



Officials: Darren Krzesnik, Joseph Barcellos, Katrina Baker-Cutler

San Fran. St. - 65

Record: 1-2

NO.	Name	F	Min	FG	3P	FT	Rebounds			Fouls		TP	AS	TO	ST	Blocks		+/-
				M-A	M-A	M-A	OR	DR	TOT	PF	FD					BS	BA	
21	Nyana Asiasi	F	34:09	2-6	2-4	0-0	1	6	7	4	2	6	0	2	1	0	0	-25
2	Alexsandra Alvarado	G	31:02	6-19	3-9	2-3	1	2	3	1	5	17	1	4	3	0	0	-13
12	Ana Daniels	G	31:44	3-10	0-0	6-8	2	3	5	1	5	12	2	4	1	1	0	-20
24	Sage Bridges-Bey	G	33:18	3-6	1-3	2-2	0	4	4	1	2	9	1	7	0	0	0	-25
32	Seilala Lautaimi	G	24:47	3-5	0-0	9-10	3	4	7	5	4	15	1	0	1	0	0	-12
23	Carleigh Adams		13:16	2-3	2-3	0-0	0	2	2	3	0	6	0	2	0	0	0	-11
5	Geriah Bradley		14:19	0-3	0-0	0-0	0	0	0	2	0	0	3	4	0	0	0	-11
0	Perséas Gioukaris		17:26	0-1	0-0	0-0	1	0	1	2	3	0	1	1	1	0	0	-18
Team							1	2	3			0		0				
Totals				19-53	8-19	19-23	9	23	32	19	21	65	9	24	7	1	0	-27

Technical Fouls::NONE

Shooting By Period		
1st FG%	3-16	18.8%
3PT%	1-5	20.0%
FT%	5-6	83.3%
2nd FG%	5-12	41.7%
3PT%	3-5	60.0%
FT%	6-8	75%
3rd FG%	4-11	36.4%
3PT%	1-2	50.0%
FT%	7-8	87.5%
4th FG%	7-14	50.0%
3PT%	3-7	42.9%
FT%	1-1	100%
GM FG%	19-53	35.8%
3PT%	8-19	42.1%
FT%	19-23	82.6%

Dead Ball Rebounds: 1, 0

San Jose St. - 92

Record: 2-1

NO.	Name	F	Min	FG	3P	FT	Rebounds			Fouls		TP	AS	TO	ST	Blocks		+/-
				M-A	M-A	M-A	OR	DR	TOT	PF	FD					BS	BA	
32	Djessira Diawara	F	26:10	5-8	0-0	0-3	1	3	4	4	2	10	0	3	2	0	1	11
31	Finau Tonga	C	23:14	10-13	0-0	2-4	1	8	9	4	3	22	1	5	1	0	0	21
1	Amiah Simmons	G	18:49	3-6	0-1	2-3	0	0	0	0	2	8	1	1	2	0	0	22
8	Amira Brown	G	20:46	3-11	0-2	6-6	5	2	7	0	4	12	6	1	1	0	0	8
9	Rylei Waugh	G	32:50	6-11	0-2	2-2	2	3	5	3	4	14	3	0	1	0	0	16
0	Sydni Summers		16:42	2-6	1-4	0-0	0	2	2	3	2	5	4	1	0	0	0	13
2	Jasmine Singleton		20:16	1-2	1-1	0-0	1	4	5	2	0	3	5	0	0	0	0	15
5	Hennie van Schaik		16:10	3-7	0-1	0-0	2	3	5	1	1	6	0	1	2	0	0	22
12	Sofia Kelemeni		12:35	3-5	1-2	0-0	1	2	3	1	1	7	0	1	0	0	0	13
11	Marisa Davis-Jones		07:17	1-2	1-1	0-0	0	0	0	2	0	3	1	1	0	0	0	-2
7	Mecca Alexander		02:56	1-1	0-0	0-0	0	1	1	1	0	2	0	1	0	0	0	-1
23	Stella Sgro		02:16	0-0	0-0	0-0	0	0	0	0	0	0	0	0	0	0	0	-3
Team							2	0	2			0		1				
Totals				38-72	4-14	12-18	15	28	43	21	19	92	21	16	9	0	1	27

Technical Fouls::NONE

Shooting By Period		
1st FG%	12-21	57.1%
3PT%	1-3	33.3%
FT%	4-5	80%
2nd FG%	10-24	41.7%
3PT%	2-6	33.3%
FT%	2-2	100%
3rd FG%	6-13	46.2%
3PT%	0-3	0.0%
FT%	6-6	100%
4th FG%	10-14	71.4%
3PT%	1-2	50.0%
FT%	0-5	0%
GM FG%	38-72	52.8%
3PT%	4-14	28.6%
FT%	12-18	66.7%

Dead Ball Rebounds: 2, 0

	SFSU	SJSU
Biggest lead	2 (1 st 9:09)	30 (4 th 2:51)
Best Scoring Run	8(2 nd 7:18)	12(1 st 4:03)
Lead Changes	3	
Times Tied	1	
Time with Lead	02:40	36:13

	SFSU	SJSU
Points from		
Turnovers	14	23
Paint	18	58
Second Chance	8	16
Fast Breaks	16	14
Bench	6	26

	Period by Period Scoring				
	1st	2nd	3rd	4th	TOT
SFSU	12	19	16	18	65
SJSU	29	24	18	21	92



Officials: Darren Krzesnik, Joseph Barcellos, Katrina Baker-Cutler

Period 1

Quarter Starters:

SJSU	1 Simmons A	8 Brown A	9 Waugh R	31 Tonga F	32 Diawara D
SFSU	2 Alvarado A	12 Daniels A	21 Asiasi N	24 Bridges-Bey S	32 Lautaimi S

Game Time	SJSU	Score	Diff	SFSU
10:00	32 DIAWARA D jumpball won			32 LAUTAIMI S jumpball lost
09:45	8 BROWN A 3pt FG , jump shot missed			
09:40				24 BRIDGES-BEY S defensive rebound (1)
09:23				2 ALVARADO A 3pt FG , jump shot missed
09:19				21 ASIASI N offensive rebound (1)
09:09	31 TONGA F foul shooting (1 - 1)			21 ASIASI N foul drawn (1)
09:09		0-1	-1	32 LAUTAIMI S free throw 1 - 2 made (1)
09:09		0-2	-2	32 LAUTAIMI S free throw 2 - 2 made (2)
09:01	31 TONGA F 2pt FG in the paint, layup missed			
08:58				21 ASIASI N defensive rebound (2)
08:44				12 DANIELS A 2pt FG outside the paint, pull up jump shot missed
08:39	8 BROWN A defensive rebound (1)			
08:33	1 SIMMONS A 2pt FG in the paint, driving layup made (2)	2-2	0	
08:18				32 LAUTAIMI S 2pt FG in the paint, layup missed
08:17				32 LAUTAIMI S offensive rebound (1)
08:17	32 DIAWARA D foul shooting (1 - 2)			32 LAUTAIMI S foul drawn (1)
08:17		2-3	-1	32 LAUTAIMI S free throw 1 - 2 made (3)
08:16				32 LAUTAIMI S free throw 2 - 2 missed
08:15	31 TONGA F defensive rebound (1)			
07:57	1 SIMMONS A turnover lost ball (1)			21 ASIASI N steal (1)
07:52	8 BROWN A steal (1)			24 BRIDGES-BEY S turnover bad pass (1)
07:47	8 BROWN A 2pt FG fast break from turnover in the paint, driving layup made (2)	4-3	1	
07:40				2 ALVARADO A turnover bad pass (1)
07:39	31 TONGA F 2pt FG from turnover in the paint, layup missed			
07:39				32 LAUTAIMI S defensive rebound (2)
07:39				12 DANIELS A 2pt FG in the paint, driving layup missed
07:39				32 LAUTAIMI S offensive rebound (3)
07:39		4-5	-1	32 LAUTAIMI S 2pt FG second chance in the paint, tip-in layup made (5)
06:56	9 WAUGH R foul drawn (1)			2 ALVARADO A foul personal (1 - 1)
06:56	1 SIMMONS A substitution out			
06:56	8 BROWN A substitution out			
06:56	31 TONGA F substitution out			
06:56	0 SUMMERS S substitution in			
06:56	2 SINGLETON J substitution in			
06:56	5 VAN SCHAIK H substitution in			
06:52	0 SUMMERS S 3pt FG , jump shot missed			
06:46				21 ASIASI N defensive rebound (3)
06:42				12 DANIELS A 2pt FG outside the paint, pull up jump shot missed
06:38	2 SINGLETON J defensive rebound (1)			
06:32	2 SINGLETON J 2pt FG outside the paint, jump shot missed			



Official Basketball Play by Play - 1st Period
San Fran. St. at San Jose St.
 11/12/24 Provident Credit Union Event Center, San Jose
 2024-25 Women's Basketball

Game Time: 6:00 PM
Game Duration: 1:45
Attendance: 914

Officials: Darren Krzesnik, Joseph Barcellos, Katrina Baker-Cutler

Game Time	SJSU	Score	Diff	SFSU
06:31				defensive rebound (8)
06:31	9 WAUGH R substitution out			
06:31	12 KELEMENI S substitution in			
06:12				2 ALVARADO A 2pt FG in the paint, driving layup missed
06:09	2 SINGLETON J defensive rebound (2)			
06:05	32 DIAWARA D 2pt FG fast break in the paint, layup made (2)	6-5	1	
06:05	2 SINGLETON J assist (1)			
05:50				24 BRIDGES-BEY S 3pt FG , jump shot missed
05:46				2 ALVARADO A offensive rebound (1)
05:45				21 ASIASI N 3pt FG second chance, jump shot missed
05:42	5 VAN SCHAIK H defensive rebound (1)			
05:42	5 VAN SCHAIK H foul drawn (1)			32 LAUTAIMI S foul personal (1 - 2)
05:42				32 LAUTAIMI S substitution out
05:42				23 ADAMS C substitution in
05:33	12 KELEMENI S 3pt FG , jump shot made (3)	9-5	4	
05:33	2 SINGLETON J assist (2)			
05:17				24 BRIDGES-BEY S turnover bad pass (2)
05:16	32 DIAWARA D substitution out			
05:16	31 TONGA F substitution in			
05:16				2 ALVARADO A substitution out
05:16				5 BRADLEY G substitution in
04:58	5 VAN SCHAIK H 2pt FG from turnover outside the paint, pull up jump shot missed			
04:52				24 BRIDGES-BEY S defensive rebound (2)
04:43				24 BRIDGES-BEY S 3pt FG , jump shot missed
04:40	2 SINGLETON J defensive rebound (3)			
04:31	31 TONGA F 2pt FG in the paint, layup made (2)	11-5	6	
04:31	31 TONGA F foul drawn (1)			21 ASIASI N foul shooting (1 - 3)
04:31	Timeout media			
04:31	31 TONGA F free throw 1 - 1 made (3)	12-5	7	
04:18	5 VAN SCHAIK H steal (1)			5 BRADLEY G turnover bad pass (1)
04:15	5 VAN SCHAIK H 2pt FG from turnover in the paint, layup made (2)	14-5	9	
04:14	0 SUMMERS S foul drawn (1)			5 BRADLEY G foul offensive (1 - 4)
04:14				5 BRADLEY G turnover offensive (2)
04:14				12 DANIELS A substitution out
04:14				2 ALVARADO A substitution in
04:03	31 TONGA F 2pt FG from turnover in the paint, layup made (5)	16-5	11	
04:03	0 SUMMERS S assist (1)			
03:43				5 BRADLEY G 2pt FG outside the paint, jump shot missed
03:38	12 KELEMENI S defensive rebound (1)			
03:35	5 VAN SCHAIK H 2pt FG in the paint, driving layup missed			
03:32				24 BRIDGES-BEY S defensive rebound (3)
03:21				24 BRIDGES-BEY S 2pt FG in the paint, layup missed
03:19	0 SUMMERS S defensive rebound (1)			
03:06	31 TONGA F turnover lost ball (1)			
03:06	0 SUMMERS S substitution out			
03:06	12 KELEMENI S substitution out			
03:06	8 BROWN A substitution in			
03:06	9 WAUGH R substitution in			



Official Basketball Play by Play - 1st Period
San Fran. St. at San Jose St.
 11/12/24 Provident Credit Union Event Center, San Jose
 2024-25 Women's Basketball

Game Time: 6:00 PM
Game Duration: 1:45
Attendance: 914

Officials: Darren Krzesnik, Joseph Barcellos, Katrina Baker-Cutler

Game Time	SJSU	Score	Diff	SFSU
02:59		16-7	9	2 ALVARADO A 2pt FG fast break from turnover in the paint, driving layup made (2)
02:39	31 TONGA F 2pt FG in the paint, layup made (7)	18-7	11	
02:39	8 BROWN A assist (1)			
02:23	2 SINGLETON J foul personal (1 - 3)			2 ALVARADO A foul drawn (1)
02:23	2 SINGLETON J substitution out			
02:23	1 SIMMONS A substitution in			
02:23				23 ADAMS C substitution out
02:23				32 LAUTAIMI S substitution in
02:16	31 TONGA F steal (1)			5 BRADLEY G turnover bad pass (3)
02:12	1 SIMMONS A foul drawn (1)			5 BRADLEY G foul shooting (2 - 5)
02:11				5 BRADLEY G substitution out
02:11				0 GIOUKARIS P substitution in
02:11	1 SIMMONS A free throw fast break 1 - 2 made (3)	19-7	12	
02:11	1 SIMMONS A free throw fast break 2 - 2 made (4)	20-7	13	
02:01	1 SIMMONS A steal (1)			2 ALVARADO A turnover lost ball (2)
01:55	9 WAUGH R 2pt FG fast break from turnover in the paint, driving layup made (2)	22-7	15	
01:55	8 BROWN A assist (2)			
01:55				2 ALVARADO A substitution out
01:55				12 DANIELS A substitution in
01:55	1 SIMMONS A foul drawn (2)			0 GIOUKARIS P foul shooting (1 - 6)
01:55	1 SIMMONS A free throw 1 - 1 missed			
01:55	5 VAN SCHAIK H offensive rebound (2)			
01:54	5 VAN SCHAIK H 2pt FG second chance in the paint, layup missed			
01:50				24 BRIDGES-BEY S defensive rebound (4)
01:22				32 LAUTAIMI S 2pt FG in the paint, layup missed
01:18	31 TONGA F defensive rebound (2)			
01:14	8 BROWN A 2pt FG fast break in the paint, layup made (4)	24-7	17	
01:03				12 DANIELS A 2pt FG outside the paint, jump shot missed
01:01	9 WAUGH R defensive rebound (1)			
00:52	31 TONGA F 2pt FG in the paint, layup made (9)	26-7	19	
00:52	8 BROWN A assist (3)			
00:51	31 TONGA F foul drawn (2)			21 ASIASI N foul shooting (2 - 7)
00:51	1 SIMMONS A substitution out			
00:51	5 VAN SCHAIK H substitution out			
00:51	8 BROWN A substitution out			
00:51	0 SUMMERS S substitution in			
00:51	11 DAVIS-JONES M substitution in			
00:51	12 KELEMENI S substitution in			
00:51	31 TONGA F free throw 1 - 1 made (10)	27-7	20	
00:44	31 TONGA F foul shooting (2 - 4)			12 DANIELS A foul drawn (1)
00:44	31 TONGA F substitution out			
00:44	32 DIAWARA D substitution in			
00:44				0 GIOUKARIS P substitution out
00:44				2 ALVARADO A substitution in
00:44		27-8	19	12 DANIELS A free throw fast break 1 - 2 made (1)
00:44		27-9	18	12 DANIELS A free throw fast break 2 - 2 made (2)
00:35	9 WAUGH R 2pt FG outside the paint, jump shot made (4)	29-9	20	



Official Basketball Play by Play - 1st Period
San Fran. St. at San Jose St.
11/12/24 Provident Credit Union Event Center, San Jose
2024-25 Women's Basketball

Game Time: 6:00 PM
Game Duration: 1:45
Attendance: 914

Officials: Darren Krzesnik, Joseph Barcellos, Katrina Baker-Cutler

Game Time	SJSU	Score	Diff	SFSU
00:35	11 DAVIS-JONES M assist (1)			
00:13				12 DANIELS A turnover lost ball (1)
00:13				32 LAUTAIMI S substitution out
00:13				23 ADAMS C substitution in
00:07	11 DAVIS-JONES M 2pt FG from turnover in the paint, layup missed			
00:04				12 DANIELS A defensive rebound (1)
00:00		29-12	17	23 ADAMS C 3pt FG fast break, jump shot made (3)
00:00				24 BRIDGES-BEY S assist (1)
END OF PERIOD				
SJSU 29-12 SFSU				



Officials: Darren Krzesnik, Joseph Barcellos, Katrina Baker-Cutler

San Fran. St. - 12

NO.	Name	F	Min	FG			Rebounds			Fouls		TP	AS	TO	ST	Blocks		+/-
				M-A	M-A	M-A	OR	DR	TOT	PF	FD					BS	BA	
21	Nyana Asiasi	F	10:00	0-1	0-1	0-0	1	2	3	2	1	0	0	0	1	0	0	-17
2	Alexsandra Alvarado	G	07:48	1-3	0-1	0-0	1	0	1	1	1	2	0	2	0	0	0	-7
12	Ana Daniels	G	07:41	0-4	0-0	2-2	0	1	1	0	1	2	0	1	0	0	0	-11
24	Sage Bridges-Bey	G	10:00	0-3	0-2	0-0	0	4	4	0	0	0	1	2	0	0	0	-17
32	Seilala Lautaimi	G	06:27	1-3	0-0	3-4	2	1	3	1	1	5	0	0	0	0	0	-10
23	Carleigh Adams		03:33	1-1	1-1	0-0	0	0	0	0	0	3	0	0	0	0	0	-7
5	Geriah Bradley		03:05	0-1	0-0	0-0	0	0	0	2	0	0	0	3	0	0	0	-7
0	Perséas Gioukaris		01:27	0-0	0-0	0-0	0	0	0	1	0	0	0	0	0	0	0	-9
Team							0	1	1			0		0				
Totals				3-16	1-5	5-6	4	9	13	7	4	12	1	8	1	0	0	-17

Shooting By Period		
1st FG%	3-16	18.8%
3PT%	1-5	20.0%
FT%	5-6	83.3%
GM FG%	3-16	18.8%
3PT%	1-5	20.0%
FT%	5-6	83.3%

Dead Ball Rebounds: 0, 0

Technical Fouls: NONE

San Jose St. - 29

NO.	Name	F	Min	FG			Rebounds			Fouls		TP	AS	TO	ST	Blocks		+/-
				M-A	M-A	M-A	OR	DR	TOT	PF	FD					BS	BA	
32	Djessira Diawara	F	05:29	1-1	0-0	0-0	0	0	0	1	0	2	0	0	0	0	0	1
31	Finau Tonga	C	07:36	4-6	0-0	2-2	0	2	2	2	2	10	0	1	1	0	0	15
1	Amiah Simmons	G	04:36	1-1	0-0	2-3	0	0	0	0	2	4	0	1	1	0	0	7
8	Amira Brown	G	05:19	2-3	0-1	0-0	0	1	1	0	0	4	3	0	1	0	0	7
9	Rylei Waugh	G	06:35	2-2	0-0	0-0	0	1	1	0	1	4	0	0	0	0	0	5
0	Sydni Summers		04:41	0-1	0-1	0-0	0	1	1	0	1	0	1	0	0	0	0	10
2	Jasmine Singleton		04:33	0-1	0-0	0-0	0	3	3	1	0	0	2	0	0	0	0	12
5	Hennie van Schaik		06:05	1-4	0-0	0-0	1	1	2	0	1	2	0	0	1	0	0	20
12	Sofia Kelemen		04:16	1-1	1-1	0-0	0	1	1	0	0	3	0	0	0	0	0	10
11	Marisa Davis-Jones		00:51	0-1	0-0	0-0	0	0	0	0	0	0	1	0	0	0	0	-2
Team							0	0	0			0		0				
Totals				12-21	1-3	4-5	1	10	11	4	7	29	7	2	4	0	0	17

Shooting By Period		
1st FG%	12-21	57.1%
3PT%	1-3	33.3%
FT%	4-5	80%
GM FG%	12-21	57.1%
3PT%	1-3	33.3%
FT%	4-5	80.0%

Dead Ball Rebounds: 0, 0

Technical Fouls: NONE

	SFSU	SJSU
Biggest lead	2 (1 st 9:09)	20 (1 st 0:51)
Best Scoring Run	3 (1 st 0:00)	12 (1 st 4:03)
Lead Changes	3	
Times Tied	1	
Time with Lead	02:40	06:13

	SFSU	SJSU
Points from		
Turnovers	2	10
Paint	4	20
Second Chance	5	0
Fast Breaks	7	10
Bench	3	5

	Period by Period Scoring				
	1st	2nd	3rd	4th	TOT
SFSU	12	19	16	18	65
SJSU	29	24	18	21	92



Officials: Darren Krzesnik, Joseph Barcellos, Katrina Baker-Cutler

Period 2

Quarter Starters:

SJSU	2 Singleton J	5 van Schaik H	8 Brown A	9 Waugh R	32 Diawara D
SFSU	2 Alvarado A	12 Daniels A	23 Adams C	24 Bridges-Bey S	32 Lautaimi S

Game Time	SJSU	Score	Diff	SFSU
10:00	0 SUMMERS S substitution out			
10:00	11 DAVIS-JONES M substitution out			
10:00	12 KELEMENI S substitution out			
10:00	2 SINGLETON J substitution in			
10:00	5 VAN SCHAIK H substitution in			
10:00	8 BROWN A substitution in			
10:00				21 ASIASI N substitution out
10:00				32 LAUTAIMI S substitution in
09:48				2 ALVARADO A 2pt FG in the paint, layup missed
09:48	2 SINGLETON J defensive rebound (4)			
09:48	jump ball situation			
09:43	9 WAUGH R 3pt FG , jump shot missed			
09:38	8 BROWN A offensive rebound (2)			
09:38	8 BROWN A foul drawn (1)			23 ADAMS C foul shooting (1 - 1)
09:36				23 ADAMS C substitution out
09:36				21 ASIASI N substitution in
09:36	8 BROWN A free throw 1 - 2 made (5)	30-12	18	
09:36	8 BROWN A free throw 2 - 2 made (6)	31-12	19	
09:20		31-15	16	2 ALVARADO A 3pt FG , jump shot made (5)
09:20				12 DANIELS A assist (1)
09:04	9 WAUGH R 2pt FG in the paint, driving layup missed			
09:02				12 DANIELS A defensive rebound (2)
09:02	jump ball situation			
08:42				24 BRIDGES-BEY S turnover travel (3)
08:27	32 DIAWARA D 2pt FG from turnover in the paint, layup blocked			
08:27				12 DANIELS A block (1)
08:27				32 LAUTAIMI S defensive rebound (4)
08:01		31-17	14	32 LAUTAIMI S 2pt FG in the paint, layup made (7)
08:01				2 ALVARADO A assist (1)
07:44	5 VAN SCHAIK H 3pt FG , jump shot missed			
07:40				12 DANIELS A defensive rebound (3)
07:30	32 DIAWARA D foul shooting (2 - 1)			12 DANIELS A foul drawn (2)
07:30	5 VAN SCHAIK H substitution out			
07:30	8 BROWN A substitution out			
07:30	32 DIAWARA D substitution out			
07:30	0 SUMMERS S substitution in			
07:30	12 KELEMENI S substitution in			
07:30	31 TONGA F substitution in			
07:30		31-18	13	12 DANIELS A free throw 1 - 2 made (3)
07:30				12 DANIELS A free throw 2 - 2 missed
07:29	31 TONGA F defensive rebound (3)			
07:23	12 KELEMENI S 2pt FG in the paint, layup missed			
07:21				32 LAUTAIMI S defensive rebound (5)



Official Basketball Play by Play - 2nd Period
San Fran. St. at San Jose St.
 11/12/24 Provident Credit Union Event Center, San Jose
 2024-25 Women's Basketball

Game Time: 6:00 PM
Game Duration: 1:45
Attendance: 914

Officials: Darren Krzesnik, Joseph Barcellos, Katrina Baker-Cutler

Game Time	SJSU	Score	Diff	SFSU
07:18	0 SUMMERS S foul shooting (1 - 2)			12 DANIELS A foul drawn (3)
07:18		31-19	12	12 DANIELS A free throw fast break 1 - 2 made (4)
07:18		31-20	11	12 DANIELS A free throw fast break 2 - 2 made (5)
07:01	2 SINGLETON J 3pt FG , jump shot made (3)	34-20	14	
07:01	9 WAUGH R assist (1)			
06:43				12 DANIELS A 2pt FG in the paint, driving layup missed
06:41				32 LAUTAIMI S offensive rebound (6)
06:41	12 KELEMENI S foul shooting (1 - 3)			32 LAUTAIMI S foul drawn (2)
06:41	0 SUMMERS S substitution out			
06:41	2 SINGLETON J substitution out			
06:41	1 SIMMONS A substitution in			
06:41	8 BROWN A substitution in			
06:41		34-21	13	32 LAUTAIMI S free throw 1 - 2 made (8)
06:41		34-22	12	32 LAUTAIMI S free throw 2 - 2 made (9)
06:33	31 TONGA F 2pt FG in the paint, layup made (12)	36-22	14	
06:33	8 BROWN A assist (4)			
06:24		36-24	12	24 BRIDGES-BEY S 2pt FG fast break in the paint, driving layup made (2)
06:07	8 BROWN A 2pt FG in the paint, layup missed			
06:00	8 BROWN A offensive rebound (3)			
06:00	8 BROWN A 2pt FG second chance in the paint, tip-in layup made (8)	38-24	14	
06:00				2 ALVARADO A turnover bad pass (3)
05:50	9 WAUGH R 2pt FG from turnover outside the paint, jump shot missed			
05:41	8 BROWN A offensive rebound (4)			
05:41	8 BROWN A 2pt FG from turnover second chance in the paint, tip-in layup missed			
05:40	8 BROWN A offensive rebound (5)			
05:40	8 BROWN A 2pt FG from turnover second chance in the paint, tip-in layup missed			
05:39	12 KELEMENI S offensive rebound (2)			
05:39	12 KELEMENI S 2pt FG from turnover second chance in the paint, tip-in layup made (5)	40-24	16	
05:33				12 DANIELS A turnover bad pass (2)
05:33	31 TONGA F substitution out			
05:33	32 DIAWARA D substitution in			
05:26	8 BROWN A foul drawn (2)			32 LAUTAIMI S foul personal (2 - 2)
05:26				32 LAUTAIMI S substitution out
05:26				23 ADAMS C substitution in
05:24	8 BROWN A 2pt FG from turnover in the paint, driving layup missed			
05:21	9 WAUGH R offensive rebound (2)			
05:18	12 KELEMENI S 2pt FG from turnover second chance outside the paint, jump shot made (7)	42-24	18	
05:18	9 WAUGH R assist (2)			
04:56		42-27	15	24 BRIDGES-BEY S 3pt FG , jump shot made (5)
04:38	9 WAUGH R 2pt FG in the paint, driving layup made (6)	44-27	17	
04:18	12 KELEMENI S foul drawn (1)			23 ADAMS C foul offensive (2 - 3)
04:18				23 ADAMS C turnover offensive (1)
04:18	Timeout media			
04:18				12 DANIELS A substitution out



Officials: Darren Krzesnik, Joseph Barcellos, Katrina Baker-Cutler

Game Time	SJSU	Score	Diff	SFSU
04:18				21 ASIASI N substitution out
04:18				23 ADAMS C substitution out
04:18				0 GIOUKARIS P substitution in
04:18				5 BRADLEY G substitution in
04:18				32 LAUTAIMI S substitution in
04:05	1 SIMMONS A 2pt FG from turnover in the paint, driving layup missed			
04:02				defensive rebound (19)
03:46				5 BRADLEY G 2pt FG in the paint, layup missed
03:41				offensive rebound (20)
03:41	9 WAUGH R foul personal (1 - 4)			24 BRIDGES-BEY S foul drawn (1)
03:41				24 BRIDGES-BEY S turnover travel (4)
03:41	8 BROWN A substitution out			
03:41	12 KELEMENI S substitution out			
03:41	0 SUMMERS S substitution in			
03:41	2 SINGLETON J substitution in			
03:27	0 SUMMERS S 3pt FG from turnover, jump shot made (3)	47-27	20	
03:27	2 SINGLETON J assist (3)			
03:20				5 BRADLEY G turnover lost ball (4)
03:20				5 BRADLEY G substitution out
03:20				12 DANIELS A substitution in
03:10	0 SUMMERS S 3pt FG from turnover, jump shot missed			
03:05	2 SINGLETON J offensive rebound (5)			
03:00	9 WAUGH R 2pt FG from turnover second chance outside the paint, jump shot missed			
02:55				2 ALVARADO A defensive rebound (2)
02:35				12 DANIELS A turnover bad pass (3)
02:17	32 DIAWARA D foul offensive (3 - 5)			2 ALVARADO A foul drawn (2)
02:17	32 DIAWARA D turnover offensive (1)			
02:17	1 SIMMONS A substitution out			
02:17	11 DAVIS-JONES M substitution in			
01:59				2 ALVARADO A 2pt FG from turnover in the paint, driving layup missed
01:51				12 DANIELS A offensive rebound (4)
01:51				12 DANIELS A 2pt FG from turnover second chance in the paint, tip-in layup missed
01:50	32 DIAWARA D defensive rebound (1)			
01:44	0 SUMMERS S 2pt FG in the paint, layup made (5)	49-27	22	
01:44	2 SINGLETON J assist (4)			
01:35		49-30	19	2 ALVARADO A 3pt FG , jump shot made (8)
01:20	0 SUMMERS S foul drawn (2)			0 GIOUKARIS P foul personal (2 - 4)
01:15	32 DIAWARA D 2pt FG in the paint, driving layup made (4)	51-30	21	
01:15	2 SINGLETON J assist (5)			
00:58				2 ALVARADO A 3pt FG , jump shot missed
00:55				12 DANIELS A offensive rebound (5)
00:55	11 DAVIS-JONES M foul shooting (1 - 6)			12 DANIELS A foul drawn (4)
00:55	0 SUMMERS S substitution out			
00:55	12 KELEMENI S substitution in			
00:55				0 GIOUKARIS P substitution out
00:55				21 ASIASI N substitution in



Official Basketball Play by Play - 2nd Period
San Fran. St. at San Jose St.
 11/12/24 Provident Credit Union Event Center, San Jose
 2024-25 Women's Basketball

Game Time: 6:00 PM
Game Duration: 1:45
Attendance: 914

Officials: Darren Krzesnik, Joseph Barcellos, Katrina Baker-Cutler

Game Time	SJSU	Score	Diff	SFSU
00:55				12 DANIELS A free throw 1 - 2 missed
00:55				offensive dead ball rebound (1)
00:55		51-31	20	12 DANIELS A free throw 2 - 2 made (6)
00:37	32 DIAWARA D 2pt FG in the paint, layup made (6)	53-31	22	
00:21				2 ALVARADO A 3pt FG , jump shot missed
00:16	32 DIAWARA D defensive rebound (2)			
00:03	12 KELEMENI S 3pt FG , jump shot missed			
00:00				32 LAUTAIMI S defensive rebound (7)
END OF PERIOD				
SJSU 53-31 SFSU				



Officials: Darren Krzesnik, Joseph Barcellos, Katrina Baker-Cutler

San Fran. St. - 19

NO.	Name	F	Min	FG			Rebounds			Fouls		TP	AS	TO	ST	Blocks		+/-
				M-A	M-A	M-A	OR	DR	TOT	PF	FD					BS	BA	
21	Nyana Asiasi	F	06:13	0-0	0-0	0-0	0	0	0	0	0	0	0	0	0	0	0	-1
2	Alexsandra Alvarado	G	10:00	2-6	2-4	0-0	0	1	1	0	1	6	1	1	0	0	0	-5
12	Ana Daniels	G	09:02	0-2	0-0	4-6	2	2	4	0	3	4	1	2	0	1	0	-2
24	Sage Bridges-Bey	G	10:00	2-2	1-1	0-0	0	0	0	0	1	5	0	2	0	0	0	-5
32	Seilala Lautaimi	G	08:52	1-1	0-0	2-2	1	3	4	1	1	4	0	0	0	0	0	-4
23	Carleigh Adams		01:32	0-0	0-0	0-0	0	0	0	2	0	0	0	1	0	0	0	-1
0	Perséas Gioukaris		03:23	0-0	0-0	0-0	0	0	0	1	0	0	0	0	0	0	0	-4
5	Geriah Bradley		00:58	0-1	0-0	0-0	0	0	0	0	0	0	0	1	0	0	0	-3
Team							1	1	2			0		0				
Totals				5-12	3-5	6-8	4	7	11	4	6	19	2	7	0	1	0	-5

Shooting By Period		
2 nd FG%	5-12	41.7%
3PT%	3-5	60.0%
FT%	6-8	75%
GM FG%	5-12	41.7%
3PT%	3-5	60.0%
FT%	6-8	75.0%

Dead Ball Rebounds: 1, 0

Technical Fouls::NONE

San Jose St. - 24

NO.	Name	F	Min	FG			Rebounds			Fouls		TP	AS	TO	ST	Blocks		+/-
				M-A	M-A	M-A	OR	DR	TOT	PF	FD					BS	BA	
32	Djessira Diawara	F	08:03	2-3	0-0	0-0	0	2	2	2	0	4	0	1	0	0	1	3
31	Finau Tonga	C	01:57	1-1	0-0	0-0	0	1	1	0	0	2	0	0	0	0	0	2
1	Amiah Simmons	G	04:24	0-1	0-0	0-0	0	0	0	0	0	0	0	0	0	0	0	6
8	Amira Brown	G	05:30	1-5	0-0	2-2	4	0	4	0	2	4	1	0	0	0	0	0
9	Rylei Waugh	G	10:00	1-5	0-1	0-0	1	0	1	1	0	2	2	0	0	0	0	5
2	Jasmine Singleton		07:00	1-1	1-1	0-0	1	1	2	0	0	3	3	0	0	0	0	2
5	Hennie van Schaik		02:30	0-1	0-1	0-0	0	0	0	0	0	0	0	0	0	0	0	-3
0	Sydni Summers		03:35	2-3	1-2	0-0	0	0	0	1	1	5	0	0	0	0	0	4
12	Sofia Kelemen		04:44	2-4	0-1	0-0	1	0	1	1	1	4	0	0	0	0	0	4
11	Marisa Davis-Jones		02:17	0-0	0-0	0-0	0	0	0	1	0	0	0	0	0	0	0	2
Team							0	0	0			0		0				
Totals				10-24	2-6	2-2	7	4	11	6	4	24	6	1	0	0	1	5

Shooting By Period		
2 nd FG%	10-24	41.7%
3PT%	2-6	33.3%
FT%	2-2	100%
GM FG%	10-24	41.7%
3PT%	2-6	33.3%
FT%	2-2	100.0%

Dead Ball Rebounds: 0, 0

Technical Fouls::NONE

	SFSU	SJSU
Biggest lead	0 (1 st 10:00)	22 (2 nd 1:44)
Best Scoring Run	8(2 nd 7:18)	7(2 nd 1:44)
Lead Changes	0	
Times Tied	0	
Time with Lead	00:00	09:48

	SFSU	SJSU
Points from		
Turnovers	0	7
Paint	4	14
Second Chance	3	8
Fast Breaks	4	0
Bench	0	12

	Period by Period Scoring				
	1st	2nd	3rd	4th	TOT
SFSU	12	19	16	18	65
SJSU	29	24	18	21	92



Officials: Darren Krzesnik, Joseph Barcellos, Katrina Baker-Cutler

San Fran. St. - 31

NO.	Name	F	Min	FG			Rebounds			Fouls		TP	AS	TO	ST	Blocks		+/-
				M-A	3P	FT	OR	DR	TOT	PF	FD					BS	BA	
21	Nyana Asiasi	F	16:13	0-1	0-1	0-0	1	2	3	2	1	0	0	0	1	0	0	-18
2	Alexsandra Alvarado	G	17:48	3-9	2-5	0-0	1	1	2	1	2	8	1	3	0	0	0	-12
12	Ana Daniels	G	16:43	0-6	0-0	6-8	2	3	5	0	4	6	1	3	0	1	0	-13
24	Sage Bridges-Bey	G	20:00	2-5	1-3	0-0	0	4	4	0	1	5	1	4	0	0	0	-22
32	Seilala Lautaimi	G	15:19	2-4	0-0	5-6	3	4	7	2	2	9	0	0	0	0	0	-14
23	Carleigh Adams		05:05	1-1	1-1	0-0	0	0	0	2	0	3	0	1	0	0	0	-8
5	Geriah Bradley		04:03	0-2	0-0	0-0	0	0	0	2	0	0	0	4	0	0	0	-10
0	Perséas Gioukaris		04:50	0-0	0-0	0-0	0	0	0	2	0	0	0	0	0	0	0	-13
Team							1	2	3			0		0				
Totals				8-28	4-10	11-14	8	16	24	11	10	31	3	15	1	1	0	-22

Shooting By Period		
1 st FG%	3-16	18.8%
3PT%	1-5	20.0%
FT%	5-6	83.3%
2 nd FG%	5-12	41.7%
3PT%	3-5	60.0%
FT%	6-8	75%
GM FG%	8-28	28.6%
3PT%	4-10	40.0%
FT%	11-14	78.6%

Dead Ball Rebounds: 1, 0

Technical Fouls::NONE

San Jose St. - 53

NO.	Name	F	Min	FG			Rebounds			Fouls		TP	AS	TO	ST	Blocks		+/-
				M-A	3P	FT	OR	DR	TOT	PF	FD					BS	BA	
32	Djessira Diawara	F	13:32	3-4	0-0	0-0	0	2	2	3	0	6	0	1	0	0	1	4
31	Finau Tonga	C	09:33	5-7	0-0	2-2	0	3	3	2	2	12	0	1	1	0	0	17
1	Amiah Simmons	G	09:00	1-2	0-0	2-3	0	0	0	0	2	4	0	1	1	0	0	13
8	Amira Brown	G	10:49	3-8	0-1	2-2	4	1	5	0	2	8	4	0	1	0	0	7
9	Rylei Waugh	G	16:35	3-7	0-1	0-0	1	1	2	1	1	6	2	0	0	0	0	10
0	Sydni Summers		08:16	2-4	1-3	0-0	0	1	1	1	2	5	1	0	0	0	0	14
2	Jasmine Singleton		11:33	1-2	1-1	0-0	1	4	5	1	0	3	5	0	0	0	0	14
5	Hennie van Schaik		08:35	1-5	0-1	0-0	1	1	2	0	1	2	0	0	1	0	0	17
12	Sofia Kelemen		09:00	3-5	1-2	0-0	1	1	2	1	1	7	0	0	0	0	0	14
11	Marisa Davis-Jones		03:08	0-1	0-0	0-0	0	0	0	1	0	0	1	0	0	0	0	0
Team							0	0	0			0		0				
Totals				22-45	3-9	6-7	8	14	22	10	11	53	13	3	4	0	1	22

Shooting By Period		
1 st FG%	12-21	57.1%
3PT%	1-3	33.3%
FT%	4-5	80%
2 nd FG%	10-24	41.7%
3PT%	2-6	33.3%
FT%	2-2	100%
GM FG%	22-45	48.9%
3PT%	3-9	33.3%
FT%	6-7	85.7%

Dead Ball Rebounds: 0, 0

Technical Fouls::NONE

	SFSU	SJSU
Biggest lead	2 (1 st 9:09)	22 (2 nd 1:44)
Best Scoring Run	8(2 nd 7:18)	12(1 st 4:03)
Lead Changes	3	
Times Tied	1	
Time with Lead	02:40	16:13

Points from	SFSU	SJSU
Turnovers	2	17
Paint	8	34
Second Chance	8	8
Fast Breaks	11	10
Bench	3	17

	Period by Period Scoring				
	1st	2nd	3rd	4th	TOT
SFSU	12	19	16	18	65
SJSU	29	24	18	21	92



Period 3

Quarter Starters:

SJSU	1 Simmons A	8 Brown A	9 Waugh R	31 Tonga F	32 Diawara D
SFSU	2 Alvarado A	12 Daniels A	21 Asiasi N	24 Bridges-Bey S	32 Lautaimi S

Game Time	SJSU	Score	Diff	SFSU
10:00	2 SINGLETON J substitution out			
10:00	11 DAVIS-JONES M substitution out			
10:00	12 KELEMENI S substitution out			
10:00	1 SIMMONS A substitution in			
10:00	8 BROWN A substitution in			
10:00	31 TONGA F substitution in			
09:50	9 WAUGH R foul drawn (2)			32 LAUTAIMI S foul shooting (3 - 1)
09:50	9 WAUGH R free throw 1 - 2 made (7)	54-31	23	
09:50	9 WAUGH R free throw 2 - 2 made (8)	55-31	24	
09:33		55-34	21	21 ASIASI N 3pt FG , jump shot made (3)
09:33				32 LAUTAIMI S assist (1)
09:04	31 TONGA F 2pt FG in the paint, layup made (14)	57-34	23	
09:04	9 WAUGH R assist (3)			
08:39				2 ALVARADO A 2pt FG in the paint, driving layup missed
08:35	9 WAUGH R defensive rebound (3)			
08:26	31 TONGA F 2pt FG in the paint, layup made (16)	59-34	25	
08:26	8 BROWN A assist (5)			
08:02	31 TONGA F foul shooting (3 - 1)			32 LAUTAIMI S foul drawn (3)
08:02	5 VAN SCHAIK H substitution in			
08:02	31 TONGA F substitution out			
08:02	32 DIAWARA D substitution out			
08:02	11 DAVIS-JONES M substitution in			
08:02		59-35	24	32 LAUTAIMI S free throw 1 - 2 made (10)
08:02		59-36	23	32 LAUTAIMI S free throw 2 - 2 made (11)
07:51	1 SIMMONS A 2pt FG in the paint, driving layup missed			
07:48				21 ASIASI N defensive rebound (4)
07:43	5 VAN SCHAIK H foul personal (1 - 2)			21 ASIASI N foul drawn (2)
07:38	9 WAUGH R foul shooting (2 - 3)			32 LAUTAIMI S foul drawn (4)
07:38	Timeout 30 Sec			
07:38				Timeout media
07:38		59-37	22	32 LAUTAIMI S free throw 1 - 2 made (12)
07:38		59-38	21	32 LAUTAIMI S free throw 2 - 2 made (13)
07:32	1 SIMMONS A substitution out			
07:32	2 SINGLETON J substitution in			
07:23	5 VAN SCHAIK H turnover bad pass (1)			12 DANIELS A steal (1)
07:22	9 WAUGH R foul personal (3 - 4)			12 DANIELS A foul drawn (5)
07:22	5 VAN SCHAIK H substitution out			
07:22	32 DIAWARA D substitution in			
07:22	11 DAVIS-JONES M substitution out			
07:22	31 TONGA F substitution in			
07:00	2 SINGLETON J foul shooting (2 - 5)			24 BRIDGES-BEY S foul drawn (2)
07:00		59-39	20	24 BRIDGES-BEY S free throw 1 - 2 made (6)
07:00		59-40	19	24 BRIDGES-BEY S free throw 2 - 2 made (7)



Official Basketball Play by Play - 3rd Period
San Fran. St. at San Jose St.
 11/12/24 Provident Credit Union Event Center, San Jose
 2024-25 Women's Basketball

Game Time: 6:00 PM
Game Duration: 1:45
Attendance: 914

Officials: Darren Krzesnik, Joseph Barcellos, Katrina Baker-Cutler

Game Time	SJSU	Score	Diff	SFSU
06:54	8 BROWN A turnover bad pass (1)			
06:37				12 DANIELS A 2pt FG from turnover outside the paint, pull up jump shot missed
06:33	31 TONGA F defensive rebound (4)			
06:23	9 WAUGH R 3pt FG , jump shot missed			
06:20	8 BROWN A offensive rebound (6)			
06:20	8 BROWN A foul drawn (3)			21 ASIASI N foul shooting (3 - 2)
06:19	8 BROWN A free throw 1 - 2 made (9)	60-40	20	
06:19	8 BROWN A free throw 2 - 2 made (10)	61-40	21	
06:19	8 BROWN A substitution out			
06:19	0 SUMMERS S substitution in			
05:55				2 ALVARADO A 2pt FG outside the paint, jump shot missed
05:51	31 TONGA F defensive rebound (5)			
05:46	32 DIAWARA D 2pt FG in the paint, driving layup missed			
05:43				21 ASIASI N defensive rebound (5)
05:41	9 WAUGH R steal (1)			21 ASIASI N turnover bad pass (1)
05:30	31 TONGA F 2pt FG from turnover in the paint, layup missed			
05:27	32 DIAWARA D offensive rebound (3)			
05:11	jump ball situation			
05:11	31 TONGA F turnover lost ball (2)			2 ALVARADO A steal (1)
05:11	9 WAUGH R substitution out			
05:11	12 KELEMENI S substitution in			
05:11				12 DANIELS A substitution out
05:11				5 BRADLEY G substitution in
05:04	0 SUMMERS S foul personal (2 - 6)			2 ALVARADO A foul drawn (3)
05:04		61-41	20	2 ALVARADO A free throw 1 - 2 made (9)
05:03				2 ALVARADO A free throw 2 - 2 missed
05:02	12 KELEMENI S defensive rebound (3)			
04:49	0 SUMMERS S 3pt FG , jump shot missed			
04:45	31 TONGA F offensive rebound (6)			
04:42	31 TONGA F 2pt FG second chance in the paint, layup made (18)	63-41	22	
04:25				24 BRIDGES-BEY S turnover bad pass (5)
04:25	Timeout media			
04:25				21 ASIASI N substitution out
04:25				0 GIOUKARIS P substitution in
04:15	12 KELEMENI S turnover bad pass (1)			32 LAUTAIMI S steal (1)
03:49	jump ball situation			
03:49	32 DIAWARA D steal (1)			2 ALVARADO A turnover lost ball (4)
03:48	32 DIAWARA D turnover bad pass (2)			2 ALVARADO A steal (2)
03:43		63-43	20	2 ALVARADO A 2pt FG fast break from turnover in the paint, layup made (11)
03:12	0 SUMMERS S 2pt FG in the paint, driving layup missed			
03:10	offensive rebound (30)			
03:10	turnover shot clock (9)			
03:10	12 KELEMENI S substitution out			
03:10	9 WAUGH R substitution in			
03:04				5 BRADLEY G 2pt FG from turnover in the paint, hook shot missed
03:00	0 SUMMERS S defensive rebound (2)			



Official Basketball Play by Play - 3rd Period
San Fran. St. at San Jose St.
 11/12/24 Provident Credit Union Event Center, San Jose
 2024-25 Women's Basketball

Game Time: 6:00 PM
Game Duration: 1:45
Attendance: 914

Officials: Darren Krzesnik, Joseph Barcellos, Katrina Baker-Cutler

Game Time	SJSU	Score	Diff	SFSU
02:52	31 TONGA F 2pt FG in the paint, layup made (20)	65-43	22	
02:52	0 SUMMERS S assist (2)			
02:37		65-45	20	32 LAUTAIMI S 2pt FG in the paint, layup made (15)
02:37				5 BRADLEY G assist (1)
02:22	32 DIAWARA D foul offensive (4 - 7)			2 ALVARADO A foul drawn (4)
02:22	32 DIAWARA D turnover offensive (3)			
02:21	2 SINGLETON J substitution out			
02:21	32 DIAWARA D substitution out			
02:21	5 VAN SCHAIK H substitution in			
02:21	8 BROWN A substitution in			
02:21				32 LAUTAIMI S substitution out
02:21				12 DANIELS A substitution in
02:21				24 BRIDGES-BEY S substitution out
02:21				21 ASIASI N substitution in
02:02				21 ASIASI N 2pt FG from turnover outside the paint, jump shot missed
01:55	31 TONGA F defensive rebound (7)			
01:50	5 VAN SCHAIK H 2pt FG outside the paint, turnaround jump shot made (4)	67-45	22	
01:50	0 SUMMERS S assist (3)			
01:19				2 ALVARADO A 2pt FG in the paint, layup missed
01:17	5 VAN SCHAIK H defensive rebound (3)			
01:10	8 BROWN A 3pt FG , jump shot missed			
01:06	9 WAUGH R offensive rebound (4)			
01:06	9 WAUGH R 2pt FG second chance in the paint, tip-in layup made (10)	69-45	24	
00:51		69-47	22	12 DANIELS A 2pt FG outside the paint, pull up jump shot made (8)
00:35	8 BROWN A foul drawn (4)			12 DANIELS A foul shooting (1 - 3)
00:35	8 BROWN A free throw 1 - 2 made (11)	70-47	23	
00:35	8 BROWN A free throw 2 - 2 made (12)	71-47	24	
00:21				2 ALVARADO A 3pt FG , jump shot missed
00:18	5 VAN SCHAIK H defensive rebound (4)			
00:01	31 TONGA F turnover lost ball (3)			2 ALVARADO A steal (3)
END OF PERIOD				
SJSU 71-47 SFSU				



Officials: Darren Krzesnik, Joseph Barcellos, Katrina Baker-Cutler

San Fran. St. - 16

NO.	Name	F	Min	FG			Rebounds			Fouls		TP	AS	TO	ST	Blocks		+/-
				M-A	M-A	M-A	OR	DR	TOT	PF	FD					BS	BA	
21	Nyana Asiasi	F	07:56	1-2	1-1	0-0	0	2	2	1	1	3	0	1	0	0	0	-4
2	Alexsandra Alvarado	G	10:00	1-5	0-1	1-2	0	0	0	0	2	3	0	1	3	0	0	-2
12	Ana Daniels	G	07:10	1-2	0-0	0-0	0	0	0	1	1	2	0	0	1	0	0	-3
24	Sage Bridges-Bey	G	07:39	0-0	0-0	2-2	0	0	0	0	1	2	0	1	0	0	0	2
32	Seilala Lautaimi	G	07:39	1-1	0-0	4-4	0	0	0	1	2	6	1	0	1	0	0	2
5	Geriah Bradley		05:11	0-1	0-0	0-0	0	0	0	0	0	0	1	0	0	0	0	-3
0	Perséas Gioukaris		04:25	0-0	0-0	0-0	0	0	0	0	0	0	0	0	0	0	0	-2
Team							0	0	0			0						
Totals				4-11	1-2	7-8	0	2	2	3	7	16	2	3	5	0	0	-2

Shooting By Period		
3rd FG%	4-11	36.4%
3PT%	1-2	50.0%
FT%	7-8	87.5%
GM FG%	4-11	36.4%
3PT%	1-2	50.0%
FT%	7-8	87.5%

Dead Ball Rebounds: 0, 0

Technical Fouls::NONE

San Jose St. - 18

NO.	Name	F	Min	FG			Rebounds			Fouls		TP	AS	TO	ST	Blocks		+/-
				M-A	M-A	M-A	OR	DR	TOT	PF	FD					BS	BA	
32	Djessira Diawara	F	06:59	0-1	0-0	0-0	1	0	1	1	0	0	0	2	1	0	0	2
31	Finau Tonga	C	09:20	4-5	0-0	0-0	1	3	4	1	0	8	0	2	0	0	0	6
1	Amiah Simmons	G	02:28	0-1	0-0	0-0	0	0	0	0	0	0	0	0	0	0	0	-1
8	Amira Brown	G	06:02	0-1	0-1	4-4	1	0	1	0	2	4	1	1	0	0	0	3
9	Rylei Waugh	G	07:59	1-2	0-1	2-2	1	1	2	2	1	4	1	0	1	0	0	3
5	Hennie van Schaik		03:01	1-1	0-0	0-0	0	2	2	1	0	2	0	1	0	0	0	0
11	Marisa Davis-Jones		00:40	0-0	0-0	0-0	0	0	0	0	0	0	0	0	0	0	0	-4
2	Jasmine Singleton		05:11	0-0	0-0	0-0	0	0	0	1	0	0	0	0	0	0	0	-1
0	Sydni Summers		06:19	0-2	0-1	0-0	0	1	1	1	0	0	2	0	0	0	0	3
12	Sofia Kelemeni		02:01	0-0	0-0	0-0	0	1	1	0	0	0	0	1	0	0	0	-1
Team							1	0	1			0		1				
Totals				6-13	0-3	6-6	5	8	13	7	3	18	4	8	2	0	0	2

Shooting By Period		
3rd FG%	6-13	46.2%
3PT%	0-3	0.0%
FT%	6-6	100%
GM FG%	6-13	46.2%
3PT%	0-3	0.0%
FT%	6-6	100.0%

Dead Ball Rebounds: 0, 0

Technical Fouls::NONE

	SFSU	SJSU
Biggest lead	0 (1 st 10:00)	25 (3 rd 8:26)
Best Scoring Run	6(3 rd 7:00)	4(3 rd 8:26)
Lead Changes	0	
Times Tied	0	
Time with Lead	00:00	09:50

Points from	SFSU	SJSU
Turnovers	5	0
Paint	4	10
Second Chance	0	6
Fast Breaks	2	0
Bench	0	2

	Period by Period Scoring				
	1st	2nd	3rd	4th	TOT
SFSU	12	19	16	18	65
SJSU	29	24	18	21	92



Officials: Darren Krzesnik, Joseph Barcellos, Katrina Baker-Cutler

Period 4

Quarter Starters:

SJSU	0 Summers S	2 Singleton J	8 Brown A	9 Waugh R	32 Diawara D
SFSU	2 Alvarado A	12 Daniels A	21 Asiasi N	24 Bridges-Bey S	32 Lautaimi S

Game Time	SJSU	Score	Diff	SFSU
10:00	5 VAN SCHAIK H substitution out			
10:00	31 TONGA F substitution out			
10:00	2 SINGLETON J substitution in			
10:00	32 DIAWARA D substitution in			
10:00				0 GIOUKARIS P substitution out
10:00				5 BRADLEY G substitution out
10:00				24 BRIDGES-BEY S substitution in
10:00				32 LAUTAIMI S substitution in
09:45		71-50	21	2 ALVARADO A 3pt FG , jump shot made (14)
09:45				12 DANIELS A assist (2)
09:44	0 SUMMERS S foul shooting (3 - 1)			2 ALVARADO A foul drawn (5)
09:44		71-51	20	2 ALVARADO A free throw 1 - 1 made (15)
09:37	0 SUMMERS S turnover bad pass (1)			
09:37	0 SUMMERS S substitution out			
09:37	8 BROWN A substitution out			
09:37	1 SIMMONS A substitution in			
09:37	5 VAN SCHAIK H substitution in			
09:31				21 ASIASI N turnover travel (2)
09:15	32 DIAWARA D 2pt FG from turnover in the paint, driving layup made (8)	73-51	22	
09:15	32 DIAWARA D foul drawn (1)			32 LAUTAIMI S foul shooting (4 - 1)
09:15	32 DIAWARA D free throw 1 - 1 missed			
09:15	5 VAN SCHAIK H offensive rebound (5)			
09:15	5 VAN SCHAIK H 2pt FG second chance in the paint, tip-in layup made (6)	75-51	24	
09:00				2 ALVARADO A 3pt FG , jump shot missed
08:57	9 WAUGH R defensive rebound (5)			
08:51	32 DIAWARA D 2pt FG fast break in the paint, layup made (10)	77-51	26	
08:51	1 SIMMONS A assist (1)			
08:26		77-53	24	2 ALVARADO A 2pt FG in the paint, turnaround jump shot made (17)
08:11	32 DIAWARA D foul drawn (2)			32 LAUTAIMI S foul shooting (5 - 2)
08:11				2 ALVARADO A substitution out
08:11				32 LAUTAIMI S substitution out
08:11				0 GIOUKARIS P substitution in
08:11				23 ADAMS C substitution in
08:11	32 DIAWARA D free throw 1 - 2 missed			
08:11	offensive dead ball rebound (1)			
08:10	32 DIAWARA D free throw 2 - 2 missed			
08:08				21 ASIASI N defensive rebound (6)
07:50	5 VAN SCHAIK H steal (2)			24 BRIDGES-BEY S turnover lost ball (6)
07:37	9 WAUGH R 2pt FG from turnover outside the paint, pull up jump shot made (12)	79-53	26	
07:12	9 WAUGH R foul drawn (3)			23 ADAMS C foul offensive (3 - 3)



Official Basketball Play by Play - 4th Period
San Fran. St. at San Jose St.
 11/12/24 Provident Credit Union Event Center, San Jose
 2024-25 Women's Basketball

Game Time: 6:00 PM
Game Duration: 1:45
Attendance: 914

Officials: Darren Krzesnik, Joseph Barcellos, Katrina Baker-Cutler

Game Time	SJSU	Score	Diff	SFSU
07:12				23 ADAMS C turnover offensive (2)
07:12				12 DANIELS A substitution out
07:12				5 BRADLEY G substitution in
06:54	32 DIAWARA D 2pt FG from turnover in the paint, layup missed			
06:51				21 ASIASI N defensive rebound (7)
06:28	9 WAUGH R foul drawn (4)			24 BRIDGES-BEY S foul offensive (1 - 4)
06:28				24 BRIDGES-BEY S turnover offensive (7)
06:28	2 SINGLETON J substitution out			
06:28	32 DIAWARA D substitution out			
06:28	8 BROWN A substitution in			
06:28	31 TONGA F substitution in			
06:28				24 BRIDGES-BEY S substitution out
06:28				2 ALVARADO A substitution in
06:20	8 BROWN A 2pt FG from turnover in the paint, driving layup missed			
06:17				23 ADAMS C defensive rebound (1)
06:06				2 ALVARADO A 2pt FG in the paint, driving layup missed
06:04	31 TONGA F defensive rebound (8)			
06:01	1 SIMMONS A 2pt FG fast break in the paint, driving layup made (6)	81-53	28	
05:54		81-56	25	23 ADAMS C 3pt FG fast break, jump shot made (6)
05:54				5 BRADLEY G assist (2)
05:31	8 BROWN A 2pt FG in the paint, turnaround jump shot missed			
05:26				2 ALVARADO A defensive rebound (3)
05:24				2 ALVARADO A 3pt FG , jump shot missed
05:20	31 TONGA F defensive rebound (9)			
05:03	31 TONGA F turnover travel (4)			
05:03	5 VAN SCHAIK H substitution out			
05:03	31 TONGA F substitution out			
05:03	11 DAVIS-JONES M substitution in			
05:03	32 DIAWARA D substitution in			
05:03				2 ALVARADO A substitution out
05:03				5 BRADLEY G substitution out
05:03				12 DANIELS A substitution in
05:03				24 BRIDGES-BEY S substitution in
04:46				21 ASIASI N 2pt FG from turnover outside the paint, jump shot missed
04:38				0 GIOUKARIS P offensive rebound (1)
04:38				0 GIOUKARIS P 2pt FG from turnover second chance in the paint, tip-in layup missed
04:38	32 DIAWARA D defensive rebound (4)			
04:31	11 DAVIS-JONES M 3pt FG , jump shot made (3)	84-56	28	
04:31	8 BROWN A assist (6)			
04:13				23 ADAMS C 3pt FG , jump shot missed
04:09	8 BROWN A defensive rebound (7)			
03:59	1 SIMMONS A 3pt FG , jump shot missed			
03:56				23 ADAMS C defensive rebound (2)
03:42		84-58	26	24 BRIDGES-BEY S 2pt FG in the paint, driving layup made (9)
03:18	1 SIMMONS A 2pt FG in the paint, driving layup made (8)	86-58	28	
03:02	32 DIAWARA D steal (2)			12 DANIELS A turnover lost ball (4)



Official Basketball Play by Play - 4th Period
San Fran. St. at San Jose St.
 11/12/24 Provident Credit Union Event Center, San Jose
 2024-25 Women's Basketball

Game Time: 6:00 PM
Game Duration: 1:45
Attendance: 914

Officials: Darren Krzesnik, Joseph Barcellos, Katrina Baker-Cutler

Game Time	SJSU	Score	Diff	SFSU
02:56	Timeout 30 Sec			
02:56	Timeout media			
02:56	8 BROWN A substitution out			
02:56	32 DIAWARA D substitution out			
02:56	7 ALEXANDER M substitution in			
02:56	31 TONGA F substitution in			
02:56				24 BRIDGES-BEY S substitution out
02:56				5 BRADLEY G substitution in
02:51	9 WAUGH R 2pt FG from turnover outside the paint, jump shot made (14)	88-58	30	
02:51	31 TONGA F assist (1)			
02:32	1 SIMMONS A steal (2)			0 GIOUKARIS P turnover bad pass (1)
02:16	31 TONGA F foul offensive (4 - 2)			0 GIOUKARIS P foul drawn (1)
02:16	31 TONGA F turnover offensive (5)			
02:16	1 SIMMONS A substitution out			
02:16	23 SGRO S substitution in			
02:07	7 ALEXANDER M foul personal (1 - 3)			0 GIOUKARIS P foul drawn (2)
02:04		88-61	27	21 ASIASI N 3pt FG from turnover, jump shot made (6)
02:04				5 BRADLEY G assist (3)
01:47	31 TONGA F foul drawn (3)			21 ASIASI N foul personal (4 - 5)
01:47	31 TONGA F free throw 1 - 2 missed			
01:47	offensive dead ball rebound (2)			
01:47	31 TONGA F free throw 2 - 2 missed			
01:45	offensive rebound (42)			
01:44	9 WAUGH R substitution out			
01:44	0 SUMMERS S substitution in			
01:37	11 DAVIS-JONES M turnover lost ball (1)			0 GIOUKARIS P steal (1)
01:34	11 DAVIS-JONES M foul personal (2 - 4)			0 GIOUKARIS P foul drawn (3)
01:34	11 DAVIS-JONES M substitution out			
01:34	12 KELEMENI S substitution in			
01:23		88-63	25	12 DANIELS A 2pt FG from turnover in the paint, driving layup made (10)
01:23				0 GIOUKARIS P assist (1)
00:56	31 TONGA F 2pt FG in the paint, layup made (22)	90-63	27	
00:56	0 SUMMERS S assist (4)			
00:44				21 ASIASI N 3pt FG , jump shot missed
00:40	7 ALEXANDER M defensive rebound (1)			
00:35	7 ALEXANDER M turnover lost ball (1)			
00:18		90-65	25	12 DANIELS A 2pt FG from turnover outside the paint, pull up jump shot made (12)
00:01	7 ALEXANDER M 2pt FG in the paint, pull up jump shot made (2)	92-65	27	
END OF GAME				
SJSU 92-65 SFSU				



Officials: Darren Krzesnik, Joseph Barcellos, Katrina Baker-Cutler

San Fran. St. - 18

NO.	Name	F	Min	FG			Rebounds			Fouls		TP	AS	TO	ST	Blocks		+/-
				M-A	3P	FT	OR	DR	TOT	PF	FD					BS	BA	
21	Nyana Asiasi	F	10:00	1-3	1-2	0-0	0	2	2	1	0	3	0	1	0	0	0	-3
2	Alexsandra Alvarado	G	03:14	2-5	1-3	1-1	0	1	1	0	1	6	0	0	0	0	0	1
12	Ana Daniels	G	07:51	2-2	0-0	0-0	0	0	0	0	0	4	1	1	0	0	0	-4
24	Sage Bridges-Bey	G	05:39	1-1	0-0	0-0	0	0	0	1	0	2	0	2	0	0	0	-5
32	Seilala Lautaimi	G	01:49	0-0	0-0	0-0	0	0	0	2	0	0	0	0	0	0	0	0
0	Perséas Gioukaris		08:11	0-1	0-0	0-0	1	0	1	0	3	0	1	1	1	0	0	-3
23	Carleigh Adams		08:11	1-2	1-2	0-0	0	2	2	1	0	3	0	1	0	0	0	-3
5	Geriah Bradley		05:05	0-0	0-0	0-0	0	0	0	0	0	0	2	0	0	0	0	2
Team							0	0	0			0						
Totals				7-14	3-7	1-1	1	5	6	5	4	18	4	6	1	0	0	-3

Shooting By Period		
4 th FG%	7-14	50.0%
3PT%	3-7	42.9%
FT%	1-1	100%
GM FG%	7-14	50.0%
3PT%	3-7	42.9%
FT%	1-1	100.0%

Dead Ball Rebounds: 0, 0

Technical Fouls::NONE

San Jose St. - 21

NO.	Name	F	Min	FG			Rebounds			Fouls		TP	AS	TO	ST	Blocks		+/-
				M-A	3P	FT	OR	DR	TOT	PF	FD					BS	BA	
32	Djessira Diawara	F	05:39	2-3	0-0	0-3	0	1	1	0	2	4	0	0	1	0	0	5
31	Finau Tonga	C	04:21	1-1	0-0	0-2	0	2	2	1	1	2	1	2	0	0	0	-2
1	Amiah Simmons	G	07:21	2-3	0-1	0-0	0	0	0	0	0	4	1	0	1	0	0	10
8	Amira Brown	G	03:55	0-2	0-0	0-0	0	1	1	0	0	0	1	0	0	0	0	-2
9	Rylei Waugh	G	08:16	2-2	0-0	0-0	0	1	1	0	2	4	0	0	0	0	0	3
2	Jasmine Singleton		03:32	0-0	0-0	0-0	0	0	0	0	0	0	0	0	0	0	0	2
5	Hennie van Schaik		04:34	1-1	0-0	0-0	1	0	1	0	0	2	0	0	1	0	0	5
11	Marisa Davis-Jones		03:29	1-1	1-1	0-0	0	0	0	1	0	3	0	1	0	0	0	2
7	Mecca Alexander		02:56	1-1	0-0	0-0	0	1	1	1	0	2	0	1	0	0	0	-1
23	Stella Sgro		02:16	0-0	0-0	0-0	0	0	0	0	0	0	0	0	0	0	0	-3
0	Sydni Summers		02:07	0-0	0-0	0-0	0	0	0	1	0	0	1	1	0	0	0	-4
12	Sofia Kelemeni		01:34	0-0	0-0	0-0	0	0	0	0	0	0	0	0	0	0	0	0
Team							1	0	1			0						
Totals				10-14	1-2	0-5	2	6	8	4	5	21	4	5	3	0	0	3

Shooting By Period		
4 th FG%	10-14	71.4%
3PT%	1-2	50.0%
FT%	0-5	0%
GM FG%	10-14	71.4%
3PT%	1-2	50.0%
FT%	0-5	0.0%

Dead Ball Rebounds: 2, 0

Technical Fouls::NONE

	SFSU	SJSU
Biggest lead	0 (1 st 10:00)	30 (4 th 2:51)
Best Scoring Run	5(4 th 1:23)	6(4 th 8:51)
Lead Changes	0	
Times Tied	0	
Time with Lead	00:00	09:45

	SFSU	SJSU
Points from		
Turnovers	7	6
Paint	6	14
Second Chance	0	2
Fast Breaks	3	4
Bench	3	7

	Period by Period Scoring				
	1st	2nd	3rd	4th	TOT
SFSU	12	19	16	18	65
SJSU	29	24	18	21	92



Officials: Darren Krzesnik, Joseph Barcellos, Katrina Baker-Cutler

San Fran. St. - 34

NO.	Name	F	Min	FG			Rebounds			Fouls		TP	AS	TO	ST	Blocks		+/-
				M-A	M-A	M-A	OR	DR	TOT	PF	FD					BS	BA	
21	Nyana Asiasi	F	17:56	2-5	2-3	0-0	0	4	4	2	1	6	0	2	0	0	0	-7
2	Alexsandra Alvarado	G	13:14	3-10	1-4	2-3	0	1	1	0	3	9	0	1	3	0	0	-1
12	Ana Daniels	G	15:01	3-4	0-0	0-0	0	0	0	1	1	6	1	1	1	0	0	-7
24	Sage Bridges-Bey	G	13:18	1-1	0-0	2-2	0	0	0	1	1	4	0	3	0	0	0	-3
32	Seilala Lautaimi	G	09:28	1-1	0-0	4-4	0	0	0	3	2	6	1	0	1	0	0	2
5	Geriah Bradley		10:16	0-1	0-0	0-0	0	0	0	0	0	0	3	0	0	0	0	-1
0	Perséas Gioukaris		12:36	0-1	0-0	0-0	1	0	1	0	3	0	1	1	1	0	0	-5
23	Carleigh Adams		08:11	1-2	1-2	0-0	0	2	2	1	0	3	0	1	0	0	0	-3
Team							0	0	0			0		0				
Totals				11-25	4-9	8-9	1	7	8	8	11	34	6	9	6	0	0	-5

Shooting By Period		
3 rd FG%	4-11	36.4%
3PT%	1-2	50.0%
FT%	7-8	87.5%
4 th FG%	7-14	50.0%
3PT%	3-7	42.9%
FT%	1-1	100%
GM FG%	11-25	44.0%
3PT%	4-9	44.4%
FT%	8-9	88.9%

Dead Ball Rebounds: 0, 0

Technical Fouls::NONE

San Jose St. - 39

NO.	Name	F	Min	FG			Rebounds			Fouls		TP	AS	TO	ST	Blocks		+/-
				M-A	M-A	M-A	OR	DR	TOT	PF	FD					BS	BA	
32	Djessira Diawara	F	12:38	2-4	0-0	0-3	1	1	2	1	2	4	0	2	2	0	0	7
31	Finau Tonga	C	13:41	5-6	0-0	0-2	1	5	6	2	1	10	1	4	0	0	0	4
1	Amiah Simmons	G	09:49	2-4	0-1	0-0	0	0	0	0	0	4	1	0	1	0	0	9
8	Amira Brown	G	09:57	0-3	0-1	4-4	1	1	2	0	2	4	2	1	0	0	0	1
9	Rylei Waugh	G	16:15	3-4	0-1	2-2	1	2	3	2	3	8	1	0	1	0	0	6
5	Hennie van Schaik		07:35	2-2	0-0	0-0	1	2	3	1	0	4	0	1	1	0	0	5
11	Marisa Davis-Jones		04:09	1-1	1-1	0-0	0	0	0	1	0	3	0	1	0	0	0	-2
2	Jasmine Singleton		08:43	0-0	0-0	0-0	0	0	0	1	0	0	0	0	0	0	0	1
0	Sydni Summers		08:26	0-2	0-1	0-0	0	1	1	2	0	0	3	1	0	0	0	-1
12	Sofia Kelemeni		03:35	0-0	0-0	0-0	0	1	1	0	0	0	0	1	0	0	0	-1
7	Mecca Alexander		02:56	1-1	0-0	0-0	0	1	1	1	0	2	0	1	0	0	0	-1
23	Stella Sgro		02:16	0-0	0-0	0-0	0	0	0	0	0	0	0	0	0	0	0	-3
Team							2	0	2			0		1				
Totals				16-27	1-5	6-11	7	14	21	11	8	39	8	13	5	0	0	5

Shooting By Period		
3 rd FG%	6-13	46.2%
3PT%	0-3	0.0%
FT%	6-6	100%
4 th FG%	10-14	71.4%
3PT%	1-2	50.0%
FT%	0-5	0%
GM FG%	16-27	59.3%
3PT%	1-5	20.0%
FT%	6-11	54.5%

Dead Ball Rebounds: 2, 0

Technical Fouls::NONE

	SFSU	SJSU
Biggest lead	0 (1 st 10:00)	30 (4 th 2:51)
Best Scoring Run	6(3 rd 7:00)	6(4 th 8:51)
Lead Changes	0	
Times Tied	0	
Time with Lead	00:00	19:50

	SFSU	SJSU
Points from		
Turnovers	12	6
Paint	10	24
Second Chance	0	8
Fast Breaks	5	4
Bench	3	9

	Period by Period Scoring				
	1st	2nd	3rd	4th	TOT
SFSU	12	19	16	18	65
SJSU	29	24	18	21	92



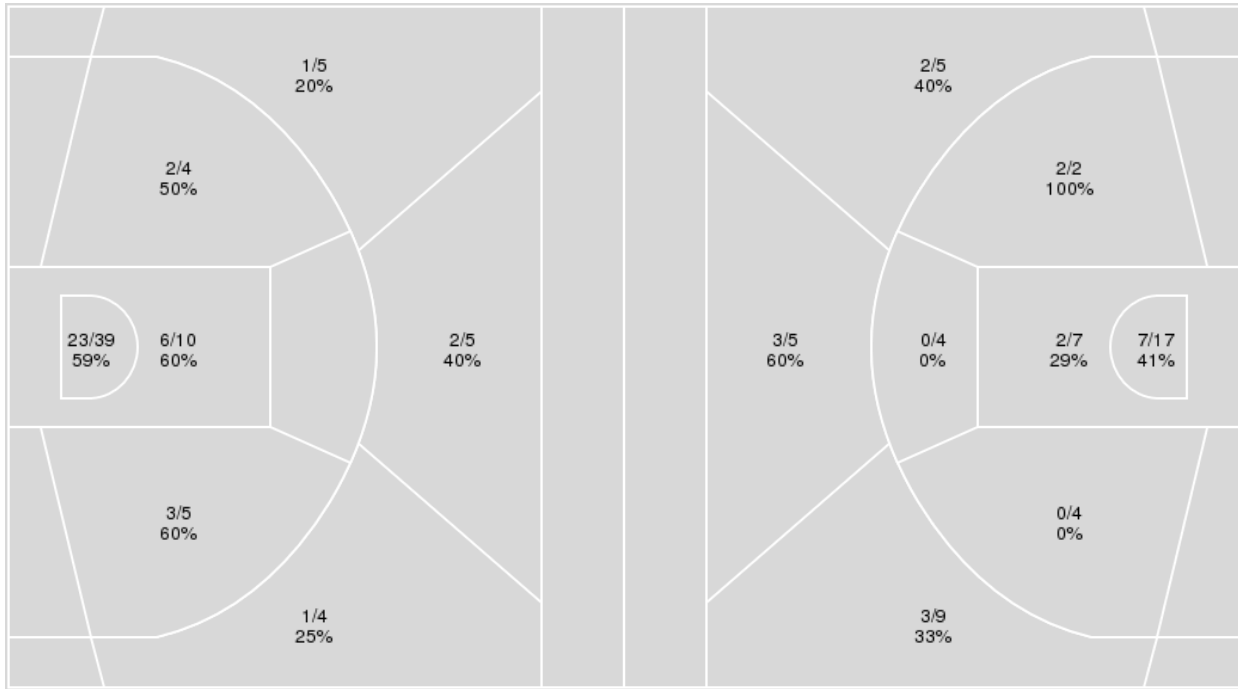
Officials: Darren Krzesnik, Joseph Barcellos, Katrina Baker-Cutler

{ Players => 0, 1, 2, 3, 5, 7, 8, 9, 11, 12, 15, 22, 23, 31, 32; } FG Types => All; Results => All;

{ Players => 0, 1, 2, 3, 5, 12, 14, 32, 21, 22, 23, 24; } FG Types => All; Results => All;

San Jose St.

San Fran. St.



San Jose St.	M/A	%
Field Goals	38/72	53
2 Points	34/58	59
3 Points	4/14	29
Free Throws	12/18	67

San Fran. St.	M/A	%
Field Goals	19/53	36
2 Points	11/34	32
3 Points	8/19	42
Free Throws	19/23	83



San Fran. St. at San Jose St.

11/12/24 Provident Credit Union Event Center, San Jose
2024-25 Women's Basketball

Officials: Darren Krzesnik, Joseph Barcellos, Katrina Baker-Cutler

San Fran. St.

No	Name	Mins		Score		Points Diff		Points per Min		Assists		Rebounds		Steals		Turnovers	
		On	Off	On	Off	On	Off	On	Off	On	Off	On	Off	On	Off	On	Off
0	Perséas Gioukaris	17:26	22:35	21 - 39	44 - 53	-18	-9	1.21	1.95	4	5	12	20	4	3	10	14
2	Alexandra Alvarado	31:02	08:59	56 - 69	9 - 23	-13	-14	1.80	1.00	7	2	26	6	6	1	17	7
5	Geriah Bradley	14:19	25:41	19 - 30	46 - 62	-11	-16	1.33	1.79	4	5	7	25	4	3	9	15
12	Ana Daniels	31:44	08:16	55 - 75	10 - 17	-20	-7	1.73	1.21	7	2	26	6	5	2	17	7
21	Nyana Asiasi	34:09	05:51	58 - 83	7 - 9	-25	-2	1.70	1.20	8	1	27	5	5	2	20	4
23	Carleigh Adams	13:16	26:44	20 - 31	45 - 61	-11	-16	1.51	1.68	4	5	9	23	1	6	9	15
24	Sage Bridges-Bey	33:18	06:42	53 - 78	12 - 14	-25	-2	1.59	1.79	6	3	30	2	5	2	23	1
32	Seilala Lautaimi	24:47	15:13	43 - 55	22 - 37	-12	-15	1.73	1.45	5	4	23	9	5	2	15	9

San Jose St.

No	Name	Mins		Score		Points Diff		Points per Min		Assists		Rebounds		Steals		Turnovers	
		On	Off	On	Off	On	Off	On	Off	On	Off	On	Off	On	Off	On	Off
0	Sydni Summers	16:42	23:18	39 - 26	53 - 39	13	14	2.34	2.27	11	10	20	23	3	6	11	5
1	Amiah Simmons	18:49	21:11	48 - 26	44 - 39	22	5	2.55	2.08	10	11	18	25	6	3	4	12
2	Jasmine Singleton	20:16	19:44	42 - 27	50 - 38	15	12	2.07	2.53	10	11	22	21	4	5	10	6
5	Hennie van Schaik	16:10	23:50	40 - 18	52 - 47	22	5	2.47	2.18	8	13	19	24	4	5	4	12
7	Mecca Alexander	02:56	37:04	6 - 7	86 - 58	-1	28	2.05	2.32	2	19	2	41	1	8	3	13
8	Amira Brown	20:46	19:14	47 - 39	45 - 26	8	19	2.26	2.34	9	12	23	20	4	5	6	10
9	Rylei Waugh	32:50	07:10	74 - 58	18 - 7	16	11	2.25	2.51	17	4	34	9	7	2	10	6
11	Marisa Davis-Jones	07:17	32:43	16 - 18	76 - 47	-2	29	2.20	2.32	5	16	5	38	2	7	3	13
12	Sofia Kelemeni	12:35	27:25	36 - 23	56 - 42	13	14	2.86	2.04	8	13	16	27	2	7	5	11
23	Stella Sgro	02:16	37:44	4 - 7	88 - 58	-3	30	1.76	2.33	1	20	2	41	0	9	2	14
31	Finau Tonga	23:14	16:47	57 - 36	35 - 29	21	6	2.45	2.09	12	9	30	13	7	2	13	3
32	Djessira Diawara	26:10	13:51	51 - 40	41 - 25	11	16	1.95	2.96	12	9	24	19	5	4	9	7

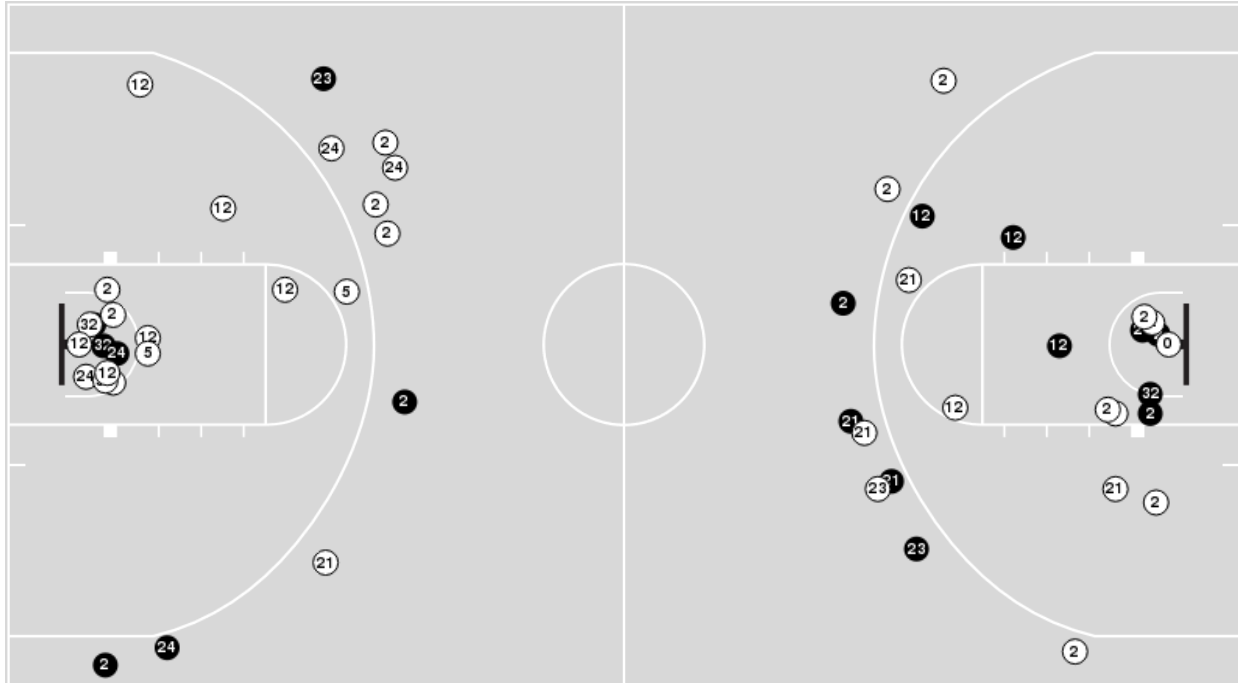


Officials: Darren Krzesnik, Joseph Barcellos, Katrina Baker-Cutler

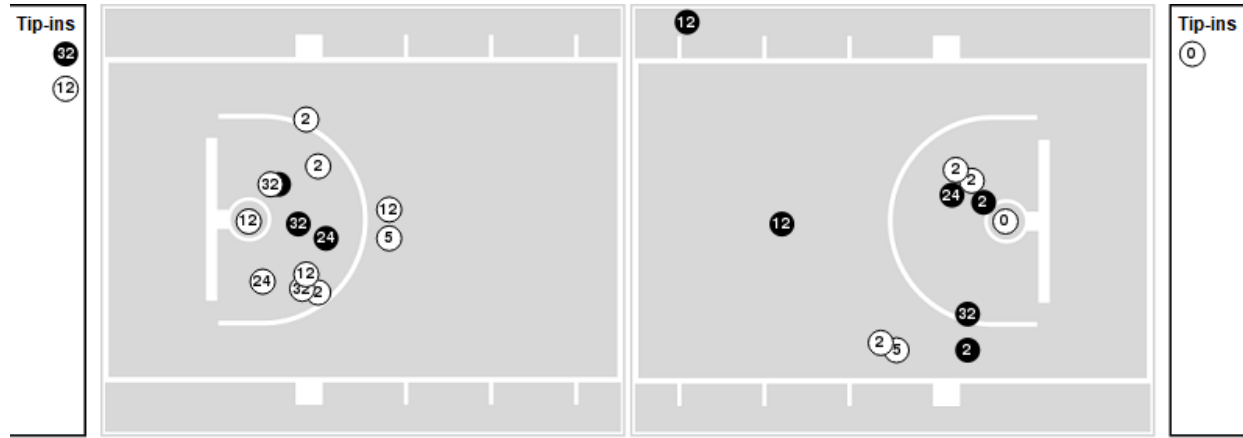
Players => 0, 1, 2, 3, 5, 12, 14, 32, 21, 22, 23, 24FG Types=>AllResults=>All

San Fran. St.

All Field Goals



Blow Up Chart



● Made ○ Missed N - Player Number

San Fran. St.	M/A	%
Field Goals	19/53	36
2 Points	11/34	32
3 Points	8/19	42
Free Throws	19/23	83

San Fran. St.	M/A	%
Points in the Paint	18 (9 / 24)	38
Fast Break Points	16 (9/9)	100
Second Chance Points	8 (7/12)	58
Effective FG%	43	

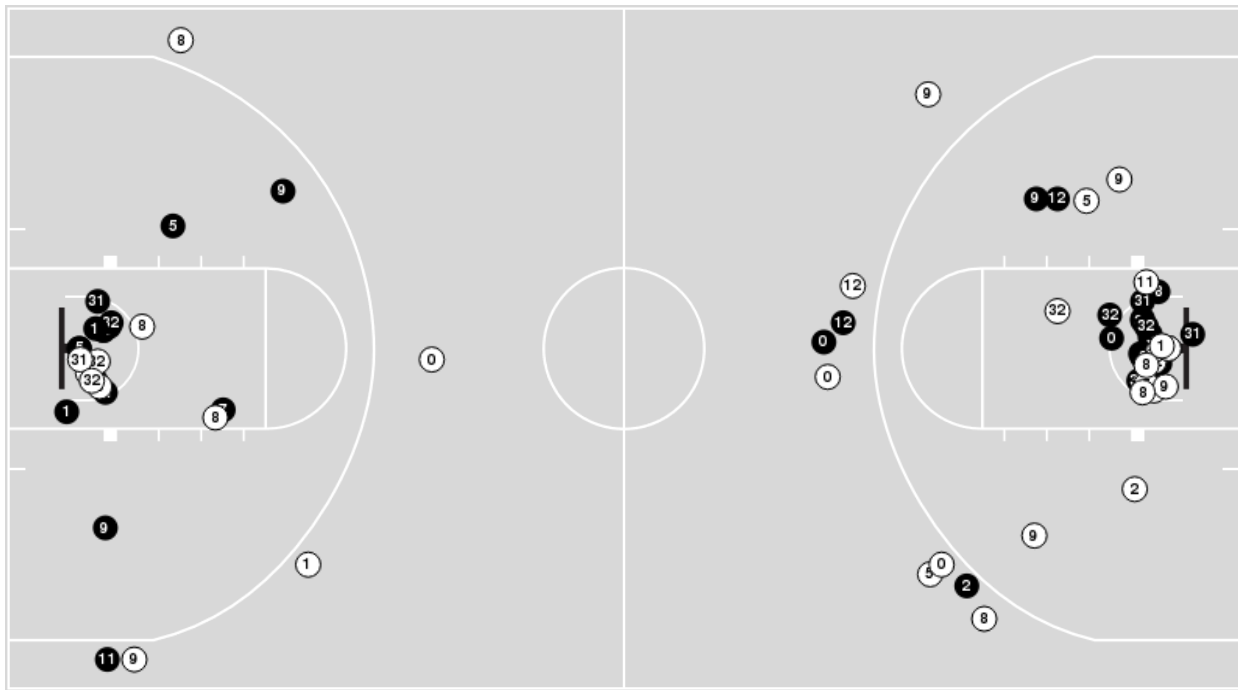


Officials: Darren Krzesnik, Joseph Barcellos, Katrina Baker-Cutler

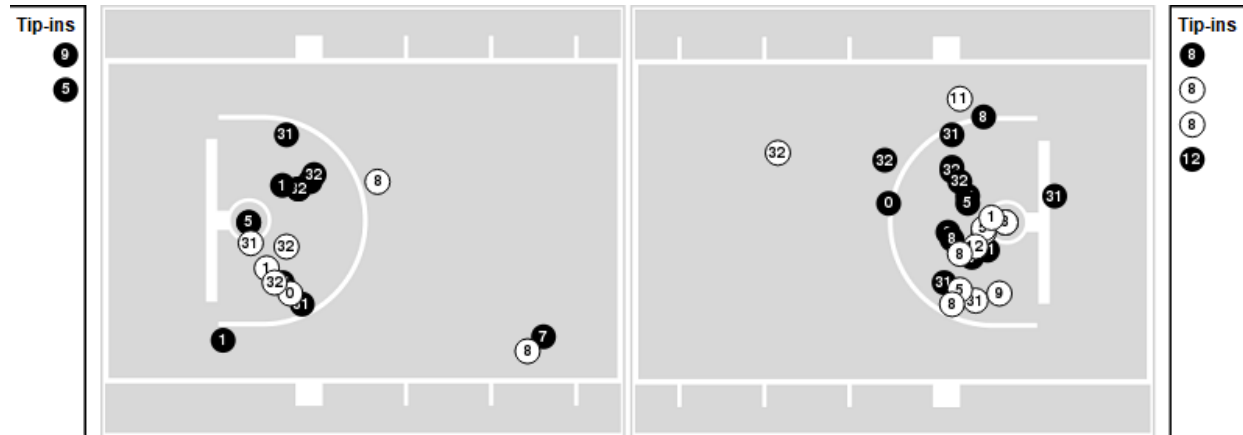
Players => 0, 1, 2, 3, 5, 7, 8, 9, 11, 12, 15, 22, 23, 31, 32FG Types=>AllResults=>All

San Jose St.

All Field Goals



Blow Up Chart



● Made ○ Missed N - Player Number

San Jose St.	M/A	%
Field Goals	38/72	53
2 Points	34/58	59
3 Points	4/14	29
Free Throws	12/18	67

San Jose St.	M/A	%
Points in the Paint	58 (29 / 49)	59
Fast Break Points	14 (8/8)	100
Second Chance Points	16 (10/14)	71
Effective FG%	56	



Officials: Darren Krzesnik, Joseph Barcellos, Katrina Baker-Cutler

San Fran. St.

Lineup	Quarter On	Time On	Quarter Off	Time Off	Time on Court	Score	Score Diff	Reb	Stl	Tov	Ass	PPP
2- Alvarado A/ 12- Daniels A/ 32- Lautaimi S/ 21- Asiasi N/ 24- Bridges-Bey S/	1	10:00	1	05:42	04:18	5-6	-1	9	1	2	0	0.5708
2- Alvarado A/ 12- Daniels A/ 21- Asiasi N/ 23- Adams C/ 24- Bridges-Bey S/	1	05:42	1	05:16	00:26	0-3	-3	0	0	1	0	0.0000
5- Bradley G/ 12- Daniels A/ 21- Asiasi N/ 23- Adams C/ 24- Bridges-Bey S/	1	05:16	1	04:14	01:02	0-5	-5	1	0	2	0	0.0000
2- Alvarado A/ 5- Bradley G/ 21- Asiasi N/ 23- Adams C/ 24- Bridges-Bey S/	1	04:14	1	02:23	01:51	2-4	-2	1	0	0	0	0.6667
2- Alvarado A/ 5- Bradley G/ 32- Lautaimi S/ 21- Asiasi N/ 24- Bridges-Bey S/	1	02:23	1	02:11	00:12	0-0	0	0	0	1	0	0.0000
0- Gioukaris P/ 2- Alvarado A/ 32- Lautaimi S/ 21- Asiasi N/ 24- Bridges-Bey S/	1	02:11	1	01:55	00:16	0-4	-4	0	0	1	0	0.0000
0- Gioukaris P/ 12- Daniels A/ 32- Lautaimi S/ 21- Asiasi N/ 24- Bridges-Bey S/	1	01:55	1	00:44	01:10	0-5	-5	1	0	0	0	0.0000
2- Alvarado A/ 12- Daniels A/ 32- Lautaimi S/ 21- Asiasi N/ 24- Bridges-Bey S/	1	00:44	1	00:13	00:30	2-2	0	0	0	1	0	1.0638
2- Alvarado A/ 12- Daniels A/ 21- Asiasi N/ 23- Adams C/ 24- Bridges-Bey S/	1	00:13	2	10:00	00:13	3-0	3	1	0	0	1	3.0000
2- Alvarado A/ 12- Daniels A/ 32- Lautaimi S/ 23- Adams C/ 24- Bridges-Bey S/	2	10:00	2	09:36	00:24	0-0	0	0	0	0	0	0.0000
2- Alvarado A/ 12- Daniels A/ 32- Lautaimi S/ 21- Asiasi N/ 24- Bridges-Bey S/	2	09:36	2	05:26	04:10	12-11	1	5	0	3	2	1.3889
2- Alvarado A/ 12- Daniels A/ 21- Asiasi N/ 23- Adams C/ 24- Bridges-Bey S/	2	05:26	2	04:18	01:08	3-4	-1	0	0	1	0	1.5000
0- Gioukaris P/ 2- Alvarado A/ 5- Bradley G/ 32- Lautaimi S/ 24- Bridges-Bey S/	2	04:18	2	03:20	00:58	0-3	-3	2	0	2	0	0.0000
0- Gioukaris P/ 2- Alvarado A/ 12- Daniels A/ 32- Lautaimi S/ 24- Bridges-Bey S/	2	03:20	2	00:55	02:25	3-4	-1	3	0	1	0	1.0000
2- Alvarado A/ 12- Daniels A/ 32- Lautaimi S/ 21- Asiasi N/ 24- Bridges-Bey S/	2	00:55	3	05:11	05:44	10-10	0	3	2	1	1	1.0504
2- Alvarado A/ 5- Bradley G/ 32- Lautaimi S/ 21- Asiasi N/ 24- Bridges-Bey S/	3	05:11	3	04:25	00:46	1-2	-1	0	0	1	0	0.5319
0- Gioukaris P/ 2- Alvarado A/ 5- Bradley G/ 32- Lautaimi S/ 24- Bridges-Bey S/	3	04:25	3	02:21	02:04	4-2	2	0	2	1	1	1.0000
0- Gioukaris P/ 2- Alvarado A/ 5- Bradley G/ 12- Daniels A/ 24- Bridges-Bey S/	3	02:21	3	02:21	00:00	0-0	0	0	0	0	0	0.0000
0- Gioukaris P/ 2- Alvarado A/ 5- Bradley G/ 12- Daniels A/ 21- Asiasi N/	3	02:21	4	10:00	02:21	2-6	-4	0	1	0	0	0.5000
2- Alvarado A/ 12- Daniels A/ 32- Lautaimi S/ 21- Asiasi N/ 24- Bridges-Bey S/	4	10:00	4	08:11	01:49	6-6	0	0	0	1	1	1.3514
0- Gioukaris P/ 12- Daniels A/ 21- Asiasi N/ 23- Adams C/ 24- Bridges-Bey S/	4	08:11	4	07:12	00:59	0-2	-2	1	0	2	0	0.0000
0- Gioukaris P/ 5- Bradley G/ 21- Asiasi N/ 23- Adams C/ 24- Bridges-Bey S/	4	07:12	4	06:28	00:44	0-0	0	1	0	1	0	0.0000
0- Gioukaris P/ 2- Alvarado A/ 5- Bradley G/ 21- Asiasi N/ 23- Adams C/	4	06:28	4	05:03	01:25	3-2	1	2	0	0	1	1.0000
0- Gioukaris P/ 12- Daniels A/ 21- Asiasi N/ 23- Adams C/ 24- Bridges-Bey S/	4	05:03	4	02:56	02:07	2-5	-3	2	0	1	0	0.5000
0- Gioukaris P/ 5- Bradley G/ 12- Daniels A/ 21- Asiasi N/ 23- Adams C/	4	02:56	4	00:00	02:56	7-6	1	0	1	1	2	1.4000



Officials: Darren Krzesnik, Joseph Barcellos, Katrina Baker-Cutler

San Jose St.

Lineup	Quarter On	Time On	Quarter Off	Time Off	Time on Court	Score	Score Diff	Reb	Stl	Tov	Ass	PPP
1- Simmons A/ 8- Brown A/ 9- Waugh R/ 31- Tonga F/ 32- Diawara D/	1	10:00	1	06:56	03:04	4-5	-1	2	1	1	0	0.6667
0- Summers S/ 2- Singleton J/ 5- van Schaik H/ 9- Waugh R/ 32- Diawara D/	1	06:56	1	06:31	00:25	0-0	0	1	0	0	0	0.0000
0- Summers S/ 2- Singleton J/ 5- van Schaik H/ 12- Kelemeni S/ 32- Diawara D/	1	06:31	1	05:16	01:15	5-0	5	2	0	0	2	2.5000
0- Summers S/ 2- Singleton J/ 5- van Schaik H/ 12- Kelemeni S/ 31- Tonga F/	1	05:16	1	03:06	02:10	7-0	7	3	1	1	1	1.0870
2- Singleton J/ 5- van Schaik H/ 8- Brown A/ 9- Waugh R/ 31- Tonga F/	1	03:06	1	02:23	00:43	2-2	0	0	0	0	1	2.0000
1- Simmons A/ 5- van Schaik H/ 8- Brown A/ 9- Waugh R/ 31- Tonga F/	1	02:23	1	00:51	01:32	8-0	8	3	2	0	2	1.8519
0- Summers S/ 9- Waugh R/ 11- Davis-Jones M/ 12- Kelemeni S/ 31- Tonga F/	1	00:51	1	00:44	00:06	1-0	1	0	0	0	0	2.2727
0- Summers S/ 9- Waugh R/ 11- Davis-Jones M/ 12- Kelemeni S/ 32- Diawara D/	1	00:44	2	10:00	00:44	2-5	-3	0	0	0	1	1.0000
2- Singleton J/ 5- van Schaik H/ 8- Brown A/ 9- Waugh R/ 32- Diawara D/	2	10:00	2	07:30	02:30	2-5	-3	2	0	0	0	0.5155
0- Summers S/ 2- Singleton J/ 9- Waugh R/ 12- Kelemeni S/ 31- Tonga F/	2	07:30	2	06:41	00:49	3-3	0	1	0	0	1	1.5000
1- Simmons A/ 8- Brown A/ 9- Waugh R/ 12- Kelemeni S/ 31- Tonga F/	2	06:41	2	05:33	01:08	6-4	2	4	0	0	1	2.0000
1- Simmons A/ 8- Brown A/ 9- Waugh R/ 12- Kelemeni S/ 32- Diawara D/	2	05:33	2	03:41	01:52	4-3	1	1	0	0	1	1.3333
0- Summers S/ 1- Simmons A/ 2- Singleton J/ 9- Waugh R/ 32- Diawara D/	2	03:41	2	02:17	01:24	3-0	3	1	0	1	1	1.0000
0- Summers S/ 2- Singleton J/ 9- Waugh R/ 11- Davis-Jones M/ 32- Diawara D/	2	02:17	2	00:55	01:22	4-3	1	1	0	0	2	2.0000
2- Singleton J/ 9- Waugh R/ 11- Davis-Jones M/ 12- Kelemeni S/ 32- Diawara D/	2	00:55	3	10:00	00:55	2-1	1	1	0	0	0	1.0000
1- Simmons A/ 8- Brown A/ 9- Waugh R/ 31- Tonga F/ 32- Diawara D/	3	10:00	3	08:02	01:58	6-3	3	1	0	0	2	2.0833
1- Simmons A/ 5- van Schaik H/ 8- Brown A/ 9- Waugh R/ 11- Davis-Jones M/	3	08:02	3	07:32	00:30	0-4	-4	0	0	0	0	0.0000
2- Singleton J/ 5- van Schaik H/ 8- Brown A/ 9- Waugh R/ 11- Davis-Jones M/	3	07:32	3	07:22	00:10	0-0	0	0	0	1	0	0.0000
2- Singleton J/ 8- Brown A/ 9- Waugh R/ 11- Davis-Jones M/ 32- Diawara D/	3	07:22	3	07:22	00:00	0-0	0	0	0	0	0	0.0000
2- Singleton J/ 8- Brown A/ 9- Waugh R/ 31- Tonga F/ 32- Diawara D/	3	07:22	3	06:19	01:03	2-2	0	2	0	1	0	1.0638
0- Summers S/ 2- Singleton J/ 9- Waugh R/ 31- Tonga F/ 32- Diawara D/	3	06:19	3	05:11	01:08	0-0	0	2	1	1	0	0.0000
0- Summers S/ 2- Singleton J/ 12- Kelemeni S/ 31- Tonga F/ 32- Diawara D/	3	05:11	3	03:10	02:01	2-3	-1	3	1	3	0	0.5000
0- Summers S/ 2- Singleton J/ 9- Waugh R/ 31- Tonga F/ 32- Diawara D/	3	03:10	3	02:21	00:49	2-2	0	1	0	1	1	1.0000
0- Summers S/ 5- van Schaik H/ 8- Brown A/ 9- Waugh R/ 31- Tonga F/	3	02:21	4	10:00	02:21	6-2	4	4	0	1	1	1.5464
0- Summers S/ 2- Singleton J/ 8- Brown A/ 9- Waugh R/ 32- Diawara D/	4	10:00	4	09:37	00:23	0-4	-4	0	0	1	0	0.0000
1- Simmons A/ 2- Singleton J/ 5- van Schaik H/ 9- Waugh R/ 32- Diawara D/	4	09:37	4	06:28	03:09	8-2	6	2	1	0	1	1.5038
1- Simmons A/ 5- van Schaik H/ 8- Brown A/ 9- Waugh R/ 31- Tonga F/	4	06:28	4	05:03	01:25	2-3	-1	2	0	1	0	0.5000
1- Simmons A/ 8- Brown A/ 9- Waugh R/ 11- Davis-Jones M/ 32- Diawara D/	4	05:03	4	02:56	02:07	5-2	3	2	1	0	1	1.6667
1- Simmons A/ 7- Alexander M/ 9- Waugh R/ 11- Davis-Jones M/ 31- Tonga F/	4	02:56	4	02:16	00:40	2-0	2	0	1	1	1	1.0000
7- Alexander M/ 9- Waugh R/ 11- Davis-Jones M/ 23- Sgro S/ 31- Tonga F/	4	02:16	4	01:44	00:32	0-3	-3	1	0	0	0	-0.0000
0- Summers S/ 7- Alexander M/ 11- Davis-Jones M/ 23- Sgro S/ 31- Tonga F/	4	01:44	4	01:34	00:10	0-0	0	0	0	1	0	0.0000
0- Summers S/ 7- Alexander M/ 12- Kelemeni S/ 23- Sgro S/ 31- Tonga F/	4	01:34	4	00:00	01:34	4-4	0	1	0	1	1	1.3333



Officials: Darren Krzesnik, Joseph Barcellos, Katrina Baker-Cutler

San Fran. St.

Lineup	Time	Score	Score Diff	Pts/Min	Reb	Stl	Tov	Ass	PPP
2- Alvarado A/ 12- Daniels A/ 32- Lautaimi S/ 21- Asiasi N/ 24- Bridges-Bey S/	16:31	35-35	0	2.1171	17	3	8	4	1.0529
0- Gioukaris P/ 12- Daniels A/ 21- Asiasi N/ 23- Adams C/ 24- Bridges-Bey S/	03:06	2-7	-5	0.6452	3	0	3	0	0.3333
0- Gioukaris P/ 2- Alvarado A/ 5- Bradley G/ 32- Lautaimi S/ 24- Bridges-Bey S/	03:02	4-5	-1	1.3187	2	2	3	1	0.6667
0- Gioukaris P/ 5- Bradley G/ 12- Daniels A/ 21- Asiasi N/ 23- Adams C/	02:56	7-6	1	2.3864	0	1	1	2	1.4000
0- Gioukaris P/ 2- Alvarado A/ 12- Daniels A/ 32- Lautaimi S/ 24- Bridges-Bey S/	02:25	3-4	-1	1.2414	3	0	1	0	1.0000
0- Gioukaris P/ 2- Alvarado A/ 5- Bradley G/ 12- Daniels A/ 21- Asiasi N/	02:21	2-6	-4	0.8511	0	1	0	0	0.5000
2- Alvarado A/ 5- Bradley G/ 21- Asiasi N/ 23- Adams C/ 24- Bridges-Bey S/	01:51	2-4	-2	1.0811	1	0	0	0	0.6667
2- Alvarado A/ 12- Daniels A/ 21- Asiasi N/ 23- Adams C/ 24- Bridges-Bey S/	01:47	6-7	-1	3.3457	1	0	2	1	1.5000
0- Gioukaris P/ 2- Alvarado A/ 5- Bradley G/ 21- Asiasi N/ 23- Adams C/	01:25	3-2	1	2.1176	2	0	0	1	1.0000
0- Gioukaris P/ 12- Daniels A/ 32- Lautaimi S/ 21- Asiasi N/ 24- Bridges-Bey S/	01:10	0-5	-5	0.0000	1	0	0	0	0.0000
5- Bradley G/ 12- Daniels A/ 21- Asiasi N/ 23- Adams C/ 24- Bridges-Bey S/	01:02	0-5	-5	0.0000	1	0	2	0	0.0000
2- Alvarado A/ 5- Bradley G/ 32- Lautaimi S/ 21- Asiasi N/ 24- Bridges-Bey S/	00:58	1-2	-1	1.0345	0	0	2	0	0.3472
0- Gioukaris P/ 5- Bradley G/ 21- Asiasi N/ 23- Adams C/ 24- Bridges-Bey S/	00:44	0-0	0	0.0000	1	0	1	0	0.0000
2- Alvarado A/ 12- Daniels A/ 32- Lautaimi S/ 23- Adams C/ 24- Bridges-Bey S/	00:24	0-0	0	0.0000	0	0	0	0	0.0000
0- Gioukaris P/ 2- Alvarado A/ 32- Lautaimi S/ 21- Asiasi N/ 24- Bridges-Bey S/	00:16	0-4	-4	0.0000	0	0	1	0	0.0000
0- Gioukaris P/ 2- Alvarado A/ 5- Bradley G/ 12- Daniels A/ 24- Bridges-Bey S/	00:00	0-0	0	NaN	0	0	0	0	0.0000



Officials: Darren Krzesnik, Joseph Barcellos, Katrina Baker-Cutler

San Jose St.

Lineup	Time	Score	Score Diff	Pts/Min	Reb	Stl	Tov	Ass	PPP
1- Simmons A/ 8- Brown A/ 9- Waugh R/ 31- Tonga F/ 32- Diawara D/	05:02	10-8	2	1.9868	3	1	1	2	1.1261
1- Simmons A/ 2- Singleton J/ 5- van Schaik H/ 9- Waugh R/ 32- Diawara D/	03:09	8-2	6	2.5397	2	1	0	1	1.5038
1- Simmons A/ 5- van Schaik H/ 8- Brown A/ 9- Waugh R/ 31- Tonga F/	02:57	10-3	7	3.3898	5	2	1	2	1.2019
2- Singleton J/ 5- van Schaik H/ 8- Brown A/ 9- Waugh R/ 32- Diawara D/	02:30	2-5	-3	0.8000	2	0	0	0	0.5155
0- Summers S/ 5- van Schaik H/ 8- Brown A/ 9- Waugh R/ 31- Tonga F/	02:21	6-2	4	2.5532	4	0	1	1	1.5464
0- Summers S/ 2- Singleton J/ 5- van Schaik H/ 12- Kelemeni S/ 31- Tonga F/	02:10	7-0	7	3.2308	3	1	1	1	1.0870
1- Simmons A/ 8- Brown A/ 9- Waugh R/ 11- Davis-Jones M/ 32- Diawara D/	02:07	5-2	3	2.3622	2	1	0	1	1.6667
0- Summers S/ 2- Singleton J/ 12- Kelemeni S/ 31- Tonga F/ 32- Diawara D/	02:01	2-3	-1	0.9917	3	1	3	0	0.5000
0- Summers S/ 2- Singleton J/ 9- Waugh R/ 31- Tonga F/ 32- Diawara D/	01:57	2-2	0	1.0256	3	1	2	1	0.5000
1- Simmons A/ 8- Brown A/ 9- Waugh R/ 12- Kelemeni S/ 32- Diawara D/	01:52	4-3	1	2.1429	1	0	0	1	1.3333
0- Summers S/ 7- Alexander M/ 12- Kelemeni S/ 23- Sgro S/ 31- Tonga F/	01:34	4-4	0	2.5532	1	0	1	1	1.3333
0- Summers S/ 1- Simmons A/ 2- Singleton J/ 9- Waugh R/ 32- Diawara D/	01:24	3-0	3	2.1429	1	0	1	1	1.0000
0- Summers S/ 2- Singleton J/ 9- Waugh R/ 11- Davis-Jones M/ 32- Diawara D/	01:22	4-3	1	2.9268	1	0	0	2	2.0000
0- Summers S/ 2- Singleton J/ 5- van Schaik H/ 12- Kelemeni S/ 32- Diawara D/	01:15	5-0	5	4.0000	2	0	0	2	2.5000
1- Simmons A/ 8- Brown A/ 9- Waugh R/ 12- Kelemeni S/ 31- Tonga F/	01:08	6-4	2	5.2941	4	0	0	1	2.0000
2- Singleton J/ 8- Brown A/ 9- Waugh R/ 31- Tonga F/ 32- Diawara D/	01:03	2-2	0	1.9048	2	0	1	0	1.0638
2- Singleton J/ 9- Waugh R/ 11- Davis-Jones M/ 12- Kelemeni S/ 32- Diawara D/	00:55	2-1	1	2.1818	1	0	0	0	1.0000
0- Summers S/ 2- Singleton J/ 9- Waugh R/ 12- Kelemeni S/ 31- Tonga F/	00:49	3-3	0	3.6735	1	0	0	1	1.5000
0- Summers S/ 9- Waugh R/ 11- Davis-Jones M/ 12- Kelemeni S/ 32- Diawara D/	00:44	2-5	-3	2.6966	0	0	0	1	1.0000
2- Singleton J/ 5- van Schaik H/ 8- Brown A/ 9- Waugh R/ 31- Tonga F/	00:43	2-2	0	2.7907	0	0	0	1	2.0000
1- Simmons A/ 7- Alexander M/ 9- Waugh R/ 11- Davis-Jones M/ 31- Tonga F/	00:40	2-0	2	3.0000	0	1	1	1	1.0000
7- Alexander M/ 9- Waugh R/ 11- Davis-Jones M/ 23- Sgro S/ 31- Tonga F/	00:32	0-3	-3	0.0000	1	0	0	0	-0.0000
1- Simmons A/ 5- van Schaik H/ 8- Brown A/ 9- Waugh R/ 11- Davis-Jones M/	00:30	0-4	-4	0.0000	0	0	0	0	0.0000
0- Summers S/ 2- Singleton J/ 5- van Schaik H/ 9- Waugh R/ 32- Diawara D/	00:25	0-0	0	0.0000	1	0	0	0	0.0000
0- Summers S/ 2- Singleton J/ 8- Brown A/ 9- Waugh R/ 32- Diawara D/	00:23	0-4	-4	0.0000	0	0	1	0	0.0000
2- Singleton J/ 5- van Schaik H/ 8- Brown A/ 9- Waugh R/ 11- Davis-Jones M/	00:10	0-0	0	0.0000	0	0	1	0	0.0000
0- Summers S/ 7- Alexander M/ 11- Davis-Jones M/ 23- Sgro S/ 31- Tonga F/	00:10	0-0	0	0.0000	0	0	1	0	0.0000
0- Summers S/ 9- Waugh R/ 11- Davis-Jones M/ 12- Kelemeni S/ 31- Tonga F/	00:06	1-0	1	9.2308	0	0	0	0	2.2727
2- Singleton J/ 8- Brown A/ 9- Waugh R/ 11- Davis-Jones M/ 32- Diawara D/	00:00	0-0	0	NaN	0	0	0	0	0.0000