



# San José State University Women's Basketball

Contact: Amy Villa, Director of Athletics Media Relations  
408-924-1216 - Office • 408-421-8604 Cell • amy.villa@sjsu.edu  
For Immediate Release • December 16, 2025

## 2025-26 Schedule 1-9, 0-0 MW

|         |                         |            |
|---------|-------------------------|------------|
| Nov. 8  | at BYU                  | L, 70-51   |
| Nov. 14 | at California Baptist   | L, 69-55   |
| NOV. 19 | UC SANTA BARBARA        | L, 75-60   |
| Nov. 23 | at Pepperdine           | L, 76-52   |
| Nov. 28 | at Portland State       | L, 75-64   |
| Dec. 1  | at #21 Washington       | L, 80-54   |
| DEC. 4  | SAINT MARY'S - NBCSCA   | L, 58-53   |
| Dec. 7  | at California           | L, 92-42   |
| DEC. 10 | BETHESDA                | Canceled   |
| DEC. 11 | CAL STATE MONTEREY BAY  | W, 83-40   |
| Dec. 13 | at CSUN                 | L, 66-55   |
| Dec. 17 | *at Wyoming             | 5:30 p.m.  |
| DEC. 21 | SACRAMENTO ST. - NBCSBA | 2:00 p.m.  |
| DEC. 28 | *GRAND CANYON           | 2:00 p.m.  |
| Dec. 31 | *Utah State             | 1:00 p.m.  |
| JAN. 3  | *NEW MEXICO             | 2:00 p.m.  |
| Jan. 7  | *at Fresno State        | 6:30 p.m.  |
| JAN. 10 | *AIR FORCE - NBCSBA     | 2:00 p.m.  |
| JAN. 14 | *UNLV                   | 7:00 p.m.  |
| Jan. 17 | *at Colorado State      | 12:00 p.m. |
| JAN. 21 | *NEVADA                 | 7:00 p.m.  |
| Jan. 24 | *at San Diego State     | 1:00 p.m.  |
| Jan. 31 | *at Boise State         | 2:00 p.m.  |
| FEB. 4  | *FRESNO STATE           | 7:00 p.m.  |
| FEB. 7  | *SAN DIEGO STATE        | 2:00 p.m.  |
| Feb. 11 | *at New Mexico          | 7:00 p.m.  |
| Feb. 14 | *at Air Force           | 12:00 p.m. |
| FEB. 18 | *UTAH STATE             | 7:00 p.m.  |
| FEB. 21 | *BOISE STATE            | 2:00 p.m.  |
| Feb. 25 | *at Nevada              | 6:30 p.m.  |
| Feb. 28 | *at Grand Canyon        | 1:00 p.m.  |
| MARCH 3 | *COLORADO STATE         | 7:00 p.m.  |

March 7-10 Mountain West Championship

Thomas & Mack, Las Vegas, Nev.

Mountain West Network

\* – Mountain West game

All times listed PT

Home games at Provident Credit Union Event Center

NBCSBA - NBC Sports Bay Area

NBCSCA - NBC Sports California

## Game 11

### San José State (1-9, 0-0) at Wyoming (3-6, 0-0)

Wednesday, December 17

Arena-Auditorium

Laramie, Wyo.

6:30 p.m. MT/5:30 p.m. PT

Mountain West Network



Live Video - <https://sjsuspartans.com/watch>

Live Stats for all games - <https://www.sjsustats.statbroadcast.com>

#### San José State

Head Coach: Jonas Chatterton

Record at SJSU: 1-9 (1st)

Career Record: 1-9 (1st)

#### Wyoming

Head Coach: Heather Ezell

Record at WYO: 68-44 (4th)

Career Record: 68-44 (4th)

**MOUNTAIN WEST PLAY STARTS WEDNESDAY:** San José State opens the Mountain West portion of the schedule with a road game this Wednesday at Wyoming. This is the only meeting between the two teams this season. With the unbalanced conference schedule, SJSU will play Wyoming (away) and UNLV (home) one time, and the other schools twice.

San José State is looking to break two streaks this week - a road losing streak dating back to last season and a conference losing streak also dating back to last year. The Spartans are also looking for their first win in Laramie since the 2015-16 season. That year, SJSU won, 67-66, on January 13, 2016, as Dezz Ramos hit a three with 1.1 seconds remaining to propel the Spartans to victory. The Spartans have lost seven straight in Laramie since this game. San José State also has a 15-game losing streak to Wyoming.

**LIVE STATS:** Live stats can be found at <https://www.sjsustats.statbroadcast.com>

**LIVE VIDEO:** San José State home women's basketball games for the 2025-26 season can be seen on the Mountain West Network. Daniel Barrera will be on the call for most home games this year. <https://sjsuspartans.com/watch>

**MW APP:** All Mountain West women's basketball games will be streamed on the Mountain West Network and available on the Mountain West App. Be sure to download the app, which is available on Android, IOS, Apple TV, Roku, Amazon Fire and Android TV. For more information, visit [themw.com/mwapp](http://themw.com/mwapp).

## Possible Spartan Starters (as of 12/14)

|    |                 |   |      |       |                                    |
|----|-----------------|---|------|-------|------------------------------------|
| 1  | Allie Cummins   | G | 5-9  | JR    | 8.4 ppg, 1.6 rpg, 1.4 apg          |
| 3  | Mecca Alexander | G | 5-7  | SO    | 9.9 ppg, 5.2 rpg, 2.6 apg, 1.3 spg |
| 11 | Carla Fuster    | G | 5-10 | FR    | 3.3 ppg, 0.8 rpg                   |
| 32 | Gabriela Pato   | F | 6-4  | FR    | 5.4 ppg, 3.8 rpg, 1.6 bpg          |
| 15 | Maya Anderson   | F | 6-1  | RS-SO | 11.7 ppg, 6.3 rpg, 1.3 spg         |

-CON.-

| Wyoming | Comparison     | San José State |
|---------|----------------|----------------|
| 52.7    | Points/Game    | 56.9           |
| 59.4    | Opp. PPG       | 70.1           |
| -6.8    | Scoring Margin | -13.2          |
| .394    | FG%            | .336           |
| .406    | Opp FG%        | .378           |
| .264    | 3PFG%          | .254           |
| .277    | Opp 3PFG%      | .302           |
| .720    | FT%            | .791           |
| .714    | Opp FT%        | .702           |
| 32.4    | Reb/Game       | 39.7           |
| 35.4    | Opp Reb/Game   | 44.3           |
| -3.0    | Reb. Margin    | -4.6           |
| 13.2    | Assists/Game   | 11.0           |
| 16.0    | Turnovers/Game | 19.1           |
| 3.0     | Blocks/Game    | 4.6            |
| 6.9     | Steals/Game    | 5.9            |

**ABOUT WYOMING:** The Cowgirls enter Wednesday night's game with a 3-6 overall record after falling at Minnesota, 80-34, Sunday night. The team's wins have come against Long Beach State (72-39), Chadron State (75-38) and South Dakota (66-59). Head coach Heather Ezell is in her fourth season at the helm of the program with a 68-44 record.

#### Wyoming's Leaders

|              |               |                 |
|--------------|---------------|-----------------|
| Points/Game  | 16.3          | Malene Pedersen |
| Reb./Game    | 4.0           | Three players   |
| 3pt Made     | 19            | Malene Pedersen |
| Assists      | 23            | Payton Muma     |
| Blocks       | 7             | Madi Symons     |
| Steals       | 14            | Payton Muma     |
| Field Goal % | .505 (56-111) | Malene Pedersen |
| 3PT %        | .528 (19-36)  | Malene Pedersen |
| Free Throw % | .941 (16-17)  | Malene Pedersen |

**Series Record** - 3-20

**First Meeting** - L, 74-51, January 23, 1997, San Jose

**Last Meeting** - L, 59-54, February 15, 2025, Laramie  
Current Spartan **Amira Brown** grabbed 11 rebounds to go with seven points in the game. SJSU used a 19-2 in the last 3:30 of the game to cut the deficit to five points but could get no closer.

**Last SJSU Win** - 65-51, March 1, 2016, San Jose

**Current Streak** - L15

**Record in Laramie** - 1-10

#### Series Meetings

|         |   |        |          |
|---------|---|--------|----------|
| 1996-97 | L | 74-51  | San Jose |
|         | L | 86-53  | Laramie  |
| 2013-14 | W | 74-68  | San Jose |
|         | L | 103-80 | Laramie  |
| 2014-15 | L | 96-60  | Laramie  |
|         | L | 71-61  | San Jose |
| 2015-16 | W | 67-66  | Laramie  |
|         | W | 65-51  | San Jose |
| 2016-17 | L | 89-60  | Laramie  |
|         | L | 68-59  | San Jose |
| 2017-18 | L | 58-64  | Laramie  |
|         | L | 66-64  | San Jose |
| 2018-19 | L | 70-56  | San Jose |
|         | L | 85-56  | Laramie  |
| 2019-20 | L | 80-45  | Laramie  |
| 2021-22 | L | 54-75  | Laramie  |
|         | L | 85-64  | San Jose |



## 2025-26 Mountain West Standings (through 12/14)

| Team                  | Conference |          |             | Overall  |          |             |
|-----------------------|------------|----------|-------------|----------|----------|-------------|
|                       | W          | L        | PCT         | W        | L        | PCT         |
| Boise State           | 0          | 0        | .000        | 9        | 2        | .818        |
| Colorado State        | 0          | 0        | .000        | 9        | 2        | .818        |
| New Mexico            | 0          | 0        | .000        | 8        | 3        | .727        |
| San Diego State       | 0          | 0        | .000        | 6        | 3        | .667        |
| Air Force             | 0          | 0        | .000        | 6        | 4        | .600        |
| Fresno State          | 0          | 0        | .000        | 6        | 5        | .545        |
| UNLV                  | 0          | 0        | .000        | 5        | 5        | .500        |
| Utah State            | 0          | 0        | .000        | 4        | 5        | .444        |
| Nevada                | 0          | 0        | .000        | 4        | 6        | .400        |
| Wyoming               | 0          | 0        | .000        | 3        | 6        | .333        |
| Grand Canyon          | 0          | 0        | .000        | 1        | 9        | .100        |
| <b>San José State</b> | <b>0</b>   | <b>0</b> | <b>.000</b> | <b>1</b> | <b>9</b> | <b>.100</b> |

#### Upcoming Schedule

##### Wednesday, December 17

|  |              |
|--|--------------|
| UNLV at Grand Canyon* (CBSSN)          | 6 p.m. MT    |
| Air Force at Utah State* (MWN)         | 6 p.m. MT    |
| San José State at Wyoming* (MWN)       | 6:30 p.m. MT |
| Boise State at New Mexico* (MWN)       | 7 p.m. MT    |
| Colorado State at Nevada* (MWN)        | 6:30 p.m. PT |
| San Diego State at Fresno State* (MWN) | 6:30 p.m. PT |

##### Saturday, December 20

|                                       |           |
|---------------------------------------|-----------|
| Utah State at Colorado State* (MWN)   | 1 p.m. MT |
| New Mexico at UNLV* (MWN)             | 1 p.m. PT |
| Boise State at San Diego State* (MWN) | 1 p.m. PT |
| Wyoming at Fresno State* (MWN)        | 2 p.m. PT |
| Nevada at Air Force* (MWN)            | 1 p.m. MT |

##### Sunday, December 21

|  |           |
|--|-----------|
| Sacramento State at San José State (MWN) | 2 p.m. PT |
|--|-----------|

##### Sunday, December 28

|                                       |           |
|---------------------------------------|-----------|
| Grand Canyon at San José State* (MWN) | 2 p.m. PT |
|---------------------------------------|-----------|

##### Wednesday, December 31

|                                       |            |
|---------------------------------------|------------|
| Colorado State at Grand Canyon* (MWN) | 11 a.m. MT |
| Fresno State at UNLV* (MWN)           | 12 p.m. PT |
| Wyoming at New Mexico* (MWN)          | 1 p.m. MT  |
| San José State at Utah State* (MWN)   | 1 p.m. MT  |
| Air Force at San Diego State* (MWN)   | 1 p.m. PT  |
| Nevada at Boise State* (MWN)          | 2 p.m. MT  |

##### Saturday, January 3

|                                       |           |
|---------------------------------------|-----------|
| Fresno State at Colorado State* (MWN) | 1 p.m. MT |
| Utah State at Nevada* (MWN)           | 1 p.m. PT |
| San Diego State at Wyoming* (MWN)     | 2 p.m. MT |
| Grand Canyon at Boise State* (MWN)    | 2 p.m. MT |
| New Mexico at San José State* (MWN)   | 2 p.m. PT |
| UNLV at Air Force* (MWN)              | 1 p.m. MT |

|         |   |       |           |
|---------|---|-------|-----------|
| 2022-23 | L | 64-48 | San Jose  |
|         | L | 68-54 | Laramie   |
|         | L | 72-52 | Las Vegas |
| 2023-24 | L | 88-73 | San Jose  |
| 2024-25 | L | 77-64 | San Jose  |
|         | L | 59-54 | Laramie   |

**HEAD COACH JONAS CHATTERTON:** San José State head coach **Jonas Chatterton** is in his first season at the helm of the Spartan program. He recorded his first win as a collegiate head coach on December 11 when the Spartans defeated Cal State Monterey Bay, 83-40, inside the Provident Credit Union Event Center.

**DOUBLE-DOUBLES ON THE COURT:** This season, three Spartans have recorded double-doubles for the Spartans. **Amira Brown** recorded the first Spartan double-double of the season with 12 points and 12 rebounds at California Baptist on November 14.

**Gabriela Pato** recorded her first collegiate double-double with 10 points and a career-high 10 rebounds against Saint Mary's on December 4.

**Maya Anderson** is the latest Spartan with a double-double as she led the team with 18 points and 12 rebounds in the win over Cal State Monterey Bay.

#### M. ANDERSON LEADING THE SPARTANS:

**Maya Anderson** leads San José State in scoring with 118 points, 11.8 per game. She has led the team in points in five games including a career-best 18 points against Saint Mary's and Cal State Monterey Bay. She has scored in double figures in seven games this season..

Anderson leads the team with 63 rebounds, 6.3 per game. She has led the team in boards in three games - 8 at BYU, 9 against UC Santa Barbara and 12 versus Cal State Monterey Bay.

**CUMMINS FOR THREEEEE!** **Allie Cummins** leads the Spartans with 16 three-pointers made on the season. She hit 25 percent of those during the Saint Mary's game. Cummins hit four made threes in the first quarter of the game, scoring 12 of the team's 18 points in the quarter. Cummins is the first Spartan to make four threes in a quarter since Sydni Summers made four in the fourth quarter against UC Santa Barbara in November of 2024.

**BLOCK PARTY!:** San José State is among the top-50 teams in the country in blocked shots with 46, 4.6 pg. The Spartans blocked a season-high nine blocks in the game at Pepperdine on November 23. The nine blocks are the most by a Mountain West team this season and the most by an SJSU team since the nine recorded in a 72-49 win at Air Force on January 20, 2016.

**Gabriela Pato** leads the team with 14 blocks, including four against Saint Mary's, while **Kaliyah Dillard** is second with 10, starting the season with three at BYU.

#### SJSU'S RECORD WHEN ...

|   |         |
|---|---------|
| home.....   | 1-2     |
| away.....   | 0-7     |
| neutral.....  | 0-0     |
| overtime.....   | 0-0     |
| games decided by 3 pts or less.....                             | 0-0     |
| games decided by 4-5 pts.....                                   | 0-1     |
| games decided by 6-10 pts.....                                  | 0-0     |
| games decided by 11-19 pts.....                                 | 0-4     |
| games decided by 20+ pts.....                                   | 1-4     |
| vs. Top 25.....   | 0-1     |
| vs. Top 10.....   | 0-0     |
| vs. Power 4 opponents.....                                      | 0-3     |
| scoring first.....  | 1-3     |
| leading at the half.....  | 1-1     |
| tied at the half.....   | 0-1     |
| trailing at the half.....                                       | 0-7     |
| leading after 3rd quarter.....                                  | 1-0     |
| tied after 3rd quarter.....                                     | 0-0     |
| trailing after 3rd quarter.....                                 | 0-9     |
| leading with 5 mins remaining.....                              | 1-0     |
| tied with 5 mins remaining.....                                 | 0-0     |
| trailing with 5 mins remaining.....                             | 0-9     |
| SJSU shoots 50% or better.....                                  | 0-0     |
| SJSU shoots less than 50%.....                                  | 1-9     |
| SJSU shoots better than opponent.....                           | 1-1     |
| SJSU shoots the same as opponent.....                           | 0-0     |
| SJSU shoots worse than opponent.....                            | 0-8     |
| Opponent shoots 50% or better.....                              | 0-0     |
| Opponent shoots less than 50%.....                              | 1-9     |
| SJSU outrebounds opponent.....                                  | 1-2     |
| Opponent outrebounds SJSU.....                                  | 0-7     |
| SJSU equals opponent in rebs.....                               | 0-0     |
| SJSU shoots 80% or better from FT line.....                     | 0-2     |
| SJSU has more FT attempts.....                                  | 0-4     |
| Opponent has more FT attempts.....                              | 1-4     |
| SJSU equals opponent in FT attempts.....                        | 0-1     |
| SJSU shoots 40% or better from 3.....                           | 0-0     |
| SJSU has less turnovers than opponent.....                      | 0-2     |
| SJSU has more turnovers than opponent.....                      | 1-5     |
| SJSU equals opponent in turnovers.....                          | 0-2     |
| SJSU scores 100+ pts.....                                       | 0-0     |
| SJSU scores 90-99 pts.....                                      | 0-0     |
| SJSU scores 80-89 pts.....                                      | 1-0     |
| SJSU scores 70-79 pts.....                                      | 0-0     |
| SJSU scores 60-69 pts.....                                      | 0-2     |
| SJSU scores 50-59.....  | 0-6     |
| SJSU scores less than 50 pts.....                               | 0-1     |
| Opponent scores 100+ pts.....                                   | 0-0     |
| Opponent scores 90-99 pts.....                                  | 0-1     |
| Opponent scores 80-89 pts.....                                  | 0-1     |
| Opponent scores 70-79 pts.....                                  | 0-4     |
| Opponent scores 60-69 pts.....                                  | 0-2     |
| Opponent scores 50-59.....                                      | 0-1     |
| Opponent scores less than 50 pts.....                           | 1-0     |
| On Monday.....  | 0-1     |
| On Tuesday.....   | 0-0     |
| On Wednesday.....   | 0-1     |
| On Thursday.....  | 1-1     |
| On Friday.....  | 0-2     |
| On Saturday.....  | 0-2     |
| On Sunday.....  | 0-2     |
| In November.....  | 0-5     |
| In December.....  | 1-4     |
| In January.....   | 0-0     |
| In February.....  | 0-0     |
| In March.....   | 0-0     |
| On National TV (ESPN, ESPN2, CBS Sports Network, FS1, FS2)..... | 0-0     |
| On NBC Sports Bay Area/California.....                          | 0-1     |
| On Mountain West Network.....                                   | 1-2     |
| Miscellaneous   |         |
| Current Streak.....   | Lost 1  |
| Home court streak.....  | Won 1   |
| Neutral court streak.....                                       | Lost 1  |
| Road Streak.....  | Lost 17 |



**NATIONAL RANKINGS:** Through December 14, the Spartans rank in the top-100 in five categories.

|  |         |
|--|---------|
| Blocks PG - 49th                       | 4.6 pg  |
| Three-Point Attempts PG - 53rd         | 24.8 pg |
| Rebounds - Defensive - 71st            | 27.8 pg |
| Gabriela Pato - Total Blocks - 93rd    | 14      |
| Gabriela Pato - Blocks per game - 89th | 1.40 pg |

**WAUGH MAKING A DIFFERENCE FOR THE SPARTANS:**

**Rylei Waugh** is key cog for the Spartans this season, whether starting or coming off the bench. She is second on the team in scoring with 89 points, 9.9 per game, and is third on the team rebounding with 47, 5.2 pg. Waugh has dished out a team-best 23 assists and grabbed a team-high 12 steals. She led the team in scoring in three games and in rebounding in three games.

Waugh started the season by coming off the bench in the first four games but transitioned to a starter for the Portland State contest. In that game, she led the team with a career-high 18 points and three assists and grabbed a career-best four steals.

**WHO WANTS TO SCORE TONIGHT?** Through nine games this season, five different Spartans have led the team in scoring.

**Maya Anderson** has led the team in scoring in five games, while **Rylei Waugh** in has led the team in three games. **Amira Brown** scored 12 points in the win at CBU, while **Gabriela Pato** scored 11 to led the Spartans at No. 21 Washington. **Katari-na Anderson** came off the bench at California and scored 10 points to lead SJSU.

**K. ANDERSON MAKING A DIFFERENCE:** **Katarina Anderson** is making a difference on the Spartan team in her first year with the Spartan program. She led the team in scoring at California with 10 points on 4-of-7 shooting from the field in 21 minutes of action. She was second on the team in scoring at Pepperdine with nine points where she went 3-for-4 from the field. Anderson is averaging 4.8 points and 12.0 minutes played per game.

Anderson is also getting others involved in the offense with 16 assists on the season. She dished out a team-best seven assists in the win over Cal State Monterey Bay.

**RING THE VICTORY BELL!:** The Spartans got their first win of the season with the 83-40 victory over Cal State Monterey Bay on December 11. **Maya Anderson** led the team with 18 points and 12 rebounds. **Amira Brown** came off the bench to grab 10 rebounds and dish out four assists. **Kaliyah Dillard** scored a career-best 10 points and grabbed six rebound. **Katarina Anderson** scored eight points and dished out a season-best seven assists. In all, 12 Spartans scored in the win.

**MULTIPLE SPARTANS SCORE IN DOUBLE FIGURES:** Three times this season, at least three Spartans have scored in double figures.

BYU - Maya Anderson, 17; Rylei Waugh, 14; Allie Cummins, 10  
CBU - Amira Brown, 12; Rylei Waugh, 12; Maya Anderson, 11; Allie Cummins, 10  
SMC - Maya Anderson, 18; Allie Cummins, 14; Gabriela Pato, 10

**MW Player of the Week**

|         |   |
|---------|---|
| Nov. 10 | Meadow Roland, So., F, UNLV             |
| Nov. 17 | Dani Bayes, Sr., G, Boise State         |
| Nov. 24 | Lexus Bargesser, Sr., G, Colorado State |
| Dec. 1  | Meadow Roland, So., F, UNLV             |
| Dec. 8  | Lexus Bargesser, Sr., G, Colorado State |
| Dec. 15 | Nat Martinez, So., G, San Diego State   |
| Dec. 22 |   |
| Dec. 29 |   |
| Jan. 5  |   |
| Jan. 12 |   |
| Jan. 19 |   |
| Jan. 26 |   |
| Feb. 2  |   |
| Feb. 9  |   |
| Feb. 16 |   |
| Feb. 23 |   |
| March 2 |   |
| March 9 |   |

**MW Freshman of the Week**

|         |                                 |
|---------|---------------------------------|
| Nov. 10 | Ava Marr, G, Fresno State       |
| Nov. 17 | Tyler Jones, G, New Mexico      |
| Nov. 24 | Norah Moo, F, Grand Canyon      |
| Dec. 1  | Ava Marr, G, Fresno State       |
| Dec. 8  | Laila Abdurraqib, G, New Mexico |
| Dec. 15 | Ava Marr, G, Fresno State       |
| Dec. 22 |                                 |
| Dec. 29 |                                 |
| Jan. 5  |                                 |
| Jan. 12 |                                 |
| Jan. 19 |                                 |
| Jan. 26 |                                 |
| Feb. 2  |                                 |
| Feb. 9  |                                 |
| Feb. 16 |                                 |
| Feb. 23 |                                 |
| March 2 |                                 |
| March 9 |                                 |

**MW Statistics (All Games) (thru 12/14)**

|                             |                          |
|-----------------------------|--------------------------|
| Scoring - 15th              | Maya Anderson, 11.80 pg  |
| Scoring - 20th              | Rylei Waugh, 9.89 pg     |
| 3-pt FG Made - T14th        | Allie Cummins, 1.60 pg   |
| Rebounding - 5th            | Amira Brown, 6.33 pg     |
| Rebounding - 6th            | Maya Anderson, 6.30 pg   |
| Rebounding - 18th           | Rylei Waugh, 5.22 pg     |
| Offensive Rebounds - 12th   | Gabriela Pato, 1.90 pg   |
| Defensive Rebounds - 6th    | Amira Brown, 4.56 pg     |
| Defensive Rebounds - 7th    | Maya Anderson, 4.50 pg   |
| Defensive Rebounds - 9th    | Rylei Waugh, 4.11 pg     |
| Free Throw Percentage - 4th | Rylei Waugh, .806        |
| Assists - 20th              | Rylei Waugh, 2.56 pg     |
| Blocked Shots - 2nd         | Gabriela Pato, 1.40 pg   |
| Blocked Shots - T4th        | Kaliyah Dillard, 1.00 pg |
| Minutes Played - 9th        | Maya Anderson, 30.64 pg  |

**FINAL MW TEAM TO OPEN AT HOME:** With the UCSB game, SJSU was the final team in the conference to play a home game for the 2025-2 season. The Spartans were also the final team to begin play for the 2025-26 season with their game at BYU.

**NAMETAGS FOR EVERYONE!:** The Spartans welcomed eight players and entirely new coaching staff for 2025-26 season.

**New Players**

Katrina Anderson  
Allie Cummins  
Carla Fuster  
Briannah McGee  
Harisa Mehmedovic  
Gabriela Pato  
McKenna Simons  
Amelie Sitterud

**New Coaches**

Jonas Chatterton  
Emily Coddling  
Jaime Gluesing  
Brandon Morrison  
Jordan Moser

**UP NEXT:** San José State returns to the Provident Credit Union Event Center on Sunday, December 21, to face Sacramento State in the team's final non-conference game of the season. Tip time is set for 2 p.m.

**Miscellaneous Stats**

**Career Double-Doubles**

**Amira Brown - 2**

10 points, 11 rebounds -  
at Boise State, Jan. 15, 2025  
12 points, 12 rebounds  
at California Baptist, Nov. 14, 2025

**Gabriela Pato - 1**

10 points, 10 rebounds  
vs. Saint Mary's, December 4, 2025

**Maya Anderson - 1**

18 points, 12 rebounds  
vs. Cal State Monterey Bay, December 11, 2025

**Career 10+ rebound games**

**Amira Brown - 3**

11, at Boise State, Jan. 15, 2025  
11, at Wyoming, Feb. 15, 2025  
12, at California Baptist, Nov. 14, 2025

**Gabriela Pato - 1**

10, vs. Saint Mary's, December 4, 2025

**10+ rebound games in 2025-26**

**Amira Brown - 2**

12 - at California Baptist, Nov. 14, 2025  
10, vs. Cal State Monterey Bay, December 11, 2025

**Gabriela Pato - 1**

10, vs. Saint Mary's, December 4, 2025

**Maya Anderson - 1**

12, vs. Cal State Monterey Bay, December 11, 2025

**Double-Doubles in 2025-26**

**Amira Brown - 1**

12 points, 12 rebounds  
at California Baptist, November 14, 2025

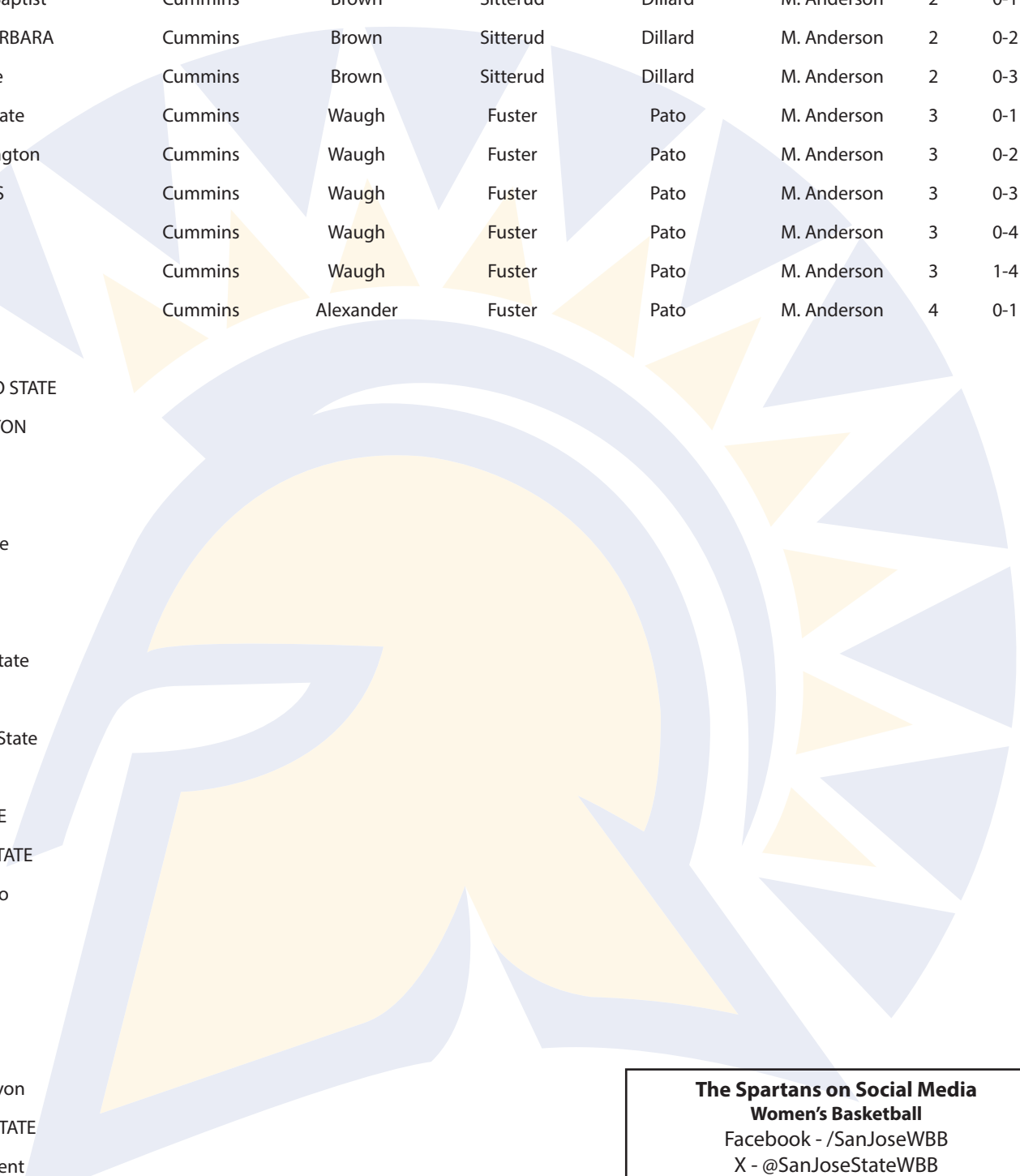
**Gabriela Pato - 1**

10 points, 10 rebounds  
vs. Saint Mary's, December 4, 2025

**Maya Anderson - 1**

18 points, 12 rebounds  
vs. Cal State Monterey Bay, December 11, 2025

## Starting Lineups



| Game                  | Guard   | Guard     | Guard    | Forward | Forward     | No. | Record |
|-----------------------|---------|-----------|----------|---------|-------------|-----|--------|
| at BYU                | Cummins | Brown     | Sgro     | Dillard | M. Anderson | 1   | 0-1    |
| at California Baptist | Cummins | Brown     | Sitterud | Dillard | M. Anderson | 2   | 0-1    |
| UC SANTA BARBARA      | Cummins | Brown     | Sitterud | Dillard | M. Anderson | 2   | 0-2    |
| at Pepperdine         | Cummins | Brown     | Sitterud | Dillard | M. Anderson | 2   | 0-3    |
| at Portland State     | Cummins | Waugh     | Fuster   | Pato    | M. Anderson | 3   | 0-1    |
| at #21 Washington     | Cummins | Waugh     | Fuster   | Pato    | M. Anderson | 3   | 0-2    |
| SAINT MARY'S          | Cummins | Waugh     | Fuster   | Pato    | M. Anderson | 3   | 0-3    |
| at California         | Cummins | Waugh     | Fuster   | Pato    | M. Anderson | 3   | 0-4    |
| CSUMB                 | Cummins | Waugh     | Fuster   | Pato    | M. Anderson | 3   | 1-4    |
| at CSUN               | Cummins | Alexander | Fuster   | Pato    | M. Anderson | 4   | 0-1    |
| at Wyoming            |         |           |          |         |             |     |        |
| SACRAMENTO STATE      |         |           |          |         |             |     |        |
| GRAND CANYON          |         |           |          |         |             |     |        |
| at Utah State         |         |           |          |         |             |     |        |
| NEW MEXICO            |         |           |          |         |             |     |        |
| at Fresno State       |         |           |          |         |             |     |        |
| AIR FORCE             |         |           |          |         |             |     |        |
| UNLV                  |         |           |          |         |             |     |        |
| at Colorado State     |         |           |          |         |             |     |        |
| NEVADA                |         |           |          |         |             |     |        |
| at San Diego State    |         |           |          |         |             |     |        |
| at Boise State        |         |           |          |         |             |     |        |
| FRESNO STATE          |         |           |          |         |             |     |        |
| SAN DIEGO STATE       |         |           |          |         |             |     |        |
| at New Mexico         |         |           |          |         |             |     |        |
| at Air Force          |         |           |          |         |             |     |        |
| UTAH STATE            |         |           |          |         |             |     |        |
| BOISE STATE           |         |           |          |         |             |     |        |
| at Nevada             |         |           |          |         |             |     |        |
| at Grand Canyon       |         |           |          |         |             |     |        |
| COLORADO STATE        |         |           |          |         |             |     |        |
| MW Tournament         |         |           |          |         |             |     |        |

**The Spartans on Social Media**  
**Women's Basketball**

Facebook - /SanJoseWBB

X - @SanJoseStateWBB

Instagram - @SJSUWBB

Tik Tok - @sanjosestatewbb

**Athletics Department**

Facebook - /SJSUspartans

X - @SJSUAthletics

Instagram - @sjsuspartans

YouTube - /SJSUAthletics



## 2025-26 San José State Women's Basketball Roster

| NO | NAME              | POS | HT   | YR    | EXP | HOMETOWN/LAST SCHOOL                           |
|----|-------------------|-----|------|-------|-----|--|
| 0  | Katarina Anderson | G   | 5-7  | SR    | HS  | Nipomo, Calif./Nipomo HS                       |
| 1  | Allie Cummins     | G   | 5-9  | JR    | TR  | Moraga, Calif./Northern Arizona                |
| 2  | McKenna Simons    | G   | 5-10 | SR    | TR  | Overland Park, Kan./Grand Canyon U.            |
| 3  | Mecca Alexander   | G   | 5-7  | SO    | 1V  | Antioch, Calif./Cornerstone Christian School   |
| 4  | Rylei Waugh       | G   | 5-6  | JR    | 1V  | Los Angeles, Calif./Pima CC                    |
| 5  | Harisa Mehmedovic | F   | 6-1  | JR    | JC  | Salt Lake City, Utah/Union County College (NJ) |
| 8  | Amira Brown       | G   | 5-10 | RS-SR | 3V  | Richmond, Calif./Laney College/Tulsa           |
| 10 | Amelie Sitterud   | G/F | 6-0  | JR    | TR  | Kirkland, Wash./LMU                            |
| 11 | Carla Fuster      | G   | 5-10 | FR    | HS  | Barcelona, Spain/INS Alba del Vallès           |
| 15 | Maya Anderson     | G/F | 6-1  | RS-SO | 1V  | Toronto, Ontario/Crestwood Prep College        |
| 20 | Briannah McGee    | G   | 5-7  | JR    | TR  | Murietta, Calif./Murietta Valley HS/Redlands   |
| 22 | Kaliyah Dillard   | F   | 6-0  | RS-SO | 1V  | Las Vegas, Nev./Centennial HS                  |
| 23 | Stella Sgro       | G/F | 5-11 | SO    | 1V  | Toronto, Ontario/Royal Crown School            |
| 32 | Gabriela Pato     | F   | 6-4  | FR    | HS  | Vigo, Spain/Escola Rosalía De Castro           |

**Head Coach:** Jonas Chatterton (Utah, 2000/1st season)

**Assistant Coaches:** Emily Coddington (St. Mary's 2021/Oregon State, 2022/1st season)

**Assistant Coaches:** Jaime Gluesing (FGCU, 2016/1st season)

**Assistant Coaches:** Brandon Morrison (UNLV, 2016/1st season)

**Assistant Coach/Coordinator of Player Personnel:** Jordan Moser (Oklahoma, 2025/1st season)

**Creative Content/Video Coordinator:** Imani Sires (San José State, 2024/3rd season)

**Graduate Assistant:** Julia Rodriguez Vela (San José State, 2024/2nd season)

### Pronunciations

Amira Brown – AH-meer-ah

Allie Cummins – COME-ins

Kaliyah Dillard – kuh-LEE-uh

Carla Fuster – FOO-ster

Briannah McGee – BREE-an-uh

Harisa Mehmedovic – HAH-ree-suh meh-med-oh-vich

Gabriela Pato – gab-REE-el-ah PAH-tow

Stella Sgro – ss-grow

Amelie Sitterud – AH-meh-lee SIT-er-ood

Rylei Waugh – RYE-lee WAH (like water)





#0

**KATARINA ANDERSON**Guard • 5-7 • SR  
Nipomo, Calif.

#1

**ALLIE CUMMINS**Guard • 5-9 • JR  
Moraga, Calif.

#2

**MxKENNA SIMONS**Guard • 5-10 • SR  
Overland Park, Kan.

#3

**MECCA ALEXANDER**Guard • 5-7 • SO  
Antioch, Calif.

#4

**RYLEI WAUGH**Guard • 5-6 • JR  
Istanbul, Turkey

#5

**HARISA MEHMEDOVIC**Forward • 6-1 • JR  
Salt Lake City, Utah

#8

**AMIRA BROWN**Guard • 5-10 • RS-SR  
Richmond, Calif.

#10

**AMELIE SITTERUD**Guard/Forward • 6-0 • JR  
Kirkland, Wash.

#11

**CARLA FUSTER**Guard • 5-10 • FR  
Barcelona, Spain

#15

**MAYA ANDERSON**Guard/Forward • 6-1 • SO  
Toronto, Ontario

#20

**BRIANNA MCGEE**Guard • 5-7 • JR  
Murieta, Calif.

#22

**KALIYAH DILLARD**Forward • 6-0 • RS-SO  
Las Vegas, Nev.

#23

**STELLA SGRO**Guard/Forward • 5-11 • SO  
Toronto, Ontario

#25

**GABRIELA PATO**Forward • 6-4 • FR  
Vigo, Span**JONAS  
CHATTERTON**  
Head Coach**EMILY CODDING**  
Assistant Coach**JAIME GLUESING**  
Assistant Coach**BRANDON  
MORRISON**  
Assistant Coach**JORDAN MOSER**  
Assistant Coach





## Jonas Chatterton Head Coach

Jonas Chatterton was hired as the San José State women's basketball program's 11th head coach in school history on April 25, 2025. Chatterton brings over 24 years of Division I coaching experience, a deep legacy of player development, and a history of success at some of the nation's most competitive programs.

Chatterton most recently served as associate head coach at the University of Oklahoma, where he played a key role in program

strategy, recruiting, and athlete performance. The Sooners advanced to the Sweet 16 this past season, falling to eventual national champion UConn.

Before OU, Chatterton spent a decade at Oregon State University, helping guide the Beavers to the 2016 Final Four, multiple Elite Eights, and three Pac-12 regular season titles. His coaching résumé includes successful stints at Colorado, BYU, and Westminster College. Chatterton's teams have produced a cumulative record of 501-237 with an impressive .679 winning percentage.

Throughout his career, Chatterton has coached numerous All-Americans, including conference players and freshmen of the year, and has consistently helped teams reach postseason play, including multiple Sweet 16 and NCAA Tournament appearances.

Chatterton holds a Bachelor of Science in Exercise and Sport Science from the University of Utah and has been recognized nationally, including participation in Nike's prestigious Villa 7 Consortium for top assistant coaches, and was named one of the 2023 50 Most Impactful High Major Assistants by Silver Ways Media.

Chatterton has four children: daughters Josie, Celia, and Jada, and a son, Hudson.

### COACHING HISTORY

2024-25: Oklahoma, Associate Head Coach  
2014-24: Oregon State, Associate Head Coach  
2013-14: Colorado, Associate Head Coach  
2010-13: Colorado, Assistant Coach  
2001-09: BYU, Assistant Coach  
1998-2000: Westminster College, Assistant Coach

### COACHING HIGHLIGHTS

13 NCAA Tournaments  
2016 Final Four, 2024 Elite Eight  
Four conference championships

### PLAYING EXPERIENCE

1996-97: Rocky Mountain College (Mont.)





2025-26 San Jose St. Women's Basketball  
Combined Team Statistics  
All games

Game Records

| Record         | Overall | Home | Away | Neutral |
|----------------|---------|------|------|---------|
| ALL GAMES      | 1-9     | 1-2  | 0-7  | 0-0     |
| CONFERENCE     | 0-0     | 0-0  | 0-0  | 0-0     |
| NON-CONFERENCE | 1-9     | 1-2  | 0-7  | 0-0     |

Score by Periods

| Team         | 1st | 2nd | 3rd | 4th | OT | TOT |
|--------------|-----|-----|-----|-----|----|-----|
| San Jose St. | 152 | 134 | 144 | 139 | 0  | 569 |
| Opponents    | 166 | 177 | 194 | 164 | 0  | 701 |

Team Box Score

| No.       | Player             |       |        |      | Total   |      | 3-Point  |      | F-Throw |      | Rebounds |     |     |      |     |    |     |     |     |     |     |      |  |  |
|-----------|--------------------|-------|--------|------|---------|------|----------|------|---------|------|----------|-----|-----|------|-----|----|-----|-----|-----|-----|-----|------|--|--|
|           |                    | GP-GS | MIN    | AVG  | FG-FGA  | FG%  | 3FG-3FGA | 3FG% | FT-FTA  | FT%  | OFF      | DEF | TOT | AVG  | PF  | DQ | A   | TO  | BLK | STL | PTS | AVG  |  |  |
| 15        | ANDERSON, Maya     | 10-10 | 306:23 | 30.6 | 41-119  | .345 | 13-50    | .260 | 23-32   | .719 | 18       | 45  | 63  | 6.3  | 15  | 0  | 10  | 31  | 1   | 13  | 118 | 11.8 |  |  |
| 4         | WAUGH, Rylei       | 9-5   | 254:14 | 28.2 | 28-79   | .354 | 4-17     | .235 | 29-36   | .806 | 10       | 37  | 47  | 5.2  | 19  | 0  | 23  | 26  | 3   | 12  | 89  | 9.9  |  |  |
| 1         | CUMMINS, Allie     | 10-10 | 283:01 | 28.3 | 27-90   | .300 | 16-57    | .281 | 9-10    | .900 | 3        | 14  | 17  | 1.7  | 20  | 1  | 16  | 21  | 0   | 4   | 79  | 7.9  |  |  |
| 8         | BROWN, Amira       | 9-4   | 171:02 | 19.0 | 19-57   | .333 | 3-16     | .188 | 14-22   | .636 | 16       | 41  | 57  | 6.3  | 10  | 0  | 11  | 25  | 3   | 10  | 55  | 6.1  |  |  |
| 32        | PATO, Gabriela     | 10-6  | 153:45 | 15.4 | 17-45   | .378 | 1-5      | .200 | 14-20   | .700 | 19       | 17  | 36  | 3.6  | 19  | 0  | 4   | 7   | 14  | 2   | 49  | 4.9  |  |  |
| 0         | ANDERSON, Katarina | 7-0   | 94:33  | 13.5 | 12-25   | .480 | 5-10     | .500 | 5-6     | .833 | 0        | 8   | 8   | 1.1  | 9   | 0  | 16  | 11  | 2   | 2   | 34  | 4.9  |  |  |
| 11        | FUSTER, Carla      | 10-6  | 172:52 | 17.3 | 11-39   | .282 | 8-23     | .348 | 3-4     | .750 | 3        | 5   | 8   | 0.8  | 13  | 0  | 3   | 9   | 2   | 4   | 33  | 3.3  |  |  |
| 2         | SIMONS, McKenna    | 6-0   | 81:12  | 13.5 | 7-17    | .412 | 3-9      | .333 | 1-2     | .500 | 2        | 3   | 5   | 0.8  | 9   | 0  | 3   | 6   | 1   | 2   | 18  | 3.0  |  |  |
| 23        | SGRO, Stella       | 7-1   | 104:07 | 14.9 | 7-34    | .206 | 7-30     | .233 | 0-0     | .000 | 0        | 14  | 14  | 2.0  | 4   | 0  | 10  | 6   | 1   | 1   | 21  | 3.0  |  |  |
| 22        | DILLARD, Kaliyah   | 10-4  | 118:35 | 11.9 | 10-26   | .385 | 0-6      | .000 | 4-12    | .333 | 16       | 21  | 37  | 3.7  | 18  | 0  | 6   | 12  | 10  | 4   | 24  | 2.4  |  |  |
| 5         | MEHMEDOVIC, Harisa | 10-0  | 99:19  | 9.9  | 10-29   | .345 | 1-5      | .200 | 3-4     | .750 | 0        | 11  | 11  | 1.1  | 23  | 0  | 2   | 14  | 6   | 2   | 24  | 2.4  |  |  |
| 3         | ALEXANDER, Mecca   | 10-1  | 66:37  | 6.7  | 6-14    | .429 | 2-7      | .286 | 2-4     | .500 | 1        | 6   | 7   | 0.7  | 4   | 0  | 3   | 8   | 0   | 0   | 16  | 1.6  |  |  |
| 10        | SITTERUD, Amelie   | 9-3   | 92:50  | 10.3 | 4-18    | .222 | 0-13     | .000 | 1-2     | .500 | 1        | 20  | 21  | 2.3  | 14  | 0  | 3   | 8   | 3   | 3   | 9   | 1.0  |  |  |
| 20        | MCGEE, Briannah    | 1-0   | 01:32  | 1.5  | 0-0     | .000 | 0-0      | .000 | 0-0     | .000 | 0        | 0   | 0   | 0.0  | 0   | 0  | 0   | 0   | 0   | 0   | 0   | 0.0  |  |  |
| Team      |                    |       |        |      |         |      |          |      |         |      | 30       | 36  | 66  |      |     |    |     | 7   |     |     |     |      |  |  |
| Total     |                    | 10    | 2000   |      | 199-592 | .336 | 63-248   | .254 | 108-154 | .701 | 119      | 278 | 397 | 39.7 | 177 | 1  | 110 | 191 | 46  | 59  | 569 | 56.9 |  |  |
| Opponents |                    | 10    | 2000   |      | 249-659 | .378 | 83-275   | .302 | 120-171 | .702 | 156      | 287 | 443 | 44.3 | 168 | 1  | 149 | 145 | 48  | 103 | 701 | 70.1 |  |  |

Team Statistics

|                        | SJSU    | OPP     |
|------------------------|---------|---------|
| Scoring                | 569     | 701     |
| Points per game        | 56.9    | 70.1    |
| Scoring margin         | -13.2   | -       |
| Field goals-att        | 199-592 | 249-659 |
| Field goal pct         | .336    | .378    |
| 3 point fg-att         | 63-248  | 83-275  |
| 3-point FG pct         | .254    | .302    |
| 3-pt FG made per game  | 6.3     | 8.3     |
| Free throws-att        | 108-154 | 120-171 |
| Free throw pct         | .701    | .702    |
| F-Throws made per game | 10.8    | 12.0    |
| Rebounds               | 397     | 443     |
| Rebounds per game      | 39.7    | 44.3    |
| Rebounding margin      | -4.6    | -       |
| Assists                | 110     | 149     |
| Assists per game       | 11.0    | 14.9    |
| Turnovers              | 191     | 145     |
| Turnovers per game     | 19.1    | 14.5    |
| Turnover margin        | -4.6    | -       |
| Assist/turnover ratio  | 0.6     | 1.0     |
| Steals                 | 59      | 103     |
| Steals per game        | 5.9     | 10.3    |
| Blocks                 | 46      | 48      |
| Blocks per game        | 4.6     | 4.8     |
| Winning streak         | 0       | -       |
| Home win streak        | 1       | -       |
| Attendance             | 1415    | 6637    |
| Home games-Avg/Game    | 3-472   | 7-948   |
| Neutral site-Avg/Game  | -       | 0-0     |

Team Results

| Date       | Opponent              |   | Score | Att. |
|------------|-----------------------|---|-------|------|
| 11/08/2025 | at BYU                | L | 51-70 | 1668 |
| 11/14/2025 | at California Baptist | L | 55-69 | 1029 |
| 11/19/2025 | UC Santa Barbara      | L | 60-75 | 567  |
| 11/23/2025 | at Pepperdine         | L | 52-76 | 321  |
| 11/28/2025 | at Portland St.       | L | 64-75 | 289  |
| 12/01/2025 | at Washington         | L | 54-80 | 1960 |
| 12/04/2025 | Saint Mary's (CA)     | L | 53-58 | 504  |
| 12/07/2025 | at California         | L | 42-92 | 1150 |
| 12/11/2025 | Cal St. Monterey Bay  | W | 83-40 | 344  |
| 12/13/2025 | at CSUN               | L | 55-66 | 220  |



## Game Records

| Record         | Overall | Home | Away | Neutral |
|----------------|---------|------|------|---------|
| ALL GAMES      | 1-9     | 1-2  | 0-7  | 0-0     |
| CONFERENCE     | 0-0     | 0-0  | 0-0  | 0-0     |
| NON-CONFERENCE | 1-9     | 1-2  | 0-7  | 0-0     |

| Date       | Opponent              |   | Score | Att. | High Points                            | High Rebounds                          |
|------------|-----------------------|---|-------|------|--|--|
| 11/08/2025 | at BYU                | L | 51-70 | 1668 | (17) ANDERSON, Maya                    | (8) ANDERSON, Maya                     |
| 11/14/2025 | at California Baptist | L | 55-69 | 1029 | (12) BROWN, Amira<br>(12) WAUGH, Rylei | (12) BROWN, Amira                      |
| 11/19/2025 | UC Santa Barbara      | L | 60-75 | 567  | (12) ANDERSON, Maya                    | (9) ANDERSON, Maya<br>(9) WAUGH, Rylei |
| 11/23/2025 | at Pepperdine         | L | 52-76 | 321  | (10) WAUGH, Rylei                      | (6) BROWN, Amira<br>(6) WAUGH, Rylei   |
| 11/28/2025 | at Portland St.       | L | 64-75 | 289  | (18) WAUGH, Rylei                      | (8) BROWN, Amira<br>(8) WAUGH, Rylei   |
| 12/01/2025 | at Washington         | L | 54-80 | 1960 | (11) PATO, Gabriela                    | (5) BROWN, Amira                       |
| 12/04/2025 | Saint Mary's (CA)     | L | 53-58 | 504  | (18) ANDERSON, Maya                    | (10) PATO, Gabriela                    |
| 12/07/2025 | at California         | L | 42-92 | 1150 | (10) ANDERSON, Katarina                | (7) BROWN, Amira                       |
| 12/11/2025 | Cal St. Monterey Bay  | W | 83-40 | 344  | (18) ANDERSON, Maya                    | (12) ANDERSON, Maya                    |
| 12/13/2025 | at CSUN               | L | 55-66 | 220  | (13) ANDERSON, Maya                    | (8) DILLARD, Kaliyah                   |

|              | Games     | Attend      | Avg/Game   |
|--------------|-----------|-------------|------------|
| Home         | 3         | 1415        | 472        |
| Away         | 7         | 6637        | 948        |
| Neutral      | 0         | 0           | 0          |
| <b>Total</b> | <b>10</b> | <b>8052</b> | <b>805</b> |



| Opponent              | Date       | Score |   | 0                     | 1                     | 2                     | 3                     | 4                     | 5          | 8       | 10    | 11    | 15      | 20    |
|-----------------------|------------|-------|---|-----------------------|-----------------------|-----------------------|-----------------------|-----------------------|------------|---------|-------|-------|---------|-------|
|                       |            |       |   | ANDERSON,K CUMMINS,AL | SIMONS,MCK ALEXANDER, | WAUGH,RYLE MEHMEDOVIC | BROWN,AMIR SITTERUD,A | FUSTER,CAR ANDERSON,M | MCGEE,BRIA |         |       |       |         |       |
| at BYU                | 11/08/2025 | 51-70 | L | DNP                   | 10-2-1                | 3-0-1                 | 0-0-0                 | 14-4-2                | 0-1-0      | 0-3-2   | 4-1-0 | 0-0-0 | 17-8-2  | DNP   |
| at California Baptist | 11/14/2025 | 55-69 | L | DNP                   | 10-1-3                | 0-1-2                 | 0-3-0                 | 12-6-2                | 6-3-0      | 12-12-1 | 0-8-0 | 4-1-0 | 11-8-1  | DNP   |
| UC Santa Barbara      | 11/19/2025 | 60-75 | L | 0-0-1                 | 4-2-3                 | DNP                   | 6-1-0                 | 9-9-3                 | 1-0-0      | 11-4-0  | 0-4-0 | 7-1-1 | 12-9-0  | DNP   |
| at Pepperdine         | 11/23/2025 | 52-76 | L | 9-3-0                 | 8-2-1                 | DNP                   | 0-1-0                 | 10-6-3                | 0-0-0      | 6-6-0   | 0-1-1 | 5-1-1 | 7-1-1   | DNP   |
| at Portland St.       | 11/28/2025 | 64-75 | L | 2-0-2                 | 9-0-2                 | 3-2-0                 | 0-0-0                 | 18-8-3                | 2-4-1      | 4-8-1   | DNP   | 6-0-1 | 9-7-0   | DNP   |
| at Washington         | 12/01/2025 | 54-80 | L | 0-0-0                 | 8-1-2                 | 5-1-0                 | 2-0-0                 | 7-3-4                 | 2-1-1      | 9-5-0   | 0-3-0 | 0-0-0 | 10-3-2  | DNP   |
| Saint Mary's (CA)     | 12/04/2025 | 53-58 | L | DNP                   | 14-1-0                | 2-0-0                 | 0-0-0                 | 7-5-5                 | 0-1-0      | DNP     | 2-0-0 | 0-2-0 | 18-6-0  | DNP   |
| at California         | 12/07/2025 | 42-92 | L | 10-0-2                | 5-1-0                 | 5-1-0                 | 0-0-0                 | 7-5-0                 | 2-0-0      | 4-7-2   | 0-1-1 | 2-1-0 | 3-3-0   | DNP   |
| Cal St. Monterey Bay  | 12/11/2025 | 83-40 | W | 8-2-7                 | 8-4-1                 | DNP                   | 2-1-3                 | 5-1-1                 | 7-0-0      | 6-10-4  | 1-3-1 | 6-1-0 | 18-12-3 | 0-0-0 |
| at CSUN               | 12/13/2025 | 55-66 | L | 5-3-4                 | 3-3-3                 | DNP                   | 6-1-0                 | DNP                   | 4-1-0      | 3-2-1   | 2-0-0 | 3-1-0 | 13-6-1  | DNP   |

| Opponent              | Date       | Score |   | 22         | 23         | 32         |
|-----------------------|------------|-------|---|------------|------------|------------|
|                       |            |       |   | DILLARD,KA | SGRO,STELL | PATO,GABRI |
| at BYU                | 11/08/2025 | 51-70 | L | 0-6-0      | 3-4-2      | 0-3-1      |
| at California Baptist | 11/14/2025 | 55-69 | L | 0-4-1      | DNP        | 0-0-0      |
| UC Santa Barbara      | 11/19/2025 | 60-75 | L | 4-5-0      | DNP        | 6-3-0      |
| at Pepperdine         | 11/23/2025 | 52-76 | L | 1-4-2      | DNP        | 6-5-0      |
| at Portland St.       | 11/28/2025 | 64-75 | L | 2-1-0      | 0-0-1      | 9-3-1      |
| at Washington         | 12/01/2025 | 54-80 | L | 0-0-0      | 0-1-0      | 11-4-0     |
| Saint Mary's (CA)     | 12/04/2025 | 53-58 | L | 0-0-0      | 0-2-4      | 10-10-1    |
| at California         | 12/07/2025 | 42-92 | L | 0-3-2      | 3-1-0      | 1-0-1      |
| Cal St. Monterey Bay  | 12/11/2025 | 83-40 | W | 10-6-0     | 6-4-2      | 6-6-0      |
| at CSUN               | 12/13/2025 | 55-66 | L | 7-8-1      | 9-2-1      | 0-2-0      |





**2025-26 San Jose St. Women's Basketball  
Team Game-by-Game  
All games**

|                       |            |       |   | Total   |      | 3-Pointers |      | Free throws |       | Rebounds |     |     |      |     |     |     |     |     |     |      |  |
|-----------------------|------------|-------|---|---------|------|------------|------|-------------|-------|----------|-----|-----|------|-----|-----|-----|-----|-----|-----|------|--|
| Opponent              | Date       | Score |   | FG-FGA  | PCT  | 3FG-3FGA   | PCT  | FT-FTA      | PCT   | OFF      | DEF | TOT | AVG  | PF  | A   | TO  | BLK | STL | PTS | AVG  |  |
| at BYU                | 11/08/2025 | 51-70 | L | 19-63   | .302 | 4-22       | .182 | 9-14        | .643  | 13       | 32  | 45  | 45.0 | 17  | 11  | 22  | 5   | 10  | 51  | 51.0 |  |
| at California Baptist | 11/14/2025 | 55-69 | L | 17-53   | .321 | 5-24       | .208 | 16-21       | .762  | 16       | 37  | 53  | 49.0 | 19  | 10  | 33  | 3   | 6   | 55  | 53.0 |  |
| UC Santa Barbara      | 11/19/2025 | 60-75 | L | 18-47   | .383 | 4-23       | .174 | 20-28       | .714  | 6        | 35  | 41  | 46.3 | 20  | 8   | 25  | 3   | 3   | 60  | 55.3 |  |
| at Pepperdine         | 11/23/2025 | 52-76 | L | 15-62   | .242 | 7-28       | .250 | 15-17       | .882  | 13       | 25  | 38  | 44.3 | 16  | 9   | 15  | 9   | 2   | 52  | 54.5 |  |
| at Portland St.       | 11/28/2025 | 64-75 | L | 25-63   | .397 | 5-20       | .250 | 9-16        | .563  | 13       | 25  | 38  | 43.0 | 19  | 12  | 20  | 6   | 10  | 64  | 56.4 |  |
| at Washington         | 12/01/2025 | 54-80 | L | 19-62   | .306 | 7-25       | .280 | 9-9         | 1.000 | 13       | 15  | 28  | 40.5 | 13  | 9   | 10  | 4   | 7   | 54  | 56.0 |  |
| Saint Mary's (CA)     | 12/04/2025 | 53-58 | L | 18-58   | .310 | 7-26       | .269 | 10-14       | .714  | 14       | 20  | 34  | 39.6 | 14  | 10  | 14  | 4   | 8   | 53  | 55.6 |  |
| at California         | 12/07/2025 | 42-92 | L | 16-56   | .286 | 6-25       | .240 | 4-11        | .364  | 9        | 21  | 30  | 38.4 | 18  | 8   | 18  | 4   | 7   | 42  | 53.9 |  |
| Cal St. Monterey Bay  | 12/11/2025 | 83-40 | W | 33-67   | .493 | 8-28       | .286 | 9-12        | .750  | 14       | 39  | 53  | 40.0 | 19  | 22  | 15  | 7   | 3   | 83  | 57.1 |  |
| at CSUN               | 12/13/2025 | 55-66 | L | 19-61   | .311 | 10-27      | .370 | 7-12        | .583  | 8        | 29  | 37  | 39.7 | 22  | 11  | 19  | 1   | 3   | 55  | 56.9 |  |
| Total                 |            | 569   |   | 199-592 | .336 | 63-248     | .254 | 108-154     | .701  | 119      | 278 | 397 | 39.7 | 177 | 110 | 191 | 46  | 59  | 569 | 56.9 |  |
| Opponents             |            | 701   |   | 249-659 | .378 | 83-275     | .302 | 120-171     | .702  | 156      | 287 | 443 | 44.3 | 168 | 149 | 145 | 48  | 103 | 701 | 70.1 |  |

**San Jose St. Averages**

| Games Played | Points/game | FG Pct | 3FG Pct | FT Pct | Rebounds/game | Assists/game | Turnovers/game | Assist/Turnover ratio | Steals/game | Blocks/game |
|--------------|-------------|--------|---------|--------|---------------|--------------|----------------|-----------------------|-------------|-------------|
| 10           | 56.9        | 33.6   | 25.4    | 70.1   | 39.7          | 11.0         | 19.1           | 0.6                   | 5.9         | 4.6         |



**2025-26 San Jose St. Women's Basketball  
Opponents Game-by-Game  
All games**

|                       |            |       |   | Total   |      | 3-Pointers |      | Free throws |      | Rebounds |     |     |      |     |     |     |     |     |     |      |  |
|-----------------------|------------|-------|---|---------|------|------------|------|-------------|------|----------|-----|-----|------|-----|-----|-----|-----|-----|-----|------|--|
| Opponent              | Date       | Score |   | FG-FGA  | PCT  | 3FG-3FGA   | PCT  | FT-FTA      | PCT  | OFF      | DEF | TOT | AVG  | PF  | A   | TO  | BLK | STL | PTS | AVG  |  |
| at BYU                | 11/08/2025 | 51-70 | L | 25-76   | .329 | 9-41       | .220 | 11-13       | .846 | 21       | 33  | 54  | 54.0 | 17  | 18  | 17  | 9   | 12  | 70  | 70.0 |  |
| at California Baptist | 11/14/2025 | 55-69 | L | 24-74   | .324 | 6-38       | .158 | 15-21       | .714 | 15       | 22  | 37  | 45.5 | 21  | 16  | 12  | 8   | 22  | 69  | 69.5 |  |
| UC Santa Barbara      | 11/19/2025 | 60-75 | L | 24-65   | .369 | 10-30      | .333 | 17-20       | .850 | 8        | 28  | 36  | 42.3 | 20  | 14  | 12  | 2   | 9   | 75  | 71.3 |  |
| at Pepperdine         | 11/23/2025 | 52-76 | L | 28-70   | .400 | 13-31      | .419 | 7-9         | .778 | 18       | 34  | 52  | 44.8 | 17  | 15  | 15  | 6   | 10  | 76  | 72.5 |  |
| at Portland St.       | 11/28/2025 | 64-75 | L | 27-66   | .409 | 6-20       | .300 | 15-19       | .789 | 16       | 28  | 44  | 44.6 | 18  | 20  | 16  | 5   | 10  | 75  | 73.0 |  |
| at Washington         | 12/01/2025 | 54-80 | L | 28-62   | .452 | 9-22       | .409 | 15-19       | .789 | 22       | 27  | 49  | 45.3 | 12  | 13  | 13  | 8   | 4   | 80  | 74.2 |  |
| Saint Mary's (CA)     | 12/04/2025 | 53-58 | L | 23-54   | .426 | 3-13       | .231 | 9-11        | .818 | 12       | 28  | 40  | 44.6 | 15  | 14  | 16  | 2   | 9   | 58  | 71.9 |  |
| at California         | 12/07/2025 | 42-92 | L | 34-72   | .472 | 11-30      | .367 | 13-22       | .591 | 22       | 33  | 55  | 45.9 | 12  | 20  | 12  | 2   | 12  | 92  | 74.4 |  |
| Cal St. Monterey Bay  | 12/11/2025 | 83-40 | W | 16-61   | .262 | 3-14       | .214 | 5-17        | .294 | 11       | 19  | 30  | 44.1 | 17  | 5   | 13  | 1   | 5   | 40  | 70.6 |  |
| at CSUN               | 12/13/2025 | 55-66 | L | 20-59   | .339 | 13-36      | .361 | 13-20       | .650 | 11       | 35  | 46  | 44.3 | 19  | 14  | 19  | 5   | 10  | 66  | 70.1 |  |
| Total                 |            | 701   |   | 249-659 | .378 | 83-275     | .302 | 120-171     | .702 | 156      | 287 | 443 | 44.3 | 168 | 149 | 145 | 48  | 103 | 701 | 70.1 |  |
| San Jose St.          |            | 569   |   | 199-592 | .336 | 63-248     | .254 | 108-154     | .701 | 119      | 278 | 397 | 39.7 | 177 | 110 | 191 | 46  | 59  | 569 | 56.9 |  |

**Opponents Averages**

| Games Played | Points/game | FG Pct | 3FG Pct | FT Pct | Rebounds/game | Assists/game | Turnovers/game | Assist/Turnover ratio | Steals/game | Blocks/game |
|--------------|-------------|--------|---------|--------|---------------|--------------|----------------|-----------------------|-------------|-------------|
| 10           | 70.1        | 37.8   | 30.2    | 70.2   | 44.3          | 14.9         | 14.5           | 1.0                   | 10.3        | 4.8         |

**San Jose State Player Game Highs**

|                            |          |                                       |
|----------------------------|----------|---------------------------------------|
| Points .....               | 18 ..... | Rylei Waugh, at Portland St., 11/28   |
| .....                      | 18 ..... | Maya Anderson, vs. Saint Mary's, 12/4 |
| .....                      | 18 ..... | Maya Anderson, vs. CSUMB, 12/11       |
| FG Made .....              | 8 .....  | Maya Anderson, vs. CSUMB, 12/11       |
| FG Attempts .....          | 20 ..... | Maya Anderson, at BYU, 11/8           |
| 3-Pt. FG Made .....        | 4 .....  | Allie Cummins, vs. Saint Mary's, 12/4 |
| 3-Pt. FG Attempts .....    | 10 ..... | Allie Cummins, vs. Saint Mary's, 12/4 |
| Free Throws Made .....     | 7 .....  | Rylei Waugh, vs. UCSB, 11/19/25       |
| Free Throws Attempts ..... | 10 ..... | Rylei Waugh, vs. UCSB, 11/19/25       |
| Rebounds .....             | 12 ..... | Amira Brown, at CBU, 11/14            |
| .....                      | 12 ..... | Maya Anderson, vs. CSUMB, 12/11       |
| Assists .....              | 7 .....  | Katarina Anderson, vs. CSUMB, 12/11   |
| Steals .....               | 4 .....  | Rylei Waugh, at Portland St., 11/28   |
| .....                      | 4 .....  | Maya Anderson, vs. Saint Mary's, 12/4 |
| .....                      | 4 .....  | Amira Brown, at California, 12/7      |
| Blocked Shots .....        | 4 .....  | Gabriela Pato, vs. Saint Mary's, 12/4 |
| Turnovers .....            | 8 .....  | Rylei Waugh, at CBU, 11/14            |
| .....                      | 8 .....  | Maya Anderson, vs. UCSB, 11/19/25     |
| Fouls .....                | 5 .....  | Allie Cummins, at CBU, 11/14          |

**San Jose State Game Highs**

|                            |                     |                          |
|----------------------------|---------------------|--------------------------|
| Points .....               | 83 .....            | vs. CSUMB, 12/11         |
| Points, Quarter .....      | 22 (2nd Q) .....    | vs. CSUMB, 12/11         |
| Points, Half .....         | 43 (1st half) ..... | vs. CSUMB, 12/11         |
| FG Made .....              | 33 .....            | vs. CSUMB, 12/11         |
| FG Attempts .....          | 67 .....            | vs. CSUMB, 12/11         |
| FG Percentage .....        | 49.3 (33-67) .....  | vs. CSUMB, 12/11         |
| 3-Pt. FG Made .....        | 10 .....            | at CSUN, 12/13           |
| 3-Pt. FG Attempts .....    | 28 .....            | at Pepperdine, 11/23     |
| .....                      | 28 .....            | vs. CSUMB, 12/11         |
| Free Throws Made .....     | 20 .....            | vs. UCSB, 11/19/25       |
| Free Throws Attempts ..... | 28 .....            | vs. UCSB, 11/19/25       |
| Rebounds .....             | 53 .....            | at CBU, 11/14            |
| .....                      | 53 .....            | vs. CSUMB, 12/11         |
| Assists .....              | 22 .....            | vs. CSUMB, 12/11         |
| Steals .....               | 10 .....            | at BYU, 11/8             |
| .....                      | 10 .....            | at Portland State, 11/28 |
| Blocked Shots .....        | 9 .....             | at Pepperdine, 11/23     |
| Turnovers .....            | 33 .....            | at CBU, 11/14            |
| Fouls .....                | 22 .....            | at CSUN, 12/13           |

**San Jose State Game Lows**

|                            |                     |                          |
|----------------------------|---------------------|--------------------------|
| Points .....               | 42 .....            | at California, 12/7      |
| Points, Quarter .....      | 4 (1st Q) .....     | at California, 12/7      |
| Points, Half .....         | 16 (1st half) ..... | at California, 12/7      |
| FG Made .....              | 15 .....            | at Pepperdine, 11/23     |
| FG Attempts .....          | 47 .....            | vs. UCSB, 11/19/25       |
| FG Percentage .....        | 24.2 .....          | at Pepperdine, 11/23     |
| 3-Pt. FG Made .....        | 4 .....             | at BYU, 11/8             |
| .....                      | 4 .....             | vs. UCSB, 11/19/25       |
| 3-Pt. FG Attempts .....    | 20 .....            | at Portland State, 11/28 |
| Free Throws Made .....     | 4 .....             | at California, 12/7      |
| Free Throws Attempts ..... | 9 .....             | at Washington, 12/1      |
| Rebounds .....             | 28 .....            | at Washington, 12/1      |
| Assists .....              | 8 .....             | vs. UCSB, 11/19/25       |
| .....                      | 8 .....             | at California, 12/7      |
| Steals .....               | 2 .....             | at Pepperdine, 11/23     |
| Blocked Shots .....        | 1 .....             | at CSUN, 12/13           |
| Turnovers .....            | 10 .....            | at Washington, 12/1      |
| Fouls .....                | 13 .....            | at Washington, 12/1      |

**Opponent Player Game Highs**

|                            |          |  |
|----------------------------|----------|--|
| Points .....               | 29 ..... | Sayvia Sellers, Washington, 12/1           |
| FG Made .....              | 10 ..... | Kyleigh Brown, Portland St., 11/28         |
| FG Attempts .....          | 20 ..... | Kyleigh Brown, Portland St., 11/28         |
| 3-Pt. FG Made .....        | 5 .....  | Delaney Gibb, BYU, 11/8                    |
| .....                      | 5 .....  | Sayvia Sellers, Washington, 12/1           |
| .....                      | 5 .....  | Rita Nazairo, CSUN, 12/13                  |
| 3-Pt. FG Attempts .....    | 11 ..... | Delaney Gibb, BYU, 11/8                    |
| .....                      | 11 ..... | Sydney Benally, BYU, 11/8                  |
| Free Throws Made .....     | 6 .....  | Olivia Hamlin, BYU, 11/8                   |
| .....                      | 6 .....  | Zoe Borter, UCSB, 11/19                    |
| .....                      | 6 .....  | Sayvia Sellers, Washington, 12/1           |
| Free Throws Attempts ..... | 6 .....  | Olivia Hamlin, BYU, 11/8                   |
| .....                      | 6 .....  | Lauren Olsen, CBU, 11/14                   |
| .....                      | 6 .....  | Zoe Borter, UCSB, 11/19                    |
| .....                      | 6 .....  | Sayvia Sellers, Washington, 12/1           |
| .....                      | 6 .....  | Nadia Bernard, CSUN, 12/13                 |
| Rebounds .....             | 11 ..... | Sakima Walker, California, 12/7            |
| Assists .....              | 7 .....  | Laynee Torres-Kahapea, Portland St., 11/28 |
| Steals .....               | 8 .....  | Filipa Barros, CBU, 11/14                  |
| Blocked Shots .....        | 4 .....  | Lara Rohkohl, BYU, 11/8                    |
| .....                      | 4 .....  | Shorna Preston, Pepperdine, 11/23          |
| .....                      | 4 .....  | Brynn McGaughy, Washington, 12/1           |
| Fouls .....                | 5 .....  | Jite Gbemutor, CSUN, 12/13                 |

**Opponent Game Highs**

|                            |                    |                       |
|----------------------------|--------------------|-----------------------|
| Points .....               | 92 .....           | California, 12/7      |
| FG Made .....              | 34 .....           | California, 12/7      |
| FG Attempts .....          | 76 .....           | BYU, 11/8             |
| FG Percentage .....        | 47.2 (34-73) ..... | California, 12/7      |
| 3-Pt. FG Made .....        | 13 .....           | Pepperdine, 11/23     |
| .....                      | 13 .....           | CSUN, 12/13           |
| 3-Pt. FG Attempts .....    | 41 .....           | BYU, 11/8             |
| Free Throws Made .....     | 17 .....           | UCSB, 11/19           |
| Free Throws Attempts ..... | 22 .....           | California, 12/7      |
| Rebounds .....             | 55 .....           | California, 12/7      |
| Assists .....              | 20 .....           | Portland State, 11/28 |
| .....                      | 20 .....           | California, 12/7      |
| Steals .....               | 22 .....           | CBU, 11/14            |
| Blocked Shots .....        | 9 .....            | BYU, 11/8             |
| Turnovers .....            | 19 .....           | CSUN, 12/13           |
| Fouls .....                | 21 .....           | CBU, 11/14            |

**Opponent Game Lows**

|                            |                    |                    |
|----------------------------|--------------------|--------------------|
| Points .....               | 40 .....           | CSUMB, 12/11       |
| FG Made .....              | 16 .....           | CSUMB, 12/11       |
| FG Attempts .....          | 54 .....           | Saint Mary's, 12/4 |
| FG Percentage .....        | 26.2 (16-61) ..... | CSUMB, 12/11       |
| 3-Pt. FG Made .....        | 3 .....            | Saint Mary's, 12/4 |
| .....                      | 3 .....            | CSUMB, 12/11       |
| 3-Pt. FG Attempts .....    | 13 .....           | Saint Mary's, 12/4 |
| Free Throws Made .....     | 5 .....            | CSUMB, 12/11       |
| Free Throws Attempts ..... | 9 .....            | Pepperdine, 11/23  |
| Rebounds .....             | 30 .....           | CSUMB, 12/11       |
| Assists .....              | 5 .....            | CSUMB, 12/11       |
| Steals .....               | 4 .....            | Washington, 12/1   |
| Blocked Shots .....        | 1 .....            | CSUMB, 12/11       |
| Turnovers .....            | 12 .....           | CBU, 11/14         |
| .....                      | 12 .....           | UCSB, 11/19        |
| .....                      | 12 .....           | California, 12/7   |
| Fouls .....                | 12 .....           | Washington, 12/1   |
| .....                      | 12 .....           | California, 12/7   |

## THE LAST TIME.....

### \*A PLAYER SCORED 30 OR MORE POINTS:

32, by Amiah Simmons, at Fresno State, February 1, 2025

### \*AN OPPONENT SCORED 30 OR MORE POINTS:

36, by Cheyenne Stubbs, Utah State, February 26, 2025

### \*A PLAYER COLLECTED 20 OR MORE REBOUNDS:

20, by Tyra Whitehead, vs. Fresno State, January 4, 2020

### \*AN OPPONENT COLLECTED 20 OR MORE REBOUNDS:

20, by Ali Bamberger, at Saint Mary's, November 30, 2021

### \*A PLAYER COLLECTED 10 OR MORE ASSISTS:

10, by Sofia Kelemen, vs. Utah State, February 21, 2024

### \*AN OPPONENT COLLECTED 10 OR MORE ASSISTS:

10, by Dymonique Maxie, Nevada, March 5, 2024

### \*A PLAYER HAD 5 OR MORE STEALS:

6, by Sofia Kelemen, vs. Bethesda, December 21, 2024

### \*AN OPPONENT HAD 5 OR MORE STEALS:

8, by Filipa Barros, CBU, November 14, 2025

### \*A PLAYER HAD 5 OR MORE BLOCKED SHOTS:

5, by Riana Byrd, at Air Force, January 30, 2016

### \*AN OPPONENT HAD 5 OR MORE BLOCKED SHOTS:

6, by Abby Muse, Boise State, January 15, 2025

### \*A PLAYER MADE 10 OR MORE FIELD GOALS:

10, by Amiah Simmons, at Utah State, February 26, 2025

### \*AN OPPONENT MADE 10 OR MORE FIELD GOALS:

10, by Kyleigh Brown, at Portland State, November 28, 2025

### \*A PLAYER ATTEMPTED 20 OR MORE FIELD GOALS:

20, Maya Anderson, at BYU, November 8, 2025

### \*AN OPPONENT ATTEMPTED 20 OR MORE FIELD GOALS:

20, by Kyleigh Brown, at Portland State, November 28, 2025

### \*A PLAYER MADE 10 OR MORE FREE THROWS:

10, by Rylei Waugh, vs. San Diego State, February 22, 2025

### \*AN OPPONENT MADE 10 OR MORE FREE THROWS:

12, by Cheyenne Stubbs, Utah State, February 26, 2025

### \*A PLAYER MADE 5 OR MORE 3-PT FIELD GOALS:

5, by Sydni Summers, at Fresno State, February 1, 2025

### \*AN OPPONENT MADE 5 OR MORE 3-PT FIELD GOALS:

5, by Rita Nazario, CSUN, December 13, 2025

### \*A PLAYER ATTEMPTED 10 OR MORE 3-PT FGS:

10, by Allie Cummins, vs. Saint Mary's, December 4, 2025

### \*AN OPPONENT ATTEMPTED 10 OR MORE 3-PT FIELD GOALS:

10, by Sayvia Sellers, Washington, December 1, 2025

### \*SAN JOSÉ STATE SCORED 100 OR MORE POINTS:

100 (100-44 win) vs. Bethesda, December 21, 2024

### \*AN OPPONENT SCORED 100 OR MORE POINTS:

104 (104-63 loss) at UNLV, February 19, 2022

### \*SJSU SHOT AT LEAST 60% FROM THE FIELD IN A GAME:

63.2 (36-57) Air Force, January 11, 2025

### \*A TEAM SHOT AT LEAST 60% FROM THE FIELD IN A GAME VS. SJSU:

61.2 (30-49) by Wyoming, February 28, 2024

### \*SAN JOSE STATE HAD TWO PLAYERS SCORE 20 POINTS IN A GAME:

31, Sabrina Ma; 26, Amhyia Moreland, vs. Bethesda, Nov. 27, 2023

### \*SAN JOSÉ STATE HAD TWO OR MORE PLAYERS WITH 10 OR MORE REBOUNDS IN A GAME:

12 by Maya Anderson, 10 by Amira Brown, vs. Cal State Monterey Bay, December 11, 2025

### \*SAN JOSÉ STATE HAD FIVE OR MORE PLAYERS WITH 10 OR MORE POINTS IN A GAME:

27 by Sofia Kelemen, 16 by Finau Tonga, 14 by Marisa Davis-Jones, 14 by Djessira Diawara, 11 by Sydni Summers, 11 by Stella Sgro, vs. Bethesda, December 21, 2024

### \*SAN JOSÉ STATE HAD TWO OR MORE PLAYERS WITH 10 OR MORE POINTS & 10 OR MORE REBOUNDS IN A GAME:

24 points and 13 rebounds by Jasmine Smith, 12 points and 14 rebounds by Paris Baird, vs. New Mexico, February 4, 2017

### \*A SAN JOSÉ STATE PLAYER SCORE 30 OR MORE POINTS IN SUCCESSIVE GAMES:

34, at Air Force, on Feb. 18, 2017, and 37, at Utah State on Feb. 22, 2018, by Dezz Ramos

### \*A SAN JOSÉ STATE PLAYER SCORED 20 OR MORE POINTS AND COLLECTED 20 OR MORE REBOUNDS IN A GAME:

22 points, 20 rebounds on January 4, 2020, by Tyra Whitehead  
27 points, 20 rebounds on February 23, 1989, by Lora Alexander

### \*SAN JOSÉ STATE WON BY 30 OR MORE POINTS:

43 (83-40) vs. Cal State Monterey Bay, December 11, 2025

### \*SAN JOSÉ STATE LOST BY 30 OR MORE POINTS:

50 (92-42) at California, December 7, 2025

### \*SAN JOSÉ STATE WON FIVE OR MORE STRAIGHT GAMES:

6, January 8, 2020 through January 29, 2020

### \*SAN JOSÉ STATE WON AN IN-SEASON TOURNAMENT:

2003 Doubletree Classic in New Orleans, La.

### \*SAN JOSÉ STATE BEAT A NATIONALLY-RANKED TEAM:

California was ranked 22nd on December 9, 2009, when the Spartans went to Berkeley and upset the Bears, 68-66. The only other win over a ranked opponent was 69-56, over No. 17 Oregon State on February 5, 1983.



## 2025-26 San José State Women's Basketball

15-15-15-15



Official Basketball Box Score - Final

**San Jose St. at BYU**  
11/28/25 Marriott Center, Provo  
2025-26 Women's BasketballGame Time: 2:00 PM  
Game Duration: 1:56  
Attendance: 1,668

Officials: Michael Price, Esther Hsu, Brian Woods

San Jose St. - 51

Record: 0-1

| NO. Name            | Min     | FG    | 3P   | FT   | Rebounds  | Fouls | TP | AS | TO | ST | Blocks | +/- |
|---------------------|---------|-------|------|------|-----------|-------|----|----|----|----|--------|-----|
|                     |         | M-A   | M-A  | M-A  | OR DR TOT | PF FD |    |    |    |    | BS BA  |     |
| 15 Maya Anderson    | F 31:15 | 7-20  | 1-6  | 2-4  | 1 7 8     | 2 3   | 17 | 2  | 5  | 3  | 0 5    | -13 |
| 1 Allie Cummins     | G 32:08 | 4-12  | 1-5  | 1-1  | 0 2 2     | 2 1   | 10 | 1  | 4  | 0  | 0 1    | -17 |
| 8 Amira Brown       | G 23:23 | 0-5   | 0-1  | 0-2  | 0 3 3     | 2 6   | 0  | 2  | 1  | 2  | 1 2    | 4   |
| 22 Kaliyah Dillard  | G 17:54 | 0-2   | 0-1  | 0-0  | 3 3 6     | 2 0   | 0  | 0  | 3  | 1  | 3 0    | 10  |
| 23 Stella Sgro      | G 24:03 | 1-5   | 1-5  | 0-0  | 0 4 4     | 0 2   | 3  | 2  | 2  | 1  | 0 0    | -10 |
| 2 McKenna Simons    | 14:03   | 1-2   | 1-2  | 0-0  | 0 0 0     | 3 0   | 3  | 1  | 1  | 0  | 0 0    | -15 |
| 4 Rylee Waugh       | 28:11   | 4-11  | 0-1  | 6-7  | 0 4 4     | 2 3   | 14 | 2  | 4  | 2  | 0 1    | -11 |
| 5 Harisa Mehmedovic | 04:28   | 0-1   | 0-0  | 0-0  | 1 1 2     | 0 0   | 0  | 1  | 0  | 0  | 0 0    | -8  |
| 10 Amelie Sitterud  | 09:56   | 2-2   | 0-0  | 0-0  | 1 1 1     | 0 0   | 4  | 0  | 0  | 0  | 0 0    | -6  |
| 32 Gabriela Pato    | 11:09   | 0-2   | 0-0  | 0-0  | 2 1 3     | 2 2   | 0  | 1  | 0  | 0  | 1 0    | -18 |
| 3 Mecca Alexander   | 01:53   | 0-0   | 0-0  | 0-0  | 0 0 0     | 0 0   | 0  | 0  | 1  | 0  | 0 0    | -7  |
| 11 Carla Fuster     | 01:37   | 0-1   | 0-1  | 0-0  | 0 0 0     | 0 0   | 0  | 0  | 0  | 1  | 0 0    | -4  |
| Team                |         |       |      |      | 7 6 13    | 0     | 0  |    |    |    |        |     |
| Totals              |         | 19-63 | 4-22 | 9-14 | 13 32 45  | 17 17 | 51 | 11 | 22 | 10 | 5 9    | -19 |

Major Fouls: NONE

| Shooting By Period | 1st FG%     | 2nd FG% | 3rd FG% | 4th FG% | GM FG% |
|--------------------|-------------|---------|---------|---------|--------|
| 1st FG%            | 7-12 58.3%  |         |         |         |        |
| 3PT%               | 3-5 60.0%   |         |         |         |        |
| FT%                | 3-3 100%    |         |         |         |        |
| 2nd FG%            | 2-16 12.5%  |         |         |         |        |
| 3PT%               | 1-8 12.5%   |         |         |         |        |
| FT%                | 0-0 0%      |         |         |         |        |
| 3rd FG%            | 4-16 25.0%  |         |         |         |        |
| 3PT%               | 0-5 0.0%    |         |         |         |        |
| FT%                | 3-5 60%     |         |         |         |        |
| 4th FG%            | 6-19 31.6%  |         |         |         |        |
| 3PT%               | 0-4 0.0%    |         |         |         |        |
| FT%                | 3-6 50%     |         |         |         |        |
| GM FG%             | 19-63 30.2% |         |         |         |        |
| 3PT%               | 4-22 18.2%  |         |         |         |        |
| FT%                | 9-14 64.3%  |         |         |         |        |

Dead Ball Rebounds: 3, 0

BYU - 70

Record: 2-0

| NO. Name                  | Min     | FG    | 3P   | FT    | Rebounds  | Fouls | TP | AS | TO | ST | Blocks | +/- |
|---------------------------|---------|-------|------|-------|-----------|-------|----|----|----|----|--------|-----|
|                           |         | M-A   | M-A  | M-A   | OR DR TOT | PF FD |    |    |    |    | BS BA  |     |
| 13 Lara Rohkohl           | C 21:56 | 4-8   | 0-0  | 0-0   | 5 5 10    | 2 1   | 8  | 1  | 1  | 0  | 4 2    | 19  |
| 2 Sydney Benally          | G 27:00 | 2-13  | 1-11 | 0-0   | 1 2 3     | 2 1   | 5  | 5  | 1  | 3  | 1 0    | 27  |
| 11 Delaney Gibb           | G 30:29 | 6-17  | 5-11 | 4-4   | 3 3 6     | 3 3   | 21 | 6  | 4  | 3  | 0 0    | 15  |
| 23 Marya Hudgins          | G 22:42 | 3-8   | 0-2  | 0-1   | 2 6 8     | 2 3   | 6  | 1  | 3  | 2  | 0 1    | 9   |
| 24 Brinley Cannon         | G 28:23 | 3-6   | 1-3  | 0-0   | 1 8 9     | 2 1   | 7  | 2  | 0  | 2  | 3 1    | 21  |
| 3 Bolante Yussuf          | 09:44   | 1-2   | 0-0  | 1-2   | 3 1 4     | 4 4   | 3  | 0  | 3  | 1  | 0 1    | 4   |
| 7 Olivia Hamlin           | 27:50   | 5-12  | 2-8  | 6-6   | 1 3 4     | 1 3   | 18 | 2  | 3  | 1  | 0 0    | 10  |
| 20 Braeden Gunlock        | 12:26   | 0-3   | 0-2  | 0-0   | 1 1 2     | 0 0   | 0  | 0  | 2  | 0  | 0 0    | -10 |
| 8 Arielle Mackey-Williams | 10:38   | 1-4   | 0-1  | 0-0   | 0 1 1     | 0 0   | 2  | 1  | 0  | 0  | 0 0    | 4   |
| 33 Hattie Ogden           | 08:53   | 0-3   | 0-3  | 0-0   | 0 1 1     | 1 1   | 0  | 0  | 0  | 0  | 1 0    | -4  |
| Team                      |         |       |      |       | 4 2 6     | 0     | 0  |    |    |    |        |     |
| Totals                    |         | 25-76 | 9-41 | 11-13 | 21 33 54  | 17 17 | 70 | 18 | 17 | 12 | 9 5    | 19  |

Major Fouls: NONE

| Shooting By Period | 1st FG%     | 2nd FG% | 3rd FG% | 4th FG% | GM FG% |
|--------------------|-------------|---------|---------|---------|--------|
| 1st FG%            | 8-24 33.3%  |         |         |         |        |
| 3PT%               | 3-13 23.1%  |         |         |         |        |
| FT%                | 3-5 60%     |         |         |         |        |
| 2nd FG%            | 5-20 25.0%  |         |         |         |        |
| 3PT%               | 0-9 0.0%    |         |         |         |        |
| FT%                | 3-3 100%    |         |         |         |        |
| 3rd FG%            | 7-17 41.2%  |         |         |         |        |
| 3PT%               | 4-10 40.0%  |         |         |         |        |
| FT%                | 5-5 100%    |         |         |         |        |
| 4th FG%            | 5-15 33.3%  |         |         |         |        |
| 3PT%               | 2-9 22.2%   |         |         |         |        |
| FT%                | 0-0 0%      |         |         |         |        |
| GM FG%             | 25-76 32.9% |         |         |         |        |
| 3PT%               | 9-41 22.0%  |         |         |         |        |
| FT%                | 11-13 84.6% |         |         |         |        |

Dead Ball Rebounds: 0, 0

|                  | SJSU                      | BYU                       |
|------------------|---------------------------|---------------------------|
| Biggest lead     | 0 (1 <sup>st</sup> 10:00) | 22 (3 <sup>rd</sup> 1:18) |
| Best Scoring Run | 7 (1 <sup>st</sup> 0:40)  | 13 (2 <sup>nd</sup> 3:20) |
| Lead Changes     | 0                         |                           |
| Times Tied       | 2                         |                           |
| Time with Lead   | 00:00                     | 37:44                     |

| Points from   | SJSU | BYU |
|---------------|------|-----|
| Turnovers     | 18   | 16  |
| Paint         | 24   | 28  |
| Second Chance | 6    | 19  |
| Fast Breaks   | 4    | 20  |
| Bench         | 21   | 23  |

| Period by Period Scoring | 1st | 2nd | 3rd | 4th | TOT |
|--------------------------|-----|-----|-----|-----|-----|
| SJSU                     | 20  | 5   | 11  | 15  | 51  |
| BYU                      | 22  | 13  | 23  | 12  | 70  |



Official Basketball Box Score - Final

**San Jose St. at California Baptist**  
11/14/25 CBU Events Center, Riverside  
2025-26 Women's BasketballGame Time: 5:00 PM  
Game Duration: 1:59  
Attendance: 1,029

Officials: Mark Merritt, Kail Kimura, DeAnna Butler

San Jose St. - 55

Record: 0-2

| NO. Name            | Min     | FG    | 3P   | FT    | Rebounds  | Fouls | TP | AS | TO | ST | Blocks | +/- |
|---------------------|---------|-------|------|-------|-----------|-------|----|----|----|----|--------|-----|
|                     |         | M-A   | M-A  | M-A   | OR DR TOT | PF FD |    |    |    |    | BS BA  |     |
| 15 Maya Anderson    | F 35:14 | 3-9   | 0-4  | 5-6   | 4 4 8     | 1 4   | 11 | 1  | 3  | 2  | 0 1    | -10 |
| 1 Allie Cummins     | G 18:59 | 3-6   | 2-3  | 2-2   | 0 1 1     | 5 1   | 10 | 3  | 4  | 1  | 0 1    | -3  |
| 8 Amira Brown       | G 25:43 | 3-8   | 1-3  | 5-8   | 3 9 12    | 3 6   | 12 | 1  | 7  | 0  | 1 0    | -13 |
| 10 Amelie Sitterud  | G 18:10 | 0-4   | 0-4  | 0-0   | 1 7 8     | 2 1   | 0  | 0  | 1  | 0  | 2 0    | -3  |
| 22 Kaliyah Dillard  | G 11:45 | 0-2   | 0-1  | 0-0   | 2 2 4     | 3 0   | 0  | 1  | 3  | 1  | 0 1    | -2  |
| 2 McKenna Simons    | 17:01   | 0-3   | 0-2  | 0-0   | 0 1 1     | 2 0   | 0  | 2  | 1  | 0  | 0 1    | -7  |
| 4 Rylee Waugh       | 31:05   | 4-9   | 1-2  | 3-3   | 2 4 6     | 2 6   | 12 | 2  | 8  | 1  | 0 0    | -19 |
| 5 Harisa Mehmedovic | 20:00   | 3-7   | 0-3  | 0-0   | 0 3 3     | 1 1   | 6  | 0  | 3  | 0  | 2 0    | -4  |
| 32 Gabriela Pato    | 03:03   | 0-1   | 0-0  | 0-0   | 0 0 0     | 0 0   | 0  | 0  | 0  | 1  | 0 1    | -4  |
| 3 Mecca Alexander   | 05:12   | 0-1   | 0-1  | 0-0   | 0 3 3     | 0 0   | 0  | 0  | 1  | 0  | 0 0    | 4   |
| 11 Carla Fuster     | 13:49   | 1-3   | 1-1  | 1-2   | 0 1 1     | 0 2   | 4  | 0  | 1  | 0  | 0 1    | -9  |
| Team                |         |       |      |       | 4 2 6     | 1     | 0  |    |    |    |        |     |
| Totals              |         | 17-53 | 5-24 | 16-21 | 16 37 53  | 20 21 | 55 | 10 | 33 | 6  | 3 8    | -14 |

Major Fouls: Coach (TF) 4 4<sup>th</sup> 1:41

| Shooting By Period | 1st FG%     | 2nd FG% | 3rd FG% | 4th FG% | GM FG% |
|--------------------|-------------|---------|---------|---------|--------|
| 1st FG%            | 6-14 42.9%  |         |         |         |        |
| 3PT%               | 2-7 28.6%   |         |         |         |        |
| FT%                | 4-6 66.7%   |         |         |         |        |
| 2nd FG%            | 4-11 36.4%  |         |         |         |        |
| 3PT%               | 1-4 25.0%   |         |         |         |        |
| FT%                | 3-4 75%     |         |         |         |        |
| 3rd FG%            | 4-15 26.7%  |         |         |         |        |
| 3PT%               | 2-9 22.2%   |         |         |         |        |
| FT%                | 7-9 77.8%   |         |         |         |        |
| 4th FG%            | 3-13 23.1%  |         |         |         |        |
| 3PT%               | 0-4 0.0%    |         |         |         |        |
| FT%                | 2-2 100%    |         |         |         |        |
| GM FG%             | 17-53 32.1% |         |         |         |        |
| 3PT%               | 5-24 20.8%  |         |         |         |        |
| FT%                | 16-21 76.2% |         |         |         |        |

Dead Ball Rebounds: 3, 0

California Baptist - 69

Record: 4-0

| NO. Name                | Min     | FG    | 3P   | FT    | Rebounds  | Fouls | TP | AS | TO | ST | Blocks | +/- |
|-------------------------|---------|-------|------|-------|-----------|-------|----|----|----|----|--------|-----|
|                         |         | M-A   | M-A  | M-A   | OR DR TOT | PF FD |    |    |    |    | BS BA  |     |
| 14 Emma Johansson       | C 25:09 | 4-12  | 0-4  | 0-0   | 2 4 6     | 4 0   | 8  | 2  | 4  | 0  | 3 0    | 2   |
| 5 Filipa Barros         | G 29:01 | 1-8   | 0-4  | 3-4   | 3 4 7     | 0 5   | 5  | 4  | 1  | 8  | 0 0    | 8   |
| 10 Chance Bucher        | G 19:54 | 3-7   | 2-5  | 0-0   | 0 2 2     | 2 0   | 8  | 0  | 0  | 1  | 1 0    | -1  |
| 24 Khloe Lemon          | G 25:43 | 3-11  | 1-6  | 1-4   | 0 2 2     | 3 4   | 1  | 0  | 2  | 0  | 2 0    | 10  |
| 27 CeCe Legaspi         | G 14:21 | 0-5   | 0-3  | 2-2   | 4 1 5     | 1 1   | 2  | 0  | 1  | 1  | 2 1    | -5  |
| 3 Shawnee Nordstrom     | 16:24   | 2-6   | 0-4  | 2-2   | 3 2 5     | 2 1   | 6  | 2  | 1  | 3  | 0 0    | 3   |
| 13 Lauren Olsen         | 30:23   | 8-16  | 3-8  | 4-6   | 0 2 2     | 4 3   | 23 | 4  | 3  | 4  | 1 0    | 19  |
| 4 Ryleigh Hess          | 18:07   | 2-3   | 0-1  | 3-3   | 0 1 1     | 1 2   | 7  | 0  | 0  | 0  | 0 0    | 12  |
| 11 Sofia Alonso Hidalgo | 17:28   | 1-6   | 0-3  | 0-0   | 0 0 0     | 3 3   | 2  | 4  | 1  | 3  | 0 0    | 4   |
| 21 Paula Haw            | 03:30   | 0-0   | 0-0  | 0-0   | 0 1 1     | 1 0   | 0  | 0  | 0  | 0  | 1 0    | 8   |
| Team                    |         |       |      |       | 3 3 6     | 0     | 0  |    |    |    |        |     |
| Totals                  |         | 24-74 | 6-38 | 15-21 | 15 22 37  | 21 19 | 69 | 16 | 12 | 22 | 8 3    | 14  |

Major Fouls: NONE

| Shooting By Period | 1st FG%     | 2nd FG% | 3rd FG% | 4th FG% | GM FG% |
|--------------------|-------------|---------|---------|---------|--------|
| 1st FG%            | 5-19 26.3%  |         |         |         |        |
| 3PT%               | 1-12 8.3%   |         |         |         |        |
| FT%                | 8-8 100%    |         |         |         |        |
| 2nd FG%            | 5-19 26.3%  |         |         |         |        |
| 3PT%               | 1-9 11.1%   |         |         |         |        |
| FT%                | 0-2 0%      |         |         |         |        |
| 3rd FG%            | 9-21 42.9%  |         |         |         |        |
| 3PT%               | 2-10 20.0%  |         |         |         |        |
| FT%                | 3-3 100%    |         |         |         |        |
| 4th FG%            | 5-15 33.3%  |         |         |         |        |
| 3PT%               | 2-7 28.6%   |         |         |         |        |
| FT%                | 4-8 50%     |         |         |         |        |
| GM FG%             | 24-74 32.4% |         |         |         |        |
| 3PT%               | 6-38 15.8%  |         |         |         |        |
| FT%                | 15-21 71.4% |         |         |         |        |

Dead Ball Rebounds: 4, 0

|                  | SJSU                      | CBU                       |
|------------------|---------------------------|---------------------------|
| Biggest lead     | 8 (3 <sup>rd</sup> 8:18)  | 14 (4 <sup>th</sup> 0:35) |
| Best Scoring Run | 13 (3 <sup>rd</sup> 8:18) | 8 (1 <sup>st</sup> 1:46)  |
| Lead Changes     | 8                         |                           |
| Times Tied       | 7                         |                           |
| Time with Lead   | 09:09                     | 28:07                     |

| Points from   | SJSU | CBU |
|---------------|------|-----|
| Turnovers     | 9    | 35  |
| Paint         | 14   | 34  |
| Second Chance | 6    | 15  |
| Fast Breaks   | 6    | 14  |
| Bench         | 22   | 38  |

| Period by Period Scoring | 1st | 2nd | 3rd | 4th | TOT |
|--------------------------|-----|-----|-----|-----|-----|
| SJSU                     | 18  | 12  | 17  | 8   | 55  |
| CBU                      | 19  | 11  | 23  | 16  | 69  |



Official Basketball Box Score - Final

**UC Santa Barbara at San Jose State**  
11/19/25 Provident Credit Union Event Center, San Jose, CA  
2025-26 Women's BasketballGame Time: 6:00 PM  
Game Duration: 1:46  
Attendance: 567

Officials: Michol Murray, Rochelle Bennett, Simona Petroniyev

UC Santa Barbara - 75

Record: 4-1

| NO. Name                | Min     | FG    | 3P    | FT    | Rebounds  | Fouls | TP | AS | TO | ST | Blocks | B+/- |
|-------------------------|---------|-------|-------|-------|-----------|-------|----|----|----|----|--------|------|
|                         |         | M-A   | M-A   | M-A   | OR DR TOT | PF FD |    |    |    |    | BS BA  |      |
| 2 Zoe Borter            | F 37:20 | 6-14  | 4-8   | 6-6   | 1 2 3     | 1 5   | 22 | 3  | 1  | 2  | 0 1    | 16   |
| 5 Olivia Bradley        | F 24:15 | 4-11  | 1-2   | 2-2   | 1 5 6     | 2 2   | 11 | 3  | 1  | 2  | 0 2    | 10   |
| 12 Madison Naro         | G 34:58 | 6-12  | 2-7   | 4-4   | 1 3 4     | 3 3   | 18 | 2  | 1  | 3  | 0 0    | 14   |
| 23 Zoe Shaw             | G 30:31 | 1-11  | 0-5   | 1-2   | 0 3 3     | 2 2   | 3  | 2  | 0  | 0  | 0 0    | 28   |
| 55 Skylar Burke         | G 25:54 | 1-7   | 0-3   | 2-2   | 4 4 6     | 2 3   | 4  | 1  | 3  | 1  | 2 0    | 7    |
| 4 Julia Puente-Valverde | 14:10   | 1-5   | 0-2   | 2-4   | 0 6 6     | 3 4   | 4  | 1  | 3  | 1  | 0 0    | 0    |
| 32 Jessica Grant        | 21:04   | 3-3   | 3-3   | 0-0   | 0 1 1     | 3 0   | 9  | 1  | 2  | 0  | 0 0    | -5   |
| 15 Chauncey Andersen    | 06:31   | 2-2   | 0-0   | 0-0   | 0 1 1     | 4 1   | 4  | 0  | 0  | 0  | 0 0    | 6    |
| 8 Ava Rawlins           | 05:17   | 0-0   | 0-0   | 0-0   | 0 0 0     | 0 0   | 0  | 1  | 0  | 0  | 0 0    | -1   |
| Team                    |         |       |       |       | 3 3 6     | 0     | 0  | 1  | 1  |    |        |      |
| Totals                  |         | 24-65 | 10-30 | 17-20 | 8 28 36   | 20 20 | 75 | 14 | 12 | 9  | 2 3    | 15   |

## 2025-26 San José State Women's Basketball

16-16-16



Official Basketball Box Score - Final  
**San Jose St. at Portland St.**  
11/28/25 Viking Pavilion, Portland  
2025-26 Women's Basketball

Officials: Steve Behnap, Johnny Mendez Jr., Michal Ann Ure

San Jose St. - 64

Record: 0-5

| NO.    | Name              | Min     | FG<br>M-A | 3P<br>M-A | FT<br>M-A | Rebounds<br>OR DR TOT | Fouls<br>PF FD | TP | AS | TO | ST | Blocks<br>BS BA | +/- |
|--------|-------------------|---------|-----------|-----------|-----------|-----------------------|----------------|----|----|----|----|-----------------|-----|
| 15     | Maya Anderson     | F 28:25 | 3-11      | 1-5       | 2-2       | 4 3 7                 | 0 1            | 9  | 0  | 4  | 1  | 0               | -13 |
| 32     | Gabriela Pato     | F 20:51 | 4-8       | 0-0       | 1-4       | 1 2 3                 | 4 2            | 9  | 1  | 2  | 0  | 3               | 0   |
| 1      | Allie Cummins     | G 32:14 | 3-13      | 2-8       | 1-2       | 0 0 0                 | 1 1            | 9  | 2  | 0  | 0  | 0               | -14 |
| 4      | Rylei Waugh       | G 32:56 | 7-12      | 0-0       | 4-6       | 3 5 8                 | 2 8            | 18 | 3  | 2  | 4  | 0               | -9  |
| 11     | Carla Fuster      | G 16:29 | 2-3       | 2-3       | 0-0       | 0 0 0                 | 0 3            | 1  | 6  | 1  | 1  | 0               | 0   |
| 2      | McKenna Simons    | 18:31   | 1-4       | 0-1       | 1-2       | 1 1 2                 | 2 3            | 3  | 0  | 2  | 2  | 0               | -1  |
| 5      | Harisa Mehmedovic | 13:52   | 1-3       | 0-0       | 0 0 0     | 4 4 4                 | 4 1            | 2  | 1  | 3  | 1  | 2               | 0   |
| 0      | Katarina Anderson | 08:35   | 1-2       | 0-1       | 0-0       | 0 0 0                 | 0 0            | 2  | 2  | 2  | 1  | 0               | -4  |
| 8      | Amira Brown       | 16:39   | 2-6       | 0-2       | 0 0 0     | 2 6 8                 | 1 0            | 4  | 1  | 2  | 0  | 0               | -1  |
| 22     | Kaliyah Dillard   | 05:17   | 1-1       | 0-0       | 0 0 0     | 1 0 1                 | 0 0            | 2  | 0  | 0  | 0  | 1               | -2  |
| 23     | Stella Sgro       | 04:12   | 0-0       | 0-0       | 0 0 0     | 0 0 0                 | 0 0            | 1  | 1  | 0  | 0  | 0               | -3  |
| 3      | Mecca Alexander   | 02:00   | 0-0       | 0-0       | 0 0 0     | 0 0 0                 | 0 2            | 0  | 0  | 1  | 0  | 0               | 0   |
| Team   |                   |         |           |           |           | 1 4 5                 | 0              | 0  | 0  | 0  | 0  | 5               | -11 |
| Totals |                   |         | 25-63     | 5-20      | 9-16      | 13 25 38              | 19 18          | 64 | 12 | 20 | 10 | 6               | 5   |

Major Fouls: NONE

Game Time: 5:00 PM  
Game Duration: 1:50  
Attendance: 299



Official Basketball Box Score - Final  
**San Jose St. at Washington**  
12/01/25 Alaska Airlines Arena, Seattle, WA  
2025-26 Women's Basketball

Game Time: 6:00 PM  
Game Duration: 1:40  
Attendance: 1,360

Officials: Brenda Pantoja, Maj Forsberg, Xiomara Cruz-Johnson

San Jose St. - 54

Record: 0-6

| NO.    | Name              | Min     | FG<br>M-A | 3P<br>M-A | FT<br>M-A | Rebounds<br>OR DR TOT | Fouls<br>PF FD | TP | AS | TO | ST | Blocks<br>BS BA | +/- |
|--------|-------------------|---------|-----------|-----------|-----------|-----------------------|----------------|----|----|----|----|-----------------|-----|
| 15     | Maya Anderson     | F 28:33 | 2-10      | 2-5       | 4-4       | 2 1 3                 | 0 2            | 10 | 2  | 1  | 0  | 0               | -29 |
| 32     | Gabriela Pato     | F 19:25 | 3-7       | 1-2       | 4-4       | 3 1 4                 | 1 3            | 11 | 0  | 0  | 1  | 0               | -20 |
| 1      | Allie Cummins     | G 27:07 | 3-7       | 2-5       | 0-0       | 0 1 1                 | 2 0            | 8  | 2  | 3  | 1  | 0               | -32 |
| 4      | Rylei Waugh       | G 32:56 | 3-9       | 1-2       | 0-0       | 1 2 3                 | 1 3            | 7  | 4  | 2  | 1  | 0               | -34 |
| 11     | Carla Fuster      | G 22:59 | 0-7       | 0-4       | 0-0       | 0 0 0                 | 0 1            | 0  | 0  | 0  | 0  | 1               | -21 |
| 2      | McKenna Simons    | 09:35   | 2-3       | 1-1       | 0-0       | 0 1 1                 | 1 1            | 5  | 0  | 0  | 0  | 1               | 2   |
| 5      | Harisa Mehmedovic | 14:03   | 1-3       | 0-0       | 0-0       | 0 1 1                 | 4 0            | 2  | 1  | 0  | 1  | 1               | 2   |
| 8      | Amira Brown       | 18:50   | 4-10      | 0-1       | 1-1       | 3 2 5                 | 1 2            | 9  | 0  | 0  | 0  | 0               | -5  |
| 10     | Amelle Sitterud   | 13:06   | 0-4       | 0-4       | 0-0       | 0 3 3                 | 3 0            | 0  | 0  | 1  | 2  | 1               | 9   |
| 22     | Kaliyah Dillard   | 06:32   | 0-0       | 0-0       | 0-0       | 0 0 0                 | 0 0            | 0  | 0  | 0  | 0  | 0               | -7  |
| 3      | Mecca Alexander   | 02:58   | 1-1       | 0-0       | 0-0       | 0 0 0                 | 0 0            | 2  | 0  | 1  | 0  | 0               | 0   |
| 0      | Katarina Anderson | 01:58   | 0-0       | 0-0       | 0 0 0     | 0 0 0                 | 0 0            | 0  | 0  | 1  | 1  | 0               | 2   |
| 23     | Stella Sgro       | 01:58   | 0-1       | 0-1       | 0-0       | 0 1 1                 | 0 0            | 0  | 0  | 0  | 0  | 0               | 2   |
| Team   |                   |         |           |           |           | 4 2 6                 | 0              | 0  | 2  | 0  | 2  |                 |     |
| Totals |                   |         | 19-62     | 7-25      | 9-9       | 13 15 28              | 13 12          | 54 | 9  | 10 | 7  | 4               | -26 |

Major Fouls: NONE

| Shooting By Period | 1st FG%     | 2nd FG% | 3rd FG%    | 4th FG% | GM FG%     | FT% |
|--------------------|-------------|---------|------------|---------|------------|-----|
| 1st FG%            | 3-15 20.0%  | 3PT%    | 2-6 33.3%  | FT%     | 2-2 100%   |     |
| 2nd FG%            | 4-15 26.7%  | 3PT%    | 1-6 16.7%  | FT%     | 2-2 100%   |     |
| 3rd FG%            | 9-16 56.3%  | 3PT%    | 4-8 50.0%  | FT%     | 3-3 100%   |     |
| 4th FG%            | 3-16 18.8%  | 3PT%    | 0-5 0.0%   | FT%     | 2-2 100%   |     |
| GM FG%             | 19-62 30.6% | 3PT%    | 7-25 28.0% | FT%     | 9-9 100.0% |     |

Dead Ball Rebounds: 3, 0

Portland St. - 75

Record: 2-4

| NO.    | Name                 | Min     | FG<br>M-A | 3P<br>M-A | FT<br>M-A | Rebounds<br>OR DR TOT | Fouls<br>PF FD | TP | AS | TO | ST | Blocks<br>BS BA | +/- |
|--------|----------------------|---------|-----------|-----------|-----------|-----------------------|----------------|----|----|----|----|-----------------|-----|
| 8      | Cici Ellington       | F 19:55 | 5-11      | 1-3       | 3-4       | 2 3 5                 | 1 2            | 14 | 4  | 2  | 1  | 2               | 12  |
| 10     | Kirstine Munk        | F 19:55 | 1-2       | 0-0       | 4-5       | 1 1 2                 | 1 3            | 6  | 1  | 1  | 1  | 0               | -4  |
| 15     | Ajae Yoakum          | F 22:33 | 2-7       | 0-0       | 1-2       | 0 4 4                 | 3 2            | 5  | 3  | 4  | 0  | 0               | -8  |
| 11     | Layne Torres-Kahapea | G 32:34 | 0-5       | 0-3       | 2-2       | 1 5 6                 | 3 4            | 2  | 7  | 4  | 1  | 0               | -1  |
| 12     | Kyleigh Brown        | G 37:20 | 10-20     | 2-6       | 0-0       | 1 6 7                 | 3 3            | 22 | 2  | 1  | 1  | 0               | 6   |
| 4      | Sophie Buzzard       | 17:34   | 2-5       | 2-4       | 2-2       | 0 0 0                 | 2 2            | 8  | 0  | 0  | 1  | 0               | 10  |
| 9      | Hannah Chicken       | 26:31   | 6-11      | 0-1       | 3-4       | 3 5 8                 | 4 2            | 15 | 1  | 4  | 4  | 1               | 2   |
| 23     | Taylor Moffat        | 07:26   | 1-3       | 1-3       | 0-0       | 0 1 1                 | 0 1            | 3  | 2  | 0  | 0  | 1               | 10  |
| 20     | Katelyn Best         | 05:03   | 0-2       | 0-0       | 0 0 0     | 1 0 1                 | 0 0            | 0  | 0  | 0  | 1  | 0               | -4  |
| 3      | Brooklyn Strandy     | 01:19   | 0-0       | 0-0       | 0 0 0     | 1 0 1                 | 1 0            | 0  | 0  | 0  | 0  | 0               | -2  |
| Team   |                      |         |           |           |           | 6 3 9                 | 0              | 0  | 0  | 0  | 0  |                 |     |
| Totals |                      |         | 27-66     | 6-20      | 15-19     | 16 28 44              | 18 19          | 75 | 20 | 16 | 10 | 5               | 6   |

Major Fouls: NONE

| Shooting By Period | 1st FG%     | 2nd FG% | 3rd FG%    | 4th FG% | GM FG%      | FT% |
|--------------------|-------------|---------|------------|---------|-------------|-----|
| 1st FG%            | 6-14 42.9%  | 3PT%    | 2-6 33.3%  | FT%     | 4-6 66.7%   |     |
| 2nd FG%            | 6-22 27.3%  | 3PT%    | 1-5 20.0%  | FT%     | 2-2 100%    |     |
| 3rd FG%            | 7-15 46.7%  | 3PT%    | 1-3 33.3%  | FT%     | 5-7 71.4%   |     |
| 4th FG%            | 8-15 53.3%  | 3PT%    | 2-6 33.3%  | FT%     | 4-4 100%    |     |
| GM FG%             | 27-66 40.9% | 3PT%    | 6-20 30.0% | FT%     | 15-19 78.9% |     |

Dead Ball Rebounds: 2, 0

|                  | SJSU                     | PSU                       |
|------------------|--------------------------|---------------------------|
| Biggest lead     | 4 (3 <sup>rd</sup> 7:27) | 13 (4 <sup>th</sup> 1:20) |
| Best Scoring Run | 7 (2 <sup>nd</sup> 6:44) | 10 (3 <sup>rd</sup> 2:38) |
| Lead Changes     | 10                       |                           |
| Times Tied       | 11                       |                           |
| Time with Lead   | 04:15                    | 29:28                     |

| Points from   | SJSU | PSU |
|---------------|------|-----|
| Turnovers     | 12   | 18  |
| Paint         | 40   | 24  |
| Second Chance | 5    | 15  |
| Fast Breaks   | 7    | 11  |
| Bench         | 13   | 26  |

| Period by Period Scoring | 1st | 2nd | 3rd | 4th | TOT |
|--------------------------|-----|-----|-----|-----|-----|
| SJSU                     | 15  | 17  | 12  | 20  | 64  |
| PSU                      | 18  | 15  | 20  | 22  | 75  |



Official Basketball Box Score - Final  
**Saint Mary's (CA) at San Jose State**  
12/04/25 Provident Credit Union Event Center, San Jose, CA  
2025-26 Women's Basketball

Game Time: 7:00 PM  
Game Duration: 1:41  
Attendance: 504



Official Basketball Box Score - Final  
**San Jose St. at California**  
12/07/25 Haas Pavilion, Berkeley  
2025-26 Women's Basketball

Game Time: 2:00 PM  
Game Duration: 1:50  
Attendance: 1,150

Officials: Tyler Trimble, Adrienne Gilmore-Nichols, Ashley Birch

Saint Mary's (CA) - 58

Record: 6-4

| NO.    | Name                   | Min     | FG<br>M-A | 3P<br>M-A | FT<br>M-A | Rebounds<br>OR DR TOT | Fouls<br>PF FD | TP | AS | TO | ST | Blocks<br>BS BA | +/- |
|--------|------------------------|---------|-----------|-----------|-----------|-----------------------|----------------|----|----|----|----|-----------------|-----|
| 7      | Edie Clarke            | F 30:24 | 2-3       | 0-1       | 0-0       | 2 5 7                 | 2 0            | 4  | 0  | 2  | 2  | 2               | 6   |
| 22     | Melesungu Afeaki       | F 04:18 | 0-2       | 0-0       | 0 0 0     | 1 0 1                 | 0 0            | 0  | 0  | 1  | 0  | 0               | -3  |
| 0      | Jada Hunter            | G 28:39 | 1-10      | 0-1       | 1-2       | 0 1 1                 | 3 2            | 3  | 3  | 1  | 1  | 0               | 11  |
| 2      | Amy Kurkowski          | G 14:01 | 0-1       | 0-1       | 0-0       | 3 1 4                 | 0 1            | 0  | 2  | 1  | 1  | 0               | 0   |
| 23     | Addi Wedin             | G 28:28 | 4-8       | 0-1       | 3-4       | 2 4 6                 | 1 5            | 11 | 1  | 1  | 2  | 0               | 19  |
| 5      | Abigail Shoff          | 13:03   | 4-5       | 1-1       | 0-0       | 0 1 1                 | 2 1            | 9  | 0  | 3  | 0  | 0               | -6  |
| 8      | Emily Foy              | 28:39   | 6-13      | 2-6       | 2-2       | 1 4 5                 | 1 1            | 16 | 1  | 2  | 1  | 0               | 0   |
| 10     | Georgia Grigoropoulou  | 03:25   | 0-0       | 0-0       | 0 0 0     | 0 1 1                 | 0 0            | 0  | 1  | 1  | 0  | 0               | -1  |
| 13     | Malia Latu             | 17:35   | 3-4       | 0-1       | 2-2       | 0 4 4                 | 2 3            | 8  | 1  | 2  | 1  | 0               | -4  |
| 33     | Ella Wedin             | 05:14   | 0-1       | 0-1       | 0-0       | 0 0 0                 | 0 0            | 0  | 1  | 0  | 0  | 0               | -6  |
| 3      | Mauriana Hashemian-Orr | 20:03   | 2-3       | 0-0       | 1-1       | 1 2 3                 | 3 1            | 5  | 4  | 1  | 1  | 0               | 7   |
| 4      | Charlece Ohiaeri       | 06:11   | 1-4       | 0-0       | 0-0       | 1 1 2                 | 0 0            | 2  | 0  | 0  | 0  | 1               | 0   |
| Team   |                        |         |           |           |           | 2 4 6                 | 0              | 0  | 1  | 0  | 0  |                 |     |
| Totals |                        |         | 23-54     | 3-13      | 9-11      | 12 28 40              | 15 14          | 58 | 14 | 16 | 9  | 2               | 4   |

Major Fouls: NONE

| Shooting By Period | 1st FG%     | 2nd FG% | 3rd FG%    | 4th FG% | GM FG%     | FT% |
|--------------------|-------------|---------|------------|---------|------------|-----|
| 1st FG%            | 4-11 36.4%  | 3PT%    | 1-3 33.3%  | FT%     | 3-3 100%   |     |
| 2nd FG%            | 8-14 57.1%  | 3PT%    | 1-4 25.0%  | FT%     | 1-2 50%    |     |
| 3rd FG%            | 7-14 50.0%  | 3PT%    | 0-0 0.0%   | FT%     | 2-2 100%   |     |
| 4th FG%            | 4-11 36.4%  | 3PT%    | 1-6 16.7%  | FT%     | 3-4 75%    |     |
| GM FG%             | 23-54 42.6% | 3PT%    | 3-13 23.1% | FT%     | 9-11 81.8% |     |

Dead Ball Rebounds: 1, 0

San Jose State - 53

Record: 0-7

| NO.    | Name              | Min     | FG<br>M-A | 3P<br>M-A | FT<br>M-A | Rebounds<br>OR DR TOT | Fouls<br>PF FD | TP | AS | TO | ST | Blocks<br>BS BA | +/- |
|--------|-------------------|---------|-----------|-----------|-----------|-----------------------|----------------|----|----|----|----|-----------------|-----|
| 15     | Maya Anderson     | F 34:18 | 6-14      | 3-4       | 3-4       | 2 4 6                 | 3 4            | 18 | 0  | 1  | 4  | 0               | -11 |
| 32     | Gabriela Pato     | F 28:37 | 3-6       | 0-0       | 4-6       | 6 4 10                | 1 5            | 10 | 1  | 2  | 0  | 4               | -9  |
| 1      | Allie Cummins     | G 35:24 | 5-15      | 4-10      | 0-0       | 1 1 2                 | 0 10           | 14 | 0  | 4  | 1  | 0               | 2   |
| 4      | Rylei Waugh       | G 40:00 | 2-7       | 0-3       | 3-4       | 2 3 5                 | 3 5            | 7  | 5  | 3  | 2  | 0               | -5  |
| 11     | Carla Fuster      | G 17:04 | 0-3       | 0-1       | 0-0       | 2 0 2                 | 0 2            | 0  | 0  | 1  | 0  | 0               | -14 |
| 5      | Harisa Mehmedovic | 09:18   | 0-2       | 0-0       | 0 0 0     | 1 1 2                 | 1 0            | 0  | 0  | 0  | 0  | 0               | 4   |
| 10     | Amelle Sitterud   | 05:42   | 1-3       | 0-2       | 0-0       | 0 0 0                 | 0 0            | 2  | 0  | 0  | 0  | 0               | 6   |
| 23     | Stella Sgro       | 17:50   | 0-5       | 0-5       | 0-0       | 0 2 2                 | 1 0            | 0  | 4  | 0  | 0  | 0               | 5   |
| 3      | Mecca Alexander   | 02:44   | 0-0       | 0-0       | 0 0 0     | 0 0 0                 | 0 0            | 0  | 0  | 0  | 0  | 0               | -4  |
| 22     | Kaliyah Dillard   | 02:05   | 0-1       | 0-0       | 0 0 0     | 0 0 0                 | 0 0            | 0  | 0  | 1  | 1  | 0               | 0   |
| 2      | McKenna Simons    | 06:58   | 1-2       | 0-1       | 0-0       | 0 0 0                 | 0 0            | 2  | 0  | 0  | 0  | 0               | -2  |
| Team   |                   |         |           |           |           | 2 5 7                 | 0              | 0  | 2  | 0  | 0  |                 |     |
| Totals |                   |         | 18-58     | 7-26      | 10-14     | 14 20 34              | 14 15          | 53 | 10 | 14 | 8  | 4               | -5  |

Major Fouls: NONE

| Shooting By Period | 1st FG%     | 2nd FG% | 3rd FG%    | 4th FG% | GM FG%      | FT% |
|--------------------|-------------|---------|------------|---------|-------------|-----|
| 1st FG%            | 6-16 37.5%  | 3PT%    | 4-11 36.4% | FT%     | 2-2 100%    |     |
| 2nd FG%            | 4-15 26.7%  | 3PT%    | 1-8 12.5%  | FT%     | 0-0 0%      |     |
| 3rd FG%            | 4-17 23.5%  | 3PT%    | 1-2 50.0%  | FT%     | 4-6 66.7%   |     |
| 4th FG%            | 4-10 40.0%  | 3PT%    | 1-5 20.0%  | FT%     | 4-6 66.7%   |     |
| GM FG%             | 18-58 31.0% | 3PT%    | 7-26 26.9% | FT%     | 10-14 71.4% |     |

Dead Ball Rebounds: 2, 0

|                  | SMC                       | SJSU                     |
|------------------|---------------------------|--------------------------|
| Biggest lead     | 10 (3 <sup>rd</sup> 5:07) | 9 (1 <sup>st</sup> 0:58) |
| Best Scoring Run | 10 (2 <sup>nd</sup> 2:52) | 6 (1 <sup>st</sup> 2:52) |
| Lead Changes     | 3                         |                          |
| Times Tied       | 5                         |                          |



Official Basketball Box Score - Final  
Cal St. Monterey Bay at San Jose St.  
12/11/25 Provident Credit Union Event Center, San Jose, CA  
2025-26 Women's Basketball

Officials: Benny Luna, Johanna Mendez Jr., Israel Luna

Game Time: 7:00 PM  
Game Duration: 1:40  
Attendance: 344



Official Basketball Box Score - Final  
San Jose St. at CSUN  
12/13/25 Premier America Credit Union Arena, Northridge, Calif.  
2025-26 CSUN Women's Basketball

Officials: Michol Murray, Simona Petronyte, Dominique Harris

Game Time: 2:00 PM  
Game Duration: 1:51  
Attendance: 220

Cal St. Monterey Bay - 40

Record: 4-3

| NO.    | Name                | Min     | FG<br>M-A | 3P<br>M-A | FT<br>M-A | Rebounds<br>OR DR TOT | Fouls<br>PF FD | TP | AS | TO | ST | Blocks<br>BS BA | +/- |
|--------|---------------------|---------|-----------|-----------|-----------|-----------------------|----------------|----|----|----|----|-----------------|-----|
| 1      | Aliyah Young        | F 24:00 | 2-10      | 0-6       | 0-0       | 1 0 1                 | 1 0            | 4  | 0  | 0  | 0  | 0 0             | -23 |
| 22     | Malaysia Lucero     | C 14:45 | 0-8       | 0-0       | 0-0       | 1 2 3                 | 4 3            | 0  | 0  | 1  | 0  | 0 1             | -13 |
| 2      | Riley Walls         | G 27:28 | 1-3       | 0-0       | 2-3       | 0 3 3                 | 2 2            | 4  | 1  | 1  | 3  | 1 0             | -39 |
| 5      | A'ajah Slocum       | G 36:30 | 1-5       | 0-0       | 1-2       | 0 3 3                 | 1 3            | 3  | 1  | 3  | 1  | 0 1             | -40 |
| 11     | Leah Sarabia        | G 32:06 | 8-19      | 2-5       | 1-2       | 2 2 4                 | 1 1            | 19 | 2  | 1  | 1  | 0 2             | -36 |
| 24     | Janelle Pena        | 09:23   | 0-2       | 0-0       | 0-0       | 0 1 1                 | 2 1            | 0  | 0  | 1  | 0  | 0 0             | -16 |
| 3      | Demi Thompson Lopez | 16:34   | 1-4       | 0-1       | 0-0       | 0 1 1                 | 2 1            | 2  | 0  | 0  | 0  | 0 1             | -20 |
| 20     | Jayden McNeal       | 12:01   | 2-6       | 0-0       | 1-6       | 1 1 2                 | 1 3            | 5  | 0  | 1  | 0  | 0 2             | -7  |
| 10     | Ledjan Pahukoa      | 04:24   | 1-1       | 1-1       | 0-0       | 0 1 1                 | 0 1            | 3  | 1  | 0  | 0  | 0 0             | 2   |
| 0      | Brianna Bouton      | 03:15   | 0-0       | 0-0       | 0-2       | 0 0 0                 | 1 1            | 2  | 0  | 0  | 1  | 0 0             | 1   |
| 15     | Sasha Capers        | 10:42   | 0-2       | 0-1       | 0-2       | 0 0 1                 | 1 1            | 0  | 0  | 0  | 0  | 0 0             | -10 |
| 23     | Jolie Johnson       | 08:53   | 0-1       | 0-0       | 0-0       | 0 1 1                 | 1 1            | 0  | 0  | 1  | 0  | 0 0             | -14 |
| Team   |                     |         |           |           |           | 5 4 9                 | 0              | 0  | 3  |    |    |                 |     |
| Totals |                     |         | 16-61     | 3-14      | 5-17      | 11 19 30              | 17 19          | 40 | 5  | 13 | 5  | 1 7             | -43 |

Major Fouls: NONE

| Shooting By Period |      |             |
|--------------------|------|-------------|
| 1 <sup>st</sup>    | FG%  | 5-14 35.7%  |
|                    | 3PT% | 0-2 0.0%    |
|                    | FT%  | 1-2 50%     |
| 2 <sup>nd</sup>    | FG%  | 2-15 13.3%  |
|                    | 3PT% | 1-5 20.0%   |
|                    | FT%  | 0-4 0%      |
| 3 <sup>rd</sup>    | FG%  | 4-15 26.7%  |
|                    | 3PT% | 1-4 25.0%   |
|                    | FT%  | 4-9 44.4%   |
| 4 <sup>th</sup>    | FG%  | 5-17 29.4%  |
|                    | 3PT% | 1-3 33.3%   |
|                    | FT%  | 0-2 0%      |
| GM                 | FG%  | 16-61 26.2% |
|                    | 3PT% | 3-14 21.4%  |
|                    | FT%  | 5-17 29.4%  |

Dead Ball Rebounds: 7, 1

San Jose St. - 83

Record: 1-8

| NO.    | Name              | Min     | FG<br>M-A | 3P<br>M-A | FT<br>M-A | Rebounds<br>OR DR TOT | Fouls<br>PF FD | TP | AS | TO | ST | Blocks<br>BS BA | +/- |
|--------|-------------------|---------|-----------|-----------|-----------|-----------------------|----------------|----|----|----|----|-----------------|-----|
| 15     | Maya Anderson     | F 28:21 | 8-14      | 0-4       | 2-4       | 3 9 12                | 1 5            | 18 | 3  | 1  | 0  | 0 0             | 32  |
| 32     | Gabriela Pato     | F 17:14 | 3-5       | 0-0       | 0-0       | 2 4 6                 | 3 1            | 6  | 0  | 1  | 0  | 3 0             | 19  |
| 1      | Allie Cummins     | G 21:14 | 3-6       | 1-4       | 1-1       | 2 2 4                 | 0 1            | 8  | 1  | 0  | 0  | 0 0             | 16  |
| 4      | Rylei Waugh       | G 06:57 | 2-3       | 1-1       | 0-0       | 0 1 1                 | 1 0            | 5  | 1  | 2  | 0  | 0 0             | 5   |
| 11     | Carla Fuster      | G 20:11 | 2-7       | 2-5       | 0-0       | 0 1 1                 | 3 1            | 6  | 0  | 0  | 1  | 1 0             | 13  |
| 8      | Amira Brown       | 17:59   | 3-8       | 0-2       | 0-0       | 2 8 10                | 2 2            | 6  | 4  | 5  | 1  | 1 0             | 16  |
| 23     | Stella Sgro       | 22:04   | 2-9       | 2-8       | 0-0       | 0 4 4                 | 0 0            | 6  | 2  | 0  | 0  | 1 0             | 30  |
| 3      | Mecca Alexander   | 12:28   | 1-2       | 0-1       | 0-0       | 0 1 1                 | 0 0            | 2  | 3  | 1  | 0  | 0 1             | 30  |
| 22     | Kaliyah Dillard   | 08:34   | 4-4       | 0-0       | 2-2       | 3 3 6                 | 3 4            | 10 | 0  | 0  | 1  | 1 0             | 25  |
| 5      | Harisa Mehmedovic | 10:38   | 3-5       | 1-1       | 0-0       | 0 0 0                 | 4 0            | 7  | 0  | 1  | 0  | 0 0             | 1   |
| 0      | Katarina Anderson | 19:04   | 2-4       | 1-2       | 3-3       | 0 2 2                 | 0 2            | 8  | 7  | 3  | 0  | 0 1             | 28  |
| 10     | Amelie Sitterud   | 13:44   | 0-0       | 0-0       | 1-2       | 0 3 3                 | 2 1            | 1  | 1  | 1  | 0  | 0 0             | 14  |
| 20     | Briannah McGee    | 01:32   | 0-0       | 0-0       | 0-0       | 0 0 0                 | 0 0            | 0  | 0  | 0  | 0  | 0 0             | 0   |
| Team   |                   |         |           |           |           | 2 1 3                 | 0              | 0  | 0  |    |    |                 |     |
| Totals |                   |         | 33-67     | 8-28      | 9-12      | 14 39 53              | 19 17          | 83 | 22 | 15 | 3  | 7 1             | 43  |

Major Fouls: NONE

| Shooting By Period |      |             |
|--------------------|------|-------------|
| 1 <sup>st</sup>    | FG%  | 8-16 50.0%  |
|                    | 3PT% | 4-7 57.1%   |
|                    | FT%  | 1-2 50%     |
| 2 <sup>nd</sup>    | FG%  | 8-22 36.4%  |
|                    | 3PT% | 0-7 0.0%    |
|                    | FT%  | 6-6 100%    |
| 3 <sup>rd</sup>    | FG%  | 8-15 53.3%  |
|                    | 3PT% | 2-7 28.6%   |
|                    | FT%  | 1-3 33.3%   |
| 4 <sup>th</sup>    | FG%  | 9-14 64.3%  |
|                    | 3PT% | 2-7 28.6%   |
|                    | FT%  | 1-1 100%    |
| GM                 | FG%  | 33-67 49.3% |
|                    | 3PT% | 8-28 28.6%  |
|                    | FT%  | 9-12 75.0%  |

Dead Ball Rebounds: 3, 0

San Jose St. - 55

Record: 1-9

| NO.    | Name              | Min     | FG<br>M-A | 3P<br>M-A | FT<br>M-A | Rebounds<br>OR DR TOT | Fouls<br>PF FD | TP | AS | TO | ST | Blocks<br>BS BA | +/- |
|--------|-------------------|---------|-----------|-----------|-----------|-----------------------|----------------|----|----|----|----|-----------------|-----|
| 15     | Maya Anderson     | F 36:48 | 4-15      | 3-8       | 2-4       | 1 5 6                 | 1 3            | 13 | 1  | 4  | 1  | 0 0             | -7  |
| 32     | Gabriela Pato     | F 10:47 | 0-3       | 0-1       | 0-0       | 0 2 2                 | 1 3            | 0  | 0  | 1  | 0  | 0 0             | -7  |
| 1      | Allie Cummins     | G 36:42 | 1-8       | 1-5       | 0-0       | 0 3 3                 | 4 0            | 3  | 3  | 2  | 0  | 0 2             | -3  |
| 3      | Mecca Alexander   | G 10:14 | 2-2       | 1-1       | 1-2       | 0 1 1                 | 0 2            | 6  | 0  | 0  | 0  | 0 0             | -11 |
| 11     | Carla Fuster      | G 16:32 | 1-1       | 1-1       | 0-0       | 0 1 1                 | 1 0            | 3  | 0  | 3  | 0  | 0 0             | -7  |
| 8      | Amira Brown       | 08:07   | 1-5       | 1-2       | 0-0       | 1 1 2                 | 0 1            | 3  | 1  | 1  | 2  | 0 2             | -6  |
| 22     | Kaliyah Dillard   | 20:19   | 3-8       | 0-1       | 1-2       | 3 5 8                 | 3 6            | 7  | 1  | 1  | 0  | 1 0             | 5   |
| 23     | Stella Sgro       | 25:31   | 3-8       | 3-7       | 0-0       | 0 2 2                 | 3 0            | 9  | 1  | 2  | 0  | 0 0             | -14 |
| 0      | Katarina Anderson | 22:44   | 2-8       | 0-1       | 1-2       | 0 3 3                 | 3 3            | 5  | 4  | 1  | 0  | 0 0             | 8   |
| 5      | Harisa Mehmedovic | 08:55   | 1-2       | 0-0       | 2-2       | 0 1 1                 | 4 1            | 4  | 0  | 3  | 0  | 0 1             | -9  |
| 10     | Amelie Sitterud   | 03:22   | 1-1       | 0-0       | 0-0       | 0 0 0                 | 2 0            | 2  | 0  | 1  | 0  | 0 0             | -4  |
| Team   |                   |         |           |           |           | 3 5 8                 | 0              | 0  | 0  |    |    |                 |     |
| Totals |                   |         | 19-61     | 10-27     | 7-12      | 8 29 37               | 22 19          | 55 | 11 | 19 | 3  | 1 5             | -11 |

Major Fouls: NONE

Dead Ball Rebounds: 4, 0

CSUN - 66

Record: 5-4

| NO.    | Name                | Min     | FG<br>M-A | 3P<br>M-A | FT<br>M-A | Rebounds<br>OR DR TOT | Fouls<br>PF FD | TP | AS | TO | ST | Blocks<br>BS BA | +/- |
|--------|---------------------|---------|-----------|-----------|-----------|-----------------------|----------------|----|----|----|----|-----------------|-----|
| 24     | Mariona Cos-Morales | F 17:24 | 1-4       | 0-1       | 0-2       | 1 2 3                 | 0 3            | 2  | 2  | 1  | 2  | 0 0             | 13  |
| 34     | Nadia Bernard       | F 19:18 | 2-5       | 0-0       | 4-6       | 1 6 7                 | 2 3            | 8  | 1  | 0  | 0  | 0 0             | 14  |
| 3      | Kelly Tumlin        | G 29:47 | 2-9       | 2-9       | 2-2       | 0 8 8                 | 0 3            | 8  | 2  | 4  | 0  | 0 0             | 5   |
| 22     | Laini Dahlin        | G 26:03 | 2-10      | 2-8       | 0-0       | 2 3 5                 | 2 2            | 6  | 0  | 1  | 1  | 0 1             | 10  |
| 33     | Rita Nazario        | G 32:05 | 6-10      | 5-8       | 3-4       | 0 3 3                 | 1 4            | 20 | 0  | 1  | 1  | 0 0             | 2   |
| 0      | Jilte Gbemutor      | 12:38   | 2-4       | 1-1       | 0-0       | 3 2 5                 | 5 1            | 1  | 1  | 2  | 1  | 0 1             | 7   |
| 2      | Saray White         | 24:41   | 2-4       | 2-3       | 3-4       | 2 3 5                 | 3 3            | 9  | 1  | 2  | 1  | 0 0             | 7   |
| 4      | Morgan Edwards      | 17:42   | 3-9       | 1-6       | 1-2       | 1 2 3                 | 2 1            | 8  | 1  | 1  | 1  | 0 0             | 5   |
| 10     | Alondra Lizama      | 04:32   | 0-1       | 0-0       | 0-0       | 0 0 0                 | 3 0            | 0  | 2  | 1  | 2  | 0 0             | -6  |
| 1      | Amya Moody          | 09:26   | 0-2       | 0-0       | 0-0       | 0 0 0                 | 1 1            | 0  | 3  | 4  | 0  | 0 0             | 1   |
| 23     | Maya Contreras      | 06:24   | 0-1       | 0-0       | 0-0       | 0 3 3                 | 0 1            | 0  | 1  | 1  | 0  | 3 0             | -3  |
| Team   |                     |         |           |           |           | 1 3 4                 | 0              | 0  | 2  |    |    |                 |     |
| Totals |                     |         | 20-59     | 13-36     | 13-20     | 11 35 46              | 19 22          | 66 | 14 | 19 | 10 | 5 1             | 11  |

Major Fouls: NONE

Dead Ball Rebounds: 6, 0

|                  | CSMB                      | SJSU                      |
|------------------|---------------------------|---------------------------|
| Biggest lead     | 0 (1 <sup>st</sup> 10:00) | 45 (4 <sup>th</sup> 1:21) |
| Best Scoring Run | 5 (2 <sup>nd</sup> 9:24)  | 18 (2 <sup>nd</sup> 2:10) |
| Lead Changes     | 0                         |                           |
| Times Tied       | 0                         |                           |
| Time with Lead   | 00:00                     | 38:30                     |

| Points from   | CSMB | SJSU |
|---------------|------|------|
| Turnovers     | 10   | 19   |
| Paint         | 22   | 48   |
| Second Chance | 6    | 18   |
| Fast Breaks   | 6    | 23   |
| Bench         | 10   | 40   |

| Period by Period Scoring |     |     |     |     |     |
|--------------------------|-----|-----|-----|-----|-----|
|                          | 1st | 2nd | 3rd | 4th | TOT |
| CSMB                     | 11  | 5   | 13  | 11  | 40  |
| SJSU                     | 21  | 22  | 19  | 21  | 83  |

|                  | SJS                       | CSUN                      |
|------------------|---------------------------|---------------------------|
| Biggest lead     | 3 (1 <sup>st</sup> 8:46)  | 18 (4 <sup>th</sup> 4:25) |
| Best Scoring Run | 13 (3 <sup>rd</sup> 2:15) | 12 (2 <sup>nd</sup> 1:49) |
| Lead Changes     | 7                         |                           |
| Times Tied       | 1                         |                           |
| Time with Lead   | 02:32                     | 35:41                     |

| Points from   | SJS | CSUN |
|---------------|-----|------|
| Turnovers     | 10  | 17   |
| Paint         | 12  | 10   |
| Second Chance | 7   | 8    |
| Fast Breaks   | 14  | 12   |
| Bench         | 30  | 22   |

| Period by Period Scoring |     |     |     |     |     |
|--------------------------|-----|-----|-----|-----|-----|
|                          | 1st | 2nd | 3rd | 4th | TOT |
| SJS                      | 17  | 14  | 14  | 10  | 55  |
| CSUN                     | 22  | 22  | 9   | 13  | 66  |





#0  
Katarina  
Anderson  
G • 5-7 • SR  
Nipomo, Calif./  
Nipomo HS

- \*First year at San José State
- \*Made her debut against UC Santa Barbara
- \*Came off the bench to lead the team in scoring with a season-best 10 points at California
- \*Was 4-for-7 from the field in her first game in double-figures scoring
- \*Scored nine points at Pepperdine, second on the team, going 3-for-4 from the field
- \*Added eight points against Cal State Monterey Bay
- \*Three rebounds at Pepperdine and at CSUN
- \*Dished out seven assists against Cal State Monterey Bay and four assists at CSUN
- \*Two assists at Portland State and at California
- \*Blocks at Pepperdine and at No. 21 Washington
- \*One steal at Portland State and at No. 21 Washington

| Season Highs.....                | Career Highs                            |
|----------------------------------|---|
| 10, at California, 12/7/25 ..... | Points ..... 10, at California, 12/7/25 |
| 4, at California, 12/7/25 .....  | FG Made ..... 4, at California, 12/7/25 |
| 8, at CSUN, 12/13/25 .....       | FG Att. .... 8, at CSUN, 12/13/25       |
| 2, Two games .....               | 3pt Made ..... 2, Two games             |
| 3, Two games .....               | 3pt Att..... 3, Two games               |
| 3, vs. CSUMB, 12/11/25 .....     | FT Made.....3, vs. CSUMB, 12/11/25      |
| 3, vs. CSUMB, 12/11/25 .....     | FT Att.....3, vs. CSUMB, 12/11/25       |
| 3, Two games .....               | Rebounds..... 3, Two games              |
| 7, vs. CSUMB, 12/11/25 .....     | Assists ..... 7, vs. CSUMB, 12/11/25    |
| 1, Two games .....               | Blocks..... 1, Two games                |
| 1, Two games .....               | Steals ..... 1, Two games               |

| Opponent             | Date       | GS | MIN   | Total  |      | 3-Pointers |      | Free throws |       | Rebounds |     |     |     | PF | A  | TO | BLK | STL | PTS | AVG |
|----------------------|------------|----|-------|--------|------|------------|------|-------------|-------|----------|-----|-----|-----|----|----|----|-----|-----|-----|-----|
|                      |            |    |       | FG-FGA | PCT  | 3FG-3FGA   | PCT  | FT-FTA      | PCT   | OFF      | DEF | TOT | AVG |    |    |    |     |     |     |     |
| UC Santa Barbara     | 11/19/2025 |    | 09:05 | 0-0    | .000 | 0-0        | .000 | 0-0         | .000  | 0        | 0   | 0   | 0.0 | 2  | 1  | 1  | 0   | 0   | 0.0 |     |
| at Pepperdine        | 11/23/2025 |    | 12:02 | 3-4    | .750 | 2-3        | .667 | 1-1         | 1.000 | 0        | 3   | 3   | 1.5 | 2  | 0  | 3  | 1   | 0   | 9   | 4.5 |
| at Portland St.      | 11/28/2025 |    | 08:35 | 1-2    | .500 | 0-1        | .000 | 0-0         | .000  | 0        | 0   | 0   | 1.0 | 0  | 2  | 2  | 0   | 1   | 2   | 3.7 |
| at Washington        | 12/01/2025 |    | 01:58 | 0-0    | .000 | 0-0        | .000 | 0-0         | .000  | 0        | 0   | 0   | 0.8 | 0  | 0  | 0  | 1   | 1   | 0   | 2.8 |
| at California        | 12/07/2025 |    | 21:05 | 4-7    | .571 | 2-3        | .667 | 0-0         | .000  | 0        | 0   | 0   | 0.6 | 2  | 2  | 1  | 0   | 0   | 10  | 4.2 |
| Cal St. Monterey Bay | 12/11/2025 |    | 19:04 | 2-4    | .500 | 1-2        | .500 | 3-3         | 1.000 | 0        | 2   | 2   | 0.8 | 0  | 7  | 3  | 0   | 0   | 8   | 4.8 |
| at CSUN              | 12/13/2025 |    | 22:44 | 2-8    | .250 | 0-1        | .000 | 1-2         | .500  | 0        | 3   | 3   | 1.1 | 3  | 4  | 1  | 0   | 0   | 5   | 4.9 |
| Totals               |            | 0  | 94:33 | 12-25  | .480 | 5-10       | .500 | 5-6         | .833  | 0        | 8   | 8   | 1.1 | 9  | 16 | 11 | 2   | 2   | 34  | 4.9 |

Player Averages

| Games Played | Minutes/game | Points/game | FG Pct | 3FG Pct | FT Pct | Rebounds/game | Assists/game | Turnovers/game | Assist/Turnover ratio | Steals/game | Blocks/game |
|--------------|--------------|-------------|--------|---------|--------|---------------|--------------|----------------|-----------------------|-------------|-------------|
| 7            | 13.5         | 4.9         | 48.0   | 50.0    | 83.3   | 1.1           | 2.3          | 1.6            | 1.5                   | 0.3         | 0.3         |

|         |      |       |         | Field Goals |      | 3-Point  |      | F-Throws |      | Rebounds |     |     |     |       |    |    |     | Scoring |     |     |
|---------|------|-------|---------|-------------|------|----------|------|----------|------|----------|-----|-----|-----|-------|----|----|-----|---------|-----|-----|
| SEASON  | TEAM | GP-GS | MIN/AVG | FG-FGA      | FG%  | 3FG-3FGA | 3FG% | FT-FTA   | FT%  | OFF      | DEF | TOT | AVG | PF-FO | A  | TO | BLK | STL     | PTS | AVG |
| 2025-26 | SJSU | 7-0   | 95/13.5 | 12-25       | .480 | 5-10     | .500 | 5-6      | .833 | 0        | 8   | 8   | 1.1 | 9-0   | 16 | 11 | 2   | 2       | 34  | 4.9 |
| TOTAL   |      | 7-0   | 95/13.5 | 12-25       | .480 | 5-10     | .500 | 5-6      | .833 | 0        | 8   | 8   | 1.1 | 9-0   | 16 | 11 | 2   | 2       | 34  | 4.9 |



#1  
Allie  
Cummins  
G • 5-9 • JR  
Moraga, Calif./  
Northern Arizona

COME-ins

- \*First season at San José State after transferring from Northern Arizona
- \*Started all 10 games
- \*Season-best 14 points against Saint Mary's
- \*Was 4-for-10 from three-point range
- \*Made all 4 threes in the first quarter
- \*Scored 10 points in the first two games of the season
- \*Added nine points at Portland State and eight points at Pepperdine and No. 21 Washington and against Cal State Monterey Bay
- \*Four rebounds versus Cal State Monterey Bay, three rebounds at CSUN and two rebounds at BYU, versus UCSB and at Pepperdine
- \*Dished out three assists and grabbed a steal at CBU
- \*Three assists in home debut versus UC Santa Barbara

| Season Highs.....         |         |                            |  |  |  |  |  |  |  | Career Highs             |          |                            |  |  |  |  |  |  |  |
|---------------------------|---------|----------------------------|--|--|--|--|--|--|--|--------------------------|----------|----------------------------|--|--|--|--|--|--|--|
| 14, Saint Mary's, 12/4/25 | Points  | 15, at Montana, 2/8/25     |  |  |  |  |  |  |  | 5, Saint Mary's, 12/4/25 | FG Made  | 5, Three games             |  |  |  |  |  |  |  |
| 15, Saint Mary's, 12/4/25 | FG Att  | 15, Saint Mary's, 12/4/25  |  |  |  |  |  |  |  | 4, Saint Mary's, 12/4/25 | 3pt Made | 4, Saint Mary's, 12/4/25   |  |  |  |  |  |  |  |
| 10, Saint Mary's, 12/4/25 | 3pt Att | 10, Saint Mary's, 12/4/25  |  |  |  |  |  |  |  | 2, Two games             | FT Made  | 3, Sacramento St., 2/15/24 |  |  |  |  |  |  |  |
| 2, Two games              | FT Att  | 3, Sacramento St., 2/15/24 |  |  |  |  |  |  |  | 4, vs. CSUMB, 12/11/25   | Rebounds | 5, at S. Dakota, 12/7/24   |  |  |  |  |  |  |  |
| 3, Three games            | Assists | 3, Three games             |  |  |  |  |  |  |  |                          | Blocks   | 1, Two games               |  |  |  |  |  |  |  |
| 1, Four games             | Steals  | 1, 13 games                |  |  |  |  |  |  |  |                          |          |                            |  |  |  |  |  |  |  |

| Opponent              | Date       | GS | MIN       | Total  |      | 3-Pointers |      | Free throws |       | Rebounds |     |     |     | PF | A  | TO | BLK | STL | PTS | AVG  |
|-----------------------|------------|----|-----------|--------|------|------------|------|-------------|-------|----------|-----|-----|-----|----|----|----|-----|-----|-----|------|
|                       |            |    |           | FG-FGA | PCT  | 3FG-3FGA   | PCT  | FT-FTA      | PCT   | OFF      | DEF | TOT | AVG |    |    |    |     |     |     |      |
| at BYU                | 11/08/2025 | *  | 32:08     | 4-12   | .333 | 1-5        | .200 | 1-1         | 1.000 | 0        | 2   | 2   | 2.0 | 2  | 1  | 4  | 0   | 0   | 10  | 10.0 |
| at California Baptist | 11/14/2025 | *  | 18:59     | 3-6    | .500 | 2-3        | .667 | 2-2         | 1.000 | 0        | 1   | 1   | 1.5 | 5  | 3  | 4  | 0   | 1   | 10  | 10.0 |
| UC Santa Barbara      | 11/19/2025 | *  | 29:36     | 1-8    | .125 | 0-6        | .000 | 2-2         | 1.000 | 1        | 1   | 2   | 1.7 | 0  | 3  | 1  | 0   | 0   | 4   | 8.0  |
| at Pepperdine         | 11/23/2025 | *  | 31:15     | 3-10   | .300 | 2-7        | .286 | 0-0         | .000  | 0        | 2   | 2   | 1.8 | 1  | 1  | 0  | 0   | 0   | 8   | 8.0  |
| at Portland St.       | 11/28/2025 | *  | 32:14     | 3-13   | .231 | 2-8        | .250 | 1-2         | .500  | 0        | 0   | 0   | 1.4 | 1  | 2  | 0  | 0   | 0   | 9   | 8.2  |
| at Washington         | 12/01/2025 | *  | 27:07     | 3-7    | .429 | 2-5        | .400 | 0-0         | .000  | 0        | 1   | 1   | 1.3 | 2  | 2  | 3  | 0   | 1   | 8   | 8.2  |
| Saint Mary's (CA)     | 12/04/2025 | *  | 35:24     | 5-15   | .333 | 4-10       | .400 | 0-0         | .000  | 0        | 1   | 1   | 1.3 | 2  | 0  | 4  | 0   | 1   | 14  | 9.0  |
| at California         | 12/07/2025 | *  | 18:22     | 1-5    | .200 | 1-4        | .250 | 2-2         | 1.000 | 0        | 1   | 1   | 1.3 | 3  | 0  | 3  | 0   | 1   | 5   | 8.5  |
| Cal St. Monterey Bay  | 12/11/2025 | *  | 21:14     | 3-6    | .500 | 1-4        | .250 | 1-1         | 1.000 | 2        | 2   | 4   | 1.6 | 0  | 1  | 0  | 0   | 0   | 8   | 8.4  |
| at CSUN               | 12/13/2025 | *  | 36:42     | 1-8    | .125 | 1-5        | .200 | 0-0         | .000  | 0        | 3   | 3   | 1.7 | 4  | 3  | 2  | 0   | 0   | 3   | 7.9  |
| Totals                |            |    | 10 283:01 | 27-90  | .300 | 16-57      | .281 | 9-10        | .900  | 3        | 14  | 17  | 1.7 | 20 | 16 | 21 | 0   | 4   | 79  | 7.9  |

Player Averages

| Games Played | Minutes/ game | Points/ game | FG Pct | 3FG Pct | FT Pct | Rebounds/ game | Assists/ game | Turnovers/ game | Assist/Turnover ratio | Steals/ game | Blocks/ game |
|--------------|---------------|--------------|--------|---------|--------|----------------|---------------|-----------------|-----------------------|--------------|--------------|
| 10           | 28.3          | 7.9          | 30.0   | 28.1    | 90.0   | 1.7            | 1.6           | 2.1             | 0.8                   | 0.4          | 0.0          |

|                |      |       |          | Field Goals |      | 3-Point  |      | F-Throws |      | Rebounds |     |     |     |       |    |    |     |     | Scoring |     |
|----------------|------|-------|----------|-------------|------|----------|------|----------|------|----------|-----|-----|-----|-------|----|----|-----|-----|---------|-----|
| SEASON         | TEAM | GP-GS | MIN/AVG  | FG-FGA      | FG%  | 3FG-3FGA | 3FG% | FT-FTA   | FT%  | OFF      | DEF | TOT | AVG | PF-FO | A  | TO | BLK | STL | PTS     | AVG |
| 2023-24        | NAU  | 26-0  | 222/8.5  | 20-46       | .435 | 8-26     | .308 | 10-15    | .667 | 10       | 13  | 23  | 0.9 | 15-0  | 11 | 6  | 1   | 2   | 58      | 2.2 |
| 2024-25        | NAU  | 33-0  | 350/10.6 | 36-112      | .321 | 20-80    | .250 | 9-10     | .900 | 13       | 22  | 35  | 1.1 | 16-0  | 20 | 18 | 1   | 7   | 101     | 3.1 |
| 2025-26        | SJSU | 10-10 | 283/28.3 | 27-90       | .300 | 16-57    | .281 | 9-10     | .900 | 3        | 14  | 17  | 1.7 | 20-1  | 16 | 21 | 0   | 4   | 79      | 7.9 |
| TOTAL FOR SJSU |      | 10-10 | 283/28.3 | 27-90       | .300 | 16-57    | .281 | 9-10     | .900 | 3        | 14  | 17  | 1.7 | 20-1  | 16 | 21 | 0   | 4   | 79      | 7.9 |
| TOTAL          |      | 69-10 | 855/12.4 | 83-248      | .335 | 44-163   | .270 | 28-35    | .800 | 26       | 49  | 75  | 1.1 | 51-1  | 47 | 45 | 2   | 13  | 238     | 3.4 |



#2  
**McKenna  
Simons**  
G • 5-10 • SR  
Overland Park, Kan./  
Grand Canyon

- \*First year at San José State
- \*Seen action in six games
- \*Five points at No. 21 Washington, 2-for-3 from the field
- \*Added five points at California
- \*Three points at BYU, going 1-for-2 from three-point range
- \*Three points and two rebounds at Portland State
- \*One rebound at CBU and at No. 21 Washington
- \*Dished out two assists at CBU and one at BYU
- \*Two steals at Portland State

| Season Highs.....                    | Career Highs                                 |
|--------------------------------------|--|
| 5, Two games .....                   | Points. 9, at Abilene Christian, 1/11/24     |
| 2, Two games .....                   | FG Made 3, vs. at Abilene Christian, 1/24/24 |
| 4, at Portland State, 11/28,25 ..... | FG Att... 6, vs. AZ Christian, 1/11/23       |
| 1, Three games .....                 | 3pt Made 2, vs. AZ Christian, 1/11/23        |
| 2, Three games .....                 | 3pt Att... 5, vs. AZ Christian, 1/11/23      |
| 1, at Portland State, 11/28,25 ..... | FT Made..... 2, Five games                   |
| 2, at Portland State, 11/28,25 ..... | FT Att 5, at Abilene Christian, 1/11/24      |
| 2, at Portland State, 11/28,25 ..... | Rebounds..... 5, at Utah Valley, 1/1/24      |
| 2, at CBU, 11/14/25 .....            | Assists ..... 3, vs. Nicholls, 11/25/23      |
| 1, at Washington, 12/1/25 .....      | Blocks..... 1, at Washington, 12/1/25        |
| 2, at Portland State, 11/28,25 ..... | Steals ..... 3, vs. Columbia, 12/11/22       |

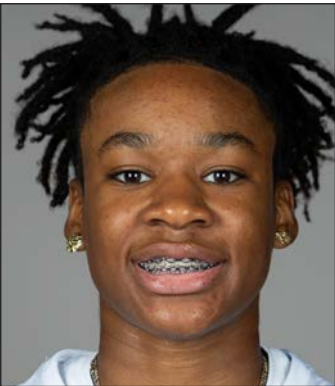
| Opponent              | Date       | GS | MIN   | Total  |      | 3-Pointers |       | Free throws |      | Rebounds |     |     |     | PF | A | TO | BLK | STL | PTS | AVG |
|-----------------------|------------|----|-------|--------|------|------------|-------|-------------|------|----------|-----|-----|-----|----|---|----|-----|-----|-----|-----|
|                       |            |    |       | FG-FGA | PCT  | 3FG-3FGA   | PCT   | FT-FTA      | PCT  | OFF      | DEF | TOT | AVG |    |   |    |     |     |     |     |
| at BYU                | 11/08/2025 |    | 14:03 | 1-2    | .500 | 1-2        | .500  | 0-0         | .000 | 0        | 0   | 0   | 0.0 | 3  | 1 | 1  | 0   | 0   | 3   | 3.0 |
| at California Baptist | 11/14/2025 |    | 17:01 | 0-3    | .000 | 0-2        | .000  | 0-0         | .000 | 0        | 1   | 1   | 0.5 | 2  | 2 | 1  | 0   | 0   | 0   | 1.5 |
| at Portland St.       | 11/28/2025 |    | 18:31 | 1-4    | .250 | 0-1        | .000  | 1-2         | .500 | 1        | 1   | 2   | 1.0 | 2  | 0 | 2  | 0   | 2   | 3   | 2.0 |
| at Washington         | 12/01/2025 |    | 09:35 | 2-3    | .667 | 1-1        | 1.000 | 0-0         | .000 | 0        | 1   | 1   | 1.0 | 1  | 0 | 0  | 1   | 0   | 5   | 2.8 |
| Saint Mary's (CA)     | 12/04/2025 |    | 06:58 | 1-2    | .500 | 0-1        | .000  | 0-0         | .000 | 0        | 0   | 0   | 0.8 | 0  | 0 | 0  | 0   | 0   | 2   | 2.6 |
| at California         | 12/07/2025 |    | 15:03 | 2-3    | .667 | 1-2        | .500  | 0-0         | .000 | 1        | 0   | 1   | 0.8 | 1  | 0 | 2  | 0   | 0   | 5   | 3.0 |
| Totals                |            | 0  | 81:12 | 7-17   | .412 | 3-9        | .333  | 1-2         | .500 | 2        | 3   | 5   | 0.8 | 9  | 3 | 6  | 1   | 2   | 18  | 3.0 |

Player Averages

| Games Played | Minutes/ game | Points/ game | FG Pct | 3FG Pct | FT Pct | Rebounds/ game | Assists/ game | Turnovers/ game | Assist/Turnover ratio | Steals/ game | Blocks/ game |
|--------------|---------------|--------------|--------|---------|--------|----------------|---------------|-----------------|-----------------------|--------------|--------------|
| 6            | 13.5          | 3.0          | 41.2   | 33.3    | 50.0   | 0.8            | 0.5           | 1.0             | 0.5                   | 0.3          | 0.2          |

|                |      |       |         | Field Goals |      | 3-Point  |      | F-Throws |      | Rebounds |     |     |     | Scoring |    |    |     |     |     |     |
|----------------|------|-------|---------|-------------|------|----------|------|----------|------|----------|-----|-----|-----|---------|----|----|-----|-----|-----|-----|
| SEASON         | TEAM | GP-GS | MIN/AVG | FG-FGA      | FG%  | 3FG-3FGA | 3FG% | FT-FTA   | FT%  | OFF      | DEF | TOT | AVG | PF-FO   | A  | TO | BLK | STL | PTS | AVG |
| 2022-23        | GCU  | 16-0  | 80/5.0  | 2-14        | .143 | 1-9      | .111 | 3-6      | .500 | 4        | 5   | 9   | 0.6 | 8-0     | 2  | 7  | 0   | 7   | 8   | 0.5 |
| 2023-24        | GCU  | 26-0  | 172/6.6 | 12-28       | .429 | 6-18     | .333 | 9-14     | .643 | 8        | 14  | 22  | 0.8 | 12-0    | 14 | 10 | 0   | 5   | 39  | 1.5 |
| 2025-26        | SJSU | 6-0   | 81/13.5 | 7-17        | .412 | 3-9      | .333 | 1-2      | .500 | 2        | 3   | 5   | 0.8 | 9-0     | 3  | 6  | 1   | 2   | 18  | 3.0 |
| TOTAL FOR SJSU |      | 6-0   | 81/13.5 | 7-17        | .412 | 3-9      | .333 | 1-2      | .500 | 2        | 3   | 5   | 0.8 | 9-0     | 3  | 6  | 1   | 2   | 18  | 3.0 |
| TOTAL          |      | 48-0  | 333/6.9 | 21-59       | .356 | 10-36    | .278 | 13-22    | .591 | 14       | 22  | 36  | 0.8 | 29-0    | 19 | 23 | 1   | 14  | 65  | 1.4 |





\*Second year at San José State

\*Seen action in all 10 games

\*Started at CSUN

\*Career-best six points at home versus UC Santa Barbara and at CSUN

\*Scored two points at No. 21 Washington and versus Cal State Monterey Bay

\*Grabbed three rebounds at CBU

\*Dished out three assists in the win over Cal State Monterey Bay

| Season Highs.....               | Career Highs                           |
|---------------------------------|--|
| 6, Two games .....              | Points..... 6, Two games               |
| 2, Two games .....              | FG Made..... 2, Two games              |
| 3, Two games .....              | FG Att..... 4, Three games             |
| 1, Two games .....              | 3pt Made..... 1, Five games            |
| 2, at Pepperdine, 11/23/25..... | 3pt Att..... 3, at Air Force, 2/5/25   |
| 1, Two games .....              | FT Made..... 1, Two games              |
| 2, Two games .....              | FT Att..... 2, Three games             |
| 3, at CBU, 11/14/25 .....       | Rebounds..... 3, Two games             |
| 3, vs. CSUMB, 12/11/25 .....    | Assists..... 3, Two games              |
| .....                           | Blocks..... 1, at Colorado St., 1/4/25 |
| .....                           | Steals..... 1, Two games               |

#3  
Mecca  
Alexander  
G • 5-7 • SO  
Antioch, Calif./  
Cornerstone  
Christian School

| Opponent              | Date       | GS | MIN     | Total  |       | 3-Pointers |       | Free throws |      | Rebounds |     |     |     | PF | A | TO | BLK | STL | PTS | AVG |
|-----------------------|------------|----|---------|--------|-------|------------|-------|-------------|------|----------|-----|-----|-----|----|---|----|-----|-----|-----|-----|
|                       |            |    |         | FG-FGA | PCT   | 3FG-3FGA   | PCT   | FT-FTA      | PCT  | OFF      | DEF | TOT | AVG |    |   |    |     |     |     |     |
| at BYU                | 11/08/2025 |    | 01:53   | 0-0    | .000  | 0-0        | .000  | 0-0         | .000 | 0        | 0   | 0   | 0.0 | 0  | 0 | 1  | 0   | 0   | 0   | 0.0 |
| at California Baptist | 11/14/2025 |    | 05:12   | 0-1    | .000  | 0-1        | .000  | 0-0         | .000 | 0        | 3   | 3   | 1.5 | 0  | 0 | 1  | 0   | 0   | 0   | 0.0 |
| UC Santa Barbara      | 11/19/2025 |    | 12:31   | 2-3    | .667  | 1-1        | 1.000 | 1-2         | .500 | 0        | 1   | 1   | 1.3 | 2  | 0 | 2  | 0   | 0   | 6   | 2.0 |
| at Pepperdine         | 11/23/2025 |    | 06:35   | 0-2    | .000  | 0-2        | .000  | 0-0         | .000 | 1        | 0   | 1   | 1.3 | 0  | 0 | 0  | 0   | 0   | 0   | 1.5 |
| at Portland St.       | 11/28/2025 |    | 02:00   | 0-0    | .000  | 0-0        | .000  | 0-0         | .000 | 0        | 0   | 0   | 1.0 | 2  | 0 | 1  | 0   | 0   | 0   | 1.2 |
| at Washington         | 12/01/2025 |    | 02:58   | 1-1    | 1.000 | 0-0        | .000  | 0-0         | .000 | 0        | 0   | 0   | 0.8 | 0  | 0 | 1  | 0   | 0   | 2   | 1.3 |
| Saint Mary's (CA)     | 12/04/2025 |    | 02:44   | 0-0    | .000  | 0-0        | .000  | 0-0         | .000 | 0        | 0   | 0   | 0.7 | 0  | 0 | 0  | 0   | 0   | 0   | 1.1 |
| at California         | 12/07/2025 |    | 10:02   | 0-3    | .000  | 0-1        | .000  | 0-0         | .000 | 0        | 0   | 0   | 0.6 | 0  | 0 | 1  | 0   | 0   | 0   | 1.0 |
| Cal St. Monterey Bay  | 12/11/2025 |    | 12:28   | 1-2    | .500  | 0-1        | .000  | 0-0         | .000 | 0        | 1   | 1   | 0.7 | 0  | 3 | 1  | 0   | 0   | 2   | 1.1 |
| at CSUN               | 12/13/2025 | *  | 10:14   | 2-2    | 1.000 | 1-1        | 1.000 | 1-2         | .500 | 0        | 1   | 1   | 0.7 | 0  | 0 | 0  | 0   | 0   | 6   | 1.6 |
| Totals                |            |    | 1 66:37 | 6-14   | .429  | 2-7        | .286  | 2-4         | .500 | 1        | 6   | 7   | 0.7 | 4  | 3 | 8  | 0   | 0   | 16  | 1.6 |

Player Averages

| Games Played | Minutes/ game | Points/ game | FG Pct | 3FG Pct | FT Pct | Rebounds/ game | Assists/ game | Turnovers/ game | Assist/Turnover ratio | Steals/ game | Blocks/ game |
|--------------|---------------|--------------|--------|---------|--------|----------------|---------------|-----------------|-----------------------|--------------|--------------|
| 10           | 6.7           | 1.6          | 42.9   | 28.6    | 50.0   | 0.7            | 0.3           | 0.8             | 0.4                   | 0.0          | 0.0          |

|         |      |       |         | Field Goals |      | 3-Point  |      | F-Throws |      | Rebounds |     |     |     | Scoring |    |    |     |     |     |     |
|---------|------|-------|---------|-------------|------|----------|------|----------|------|----------|-----|-----|-----|---------|----|----|-----|-----|-----|-----|
| SEASON  | TEAM | GP-GS | MIN/AVG | FG-FGA      | FG%  | 3FG-3FGA | 3FG% | FT-FTA   | FT%  | OFF      | DEF | TOT | AVG | PF-FO   | A  | TO | BLK | STL | PTS | AVG |
| 2024-25 | SJSU | 19-4  | 146/7.7 | 4-30        | .133 | 3-18     | .167 | 1-2      | .500 | 0        | 13  | 13  | 0.7 | 20-0    | 12 | 17 | 1   | 2   | 12  | 0.6 |
| 2025-26 | SJSU | 10-1  | 67/6.7  | 6-14        | .429 | 2-7      | .286 | 2-4      | .500 | 1        | 6   | 7   | 0.7 | 4-0     | 3  | 8  | 0   | 0   | 16  | 1.6 |
| TOTAL   |      | 29-5  | 213/7.3 | 10-44       | .227 | 5-25     | .200 | 3-6      | .500 | 1        | 19  | 20  | 0.7 | 24-0    | 15 | 25 | 1   | 2   | 28  | 1.0 |



#4  
Rylei  
Waugh  
G • 5-6 • JR  
Los Angeles, Calif./  
Pima CC  
  
RYE-lee  
WAH (like water)

- \*Second season at San José State
- \*Played in nine games, started five
- \*First start at Portland State
- Was a key player coming off the bench before her starting role
- \*Career-best 18 points to lead SJSU at Portland State
- \*One of two players to lead the team in scoring at CBU with 12 points
- \*Team-high 10 points at Pepperdine
- \*Started the year scoring 14 points at BYU
- \*Is 29-for-36 from the free throw line
- \*Career-high nine rebounds versus UC Santa Barbara
- \*Grabbed six rebounds at CBU and at Pepperdine
- \*Dished out a career-best five assists against Saint Mary's and four assists at No. 21 Washington
- \*Two blocked shots at California
- \*Four steals at Portland State

| Season Highs.....                    | Career Highs                           |
|--------------------------------------|--|
| 18, at Portland State, 11/28/25..... | Points..18, at Portland St., 11/28/25  |
| 7, at Portland State, 11/28/25 ..... | FG Made .....6, vs. SF State, 11/12/24 |
| 12, Two games .....                  | FG Att. 12, at Pepperdine, 11/23/25    |
| 1, Four games.....                   | 3pt Made ..... 2, Five games           |
| 3, Three games .....                 | 3pt Att..7, at San Diego St., 1/22/25  |
| 7, UCSB, 11/19/25 .....              | FT Made 10, vs. San Diego St., 1/22/25 |
| 10, UCSB, 11/19/25 .....             | FT Att..... 10, Two games              |
| 9, UCSB, 11/19/25 .....              | Rebounds.....9, UCSB, 11/19/25         |
| 5, Saint Mary's, 12/4/25 .....       | Assists ..... 5, Two games             |
| 2, at California, 12/7/25 .....      | Blocks..... 2, Two games               |
| 4, at Portland State, 11/28/25 ..... | Steals ..... 4, Three games            |

| Opponent              | Date       | GS | MIN   | Total  |       | 3-Pointers |       | Free throws |       | Rebounds |     |     |     | PF  | A  | TO | BLK | STL | PTS | AVG  |     |
|-----------------------|------------|----|-------|--------|-------|------------|-------|-------------|-------|----------|-----|-----|-----|-----|----|----|-----|-----|-----|------|-----|
|                       |            |    |       | FG-FGA | PCT   | 3FG-3FGA   | PCT   | FT-FTA      | PCT   | OFF      | DEF | TOT | AVG |     |    |    |     |     |     |      |     |
| at BYU                | 11/08/2025 |    | 28:11 | 4-11   | .364  | 0-1        | .000  | 6-7         | .857  | 0        | 4   | 4   | 4.0 | 2   | 2  | 4  | 0   | 2   | 14  | 14.0 |     |
| at California Baptist | 11/14/2025 |    | 31:05 | 4-9    | .444  | 1-2        | .500  | 3-3         | 1.000 | 2        | 4   | 6   | 5.0 | 2   | 2  | 8  | 0   | 1   | 12  | 13.0 |     |
| UC Santa Barbara      | 11/19/2025 |    | 30:28 | 1-8    | .125  | 0-3        | .000  | 7-10        | .700  | 0        | 9   | 9   | 6.3 | 3   | 3  | 1  | 0   | 2   | 9   | 11.7 |     |
| at Pepperdine         | 11/23/2025 |    | 28:28 | 2-12   | .167  | 0-3        | .000  | 6-6         | 1.000 | 2        | 4   | 6   | 6.3 | 3   | 3  | 2  | 1   | 0   | 10  | 11.3 |     |
| at Portland St.       | 11/28/2025 | *  | 32:56 | 7-12   | .583  | 0-0        | .000  | 4-6         | .667  | 3        | 5   | 8   | 6.6 | 2   | 3  | 2  | 0   | 4   | 18  | 12.6 |     |
| at Washington         | 12/01/2025 | *  | 32:56 | 3-9    | .333  | 1-2        | .500  | 0-0         | .000  | 1        | 2   | 3   | 6.0 | 1   | 4  | 2  | 0   | 1   | 7   | 11.7 |     |
| Saint Mary's (CA)     | 12/04/2025 | *  | 40:00 | 2-7    | .286  | 0-3        | .000  | 3-4         | .750  | 2        | 3   | 5   | 5.9 | 3   | 5  | 3  | 0   | 2   | 7   | 11.0 |     |
| at California         | 12/07/2025 | *  | 23:13 | 3-8    | .375  | 1-2        | .500  | 0-0         | .000  | 0        | 5   | 5   | 5.8 | 2   | 0  | 2  | 2   | 0   | 7   | 10.5 |     |
| Cal St. Monterey Bay  | 12/11/2025 | *  | 06:57 | 2-3    | .667  | 1-1        | 1.000 | 0-0         | .000  | 0        | 1   | 1   | 5.2 | 1   | 1  | 2  | 0   | 0   | 5   | 9.9  |     |
| Totals                |            |    | 5     | 254:14 | 28-79 | .354       | 4-17  | .235        | 29-36 | .806     | 10  | 37  | 47  | 5.2 | 19 | 23 | 26  | 3   | 12  | 89   | 9.9 |

Player Averages

| Games Played | Minutes/ game | Points/ game | FG Pct | 3FG Pct | FT Pct | Rebounds/ game | Assists/ game | Turnovers/ game | Assist/Turnover ratio | Steals/ game | Blocks/ game |
|--------------|---------------|--------------|--------|---------|--------|----------------|---------------|-----------------|-----------------------|--------------|--------------|
| 9            | 28.2          | 9.9          | 35.4   | 23.5    | 80.6   | 5.2            | 2.6           | 2.9             | 0.9                   | 1.3          | 0.3          |

|         |      |       |           | Field Goals |      | 3-Point  |      | F-Throws |      | Rebounds |     |     |     |       |    |    |     |     | Scoring |     |
|---------|------|-------|-----------|-------------|------|----------|------|----------|------|----------|-----|-----|-----|-------|----|----|-----|-----|---------|-----|
| SEASON  | TEAM | GP-GS | MIN/AVG   | FG-FGA      | FG%  | 3FG-3FGA | 3FG% | FT-FTA   | FT%  | OFF      | DEF | TOT | AVG | PF-FO | A  | TO | BLK | STL | PTS     | AVG |
| 2024-25 | SJSU | 32-26 | 903/28.2  | 69-202      | .342 | 23-71    | .324 | 69-80    | .863 | 32       | 74  | 106 | 3.3 | 99-1  | 73 | 55 | 4   | 33  | 230     | 7.2 |
| 2025-26 | SJSU | 9-5   | 254/28.2  | 28-79       | .354 | 4-17     | .235 | 29-36    | .806 | 10       | 37  | 47  | 5.2 | 19-0  | 23 | 26 | 3   | 12  | 89      | 9.9 |
| TOTAL   |      | 41-31 | 1157/28.2 | 97-281      | .345 | 27-88    | .307 | 98-116   | .845 | 42       | 111 | 153 | 3.7 | 118-1 | 96 | 81 | 7   | 45  | 319     | 7.8 |



#5  
**Harisa Mehmedovic**  
F • 6-1 • JR  
Salt Lake City,  
Utah/  
Union County  
College (NJ)

HAH-ree-suh  
mh-MED-oh-vich

- \*First season at San José State
- Born in Bosnia but grew up in Salt Lake City
- \*Played in all 10 games this season
- \*Season-high seven points against Cal State Monterey Bay
- \*Scored her first collegiate points at CBU where she went 3-for-7 from the field
- \*Scored her first point at home against UCSB at the free throw line
- \*Grabbed four rebounds at Portland State, three rebounds at CBU and one at BYU and at No. 21 Washington
- \*Two blocks at Pepperdine and Portland State and one block against UC Santa Barbara and at Washington
- \*Only steals at Portland State and at No. 21 Washington

| Season Highs.....                   | Career Highs                          |
|-------------------------------------|---------------------------------------|
| 7, vs. CSUMB, 12/11/15.....         | Points..... 7, vs. CSUMB, 12/11/15    |
| 3, Two games .....                  | FG Made ..... 3, at CBU, 11/14/25     |
| 7, at CBU, 11/14/25 5 .....         | FG Att. .... 7, at CBU, 11/14/25      |
| 1, vs. CSUMB, 12/11/15.....         | 3pt Made ..... 1, vs. CSUMB, 12/11/15 |
| 3, at CBU, 11/14/25 .....           | 3pt Att..... 3, at CBU, 11/14/25      |
| 2, at CSUN, 12/13/25 .....          | FT Made..... 2, at CSUN, 12/13/25     |
| 2, Two games .....                  | FT Att..... 2, Two games              |
| 4, at Portland State, 11/28,25 .... | Rebounds 4, at Portland St., 11/28,25 |
| 1, Two games .....                  | Assists ..... 1, Two games            |
| 2, Two games .....                  | Blocks..... 2, Two games              |
| 1, Two games .....                  | Steals ..... 1, Two games             |

| Opponent              | Date       | GS | MIN   | Total  |      | 3-Pointers |       | Free throws |       | Rebounds |     |     |     | PF | A | TO | BLK | STL | PTS | AVG |
|-----------------------|------------|----|-------|--------|------|------------|-------|-------------|-------|----------|-----|-----|-----|----|---|----|-----|-----|-----|-----|
|                       |            |    |       | FG-FGA | PCT  | 3FG-3FGA   | PCT   | FT-FTA      | PCT   | OFF      | DEF | TOT | AVG |    |   |    |     |     |     |     |
| at BYU                | 11/08/2025 |    | 04:28 | 0-1    | .000 | 0-0        | .000  | 0-0         | .000  | 0        | 1   | 1   | 1.0 | 2  | 0 | 1  | 0   | 0   | 0   | 0.0 |
| at California Baptist | 11/14/2025 |    | 19:60 | 3-7    | .429 | 0-3        | .000  | 0-0         | .000  | 0        | 3   | 3   | 2.0 | 1  | 0 | 3  | 0   | 0   | 6   | 3.0 |
| UC Santa Barbara      | 11/19/2025 |    | 02:39 | 0-0    | .000 | 0-0        | .000  | 1-2         | .500  | 0        | 0   | 0   | 1.3 | 1  | 0 | 1  | 1   | 0   | 1   | 2.3 |
| at Pepperdine         | 11/23/2025 |    | 07:08 | 0-4    | .000 | 0-1        | .000  | 0-0         | .000  | 0        | 0   | 0   | 1.0 | 1  | 0 | 1  | 2   | 0   | 0   | 1.8 |
| at Portland St.       | 11/28/2025 |    | 13:52 | 1-3    | .333 | 0-0        | .000  | 0-0         | .000  | 0        | 4   | 4   | 1.6 | 4  | 1 | 3  | 2   | 1   | 2   | 1.8 |
| at Washington         | 12/01/2025 |    | 14:03 | 1-3    | .333 | 0-0        | .000  | 0-0         | .000  | 0        | 1   | 1   | 1.5 | 4  | 1 | 0  | 1   | 1   | 2   | 1.8 |
| Saint Mary's (CA)     | 12/04/2025 |    | 09:18 | 0-2    | .000 | 0-0        | .000  | 0-0         | .000  | 0        | 1   | 1   | 1.4 | 2  | 0 | 0  | 0   | 0   | 0   | 1.6 |
| at California         | 12/07/2025 |    | 08:19 | 1-2    | .500 | 0-0        | .000  | 0-0         | .000  | 0        | 0   | 0   | 1.3 | 0  | 0 | 1  | 0   | 0   | 2   | 1.6 |
| Cal St. Monterey Bay  | 12/11/2025 |    | 10:38 | 3-5    | .600 | 1-1        | 1.000 | 0-0         | .000  | 0        | 0   | 0   | 1.1 | 4  | 0 | 1  | 0   | 0   | 7   | 2.2 |
| at CSUN               | 12/13/2025 |    | 08:54 | 1-2    | .500 | 0-0        | .000  | 2-2         | 1.000 | 0        | 1   | 1   | 1.1 | 4  | 0 | 3  | 0   | 0   | 4   | 2.4 |
| Totals                |            | 0  | 99:19 | 10-29  | .345 | 1-5        | .200  | 3-4         | .750  | 0        | 11  | 11  | 1.1 | 23 | 2 | 14 | 6   | 2   | 24  | 2.4 |

| Player Averages |               |              |        |         |        |                |               |                 |                       |              |              |  |
|-----------------|---------------|--------------|--------|---------|--------|----------------|---------------|-----------------|-----------------------|--------------|--------------|--|
| Games Played    | Minutes/ game | Points/ game | FG Pct | 3FG Pct | FT Pct | Rebounds/ game | Assists/ game | Turnovers/ game | Assist/Turnover ratio | Steals/ game | Blocks/ game |  |
| 10              | 9.9           | 2.4          | 34.5   | 20.0    | 75.0   | 1.1            | 0.2           | 1.4             | 0.1                   | 0.2          | 0.6          |  |

|         |      |       |         | Field Goals |      | 3-Point  |      | F-Throws |      | Rebounds |     |     |     |       |   |    |     |     | Scoring |     |
|---------|------|-------|---------|-------------|------|----------|------|----------|------|----------|-----|-----|-----|-------|---|----|-----|-----|---------|-----|
| SEASON  | TEAM | GP-GS | MIN/AVG | FG-FGA      | FG%  | 3FG-3FGA | 3FG% | FT-FTA   | FT%  | OFF      | DEF | TOT | AVG | PF-FO | A | TO | BLK | STL | PTS     | AVG |
| 2025-26 | SJSU | 10-0  | 99/9.9  | 10-29       | .345 | 1-5      | .200 | 3-4      | .750 | 0        | 11  | 11  | 1.1 | 23-0  | 2 | 14 | 6   | 2   | 24      | 2.4 |
| TOTAL   |      | 10-0  | 99/9.9  | 10-29       | .345 | 1-5      | .200 | 3-4      | .750 | 0        | 11  | 11  | 1.1 | 23-0  | 2 | 14 | 6   | 2   | 24      | 2.4 |





#8  
**Amira Brown**  
G • 5-10 • RS-SR  
Richmond, Calif./  
Tulsa  
  
AH-meer-ah

- \*Second season at San José State
- \*Started four of her 10 games played
- \*First double-double of the season at CBU with team-bests of 12 points and 12 rebounds.
- \*Third double-double of her career
- \*Added 11 points against UC Santa Barbara and nine points at No. 21 Washington
- \*Grabbed 10 rebounds against Cal State Monterey Bay
- \*Eight rebounds at Portland State, seven at California and six rebounds at Pepperdine
- \*Dished out four assists against Cal State Monterey Bay and two assists at BYU and at California
- \*Recorded a blocked shot in three games
- \*Career-best four steals at California

| Season Highs.....               | Career Highs                             |
|---------------------------------|--|
| 12, at CBU, 11/14/25.....       | Points.....19, vs. Wichita St., 1/20/24  |
| 4, at Washington, 12/1/25.....  | FG Made.....7, vs. Wichita St., 1/20/24  |
| 10, at Washington, 12/1/25..... | FG Att.....12, at Boise State, 1/12/25   |
| 1, Three games.....             | 3pt Made.....4, vs. Colorado St., 3/4/25 |
| 4, at Pepperdine, 11/23/25..... | 3pt Att.....7, vs. Fresno State, 1/8/25  |
| 5, Two games.....               | FT Made.....6, vs. SF State, 11/12/24    |
| 8, at CBU, 11/14/25.....        | FT Att.....8, at CBU, 11/14/25           |
| 12, at CBU, 11/14/25.....       | Rebounds.....12, at CBU, 11/14/25        |
| 4, vs. CSUMB, 12/11/25.....     | Assists.....8, vs. Air Force, 1/11/25    |
| 1, Three games.....             | Blocks.....2, at UNLV, 3/1/25            |
| 4, at California, 12/7/25.....  | Steals.....4, at California, 12/7/25     |

10+ Rebounds (2)  
12 - at CBU, 11/14/25  
10 - vs. CSUMB, 12/11/25

| Opponent              | Date       | GS | MIN    | Total  |      | 3-Pointers |      | Free throws |       | Rebounds |     |     |     | PF | A  | TO | BLK | STL | PTS | AVG |
|-----------------------|------------|----|--------|--------|------|------------|------|-------------|-------|----------|-----|-----|-----|----|----|----|-----|-----|-----|-----|
|                       |            |    |        | FG-FGA | PCT  | 3FG-3FGA   | PCT  | FT-FTA      | PCT   | OFF      | DEF | TOT | AVG |    |    |    |     |     |     |     |
| at BYU                | 11/08/2025 | *  | 23:23  | 0-5    | .000 | 0-1        | .000 | 0-2         | .000  | 0        | 3   | 3   | 3.0 | 2  | 2  | 1  | 1   | 2   | 0   | 0.0 |
| at California Baptist | 11/14/2025 | *  | 25:43  | 3-8    | .375 | 1-3        | .333 | 5-8         | .625  | 3        | 9   | 12  | 7.5 | 3  | 1  | 7  | 1   | 0   | 12  | 6.0 |
| UC Santa Barbara      | 11/19/2025 | *  | 20:20  | 3-5    | .600 | 0-0        | .000 | 5-6         | .833  | 0        | 4   | 4   | 6.3 | 1  | 0  | 3  | 0   | 0   | 11  | 7.7 |
| at Pepperdine         | 11/23/2025 | *  | 22:57  | 1-5    | .200 | 1-4        | .250 | 3-4         | .750  | 1        | 5   | 6   | 6.3 | 0  | 0  | 2  | 0   | 1   | 6   | 7.3 |
| at Portland St.       | 11/28/2025 |    | 16:39  | 2-6    | .333 | 0-2        | .000 | 0-0         | .000  | 2        | 6   | 8   | 6.6 | 1  | 1  | 2  | 0   | 0   | 4   | 6.6 |
| at Washington         | 12/01/2025 |    | 18:50  | 4-10   | .400 | 0-1        | .000 | 1-1         | 1.000 | 3        | 2   | 5   | 6.3 | 1  | 0  | 0  | 0   | 0   | 9   | 7.0 |
| at California         | 12/07/2025 |    | 17:04  | 2-5    | .400 | 0-1        | .000 | 0-1         | .000  | 4        | 3   | 7   | 6.4 | 0  | 2  | 4  | 0   | 4   | 4   | 6.6 |
| Cal St. Monterey Bay  | 12/11/2025 |    | 17:59  | 3-8    | .375 | 0-2        | .000 | 0-0         | .000  | 2        | 8   | 10  | 6.9 | 2  | 4  | 5  | 1   | 1   | 6   | 6.5 |
| at CSUN               | 12/13/2025 |    | 08:07  | 1-5    | .200 | 1-2        | .500 | 0-0         | .000  | 1        | 1   | 2   | 6.3 | 0  | 1  | 1  | 0   | 2   | 3   | 6.1 |
| Totals                |            | 4  | 171:02 | 19-57  | .333 | 3-16       | .188 | 14-22       | .636  | 16       | 41  | 57  | 6.3 | 10 | 11 | 25 | 3   | 10  | 55  | 6.1 |

| Player Averages |  |  |  |  |  |  |  |  |  |  |  |  | Games Played | Minutes/game | Points/game | FG Pct | 3FG Pct | FT Pct | Rebounds/game | Assists/game | Turnovers/game | Assist/Turnover ratio | Steals/game | Blocks/game |
|-----------------|--|--|--|--|--|--|--|--|--|--|--|--|--------------|--------------|-------------|--------|---------|--------|---------------|--------------|----------------|-----------------------|-------------|-------------|
|                 |  |  |  |  |  |  |  |  |  |  |  |  | 9            | 19.0         | 6.1         | 33.3   | 18.8    | 63.6   | 6.3           | 1.2          | 2.8            | 0.4                   | 1.1         | 0.3         |

|                |       |       |           | Field Goals |      | 3-Point  |      | F-Throws |      | Rebounds |     |     |     |       |     |     |     |     | Scoring |     |
|----------------|-------|-------|-----------|-------------|------|----------|------|----------|------|----------|-----|-----|-----|-------|-----|-----|-----|-----|---------|-----|
| SEASON         | TEAM  | GP-GS | MIN/AVG   | FG-FGA      | FG%  | 3FG-3FGA | 3FG% | FT-FTA   | FT%  | OFF      | DEF | TOT | AVG | PF-FO | A   | TO  | BLK | STL | PTS     | AVG |
| 2023-24        | Tulsa | 35-0  | 584/16.7  | 55-124      | .444 | 14-43    | .326 | 18-39    | .462 | 25       | 68  | 93  | 2.7 | 55-0  | 28  | 50  | 5   | 22  | 142     | 4.1 |
| 2024-25        | SJSU  | 32-18 | 819/25.6  | 76-217      | .350 | 27-91    | .297 | 49-76    | .645 | 44       | 106 | 150 | 4.7 | 82-3  | 61  | 99  | 8   | 26  | 228     | 7.1 |
| 2025-26        | SJSU  | 9-4   | 171/19.0  | 19-57       | .333 | 3-16     | .188 | 14-22    | .636 | 16       | 41  | 57  | 6.3 | 10-0  | 11  | 25  | 3   | 10  | 55      | 6.1 |
| TOTAL FOR SJSU |       | 41-22 | 990/24.1  | 95-274      | .347 | 30-107   | .280 | 63-98    | .643 | 60       | 147 | 207 | 5.0 | 92-3  | 72  | 124 | 11  | 36  | 283     | 6.9 |
| TOTAL          |       | 76-22 | 1573/20.7 | 150-398     | .377 | 44-150   | .293 | 81-137   | .591 | 85       | 215 | 300 | 3.9 | 147-3 | 100 | 174 | 16  | 58  | 425     | 5.6 |



\*First year at San José State after transferring from LMU

\*Started three of the nine games played this season

\*Scored four points, perfect 2-for-2 from the field, at BYU

\*Eight rebounds and two blocked shots at CBU

\*Four rebounds against UCSB and three at No. 21 Washington and versus Cal State Monterey Bay

| Season Highs.....               | Career Highs                           |
|---------------------------------|--|
| 4, at BYU, 11/8/25 .....        | Points.....6, Six games                |
| 2, at BYU, 11/8/25 .....        | FG Made .....                          |
| 4, Two games .....              | FG Attempted..... 7, Bethesda, 11/9/24 |
| .....                           | 3pt Made .....                         |
| 4, Two games .....              | 3pt Attempted .....                    |
| 1, vs. CSUMB, 12/11.....        | FT Made..... 2, Two games              |
| 2, vs. CSUMB, 12/11.....        | FT Att .....                           |
| 8, at CBU, 11/14/25 .....       | Rebounds..... 8, at CBU, 11/14/25      |
| 1, Three games .....            | Assists .....                          |
| 2, at CBU, 11/14/25 .....       | Blocks..... 2, at CBU, 11/14/25        |
| 2, at Washington, 12/1/25 ..... | Steals .....                           |

#10  
Amelie  
Sitterud  
G/F • 6-0 • JR  
Kirkland, Wash./  
LMU

AH-meh-lee  
SIT-er-ood

\*One assist at Pepperdine, at California and against Cal State Monterey Bay

\*Two steals at No. 21 Washington

| Opponent              | Date       | GS | MIN   | Total  |       | 3-Pointers |      | Free throws |      | Rebounds |     |     |     | PF | A | TO | BLK | STL | PTS | AVG |
|-----------------------|------------|----|-------|--------|-------|------------|------|-------------|------|----------|-----|-----|-----|----|---|----|-----|-----|-----|-----|
|                       |            |    |       | FG-FGA | PCT   | 3FG-3FGA   | PCT  | FT-FTA      | PCT  | OFF      | DEF | TOT | AVG |    |   |    |     |     |     |     |
| at BYU                | 11/08/2025 |    | 09:56 | 2-2    | 1.000 | 0-0        | .000 | 0-0         | .000 | 0        | 1   | 1   | 1.0 | 0  | 0 | 0  | 0   | 0   | 4   | 4.0 |
| at California Baptist | 11/14/2025 | *  | 18:10 | 0-4    | .000  | 0-4        | .000 | 0-0         | .000 | 1        | 7   | 8   | 4.5 | 2  | 0 | 1  | 2   | 0   | 0   | 2.0 |
| UC Santa Barbara      | 11/19/2025 | *  | 07:19 | 0-3    | .000  | 0-3        | .000 | 0-0         | .000 | 0        | 4   | 4   | 4.3 | 2  | 0 | 1  | 0   | 0   | 0   | 1.3 |
| at Pepperdine         | 11/23/2025 | *  | 11:32 | 0-1    | .000  | 0-0        | .000 | 0-0         | .000 | 0        | 1   | 1   | 3.5 | 2  | 1 | 1  | 0   | 1   | 0   | 1.0 |
| at Washington         | 12/01/2025 |    | 13:06 | 0-4    | .000  | 0-4        | .000 | 0-0         | .000 | 0        | 3   | 3   | 3.4 | 3  | 0 | 1  | 1   | 2   | 0   | 0.8 |
| Saint Mary's (CA)     | 12/04/2025 |    | 05:42 | 1-3    | .333  | 0-2        | .000 | 0-0         | .000 | 0        | 0   | 0   | 2.8 | 0  | 0 | 0  | 0   | 0   | 2   | 1.0 |
| at California         | 12/07/2025 |    | 09:60 | 0-0    | .000  | 0-0        | .000 | 0-0         | .000 | 0        | 1   | 1   | 2.6 | 1  | 1 | 2  | 0   | 0   | 0   | 0.9 |
| Cal St. Monterey Bay  | 12/11/2025 |    | 13:44 | 0-0    | .000  | 0-0        | .000 | 1-2         | .500 | 0        | 3   | 3   | 2.6 | 2  | 1 | 1  | 0   | 0   | 1   | 0.9 |
| at CSUN               | 12/13/2025 |    | 03:22 | 1-1    | 1.000 | 0-0        | .000 | 0-0         | .000 | 0        | 0   | 0   | 2.3 | 2  | 0 | 1  | 0   | 0   | 2   | 1.0 |
| Totals                |            | 3  | 92:50 | 4-18   | .222  | 0-13       | .000 | 1-2         | .500 | 1        | 20  | 21  | 2.3 | 14 | 3 | 8  | 3   | 3   | 9   | 1.0 |

Player Averages

| Games Played | Minutes/ game | Points/ game | FG Pct | 3FG Pct | FT Pct | Rebounds/ game | Assists/ game | Turnovers/ game | Assist/Turnover ratio | Steals/ game | Blocks/ game |
|--------------|---------------|--------------|--------|---------|--------|----------------|---------------|-----------------|-----------------------|--------------|--------------|
| 9            | 10.3          | 1.0          | 22.2   | 0.0     | 50.0   | 2.3            | 0.3           | 0.9             | 0.4                   | 0.3          | 0.3          |

|                |      |       |          | Field Goals |      | 3-Point  |      | F-Throws |      | Rebounds |     |     |     | Scoring |    |    |     |     |     |     |
|----------------|------|-------|----------|-------------|------|----------|------|----------|------|----------|-----|-----|-----|---------|----|----|-----|-----|-----|-----|
| SEASON         | TEAM | GP-GS | MIN/AVG  | FG-FGA      | FG%  | 3FG-3FGA | 3FG% | FT-FTA   | FT%  | OFF      | DEF | TOT | AVG | PF-FO   | A  | TO | BLK | STL | PTS | AVG |
| 2023-24        | LMU  | 14-0  | 50/3.6   | 3-19        | .158 | 3-15     | .200 | 1-2      | .500 | 2        | 3   | 5   | 0.4 | 11-0    | 0  | 4  | 1   | 1   | 10  | 0.7 |
| 2024-25        | LMU  | 29-1  | 379/13.1 | 18-71       | .254 | 13-55    | .236 | 4-5      | .800 | 11       | 40  | 51  | 1.8 | 57-2    | 8  | 18 | 9   | 15  | 53  | 1.8 |
| 2025-26        | SJSU | 9-3   | 93/10.3  | 4-18        | .222 | 0-13     | .000 | 1-2      | .500 | 1        | 20  | 21  | 2.3 | 14-0    | 3  | 8  | 3   | 3   | 9   | 1.0 |
| TOTAL FOR SJSU |      | 9-3   | 93/10.3  | 4-18        | .222 | 0-13     | .000 | 1-2      | .500 | 1        | 20  | 21  | 2.3 | 14-0    | 3  | 8  | 3   | 3   | 9   | 1.0 |
| TOTAL          |      | 52-4  | 522/10.0 | 25-108      | .231 | 16-83    | .193 | 6-9      | .667 | 14       | 63  | 77  | 1.5 | 82-2    | 11 | 30 | 13  | 19  | 72  | 1.4 |



#11  
**Carla Fuster**  
G • 5-10 • FR  
Barcelona, Spain/  
INS Alba  
des Vallès

FOO-ster

- \*First year at San José State
- \*Seen action in all 10 games and started the past six games
- \*Scored her first collegiate points at California Baptist with a made three
- \*Season-high seven points against UC Santa Barbara where she was 3-for-6 from the field
- \*Added six points at Portland State and five points at Pepperdine
- \*Two rebounds against Saint Mary's
- \*One assist against UCSB and at Pepperdine and Portland State
- \*Grabbed a steal at BYU, versus UC Santa Barbara, at Portland State and against CSUMB

| Season Highs.....               | Career Highs                          |
|---------------------------------|---------------------------------------|
| 7, UCSB, 11/19/25 .....         | Points.....7, UCSB, 11/19/25          |
| 3, UCSB, 11/19/25 .....         | FG Made.....3, UCSB, 11/19/25         |
| 7, Two games .....              | FG Att.....7, Two games               |
| 2, Two games .....              | 3pt Made.....2, Two games             |
| 5, vs. CSUMB, 12/11/25 .....    | 3pt Att.....5, vs. CSUMB, 12/11/25    |
| 2, at Pepperdine, 11/23/25..... | FT Made..2, at Pepperdine, 11/23/25   |
| 2, Two games .....              | FT Att.....2, Two games               |
| 2, Saint Mary's, 12/4/25.....   | Rebounds.....2, Saint Mary's, 12/4/25 |
| 1, Three games .....            | Assists.....1, Three games            |
| 1, Two games .....              | Blocks....1, at Pepperdine, 11/23/25  |
| 1, Four games.....              | Steals.....1, Four games              |

| Opponent              | Date       | GS | MIN    | Total  |       | 3-Pointers |       | Free throws |       | Rebounds |     |     |     | PF | A | TO | BLK | STL | PTS | AVG |
|-----------------------|------------|----|--------|--------|-------|------------|-------|-------------|-------|----------|-----|-----|-----|----|---|----|-----|-----|-----|-----|
|                       |            |    |        | FG-FGA | PCT   | 3FG-3FGA   | PCT   | FT-FTA      | PCT   | OFF      | DEF | TOT | AVG |    |   |    |     |     |     |     |
| at BYU                | 11/08/2025 |    | 01:37  | 0-1    | .000  | 0-1        | .000  | 0-0         | .000  | 0        | 0   | 0   | 0.0 | 0  | 0 | 0  | 0   | 1   | 0   | 0.0 |
| at California Baptist | 11/14/2025 |    | 13:49  | 1-3    | .333  | 1-1        | 1.000 | 1-2         | .500  | 0        | 1   | 1   | 0.5 | 0  | 0 | 1  | 0   | 0   | 4   | 2.0 |
| UC Santa Barbara      | 11/19/2025 |    | 24:12  | 3-6    | .500  | 1-4        | .250  | 0-0         | .000  | 0        | 1   | 1   | 0.7 | 2  | 1 | 3  | 0   | 1   | 7   | 3.7 |
| at Pepperdine         | 11/23/2025 |    | 20:30  | 1-4    | .250  | 1-3        | .333  | 2-2         | 1.000 | 0        | 1   | 1   | 0.8 | 1  | 1 | 0  | 1   | 0   | 5   | 4.0 |
| at Portland St.       | 11/28/2025 | *  | 16:29  | 2-3    | .667  | 2-3        | .667  | 0-0         | .000  | 0        | 0   | 0   | 0.6 | 3  | 1 | 1  | 0   | 1   | 6   | 4.4 |
| at Washington         | 12/01/2025 | *  | 22:59  | 0-7    | .000  | 0-4        | .000  | 0-0         | .000  | 0        | 0   | 0   | 0.5 | 0  | 0 | 0  | 0   | 0   | 0   | 3.7 |
| Saint Mary's (CA)     | 12/04/2025 | *  | 17:04  | 0-3    | .000  | 0-1        | .000  | 0-0         | .000  | 2        | 0   | 2   | 0.7 | 2  | 0 | 1  | 0   | 0   | 0   | 3.1 |
| at California         | 12/07/2025 | *  | 19:29  | 1-4    | .250  | 0-0        | .000  | 0-0         | .000  | 1        | 0   | 1   | 0.8 | 1  | 0 | 0  | 0   | 0   | 2   | 3.0 |
| Cal St. Monterey Bay  | 12/11/2025 | *  | 20:11  | 2-7    | .286  | 2-5        | .400  | 0-0         | .000  | 0        | 1   | 1   | 0.8 | 3  | 0 | 0  | 1   | 1   | 6   | 3.3 |
| at CSUN               | 12/13/2025 | *  | 16:32  | 1-1    | 1.000 | 1-1        | 1.000 | 0-0         | .000  | 0        | 1   | 1   | 0.8 | 1  | 0 | 3  | 0   | 0   | 3   | 3.3 |
| Totals                |            | 6  | 172:52 | 11-39  | .282  | 8-23       | .348  | 3-4         | .750  | 3        | 5   | 8   | 0.8 | 13 | 3 | 9  | 2   | 4   | 33  | 3.3 |

| Player Averages |               |              |        |         |        |                |               |                 |                       |              |              |  |
|-----------------|---------------|--------------|--------|---------|--------|----------------|---------------|-----------------|-----------------------|--------------|--------------|--|
| Games Played    | Minutes/ game | Points/ game | FG Pct | 3FG Pct | FT Pct | Rebounds/ game | Assists/ game | Turnovers/ game | Assist/Turnover ratio | Steals/ game | Blocks/ game |  |
| 10              | 17.3          | 3.3          | 28.2   | 34.8    | 75.0   | 0.8            | 0.3           | 0.9             | 0.3                   | 0.4          | 0.2          |  |

|         |      |       |          | Field Goals |      | 3-Point  |      | F-Throws |      | Rebounds |     |     |     |       |   |    |     |     | Scoring |     |
|---------|------|-------|----------|-------------|------|----------|------|----------|------|----------|-----|-----|-----|-------|---|----|-----|-----|---------|-----|
| SEASON  | TEAM | GP-GS | MIN/AVG  | FG-FGA      | FG%  | 3FG-3FGA | 3FG% | FT-FTA   | FT%  | OFF      | DEF | TOT | AVG | PF-FO | A | TO | BLK | STL | PTS     | AVG |
| 2025-26 | SJSU | 10-6  | 173/17.3 | 11-39       | .282 | 8-23     | .348 | 3-4      | .750 | 3        | 5   | 8   | 0.8 | 13-0  | 3 | 9  | 2   | 4   | 33      | 3.3 |
| TOTAL   |      | 10-6  | 173/17.3 | 11-39       | .282 | 8-23     | .348 | 3-4      | .750 | 3        | 5   | 8   | 0.8 | 13-0  | 3 | 9  | 2   | 4   | 33      | 3.3 |



**#15**  
**Maya**  
**Anderson**  
**G/F • 6-1 • RS-SO**  
**Toronto, Canada/**  
**Crestwood Prep**  
**College**

- \*Third season at San José State
- \*Started all 10 games
- \*Led the team in scoring in five games
- \*Scored in double figures in seven games
- \*First career double-double with career bests of 18 points and 12 rebounds in a win over Cal State Monterey Bay
- \*Led the Spartans in scoring against BYU with 17 points
- \*Led the team with 13 points at CSUN and 12 points in the UC Santa Barbara game
- \*Nine rebounds against UCSB and added eight in two games
- \*Three assists against Cal State Monterey Bay and two assists at BYU and at No. 21 Washington
- \*Four steals versus Saint Mary's and three at BYU
- \*Two steals at California Baptist and at California
- \*Only blocked shot at Pepperdine

| Season Highs.....               | Career Highs                             |
|---------------------------------|--|
| 18, Two games.....              | Points..... 18, Two games                |
| 8, vs. CSUMB, 12/11/25.....     | FG Made..... 8, vs. CSUMB, 12/11/25      |
| 20, at BYU, 11/8/25.....        | FG Att..... 20, at BYU, 11/8/25          |
| 3, Two games.....               | 3pt Made..... 3, Three games             |
| 8, at CSUN, 12/13/25.....       | 3pt Att..... 9, at Colorado St., 1/27/24 |
| 5, at CBU, 11/14/25.....        | FT Made..... 5, at CBU, 11/14/25         |
| 6, at CBU, 11/14/25.....        | FT Att..... 6, Two games                 |
| 12, vs. CSUMB, 12/11/25.....    | Rebounds..... 12, vs. CSUMB, 12/11/25    |
| 3, vs. CSUMB, 12/11/25.....     | Assists 5, vs. San Diego St., 2/10/24    |
| 1, at Pepperdine, 11/23/25..... | Blocks..... 1, Five games                |
| 4, Saint Mary's, 12/4/25.....   | Steals..... 4, Saint Mary's, 12/4/25     |

**10+ Rebound Games (1)**  
12 - vs. CSUMB, 12/11/25

| Opponent              | Date       | GS | MIN       | Total  |      | 3-Pointers |      | Free throws |       | Rebounds |     |     |     | PF | A  | TO | BLK | STL | PTS | AVG  |
|-----------------------|------------|----|-----------|--------|------|------------|------|-------------|-------|----------|-----|-----|-----|----|----|----|-----|-----|-----|------|
|                       |            |    |           | FG-FGA | PCT  | 3FG-3FGA   | PCT  | FT-FTA      | PCT   | OFF      | DEF | TOT | AVG |    |    |    |     |     |     |      |
| at BYU                | 11/08/2025 | *  | 31:15     | 7-20   | .350 | 1-6        | .167 | 2-4         | .500  | 1        | 7   | 8   | 8.0 | 2  | 2  | 5  | 0   | 3   | 17  | 17.0 |
| at California Baptist | 11/14/2025 | *  | 35:14     | 3-9    | .333 | 0-4        | .000 | 5-6         | .833  | 4        | 4   | 8   | 8.0 | 1  | 1  | 3  | 0   | 2   | 11  | 14.0 |
| UC Santa Barbara      | 11/19/2025 | *  | 34:27     | 5-8    | .625 | 2-4        | .500 | 0-0         | .000  | 1        | 8   | 9   | 8.3 | 3  | 0  | 8  | 0   | 0   | 12  | 13.3 |
| at Pepperdine         | 11/23/2025 | *  | 26:21     | 2-9    | .222 | 1-4        | .250 | 2-2         | 1.000 | 0        | 1   | 1   | 6.5 | 1  | 1  | 3  | 1   | 0   | 7   | 11.8 |
| at Portland St.       | 11/28/2025 | *  | 28:24     | 3-11   | .273 | 1-5        | .200 | 2-2         | 1.000 | 4        | 3   | 7   | 6.6 | 0  | 0  | 4  | 0   | 1   | 9   | 11.2 |
| at Washington         | 12/01/2025 | *  | 28:33     | 2-10   | .200 | 2-5        | .400 | 4-4         | 1.000 | 2        | 1   | 3   | 6.0 | 0  | 2  | 1  | 0   | 0   | 10  | 11.0 |
| Saint Mary's (CA)     | 12/04/2025 | *  | 34:18     | 6-14   | .429 | 3-4        | .750 | 3-4         | .750  | 2        | 4   | 6   | 6.0 | 3  | 0  | 1  | 0   | 4   | 18  | 12.0 |
| at California         | 12/07/2025 | *  | 22:41     | 1-9    | .111 | 0-6        | .000 | 1-2         | .500  | 0        | 3   | 3   | 5.6 | 3  | 0  | 1  | 0   | 2   | 3   | 10.9 |
| Cal St. Monterey Bay  | 12/11/2025 | *  | 28:21     | 8-14   | .571 | 0-4        | .000 | 2-4         | .500  | 3        | 9   | 12  | 6.3 | 1  | 3  | 1  | 0   | 0   | 18  | 11.7 |
| at CSUN               | 12/13/2025 | *  | 36:48     | 4-15   | .267 | 3-8        | .375 | 2-4         | .500  | 1        | 5   | 6   | 6.3 | 1  | 1  | 4  | 0   | 1   | 13  | 11.8 |
| Totals                |            |    | 10 306:23 | 41-119 | .345 | 13-50      | .260 | 23-32       | .719  | 18       | 45  | 63  | 6.3 | 15 | 10 | 31 | 1   | 13  | 118 | 11.8 |

| Player Averages |               |              |        |         |        |                |               |                 |                       |              |              |
|-----------------|---------------|--------------|--------|---------|--------|----------------|---------------|-----------------|-----------------------|--------------|--------------|
| Games Played    | Minutes/ game | Points/ game | FG Pct | 3FG Pct | FT Pct | Rebounds/ game | Assists/ game | Turnovers/ game | Assist/Turnover ratio | Steals/ game | Blocks/ game |
| 10              | 30.6          | 11.8         | 34.5   | 26.0    | 71.9   | 6.3            | 1.0           | 3.1             | 0.3                   | 1.3          | 0.1          |

|         |      |       |           | Field Goals |      | 3-Point  |      | F-Throws |      | Rebounds |     |     |     | Scoring |    |    |     |     |     |      |
|---------|------|-------|-----------|-------------|------|----------|------|----------|------|----------|-----|-----|-----|---------|----|----|-----|-----|-----|------|
| SEASON  | TEAM | GP-GS | MIN/AVG   | FG-FGA      | FG%  | 3FG-3FGA | 3FG% | FT-FTA   | FT%  | OFF      | DEF | TOT | AVG | PF-FO   | A  | TO | BLK | STL | PTS | AVG  |
| 2023-24 | SJSU | 24-17 | 723/30.1  | 41-161      | .255 | 22-87    | .253 | 25-30    | .833 | 23       | 37  | 60  | 2.5 | 30-0    | 52 | 48 | 4   | 29  | 129 | 5.4  |
| 2025-26 | SJSU | 10-10 | 306/30.6  | 41-119      | .345 | 13-50    | .260 | 23-32    | .719 | 18       | 45  | 63  | 6.3 | 15-0    | 10 | 31 | 1   | 13  | 118 | 11.8 |
| TOTAL   |      | 34-27 | 1030/30.3 | 82-280      | .293 | 35-137   | .255 | 48-62    | .774 | 41       | 82  | 123 | 3.6 | 45-0    | 62 | 79 | 5   | 42  | 247 | 7.3  |





\*First year at San José State

\*Saw her first action of the season against Cal State Monterey Bay

| Season Highs.....       | Career Highs |
|-------------------------|--------------|
| .....Points.....        | .....        |
| .....FG Made.....       | .....        |
| .....FG Attempted.....  | .....        |
| .....3pt Made.....      | .....        |
| .....3pt Attempted..... | .....        |
| .....FT Made.....       | .....        |
| .....FT Att.....        | .....        |
| .....Rebounds.....      | .....        |
| .....Assists.....       | .....        |
| .....Blocks.....        | .....        |
| .....Steals.....        | .....        |

#20  
Briannah  
McGee  
G • 5-7 • JR  
Murrietta, Calif./  
Redlands

| Opponent             |  | Date       | GS | MIN   | Total  |      | 3-Pointers |      | Free throws |      | Rebounds |     |     |     | PF | A | TO | BLK | STL | PTS | AVG |
|----------------------|--|------------|----|-------|--------|------|------------|------|-------------|------|----------|-----|-----|-----|----|---|----|-----|-----|-----|-----|
|                      |  |            |    |       | FG-FGA | PCT  | 3FG-3FGA   | PCT  | FT-FTA      | PCT  | OFF      | DEF | TOT | AVG |    |   |    |     |     |     |     |
| Cal St. Monterey Bay |  | 12/11/2025 |    | 01:32 | 0-0    | .000 | 0-0        | .000 | 0-0         | .000 | 0        | 0   | 0   | 0.0 | 0  | 0 | 0  | 0   | 0   | 0   | 0.0 |
| Totals               |  |            | 0  | 01:32 | 0-0    | .000 | 0-0        | .000 | 0-0         | .000 | 0        | 0   | 0   | 0.0 | 0  | 0 | 0  | 0   | 0   | 0   | 0.0 |

Player Averages

| Games Played | Minutes/ game | Points/ game | FG Pct | 3FG Pct | FT Pct | Rebounds/ game | Assists/ game | Turnovers/ game | Assist/Turnover ratio | Steals/ game | Blocks/ game |
|--------------|---------------|--------------|--------|---------|--------|----------------|---------------|-----------------|-----------------------|--------------|--------------|
| 1            | 1.5           | 0.0          | 0.0    | 0.0     | 0.0    | 0.0            | 0.0           | 0.0             | 0.0                   | 0.0          | 0.0          |

|         |      |       |         | Field Goals |      | 3-Point  |      | F-Throws |      | Rebounds |     |     |     |       |   |    |     |     | Scoring |     |
|---------|------|-------|---------|-------------|------|----------|------|----------|------|----------|-----|-----|-----|-------|---|----|-----|-----|---------|-----|
| SEASON  | TEAM | GP-GS | MIN/AVG | FG-FGA      | FG%  | 3FG-3FGA | 3FG% | FT-FTA   | FT%  | OFF      | DEF | TOT | AVG | PF-FO | A | TO | BLK | STL | PTS     | AVG |
| 2025-26 | SJSU | 1-0   | 2/1.5   | 0-0         | .000 | 0-0      | .000 | 0-0      | .000 | 0        | 0   | 0   | 0.0 | 0-0   | 0 | 0  | 0   | 0   | 0       | 0.0 |
| TOTAL   |      | 1-0   | 2/1.5   | 0-0         | .000 | 0-0      | .000 | 0-0      | .000 | 0        | 0   | 0   | 0.0 | 0-0   | 0 | 0  | 0   | 0   | 0       | 0.0 |



**#22**  
**Kaliyah**  
**Dillard**  
**F • 6-0 • RS-SO**  
**Las Vegas, Nev./**  
**Centennial HS**  
  
**kuh-LEE-uh**

- \*Third year at San José State
- \*Started four games and appeared in all 10
- \*Scored a season-high 10 points in a home win over Cal State Monterey Bay
- \*Was 4-for-4 from the field in that game
- \*Scored four points against UC Santa Barbara
- \*Led the team with eight rebounds at CSUN
- \*Six rebounds at BYU and versus Cal State Monterey Bay and five rebounds against UCSB
- \*Three blocks and a steal at BYU
- \*Two blocks versus UC Santa Barbara and at Pepperdine
- \*Two assists at Pepperdine and at California

| Season Highs.....               | Career Highs                          |
|---------------------------------|---------------------------------------|
| 10, vs. CSUMB, 12/11/25 .....   | Points..... 10, vs. CSUMB, 12/11/25   |
| 4, vs. CSUMB, 12/11/25 .....    | FG Made.....4, vs. CSUMB, 12/11/25    |
| 8, at CSUN, 12/13/25 .....      | FG Att..... 8, at CSUN, 12/13/25      |
| .....                           | 3pt Made .....                        |
| 2, UCSB, 11/19/25 .....         | 3pt Att.....2,Two games               |
| 2, vs. CSUMB, 12/11/25 .....    | FT Made.....2, vs. CSUMB, 12/11/25    |
| 4, at California, 12/7/25 ..... | FT Att..... 4, at California, 12/7/25 |
| 8, at CSUN, 12/13/25 .....      | Rebounds..... 8, at CSUN, 12/13/25    |
| 2, Two games .....              | Assists .....                         |
| 3, at BYU, 11/8/25 .....        | Blocks.....3, at BYU, 11/8/25         |
| 1, Four games.....              | Steals.....2, vs. Bethesda, 12/21/24  |

**3+ Block Games (1)**  
3 - at BYU, 11/8/25

| Opponent              | Date       | GS | MIN    | Total  |       | 3-Pointers |      | Free throws |       | Rebounds |     |     |     | PF | A | TO | BLK | STL | PTS | AVG |
|-----------------------|------------|----|--------|--------|-------|------------|------|-------------|-------|----------|-----|-----|-----|----|---|----|-----|-----|-----|-----|
|                       |            |    |        | FG-FGA | PCT   | 3FG-3FGA   | PCT  | FT-FTA      | PCT   | OFF      | DEF | TOT | AVG |    |   |    |     |     |     |     |
| at BYU                | 11/08/2025 | *  | 17:54  | 0-2    | .000  | 0-1        | .000 | 0-0         | .000  | 3        | 3   | 6   | 6.0 | 2  | 0 | 3  | 3   | 1   | 0   | 0.0 |
| at California Baptist | 11/14/2025 | *  | 11:45  | 0-2    | .000  | 0-1        | .000 | 0-0         | .000  | 2        | 2   | 4   | 5.0 | 3  | 1 | 3  | 0   | 1   | 0   | 0.0 |
| UC Santa Barbara      | 11/19/2025 | *  | 15:32  | 2-4    | .500  | 0-2        | .000 | 0-2         | .000  | 1        | 4   | 5   | 5.0 | 2  | 0 | 3  | 2   | 0   | 4   | 1.3 |
| at Pepperdine         | 11/23/2025 | *  | 15:24  | 0-1    | .000  | 0-0        | .000 | 1-2         | .500  | 1        | 3   | 4   | 4.8 | 4  | 2 | 1  | 2   | 0   | 1   | 1.3 |
| at Portland St.       | 11/28/2025 |    | 05:17  | 1-1    | 1.000 | 0-0        | .000 | 0-0         | .000  | 1        | 0   | 1   | 4.0 | 0  | 0 | 0  | 0   | 1   | 0   | 1.4 |
| at Washington         | 12/01/2025 |    | 06:32  | 0-0    | .000  | 0-0        | .000 | 0-0         | .000  | 0        | 0   | 0   | 3.3 | 0  | 0 | 0  | 0   | 0   | 0   | 1.2 |
| Saint Mary's (CA)     | 12/04/2025 |    | 02:05  | 0-1    | .000  | 0-0        | .000 | 0-0         | .000  | 0        | 0   | 0   | 2.9 | 0  | 0 | 1  | 0   | 1   | 0   | 1.0 |
| at California         | 12/07/2025 |    | 15:13  | 0-3    | .000  | 0-1        | .000 | 0-4         | .000  | 2        | 1   | 3   | 2.9 | 1  | 2 | 0  | 0   | 0   | 0   | 0.9 |
| Cal St. Monterey Bay  | 12/11/2025 |    | 08:34  | 4-4    | 1.000 | 0-0        | .000 | 2-2         | 1.000 | 3        | 3   | 6   | 3.2 | 3  | 0 | 0  | 1   | 1   | 10  | 1.9 |
| at CSUN               | 12/13/2025 |    | 20:18  | 3-8    | .375  | 0-1        | .000 | 1-2         | .500  | 3        | 5   | 8   | 3.7 | 3  | 1 | 1  | 1   | 0   | 7   | 2.4 |
| Totals                |            | 4  | 118:35 | 10-26  | .385  | 0-6        | .000 | 4-12        | .333  | 16       | 21  | 37  | 3.7 | 18 | 6 | 12 | 10  | 4   | 24  | 2.4 |

Player Averages

| Games Played | Minutes/ game | Points/ game | FG Pct | 3FG Pct | FT Pct | Rebounds/ game | Assists/ game | Turnovers/ game | Assist/Turnover ratio | Steals/ game | Blocks/ game |
|--------------|---------------|--------------|--------|---------|--------|----------------|---------------|-----------------|-----------------------|--------------|--------------|
| 10           | 11.9          | 2.4          | 38.5   | 0.0     | 33.3   | 3.7            | 0.6           | 1.2             | 0.5                   | 0.4          | 1.0          |

|         |      |       |          | Field Goals |      | 3-Point  |      | F-Throws |      | Rebounds |     |     |     |       |   |    |     |     | Scoring |     |
|---------|------|-------|----------|-------------|------|----------|------|----------|------|----------|-----|-----|-----|-------|---|----|-----|-----|---------|-----|
| SEASON  | TEAM | GP-GS | MIN/AVG  | FG-FGA      | FG%  | 3FG-3FGA | 3FG% | FT-FTA   | FT%  | OFF      | DEF | TOT | AVG | PF-FO | A | TO | BLK | STL | PTS     | AVG |
| 2024-25 | SJSU | 6-0   | 27/4.6   | 0-7         | .000 | 0-2      | .000 | 1-4      | .250 | 5        | 5   | 10  | 1.7 | 3-0   | 1 | 2  | 1   | 2   | 1       | 0.2 |
| 2025-26 | SJSU | 10-4  | 119/11.9 | 10-26       | .385 | 0-6      | .000 | 4-12     | .333 | 16       | 21  | 37  | 3.7 | 18-0  | 6 | 12 | 10  | 4   | 24      | 2.4 |
| TOTAL   |      | 16-4  | 146/9.1  | 10-33       | .303 | 0-8      | .000 | 5-16     | .313 | 21       | 26  | 47  | 2.9 | 21-0  | 7 | 14 | 11  | 6   | 25      | 1.6 |



- \*Second season at San José State
- \*Played in seven games
- \*Started against BYU and scored three points
- \*Season-high nine points at CSUN where she made three three-pointers
- \*Six points in win over Cal State Monterey Bay
- \*Added four points at California
- \*Was sidelined part of November due to an injury
- \*Dished four assists against Saint Mary's and two assists at BYU and versus Cal State Monterey Bay
- \*Only blocked shot versus Cal State Monterey Bay
- \*One steal at BYU

| Season Highs.....             | Career Highs                           |
|-------------------------------|--|
| 9, at CSUN, 12/13/25 .....    | Points.... 11, vs. Bethesda, 12/21/24  |
| 3, at CSUN, 12/13/25 .....    | FG Made ....4, vs. Bethesda, 12/21/24  |
| 9, vs. CSUMB, 12/11/25 .....  | FG Att..... 9, Two games               |
| 3, at CSUN, 12/13/25 .....    | 3pt Made ..... 3, at CSUN, 12/13/25    |
| 8, vs. CSUMB, 12/11/25 .....  | 3pt Att.....8, vs. CSUMB, 12/11/25     |
| .....                         | FT Made..... 2, Two games              |
| .....                         | FT Att..... 2, Two games               |
| 4, Two games .....            | Rebounds..... 4, Three games           |
| 4, Saint Mary's 12/4/25 ..... | Assists ..4, vs. Saint Mary's, 12/4/25 |
| 1, vs. CSUMB, 12/11/25 .....  | Blocks..... 1, Two games               |
| 1, at BYU, 11/8/25 .....      | Steals .....4, vs. Bethesda, 12/21/24  |

#23  
Stella  
Sgro  
G/F • 5-11 • SO  
Toronto, Ontario/  
Royal Crown  
School

ss-GROW

| Opponent             | Date       | GS | MIN    | Total FG-FGA | PCT  | 3-Pointers 3FG-3FGA | PCT  | Free throws FT-FTA | PCT  | Rebounds OFF DEF TOT AVG | PF | A  | TO | BLK | STL | PTS | AVG |
|----------------------|------------|----|--------|--------------|------|---------------------|------|--------------------|------|--------------------------|----|----|----|-----|-----|-----|-----|
| at BYU               | 11/08/2025 | *  | 24:03  | 1-5          | .200 | 1-5                 | .200 | 0-0                | .000 | 0 4 4 4.0                | 0  | 2  | 2  | 0   | 1   | 3   | 3.0 |
| at Portland St.      | 11/28/2025 |    | 04:12  | 0-0          | .000 | 0-0                 | .000 | 0-0                | .000 | 0 0 0 2.0                | 0  | 1  | 1  | 0   | 0   | 0   | 1.5 |
| at Washington        | 12/01/2025 |    | 01:58  | 0-1          | .000 | 0-1                 | .000 | 0-0                | .000 | 0 1 1 1.7                | 0  | 0  | 0  | 0   | 0   | 0   | 1.0 |
| Saint Mary's (CA)    | 12/04/2025 |    | 17:50  | 0-5          | .000 | 0-5                 | .000 | 0-0                | .000 | 0 2 2 1.8                | 1  | 4  | 0  | 0   | 0   | 0   | 0.8 |
| at California        | 12/07/2025 |    | 08:29  | 1-6          | .167 | 1-4                 | .250 | 0-0                | .000 | 0 1 1 1.6                | 0  | 0  | 1  | 0   | 0   | 3   | 1.2 |
| Cal St. Monterey Bay | 12/11/2025 |    | 22:04  | 2-9          | .222 | 2-8                 | .250 | 0-0                | .000 | 0 4 4 2.0                | 0  | 2  | 0  | 1   | 0   | 6   | 2.0 |
| at CSUN              | 12/13/2025 |    | 25:31  | 3-8          | .375 | 3-7                 | .429 | 0-0                | .000 | 0 2 2 2.0                | 3  | 1  | 2  | 0   | 0   | 9   | 3.0 |
| Totals               |            | 1  | 104:07 | 7-34         | .206 | 7-30                | .233 | 0-0                | .000 | 0 14 14 2.0              | 4  | 10 | 6  | 1   | 1   | 21  | 3.0 |

Player Averages

| Games Played | Minutes/ game | Points/ game | FG Pct | 3FG Pct | FT Pct | Rebounds/ game | Assists/ game | Turnovers/ game | Assist/Turnover ratio | Steals/ game | Blocks/ game |
|--------------|---------------|--------------|--------|---------|--------|----------------|---------------|-----------------|-----------------------|--------------|--------------|
| 7            | 14.9          | 3.0          | 20.6   | 23.3    | 0.0    | 2.0            | 1.4           | 0.9             | 1.7                   | 0.1          | 0.1          |

|         |      |       |          | Field Goals |      | 3-Point  |      | F-Throws |       | Rebounds |     |     |     | Scoring |    |    |     |     |     |     |
|---------|------|-------|----------|-------------|------|----------|------|----------|-------|----------|-----|-----|-----|---------|----|----|-----|-----|-----|-----|
| SEASON  | TEAM | GP-GS | MIN/AVG  | FG-FGA      | FG%  | 3FG-3FGA | 3FG% | FT-FTA   | FT%   | OFF      | DEF | TOT | AVG | PF-FO   | A  | TO | BLK | STL | PTS | AVG |
| 2024-25 | SJSU | 19-1  | 110/5.8  | 14-47       | .298 | 7-24     | .292 | 4-4      | 1.000 | 6        | 7   | 13  | 0.7 | 9-0     | 2  | 5  | 1   | 8   | 39  | 2.1 |
| 2025-26 | SJSU | 7-1   | 104/14.9 | 7-34        | .206 | 7-30     | .233 | 0-0      | .000  | 0        | 14  | 14  | 2.0 | 4-0     | 10 | 6  | 1   | 1   | 21  | 3.0 |
| TOTAL   |      | 26-2  | 214/8.2  | 21-81       | .259 | 14-54    | .259 | 4-4      | 1.000 | 6        | 21  | 27  | 1.0 | 13-0    | 12 | 11 | 2   | 9   | 60  | 2.3 |



#32  
**Gabriela Pato**  
F • 6-4 • FR  
Vigo, Spain/  
Escola Rosalia  
De Castro  
  
PAH-tow

- \*First season at San Jose State
- \*Has played 10 games, starting the past six games
- \*Scored her first collegiate points against UC Santa Barbara
- \*Led the team with 11 points at No. 21 Washington
- \*Made her first three-pointer of the season and went 4-for-4 from the free throw line against the Huskies

Season Highs.....Career Highs

11, at Washington, 12/1/25.....Points...11, at Washington, 12/1/25

4, at Portland State, 11/28/25.....FG Made. 4, at Portland St., 11/28/25

10, at Pepperdine, 11/23/25.....FG Att. 10, at Pepperdine, 11/23/25

1, at Washington, 12/1/25.....3pt Made. 1, at Washington, 12/1/25

2, at Washington, 12/1/25.....3pt Att.....2, at Washington, 12/1/25

4, Three games.....FT Made.....4, Three games

6, Saint Mary's, 12/4/25.....FT Att.....6, Saint Mary's, 12/4/25

10, Saint Mary's, 12/4/25.....Rebounds....10, Saint Mary's, 12/4/25

1, Four games.....Assists.....1, Four games

4, Saint Mary's, 12/4/25.....Blocks.....4, Saint Mary's, 12/4/25

1, Two games.....Steals.....1, Two games

- \*First collegiate double-double with 10 points and 10 rebounds against Saint Mary's
- \*Nine points on 4-of-8 from the field at Portland State
- \*Six points against UCSB and at Pepperdine
- \*Six rebounds against CSUMB and five rebounds at Pepperdine
- \*Four blocked shots against Saint Mary's
- \*Three blocked shots at Portland State and versus Cal State Monterey Bay
- \*Grabbed a steal at California Baptist and at No. 21 Washington

10+ Rebounds (1)  
10 - Saint Mary's, 12/4/25

3+ Block Games (3)  
4 - vs. Saint Mary's, 12/4/25  
3 - at Portland St., 11/28/25  
3 - vs. CSUMB, 12/11/24

| Opponent              | Date       | GS | MIN    | Total  |      | 3-Pointers |      | Free throws |       | Rebounds |     |     |     | PF | A | TO | BLK | STL | PTS | AVG |
|-----------------------|------------|----|--------|--------|------|------------|------|-------------|-------|----------|-----|-----|-----|----|---|----|-----|-----|-----|-----|
|                       |            |    |        | FG-FGA | PCT  | 3FG-3FGA   | PCT  | FT-FTA      | PCT   | OFF      | DEF | TOT | AVG |    |   |    |     |     |     |     |
| at BYU                | 11/08/2025 |    | 11:09  | 0-2    | .000 | 0-0        | .000 | 0-0         | .000  | 2        | 1   | 3   | 3.0 | 2  | 1 | 0  | 1   | 0   | 0   | 0.0 |
| at California Baptist | 11/14/2025 |    | 03:03  | 0-1    | .000 | 0-0        | .000 | 0-0         | .000  | 0        | 0   | 0   | 1.5 | 0  | 0 | 0  | 0   | 1   | 0   | 0.0 |
| UC Santa Barbara      | 11/19/2025 |    | 13:51  | 1-2    | .500 | 0-0        | .000 | 4-4         | 1.000 | 2        | 1   | 3   | 2.0 | 2  | 0 | 0  | 0   | 0   | 6   | 2.0 |
| at Pepperdine         | 11/23/2025 |    | 17:48  | 3-10   | .300 | 0-1        | .000 | 0-0         | .000  | 3        | 2   | 5   | 2.8 | 1  | 0 | 1  | 1   | 0   | 6   | 3.0 |
| at Portland St.       | 11/28/2025 | *  | 20:51  | 4-8    | .500 | 0-0        | .000 | 1-4         | .250  | 1        | 2   | 3   | 2.8 | 4  | 1 | 2  | 3   | 0   | 9   | 4.2 |
| at Washington         | 12/01/2025 | *  | 19:25  | 3-7    | .429 | 1-2        | .500 | 4-4         | 1.000 | 3        | 1   | 4   | 3.0 | 1  | 0 | 0  | 0   | 1   | 11  | 5.3 |
| Saint Mary's (CA)     | 12/04/2025 | *  | 28:37  | 3-6    | .500 | 0-0        | .000 | 4-6         | .667  | 6        | 4   | 10  | 4.0 | 1  | 1 | 2  | 4   | 0   | 10  | 6.0 |
| at California         | 12/07/2025 | *  | 11:00  | 0-1    | .000 | 0-1        | .000 | 1-2         | .500  | 0        | 0   | 0   | 3.5 | 4  | 1 | 0  | 2   | 0   | 1   | 5.4 |
| Cal St. Monterey Bay  | 12/11/2025 | *  | 17:14  | 3-5    | .600 | 0-0        | .000 | 0-0         | .000  | 2        | 4   | 6   | 3.8 | 3  | 0 | 1  | 3   | 0   | 6   | 5.4 |
| at CSUN               | 12/13/2025 | *  | 10:47  | 0-3    | .000 | 0-1        | .000 | 0-0         | .000  | 0        | 2   | 2   | 3.6 | 1  | 0 | 1  | 0   | 0   | 0   | 4.9 |
| Totals                |            | 6  | 153:45 | 17-45  | .378 | 1-5        | .200 | 14-20       | .700  | 19       | 17  | 36  | 3.6 | 19 | 4 | 7  | 14  | 2   | 49  | 4.9 |

| Player Averages |               |              |        |         |        |                |               |                 |                       |              |              |  |
|-----------------|---------------|--------------|--------|---------|--------|----------------|---------------|-----------------|-----------------------|--------------|--------------|--|
| Games Played    | Minutes/ game | Points/ game | FG Pct | 3FG Pct | FT Pct | Rebounds/ game | Assists/ game | Turnovers/ game | Assist/Turnover ratio | Steals/ game | Blocks/ game |  |
| 10              | 15.4          | 4.9          | 37.8   | 20.0    | 70.0   | 3.6            | 0.4           | 0.7             | 0.6                   | 0.2          | 1.4          |  |

|         |      |       |          | Field Goals |      | 3-Point  |      | F-Throws |      | Rebounds |     |     |     | Scoring |   |    |     |     |     |     |
|---------|------|-------|----------|-------------|------|----------|------|----------|------|----------|-----|-----|-----|---------|---|----|-----|-----|-----|-----|
| SEASON  | TEAM | GP-GS | MIN/AVG  | FG-FGA      | FG%  | 3FG-3FGA | 3FG% | FT-FTA   | FT%  | OFF      | DEF | TOT | AVG | PF-FO   | A | TO | BLK | STL | PTS | AVG |
| 2025-26 | SJSU | 10-6  | 154/15.4 | 17-45       | .378 | 1-5      | .200 | 14-20    | .700 | 19       | 17  | 36  | 3.6 | 19-0    | 4 | 7  | 14  | 2   | 49  | 4.9 |
| TOTAL   |      | 10-6  | 154/15.4 | 17-45       | .378 | 1-5      | .200 | 14-20    | .700 | 19       | 17  | 36  | 3.6 | 19-0    | 4 | 7  | 14  | 2   | 49  | 4.9 |