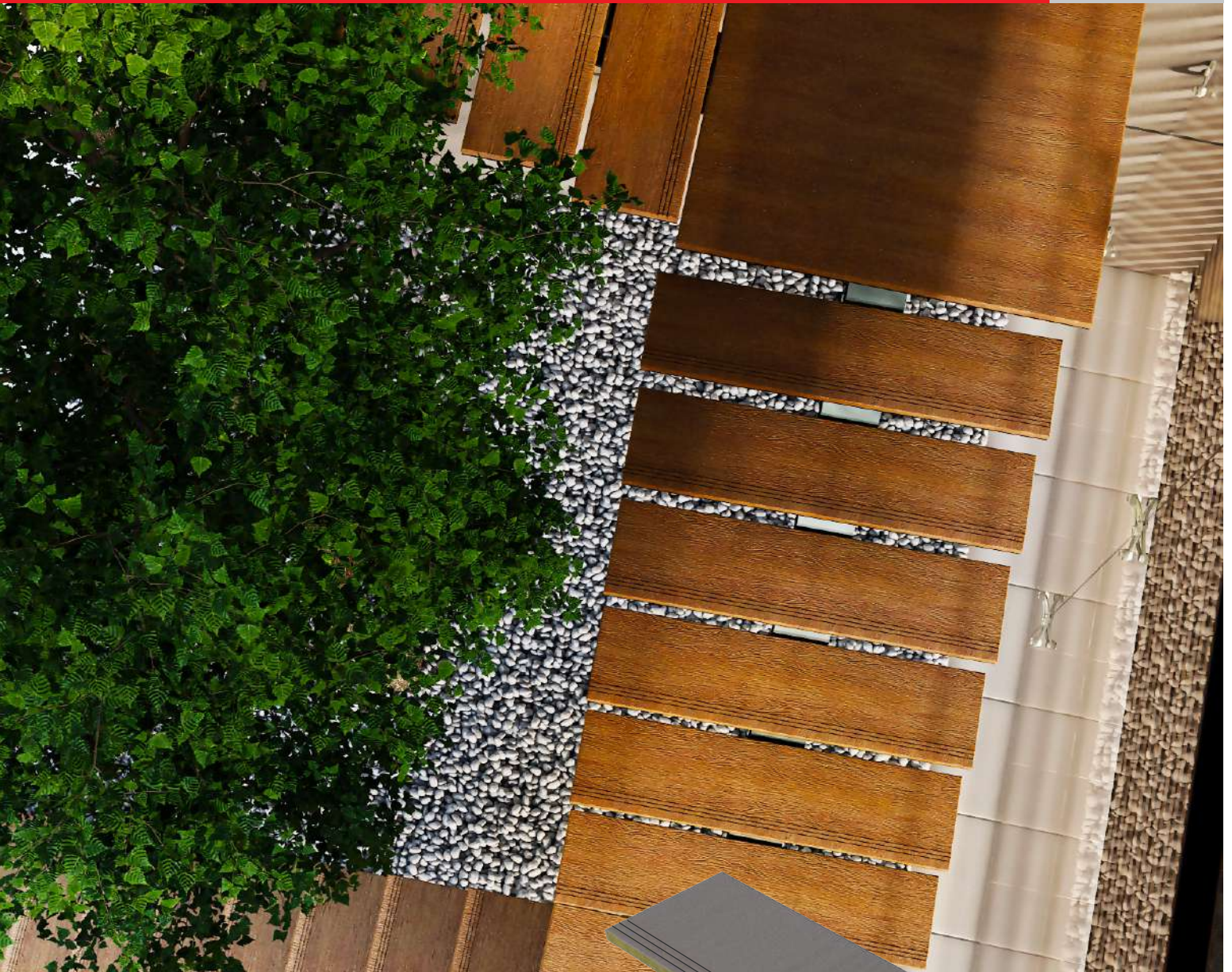


SCG Cement Wood MEGA STAIR



Finished Stair Case Cement with wood Grain & Groove product

- The product made from Portland cement and wood
- Durable use for Internal and External
- Recommended coating with acrylic color paint



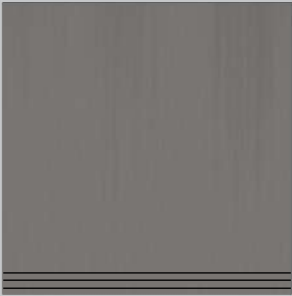


SCG Cement wood stair case V-Groove straight grain



- Anti Slip with V-Groove straight grain
- Time saving (without nosing process)
- Easy to install like wood

Landing with groove



- More Spaces of stair landing (1.44 Sq.m./Piece)
- Quick installation & seamless
- Anti Slip with V-groove grain



Anti-Termite



Durable against
weather



Good for respiration



Nonflammable



Money & Time
saving

Stair case “MEGA Series”

Specification

Type	W*D*H	Weight/Piece (Kg.)	Piece/Pallet (Kg.)
Riser	18 x 120 x 1.6	4.7	75
Tread	27 x 120 x 2.4	10.5	60
	30 x 120 x 2.4	11.7	60
Tread with groove	27 x 120 x 2.4	10.5	60
	30 x 120 x 2.4	11.7	60
Landing with groove	120 x 120 x 2.4	46.7	20

Installation Guide

Installation over Grey concrete

Use tile adhesive for natural stone tile

- The surface must be dry, flat, level and fully cured
- Make sure water absorption of the substate is at normal level.
In case of new render or leveling , the substrate should be fully cured for 7 days or 168 hrs. per 1 cm thickness of adhesive before tilling .
- Longer & safety attached the stair with wing screw (Pilot hole done by drilling) at the edge of stair Space form the corner 25 mm.
- Hide screw head with acrylic filler

Installation over steel frame

Add Steel or steel frame along the center under stair case

- Steel thickness 23-32 mm.
- Frame place every 400*400 mm.
- Finished coating steel surface before attach the stair
- Attached the stair with wing screw (Pilot hole done by drilling) at the edge of stair Space form the corner 25 mm.
- Hide screw head with acrylic filler

Coating with Fiber Cement Color

- The surface must be dry, flat, level and fully cured
Varnish with Primer paint 1 layer
- Paint with 100% Transparent acrylics for 2-3 layers
to get timber-like surface by brush



* All content, desing,and layout are Copyright © 2017, SCG Cement-Building Materials ALL Right s Reserved, Reproduction in whole or part in any form or medium without specific written permission is prohibited.



Available at leading construction stores
SCG Contact Center 02-586-2222
Email : contact@scg.co.th, www.scgbuildingmaterials.com