

THE TRADITION CONTINUES...

2	<i>Christina Ross became SDSU's second All-American when she was named a second-team selection by Easton-Bell Sports in 2008. Current senior Erin Floros was a first-team pick in 2006.</i>	21	<i>SDSU has had 21 NFCA All-West Region honorees, including Christina Ross' second-team selection a year ago.</i>
2	<i>The Aztecs have played in two NCAA Regional championship games in four tournament appearances, including the Los Angeles Regional in 2006.</i>	29	<i>Twenty-nine Aztecs have been named conference player of the week (17 in MWC, 12 in WAC).</i>
3	<i>In 2008, Kathy Van Wyk won her third Mountain West Conference Coach of the Year award.</i>	43	<i>SDSU has had 43 Mountain West Conference Pitcher of the Week winners since 2000, the most by any school in the league.</i>
3	<i>Three Aztecs have been named the Mountain West Conference Freshman of the Year in the last seven seasons.</i>	47	<i>San Diego State has had 47 student-athletes earn conference all-academic honors in their respective conference. Katy Erickson, Erin Floros, Brittany Knudsen and Stephanie Quichocho-Rosario were each named to the MWC all-academic squad in 2008.</i>
4	<i>SDSU has won four Mountain West Conference championships in the last seven campaigns.</i>	54	<i>SDSU has had 54 athletes receive all-conference accolades, including four last year.</i>
4	<i>The Aztecs have played in the NCAA tournament four times in the past eight seasons.</i>	808	<i>The Aztecs have won 808 games in the program's 33 years.</i>
6	<i>An SDSU player has been named the Mountain West Conference Pitcher of the Year six times in the past eight years.</i>	.621	<i>The Aztecs have won 62.1 percent of their Mountain West Conference games in the league's nine-year history.</i>
7	<i>The Aztecs have logged seven NCAA tournament victories.</i>	.625	<i>San Diego State has a .625 winning percentage the last eight years.</i>
11	<i>Last year's Aztecs set 11 school records, including most wins (44), runs (243), walks (169) and pitching strikeouts (394).</i>	.721	<i>The 2008 squad had a school-best .721 winning percentage.</i>

INTRODUCTION
 THIS IS SDSU
 COACHES/STAFF
 THE AZTECS
 REVIEW
 HISTORY

2009 QUICK FACTS

SAN DIEGO STATE UNIVERSITY QUICK FACTS

Location	San Diego, Calif.
Founded	1897
Enrollment	35,887
President	Dr. Stephen Weber
Director of Athletics	Jeff Schemmel
Senior Woman Administrator	Jenny Bramer
Nickname	Aztecs
Colors	Scarlet and Black
Conference	Mountain West
Home Field (Capacity)	SDSU Softball Stadium (1,000)

SAN DIEGO STATE SOFTBALL QUICK FACTS

Head Coach	Kathy Van Wyk (CS Fullerton, 1983)
Record at SDSU	408-293-1 (.582), 12 seasons
Overall Record	Same
Softball Office Phone	(619) 594-1850
Assistant Coach	Stacey Nuvevan (UCLA, 2002)
Assistant Coach	Steve Miner (San Diego State, 1970)
Director of Operations	Miranda Bleisch (Point Loma Nazarene, 2004)
Volunteer Coach	Forrest Levinson
Athletic Trainer	Dave Smith
First Year of Division I Softball	1977
All-time Record	.808-862-6 (.484), 33rd season
NCAA Division I Tournament Appearances	Four (2001, 2003, 2006, 2008)
2008 Record	44-17 (.721)
2008 MWC Record (Finish)	15-5 (First)
Letterwinners Returning/Lost	12/4
Starters Returning/Lost	8/2
Pitchers Returning/Lost	2/1
Newcomers	6
Top Returners	Monica Alnes (RS-Jr., 1B, 2006 All-MWC)
	Erin Floros (Sr., C, 2006 All-American, Two-Time All-MWC)
	Brittany Knudsen (Jr., OF, 2007 All-West 2nd Team, All-MWC)
	Lindsey Marquez (Jr., 2B, 2007 All-MWC)
Key Losses	Megan McDonald (2008 All-MWC)
	Christina Ross (2008 All-American, Two-Time All-Region & MWC Pitcher of the Year)
	Tamani Wells (2008 All-MWC)

SAN DIEGO STATE MEDIA RELATIONS

Assistant Athletic Director, Media Relations	Mike May
Assistant Media Relations Directors	Peggy Curtin
	Dave Kuhn
	Jamie McConeghy (Softball Contact)
	Darin Wong
McConeghy Office Phone	(619) 594-4348
McConeghy Cell Phone	(607) 435-5577
McConeghy E-mail	jmcconeg@mail.sdsu.edu
Media Relations Assistants	Victoria Valencia
	Taylor Weirick
Media Relations Phone	(619) 594-5547
Media Relations Fax	(619) 582-6541
SDSU Athletics Website	www.goaztecs.com
Mailing Address	SDSU Media Relations
	3014 Aztec Athletics Center
	5302 55th Street
	San Diego, CA 92182

MEDIA INFORMATION

Requests for interviews and credentials should be directed to Jamie McConeghy in the San Diego State media relations office. Interviews are generally available following practice sessions, but must be arranged 24 hours in advance by contacting Jamie McConeghy at (619) 594-4348 or at jmcconeg@mail.sdsu.edu. On game days, Aztec players and coaches will only be available postgame following a 10-minute cooling off period.

MEDIA GUIDE CREDITS

The 2009 San Diego State softball media guide is a publication of the San Diego State athletic media relations office. The publication was written, edited and designed by assistant media relations director Jamie McConeghy. Assistance was provided by Christina Ross. Additional editing provided by Rachel Richards, Kathy Van Wyk and Mike May. Cover designed by Jamie McConeghy. Photography by Stan Liu, Jamie McConeghy and DD Oberhelman. Printing by Atlas Lithograph. On cover (left to right): seniors Christine Kulick, Tonye McCorkle, Dani Sidoti, Erin Floros and Taryin Casillas in front of Museum of Man and California Tower in historic Balboa Park.

TABLE OF CONTENTS

INTRODUCTION	
Table of Contents/Quick Facts	2
Schedule	3
Roster/Pronunciation	4
Broadcast Roster	5
Outlook	6-7
Opponents	8-9
Campbell-Cartier Classic	10
Other Aztec Tournaments	11
SDSU Softball Stadium	12
THIS IS SAN DIEGO STATE	
San Diego State University	14-15
Fantastic Facilities	16-17
Aztec Leadership	18
Aztec Academics	19
Aztec Culture	20
This is San Diego	21
Donation Information and Recognition	22
COACHING STAFF	
Head Coach Kathy Van Wyk	24-25
Assistant Coach Stacey Nuvevan	26
Assistant Coach Steve Miner	26
Director of Operations Miranda Bleisch	27
Support Staff	27
MEET THE AZTECS	
Taryin Casillas	30-31
Erin Floros	32-33
Christine Kulick	34-35
Tonye McCorkle	36-37
Dani Sidoti	38-39
Monica Alnes	40-41
Katy Erickson	42
Sydney Fleming	43
Brittany Knudsen	44-45
Lindsey Marquez	46-47
Stefanie Quichocho-Rosario	48
Samantha Beasley	49
Jessica Camello	50
Brooke Petty	50
Taylor Sutton	51
Traci Wolf	51
Jen Wisneski	52
Roshana Lavery	53
Bailey Micetich	53
Felicia Reifschneider	53
Ashley Rose	54
Nicole Trimbo	54
Team Photo	54
2008 REVIEW	
Notes	56
Results	57
Statistics	58
Miscellaneous Statistics	59-60
Mountain West Conference Standings/Awards	61
Mountain West Conference Leaders	62
HISTORY AND RECORDS	
NCAA Tournament History	64
Letterwinners	65
Awards and Honors	66
Miscellaneous Records	67
Career Records	68-70
Season Records	71-73
Coaching Records	74
All-Time Results	74-79
Records vs. Opponents	79
Mountain West Conference	80

INTRODUCTION

THIS IS SDSU

COACHES/STAFF

THE AZTECS

REVIEW

HISTORY

2009 SCHEDULE

Date	Day	Opponent	Site	Time
Feb. 6	Friday	~ vs. Indiana	Los Angeles, Calif.	9 a.m. PT
Feb. 6	Friday	~ vs. Cal Poly	Los Angeles, Calif.	11:30 a.m. PT
Feb. 7	Saturday	~ vs. Pacific	Los Angeles, Calif.	9 a.m. PT
Feb. 7	Saturday	~ vs. Cal Poly	Los Angeles, Calif.	11:30 a.m. PT
Feb. 8	Sunday	~ at UCLA	Los Angeles, Calif.	2 p.m. PT
Feb. 12	Thursday	! Utah State	SDSU Softball Stadium	7 p.m. PT
Feb. 13	Friday	! Stanford	SDSU Softball Stadium	7 p.m. PT
Feb. 14	Saturday	! UC Santa Barbara	SDSU Softball Stadium	4:30 p.m. PT
Feb. 14	Saturday	! Washington	SDSU Softball Stadium	7 p.m. PT
Feb. 15	Sunday	! Long Beach State	SDSU Softball Stadium	2 p.m. PT
Feb. 20	Friday	@ vs. Kentucky	Lafayette, La.	11 a.m. CT
Feb. 20	Friday	@ vs. Connecticut	Lafayette, La.	4:30 p.m. CT
Feb. 21	Saturday	@ at Louisiana-Lafayette	Lafayette, La.	Noon CT
Feb. 22	Sunday	@ at Louisiana-Lafayette	Lafayette, La.	11:30 a.m. CT
Feb. 25	Wednesday	San Diego	SDSU Softball Stadium	6 p.m. PT
Feb. 27	Friday	# Oregon	SDSU Softball Stadium	7 p.m. PT
Feb. 28	Saturday	# Missouri	SDSU Softball Stadium	4:30 p.m. PT
Feb. 28	Saturday	# UCLA	SDSU Softball Stadium	7 p.m. PT
March 1	Sunday	# Santa Clara	SDSU Softball Stadium	4:30 p.m. PT
March 6	Friday	\$ vs. Illinois State	Palo Alto, Calif.	9 a.m. PT
March 6	Friday	\$ vs. Vermont	Palo Alto, Calif.	11:15 a.m. PT
March 7	Saturday	\$ vs. UC Davis	Palo Alto, Calif.	9 a.m. PT
March 7	Saturday	\$ at Stanford	Palo Alto, Calif.	1:30 p.m. PT
March 8	Sunday	\$ vs. Penn State	Palo Alto, Calif.	9 a.m. PT
March 11	Wednesday	South Dakota State	SDSU Softball Stadium	6 p.m. PT
March 12	Thursday	% Miami (OH)	SDSU Softball Stadium	7 p.m. PT
March 13	Friday	% Oklahoma State	SDSU Softball Stadium	4:30 p.m. PT
March 13	Friday	% Northern Colorado	SDSU Softball Stadium	7 p.m. PT
March 14	Saturday	% New Mexico State	SDSU Softball Stadium	2 p.m. PT
March 14	Saturday	% Iowa State	SDSU Softball Stadium	4:30 p.m. PT
March 15	Sunday	% Cal State Northridge	SDSU Softball Stadium	2 p.m. PT
March 17	Tuesday	Texas Tech	SDSU Softball Stadium	6 p.m. PT
March 20	Friday	Cal State Fullerton	SDSU Softball Stadium	6 p.m. PT
March 21	Saturday	at Cal State Fullerton	Fullerton, Calif.	1 p.m. PT
April 1	Wednesday	at San Diego	San Diego, Calif.	6 p.m. PT
April 4	Saturday	at UNLV*	Las Vegas, Nev.	6 p.m. PT
April 5	Sunday	at UNLV*	Las Vegas, Nev.	1 p.m. PT
April 8	Wednesday	UTEP	SDSU Softball Stadium	6 p.m. PT
April 10	Friday	Colorado State*	SDSU Softball Stadium	6 p.m. PT
April 11	Saturday	New Mexico*	SDSU Softball Stadium	6 p.m. PT
April 12	Sunday	New Mexico*	SDSU Softball Stadium	1 p.m. PT
April 16	Thursday	at Brigham Young*	Provo, Utah	7 p.m. MT
April 17	Friday	at Utah*	Salt Lake City, Utah	4 p.m. MT
April 18	Saturday	at Utah*	Salt Lake City, Utah	1 p.m. MT
April 24	Friday	at New Mexico*	Albuquerque, N.M.	7 p.m. MT
April 25	Saturday	at Colorado State*	Fort Collins, Colo.	3 p.m. MT
April 26	Sunday	at Colorado State*	Fort Collins, Colo.	1 p.m. MT
April 30	Thursday	Utah*	SDSU Softball Stadium	6 p.m. PT
May 1	Friday	Brigham Young*	SDSU Softball Stadium	6 p.m. PT
May 2	Saturday	Brigham Young*	SDSU Softball Stadium	1 p.m. PT
May 9	Saturday	UNLV*	SDSU Softball Stadium	1 p.m. PT
May 15-17	NCAA Regionals		TBA	TBA

~ Stacy Winsberg Memorial Tournament (Los Angeles, Calif.)

! Campbell/Cartier Classic (San Diego State University)

@ Fifth Annual Mardi Gras Invitational (Lafayette, La.)

San Diego Classic I (San Diego State University)

\$ Stanford Louisville Slugger Classic (Palo Alto, Calif.)

% San Diego Classic II (San Diego State University)

* Mountain West Conference Game

2009 ROSTER

NUMERICAL

NO.	NAME	POS.	HT.	B/T	YR	EXP	HOMETOWN (LAST SCHOOL)
00	Stefanie Quichocho-Rosario	OF	5-3	L/R	Jr.	2L	San Diego, Calif. (Morse HS)
2	Tonye McCorkle	OF	5-4	L/R	Sr.	1L	Santa Ana Heights, Calif. (Syracuse Univ.)
3	Taylor Sutton	2B	5-5	L/R	So.	SQ	Gilroy, Calif. (Live Oak HS)
4	Felicia Reifschneider	UT	5-3	S/R	Fr.	HS	San Diego, Calif. (Morse HS)
6	Roshana Lavery	OF	5-4	L/R	Fr.	HS	San Diego, Calif. (Mission Bay HS)
7	Samantha Beasley	P	5-6	L/R	So.	1L	San Diego, Calif. (Steele Canyon HS)
8	Dani Sidoti (C)	1B/OF	5-10	L/R	RS-Sr.	3L	Tucson, Ariz. (Salpointe Catholic HS)
9	Monica Alnes (C)	1B	5-7	R/R	RS-Jr.	2L	Rancho Palos Verdes, Calif. (Palos Verdes Peninsula HS)
10	Traci Wolf	C/OF	5-6	S/R	So.	TR	Lancaster, Calif. (Antelope Valley College)
11	Jessica Camello	UT	5-6	L/R	So.	SQ	Temecula, Calif. (Temecula Valley HS)
14	Taryin Casillas	3B/DP	5-7	R/R	RS-Sr.	3L	San Diego, Calif. (Grossmont HS)
15	Katy Erickson	OF	5-5	L/R	Jr.	2L	Tustin, Calif. (Foothill HS)
16	Bailey Micetich	P	5-9	R/R	Fr.	HS	Woodland, Calif. (Pioneer HS)
18	Christine Kulick	3B	5-3	L/R	Sr.	1L	Aliso Viejo, Calif. (Iowa State Univ.)
19	Lindsey Marquez	2B	5-1	L/R	Jr.	2L	Tustin, Calif. (Lutheran HS)
20	Ashley Rose	3B	5-9	R/R	Fr.	HS	Antioch, Calif. (Carondelet HS)
22	Sydney Fleming	C	5-8	R/R	RS-Jr.	SQ	Oakland, Calif. (Bishop O'Dowd HS)
23	Brooke Petty	P	5-5	R/R	So.	1L	San Diego, Calif. (Vista HS)
24	Jen Wisneski	SS	5-2	R/R	So.	1L	Riverside, Calif. (Jurupa Valley HS)
39	Brittany Knudsen	OF	5-5	L/R	Jr.	2L	San Diego, Calif. (Escondido HS)
44	Erin Floros (C)	C/IF	5-7	R/R	Sr.	3L	San Diego, Calif. (Mt. Carmel HS)
RS	Nicole Trimbo	OF	5-8	R/R	Fr.	HS	St. Peter, Minn. (St. Peter HS)

ALPHABETICAL

NO.	NAME	POS.	HT.	B/T	YR	EXP	HOMETOWN (LAST SCHOOL)
9	Monica Alnes (C)	1B	5-7	R/R	RS-Jr.	2L	Rancho Palos Verdes, Calif. (Palos Verdes Peninsula HS)
7	Samantha Beasley	P	5-6	L/R	So.	1L	San Diego, Calif. (Steele Canyon HS)
11	Jessica Camello	UT	5-6	L/R	So.	SQ	Temecula, Calif. (Temecula Valley HS)
14	Taryin Casillas	3B/DP	5-7	R/R	RS-Sr.	3L	San Diego, Calif. (Grossmont HS)
15	Katy Erickson	OF	5-5	L/R	Jr.	2L	Tustin, Calif. (Foothill HS)
22	Sydney Fleming	C	5-8	R/R	RS-Jr.	SQ	Oakland, Calif. (Bishop O'Dowd HS)
44	Erin Floros (C)	C/IF	5-7	R/R	Sr.	3L	San Diego, Calif. (Mt. Carmel HS)
39	Brittany Knudsen	OF	5-5	L/R	Jr.	2L	San Diego, Calif. (Escondido HS)
18	Christine Kulick	3B	5-3	L/R	Sr.	1L	Aliso Viejo, Calif. (Iowa State Univ.)
6	Roshana Lavery	OF	5-4	L/R	Fr.	HS	San Diego, Calif. (Mission Bay HS)
19	Lindsey Marquez	2B	5-1	L/R	Jr.	2L	Tustin, Calif. (Lutheran HS)
2	Tonye McCorkle	OF	5-4	L/R	Sr.	1L	Santa Ana Heights, Calif. (Syracuse Univ.)
16	Bailey Micetich	P	5-9	R/R	Fr.	HS	Woodland, Calif. (Pioneer HS)
23	Brooke Petty	P	5-5	R/R	So.	1L	San Diego, Calif. (Vista HS)
00	Stefanie Quichocho-Rosario	OF	5-3	L/R	Jr.	2L	San Diego, Calif. (Morse HS)
4	Felicia Reifschneider	UT	5-3	S/R	Fr.	HS	San Diego, Calif. (Morse HS)
20	Ashley Rose	3B	5-9	R/R	Fr.	HS	Antioch, Calif. (Carondelet HS)
8	Dani Sidoti (C)	1B/OF	5-10	L/R	RS-Sr.	3L	Tucson, Ariz. (Salpointe Catholic HS)
3	Taylor Sutton	2B	5-5	L/R	So.	SQ	Gilroy, Calif. (Live Oak HS)
RS	Nicole Trimbo	OF	5-8	R/R	Fr.	HS	St. Peter, Minn. (St. Peter HS)
24	Jen Wisneski	SS	5-2	R/R	So.	1L	Riverside, Calif. (Jurupa Valley HS)
10	Traci Wolf	C/OF	5-6	S/R	So.	TR	Lancaster, Calif. (Antelope Valley College)

C = Captains

HEAD COACH: Kathy Van Wyk (Cal State Fullerton, 1983), 13th season

ASSISTANT COACHES: Stacey Nuveman (UCLA, 2002), first season; Steve Miner (San Diego State, 1970), second season

DIRECTOR OF OPERATIONS: Miranda Bleisch (Point Loma Nazarene, 2004), second season as director of operations/fourth season overall

VOLUNTEER COACH: Forrest Levinson, third season

UNDERGRADUATE COACHES: Megan McDonald, first season; Christina Ross, first season

BY POSITION	BY BATTING STANCE	BY CLASS	BY STATE	PRONUNCIATION
Outfielders (8) Erickson, Knudsen, Lavery, McCorkle, Quichocho-Rosario, Sidoti, Trimbo, Wolf	Right-handed (9) Alnes, Casillas, Fleming, Floros, Micetich, Petty, Rose, Trimbo, Wisneski	Seniors (5) Casillas, Floros, Kulick, McCorkle, Sidoti	California (20) Alnes, Beasley, Camello, Casillas, Erickson, Fleming, Floros, Knudsen, Kulick, Lavery, Marquez, McCorkle, Micetich, Petty, Quichocho-Rosario, Reifschneider, Rose, Sutton, Wisneski, Wolf	Players Monica AlnesALL-ness Samantha BeasleyBEEES-lee Taryin CasillasTAIR-in ca-SEE-es Brittany Knudsenkuh-NOOD-sen Christine KulickQUE-lick Roshana Laveryroh-SHAWNNA LAY-ver-ee Tonye McCorkleTONY Bailey MicetichMISS-a-tich Stefanie Quichocho-RosarioKEY-cho-cho Felicia ReifschneiderREEFE-schnyder Dani SidotiDanny seh-DOE-ee Jen WisneskiWIZ-NESS-key
Infielders (9) Alnes, Casillas, Floros, Kulick, Marquez, Rose, Sidoti, Sutton, Wisneski	Left-handed (11) Beasley, Camello, Erickson, Knudsen, Kulick, Lavery, Marquez, McCorkle, Quichocho-Rosario, Sidoti, Sutton	Juniors (6) Alnes, Erickson, Fleming, Knudsen, Marquez, Quichocho-Rosario	Arizona (1) Sidoti	Coaching Staff Miranda BleischBLY-sch Kathy Van Wykvan WIKE
Catchers (3) Fleming, Floros, Wolf	Switch (2) Reifschneider, Wolf	Sophomores (6) Beasley, Camello, Petty, Sutton, Wisneski, Wolf	Minnesota (1) Trimbo	
Pitchers (5) Beasley, Micetich, Petty		Freshmen (5) Lavery, Micetich, Reifschneider, Rose, Trimbo		
Utility (2) Camello, Reifschneider				

INTRODUCTION

THIS IS SDSU

COACHES/STAFF

THE AZTECS

REVIEW

HISTORY

BROADCAST ROSTER



00 Stefanie Quichocho-Rosario
Jr • OF • 5-3 • L/R
San Diego, Calif.



2 Tonye McCorkle
Sr • OF • 5-4 • L/R
Santa Ana Heights, Calif.



3 Taylor Sutton
So • 2B • 5-5 • L/R
Gilroy, Calif.



4 Felicia Reifschneider
Fr • UT • 5-3 • S/R
San Diego, Calif.



6 Roshana Lavery
Fr • OF • 5-4 • L/R
San Diego, Calif.



7 Samantha Beasley
So • P • 5-6 • L/R
San Diego, Calif.



8 Dani Sidoti
RS-Sr • 1B/OF • 5-10 • L/R
Tucson, Ariz.



9 Monica Alnes
RS-Jr • 1B • 5-7 • R/R
Rancho Palos Verdes, Calif.



10 Traci Wolf
So • C/OF • 5-6 • S/R
Lancaster, Calif.



11 Jessica Camello
So • UT • 5-6 • L/R
Temecula, Calif.



14 Taryin Casillas
RS-Sr • 3B/DP • 5-7 • R/R
San Diego, Calif.



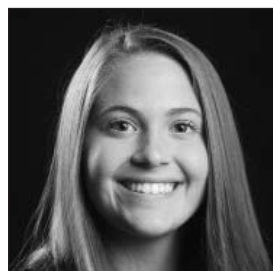
15 Katy Erickson
Jr • OF • 5-5 • L/R
Tustin, Calif.



16 Bailey Micetich
Fr • P • 5-9 • R/R
Woodland, Calif.



18 Christine Kulick
Sr • 3B • 5-3 • L/R
Aliso Viejo, Calif.



20 Ashley Rose
Fr • 3B • 5-9 • R/R
Antioch, Calif.



22 Sydney Fleming
RS-Jr • C • 5-8 • R/R
Oakland, Calif.



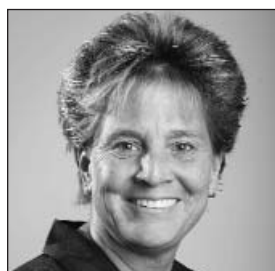
24 Jen Wisneski
So • SS • 5-2 • R/R
Riverside, Calif.



39 Brittany Knudsen
Jr • OF • 5-5 • L/R
San Diego, Calif.



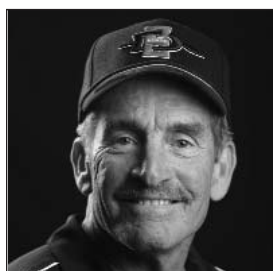
44 Erin Floros
Sr • C/IF • 5-7 • R/R
San Diego, Calif.



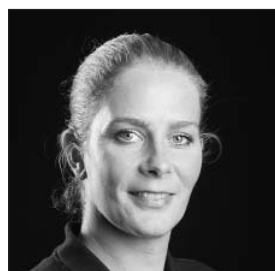
Kathy Van Wyk
Head Coach - 13th Year
CS Fullerton, 1983



Stacey Nuveman
Assistant Coach - First Year
UCLA, 2002



Steve Miner
Assistant Coach - Second Year
San Diego State, 1970



Miranda Bleisch
Dir. of Operations - Fourth Year
Point Loma Nazarene, 2004



Forrest Levinson
Volunteer Assistant Coach -
Third Year

INTRODUCTION

THIS IS SDSU

COACHES/STAFF

THE AZTECS

REVIEW

HISTORY

2009 OUTLOOK

INTRODUCTION

THIS IS SDSU

COACHES/STAFF

THE AZTECS

REVIEW

HISTORY

How does one team rebound from a fifth-place showing of six schools in league play? Easy. You win the conference for the fourth time in seven seasons, advance to another NCAA tournament and finish with the best record in school history against arguably the toughest schedule in the program's 32 years.

That's exactly what the San Diego State softball team did in 2008, finishing 44-17 (.721), including a 15-5 mark in Mountain West Conference play. The Aztecs set or tied 11 school records in their magical season before falling to 16th-seeded and host Fresno State, 2-0, in extra innings in the NCAA tournament.

Thirteenth-year head coach Kathy Van Wyk, however, was hoping for more. *Much* more.

"(2008) was an incredible season," Van Wyk said. "We accomplished huge things and earned a great deal of respect. In the end though, it was disappointing, because I really thought and hoped that we would go farther than we did."

This urge to get better is the reason why optimism is at an all-time high on Montezuma Mesa for SDSU softball.

"It's not good enough anymore to just qualify for (NCAA) Regionals," Van Wyk said. "We want to do better than that. We want to get to the Women's College World Series and ultimately win a national championship."

San Diego State returns eight starters, including senior All-American Erin Floros and five-tool player Britany Knudsen, from last year's squad and a healthy Monica Alnes. Van Wyk will count on these leaders to bring along a young pitching staff and hopefully do something the Aztecs have never done; reach the NCAA tournament in back-to-back seasons.

"Pitching is going to make the difference for us," Van

Wyk said. "We have the talent, but we have to gain that experience and maturity very quickly. The ability is there and it's up to us as a coaching staff to help them grow and see what they are capable of."

Pitchers

After losing arguably the greatest pitcher in program history in Christina Ross, two young pitchers will have a chance to take their turn and become the next big thing.

Sophomore Samantha Beasley returns with the most experience after going 8-2 with a 1.94 ERA in 75 2/3 innings. Beasley showed signs of brilliance in her first collegiate season a year ago with impressive performances against nationally ranked foes Northwestern, Georgia and Michigan, and a victory against Sacramento State in the NCAA Regional. The 2009 Beasley figures to be even better.

"I can't say enough about the growth of Sam Beasley in one year," Van Wyk said. "It's just been phenomenal. She has added new pitches, improved the pitches she already had and really come into her own. I think she understands that the weight of the staff is on her shoulders right now. She seems to relish that position and I'm expecting big things out of her."

Another hurler who Van Wyk will go to early and often is true freshman Bailey Micetich. The hard-throwing Woodland, Calif., native comes to the Mesa after putting up ridiculous numbers in her days at Pioneer High School.

"Bailey has tremendous talent and throws the ball hard," Van Wyk said. "A big key to her success is going to be her changeup, something we've worked very hard on in the fall and spring. I'm excited to see what she can do against the competition."

Sophomore Brooke Petty, who went 6-1 with a 1.72 ERA in 57 innings a year ago, will most likely utilize her redshirt season.

Catchers

One of the strengths this season could be behind the plate, led by Floros, a 2006 All-American and two-time all-league pick.

Floros will return to the backstop this season after playing most of 2008 at first base and missing the majority of 2007 with a torn ACL. With 13 marks in the school's career top-10 list, including a .991 fielding percentage, Floros will help anywhere she is on the field.

"Erin looks very strong and her knee is fully recovered," Van Wyk said. "She provides tremendous leadership and a calm effect on these young pitchers, which will be very important for us this year. We've talked a lot about Erin becoming more of a vocal leader because she has such a huge amount of respect from her teammates and she needs to be the driving force out there. I think she will embrace this challenge."

Redshirt junior Sydney Fleming and sophomore transfer Traci Wolf figure to give Floros some time off behind the plate.

Fleming played in seven games in 2008, batting .286 while posting a perfect fielding percentage in seven chances.

"Sydney is the kind of player every coach wants on their team," Van Wyk said. "She is one of the hardest workers and possesses tremendous heart, attitude and leadership. She is swinging the bat better and will get

her opportunities."

Wolf, a junior academically, but sophomore athletically, comes to SDSU after spending one season in the junior college ranks at Antelope Valley College, where she led the team to a perfect 14-0 season in league play and 40-10 record overall. The Foothill Conference Player of the Year batted .434 (59-for-136) with a .481 on base percentage, while leading the Marauders in runs (48), triples (11), walks (17) and stolen bases (31).

"Traci just came (to SDSU) in January and is still learning the system and it will be a bit of an adjustment period for her," Van Wyk said. "We'll try to get her some early innings to settle her down a bit. She is very athletic and runs well."

Infielders

After committing an uncharacteristic 98 errors in 2007, the Aztec infield shored up the defense with a terrific 2008 campaign. Led by highlight plays by shortstop Jen Wisneski and second baseman Lindsey Marquez, a fundamentally strong Christine Kulick and improving Dani Sidoti, the defense made just 61 miscues in five more games.

The infield instantly gets better, too, with the addition of Alnes, who redshirted last year with a back injury. Alnes, who excelled at first base in her freshman season before moving to shortstop in 2007, has the 10th-best fielding percentage in school history. Ranked among the career top-10 list in nine offensive categories will certainly help as well.

"Right now Monica is leading the way at first base," Van Wyk said. "We're real excited to get her back and get her going. She is looking good and starting to get back toward her old self in terms of swinging the bat. She's always been a great leader and she'll help Erin (Floros) in terms of leading the infield."

Sidoti, a redshirt senior, could also see time at first base after improving there throughout last year. An outfielder her first two seasons, Sidoti committed just four errors in 159 chances (.975) at her new position in 2008.

"Dani is doing a great job, especially since it really is such a new position for her," Van Wyk said. "She is swinging the bat very well, too, so we'll need to find a way to get her in the lineup. She's a fifth-year senior and you can't measure the amount that extra year gives in terms of maturity, experience and self-confidence."

Freshman Ashley Rose could also see time at first base after a good fall season.

"Ashley is really swinging a hot bat and she is another one that we may need to find a way to get her bat in the lineup," Van Wyk said. "Whether she plays third, first or DH's, we'll try to get her in there."

With all-conference pick Lindsey Marquez redshirted because of a shoulder injury, it appears second base will go to sophomore Taylor Sutton. Sutton played in 15 games in 2008 with eight starts to her credit. She was perfect in the field in 30 chances and had six hits in 25 at-bats.

"Taylor has great instincts and that is so important for second basemen," Van Wyk said. "She knows the position, it is probably the most difficult one on the field, and she does a great job of playing well against the slappers. Being just a sophomore, she has limited experience but will have to grow up real fast."

A wildcard who could challenge Sutton at second is



Sophomore Samantha Beasley



Sophomore Jen Wisneski

freshman Felicia Reifschneider, who played at Morse High School along with current junior Stefanie Quichocho-Rosario.

"Felicia has the natural talent – she is fast, she is explosive, she can do a lot of things on the bases," Van Wyk said. "When she learns the position better and the instincts that come with it, she will become a very good second baseman."

Sophomore Jen Wisneski is most likely the one lock on the infield after her brilliant freshman campaign that saw her start 60 of the team's 61 games. She boasts a great range with a strong arm and appears to have found her offensive stroke in the fall season. The only concern, however, is an arm injury that came up in mid-January.

"Jen is struggling right now with some arm problems but she is going to suck it up through the season and try to make it best as she can," Van Wyk said. "She has really settled down and started to harness her abilities, which are amazing. She is probably the hardest worker on the field and there is no in between for her, it's all or nothing."

An x-factor at short could be sophomore Jessica Camello. Camello, who showed signs of brilliance at the plate, will give Wisneski some rest early on in the season.

"(Camello) is another one who has blossomed under (assistant) coach (Stacey) Nuveman's offensive help," Van Wyk said. "It is going to be interesting, because if all this potential comes out, it's going to put some pressure on (the coaching staff) to put the right lineup out there. She is starting to gain some confidence."

Van Wyk could go a lot of different ways at third base, from two-year starter Kulick to redshirt senior and power threat Taryin Casillas to first-year player Rose.

"There is a little bit of a logjam on third base and I'm not quite sure where to go," Van Wyk said. "Christine Kulick obviously has the leg up to start at third base. She has done really well for us and is a spark plug. She is quick and does a nice job defensively."

Last year, Kulick earned the start at the hot corner 43 times, while setting career bests in many offensive categories.

"It will probably come down to who is hitting at the moment," Van Wyk said. "And that is where both Taryin and Ashley will throw a wrench in the works. Both have played well defensively and both are swinging the bat very well."

Casillas returns to the Aztecs in 2009 looking to regain her form from her freshman and sophomore seasons of 2005 and 2006, respectively. In her career, Casillas is ranked eighth in doubles (22) and tied for ninth in home runs (7).

"Taryin is probably back to about 75 percent of her old self," Van Wyk said. "Within the next month she'll be close to 100 percent, so I'm excited to see what she can do."

Rose might also see time at third, but much will depend on who is playing the best.

"Ashley will benefit from a year of learning from these two," Van Wyk said. "She'll get some playing time swinging the bat, but maybe not as much defensively."

Outfielders

Two of the three starting outfielders from last season return in Tonye McCorkle and Knudsen and each probably have locked down starting spots.

McCorkle, who played with Syracuse from 2006-07, made a huge impact last season by batting .310 with a 35 RBI, 37 runs and 12 stolen bases. The thought is that she will continue to swing the hot bat heading into her final season.

"We need (Tonye's) bat in the lineup," Van Wyk said. "She is probably our best pure-hitter and with that she adds great speed on the basepaths."

Moving back to center will be Knudsen. Knudsen has done it all in her two seasons at SDSU and is already ranked among the career top-10 in 10 categories. Last year, Knudsen led the squad in runs (39), doubles (10), total bases (80), slugging percentage (.432) and walks (27). She has also earned the acclaim of coach Van Wyk.

"Brittany is probably the best pure outfielder that I have ever had in my 25 years of coaching," Van Wyk said. "Technique wise she is just so solid, her throws are on the money and she is always in the right position. She has really grabbed on to what (assistant coach) Stacey (Nuveman) has been doing offensively and I'm excited to see her blossom a little bit more this year."

With two positions locked up, the big question remains who is going to replace three-year starter Tamani Wells?

"Right field is probably the only real open position right now," Van Wyk said. "It could be Traci (Wolf), Katy (Erickson), Dani (Sidoti) or even (Stefanie) Quichocho-Rosario."

Erickson is coming off a solid fall that has been dampened by an arm injury early in spring camp. Last season she was mainly used as a pinch-runner, but did have two hits in her six at-bats.

"She had a great fall hitting and playing defense," Van Wyk said. "The question marks are her arm, which has been hurting, and her ability to handle the pressure."

Quichocho-Rosario, who reached on an infield single in her only plate appearance a year ago, has impressed the coaching staff with a strong fall. Already a threat to score with her speed, Quichocho-Rosario batted over .600 in eight games in the fall, the highest mark on the team.

"It might be that Stefanie earns a spot for what she has done offensively," Van Wyk said. "It would be nice to

get her on four times a game instead of just once. She's working hard to improve her defensive skills. She is definitely going to get her opportunities because she has earned it."

Freshmen Roshana Lavery and Nicole Trimbo will most likely redshirt.

Schedule

Van Wyk has once again put together a top-notch schedule that will challenge the Aztecs throughout the season.

San Diego State will play 51 regular season games (weather permitting), highlighted by two games each against 2008 Women's College World Series opponents UCLA and Louisiana-Lafayette. The Aztecs will once again play host to three tournaments, including the 19th annual Campbell/Cartier Classic.

Of its 35 opponents, nine will be against teams who made the 2008 NCAA tournament over a span of 15 games. In addition, SDSU will play five top-25 RPI teams from a year ago.

"We've got some very good teams in the mix," Van Wyk said. "Looking at last year's RPI, about 50 percent of our games are against teams between 50 and 100, and another 25 percent are top 50, which is good."

The Aztecs also play Stanford twice, as well as Pac-10 foes Oregon and Washington, and Big 12 schools Missouri, Oklahoma State and Texas Tech. SDSU will also meet Big West programs Cal Poly (twice), UC Santa Barbara, Long Beach State, UC Davis, Cal State Northridge and Cal State Fullerton (twice).

"It's going to be tough," Van Wyk said. "More than anything we don't fly under the radar now, teams take us serious."

SDSU begins its MWC slate April 4 at UNLV. The Aztecs will play each of the five teams in the conference three times to round out regular season play.

"It's all a question mark at this point in the season and we are all anxious to get out there the first few weeks and see what the other teams are doing," Van Wyk said. "(MWC play) is going to be a dogfight, like it is every year."



Outfielders Tonye McCorkle, Brittany Knudsen and Katy Erickson

2009 OPPONENTS

* All times local to site

INTRODUCTION

THIS IS SDSU

COACHES/STAFF

THE AZTECS

REVIEW

HISTORY

INDIANA

Feb. 6 - 9 a.m.
Los Angeles, Calif.

Location.....Bloomington, Ind.
Nickname.....Hoosiers
Colors.....Cream & Crimson
Conference.....Big Ten
Head Coach.....Michelle Gardner
Alma Mater.....Michigan '89
Career Record/Seasons.....187-176/6
2008 Record.....16-35
Big Ten Record/Place.....6-4/10th
Starters R/L.....10/4
Newcomers.....5
SID.....Nate Wiechler
Phone.....(812) 856-0146
Fax.....(812) 855-9401
E-mail.....nwiecher@indiana.edu

CAL POLY

Feb. 6 - 9 a.m., Los Angeles, CA
Feb. 7 - 9 a.m., Los Angeles, CA

Location.....San Luis Obispo, Calif.
Nickname.....Mustangs
Colors.....Green, Copper & Gold
Conference.....Big West
Head Coach.....Jenny Condon
Alma Mater.....Iowa State '91
Career Record/Seasons.....125-78/4
2008 Record.....24-22
Big West Record/Place.....12-9/T-3rd
Starters R/L.....10/4
Newcomers.....4
SID.....Chris Giovannetti
Phone.....(805) 756-7513
Fax.....(805) 756-2650
E-mail.....cgiovann@calpoly.edu

PACIFIC

Feb. 7 - 9 a.m.
Los Angeles, Calif.

Location.....Stockton, Calif.
Nickname.....Tigers
Colors.....Orange & Black
Conference.....Big West
Head Coach.....Brian Kolze
Alma Mater.....CS Northridge '84
Career Record/Seasons.....501-402-1/17
2008 Record.....25-34
Big West Record/Place.....7-14/7th
Starters R/L.....8/2
Newcomers.....N/A
SID.....Ben Laskey
Phone.....(209) 946-2730
Fax.....(209) 946-2757
E-mail.....b_laskey@pacific.edu

UCLA

Feb. 8 - 2 p.m., Los Angeles, CA
Feb. 28 - 7 p.m., SDSU

Location.....Los Angeles, Calif.
Nickname.....Bruins
Colors.....Blue & Gold
Conference.....Pac-10
Head Coach.....Kelly Inouye-Perez
Alma Mater.....UCLA '93
Career Record/Seasons.....88-27/3
2008 Record.....51-9
Pac-10 Record/Place.....17-4/2nd
Starters R/L.....11/2
Newcomers.....4
SID.....James Ybiernas
Phone.....(310) 206-8123
Fax.....(310) 825-8664
E-mail.....jamesy@athletics.ucla.edu

UTAH STATE

Feb. 12 - 7 p.m.
SDSU Softball Stadium

Location.....Logan, Utah
Nickname.....Aggies
Colors.....Navy Blue & White
Conference.....WAC
Head Coach.....Candi Letts
Alma Mater.....Creighton '83
Career Record/Seasons.....344-420-1/14
2008 Record.....14-34
WAC Record/Place.....2-15/7th
Starters R/L.....6/3
Newcomers.....6
SID.....Kara Irving
Phone.....(435) 797-1361
Fax.....(435) 797-2615
E-mail.....kara.irving@usu.edu

STANFORD

Feb. 13 - 7 p.m., SDSU
March 7 - 1:30 p.m., Palo Alto, Ca.

Location.....Stanford, Calif.
Nickname.....Cardinal
Colors.....Cardinal & White
Conference.....Pac-10
Head Coach.....John Rittman
Alma Mater.....New Mexico State '86
Career Record/Seasons.....514-247-3/12
2008 Record.....49-15
Pac-10 Record/Place.....11-10/4th
Starters R/L.....7/5
Newcomers.....6
SID.....Kendall Johnson
Phone.....(650) 723-0996
Fax.....(650) 725-2357
E-mail.....kendallj@stanford.edu

UC SANTA BARBARA

Feb. 14 - 4:30 p.m.
SDSU Softball Stadium

Location.....Santa Barbara, Calif.
Nickname.....Gauchos
Colors.....Blue & Gold
Conference.....Big West
Head Coach.....Brie Galicinao
Alma Mater.....Princeton '02
Career Record/Seasons.....30-24/1
2008 Record.....30-24
Big West Record/Place.....13-8/2nd
Starters R/L.....6/3
Newcomers.....7
SID.....Lisa Skvarla
Phone.....(805) 893-8603
Fax.....(805) 893-4537
E-mail.....lisa.skvarla@athletics.ucsb.edu

WASHINGTON

Feb. 14 - 7 p.m.
SDSU Softball Stadium

Location.....Seattle, Wash.
Nickname.....Huskies
Colors.....Purple & Gold
Conference.....Pac-10
Head Coach.....Heather Tarr
Alma Mater.....Washington '97
Career Record/Seasons.....142-91/4
2008 Record.....30-25-1
Pac-10 Record/Place.....7-14/6th
Starters R/L.....7/2
Newcomers.....5
SID.....Rosie Leutzinger
Phone.....(206) 685-3119
Fax.....(206) 543-5000
E-mail.....rleutzinger@ca.washington.edu

LONG BEACH STATE

Feb. 15 - 2 p.m.
SDSU Softball Stadium

Location.....Long Beach, Calif.
Nickname.....49ers
Colors.....Black & Gold
Conference.....Big West
Head Coach.....Kim Sowder
Alma Mater.....Long Beach State '91
Career Record/Seasons.....68-42/2
2008 Record.....40-17
Big West Record/Place.....15-6/1st
Starters R/L.....8/4
Newcomers.....7
SID.....Andrea Ohta
Phone.....(562) 985-8569
Fax.....(562) 985-1549
E-mail.....aotha@csulb.edu

KENTUCKY

Feb. 20 - 11 a.m.
Lafayette, La.

Location.....Lexington, Ky.
Nickname.....Wildcats
Colors.....Blue & White
Conference.....SEC
Head Coach.....Rachel Lawson
Alma Mater.....UMass '94
Career Record/Seasons.....109-121/4
2008 Record.....17-37
SEC Record/Place.....3-25/11th
Starters R/L.....8/3
Newcomers.....10
SID.....Deb Moore
Phone.....(859) 257-8506
Fax.....(859) 323-4310
E-mail.....deb.moore@uky.edu

CONNECTICUT

Feb. 20 - 4:30 p.m.
Lafayette, La.

Location.....Storrs, Conn.
Nickname.....Huskies
Colors.....Blue & White
Conference.....Big East
Head Coach.....Karen Mullins
Alma Mater.....UConn '79
Career Record/Seasons.....733-462-5/25
2008 Record.....28-22
Big East Record/Place.....14-7/3rd
Starters R/L.....N/A
Newcomers.....5
SID.....Betsy Devine
Phone.....(860) 486-1498
Fax.....(860) 486-5085
E-mail.....elizabeth.devine@uconn.edu

LA.-LAFAYETTE

Feb. 21 - Noon, Lafayette, La.
Feb. 22 - 11:30 a.m., Lafayette, La.

Location.....Lafayette, La.
Nickname.....Ragin' Cajuns
Colors.....Vermillion & White
Conference.....Sun Belt
Co-Head Coaches.....Stefni and Michael Lotief
Career Record/Seasons.....407-97/9
2008 Record.....52-15
SBC Record/Place.....19-3/1st
Starters R/L.....12/3
Newcomers.....8
SID.....Chris Whitehead
Phone.....(337) 482-6329
Fax.....(337) 482-6529
E-mail.....whitehead@louisiana.edu

SAN DIEGO

Feb. 25 - 6 p.m., SDSU
April 1 - 6 p.m., San Diego, Calif.

Location.....San Diego, Calif.
Nickname.....Toreros
Colors.....Torero Blue, Navy & White
Conference.....Pacific Coast
Head Coach.....Melissa McElvain
Alma Mater.....Oklahoma State '99
Career Record/Seasons.....120-225/7
2008 Record.....16-40
Pacific Coast Record.....3-17
Starters R/L.....9/3
Newcomers.....N/A
SID.....Ryan McCann
Phone.....(619) 260-6900
Fax.....(619) 260-2990
E-mail.....rmccann@sandiego.edu

OREGON

Feb. 27 - 7 p.m.
SDSU Softball Stadium

Location.....Eugene, Ore.
Nickname.....Ducks
Colors.....Green & Yellow
Conference.....Pac-10
Head Coach.....Kathy Arendsen
Alma Mater.....Chico State '80
Career Record/Seasons.....218-142/7
2008 Record.....35-29
Pac-10 Record/Place.....5-16/8th
Starters R/L.....9/5
Newcomers.....5
SID.....Geoff Thurner
Phone.....(541) 346-2250
Fax.....(541) 346-5449
E-mail.....gthurner@uoregon.edu

MISSOURI

Feb. 28 - 4:30 p.m.
SDSU Softball Stadium

Location.....Columbia, Mo.
Nickname.....Tigers
Colors.....Old Gold & Black
Conference.....Big 12
Head Coach.....Ehren Earleywine
Alma Mater.....Westminster '94
Career Record/Seasons.....230-96/5
2008 Record.....47-17
Big 12 Record/Place.....11-6/3rd
Starters R/L.....N/A
Newcomers.....N/A
SID.....Emily Gatewood Murray
Phone.....(573) 884-8519
Fax.....N/A
E-mail.....gatewoode@missouri.edu

SANTA CLARA

March 1 - 4:30 p.m.
SDSU Softball Stadium

Location.....Santa Clara, Calif.
Nickname.....Broncos
Colors.....Red & White
Conference.....Pacific Coast
Head Coach.....Lisa Fisher
Alma Mater.....Fresno State '94
Career Record/Seasons.....9-51/1
2008 Record.....9-51
PCSC Record/Place.....5-15/5th
Starters R/L.....5/4
Newcomers.....7
SID.....Diana Chamorro
Phone.....(408) 554-4670
Fax.....(408) 554-6942
E-mail.....dchamorro@scu.edu

ILLINOIS STATE

March 6 - 9 a.m.
Palo Alto, Calif.

Location.....Normal, Ill.
Nickname.....Redbirds
Colors.....Red & White
Conference.....Missouri Valley
Head Coach.....Melinda Fischer
Alma Mater.....Illinois State '72
Career Record/Seasons.....752-503-4/23
2008 Record.....28-20
MVC Record/Place.....17-7/2nd
Starters R/L.....10/2
Newcomers.....7
SID.....Keith Trivitt
Phone.....(309) 438-7748
Fax.....(309) 438-5634
E-mail.....katrivi@ilstu.edu

VERMONT

March 6 - 11:15 a.m.
Palo Alto, Calif.

Location.....Burlington, Vt.
Nickname.....Catamounts
Colors.....Green & Gold
Conference.....America East
Head Coach.....Tarah Beyster
Alma Mater.....Oregon State '06
Career Record/Seasons.....0-0/0
2008 Record.....14-27
America East Record/Place.....7-14/7th
Starters R/L.....N/A
Newcomers.....N/A
SID.....Ben Dickie
Phone.....(802) 656-1188
Fax.....(802) 656-8328
E-mail.....bdickie@uvm.edu

UC DAVIS

March 7 - 9 a.m.
Palo Alto, Calif.

Location.....Davis, Calif.
Nickname.....Aggies
Colors.....Yale Blue & Gold
Conference.....Big West
Head Coach.....Karen Yoder
Alma Mater.....CS East Bay '96
Career Record/Seasons.....223-262-3/9
2008 Record.....24-36
Big West Record/Place.....9-12/6th
Starters R/L.....9/3
Newcomers.....4
SID.....John McMahon
Phone.....(530) 752-2663
Fax.....(530) 754-5674
E-mail.....jmcMahon@ucdavis.edu

PENN STATE

March 8 - 9 a.m.
Palo Alto, Calif.

Location.....University Park, Pa.
Nickname.....Nittany Lions
Colors.....Blue & White
Conference.....Big Ten
Head Coach.....Robin Petrini
Alma Mater.....Utah State '83
Career Record/Seasons.....376-298-1/13
2008 Record.....34-22
Big West Record/Place.....6-12/T-9th
Starters R/L.....8/5
Newcomers.....5
SID.....Ashley Smith
Phone.....(814) 865-3613
Fax.....(814) 863-3165
E-mail.....ams57@psu.edu

2009 OPPONENTS

* All times local to site

SOUTH DAKOTA ST.

March 11 - 6 p.m.

SDSU Softball Stadium

Location.....Brookings, S.D.
 Nickname.....Jackrabbits
 Colors.....Yellow & Blue
 Conference.....The Summit League
 Head Coach.....Joanna Lane
 Alma Mater.....Georgetown (Ky.) '02
 Career Record/Seasons.....17-27/1
 2008 Record.....17-27
 Summit League Record.....9-9
 Starters R/L.....7/4
 Newcomers.....N/A
 SID.....Ryan Sweeter
 Phone.....(605) 688-4822
 Fax.....(605)
 E-mail.....rwan.sweeter@sdstate.edu

MIAMI (OH)

March 12 - 7 p.m.

SDSU Softball Stadium

Location.....Oxford, Ohio
 Nickname.....Red Hawks
 Colors.....Red & White
 Conference.....Mid-American
 Head Coach.....Kelly Kovach Schoenly
 Alma Mater.....Michigan '95
 Career Record/Seasons.....49-62/12
 2008 Record.....23-27
 MAC Record/Place.....13-3/3rd
 Starters R/L.....5/4
 Newcomers.....6
 SID.....Michael Roth
 Phone.....(513) 529-7092
 Fax.....(513) 529-6729
 E-mail.....rothmb@muhio.edu

OKLAHOMA STATE

March 13 - 4:30 p.m.

SDSU Softball Stadium

Location.....Stillwater, Okla.
 Nickname.....Cowboys
 Colors.....Orange & Black
 Conference.....Big 12
 Head Coach.....Rich Wieligman
 Alma Mater.....Lubbock Christian '85
 Career Record/Seasons.....51-58/2
 2008 Record.....26-25
 Big 12 Record/Place.....9-9/5th
 Starters R/L.....N/A
 Newcomers.....N/A
 SID.....Mike Noteware
 Phone.....(405) 744-7756
 Fax.....405-744-7754
 E-mail.....mike.noteware@okstate.edu

NO. COLORADO

March 13 - 7 p.m.

SDSU Softball Stadium

Location.....Greeley, Colo.
 Nickname.....Bears
 Colors.....Blue, White & Gold
 Conference.....Pacific Coast
 Head Coach.....Jennifer Schunke
 Alma Mater.....Arkansas '00
 Career Record/Seasons.....28-70/2
 2008 Record.....16-36
 PSAC Record.....First Season
 Returners.....N/A
 Newcomers.....N/A
 SID.....Heather Kennedy
 Phone.....(970) 351-1065
 Fax.....(970) 351-1995
 E-mail.....heather.kennedy@unco.edu

NEW MEXICO STATE

March 14 - 2 p.m.

SDSU Softball Stadium

Location.....Las Cruces, N.M.
 Nickname.....Aggies
 Colors.....Crimson & White
 Conference.....WAC
 Head Coach.....Kathy Rodolph
 Alma Mater.....UTEP '85
 Career Record/Seasons.....322-248/8
 2008 Record.....26-36
 WAC Record/Finish.....7-11/5th
 Returners.....14
 Newcomers.....9
 SID.....Katie Doherty
 Phone.....(575) 646-1805
 Fax.....(575) 646-2425
 E-mail.....dohertyk@nmsu.edu

IOWA STATE

March 14 - 4:30 p.m.

SDSU Softball Stadium

Location.....Ames, Iowa
 Nickname.....Cyclones
 Colors.....Cardinal & Gold
 Conference.....Big 12
 Head Coach.....Stacy Gemeinhardt-Cesler
 Alma Mater.....Missouri '01
 Career Record/Seasons.....218-148/7
 2008 Record.....29-29
 Big 12 Record/Place.....4-14/T-9th
 Starters R/L.....7/3
 Newcomers.....8
 SID.....Matt Shoultz
 Phone.....(515) 294-1393
 Fax.....(515) 294-0558
 E-mail.....mshoultz@iastate.edu

CS NORTHRIDGE

March 15 - 2 p.m.

SDSU Softball Stadium

Location.....Northridge, Calif.
 Nickname.....Matadors
 Colors.....Red, White & Black
 Conference.....Big West
 Head Coach.....Barbara Jordan
 Alma Mater.....CSUN '87
 Career Record/Seasons.....173-146-18
 2008 Record.....23-24
 Big West Record/Place.....12-9/3rd
 Starters R/L.....6/3
 Newcomers.....4
 SID.....Geoff Herberg
 Phone.....(818) 677-3243
 Fax.....(818) 677-4950
 E-mail.....geoffrey.herberg@csun.edu

TEXAS TECH

March 17 - 6 p.m.

SDSU Softball Stadium

Location.....Lubbock, Texas
 Nickname.....Red Raiders
 Colors.....Scarlet & Black
 Conference.....Big 12
 Head Coach.....Amy Suiter
 Alma Mater.....Washington '04
 Career Record/Seasons.....First
 2008 Record.....23-36
 Big 12 Record/Place.....8-10/6th
 Starters R/L.....9/4
 Newcomers.....7
 SID.....Jody Roginson
 Phone.....(806) 742-3355
 Fax.....(806) 742-1970
 E-mail.....jody.roginson@ttu.edu

CS FULLERTON

March 20 - 6 p.m., SDSU

March 21 - 1 p.m., Fullerton, CA

Location.....Fullerton, Calif.
 Nickname.....Titans
 Colors.....Navy Blue, Orange & White
 Conference.....Big West
 Head Coach.....Michelle Gromacki
 Alma Mater.....Cal State Fullerton '87
 Career Record/Seasons.....337-187-1/9
 2008 Record.....27-28-1
 Big West Record/Place.....11-10/5th
 Starters R/L.....6/8
 Newcomers.....11
 SID.....Jason Spencer
 Phone.....(714) 278-7547
 Fax.....(714) 278-3141
 E-mail.....jspencer@fullerton.edu

UNLV

April 4-5 - 6/1 p.m., Las Vegas, NV

May 9 - 1 p.m., SDSU

Location.....Las Vegas, Nev.
 Nickname.....Rebels
 Colors.....Scarlet & Gray
 Conference.....Mountain West
 Head Coach.....Pete Manarino
 Alma Mater.....Cal State Fullerton '84
 Career Record/Seasons.....843-508-2/23
 2008 Record.....35-40-1
 MWC Record/Place.....5-15/6th
 Starters R/L.....8/5
 Newcomers.....13
 SID.....Jeffrey Seals
 Phone.....(702) 895-3134
 Fax.....(702) 895-0989
 E-mail.....jeff.seals@unlv.edu

UTEP

April 8 - 6 p.m.

SDSU Softball Stadium

Location.....El Paso, Texas
 Nickname.....Miners
 Colors.....Dark Blue, Orange & Silver
 Conference.....Conference USA
 Head Coach.....Kathleen Rodriguez
 Alma Mater.....St. Mary's (Texas) '94
 Career Record/Seasons.....108-163/5
 2008 Record.....30-24
 C-USA Record/Place.....10-14/6th
 Starters R/L.....7/6
 Newcomers.....8
 SID.....Angela Olivas
 Phone.....(915) 747-6541
 Fax.....(915) 747-5444
 E-mail.....acolivas@utep.edu

COLORADO STATE

April 10 - 6 p.m., SDSU

April 25-26 - 3/1 p.m., Fort Collins, CO

Location.....Fort Collins, Colo.
 Nickname.....Rams
 Colors.....Green & Gold
 Conference.....Mountain West
 Head Coach.....Mary Yori
 Alma Mater.....Creighton '82
 Career Record/Seasons.....221-196/8
 2008 Record.....29-22
 MWC Record/Place.....9-11/3rd
 Starters R/L.....N/A
 Newcomers.....N/A
 SID.....Danny Mattie/Tawny Dennis
 Phone.....(970) 491-4672
 Fax.....(970) 491-1348
 E-mail.....d.mattie@colostate.edu

NEW MEXICO

April 11-12 - 6 p.m./1 p.m., SDSU

April 24 - 7 p.m., Albuquerque, NM

Location.....Albuquerque, N.M.
 Nickname.....Lobos
 Colors.....Cherry & Silver
 Conference.....Mountain West
 Head Coach.....Ty Singleton
 Alma Mater.....Portland '92
 Career Record/Seasons.....250-184/8
 2008 Record.....25-26
 MWC Record/Place.....7-13/5th
 Starters R/L.....5/8
 Newcomers.....5
 SID.....Chris Deal
 Phone.....(505) 925-5523
 Fax.....(505) 925-5529
 E-mail.....cdeal@unm.edu

BRIGHAM YOUNG

April 16 - 7 p.m., Provo, Utah

May 1-2 - 6 p.m./1 p.m., SDSU

Location.....Provo, Utah
 Nickname.....Cougars
 Colors.....Blue, White & Tan
 Conference.....Mountain West
 Head Coach.....Gordon Eakin
 Alma Mater.....Utah
 Career Record/Seasons.....245-111/6
 2008 Record.....44-20
 MWC Record/Place.....14-6/2nd
 Starters R/L.....10/4
 Newcomers.....7
 SID.....Jillian Williams
 Phone.....(801) 422-8999
 Fax.....(801) 422-0633
 E-mail.....softball_sid@byu.edu

UTAH

April 17-18 - 4/1 p.m., Salt Lake City, UT

April 30 - 6 p.m., SDSU

Location.....Salt Lake City, Utah
 Nickname.....Utes
 Colors.....Crimson & White
 Conference.....Mountain West
 Head Coach.....Amy Hogue
 Alma Mater.....Utah '94
 Career Record/Seasons.....28-27/1
 2008 Record.....28-27
 MWC Record/Place.....10-10/3rd
 Starters R/L.....6/5
 Newcomers.....8
 SID.....Mike DeVine
 Phone.....(505) 581-8997
 Fax.....(505) 581-4358
 E-mail.....mdevine@huntsman.utah.edu



Last season, the Aztecs went 44-17, including a 15-5 mark in league play to capture the Mountain West Conference title for the fourth time in the past eight seasons. San Diego State clinched a share of the championship on May 9 with a convincing 9-0 victory at UNLV in five innings. The following day, SDSU wrapped up the outright title with a 6-0 shutout over the host Rebels. The squad celebrated following the game with a team photo near the visiting dugout along with their new 2008 MWC championships t-shirts.

2009 CAMPBELL-CARTIER CLASSIC

19TH ANNUAL CAMPBELL/CARTIER CLASSIC

FEBRUARY 12-15, 2009 • SDSU SOFTBALL STADIUM • SAN DIEGO, CALIF.

INTRODUCTION

THIS IS SDSU

COACHES/STAFF

THE AZTECS

REVIEW

HISTORY

The San Diego State University Campbell/Cartier Classic is an annual event held in the memory of former Aztec softball players Susanne Campbell and Karin Cartier.

Campbell and Cartier lost their lives during the 1991 softball season in a single-car accident that took place in Rosarito, Mexico. It left a lasting mark on teammates, coaches and the program.

Campbell, a three-year starting catcher, was in her senior year. She had a .344 batting average, was an all-Western Athletic Conference selection and led the Aztecs in many offensive and defensive categories. She also set several single-season and career records and is among the top softball athletes to wear an SDSU uniform.

Cartier, a transfer pitcher from Hawai'i, had an excellent 1991 season at SDSU. She was emerging as a top pitcher and great hitter. Along with Campbell, Cartier was one of the strongest Aztecs in the weight room and possessed good leadership abilities and Division I playing experience.

To pay tribute to Susanne Campbell and Karin Cartier, the San Diego State softball team renamed the SDSU Spring Classic in 1994 to the Campbell/Cartier Classic in memory of their friendship and fine athletic ability. The 2009 tournament will be the 19th annual classic.

In honor of Susanne Campbell and Karin Cartier, an endowment fund has also been established bearing their names. The recipient of this annual scholarship is a student-athlete who is dedicated, has strong character, possesses leadership skills and demonstrates sportsmanship. Contact assistant coach Stacey Nuveman for more information about the Campbell/Cartier Memorial Fund at (619) 594-5853.

The 2009 version of the Campbell/Cartier Classic will once again be one of the strongest tournaments in the nation. This year's tournament features the Aztecs, and other 2008 NCAA tournament teams Stanford, Washington and Long Beach State, as well as '08 Classic competitors UC Santa Barbara and Utah State.

Last year, SDSU outscored its opponents, 22-3, over the perfect five-game weekend to claim its first-ever Campbell/Cartier Classic title.

THURSDAY, FEBRUARY 12		SATURDAY, FEBRUARY 14	
Time	SDSU Softball Stadium	Time	SDSU Softball Stadium
4:30 p.m.	Stanford vs. * UC Santa Barbara	9 a.m.	* Long Beach State vs. Utah State
7 p.m.	San Diego State vs. * Utah State	11:30 a.m.	Stanford vs. * Utah State
FRIDAY, FEBRUARY 13		2 p.m.	* Long Beach State vs. UC Santa Barbara
Time	SDSU Softball Stadium	4:30 p.m.	San Diego State vs. * UC Santa Barbara
9 a.m.	UC Santa Barbara vs. * Washington	7 p.m.	* San Diego State vs. Washington
11:30 a.m.	* UC Santa Barbara vs. Utah State	SUNDAY, FEBRUARY 15	
2 p.m.	* Washington vs. Utah State	Time	SDSU Softball Stadium
4:30 p.m.	Long Beach State vs. * Stanford	9 a.m.	* Stanford vs. UC Santa Barbara
7 p.m.	* San Diego State vs. Stanford	11:30 a.m.	Washington vs. * Long Beach State
First team listed will occupy third base dugout		2 p.m.	* San Diego State vs. Long Beach State
* = Home Team; SDSU games in BOLD			



Susanne Campbell



Karin Cartier

2009 Campbell/Cartier Classic Capsule

Team	2008 Record	2008 RPI	2008 Postseason
Stanford	49-15 (.766)	13	NCAA Super Regionals
Long Beach State	40-17 (.702)	20	NCAA Regionals
San Diego State	44-17 (.721)	26	NCAA Regionals
Washington	30-25 (.545)	32	NCAA Regionals
UC Santa Barbara	30-24 (.556)	79	
Utah State	14-34 (.292)	202	
TOTAL	207-132 (.611)	62	4 NCAA Appearances

Campbell/Cartier Classic Champions

1991 Long Beach State	1997 Long Beach State	2003 Sacramento State
1992 UCLA	1998 Long Beach State	2004 Cal State Northridge
1993 Long Beach State	1999 Cal State Northridge	2005 No winner due to rain
1994 Washington	2000 Stanford	2006 UCLA
1995 UCLA	2001 Stanford	2007 California
1996 Sacramento State	2002 Pacific	2008 San Diego State

Campbell/Cartier Award Winners

1995 Stevie Campbell	2000 Tami Sampson	2004 Lacey Craft
1996 Chrystal Friesen	2001 Sandra Durazo	2005 Katie Cochran
1997 Lisa Gonzales	Vanessa Villegas	2006 Monica Alnes
1998 Erryn Gutjahr	2002 Kellie Nordhagen	2007 Monica Alnes
1999 Erryn Gutjahr	2003 Jennifer Funk	2008 Monica Alnes

2008 Standings

1. San Diego State – 5-0
2. Fresno State – 3-1
3. Utah State – 2-2
4. UC Santa Barbara – 2-3
5. Indiana – 1-4
Tulsa – 1-4

OTHER 2009 TOURNAMENTS

Stacy Winsberg Memorial Tournament (Feb. 6-8) Host: UCLA (Los Angeles, Calif.)

FRIDAY, FEBRUARY 6

9 a.m. **San Diego State** vs. Indiana
11:30 a.m. San Diego State vs. **Cal Poly**

Home team in **BOLD**

SATURDAY, FEBRUARY 7

9 a.m. San Diego State vs. **Pacific**
11:30 a.m. **San Diego State** vs. Cal Poly

SUNDAY, FEBRUARY 8

2 p.m. San Diego State vs. **UCLA**

Fifth Annual Mardi Gras Invitational (Feb. 20-22) Host: Louisiana-Lafayette (Lafayette, La.)

FRIDAY, FEBRUARY 20

11 a.m. San Diego State vs. Kentucky
4:30 p.m. San Diego State vs. Connecticut

SATURDAY, FEBRUARY 21

Noon San Diego State vs. Louisiana-Lafayette

SUNDAY, FEBRUARY 22

11:30 a.m. San Diego State vs. Louisiana-Lafayette

San Diego Classic I (Feb. 27-March 1) Host: San Diego State and San Diego (San Diego, Calif.)

FRIDAY, FEBRUARY 27

11:30 a.m. * UCLA vs. Utah
2 p.m. Santa Clara vs. * Utah
4:30 p.m. Missouri vs. * Oregon
7 p.m. * **San Diego State** vs. Oregon

First team listed occupies third base dugout

SATURDAY, FEBRUARY 28

9 a.m. * Colorado State vs. Santa Clara
11:30 a.m. Colorado State vs. * Oregon
2 p.m. * Santa Clara vs. Missouri
4:30 p.m. **San Diego State** vs. * Missouri
7 p.m. * **San Diego State** vs. UCLA

* = Home Team; SDSU games in **BOLD**

SUNDAY, MARCH 1

9 a.m. * Oregon vs. Utah
11:30 a.m. Oregon vs. * UC Davis
2 p.m. * Colorado State vs. UC Davis
4:30 p.m. **San Diego State** vs. * Santa Clara

* Note: Only games played at SDSU Softball Stadium listed

Stanford Louisville Slugger Classic (March 6-8) Host: Stanford (Palo Alto, Calif.)

FRIDAY, MARCH 6

9 a.m. San Diego State vs. Illinois State
11:15 a.m. San Diego State vs. Vermont

SATURDAY, MARCH 7

9 a.m. San Diego State vs. UC Davis
11:15 a.m. San Diego State vs. Stanford

SUNDAY, MARCH 8

9 a.m. San Diego State vs. Penn State

San Diego Classic II (March 12-15) Host: San Diego State and San Diego (San Diego, Calif.)

THURSDAY, MARCH 12

7 p.m. **San Diego St.** vs. * Miami (OH)

First team listed occupies third base dugout

FRIDAY, MARCH 13

9 a.m. * New Mexico St. vs. Texas Tech
11:30 a.m. CS Northridge vs. * Texas Tech
2 p.m. * CS Northridge vs. Oklahoma St.
4:30 p.m. * **San Diego St.** vs. Oklahoma St.
7 p.m. **San Diego St.** vs. * Northern Colo.

* = Home Team; SDSU games in **BOLD**

SATURDAY, MARCH 14

9 a.m. New Mexico St. vs. * Miami (OH)
11:30 a.m. * CS Northridge vs. Miami (OH)
2 p.m. **San Diego St.** vs. * New Mexico St.
4:30 p.m. * **San Diego St.** vs. Iowa St.
7 p.m. CS Northridge vs. * Iowa St.

* NOTE: Only games played at SDSU listed

SUNDAY, MARCH 15

9 a.m. * UCONN vs. Oklahoma St.
11:30 a.m. New Mexico St. vs. * Iowa St.
2 p.m. * **San Diego St.** vs. CS Northridge

SDSU SOFTBALL STADIUM

INTRODUCTION

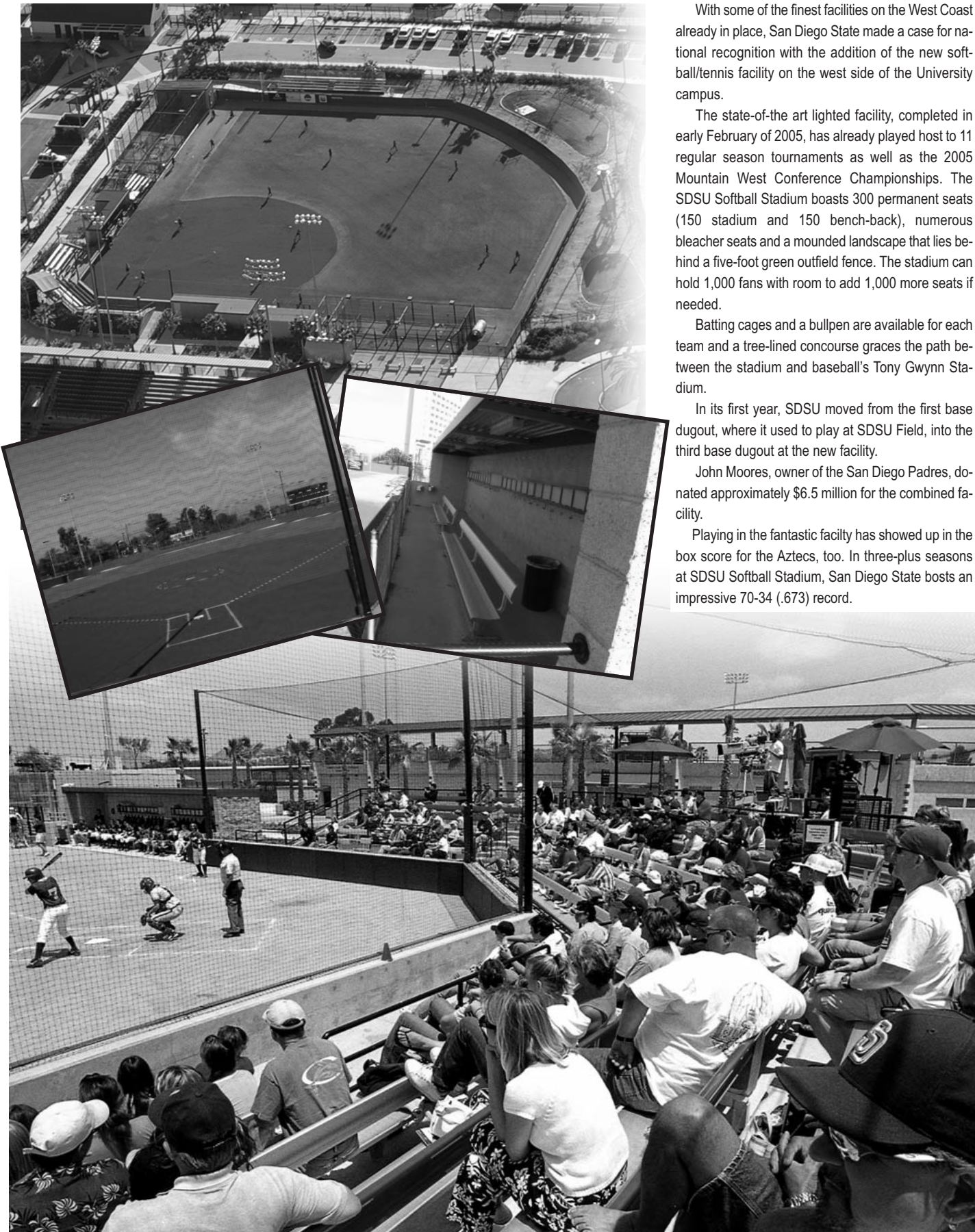
THIS IS SDSU

COACHES/STAFF

THE AZTECS

REVIEW

HISTORY



With some of the finest facilities on the West Coast already in place, San Diego State made a case for national recognition with the addition of the new softball/tennis facility on the west side of the University campus.

The state-of-the-art lighted facility, completed in early February of 2005, has already played host to 11 regular season tournaments as well as the 2005 Mountain West Conference Championships. The SDSU Softball Stadium boasts 300 permanent seats (150 stadium and 150 bench-back), numerous bleacher seats and a mounded landscape that lies behind a five-foot green outfield fence. The stadium can hold 1,000 fans with room to add 1,000 more seats if needed.

Batting cages and a bullpen are available for each team and a tree-lined concourse graces the path between the stadium and baseball's Tony Gwynn Stadium.

In its first year, SDSU moved from the first base dugout, where it used to play at SDSU Field, into the third base dugout at the new facility.

John Moores, owner of the San Diego Padres, donated approximately \$6.5 million for the combined facility.

Playing in the fantastic facility has showed up in the box score for the Aztecs, too. In three-plus seasons at SDSU Softball Stadium, San Diego State boasts an impressive 70-34 (.673) record.