



SAN DIEGO STATE AZTECS

2022 Volleyball Weekly Notes

Jim Solien (Primary Contact)
 Assistant Media Relations Director
Office Phone Number: (619) 594-2576
E-Mail Address: jsolien@sdsu.edu
News Release Date: Nov. 16, 2022

SDSU Official Athletics Website: goaztecs.com
SDSU Official Athletics Twitter: @GoAztecs
SDSU Official Athletics Instagram: @GoAztecs
SDSU Official Athletics Facebook: facebook.com/goaztecs
SDSU Official Athletics YouTube: youtube.com/goaztecs.com

2022 AZTEC VOLLEYBALL SCHEDULE

Day/Date	Opponent	Time
Friday, Aug. 26	California [^] (MWN)	L, 0-3
Saturday, Aug. 27	Army West Point [^]	W, 3-1
Saturday, Aug. 27	UC San Diego [^] (MWN)	W, 3-1
Friday, Sept. 2	vs. No. 9 Baylor [#]	L, 1-3
Saturday, Sept. 3	at Pepperdine [#]	L, 0-3
Saturday, Sept. 3	vs. UC Santa Barbara [#]	L, 1-3
Friday, Sept. 9	Maryland [~]	L, 1-3
Friday, Sept. 9	Arizona [~] (MWN)	L, 0-3
Saturday, Sept. 10	Sacramento State [~]	L, 2-3
Thursday, Sept. 15	UCLA ⁺ (MWN)	L, 0-3
Saturday, Sept. 17	at San Diego ⁺	L, 1-3
Thursday, Sept. 22	San José State* (MWN)	L, 1-3
Saturday, Sept. 24	Nevada*	W, 3-1
Tuesday, Sept. 27	at Fresno State* (MWN)	W, 3-0
Saturday, Oct. 1	at UNLV* (MWN)	L, 1-3
Thursday, Oct. 6	at Utah State* (MWN)	L, 0-3
Saturday, Oct. 8	at Boise State* (MWN)	L, 1-3
Thursday, Oct. 13	Wyoming*	L, 1-3
Saturday, Oct. 15	Colorado State* (MWN)	L, 0-3
Thursday, Oct. 20	at New Mexico* (MWN)	L, 1-3
Saturday, Oct. 22	Air Force* (MWN)	W, 3-1
Thursday, Oct. 27	at Colorado State* (MWN)	L, 1-3
Saturday, Oct. 29	at Wyoming* (MWN)	W, 3-1
Thursday, Nov. 3	Boise State* (MWN)	W, 3-1
Saturday, Nov. 5	Utah State* (MWN)	L, 1-3
Monday, Nov. 7	Fresno State*	W, 3-0
Thursday, Nov. 10	UNLV* (MWN)	L, 1-3
Thursday, Nov. 17	at Nevada* (MWN)	6 p.m. PT
Saturday, Nov. 19	at San José State* (MWN)	1 p.m. PT
Wed.-Fri., Nov. 23-25	MW Championship&	TBA

[^] - San Diego State Invitational (San Diego, Calif.)
[#] - Pepperdine ASICS Classic (Malibu, Calif.)
[~] - Aztec Classic (San Diego, Calif.)
⁺ - SDSU/USD Challenge (San Diego, Calif.)
[&] - MW Championship (Fort Collins, Colo.)

* - Mountain West match
 (MWN) - Mountain West Network match

Socially
 Twitter: @AztecVB
 Instagram: @Aztec_WVB

Match Week Preview

Links to Mountain West Network streaming video and live stats on GoAztecs.com

San Diego State (8-19, 6-10 MW) at Nevada (13-14, 7-9 MW)
 Thursday, Nov. 17 | 6 p.m. PT | Live Stats | MW Network
 Series: SDSU leads 13-7



San Diego State (8-19, 6-10 MW) at San José State (19-7, 13-3 MW)
 Saturday, Nov. 19 | 2 p.m. PT | Live Stats | MW Network | NBC Sports Bay Area
 Series: SDSU leads 22-16



AZTEC VOLLEYBALL WRAPS UP REGULAR-SEASON SLATE AT NEVADA, SAN JOSE STATE

- > The San Diego State volleyball team closes out its regular-season schedule this week with a pair of key Mountain West matches at Nevada and San José State.
- > The Aztecs will battle the Wolf Pack on Thursday, Nov. 17, starting at 6 p.m. PT, before heading to the Bay Area for a clash with the Spartans on Saturday, Nov. 19, beginning at 2 p.m.
- > In addition to live stats, both contests will be streamed live via the Mountain West Network on GoAztecs.com. Saturday's SDSU-SJSU clash will also be televised on NBC Sports Bay Area.
- > San Diego State wrapped up its 2022 home slate with a split of two matches, sweeping past Fresno State (25-14, 25-23, 25-18) on Nov. 7, before suffering a reversal of fortune three days later, falling to conference leader UNLV (19-25, 12-25, 23-25), as the Rebels spoiled the Scarlet and Black's Senior Night festivities.
- > With their results, the Aztecs (8-19, 6-10 MW) find themselves in a tie for seventh place in the conference standings with Boise State, one match behind a pair of fifth-place squads in New Mexico and Nevada, as the top six teams qualify for the Mountain West Championship, Nov. 23-25, in Fort Collins, Colorado.
- > Entering the week, middle blocker Julia Haynie ranks fifth in the conference for all matches with a .353 hitting percentage, while fellow middle Elly Schraeder has climbed into sixth with 1.10 blocks per set.

SERIES RECORD VS. NEVADA

- > The Aztecs boast a 14-6 record vs. the Wolf Pack in 20 all-time meetings dating back to 2011.
- > SDSU has won the last three encounters against Nevada after logging a four-set triumph at home on Sept. 24 (25-16, 25-22, 20-25, 26-24).
- > In that contest, the Aztecs received double-digit kills from three players to go with solid back-row support to snap a season-long nine-match losing streak.
- > Madison Corf led all players with a career-best 22 kills, while Mikela Labno launched 14 put-aways, followed closely by Kayla Rivera's season-high 13 non-returnables.
- > Despite 26 hitting errors, the Scarlet and Black kept up the barrage, posting season bests in kills (71) and attempts (156) while hitting at a .295 clip to spark their victory.
- > Not to be outdone, the SDSU defense held firm, limiting Nevada to just 39 kills and a .203 efficiency after notching a season-high 77 digs. Individually, McKenna Douglas established a career best with 26 digs, while Ellie Geoghegan added 13 scoops of her own.
- > The Aztec charge also included Noa Miller (7 digs), who dished out 31 assists despite sharing the setter duties with Kennedy Feuerborn (15 assists) and Sarena Gonzalez (9 assists, 4 digs).
- > Despite 20 kills in the fourth and final frame, SDSU trailed by as many as five points at 15-10 after a ball-handling error. In addition, the Aztecs faced the possibility of letting a 2-0 lead in sets evaporate after the Wolf Pack grabbed a 23-19 lead. Moments later, the Scarlet and Black was gifted two points on a Nevada service error and a wayward attack sandwiched around a Corf kill.
- > SDSU returned the favor with its own mishandled ball shortly thereafter, which gave the visitors a 24-22 edge. However, the Aztecs flashed their resiliency by closing with four straight points to secure the win. First, the Wolf Pack committed an attack error, while Rivera and Julia Haynie soon followed with consecutive kills to vault in front. Then Douglas stepped up a delivered a match-clinching ace as the Aztec bench erupted in jubilation.

SERIES RECORD VS. SAN JOSÉ STATE

- > Despite dropping four straight to the Spartans, the Aztecs still lead the all-time series 22-16 in 38 varsity meetings since 1977.
- > The Aztecs sport a 12-6 record against SJSU in San Diego, a 7-10 mark in San Jose and a 3-0 ledger on a neutral court.
- > Since San José State joined the Mountain West in 2013, SDSU is 7-9 against the Spartans, including a 3-5 mark in San Jose.
- > In the conference opener for both teams on Sept. 22, the Aztecs were dealt a four-set defeat by San José State in San Diego (18-25, 25-18, 21-25, 10-25).
- > Neither side hit the ball particularly well, as the Spartans finished with a .195 efficiency for the match, while SDSU mustered a .098 clip. Although SJSU totaled two fewer attack errors (24-26), the visitors maintained a 47-39 advantage in kills and a 16-12 edge in team blocks to help fuel their victory.
- > Individually, the Aztecs were led by Madison Corf's 10 kills, while Heipua Tautua'a flirted with a rare triple-double, amassing nine put-aways and nine digs to go with a career-high seven blocks, including a pair of solo stops.
- > In addition, Kat Cooper (.429) and Kayla Rivera launched seven non-returnables apiece, while Elly Schraeder fell one block short of a personal-best after posting eight rejections, including a solo stuff.

GENERAL INFORMATION

Location San Diego, Calif.
 Founded 1897
 Enrollment 35,782
 Nickname Aztecs
 Colors Scarlet and Black (Pantone 187)
 Conference Mountain West
 Affiliation Division I
 President Dr. Adela de la Torre
 Director of Athletics John David Wicker
 Faculty Representative Dr. Frank Harris III
 Home Facility Aztec Court at Peterson Gym (2,000)

TEAM INFORMATION

Head Coach Brent Hilliard
 Alma Mater Long Beach State '93
 Record at SDSU 22-50 (Third year)
 Career Record 76-61 (Fifth year)
 E-Mail bhilliard@sdsu.edu
 Volleyball Office Phone (619) 594-5064
 Volleyball Office Fax (619) 594-1674
 Assistant Coach/Recruiting Coordinator Melanie Greene
 Assistant Coach Steve Timmons
 Volleyball Operations Assistant Kara Barkdoll
 Fall 2021 Record 8-22
 Fall 2021 Conference Record 5-13 (Ninth)
 Fall 2021 Home Record 5-4
 Spring 2021 Road Record 1-5
 Letterwinners Returning/Lost 9/8
 Starters Returning/Lost 3/3+Libero

PROGRAM HISTORY

First Year of Volleyball 1976
 Overall Record 902-658 (.578)
 NCAA Appearances 14
 Last Postseason Appearance 2012
 NCAA Postseason Record 15-14

MEDIA RELATIONS

Assistant Media Relations Director Jim Solien
 E-Mail jsolien@sdsu.edu
 SID Office Phone (619) 594-2576
 SID Office Fax (619) 582-6541
 Official Athletic Website www.GoAztecs.com

**2022 AZTEC VOLLEYBALL
 STATISTICAL LEADERS**
(min. 50 percent of team sets played)

Hitting Percentage*	353	Julia Haynie
Kills	242	Madison Corf
Kills per set	2.63	Madison Corf
Assists	527	Noa Miller
Assists per set	5.27	Noa Miller
Service Aces	30	Noa Miller
Service Aces per set	0.30	Noa Miller
Digs	317	Ellie Geoghegan
Digs per set	3.17	Ellie Geoghegan
Blocks	100.0	Elly Schraeder
Blocks per set	1.10	Elly Schraeder

*. min 3.0 attempts per set

2022 AZTEC VOLLEYBALL FALL ROSTER

No.	Player	Pos.	Ht.	Yr.	Hometown (Last School)
2	Heipua Tautua'a	OH	6-2	Jr.	Wai'anae, Hawaii (Wai'anae HS)
3	McKenna Douglas	DS/L	5-7	Fr.	Phoenix, Ariz. (Notre Dame Prep)
4	Kennedy Feuerborn	S	6-3	Jr.	Overland Park, Kan. (Johnson County CC)
6	Jordyn Goldsmith	OPP	6-1	So.	Valleyford, Wash. (Freeman HS)
7	Madison Corf	OH	5-11	Fr.	Kansas City, Mo. (Liberty HS)
8	Ellie Geoghegan	DS/L	5-8	Fr.	Manhattan Beach, Calif. (Mira Costa HS)
9	Sara Mukaj	MB	6-3	So.	Madena, Italy (Istituto Scaruffi-Levi Tricolore)
10	Cara Braun	OH	6-1	Fr.	Tempe, Ariz. (Valley Christian HS)
11	Kayla Rivera	OPP	6-1	Sr.	Ventura, Calif. (Univ. of Georgia)
13	Julia Haynie	MB	6-2	Sr.	Temecula, Calif. (Portland State)
14	Reagan Merk	OH	5-11	So.	Huntington Beach, Calif. (Mater Dei HS)
15	Mikela Labno	OH	6-2	So.	Hilmar, Calif. (Hilmar HS)
16	Sarena Gonzalez	S	5-8	Fr.	Temecula, Calif. (Temecula Valley HS)
19	Noa Miller	S	5-10	Sr.	Douglasville, Ga. (Arizona State)
20	Elly Schraeder	MB	6-2	So.	Athol, Idaho (Univ. of San Diego)
21	Kat Cooper	MB	6-1	Fr.	Springdale, Ark. (Har-Ber HS)

Head Coach: Brent Hilliard (Long Beach State, 1993), Third season at SDSU
Assistant Coach/Recruiting Coordinator: Melanie Greene (San Diego State, 2007), 12th season at SDSU
Assistant Coach: Steve Timmons (USC), Third season at SDSU
Volleyball Operations Assistant: Kara Barkdoll (Cal State San Marcos, 2015), Fifth season at SDSU

Pronunciations

#2 HEIPUA TAUTUA'A	HEY-poo-ah TAW-too-AH-AH
#4 Kennedy FEUERBORN	FEWER-born
#8 Ellie GEOGHEGAN	GAY-gun
#9 Sara MUKAJ	MOO-kye
#15 MIKELA Labno	ma-KAY-la
#19 NOA Miller	Noah
#21 Elly SCHRAEDER	SCHRAY-der



OPPONENT COMPARISON

2022 Overall Stats	SDSU	MW Rank	OPP	NEV	MW Rank	OPP	SJSU	MW Rank	OPP
Hitting Percentage	.187	10	.260	.160	11	.196	.246	3	.203
Kills per set	12.47	6	12.38	11.35	11	12.95	14.08	1	11.25
Assists per set	11.66	6	11.31	10.47	11	12.17	13.21	1	10.26
Service Aces per set	1.38	8	1.80	1.50	4	1.53	1.75	2	1.09
Digs per set	11.81	11	10.98	15.67	2	17.18	13.06	5	11.15
Blocks per set	1.91	11	2.84	2.26	7	2.41	2.30	3	2.17

SCOUTING THE OPPOSITION

> **Nevada (13-14, 7-9 MW)** is tied with New Mexico for fifth place in the Mountain West standings after splitting a pair of road matches last week. The Wolf Pack toppled Boise State in four sets on Nov. 10 (22-25, 25-20, 25-21, 27-25) before suffering a sweep at Utah State by identical set scores two days later (16-25, 16-25, 16-25). Nevada has played just seven home matches this season, posting a 4-3 record, compared to a 9-11 mark in road/neutral contests. Offensively, the Wolf Pack are led by sixth-year senior Kayla Afoa, who ranks fourth in the MW for all matches with 3.72 kills per set, while freshman and fellow outside hitter Gabby McLaughlin is slotted 11th in the conference with 3.08 put-aways per frame. In addition, McLaughlin (0.36/set) and Afoa (0.32/set) also find themselves among the league leaders in service aces, ranking third and ninth, respectively. In addition, freshman Kia Kaohelouli occupies the third spot in the conference with 4.04 digs per set, while senior setter Ashley Alcaraz ranks sixth with 7.18 assists per sets. At the net, Nevada sports two middles who find themselves in the MW top 10 in blocks, including freshman Jordan Schwartz (7th, 1.09/set) and fellow classmate Bella Snyder (9th, 1.05/set). As a team, the Wolf Pack rank second in the conference in digs (15.67/set), third in opponent hitting percentage (.196) and fourth in service aces (1.50/set). However, Nevada is just seventh in blocks (2.26/set) and ranks last in hitting percentage (.160) and kills (11.35/set). The Wolf Pack are coached by Lee Nelson, who is in his eighth season on the Reno campus after spending three years as an assistant at Miami (Fla.) from 2012-14. Prior to his stint with the Hurricanes, Nelson was the associate head coach of the men's program at UC Santa Barbara. His career record stands at 85-135.

> **San José State (19-7, 13-3 MW)** tied a program record with 13 Mountain West victories after defeating Boise State on the road last Saturday in four sets (27-25, 22-25, 25-21, 25-15). The Spartans rebounded with that victory over the Broncos after dropping a tough five-set decision at Utah State two days earlier (21-25, 25-18, 25-22, 22-25, 20-22). Prior to Saturday's clash with the Aztecs, SJSU will play host to Fresno State on Thursday night. The Spartans boast an unblemished 8-0 mark at home so far this season and are a combined 11-7 on the road. Offensively, San José State is led by senior Amethyst Harper, who ranks eighth in the conference with an average of 3.26 kills per set, while sophomore and fellow outside hitter Blaire Fleming (2.99) and senior opposite hitter Haylee Nelson (2.70) are also averaging over two put-aways per frame. Along the back row, senior Sarah Smevov ranks second in the MW with 4.12 digs per set, while junior middle blocker Jianna Dawson occupies the eighth and ninth spots, respectively, in blocks (1.08/set) and hitting percentage (.332). Not to be outdone, junior setter Mia Schafer finds herself among the MW leaders this week, topping the conference in service aces (0.38/set) while ranking eighth in assists (6.04/set). Collectively, the Spartans lead the league in assists (13.21/set) and kills (14.08/set), which rank 18th and 14th in nation, respectively. In addition, SJSU is slotted in the top half of the MW in other categories, including service aces (2nd, 1.75/set), hitting percentage (3rd, .246), blocks (3rd, 2.30/set) and digs (5th, 13.06/set). Head coach Trent Kersten is in his third year at the helm of the Spartan program after spending five years as

2022 MOUNTAIN WEST STANDINGS (AS OF NOV. 16)

Team	---Conference---			-----Overall-----			
	W	L	Pct.	W	L	Pct.	Strk
UNLV	15	1	.938	24	3	.885	W15
San José State	13	3	.812	19	7	.731	W1
Utah State	11	5	.688	19	8	.704	W4
Colorado State	11	5	.688	18	9	.667	W1
New Mexico	7	9	.438	16	10	.615	W2
Nevada	7	9	.438	13	14	.481	L1
San Diego State	6	10	.375	8	19	.296	L1
Boise State	6	10	.375	14	13	.519	L7
Wyoming	6	11	.353	10	19	.345	L6
Air Force	5	11	.312	13	15	.464	L1
Fresno State	1	15	.062	7	21	.250	L2

Upcoming Matches in the MW

Thursday, Nov. 17

San Diego State at Nevada, 6 p.m. PT

- Boise State at Air Force, 6 p.m. MT
- Utah State at New Mexico, 6:30 p.m. MT
- Fresno State at San José State, 6 p.m. PT
- Wyoming at UNLV, 6:30 p.m. PT

Saturday, Nov. 19

San Diego State at San José State, 2 p.m. PT

- Boise State at New Mexico, 1 p.m. MT
- Utah State at Air Force, 1 p.m. MT
- Fresno State at Nevada, 1 p.m. PT
- Colorado State at UNLV, 1 p.m. PT

Wednesday-Friday, Nov. 23-25

Mountain West Championship; Fort Collins, Colorado



an assistant coach and recruiting coordinator at TCU from 2015-19. During his tenure with the Horned Frogs staff, Kersten's 2019 recruiting class was ranked fifth in the country by Volleyball Magazine and sixth by Prep Volleyball. Kersten played three seasons at UCLA, where he ranked among the nation's top 15 in hitting percentage (.387) and blocks (1.08/set) as a senior in 2015.

THIS WEEK'S SAN DIEGO MATCH CONNECTIONS

- > Nevada setter Andrea Alcaraz was a four-year letterwinner at nearby Poway High School.
- > Wolf Pack outside hitter/opposite hitter Nicanora Clarke and Aztec outside hitter Heipua Tautua'a both attended Wai'anae High School in Hawai'i.
- > San José State sports three players who prepped at San Diego County high schools in setter Mia Schafer along with middle blockers Yazmin Pitpit and Allyson Alden. Schafer graduated from La Costa Canyon High; Pitpit is an alumna of Scripps Ranch High, while Alden attended San Marcos High.
- > Spartan libero Alessia Buffagni and SDSU middle blocker Sara Mukaj hail from the Italian province of Modena.

SDSU IN MW RANKINGS

- > Entering the weekend, Julia Haynie is slotted fifth in the conference with a .369 hitting percentage in MW action and has compiled a .353 efficiency for all matches, where she also ranks fifth.
- > Elly Schraeder has vaulted into the third position for MW matches with 1.21 blocks per set and ranks 10th with a .343 hitting percentage. For all contests, the SDSU sophomore is sixth in the conference with 1.10 rejections per frame.
- > Ellie Geoghegan occupies the seventh spot with 3.39 digs per set in league matches and ranks 10th in the conference with 317 digs for the season.
- > Noa Miller is also slotted 10th in the league with 5.69 assists per sets against MW competition.
- > Miller's six service aces against UC San Diego on Aug. 27 is tied for the second-highest total in the Mountain West this season and marks the most by an SDSU player since Ashlynn Dunbar served up six of her own vs. Colorado State on Sept. 27, 2018. Dunbar also finished with seven service aces against CSU Bakersfield in the 2018 season opener.
- > McKenna Douglas' 26-dig effort vs. Nevada on Sept. 24 is tops for a four-set MW match this season.
- > Madison Corf's .667 hitting percentage (15-1-21) vs. Fresno State on Nov. 7 marks the fourth-best efficiency in the conference this season (min. 12 kills).
- > Meanwhile, Kayla Rivera's .647 hitting percentage (12-1-17) vs. Pepperdine on Sept. 3 is tied for the seventh-best clip in the league this year.
- > Schraeder's nine overall blocks vs. Army West Point is tied for the seventh-best figure in the MW this season and represents the most by an SDSU competitor since Lexie Hamrick's 11 rejections against UTEP on Sept. 15, 2018.
- > Corf's 22 kills vs. Nevada is tied for the fifth-highest total in a four-set match this year, while her 21 put-aways against Air Force are tied for eighth in a four-set contest.
- > Collectively, the Aztecs' 71 kills against Nevada is tied for the fourth-highest figure in the league this season and represents the most in a four-set match.
- > In addition, SDSU's 67 kills against UC San Diego is tied for the fourth-highest total in the MW for a four-set match this year.
- > The Aztecs' 14 team blocks vs. Army is tied for the 12th-highest total in the conference.

HAYNIE ON THE RISE

- > Middle blocker Julia Haynie has started 14 of 16 conference matches thus far, posting a .369 hitting percentage in that span.
- > The Aztec senior has powered down 75 kills in 157 attempts with just 17 errors against league opponents.
- > Haynie has also recorded 28 total blocks in MW play, including four solo stops.
- > In a road match at New Mexico on Oct. 20, Haynie set a career high with a .769 hitting percentage after launching 10 kills in 13 swings without an error. She also established a season best with 7 total blocks vs. the Lobos.
- > The Temecula, California, product has recorded multiple blocks in five of her last eight matches and nine for the season.
- > With two matches remaining, Haynie has already set a personal single-season high with 104 kills after launching 103 non-returnables in 2021.
- > For the season, she ranks fifth in the Mountain West with a .353 efficiency and is currently third on the squad with 36 total blocks.

SCHRAEDER STYLIN'

- > Middle blocker Elly Schraeder has ramped up her production over the last seven matches, averaging 1.50 blocks and 1.85 kills per set while hitting at a .400 clip.
- > The SDSU sophomore has powered down 48 kills in 95 attempts during that stretch with just 10 errors.
- > Additionally, Schraeder has totaled at least four blocks in those seven outings.
- > Against Fresno State on Nov. 7, the Athol, Idaho, native established season highs of nine kills and a .667 hitting percentage, committing one error in 12 swings. She also set a collegiate best with three digs vs. the Bulldogs.
- > Not to be outdone, Schraeder tied her career-high with eight block assists against Boise State on Nov. 7.
- > For the season, Schraeder ranks sixth in the MW for all matches with 1.10 blocks per set but has moved into the third spot during MW play with 1.21 blocks per frame.

AZTECS INK THREE PREP STARS FOR 2023

- > San Diego State volleyball head coach Brent Hilliard has announced the signing of high school standouts Natalie Hughes (McKinney, Texas), Campbell Hague (Cheney, Kan.) and Fatimah Hall (Long Beach, Calif.) to National Letters of Intent. The highly prized trio of future Aztecs will arrive on the SDSU campus in time for the 2023 campaign.
- "We are very excited with the addition of Natalie, Campbell and Fatimah to our Aztec family," Hilliard said. "Each player provides a much-needed skill set that will help our team in its goal of winning a conference championship."
- A 6-4 opposite hitter, Hughes earned first-team AVCA High School All-America honors after leading McKinney North High in kills

Week 13: at Nevada | at San José State

(473), kills per set (4.4), hitting percentage (.316), total blocks (83) and blocks per set (0.8) this season, according to MaxPreps.

Hughes, who just completed her senior campaign, led the Bulldogs to their second straight Class 5A Region II quarterfinal playoff berth after a finals appearance in 2020.

Hughes has amassed over 1,100 kills during her prep career and has broken the school's all-time record with 353 total blocks, according to MaxPreps. She garnered first-team all-District 13 5A accolades in 2021 after collecting Blocker of the Year plaudits in 2019.

A Class of 2023 Top 150 player who received All-America honorable mention from PrepVolleyball.com, Hughes also competed for the renowned Madfrog Volleyball Club, helping her squad to a fifth-place tie in open competition at the 2022 Girls Junior National Championships.

"Natalie brings a dominant blocking presence on the right side that will help our team immediately," Hilliard said. "Her size and explosiveness should give her an early opportunity to see the court upon her arrival. Natalie also exudes unbridled enthusiasm and is extremely competitive in nature. We can't wait to see her play next fall."

A 6-2 middle blocker/outside hitter, Hague collected Most Valuable Player honors in the Central Plains League as a senior after leading Cheney High in numerous categories, including kills (338), kills per set (3.60), hitting percentage (.270), service aces (42), total blocks (73), blocks per set (0.8), according to MaxPreps.

A two-time all-conference selection, Hague contributed to a winning tradition at Cheney High, helping the Cardinals to a combined 106-14 record in her three seasons as a prep, highlighted by a runner-up finish at the 2021 Kansas State High School Activities Association (KSHSAA) Class 3A Championship as a junior

followed by a third-place standing this season.

A multi-sport athlete, Hague also excelled on the basketball court, earning a spot on the all-tournament team at the 2021 Kansas state championships after helping Cheney to the Class 3A title. Additionally, she garnered second-team all-conference accolades following her junior campaign last season.

Not to be outdone, Hague finished runner-up in the triple jump at the 2022 Kansas state track and field championships last spring and was a qualifier in the long jump, javelin and triple jump at the state meet as a sophomore in 2021.

"Campbell is a true diamond in the rough, and her size will translate to both the middle and outside hitting spots for our team moving forward," Hilliard said. "Our coaching staff has been looking for true athletes that are physical and dynamic in nature. Campbell provides both of these characteristics along with the skill that is unique for someone her size. I have no doubt that she will make an immediate impact on our team upon her arrival."

A 5-9 setter, Hall also brings a winning pedigree to The Mesa after helping her Lakewood High squad compile a 54-14 record over the past two seasons, highlighted by a pair of Moore League championships with a 24-0 mark in conference play, during which the Lancers lost just one set.

As a senior in 2022, Hall racked up over 800 assists and 200 digs, helping Lakewood High secure berths in the prestigious CIF Southern Section Division I championships and CIF State Open Division playoffs, as the Lancers finished with a No. 8 state ranking in the Open Division.

In mid-September, Hall was named Girls Athlete of the Week by the Long Beach Press-Telegram and additionally helped her squad finish 11th out of 64 teams at the renowned Durango Fall Classic tournament in Las Vegas, Nevada.

2022 AZTEC SUPERLATIVES

Individual

HITTING PERCENTAGE (min. 12 kills)

.667 (15-1-21) Madison Corf vs. Fresno State (Nov. 7)

KILLS

22 Madison Corf vs. Nevada (Sept. 24)

5 sets 15 Madison Corf and Mikela Labno vs. Sacramento State (Sept. 10)

4 sets 22 Madison Corf vs. Nevada (Sept. 24)

3 sets 15 Madison Corf vs. Fresno State (Nov. 7) and Colorado State (Oct. 15)

TOTAL ATTEMPTS

47 Madison Corf vs. Nevada (Sept. 24)

5 sets 37 Madison Corf vs. Sacramento State (Sept. 10)

4 sets 47 Madison Corf vs. Nevada (Sept. 24)

3 sets 35 Heipua Tautua'a at Pepperdine (Sept. 3)

ASSISTS

33 Noa Miller vs. Air Force (Oct. 22)

5 sets 27 Noa Miller vs. Sacramento State (Sept. 10)

4 sets 33 Noa Miller vs. Air Force (Oct. 22)

3 sets 26 Noa Miller vs. Fresno State (Nov. 7)

DIGS

26 McKenna Douglas vs. Nevada (Sept. 24)

5 sets 23 Ellie Geoghegan vs. Sacramento State (Sept. 10)

4 sets 26 McKenna Douglas vs. Nevada (Sept. 24)

3 sets 16 Ellie Geoghegan at Pepperdine (Sept. 3)

SERVICE ACES

6 Noa Miller vs. UC San Diego (Aug. 27)

BLOCK SOLOS

2 Elly Schraeder at UNLV (Oct. 1) and vs. No. 9 Baylor (Sept. 2)

..... and Heipua Tautua'a vs. San José State (Sept. 22)

BLOCK ASSISTS

8 Elly Schraeder vs. Boise State (Nov. 3) and Army West Point (Aug. 27)

TOTAL BLOCKS

9 Elly Schraeder vs. Army West Point (Aug. 27)

Team

HITTING PERCENTAGE

.349 (42-13-83) vs. Fresno State (Sept. 27)

KILLS

71 vs. Nevada (Sept. 24)

5 sets 61 vs. Sacramento State (Sept. 10)

4 sets 71 vs. Nevada (Sept. 24)

3 sets 48 at Pepperdine (Sept. 3)

TOTAL ATTEMPTS

159 vs. Air Force (Oct. 22) and at New Mexico (Oct. 20)

5 sets 152 vs. Sacramento State (Sept. 10)

4 sets 159 vs. Air Force (Oct. 22) and at New Mexico (Oct. 20)

3 sets 112 at Pepperdine (Sept. 3)

ASSISTS

64 vs. Nevada (Sept. 24)

5 sets 58 vs. Sacramento State (Sept. 10)

4 sets 64 vs. Nevada (Sept. 24)

3 sets 48 at Pepperdine (Sept. 3)

DIGS

77 vs. Nevada (Sept. 24)

5 sets 55 vs. Sacramento State (Sept. 10)

4 sets 77 vs. Nevada (Sept. 24)

3 sets 43 vs. Fresno State (Nov. 7)

SERVICE ACES

10 vs. Fresno State (Nov. 7) and at Fresno State (Sept. 27)

TOTAL BLOCKS

14.0 vs. Army West Point (Aug. 27)

Week 13: at Nevada | at San José State

In 2021, Hall received second-team all-conference honors, helping the Lakewood squad to a high ranking of No. 2 in the state's Open Division.

"Fatimah is the setter we've been searching for quite some time, and she has great location, deception and athleticism to match," Hilliard said. "Her volleyball IQ is off the charts, and she knows how to make her hitters successful no matter what style of offense she is running. Since the first recruiting opportunity with Fatimah, I have been impressed with her work ethic. I truly believe she will lead our Aztecs to new heights once she arrives on The Mesa."

SCHEDULE NAVIGATION

- > San Diego State is off to a 6-10 start in Mountain West play this season after logging a 2-9 mark through a difficult non-conference slate.
- > During their non-league schedule, the Aztecs faced four foes that appeared or were receiving votes in the AVCA poll at match time, including No. 8 San Diego, No. 9 Baylor, Pepperdine (rv), UCLA (rv), along with additional Power 5 opponents Maryland and Arizona. Pepperdine climbed to as high as No. 22 in the AVCA rankings this season, while UCLA opened at No. 12 in the AVCA preseason poll and was ranked in the first two weeks of the regular season prior to its clash at SDSU.
- > Similarly, the Aztecs have faced 11 opponents that are currently listed among the top 100 in the sixth NCAA Women's Volleyball RPI of the season released on Nov. 14, including San Diego (No. 12), Baylor (No. 16), UNLV (No. 22), Pepperdine (No. 43), Colorado State (No. 54), Utah State (No. 55), UCLA (No. 58), San José State (No. 63), UC Santa Barbara (No. 85), New Mexico (No. 91) and Arizona (No. 98).

GEOGHEGAN EARNS TWO MW WEEKLY HONORS

- > Ellie Geoghegan picked up two Mountain West awards on Oct. 24 when she was named the league's Defensive Player of the Week and Freshman of the Week by the conference office for her performance in four-set matches vs. New Mexico and Air Force.
- > With her honors, Geoghegan garnered the first two MW weekly accolades of her career and the Aztecs' first two of the season.
- > A native of Manhattan Beach, California, Geoghegan led the Scarlet and Black with 47 digs and 5.88 digs per set, the latter of which was nearly three scoops higher than her season average of 2.74 heading into the weekend. The Aztec libero anchored a back row that helped limit SDSU's two opponents to a combined .159 hitting percentage.
- > In a road match at New Mexico on Oct. 20, Geoghegan set a career high with 24 digs (6.00/set) and was an integral part of an Aztec defense that held the Lobos to a .112 hitting percentage for the night, including a .037 clip over the final three sets. UNM's .112 efficiency was the second lowest for an SDSU foe this season.
- > Two days later, Geoghegan followed that effort with an additional 23 scoops against Air Force (5.75/set), helping the Aztecs snap a six-match losing streak. She contributed to a tremendous defensive effort that limited the Falcons to a combined 17 kills over the final two sets, as the Scarlet and Black posted identical 25-16 scores in that stretch to win going away.
- > With her performance, Geoghegan eclipsed the 20-dig plateau in consecutive matches for the first time this year and has held or shared the team lead for digs in six straight outings and 13 for the season.
- > Geoghegan also aided the Aztec cause with 12 setting assists and two aces last week, dishing out a career-high eight helpers at UNM.

NEWCOMERS SHINE

- > Seven of eight Aztec newcomers have seen action for the Scarlet and Black this season, with several providing key contributions through 27 matches.
- > Freshman Madison Corf has started 21 of 27 matches and leads the team with 2.63 kills per set and 242 kills overall. The former AVCA Prep All-American set a career high with 22 put-aways in SDSU's 3-1 triumph over Nevada on Sept. 24, which is tied for MW's fifth-highest total in a four-set match this year. Corf has recorded double-digit kills in 10 matches thus far, tying Kayla Rivera for the team lead. Against Fresno State on Nov. 7, the Kansas City, Missouri native set a collegiate best with a .667 hitting percentage, blasting 15 kills in 21 attempts with just one error. Corf also logged her first collegiate double-double with 15 kills and 11 digs vs. Colorado State on Oct. 15.
- > A senior transfer from Georgia, Kayla Rivera has started 25 of 27 matches for SDSU and has climbed into the second spot on the team in kills (241) and kills per set (2.41) while holding down the No. 2 position in total blocks (75.0) and blocks per set (0.75). The Aztec opposite hitter blasted double-digit kills in six straight matches, including 13 put-aways in consecutive outings vs. Wyoming and Boise State to equal a career high. Against the Cowgirls, Rivera accounted for the final two points of the match with a kill and solo block in the fourth set, leading the Aztecs to their first victory over Wyoming on the road since 2012. Earlier, the Ventura, California, native was named to the all-tournament team at the Pepperdine ASICS Classic after posting 29 kills and a .313 hitting percentage, including a career-best .647 clip (12-1-17) vs. the host Waves. She also powered down 13 kills against Nevada and a collegiate-best seven block assists vs. Army West Point at the SDSU Invitational.
- > Freshman defensive specialist Ellie Geoghegan has taken over the team lead with 317 overall digs, which ranks 10th in the MW. The Manhattan Beach product has surpassed the double-digit plateau in that category in eight of her last 10 matches and on 15 occasions overall, highlighted by a season-high 24 scoops at New Mexico on Oct. 20. She also contributed 23 scoops vs. Air Force two days later, earning MW Defensive Player of the Week and Freshman of the Week honors. Geoghegan has also recorded 24 of her 28 service aces for the season in her last 18 appearances, including a career-best four vs. Fresno State on Nov. 7.
- > In her first season on The Mesa after transferring from USD, sophomore middle blocker Elly Schraeder has started all 26 matches she has played, leading the team with 100 total blocks and 1.10 blocks per set, the latter of which ranks sixth in the Mountain West. The Athol, Idaho, native has flashed her versatility over the past seven matches, combining for 48 kills (1.85/set) and 39 blocks (1.50/set). Against Fresno State on Nov. 7, she posted a season-best .667 hitting percentage (min. 7 kills), blasting collegiate-best nine kills on 12 attempts against one error to go with four blocks, including a solo stop. The previous week, she helped the Scarlet and Black defeat Wyoming on the road for the first time since 2012 after notching eight additional put-aways while contributing seven blocks, including a solo stuff. Earlier in the season vs. Army on Aug. 27, Schraeder registered a career-high nine blocks, including a solo stop, while hitting .375 on eight kills in 16 swings with just two errors.
- > A starter in 10 of 22 appearances, freshman middle blocker Kai Cooper ranks fourth on the team with 32 total blocks and 0.48 blocks per set. A former AVCA Prep All-American, Cooper enjoyed a breakout performance against UC San Diego at the SDSU Invitational when she hit .600 on seven kills in 10 attempts against just one error while adding five blocks (1 solo) and five digs. Earlier that day, the Springdale, Arkansas, native recorded five additional blocks (1 solo) vs. Army West Point. In the Mountain West opener against San José State, Cooper matched her season best with seven kills, posting a .429 efficiency with one error in 14 swings.
- > Freshman setter Sarena Gonzalez ranks second on the squad with 4.69 assists per set. A starter in 11 of 27 matches, the Temecula product has dished at least 20 assists in seven appearances, including a season-high 31 helpers at Wyoming on Oct 29, as the Aztecs defeated the Cowgirls in Laramie for the first time since 2012. In addition, Gonzalez has 92 digs (1.02/set) and 10 aces (0.11/set) to her credit, including a season-best eight digs at Colorado

2022 SITUATIONAL RECORDS

GENERAL

Overall.....	8-19
Mountain West.....	6-10
Home.....	6-10
Away.....	2-7
Neutral.....	0-2
vs. Ranked Teams.....	0-2
vs. Unranked Teams.....	8-17
Matches Following a Win.....	3-5
Matches Following a Loss.....	5-13
Longest Winning Streak.....	2
Longest Losing Streak.....	9
Current Streak.....	Lost 1

BY SETS

3 Sets.....	2-7
4 Sets.....	6-11
5 Sets.....	0-1
Leading After Two.....	5-0
Trailing After Two.....	0-14
Tied After Two.....	3-5
Leading 2-1.....	5-0
Trailing 2-1.....	0-10

BY MONTH

August.....	2-1
September.....	2-9
October.....	2-7
November.....	2-2

BY DAY

Monday.....	1-0
Tuesday.....	1-0
Thursday.....	1-7
Friday.....	0-4
Saturday.....	5-8

BY KILLS

Leading in Kills.....	8-3
Trailing in Kills.....	0-15
Tied in Kills.....	0-1

BY DIGS

Leading in Digs.....	7-9
Trailing in Digs.....	1-9
Tied in Digs.....	0-1

BY BLOCKS

Leading in Blocks.....	3-1
Trailing in Blocks.....	5-17
Tied in Blocks.....	0-1

BY ATTACK PERCENTAGE

Greater Attack Percentage.....	8-1
Lower Attack Percentage.....	0-18
Equal Attack Percentage.....	0-0
Hitting above .300.....	3-0
Hitting between .200 and .300.....	4-5
Hitting between .100 and .200.....	1-9
Hitting below .100.....	0-5
Opponent Hitting above .300.....	0-10
Opponent Hitting between .200 and .300.....	5-7
Opponent Hitting between .100 and .200.....	2-2
Opponent Hitting below .100.....	1-0

BY INDIVIDUAL KILLS

3+ Double-Digit Individual Kill Totals.....	4-2
2 Double-Digit Individual Kill Totals.....	2-4
1 Double-Digit Individual Kill Totals.....	2-7
0 Double-Digit Individual Kill Totals.....	0-6

2022 MATCH-BY-MATCH LEADERS

Date	Opponent	Kills	Hitting Pct.*	Assists	Aces	Digs	Blocks
A.26	California	Three players - 7	Labno (.118)	Gonzalez - 16	Geoghegan - 2	Tautua'a - 8	Schraeder - 4
A.27	Army West Point	Tautua'a - 13	Tautua'a (.379)	Miller - 21	Miller - 3	Douglas - 14	Schraeder - 9
A.28	UC San Diego	Corf - 15	Cooper (.600)	Gonzalez - 30	Miller - 6	Douglas - 19	Cooper - 5
S.2	vs. No. 9 Baylor	Tautua'a - 13	Rivera (.048)	Gonzalez - 25	Corf - 1	Tautua'a - 16	Schraeder - 5
S.3	at Pepperdine	Rivera - 12	Rivera (.647)	Gonzalez - 24	Tautua'a - 4	Geoghegan - 16	Cooper - 3
S.3	vs. UC Santa Barbara	Rivera/Haynie - 10	Haynie (.474)	Gonzalez - 21	Corf/Miller - 1	Geoghegan - 17	Four players - 1
S.9	Maryland	Tautua'a - 14	Tautua'a (.300)	Miller - 17	Gonzalez - 3	Geoghegan - 12	Haynie/Rivera - 3
S.9	Arizona	Corf - 9	Corf (.227)	Gonzalez - 17	Haynie/Tautua'a - 1	Geoghegan - 11	Schraeder - 3
S.10	Sacramento State	Corf/Labno - 15	Labno (.407)	Miller - 27	Miller - 2	Geoghegan - 23	Schraeder - 4
S.15	UCLA	Rivera - 8	Rivera (.227)	Gonzalez - 12	Geoghegan - 2	Tautua'a - 9	Schraeder - 3
S.17	at No. 8 San Diego	Labno - 10	Labno (.450)	Gonzalez - 19	Geoghegan - 3	Geoghegan - 14	Schraeder - 4
S.22	San José State	Corf - 10	Cooper (.429)	Miller - 19	Three players - 1	Douglas - 14	Schraeder - 8
S.24	Nevada	Corf - 22	Rivera (.385)	Miller - 31	Douglas - 2	Douglas - 26	Cooper - 2
S.27	at Fresno State	Labno - 12	Haynie (.636)	Miller - 14	Douglas - 5	Douglas/Geoghegan - 5	Three players - 2
O.1	at UNLV	Corf - 15	Rivera (.467)	Gonzalez - 15	Haynie - 2	Douglas - 9	Rivera/Schraeder - 4
O.6	at Utah State	Rivera - 9	Rivera (.211)	Miller - 14	Douglas/Geoghegan - 1	Douglas/Geoghegan - 7	Tautua'a - 5
O.8	at Boise State	Labno - 16	Labno (.355)	Miller - 24	Geoghegan - 2	Geoghegan/Tautua'a - 9	Haynie/Rivera - 3
O.13	Wyoming	Rivera - 9	Tautua'a (.167)	Miller - 17	Geoghegan - 3	Geoghegan - 18	Cooper/Rivera - 4
O.15	Colorado State	Corf - 15	Labno (.304)	Miller - 20	Miller - 2	Geoghegan - 14	Labno/Schraeder - 2
O.20	at New Mexico	Labno - 12	Haynie (.769)	Miller - 25	Geoghegan/Miller - 1	Geoghegan - 24	Haynie - 7
O.22	Air Force	Corf - 21	Haynie (.429)	Miller - 33	Corf - 3	Geoghegan - 23	Rivera/Schraeder - 5
O.27	at Colorado State	Tautua'a - 14	Rivera (.308)	Miller - 26	Rivera/Tautua'a - 2	Tautua'a - 15	Rivera - 7
O.29	at Wyoming	Rivera - 13	Haynie (.474)	Gonzalez - 31	Rivera - 2	Geoghegan - 17	Schraeder - 7
N.3	Boise State	Rivera - 13	Rivera (.375)	Miller - 23	Corf/Rivera - 2	Geoghegan - 21	Schraeder - 8
N.5	Utah State	Rivera - 12	Rivera (.286)	Miller - 20	Miller - 3	Geoghegan - 9	Three players - 4
N.7	Fresno State	Corf - 15	Corf/Schraeder (.667)	Miller - 26	Geoghegan - 4	Tautua'a - 9	Schraeder - 4
N.10	UNLV	Corf/Rivera - 7	Schraeder (.600)	Miller - 15	Three players - 1	Geoghegan - 11	Schraeder - 5
N.17	at Nevada						
N.19	at San José State						

* - min. 7 kills

State on Oct. 27. She also spun three aces on consecutive serves in the fourth set against Maryland at the Aztec Classic on Sept. 9.

> Despite missing 17 matches this season, freshman libero McKenna Douglas ranks second on the Aztecs with 3.03 digs per set. The Phoenix, Arizona, native averaged 3.14 digs per frame in a six-match span from Sept. 22-Oct. 8, highlighted by a career-high 26 scoops vs. Nevada. In SDSU's 3-0 triumph at Fresno State on Sept. 27, Douglas served up a collegiate-best five aces, helping the Scarlet and Black record its first road sweep over the Bulldogs since 1996.

ODDS & ENDS

- > With its four-set triumph over Wyoming on Oct. 29, San Diego State recorded the 900th victory in program history. Dating back to 1976, the Aztecs own an all-time record of 902-658 in almost 47 seasons of varsity volleyball competition.
- > Against the Cowgirls, the Aztecs posted more team blocks than their opponent (12.0 to 5.0) for just the fourth time this season, improving to 3-1 in that statistical situation.
- > Five of SDSU's eight wins this year have been registered on a Saturday.
- > Elly Schraeder has totaled at least four blocks in seven straight matches and has come up with at least one rejection in nine consecutive appearances.
- > Noa Miller has served up at least one ace in four straight matches and eight of her last nine contests, including three apiece vs. Boise State and Utah State at home.
- > Heipua Tautua'a leads the Scarlet and Black with five double-doubles on the year.
- > Ellie Geoghegan has recorded double-digit dig totals in eight of her last 10 matches, including a career-high 24 scoops at New Mexico on Oct. 20. She also set a collegiate best with four aces vs. Fresno State on Nov. 7.
- > All eight of the Aztecs' victories have been recorded with SDSU maintaining the statistical advantage in kills and hitting percentage.
- > San Diego State is 5-0 this season when holding a 2-1 lead after three sets.

REWIND: AZTECS WRAP UP NON-CONFERENCE SLATE

- > San Diego State concluded its challenging non-conference schedule against a pair of perennial heavyweights last month, dropping a three-set decision at home to UCLA (16-25, 23-25, 15-25) on Sept. 15 before falling to No. 8 San Diego on the road two days later (25-20, 13-25, 14-25, 12-25).
- > Kayla Rivera, Mikela Labno and Madison Corf led the Aztecs with 2.14 kills per set for the week (15 overall), while Elly Schraeder averaged one block per frame (7 total).

> However, the Scarlet and Black was out-hit by a collective .330 to .112 in the two matches, committing 17 more attack errors, while trailing in team blocks 22.0 to 12.0.

> Competing on its newly unveiled playing surface, UCLA spoiled San Diego State's festivities by maintaining a statistical advantage in hitting percentage (.273 to .078), kills (39-30) and team blocks (14.0 to 6.0) while capitalizing on 23 attack errors.

> Despite the disparity, the Aztecs and Bruins combined for 23 ties and 13 lead changes in the match. However, UCLA employed timely runs in each of the three sets to keep the Scarlet and Black at bay.

> Individually, SDSU was led by Rivera's eight kills, while Corf launched six non-returnables of her own, hitting .750 on eight attempts without an error.

> The Aztec cause also included nine digs by Heipua Tautua'a, while Elly Schraeder totaled three blocks, including a solo stuff.

> Against the Toreros on Sept. 17, SDSU claimed the opening set against the nation's eighth-ranked team but could not sustain the momentum.

> The Aztecs came out firing on all cylinders, hitting .433 in the first stanza on 15 kills in 30 attempts with just two errors.

> However, SDSU was stymied for the remainder of the match, compiling a meager .048 attack percentage on a combined 24 kills against 19 errors in 104 swings over the final three frames.

> Conversely, USD switched on the afterburners in that span, hitting at a torrid .425 clip thanks to a collective 42 kills in 87 attempts with just five miscues.

> For the match, the Toreros out-hit the Aztecs .373 to .134, maintaining the upper hand in kills (56-39), digs (51-43) and team blocks (8.0 to 6.0).

> Individually, SDSU was led by Mikela Labno, who powered down 10 kills and hit .450 for the night after committing just one error in 20 attempts, while Madison Corf just missed her first career double-double following a nine-kill, 10-dig performance.

> Aztec contributors also included Kayla Rivera, who launched seven kills and finished with a pair of block assists, while Heipua Tautua'a and Kat Cooper (.462) floored six shots apiece and recorded a solo block.

A LOOK BACK AT THE AZTEC CLASSIC

> Returning to The Mesa for its second home tournament of the regular season, Sept. 9-10, San Diego State continued its demanding non-conference schedule when it welcomed three teams that combined for 54 victories in 2021.

> The Aztecs opened the event with a four-set loss to Maryland (14-25, 25-21, 20-25, 18-25) before dropping a three-decision to Arizona (17-25, 15-25, 11-25) later that night.

Week 13: at Nevada | at San José State

- > SDSU then closed out the weekend with a tight battle against Sacramento State but ultimately fell in a five-set thriller (16-25, 26-28, 25-21, 25-22, 8-15).
- > Three Aztecs averaged over two kills per set for the tournament, led by Heipua Tautua'a (2.92), Madison Corf (2.50) and Mikela Labno (2.17).
- > In addition, Ellie Geoghegan averaged 3.83 digs per set, followed by Tautua'a (2.17).
- > As a team, however, SDSU was out-hit .304 to .186 for the weekend and trailed in both kills (147-130) and team blocks (30.0 to 15.0).
- > Against Sac State, the Aztecs fought back from a two-set deficit on Saturday but could not pull off the reverse sweep.
- > Labno launched a career-high 15 kills, while Corf tied her collegiate best with 15 put-aways as well.
- > Not to be outdone, Tautua'a finished with her third double-double of the season after posting 14 kills and 14 digs, providing ample back row support for Geoghegan, who set a career high with 23 scoops, while Noa Miller (27 assists) and Sarena Gonzalez (23 assists) split the setting chores.
- > Despite maintaining a 61-55 collective advantage in kills and a 55-49 margin in digs, however, the Aztecs committed more attack errors (28-21) and finished with a 12.0 to 6.0 deficiency in team blocks. Additionally, SDSU was plagued by 12 service errors, while the Hornets held a slight 10-6 edge in aces.
- > Still, the teams battled through an entertaining and competitive match, combining for 30 ties and 16 leads changes on the afternoon.
- > Against Maryland in a rare Friday matinee, the Terrapins maintained the statistical advantage in most categories, including kills (50-41), service aces (12-7) and team blocks (11.0 to 5.0) to help fuel their victory.
- > In addition, Maryland out-hit the Aztecs .289 to .179, posting a .462 clip in the opening set after knocking down 14 kills on 26 attempts with just two errors to help set the tone for the contest.
- > Individually, SDSU was led by Tautua'a (.300), who blasted a team-high 14 kills to go with nine digs. In addition, Labno and Julia Haynie recorded eight put-aways apiece.
- > Later that evening vs. Arizona, the Aztecs were unable to right the ship, as the Wildcats maintained a .438 hitting percentage compared to SDSU's .138 clip.
- > Arizona owned a sizable 42-28 advantage in kills and a 7.0 to 4.0 edge in team blocks while benefiting from 15 Aztec attack errors to complete the sweep.
- > Corf (9) and Tautua'a (7) combined for 16 of SDSU's 28 kills but no other player had more than three for the hosts.

RECAPING THE PEPPERDINE ASICS CLASSIC

- > Despite dropping three matches against teams that combined for 65 victories last season, the Aztecs kept things close in 10 of 11 sets, trailing by a combined seven kills for the tournament (148-141). However, SDSU committed twice as many attack errors (85-42), finishing with a .169 hitting percentage, compared to a .318 clip for the opposition. In addition, the Aztecs were victimized by 22 service aces and experienced a deficiency in team blocks (42.0 to 11.5).
- > The Aztecs had their moments against then-No. 9 Baylor in the tournament opener on Sept. 2, but were unable to sustain the momentum after a third-set rally, ultimately falling by a 3-1 count (18-25, 17-25, 29-27, 14-25).
- > Individually, SDSU was paced by Heipua Tautua'a, who recorded her second straight double-double and sixth of her career after posting 13 kills and 16 digs, while Madison Corf launched 11 put-aways of her own. The Aztecs' offensive fortunes also received a boost from Kayla Rivera (7 kills) and Mikela Labno (6 kills), while Elly Schraeder anchored the middle with five blocks, including a pair of solo stops.
- > Elsewhere, Sarena Gonzalez (25 assists) and Noa Miller (15 assists, 8 digs) shared the setting responsibilities, while Kat Cooper contributed five kills and two block assists at the net.
- > Trailing 0-2 in sets, SDSU entertained hopes of a comeback in the third stanza, as the teams combined for 13 ties and a pair of lead changes. The Aztecs enjoyed their most productive set of the match, blasting 16 kills, including four apiece by Corf and Tautua'a. In addition, the Scarlet and Black limited the Bears to their lowest hitting percentage of the day (.121).
- > Nevertheless, San Diego State still found itself on the verge of defeat after Baylor took a 24-21 lead following a block by Lauren Harrison and Mallory Talbert. Unfazed, the Aztecs maintained their composure, fighting off five additional match points with an 8-3 closing spurt, clinching the set with three straight points to overcome a 27-26 deficit. Kills by Cooper and Labno, followed by Corf's service ace, afforded SDSU some new life. Unfortunately, the Aztecs' newfound enthusiasm was soon dashed early in the fourth frame, as the Bears grabbed a 9-4 lead and were never threatened.
- > SDSU closed out its second tournament of the season the next day (Sept. 3) on a sour note, falling to host Pepperdine in three sets (18-25, 20-25, 32-34) before suffering a 3-1 defeat at the hands of UC Santa Barbara (18-25, 18-25, 25-22, 16-25).
- > Against the Waves, the Aztecs were led by Kayla Rivera, who finished with a .647 efficiency on a match-high 12 kills in 17 swings with just one error, while Heipua Tautua'a racked up 11 non-returnables to go with a career-best four service aces. Mikela Labno also hit well on the afternoon, finishing with a .316 clip (7-1-19), while Ellie Geoghegan scooped up a match-high 16 digs.
- > However, SDSU was out-hit for the match .371 to .259, as Pepperdine benefited from 15 unforced Aztec attack errors. Although the Scarlet and Black maintained a 42-36 advantage in digs and each side served up six aces, the Waves also finished with more team blocks (9.0 to 4.5) to help fuel their win.
- > The third set was the most entertaining, as the teams combined for 11 ties and four lead changes. Still, the Aztecs seemed poised to extend the match to a fourth frame after building a 20-15 lead thanks to a Rivera kill. Pepperdine tightened the score at 23-21 moments later following a kill, a combined block and a Meg Brown ace.
- > Labno responded with a kill of her own, which extended the SDSU lead to 24-21. Incredibly, the Waves fought off nine set points down the stretch, including a 32-31 deficit after another Labno put-away. Pepperdine finally closed off the match on a service ace following a kill and an Aztec attack error.
- > In the nightcap against the Gauchos, San Diego State was stymied in the middle, as UCSB maintained a decisive advantage in team blocks (13.0 to 2.0) while serving up 12 aces compared to the Aztecs' two. In addition, the Gauchos owned the statistical edge in kills (50-45) and hitting percentage (.310 to .161), capitalizing on 13 SDSU unforced attack errors to help power their victory.
- > The Aztecs were paced by Julia Haynie (.474) and Kayla Rivera (.368), who blasted 10 kills apiece, while Reagan Merk tied her career high with seven put-aways. In addition, Ellie Geoghegan anchored the SDSU back row with 17 digs.

ALL-TOURNAMENT AZTEC

- > Senior opposite hitter Kayla Rivera earned a spot on the all-tournament team for her performance in three matches at the Pepperdine ASICS Classic, Sept. 2-3, in Malibu, California.
- > A native of Ventura, Rivera led the Aztecs with 29 kills overall and hit .333, including a career-best .647 against host Pepperdine on Sept. 3, when she launched 12 non-returnables on 17 attempts with just one error.
- > She also contributed double-digit kills later that day vs. UC Santa Barbara when she tied for team-high honors with 10 put-aways to go with a .368 efficiency.

SDSU INVITATIONAL REWIND

- > After dropping a hard-fought three-set decision to California (20-25, 23-25, 23-25) in their season opener on Aug. 26, the Aztecs rebounded with a pair of

AVCA DIVISION I POLL

(As of Nov. 14, 2022)

Rk		Points	Record	Prev
1	Texas (56)	1584	19-1	1
2	San Diego (3)	1477	24-1	2
3	Wisconsin (3)	1455	21-3	3
4	Louisville (2)	1387	24-2	5
5	Ohio State	1352	19-5	6
6	Nebraska	1277	22-3	4
7	Pittsburgh	1241	25-2	7
8	Stanford	1212	20-4	8
9	Minnesota	1069	17-7	9
10	Florida	943	20-4	11
11	Creighton	858	24-3	12
12	Oregon	799	19-5	14
13	Georgia Tech	788	18-6	13
14	Penn State	759	21-6	16
15	Baylor	661	21-5	10
16	Marquette	622	24-2	17
17	Brigham Young	586	20-5	18
18	Kentucky	575	16-6	19
19	Purdue	547	18-8	15
20	Western Kentucky	409	26-2	22
21	Washington	275	18-8	20
22	Rice	267	23-3	21
23	Houston	244	25-2	23
24	UCF	200	23-1	24
25	Washington State	110	19-8	25

First-place votes in parentheses

Others receiving votes and listed on two or more ballots: Towson 16; USC 14; Arkansas 12; Loyola Marymount 9; Iowa State 6; Pepperdine 6; Colorado 3.

MW PLAYERS OF THE WEEK

MW Offensive Player of the Week

- A.29 Kylee Stokes, OPP, Sr., Utah State
- S.5 Kayla Afoa, OH, Sr., Nevada
- S.12 Paige Bartsch, OPP, So., Boise State
- S.19 Blaire Fleming, OH, So., San José State
- S.26 Kennedy Stanford, OH, Jr., Colorado State
- O.3 Gabrielle Arrette-Ramos, OH, Jr., UNLV
- O.10 Tatum Stall, OH, Jr., Utah State
- O.17 Kennedy Stanford, OH, Jr., Colorado State
- O.24 Ellease Crumpton, MB, Sr., UNLV
- O.31 Isabel Martin, OH, Jr., UNLV
- N.7 Isabel Martin, OH, Jr., UNLV
- N.14 Uxue Guereca, OH, Jr., New Mexico

MW Defensive Player of the Week

- A.29 Joi Harvey, MB, Jr., Air Force
- S.5 Kia Kaohelaulii, L, Jr., Nevada
- S.12 Allison Casillas, L, Sr., Boise State
- S.19 Maya Sands, L, Fr., UNLV
- S.26 Sarah Smevog, L, Sr., San José State
- O.3 Sarah Smevog, L, Sr., San José State
- O.10 Sarah Smevog, L, Sr., San José State
- O.17 Jordi Holdaway, L, So., Utah State
- O.24 Ellie Geoghegan, L, Fr., San Diego State
- O.31 Mac Russ, MB, So., Air Force
- N.7 Kayla Afoa, OH, Sr., Nevada
- N.14 Alena Molden, L, Sr., New Mexico

MW Freshman of the Week

- A.29 Leah Wilton-LaBoy, S, Utah State
- S.5 Gabby McLaughlin, OH, Nevada
- S.12 Lea Zurlinden, MB, New Mexico
- S.19 Maya Sands, L, UNLV
- S.26 Elle Cotton, S, Boise State
- O.3 Tierney Barlow, MB, Wyoming
- O.10 Bella Wooden, MB, Utah State
- O.17 Maya Sands, L, UNLV
- O.24 Ellie Geoghegan, L, San Diego State
- O.31 Leah Wilton-LaBoy, S, Utah State
- N.7 Bella Wooden, MB, Utah State
- N.14 Lea Zurlinden, MB, New Mexico

Week 13: at Nevada | at San José State

3-1 victories the following day vs. Army West Point (25-22, 22-25, 25-16, 19-25) and UC San Diego (25-22, 25-20, 26-28, 25-20).

- > Against Army West Point, the SDSU attack was powered by the combo of Heipua Tautua'a (13 kills) and Mikela Labno (12 kills), while setter Noa Miller recorded her first double-double of the season with 21 assists and 12 digs.
- > However, it was the Aztec defense that proved to be the difference against the Black Knights, finishing with a 14.0 to 10.0 advantage in team blocks, to go with a 54-49 spread in digs.
- > In addition to a career-high nine blocks, Ely Schraeder (.375) displayed her dual-threat capabilities with eight kills against only two errors, while Kayla Rivera finished with seven block assists to set her own personal best.
- > The teams combined for 13 ties and three lead changes in the opening set. However, the match witnessed just two more deadlocks in the second stanza, as the Scarlet and Black led throughout the third and fourth frames.
- > In the nightcap vs. UC San Diego, the Aztecs (2-1) owned a decisive 67-42 advantage in kills and served up seven aces to help fuel their win, overcoming a 14.0 to 9.0 deficiency in team blocks.
- > In addition, SDSU outthit the Tritons .270 to .183 and maintained a sizable 51-42 in digs while benefiting from 20 opponent attack errors.
- > Individually, four players posted double-digit kills for the Aztecs, including freshman Madison Corf (.303), who blasted a match-high 14 put-aways, while Tautua'a logged her first double-double of the year with 14 non-returnables to go with 10 digs.
- > Elsewhere, SDSU also received a career-high tying 13 kills from Labno, while Rivera sparked the offense as well with 10 put-aways, followed by Kat Cooper, who hit .600 for the night (7-1-10) and contributed five total blocks, including a solo stop.
- > Not to be outdone, Miller (28 assists) posted a career-high six service aces, sharing the setting duties with Sarena Gonzalez, who dished out 30 helpers of her own. Meanwhile, McKenna Douglas led all players with 19 digs to anchor the Aztec back row.
- > In the opener against Cal, the teams combined for 36 ties and 20 lead changes, as seven of eight SDSU newcomers saw action in the see-saw affair.
- > Despite maintaining a narrow 38-37 edge in kills and a 7-4 spread in service aces, however, the Aztecs were plagued by 25 attack errors, posting a .121 hitting percentage on the night.
- > Conversely, the Golden Bears owned a decisive advantage in team blocks (12.0 to 5.0) and totaled just eight errant attacks, finishing with a .358 efficiency to help key their victory.
- > Offensively, SDSU was led by the trio of Tautua'a, Labno and Madison Corf, who blasted seven kills each, while Kat Cooper (.357) and Kayla Rivera (3 block assists) launched six non-returnables apiece.

WELCOME BACK

- > Outside hitter Heipua Tautua'a leads the group of eight Aztec letterwinners who return for the 2022 campaign.
- > Tautua'a continued to display her tremendous versatility last season, finishing second on the team in kills (208), digs (239) and digs per set (2.28) while occupying the third spot in kills per set (1.96) and double-doubles (3).
- > The SDSU junior also compiled double-digit digs in 11 matches and surpassed double figures in kills on six occasions last year.
- > Tautua'a enters the 2022 season having started 43 of 44 matches she has appeared in.
- > The Aztecs will also look for senior leadership from Noa Miller and Julia Haynie.
- > A 5-10 setter, Miller led the Scarlet and Black in assists in all but one of her 20 matches played last season. The Arizona State transfer also tied for the top spot on the squad with four double-doubles in her first season at SDSU.
- > Despite missing the final seven matches of the 2021 campaign, Miller averaged a team-leading 6.01 assists per set, which ranked seventh in the Mountain West.
- > Haynie also brought previous Division I experience with her to "America's Finest City" after spending her first two seasons at Portland State. The 6-1 middle blocker led the Aztecs with 61 total blocks, including a team-high eight solo stops across 88 sets. She also ranked fifth on the team with 103 kills (1.17/set), finishing with a .222 hitting percentage.
- > In addition, Haynie topped the squad or tied for the team lead in blocks eight times. She also posted at least one kill in all 25 matches she played while recording at least one block assist in all but four contests, including eight straight to end the year.
- > San Diego State is also expecting continued improvement from a pair of sophomores - Mikela Labno and Jordyn Goldsmith.
- > Last season, Labno ranked fourth on the Aztecs with 132 kills and 1.81 kills per set while contributing 65 digs and 25 total blocks in 73 sets played. She also tied for second on the team with seven block solos and recorded at least one kill in all but two appearances.
- > A native of Hilmar, California, Labno surpassed the double-digit kill plateau on four occasions, logging a breakout performance vs. No. 17 Pepperdine at the Gaucho Invitational, where she launched a season-high 13 kills on 23 attempts with just one error for a stellar .522 hitting percentage, which ranked as the team's second-best clip of the year (min. 12 kills).

- > A 6-1 opposite hitter, Goldsmith also enjoyed a solid debut for the Scarlet and Black in 2021, ranking fifth on the team in kills (119) and kills per set (1.58). She also finished with 35 total blocks and 30 digs across 76 sets, making nine starts in 25 appearances.
- > Goldsmith posted her best hitting percentage of the 2021 season with a .636 clip in a three-set sweep of Air Force, blasting seven kills without an error in 11 attempts.
- > Also back in the mix are a trio of underclassmen in Kennedy Feuerborn, Reagan Merk and Sara Mukaj.
- > A 6-3 setter, Feuerborn appeared in 27 of 30 matches last year, starting six of the Aztecs' final eight contests. As a sophomore, she averaged 3.11 assists (230 overall) while registering 38 kills and 24 block assists. In addition, Feuerborn eclipsed the 20-assist plateau on three occasions, including a season-high 23 helpers at home vs. Boise State.
- > Merk saw action in 18 matches during her freshman campaign on The Mesa, earning two starts. The 5-11 outside hitter posted 29 kills, 40 digs, five service aces and three blocks in 42 sets last year. Against Texas Southern at the Arizona Wildcat Invitational, she came off the bench and played all three sets, recording season-highs of seven kills and six digs to help the Scarlet and Black complete the sweep.
- > A 6-3 middle blocker, Mukaj was off to a tremendous start in 2021 before suffering a season-ending ACL injury vs. San Diego. A standout international player from Italy, Mukaj hit .333 with 16 kills on 36 attempts against four errors across 27 sets while finishing with 22 total blocks, 16 dig and seven aces. She posted a .636 hitting percentage on seven kills in 11 attempts without an error against Sam Houston in the finale of the Bearkat Invitational, adding five digs and four block assists.

NEW KIDS IN TOWN

- > The prospects for the San Diego State volleyball program continue to brighten after head coach Brent Hilliard reshaped the Aztec roster with a solid newcomer class for the 2022 campaign.
- > SDSU's early signing class last November featured three prep stars in outside hitters Madison Corf (Kansas City, Mo.) and Cara Braun (Tempe, Ariz.), along with middle blocker Kat Cooper (Springdale, Ark.).
- > Over the winter, the Aztecs added a pair of Division I transfers in middle blocker Ely Schraeder (San Diego) and opposite hitter Kayla Rivera (Georgia) before inking three more high school standouts during the spring in defensive specialists McKenna Douglas (Phoenix, Ariz.) and Ellie Geoghegan (Manhattan Beach, Calif.), along with setter Sarena Gonzalez (Temecula, Calif.).
- > As a senior at Liberty High School in suburban Kansas City, Missouri, Corf garnered second-team All-America accolades from the American Volleyball Coaches Association after earning a spot on the AVCA All-Region VI team. Last season, she established single-season career highs in kills (390, 4.1/set), digs (353, 3.7/set), blocks (50) and aces (33), helping the Blue Jays to a 26-5 overall record and a second-place district finish.
- > Cooper also received national acclaim last year, earning AVCA All-America honorable mention to go with AVCA All-Region IV distinction after leading Har-Ber High School to a 33-2 record and a runner-up finish in the 6A bracket at the 2021 Arkansas state championships. A four-time all-conference selection, Cooper merited all-state recognition and landed on the all-state tournament team in each of her final three seasons.
- > Braun brings a winning pedigree with her to SDSU as well after leading her Valley Christian High team to the 2021 Arizona 3A state championship, garnering Conference 3A Player of the Year and 3A Metro Region Offensive Player of the Year accolades. According to MaxPreps, Braun totaled 1,290 kills and hit .344 during her prep career, helping Valley Christian to an additional pair of runner-up state finishes in 2019 and 2020.
- > Not to be outdone, Douglas also starred on the Arizona prep volleyball scene, capping a brilliant senior campaign in 2021 with all-state honors from the Arizona Republic after leading Notre Dame Prep to a 37-5 record, highlighted by a Conference 4A state championship. Last season, Douglas was named both the Conference 4A Player of the Year and Defensive Player of the Year while receiving identical acclaim in the 4A West Valley Region after averaging a career-high 4.8 digs per set (307 overall) to go with 61 assists and 47 service aces, according to MaxPreps.
- > Geoghegan is also eager to display her defensive prowess this season after she was named the Bay League Division I Libro of the Year and received all-conference recognition at Mira Costa High School in 2021. The Manhattan Beach native led her Mustang squad to a 28-9 overall record and a regional semifinal appearance in the 2021 CIF Open Division state tournament. For her efforts, Geoghegan also collected first-team all-area honors by the Daily Breeze, as Mira Costa finished the year at No. 17 in the AVCA/USA Today Super 25 National High School Rankings.
- > Gonzalez, meanwhile, is a local product who attended Temecula Valley High and received all-Southwestern Conference recognition as a senior after helping her Golden Bears squad advance to the second round of the 2021 CIF Southern Section Division II playoffs.
- > The first of two transfers to last year's signing class, Schraeder was a part of two teams at USD that advanced to the NCAA Tournament, including a second-round appearance in the fall of 2021. During her freshman campaign that was shortened and delayed due to the COVID-19 pandemic, Schraeder ranked second in the West Coast Conference with a team-high 1.30 blocks per set, establishing a personal best with seven block assists in a road sweep at Gonzaga. A prep star at Coeur d'Alene High in Idaho, Schraeder merited the state's Girls Volleyball 5A/4A Athlete of the Year honors in 2019 and 2020.
- > A native of Ventura, Rivera returns to the West Coast after playing three seasons at Georgia, where she started 34 matches in 76 appearances. In 2021, she enjoyed her most productive season as collegian, finishing with 201 kills (2.05/set), 77 total blocks (0.79/set) and 73 digs (0.75/set) in 98 sets played. In addition, Rivera blasted 10+ kills eight times during the year and posted three or more blocks in 17 outings.

PRESEASON PROGNOSTICATIONS

> San Diego State was pegged for an eighth-place finish in the 2022 Mountain West preseason coaches poll released on Aug. 17.

> In the 23-year history of the Mountain West, SDSU has finished first (2012), second (2002, 2011), fourth (2000, 2001, 2003, 2013, 2017), fifth (2005, 2015, 2019), sixth (1999, 2004, 2006, 2009, 2010, 2014, 2016), seventh (2008), eighth (2007, 2018, 2020), and ninth (2021) in the final league standings.

2022 Mountain West Preseason Poll

Rk.	Team (1st-place votes)	Pts.
1.	Colorado State (6)	93
2.	Utah State (3)	91
3.	San José State (1)	75
	Boise State (1)	75
5.	New Mexico	68
6.	UNLV	57
7.	Wyoming	47
8.	San Diego State	33
9.	Fresno State	29
10.	Air Force	27
11.	Nevada	10

MOUNTAIN WEST VOLLEYBALL CHAMPIONSHIP TICKETS ON SALE

> Tickets are now on sale for the 2022 Mountain West Volleyball Championship in Fort Collins, Colorado. The three-day event will run from Nov. 23-25, at Moby Arena on the campus of Colorado State University.

> Single-session tickets range from \$7-15, while all-session passes are \$17-35.

> Tickets can be purchased at CSURams.com, at the Moby Arena box office or by phone at 800-491-RAMS (7267).

> The top six teams in the conference standings will qualify for the Mountain West Volleyball Championship. First-round action starts on Wednesday, Nov. 23, at 1 p.m. MT and 4 p.m. MT. Two semifinal contests will be featured on Thursday, Nov. 24, beginning at 1 p.m. MT and 4 p.m. MT, while the championship match is slated for Friday, Nov. 25, at 6:30 p.m. MT.

> All matches will air live on the Mountain West Network. The MW app is available on your TV through Apple TV, Android TV, Amazon Fire TV or Roku. Mobile applications are available through the iOS App Store and Google Play.



Brent HILLIARD

Head Coach - Third Season at San Diego State

San Diego State Director of Athletics John David Wicker ushered in a new era for the Aztec volleyball team with the hiring of Brent Hilliard as the fifth head coach in program history on Jan. 31, 2020.

In his second season at SDSU, Hilliard and the Aztecs were faced with another demanding schedule, squaring off against 10 teams that qualified for postseason play.

However, San Diego State had its moments of glory in the fall of 2021, posting a 3-0 sweep at eventual Mountain West tournament champion Boise State before recording a five-set thriller on the road at UNLV, which ultimately captured the NIVC crown.

Individually, Hilliard oversaw the continued rise to prominence of Victoria O'Sullivan, who received all-Mountain West recognition for the second straight season after ranking second in the conference with 3.71 kills per set, as the SDSU outside hitter concluded her illustrious career with 1,026 kills overall.

Hilliard's charges enjoyed another successful year scholastically, with nine Aztecs landing on the Mountain West all-academic team, including Ashley Vanderpan, Kennedy Feuerborn and Serena Hodson, who took home the department's prestigious Malik Award, presented to SDSU student-athletes who attain a 4.0 GPA.

In his first season with the Scarlet and Black, Hilliard endured a challenging season fraught with COVID-19 protocols, an abbreviated schedule that was postponed until spring, along with injuries to key players.

However, Hilliard and the Aztecs persevered through the 2021 spring campaign, posting a 6-9 record, highlighted by thrilling victories over Boise State on the road and Colorado State at home in the season finale, respectively. Against the Broncos, SDSU defeated a Boise State team that entered the contest with four consecutive 3-0 sweeps. Two weeks later, the Aztecs snapped an 11-match to the Rams dating back to 2014 and logged their first win over CSU in San Diego since 2012.

Under Hilliard's guidance, O'Sullivan garnered all-Mountain West accolades for the first time in her career, as the SDSU junior led the squad with 3.25 kills per set, which ranked seventh in the conference. In addition, seniors Lauren Lee and Erin Gillcrest received MW Defensive Player of the Week recognition following the team's aforementioned wins over Boise State and Colorado State, respectively.

Hilliard's Aztecs also excelled in the classroom, with 12 student-athlete earning a spot on the Mountain West all-academic team, including Lauren Lee, who also merited first-team all-District 8 academic honors from the College Sports Information Directors of America (CoSIDA).

A 2018 inductee to the Southern California Indoor Volleyball Hall of Fame, Hilliard arrived at SDSU with a wealth of experience after achieving 19 years of unparalleled success as an assistant coach at the University of San Diego, where he served as the Toreros' associate head coach since 2007.

During his fruitful tenure, the Toreros qualified for the NCAA Tournament in all but one of his 19 seasons, advancing to the Sweet 16 in 2004, 2006, 2013 and 2018. In addition, Hilliard helped guide the Toreros to nine West Coast Conference championships while his players earned six All-America awards, 12 All-America honorable mentions, 44 all-WCC accolades and 15 freshman all-conference certificates.

Hilliard twice assumed the reins of the USD program on an interim basis while head coach Jennifer Petrie was absent on maternity leave. In 2006, Hilliard was honored as WCC Coach of the Year after guiding the Toreros to a conference championship and a Sweet 16 appearance in the NCAA Tournament. That season, he coached five all-conference honorees, including WCC Player of the Year Kristen Carlson, as USD finished 14th in the final USA Today/Coaches Poll.

The Toreros also flourished under Hilliard's guidance in 2011, racing to a 13-0 start en route a program-best 28-5 record, highlighted by a spot in the second round of the NCAA Tournament. Throughout his stint, USD was consistently ranked among the nation's top 25, climbing to as high as No. 2 during the 2013 campaign and rising to No. 5 in 2016.

"I would like to thank John David Wicker, Jenny Bramer, Dr. Adela de la Torre and the rest of the SDSU search committee for making me feel so welcome during the interview process," Hilliard said upon his hiring. "To be the head coach of such a remarkable women's volleyball program in my family's hometown is truly a once in a lifetime opportunity."

"We are fully committed to work tirelessly to elevate this program back to an elite status on the college volleyball landscape, one that the student body, faculty, community, alumni and, of course, all future Aztecs will take great pride in."

Hilliard played collegiately at Long Beach State, earning All-America honors in each of his four years from 1990-93, including first-team recognition over his final three seasons. A right-side hitter for the 49ers, Hilliard was named the NCAA Men's Volleyball Player of the Year as a junior in 1992 after leading LBSU to a 31-1 record.

In 1991, Hilliard and the 49ers captured the NCAA Championship with a 3-1 victory over USC in the finals, avenging a loss to the Trojans in the title match the year before. He finished his career as the NCAA all-time leader with 3,034 kills.

Additionally, Hilliard was selected to play for Team USA in the 1992 Summer Olympics in Barcelona, Spain, where he helped the Americans capture the bronze medal. The following year, he won a silver medal at the 1993 Pan American Games in Argentina and also owns a bronze medal from the 1991 World Cup.

After receiving his undergraduate degree in 1993 from Long Beach State in political science, Hilliard continued his volleyball career as a professional in Europe from 1995-98, playing two seasons in Belgium and another in the Netherlands. In 1996, Hilliard and the Masiek Volleyball Club captured the Belgian national championship and competed in the European Champions League.

In addition to his collegiate experience, which included a stint as head coach at nearby Cuyamaca College in 1999 and 2000, Hilliard has also coached for the past 12 years at Wave Volleyball Club in Del Mar, the premier volleyball club in San Diego County.

"Our priority at SDSU will be to engage, attract and secure exceptional student-athletes that strive for both academic and athletic excellence in their everyday lives," Hilliard added. "From day one, we will set expectations high and build from there. I am incredibly excited to get started and I look forward to the bright future ahead."

HILLIARD'S COLLEGIATE COACHING LEDGER (As an Assistant at USD)

Year	Overall Record	WCC Record (Finish)	Postseason
2001	22-9	10-4 (3rd)	NCAA Second Round
2002	25-8	10-4 (3rd)	NCAA First Round
2003	17-13	6-8 (T-5th)	NCAA First Round
2004	24-5	14-0 (1st)	NCAA Sweet 16
2005	23-6	10-4 (T-2nd)	NCAA Second Round
2006*	26-6	13-1 (1st)	NCAA Sweet 16
2007	21-8	11-3 (1st)	NCAA First Round
2008	23-5	12-2 (1st)	NCAA First Round
2009	18-7	10-4 (2nd)	None
2010	24-8	13-1 (1st)	NCAA Second Round
2011*	28-5	12-4 (2nd)	NCAA Second Round
2012	21-7	13-3 (T-1st)	NCAA First Round
2013	26-4	16-2 (1st)	NCAA Sweet 16
2014	19-12	12-6 (T-3rd)	NCAA First Round
2015	22-10	14-4 (2nd)	NCAA Second Round
2016	24-6	15-3 (2nd)	NCAA First Round
2017	25-5	17-1 (T-1st)	NCAA Second Round
2018	18-13	13-5 (3rd)	NCAA Sweet 16
2019	25-6	17-1 (1st)	NCAA Second Round
USD Total	431-143 (.751)		
WCC Total	238-60 (.799)		

As Head Coach at SDSU

Year	Overall Record	MW Record (Finish)	Postseason
2020	6-9	6-9 (8th)	
2021	8-22	5-13 (9th)	
2022	8-19	6-10	
SDSU Total	22-50		
Career as Head Coach	76-61 (.555)		
Overall Total	453-193 (.701)		

Notes

* - Served as interim head coach during the 2006 and 2011 seasons at USD. Record reflected in career totals.

- > Qualified for the NCAA Tournament in 18 of his 19 seasons at USD
- > Reached the NCAA Sweet 16 four times in 2004, 2006, 2013 and 2018
- > Won nine West Coast Conference championships

2022 AZTEC PHOTO ROSTER



Heipua TAUTUA'A
OH | 6-2 | Jr.

2



McKenna DOUGLAS
DS/L | 5-7 | Fr.

3



Kennedy FEUERBORN
S | 6-3 | Jr.

4



Jordyn GOLDSMITH
OPP | 6-1 | So.

6



Madison CORF
OH | 5-11 | Fr.

7



Ellie GEOGHEGAN
DS/L | 5-8 | Fr.

8



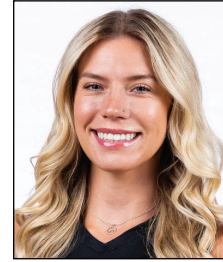
Sara MUKAJ
MB | 6-3 | So.

9



Cara BRAUN
OH | 6-1 | Fr.

10



Kayla RIVERA
OPP | 6-1 | Sr.

11



Julia HAYNIE
MB | 6-1 | Sr.

13



Reagan MERK
OH | 5-11 | So.

14



Mikela LABNO
OH | 6-2 | So.

15



Sarena GONZALEZ
S | 5-8 | Fr.

16



Noa MILLER
S | 5-10 | Sr.

19



Elly SCHRAEDER
MB | 6-2 | So.

20



Kat COOPER
MB | 6-1 | MB

21



Brent HILLIARD
Head Coach



Melanie GREENE
Assistant Coach/
Recruiting Coordinator



STEVE TIMMONS
Assistant Coach



Kara BARKDOLL
Volleyball Operations
Assistant



2022-23 San Diego St. Women's Volleyball Combined Team Statistics All games

Game Records

Overall	Conference	Home	Away	Neutral
8 - 19	6 - 10	6 - 10	2 - 7	0 - 2

Team Box Score

##	Player	SP	Attack					Set		Serve			Dig			Blocking					PTS	
			K	K/S	E	TA	PCT	A	A/S	SA	SE	SA/S	RE	DIG	DIG/S	BS	BA	TOT/S	BLK/S	BE		BHE
2	Tautua'a, Heipua	93	210	2.26	117	606	.153	17	0.18	16	31	0.17	36	187	2.01	7	23	30	0.32	6	1	244.5
3	Douglas, McKenna	37	2	0.05	0	7	.286	38	1.03	12	10	0.32	10	112	3.03	0	0	0	0.00	0	1	14.0
4	Feuerborn, Kennedy	16	7	0.44	4	20	.150	40	2.50	0	0	0.00	0	1	0.06	0	2	2	0.13	0	2	8.0
6	Goldsmith, Jordyn	15	10	0.67	12	38	-.053	0	0.00	0	0	0.00	0	3	0.20	0	6	6	0.40	0	0	13.0
7	Corf, Madison	92	242	2.63	154	624	.141	10	0.11	13	34	0.14	51	131	1.42	4	18	22	0.24	9	2	268.0
8	Geoghegan, Ellie	100	6	0.06	1	9	.556	75	0.75	28	46	0.28	52	317	3.17	0	0	0	0.00	0	0	34.0
9	Mukaj, Sara	9	2	0.22	0	13	.154	2	0.22	1	0	0.11	0	3	0.33	0	1	1	0.11	2	0	3.5
11	Rivera, Kayla	100	241	2.41	131	642	.171	5	0.05	11	19	0.11	0	35	0.35	7	68	75	0.75	6	0	293.0
13	Haynie, Julia	69	104	1.51	27	218	.353	8	0.12	10	12	0.14	0	16	0.23	5	31	36	0.52	5	0	134.5
14	Merk, Reagan	35	13	0.37	12	41	.024	4	0.11	5	7	0.14	7	37	1.06	0	1	1	0.03	1	0	18.5
15	Labno, Mikela	88	196	2.23	99	529	.183	9	0.10	0	2	0.00	10	42	0.48	4	21	25	0.28	0	0	210.5
16	Gonzalez, Sarena	90	3	0.03	0	11	.273	422	4.69	10	22	0.11	1	92	1.02	0	0	0	0.00	0	10	13.0
19	Miller, Noa	100	22	0.22	6	57	.281	527	5.27	30	21	0.30	0	170	1.70	0	5	5	0.05	2	12	54.5
20	Schraeder, Elly	91	119	1.31	39	280	.286	6	0.07	0	0	0.00	0	13	0.14	14	86	100	1.10	16	2	176.0
21	Cooper, Kat	66	70	1.06	30	189	.212	3	0.05	2	12	0.03	0	22	0.33	5	27	32	0.48	2	1	90.5
SAN DIEGO ST.		100	1247	12.47	632	3284	.187	1166	11.66	138	216	1.38	180	1181	11.81	46	289	190.5	1.91	49	31	1,575.5
Opponents		100	1238	12.38	445	3045	.260	1131	11.31	180	220	1.80	138	1098	10.98	36	495	283.5	2.84	49	32	1,701.5

Team statistics

	SDSU	OPP
ATTACK		
Kills	1247	1238
Errors	632	445
Total Attacks	3284	3045
Attack Pct	.187	.260
Kills/Set	12.47	12.38
SET		
Assists	1166	1131
Attempts	3285	2973
Assist Pct	.355	.380
Assists/Set	11.66	11.31
SERVE		
Aces	138	180
Errors	216	220
Attempts	2124	2333
Serve Pct	.898	.906
Aces/Set	1.38	1.80
SERVE RECEPTIONS		
Errors	180	138
Errors/Set	1.80	1.38
Attempts	2113	1909
Reception Pct	.915	.999
DEFENSE		
Digs	1181	1098
Digs/Set	11.81	10.98
BLOCKING		
Block solo	46	36
Block Assist	289	495
Total Blocks	190.5	283.5
Blocks/Set	1.91	2.84
Block Errors	49	49
Ball handling errors	31	32
ATTENDANCE		
Total	5399	8759
Dates/Avg Per Date	16/337	9/973
Neutral Site #/Avg	2/104	-
Current win streak	0	-
Home win streak	0	-

Team Results

Date	Opponent	Score	Score-by-set	Att.
08/26/2022	California	L 0-3	20-25,23-25,23-25	357
08/27/2022	Army West Point	W 3-1	25-22,22-25,25-16,25-19	287
08/27/2022	UC San Diego	W 3-1	25-22,25-20,26-28,25-20	341
09/02/2022	vs Baylor	L 1-3	18-25,17-25,29-27,14-25	125
09/03/2022	at Pepperdine	L 0-3	18-25,20-25,32-34	302
09/03/2022	vs UC Santa Barbara	L 1-3	18-25,18-25,25-22,16-25	82
09/09/2022	Maryland	L 1-3	14-25,25-21,20-25,18-25	122
09/09/2022	Arizona	L 0-3	17-25,15-25,11-25	388
09/10/2022	Sacramento St.	L 2-3	16-25,26-28,25-21,25-22,8-15	186
09/15/2022	UCLA	L 0-3	16-25,23-25,15-25	686
09/17/2022	at San Diego	L 1-3	25-20,13-25,14-25,12-25	1000
* 09/22/2022	San Jose St.	L 1-3	18-25,25-18,21-25,10-25	322
* 09/24/2022	Nevada	W 3-1	25-16,25-22,20-25,26-24	244
* 09/27/2022	at Fresno St.	W 3-0	25-18,25-21,25-21	641
* 10/01/2022	at UNLV	L 1-3	15-25,19-25,27-25,22-25	698
* 10/06/2022	at Utah St.	L 0-3	19-25,17-25,10-25	1084
* 10/08/2022	at Boise St.	L 1-3	21-25,16-25,25-22,23-25	1281
* 10/13/2022	Wyoming	L 1-3	14-25,22-25,25-20,17-25	441
* 10/15/2022	Colorado St.	L 0-3	21-25,21-25,23-25	387
* 10/20/2022	at New Mexico	L 1-3	21-25,23-25,25-18,21-25	727
* 10/22/2022	Air Force	W 3-1	25-21,27-29,25-16,25-16	320
* 10/27/2022	at Colorado St.	L 1-3	25-21,23-25,20-25,18-25	2239
* 10/29/2022	at Wyoming	W 3-1	31-29,20-25,25-17,26-24	787
* 11/03/2022	Boise St.	W 3-1	25-19,25-23,20-25,25-21	402
* 11/05/2022	Utah St.	L 1-3	27-25,18-25,18-25,14-25	355
* 11/07/2022	Fresno St.	W 3-0	25-14,25-23,25-18	188
* 11/10/2022	UNLV	L 0-3	19-25,12-25,23-25	373



2022-23 San Diego St. Women's Volleyball Combined Team Statistics In Conference games

Game Records

Overall	Conference	Home	Away	Neutral
6 - 10	6 - 10	4 - 5	2 - 5	0 - 0

Team Box Score

##	Player	SP	Attack					Set		Serve			Dig			Blocking					PTS	
			K	K/S	E	TA	PCT	A	A/S	SA	SE	SA/S	RE	DIG	DIG/S	BS	BA	TOT/S	BLK/S	BE		BHE
2	Tautua'a, Heipua	53	102	1.92	57	311	.145	7	0.13	9	16	0.17	15	99	1.87	5	15	20	0.38	2	1	123.5
3	Douglas, McKenna	22	1	0.05	0	6	.167	24	1.09	10	6	0.45	6	69	3.14	0	0	0	0.00	0	0	11.0
4	Feuerborn, Kennedy	12	6	0.50	3	12	.250	29	2.42	0	0	0.00	0	0	0.00	0	0	0	0.00	0	1	6.0
6	Goldsmith, Jordyn	12	7	0.58	10	28	-.107	0	0.00	0	0	0.00	0	3	0.25	0	6	6	0.50	0	0	10.0
7	Corf, Madison	55	157	2.85	93	395	.162	7	0.13	11	21	0.20	29	96	1.75	3	9	12	0.22	4	2	175.5
8	Geoghegan, Ellie	59	4	0.07	1	7	.429	52	0.88	19	25	0.32	34	200	3.39	0	0	0	0.00	0	0	23.0
9	Mukaj, Sara	2	0	0.00	0	1	.000	0	0.00	0	0	0.00	0	0	0.00	0	0	0	0.00	0	0	0.0
11	Rivera, Kayla	59	159	2.69	80	399	.198	5	0.08	11	19	0.19	0	32	0.54	7	42	49	0.83	4	0	198.0
13	Haynie, Julia	49	75	1.53	17	157	.369	7	0.14	9	12	0.18	0	12	0.24	4	24	28	0.57	3	0	100.0
14	Merk, Reagan	16	5	0.31	7	22	-.091	2	0.13	0	1	0.00	2	10	0.63	0	1	1	0.06	0	0	5.5
15	Labno, Mikela	47	106	2.26	55	289	.176	7	0.15	0	0	0.00	7	18	0.38	3	10	13	0.28	0	0	114.0
16	Gonzalez, Sarena	52	3	0.06	0	10	.300	221	4.25	4	6	0.08	0	59	1.13	0	0	0	0.00	0	6	7.0
19	Miller, Noa	59	17	0.29	6	41	.268	336	5.69	14	12	0.24	0	100	1.69	0	5	5	0.08	1	5	33.5
20	Schraeder, Elly	52	77	1.48	19	169	.343	2	0.04	0	0	0.00	0	12	0.23	9	54	63	1.21	8	1	113.0
21	Cooper, Kat	38	39	1.03	18	113	.186	3	0.08	0	4	0.00	0	11	0.29	2	12	14	0.37	2	1	47.0
SAN DIEGO ST.		59	758	12.85	366	1960	.200	702	11.90	87	122	1.47	100	721	12.22	33	178	122	2.07	24	17	967.0
Opponents		59	729	12.36	269	1839	.250	656	11.12	100	136	1.69	87	652	11.05	21	265	153.5	2.60	35	13	982.5

Team statistics

	SDSU	OPP
ATTACK		
Kills	758	729
Errors	366	269
Total Attacks	1960	1839
Attack Pct	.200	.250
Kills/Set	12.85	12.36
SET		
Assists	702	656
Attempts	2019	1857
Assist Pct	.348	.353
Assists/Set	11.90	11.12
SERVE		
Aces	87	100
Errors	122	136
Attempts	1288	1361
Serve Pct	.905	.900
Aces/Set	1.47	1.69
SERVE RECEPTIONS		
Errors	100	87
Errors/Set	1.69	1.47
Attempts	1225	1168
Reception Pct	.918	.999
DEFENSE		
Digs	721	652
Digs/Set	12.22	11.05
BLOCKING		
Block solo	33	21
Block Assist	178	265
Total Blocks	122	153.5
Blocks/Set	2.07	2.60
Block Errors	24	35
Ball handling errors	17	13
ATTENDANCE		
Total	3032	7457
Dates/Avg Per Date	9/337	7/1065
Neutral Site #/Avg	0/0	-
Current win streak	0	-
Home win streak	0	-

Team Results

Date	Opponent	Score	Score-by-set	Att.
* 09/22/2022	San Jose St.	L 1-3	18-25,25-18,21-25,10-25	322
* 09/24/2022	Nevada	W 3-1	25-16,25-22,20-25,26-24	244
* 09/27/2022	at Fresno St.	W 3-0	25-18,25-21,25-21	641
* 10/01/2022	at UNLV	L 1-3	15-25,19-25,27-25,22-25	698
* 10/06/2022	at Utah St.	L 0-3	19-25,17-25,10-25	1084
* 10/08/2022	at Boise St.	L 1-3	21-25,16-25,25-22,23-25	1281
* 10/13/2022	Wyoming	L 1-3	14-25,22-25,25-20,17-25	441
* 10/15/2022	Colorado St.	L 0-3	21-25,21-25,23-25	387
* 10/20/2022	at New Mexico	L 1-3	21-25,23-25,25-18,21-25	727
* 10/22/2022	Air Force	W 3-1	25-21,27-29,25-16,25-16	320
* 10/27/2022	at Colorado St.	L 1-3	25-21,23-25,20-25,18-25	2239
* 10/29/2022	at Wyoming	W 3-1	31-29,20-25,25-17,26-24	787
* 11/03/2022	Boise St.	W 3-1	25-19,25-23,20-25,25-21	402
* 11/05/2022	Utah St.	L 1-3	27-25,18-25,18-25,14-25	355
* 11/07/2022	Fresno St.	W 3-0	25-14,25-23,25-18	188
* 11/10/2022	UNLV	L 0-3	19-25,12-25,23-25	373

SEASON HIGHS

CAREER HIGHS

#2 HEIPUA TAUTUA'A

Hitting Percentage (*min. 7 kills*) .379 (13-29-29) vs. Army West Point, 8/27/22
 Total Attempts 35, at Pepperdine, 9/3/22
 Kills 14, four times, last: at Colorado State, 10/27/22
 Assists 3, at Pepperdine, 9/3/22
 Aces 4, at Pepperdine, 9/3/22
 Digs 16, vs. No. 9 Baylor, 9/2/22
 Block Solos 2, vs. San José State, 9/22/22
 Block Assists 5, vs. San José State, 9/22/22
 Total Blocks 7, vs. San José State, 9/22/22
 Points 17.5, at Colorado State, 10/27/22

#3 MCKENNA DOUGLAS

Hitting Percentage (*min. 7 kills*) N/A
 Total Attempts 4, at UNLV, 10/1/22
 Kills 1, twice, last: at Fresno State, 9/27/22
 Assists 7, vs. Nevada, 9/24/22
 Aces 5, at Fresno State, 9/27/22
 Digs 26, vs. Nevada, 9/24/22
 Block Solos N/A
 Block Assists N/A
 Total Blocks N/A
 Points 6.0, at Fresno State, 9/27/22

#4 KENNEDY FEUERBORN

Hitting Percentage (*min. 7 kills*) N/A
 Total Attempts 5, twice: last, vs. Wyoming, 10/13/22
 Kills 2, three times, last: vs. Wyoming, 10/13/22
 Assists 15, vs. Nevada, 9/24/22
 Aces N/A
 Digs 1, vs. Maryland, 9/9/22
 Block Solos N/A
 Block Assists 1, twice, last: vs. Maryland, 9/9/22
 Total Blocks 1, twice, last: vs. Maryland, 9/9/22
 Points 2.0, three times, last: vs. Wyoming, 10/13/22

#6 JORDYN GOLDSMITH

Hitting Percentage (*min. 7 kills*) N/A
 Total Attempts 11, vs. Utah State, 11/5/22
 Kills 3, twice, last: vs. Colorado State, 10/15/22
 Assists N/A
 Aces N/A
 Digs 2, vs. Nevada, 9/24/22
 Block Solos N/A
 Block Assists 4, vs. Utah State, 11/5/22
 Total Blocks 4, vs. Utah State, 11/5/22
 Points 3.5, vs. Colorado State, 10/15/22

#7 MADISON CORF

Hitting Percentage (*min. 7 kills*) .667, vs. Fresno State, 11/7/22
 Total Attempts 47, vs. Nevada, 9/24/22
 Kills 22, vs. Nevada, 9/24/22
 Assists 2, three times, last: vs. UNLV, 11/10/22
 Aces 3, vs. Air Force, 10/22/22
 Digs 11, twice, last: at New Mexico, 10/20/22
 Block Solos 1, four times, last: at Wyoming, 10/1/22
 Block Assists 2, twice, last: vs. Sacramento State, 9/10/22
 Total Blocks 2, three times, last: vs. Sacramento State, 9/10/22
 Points 24.5, vs. Air Force, 10/22/22

#8 ELLIE GEOGHEGAN

Hitting Percentage (*min. 7 kills*) N/A
 Total Attempts 3, at Fresno State, 9/27/22
 Kills 2, at Fresno State, 9/27/22
 Assists 8, twice, last: at Wyoming, 10/29/22
 Aces 4, vs. Fresno State, 11/7/22
 Digs 24, at New Mexico, 10/20/22
 Block Solos N/A
 Block Assists N/A
 Total Blocks N/A
 Points 4.0, vs. Fresno State, 11/7/22

.462 (14-2-26), at Boise State, 3/20/21
 38, vs. Nevada, 2/26/21
 15, vs. Nevada, 2/26/21
 5, vs. Fresno State, 10/7/21
 4, at Pepperdine, 9/3/22
 22, vs. New Mexico, 2/20/21
 3, at Wyoming, 3/5/21
 6, at Boise State, 3/20/21
 7, vs. San José State, 9/22/22
 19.0, at Boise State, 3/20/21

N/A
 4, at UNLV, 10/1/22
 1, twice, last: at Fresno State, 9/27/22
 7, vs. Nevada, 9/24/22
 5, at Fresno State, 9/27/22
 26, vs. Nevada, 9/24/22
 N/A
 N/A
 N/A
 6.0, at Fresno State, 9/27/22

N/A
 15, vs. Fresno State, 10/7/21
 6, at UNLV, 2/5/21
 27, at UNLV, 2/5/21
 1, twice, last: vs. Boise State, 10/30/21
 7, vs. Fresno State, 2/12/21
 1, twice, last: vs. Fresno State, 2/12/21
 5, vs. Nevada, 11/18/21
 5, vs. Nevada, 11/18/21
 7.0, twice, last: vs. Utah State, 10/28/21

.636 (7-0-11), vs. Air Force 10/2/21
 27, vs. Colorado State, 10/21/21
 9, three times, last: at Wyoming, 10/23/21
 2, vs. Boise State, 10/30/21
 N/A
 3, four times, last: at Utah State, 10/16/21
 1, four times, last: at Wyoming, 10/23/21
 4, three times, last: vs. Utah State, 11/5/22
 5, vs. Fresno State, 10/7/21
 10.0, at Wyoming, 10/23/21

.667, vs. Fresno State, 11/7/22
 47, vs. Nevada, 9/24/22
 22, vs. Nevada, 9/24/22
 2, three times, last: vs. UNLV, 11/10/22
 3, vs. Air Force, 10/22/22
 11, twice, last: at New Mexico, 10/20/22
 1, four times, last: at Wyoming, 10/1/22
 2, twice, last: vs. Sacramento State, 9/10/22
 2, three times, last: vs. Sacramento State, 9/10/22
 24.5, vs. Air Force, 10/22/22

N/A
 3, at Fresno State, 9/27/22
 2, at Fresno State, 9/27/22
 8, twice, last: at Wyoming, 10/29/22
 4, vs. Fresno State, 11/7/22
 24, at New Mexico, 10/20/22
 N/A
 N/A
 N/A
 4.0, vs. Fresno State, 11/7/22

SEASON HIGHS

CAREER HIGHS

#9 SARA MUKAJ

Hitting Percentage (<i>min. 7 kills</i>)	N/A
Total Attempts	6, vs. Arizona, 9/9/22
Kills	1, twice, last: vs. Arizona, 9/9/22
Assists	2, vs. Sacramento State, 9/10/22
Aces	1, vs. Sacramento State, 9/10/22
Digs	3, vs. Sacramento State, 9/10/22
Block Solos	N/A
Block Assists	1, vs. Sacramento State, 9/10/22
Total Blocks	1, vs. Sacramento State, 9/10/22
Points	1.5, vs. Sacramento State, 9/10/22

#10 CARA BRAUN

Hitting Percentage (<i>min. 7 kills</i>)	
Total Attempts	
Kills	
Assists	
Aces	
Digs	
Block Solos	
Block Assists	
Total Blocks	
Points	

#11 KAYLA RIVERA

Hitting Percentage (<i>min. 7 kills</i>)	.647 (12-1-17) at Pepperdine, 9/3/22
Total Attempts	36, at New Mexico, 10/20/22
Kills	13, three times, last: vs. Boise State 11/3/22
Assists	2, at Fresno State, 9/27/22
Aces	2, four times, last: vs. Fresno State, 11/7/22
Digs	5, twice, last: at New Mexico, 10/20/22
Block Solos	1, four times, last: at Colorado State, 10/27/22
Block Assists	7, vs. Army West Point, 8/27/22
Total Blocks	7, twice, last: at Colorado State, 10/27/22
Points	18.0, vs. Boise State 11/3/22

* - played at Georgia (Fall 2018-Fall 2021)

#13 JULIA HAYNIE

Hitting Percentage (<i>min. 7 kills</i>)	.769 (10-0-13), at New Mexico, 10/20/22
Total Attempts	19, three times, last: at Wyoming, 10/29/22
Kills	10, three times, last: at Wyoming, 10/29/22
Assists	3, at Fresno State, 9/27/22
Aces	2, three times, last: at Utah State, 11/5/22
Digs	2, four times, last: vs. Fresno State, 11/7/22
Block Solos	1, twice, last: at New Mexico, 10/20/22
Block Assists	6, at New Mexico, 10/20/22
Total Blocks	7, at New Mexico, 10/20/22
Points	14.0, at New Mexico, 10/20/22

^ - played at Portland State (Fall 2019 & Spring 2021)

#14 REAGAN MERK

Hitting Percentage	.286 (7-3-14), vs. UC Santa Barbara, 9/3/22
Total Attempts	14, vs. UC Santa Barbara, 9/3/22
Kills	7, vs. UC Santa Barbara, 9/3/22
Assists	2, vs. Maryland, 9/9/22
Aces	2, twice, last: vs. Maryland, 9/9/22
Digs	7, vs. Maryland, 9/9/22
Block Solos	N/A
Block Assists	1, at Fresno State, 9/27/22
Total Blocks	1, at Fresno State, 9/27/22
Points	7.0, vs. UC Santa Barbara, 9/3/22

#15 MIKELA LABNO

Hitting Percentage (<i>min. 7 kills</i>)	.450 (10-1-20), at No. 8 San Diego, 9/17/22
Total Attempts	35, at New Mexico, 10/20/22
Kills	16, at Boise State, 10/8/22
Assists	2, twice, last: at Fresno State, 9/27/22
Aces	N/A
Digs	6, twice, last: vs. Nevada, 9/24/22
Block Solos	1, three times, last: vs. Colorado State, 10/15/22
Block Assists	4, at Wyoming, 10/29/22
Total Blocks	4, at Wyoming, 10/29/22
Points	17.0, at Boise State, 10/8/22

.636 (7-0-11) at Sam Houston, 8/28/21
11, at Sam Houston, 8/28/21
7, at Sam Houston, 8/28/21
4, twice, last: at UC Santa Barbara, 9/3/21
4, at Sam Houston, 8/27/21
5, at Sam Houston, 8/28/21
1, at UC Santa Barbara, 9/3/21
4, twice, last: vs. Pepperdine, 9/4/21
4, three times, last: vs. Pepperdine, 9/4/21
10.0, at Sam Houston, 8/28/21

.647 (12-1-17) at Pepperdine, 9/3/22
36, at New Mexico, 10/20/22; at Texas A&M, 10/8/21*
15, at Texas A&M, 10/8/21*
2, at Fresno State, 9/27/22
2, nine times, last: vs. Fresno State, 11/7/22
18, at Texas A&M, 10/8/21*
5, vs. Arkansas, 2/5/21*
7, vs. Army West Point, 8/27/22
7, twice, last: at Colorado State, 10/27/22
18.0, vs. Boise State 11/3/22

.769 (10-0-13), at New Mexico, 10/20/22
25, vs. Idaho, 1/25/21^
11, vs. Idaho, 1/25/21^
3, at Fresno State, 9/27/22
3, vs. UC Davis, 9/7/19^
4, twice, last: at UNLV, 11/1/21
2, twice, last: at Fresno State, 11/6/21
9, vs. Eastern Washington, 10/31/19^
10, vs. Eastern Washington, 10/31/19^
14.0, at New Mexico, 10/20/22

.385 (7-2-13), vs. Texas Southern, 9/17/21
20, vs. UC Riverside, 9/18/21
7, three times: vs. UC Santa Barbara, 9/3/22
2, three times, last: vs. Maryland, 9/9/22
2, three times, last: vs. Maryland, 9/9/22
7, vs. Maryland, 9/9/22
1, vs. UC Riverside, 9/18/21
2, vs. UC Riverside, 9/18/21
3, vs. UC Riverside, 9/18/21
9.0, vs. UC Riverside, 9/18/21

.522 (13-1-23), vs. Pepperdine, 9/4/21
35, at New Mexico, 10/20/22
16, at Boise State, 10/8/22
2, three times, last: at Fresno State, 9/27/22
2, at Long Beach State, 9/14/21
13, vs. UC Riverside, 9/18/21
2, vs. San Diego, 9/11/21
4, at Wyoming, 10/29/22
4, twice last: at Wyoming, 10/29/22
17.0, at Boise State, 10/8/22

SEASON HIGHS

CAREER HIGHS

#16 SARENA GONZALEZ

Hitting Percentage (<i>min. 7 kills</i>)	N/A
Total Attempts	6, at UNLV, 10/1/22
Kills	1, three times, last: at Colorado State, 10/27/22
Assists	31, at Wyoming, 10/29/22
Aces	3, vs. Maryland, 9/9/22
Digs	8, at Colorado State, 10/27/22
Block Solos	N/A
Block Assists	N/A
Total Blocks	N/A
Points	3.0, twice, last: at Fresno State, 9/27/22

#19 NOA MILLER

Hitting Percentage (<i>min. 7 kills</i>)	N/A
Total Attempts	8, at UNLV, 10/1/22
Kills	4, vs. Boise State, 11/3/22
Assists	33, vs. Air Force, 10/22/22
Aces	6, vs. UC San Diego, 8/27/22
Digs	12, vs. Army West Point, 8/27/22
Block Solos	N/A
Block Assists	3, at New Mexico, 10/20/22
Total Blocks	3, at New Mexico, 10/20/22
Points	6.0, vs. UC San Diego, 8/27/22

* - played at Wofford in 2018 and at Arizona State in 2019

#20 ELLY SCHRAEDER

Hitting Percentage (<i>min. 7 kills</i>)	.667 (9-1-12), vs. Fresno State, 11/7/22
Total Attempts	21, at Wyoming, 10/29/22
Kills	9, vs. Fresno State, 11/7/22
Assists	1, six times, last: vs. Fresno State, 11/7/22
Aces	N/A
Digs	3, vs. Fresno State, 11/7/22
Block Solos	2, twice, last: at UNLV, 10/1/22
Block Assists	8, twice, last vs. Boise State, 11/3/22
Total Blocks	9.0, vs. Army West Point, 8/27/22
Points	13.0, vs. Army West Point, 8/27/22

+ - played at San Diego (Spring & Fall 2021)

#21 KAT COOPER

Hitting Percentage (<i>min. 7 kills</i>)	.600 (7-1-10), vs. UC San Diego, 8/27/22
Total Attempts	17, at New Mexico, 10/20/22
Kills	7, vs. UC San Diego, 8/27/22
Assists	1, three times, last: at Colorado State, 10/27/22
Aces	1, twice, last: vs. Army West Point, 8/27/22
Digs	5, vs. UC San Diego, 8/27/22
Block Solos	1, five times, last: vs. Wyoming, 10/13/22
Block Assists	4, twice, last: vs. UC San Diego, 8/27/22
Total Blocks	5, twice, last: vs. UC San Diego, 8/27/22
Points	10.0, vs. UC San Diego, 8/27/22

N/A
6, at UNLV, 10/1/22
1, three times, last: at Colorado State, 10/27/22
31, at Wyoming, 10/29/22
3, vs. Maryland, 9/9/22
8, at Colorado State, 10/27/22
N/A
N/A
N/A
3.0, twice, last: at Fresno State, 9/27/22

N/A
8, at UNLV, 10/1/22
6, vs. Fresno State, 10/7/21
33, vs. Air Force, 10/22/22
6, vs. UC San Diego, 8/27/22
16, vs. Houston, 8/30/19*
N/A
3, at New Mexico, 10/20/22
3, at New Mexico, 10/20/22
6.0 twice, last: vs. UC San Diego, 8/27/22

.778 (7-0-9), vs. Portland (2/10/21)+
21, at Wyoming, 10/29/22
9, vs. Fresno State, 11/7/22
2, at Loyola Marymount, 3/13/21+
1, at Loyola Marymount, 3/13/21+
3, vs. Fresno State, 11/7/22
2, four times, last: at UNLV, 10/1/22
8, twice, last vs. Boise State, 11/3/22
9.0, vs. Army West Point, 8/27/22
13.0, vs. Army West Point, 8/27/22

.600 (7-1-10), vs. UC San Diego, 8/27/22
17, at New Mexico, 10/20/22
7, vs. UC San Diego, 8/27/22
1, three times, last: at Colorado State, 10/27/22
1, twice, last: vs. Army West Point, 8/27/22
5, vs. UC San Diego, 8/27/22
1, five times, last: vs. Wyoming, 10/13/22
4, twice, last: vs. UC San Diego, 8/27/22
5, twice, last: vs. UC San Diego, 8/27/22
10.0, vs. UC San Diego, 8/27/22