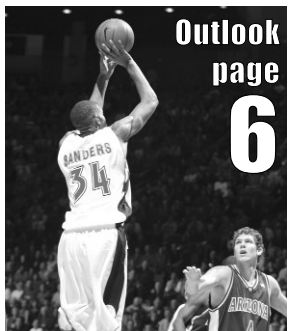


Table of Contents



The 2003-04 San Diego State Men's Basketball Media Guide

The 2003-04 San Diego State University Basketball Media Guide is a publication of the San Diego State University athletic media relations office. The publication was written, edited and designed by assistant media relations director Mike May.

Assistance was provided by associate athletic director and media relations director Kevin Klintworth, assistant media relation directors Dave Kuhn and Peggy Curtin, media relations assistants Dan Gisel and Matt MacDonald, media relations student assistants Lesley Fong, Jim Solien, Clay Spiegel and Darin Wong.

Photography

Ernie Anderson, Ken Jacques, Stan Liu, Kelly Ayers

Printing

MultiAd Sports (Peoria, Ill.)

Additional Copies

Additional copies of the San Diego State media guide are available for \$10 through the Aztec media relations office.

Introduction	1
Schedule	2
San Diego State Quick Facts	3
Rosters	4
Broadcast Roster	5
Season Outlook	6

This is San Diego State Basketball	13
San Diego State University	14
San Diego	16
Steve Fisher	18
Fisher's Players in the NBA	20
Cox Arena at Aztec Bowl	22
Game day at SDSU	24
SDSU Athletics	26
Mountain West Conference	28

Coaches and Staff	29
Steve Fisher	30
Brian Dutcher	38
Gary Grant	39
Gregg Gottlieb	40
Mark Fisher	41
Mark Haines	41
Basketball Support Staff	42
SDSU Athletic Department Staff	43

Players	45
Trimaine Davis	46
Travis Hanour	48
Tommy Johnson	51
Chris Manker	54
Aerick Sanders	57
John Sharper	61

Steve Sir	63
Wesley Stokes	65
Chris Walton	67
Ben Wardrop	70
Brandon Heath	71
Marcus Slaughter	71
Shawn Weinstein	72

2002-03 Review	73
Season Notes	74
Results	76
Statistics	77
Team Game-By-Game	78
Superlatives	80
Player Game-By-Game	81
Tony Bland	82
Mike Mackell	84
Deandre Moore	85
Game Recaps	87
Mountain West Conference Stats	97

Records	99
Team Single Season	100
Scoring	102
Rebounds	104
Assists	105
Field Goals	106
Free Throws	107
Three-Point Field Goals	108
Miscellaneous	109
MWC Records	111
Cox Arena Records	114

History	115
Year-By-Year	116
Speciality Games	127
Year-By-Year Summary	128

Statistical History	130
vs. All Foes/Conferences	132
Attendance/Home Record	133
1,000-Point Scorers	134
Annual Statistical Leaders	138
Letterwinners	140
All-Time Individual Stats	142
NCAA/NIT Postseason	146
vs. Conferences	146
Awards and Honors	149
Conference Tournaments	150
Miscellaneous Fisher Era	152

University	153
San Diego State University	154
Dr. Stephen Weber	158
Mike Bohn	159
Media Information	160
Opponent Directory	162
Media Outlets	164
Broadcast Information	165
Cox Arena	166
Directory	168

2003-04 Schedule

Aztecs Travel Plans

► Hotel information on page 164

Texas Tech

► Depart: Friday, Dec. 12 at 12:50 p.m. on Southwest No. 1604/2750 (through Albuquerque), arriving in Lubbock at 3:30 p.m.
 ► Return: Sunday, Dec. 14 at 8:00 a.m. on Southwest No. 785/2134 (through Albuquerque), arriving in San Diego at 10:00 a.m.

Arizona

► Depart: Sunday, Dec. 21 at 1:45 p.m. on Southwest No. 2044, arriving in Tucson at 3:55 p.m.
 ► Return: Tuesday, Dec. 23 at 8:00 a.m. on Southwest No. 1053, arriving in San Diego at 8:15 a.m.

Saint Mary's

► Depart: Monday, Jan. 5 at 3:00 p.m. on Southwest No. 1522, arriving in Oakland at 4:30 p.m.
 ► Return: Wednesday, Jan. 7 at 11:30 a.m. on Southwest No. 2075, arriving in San Diego at 12:50 p.m.

Colorado State/Wyoming

► Depart: Friday, Jan. 23 at 2:15 p.m. on United No. 1566, arriving in Denver at 5:19 p.m.
 ► Return: Tuesday, Jan. 27 at 11:30 a.m. on United 1523, arriving in San Diego at 12:46 p.m.

Utah/Brigham Young

► Depart: Friday, Feb. 6 at 1:00 p.m. on Delta No. 1654, arriving in Salt Lake City at 3:49 p.m.
 ► Return: Tuesday, Feb. 10 at 2:50 p.m. on Delta No. 1449, arriving in San Diego at 3:37 p.m.

UNLV

► Depart: Monday, Feb. 16 at 3:25 p.m. on America West No. 197, arriving in Las Vegas at 4:35 p.m.
 ► Return: Tuesday, Feb. 17 at 11:55 p.m. on America West No. 199, arriving in San Diego at 12:57 a.m. (Wed., Feb. 18)

New Mexico/Air Force

► Depart: Friday, Feb. 27 at 2:10 p.m. on Southwest No. 2527, arriving in Albuquerque at 4:50 p.m.
 ► Depart: Albuquerque: Sunday, Feb. 29 at 10:20 a.m. on United No. 718, arriving in Denver at 11:34 a.m.
 ► Return: Tuesday, Mar. 2 at 11:30 a.m. on United 1523, arriving in San Diego at 12:46 p.m.

Date	Day	Opponent	Site	Time	TV
Exhibition Games					
Nov. 4	Tue.	LA Stars	Cox Arena	7:05 p.m. PST	
Nov. 13	Thur.	Branch West	Cox Arena	7:05 p.m. PST	
Nov. 21	Fri.	Long Beach State ^	Cox Arena	7:35 p.m. PST	Ch. 4 San Diego
EA Sports Maui Invitational (Lahaina Civic Center; Maui, Hawaii)					
Nov. 24	Mon.	vs. Ohio State		4:00 p.m. HST	ESPN2
Nov. 25	Tue.	vs. Central Michigan/vs. Dayton			
Nov. 26	Wed.	at Chaminade/vs. Hawai'i/vs. Santa Clara/vs. Villanova			
Nov. 30	Sun.	Troy State	Cox Arena	2:05 p.m. PST	Ch. 4 San Diego
Dec. 3	Wed.	at San Diego	San Diego, Calif.	7:00 p.m. PST	Ch. 4 San Diego
Dec. 6	Sat.	UC San Diego	Cox Arena	7:05 p.m. PST	
Dec. 13	Sat.	at Texas Tech	Lubbock, Texas	1:35 p.m. CST	
Dec. 18	Thur.	Cal Poly	Cox Arena	7:05 p.m. PST	Ch. 4 San Diego
Dec. 20	Sat.	Eastern Washington ^	Cox Arena	7:05 p.m. PST	Ch. 4 San Diego
Dec. 22	Mon.	at Arizona	Tucson, Ariz.	6:30 p.m. MST	FOX Sports Ariz.
Dec. 27	Sat.	Washington	Cox Arena	7:05 p.m. PST	Ch. 4 San Diego
Dec. 31	Wed.	Portland	Cox Arena	1:05 p.m. PST	
Jan. 3	Sat.	Iowa State	Cox Arena	7:05 p.m. PST	Ch. 4 San Diego
Jan. 6	Tue.	at Saint Mary's	Moraga, Calif.	7:05 p.m. PST	
Jan. 12	Mon.	Brigham Young*	Cox Arena	7:05 p.m. PST	SportsWest/4SD
Jan. 17	Sat.	UNLV*	Cox Arena	Noon PST	ESPN+Plus/4SD
Jan. 24	Sat.	at Colorado State*	Fort Collins, Colo.	7:00 p.m. MST	Ch. 4 San Diego
Jan. 26	Mon.	at Wyoming*	Laramie, Wyo.	7:00 p.m. MST	SportsWest/4SD
Jan. 31	Sat.	Air Force*	Cox Arena	7:05 p.m. PST	Ch. 4 San Diego
Feb. 2	Mon.	New Mexico*	Cox Arena	7:05 p.m. PST	SportsWest/4SD
Feb. 7	Sat.	at Utah*	Salt Lake City, Utah	3:00 p.m. MST	Ch. 4 San Diego
Feb. 9	Mon.	at Brigham Young*	Provo, Utah	10:00 p.m. MST	ESPN
Feb. 17	Tue.	at UNLV*	Las Vegas, Nev.	7:30 p.m. PST	SportsWest/4SD
Feb. 21	Sat.	Wyoming*	Cox Arena	7:05 p.m. PST	Ch. 4 San Diego
Feb. 23	Mon.	Colorado State*	Cox Arena	7:05 p.m. PST	Ch. 4 San Diego
Feb. 28	Sat.	at New Mexico*	Albuquerque, N.M.	7:05 p.m. MST	SportsWest/4SD
Mar. 1	Mon.	at Air Force*	Colorado Springs, Colo.	7:05 p.m. MST	Ch. 4 San Diego
Mar. 6	Sat.	Utah*	Cox Arena	3:00 p.m. PST	ESPN+Plus/4SD
Mar. 11-13		at Mountain West Tournament (Denver, Colo.)			

* - Indicates Mountain West Conference game. ^ - Indicates doubleheader with San Diego State women.
 All ESPN+Plus and SportsWest televised games will air locally on Channel 4 San Diego.

2004 NCAA Div. I Men's Basketball Championship Dates and Sites

Opening Round Site

Univ. of Dayton Arena
 Dayton, Ohio
 Dayton, host
 March 16

First/Second Round Sites

HSBC Arena
 Buffalo, N.Y.
 Canisius, Niagara and MAAC, tri-hosts
 March 18 and 20

Nationwide Arena
 Columbus, Ohio
 Ohio State, host
 March 19 and 21

Pepsi Center
 Denver, Colo.
 Colorado State and MWC, co-hosts
 March 18 and 20

Kemper Arena
 Kansas City, Mo.
 Big 12, host
 March 19 and 21

Bradley Center
 Milwaukee, Wis.
 Marquette, host
 March 19 and 21

TD Waterhouse Centre
 Orlando, Fla.
 Stetson, host
 March 19 and 21

RBC Center
 Raleigh, N.C.
 North Carolina State, host
 March 18 and 20

Key Arena
 Seattle, Wash.
 Washington, host
 March 18 and 20

Regional Sites

Continental Airline Arena
 East Rutherford, N.J.
 Rutgers, host
 March 25 and 27

Georgia Dome
 Atlanta, Ga.
 Georgia Tech, host
 March 26 and 28

Edward Jones Dome
 St. Louis
 Missouri Valley Conf., host
 March 26, 28

America West Arena
 Phoenix, Ariz.
 Arizona State, host
 March 25 and 27

Final Four

Alamodome
 San Antonio, Texas
 Texas-San Antonio, host
 April 3 and 5

General Information

Location San Diego, Calif. 92182
 Founded 1897
 Enrollment 33,400
 Nickname Aztecs
 Colors Scarlet and Black
 PMS Color 185
 Arena Cox Arena at Aztec Bowl
 Opened 1997
 Capacity 12,414
 Affiliation NCAA Division I
 Conference Mountain West
 President Dr. Stephen Weber
 Alma Mater (Year) Bowling Green (1964)
 Athletics Director Mike Bohn
 Alma Mater (Year) Kansas (1983)
 Athletic Department Phone 619-594-3019
 Ticket Office Phone 619-283-7378
 or 619-283-SDSU

History

Seasons of Basketball Entering 83rd
 First Season of Basketball 1921-22
 All-Time Record 1,113-956
 NCAA Tournament Appearances 7
 Seasons of Div. I Basketball Entering 34th
 First Season of Div. I Basketball 1970-71
 All-Time Div. I Record 424-510
 NCAA Div. I Tournament Appearances 4
 Last NCAA Appearance 2002
 NIT Appearances 2
 Last NIT Appearance 2003

Media Relations

Assistant SID/MBB Mike May
 SID Main Office Number 619-594-5547
 May Cell Phone 619-957-8372
 SID Fax Number 619-582-6541
 May E-mail mmay@mail.sdsu.edu
 Associate AD/SID Kevin Klintworth
 Klintworth E-mail kklintwo@mail.sdsu.edu
 SID Mailing Address Aztec Media Relations
 3014 Aztec Athletics Center
 5302 55th Street
 San Diego State University
 San Diego, CA 92182

Basketball Staff

Head Coach Steve Fisher
 Alma Mater (Year) Illinois State (1967)
 Record at SDSU (Years) 56-63 (4)
 Record Overall (Years) 240-145 (12 full)
 Basketball Office Phone 619-594-6249
 Best Time to Contact Fisher Contact May
 Assistant Head Coach Brian Dutcher
 Alma Mater (Year) Minnesota (1982)
 Assistant Coach Gregg Gottlieb
 Alma Mater (Year) UCLA (1995)
 Assistant Coach Gary Grant
 Alma Mater Michigan (1988)
 Director of Basketball Operations Mark Fisher
 Alma Mater (Year) Michigan (2001)
 Director of Player Development Matt Soria
 Alma Mater (Year) San Diego State (2001)
 Basketball Trainer Mark Haines
 Alma Mater (Year) Metropolitan State (1987)
 Administrative Assistant Marty Malano

Team Information

	Total	Home	Away
2002-03 Record	16-14	11-6	5-8
2002-03 MWC Record	6-8	4-3	2-5
Mountain West Finish			5th
MWC Tournament			Quarterfinals (0-1)
Postseason			NIT Second Round (1-1)
Starters Returning/Lost			1/4
Letterwinners Returning/Lost			8/5

Media Information

Radio Station XPRS-AM 1090
 Play-By-Play Announcer John Fricke
 PBP Phone Number (858) 453-9153
 Radio Analyst John Kentera
 Analyst Phone Number (858) 453-9153
 Visitor Radio Contact TBA
 Video Footage Contact Brian Murphy
 VFC Phone Number (619) 594-7617
 Beat Writer Ed Graney
 San Diego Union-Tribune
 619-293-2203
 Beat Writer Mike Sullivan
 North County Times
 760-739-6645

Media Services

SID Office Phone 619-594-5547
 SID Office Fax 619-582-6541
 Cox Arena Press Row 619-265-5853
 SDSU Athletics Website www.goaztecs.com

2003-04 Roster Breakdown

Starters Returning (1)

Player	Ht	Wt	Cl	Pos.	PPG	RPG
Aerick Sanders	6-9	203	Sr.	F	6.1	7.6

Total Letterwinners Returning (8)

Player	Ht	Wt	Cl	Pos.	PPG	RPG
Trimaime Davis	6-8	223	So.	F	1.5	1.1
Travis Hanour	6-8	216	Jr.	G	3.1	3.1
Tommy Johnson	6-4	188	Jr.	G	5.6	2.6
Chris Manker	7-1	215	Jr.	C	2.9	1.2
Aerick Sanders	6-9	203	Sr.	F	6.1	7.6
John Sharper	6-1	198	So.	G	1.9	0.8
Steve Sir	6-6	205	So.	G	5.5	1.1
Ben Wardrop	6-3	201	Sr.	G	0.9	0.0

Newcomers/Including '02-03 Redshirts (5)

Player	Ht	Wt	Cl	Pos.	PPG	RPG
Brandon Heath	6-3	172	Fr.	G	---	---
Marcus Slaughter	6-9	208	Fr.	F	---	---
Wesley Stokes	6-0	168	Jr.	G	5.8	2.4
Chris Walton	6-10	230	Jr.	F	2.8	3.1
Shawn Weinstein	6-1	178	Fr.	G	---	---

Averages above from the 2000-01 season.

Starters Lost (4)

Player	Ht	Wt	Cl.	Pos.	PPG	RPG
Tony Bland	6-5	201	Exp.	G	16.4	3.5
Evan Burns	6-8	220	Tr.	F	9.2	5.1
Mike Mackell	6-9	250	Exp.	C	14.4	4.6
Deandre Moore	5-10	191	Exp.	G	8.3	3.7

Total Letterwinners Lost (5)

Player	Ht	Wt	Cl	Pos.	PPG	RPG
Tony Bland	6-5	201	Exp.	G	16.4	3.5
Evan Burns	6-8	220	Tr.	F	9.2	5.1
Mike Mackell	6-9	250	Exp.	C	14.4	4.6
Deandre Moore	5-10	191	Exp.	G	8.3	3.7
Markee White	6-7	197	Tr.	F	0.3	0.5

Honors Candidates

Wesley Stokes - All-Conference, All-Transfer, All-Region
 Aerick Sanders - All-Conference

2003-04 San Diego State Alphabetical Roster

No.	Name	Pos.	Ht.	Wt.	Yr.	Exp.	Most Recent Div. I Season			Hometown (High School/Previous School)
							PPG	RPG	APG	
20	Trimaïne Davis	F	6-8	223	So.	1L	1.5	1.1	0.0	West Pittsburg, Calif. (Pittsburg High)
5	Travis Hanour	G	6-8	216	Jr.	1L	3.1	3.1	1.0	Laguna Beach, Calif. (Laguna Beach High/Univ. of Arizona)
1	Brandon Heath	G	6-3	172	Fr.	HS	---	---	---	Los Angeles, Calif. (Westchester High)
0	Tommy Johnson	G	6-4	188	Jr.	2L	5.6	2.6	1.8	Los Angeles, Calif. (Crenshaw High)
33	Chris Manker	C	7-1	215	Jr.	1L	2.9	1.2	0.2	West Des Moines, Iowa (Laguna Beach (Calif.) High/Oregon State Univ.)
34	Aerick Sanders	F-C	6-9	203	Sr.	3L	6.1	7.6	1.2	Carson, Calif. (Gardena Serra High)
15	John Sharper	G	6-1	198	So.	1L	1.9	0.8	0.6	Oakland, Calif. (St. Mary's High)
11	Steve Sir	G	6-6	205	So.	1L	5.5	1.1	0.9	Edmonton, Alberta (Cretin Derham Hall High)
42	Marcus Slaughter	F	6-9	208	Fr.	HS	---	---	---	Riverside, Calif. (J.W. North High)
2	Wesley Stokes	G	6-0	168	Jr.	TR	5.8	2.4	4.1	Long Beach, Calif. (Poly High/Univ. of Missouri)
3	Chris Walton	F	6-10	230	Jr.	2L	2.8	3.1	0.2	San Diego, Calif. (Univ. of San Diego High)
32	Ben Wardrop *	G	6-3	201	Sr.	1L	0.9	0.0	0.4	Anaheim, Calif. (Loara High)
10	Shawn Weinstein *	G	6-1	178	Fr.	HS	---	---	---	Rancho Pales Verdes, Calif. (Peninsula High)

2003-04 San Diego State Numerical Roster

No.	Name	Pos.	Ht.	Wt.	Yr.	Exp.	Most Recent Div. I Season			Hometown (High School/Previous School)
							PPG	RPG	APG	
0	Tommy Johnson	G	6-4	188	Jr.	2L	5.6	2.6	1.8	Los Angeles, Calif. (Crenshaw High)
1	Brandon Heath	G	6-3	172	Fr.	HS	---	---	---	Los Angeles, Calif. (Westchester High)
2	Wesley Stokes	G	6-0	168	Jr.	TR	5.8	2.4	4.1	Long Beach, Calif. (Poly High/Univ. of Missouri)
3	Chris Walton	F	6-10	230	Jr.	2L	2.8	3.1	0.2	San Diego, Calif. (Univ. of San Diego High)
5	Travis Hanour	G	6-8	216	Jr.	1L	3.1	3.1	1.0	Laguna Beach, Calif. (Laguna Beach High/Univ. of Arizona)
10	Shawn Weinstein *	G	6-1	178	Fr.	HS	---	---	---	Rancho Pales Verdes, Calif. (Peninsula High)
11	Steve Sir	G	6-6	205	So.	1L	5.5	1.1	0.9	Edmonton, Alberta (Cretin Derham Hall High)
15	John Sharper	G	6-1	198	So.	1L	1.9	0.8	0.6	Oakland, Calif. (St. Mary's High)
20	Trimaïne Davis	F	6-8	223	So.	1L	1.5	1.1	0.0	West Pittsburg, Calif. (Pittsburg High)
32	Ben Wardrop *	G	6-3	201	Sr.	1L	0.9	0.0	0.4	Anaheim, Calif. (Loara High)
33	Chris Manker	C	7-1	215	Jr.	1L	2.9	1.2	0.2	West Des Moines, Iowa (Laguna Beach (Calif.) High/Oregon State Univ.)
34	Aerick Sanders	F-C	6-9	203	Sr.	3L	6.1	7.6	1.2	Carson, Calif. (Gardena Serra High)
42	Marcus Slaughter	F	6-9	208	Fr.	HS	---	---	---	Riverside, Calif. (J.W. North High)

Head Coach: Steve Fisher (Illinois State, 1967)
Assistant Head Coach: Brian Dutcher (Minnesota, 1982)
Assistant Coach: Gregg Gottlieb (UCLA, 1995), Gary Grant (Michigan, 1988)
Director of Operations: Mark Fisher (Michigan, 2001)
Dir. of Player Development: Matt Soria (San Diego State, 2001)
Athletic Trainer: Mark Haines (Metropolitan State College, 1987)

Year refers to basketball eligibility for the 2003-04 season. * - Indicates walk-on.

► Pronunciations

Travis Hanour
 Travis HAN-our
Chris Manker
 Chris MANE-ker (like banker)
Aerick Sanders
 AIR-ick Sanders
Ben Wardrop
 Ben WAR-drip
Shawn Weinstein
 Shawn Wine-STEEN

► By Class

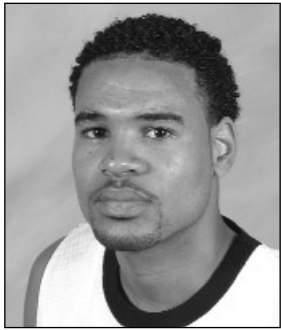
Seniors (2)
 Aerick Sanders, Ben Wardrop
Juniors (5)
 Travis Hanour, Tommy Johnson, Chris Manker, Wesley Stokes, Chris Walton
Sophomores (3)
 Trimaïne Davis, John Sharper, Steve Sir

Freshmen (3)
 Brandon Heath, Marcus Slaughter, Shawn Weinstein

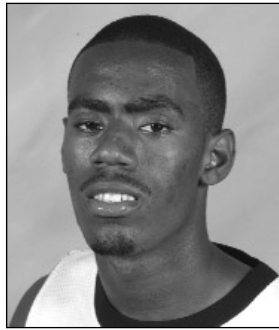
► By Position

Guards (8)
 Travis Hanour, Brandon Heath, Tommy Johnson, John Sharper, Wesley Stokes, Steve Sir, Ben Wardrop, Shawn Weinstein
Forwards (4)
 Trimaïne Davis, Aerick Sanders, Marcus Slaughter, Chris Walton
Centers (2)
 Chris Manker, Aerick Sanders

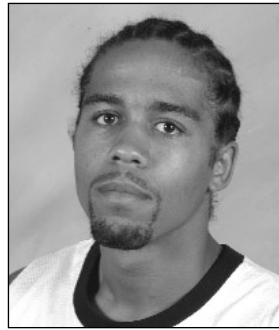
Broadcast Roster



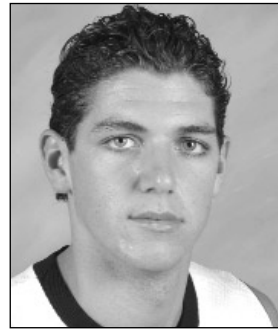
0 Tommy Johnson
 Jr. • G • 6-4 • 188
 Los Angeles, Calif.



1 Brandon Heath
 Fr. • G • 6-3 • 172
 Los Angeles, Calif.



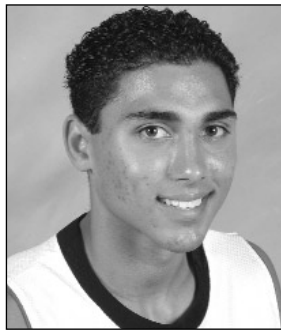
2 Wesley Stokes
 Jr. • G • 6-0 • 168
 Long Beach, Calif.



4 Chris Walton
 Jr. • F • 6-10 • 230
 San Diego, Calif.



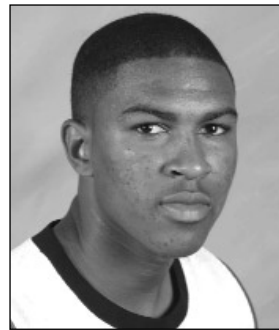
5 Travis Hanour
 Jr. • G • 6-8 • 216
 Laguna Beach, Calif.



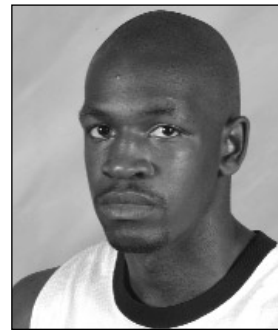
10 Shawn Weinstein
 Fr. • G • 6-1 • 178
 Rancho Palms Verdes, Calif.



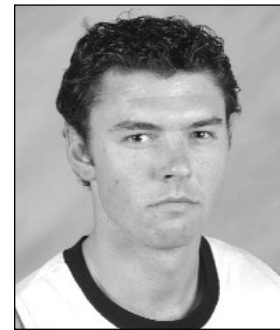
11 Steve Sir
 So. • G • 6-6 • 205
 Edmonton, Alberta



15 John Sharper
 So. • G • 6-1 • 198
 Oakland, Calif.



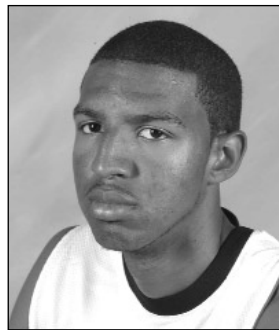
20 Trimaine Davis
 So. • F • 6-8 • 223
 West Pittsburg, Calif.



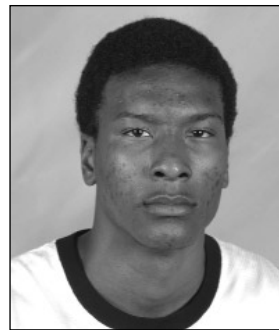
32 Ben Wardrop
 Jr. • G • 6-2 • 189
 Anaheim, Calif.



33 Chris Manker
 Jr. • C • 7-1 • 215
 W. Des Moines, Iowa



34 Aerick Sanders
 Sr. • F-C • 6-9 • 203
 Carson, Calif.



42 Marcus Slaughter
 Fr. • F • 6-9 • 208
 Riverside, Calif.



Steve Fisher
 Head Coach



Brian Dutcher
 Assistant Head Coach



Gregg Gottlieb
 Assistant Coach



Gary Grant
 Assistant Coach



Mark Fisher
 Director of Basketball
 Operations



Matt Soria
 Director of Player
 Development



Mark Haines
 Athletic Trainer

The 2003-04 Season Outlook



A victory in a national postseason tournament, two straight postseason tournament appearances, three consecutive .500 or better seasons, sold-out home crowds, record television appearances and a national championship coach beginning his fifth season has San Diego State fans talking about a...

Winning Tradition

Percentage Returning in '03-04

Category	Pct. Back
Points	33.9
Field Goals	33.3
Three-Point FGs	59.9
Free Throws	24.4
Rebounds	49.0
Assists	36.0
Blocks	48.8
Steals	34.6
Minutes	43.2

Career Games Played/Started

Player	GP	GS
Aerick Sanders	79	30
Wesley Stokes	69	21
Chris Walton	61	3
Tommy Johnson	48	7
Chris Manker	46	4
Travis Hanour	38	8
Steve Sir	30	7
John Sharper	28	0
Trimaine Davis	24	0
Ben Wardrop	22	0

Let's start with the basics. San Diego State basketball has been in a constant state of evolution since Steve Fisher was hired in March of 1999 to take over a struggling program.

From that initial 5-23 team that drew just over 2,000 fans per game, Aztec Basketball has, without question, reached a new level.

San Diego State has won 37 games over the last two seasons and appeared in the NCAA Tournament as well as the National Invitation Tournament

during that span.

Those 2,000 or so fans that were on hand for Fisher's first season have been joined by more than 5,000 of their closest friends. Aztec Basketball leads the nation in increased attendance over the last three years. During the 2002-2003 season, SDSU set a new school record with an average crowd of 7,172.

Those extra people sure make things more fun. They cheer in all the right places and they've turned Cox Arena into a true home-court advantage.

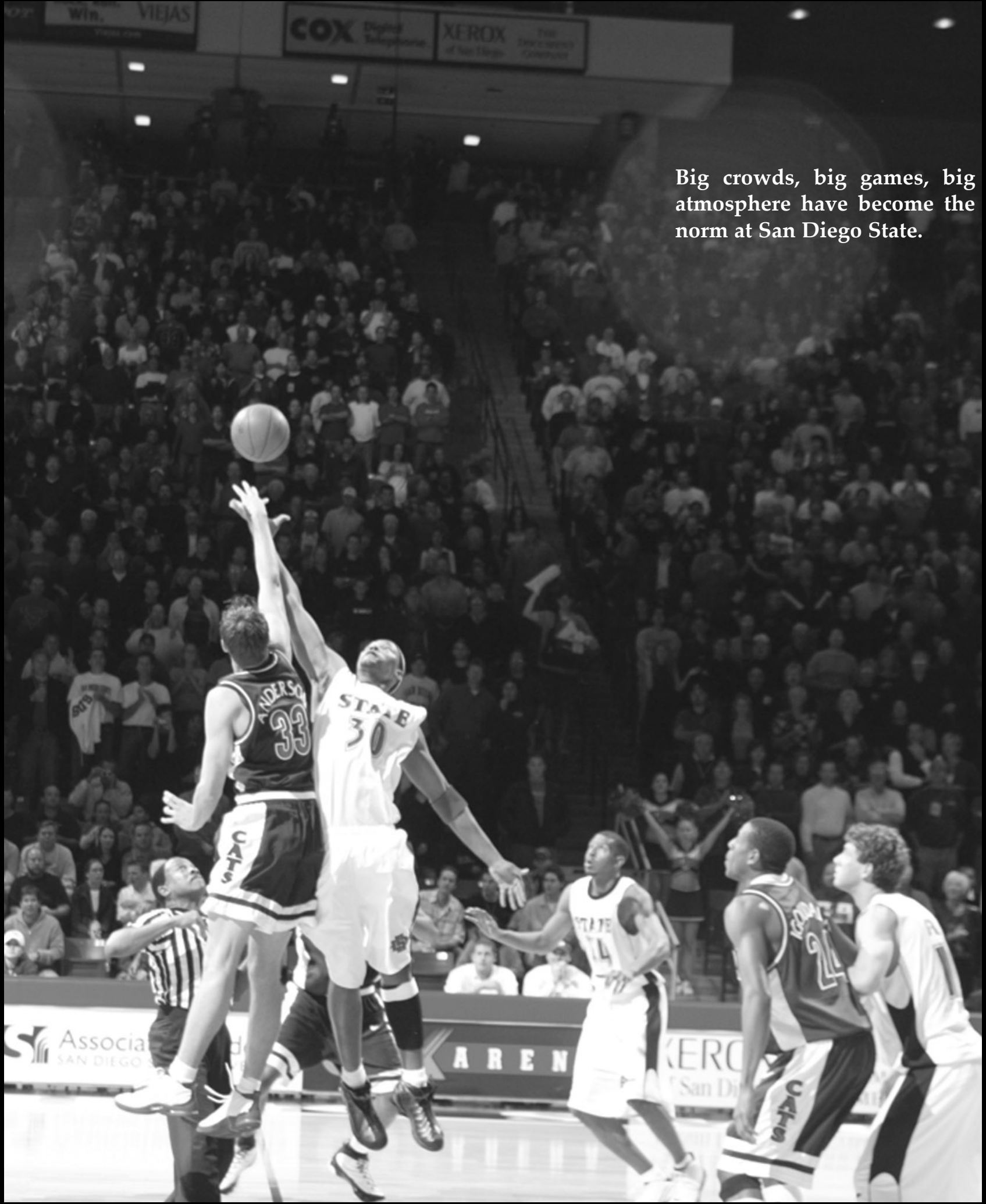
There's another noticeable change. Almost every

time San Diego State takes the court, any court, its movements are tracked by television cameras as nearly every Aztec game is now televised live.

That sure is nice as well. It's wholesome fun for the entire family right in the middle of the prime-time schedule.

But a peculiar thing has taken place over the last four years as well. Those extra people at Cox Arena, and those at home watching with their families on a cozy night, they seem to have brought another change to the program.

Expectations.

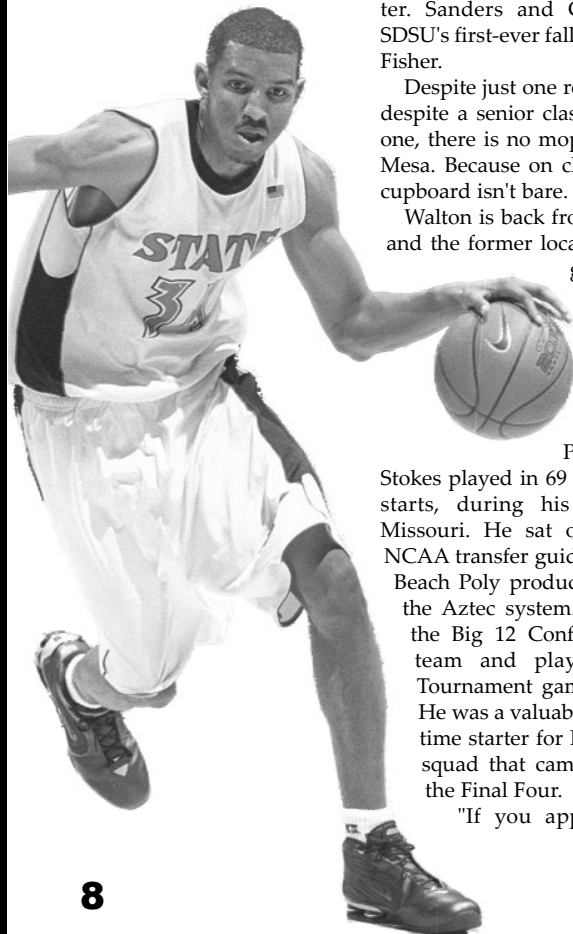


Big crowds, big games, big atmosphere have become the norm at San Diego State.

Team Breakdown

2002-03 Record	16-14
MWC Record	6-8
MWC Finish	5th
MWC Tournament	0-1
Postseason NIT	1-1
Starters Returning (1)	
Aerick Sanders (Sr., F-C, 6-9)	
Starters Lost (4)	
Tony Bland (G, 6-5)	
Mike Mackell (C, 6-9)	
Deandre Moore (G, 5-10)	
Evan Burns (F, 6-8)	
Letterwinners Returning (8)	
Trimaïne Davis (So., F, 6-8)	
Travis Hanour (Jr., G, 6-8)	
Tommy Johnson (Jr., G, 6-4)	
Chris Manker (Jr., C, 7-1)	
Aerick Sanders (Sr., F-C, 6-9)	
John Sharper (So., G, 6-1)	
Steve Sir (So., G, 6-6)	
Ben Wardrop (Sr., G, 6-3)	
Newcomers/Others Returning (5)	
Brandon Heath (Fr., G, 6-3)	
Marcus Slaughter (Fr., F, 6-9)	
Wesley Stokes (Jr., G, 6-0)	
Chris Walton (Jr., F, 6-10)	
Shawn Weinstein (Fr., G, 6-1)	

Aerick Sanders, who ranked second in rebounding in the MWC last season, is the lone scholarship senior on the '03-04 squad.



Maybe for the first time ever, and certainly for the only time in recent history, San Diego State basketball fans anticipate that they will see good teams when they make it to Cox Arena. It's sort of like, um, a little tradition. Don't bother worrying about returning starters or lettermen or the strength of the opposition. Those things really don't concern Aztec basketball fans anymore. Any team is fair game in any season.

"We have expectations now and I'm all for that," said Fisher as he prepares his fifth Aztec basketball team for the rigors of a challenging schedule. "We have our own expectations as well. I know with only one senior on the roster there will be a tendency for people to think we're a year away. That's not what we are thinking.

"We've always told our team they only have today. And if we have a super season, I don't think any of us will be surprised."

It's called tradition, sprinkled with some expectations.

The Squad

San Diego State will indeed be a young squad with just one senior. Only one player returns from last year's team who would be considered a true returning starter and that's team captain Aerick Sanders. He is the lone senior on the roster. Sanders and Chris Walton were SDSU's first-ever fall signees under Steve Fisher.

Despite just one returning starter, and despite a senior class that numbers just one, there is no moping on Montezuma Mesa. Because on closer inspection, the cupboard isn't bare.

Walton is back from a redshirt season and the former local prep star is a bigger, stronger junior with 61 games of play under his belt. He could see action at three different positions for SDSU.

Point guard Wesley Stokes played in 69 games, including 21 starts, during his two-year stay at Missouri. He sat out last season per NCAA transfer guidelines and the Long Beach Poly product has had a year in the Aztec system. He was named to the Big 12 Conference all-freshman team and played in six NCAA Tournament games with the Tigers. He was a valuable member and part-time starter for Missouri's 2001-2002 squad that came within a game of the Final Four.

"If you appreciate basketball,

you'll like our team" Fisher said. "We will have a very high basketball IQ as a group. We'll be smart and we'll work hard. This is going to be a fun team to coach and watch play. We'll make good decisions and execute at both ends of the floor. That will win games for you."

Along with the older newcomers, San Diego State has a pair of heavily-recruited freshmen in guard Brandon Heath and forward Marcus Slaughter and both are likely to get minutes early. And a load of returning role players from a year ago are also back, including part-time starter Tommy Johnson, wing player Travis Hanour, shooting phenom Steve Sir, the athletic Trimaïne Davis and the versatile Chris Manker.

"We'll shoot the ball efficiently from the perimeter and I think our ball skills are pretty good," the head coach said.

"The lack of size will be a factor because people in our league are not only tall but they have a lot of bulk," he added. "We'll have to do a good job of playing aggressive defense in the post and on the ball."

With the newcomers and the youth comes the chance to re-define the team. San Diego State's roster will be difficult to designate in traditional basketball terms and will likely provide some tough matchups for the opposition.

"We can go big (a relative term) and we can go smaller," Fisher said. "We'll have a lot of options because there's not a lot of difference in our shooting guard and small forward positions and there's not a lot of difference between our power forward and our center positions. We have a seven-footer who is one of our best three-point shooters and we have some slashers."

Point Guard

	Cl.	Ht.	Wt.	PPG	APG
Brandon Heath	Fr.	6-3	172	---	---
John Sharper	So.	6-1	198	1.9	0.6
Wesley Stokes	Jr.	6-0	168	5.8	4.1

The job is clearly in the hands of Wesley Stokes. The junior is a true-point and should allow SDSU to not miss a beat, despite the loss of three-year starter Deandre Moore. Stokes is experienced, battle-tested and chomping at the bit to return to the battles of college basketball after a year as a redshirt that included battling Moore every day in practice.

"I think we'll be a smart team and that starts with Wesley Stokes at the point guard," Fisher said. "He is smart but he is also so good when you allow him to be creative. We have to learn as a team that fine line between structure and freedom."

Stokes had 214 assists to just 133 turnovers during his career at Missouri. Those numbers came during the most inexperienced portion of his career and should climb considerably at State in his final two seasons.

"Wesley will be one of the premier point guards on the West Coast," Fisher said. "He knows how to play and he's not afraid to make a play. He makes everyone else better.

"He's a smart defender. He won't put huge pressure on you but he will out-smart you," concluded Fisher.

Stokes also hit 46 three-pointers during his career as a Tiger and his offensive game includes plenty of ability to penetrate.

Behind the transfer is where it gets fuzzy. Freshman Brandon Heath and sophomore John Sharper will see some action at a position that doesn't include a true depth chart.

"Our backup point will be a little bit by committee but those three (Stokes, Heath and Sharper) will carry the load," according to Fisher. "They all have the ball skills and they can all shoot. They are both (Heath and Sharper) reliable as a backup at the point."

Shooting Guard

	Cl.	Ht.	Wt.	PPG	APG
Brandon Heath	Fr.	6-3	172	---	---
Tommy Johnson	Jr.	6-4	188	5.6	1.8
John Sharper	So.	6-1	198	1.9	0.6
Steve Sir	So.	6-6	205	5.5	0.9
Ben Wardrop	Sr.	6-3	201	0.9	0.4
Shawn Weinstein	Fr.	6-1	178	---	---

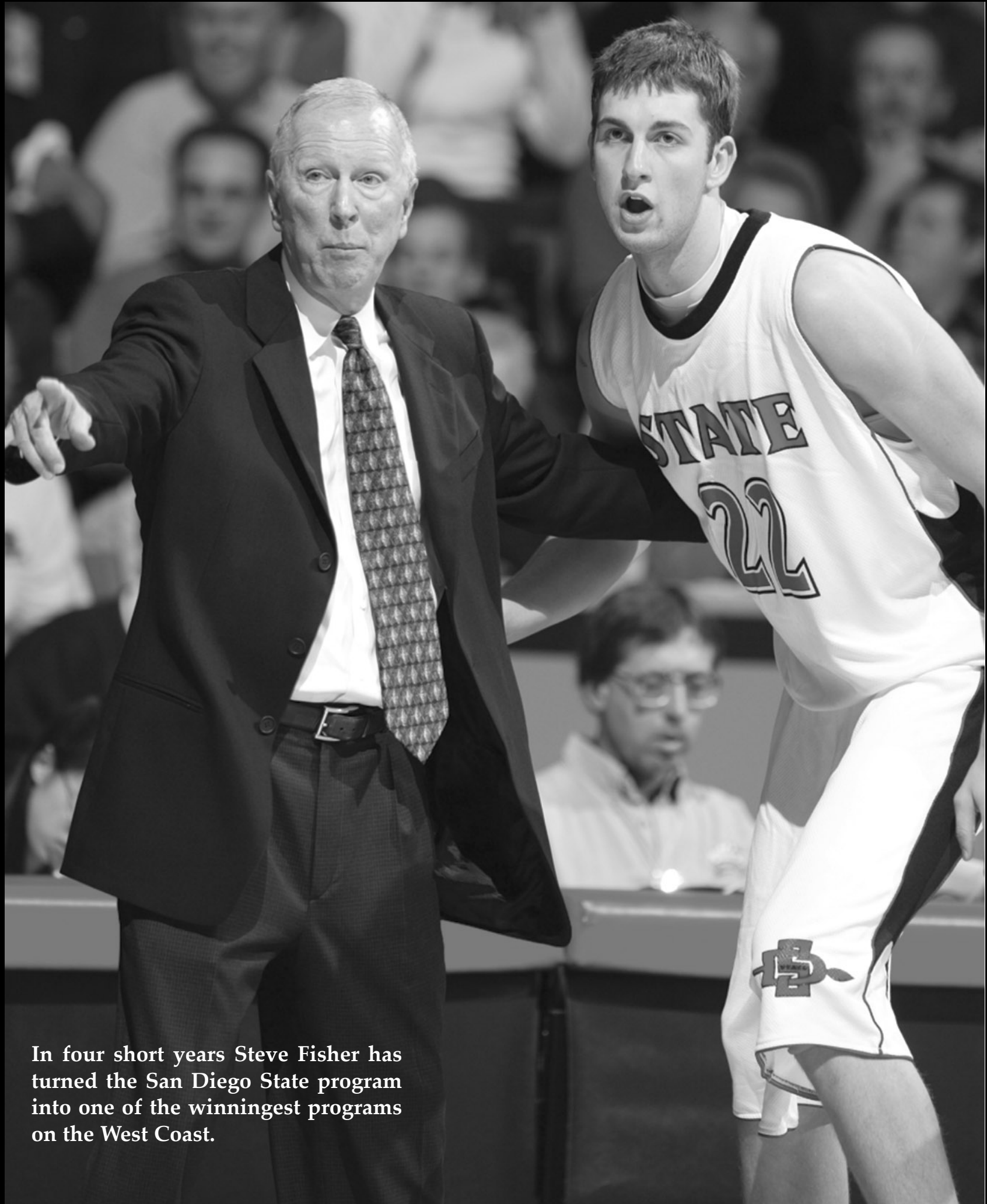
There are players here - a whole lot of them. Returning to the role is Tommy Johnson, who started seven games last year as a sophomore and is a true wing player. Sharper and Heath are shooting guards. There was no clear leader early in camp.

Heath, the heavily-decorated freshman, is the team's best athlete, according to the coaching staff. He is the quickest and fastest player on the squad and may hold that distinction among all league rosters.

"Brandon can really guard the ball," Fisher said. "He's a tenacious, aggressive 'on-ball' defender and we need to take advantage of that. He's young and working hard and we'll enjoy watching him mature. We'll use him a lot at the point but he is a natural shooting guard."

Heath was a scorer in high school and has the skills to continue that development at the highest level of college basketball.

The closest thing to a returning starter in the backcourt is Tommy Johnson. He



In four short years Steve Fisher has turned the San Diego State program into one of the winningest programs on the West Coast.

started seven games last season and averaged 17 minutes per game over the course of the season.

"Tommy Johnson is a guy who has some starting experience and brings that to the table," Fisher said of another product of the Los Angeles high schools.

Johnson, who prepped at Crenshaw High School, has had a knack for the big play his first two years on campus and his evolution into the college game is promising.

"Tommy has been showing a lot of maturity off the court as well as on," said Fisher. "You can see it in his game and you can see it in him as a person."

Johnson averaged just 5.6 points per game last season, but he canned 23 three-pointers. He has been tagged more as a scorer than a shooter and this season those skills may have a chance to blossom.

John Sharper is also a two-guard. The former walk-on played some key minutes last season as a freshman and he hit on 43.8 percent of his three-point attempts. His minutes are likely to increase as he will see playing time at both back-court positions.

Should Fisher decide to go with a big lineup, it wouldn't be surprising to see Travis Hanour or Steve Sir in the back-court as well. And walk-on Shawn Weinstein has impressed the coaches early with his shooting skills.

It is not beyond the realm of possibility to see walk-on senior Ben Wardrop log time for the Aztecs this season. A fan favorite and a team leader off the court, Wardrop's knowledge of the game and passion for playing it give the staff an opportunity to get him into the game without the team missing a beat.

On paper, the shooting guards have the biggest shoes to fill. San Diego State is trying to replace two-year starter Tony Bland. The departed senior led the Aztecs last season with 16.4 points per game and was second on the team in steals (33). He was a staple on SDSU's two postseason tournament teams after transferring from Syracuse. And maybe even more importantly, the Aztecs will be lacking the leadership of a player who saw action in three NCAA Tournaments and an NIT during his career.

Small Forward

	Cl.	Ht.	Wt.	PPG	RPG
Travis Hanour	Jr.	6-8	216	3.1	1.0
Tommy Johnson	Jr.	6-4	188	5.6	2.6
Steve Sir	So.	6-6	215	5.5	0.9
Marcus Slaughter	Fr.	6-9	208	---	---
Chris Walton	Jr.	6-10	230	2.8	0.2

Like the shooting guard position, there is no limit of candidates to man the small forward slot. In fact, it may be one of the more productive spots on the floor for the Aztecs.

Travis Hanour has battled knee problems since before his arrival on campus. The talented junior could be one of the more important Aztecs and he would fit in nicely on the wing.

"Travis will be a key for us," Fisher said. "He has tremendous potential and shows flashes of what he can be when healthy. Hopefully the off-season surgery will help. During the early portion of workouts he has been very good and more sturdy."

Hanour was fighting for a starting job at Arizona when he elected to head to San Diego. He missed the first six games of the season completing NCAA transfer guidelines. The tendonitis in his knees limited him to 18 games last season, although he did make eight starts. His knees, however, strongly limited his ability to practice and play in games that had short turn-around times. The knees finally ended his season five games prematurely and led to off-season surgery.

Hanour has range, the ability to get to the basket and when healthy is among the team's best athletes.

"There is no question that Travis is a very important piece to the puzzle," Fisher said. "We need to know more about his health, but you can't help but be excited when you watch him play."

Steve Sir is San Diego State's best shooter and among the nation's top three-point men. He will get his minutes on the perimeter as well. Last season, as a redshirt freshman, Sir started seven games and averaged 5.5 points. He led the Aztecs with 46 three-pointers.

"Steve is a hard worker with unlimited shooting range," Fisher said. "He has been working on becoming a complete player and we look forward to having him around for three more seasons."

Tommy Johnson is also capable of minutes on the wing.

"There is not a lot of difference in our two and three positions," according to Fisher. "We ask them to do a lot of the same things and they flip-flop a lot."

Chris Walton and Marcus Slaughter are candidates for wing time as well.

"Marcus is going to be a terrific player for us," Fisher said. "He can score and he can score off the dribble. He has some versatility and he will be outstanding for us. Like all freshmen he needs to get stronger and that will make him so much better. But he'll be fighting for heavy minutes immediately at more than one position."

Power Forward-Center

	Cl.	Ht.	Wt.	PPG	RPG
Trimaine Davis	So.	6-8	223	1.5	1.1
Chris Manker	Jr.	7-1	215	2.9	1.2
Aerick Sanders	Sr.	6-9	203	6.1	7.6
Chris Walton	Jr.	6-10	230	2.8	3.1

Like the wing and shooting guard, in Steve Fisher's book there is not a lot of difference in the power forward and the pivot. SDSU has a healthy choice of players and may choose their spots based on matchups.

"You start the front-court with Aerick Sanders and Chris Walton," Fisher said. "Those are the two with the most experience. Chris Manker and Trimaine Davis are also in the picture after playing critical minutes last season."

"The best benefit Chris Walton got from his redshirt season was the weight room," the head coach added. "He was in there every day and he is a lot bigger and stronger. As a result, I think he has some confidence that he can go inside and knock people around a little bit. He has also improved his ball skills. He can move out and hit the 15-footer and he's always been a good passer."

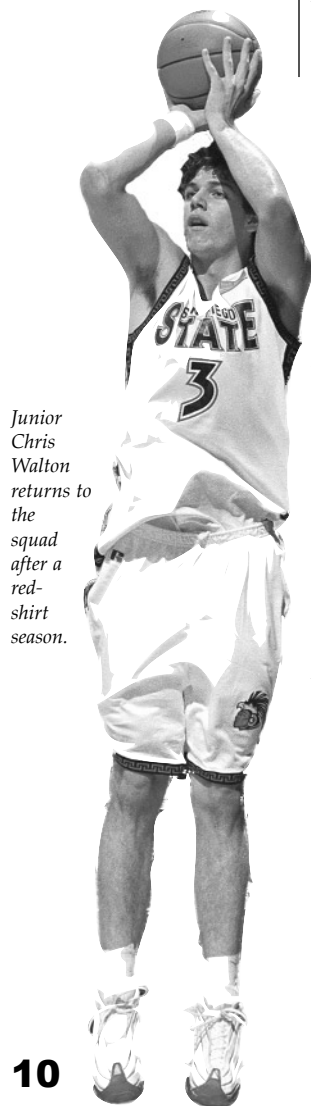
Aerick Sanders is a coaching favorite, and we're not just talking about Aztec coaches.

"Aerick is the definition of a team player," Fisher said of the willowy senior who averaged 7.6 rebounds to rank third in the Mountain West Conference. "He will do anything to help the team win. Everyone says they don't care about statistics. Aerick actually means it. He will do whatever is best for the team. He will be as good of a 'garbage' player as there is in the country. He'll make more plays off of energy and effort than anyone else in our league. He is relentless with how he plays on both ends of the court."

Not surprisingly, Sanders will serve as the Aztecs' team captain in 2003-2004. Sanders averaged 6.1 points per game and hit 50 percent of his field-goal attempts last season. He is also climbing SDSU charts for blocked shots in a career. However, it is clearly his attitude that provides the biggest benefit for San Diego State.

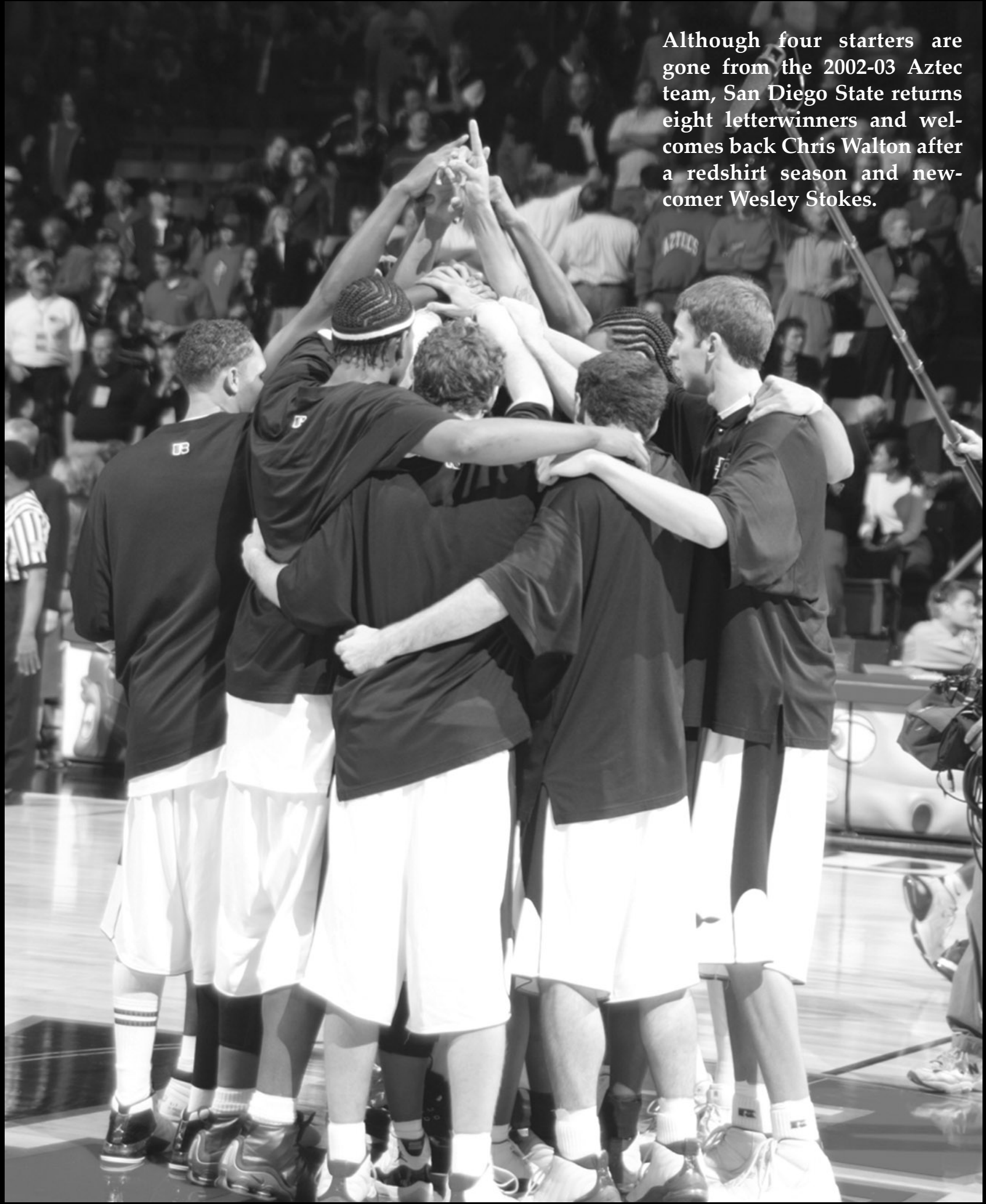
The Aztecs' biggest body is junior 7-1 Chris Manker. He is also among the best three-point shooters on the team. He canned 16 treys last season to rank fourth on the team, despite missing the first four games to comply with NCAA transfer guidelines after he departed Oregon State.

"He is a guy that can certainly stretch the defense with his shooting skills and he is a seven-footer with quick, lively, athletic feet," said Fisher. "He absolute-



Junior Chris Walton returns to the squad after a red-shirt season.

Although four starters are gone from the 2002-03 Aztec team, San Diego State returns eight letterwinners and welcomes back Chris Walton after a redshirt season and newcomer Wesley Stokes.



Coaching Staff

Head Coach

Steve Fisher

Alma Mater, Year

Illinois State, 1967

Record at San Diego State

56-63 (four seasons)

Career Record

240-145 (12 full seasons)

Assistant Head Coach

Brian Dutcher

Assistant Coaches

Gregg Gottlieb

Gary Grant

Director of Basketball Operations

Mark Fisher

Director of Player Development

Matt Soria

Trainer

Mark Haines


ly has to become a better insider defender and rebounder for us this season. It is critical for his cause as well as ours."

Trimaine Davis is a 6-9 bundle of energy entering his sophomore season. As a freshman, his minutes varied but his hustle and athleticism made him an instant fan favorite.

"He is a natural post player but he is starting to shoot the ball better facing the basketball," Fisher said. "Effort is one of his strengths and he is very eager to please."

Davis is a redshirt sophomore so the natural progression says that he is a contender for more minutes and possibly starting duties.

"We really need him to be a big rebounder for us," Fisher said. "He also needs to be a team defender as well as an on-ball defender."

That's the Aztecs this season. It can be a small team that plays bigger or a big team that plays smaller. Not unlike the recent Aztec tradition. A smaller player, getting bigger all the time. 



Aztec Preseason Notebook

Fisher Enters 13th Season as Head Coach; Fifth at SDSU

Fisher enters his 13th full season as a head coach with a 240-145 career mark (62.3 percent). His teams have advanced to the NCAA Tournament eight times and have won 20 or more games on seven occasions.

Last season Fisher guided the Aztecs to the postseason for the second consecutive season and just the sixth time in 33 seasons at the Division I level.

In four seasons at SDSU, Fisher is 56-63. The 56 victories place him seventh among the 15 coaches in school history and give him the most wins by any Aztec coach since Smokey Gaines posted a 112-117 record from 1979-80 to 1986-87.

Fisher Reloads Instead of Rebuilds

One mark of a great coach is the ability to loose the top point producers from the previous season and still have success. Few coaches in the nation can match Steve Fisher's success in this area.

On four occasions, Fisher has lost at least his top two scorers from the previous season. In all four of the following seasons, he led his team back to the postseason, most recently accomplishing the task last season.

In 2001-02 San Diego State advanced to the postseason for the first time in 16 seasons on the strength of five seniors, including the team's top two scorers in Al Faux and Randy Holcomb. Nonetheless, Fisher was able to guide the 2002-03 squad into the postseason for the second consecutive season.

The task may be a bit daunting this season with the loss of the top four point producers off last season's squad, but it is nothing that Fisher has not faced before.

In 1990-91, Fisher's squad was faced with the departure of its top four scorers - Rumeal Robinson, Terry Mills, Loy Vaught and Sean Higgins. That quadruplet accounted for 66.8 points a game for the Wolverines in 1989-90. Nonetheless, Fisher guided the new-look Michigan squad to the NIT in 1990-91.

Below is a look at how Fisher's squads have fared when having the previous season's top scorers depart.

Season	Previous Result	Season Result
Leading Scorers Lost		
▶ 1990-91	NCAA, 2nd Round	NIT, 1st Round
Lost: Rumeal Robinson (19.2), Terry Mills (18.1), Loy Vaught (15.5), Sean Higgins (14.0)		
▶ 1994-95	NCAA, Elite Eight	NCAA, 1st Round
Lost: Juwan Howard (20.8), Jalen Rose (19.9)		
▶ 1995-96	NCAA, 1st Round	NCAA, 1st Round
Lost: Ray Jackson (15.8), Jimmy King (14.7)		
▶ 2002-03	NCAA, 1st Round	NIT, 2nd Round
Lost: Al Faux (17.0), Randy Holcomb (16.9)		
▶ 2003-04	NIT, 2nd Round	
Lost: Tony Bland (16.4), Mike Mackell (14.4), Evan Burns (9.2), Deandre Moore (8.3)		

Off-Season Surgery

Five Aztec basketball players had surgery during the off-season. Chris Manker underwent arthroscopic knee surgery on April 11th. Travis Hanour underwent surgery on April 14th to alleviate chronic tendinitis, an ailment that hampered him throughout his sophomore season. John Sharper had surgery in June after fracturing his third metacarpal in his right hand while playing basketball. Steve Sir had sportsman's hernia surgery on Sept. 18th. Finally, Wesley Stokes had arthroscopic knee surgery in September to correct the roughening of the surface of the knee.

Seven Players Have Starting Experience

Although the Aztecs have only one returning starter, seven of the 13 players on the roster have earned at least one start in their career. The list of Aztecs that have started games includes Aerick Sanders (30), Wesley Stokes (21), Travis Hanour (8), Tommy Johnson (7), Steve Sir (7), Chris Manker (4) and Chris Walton (3).

Eight Returning Letterwinners

San Diego State returns a Division I school-record eight letterwinners off last season's squad. That core group contributed significantly to last season's postseason team with seven of those eight players seeing action in at least 24 of 30 games last season and does not count Chris Walton, who redshirted last season, and Missouri transfer Wesley Stokes.