

San Diego State Aztecs

2017-18 Record: 13-8; 5-5 MW

11 Postseason Berths in Last 12 Years, 10-Time MW Champions

- The Aztecs have won at least 19 games 12 straight years, which is tied for the 10th-longest active streak in the nation.
- San Diego State has advanced to postseason play in 11 of the last 12 seasons (2006 NCAA, 2007-09 NIT, 2010-15 NCAA, 2016 NIT).

Trends:

- SDSU is 12th nationally in winning percentage since the beginning of 2010-11, trailing Gonzaga, Wichita St., Kansas, Kentucky, Duke, Ariz., Saint Mary's, L'ville, Villanova, UNC & SFA.
- San Diego State has won 63 straight games when shooting 50 percent or better from the field.

| Number | Name | Position | Height | Year | HS | PPG | RPG | APG | FG | 3FG | FT | Notes |
|--------|-------------------------|----------|--------|--------|--|-------------------------|------------|------------|--------------|--------------|--------------|--|
| 0 | Devin Watson | Guard | 6-1 | Jr.-TR | Oceanside, Calif. (San Francisco) | 17-18: 13.2 MW: 13.3 | 2.9 2.8 | 4.2 4.8 | 42.6 48.3 | 38.1 53.8 | 81.7 78.8 | 1,146 career points (surpassed 1K mark vs. Bradley)... 58 career double-figure scoring games, 16 this season, 10 of last 11... Last 7 gms.: 13.4 ppg, 5.4 rpg, 4.60 FG... 22 career 20+pt. games (3 this year)... 14.0 career scoring average... 2.02 a/to this season... Multiple assists in 27 of last 30 games... Last 11 gms.: 51 ast., 24 TOs... Last 4 gms: 9-14 3FG (.643)... 13 pts., 4 ast., 1 TO vs. Air Force. |
| 2 | Adam Seiko | Guard | 6-3 | Fr.-HS | Boston, Mass. (Sierra Canyon HS (Calif.)) | 17-18: -- MW: -- | -- -- | -- -- | -- -- | -- -- | -- -- | Pronounced SAY-ko... Redshirting this season... Three-star signee by Rivals... Averaged 10.4 points, 3.2 rebounds, 2.0 assists, 1.6 steals as a senior at Sierra Canyon High... Sierra Canyon went 27-3, and was ranked No. 5 in California and No. 15 nationally his senior year... Known for defending opposing team's best perimeter player in high school... Strong guard who can shoot the three-point shot. |
| 3 | Trey Kell | Guard | 6-4 | Sr.-3L | San Diego, Calif. (St. Augustine HS) | 17-18: 7.9 MW: 7.9 | 3.9 3.9 | 3.3 3.3 | 37.6 32.5 | 34.4 31.0 | 70.4 63.2 | Preseason all-MW... 1,292 career points... 1 of 13 active players w/1,250 pts., 450 rebs., 250 asts., 100 stl... 24 of last 36 gms. w/10+ pts... Scored in double figures 68x (7 20-pt gms)... 1 TO or less 63x... 54 asts. in last 15 gms. (3.6 apg)... Missed 3 games due to injury (right ankle vs. Wash. St., missed 2 games; left ankle vs. UNLV, missed 1 game)... 14 pts., 4 ast. (12 pts., 4 ast. in 2H) vs. Gonzaga. |
| 4 | Michael Sohikish | Guard | 5-9 | Jr.-RS | San Diego, Calif. (University City HS) | 17-18: 0.8 MW: 0.5 | 0.2 0.0 | 0.2 0.3 | 3/9 1/5 | 0/4 0/3 | 2/4 0/0 | Walk-on who has played in 10 games this season... A civil engineer major who served as a student-manager before earning playing time... Saw action in his first Mountain West game vs. Utah State, logging one minute of action... Career totals: 8 points, 2 rebounds, 2 assist, 22 minutes and just 1 turnover... Also saw action against: SD Christian, ASU, McNeese, EIU, Sacramento St., Bradley, SJSU, CSU, AF. |
| 5 | Jalen McDaniels | Forward | 6-10 | Fr.-RS | Federal Way, Wash. (Federal Way HS) | 17-18: 9.5 MW: 13.0 | 7.0 8.5 | 0.7 0.9 | 60.2 65.8 | 1/10 0/3 | 78.1 81.1 | One of 6 Fr. in country w/9.5 pts., 7.0 rebs., 60 FG pct... Last 14 gms.: 12.1 pts., 8.1 rebs., 67 FG pct... Started last 10 gms... 8 of last 9 gms. w/10+ pts. (13.8 ppg)... Last 8 gms.: 111 pts., 44-64 FGs (68.8 pct)... Five double-doubles (3 vs. MW)... Seven 10+ rebound games (4 vs. MW)... 15 pts., 10 rebs., 2 stl. vs. Gonzaga... CH 19 pts., 10 rebs., CH 2 stl. at CSU... Team-best 16 pts. vs. Gonzaga... 13 rebs. vs. Air Force. |
| 10 | Max Montana | Forward | 6-9 | Jr.-1L | Calabasas, Calif. (Indiana) | 17-18: 8.3 MW: 9.9 | 2.9 3.1 | 0.6 0.9 | 40.9 45.5 | 36.8 42.6 | 75.0 75.0 | Snapped 0-15 3FG slump and is 20-44 (45.5 pct.) since (last 8 gms. played)... 60 3FG in last 33 GP... Min. 1 3FG in 32 of 43 gms. at SDSU... CH five 3FG 3x last season and vs. CSU this year... 21 gms. w/multiple 3FG... 17 career 10+ scoring gms. (3 straight)... 15 pts. (4-6 3FG; 4-4 3FG in 1st half) at ASU... Hyperextended knee at ASU, DNP next 6 gms... SH 20 pts. (CH 5 3FG), 4 rebs. vs. CSU... 13 pts., SH 6 rebs. vs. Air Force. |
| 11 | Matt Mitchell | Forward | 6-6 | Fr.-HS | Riverside, Calif. (Roosevelt HS) | 17-18: 10.3 MW: 9.2 | 4.2 3.8 | 2.0 2.2 | 42.2 44.2 | 34.4 31.6 | 77.2 66.7 | 20 starts (19 straight)... Is 25-48 FG (52.1 pct.) over last 6 gms. & 18-27 from 2-pt. range (66.7 pct.)... 12 gms. w/at least 10 pts... 32-83 3FG after starting career 0-10... 18 3FG in last 12 gms... Has a steal in 12 of last 13 gms... CH 31 pts. (was 4th most by D-I freshman this season at the time) (10-14 FG, 7-11 3FG), 6 rebs., 3 ast. vs. EIU... 15 pts., 5 rebs. vs. Gonzaga... 4 ast., CH 3 blk., 2 stl. vs. Air Force. |
| 20 | Jordan Schakel | Guard | 6-6 | Fr.-HS | Torrance, Calif. (Bishop Montgomery HS) | 17-18: 3.5 MW: 3.7 | 2.2 2.0 | 0.6 0.6 | 33.8 31.6 | 35.8 39.3 | 7/10 2/4 | Averaging 14.8 mins. and has played in all 21 games this season... Last 8 gms.: 32 pts., 10-23 3FGs, 18 rebs., 6 asts., 122 MP... FGM in 8 of last 10 gms... 1 TO or less in 14 straight games (1 TO, 184 mins)... 6 pts., CH 7 rebs., 2 ast. vs. Wash. St... 6 pts. (2-4 3FG) at UNM... CH 2 assists vs. Colorado State... CH 8 pts. in 19 mins. vs. Air Force... Won a school-record 118 games in his prep career at BMHS. |
| 21 | Malik Pope | Forward | 6-10 | Sr.-3L | Sacramento, Calif. (Laguna Creek HS) | 17-18: 12.9 MW: 13.6 | 6.6 6.2 | 1.0 1.0 | 53.7 53.3 | 39.3 25.0 | 69.0 72.4 | Team co-captain... 971 career points... 43 career double-figure scoring games... Six career 20+pt. games (three this season)... 13.7 ppg, 6.3 rpg last 13 gms... 91 rebs. last 14 gms. (6.5 rpg)... Made 38 of last 65 FGA (58.5 pct.)... 13 blocked shots in last 8 gms... Season-high 21 points (career-high 10 FGs), 9 rebs., 8 ast. at Wyoming... 14 pts., 8 rebs., 2 asts. at UNLV... 9 pts., 6 rebs., 3 blks. vs. Air Force. |
| 24 | Nolan Narain | Forward | 6-10 | So.-1L | Hamilton, Ontario, Canada (La Lumiere School (Ind.)) | 17-18: 4.4 MW: 2.5 | 2.1 0.5 | 0.3 0.0 | 72.2 51.9 | 1/5 3/4 | 64.3 4/5 | One of six returners from last season... Is a former 4-star high school player by Scout... Averaging 11.1 mins... Has made 26 of 36 FGA this season... Last 6 GP: 3.2 ppg (7-9 FG; 5-6 FT)... 7 pts. (3-3 FG) vs. EIU... 8 pts., in career-high 24 mins. vs. Sacramento State... CH 10 pts., 7 rebs. vs. Washington State... 9 pts., 4 rebs., 2 asts., 2 stls. vs. Bradley... 6 pts., (2-2 FG, 2-3 FT), 1 blk. vs. Fresno State. |
| 42 | Jeremy Hemsley | Guard | 6-3 | Jr.-2L | Rancho Cucamonga, Calif. (Damien HS) | 17-18: 8.2 MW: 7.9 | 1.8 1.1 | 2.5 2.0 | 44.5 51.9 | 28.6 38.1 | 67.9 7/12 | 1,019 career points (11.4 ppg)... 112 career treys (T-13th in SDSU history)... Started 61 of 89 games in his career... Led team in scoring 27x and in assists 30x... SDSU is 15-2 when he has at least four assists and 30-11 when he has one TO or less... Has 9 career 20-pt. games... Double figures in scoring 56x (3 straight; 14.7 ppg)... Multiple assists 14x this season... 19 pts. (7-12 FG), 30 mins. at UNLV... 14 pts. vs. AF. |
| 45 | Kameron Rooks | Center | 7-1 | Sr.-TR | San Marcos, Calif. (California) | 17-18: 2.8 MW: 1.9 | 3.6 2.1 | 0.3 0.1 | 53.3 53.8 | 0/0 0/0 | 46.7 3/8 | Graduate transfer from California... Has 76 career blocked shots... Has 4 career double-figure scoring games with 3 coming last year... Is a career 53.9-percent shooter from the floor... Cousin of former SDSU forward/MW champ JJ O'Brien... Son of the late Sean Rooks... 6 pts., season-high 9 rebs. in 12 mins. vs. Sac State... 2 pts., 3 rebs., 1 blk. at UNLV... 4 pts., 7 rebs. (4 off.), 2 blk., 14 mins. vs. Air Force. |

red indicates probable starter, black indicates reserve, ~~number~~ indicates player is injured; gold indicates redshirt.

SDSU BROADCAST ROSTER

San Diego State at Fresno State | Save Mart Center | February 6, 2018



0
DEVIN WATSON

Guard
6-1, 172, Junior-TR
Oceanside, Calif.
San Francisco

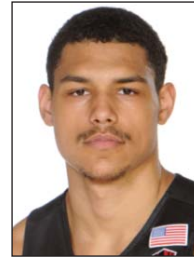
PPG: 13.2 RPG: 2.9 APG: 4.2
FG%: 42.6 3FG: 38.1 FT%: 81.7



2
ADAM SEIKO

Guard
6-3, 195, Freshman-HS
Boston, Mass.
Sierra Canyon High (Calif.)

PPG: -- RPG: -- APG: --
FG%: -- 3FG: -- FT%: --



3
TREY KELL

Guard
6-4, 216, Senior-3L
San Diego, Calif.
St. Augustine High

PPG: 10.2 RPG: 3.9 APG: 3.3
FG%: 37.6 3FG: 34.4 FT%: 70.4



4
MICHAEL SOHIKISH

Guard
5-9, 160, Junior-HS
San Diego, Calif.
University City High

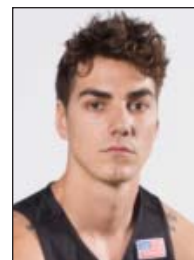
PPG: 0.8 RPG: 0.2 APG: 0.2
FG%: 3/9 3FG: 0/4 FT%: 2/4



5
JALEN MCDANIELS

Forward
6-10, 195, Freshman-RS
Federal Way, Wash.
Federal Way High

PPG: 9.5 RPG: 7.0 APG: 0.7
FG%: 60.2 3FG: 10.0 FT%: 78.1



10
MAX MONTANA

Forward
6-9, 210, Junior-1L
Calabasas, Calif.
Indiana

PPG: 8.3 RPG: 2.9 APG: 0.6
FG%: 40.9 3FG: 36.8 FT%: 75.0



11
MATT MITCHELL

Forward
6-6, 230, Freshman-HS
Riverside, Calif.
Roosevelt High

PPG: 10.3 RPG: 4.2 APG: 2.0
FG%: 42.2 3FG: 34.4 FT%: 77.2



20
JORDAN SCHAKEL

Guard
6-6, 195, Freshman-HS
Torrance, Calif.
Bishop Montgomery High

PPG: 3.5 RPG: 2.2 APG: 0.6
FG%: 33.8 3FG: 35.8 FT%: 7/10



21
MALIK POPE

Forward
6-10, 220, Senior-3L
Sacramento, Calif.
Laguna Creek High

PPG: 12.9 RPG: 6.6 APG: 1.0
FG%: 53.7 3FG: 39.3 FT%: 69.0



24
NOLAN NARAIN

Forward
6-10, 226, Sophomore-1L
Hamilton, Ontario, Canada
La Lumiere School (Ind.)

PPG: 4.4 RPG: 2.1 APG: 0.3
FG%: 72.2 3FG: 1/5 FT%: 64.3



42
JEREMY HEMSLEY

Guard
6-3, 200, Junior-2L
Rancho Cucamonga, Calif.
Damien High

PPG: 8.2 RPG: 1.8 APG: 2.5
FG%: 44.5 3FG: 28.6 FT%: 67.9



45
KAMERON ROOKS

Center
7-1, 266, Senior-TR
San Marcos, Calif.
California

PPG: 2.8 RPG: 3.6 APG: 0.3
FG%: 53.3 3FG: 0/0 FT%: 46.7



HEAD COACH
BRIAN DUTCHER

- 1st season as head coach
- 19th year at SDSU
- 1989 NCAA champion
- 3 NCAA title game appearances
- 16 NCAA tournament appearances
- 10-time Mountain West champion



ASSOCIATE HEAD COACH
JUSTIN HUTSON



ASSISTANT COACH
DAVE VELASQUEZ



ASSISTANT COACH
TIM SHELTON



ASST. TO HEAD COACH
MARK FISHER