



SAN DIEGO STATE WOMEN'S BASKETBALL

2016-17 GAME NOTES

Jen Heisel, Assistant Media Relations Director • E-Mail: jheisel@mail.sdsu.edu • Office: 619-594-3014 • Cell: 862-432-5499

2016-17 SCHEDULE

Date	Opponent	Time
Nov. 4	CSU San Marcos (exh.)	W, 74-53
Nov. 11	at UC Riverside	L, 44-72
Nov. 14	San Diego Christian	W, 80-70
Nov. 17	at San Diego	L, 53-91
Nov. 20	Loyola Marymount	L, 53-60

Seton Hall Thanksgiving Classic (South Orange, N.J.)

Nov. 26	vs. UT Arlington	L, 58-64
Nov. 27	vs. Central Connecticut	W, 80-62

Dec. 2	at UC Davis	L, 55-75
Dec. 9	Michigan	L, 57-92
Dec. 11	UC Santa Barbara	W, 84-70
Dec. 22	at Cal State Fullerton	W, 71-61
Dec. 28	Biola	W, 63-48
Dec. 31	at New Mexico*	7 p.m.
Jan. 4	Nevada*	6:30 p.m.
Jan. 7	Boise State*	2 p.m.
Jan. 11	at San José State*	7 p.m.
Jan. 14	at Utah State*	2 p.m.
Jan. 18	UNLV*	2 p.m.
Jan. 25	Air Force*	6:30 p.m.
Jan. 28	at Colorado State*	2 p.m.
Feb. 1	at Wyoming*	7 p.m.
Feb. 4	Fresno State*	2 p.m.
Feb. 8	San José State*	6:30 p.m.
Feb. 11	at Nevada*	4 p.m.
Feb. 15	Utah State*	6:30 p.m.
Feb. 18	at UNLV*	4 p.m.
Feb. 22	at Fresno State*	7 p.m.
Feb. 25	Colorado State*	2 p.m.
Feb. 28	at Air Force*	7 p.m.
March 3	New Mexico*	6:30 p.m.
March 6-10	MW Championship (Las Vegas, Nev.)	TBA

All times local to site | Home games in **Bold** at Viejas Arena
* = Mountain West game

GAME 12 | NEW MEXICO (WISEPIES ARENA) | SAT., DEC. 31 | 7 P.M. MT

LIVE MEDIA: Stats (GoAztecs.com), Video/Audio (Mountain West Network) | Series vs. New Mexico: New Mexico leads, 32-26 / UNM won 1



SAN DIEGO STATE
2016-17 Record: 4-6 (0-0 MW)
Head Coach: Stacie Terry
Fourth Year at SDSU/Fourth overall



NEW MEXICO
2016-17 Record: 4-6 (0-0 MW)
Head Coach: Mike Bradbury
First Year at UNM/10th overall

TOP PERFORMERS

Scoring	McKynzie Fort - 16.8
Rebounding	Ariell Bostick - 5.6
Assists	Ariell Bostick - 4.8

TOP PERFORMERS

Scoring	Richelle van der Keijl - 15.2
Rebounding	Richelle van der Keijl - 10.6
Assists	Cherise Baynon - 7.6

- San Diego State opens the Mountain West campaign on Sat., Dec. 31 with a 7 p.m. (MT) contest at New Mexico. Chris Ello will call the play-by-play action for live audio on GoAztecs.com and a live stream on the Mountain West Network.
- San Diego State is enjoying its longest win streak of the year at three games after topping Biola at home, 63-48. The Aztecs produced one of its finest defensive efforts of the season, holding the Eagles to a season-low 48 points Wednesday evening. Biola's 48 points was the fewest allowed by SDSU this year, and its fewest allowed since a 62-44 win over Wyoming in the first round of the 2016 Mountain West Tournament.
- In just her second game in the Scarlet and Black following a transfer from Washington, Khalia Lark got a career-high 14 points and nine rebounds. Ariell Bostick was a defensive powerhouse, posting a career-best 10 assists, the most for an Aztec since Chelsea Hopkins' 14 assists on March 14, 2013 vs. Nevada, to go alongside seven rebounds. Lexy Thorderson grabbed a season-high five boards and Monique Terry produced eight points for her most as a collegian. Kymberly Ellison, who ranked second in the Mountain West with 24 made 3-pointers coming into the game, made three against the Eagles for nine points.
- As the season has progressed, the Aztecs have shown marked improvement, and have displayed growth when compared to its non-conference slate last year. While the 2016-17 team has the same non-conference record as the 2015-16 team at 5-6, SDSU has a better shooting percentage (.407, 66-for-215 vs. .386, 238-for-617), a better 3-point shooting percentage (.307, 66-for-215 vs. .279, 51-for-183), a markedly improved free-throw percentage (.750, 144-for-192 vs. .612, 126-for-206), more assists (125 vs. 120) and more points per game (63.5 vs. 59.4).
- After opening the season with a pair of wins over Fairleigh Dickinson and New Mexico State, New Mexico stumbled with four-straight losses. The team opens its Mountain West season on Thursday with a road contest against Fresno State. The Lobos are led offensively by senior transfer Richelle van der Keijl's 15.2 points and 10.6

SAN DIEGO STATE AZTECS (4-6, 0-0 MW)

No.	Name	Pos.	Ht.	Yr.	Exp.	PPG	RPG	APG	Individual Player Notes
1	Khalia Lark	F	6-0	Jr.	TR	9.5	7.0	1.0	In her first 2 SDSU games, averaged 27 MPG ... Career-high 14 pts. and 9 rebounds vs. Biola
3	Ariell Bostick	G	5-4	Sr.	3L	4.5	5.6	4.4	Team-high 48 assists ... Career-high 10 assists vs. Biola were most since 2012-13 season
4	Kymberly Ellison	G	5-7	Sr.	1L	9.9	2.6	1.2	Leads team and ranks second in MW with 27 treys ... Had a career-best four three's against Michigan
11	Arantxa Gómez Ferrer	F	6-0	So.	1L	1.8	2.4	0.2	Averaging 13 MPG per game ... Leads team with 7 blocks, getting 2 in three games this season
13	Allison Brown	G	5-7	Jr.	SQ	2.0	0.7	0.7	Appearances in 3 games, playing a season-high 9 mins. vs. SDCC ... Career-high 4 points vs. Michigan
15	McKynzie Fort	G	5-9	Jr.	2L	16.8	3.5	1.7	Ranks second in MW with 16.8 PPG ... Team-high 31.1 MPG ... Career-high 29 pts. at Cal State Fullerton
20	Geena Gomez	G	5-8	Jr.	1L	7.2	2.4	1.7	Scored a career-high 17 points vs. Central Connecticut, which she matched vs. UC Santa Barbara
21	Abby Lowe	G	5-11	Fr.	HS	1.6	1.0	0.1	Averaging 6.7 minutes per game ... Career-high 7 points at UC Davis
22	Lexy Thorderson	G/F	6-0	Jr.	2L	7.4	2.1	0.9	Career-best 17 points vs. UC Santa Barbara ... Second-most made 3-pointers on the team (13)
30	Cheyenne Greenhouse	G	5-11	Jr.	2L	5.7	1.3	0.3	Season-high 10 points vs. UC Santa Barbara422 field goal percentage on the year
34	Baylee Vanderdoes	F	6-1	Fr.	HS	4.9	4.4	0.5	Third with 4.4 RPG, starting eight games ... Double-double vs. SDCC was first for freshman since 2014
40	Monique Terry	F	6-2	Fr.	HS	3.4	2.5	0.2	Has started SDSU's last six games, posting career-highs in minutes played (23) and points (8)
44	Aleiah Brandon	F	6-1	Sr.	3L	0.0	0.0	0.0	Provides veteran leadership as a fifth-year senior
45	Naomi Ekwedike	F	6-6	Fr.	HS	1.9	1.2	0.0	Has played double-digit minutes in three games ... Scored season-high 5 points vs. SDCC

Head Coach: Stacie Terry (UT Arlington, 1998) | 37-55 (Fourth Season at SDSU/Fourth Overall)

Assistant Coaches: Jesse Clark (Pacific Union, 2003); Ciara Carl (Point Loma Nazarene, 2005); Nick Grant (Baylor, 2010)

Director of Basketball Operations: Jon Silver (UCLA, 2009)

Director of Player Personnel: Paris Johnson (San Diego State, 2011)

Athletic Trainer: Queenie Soriano (San Diego State, 2004)

Head Manager: Chris Straker

SAN DIEGO STATE QUICK FACTS

GENERAL INFORMATION

Location: San Diego, Calif., 92182
 Founded: 1897
 Enrollment: 30,750
 Nickname: Aztecs
 School Colors: Scarlet and Black
 Affiliation: NCAA Division I
 Conference: Mountain West
 Home Arena (Capacity):
 Steve Fisher Court at Viejas Arena (12,414)
 President: Dr. Elliot Hirshman
 Director of Athletics: John David Wicker
 Faculty Athletic Representative: Patrick Papin
 Athletics Dept. Phone: 619-594-3019

AZTEC BASKETBALL FACTS

First Year of Basketball: 1976-77
 All-Time Record: 629-552 (.533) / 40 seasons
 Postseason Appearances/NCAA Appearances: 12/9
 Last Postseason Appearance: 2013--
 Lost to BYU (69-58) in WNIT Second Round

SDSU TEAM INFORMATION

2015-16 Record: 12-19 (.387)
 2015-16 MW Record/Finish: 6-12/T-8th
 2016 MW Tournament Record: 1-1
 2016 Final NCAA RPI: 238
 Letterwinners Returning/Lost: 9/2
 Starters Returning/Lost: 3/2
 Newcomers: 5

AZTEC BASKETBALL STAFF

Head Coach: Stacie Terry
 Alma Mater: UT Arlington, 1998
 Career Record/Years: 37-55/Fourth Year
 Record at SDSU: Same
 Best Time to Call: Contact SID
 Basketball Office Phone: 619-594-4095
 Basketball Office Fax: 619-594-8057
 Assistant Coaches:
 Jesse Clark, Fourth season at SDSU
 Alma Mater: Pacific Union, 2003
 Ciara Carl, Fourth season at SDSU
 Alma Mater: Point Loma Nazarene, 2005
 Nick Grant, Third season at SDSU
 Alma Mater: Baylor, 2010
 Director of Basketball Operations: Jon Silver
 First season at SDSU
 Alma Mater: UCLA, 2009
 Director of Player Personnel: Paris Johnson
 First season at SDSU
 Alma Mater: San Diego State, 2009
 Athletic Trainer: Queenie Soriano
 Head Manager: Chris Straker
 Academic Advisor: Dr. Bre White
 Strength and Conditioning: Eddie Padilla

SDSU MEDIA RELATIONS

Women's Basketball SID: Jen Heisel
 E-mail: jheisel@mail.sdsu.edu
 Office Phone: 619-594-3014
 Cell Phone: 862-432-5499

Scouting the Lobos

After opening the season with a pair of wins over Fairleigh Dickinson and New Mexico State, New Mexico stumbled with four-straight losses. The team opens its Mountain West season on Thursday with a road contest against Fresno State.

The Lobos are led offensively this season by senior transfer Richelle van der Keijl's 15.2 points and 10.6 rebounds. The one-time Mountain West Player of the Week honoree is one of four Mountain West players with three-or-more double-doubles, alongside teammate Cherise Beynon. Beynon, New Mexico's only returning starter from its 2015-16 squad, is pacing the team with 76 assists to top the conference and is averaging 14.2 points per game.

In the teams' second meeting of the year last season, the Aztecs fell to New Mexico at home, 64-45, after being mired in a 17-6 first-quarter deficit. Beynon drained four of UNM's six 3-pointers on the night and finished the game with a team-high 20 points.

Mike Bradbury is in his first season at the helm of New Mexico's program.

Improving is Key!

As the season has progressed, the Aztecs have shown marked improvement, and have displayed growth when compared to its non-conference slate last year. While the 2016-17 team has the same non-conference record as the 2015-16 team at 5-6, SDSU has a better shooting percentage (.407, 66-for-215 vs. .386, 238-for-617), a better 3-point shooting percentage (.307, 66-for-215 vs. .279, 51-for-183), a markedly improved free-throw percentage (.750, 144-for-192 vs. .612, 126-for-206), more assists (125 vs. 120) and more points per game (63.5 vs. 59.4).

Not a Lark

In her first two games as an Aztec following her transfer from Washington prior to the Spring 2015 semester, junior Khalia Lark has made an immediate impact. The Irvine, Calif., native has scored 19 points and grabbed 14 boards in the pair of contests, posting a career-high 14 points and nine rebounds against Biola. She has averaged 27 minutes off the bench, the second-most on the team.

Ellison Looking Long

This season from 3-point range, senior Kymberly Ellison has had a year to remember. In her first year as a starter, the Columbus, Ga., native has 27 3-pointers to lead the team and rank second in the Mountain West. Nationally, her 2.45 treys per game rank 76th. Ellison is on pace to shatter her previous personal best of 33 three's in a season, set last year when she finished second on the Aztecs.

Feelin' Free

When sent to the free-throw line, the Aztecs perform. The team is currently 44th in the nation, and second in the Mountain West, cashing in on 75 percent (144-for-192) of its free-throw attempts. McKynzie Fort ranks 11th in the conference (minimum of 25 attempts) with a .782 free-throw percentage (43-for-55), and her 43 free throws made are 95th-most nationally.

Fort's On Fire

After leading the Aztecs offensively last season, junior McKynzie

MW PRESEASON POLL

Rk.	Team	Pts.
1.	Colorado State (17)	283
2.	Boise State (11)	271
3.	Fresno State	225
4.	UNLV	201
5.	San José State	197
6.	New Mexico (1)	176
7.	San Diego State	126
8.	Wyoming	123
9.	Utah State	97
10.	Nevada	66
11.	Air Force	28

First-place votes in parentheses

MW PRESEASON HONORS

Preseason All-Mountain West Team

Brooke Pahukoa, Boise State
 Ellen Nystrom, Colorado State
 Bego Faz Davalos, Fresno State
 Cherise Beynon, New Mexico
 Dezz Ramos, San José State

Preseason Player of the Year

Ellen Nystrom, Colorado State

Preseason Newcomers of the Year:

Mykiel Burlison, New Mexico

Preseason Freshman of the Year

Hallie Gennett, San José State

SDSU IN THE MW POLL

Year	Pre.	Final
1999-2000	6th	6th
2000-01	7th	6th
2001-02	7th	7th
2002-03	7th	7th
2003-04	6th	7th
2004-05	7th	t-7th
2005-06	8th	9th
2006-07	7th	7th
2007-08	7th	t-5th
2008-09	2nd	2nd
2009-10	1st	t-3rd
2010-11	2nd	6th
2011-12	2nd	1st
2012-13	1st	1st
2013-14	3rd	t-6th
2014-15	7th	7th
2015-16	6th	t-8th
2016-17	7th	--



Fort has wasted little time building on her success The Fontana, Calif., native is averaging a career-high 16.8 points per game to rank second in the Mountain West, helped by her best performance in the Scarlet and Black with 29 points at Cal State Fullerton alongside a season-high four assists. One of the Aztecs' most reliable performers, she leads the squad with 31.1 minutes per game and has already matched her career high with three long balls.

Moral Support

In Stacie Terry's fourth season, fans are showing their support for her program. The Aztecs have averaged 897 in attendance at the team's four home games thus far, up from 487 last season. Against Michigan, 2,632 fans were in attendance for the greatest showing since Jan. 24, 2009, when 2,792 were in Viejas Arena to see San Diego State play then-conference foe Brigham Young.

Grounding the Gauchos

Against UC Santa Barbara, SDSU used one of its most complete performances of the year to beat the Gauchos, generating its highest point total of the year in the 84-70 victory. Five Aztecs recorded double-digit points, led by juniors Lexy Thorderson and Geena Gomez each netting 17 points. Thorderson's total was a career-high, while Gomez matched her own career high, previously earned against Central Connecticut earlier this season. SDSU also made 10 3-pointers, its most since a 69-46 win over UC Santa Barbara on March 20, 2013 in the WNIT.

Keeping it Fresh(men)

San Diego State's freshmen have wasted little time making their impact felt on the program.

Monique Terry has started the Aztecs' last six games, averaging nearly 16 minutes per game in those contests. She had a career game against Biola, netting a career-best eight points in 23 minutes logged, also a career best. In the previous game at Cal State Fullerton, she grabbed five boards, her most to date.

Starting eight games this season, Baylee Vanderdoes is second on the squad with a .467 (14-for-30) shooting percentage and her 4.4 rebounds per game also rank second. Against San Diego Christian, the Auburn, Calif., native scored 10 points and added as many rebounds to become the first freshman with a double-double since Cheyenne Greenhouse accomplished the feat against Sacramento State (Nov. 14, 2014) with 19 points and 11 rebounds.

NEW MEXICO SERIES NOTES

SAN DIEGO STATE AT NEW MEXICO *New Mexico leads, 32-26*

• 2016-17 Comparative Stats

SDSU		UNM
5-6	Overall Record	4-6
0-0	League Record	0-0
.407	Field Goal Pct.	.384
.307	3-PT FG Pct.	.281
.750	Free Throw Pct.	.559
.452	Opp. FG Pct.	.352
.353	Opp. 3-PT FG Pct.	.306
.637	Opp. FT Pct.	.737
32.0	Rebound Avg.	47.3
-4.1	Rebound Margin	+2.2
63.5	Points/Game	68.6
69.5	Pts. Allowed/Game	64.9

• Series Numbers

Record at SDSU	11-12
Record at UNM	11-13
Record at Neutral	4-7
Most Points SDSU	98, 1995
Most Points UNM	86, 2001
Largest Margin SDSU	58, 1994
Largest Margin UNM	34, 2004
Longest SDSU Win Streak	10
Longest UNM Win Streak	19
Current Streak	UNM 1

AZTECS VS. MOUNTAIN WEST

Air Force	33	6
Boise State	7	4
Colorado State	27	25
Fresno State	26	16
Nevada	8	7
New Mexico	26	32
San José State	20	5
UNLV	27	26
Utah State	5	3
Wyoming	27	26
Total	206	149

LAST MEETING | NEW MEXICO

New Mexico at San Diego State Box Score (3-1-16)

UNM	FG	3FG	FT	REB	F	TP	A	T	B	S	MP
Shumpert	6-10	0-0	3-4	3	3	15	2	0	1	2	26
Nunn	2-3	0-0	1-2	2	0	5	3	3	1	1	22
Beynon	8-14	4-6	0-2	5	2	20	2	1	0	0	29
Owens	2-6	1-3	1-1	8	2	6	3	4	0	0	34
Bovero	0-0	0-0	0-0	1	0	0	1	2	0	0	11
Pye	2-3	1-2	0-0	2	0	5	1	0	0	1	8
Greenwood	0-0	0-0	0-0	0	1	0	0	0	0	0	5
Lapeyrolerie	2-5	0-2	0-0	3	2	4	0	0	0	0	11
Chavez	0-2	0-0	0-0	3	0	0	0	0	0	0	8
Otto	0-3	0-1	0-0	2	2	0	0	1	1	0	10
Bryan	0-1	0-1	0-0	2	1	0	1	2	1	1	10
Keller	1-2	0-1	2-2	3	5	4	1	1	0	0	15
Lines	0-0	0-0	1-2	1	0	1	4	1	0	0	6
Johnson	2-4	0-0	0-0	2	1	4	0	1	0	0	5
TEAM				1							
Totals	25-53	6-16	8-13	38	19	64	18	16	4	5	200
Pct.	47.2	37.5	61.5								

SDSU	FG	3FG	FT	REB	F	TP	A	T	B	S	MP
Smith	4-9	0-0	2-3	3	4	10	0	1	0	0	29
Bostick	3-9	0-2	2-2	5	1	6	2	1	0	5	31
Harvey	1-3	0-1	5-7	1	1	7	1	4	1	1	29
Fort	4-13	0-0	3-6	4	2	11	1	5	0	0	32
Greenhouse	2-4	0-0	0-0	0	1	4	1	2	0	0	23
Ellison	2-6	0-4	0-0	0	1	4	1	0	0	1	18
Brown	0-0	0-0	0-0	1	0	0	0	0	0	0	2
Gomez	0-0	0-0	0-0	1	0	0	1	0	0	0	9
Thorderson	1-4	1-3	0-0	0	1	3	0	1	0	0	14
Herd	0-1	0-0	0-0	1	2	0	1	1	0	0	13
TEAM				8							
Totals	17-49	1-10	10-16	24	13	45	8	15	1	7	200
Pct.	34.7	10.0	62.5								

Officials: Lisa Jones, Darren Krzesnik, Cheryl Blue

Technical fouls: None

Attendance: 303

Score by Periods	1st	2nd	3rd	4th	Total
New Mexico	17	15	21	11	64
San Diego State	6	12	15	12	45

Go Go Gomez

Geena Gomez is in the midst of a breakout season in her junior year. At the Seton Hall Thanksgiving Classic, she scored a career-high 17 points, going 3-for-3 from beyond the arc and connecting on all six attempts at the free-throw line. Gomez matched that total in her second start of the year against UC Santa Barbara.

Biola Recap

San Diego State women's basketball produced one of its best defensive efforts of the season against Biola, holding the Eagles to a season-low 48 points in a 63-48 non-conference win Wednesday evening.

The win was the Aztecs' third straight, marking their longest win streak of the season. Biola's 48 points was the fewest allowed by SDSU this year, and its fewest allowed since a 62-44 win over Wyoming in the first round of the 2016 Mountain West Tournament.

In just her second game in the Scarlet and Black following a transfer from Washington, Khalia Lark got a career-high 14 points and nine rebounds. Ariell Bostick was a defensive powerhouse, posting a career-best 10 assists, the most for an Aztec since Chelsea Hopkins' 14 assists on March 14, 2013 vs. Nevada, to go alongside seven rebounds. McKynzie Fort recorded 14 points, while Lexy Thorderson grabbed a season-high five boards and Monique Terry produced eight points for her most as a collegian. Kymberly Ellison, who ranked second in the Mountain West with 24 made 3-pointers coming into the game, made three against the Eagles for nine points.

Biola got the first score of the game on a long ball by Annie Park, but Ellison was able to match that on the next Aztec possession. SDSU then went over three minutes recording a point before Fort sparked the San Diego State offense. She knocked down a jumper from the front of the basket at 5:45, then followed that up 26 seconds later with a layup to put SDSU up, 9-8.

The Eagles were able to regain a lead at 10-9 before San Diego State went on a 7-0 run for a 16-12 lead after 10 minutes of play.

Lark opened scoring in the second quarter with a jumper from the top of the key and an 18-12 advantage. After a Biola 3-pointer, SDSU got a layup from Ellison and a Cheyenne Greenhouse free throw. But both teams found themselves unable to score, as the Eagles couldn't get a basket for 4:11 and the Aztecs were shut out for four minutes, when Geena Gomez dropped in a close-range jumper for the 23-17 score. Lark's jumper from the right edge of the key increased SDSU's lead to 25-17 with 2:21 to go.

NEW MEXICO SERIES HISTORY

1-18-92	San Diego	W	91-44
2-15-92	Albuquerque	W	74-52
1-24-93	Albuquerque	W	54-44
2-18-93	San Diego	W	78-51
2-11-94	Albuquerque	W	98-52
2-20-94	San Diego	W	96-38
3-9-94	Neutral Site	W	95-60
1-19-95	San Diego	W	85-61
2-11-95	Albuquerque	W	75-47
3-8-95	Albuquerque	W	57-39
1-18-96	Albuquerque	L	56-62
1-27-96	San Diego	W	74-52
3-5-97	Neutral Site	W	57-50
1-7-99	San Diego	L	53-66
2-4-99	Albuquerque	L	51-75
1-20-00	Albuquerque	L	47-65
2-17-00	San Diego	L	60-66
1-20-01	Albuquerque	L	66-86
2-15-01	San Diego	W	56-53
3-7-01	Neutral Site	L	49-55
1-23-02	San Diego	L	49-58
2-23-02	Albuquerque	L	53-63
3-6-02	Neutral Site	L	52-65
1-30-03	Albuquerque	L	42-75
3-1-03	San Diego	L	46-64
3-12-03	Neutral Site	L	49-54
1-29-04	Albuquerque	L	42-76
2-28-04	San Diego	L	44-47
1-29-05	San Diego	L	53-72
2-24-05	Albuquerque	L	58-78
3-9-05	Neutral Site	L	52-81
1-25-06	Albuquerque	L	45-76
2-25-06	San Diego	L	48-75
1-31-07	Albuquerque	L	46-76
3-3-07	San Diego	L	48-67
1-12-08	San Diego	L	47-60
2-13-08	Albuquerque	L	54-63
3-15-08	Neutral Site	L	59-62
1-21-09	Albuquerque	W	57-52
2-21-09	San Diego	W	75-64
1-6-10	Albuquerque	W	61-39
2-6-10	San Diego	L	58-65
1-15-11	San Diego	W	56-53
2-15-11	Albuquerque	W	50-44
3-8-11	Neutral Site	L	57-65
1-18-12	San Diego	W	77-47
2-15-12	Albuquerque	W	57-44
3-10-12	Neutral Site	W	57-43
1-26-13	Albuquerque	W	63-39
2-27-13	San Diego	W	72-44
3-15-13	Neutral Site	W	67-39
2-22-14	San Diego	W	53-48
3-7-14	Albuquerque	L	46-62
1-7-15	Albuquerque	L	53-62
2-18-15	San Diego	L	47-63
3-10-15	Neutral Site	L	56-57
2-6-16	Albuquerque	W	51-46
3-1-16	San Diego	L	45-64

A deep three from the right side of the basket by Lark put SDSU up, 28-19, at the end of the first half.

After a jumper by Biola, Terry and Fort added layups on back-to-back possessions for a 32-21 lead just over one minute into the second half. But the Eagles were able to go on a 7-2 run to cut the Aztecs' lead to 34-28 at 6:33.

Twenty-four seconds later, Greenhouse made a pair of free throws to stop Biola's roll, and Lark tacked on a layup to snatch back the double-digit lead for the Aztecs at 38-28. The Eagles made good on a 3-point play for the 38-31 score with exactly five minutes to go in the third quarter.

Bostick got her seventh assist of the game when she dished the ball to Terry at 2:24 for a 40-31 Aztec advantage. The pair duplicated the play less than a minute later for the 42-31 score at 1:31, which SDSU maintained through the end of the third quarter.

In the final frame, both teams had trouble finding the basket early on. Biola got a layup at 7:37 and the Aztecs didn't score until Ellison's long ball at 6:40. Fort followed that up with a jumper 25 seconds later to increase SDSU's lead to 47-33. But the Eagles were able to get a three at 5:43 for a 47-36 Aztec margin.

San Diego State stayed strong, however, and closed out the contest by out-scoring Biola, 16-12, for the final 63-48 win.

For the game, the Aztecs shot 47.3 percent (26-for-55) to the Eagles' 37.3 percent (19-for-51) and out-rebounded Biola, 35-29. SDSU committed 11 turnovers to Biola's 14, and was 6-for-22 from beyond the 3-point arc, as compared to its opponent's 6-for-27 pace.

Nationally-Ranked Class Joining Aztecs

San Diego State women's basketball head coach Stacie Terry has announced the signing of a nationally-ranked class for the 2017-18 campaign. The 46th-ranked recruiting class in the country according to Blue Star Basketball, Te'a Adams, Jenay Borjorquez, Kiara Edwards, Najé Murray and Kennedy Villa have signed National-Letters-of-Intent to join the Aztecs next season.

Adams, a 5-9 guard from Kirkland, Wash., is a three-star recruit according to ESPN and was given a scouts grade of 90. Entering her fourth year of varsity basketball at Juanita High School, Adams has averaged 19.2 points per game, 3.4 steals per game and 2.5 assists and rebounds each per game during a career that has yielded three all-conference honors.

Bojorquez, a 5-6 point guard from Phoenix, is in her third season of varsity ball at Sierra Linda High School. A three-and-a-half-star recruit according to Prospects Nation, Bojorquez has held the top spot on Sierra Linda High's varsity squad in assists per game for two consecutive years.

Averaging nearly a double-double per game during her three-year varsity career at Valley Vista High School in Surprise, Ariz., Edwards is a 6-1 forward. Ranked No. 119 by Prospects Nation, the four-star recruit is coming off of an invitation to the 2016 USA Basketball Women's U17 World Championship team trials this May.

A 5-6 guard from perennial national powerhouse St. Mary's in Stockton, Calif., Murray earned three stars and a 90 scouts grade by ESPN. Led by head coach Tom Gonsalves, St. Mary's has won 57 of its last 58 games and nine consecutive section championships.

Villa, a 6-0 guard from Oakland, Calif., attends Saint Mary's College High School in Berkeley, Calif. A three-star recruit according to ESPN, she earned a scouts grade of 88.

Bringin' it Back

San Diego State returns 69.3 percent of its scoring, three starters and nine letterwinners from its 2015-16 team.

The team will be led this season by All-Mountain West honorable mention and All-Mountain West Defensive Team honoree McKynzie Fort. The 5-9 guard from Fontana, Calif., was just one of two Aztecs to start all 31 games, finishing sixth in the conference with an average of 14.4 points per game. She also ranked among the conference's leaders in steals (1-3rd -- 2.0/gm), free-throw percentage (6th -- (.693)) and field-goal percentage (11th -- (.462)).

Ariell Bostick will don the Scarlet and Black for the final time as the team's top assist-getter from the previous season. The senior from Oakland, Calif., finished 10th in the Mountain West with a team-high 2.9 assists per outing. Classmate Aleiah Brandon was a top defensive threat for the Aztecs during the 2015-16 season, blocking 10 shots, the second-most on the team, in 26 appearances and 18 starts.

The Aztecs' top three-point threat last season, Lexy Thorderson, a six-foot junior from Castle Rock, Colo., will be looked upon to fulfill a similar role. Appearing in all 31 of SDSU's games, she drained 40 of 124 shots from behind the arc, ranking 13th in the

conference.

A steady presence, Cheyenne Greenhouse also played in every game for San Diego State, making 22 starts, including 18 to end the season. She averaged 20.9 minutes per game, the fifth-most on the squad.

In her first season in the Scarlet and Black after a transfer from Georgia Tech, senior Kymberly Ellison was another Aztec who appeared in every contest. In an average of 12.8 minutes per game, she posted a .722 free throw percentage, the second-best on the team.

Fellow newcomer Geena Gomez was also quick to make an impact after her transfer from St. John's. The junior from Huntington Beach, Calif., appeared in 29 of SDSU's 31 games, maintaining the squad's highest assist-to-turnover ratio (1.42) and ranking second on the team with a .324 three-point field goal percentage (23-of-71).

Gomez's classmate Allison Brown has also made an impact on the team. A walk-on prior to her freshman season, Brown earned a scholarship for the 2016-17 season after playing in a career-high nine games last year.

Jumpin' Jehosophat, Juniors!

The Aztecs' junior class has been anything but junior. During the 2015-16 season, Allison Brown, McKynzie Fort, Geena Gomez, Cheyenne Greenhouse and Lexy Thorderson averaged a combined 21.56 minutes per game, 7.17 points per game, 1.29 steals per game and 2.94 rebounds per game. The group accounted for 47.7 percent of SDSU's

SAN DIEGO STATE STREAKS

Most Consecutive Starts

	Consecutive	Total
McKynzie Fort	66	66
Kymerly Ellison*	11	11
Monique Terry	6	6
Lexy Thorderson	3	7
Geena Gomez*	3	4
Ariell Bostick	0	53
Cheyenne Greenhouse	0	32
Aleiah Brandon	0	18
Baylee Vanderdoes	0	8

Most Consecutive Games

	Consecutive	Total
McKynzie Fort	74	74
Ariell Bostick	66	89
Kymerly Ellison*	42	42
Geena Gomez*	40	40
Arantxa Gómez Ferrer	11	29
Monique Terry	11	11
Cheyenne Greenhouse	9	73
Lexy Thorderson	9	70
Khalia Lark	2	2
Allison Brown	1	19
Abby Lowe	1	9
Naomi Ekwedike	0	9
Aleiah Brandon	0	72
Baylee Vanderdoes	0	8

Most Consecutive Games With A Point^

	Consecutive	Total
McKynzie Fort	74	74
Kymerly Ellison*	10	33
Ariell Bostick	2	80
Cheyenne Greenhouse	9	58
Geena Gomez*	7	27
Lexy Thorderson	6	46
Khalia Lark	2	2
Monique Terry	1	9
Allison Brown	1	4
Arantxa Gómez Ferrer	0	12
Naomi Ekwedike	0	5
Abby Lowe	0	4
Aleiah Brandon	0	39
Baylee Vanderdoes	0	8

*SDSU totals only; ^must have played in the game

@AZTECWBB IN THE NATION

Category	Team	Value	Rank
Free-Throw Percentage		75.0	44
Fewest Turnovers		174	93
Fewest Fouls		165	85

McKynzie Fort

Category	Value	Rank
Free Throws Made	43	95
Points Per Game	16.8	95

Kymerly Ellison

Category	Value	Rank
3-Point Field Goals Per Game	2.45	76
3-Point Field Goals Made	27	92

total offense a season ago, logging 41.2 percent of the team's total minutes played. Also excelling in the classroom, Greenhouse and Thorderson earned Academic All-Mountain West honors.

The New Aztecs on the Block

San Diego State newcomers are looking to leave a legacy on Montezuma Mesa. Recent high school graduates Monique Terry (San Antonio, Texas), Baylee Vanderdoes (Auburn, Calif.), Naomi Ekwedike (Lagos, Nigeria) and Abby Lowe (Stockport, England) signed National Letters of Intent for the 2016-17 campaign. The four freshmen will join University of Washington transfer Khalia Lark (Irvine, Calif.), a junior for the 2016-17 season who enrolled at SDSU prior to the Spring 2016 semester and is eligible Dec. 22.

A McDonald's All-America nominee, Terry was rated a three-star recruit by espnW and was given a scouts grade of 89. During her junior season at Brennan High School, the 6-2 forward was the lone player in District 27-6A to average a double-double, posting 10.3 points and 10.4 rebounds per game while leading the district with a .540 field-goal percentage. She was also named the District 27-6A's defensive player of the year and received all-region honors.

Vanderdoes played prep ball at Placer High School, where she averaged 21.1 points, 11.0 rebounds and 3.6 blocks per contest as a senior, earning a spot on the MaxPreps Division IV all-California state second team. The 6-1 forward was also named the Pioneer Valley League's most valuable player on two occasions and received second-team all-metro honors from the Sacramento Bee. She holds Placer High's single-game record for points scored (41) and blocked shots (11). Like Terry, Vanderdoes received a scouts grade of 89 and was rated a three-star recruit by espnW. Her brother, Eddie, is a defensive lineman at UCLA. A native of Lagos, Nigeria, Ekwedike is a 6-6 post player who prepped for three years at Potter's House Christian Academy in Jacksonville, Fla., where she was a member of two state championship teams and helped her squad win a national championship in the National Christian School Athletic Association tournament in 2015. Ekwedike was also rated a three-star recruit by espnW and given a scouts grade of 88.

Rounding out the 2016 recruiting class is Lowe, who played two years at the Barking Abbey Academy near London, helping the Crusaders capture the first-ever Women's Elite Academy Basketball League title last season. In addition, the 5-11 shooting guard earned a silver medal for the U16 squad representing England at the European Championships in 2014.

A highly successful prep player at powerhouse Mater Dei High School in Orange County, Lark helped the Monarchs win two CIF championships, one state title and one national championship alongside fellow Aztec Allison Brown. As a sophomore, Lark's Mater Dei squad posted a 34-3 record and captured the Southern Section Division IAA crown, where she scored 14 points in the championship game.

A 6-foot guard, Lark appeared in 29 games over one-and-a-half seasons at Washington, where she averaged 2.5 points and 1.5 rebounds while shooting 38 percent from three-point range. As a freshman, she scored a career-high 10 points in a victory over Seattle University and grabbed a personal-best five rebounds that season in the Pac-12 title game vs. California.

Stiff Slate

The Aztecs will have to contend with a challenging schedule for the 2016-17 campaign, as SDSU will face seven teams

MW STANDINGS

As of Dec. 28

	MW	Overall
Boise State (RV/--)	0-0	10-1
UNLV	0-0	9-3
Wyoming	0-0	8-3
Colorado State	0-0	8-4
Utah State	0-0	7-4
Fresno State	0-0	7-4
Nevada	0-0	6-5
San Diego State	0-0	5-6
New Mexico	0-0	4-6
San José State	0-0	3-9
Air Force	0-0	2-8

MW SCHEDULE

Thursday, December 29

COLORADO STATE at UNLV*, 3 p.m. PT
 WYOMING at AIR FORCE*, 7 p.m. MT
 UTAH STATE at BOISE STATE*, 7 p.m. MT
 NEW MEXICO at FRESNO STATE*, 7 p.m. PT
 NEVADA at SAN JOSÉ STATE*, 7 p.m. PT

Saturday, December 31

BOISE STATE at COLORADO STATE*, 2 p.m. MT
 AIR FORCE at UTAH STATE*, 2 p.m. MT
 UNLV at WYOMING*, 2 p.m. MT
 FRESNO STATE at NEVADA*, 2 p.m. PT
 SAN DIEGO STATE at NEW MEXICO*, 7 p.m. MT

Wednesday, January 4

FRESNO STATE at WYOMING*, 6:30 p.m. MT
 NEVADA at SAN DIEGO STATE*, 6:30 p.m. PT
 UNLV at BOISE STATE*, 7 p.m. MT
 SAN JOSÉ STATE at COLORADO STATE*, 7 p.m. MT
 UTAH STATE at NEW MEXICO*, 7 p.m. MT

Saturday, January 7

SAN JOSÉ STATE at FRESNO STATE*, 2 p.m. PT
 BOISE STATE at SAN DIEGO STATE*, 2 p.m. PT
 COLORADO STATE at AIR FORCE*, 4 p.m. MT
 NEW MEXICO at NEVADA*, 4 p.m. PT
 UTAH STATE at UNLV*, 4 p.m. PT

Wednesday, January 11

NEW MEXICO at UNLV*, 6 p.m. PT
 WYOMING at UTAH STATE*, 7 p.m. MT
 AIR FORCE at FRESNO STATE*, 7 p.m. PT
 SAN DIEGO STATE at SAN JOSÉ STATE*, 7 p.m. PT

SDSU RECORD WHEN...

Playing at home	3-2
Playing on the road	1-3
Playing at a neutral site	1-1
Playing a night game (5 pm or later)	3-3
Playing a day game	2-3
Leading at halftime	4-0
Trailing at halftime	1-6
Tied at halftime	0-0
Leading with 5:00 left in regulation	5-0
Trailing with 5:00 left in regulation	0-6
Tied with 5:00 left	0-0
In overtime	0-0
Scoring less than 60 points	0-6
Scoring between 60-69 points	1-0
Scoring between 70-79 points	1-0
Scoring between 80-89 points	3-0
Scoring 90 or more points	0-0
Opponent scores less than 60 points	1-0
Opponent scores 60-69 points	2-2
Opponent scores 70-79 points	2-2
Opponent scores 80-89 points	0-0
Opponent scores 90 or more points	0-2
FG% .500 or better	3-0
FG% under .500	2-6
FG% .400-.499	2-0
FG% under .400	0-6
Opponent FG% .500 or better	1-4
Opponent FG% under .500	3-1
Opponent FG% .400-.499	1-1
Opponent FG% under .400	4-1
Better shooting %	5-0
Worse shooting %	0-6
More FG attempts	2-4
Fewer FG attempts	3-2
Same FG attempts	0-0
More FGs made	4-0
Fewer FGs made	0-6
Same FGs made	1-0
More FT attempts	2-5
Fewer FT attempts	3-1
Same FT attempts	0-0
More FTs made	4-4
Fewer FTs made	0-1
Same FTs made	1-1
More rebounds	3-2
Fewer rebounds	2-4
Same rebounds	0-0
More turnovers	1-3
Fewer turnovers	4-2
Same turnovers	0-1
More assists	3-0
Fewer assists	2-6
Same assists	0-0
More steals	3-1
Fewer steals	0-4
Same steals	2-1

SDSU STREAKS

Last 5 games	3-2
Last 10 games	5-5
Longest winning streak	3
Longest losing streak	3
Current streak	Won 3

that advanced to the postseason.

San Diego State opens the season with a battle at UC Riverside, which played in the first round of the WNIT. Six days later, the Scarlet and Black visits crosstown rival San Diego, which advanced to the third round of the prestigious tournament. Over Thanksgiving Weekend, SDSU plays at the Seton Hall Tournament and could face the Pirates, returning in 2016-17 from a NCAA Tournament first-round showing. On Fri., Dec. 9, San Diego State welcomes Michigan to Viejas Arena, which is coming off of a WNIT semifinal appearance.

Additionally, SDSU faces conference foes Fresno State, New Mexico and Colorado State twice each, all of which made appearances in the WNIT.

2016-17 By the Numbers

With a new season upon Montezuma Mesa, head coach Stacie Terry's fourth season is one brewing with promise. Below are trends to watch for in 2016-17:

- The Aztecs are true believers in the home court advantage. They enter the season with wins in 50 of its last 75 home games and have gone 82-37 on the Viejas Arena floor since the start of the 2008-09 campaign.

- With the game on the line, the Scarlet and Black gets the job done. The team has won 55 straight and has gone 86-1 since the beginning of the 2011-12 campaign when leading with five minutes left in the game. The Aztecs' lone blemish during that span occurred in a 59-58 heart-breaking loss at Washington on Dec. 5, 2012.

- The Aztecs are fond of closing out the calendar year on a high note. SDSU is 39-19 in December games dating back to the 2006-07 campaign, with seven of those losses coming against teams either ranked or receiving votes in the national polls.

- Over the last nine seasons, San Diego State has been solid in conference play. SDSU has recorded 87 Mountain West victories after posting 31 wins in the league's first nine years.

- The Aztecs have advanced to finals of the MW Championship in five of the last nine years, and advanced in the tournament every season since 2010-11, after not winning a single game in the tournament's first eight years of existence.

2016-17 Media Information

All media requests for interviews with the coaching staff or student-athletes should be directed to Jen Heisel at jheisel@mail.sdsu.edu. Please submit your requests with a minimum of 24 hours notice.

During the season, head coach Stacie Terry and the players are generally available to meet with the media following each workout, as requested. There will be no interviews on game days until postgame.

The Aztec basketball team officially began practice in early October. All workouts will take place at the Jeff Jacobs JAM Center with a few exceptions. Media wishing to attend practice should contact the Aztec media relations department at least one day in advance.

Media desiring to cover Aztec practices on campus can park in Parking Structure 7 and obtain a special parking permit from the SDSU athletic media relations office. Media parking via permit only will be provided for all home games in PS 4, adjacent to Viejas Arena.

ASSOCIATED PRESS POLL

(Week 8 - Dec. 26)

Rk		Record	Pts
1	Connecticut (33)	11-0	825
2	Notre Dame	11-1	767
3	Baylor	11-1	759
4	Maryland	12-0	740
5	Mississippi State	13-0	679
6	South Carolina	10-1	664
7	Florida State	12-1	629
8	Louisville	12-2	593
9	Washington	12-1	539
10	UCLA	9-2	517
11	Miami	11-1	473
12	West Virginia	12-0	451
13	Stanford	9-2	408
14	Ohio State	10-4	400
15	Duke	11-1	310
16	Texas	6-4	272
17	Kentucky	9-3	251
18	Arizona State	9-2	247
19	Virginia Tech	12-0	227
20	Colorado	10-1	188
21	California	12-0	159
22	Oregon State	10-1	147
23	South Florida	10-1	117
24	Oklahoma	9-3	112
25	Syracuse	9-4	76

First-place votes in parentheses

Others receiving votes: DePaul 60, Kansas State 22, Oregon 18, USC 17, Gonzaga 12, Tennessee 11, Oklahoma State 8, Texas A&M 7, Utah 4, Northwestern 1, Ole Miss 3, Vanderbilt 2, Marquette 2, Green Bay 1, Clemson 1, Michigan 1, Georgetown 1, Boise State 1

USA TODAY COACHES POLL

(Week 8 - Dec. 26)

Rk		Record	Pts
1	Connecticut (32)	11-0	800
2	Notre Dame	11-1	757
3	Maryland	12-0	730
4	Baylor	11-1	709
5	Mississippi State	13-0	663
6	South Carolina	10-1	650
7	Florida State	12-1	610
8	Louisville	12-2	575
9	Washington	12-1	534
10	UCLA	9-2	495
11	Miami	11-1	468
12	West Virginia	12-0	441
13	Ohio State	10-4	396
14	Stanford	9-2	383
15	Oregon State	10-1	328
16	Texas	6-4	267
17	Duke	11-1	259
18	California	12-0	240
19	Arizona State	9-2	235
20	Virginia Tech	12-0	172
21	Syracuse	9-4	154
22	DePaul	8-4	137
23	Kentucky	9-3	107
24	Oklahoma	9-3	80
25	South Florida	10-1	76

First-place votes in parentheses

Others receiving votes: Michigan State 29, Oklahoma State 22, Gonzaga 15, Green Bay 14, Michigan 12, Texas A&M 11, Northwestern 9, Utah 6, Tennessee 6, Colorado 3, Temple 2, Oregon 2, Tulane 1, Penn State 1, LSU 1

PERSONNEL SUMMARY

Returning Starters (3):

Ariell Bostick, Sr., G (4.9 ppg, 4.2 rpg, 2.9 apg)
 McKynzie Fort, Jr., G (14.3 ppg, 4.1 rpg, 2.4 apg)
 Cheyenne Greenhouse, Jr., G (4.9 ppg, 3.2 rpg, 0.5 apg)

Starters Lost (2):

Ahijaleé Harvey, G (9.3 ppg, 3.6 rpg, 2.1 apg)
 Deidra Smith, F (7.5 ppg, 4.9 rpg, 0.5 bpg)

Other Players Lost (1):

Kylie Herd, Jr., G (10.2 mpg, 1.3 rpg)

Other Letterwinners Returning (5):

Aleiah Brandon, Sr., F (3.4 ppg, 2.4 rpg)
 Kymberly Ellison, Sr., G (4.5 ppg, 0.7 apg, 33 3FGs)
 Arantxa Gómez Ferrer, So., F (0.6 ppg, 0.9 rpg)
 Geena Gomez, Jr., G (3.4 ppg, 1.9 rpg, 1.3 apg)
 Lexy Thorderson, Jr., F/G (5.2 ppg, 2.2 rpg, 40 3FGs)

Other Players Returning (1):

Allison Brown, Jr., G (9 gms)

Newcomers (5):

Naomi Ekwedike, Fr., F, 6-6, Lagos, Nigeria
 (Potter's House Christian Academy (Fla.))
 Khalia Lark, Jr., G, 6-0, Santa Ana, Calif.
 (Washington/Mater Dei HS)
 Abby Lowe, Fr., G, 5-11, Stockport, England
 (Barking Abbey Academy)
 Monique Terry, Fr., F, 6-2, San Antonio, Texas
 (Brennan HS)
 Baylee Vanderdoes, Fr., F, 6-2, Auburn, Calif.
 (Placer HS)

ROSTER BREAKDOWN

By Class

Seniors (3): Bostick, Brandon, Ellison; **Juniors (6):** Brown, Fort, G. Gomez, Greenhouse, Lark, Thorderson; **Sophomore (1):** A. Gómez Ferrer; **Freshmen (4):** Ekwedike, Lowe, Terry, Vanderdoes

By State/Country

California (8): Bostick, Brandon, Brown, Fort, G. Gomez, Greenhouse, Lark, Vanderdoes; **Colorado (1):** Thorderson; **Texas (1):** Terry; **Georgia (1):** Ellison; **Spain (1):** A. Gómez Ferrer; **England (1):** Lowe; **Nigeria (1):** Ekwedike

By Position

Centers (1): Ekwedike; **Forwards (4):** Brandon, A. Gómez Ferrer, Terry, Thorderson, Vanderdoes; **Guards (8):** Bostick, Brown, Ellison, Fort, G. Gomez, Greenhouse, Lark, Lowe, Thorderson

By Height

6-6 (1): Ekwedike; **6-2 (1):** Terry; **6-1 (2):** Brandon, Vanderdoes; **6-0 (3):** A. Gómez Ferrer, Lark, Thorderson; **5-11 (2):** Greenhouse, Lowe; **5-9 (1):** Fort; **5-8 (1):** G. Gomez; **5-7 (2):** Brown, Ellison; **5-4 (1):** Bostick

2016-17 NUMERICAL ROSTER

No.	Name	Pos.	Ht.	Yr.	Exp.	Hometown (Previous School/High School)
1	Khaliya Lark	F	6-0	Jr.	TR	Santa Ana, Calif. (Washington/Mater Dei HS)
3	Ariell Bostick	G	5-4	Sr.	3L	Oakland, Calif. (Bishop O'Dowd HS)
4	Kymberly Ellison	G	5-7	Sr.	1L	Columbus, Ga. (Georgia Tech/Hardaway HS)
11	Arantxa Gómez Ferrer	F	6-0	So.	1L	Valencia, Spain (Parque Colegio Santa Ana HS)
13	Allison Brown	G	5-7	Jr.	SQ	Anaheim Hills, Calif. (Mater Dei HS)
15	McKynzie Fort	G	5-9	Jr.	2L	Fontana, Calif. (Etiwanda HS)
20	Geena Gomez	G	5-8	Jr.	1L	Huntington Beach, Calif. (St. Joseph's (Pa.)/Edison HS)
21	Abby Lowe	G	5-11	Fr.	HS	Stockport, England (Barking Abbey Academy)
22	Lexy Thorderson	G/F	6-0	Jr.	2L	Castle Rock, Colo. (Rock Canyon HS)
30	Cheyenne Greenhouse	G	5-11	Jr.	2L	Riverside, Calif. (Canyon Springs HS)
34	Baylee Vanderdoes	F	6-2	Fr.	HS	Auburn, Calif. (Placer HS)
40	Monique Terry	F	6-2	Fr.	HS	San Antonio, Texas (Brennan HS)
44	Aleiah Brandon	F	6-1	Sr.	3L	Corona, Calif. (Centennial HS)
45	Naomi Ekwedike	F	6-6	Fr.	HS	Lagos, Nigeria (Potters House Christian Academy)

2016-17 ALPHABETICAL ROSTER

No.	Name	Pos.	Ht.	Yr.	Exp.	Hometown (Previous School/High School)
3	Ariell Bostick	G	5-4	Sr.	3L	Oakland, Calif. (Bishop O'Dowd HS)
44	Aleiah Brandon	F	6-1	Sr.	3L	Corona, Calif. (Centennial HS)
13	Allison Brown	G	5-7	Jr.	SQ	Anaheim Hills, Calif. (Mater Dei HS)
45	Naomi Ekwedike	F	6-6	Fr.	HS	Lagos, Nigeria (Potters House Christian Academy (Fla.))
4	Kymberly Ellison	G	5-7	Sr.	1L	Columbus, Ga. (Georgia Tech/Hardaway HS)
15	McKynzie Fort	G	5-9	Jr.	2L	Fontana, Calif. (Etiwanda HS)
20	Geena Gomez	G	5-8	Jr.	1L	Huntington Beach, Calif. (St. Joseph's (Pa.)/Edison HS)
11	Arantxa Gómez Ferrer	F	6-0	So.	1L	Valencia, Spain (Parque Colegio Santa Ana HS)
30	Cheyenne Greenhouse	G	5-11	Jr.	2L	Riverside, Calif. (Canyon Springs HS)
1	Khaliya Lark	F	6-0	Jr.	TR	Santa Ana, Calif. (Washington/Mater Dei HS)
21	Abby Lowe	G	5-11	Fr.	HS	Stockport, England (Barking Abbey HS)
40	Monique Terry	F	6-2	Fr.	HS	San Antonio, Texas (Brennan HS)
22	Lexy Thorderson	G/F	6-0	So.	1L	Castle Rock, Colo. (Rock Canyon HS)
34	Baylee Vanderdoes	F	6-2	Fr.	HS	Auburn, Calif. (Placer HS)

Head Coach: Stacie Terry (UT Arlington, 1998), Fourth season at SDSU/Fourth overall

Assistant Coach: Jesse Clark (Pacific Union, 2003), Fourth season at SDSU

Assistant Coach: Ciara Carl (Point Loma Nazarene, 2005), Fourth season at SDSU

Assistant Coach: Nick Grant (Baylor, 2010), Third season at SDSU

Director of Operations: Jon Silver (UCLA, 2009), First season at SDSU

Director of Player Personnel: Paris Johnson (San Diego State, 2011), First season at SDSU

2016-17 PRONUNCIATION GUIDE

Ariell Bostick	arr-EE-ell
Aleiah Brandon	uh-LAY-uh
Naomi Ekwedike	nay-O-mee eck-wed-EE-kay
Arantxa Gómez Ferrer	uh-RON-cha GO-mez Fur-AIR
McKynzie Fort	ma-KEN-zee
Baylee Vanderdoes	VAN-der-doze
Ciara Carl	see-ARR-uh

STACIE TERRY

Head Coach
 Fourth Year at San Diego State; Fourth Year Overall
 UT Arlington, 1998



THE STACIE TERRY FILE

Hometown

San Diego, Calif.

Education

Bachelor of Arts -
 Broadcast Journalism
 UT Arlington, 1998

Playing Experience

1994-98
 UT Arlington

Head Coaching Experience

2013-present
 San Diego State

Previous Coaching Experience

2011-13
 LSU
 Assistant Coach

2008-11

UCLA
 Assistant Coach

2007-08

Southern Mississippi
 Recruiting Coordinator

2004-07

Illinois
 Assistant Coach

2003-04

Dayton
 Assistant Coach

2000-03

Louisville
 Assistant Coach

1999-2000

UT Arlington
 Graduate Assistant

San Diego native Stacie Terry enters her fourth year at the helm of the Aztec women's basketball team after she was named the eighth head coach in program history on May 15, 2013.

Under Terry's direction, SDSU has continued its trend of garnering all-conference honors. In 2015-16, following a campaign that saw her team finish sixth in the league with 14.4 points per game and was tied for third with two steals per game, sophomore McKynzie Fort earned nods on the MW All-Defensive Team and as an All-MW honorable mention pick. San Diego State's 34th All-MW recipient, the Aztecs have picked up a conference nod each of the last 17 seasons.

During her first season on Montezuma Mesa, Terry was saddled with the unenviable task of replacing four senior starters who accounted for nearly 64 percent of the team's scoring offense from the previous year, as well as overcoming the loss of two key players to injuries prior to conference play.

Despite those obstacles and a demanding schedule featuring nine games against teams that eventually advanced to postseason competition, Terry's squad flashed its resiliency during the 2013-14 campaign. The Aztecs led the league in rebounding margin and rebounding defense while ranking second in field-goal percentage.

Individually, Terry also oversaw the progress of senior center Cierra Warren, who became the fifth SDSU player in a six-year span to receive first-team all-MW recognition.

Prior to her arrival on The Mesa, Terry gained a wealth of experience as an assistant coach at the Division I level for 14 years, including five under head coach Nikki (Caldwell) Fargas, who transformed UCLA into a powerhouse before restoring LSU to national prominence.

During Terry's two seasons at LSU, the Lady Tigers compiled a 45-23 overall record and earned two NCAA tournament bids, including a Sweet 16 appearance during the 2012-13 campaign. During that season, the Lady Tigers also posted six victories against ranked opponents and finished with their second-highest scoring average (69.0) in the last seven years. Under Terry's guidance, forward LaShondra Barrett garnered first-team all-Southeastern Conference accolades and received honorable mention All-America distinction in 2012 before becoming a first-round draft choice of the WNBA's Washington Mystics.

Prior to her appointment at LSU, Terry served as an assistant under Fargas at UCLA from 2008-11, helping the Bruins gain national acclaim with a pair of NCAA tournament appearances. During Terry's tenure, UCLA posted 72 overall victories, as the 2010-11 squad finished with a 28-5 record, setting a school record for fewest losses in a single season to go with a No. 7 national ranking. In addition, the Bruins signed the fourth-ranked recruiting class that season, according to ESPN HoopGurlz, while Terry helped mentor first-team all-Pac-10 performers in Doreena Campbell, Darxia Morris and Jasmine Dixon, a 2012 honorable mention AP All-America selection, and all-conference freshman honorees Atonye Nyingifa and Markel Walker.

Terry spent the 2007-08 campaign at Southern Mississippi, as the Golden Eagles posted a 21-14 record and earned a postseason berth in the Women's National Invitation Tournament (WNIT). While at Southern Miss, Terry spearheaded the development and coordination of the Lady Eagle recruiting campaign. Her responsibilities also included working with the perimeter players, scouting opponents and film breakdown, as well as coordinating all of the team's community service events.

Terry also coached for three seasons from 2004-07 as an assistant under Hall of Fame head coach Theresa Grentz at Illinois, where the Fighting Illini had three straight recruiting classes

ranked among the top 25 in the nation, according to Blue Star Basketball, and made three consecutive trips to the WNIT. Her primary duties included defensive instruction and working with the perimeter players.

In addition, Terry coached at Dayton during the 2003-04 season following a three-year stint at Louisville from 2000-03. With the Cardinals, Terry's responsibilities encompassed recruiting, scouting, player development, summer camps and serving as a liaison for the program's community service outreach. Louisville captured the Conference USA regular-season title and earned a trip to the NCAA tournament in 2001 before making a WNIT appearance in 2002. She also assisted in signing the nation's 21st-ranked recruiting class in 2002-03, according to All-Star Girls Report. Terry recruited and coached all-Conference USA honoree Lori Nero, a draft choice of the WNBA's Houston Comets, as well as Sara Nord, who finished her collegiate career as the Cardinals' all-time assist leader and ranks among the top-15 scorers in school history.

Terry enjoyed a successful collegiate playing career at the University of Texas at Arlington, winning four varsity letters from 1994-98 under head coach Mike Dean. She earned first-team all-Southland Conference honors after leading the Mavericks in scoring with 17.4 points per game as a senior in 1997-98. Terry scored 1,169 points during her career at UTA and still ranks among the school's top 10 in 3-point field goals made (third), assists (sixth), steals (seventh), 3-point field goal percentage (ninth) and free-throw percentage (10th). Additionally, she is just one of 17 players in Maverick history to surpass the 1,000-point plateau.

Terry played one season of professional basketball in Warsaw, Poland, averaging 12.0 points and 6.0 assists with the Polonia Phoenix, before returning to UT Arlington to begin her coaching career as a graduate assistant in 1999.

Terry prepped at El Capitan High and held the Vaqueros' career scoring record for three years following her graduation. She was inducted into the school's athletic hall of fame in 2008.



#1 KHALIA LARK

Junior • TR

6-0

Guard

Irvine, Calif.

Washington / Mater Dei High School

A versatile wing shot who brings toughness to the team following a transfer from Washington

▶▶▶ GAME HIGHS

	CAREER	2016-17 SEASON	* AT WASHINGTON
Points	14, vs. Biola (12-28-16)	14, vs. Biola (12-28-16)	
Rebounds	9, vs. Biola (12-28-16)	9, vs. Biola (12-28-16)	
Assists	2, Twice, Last: at Cal State Fullerton (12-22-16)	2, at Cal State Fullerton (12-22-16)	
Steals	1, Six times, Last: vs. Biola (12-28-16)	1, Twice, Last: vs. Biola (12-28-16)	
Blocks	N/A	N/A	
Field Goals	6, vs. Biola (12-28-16)	6, vs. Biola (12-28-16)	
Field Goal Attempts	9, Twice, Last: vs. Biola (12-28-16)	9, Twice, Last: vs. Biola (12-28-16)	
3-pt. Field Goals	2, Four times, Last: vs. Biola (12-28-16)	2, vs. Biola (12-28-16)	
3-pt. Field Goal Attempts	5, vs. Biola (12-28-16)	5, vs. Biola (12-28-16)	
Free Throws	4, Twice, Last: vs. Seattle U (12-4-14)*	N/A	
Free Throw Attempts	6, vs. Santa Clara (11-14-15)*	N/A	
Double-Figure Scoring Games	2	1	
Double-Figure Rebounding Games	N/A	N/A	
Double-Doubles	N/A	N/A	

▶▶▶ 2016-17 GAME-BY-GAME STATISTICS

Opponent	Date	gs	min	Total		3-Pointers		Free throws		Rebounds				pf	a	t/o	blk	stl	pts	avg
				fg-fga	pct	3fg-fga	pct	ft-fta	pct	off	def	tot	avg							
at Cal State Fullerton	12-22-16		29	2-9	.222	1-3	.333	0-0	.000	1	4	5	5.0	3	2	0	0	1	5	5.0
BIOLA	12-28-16		25	6-9	.667	2-5	.400	0-0	.000	1	8	9	7.0	1	0	2	0	1	14	9.5
Totals		0	54	8-18	.444	3-8	.375	0-0	.000	2	12	14	7.0	4	2	2	0	2	19	9.5

Games played: 2
 Minutes/game: 27.0
 Points/game: 9.5
 FG Pct: 44.4
 3FG Pct: 37.5

Rebounds/game: 7.0
 Assists/game: 1.0
 Turnovers/game: 1.0
 Assist/turnover ratio: 1.0
 Steals/game: 1.0

LARK'S CAREER STATISTICS

Season	gp-gs	min/avg	Total		3-Point		F-Throws		Rebounds				pf	fo	ast	to	blk	stl	* - at Washington Scoring	
			fg-fga	pct	fg-fga	pct	ft-fta	pct	off	def	tot	avg							pts	avg
2014-15*	23-0	198/8.6	17-39	.436	11-27	.407	11-14	.786	10	21	31	1.3	12	0	5	13	0	3	56	2.4
2015-16*	6-0	83/13.8	5-15	.333	2-7	.286	5-11	.455	2	11	13	2.2	3	0	2	7	0	1	17	2.8
2016-17	2-0	54/27.0	8-18	.444	3-8	.375	0-0	.000	2	12	14	7.0	4	0	2	2	0	2	19	9.5
TOTAL	2-0	54/27.0	8-18	.444	3-8	.375	0-0	.000	2	12	14	7.0	4	0	2	2	0	2	19	9.5



#4 KYMBERLY ELLISON

Senior • 1L

5-7

Guard

Columbus, Ga.

Georgia Tech / Hardaway High School

A talented passer with strong floor vision who also excels at knocking down threes

▶▶▶ GAME HIGHS

	CAREER	2016-17 SEASON
Points	14, vs. San Diego (12-3-15)	13, Twice, Last: vs. UC Santa Barbara (12-11-16)
Rebounds	5, vs. Loyola Marymount (11-20-16)	5, Twice, Last: vs. Michigan (12-9-16)
Assists	3, Twice, Last: vs. San Diego Christian (11-14-16)	3, vs. San Diego Christian (11-14-16)
Steals	4, at Utah State (1-23-16)	2, Four times, Last: vs. Michigan (12-9-16)
Blocks	2, vs. Biola (12-28-16)	2, vs. Biola (12-28-16)
Field Goals	5, Twice, Last: vs. Nevada (1-27-16)	4, Five times, Last: at Cal State Fullerton (12-22-16)
Field Goal Attempts	11, Twice, Last: at Cal State Fullerton (12-22-16)	11, Twice, Last: at Cal State Fullerton (12-22-16)
3-pt. Field Goals	4, vs. Michigan (12-9-16)	4, vs. Michigan (12-9-16)
3-pt. Field Goal Attempts	9, Twice, Last: at Cal State Fullerton (12-22-16)	9, Twice, Last: at Cal State Fullerton (12-22-16)
Free Throws	6, at San Diego (11-17-16)	6, at San Diego (11-17-16)
Free Throw Attempts	8, at San Diego (11-17-16)	8, at San Diego (11-17-16)
Double-Figure Scoring Games	8	6
Double-Figure Rebounding Games	N/A	N/A
Double-Doubles	N/A	N/A

▶▶▶ 2016-17 GAME-BY-GAME STATISTICS

Opponent	Date	gs	min	Total		3-Pointers		Free throws		Rebounds											
				fg-fga	pct	3fg-fga	pct	ft-fa	pct	off	def	tot	avg	pf	a	t/o	blk	stl	pts	avg	
at UC Riverside	11-11-16	*	21	2-8	.250	2-6	.333	0-0	.000	0	1	1	1.0	4	0	2	0	0	6	6.0	
SAN DIEGO CHRISTIAN	11-14-16	*	35	4-6	.667	3-4	.750	1-2	.500	0	3	3	2.0	3	3	2	0	0	12	9.0	
at San Diego	11-17-16	*	25	0-9	.000	0-5	.000	6-8	.750	0	3	3	2.3	2	1	1	1	2	6	8.0	
LOYOLA MARYMOUNT	11-20-16	*	25	3-11	.273	2-8	.250	0-0	.000	2	3	5	3.0	1	1	3	0	2	8	8.0	
vs UT-Arlington	11-26-16	*	26	4-10	.400	3-9	.333	2-2	1.000	1	2	3	3.0	4	0	4	0	1	13	9.0	
vs Central Connecticut	11-27-16	*	24	3-7	.429	2-6	.333	2-2	1.000	0	0	0	2.5	4	2	0	0	1	10	9.2	
at UC Davis	12-02-16	*	20	3-10	.300	2-7	.286	0-0	.000	2	0	2	2.4	1	1	2	0	2	8	9.0	
MICHIGAN	12-09-16	*	27	4-8	.500	4-8	.500	0-0	.000	1	4	5	2.8	4	2	3	0	2	12	9.4	
UC SANTA BARBARA	12-11-16	*	26	4-7	.571	3-5	.600	2-2	1.000	1	2	3	2.8	2	1	0	0	1	13	9.8	
at Cal State Fullerton	12-22-16	*	25	4-11	.364	3-9	.333	1-2	.500	0	2	2	2.7	1	1	1	0	1	12	10.0	
BIOLA	12-28-16	*	24	3-7	.429	3-7	.429	0-0	.000	0	2	2	2.6	0	1	0	2	1	9	9.9	
Totals			11	278	34-94	.362	27-74	.365	14-18	.778	7	22	29	2.6	26	13	18	3	13	109	9.9

Games played: 11
 Minutes/game: 25.3
 Points/game: 9.9
 FG Pct: 36.2
 3FG Pct: 36.5
 FT Pct: 77.8

Rebounds/game: 2.6
 Assists/game: 1.2
 Turnovers/game: 1.6
 Assist/turnover ratio: 0.7
 Steals/game: 1.2
 Blocks/game: 0.3

ELLISON'S CAREER STATISTICS

Season	gp-gs	min/avg	Total		3-Point		F-Throws		Rebounds				* - at Georgia Tech							
			fg-fga	pct	fg-fga	pct	ft-fa	pct	off	def	tot	avg	pf	fo	ast	to	blk	stl	pts	avg
2012-13*	4-0	2/0.5	1-2	.500	1-2	.500	0-0	.000	0	0	0	0.0	0	0	0	0	0	0	3	0.8
2013-14*	11-0	21/1.9	1-5	.200	0-3	.000	0-0	.000	0	2	2	0.2	2	0	4	4	1	1	2	0.2
2015-16	31-0	396/12.8	47-155	.303	33-126	.262	13-18	.722	6	19	25	0.8	39	1	21	32	1	18	140	4.5
2016-17	11-11	278/25.3	34-94	.362	27-74	.365	14-18	.778	7	22	29	2.6	26	0	13	18	3	13	109	9.9
TOTAL	42-11	674/16.0	81-249	.325	60-200	.300	27-36	.750	13	41	54	1.3	65	1	34	50	4	31	249	5.9
All*	57-11	697/12.2	83-256	.324	61-205	.298	27-36	.750	13	43	56	1.0	67	1	38	54	5	32	254	4.5



#11 ARANTXA GOMEZ FERRER

Sophomore • 1L

6-0

Forward

Valencia, Spain

Parque Colegio Santa Ana High School / Ros Casares Valencia Club

A skilled inside threat who can stretch the floor

▶▶▶ GAME HIGHS

	CAREER	2016-17 SEASON
Points	5, at Cal State Fullerton (12-22-16)	5, at Cal State Fullerton (12-22-16)
Rebounds	5, at Cal State Fullerton (12-22-16)	5, at Cal State Fullerton (12-22-16)
Assists	1, Four times, Last: vs. UC Santa Barbara (12-11-16)	1, Twice, Last: vs. UC Santa Barbara (12-11-16)
Steals	1, Seven times, Last: vs. Biola (12-28-16)	1, Three times, Last: vs. Biola (12-28-16)
Blocks	2, Three times, Last: vs. UC Santa Barbara (12-11-16)	2, Three times, Last: vs. UC Santa Barbara (12-11-16)
Field Goals	2, Six times, Last: at Cal State Fullerton (12-22-16)	2, at Cal State Fullerton (12-22-16)
Field Goal Attempts	3, Twice, Last: at San Diego (11-17-16)	3, Twice, Last: at San Diego (11-17-16)
3-pt. Field Goals	N/A	N/A
3-pt. Field Goal Attempts	N/A	N/A
Free Throws	2, Twice, Last: vs. UC Santa Barbara (12-11-16)	2, Twice, Last: vs. UC Santa Barbara (12-11-16)
Free Throw Attempts	4, Three times, Last: at San Diego (11-17-16)	4, Twice, Last: at UC Davis (12-2-16)
Double-Figure Scoring Games	N/A	N/A
Double-Figure Rebounding Games	N/A	N/A
Double-Doubles	N/A	N/A

▶▶▶ 2016-17 GAME-BY-GAME STATISTICS

Opponent	Date	gs	min	Total		3-Pointers		Free throws		Rebounds				pf	a	t/o	blk	stl	pts	avg	
				fg-fga	pct	3fg-fga	pct	ft-fta	pct	off	def	tot	avg								
at UC Riverside	11-11-16		16	0-0	.000	0-0	.000	1-2	.500	0	0	0	0.0	0	0	0	0	0	1	1.0	
SAN DIEGO CHRISTIAN	11-14-16		8	1-3	.333	0-0	.000	0-0	.000	0	2	2	1.0	2	0	1	0	1	2	1.5	
at San Diego	11-17-16		15	1-3	.333	0-0	.000	1-4	.250	3	0	3	1.7	2	0	0	0	0	3	2.0	
LOYOLA MARYMOUNT	11-20-16		9	0-0	.000	0-0	.000	0-0	.000	0	1	1	1.5	1	0	0	0	1	0	1.5	
vs UT-Arlington	11-26-16		11	0-0	.000	0-0	.000	2-2	1.000	2	1	3	1.8	2	0	2	2	0	2	1.6	
vs Central Connecticut	11-27-16		5	1-1	1.000	0-0	.000	0-0	.000	0	0	0	1.5	2	0	1	0	0	2	1.7	
at UC Davis	12-02-16		14	0-1	.000	0-0	.000	1-4	.250	1	3	4	1.9	2	1	2	2	0	1	1.6	
MICHIGAN	12-09-16		7	0-0	.000	0-0	.000	0-0	.000	2	0	2	1.9	0	0	0	0	0	0	1.4	
UC SANTA BARBARA	12-11-16		25	1-2	.500	0-0	.000	2-2	1.000	0	4	4	2.1	1	1	0	2	0	4	1.7	
at Cal State Fullerton	12-22-16		20	2-2	1.000	0-0	.000	1-2	.500	3	2	5	2.4	3	0	2	0	0	5	2.0	
BIOLA	12-28-16		13	0-0	.000	0-0	.000	0-0	.000	1	1	2	2.4	1	0	2	1	1	0	1.8	
Totals			0	143	6-12	.500	0-0	.000	8-16	.500	12	14	26	2.4	16	2	10	7	3	20	1.8

Games played: 11
 Minutes/game: 13.0
 Points/game: 1.8
 FG Pct: 50.0
 FT Pct: 50.0

Rebounds/game: 2.4
 Assists/game: 0.2
 Turnovers/game: 0.9
 Assist/turnover ratio: 0.2
 Steals/game: 0.3
 Blocks/game: 0.6

GOMEZ FERRER'S CAREER STATISTICS

Season	gp-gs	min/avg	Total		3-Point		F-Throws		Rebounds				Scoring							
			fg-fga	pct	fg-fga	pct	ft-fta	pct	off	def	tot	avg	pf	fo	ast	to	blk	stl	pts	avg
2015-16	18-0	118/6.6	5-12	.417	0-0	.000	0-12	.000	10	6	16	0.9	18	0	2	5	1	4	10	0.6
2016-17	11-0	143/13.0	6-12	.500	0-0	.000	8-16	.500	12	14	26	2.4	16	0	2	10	7	3	20	1.8
TOTAL	29-0	261/9.0	11-24	.458	0-0	.000	8-28	.286	22	20	42	1.4	34	0	4	15	8	7	30	1.0



#13 ALLISON BROWN

Junior • SQ

5-7

Guard

Anaheim Hills, Calif.

Mater Dei High School

A walk-on who earned a scholarship for the 2016-17 campaign

▶▶▶ GAME HIGHS

	CAREER	2016-17 SEASON
Points	4, vs. Michigan (12-9-16)	4, vs. Michigan (12-9-16)
Rebounds	3, vs. San Diego Christian (12-21-15)	1, Twice, Last: vs. Biola (12-28-16)
Assists	2, vs. Wyoming (1-14-15)	1, Twice, Last: vs. Biola (12-28-16)
Steals	1, at Loyola Marymount (12-10-15)	N/A
Blocks	N/A	N/A
Field Goals	1, Four times, Last: vs. Biola (12-28-16)	1, Twice, Last: vs. Biola (12-28-16)
Field Goal Attempts	3, Twice, Last: vs. Air Force (1-21-15)	2, vs. Michigan (12-9-16)
3-pt. Field Goals	1, Twice, Last: vs. San Diego Christian (12-21-15)	N/A
3-pt. Field Goal Attempts	4, Twice, Last: vs. Air Force (1-21-15)	N/A
Free Throws	2, vs. Michigan (12-9-16)	2, vs. Michigan (12-9-16)
Free Throw Attempts	2, Twice, Last: vs. Michigan (12-9-16)	2, vs. Michigan (12-9-16)
Double-Figure Scoring Games	N/A	N/A
Double-Figure Rebounding Games	N/A	N/A
Double-Doubles	N/A	N/A

▶▶▶ 2016-17 GAME-BY-GAME STATISTICS

Opponent	Date	gs	min	Total		3-Pointers		Free throws		Rebounds				pf	a	t/o	blk	stl	pts	avg
				fg-fga	pct	3fg-fga	pct	ft-fta	pct	off	def	tot	avg							
SAN DIEGO CHRISTIAN	11-14-16		9	0-1	.000	0-0	.000	0-0	.000	0	1	1	1.0	1	1	2	0	0	0	0.0
MICHIGAN	12-09-16		2	1-1	1.000	0-0	.000	2-2	1.000	0	0	0	0.5	0	0	0	0	0	4	2.0
BIOLA	12-28-16		3	1-1	1.000	0-0	.000	0-0	.000	0	1	1	0.7	1	1	0	0	0	2	2.0
Totals		0	14	2-3	.667	0-0	.000	2-2	1.000	0	2	2	0.7	2	2	2	0	0	6	2.0

Games played: 3
 Minutes/game: 4.7
 Points/game: 2.0
 FG Pct: 66.7
 FT Pct: 100.0

Rebounds/game: 0.7
 Assists/game: 0.7
 Turnovers/game: 0.7
 Assist/turnover ratio: 1.0

BROWN'S CAREER STATISTICS

Season	gp-gs	min/avg	Total		3-Point		F-Throws		Rebounds				Scoring							
			fg-fga	pct	fg-fga	pct	ft-fta	pct	off	def	tot	avg	pf	fo	ast	to	blk	stl	pts	avg
2014-15	7-0	26/3.7	1-9	.111	1-9	.111	0-2	.000	1	1	2	0.3	3	0	2	3	0	0	3	0.4
2015-16	9-0	19/2.1	1-4	.250	1-3	.333	0-0	.000	1	3	4	0.4	0	0	2	3	0	1	3	0.3
2016-17	3-0	14/4.7	2-3	.667	0-0	.000	2-2	1.000	0	2	2	0.7	2	0	2	2	0	0	6	2.0
TOTAL	19-0	59/3.1	4-16	.250	2-12	.167	2-4	.500	2	6	8	0.4	5	0	6	8	0	1	12	0.6



#20 GEENA GOMEZ

Junior • 1L

5-8

Guard

Huntington Beach, Calif.

St. Joseph's (Pa.) / Edison High School

A heady decision-maker and knock-down shooter

▶▶▶ GAME HIGHS

	CAREER	2016-17 SEASON
Points	17, Twice, Last: vs. UC Santa Barbara (12-11-16)	17, Twice, Last: vs. UC Santa Barbara (12-11-16)
Rebounds	5, Four times, Last: vs. Central Connecticut (11-27-16)	5, Twice, Last: vs. Central Connecticut (11-27-16)
Assists	6, vs. North Dakota State (1-27-15)	4, vs. Loyola Marymount (11-20-16)
Steals	2, Four times, Last: vs. Central Connecticut (11-27-16)	2, Twice, Last: vs. Central Connecticut (11-27-16)
Blocks	1, Twice, Last: at UNLV (3-4-16)	N/A
Field Goals	6, vs. UC Santa Barbara (12-11-16)	6, vs. UC Santa Barbara (12-11-16)
Field Goal Attempts	12, Twice, Last: at San Jose State (1-6-16)	10, Twice, Last: vs. UC Santa Barbara (12-11-16)
3-pt. Field Goals	4, at San Jose State (1-6-16)	3, Twice, Last: vs. UC Santa Barbara (12-11-16)
3-pt. Field Goal Attempts	9, at San Jose State (1-6-16)	5, Three times, Last: vs. UC Santa Barbara (12-11-16)
Free Throws	6, vs. Central Connecticut (11-27-16)	6, vs. Central Connecticut (11-27-16)
Free Throw Attempts	6, Twice, Last: vs. Central Connecticut (11-27-16)	6, vs. Central Connecticut (11-27-16)
Double-Figure Scoring Games	5	4
Double-Figure Rebounding Games	N/A	N/A
Double-Doubles	N/A	N/A

▶▶▶ 2016-17 GAME-BY-GAME STATISTICS

Opponent	Date	gs	min	Total		3-Pointers		Free throws		Rebounds				pf	a	t/o	blk	stl	pts	avg
				fg-fga	pct	3fg-fga	pct	ft-fta	pct	off	def	tot	avg							
at UC Riverside	11-11-16		25	2-7	.286	1-3	.333	1-2	.500	1	1	2	2.0	2	0	3	0	1	6	6.0
SAN DIEGO CHRISTIAN	11-14-16	*	32	4-8	.500	2-5	.400	4-4	1.000	1	1	2	2.0	3	2	3	0	0	14	10.0
at San Diego	11-17-16		27	0-9	.000	0-5	.000	2-2	1.000	1	3	4	2.7	3	0	4	0	2	2	7.3
LOYOLA MARYMOUNT	11-20-16		23	0-3	.000	0-3	.000	0-0	.000	0	1	1	2.3	0	4	1	0	0	0	5.5
vs UT-Arlington	11-26-16		29	2-6	.333	1-3	.333	1-2	.500	0	5	5	2.8	3	2	2	0	0	6	5.6
vs Central Connecticut	11-27-16		24	4-7	.571	3-3	1.000	6-6	1.000	0	5	5	3.2	2	2	0	2	2	17	7.5
at UC Davis	12-02-16		15	1-5	.200	0-1	.000	0-0	.000	1	0	1	2.9	0	2	0	0	0	2	6.7
MICHIGAN	12-09-16		27	4-10	.400	2-3	.667	1-2	.500	1	1	2	2.8	1	1	2	0	0	11	7.3
UC SANTA BARBARA	12-11-16	*	29	6-10	.600	3-5	.600	2-2	1.000	0	3	3	2.8	0	1	1	0	0	17	8.3
at Cal State Fullerton	12-22-16	*	19	1-5	.200	0-4	.000	0-0	.000	0	0	0	2.5	1	2	2	0	0	2	7.7
BIOLA	12-28-16	*	17	1-4	.250	0-2	.000	0-0	.000	0	1	1	2.4	1	3	2	0	1	2	7.2
Totals			4	267	.338	12-37	.324	17-20	.850	5	21	26	2.4	16	19	22	0	6	79	7.2

Games played: 11
 Minutes/game: 24.3
 Points/game: 7.2
 FG Pct: 33.8
 3FG Pct: 32.4
 FT Pct: 85.0

Rebounds/game: 2.4
 Assists/game: 1.7
 Turnovers/game: 2.0
 Assist/turnover ratio: 0.9
 Steals/game: 0.5

GOMEZ'S CAREER STATISTICS

Season	gp-gs	min/avg	Total		3-Point		F-Throws		Rebounds				* - at St. Joseph's Scoring							
			fg-fga	pct	fg-fga	pct	ft-fta	pct	off	def	tot	avg	pf	fo	ast	to	blk	stl	pts	avg
2013-14*	24-1	114/4.8	10-34	.294	3-14	.214	5-7	.714	1	10	11	0.5	17	0	13	6	1	2	28	1.2
2015-16	29-0	426/14.7	30-107	.280	23-71	.324	15-22	.682	13	42	55	1.9	23	0	37	26	2	11	98	3.4
2016-17	11-4	267/24.3	25-74	.338	12-37	.324	17-20	.850	5	21	26	2.4	16	0	19	22	0	6	79	7.2
TOTAL	40-4	693/17.3	55-181	.304	35-108	.324	32-42	.762	18	63	81	2.0	39	0	56	48	2	17	177	4.4



#21 ABBY LOWE

Freshman • HS

5-11

Guard

Stockport, England

Barking Abbey Academy

Slashing-type guard with a high basketball IQ who adds height and depth to wing position

▶▶▶ GAME HIGHS

2016-17 SEASON	
Points	7, at UC Davis (12-2-16)
Rebounds	3, Twice, Last: vs. San Diego Christian (11-14-16)
Assists	1, vs. San Diego Christian (11-14-16)
Steals	N/A
Blocks	1, at San Diego (11-20-16)
Field Goals	2, at UC Davis (12-2-16)
Field Goal Attempts	4, vs. San Diego Christian (11-14-16)
3-pt. Field Goals	1, at UC Davis (12-2-16)
3-pt. Field Goal Attempts	2, at UC Davis (12-2-16)
Free Throws	2, Twice, Last: at UC Davis (12-2-16)
Free Throw Attempts	2, Three times, Last: at UC Davis (12-2-16)
Double-Figure Scoring Games	N/A
Double-Figure Rebounding Games	N/A
Double-Doubles	N/A

▶▶▶ 2016-17 GAME-BY-GAME STATISTICS

Opponent	Date	gs	min	Total		3-Pointers		Free throws		Rebounds				pf	a	t/o	blk	stl	pts	avg
				fg-fga	pct	3fg-fga	pct	ft-fta	pct	off	def	tot	avg							
at UC Riverside	11-11-16		12	1-2	.500	0-0	.000	0-0	.000	2	1	3	3.0	3	0	3	0	0	2	2.0
SAN DIEGO CHRISTIAN	11-14-16		8	1-4	.250	0-1	.000	1-1	1.000	1	2	3	3.0	1	1	1	0	0	3	2.5
at San Diego	11-17-16		9	0-2	.000	0-1	.000	0-2	.000	1	1	2	2.7	1	0	2	0	0	0	1.7
LOYOLA MARYMOUNT	11-20-16		3	0-0	.000	0-0	.000	0-0	.000	0	0	0	2.0	0	0	0	1	0	0	1.3
vs UT-Arlington	11-26-16		3	0-0	.000	0-0	.000	2-2	1.000	0	0	0	1.6	1	0	0	0	0	2	1.4
vs Central Connecticut	11-27-16		3	0-1	.000	0-0	.000	0-0	.000	0	1	1	1.5	1	0	1	0	0	0	1.2
at UC Davis	12-02-16		8	2-3	.667	1-2	.500	2-2	1.000	0	0	0	1.3	2	0	0	0	0	7	2.0
MICHIGAN	12-09-16		2	0-0	.000	0-0	.000	0-0	.000	0	0	0	1.1	0	0	0	0	0	0	1.8
BIOLA	12-28-16		12	0-3	.000	0-1	.000	0-0	.000	0	0	0	1.0	1	0	0	0	0	0	1.6
Totals		0	60	4-15	.267	1-5	.200	5-7	.714	4	5	9	1.0	10	1	7	1	0	14	1.6

Games played: 9
 Minutes/game: 6.7
 Points/game: 1.6
 FG Pct: 26.7
 3FG Pct: 20.0
 FT Pct: 71.4

Rebounds/game: 1.0
 Assists/game: 0.1
 Turnovers/game: 0.8
 Assist/turnover ratio: 0.1
 Blocks/game: 0.1

LOWE'S CAREER STATISTICS

Season	gp-gs	min/avg	Total		3-Point		F-Throws		Rebounds				Scoring							
			fg-fga	pct	fg-fga	pct	ft-fta	pct	off	def	tot	avg	pf	fo	ast	to	blk	stl	pts	avg
2016-17	9-0	60/6.7	4-15	.267	1-5	.200	5-7	.714	4	5	9	1.0	10	0	1	7	1	0	14	1.6
TOTAL	9-0	60/6.7	4-15	.267	1-5	.200	5-7	.714	4	5	9	1.0	10	0	1	7	1	0	14	1.6



#22 LEXY THORDERSON

Junior • 2L

6-0

Guard/Forward

Castle Rock, Colo.

Rock Canyon High School

Team's top three-point threat in 2015-16 who will be tasked with an expanded role

▶▶▶ GAME HIGHS

	CAREER	2016-17 SEASON
Points	17, vs. UC Santa Barbara (12-11-16)	17, vs. UC Santa Barbara (12-11-16)
Rebounds	7, vs. San Diego Christian (12-21-15)	5, vs. Biola (12-28-16)
Assists	3, vs. UT Arlington (11-26-16)	3, vs. UT Arlington (11-26-16)
Steals	2, Three times, Last: at UC Davis (12-2-16)	2, at UC Davis (12-2-16)
Blocks	1, 10 times, Last: vs. Loyola Marymount (11-20-16)	1, Three, Last: vs. Michigan (12-9-16)
Field Goals	5, Twice, Last: vs. UC Santa Barbara (12-11-16)	5, vs. UC Santa Barbara (12-11-16)
Field Goal Attempts	14, at UC Davis (12-2-16)	14, at UC Davis (12-2-16)
3-pt. Field Goals	4, Twice, Last: vs. North Dakota State (11-27-15)	3, Twice, Last: at Cal State Fullerton (12-22-16)
3-pt. Field Goal Attempts	11, at UC Davis (12-2-16)	11, at UC Davis (12-2-16)
Free Throws	5, vs. UC Santa Barbara (12-11-16)	5, vs. UC Santa Barbara (12-11-16)
Free Throw Attempts	5, vs. UC Santa Barbara (12-11-16)	5, vs. UC Santa Barbara (12-11-16)
Double-Figure Scoring Games	11	4
Double-Figure Rebounding Games	N/A	N/A
Double-Doubles	N/A	N/A

▶▶▶ 2016-17 GAME-BY-GAME STATISTICS

Opponent	Date	gs	min	Total		3-Pointers		Free throws		Rebounds				pf	a	t/o	blk	stl	pts	avg
				fg-fga	pct	3fg-fga	pct	ft-fta	pct	off	def	tot	avg							
at San Diego	11-17-16		18	1-5	.200	1-2	.500	0-0	.000	1	0	1	1.0	0	0	0	1	0	3	3.0
LOYOLA MARYMOUNT	11-20-16	*	19	2-12	.167	1-9	.111	1-2	.500	2	1	3	2.0	3	2	0	1	0	6	4.5
vs UT-Arlington	11-26-16	*	22	0-4	.000	0-4	.000	0-0	.000	0	1	1	1.7	1	3	1	0	1	0	3.0
vs Central Connecticut	11-27-16		20	3-6	.500	2-4	.500	2-2	1.000	0	1	1	1.5	4	0	0	0	1	10	4.8
at UC Davis	12-02-16		23	4-14	.286	3-11	.273	0-0	.000	0	2	2	1.6	0	1	0	0	2	11	6.0
MICHIGAN	12-09-16		20	1-6	.167	1-5	.200	0-0	.000	0	0	0	1.3	0	2	0	1	0	3	5.5
UC SANTA BARBARA	12-11-16	*	28	5-11	.455	2-7	.286	5-5	1.000	0	4	4	1.7	0	2	1	0	1	17	7.1
at Cal State Fullerton	12-22-16	*	28	5-7	.714	3-5	.600	0-0	.000	1	1	2	1.8	1	0	1	0	1	13	7.9
BIOLA	12-28-16	*	22	2-9	.222	0-5	.000	0-0	.000	3	2	5	2.1	1	0	0	0	0	4	7.4
Totals			5	200	23-74	.311	13-52	.250	8-9	.889	7	12	19	2.1	10	3	3	6	67	7.4

Games played: 9
 Minutes/game: 22.2
 Points/game: 7.4
 FG Pct: 31.1
 3FG Pct: 25.0
 FT Pct: 88.9

Rebounds/game: 2.1
 Assists/game: 1.1
 Turnovers/game: 0.3
 Assist/turnover ratio: 3.3
 Steals/game: 0.7
 Blocks/game: 0.3

THORDERSON'S CAREER STATISTICS

Season	gp-gs	min/avg	Total		3-Point		F-Throws		Rebounds				Scoring							
			fg-fga	pct	fg-fga	pct	ft-fta	pct	off	def	tot	avg	pf	fo	ast	to	blk	stl	pts	avg
2014-15	30-0	226/7.5	20-70	.286	13-58	.224	4-4	1.000	7	12	19	0.6	15	0	8	18	1	3	57	1.9
2015-16	31-2	524/16.9	58-172	.337	40-124	.323	5-8	.625	16	51	67	2.2	33	0	4	9	8	10	161	5.2
2016-17	9-5	200/22.2	23-74	.311	13-52	.250	8-9	.889	7	12	19	2.1	10	0	10	3	3	6	67	7.4
TOTAL	70-7	950/13.6	101-316	.320	66-234	.282	17-21	.810	30	75	105	1.5	58	0	22	30	12	19	285	4.1



#30 CHEYENNE GREENHOUSE

Junior • 2L
 5-11
 Guard
 Riverside, Calif.
 Canyon Springs High School

A talented and adaptable slasher who can fill multiple roles

►►► **GAME HIGHS**

	CAREER	2016-17 SEASON
Points	19, vs. Sacramento State (11-14-14)	10, vs. UC Santa Barbara (12-11-16)
Rebounds	11, vs. Sacramento State (11-14-14)	3, Twice, Last: vs. UT Arlington (11-26-16)
Assists	5, vs. Sacramento State (11-14-14)	1, Three times, Last: vs. UC Santa Barbara (12-11-16)
Steals	2, Twice, Last: at Air Force (2-13-16)	1, at UC Riverside (11-11-16)
Blocks	2, at Air Force (2-13-16)	N/A
Field Goals	6, Three times, Last: at Wyoming (12-30-15)	3, Three times, Last: vs. UC Santa Barbara (12-11-16)
Field Goal Attempts	12, vs. Sacramento State (11-14-14)	10, at UC Riverside (11-11-16)
3-pt. Field Goals	2, vs. UC Santa Barbara (12-11-16)	2, vs. UC Santa Barbara (12-11-16)
3-pt. Field Goal Attempts	3, Twice, Last: vs. UC Santa Barbara (12-11-16)	3, vs. UC Santa Barbara (12-11-16)
Free Throws	7, vs. Sacramento State (11-14-14)	4, vs. Loyola Marymount (11-20-16)
Free Throw Attempts	10, vs. Sacramento State (11-14-14)	5, vs. Loyola Marymount (11-20-16)
Double-Figure Scoring Games	9	1
Double Figure Rebounding Games	1	N/A
Double-Doubles	1	N/A

►►► **2016-17 GAME-BY-GAME STATISTICS**

Opponent	Date	gs	min	Total		3-Pointers		Free throws		Rebounds				pf	a	t/o	blk	stl	pts	avg
				fg-fga	pct	3fg-fga	pct	ft-fta	pct	off	def	tot	avg							
at UC Riverside	11-11-16	*	30	3-10	.300	0-2	.000	0-0	.000	2	1	3	3.0	0	0	0	0	1	6	6.0
at San Diego	11-17-16	*	20	1-5	.200	0-0	.000	0-0	.000	0	0	0	1.5	1	0	1	0	0	2	4.0
LOYOLA MARYMOUNT	11-20-16		18	2-4	.500	0-1	.000	4-5	.800	0	0	0	1.0	5	1	4	0	0	8	5.3
vs UT-Arlington	11-26-16		15	3-7	.429	0-1	.000	2-2	1.000	1	2	3	1.5	0	0	2	0	0	8	6.0
vs Central Connecticut	11-27-16		9	1-1	1.000	0-0	.000	2-4	.500	0	2	2	1.6	1	0	0	0	0	4	5.6
at UC Davis	12-02-16		18	2-5	.400	0-0	.000	0-0	.000	0	0	0	1.3	1	1	0	0	0	4	5.3
MICHIGAN	12-09-16		23	1-3	.333	0-0	.000	2-2	1.000	0	1	1	1.3	1	0	2	0	0	4	5.1
UC SANTA BARBARA	12-11-16		13	3-4	.750	2-3	.667	2-2	1.000	1	1	2	1.4	1	1	0	0	0	10	5.8
at Cal State Fullerton	12-22-16		6	1-1	1.000	0-0	.000	1-1	1.000	1	0	1	1.3	0	0	1	0	0	3	5.4
BIOLA	12-28-16		15	2-5	.400	1-2	.500	3-4	.750	1	0	1	1.3	1	0	1	0	0	8	5.7
Totals		2	167	19-45	.422	3-9	.333	16-20	.800	6	7	13	1.3	11	3	11	0	1	57	5.7

Games played: 10	Rebounds/game: 1.3
Minutes/game: 16.7	Assists/game: 0.3
Points/game: 5.7	Turnovers/game: 1.1
FG Pct: 42.2	Assist/turnover ratio: 0.3
3FG Pct: 33.3	Steals/game: 0.1
FT Pct: 80.0	

GREENHOUSE'S CAREER STATISTICS

Season	gp-gs	min/avg	Total		3-Point		F-Throws		Rebounds				Scoring							
			fg-fga	pct	fg-fga	pct	ft-fta	pct	off	def	tot	avg	pf	fo	ast	to	blk	stl	pts	avg
2014-15	31-8	441/14.2	43-118	.364	1-4	.250	32-48	.667	40	47	87	2.8	23	0	21	35	1	8	119	3.8
2015-16	31-22	647/20.9	59-161	.366	2-9	.222	33-49	.673	53	47	100	3.2	35	0	17	30	6	9	153	4.9
2016-17	10-2	167/16.7	19-45	.422	3-9	.333	16-20	.800	6	7	13	1.3	11	1	3	11	0	1	57	5.7
TOTAL	72-32	1255/17.4	121-324	.373	6-22	.273	81-117	.692	99	101	200	2.8	69	1	41	76	7	18	329	4.6



#34 BAYLEE VANDERDOES

Freshman • HS

6-1

Forward

Auburn, Calif.

Placer High School

Extremely skilled offensively at the post position and shoots the ball very well from the outside

▶▶▶ GAME HIGHS

2016-17 SEASON	
Points	10, vs. San Diego Christian (11-14-16)
Rebounds	10, vs. San Diego Christian (11-14-16)
Assists	2, vs. Central Connecticut (11-27-16)
Steals	1, Twice, Last: at UC Davis (12-2-16)
Blocks	1, vs. San Diego Christian (11-14-16)
Field Goals	5, vs. San Diego Christian (11-14-16)
Field Goal Attempts	7, vs. San Diego Christian (11-14-16)
3-pt. Field Goals	N/A
3-pt. Field Goal Attempts	N/A
Free Throws	4, at San Diego (11-17-16)
Free Throw Attempts	4, Twice, Last: at San Diego (11-17-16)
Double-Figure Scoring Games	1
Double-Figure Rebounding Games	1
Double-Doubles	1

▶▶▶ 2016-17 GAME-BY-GAME STATISTICS

Opponent	Date	gs	min	Total		3-Pointers		Free throws		Rebounds				pf	a	t/o	blk	stl	pts	avg	
				fg-fga	pct	3fg-fga	pct	ft-fta	pct	off	def	tot	avg								
at UC Riverside	11-11-16	*	17	2-3	.667	0-0	.000	3-3	1.000	3	2	5	5.0	3	0	1	0	0	7	7.0	
SAN DIEGO CHRISTIAN	11-14-16	*	22	5-7	.714	0-0	.000	0-1	.000	2	8	10	7.5	1	0	2	1	0	10	8.5	
at San Diego	11-17-16	*	15	0-3	.000	0-0	.000	4-4	1.000	0	2	2	5.7	3	0	0	0	0	4	7.0	
LOYOLA MARYMOUNT	11-20-16	*	25	3-4	.750	0-0	.000	0-0	.000	0	6	6	5.8	2	1	1	0	0	6	6.8	
vs UT-Arlington	11-26-16	*	20	0-2	.000	0-0	.000	2-4	.500	2	2	4	5.4	2	0	1	0	1	2	5.8	
vs Central Connecticut	11-27-16	*	23	3-5	.600	0-0	.000	1-2	.500	1	1	2	4.8	4	2	3	0	0	7	6.0	
at UC Davis	12-02-16	*	16	1-5	.200	0-0	.000	0-0	.000	2	4	6	5.0	3	0	2	0	1	2	5.4	
MICHIGAN	12-09-16	*	20	0-1	.000	0-0	.000	1-2	.500	0	0	0	4.4	1	1	2	0	0	1	4.9	
Totals			8	158	14-30	.467	0-0	.000	11-16	.688	10	25	35	4.4	19	4	12	1	2	39	4.9

Games played: 8
 Minutes/game: 19.8
 Points/game: 4.9
 FG Pct: 46.7
 FT Pct: 68.8

Rebounds/game: 4.4
 Assists/game: 0.5
 Turnovers/game: 1.5
 Assist/turnover ratio: 0.3
 Steals/game: 0.3
 Blocks/game: 0.1

VANDERDOES' CAREER STATISTICS

Season	gp-gs	min/avg	Total		3-Point		F-Throws		Rebounds				Scoring							
			fg-fga	pct	fg-fga	pct	ft-fta	pct	off	def	tot	avg	pf	fo	ast	to	blk	stl	pts	avg
2016-17	8-8	158/19.8	14-30	.467	0-0	.000	11-16	.688	10	25	35	4.4	19	0	4	12	1	2	39	4.9
TOTAL	8-8	158/19.8	14-30	.467	0-0	.000	11-16	.688	10	25	35	4.4	19	0	4	12	1	2	39	4.9



#44 ALEIAH BRANDON

Senior • 3L

6-1

Forward

Corona, Calif.

Centennial High School

Provides veteran leadership as a fifth-year senior

▶▶▶ GAME HIGHS

	CAREER	2016-17 SEASON
Points	11, Twice, Last: at Fresno State (1-20-16)	N/A
Rebounds	6, vs. UC Davis (11-19-16)	N/A
Assists	2, Five times, Last: vs. UNLV (1-30-16)	N/A
Steals	2, Six times, Last: at Fresno State (1-20-16)	N/A
Blocks	2, Three times, Last: vs. San Jose State (2-20-16)	N/A
Field Goals	5, at Fresno State (1-20-16)	N/A
Field Goal Attempts	9, at Fresno State (1-20-16)	N/A
3-pt. Field Goals	2, at Washington (11-13-15)	N/A
3-pt. Field Goal Attempts	5, Three times, Last: vs. Wisconsin (11-29-15)	N/A
Free Throws	2, Four times, Last: vs. San Jose State (2-20-16)	N/A
Free Throw Attempts	2, Five times, Last: vs. San Jose State (2-20-16)	N/A
Double-Figure Scoring Games	3	N/A
Double-Figure Rebounding Games	N/A	N/A
Double-Doubles	N/A	N/A

▶▶▶ 2016-17 GAME-BY-GAME STATISTICS

Opponent	GS	Min	TOTAL			3-PTS			FT	FTA	Pct	Off	REBOUNDS		PF	A	TO	Blk	Stl	Pts	Avg
			FG	FGA	Pct	3FG	FGA	Pct					Def	Tot							
at UC Riverside																					
SAN DIEGO CHRISTIAN																					
at San Diego																					
LOYOLA MARYMOUNT																					
vs. UT Arlington																					
vs. Central Connecticut																					
at UC Davis																					
MICHIGAN																					
UC SANTA BARBARA																					
at Cal State Fullerton																					
BIOLA																					
at New Mexico																					
NEVADA																					
BOISE STATE																					
at San Jose State																					
at Utah State																					
UNLV																					
AIR FORCE																					
at Colorado State																					
at Wyoming																					
FRESNO STATE																					
SAN JOSE STATE																					
at Nevada																					
UTAH STATE																					
at UNLV																					
at Fresno State																					
COLORADO STATE																					
at Air Force																					
NEW MEXICO																					
TOTALS																					

BRANDON'S CAREER STATISTICS

Season	gp-gs	min/avg	Total		3-Point		F-Throws		Rebounds				Scoring							
			fg-fga	pct	fg-fga	pct	ft-fta	pct	off	def	tot	avg	pf	fo	ast	to	blk	stl	pts	avg
2012-13	17-0	109/6.4	13-21	.619	0-0	.000	0-0	.000	3	11	14	0.8	9	0	0	5	5	2	26	1.5
2014-15	30-0	281/9.4	24-51	.471	10-29	.345	6-6	1.000	7	24	31	1.0	37	0	7	20	2	7	64	2.1
2015-16	26-18	494/19.0	37-111	.333	11-41	.268	3-4	.750	13	49	62	2.4	54	1	15	28	10	14	88	3.4
TOTAL	73-18	884/12.1	74-183	.404	21-70	.300	9-10	.900	23	84	107	1.5	100	1	22	53	17	23	178	2.4



#45 NAOMI EKWEDIKE

Freshman • HS

6-6

Center

Lagos, Nigeria

Potter's House Christian Academy (Fla.)

A quick learner who will be an asset on defense with great hands and footwork to finish around the rim

▶▶▶ GAME HIGHS

2016-17 SEASON	
Points	5, vs. San Diego Christian (11-14-16)
Rebounds	3, Twice, Last: at UC Davis (12-2-16)
Assists	N/A
Steals	N/A
Blocks	N/A
Field Goals	2, Three times, Last: vs. Michigan (12-9-16)
Field Goal Attempts	4, vs. San Diego Christian (11-14-16)
3-pt. Field Goals	N/A
3-pt. Field Goal Attempts	N/A
Free Throws	1, vs. San Diego Christian (11-14-16)
Free Throw Attempts	2, vs. San Diego Christian (11-14-16)
Double-Figure Scoring Games	N/A
Double-Figure Rebounding Games	N/A
Double-Doubles	N/A

▶▶▶ 2016-17 GAME-BY-GAME STATISTICS

Opponent	Date	gs	min	Total		3-Pointers		Free throws		Rebounds				pf	a	t/o	blk	stl	pts	avg
				fg-fga	pct	3fg-fga	pct	ft-fga	pct	off	def	tot	avg							
at UC Riverside	11-11-16		2	0-1	.000	0-0	.000	0-0	.000	0	0	0	0.0	1	0	3	0	0	0	0.0
SAN DIEGO CHRISTIAN	11-14-16		10	2-4	.500	0-0	.000	1-2	.500	0	0	0	0.0	1	0	1	0	0	5	2.5
at San Diego	11-17-16		6	1-2	.500	0-0	.000	0-0	.000	1	2	3	1.0	2	0	1	0	0	2	2.3
LOYOLA MARYMOUNT	11-20-16		6	1-2	.500	0-0	.000	0-1	.000	0	0	0	0.8	2	0	1	0	0	2	2.3
vs UT-Arlington	11-26-16		7	0-2	.000	0-0	.000	0-0	.000	0	2	2	1.0	1	0	0	0	0	0	1.8
vs Central Connecticut	11-27-16		12	0-2	.000	0-0	.000	0-0	.000	0	0	0	0.8	0	0	3	0	0	0	1.5
at UC Davis	12-02-16		10	2-3	.667	0-0	.000	0-0	.000	2	1	3	1.1	1	0	2	0	0	4	1.9
MICHIGAN	12-09-16		8	2-3	.667	0-0	.000	0-0	.000	2	0	2	1.3	2	0	1	0	0	4	2.1
UC SANTA BARBARA	12-11-16		2	0-0	.000	0-0	.000	0-0	.000	0	1	1	1.2	0	0	1	0	0	0	1.9
Totals		0	63	8-19	.421	0-0	.000	1-3	.333	5	6	11	1.2	10	0	13	0	0	17	1.9

Games played: 9
 Minutes/game: 7.0
 Points/game: 1.9
 FG Pct: 42.1
 FT Pct: 33.3

Rebounds/game: 1.2
 Turnovers/game: 1.4

EKWEDIKE'S CAREER STATISTICS

Season	gp-gs	min/avg	Total		3-Point		F-Throws		Rebounds				Scoring							
			fg-fga	pct	fg-fga	pct	ft-fga	pct	off	def	tot	avg	pf	fo	ast	to	blk	stl	pts	avg
2016-17	9-0	63/7.0	8-19	.421	0-0	.000	1-3	.333	5	6	11	1.2	10	0	0	13	0	0	17	1.9
TOTAL	9-0	63/7.0	8-19	.421	0-0	.000	1-3	.333	5	6	11	1.2	10	0	0	13	0	0	17	1.9

All games

RECORD:	OVERALL	HOME	AWAY	NEUTRAL
ALL GAMES	5-6	3-2	1-3	1-1
CONFERENCE	0-0	0-0	0-0	0-0
NON-CONFERENCE	5-6	3-2	1-3	1-1

##	Player	gp-gs	min	avg	Total		3-Point		F-Throw		Rebounds				pf	dq	a	to	blk	stl	pts	avg
					fg-fga	fg%	3fg-fga	3fg%	ft-fta	ft%	off	def	tot	avg								
15	FORT, McKynzie	11-11	342	31.1	69-149	.463	4-19	.211	43-55	.782	13	25	38	3.5	27	2	19	29	2	9	185	16.8
04	ELLISON, Kymberly	11-11	278	25.3	34-94	.362	27-74	.365	14-18	.778	7	22	29	2.6	26	0	13	18	3	13	109	9.9
01	LARK, Khalia	2-0	54	27.0	8-18	.444	3-8	.375	0-0	.000	2	12	14	7.0	4	0	2	2	0	2	19	9.5
22	THORDERSON, Lexy	9-5	200	22.2	23-74	.311	13-52	.250	8-9	.889	7	12	19	2.1	10	0	10	3	3	6	67	7.4
20	GOMEZ, Geena	11-4	267	24.3	25-74	.338	12-37	.324	17-20	.850	5	21	26	2.4	16	0	19	22	0	6	79	7.2
30	GREENHOUSE, Chey	10-2	167	16.7	19-45	.422	3-9	.333	16-20	.800	6	7	13	1.3	11	1	3	11	0	1	57	5.7
34	VANDERDOES, Bayle	8-8	158	19.8	14-30	.467	0-0	.000	11-16	.688	10	25	35	4.4	19	0	4	12	1	2	39	4.9
03	BOSTICK, Ariell	11-8	293	26.6	16-37	.432	3-8	.375	14-19	.737	6	56	62	5.6	24	1	48	26	0	24	49	4.5
40	TERRY, Monique	11-6	161	14.6	16-30	.533	0-3	.000	5-7	.714	10	18	28	2.5	18	0	2	12	2	3	37	3.4
13	BROWN, Allison	3-0	14	4.7	2-3	.667	0-0	.000	2-2	1.000	0	2	2	0.7	2	0	2	2	0	0	6	2.0
45	EKWEDIKE, Naomi	9-0	63	7.0	8-19	.421	0-0	.000	1-3	.333	5	6	11	1.2	10	0	0	13	0	0	17	1.9
11	GOMEZ, Arantxa	11-0	143	13.0	6-12	.500	0-0	.000	8-16	.500	12	14	26	2.4	16	0	2	10	7	3	20	1.8
21	LOWE, Abby	9-0	60	6.7	4-15	.267	1-5	.200	5-7	.714	4	5	9	1.0	10	0	1	7	1	0	14	1.6
Team											20	20	40				7					
Total.....		11	2200		244-600	.407	66-215	.307	144-192	.750	107	245	352	32.0	193	4	125	174	19	69	698	63.5
Opponents.....		11	2200		290-641	.452	78-221	.353	107-168	.637	124	273	397	36.1	198	-	174	174	28	68	765	69.5

Score by Periods	1st	2nd	3rd	4th	Totals
SDSU	181	152	164	201	698
Opponents	218	189	184	174	765

Home games

RECORD:	OVERALL	HOME	AWAY	NEUTRAL
ALL GAMES	3-2	3-2	0-0	0-0
CONFERENCE	0-0	0-0	0-0	0-0
NON-CONFERENCE	3-2	3-2	0-0	0-0

#	Player	gp-gs	min	Total		3-Point		F-Throw		Rebounds				pf	dq	a	to	blk	stl	pts	avg	
				fg-fga	fg%	3fg-fga	3fg%	ft-fa	ft%	off	def	tot	avg									
15	FORT, McKynzie	5-5	155	31.0	32-69	.464	3-9	.333	23-27	.852	9	14	23	4.6	8	0	7	11	0	5	90	18.0
01	LARK, Khalia	1-0	25	25.0	6-9	.667	2-5	.400	0-0	.000	1	8	9	9.0	1	0	0	2	0	1	14	14.0
04	ELLISON, Kymberly	5-5	137	27.4	18-39	.462	15-32	.469	3-4	.750	4	14	18	3.6	10	0	8	8	2	6	54	10.8
20	GOMEZ, Geena	5-3	128	25.6	15-35	.429	7-18	.389	7-8	.875	2	7	9	1.8	5	0	11	9	0	1	44	8.8
30	GREENHOUSE, Chey	4-0	69	17.3	8-16	.500	3-6	.500	11-13	.846	2	2	4	1.0	8	1	2	7	0	0	30	7.5
22	THORDERSON, Lexy	4-3	89	22.3	10-38	.263	4-26	.154	6-7	.857	5	7	12	3.0	4	0	6	1	2	1	30	7.5
34	VANDERDOES, Bayle	3-3	67	22.3	8-12	.667	0-0	.000	1-3	.333	2	14	16	5.3	4	0	2	5	1	0	17	5.7
40	TERRY, Monique	5-3	71	14.2	7-15	.467	0-2	.000	2-4	.500	4	5	9	1.8	7	0	0	4	2	2	16	3.2
03	BOSTICK, Ariell	5-3	132	26.4	6-11	.545	0-1	.000	4-7	.571	2	26	28	5.6	10	0	27	11	0	7	16	3.2
45	EKWEDIKE, Naomi	4-0	26	6.5	5-9	.556	0-0	.000	1-3	.333	2	1	3	0.8	5	0	0	4	0	0	11	2.8
13	BROWN, Allison	3-0	14	4.7	2-3	.667	0-0	.000	2-2	1.000	0	2	2	0.7	2	0	2	2	0	0	6	2.0
11	GOMEZ, Arantxa	5-0	62	12.4	2-5	.400	0-0	.000	2-2	1.000	3	8	11	2.2	5	0	1	3	3	3	6	1.2
21	LOWE, Abby	4-0	25	6.3	1-7	.143	0-2	.000	1-1	1.000	1	2	3	0.8	2	0	1	1	1	0	3	0.8
Team											3	7	10					3				
Total.....		5	1000		120-268	.448	34-101	.337	63-81	.778	40	117	157	31.4	71	1	67	71	11	26	337	67.4
Opponents.....		5	1000		130-310	.419	42-125	.336	38-64	.594	72	117	189	37.8	78	-	81	69	10	25	340	68.0

Score by Periods	1st	2nd	3rd	4th	Totals
SDSU	95	75	70	97	337
Opponents	103	70	91	76	340

Away games

RECORD:	OVERALL	HOME	AWAY	NEUTRAL
ALL GAMES	1-3	0-0	1-3	0-0
CONFERENCE	0-0	0-0	0-0	0-0
NON-CONFERENCE	1-3	0-0	1-3	0-0

#	Player	gp-gs	min	Total		3-Point		F-Throw		Rebounds				pf	dq	a	to	blk	stl	pts	avg	
				fg-fga	fg%	3fg-fga	3fg%	ft-fa	ft%	off	def	tot	avg									
15	FORT, McKynzie	4-4	132	33.0	26-63	.413	1-8	.125	16-21	.762	4	7	11	2.8	12	1	7	13	1	4	69	17.3
22	THORDERSON, Lexy	3-1	69	23.0	10-26	.385	7-18	.389	0-0	.000	2	3	5	1.7	1	0	1	1	1	3	27	9.0
04	ELLISON, Kymberly	4-4	91	22.8	9-38	.237	7-27	.259	7-10	.700	2	6	8	2.0	8	0	3	6	1	5	32	8.0
01	LARK, Khalia	1-0	29	29.0	2-9	.222	1-3	.333	0-0	.000	1	4	5	5.0	3	0	2	0	0	1	5	5.0
34	VANDERDOES, Bayle	3-3	48	16.0	3-11	.273	0-0	.000	7-7	1.000	5	8	13	4.3	9	0	0	3	0	1	13	4.3
30	GREENHOUSE, Chey	4-2	74	18.5	7-21	.333	0-2	.000	1-1	1.000	3	1	4	1.0	2	0	1	2	0	1	15	3.8
03	BOSTICK, Ariell	4-3	100	25.0	5-18	.278	1-5	.200	3-4	.750	3	16	19	4.8	8	0	15	7	0	11	14	3.5
20	GOMEZ, Geena	4-1	86	21.5	4-26	.154	1-13	.077	3-4	.750	3	4	7	1.8	6	0	4	9	0	3	12	3.0
21	LOWE, Abby	3-0	29	9.7	3-7	.429	1-3	.333	2-4	.500	3	2	5	1.7	6	0	0	5	0	0	9	3.0
40	TERRY, Monique	4-2	59	14.8	4-8	.500	0-0	.000	3-3	1.000	3	10	13	3.3	6	0	0	6	0	0	11	2.8
11	GOMEZ, Arantxa	4-0	65	16.3	3-6	.500	0-0	.000	4-12	.333	7	5	12	3.0	7	0	1	4	2	0	10	2.5
45	EKWEDIKE, Naomi	3-0	18	6.0	3-6	.500	0-0	.000	0-0	.000	3	3	6	2.0	4	0	0	6	0	0	6	2.0
Team											17	5	22					2				
Total.....		4	800		79-239	.331	19-79	.241	46-66	.697	56	74	130	32.5	72	1	34	64	5	29	223	55.8
Opponents.....		4	800		117-220	.532	27-63	.429	38-57	.667	30	112	142	35.5	76	-	76	68	15	31	299	74.8

Score by Periods	1st	2nd	3rd	4th	Totals
SDSU	59	41	52	71	223
Opponents	77	91	65	66	299

Neutral site games

RECORD:	OVERALL	HOME	AWAY	NEUTRAL
ALL GAMES	1-1	0-0	0-0	1-1
CONFERENCE	0-0	0-0	0-0	0-0
NON-CONFERENCE	1-1	0-0	0-0	1-1

##	Player	gp-gs	min	avg	Total		3-Point		F-Throw		Rebounds				pf	dq	a	to	blk	stl	pts	avg
					fg-fga	fg%	3fg-fga	3fg%	ft-fa	ft%	off	def	tot	avg								
15	FORT, McKynzie	2-2	55	27.5	11-17	.647	0-2	.000	4-7	.571	0	4	4	2.0	7	1	5	5	1	0	26	13.0
04	ELLISON, Kymberly	2-2	50	25.0	7-17	.412	5-15	.333	4-4	1.000	1	2	3	1.5	8	0	2	4	0	2	23	11.5
20	GOMEZ, Geena	2-0	53	26.5	6-13	.462	4-6	.667	7-8	.875	0	10	10	5.0	5	0	4	4	0	2	23	11.5
03	BOSTICK, Ariell	2-2	61	30.5	5-8	.625	2-2	1.000	7-8	.875	1	14	15	7.5	6	1	6	8	0	6	19	9.5
30	GREENHOUSE, Chey	2-0	24	12.0	4-8	.500	0-1	.000	4-6	.667	1	4	5	2.5	1	0	0	2	0	0	12	6.0
40	TERRY, Monique	2-1	31	15.5	5-7	.714	0-1	.000	0-0	.000	3	3	6	3.0	5	0	2	2	0	1	10	5.0
22	THORDERSON, Lexy	2-1	42	21.0	3-10	.300	2-8	.250	2-2	1.000	0	2	2	1.0	5	0	3	1	0	2	10	5.0
34	VANDERDOES, Bayle	2-2	43	21.5	3-7	.429	0-0	.000	3-6	.500	3	3	6	3.0	6	0	2	4	0	1	9	4.5
11	GOMEZ, Arantxa	2-0	16	8.0	1-1	1.000	0-0	.000	2-2	1.000	2	1	3	1.5	4	0	0	3	2	0	4	2.0
21	LOWE, Abby	2-0	6	3.0	0-1	.000	0-0	.000	2-2	1.000	0	1	1	0.5	2	0	0	1	0	0	2	1.0
45	EKWEDIKE, Naomi	2-0	19	9.5	0-4	.000	0-0	.000	0-0	.000	0	2	2	1.0	1	0	0	3	0	0	0	0.0
Team											0	8	8				2					
Total.....		2	400		45-93	.484	13-35	.371	35-45	.778	11	54	65	32.5	50	2	24	39	3	14	138	69.0
Opponents.....		2	400		43-111	.387	9-33	.273	31-47	.660	22	44	66	33.0	44	-	17	37	3	12	126	63.0

Score by Periods	1st	2nd	3rd	4th	Totals
SDSU	27	36	42	33	138
Opponents	38	28	28	32	126

Games won

RECORD:	OVERALL	HOME	AWAY	NEUTRAL
ALL GAMES	5-0	3-0	1-0	1-0
CONFERENCE	0-0	0-0	0-0	0-0
NON-CONFERENCE	5-0	3-0	1-0	1-0

#	Player	gp-gs	min	avg	Total		3-Point		F-Throw		Rebounds				a	to	blk	stl	pts	avg		
					fg-fga	fg%	3fg-fga	3fg%	ft-fa	ft%	off	def	tot	avg							pf	dq
15	FORT, McKynzie	5-5	164	32.8	41-72	.569	3-6	.500	21-25	.840	6	11	17	3.4	11	0	14	8	1	5	106	21.2
04	ELLISON, Kymberly	5-5	134	26.8	18-38	.474	14-31	.452	6-8	.750	1	9	10	2.0	10	0	8	3	2	4	56	11.2
22	THORDERSON, Lexy	4-3	98	24.5	15-33	.455	7-21	.333	7-7	1.000	4	8	12	3.0	6	0	2	2	0	3	44	11.0
20	GOMEZ, Geena	5-4	121	24.2	16-34	.471	8-19	.421	12-12	1.000	1	10	11	2.2	7	0	10	10	0	3	52	10.4
01	LARK, Khalia	2-0	54	27.0	8-18	.444	3-8	.375	0-0	.000	2	12	14	7.0	4	0	2	2	0	2	19	9.5
34	VANDERDOES, Bayle	2-2	45	22.5	8-12	.667	0-0	.000	1-3	.333	3	9	12	6.0	5	0	2	5	1	0	17	8.5
30	GREENHOUSE, Chey	4-0	43	10.8	7-11	.636	3-5	.600	8-11	.727	3	3	6	1.5	3	0	1	2	0	0	25	6.3
40	TERRY, Monique	5-4	77	15.4	10-15	.667	0-1	.000	1-2	.500	6	6	12	2.4	12	0	2	6	1	3	21	4.2
03	BOSTICK, Ariell	5-2	134	26.8	7-10	.700	1-1	1.000	0-2	.000	1	29	30	6.0	8	0	34	11	0	10	15	3.0
11	GOMEZ, Arantxa	5-0	71	14.2	5-8	.625	0-0	.000	3-4	.750	4	9	13	2.6	9	0	1	6	3	2	13	2.6
45	EKWEDIKE, Naomi	3-0	24	8.0	2-6	.333	0-0	.000	1-2	.500	0	1	1	0.3	1	0	0	5	0	0	5	1.7
13	BROWN, Allison	2-0	12	6.0	1-2	.500	0-0	.000	0-0	.000	0	2	2	1.0	2	0	2	2	0	0	2	1.0
21	LOWE, Abby	3-0	23	7.7	1-8	.125	0-2	.000	1-1	1.000	1	3	4	1.3	3	0	1	2	0	0	3	1.0
Team											3	10	13				3					
Total.....		5	1000		139-267	.521	39-94	.415	61-77	.792	35	122	157	31.4	81	0	79	67	8	32	378	75.6
Opponents.....		5	1000		112-289	.388	37-123	.301	50-76	.658	61	103	164	32.8	78	-	64	75	8	26	311	62.2

Score by Periods	1st	2nd	3rd	4th	Totals
SDSU	97	77	86	118	378
Opponents	89	67	73	82	311

Games lost

RECORD:	OVERALL	HOME	AWAY	NEUTRAL
ALL GAMES	0-6	0-2	0-3	0-1
CONFERENCE	0-0	0-0	0-0	0-0
NON-CONFERENCE	0-6	0-2	0-3	0-1

#	Player	gp-gs	min	avg	Total		3-Point		F-Throw		Rebounds				a	to	blk	stl	pts	avg		
					fg-fga	fg%	3fg-fga	3fg%	ft-fa	ft%	off	def	tot	avg							pf	dq
15	FORT, McKynzie	6-6	178	29.7	28-77	.364	1-13	.077	22-30	.733	7	14	21	3.5	16	2	5	21	1	4	79	13.2
04	ELLISON, Kymberly	6-6	144	24.0	16-56	.286	13-43	.302	8-10	.800	6	13	19	3.2	16	0	5	15	1	9	53	8.8
03	BOSTICK, Ariell	6-6	159	26.5	9-27	.333	2-7	.286	14-17	.824	5	27	32	5.3	16	1	14	15	0	14	34	5.7
30	GREENHOUSE, Chey	6-2	124	20.7	12-34	.353	0-4	.000	8-9	.889	3	4	7	1.2	8	1	2	9	0	1	32	5.3
22	THORDERSON, Lexy	5-2	102	20.4	8-41	.195	6-31	.194	1-2	.500	3	4	7	1.4	4	0	8	1	3	3	23	4.6
20	GOMEZ, Geena	6-0	146	24.3	9-40	.225	4-18	.222	5-8	.625	4	11	15	2.5	9	0	9	12	0	3	27	4.5
13	BROWN, Allison	1-0	2	2.0	1-1	1.000	0-0	.000	2-2	1.000	0	0	0	0.0	0	0	0	0	0	0	4	4.0
34	VANDERDOES, Bayle	6-6	113	18.8	6-18	.333	0-0	.000	10-13	.769	7	16	23	3.8	14	0	2	7	0	2	22	3.7
40	TERRY, Monique	6-2	84	14.0	6-15	.400	0-2	.000	4-5	.800	4	12	16	2.7	6	0	0	6	1	0	16	2.7
45	EKWEDIKE, Naomi	6-0	39	6.5	6-13	.462	0-0	.000	0-1	.000	5	5	10	1.7	9	0	0	8	0	0	12	2.0
21	LOWE, Abby	6-0	37	6.2	3-7	.429	1-3	.333	4-6	.667	3	2	5	0.8	7	0	0	5	1	0	11	1.8
11	GOMEZ, Arantxa	6-0	72	12.0	1-4	.250	0-0	.000	5-12	.417	8	5	13	2.2	7	0	1	4	4	1	7	1.2
Team											17	10	27				4					
Total.....		6	1200		105-333	.315	27-121	.223	83-115	.722	72	123	195	32.5	112	4	46	107	11	37	320	53.3
Opponents.....		6	1200		178-352	.506	41-98	.418	57-92	.620	63	170	233	38.8	120	-	110	99	20	42	454	75.7

Score by Periods	1st	2nd	3rd	4th	Totals
SDSU	84	75	78	83	320
Opponents	129	122	111	92	454

TEAM STATISTICS

Opponent	Date	Score		Total		3-Pointers		Free throws		Rebounds				pf	a	t/o	blk	stl	pts	avg
				fg-fga	pct	3fg-fga	pct	ft-fta	pct	off	def	tot	avg							
at UC Riverside	11-11-16	44-72	L	16-55	.291	3-16	.188	9-14	.643	15	20	35	35.0	17	5	18	0	5	44	44.0
SAN DIEGO CHRISTIAN	11-14-16	80-70	W	31-56	.554	7-13	.538	11-14	.786	7	30	37	36.0	16	19	16	2	3	80	62.0
at San Diego	11-17-16	53-91	L	17-63	.270	2-17	.118	17-25	.680	15	16	31	34.3	25	2	17	3	7	53	59.0
LOYOLA MARYMOUNT	11-20-16	53-60	L	20-61	.328	4-29	.138	9-13	.692	12	25	37	35.0	19	10	17	2	8	53	57.5
vs UT-Arlington	11-26-16	58-64	L	16-45	.356	5-19	.263	21-27	.778	9	26	35	35.0	25	8	22	2	5	58	57.6
vs Central Connecticut	11-27-16	80-62	W	29-48	.604	8-16	.500	14-18	.778	2	28	30	34.2	25	16	17	1	9	80	61.3
at UC Davis	12-02-16	55-75	L	19-64	.297	6-23	.261	11-15	.733	14	21	35	34.3	13	12	14	2	9	55	60.4
MICHIGAN	12-09-16	57-92	L	17-45	.378	7-17	.412	16-21	.762	7	15	22	32.8	13	9	19	2	3	57	60.0
UC SANTA BARBARA	12-11-16	84-70	W	26-51	.510	10-20	.500	22-24	.917	3	23	26	32.0	12	14	8	2	4	84	62.7
at Cal State Fullerton	12-22-16	71-61	W	27-57	.474	8-23	.348	9-12	.750	12	17	29	31.7	17	15	15	0	8	71	63.5
BIOLA	12-28-16	63-48	W	26-55	.473	6-22	.273	5-9	.556	11	24	35	32.0	11	15	11	3	8	63	63.5
SDSU		698		244-600	.407	66-215	.307	144-192	.750	107	245	352	32.0	193	125	174	19	69	698	63.5
Opponents		765		290-641	.452	78-221	.353	107-168	.637	124	273	397	36.1	198	174	174	28	68	765	69.5

Games played: 11
 Points/game: 63.5
 FG Pct: 40.7
 3FG Pct: 30.7
 FT Pct: 75.0

Rebounds/game: 32.0
 Assists/game: 11.4
 Turnovers/game: 15.8
 Assist/turnover ratio: 0.7
 Steals/game: 6.3
 Blocks/game: 1.7

STATISTICS - INDIVIDUAL GAME-BY-GAME / STARTING LINEUPS

	1	3	4	11	13	15	20	21	22	30	34	40	45
Opponent	Khalia Lark	Ariell Bostick	Kymerly Ellison	Arantxa Gomez	Allison Brown	McKynzie Fort	Geena Gomez	Abby Lowe	Lexy Thorderson	Cheyenne Greenhouse	Baylee Vanderdoes	Monique Terry	Naomi Ekwedike
at UC Riverside	DNP	0-8-2	6-1-0	1-0-0	DNP	14-3-3	6-2-0	2-3-0	DNP	6-3-0	7-5-0	2-1-0	0-0-0
SAN DIEGO CHRISTIAN	DNP	4-6-8	12-3-3	2-2-0	0-0-1	28-7-4	14-2-2	3-3-1	DNP	DNP	10-10-0	2-1-0	5-0-0
at San Diego	DNP	9-1-1	6-3-1	3-3-0	DNP	12-1-0	2-4-0	0-2-0	3-1-0	2-0-0	4-2-0	7-4-0	2-3-0
LOYOLA MARYMOUNT	DNP	1-9-1	8-5-1	0-1-0	DNP	22-9-0	0-1-4	0-0-0	6-3-2	8-0-1	6-6-1	0-2-0	2-0-0
vs. UT Arlington	DNP	12-5-1	13-3-0	2-3-0	DNP	9-2-2	6-5-2	2-0-0	0-1-3	8-3-0	2-4-0	4-4-0	0-2-0
vs. Central Connecticut	DNP	7-10-5	10-0-2	2-0-0	DNP	17-2-3	17-5-2	0-1-0	10-1-0	4-2-0	7-2-2	6-2-2	0-0-0
at UC Davis	DNP	3-6-6	8-2-1	1-4-1	DNP	11-3-0	2-1-2	7-0-0	11-2-1	4-0-1	2-6-0	2-3-0	4-3-0
MICHIGAN	DNP	9-3-3	12-5-2	0-2-0	4-0-0	8-3-0	11-2-1	0-0-0	3-0-2	4-1-0	1-0-1	1-2-0	4-2-0
UC SANTA BARBARA	DNP	0-3-5	13-3-1	4-4-1	DNP	18-3-3	17-3-1	DNP	17-4-2	10-2-1	DNP	5-1-0	0-1-0
at Cal State Fullerton	5-5-2	2-4-6	12-2-1	5-5-0	DNP	29-4-4	2-0-2	DNP	13-2-0	3-1-0	DNP	0-5-0	DNP
BIOLA	14-9-0	2-7-10	9-2-1	0-2-0	2-1-1	14-1-0	2-1-3	0-0-0	4-5-0	8-1-0	DNP	8-3-0	DNP
at New Mexico													
NEVADA													
BOISE STATE													
at San Jose State													
at Utah State													
UNLV													
AIR FORCE													
at Colorado State													
at Wyoming													
FRESNO STATE													
SAN JOSE STATE													
at Nevada													
UTAH STATE													
at UNLV													
at Fresno State													
COLORADO STATE													
at Air Force													
NEW MEXICO													

DNP - Did Not Play

Game	Forward	Forward/Guard	Guard	Guard	Guard	Game	Forward	Forward/Guard	Guard	Guard	Guard
at UC Riverside	Vanderdoes	Greenhouse	Fort	Ellison	Bostick	SAN JOSE STATE					
SAN DIEGO CHRISTIAN	Vanderdoes	Gomez	Fort	Ellison	Bostick	at Nevada					
at San Diego	Vanderdoes	Greenhouse	Fort	Ellison	Bostick	UTAH STATE					
LOYOLA MARYMOUNT	Vanderdoes	Thorderson	Fort	Ellison	Bostick	at UNLV					
vs. UT Arlington	Vanderdoes	Thorderson	Fort	Ellison	Bostick	at Fresno State					
vs. Central Connecticut	Vanderdoes	Terry	Fort	Ellison	Bostick	COLORADO STATE					
at UC Davis	Vanderdoes	Terry	Fort	Ellison	Bostick	at Air Force					
MICHIGAN	Vanderdoes	Terry	Fort	Ellison	Bostick	NEW MEXICO					
UC SANTA BARBARA	Thorderson	Terry	Fort	Ellison	Gomez						
at Cal State Fullerton	Thorderson	Terry	Fort	Ellison	Gomez						
BIOLA	Thorderson	Terry	Fort	Ellison	Gomez						
at New Mexico											
NEVADA											
BOISE STATE											
at San Jose State											
at Utah State											
UNLV-											
AIR FORCE											
at Colorado State											
at Wyoming											
FRESNO STATE											

Lineup Records

- Bostick-Ellison-Fort-Vanderdoes-Terry: 1-2
- Bostick-Ellison-Fort-Vanderdoes-Greenhouse: 0-2
- Bostick-Ellison-Fort-Vanderdoes-Thorderson: 0-2
- Bostick-Ellison-Fort-Vanderdoes-Gomez: 1-0
- Gomez-Ellison-Fort-Thorderson-Terry: 3-0

Aztec Team Highs

Points	84, vs. UC Santa Barbara (12-11-16)
Scoring Margin	18, vs. Central Connecticut (11-27-16)
FG Made	31, vs. San Diego Christian (11-14-16)
FG Attempts	64, at UC Davis (12-2-16)
FG Pct.	.604 (29-48), vs. Central Connecticut (11-27-16)
3-Point FG Made	10, vs. UC Santa Barbara (12-11-16)
3-Point FG Attempts	29, vs. Loyola Marymount (11-20-16)
3-Point FG Pct.	.538 (7-13), vs. San Diego Christian (11-14-16)
Free Throws Made	22, vs. UC Santa Barbara (12-11-16)
Free Throw Attempts	27, vs. UT Arlington (11-26-16)
Free Throw Pct.	.917 (22-24), vs. UC Santa Barbara (12-11-16)
Rebounds	37, Twice, Last: vs. Loyola Marymount (11-20-16)
Assists	19, vs. San Diego Christian (11-14-16)
Steals	9, Twice, Last: at UC Davis (12-2-16)
Blocks	3, Twice, Last: vs. Biola (12-28-16)
Turnovers	22, vs. UT Arlington (11-26-16)
Fouls	25, Three times, Last: vs. Central Connecticut (11-27-16)

Aztec Team Lows

Points	44, at UC Riverside (11-11-16)
Scoring Margin	10, Twice, Last: at Cal State Fullerton (12-22-16)
FG Made	16, Twice, Last: vs. UT Arlington (11-26-16)
FG Attempts	45, Twice, Last: vs. Michigan (12-9-16)
FG Pct.	.270 (17-63), at San Diego (11-17-16)
3-Point FG Made	2, at San Diego (11-17-16)
3-Point FG Attempts	13, at San Diego Christian (11-14-16)
3-Point FG Pct.	.118 (2-17), at San Diego (11-17-16)
Free Throws Made	5, vs. Biola (12-28-16)
Free Throw Attempts	9, vs. Biola (12-28-16)
Free Throw Pct.	.643 (9-14), at UC Riverside (11-11-16)
Rebounds	22, vs. Michigan (12-9-16)
Assists	2, at San Diego (11-17-16)
Steals	3, Twice, Last: vs. Michigan (12-9-16)
Blocks	0, Twice, Last: at Cal State Fullerton (12-22-16)
Turnovers	8, vs. UC Santa Barbara (12-11-16)
Fouls	11, vs. Biola (12-28-16)

Aztec Scoring

First Half High	45, vs. San Diego Christian (11-14-16)
First Quarter High	27, vs. UC Santa Barbara (12-11-16)
Second Quarter High	24, vs. Central Connecticut (11-27-16)
Second Half High	46, vs. UC Santa Barbara (12-11-16)
Third Quarter High	25, vs. vs. Central Connecticut (11-27-16)
Fourth Quarter High	27, Twice, Last: at Cal State Fullerton (12-22-16)
First Half Low	21, at UC Riverside (11-11-16)
First Quarter Low	12, at UC Davis (12-2-16)
Second Quarter Low	6, at UC Riverside (11-11-16)
Second Half Low	23, at UC Riverside (11-11-16)
Third Quarter Low	8, at San Diego (11-17-16)
Fourth Quarter Low	11, Twice, Last: vs. Loyola Marymount (11-20-16)
Largest Halftime Lead	9 (19-28), vs. Biola (12-28-16)
Largest Halftime Deficit	21, Twice, Last: (23-44), at UC Davis (12-2-16)
Largest Lead	25 (73-48), vs. Central Connecticut (11-27-16)
Largest Deficit	38 (53-91), at San Diego (11-17-16)
Largest Deficit in a Win	12 (29-41), at Cal State Fullerton (12-22-16)
Largest Lead in a Loss	6 (40-34), vs. Loyola Marymount (11-20-16)

Opponent Team Highs

Points	92, vs. Michigan (12-9-16)
Scoring Margin	38 (91-53), at San Diego (11-17-16)
FG Made	37, Twice, Last: vs. Michigan (12-9-16)
FG Attempts	68, vs. UC Santa Barbara (12-11-16)
FG Pct.	.649 (37-57), at San Diego (11-17-16)
3-Point FG Made	12, at UC Davis (12-2-16)
3-Point FG Attempts	31, vs. San Diego Christian (11-14-16)
3-Point FG Pct.	.583 (7-12), at UC Riverside (11-11-16)
Free Throws Made	19, vs. Central Connecticut (11-27-16)
Free Throw Attempts	25, vs. Central Connecticut (11-27-16)
Free Throw Pct.	.760 (19-25), vs. Central Connecticut (11-27-16)
Rebounds	44, Twice, Last: vs. UC Santa Barbara (12-11-16)
Assists	27, vs. Michigan (12-9-16)
Steals	10, at San Diego (11-17-16)
Blocks	5, Twice, Last: at UC Davis (12-2-16)
Turnovers	19, vs. Central Connecticut (11-27-16)
Fouls	26, Twice, Last: vs. UT Arlington (11-26-16)

Opponent Team Lows

Points	48, vs. Biola (12-28-16)
Scoring Margin	7 (60-53), vs. Loyola Marymount (11-20-16)
FG Made	19, Twice, Last: vs. Biola (12-28-16)
FG Attempts	49, at Cal State Fullerton (12-22-16)
FG Pct.	.345 (19-55), vs. Central Connecticut (11-27-16)
3-Point FG Made	2, at San Diego (11-17-16)
3-Point FG Attempts	7, at San Diego (11-17-16)
3-Point FG Pct.	.222 (6-27), vs. Biola (12-28-16)
Free Throws Made	3, at UC Davis (12-2-16)
Free Throw Attempts	4, at UC Davis (12-2-16)
Free Throw Pct.	.500 (9-18), vs. Loyola Marymount (11-20-16)
Rebounds	27, at Cal State Fullerton (12-22-16)
Assists	7, Last: vs. Central Connecticut (11-27-16)
Steals	3, Twice, Last: vs. UC Santa Barbara (12-11-16)
Blocks	0, vs. Loyola Marymount (11-20-16)
Turnovers	11, vs. San Diego Christian (11-14-16)
Fouls	10, vs. Biola (12-28-16)

Opponent Scoring

First Half High	50, at San Diego (11-17-16)
First Quarter High	29, vs. Michigan (12-9-16)
Second Quarter High	26, Twice, Last: at UC Davis (12-2-16)
Second Half High	43, vs. Michigan (12-9-16)
Third Quarter High	29, vs. Michigan (12-9-16)
Fourth Quarter High	18, at San Diego (11-17-16)
First Half Low	19, vs. Biola (12-28-16)
First Quarter Low	12, vs. Biola (12-28-16)
Second Quarter Low	7, vs. Biola (12-28-16)
Second Half Low	27, at Cal State Fullerton (12-22-16)
Third Quarter Low	12, vs. Biola (12-28-16)
Fourth Quarter Low	14, at Cal State Fullerton (12-22-16)
Largest Halftime Lead	21, Twice, Last: (44-23), at UC Davis (12-2-16)
Largest Halftime Deficit	9 (19-28), vs. Biola (12-28-16)
Largest Lead	39 (90-51), vs. Michigan (12-9-16)
Largest Deficit	25 (48-73), vs. Central Connecticut (11-27-16)
Largest Deficit in a Win	6 (34-40), vs. Loyola Marymount (11-20-16)
Largest Lead in a Loss	12 (41-29), at Cal State Fullerton (12-22-16)

Aztec Individual Highs

Points

29, McKynzie Fort at Cal State Fullerton (12-22-16)

Field Goals Made

11, McKynzie Fort at Cal State Fullerton (12-22-16)
11, McKynzie Fort vs. San Diego Christian (11-14-16)

Field Goals Attempted

21, McKynzie Fort vs. Loyola Marymount (11-20-16)
21, McKynzie Fort at UC Riverside (11-11-16)

Field Goal Percentage (min. 5 made)

.727 (8-11), McKynzie Fort vs. Central Connecticut (11-27-16)

3-Point Field Goals Made

4, Kymberly Ellison vs. Michigan (12-9-16)

3-Point Field Goals Attempted

11, Lexy Thorderson at UC Davis (12-2-16)

3-Pt Field Goal Percentage (min. 2 made)

1.000 (3-3), Geena Gomez vs. Central Connecticut (11-27-16)
1.000 (2-2), McKynzie Fort vs. San Diego Christian (11-14-16)

Free Throws Made

8, McKynzie Fort vs. UC Santa Barbara (12-11-16)

Free Throw Attempted

9, McKynzie Fort vs. UC Santa Barbara (12-11-16)

Free Throw Percentage (min 3 made)

1.000 (7-7), McKynzie Fort at UC Davis (12-2-16)
1.000 (6-6), Geena Gomez vs. Central Connecticut (11-27-16)
1.000 (5-5), Lexy Thorderson vs. UC Santa Barbara (12-11-16)
1.000 (4-4), Baylee Vanderdoes at San Diego (11-17-16)
1.000 (4-4), McKynzie Fort, Geena Gomez vs. San Diego Christian (11-14-16)
1.000 (3-3), Ariell Bostick vs. Michigan (12-9-16)
1.000 (3-3), McKynzie Fort vs. Loyola Marymount (11-20-16)
1.000 (3-3), Baylee Vanderdoes at UC Riverside (11-11-16)

Rebounds

10, Ariell Bostick vs. Central Connecticut (11-27-16)
10, Baylee Vanderdoes vs. San Diego Christian (11-14-16)

Assists

10, Ariell Bostick vs. Biola (12-28-16)

Steals

4, Ariell Bostick at UC Davis (12-2-16)
4, Ariell Bostick vs. Central Connecticut (11-27-16)
4, Ariell Bostick vs. Loyola Marymount (11-20-16)

Blocked Shots

2, Kymberly Ellison vs. Biola (12-28-16)
2, Arantxa Gomez Ferrer vs. UC Santa Barbara (12-11-16)
2, Arantxa Gomez Ferrer at UC Davis (12-2-16)
2, Arantxa Gomez Ferrer vs. UT Arlington (11-26-16)

Turnovers

5, Ariell Bostick vs. UT Arlington (11-26-16)

Fouls

5, Ariell Bostick, McKynzie Fort vs. UT Arlington (11-26-16)
5, Cheyenne Greenhouse vs. Loyola Marymount (11-20-16)
5, McKynzie Fort at San Diego (11-17-16)

Opponent Individual Highs

Points

28, Dani Nafekh at UC Davis (12-2-16)

Field Goals Made

10, Dani Nafekh at UC Davis (12-2-16)

Field Goals Attempted

19, Nyadoup Lam vs. San Diego Christian (11-14-16)

Field Goal Percentage (min 5 made)

.800 (8-10), Maya Hood at San Diego (11-17-16)

3-Point Field Goals Made

8, Dani Nafekh at UC Davis (12-2-16)

3-Point Field Goals Attempted

12, Coco Miller vs. UC Santa Barbara (12-11-16)

3-Pt Field Goal Percentage (min 2 made)

1.000 (2-2), Kayla Macedo vs. Biola (12-28-16)

Free Throws Made

9, Cebria Outlow vs. Central Connecticut (11-27-16)

Free Throws Attempted

11, Cebria Outlow vs. Central Connecticut (11-27-16)

Free Throw Percentage (min 3 made)

1.000 (3-3) Brianna Jacobs vs. Central Connecticut (11-27-16)
1.000 (3-3), Michelle Curry at UC Riverside (11-11-16)

Rebounds

15, Jackie Johnson vs. Loyola Marymount (11-20-16)

Assists

11, Siera Thompson vs. Michigan (12-9-16)
11, Rejane Verin at UC Riverside (11-11-16)

Steals

3, Cierra Johnson vs. UT Arlington (11-26-16)
3, Cheyanne Wallace vs. Loyola Marymount (11-20-16)
3, Patricia Brossmann at San Diego (11-17-16)

Blocked Shots

3, Marly Anderson at UC Davis (12-2-16)

Turnovers

6, Giocelis Reynoso vs. Central Connecticut (11-27-16)

Fouls

4, Jade Vega, Dhanyel Johnson at Cal State Fullerton (12-22-16)
4, Natalia Bruening, Sarah Porter vs. UC Santa Barbara (12-11-16)
4, Hallie Thome vs. Michigan (12-9-16)
4, Cheyanne Wallace vs. Loyola Marymount (11-20-16)
4, Cierra Belvin vs. Loyola Marymount (11-20-16)
4, Alexandra Young at San Diego (11-17-16)
4, Nyadoup Lam vs. San Diego Christian (11-14-16)
4, Lauren Holt at UC Riverside (11-11-16)

2016-17 MISCELLANEOUS STATS

The Last Time an Aztec ...

Scored 20-24 points
22, McKynzie Fort, 11-20-16 vs. Loyola Marymount

Scored 25-29 points
29, McKynzie Fort, 12-22-16 at Cal State Fullerton

Scored 30-39 points
31, Cierra Warren, 1-22-14 vs. San José State

Scored 40+ points
41, Chana Perry, 1-2-88 vs. Northern Illinois

Had 20+ rebounds
27, Chana Perry, 11-25-88 vs. Alabama State

Had 15-19 rebounds
17, Kristina Hunter, 1-11-14 vs. Air Force

Had 10-14 rebounds
10, Ariell Bostick, 11-27-16 vs. Central Connecticut

Had 10+ assists
10, Ariell Bostick vs. Biola (12-29-16)

Had A Double-Double
Baylee Vanderdoes (10 points, 10 rebounds), 11-14-16 vs. San Diego Christian

Had A Triple-Double
Chelsea Hopkins, 13 points, 11 rebounds, 12 assists, 3-9-13 vs. Boise State

The Last Time San Diego State ...

Had two players score 20 points in the same game
Deajanae Scurry (22) and Cierra Warren (20), 1-25-14 vs. Utah State

Had two players with a double-double in the same game
Erimma Amariqwa (19 points, 13 rebounds) and Cheyenne Greenhouse (19 points, 11 rebounds), 11-14-14 vs. Sacramento State

Scored 100+ points
101, vs. Colorado State (101-62), 1-25-92

Allowed 100+ points
104, vs. UCLA (56-104), 12-11-98

Won by 20+ points
35, vs. San Diego Christian (60-25), 12-21-15

Won by 30+ points
35, vs. San Diego Christian (60-25), 12-21-15

Won by 40+ points
41, vs. Boise State (86-45), 3-9-13

Won by 50+ points
51, vs. Air Force (79-28), 1-7-09

Won in Overtime
vs. Fresno State (65-54), 2-10-16

Lost in Overtime
vs. Utah (70-67), 1-8-11

2016-17 Aztec Leaders

Double-Figure Scoring Games
McKynzie Fort (9), Kymberly Ellison (6), Geena Gomez (4), Lexy Thorderson (4), Khalia Lark (1), Baylee Vanderdoes (1), Ariell Bostick (1), Cheyenne Greenhouse (1)

SDSU High Scorer
McKynzie Fort (9), Kymberly Ellison (2), Geena Gomez (1), Khalia Lark (1), Lexy Thorderson (1)

Games Led SDSU In Rebounds
Ariell Bostick (5), Geena Gomez (2), Arantxa Gomez Ferrer (2), Khalia Lark (2), Monique Terry (2), Baylee Vanderdoes (2), Kymberly Ellison (1), McKynzie Fort (1), Lexy Thorderson (1)

Games Led SDSU In Assists
Ariell Bostick (8), McKynzie Fort (1), Kymberly Ellison (1), Geena Gomez (1), Lexy Thorderson (1)

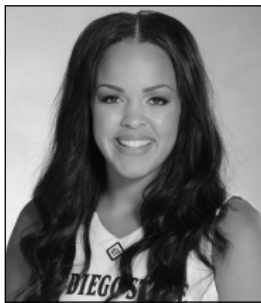
Games Led SDSU In Steals
Ariell Bostick (9), Kymberly Ellison (3), McKynzie Fort (2), Geena Gomez (1), Arantxa Gomez Ferrer (1), Monique Terry (1), Lexy Thorderson (1)

Games Led SDSU In Blocks
Arantxa Gomez Ferrer (3), Lexy Thorderson (3), McKynzie Fort (2), Monique Terry (2), Kymberly Ellison (2), Abby Lowe (1), Baylee Vanderdoes (1)

► 2016-17 SPECIALTY STATS

San Diego State/Opponent

	Points in Paint	Points off TOs	2nd Chance Points	Fast Break Points	Bench Points
at UC Riverside (L)	11/18	10/22	6/5	0/0	11/22
SAN DIEGO CHRISTIAN	15/14	38/20	6/6	6/2	70/12
at San Diego	18/44	13/23	6/8	0/0	17/39
LOYOLA MARYMOUNT	26/32	17/20	10/15	5/2	10/3
vs. UT Arlington	18/36	10/25	15/15	8/4	22/26
vs. Central Connecticut	36/26	15/16	4/13	6/2	33/29
at UC Davis	22/26	14/17	9/14	6/6	29/14
MICHIGAN	14/38	8/21	9/14	2/6	26/40
UC SANTA BARBARA	24/30	20/9	5/21	8/0	14/30
at Cal State Fullerton	28/24	23/14	10/10	2/4	15/12
BIOLA	36/22	14/10	2/9	8/0	26/6
at New Mexico					
NEVADA					
BOISE STATE					
at San Jose State					
at Utah State					
UNLV					
AIR FORCE					
at Colorado State					
at Wyoming					
FRESNO STATE					
SAN JOSE STATE					
at Nevada					
UTAH STATE					
at UNLV					
at Fresno State					
COLORADO STATE					
at Air Force					
NEW MEXICO					



KHALIA LARK
Jr. | 6-0 | G
Irvine, Calif.
Mater Dei HS/Washington

1



ARIELL BOSTICK
Sr. | 5-4 | G
Oakland, Calif.
Bishop O'Dowd HS

3



KYMBERLY ELLISON
Sr. | 5-7 | G
Columbus, Ga.
Hardaway HS/Georgia Tech

4



ARANTXA GOMEZ FERRER
So. | 6-0 | F
Valencia, Spain
Parque Colegio Santa Ana HS

11



ALLISON BROWN
Jr. | 5-7 | G
Anaheim Hills, Calif.
Mater Dei HS

13



MCKYNZIE FORT
Jr. | 5-9 | G
Fontana, Calif.
Etiwanda HS

15



GEENA GOMEZ
Jr. | 5-8 | G
Huntington Beach, Calif.
Edison HS/St. Joseph's (Pa.)

20



ABBY LOWE
Fr. | 5-11 | G
Stockport, England
Barking Abbey Academy

21



LEXY THORDERSON
Jr. | 6-0 | G/F
Castle Rock, Colo.
Rock Canyon HS

22



CHEYENNE GREENHOUSE
Jr. | 5-11 | G
Riverside, Calif.
Canyon Springs HS

30



BAYLEE VANDERDOES
Fr. | 6-1 | F
Auburn, Calif.
Placer HS

34



MONIQUE TERRY
Fr. | 6-2 | F
San Antonio, Texas
Brennan HS

40



ALEIAH BRANDON
Sr. | 6-1 | F
Corona, Calif.
Centennial HS

44



NAOMI EKWEDIKE
Fr. | 6-6 | C
Lagos, Nigeria
Potters House Christian Academy (Fla.)

45



STACIE TERRY
Head Coach
Fourth Season



JESSE CLARK
Assistant Coach
Fourth Season



CIARA CARL
Assistant Coach
Fourth Season



NICK GRANT
Assistant Coach
Third Season