



SAN DIEGO STATE WOMEN'S BASKETBALL

2016-17 GAME NOTES

Jen Heisel, Assistant Media Relations Director • E-Mail: jheisel@mail.sdsu.edu • Office: 619-594-3014 • Cell: 862-432-5499

2016-17 SCHEDULE

Date	Opponent	Time
Nov. 4	CSU San Marcos (exh.)	W, 74-53
Nov. 11	at UC Riverside	L, 44-72
Nov. 14	San Diego Christian	W, 80-70
Nov. 17	at San Diego	L, 53-91
Nov. 20	Loyola Marymount	L, 53-60

Seton Hall Thanksgiving Classic (South Orange, N.J.)

Nov. 26	vs. UT Arlington	Noon
Nov. 27	vs. Seton Hall/Central Conn. State	TBA

Dec. 2	at UC Davis	7 p.m.
Dec. 9	Michigan	Noon
Dec. 11	UC Santa Barbara	2 p.m.
Dec. 22	at Cal State Fullerton	7 p.m.
Dec. 28	Biola	6:30 p.m.
Dec. 31	at New Mexico*	2 p.m.
Jan. 4	Nevada*	6:30 p.m.
Jan. 7	Boise State*	2 p.m.
Jan. 11	at San José State*	7 p.m.
Jan. 14	at Utah State*	2 p.m.
Jan. 18	UNLV*	2 p.m.
Jan. 25	Air Force*	6:30 p.m.
Jan. 28	at Colorado State*	2 p.m.
Feb. 1	at Wyoming*	7 p.m.
Feb. 4	Fresno State*	2 p.m.
Feb. 8	San José State*	6:30 p.m.
Feb. 11	at Nevada*	4 p.m.
Feb. 15	Utah State*	6:30 p.m.
Feb. 18	at UNLV*	4 p.m.
Feb. 22	at Fresno State*	7 p.m.
Feb. 25	Colorado State*	2 p.m.
Feb. 28	at Air Force*	7 p.m.
March 3	New Mexico*	6:30 p.m.
March 6-10	MW Championship (Las Vegas, Nev.)	TBA

All times local to site | Home games in **Bold** at Viejas Arena
* = Mountain West game

GAME 5 | UT ARLINGTON (WALSH GYMNASIUM) | SAT., NOV. 26 | NOON ET

LIVE MEDIA: Stats and Audio (GoAztecs.com) | Series vs. UT Arlington: First Meeting



SAN DIEGO STATE

2016-17 Record: 1-3 (0-0 MW)

Head Coach: Stacie Terry

Fourth Year at SDSU/Fourth overall

TOP PERFORMERS

Scoring McKynzie Fort - 19.8

Rebounding Ariell Bostick - 6.0

Assists Ariell Bostick - 12



UT ARLINGTON

2016-17 Record: 3-0 (0-0 Sun Belt)

Head Coach: Krista Gerlich

Fifth Year at UT/11th overall

TOP PERFORMERS

Scoring Christina Devers - 19.3

Rebounding Rebekah VanDijk - 9.3

Assists Miranda LeJune - 17

GAME 6 | SETON HALL OR CCSU (WALSH GYMNASIUM) | SUN., NOV. 27 | TBA

LIVE MEDIA: Stats and Audio (GoAztecs.com) | Series vs. Seton Hall: SHU leads, 1-0 / Streak: SHU won 1; Series vs. CCSU: First Meeting



SAN DIEGO STATE

2016-17 Record: 1-3 (0-0 MW)

Head Coach: Stacie Terry

Fourth Year at SDSU/Fourth overall



SETON HALL

2016-17 Record: 3-1 (0-0 BIG EAST)

Head Coach: Anthony Bozzella

Fourth Year at SHU/24th overall



CENTRAL CONN. STATE

2016-17 Record: 1-3 (0-0 Northeast)

Head Coach: Beryl Piper

10th Year at CCSU/10th overall

- San Diego State visits the Garden State this weekend for the Seton Hall Thanksgiving Classic. Appearing in the tournament are the host Pirates, Aztec head coach Stacie Terry's alma mater of UT Arlington and Central Connecticut State.
- The Aztecs have never faced Central Connecticut State or UT Arlington. The lone game between SDSU and Seton Hall was on Dec. 28, 1991, when the Aztecs fell to the Pirates, 71-61.
- Junior McKynzie Fort has been outstanding in the early part of the season. With four games under her belt, she has averaged a career-high 19.8 points per game to rank second in the Mountain West.
- Starting all of SDSU's contests, freshman Baylee Vanderdoes has emerged as a vital piece of the Aztecs' game plan. Sitting second with 5.8 rebounds per game, she boasts a team-best .588 (10-for-17) field goal percentage.

SAN DIEGO STATE AZTECS (1-3, 0-0 MW)

No.	Name	Pos.	Ht.	Yr.	Exp.	PPG	RPG	APG	Individual Player Notes
1	Khalia Lark	F	6-0	Jr.	TR	0.0	0.0	0.0	Eligible Dec. 22 due to transfer from Washington prior to Spring 2016 semester
3	Ariell Bostick	G	5-4	Sr.	3L	3.5	6.0	3.0	Team-high 12 assists while also sporting the team's highest assist-to-turnover ratio (1.7)
4	Kymerly Ellison	G	5-7	Sr.	1L	8.0	3.0	1.3	Leads team with seven three-pointers on 23 attempts ... Ranks second with 8.0 PPG
11	Arantxa Gómez Ferrer	F	6-0	So.	1L	1.5	1.5	0.0	12.0 minutes per game ... Returns after missing final 18 games last season with knee injury
13	Allison Brown	G	5-7	Jr.	SQ	0.0	1.0	0.0	Played nine minutes with a rebound vs. SDCC ... Walk-on who earned scholarship for 2016-17 campaign
15	McKynzie Fort	G	5-9	Jr.	2L	19.8	5.0	1.8	Ranks second in the MW with 19.8 PPG ... Career-high 28 pts. vs. SDCC
20	Geena Gomez	G	5-8	Jr.	1L	10.0	2.0	1.0	Earned first career start vs. SDCC ... Second on the team with three three-pointers
21	Abby Lowe	G	5-11	Fr.	HS	1.3	2.0	0.3	Averaging eight minutes per game with appearances in all four SDSU contests
22	Lexy Thorderson	G/F	6-0	Jr.	2L	4.5	2.0	1.0	Two games played with one start vs. Loyola Marymount ... Missed first two games due to illness
30	Cheyenne Greenhouse	G	5-11	Jr.	2L	5.3	1.0	0.3	.316 field goal percentage in 22.7 minutes per game vs. LMU, UC Riverside and USD
34	Baylee Vanderdoes	F	6-1	Fr.	HS	6.8	5.8	0.3	Second with 5.8 rebounds per game ... Double-double vs. SDCC was first for freshman since 2014
40	Monique Terry	F	6-2	Fr.	HS	2.8	2.0	0.0	Made her first collegiate field goal vs. SDCC ... Season-high four rebounds at USD
44	Aleiah Brandon	F	6-1	Sr.	3L	0.0	0.0	0.0	Provides veteran leadership as a fifth-year senior
45	Naomi Ekwedike	F	6-6	Fr.	HS	2.3	0.8	0.0	Breakout game vs. SDCC with 5 points, going 2-for-4 from the floor in 10 minutes logged

Head Coach: Stacie Terry (UT Arlington, 1998) | 37-55 (Fourth Season at SDSU/Fourth Overall)

Assistant Coaches: Jesse Clark (Pacific Union, 2003); Ciara Carl (Point Loma Nazarene, 2005); Nick Grant (Baylor, 2010)

Director of Basketball Operations: Jon Silver (UCLA, 2009)

Director of Player Personnel: Paris Johnson (San Diego State, 2011)

Athletic Trainer: Queenie Soriano (San Diego State, 2004)

Head Manager: Chris Straker

SAN DIEGO STATE QUICK FACTS

GENERAL INFORMATION

Location: San Diego, Calif., 92182
 Founded: 1897
 Enrollment: 30,750
 Nickname: Aztecs
 School Colors: Scarlet and Black
 Affiliation: NCAA Division I
 Conference: Mountain West
 Home Arena (Capacity):
 Steve Fisher Court at Viejas Arena (12,414)
 President: Dr. Elliot Hirshman
 Director of Athletics: John David Wicker
 Faculty Athletic Representative: Patrick Papin
 Athletics Dept. Phone: 619-594-3019

AZTEC BASKETBALL FACTS

First Year of Basketball: 1976-77
 All-Time Record: 629-552 (.533) / 40 seasons
 Postseason Appearances/NCAA Appearances: 12/9
 Last Postseason Appearance: 2013--
 Lost to BYU (69-58) in WNIT Second Round

SDSU TEAM INFORMATION

2015-16 Record: 12-19 (.387)
 2015-16 MW Record/Finish: 6-12/T-8th
 2016 MW Tournament Record: 1-1
 2016 Final NCAA RPI: 238
 Letterwinners Returning/Lost: 9/2
 Starters Returning/Lost: 3/2
 Newcomers: 5

AZTEC BASKETBALL STAFF

Head Coach: Stacie Terry
 Alma Mater: UT Arlington, 1998
 Career Record/Years: 37-55/Fourth Year
 Record at SDSU: Same
 Best Time to Call: Contact SID
 Basketball Office Phone: 619-594-4095
 Basketball Office Fax: 619-594-8057
 Assistant Coaches:
 Jesse Clark, Fourth season at SDSU
 Alma Mater: Pacific Union, 2003
 Ciara Carl, Fourth season at SDSU
 Alma Mater: Point Loma Nazarene, 2005
 Nick Grant, Third season at SDSU
 Alma Mater: Baylor, 2010
 Director of Basketball Operations: Jon Silver
 First season at SDSU
 Alma Mater: UCLA, 2009
 Director of Player Personnel: Paris Johnson
 First season at SDSU
 Alma Mater: San Diego State, 2009
 Athletic Trainer: Queenie Soriano
 Head Manager: Chris Straker
 Academic Advisor: Dr. Bre White
 Strength and Conditioning: Eddie Padilla

SDSU MEDIA RELATIONS

Women's Basketball SID: Jen Heisel
 E-mail: jheisel@mail.sdsu.edu
 Office Phone: 619-594-3014
 Cell Phone: 862-432-5499

Scouting the Mavericks

SDSU will face a UT Arlington team that can boast its best start to a season since 1999-00 at 3-0. The Mavericks most recently topped Western Kentucky, who received votes in the USA Today Coaches' Poll, 71-68, on the road and narrowly edged Wichita State, 74-70.

Offensively, the team is led by reigning Sun Belt Player of the Week Christina Devers and her 19.3 points per game. The Mavericks are also getting help from Rebekah VanDijk's back-to-back doubles (29th nationally) and Cierra Johnson's conference-leading 4.33 steals per game.

Krista Gerlich is in her fifth year as the Mavericks' head coach.

Scouting the Pirates

Seton Hall is not showing any signs of a letdown following a 2015-16 campaign in which it appeared in its second consecutive NCAA Tournament.

The team is currently averaging an outstanding 85 points per game, led by Khade Carrington's .607 (34-56) shooting percentage and 23.3 points per game. Madison Jones is Seton Hall's top playmaker, boasting a team-high 21 assists, while Angel Delgado is averaging a double-double at 14.5 points and 11 rebounds per game.

In his fourth year at the helm of Seton Hall's program is Anthony Bozzella.

Scouting the Blue Devils

Central Connecticut State has had a rough start to its season, with its only win coming in overtime vs Vermont on Nov. 18. Most recently, the team suffered a 39-point loss to Massachusetts on the road, falling 76-37.

Defense has been the Blue Devils' greatest downfall this season, getting out-scored an average of 14.3 points per game. Despite that, the team has seen offensive production, led by Aleah Epps' 13.5 points per game. Andi Lyndon and Giocelis Reynoso are the Blue Devils' top ball handlers, each averaging over 10 rebounds per game.

Beryl Piper is Central Connecticut State's 10-year head coach.

Maverick Meeting Mavericks

For SDSU head coach Stacie Terry, the Aztecs' game against UT Arlington will hold greater personal significance. Terry was a four-year letterwinner at UT Arlington from 1994-98, earning all-Southland Conference honors as a senior in 1997-98 after leading the team in scoring with 17.4 points per game. She scored 1,169 points during her Maverick career and still ranks among the school's top 10 in 3-point field goals made (third), assists (sixth), steals (seventh), 3-point field goal percentage (ninth) and free-throw percentage (10th). Additionally, she is just one of 17 players in Maverick history to surpass the 1,000-point plateau. Terry got her start behind the bench at UT Arlington, serving as a graduate assistant at UT Arlington for the 1999-00 season.

Fort's On Fire

Junior McKynzie Fort has lived up to her moniker as the Aztecs' All-Mountain West honorable mention performer from a season prior. The Fontana, Calif., native is averaging a career-high 19.8 points per game, helped by her best performance in the Scarlet and Black with 28 points against San Diego Christian. She is also proving her worth as a 2015-16 All-Mountain West Defensive

MW PRESEASON POLL

Rk.	Team	Pts.
1.	Colorado State (17)	283
2.	Boise State (11)	271
3.	Fresno State	225
4.	UNLV	201
5.	San José State	197
6.	New Mexico (1)	176
7.	San Diego State	126
8.	Wyoming	123
9.	Utah State	97
10.	Nevada	66
11.	Air Force	28

First-place votes in parentheses

MW PRESEASON HONORS

Preseason All-Mountain West Team

Brooke Pahukoa, Boise State
 Ellen Nystrom, Colorado State
 Bego Faz Davalos, Fresno State
 Cherise Beynon, New Mexico
 Dezz Ramos, San José State

Preseason Player of the Year

Ellen Nystrom, Colorado State

Preseason Newcomers of the Year:

Mykiel Burlison, New Mexico

Preseason Freshman of the Year

Hallie Gennett, San José State

SDSU IN THE MW POLL

Year	Pre.	Final
1999-2000	6th	6th
2000-01	7th	6th
2001-02	7th	7th
2002-03	7th	7th
2003-04	6th	7th
2004-05	7th	t-7th
2005-06	8th	9th
2006-07	7th	7th
2007-08	7th	t-5th
2008-09	2nd	2nd
2009-10	1st	t-3rd
2010-11	2nd	6th
2011-12	2nd	1st
2012-13	1st	1st
2013-14	3rd	t-6th
2014-15	7th	7th
2015-16	6th	t-8th
2016-17	7th	--



Team honoree, with a career-best five rebounds per game.

No Dozing for Vanderdoes

Freshman Baylee Vanderdoes has wasted no time making her mark at SDSU. Starting all four games this year, the Auburn, Calif., native tops the squad with a .588 (10-for-17) shooting percentage and her 5.8 rebounds per game are good enough for second. Against San Diego Christian, Vanderdoes scored 10 points and added as many rebounds to become the first freshman with a double-double since Cheyenne Greenhouse accomplished the feat against Sacramento State (Nov. 14, 2014) with 19 points and 11 rebounds.

Loyola Marymount Recap

Junior McKynzie Fort's 22 points and nine rebounds weren't enough to power San Diego State women's basketball in a juggernaut against Loyola Marymount Sunday afternoon, as the Aztecs fell to the Lions in non-conference action, 60-53.

In the first half, San Diego State had one of its best shooting performances of the season, shooting 46 percent (11-for-26) from the floor as compared to the Lions' 38.1 (13-for-34) first-half shooting percentage.

In the third quarter, trailing 32-38, the Scarlet and Black opened up the contest with a 12-2 run.

Just 21 seconds into the second half, SDSU was able to cut the LMU lead to two points. Ariell Bostick stole the ball and passed it to Kymberly Ellison, who went for the three and missed. Lexy Thorderson scooped up the rebound and went for a three of her own but the ball careened off the basket. Fort was able to snag the ball and the third time was the charm for a nearside jumper and the 32-30 Aztec advantage.

SDSU attained its first lead of the game shortly thereafter with an Ellison trey and, 30 seconds later, San Diego State was able to build on the margin. After a Bostick defensive rebound, Cheyenne Greenhouse threw the ball to Baylee Vanderdoes at the basket, who lifted in the 36-32 score. A jumper by Greenhouse and layup by Ellison gave the Scarlet and Black its greatest lead of the game at 40-34.

But the Lions went on a 7-0 run to snatch back its lead and get the 41-40 score.

At 3:42, however, Fort picked up the rebound of Thorderson's three-point shot and fought through traffic to get the 42-41 basket and San Diego State advantage.

Three consecutive field goals by Loyola Marymount regained its lead at 47-42 to end the third.

In the fourth quarter, despite being down as much as 10 points, the Aztecs were able to keep the game within reach. With 24 seconds to go in regulation, a good three by Thorderson and free throws by Fort (2) and Bostick (1) sliced the margin to four points.

But San Diego State's shots wouldn't fall and LMU would make four free throws for the final 60-53 score.

For the game, the Aztecs shot 32.8 percent (20-for-61), led by Fort's 22 points. Bostick's nine rebounds were one away from her career-high (10). In her first start of the year, Thorderson recorded six points and three rebounds in 19 minutes logged.

San Diego Recap

San Diego State women's basketball was unable to get past a University of San Diego team that shot 65 percent (37-for-57) and fell to its crosstown rival, 91-53, in a non-conference game Thursday night.

In the first half, San Diego State had to contend with a Torero team that shot an outstanding 70 percent (19-for-27) compared to SDSU's 29 percent (9-for-31).

After McKynzie Fort and Kymberly Ellison made a trio of free throws to start the game, Fort got the Aztecs' first two field goals. Her short jumper put the game within one point at 6-5 2:44 into the game. Three-and-a-half minutes later, she drove the basket, hooked right and threw in the 16-7 shot.

With time winding down on the first quarter, the Aztecs were determined to keep the contest within reach.

As two minutes were on the clock, Ariell Bostick intercepted a pass by USD's leading assist-getter Cori Woodward and ran it down the court with freshman Monique Terry sprinting ahead of her. Bostick passed it to Terry at the basket who laid it in. Terry added another two points on the ensuing possession with a good layup for the 20-13 score.

Bostick cut the Toreros' lead to five at 20-15 shortly thereafter with a left-handed shot into the basket.

With the exception of a good free throw by Ellison early in the second quarter, USD was able to rely on its hot shooting and went on a 11-2 run for a 31-17 San Diego advantage.

The teams traded baskets midway through the frame for a 37-24 tally. USD, however, was able to break away and out-scored San Diego State, 13-5, for the 50-29 halftime lead.

Both teams got into foul trouble in the first half, with SDSU incurring 16 personal fouls and USD assessed 15 personal fouls in the first 20 minutes alone.

In the third quarter, however, the Aztecs were out-scored 23-8 for a 73-37 Torero lead heading into the fourth quarter.

But Naomi Ekwedike (2), Fort (2), Lexy Thorderson (3) and Bostick (2) knocked down nine points to cut the advantage to 79-46 nearly three-and-a-half minutes into the fourth quarter.

With just under five minutes remaining in the game, Bostick stole the ball and shoveled it midcourt to Greenhouse, who cashed in on a layup. Terry added a three-point play with a left-handed layup and good free throw for the 81-51 score.

Unfortunately the lead was too much for the Aztecs to overcome and SDSU fell, 91-53.

UT ARLINGTON SERIES NOTES

UT ARLINGTON vs. SAN DIEGO STATE
First Meeting

• 2016-17 Comparative Stats

UTA		SDSU
3-0	Overall Record	1-3
0-0	League Record	0-0
.429	Field Goal Pct.	.357
.368	3-PT FG Pct.	.213
.698	Free Throw Pct.	.697
.444	Opp. FG Pct.	.473
.385	Opp. 3-PT FG Pct.	.379
.695	Opp. FT Pct.	.620
37.3	Rebound Avg.	35.0
+5.0	Rebound Margin	-2.8
73.3	Points/Game	57.5
64.0	Pts. Allowed/Game	73.2

CENTRAL CONN. ST. SERIES NOTES

CENTRAL CONNECTICUT STATE vs. SAN DIEGO STATE
First Meeting

• 2016-17 Comparative Stats

CCSU		SDSU
1-3	Overall Record	1-3
0-0	League Record	0-0
.302	Field Goal Pct.	.357
.296	3-PT FG Pct.	.213
.743	Free Throw Pct.	.697
.432	Opp. FG Pct.	.473
.271	Opp. 3-PT FG Pct.	.379
.671	Opp. FT Pct.	.620
42.5	Rebound Avg.	35.0
+1.2	Rebound Margin	-2.8
56.0	Points/Game	57.5
70.3	Pts. Allowed/Game	73.2

AZTECS VS. NORTHEAST

Team	W	L
Bryant	0	0
Central Conn. St.	0	0
Farleigh Dickinson	0	0
Long Island	1	0
Mt. St. Mary's	0	0
Robert Morris	0	0
Sacred Heart	0	0
St. Francis (NY)	0	0
St. Francis (PA)	0	0
Wagner	0	0
Total	1	0

AZTECS VS. SUN BELT

Team	W	L
Appalachian State	0	0
Arkansas State	0	0
Ark.-Little Rock	0	0
Georgia Southern	0	0
Georgia State	1	0
La.-Lafayette	0	0
La.-Monroe	0	2
South Alabama	0	0
Texas State	0	1
Troy	0	0
UT Arlington	0	0
Total	1	3

Nationally-Ranked Class Joining Aztecs

San Diego State women's basketball head coach Stacie Terry has announced the signing of a nationally-ranked class for the 2017-18 campaign. The 46th-ranked recruiting class in the country according to Blue Star Basketball, Te'a Adams, Jenay Borjorquez, Kiara Edwards, Najé Murray and Kennedy Villa have signed National-Letters-of-Intent to join the Aztecs next season.

Adams, a 5-9 guard from Kirkland, Wash., is a three-star recruit according to ESPN and was given a scouts grade of 90. Entering her fourth year of varsity basketball at Juanita High School, Adams has averaged 19.2 points per game, 3.4 steals per game and 2.5 assists and rebounds each per game during a career that has yielded three all-conference honors.

Bojorquez, a 5-6 point guard from Phoenix, is in her third season of varsity ball at Sierra Linda High School. A three-and-a-half-star recruit according to Prospects Nation, Bojorquez has held the top spot on Sierra Linda High's varsity squad in assists per game for two consecutive years.

Averaging nearly a double-double per game during her three-year varsity career at Valley Vista High School in Surprise, Ariz., Edwards is a 6-1 forward. Ranked No. 119 by Prospects Nation, the four-star recruit is coming off of an invitation to the 2016 USA Basketball Women's U17 World Championship team trials this May.

A 5-6 guard from perennial national powerhouse St. Mary's in Stockton, Calif., Murray earned three stars and a 90 scouts grade by ESPN. Led by head coach Tom Gonsalves, St. Mary's has won 57 of its last 58 games and nine consecutive section championships.

Villa, a 6-0 guard from Oakland, Calif., attends Saint Mary's College High School in Berkeley, Calif. A three-star recruit according to ESPN, she earned a scouts grade of 88.

Aztecs Picked Seventh in MW Preseason Poll

San Diego State has been picked to finish seventh in the 2016-17 Mountain West Women's Basketball Preseason Poll, the league office announced today. The voting panel consisted of the MW's 11 head coaches and select women's basketball media from around the conference.

The Aztecs collected 126 points in the poll, topping Wyoming, with whom they tied for eighth in the conference standings last season, by three points (123).

Three-time defending Mountain West champion Colorado State is expected to repeat as the league's top team, garnering 17 first-place points and 283 total points from the panel. Boise State picked up 11 first-place points and 271 total points for second place. Fresno State's 225 points ranked third in the poll. After finishing the season as the league's top-three teams, the trio represented the Mountain West in the 2016 Women's NIT.

SETON HALL SERIES NOTES

SAN DIEGO STATE AT SETON HALL
Seton Hall leads series, 1-0

• 2016-17 Comparative Stats

SHU	Overall Record	SDSU
3-1	Overall Record	1-3
0-0	League Record	0-0
.398	Field Goal Pct.	.357
.315	3-PT FG Pct.	.213
.691	Free Throw Pct.	.697
.383	Opp. FG Pct.	.473
.297	Opp. 3-PT FG Pct.	.379
.590	Opp. FT Pct.	.620
35.8	Rebound Avg.	35.0
-12.0	Rebound Margin	-2.8
69.5	Points/Game	57.5
69.8	Pts. Allowed/Game	73.2

• Series Numbers

Record at SDSU.....	0-0
Record at SHU.....	0-1
Record at Neutral.....	0-0
Most Points SDSU.....	61, 1991
Most Points SHU.....	71, 1991
Largest Margin SDSU.....	N/A
Largest Margin SHU.....	10, 1991
Longest SDSU Win Streak.....	0
Longest SHU Win Streak.....	1
Current Streak.....	SHU 1

• Series History

Date	Site	Result
12-28-91	South Orange, N.J.	L, 61-71

AZTECS VS. BIG EAST

Team	W	L
Butler	0	0
Creighton	0	8
DePaul	2	0
Georgetown	0	1
Marquette	0	0
Providence	1	0
St. John's	1	1
Seton Hall	0	1
Villanova	1	0
Xavier	0	0
Total	5	11

LAST MEETING | SETON HALL

San Diego State at Seton Hall Box Score (12-28-91)

SDSU	FG	3FG	FT	REB	F	TP	A	T	B	S	MP
Falisha Wright	9-16	0-1	1-2	4	4	19	2	6	0	2	37
Michelle Miles	5-9	0-0	0-0	5	4	10	4	2	0	4	40
Kieishia Gaines	4-15	0-0	1-2	9	0	9	3	1	2	3	37
Christina Murguio	1-4	0-1	2-2	3	1	4	1	4	0	0	20
Michelle Suman	5-7	0-0	3-5	4	1	13	0	1	0	0	25
Tammy Blackburn	2-4	0-0	0-0	3	3	4	0	2	0	0	23
Elisha Johns	0-2	0-1	0-0	2	3	0	1	0	0	0	9
Tameka McGlawn	1-1	0-0	0-2	4	1	2	1	0	0	0	9
Team				2							
Totals	27-58	0-3	7-13	36	17	61	12	16	2	9	200
Pct.	46.6	00.0	53.8								

Seton Hall	FG	3FG	FT	REB	F	TP	A	T	B	S	MP
Lee	1-3	0-0	0-0	0	1	2	1	2	0	1	19
Brooks	7-14	0-1	0-1	11	1	14	4	2	1	0	38
Moore	5-14	0-0	2-2	14	2	12	0	2	1	3	35
Walker	2-6	0-0	0-0	2	1	4	0	1	0	1	9
Sievens	1-7	0-0	0-1	4	1	2	1	2	0	0	31
Tingley	0-1	0-0	0-0	1	1	0	1	1	0	0	7
Sims	2-8	0-1	0-0	0	2	4	0	0	0	0	12
Makarewicz	5-9	1-2	2-2	3	1	13	0	1	0	1	23
Lovelace	0-0	0-0	0-0	1	1	0	0	0	0	1	4
Alleyne	2-3	2-3	8-8	4	0	14	3	0	0	0	17
Johnson	3-5	0-0	0-0	2	2	6	0	0	0	2	5
Team				2							
Totals	28-70	3-7	12-14	44	13	71	10	11	2	9	200
Pct.	40.0	42.4	85.7								

Officials: Dave Gil, Vic Beauseigage

Technical fouls: None

Attendance: 1,017

Score by Periods	1st	2nd	Total
San Diego State	25	36	61
Seton Hall	28	43	71

Bringin' it Back

San Diego State returns 69.3 percent of its scoring, three starters and nine letterwinners from its 2015-16 team.

The team will be led this season by All-Mountain West honorable mention and All-Mountain West Defensive Team honoree McKynzie Fort. The 5-9 guard from Fontana, Calif., was just one of two Aztecs to start all 31 games, finishing sixth in the conference with an average of 14.4 points per game. She also ranked among the conference's leaders in steals (1-3rd -- 2.0/gm), free-throw percentage (6th -- (.693)) and field-goal percentage (11th -- (.462)).

Ariell Bostick will don the Scarlet and Black for the final time as the team's top assist-getter from the previous season. The senior from Oakland, Calif., finished 10th in the Mountain West with a team-high 2.9 assists per outing.

Classmate Aleiah Brandon was a top defensive threat for the Aztecs during the 2015-16 season, blocking 10 shots, the second-most on the team, in 26 appearances and 18 starts.

The Aztecs' top three-point threat last season, Lexy Thorderson, a six-foot junior from Castle Rock, Colo., will be looked upon to fulfill a similar role. Appearing in all 31 of SDSU's games, she drained 40 of 124 shots from behind the arc, ranking 13th in the conference.

A steady presence, Cheyenne Greenhouse also played in every game for San Diego State, making 22 starts, including 18 to end the season. She averaged 20.9 minutes per game, the fifth-most on the squad.

In her first season in the Scarlet and Black after a transfer from Georgia Tech, senior Kymberly Ellison was another Aztec who appeared in every contest. In an average of 12.8 minutes per game, she posted a .722 free throw percentage, the second-best on the team.

Fellow newcomer Geena Gomez was also quick to make an impact after her transfer from St. John's. The junior from Huntington Beach, Calif., appeared in 29 of SDSU's 31 games, maintaining the squad's highest assist-to-turnover ratio (1.42) and ranking second on the team with a .324 three-point field goal percentage (23-of-71).

Gomez's classmate Allison Brown has also made an impact on the team. A walk-on prior to her freshman season, Brown earned a scholarship for the 2016-17 season after playing in a career-high nine games last year.

SAN DIEGO STATE STREAKS

Most Consecutive Starts

	Consecutive	Total
McKynzie Fort	59	59
Ariell Bostick	31	49
Kymberly Ellison*	4	4
Baylee Vanderdoes	4	4
Geena Gomez*	1	1
Cheyenne Greenhouse	1	32
Aleiah Brandon	0	18
Lexy Thorderson	0	3

Most Consecutive Games

	Consecutive	Total
McKynzie Fort	67	67
Ariell Bostick	59	82
Kymberly Ellison*	35	35
Geena Gomez*	33	33
Arantxa Gómez Ferrer	4	22
Naomi Ekwedike	4	4
Abby Lowe	4	4
Monique Terry	4	4
Baylee Vanderdoes	4	4
Allison Brown	1	17
Cheyenne Greenhouse	2	66
Lexy Thorderson	2	63
Aleiah Brandon	0	72

Most Consecutive Games With A Point^

	Consecutive	Total
McKynzie Fort	67	67
Kymberly Ellison*	4	26
Baylee Vanderdoes	4	4
Ariell Bostick	3	74
Naomi Ekwedike	3	3
Cheyenne Greenhouse	2	51
Lexy Thorderson	2	40
Monique Terry	2	3
Aleiah Brandon	0	39
Geena Gomez*	0	20
Arantxa Gómez Ferrer	0	7
Allison Brown	0	2
Abby Lowe	0	2

*SDSU totals only

^must have played in the game

Jumpin' Jehosaphat, Juniors!

The Aztecs' junior class has been anything but junior. During the 2015-16 season, Allison Brown, McKynzie Fort, Geena Gomez, Cheyenne Greenhouse and Lexy Thorderson averaged a combined 21.56 minutes per game, 7.17 points per game, 1.29 steals per game and 2.94 rebounds per game. The group accounted for 47.7 percent of SDSU's total offense a season ago, logging 41.2 percent of the team's total minutes played. Also excelling in the classroom, Greenhouse and Thorderson earned Academic All-Mountain West honors.

The New Aztecs on the Block

San Diego State newcomers are looking to leave a legacy on Montezuma Mesa. Recent high school graduates Monique Terry (San Antonio, Texas), Baylee Vanderdoes (Auburn, Calif.), Naomi Ekwedike (Lagos, Nigeria) and Abby Lowe (Stockport, England) signed National Letters of Intent for the 2016-17 campaign. The four freshmen will join University of Washington transfer Khalia Lark (Irvine, Calif.), a junior for the 2016-17 season who enrolled at SDSU prior to the Spring 2016 semester and is eligible Dec. 22.

A McDonald's All-America nominee, Terry was rated a three-star recruit by espnW and was given a scouts grade of 89. During her junior season at Brennan High School, the 6-2 forward was the lone player in District 27-6A to average a double-double, posting 10.3 points and 10.4 rebounds per game while leading the district with a .540 field-goal percentage. She was also named the District 27-6A's defensive player of the year and received all-region honors.

Vanderdoes played prep ball at Placer High School, where she averaged 21.1 points, 11.0 rebounds and 3.6 blocks per contest as a senior, earning a spot on the MaxPreps Division IV all-California state second team. The 6-1 forward was also named the Pioneer Valley League's most valuable player on two occasions and received second-team all-metro honors from the Sacramento Bee. She holds Placer High's single-game record for points scored (41) and blocked shots (11). Like Terry, Vanderdoes received a scouts grade of 89 and was rated a three-star recruit by espnW. Her brother, Eddie, is a defensive lineman at UCLA.

A native of Lagos, Nigeria, Ekwedike is a 6-6 post player who prepped for three years at Potter's House Christian Academy in Jacksonville, Fla., where she was a member of two state championship teams and helped her squad win a national championship in the National Christian School Athletic Association tournament in 2015. Ekwedike was also rated a three-star recruit by espnW and given a scouts grade of 88.

Rounding out the 2016 recruiting class is Lowe, who played two years at the Barking Abbey Academy near London, helping the Crusaders capture the first-ever Women's Elite Academy Basketball League title last season. In addition, the 5-11 shooting guard earned a silver medal for the U16 squad representing England at the European Championships in 2014.

A highly successful prep player at powerhouse Mater Dei High School in Orange County, Lark helped the Monarchs win two CIF championships, one state title and one national championship alongside fellow Aztec Allison Brown. As a sophomore, Lark's Mater Dei squad posted a 34-3 record and captured the Southern Section Division IAA crown, where she scored 14 points in the championship game.

A 6-foot guard, Lark appeared in 29 games over one-and-a-half seasons at Washington, where she averaged 2.5 points and 1.5 rebounds while shooting 38 percent from three-point range. As a freshman, she scored a career-high 10 points in a victory over Seattle University and grabbed a personal-best five rebounds that season in the Pac-12 title

MW STANDINGS

	MW	Overall
Boise State (RV/-)	0-0	3-0
UNLV	0-0	3-0
Utah State	0-0	3-0
Nevada	0-0	3-1
Wyoming	0-0	3-1
New Mexico	0-0	2-1
Colorado State (RV/-)	0-0	1-2
Fresno State	0-0	1-2
San Diego State	0-0	1-3
San José State	0-0	1-3
Air Force	0-0	0-3

MW SCHEDULE

Tuesday, November 22

Southern Utah at UTAH STATE, 5:30 p.m.
Adams State at WYOMING, 5:30 p.m. MT

Wednesday, November 23

Adams State at COLORADO STATE, 2:30 p.m. MT
AIR FORCE at Army West Point, 7 p.m. ET

Friday, November 25

FRESNO STATE vs. Belmont, Noon PT
UTAH STATE vs. Incarnate Word, 2 p.m. MT
BOISE STATE at Saint Mary's, 2 p.m. PT
Navy at NEVADA, 2 p.m. PT
SAN JOSÉ STATE at Hawai'i, 5:30 p.m. HT
Tulsa at NEW MEXICO, 7 p.m. MT

Saturday, November 26

BYU/St. Joseph's at NEW MEXICO, TBD MT
SAN DIEGO STATE vs. UT Arlington, Noon ET
BOISE STATE vs. Charlotte, Noon PT
Tennessee State at UNLV, Noon PT
AIR FORCE at Fairleigh Dickinson, 1 p.m. ET
FRESNO STATE vs. UC Irvine, 1 p.m. PT
Arkansas/Memphis at NEVADA, 2/4:30 p.m. PT
SAN JOSÉ STATE vs. 7/7 Mississippi State, 3 p.m. HT

Sunday, November 27

SAN DIEGO STATE vs. Central Connecticut State/at Seton Hall, TBD ET
Ole Miss/Wisconsin at UNLV, Noon, 2:30 p.m. PT
COLORADO STATE at 13/12 Oklahoma, 2 p.m. CT
WYOMING at Drake, 2 p.m. CT
UTAH STATE at Montana, 2 p.m. MT
SAN JOSÉ STATE vs. Oregon, 2 p.m. HT

@AZTECWBB IN THE NATION

SDSU Rankings In National Top 100 (2015-16)

Category	Value	Rank
Fewest Fouls	477	45
Fewest Turnovers	463	84
Personal Fouls Per Game	15.4	50
Turnovers Per Game	14.9	100

SDSU RECORD WHEN...

Playing at home	1-1
Playing on the road	0-2
Playing at a neutral site	0-0
Playing a night game (5 pm or later)	1-2
Playing a day game	0-1
Leading at halftime	1-0
Trailing at halftime	0-3
Tied at halftime	0-0
Leading with 5:00 left in regulation	1-0
Trailing with 5:00 left in regulation	0-3
Tied with 5:00 left	0-0
In overtime	0-0
Scoring less than 60 points	0-3
Scoring between 60-69 points	0-0
Scoring between 70-79 points	0-0
Scoring between 80-89 points	1-0
Scoring 90 or more points	0-0
Opponent scores less than 60 points	0-0
Opponent scores 60-69 points	0-1
Opponent scores 70-79 points	1-1
Opponent scores 80-89 points	0-0
Opponent scores 90 or more points	0-1
FG% .500 or better	1-0
FG% under .500	0-0
FG% .400-.500	0-0
FG% under .400	0-3
Opponent FG% .500 or better	0-2
Opponent FG% under .500	1-0
Opponent FG% .400-.500	0-0
Opponent FG% under .400	1-1
Better shooting %	1-0
Worse shooting %	0-3
More FG attempts	0-3
Fewer FG attempts	1-0
Same FG attempts	0-0
More FGs made	1-0
Fewer FGs made	0-3
Same FGs made	0-0
More FT attempts	0-2
Fewer FT attempts	1-1
Same FT attempts	0-0
More FTs made	1-1
Fewer FTs made	0-1
Same FTs made	0-1
More rebounds	1-1
Fewer rebounds	0-2
Same rebounds	0-0
More turnovers	1-1
Fewer turnovers	0-1
Same turnovers	0-1
More assists	1-0
Fewer assists	0-3
Same assists	0-0
More steals	0-0
Fewer steals	0-2
Same steals	1-1

SDSU STREAKS

Last 5 games	1-3
Last 10 games	1-3
Longest winning streak	1
Longest losing streak	2
Current streak	Last 2

game vs. California.

Stiff Slate

The Aztecs will have to contend with a challenging schedule for the 2016-17 campaign, as SDSU will face seven teams that advanced to the postseason. San Diego State opens the season with a battle at UC Riverside, which played in the first round of the WNIT. Six days later, the Scarlet and Black visits crosstown rival San Diego, which advanced to the third round of the prestigious tournament. Over Thanksgiving Weekend, SDSU plays at the Seton Hall Tournament and could face the Pirates, returning in 2016-17 from a NCAA Tournament first-round showing. On Fri., Dec. 9, San Diego State welcomes Michigan to Viejas Arena, which is coming off of a WNIT semifinal appearance. Additionally, SDSU faces conference foes Fresno State, New Mexico and Colorado State twice each, all of which made appearances in the WNIT.

2016-17 By the Numbers

With a new season upon Montezuma Mesa, head coach Stacie Terry's fourth season is one brewing with promise. Below are trends to watch for in 2016-17:

- The Aztecs are true believers in the home court advantage. They enter the season with wins in 50 of its last 75 home games and have gone 82-37 on the Viejas Arena floor since the start of the 2008-09 campaign.
- With the game on the line, the Scarlet and Black gets the job done. The team has won 55 straight and has gone 86-1 since the beginning of the 2011-12 campaign when leading with five minutes left in the game. The Aztecs' lone blemish during that span occurred in a 59-58 heart-breaking loss at Washington on Dec. 5, 2012.
- The Aztecs are fond of closing out the calendar year on a high note. SDSU is 39-19 in December games dating back to the 2006-07 campaign, with seven of those losses coming against teams either ranked or receiving votes in the national polls.
- Over the last nine seasons, San Diego State has been solid in conference play. SDSU has recorded 87 Mountain West victories after posting 31 wins in the league's first nine years.
- The Aztecs have advanced to finals of the MW Championship in five of the last nine years, and advanced in the tournament every season since 2010-11, after not winning a single game in the tournament's first eight years of existence.

Listen Live

For the 16th consecutive year, Aztec women's basketball fans will have an opportunity to listen to live play-by-play of regular-season games over the internet at www.goaztecs.com.

SDSU alumnus Chris Ello begins his ninth season of calling the action and is a familiar voice in the San Diego area. In addition to his responsibilities with the Aztec women's basketball squad, Ello is a member of the football broadcast team as a sideline reporter for the school's flagship station, The Mighty 1090 AM.

Ello started his career in sports talk radio in San Diego on XTRA Sports 690 in the summer of 1994. He has accumulated a wealth of experience doing play-by-play for a variety of sports at every level, including stints with the SDSU football (1985), baseball (1998-99) and men's basketball (2006-07) squads.

From 1996-2006, Ello was the voice of the San Diego Gulls hockey team and has called the action for the San Diego Sockers (indoor soccer), San Diego Spirit (outdoor soccer), San Diego Wildcards (CBA) and San Diego Riptide (arena football). He also has experience broadcasting high school CIF football and basketball games since 2000.

For the fourth straight year, all regular-season Aztec home contests in 2016-17 will feature a live video stream via the Mountain West Network to supplement the audio call from Viejas Arena.

ASSOCIATED PRESS POLL

(Week 3 - Nov. 21)

Rk		Record	Pts
1	Notre Dame (16)	4-0	804
2	Connecticut (16)	3-0	797
3	South Carolina (11)	2-0	755
4	Louisville	5-0	707
5	Baylor	3-1	704
6	Maryland	4-0	665
7	Mississippi State	4-0	614
8	Ohio State	3-1	591
9	UCLA	3-1	533
10	Florida State	3-1	502
11	Stanford	3-1	448
11	Syracuse	3-0	448
13	Oklahoma	3-0	389
14	Texas	1-2	376
15	Washington	3-1	348
16	Florida	3-0	300
17	Tennessee	3-1	257
18	DePaul	3-0	256
19	West Virginia	3-0	214
20	Kentucky	3-1	205
21	Miami	3-1	155
22	Oregon State	3-0	147
23	Arizona State	2-1	98
24	Michigan State	4-0	84
25	Gonzaga	3-0	62

First-place votes in parentheses

Others receiving votes: Auburn 55, Missouri 52, Colorado 41, Indiana 27, Texas A&M 26, Marquette 18, South Dakota State 12, South Florida 8, Green Bay 7, NC State 7, Saint Louis 6, Western Kentucky 3, California 2, Boise State 1, Duke 1

USA TODAY COACHES POLL

(Week 2 - Nov. 21)

Rk		Record	Pts
1	Notre Dame (17)	4-0	776
2	Connecticut (13)	3-0	773
3	South Carolina (2)	3-0	741
4	Louisville	6-0	670
5	Maryland	4-0	666
6	Baylor	3-1	661
7	Mississippi State	4-0	601
8	Ohio State	3-1	558
9	Florida State	3-1	490
10	UCLA	3-1	475
11	Stanford	3-1	452
12	Oklahoma	3-0	392
13	Washington	3-1	379
14	Texas	1-2	353
15	Oregon State	3-0	315
16	Tennessee	3-1	275
17	DePaul	3-0	272
18	Syracuse	3-1	260
19	Michigan State	4-0	197
20	Florida	3-0	182
21	Arizona State	2-1	168
22	Miami	3-1	143
23	West Virginia	3-0	125
24	Kentucky	3-1	124
25	Texas A&M	3-0	83

First-place votes in parentheses

Others receiving votes: Gonzaga 58, Michigan 36, South Dakota State 35, South Florida 33, Green Bay 20, NC State 19, California 13, Georgia Tech 9, Missouri 8, Duke 6, Penn State 6, Saint Louis 5, Auburn 5, Oklahoma State 4, Temple 3, Western Kentucky 3, Marquette 2, Indiana 2, Tulane 1, Virginia Tech 1

PERSONNEL SUMMARY

Returning Starters (3):

Ariell Bostick, Sr., G (4.9 ppg, 4.2 rpg, 2.9 apg)
 McKynzie Fort, Jr., G (14.3 ppg, 4.1 rpg, 2.4 apg)
 Cheyenne Greenhouse, Jr., G (4.9 ppg, 3.2 rpg, 0.5 apg)

Starters Lost (2):

Ahijaleé Harvey, G (9.3 ppg, 3.6 rpg, 2.1 apg)
 Deidra Smith, F (7.5 ppg, 4.9 rpg, 0.5 bpg)

Other Players Lost (1):

Kylie Herd, Jr., G (10.2 mpg, 1.3 rpg)

Other Letterwinners Returning (5):

Aleiah Brandon, Sr., F (3.4 ppg, 2.4 rpg)
 Kymberly Ellison, Sr., G (4.5 ppg, 0.7 apg, 33 3FGs)
 Arantxa Gómez Ferrer, So., F (0.6 ppg, 0.9 rpg)
 Geena Gomez, Jr., G (3.4 ppg, 1.9 rpg, 1.3 apg)
 Lexy Thorderson, Jr., F/G (5.2 ppg, 2.2 rpg, 40 3FGs)

Other Players Returning (1):

Allison Brown, Jr., G (9 gms)

Newcomers (5):

Naomi Ekwedike, Fr., F, 6-6, Lagos, Nigeria
 (Potter's House Christian Academy (Fla.))
 Khalia Lark, Jr., G, 6-0, Santa Ana, Calif.
 (Washington/Mater Dei HS)
 Abby Lowe, Fr., G, 5-11, Stockport, England
 (Barking Abbey Academy)
 Monique Terry, Fr., F, 6-2, San Antonio, Texas
 (Brennan HS)
 Baylee Vanderdoes, Fr., F, 6-2, Auburn, Calif.
 (Placer HS)

ROSTER BREAKDOWN

By Class

Seniors (3): Bostick, Brandon, Ellison; **Juniors (6):** Brown, Fort, G. Gomez, Greenhouse, Lark, Thorderson; **Sophomore (1):** A. Gómez Ferrer; **Freshmen (4):** Ekwedike, Lowe, Terry, Vanderdoes

By State/Country

California (8): Bostick, Brandon, Brown, Fort, G. Gomez, Greenhouse, Lark, Vanderdoes; **Colorado (1):** Thorderson; **Texas (1):** Terry; **Georgia (1):** Ellison; **Spain (1):** A. Gómez Ferrer; **England (1):** Lowe; **Nigeria (1):** Ekwedike

By Position

Centers (1): Ekwedike; **Forwards (4):** Brandon, A. Gómez Ferrer, Terry, Thorderson, Vanderdoes; **Guards (8):** Bostick, Brown, Ellison, Fort, G. Gomez, Greenhouse, Lark, Lowe, Thorderson

By Height

6-6 (1): Ekwedike; **6-2 (1):** Terry; **6-1 (2):** Brandon, Vanderdoes; **6-0 (3):** A. Gómez Ferrer, Lark, Thorderson; **5-11 (2):** Greenhouse, Lowe; **5-9 (1):** Fort; **5-8 (1):** G. Gomez; **5-7 (2):** Brown, Ellison; **5-4 (1):** Bostick

2016-17 NUMERICAL ROSTER

No.	Name	Pos.	Ht.	Yr.	Exp.	Hometown (Previous School/High School)
1	Khaliya Lark	F	6-0	Jr.	TR	Santa Ana, Calif. (Washington/Mater Dei HS)
3	Ariell Bostick	G	5-4	Sr.	3L	Oakland, Calif. (Bishop O'Dowd HS)
4	Kymberly Ellison	G	5-7	Sr.	1L	Columbus, Ga. (Georgia Tech/Hardaway HS)
11	Arantxa Gómez Ferrer	F	6-0	So.	1L	Valencia, Spain (Parque Colegio Santa Ana HS)
13	Allison Brown	G	5-7	Jr.	SQ	Anaheim Hills, Calif. (Mater Dei HS)
15	McKynzie Fort	G	5-9	Jr.	2L	Fontana, Calif. (Etiwanda HS)
20	Geena Gomez	G	5-8	Jr.	1L	Huntington Beach, Calif. (St. Joseph's (Pa.)/Edison HS)
21	Abby Lowe	G	5-11	Fr.	HS	Stockport, England (Barking Abbey Academy)
22	Lexy Thorderson	G/F	6-0	Jr.	2L	Castle Rock, Colo. (Rock Canyon HS)
30	Cheyenne Greenhouse	G	5-11	Jr.	2L	Riverside, Calif. (Canyon Springs HS)
34	Baylee Vanderdoes	F	6-2	Fr.	HS	Auburn, Calif. (Placer HS)
40	Monique Terry	F	6-2	Fr.	HS	San Antonio, Texas (Brennan HS)
44	Aleiah Brandon	F	6-1	Sr.	3L	Corona, Calif. (Centennial HS)
45	Naomi Ekwedike	F	6-6	Fr.	HS	Lagos, Nigeria (Potters House Christian Academy)

2016-17 ALPHABETICAL ROSTER

No.	Name	Pos.	Ht.	Yr.	Exp.	Hometown (Previous School/High School)
3	Ariell Bostick	G	5-4	Sr.	3L	Oakland, Calif. (Bishop O'Dowd HS)
44	Aleiah Brandon	F	6-1	Sr.	3L	Corona, Calif. (Centennial HS)
13	Allison Brown	G	5-7	Jr.	SQ	Anaheim Hills, Calif. (Mater Dei HS)
45	Naomi Ekwedike	F	6-6	Fr.	HS	Lagos, Nigeria (Potters House Christian Academy (Fla.))
4	Kymberly Ellison	G	5-7	Sr.	1L	Columbus, Ga. (Georgia Tech/Hardaway HS)
15	McKynzie Fort	G	5-9	Jr.	2L	Fontana, Calif. (Etiwanda HS)
20	Geena Gomez	G	5-8	Jr.	1L	Huntington Beach, Calif. (St. Joseph's (Pa.)/Edison HS)
11	Arantxa Gómez Ferrer	F	6-0	So.	1L	Valencia, Spain (Parque Colegio Santa Ana HS)
30	Cheyenne Greenhouse	G	5-11	Jr.	2L	Riverside, Calif. (Canyon Springs HS)
1	Khaliya Lark	F	6-0	Jr.	TR	Santa Ana, Calif. (Washington/Mater Dei HS)
21	Abby Lowe	G	5-11	Fr.	HS	Stockport, England (Barking Abbey HS)
40	Monique Terry	F	6-2	Fr.	HS	San Antonio, Texas (Brennan HS)
22	Lexy Thorderson	G/F	6-0	So.	1L	Castle Rock, Colo. (Rock Canyon HS)
34	Baylee Vanderdoes	F	6-2	Fr.	HS	Auburn, Calif. (Placer HS)

Head Coach: Stacie Terry (UT Arlington, 1998), Fourth season at SDSU/Fourth overall

Assistant Coach: Jesse Clark (Pacific Union, 2003), Fourth season at SDSU

Assistant Coach: Ciara Carl (Point Loma Nazarene, 2005), Fourth season at SDSU

Assistant Coach: Nick Grant (Baylor, 2010), Third season at SDSU

Director of Operations: Jon Silver (UCLA, 2009), First season at SDSU

Director of Player Personnel: Paris Johnson (San Diego State, 2011), First season at SDSU

2016-17 PRONUNCIATION GUIDE

Ariell Bostick	arr-EE-ell
Aleiah Brandon	uh-LAY-uh
Naomi Ekwedike	nay-O-mee eck-wed-EE-kay
Arantxa Gómez	uh-RON-cha
McKynzie Fort	ma-KEN-zee
Baylee Vanderdoes	VAN-der-doze
Ciara Carl	see-ARR-uh

STACIE TERRY

Head Coach
 Fourth Year at San Diego State; Fourth Year Overall
 UT Arlington, 1998



THE STACIE TERRY FILE

Hometown

San Diego, Calif.

Education

Bachelor of Arts -
 Broadcast Journalism
 UT Arlington, 1998

Playing Experience

1994-98
 UT Arlington

Head Coaching Experience

2013-present
 San Diego State

Previous Coaching Experience

2011-13
 LSU
 Assistant Coach

2008-11

UCLA
 Assistant Coach

2007-08

Southern Mississippi
 Recruiting Coordinator

2004-07

Illinois
 Assistant Coach

2003-04

Dayton
 Assistant Coach

2000-03

Louisville
 Assistant Coach

1999-2000

UT Arlington
 Graduate Assistant

San Diego native Stacie Terry enters her fourth year at the helm of the Aztec women's basketball team after she was named the eighth head coach in program history on May 15, 2013.

Under Terry's direction, SDSU has continued its trend of garnering all-conference honors. In 2015-16, following a campaign that saw her team finish sixth in the league with 14.4 points per game and was tied for third with two steals per game, sophomore McKynzie Fort earned nods on the MW All-Defensive Team and as an All-MW honorable mention pick. San Diego State's 34th All-MW recipient, the Aztecs have picked up a conference nod each of the last 17 seasons.

During her first season on Montezuma Mesa, Terry was saddled with the unenviable task of replacing four senior starters who accounted for nearly 64 percent of the team's scoring offense from the previous year, as well as overcoming the loss of two key players to injuries prior to conference play.

Despite those obstacles and a demanding schedule featuring nine games against teams that eventually advanced to postseason competition, Terry's squad flashed its resiliency during the 2013-14 campaign. The Aztecs led the league in rebounding margin and rebounding defense while ranking second in field-goal percentage.

Individually, Terry also oversaw the progress of senior center Cierra Warren, who became the fifth SDSU player in a six-year span to receive first-team all-MW recognition.

Prior to her arrival on The Mesa, Terry gained a wealth of experience as an assistant coach at the Division I level for 14 years, including five under head coach Nikki (Caldwell) Fargas, who transformed UCLA into a powerhouse before restoring LSU to national prominence.

During Terry's two seasons at LSU, the Lady Tigers compiled a 45-23 overall record and earned two NCAA tournament bids, including a Sweet 16 appearance during the 2012-13 campaign. During that season, the Lady Tigers also posted six victories against ranked opponents and finished with their second-highest scoring average (69.0) in the last seven years. Under Terry's guidance, forward LaShondra Barrett garnered first-team all-Southeastern Conference accolades and received honorable mention All-America distinction in 2012 before becoming a first-round draft choice of the WNBA's Washington Mystics.

Prior to her appointment at LSU, Terry served as an assistant under Fargas at UCLA from 2008-11, helping the Bruins gain national acclaim with a pair of NCAA tournament appearances. During Terry's tenure, UCLA posted 72 overall victories, as the 2010-11 squad finished with a 28-5 record, setting a school record for fewest losses in a single season to go with a No. 7 national ranking. In addition, the Bruins signed the fourth-ranked recruiting class that season, according to ESPN HoopGurlz, while Terry helped mentor first-team all-Pac-10 performers in Doreena Campbell, Darxia Morris and Jasmine Dixon, a 2012 honorable mention AP All-America selection, and all-conference freshman honorees Atonye Nyingifa and Markel Walker.

Terry spent the 2007-08 campaign at Southern Mississippi, as the Golden Eagles posted a 21-14 record and earned a postseason berth in the Women's National Invitation Tournament (WNIT). While at Southern Miss, Terry spearheaded the development and coordination of the Lady Eagle recruiting campaign. Her responsibilities also included working with the perimeter players, scouting opponents and film breakdown, as well as coordinating all of the team's community service events.

Terry also coached for three seasons from 2004-07 as an assistant under Hall of Fame head coach Theresa Grentz at Illinois, where the Fighting Illini had three straight recruiting classes

ranked among the top 25 in the nation, according to Blue Star Basketball, and made three consecutive trips to the WNIT. Her primary duties included defensive instruction and working with the perimeter players.

In addition, Terry coached at Dayton during the 2003-04 season following a three-year stint at Louisville from 2000-03. With the Cardinals, Terry's responsibilities encompassed recruiting, scouting, player development, summer camps and serving as a liaison for the program's community service outreach. Louisville captured the Conference USA regular-season title and earned a trip to the NCAA tournament in 2001 before making a WNIT appearance in 2002. She also assisted in signing the nation's 21st-ranked recruiting class in 2002-03, according to All-Star Girls Report. Terry recruited and coached all-Conference USA honoree Lori Nero, a draft choice of the WNBA's Houston Comets, as well as Sara Nord, who finished her collegiate career as the Cardinals' all-time assist leader and ranks among the top-15 scorers in school history.

Terry enjoyed a successful collegiate playing career at the University of Texas at Arlington, winning four varsity letters from 1994-98 under head coach Mike Dean. She earned first-team all-Southland Conference honors after leading the Mavericks in scoring with 17.4 points per game as a senior in 1997-98. Terry scored 1,169 points during her career at UTA and still ranks among the school's top 10 in 3-point field goals made (third), assists (sixth), steals (seventh), 3-point field goal percentage (ninth) and free-throw percentage (10th). Additionally, she is just one of 17 players in Maverick history to surpass the 1,000-point plateau.

Terry played one season of professional basketball in Warsaw, Poland, averaging 12.0 points and 6.0 assists with the Polonia Phoenix, before returning to UT Arlington to begin her coaching career as a graduate assistant in 1999.

Terry prepped at El Capitan High and held the Vaqueros' career scoring record for three years following her graduation. She was inducted into the school's athletic hall of fame in 2008.



#3 ARIELL BOSTICK

Senior • 3L

5-4

Guard

Oakland, Calif.

Bishop O'Dowd High School

Team's top facilitator who gets to the rim and free-throw line often with speed

▶▶▶ GAME HIGHS

	CAREER	2016-17 SEASON
Points	19, vs. Boise State (2-5-14)	9, at San Diego (11-17-16)
Rebounds	10, at Wyoming (12-30-15)	9, vs. Loyola Marymount (11-20-16)
Assists	8, Twice, Last: vs. San Diego Christian (11-14-16)	8, vs. San Diego Christian (11-14-16)
Steals	5, Twice, Last: at New Mexico (3-1-16)	4, vs. Loyola Marymount (11-20-16)
Blocks	1, Four times, Last: at Wyoming (12-30-15)	N/A
Field Goals	7, vs. Colorado State (1-2-14)	3, at San Diego (11-17-16)
Field Goal Attempts	16, Twice, Last: vs. Wyoming (2-12-14)	9, at San Diego (11-17-16)
3-pt. Field Goals	3, vs. San José State (1-22-14)	1, at San Diego (11-17-16)
3-pt. Field Goal Attempts	7, vs. Wyoming (2-12-14)	4, at San Diego (11-17-16)
Free Throws	5, Four times, Last: vs. Boise State (2-15-14)	2, at San Diego (11-17-16)
Free Throw Attempts	8, at UC Santa Barbara (11-30-13)	2, Twice, Last: vs. Loyola Marymount (11-20-16)
Double-Figure Scoring Games	18	N/A
Double-Figure Rebounding Games	1	N/A
Double-Doubles	N/A	N/A

▶▶▶ 2016-17 GAME-BY-GAME STATISTICS

Opponent	GS	Min	TOTAL			3-PTS			FT	FTA	Pct	REBOUNDS				PF	A	TO	Blk	Stl	Pts	Avg	
			FG	FGA	Pct	3FG	FGA	Pct				Off	Def	Tot	Avg								
at UC Riverside	*	25	0	2	.000	0	0	.000	0	0	.000	0	8	8	8.0	1	2	2	0	2	0	0.0	
SAN DIEGO CHRISTIAN	*	26	2	3	.666	0	0	.000	0	0	.000	0	6	6	7.0	1	8	2	0	1	4	2.0	
at San Diego	*	23	3	9	.333	1	4	.250	2	2	1.000	0	1	1	5.0	3	1	0	0	2	9	4.3	
LOYOLA MARYMOUNT	*	31	0	3	.000	0	1	.000	1	2	.500	2	7	9	6.0	3	1	3	0	4	1	3.5	
vs. UT Arlington																							
vs. Cen. Conn. St./Seton Hall																							
at UC Davis																							
MICHIGAN																							
UC SANTA BARBARA																							
at Cal State Fullerton																							
BIOLA																							
at New Mexico																							
NEVADA																							
BOISE STATE																							
at San Jose State																							
at Utah State																							
UNLV																							
AIR FORCE																							
at Colorado State																							
at Wyoming																							
FRESNO STATE																							
SAN JOSE STATE																							
at Nevada																							
UTAH STATE																							
at UNLV																							
at Fresno State																							
COLORADO STATE																							
at Air Force																							
NEW MEXICO																							
TOTALS		4	105	5	17	.294	1	5	.200	3	4	.750	2	22	24	6.0	8	12	7	0	9	14	3.5

BOSTICK'S CAREER STATISTICS

Year	GP-GS	MIN-AVG	FG-A	PCT	3P-A	PCT	FT-A	PCT	REB	AVG	PF-FO	A	TO	BLK	STL	PTS	AVG
2013-14	23-13	576-25.0	79-203	.389	19-58	.328	39-57	.684	71	3.1	51-1	65	67	2	32	216	9.4
2014-15	23-5	476-21.6	44-144	.306	11-37	.297	25-38	.658	58	2.5	30-0	42	46	6	27	124	5.4
2015-16	31-27	805-26.0	54-149	.362	6-32	.188	37-57	.649	131	4.2	67-0	89	73	2	56	151	4.9
2016-17	4-4	105-26.3	5-17	.294	1-5	.200	3-4	.750	24	6.0	8-0	12	7	0	9	14	3.5
Totals	81-47	1962-24.2	182-515	.353	37-132	.280	104-156	.667	284	3.5	156-1	208	193	10	124	505	6.2



#44 ALEIAH BRANDON

Senior • 3L

6-1

Forward

Corona, Calif.

Centennial High School

Provides veteran leadership as a fifth-year senior

▶▶▶ GAME HIGHS

	CAREER	2016-17 SEASON
Points	11, Twice, Last: at Fresno State (1-20-16)	N/A
Rebounds	6, vs. UC Davis (11-19-16)	N/A
Assists	2, Five times, Last: vs. UNLV (1-30-16)	N/A
Steals	2, Six times, Last: at Fresno State (1-20-16)	N/A
Blocks	2, Three times, Last: vs. San Jose State (2-20-16)	N/A
Field Goals	5, at Fresno State (1-20-16)	N/A
Field Goal Attempts	9, at Fresno State (1-20-16)	N/A
3-pt. Field Goals	2, at Washington (11-13-15)	N/A
3-pt. Field Goal Attempts	5, Three times, Last: vs. Wisconsin (11-29-15)	N/A
Free Throws	2, Four times, Last: vs. San Jose State (2-20-16)	N/A
Free Throw Attempts	2, Five times, Last: vs. San Jose State (2-20-16)	N/A
Double-Figure Scoring Games	3	N/A
Double-Figure Rebounding Games	N/A	N/A
Double-Doubles	N/A	N/A

▶▶▶ 2016-17 GAME-BY-GAME STATISTICS

Opponent	GS	Min	TOTAL			3-PTS			FT	FTA	Pct	REBOUNDS				PF	A	TO	Blk	Stl	Pts	Avg	
			FG	FGA	Pct	3FG	FGA	Pct				Off	Def	Tot	Avg								
at UC Riverside																							
SAN DIEGO CHRISTIAN									Did Not Play														
at San Diego									Did Not Play														
LOYOLA MARYMOUNT									Did Not Play														
vs. UT Arlington									Did Not Play														
vs. Cen. Conn. St./Seton Hall									Did Not Play														
at UC Davis																							
MICHIGAN																							
UC SANTA BARBARA																							
at Cal State Fullerton																							
BIOLA																							
at New Mexico																							
NEVADA																							
BOISE STATE																							
at San Jose State																							
at Utah State																							
UNLV																							
AIR FORCE																							
at Colorado State																							
at Wyoming																							
FRESNO STATE																							
SAN JOSE STATE																							
at Nevada																							
UTAH STATE																							
at UNLV																							
at Fresno State																							
COLORADO STATE																							
at Air Force																							
NEW MEXICO																							

TOTALS

BRANDON'S CAREER STATISTICS																					
Year	GP-GS	MIN-AVG	FG-A	PCT	3P-A	PCT	FT-A	PCT	REB	AVG	PF-FO	A	TO	BLK	STL	PTS	AVG				
2012-13	17-0	109-6.4	13-21	.619	0-0	.000	0-0	.000	14	0.8	9-0	0	5	5	2	26	1.5				
2013-14	-	Redshirt Year	-	-	-	-	-	-	-	-	-	-	-	-	-	-	-				
2014-15	30-0	281-9.4	24-51	.471	10-29	.345	6-6	1.000	31	1.0	37-0	7	20	2	7	64	2.1				
2015-16	26-18	494-19.0	37-111	.333	11-41	.268	3-4	.750	62	2.4	54-1	15	28	10	14	88	3.4				
2016-17	--	--	--	--	--	--	--	--	--	--	--	--	--	--	--	--	--				
Totals	73-18	884-12.1	74-183	.404	21-70	.300	9-10	.900	107	1.5	100-1	22	53	17	23	178	2.4				



#4 KYMBERLY ELLISON

Senior • 1L
 5-7
 Guard
 Columbus, Ga.
 Georgia Tech / Hardaway High School

A talented passer with strong floor vision who also excels at knocking down threes

▶▶▶ GAME HIGHS

	CAREER	2016-17 SEASON
Points	14, vs. San Diego (12-3-15)	12, vs. San Diego Christian (11-14-16)
Rebounds	3, Three times, Last: vs. Nevada (1-27-16)	5, vs. Loyola Marymount (11-20-16)
Assists	3, at Utah State (1-23-16)	3, vs. San Diego Christian (11-14-16)
Steals	4, at Utah State (1-23-16)	2, Twice, Last: vs. Loyola Marymount (11-20-16)
Blocks	1, Twice, Last: vs. Fresno State (2-10-16)	1, at San Diego (11-17-16)
Field Goals	5, Twice, Last: vs. Nevada (1-27-16)	4, vs. San Diego Christian (11-14-16)
Field Goal Attempts	10, Twice, Last: vs. UNLV (1-30-16)	11, vs. Loyola Marymount (11-20-16)
3-pt. Field Goals	3, Four times, Last: vs. San Jose State (2-20-16)	3, vs. San Diego Christian (11-14-16)
3-pt. Field Goal Attempts	8, vs. UNLV (1-30-16)	8, vs. Loyola Marymount (11-20-16)
Free Throws	3, at Wyoming (12-30-15)	6, at San Diego (11-17-16)
Free Throw Attempts	4, at Wyoming (12-30-15)	8, at San Diego (11-17-16)
Double-Figure Scoring Games	5	1
Double-Figure Rebounding Games	N/A	N/A
Double-Doubles	N/A	N/A

▶▶▶ 2016-17 GAME-BY-GAME STATISTICS

Opponent	GS	Min	TOTAL			3-PTS			FT	FTA	Pct	Off	REBOUNDS				PF	A	TO	Blk	Stl	Pts	Avg
			FG	FGA	Pct	3FG	FGA	Pct					Def	Tot	Avg								
at UC Riverside	*	21	2	8	.250	2	6	.333	0	0	.000	0	1	1	1.0	4	0	2	0	0	0	6	6.0
SAN DIEGO CHRISTIAN	*	35	4	6	.666	3	4	.750	1	2	.500	0	3	3	2.0	3	3	2	0	0	0	12	9.0
at San Diego	*	25	0	9	.000	0	5	.000	6	8	.750	0	3	3	2.3	2	1	1	1	2	2	6	8.0
LOYOLA MARYMOUNT	*	25	3	11	.273	2	8	.250	0	0	.000	2	3	5	3.0	1	1	3	0	2	8	8.0	
vs. UT Arlington																							
vs. Gen. Conn. St./Seton Hall																							
at UC Davis																							
MICHIGAN																							
UC SANTA BARBARA																							
at Cal State Fullerton																							
BIOLA																							
at New Mexico																							
NEVADA																							
BOISE STATE																							
at San Jose State																							
at Utah State																							
UNLV																							
AIR FORCE																							
at Colorado State																							
at Wyoming																							
FRESNO STATE																							
SAN JOSE STATE																							
at Nevada																							
UTAH STATE																							
at UNLV																							
at Fresno State																							
COLORADO STATE																							
at Air Force																							
NEW MEXICO																							
TOTALS		4	106	9	34	.265	7	23	.304	7	10	.700	2	10	12	3.0	10	5	8	1	4	32	8.0

ELLISON'S CAREER STATISTICS

Year	GP-GS	MIN-AVG	FG-A	PCT	3P-A	PCT	FT-A	PCT	REB	AVG	PF-FO	A	TO	BLK	STL	PTS	AVG
2012-13*	4-0	2-0.5	1-2	.500	1-2	.500	0-0	.000	0	0.0	0-0	0	0	0	0	3	0.8
2013-14*	11-0	21-1.9	1-5	.200	0-3	.000	0-0	.000	2	0.2	2-0	4	4	1	1	2	0.2
2014-15	-	Redshirt Year	-	-	-	-	-	-	-	-	-	-	-	-	-	-	-
2015-16	31-0	396-12.8	47-155	.303	33-126	.262	13-18	.722	25	0.8	39-1	21	32	1	18	140	4.5
2016-17	4-4	106-26.5	9-34	.265	7-23	.304	7-10	.700	12	3.0	10-0	5	8	1	4	32	8.0
Totals	50-4	525-10.5	58-196	.296	41-154	.266	20-28	.714	39	0.8	51-1	30	44	3	23	177	3.6



#13 ALLISON BROWN

Junior • SQ

5-7

Guard

Anaheim Hills, Calif.

Mater Dei High School

A walk-on who earned a scholarship for the 2016-17 campaign

▶▶▶ GAME HIGHS

	CAREER	2016-17 SEASON
Points	3, Twice, Last: vs. San Diego Christian (12-21-15)	N/A
Rebounds	3, vs. San Diego Christian (12-21-15)	1, vs. San Diego Christian (11-14-16)
Assists	2, vs. Wyoming (1-14-15)	1, vs. San Diego Christian (11-14-16)
Steals	1, at Loyola Marymount (12-10-15)	N/A
Blocks	N/A	N/A
Field Goals	1, Twice, Last: vs. San Diego Christian (12-21-15)	N/A
Field Goal Attempts	3, Twice, Last: vs. Air Force (1-21-15)	1, vs. San Diego Christian (11-14-16)
3-pt. Field Goals	1, Twice, Last: vs. San Diego Christian (12-21-15)	N/A
3-pt. Field Goal Attempts	4, Twice, Last: vs. Air Force (1-21-15)	N/A
Free Throws	N/A	N/A
Free Throw Attempts	2, vs. Michigan (11-29-14)	N/A
Double-Figure Scoring Games	N/A	N/A
Double-Figure Rebounding Games	N/A	N/A
Double-Doubles	N/A	N/A

▶▶▶ 2016-17 GAME-BY-GAME STATISTICS

Opponent	GS	Min	TOTAL			3-PTS			FT	FTA	Pct	Off	REBOUNDS				PF	A	TO	Blk	Stl	Pts	Avg	
			FG	FGA	Pct	3FG	FGA	Pct					Def	Tot	Avg									
at UC Riverside									Did Not Play															
SAN DIEGO CHRISTIAN		9	0	1	.000	0	0	.000	0	0	.000	0	1	1	1.0	1	1	2	0	0	0	0.0		
at San Diego									Did Not Play															
LOYOLA MARYMOUNT									Did Not Play															
vs. UT Arlington									Did Not Play															
vs. Cen. Conn. St./Seton Hall																								
at UC Davis																								
MICHIGAN																								
UC SANTA BARBARA																								
at Cal State Fullerton																								
BIOLA																								
at New Mexico																								
NEVADA																								
BOISE STATE																								
at San Jose State																								
at Utah State																								
UNLV																								
AIR FORCE																								
at Colorado State																								
at Wyoming																								
FRESNO STATE																								
SAN JOSE STATE																								
at Nevada																								
UTAH STATE																								
at UNLV																								
at Fresno State																								
COLORADO STATE																								
at Air Force																								
NEW MEXICO																								
TOTALS																								

BROWN'S CAREER STATISTICS

Year	GP-GS	MIN-AVG	FG-A	PCT	3P-A	PCT	FT-A	PCT	REB	AVG	PF-FO	A	TO	BLK	STL	PTS	AVG
2014-15	7-0	26-4.3	1-9	.111	1-9	.111	0-2	.000	2	0.3	3-0	2	3	0	0	3	0.4
2015-16	9-0	19-2.1	1-4	.250	1-3	.333	0-0	.000	4	0.4	0-0	2	3	0	1	3	0.3
2016-17	1-0	9-9.0	0-1	.000	0-0	.000	0-0	.000	1	1.0	1-0	1	2	0	0	0	0.0
Totals	17-0	54-3.2	2-14	.143	2-12	.166	0-2	.000	7	0.41	4-0	2	8	0	1	6	0.35



#45 NAOMI EKWEDIKE

Freshman • HS

6-6

Center

Lagos, Nigeria

Potter's House Christian Academy (Fla.)

A quick learner who will be an asset on defense with great hands and footwork to finish around the rim

▶▶▶ GAME HIGHS

	2016-17 SEASON
Points	5, vs. San Diego Christian (11-14-16)
Rebounds	3, at San Diego (11-17-16)
Assists	N/A
Steals	N/A
Blocks	N/A
Field Goals	2, vs. San Diego Christian (11-14-16)
Field Goal Attempts	4, vs. San Diego Christian (11-14-16)
3-pt. Field Goals	N/A
3-pt. Field Goal Attempts	N/A
Free Throws	1, vs. San Diego Christian (11-14-16)
Free Throw Attempts	2, vs. San Diego Christian (11-14-16)
Double-Figure Scoring Games	N/A
Double-Figure Rebounding Games	N/A
Double-Doubles	N/A

▶▶▶ 2016-17 GAME-BY-GAME STATISTICS

Opponent	GS	Min	TOTAL			3-PTS			FT	FTA	Pct	REBOUNDS				PF	A	TO	Blk	Stl	Pts	Avg
			FG	FGA	Pct	3FG	FGA	Pct				Off	Def	Tot	Avg							
at UC Riverside		2	0	1	.000	0	0	.000	0	0	.000	0	0	0	0.0	1	0	3	0	0	0	0.0
SAN DIEGO CHRISTIAN		10	2	4	.500	0	0	.000	1	2	.500	0	0	0	0.0	1	0	1	0	0	5	2.5
at San Diego		6	1	2	.500	0	0	.000	0	0	.000	1	2	3	1.0	2	0	1	0	0	2	2.3
LOYOLA MARYMOUNT		6	1	2	.500	0	0	.000	0	1	.000	0	0	0	0.8	2	0	1	0	0	2	2.3
vs. UT Arlington																						
vs. Cen. Conn. St./Seton Hall																						
at UC Davis																						
MICHIGAN																						
UC SANTA BARBARA																						
at Cal State Fullerton																						
BIOLA																						
at New Mexico																						
NEVADA																						
BOISE STATE																						
at San Jose State																						
at Utah State																						
UNLV																						
AIR FORCE																						
at Colorado State																						
at Wyoming																						
FRESNO STATE																						
SAN JOSE STATE																						
at Nevada																						
UTAH STATE																						
at UNLV																						
at Fresno State																						
COLORADO STATE																						
at Air Force																						
NEW MEXICO																						
TOTALS		24	4	9	.444	0	0	.000	1	3	.333	1	2	3	0.8	6	0	6	0	0	9	2.3

EKWEDIKE'S CAREER STATISTICS

Year	GP-GS	MIN-AVG	FG-A	PCT	3P-A	PCT	FT-A	PCT	REB	AVG	PF-FO	A	TO	BLK	STL	PTS	AVG
2016-17	2-0	24-6.0	4-9	.444	0-0	.000	1-3	.333	3	0.8	6	0	6	0	0	9	2.3
Totals	2-0	12-6.0	2-5	.400	0-0	.000	1-2	.500	0	0.0	2-0	0	4	0	0	5	2.5



#15 MCKYNZIE FORT

Junior • 2L

5-9

Guard

Fontana, Calif.

Etiwanda High School

A two-time All-Mountain West honoree who's difficult to guard one-on-one and has an improved three-point shot

▶▶▶ GAME HIGHS

	CAREER	2016-17 SEASON
Points	28, vs. San Diego Christian (11-14-16)	28, vs. San Diego Christian (11-14-16)
Rebounds	11, vs. Fresno State (2-10-16)	9, vs. Loyola Marymount (11-20-16)
Assists	6, vs. UNLV (3-3-15)	4, vs. San Diego Christian (11-14-16)
Steals	5, Four times, Last: at New Mexico (2-6-16)	1, Four times, Last: vs. Loyola Marymount (11-20-16)
Blocks	2, Three times, Last: at New Mexico (2-6-16)	1, at San Diego (11-17-16)
Field Goals	11, vs. San Diego Christian (11-14-16)	11, vs. San Diego Christian (11-14-16)
Field Goal Attempts	18, vs. San Diego Christian (11-14-16)	21, vs. Loyola Marymount (11-20-16)
3-pt. Field Goals	2, vs. UC Riverside (11-16-15), vs. San Diego Christian (11-14-16)	2, vs. San Diego Christian (11-14-16)
3-pt. Field Goal Attempts	6, vs. Washington (12-18-14)	6, vs. Loyola Marymount (11-20-16)
Free Throws	11, vs. UC Riverside (11-16-15)	4, vs. San Diego Christian (11-14-16)
Free Throw Attempts	12, Twice, Last: vs. Fresno State (2-10-16)	5, at UC Riverside (11-11-16)
Double-Figure Scoring Games	44	4
Double-Figure Rebounding Games	1	N/A
Double-Doubles	1	N/A

▶▶▶ 2016-17 GAME-BY-GAME STATISTICS

Opponent	GS	Min	TOTAL			3-PTS			FT	FTA	Pct	REBOUNDS				PF	A	TO	Blk	Stl	Pts	Avg	
			FG	FGA	Pct	3FG	FGA	Pct				Off	Def	Tot	Avg								
at UC Riverside	*	38	6	21	.286	0	5	.000	2	5	.400	0	3	3	3.0	2	3	3	0	1	14	14.0	
SAN DIEGO CHRISTIAN	*	35	11	18	.611	2	2	1.000	4	4	1.000	2	5	7	5.0	2	4	1	0	1	28	21.0	
at San Diego	*	28	7	12	.583	0	0	.000	1	2	.500	1	0	1	3.7	5	0	4	1	1	15	19.0	
LOYOLA MARYMOUNT	*	36	9	21	.429	1	6	.167	3	3	1.000	5	4	9	5.02	0	4	4	0	1	22	19.8	
vs. UT Arlington																							
vs. Cen. Conn. St./Seton Hall																							
at UC Davis																							
MICHIGAN																							
UC SANTA BARBARA																							
at Cal State Fullerton																							
BIOLA																							
at New Mexico																							
NEVADA																							
BOISE STATE																							
at San Jose State																							
at Utah State																							
UNLV																							
AIR FORCE																							
at Colorado State																							
at Wyoming																							
FRESNO STATE																							
SAN JOSE STATE																							
at Nevada																							
UTAH STATE																							
at UNLV																							
at Fresno State																							
COLORADO STATE																							
at Air Force																							
NEW MEXICO																							
TOTALS		4	137	33	72	.458	3	13	.231	10	14	.714	8	12	20	5.0	11	7	12	1	4	79	19.8

FORT'S CAREER STATISTICS

Year	GP-GS	MIN-AVG	FG-A	PCT	3P-A	PCT	FT-A	PCT	REB	AVG	PF-FO	A	TO	BLK	STL	PTS	AVG
2014-15	31-24	839-27.1	125-278	.450	2-13	.154	60-96	.625	99	3.2	55-0	59	94	5	30	312	10.1
2015-16	31-31	971-31.3	169-366	.462	3-12	.250	104-150	.693	127	4.1	71-0	73	93	8	62	445	14.4
2016-17	4-4	137-34.3	33-72	.458	3-13	.231	10-14	.714	20	5.0	11-1	7	12	1	4	79	19.8
Totals	66-59	1947-29.5	327-716	.457	8-38	.211	174-259	.672	246	3.7	133-0	139	200	14	96	836	12.7



#20 GEENA GOMEZ

Junior • 1L

5-8

Guard

Huntington Beach, Calif.

St. Joseph's (Pa.) / Edison High School

A heady decision-maker and knock-down shooter

▶▶▶ GAME HIGHS

	CAREER	2016-17 SEASON
Points	15, at San Jose State (1-6-16)	14, vs. San Diego Christian (11-14-16)
Rebounds	5, Twice, Last: vs. Utah State (1-2-16)	4, at San Diego (11-17-16)
Assists	6, vs. North Dakota State (1-27-15)	2, vs. San Diego Christian (11-14-16)
Steals	2, Twice, Last: at Washington (11-23-15)	1, at UC Riverside (11-11-16)
Blocks	1, Twice, Last: at UNLV (3-4-16)	N/A
Field Goals	4, Three times, Last: vs. San Diego Christian (11-14-16)	4, vs. San Diego Christian (11-14-16)
Field Goal Attempts	12, Twice, Last: at San Jose State (1-6-16)	9, at San Diego (11-17-16)
3-pt. Field Goals	4, at San Jose State (1-6-16)	2, vs. San Diego Christian (11-14-16)
3-pt. Field Goal Attempts	9, at San Jose State (1-6-16)	5, Twice, Last: at San Diego (11-17-16)
Free Throws	4, vs. Cal State Fullerton (12-19-15), vs. San Diego Christian (11-14-16)	4, vs. San Diego Christian (11-14-16)
Free Throw Attempts	6, at San Jose State (1-6-16)	4, vs. San Diego Christian (11-14-16)
Double-Figure Scoring Games	2	1
Double-Figure Rebounding Games	N/A	N/A
Double-Doubles	N/A	N/A

▶▶▶ 2016-17 GAME-BY-GAME STATISTICS

Opponent	GS	Min	TOTAL			3-PTS			FT	FTA	Pct	REBOUNDS				PF	A	TO	Blk	Stl	Pts	Avg
			FG	FGA	Pct	3FG	FGA	Pct				Off	Def	Tot	Avg							
at UC Riverside		25	2	7	.289	1	3	.333	1	2	.500	1	1	2	2.0	2	0	3	0	1	6	6.0
SAN DIEGO CHRISTIAN	*	32	4	8	.500	2	5	.400	4	4	1.000	1	1	2	2.0	3	2	3	0	0	14	10.0
at San Diego		27	0	9	.000	0	5	.000	2	2	1.000	1	3	4	2.7	3	0	4	0	2	2	7.3
LOYOLA MARYMOUNT		23	0	3	.000	0	3	.000	0	0	.000	0	1	1	2.3	0	4	1	0	0	0	5.5
vs. UT Arlington																						
vs. Gen. Conn. St./Seton Hall																						
at UC Davis																						
MICHIGAN																						
UC SANTA BARBARA																						
at Cal State Fullerton																						
BIOLA																						
at New Mexico																						
NEVADA																						
BOISE STATE																						
at San Jose State																						
at Utah State																						
UNLV																						
AIR FORCE																						
at Colorado State																						
at Wyoming																						
FRESNO STATE																						
SAN JOSE STATE																						
at Nevada																						
UTAH STATE																						
at UNLV																						
at Fresno State																						
COLORADO STATE																						
at Air Force																						
NEW MEXICO																						
TOTALS	1	107	6	27	.222	3	16	.188	7	8	.875	3	6	9	2.3	8	6	11	0	3	22	5.5

GOMEZ'S CAREER STATISTICS

Year	GP-GS	MIN-AVG	FG-A	PCT	3P-A	PCT	FT-A	PCT	REB	AVG	PF-FO	A	TO	BLK	STL	PTS	AVG
2013-14*	24-1	114-4.8	10-34	.294	3-14	.214	5-7	.714	11	0.5	17-0	13	6	1	2	28	1.2
2014-15	-	Redshirt Year	-	-	-	-	-	-	-	-	-	-	-	-	-	-	-
2015-16	29-0	424-14.7	30-107	.280	23-71	.324	15-22	.682	55	1.9	23-0	37	26	2	11	98	3.4
2016-17	4-1	107-26.8	6-27	.222	3-16	.188	7-8	.875	9	2.3	8-0	6	11	0	3	22	5.5
Totals	57-2	645-11.3	46-168	.274	29-101	.287	27-37	.730	75	1.32	48-0	56	43	3	16	148	2.6



#11 ARANTXA GOMEZ FERRER

Sophomore • 1L

6-0

Forward

Valencia, Spain

Parque Colegio Santa Ana High School / Ros Casares Valencia Club

A skilled inside threat who can stretch the floor

▶▶▶ GAME HIGHS

	CAREER	2016-17 SEASON
Points	3, at San Diego (11-17-16)	3, at San Diego (11-17-16)
Rebounds	3, Four times, Last: at San Diego (11-17-16)	3, at San Diego (11-17-16)
Assists	1, Twice, Last: at Colorado State (2-3-16)	N/A
Steals	1, Six times, Last: at San Diego (11-17-16)	1, Twice, Last: at San Diego (11-17-16)
Blocks	1, vs. North Dakota State (11-27-15)	N/A
Field Goals	2, Five times, Last: vs. Cal State Fullerton (12-19-15)	1, Twice, Last: at San Diego (11-17-16)
Field Goal Attempts	3, Twice, Last: at San Diego (11-17-16)	3, Twice, Last: at San Diego (11-17-16)
3-pt. Field Goals	N/A	N/A
3-pt. Field Goal Attempts	N/A	N/A
Free Throws	1, Twice, Last: at UC Riverside (11-11-16)	1, Twice, Last: at San Diego (11-17-16)
Free Throw Attempts	4, Three times, Last: at San Diego (11-17-16)	4, at San Diego (11-17-16)
Double-Figure Scoring Games	N/A	N/A
Double-Figure Rebounding Games	N/A	N/A
Double-Doubles	N/A	N/A

▶▶▶ 2016-17 GAME-BY-GAME STATISTICS

Opponent	GS	Min	TOTAL			3-PTS			FT	FTA	Pct	Off	REBOUNDS				PF	A	TO	Blk	Stl	Pts	Avg
			FG	FGA	Pct	3FG	FGA	Pct					Def	Tot	Avg								
at UC Riverside		16	0	0	.000	0	0	.000	1	2	.500	0	0	0	0.0	0	0	0	0	0	0	1	1.0
SAN DIEGO CHRISTIAN		8	1	3	.333	0	0	.000	0	0	.000	0	2	2	1.0	2	0	1	0	1	2	1.5	
at San Diego		15	1	3	.333	0	0	.000	1	4	.250	3	0	3	1.7	2	0	0	0	0	3	2.0	
LOYOLA MARYMOUNT		9	0	0	.000	0	0	.000	0	0	.000	0	1	1	1.5	1	0	0	0	1	0	1.5	
vs. UT Arlington																							
vs. Cen. Conn. St./Seton Hall																							
at UC Davis																							
MICHIGAN																							
UC SANTA BARBARA																							
at Cal State Fullerton																							
BIOLA																							
at New Mexico																							
NEVADA																							
BOISE STATE																							
at San Jose State																							
at Utah State																							
UNLV																							
AIR FORCE																							
at Colorado State																							
at Wyoming																							
FRESNO STATE																							
SAN JOSE STATE																							
at Nevada																							
UTAH STATE																							
at UNLV																							
at Fresno State																							
COLORADO STATE																							
at Air Force																							
NEW MEXICO																							
TOTALS		0	48	2	6	.333	0	0	.000	2	6	.333	3	3	6	1.5	5	0	1	0	2	6	1.5

GOMEZ FERRER'S CAREER STATISTICS

Year	GP-GS	MIN-AVG	FG-A	PCT	3P-A	PCT	FT-A	PCT	REB	AVG	PF-FO	A	TO	BLK	STL	PTS	AVG
2015-16	18-0	118-6.6	5-12	.417	0-0	.000	0-12	.000	16	0.9	18-0	2	5	1	4	10	0.6
2016-17	4-0	48-12.0	2-6	.333	0-0	.000	2-6	.333	6	1.5	5-0	0	1	0	2	6	1.5
Totals	22-0	166-7.6	7-18	.389	0-0	.000	2-18	.111	22	1.0	23-0	2	6	1	6	16	0.7



#30 CHEYENNE GREENHOUSE

Junior • 2L

5-11

Guard

Riverside, Calif.

Canyon Springs High School

A talented and adaptable slasher who can fill multiple roles

▶▶▶ GAME HIGHS

	CAREER	2016-17 SEASON
Points	19, vs. Sacramento State (11-14-14)	8, vs. Loyola Marymount (11-20-16)
Rebounds	11, vs. Sacramento State (11-14-14)	3, at UC Riverside (11-11-16)
Assists	5, vs. Sacramento State (11-14-14)	1, vs. Loyola Marymount (11-20-16)
Steals	2, Twice, Last: at Air Force (2-13-16)	1, at UC Riverside (11-11-16)
Blocks	2, at Air Force (2-13-16)	N/A
Field Goals	6, Three times, Last: at Wyoming (12-30-15)	3, at UC Riverside (11-11-16)
Field Goal Attempts	12, vs. Sacramento State (11-14-14)	10, at UC Riverside (11-11-16)
3-pt. Field Goals	1, Three times, Last: at Air Force (2-13-16)	N/A
3-pt. Field Goal Attempts	3, vs. UC Riverside (11-16-15)	2, at UC Riverside (11-11-16)
Free Throws	7, vs. Sacramento State (11-14-14)	4, vs. Loyola Marymount (11-20-16)
Free Throw Attempts	10, vs. Sacramento State (11-14-14)	5, vs. Loyola Marymount (11-20-16)
Double-Figure Scoring Games	8	N/A
Double Figure Rebounding Games	1	N/A
Double-Doubles	1	N/A

▶▶▶ 2016-17 GAME-BY-GAME STATISTICS

Opponent	GS	Min	TOTAL			3-PTS			FT	FTA	Pct	REBOUNDS				PF	A	TO	Blk	Stl	Pts	Avg	
			FG	FGA	Pct	3FG	FGA	Pct				Off	Def	Tot	Avg								
at UC Riverside	*	30	3	10	.300	0	2	.000	0	0	.000	2	1	3	3.0	0	0	0	0	1	6	6.0	
SAN DIEGO CHRISTIAN									Did Not Play														
at San Diego	*	20	1	5	.200	0	0	.000	0	0	.000	0	0	0	1.5	1	0	1	0	0	2	4.0	
LOYOLA MARYMOUNT		18	2	4	.500	0	1	.000	4	5	.800	0	0	0	1.0	5	1	4	0	0	8	5.3	
vs. UT Arlington																							
vs. Cen. Conn. St./Seton Hall																							
at UC Davis																							
MICHIGAN																							
UC SANTA BARBARA																							
at Cal State Fullerton																							
BIOLA																							
at New Mexico																							
NEVADA																							
BOISE STATE																							
at San Jose State																							
at Utah State																							
UNLV																							
AIR FORCE																							
at Colorado State																							
at Wyoming																							
FRESNO STATE																							
SAN JOSE STATE																							
at Nevada																							
UTAH STATE																							
at UNLV																							
at Fresno State																							
COLORADO STATE																							
at Air Force																							
NEW MEXICO																							
TOTALS	2	68	6	19	.316	0	3	.000	4	5	.800	2	1	3	1.0	6	1	5	0	1	16	5.3	

GREENHOUSE'S CAREER STATISTICS

Year	GP-GS	MIN-AVG	FG-A	PCT	3P-A	PCT	FT-A	PCT	REB	AVG	PF-FO	A	TO	BLK	STL	PTS	AVG
2014-15	31-8	441-14.2	43-118	.364	1-4	.250	32-48	.667	87	2.8	23-0	21	35	1	8	119	3.8
2015-16	31-22	647-20.9	59-161	.366	2-9	.222	33-49	.673	100	3.2	35-0	17	30	6	9	153	4.9
2016-17	3-2	68-22.7	6-19	.316	0-3	.000	4-5	.800	3	1.0	6-1	1	5	0	1	16	5.3
Totals	65-32	1156-17.8	108-298	.362	3-16	.188	69-102	.676	190	2.9	66-1	38	70	7	18	288	4.4



#1 KHALIA LARK

Junior • TR

6-0

Guard

Irvine, Calif.

Washington / Mater Dei High School

A versatile wing shot who will bring toughness to the team when eligible Dec. 22

▶▶▶ GAME HIGHS

	CAREER	2016-17 SEASON	* AT WASHINGTON
Points	10, vs. Seattle U (12-4-14)*	N/A	
Rebounds	5, Twice, Last: vs. Seattle U (12-4-14)*	N/A	
Assists	2, at Arizona State (1-3-15)*	N/A	
Steals	1, Four times, Last: vs. Seattle U (12-4-14)*	N/A	
Blocks	N/A	N/A	
Field Goals	3, Twice, Last: vs. vs. Seattle U (12-4-14)*	N/A	
Field Goal Attempts	6, vs. Seattle U (12-4-14)*	N/A	
3-pt. Field Goals	2, Three times, Last: vs. Seattle U (12-4-14)*	N/A	
3-pt. Field Goal Attempts	3, Twice, Last: vs. Seattle U (12-4-14)*	N/A	
Free Throws	4, Twice, Last: vs. Seattle U (12-4-14)*	N/A	
Free Throw Attempts	6, vs. Santa Clara (11-14-15)*	N/A	
Double-Figure Scoring Games	1	N/A	
Double-Figure Rebounding Games	N/A	N/A	
Double-Doubles	N/A	N/A	

▶▶▶ 2016-17 GAME-BY-GAME STATISTICS

Opponent	TOTAL			3-PTS			REBOUNDS																
	GS	Min	FG	FGA	Pct	3FG	FGA	Pct	FT	FTA	Pct	Off	Def	Tot	Avg	PF	A	TO	Blk	Stl	Pts	Avg	
at UC Riverside																							
SAN DIEGO CHRISTIAN																							
at San Diego																							
LOYOLA MARYMOUNT																							
vs. UT Arlington																							
vs. Cen. Conn. St./Seton Hall																							
at UC Davis																							
MICHIGAN																							
UC SANTA BARBARA																							
at Cal State Fullerton																							
BIOLA																							
at New Mexico																							
NEVADA																							
BOISE STATE																							
at San Jose State																							
at Utah State																							
UNLV																							
AIR FORCE																							
at Colorado State																							
at Wyoming																							
FRESNO STATE																							
SAN JOSE STATE																							
at Nevada																							
UTAH STATE																							
at UNLV																							
at Fresno State																							
COLORADO STATE																							
at Air Force																							
NEW MEXICO																							
TOTALS																							

LARK'S CAREER STATISTICS

Year	GP-GS	MIN-AVG	FG-A	PCT	3P-A	PCT	FT-A	PCT	REB	AVG	PF-FO	A	TO	BLK	STL	PTS	AVG
2014-15	23-0	198-8.6	17-39	.436	11-27	.407	11-14	.786	31	1.3	12-0	5	13	0	3	56	2.4
2015-16	6-0	83-13.8	5-15	.385	2-7	.333	5-11	.455	13	2.2	3-0	2	7	0	1	17	2.8
2016-17	--	--	--	--	--	--	--	--	--	--	--	--	--	--	--	--	--
Totals	29-0	281-9.7	22-54	.423	13-34	.394	16-25	.640	44	1.5	15-0	7	20	0	4	73	2.5



#21 ABBY LOWE

Freshman • HS

5-11

Guard

Stockport, England

Barking Abbey Academy

Slashing-type guard with a high basketball IQ who adds height and depth to wing position

▶▶▶ GAME HIGHS

2016-17 SEASON	
Points	3, vs. San Diego Christian (11-14-16)
Rebounds	3, Twice, Last: vs. San Diego Christian (11-14-16)
Assists	1, vs. San Diego Christian (11-14-16)
Steals	N/A
Blocks	1, at San Diego (11-20-16)
Field Goals	1, at UC Riverside (11-11-16), vs. San Diego Christian (11-14-16)
Field Goal Attempts	4, vs. San Diego Christian (11-14-16)
3-pt. Field Goals	N/A
3-pt. Field Goal Attempts	1, Twice, Last: at San Diego (11-17-16)
Free Throws	1, vs. San Diego Christian (11-14-16)
Free Throw Attempts	2, at San Diego (11-17-16)
Double-Figure Scoring Games	N/A
Double-Figure Rebounding Games	N/A
Double-Doubles	N/A

▶▶▶ 2016-17 GAME-BY-GAME STATISTICS

Opponent	GS	Min	TOTAL			3-PTS			FT	FTA	Pct	REBOUNDS					PF	A	TO	Blk	Stl	Pts	Avg	
			FG	FGA	Pct	3FG	FGA	Pct				Off	Def	Tot	Avg									
at UC Riverside		12	1	2	.500	0	0	.000	0	0	.000	2	1	3	3.0	3	0	3	0	0	0	0	2	2.0
SAN DIEGO CHRISTIAN		8	1	4	.250	0	1	.000	1	1	1.000	1	2	3	3.0	1	1	1	0	0	0	0	3	2.5
at San Diego		9	0	2	.000	0	1	.000	0	2	.000	1	1	2	2.7	1	0	2	0	0	0	0	0	1.7
LOYOLA MARYMOUNT		3	0	0	.000	0	0	.000	0	0	.000	0	0	0	2.0	0	0	0	1	0	0	0	0	1.3
vs. UT Arlington																								
vs. Cen. Conn. St./Seton Hall																								
at UC Davis																								
MICHIGAN																								
UC SANTA BARBARA																								
at Cal State Fullerton																								
BIOLA																								
at New Mexico																								
NEVADA																								
BOISE STATE																								
at San Jose State																								
at Utah State																								
UNLV																								
AIR FORCE																								
at Colorado State																								
at Wyoming																								
FRESNO STATE																								
SAN JOSE STATE																								
at Nevada																								
UTAH STATE																								
at UNLV																								
at Fresno State																								
COLORADO STATE																								
at Air Force																								
NEW MEXICO																								
TOTALS		32	2	8	.250	0	2	.000	1	3	.333	4	4	8	2.0	5	1	6	1	0	0	5	1.3	

LOWE'S CAREER STATISTICS

Year	GP-GS	MIN-AVG	FG-A	PCT	3P-A	PCT	FT-A	PCT	REB	AVG	PF-FO	A	TO	BLK	STL	PTS	AVG
2016-17	4-0	32-8.0	2-8	.250	0-2	.000	1-3	.333	8	2.0	5	1	6	1	0	5	1.3
Totals	4-0	32-8.0	2-8	.250	0-2	.000	1-3	.333	8	2.0	5	1	6	1	0	5	1.3



#40 MONIQUE TERRY

Freshman • HS

6-2

Forward

San Antonio, Texas

Brennan High School

Enthusiastic and hard-working utility player whose greatest strength is rebounding

▶▶▶ GAME HIGHS

	2016-17 SEASON
Points	7, at San Diego (11-17-16)
Rebounds	4, at San Diego (11-17-16)
Assists	N/A
Steals	N/A
Blocks	1, vs. San Diego Christian (11-14-16)
Field Goals	3, at San Diego (11-17-16)
Field Goal Attempts	4, at San Diego (11-17-16)
3-pt. Field Goals	N/A
3-pt. Field Goal Attempts	1, Twice, Last: vs. Loyola Marymount (11-20-16)
Free Throws	2, at UC Riverside (11-11-16)
Free Throw Attempts	2, at UC Riverside (11-11-16)
Double-Figure Scoring Games	N/A
Double-Figure Rebounding Games	N/A
Double-Doubles	N/A

▶▶▶ 2016-17 GAME-BY-GAME STATISTICS

Opponent	GS	Min	TOTAL			3-PTS			FT	FTA	Pct	REBOUNDS						PF	A	TO	Blk	Stl	Pts	Avg
			FG	FGA	Pct	3FG	FGA	Pct				Off	Def	Tot	Avg									
at UC Riverside	14	0	1	.000	0	0	.000	2	2	1.000	0	1	1	1.0	1	0	1	0	0	0	0	2	2.0	
SAN DIEGO CHRISTIAN	15	1	2	.500	0	1	.000	0	0	.000	0	1	1	1.0	1	0	1	1	0	0	2	2.0		
at San Diego	14	3	4	.750	0	0	.000	1	1	1.000	1	3	4	2.0	3	0	2	0	0	0	7	3.7		
LOYOLA MARYMOUNT	5	0	1	.000	0	1	.000	0	0	.000	1	1	2	2.0	0	0	0	0	0	0	0	2.8		
vs. UT Arlington																								
vs. Cen. Conn. St./Seton Hall																								
at UC Davis																								
MICHIGAN																								
UC SANTA BARBARA																								
at Cal State Fullerton																								
BIOLA																								
at New Mexico																								
NEVADA																								
BOISE STATE																								
at San Jose State																								
at Utah State																								
UNLV																								
AIR FORCE																								
at Colorado State																								
at Wyoming																								
FRESNO STATE																								
SAN JOSE STATE																								
at Nevada																								
UTAH STATE																								
at UNLV																								
at Fresno State																								
COLORADO STATE																								
at Air Force																								
NEW MEXICO																								
TOTALS	48	4	8	.500	0	2	.000	3	3	1.000	2	6	8	2.0	5	0	4	1	0	0	11	2.8		

TERRY'S CAREER STATISTICS

Year	GP-GS	MIN-AVG	FG-A	PCT	3P-A	PCT	FT-A	PCT	REB	AVG	PF-FO	A	TO	BLK	STL	PTS	AVG
2016-17	4-0	48-12.0	4-8	.500	0-2	.000	3-3	1.000	8	2.0	5	0	4	1	-	11	2.8
Totals	4-0	48-12.0	4-8	.500	0-2	.000	3-3	1.000	8	2.0	5	0	4	1	-	11	2.8



#22 LEXY THORDERSON

Junior • 2L

6-0

Guard/Forward

Castle Rock, Colo.

Rock Canyon High School

Team's top three-point threat in 2015-16 who will be tasked with an expanded role

▶▶▶ GAME HIGHS

	CAREER	2016-17 SEASON
Points	12, Three times, Last: vs. North Dakota State (11-27-15)	6, vs. Loyola Marymount (11-20-16)
Rebounds	7, vs. San Diego Christian (12-21-15)	3, vs. Loyola Marymount (11-20-16)
Assists	2, Three times, Last: vs. UNLV (3-3-15)	2, vs. Loyola Marymount (11-20-16)
Steals	2, Twice, Last: vs. Fresno State (2-10-16)	N/A
Blocks	1, 10 times, Last: vs. Loyola Marymount (11-20-16)	1, Twice, Last: vs. Loyola Marymount (11-20-16)
Field Goals	5, at Colorado State (2-14-15)	2, vs. Loyola Marymount (11-20-16)
Field Goal Attempts	12, Twice, Last: vs. Loyola Marymount (11-20-16)	12, vs. Loyola Marymount (11-20-16)
3-pt. Field Goals	4, Twice, Last: vs. North Dakota State (11-27-15)	1, Twice, Last: vs. Loyola Marymount (11-20-16)
3-pt. Field Goal Attempts	9, vs. Loyola Marymount (11-20-16)	9, vs. Loyola Marymount (11-20-16)
Free Throws	2, Four times, Last: vs. Wyoming (2-24-16)	1, vs. Loyola Marymount (11-20-16)
Free Throw Attempts	4, vs. Wyoming (3-7-16)	2, vs. Loyola Marymount (11-20-16)
Double-Figure Scoring Games	8	N/A
Double-Figure Rebounding Games	N/A	N/A
Double-Doubles	N/A	N/A

▶▶▶ 2016-17 GAME-BY-GAME STATISTICS

Opponent	GS	Min	TOTAL			3-PTS			FT	FTA	Pct	REBOUNDS				PF	A	TO	Blk	Stl	Pts	Avg
			FG	FGA	Pct	3FG	FGA	Pct				Off	Def	Tot	Avg							
at UC Riverside																						
SAN DIEGO CHRISTIAN									Did Not Play													
at San Diego		18	1	5	.200	1	2	.500	0	0	.000	1	0	1	1.0	0	0	0	1	0	3	3.0
LOYOLA MARYMOUNT	*	19	2	12	.167	1	9	.111	1	2	.500	2	1	3	2.0	3	2	0	1	0	6	4.5
vs. UT Arlington																						
vs. Cen. Conn. St./Seton Hall																						
at UC Davis																						
MICHIGAN																						
UC SANTA BARBARA																						
at Cal State Fullerton																						
BIOLA																						
at New Mexico																						
NEVADA																						
BOISE STATE																						
at San Jose State																						
at Utah State																						
UNLV																						
AIR FORCE																						
at Colorado State																						
at Wyoming																						
FRESNO STATE																						
SAN JOSE STATE																						
at Nevada																						
UTAH STATE																						
at UNLV																						
at Fresno State																						
COLORADO STATE																						
at Air Force																						
NEW MEXICO																						
TOTALS	1	37	3	17	.176	2	11	.182	1	2	.500	3	1	4	2.0	3	2	0	2	0	9	4.5

THORDERSON'S CAREER STATISTICS

Year	GP-GS	MIN-AVG	FG-A	PCT	3P-A	PCT	FT-A	PCT	REB	AVG	PF-FO	A	TO	BLK	STL	PTS	AVG
2014-15	30-0	226-7.5	20-70	.286	13-58	.224	4-4	1.000	19	0.6	15-0	8	18	1	3	57	1.9
2015-16	31-2	524-16.9	58-172	.337	40-124	.323	5-8	.625	67	2.2	33-0	4	9	8	10	161	5.2
2016-17	2-1	37-18.5	3-17	.176	2-11	.182	1-2	.500	4	2.0	3-0	2	0	2	0	9	4.5
Totals	63-3	787-12.5	81-259	.312	55-193	.285	10-14	.714	90	1.4	51-0	14	27	11	13	227	3.6



#34 BAYLEE VANDERDOES

Freshman • HS

6-1

Forward

Auburn, Calif.

Placer High School

Extremely skilled offensively at the post position and shoots the ball very well from the outside

▶▶▶ GAME HIGHS

2016-17 SEASON	
Points	10, vs. San Diego Christian (11-14-16)
Rebounds	10, vs. San Diego Christian (11-14-16)
Assists	1, vs. Loyola Marymount (11-20-16)
Steals	N/A
Blocks	1, vs. San Diego Christian (11-14-16)
Field Goals	5, vs. San Diego Christian (11-14-16)
Field Goal Attempts	7, vs. San Diego Christian (11-14-16)
3-pt. Field Goals	N/A
3-pt. Field Goal Attempts	N/A
Free Throws	4, at San Diego (11-17-16)
Free Throw Attempts	4, Twice, Last: at San Diego (11-17-16)
Double-Figure Scoring Games	1
Double-Figure Rebounding Games	1
Double-Doubles	1

▶▶▶ 2016-17 GAME-BY-GAME STATISTICS

Opponent	GS	Min	TOTAL			3-PTS			FT	FTA	Pct	REBOUNDS					PF	A	TO	Blk	Stl	Pts	Avg	
			FG	FGA	Pct	3FG	FGA	Pct				Off	Def	Tot	Avg									
at UC Riverside	*	17	2	3	.667	0	0	.000	3	3	1.000	3	2	5	5.0	3	0	1	0	0	7	7.0		
SAN DIEGO CHRISTIAN	*	22	5	7	.714	0	0	.000	0	1	.000	2	8	10	7.5	1	0	2	1	0	10	8.5		
at San Diego	*	15	0	3	.000	0	0	.000	4	4	1.000	0	2	2	5.7	3	0	0	0	0	4	7.0		
LOYOLA MARYMOUNT	*	25	3	4	.750	0	0	.000	0	0	.000	0	6	6	5.8	2	1	1	0	0	6	6.8		
vs. UT Arlington																								
vs. Gen. Conn. St./Seton Hall																								
at UC Davis																								
MICHIGAN																								
UC SANTA BARBARA																								
at Cal State Fullerton																								
BIOLA																								
at New Mexico																								
NEVADA																								
BOISE STATE																								
at San Jose State																								
at Utah State																								
UNLV																								
AIR FORCE																								
at Colorado State																								
at Wyoming																								
FRESNO STATE																								
SAN JOSE STATE																								
at Nevada																								
UTAH STATE																								
at UNLV																								
at Fresno State																								
COLORADO STATE																								
at Air Force																								
NEW MEXICO																								
TOTALS		4	79	10	17	.588	0	0	.000	7	8	.875	5	18	23	5.8	9	1	4	1	0	0	27	6.8

VANDERDOES' CAREER STATISTICS

Year	GP-GS	MIN-AVG	FG-A	PCT	3P-A	PCT	FT-A	PCT	REB	AVG	PF-FO	A	TO	BLK	STL	PTS	AVG
2016-17	4-4	79-19.8	10-17	.588	0-0	.000	7-8	.875	23	5.8	9	1	4	1	0	27	6.8
Totals	2-2	39-19.5	7-10	.700	0-0	.000	3-4	.750	15	7.5	4-0	0	3	1	0	17	8.5

All games

RECORD:	OVERALL	HOME	AWAY	NEUTRAL
ALL GAMES	1-3	1-1	0-2	0-0
CONFERENCE	0-0	0-0	0-0	0-0
NON-CONFERENCE	1-3	1-1	0-2	0-0

##	Player	gp-gs	min	avg	Total		3-Point		F-Throw		Rebounds				pf	dq	a	to	blk	stl	pts	avg
					fg-fga	fg%	3fg-fga	3fg%	ft-fta	ft%	off	def	tot	avg								
15	FORT, McKynzie	4-4	137	34.2	33-72	.458	3-13	.231	10-14	.714	8	12	20	5.0	11	1	7	12	1	4	79	19.8
04	ELLISON, Kymberly	4-4	106	26.5	9-34	.265	7-23	.304	7-10	.700	2	10	12	3.0	10	0	5	8	1	4	32	8.0
34	VANDERDOES, Bayle	4-4	79	19.8	10-17	.588	0-0	.000	7-8	.875	5	18	23	5.8	9	0	1	4	1	0	27	6.8
20	GOMEZ, Geena	4-1	107	26.8	6-27	.222	3-16	.188	7-8	.875	3	6	9	2.3	8	0	6	11	0	3	22	5.5
30	GREENHOUSE, Chey	3-2	68	22.7	6-19	.316	0-3	.000	4-5	.800	2	1	3	1.0	6	1	1	5	0	1	16	5.3
22	THORDERSON, Lexy	2-1	37	18.5	3-17	.176	2-11	.182	1-2	.500	3	1	4	2.0	3	0	2	0	2	0	9	4.5
03	BOSTICK, Ariell	4-4	105	26.3	5-17	.294	1-5	.200	3-4	.750	2	22	24	6.0	8	0	12	7	0	9	14	3.5
40	TERRY, Monique	4-0	48	12.0	4-8	.500	0-2	.000	3-3	1.000	2	6	8	2.0	5	0	0	4	1	0	11	2.8
45	EKWEDIKE, Naomi	4-0	24	6.0	4-9	.444	0-0	.000	1-3	.333	1	2	3	0.8	6	0	0	6	0	0	9	2.3
11	GOMEZ, Arantxa	4-0	48	12.0	2-6	.333	0-0	.000	2-6	.333	3	3	6	1.5	5	0	0	1	0	2	6	1.5
21	LOWE, Abby	4-0	32	8.0	2-8	.250	0-2	.000	1-3	.333	4	4	8	2.0	5	0	1	6	1	0	5	1.3
13	BROWN, Allison	1-0	9	9.0	0-1	.000	0-0	.000	0-0	.000	0	1	1	1.0	1	0	1	2	0	0	0	0.0
Team											14	5	19					2				
Total.....		4	800		84-235	.357	16-75	.213	46-66	.697	49	91	140	35.0	77	2	36	68	7	23	230	57.5
Opponents.....		4	800		112-237	.473	25-66	.379	44-71	.620	42	109	151	37.8	77	-	67	60	11	29	293	73.2

Score by Periods	1st	2nd	3rd	4th	Totals
SDSU	69	54	45	62	230
Opponents	83	76	65	69	293

Home games

RECORD:	OVERALL	HOME	AWAY	NEUTRAL
ALL GAMES	1-1	1-1	0-0	0-0
CONFERENCE	0-0	0-0	0-0	0-0
NON-CONFERENCE	1-1	1-1	0-0	0-0

#	Player	gp-gs	min	avg	Total		3-Point		F-Throw		Rebounds				pf	dq	a	to	blk	stl	pts	avg		
					fg-fga	fg%	3fg-fga	3fg%	ft-fta	ft%	off	def	tot	avg										
15	FORT, McKynzie	2-2	71	35.5	20-39	.513	3-8	.375	7-7	1.000	7	9	16	8.0	4	0	4	5	0	2	50	25.0		
04	ELLISON, Kymberly	2-2	60	30.0	7-17	.412	5-12	.417	1-2	.500	2	6	8	4.0	4	0	4	5	0	2	20	10.0		
30	GREENHOUSE, Chey	1-0	18	18.0	2-4	.500	0-1	.000	4-5	.800	0	0	0	0.0	5	1	1	4	0	0	8	8.0		
34	VANDERDOES, Bayle	2-2	47	23.5	8-11	.727	0-0	.000	0-1	.000	2	14	16	8.0	3	0	1	3	1	0	16	8.0		
20	GOMEZ, Geena	2-1	55	27.5	4-11	.364	2-8	.250	4-4	1.000	1	2	3	1.5	3	0	6	4	0	0	14	7.0		
22	THORDERSON, Lexy	1-1	19	19.0	2-12	.167	1-9	.111	1-2	.500	2	1	3	3.0	3	0	2	0	1	0	6	6.0		
45	EKWEDIKE, Naomi	2-0	16	8.0	3-6	.500	0-0	.000	1-3	.333	0	0	0	0.0	3	0	0	2	0	0	7	3.5		
03	BOSTICK, Ariell	2-2	57	28.5	2-6	.333	0-1	.000	1-2	.500	2	13	15	7.5	4	0	9	5	0	5	5	2.5		
21	LOWE, Abby	2-0	11	5.5	1-4	.250	0-1	.000	1-1	1.000	1	2	3	1.5	1	0	1	1	1	0	3	1.5		
11	GOMEZ, Arantxa	2-0	17	8.5	1-3	.333	0-0	.000	0-0	.000	0	3	3	1.5	3	0	0	1	0	2	2	1.0		
40	TERRY, Monique	2-0	20	10.0	1-3	.333	0-2	.000	0-0	.000	1	2	3	1.5	1	0	0	1	1	0	2	1.0		
13	BROWN, Allison	1-0	9	9.0	0-1	.000	0-0	.000	0-0	.000	0	1	1	1.0	1	0	1	2	0	0	0	0.0		
Team											1	2	3											
Total.....		2	400		51-117	.436	11-42	.262	20-27	.741	19	55	74	37.0	35	1	29	33	4	11	133	66.5		
Opponents.....		2	400		48-126	.381	16-47	.340	18-33	.545	29	47	76	38.0	32	-	30	28	2	11	130	65.0		

Score by Periods	1st	2nd	3rd	4th	Totals
SDSU	39	34	25	35	133
Opponents	40	29	28	33	130

Away games

RECORD:	OVERALL	HOME	AWAY	NEUTRAL
ALL GAMES	0-2	0-0	0-2	0-0
CONFERENCE	0-0	0-0	0-0	0-0
NON-CONFERENCE	0-2	0-0	0-2	0-0

#	Player	gp-gs	min	avg	Total		3-Point		F-Throw		Rebounds				pf	dq	a	to	blk	stl	pts	avg		
					fg-fga	fg%	3fg-fga	3fg%	ft-fta	ft%	off	def	tot	avg										
15	FORT, McKynzie	2-2	66	33.0	13-33	.394	0-5	.000	3-7	.429	1	3	4	2.0	7	1	3	7	1	2	29	14.5		
04	ELLISON, Kymberly	2-2	46	23.0	2-17	.118	2-11	.182	6-8	.750	0	4	4	2.0	6	0	1	3	1	2	12	6.0		
34	VANDERDOES, Bayle	2-2	32	16.0	2-6	.333	0-0	.000	7-7	1.000	3	4	7	3.5	6	0	0	1	0	0	11	5.5		
40	TERRY, Monique	2-0	28	14.0	3-5	.600	0-0	.000	3-3	1.000	1	4	5	2.5	4	0	0	3	0	0	9	4.5		
03	BOSTICK, Ariell	2-2	48	24.0	3-11	.273	1-4	.250	2-2	1.000	0	9	9	4.5	4	0	3	2	0	4	9	4.5		
20	GOMEZ, Geena	2-0	52	26.0	2-16	.125	1-8	.125	3-4	.750	2	4	6	3.0	5	0	0	7	0	3	8	4.0		
30	GREENHOUSE, Chey	2-2	50	25.0	4-15	.267	0-2	.000	0-0	.000	2	1	3	1.5	1	0	0	1	0	1	8	4.0		
22	THORDERSON, Lexy	1-0	18	18.0	1-5	.200	1-2	.500	0-0	.000	1	0	1	1.0	0	0	0	0	1	0	3	3.0		
11	GOMEZ, Arantxa	2-0	31	15.5	1-3	.333	0-0	.000	2-6	.333	3	0	3	1.5	2	0	0	0	0	0	4	2.0		
45	EKWEDIKE, Naomi	2-0	8	4.0	1-3	.333	0-0	.000	0-0	.000	1	2	3	1.5	3	0	0	4	0	0	2	1.0		
21	LOWE, Abby	2-0	21	10.5	1-4	.250	0-1	.000	0-2	.000	3	2	5	2.5	4	0	0	5	0	0	2	1.0		
Team											13	3	16											
Total.....		2	400		33-118	.280	5-33	.152	26-39	.667	30	36	66	33.0	42	1	7	35	3	12	97	48.5		
Opponents.....		2	400		64-111	.577	9-19	.474	26-38	.684	13	62	75	37.5	45	-	37	32	9	18	163	81.5		

Score by Periods	1st	2nd	3rd	4th	Totals
SDSU	30	20	20	27	97
Opponents	43	47	37	36	163

Games won

RECORD:	OVERALL	HOME	AWAY	NEUTRAL
ALL GAMES	1-0	1-0	0-0	0-0
CONFERENCE	0-0	0-0	0-0	0-0
NON-CONFERENCE	1-0	1-0	0-0	0-0

#	Player	gp-gs	min	avg	Total		3-Point		F-Throw		Rebounds				pf	dq	a	to	blk	stl	pts	avg	
					fg-fga	fg%	3fg-fga	3fg%	ft-fa	ft%	off	def	tot	avg									
15	FORT, McKynzie	1-1	35	35.0	11-18	.611	2-2	1.000	4-4	1.000	2	5	7	7.0	2	0	4	1	0	1	28	28.0	
20	GOMEZ, Geena	1-1	32	32.0	4-8	.500	2-5	.400	4-4	1.000	1	1	2	2.0	3	0	2	3	0	0	14	14.0	
04	ELLISON, Kymberly	1-1	35	35.0	4-6	.667	3-4	.750	1-2	.500	0	3	3	3.0	3	0	3	2	0	0	12	12.0	
34	VANDERDOES, Bayle	1-1	22	22.0	5-7	.714	0-0	.000	0-1	.000	2	8	10	10.0	1	0	0	2	1	0	10	10.0	
45	EKWEDIKE, Naomi	1-0	10	10.0	2-4	.500	0-0	.000	1-2	.500	0	0	0	0.0	1	0	0	1	0	0	5	5.0	
03	BOSTICK, Ariell	1-1	26	26.0	2-3	.667	0-0	.000	0-0	.000	0	6	6	6.0	1	0	8	2	0	1	4	4.0	
21	LOWE, Abby	1-0	8	8.0	1-4	.250	0-1	.000	1-1	1.000	1	2	3	3.0	1	0	1	1	0	0	3	3.0	
40	TERRY, Monique	1-0	15	15.0	1-2	.500	0-1	.000	0-0	.000	0	1	1	1.0	1	0	0	1	1	0	2	2.0	
11	GOMEZ, Arantxa	1-0	8	8.0	1-3	.333	0-0	.000	0-0	.000	0	2	2	2.0	2	0	0	1	0	1	2	2.0	
13	BROWN, Allison	1-0	9	9.0	0-1	.000	0-0	.000	0-0	.000	0	1	1	1.0	1	0	1	2	0	0	0	0.0	
Team											1	1	2										
Total.....		1	200		31-56	.554	7-13	.538	11-14	.786	7	30	37	37.0	16	0	19	16	2	3	80	80.0	
Opponents.....		1	200		25-66	.379	11-31	.355	9-15	.600	14	18	32	32.0	14	-	17	11	2	3	70	70.0	

Score by Periods	1st	2nd	3rd	4th	Totals
San Diego State	25	20	11	24	80
Opponents	20	17	13	20	70

Games lost

RECORD:	OVERALL	HOME	AWAY	NEUTRAL
ALL GAMES	0-3	0-1	0-2	0-0
CONFERENCE	0-0	0-0	0-0	0-0
NON-CONFERENCE	0-3	0-1	0-2	0-0

#	Player	gp-gs	min	avg	Total		3-Point		F-Throw		Rebounds				pf	dq	a	to	blk	stl	pts	avg	
					fg-fga	fg%	3fg-fga	3fg%	ft-fa	ft%	off	def	tot	avg									
15	FORT, McKynzie	3-3	102	34.0	22-54	.407	1-11	.091	6-10	.600	6	7	13	4.3	9	1	3	11	1	3	51	17.0	
04	ELLISON, Kymberly	3-3	71	23.7	5-28	.179	4-19	.211	6-8	.750	2	7	9	3.0	7	0	2	6	1	4	20	6.7	
34	VANDERDOES, Bayle	3-3	57	19.0	5-10	.500	0-0	.000	7-7	1.000	3	10	13	4.3	8	0	1	2	0	0	17	5.7	
30	GREENHOUSE, Chey	3-2	68	22.7	6-19	.316	0-3	.000	4-5	.800	2	1	3	1.0	6	1	1	5	0	1	16	5.3	
22	THORDERSON, Lexy	2-1	37	18.5	3-17	.176	2-11	.182	1-2	.500	3	1	4	2.0	3	0	2	0	2	0	9	4.5	
03	BOSTICK, Ariell	3-3	79	26.3	3-14	.214	1-5	.200	3-4	.750	2	16	18	6.0	7	0	4	5	0	8	10	3.3	
40	TERRY, Monique	3-0	33	11.0	3-6	.500	0-1	.000	3-3	1.000	2	5	7	2.3	4	0	0	3	0	0	9	3.0	
20	GOMEZ, Geena	3-0	75	25.0	2-19	.105	1-11	.091	3-4	.750	2	5	7	2.3	5	0	4	8	0	3	8	2.7	
45	EKWEDIKE, Naomi	3-0	14	4.7	2-5	.400	0-0	.000	0-1	.000	1	2	3	1.0	5	0	0	5	0	0	4	1.3	
11	GOMEZ, Arantxa	3-0	40	13.3	1-3	.333	0-0	.000	2-6	.333	3	1	4	1.3	3	0	0	0	0	1	4	1.3	
21	LOWE, Abby	3-0	24	8.0	1-4	.250	0-1	.000	0-2	.000	3	2	5	1.7	4	0	0	5	1	0	2	0.7	
Team											13	4	17										
Total.....		3	600		53-179	.296	9-62	.145	35-52	.673	42	61	103	34.3	61	2	17	52	5	20	150	50.0	
Opponents.....		3	600		87-171	.509	14-35	.400	35-56	.625	28	91	119	39.7	63	-	50	49	9	26	223	74.3	

Score by Periods	1st	2nd	3rd	4th	Totals
SDSU	44	34	34	38	150
Opponents	63	59	52	49	223

TEAM STATISTICS

Opponent	Date	Score		Total		3-Pointers		Free throws		Rebounds				pf	a	t/o	blk	stl	pts	avg
				fg-fga	pct	3fg-fga	pct	ft-fta	pct	off	def	tot	avg							
at UC Riverside	11/11/16	44-72	L	16-55	.291	3-16	.188	9-14	.643	15	20	35	35.0	17	5	18	0	5	44	44.0
SAN DIEGO CHRISTIAN	11-14-16	80-70	W	31-56	.554	7-13	.538	11-14	.786	7	30	37	36.0	16	19	16	2	3	80	62.0
at San Diego	11/17/16	53-91	L	17-63	.270	2-17	.118	17-25	.680	15	16	31	34.3	25	2	17	3	7	53	59.0
LOYOLA MARYMOUNT	11-20-16	53-60	L	20-61	.328	4-29	.138	9-13	.692	12	25	37	35.0	19	10	17	2	8	53	57.5
SDSU		230		84-235	.357	16-75	.213	46-66	.697	49	91	140	35.0	77	36	68	7	23	230	57.5
Opponents		293		112-237	.473	25-66	.379	44-71	.620	42	109	151	37.8	77	67	60	11	29	293	73.2

Games played: 4
 Points/game: 57.5
 FG Pct: 35.7
 3FG Pct: 21.3
 FT Pct: 69.7

Rebounds/game: 35.0
 Assists/game: 9.0
 Turnovers/game: 17.0
 Assist/turnover ratio: 0.5
 Steals/game: 5.8
 Blocks/game: 1.8

STATISTICS - INDIVIDUAL GAME-BY-GAME / STARTING LINEUPS

	1	3	4	11	13	15	20	21	22	30	34	40	45
Opponent	Khalia Lark	Ariell Bostick	Kymerly Ellison	Arantxa Gomez	Allison Brown	McKynzie Fort	Geena Gomez	Abby Lowe	Lexy Thorderson	Cheyenne Greenhouse	Baylee Vanderdoes	Monique Terry	Naomi Ekwedike
at UC Riverside	DNP	0-8-2	6-1-0	1-0-0	DNP	14-3-3	6-2-0	2-3-0	DNP	6-3-0	7-5-0	2-1-0	0-0-0
SAN DIEGO CHRISTIAN	DNP	4-6-8	12-3-3	2-2-0	0-0-1	28-7-4	14-2-2	3-3-1	DNP	DNP	10-10-0	2-1-0	5-0-0
at San Diego	DNP	9-1-1	6-3-1	3-3-0	DNP	12-1-0	2-4-0	0-2-0	3-1-0	2-0-0	4-2-0	7-4-0	2-3-0
LOYOLA MARYMOUNT	DNP	1-9-1	8-5-1	0-1-0	DNP	22-9-0	0-1-4	0-0-0	6-3-2	8-0-1	6-6-1	0-2-0	2-0-0
vs. UT Arlington													
vs. Cen. Conn. St./Seton Hall													
at UC Davis													
MICHIGAN													
UC SANTA BARBARA													
at Cal State Fullerton													
BIOLA													
at New Mexico													
NEVADA													
BOISE STATE													
at San Jose State													
at Utah State													
UNLV													
AIR FORCE													
at Colorado State													
at Wyoming													
FRESNO STATE													
SAN JOSE STATE													
at Nevada													
UTAH STATE													
at UNLV													
at Fresno State													
COLORADO STATE													
at Air Force													
NEW MEXICO													

DNP - Did Not Play

Game	Forward	Forward/Guard	Guard	Guard	Guard	Game	Forward	Forward/Guard	Guard	Guard	Guard
at UC Riverside	Vanderdoes	Ellison	Fort	Greenhouse	Bostick	SAN JOSE STATE					
SAN DIEGO CHRISTIAN	Vanderdoes	Ellison	Fort	Gomez	Bostick	at Nevada					
at San Diego	Vanderdoes	Ellison	Fort	Greenhouse	Bostick	UTAH STATE					
LOYOLA MARYMOUNT	Vanderdoes	Ellison	Fort	Thorderson	Bostick	at UNLV					
vs. UT Arlington						at Fresno State					
vs. Cen. Conn. St./Seton Hall						COLORADO STATE					
at UC Davis						at Air Force					
MICHIGAN						NEW MEXICO					
UC SANTA BARBARA											
at Cal State Fullerton											
BIOLA											
at New Mexico											
NEVADA											
BOISE STATE											
at San Jose State											
at Utah State											
UNLV											
AIR FORCE											
at Colorado State											
at Wyoming											
FRESNO STATE											

Lineup Records
 Bostick-Ellison-Fort-Greenhouse-Vanderdoes: 0-2
 Bostick-Ellison-Fort-Gomez-Vanderdoes: 1-0
 Bostick-Ellison-Fort-Thorderson-Vanderdoes: 0-1

Aztec Team Highs

Points	80, vs. San Diego Christian (11-14-16)
Scoring Margin	10, vs. San Diego Christian (11-14-16)
FG Made	31, vs. San Diego Christian (11-14-16)
FG Attempts	63, at San Diego (11-17-16)
FG Pct.	.554 (31-56), vs. San Diego Christian (11-14-16)
3-Point FG Made	7, vs. San Diego Christian (11-14-16)
3-Point FG Attempts	29, vs. Loyola Marymount (11-20-16)
3-Point FG Pct.	.538 (7-13), vs. San Diego Christian (11-14-16)
Free Throws Made	17, at San Diego (11-17-16)
Free Throw Attempts	25, at San Diego (11-17-16)
Free Throw Pct.	.786 (11-14), vs. San Diego Christian (11-14-16)
Offensive Rebounds	15, Twice, Last: at San Diego (11-17-16)
Defensive Rebounds	30, vs. San Diego Christian (11-14-16)
Total Rebounds	37, Twice, Last: vs. Loyola Marymount (11-20-16)
Assists	19, vs. San Diego Christian (11-14-16)
Steals	8, vs. Loyola Marymount (11-20-16)
Blocks	3, at San Diego (11-17-16)
Turnovers	18, at UC Riverside (11-11-16)
Fouls	25, at San Diego (11-17-16)

Aztec Team Lows

Points	44, at UC Riverside (11-11-16)
Scoring Margin	10, vs. San Diego Christian (11-14-16)
FG Made	16, at UC Riverside (11-11-16)
FG Attempts	55, at UC Riverside (11-11-16)
FG Pct.	.270 ()
3-Point FG Made	2, at San Diego (11-17-16)
3-Point FG Attempts	13, at San Diego (11-17-16)
3-Point FG Pct.	.118 (2-17), at San Diego (11-17-16)
Free Throws Made	9, Twice, Last: vs. Loyola Marymount (11-20-16)
Free Throw Attempts	13, vs. Loyola Marymount (11-20-16)
Free Throw Pct.	.643 (9-14), at UC Riverside (11-11-16)
Offensive Rebounds	7, vs. San Diego Christian (11-14-16)
Defensive Rebounds	16, at San Diego (11-17-16)
Total Rebounds	31, at San Diego (11-17-16)
Assists	2, at San Diego (11-17-16)
Steals	3, vs. San Diego Christian (11-14-16)
Blocks	0, at UC Riverside (11-11-16)
Turnovers	16, vs. San Diego Christian (11-14-16)
Fouls	16, vs. San Diego Christian (11-14-16)

Aztec Scoring

First Half High	45, vs. San Diego Christian (11-14-16)
Second Half High	35, vs. San Diego Christian (11-14-16)
First Half Low	21, at UC Riverside (11-11-16)
Second Half Low	23, at UC Riverside (11-11-16)
Largest Halftime Lead	8, vs. San Diego Christian (11-14-16)
Largest Halftime Deficit	21 (29-50), at San Diego (11-17-16)
Largest Lead	15 (52-37), vs. San Diego Christian (11-14-16)
Largest Deficit	38 (53-91), at San Diego (11-17-16)
Largest Deficit in a Win	1 (19-20), vs. San Diego Christian (11-14-16)
Largest Lead in a Loss	6 (40-34), vs. Loyola Marymount (11-20-16)

Opponent Team Highs

Points	91, at San Diego (11-17-16)
Scoring Margin	38 (91-53), at San Diego (11-17-16)
FG Made	37, at San Diego (11-17-16)
FG Attempts	66, vs. San Diego Christian (11-14-16)
FG Pct.	.649 (37-57), at San Diego (11-17-16)
3-Point FG Made	11, vs. San Diego Christian (11-14-16)
3-Point FG Attempts	31, vs. San Diego Christian (11-14-16)
3-Point FG Pct.	.583 (7-12), at UC Riverside (11-11-16)
Free Throws Made	15, at San Diego (11-17-16)
Free Throw Attempts	21, at San Diego (11-17-16)
Free Throw Pct.	.714 (15-21), at San Diego (11-17-16)
Offensive Rebounds	14, vs. San Diego Christian (11-14-16)
Defensive Rebounds	36, at San Diego (11-17-16)
Total Rebounds	42, at San Diego (11-17-16)
Assists	21, at UC Riverside (11-11-16)
Steals	10, at San Diego (11-17-16)
Blocks	5, at San Diego (11-17-16)
Turnovers	18, at San Diego (11-17-16)
Fouls	26, at San Diego (11-17-16)

Opponent Team Lows

Points	60, vs. Loyola Marymount (11-20-16)
Scoring Margin	7 (60-53), vs. Loyola Marymount (11-20-16)
FG Made	23, vs. Loyola Marymount (11-20-16)
FG Attempts	54, at UC Riverside (11-11-16)
FG Pct.	.379 (25-66), vs. San Diego Christian (11-14-16)
3-Point FG Made	2, at San Diego (11-17-16)
3-Point FG Attempts	7, at San Diego (11-17-16)
3-Point FG Pct.	.286 (2-7), at San Diego (11-17-16)
Free Throws Made	9, Twice, Last: vs. Loyola Marymount (11-20-16)
Free Throw Attempts	15, vs. San Diego Christian (11-14-16)
Free Throw Pct.	.500 (9-18), vs. Loyola Marymount (11-20-16)
Offensive Rebounds	7, at UC Riverside (11-11-16)
Defensive Rebounds	18, vs. San Diego Christian (11-14-16)
Total Rebounds	32, vs. San Diego Christian (11-14-16)
Assists	13, vs. Loyola Marymount (11-20-16)
Steals	3, vs. San Diego Christian (11-14-16)
Blocks	0, vs. Loyola Marymount (11-20-16)
Turnovers	11, vs. San Diego Christian (11-14-16)
Fouls	14, vs. San Diego Christian (11-14-16)

Opponent Scoring

First Half High	50, at San Diego (11-17-16)
Second Half High	41, at San Diego (11-17-16)
First Half Low	32, vs. Loyola Marymount (11-20-16)
Second Half Low	28, vs. Loyola Marymount (11-20-16)
Largest Halftime Lead	21 (50-29), at San Diego (11-17-16)
Largest Halftime Deficit	8 (37-45), vs. San Diego Christian (11-14-16)
Largest Lead	38 (91-53), at San Diego (11-17-16)
Largest Deficit	15 (37-52), vs. San Diego Christian (11-14-16)
Largest Deficit in a Win	6 (34-40), vs. Loyola Marymount (11-20-16)
Largest Lead in a Loss	1 (19-20), vs. San Diego Christian (11-14-16)

Aztec Individual Highs

Points

28, McKynzie Fort vs. San Diego Christian (11-14-16)

Field Goals Made

11, McKynzie Fort vs. San Diego Christian (11-14-16)

Field Goals Attempted

21, McKynzie Fort vs. Loyola Marymount (11-20-16)

21, McKynzie Fort at UC Riverside (11-11-16)

Field Goal Percentage (min. 5 made)

.611 (11-18), McKynzie Fort vs. San Diego Christian (11-14-16)

3-Point Field Goals Made

3, Kymberly Ellison vs. San Diego Christian (11-14-16)

3-Point Field Goals Attempted

8, Kymberly Ellison vs. Loyola Marymount (11-20-16)

3-Pt Field Goal Percentage (min. 2 made)

.750 (3-4), Kymberly Ellison vs. San Diego Christian (11-14-16)

Free Throws Made

6, Kymberly Ellison at San Diego (11-17-16)

Free Throw Attempted

8, Kymberly Ellison, at San Diego (11-17-16)

Free Throw Percentage (min 3 made)

1.000 (4-4), Baylee Vanderdoes at San Diego (11-17-16)

1.000 (4-4), McKynzie Fort, Geena Gomez vs. San Diego Christian (11-14-16)

1.000 (3-3), McKynzie Fort vs. Loyola Marymount (11-20-16)

1.000 (3-3), Baylee Vanderdoes at UC Riverside (11-11-16)

Rebounds

10, Baylee Vanderdoes vs. San Diego Christian (11-14-16)

Assists

8, Ariell Bostick vs. San Diego Christian (11-14-16)

Steals

4, Ariell Bostick vs. Loyola Marymount (11-20-16)

Blocked Shots

1, Lexy Thorderson, Abby Lowe vs. Loyola Marymount (11-20-16)

1, Kymberly Ellison, McKynzie Fort, Lexy Thorderson at San Diego (11-17-16)

1, Baylee Vanderdoes, Monique Terry vs. San Diego Christian (11-14-16)

Turnovers

4, McKynzie Fort vs. Loyola Marymount (11-20-16)

4, Cheyenne Greenhouse vs. Loyola Marymount (11-20-16)

4, McKynzie Fort at San Diego (11-17-16)

Fouls

5, Cheyenne Greenhouse vs. Loyola Marymount (11-20-16)

5, McKynzie Fort at San Diego (11-17-16)

Opponent Individual Highs

Points

22, Lauren Holt at UC Riverside (11-11-16)

Field Goals Made

8, Cheyanne Wallace vs. Loyola Marymount (11-20-16)

8, Maya Hood at San Diego (11-17-16)

8, Lauren Holt at UC Riverside (11-11-16)

Field Goal Att.

19, Nyadoup Lam vs. San Diego Christian (11-14-16)

Field Goal Percentage (min 5 made)

.800 (8-10), Maya Hood at San Diego (11-17-16)

3-Point Field Goals Made

5, Lauren Holt at UC Riverside (11-11-16)

3-Point Field Goals Attempted

7, Nyadoup Lam vs. San Diego Christian (11-14-16)

7, Lauren Holt at UC Riverside (11-11-16)

3-Pt Field Goal Percentage (min 2 made)

.714 (5-7), Lauren Holt at UC Riverside (11-11-16)

Free Throws Made

5, Cori Woodward at San Diego (11-17-16)

Free Throws Attempted

6, Cori Woodward at San Diego (11-17-16)

Free Throw Percentage (min 3 made)

1.000 (3-3), Michelle Curry at UC Riverside (11-11-16)

Rebounds

15, Jackie Johnson vs. Loyola Marymount (11-20-16)

Assists

11, Rejane Verin at UC Riverside (11-11-16)

Steals

3, Cheyanne Wallace vs. Loyola Marymount (11-20-16)

3, Patricia Brossmann at San Diego (11-17-16)

Blocked Shots

2, Sydney Williams at San Diego (11-17-16)

Turnovers

5, Andee Velasco vs. Loyola Marymount (11-20-16)

5, Sydney Williams at San Diego (11-17-16)

5, Saskia Giesselbach vs. San Diego Christian (11-14-16)

Fouls

4, Cheyanne Wallace vs. Loyola Marymount (11-20-16)

4, Cierra Belvin vs. Loyola Marymount (11-20-16)

4, Alexandra Young at San Diego (11-17-16)

4, Nyadoup Lam vs. San Diego Christian (11-14-16)

4, Lauren Holt at UC Riverside (11-11-16)

The Last Time an Aztec ...

Scored 20-24 points
22, McKynzie Fort, 11-20-16 vs. Loyola Marymount

Scored 25-29 points
28, McKynzie Fort, 11-14-16 vs. San Diego Christian

Scored 30-39 points
31, Cierra Warren, 1-22-14 vs. San José State

Scored 40+ points
41, Chana Perry, 1-2-88 vs. Northern Illinois

Had 20+ rebounds
27, Chana Perry, 11-25-88 vs. Alabama State

Had 15-19 rebounds
17, Kristina Hunter, 1-11-14 vs. Air Force

Had 10-14 rebounds
10, Baylee Vanderdoes, 11-14-16 vs. San Diego Christian

Had 10+ assists
14, Chelsea Hopkins, 3-14-13 vs. Nevada

Had A Double-Double
Baylee Vanderdoes (10 points, 10 rebounds), 11-14-16 vs. San Diego Christian

Had A Triple-Double
Chelsea Hopkins, 13 points, 11 rebounds, 12 assists, 3-9-13 vs. Boise State

The Last Time San Diego State ...

Had two players score 20 points in the same game
Deajanae Scurry (22) and Cierra Warren (20), 1-25-14 vs. Utah State

Had two players with a double-double in the same game
Erimma Amarikwa (19 points, 13 rebounds) and Cheyenne Greenhouse (19 points, 11 rebounds), 11-14-14 vs. Sacramento State

Scored 100+ points
101, vs. Colorado State (101-62), 1-25-92

Allowed 100+ points
104, vs. UCLA (56-104), 12-11-98

Won by 20+ points
35, vs. San Diego Christian (60-25), 12-21-15

Won by 30+ points
35, vs. San Diego Christian (60-25), 12-21-15

Won by 40+ points
41, vs. Boise State (86-45), 3-9-13

Won by 50+ points
51, vs. Air Force (79-28), 1-7-09

Won in Overtime
vs. Fresno State (65-54), 2-10-16

Lost in Overtime
vs. Utah (70-67), 1-8-11

2016-17 Aztec Leaders

Double-Figure Scoring Games
McKynzie Fort (4), Geena Gomez (1), Kymberly Ellison (1), Baylee Vanderdoes (1)

SDSU High Scorer
McKynzie Fort (4)

Games Led SDSU In Rebounds
Ariell Bostick (2), McKynzie Fort (1), Baylee Vanderdoes (1), Geena Gomez (1), Monique Terry (1)

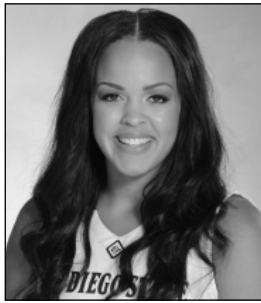
Games Led SDSU In Assists
McKynzie Fort (1), Ariell Bostick (2), Kymberly Ellison (1), Geena Gomez (1)

Games Led SDSU In Steals
Ariell Bostick (4), Kymberly Ellison (1), McKynzie Fort, Geena Gomez (1), Arantxa Gomez Ferrer (1)

Games Led SDSU In Blocks
Lexy Thorderson (2), Kymberly Ellison (1), McKynzie Fort (1), Abby Lowe (1), Monique Terry (1), Baylee Vanderdoes (1)

► 2016-17 SPECIALTY STATS
San Diego State/Opponent

	Points in Paint	Points off TOs	2nd Chance Points	Fast Break Points	Bench Points
at UC Riverside (L)	11/18	10/22	6/5	0/0	11/22
SAN DIEGO CHRISTIAN	15/14	38/20	6/6	6/2	70/12
at San Diego	18/44	13/23	6/8	0/0	17/39
LOYOLA MARYMOUNT	26/32	17/20	10/15	5/2	10/3
vs. UT Arlington					
vs. Gen. Conn. St./Seton Hall					
at UC Davis					
MICHIGAN					
UC SANTA BARBARA					
at Cal State Fullerton					
BIOLA					
at New Mexico					
NEVADA					
BOISE STATE					
at San Jose State					
at Utah State					
UNLV					
AIR FORCE					
at Colorado State					
at Wyoming					
FRESNO STATE					
SAN JOSE STATE					
at Nevada					
UTAH STATE					
at UNLV					
at Fresno State					
COLORADO STATE					
at Air Force					
NEW MEXICO					



KHALIA LARK
Jr. | 6-0 | G
Irvine, Calif.
Mater Dei HS/Washington

1



ARIELL BOSTICK
Sr. | 5-4 | G
Oakland, Calif.
Bishop O'Dowd HS

3



KYMBERLY ELLISON
Sr. | 5-7 | G
Columbus, Ga.
Hardaway HS/Georgia Tech

4



ARANTXA GOMEZ FERRER
So. | 6-0 | F
Valencia, Spain
Parque Colegio Santa Ana HS

11



ALLISON BROWN
Jr. | 5-7 | G
Anaheim Hills, Calif.
Mater Dei HS

13



MCKYNZIE FORT
Jr. | 5-9 | G
Fontana, Calif.
Etiwanda HS

15



GEENA GOMEZ
Jr. | 5-8 | G
Huntington Beach, Calif.
Edison HS/St. Joseph's (Pa.)

20



ABBY LOWE
Fr. | 5-11 | G
Stockport, England
Barking Abbey Academy

21



LEXY THORDERSON
Jr. | 6-0 | G/F
Castle Rock, Colo.
Rock Canyon HS

22



CHEYENNE GREENHOUSE
Jr. | 5-11 | G
Riverside, Calif.
Canyon Springs HS

30



BAYLEE VANDERDOES
Fr. | 6-1 | F
Auburn, Calif.
Placer HS

34



MONIQUE TERRY
Fr. | 6-2 | F
San Antonio, Texas
Brennan HS

40



ALEIAH BRANDON
Sr. | 6-1 | F
Corona, Calif.
Centennial HS

44



NAOMI EKWEDIKE
Fr. | 6-6 | C
Lagos, Nigeria
Potters House Christian Academy (Fla.)

45



STACIE TERRY
Head Coach
Fourth Season



JESSE CLARK
Assistant Coach
Fourth Season



CIARA CARL
Assistant Coach
Fourth Season



NICK GRANT
Assistant Coach
Third Season