

SAN DIEGO STATE




Visiting Team Guide
2017-2018



SAN DIEGO STATE AZTECS

Table of Contents

Welcome to San Diego.2	Transportation Information. 15
Department of Athletics Staff.3	
Map to Qualcomm Stadium.4	
Qualcomm Stadium Map.5	
Advance Football Information.6	Hotels. 16-17
Football Ticket Information.7	Restaurants. 18-21
Campus Athletic Facilities Map.8	College Area Fast Food.22
Viejas Arena Map.9	Movies & Shopping. 23
Men’s Basketball Ticket Information.10	Special Attractions.24
Tony Gwynn Stadium Map. 11	Radio Stations & Weather. 25
Arial View of Athletic Facilities.12-13	Emergency & Miscellaneous Info. 26
Other Ticket Information. 14	Visiting Team Travel Info Form.27

**The California
State University system is
committed to providing equal
opportunities for male and
female students in all campus
programs, including
intercollegiate athletics.**



SAN DIEGO STATE AZTECS

Welcome to San Diego

Dear Guest:

We look forward to your team's visit to San Diego. As you prepare for your visit, we hope you will utilize this guide as a resource. We have compiled some information to assist you with your travel plans. You will find information regarding travel, dining, lodging, entertainment attractions, and miscellaneous information, which will make your stay in San Diego even more enjoyable.

Parking Information

When you arrive at SDSU, it is important to remember that parking regulations are strictly enforced and we ask you to please follow event parking signs displayed throughout the campus.

Please refer to the map on page 8 for parking information at specific facilities. *For games, parking structure 7 requires the purchase of a parking permit at \$2 per hour. Yellow parking permit dispensers are located on both levels of parking structure 7 at both the north and south ends.* Parking lot 13 may be used for visiting men's and women's basketball teams only. For additional parking questions and/or instructions, please contact Event Management at (619) 594-3383.

Locker Rooms

It is recommended that all teams, except baseball, basketball, & football, dress at the hotel and arrive at the venue in uniform. Towels can be provided, upon request, for showers following the game. Please call the Equipment Room if your team requires any special needs (i.e., shower facilities and laundry services) at (619) 594-4951.

Athletic Medicine

The Aztec Athletic Medicine Facility is located in room 1400 of the Aztec Athletics Center. Their office hours are 8 a.m. to 6 p.m., Monday through Friday. Please contact the staff at (619) 594-5551 to coordinate any special training needs your team may require.

If you have additional questions or need further assistance, please refer to the department phone directory located on the following page.

We look forward to your visit and wish you good luck in your upcoming season.

Sincerely,

**SAN DIEGO STATE UNIVERSITY
DEPARTMENT OF ATHLETICS**



Hepner Hall

SAN DIEGO STATE AZTECS

Department of Athletics Staff

(619 area code)

Administration

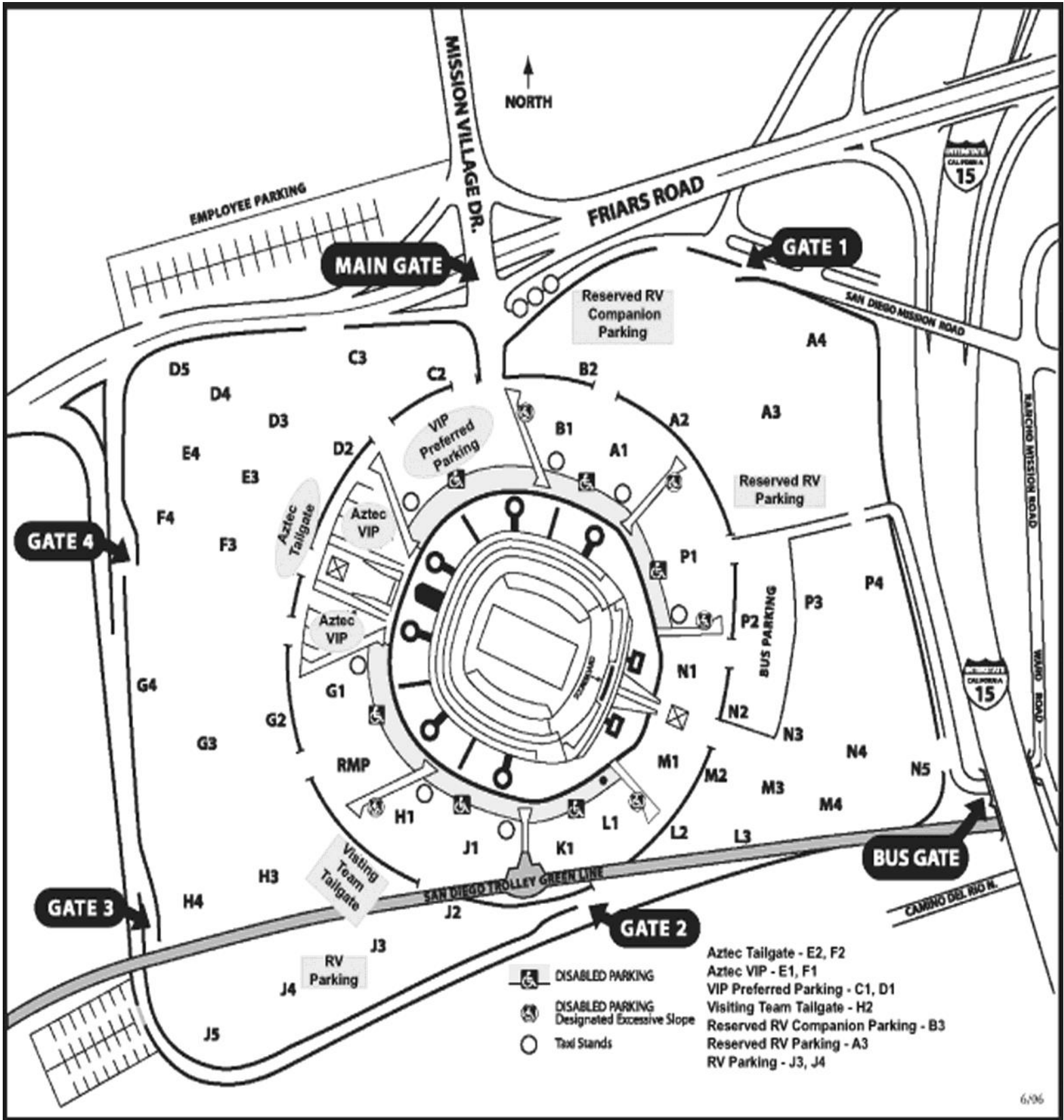
John David Wicker Director of Intercollegiate Athletics	594-6357
Executive Associate Athletic Director/SWA Jenny Bramer	594-0394
Executive Associate Athletic Director / External Relations Steve Schnall	594-3210
Senior Associate Athletic Director of Business Administration Chuck Lang	594-6296
Associate Athletic Director of Compliance Andy Humes	594-7925
Senior Associate AD of Communications/ Media Relations Mike May	594-3023
Senior Associate Athletic Director of Development Mandy Huiras	594-7924
Senior Associate AD of Student-Athlete Academic Support Services Bobby Smitheran	594-5891
Assistant Athletic Director of Operations– Event Management Dave Noll	594-4191
Assistant Athletic Director of Operations– Special Events/Projects Lesley Fong	594-8942
Assistant Athletic Director of Marketing and New Media Lisa Pearson	594-0760
Assistant Athletic Director of Sports Medicine Patrick Spieldenner	594-7650
Director of Athletic Equipment Services Angie Garza	594-3419
Assistant Athletic Director of Strength & Conditioning Adam Hall	594-2070
Assistant Athletic Director of Football Operations Jashon Sykes	594-4621
Assistant Athletic Director of Men’s Basketball Operations Matt Soria	594-5509
Director of Women’s Basketball Operations Jonathan Silver	594-0260
NCAA Faculty Athletics Representative Patrick Papin	594-3299
Student– Athlete Services Coordinator Ashley Sloper	594-4530

Coaching Staff

Baseball Mark Martinez	594-1818
Men’s Basketball Brian Dutcher	594-6249
Women’s Basketball Stacie Terry	594-4095
Women’s Rowing Bill Zack	594-0650
Women’s Cross Country Sheila Burrell	594-5514
Football Rocky Long	594-7197
Men’s Golf Ryan Donovan	594-4334
Women’s Golf Leslie Spalding	594-7665
Women’s Lacrosse Kylee White	594-6548
Men’s Soccer Lev Kirshner	594-0136
Women’s Soccer Mike Friesen	594-3749
Softball Kathy Van Wyk	594-1952
Women’s Swimming Mike Shrader	594-5883
Men’s Tennis Gene Carswell	594-5084
Women’s Tennis Peter Mattera	594-6505
Women’s Track & Field Shelia Burrell	594-5514
Women’s Volleyball Deitre Collins-Parker	594-5064
Women’s Water Polo Carin Crawford	594-0649
Aztec Marching Band, Director Bryan K. Ransom	594-1601
Aztec Cheer Squad Jennifer Long	

SAN DIEGO STATE AZTECS

Map to Qualcomm Stadium



6/96

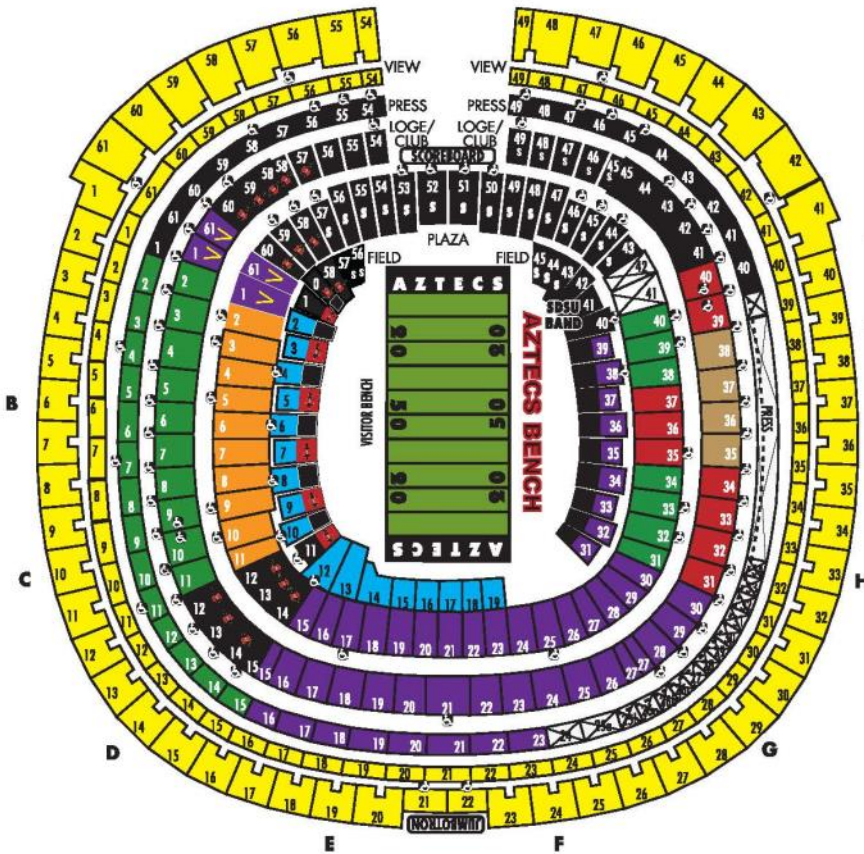
SAN DIEGO STATE AZTECS

Qualcomm Stadium

Home of the Aztecs

2017 AZTEC FOOTBALL

SINGLE GAME TICKET PRICING



Prices include \$1 City of San Diego facility fee.

1 2

 Club South	\$100 \$50
 Plaza-Club South	\$75 \$40
 Plaza South/Club-Pres North	\$65 \$35
 Plaza North	\$55 \$30
 Field South/Plaza-Loge-Pres-Club Endzone	\$45 \$25
 Field North/Field Endzone	\$35 \$20
 View - (SkyShow & Select Games)	\$45 \$25

 SDSU STUDENT AREA  Visiting Team

  NOT AVAILABLE

Tier 1 - Stanford and Boise State
Tier 2 - UC Davis, Northern Illinois, Fresno State, Nevada, New Mexico

Student guest ticket price is equivalent to the Field North/Field Endzone price in each tier.

2017 Aztec Football Home Game Schedule

For Schedule updates, check GOAZTECS.COM

Saturday, September 2 | UC Davis | 5:30 p.m.

Saturday, September 16 | Stanford | 7:30 p.m.

Saturday, September 30 | Northern Illinois | 7:30 p.m.

Saturday, October 14 | Boise State | 7:30 p.m.

Saturday, October 21 | Fresno State | 7:30 p.m.

Saturday, November 18 | Nevada | 7:30 p.m.

Friday, November 24 | New Mexico | 12:30 p.m.

For Tickets...

GOAZTECS.COM

619-283-7378 (M-F, 9am-5pm)

Qualcomm Stadium-Window E (M-F, 9am-5pm)

Children 2 and under do not require a ticket.

No Re-Entry permitted at Qualcomm Stadium.

Group Tickets (20 or more): \$5 off ticket price*

*Excluding Gold Sections

For consignment and ticket price information, please call
(619) 283-SDSU (7378)

SAN DIEGO STATE AZTECS

Football Ticket Information

CONSIGNMENT

The Aztec Ticket Office will contact visiting teams regarding consignment ticket needs prior to the season. Requested tickets will be mailed, along with any contracted complimentary tickets, at least two to three weeks prior to the game. Any unsold tickets must be returned one week prior to the game. The Aztec Ticket Office is located at Qualcomm Stadium, ticket window "E." If other arrangements are needed, please call the Aztec Ticket Office at (619) 283-7378.

If you prefer to return your ticket consignment via express mail, please use the following address:

Player's Guest Pass Gate

Player guest seats may be selected from your consignment or contracted complimentary allotment. A representative from your school should report to the ticket office **at least two (2) hours prior to game time** with the player guest tickets and an alphabetized list. They will be directed to gate "H." The gate opens an hour and a half before game time. The player's guest, after showing proper picture identification, will sign the list and be admitted into the stadium to receive a ticket stub. The school's representative must remain at the gate until all the tickets have been picked up, or when gate "H" closes at the end of halftime. The ticket office will also close after halftime.

DAY OF GAME WILL CALL

SDSU and General Public "Will Call" are located at ticket window "E" beginning two (2) hours prior to game time and close at the end of halftime. We require that all persons show proper picture identification. Please keep your team's "Will Call" at your player pass gate.

Aztec Athletic Ticket Office
c/o Ticket Office Manager
Qualcomm Stadium– Window "E"
9449 Friars Road
San Diego, CA 92108

BAND & PEP SQUAD SEATING

Seating arrangements for visiting bands will be allocated in the field level and are not part of any complimentary or consignment allotment; there is no charge. Cheerleaders are positioned in front of Field Level 0 & 1. ***Please make your request no later than 30 days prior to the event*** so accommodations can be made. Band and cheer members, in uniform or with an instrument, do not need tickets.



Mission Bay

SAN DIEGO STATE AZTECS

Advance Football Information

Aztec Uniform

Home: Black Jerseys, Black Pants, Red Helmets
Away: White Jerseys, Black Pants, Red Helmets

Game Ball

Nike Vapor Elite

Stadium Information

Qualcomm Stadium (70,561 capacity) (619) 641-3100
Located in Mission Valley just northwest of Interstate 8 & 15

Manager: Mike McSweeney (619) 641-3101
Turf: Natural Turf
Half-Time: 20 minutes
Dressing Rooms: Under stands at west-end of stadium
Towels: 300-400
Ice: 125 lbs.

Sideline Communications: Gary Brashear (619) 281-1500

Requests

Scouting Films: Brian Murphy (619) 594-7617
Scouting Tickets: Mike May (619) 594-3023
Radio/TV/Press Box: Mike May (619) 594-3023
Workout Schedule: David Noll (619) 594-4191
Athletic Medicine: Patrick Spieldenner (619) 594-7652
Athletic Equipment: Sonny Sanfillipo (619) 594-4951
Coaches' Phones: Gary Brashear (619) 281-1500
Tailgate Reservations: ACE Parking (619) 277-6408

Parking Passes

Seven (7) parking passes for team vehicles

Credentials

Sixty (60) total in bench area, per MWC rules.
Visiting Athletic Director suite.
Contact: David Noll (619) 594-4191
All team vehicles must enter through the main gate.
A maximum of two (2) buses are allowed through the west tunnel.

Practice Time Information

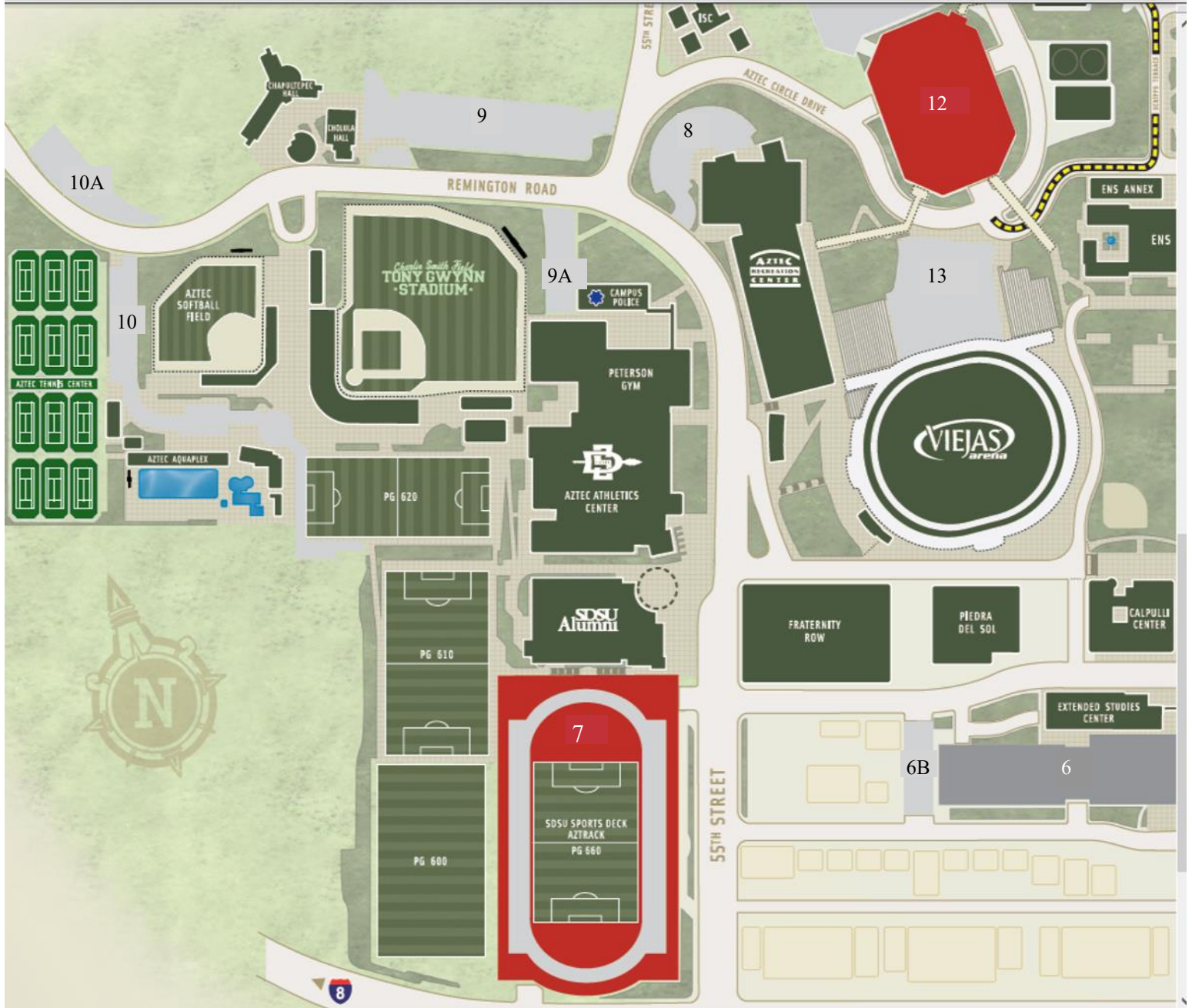
If your team needs to make specific practice time arrangements, please contact David Noll at (619) 594-4191.

Will Call

The visiting team player "Will Call" is located at gate "H." **subject to change*
Public "Will Call" is located at gate "E."

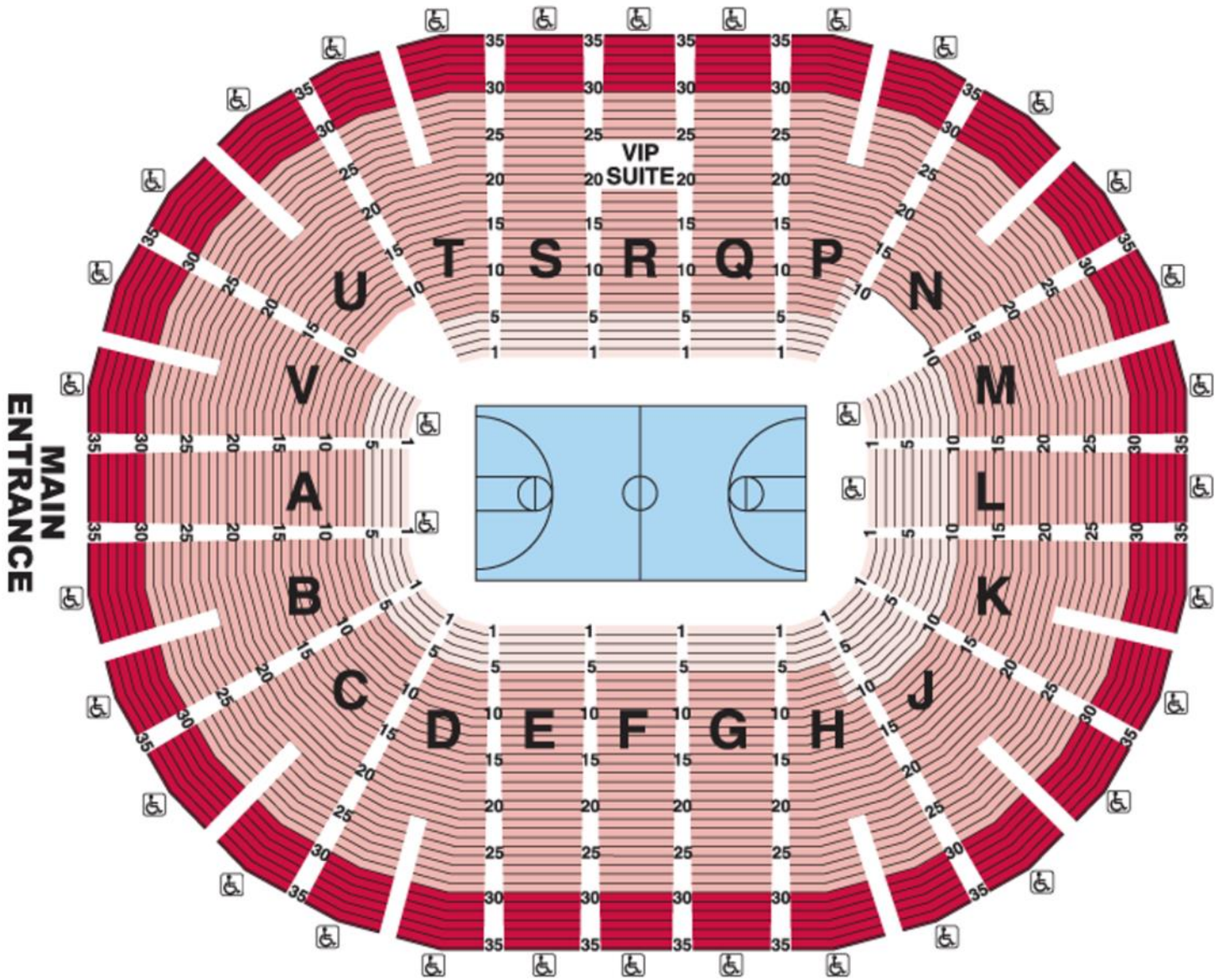
SAN DIEGO STATE AZTECS

Campus Athletic Facilities Map



SAN DIEGO STATE AZTECS

Viejas Arena Map



For consignment and ticket price information, please call
(619) 283-SDSU (7378)

SAN DIEGO STATE AZTECS

Men's Basketball Ticket Information

TICKET PRICES (Ticket windows and gates are open 90 minutes prior to tip-off; doors are open 60 minutes prior to tip-off.)

\$35.00	Reserved Chairback Seating
\$25.00	General Admission Bench Seating
FREE	SDSU Student Area General Admission (with current SDSU Card ID and validation)

CONSIGNMENT

Prior to the season, a written request should be made to the Athletic Ticket Office, PO Box 600215, San Diego, CA 92160, for consignment tickets. Requested tickets will be mailed, along with any contracted comps, at least two to three weeks prior to the game. Any unsold tickets must be returned at least twenty-four (24) hours prior to game day or the Friday preceding a weekend game; complimentary tickets cannot be returned. The ticket office opens at 10:00 a.m. on game day, and is located off 55th Street at the west entrance of Viejas Arena at Aztec Bowl. If other arrangements are needed, please call (619) 283-7378.

If you prefer to return your ticket consignment via express mail, please use the following address:

**Aztec Athletic Ticket Office
c/o Ticket Office Manager
Qualcomm Stadium– Window “E”
9449 Friars Road
San Diego, CA 92108**



Viejas Arena at Aztec Bowl

PLAYER GUEST PASS GATE

Player guest seats may be selected from your consignment or contracted complimentary allotment. A representative from your school should report to the ticket office **at least two (2) hours prior to the game** with the player guest tickets and an alphabetized list. They will be directed to the west entrance of Viejas Arena. The gate opens an hour and a half before tip-off. The player's guest, after showing proper picture identification, will sign the list and be admitted inside the gate to receive a ticket stub. The ticket office will also close after halftime.

TEAM PARKING

Visiting teams may park in parking lot 13, which is located immediately north of Viejas Arena.

LOCKER ROOM INFORMATION

The locker rooms are located on the floor level, at the north end of the arena. Towels, ice, and water will be provided for all teams. For any additional equipment needs, please contact the Equipment Manager at (619) 594-4951.

PRACTICE TIME INFORMATION

If your team needs to make specific practice time arrangements, please contact Event Management at (619) 594-0396.

BAND & PEP SQUAD SEATING

If your band or pep squad plans to participate in game activities, please contact Event Management at (619) 594-4191 or via fax at (619) 594-1334; they will coordinate the details. Band and cheer members, in uniform or with an instrument, do not need tickets.

SAN DIEGO STATE AZTECS

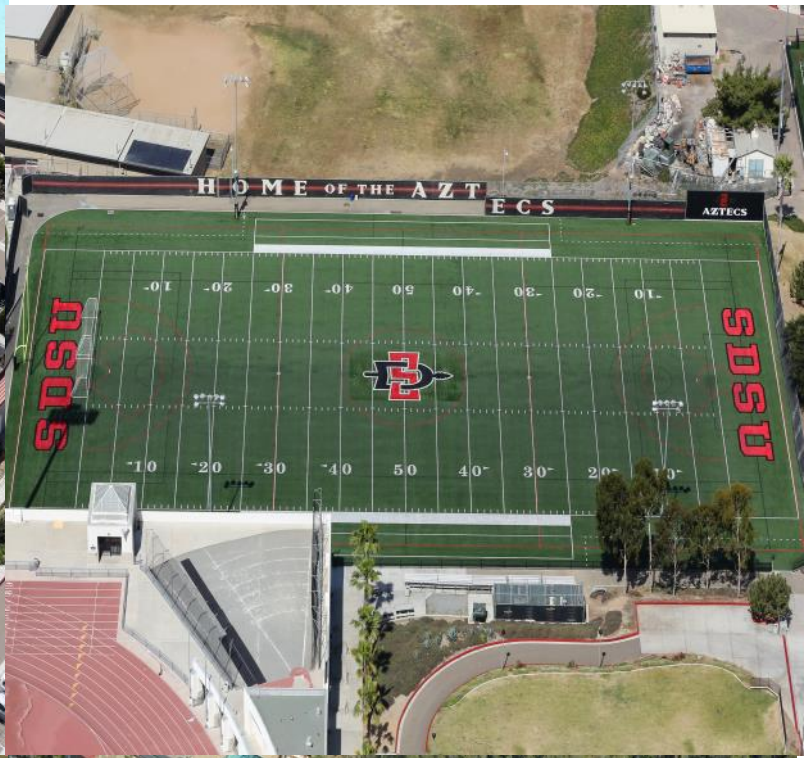
Tony Gwynn Stadium



**For consignment and ticket price information, please call
(619) 283-SDSU (7378)**

SAN DIEGO STATE AZTECS

Softball/ Tennis/ Aquaplex/ Lacrosse



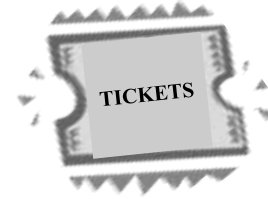
SAN DIEGO STATE AZTECS

Sports Deck/ Peterson Gym



SAN DIEGO STATE AZTECS

Other Ticket Information



ON-CAMPUS DEPARTMENT OF ATHLETICS EVENTS

TICKETS

Refunds are not available, so it is recommended to check the complimentary ticket list before purchasing a ticket. Ticket prices are listed below and are subject to change for tournaments and special games/events.

COMPLIMENTARY TICKETS

Complimentary admissions are allotted to visiting teams as per each individual game contract. The complimentary ticket list is supplied to the Event Supervisor thirty (30) minutes prior to the opening of the gates. There will be no further additions or changes after admission gates have opened. Guests on the pass list are required to show proper picture identification and sign his/her name on the list.

All NCAA rules regarding complimentary admissions will be enforced.

TICKET PRICES

BASEBALL @ Tony Gwynn Stadium (*gates/tickets open 90 minutes prior to the first pitch.*)
SOFTBALL @ the SDSU Softball Stadium (*gates/tickets open 60 minutes prior to the first pitch.*)
WOMEN'S VOLLEYBALL @ Peterson Gym (*gates/tickets open 60 minutes prior to game time.*)
WOMEN'S TRACK & FIELD @ the SportsDeck (*gates/tickets open 60 minutes prior to event time.*)

\$6.00 ADULTS
FREE CHILDREN 2 YEARS OLD & UNDER
FREE SDSU STUDENTS (*with current SDSU Card ID and validation*)

WOMEN'S BASKETBALL @ Viejas Arena
(*Ticket windows and gates open 60 minutes prior to tip-off.*)

\$20.00 COURTSIDE ROW
\$9.00 RESERVE SEATING
\$6.00 GENERAL ADMISSION
FREE CHILDREN 2 YEARS OLD & UNDER
FREE SDSU STUDENTS (*with current SDSU Card ID and validation*)

SAN DIEGO STATE AZTECS

Transportation Information



AIRPORTS

Lindbergh Field/San Diego International Airport, 3665 & 3707 North Harbor Drive
 Parking Info (619) 291-1343 san.org

Montgomery Field, 3740 John Montgomery Drive, San Diego
 Airport Operations (858) 573-1440



AIRLINES

Alaska Airlines	(800) 252-7522	alaskaair.com
American	(800) 433-7300	aa.com
Frontier	(888) 601-4296	flyfrontier.com
Southwest	(800) 435-9792	southwest.com
United	(800) 864-8331	united.com



AUTO RENTAL

Enterprise	(844) 362-0813	enterprise.com
Budget	(800) 218-7992	budget.com
Hertz	(800) 654-3131	hertz.com
Advantage	(800) 777-5500	advantage.com



BUSES

Sun Diego Charter	(619) 336-9200	sundiegocharter.com
<i>Official Charter of SDSU Athletics</i>		



CITY TRANSIT

Cal Trans (Highway Conditions)	(800) 427-7623	dot.ca.gov
San Diego Transit	(619) 238-0100	sdmts.com
Route & Schedule Info	(619) 233-3004	sdmts.com



TAXI/SHUTTLE SERVICE

Yellow Cab Company	(619) 444-4444	
Orange Cab Custom Tours	(619) 291-3333	
Orange Cab	(619) 223-5555	
Cloud Nine Shuttle	(800) 258-3826	cloud9shuttle.com



TRAINS

Amtrak	(800) 872-1477 or (800) 872-7245	amtrak.com
San Diego:	1050 Kettner Blvd. (619) 239-9021	
Oceanside:	235 S. Tremont (760) 722-4622	

BOLD NAMES REPRESENT AZTEC SPONSORS. ANY PATRONAGE IS GREATLY APPRECIATED.

SAN DIEGO STATE AZTECS

SDSU Partner Hotels & Transportation



Courtyard by Marriott - San Diego Central
8651 Spectrum Center Blvd.
San Diego, CA 92123

Max McCormack
Corporate Sales Manager
(858) 633-9014
maxm@cy-kearnymesa.com

**Voted Top Hotel in San Diego &
Experienced Host Hotel of Collegiate
Sports!**

- **Rates Starting At \$99.00**
- **Includes: Full HOT Team Breakfast, Blocked-off Team/Bus Parking, and Internet**
- **Approximately 10 Minutes to San Diego State University & Qualcomm**
- **Complimentary Suite Upgrade for Coach**
- **Complimentary Meeting Space & Discounted Menus**
- **Double Marriott Rewards Points**



Official Transportation / Charter Service of SDSU Athletics

Sun Diego Charter Company is proud to represent San Diego State University as the exclusive provider of motorcoach charter transportation for the SDSU Athletics Program.

Highlights:

Largest provider of motorcoach charter services in San Diego

Newest fleet of vehicles in San Diego, including 49 pax and 56 pax deluxe motorcoaches

DVD, GPS, and WIFI equipped motorcoaches available (WIFI upon request)

Industry leading maintenance standards in accordance with CA-DOT & CHP

Exemplary customer service by experienced Sales and Operations professionals

Drivers are professionally trained by Sun Diego's own Safety & Training Managers

Driver requests are welcome

Mention that you were referred through San Diego State and receive our preferred customer discounted rates!

Brian Webber, Business Development Manager
Sun Diego Charter Company
522 W 8th Street, National City CA 91950
(o) 619-336-9200 cell: 619-241-5113

bwebber@sundiegocharter.com
www.sundiegocharter.com

SAN DIEGO STATE AZTECS

SDSU Partner Hotels & Restaurants



VOTED BEST PIZZA for 25 years by San Diego State Students!

We specialize in catering large group orders, delivered anywhere in San Diego.

Or reserve space for your group at either of our San Diego locations:

6145 El Cajon Boulevard
 Corner of College & El Cajon Boulevard,
 just south of SDSU
 (619)265-0999, www.woodstockssd.com

1221 Garnet Avenue, Pacific Beach
 (858)642-6900, www.woodstockspb.com



Please a crowd of any size with Rubio's A-Go-Go Catering. Rubio's can accommodate catering needs for groups as small as five to as large as 100+. Rubio's A-Go-Go Catering makes feeding a group as easy as a day at the beach.

For catering needs contact: Sheena Severns,
 San Diego Marketing Coordinator, 858-790-1143



4041 Harney St
 San Diego, CA 92110



AS AWARD-WINNING
AS YOUR TEAM



RELAX. ENJOY. SHARE.*



SAN DIEGO STATE AZTECS

SDSU Partner Restaurants



LET US CATER Order online at jerseymikes.com
~ your ~
TEAM MEALS

SINCE 1956
Jersey Mike's
SUBS

Made to Order - Always Fresh!
Contact Jessica Zulauf
jessica.zulauf@jmsocal.com • 619-929-7486

Campus Plaza Center • 6083 El Cajon Blvd. • San Diego



Matt Lizalde 619-297-4330
2489 San Diego Ave,
San Diego, CA 92110



8910 Troy Street
Spring Valley, CA 91977
calicomfortbbq.com



Official Host Location of the Aztec Football and Basketball Coaches' Shows

The Aztec Football Coaches Show starts this August live on location at Hooley's Irish Pub and Grill located in the Grossmont Shopping Center.

5500 Grossmont Center Drive #277
La Mesa, CA 91942
619.713.6900

2955 Jamacha Road, Ste. 21
Rancho San Diego, CA 92019



John Mendiola
858-583-1953 or (619) 229-6888
6083 El Cajon Blvd. Suite B-1
Campus Plaza, San Diego, CA 92115

Eureka!
Discover American Craft

5140 College Ave
San Diego, CA 92115
(619) 220-2400
www.eurekarestaurantgroup.com/blog/locations/san-diego-state/

SAN DIEGO STATE AZTECS

SDSU Partner Restaurants



Nicolosi's is San Diego's most authentic Italian restaurant. For more than 60 years, we have been serving up fresh and authentic recipes passed on from generation to generation. We create our food with care and love, and our staff treats you like family. Visit us today for the best Italian food in town. Mangia!



DINE-IN, DELIVERY or FOOD TO GO!

To place a Take Out Order Call:
 San Diego (619) 461-5757
 El Cajon (619) 444-0303

Or visit our Website to
 Order Online for Delivery!

www.nicolosis.com

Nicolosi's offers Italian food catering, wedding catering, special event catering, large business take-out orders, office take-out orders, school restaurant fundraiser nights, and birthday parties and private holiday party reservations.

San Diego Location:

7005 Navajo Road
 San Diego, CA 92119

Sun - Thurs: 11:00am-9:00pm
 Fri & Sat: 11:00am-9:30pm

El Cajon Location:

221 East Main Street
 El Cajon, CA 92020

Sun - Thu 11:00am-8:30pm
 Fri 11:00am-9:00pm
 Sat 11:00am-9:00pm

Pacific Hospitality Group

Pacific Hospitality Group, Inc. inspires a tradition of innovation developed over our 35+ year history. We provide attentive hospitality by catering to our guest's senses everyday of their stay, for every meal or during each round of golf they play. We focus on this mission to offer and support a hospitable culture through each of our hotels, restaurants and golf courses.



Hacienda Hotel - Old Town
 San Diego



"Absolutely charming..." is the most common description heard by our guests as they relax in the sitting area of the lobby. From the beautiful lobby to our deluxe guest rooms, the Best Western Plus Hacienda Hotel is designed to make you feel at home.

4041 Harney Street
 San Diego, CA 92110

For details and reservations:
 800-888-1991 or visit

haciendahotel-oldtown.com



"It's a Fiesta for Your Senses." The Old Town Tequila Factory Restaurant is *THE SPOT* to savor great Margaritas and delicious Authentic Mexican Food. Enjoy the breathtaking views of Old Town out to Mission Bay from our Tequila Terrace.

2467 Juan Street
 San Diego, CA 92110

For details and reservations:
 619-260-8124 or visit

oldtowntequilafactory.com



The Legendary Warner Springs Ranch Golf Club is an 18 hole, Par 72, 6775 yard, Championship Course offering a picturesque and challenging golf experience for all skill levels.

31652 Hwy 79
 Warner Springs, CA 92086
 For details and tee times:
 760-782-4270 or visit

warnerspringsgc.com



The popular Salt Creek Golf Club is a Links-Style, 18 hole, Par 72, 6829 yard, Championship Course offering incredible views and an enjoyable day of golf where you'll use every club in your bag.

525 Hunte Parkway
 Chula Vista, CA 91914
 For details and tee times:
 619-656-2373 or visit

saltcreekgc.com

SAN DIEGO STATE AZTECS

SDSU Partner Restaurants

PREPKITCHEN

LITTLE ITALY

Prepkitchen Little Italy

1660 India St. Fl. 2
San Diego, California 92101
(619) 398-8383
www.prepkitchennlittleitaly.com

Lunch Menu 11.30am-3 pm
Happy Hour 3-5pm
Dinner 5pm-Close
Brunch: Sat & Sun 10am-3pm

Voted One of the 10 Best Burgers in San Diego
Always Farm-to-Table

10 miles west of SDSU in the heart of Little
Italy



All Aspects
CATERING & EVENTS
CATERING • PHOTOGRAPHY • VIDEO • FLORAL • BARS
MUSIC • RENTALS • COORDINATING • ENTERTAINMENT

All Aspects is proud to be The Official Catering Host for San Diego State Aztecs

All Aspects Catering & Events is one of San Diego's most established companies that continues to build its reputation as the Premier Catering & Event Production company in Southern California. Voted "Best of Catering" for 2015 & 2016 - All Aspects Catering & Events is "Your One Stop Shop for All Your Party Needs"

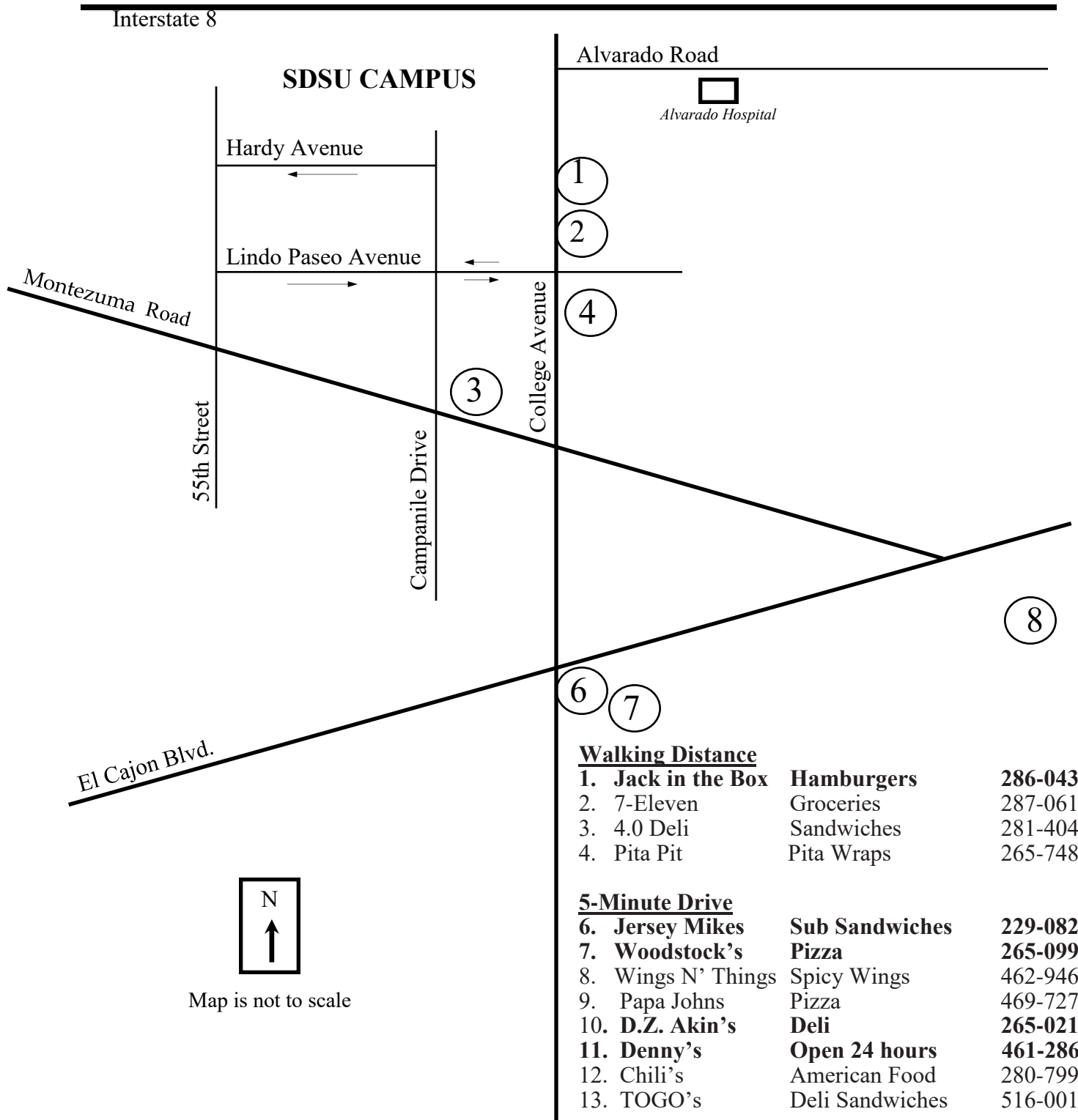
Whether you need simple or extravagant, we provide a memorable, one of kind experience to each of our clients. Our highly trained Sales and Customer Service Representatives will provide you with a personalized experience unlike any other!

Call our catering office today for an instant quote **855.287.7658** or email your request to Sales@allaspectscatering.com

**9932 Mesa Rim Rd. Suite A
San Diego, CA 92121**

SAN DIEGO STATE AZTECS

College Area Fast Food



BOLD NAMES REPRESENT AZTEC SPONSORS. ANY PATRONAGE IS GREATLY APPRECIATED.

SAN DIEGO STATE AZTECS

Movies & Shopping

MOVIE THEATERS

La Mesa

Pacific Grossmont Center 10 Grossmont Center 5500 Grossmont Center Dr. (619) 465-3040

Mission & Fashion Valleys

AMC Fashion Valley 18 Fashion Valley Center Off Hwy. 163 @ Friars Rd. West (619) 296-0370

AMC Mission Valley 20 Mission Valley Center I-8, exit Mission Center Road (619) 296-2737

UltraStar Mission Valley 7 Hazard Center Friars Road & Hwy. 163 (619) 574-8684

Downtown

United Artists 8 Horton Plaza F Street & 4th Avenue (844) 462-7342

Movie Phone

Movie listings, locations, times, previews, etc. (619) 444-FILM
www.moviefone.com (3456)

SHOPPING MALLS

La Mesa

Grossmont Center 5500 Grossmont Center Drive (619) 465-2900

Mission & Fashion Valleys

Bazaar Del Mundo 4133 Taylor St (619) 296-3161

Mission Valley Center 1640 Camino Del Rio North (619) 296-6375

Fashion Valley Mall Friars Road & Hwy. 163 (619) 688-9113

Downtown

Horton Plaza F Street & 4th Avenue (619) 239-8180

SAN DIEGO STATE AZTECS

Special Attractions

Attractions	Area of San Diego	Phone Number/ Website	Description
Balboa Park & San Diego Zoo	Near downtown San Diego	(619) 231-1515 zoo.sandiegozoo.org	San Diego Zoo, Old Globe Theatre, Starlight Bowl, Rueben H. Fleet Science Center, & numerous museums and art galleries.
Cabrillo National Monument	Point Loma	(619) 557-5450 nps.gov/cabr	The monument commemorates the arrival of explorer Juan Cabrillo in 1542. Offers an incredible view of the city and the ocean.
Gaslamp Quarter	Downtown San Diego	(619) 233-5227 gaslamp.org	A 16-block historical district featuring restored downtown San Diego structures. Several Continental and Italian restaurants and nightclubs. Adjacent to Horton Plaza.
Mission Bay Park	Mission Bay	(619) 276-8200 sandiego.gov	The bay is an incredible 4,600 acre man-made aquatic park. It offers boating, beaches, and plenty of areas to picnic. Sea World & Belmont Park Rollercoaster are also located around the bay.
Mission Basilica San Diego de Alcalá	Mission Valley	(619) 283-7319 missionsandiego.com	The first Franciscan mission in California, dating Mission Valley back to 1774.
Old Town State Historic Park	Old Town	(619) 220-5422 parks.ca.gov	Many historic buildings representing the birthplace of San Diego. Restored homes, hotels, shops, and several Mexican food restaurants.
San Diego Harbor Excursion	Downtown San Diego	(619) 234-4111 sdhe.com	Provides 1- or 2-hour guided tours of the harbor.
Sea World	Mission Bay	(800) 257-4268 seaworld.com	A 150-acre marine life park, with exhibits and shows presented throughout the day.
San Diego Trolley	San Diego County	(619) 238-0100 sdmts.com	The trolley has two lines. The Blue line runs from Qualcomm Stadium through Old Town and downtown to Tijuana. The Orange line starts downtown & continues east to El Cajon & Santee. In 2005, the trolley will open a line through SDSU.
San Diego Zoo Safari Park	Escondido	(760) 747-8702 sdzsafaripark.org	An extension of the San Diego Zoo, this wildlife Escondido reserve is home to 2,500 Asian and African animals.
Aquatica (water park)	2052 Entertainment Cir., Chula Vista	(800) 257-4268	805 South, exit Main Street; go east two miles; on right side, next to the Coors Amphitheater.
San Diego Hall of Champions Sports Museum	In Balboa Park, near downtown San Diego	(619) 234-2544 sdhoc.com	Celebrates hometown athletes with hands-on, interactive exhibits and participatory programs. Tours offered daily; call 619-699-2317.

Other useful Websites:

utsandiego.com
sdchamber.org
sandiego.org

San Diego Union-Tribune
San Diego Chamber of Commerce
San Diego Convention & Visitor's Bureau

SAN DIEGO STATE AZTECS

Radio Stations & Weather

RADIO STATIONS-FM

88.3	KSDS	Jazz
89.5	KPBS	Public radio/SDSU
90.3	XHITZ	Top 40
91.1	XETRA	Alternative Rock
92.5	XHRM	Urban Contemporary
93.3	KHTS	Top 40
94.1	KMYI	Hit of the 80's, 90's and now
94.9	KBZT	Alternative
95.7	KSSX	Hip Hop
96.5	KYXY	Adult Contemporary
97.3	KSON	Country
98.1	KXSN	Adult Contemporary
100.7	KFMB	Popular Rock
101.5	KGB - Home of the Aztecs	Classic Rock
102.1	KLVI	Christian Contemporary
103.7	KEGY	Top 40
105.3	KIOZ	Rock
106.5	KLNV	Spanish

RADIO STATIONS-AM

600	KOGO	News & Talk radio
760	KFMB	News & Talk radio
1000	KCEO	Religious
1090	XEPRS	Sports Talk
1170	KCBQ	Talk
1360	KLSD - Home of the Aztecs	Sports
1420	XEXX	Spanish

SAN DIEGO WEATHER

With an average daily temperature of 70°F, San Diego has an almost perfect climate. The average annual rainfall of 9.5 inches falls mainly during December, January, and February. Winters are mild, with daytime temperatures in the mid-60s and nights about 20° cooler. Because San Diego lies so close to the ocean, some days are punctuated by early morning and late night fog. Summers in the city are beautiful; temperatures reach about 76°F during the day and drop to about 64°F at night. August and September are the warmest months, but even mid-winter provides plenty of comfortable sunbathing days. The SDSU campus is located 13 miles inland of the airport where city temperatures are measured. SDSU generally has more sunshine & warmer temperatures. In the summer months SDSU can become 10°-15° warmer than the reported city temperatures.

For an updated local forecast, you can contact the National Weather Service at (858) 289-1212.

SAN DIEGO STATE AZTECS

Emergency & Miscellaneous Information

EMERGENCY NUMBERS

POLICE / FIRE / MEDICAL EMERGENCIES		911
Non-Emergency		(619) 531-2000
Anonymous Tips		(619) 235-8477
Dentist Referral	(San Diego County Dental Society)	(619) 275-0244
Doctor Referral	(San Diego County Medical Society)	(858) 565-8888

HOSPITALS

Mercy Hospital	4077 5th Avenue	San Diego, CA 92103	(619) 294-8111
Kaiser Permanente	4647 Zion Avenue	San Diego, CA 92120	(619) 528-5000
Sharp Memorial Hospital	7901 Frost Street	San Diego, CA 92123	(858) 939-3400
Alvarado Hospital	6655 Alvarado Rd	San Diego, CA 92120	(619) 287-3270

TOURISM

Visitor Services, Chamber of Commerce	sdchamber.org	(619) 544-1300
Convention & Visitors Bureau	sandiego.org	(619) 232-3101

MISCELLANEOUS INFORMATION

Western Union	westernunion.com	6155 El Cajon Blvd., San Diego 92115	(800) 325-6000
Express Mail	usps.com	Automated message	(800) 222-1811
Main Post Office	usps.com	6401 El Cajon Blvd., San Diego 92115	(800) 275-8777
Federal Express	fedex.com	Automated message	(800) 463-3339

Lost Credit Cards

American Express	americanexpress.com	(800) 528-2121
Discover Card	discovercard.com	(800) 347-2683
MasterCard	mastercard.com	(800) 826-2181
VISA	visa.com	(800) 336-8472

International Currency Writing

Thomas Cook	usthomascook.com
-------------	------------------

<u>Qualcomm Stadium</u>	goaztecs.com	Aztec Info Line	(619) 283-7096
-------------------------	--------------	-----------------	----------------

<u>Accessible San Diego</u>	accessandiego.org	Physically challenged persons	(619) 279-0704
-----------------------------	-------------------	-------------------------------	----------------

SAN DIEGO STATE AZTECS

Visiting Team Travel Info Form

Team

Visiting Team _____ Sport _____
Game Date _____ Time _____

Visiting Team Contact Person

Name _____
Position (or Title) _____
Office Phone () _____
Cell Phone () _____
Home Phone () _____
Fax Number () _____

Transportation/Lodging

Carrier _____ Flight # _____ Date _____ Time _____
Arrival in San Diego _____ Date _____ Time _____
Local Transportation _____
Hotel _____ Hotel Phone _____
Departure from San Diego _____ Date _____ Time _____
Parking Passes Needed _____
Number of Buses or Vans _____

Requested Practice Times

Day Prior _____
Game Day _____
Contact Person _____
Phone Number _____

Travel Party

Number of Athletes _____ Number of Cheerleaders _____
Number of Mascots _____ Number in Pep Band _____
Number of Coaches/Staff _____

Please complete and then mail or fax this form to the following address/fax number no later than 30 days prior to the event date:

Event Management
San Diego State University
Department of Athletics
5500 Campanile Drive
San Diego, CA 92182-4313

Questions? Please contact:
David Noll: 619-594-4191, dnoll@mail.sdsu.edu
Louis Schenk: 619-594-7201, lschenk@mail.sdsu.edu
Steve Bartel: 619-594-0396, sbartel@mail.sdsu.edu
Fax: 619-594-1334