

TABLE OF CONTENTS



GENERAL INFORMATION

Table of Contents	1
Jeff Jacobs JAM Center	2-3
Quick Facts/Media Information	4
San Diego Media Outlets	5
Aztec Media	6
2017-18 Season Outlook by Mick McGrane	7
2017-18 Rosters/Roster Breakdown	8-9
2017-18 Schedule/NCAA Tournament Info	10

COACHES/STAFF PROFILES

Head Coach Stacie Terry	12-14
Assistant Coach Jesse Clark	15
Assistant Coach Ciara Carl	16
Assistant Coach Nick Grant	17
Director of Basketball Operations Jon Silver	18
Director of Player Personnel Paris Johnson	19
Support Staff	20

PLAYER PROFILES

Allison Brown	22-24
Naomi Ekwedike	25-27
McKynzie Fort	28-30
Geena Gomez	31-33
Arantxa Gómez Ferrer	34-36
Cheyenne Greenhouse	37-39
Khalia Lark	40-42
Abby Lowe	43-45
Monique Terry	46-48
Lexy Thorderson	49-51

Baylee Vanderdoes	52-54
Te'a Adams	55
Jenay Bojorquez	56
Kiara Edwards	57
Loli Gomez	58
Najé Murray	59
Kennedi Villa	60

2016-17 SEASON REVIEW

Results/Stats	62-65
Superlatives	66-67
Miscellaneous Stats	68
Box Scores	69-74
Mountain West Review	75-77

AZTEC RECORDS

Team Records	80
Individual Records	81
Single-Game Bests	82
Single-Season Records	83
Career Records	84
Annual Leaders	85
Year-By-Year Team Stats	86

AZTEC HISTORY

Coaching History	88
Year-By-Year Results	89-98
All-Time Series Records	99
All-Time Versus Conferences	100
All-Time Scores	101-107

Postseason History	108-111
All-Time Letterwinners	112
Honors And Awards	113
1,000-Point Scorers	114-115
Aztec Hall of Fame Members	116

THE UNIVERSITY

San Diego State University	118-119
Prominent Alumni	120
Aztec Culture	121
University President	122
Director Of Athletics	123
Viejas Arena	124-125
Fowler Athletics Center	126-127
Aztec Academic Commitment	128
Aztec Life Skills Program	129
Aztec Basketball Program History	130-131
Mountain West	132
Athletic Department Directory	133
Broadcast Roster	134



JEFF JACOBS JAM CENTER



"This has been a priority for some time and will help both basketball programs immensely. This will be another showcase facility for the athletic department as well as the University as a whole."

- Steve Fisher, Former SDSU Men's Basketball Head Coach



AZTECS
BASKETBALL

San Diego State held a grand-opening ceremony for the 23,500-square foot Jeff Jacobs JAM Center on Sunday, Aug. 23, 2015. The event marked the official opening of the Aztecs' on-campus basketball performance center, which broke ground on Aug. 27, 2014.

Speaking before the ceremonial ribbon cutting was former SDSU president Elliot Hirshman, former men's basketball head coach Steve Fisher and former women's hoops senior guard Ahjalee Harvey.

Preliminary site work started in July 2014, just south of the Fowler Athletics Center and east of the football practice fields. The facility, which will support the continued growth and development of the SDSU men's and women's basketball teams, includes two full-length courts, eight baskets, locker rooms, film room, team lounges, athletic training room and coaches locker rooms.

Hundreds of supporters contributed to the effort to make the Jeff Jacobs JAM Center a reality. In addition to the naming gift from Jeff Jacobs, Hal and Debby Jacobs, Steve and Lisa Altman and Jim Morris, creating the name "JAM" Center, sizeable donations were made from the Manna Charitable Foundation and the Walter and Betty Zable Foundation. The total cost of the project was \$15 million.

The project was designed by JCI Architecture and was built by The Hunt Construction Group.



JEFF JACOBS JAM CENTER FEATURES

- 23,500 square feet
- Two full-length courts
- Eight baskets
- Two scoreboards
- Keiser strength equipment
- Locker rooms
- Film room
- Team lounges
- Athletic training room



"This is more than just a building, it is our classroom. This will provide an opportunity for our student-athletes to enhance their individual games, which will in turn benefit our programs. This also keeps SDSU competing at the highest level not only in basketball, but in recruiting as well."

- Stacie Terry, SDSU Women's Basketball Head Coach



QUICK FACTS/MEDIA INFORMATION



GENERAL INFORMATION

Location: San Diego, Calif., 92182
 Founded: 1897
 Enrollment: 33,726
 Nickname: Aztecs
 School Colors: Scarlet and Black
 Affiliation: NCAA Division I
 Conference: Mountain West
 Home Arena (Capacity):
 Steve Fisher Court at Viejas Arena (12,414)
 President: Sally Roush
 Director of Athletics: John David Wicker
 Faculty Athletic Representative: Patrick Papin
 Athletics Dept. Phone: 619-594-3019

AZTEC BASKETBALL FACTS

First Year of Basketball: 1976-77
 All-Time Record: 640-573 (.528) / 41 seasons
 Postseason Appearances/NCAA Appearances: 12/9
 Last Postseason Appearance: 2013--
 Lost to BYU (69-58) in WNIT Second Round

SDSU TEAM INFORMATION

2016-17 Record: 11-19 (.367)
 2016-17 MW Record/Finish: 6-12/9th
 2017 MW Tournament Record: 0-1
 2017 Final NCAA RPI: 270
 Letterwinners Returning/Lost: 9/2
 Starters Returning/Lost: 4/2
 Newcomers: 6

AZTEC BASKETBALL STAFF

Head Coach: Stacie Terry
 Alma Mater: UT Arlington, 1998
 Career Record/Years: 48-74/Fifth Year
 Record at SDSU: Same
 Best Time to Call: Contact SID
 Basketball Office Phone: 619-594-4095
 Basketball Office Fax: 619-594-8057
 Assistant Coaches:
 Jesse Clark, Fifth season at SDSU
 Alma Mater: Pacific Union, 2003
 Ciara Carl, Fifth season at SDSU
 Alma Mater: Point Loma Nazarene, 2005
 Nick Grant, Fourth season at SDSU
 Alma Mater: Baylor, 2010
 Director of Basketball Operations: Jon Silver
 Second season at SDSU
 Alma Mater: UCLA, 2009
 Director of Player Personnel: Paris Johnson
 Second season at SDSU
 Alma Mater: San Diego State, 2009
 Athletic Trainer: Queenie Soriano
 Academic Advisor: Dr. Bre White
 Strength and Conditioning: Eddie Padilla

SDSU MEDIA RELATIONS

Women's Basketball SID: Jen Heisel
 E-mail: jheisel@mail.sdsu.edu
 Office Phone: 619-594-5549

The 2017-18 SDSU basketball media guide has been prepared to assist media members in their coverage of the Aztecs. Additional information, including media releases and photographs, may be obtained by contacting assistant media relations director Jen Heisel at 619-594-5549.

CREDENTIALS

All requests for working credentials (press, radio, television, scouting) should be directed to Jen Heisel at least 24 hours prior to tip-off. Credentials will not be mailed. They may be picked up at the media entrance at Viejas Arena (lower level) 90 minutes prior to the start of all home games.

CAMPUS PARKING

Media desiring to cover Aztec practices on campus can park in Parking Structure 7 (PS 7) and obtain a special parking pass from the Aztec media relations office. Media parking (via permit) will be provided for all home games in Parking Structure 12, adjacent to Viejas Arena.

DIRECTIONS TO VIEJAS ARENA

Take I-8 East to the College Avenue exit. Take College Avenue south towards SDSU. Turn right on Montezuma Road. Turn right on 55th Street. Viejas Arena is on the right-hand side.

PRACTICE AND INTERVIEWS

Media wishing to attend practice should contact the Aztec media relations department at least one day in advance.

Head coach Stacie Terry and the players are generally available to meet with the media following each workout, as requested. Coaches and players are also available to conduct television and radio interviews, which must be set up through the media relations office at 619-594-3014.

Please request all interviews with a minimum of 24 hours notice. San Diego State players and coaches will not be available for interviews on game days until postgame.

GAMEDAY SERVICES

The Aztec media relations office furnishes game programs, pregame notes and media guides prior to each game in the media room at Viejas Arena. Play-by-play accounts, halftime and final statistics and shot charts are also provided.

TELEPHONES

Several phones are available in the media room and on press row, but are available on a first-come, first-serve basis. For more information on phone-line installation, contact Viejas Arena at (619) 594-3533.

Phone lines for visiting radio broadcasts (one ISDN, one business) will be provided on a reciprocal basis.

MEDIA SEATING

Media will be assigned seats along press row tables located behind the visitor's bench. Please check the media seating chart in the media workbook.

PHOTOGRAPHERS

Photographers are restricted to either designated areas along the baseline and are not permitted near team benches during the game.

WEEKLY PRESS RELEASE

Weekly Aztec basketball releases in pdf format (Acrobat) are available for download from the women's basketball page at www.goaztecs.com or via e-mail. Please contact assistant media relations director Jen Heisel if you would like to be placed on the Aztec basketball e-mail list.

AZTEC WEBCASTS

Aztec basketball fans will have an opportunity to listen to live play-by-play of regular-season games, both home and away, over the internet at www.goaztecs.com. In addition, all Aztec home contests during the 2017-18 regular season will feature a live video stream via the Mountain West Network to supplement the audio call from Viejas Arena.

For the 11th consecutive year, SDSU alumnus Chris Eilo will be the voice of Aztec basketball both at home and on the road.

AZTEC MEDIA RELATIONS



Jen Heisel
Assistant Media Relations Director
Women's Basketball Contact
 Office: 619-594-5549
 Cell: 862-432-5499
 E-Mail: jheisel@mail.sdsu.edu

Mailing Address

Aztec Media Relations
 Fowler Athletics Center, Suite 3014
 5302 55th Street
 San Diego, CA 92182-4309

Viejas Arena Press Row Phone

619-265-5853

2017-18 SDSU WOMEN'S BASKETBALL MEDIA GUIDE

Aztec Media Relations Office
 San Diego State University - Dept. of Athletics
 Fowler Athletics Center, Suite 3014
 5302 55th Street
 San Diego, CA 92182-4309
 Office Phone: (619) 594-5549
 Office Fax: (619) 5946541
 Press Row: (619) 265-5853
 Website: www.goaztecs.com

MEDIA GUIDE CREDITS

Editor/Layout And Design: Jen Heisel
 Editorial Assistance: Alex Ellison, Eric Harding,
 Jim Solien, Lauren Weaver, Darin Wong
 Photography: Ernie Anderson, Derrick Tuskan, Gladie Jaffe,
 Paris Johnson, Terrell Lloyd, Mollie McClure, Ken Jacques Photography,
 Dolwain Green, Jamie Schwaberow & Steve Nowland/NCAA Photos, Sandy
 Huffaker, Patrick Meredith, Joe Murphy, WNBA/Getty Images, Joel Zwink.

Cover Design: Jen Heisel
 Printing: L+L Printers, San Diego

CSU COMMITMENT

The California State University is committed to providing equal opportunities to men and women CSU students in all campus programs, including inter-collegiate athletics.

ON THE INTERNET

Information on Aztec basketball is available on the Internet at www.goaztecs.com. Press releases and recaps, along with in-game and season statistics, are updated on a weekly basis. In addition, the basketball media guide is also located on the site and includes player profiles, school records and team history.

SOCIAL MEDIA

Facebook [facebook.com/aztecwbb](https://www.facebook.com/aztecwbb)
 Twitter @aztecwbb
 Instagram @aztecwbb
 YouTube [youtube.com/goaztecscom](https://www.youtube.com/goaztecscom)

MEDIA OUTLETS



NEWSPAPERS

San Diego Union-Tribune
 PO Box 120191
 San Diego, CA 92112
News Desk: (619) 293-1341
Fax: (619) 260-5078
Web Site: sandiegouniontribune.com
E-Mail: sports@uniontrib.com

Mark Zeigler, Writer(619) 293-1341
 Tod Leonard, Writer.....(619) 293-1341
 Jay Posner, Sports Editor(619) 293-1297
 Nick Canepa, Columnist(619) 293-1397
 Kevin Acee, Columnist(619) 293-1341

The Daily Aztec
 San Diego State University, BAM-2
 San Diego, CA 92182-4591
Phone: (619) 594-7817
Fax: (619) 594-1804
Web Site: thedailyaztec.com
E-Mail: sports@thedailyaztec.com
 Zachary Engberg, Sports Editor

WIRE SERVICE

Associated Press
 PO Box 191
 San Diego, CA 92112
News Desk: (619) 231-9365
Fax: (619) 291-2098
E-Mail: sandiego@ap.org
 Bernie Wilson, Sports Editor

TELEVISION STATIONS

KSWB (FOX) Channel 5
 7191 Engineer Rd.
 San Diego, CA 92111
News Desk: (858) 573-6500
Fax: (858) 573-6600
 Jason Hendrick, Sports Producer(858) 354-8445
 Troy Hirsch, Sports(858) 573-6507

KNSD (NBC) Channel 7
 225 Broadway
 San Diego, CA 92101
News Desk: (619) 578-0201
Fax: (619) 578-0202
 Jim Laslavic, Sports Director(619) 578-0226
 Derek Togerson, Sports.....(619) 578-0215
 Todd Strain, Sports(619) 578-0215
 Dave Smith, Photographer.....(619) 250-3853

KFMB (CBS) Channel 8
 PO Box 85888
 San Diego, CA 92186
News Desk: (858) 495-7587
Fax: (858) 560-0627
 Kyle Kraska, Sports Director(858) 495-7588
 John Howard, Anchor/Reporter(858) 495-7586
 Todd Villalobos, Producer.....(858) 495-7587

KUSI (IND) Channel 9/51
 PO Box 719051
 San Diego, CA 92171-9051
News Desk: (858) 505-5014
Fax: (858) 576-9317
 Paul Rudy, Sports Director(858) 505-5047
 Rick Willis, Sports(858) 505-5032
 Brandon Stone, Sports

KGTV (ABC) Channel 10
 4600 Air Way
 San Diego, CA 92102
News Desk: (619) 237-6383
Fax: (619) 527-0369
 Ben Higgins, Sports Director(619) 237-6372
 Steve Smith, Sports(619) 237-6314
 Jeff LeValley, Chief Photographer(619) 237-6316

RADIO STATIONS

XTRA Sports (1360 AM) (SDSU Flagship)
 9660 Granite Ridge Drive
 Suite 100
 San Diego, CA 92123-2657
News Desk: (858) 715-3367
Fax: (858) 715-3363; (858) 715-3364
Local Weekday Lineup:
 Nick Hardwick and Judson Richards, 6-9 a.m.
 Producer: Matt Skrabay
 Mark Willard and Rich Ohrnberger, Noon-3 p.m.
 Producer: Kyle Englehart
 The Loose Cannons
 Steve Hartman and Mike Costa, 3-6 p.m.
 Producer: Ernie Martinez

XPRS - The Mighty 1090 (1090 AM)
 6160 Cornerstone Ct. #100
 San Diego, CA 92121
Phone: (858) 320-0377
Fax: (858) 320-0328
Local Weekday Lineup:
 Dan Sileo, 6-9 a.m.
 Producer: Daniel Reiter
 Darren Smith, Noon-3 p.m.
 Producers: Marty Caswell, Jordan Carruth
 Scott Kaplan and Billy Ray Smith, 3-6 p.m.
 Producer: Alex Padilla

XEPE - ESPN Radio (1700 AM)
 6160 Cornerstone Ct. #100
 San Diego, CA 92121
Phone: (858) 535-2500
Fax: (858) 320-0328

KFMB Radio (760 AM)
 7677 Engineer Road
 San Diego, CA 92111
Phone: (858) 292-7600
Fax: (858) 279-7676

KOGO (600 AM)
 9660 Granite Ridge Drive
 San Diego, CA 92123-2657
News Desk: (858) 560-6671
Fax: (858) 715-3363; (858) 715-3364



AZTEC MEDIA



AZTEC BASKETBALL ON THE INTERNET

For the 17th consecutive year, Aztec women's basketball fans will have an opportunity to listen to live play-by-play of regular-season games over the internet at www.goaztecs.com.

SDSU alumnus Chris Ello begins his 11th season of calling the action and is a familiar voice in the San Diego area. In addition to his responsibilities with the Aztec women's basketball squad, Ello is a member of the football broadcast team as a home sideline reporter for the school's flagship station, XTRA 1360 AM and 101.5 KGB.

Ello started his career in sports talk radio in San Diego on XTRA Sports 690 in the summer of 1994. He has accumulated a wealth of experience doing play-by-play for a variety of sports at every level, including stints with the SDSU football (1985), baseball (1998-99) and men's basketball (2006-07) squads.

From 1996-2006, Ello was the voice of the San Diego Gulls hockey team and has called the action for the San Diego Sockers (indoor soccer), San Diego Spirit (outdoor soccer), San Diego Wildcards (CBA) and San Diego Riptide (arena football). He also has experience broadcasting high school CIF football and basketball games since 2000.

Ello graduated in 1985 with a bachelor's degree in journalism from San Diego State, where he spent two seasons with the baseball team from 1980-81 as a left-handed pitcher. A former sports editor at the Daily Aztec, he resides in Rancho San Diego with his wife, Lori.

For the fifth straight year, all regular-season Aztec home contests in 2017-18 will feature a live video stream via the Mountain West Network to supplement the audio call from Viejas Arena.

MOUNTAIN WEST NETWORK

The Mountain West, in collaboration with STADIUM continues to expand and enhance the video content and reach of its digital network. Under this unique alliance, the Heartland Emmy award-winning Mountain West Network, provides on-demand video content, as well as broadcasts an unprecedented number of live events from the league's 18 sports.

Since its launch in October of 2012, the Mountain West Network has provided fans over 2,000 on-demand videos, while also live-streaming over 3,300 events, including select Conference championships.

Mountain West Network content is available at no cost to viewers and is accessible on multiple devices, including desktop and laptop computers, smartphones and tablets. Fans can also download the official mobile application of the Mountain West on their iPhone, iPod Touch, iPad and Android devices. Visit the App Store or Google Play for details on the free applications.

Additionally, the Mountain West Network simulcasts all local and regional telecasts online, including ROOT SPORTS-produced football and men's basketball games in markets outside of the ROOT SPORTS footprint, including Cox Communications broadcasts outside of the local market (Las Vegas and San Diego).

ABOUT CBS SPORTS NETWORK

CBS Sports Network televises more than 300 live games and over 2,000 hours of original programming every year. The network telecasts Professional Bull Riding (PBR), live football, basketball and more from the Mountain West, Conference USA, Atlantic 10, as well as Army, Navy and the Patriot League.

CBS Sports Network also delivers exclusive coverage of SEC football, live NCAA® Tournament studio analysis, award-winning original productions and much more. CBS Sports Network is the home of both the National Lacrosse League (NLL) and Major League Lacrosse (MLL).

Throughout the year, the network also telecasts a full slate of original programming such as behind-the-scenes series, documentaries and studio coverage featuring expert analysis, predictions, in-depth interviews and more.



SHOOTING FOR HIGHER GOALS *by Mick McGrane*



It's 10:30 a.m. on a Tuesday morning and Stacie Terry's cell phone is buzzing again.

The incoming text message features a picture of a machine called "The Gun," a mechanism stationed under a basket that serves as a personal rebounder and records a player's shooting percentage from various positions on the floor.

Terry, who is entering her fifth season as San Diego State's women's basketball coach, has challenged her players to make 10,000 3-point shots in 10 weeks. Using their own cell phones, players text Terry from the adjacent JAM Center to validate participation and provide a photo of "The Gun's" final digital readout. The players are on their own. The previous night, Terry received texts from freshmen Kennedy Villa and Jenay Bojorquez, who finished shooting shortly before midnight.

Of course, when a player like senior Lexy Thorderson reaches the 10,000-makes plateau in less than three-and-a-half weeks, there's some catching up to do.

Which is not wholly unlike the task facing the Aztecs.

SDSU, which is looking for its first winning season since 2012-13, is coming off a 2016-17 campaign in which it finished 11-19 overall and 6-12 in the Mountain West (ninth place).

Yet pity not the Aztecs. SDSU returns four starters and 78.9 percent of its scoring from last year. It also boasts one of the top freshman classes in the country. According to the website prospectsnation.com, the Aztecs have assembled not only the best freshman class in the league, but the 23rd best in the nation.

For Terry, the light at the end of the tunnel grows rosier by the day.

"This team has really been resilient," Terry said. "We've gone through our share of adversity. Our theme this year is, 'Coming out of the Darkness' because we've gone through some tough times. We've worked really hard to get through it and now we're coming out of it. Hopefully, going through that will help us prepare to make a run this year."

A run that will be made by a roster now entirely comprised of players recruited by Terry and her staff. After four seasons, players fully understand Terry's motives and the course she's charted to steer SDSU back to the postseason. It's now her team, her terms and her goal to get back in a race where the Aztecs' closest peak at first place under Terry came in 2013-14 when they finished sixth.

"It is a little different now, because these kids were recruited by our staff," Terry said. "They came to play here and to play for me. They believe in our vision. This is the first time in a long time that I can really say that we have the pieces. Now it's time to put it all together and make a run in this conference."

"I've talked to a lot of coaches who have taken over programs, and they've said that around year four to year five is when the magic happens. I felt we had a lot of the pieces last year, but we just didn't play to our ability. It was disappointing, because I thought we had a chance to do some special things. This year, I think that disappointment is going push them and has pushed them to make sure that doesn't happen again. I'm optimistic that we can make some noise."

It's optimism that comes from the knowing that not only do you have the potential Mountain West preseason Player of the Year in senior guard McKynzie Fort, but also perhaps the league's preseason Freshman of the Year from a group that includes forward Kiara Edwards, a four-star recruit who was invited to the 2016 Women's U17 World Championship team trials.

Fort, the team's only player to start all 30 games last season, earned first-team all-MW honors after finishing second in the league with an average of 15.9 points per game. Her 1,233 points currently

place her 16th on the school's all-time scoring list.

Thorderson's 66 three pointers last year paced the team's best 3-point shooting season in program history. The six-foot senior from Castle Park, Colo., returns after fueling an offense that produced 204 treys on the season.

Fort and Thorderson are joined by fellow returning starters Geena Gomez and Khalia Lark, a six-foot senior guard who was forced to sit out the first half of last season after transferring from Washington. Gomez, a 5-8 guard, shot 36.0 percent from 3-point range last season, the sixth-best mark in the league. Lark, meanwhile, started 10 of the team's 21 games after sitting out the fall semester and led the Aztecs with an average of 6.1 rebounds per game.

"I think we're going to surprise a lot of people this year, because McKynzie's gotten better," Terry said. "Lexy has worked tirelessly on being more than just a shooter, and Geena just has one of the highest basketball IQs of any kid I've coached. Khalia Lark is playing fantastic basketball. Our four seniors, who are going to carry the majority of the load for us, are playing at the highest level I've ever seen."

Nonetheless, Terry is expecting more, particularly in the areas of defense and rebounding. While the Aztecs were the fourth-best 3-point shooting team in the MW and ranked fifth in field-goal percentage last season, they also ranked 10th in scoring defense and 11th (last) in offensive rebounding.

Suffice, summer was not exactly a day at the beach.

"The mindset has to change," Terry said. "During the first two weeks of our boot camp, we went strictly with defensive-minded things. Normally, that time is for conditioning and getting in shape, so we coupled our conditioning with a defensive mindset. We know that's what we need to do to win."

"We had some really good stretches last year where we could really score the ball, but defensively we just couldn't stop anybody. Our point production was enough to win games, but we just didn't do a good enough job of defending. We know that's our number one priority to fix, with rebounding being a close second."

"I told our staff and our kids that I'm going to be completely transparent about what we need to do so that they understand what their roles are and what they need to do for us to be successful. And they're all in. Our veterans understand what we need to do. Something changes from your junior year to your senior year, and maybe it's recognizing that your time is running out. But our seniors have been phenomenal with our freshmen in the process of helping them move along faster. They're making sure our freshmen know what has to happen, about the improvements we need to make on defense for us to be successful."

To that end, identifying a post player will prove paramount, and the Aztecs are not without candidates. One of those candidates is 6-6 sophomore Naomi Ekwedike, a native of Lagos, Nigeria, who was limited to nine games last season after suffering a knee injury in early December. Though her basketball skills are limited after having played the game for only three years at Potter's House Christian Academy in Jacksonville, Fla., Ekwedike is four inches taller than the next tallest player (6-2 forward Monique Terry) player on the roster.

Other potential starters at the post position include junior Arantxa Gómez Ferrer and sophomore Baylee Vanderdoes.

"We're hoping someone emerges at center," Terry said. "Naomi has done a fantastic job of getting herself in better shape and understanding the game better. She's a game-changer for us, because there aren't a lot of 6-6 players in our game that can change a game the way she does. She has great hands, she can finish around the rim,

she can change shots. It's just a matter of what kind of game shape she can get in and how (many minutes) she can play."

"Last year, we had to play Lexy and Khalia at the four and five and we were just undersized, which really hurt us in terms of rebounding. We're going to go with a true five this season, but that position is still up in the air because of the competition."

Indeed, competition abounds, largely due to an incoming freshman class that represents SDSU's first nationally ranked class since 2010-11. The group includes 5-9 guard Te'a Adams, who finished her career as the all-time leading scorer (1,835 points) at Juanita High in Kirkland, Wash.; Bojorquez, a 5-6 guard from Phoenix who earned a spot in the Arizona Girls High School All-Star game after helping lead Sierra Linda High to the Class 5A state championship game; 5-6 guard Naje Murray, a three-star recruit from national powerhouse Stockton St. Mary's; Villa, a three-star 6-foot guard from St. Mary's High in Oakland; and Edwards, who averaged nearly a double-double (12.9 points, 9.8 rebounds) during a four-year varsity career at Valley Vista High in Surprise, Ariz.

Nonetheless, cracking a lineup that includes four returning starters will take some doing.

"It doesn't guarantee (the four returning starters) will have starting jobs, but if you ask me today I'd say, yes, they will start because they've earned it," Terry said. "They put in a lot of hard work and time in the summer and those four are the front-runners for (their respective positions)."

"Now, that being said, when you look at our freshman class, they are really good. They're not afraid of anything, and we're expecting a lot from them. I love that confidence about them. But what I really love — and we've never had this since I've been here — is that the competition in practice is so much better, because we have more talent on our team top to bottom. One through 10, anybody can step in and play."

Giving a team "Coming out of the Darkness" a chance to finally level the playing field. And giving its coach reason to smile.

"I'm a very competitive person, so not seeing the success that I wanted, it was tough not seeing it come as quickly as I'd hoped," said Terry, who attended El Capitan High in nearby Lakeside before a collegiate career at UT Arlington. "I think our kids worked hard, but we wanted to reap some of the rewards of that hard work a little faster."

"And for me, I think some of it was finding out who I was as a coach. We went through some growing pains in terms of them understanding who I was, what I wanted to run and what I wanted to do. It wasn't easy for anybody as we evolved through it. So, I'm excited where we are as a team. The challenge is whether or not we can stay together, because we have a lot of talent and not everybody's going to play. It's a matter of players coming to terms with what their roles are and being the best teammate they possibly can. If we can do that, we have a chance to have a special year."

Yet before dreaming too big, Terry said, the program first must climb high enough to catch a glimpse of the league's elite.

"(The postseason) is not our goal right now," she said. "Our goal is to finish in the top of the league, because I think that would be a big step forward from where we've been. I don't want to look too far ahead. I want them to have success in our early tournaments and then obviously do the same in our league games. I think if we can have some early success that it will really help our confidence."

That and making 10,000 3-point shots in 10 weeks.



ROSTERS



2017-18 NUMERICAL ROSTER

No.	Name	Pos.	Ht.	Yr.	Exp.	Hometown (Previous School/High School)
0	Kennedi Villa	G	6-0	Fr.	HS	Albany, Calif. (St. Mary's HS)
1	Khalia Lark	G/F	6-0	Sr.	1L	Irvine, Calif. (Washington/Mater Dei HS)
3	Jenay Bojorquez	G	5-6	Fr.	HS	Phoenix, Ariz. (Sierra Linda HS)
5	Te'a Adams	G	5-9	Fr.	HS	Kirkland, Wash. (Juanita HS)
10	Najé Murray	G	5-6	Fr.	HS	Stockton, Calif. (St. Mary's HS)
11	Arantxa Gómez Ferrer	F	6-0	Jr.	2L	Valencia, Spain (Parque Colegio Santa Ana HS)
13	Allison Brown	G	5-7	Sr.	SQ	Anaheim Hills, Calif. (Mater Dei HS)
15	McKynzie Fort	G	5-9	Sr.	3L	Fontana, Calif. (Etiwanda HS)
20	Geena Gomez	G	5-8	Sr.	2L	Huntington Beach, Calif. (Edison HS/St. Joseph's (Pa.))
21	Abby Lowe	G	5-11	So.	1L	Stockport, England (Barking Abbey Academy)
22	Lexy Thorderson	G	6-0	Sr.	3L	Castle Rock, Colo. (Rock Canyon HS)
23	Loli Gomez	G	5-10	Jr.	TR	Huntington Beach, Calif. (Edison HS/CSU San Bernardino)
24	Kiara Edwards	F	6-1	Fr.	HS	Surprise, Ariz. (Valley Vista HS)
30	Cheyenne Greenhouse	G	5-11	Sr.	3L	Riverside, Calif. (Canyon Springs HS)
34	Baylee Vanderdoes	F	6-1	So.	1L	Auburn, Calif. (Placer HS)
40	Monique Terry	F	6-2	So.	1L	San Antonio, Texas (Brennan HS)
45	Naomi Ekwedike	C	6-6	So.	SQ	Lagos, Nigeria (Potter's House Christian Academy (Fla.))

2017-18 ALPHABETICAL ROSTER

No.	Name	Pos.	Ht.	Yr.	Exp.	Hometown (Previous School/High School)
5	Te'a Adams	G	5-9	Fr.	HS	Kirkland, Wash. (Juanita HS)
3	Jenay Bojorquez	G	5-6	Fr.	HS	Phoenix, Ariz. (Sierra Linda HS)
13	Allison Brown	G	5-7	Sr.	SQ	Anaheim Hills, Calif. (Mater Dei HS)
24	Kiara Edwards	F	6-1	Fr.	HS	Surprise, Ariz. (Valley Vista HS)
45	Naomi Ekwedike	C	6-6	So.	SQ	Lagos, Nigeria (Potter's House Christian Academy (Fla.))
15	McKynzie Fort	G	5-9	Sr.	3L	Fontana, Calif. (Etiwanda HS)
20	Geena Gomez	G	5-8	Sr.	2L	Huntington Beach, Calif. (Edison HS/St. Joseph's (Pa.))
23	Loli Gomez	G	5-10	Jr.	TR	Huntington Beach, Calif. (Edison HS/CSU San Bernardino)
11	Arantxa Gómez Ferrer	F	6-0	Jr.	2L	Valencia, Spain (Parque Colegio Santa Ana HS)
30	Cheyenne Greenhouse	G	5-11	Sr.	3L	Riverside, Calif. (Canyon Springs HS)
1	Khalia Lark	G/F	6-0	Sr.	1L	Irvine, Calif. (Washington/Mater Dei HS)
21	Abby Lowe	G	5-11	So.	1L	Stockport, England (Barking Abbey Academy)
10	Najé Murray	G	5-6	Fr.	HS	Stockton, Calif. (St. Mary's HS)
40	Monique Terry	F	6-2	So.	1L	San Antonio, Texas (Brennan HS)
22	Lexy Thorderson	G	6-0	Sr.	3L	Castle Rock, Colo. (Rock Canyon HS)
34	Baylee Vanderdoes	F	6-1	So.	1L	Auburn, Calif. (Placer HS)
0	Kennedi Villa	G	6-0	Fr.	HS	Albany, Calif. (St. Mary's HS)

Head Coach: Stacie Terry (UT Arlington, 1998), Fifth season at SDSU/Fifth overall

Assistant Coach: Jesse Clark (Pacific Union, 2003), Fifth season at SDSU

Assistant Coach: Ciara Carl (Point Loma Nazarene, 2005), Fifth season at SDSU

Assistant Coach: Nick Grant (Baylor, 2010), Fourth season at SDSU

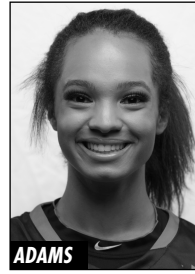
Director of Operations: Jon Silver (UCLA, 2009), Second season at SDSU

Director of Player Personnel: Paris Johnson (San Diego State, 2011), Second season at SDSU

2017-18 PRONUNCIATION GUIDE

Jenay Bojorquez	Jen-AY Bo-HOR-kehz
Te'a Adams	TAY-uh
Naomi Ekwedike	nay-O-mee ache-WAY-dee-kay
Arantxa Gómez Ferrer	uh-RON-cha fur-AIR
McKynzie Fort	ma-KEN-zee
Loli Gomez	LOW-lee
Najé Murray	Nah-JZAY
Baylee Vanderdoes	VAN-der-doze
Ciara Carl	see-ARR-uh

ROSTER BREAKDOWN



Returning Starters (4)

McKynzie Fort, Sr., G (14.3 ppg, 4.1 rpg, 31.9 mpg)
 Geena Gomez, Sr., G (6.8 ppg, 3.2 rpg, 36 3FGs)
 Khalia Lark, Sr., G/F (25.9 mpg, 8.4 ppg, 6.1 rpg)
 Lexy Thorderson, Sr., F/G (9.5 ppg, 66 3FGs, 25.7 mpg)

Starters Lost (2)

Ariell Bostick, G (23.2 mpg, 4.2 rpg, 3.5 apg)
 Kymberly Ellison, G (25.3 mpg, 9.2 ppg, 61 3FGs)

Newcomers (6)

Te'a Adams, Fr., G., 5-9, Kirkland, Wash. (Juanita HS)
 Jenay Bojorquez, Fr., G, 5-6, Phoenix, Ariz. (Sierra Linda HS)
 Kiara Edwards, Fr., F, 6-1, Surprise, Ariz. (Valley Vista HS)
 Loli Gomez, Jr., G., 5-10, Huntington Beach, Calif. (Edison HS/CSU San Bernardino)
 Najé Murray, Fr., G, 5-6, Stockton, Calif. (St. Mary's HS)
 Kennedi Villa, Fr., G., 6-0, Oakland, Calif. (St. Mary's HS)

► ROSTER BREAKDOWN

By Class

Seniors (6): Brown, Fort, G. Gomez, Greenhouse, Lark, Thorderson; **Juniors (2):** A. Gómez Ferrer, L. Gomez; **Sophomores (4):** Ekwedike, Lowe, Terry, Vanderdoes; **Freshmen (5):** Adams, Bojorquez, Edwards, Murray, Villa

By State/Country

Arizona (2): Bojorquez, Edwards; **California (9):** Brown, Fort, G. Gomez, L. Gomez, Greenhouse, Lark, Murray, Vanderdoes, Villa; **Colorado (1):** Thorderson; **Texas (1):** Terry; **Washington (1):** Adams; **Spain (1):** A. Gómez Ferrer; **England (1):** Lowe; **Nigeria (1):** Ekwedike

By Position

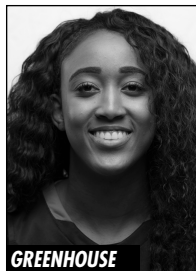
Centers (1): Ekwedike; **Forwards (5):** A. Gómez Ferrer, Edwards, Lark, Terry, Vanderdoes; **Guards (12):** Adams, Bojorquez, Brown, Fort, G. Gomez, L. Gomez, Greenhouse, Lark, Lowe, Murray, Thorderson, Villa

By Height

6-6 (1): Ekwedike; **6-2 (1):** Terry; **6-1 (2):** Edwards, Vanderdoes; **6-0 (4):** A. Gómez Ferrer, Lark, Thorderson, Villa; **5-11 (2):** Greenhouse, Lowe; **5-10 (1):** Loli Gomez; **5-9 (2):** Adams, Fort; **5-8 (2):** G. Gomez; **5-7 (1):** Brown; **5-6 (2):** Bojorquez, Murray

► RETURNING CATEGORY LEADERS FROM 2016-17

Minutes Per Game McKynzie Fort.....31.9	Steals Per Game McKynzie Fort.....0.9
Points Per Game McKynzie Fort.....15.9	Field Goal Percentage (min 100 att.) McKynzie Fort......436
Rebounds Per Game Khalia Lark6.1	Free-Throw Percentage (min 10 made) McKynzie Fort......784
Assists Per Game McKynzie Fort.....2.5	Three-Point Field Goal Percentage Geena Gomez......360
Blocked Shots Per Game Lexy Thorderson.....0.3	



Other Letterwinners Returning (5)

Cheyenne Greenhouse, Sr., G (15.4 mpg, 4.2 ppg, 2.0 rpg)
 Arantxa Gómez Ferrer, Jr., F (0.6 ppg, 0.9 rpg)
 Abby Lowe, So., G (15 gms, 1.2 ppg)
 Monique Terry, So., F (12.3 mpg, 2.7 ppg, 2.0 rpg)
 Baylee Vanderdoes, So., F (13.6 mpg, 3.9 ppg, 2.7 rpg)

Other Players Lost (1)

Aleiah Brandon, F



Other Players Returning (2)
 Allison Brown, Sr., G (9 gms)
 Naomi Ekwedike, So., C (9 gms)



SCHEDULE/NCAA TOURNAMENT



► 2017-18 AZTEC BASKETBALL SCHEDULE

Day	Date	Opponent	Time
Fri.	Nov. 3	Cal State Los Angeles (exh.)	6:30 p.m.
Fri.	Nov. 10	Presbyterian	Noon
Tues.	Nov. 14	Cal State Northridge	6:30 p.m.
Sat.	Nov. 18	Cal State Fullerton	Noon
Junkanoo Jam (Bimini, Bahamas)			
Fri.	Nov. 24	vs. Central Michigan	5:15 p.m.
Sat.	Nov. 25	vs. Iowa State/Tulane	TBA
Wed.	Nov. 29	San Diego	6:30 p.m.
Sun.	Dec. 3	at Arizona	2 p.m.
Fri.	Dec. 8	UC Irvine	Noon
Sun.	Dec. 10	Hope International	1 p.m.
Thurs.	Dec. 14	Santa Clara	6:30 p.m.
Fri.	Dec. 22	at UC Santa Barbara	7 p.m.
Thurs.	Dec. 28	Wyoming*	6:30 p.m.
Sat.	Dec. 30	at Utah State*	2 p.m.
Wed.	Jan. 3	Colorado State*	6:30 p.m.
Wed.	Jan. 10	at San José State*	7 p.m.
Sat.	Jan. 13	Boise State*	1 p.m.
Wed.	Jan. 17	at Fresno State*	7 p.m.
Sat.	Jan. 20	New Mexico*	1 p.m.
Wed.	Jan. 24	at Colorado State*	7 p.m.
Sat.	Jan. 27	UNLV*	1 p.m.
Sat.	Feb. 3	at Air Force*	1 p.m.
Wed.	Feb. 7	Fresno State*	Noon
Sat.	Feb. 10	Nevada*	1 p.m.
Wed.	Feb. 14	at Wyoming*	6:30 p.m.
Sat.	Feb. 17	at UNLV*	3 p.m.
Wed.	Feb. 21	Air Force*	6:30 p.m.
Sat.	Feb. 24	San José State*	1 p.m.
Tues.	Feb. 27	at Boise State*	7 p.m.
Fri.	March 2	at Nevada*	2 p.m.

Mountain West Championship (Las Vegas, Nev.)

Mon.-Fri.	March 5-9	MW Championship	TBA
-----------	-----------	-----------------	-----

NCAA Tournament

Fri.-Mon.	March 16-19	NCAA 1st and 2nd Rounds (Location TBD)	TBA
Fri.-Mon.	March 23-26	NCAA Regionals (Location TBD)	TBA
Fri. & Sun.	March 30 & April 1	NCAA Final Four (Columbus, Ohio)	TBA

All times local to site

Home games in **Bold**

All home games at Steve Fisher Court at Viejas Arena

* = Mountain West game

► 2017-18 AZTEC BASKETBALL HOME GAME PROMOTIONS

Wednesday, November 29 - vs. San Diego
High School Night

Friday, December 8 - vs. UC Irvine
Field Trip Day and Faculty/Staff Appreciation Day

Saturday, January 13 - vs. Boise State
Military Appreciation Day

Saturday, January 20 - vs. New Mexico
Alumni Weekend Celebration

Saturday, January 27 - vs. UNLV
San Diego County Office of Education Girls and Women in Sport Day

Wednesday, February 7 - vs. Fresno State
Field Trip Day and Faculty/Staff Appreciation Day

Saturday, February 10 - vs. Nevada
WBCA Play4Kay Game for Breast Cancer Awareness

Saturday, February 24 - vs. San José State
Senior Day

► 2018 NCAA TOURNAMENT INFORMATION



NCAA First and Second Rounds

March 16-19

16 Campus Sites

NCAA Regionals

March 23-26

Lexington Regional

Rupp Arena (Lexington, Ky.)

Host: University of Kentucky

March 23-26

Albany Regional

Times Union Center (Albany, N.Y.)

Host: MAAC

March 23-26

Kansas City Regional

Sprint Center (Kansas City, Mo.)

Host: Big 12

March 23-26

Spokane Regional

Veterans Memorial Arena (Spokane, Wash.)

Host: Idaho

NCAA Final Four

March 30 and April 1

Nationwide Arena (Columbus, Ohio)

Host: Ohio State