

Aztec Coaches

Steve Fisher and his basketball staff look to guide the Aztecs to the postseason for a sixth consecutive year.



Inside:

Steve Fisher	34
Brian Dutcher	46
Justin Hutson	47
Mark Fisher	48
Matt Soria	49
David Velasquez	49
Support Staff	50

Building a Lasting **LEGACY**

Aztec Head Coach Steve Fisher

Overall: 382-231 (19-Full Seasons) ♦ San Diego State: 198-149 (11 Seasons)

**NCAA National Championship ♦ Three NCAA Final Four Appearances ♦ National Coach of the Year
10 NCAA Tournament Appearances ♦ 16 Postseason Appearances**



Steve Fisher has guided the Aztecs to postseason play in seven of the past nine seasons, including a school-record five straight years.

Steve Fisher has guided the San Diego State basketball program to unparalleled heights. In 11 seasons, he has taken a program that regularly missed out on the conference postseason tournament, to one which has become one of the best programs on the West Coast and in the Associated Press Top 25 preseason poll.

The best news for San Diego State fans is that the school exercised its option on Fisher's

contract prior to the 2009-10 campaign, which will keep the national championship coach in San Diego for the foreseeable future.

When Fisher arrived on the scene in March of 1999, he found a basketball program that wasn't good enough to be called average. The Aztecs had suffered through 13 losing seasons in 14 years. Members of the school's last NCAA team were in the early stages of middle age. The expectations were set. The Aztecs were expected to lose. The year before Fisher's

arrival on campus, San Diego State won just four games.

Now those days are a distant memory. Fisher guided the Aztecs to the NCAA Tournament in 2002, 2006 and 2010, and the postseason NIT in 2003, 2007, 2008 and 2009, to go along with six 20-win seasons. In addition, San Diego State brings back a solid core of talented players, including all five starters and nine letterwinners, and a pair of players who utilized their redshirt seasons just a year ago. This group is certainly ready to turn heads.





Collegiate Coaching Experience

1979-82 Assistant Coach, Western Michigan University

Coached under Les Wothke, the same coach that hired him for his first coaching position at Rich East (Ill.) High... Team won the 1981 conference championship.

1982-89 Assistant Coach, University of Michigan

In six full seasons as an assistant, Michigan made four trips to the NCAA Tournament and claimed the 1984 NIT championship... Michigan won Big Ten titles in both 1985 and 1986.

1989-97 Head Coach, University of Michigan

Claimed Michigan's only national championship to date in men's basketball (1989)... Guided the Wolverines to three of the school's five national championship game appearances... In eight full seasons, he compiled a 184-82 record (69.1 percent)... His teams made seven NCAA appearances and two postseason NIT trips... One of six coaches to win both an NCAA and NIT championship... Recorded five 20-win seasons, including a 31-5 record during the 1992-93 campaign... *Basketball Times* National Coach of the Year in 1992.

1999-Present Head Coach, San Diego State University

Authored one of the greatest turnarounds in college basketball history by taking a San Diego State program that won four games the year before his arrival to three Mountain West Conference Tournament championships, an MWC regular season title, three NCAA tournament berths and four appearances in the postseason NIT... Team went from 5-23 his first season (1999-00) to post eight .500 or better seasons: 14-14 (2000-01), 21-12 (2001-02), 16-14 (2002-03), 24-9 (2005-06), 22-11 (2006-07), 20-13 (2007-08), 26-10 (2008-09), 25-9 (2009-10)... Won 20 or more games in six of the last nine seasons, including five straight... The top nine single-season home attendance marks have been set in the last nine seasons.

The ingredients for a successful basketball program seemed to have arrived at San Diego State at approximately the same time Fisher did.

Viejas Arena, formerly Cox Arena, was one of the glaring athletic upgrades on the west side of campus, and its opening signified the new-placed emphasis on basketball in the Aztec athletic department. The program moved from the aging San Diego Sports Arena on the west side of the city to an on-campus home located just steps away from fraternities and sororities.

After the arrival of Cox Arena, one important ingredient was lacking.

On March 26, 1999, SDSU announced its arrival on the basketball scene in a news conference to introduce its new coach, Steve Fisher. Fresh from a stint with the Sacramento Kings and with three appearances in the Final Four and a national championship in his pocket, he rolled up his sleeves and went to work. And work was needed. It looked to be a daunting challenge and yet the man with one of the highest winning percentages in NCAA Tournament history had no reservations.

"We have everything here that we need to be successful at the highest level," Fisher said at the time. "We have a great campus in a great city. The arena is as good of a facility as you can find. Our league is very good and getting better. Who wouldn't want to play here?"

Coming off a 4-22 season, not much was expected of the Aztecs in the new coach's first year. The Aztecs finished 5-23 but never stopped working. The last game of the season was a near upset of UNLV in the first round of the MWC Tournament. The eventual champions bested the Aztecs in the final minutes.

"We worked hard - we just weren't good enough," Fisher said of his first group of Aztecs. "They tried to do everything we wanted, but we spent the year dodging bullets."

It was year two, the 2000-01 campaign, when Fisher and SDSU served notice that better days were ahead and some, in fact, had arrived. The Aztecs were one of the nation's most improved teams, finishing the year at 14-14 and in the process, ending several less-than-flattering streaks, including a long road losing streak, a long conference losing streak and an overall losing streak. Attendance jumped by an astounding 73 percent and by spring, the stars of tomorrow

became more receptive when Fisher and his staff came calling to talk about Aztec basketball.

And then came year three. An indifferent start gave way to a down-right slow beginning to conference play. But the Aztecs then unveiled a trait that has become synonymous with Steve Fisher teams. They played their best when it mattered most.

The Aztecs roared down the stretch, winning eight of their final 10 games and climbing to .500 in Mountain West play, a major step for San Diego State basketball.

Then came March, a month that has always been magical for Steve Fisher.

The Aztecs headed to Las Vegas and picked up three straight wins to claim their first Mountain West title, including victories over top-seeded Wyoming and home-standing UNLV.

The season ended with a 21-12 record and continued the upward surge of the program. And SDSU was close to so much more. The Aztecs dropped three overtime games, lost a hard-fought battle at Utah and went on the road to push Duke. San Diego State reached 21 wins for the first time since the 1984-85 season and returned to the NCAA Tournament for the first time since that same '84-85 team.

Along the way there were more glaring landmarks. SDSU picked up its first win at New Mexico since 1984 and swept the Colorado State-Wyoming swing, considered one of the toughest in college basketball, for the first time ever.

However, it is what lies ahead and not the past that continues to drive the energetic Fisher.

"I have never said I wanted the program in a certain place by a certain time," he said. "You just work hard, prepare well and try to get lucky. We have probably done a little bit of each."

The Aztecs proved that they were more than a one-hit wonder in 2002-03 by returning to the postseason and claiming their first postseason victory in 33 seasons at the Division I level. San Diego State concluded its third straight season with a .500 or better record by going 16-14 and advancing to the second round of the NIT. Along the way, the Aztecs played before two sellout crowds in Cox Arena en route to shattering the home attendance average (7,172).

Although SDSU struggled the following two seasons, Fisher and the Aztecs enjoyed one of the best seasons in school history in 2005-06. Expectations were high from the out-

Steve Fisher



2010 NCAA TOURNAMENT ► 2010 MOUNTAIN WEST CONFERENCE CHAMPIONS

set as the conference media picked SDSU as the team to beat in the MWC, something that had never happened in the Scarlet and Black's Division I history. In addition, the league media also bestowed on SDSU the titles of player of the year (Marcus Slaughter), first-team all-conference (Slaughter and Brandon Heath) and newcomer of the year (Mohamed Abukar).

And that was just the beginning. San Diego State won a then Division I school-record 24 games, the regular season conference crown and the league tournament title en route to a bid in the NCAA Tournament. At season's end, Brandon Heath had been named an AP honorable mention All-American, the MWC player of the year and a first-team all-league selection, while teammates Marcus Slaughter (MWC tournament MVP, first-team all-MWC) and Mohamed Abukar (second-team all-conference) also garnered attention.

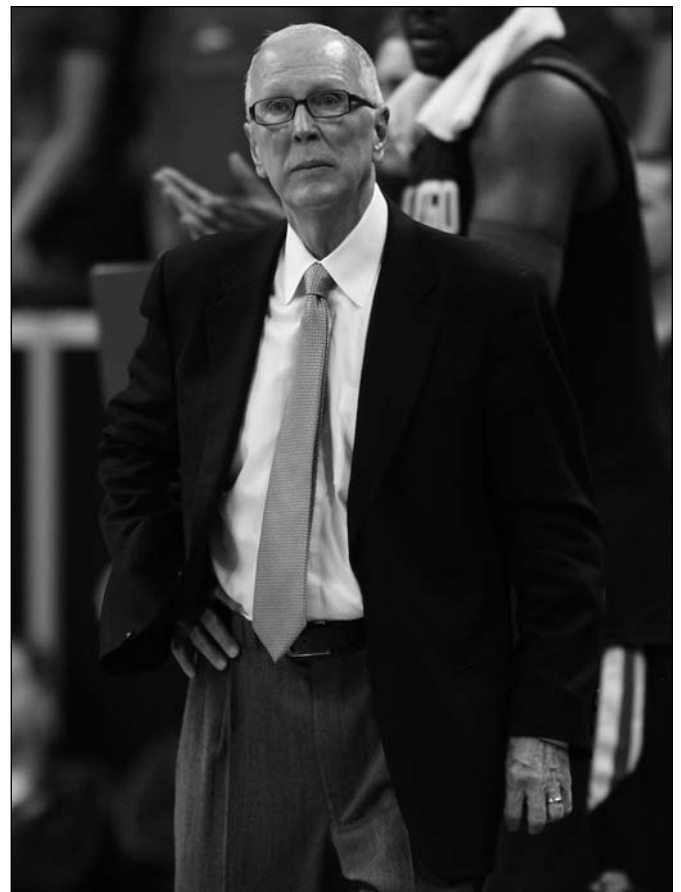
The success from the Aztecs' magical year continued in 2006-07 as SDSU went on to win its first eight games, marking the best start to a season by a Fisher-coached team, and posted its second straight 20-plus win season with a record of 22-11, something that had not been accomplished on Montezuma Mesa during the Aztecs'

time as a Division I program. In the process, SDSU earned a spot in the MasterCard NIT and captured its first Division I postseason road victory before falling in the second round.

In 2007-08, the winning trend was carried on by a junior-laden team that finished with a 20-13 record and another appearance in the postseason NIT. The Aztecs became the first team in the school's Division I history to record three straight 20-win seasons and three consecutive postseason berths.

Then came 2008-09 when those aforementioned streaks were extended to four straight seasons after Fisher led San Diego State to a 26-10 record and an appearance in the semifinals of the NIT. The 26 victories represented a new school record.

Despite losing 4,291 career points from the 2008-09 squad, Fisher and the 2009-10 Aztecs made it a point to not have a drop off, even with six newcomers. San Diego State finished with a 25-9 record, won the school's MWC tournament title and advanced to the NCAA Tournament for the first time since 2006. SDSU was led by a freshman in Kawhi Leonard, who became the first freshman in Mountain West history to be voted onto the all-conference first team, all



COACHES ► STEVE FISHER

AZTEC BASKETBALL MEDIA GUIDE

Steve Fisher Year-By-Year

Year	School	W	L	Pct.	Conference			Postseason/Honors
					W	L	Pct.	
1989	Michigan	6	0	1.000	-	-	-	NCAA Champions
1989-90	Michigan	23	8	.742	12	6	.667	NCAA Second Round
1990-91	Michigan	14	15	.483	7	11	.389	NIT First Round
1991-92	Michigan	25	9	.735	11	7	.611	NCAA Runner-Up, <i>Basketball Times</i> Coach of the Year
1992-93	Michigan	31	5	.861	15	3	.833	NCAA Runner-Up
1993-94	Michigan	24	8	.750	13	5	.722	NCAA Regional Finalist
1994-95	Michigan	17	14	.548	11	7	.611	NCAA First Round
1995-96	Michigan	20	12	.625	10	8	.556	NCAA First Round
1996-97	Michigan	24	11	.686	9	9	.500	NIT Champions
Eight Full Seasons at UM		184	82	.691	88	56	.611	7 NCAA Tournaments, 9 Postseason Appearances
Year	School	W	L	Pct.	W	L	Pct.	Postseason/Notes
1999-00	San Diego State	5	23	.179	0	14	.000	
2000-01	San Diego State	14	14	.500	4	10	.286	8th-most improved team in the country (Sagarin Ratings)
2001-02	San Diego State	21	12	.636	7	7	.500	NCAA First Round; Aztecs' first NCAA trip since 1985
2002-03	San Diego State	16	14	.533	6	8	.429	NIT Second Round; First win in D-I postseason tourney
2003-04	San Diego State	14	16	.467	5	9	.357	Overcame loss of four starters for fourth straight season w/14 wins
2004-05	San Diego State	11	18	.379	4	10	.286	Young Aztecs drop seven gms. by four pts. or less or in OT
2005-06	San Diego State	24	9	.727	13	3	.813	NCAA First Round; MWC regular season and tourney champs
2006-07	San Diego State	22	11	.667	10	6	.625	NIT Second Round; First road win in D-I postseason tourney
2007-08	San Diego State	20	13	.606	9	7	.563	NIT First Round; Third straight 20-win season
2008-09	San Diego State	26	10	.722	11	5	.688	NIT Semifinals; Fourth straight 20-win year; SDSU-record 26 wins
2009-10	San Diego State	25	9	.735	11	5	.688	NCAA First Round; MWC Tournament Champions
11 Seasons at SDSU		198	149	.571	80	84	.488	3 NCAA Tournaments, 7 Postseason Appearances
		W	L	Pct.	W	L	Pct.	Postseason/Honors
19-Season Career Totals		382	231	.623	168	140	.545	10 NCAA Tournaments, 16 Postseason Appearances

In November of 2002, the University of Michigan chose to vacate a number of games from the 1992-1999 time period. Because of this, the NCAA no longer recognizes those contests and thus lists Steve Fisher's career coaching record differently. The chart above and all references in this publication include all games.

Steve Fisher



2010 NCAA TOURNAMENT ► 2010 MOUNTAIN WEST CONFERENCE CHAMPIONS

The Steve Fisher File

Hometown: Herrin, Ill.

Family: wife Angie, sons Mark (32), Jay (23).

Education: Illinois State Univ. (B.S. in 1967 and M.S. in 1968)

while being named league freshman of the year and MWC tournament MVP.

SDSU's winning ways do not look as if they will come to an end anytime soon either. Fisher is set to return all five starters this season and excitement surrounding the program is at an all-time high, both locally and nationally.

Prior to arriving in San Diego, Fisher spent one season as an assistant coach with the Sacramento Kings. However, he is best known for his efforts at the collegiate level. He became a household name at Michigan, where he transformed a prominent program into a perennial national championship contender and winner. Returning to the college game was returning home.

"I enjoyed the NBA," Fisher said. "It was all basketball all the time. But I always felt I belonged in the college game. If I have a calling, it is as a teacher. I enjoy teaching basketball. I think it is what I do best."

That point would be hard to argue.

No head-coaching career, at any level, started quicker than that of Steve Fisher. Six games into his head-coaching career he was undefeated and sporting a national championship ring. And the success didn't stop with the national title.

Fisher spent eight-plus seasons, won an NCAA title and an NIT championship and carved out one of the most glamorous periods in college basketball history during the Fab Five years.

Under Fisher, the Wolverines won at least 20 games four times and finished among the top three in the powerful Big Ten Conference five times. In 1995, Michigan set a league record by holding opponents to just 39.4 percent



In just his third season, Steve Fisher guided SDSU to the NCAA Tournament for the first time since 1985.

shooting from the floor.

Fisher and company raised the bar even higher in the postseason. His seven NCAA Tournament teams combined for a 20-6 record on the court for a winning percentage of .769 in the national bracket. Three of his teams advanced to the Final Four.

Just seven head coaches have led schools to the championship of the NIT as well as the NCAA. The others to accomplish that feat are Bobby Knight, Adolph Rupp, Joe B. Hall, Al McGuire, Dean Smith and Jim Calhoun.

Add to the accolades the fact that Fisher coached perhaps the most famous group of players in modern NCAA history. In 1991, Fisher and Aztec assistant head coach Brian Dutcher inked a recruiting class that would later be known as the "Fab Five." The group included Ray Jackson, Jimmy King and NBA stars Juwan Howard, Jalen Rose and Chris Webber. They were the heart, and indeed the starting five, of two consecutive NCAA runner-up teams in Ann Arbor. For his efforts with that group, Fisher was named the 1992 national coach of the year by *Basketball Times*.

During his stay in Michigan, Fisher coached seven players that would be taken in the first round of the NBA draft, including the three members of the Fab Five.

His accomplishments may be even greater at SDSU. In 2001-02 he led the Aztecs to the postseason for the first time since 1985 and for just the fourth time ever. The 21 wins were second most for the school as a Division I program and the most since 1985.

That was followed by a berth in the NIT in 2002-03 and the Aztecs' first

Division I postseason victory.

The fact that those numbers came in his first four years at SDSU signifies what is one of the great recent turn-arounds in college basketball.

Steve Fisher grew up in Herrin, Ill., and played his college basketball at Illinois State University, where he earned two varsity letters. He was a member of the university's Division II Final Four team as a senior. In 1967, he completed work on his bachelor's degree at ISU in physical education and math. The following year he earned a master's degree in physical education.

Fisher began his climb up the coaching ladder in Park Forest, Ill., where he served as an assistant coach and later became head coach at Rich East High School. In eight years at the helm of the program, he built Rich East into one of the top programs in the Chicago area.

"I probably could have stayed in the high school ranks my entire career and been happy," Fisher said. "I coached basketball and taught math and that was fine with me."

In 1979, Fisher moved into the collegiate ranks at Western Michigan. He spent three years as an assistant under Les Wothke, who had hired him at Rich East. He helped build the Bronco program into a conference champion in 1981.

In 1982, he moved across the state to Michigan where he helped Bill Frieder lead the Wolverines to a pair of conference titles. As he was in high school, Fisher was happy sitting in the middle of the bench, removed from the spotlight. A career as an assistant would have worked just fine.

Seven years after his hiring and on the verge of the NCAA Tournament,



Steve Fisher, who is in his 12th season at San Diego State, is the longest-tenured head coach in the Mountain West Conference.

Frieder accepted the head-coaching job at Arizona State and Michigan athletic director Bo Schembechler quickly moved Fisher to the end of the bench. Fisher then moved himself into the national spotlight.

He assumed the role of interim head coach with no promise of a future. However, he made a strong case for the job when he promptly led a team that finished third in the Big Ten race to the national title. Included in that run was a win over Illinois in the national semifinals. The Illini were considered by many to be the best team in the country. The title was the first and remains the only championship in Michigan history.

The 1991-92 and 1992-93 seasons were the fanatical years of the Fab Five. Not only did the Wolverines achieve cult-like status, but they were the most successful group of underclassmen in the history of college sports.

In the years before the early entries into the NBA and before high school stars spent their lunch hours with agents, Michigan's successes were even more impressive. Two straight trips to the NCAA title game with five freshmen and then five sophomores in the starting lineup marked an incredible accomplishment. UM set a school record in 1992-93 by going 31-5.

In all, Steve Fisher carved out the most successful period in Michigan basketball history. His final club in Ann Arbor won the NIT. However, he is now clearly planted in Southern California.

"My family and I are elated to be at San Diego State," he said. "This program has unlimited potential. I have a responsibility to make sure the potential is realized."

Fisher's first full recruiting class was ranked among the nation's top 40. His second group was a consensus top-25 crop and the Aztecs keep moving up the chart. Potential no longer seems like a bad word.

The season-ticket base is rapidly swelling. The community has an interest even in the off-season. Steve Fisher has led the Aztecs from the wasteland to the throne room.

Fisher, the 14th head coach in Aztec history, is married to the former Angie Wilson, another former teacher at Rich East High School. They have two sons. Mark is a Michigan graduate who is in his fourth year as an assistant coach and ninth season overall at SDSU. Jay is a 2008 graduate from the University of Southern California.

Active National Championship Coaches

- Jim Boeheim, Syracuse
- Jim Calhoun, Connecticut
- Billy Donovan, Florida
- **Steve Fisher, San Diego State**
- Tom Izzo, Michigan State
- Mike Krzyzewski, Duke
- Lute Olson, Arizona
- Rick Pitino, Louisville
- Bill Self, Kansas
- Tubby Smith, Minnesota
- Gary Williams, Maryland
- Roy Williams, North Carolina

Active Highest NCAA Tournament Winning Percentage

active coaches, minimum 10 games

1. Mike Krzyzewski, Duke 77.6
2. Billy Donovan, Florida 75.9
3. Roy Williams, No. Carolina 75.0
4. Tom Izzo, Michigan State 73.9
5. Rick Pitino, Louisville 73.1
6. Jim Calhoun, UConn 70.5
7. John Calipari, Kentucky 70.0
8. Bill Self, Kansas 69.4
9. Ben Howland, UCLA 69.2
10. ► **Steve Fisher, SDSU 69.0**
11. Tubby Smith, Minnesota 65.9

Active Coaches Final Four Appearances

1. Mike Krzyzewski, Duke 11
2. Roy Williams, North Carolina 7
3. Tom Izzo, Michigan State 6
4. Rick Pitino, Louisville 5
5. ► **Steve Fisher, SDSU 3**
- Jim Boeheim, Syracuse 3
- Jim Calhoun, UConn 3
- Billy Donovan, Florida 3
- Ben Howland, UCLA 3

Active Coaches Most NBA Draft Picks

Active Coaches, Since 1989

1. Mike Krzyzewski, Duke 29
2. Roy Williams, North Carolina 27
3. Jim Calhoun, Connecticut 24
4. Rick Barnes, Texas 19
5. Jim Boeheim, Syracuse 18
6. John Calipari, Kentucky 17
7. Gary Williams, Maryland 16
8. ► **Steve Fisher, SDSU 14**
- Bob Huggins, West Virginia 14
10. Rick Pitino, Louisville 13
- Bill Self, Kansas 13
12. Tom Izzo, Michigan State 12

Coach listed with current school.

► Steve Fisher vs. All Foes

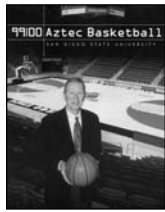
Air Force	14-10	Monmouth	1-0
Alaska Fairbanks	1-0	Morgan State	1-0
Albany	1-0	Murray State	1-0
Arizona	2-9	Navy	1-0
Arizona State	1-4	Nebraska	1-0
Arkansas	1-1	New Mexico	12-12
Arkansas-Pine Bluff	1-0	New Mexico State	1-2
Auburn	1-0	Norfolk State	2-0
Ball State	2-1	North Carolina	2-1
Baylor	0-1	Northern Arizona	1-0
Boston	3-0	Northern Colorado	1-1
Bowling Green	1-0	Northern Iowa	1-0
Bradley	1-0	Northern Michigan	1-0
Brigham Young	10-16	Northwestern	13-1
Cal Poly	2-0	Notre Dame	3-0
California	1-3	Ohio State	10-6
Campbell	1-0	Oklahoma State	3-1
CS Fullerton	2-1	Pacific	0-2
CS Northridge	2-0	Penn	1-1
Central Michigan	5-0	Penn State	6-2
Chaminade	1-0	Pepperdine	1-0
Chicago State	3-0	Pittsburgh	0-1
Cincinnati	1-0	Point Loma Nazarene	1-0
Cleveland State	5-0	Pomona-Pitzer	1-0
Coastal Carolina	1-0	Portland	3-1
Colorado	0-1	Providence	0-2
Colorado State	17-8	Purdue	6-10
Columbia	1-0	Rice	2-0
Davidson	1-0	St. Francis	1-0
Dayton	0-1	St. John's	1-1
DePaul	1-0	Sacramento State	1-0
Detroit	6-0	Saint Mary's	2-5
Drake	1-0	Sam Houston State	1-0
Duke	3-7	San Diego	7-4
East Tennessee State	1-0	Santa Clara	1-0
Eastern Michigan	4-0	Seattle	1-0
Eastern Washington	2-1	Seattle Pacific	1-0
Florida	0-1	Seton Hall	2-0
Florida Atlantic	2-0	South Alabama	1-0
Florida State	1-0	South Carolina State	1-0
Fresno State	4-1	South Dakota State	2-0
George Washington	1-0	Southern California	0-1
Georgia Tech	1-1	Southern Mississippi	1-0
Grambling State	1-0	Syracuse	0-1
Hawai'i	2-0	TCU	9-1
Hampton	1-0	Temple	2-0
High Point	1-0	Tennessee	0-1
Houston	2-0	Texas A&M-Corpus Christi	2-0
Illinois	13-5	Texas Tech	0-4
Illinois-Chicago	0-1	Texas	1-2
Illinois State	1-0	Troy State	0-1
Indiana	6-11	Tulane	2-0
Indiana-Purdue Fort Wayne	2-0	UC Riverside	4-0
Iowa	9-7	UC San Diego	9-0
Iowa State	3-2	UC Santa Barbara	7-2
Jackson State	1-0	UCLA	1-0
Kansas	1-0	UMBC	1-0
Kansas State	1-0	UNLV	13-16
Kentucky	1-0	UT-Chattanooga	2-0
Lafayette	1-0	Utah	9-17
Liberty	1-0	Virginia	1-0
Long Beach State	2-0	Virginia Tech	1-0
LSU	2-0	Washington	1-3
Loyola Marymount	6-2	Washington State	1-2
Marquette	2-0	Weber State	2-0
Maryland	1-0	Western Carolina	1-0
Memphis	0-1	Western Kentucky	0-1
Miami (Fla.)	1-0	Western Michigan	1-1
Michigan State	10-6	Wisconsin	10-5
Minnesota	9-5	Wyoming	12-13
Missouri State	1-0	Xavier	1-0

Steve Fisher Era



2010 NCAA TOURNAMENT ► 2010 MOUNTAIN WEST CONFERENCE CHAMPIONS

1999-2000 • 5-23 Overall/0-14 MWC



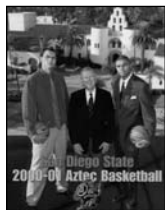
► First-year coach Steve Fisher instills a winning attitude and a belief that great things can happen at San Diego State.

► Fisher instantly gives SDSU credibility and national attention. National media outlets such as ESPN, *Los Angeles Times*, *Chicago Tribune* and the *Philadelphia News* all do lengthy features on the first-year Aztec coach.

	PPG	RPG	APG
Myron Epps (F, 6-6, 210, So., Tulare, Calif.)	14.4	5.9	0.6
Marcelo Correa (C, 6-10, 225, Jr., Franca, Brazil)	10.2	6.4	1.3
David Abramowitz (G, 6-0, 170, So., Tijuana, Mexico)	7.6	1.9	3.0
Bradley Jackson (G, 5-10, 165, Fr., Inglewood, Calif.)	7.1	2.7	3.6
Vincent Okotie (F, 6-7, 230, So., El Cajon, Calif.)	6.6	2.6	1.3
Michael Marion (G, 6-6, 190, Jr., Portland, Ore.)	5.7	2.4	1.0
Donte Wilson (G, 6-3, 175, Sr., McKinney, Texas)	4.5	2.0	1.8
Jeffrey Berokoff (G, 6-3, 190, So., Whittier, Calif.)	3.8	1.2	0.9
Walter Small (F, 6-4, 215, So., Lakewood, Calif.)	2.8	1.4	0.1
Joe Mann (C, 6-10, 265, So., San Diego, Calif.)	1.9	2.3	0.1
Eric Rohwer (F, 6-9, 235, Fr., Burbank, Calif.)	0.5	0.0	0.0
Jim Roban (F, 6-6, 210, Jr., Las Vegas, Nev.)		DNP	

Assistant Coaches: Brian Dutcher, Marvin Menzies, Jim Tomey

2000-01 • 14-14 Overall/4-10 MWC



► San Diego State posts its second .500 or better season in the last 16 years.

► The 14 victories in 2000-01 equal the total number of wins SDSU posted in the 66 games prior to the season.

► The Sagarin Ratings show San Diego State is the eighth most improved team in the country, jumping from a preseason ranking of 262 to 143 in the final ratings.

► SDSU had a 73-percent increase in home attendance over the previous year, the second-largest jump nationally.

► SDSU breaks notable losing streaks like a 17-game overall losing streak, 17-game conference losing streak, 24-game conference road losing streak and a 30-game overall road losing streak.

	PPG	RPG	APG
Randy Holcomb (F, 6-9, 219, Jr., Chicago, Ill.)	15.9	6.6	1.4
Myron Epps (F, 6-6, 210, Jr., Tulare, Calif.)	11.1	4.5	1.0
Al Faux (G, 6-2, 186, Jr., Los Angeles, Calif.)	10.5	3.5	2.6
Deandre Moore (G, 5-9, 179, So., Compton, Calif.)	6.8	3.4	5.0
Marcelo Correa (C, 6-10, 226, Sr., Franca, Brazil)	6.4	4.0	1.0
Karlo Kovacic (G, 6-5, 204, Jr., Rijeka, Croatia)	5.3	1.8	0.7
David Abramowitz (G, 6-0, 170, Jr., Tijuana, Mexico)	5.0	1.3	1.9
Jim Roban (F, 6-6, 210, Sr., Las Vegas, Nev.)	4.6	1.3	0.3
Aerick Sanders (F-C, 6-8, 192, So., Carson, Calif.)	3.8	3.8	0.3
Chris Walton (F, 6-8, 218, Fr., San Diego, Calif.)	3.3	2.5	1.3
Michael Marion (G, 6-7, 199, Sr., Portland, Ore.)	1.9	0.6	0.6
Tad Boyes (F, 6-6, 225, Fr., West Palm Beach, Fla.)	1.3	0.0	0.0
Ben Wardrop (G, 6-2, 185, So., Anaheim, Calif.)	0.0	0.6	0.1
Andre Torres (G, 5-9, 170, So., Chula Vista, Calif.)	0.0	0.0	0.2
Andy Ormsby (F, 6-7, 205, So., Glenwood Springs, Colo.)		DNP	

Assistant Coaches: Brian Dutcher, Marvin Menzies, Jim Tomey

2001-02 • 21-12/7-7 MWC/NCAA Tournament/MWC Champs



► San Diego State advanced to the NCAA Tournament for the fourth time in the school's 32-year Division I history and earned its first NCAA berth since 1985.

► The 21 wins were the second most in the school's DI era and marked the third consecutive season the Aztecs improved their win total from the previous campaign.

► SDSU ended '01-02 with a final RPI of 39, marking the second consecutive season that SDSU jumped 100 positions from the previous season's final RPI.

	PPG	RPG	APG
Al Faux (G, 6-2, 178, Sr., Los Angeles, Calif.)	17.0	3.6	1.8
Randy Holcomb (F, 6-9, 222, Sr., Chicago, Ill.)	16.9	9.0	1.7
Tony Bland (G, 6-5, 192, Jr., Los Angeles, Calif.)	15.7	4.0	3.4
Mike Mackell (C, 6-9, 241, Jr., Washington, D.C.)	10.6	4.4	0.5
Deandre Moore (G, 5-10, 195, Jr., Compton, Calif.)	3.6	1.9	2.8
Brandon Smith (G/F, 6-7, 215, Sr., Amarillo, Texas)	3.3	2.2	2.1
Chris Walton (F, 6-10, 230, So., San Diego, Calif.)	2.8	3.1	0.9
Aerick Sanders (F-C, 6-9, 203, So., Carson, Calif.)	2.5	3.1	0.2
Karlo Kovacic (G, 6-5, 196, Sr., Rijeka, Croatia)	2.3	0.3	0.7

Myron Epps (F, 6-6, 221, Sr., Tulare, Calif.)	2.2	2.3	0.5
Tommy Johnson (G, 6-4, 184, Fr., Los Angeles, Calif.)	1.5	0.9	0.4
Ben Wardrop (G, 6-3, 201, So., Anaheim, Calif.)	0.6	0.6	0.2
Jim Roban (G, 6-7, 224, Sr., Las Vegas, Nev.)		DNP	
Trimaime Davis (F, 6-7, 212, Fr., West Pittsburg, Calif.)		REDSHIRT	
Steve Sir (G, 6-6, 192, Fr., Minnetonka, Minn.)		REDSHIRT	
Andre Torres (G, 5-9, 170, Jr., Chula Vista, Calif.)		REDSHIRT	
Markee White (F, 6-7, 184, Fr., Long Beach, Calif.)		REDSHIRT	

Assistant Coaches: Brian Dutcher, Marvin Menzies, Jim Tomey

2002-03 • 16-14 Overall/6-8 MWC/NIT Second Round



► SDSU returns to the postseason for the second consecutive season, marking the first time since 1975 and 1976 that the Aztecs appeared in two straight national postseason tournaments.

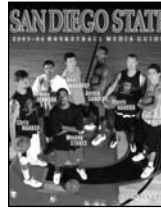
► San Diego State claims the first victory in the national postseason tournament of its 33-year Division I era history with a win in the first round of the NIT. The Aztecs' last postseason victory came in 1968.

► The Aztecs have a school-record four players earn all-conference recognition as Tony Bland is named to the second team and Evan Burns, Mike Mackell and Deandre Moore earn honorable mention..

	PPG	RPG	APG
Tony Bland (G, 6-5, 201, Sr., Los Angeles, Calif.)	16.4	3.5	3.4
Mike Mackell (C, 6-9, 250, Sr., Washington, D.C.)	14.4	4.6	0.7
Evan Burns (F, 6-8, 220, Fr., Los Angeles, Calif.)	9.2	5.1	1.1
Deandre Moore (G, 5-10, 191, Sr., Compton, Calif.)	8.3	3.7	4.1
Aerick Sanders (F, 6-8, 204, Jr., Carson, Calif.)	6.1	7.6	1.2
Tommy Johnson (G, 6-4, 185, So., Los Angeles, Calif.)	5.6	2.6	1.8
Steve Sir (G, 6-6, 201, Fr., Minnetonka, Minn.)	5.5	1.1	0.9
Travis Hanour (G, 6-7, 198, So., Laguna Beach, Calif.)	3.1	3.1	1.0
Chris Manker (C, 7-0, 209, So., West Des Moines, Iowa)	2.9	1.2	0.2
John Sharper (G, 6-0, 190, Fr., Oakland, Calif.)	1.9	0.8	0.6
Trimaime Davis (F, 6-7, 219, Fr., West Pittsburg, Calif.)	1.5	1.1	0.0
Ben Wardrop (G, 6-2, 189, Jr., Anaheim, Calif.)	0.9	0.0	0.4
Markee White (F, 6-7, 190, Fr., Long Beach, Calif.)	0.3	0.5	0.5
Andre Torres (G, 5-9, 170, Jr., Chula Vista, Calif.)	0.0	0.0	0.0
Chris Walton (F, 6-9, 227, Jr., San Diego, Calif.)		REDSHIRT	

Assistant Coaches: Brian Dutcher, Marvin Menzies, Gregg Gottlieb

2003-04 • 14-16 Overall/5-9 MWC



► San Diego State survived the loss of four starters and the nation's 64th most difficult schedule (third toughest in the MWC) to claim 14 victories marking the fourth straight season SDSU has won at least 14 games.

► San Diego State defeated Brigham Young and UNLV at home in the same season for just the second time in school history. The Aztecs also disposed of the Rebels and Cougars during the 1981-82 campaign.

► San Diego State's 11-4 record at Cox Arena marked the second best home winning percentage for an Aztec squad in the last 19 seasons (the 2001-02 team went 12-3 at home).

	PPG	RPG	APG
Aerick Sanders (F-C, 6-9, 203, Sr., Carson, Calif.)	16.1	9.8	1.0
Brandon Heath (G, 6-3, 172, Fr., Los Angeles, Calif.)	13.8	2.7	2.2
Wesley Stokes (G, 6-0, 168, Jr., Long Beach, Calif.)	12.1	2.3	5.8
Chris Walton (F, 6-10, 230, Jr., San Diego, Calif.)	8.7	4.9	2.3
Marcus Slaughter (F, 6-9, 208, Fr., Riverside, Calif.)	7.9	6.8	0.7
John Sharper (G, 6-1, 198, So., Oakland, Calif.)	4.1	0.9	0.9
Tommy Johnson (G, 6-4, 188, Jr., Los Angeles, Calif.)	4.0	1.9	1.0
Chris Manker (C, 7-1, 215, Jr., West Des Moines, Iowa)	3.4	2.3	0.3
Trimaime Davis (F, 6-8, 223, So., West Pittsburg, Calif.)	1.5	1.0	0.1
Ben Wardrop (G, 6-3, 201, Sr., Anaheim, Calif.)	0.2	0.6	0.2
Steve Sir (G, 6-6, 205, So., Edmonton, Alberta)	1.5	0.5	1.0
Travis Hanour (G, 6-8, 216, Jr., Laguna Beach, Calif.)		INJURED	
Shawn Weinstein (G, 6-1, 178, Fr., Rancho Palos Verdes, Calif.)		REDSHIRT	

Assistant Coaches: Brian Dutcher, Gregg Gottlieb, Gary Grant

2004-05 • 11-18 Overall/4-10 MWC

► SDSU played the 75th most difficult schedule while losing 65 games from the senior class due to injury, illness or suspension.

► San Diego State won at BYU and UNLV in the same season for the first time in school history.

► SDSU won at BYU for just the third time in 26 visits to Provo (3-23) and

Steve Fisher Era



2010 NCAA TOURNAMENT ► 2010 MOUNTAIN WEST CONFERENCE CHAMPIONS



snapped a 17-game conference losing streak to the Cougars in Provo.

► San Diego State claimed its first regular-season victory at the Thomas & Mack Center, second win over UNLV in the building and third victory over the Rebels in Sin City in 19 games (3-16).

► SDSU swept Brigham Young for just the third time in school history and the first time since the 1984-85 season.

	PPG	RPG	APG
Brandon Heath (G, 6-3, 183, So., Los Angeles, Calif.)	18.3	3.5	3.7
Marcus Slaughter (F, 6-8, 223, So., Riverside, Calif.)	17.8	9.0	1.3
Chris Manker (C, 7-0, 225, Sr., West Des Moines, Iowa)	6.8	2.7	1.0
Chris Walton (F, 6-8, 234, Sr., San Diego, Calif.)	6.3	2.6	1.5
Matt Thomas (G, 6-3, 191, Fr., Riverside, Calif.)	6.1	3.4	1.5
John Sharper (G, 6-0, 195, Jr., Oakland, Calif.)	6.0	1.1	1.3
Trimaime Davis (F, 6-8, 233, Jr., West Pittsburg, Calif.)	5.2	2.3	0.2
Mohamed Camara (C, 6-10, 265, Jr., Conakry, Guinea)	2.4	3.8	0.5
Tyler Smith (G, 6-2, 208, Fr., San Clemente, Calif.)	2.2	1.6	1.2
Jared Ines (F, 6-7, 234, Sr., Modesto, Calif.)	1.6	0.0	0.0
Tommy Johnson (G, 6-3, 186, Sr., Los Angeles, Calif.)	1.0	0.8	0.5
Travis Hanour (G, 6-6, 202, Sr., Laguna Beach, Calif.)	1.0	1.0	0.7
Shawn Weinstein (G, 6-0, 188, Fr., Rancho Palos Verdes, Calif.)	0.0	0.0	0.0

REDSHIRT
REDSHIRT

Assistant Coaches: Brian Dutcher, Gregg Gottlieb, Mark Hughes

2005-06 • 24-9/13-3 MWC/NCAA Tournament/MWC Champs



► San Diego State advanced to the NCAA Tournament for the fifth time in school history and the second time under Steve Fisher.

► SDSU won a school DI era-record 24 games and tied the school's all-time mark. It also broke the school record with 13 conference victories and tied the MWC record.

► SDSU won its third conference championship of the DI era and its first outright title.

► The Aztecs claimed their second MWC tournament crown and became the first in league history to win the tourney title twice.

► Junior Brandon Heath earned AP Honorable Mention All-America honors, was league MVP and was voted to the all-MWC first team.

► Junior Marcus Slaughter earned first-team all-league honors and was the MWC tournament MVP. Fellow junior Mohamed Abukar garnered all-league second-team accolades.

► With Abukar in the starting lineup, the Aztecs went 17-4.

	PPG	RPG	APG
Brandon Heath (G, 6-4, 198, Jr., Los Angeles, Calif.)	18.4	3.4	3.5
Marcus Slaughter (F, 6-9, 220, Jr., Riverside, Calif.)	16.5	11.0	1.9
Mohamed Abukar (F, 6-10, 216, Jr., San Diego, Calif.)	14.3	4.7	1.0
Kyle Spain (F, 6-5, 218, Fr., Newark, Calif.)	9.2	5.6	1.0
John Sharper (G, 6-0, 190, Sr., Oakland, Calif.)	8.8	1.4	0.9
Richie Williams (G, 5-9, 158, Fr., San Diego, Calif.)	6.6	2.6	3.8
Trimaime Davis (F, 6-7, 235, Sr., West Pittsburg, Calif.)	4.0	2.1	0.3
Mohamed Camara (C, 6-10, 245, Sr., Conakry, Guinea)	2.5	3.6	0.3
Matt Thomas (G, 6-3, 200, So., Riverside, Calif.)	1.3	1.2	1.1
Brett Hoerner (F, 6-11, 206, Fr., Fullerton, Calif.)	1.9	1.1	0.1
Tim McGrath (F, 6-5, 187, Fr., Santa Monica, Calif.)	0.6	1.1	0.4
Chris Lamb (F, 6-10, 231, Fr., Louisville, Colo.)	0.7	0.0	0.0

REDSHIRT

Assistant Coaches: Brian Dutcher, Gregg Gottlieb, Mark Hughes

2006-07 • 22-11/10-6 MWC/NIT Second Round



► San Diego State advanced to postseason play in consecutive years for the third time in school history.

► SDSU earned a berth in the NIT for the second time under Steve Fisher and reached the postseason for the fourth time in the last six seasons.

► With its win over Missouri State in the first round of the NIT, SDSU recorded just its second postseason tournament win in school history.

► The Aztecs won 20 or more games in consecutive seasons for the first time in program history at the Division I level.

► San Diego State defeated (13/11) Air Force and (21/22) BYU, marking the third time in the DI era that the Aztecs have defeated a pair of nationally

ranked teams in one season.

► Brandon Heath finished his career as the all-time leading scorer in school and MWC history with 2,189 points.

	PPG	RPG	APG
Brandon Heath (G, 6-4, 203, Sr., Los Angeles, Calif.)	19.3	3.8	3.6
Mohamed Abukar (F, 6-10, 229, Sr., San Diego, Calif.)	15.8	5.8	1.6
Lorenzo Wade (F, 6-6, 228, So., Las Vegas, Nev.)	10.5	5.3	2.6
Jerome Habel (F, 6-10, 200, Jr., Rockville, Md.)	10.9	6.2	0.8
Richie Williams (G, 5-9, 162, So., San Diego, Calif.)	7.0	4.0	4.6
Kyle Spain (F, 6-5, 229, So., Newark, Calif.)	6.6	4.6	0.9
Jer' Vaughn Johnson (F, 6-6, 254, Fr., Compton, Calif.)	2.4	1.9	0.1
Jon Pastorek (F, 6-8, 209, Fr., Anaheim, Calif.)	1.5	0.8	0.3
Chris Lamb (C, 6-10, 245, So., Louisville, Colo.)	1.4	0.9	0.3
Matt Thomas (G, 6-4, 213, Jr., Riverside, Calif.)	1.5	1.5	2.0
Brandon Martin (G, 6-1, 175, Fr., Fremont, Calif.)	0.2	0.6	0.2
David Velasquez (G, 5-11, 175, Sr., Sunnysvale, Calif.)	0.0	0.0	0.0
Ryan Amoroso (F, 6-8, 272, Jr., Burnsville, Minn.)			

REDSHIRT

Assistant Coaches: Brian Dutcher, Gregg Gottlieb, Justin Hutson

2007-08 • 20-13/9-7 MWC/NIT



► San Diego State advanced to postseason play and won at least 20 games for the third straight season and for the first time in Division I history.

► SDSU earned a berth in the NIT for the third time under Steve Fisher and reached the postseason for the fifth time in the last seven seasons.

► The Aztecs reached the postseason for the third straight year for the first time since the 1939-40, 1940-41, and 1941-42 seasons.

► Lorenzo Wade earned all-MWC first-team recognition, while Ryan Amoroso and Billy White were third-team honorees. White was also named the MWC freshman of the year.

	PPG	RPG	APG
Lorenzo Wade (F, 6-6, 226, Jr., Las Vegas, Nev.)	14.8	4.5	3.6
Ryan Amoroso (F, 6-8, 257, Jr., Burnsville, Minn.)	11.4	6.5	0.8
Billy White (F, 6-8, 212, Fr., Las Vegas, Nev.)	8.5	5.9	1.0
Kyle Spain (F, 6-5, 209, Jr., Newark, Calif.)	13.2	5.4	1.2
Kelvin Davis (G, 6-3, 215, Jr., Waterbury, Conn.)	7.5	2.7	0.8
D.J. Gay (G, 6-0, 156, Fr., Sun Valley, Calif.)	5.8	1.5	1.7
Richie Williams (G, 5-10, 152, Jr., San Diego, Calif.)	6.9	2.7	3.0
Matt Thomas (G, 6-4, 204, Sr., Riverside, Calif.)	2.1	1.7	1.1
Jon Pastorek (F, 6-10, 210, So., Anaheim, Calif.)	1.9	1.2	0.4
Tim Shelton (F, 6-7, 242, Fr., Fresno, Calif.)	10.0	4.8	1.5
Jer' Vaughn Johnson (F, 6-6, 240, So., Compton, Calif.)	1.0	1.3	0.3
Chris Lamb (C, 6-10, 223, Jr., Louisville, Colo.)	0.7	0.6	0.2
Jason Deutchman (G, 6-6, 209, So., Los Angeles, Calif.)			
Bryan Horton (G, 6-1, 187, Fr., Anaheim, Calif.)			

REDSHIRT

REDSHIRT

Assistant Coaches: Brian Dutcher, Justin Hutson, Mark Fisher

2008-09 • 26-10/11-5 MWC/NIT Semifinals



► For the fourth straight season, San Diego State won 20 or more games and advanced to the postseason.

► The Aztecs won a school-record 26 games.

► SDSU was the No. 1 overall seed in the NIT and advanced to the semifinals at Madison Square Garden in New York City.

► For the second time in school history, the Aztecs posted four consecutive 20-win seasons. The other occurrence was during a four-year run from 1938-41.

► Kyle Spain and Lorenzo Wade earned all-MWC second-team recognition, while Richie Williams earned third-team honors and was named to the all-defensive team. Billy White, meanwhile, garnered honorable mention accolades.

	PPG	RPG	APG
Kyle Spain (F, 6-5, 220, Sr., Newark, Calif.)	14.0	5.3	1.4
Lorenzo Wade (F, 6-6, 225, Sr., Las Vegas, Nev.)	14.1	4.6	2.7
Billy White (F, 6-8, 226, So., Las Vegas, Nev.)	8.8	3.8	0.8
Tim Shelton (F, 6-7, 241, RS-Fr., Fresno, Calif.)	7.9	4.7	1.3
Richie Williams (G, 5-10, 162, Sr., San Diego, Calif.)	7.2	4.4	3.5
Ryan Amoroso (F, 6-8, 263, Sr., Burnsville, Minn.)	7.5	4.5	0.7
D.J. Gay (G, 6-0, 155, So., Sun Valley, Calif.)	6.0	1.5	1.8
Mehdi Cheriet (F, 6-8, 212, Jr., Tarare, France)	4.6	2.2	0.6
Matt Thomas (G, 6-4, 213, Sr., Riverside, Calif.)	1.8	1.6	0.9
Kelvin Davis (G, 6-3, 215, Jr., Waterbury, Conn.)	2.5	1.8	0.5
Bryce Smith (G, 6-3, 202, Fr., Woodland Hills, Calif.)	0.7	0.2	0.0
Bryan Horton (G, 6-1, 196, RS-Fr., Anaheim, Calif.)	0.2	0.2	0.2

Steve Fisher Era/Game-By-Game



2010 NCAA TOURNAMENT ► 2010 MOUNTAIN WEST CONFERENCE CHAMPIONS

Tim Island (G, 6-4, 207, Jr., San Diego, Calif.)
 Jason Deutchman (G, 6-6, 210, So., Los Angeles, Calif.)
 Brian Carlwell (C, 6-10, 296, Jr., Maywood, Ill.)
 Tyrone Shelley (G, 6-5, 217, So., San Diego, Calif.)
Assistant Coaches: Brian Dutcher, Justin Hutson, Mark Fisher.

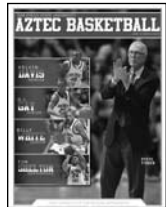
0.3 0.7 0.2
 0.0 0.6 0.1
 REDSHIRT
 REDSHIRT

► San Diego State defeated three nationally ranked teams (vs. No. 15/14 New Mexico, vs. No. 23/25 UNLV, vs. No. 8/8 New Mexico) for the first time in the school's Division I history.

► Leonard set the school record for double-doubles by a freshman with 17. Michael Cage previously held the record with 10.

► San Diego State defeated reigning conference champion Utah twice in 2009-10. The last time SDSU swept the season series from the Utes was during the 1982 campaign.

2009-10 • 25-9/11-5 MWC/NCAA Tournament/MWC Champs



► San Diego State won 20 or more games and advanced to the postseason for the fifth straight season.

► The Aztecs won 25 games, the second most in school history.

► SDSU advanced to the NCAA Tournament for the first time since 2006 and for the third time in the Steve Fisher era.

► The Aztecs won their third Mountain West Conference tournament championship. It was the second time SDSU won the tournament title by beating UNLV on its home floor.

► Kawhi Leonard became the first freshman in the history of the MWC to earn all-conference first-team honors. The forward was also named MWC freshman of the year and MWC tournament MVP, all while being one of just four freshman nationally to lead his team in scoring and rebounding.

► Malcolm Thomas earned all-MWC second-team recognition, while D.J. Gay and Billy White garnered honorable mention accolades.

	PPG	RPG	APG
Kawhi Leonard (F, 6-7, 225, Fr., Riverside, Calif.)	12.7	9.9	1.9
Malcolm Thomas (F, 6-9, 215, Jr., San Diego, Calif.)	10.9	7.6	2.3
D.J. Gay (G, 6-0, 167, Jr., Sun Valley, Calif.)	10.5	2.2	3.2
Billy White (F, 6-8, 235, Jr., Las Vegas, Nev.)	11.1	4.3	1.4
Chase Tapley (G, 6-2, 205, Fr., Sacramento, Calif.)	7.6	2.3	2.2
Kelvin Davis (G, 6-3, 220, Sr., Waterbury, Conn.)	6.6	1.3	1.0
Tyrone Shelley (G, 6-6, 225, So., San Diego, Calif.)	6.1	3.5	0.8
Brian Carlwell (C, 6-11, 297, Jr., Maywood, Ill.)	4.7	2.8	0.4
Tim Shelton (F, 6-7, 248, So., Fresno, Calif.)	3.3	2.0	1.4
Alec Williams (F, 6-6, 268, Fr., San Juan Capistrano, Calif.)	1.9	1.2	0.3
Bryan Horton (G, 6-1, 205, So., Anaheim, Calif.)	0.8	0.5	0.3
Jason Deutchman (G, 6-6, 220, Sr., Los Angeles, Calif.)	1.7	0.7	0.0
Ben Kneller (F, 6-6, 200, Sr., Westlake Village, Calif.)	0.5	0.5	0.0
Mehdi Cheriet (F, 6-9, 218, Sr., Tarare, France)			REDSHIRT
James Rahon (G, 6-5, 202, So., San Diego, Calif.)			REDSHIRT

Assistant Coaches: Brian Dutcher, Justin Hutson, Mark Fisher.

► 1989 • 6-0

NCAA Champions

Home: 0-0, Away: 0-0, Neutral: 6-0

Starting Lineup: Glen Rice (F, Sr., 25.6 ppg, 6.3 rpg), Loy Vaught (F, Jr., 12.6 ppg, 8.0 rpg), Terry Mills (C, Jr., 11.6 ppg, 5.9 rpg), Rumeal Robinson (G, Jr., 14.9 ppg, 6.3 apg), Michael Griffin (G, Jr., 2.7 ppg, 2.4 rpg)

NCAA FIRST and SECOND ROUNDS - SOUTHEAST REGIONAL (Atlanta, Ga.)

M.17 ~vs. XavierW 92-87
 M.19 ~vs. South AlabamaW 91-82

NCAA REGIONAL ROUNDS

SOUTHEAST REGIONAL (Lexington, Ky.)

M.23 ~vs. (5) North CarolinaW 92-87
 M.25 ~vs. VirginiaW 102-65

NCAA FINAL FOUR (Seattle, Wash.)

A.1 ~vs. (3) IllinoisW 83-81
 A.3 ~vs. (11) Seton Hallot-W 81-80

-- NCAA Tournament.

► 1989-90 • 23-8; 12-6 Big Ten

NCAA Second Round

Home: 15-1, Away: 6-5, Neutral: 2-2

Starting Lineup: Sean Higgins (F, Jr., 14.0 ppg, 3.6 rpg), Loy Vaught (F, Sr., 15.5 ppg, 11.2 rpg), Terry Mills (C, Sr., 18.1 ppg, 8.0 rpg), Rumeal Robinson (G, Jr., 19.2 ppg, 6.1 apg), Michael Griffin (G, Sr., 3.5 ppg, 2.6 apg)

TIP-OFF CLASSIC (Springfield, Mass.)

N.25 vs. (6) ArizonaL 75-82
 N.27 at Boston UniversityW 73-65
 N.29 Grambling StateW 85-70
 D.2 Iowa StateW 101-78
 D.6 Central MichiganW 100-51
 D.9 (6) Dukeot-W 113-108
 D.11 Chicago StateW 84-57
 D.16 at MarquetteW 82-73

DUEL IN THE DESERT (Las Vegas, Nev.)

D.23 vs. Seton HallW 91-86
 D.28 Northern MichiganW 102-74
 D.30 Eastern MichiganW 107-83
 J.8 *at (9) IndianaL 67-69
 J.13 *(16) MinnesotaW 87-83
 J.15 *at (8) IllinoisW 74-70
 J.18 *Ohio StateW 90-88
 J.20 *at Iowaot-L 76-78
 J.25 *at NorthwesternW 86-79
 J.27 *Michigan StateW 65-63
 J.31 *(8) PurdueL 73-91
 F.3 *at WisconsinW 77-63
 F.8 *(25) IndianaW 79-71

F.11 *(12) IllinoisW 93-79
 F.15 *at (77) MinnesotaW 77-73
 F.18 *at Ohio StateL 61-64
 F.24 *NorthwesternW 94-69
 M.1 *at (14) Michigan StateL 70-78
 M.4 *at (9) PurdueL 77-79
 M.8 *WisconsinW 94-64
 M.10 *IowaW 127-96

NCAA FIRST & SECOND ROUNDS - WEST REGIONAL (Los Angeles, Calif.)

M.16 ~vs. Illinois StateW 76-70
 M.17 ~vs. (21) Loyola MarymountL 115-149

* - Big Ten Conference Game. -- NCAA Tournament.

► 1990-91 • 14-15; 7-11 Big Ten

Home: 10-5, Away: 3-9, Neutral: 1-1

Postseason NIT First Round

Starting Lineup: James Voskuil (F, So., 6.7 ppg, 2.9 rpg), Freddie Hunter (F, Jr., 3.6 ppg, 4.3 rpg), Eric Riley (C, So., 10.6 ppg, 8.6 rpg), Demetrius Calip (G, Sr., 20.5 ppg, 3.9 rpg), Michael Talley (G, So., 11.0 ppg, 3.2 apg)

N.28 Central MichiganW 72-63
 D.1 UtahW 81-65
 D.4 Eastern MichiganW 78-76
 D.8 at (5) DukeL 68-75
 D.10 Boston UniversityW 90-68
 D.12 Chicago StateW 102-78
 D.15 at Iowa StateL 72-81
 D.22 MarquetteW 89-81

ASU CACTUS CLASSIC TOURNAMENT (Tempe, Ariz.)

D.28 vs. TexasL 74-76
 D.29 vs. PennsylvaniaW 84-62
 J.3 *at (25) Michigan StateL 70-85
 J.5 *(6) Ohio StateL 57-67
 J.10 *at (22) IowaL 78-79
 J.12 *at PurdueL 69-86
 J.17 *NorthwesternW 79-68
 J.19 *at Wisconsinot-W 69-68
 J.24 *(3) IndianaL 60-70
 J.26 *IllinoisL 67-72
 J.31 *at MinnesotaW 66-62
 F.9 *IowaW 84-70
 F.11 *at (3) Ohio StateL 65-81
 F.16 *at NorthwesternW 64-58
 F.18 *Purdueot-L 77-83
 F.21 *WisconsinW 65-62
 F.24 *at (4) IndianaL 70-112
 F.28 *at IllinoisL 65-68
 M.3 *MinnesotaW 68-60
 M.9 *Michigan StateL 59-66

POSTSEASON NIT (Boulder, Colo.)

M.13 `at ColoradoL 64-71

* - Big Ten Conference Game. ` - Postseason NIT.

► 1991-92 • 25-9; 11-7 Big Ten

NCAA Runner-Up

Home: 10-4, Away: 8-4, Neutral: 7-1

Starting Lineup: Chris Webber (F, Fr., 15.5 ppg, 10.0 rpg), Ray Jackson (F, Fr., 4.6 ppg, 3.0 rpg), Juwan Howard (C, Fr., 11.1 ppg, 6.2 rpg), Jalen Rose (G, Fr., 17.6 ppg, 4.3 rpg), Jimmy King (G, Fr., 9.9 ppg, 3.3 rpg)

D.2 at DetroitW 100-74
 D.7 at Cleveland StateW 80-61
 D.9 Chicago StateW 112-62
 D.12 Eastern MichiganW 91-77
 D.14 (1) Dukeot-L 77-85
 D.16 Central MichiganW 86-70
 D.21 RiceW 87-70

RED LOBSTER CLASSIC (Orlando, Fla.)

D.28 vs. Brigham YoungW 86-83
 D.30 vs. Virginia TechW 63-51
 J.9 *at Iowaot-W 80-77
 J.11 *at MinnesotaL 64-73
 J.15 *PurdueL 60-65
 J.18 *at IllinoisW 68-61
 J.21 *at (4) IndianaL 74-89
 J.25 *WisconsinW 98-83
 J.29 *at (13) Michigan Stateot-W 89-79
 F.2 *(10) Ohio StateL 58-68
 F.5 *NorthwesternW 81-58
 F.9 at Notre DameW 74-65
 F.12 *IowaW 79-74
 F.15 *(12) Michigan StateL 59-70
 F.19 *MinnesotaW 95-70
 F.22 *at NorthwesternW 76-63
 F.26 *at WisconsinL 78-96
 M.3 *at (5) Ohio StateL 66-77
 M.8 *(2) IndianaW 68-60
 M.11 *at PurdueW 70-61
 M.14 *IllinoisW 68-59

NCAA FIRST & SECOND ROUNDS - SOUTHEAST REGIONAL (Atlanta, Ga.)

M.20 ~vs. TempleW 73-66
 M.22 ~vs. E. Tennessee St.W 102-90

NCAA SOUTHEAST REGIONAL (Lexington, Ky.)

M.27 ~vs. (11) Oklahoma StateW 75-72
 M.29 ~vs. (3) Ohio Stateot-W 76-72

NCAA FINAL FOUR (Minneapolis, Minn.)

A.4 ~vs. (12) CincinnatiW 76-72
 A.6 ~vs. (1) DukeL 51-71

* - Big Ten Conference Game. -- NCAA Tournament.

STEVE FISHER ERA/GAME-BY-GAME ◀ COACHES

Steve Fisher Game-By-Game



2010 NCAA TOURNAMENT ► 2010 MOUNTAIN WEST CONFERENCE CHAMPIONS

► 1992-93 • 31-5; 15-3 Big Ten

NCAA Runner-Up

Home: 14-1, Away: 8-3, Neutral: 9-1

Starting Lineup: Chris Webber (F, So., 19.2 ppg, 10.1 rpg), Ray Jackson (F, So., 9.0 ppg, 4.1 rpg), Juwan Howard (C, So., 14.6 ppg, 7.4 rpg), Jalen Rose (G, So., 15.4, 4.2 rpg), Jimmy King (G, So., 10.8 ppg, 4.4 rpg)

D.1	at Rice	W	75-71
D.5	at (4) Duke	L	68-79
D.7	Detroit	W	92-77
D.9	Bowling Green	W	79-68
D.14	Cleveland State	W	88-56
D.19	Iowa State	W	94-72
D.21	Central Michigan	W	94-69

RAINBOW CLASSIC (Honolulu, Hawaii)

D.28	vs. (20) Nebraska	W	88-73
D.29	vs. (5) North Carolina	W	79-78
D.30	vs. (2) Kansas	W	86-74
J.2	Eastern Michigan	W	88-58
J.7	*at (9) Purdue	W	80-70
J.9	*at Wisconsin	W	98-73
J.12	*(6) Indiana	L	75-76
J.16	Notre Dame	W	70-55
J.20	*at Minnesota	W	80-73
J.23	*Illinois	W	76-68
J.28	*Ohio State	W	66-64
J.31	*at (11) Iowa	L	80-88
F.2	*at (25) Michigan State	W	73-69
F.7	*(19) Purdue	W	84-76
F.10	*Wisconsin	W	85-66
F.14	*at (1) Indiana	L	92-93
F.17	*at Penn State	W	80-70
F.20	*Minnesota	W	84-69
F.28	*at Ohio State	W	66-64
M.2	*(15) Iowa	W	82-73
M.7	*Michigan State	ot-W	87-81
M.10	*at Illinois	ot-W	98-97
M.13	*Northwestern	W	86-60

NCAA FIRST & SECOND ROUNDS - WEST REGIONAL (Tucson, Ariz.)

M.19	~vs. Coastal Carolina	W	84-53
M.21	~vs. UCLA	ot-W	86-84

NCAA WEST REGIONAL (Tucson, Ariz.)

M.26	~vs. George Washington	W	72-64
M.28	~vs. Temple	W	77-72

NCAA FINAL FOUR (New Orleans, La.)

A.3	~vs. (2) Kentucky	ot-W	81-78
A.5	~vs. (4) North Carolina	L	71-77

* - Big Ten Conference Game. ~ - NCAA Tournament Game. ^ - at Palace of Auburn Hills (Auburn Hills, Mich.).

► 1993-94 • 24-8; 13-5 Big Ten

NCAA Regional Finalist

Home: 14-2, Away: 5-5, Neutral: 5-1

Starting Lineup: Ray Jackson (F, Jr., 11.4 ppg, 6.3 rpg), Juwan Howard (C, Jr., 20.8 ppg, 9.0 rpg), Jalen Rose (G, Jr., 19.9 ppg, 5.7 rpg), Jimmy King (Jr., G, 12.3 ppg, 3.9 rpg), Dugan Fife (So., G, 6.5 ppg, 2.7 rpg)

TIP-OFF CLASSIC (Springfield, Mass.)

N.26	vs. (13) Georgia Tech	W	80-70
N.29	Cleveland State	W	84-71
D.1	Tulane	W	84-69
D.4	Tenn.-Chattanooga	W	97-86
D.6	Detroit	W	78-60
D.11	(4) Duke	L	63-73
D.20	Central Michigan	W	86-44

FIESTA BOWL CLASSIC (Tucson, Ariz.)

D.28	vs. Auburn	W	102-81
D.30	at (12) Arizona	L	95-119
J.3	Boston University	W	111-84
J.5	*Michigan State	W	75-64
J.8	*at Iowa	W	71-70
J.13	*Ohio State	ot-W	86-75
J.16	*at (11) Indiana	L	62-72
J.20	*at (20) Minnesota	L	58-63
J.23	*at Illinois	W	74-70
J.29	*(16) Wisconsin	W	79-75
F.1	*at (8) Purdue	W	63-62
F.5	*at Michigan State	W	59-51
F.8	*(12) Indiana	W	91-67
F.13	*at Ohio State	W	72-70

F.16	*Iowa	W	89-76
F.19	*(20) Minnesota	W	72-65
F.22	*Illinois	W	79-70
M.2	*at Wisconsin	L	58-71
M.6	*(9) Purdue	L	94-95
M.9	*Penn State	W	81-72
M.12	*at Northwestern	ot-L	93-97

NCAA FIRST & SECOND ROUNDS - MIDEAST REGIONAL (Wichita, Kan.)

M.17	~vs. Pepperdine	ot-W	78-74
M.19	~vs. (20) Texas	W	84-79

NCAA MIDEAST REGIONAL (Dallas, Texas)

M.24	~vs. Maryland	W	78-71
M.27	~vs. (2) Arkansas	L	68-76

* - Big Ten Conference Game. ~ - NCAA Tournament Game.

► 1994-95 • 17-14; 11-7 Big Ten

NCAA First Round

Home: 10-3, Away: 4-7, Neutral: 3-4

Starting Lineup: Ray Jackson (F, Sr., 15.8 ppg, 5.3 rpg), Maurice Taylor (F, Fr., 12.4 ppg, 5.1 rpg), Makhtar Ndiaye (C, So., 5.0 ppg, 5.2 rpg), Jimmy King (Sr., G, 14.7 ppg, 5.0 rpg), Dugan Fife (Jr., G, 3.4 ppg, 1.9 rpg)

MAUI CLASSIC (Lahaina, Hawaii)

N.21	vs. Tulane	W	75-73
N.22	vs. Arizona State	L	62-79
N.23	vs. Utah	W	73-69

GREAT EIGHT BASKETBALL CLASSIC (Auburn Hills, Mich.)

N.30	vs. (9) Arizona	L	57-78
D.3	at Tenn.-Chattanooga	W	83-71
D.5	Detroit	W	87-76
D.10	at (9) Duke	L	59-69
D.13	Pennsylvania	L	60-62
D.22	Jackson State	W	87-81

US WEST CELLULAR AIR TIME TOURNAMENT (Seattle, Wash.)

D.29	vs. Portland	ot-W	88-84
D.30	vs. Washington	L	61-65
J.3	*Purdue	W	71-61
J.8	*at Penn State	L	63-73
J.11	*(19) Iowa	ot-W	83-82
J.14	*at Northwestern	W	92-70
J.17	*at (20) Illinois	W	69-59
J.22	*(12) Michigan State	L	71-73
J.24	*at Indiana	W	65-52
J.29	St. John's	L	77-82
F.1	*Wisconsin	W	62-58
F.4	*at Minnesota	L	58-80
F.8	*Ohio State	W	72-58
F.11	*at Wisconsin	L	65-70
F.19	*Indiana	W	61-50
F.21	*at (12) Michigan State	L	64-67
F.26	*Illinois	W	63-51
M.1	*Northwestern	W	81-64
M.5	*at Iowa	L	69-89
M.8	*Penn State	W	67-60
M.12	*at (14) Purdue	L	67-73

NCAA FIRST & SECOND ROUNDS - MIDWEST REGIONAL (Dayton, Ohio)

M.16	~vs. (21) W. Kentucky	ot-L	76-82
------	-----------------------	------	-------

* - Big Ten Conference Game. ~ - NCAA Tournament Game.

► 1995-96 • 20-12; 10-8 Big Ten

NCAA First Round

Home: 11-2, Away: 6-6, Neutral: 3-4

Starting Lineup: Maurice Taylor (F, So., 14.0 ppg, 7.1 rpg), Maceo Baston (C, So., 11.7 ppg, 6.7 rpg), Louis Bullock (G, Fr., 13.5 ppg, 3.0 rpg), Travis Conlan (G, So., 4.5 ppg, 4.8 rpg), Dugan Fife (G, Sr., 4.6 ppg, 2.3 rpg)

N.15	vs. DePaul	W	73-65
N.17	vs. Weber State	W	80-62
N.22	vs. (4) Arizona	L	79-86
N.24	vs. (25) Georgia Tech	L	61-77
N.27	St. Francis	W	84-52
N.29	at Ball State	W	80-52
D.2	at Detroit	W	68-48
D.5	at Louisiana State	W	69-68
D.9	(18) Duke	W	88-84
D.16	Washington	W	60-59
D.18	Cleveland State	W	84-55
D.28	vs. UNLV	L	64-66

D.30	vs. Davidson	W	82-70
J.3	*at Wisconsin	L	46-51
J.6	*Northwestern	W	83-51
J.9	*(21) Illinois	W	83-68
J.13	*at Michigan State	W	76-54
J.21	*(14) Penn State	W	67-66
J.23	*at Indiana	L	83-99
J.28	*at (22) Iowa	L	61-70
J.31	*(17) Purdue	L	64-69
F.3	*at Ohio State	W	77-58
F.10	*at (14) Purdue	L	64-69
F.13	*(19) Iowa	L	55-62
F.18	*Indiana	W	80-75
F.22	*at (14) Penn State	L	57-67
F.24	*Minnesota	W	65-62
F.27	*Michigan State	W	75-46
M.3	*at Illinois	L	62-73
M.6	*at Northwestern	W	77-50
M.9	*Wisconsin	W	65-51

NCAA FIRST & SECOND ROUNDS - MIDWEST REGIONAL (Milwaukee, Wis.)

M.15	~vs. Texas	L	76-80
------	------------	---	-------

* - Big Ten Conference Game. ~ - NCAA Tournament Game.

► 1996-97 • 24-11; 9-9 Big Ten

Postseason NIT Champions

Home: 9-3, Away: 6-6, Neutral: 9-2

Starting Lineup: Maurice Taylor (F, Jr., 12.4 ppg, 6.2 rpg), Jerod Ward (F, Jr., 8.3 ppg, 3.5 rpg), Robert Traylor (C, So., 13.1 ppg, 7.7 rpg), Louis Bullock (G, So., 16.3 ppg, 3.0 rpg), Travis Conlan (G, Jr., 4.7 ppg, 3.7 rpg)

N.26	Ball State	W	87-63
N.30	at Cleveland State	W	80-74
D.2	Bradley	ot-W	66-64
D.5	Detroit	W	75-59
D.8	at (10) Duke	W	62-61
D.11	vs. St. John's	W	76-61
D.15	vs. Louisiana State	W	70-59
D.21	vs. (6) Arizona	ot-W	73-71
D.28	vs. Memphis	L	72-73
D.29	vs. Washington State	W	85-79
D.30	vs. Pittsburgh	L	78-85
J.2	*Ohio State	L	71-73
J.4	*at Northwestern	W	75-57
J.9	*(25) Illinois	W	88-74
J.11	*at (11) Minnesota	L	64-70
J.16	*Purdue	W	89-65
J.19	*Iowa	W	79-71
J.21	*at (21) Indiana	L	70-72
J.25	at Michigan State	W	74-61
J.28	*at Penn State	W	67-59
F.1	*Michigan State	W	85-65
F.6	*at Wisconsin	L	53-58
F.8	*Penn State	W	81-64
F.16	*Indiana	ot-L	81-84
F.20	*at Iowa	L	75-80
F.23	*at Purdue	L	58-67
F.26	*(2) Minnesota	L	54-55
M.2	*at (21) Illinois	L	51-70
M.5	*Northwestern	W	93-76
M.9	*Ohio State	ot-W	86-81

POSTSEASON NIT (Ann Arbor, Mich.)

M.13	Miami (Fla.)	W	76-63
M.18	vs. Oklahoma State	W	75-65

POSTSEASON NIT (Notre Dame, Ind.)

M.20	vs. Notre Dame	W	67-66
------	----------------	---	-------

POSTSEASON NIT (New York, N.Y.)

M.25	vs. Arkansas	W	77-62
M.27	vs. Florida State	W	82-73

* - Big Ten Conference Game. ~ - Postseason NIT Game

► 1999-00 • 5-23; 0-14 Mountain West

Home: 5-10, Away: 0-13, Neutral: 0-0

Starting Lineup: Myron Epps (F, So., 14.4 ppg, 5.9 rpg), Vincent Okotie (F, So., 6.6, 2.6), Marcelo Correa (C, Jr., 10.2, 6.4), Bradley Jackson (G, Fr., 7.1, 2.7), Donte Wilson (G, Sr., 4.5, 2.0)

N.24	UC Riverside	W	73-57
N.30	at New Mexico State	L	49-66
D.4	at San Diego	L	45-73
D.12	at (17/17) Oklahoma State	L	63-97
D.16	South Carolina State	W	72-57

Steve Fisher Game-By-Game



2010 NCAA TOURNAMENT ► 2010 MOUNTAIN WEST CONFERENCE CHAMPIONS

STEVE FISHER GAME-BY-GAME ◀ COACHES

D.18	at Arizona State	.L	85-99
D.20	Southern California	.L	54-87
D.22	UC Santa Barbara	.W	60-57
D.27	Ball State	.L	65-82
D.30	Loyola Marymount	.W	70-63
J.2	High Point	.W	74-63
J.5	CS Fullerton	.L	66-72
J.8	at Pacific	.L	63-74
J.10	*(-/24) Utah	.L	55-70
J.20	*Air Force	.3ot-L	77-81
J.22	*at UNLV	.L	55-83
J.27	*at Colorado State	.L	67-75
J.29	*at Wyoming	.L	87-93
F.3	*Brigham Young	.L	50-72
F.5	*New Mexico	.L	57-78
F.10	*at (21/20) Utah	.L	65-83
F.12	*Colorado State	.L	46-74
F.19	*Wyoming	.L	57-71
F.24	*at Air Force	.L	55-63
F.26	*at New Mexico	.L	49-78
M.2	*UNLV	.L	64-85
M.4	*at Brigham Young	.L	50-67
MWC CHAMPIONSHIP (Las Vegas, Nev.)			
M.9	at (#1) UNLV (QF)	.L	72-77

* - Mountain West Conference game.

► 2000-01 • 14-14; 4-10 Mountain West

Home: 12-5, Away: 2-8, Neutral: 0-1

Starting Lineup: Randy Holcomb (F, Jr., 15.9 ppg, 6.6 rpg), Myron Epps (F, Jr., 11.1, 4.5), Marcelo Correa (C, Sr., 6.4, 4.0), Deandre Moore (G, So., 6.8, 3.4), Al Faux (G, Jr., 10.5, 3.5)

N.18	UC San Diego	.W	80-48
N.21	New Mexico State	.W	77-62
N.27	at Fresno State	.L	62-70
N.30	Florida Atlantic	.W	90-57
D.2	CS Sacramento	.W	92-69
D.6	at UC Santa Barbara	.3ot-L	77-80
D.9	San Diego	.L	52-55
D.16	Arizona State	.W	64-62
D.18	Morgan State	.W	78-64
D.21	Norfolk State	.W	79-69
D.30	Oklahoma State	.W	87-66
J.4	Texas A&M-CC	.W	84-70
J.6	at Loyola Marymount	.W	61-58
J.8	*New Mexico	.L	67-75
J.13	*at Brigham Young	.L	50-79
J.15	*at Utah	.L	39-58
J.20	*Air Force	.W	67-43
J.27	*at UNLV	.ot-L	72-82
F.3	*at Wyoming	.L	66-101
F.5	*at Colorado State	.L	56-77
F.10	*Utah	.L	63-76
F.12	*Brigham Young	.L	66-69
F.17	*at New Mexico	.L	54-72
F.19	*at Air Force	.W	62-48
F.24	*UNLV	.W	83-66
M.1	*Wyoming	.L	62-69
M.3	*Colorado State	.W	78-73
MWC CHAMPIONSHIP (Las Vegas, Nev.)			
M.8	vs. (#3) Wyoming (QF)	.L	58-73

* - Mountain West Conference game. ~ Steve Fisher's 200th career coaching victory.

► 2001-02 • 21-12; 7-7 Mountain West

NCAA First Round

Home: 12-3, Away: 6-8, Neutral: 3-1

Starting Lineup: Randy Holcomb (F, Sr., 16.9 ppg, 9.0 rpg), Mike Mackell (C, Jr., 10.6, 4.4), Tony Bland (G, Jr., 15.7, 4.0), Al Faux (G, Sr., 17.0, 3.6), Deandre Moore (G, Jr., 3.6, 1.9)

FORD RED RAIDER CLASSIC (Lubbock, Texas)			
N.16	vs. Northern Iowa (SF)	.W	71-57
N.17	at Texas Tech (CH)	.L	71-81
N.21	Norfolk State	.W	78-71
N.24	at New Mexico State	.L	79-94
N.27	UC San Diego	.W	98-53
D.1	CS Northridge	.W	80-70
D.5	at San Diego	.L	67-72
D.8	(21/16) Fresno State	.W	93-78
D.14	at Hawai'i	.W	61-58
D.20	Eastern Washington	.W	86-58
D.29	at (1/1) Duke	.L	79-92

D.31	Columbia	.W	75-59
J.2	IPFW	.W	90-72
J.8	at Texas A&M-CC	.W	82-79
J.12	*at Brigham Young	.L	64-75
J.14	*at Utah	.L	70-76
J.19	*Colorado State	.W	81-69
J.21	*Wyoming	.ot-L	85-88
J.26	*UNLV	.ot-L	79-80
J.29	Houston	.W	78-66
F.2	*at New Mexico	.W	78-65
F.4	*at Air Force	.L	54-67
F.9	*Utah	.L	53-70
F.11	*Brigham Young	.W	77-73
F.16	*at Colorado State	.W	75-63
F.18	*at Wyoming	.W	68-64
F.23	*at UNLV	.ot-L	76-83
F.28	*New Mexico	.W	84-71
M.2	*Air Force	.W	49-47

MWC CHAMPIONSHIP (Las Vegas, Nev.)

M.7	vs. (#4) BYU (QF)	.W	62-51
M.8	vs. (#1) Wyoming (SF)	.W	70-69
M.9	at (#3) UNLV (CH)	.W	78-75

NCAA FIRST & SECOND ROUNDS - MIDWEST REGIONAL (Chicago, Ill.)

M.15	vs. (13/16) (#4) Illinois	.L	64-93
------	---------------------------	----	-------

* - Mountain West Conference game.

► 2002-03 • 16-14; 6-8 Mountain West

NIT Second Round

Home: 11-6, Away: 5-8, Neutral: 0-0

Starting Lineup: Evan Burns (F, Fr., 9.2 ppg, 5.1 rpg), Aerick Sanders (F, Jr., 6.1 ppg, 7.6 rpg), Mike Mackell (C, Sr., 14.4 ppg, 4.6 rpg), Tony Bland (G, Sr., 16.4 ppg, 3.5 rpg), Deandre Moore (G, Sr., 8.3 ppg, 3.7 rpg)

N.23	Eastern Washington	.L	70-75
N.27	at Portland	.L	86-91
N.30	at Cal Poly	.W	65-62
D.2	UC San Diego	.W	87-57
D.7	(1/1) Arizona	.L	81-89
D.10	at Long Beach State	.W	64-55
D.14	Hawai'i	.W	60-49
D.21	at Houston	.W	71-61
D.28	Florida Atlantic	.W	91-75
D.30	IPFW	.W	74-58
J.3	Loyola Marymount	.W	76-69
J.6	(23/21) Texas Tech	.L	63-75
J.8	San Diego	.W	78-72
J.11	*at Air Force	.W	63-48
J.18	*Utah	.W	58-56
J.20	*Brigham Young	.L	69-80
J.25	*at New Mexico	.L	62-66
F.1	*Colorado State	.L	69-72
F.3	*Wyoming	.W	80-70
F.11	*UNLV	.L	64-79
F.15	*at Utah	.L	62-76
F.17	*at Brigham Young	.L	64-66
F.22	*Air Force	.W	67-53
F.24	*New Mexico	.W	89-73
M.1	*at Wyoming	.W	86-73
M.3	*at Colorado State	.L	89-102
M.8	*at UNLV	.L	72-83

MWC CHAMPIONSHIP (Las Vegas, Nev.)

M.13	at (#4) UNLV (QF)	.L	67-83
------	-------------------	----	-------

POSTSEASON NIT (San Diego, Calif.)

M.19	UC Santa Barbara (FR)	.ot-W	67-62
------	-----------------------	-------	-------

POSTSEASON NIT (Lubbock, Texas)

M.21	at Texas Tech (SR)	.L	48-57
------	--------------------	----	-------

* - Mountain West Conference game. ~ Postseason NIT Game

► 2003-04 • 14-16; 5-9 Mountain West

Home: 11-4, Away: 2-10, Neutral: 1-2

Starting Lineup: Marcus Slaughter (F, Fr., 7.9 ppg, 6.8 rpg), Chris Walton (F, Jr., 8.7 ppg, 4.9 rpg), Aerick Sanders (F, Sr., 16.1 ppg, 9.8 rpg), Brandon Heath (G, Fr., 13.8 ppg, 2.7 rpg), Wesley Stokes (G, Jr., 12.1 ppg, 2.3 rpg)

N.21	Long Beach State	.W	74-44
EA SPORTS MAUI INVITATIONAL (Lahaina, Hawaii)			
N.24	vs. Ohio State (QF)	.W	83-61
N.25	vs. Dayton (SF)	.L	71-76
N.26	at Chaminade (3P)	.W	75-67
N.30	Troy State	.L	84-93

D.3	at San Diego	.W	66-63
D.6	UC San Diego	.W	76-51
D.13	at Texas Tech	.L	68-78
D.18	Cal Poly	.W	90-71
D.20	Eastern Washington	.W	79-66
D.22	at (5/5) Arizona	.L	71-83
D.27	Washington	.L	81-92
D.31	Portland	.W	67-61
J.3	Iowa State	.W	86-76
J.6	at Saint Mary's	.L	66-80
J.12	*Brigham Young	.W	65-61
J.17	*UNLV	.W	83-78
J.24	*at Colorado State	.2ot-L	82-92
J.26	*at Wyoming	.L	71-79
J.31	*Air Force	.L	43-57
F.2	*New Mexico	.W	72-68
F.7	*at Utah	.L	61-65
F.9	*at Brigham Young	.ot-L	69-83
F.17	*at UNLV	.L	65-68
F.21	*Wyoming	.W	74-66
F.23	*Colorado State	.W	72-64
F.28	*at New Mexico	.L	60-72
M.1	*at Air Force	.L	49-61
M.6	*Utah	.L	53-66

MWC CHAMPIONSHIP (Denver, Colo.)

M.11	at (#3) Utah (QF)	.L	69-75
------	-------------------	----	-------

* - Mountain West Conference game.

► 2004-05 • 11-18; 4-10 Mountain West

Home: 7-9, Away: 3-8, Neutral: 1-1

Head Coach: Steve Fisher

Starting Lineup: Marcus Slaughter (F, So., 17.8 ppg, 9.0 rpg), Chris Walton (F, Sr., 6.3 ppg, 2.6 rpg), Mohamed Camara (C, Jr., 2.4 ppg, 3.8 rpg), John Sharper (G, Jr., 6.0 ppg, 1.1 rpg), Brandon Heath (C, So., 18.3 ppg, 3.5 rpg)

N.19	UC Santa Barbara	.ot-L	72-80
N.22	Monmouth	.W	69-65
N.27	UC San Diego	.W	86-51
D.1	San Diego	.W	83-63
D.4	at UC Santa Barbara	.W	73-55
D.7	at (16/21) Washington	.L	69-98
SAN DIEGO SLAM (Cox Arena; San Diego, Calif.)			
D.11	California	.L	57-60
D.14	Saint Mary's	.L	64-73
D.18	at Loyola Marymount	.L	68-72
D.21	CS Fullerton	.W	63-60
D.28	at Iowa State	.L	59-69
D.31	Providence	.L	67-76
J.3	South Dakota State	.W	64-49
J.8	*at Brigham Young	.W	59-57
J.15	*at UNLV	.W	81-73
J.22	*Wyoming	.ot-L	81-88
J.24	*Colorado State	.W	84-77
J.29	*at Air Force	.L	50-62
J.31	*at New Mexico	.L	71-88
F.5	*(21/22) Utah	.L	41-61
F.7	*Brigham Young	.W	66-58
F.12	*UNLV	.ot-L	91-93
F.19	*at Colorado State	.ot-L	88-93
F.21	*at Wyoming	.L	65-69
F.26	*New Mexico	.L	61-78
F.28	*Air Force	.L	57-77
M.5	*at (16/15) Utah	.L	67-77

MWC CHAMPIONSHIP (Denver, Colo.)

M.10	vs. (#3) Air Force (QF)	.W	73-68
------	-------------------------	----	-------

M.11	vs. (#2) New Mexico (SF)	.L	67-77
------	--------------------------	----	-------

* - Mountain West Conference game.

► 2005-06 • 24-9; 13-3 Mountain West

NCAA First Round

Home: 13-2, Away: 7-5, Neutral: 4-2

Head Coach: Steve Fisher

Starting Lineup: Marcus Slaughter (F, Jr., 16.5 ppg, 11.0 rpg), Mohamed Abukar (F, Jr., 14.3 ppg, 4.7 rpg), Kyle Spain (F, Fr., 9.2 ppg, 5.6 rpg), Brandon Heath (G, Jr., 18.4 ppg, 3.4 rpg), Richie Williams (G, Fr., 6.6 ppg, 3.8 rpg)

BP TOP OF THE WORLD CLASSIC (Fairbanks, Alaska)

N.17	at Alaska Fairbanks (QF)	.W	67-55
N.19	vs. Illinois-Chicago (SF)	.L	63-66
N.20	vs. Southern Mississippi (3P)	.W	79-51
N.26	Albany	.W	80-53

Steve Fisher Game-By-Game



2010 NCAA TOURNAMENT ► 2010 MOUNTAIN WEST CONFERENCE CHAMPIONS

N.30	at San Diego	L	80-90
D.3	Point Loma Nazarene	W	88-77
D.6	at California	L	64-82

SAN DIEGO SLAM (Cox Arena; San Diego, Calif.)

D.10	Washington State	L	49-60
D.17	UC Santa Barbara	W	66-54
D.20	UMBC	W	58-45
D.27	at Providence	L	65-80
D.31	Loyola Marymount	W	84-68
J.4	*Colorado State	W	83-75
J.7	*at Air Force	L	62-65
J.11	*at Utah	W	72-67
J.14	*UNLV	W	83-67
J.18	*at TCU	W	76-57
J.21	*Brigham Young	W	88-61
J.25	*New Mexico	W	75-69
J.28	*at Wyoming	ot-W	78-77
F.4	*at Colorado State	W	85-81
F.8	*Air Force	W	61-51
F.11	*Utah	L	65-67
F.16	*at UNLV	W	81-70
F.18	*TCU	W	83-71
F.22	*at Brigham Young	L	90-100
F.25	*at New Mexico	W	73-66
M.1	*Wyoming	W	91-72
M.3	South Dakota State	W	88-63

MWC CHAMPIONSHIP (Denver, Colo.)

M.9	vs. (#8) Colorado State (QF)	W	64-52
M.10	vs. (#4) UNLV (SF)	W	63-60
M.11	vs. (#7) Wyoming (CH)	ot-W	69-64

NCAA FIRST & SECOND ROUNDS - OAKLAND REGIONAL (Salt Lake City, Utah)

M.15	vs. (#6) Indiana (FR)	L	83-87
------	-----------------------	---	-------

* - Mountain West Conference game.

► 2006-07 • 22-11; 10-6 Mountain West

NIT Second Round

Home: 14-2, Away: 6-8, Neutral: 2-1

Head Coach: Steve Fisher

Starting Lineup: Mohamed Abukar (F, Sr., 15.8 ppg, 5.8 rpg), Jerome Habel (F, Jr., 10.9 ppg, 6.2 rpg), Lorenzo Wade (F, So., 10.5 ppg, 5.3 rpg), Brandon Heath (G, Sr., 19.3 ppg, 3.8 rpg), Richie Williams (G, So., 7.0 ppg, 4.6 apg)

SHAMROCK INVITATIONAL (Moraga, Calif.)

N.10	vs. Murray State	W	87-84
N.11	at Saint Mary's	W	74-73
N.12	vs. Seattle Pacific	W	76-73
N.15	UC San Diego	W	84-48
N.18	California	W	86-79
N.21	UC Riverside	W	79-45
N.25	at UC Santa Barbara	W	76-72
N.29	San Diego	W	79-76
D.2	at Western Michigan	L	73-84

SAN DIEGO SLAM (Cox Arena; San Diego, Calif.)

D.9	(14/15) Arizona	L	48-69
D.12	Campbell	W	119-82
D.16	Loyola Marymount	W	74-63
D.21	at Washington State	L	54-64
D.30	Lafayette	W	78-68
J.3	*Wyoming	L	65-66
J.6	*at Brigham Young	L	58-80
J.13	*Colorado State	W	81-76
J.17	*New Mexico	W	73-68
J.20	*at (13/11) Air Force	L	51-56
J.23	*at UNLV	L	61-68
J.27	*Utah	W	63-53
J.31	*at TCU	W	76-71
F.6	*(15/13) Air Force	W	62-41
F.10	*at Colorado State	W	81-66
F.13	*UNLV	W	67-52
F.17	*at Wyoming	L	71-80
F.20	*at New Mexico	ot-W	81-74
F.24	*(21/22) Brigham Young	W	86-74
F.27	*at Utah	L	68-74
M.3	*TCU	W	56-51

MWC CHAMPIONSHIP (Las Vegas, Nev.)

M.8	vs. (#6) Colorado State (QF)	L	64-69
-----	------------------------------	---	-------

MASTERCARD NIT - SOUTH REGION (Springfield, Mo.)

M.14	at (#3) Missouri State (FR)	W	74-70
------	-----------------------------	---	-------

MASTERCARD NIT - SOUTH REGION (Syracuse, N.Y.)

M.19	at (#2) Syracuse (SR)	L	64-80
------	-----------------------	---	-------

^ - Seattle, Wash. * - Mountain West Conference game.

► 2007-08 • 20-13; 9-7 Mountain West

NIT First Round

Home: 11-3, Away: 6-8, Neutral: 3-2

Head Coach: Steve Fisher

Starting Lineup: Billy White (F, Fr., 8.5 ppg, 5.9 rpg), Lorenzo Wade (F, Jr., 14.8 ppg, 4.5 rpg), Ryan Amoroso (C, Jr., 11.4 ppg, 6.5 rpg), D.J. Gay (G, Fr., 5.8 ppg, 1.7 apg), Kyle Spain (G, Jr., 13.2 ppg, 5.4 rpg)

WORLD VISION CLASSIC (Fresno, Calif.)

N.9	vs. Liberty	W	62-50
N.10	vs. Portland	W	78-64
N.11	at Fresno State	W	89-72
N.17	UC San Diego	W	76-60
N.19	at San Diego	W	69-64
N.24	at California	L	69-77
N.28	at Loyola Marymount	W	78-56
D.1	Western Michigan	W	72-61
D.4	UC Riverside	W	59-46

WOODEN CLASSIC (Honda Center; Anaheim, Calif.)

D.8	vs. Saint Mary's	L	64-69
D.17	Navy	W	86-76

FIESTA BOWL CLASSIC (McKale Center; Tucson, Ariz.)

D.22	(19/19) at Arizona	L	58-74
D.28	Sam Houston State	ot-W	79-78
J.5	*TCU	W	64-57
J.9	Northern Colorado	L	56-62
J.12	*at New Mexico	W	72-67
J.16	*Utah	ot-W	64-56
J.19	*Wyoming	W	70-43
J.23	*at Brigham Young	L	56-59
J.26	*UNLV	L	69-72
J.29	*at Colorado State	W	83-82
F.6	*Air Force	W	49-38
F.9	*at TCU	L	62-68
F.13	*New Mexico	L	63-73
F.16	*at Utah	L	66-72
F.19	*at Wyoming	W	79-68
F.23	*Brigham Young	W	69-65
F.26	*at UNLV	L	58-68
M.1	*Colorado State	W	86-62
M.8	*at Air Force	L	43-46

MWC CHAMPIONSHIP (Las Vegas, Nev.)

M.13	vs. (#5) Air Force (QF)	W	53-49
M.14	vs. (#1) (24/23) Brigham Young (SF)	L	54-63

MASTERCARD NIT (Gainesville, Fla.)

M.19	at (#2) Florida (FR)	L	49-73
------	----------------------	---	-------

* - Mountain West Conference game.

► 2008-09 • 26-10; 11-5 Mountain West

NIT Semifinals

Home: 16-2, Away: 6-5, Neutral: 4-3

Head Coach: Steve Fisher

Starting Lineup: Kyle Spain (F, Sr., 14.0 ppg, 5.3 rpg), Billy White (F, So., 8.8 ppg, 3.8 rpg), Ryan Amoroso (C, Sr., 7.5 ppg, 4.5 rpg), D.J. Gay (G, So., 6.0 ppg, 1.5 rpg), Richie Williams (G, Sr., 7.2 ppg, 3.5 apg)

N.15	UC San Diego	W	59-40
N.18	(15/15) Arizona State	L	52-59
N.22	Fresno State	W	80-56

GREAT ALASKA SHOOTOUT (Anchorage, Alaska)

N.27	vs. W. Carolina (QF) (11.2) (KCFT-Alaska)	W	59-58
N.28	vs. Seattle (SF) (KCFT-Alaska)	W	75-56
N.29	vs. Hampton (CH) (KCFT-Alaska)	W	76-47
D.3	at Northern Colorado	W	73-62
D.6	San Diego (The Mtn., 4SD)	W	57-46
D.10	at Arizona (FS Arizona)	L	56-69

WOODEN CLASSIC (Honda Center; Anaheim, Calif.)

D.13	vs. Saint Mary's (D) (HDNET, 4SD)	L	64-67
D.20	UC Santa Barbara (The Mtn.)	W	68-51
D.22	Cal State Northridge	W	72-56
D.29	Arkansas Pine-Bluff	W	93-61
J.3	*at Air Force	W	61-44
J.10	*Utah (VERSUS)	W	72-63
J.14	*at Wyoming (The Mtn.)	L	79-83
J.21	*New Mexico (The Mtn.)	W	81-76
J.24	*at Brigham Young (The Mtn., 4SD)	L	71-77
J.28	*TCU (CBS C)	W	67-50
J.31	*at Colorado State (The Mtn.)	W	78-59
F.3	*at UNLV (The Mtn., 4SD)	ot-W	68-66
F.7	*Air Force (CBS C)	W	65-34
F.11	*at Utah (The Mtn.)	L	55-67

F.14	*Wyoming (The Mtn.)	W	71-60
F.21	*at New Mexico (VERSUS)	L	49-75
F.24	*Brigham Young (The Mtn.)	L	59-69
F.28	*at TCU (The Mtn., 4SD)	ot-W	79-77
M.4	*Colorado State (The Mtn.)	W	68-59
M.7	*UNLV (CBS C)	W	57-46

MWC CHAMPIONSHIP (Las Vegas, Nev.)

M.12	at (#5) UNLV (QF) (The Mtn., CBS C, 4SD)	W	71-57
M.13	vs. (#1) (25/-) BYU (SF) (CBS C, 4SD)	W	64-62
M.14	vs. (2) Utah (CH) (VERSUS)	L	50-52

NATIONAL INVITATION TOURNAMENT

M.17	(#8) Weber State (FR)	W	65-49
M.20	(#4) Kansas State (SR)^	W	70-52
M.25	(#2) Saint Mary's (QF) (ESPN2)	W	70-66
M.31	vs. (#3) Baylor (SF) (ESPN2) +	L	62-76

* - Mountain West Conference game. ^ - Jenny Craig Pavilion (San Diego, Calif.). + - Madison Square Garden (New York, N.Y.)

► 2009-10 • 25-9; 11-5 Mountain West

NCAA TOURNAMENT - FIRST ROUND

Home: 14-1, Away: 9-7, Neutral: 2-1

Head Coach: Steve Fisher

Starting Lineup: Kawhi Leonard (F, Fr., 12.7 ppg, 9.9 rpg), Billy White (F, Jr., 11.1 ppg, 4.3 rpg), Malcolm Thomas (F, Jr., 10.9 ppg, 7.6 rpg), D.J. Gay (G, Jr., 10.5 ppg, 3.2 apg), Chase Tapley (G, Fr., 7.6 ppg, 2.1 apg)

N.14	UC San Diego (D)	W	77-52
N.16	at Saint Mary's (ESPN)	L	58-80

WEST COAST CLASSIC (Campus Sites)

N.19	Santa Clara	W	86-53
N.23	at Fresno State	W	62-58
N.25	at Pacific	L	63-71
N.28	Northern Arizona	W	89-48
D.2	at San Diego (4SD)	ot-W	69-62
D.5	at UC Santa Barbara	W	69-61
D.9	Cal State Fullerton	W	82-68
D.12	Arizona (The Mtn.)	W	63-46
D.19	at Arizona State (D) (FS Arizona, Fox College)	L	52-55
D.22	at Drake	ot-W	76-73
D.29	UC Riverside	W	58-53
D.31	Pomona-Pitzer (D)	W	89-54

J.5	*(15/14) New Mexico (The Mtn.)	W	74-64
J.9	*at Wyoming (04.9) (The Mtn., 4SD)	L	83-85
J.13	*at UNLV (CBS C)	L	66-76
J.16	*TCU (The Mtn.)	W	67-62
J.19	*at Utah (The Mtn., 4SD)	W	70-68
J.23	*(14/13) Brigham Young (The Mtn.)	L	69-71
J.30	*at Colorado State (The Mtn., 4SD)	W	64-52
F.2	*Air Force (CBS C)	W	70-48
F.6	*at (15/23) New Mexico (02.7) (D) (The Mtn., 4SD) ot-L	W	86-88
F.10	*Wyoming (The Mtn.)	W	88-57
F.13	*(23/25) UNLV (D) (VERSUS)	W	68-58
F.16	*at TCU (The Mtn., 4SD)	W	68-51
F.20	*Utah (The Mtn.)	W	68-61
F.24	*at (13/11) Brigham Young (CBS C)	L	68-82
M.3	*Colorado State (The Mtn.)	W	68-55
M.6	*at Air Force (The Mtn.)	W	61-42

MWC CHAMPIONSHIP (Las Vegas, Nev.)

M.11	vs. (#5) Colorado St. (QF) (D) (The Mtn., CBS C, 4SD)	W	72-71
M.12	vs. (#1) (8/8) New Mexico (SF) (CBS C, 4SD)	W	72-69
M.13	at (#3) UNLV (CH) (D) (VERSUS)	W	55-45

NCAA FIRST & SECOND ROUNDS

(Dunkin' Donuts Center; Providence, R.I.)

M.18	(#6) (15/14) Tennessee (FR) (CBS)	L	59-62
------	-----------------------------------	---	-------

* - Mountain West Conference game.

AP/USA Today Polls - The number in front of the opponent name indicates its national ranking at the time of the game. Prior to the 1999-2000 season, ranking refers to only the Associated Press poll.
#X - Indicates seed of opponent in a tournament
FR - First round of tournament; SR - Second round of tournament
QF - Quarterfinal round of tournament
SF - Semifinal round of tournament
CH - Championship game of tournament



Brian Dutcher

Assistant Head Coach

Birthdate

October 30, 1959

Hometown

Alpena, Mich.

Education

1982 – B.S. degree from Minnesota. 1984 – M. S. degree from Illinois

Marital Status

Married to Jan Dutcher

Children

Erin (22) and Liza (20)

Brian Dutcher

Assistant Head Coach - 12th Season at San Diego State Minnesota '82

One of Steve Fisher's first moves as head coach at San Diego State was to hire Brian Dutcher as his top assistant. Dutcher, 51, was a regional scout for the Sacramento Kings before assuming the role of assistant head coach at SDSU.

Dutcher served as assistant coach and later associate head coach at Michigan under Fisher. He spent 10 seasons on the Wolverine staff, establishing himself as one of the nation's top assistant coaches. His first year in Ann Arbor was 1989 and resulted in a national title for Michigan as he assisted then-interim head coach Steve Fisher on the bench.

The Bloomington, Minn., native headed up UM's recruiting efforts in 1990-91 when the Wolverines inked Juwan Howard, Ray Jackson, Jimmy King, Jalen Rose and Chris Webber. The "Fab Five" is considered perhaps the best recruiting class in NCAA history. Dutcher helped lead that group to nearly 100 wins, two berths in the NCAA championship game and a regional final over a four-year period. He was also on the Michigan staff for an NIT championship and a Big Ten tournament title (1998).

Dutcher's recruiting prowess, however, was demonstrated by more than just the "Fab Five" haul. Michigan had the nation's top-ranked recruiting class in 1993-94 and in 1994-95, with a group that included Maurice Taylor and Jerod Ward. The accomplishment marked the first time that a university had the nation's top class in consecutive years, according to recruiting analyst Bob Gibbons.

His efforts at SDSU have quickly gained accolades as well. The first full-year recruiting effort by Steve Fisher, Brian Dutcher and Co., resulted in a class that was a consensus top-40 group. Their second effort resulted in a top-25 recruiting class without counting a pair of high-profile transfers. Seven seasons ago, Dutcher helped the Aztecs attract SDSU's first McDonald's All-American. In 2004, Aztec freshmen Brandon Heath and Marcus Slaughter earned starting spots en route to earning all-league

recognition. Dutcher was also instrumental in the recruitment of Ryan Amoroso, who earned all-league honors in 2007, and last season's highly touted class, which produced freshmen starters Kawhi Leonard and Chase Tapley. Leonard went on to earn MWC first-team honors, becoming the first freshman in league history to do so, conference freshman of the year accolades and MWC tournament MVP.

Dutcher is firmly entrenched as one of the nation's top recruiters after showing that his rapport is as strong with potential student-athletes on the West Coast as it was in the vaunted Big Ten Conference.

Dutcher was born Oct. 30, 1959, in Alpena, Mich. He attended Bloomington (Minn.) Jefferson High School and went on to earn a bachelor's degree in physical education from Minnesota in 1982. While an undergraduate, he worked for his

father, then-Minnesota head coach Jim Dutcher. He then spent one season in the prep ranks at Apple Valley (Minn.) High School before becoming a graduate assistant at Illinois, where he earned his master's degree in physical education and athletic administration.

While in Champaign, Dutcher helped Lou Henson lead the Illini to a Big Ten championship, two appearances in the Sweet 16 and one regional final.

Dutcher's first full-time coaching job came at South Dakota State, where he spent three seasons helping turn around the Division II program before departing in 1988 for Michigan.

His final season in Ann Arbor ended with the Wolverines claiming the first-ever Big Ten Tournament championship.

Dutcher and his wife, Jan, have two daughters, Erin (22) and Liza (20).



Justin Hutson

Assistant Coach - 5th Season at San Diego State
CS Bakersfield '94

Justin Hutson enters his fifth year as an assistant coach at San Diego State after helping the Aztecs reach the postseason for a fifth consecutive season. Hutson, who is also the team's recruiting coordinator, is instrumental in player instruction, skill development and assisting in all areas of the program.

His duties as an assistant coach include on-court coaching, opponent scouting and recruiting.

In his first four years at SDSU, Hutson helped the Aztecs to a quartet of 20-plus win seasons, three straight berths in the NIT, the last of which resulted in a semifinal appearance, and last season's NCAA Tournament bid after the Aztecs won the Mountain West Conference. It marked the fifth season in a row in which SDSU posted 20-plus victories and advanced to the postseason.

On the recruiting side, Hutson was instrumental in the signing of San Diego State's nationally recognized 2007-08 incoming class, and last season's top-15 class. The 2009-10 incoming group, which featured the California Player of the Year in Kawhi Leonard, was ranked No. 15 in the nation by The HOOP SCOOP Online and was rated as the No. 1 class among non-automatic qualifying BCS schools by The HOOP SCOOP Online and Rivals.com. ESPN.com slotted the Aztec incoming class at No. 4 in its "mid-major recruiting."

The hype was well deserved as Leonard became the first freshman in MWC history to be named to the all-conference first team, all while earning league freshman of the year honors and being named the MWC tournament MVP. Leonard additionally was one of only four freshmen nationally to lead his team in scoring and rebounding. He and classmate, Chase Tapley, were also regulars in the starting lineup.

When not on the recruiting trail, Hutson is busy on the practice court where he is working with the team's guards. In 2007, he helped Richie Williams rank first in the MWC in steals, second in assists and sixth in assist-to-turnover ratio. He was also

instrumental in Brandon Heath ranking second in scoring, sixth in assists, third in steals and three-point field goals made per game and seventh in assist-to-turnover ratio. The last three seasons, he has tutored Gay as he has played in all 103 games (83 starts).

The last three seasons, Hutson has taken on the role of defensive coordinator and helped the Aztecs rank first in the MWC in scoring defense and steals in 2008-09, and in scoring defense and rebounding defense in '09-10. On a national level, SDSU had one of the stingiest defenses in 2009-10, allowing just 61.8 points to rank 36th among all Division I schools.

Prior to arriving on campus in July 2006, Hutson served as an assistant coach at Cal Poly.

The Mustangs went 10-19 in 2005-06, doubling their previous season's win total. He was responsible for recruiting the 2006 Big West Freshman of the Year and landing two freshmen on the Big West all-freshmen team, along with bringing two first-team all-Big West selections and the defensive player of the year to San Luis Obispo in 2006-07.

Before arriving at Cal Poly, Hutson

served as the head varsity coach at Bakersfield High School where he led it to a CIF Central Section Championship and four appearances in the playoffs in four seasons. His 2004 team was ranked as high as No. 22 in the nation and fourth in California and his 2003 squad finished the season with a 25-5 record and won the section title. Prior to entering the high school ranks, he was an assistant coach at his alma mater, Cal State Bakersfield, for two seasons (1999-00).

As a collegiate player, Hutson enjoyed a storied college career, winning two NCAA Division II championships at Cal State Bakersfield. In the 1993 championship season, the Roadrunners were undefeated with a 33-0 record and followed that up with a 27-6 record during the 1994 season.

A native of Bakersfield, Hutson earned his bachelor's degree in physical education in 1994 and a teaching credential in 1995 from Cal State Bakersfield. He also recently received his Master of Arts in education from Cal State Bakersfield.

Hutson has two children, Jada, 8, and Janae, 6, and is engaged to Ruth E. Patterson.



Justin Hutson

Assistant Coach

Birthdate

Oct. 16, 1971

Education

1994 – B.S. degree from CS Bakersfield. 1995 – teaching credential from CS Bakersfield. 2009 – M.A. degree from CS Bakersfield





Mark Fisher

Assistant Coach

Birthdate

Nov. 10, 1978

Education

2001 – B.A. degree from Michigan

Mark Fisher

Assistant Coach - 9th Season at San Diego State Michigan '01

Mark Fisher enters his fourth season as assistant coach and ninth overall at San Diego State. The son of 12th-year San Diego State head coach Steve Fisher, Mark Fisher has taken on assistant coach duties after being the program's director of operations the five previous seasons.

Fisher's responsibilities include on-court coaching and skill development with San Diego State's post players, opponent scouting, player development and recruiting. Fisher is responsible for the Aztecs' offensive concepts, such as spacing, ball screening, play implementation and the like.

In his first three years of coaching at SDSU, Fisher helped the Aztecs to their fifth straight 20-win season and fifth consecutive appearance in the postseason, including last year's NCAA Tournament bid.

When not on the practice court, Fisher can be found on the road in high school gyms around America recruiting.

The fourth-year assistant helped secure last season's highly touted incoming class, which featured the California Player of the Year, Kawhi Leonard. The 2009-10 incoming group was ranked No. 15 in the nation by The HOOP SCOOP Online and was rated as the No. 1 class among non-automatic qualifying BCS schools by The HOOP SCOOP Online and Rivals.com. ESPN.com slotted the Aztec incoming class at No. 4 in its "mid-major recruiting."

The hype was well deserved as Leonard became the first freshman in MWC history to be named to the all-conference first team, all while earning league freshman of the year honors and being named the MWC tournament MVP. Leonard additionally was one of only four freshmen nationally to lead his team in scoring and rebounding. He and classmate, Chase Tapley, were also regulars in the starting lineup.

In addition, Fisher was also the lead recruiter for Aztec newcomer James Rahon, who is eligible to play in 2010-11.

As the director of operations,

Fisher handled many of the day-to-day operations, including scheduling, summer camps and organizing all aspects of team travel. He represented the basketball program with the athletic administration.

During his time supervising scheduling, the Aztecs have played high-profile games against Arizona, California, Providence, Iowa State, Washington and Washington State among others. In addition, he arranged SDSU to play in the BP Top of the World Classic in Fairbanks, Alaska, the Shamrock Invitational in Moraga, Calif., the World Vision Classic in Fresno, Calif., and the prestigious John R. Wooden Classic in Anaheim, Calif., in past seasons.

In his four years as the team's schedule maker, the Aztecs won 92 games, for an average of 23 wins per season, and reached the postseason in each of those years.

In previous seasons, when SDSU had two assistant coaches, Fisher officially took on coaching responsibilities,

including conducting individual workouts and off-campus recruiting.

Fisher, the oldest of Steve Fisher's two sons, graduated from the University of Michigan in December of 2001. He graduated with a bachelor's degree in psychology.

Around basketball a majority of his life, Mark Fisher has amassed a variety of experience in a short period of time.

From 1998-2001, Fisher worked in a variety of capacities for Lincoln High School in Ann Arbor, Mich. He served as the varsity assistant head coach, head junior varsity coach and the head freshman coach during his tenure, assisting in all areas of the program.

He served as associate head coach for an Ann Arbor AAU team in the summer of 2001. Many of the players on that squad went on to play college basketball.

Fisher is single and lives in Carmel Valley.



Matt Soria

Director of Basketball Operations - 11th Season at San Diego State San Diego State '02

Matt Soria begins his 11th year with the San Diego State men's basketball program and his fourth as the director of basketball operations.

In November 2007, Soria was named the director of basketball operations after Mark Fisher, who previously held the position, was promoted to assistant coach.

Soria handles day-to-day operations, including scheduling, summer camps and organizing all aspects of team travel.

Prior to his current post, Soria was the basketball program's director of player development, a position he held for three years.

Soria assisted the basketball coaching staff with video breakdown, travel, community service and handled many of the day-to-day office duties.

During his three-year tenure as the

director of player development, the Aztecs went a combined 57-38, won the 2006 Mountain West Conference regular season and tournament championships, earned a berth to the 2006 NCAA Tournament and advanced to the second round of the 2007 postseason NIT.

Prior to being the director of player development, Soria was a three-year manager for the Aztecs where he served as the team's head manager for the 2001-02 and 2002-03 seasons. Both of those seasons SDSU advanced to postseason play.

Soria graduated from San Diego State with a bachelor's degree in political science in December 2002, and earned his master's degree in educational technology from SDSU in December 2006.

Soria played collegiate basketball for two seasons at Cabrillo College in

Aptos, Calif., before transferring to San Diego State.

Soria, 31, is married to the former Melissa Schuetz. The couple has a newborn son, Dylan, and the family resides in San Diego.



Matt Soria

Director of Basketball Operations

David Velasquez

Director of Player Development - 9th Season at San Diego State San Diego State '07

David Velasquez enters his ninth season at San Diego State and his fourth as the Aztecs' director of player development.

Velasquez assists the basketball coaching staff with video breakdown, film exchange, travel, community service and handles many of the day-to-day office duties.

Prior to his current position, Velasquez was a student manager for the 2002-03 season before serving as head manager from 2003-07.

In 2002-03, San Diego State earned a berth to postseason NIT where the Aztecs picked up their first Division I postseason tournament victory en route to an appearance in the second round.

Then in 2005-06, San Diego State won the Mountain West Conference by going 13-3 and went on to win the MWC tournament. As a result, the Aztecs advanced to the NCAA

Tournament for the second time under head coach Steve Fisher and won a then school-record 24 ball-games.

During the 2006-07 season, Fisher awarded Velasquez a scholarship in December 2006 and was added to the active roster in January 2007.

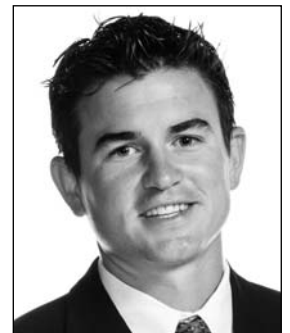
As an official playing member of the team, Velasquez played in four games and recorded a steal. He was a member of a team that finished with a 22-11 record and advanced to the second round of the postseason NIT.

In Velasquez's five seasons as manager, the Aztecs went to the postseason three times and won 22 or more games twice.

Following his graduation from San Diego State in May 2007, Velasquez was hired at the University of the Pacific later that month. As the Tigers' graduate manager, he assisted with Pacific's camps, created highlight tapes and coordinated film exchange

before returning to his alma mater.

Since his return, SDSU has recorded three more 20-win seasons and reached the postseason in each of the last three years.



David Velasquez

Director of Player Development



David Smith

David Smith

Athletic Trainer
3rd Season at SDSU (Biola '04)

David Smith is in his third year on the San Diego State athletic training staff and his first as head athletic trainer for men's basketball.

Smith handles all of the medical needs for the men's basketball team throughout the year. He supervises all rehabilitative efforts in case of injury.

He also assists the athletic training staff in football and baseball, as well as other sports on campus.

Smith arrived at San Diego State after two years at Horizon High School in San Diego. Before Horizon, Smith spent one year each at Lavas Physical Therapy and Cal Baptist University.

He is a 2004 graduate of Biola University and is currently working on his master's degree in kinesiology.



Randy Shelton

Randy Shelton

Strength and Conditioning Coach
1st Season at SDSU (San Diego State '00)

Randy Shelton is in his first season at San Diego State as the men's basketball team's strength and conditioning coach.

Shelton, the owner and operator of High Voltage Fitness in nearby La Jolla, was the personal training coordinator at the Aztec Recreation Center (1998-2008), as well as the owner and operator of Rapid Speed for seven years prior to coming to Montezuma Mesa.

In the past, Shelton has worked with former Aztec basketball players Mohamed Abukar, Brandon Heath, Aerick Sanders, John Sharper, Marcus Slaughter and Chris Walton after they left the university.

He has also worked with over 50 NFL players including, Femi and Brandon Ayanbadejo, Will Demps, A.J. Feeley, Robert Griffith, Freddie Jones, Freddy Keiaho and Matt McCoy.

A 2000 graduate of San Diego State, Shelton is a member of the National Strength and Conditioning Association and is a Certified Strength and Conditioning Specialist (CSCS).

Shelton is married to the former Waleska Valle.



Kristie Smedsrud

Kristie Smedsrud

Academic Counselor
8th Season at SDSU (Texas A&M '00)

Kristie Smedsrud is in her eighth season as an academic counselor at San Diego State. Smedsrud works with the men's basketball program and is responsible for monitoring each student-athlete's academic progress.

In addition to advising players, Smedsrud works one-on-one with members of the team on a daily basis to assist the student-athletes with tutors, professors, monitoring deadlines and exams. She also oversees the study hall and tutorial services for the team - both in San Diego and on the road.

Smedsrud came to San Diego State from Butler University, where she was the Assistant Athletic Director for Compliance and Academic Support. Prior to her stint at Butler, she was in academic advising at Texas A&M for one year. A 2000 graduate of Texas A&M, Smedsrud also earned her master's degree at the school in 2001.



Marty Malano

Marty Malano

Administrative Assistant
12th Season at SDSU

Marty Malano enters her 11th season as the administrative assistant for the San Diego State basketball program and her 12th year at SDSU.

Malano handles administrative duties in the day-to-day operations of the San Diego State basketball office. She works closely with Steve Fisher to organize his schedule.

In addition to assisting Fisher, Malano assists the coaching staff with schedules, travel and recruiting responsibilities. She also serves as the basketball staff liaison to the Big 64, the booster support group for men's basketball.

The Malano name is a familiar one to Aztec Fans. Marty's son, Mike, was an All-America football player at SDSU in 1999.

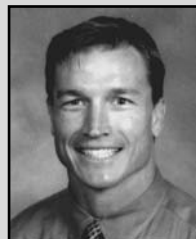
San Diego State Men's Basketball Team Doctors & Managers



Christopher Behr
 Team Physician



Greg Gastaldo
 Team Physician



Alan Richburg
 Team Physician



Peter Wile
 Team Physician



Dennis Brown
 Equipment Attendant



Alex Jamerson
 Head Manager