



SAN DIEGO STATE BASKETBALL

2017-18 MEN'S BASKETBALL GAME NOTES

Mike May, Senior Associate Athletics Director of Communications and Media Relations ♦ E-Mail: mmay@mail.sdsu.edu ♦ Office: 619.594.5547 ♦ Cell: 619.957.8372
Darin Wong, Assistant Athletics Director of Media Relations ♦ E-Mail: dwong@mail.sdsu.edu ♦ Office: 619.594.5548 ♦ Cell: 310.489.2378

GAME INFORMATION

Date / Time: Friday, Nov. 10 / 7 p.m. PT
Site: Steve Fisher Court at Viejas Arena (12,414) / San Diego, Calif.
Television: None
Talent: N/A
SDSU Radio: 101.5 KGB / XTRA 1360
Talent: Ted Leitner (play by play), Jon Schaeffer (pre, half, post)
Live Stats: GoAztecs.com
Series vs. San Diego Christian: San Diego State leads, 7-0
Streak: San Diego State, W7
at San Diego: San Diego State leads, 7-0
at Santee: N/A
Neutral: N/A
Last Meeting: Nov. 26, 2010: SDSU - W, 88-69 at Viejas Arena
Last Meeting: Nov. 16, 2016: SDSU - W, 81-58 at Viejas Arena
Dutcher vs. San Diego Christian: First Meeting

SCHEDULE / RESULTS

Date	SDSU	Opp.	Opponent (TV/Stream)	Time / Result
N.2			UC San Diego - Exhibition	W, 98-79
N.10			San Diego Christian	7 p.m. PT
N.14			at Arizona State (Pac-12 Networks)	7 p.m. MT
N.17			McNeese State (FOX Sports San Diego)	7:30 p.m. PT
N.20			Eastern Illinois (FOX Sports San Diego)	7:30 p.m. PT
N.23			#vs. Sacramento State (ESPNU)	10 p.m. PT
N.24			#vs. TBD (ESPN2/3)	4 or 6 p.m. PT
N.26			#vs. TBD (ESPN Networks)	TBD
N.30			at San Diego (FOX Sports West)	8 p.m. PT
D.3			Bradley (Mountain West Network on STADIUM)	3 p.m. PT
D.9			California (CBS Sports Network)	2 p.m. PT
D.21			Gonzaga (CBS Sports Network)	7 p.m. PT
D.27			*at Wyoming (ESPN3)	7 p.m. MT
D.30			*Utah State (ESPN3)	7 p.m. PT
J.2			*at Colorado State (CBS Sports Network)	7 p.m. MT
J.9			*San José State (CBS Sports Network)	8 p.m. PT
J.13			*at Boise State (ESPN2)	8 p.m. MT
J.17			*Fresno State (ESPNU/3)	8 p.m. PT
J.20			*at New Mexico (CBS Sports Network)	5 p.m. MT
J.24			*Colorado State (CBS Sports Network)	8 p.m. PT
J.27			*at UNLV (CBS Sports Network)	7 p.m. PT
E.3			*Air Force (ESPNU/3)	5 p.m. PT
E.6			*at Fresno State (CBS Sports Network)	8 p.m. PT
E.10			*at Nevada (ESPN2)	5 p.m. PT
E.14			*Wyoming (CBS Sports Network)	8 p.m. PT
E.17			*UNLV (CBS Sports Network)	1 p.m. PT
E.21			*at Air Force (CBS Sports Network)	7:30 p.m. MT
E.24			*at San José State (ESPNU/3)	7 p.m. PT
E.27			*Boise State (CBS Sports Network)	8 p.m. PT
M.3			*Nevada (CBS Sports Network)	7 p.m. PT
M.7-10			+at MW Championship (TBD)	TBD

- Wooden Legacy (Titan Gym; Fullerton, Calif.); * - Mountain West game; + - Mountain West Championship (Thomas & Mack Center; Las Vegas, Nev.)

GAME 1



SAN DIEGO STATE AZTECS

Record: 0-0 (0-0 Mountain West)
Head Coach: Brian Dutcher
Career Record: 0-0 (1st Season), **Record at San Diego State:** Same



SAN DIEGO CHRISTIAN HAWKS

Record: 1-3 (0-0 Golden State Athletic)
Head Coach: Edgar Mendez
Career Record: 25-54 (4th Season), **Record at San Diego Christian:** Same

NEWS AND NOTES

- Game No. 1 of the Brian Dutcher era begins when San Diego State plays host to San Diego Christian. The Aztecs are entering their 97th season of men's basketball and the 48th of in their Division I history.
- SDSU has won four straight season openers and 11 of the last 12 lidlifters. The one hiccup came in 2012-13 opener when San Diego State fell to No. 9/9 Syracuse on the USS Midway.
- The Aztecs have won 11 straight season-opening games against unranked teams, a streak that dates back to the 2005-06 campaign. SDSU's last loss to an unranked foe on opening night occurred on Nov. 19, 2004, when it was on the wrong end of an 80-72 double-overtime score. SDSU has also won seven straight openers that have taken place at home.
- Dutcher will look to become the third consecutive SDSU head coach to win in his debut, following in the footsteps of Fred Trenkle in 1994-95, and the recently retired Steve Fisher in 1999-2000. Dutcher was alongside Fisher 19 seasons ago when he helped the Aztecs defeat UC Riverside, 73-57.
- Although new to head coaching at SDSU, Dutcher is no stranger to the University or the program. The 19th-year Aztec coach has experienced 386 victories and 10 Mountain West championships while atop Montezuma Mesa.
- The Aztecs go into the season opener with a 62-6 record in their last 68 games vs. California schools and 50-1 in their last 50 vs. non-league California teams (50-0 in last 50 in games played indoors).
- San Diego State has faced San Diego Christian in each of the last seven years, but has never opened the season with them. In seven victories, the Aztecs have won by an average of 27.3 points.
- SDSU enters the game with the Hawks having played just one exhibition, a 98-79 decision over UC San Diego last Thursday night at Viejas Arena. San Diego State had six players score in double figures, shot 60.7 percent from the floor, including 53.8 percent from the three-point arc (7-13), and committed just six turnovers.
- Senior guard Trey Kell, a preseason all-Mountain West selection, led the Aztecs in the exhibition with a team-high 14 points, seven rebounds and game-high seven assists. Starting backcourt teammate and junior transfer Devin Watson added 13 points in his first action in an SDSU uniform.
- A pair of freshman enjoyed strong first showings in the game vs. the Tritons. Redshirt freshman forward Jalen McDaniels registered 10 points and a game-high eight rebounds, and true freshman Matt Mitchell posted 13 points and a game-high two steals. Both came off the bench and played more than 20 minutes (Mitchell - 22, McDaniels - 21).
- Returning starters Malik Pope and Jeremy Hemsley also had solid showings vs. UCSD. Pope, a senior, turned in 11 points on 4-of-7 shooting and six boards, while Hemsley made five of his seven attempts from the floor and also finished with 11 points.
- Last month, San Diego State was picked to finish second in the MW's preseason media poll. SDSU earned 229 points and two first-place votes and trailed only Nevada (257 points; 19 first-place votes). The Aztecs, however, were ahead of third-place Boise State (211; 2), fourth-place Fresno State (188) and fifth-place Colorado State (154). The remaining first-place tally went to UNLV, which was predicted to finish in sixth (138). The rest of the poll: Wyoming (7th; 133), Utah State (8th; 102), New Mexico (9th; 93), San José State (10th; 41), Air Force (11th; 38).

CONSECUTIVE 19-WIN SEASONS

Below is a list of the longest active 19-win seasons entering 2017-18.

School	No.	School	No.
Kansas	34	San Diego State	12
Duke	21	Belmont	12
Gonzaga	20	Brigham Young	12
Louisville	16		
Wisconsin	16		
North Carolina	15		
VCU	14		
Akron	13		
Michigan State	13		

CLASS OF THE MOUNTAIN WEST

Below is a list of the most men's basketball conference championships (regular season and tournament) won by current Mountain West institutions entering 2017-18.

School	No.	School	No.
San Diego State	10	Colorado State	1
New Mexico	8	Fresno State	1
UNLV	4	San José State	0
Wyoming	3	Utah State	0
Nevada	2		
Air Force	1		
Boise State	1		

BEST RECORD SINCE '10-11

Below is a list of the highest winning percentages since the beginning of 2010-11.

School	W-L	Pct.
Gonzaga	212-40	84.1
Wichita State	208-43	82.9
Kansas	214-45	82.6
Kentucky	214-50	81.1
Arizona	204-51	80.0
Duke	203-51	79.9
Louisville	196-57	77.5
North Carolina	202-61	76.8
Saint Mary's	182-55	76.8
San Diego State	188-60	75.8

San Diego State Aztecs

2017-18 Record: 0-0; 0-0 MW
 11 Postseason Berths in Last 12 Years, 10-Time MW Champions

- The Aztecs have won at least 19 games 12 straight years, which is tied for the 10th-longest active streak in the nation.
- San Diego State has advanced to postseason play in 11 of the last 12 seasons (2006 NCAA, 2007-09 NIT, 2010-15 NCAA, 2016 NIT).

Trends:

- SDSU is 10th nationally in winning percentage since the beginning of 2010-11, trailing Gonzaga, Wichita State, Kansas, Kentucky, Arizona, Duke, Louisville, North Carolina and Saint Mary's.
- San Diego State has won 57 straight games when shooting 50 percent or better from the field.

	PPG	RPG	APG	FG	3FG	FT	
0 Devin Watson <i>Guard, 6-1, 172, Jr.-TR</i> <i>Oceanside, Calif. (San Francisco)</i>	16-17 MW	-- --	-- --	-- --	-- --	-- --	Transfer from San Francisco... Averaged 20.3 points and 4.9 assists as a sophomore in 2015-16... 2016 all-West Coast Conference first team selection... Sixth-highest scoring sophomore in Division I in 2015-16... Scored in double figures 29 of 30 games in 2015-16 (42 career)... 14.2 career scoring average... 224 assists against 148 turnovers in his career (1.5 a/to ratio)... 13 pts. vs. UCSD (exh.).
2 Adam Seiko <i>Guard, 6-3, 195, Fr.-HS</i> <i>Boston, Mass. (Sierra Canyon HS (Calif.))</i>	16-17 MW	-- --	-- --	-- --	-- --	-- --	Pronounced SAY-ka... Three-star signee by Rivals... Averaged 10.4 points, 3.2 rebounds, 2.0 assists, 1.6 steals as a senior at Sierra Canyon High... Sierra Canyon went 27-3, and was ranked No. 5 in California and No. 15 nationally his senior year... Known for defending opposing team's best perimeter player in high school... Strong guard who can shoot the three-point shot... DNP vs. UCSD (exh.).
3 Trey Kell <i>Guard, 6-4, 216, Sr.-3L</i> <i>San Diego, Calif. (St. Augustine HS)</i>	16-17 MW	13.1 12.8	4.9 5.3	2.9 2.8	37.8 37.3	26.8 25.4	Preseason all-MW... Team co-captain (Malik Pope)... Became 31st Aztec in 1K-point club last season (1,109)... 14 of last 18 gms. w/10+ pts... Scored in double figures 58x (7 20-pt gms)... 1 TO or less 55x... Averaged career highs in points (13.2), rebounds (4.9) and assists (2.9) last season... Averaged 6.7 rebounds the last two months of the season last year (12 games)... 14 pts., 7 rebs., 7 ast. vs. UCSD (exh.).
5 Jalen McDaniels <i>Forward, 6-10, 195, Fr.-RS</i> <i>Federal Way, Wash. (Federal Way HS)</i>	16-17 MW	-- --	-- --	-- --	-- --	-- --	Named the preseason MW Co-Freshman of the Year last season... Redshirted last year, but played in both exhibitions... 4-star player by Scout and 247Sports at the time of his signing... No. 98 on Rivals 150... Led his high school to a 29-0 record and a state title, its second straight, as a senior in 2015-16... AP Washington state Class 4A first-team as a senior... All-state by USA Today and The News Tribune... 10 pts., 8 rebs. vs. UCSD (exh.).
10 Max Montana <i>Forward, 6-9, 210, Jr.-1L</i> <i>Calabasas, Calif. (Indiana)</i>	16-17 MW	7.7 7.5	3.8 3.9	0.4 0.5	36.4 37.5	81.0 78.3	Started 10 of 29 games last year, his first at SDSU... 35 3FG in last 19 gms. of 2016-17... Min. 1 3FG in 22 of 29 games last year... Career-high five 3FG three times last season... 52 3FG last season (2nd on team) in 28 GP... 14 gms. w/multiple 3FG... Has 11 career double-figure scoring games (10 at SDSU)... Led the Aztecs in scoring once and in rebounding six times... 6 pts., (4-4 FT) vs. UCSD (exh.).
11 Matt Mitchell <i>Forward, 6-6, 230, Fr.-HS</i> <i>Riverside, Calif. (Roosevelt HS)</i>	16-17 MW	-- --	-- --	-- --	-- --	-- --	A three-star signee, according to Rivals and Scout... Named The Press-Enterprise's HSGametime Boys Basketball Player of the Year in 2016-17... Helped his high school win its first league title, capture the CIF Southern Section regional title, and claim the CIF State Division I championship as a senior... Averaged 25.4 points, 9.5 rebounds, 3.0 assists and 2.2 steals as a senior... 13 pts., 2 stl. vs. UCSD (exh.).
20 Jordan Schakel <i>Guard, 6-6, 195, Fr.-HS</i> <i>Torrance, Calif. (Bishop Montgomery HS)</i>	16-17 MW	-- --	-- --	-- --	-- --	-- --	Four-star signee by ESPN and Scout... No. 137 on the Rivals 150 at the time of his signing... Won a school-record 118 games in his prep career at Bishop Montgomery... Scored 1,607 points to rank 10th at BMHS... Helped Knights win a 2017 CIF State Open Division title and a Southern Section Open Division championship... Guided BMHS to a No. 1 state ranking and a No. 3 national ranking as a senior... 6 pts. (3-3 3FG) vs. UCSD (exh.).
21 Malik Pope <i>Forward, 6-10, 220, Sr.-3L</i> <i>Sacramento, Calif. (Laguna Creek HS)</i>	16-17 MW	11.0 10.6	6.1 6.2	1.5 1.4	45.3 44.2	39.2 40.0	Finished 2016-17 strong by averaging 13.1 points and 7.1 rebounds, while shooting 46 percent, including 46.9 percent from three-point range in the final 14 games... SDSU is 21-8 when he scores 10+ pts... Had 29 career double-figure scoring games, including a career-high 13 in '16-17... Returns as the team's top rebounder (6.1) and shot blocker (23)... 11 pts., 6 rebs. vs. UCSD (exh.).
24 Nolan Narain <i>Forward, 6-10, 226, So.-1L</i> <i>Hamilton, Ontario, Canada (La Lumiere School (Ind.))</i>	16-17 MW	1.4 1.7	1.0 1.7	0.0 0.0	33.3 2/4	1/4 1/2	One of six returners from last season... Is in his third season overall at SDSU... Played in nine games, averaging 6.1 mins. last year... Minimum one rebound in last seven games played... Is one of five players on the roster standing at 6-9 or taller... Is a former four-star high school player by Scout... Arrived on campus early and redshirted the 2015-16 campaign... 6 pts., 4 rebs., 2 blk. vs. UCSD (exh.).
31 Montaque Gill-Caesar <i>Guard, 6-6, 216, Jr.-1L</i> <i>Vaughn, Ontario, Canada (Missouri)</i>	16-17 MW	3.3 3.0	1.8 1.7	0.2 0.2	28.0 29.2	13.9 0/17	Pronounced MON-take... Is one of five returning Aztecs to have started at least one game in 2016-17... Played in 26 of 33 games last season... Averaged 12.3 mpg last year... Started two games in his first season with SDSU in 2016-17... Had four games with at least 10+ pts. last season... Has 17 career double-figure scoring games... Played his true freshman campaign at Missouri (2014-15)... DNP vs. UCSD (exh.).
42 Jeremy Hemsley <i>Guard, 6-3, 200, Jr.-2L</i> <i>Rancho Cucamonga, Calif. (Damien HS)</i>	16-17 MW	12.9 11.4	2.4 2.2	2.1 1.9	41.5 36.5	37.9 26.4	Mountain West honorable mention by the coaches in 2016-17... One of three returning starters... Started 56 of 69 games in his career... Led team in scoring 26 times and in assists 25 times... SDSU is 10-1 when he has at least four assists and 21-7 when he has one TO or less... Has nine career 20-pt. games... Team-best 56 3FG last season... Double figures in scoring 47 times... 11 pts. vs. UCSD (exh.).
45 Kameron Rooks <i>Center, 7-1, 266, Sr.-TR</i> <i>San Marcos, Calif. (California)</i>	16-17 MW	4.9 --	4.5 --	0.3 --	54.7 --	0/0 --	Graduate transfer from California... Averaged a career-high 4.9 points last season... Has 60 career blocked shots... Has four career double-figure scoring games with three coming last year... Is a career 54.1 percent shooter from the floor... Shot a career-high 60.0 percent from the FT line... The cousin of former SDSU forward and MW champ JJ O'Brien... Is the son of the late Sean Rooks... 7 pts., 3 rebs. vs. UCSD (exh.).

red indicates probable starter, black indicates reserve, gold indicates inactive.

SCHEDULE / RESULTS

Date	Opponent (Television/Stream)	Time/Result	Note
N.2	UC San Diego - Exhibition	W, 98-79	► SDSU shoots 60.7 percent from the floor; Six Aztecs reach double figures in scoring; SDSU commits only six turnovers
N.10	San Diego Christian	7 p.m. PT	► Aztecs have won four straight season openers; San Diego State leads series, 7-0
N.14	at Arizona State (Pac-12 Networks)	7 p.m. MT	► SDSU to finish home-and-home series after falling last season at Viejas Arena; Last win came on Dec. 16, 2000
N.17	McNeese State (TBD)	7:30 p.m. PT	► Aztecs are 2-0 all-time vs. McNeese State; Last meeting came in 2013-14 (W, 65-36; Dec. 21, 2013)
N.20	Eastern Illinois (TBD)	7:30 p.m. PT	► First meeting; SDSU is 2-0 all-time vs. current members of the OVC, but has never hosted an OVC schools
N.23	#vs. Sacramento State (ESPNU)	10 p.m. PT	► SDSU is 3-1 all-time vs. Sacramento State; Last meeting was on Dec. 2, 2000, at then-Cox Arena (W, 92-69)
N.24	#vs. Georgia/at Cal State Fullerton (ESPN2/3)	4 or 6 p.m. PT	► SDSU won the Wooden Legacy in 2013, defeating College of Charleston, No. 20/18 Creighton, No. 25/-- Marquette
N.26	#vs. TBD (ESPN Networks)	TBD	► SDSU has played in the title game of an in-season event seven straight times
N.30	at San Diego (TBD)	7 p.m. PT	► SDSU has won four straight in the series at Jenny Craig Pavilion; SDSU leads the all-time series, 30-18
D.3	Bradley (Mountain West Network on STADIUM)	3 p.m. PT	► First meeting between the Aztecs and Braves since Dec. 20, 1967; SDSU is 0-4 all-time vs. Bradley
D.9	California (CBS Sports Network)	2 p.m. PT	► Aztecs have won four straight in series, including last season in Sacramento; SDSU leads series, 7-4
D.21	Gonzaga (CBS Sports Network)	7 p.m. PT	► The conclusion of a home-and-home series that started last season; The teams have split the last two meetings
D.27	*at Wyoming (ESPN3)	7 p.m. MT	► First trip to Laramie since 2016; SDSU has won two straight and four of the last six at Arena-Auditorium
D.30	*Utah State (ESPN3)	7 p.m. PT	► Only meeting of the season; SDSU has won all four home games vs. USU in the Mountain West era
J.2	*at Colorado State (CBS Sports Network)	7 p.m. MT	► SDSU dropped a 56-55 decision last year at Moby Arena; Aztecs are 11-26 in Fort Collins and split last four
J.9	*San José State (CBS Sports Network)	8 p.m. PT	► The Aztecs have won five straight home games vs. SJSU; 18.7 avg. winning margin at home vs. SJSU in MW era
J.13	*at Boise State (ESPN2)	8 p.m. MT	► Teams have split six games inside Taco Bell Arena; SDSU lost, 78-68, last season in Boise
J.17	*Fresno State (ESPN2/3)	8 p.m. PT	► San Diego State has won six of the last seven home games vs. Fresno State, but lost last season at Viejas Arena, 63-55
J.20	*at New Mexico (CBS Sports Network)	5 p.m. MT	► SDSU has won two of the last three meetings at The Pit, but fell five points short in last year's season finale
J.24	*Colorado State (CBS Sports Network)	8 p.m. PT	► San Diego State has won 13 of the last 14 home games vs. the Rams, but lost last season, 78-77
J.27	*at UNLV (CBS Sports Network)	7 p.m. PT	► SDSU has won seven straight games vs. UNLV inside Thomas & Mack Center and won both games last year
F.3	*Air Force (ESPN2/3)	5 p.m. PT	► San Diego State has won 12 consecutive home games vs. Air Force; The Aztecs are 31-6 all-time vs. the Falcons at home
F.6	*at Fresno State (CBS Sports Network)	8 p.m. PT	► The Aztecs snapped a two-game road losing streak at Fresno State last year; SDSU has won five of last seven at FS
F.10	*at Nevada (ESPN2)	5 p.m. PT	► SDSU has won three of the last four games at Nevada; The Aztecs are 5-3 all-time vs. the Wolf Pack in Reno
F.14	*Wyoming (CBS Sports Network)	8 p.m. PT	► San Diego State has won nine straight vs. Wyoming inside Viejas Arena; SDSU is 25-11 all-time vs. the Cowboys at home
F.17	*UNLV (CBS Sports Network)	1 p.m. PT	► SDSU has won four home games in a row and eight of the last nine vs. UNLV; SDSU is 15-12 vs. UNLV at home
F.21	*at Air Force (CBS Sports Network)	7:30 p.m. MT	► The Aztecs have won two of the last three games at Air Force and lost by three points a year ago
F.24	*at San José State (ESPN2/3)	7 p.m. PT	► SDSU has won three of the last four games at SJSU in the Mountain West era; SDSU lost last year, 76-71
F.27	*Boise State (CBS Sports Network)	8 p.m. PT	► San Diego State will welcome Boise State to Viejas Arena for first time since Jan. 16, 2016; SDSU is 4-2 vs. Boise at home
M.3	*Nevada (CBS Sports Network)	7 p.m. PT	► Second time in four years SDSU will play Nevada on Senior Night; San Diego State has won 12 straight Senior Night games
M.7-10	+at Mountain West Championship (TBD)	TBD	► San Diego State has reached the MW championship game seven of the last nine years

- Wooden Legacy (Titan Gym; Fullerton, Calif.), * - Mountain West game, + - MW Championship (Thomas & Mack Center; Las Vegas, Nev.)

AZTECS PICKED SECOND IN MW PRESEASON POLL

■ SDSU was picked to finish second in the Mountain West media poll. It marked the 13th consecutive year in which San Diego State was picked to finish in the top four of the MW preseason poll and the fourth year in a row that it has been selected either first or second.

KELL NAMED PRESEASON ALL-MW

■ Trey Kell was named a preseason all-Mountain West selection at the conference's media summit in Las Vegas in October. With the recognition, he became just the third Aztec to be named to the preseason team multiple times in MW history, joining Brandon Heath (2005-06, 2006-07) and Winston Shepard (2014-15, 2015-16).

HEMSLEY CLOSING IN ON A GRAND

■ Jeremy Hemsley is quickly closing in on 1,000 points for his career. In 69 career games, the junior has scored 855 points. Once he hits the milestone, he will be the 32nd member of the Aztecs' 1,000-point club and the first since Trey Kell accomplished the feat on Feb. 12, 2017.

HIGH-END EXPERIENCE

■ The Aztecs welcome six new players to the roster, but two come loaded with high-level experience in Devin Watson and Kameron Rooks. The childhood friends from North San Diego County are eligible after transferring from a pair of Bay Area schools (Watson - San Francisco; Rooks - California).
 ■ Watson brings 61 career games, including 47 starts, with him to the table, while Rooks has seen action in 83 games (20 starts) and played in the NCAA tournament (2016) and the NIT (2017).

FRESHMAN CONTRIBUTION

■ SDSU played three freshmen (Jalen McDaniels, Matt Mitchell, Jordan Schakel) in the exhibition vs. UC San Diego and they figure to get their fair share of minutes as the trio logged at least 15 in the minutes played column.
 ■ As a group, they made 11 of 17 from the floor (64.7 percent), including all five from three-point range, for 29 points and grabbed nine rebounds.

MEDIA RELATIONS

MEDIA RELATIONS OFFICE

Fowler Athletics Center
 5302 55th Street, Suite 3014
 San Diego, CA 92182
 ■ Office: 619.594.5547
 ■ Fax: 619.582.6541

MIKE MAY

Senior Associate A.D. of Communications and Media Relations

■ Coach Fisher Interviews
 ■ E-Mail: mmay@mail.sdsu.edu
 ■ Office: 619.594.5547
 ■ Cell: 619.957.8372

DARIN WONG

Assistant A.D. - Media Relations

■ Student-Athlete Interviews
 ■ E-Mail: dwong@mail.sdsu.edu
 ■ Office: 619.594.5547
 ■ Cell: 310.489.2378
 ■ Twitter: @dwong_

STAY CONNECTED

■ Athletics Website: goaztecs.com
 ■ Twitter: @GoAztecs / @Aztec_MBB
 ■ Facebook: facebook.com/goaztecs
 ■ Instagram: @goaztecs / @aztecs_mbb
 ■ YouTube: youtube.com/goaztecscom

SERIES VS. SAN DIEGO CHRISTIAN

SAN DIEGO STATE LEADS, 7-0

Home: 7-0, Away: 0-0, Neutral: 0-0

Date	Location	Score
N.26.10	San Diego (VA)	W 88-69
J.5.12	San Diego (VA)	W 83-52
N.13.12	San Diego (VA)	W 91-57
N.20.13	San Diego (VA)	W 93-41
D.27.14	San Diego (VA)	W 72-50
N.18.15	San Diego (VA)	W 71-61
N.16.16	San Diego (VA)	W 81-58

VA - Viejas Arena

TWO POINTS SHY OF 100

- San Diego State scored 98 points in the exhibition vs. UC San Diego. The Aztecs scored more than that just once last season (100 vs. Savannah State on Nov. 28). Outside of that, SDSU scored more than 80 points just three other times (San Diego Christian, vs. Tulsa, vs. Boise State).
- The last three seasons, the Aztecs have averaged 61.8 points per game in 2014-15, 68.6 in 2015-16, and 68.5 in 2016-17.
- The school record for points per game for an entire season is 86.9, which occurred in SDSU's first season as a Division I member (1970-71).

SERIES HISTORY VS. SAN DIEGO CHRISTIAN

- San Diego State has defeated San Diego Christian all seven times.
- SDSU is averaging 82.7 points per game vs. the Hawks, while limiting SDC to 55.4 points.
- The Aztecs' 52-point win in 2013 is the fifth-largest margin of victory in school history.
- Below is a look at what current Aztecs have done vs. San Diego Christian.

SDSU	G-GS	FG-A	3FG-A	FT-A	REB	AVG.	A	TO	BS	ST	PTS	AVG	HI
Jeremy Hemsley	2-2	14-19	4-5	5-9	5	2.5	7	1	2	2	37	18.5	23
Trey Kell	3-3	9-17	2-5	5-8	10	3.3	7	3	1	1	25	8.3	19
Malik Pope	2-1	8-16	2-6	3-4	11	5.5	4	1	3	1	21	10.5	14
Nolan Narain	1-0	2-6	0-1	0-0	1	1.0	0	1	0	0	4	4.0	4
Montaque Gill-Caesar	1-1	0-2	0-0	1-2	1	1.0	0	0	0	0	1	1.0	1

AZTEC STAPLE: DEFENSE

- The Aztecs have been one of the elite defensive teams in the nation over the last few seasons and this year they return six letterwinners off a team that finished eighth in the nation in field-goal percentage defense and 15th in scoring defense. Both were tops in the Mountain West.
- According to KenPom.com, SDSU last season ranked eighth nationally in effective field-goal percentage defense, ninth in two-point field-goal percentage defense and 20th in blocked shot percentage.
- 2013-14 ranks: 2nd in scoring defense, 6th in scoring margin, 8th in field-goal percentage defense.
- 2014-15 ranks: 2nd in scoring defense, 7th in field-goal percentage defense, 24th in blocked shots.
- 2015-16 ranks: 1st in field-goal percentage defense, 3rd in scoring defense, 10th in blocked shots.
- 2016-17 ranks: 8th in field-goal percentage defense, 15th in scoring defense, 34th in blocked shots.

TOUGH OUT AT HOME

- SDSU has been one of the hardest teams to beat at home since the start of the 2005-06 campaign.

BEST HOME RECORDS, SINCE START OF 2005-06 (through Nov. 6)

Rk.	Team	W	L	Pct.
1.	Kansas	200	10	95.2
2.	Duke	185	15	92.5
3.	Gonzaga	165	17	90.7
4.	Belmont	137	16	89.5
5.	Brigham Young	174	21	89.2
6.	Kentucky	185	23	88.9
7.	VCU	163	21	88.6
8.	Stephen F. Austin	156	21	88.1
9.	Notre Dame	189	26	87.9
10.	Michigan State	172	24	87.8
11.	San Diego State	169	24	87.6

STREAKING THROUGH CALIFORNIA

- SDSU had won 47 straight games vs. teams from the state of California, a streak that dated to Dec. 2, 2009, before falling at Fresno State, 59-57, on Jan. 3, 2015.
- The Aztecs are now 62-6 in their last 68 vs. California schools and 50-1 in their last 50 vs. non-league California teams (50-0 in last 50 in games played indoors).
- San Diego State has also beaten seven Pac-12 schools during this remarkable run.
- The 47-game winning streak vs. California schools was the longest active streak in the country ahead of second-place BYU (22 straight vs. Colorado teams) and Pittsburgh (22 straight vs. Pennsylvania teams).

NICE RUN

- San Diego State is a member of the California State University system and it had won 22 straight home games against CSU schools dating to the 2000-01 campaign. The streak ended on Feb. 22, 2017, when Fresno State earned a 63-55 victory. Prior to the defeat, the Aztecs' last loss to a Cal State school at home happened back on Jan. 5, 2000, against Cal State Fullerton.
- SDSU has also won 21 consecutive non-conference games vs. its fellow CSU institutions. The Aztecs have not suffered a loss since Nov. 27, 2000, at Fresno State (WAC).

PRETTY GOOD WHEN LOW ON TIME

- The Aztecs have been good at preparing when short on time. When there is less than 24 hours to prepare, SDSU is 17-2 in its last 19 regular-season tries.

ATOP THE MOUNTAIN

■ Since the beginning of the Mountain West in 1999-00, San Diego State has the most men's basketball championships than any other current member of the league, which is a remarkable feat considering the Aztecs went 0-14 in league play the first season (1999-2000) and 4-10 the second year (2000-01). Here is the list of current Mountain West schools with their regular-season championships (includes ties) and tournament championships: 1. San Diego State 10, 2. New Mexico 8, t-3. UNLV 3, t-3. Wyoming 3, 5. Nevada 2, t-6. Air Force 1, t-6. Colorado State 1, t-6. Boise State 1, t-6. Fresno State 1.

MOUNTAIN WEST RECORDS (through Nov. 6), SINCE 2010-11 SEASON (includes MW Championship)

Rk.	Team	W	L	Pct.	RS Championships	Tourney Championships
1.	San Diego State	102	36	73.9	5	1
2.	New Mexico	83	49	62.9	2	3
3.	Colorado State	76	56	57.6	0	0
4.	Boise State	61	50	55.0	1	0
5.	Fresno State	53	44	54.6	0	1
6.	UNLV	67	65	50.8	0	0
7.	Nevada	46	50	47.9	1	1
8.	Utah State	35	44	44.3	0	0
9.	Wyoming	52	76	40.6	0	1
10.	Air Force	40	87	31.5	0	0
11.	San José State	12	63	16.0	0	0

TOUGH AWAY FROM HOME

■ SDSU is 88-46 (65.7 percent) in road/neutral games since March 6, 2010, which is the seventh-highest winning percentage nationally.

BEST ROAD/NEUTRAL RECORDS, SINCE MARCH 6, 2010 (through Nov. 6)

Rk.	Team	W	L	Pct.
1.	Gonzaga	112	31	78.3
2.	Wichita State	103	35	74.6
3.	Kansas	106	41	72.1
4.	Duke	104	43	70.7
5.	Kentucky	104	45	69.8
6.	Arizona	92	44	67.6
7.	North Carolina	103	52	66.5
8.	San Diego State	90	47	65.7
9.	Villanova	89	47	65.4
10.	Saint Mary's	74	40	64.9

■ Included in that stretch are victories at Kansas, at Arizona, at Gonzaga, at New Mexico (four times), at UNLV (nine times), at California, at Utah State (twice), at Utah and at USC. Also included are neutral court victories over UCLA, California (twice), Marquette, Creighton, New Mexico, BYU (twice), Oklahoma, Pittsburgh and St. John's.

AMONG THE BEST

BEST FOOTBALL AND MEN'S BASKETBALL WINNING PERCENTAGE SINCE THE BEGINNING OF THE 2010-11 ACADEMIC YEAR (through Nov. 6)

Rk.	Team	W	L	Pct.
1.	Ohio State	267	85	75.9
2.	Wisconsin	269	90	74.9
3.	Louisville	264	89	74.8
4.	San Diego State	259	92	73.8
5.	Oregon	265	95	73.6
6.	Arizona	257	97	72.6
7.	Michigan State	255	101	71.6
8.	Duke	250	101	71.2
9.	North Carolina	258	105	71.1
10.	Kentucky	252	107	70.2

BEST MEN'S BASKETBALL WINNING PERCENTAGE SINCE THE BEGINNING OF THE 2010-11 SEASON (through Nov. 6)

Rk.	Team	W	L	Pct.
1.	Gonzaga	212	40	84.1
2.	Wichita State	208	43	82.9
3.	Kansas	214	45	82.6
4.	Kentucky	214	50	81.1
5.	Arizona	204	51	80.0
6.	Duke	203	51	79.9
7.	Louisville	196	57	77.5
8.	North Carolina	202	61	76.8
9.	Saint Mary's	182	55	76.8
10.	San Diego State	188	60	75.8

PRESEASON MOUNTAIN WEST POLL

Rk.	Team	Points	1P Votes
1.	Nevada	257	19
2.	San Diego State	229	2
3.	Boise State	211	2
4.	Fresno State	188	--
5.	Colorado State	154	--
6.	UNLV	138	1
7.	Wyoming	133	--
8.	Utah State	102	--
9.	New Mexico	93	--
10.	San José State	41	--
11.	Air Force	38	--

All-MW Team

Trey Kell, Sr., G, San Diego State

Chandler Hutchison, Sr., G, Boise State

Jordan Caroline, Jr., G/F, Nevada

Koby McEwen, So., G, Utah State

Justin James, Jr., G, Wyoming

Player of the Year: Chandler Hutchison, Sr., G, Boise State

Freshman of the Year: Brandon McCoy, F, UNLV

Newcomer of the Year: Caleb Martin, Jr., F, Nevada

SDSU BROADCAST ROSTER

San Diego Christian at San Diego State | Steve Fisher Court at Viejas Arena | November 10, 2017



0
DEVIN WATSON

Guard
6-1, 172, Junior-TR
Oceanside, Calif.
San Francisco

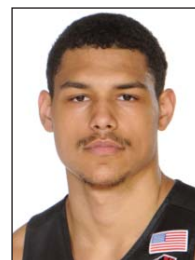
PPG: -- RPG: -- APG: --
FG%: -- 3FG: -- FT%: --



2
ADAM SEIKO

Guard
6-3, 195, Freshman-HS
Boston, Mass.
Sierra Canyon High (Calif.)

PPG: -- RPG: -- APG: --
FG%: -- 3FG: -- FT%: --



3
TREY KELL

Guard
6-4, 216, Senior-3L
San Diego, Calif.
St. Augustine High

PPG: 13.2 RPG: 4.9 APG: 2.9
FG%: 37.5 3FG: 26.8 FT%: 76.6



4
MICHAEL SOHIKISH

Guard
5-9, 160, Junior-HS
San Diego, Calif.
University City High

PPG: -- RPG: -- APG: --
FG%: -- 3FG: -- FT%: --



5
JALEN MCDANIELS

Forward
6-10, 195, Freshman-RS
Federal Way, Wash.
Federal Way High

PPG: -- RPG: -- APG: --
FG%: -- 3FG: -- FT%: --



10
MAX MONTANA

Forward
6-9, 210, Junior-1L
Calabasas, Calif.
Indiana

PPG: 7.7 RPG: 3.8 APG: 0.4
FG%: 36.4 3FG: 34.7 FT%: 81.0



11
MATT MITCHELL

Forward
6-6, 230, Freshman-HS
Riverdale, Calif.
Roosevelt High

PPG: -- RPG: -- APG: --
FG%: -- 3FG: -- FT%: --



20
JORDAN SCHAKEL

Guard
6-6, 195, Freshman-HS
Torrance, Calif.
Bishop Montgomery High

PPG: -- RPG: -- APG: --
FG%: -- 3FG: -- FT%: --



21
MALIK POPE

Forward
6-10, 220, Senior-3L
Sacramento, Calif.
Laguna Creek High

PPG: 11.0 RPG: 6.1 APG: 1.5
FG%: 45.3 3FG: 39.2 FT%: 70.3



24
NOLAN NARAIN

Forward
6-10, 226, Sophomore-1L
Hamilton, Ontario, Canada
La Lumiere School (Ind.)

PPG: 1.4 RPG: 1.0 APG: 0.0
FG%: 33.3 3FG: 1/4 FT%: 0/0



31
MONTAQUE GILL-CAESAR

Guard
6-6, 216, Junior-1L
Vaughan, Ontario, Canada
Huntington Prep (W.Va.)

PPG: 3.3 RPG: 1.8 APG: 0.2
FG%: 28.0 3FG: 13.9 FT%: 75.8



42
JEREMY HEMSLEY

Guard
6-3, 200, Junior-2L
Rancho Cucamonga, Calif.
Damien High

PPG: 12.9 RPG: 2.4 APG: 2.1
FG%: 41.5 3FG: 37.3 FT%: 62.7



45
KAMERON ROOKS

Center
7-1, 266, Senior-TR
San Marcos, Calif.
California

PPG: 4.9 RPG: 4.5 APG: 0.3
FG%: 54.7 3FG: 0/0 FT%: 60.0



HEAD COACH
BRIAN DUTCHER

- 1st season as head coach
- 19th year at SDSU
- 1989 NCAA champion
- 3 NCAA title game appearances
- 16 NCAA tournament appearances
- 10-time Mountain West champion

2017-18 SAN DIEGO STATE ALPHABETICAL ROSTER

No.	Name	Pos.	Ht.	Wt.	Yr.	Exp.	Most Recent Div. I Season			Hometown (High School/Previous School)
							PPG	RPG	APG	
31	Montaque Gill-Caesar	G	6-6	216	Jr.	1L	3.3	1.8	0.2	Vaughan, Ontrario, Canada (Huntington Prep (W.Va.)/Missouri)
42	Jeremy Hemsley	G	6-3	200	Jr.	2L	12.9	2.4	2.1	Rancho Cucamonga, Calif. (Damien High)
3	Trey Kell	G	6-4	216	Sr.	3L	13.2	4.9	2.9	San Diego, Calif. (St. Augustine High)
5	Jalen McDaniels	F	6-10	195	Fr.	RS	--	--	--	Federal Way, Wash. (Federal Way High)
11	Matt Mitchell	F	6-6	230	Fr.	HS	--	--	--	Riverside, Calif. (Roosevelt High)
10	Max Montana	F	6-9	210	Jr.	1L	7.7	3.8	0.4	Calabasas, Calif. (Wilbraham & Monson Academy (Mass.)/Indiana)
24	Nolan Narain	F	6-10	226	So.	1L	1.4	1.0	0.0	Hamilton, Ontario, Canada (La Lumiere School (Ind.))
21	Malik Pope	F	6-10	220	Sr.	3L	11.0	6.1	1.5	Sacramento, Calif. (Laguna Creek High)
45	Kameron Rooks	C	7-1	266	Sr.	TR	4.9	4.5	0.3	San Marcos, Calif. (Mission Hills High/California)
20	Jordan Schakel	G	6-6	195	Fr.	HS	--	--	--	Torrance, Calif. (Bishop Montgomery High)
2	Adam Seiko	G	6-3	195	Fr.	HS	--	--	--	Boston, Mass. (Sierra Canyon High (Calif.))
4	Michael Sohikish	G	5-9	160	Jr.	HS	--	--	--	San Diego, Calif. (University City High)
0	Devin Watson	G	6-1	172	Jr.	TR	20.3	2.5	4.9	Oceanside, Calif. (El Camino High/San Francisco)

2017-18 SAN DIEGO STATE NUMERICAL ROSTER

No.	Name	Pos.	Ht.	Wt.	Yr.	Exp.	Most Recent Div. I Season			Hometown (High School/Previous School)
							PPG	RPG	APG	
0	Devin Watson	G	6-1	172	Jr.	TR	20.3	2.5	4.9	Oceanside, Calif. (El Camino High/San Francisco)
2	Adam Seiko	G	6-3	195	Fr.	HS	--	--	--	Boston, Mass. (Sierra Canyon High (Calif.))
3	Trey Kell	G	6-4	216	Sr.	3L	13.2	4.9	2.9	San Diego, Calif. (St. Augustine High)
4	Michael Sohikish	G	5-9	160	Jr.	HS	--	--	--	San Diego, Calif. (University City High)
5	Jalen McDaniels	F	6-10	195	Fr.	RS	--	--	--	Federal Way, Wash. (Federal Way High)
10	Max Montana	F	6-9	210	Jr.	1L	7.7	3.8	0.4	Calabasas, Calif. (Wilbraham & Monson Academy (Mass.)/Indiana)
11	Matt Mitchell	F	6-6	230	Fr.	HS	--	--	--	Riverside, Calif. (Roosevelt High)
20	Jordan Schakel	G	6-6	195	Fr.	HS	--	--	--	Torrance, Calif. (Bishop Montgomery High)
21	Malik Pope	F	6-10	220	Sr.	3L	11.0	6.1	1.5	Sacramento, Calif. (Laguna Creek High)
24	Nolan Narain	F	6-10	226	So.	1L	1.4	1.0	0.0	Hamilton, Ontario, Canada (La Lumiere School (Ind.))
31	Montaque Gill-Caesar	G	6-6	216	Jr.	1L	3.3	1.8	0.2	Vaughan, Ontrario, Canada (Huntington Prep (W.Va.)/Missouri)
42	Jeremy Hemsley	G	6-3	200	Jr.	2L	12.9	2.4	2.1	Rancho Cucamonga, Calif. (Damien High)
45	Kameron Rooks	C	7-1	266	Sr.	TR	4.9	4.5	0.3	San Marcos, Calif. (Mission Hills High/California)

Head Coach:

Brian Dutcher (Minnesota, 1982), First Season (19th Season Overall at SDSU)

Associate Head Coach:

Justin Hutson (CSU Bakersfield, 1994), First Season (10th Season Overall at SDSU)

Assistant Coaches:

David Velasquez (San Diego State, 2007), Fifth Season (16th Season Overall at SDSU)

Tim Shelton (San Diego State, 2011), First Season (11th Season Overall at SDSU)

Assistant to the Head Coach:

Mark Fisher (Michigan, 2001), Fifth Season (16th Season Overall at SDSU)

Assistant A.D.-Director of Operations:

Matt Soria (San Diego State, 2002), 11th Season (18th Season Overall at SDSU)

Director of Player Development:

JD Pollock (Kennesaw State, 2009), First Season (First Season Overall at SDSU)

ELIGIBLE IN 2018-19

No.	Name	Pos.	Ht.	Wt.	Yr.	Exp.	Most Recent Div. I Season			Hometown (High School/Previous School)
							PPG	RPG	APG	
13	Patrick Fisher	G	6-4	200	So.	TR	2.0	0.0	0.0	Carlsbad, Calif. (Vermont Academy/Winthrop)

PRONUNCIATIONS

Montaque Gill-Caesar

Mahn-take Gill-Caesar

Jordan Schakel

Jordan SHACK-kull

Adam Seiko

Adam SAY-ko

Michael Sohikish

Michael so-HE-kish



BRIAN DUTCHER

Head Coach

1st Season • 19th Season Overall at SDSU • Minnesota, 1982

Brian Dutcher, a long-time San Diego State men's basketball assistant coach, is entering his first season as head coach following Steve Fisher's retirement announcement on April 11, 2017. Dutcher, who was on Montezuma Mesa for all of Fisher's 18 seasons, held the title of associate head coach/head coach in waiting the previous six years and is the program's 15th head coach.

Over the course of his time at San Diego State, Dutcher helped the Aztecs reach the postseason 13 times, including eight trips to the NCAA tournament, win a conference-best 10 Mountain West titles and record 12 seasons of at least 20 victories.

Since 2008-09, Dutcher and SDSU twice advanced to the NCAA Sweet 16 (2011, 2014) and NIT semifinal round (2009, 2016), won at least 25 games seven times and captured seven MW championships (five regular season, two tournament).

Dutcher arrived at SDSU shortly after Fisher was hired on March 26, 1999. In his first year in "America's Finest City," the Aztecs won only five games, but improved upon their win total from the season before. After that, San Diego State posted a 14-14 record in 2000-01, before winning the 2002 MW Championship, earning a NCAA tournament bid and finishing with a 21-12 record. The 2002-03 campaign saw SDSU receive an NIT invitation, which culminated in the program's first Division I postseason victory.

After helping attract the first McDonald's All-American to the 2002-03 squad, Dutcher assisted in securing the signatures of future starters and all-league performers Brandon Heath and Marcus Slaughter. The duo started their first two seasons on The Mesa, leading to the 2005-06 season that produced the school's first Mountain West regular-season and tournament title sweep.

The Aztecs advanced to the NCAA tournament and ultimately won a then-school-record 24 games. That appearance led to a string of 10 consecutive postseason berths.

From the 2006-07 campaign through 2008-09, San Diego State registered 20 or more wins and went to three straight NITs. In 2009, the Aztecs advanced to the NIT semifinals and broke the previous school record with 26 victories.

The run to the NIT semifinals was a springboard to the most successful run in SDSU basketball history. Led by future NBA first-round draft pick and NBA champion Kawhi Leonard, the 2009-10 Aztecs won the MW Championship, advanced to the NCAA tournament and fell four points shy of moving on to the second round before finishing with a 25-9 record.

The NCAA experience from the 2009-10 squad proved fruitful in 2010-11 when it returned all five starters, including Leonard, and a freshman named Jamaal Franklin, who would turn out to be a future MW Player of the Year and NBA draft selection. With Dutcher on staff, SDSU won its first 20 games of the year, shared the MW regular-season title and captured the MW tournament crown. The Aztecs moved on to the NCAA tournament as a No. 2 seed and won the program's first Division I NCAA tournament game. San Diego State, which was ranked as high as No. 4 and received first-place votes at one point in the season, advanced to the Sweet 16 and fell to the eventual national champion, finishing with a school-record 34 wins, a mark that still stands today. The Aztecs' also found themselves in the final top-25 polls, ranking sixth in the AP and 11th in the USA Today Coaches Poll.

Five months after SDSU's record-setting 2010-11 campaign, the University elevated Dutcher from associate head coach to associate head coach/head coach in waiting.

In his first season with his new title, Dutcher and the Aztecs advanced to the 2011-12 NCAA tournament as an at-large team and recorded 26 wins. The next season, SDSU was again an at-large selection to the 2013 NCAA tournament, moved on to the round of 32 for the second time in three years and finished with 23 victories.

Another NCAA Sweet 16 run was in the cards in Dutcher's third season as the head coach in waiting. The Aztecs opened the season by winning 21 of their first 22 games, including 20 in a row at one point, and were led by seniors Xavier Thames, who would become an NBA draft pick, and Josh Davis. SDSU won the program's second outright Mountain West regular-season title and later swept through two games in Spokane, Washington, to secure its second Sweet 16 appearance in four seasons. San Diego State compiled 31 wins and finished the season ranked 13th in the AP and 12th in the Coaches after rising to as high as fifth nationally in both polls.

The 2014-15 campaign saw the Aztecs spend their fifth straight season in the top 25. In the process of winning 27 games, San Diego State grabbed its second straight MW regular-season crown and earned an at-large invitation to the NCAA tournament where they defeated St. John's in the round of 64. One season later, the Aztecs found themselves in the NIT after winning the MW by three games with a 16-2 record. Nevertheless, San Diego State won three games and qualified for the NIT national semifinals, eventually logging 28 victories.

More recently, San Diego State completed the 2016-17 slate with a 19-14 record despite experiencing a rash of injuries. The 2016 Hawaiian Airlines Diamond Head Classic champions will enter 2017-18 as one of 12 teams to have won at least 19 games in 12 consecutive seasons.

Before Dutcher arrived at San Diego State, he served as assistant coach and later associate head coach at Michigan under Fisher. He spent 10 seasons on the Wolverine staff, establishing himself as one of the nation's top assistant coaches. His first year in Ann Arbor was 1989 and resulted in a national title for Michigan as he assisted then-interim head coach Fisher on the bench.

The Bloomington, Minn., native led UM's recruiting efforts in 1990-91 when the Wolverines inked Juwan Howard, Ray Jackson, Jimmy King, Jalen Rose and Chris Webber. The "Fab Five" is considered perhaps the best recruiting class in NCAA history. Dutcher helped lead that group to nearly 100 wins, two berths in the NCAA championship game and a regional final over a four-year period. He was also on the Michigan staff for an NIT championship (1997).

Dutcher's recruiting prowess, however, was demonstrated by more than just the "Fab Five" haul. Michigan had the nation's top-ranked recruiting class in 1993-94 and in 1994-95, with a group that included Maurice Taylor and Jerod Ward. The accomplishment marked the first time that a university had the nation's top class in consecutive years, according to recruiting analyst Bob Gibbons.

Dutcher was born Oct. 30, 1959, in Alpena, Mich. He attended Jefferson High School in Bloomington, Minn., and went on to earn a bachelor's degree in physical education from Minnesota in 1982. While an undergraduate, he worked for his father, then-Gopher head coach Jim Dutcher. He then spent one season in the prep ranks at Apple Valley (Minn.) High School before becoming a graduate assistant at Illinois, where he earned his master's degree in physical education and athletic administration.

While in Champaign, Dutcher helped Lou Henson lead the Illini to a Big Ten championship, two appearances in the Sweet 16 and one regional final.

Dutcher's first full-time coaching job came at South Dakota State, where he spent three seasons helping turn around the Division II program before departing in 1988 for Michigan.

His final season in Ann Arbor ended with the Wolverines claiming the first-ever Big Ten Tournament championship.

Brian Dutcher Year-By-Year (Division I Only)

Year	School	Overall		Conference		Postseason; Championships
		W-L	Pct.	W-L	Pct.	
1988-89	Michigan	30-7	.811	12-6	.667	NCAA Champions
1989-90	Michigan	23-8	.742	12-6	.667	NCAA 2nd Round
1990-91	Michigan	14-15	.483	7-11	.389	NIT 1st Round
1991-92	Michigan	25-9	.735	11-7	.611	NCAA Runner-Up
1992-93	Michigan	31-5	.861	15-3	.833	NCAA Runner-Up
1993-94	Michigan	24-8	.750	13-5	.722	NCAA Regional Finalist
1994-95	Michigan	17-14	.548	11-7	.611	NCAA 1st Round
1995-96	Michigan	20-12	.625	10-8	.556	NCAA 1st Round
1996-97	Michigan	24-11	.686	9-9	.500	NIT Champions
1997-98	Michigan	25-9	.735	11-5	.688	NCAA 2nd Round; Big 10 Tournament
10 Seasons at UM		233-98	.704	111-67	.624	8 NCAs, 10 Postseason Appearances

Year	School	Overall		Conference		Postseason; Championships
		W-L	Pct.	W-L	Pct.	
1999-00	San Diego State	5-23	.179	0-14	.000	
2000-01	San Diego State	14-14	.500	4-10	.286	
2001-02	San Diego State	21-12	.636	7-7	.500	NCAA 1st round; MW Tournament
2002-03	San Diego State	16-14	.533	6-8	.429	NIT second round
2003-04	San Diego State	14-16	.467	5-9	.357	
2004-05	San Diego State	11-18	.379	4-10	.286	
2005-06	San Diego State	24-9	.727	13-3	.813	NCAA 1st Round; MW RS, Tournament
2006-07	San Diego State	22-11	.667	10-6	.625	NIT 2nd Round
2007-08	San Diego State	20-13	.606	9-7	.563	NIT 1st Round
2008-09	San Diego State	26-10	.722	11-5	.688	NIT Semifinals
2009-10	San Diego State	25-9	.735	11-5	.688	NCAA 1st Round; MW Tournament
2010-11	San Diego State	34-3	.919	14-2	.875	NCAA Sweet 16; MW RS, Tournament
2011-12	San Diego State	26-8	.765	10-4	.714	NCAA 2nd Round; MW RS
2012-13	San Diego State	23-11	.676	9-7	.563	NCAA 3rd Round
2013-14	San Diego State	31-5	.861	16-2	.889	NCAA Sweet 16; MW RS
2014-15	San Diego State	27-9	.750	14-4	.778	NCAA 3rd Round; MW Co-RS
2015-16	San Diego State	28-10	.737	16-2	.889	NIT Semifinals; MW RS
2016-17	San Diego State	19-14	.576	9-9	.500	
18 Seasons at SDSU		386-209	.649	168-114	.596	8 NCAs, 13 Postseason Appearances

28-Season Career Totals	Overall		Conference		Postseason
	W-L	Pct.	W-L	Pct.	
	619-307	.668	279-181	.607	16 NCAs, 23 Postseason Appearances

SEASON / CAREER HIGHS

Points

Season
Career 33 vs. Pepperdine (3-5-16)
33 vs. Gonzaga (1-2-16)

Rebounds

Season
Career 8 vs. Coppin State (12-18-15)

Assists

Season
Career 8 at Portland (1-28-16)

Field Goals

Season
Career 12 vs. Gonzaga (1-2-16)

Field Goals Attempted

Season
Career 26 vs. Gonzaga (1-2-16)

Three-Point Field Goals

Season
Career 5 vs. Gonzaga (1-2-16)

Three-Point FG Attempted

Season
Career 12 vs. Gonzaga (1-2-16)

Free Throws

Season
Career 14 vs. UC Riverside (11-21-15)

Free Throws Attempted

Season
Career 17 at Pacific (2-25-16)

Steals

Season
Career 6 at Florida Gulf Coast (11-25-14)

Blocked Shots

Season
Career

Minutes Played

Season
Career 42 vs. Santa Clara (2-6-16)
42 vs. Gonzaga (1-2-16)



0 • DEVIN WATSON

GUARD • 6-1 • 172 • JUNIOR - TR
OCEANSIDE, CALIF. (SAN FRANCISCO)

Quick Hits

* His scoring and assist averages, along with his field-goal and three-point field goal totals in 2015-16 would have led all Aztecs in 2016-17.

* Had seven games of at least 25 points in 2015-16 at San Francisco.

* Enters the season with an active 19-game double-figure scoring streak.

2017-18 GAME-BY-GAME STATISTICS

Opponent	GS	FG	3FG	FT	O-D-R	PF	TP	A	TO	B	S	MP
San Diego Christian												
at Arizona State												
McNeese State												
Eastern Illinois												
vs. Sacramento State												
vs. TBD												
vs. TBD												
at San Diego												
Bradley												
California												
Gonzaga												
at Wyoming												
Utah State												
at Colorado State												
San Jose State												
at Boise State												
Fresno State												
at New Mexico												
Colorado State												
at UNLV												
Air Force												
at Fresno State												
at Nevada												
Wyoming												
UNLV												
at Air Force												
at San Jose State												
Boise State												
Nevada												

MISCELLANEOUS STATS / SAN DIEGO STATE RECORD

Category	2017-18 Season		Career Games	Career SDSU W/L
	Games	SDSU W/L		
Double-Figure Scoring	0	0-0	42	0-0
Double-Figure Assists	0	0-0	0	0-0
Double-Doubles	0	0-0	0	0-0
Led SDSU in Scoring	0	0-0	0	0-0
Led SDSU in Rebounding	0	0-0	0	0-0
Led SDSU in Assists	0	0-0	0	0-0
15+ Point Games	0	0-0	27	0-0
5+ Assist Games	0	0-0	23	0-0
Consecutive Games	Current	Long		
Double-Figure Scoring	19	19		
With At Least 1 Assist	9	37		
Played 30 or More Minutes	8	18		
Consecutive Made FTs	8	N/A		

► WATSON CAREER STATISTICS

* - San Francisco

Year	G-GS	Min.-Avg.	FG-FGA	Pct.	3P-3PA	Pct.	FT-FTA	Pct.	OR	DR	Reb	Avg.	PF-D	AT	TO	BS	ST	Pts	Avg.
14-15*	31-17	732-23.6	82-214	.383	16-64	.250	81-111	.730	13	39	52	1.7	58-2	78	59	0	31	261	8.4
15-16*	30-30	1,041-34.7	192-459	.418	65-186	.349	159-217	.733	9	65	74	2.5	53-2	146	89	0	27	608	20.3
17-18																			
Totals	61-47	1,773-29.1	274-673	.407	81-250	.324	240-328	.732	22	104	126	2.1	111-4	224	148	0	58	869	14.2

SEASON / CAREER HIGHS

Points

Season
Career 27 vs. Fresno State (1-19-16)

Rebounds

Season
Career 12 vs. Air Force (3-1-17)

Assists

Season
Career 7 vs. UNLV (2-19-17)
7 vs. Savannah State (11-28-16)

Field Goals

Season
Career 9 at UNLV (1-17-17)
9 vs. Fresno State (1-19-16)

Field Goals Attempted

Season
Career 17 vs. New Mexico (2-6-16)
17 at Colorado State (1-13-16)

Three-Point Field Goals

Season
Career 4 - seven times

Three-Point FG Attempted

Season
Career 12 vs. Air Force (2-13-16)

Free Throws

Season
Career 9 at Wyoming (1-14-15)

Free Throws Attempted

Season
Career 12 vs. Fresno State (1-19-16)
12 vs. St. John's (3-20-15)

Steals

Season
Career 5 vs. Tulsa (12-23-16)
5 vs. Arizona State (12-10-16)

Blocked Shots

Season
Career 2 vs. Boise State (3-9-17)
2 vs. San José State (1-10-17)
2 vs. Utah State (3-10-16)

Minutes Played

Season
Career 37 vs. Colorado State (3-10-17)
37 vs. Tulsa (12-23-16)
37 at Fresno State (2-10-16)
37 at Nevada (1-26-16)
37 vs. Fresno State (1-19-16)
37 at Colorado State (1-13-16)



3 • TREY KELL

GUARD • 6-4 • 216 • SENIOR - 3L
SAN DIEGO, CALIF. (ST. AUGUSTINE HIGH)

Quick Hits

* Enters the season as the team's top returner in scoring, assists, steals, free throws and minutes.

* Averaged 6.7 rebounds in the last two months of the 2016-17 season (12 games).

* Owns the most starting experience of any Aztec on the roster with 85 career starting assignments, including 70 of the last 71 after not starting on Senior Night last year.

2017-18 GAME-BY-GAME STATISTICS

Opponent	GS	FG	3FG	FT	O-D-R	PF	TP	A	TO	B	S	MP
San Diego Christian												
at Arizona State												
McNeese State												
Eastern Illinois												
vs. Sacramento State												
vs. TBD												
at San Diego												
Bradley												
California												
Gonzaga												
at Wyoming												
Utah State												
at Colorado State												
San Jose State												
at Boise State												
Fresno State												
at New Mexico												
Colorado State												
at UNLV												
Air Force												
at Fresno State												
at Nevada												
Wyoming												
UNLV												
at Air Force												
at San Jose State												
Boise State												
Nevada												

MISCELLANEOUS STATS / SAN DIEGO STATE RECORD

Category	2017-18 Season		Career Games	Career SDSU W/L
	Games	SDSU W/L		
Double-Figure Scoring	0	-0	58	43-15
Double-Figure Assists	0	0-0	0	0-0
Double-Doubles	0	0-0	1	1-0
Led SDSU in Scoring	0	0-0	28	20-8
Led SDSU in Rebounding	0	0-0	8	4-4
Led SDSU in Assists	0	0-0	30	20-10
15+ Point Games	0	0-0	32	25-7
5+ Assist Games	0	0-0	8	7-1
Consecutive Games	Current	Long		
Double-Figure Scoring	3	20		
With At Least 1 Assist	26	26		
Played 30 or More Minutes	3	13		
Consecutive Made FTs	0	17		

► KELL CAREER STATISTICS

Year	G-GS	Min.-Avg.	FG-FGA	Pct.	3P-3PA	Pct.	FT-FTA	Pct.	OR	DR	Reb	Avg.	PF-D	AT	TO	BS	ST	Pts	Avg.	
14-15	35-15	709-20.3	62-186	.333	15-68	.221	58-91	.637	19	79	98	2.8	33-0	56	38	3	20	197	5.6	
15-16	38-38	1,084-28.5	158-390	.405	71-185	.384	90-135	.667	29	113	142	3.7	51-1	54	68	7	30	477	12.6	
16-17	33-32	1,050-31.8	143-381	.375	38-142	.268	111-145	.766	17	145	162	4.9	56-2	96	57	14	45	435	13.2	
17-18																				
Totals	106-85	2,843-26.8	363-957	.379	124-395	.314	259-371	.698	65	337	402	3.8	140-3	206	163	24	95	1,109	10.5	

SEASON / CAREER HIGHS

Points

Season
Career 21 vs. Boise State (3-9-17)

Rebounds

Season
Career 9 vs. San José State (1-10-17)
9 vs. Miss. Valley State (11-14-14)

Assists

Season
Career 2 at Air Force (1-24-17)
2 vs. San José State (1-10-17)
2 vs. Georgetown (12-27-14)
2 vs. Savannah State (12-6-14)

Field Goals

Season
Career 7 vs. Boise State (3-9-17)

Field Goals Attempted

Season
Career 13 at Boise State (1-7-17)

Three-Point Field Goals

Season
Career 5 vs. Boise State (3-9-17)
5 at Boise State (1-7-17)
5 at Nevada (1-4-17)

Three-Point FG Attempted

Season
Career 9 vs. San José State (1-10-17)
9 at Nevada (1-4-17)
9 vs. Tulsa (12-23-16)

Free Throws

Season
Career 6 vs. Fresno State (2-22-17)
6 vs. Alabama State (12-12-16)
6 vs. Miss. Valley State (11-14-14)

Free Throws Attempted

Season
Career 9 vs. Fresno State (2-22-17)

Steals

Season
Career 3 at UNLV (1-17-17)

Blocked Shots

Season
Career 1 - 10 times

Minutes Played

Season
Career 34 at Boise State (1-7-17)



10 • MAX MONTANA

FORWARD • 6-9 • 210 • JUNIOR - 1L
CALABASAS, CALIF. (INDIANA)

Quick Hits

- * Made 52 three-pointers, just four behind the team leader last season, despite missing four games due to injury.
- * Is one of five returners to have started at least one game in 2016-17.
- * Ranked fifth on the team last season in offensive rebounds (31) while only playing the seventh most minutes.

2017-18 GAME-BY-GAME STATISTICS

Opponent	GS	FG	3FG	FT	O-D-R	PF	TP	A	TO	B	S	MP
San Diego Christian												
at Arizona State												
McNeese State												
Eastern Illinois												
vs. Sacramento State												
vs. TBD												
vs. TBD												
at San Diego												
Bradley												
California												
Gonzaga												
at Wyoming												
Utah State												
at Colorado State												
San Jose State												
at Boise State												
Fresno State												
at New Mexico												
Colorado State												
at UNLV												
Air Force												
at Fresno State												
at Nevada												
Wyoming												
UNLV												
at Air Force												
at San Jose State												
Boise State												
Nevada												

MISCELLANEOUS STATS / SAN DIEGO STATE RECORD

Category	2017-18 Season		Career Games	Career SDSU W/L
	Games	SDSU W/L		
Double-Figure Scoring	0	0-0	11	4-6
Double-Figure Rebounds	0	0-0	0	0-0
Double-Doubles	0	0-0	0	0-0
Led SDSU in Scoring	0	0-0	1	1-0
Led SDSU in Rebounding	0	0-0	6	5-1
Led SDSU in Assists	0	0-0	0	0-0
15+ Point Games	0	0-0	5	2-2
One Turnover or Less	0	0-0	52	15-9
Multiple Three-Pointers	0	0-0	14	6-8
Consecutive Games	Current	Long		
Double-Figure Scoring	0	4		
With At Least 1 Assist	0	2		
Played 30 or More Minutes	0	1		
Consecutive Made FTs	1	10		

► HOETZEL CAREER STATISTICS

Year	G-GS	Min.-Avg.	FG-FGA	Pct.	3P-3PA	Pct.	FT-FTA	Pct.	OR	DR	Reb	Avg.	PF-D	AT	TO	BS	ST	Pts	Avg.
14-15*	31-0	240-7.7	24-56	.429	10-29	.345	15-21	.714	10	31	41	1.3	32-1	10	13	3	4	73	2.4
16-17	29-10	556-19.2	68-187	.364	52-150	.347	34-42	.810	31	80	111	3.8	50-2	12	25	7	17	222	7.7
17-18																			
Totals	60-10	796-13.3	92-243	.379	62-179	.346	49-63	.778	41	111	152	2.5	82-3	22	38	10	21	295	4.9

* - Indiana

SEASON / CAREER HIGHS

Points

Season
Career 22 vs. Boise State (3-9-17)
22 at Colorado State (1-24-15)

Rebounds

Season
Career 12 at UNLV (3-8-17)
12 vs. Washington (3-21-16)

Assists

Season
Career 5 vs. UNLV (3-5-16)

Field Goals

Season
Career 9 at Colorado State (1-24-15)

Field Goals Attempted

Season
Career 16 vs. Fresno State (3-12-16)

Three-Point Field Goals

Season
Career 4 at Colorado State (1-24-15)

Three-Point FG Attempted

Season
Career 5 - nine times

Free Throws

Season
Career 7 vs. Boise State (3-9-17)

Free Throws Attempted

Season
Career 8 vs. Boise State (3-9-17)
8 at New Mexico (3-4-17)
8 vs. Wyoming (1-31-17)

Steals

Season
Career 4 vs. Wyoming (1-31-17)

Blocked Shots

Season
Career 3 vs. Southern Miss (12-22-16)
3 vs. Colorado State (2-2-16)
3 vs. Nevada (3-7-15)
3 vs. Boise State (2-28-15)

Minutes Played

Season
Career 37 at New Mexico (3-1-16)



21 • MALIK POPE

FORWARD • 6-10 • 220 • SENIOR - 3L
SACRAMENTO, CALIF. (LAGUNA CREEK HIGH)

Quick Hits

* Enters the season as the team's top returning rebounder (6.1) and shot blocker (23), and third-leading scorer (11.0).

* In his final 14 games of 2016-17, he averaged 13.1 points and 7.1 rebounds, while shooting 46.0 percent, including 46.9 percent from three-point range.

* In his final three games of the season, at the MW Championship, he averaged 17.7 points (.474 FG, .667 3FG, .813 FT), 9.0 rebounds, 2.0 assists, 1.0 blocked shots and 1.0 steals.

2017-18 GAME-BY-GAME STATISTICS

Opponent	GS	FG	3FG	FT	O-D-R	PF	TP	A	TO	B	S	MP
San Diego Christian												
at Arizona State												
McNeese State												
Eastern Illinois												
vs. Sacramento State												
vs. TBD												
at San Diego												
Bradley												
California												
Gonzaga												
at Wyoming												
Utah State												
at Colorado State												
San Jose State												
at Boise State												
Fresno State												
at New Mexico												
Colorado State												
at UNLV												
Air Force												
at Fresno State												
at Nevada												
Wyoming												
UNLV												
at Air Force												
at San Jose State												
Boise State												
Nevada												

MISCELLANEOUS STATS / SAN DIEGO STATE RECORD

Category	2017-18 Season		Career Games	Career SDSU W/L
	Games	SDSU W/L		
Double-Figure Scoring	0	0-0	29	21-8
Double-Doubles	0	0-0	7	6-1
Led SDSU in Scoring	0	0-0	14	9-5
Led SDSU in Rebounding	0	0-0	22	15-7
Led SDSU in Assists	0	0-0	9	6-3
15+ Point Games	0	0-0	13	9-4
2+ Assist Games	0	0-0	22	15-7
Consecutive Games	Current	Long		
Double-Figure Scoring	3	4		
With At Least 1 Assist	5	5		
Played 30 or More Minutes	1	3		
Consecutive Made FTs	0	8		

▶ POPE CAREER STATISTICS

Year	G-GS	Min.-Avg.	FG-FGA	Pct.	3P-3PA	Pct.	FT-FTA	Pct.	OR	DR	Reb	Avg.	PF-D	AT	TO	BS	ST	Pts	Avg.	
14-15	31-0	459-14.8	56-123	.455	20-49	.408	27-40	.675	25	59	84	2.7	30-0	19	25	24	8	159	5.1	
15-16	38-16	810-21.3	101-252	.401	38-102	.373	37-57	.649	33	156	189	5.0	56-1	29	41	29	10	277	7.3	
16-17	24-21	621-25.9	96-212	.453	20-51	.392	52-74	.703	42	105	147	6.1	52-1	36	34	23	18	264	11.0	
17-18																				
Totals	93-37	1,890-20.3	253-587	.431	78-202	.386	116-171	.678	100	320	420	4.5	138-2	84	100	76	36	700	7.5	

SEASON / CAREER HIGHS

Points

Season
Career 5 at Utah State (2-15-17)

Rebounds

Season
Career 3 at Utah State (2-15-17)

Assists

Season
Career

Field Goals

Season
Career 2 at Utah State (2-15-17)
2 vs. SD Christian (11-16-16)

Field Goals Attempted

Season
Career 6 vs. SD Christian (11-16-16)

Three-Point Field Goals

Season
Career 1 at Utah State (2-15-17)

Three-Point FG Attempted

Season
Career 1 vs. Fresno State (2-22-17)
1 at Utah State (2-15-17)
1 vs. SD Christian (11-16-16)
1 at Gonzaga (11-14-16)

Free Throws

Season
Career

Free Throws Attempted

Season
Career

Steals

Season
Career 1 at Utah State (2-15-17)

Blocked Shots

Season
Career

Minutes Played

Season
Career 18 vs. SD Christian (11-16-16)



24 • NOLAN NARAIN

FORWARD • 6-10 • 226 • SOPHOMORE - 1L
HAMILTON, ONTARIO, CANADA (LA LUMIERE SCHOOL (IND.))

Quick Hits

- * Entering his third season in the program and his second as an active roster player.
- * Grabbed at least one rebound in his last seven outings of 2016-17.
- * Is part of a four-man frontcourt that features no player under 6-9.

2017-18 GAME-BY-GAME STATISTICS

Opponent	GS	FG	3FG	FT	O-D-R	PF	TP	A	TO	B	S	MP
San Diego Christian												
at Arizona State												
McNeese State												
Eastern Illinois												
vs. Sacramento State												
vs. TBD												
vs. TBD												
at San Diego												
Bradley												
California												
Gonzaga												
at Wyoming												
Utah State												
at Colorado State												
San Jose State												
at Boise State												
Fresno State												
at New Mexico												
Colorado State												
at UNLV												
Air Force												
at Fresno State												
at Nevada												
Wyoming												
UNLV												
at Air Force												
at San Jose State												
Boise State												
Nevada												

MISCELLANEOUS STATS / SAN DIEGO STATE RECORD

Category	2017-18 Season		Career Games	Career SDSU W/L
	Games	SDSU W/L		
Double-Figure Scoring	0	0-0	0-0	0-0
15-Point Games	0	0-0	0-0	0-0
Led SDSU in Scoring	0	0-0	0-0	0-0
Led SDSU in Rebounding	0	0-0	0-0	0-0
Led SDSU in Assists	0	0-0	0-0	0-0
Multiple Steals	0	0-0	0-0	0-0
One Turnover or Less	0	0-0	9	7-2
Consecutive Games	Current	Long		
Consecutive Games Played	0	3		
Without Fouling Out	9	9		
Scoring A Point	0	1		
One Turnover or Less	9	9		

► NARAIN CAREER STATISTICS

Year	G-GS	Min.-Avg.	FG-FGA	Pct.	3P-3PA	Pct.	FT-FTA	Pct.	OR	DR	Reb	Avg.	PF-D	AT	TO	BS	ST	Pts	Avg.
16-17	9-0	55-6.1	6-18	.333	1-4	.250	0-0	.000	2	7	9	1.0	9-0	0	3	0	1	13	1.4
17-18																			
Totals	9-0	55-6.1	6-18	.333	1-4	.250	0-0	.000	2	7	9	1.0	9-0	0	3	0	1	13	1.4

SEASON / CAREER HIGHS

Points

Season
Career 21 vs. UMKC (11-14-14)

Rebounds

Season
Career 7 vs. UMKC (11-14-14)

Assists

Season
Career 3 vs. Florida (2-24-15)

Field Goals

Season
Career 9 vs. UMKC (11-14-14)

Field Goals Attempted

Season
Career 23 vs. UMKC (11-14-14)

Three-Point Field Goals

Season
Career 4 at Chaminade (11-26-14)

Three-Point FG Attempted

Season
Career 8 at Chaminade (11-26-14)

Free Throws

Season
Career 8 vs. Arizona (11-24-14)

Free Throws Attempted

Season
Career 12 vs. Arizona (11-24-14)

Steals

Season
Career 3 at Chaminade (11-26-14)

Blocked Shots

Season
Career 1 at New Mexico (3-4-17)
1 vs. San José State (1-10-17)
1 vs. Oklahoma State (12-30-14)
1 vs. Elon (12-11-14)

Minutes Played

Season
Career 36 vs. UMKC (11-14-14)



31 • MONTAQUE GILL-CAESAR

GUARD • 6-6 • 216 • JUNIOR - 1L
VAUGHAN, ONTARIO, CANADA (MISSOURI)

Quick Hits

- * Is one of five returning Aztecs who started at least one game in 2016-17.
- * Enters the season with 17 career double-figure scoring games, the fifth most among active Aztecs.
- * Committed one turnover or less in 20 of 26 games in 2016-17.

2017-18 GAME-BY-GAME STATISTICS

Opponent	GS	FG	3FG	FT	O-D-R	PF	TP	A	TO	B	S	MP
San Diego Christian												
at Arizona State												
McNeese State												
Eastern Illinois												
vs. Sacramento State												
vs. TBD												
vs. TBD												
at San Diego												
Bradley												
California												
Gonzaga												
at Wyoming												
Utah State												
at Colorado State												
San Jose State												
at Boise State												
Fresno State												
at New Mexico												
Colorado State												
at UNLV												
Air Force												
at Fresno State												
at Nevada												
Wyoming												
UNLV												
at Air Force												
at San Jose State												
Boise State												
Nevada												

MISCELLANEOUS STATS / SAN DIEGO STATE RECORD

Category	2017-18 Season		Career Games	Career SDSU W/L
	Games	SDSU W/L		
Double-Figure Scoring	0	0-0	17	4-0
Double-Figure Rebounds	0	0-0	0	0-0
Double-Doubles	0	0-0	0	0-0
Led SDSU in Scoring	0	0-0	0	0-0
Led SDSU in Rebounding	0	0-0	1	0-1
Led SDSU in Assists	0	0-0	0	0-0
15+ Point Games	0	0-0	7	0-0
One Turnover or Less	00	0-0	31	12-8
Multiple Three-Pointers	0	0-0	9	1-0
Consecutive Games	Current	Long		
Double-Figure Scoring	0	1		
With At Least 1 Assist	0	3		
Played 30 or More Minutes	0	1		
Consecutive Made FTs	2	13		

► GILL-CAESAR CAREER STATISTICS

* - Missouri

Year	G-GS	Min.-Avg.	FG-FGA	Pct.	3P-3PA	Pct.	FT-FTA	Pct.	OR	DR	Reb	Avg.	PF-D	AT	TO	BS	ST	Pts	Avg.
14-15*	27-13	647-24.0	84-231	.364	29-94	.309	49-66	.742	20	60	80	3.0	55-1	14	52	2	19	246	9.1
16-17	26-2	320-12.3	28-100	.280	5-36	.139	25-33	.758	15	31	46	1.8	25-0	6	23	2	9	86	3.3
17-18																			
Totals	53-15	967-18.2	112-331	.338	34-130	.262	74-99	.747	35	91	126	2.4	80-1	20	75	4	28	332	6.3

SEASON / CAREER HIGHS

Points

Season
Career 30 at Nevada (1-4-17)

Rebounds

Season
Career 7 vs. San José State (1-10-17)

Assists

Season
Career 9 vs. Savannah State (11-28-16)

Field Goals

Season
Career 12 at Nevada (1-4-17)

Field Goals Attempted

Season
Career 25 at Nevada (1-4-17)

Three-Point Field Goals

Season
Career 7 at Grand Canyon (12-7-16)

Three-Point FG Attempted

Season
Career 12 at Nevada (1-4-17)

Free Throws

Season
Career 10 vs. New Mexico (2-6-16)

Free Throws Attempted

Season
Career 10 vs. New Mexico (2-6-16)

Steals

Season
Career 4 at Wyoming (2-24-16)

Blocked Shots

Season
Career 2 vs. San José State (1-10-17)
2 vs. California (11-21-16)
2 vs. Wyoming (12-30-15)
2 at Utah (11-16-15)

Minutes Played

Season
Career 38 vs. New Mexico (2-6-16)



42 • JEREMY HEMSLEY

GUARD • 6-3 • 200 • JUNIOR - 2L
RANCHO CUCAMONGA, CALIF. (DAMIEN HIGH)

Quick Hits

- * Averaged career highs in scoring, rebounding and assists last season.
- * Enters the season just 145 points shy of reaching the 1,000-point plateau.
- * SDSU is 10-1 when he has at least four assists, 15-5 when he scored at least 15 points and 21-7 when he commits one turnover or less.

2017-18 GAME-BY-GAME STATISTICS

Opponent	GS	FG	3FG	FT	O-D-R	PF	TP	A	TO	B	S	MP
San Diego Christian												
at Arizona State												
McNeese State												
Eastern Illinois												
vs. Sacramento State												
vs. TBD												
vs. TBD												
at San Diego												
Bradley												
California												
Gonzaga												
at Wyoming												
Utah State												
at Colorado State												
San Jose State												
at Boise State												
Fresno State												
at New Mexico												
Colorado State												
at UNLV												
Air Force												
at Fresno State												
at Nevada												
Wyoming												
UNLV												
at Air Force												
at San Jose State												
Boise State												
Nevada												

MISCELLANEOUS STATS / SAN DIEGO STATE RECORD

Category	2017-18 Season		Career Games	Career SDSU W/L
	Games	SDSU W/L		
Double-Figure Scoring	0	0-0	47	32-15
Double-Figure Assists	0	0-0	0	0-0
Double-Doubles	0	0-0	0	0-0
Led SDSU in Scoring	0	0-0	26	16-10
Led SDSU in Rebounding	0	0-0	0	0-0
Led SDSU in Assists	0	0-0	25	16-9
15+ Point Games	0	0-0	20	15-5
5+ Assist Games	0	0-0	8	7-1
One Turnover or Less	0	0-0	29	22-7
Consecutive Games	Current	Long		
Double-Figure Scoring	2	8		
With At Least 1 Assist	4	11		
Played 30 or More Minutes	1	4		
Consecutive Made FTs	0	17		

► HEMSLEY CAREER STATISTICS

Year	G-GS	Min.-Avg.	FG-FGA	Pct.	3P-3PA	Pct.	FT-FTA	Pct.	OR	DR	Reb	Avg.	PF-D	AT	TO	BS	ST	Pts	Avg.	
15-16	37-25	1,014-27.4	147-342	.430	42-118	.356	107-141	.759	19	70	89	2.4	82-3	68	71	12	27	443	12.0	
16-17	32-31	917-28.7	146-352	.415	56-150	.373	64-102	.627	16	62	78	2.4	67-1	66	64	9	20	412	12.9	
17-18																				
Totals	69-56	1,931-28.0	293-694	.422	98-268	.366	171-243	.704	35	132	167	2.4	149-4	134	135	21	47	855	12.4	

SEASON / CAREER HIGHS

Points

Season
Career 15 vs. UC Irvine (11-16-16)

Rebounds

Season
Career 14 at Washington (2-18-16)

Assists

Season
Career 2 vs. Stanford (2-6-16)
2 at Utah (1-27-16)

Field Goals

Season
Career 4 vs. Oregon (2-22-17)
4 vs. Colorado (2-5-17)
4 at Washington State (2-21-16)
4 vs. Stanford (2-6-16)

Field Goals Attempted

Season
Career 8 at Washington State (2-21-16)

Three-Point Field Goals

Season
Career

Three-Point FG Attempted

Season
Career

Free Throws

Season
Career 7 vs. UC Irvine (11-16-16)

Free Throws Attempted

Season
Career 12 vs. UC Irvine (11-16-16)

Steals

Season
Career 2 vs. UC Irvine (11-16-16)

Blocked Shots

Season
Career 4 vs. San Diego State (11-21-16)
4 vs. South Dakota State (11-11-16)

Minutes Played

Season
Career 34 vs. UC Irvine (11-16-16)



45 • KAMERON ROOKS

CENTER • 7-1 • 266 • SENIOR - TR
SAN MARCOS, CALIF. (CALIFORNIA)

Quick Hits

- * Earned his bachelor's degree from California and is a graduate transfer.
- * Is a 54.1-percent shooter for his career.
- * Has previously played against four teams (Arizona State, Fresno State, Nevada, Wyoming) on this season's schedule.

2017-18 GAME-BY-GAME STATISTICS

Opponent	GS	FG	3FG	FT	O-D-R	PF	TP	A	TO	B	S	MP
San Diego Christian												
at Arizona State												
McNeese State												
Eastern Illinois												
vs. Sacramento State												
vs. TBD												
vs. TBD												
at San Diego												
Bradley												
California												
Gonzaga												
at Wyoming												
Utah State												
at Colorado State												
San Jose State												
at Boise State												
Fresno State												
at New Mexico												
Colorado State												
at UNLV												
Air Force												
at Fresno State												
at Nevada												
Wyoming												
UNLV												
at Air Force												
at San Jose State												
Boise State												
Nevada												

MISCELLANEOUS STATS / SAN DIEGO STATE RECORD

Category	2017-18 Season		Career Games	Career SDSU W/L
	Games	SDSU W/L		
Double-Figure Scoring	0	0-0	4	0-0
Double-Figure Rebounds	0	0-0	3	0-0
Double-Doubles	0	0-0	1	0-0
Led SDSU in Scoring	0	0-0	0	0-0
Led SDSU in Rebounding	0	0-0	0	0-0
Led SDSU in Assists	0	0-0	0	0-0
15+ Point Games	0	0-0	1	0-0
One Turnover or Less	0	0-0	52	0-0
Multiple Blocked Shots	0	0-0	16	0-0
Consecutive Games	Current	Long		
Double-Figure Scoring	0	1		
With At Least 1 Blocked Shot	1	4		
With At Least 1 Assist	0	3		
One Turnover or Less	5	11		

► ROOKS CAREER STATISTICS

Year	G-GS	Min.-Avg.	FG-FGA	Pct.	3P-3PA	Pct.	FT-FTA	Pct.	OR	DR	Reb	Avg.	PF-D	AT	TO	BS	ST	Pts	Avg.	
13-14*	26-0	182-7.0	12-28	.429	0-0	.000	9-17	.529	13	28	41	1.6	31-0	4	6	10	3	33	1.3	
15-16*	33-10	566-17.2	47-82	.573	0-0	.000	26-46	.565	63	98	161	4.9	98-6	12	18	28	5	120	3.6	
16-17*	24-10	411-17.1	41-75	.547	0-0	.000	36-60	.600	42	65	107	4.5	60-4	8	20	22	4	118	4.9	
171-8																				
Totals	83-20	1,159-14.0	100-185	.541	0-0	.000	71-123	.577	118	191	309	3.7	189-10	24	44	60	12	271	3.3	

* - California

SAN DIEGO STATE SCHEDULE/RESULTS

Record: 19-14 (Home: 10-4, Away: 4-9, Neutral: 5-1)
 Mountain West: 9-9 (Home: 6-3, Away: 3-6)

SDSU								San Diego State High			
Date	NR	Opponent	SDSU Result	W-L	Record	MW	Scorer	Rebounder	Assists	Attendance	
Nov. 11	rv/rv	SAN DIEGO	W 69-59	W1	1-0		Hemsley - 25	Williams - 5	Hemsley, Kell - 2	12,414 (c)	
Nov. 14	rv/rv	at [14/14] Gonzaga	L 48-69	L1	1-1		Kell, Hemsley - 14	Cheatham, Gill-Caesar - 6	Cheatham, Hemsley - 2	6,000 (c)	
Nov. 16	rv/rv	SAN DIEGO CHRISTIAN	W 81-58	W1	2-1		Hemsley - 23	Allen, Williams - 9	Hemsley - 5	12,414 (c)	
Nov. 21		vs. [rv/rv] California~	W 77-65	W2	3-1		Hemsley - 15	Hoetzel - 7	Hemsley, Kell - 3	10,104	
Nov. 28	rv/--	SAVANNAH STATE	W 100-67	W3	4-1		Cheatham - 18	Cheatham, Hoetzel - 8	Hemsley - 9	12,414 (c)	
Dec. 3	rv/--	at Loyola	L 59-65	L1	4-2		Kell - 16	Pope - 7	Pope - 3	2,189	
Dec. 7		at Grand Canyon	L 72-76	L2	4-3		Hemsley - 28	Cheatham - 12	Pope - 3	7,171	
Dec. 10		ARIZONA STATE	L 63-74	L3	4-4		Kell - 20	Allen - 8	Allen, Cheatham - 2	12,414 (c)	
Dec. 12		ALABAMA STATE	W 73-41	W1	5-4		Pope - 16	Pope - 7	Allen, Cheatham - 3	12,414 (c)	
Dec. 22		vs. Southern Miss#	W 66-51	W2	6-4		Cheatham - 16	Cheatham - 13	Kell - 5	5,942	
Dec. 23		vs. Tulsa#	W 82-63	W3	7-4		Hemsley - 20	Hoetzel - 5	Kell - 4	5,873	
Dec. 25		vs. San Francisco#	W 62-48	W4	8-4		Cheatham - 16	Cheatham - 11	Kell, Williams - 3	6,119	
Jan. 1		NEW MEXICO*	L 62-68	L1	8-5	0-1	Hemsley - 16	Cheatham - 8	Kell - 5	12,414 (c)	
Jan. 4		at Nevada*	L 69-72	L2	8-6	0-2	Hemsley - 30	Cheatham - 8	Cheatham - 6	8,461	
Jan. 7		at Boise State*	L 68-78	L3	8-7	0-3	Allen - 17	Izundu - 8	Kell - 4	4,411	
Jan. 10		SAN JOSE STATE*	W 76-61	W1	9-7	1-3	Hemsley, Hoetzel, Kell - 12	Hoetzel - 9	Hemsley, Kell - 4	12,414 (c)	
Jan. 14		UTAH STATE*	W 74-55	W2	10-7	2-3	Hemsley, Shrigley - 14	Cheatham - 7	Kell - 5	12,414 (c)	
Jan. 17		at UNLV*	W 64-51	W3	11-7	3-3	Kell - 24	Hoetzel, Pope - 5	Williams - 3	10,007	
Jan. 24		at Air Force*	L 67-70	L1	11-8	3-4	Kell - 14	Hoetzel - 8	Cheatham, Hemsley - 3	1,705	
Jan. 28		COLORADO STATE* (:03.8)	L 77-78	L2	11-9	3-5	Pope - 19	Pope - 7	Hemsley - 3	11,881	
Jan. 31		WYOMING*	W 77-68	W1	12-9	4-5	Kell - 18	Pope - 8	Kell, Pope - 3	11,883	
Feb. 4		at Fresno State*	W 70-67	W2	13-9	5-5	Kell - 22	Kell, Pope - 7	Pope - 3	8,882	
Feb. 7		at San José State*	L 71-76	L1	13-10	5-6	Hemsley, Kell - 13	Kell - 9	Kell - 3	3,107	
Feb. 12		NEVADA*	W 70-56	W1	14-10	6-6	Kell - 17	Pope - 10	Hemsley - 3	11,697	
Feb. 15		at Utah State*	W 66-62	W2	15-10	7-6	Kell - 21	Kell - 7	Kell - 3	6,427	
Feb. 19		UNLV*	W 77-64	W3	16-10	8-6	Pope - 17	Pope - 9	Kell - 7	11,896	
Feb. 22		FRESNO STATE*	L 55-63	L1	16-11	8-7	Allen, Hemsley - 13	Pope - 6	Hemsley, Kell - 2	12,029	
Feb. 25		at Colorado State* (:04.1)	L 55-56	L2	16-12	8-8	Allen - 12	Cheatham - 9	Allen, Hemsley, Kell - 2	7,856	
Mar. 1		AIR FORCE*	W 51-38	W1	17-12	9-8	Pope - 11	Kell - 12	Kell - 4	12,044	
Mar. 4		at New Mexico*	L 59-64	L1	17-13	9-9	Cheatham - 13	Kell - 9	Cheatham, Hemsley - 2	13,958	
Mar. 8		at [11] UNLV* (MW-Opening Round)	W-ot 62-52	W1	18-13		Kell, Pope - 13	Pope - 12	Kell, Williams - 3	4,979	
Mar. 9		vs. [3] Boise State* (MW-Quarterfinals)	W 87-68	W2	19-13		Pope - 22	Pope - 10	Kell - 5	5,057	
Mar. 10		vs. [2] Colorado State* (MW-Semifinals)	L 63-71	L1	19-14		Pope - 18	Allen, Cheatham, Pope - 5	Kell - 3	6,211	

Caps denotes home game. ~ - Golden 1 Center (Sacramento, Calif.). # - Hawaiian Airlines Diamond Head Classic (Stan Sheriff Center; Honolulu, Hawaii). * - Mountain West Game. ` - Mountain West Men's Basketball Championship (Thomas & Mack Center; Las Vegas, Nevada). c - Capacity crowd. SDSU NR - San Diego State national ranking (Associated Press and USA Today coaches polls at game time). Time to the right of opponent name indicates time remaining on a game-winning shot.

Record/Attendance Summary

	G	W-L	Total	Average	High
Home	14	10-4	170,142	12,196	12,414 - eight times
Mountain West	9	6-3	108,672	12,075	12,414 - three times
Away	13	4-9	85,153	6,550	13,958 at New Mexico (Mar. 4)
Mountain West	8	3-5	64,814	7,202	13,958 at New Mexico (Mar. 4)
Neutral	6	5-1	34,249	5,708	10,104 vs. California (Nov. 21)
Total	33	19-14	290,144	8,792	13,958 at New Mexico (Mar. 4)
Mountain West	18	9-9	173,486	9,638	13,958 at New Mexico (Mar. 4)

Win/Loss Margin

	1	2	3	4	5	6	7	8	9	10	11	12	13	14	15	16	17	19	20	21	23	32	33	=<3	=<5	=<10	
Win			1	1					1	2		1	3	2	2			3			1	1	1	1	1	2	5
Loss	2		2	1	2	2		2			1	1									1				4	7	11

SEASON STATS

Record: 19-14 (Home: 10-4, Away: 4-9, Neutral: 5-1)

No.	Player	GP	GS	Min	Avg	TOTAL			3-PTS			REBOUNDS																
						FG	FGA	Pct	3FG	FGA	Pct	FT	FTA	Pct	Off	Def	Tot	Avg	PF	FO	A	TO	Blk	Stl	Pts	Avg		
03	KELL, Trey	33	32	1050	31.8	143	381	.375	38	142	.268	111	145	.766	17	145	162	4.9	56	2	96	57	14	45	435	13.2		
42	HEMSLEY, Jeremy	32	31	917	28.7	146	352	.415	56	150	.373	64	102	.627	16	62	78	2.4	67	1	66	64	9	20	412	12.9		
14	CHEATHAM, Zylan	31	22	726	23.4	95	183	.519	2	12	.167	90	119	.756	69	125	194	6.3	83	2	43	60	18	33	282	9.1		
04	ALLEN, Dakarai	33	33	932	28.2	102	194	.526	13	47	.277	56	86	.651	42	96	138	4.2	97	5	47	52	28	44	273	8.3		
21	POPE, Malik	24	21	621	25.9	96	212	.453	20	51	.392	52	74	.703	42	105	147	6.1	52	1	36	34	23	18	264	11.0		
30	HOETZEL, Max	29	10	556	19.2	68	187	.364	52	150	.347	34	42	.810	31	80	111	3.8	50	2	12	25	7	17	222	7.7		
20	SHRIGLEY, Matt	29	4	591	20.4	48	149	.322	43	132	.326	12	19	.632	13	47	60	2.1	36	0	19	16	9	19	151	5.2		
23	GILL-CAESAR, Montagu	26	2	320	12.3	28	100	.280	5	36	.139	25	33	.758	15	31	46	1.8	25	0	6	23	2	9	86	3.3		
45	IZUNDU, Valentine	30	9	508	16.9	32	52	.615	0	0	.000	12	30	.400	52	48	100	3.3	68	2	4	16	53	5	76	2.5		
11	WILLIAMS, D'Erryl	28	1	331	11.8	18	46	.391	3	9	.333	6	11	.545	11	41	52	1.9	26	0	31	19	0	14	45	1.6		
24	NARAIN, Nolan	9	0	55	6.1	6	18	.333	1	4	.250	0	0	.000	2	7	9	1.0	9	0	0	3	0	1	13	1.4		
12	WILSON, Emmanuel	4	0	18	4.5	0	4	.000	0	3	.000	1	2	.500	0	1	1	0.3	3	0	0	4	1	2	1	0.3		
TEAM														40	61	101	3.1	0					14					0
SAN DIEGO STATE		33				782	1878	.416	233	736	.317	463	663	.698	350	849	1199	36.3	572	15	360	387	164	227	2260	68.5		
OPPONENTS		33				715	1845	.388	219	676	.324	415	587	.707	342	815	1157	35.1	628	-	366	424	116	175	2064	62.5		

SCORE BY PERIODS:	1st	2nd	OT	2OT	Total
SAN DIEGO STATE	1,121	1,127	12		- 2,260
OPPONENTS	942	1,120	2		- 2,064

Mountain West: 9-9 (Home: 6-3, Away: 3-6)

No.	Player	GP	GS	Min	Avg	TOTAL			3-PTS			REBOUNDS																
						FG	FGA	Pct	3FG	FGA	Pct	FT	FTA	Pct	Off	Def	Tot	Avg	PF	FO	A	TO	Blk	Stl	Pts	Avg		
03	KELL, Trey	18	17	569	31.6	76	204	.373	18	71	.254	60	84	.714	9	86	95	5.3	37	2	51	35	7	19	230	12.8		
42	HEMSLEY, Jeremy	18	17	513	28.5	73	200	.365	23	87	.264	36	56	.643	9	31	40	2.2	33	0	35	35	3	11	205	11.4		
04	ALLEN, Dakarai	18	18	524	29.1	63	107	.589	8	22	.364	32	46	.696	27	46	73	4.1	57	4	23	33	14	24	166	9.2		
21	POPE, Malik	14	11	370	26.4	53	120	.442	12	30	.400	31	43	.721	20	67	87	6.2	33	0	20	20	13	10	149	10.6		
10	HOETZEL, Max	17	8	355	20.9	39	104	.375	31	84	.369	18	23	.783	21	46	67	3.9	34	2	9	17	4	13	127	7.5		
14	CHEATHAM, Zylan	16	10	339	21.2	41	86	.477	0	6	.000	36	50	.720	33	64	97	6.1	48	1	25	33	8	19	118	7.4		
20	SHRIGLEY, Matt	16	3	346	21.6	26	89	.292	24	81	.296	11	17	.647	3	24	27	1.7	20	0	11	7	4	10	87	5.4		
45	IZUNDU, Valentine	16	5	275	17.2	21	29	.724	0	0	.000	8	18	.444	28	30	58	3.6	41	1	2	7	32	2	50	3.1		
23	GILL-CAESAR, Montagu	13	0	136	10.5	14	48	.292	0	17	.000	11	16	.688	11	11	22	1.7	12	0	2	9	2	5	39	3.0		
11	WILLIAMS, D'Erryl	17	1	157	9.2	8	23	.348	1	5	.200	2	4	.500	7	15	22	1.3	13	0	11	7	0	9	19	1.1		
24	NARAIN, Nolan	3	0	14	4.7	2	4	.500	1	2	.500	0	0	.000	1	4	5	1.7	4	0	0	1	0	1	5	1.7		
12	WILSON, Emmanuel	1	0	2	2.0	0	0	.000	0	0	.000	1	2	.500	0	0	0	0.0	0	0	0	0	0	0	1	1.0		
TEAM														19	29	48	2.7	0					7					0
SAN DIEGO STATE		18				416	1014	.410	118	405	.291	246	359	.685	188	453	641	35.6	332	10	189	211	87	123	1196	66.4		
OPPONENTS		18				387	1005	.385	110	349	.315	253	350	.723	204	446	650	36.1	338	-	214	222	63	89	1137	63.2		

SCORE BY PERIODS:	1st	2nd	OT	2OT	Total
SAN DIEGO STATE	591	605			- 1,196
OPPONENTS	492	645			- 1,137

HOME/AWAY STATS

Home: 10-4

No.	Player	GP	GS	Min	Avg	TOTAL			3-PTS			REBOUNDS			PF	FO	A	TO	Blk	Stl	Pts	Avg						
						FG	FGA	Pct	3FG	FGA	Pct	FT	FTA	Pct									Off	Def	Tot	Avg		
03	KELL, Trey	14	13	442	31.6	61	149	.409	16	59	.271	48	64	.750	5	57	62	4.4	21	0	49	28	7	17	186	13.3		
42	HEMSLEY, Jeremy	13	12	383	29.5	63	139	.453	20	57	.351	35	55	.636	6	26	32	2.5	27	0	35	21	4	13	181	13.9		
21	POPE, Malik	10	9	268	26.8	45	86	.523	6	18	.333	28	41	.683	12	56	68	6.8	20	0	15	14	9	7	124	12.4		
04	ALLEN, Dakarai	14	14	379	27.1	49	86	.570	4	20	.200	18	31	.581	18	39	57	4.1	43	2	22	24	12	25	120	8.6		
14	CHEATHAM, Zylan	12	10	301	25.1	39	72	.542	0	3	.000	27	40	.675	26	50	76	6.3	33	1	19	27	8	20	105	8.8		
10	HOETZEL, Max	12	4	230	19.2	28	77	.364	20	62	.323	23	27	.852	16	33	49	4.1	29	2	4	11	3	5	99	8.3		
20	SHRIGLEY, Matt	11	2	226	20.5	23	65	.354	20	56	.357	10	15	.667	3	19	22	2.0	8	0	10	8	2	10	76	6.9		
23	GILL-CAESAR, Montagu	12	2	167	13.9	17	57	.298	3	24	.125	15	16	.938	8	16	24	2.0	10	0	4	11	1	7	52	4.3		
45	IZUNDU, Valentine	13	3	194	14.9	16	24	.667	0	0	.000	3	8	.375	21	23	44	3.4	20	0	1	6	21	3	35	2.7		
11	WILLIAMS, D'Erryl	13	1	160	12.3	8	20	.400	1	3	.333	1	2	.500	5	22	27	2.1	16	0	15	6	0	7	18	1.4		
24	NARAIN, Nolan	6	0	32	5.3	4	12	.333	0	2	.000	0	0	.000	1	4	5	0.8	4	0	0	2	0	0	8	1.3		
12	WILSON, Emmanuel	4	0	18	4.5	0	4	.000	0	3	.000	1	2	.500	0	1	1	0.3	3	0	0	4	1	2	1	0.3		
TEAM														16	23	39	2.8	0					4					0
SAN DIEGO STATE		14				353	791	.446	90	307	.293	209	301	.694	137	369	506	36.1	234	5	174	166	68	116	1005	71.8		
OPPONENTS		14				295	798	.370	100	302	.331	160	222	.721	151	324	475	33.9	285	-	156	200	39	71	850	60.7		

SCORE BY PERIODS:	1st	2nd	OT	2OT	Total
SAN DIEGO STATE	518	487			- 1,005
OPPONENTS	364	486			- 850

Road/Neutral: 9-10 (Away: 4-9, Neutral: 5-1)

No.	Player	GP	GS	Min	Avg	TOTAL			3-PTS			REBOUNDS			PF	FO	A	TO	Blk	Stl	Pts	Avg						
						FG	FGA	Pct	3FG	FGA	Pct	FT	FTA	Pct									Off	Def	Tot	Avg		
03	KELL, Trey	19	19	608	32.0	82	232	.353	22	83	.265	63	81	.778	12	88	100	5.3	35	2	47	29	7	28	249	13.1		
42	HEMSLEY, Jeremy	19	19	534	28.1	83	213	.390	36	93	.387	29	47	.617	10	36	46	2.4	40	1	31	43	5	7	231	12.2		
14	CHEATHAM, Zylan	19	12	425	22.4	56	111	.505	2	9	.222	63	79	.797	43	75	118	6.2	50	1	24	33	10	13	177	9.3		
04	ALLEN, Dakarai	19	19	553	29.1	53	108	.491	9	27	.333	38	55	.691	24	57	81	4.3	54	3	25	28	16	19	153	8.1		
21	POPE, Malik	14	12	353	25.2	51	126	.405	14	33	.424	24	33	.727	30	49	79	5.6	32	1	21	20	14	11	140	10.0		
30	HOETZEL, Max	17	6	326	19.2	40	110	.364	32	88	.364	11	15	.733	15	47	62	3.6	21	0	8	14	4	12	123	7.2		
20	SHRIGLEY, Matt	18	2	365	20.3	25	84	.298	23	76	.303	2	4	.500	10	28	38	2.1	28	0	9	8	7	9	75	4.2		
30	IZUNDU, Valentine	17	6	314	18.5	16	28	.571	0	0	.000	9	22	.409	31	25	56	3.3	48	2	3	10	32	2	41	2.4		
23	GILL-CAESAR, Montagu	14	0	153	10.9	11	43	.256	2	12	.167	10	17	.588	7	15	22	1.6	15	0	2	12	1	2	34	2.4		
11	WILLIAMS, D'Erryl	15	0	171	11.4	10	26	.385	2	6	.333	5	9	.556	6	19	25	1.7	10	0	16	13	0	7	27	1.8		
24	NARAIN, Nolan	3	0	23	7.7	2	6	.333	1	2	.500	0	0	.000	1	3	4	1.3	5	0	0	1	0	1	5	1.7		
TEAM														24	38	62	3.3	0					10					0
SAN DIEGO STATE		19				429	1087	.395	143	429	.333	254	362	.702	213	480	693	36.5	338	10	186	221	96	111	1255	66.1		
OPPONENTS		19				420	1047	.401	119	374	.318	255	365	.699	191	491	682	35.9	343	-	210	224	77	104	1214	63.9		

SCORE BY PERIODS:	1st	2nd	OT	2OT	Total
SAN DIEGO STATE	603	640	12		- 1,255
OPPONENTS	578	634	2		- 1,214

WIN/LOSS STATS

Wins: 19

No.	Player	GP	GS	Min	Avg	TOTAL			3-PTS			REBOUNDS			PF	FO	A	TO	Blk	Stl	Pts	Avg								
						FG	FGA	Pct	3FG	FGA	Pct	FT	FTA	Pct									Off	Def	Tot	Avg				
03	KELL, Trey	19	18	602	31.7	90	211	.427	23	75	.307	67	85	.788	8	89	97	5.1	26	0	68	33	11	23	270	14.2				
42	HEMSLEY, Jeremy	18	17	492	27.3	77	178	.433	29	70	.414	40	62	.645	7	36	43	2.4	41	1	40	34	9	13	223	12.4				
14	CHEATHAM, Zylan	18	13	428	23.8	59	103	.573	2	7	.286	60	80	.750	35	77	112	6.2	43	0	19	28	13	21	180	10.0				
21	POPE, Malik	14	12	369	26.4	61	125	.488	10	28	.357	33	48	.688	27	73	100	7.1	31	1	21	21	15	9	165	11.8				
04	ALLEN, Dakarai	19	19	506	26.6	56	110	.509	8	30	.267	29	48	.604	19	49	68	3.6	51	1	30	29	15	23	149	7.8				
20	SHRIGLEY, Matt	17	3	364	21.4	39	98	.398	35	86	.407	11	17	.647	6	30	36	2.1	22	0	15	9	8	16	124	7.3				
30	HOETZEL, Max	17	5	307	18.1	36	99	.364	25	82	.305	23	27	.852	14	52	66	3.9	29	1	6	11	4	11	120	7.1				
23	GILL-CAESAR, Montagu	15	2	190	12.7	20	65	.308	4	22	.182	17	19	.895	7	19	26	1.7	15	0	3	13	1	9	61	4.1				
45	IZUNDU, Valentine	17	5	256	15.1	18	28	.643	0	0	.000	6	14	.429	28	27	55	3.2	40	2	2	7	31	4	42	2.5				
11	WILLIAMS, D'Erryl	18	1	249	13.8	15	34	.441	1	5	.200	5	9	.556	9	32	41	2.3	17	0	29	15	0	10	36	2.0				
24	NARAIN, Nolan	7	0	44	6.3	6	14	.429	1	2	.500	0	0	.000	2	6	8	1.1	8	0	0	3	0	1	13	1.9				
12	WILSON, Emmanuel	4	0	18	4.5	0	4	.000	0	3	.000	1	2	.500	0	1	1	0.3	3	0	0	4	1	2	1	0.3				
TEAM														19	32	51	2.7	0							10	0				
SAN DIEGO STATE		19				477	1069	.446	138	410	.337	292	411	.710	181	523	704	37.1	326	6	233	217	108	142	1384	72.8				
OPPONENTS		19				381	1061	.359	119	397	.300	213	308	.692	185	450	635	33.4	387	-	190	274	56	90	1094	57.6				

SCORE BY PERIODS:	1st	2nd	OT	2OT	Total
SAN DIEGO STATE	693	679	12		- 1,384
OPPONENTS	526	566	2		- 1,094

Losses: 14

No.	Player	GP	GS	Min	Avg	TOTAL			3-PTS			REBOUNDS			PF	FO	A	TO	Blk	Stl	Pts	Avg								
						FG	FGA	Pct	3FG	FGA	Pct	FT	FTA	Pct									Off	Def	Tot	Avg				
42	HEMSLEY, Jeremy	14	14	425	30.4	69	174	.397	27	80	.338	24	40	.600	9	26	35	2.5	26	0	26	30	0	7	189	13.5				
03	KELL, Trey	14	14	448	32.0	53	170	.312	15	67	.224	44	60	.733	9	56	65	4.6	30	2	28	24	3	22	165	11.8				
04	ALLEN, Dakarai	14	14	426	30.4	46	84	.548	5	17	.294	27	38	.711	23	47	70	5.0	46	4	17	23	13	21	124	8.9				
14	CHEATHAM, Zylan	13	9	298	22.9	36	80	.450	0	5	.000	30	39	.769	34	48	82	6.3	40	2	24	32	5	12	102	7.8				
10	HOETZEL, Max	12	5	249	20.8	32	88	.364	27	68	.397	11	15	.733	17	28	45	3.8	21	1	6	14	3	6	102	8.5				
21	POPE, Malik	10	9	252	25.2	35	87	.402	10	23	.435	19	26	.731	15	32	47	4.7	21	0	15	13	8	9	99	9.9				
30	IZUNDU, Valentine	13	4	252	19.4	14	24	.583	0	0	.000	6	16	.375	24	21	45	3.5	28	0	2	9	22	1	34	2.6				
20	SHRIGLEY, Matt	12	1	227	18.9	9	51	.176	8	46	.174	1	2	.500	7	17	24	2.0	14	0	4	7	1	3	27	2.3				
23	GILL-CAESAR, Montagu	11	0	130	11.8	8	35	.229	1	14	.071	8	14	.571	8	12	20	1.8	10	0	3	10	1	0	25	2.3				
11	WILLIAMS, D'Erryl	10	0	82	8.2	3	12	.250	2	4	.500	1	2	.500	2	9	11	1.1	9	0	2	4	0	4	9	0.9				
24	NARAIN, Nolan	2	0	11	5.5	0	4	.000	0	2	.000	0	0	.000	0	1	1	0.5	1	0	0	0	0	0	0	0.0				
TEAM														21	29	50	3.6	0							4	0				
SAN DIEGO STATE		14				305	809	.377	95	326	.291	171	252	.679	169	326	495	35.4	246	9	127	170	56	85	876	62.6				
OPPONENTS		14				334	784	.426	100	279	.358	202	279	.724	157	365	522	37.3	241	-	176	150	60	85	970	69.3				

SCORE BY PERIODS:	1st	2nd	OT	2OT	Total
SAN DIEGO STATE	428	448			- 876
OPPONENTS	416	554			- 970

MOUNTAIN WEST TOURNAMENT

2016-17 Record: 2-1 (Away: 1-0, Neutral: 1-1)

No.	Player	GP	GS	Min	Avg	TOTAL			3-PTS			REBOUNDS			PF	FO	A	TO	Blk	Stl	Pts	Avg				
						FG	FGA	Pct	3FG	FGA	Pct	FT	FTA	Pct									Off	Def	Tot	Avg
21	POPE, Malik	3	3	88	29.3	18	38	.474	4	6	.667	13	16	.813	13	14	27	9.0	6	0	6	1	3	3	53	17.7
03	KELL, Trey	3	3	108	36.0	10	38	.263	3	10	.300	15	18	.833	1	16	17	5.7	6	0	11	5	3	6	38	12.7
42	HEMSLEY, Jeremy	3	3	81	27.0	12	28	.429	4	12	.333	1	6	.167	0	7	7	2.3	10	1	5	8	0	1	29	9.7
10	HOETZEL, Max	3	0	47	15.7	8	15	.533	6	13	.462	4	5	.800	2	4	6	2.0	2	0	0	2	0	0	26	8.7
14	CHEATHAM, Zylan	3	0	54	18.0	8	13	.615	0	0	.000	7	9	.778	8	7	15	5.0	6	0	1	5	2	0	23	7.7
04	ALLEN, Dakarai	3	3	103	34.3	5	15	.333	1	3	.333	5	12	.417	3	11	14	4.7	9	1	4	8	3	5	16	5.3
45	IZUNDU, Valentine	3	3	61	20.3	5	8	.625	0	0	.000	2	3	.667	5	2	7	2.3	6	0	0	2	10	0	12	4.0
11	WILLIAMS, D'Erryl	3	0	33	11.0	3	8	.375	0	1	.000	4	5	.800	0	3	3	1.0	3	0	5	2	0	1	10	3.3
20	SHRIGLEY, Matt	3	0	43	14.3	2	5	.400	1	3	.333	0	0	.000	3	3	6	2.0	6	0	2	3	0	2	5	1.7
23	GILL-CAESAR, Montagu	1	0	7	7.0	0	2	.000	0	0	.000	0	0	.000	0	1	1	1.0	0	0	0	0	0	0	0	0.0
TEAM														2	8	10	3.3	0				2				0
SAN DIEGO STATE		3				71	170	.418	19	48	.396	51	74	.689	37	76	113	37.7	54	2	34	38	21	18	212	70.7
OPPONENTS		3				63	155	.406	20	57	.351	45	60	.750	19	70	89	29.7	59	-	25	37	8	20	191	63.7

SCORE BY PERIODS:	1st	2nd	OT	2OT	Total
SAN DIEGO STATE	92	108	12		- 212
OPPONENTS	99	90	2		- 191

HAWAIIAN AIRLINES DIAMOND HEAD TOURNAMENT

Record: 3-0

No.	Player	GP	GS	Min	Avg	TOTAL			3-PTS			REBOUNDS			PF	FO	A	TO	Blk	Stl	Pts	Avg				
						FG	FGA	Pct	3FG	FGA	Pct	FT	FTA	Pct									Off	Def	Tot	Avg
14	CHEATHAM, Zylan	3	3	89	29.7	14	21	.667	1	1	1.000	18	21	.857	7	21	28	9.3	3	0	4	4	1	4	47	15.7
42	HEMSLEY, Jeremy	3	3	80	26.7	15	29	.517	8	16	.500	3	6	.500	3	3	6	2.0	7	0	4	8	2	3	41	13.7
03	KELL, Trey	3	3	87	29.0	14	29	.483	5	17	.294	7	7	1.000	1	10	11	3.7	3	0	12	3	1	5	40	13.3
04	ALLEN, Dakarai	3	3	72	24.0	8	19	.421	2	8	.250	3	3	1.000	2	6	8	2.7	8	0	5	3	1	1	21	7.0
20	SHRIGLEY, Matt	3	0	71	23.7	7	17	.412	7	15	.467	0	0	.000	2	6	8	2.7	5	0	2	1	4	3	21	7.0
10	HOETZEL, Max	3	2	55	18.3	6	23	.261	3	19	.158	1	2	.500	0	12	12	4.0	5	0	1	1	0	1	16	5.3
23	GILL-CAESAR, Montagu	3	0	39	13.0	2	9	.222	1	3	.333	4	4	1.000	0	3	3	1.0	4	0	1	3	0	2	9	3.0
21	POPE, Malik	1	1	24	24.0	3	7	.429	2	5	.400	1	2	.500	2	2	4	4.0	2	0	0	1	3	0	9	9.0
11	WILLIAMS, D'Erryl	3	0	50	16.7	3	6	.500	0	1	.000	0	2	.000	2	7	9	3.0	0	0	6	6	0	0	6	2.0
45	IZUNDU, Valentine	3	0	32	10.7	0	1	.000	0	0	.000	0	1	.000	3	2	5	1.7	11	1	1	1	0	2	0	0.0
24	NARAIN, Nolan	1	0	1	1.0	0	0	.000	0	0	.000	0	0	.000	0	1	1	1.0	1	0	0	1	0	0	0	0.0
TEAM														1	3	4	1.3	0				1				0
SAN DIEGO STATE		3				72	161	.447	29	85	.341	37	48	.771	23	76	99	33.0	49	1	36	33	12	21	210	70.0
OPPONENTS		3				59	157	.376	17	62	.274	27	40	.675	22	67	89	29.7	54	-	21	43	6	14	162	54.0

SCORE BY PERIODS:	1st	2nd	OT	2OT	Total
SAN DIEGO STATE	109	101			- 210
OPPONENTS	85	77			- 162

TEAM GAME-BY-GAME

Opponent	Site/Date	FG-FGA	Pct	3P-3PA	Pct	FT-FTA	Pct	Off-Def	Tot	PF	AT	TO	BS	ST	1st-2nd	Pts
at [rv/rv] SDSU San Diego	H 11/11	23-51 24-49	.451 .490	7-17 6-15	.412 .400	16-22 5-10	.727 .500	10-21 7-21	31 28	17 23	7 10	7 14	4 2	10 0	35-34 33-26	69 59
[rv/rv] SDSU at [14/14] Gonzaga	A 11/14	16-56 26-66	.286 .394	5-21 8-24	.238 .333	11-14 9-14	.786 .643	7-33 10-35	40 45	12 17	5 16	15 7	5 8	5 13	21-27 36-33	48 69
at [rv/rv] SDSU San Diego Christian	H 11/16	32-57 20-62	.561 .379	4-12 11-29	.333 .379	13-21 7-8	.619 .875	3-34 8-26	37 34	13 20	18 12	13 17	8 2	8 6	37-44 23-35	81 58
SDSU vs. [rv/rv] California	N 11/21	24-65 17-53	.369 .321	7-19 5-14	.368 .357	22-31 26-36	.710 .722	12-25 15-35	37 50	24 26	8 7	5 16	4 9	5 2	42-35 25-40	77 65
[rv/-] SDSU Savannah State	H 11/28	35-83 24-75	.422 .320	14-40 10-38	.350 .263	16-21 9-17	.762 .529	16-39 15-33	55 48	15 19	22 12	10 17	7 3	6 3	60-40 32-35	100 67
[rv/-] SDSU at Loyola	A 12/3	23-57 27-53	.404 .509	11-26 7-20	.423 .350	2-3 4-10	.667 .400	13-24 4-24	37 28	13 11	8 12	12 7	3 5	4 7	33-26 35-30	59 65
SDSU at Grand Canyon	A 12/7	24-62 29-56	.387 .518	8-23 8-17	.348 .471	16-26 10-16	.615 .625	20-21 9-24	41 33	16 23	9 17	11 11	3 4	6 8	27-45 35-41	72 76
at SDSU Arizona State	H 12/10	21-57 24-54	.368 .444	6-24 10-23	.250 .435	15-18 16-18	.833 .889	12-18 13-21	30 34	17 16	9 12	17 18	3 6	12 7	32-31 25-49	63 74
at SDSU Alabama State	H 12/12	25-45 15-60	.556 .250	5-16 7-28	.313 .250	18-26 4-8	.692 .500	9-29 16-13	38 29	10 22	15 8	15 15	7 0	9 6	42-31 22-19	73 41
SDSU vs. Southern Miss	N 12/22	22-50 19-57	.440 .333	7-26 8-23	.269 .348	15-18 5-6	.833 .833	7-32 6-20	39 26	14 19	10 11	12 9	6 2	1 3	36-30 20-31	66 51
SDSU vs. Tulsa	N 12/23	27-59 21-49	.458 .429	13-32 5-19	.406 .263	15-22 16-21	.682 .762	9-15 11-26	24 37	20 20	15 5	8 23	3 2	16 3	41-41 37-26	82 63
SDSU vs. San Francisco	N 12/25	23-52 19-51	.442 .373	9-27 4-20	.333 .200	7-8 6-13	.875 .462	7-29 5-21	36 26	15 15	11 5	13 11	3 2	4 8	32-30 28-20	62 48
at SDSU New Mexico	H 1/1	22-53 21-51	.415 .412	5-23 6-12	.217 .500	13-18 20-26	.722 .769	8-19 11-27	27 38	18 17	12 13	16 16	4 4	13 6	36-26 25-43	62 68
SDSU at Nevada	A 1/4	26-67 26-65	.388 .400	13-35 9-28	.371 .321	4-6 11-16	.667 .688	8-26 14-32	34 46	16 12	15 14	7 8	3 6	4 3	31-38 35-37	69 62
SDSU at Boise State	A 1/7	21-52 26-58	.404 .448	6-18 10-28	.333 .357	18-25 16-23	.720 .696	12-22 15-23	34 38	23 19	8 15	15 11	4 3	5 2	35-31 39-39	66 78
at SDSU San José State	H 1/10	25-52 25-66	.481 .379	8-23 3-20	.348 .150	18-26 8-12	.692 .667	7-35 7-23	42 30	18 22	17 13	18 15	8 4	6 7	42-34 23-38	76 61
at SDSU Utah State	H 1/14	28-49 19-50	.571 .380	10-24 7-16	.417 .438	8-13 10-14	.615 .714	5-23 8-18	28 26	16 16	14 8	11 13	4 0	6 4	41-33 34-21	74 55
SDSU at UNLV	A 1/17	22-53 20-56	.415 .357	6-18 3-13	.333 .231	14-15 8-12	.933 .667	10-26 13-22	36 35	17 16	7 8	10 12	8 6	8 4	34-30 31-20	64 51
SDSU at Air Force	A 1/24	21-56 20-52	.375 .385	8-29 6-18	.276 .333	7-12 14-23	.583 .609	10-27 11-27	37 38	21 12	12 12	14 11	4 4	5 4	34-23 24-36	57 60
at SDSU Colorado State	H 1/28	26-58 28-61	.448 .459	6-22 10-18	.273 .556	19-28 12-14	.679 .857	14-21 13-20	35 33	15 22	9 11	5 7	2 3	4 2	33-44 23-55	77 78
at SDSU Wyoming	H 1/31	22-56 22-60	.393 .367	5-21 8-26	.238 .308	28-39 16-24	.718 .667	12-28 14-26	40 40	26 30	11 13	13 17	6 2	14 4	31-46 27-41	77 68
SDSU at Fresno State	A 2/4	23-52 22-54	.442 .407	5-18 7-18	.278 .389	19-24 16-21	.792 .762	10-21 13-22	31 35	16 22	8 11	15 14	7 3	6 6	27-43 26-41	70 67
SDSU at San José State	A 2/7	25-57 25-67	.439 .373	3-13 7-24	.231 .292	23-26 14-21	.885 .667	9-24 17-23	33 40	19 20	15 10	10 15	2 7	6 4	29-42 33-43	71 76
at SDSU Nevada	H 2/12	30-62 20-67	.484 .299	4-18 5-23	.222 .217	6-11 11-17	.545 .647	10-31 17-21	41 38	16 17	11 10	13 13	5 5	9 10	42-28 28-28	70 56
SDSU at Utah State	A 2/15	23-56 22-52	.411 .423	8-22 6-20	.364 .300	12-19 12-19	.632 .632	7-26 7-29	33 36	17 14	11 17	9 15	4 3	8 4	32-34 29-33	66 62
at SDSU UNLV	H 2/19	29-57 20-48	.509 .417	8-21 8-18	.381 .444	11-17 16-19	.647 .842	8-23 5-22	31 27	19 20	13 13	9 14	2 2	8 5	41-36 26-38	77 64

TEAM GAME-BY-GAME

Opponent	Site/Date	FG-FGA	Pct	3P-3PA	Pct	FT-FTA	Pct	Off-Def	Tot	PF	AT	TO	BS	ST	1st-2nd	Pts
at SDSU	H	18-52	.346	4-19	.211	15-22	.682	9-18	27	16	7	10	5	4	24-31	55
Fresno State	2/22	22-51	.431	6-15	.400	13-19	.684	12-25	37	21	11	9	4	6	30-33	63
SDSU	A	21-59	.356	7-22	.318	6-7	.857	14-23	37	16	6	9	5	4	33-22	55
at Colorado State	2/25	19-60	.317	7-30	.233	11-15	.733	20-25	45	11	9	10	6	4	21-35	56
at SDSU	H	17-59	.288	4-27	.148	13-19	.684	14-30	44	18	9	9	3	7	22-29	51
Air Force	3/1	11-44	.250	3-21	.143	13-16	.813	5-28	33	20	10	15	2	5	13-25	38
SDSU	A	17-54	.315	4-21	.190	21-37	.568	13-31	44	24	9	13	6	8	24-35	59
at New Mexico	3/4	19-53	.358	3-12	.250	23-34	.676	10-32	42	28	11	12	4	7	25-39	64
[6] SDSU	A - MW, OR	18-58	.310	5-15	.333	21-26	.808	12-32	44	20	11	17	10	8	14-36-12	62
at [11] UNLV	3/8	18-57	.316	4-16	.250	12-18	.667	8-26	34	20	7	12	5	7	32-18-2	52
[6] SDSU	N - MW, QF	29-53	.547	9-14	.643	20-33	.606	13-24	37	16	15	10	9	3	42-45	87
vs. [3] Boise State	3/9	23-51	.451	9-20	.450	13-16	.813	5-18	23	26	10	12	2	3	37-31	68
[6] SDSU	N - MW, SF	24-59	.407	5-19	.263	10-15	.667	12-20	32	19	8	11	2	7	36-27	63
vs. [2] Colorado State	3/10	22-47	.468	7-21	.333	20-25	.800	6-26	32	13	8	13	1	10	30-41	71

LONGEST RUNS (most consecutive points scored by SDSU)

Runs of 10-0 or More: Season: 23 / Mountain West: 10
 Home: 12, Away: 7, Neutral 4
 Current Consecutive Game Streak: 1

Record in Games with at Least 1 10-0 Run: 12-6 (Home: 7-2, Away: 2-3, Neutral: 3-1)
 Record in Games with at Least 2 10-0 Runs: 4-0
 Record in Games with at Least 3 10-0 Runs: 1-0

Streak: Lost 1

Points	Opponent	Date	Outcome	Half	Started	Elapsed	Scoring	FG	3FG	FT	
15	Air Force*	3-1-17	W	51-38	1st	9:19	8:40	Pope 7, Hoetzel 3, Allen 2, Cheatham 2, Kell	4-14	1-8	6-8
15	vs. Southern Mississippi (DH-QF)	12-22-16	W	66-51	1st	19:02	5:21	Allen 7, Pope 3, Shrigley 3, Kell 2	6-12	3-7	0-0
14	at UNLV (MW-OR)	3-8-17	W-at	62-52	2nd	17:27	3:38	Hemsley 6, Kell 6, Pope 2	5-6	2-2	2-4
14	San Jose State*	1-10-17	W	76-61	1st	9:23	3:55	Gill-Caesar 4, Hoetzel 3, Shrigley 3, Cheatham 2, Kell 2	4-7	2-5	4-6
13	Colorado State*	1-28-17	L	77-78	1st+	4:13	4:21	Allen 7, Hemsley 2, Hoetzel 2, Kell 2	6-9	0-1	1-1
13	San Diego	11-11-16	W	69-59	2nd	15:06	7:56	Kell 6, Hemsley 4, Williams 3	6-14	1-4	0-0
13	San Diego	11-11-16	W	69-59	1st	5:02	4:21	Kell 7, Hemsley 6	4-5	2-2	3-7
12	at UNLV (MW-OR)	3-8-17	W-at	62-52	OT	4:41	3:56	Kell 7, Allen 3, Pope 2	3-4	1-2	5-6
12	at Colorado State*	2-25-17	L	55-56	1st	9:55	3:32	Kell 5, Pope 5, Allen 2	5-7	2-2	0-0
12	vs. Tulsa (DH-SF)	12-23-16	W	82-63	2nd	11:00	2:35	Hemsley 6, Hoetzel 3, Shrigley 3	4-5	4-5	0-0
12	Savannah State	11-28-16	W	100-67	2nd	8:31	2:09	Cheatham 5, Gill-Caesar 3, Hemsley 2, Pope 2	5-7	1-1	1-3
11	at UNLV (MW-OR)	3-8-17	W-at	62-52	2nd	12:40	3:43	Izundu 4, Shrigley 3, Hoetzel 2, Williams 2	4-6	1-2	2-2
11	Utah State*	1-14-17	W	74-55	2nd	19:54	2:07	Allen 5, Cheatham 4, Hemsley 2	5-5	1-1	0-1
11	at Grand Canyon	12-7-16	L	72-76	2nd	12:25	1:54	Hemsley 6, Cheatham 4, Izundu 1	3-4	2-2	3-4
11	Savannah State	11-28-16	W	100-67	1st	3:20	2:10	Gill-Caesar 3, Kell 3, Hoetzel 2, Izundu 2, Hemsley 1	4-7	1-3	2-3
10	vs. Colorado State* (MWC-SF)	3-10-17	L	63-71	1st	17:07	2:26	Pope 5, Kell 3, Allen 2	4-6	2-3	0-0
10	Fresno State*	2-22-17	L	55-63	2nd	9:29	1:57	Hemsley 5, Hoetzel 3, Allen 2	4-4	2-2	0-0
10	at Utah State*	2-15-17	W	66-62	2nd	8:46	2:10	Hemsley 5, Kell 5	3-4	2-2	2-2
10	Wyoming*	1-31-17	W	77-68	1st	7:59	3:21	Allen 5, Kell 3, Williams 2	4-7	2-3	0-0
10	at Air Force*	1-24-17	L	67-70	1st	18:07	2:35	Hemsley 5, Hoetzel 3, Allen 2	4-7	2-3	0-0
10	Utah State*	1-14-17	W	74-55	1st	5:20	3:00	Pope 4, Kell 3, Shrigley 3	4-5	1-2	1-1
10	vs. California	11-21-16	W	77-65	1st	6:39	3:21	Hemsley 10	3-5	1-3	3-3
10	Alabama State	12-12-16	W	73-41	1st~	19:43	3:15	Pope 6, Allen 2, Cheatham 2	5-6	0-1	0-1

+ indicates run entered the next half or overtime. ~ - indicates run opened game.

INDIVIDUAL GAME-BY-GAME (POINTS/REBS./ASTS.)

	2	3	4	5	10	11	12	14	20	21	23	24	33	42	45
Opponent	Ben Perez	Trey Kell	Dakarai Allen	Jalen McDaniel	Max Hoetzel	D'Erryl Williams	Emmanuel Wilson	Zylan Cheatham	Matt Shrigley	Malik Pope	Montaque Gill-Cesar	Nolan Narain	Niksha Federico	Jeremy Hemsley	Valentine Izundu
SAN DIEGO	INJ	23/4/2	6/4/1	CD	INJ	3/5/1	CD	8/4/1	INJ	INJ	2/4/0	2/0/0	DND	25/4/2	0/3/0
at [14/14] Gonzaga	DNT	14/4/1	5/5/0	CD	DNT	3/0/0	DNT	4/6/2	0/3/0	INJ	6/6/0	DNT	DNT	14/4/2	2/5/0
SAN DIEGO CHRISTIAN	INJ	19/6/4	15/9/4	CD	INJ	4/9/3	0/0/0	15/7/2	INJ	INJ	1/1/0	4/1/0	DND	23/2/5	INJ
vs. [rv/rv] California~	DNT	11/2/3	6/6/1	DND	11/7/1	CD	DNT	8/2/0	10/1/0	14/5/0	2/1/0	CD	DNT	15/3/3	0/3/0
SAVANNAH STATE	DND	9/7/7	2/1/1	DND	15/8/0	0/2/3	0/1/0	18/8/1	15/4/0	8/5/1	12/5/0	0/1/0	DND	14/3/9	7/7/0
at Loyola	DNT	16/6/2	9/3/1	DNT	6/5/0	CD	DNT	6/4/1	5/1/0	7/7/3	2/0/0	CD	DNT	8/4/0	0/1/1
at Grand Canyon	DNT	8/3/0	9/4/2	DNT	0/0/1	CD	DNT	17/12/1	3/5/2	4/2/3	0/0/0	CD	DNT	28/5/0	3/7/0
ARIZONA STATE	DND	20/4/1	8/8/2	DND	12/4/0	CD	CD	7/5/2	0/1/1	4/3/1	2/1/1	CD	DND	10/0/1	0/1/0
ALABAMA STATE	DND	7/3/2	10/3/3	DND	9/2/0	0/2/2	0/0/0	11/6/3	5/4/1	16/7/2	11/2/2	2/1/0	DND	INJ	2/3/0
vs. Southern Miss#	DNT	11/3/5	7/4/1	DND	4/2/0	4/6/1	DNT	16/13/3	6/4/0	9/4/0	0/0/0	0/1/0	DNT	9/1/0	0/0/0
vs. Tulsa#	DNT	19/3/4	8/2/2	DND	5/5/1	0/1/2	DNT	15/4/1	6/2/2	INJ	9/1/0	CD	DNT	20/4/2	0/1/1
vs. San Francisco#	DNT	10/5/3	6/2/2	DND	7/5/0	2/2/3	DNT	16/11/0	9/2/0	INJ	0/2/1	CD	DNT	12/1/2	0/4/0
NEW MEXICO*	DND	12/0/5	8/6/1	DND	10/4/1	0/1/1	DND	7/8/1	INJ	INJ	0/1/1	INJ	DND	16/3/2	9/3/0
at Nevada*	DNT	3/6/1	6/4/2	DND	15/4/1	3/2/0	DNT	6/8/6	INJ	INJ	3/2/0	CD	DNT	30/3/5	3/2/0
at Boise State*	DNT	9/7/4	17/5/0	DND	16/5/0	INJ	DNT	12/1/2	0/2/0	INJ	0/2/1	CD	DNT	7/1/1	5/8/0
SAN JOSÉ STATE*	DND	12/2/4	7/0/1	DND	12/9/2	4/2/1	DND	10/8/2	4/0/3	INJ	10/4/0	CD	DND	12/7/4	5/7/0
UTAH STATE*	DND	12/3/5	9/2/2	DND	6/4/0	1/0/1	1/0/0	8/7/1	14/1/1	9/5/1	0/2/0	0/1/0	DND	14/1/3	0/1/0
at UNLV*	DNT	24/4/1	10/3/1	DND	9/5/0	2/3/3	DNT	8/4/0	3/4/0	2/5/1	0/0/0	CD	DNT	4/1/1	2/3/0
at Air Force*	DNT	14/5/1	7/4/2	DNT	11/8/2	1/2/1	DNT	4/6/3	6/2/0	7/4/0	0/1/0	CD	DNT	7/2/3	CD
COLORADO STATE*	DND	16/3/2	11/5/2	DND	10/6/0	0/0/0	DND	INJ	0/2/0	19/7/2	0/1/0	CD	DND	17/3/3	4/5/0
WYOMING*	DND	18/2/3	13/7/2	DND	6/5/0	2/2/2	DND	INJ	2/2/1	17/8/3	12/1/0	CD	DND	5/2/0	2/4/0
at Fresno State*	DNT	22/7/2	13/4/1	DNT	0/0/0	0/0/0	DNT	8/4/0	3/0/2	9/7/3	INJ	CD	DNT	7/2/0	8/6/0
at San José State*	DNT	13/9/3	12/3/1	DNT	INJ	0/1/0	DNT	8/7/2	6/2/0	10/3/2	6/3/0	CD	DNT	13/2/2	3/6/0
NEVADA*	DND	17/7/1	6/4/1	DND	0/1/1	0/0/0	DND	4/6/2	10/1/2	12/10/0	2/0/0	CD	DND	15/2/3	4/5/1
at Utah State*	DNT	21/7/3	7/3/2	DNT	3/4/1	0/1/1	DNT	5/5/0	6/1/1	6/5/2	INJ	5/3/0	DNT	13/3/1	INJ
UNLV*	DND	6/7/7	6/3/2	DND	5/0/0	0/1/0	DND	9/5/2	16/2/0	17/9/1	INJ	CD	DND	16/0/1	2/3/0
FRESNO STATE*	DND	9/2/2	13/3/0	DND	9/3/0	0/0/0	DND	0/4/1	0/3/1	11/6/1	INJ	0/1/0	DND	13/2/2	0/1/0
at Colorado State*	DNT	10/3/2	12/8/2	DNT	6/0/0	2/3/0	DNT	8/9/0	0/1/0	10/7/0	INJ	CD	DNT	7/1/2	0/1/0
AIR FORCE*	DND	6/12/4	6/2/0	DND	5/3/0	4/3/1	DND	8/8/1	10/2/0	11/8/3	0/2/0	CD	DND	1/3/0	0/1/0
at New Mexico*	DNT	6/9/1	3/7/1	DND	4/6/1	0/1/0	DNT	13/7/2	7/2/0	9/3/1	6/3/0	CD	DNT	8/2/2	3/2/1
at [11] UNLV (MWC-OR)	DNT	13/7/3	3/5/1	DND	2/2/0	8/2/3	DNT	4/5/0	3/4/1	13/12/2	0/1/0	CD	DNT	8/2/1	8/3/0
vs. [3] Boise State (MWC-DF)	DNT	10/6/5	9/4/2	DND	21/4/0	2/0/2	DNT	9/5/0	2/2/1	22/10/2	CD	CD	DNT	10/2/3	2/1/0
vs. [2] Colorado State (MWC-SF)	DNT	15/4/3	4/5/1	DND	3/0/0	0/1/0	DNT	10/5/1	0/0/0	18/5/2	CD	CD	DNT	11/3/1	2/3/0

Red indicates players started. CD – Did Not Play-Coach's Decision. DND - Did Not Dress. DNT - Did Not Travel. INJ – Did Not Play-Injured. SUSP - Suspension. Caps denotes home game. ~ - Golden I Center (Sacramento, Calif.)
 # - Hawaiian Airlines Diamond Head Classic (Stan Sheriff Center; Honolulu, Hawaii). * - Mountain West Game. ` - Mountain West Men's Basketball Championship (Thomas & Mack Center; Las Vegas, Nevada).

STARTING LINEUPS

F / G	F / G	F / C	G	G	W-L	Record As SDSU Starter	Season	Career*
Allen	Cheatham	Pope	Kell	Hemsley	5-4	Dakarai Allen	19-14	32-19
Allen	Cheatham	Pope	Kell	Shrigley	1-0	Zylan Cheatham	13-9	34-14
Allen	Hoetzel	Cheatham	Kell	Hemsley	5-4	Montaque Gill-Cesar	2-0	2-0
Allen	Gill-Cesar	Cheatham	Kell	Hemsley	2-0	Jeremy Hemsley	17-14	35-21
Allen	Izundu	Cheatham	Kell	Hemsley	0-1	Max Hoetzel	5-5	5-5
Allen	Hoetzel	Pope	Kell	Hemsley	0-1	Valentine Izundu	5-4	5-4
Allen	Pope	Izundu	Kell	Hemsley	4-3	Trey Kell	18-14	57-28
Allen	Shrigley	Pope	Kell	Hemsley	1-1	Malik Pope	12-9	23-14
Allen	Williams	Izundu	Pope	Shrigley	1-0	Matt Shrigley	3-1	20-4
						D'Erryl Williams	1-0	1-0

* Aztec career

INDIVIDUAL SUPERLATIVES

Category	San Diego State	Opponent
Points Scored	30 Jeremy Hemsley at Nevada (1-4-17)	37 - Gian Clavell, Colorado State (1-28-17)
Field Goals	12 Jeremy Hemsley at Nevada (1-4-17)	14 - Gian Clavell, Colorado State (1-28-17)
Field Goals Attempted	25 Jeremy Hemsley at Nevada (1-4-17)	24 - Gian Clavell, Colorado State (2-25-17)
Highest FG Percentage (min. 5 made)	1.000 (6-6) - Cheatham vs. Savannah St. (11-28-16), 1.000 (5-5) - Cheatham vs. Alabama St.	.917 (11-12) - Aundre Jackson, Loyola (12-3-16)
Highest FG Percentage (min. 10 made)	.480 (12-25) - Jeremy Hemsley at Nevada (1-4-17)	.917 (11-12) - Aundre Jackson, Loyola (12-3-16)
3-Point Field Goals Made	7 - Jeremy Hemsley at Grand Canyon (12-7-16)	5 - Duncan, Boise (3-9-17), Frayer, GCU (12-7-16), Mathews, Gonzaga (11-14-16)
3-Point Field Goals Attempted	12 - Jeremy Hemsley at Nevada (1-4-17), Matt Shrigley vs. Savannah State (11-28-16)	15 - Gian Clavell, Colorado State (2-25-17)
3-Point Field Goal Percentage (min. 4 made)	.875 (7-8), Jeremy Hemsley at Grand Canyon (12-7-16)	1.000 (4-4) - Luis Salgado, San Diego Christian (11-16-16)
3-Point Field Goal Percentage (min. 5 made)	.875 (7-8), Jeremy Hemsley at Grand Canyon (12-7-16)	.714 (5-7) - Jordan Mathews, Gonzaga (11-14-16)
Free Throws	9 - Zylan Cheatham at Grand Canyon (12-7-16)	15 - Elijah Brown, New Mexico (3-4-17)
Free Throws Attempted	11 - Zylan Cheatham at Grand Canyon (12-7-16)	17 - Elijah Brown, New Mexico (3-4-17)
Free Throw Percentage (min. 7 made)	.889 (8-9) - Zylan Cheatham vs. Southern Miss (12-22-16)	1.000 (9-9) - Deshon Taylor, Fresno State (2-22-17)
Free Throw Percentage (min. 10 made)	N/A	.882 (15-17) - Elijah Brown, New Mexico (3-4-17)
Offensive Rebounds	6 - Malik Pope vs. Boise State (3-9-17)	6 - Nico Carvacho, Colorado State (2-25-17)
Defensive Rebounds	12 - Trey Kell vs. Air Force (3-1-17)	10 - Chandler Hutchinson, Boise State (1-7-17)
Total Rebounds	13 - Zylan Cheatham vs. Southern Miss (12-22-16)	13 - Chandler Hutchinson, Boise State (1-7-17)
Assists	9 - Jeremy Hemsley vs. Savannah State (11-28-16)	9 - DeWayne Russell, Grand Canyon (12-7-16)
Blocked Shots	5 - Valentine Izundu at UNLV (3-8-17), Dakarai Allen vs. San Diego Christian (11-16-16)	5 - Cheickna Dembele, UNLV (3-8-17), Jethro Tshisumpa, Arizona State (12-10-16)
Steals	5 - Trey Kell vs. Tulsa (12-23-16), vs. Arizona State (12-10-16)	6 - Gian Clavell, Colorado State (3-10-17), Frankie Ferrari, San Francisco (12-25-16)
Minutes Played	39 - Dakarai Allen vs. Nevada (2-12-17)	43 - Christian Jones, UNLV (3-8-17)

TEAM SUPERLATIVES

SDSU High	SDSU Low	Category	Opponent High	Opponent Low
100 vs. Savannah State (11-28-16)	48 at Gonzaga (11-14-16)	Points Scored	78, Colorado State (1-28-17), Boise State (1-7-17)	38, Air Force (3-1-17)
35 vs. Savannah State (11-28-16)	16 at Gonzaga (11-14-16)	Field Goals	29, Grand Canyon (12-7-16)	11, Air Force (3-1-17)
83 vs. Savannah State (11-28-16)	45 vs. Alabama State (12-12-16)	Field Goals Attempted	75, Savannah State (11-28-16)	44, Air Force (3-1-17)
.571 vs. Utah State (1-14-17)	.286 at Gonzaga (11-14-16)	FG Percentage	.518, Grand Canyon (12-7-16)	.250, Air Force (3-1-17), Alabama St. (12-12-16)
14 vs. Savannah State (11-28-16)	4 - five times	3-Point Field Goals Made	11, San Diego Christian (11-16-16)	3 - five times
40 vs. Savannah State (11-28-16)	12 vs. San Diego Christian (11-16-16)	3-Point Field Goals Attempted	38, Savannah State (11-28-16)	12, Nw Mexico (3-4-17), New Mexico (1-1-17)
.643 vs. Boise State (3-9-17)	.190 at New Mexico (3-4-17)	3-Point Field Goal Percentage	.500, New Mexico (1-1-17)	.143, Air Force (3-1-17)
28 vs. Wyoming (1-31-17)	2 at Loyola (12-3-16)	Free Throws Made	26, California (11-21-16)	4, Alabama State (12-12-16), Loyola (12-3-16)
39 vs. Wyoming (1-31-17)	3 at Loyola (12-3-16)	Free Throws Attempted	36, California (11-21-16)	6, Southern Miss (12-22-16)
.933 at UNLV (1-17-17)	.545 vs. Nevada (2-12-17)	Free Throw Percentage	.889, Arizona State (12-10-16)	.400, Loyola (12-3-16)
20 at Grand Canyon (12-7-16)	3 vs. San Diego Christian (11-16-16)	Offensive Rebounds	20, Colorado State (2-25-17)	4, Loyola (12-3-16)
39 vs. Savannah State (11-28-16)	15 vs. Tulsa (12-23-16)	Defensive Rebounds	35, California (11-21-16), Gonzaga (11-14-16)	13, Alabama State (12-12-16)
55 vs. Savannah State (11-28-16)	24 vs. Tulsa (12-23-16)	Total Rebounds	50, California (11-21-16)	23, Boise State (3-9-17)
26 vs. Wyoming (1-31-17)	10 vs. Alabama State (12-12-16)	Fouls	30, Wyoming (1-31-17)	11, CSU (2-25-17), USM (12-22-16), Loyola (12-3-16)
1 - 14 times	0 - 19 times	Fouled Out	3, New Mexico (3-4-17)	0 - 21 times
22 vs. Savannah State (11-28-16)	5 at Gonzaga (11-14-16)	Assists	17, Utah State (2-15-17), Grand Canyon (12-7-16)	5, San Francisco (12-25-16), Tulsa (12-23-16)
18 vs. San José State (1-10-17)	5 vs. Colorado State (1-28-17), vs. California (11-21-16)	Turnovers	23, Tulsa (12-23-16)	7, Colorado State, Loyola, Gonzaga
10 at UNLV (3-8-17)	2 vs. CSU (3-10-17), vs. UNLV (2-19-17), vs. CSU (1-28-17)	Blocked Shots	9, California (11-21-16)	0, Utah St. (1-14-17), Alabama St. (12-12-16)
16 vs. Tulsa (12-23-16)	1 vs. Southern Miss (12-22-16)	Steals	13, Gonzaga (11-14-16)	0, San Diego (11-11-16)
60 (1st) vs. Savannah State (11-28-16)	21 (1st) at Gonzaga (11-14-16)	Points/Half	55 (2nd) Colorado State (1-28-17)	13 (1st), Air Force (3-1-17)
.630 (1st) vs. Utah State (1-14-17)	.148 (1st) at UNLV (3-8-17)	FG Percentage/Half	.613 (2nd) Colorado State (1-28-17)	.150 (1st), Air Force (3-1-17)
5 vs. CSU, vs. SJSU, vs. Savannah State, vs. Cal	1 at New Mexico (3-4-17), at Loyola (12-3-16)	Double-Figure Scorers	5, Boise State (1-7-17)	1 - five times
+14 vs. Boise State (3-9-17)	-13 vs. Tulsa (12-23-16), vs. California (11-21-16)	Rebound Margin		
+28 vs. Savannah State (11-28-16)	-15 at Gonzaga (11-14-16)	Halftime Scoring Margin		

WIN SHARES

Player	Win Shares	OWS	DWS
Dakarai Allen	3.3	1.3	2.0
Zylan Cheatham	3.3	1.5	1.8
Niksha Federico			
Montaque Gill-Caesar	-0.5	0.6	0.1
Jeremy Hemsley	1.1	1.4	2.5
Max Hoetzel	2.1	1.0	1.2
Valentine Izundu	1.6	0.5	1.1
Trey Kell	3.8	1.5	2.3
Nolan Narain	-0.1	0.1	0.0
Ben Perez			
Malik Pope	2.7	1.3	1.4
Matt Shrigley	1.5	0.4	1.1
D'Erryl Williams	0.7	0.0	0.7
Emmanuel Wilson	-0.2	0.1	-0.1

BIGGEST LEADS/TIME IN LEAD/SPECIALTY STATS

Date	Opponent	SDSU Result	SDSU Big		Opp Big	Ties	LC	SDSU in			Opp in		Paint		Off TOs		2nd Ch.		Bench	
			Lead	Lead				Lead	Lead	Tied	SD	Opp	SD	Opp	SD	Opp	SD	Opp		
Nov. 11	SAN DIEGO	W 69-59	19	9	3	9	21:35	16:15	1:51	32	30	13	7	8	8	5	11			
Nov. 14	at [14/14] Gonzaga	L 48-69	4	30	1	1	2:23	33:45	3:52	22	34	8	25	6	9	9	28			
Nov. 16	SAN DIEGO CHRISTIAN	W 81-58	15	0	0	0	38:17	0:00	1:43	14	4	12	3	0	7	4	14			
Nov. 21	vs. [rv/rv] California~	W 77-65	19	2	5	3	33:12	0:44	5:48	30	22	23	5	8	14	23	38			
Nov. 28	SAVANNAH STATE	W 100-67	37	0	0	0	38:56	0:00	1:04	40	26	23	4	19	11	49	31			
Dec. 3	at Loyola	L 59-65	2	10	5	10	2:39	33:13	4:08	22	32	2	6	12	4	13	11			
Dec. 7	at Grand Canyon	L 72-76	5	11	3	7	13:20	24:24	2:16	26	30	11	14	22	10	6	24			
Dec. 10	ARIZONA STATE	L 63-76	10	12	2	1	22:38	16:37	0:45	30	24	20	16	13	4	14	32			
Dec. 12	ALABAMA STATE	W 73-41	32	0	0	0	39:43	0:00	0:17	38	10	16	10	10	9	24	16			
Dec. 22	vs. Southern Miss#	W 66-51	19	1	0	2	39:28	0:20	0:12	20	20	10	11	2	0	14	6			
Dec. 23	vs. Tulsa#	W 82-63	19	8	6	5	30:20	4:34	5:05	26	22	26	8	5	8	15	12			
Dec. 25	vs. San Francisco#	W 62-48	14	3	4	6	32:23	3:00	4:08	20	16	14	6	7	2	11	33			
Jan. 1	NEW MEXICO*	L 62-68	11	6	3	2	35:41	1:57	1:56	32	26	17	11	11	7	9	22			
Jan. 4	at Nevada*	L 69-72	4	10	4	8	4:01	34:23	1:36	22	24	6	2	12	23	9	0			
Jan. 7	at Boise State*	L 66-78	11	16	1	1	17:35	21:56	0:29	30	30	4	30	6	21	5	40			
Jan. 10	SAN JOSÉ STATE*	W 76-61	23	2	4	3	36:09	1:17	2:34	34	38	14	12	5	2	23	14			
Jan. 14	UTAH STATE*	W 74-55	25	3	1	4	37:08	1:31	1:21	28	18	24	8	5	5	25	8			
Jan. 17	at UNLV*	W 64-51	16	7	4	6	23:24	11:57	4:39	28	24	15	10	7	10	9	2			
Jan. 24	at Air Force*	L 57-60	14	3	3	2	32:50	1:49	5:21	22	22	15	13	4	8	14	25			
Jan. 28	COLORADO STATE*	L 77-78	13	4	10	9	30:02	3:22	6:30	36	22	7	4	14	11	4	6			
Jan. 31	WYOMING*	W 77-68	17	0	0	0	39:12	0:00	0:40	26	22	25	7	15	16	22	33			
Feb. 4	at Fresno State*	W 70-67	11	8	3	2	25:13	12:15	1:59	34	26	16	16	11	10	16	37			
Feb. 7	at San José State*	L 71-76	7	12	3	1	10:54	25:31	3:35	30	34	8	27	10	2	17	21			
Feb. 12	NEVADA*	W 70-56	20	3	2	3	35:56	2:49	1:15	38	24	16	9	7	16	16	5			
Feb. 15	at Utah State*	W 66-62	13	2	5	2	35:07	1:43	3:10	22	24	5	11	8	10	11	14			
Feb. 19	UNLV*	W 77-64	17	2	5	6	32:49	1:41	5:30	38	20	18	12	8	2	23	6			
Feb. 22	FRESNO STATE*	L 55-63	7	11	2	1	8:09	29:11	2:40	26	24	11	13	8	11	9	19			
Feb. 25	at Colorado State*	L 55-56	13	1	2	3	34:57	2:01	3:02	24	16	8	10	9	18	16	5			
Mar. 1	AIR FORCE*	W 51-38	14	6	2	1	24:56	8:39	6:19	22	12	12	9	10	2	20	4			
Mar. 4	at New Mexico*	L 59-64	7	15	5	5	11:41	27:46	0:33	26	26	11	9	11	9	12	8			
Mar. 8	at [11] UNLV (MWC-OR)	W-ot 62-52	13	21	4	5	12:27	28:54	3:39	26	18	15	12	14	6	17	7			
Mar. 9	vs. [3] Boise State (MWC-QF)	W 87-68	22	6	3	4	32:06	5:41	2:13	34	18	16	7	21	4	34	30			
Mar. 10	vs. [2] Boise State (MWC-SF)	L 63-71	13	9	3	1	30:40	6:14	3:06	32	20	19	10	14	3	13	7			

Caps denotes home game. ~ - Golden 1 Center (Sacramento, Calif.). # - Hawaiian Airlines Diamond Head Classic (Stan Sheriff Center; Honolulu, Hawaii). * - Mountain West Game. ` - Mountain West Men's Basketball Championship (Thomas & Mack Center; Las Vegas, Nevada).

LEADS AND DEFICITS

SEASON

MOUNTAIN WEST GAME

SDSU Biggest Halftime Lead	28 vs. Savannah State (11-28-16)	19 vs. San José State (1-10-17)
SDSU Biggest Halftime Lead Lost	12 at Colorado State (2-25-17)	12 at Colorado State (2-25-17)
SDSU Biggest Halftime Lead Lost in a Loss	12 at Colorado State (2-25-17)	12 at Colorado State (2-25-17)
SDSU Biggest Halftime Deficit	18 at UNLV (3-8-17)	6 vs. Fresno State (2-22-17)
SDSU Biggest Halftime Deficit Overcome	18 at UNLV (3-8-17)	
SDSU Biggest Halftime Deficit Overcome for Victory	18 at UNLV (3-8-17)	
SDSU Biggest Lead	37 vs. Savannah State (11-28-16)	25 vs. Utah State (1-14-17)
SDSU Biggest Lead Lost	14 at Air Force (1-24-17)	14 at Air Force (1-24-17)
SDSU Biggest Lead Lost in a Loss	14 at Air Force (1-24-17)	14 at Air Force (1-24-17)
SDSU Biggest Deficit	30 at Gonzaga (11-11-16)	16 at Boise State (1-7-17)
SDSU Biggest Deficit Overcome	21 at UNLV (3-8-17)	8 at Fresno State (2-4-17)
SDSU Biggest Deficit Overcome in a Victory	21 at UNLV (3-8-17)	8 at Fresno State (2-4-17)

INDIVIDUAL STREAKS

Player	Current		Career Lg GP	Current		Career Lg GS	Current Streaks			Career Long Streaks		
	GP Strk	Last GP/DNP		GS Strk	Last GS/DNS		10+Pts.	20+Pts.	10+Rebs.	10+Pts.	20+Pts.	10+Rebs.
Dakarai Allen	71	DNP - vs. Duke (3-22-15)	71	39	DNS - vs. Utah St (3-10-16)	39	-	-	-	4	-	-
Zylan Cheatham	12	DNP - vs. Wyoming (1-31-17)	57	-	GS - Fresno State (2-22-17)	19	1	-	-	4	-	1
Niksha Federico	-	GP - vs. GWU (3-29-16)	3	-	no career starts	-	-	-	-	-	-	-
Montaque Gill-Caesar	-	GP - at UNLV (3-9-17)	21	-	GS - SD Christian (11-16-16)	13	-	-	-	4	1	-
Jeremy Hemsley	23	DNP - Alabama St. (12-12-16)	25	3	DNS - Air Force (3-1-17)	25	1	-	-	8	1	-
Max Hoetzel	10	DNP - at San Jose St. (2-7-17)	19	-	GS - Colorado St. (1-28-17)	10	-	-	-	4	-	-
Valentine Izundu	8	DNP - at Utah St. (2-15-17)	15	6	DNS - Fresno State (2-22-17)	6	-	-	-	1	-	-
Trey Kell	86	DNP - Fresno St. (2-27-15)	86	4	DNS - Air Force (3-1-17)	66	2	-	-	20	1	1
Jalen McDaniels	-	no career games	-	-	no career starts	-	-	-	-	-	-	-
Nolan Narain	-	GP - Fresno State (2-22-17)	3	-	no career starts	-	-	-	-	-	-	-
Ben Perez	-	GP - vs. GWU (3-29-16)	11	-	no career starts	-	-	-	-	2	-	-
Malik Pope	17	DNP - San Jose St. (1-10-17)	64	14	DNS - at Air Force (1-24-17)	14	3	-	-	4	1	2
Matt Shrigley	18	DNP - at Nevada (1-4-17)	36	-	GS - Air Force (3-1-17)	15	-	-	-	3	-	-
D'Erryl Williams	18	DNP - at Boise St. (1-7-17)	18	-	GS - Air Force (3-1-17)	1	-	-	-	-	-	-
Emmanuel Wilson	-	no career games	-	-	no career starts	-	-	-	-	-	-	-

Red indicates streak is current.

MOUNTAIN WEST CONFERENCE STANDINGS GAME-BY-GAME

Date	Opponent	SDSU Result	Entering Game Day			At the End of Game Day						
			W-L	Pl.	GA/GB	W-L	Pl.	GA/GB	H&A +/-	Margin	Avg.	Rk.
Jan. 1	NEW MEXICO*	L 62-68	0-0	T-3	-1.0	0-1	T-9	-1.5	-1	-6	-6.0	10
Jan. 4	at Nevada*	L 69-72	0-1	T-9	-1.5	0-2	T-10	-2.5	-1	-9	-4.5	9
Jan. 7	at Boise State*	L 66-78	0-2	T-10	-2.5	0-3	T-11	-3.5	-1	-21	-7.0	8
Jan. 10	SAN JOSÉ STATE*	W 76-61	0-3	T-11	-3.5	1-3	T-10	-3.0	-1	-6	-1.5	7
Jan. 14	UTAH STATE*	W 74-55	1-3	T-10	-3.0	2-3	T-6	-2.0	-1	+13	+2.6	4
Jan. 17	at UNLV*	W 64-51	2-3	T-6	-2.0	3-3	T-5	-1.5	0	+26	+4.3	3
Jan. 24	at Air Force*	L 57-60	3-3	6	-1.5	3-4	T-6	-2.0	0	+23	+3.3	5
Jan. 28	COLORADO STATE*	L 77-78	3-4	7	-2.5	3-5	T-7	-3.5	-1	+22	+2.8	4
Jan. 31	WYOMING*	W 77-68	3-5	T-7	-3.5	4-5	6	-3.0	-1	+31	+3.4	2
Feb. 4	at Fresno State*	W 70-67	4-5	6	-3.0	5-5	6	-3.0	0	+34	+3.4	3
Feb. 7	at San José State*	L 71-76	5-5	6	-3.0	5-6	T-7	-3.0	0	+29	+2.6	3
Feb. 12	NEVADA*	W 70-56	5-6	8	-3.5	6-6	T-5	-3.0	0	+43	+3.6	3
Feb. 15	at Utah State*	W 66-62	6-6	T-5	-3.0	7-6	5	-2.5	+1	+47	+3.6	3
Feb. 19	UNLV*	W 77-64	7-6	5	-2.5	8-6	5	-2.0	+1	+60	+4.3	3
Feb. 22	FRESNO STATE*	L 55-63	8-6	4	-2.5	8-7	6	-3.0	0	+52	+3.5	3
Feb. 25	at Colorado State*	L 55-56	8-7	6	-3.0	8-8	6	-4.0	0	+51	+3.2	3
Mar. 1	AIR FORCE*	W 51-38	8-8	6	-4.5	9-8	T-5	-4.0	0	+64	+3.8	3
Mar. 4	at New Mexico*	L 59-64	9-8	T-5	-4.0	9-9	6	-5.0	0	+59	+3.3	4

* - indicates Mountain West Conference game.

MISCELLANEOUS STATISTICS

SEASON	Team Leader -----			Games With -----					Double-Doubles	
	Points	Rebounds	Assists	10+ Pts	20+Pts	30+Pts	10+Rebs	10+Ast	Point/Reb.	Point/Ast.
Dakarai Allen	3	3	3	10						
Zylan Cheatham	4	10	6	11			3		3	
Niksha Federico										
Montaque Gill-Caesar		1		4						
Jeremy Hemsley	12		12	21	5	1				
Max Hoetzel	1	6		9	1					
Valentine Izundu		1								
Trey Kell	12	5	19	24	5			1		
Jalen McDaniels										
Nolan Narain										
Ben Perez										
Malik Pope	7	12	4	13	1			3		3
Matt Shrigley	1			6						
D'Erryl Williams		2	3							
Emmanuel Wilson										

CAREER	Team Leader -----			Games With -----					Double-Doubles	
	Points	Rebounds	Assists	10+ Pts	20+Pts	30+Pts	10+Rebs	10+Ast	Point/Reb.	Point/Ast.
Dakarai Allen	5	5	8	22						
Zylan Cheatham	6	21	10	21				9		5
Niksha Federico										
Montaque Gill-Caesar		1		17	1					
Jeremy Hemsley	26		25	47	9	1				
Max Hoetzel	1	6		11	1					
Valentine Izundu		1		3						
Trey Kell	28	8	30	58	7			2		1
Jalen McDaniels										
Nolan Narain										
Ben Perez				2						
Malik Pope	14	21	9	29	3			7		7
Matt Shrigley	2		4	21						
D'Erryl Williams		2	6							
Emmanuel Wilson										

DUNKS	SEASON	GM. HIGH
Zylan Cheatham	21	3
Valentine Izundu	17	2
Dakarai Allen	8	1
Malik Pope	6	2
Trey Kell	5	1
Jeremy Hemsley	3	1
Max Hoetzel	2	1
TOTAL	62	6

TOP SCORING PERFORMANCES
30, Jeremy Hemsley at Nevada* (1-4-17)
28, Trey Kell at UNLV* (1-17-17)
28, Jeremy Hemsley at Grand Canyon (12-7-16)
25, Jeremy Hemsley vs. San Diego (11-11-16)
23, Jeremy Hemsley vs. San Diego Christian (11-16-16)
23, Trey Kell vs. San Diego (11-11-16)
22, Malik Pope vs. Boise State* (3-9-17)
22, Trey Kell at Fresno State* (2-4-17)
21, Max Hoetzel vs. Boise State* (3-9-17)
21, Max Hoetzel vs. Boise State* (3-9-17)
21, Trey Kell at Utah State* (2-15-17)
20, Jeremy Hemsley vs. Tulsa (12-23-16)
20, Trey Kell vs. Arizona State (12-10-16)
19, Trey Kell vs. Tulsa (12-23-16)
19, Trey Kell vs. San Diego Christian (11-16-16)
18, Malik Pope vs. Colorado State* (3-10-17)
18, Trey Kell vs. Wyoming* (1-31-17)
18, Zylan Cheatham vs. Savannah State (11-28-16)
17, Malik Pope vs. UNLV* (2-19-17)
17, Trey Kell vs. Nevada* (2-12-17)
17, Malik Pope vs. Wyoming* (1-31-17)
17, Jeremy Hemsley vs. Colorado State* (1-28-17)
17, Zylan Cheatham at Grand Canyon (12-7-16)

TOP REBOUNDING PERFORMANCES
13, Zylan Cheatham vs. Southern Miss (12-22-16)
12, Malik Pope at UNLV* (3-8-17)
12, Trey Kell vs. Air Force* (3-1-17)
12, Zylan Cheatham at Grand Canyon (12-7-16)
11, Zylan Cheatham vs. San Francisco (12-25-16)
10, Malik Pope vs. Boise State* (3-9-17)
10, Malik Pope vs. Nevada* (2-12-17)
9, Trey Kell at New Mexico* (3-4-17)
9, Zylan Cheatham at Colorado State* (2-25-17)
9, Malik Pope vs. UNLV* (2-19-17)
9, Trey Kell at San José State* (1-10-17)
9, Max Hoetzel vs. San José State* (1-10-17)
9, Dakarai Allen vs. San Diego Christian (11-16-16)
9, D'Erryl Williams vs. San Diego Christian (11-16-16)

TOP ASSIST PERFORMANCES
9, Jeremy Hemsley vs. Savannah State (11-28-16)
6, Zylan Cheatham at Nevada* (1-4-17)
7, Trey Kell vs. UNLV* (2-19-17)
7, Trey Kell vs. Savannah State (11-28-16)
5, Trey Kell vs. Boise State* (3-9-17)
5, Trey Kell vs. Utah State* (1-14-17)
5, Jeremy Hemsley at Nevada* (1-4-17)
5, Trey Kell vs. New Mexico* (1-1-17)
5, Trey Kell vs. Southern Miss (12-22-16)
5, Jeremy Hemsley vs. San Diego Christian (11-16-16)

TOP 3-POINT FG PERFORMANCES
7, Jeremy Hemsley at Grand Canyon (12-7-16)
6, Jeremy Hemsley at Nevada* (1-4-17)
5, Max Hoetzel vs. Boise State* (3-9-17)
5, Max Hoetzel at Boise State* (1-7-17)
5, Max Hoetzel at Nevada* (1-4-17)

5, Jeremy Hemsley vs. Tulsa (12-23-16)
5, Matt Shrigley vs. Savannah State (11-28-16)
4, Matt Shrigley vs. UNLV* (2-19-17)
4, Matt Shrigley vs. Utah State* (1-14-17)
4, Max Hoetzel vs. San José State* (1-10-17)
4, Max Hoetzel vs. Arizona State (12-10-16)
4, Trey Kell at Loyola (12-3-16)
4, Jeremy Hemsley vs. San Diego (11-11-16)

TOP STEALS
5, Trey Kell vs. Tulsa (12-23-16)
5, Trey Kell vs. Arizona State (12-10-16)
4, Malik Pope vs. Wyoming* (1-31-17)
4, Dakarai Allen vs. New Mexico* (1-1-17)
4, Dakarai Allen vs. Alabama State (12-12-16)

GAMES MISSED	
Malik Pope	9
Max Hoetzel	4
Matt Shrigley	4
Ben Perez	3
Zylan Cheatham	2
Montaque Gill-Caesar	2
Valentine Izundu	2
Nolan Narain	1
D'Erryl Williams	1
TOTAL	28

* - conference game. ` - conference tournament game.

SEASON/CAREER HIGHS

#3 • TREY KELL

	Season	Career
Points	24 at UNLV*, 1-17-17	27 vs. Fresno State*, 1-19-16
Rebounds	12 vs. Air Force*, 3-1-17	12 vs. Air Force*, 3-1-17
Assists	7 - two times	7 - two times
Steals	5 - two times	5 - two times
Blocked Shots	2 - two times	2 - three times
Minutes	37 - two times	37 - six times
10+ Scoring Games	24 times (15-9)	58 times (43-15)
20+ Scoring Games	5 times (4-1)	7 times (6-1)

#4 • DAKARAI ALLEN

	Season	Career
Points	17 at Boise State*, 1-7-17	17 at Boise State*, 1-7-17
Rebounds	9 vs. San Diego Christian, 11-16-16	9 vs. San Diego Christian, 11-16-16
Assists	4 vs. San Diego Christian, 11-16-16	4 - four times
Steals	4 - two times	4 - seven times
Blocked Shots	5 vs. San Diego Christian, 11-16-16	5 vs. San Diego Christian, 11-16-16
Minutes	39 vs. Nevada*, 1-12-17	39 vs. Nevada*, 1-12-17
10+ Scoring Games	10 times (5-5)	22 times (14-8)

#5 • JALEN MCDANIELS

	Season/Career
Points	
Rebounds	
Assists	
Steals	
Blocked Shots	
Minutes	

#10 • MAX HOETZEL

	Season	Career
Points	21 vs. Boise State*, 3-9-17	21 vs. Boise State*, 3-9-17
Rebounds	9 vs. San José State*, 1-10-17	9 - two times
Assists	2 - two times	2 - four times
Steals	3 at UNLV*, 1-17-17	3 at UNLV*, 1-17-17
Blocked Shots	1 - seven times	1 - nine times
Minutes	34 at Boise State*, 1-7-17	34 at Boise State*, 1-7-17
10+ Scoring Games	10 times (4-6)	11 times

#11 • D'ERRYL WILLIAMS

	Season	Career
Points	8 at UNLV*, 3-8-17	9 vs. San Diego Christian, 11-18-15
Rebounds	9 vs. San Diego Christian, 11-16-16	9 vs. San Diego Christian, 11-16-16
Assists	3 - five times	4 vs. Nicholls, 12-10-15
Steals	2 - three times	2 - seven times
Blocked Shots		1 - two times
Minutes	30 vs. San Diego Christian, 11-16-16	30 vs. San Diego Christian, 11-16-16

#12 • EMMANUEL WILSON

	Season/Career
Points	1 vs. Utah State*, 1-14-17
Rebounds	1 vs. Savannah State, 11-28-16
Assists	
Steals	1 - two times
Blocked Shots	2 vs. San Diego Christian, 11-21-16
Minutes	12 vs. San Diego Christian, 11-21-16

#14 • ZYLAN CHEATHAM

	Season	Career
Points	18 vs. Savannah State, 11-28-16	18 vs. Savannah State, 11-28-16
Rebounds	13 vs. Southern Miss, 12-22-16	13 vs. Southern Miss, 12-22-16
Assists	6 at Nevada*, 1-4-17	6 at Nevada*, 1-4-17
Steals	3 - three times	3 - three times
Blocked Shots	2 - two times	4 at Fresno State*, 2-10-16
Minutes	36 vs. San Diego, 11-11-16	36 vs. San Diego, 11-11-16
10+ Scoring Games	11 times (7-4)	21 times (15-6)
10+ Rebounding Games	3 times (2-1)	9 times (6-3)
Double-Doubles	3 times (2-1)	5 times (4-1)

#20 • MATT SHRIGLEY

	Season	Career
Points	16 vs. UNLV*, 2-19-17	16 - two times
Rebounds	5 at Grand Canyon, 12-7-16	5 - five times
Assists	3 vs. San José State*, 1-10-17	6 vs. Air Force*, 2-13-16
Steals	3 vs. UNLV*, 2-19-17	3 - two times
Blocked Shots	2 - two times	3 at Air Force*, 1-20-15
Minutes	30 at Air Force*, 1-24-17	30 at Air Force*, 1-24-17
10+ Scoring Games	6 times (6-0)	21 times (19-2)

#21 • MALIK POPE

	Season	Career
Points	22 vs. Boise State*, 3-9-17	22 - two times
Rebounds	12 at UNLV*, 3-8-17	12 - two times
Assists	3 - five times	5 vs. UNLV*, 3-5-16
Steals	4 vs. Wyoming*, 1-31-17	4 vs. Wyoming*, 1-31-17
Blocked Shots	3 vs. Southern Miss, 12-22-16	3 - five times
Minutes	33 at UNLV*, 3-8-17	37 at New Mexico* (3-1-16)
10+ Scoring Games	13 times (8-5)	29 times (21-8)
20+ Scoring Games	1 time (1-0)	3 times (2-1)
Double-Doubles	3 times (3-0)	7 times (6-1)

#23 • MONTAQUE GILL-CAESAR

	Season	Career
Points	12 - two times	21 vs. UMKC, 11-14-14
Rebounds	6 at Gonzaga, 11-14-16	7 vs. UMKC, 11-14-14
Assists	2 vs. Alabama State, 12-12-16	3 vs. Florida, 2-24-15
Steals	2 - three times	3 at Chaminade, 11-26-14
Blocked Shots	1 - two times	1 - four times
Minutes	32 vs. San Diego, 11-11-16	36 vs. UMKC, 11-14-14
10+ Scoring Games	4 times (4-0)	17 times

#24 • NOLAN NARAIN

	Season/Career
Points	5 at Nevada*, 2-15-17
Rebounds	3 at Nevada*, 2-15-17
Assists	
Steals	1 at Nevada*, 2-15-17
Blocked Shots	
Minutes	18 vs. San Diego Christian, 11-16-16

#33 • NIKSHA FEDERICO

	Season	Career
Points		6 vs. San José State*, 2-25-14
Rebounds		1 - five times
Assists		1 - two times
Steals		
Blocked Shots		1 vs. San Diego Christian, 12-27-14
Minutes		4 vs. St. Katherine, 12-27-13

#42 • JEREMY HEMSLEY

	Season	Career
Points	30 at Nevada*, 1-4-17	30 at Nevada*, 1-4-17
Rebounds	7 vs. San José State*, 1-10-17	7 vs. San José State*, 1-10-17
Assists	9 vs. Savannah State, 11-28-16	9 vs. Savannah State, 11-28-16
Steals	3 - two times	4 at Wyoming, 2-24-16
Blocked Shots	2 - two times	2 - four times
Minutes	37 vs. New Mexico*, 1-1-17	38 vs. New Mexico*, 2-6-16
10+ Scoring Games	21 times (12-9)	47 times (32-15)
20+ Scoring Games	5 times (3-2)	9 times (7-2)
30+ Scoring Games	1 time (0-1)	1 time (0-1)

#45 • VALENTINE IZUNDU

	Season	Career
Points	9 vs. New Mexico*, 1-1-17	10 - three times
Rebounds	8 at Boise State*, 1-7-17	8 at Boise State, 1-7-17
Assists	1 - four times	2 vs. New Mexico, 12-25-15
Steals	1 - five times	1 - 13 times
Blocked Shots	5 at UNLV*, 3-8-17	6 vs. Idaho State, 11-20-15
Minutes	29 at UNLV*, 3-8-17	29 at UNLV*, 3-8-17
10+ Scoring Games		3 times

MISCELLANEOUS STATISTICS

San Diego State's Record When...

Category	2016-17 Season	Fisher Era	SDSU Streak	Note
Home	10-4	228-61	Won 1	SDSU is 56-9 in its last 65 home games and 37-5 in its last 42 Mountain West home games (since Jan. 26, 2013)
Away	4-9	104-115	Won 1	SDSU is 55-29 in its last 84 road games; Aztecs are 54-22 in last 76 road games vs. non-AP top 25 teams
Neutral	5-1	55-32	Lost 1	Aztecs have won 33 of the last 50 games at neutral sites (33-17)
Scoring First	12-10		Lost 1	SDSU is 117-34 in its last 151 games in which it has scored first
Opponent Scores First	7-4		Won 3	SDSU is 71-26 in its last 97 games in which the opponent has scored first
Leading at Half	18-6	301-51	Lost 1	SDSU is 62-8 in its last 70 games when ahead at half; 72-4 in last 76 at home when leading at half
Trailing at Half	1-8	69-152	Won 1	SDSU is 5-11 the last 16 times trailing at the half and 31-40 since the beginning of the 2010-11 season when trailing at halftime
Tied at Half		16-6	Won 1	SDSU is 7-3 in last 10 games that have been tied at half
Leading with 5:00 Left	19-3		Won 3	Won 253 of last 258 times; SDSU had 164-game winning streak snapped vs. Boise State (2-27-16); Last previous loss: at Wyoming (1-9-10)
Trailing with 5:00 Left	0-9		Lost 11	SDSU is 7-43 in its last 50; Last wins: vs. Boise (2-6-13), at USU (1-25-14), vs. LBSU (12-10-14), at UNLV (3-4-15), at UN (1-26-16), vs. USU (3-10-16)
Tied with 5:00 Left	0-2		Lost 3	SDSU is 3-3 in last 6; at Boise (2-5-14), at UNLV (3-1-14), at CSU (1-13-16), at Fresno (2-10-16), at AFA (1-24-17), vs. CSU (1-28-17)
In Overtime	1-0	22-14	Won 3	SDSU is 21-2 in its last 23 overtime games; Last loss: at Cincinnati (12-17-14); Won last seven overtime games played at home
SDSU Outrebounds Opp.	14-5	284-86	Won 2	SDSU is 31-7 in its last 38 and 141-26 in its last 167 games when outrebounding foe. Last loss: at New Mexico (3-4-17)
SDSU is Outrebounded	4-8	91-115	Lost 2	SDSU is 40-30 in its last 70 games when outrebounded; Last win: at Utah State (2-15-17)
SDSU Commits Fewer TOs	12-5	228-67	Lost 1	SDSU is 45-7 in its last 52 when committing fewer turnovers. Last loss: vs. Colorado State (3-10-17)
Opp. Commits Fewer TOs	5-7	131-126	Won 1	SDSU is 63-34 in its last 97 games when committing more turnovers; Last win: at UNLV (3-8-17)
SDSU More FT Attempts	13-5	283-75	Won 2	SDSU is 138-25 in its last 163 games in the category. Last loss: at New Mexico (3-4-17)
Opp. More FT Attempts	5-7	90-127	Lost 2	SDSU is 43-31 in its last 74 games in this category. Last win: vs. UNLV (2-19-17)
SDSU Shoots Better than Opp.	16-2	311-43	Won 2	SDSU is 163-10 in last 173 with higher FG pct. Last loss: at Colorado State (2-25-17)
Opp. Shoots Better than SDSU	3-12	70-163	Lost 1	SDSU is 34-48 since the beginning of the 2010-11 season when the opponent has a higher FG pct.; Last win: at UNLV (3-8-17)
SDSU Shoots 50% or Better	5-0	129-14	Won 58	Won 58 straight games; Last loss: at No. 15 UNM (2-6-10); Won 65 straight at home when FG pct. >= 50.0 pct. (UNLV, 1-26-02)
SDSU Shoots 40-50%	10-5	190-86	Lost 1	Since March 3, 2010, SDSU is 95-18 overall; and 50-5 at home
SDSU Shoots 40% or Less	4-9	67-109	Won 1	SDSU is 51-8 when shooting 38.9 pct. or better (since Jan. 31, 2015); SDSU is 59-3 since Feb. 22, 2012, at home when shooting at least 38.9 pct.
Opp. Shoots 50% or Better	0-2	24-60	Lost 2	Duke snapped streak of 41 straight SDSU opponents to less than 50 pct. from the field in the 2015 NCAA tournament
Opp. Shoots 40-50%	6-7	147-114	Lost 1	Losses this season: vs. ASU (12-10-16), vs. UNM (1-1-17), at Boise (1-7-17), CSU (1-28-17), SJSU (2-7-17), Fresno (2-22-17), vs. CSU (3-10-17)
Opp. Shoots 40% or Less	13-5	215-35	Won 1	SDSU is 209-30 in last 239 games. Last Ls: at Gonzaga (11-14-16), at UN (1-4-17), at AFA (1-24-17), at CSU (2-25-17), at UNM (3-4-17)
SDSU Bench Outscores Opp.	13-4	225-84	Lost 1	SDSU is 127-24 in this category since the beginning of the 2010-11 season; Aztecs are 95-20 in last 115 games
Opp. Bench Outscores SDSU	6-10	152-116	Lost 3	SDSU is 56-34 in this category since the beginning of the 2010-11 season
SDSU Scores Less Than 60	1-6	37-78	Lost 1	SDSU is 23-28 in its last 51 games when scoring less than 60 points; Last win: vs. Air Force (3-1-17)
SDSU Scores At Least 60 & Less Than 70	6-5	109-84	Lost 1	SDSU is 56-23 in its last 79 games. Last loss: vs. Colorado (3-10-17)
SDSU Scores Between 70-79	8-3	148-29	Won 2	The Aztecs are 89-8 in their last 97 games when scoring 70-79 points. Last loss: at San José State (2-7-17); ; 27-1 at home in last 28 occurrences
SDSU Scores Between 80-89	3-0	69-16	Won 14	SDSU is 21-2 in its last 23 games when scoring between 80-89 points
SDSU Scores Between 90-99		20-2	Won 15	The Aztecs have won 15 straight games and are 20-2 under Steve Fisher in this category
SDSU Scores 100+	1-0	3-0	Won 26	The Aztecs have won 26 straight games when reaching triple digits
Opp. Scores Less Than 60	10-1	197-22	Won 2	SDSU is 124-12 in the category in last 136 games; Last losses: vs. USD (12-6-15), vs. GC (12-18-15), at Fresno (2-10-16), at CSU (2-25-17) SDSU is 105-4 the last 109 home games when holding the opponent to 60 points or less
Opp. Scores Less Than 50	3-0	68-4	Won 4	SDSU is 53-3 in last 56 games in this category (at UW, 12-7-14; vs. Wyoming, 3-14-15; Little Rock, 11-21-15); SDSU is 55-1 under Fisher at home
Opp. Scores Between 50-59	7-1	128-18	Won 1	SDSU is 42-7 in last 49 games in this category; 50-2 in last 52 home games; 71-5 under Fisher at home
Opp. Scores Between 60-69	9-6	123-58	Won 1	SDSU is 55-22 in the category since the start of 2010-11.
Opp. Scores Between 70-79	0-7	59-73	Lost 7	SDSU is 16-21 in its last 37 games when allowing between 70-79 points
Opp. Scores Between 80-89		6-39	Lost 1	SDSU is 2-5 since the beginning of the 2010-11 season in this category.
Opp. Scores Between 90-99		1-14	Won 1	SDSU snapped a 24-game losing streak in the category by winning at TCU (3-3-12)
Opp. Scores 100+		0-3	Lost 9	
Wearing Black	7-11		Lost 1	SDSU is 16-13 in last 29 and 44-31 in its last 75 games in the black uniforms; Last worn at home vs. New Mexico (1-1-17)
Wearing Red			Won 1	Aztecs are 15-5 in their last 20 when wearing red since the start of 2010-11; Last worn: at San Jose State (2-21-15)
Wearing White	10-3		Won 1	SDSU is 122-22 in white uniforms since the beginning of the 2010-11 season
Wearing Retro White	3-0	3-2	Won 3	Wore vs. USD and vs. No. 2/3 Kansas in 2015-16; vs. Alabama State, Wyoming, Air Force in 2016-17
Wearing Camouflage		0-1	Lost 1	SDSU lost to No. 9/9 Syracuse (11-11-12)
Wearing Pewter Gray		3-1	Won 2	Uniforms made its debut vs. USD (12-15-12); also worn against UNLV (1-16-13), FS (2-9-13), BSU (3-13-13)
Wearing Turquoise	1-0	3-0	Won 3	Uniforms made its debut vs. Bakersfield (11-20-14), worn again vs. San Diego Christian (11-18-15), and this season vs. Savannah St. (11-28-16)
On Monday	3-1		Won 3	Aztecs are 12-2 on Monday since the beginning of 2010-11
On Tuesday	3-2		Lost 1	SDSU is 32-7 in its last 39 games played on Tuesday. Last loss: at San José State (2-7-17)
On Wednesday	4-3		Won 2	SDSU is 15-4 in last 19 and 45-12 in its last 57 games played on Wednesday
On Thursday	2-0		Won 8	Aztecs played just 22 Thursday games since the start of the 2010-11 season
On Friday	2-1		Lost 1	SDSU is 23-5 in its last 28 games played on the day
On Saturday	2-6		Lost 2	SDSU is 55-24 in its last 79 games played on Saturday
On Sunday	3-1		Won 2	The Aztecs have played only 20 Sunday games since the beginning of the 2010-11 campaign (13-7)
In November	4-1		Won 3	SDSU is 34-9 in November since the beginning of the 2010-11 campaign
In December	4-3		Won 4	The Aztecs are 44-9 in their last 53 games played in December. Last loss: vs. Arizona State (12-10-16)
In January	4-5		Won 1	SDSU is 28-7 in last 35 and 44-11 in last 55 January games
In February	4-3		Lost 2	SDSU is 27-13 in its last 40 games played during the month
In March	3-2		Lost 1	The Aztecs are 46-17 in their last 63 March games