



Officials: Tony Padilla, Verne Harris, Doug Shows

Wyoming - 65

Record: 10-9 (3-3)

NO.	Name	F	Min	FG	3P	FT	Rebounds			Fouls		TP	AS	TO	ST	Blocks		+/-
				M-A	M-A	M-A	OR	DR	TOT	PF	FD					BS	BA	
33	Mason Walters	F	30:51	7-15	0-2	4-4	3	2	5	4	4	18	2	3	0	0	3	-12
44	Caden Powell	F	18:54	1-3	0-0	0-0	1	3	4	4	0	2	1	1	0	0	1	1
1	Brendan Wenzel	G	38:17	0-8	0-6	5-6	1	7	8	3	6	5	0	3	0	0	1	-17
3	Sam Griffin	G	40:00	8-16	5-8	1-1	0	5	5	0	3	22	3	3	0	0	0	-16
13	Akuel Kot	G	40:00	6-14	4-9	0-0	0	4	4	2	0	16	0	1	0	1	1	-16
15	Oleg Kojenets		10:42	0-0	0-0	0-0	0	1	1	0	0	0	1	1	0	0	0	-9
5	Cam Manyawu		19:33	1-1	0-0	0-0	3	2	5	1	2	2	1	2	1	0	0	-12
11	Kael Combs		01:43	0-0	0-0	0-0	0	1	1	0	0	0	0	0	0	0	0	1
Team							2	4	6			0		1				
Totals				23-57	9-25	10-11	10	29	39	14	15	65	8	15	1	1	6	-16

Shooting By Period		
1 st FG%	12-26	46.2%
3PT%	4-9	44.4%
FT%	4-4	100%
2 nd FG%	11-31	35.5%
3PT%	5-16	31.3%
FT%	6-7	85.7%
GM FG%	23-57	40.4%
3PT%	9-25	36.0%
FT%	10-11	90.9%

Dead Ball Rebounds: 1, 1

Technical Fouls::NONE

San Diego State - 81

Record: 16-4 (5-2)

NO.	Name	F	Min	FG	3P	FT	Rebounds			Fouls		TP	AS	TO	ST	Blocks		+/-
				M-A	M-A	M-A	OR	DR	TOT	PF	FD					BS	BA	
3	Micah Parrish	F	30:29	3-8	1-5	2-2	0	3	3	2	2	9	2	0	1	2	0	10
13	Jaedon LeDee	F	36:20	6-13	1-3	4-7	1	6	7	1	8	17	1	0	2	1	0	13
25	Elijah Saunders	F	21:51	3-9	3-8	0-0	3	2	5	0	0	9	2	0	1	0	0	14
5	Lamont Butler	G	30:08	10-14	2-6	1-2	0	5	5	2	2	23	4	0	3	0	0	10
14	Reese Waters	G	26:41	3-7	0-3	0-0	0	0	0	1	0	6	0	0	0	0	0	15
4	Jay Pal		09:54	0-5	0-3	0-0	0	1	1	1	0	0	1	2	1	2	0	0
12	Darrion Trammell		26:47	5-6	1-1	1-1	0	3	3	3	1	12	1	0	1	0	1	4
21	Miles Byrd		10:32	1-2	0-1	1-1	0	1	1	0	1	3	2	0	1	0	0	8
40	Miles Heide		04:43	0-0	0-0	0-0	0	1	1	4	0	0	0	0	0	1	0	3
11	Demarshay Johnson Jr.		02:35	1-1	0-0	0-0	0	0	0	1	0	2	0	0	0	0	0	3
Team							2	1	3			0		0				
Totals				32-65	8-30	9-13	6	23	29	15	14	81	13	2	10	6	1	16

Shooting By Period		
1 st FG%	14-38	36.8%
3PT%	4-19	21.1%
FT%	2-3	66.7%
2 nd FG%	18-27	66.7%
3PT%	4-11	36.4%
FT%	7-10	70%
GM FG%	32-65	49.2%
3PT%	8-30	26.7%
FT%	9-13	69.2%

Dead Ball Rebounds: 1, 1

Technical Fouls::NONE

	WYO	SDSU
Biggest lead	5 (1 st 4:02)	18 (2 nd 5:35)
Best Scoring Run	9(2 nd 17:53)	9(2 nd 19:48)
Lead Changes	14	
Times Tied	7	
Time with Lead	08:31	25:47

Points from	WYO	SDSU
Turnovers	0	19
Paint	22	34
Second Chance	9	3
Fast Breaks	0	5
Bench	2	17

	Period by Period Scoring		
	1st	2nd	TOT
WYO	32	33	65
SDSU	34	47	81



Period 1

Quarter Starters:

SDSU	3 Parrish M	5 Butler L	13 LeDee J	14 Waters R	25 Saunders E
WYO	1 Wenzel B	3 Griffin S	13 Kot A	33 Walters M	44 Powell C

Game Time	SDSU	Score	Diff	WYO
20:00	13 LEDEE J jumpball won			44 POWELL C jumpball lost
19:44	14 WATERS R 2pt FG outside the paint, jump shot missed			
19:41	25 SAUNDERS E offensive rebound (1)			
19:39	5 BUTLER L 3pt FG second chance, jump shot missed			
19:36				33 WALTERS M defensive rebound (1)
19:15	5 BUTLER L steal (1)			44 POWELL C turnover bad pass (1)
19:11	5 BUTLER L 2pt FG fast break from turnover in the paint, layup made (2)	2-0	2	
18:58				1 WENZEL B 2pt FG in the paint, layup missed
18:53				33 WALTERS M offensive rebound (2)
18:52		2-2	0	33 WALTERS M 2pt FG second chance in the paint, layup made (2)
18:30	13 LEDEE J 2pt FG in the paint, floating jump shot missed			
18:25	25 SAUNDERS E offensive rebound (2)			
18:22	3 PARRISH M 3pt FG second chance, jump shot made (3)	5-2	3	
18:22	25 SAUNDERS E assist (1)			
18:06				3 GRIFFIN S 2pt FG in the paint, floating jump shot missed
18:04	3 PARRISH M defensive rebound (1)			
17:55	25 SAUNDERS E 3pt FG , jump shot made (3)	8-2	6	
17:55	3 PARRISH M assist (1)			
17:36		8-4	4	13 KOT A 2pt FG outside the paint, step back jump shot made (2)
17:15	25 SAUNDERS E 3pt FG , jump shot made (6)	11-4	7	
17:15	5 BUTLER L assist (1)			
16:43		11-6	5	33 WALTERS M 2pt FG in the paint, driving layup made (4)
16:29	25 SAUNDERS E 3pt FG , jump shot missed			
16:25				44 POWELL C defensive rebound (1)
16:03				3 GRIFFIN S 2pt FG in the paint, step back jump shot missed
15:59	defensive rebound (4)			
15:59	5 BUTLER L foul drawn (1)			44 POWELL C foul personal (1 - 1)
15:59				44 POWELL C substitution out
15:59				15 KOJENETS O substitution in
15:49	25 SAUNDERS E 3pt FG , jump shot missed			
15:46				33 WALTERS M defensive rebound (3)
15:31				33 WALTERS M 2pt FG in the paint, layup missed
15:27	3 PARRISH M defensive rebound (2)			
15:23	3 PARRISH M 3pt FG , jump shot missed			
15:21	13 LEDEE J offensive rebound (1)			
15:21	13 LEDEE J foul drawn (1)			33 WALTERS M foul personal (1 - 2)
15:21	Timeout media			
15:21	5 BUTLER L substitution out			
15:21	25 SAUNDERS E substitution out			
15:21	4 PAL J substitution in			
15:21	12 TRAMMELL D substitution in			



Official Basketball Play by Play - First Half
Wyoming at San Diego State
 01/23/24 Steve Fisher Court at Viejas Arena, San Diego
 2023-24 Men's Basketball

Game Time: 6:05 PM
Game Duration: 1:48
Attendance: 12,414

Officials: Tony Padilla, Verne Harris, Doug Shows

Game Time	SDSU	Score	Diff	WYO
15:17	13 LEDEE J 2pt FG second chance in the paint, floating jump shot missed			
15:14				15 KOJENETS O defensive rebound (1)
14:58	jump ball situation			
14:51		11-9	2	13 KOT A 3pt FG , step back jump shot made (5)
14:29	4 PAL J 3pt FG , jump shot missed			
14:23				1 WENZEL B defensive rebound (1)
14:10				13 KOT A 3pt FG , jump shot missed
14:05	4 PAL J defensive rebound (1)			
14:02	4 PAL J 3pt FG , jump shot missed			
13:58				defensive rebound (7)
13:58	3 PARRISH M substitution out			
13:58	21 BYRD M substitution in			
13:58				33 WALTERS M substitution out
13:58				5 MANYAWU C substitution in
13:48	14 WATERS R foul personal (1 - 1)			5 MANYAWU C foul drawn (1)
13:34		11-12	-1	3 GRIFFIN S 3pt FG , jump shot made (3)
13:13	14 WATERS R 2pt FG outside the paint, turnaround jump shot made (2)	13-12	1	
13:00				15 KOJENETS O turnover travel (1)
13:00	13 LEDEE J substitution out			
13:00	40 HEIDE M substitution in			
12:43	4 PAL J 2pt FG from turnover in the paint, jump shot missed			
12:42				5 MANYAWU C defensive rebound (1)
12:42	40 HEIDE M foul personal (1 - 2)			5 MANYAWU C foul drawn (2)
12:24	12 TRAMMELL D steal (1)			13 KOT A turnover bad pass (1)
12:20	12 TRAMMELL D 2pt FG from turnover in the paint, layup blocked			
12:20				13 KOT A block (1)
12:20	offensive rebound (8)			
12:14	14 WATERS R 3pt FG from turnover second chance, jump shot missed			
12:11				13 KOT A defensive rebound (1)
12:08				13 KOT A 2pt FG in the paint, jump shot blocked
12:08	4 PAL J block (1)			
12:07				offensive rebound (10)
12:07	14 WATERS R substitution out			
12:07	5 BUTLER L substitution in			
12:00				3 GRIFFIN S 3pt FG second chance, jump shot missed
11:56				5 MANYAWU C offensive rebound (2)
11:55	40 HEIDE M foul shooting (2 - 3)			1 WENZEL B foul drawn (1)
11:55	Timeout media			
11:55	40 HEIDE M substitution out			
11:55	13 LEDEE J substitution in			
11:55				15 KOJENETS O substitution out
11:55				33 WALTERS M substitution in
11:55		13-13	0	1 WENZEL B free throw 1 - 2 made (1)
11:55		13-14	-1	1 WENZEL B free throw 2 - 2 made (2)
11:40	4 PAL J 3pt FG , jump shot missed			
11:37				13 KOT A defensive rebound (2)



Official Basketball Play by Play - First Half
Wyoming at San Diego State
 01/23/24 Steve Fisher Court at Viejas Arena, San Diego
 2023-24 Men's Basketball

Game Time: 6:05 PM
Game Duration: 1:48
Attendance: 12,414

Officials: Tony Padilla, Verne Harris, Doug Shows

Game Time	SDSU	Score	Diff	WYO
11:19				33 WALTERS M 2pt FG in the paint, hook shot missed
11:17	13 LEDEE J defensive rebound (2)			
11:12	5 BUTLER L 2pt FG in the paint, driving layup made (4)	15-14	1	
10:48	4 PAL J foul shooting (1 - 4)			33 WALTERS M foul drawn (1)
10:48		15-15	0	33 WALTERS M free throw 1 - 2 made (5)
10:48	4 PAL J substitution out			
10:48	25 SAUNDERS E substitution in			
10:48		15-16	-1	33 WALTERS M free throw 2 - 2 made (6)
10:32	25 SAUNDERS E 3pt FG , jump shot missed			
10:29				1 WENZEL B defensive rebound (2)
10:16	21 BYRD M steal (1)			1 WENZEL B turnover lost ball (1)
10:14	21 BYRD M 2pt FG fast break from turnover in the paint, layup made (2)	17-16	1	
10:14	21 BYRD M foul drawn (1)			1 WENZEL B foul shooting (1 - 3)
10:14	21 BYRD M free throw fast break 1 - 1 made (3)	18-16	2	
09:55		18-18	0	33 WALTERS M 2pt FG in the paint, hook shot made (8)
09:41	21 BYRD M substitution out			
09:41	3 PARRISH M substitution in			
09:41				5 MANYAWU C substitution out
09:41				44 POWELL C substitution in
09:29	13 LEDEE J 2pt FG in the paint, jump shot missed			
09:26	25 SAUNDERS E offensive rebound (3)			
09:16	5 BUTLER L 3pt FG second chance, jump shot missed			
09:03				44 POWELL C defensive rebound (2)
09:01	5 BUTLER L steal (2)			3 GRIFFIN S turnover lost ball (1)
09:01	5 BUTLER L 2pt FG from turnover in the paint, layup made (6)	20-18	2	
08:54		20-20	0	44 POWELL C 2pt FG in the paint, dunk, made (2)
08:54				33 WALTERS M assist (1)
08:28	25 SAUNDERS E 3pt FG , jump shot missed			
08:26				defensive dead ball rebound (1)
08:26	3 PARRISH M foul personal (1 - 5)			1 WENZEL B foul drawn (2)
08:26				1 WENZEL B substitution out
08:26				11 COMBS K substitution in
08:06	12 TRAMMELL D foul personal (1 - 6)			3 GRIFFIN S foul drawn (1)
08:06	25 SAUNDERS E substitution out			
08:06	14 WATERS R substitution in			
07:57		20-22	-2	33 WALTERS M 2pt FG in the paint, hook shot made (10)
07:39	13 LEDEE J 3pt FG , jump shot made (3)	23-22	1	
07:39	3 PARRISH M assist (2)			
07:21		23-24	-1	3 GRIFFIN S 2pt FG outside the paint, floating jump shot made (5)
07:08	13 LEDEE J 3pt FG , jump shot missed			
07:04				11 COMBS K defensive rebound (1)
06:44				13 KOT A 3pt FG , jump shot missed
06:43	defensive dead ball rebound (1)			
06:43	13 LEDEE J foul drawn (2)			33 WALTERS M foul personal (2 - 4)
06:43				Timeout media
06:43				11 COMBS K substitution out
06:43				33 WALTERS M substitution out
06:43				1 WENZEL B substitution in



Official Basketball Play by Play - First Half
Wyoming at San Diego State
 01/23/24 Steve Fisher Court at Viejas Arena, San Diego
 2023-24 Men's Basketball

Game Time: 6:05 PM
Game Duration: 1:48
Attendance: 12,414

Officials: Tony Padilla, Verne Harris, Doug Shows

Game Time	SDSU	Score	Diff	WYO
06:43				5 MANYAWU C substitution in
06:22	3 PARRISH M 2pt FG in the paint, jump shot made (5)	25-24	1	
06:18				5 MANYAWU C turnover bad pass (1)
06:15	14 WATERS R 2pt FG from turnover in the paint, step back jump shot made (4)	27-24	3	
05:42				13 KOT A 2pt FG outside the paint, jump shot missed
05:39				5 MANYAWU C offensive rebound (3)
05:36		27-27	0	13 KOT A 3pt FG second chance, jump shot made (8)
05:36				5 MANYAWU C assist (1)
05:11	14 WATERS R 3pt FG , jump shot missed			
05:09				3 GRIFFIN S defensive rebound (1)
05:00		27-30	-3	3 GRIFFIN S 3pt FG , jump shot made (8)
04:30	12 TRAMMELL D substitution out			
04:30	4 PAL J substitution in			
04:26	14 WATERS R 3pt FG , jump shot missed			
04:23	offensive rebound (11)			
04:17	13 LEDEE J 2pt FG second chance outside the paint, jump shot missed			
04:14				1 WENZEL B defensive rebound (3)
04:02		27-32	-5	3 GRIFFIN S 2pt FG outside the paint, jump shot made (10)
03:54	Timeout 30 Sec			
03:54				Timeout media
03:44	5 BUTLER L foul drawn (2)			5 MANYAWU C foul shooting (1 - 5)
03:44	5 BUTLER L free throw 1 - 2 made (7)	28-32	-4	
03:44	5 BUTLER L free throw 2 - 2 missed			
03:42				1 WENZEL B defensive rebound (4)
03:24				44 POWELL C 2pt FG in the paint, layup blocked
03:24	4 PAL J block (2)			
03:20	5 BUTLER L defensive rebound (1)			
03:17	4 PAL J 2pt FG in the paint, jump shot missed			
03:12				3 GRIFFIN S defensive rebound (2)
02:47				1 WENZEL B 3pt FG , jump shot missed
02:45	5 BUTLER L defensive rebound (2)			
02:31	5 BUTLER L 2pt FG outside the paint, jump shot made (9)	30-32	-2	
02:16				3 GRIFFIN S turnover bad pass (2)
02:16	4 PAL J substitution out			
02:16	25 SAUNDERS E substitution in			
02:16				44 POWELL C substitution out
02:16				15 KOJENETS O substitution in
02:00	13 LEDEE J 2pt FG from turnover outside the paint, jump shot made (5)	32-32	0	
02:00	5 BUTLER L assist (2)			
01:46				Timeout 30 Sec
01:39	13 LEDEE J steal (1)			1 WENZEL B turnover lost ball (2)
01:27	5 BUTLER L 3pt FG from turnover, jump shot missed			
01:25				defensive rebound (21)
01:25	5 BUTLER L substitution out			
01:25	12 TRAMMELL D substitution in			
00:58				3 GRIFFIN S 3pt FG , jump shot missed
00:55	25 SAUNDERS E defensive rebound (4)			



Official Basketball Play by Play - First Half
Wyoming at San Diego State
 01/23/24 Steve Fisher Court at Viejas Arena, San Diego
 2023-24 Men's Basketball

Game Time: 6:05 PM
Game Duration: 1:48
Attendance: 12,414

Officials: Tony Padilla, Verne Harris, Doug Shows

Game Time	SDSU	Score	Diff	WYO
00:42	3 PARRISH M 2pt FG in the paint, layup missed			
00:39				3 GRIFFIN S defensive rebound (3)
00:09				3 GRIFFIN S 2pt FG in the paint, jump shot missed
00:09				offensive dead ball rebound (2)
00:09				turnover shot clock (9)
00:03	12 TRAMMELL D 2pt FG from turnover in the paint, turnaround jump shot made (2)	34-32	2	
END OF PERIOD				
SDSU 34-32 WYO				



Officials: Tony Padilla, Verne Harris, Doug Shows

Wyoming - 32

NO.	Name	F	Min	FG	3P	FT	Rebounds			Fouls		TP	AS	TO	ST	Blocks		+/-
				M-A	M-A	M-A	OR	DR	TOT	PF	FD					BS	BA	
33	Mason Walters	F	11:14	4-6	0-0	2-2	1	2	3	2	1	10	1	0	0	0	0	0
44	Caden Powell	F	11:26	1-2	0-0	0-0	0	2	2	1	0	2	0	1	0	0	1	-3
1	Brendan Wenzel	G	18:17	0-2	0-1	2-2	0	4	4	1	2	2	0	2	0	0	0	-3
3	Sam Griffin	G	20:00	4-9	2-4	0-0	0	3	3	0	1	10	0	2	0	0	0	-2
13	Akuel Kot	G	20:00	3-7	2-4	0-0	0	2	2	0	0	8	0	1	0	1	1	-2
15	Oleg Kojenets		06:20	0-0	0-0	0-0	0	1	1	0	0	0	0	1	0	0	0	0
5	Cam Manyawu		11:00	0-0	0-0	0-0	2	1	3	1	2	0	1	1	0	0	0	-1
11	Kael Combs		01:43	0-0	0-0	0-0	0	1	1	0	0	0	0	0	0	0	0	1
Team							1	2	3			0		1				
Totals				12-26	4-9	4-4	4	18	22	5	6	32	2	9	0	1	2	-2

Shooting By Period		
1st FG%	12-26	46.2%
3PT%	4-9	44.4%
FT%	4-4	100%
GM FG%	12-26	46.2%
3PT%	4-9	44.4%
FT%	4-4	100.0%

Dead Ball Rebounds: 1, 1

Technical Fouls::NONE

San Diego State - 34

NO.	Name	F	Min	FG	3P	FT	Rebounds			Fouls		TP	AS	TO	ST	Blocks		+/-
				M-A	M-A	M-A	OR	DR	TOT	PF	FD					BS	BA	
3	Micah Parrish	F	15:43	2-4	1-2	0-0	0	2	2	1	0	5	2	0	0	0	0	4
13	Jaedon LeDee	F	18:55	2-7	1-2	0-0	1	1	2	0	2	5	0	0	1	0	0	2
25	Elijah Saunders	F	09:37	2-6	2-6	0-0	3	1	4	0	0	6	1	0	0	0	0	9
5	Lamont Butler	G	15:21	4-7	0-3	1-2	0	2	2	0	2	9	2	0	2	0	0	4
14	Reese Waters	G	15:59	2-6	0-3	0-0	0	0	0	1	0	4	0	0	0	0	0	3
4	Jay Pal		06:47	0-5	0-3	0-0	0	1	1	1	0	0	0	0	0	2	0	-4
12	Darrion Trammell		12:16	1-2	0-0	0-0	0	0	0	1	0	2	0	0	1	0	1	-6
21	Miles Byrd		04:17	1-1	0-0	1-1	0	0	0	0	1	3	0	0	1	0	0	-2
40	Miles Heide		01:05	0-0	0-0	0-0	0	0	0	2	0	0	0	0	0	0	0	0
Team							2	1	3			0		0				
Totals				14-38	4-19	2-3	6	8	14	6	5	34	5	0	5	2	1	2

Shooting By Period		
1st FG%	14-38	36.8%
3PT%	4-19	21.1%
FT%	2-3	66.7%
GM FG%	14-38	36.8%
3PT%	4-19	21.1%
FT%	2-3	66.7%

Dead Ball Rebounds: 0, 1

Technical Fouls::NONE

	WYO	SDSU
Biggest lead	5 (1st 4:02)	7 (1st 17:15)
Best Scoring Run	8(1st 13:34)	7(1st 0:03)
Lead Changes	12	
Times Tied	7	
Time with Lead	05:55	08:23

Points from	WYO	SDSU
Turnovers	0	13
Paint	10	14
Second Chance	7	3
Fast Breaks	0	5
Bench	0	5

	Period by Period Scoring		
	1st	2nd	TOT
WYO	32	33	65
SDSU	34	47	81



Period 2

Quarter Starters:

SDSU	3 Parrish M	5 Butler L	13 LeDee J	14 Waters R	25 Saunders E
WYO	1 Wenzel B	3 Griffin S	13 Kot A	33 Walters M	44 Powell C

Game Time	SDSU	Score	Diff	WYO
20:00	12 TRAMMELL D substitution out			
20:00	5 BUTLER L substitution in			
20:00				5 MANYAWU C substitution out
20:00				15 KOJENETS O substitution out
20:00				33 WALTERS M substitution in
20:00				44 POWELL C substitution in
19:48	14 WATERS R 2pt FG outside the paint, jump shot made (6)	36-32	4	
19:48	13 LEDEE J assist (1)			
19:28		36-35	1	13 KOT A 3pt FG , jump shot made (11)
19:28				3 GRIFFIN S assist (1)
18:58	3 PARRISH M 3pt FG , jump shot missed			
18:54				44 POWELL C defensive rebound (3)
18:38		36-38	-2	3 GRIFFIN S 3pt FG , jump shot made (13)
18:15	13 LEDEE J foul drawn (3)			44 POWELL C foul personal (2 - 1)
18:11	13 LEDEE J 2pt FG in the paint, jump shot missed			
18:07				1 WENZEL B defensive rebound (5)
17:53		36-41	-5	3 GRIFFIN S 3pt FG , jump shot made (16)
17:53				44 POWELL C assist (1)
17:44	13 LEDEE J foul drawn (4)			44 POWELL C foul personal (3 - 2)
17:44				44 POWELL C substitution out
17:44				15 KOJENETS O substitution in
17:37	13 LEDEE J 2pt FG in the paint, layup made (7)	38-41	-3	
17:15	5 BUTLER L foul personal (1 - 1)			3 GRIFFIN S foul drawn (2)
17:09	3 PARRISH M steal (1)			33 WALTERS M turnover bad pass (1)
17:05	3 PARRISH M foul drawn (1)			13 KOT A foul personal (1 - 3)
17:00	3 PARRISH M foul drawn (2)			1 WENZEL B foul shooting (2 - 4)
17:00	3 PARRISH M free throw 1 - 2 made (6)	39-41	-2	
17:00	25 SAUNDERS E substitution out			
17:00	40 HEIDE M substitution in			
17:00	3 PARRISH M free throw 2 - 2 made (7)	40-41	-1	
16:33				1 WENZEL B 3pt FG , jump shot blocked
16:33	3 PARRISH M block (1)			
16:33	5 BUTLER L defensive rebound (3)			
16:31	13 LEDEE J foul personal (1 - 2)			33 WALTERS M foul drawn (2)
16:31	Timeout media			
16:18	40 HEIDE M foul personal (3 - 3)			33 WALTERS M foul drawn (3)
16:08				33 WALTERS M 2pt FG in the paint, layup blocked
16:08	13 LEDEE J block (1)			
16:03	13 LEDEE J defensive rebound (3)			
16:02	13 LEDEE J 2pt FG outside the paint, jump shot made (9)	42-41	1	
16:02	13 LEDEE J foul drawn (5)			1 WENZEL B foul shooting (3 - 5)
16:02	13 LEDEE J free throw 1 - 1 made (10)	43-41	2	
15:52	5 BUTLER L steal (3)			33 WALTERS M turnover lost ball (2)



Official Basketball Play by Play - Second Half
Wyoming at San Diego State
 01/23/24 Steve Fisher Court at Viejas Arena, San Diego
 2023-24 Men's Basketball

Game Time: 6:05 PM
Game Duration: 1:48
Attendance: 12,414

Officials: Tony Padilla, Verne Harris, Doug Shows

Game Time	SDSU	Score	Diff	WYO
15:45	5 BUTLER L 2pt FG from turnover in the paint, driving layup made (11)	45-41	4	
15:33				Timeout 30 Sec
15:33	Timeout media			
15:33	14 WATERS R substitution out			
15:33	12 TRAMMELL D substitution in			
15:33				15 KOJENETS O substitution out
15:33				5 MANYAWU C substitution in
15:20	40 HEIDE M foul shooting (4 - 4)			1 WENZEL B foul drawn (3)
15:20		45-42	3	1 WENZEL B free throw 1 - 2 made (3)
15:20	40 HEIDE M substitution out			
15:20	4 PAL J substitution in			
15:20		45-43	2	1 WENZEL B free throw 2 - 2 made (4)
15:01	5 BUTLER L 3pt FG , jump shot made (14)	48-43	5	
15:01	4 PAL J assist (1)			
14:46	3 PARRISH M foul personal (2 - 5)			1 WENZEL B foul drawn (4)
14:42				3 GRIFFIN S turnover out of bounds (3)
14:15	5 BUTLER L 2pt FG from turnover in the paint, layup made (16)	50-43	7	
14:05	4 PAL J steal (1)			5 MANYAWU C turnover lost ball (2)
14:01	4 PAL J turnover bad pass (1)			
13:46	13 LEDEE J steal (2)			33 WALTERS M turnover lost ball (3)
13:34	4 PAL J turnover bad pass (2)			5 MANYAWU C steal (1)
13:30				13 KOT A 3pt FG from turnover, jump shot missed
13:26				5 MANYAWU C offensive rebound (4)
13:25				1 WENZEL B 3pt FG from turnover second chance, jump shot missed
13:20	13 LEDEE J defensive rebound (4)			
13:11	13 LEDEE J 3pt FG , jump shot missed			
13:08				3 GRIFFIN S defensive rebound (4)
12:56		50-45	5	13 KOT A 2pt FG in the paint, step back jump shot made (13)
12:35	3 PARRISH M 2pt FG in the paint, layup made (9)	52-45	7	
12:17				13 KOT A 3pt FG , jump shot missed
12:13				offensive rebound (27)
12:13	3 PARRISH M substitution out			
12:13	4 PAL J substitution out			
12:13	5 BUTLER L substitution out			
12:13	13 LEDEE J substitution out			
12:13	11 JOHNSON JR. D substitution in			
12:13	14 WATERS R substitution in			
12:13	21 BYRD M substitution in			
12:13	25 SAUNDERS E substitution in			
12:13				33 WALTERS M substitution out
12:13				44 POWELL C substitution in
12:01				13 KOT A 2pt FG second chance outside the paint, jump shot missed
11:57	25 SAUNDERS E defensive rebound (5)			
11:50	12 TRAMMELL D 2pt FG in the paint, layup made (4)	54-45	9	
11:50	12 TRAMMELL D foul drawn (1)			44 POWELL C foul shooting (4 - 6)
11:50	Timeout media			
11:50				44 POWELL C substitution out



Official Basketball Play by Play - Second Half
Wyoming at San Diego State
 01/23/24 Steve Fisher Court at Viejas Arena, San Diego
 2023-24 Men's Basketball

Game Time: 6:05 PM
Game Duration: 1:48
Attendance: 12,414

Officials: Tony Padilla, Verne Harris, Doug Shows

Game Time	SDSU	Score	Diff	WYO
11:50				33 WALTERS M substitution in
11:50	12 TRAMMELL D free throw 1 - 1 made (5)	55-45	10	
11:36				3 GRIFFIN S 2pt FG in the paint, driving layup missed
11:35				1 WENZEL B offensive rebound (6)
11:35	11 JOHNSON JR. D foul personal (1 - 6)			1 WENZEL B foul drawn (5)
11:26				13 KOT A 3pt FG second chance, jump shot missed
11:21				33 WALTERS M offensive rebound (4)
11:21		55-47	8	33 WALTERS M 2pt FG second chance in the paint, layup made (12)
10:55	11 JOHNSON JR. D 2pt FG in the paint, dunk, made (2)	57-47	10	
10:55	21 BYRD M assist (1)			
10:31				3 GRIFFIN S 2pt FG in the paint, floating jump shot missed
10:28	12 TRAMMELL D defensive rebound (1)			
10:20	25 SAUNDERS E 2pt FG in the paint, layup missed			
10:17				3 GRIFFIN S defensive rebound (5)
10:13		57-49	8	5 MANYAWU C 2pt FG in the paint, layup made (2)
10:13				3 GRIFFIN S assist (2)
09:52	12 TRAMMELL D 2pt FG outside the paint, jump shot made (7)	59-49	10	
09:52	25 SAUNDERS E assist (2)			
09:38	11 JOHNSON JR. D substitution out			
09:38	13 LEDEE J substitution in			
09:27				1 WENZEL B 3pt FG , jump shot missed
09:23	13 LEDEE J defensive rebound (5)			
09:10	12 TRAMMELL D 2pt FG outside the paint, jump shot made (9)	61-49	12	
08:31				33 WALTERS M 2pt FG outside the paint, turnaround jump shot missed
08:28	21 BYRD M defensive rebound (1)			
08:20	13 LEDEE J foul drawn (6)			33 WALTERS M foul personal (3 - 7)
08:20	13 LEDEE J 1&1 free throw 1 made (11)	62-49	13	
08:19	13 LEDEE J 1&1 free throw 2 missed			
08:18				1 WENZEL B defensive rebound (7)
08:07	25 SAUNDERS E steal (1)			1 WENZEL B turnover bad pass (3)
08:01	13 LEDEE J foul drawn (7)			13 KOT A foul shooting (2 - 8)
08:01	13 LEDEE J free throw fast break 1 - 2 missed			
08:01	offensive dead ball rebound (2)			
08:01	25 SAUNDERS E substitution out			
08:01	3 PARRISH M substitution in			
08:01	13 LEDEE J free throw fast break 2 - 2 missed			
07:58				5 MANYAWU C defensive rebound (5)
07:48				1 WENZEL B 3pt FG , jump shot missed
07:45	3 PARRISH M defensive rebound (3)			
07:39	13 LEDEE J 2pt FG in the paint, layup made (13)	64-49	15	
07:39	21 BYRD M assist (2)			
07:24				1 WENZEL B 2pt FG in the paint, layup missed
07:21	12 TRAMMELL D defensive rebound (2)			
07:17	21 BYRD M 3pt FG , jump shot missed			
07:12				1 WENZEL B defensive rebound (8)
07:00	12 TRAMMELL D foul personal (2 - 7)			33 WALTERS M foul drawn (4)
07:00				Timeout media
07:00	21 BYRD M substitution out			



Official Basketball Play by Play - Second Half
Wyoming at San Diego State
 01/23/24 Steve Fisher Court at Viejas Arena, San Diego
 2023-24 Men's Basketball

Game Time: 6:05 PM
Game Duration: 1:48
Attendance: 12,414

Officials: Tony Padilla, Verne Harris, Doug Shows

Game Time	SDSU	Score	Diff	WYO
07:00	25 SAUNDERS E substitution in			
07:00	14 WATERS R substitution out			
07:00	5 BUTLER L substitution in			
07:00				5 MANYAWU C substitution out
07:00				44 POWELL C substitution in
07:00		64-50	14	33 WALTERS M 1&1 free throw 1 made (13)
07:00		64-51	13	33 WALTERS M 1&1 free throw 2 made (14)
06:50	5 BUTLER L 2pt FG in the paint, layup made (18)	66-51	15	
06:31		66-54	12	3 GRIFFIN S 3pt FG , jump shot made (19)
06:09	12 TRAMMELL D 3pt FG , jump shot made (12)	69-54	15	
06:09	5 BUTLER L assist (3)			
05:55				33 WALTERS M 3pt FG , jump shot missed
05:52	5 BUTLER L defensive rebound (4)			
05:35	25 SAUNDERS E 3pt FG , jump shot made (9)	72-54	18	
05:35	12 TRAMMELL D assist (1)			
05:15				44 POWELL C 2pt FG in the paint, layup missed
05:13				44 POWELL C offensive rebound (4)
05:12				1 WENZEL B 3pt FG second chance, jump shot missed
05:08	13 LEDEE J defensive rebound (6)			
04:54	25 SAUNDERS E 3pt FG , jump shot missed			
04:51				13 KOT A defensive rebound (3)
04:41				3 GRIFFIN S 3pt FG , jump shot missed
04:37	5 BUTLER L defensive rebound (5)			
04:12	5 BUTLER L 3pt FG , jump shot missed			
04:09				defensive rebound (36)
04:09	25 SAUNDERS E substitution out			
04:09	40 HEIDE M substitution in			
03:59		72-57	15	13 KOT A 3pt FG , jump shot made (16)
03:59				33 WALTERS M assist (2)
03:39	3 PARRISH M 3pt FG , jump shot missed			
03:36				13 KOT A defensive rebound (4)
03:26	12 TRAMMELL D foul personal (3 - 8)			1 WENZEL B foul drawn (6)
03:26		Timeout media		
03:26		72-58	14	1 WENZEL B 1&1 free throw 1 made (5)
03:26				1 WENZEL B 1&1 free throw 2 missed
03:25	12 TRAMMELL D defensive rebound (3)			
03:10	5 BUTLER L 2pt FG in the paint, layup made (20)	74-58	16	
02:47				33 WALTERS M 2pt FG in the paint, jump shot blocked
02:47	3 PARRISH M block (2)			
02:42				33 WALTERS M offensive rebound (5)
02:42				33 WALTERS M 2pt FG second chance in the paint, layup blocked
02:42	40 HEIDE M block (1)			
02:42	40 HEIDE M defensive rebound (1)			
02:22	13 LEDEE J 2pt FG in the paint, layup made (15)	76-58	18	
02:22	5 BUTLER L assist (4)			
02:11		76-60	16	3 GRIFFIN S 2pt FG in the paint, layup made (21)
02:11	5 BUTLER L foul shooting (2 - 9)			3 GRIFFIN S foul drawn (3)
02:11	40 HEIDE M substitution out			



Official Basketball Play by Play - Second Half
Wyoming at San Diego State
 01/23/24 Steve Fisher Court at Viejas Arena, San Diego
 2023-24 Men's Basketball

Game Time: 6:05 PM
Game Duration: 1:48
Attendance: 12,414

Officials: Tony Padilla, Verne Harris, Doug Shows

Game Time	SDSU	Score	Diff	WYO
02:11	25 SAUNDERS E substitution in			
02:11				44 POWELL C substitution out
02:11				15 KOJENETS O substitution in
02:11		76-61	15	3 GRIFFIN S free throw 1 - 1 made (22)
02:00	3 PARRISH M 3pt FG , jump shot missed			
01:57				defensive rebound (39)
01:30		76-63	13	33 WALTERS M 2pt FG in the paint, layup made (16)
01:30				15 KOJENETS O assist (1)
01:02	13 LEDEE J foul drawn (8)			33 WALTERS M foul shooting (4 - 9)
01:02	13 LEDEE J free throw 1 - 2 made (16)	77-63	14	
01:02	3 PARRISH M substitution out			
01:02	12 TRAMMELL D substitution out			
01:02	14 WATERS R substitution in			
01:02	21 BYRD M substitution in			
01:02	13 LEDEE J free throw 2 - 2 made (17)	78-63	15	
00:52		78-65	13	33 WALTERS M 2pt FG in the paint, layup made (18)
00:52				3 GRIFFIN S assist (3)
00:26	5 BUTLER L 3pt FG , jump shot made (23)	81-65	16	
00:17				33 WALTERS M 3pt FG , jump shot missed
00:13	13 LEDEE J defensive rebound (7)			
END OF GAME				
SDSU 81-65 WYO				



Officials: Tony Padilla, Verne Harris, Doug Shows

Wyoming - 33

NO.	Name	F	Min	FG	3P	FT	Rebounds			Fouls		TP	AS	TO	ST	Blocks		+/-
				M-A	M-A	M-A	OR	DR	TOT	PF	FD					BS	BA	
33	Mason Walters	F	19:37	3-9	0-2	2-2	2	0	2	2	3	8	1	3	0	0	3	-12
44	Caden Powell	F	07:28	0-1	0-0	0-0	1	1	2	3	0	0	1	0	0	0	0	4
1	Brendan Wenzel	G	20:00	0-6	0-5	3-4	1	3	4	2	4	3	0	1	0	0	1	-14
3	Sam Griffin	G	20:00	4-7	3-4	1-1	0	2	2	0	2	12	3	1	0	0	0	-14
13	Akuel Kot	G	20:00	3-7	2-5	0-0	0	2	2	2	0	8	0	0	0	0	0	-14
15	Oleg Kojenets		04:22	0-0	0-0	0-0	0	0	0	0	0	0	1	0	0	0	0	-9
5	Cam Manyawu		08:33	1-1	0-0	0-0	1	1	2	0	0	2	0	1	1	0	0	-11
Team							1	2	3			0		0				
Totals				11-31	5-16	6-7	6	11	17	9	9	33	6	6	1	0	4	-14

Shooting By Period		
2 nd FG%	11-31	35.5%
3PT%	5-16	31.3%
FT%	6-7	85.7%
GM FG%	11-31	35.5%
3PT%	5-16	31.3%
FT%	6-7	85.7%

Dead Ball Rebounds: 0, 0

Technical Fouls::NONE

San Diego State - 47

NO.	Name	F	Min	FG	3P	FT	Rebounds			Fouls		TP	AS	TO	ST	Blocks		+/-
				M-A	M-A	M-A	OR	DR	TOT	PF	FD					BS	BA	
3	Micah Parrish	F	14:46	1-4	0-3	2-2	0	1	1	1	2	4	0	0	1	2	0	6
13	Jaedon LeDee	F	17:25	4-6	0-1	4-7	0	5	5	1	6	12	1	0	1	1	0	11
25	Elijah Saunders	F	12:14	1-3	1-2	0-0	0	1	1	0	0	3	1	0	1	0	0	5
5	Lamont Butler	G	14:47	6-7	2-3	0-0	0	3	3	2	0	14	2	0	1	0	0	6
14	Reese Waters	G	10:42	1-1	0-0	0-0	0	0	0	0	0	2	0	0	0	0	0	12
40	Miles Heide		03:38	0-0	0-0	0-0	0	1	1	2	0	0	0	0	0	1	0	3
12	Darrion Trammell		14:31	4-4	1-1	1-1	0	3	3	2	1	10	1	0	0	0	0	10
4	Jay Pal		03:07	0-0	0-0	0-0	0	0	0	0	0	0	1	2	1	0	0	4
11	Demarshay Johnson Jr.		02:35	1-1	0-0	0-0	0	0	0	1	0	2	0	0	0	0	0	3
21	Miles Byrd		06:15	0-1	0-1	0-0	0	1	1	0	0	0	2	0	0	0	0	10
Team							0	0	0			0		0				
Totals				18-27	4-11	7-10	0	15	15	9	9	47	8	2	5	4	0	14

Shooting By Period		
2 nd FG%	18-27	66.7%
3PT%	4-11	36.4%
FT%	7-10	70%
GM FG%	18-27	66.7%
3PT%	4-11	36.4%
FT%	7-10	70.0%

Dead Ball Rebounds: 1, 0

Technical Fouls::NONE

	WYO	SDSU
Biggest lead	5 (2 nd 17:53)	18 (2 nd 5:35)
Best Scoring Run	9(2 nd 17:53)	9(2 nd 15:45)
Lead Changes	2	
Times Tied	0	
Time with Lead	02:36	17:12

Points from	WYO	SDSU
Turnovers	0	6
Paint	12	20
Second Chance	2	0
Fast Breaks	0	0
Bench	2	12

	Period by Period Scoring		
	1st	2nd	TOT
WYO	32	33	65
SDSU	34	47	81



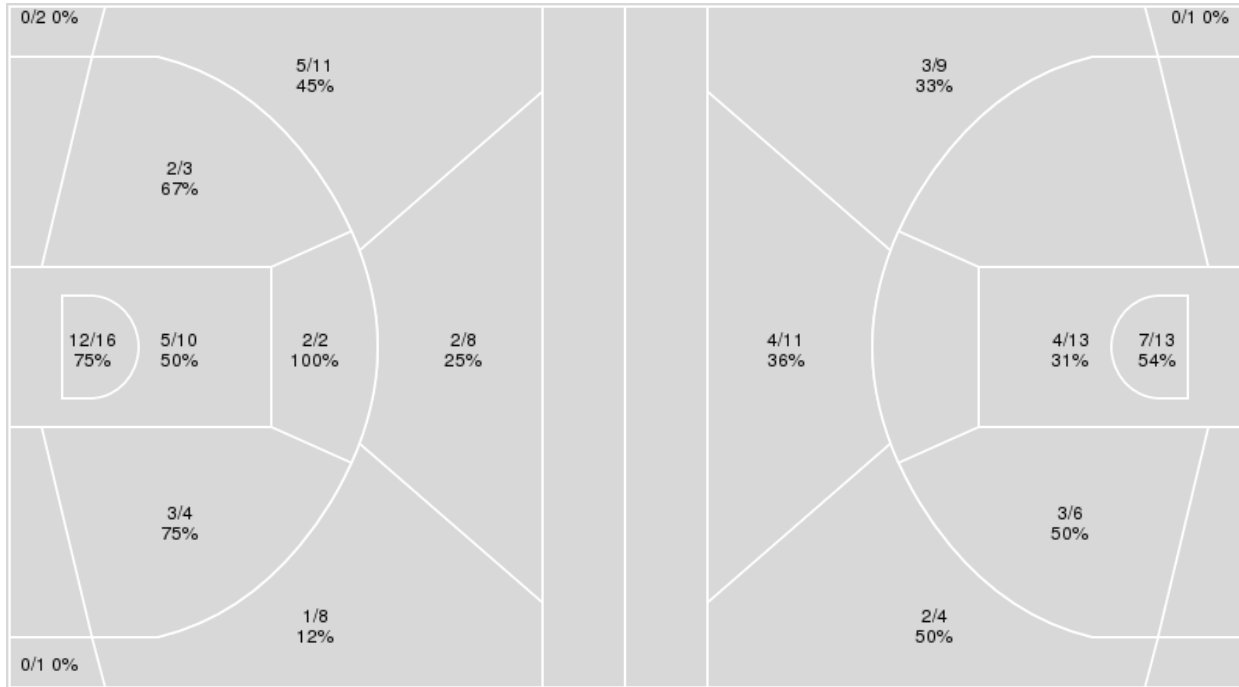
Officials: Tony Padilla, Verne Harris, Doug Shows

{ Players => 0, 2, 3, 4, 5, 8, 10, 11, 12, 13, 14, 21, 24, 25, 32, 40, 42; }
 FG Types => All; Results => All;

{ Players => 0, 1, 2, 3, 5, 7, 10, 11, 13, 15, 22, 24, 31, 33, 44; } FG
 Types => All; Results => All;

San Diego State

Wyoming



San Diego State	M/A	%
Field Goals	32/65	49
2 Points	24/35	69
3 Points	8/30	27
Free Throws	9/13	69

Wyoming	M/A	%
Field Goals	23/57	40
2 Points	14/32	44
3 Points	9/25	36
Free Throws	10/11	91



Wyoming at San Diego State

01/23/24 Steve Fisher Court at Viejas Arena, San Diego
2023-24 Men's Basketball

Game Time: 6:05 PM
Game Duration: 1:48
Attendance: 12,414

Officials: Tony Padilla, Verne Harris, Doug Shows

Wyoming

No	Name	Mins		Score		Points Diff		Points per Min		Assists		Rebounds		Steals		Turnovers	
		On	Off	On	Off	On	Off	On	Off	On	Off	On	Off	On	Off	On	Off
1	Brendan Wenzel	38:17	01:43	61 - 78	4 - 3	-17	1	1.59	2.33	8	0	38	1	1	0	15	0
3	Sam Griffin	40:00	00:00	65 - 81	0 - 0	-16	0	1.62	0.00	8	0	39	0	1	0	15	0
5	Cam Manyawu	19:33	20:27	25 - 37	40 - 44	-12	-4	1.28	1.96	2	6	22	17	1	0	11	4
11	Kael Combs	01:43	38:17	4 - 3	61 - 78	1	-17	2.33	1.59	0	8	1	38	0	1	0	15
13	Akuel Kot	40:00	00:00	65 - 81	0 - 0	-16	0	1.62	0.00	8	0	39	0	1	0	15	0
15	Oleg Kojenets	10:42	29:18	11 - 20	54 - 61	-9	-7	1.03	1.84	2	6	11	28	0	1	6	9
33	Mason Walters	30:51	09:09	54 - 66	11 - 15	-12	-4	1.75	1.20	7	1	28	11	1	0	9	6
44	Caden Powell	18:54	21:06	40 - 39	25 - 42	1	-17	2.12	1.18	5	3	17	22	0	1	4	11

San Diego State

No	Name	Mins		Score		Points Diff		Points per Min		Assists		Rebounds		Steals		Turnovers	
		On	Off	On	Off	On	Off	On	Off	On	Off	On	Off	On	Off	On	Off
3	Micah Parrish	30:29	09:31	60 - 50	21 - 15	10	6	1.97	2.21	11	2	22	7	7	3	2	0
4	Jay Pal	09:54	30:06	14 - 14	67 - 51	0	16	1.41	2.23	1	12	7	22	3	7	2	0
5	Lamont Butler	30:08	09:52	65 - 55	16 - 10	10	6	2.16	1.62	10	3	20	9	8	2	2	0
11	Demarshay Johnson Jr.	02:35	37:25	7 - 4	74 - 61	3	13	2.71	1.98	2	11	2	27	0	10	0	2
12	Darrion Trammell	26:47	13:13	50 - 46	31 - 19	4	12	1.87	2.35	8	5	17	12	6	4	2	0
13	Jaedon LeDee	36:20	03:40	74 - 61	7 - 4	13	3	2.04	1.91	11	2	26	3	9	1	2	0
14	Reese Waters	26:41	13:19	54 - 39	27 - 26	15	1	2.02	2.03	9	4	21	8	6	4	0	2
21	Miles Byrd	10:32	29:28	23 - 15	58 - 50	8	8	2.18	1.97	3	10	9	20	3	7	0	2
25	Elijah Saunders	21:51	18:09	48 - 34	33 - 31	14	2	2.20	1.82	9	4	16	13	6	4	0	2
40	Miles Heide	04:43	35:17	10 - 7	71 - 58	3	13	2.12	2.01	1	12	5	24	2	8	0	2

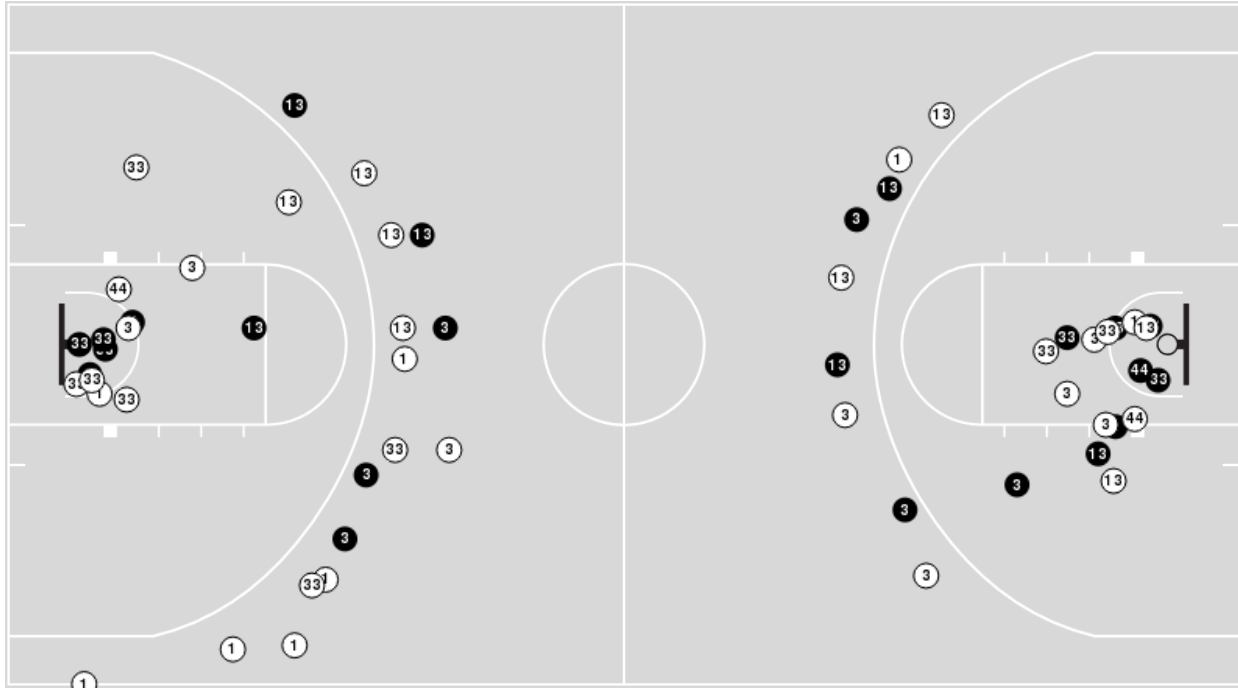


Officials: Tony Padilla, Verne Harris, Doug Shows

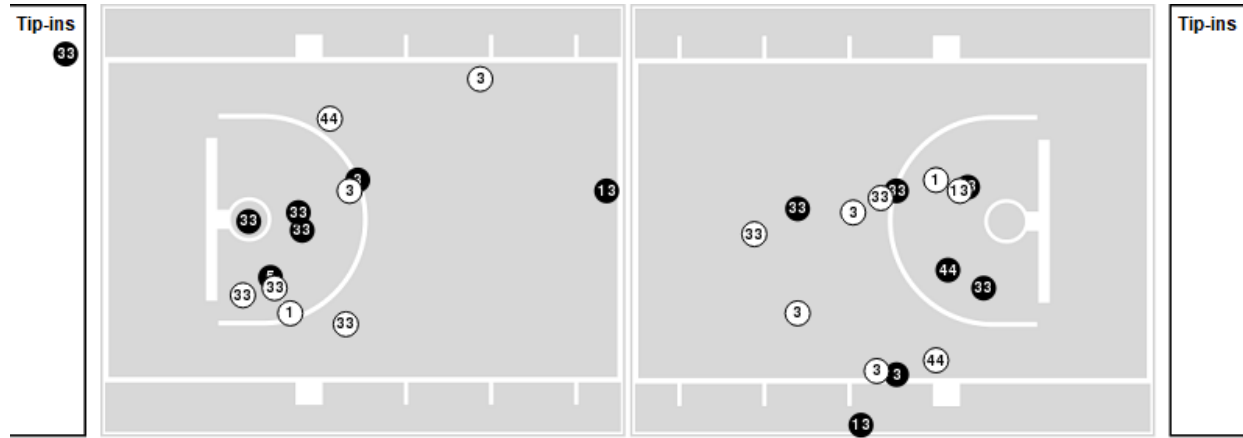
Players => 0, 1, 2, 3, 5, 7, 10, 11, 13, 15, 22, 24, 31, 33, 44 FG Types=>All Results=>All

Wyoming

All Field Goals



Blow Up Chart



● Made ○ Missed N - Player Number

Wyoming	M/A	%
Field Goals	23/57	40
2 Points	14/32	44
3 Points	9/25	36
Free Throws	10/11	91

Wyoming	M/A	%
Points in the Paint	22 (11 / 26)	42
Fast Break Points	0 (0/0)	0
Second Chance Points	9 (5/11)	45
Effective FG%	48	

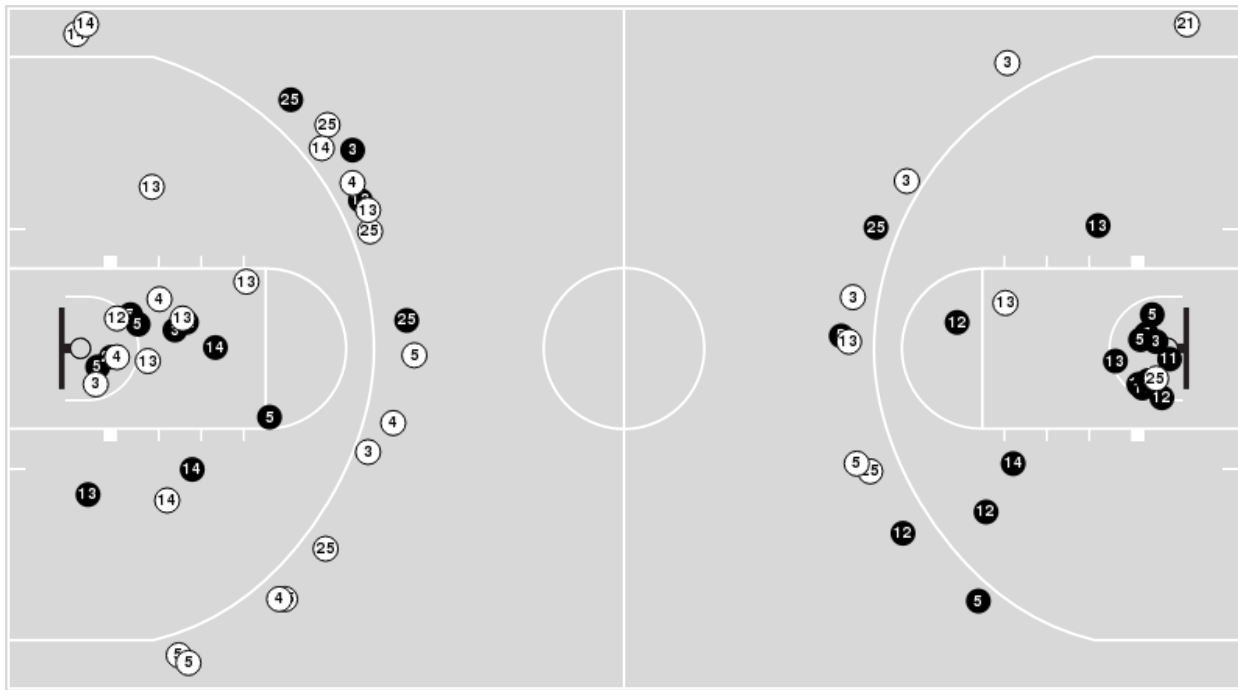


Officials: Tony Padilla, Verne Harris, Doug Shows

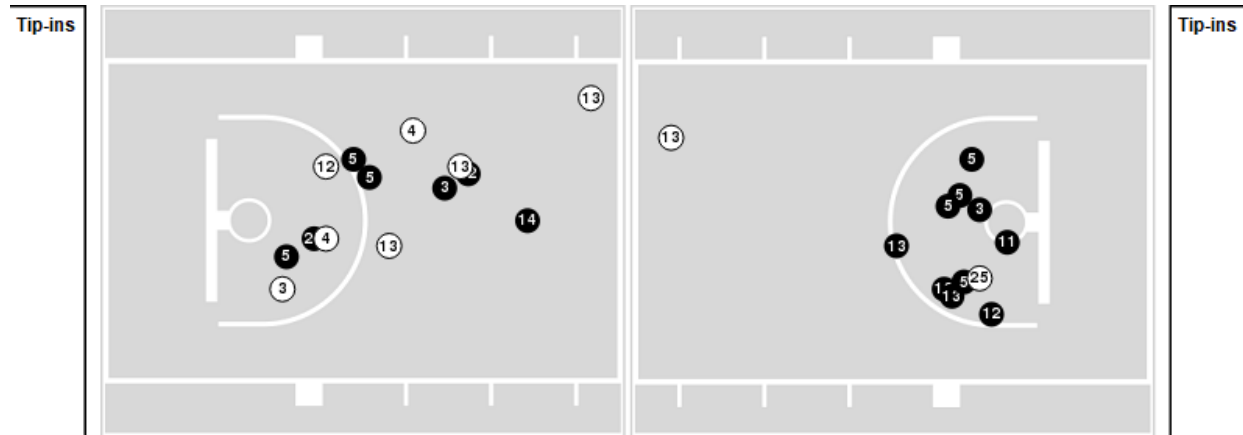
Players => 0, 2, 3, 4, 5, 8, 10, 11, 12, 13, 14, 21, 24, 25, 32, 40, 42FG Types=>AllResults=>All

San Diego State

All Field Goals



Blow Up Chart



● Made ○ Missed N - Player Number

San Diego State	M/A	%
Field Goals	32/65	49
2 Points	24/35	69
3 Points	8/30	27
Free Throws	9/13	69

San Diego State	M/A	%
Points in the Paint	34 (17 / 26)	65
Fast Break Points	5 (3/5)	60
Second Chance Points	3 (1/6)	17
Effective FG%	55	



Official Basketball Rotations Summary - Final
Wyoming at San Diego State
 01/23/24 Steve Fisher Court at Viejas Arena, San Diego
 2023-24 Men's Basketball

Game Time: 6:05 PM
Game Duration: 1:48
Attendance: 12,414

Officials: Tony Padilla, Verne Harris, Doug Shows

Wyoming

Lineup	Quarter On	Time On	Quarter Off	Time Off	Time on Court	Score	Score Diff	Reb	Stl	Tov	Ass	PPP
1- Wenzel B/ 3- Griffin S/ 13- Kot A/ 33- Walters M/ 44- Powell C/	1	20:00	1	15:59	04:01	6-11	-5	3	0	1	0	1.0000
1- Wenzel B/ 3- Griffin S/ 13- Kot A/ 15- Kojenets O/ 33- Walters M/	1	15:59	1	13:58	02:01	3-0	3	4	0	0	0	1.0000
1- Wenzel B/ 3- Griffin S/ 5- Manyawu C/ 13- Kot A/ 15- Kojenets O/	1	13:58	1	11:55	02:03	3-2	1	4	0	2	0	1.0000
1- Wenzel B/ 3- Griffin S/ 5- Manyawu C/ 13- Kot A/ 33- Walters M/	1	11:55	1	09:41	02:14	6-5	1	2	0	1	0	1.2605
1- Wenzel B/ 3- Griffin S/ 13- Kot A/ 33- Walters M/ 44- Powell C/	1	09:41	1	08:26	01:15	2-2	0	1	0	1	1	1.0000
3- Griffin S/ 11- Combs K/ 13- Kot A/ 33- Walters M/ 44- Powell C/	1	08:26	1	06:43	01:43	4-3	1	1	0	0	0	1.3333
1- Wenzel B/ 3- Griffin S/ 5- Manyawu C/ 13- Kot A/ 44- Powell C/	1	06:43	1	02:16	04:27	8-7	1	5	0	2	1	1.1429
1- Wenzel B/ 3- Griffin S/ 5- Manyawu C/ 13- Kot A/ 15- Kojenets O/	1	02:16	2	20:00	02:16	0-4	-4	2	0	2	0	0.0000
1- Wenzel B/ 3- Griffin S/ 13- Kot A/ 33- Walters M/ 44- Powell C/	2	20:00	2	17:44	02:16	9-2	7	2	0	0	2	3.0000
1- Wenzel B/ 3- Griffin S/ 13- Kot A/ 15- Kojenets O/ 33- Walters M/	2	17:44	2	15:33	02:11	0-9	-9	0	0	2	0	0.0000
1- Wenzel B/ 3- Griffin S/ 5- Manyawu C/ 13- Kot A/ 33- Walters M/	2	15:33	2	12:13	03:20	4-7	-3	3	1	3	0	0.6803
1- Wenzel B/ 3- Griffin S/ 5- Manyawu C/ 13- Kot A/ 44- Powell C/	2	12:13	2	11:50	00:23	0-2	-2	0	0	0	0	0.0000
1- Wenzel B/ 3- Griffin S/ 5- Manyawu C/ 13- Kot A/ 33- Walters M/	2	11:50	2	07:00	04:50	4-10	-6	6	0	1	1	0.5000
1- Wenzel B/ 3- Griffin S/ 13- Kot A/ 33- Walters M/ 44- Powell C/	2	07:00	2	02:11	04:49	11-12	-1	5	0	0	1	1.2557
1- Wenzel B/ 3- Griffin S/ 13- Kot A/ 15- Kojenets O/ 33- Walters M/	2	02:11	2	00:00	02:11	5-5	0	1	0	0	2	1.4535



Official Basketball Rotations Summary - Final
Wyoming at San Diego State
 01/23/24 Steve Fisher Court at Viejas Arena, San Diego
 2023-24 Men's Basketball

Game Time: 6:05 PM
Game Duration: 1:48
Attendance: 12,414

Officials: Tony Padilla, Verne Harris, Doug Shows

San Diego State

Lineup	Quarter On	Time On	Quarter Off	Time Off	Time on Court	Score	Score Diff	Reb	Stl	Tov	Ass	PPP
3- Parrish M/ 5- Butler L/ 13- LeDee J/ 14- Waters R/ 25- Saunders E/	1	20:00	1	15:21	04:39	11-6	5	6	1	0	3	1.5714
3- Parrish M/ 4- Pal J/ 12- Trammell D/ 13- LeDee J/ 14- Waters R/	1	15:21	1	13:58	01:23	0-3	-3	1	0	0	0	0.0000
4- Pal J/ 12- Trammell D/ 13- LeDee J/ 14- Waters R/ 21- Byrd M/	1	13:58	1	13:00	00:58	2-3	-1	0	0	0	0	2.0000
4- Pal J/ 12- Trammell D/ 14- Waters R/ 21- Byrd M/ 40- Heide M/	1	13:00	1	12:07	00:53	0-0	0	1	1	0	0	0.0000
4- Pal J/ 5- Butler L/ 12- Trammell D/ 21- Byrd M/ 40- Heide M/	1	12:07	1	11:55	00:12	0-0	0	0	0	0	0	0.0000
4- Pal J/ 5- Butler L/ 12- Trammell D/ 13- LeDee J/ 21- Byrd M/	1	11:55	1	10:48	01:07	2-3	-1	1	0	0	0	1.0000
5- Butler L/ 12- Trammell D/ 13- LeDee J/ 21- Byrd M/ 25- Saunders E/	1	10:48	1	09:41	01:07	3-3	0	0	1	0	0	1.2295
3- Parrish M/ 5- Butler L/ 12- Trammell D/ 13- LeDee J/ 25- Saunders E/	1	09:41	1	08:06	01:35	2-2	0	1	1	0	0	0.6667
3- Parrish M/ 5- Butler L/ 12- Trammell D/ 13- LeDee J/ 14- Waters R/	1	08:06	1	04:30	03:36	7-10	-3	0	0	0	1	1.4000
3- Parrish M/ 4- Pal J/ 5- Butler L/ 13- LeDee J/ 14- Waters R/	1	04:30	1	02:16	02:14	3-2	1	3	0	0	0	0.7732
3- Parrish M/ 5- Butler L/ 13- LeDee J/ 14- Waters R/ 25- Saunders E/	1	02:16	1	01:25	00:51	2-0	2	0	1	0	1	1.0000
3- Parrish M/ 12- Trammell D/ 13- LeDee J/ 14- Waters R/ 25- Saunders E/	1	01:25	2	20:00	01:25	2-0	2	1	0	0	0	1.0000
3- Parrish M/ 5- Butler L/ 13- LeDee J/ 14- Waters R/ 25- Saunders E/	2	20:00	2	17:00	03:00	5-9	-4	0	1	0	1	1.1261
3- Parrish M/ 5- Butler L/ 13- LeDee J/ 14- Waters R/ 40- Heide M/	2	17:00	2	15:33	01:27	6-0	6	2	1	0	0	2.0833
3- Parrish M/ 5- Butler L/ 12- Trammell D/ 13- LeDee J/ 40- Heide M/	2	15:33	2	15:20	00:13	0-1	-1	0	0	0	0	0.0000
3- Parrish M/ 4- Pal J/ 5- Butler L/ 12- Trammell D/ 13- LeDee J/	2	15:20	2	12:13	03:07	7-3	4	1	2	2	1	1.1667
11- Johnson Jr. D/ 12- Trammell D/ 14- Waters R/ 21- Byrd M/ 25- Saunders E/	2	12:13	2	09:38	02:35	7-4	3	2	0	0	2	1.5766
12- Trammell D/ 13- LeDee J/ 14- Waters R/ 21- Byrd M/ 25- Saunders E/	2	09:38	2	08:01	01:37	3-0	3	2	1	0	0	1.2931
3- Parrish M/ 12- Trammell D/ 13- LeDee J/ 14- Waters R/ 21- Byrd M/	2	08:01	2	07:00	01:01	2-0	2	2	0	0	1	0.8197
3- Parrish M/ 5- Butler L/ 12- Trammell D/ 13- LeDee J/ 25- Saunders E/	2	07:00	2	04:09	02:51	8-5	3	3	0	0	2	1.6000
3- Parrish M/ 5- Butler L/ 12- Trammell D/ 13- LeDee J/ 40- Heide M/	2	04:09	2	02:11	01:58	4-6	-2	2	0	0	1	1.3333
3- Parrish M/ 5- Butler L/ 12- Trammell D/ 13- LeDee J/ 25- Saunders E/	2	02:11	2	01:02	01:09	1-3	-2	0	0	0	0	0.6944
5- Butler L/ 13- LeDee J/ 14- Waters R/ 21- Byrd M/ 25- Saunders E/	2	01:02	2	00:00	01:02	4-2	2	1	0	0	0	2.7778



Officials: Tony Padilla, Verne Harris, Doug Shows

Wyoming

Lineup	Time	Score	Score Diff	Pts/Min	Reb	Stl	Tov	Ass	PPP
1- Wenzel B/ 3- Griffin S/ 13- Kot A/ 33- Walters M/ 44- Powell C/	12:21	28-27	1	2.2672	11	0	2	4	1.4170
1- Wenzel B/ 3- Griffin S/ 5- Manyawu C/ 13- Kot A/ 33- Walters M/	10:24	14-22	-8	1.3462	11	1	5	1	0.7511
1- Wenzel B/ 3- Griffin S/ 13- Kot A/ 15- Kojenets O/ 33- Walters M/	06:23	8-14	-6	1.2533	5	0	2	2	0.7663
1- Wenzel B/ 3- Griffin S/ 5- Manyawu C/ 13- Kot A/ 44- Powell C/	04:50	8-9	-1	1.6552	5	0	2	1	1.0000
1- Wenzel B/ 3- Griffin S/ 5- Manyawu C/ 13- Kot A/ 15- Kojenets O/	04:19	3-6	-3	0.6950	6	0	4	0	0.4286
3- Griffin S/ 11- Combs K/ 13- Kot A/ 33- Walters M/ 44- Powell C/	01:43	4-3	1	2.3301	1	0	0	0	1.3333



Official Basketball Line Up Analysis - Final
Wyoming at San Diego State
 01/23/24 Steve Fisher Court at Viejas Arena, San Diego
 2023-24 Men's Basketball

Game Time: 6:05 PM
Game Duration: 1:48
Attendance: 12,414

Officials: Tony Padilla, Verne Harris, Doug Shows

San Diego State

Lineup	Time	Score	Score Diff	Pts/Min	Reb	Stl	Tov	Ass	PPP
3- Parrish M/ 5- Butler L/ 13- LeDee J/ 14- Waters R/ 25- Saunders E/	08:30	18-15	3	2.1176	6	3	0	5	1.3393
3- Parrish M/ 5- Butler L/ 12- Trammell D/ 13- LeDee J/ 25- Saunders E/	05:35	11-10	1	1.9701	4	1	0	2	1.1653
3- Parrish M/ 5- Butler L/ 12- Trammell D/ 13- LeDee J/ 14- Waters R/	03:36	7-10	-3	1.9444	0	0	0	1	1.4000
3- Parrish M/ 4- Pal J/ 5- Butler L/ 12- Trammell D/ 13- LeDee J/	03:07	7-3	4	2.2460	1	2	2	1	1.1667
11- Johnson Jr. D/ 12- Trammell D/ 14- Waters R/ 21- Byrd M/ 25- Saunders E/	02:35	7-4	3	2.7097	2	0	0	2	1.5766
3- Parrish M/ 4- Pal J/ 5- Butler L/ 13- LeDee J/ 14- Waters R/	02:14	3-2	1	1.3433	3	0	0	0	0.7732
3- Parrish M/ 5- Butler L/ 12- Trammell D/ 13- LeDee J/ 40- Heide M/	02:11	4-7	-3	1.8321	2	0	0	1	1.3333
12- Trammell D/ 13- LeDee J/ 14- Waters R/ 21- Byrd M/ 25- Saunders E/	01:37	3-0	3	1.8557	2	1	0	0	1.2931
3- Parrish M/ 5- Butler L/ 13- LeDee J/ 14- Waters R/ 40- Heide M/	01:27	6-0	6	4.1379	2	1	0	0	2.0833
3- Parrish M/ 12- Trammell D/ 13- LeDee J/ 14- Waters R/ 25- Saunders E/	01:25	2-0	2	1.4118	1	0	0	0	1.0000
3- Parrish M/ 4- Pal J/ 12- Trammell D/ 13- LeDee J/ 14- Waters R/	01:23	0-3	-3	0.0000	1	0	0	0	0.0000
4- Pal J/ 5- Butler L/ 12- Trammell D/ 13- LeDee J/ 21- Byrd M/	01:07	2-3	-1	1.7910	1	0	0	0	1.0000
5- Butler L/ 12- Trammell D/ 13- LeDee J/ 21- Byrd M/ 25- Saunders E/	01:07	3-3	0	2.6866	0	1	0	0	1.2295
5- Butler L/ 13- LeDee J/ 14- Waters R/ 21- Byrd M/ 25- Saunders E/	01:02	4-2	2	3.8710	1	0	0	0	2.7778
3- Parrish M/ 12- Trammell D/ 13- LeDee J/ 14- Waters R/ 21- Byrd M/	01:01	2-0	2	1.9672	2	0	0	1	0.8197
4- Pal J/ 12- Trammell D/ 13- LeDee J/ 14- Waters R/ 21- Byrd M/	00:58	2-3	-1	2.0690	0	0	0	0	2.0000
4- Pal J/ 12- Trammell D/ 14- Waters R/ 21- Byrd M/ 40- Heide M/	00:53	0-0	0	0.0000	1	1	0	0	0.0000
4- Pal J/ 5- Butler L/ 12- Trammell D/ 21- Byrd M/ 40- Heide M/	00:12	0-0	0	0.0000	0	0	0	0	0.0000