

# San Diego State

2016-17 Record: 11-7; 3-3 MW  
11 Straight Postseason Appearances, 10-Time MW Champions

- The Aztecs have won at least 20 games in a school record 11 straight seasons and 23 or more in eight consecutive seasons.
- San Diego State has advanced to postseason play each of the last 11 seasons (2006 NCAA, 2007-09 NIT, 2010-15 NCAA, 2016 NIT).

**Trends:**

- SDSU is 8th nationally in winning percentage since the beginning of 2010-11, trailing Gonzaga, Kansas, Wichita State, Kentucky, Duke, Arizona and Louisville.
- San Diego State has won 56 straight games when shooting 50 percent or better from the field.

	PPG	RPG	APG	FG	3FG	FT	
<b>3</b> <b>Trey Kell</b> Guard, 6-4, 210, Jr.-2L San Diego, Calif. (St. Augustine HS)	16-17 13.3 MW 12.0	4.0 3.7	3.0 3.3	40.1 38.1	25.6 20.0	84.6 86.4	<b>Career Highs:</b> Points: 27 vs. Fresno State (1-19-16) Rebounds: 10 at Nevada (1-26-16) Assists: 7 vs. Savannah State (11-28-16)
<b>4</b> <b>Dakarai Allen</b> Guard, 6-5, 200, Sr.-3L Elk Grove, Calif. (Sheldon HS)	16-17 8.2 MW 9.5	3.9 3.3	1.5 1.2	51.4 60.0	24.2 36.4	71.4 78.6	<b>Career Highs:</b> Points: 17 at Boise State (1-7-17) Rebounds: 9 vs. SD Christian (11-16-16) Assists: 4 - three times
<b>5</b> <b>Jalen McDaniels</b> Forward, 6-9, 190, Fr.-HS Federal Way, Wash. (Federal Way HS)	16-17 -- MW --	-- --	-- --	-- --	-- --	-- --	<b>Career Highs:</b> Points: Rebounds: Assists:
<b>10</b> <b>Max Hoetzel</b> Forward, 6-9, 210, So.-TR Calabasas, Calif. (Indiana)	16-17 9.1 MW 11.3	4.6 5.2	0.5 0.7	38.3 48.9	39.6 55.3	81.3 1/2	<b>Career Highs:</b> Points: 19 vs. Miss. Valley St. (11-14-14) Rebounds: 9 - two times Assists: 2 - three times
<b>11</b> <b>D'Erryl Williams</b> Guard, 6-3, 205, Sr.-3L Sacramento, Calif. (Sheldon HS)	16-17 2.0 MW 2.0	2.7 1.6	1.6 1.2	45.8 4/9	3/5 1/2	1/4 1/2	<b>Career Highs:</b> Points: 9 vs. SD Christian (11-18-15) Rebounds: 9 vs. SD Christian (11-16-16) Assists: 4 vs. Nicholls (12-10-15)
<b>14</b> <b>Zylan Cheatham</b> Forward, 6-9, 220, So.-1L Phoenix, Ariz. (South Mountain HS)	16-17 10.7 MW 8.5	6.6 6.0	1.6 2.0	54.2 52.9	2/10 0/4	77.5 75.0	<b>Career Highs:</b> Points: 18 vs. Savannah State (11-28-16) Rebounds: 13 vs. So. Miss (12-22-16) Assists: 6 at Nevada (1-4-17)
<b>20</b> <b>Matt Shrigley</b> Forward, 6-6, 180, Sr.-3L San Diego, Calif. (La Costa Canyon HS)	16-17 5.7 MW 5.3	2.4 1.8	0.7 1.0	38.6 46.7	38.7 42.9	2/4 1/2	<b>Career Highs:</b> Points: 16 at Colorado State (1-24-15) Rebounds: 5 - five times Assists: 6 vs. Air Force (2-13-16)
<b>21</b> <b>Malik Pope</b> Forward, 6-10, 210, Jr.-2L Sacramento, Calif. (Laguna Creek HS)	16-17 8.1 MW 5.5	4.8 5.0	1.3 1.0	43.9 33.3	23.5 0/2	57.9 3/4	<b>Career Highs:</b> Points: 22 at Colorado State (1-24-15) Rebounds: 12 vs. Washington (3-21-16) Assists: 5 vs. UNLV (3-5-16)
<b>23</b> <b>Montaque Gill-Caesar</b> Guard, 6-6, 215, So.-TR Vaughn, Ontario, Canada (Missouri)	16-17 3.3 MW 2.2	1.9 1.8	0.3 0.3	25.7 20.0	17.9 0/9	82.6 5/6	<b>Career Highs:</b> Points: 21 vs. UMKC (11-14-14) Rebounds: 7 vs. UMKC (11-14-14) Assists: 3 vs. Florida (2-24-15)
<b>24</b> <b>Nolan Narain</b> Forward, 6-9, 220, Fr.-RS Hamilton, Ontario, Canada (La Lumiere School)	16-17 1.1 MW 0.0	0.7 1.0	0.0 0.0	28.6 0/0	0/2 0/0	0/0 0/0	<b>Career Highs:</b> Points: 4 vs. SD Christian (11-16-16) Rebounds: 1 - five times Assists: N/A
<b>42</b> <b>Jeremy Hemsley</b> Guard, 6-3, 180, So.-1L Rancho Cucamonga, Calif. (Damien HS)	16-17 15.4 MW 13.8	2.8 2.7	2.5 2.7	44.1 36.3	46.0 30.6	67.2 66.7	<b>Career Highs:</b> Points: 30 at Nevada (1-4-17) Rebounds: 7 vs. San José State (1-10-17) Assists: 9 vs. Savannah State (11-28-16)
<b>45</b> <b>Valentine Izundu</b> Center, 6-10, 240, Sr.-TR Houston, Texas (Washington State)	16-17 2.2 MW 4.0	3.5 4.0	0.1 0.0	61.5 90.9	0/0 0/0	35.3 4/8	<b>Career Highs:</b> Points: 10 - three times Rebounds: 8 at Boise State (1-7-17) Assists: 2 vs. New Mexico (12-25-15)

**Preseason all-MW...** all-Diamond Head Classic: 13.3 ppg, 3.7 rpg, 4.0 apg... Last 9 games: 32 ast. (3.6 apg)... Last 4 gms: 15-17 FT... Team leader in FT pct. (.846), stl. (2.6)... Season-high 24 pts. (Scored 16 of SDSU's final 20 pts.) at UNLV... 19 pts., 4 ast., 0 TO, career-high 5 stl. vs. Tulsa... 23 pts. vs. USD... Career-high 7 ast., 1 TO vs. Savannah St.... Scored in double figures 47x in his career (5 20-pt gms)... 37 of last 44 gms. w/3FGM... 1 TO or less 50x.

**Pronounced Duh-KAR-ee...** 2nd on team in stl. (25), blks. (13) and 3rd rebs. (71)... 63.5 FG on 2-pt. FGA... 50.0 FG in 11 of last 13 gms... Multiple stls. 8x this yr... CH 17 pts. at Boise... CH 5 blks. vs. SD Christian; Only Aztec at 6-5 or shorter to have 5 blks. in game since at least '96-'97... CH 4 stl. vs. Ala. St., vs. UNM... 1st in the nation last year in pts. per possession allowed (0.591) among players w/ at least 200 poss. defended... 15 career double-digit scoring games.

**Preseason MW Co-Freshman of the Year...** Has not played this season... Is the only true freshman on the team... Four-star player by Scout and 247Sports... No. 98 on Rivals 150... Led Federal Way High to a 29-0 record and a state title, its second straight, as a senior in 2015-16... Named AP Washington state Class 4A first-team player as a senior... All-state selection by USA Today and The News Tribune.

Started last 8 gms... 21-38 3FG last 6 games... 3FG in 11 straight gms (19 in last 5 gms)... 5.8 rpg last 4 games... CH 5 3FG at Nevada (15 pts.), at Boise St. (16 pts.)... 4-8 3FG en route to 12 pts. vs. Arizona St... 15 pts., team-high 8 rebs. in 17 mins. vs. Savannah St... 36 3FG (2nd on team) in 15 GP... 10 gms. w/multiple 3FG... 13-16 FT this season... Indiana transfer, who helped IU to the 2015 NCAA tourney.

**Pronounced Dee-AIR-ol...** 13.1 mpg last 9 GP... Team-high 3 ast. at UNLV... Season-high 4 pts. vs. SJSU... 6 rebs. vs. Southern Miss in 22 mins... Career-high 9 rebs. vs. SD Christian... Is 3-for-5 3FG after entering year 3-for-7 3FG in his career... Committed only 32 TOs in 581 career mins... Has only 5 multi-turnover gms. in 69 career outings... 20 of his 21 assists have come in last 11 gms... 3x MW Academic Team; Only Chris Walton has done it 4x (01, 02, 04, 05).

**Pronounced ZY-lin CHEAT-um...** 7.3 rpg last 12 gms... 32 off. reb. last 14 gms. (2.3 orgp)... Diamond Head Classic MOP: 15.7 ppg, 9.3 rpg, .667 FG, .857 FT... CH 6 ast. at Nevada... CH 3 stl. vs. UNM... 16 pts., 11 rebs. vs. San Francisco... 16 pts., CH 13 rebs. vs. Southern Miss... CH 18 pts. (6-6 FG; 3rd-best in Fisher era) vs. Savannah St... 19 double-digit scoring gms, 9 double-digit reb. gms., 5 double-doubles... 50.0+ FG pct. in 36 games.

Missed 4 gms. this season (ankle)... Started vs. Alabama St... 14 pts. (4-6 3FG) in 19 mins. vs. USU... 10 pts. off bench (3-7 3FG) vs. Cal... 15 pts. (career-high 5 3FG) vs. Savannah St... 24 3FG last 13 games and 13 3FG over last 7 games... 7 blks. last 6 games... 98 career games played, 2nd most among current Aztecs (21 starts)... Team leader with 119 career 3FG, which ranks 10th in school history... Only 59 TOs in 1,696 career minutes.

**Pronounced muh-LEEK...** Missed 9 gms. (knee)... Debuted vs. Cal, had 14 pts., 5 rebs... 516 pts., 7 rebs. vs. Alabama St... CH 3 blks. vs. Southern Miss... 9 pts., 5 rebs. in return vs. USU... 5.0 rpg last 2 games... 11 ast. last 7 games (1.6 apg)... Averaged 11.7 pts. (.475 FG, 500 3FG), 6.9 rebs. over his final 13 games last season... SDSU is 15-3 in his career when he scores 10+ pts... Had 4 double-doubles last year, including 3 in his final 5 games.

**Pronounced MON-take...** **Preseason MW Newcomer of the Year...** 14.3 mpg... Played in every game... 3 double-digit scoring gms... 10 pts., SH 2 stl. vs. SJSU... Started his 1st game at SDSU vs. USU... Team-high 6 rebs. at Gonzaga... 12 pts., 5 rebs. vs. Savannah St... 11 pts. (4-4 FT) vs. Alabama St... 2 starts at SDSU... Sat out '15-16 after transferring from Mizzou... In '14-15, finished w/highest scoring avg. (9.1) for an MU freshman since '06-'07.

Played in 7 games, averaging 6.0 mins... Min. 1 reb. in last 5 GP... Red-shirted last season as a true freshman... Enrolled a year early at SDSU and practiced with the team... A consensus four-star player out of high school following his 2014-15 season at La Lumiere... Helped La Lumiere to a 20-2 record and a No. 1 ranking in the state of Indiana in his final season... Averaged 16 points, 10 rebounds and 2 blocked shots.

CH 30 pts. (6-12 3FG), 5 ast. 0 TO at Nevada (6th Div. 1 player this season w/ at least that line)... Last 8 gms: 18-47 3FG (.383)... Led team in scoring 10x and in assists 6x... SDSU is 10-1 when he has at least 4 ast. and 21-5 when he has 1 TO or less... 28 pts. (7-8 3FG) at GCU... Career-high 9 asts., 0 TO vs. Savannah St... 25 pts. (CH 9 FG) vs. USD... Has nine 20-pt. games... Team-best 40 3FG... Double figures in scoring 39x.

1st on team in blks. (26)... 10-11 FG, 15 blks. last 6 games... 4.8 rpg last 4 gms... 9 multi-block games this season... Game-high 2 blks. in SDSU debut vs. USD... Started at Gonzaga (2 blks.)... Season-high 4 blks. at UNLV... Season-high 9 pts. vs. UNM... CH 8 rebs. at Boise St... Grad transfer from Wash. St... Blocked 50 shots a year ago (98th in Div. I)... Career-high 6 blks. vs. Idaho St... Pac 12 All-Academic 2nd-Team... Played first 2 seasons at Houston.

red indicates projected starter, black indicates reserve, gold indicates inactive.

# SDSU BROADCAST ROSTER

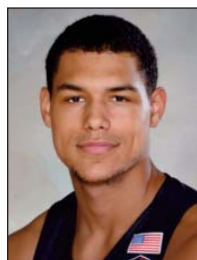
San Diego State at Air Force | Clune Arena | Jan. 24, 2017



**# 2**  
**BEN PEREZ**

Guard  
6-3, 175, Sophomore-1L  
San Marcos, Calif.  
USAF Prep Academy

PPG: -- RPG: -- APG: --  
FG%: -- 3FG: -- FT%: --



**# 3**  
**TREY KELL**

Guard  
6-4, 210, Junior-2L  
San Diego, Calif.  
St. Augustine HS

PPG: 13.3 RPG: 4.0 APG: 3.0  
FG%: 40.1 3FG: 25.6 FT%: 84.6



**# 4**  
**DAKARAI ALLEN**

Guard  
6-5, 200, Senior-3L  
Elk Grove, Calif.  
Sheldon High

PPG: 8.2 RPG: 3.9 APG: 1.5  
FG%: 51.4 3FG: 24.2 FT%: 71.4



**# 5**  
**JALEN MCDANIELS**

Forward  
6-9, 190, Freshman-HS  
Federal Way, Wash.  
Federal Way High

PPG: -- RPG: -- APG: --  
FG%: -- 3FG: -- FT%: --



**# 10**  
**MAX HOETZEL**

Forward  
6-9, 210, Sophomore-TR  
Calabasas, Calif.  
Indiana

PPG: 9.1 RPG: 4.6 APG: 0.5  
FG%: 38.3 3FG: 39.6 FT%: 81.3



**# 11**  
**D'ERRYL WILLIAMS**

Guard  
6-3, 205, Senior-3L  
Sacramento, Calif.  
Sheldon High

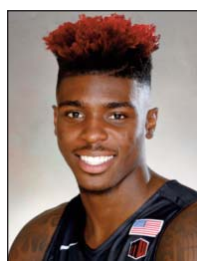
PPG: 2.0 RPG: 2.7 APG: 1.6  
FG%: 45.8 3FG: 3/5 FT%: 1/4



**# 12**  
**EMMANUEL WILSON**

Guard  
6-2, 185, Freshman-HS  
Dallas, Texas  
Plano East Senior High

PPG: 0.3 RPG: 0.3 APG: 0.0  
FG%: 0/4 3FG: 0/3 FT%: 1/2



**# 14**  
**ZYLAN CHEATHAM**

Forward  
6-9, 215, Sophomore-1L  
Phoenix, Ariz.  
South Mountain High

PPG: 10.7 RPG: 6.6 APG: 1.6  
FG%: 54.2 3FG: 2/10 FT%: 77.5



**# 20**  
**MATT SHRIGLEY**

Guard  
6-6, 190, Senior-3L  
San Diego, Calif.  
La Costa Canyon High

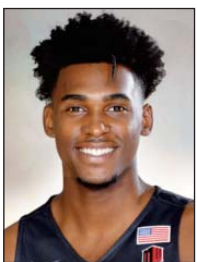
PPG: 5.7 RPG: 2.4 APG: 0.7  
FG%: 38.6 3FG: 38.7 FT%: 2/4



**# 21**  
**MALIK POPE**

Forward  
6-10, 220, Junior-2L  
Sacramento, Calif.  
Laguna Creek High

PPG: 8.1 RPG: 4.8 APG: 1.3  
FG%: 43.9 3FG: 23.5 FT%: 57.9



**# 23**  
**MONTAQUE GILL-CAESAR**

Guard  
6-6, 215, Sophomore-TR  
Vaughan, Ontario, Canada  
Missouri

PPG: 3.3 RPG: 1.9 APG: 0.3  
FG%: 25.7 3FG: 17.9 FT%: 82.6



**# 24**  
**NOLAN NARAIN**

Forward  
6-9, 220, Freshman-RS  
Hamilton, Ontario, Canada  
La Lumiere School (Ind.)

PPG: 1.1 RPG: 0.7 APG: 0.0  
FG%: 28.6 3FG: 0/2 FT%: 0/0



**# 33**  
**NIKSHA FEDERICO**

Forward  
6-7, 200, Senior-SQ  
San Diego, Calif.  
Cathedral Catholic High

PPG: -- RPG: -- APG: --  
FG%: -- 3FG: -- FT%: --



**# 42**  
**JEREMY HEMSLEY**

Guard  
6-3, 190, Sophomore-1L  
Rancho Cucamonga, Calif.  
Damien High

PPG: 15.4 RPG: 2.8 APG: 2.5  
FG%: 44.1 3FG: 46.0 FT%: 67.2



**# 45**  
**VALENTINE IZUNDU**

Center  
6-10, 240, Senior-TR  
Houston, Texas  
Washington State

PPG: 2.2 RPG: 3.5 APG: 0.1  
FG%: 61.5 3FG: 0/0 FT%: 35.3