

**The Aztec Experience**



Aztec Basketball Tradition .....1  
 San Diego State University .....2-3  
 America's Finest City .....4  
 Aztecs In the Community .....5  
 Aztec Athletics Center .....6  
 Aztec Facilities/Strength & Conditioning ..7  
 Aztec Academic Commitment .....8

**General Information**



Media Information/Quick Facts .....10  
 San Diego Media Outlets .....11  
 Aztec Media .....12

**2005-06 Season Preview**

2005-06 Preview .....14-15  
 2005-06 Rosters .....16  
 2005-06 Roster Breakdown .....17  
 2005-06 Schedule .....18  
 2006 NCAA Tournament Information .....18

**Coaching Staff**



Head Coach Beth Burns .....20-21  
 Q&A With Coach Burns .....22  
 Assistant Coach Jualeah Woods .....23  
 Assistant Coach Kate Paye .....24  
 Assistant Coach Renee Jimenez .....25  
 Dir. of Operations Tammy Stephens .....25  
 Support Staff .....26

**Player Profiles**



Seniors .....28-33  
 Sophomores .....34-41  
 Newcomers .....42-44

**2005-06 Opponents**

Opponent Information .....46-51  
 MWC Composite Schedule .....52  
 SD Surf 'N Slam/MWC Tournaments .....52  
 Series Records Vs. Opponents .....53  
 Series Records By Conference .....54  
 All-Time Scores Vs. Opponents .....55-58

**2004-05 Season Review**

2004-05 Season Recap .....60  
 2004-05 Results .....61  
 2004-05 Stats .....62  
 2004-05 Game-By-Game Stats .....63-64  
 2004-05 Superlatives .....65  
 2004-05 Box Scores .....66-70  
 2004-05 MWC Review .....71-72

**Aztec Records**

Team Records .....74  
 Individual Records .....75  
 Single-Game Bests .....76  
 Single-Season Leaders .....77  
 Career Leaders .....78  
 Annual Leaders .....79  
 Year-By-Year Team Stats .....80

**Aztec History**



Coaching History .....82  
 Year-By-Year Results .....83-89  
 Postseason History .....90-91  
 All-Time Letterwinners .....92  
 Honors and Awards .....93  
 1,000-Point Scorers .....94-95  
 Aztec Hall of Fame Members .....96

**The University**



San Diego State .....98-101  
 Aztec Culture .....102  
 City of San Diego .....103  
 Cox Arena .....104-05  
 Aztec Athletics Center .....106-07  
 Athletic Facilities .....108  
 Aztec Academic Commitment .....109  
 Aztec Program History .....110-111  
 Athletic Medicine .....112  
 Strength & Conditioning .....112  
 Media Exposure .....113  
 Life Skills .....113  
 University President .....114  
 Director of Athletics .....115  
 Athletic Department Directory .....116  
 Aztec Camps/The Full Court Press Club ..117  
 Mountain West Conference .....118  
 2006 MWC championships .....119  
 Television/Radio Roster .....120

**2005-06 Aztec Basketball Media Guide**

Aztec Media Relations Office  
 San Diego St. University - Dept. of Athletics  
 Aztec Athletics Center, Suite 3014  
 5302 55th Street  
 San Diego, CA 92182-4309  
**Office Phone:** .....(619) 594-5547  
**Office Fax:** .....(619) 582-6541  
**Press Row:** .....(619) 265-5853  
**Web Site:** .....www.goaztecs.com

**Media Guide Credits**

**Editor:** .....Peggy Curtin  
**Editorial Assistance:** ....Cody Jenkins, Keith Kawamura, Jamie McConeghy, Tim Miguel, Mike Passanisi, Jim Solien and Darin Wong  
**Photography:** .....Ernie Anderson, Peggy Curtin, Ken Jacques Photography, Dan Lawton, Stan Liu Photography, the Mountain West Conference, Oregon State and Stanford Athletic Media Relations and Joel Zwink  
**Layout and Design:** .....Peggy Curtin  
**Cover Design:** .....Darin Wong  
**Printing:** .....Host Communications

**CSU Commitment**

The California State University is committed to providing equal opportunities to men and women CSU students in all campus programs, including intercollegiate athletics.

**On The Cover**

Seniors Veronica Shaw and Michelle Strawberry and head coach Beth Burns appear on this year's media guide cover.



## General Information

Location: San Diego, Calif., 92182  
 Founded: 1897  
 Enrollment: 34,174  
 Nickname: Aztecs  
 Mascot: The Aztec Warrior  
 Colors: Scarlet & Black  
 Affiliation: NCAA Division I  
 Conference: Mountain West  
 Home Arena: Cox Arena at Aztec Bowl  
 Arena Capacity: 12,414  
 University President: Dr. Stephen L. Weber  
 Director of Athletics: Jeff Schemmel  
 Faculty Athletic Rep.: Dr. Roger Caves  
 Senior Woman Admin.: Kathy Van Wyk

## Aztec Basketball Staff

Head Coach: Beth Burns (Ohio Wesleyan University, 1979)  
 Career Record/Years: 232-148 (.611)/13 Seasons  
 Record at SDSU in First Tenure/Years: 151-83 (.645)/Eight Seasons (1989-97)  
 Best Time to Call: Contact SID  
 Basketball Office Phone: 619-594-4095  
 Basketball Office Fax: 619-594-8057  
 Assistant Coaches: Jualeah Woods (USC, 1994), Kate Paye (Stanford, 1995), Renee Jimenez (San Francisco State, 2004)  
 Director of Basketball Operations: Tammy Stephens (Cal State Fullerton, 1981)  
 Head Manager: Kelley Suminski (Stanford, 2005)  
 Administrative Assistant: Patti O'Leary  
 Athletic Trainer: Christina Scherr  
 Academic Advisor: Bre White  
 Strength & Conditioning: Jon Francis

## Aztec Basketball Facts

First Year of Aztec Basketball: 1976-77  
 All-Time Record: 448-396 (.531)  
 2004-05 Record: 8-20  
 2004-05 Conf. Record/Finish: 2-12/t7th  
 Letterwinners Returning/Lost: 5/5  
 Starters Returning/Lost: 2/3  
 Newcomers: 8  
 Postseason App./NCAA App.: 8/6  
 Last Postseason Appearance: 1997 (Lost vs. Oregon, NCAA First Round)

## Aztec Media Relations

Media Contact: Peggy Curtin  
 Office Phone: 619-594-2576  
 Home Phone: 619-540-6146  
 Cell Phone: 619-200-8776  
 Fax: 619-582-6541  
 E-Mail: mcurtin@mail.sdsu.edu  
 Press Row Phone: 619-265-5853  
 Mailing Address:  
 Aztec Media Relations  
 Department of Athletics  
 San Diego State University  
 Aztec Athletics Center, Suite 3014  
 55th Street  
 San Diego, Calif. 92182-4309  
 Official Web Site: www.goaztecs.com

The 2005-06 Aztec basketball media guide has been prepared to assist media members in their coverage of the Aztecs. Additional information, including media releases and photographs, may be obtained by contacting assistant media relations director Peggy Curtin in the Aztec media relations office at 619-594-2576.

## Credentials

All requests for working credentials (press, radio, television, scouting) should be directed to Peggy Curtin at least 24 hours prior to tip-off. Faxed inquiries may be sent to 619-582-6541. Credentials will be mailed, time permitting, or they may be picked up at the media entrance at Cox Arena (lower level) two hours prior to the start of all home games.

## Campus Parking

Media desiring to cover Aztec practices on campus can park in the Cox Arena lot L and obtain a special parking pass at the Cox Arena office. Media parking will be provided for all home games in Parking Structure IV, adjacent to Cox Arena.

## Directions To Cox Arena

Take I-8 East to the College Avenue exit. Take College Avenue south towards SDSU. Turn right on Montezuma Road. Turn right on 55th Street. Cox Arena is on the right-hand side.

## Practice And Interviews

Media wishing to attend practice should contact the Aztec media relations department at least one day in advance.

Head coach Beth Burns and the players are generally available to meet with the media following each workout, as requested. Coaches and players are also available to conduct television and radio interviews, which must be set up through the media relations office at 619-594-2576.

Please request all interviews with a minimum of 24 hours notice. San Diego State players and coaches will not be available for interviews on game days until postgame.

## Game-Day Services

The Aztec media relations office furnishes game programs, pregame notes and media guides prior to each game in the media room at Cox Arena. Play-by-play accounts, half-time and final statistics and shot charts are also provided.

## Telephones

Several phones are available in the media room and on press row, but are available on a first-come, first-serve basis. For more information on phone-line installation, contact Mike Dils at Cox Arena at (619) 594-3386.

Phone lines for visiting radio broadcasts (one ISDN, one business) will be provided on a reciprocal basis.

## Media Seating

Media will be assigned seats along press row tables located behind the visitor's bench.

Please check the media seating chart in the media workroom.

## Photographers

Photographers are restricted to either designated areas along the baseline and are not permitted along courtside during the game.

## Weekly Press Release

Weekly Aztec basketball releases in pdf format (Acrobat) are available for download from the women's basketball page at [www.goaztecs.com](http://www.goaztecs.com) or via e-mail. Please contact assistant media relations director Peggy Curtin if you would like to be placed on the Aztec basketball e-mail list.

## Aztec Web Casts

Aztec basketball fans will have an opportunity to listen to live play-by-play of all scheduled games over the internet at [www.goaztecs.com](http://www.goaztecs.com). This season, Bill Earley and Dan Lawton will rotate play-by-play and travel duties, while former Aztec Tammy Blackburn provides analysis at home games. Blackburn and Earley are in their 12th year of covering SDSU women's basketball, while Lawton is in his 11th season with the Aztecs.

## On The Internet

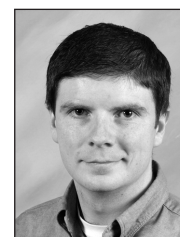
Information on Aztec basketball is available on the Internet at [www.goaztecs.com](http://www.goaztecs.com). Press releases and recaps, along with in-game and season statistics, are updated on a weekly basis. In addition, the basketball media guide is also located on the site and includes player profiles, school records and team history.

## Aztec Media Relations



Peggy Curtin

Asst. Media Relations Director  
 Women's Basketball Contact  
 Office: 619-594-2576  
 Mobile: 619-200-8776  
 E-Mail: mcurtin@mail.sdsu.edu



Jamie McConeghy  
 Media Relations Assistant  
 Office: 619-594-4348

E-Mail: jmcconeghy@projects.sdsu.edu

SDSU

AZTECS

SEASON  
INFO

2005-06 AZTEC BASKETBALL

**Newspapers**

**San Diego Union-Tribune**

PO Box 120191  
 San Diego, CA 92112  
**News Desk:** (619) 293-1341  
**Fax:** (619) 260-5078  
**E-Mail:** sports@uniontrib.com  
 Chuck Scott, Sports Editor: (619) 293-1804  
 Nicole Vargas, Beat Writer: (619) 293-1390  
 Ed Graney, Sports: (619) 293-2203  
 Nick Canepa, Columnist: (619) 293-1397  
 Tim Sullivan, Columnist: (619) 293-1033

**North County Times**

207 Pennsylvania Ave.  
 Escondido, CA 92025  
**News Desk:** (800) 200-1601  
**Fax:** (760) 740-5045  
**E-Mail:** sports@nctimes.com  
 Gary Hyvonen, Sports Editor: (760) 740-3546  
 Mike Sullivan, Beat Writer: (760) 739-6645  
 Steve Scholfield, Columnist: (760) 433-3225

**Daily Aztec**

San Diego State University, BAM-2  
 San Diego, CA 92182-4591  
**Phone:** (619) 594-7817  
**Fax:** (619) 594-7277  
**Email:** sportseditor@thedailyaztec.com  
 Willie Bans, Sports Editor

**Wire Service**

**Associated Press**

PO Box 191  
 San Diego, CA 92112  
**News Desk:** (619) 231-9365  
**Fax:** (619) 291-2098  
**Email:** Sandiego@ap.org  
 Bernie Wilson, Sports Editor

**Television Stations**

**Channel 4 San Diego**

1370 India Street  
 San Diego, CA 92101  
**Phone:** (619) 266-5236  
**Fax:** (619) 595-0168  
 Argy Stathopoulos, Sports: (619) 266-5024  
 John Weisbarth, Sports: (619) 266-5029  
 Jason Bott, Sports Producer: (619) 266-5236  
 Kelly Morris, Sports Producer

**KFMB (CBS) Channel 8**

PO Box 85888  
 San Diego, CA 92186  
**News Desk:** (858) 495-7587  
**Fax:** (858) 560-0627  
 Kyle Kraska, Sports Director: (858) 495-7588  
 John Howard, Sports: (858) 495-7586  
 Jaymee Sire, Sports: (858) 472-4306  
 Dan Roger, Producer: (858) 472-3589

**KGTV (ABC) Channel 10**

PO Box 85347  
 San Diego, CA 92186  
**News Desk:** (619) 237-6380  
**Fax:** (619) 527-0369  
 Jeff Cawley, Sports Director: (619) 237-6324  
 Ben Higgins, Sports: (619) 237-6372  
 Todd Salkowski, Sports: (619) 237-6314  
 Jeff LeValley, Photographer: (619) 237-6316

**KNSD (NBC) Channel 7/39**

225 Broadway  
 San Diego, CA 92101  
**News Desk:** (619) 578-0201  
**Fax:** (619) 578-0202  
 Jim Laslavic, Sports Director: (619) 578-0226  
 Jim Stone, Sports: (619) 578-0227  
 Dave Smith, Photographer: (619) 578-0243

**KSWB (WB) Channel 5**

7191 Engineer Road  
 San Diego, CA 92111  
**News Desk:** (858) 573-6500  
**Fax:** (858) 573-6600  
 Troy Hirsch, Sports Director: (858) 573-6528  
 Ryan Yamamoto, Sports: (858) 573-6529

**KUSI (IND) Channel 51/9**

PO Box 719051  
 San Diego, CA 92171-9051  
**News Desk:** (858) 505-5014  
**Fax:** (858) 576-9317  
 Paul Rudy, Sports Director: (858) 505-5047  
 Steve Quis, Sports: (858) 505-5033  
 Rick Willis, Sports: (858) 505-5032

**XETV (FOX) Channel 6**

8253 Ronson Road  
 San Diego, CA 92111  
**News Desk:** (858) 650-5401  
**Fax:** (858) 279-0061  
 C.S. Keys, Sports: (858) 650-5491  
 Dionne Miller, Sports: (858) 650-5492  
 Mike Lamar, Sports Producer: (858) 650-5489  
 Doug Downing, Sports Producer: (858) 650-5489

**Radio Stations**

**"The Mighty 1090" (1090 AM)**

3655 Nobel Drive, #470  
 San Diego, CA 92122  
**News Desk:** (858) 453-9153  
**Fax:** (858) 453-9157

**ESPN Radio (800 AM)**

1027 10th Avenue, Suite C  
 San Diego, CA 92101  
**Phone:** (619) 696-9902

**KFMB Radio (760 AM)**

7677 Engineer Road  
 San Diego, CA 92111  
**Phone:** (858) 292-7600  
**Fax:** (858) 279-7676

**KOGO (600 AM)**

9660 Granite Ridge Drive  
 San Diego, CA 92123-2657  
**News Desk:** (858) 560-6671  
**Fax:** (858) 715-3363; (858) 715-3364

**XTRA Radio (570 AM)**

9660 Granite Ridge Drive  
 San Diego, CA 92123-2657  
**Phone:** (858) 296-1690  
**Fax:** (858) 291-5622



SEASON  
 INFO

2005-06 AZTEC BASKETBALL





## San Diego State Basketball Network



For the fifth straight year, Aztec women's basketball fans will have an opportunity to listen to live play-by-play of all games over the internet at [www.goaztecs.com](http://www.goaztecs.com).

This season, Bill Earley and Dan Lawton will rotate play-by-play and travel duties, while former Aztec Tammy Blackburn provides analysis at home games. Blackburn and Earley are in their 12th year of covering SDSU women's basketball, while Lawton is in his 11th season with the Aztecs.

Blackburn earned four letters in basketball at San Diego State from 1991-1994, helping the Aztecs to a 26-5 record and an NCAA tournament bid her senior season. Along with her radio duties at SDSU, she is in her 11th year with Fox Sports, serving as a color commentator for Pac-10 Conference women's basketball games. Blackburn is currently an associate director for the SDSU Alumni Association.

Earley, a native San Diegan and SDSU graduate, begins his 12th season as one of the voices of the Aztecs' women's basketball team. Earley began his broadcast work as a student on KCR - SDSU's campus radio station. After returning to San Diego following law school, Earley produced (along with SDSU Alumni Executive Director Jim Herrick) SDSU women's basketball and became the original voice of the Aztecs a decade ago. Earley has been heard on several local radio stations broadcasting Aztec football, men's and women's basketball, as well as co-hosting a comedy call-in show.

Earley has also ventured into television in San Diego (Channel 4 San Diego, XETV) and Arizona. A partner specializing in employment law at San Diego's law firm of Luce Forward, he resides in Point Loma.

Lawton got his start in sports broadcasting at WSND-AM and -FM, the on-campus radio station at his alma mater, the University of Notre Dame, where he broadcast Fighting Irish football and basketball and hosted a morning show. Since then, he has been broadcasting Aztec women's basketball on KFMB, KCBQ, KPOP and goaztecs.com. Lawton also worked as co-host and writer of "Bring It On," a Sunday afternoon comedy/sports talk show which aired on KCEO-AM radio from 1998-99.

Lawton is a lawyer with his own practice in downtown San Diego. He resides in Pacific Beach.

## Aztecs Sports Weekly



For the seventh consecutive year, San Diego State University will join forces with Channel 4 San Diego to produce Aztecs Sports Weekly.

The 30-minute magazine show will highlight the week in San Diego State athletics with action footage, interviews and features. The winter and spring telecasts place an emphasis on the Aztec basketball season.



Each week head coach Beth Burns and a women's basketball player

will preview the upcoming game and review the previous week's action.

The show is hosted by Argy Stathopoulos and John Weisbarth. Best known for their efforts on Channel 4 San Diego's Padres telecasts, the pair are familiar faces around the San Diego State campus as well. Both have provided Aztecs Sports Weekly with in-depth features and behind-the-scenes looks at the athletic department. Weisbarth is a UC Santa Barbara grad, while Stathopoulos attended the University of San Diego.

The show is produced by Emmy-award nominee Jason Bott.

Each edition of Aztecs Sports Weekly is telecast several times with the initial show taking place each Wednesday evening.

All local telecasts of San Diego State sporting events, including football, men's basketball and women's basketball, can be seen on Channel 4 San Diego.

The station is a member of San Diego State and Mountain West Conference television agreements with ESPN+Plus and SportsWest.

## College Sports Television



College Sports Television (CSTV) and the Mountain West Conference have created a partnership that will revolutionize the college sports landscape. The landmark agreement includes the first NCAA Division I-A football and men's basketball conference wide deal for CSTV, beginning in the fall of 2006.

The potential 14-year agreement with CSTV incorporates all conference-related media and marketing rights, including all television, national over-the-air and satellite radio, video-on-demand and online and broadband rights.

The multi-media partnership also includes the MWC Television Network, the first-ever regional sports network dedicated solely to an intercollegiate athletic conference.

This season's women's basketball coverage includes six games of the 2006 Mountain West Conference championship, as well as six regular-season telecasts.

In addition, ESPN2 will televise the TCU at New Mexico match-up on Feb. 12, along with the title game of the conference tournament.

The 12 games by CSTV are the most ever by a single network for MWC women's basketball, while the 14 national television appearances are the most ever for MWC women's basketball.

College Sports Television is available nationally on DirecTV channel 610, while it can be seen via Time Warner Cable in San Diego on channel 415.

### 2006 Mountain West Conference Women's Basketball Television Package

Date	Game	TV
Jan. 5	Utah at New Mexico	CSTV
Jan. 7	BYU at Utah	CSTV
Feb. 2	New Mexico at BYU	CSTV
Feb. 2	TCU at UNLV	CSTV
Feb. 12	TCU at New Mexico	ESPN2
Feb. 25	Wyoming at Colorado St.	CSTV
Mar. 2	TCU at Utah	CSTV
Mar. 8-10	MWC Championships	CSTV
Mar. 11	MWC Championship Game	ESPN2



# 05-06 PREVIEW

SDSU



Season  
Preview  
p. **14**

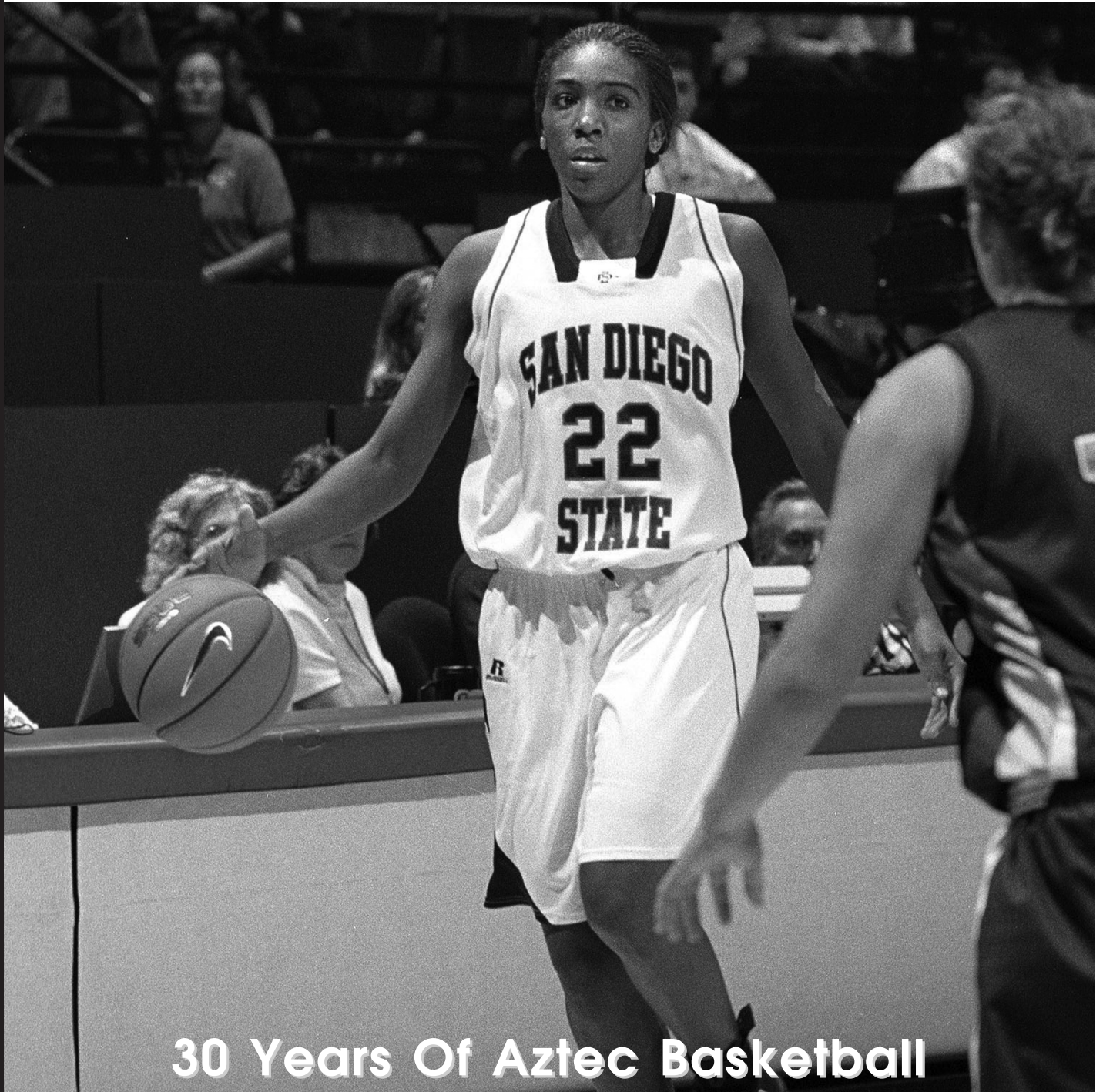


Aztec  
Roster  
p. **16**

Roster  
Breakdown  
p. **17**



Season  
Schedule  
p. **18**



30 Years Of Aztec Basketball



## Back To Basics: Burns Returns To Lead Young Aztec Squad

It will be back to basics for the Aztec basketball team this season, as the program's all-time winningest head coach Beth Burns returns to Montezuma Mesa after an eight-year absence.

Burns brings her hard-nosed, defense-minded style of play which took the Aztecs to four NCAA tournament appearances and four 20-plus win seasons from 1989 to 1997.

The challenge of building a successful program is nothing new to Burns, who enters her 14th year as a college head coach, and took SDSU from 7-23 her first year to 23-7 in her final campaign in 1996-97.

"Our goals are to improve," said Burns of the 2005-06 squad. "It starts with earning respect on our campus and then moving from our campus to the community and from the community to our league. We can do that through hard work and commitment, along with effort and enthusiasm.

"It's not always easy to have change, but (the team has) responded like champions. They are really willing listeners and really trying to do everything that we are asking of them. Basketball is not a tricky game and we need to continue to improve our fundamentals and get in great condition to put ourselves in a position to move up the ladder in the conference."

San Diego State returns just two starters and five letterwinners from a 2004-05 squad, which finished 8-20 overall and 2-12 in the Mountain West Conference a year ago.

Leading the charge are pair of returning starters in senior **Michelle Strawberry** (Corona, Calif.) and sophomore **Kate Eveland** (Southlake, Texas), while senior **Veronica Shaw** (Phoenix, Ariz.) has played in a team-high 74 career contests.

The Aztecs get back two players in guard **Courtney Fritz** (Newberg, Ore.) and forward **Erin Jackson** (Sparks, Nev.), who both ending up redshirting a year ago due to injury. Sophomore **Shanna Demus** (Palmdale, Calif.) is also expected to make an immediate impact after sitting out the 2004-05 campaign after transferring from Cal State Los Angeles.

Eight other Aztecs are expected to don the scarlet and black for the first time this year, as newcomers make up half of the 16-player roster.

With so many new faces, the biggest question in the early season will be who will emerge in the battle for playing time.

"I have absolutely no preconceived notions," Burns said. "I have never been one to be hung up on size or anything. The five who stay together and work the hardest - with and for each other - will play. If that means that everyone is 5-8, so be it. If that means that everybody is 6-3, so be it.

"We'll probably be defining roles all the way through the pre-conference season, because ability is one thing - ability when the lights go on in a competitive setting is a totally different thing. I'm not basing anything on what was, but instead, what is and we'll move forward from that."

What was for the Aztecs last year was a

team that rested most of its success on its ability to shoot from beyond the arc and cause havoc on defense. SDSU set a school record for most three-point field goals made (140) and attempted (479) for the second consecutive season, while the Aztecs led the conference in turnover margin and steals.

On the flip side, the team struggled in the rebounding department, something that could once again be an issue in 2005-06, with the lack of height in the post.

"Jana Heinrich, at 6-3, and Desiree Johnson, at 6-2, were terrific additions (this summer), because on paper we're small," Burns said. "We're really going to have to try to disrupt some people in full court and keep people off balance. That's fine and that actually dictates into the way I hope to eventually play all the time, which is full and fast."

While a few barriers may stand in the way of instant success in Burns' return to SDSU, what's more important is how this year's team will lay the groundwork for future success.

"What measures success is how you approach things everyday and if you approach it everyday by practicing like a champion, wins will follow," Burns said. "We go into win every contest and each opponent that we face, but our goals are really more simple. We want to improve everyday, be able to sustain effort everyday, and get better everyday. My goal is that the team that you see in March is a lot better than the team you saw in November."

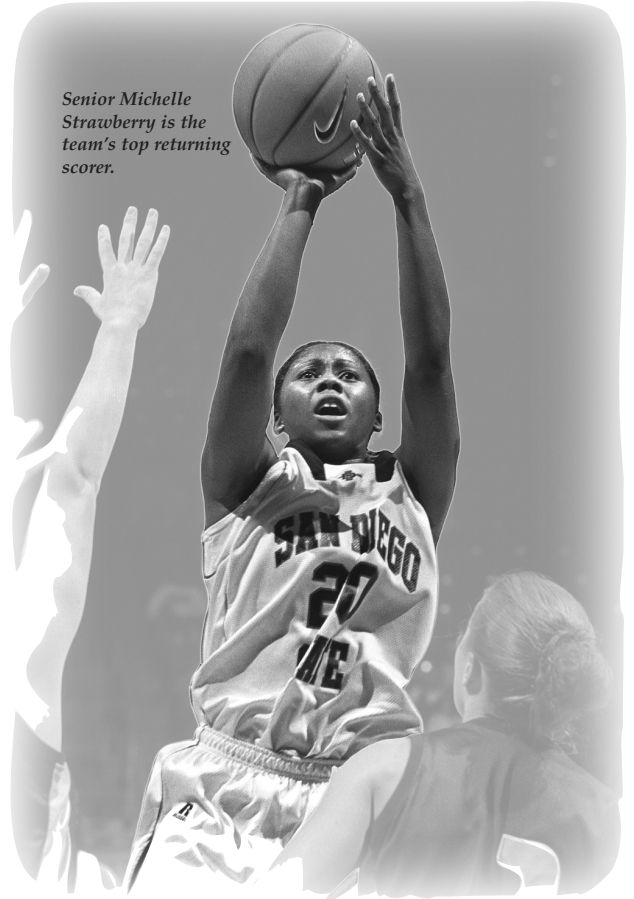
The following is a breakdown of the 2005-06 San Diego State women's basketball team.

### Guards

Several players will contend for playing time at the guard slots, with each expected to bring a little something different to the table.

Four Aztecs are in the mix to handle the point guard duties, led by sophomore **Kate Eveland** and freshman **Tamika Lipford** (Oceanside, Calif.).

A year ago, Eveland played in all 28 games, starting 20 times. She averaged six points and just over two rebounds, leading the squad in assists with 59. Eveland proved solid on defense and at the stripe, ranking sixth in both steals (1.86/g) and free-throw percentage (.750).



Senior Michelle Strawberry is the team's top returning scorer.

"Kate is a real worker," Burns said. "She is in great shape and is in the best aerobic condition of maybe anyone on our team. She really committed herself in the off-season in that respect. We're going to lean on her, even though she is young, with both point and off-guard responsibilities."

While Eveland can hurt opponents with her ability to shoot from short or long range, her counterpart, Lipford, uses her feet to get to the basket, drawing defenses in with her blazing speed.

At only 5-3, the lefty excelled at the prep level, leading The Bishop's School to a CIF title and three runner-up performances in her four seasons. Lipford could become the third true freshman to start at the point in the last three seasons for the Aztecs, joining teammates Eveland and Courtney Fritz.

"Tamika is an exciting player, who is deceptively strong, has a good handle and can get into people and guard them," Burns said. "She also really wants to be good. Combine that with her other skills and she has a really bright future. I expect her to become a fan favorite."

The other options at the point guard spot for the Aztecs are senior **Lindsay Goldblatt** (West Hills, Calif.), who appeared on a limited basis in 19 games a year ago, and freshman **LaSandra Dixon** (Azusa, Calif.), who was a proven scorer (18.4 ppg.) and solid defender (4.2 steals per game) in high school.

Senior Veronica Shaw has also spent some

time at point guard in her career at SDSU, but her true calling comes on the defensive side of the ball, as one of the top talents in the Mountain West Conference.

"Roni is incredibly athletic, has a great vertical and has quick hands," Burns said. "Coach (Jon) Francis has raved about her summer efforts in the weight room, which has only made her more quick and powerful. She will no question be in our mix defensively, because of how disruptive she can be, and I'm hoping that she can also be a great rebounding leader for us. She's tough and we're going to lean on her to guard people."

Shaw is the most experienced player on the roster, appearing in 74 career games and starting 42 times. A year ago, she recorded career highs in assists, blocks, rebounds and steals and ranked eighth in the conference in steals per game (1.8).

Another veteran at the guard slot is Fritz, who has had two major knee surgeries in the past year. Fritz started the first four contests of 2004-05, before tearing her ACL in her right knee in the team's game at Nevada in early December. After redshirting, she suffered the same injury this past summer and is hoping to return to the court in time for conference play in 2006.

"Courtney Fritz, unfortunately, has been dealt a couple of curve balls," Burns said. "Even though I haven't been able to see her on the court for a minute, she is one of the most coachable players on the team. Her eyes are in every huddle and she gets what it's like to be a major college player."

Fritz put together an impressive freshman campaign in 2003-04, starting all 28 games and pouring in 63 three-pointers. Her long-range shooting ability could be the boost the team needs when heading into its rigorous Mountain West Conference schedule.

## Forwards

The Aztecs will need solid, consistent production out of its forwards this season on both sides of the ball.

Headlining the group is senior Michelle Strawberry, the only Aztec to start all 28 contests in 2004-05. She averaged 10.3 points per game, including a team-leading 12.9 in league outings, to earn conference honorable mention honors. She scored in double-figures in each of the final five outings, including a career-high 23 points in a victory at Air Force. In addition, she is SDSU's top returning three-point threat, converting 22 of her 33 threes during MWC play.

"Michelle Strawberry has been a great leader both on and off the court," Burns said. "She has shot the ball well, can post and has a big, strong body. We are going to count on her from an experience standpoint, and I think that without question, she'll be able to handle what we ask of her offensively. Her challenge will be to match that on the defensive end."

Strawberry's fellow returnees in the front court, redshirt sophomores Erin Jackson and **Jordie Smith (Fort Collins, Colo.)**, have both battled injuries during their Aztec careers. Jackson missed all but four contests in 2004-05 after having ankle reconstruction surgery,

while Smith appeared in 25 games last season, after missing her first campaign with a back injury.

A pair of new faces in sophomore Shanna Demus and freshman **Jana Heinrich (Fischbach, Germany)** will immediately contend for starting time up front.

Demus, who sat out 2004-05 due to NCAA transfer rules, has one year of collegiate experience at Cal State Los Angeles, where she was the conference freshman of the year with 16.3 points and 6.3 rebounds per outing.

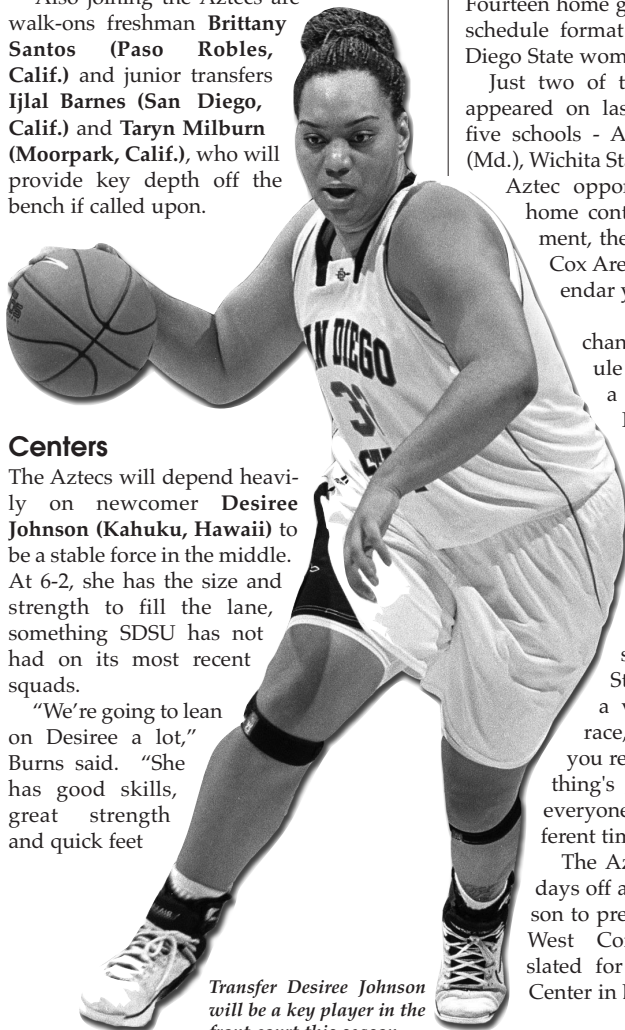
Demus is known for her athleticism and defensive skills and could be a matched pair with Strawberry at small forward.

"Shanna might be the best athlete on our team," Burns said. "I really like what she is going to be able to do for us defensively. We are going to use her in a lot of roles to help set the tone for our defense. She had a great pre-season and shot the ball extremely well, which is something that we really need."

Another strong shooter in the front court is Heinrich, who brings immediate height and a strong all-around game to the position.

"Jana might be the best shooter on the team," Burns said. "She has that European-style of being able to shoot it from deep, has excellent fundamental skills and without question is the best passer on our team. She has made an incredible adjustment coming across the ocean to join us and as much as she can handle is as much as she will do."

Also joining the Aztecs are walk-ons freshman **Brittany Santos (Paso Robles, Calif.)** and junior transfers **Ijlal Barnes (San Diego, Calif.)** and **Taryn Milburn (Moorpark, Calif.)**, who will provide key depth off the bench if called upon.



*Transfer Desiree Johnson will be a key player in the front court this season.*

for her size. She can guard people down low and is a physical rebounder, who can get people off the glass.

"Offensively, we're going to depend on her to get us some points in the paint. She can face-up and score, she can pass from the high post and she can put it on the floor. She's going to be a big part of what we do."

Johnson is actually the eldest member of the team, having battled back from a knee injury during high school to post a solid junior college career in Los Angeles. As a sophomore, she averaged 13.7 points and 8.1 rebounds to earn first-team all-conference honors.

"Dez and I have a great relationship," Burns said. "When you've had a few bends in the road, you have a little more hunger, because you appreciate the opportunities that you have. Dez had some knee issues in high school, which cost her some opportunities to get scholarship, but she never gave up. She went the junior college route, took care of her business academically, and I think that before it's said and done, she'll be a leader on this team."

Helping Johnson in the paint will be San Marcos product **Audrey Green**. Green at 6-4 is the tallest Aztec player since 2002, and was known for her skills as a shot blocker coming out of high school.

## The Schedule

Fourteen home games and a new conference schedule format highlight the 2005-06 San Diego State women's basketball schedule.

Just two of the 10 non-conference foes appeared on last season's schedule, while five schools - Auburn, Boise State, Loyola (Md.), Wichita State, UC Davis - are first-time Aztec opponents. Included in the 14 home contests is a four-team tournament, the San Diego Surf 'N Slam at Cox Arena, which caps the 2005 calendar year.

The most dramatic change in SDSU's 2005-06 schedule comes with the addition of a ninth team, TCU, to the Mountain West Conference.

League games will be played on Wednesday or Thursday evenings and on Saturdays from Jan. 5 through March 4, but will no longer feature the travel partner format.

"Having played split schedules (while at Ohio State) in the past, it makes for a very interesting conference race," Burns said. "Until March, you really don't know how everything's going to play out, because everyone is facing each other at different times."

The Aztecs will have at least five days off at the end of the regular season to prepare for the 2006 Mountain West Conference Championships, slated for March 7-11, at the Pepsi Center in Denver, Colo.

SDSU

AZTECS

SEASON  
INFO

2005-06 AZTEC BASKETBALL





The 2005-06 Aztec basketball team includes (left to right): First row - Tamika Lipford, Lindsay Goldblatt, Courtney Fritz, Shanna Demus, Kate Eveland, LaSandra Dixon and Veronica Shaw. Second row - Michelle Strawberry, Ijlal Barnes, Erin Jackson, Jana Heinrich, Desiree Johnson, Jordie Smith, Audrey Green, Brittany Santos and Taryn Milburn.

SDSU

AZTECS

SEASON  
INFO

2005-06 AZTEC BASKETBALL

**Aztec Numerical Roster**

No.	Name	Pos.	Ht.	Yr.	Exp.	Hometown (Previous School)
1	Tamika Lipford	G	5-3	Fr.	HS	Oceanside, Calif. (Bishop's HS)
4	Courtney Fritz*	G	5-8	So.	1V	Newberg, Ore. (Jesuit HS)
5	Jordie Smith*	F	6-2	So.	1V	Fort Collins, Colo. (Poudre HS)
10	Brittany Santos	F	5-10	Fr.	HS	Paso Robles, Calif. (Paso Robles HS)
11	Kate Eveland	G	5-8	So.	1V	Southlake, Texas (Southlake Carroll HS)
12	Jana Heinrich	F	6-3	Fr.	HS	Fischbach, Germany (Sportgymnasium HS)
14	Ijlal Barnes	F	5-9	Jr.	TR	San Diego, Calif. (Mesa JC)
20	Michelle Strawberry	F	5-10	Sr.	2V	Corona, Calif. (Centennial HS)
21	Veronica Shaw	G	5-7	Sr.	3V	Phoenix, Ariz. (Mountain Pointe HS)
22	Shanna Demus*	F	5-8	So.	TR	Palmdale, Calif. (CS Los Angeles)
23	LaSandra Dixon	G	5-7	Fr.	HS	Azusa, Calif. (Azusa HS)
24	Taryn Milburn	F	5-10	Jr.	TR	Moorpark, Calif. (Moorpark JC)
25	Lindsay Goldblatt	G	5-5	Sr.	1V	West Hills, Calif. (Moorpark JC)
30	Erin Jackson*	F	6-1	So.	1V	Sparks, Nev. (Reed HS)
32	Desiree Johnson	C	6-2	Jr.	TR	Kahuku, Hawaii (Los Angeles CC)
44	Audrey Green	C	6-4	Fr.	HS	San Marcos, Calif. (San Marcos HS)

**Aztec Alphabetical Roster**

No.	Name	Pos.	Ht.	Yr.	Exp.	Hometown (Previous School)
14	Ijlal Barnes	F	5-9	Jr.	TR	San Diego, Calif. (Mesa JC)
22	Shanna Demus*	F	5-8	So.	TR	Palmdale, Calif. (CS Los Angeles)
23	LaSandra Dixon	G	5-7	Fr.	HS	Azusa, Calif. (Azusa HS)
11	Kate Eveland	G	5-8	So.	1V	Southlake, Texas (Southlake Carroll HS)
4	Courtney Fritz*	G	5-8	So.	1V	Newberg, Ore. (Jesuit HS)
25	Lindsay Goldblatt	G	5-5	Sr.	1V	West Hills, Calif. (Moorpark JC)
44	Audrey Green	C	6-4	Fr.	HS	San Marcos, Calif. (San Marcos HS)
12	Jana Heinrich	F	6-3	Fr.	HS	Fischbach, Germany (Sportgymnasium HS)
30	Erin Jackson*	F	6-1	So.	1V	Sparks, Nev. (Reed HS)
32	Desiree Johnson	C	6-2	Jr.	TR	Kahuku, Hawaii (Los Angeles CC)
1	Tamika Lipford	G	5-3	Fr.	HS	Oceanside, Calif. (Bishop's HS)
24	Taryn Milburn	F	5-10	Jr.	TR	Moorpark, Calif. (Moorpark JC)
10	Brittany Santos	F	5-10	Fr.	HS	Paso Robles, Calif. (Paso Robles HS)
21	Veronica Shaw	G	5-7	Sr.	3V	Phoenix, Ariz. (Mountain Pointe HS)
5	Jordie Smith*	F	6-2	So.	1V	Fort Collins, Colo. (Poudre HS)
20	Michelle Strawberry	F	5-10	Sr.	2V	Corona, Calif. (Centennial HS)

\* = utilized redshirt year

**Head Coach:** Beth Burns (Ohio Wesleyan, 1979), first year of second stint at SDSU, 14th overall  
**Assistant Coaches:** Jualeah Woods (USC, 1994), first season at SDSU, eighth overall; Kate Paye (Stanford, 1995), second season at SDSU, third overall; Renee Jimenez (San Francisco State, 2004), first season at SDSU, first overall  
**Dir. of Operations:** Tammy Stephens (CS Fullerton, 1981), first season at SDSU, fifth overall  
**Head Manager:** Kelley Suminski (Stanford, 2005), first season at SDSU, first overall

**Aztec Pronunciation Guide**

IJLAL Barnes	ISH-luh	JANA HEINRICH	YAWN-uh HINE-rick	Kate PAYE	pay
Shanna DEMUS	DEE-muss	DESIREE Johnson	dez-ur-A	JUALEAH Woods	WAH-lee-uh
LaSANDRA Dixon	luh-SAND-ruh	TAMIKA Lipford	tuh-MEEK-uh	Renee JIMENEZ	he-MEN-ey
Kate EVELAND	EVE-lund	TARYN Milburn	TEAR-in		

## Personnel Summary



Eveland



Strawberry

### Returning Starters (2)

Kate Eveland, So., G, 6.0 ppg., 2.1 rpg.  
Michelle Strawberry, Sr, F, 10.3 ppg., 2.6 rpg.

### Starters Lost (3)

Lindsey Casey, Sr, F, 8.2 ppg., 4.9 rpg.  
Ashley Cheesman, Fr, F, 7.6 ppg., 5.2 rpg.  
Michelle Elliott, So., G/F, 11.1 ppg., 3.4 rpg.



Eveland



Goldblatt



Shaw



Smith



Strawberry

### Letterwinners Returning (5)

Kate Eveland, So., G, 6.0 ppg., 2.1 rpg.  
Lindsay Goldblatt, Sr, G, 0.4 ppg., 0.4 rpg.  
Veronica Shaw, Sr, G, 5.1 ppg., 2.7 rpg.  
Jordie Smith, So., F, 2.5 ppg., 1.8 rpg.  
Michelle Strawberry, Sr, F, 10.3 ppg., 2.6 rpg.

### Letterwinners Lost (5)

Lindsey Casey, Sr, F, 8.2 ppg., 4.9 rpg.  
Ashley Cheesman, Fr, F, 7.6 ppg., 5.2 rpg.  
Michelle Elliott, So., G/F, 11.1 ppg., 3.4 rpg.  
Jessica Huettl, So., G, 6.0 ppg., 0.6 rpg.  
Marin McCue, Fr, G/F, 3.6 ppg., 1.8 rpg.



Demus



Fritz



Jackson

### Other Players Returning (3)

Shanna Demus, So., F, transfer  
Courtney Fritz, So., G, 9.0 ppg., 0.8 rpg.  
Erin Jackson, So., F, 0.5 ppg., 1.0 rpg.

### Newcomers (8)

Ijlal Barnes, 5-9, Jr, F, San Diego, Calif.  
LaSandra Dixon, 5-7, Fr, G, Azusa, Calif.  
Audrey Green, 6-4, Fr, C, San Marcos, Calif.  
Jana Heinrich, 6-3, Fr, F, Fischbach, Germany  
Desiree Johnson, 6-2, Jr, C, Kahuku, Hawaii  
Tamika Lipford, 5-4, Fr, G, Oceanside, Calif.  
Taryn Milburn, 5-10, Jr, F, Moorpark, Calif.  
Brittany Santos, 6-0, Fr, F, Paso Robles, Calif.

## Roster Breakdown

### By Class

Seniors (3): Goldblatt, Shaw, Strawberry  
Juniors (3): Barnes, Milburn, Johnson  
Sophomores (5): Demus, Eveland, Fritz, Jackson, Smith  
Freshmen (5): Dixon, Green, Heinrich, Lipford, Santos

### By State/Country

Arizona (1): Shaw  
California (9): Barnes, Demus, Dixon, Goldblatt, Green, Lipford, Milburn, Santos, Strawberry  
Colorado (1): Smith  
Germany (1): Heinrich  
Hawaii (1): Johnson  
Nevada (1): Jackson  
Oregon (1): Fritz  
Texas (1): Eveland

### By Position

Centers (2): Green, Johnson  
Forwards (8): Barnes, Demus, Heinrich, Jackson, Milburn, Santos, Smith, Strawberry  
Guards (6): Dixon, Eveland, Fritz, Goldblatt, Lipford, Shaw

### By Height

6-4 (1): Green  
6-3 (1): Heinrich  
6-2 (2): Smith, Johnson  
6-1 (1): Jackson  
6-0 (1): Santos  
5-9 (1): Barnes  
5-10 (2): Milburn, Strawberry  
5-8 (3): Demus, Fritz, Eveland  
5-7 (2): Dixon, Shaw  
5-5 (1): Goldblatt  
5-3 (1): Lipford



## 2005-06 Schedule

Date	Opponent	Time
Nov. 8	Team Concept (Exhibition)	7 p.m.
Nov. 12	Arizona Venom (Exhibition)	4 p.m.
Nov. 19	at Wichita State	1 p.m.
Nov. 22	USD	7 p.m.
Nov. 26	at UC Riverside	1:30 p.m.
Dec. 3	at UC Davis	2 p.m.
Dec. 10	at Pepperdine	5 p.m.
Dec. 16	Portland State	7 p.m.
Dec. 20	Boise State	5:30 p.m.
Dec. 22	Pittsburgh	2 p.m.
Dec. 28-30	San Diego Surf 'N Slam Tournament (SDSU, Auburn, Loyola (Md.), UC Davis)	
Dec. 28	Auburn vs. UC Davis	5:30 p.m.
Dec. 28	vs. Loyola (Md.)	7:30 p.m.
Dec. 30	Consolation game	5:30 p.m.
Dec. 30	Championship game	7:30 p.m.
Jan. 5	at Colorado State*	7 p.m.
Jan. 7	Air Force*	2 p.m.
Jan. 11	Utah*	7 p.m.
Jan. 14	at UNLV*	7 p.m.
Jan. 18	TCU*	7 p.m.
Jan. 21	at BYU*	2 p.m.
Jan. 25	at New Mexico*	7 p.m.
Jan. 28	Wyoming*	2 p.m.
Feb. 4	Colorado State*	2 p.m.
Feb. 8	at Air Force*	7 p.m.
Feb. 11	at Utah*	3 p.m.
Feb. 15	UNLV*	7 p.m.
Feb. 18	at TCU*	2 p.m.
Feb. 22	BYU*	7 p.m.
Feb. 25	New Mexico*	2 p.m.
Mar. 2	at Wyoming*	7 p.m.
Mar. 7-11	2006 XBOX Live MWC Championships Pepsi Center (Denver, Colo.)	TBA
Mar. 18-21	NCAA First & Second Rounds	TBA
Mar. 25-28	NCAA Regionals	TBA
Apr. 2 & 4	NCAA Final Four (Boston, Mass.)	TBA

All times local to site  
 Home game in **Bold**  
 All home games at Cox Arena  
 \*Mountain West Conference Game

## 2006 NCAA Tournament



### NCAA First & Second Rounds

#### March 18 and 20

Allstate Arena (Chicago, Ill.)  
 Pepsi Center (Denver, Colo.)  
 Memorial Gymnasium (Nashville, Tenn.)  
 McKale Center (Tucson, Ariz.)

#### March 19 and 21

Ted Constant Convocation Center (Norfolk, Va.)  
 Sovereign Bank Arena (Trenton, N.J.)  
 Bryce Jordan Center (University Park, Pa.)  
 Mackey Arena (West Lafayette, Ind.)

### NCAA Regionals

#### March 25 and 27

**Albuquerque Regional**  
 The Pit (15,683)  
 Albuquerque, N.M.  
**Host:** University of New Mexico

#### March 25 and 27

**San Antonio Regional**  
 SBC Center (8,088)  
 San Antonio, Texas  
**Host:** University of Texas-San Antonio

#### March 26 and 28

**Bridgeport Regional**  
 Bridgeport Arena at Harbor Yard (9,091)  
 Bridgeport, Conn.  
**Host:** Fairfield University

#### March 26 and 28

**Cleveland Regional**  
 Quicken Loans Arena (12,000)  
 Cleveland, Ohio  
**Host:** Cleveland State University and Mid-American Conference

### NCAA Final Four

#### April 2 and 4

TD Banknorth Garden (18,560)  
 Boston, Mass.  
**Host:** Harvard University and Northeastern University

SDSU

AZTECS

SEASON  
INFO

2005-06 AZTEC BASKETBALL