



## Alphabetical Index

100-Point Games .....	123	MWC Tournaments .....	187
1,000-Point Scorers .....	168	NCAA Tournament History .....	182
All Opponents, vs. ....	156	Opponent Directory .....	202
Assistant Coaches .....	54	Player Bios .....	60
Athletic Director Mike Bohn .....	195	Preview, 2004-05 Season .....	5
Athletic Directory .....	208	Overtime Games .....	122
Attendance/Home Court Record .....	185	Postseason Tournaments .....	186
Basketball Support Staff .....	58	Recaps, 2003-04 Game .....	107
Conferences, vs. ....	164	Results, 2003-04 Season .....	98
Cox Arena at Aztec Bowl .....	206	Results, All-Time .....	140
Cox Arena Records .....	137	Roster, Broadcast .....	14
Double-Doubles .....	127	Roster, 2004-05 .....	4
Fisher, Bio Steve .....	44	San Diego State University .....	190
Freshmen Season Records .....	134	Schedule, 2004-05 .....	6
Last Time It Happened .....	181	Series, All-Time .....	157
Letterwinners .....	176	Single-Game Performances, Individual .....	126
Media Information .....	200	Specialty Games .....	151
Media Outlets .....	204	Statistics, Division I Era Career .....	178
MWC Records .....	135	Statistics, 2003-04 Season .....	99

# Table of Contents

**TEAM****SAN DIEGO STATE BASKETBALL****INTRODUCTION**

## The 2004-05 SDSU Men's Basketball Media Guide

The 2003-04 San Diego State University Basketball Media Guide is a publication of the San Diego State University athletic media relations office. The publication was written, edited and designed by associate media relations director Mike May.

Assistance was provided by associate athletic director and media relations director Kevin Klintworth, assistant media relation directors Dave Kuhn and Peggy Curtin, media relations assistants Darin Wong, Jamie McConeghy, Richard Groves and Dan Gisel, media relations student assistants Lesley Fong, Keith Kawamura, Jim Solien, Clay Spiegel, Marc Feller, Courtney Bylund and Karen Lynch.

Cover designed by Richard Groves.

## Photography

Ernie Anderson, Ken Jacques, Stan Liu and Kelly Ayers.

## Printing

Proventions Group (Nicholasville, Ky.)

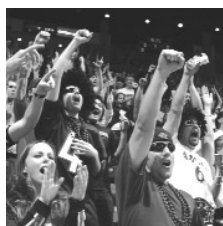


## Introduction

Index 1 • Table of Contents 2 • Quick Facts 3 • Rosters 4 • Schedule 5 • 2005 Season Preview 6 • Broadcast Roster 14

## This is SDSU Basketball

Steve Fisher 16 • Steve Fisher Timeline 18 • Fisher's Men in the NBA 20 • Cox Arena 22 • Gameday at Cox Arena 24 • Facilities 26 • Big Games 28 • Media Exposure 30 • Community Service 32 • Academics 33 • Why SDSU 34 • San Diego State University 36 • City of San Diego 38 • San Diego State Athletics 40 • Mountain West Conference 42



## Coaches and Staff

Steve Fisher 44 • Brian Dutcher 54 • Gregg Gottlieb 55 • Mark Hughes 56 • Mark Fisher 57 • Support Staff 58



## Players

Trimaine Davis 60 • Travis Hanour 63 • Brandon Heath 66 • Tommy Johnson 69 • Chris Manker 73 • John Sharper 77 • Marcus Slaughter 80 • Wesley Stokes 83 • Chris Walton 87 • Mohamed Camara/Jared Ines 91 • Chris Lamb/Tim McGrath 92 • Tyler Smith/Matt Thomas 93 • Shawn Weinstein 94

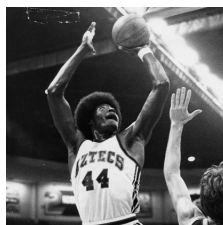
## 2003-04 Review

2003-04 Notes 96 • Results 98 • Statistics 99 • Team Game-By-Game 100 • Superlatives 102 • Player Game-By-Game 103 • Aerick Sanders 104 • Ben Wardrop 106 • Game Recaps 107 • MWC Review 117



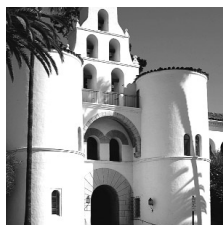
## Records

Team 120 • Streaks 121 • Team Season 122 • Individual Game 124 • Top-Game Performances 126 • Individual Season 128 • Individual Career 131 • Freshmen Records 134 • MWC Records 135 • Cox Arena Records 137



## History

Year-By-Year Results 140 • Year-By-Year Summary 152 • Statistical History 154 • vs. All Opponents 156 • All-Time Series 157 • Jersey Numbers 165 • Awards and Honors 166 • 1,000-Point Scorers 168 • Annual Statistical Leaders 172 • Letterwinners 176 • All-Time Individual State 178 • NCAA/NIT Postseason 182 • Attendance/Home Records 185 • Conference Tournament History 186 • Miscellaneous Fisher Era 188



## University

San Diego State 190 • Dr. Stephen Weber 194 • Mike Bohn 195 • Support Staff 196 • Media Information 200 • Opponent Directory 202 • Media Outlets 204 • Broadcast Information 205 • Cox Arena 206 • Directory 208

# Media Information



SAN DIEGO STATE BASKETBALL

## General Information

Location . . . . .San Diego, Calif. 92182  
 Founded . . . . .1897  
 Enrollment . . . . .33,400  
 Nickname . . . . .Aztecs  
 Colors . . . . .Scarlet and Black  
 PMS Color . . . . .185  
 Arena . . . . .Cox Arena at Aztec Bowl  
 Opened . . . . .1997  
 Capacity . . . . .12,414  
 Affiliation . . . . .NCAA Division I  
 Conference . . . . .Mountain West  
 President . . . . .Dr. Stephen Weber  
 Alma Mater (Year) . . . . .Bowling Green (1964)  
 Athletics Director . . . . .Mike Bohn  
 Alma Mater (Year) . . . . .Kansas (1983)  
 Athletic Department Phone . . . . .619-594-3019  
 Ticket Office Phone . . . . .619-283-7378  
 or 619-283-SDSU

## History

Seasons of Basketball . . . . .Entering 84th  
 First Season of Basketball . . . . .1921-22  
 All-Time Record . . . . .1,127-972  
 NCAA Tournament Appearances . . . . .7  
 Seasons of Div. I Basketball . . . . .Entering 35th  
 First Season of Div. I Basketball . . . . .1970-71  
 All-Time Div. I Record . . . . .438-526  
 NCAA Div. I Tournament Appearances . . . . .4  
 Last NCAA Appearance . . . . .2002  
 NIT Appearances . . . . .2  
 Last NIT Appearance . . . . .2003

## Media Relations

Associate SID/MBB . . . . .Mike May  
 SID Main Office Number . . . . .619-594-5547  
 May Cell Phone . . . . .619-957-8372  
 SID Fax Number . . . . .619-582-6541  
 May E-mail . . . . .mmay@mail.sdsu.edu  
 Associate AD/SID . . . . .Kevin Klintworth  
 Klintworth E-mail . . . . .kklintwo@mail.sdsu.edu  
 SID Mailing Address . . . . .Aztec Media Relations  
 3014 Aztec Athletics Center  
 5302 55th Street  
 San Diego State University  
 San Diego, CA 92182

## Basketball Staff

Head Coach . . . . .Steve Fisher  
 Alma Mater (Year) . . . . .Illinois State (1967)  
 Record at SDSU (Years) . . . . .70-79 (5)  
 Record Overall (Years) . . . . .254-161 (13 full)  
 Basketball Office Phone . . . . .619-594-6249  
 Best Time to Contact Fisher . . . . .Contact May  
 Assistant Head Coach . . . . .Brian Dutcher  
 Alma Mater (Year) . . . . .Minnesota (1982)  
 Assistant Coach . . . . .Gregg Gottlieb  
 Alma Mater (Year) . . . . .UCLA (1995)  
 Assistant Coach . . . . .Mark Hughes  
 Alma Mater . . . . .Michigan (1989)  
 Director of Basketball Operations . . . . .Mark Fisher  
 Alma Mater (Year) . . . . .Michigan (2001)  
 Director of Player Development . . . . .Matt Soria  
 Alma Mater (Year) . . . . .San Diego State (2001)  
 Basketball Trainer . . . . .Mark Haines  
 Alma Mater (Year) . . . . .Metropolitan State (1987)  
 Administrative Assistant . . . . .Marty Malano

## Team Information

	Total	Home	Away	Neu.
2003-04 Record	14-16	11-4	2-10	1-2
2003-04 MWC Record	5-9	5-2	0-7	
Mountain West Finish				T-5th
MWC Tournament				Quarterfinals (0-1)
Postseason				none
Starters Returning/Lost				4/1
Letterwinners Returning/Lost				9/2

## Media Information

Radio Station . . . . .XPRS-AM 1090  
 Play-By-Play Announcer . . . . .John Fricke  
 PBP Phone Number . . . . .(858) 453-9153  
 Radio Analyst . . . . .John Kentera  
 Analyst Phone Number . . . . .(858) 453-9153  
 Video Footage Contact . . . . .Brian Murphy  
 VFC Phone Number . . . . .(619) 594-7617  
 Beat Writer . . . . .Ed Graney  
 San Diego Union-Tribune  
 619-293-2203  
 Beat Writer . . . . .Mike Sullivan  
 North County Times  
 760-739-6645

## Media Services

SID Office Phone . . . . .619-594-5547  
 SID Office Fax . . . . .619-582-6541  
 Cox Arena Press Row . . . . .619-265-5853  
 SDSU Athletics Website . . . . .www.goaztecs.com

## 2004-05 Roster Breakdown

### Starters Returning (4)

Player	Ht	Wt	Cl	Pos.	PPG	RPG
Brandon Heath	6-3	183	So.	G	13.8	2.7
Marcus Slaughter	6-8	223	So.	F	7.9	6.8
Wesley Stokes	6-0	167	Sr.	G	12.1	5.8*
Chris Walton	6-8	234	Sr.	F	8.7	4.9

### Total Letterwinners Returning (9)

Player	Ht	Wt	Cl	Pos.	PPG	RPG
Trimaine Davis	6-8	223	Jr.	F	1.5	1.0
Travis Hanour**	6-6	202	Sr.	G	---	---
Brandon Heath	6-3	183	So.	G	13.8	2.7
Tommy Johnson	6-3	186	Sr.	G	4.0	1.9
Chris Manker	7-0	225	Sr.	C	3.4	2.3
John Sharper	6-0	195	Jr.	G	4.1	0.9
Marcus Slaughter	6-8	223	So.	F	7.9	6.8
Wesley Stokes	6-0	167	Sr.	G	12.1	5.8*
Chris Walton	6-8	234	Sr.	F	8.7	4.9

### Other Returning Players (2)

Player	Ht	Wt	Cl	Pos.
Jared Ines	6-7	234	Sr.	F
Shawn Weinstein	6-0	188	Fr.	G

### Newcomers (5)

Player	Ht	Wt	Cl	Pos.
Mohamed Camara	6-10	265	Jr.	C
Chris Lamb	6-9	205	Fr.	F
Tim McGrath	6-5	182	Fr.	F
Tyler Smith	6-2	208	Fr.	G
Matt Thomas	6-4	195	Fr.	G

### Starters Lost (1)

Player	Ht	Wt	Cl	Pos.	PPG	RPG
Aerick Sanders	6-9	203	Exp.	F-C	16.1	9.8

### Total Letterwinners Lost (2)

Player	Ht	Wt	Cl	Pos.	PPG	RPG
Aerick Sanders	6-9	203	Exp.	F-C	16.1	9.8
Ben Wardrop	6-3	201	Exp.	G	0.2	0.6

### Honors Candidates

Brandon Heath - All-Conference, All-Region  
 Marcus Slaughter - All-Conference, All-Region  
 Wesley Stokes - All-Conference, All-Region  
 Chris Walton - All-Conference, All-Region

\* - Indicates assists per game.  
 \*\* - Missed the 2003-04 season due to injuries.

INTRODUCTION

## 2004-05 San Diego State Alphabetical Roster

No.	Name	Pos.	Ht.	Wt.	Yr.	Exp.	Most Recent Div. I Season			Hometown (High School/Previous School)
							PPG	RPG	APG	
50	Mohamed Camara	C	6-10	265	Jr.	JC	---	---	---	Conakry, Guinea (Moore (Ky.) High/Riverside (Calif.) College)
20	Trimaïne Davis	F	6-8	233	Jr.	2L	1.5	1.0	0.1	West Pittsburg, Calif. (Pittsburg High)
5	Travis Hanour	G	6-6	202	Sr.	1L	3.1	3.1	1.0	Laguna Beach, Calif. (Laguna Beach High/Univ. of Arizona)
1	Brandon Heath	G	6-3	183	So.	1L	13.8	2.7	1.8	Los Angeles, Calif. (Westchester High)
31	Jared Ines *	F	6-7	234	Sr.	SQ	0.0	0.0	0.0	Modesto, Calif. (Ceres High/Ohlone College)
0	Tommy Johnson	G	6-3	186	Sr.	3L	4.0	1.9	1.0	Los Angeles, Calif. (Crenshaw High)
30	Chris Lamb	F	6-9	205	Fr.	HS	---	---	---	Louisville, Colo. (Monarch High)
33	Chris Manker	C	7-0	225	Sr.	2L	3.4	2.3	0.3	West Des Moines, Iowa (Laguna Beach (Calif.) High/Oregon State Univ.)
24	Tim McGrath	F	6-5	182	Fr.	HS	---	---	---	Santa Monica, Calif. (Santa Monica High)
15	John Sharper	G	6-0	195	Jr.	2L	4.1	0.9	0.9	Oakland, Calif. (St. Mary's High)
42	Marcus Slaughter	F	6-8	202	So.	1L	7.9	6.8	0.7	Riverside, Calif. (J.W. North High)
11	Tyler Smith *	G	6-2	208	Fr.	HS	---	---	---	San Clemente, Calif. (Santa Margarita Catholic High)
2	Wesley Stokes	G	6-0	167	Sr.	1L	12.1	2.3	5.8	Long Beach, Calif. (Poly High/Univ. of Missouri)
21	Matt Thomas	G	6-3	191	Fr.	HS	---	---	---	Riverside, Calif. (Martin Luther King High)
3	Chris Walton	F	6-8	234	Sr.	3L	8.7	4.9	2.3	San Diego, Calif. (Univ. of San Diego High)
10	Shawn Weinstein *	G	6-0	188	Fr.	RS	---	---	---	Rancho Palos Verdes, Calif. (Peninsula High)

## 2004-05 San Diego State Numerical Roster

No.	Name	Pos.	Ht.	Wt.	Yr.	Exp.	Most Recent Div. I Season			Hometown (High School/Previous School)
							PPG	RPG	APG	
0	Tommy Johnson	G	6-3	186	Sr.	3L	4.0	1.9	1.0	Los Angeles, Calif. (Crenshaw High)
1	Brandon Heath	G	6-3	183	So.	1L	13.8	2.7	1.8	Los Angeles, Calif. (Westchester High)
2	Wesley Stokes	G	6-0	167	Sr.	1L	12.1	2.3	5.8	Long Beach, Calif. (Poly High/Univ. of Missouri)
3	Chris Walton	F	6-8	234	Sr.	3L	8.7	4.9	2.3	San Diego, Calif. (Univ. of San Diego High)
5	Travis Hanour	G	6-6	202	Sr.	1L	3.1	3.1	1.0	Laguna Beach, Calif. (Laguna Beach High/Univ. of Arizona)
10	Shawn Weinstein *	G	6-0	188	Fr.	RS	---	---	---	Rancho Palos Verdes, Calif. (Peninsula High)
11	Tyler Smith *	G	6-2	208	Fr.	HS	---	---	---	San Clemente, Calif. (Santa Margarita Catholic High)
15	John Sharper	G	6-0	195	Jr.	2L	4.1	0.9	0.9	Oakland, Calif. (St. Mary's High)
20	Trimaïne Davis	F	6-8	233	Jr.	2L	1.5	1.0	0.1	West Pittsburg, Calif. (Pittsburg High)
21	Matt Thomas	G	6-3	191	Fr.	HS	---	---	---	Riverside, Calif. (Martin Luther King High)
24	Tim McGrath	F	6-5	182	Fr.	HS	---	---	---	Santa Monica, Calif. (Santa Monica High)
30	Chris Lamb	F	6-9	205	Fr.	HS	---	---	---	Louisville, Colo. (Monarch High)
31	Jared Ines *	F	6-7	234	Sr.	SQ	0.0	0.0	0.0	Modesto, Calif. (Ceres High/Ohlone College)
33	Chris Manker	C	7-0	225	Sr.	2L	3.4	2.3	0.3	West Des Moines, Iowa (Laguna Beach (Calif.) High/Oregon State Univ.)
42	Marcus Slaughter	F	6-8	223	So.	1L	7.9	6.8	0.7	Riverside, Calif. (J.W. North High)
50	Mohamed Camara	C	6-10	265	Jr.	JC	---	---	---	Conakry, Guinea (Moore (Ky.) High/Riverside (Calif.) College)

**Head Coach:** Steve Fisher (Illinois State, 1967)  
**Assistant Head Coach:** Brian Dutcher (Minnesota, 1982)  
**Assistant Coaches:** Gregg Gottlieb (UCLA, 1995), Mark Hughes (Michigan, 1989)  
**Director of Operations:** Mark Fisher (Michigan, 2001)  
**Dir. of Player Development:** Matt Soria (San Diego State, 2001)  
**Athletic Trainer:** Mark Haines (Metropolitan State College, 1987)

Year refers to basketball eligibility for the 2004-05 season. \* - Indicates walk-on. Height and weight measurements for returning players are as of September 2, 2004.

### ► Pronunciations

Mohamed Camara  
 Mohamed kuh-MAR-uh  
 Travis Hanour  
 Travis HAN-our  
 Jared Ines  
 Jared EYE-nez  
 Chris Manker  
 Chris MANE-ker (like banker)  
 Shawn Weinstein  
 Shawn Wine-STEEN

### ► By Class

**Seniors (6)**  
 Travis Hanour, Jared Ines, Tommy Johnson, Chris Manker, Wesley Stokes, Chris Walton  
**Juniors (3)**  
 Mohamed Camara, Trimaïne Davis, John Sharper

**Sophomores (2)**  
 Brandon Heath, Marcus Slaughter  
**Freshmen (5)**  
 Chris Lamb, Tim McGrath, Tyler Smith, Matt Thomas, Shawn Weinstein

### ► By Position

**Guards (8)**  
 Travis Hanour, Brandon Heath, Tommy Johnson, John Sharper, Tyler Smith, Wesley Stokes, Matt Thomas, Shawn Weinstein  
**Forwards (6)**  
 Trimaïne Davis, Jared Ines, Chris Lamb, Tim McGrath, Marcus Slaughter, Chris Walton

**Centers (2)**  
 Mohamed Camara, Chris Manker

# 2004-05 Schedule



SAN DIEGO STATE BASKETBALL

Date	Day	Opponent	Site	Time	TV
<b>Exhibition Games</b>					
Nov. 3	Wed.	CS SAN BERNARDINO	Cox Arena	7:05 p.m. PST	
Nov. 11	Thur.	POINT LOMA NAZARENE	Cox Arena	7:05 p.m. PST	
Nov. 19	Fri.	UC SANTA BARBARA	Cox Arena	7:05 p.m. PST	Channel 4 San Diego
Nov. 22	Mon.	MONMOUTH	Cox Arena	7:05 p.m. PST	Channel 4 San Diego
Nov. 27	Sat.	UC SAN DIEGO	Cox Arena	7:05 p.m. PST	
Dec. 1	Wed.	SAN DIEGO	Cox Arena	7:05 p.m. PST	
Dec. 4	Sat.	at UC Santa Barbara	Santa Barbara, Calif.	7:30 p.m. PST	
Dec. 7	Tue.	at Washington	Seattle, Wash.	7:00 p.m. PST	
<b>San Diego SLAM Presented By PerfectWave Technologies (Cox Arena; San Diego, Calif.)</b>					
Dec. 11	Sat.	USC vs. San Diego	Cox Arena	5:00 p.m. PST	Channel 4 San Diego
Dec. 11	Sat.	CALIFORNIA	Cox Arena	7:30 p.m. PST	Channel 4 San Diego
Dec. 14	Tue.	SAINT MARY'S	Cox Arena	7:05 p.m. PST	
Dec. 18	Sat.	at Loyola Marymount	Los Angeles, Calif.	7:05 p.m. PST	Channel 4 San Diego
Dec. 21	Tue.	CAL STATE FULLERTON	Cox Arena	7:05 p.m. PST	Channel 4 San Diego
Dec. 28	Tue.	at Iowa State	Ames, Iowa	7:00 p.m. CST	Cyclone Television Net.
Dec. 31	Fri.	PROVIDENCE	Cox Arena	2:05 p.m. PST	Channel 4 San Diego
Jan. 3	Mon.	SOUTH DAKOTA STATE	Cox Arena	7:05 p.m. PST	Channel 4 San Diego
Jan. 8	Sat.	*at Brigham Young	Provo, Utah	7:05 p.m. MST	SportsWest
Jan. 15	Sat.	*at UNLV	Las Vegas, Nev.	7:30 p.m. PST	SportsWest
Jan. 22	Sat.	*WYOMING	Cox Arena	7:05 p.m. PST	SportsWest
Jan. 24	Mon.	*COLORADO STATE	Cox Arena	9:00 p.m. PST	ESPN
Jan. 29	Sat.	*at Air Force	Colorado Springs, Colo.	4:05 p.m. MST	Channel 4 San Diego
Jan. 31	Mon.	*at New Mexico	Albuquerque, N.M.	7:00 p.m. MST	SportsWest
Feb. 5	Sat.	*UTAH	Cox Arena	7:05 p.m. PST	Channel 4 San Diego
Feb. 7	Mon.	*BRIGHAM YOUNG	Cox Arena	7:05 p.m. PST	SportsWest
Feb. 12	Sat.	*UNLV	Cox Arena	Noon PST	ESPN+Plus
Feb. 19	Sat.	*at Colorado State	Fort Collins, Colo.	7:00 p.m. MST	Channel 4 San Diego
Feb. 21	Mon.	*at Wyoming	Laramie, Wyo.	10:00 p.m. MST	ESPN
Feb. 26	Sat.	*NEW MEXICO	Cox Arena	7:05 p.m. PST	SportsWest
Feb. 28	Mon.	*AIR FORCE	Cox Arena	7:05 p.m. PST	Channel 4 San Diego
Mar. 5	Sat.	*at Utah	Salt Lake City, Utah	1:00 p.m. MST	ESPN+Plus

Mar. 10-12 Thur.-Sat. at Mountain West Conference Basketball Tournament (Pepsi Center; Denver, Colo.)

All ESPN+Plus and SportsWest televised games will air locally on Channel 4 San Diego. \* - Indicates Mountain West Conference game.

## Aztecs Travel Plans

► Hotel information on page 204.

### UC Santa Barbara

► Charter bus (details TBD)

### Washington

► Depart: Monday, Dec. 6 at 3:19 p.m. on Alaska Airlines No. 551, arriving in Seattle at 6:11 p.m.

► Return: Wednesday, Dec. 8 at 12:09 p.m. on Alaska Airlines No. 580, arriving in San Diego at 2:44 p.m.

### Loyola Marymount

► Charter bus (details TBD)

### Iowa State

► Depart: Monday, Dec. 27 at 8:10 a.m. on United Airlines No. 906/1220 (through Denver), arriving in Des Moines at 3:00 p.m.

► Return: Wednesday, Dec. 29 at 9:00 a.m. on United Airlines No. 782/477 (through Chicago), arriving in San Diego at 2:20 p.m.

### Brigham Young

► Depart: Friday, Jan. 7 at 1:04 p.m. on Delta Airlines No. 1760, arriving in Salt Lake City at 1:04 p.m.

► Return: Sunday, Jan. 9 at 1:05 p.m. on Delta Airlines No. 561, arriving in San Diego at 1:53 p.m.

### UNLV

► Depart: Friday, Jan. 14 at 3:16 p.m. on America West Airlines No. 6583, arriving in Las Vegas at 4:30 p.m.

► Return: Saturday, Jan. 15 at 11:59 p.m. on America West Airlines No. 730, arriving in San Diego at 1:08 a.m.

### Air Force/New Mexico

► Depart: Friday, Jan. 28 at 2:15 p.m. on United Airlines No. 368, arriving in Denver at 5:19 p.m.

► Depart Denver: Sunday, Jan. 30 at 2:40 p.m. on United Airlines No. 437, arriving in Albuquerque at 3:50 p.m.

► Return: Tuesday, Feb. 5 at 1:10 p.m. on Southwest Airlines No. 1915, arriving in San Diego at 2:00 p.m.

► Return: Tuesday, Feb. 22 at 12:15 p.m. on Frontier Airlines No. 561, arriving in San Diego at 1:25 p.m.

### Utah

► Depart: Friday, Mar. 4 at 2:50 p.m. on Delta Airlines No. 1234, arriving in Salt Lake City at 5:39 p.m.

► Return: Saturday, Mar. 5 at 6:50 p.m. on Delta Airlines No. 687, arriving in San Diego at 7:46 p.m.

INTRODUCTION

## 2005 NCAA Div. I Men's Basketball Championship Dates and Sites

### Opening Round

Univ. of Dayton Arena  
Dayton, Ohio  
Dayton, host  
March 15

### First/Second Rounds

Taco Bell Arena  
Boise, Idaho  
Boise State, host  
March 17 and 19

CSU Convocation Center  
Cleveland, Ohio  
Cleveland State, host  
March 17 and 19

RCA Dome  
Indianapolis, Ind.  
Butler/Horizon League, host  
March 17 and 19

McKale Center  
Tucson, Ariz.  
Arizona, host  
March 17 and 19

Charlotte Coliseum  
Charlotte, N.C.  
Davidson College, host  
March 18 and 20

Gaylord Entertainment Center  
Nashville, Tenn.  
Ohio Valley Conference, host  
March 18 and 20

Ford Center  
Oklahoma City, Okla.  
Big 12 Conference, host  
March 18 and 20

DCU Center  
Worcester, Mass.  
College of the Holy Cross, host  
March 18 and 20

### Regionals

Chicago Regional  
Allstate Arena  
Chicago, Ill.  
DePaul, host  
March 24 and 26

Albuquerque Regional  
University Arena  
Albuquerque, N.M.  
New Mexico, host  
March 24 and 26

Austin Regional  
Frank Erwin Center  
Austin, Texas  
Texas, host  
March 25 and 27

Syracuse Regional  
Carrier Dome  
Syracuse, N.Y.  
Syracuse, host  
March 25 and 27

### Final Four

Edward Jones Dome  
St. Louis, Mo.  
Missouri Valley Conference, host  
April 2 and 4

# The 2004-05 Season Outlook



Eight times in Steve Fisher's remarkable coaching career he has returned at least three starters off a team he coached the previous season. And all eight times he has taken those teams to the postseason. That's just one reason that Aztec fans look at the four returning starters and nine returning letterwinners and believe that San Diego State can return to the postseason for the third time in four seasons.

INTRODUCTION

# Keeping the Faith

## Percentage Returning in '04-05

Category	Pct. Back
Points	77.0
Field Goals	74.2
Three-Point FGs	99.4
Free Throws	78.0
Rebounds	68.6
Assists	91.3
Blocks	54.9
Steals	85.8
Minutes	81.9

## Career Games Played/Started

Player	GP	GS
Wesley Stokes	99	49
Chris Walton	91	32
Tommy Johnson	77	18
Chris Manker	75	5
John Sharper	57	5
Trimaine Davis	41	0
Travis Hanour	38	8
Brandon Heath	30	26
Marcus Slaughter	30	18

It would be very easy for San Diego State head basketball coach Steve Fisher to rest on his accomplishments. He could survey past achievements and know that his legacy would be secure and his career would be one that many coaches would envy and hope to emulate.

There is, however, one problem with that notion. Fisher is a man who has been to the top of the mountain, as well as to the top of the Mountain West. He is also blessed with an extraordinary amount of energy and drive. And there is, of course, the time-tested theory that reaching the promised

land only makes one more driven to reach it again.

Steve Fisher is entering his sixth season at San Diego State. He appears to be on the verge of signing the best recruiting class in the history of the school. He may be on the verge of taking the program to heights never before dreamed of on Montezuma Mesa. And the accomplishments during his first five years on campus are almost too numerous to mention but well documented.

And yet, somewhere between the past accomplishments and future glories sit the 2004-2005 Aztecs. It is a team with fifth-year seniors, and ris-

ing sophomore stars. It is a team with interchangeable parts and yet some very defined roles. It is a squad that expects to win and yet one that will face one of the more challenging schedules in the school's history.

And it is a team very anxious to write the next chapter in San Diego State's basketball revival after a season that showed just how close the Aztecs have come to the elite programs in the league.

The 2003-2004 season was an exhausting ride for San Diego State. The Aztecs were never over-matched in league play but finished with a 5-9 Mountain West record.

*Steve Fisher has guided the Aztecs to 51 victories and two postseason appearances in the last three seasons. The 51 wins are the highest three-year total for San Diego State in 19 years.*

## Postseason Play, Guaranteed

Steve Fisher has guided every team in which he returned at least three starters off a squad he coached the previous season, to postseason play. That bodes well for the Aztecs who return three starters Chris Walton, Travis Hanour and Marcus Slaughter and a fourth if you count Wesley Stokes. Below is a look at the phenomenal success Fisher has enjoyed when returning three or more starters, including a perfect 8-for-8 mark taking those teams to postseason play.

Starters Returning	Years	Times	Avg. W	NCAA	NIT	none
Five	93	1	31.0	1	0	0
Four	90, 92, 94, 97, 02	5	23.4	4	1	0
Three	95, 03	2	16.5	1	1	0
<b>When Returning 3 or More Starters</b>		<b>8</b>	<b>22.6</b>	<b>6</b>	<b>2</b>	<b>0</b>

The numbers are equally good when factoring in the nine letterwinners San Diego State returns in 2004-05 season. Fisher has guided all five teams he has coached, returning at least eight letterwinners from a squad he coached the preceding season, to postseason play, including four trips to the NCAA Tournament.

Letterwinners Returning	Times	Avg. W	NCAA	NIT	none
11	2	28.0	2	0	0
10	none				
9	1	14.0	0	1	0
8	2	22.0	2	0	0
<b>When Returning At Least Eight Letterwinners</b>	<b>5</b>	<b>22.8</b>	<b>4</b>	<b>1</b>	<b>0</b>

As a freshman in 2003-04, Marcus Slaughter ranked among the Mountain West Conference leaders in five statistical categories.

## Slaughter House

Sophomore forward Marcus Slaughter enjoyed one of the best freshman seasons in San Diego State history. Among Aztec freshmen all-time, Slaughter was third in rebounding, third in rebound average, fourth in rebound average, fifth in field goal percentage, sixth in blocked shots and seventh in steals.

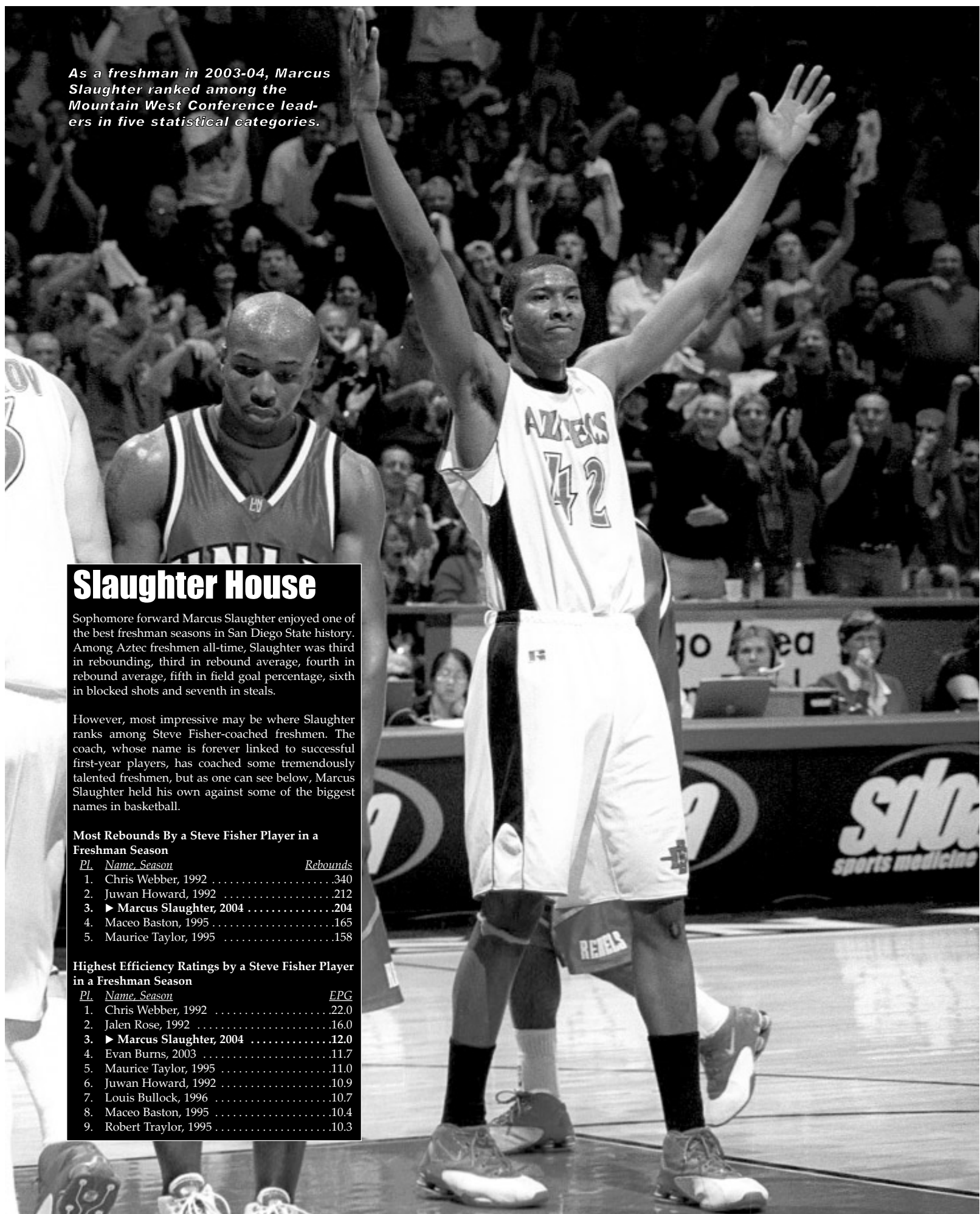
However, most impressive may be where Slaughter ranks among Steve Fisher-coached freshmen. The coach, whose name is forever linked to successful first-year players, has coached some tremendously talented freshmen, but as one can see below, Marcus Slaughter held his own against some of the biggest names in basketball.

### Most Rebounds By a Steve Fisher Player in a Freshman Season

<i>Pl.</i>	<i>Name, Season</i>	<i>Rebounds</i>
1.	Chris Webber, 1992	340
2.	Juwan Howard, 1992	212
3.	► Marcus Slaughter, 2004	204
4.	Maceo Baston, 1995	165
5.	Maurice Taylor, 1995	158

### Highest Efficiency Ratings by a Steve Fisher Player in a Freshman Season

<i>Pl.</i>	<i>Name, Season</i>	<i>EFG</i>
1.	Chris Webber, 1992	22.0
2.	Jalen Rose, 1992	16.0
3.	► Marcus Slaughter, 2004	12.0
4.	Evan Burns, 2003	11.7
5.	Maurice Taylor, 1995	11.0
6.	Juwan Howard, 1992	10.9
7.	Louis Bullock, 1996	10.7
8.	Maceo Baston, 1995	10.4
9.	Robert Traylor, 1995	10.3





# Season Outlook

**TEAM**

**SAN DIEGO STATE BASKETBALL**



*Brandon Heath caught the attention of not only Aztec fans but also the media, as he averaged 13.8 points and earned all-MWC honors as a freshman in 2003-04. His 413 points last season were the fourth highest by a Steve Fisher-coached freshman.*

San Diego State lost four road games by four points or less, or in overtime. And the final game of the season, against Utah in the first round of the Mountain West Tournament, the Aztecs held, and lost, a late lead.

It just may be time for those experiences to pay off.

Gone from last year's squad is Aerick Sanders. He wrapped up his career as one of the most popular and productive Aztecs ever. And replacing his team-high 16.1 points and team-high 9.8 rebounds will be the job of everyone.

"We return a core group of seniors, which is always good," Fisher said. "But we lost the heart and soul of our team in Aerick Sanders. But I like what we have."

This is a Fisher team. It is the type of team he likes to coach. It is a team that fits his trademark.

"I like the versatility of being able to put different combinations of people on the floor," the head coach said. "It can be predicated on whose playing well, or whom you are playing. We have that with this team. I don't care to label players as a small forward or shooting guard. I like having the ability to mix and match."

The Aztecs have older players, such as battle-tested Chris Walton, Chris Manker and Tommy Johnson. They have two of the league's up-and-coming stars in sophomores Brandon Heath and Marcus Slaughter. There is steady guard John Sharper, the athletic Trimaine Davis and Big 12-tested Wesley Stokes.

"We have some experience so that when we take that conference road trip, these players won't be walking into an arena for the first time."

There is a lot to mix and match. It looks like a Steve Fisher team.

"Brandon and Marcus were two of the best freshmen around," Fisher said. "This year we expect them to be two of the best players around."

San Diego State returns three full-time starters in Brandon Heath, Chris Walton and Marcus Slaughter. Completing the starting five could be fun, as well as interesting. And yet, there is very little urgency in naming a starting five. SDSU is versatile and talented.

The following is a position-by-position breakdown of the Aztecs as they head into the 2004-2005 season.

## Center

The slender tower of steel that roamed the paint for San Diego State for four years has departed. The loss of Aerick Sanders and his 16.1 points and 9.8 rebounds per game will be hard to replace. He was an intangible player. He did the big things, he did the little things and he did them at full speed. And he led last year's Aztecs in scoring, rebounding blocked shots and field-goal percentage.

So the adjustments for the Aztecs are two-fold. San Diego State must replace the stats and leadership of Sanders, who was also a captain. And it must replace a man in the middle who stood all of 6-8. What San Diego State loses with the departure of Sanders, could possibly be countered by sheer bulk. For the first time since Mike Mackell departed Montezuma Mesa, the Aztecs have a big, physical presence in the paint in the form of junior-college transfer Mohamed Camara. He is the space eater the Aztecs have been missing in a conference that seems to grow vertically by the second.

"He is a legitimate center," Fisher said of the newcomer. "We are very anxious to see what he can do for us inside."

Camara was an early commitment to St. John's. However, the Aztecs were able to land him in the spring signing period. He arrives on campus from Riverside Community College and could nail down a starting spot early.

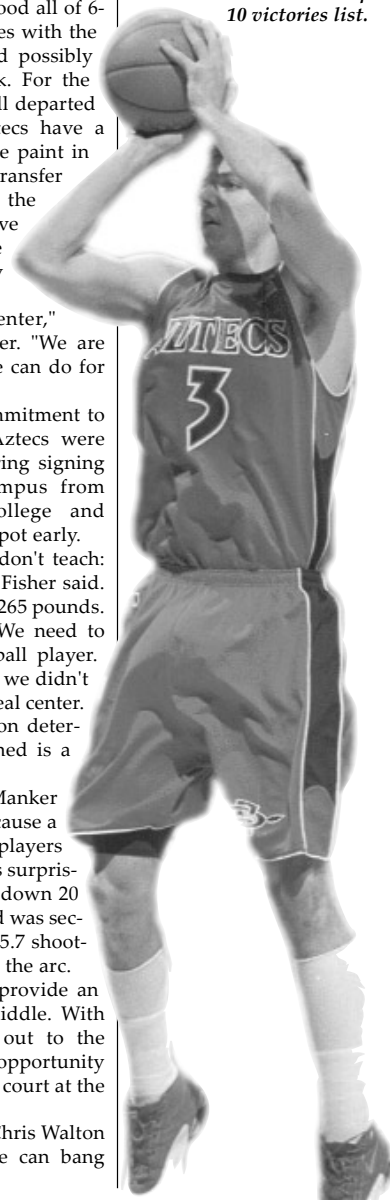
"He brings us what you don't teach: big-time size and strength," Fisher said. "He is a legitimate 6-10, and 265 pounds. He is strong and athletic. We need to help him become a basketball player. He could give us something we didn't have last year and that is a real center. Aerick was a center based on determination and need. Mohamed is a natural low-post player."

Seven-foot center Chris Manker can also bang down low or cause a mismatch by forcing larger players outside to protect against his surprising range. Manker knocked down 20 three-pointers a year ago and was second on the squad with his 35.7 shooting percentage from beyond the arc.

The two big men might provide an interesting combo in the middle. With Manker's ability to move out to the wing, there might be ample opportunity for both players to be on the court at the same time.

Senior and team captain Chris Walton is a hybrid of the two. He can bang

*Forward Chris Walton, who will serve as the team captain in 2004-05, brings a wealth of experience into his senior season. The San Diego native has played in 91 career games and made 32 starts. Walton needs to play in just three more Aztec victories to move into the Division I era top 10 victories list.*



INTRODUCTION

# Team Breakdown

2003-04 Record	14-16
MWC Record	5-9
MWC Finish	6th
MWC Tournament	0-1

## Starters Returning (4)

Player	Ht	Wt	Cl	Pos.	PPG	RPG
Brandon Heath	6-3	183	So.	G	13.8	2.7
Marcus Slaughter	6-8	223	So.	F	7.9	6.8
Wesley Stokes	6-0	167	Sr.	G	12.1	5.8*
Chris Walton	6-8	234	Sr.	F	8.7	4.9

## Total Letterwinners Returning (9)

Player	Ht	Wt	Cl	Pos.	PPG	RPG
Trimaine Davis	6-8	223	Jr.	F	1.5	1.0
Travis Hanour**	6-6	202	Sr.	G	---	---
Brandon Heath	6-3	183	So.	G	13.8	2.7
Tommy Johnson	6-3	186	Sr.	G	4.0	1.9
Chris Manker	7-0	225	Sr.	C	3.4	2.3
John Sharper	6-0	195	Jr.	G	4.1	0.9
Marcus Slaughter	6-8	223	So.	F	7.9	6.8
Wesley Stokes	6-0	167	Sr.	G	12.1	5.8*
Chris Walton	6-8	234	Sr.	F	8.7	4.9

## Other Returning Players (2)

Player	Ht	Wt	Cl	Pos.
Jared Ines	6-7	234	Sr.	F
Shawn Weinstein	6-0	188	Fr.	G

## Newcomers (5)

Player	Ht	Wt	Cl	Pos.
Mohamed Camara	6-10	265	Jr.	C
Chris Lamb	6-9	205	Fr.	F
Tim McGrath	6-5	182	Fr.	F
Tyler Smith	6-2	208	Fr.	G
Matt Thomas	6-4	195	Fr.	G

## Starters Lost (1)

Player	Ht	Wt	Cl	Pos.	PPG	RPG
Aerick Sanders	6-9	203	Exp.	F-C	16.1	9.8

## Total Letterwinners Lost (2)

Player	Ht	Wt	Cl	Pos.	PPG	RPG
Aerick Sanders	6-9	203	Exp.	F-C	16.1	9.8
Ben Wardrop	6-3	201	Exp.	G	0.2	0.6

*Trimaine Davis has endeared himself to Aztec fans through his hardworking, blue-collar approach to basketball as well as his high-flying monster dunks like this one, which clinched the Aztecs' 65-61 victory over Brigham Young last season.*



# Season Outlook

**TEAM**

SAN DIEGO STATE BASKETBALL



One of six seniors on the team, Tommy Johnson enters the 2004-05 campaign having played in 77 games and 1,104 career minutes. He is one of eight players on the roster that has started an Aztec game.

down low at 6-8 and he can move out onto a wing and even into the backcourt if needed.

All in all, the Aztecs look to be solid at center with lots of options.

## Forward

SDSU is loaded at this position, even if you divide the front line into the traditional power forward and small-forward positions.

Chris Walton is back as a fifth-year senior after a junior season in which his numbers jumped in every area. Walton averaged 8.7 points and 4.9 boards per game last year but he is a player in which the numbers fail to tell the tale. He had 69 assists to rank second on the team in that category. He is a player that has the ability to make those on the court with him better.

"Chris is improved in all phases, on and off the court," Fisher said of the player who was in his first fall recruiting class. "He is the leader of this team

and he is important to us in a lot of ways."

"I don't know if Chris is a three or four, in basketball terms," Fisher said. "He is one of the cornerstones of our team and we can use him in a lot of ways."

Walton is a lock in the starting lineup. And across the way at the other forward spot is likely to be Marcus Slaughter. He is on the fast track to stardom after earning honorable mention all-league honors in his rookie season. Of the 29 Mountain West players to earn all-conference accolades, only four were freshmen with Slaughter and teammate Brandon Heath leading the way. Among Steve Fisher-coached freshmen, only Chris Webber and Juwan Howard posted higher rebounding numbers than Slaughter's 204 boards (6.8 per game) last season.

From Feb. 1 through the rest of the season, Slaughter had a higher rebounding average than Aerick

Sanders, who ended his career as SDSU's fifth all-time leading rebounder.

"I hope Marcus inherits some of Aerick's rebounds," Fisher said. "Marcus came in at 195 and now he weighs 223 pounds. That should help him in every phase of his game. He can be an exceptional rebounder. His offensive game grew last year and he should be a very good outside-inside player for us."

The guy who could play both sides of the floor is Manker. He has the size and shooting touch to roam all over the front line.

The term power forward was invented for Trimaine Davis, a jumping junior who is probably the best pure athlete in an Aztec uniform. He is the school's best leaper, can bring the crowd to its feet for a variety of reasons and is high energy.

"Trimaine has been working and waiting for his chance and this season he is going to get that chance," Fisher said.

Another player that everyone will be watching is Travis Hanour. The senior has battled injury problems since his arrival from the University of Arizona, but he is an excellent shooter, athletic and would be a major force in the Mountain West Conference on many fronts.

Senior Tommy Johnson has made many big plays during his Aztec career and he is capable of sliding into front-line action and causing his own set of matchup problems.

A newcomer up front who will be looking to make an impact is Tim McGrath, a product of Santa Monica High School. He is a wing player and a seven-foot high jumper. Freshman Chris Lamb is a good shooter with a big upside and the coaching staff loves his toughness.

Jared Ines could be a contributor along the front line as well. He is aggressive and strong and will battle for inside opportunities.

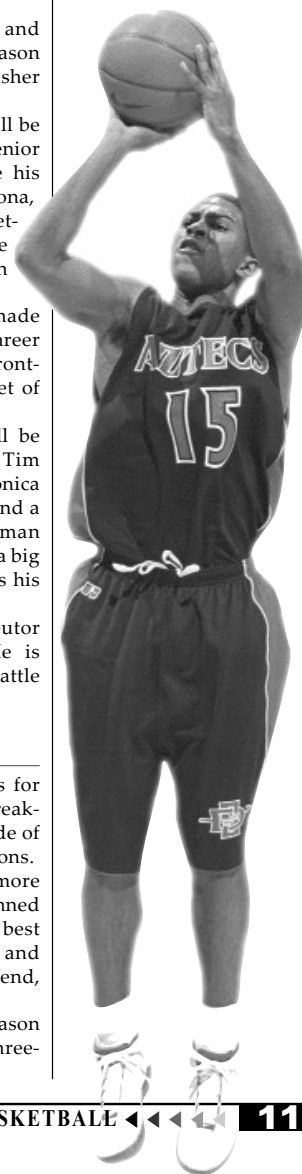
## Point Guard

In the absence of Wesley Stokes for the first semester, SDSU will be breaking in a new point guard. The upside of that is that there are plenty of options.

Junior John Sharper and sophomore Brandon Heath can and have manned the position. Sharper is among the best outside shooters on the team and Heath is a player who loves to defend, run and lead.

Sharper made five starts last season and has hit 41 percent of his three-

*A former walk-on, junior John Sharper has proven to be an effective player at both guard positions. Sharper has connected on 41.1 percent of his career three-point field goal attempts, while averaging just one turnover every 24.4 minutes of action.*



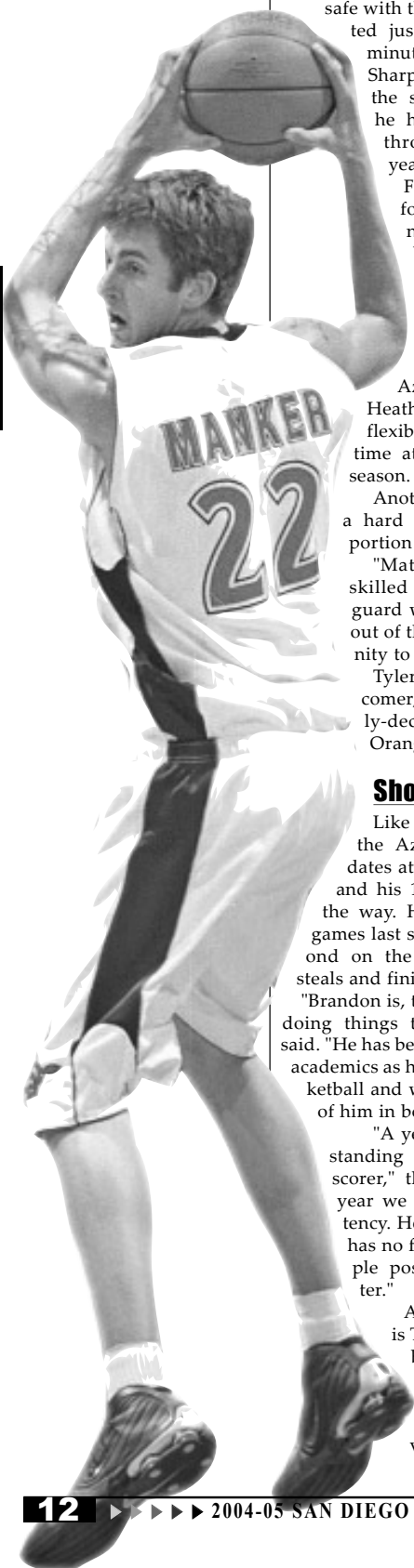
INTRODUCTION

# Season Outlook

**TEAM**

**SAN DIEGO STATE BASKETBALL**

INTRODUCTION



pointers during his career. He is also safe with the ball, having committed just 19 turnovers in 520 minutes of play last season. Sharper will also be seen at the shooting guard, where he has been a contributor throughout the last two years.

Fisher has a simple label for Brandon Heath: winner. As a freshman he became a team leader and craves the big shot down the stretch. His 413 points last year represent the second best freshman total in Aztec history. But what Heath provides most of all is flexibility. He will likely see time at both guard spots all season.

Another player that will get a hard look during the early portion is Matt Thomas.

"Matt Thomas is a very skilled ball-handling point guard with size. He will fight, out of the gate, for an opportunity to play point guard."

Tyler Smith, another newcomer, is coming off a heavily-decorated prep career in Orange County (Calif).

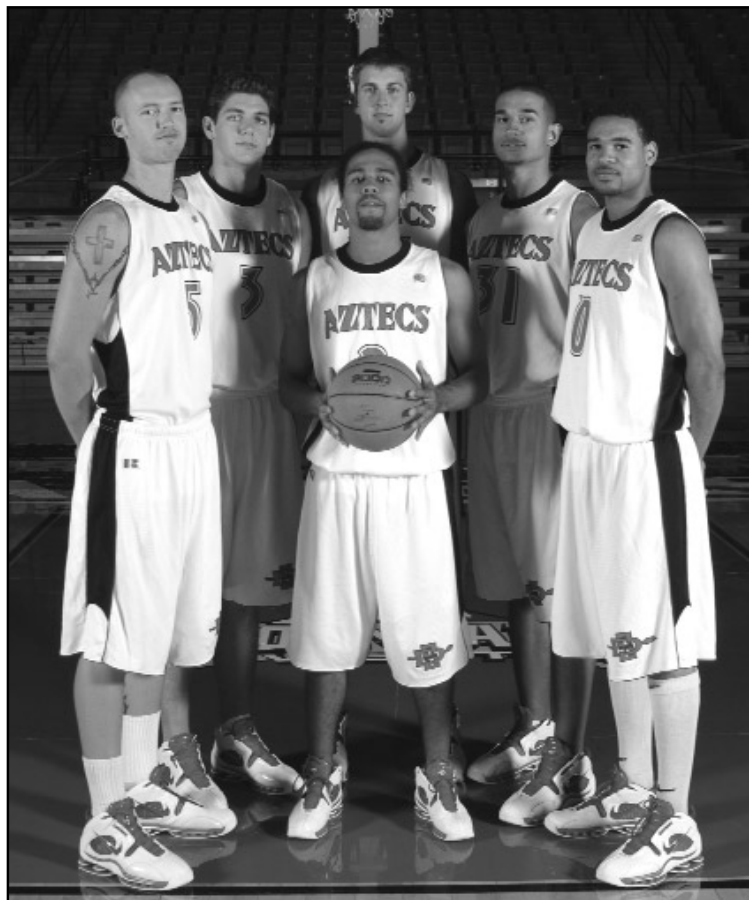
## Shooting Guard

Like the forward position, the Aztecs like their candidates at shooting guard. Heath and his 13.8-point average lead the way. He started all but four games last season and finished second on the team in scoring and steals and finished third in assists.

"Brandon is, to me, a poster child for doing things the right way," Fisher said. "He has been as tenacious with his academics as he has been with his basketball and we are extremely proud of him in both areas."

"A year ago he was an outstanding defender and a streak scorer," the coach added. "This year we just need more consistency. He finds ways to win. He has no fear. He will play multiple positions on the perimeter."

A senior in the backcourt is Tommy Johnson. He has been around the program, played a lot of minutes and has been in the starting five at various times in his



004-05 San Diego State senior class (left to right): Travis Hanour, Chris Walton, Wesley Stokes (front, center), Chris Manker, Jared Ines, Tommy Johnson.

career.

"Tommy has made some big plays for us, almost from the very beginning of his career," Fisher said. "He is another guy not afraid of making a play down the stretch. He's not really affected by any environment."

Johnson will see plenty of playing time at various places on the court. He can play several positions and would not be a surprise to see him come off the bench and play "starter" minutes. He has had a history of making a quick impact when coming off the Aztec bench.

"Tommy brings athleticism, toughness," Fisher said. "Now, we need his senior season to be one of consistency."

Hanour will also be a candidate at the shooting guard or in a three-guard lineup.

Another option could be Shawn Weinstein, is a redshirt freshman who is an exceptional shooter. He has worked hard on developing his

strength and ball skills.

## The Schedule

The Aztecs' non-conference schedule seems to be elevated every year and the 2004-05 slate is full of challenges.

"We have an extremely challenging non-conference schedule, including Cal, San Diego, Saint Mary's and Providence College," Fisher said. "The tough road tests in November and December will be at Washington, Iowa State and our home and home with UC Santa Barbara. Those teams should help prepare us for what we will see in the Mountain West Conference."

"Our league is highly regarded on every front," Fisher said. "We lose a Rick Majerus and add a Lon Kruger. No other conference in America is a closely balanced as ours. Every team had a winning home record in conference play. That's amazing. Life on the road is almost impossible in this league."

# Preseason Notes



SAN DIEGO STATE BASKETBALL

## Returning to the Postseason

Given Steve Fisher's track record, San Diego State's prospects of returning to the postseason for a third time in four seasons appears to be good. In his 12 full seasons, Steve Fisher has returned at least three starters off a squad he coached the previous season eight times. He has guided all eight of those teams to postseason play, including six of those squads to the NCAA Tournament. Those eight teams have combined to post a 20-5 record in postseason play, including two appearances in the NCAA Tournament championship game (1991 and 1992) and a championship in the NIT (1996).

Some additional notes on Steve Fisher's success when returning at least three starters off a team he has coached.

- ▶ Is 8-for-8 in leading his team to the postseason. Six times he has guided a team to the NCAA Tournament.
- ▶ Has won at least one postseason game in six of those eight seasons and at least two games in five of those eight postseasons.
- ▶ Averaged 22.6 wins in those eight seasons. In six of the eight years his teams have won at least 21 games.

Below is a look at Fisher's magic when returning at least three starters from his previous squad.

Previous Season	Record	Season	Returning Starters	Returning Letterwinners	Record	Postseason
1988-89	30-7	1989-90	4	8	23-8	NCAA Tournament, 2nd Round
1990-91	14-15	1991-92	4	11	25-9	NCAA Tournament, Runner-Up
1991-92	25-9	1992-93	5	11	31-5	NCAA Tournament, Runner-Up
1992-93	31-5	1993-94	5	11	24-8	NCAA Tournament, Elite Eight
1993-94	24-8	1994-95	3	6	17-14	NCAA Tournament, 1st Round
1995-96	20-12	1996-97	4	7	24-11	NIT Champions
2000-01	14-14	2001-02	4	8	21-12	NCAA Tournament, 1st Round
2001-02	21-12	2002-03	3	5	16-14	NIT, 2nd Round
2003-04	14-16	2004-05	4	9		
<b>Averages</b>			<b>4.0</b>	<b>8.4</b>	<b>22.6-10.1</b>	<b>8 Postseason Appearances; 20-5 record in Postseason Play</b>

## Preseason Magazines Gives Aztecs Little Love

SDSU in the MWC	
Athlon Sports	5th
Lindy's	5th
MWC Media	7th
The Sporting News	7th
Street & Smith's	7th
The Sporting News College Basketball Preseason All-Conference Team	
Marcus Slaughter, second team	
Lindy's 2004-05 Basketball All-Conference Team	
Brandon Heath, third team	
Wesley Stokes, third team	
Street & Smith's Best MWC Athlete	
Marcus Slaughter	
Street & Smith's Best MWC Interview	
Chris Walton	
Lindy's MWC Likely to be Seen in an NBA Uniform the Soonest	
Mohamed Camara	
Lindy's MWC No. 1 Signing Coup	
Matt Thomas	

Most of the pre-season magazines have picked the Aztecs to finish in the lower half of the Mountain West Conference standings and the MWC poll was no exception, picking the Aztecs to finish seventh; however, a pretty strong case can be made that San Diego State will have a successful 2004-05 season.

▶ San Diego State returns four starters and nine letterwinners (includes Travis Hanour who sat out last season due to injuries) from the 2003-04 season. The Aztecs return eight of their top nine scores from last season.

▶ Steve Fisher is 8-for-8 in his career in taking teams to the postseason when returning at least three starters off a team he coached the previous season. Included in those eight postseason trips are six NCAA Tournament berths and an average total of 22.6 wins. The last time a Steve Fisher coached team returned four starters off a team he coached was 2001-02, when Fisher guided the Aztecs to their first NCAA Tournament appearance since 1985. Twice in his career, Fisher has returned at least three starters and at least nine letterwinners off a team he coached, both seasons he has led his team to the NCAA Tournament, posting a collective 56-14 record.

▶ San Diego State returns 77.0 percent of points, 74.2 percent of field goals, 99.4 percent of three-point field goals, 78.0 percent of free throws, 68.6 percent of rebounds, 91.3 percent of assists, 54.9 percent of blocked shots, 85.8 percent of steals and 81.9 percent of minutes from the 2003-04 season.

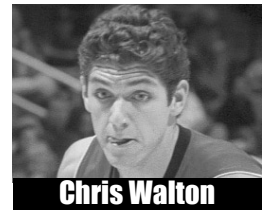
▶ The 2004-05 SDSU roster has played 538 games and made 161 starts. Nine players on the Aztec roster have played in at least 30 college games and five players have made at least 18 college starts. Last season, the Aztec roster (not counting Travis Hanour's total because he missed the season due to injury) entered the campaign with a total of 407 games and 72 starts. In 2002-03 when San Diego State advanced to the second round of the postseason NIT, the Aztecs entered the campaign with 413 games and 152 starts of experience. In 2001-02 when the Aztecs claimed the Mountain West Conference championship and advanced to the NCAA Tournament, San Diego State entered the season with 370 games and 194 starts.

▶ San Diego State was not that far away last season from making their third consecutive postseason appearance. Although the Aztecs finished 14-16 overall, they lost three games they led with 59 seconds left, lost six games that were a one possession game with 25 seconds or less remaining and lost seven games when they led with 13:48 or less remaining in regulation. Part of that can be explained by the fact that SDSU had just one scholarship senior (Aerick Sanders).

▶ San Diego State returns three players that earned all-Mountain West Conference recognition last season. Senior guard Wesley Stokes, sophomore guard Brandon Heath and sophomore forward Marcus Slaughter are back for SDSU this season. This marks the first time in school history that three all-league performers return from an Aztec team. In fact, in the Mountain West Conference era, San Diego State has never returned two all-MWC performers the following season (2000-01 (0); 2001-02 (0); 2002-03 (1) Tony Bland; 2003-04 (0); 2004-05 (3) Brandon Heath, Marcus Slaughter, Wesley Stokes).

▶ San Diego State has two of the best underclassmen not only in the league, but also in the country in Brandon Heath and Marcus Slaughter. The duo was two of only four freshmen to earn all league recognition last season. Heath and Slaughter combined to score 650 points and pull down 284 rebounds in their inaugural season.

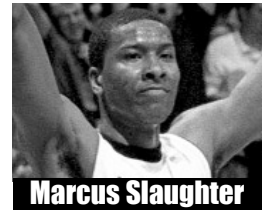
▶ Another example of the stability of the Aztec program can be found by the number of players that have signed with San Diego State out of the prep ranks. Of San Diego State's 16-player roster, three are Division I transfers (Travis Hanour, Chris Manker and Wesley Stokes), two junior college players (Mohamed Camara and walk-on Jared Ines) and 11 players who signed with SDSU direct out of high school. Of the five newcomers, four signed with the Aztecs out of high school.



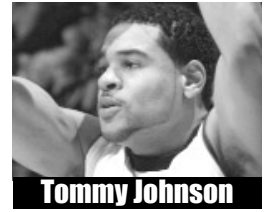
Chris Walton



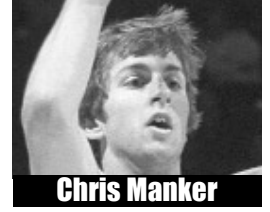
Brandon Heath



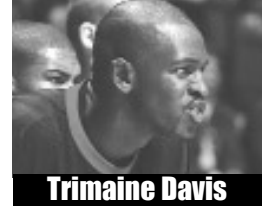
Marcus Slaughter



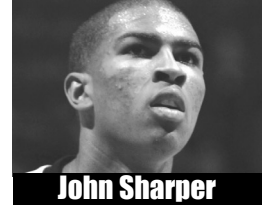
Tommy Johnson



Chris Manker



Trimaine Davis



John Sharper

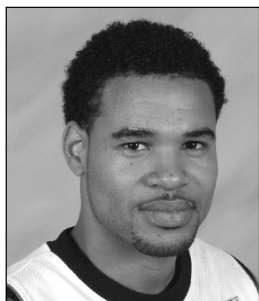
INTRODUCTION

# Broadcast Roster

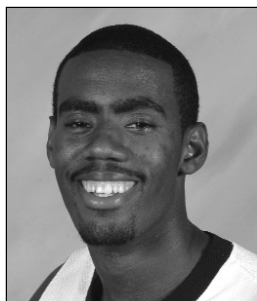


SAN DIEGO STATE BASKETBALL

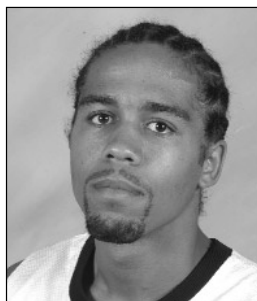
INTRODUCTION



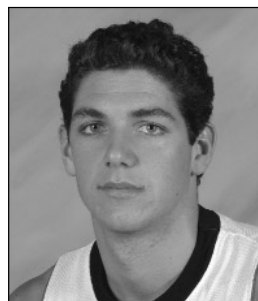
**0 Tommy Johnson**  
Sr. • G • 6-3 • 186  
Los Angeles, Calif.



**1 Brandon Heath**  
So. • G • 6-3 • 183  
Los Angeles, Calif.



**2 Wesley Stokes**  
Sr. • G • 6-0 • 167  
Long Beach, Calif.



**3 Chris Walton**  
Sr. • F • 6-8 • 234  
San Diego, Calif.



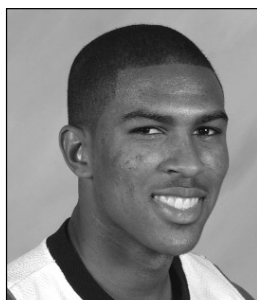
**5 Travis Hanour**  
Sr. • G • 6-6 • 202  
Laguna Beach, Calif.



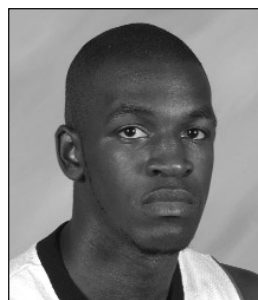
**10 Shawn Weinstein**  
Fr. • G • 6-0 • 188  
Rancho Palos Verdes, Calif.



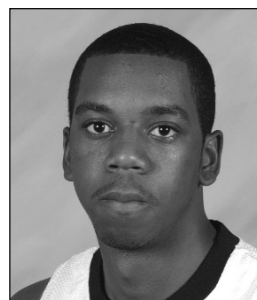
**11 Tyler Smith**  
Fr. • G • 6-2 • 208  
San Clemente, Calif.



**15 John Sharper**  
Jr. • G • 6-0 • 195  
Oakland, Calif.



**20 Trimaine Davis**  
Jr. • F • 6-8 • 233  
West Pittsburg, Calif.



**21 Matt Thomas**  
Fr. • G • 6-3 • 191  
Riverside, Calif.



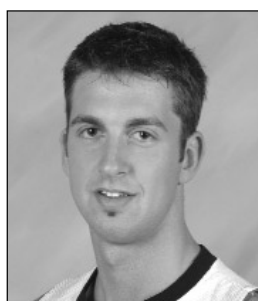
**24 Tim McGrath**  
Fr. • F • 6-5 • 182  
Santa Monica, Calif.



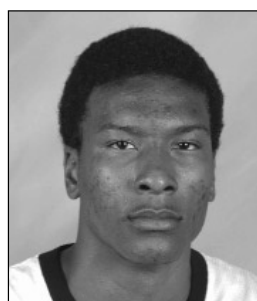
**30 Chris Lamb**  
Fr. • F • 6-9 • 205  
Louisville, Colo.



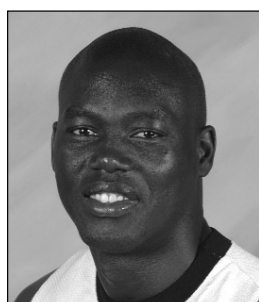
**31 Jared Ines**  
Sr. • F • 6-7 • 234  
Modesto, Calif.



**33 Chris Manker**  
Sr. • C • 7-0 • 215  
W. Des Moines, Iowa



**42 Marcus Slaughter**  
So. • F • 6-8 • 223  
Riverside, Calif.



**50 Mohamed Camara**  
Jr. • C • 6-10 • 265  
Louisville, Ky.



**Steve Fisher**  
Head Coach



**Brian Dutcher**  
Assistant Head Coach



**Gregg Gottlieb**  
Assistant Coach



**Mark Hughes**  
Assistant Coach