

# 2019 AZTEC SOFTBALL



Asst. Athletic Director - Media Relations (Softball Contact): Jamie McConeghy | jmconegh@sdsu.edu | C: (607) 435-5577 | O: (619) 594-4348 | @McConeghySDSU

## 2019 SCHEDULE (8-7, 0-0 MW)

DATE	OPPONENT	TIME/RESULT
Feb. 8	~ vs. Syracuse	W, 9-8
	~ vs. Charlotte	W, 9-1 (5 inn.)
Feb. 9	~ vs. Charlotte	W, 5-4
	~ at Grand Canyon	L, 0-9 (5 inn.)
Feb. 10	~ vs. (4/4) Oklahoma	L, 0-9 (5 inn.)
Feb. 14	! Middle Tennessee	Canceled
Feb. 15	! Middle Tennessee	W, 2-1
	! Northern Illinois	W, 7-5
Feb. 16	! UC Santa Barbara	W, 1-0
	! Grand Canyon	L, 0-8
Feb. 20	at (rv/-) Cal State Fullerton	L, 1-5
Feb. 21	@ vs. Army West Point	Canceled
Feb. 22	@ vs. (rv/rv) Nebraska	W, 4-0
	@ vs. (16/20) Oklahoma State	L, 5-15 (5 inn.)
Feb. 23	@ vs. (25/23) Texas Tech	L, 0-7
Feb. 24	@ vs. Cal Poly	W, 8-2
Feb. 26	at Loyola Marymount	L, 1-2
Feb. 28	# Brigham Young	5 p.m. PT
March 1	# UIC	7 p.m. PT
March 2	# Weber State	7 p.m. PT
March 3	# UC Davis	2 p.m. PT
March 5	Florida Gulf Coast	6 p.m. PT
March 7	S vs. Robert Morris	2 p.m. PT
March 8	S vs. Boston Univ.	9 a.m. PT
	S vs. Liberty	11:30 a.m. PT
March 9	S vs. Ohio Univ.	9 a.m. PT
	S at Long Beach State	11:30 a.m. PT
March 13	UC Riverside	6 p.m. PT
March 15	* New Mexico	6 p.m. PT
March 16	* New Mexico	6 p.m. PT
March 17	* New Mexico	Noon PT
March 22	** at (rv/-) Boise State	4 p.m. MT
March 23	* at (rv/-) Boise State	4 p.m. MT
March 24	* at (rv/-) Boise State	Noon MT
March 29	* UNLV	6 p.m. PT
March 30	* UNLV	6 p.m. PT
March 31	* UNLV	Noon PT
April 5	* at Nevada	4 p.m. PT
April 6	* at Nevada	1 p.m. PT
April 7	* at Nevada	Noon PT
April 10	at San Diego	6 p.m. PT
April 12	* San José State	6 p.m. PT
April 13	* San José State	6 p.m. PT
April 14	* San José State	Noon PT
April 23	Cal Baptist	6 p.m. PT
April 26	* at Colorado State	4 p.m. MT
April 27	* at Colorado State	1 p.m. MT
April 28	* at Colorado State	Noon MT
May 3	* Fresno State	6 p.m. PT
May 4	* Fresno State	6 p.m. PT
May 5	* Fresno State	Noon PT
May 9	* at Utah State	4 p.m. MT
May 10	* at Utah State	4 p.m. MT
May 11	* at Utah State	Noon MT

National rankings in parenthesis

(USA Today-NFCA/ESPN.com-USA Softball)

~ GCU Kickoff Tournament (Phoenix, Ariz.)

! 29th Annual Campbell/Cartier Classic (SDSU Softball Stadium)

@ Mary Nutter Collegiate Classic (Cathedral City, Calif.)

# San Diego Classic (SDSU Softball Stadium)

S Louisville Slugger Classic (Long Beach, Calif.)

\* Mountain West game

@AztecSoftball | @GoAztecs | www.GoAztecs.com

## WEEK 4 - SAN DIEGO CLASSIC - SDSU SOFTBALL STADIUM



Brigham Young  
Feb. 28 - 5 p.m. PT



UIC  
March 1 - 7 p.m. PT



Weber State  
March 2 - 7 p.m. PT



UC Davis  
March 3 - 2 p.m. PT

### San Diego State Set to Co-Host 10-Team, 24-Game San Diego Classic

Following what will be a season-long six-game stretch away from San Diego, the San Diego State softball team returns home this weekend to co-host the four-day, 10-team, 24-game San Diego Classic.

The tournament will feature the Aztecs and co-host San Diego, along with Boise State, Brigham Young, Florida Gulf Coast, Long Beach State, San José State, Weber State, UC Davis and UIC.

SDSU is slated to meet Brigham Young at 5 p.m. PT Thursday, UIC at 7 p.m. PT Friday, Weber State at 7 p.m. PT Saturday and UC Davis at 2 p.m. PT Sunday.

San Diego State enters the San Diego Classic with an 8-7 record, most recently falling at Loyola Marymount, 2-1, on Tuesday afternoon.

The Aztecs have four players hitting .300 or above for the season (min. 10 plate appearances), including Kiera Wright (.333, 12 R, 6-6 SB), Kelsey Munoz (.326, 2 HR, 10 RBI), Katie Byrd (.316, 9 R) and Molly Sturdivant (.300, 4 RBI, 4 2B).

Marissa Moreno has logged the majority of the innings in the circle for SDSU, going 5-3 with a save, a 3.81 ERA, two shutouts, three complete games and 48 strikeouts, while pitching in 14 of the team's 15 games. Moreno leads the Mountain West in strikeouts (48), innings pitched (53.1) and appearances (14), while ranking in a tie for second in victories (5) and saves (1).

San Diego State's games this weekend against Brigham Young at 5 p.m. PT Thursday, UIC at 7 p.m. PT Friday and UC Davis at 2 p.m. PT Sunday will be broadcast on the Mountain West Network ([www.goaztecs.com/videos/](http://www.goaztecs.com/videos/)).

For the complete San Diego Classic I schedule, visit the official tourney website at <https://bit.ly/2Svvn4D>.

### TOURNAMENT INFORMATION

Games	San Diego Classic
Place	SDSU Softball Stadium - San Diego, Calif.
Live Stats	<a href="http://www.GoAztecs.com">www.GoAztecs.com</a>
Live Video	SDSU vs. BYU (Feb. 28): <a href="https://bit.ly/2wvtpsa">https://bit.ly/2wvtpsa</a> SDSU vs. UIC (March 1): <a href="https://bit.ly/2wvtpsa">https://bit.ly/2wvtpsa</a> SDSU vs. UC Davis (March 3): <a href="https://bit.ly/2wvtpsa">https://bit.ly/2wvtpsa</a>

### AZTECS AT A GLANCE (2019 SEASON)

Overall Record: 8-7 (.533)	Home Record: 3-1 (.750)
USA Today/NFCA Rank: NR	Away Record: 0-3 (.000)
ESPN.com/USA Softball Rank: NR	Neutral Record: 5-3 (.625)
NCAA RPI: N/A	Last 5 Games: 2-3 (.400)
MW Record: 0-0 (.000)	Last 10 Games: 5-5 (.500)
MW Standing: N/A	vs. Top 5: 0-1 (.000)
Non-MW Record: 8-7 (.533)	vs. Top 10: 0-1 (.000)
vs. '18 NCAA Tourney Teams: 1-3 (.250)	vs. Top 25: 0-3 (.000)

### ACTIVE SDSU CAREER RECORDS

Aztec	Record	Stat	No. 2
Molly Sturdivant (1)	Sacrifice Flies	10	9

### CLIMBING THE SDSU CAREER CHARTS

Aztec	Milestone	At	Needs
Katie Byrd	32 doubles (T-8th all-time at SDSU)	30	2
Molly Sturdivant	20 home runs (5th all-time at SDSU)	19	1
	50 XB hits (T-8th all-time at SDSU)	49	1
Shelby Thompson	12 times HBP (T-4th all-time at SDSU)	11	1

### LOOKING AHEAD

March 5	vs. Florida Gulf Coast - 6 p.m. PT
March 7-9	at Louisville Slugger Classic (Long Beach, Calif.)

### PROJECTED LINEUP (2019 Statistics)

POS.	NO.	NAME	YR.	B/T	HOMETOWN	G-GS	AVG.	OB%	SLG%	HR	RBI	R	2B	3B	SB-ATT	FLD%
CF	22	Kiera Wright	Jr.	L/R	Riverside, Calif.	15-15	.333	.385	.396	0	3	12	1	1	6-6	1.000
2B	11	Katie Byrd	Sr.	R/R	Santee, Calif.	15-15	.316	.422	.316	0	4	9	0	0	2-2	.958
3B	26	Kelsey Munoz	So.	R/R	Chula Vista, Calif.	15-15	.326	.367	.522	2	10	6	3	0	0-0	.944
SS	20	Shelby Thompson	Jr.	R/R	Benicia, Calif.	10-10	.238	.370	.333	0	6	0	2	0	0-0	.882
C	31	Molly Sturdivant	Sr.	R/R	Santa Ana, Calif.	15-15	.300	.391	.400	0	4	3	4	0	0-0	.975
DP	9	Alicia Garcia	Jr.	R/R	San Diego, Calif.	14-13	.231	.310	.423	1	3	2	2	0	0-0	.947
RF	12	Maddi Ayers	Fr.	R/R	Sacramento, Calif.	6-4	.333	.400	.333	0	1	0	0	0	0-0	1.000
LF	4	Kristen Parker	Jr.	R/R	San Diego, Calif.	13-12	.182	.206	.182	0	3	2	0	0	0-0	1.000
1B	99	Taylor Adams	So.	R/R	Mill Creek, Wash.	14-13	.270	.270	.378	0	6	4	0	0	0-0	.990

### PITCHERS (2019 Statistics)

POS.	NO.	NAME	YR.	HOMETOWN	W-L	G/GS	SV	ERA	IP	K	CG	SHO	K:BB	WHIP	OBA
RHP	33	Marissa Moreno	Jr.	Torrance, Calif.	5-3	14/7	1	3.81	53.1	48	3	2.0	2.09	1.65	.270
RHP	27	MJ James	RS-Fr.	San Diego, Calif.	2-1	7/4	0	5.88	25.0	8	1	0.0	0.80	2.16	.373
RHP	9	Alicia Garcia	Jr.	San Diego, Calif.	1-3	7/4	0	5.73	14.2	8	0	0.0	1.33	1.77	.323



**KATHY VAN WYK**  
HEAD COACH | 23RD SEASON | CS FULLERTON, 1983

- As a player, Van Wyk earned All-America honors and won the Broderick Award, given to the best player in the nation, in 1982 after going 35-1 with a 0.18 ERA. The victories remain a school single-season record and .972 winning percentage was an NCAA Division I record until 2001. Her phenomenal season included four no-hitters, six one-hitters, back-to-back perfect games, 26 shutouts and 270 strikeouts.
- Is the school's all-time winningest coach with 744 career victories, including a program-best 44 wins in 2008
- Earned her fifth Mountain West Coach of the Year award in 2014 after leading the Aztecs to a 16-8 mark in league play. She also won the award in 2002, 2006, 2008 and 2013.
- Has led SDSU to 11 NCAA tournament appearances (2001, 2003, 2006, 2008, 2009, 2010, 2011, 2012, 2013, 2014 and 2015)
- Guided San Diego State to its seventh MW regular season title in 2014 with a 16-8 record. The team's other championships came in 2002, 2003, 2006, 2008, 2012 and 2013.
- Coached her eighth All-American in 2017 when Jenavee Peres was named a second-team NFCA All-American. Peres became the Aztecs' first-ever second-team NFCA All-American (SDSU's three other NFCA All-Americans were on the third team).
- Has coached 78 all-conference selections, 40 NFCA all-West Region selections, nine MW Pitchers of the Year, nine MW Freshmen of the Year, four MW Players of the Year, one MW Defensive Player of the Year and 137 conference player/pitcher of the week winners

YEAR	CAREER HEAD COACHING RECORD AT SAN DIEGO STATE			CONFERENCE		
	W	L	Pct.	W	L	Pct.
1997	30	30	.500	14	18	.438
1998	24	35	.407	14	17	.452
1999	24	24	.500	16	8	.667
<b>WAC</b>	<b>78</b>	<b>89</b>	<b>.467</b>	<b>44</b>	<b>43</b>	<b>.506</b>
2000	35	27	.565	13	7	.650
*2001	41	25	.621	10	8	.556
^2002	41	22-1	.648	14	4	.778
*^2003	39	21	.650	12	3	.800
2004	37	23	.617	14	6	.700
2005	27	30	.474	4	16	.200
*^2006	34	15	.694	15	3	.833
2007	32	24	.571	8	12	.400
*^2008	44	17	.721	15	5	.750
*2009	33	20	.623	10	5	.667
*2010	34	16	.680	11	4	.733
*2011	34	21	.618	8	5	.615
*^2012	32	24	.577	9	3	.750
*^2013	36	20	.643	13	5	.722
*^2014	40	19	.678	16	8	.667
*2015	38	20	.655	18	6	.750
2016	30	22	.577	12	12	.500
2017	31	18	.633	15	9	.625
2018	20	31	.392	11	13	.458
2019	8	7	.533	0	0	.000
<b>MW</b>	<b>666</b>	<b>422-1</b>	<b>.612</b>	<b>228</b>	<b>134</b>	<b>.630</b>
<b>TOTALS</b>	<b>744</b>	<b>511-1</b>	<b>.593</b>	<b>272</b>	<b>177</b>	<b>.606</b>

\* MADE NCAA TOURNAMENT; ^ WON MW REGULAR SEASON TITLE

**NUMERICAL ROSTER**

NO.	NAME	POS.	HT.	B/T	YR	EXP	HOMETOWN	LAST SCHOOL
00	Aris Metcalfe	OF	5-4	L/R	Sr.	3L	Compton, Calif.	King/Drew Medical Magnet HS
1	Megan Smith	OF	5-4	L/R	Jr.	2L	Valencia, Calif.	West Ranch HS
2	Paris Nguyen	SS/2B	5-5	R/R	Fr.	HS	Lake Elsinore, Calif.	Temescal Canyon HS
3	Gaby Olivarría	UTIL	5-5	L/R	So.	SQ	San Diego, Calif.	Helix Charter HS
4	Kristen Parker	OF	5-4	R/R	Jr.	1L	San Diego, Calif.	Mira Mesa HS
7	Kayla Sok	MI/OF	5-4	R/R	Sr.	SQ	Glendora, Calif.	Mt. San Antonio College
8	Janina Jusay	OF	5-5	R/R	So.	1L	San Diego, Calif.	Rancho Bernardo HS
9	Alicia Garcia	P	5-8	R/R	Jr.	TR	San Diego, Calif.	Palomar College
11	Katie Byrd	2B	5-6	R/R	Sr.	3L	Santee, Calif.	West Hills HS
12	Maddi Ayers	IF	5-6	R/R	Fr.	HS	Sacramento, Calif.	Sheldon HS
14	Jessica Cordola	IF	5-9	R/R	Fr.	HS	Santa Clarita, Calif.	Saugus HS
15	Alizae Umi	C	5-5	R/R	So.	SQ	Torrance, Calif.	West HS
19	Hannah Johnson	P	5-6	R/R	So.	TR	La Habra, Calif.	Cal State Fullerton
20	Shelby Thompson	SS	5-6	R/R	Jr.	2L	Benicia, Calif.	Benicia HS
22	Kiera Wright	OF	5-6	L/R	Jr.	2L	Riverside, Calif.	Roosevelt HS
26	Kelsey Munoz	IF	5-10	R/R	So.	1L	Chula Vista, Calif.	Mater Dei Catholic HS
27	MJ James	P	6-0	R/R	RS-Fr.	TR	San Diego, Calif.	Ohio State
28	Paige Barth	IF	5-5	R/R	Fr.	HS	Newbury Park, Calif.	Newbury Park HS
31	Molly Sturdivant	C/3B	5-6	R/R	Sr.	3L	Santa Ana, Calif.	El Modena HS
33	Marissa Moreno	P	5-11	R/R	Jr.	2L	Torrance, Calif.	Torrance HS
43	Kylie Fraser	C/IF	5-9	R/R	Fr.	HS	Redondo Beach, Calif.	Redondo Union HS
99	Taylor Adams	1B	5-9	R/R	So.	1L	Mill Creek, Wash.	Jackson HS

**ALPHABETICAL ROSTER**

NO.	NAME	POS.	HT.	B/T	YR	EXP	HOMETOWN	LAST SCHOOL
99	Taylor Adams	1B	5-9	R/R	So.	1L	Mill Creek, Wash.	Jackson HS
12	Maddi Ayers	IF	5-6	R/R	Fr.	HS	Sacramento, Calif.	Sheldon HS
28	Paige Barth	IF	5-5	R/R	Fr.	HS	Newbury Park, Calif.	Newbury Park HS
11	Katie Byrd	2B	5-6	R/R	Sr.	3L	Santee, Calif.	West Hills HS
14	Jessica Cordola	IF	5-9	R/R	Fr.	HS	Santa Clarita, Calif.	Saugus HS
43	Kylie Fraser	C/IF	5-9	R/R	Fr.	HS	Redondo Beach, Calif.	Redondo Union HS
9	Alicia Garcia	P	5-8	R/R	Jr.	TR	San Diego, Calif.	Palomar College
27	MJ James	P	6-0	R/R	RS-Fr.	TR	San Diego, Calif.	Ohio State
19	Hannah Johnson	P	5-6	R/R	So.	TR	La Habra, Calif.	Cal State Fullerton
8	Janina Jusay	OF	5-5	R/R	So.	1L	San Diego, Calif.	Rancho Bernardo HS
00	Aris Metcalfe	OF	5-4	L/R	Sr.	3L	Compton, Calif.	King/Drew Medical Magnet HS
33	Marissa Moreno	P	5-11	R/R	Jr.	2L	Torrance, Calif.	Torrance HS
26	Kelsey Munoz	IF	5-10	R/R	So.	1L	Chula Vista, Calif.	Mater Dei Catholic HS
2	Paris Nguyen	SS/2B	5-5	R/R	Fr.	HS	Lake Elsinore, Calif.	Temescal Canyon HS
3	Gaby Olivarría	UTIL	5-5	L/R	So.	SQ	San Diego, Calif.	Helix Charter HS
4	Kristen Parker	OF	5-4	R/R	Jr.	1L	San Diego, Calif.	Mira Mesa HS
1	Megan Smith	OF	5-4	L/R	Jr.	2L	Valencia, Calif.	West Ranch HS
7	Kayla Sok	MI/OF	5-4	R/R	Sr.	SQ	Glendora, Calif.	Mt. San Antonio College
31	Molly Sturdivant	C/3B	5-6	R/R	Sr.	3L	Santa Ana, Calif.	El Modena HS
20	Shelby Thompson	SS	5-6	R/R	Jr.	2L	Benicia, Calif.	Benicia HS
15	Alizae Umi	C	5-5	R/R	So.	SQ	Torrance, Calif.	West HS
22	Kiera Wright	OF	5-6	L/R	Jr.	2L	Riverside, Calif.	Roosevelt HS

**HEAD COACH:** Kathy Van Wyk (Cal State Fullerton, 1983), 23rd season  
**ASSOCIATE HEAD COACH:** Stacey Nuvevan Deniz (UCLA, 2002), 11th season  
**ASSISTANT COACH:** Mia Longfellow (Oregon State, 2007), 10th season  
**VOLUNTEER COACH:** Sarah Byrne (Cal Poly, 2008), second season  
**PRONUNCIATIONS:** Janina Jusay (JAH-neen-ah JU-say); Aris Metcalfe (AIR-iss); Kelsey Munoz (MOON-yoze); Paris Nguyen (WIN); Gaby Olivarría (OH-la-VERY-ah); Kayla Sok (sock); Molly Sturdivant (Stir-da-VAN-i); Alizae Umi (AI-ah-zay OOO-me); Kiera Wright (KEY-air-uh); Kathy Van Wyk (van WIKE); Stacey Nuvevan Deniz (Deh-neese); Mia Longfellow (MEE-ah)

**2019 Mountain West Standings (as of Feb. 26)**

Team	MW			Overall										
	W	L	Pct.	GB	H	A	W	L	Pct.	H	A	N	Streak	Last 10
Boise State	0	0	.000	--	0-0	0-0	10	2	.833	0-0	2-1	8-1	W9	9-1
UNLV	0	0	.000	--	0-0	0-0	11	3	.786	9-1	1-0	1-2	W1	7-3
Colorado State	0	0	.000	--	0-0	0-0	9	4	.692	0-0	1-1	8-3	L2	7-3
San José State	0	0	.000	--	0-0	0-0	9	5	.643	4-0	2-0	3-5	W4	6-4
Fresno State	0	0	.000	--	0-0	0-0	6	5	.545	0-0	1-3	5-2	L1	6-4
Nevada	0	0	.000	--	0-0	0-0	6	5	.545	0-0	1-2	5-3	W3	5-5
<b>San Diego State</b>	<b>0</b>	<b>0</b>	<b>.000</b>	<b>--</b>	<b>0-0</b>	<b>0-0</b>	<b>8</b>	<b>7</b>	<b>.533</b>	<b>3-1</b>	<b>0-3</b>	<b>5-3</b>	<b>L1</b>	<b>5-5</b>
New Mexico	0	0	.000	--	0-0	0-0	5	9	.357	0-0	1-4	4-5	L1	3-7
Utah State	0	0	.000	--	0-0	0-0	6	9	.400	0-0	1-2	5-7	L2	5-5

### San Diego Classic Info

The four-day, 10-team, 24-game San Diego Classic will be held at SDSU Softball Stadium (14 games) and USD Softball Complex (10 games).

The tournament will feature the Aztecs and the Toreros, along with Boise State, Brigham Young, Florida Gulf Coast, Long Beach State, San Jose State, Weber State, UC Davis and UIC.

SDSU is slated to meet Brigham Young at 5 p.m. PT Thursday, UIC at 7 p.m. PT Friday, Weber State at 7 p.m. PT Saturday and UC Davis at 2 p.m. PT Sunday.

Tickets can be purchased at <https://goaztecs.com/sports/2018/7/13/tickets-sdsu-ticket-office-html.aspx> or can be bought on the day of the game at the ticket office window.

Click on GoAztecs.com to follow the games live via StatBroadcast or to watch on the Mountain West Network (<http://www.goaztecs.com/videos/>) for San Diego State's games this weekend against Brigham Young at 5 p.m. PT Thursday, UIC at 7 p.m. PT Friday and UC Davis at 2 p.m. PT Sunday.

For the complete San Diego Classic I schedule, visit the official tournament website at <https://goaztecs.com/sports/2019/2/25/san-diego-classic.aspx>.

Below is a look at San Diego State and its four opponents at this weekend's tournament:

#### San Diego State

**2019 Record:** 8-7 (.533)  
**Offensive Slash Line:** .252/.317/.330  
**HR:** 3 | **RBIs:** 42 | **R:** 52 | **SB:** 13/14  
**ERA:** 4.67 | **OBA:** .309 | **WHIP:** 1.72  
**Fielding Pct.:** .960 | **CSB:** 5/20  
**Avg. Leader:** Wright (.333)  
**HR Leader:** Munoz (2)  
**RBI Leader:** Munoz (10)  
**Runs Leader:** Wright (12)  
**SB Leader:** Wright (6)  
**Wins Leader:** Moreno (5)  
**ERA Leader:** Moreno (3.81)  
**SO Leader:** Moreno (48)

#### Weber State

**2019 Record:** 3-7 (.300)  
**Offensive Slash Line:** .300/.393/.363  
**HR:** 1 | **RBIs:** 32 | **R:** 35 | **SB:** 7/9  
**ERA:** 9.04 | **OBA:** .337 | **WHIP:** 2.18  
**Fielding Pct.:** .955 | **CSB:** 0/11  
**Avg. Leader:** Hawker (.500)  
**HR Leader:** Pestka (1)  
**RBI Leader:** Camarero (8)  
**Runs Leader:** Hawker (6)  
**SB Leader:** Saltern (4)  
**Wins Leader:** Su'esu'e (2)  
**ERA Leader:** Su'esu'e (4.08)  
**SO Leader:** Su'esu'e (11)  
**SDSU vs. WSU:** 2-1 (.667)

#### Aztecs Win the 29th Annual Campbell/Cartier Classic

For just the fourth time in the 29 years of the Campbell/Cartier Classic, San Diego State captured the tournament title.

The Aztecs secured the tourney title after going 3-1 with wins over Middle Tennessee (2-1), Northern Illinois (7-5) and UC Santa Barbara (1-0). SDSU's lone setback was against Grand Canyon on Feb. 16 (L, 0-8). NIU had a chance to secure the tournament title, but lost to MT, 2-1, in eight innings on Feb. 17.

Following the Aztecs (3-1) were Middle Tennessee and Northern Illinois at 3-2, Grand Canyon at 2-3 and UC Santa Barbara at 1-4.

San Diego State's four Campbell/Cartier Classic titles are one short of Long Beach State for the most in the history of the tournament. Below is a look at the past winners.

#### Campbell/Cartier Classic Champions

1991	Long Beach State	2001	Stanford	2010	Western Kentucky
1992	UCLA	2002	Pacific	2011	Long Beach State
1993	Long Beach State	2003	Sacramento State	2012	UCLA
1994	Washington	2004	CSUN	2013	Oklahoma
1995	UCLA	2005	No winner due to rain	2014	<b>San Diego State</b>
1996	Sacramento State	2006	UCLA	2015	<b>San Diego State</b>
1997	Long Beach State	2007	California	2016	Kentucky
1998	Long Beach State	2008	<b>San Diego State</b>	2017	Washington
1999	CSUN	2009	Stanford (co)	2018	Kentucky
2000	Stanford		Washington (co)	2019	<b>San Diego State</b>

#### Brigham Young

**2019 Record:** 6-7 (.462)  
**Offensive Slash Line:** .259/.351/.456  
**HR:** 17 | **RBIs:** 60 | **R:** 63 | **SB:** 5/7  
**ERA:** 4.59 | **OBA:** .277 | **WHIP:** 1.64  
**Fielding Pct.:** .976 | **CSB:** 2/11  
**Avg. Leader:** Jensen (.429)  
**HR Leader:** Jensen (4)  
**RBI Leader:** Jensen (12)  
**Runs Leader:** Jensen (10)  
**SB Leader:** 5 tied at (1)  
**Wins Leader:** Moffat (3)  
**ERA Leader:** Moffat (2.73)  
**SO Leader:** Moffat (29)  
**SDSU vs. BYU:** 24-28 (.462)

#### UC Davis

**2019 Record:** 11-3 (.786)  
**Offensive Slash Line:** .284/.369/.458  
**HR:** 12 | **RBIs:** 65 | **R:** 72 | **SB:** 8/14  
**ERA:** 2.33 | **OBA:** .221 | **WHIP:** 1.18  
**Fielding Pct.:** .973 | **CSB:** 3/5  
**Avg. Leader:** Yanez (.438)  
**HR Leader:** Bower (4)  
**RBI Leader:** Bradbury (13)  
**Runs Leader:** Leon (13)  
**SB Leader:** Rojas (3)  
**Wins Leader:** Yanez (7)  
**ERA Leader:** Yanez (1.63)  
**SO Leader:** Yanez (60)  
**SDSU vs. UCD:** 6-2 (.750)

#### UIC

**2019 Record:** 2-8 (.200)  
**Offensive Slash Line:** .329/.390/.500  
**HR:** 9 | **RBIs:** 44 | **R:** 48 | **SB:** 11/13  
**ERA:** 10.90 | **OBA:** .374 | **WHIP:** 2.60  
**Fielding Pct.:** .958 | **CSB:** 3/13  
**Avg. Leader:** Watts (.467)  
**HR Leader:** 3 tied at (2)  
**RBI Leader:** McElligott (9)  
**Runs Leader:** Watts (9)  
**SB Leader:** Watts (5)  
**Wins Leader:** Hanlon/Trudeau (1)  
**ERA Leader:** Trudeau (8.69)  
**SO Leader:** Trudeau (14)  
**SDSU vs. UIC:** 3-4 (.429)

### SAN DIEGO STATE UNIVERSITY QUICK FACTS

Location .....	San Diego, Calif.
Founded .....	1897
Enrollment .....	33,915
President .....	Dr. Adela de la Torre
Director of Athletics.....	John David Wicker
Senior Woman Administrator .....	Jenny Bramer
Nickname .....	Aztecs
School Colors.....	Scarlet (PMS 187) and Black
Conference .....	Mountain West
Home Field (Capacity).....	SDSU Softball Stadium (1,000)
School Website.....	SDSU.edu
Athletics Website .....	GoAztecs.com
Conference Website .....	TheMW.com

### SAN DIEGO STATE SOFTBALL QUICK FACTS

Head Coach .....	Kathy Van Wyk (Cal State Fullerton, 1983)
Record at SDSU .....	744-511-1 (.593), 23rd season
Overall Record.....	Same
Softball Office Phone.....	(619) 594-2345
Associate Head Coach.....	Stacey Nuveman Deniz (UCLA, 2002)
Assistant Coach .....	Mia Longfellow (Oregon State, 2007)
Volunteer Coach.....	Sarah Byrne (Cal Poly, 2008)
First Year of Division I Softball .....	1977
All-Time Record .....	1,140-1,080-6 (.513), 43rd season
NCAA Division I Tournament Appearances .....	11 (2001, 2003, 2006, 2008-15)
2018 Record.....	20-31 (.392)
2018 MW Record (Finish) .....	11-13 (.458) (6th)
2018 Postseason (Record).....	N/A
Letterwinners Returning/Lost.....	12/4
Starters Returning/Lost .....	6/3
Pitchers Returning/Lost .....	2/1
Newcomers .....	8
Top Returners .....	2018 Stats/Honors
Shelby Thompson.....	Jr., SS .267, 6 HR, 19 RBI, 27 R, 7 2B, 1 3B, .447 SLG%, .347 OBP * 2018 Mountain West Defensive Player of the Year * Two-time All-Mountain West First Team (2017-18)
Katie Byrd .....	Sr., 2B .305, 23 RBI, 14 R, 10 2B, 1 3B, .377 SLG%, .350 OBP * 2017 NFCA All-West Region Second Team * 2017 All-Mountain West Team Second Team
Molly Sturdivant.....	Sr., C/3B .275, 5 HR, 26 RBI, 8 R, 4 2B, .399 SLG%, .339 OBP * 2017 NFCA All-West Region Second Team * 2017 All-Mountain West Team First Team
Marissa Moreno .....	Jr., RHP 6-16, 3.29 ERA, 155.1 IP, 81 K, 6 CG, 3 SHO, .275 avg. * One-time Mountain West Pitcher of the Week
Kelsey Munoz .....	So., 3B .294, 8 RBI, 6 R, 3 2B, .329 SLG%, .348 OBP
Taylor Adams .....	So., 1B .268, 1 HR, 13 RBI, 12 R, 5 2B, .320 SLG%, .321 OBP
Kiera Wright.....	Jr., CF .240, 6 RBI, 21 R, 1 2B, 11 SB, .248 SLG%, .324 OBP

### SAN DIEGO STATE MEDIA RELATIONS

Sr. Assoc. AD of Comm. & Media Relations .....	Mike May
Asst. AD - MR .....	Jamie McConeghy (Softball Contact)
McConeghy Office Phone .....	(619) 594-4348
McConeghy Cell Phone .....	(607) 435-5577
McConeghy E-Mail .....	jmcconegh@sdsu.edu
SDSU Athletics Website .....	www.GoAztecs.com
Mailing Address .....	SDSU Media Relations 3014 Aztec Athletics Center 5302 55th Street San Diego, CA 92182



**AZTECS IN THE 2019 NCAA RANKINGS**

(OUT OF 289 TEAMS; THROUGH FEB. 26)

SDSU Category	All Games	
	Stat	Rank
Batting Average	.252	183rd
On-Base Percentage	.317	n/a
Slugging Percentage	.330	221st
Runs Per Game	3.47	197th
Doubles Per Game	1.20	138th
Triples Per Game	0.07	208th
Home Runs Per Game	0.20	242nd
Stolen Bases Per Game	0.87	155th
Earned Run Average	4.67	195th
Strikeout-to-Walk Ratio	1.64	121st
Winning Percentage	.533	123rd
Fielding Percentage	.960	119th
Double Plays Per Game	0.33	116th

(top-100 players; top-50 pitchers) All Games

Player	Category	Stat	Rank
Marissa Moreno	Solo Shutouts	2	T-20th
	Saves	1	T-31st
	Strikeouts	48	T-38th
	Victories	5	T-48th

**AZTECS IN THE 2019 MW RANKINGS**

(OUT OF NINE TEAMS; THROUGH FEB. 26)

TEAM Category	All Games		MW Games	
	Stat	Rank	Stat	Rank
Batting Average	.252	7th		
On Base Percentage	.317	9th		
Slugging Percentage	.330	9th		
Runs	52	8th		
Hits	94	4th		
Runs Batted In	42	7th		
Doubles	18	3rd		
Triples	1	T-6th		
Home Runs	3	9th		
Total Bases	123	7th		
Total Plate Appearances	420	2nd		
At-Bats	373	2nd		
Walks	29	7th		
Hit By Pitch	7	T-3rd		
Sacrifice Bunts	10	1st		
Sacrifice Flies	1	T-8th		
Stolen Bases	13	2nd		
Earned Run Average	4.67	8th		
Opposing Batting Avg.	.309	8th		
Innings Pitched	93.0	T-2nd		
Strikeouts	64	3rd		
Wins	8	5th		
Win Percentage	.667	7th		
Saves	1	T-2nd		
WHIP (BB + H/IP)	1.72	7th		
Fielding Percentage	.960	7th		
Chances	423	1st		
Putouts	279	2nd		
Assists	127	1st		
Double Plays	5	T-1st		
Caught Stealing By	5	1st		

**Most Campbell/Cartier Classic Titles**

1. Long Beach State - 5
- 2t. San Diego State - 4
- 2t. UCLA - 4
- 4t. Washington - 3
- 4t. Stanford - 3

**Aztecs Excel in Lid-Lifters**

San Diego State has excelled in season-opening games since Kathy Van Wyk took over the reigns of the program in 1997. After a dramatic 9-8 win over Syracuse on Feb. 8, the Aztecs have now won six of seven season-opening games, 17 of their last 19 and 20 of 23 lid-lifters in Van Wyk's 23-year tenure. SDSU's only blemishes in the past 23 season-openers under Van Wyk came in 2018 (lost to No. 25/25 Georgia, 23-2), 2012 (lost to Texas Tech, 5-4) and in 2000 (lost to UIC, 5-3). Over the 23 years under Van Wyk, SDSU has outscored its opponent, 133-78, or 5.8-3.4 per game in lid-lifters. Since records were first kept in 1980, San Diego State is 29-11 (.725) in their opening games.

**The Comeback Kids**

The Aztecs are off to a 8-7 start, thanks in part to a pair of dramatic comebacks, and another walk-off win. In SDSU's opener on Feb. 8, San Diego State scored six times in the bottom of the seventh inning to rally past Syracuse, 9-8. Down by an 8-3 score after the Orange tallied a pair of unearned runs in the top of the seventh, the Aztecs answered with six runs of their own, including five with two out, to pick up the win. In the inning, SDSU used three hits and took advantage of three SU errors. After a 9-1 run-rule win over Charlotte after the Syracuse game, San Diego State rallied for another win against the 49ers in the first game on Saturday. The Aztecs scored the final four runs of the game, including three times in the bottom of the seventh to record their second straight victory when trailing after six innings. Not a comeback win, but still an impressive one was SDSU's 7-5 win over Northern Illinois on Feb. 15. The Aztecs entered the seventh inning with a 5-2 lead, but the Huskies tied it on a three-run homer by Sam Schmidt. SDSU responded in the bottom half when Kelsey Munoz took the first pitch she saw over the center-field fence for a two-run, walk-off homer. This season, SDSU is 2-4 when trailing after six innings. Prior to this season, San Diego State was just 5-112 (.043) since 2012 when trailing after six innings of play and just 13-191 (.064) since 2006 when trailing after six innings. Below is a look at SDSU's year-by-year record when trailing after six innings (since 2006) and walk-off wins (since 2010):

**SDSU When Trailing After 6 Innings (since 2006)**

Year	Record (Win Pct.)
2006	1-19 (.050)
2007	0-14 (.000)
2008	0-18 (.000)
2009	1-13 (.071)
2010	3-16 (.158)
2011	0-14 (.000)
2012	0-18 (.000)
2013	4-14 (.222)
2014	1-12 (.077)
2015	2-16 (.111)
2016	1-10 (.091)
2017	0-18 (.000)
2018	0-9 (.000)
<b>2019</b>	<b>2-4 (.333)</b>
<b>Since 2006</b>	<b>15-195 (.071)</b>

**Walk-Off Wins (since 2010)**

Year	Total Wins	Walk-Off Wins	W-O Win Pct.
2010	34	2	5.9 pct.
2011	34	5	14.7 pct.
2012	32	2	6.3 pct.
2013	36	1	2.8 pct.
2014	40	3	7.5 pct.
2015	38	4	10.5 pct.
2016	30	3	10.0 pct.
2017	31	2	6.5 pct.
2018	20	2	10.0 pct.
<b>2019</b>	<b>8</b>	<b>3</b>	<b>37.5 pct.</b>
<b>Since 2010</b>	<b>303</b>	<b>27</b>	<b>8.9 pct.</b>

**Aztec Softball to Have 18-Plus Games Broadcast on Mountain West Network**

The San Diego State softball team will have at least 18 games on the Mountain West Network this season. The network, which is broadcast live on the Internet, started during the 2013 football season and gives all Mountain West sports the ability to broadcast all sports across all the 11 MW institutions. For videos and more information, visit the site at <http://www.themw.com/#/videos>.

The Aztec softball games that are scheduled for the Mountain West Network this season are Feb. 28 vs. Brigham Young, March 1 vs. UIC, March 3 vs. UC Davis, March 5 vs. Florida Gulf Coast, the March 15-17 series with New Mexico, March 29 vs. UNLV, the April 12-14 series with San Jose State, April 23 vs. Cal Baptist, April 27 at Colorado State, May 4-5 against Fresno State and May 9-11 at Utah State. Additional road games (besides the Colorado State and Utah State games) could be announced at a later date.

The Mountain West Network can be found by visiting <http://www.goaztecs.com/videos/>.

**Aztecs Picked Fifth in the Mountain West**

The San Diego State softball team has been picked to finish fifth in the Mountain West in a preseason poll voted on by the league's nine head coaches, the conference announced Jan. 30. The Aztecs have won a league-record seven MW regular-season titles. SDSU picked up 31 points in the preseason poll, just behind UNLV (35) and ahead of Nevada (19). Defending league champion Boise State was picked to win the league with 64 points, including eight first-place votes. Fresno State garnered the other first-place vote and

had 57 points total, while San José State's 50 points were good enough for third. The bottom three of the preseason poll were Colorado State (26) in seventh, Utah State (21) in eighth and New Mexico (11) in ninth.

The Aztecs are coming off a 20-31 season in 2018, their first losing campaign since 2005. SDSU was 11-13 in MW play for sixth place, winning six of its final eight games, including two of the final three series.

## SDSU Softball Announces 2018 Schedule

San Diego State softball head coach Kathy Van Wyk has announced a 54-game schedule for the 2019 season, highlighted by two home tournaments, including the 29th annual Campbell/Cartier Classic at SDSU Softball Stadium from Feb. 14-17.

The Aztecs, who have won a league-best seven Mountain West titles in the 19-year history of the league, are scheduled to play 14 contests against teams that made last year's NCAA tournament, including 12 contests vs. conference champions.

SDSU begins its season on the road for the 12th straight year, playing at Grand Canyon Univ.'s Kickoff Tournament in Phoenix from Friday, Feb. 8-Sunday, Feb. 10. San Diego State opens with Syracuse and Charlotte on Friday, Charlotte again and the host Lopes on Saturday and perennial national power Oklahoma on Sunday. The Sooners, who won the Big 12 last year and made it to the Women's College World Series, have won four NCAA championships, including three in the past six years (2013, 2016 and 2017).

The Aztecs open their home portion of its schedule with the 29th annual Campbell/Cartier Classic from Thursday, Feb. 14-Sunday, Feb. 17. SDSU will play Conference USA champion Middle Tennessee twice (Thursday and Friday), along with Northern Illinois (Friday), Grand Canyon (Saturday) and UC Santa Barbara (Sunday).

Following a mid-week clash at Big West champion Cal State Fullerton on Wednesday, Feb. 20, San Diego State heads to the always competitive Mary Nutter Collegiate Classic in Cathedral City, Calif. (near Palm Springs) from Thursday, Feb. 21-Sunday, Feb. 24. The Aztecs are scheduled to meet Army West Point on Thursday, NCAA tournament at-large selection Oklahoma State and Nebraska on Friday, Texas Tech on Saturday, and Cal Poly on Sunday.

After a Tuesday game at Loyola Marymount on Feb. 26, the Aztecs return to America's Finest City for the San Diego Classic from Thursday, Feb. 28-Sunday, March 3. On the docket for SDSU at the classic are West Coast champion Brigham Young on Thursday, Horizon champ UIC on Friday, Weber State on Saturday and UC Davis on Sunday.

San Diego State then welcomes Florida Gulf Coast on Tuesday, March 5, before making the short drive north to Long Beach State for a tournament from Thursday, March 7-Saturday, March 9. The Aztecs will meet Robert Morris on Thursday, followed by league champions Boston Univ. (Patriot) and Liberty (Big South) on Friday, and Mid-American champ Ohio and the host 49ers on Saturday. Last year, LBSU made the NCAA tourney and finished 20th in the USA Today/NFCA poll and 22nd in the ESPN/USA Softball poll.

SDSU returns to San Diego for a four-game homestand, beginning with a non-conference game against UC Riverside on Wednesday, March 13. San Diego State then kicks off Mountain West action at home with a weekend series with New Mexico from March 15-17.

The Aztecs head to defending MW champion Boise State the following weekend (March 22-24), before welcomes UNLV to close out March (March 29-31).

SDSU hits the road for a weekend series at Nevada from April 5-7 and makes the crosstown drive to take on San Diego on Wednesday, April 10.

Next up for San Diego State is the 2017 MW champion San José State in a home series from April 12-14.

After a nine-day layoff, the Aztecs return to welcome Cal Baptist on Tuesday, April 23 in their final non-conference game of the season.

SDSU then travels to Colorado State for a weekend series from April 26-28, before hosting Fresno State from May 3-5 in San Diego State's final home series of 2019.

The Aztecs end their regular season from Thursday, May 9-Saturday, May 11 at Utah State.

The NCAA Regional kicks off postseason play from May 10-13 at 16 campus sites.

## ≡ MOUNTAIN WEST PRESEASON POLL

Below is a look at 2019 Mountain West preseason poll, voted on by the league's coaches. (First-place votes in parenthesis)

Rk.	Team	Votes
1.	Boise State (8)	64
2.	Fresno State (1)	57
3.	San José State	50
4.	UNLV	35
5.	<b>San Diego State</b>	<b>31</b>
6.	Nevada	29
7.	Colorado State	26
8.	Utah State	21
9.	New Mexico	11

## INDIVIDUAL

(top-10)

Player	Category	All Games		MW Games	
		Stat	Rank	Stat	Rank
Taylor Adams	Chances	105	2nd		
	Putouts	100	2nd		
	Doubles	4	T-3rd		
	Sacrifice Bunts	1	T-4th		
Katie Byrd	Sacrifice Bunts	2	3rd		
	Hit by Pitch	2	T-8th		
	Assists	22	T-9th		
Kylee Fraser	Caught Stealing	1	T-8th		
Alicia Garcia	Sacrifice Bunts	1	T-4th		
Aris Metcalfe	Sacrifice Bunts	1	T-4th		
	Stolen Bases	4	7th		
Marissa Moreno	Appearances	14	1st		
	Inn. Pitched	53.1	1st		
	Strikeouts	48	1st		
	Wins	5	T-2nd		
Kelsey Munoz	Saves	1	T-2nd		
	Assists	36	1st		
	At-Bats	46	T-4th		
	Total Bases	24	5th		
	Home Runs	2	T-5th		
	Hits	15	T-8th		
	Doubles	3	T-10th		
	Kristen Parker	Sacrifice Bunts	1	T-4th	
Molly Sturdivant	Caught Stealing	3	T-2nd		
	Hit by Pitch	4	T-2nd		
	Doubles	4	T-3rd		
	Chances	81	T-5th		
	Putouts	60	9th		
	Shelby Thompson	Sacrifice Flies	1	T-3rd	
	Sacrifice Bunts	1	T-4th		
	Alizae Umi	Caught Stealing	1	T-8th	
Kiera Wright	At-Bats	48	2nd		
	Hits	16	T-3rd		
	Stolen Bases	6	T-3rd		
	Triples	1	T-5th		
	Runs	12	T-6th		



### #99 TAYLOR ADAMS

SO | 1B | 5-9 | R/R | Mill Creek, Wash. | Jackson HS

	AVG.	OB%	SLG%	H	R	2B	3B	HR	RBI	SB
2019	.270	.270	.378	10	4	4	0	0	6	0
MW	--	--	--	--	--	--	--	--	--	--
Career	.268	.312	.332	51	16	9	0	1	19	3

**Career:** Started 64 of 66 possible games at 1B since coming to SDSU... 5th at SDSU w/ .991 fielding %... **2019:** 10-for-37... DNP for 1st time of career vs. GCU... 2 multi-RBI gms... 2nd in MW w/ 100 putouts... **2018:** .268 avg., starting all 51 gms at 1B... 4th in SDSU frosh history w/ .992 FLD%... 11-gm reach safely streak... **HS:** 4-time all-district at Jackson HS... 3-time captain & 3-time team MVP.



### #12 MADDI AYERS

FR | IF | 5-6 | R/R | Sacramento, Calif. | Sheldon HS

	AVG.	OB%	SLG%	H	R	2B	3B	HR	RBI	SB
2019	.333	.400	.333	3	0	0	0	0	1	0
MW	--	--	--	--	--	--	--	--	--	--
Career	.333	.400	.333	3	0	0	0	0	1	0

**Career:** Signed w/ SDSU in November 2017... **2019:** Has 6 games & 4 starts... Has 3-game reach safely streak... 1st career hit & RBI on a pinch-hit single vs. Charlotte (2/9)... 1st career start at Grand Canyon (2/9)... **HS:** Was a 4-time all-Delta League pick, including 2 years on the 1st team... Helped Sheldon HS to 3 straight section titles & 3 straight league titles.



### #28 PAIGE BARTH

FR | IF | 5-5 | R/R | Newbury Park, Calif. | Newbury Park HS

	AVG.	OB%	SLG%	H	R	2B	3B	HR	RBI	SB
2019	.000	.083	.000	0	1	0	0	0	1	0
MW	--	--	--	--	--	--	--	--	--	--
Career	.000	.083	.000	0	1	0	0	0	1	0

**Career:** Signed with the 2018 class in November 2017... **2019:** Is 0-for-11 in 5 starts (4 at RF, 1 at 1B)... Had 1st RBI & run in 1st start vs. Syracuse in the opener (2/8)... **HS:** A 3-time 1st-team all-Marmonte League selection... League's Defensive Player of the Year in 2018... A 2-time all-Los Angeles 1st-team selection & a 2-time all-Ventura County team pick.

**SAN DIEGO STATE BY THE NUMBERS (2019)**

Overall	8-7	Lost 1 1
Mountain West	0-0	Won 3
Home	3-1	Lost 1
Away	0-3	Lost 4
Neutral	5-3	Won 1
Day	5-4	Lost 1
Night (After 4:30 p.m.)	3-3	Lost 3
Last five games	2-3	Lost 1
Last 10 games	5-5	Lost 1
vs. top 5 teams	0-1	Lost 7
vs. top 10 teams	0-1	Lost 5
vs. top 25 teams	0-3	Lost 5
vs. 2018 NCAA tournament teams	1-3	Lost 2
vs. 2018 Women's College World Series teams	0-1	Lost 1
Playing as the visiting team	2-5	Lost 1
Playing as the home team	6-2	Lost 1
vs. California in-state opponents	2-2	Lost 1
vs. Out-of-state opponents	6-5	Lost 2
February	8-7	Lost 1
March	0-0	Lost 2
April	0-0	Won 2
May	0-0	Won 3
Monday	0-0	Won 1
Tuesday	0-1	Lost 2
Wednesday	0-1	Lost 1
Thursday	0-0	Won 4
Friday	5-1	Lost 1
Saturday	2-3	Lost 2
Sunday	1-1	Won 1
In first game of weekend MW series	0-0	Won 1
In second game of weekend MW series	0-0	Won 3
In third game of weekend MW series	0-0	Won 1
vs. left-handed starter	2-1	Lost 1
vs. right-handed starter	6-6	Lost 1
In doubleheader games	6-2	Lost 1
In first game of doubleheader	4-0	Won 4
In second game of doubleheader	2-2	Lost 2
In multiple game days	7-3	Lost 1
In single game days	1-4	Lost 1
In shutouts	2-4	Lost 1
In one-run games	4-1	Lost 1
In two-run games	1-0	Won 2
In 5+run games	2-5	Won 1
In run-rule games	1-3	Lost 3
In extra innings	0-0	Won 1
In games decided by international tiebreaker	0-0	Lost 1
Scoring one run	1-2	Lost 2
Scoring two or more runs	7-1	Won 1
Scoring three or more runs	6-1	Won 1
Scoring four or more runs	6-1	Won 1
Scoring five or more runs	5-1	Won 1
Scoring six or more runs	4-0	Won 8
Scoring seven or more runs	4-0	Won 6
Scoring eight or more runs	3-0	Won 4
Scoring nine or more runs	4-0	Won 33
Scoring 10 or more runs	0-0	Won 49
Scoring in first inning	4-2	Won 1
Opponent scores in first inning	1-3	Lost 1
Scoring first	7-2	Won 1
Opponent scores first	1-5	Lost 5
Leading after five innings	6-0	Won 17
Trailing after five innings	2-4	Lost 4
Tied after five innings	0-0	Lost 1
When leading at any point in the game	7-2	Won 1
When trailing at any point in the game	2-7	Lost 7
Errorless	3-2	Lost 2
Commits one or more error	5-5	Won 1
Commits two or more errors	1-2	Won 1
Outhits opponent	5-1	Lost 1
Outhit by opponent	2-6	Lost 2
Hits are tied	1-0	Won 3



#11 KATIE BYRD

RS-RS | 2B | 5-6 | R/R | Santee, Calif. | West Hills HS

	AVG.	OB%	SLG%	H	R	2B	3B	HR	RBI	SB
2019	.316	.422	.316	12	9	0	0	0	4	2
MW	--	--	--	--	--	--	--	--	--	--
Career	.317	.376	.418	151	83	31	1	5	88	7

**Career:** 9th at SDSU in 2B (31)... 90 str starts (89 at 2B, 1 at SS)... 157 GP (151 GS)... 2019: 12-for-38... 3 multi-run gms... Team-high 4 GA runs... 2018: Started all 51 gms... Hit .305 w/ 23 RBIs, team's off. MVP... 2017: 2nd-tm all-region & 2nd-tm all-MW... 4th in SDSU history in R (42) & 2B (16)... 2016: 3rd on the tm w/ 26 RBIs... 2015: RS as walk-on... HS: Prepped at local West Hills.



#14 JESSICA CORDOLA

FR | IF | 5-9 | R/R | Santa Clarita, Calif. | Saugus HS

	AVG.	OB%	SLG%	H	R	2B	3B	HR	RBI	SB
2019	.333	.400	.556	3	2	2	0	0	1	0
MW	--	--	--	--	--	--	--	--	--	--
Career	.333	.400	.556	3	2	2	0	0	1	0

**Career:** Joined the Aztecs in the fall after signing in November 2017... 2019: 3-for-9 with 2 2B & a HBP in 6 GP (2 GS)... Made her debut as pinch-hitter vs. Charlotte (2/8), taking a HBP & eventually scoring... Was 3-for-4 with 2 2B, RBI & R in 1st start vs. Cal Poly (2/24)... HS: A 1st-team all-Foothill League selection at Saugus HS... Also was the team's MVP.



#43 KYLIE FRASER

FR | C/IF | 5-9 | R/R | Redondo Beach, Calif. | Redondo Union HS

	AVG.	OB%	SLG%	H	R	2B	3B	HR	RBI	SB
2019	.154	.214	.154	2	1	0	0	0	0	0
MW	--	--	--	--	--	--	--	--	--	--
Career	.154	.214	.154	2	1	0	0	0	0	0

**Career:** Signed with the Aztecs in November 2017... 2019: 2-for-13 with a run & a walk in 8 GP (3 GS)... Started opener as DP vs. Syracuse (2/8), going 0-for-2 with a run & a walk... Had first career hit in a start at catcher vs. Grand Canyon (2/16)... HS: Outstanding female athlete at RUHS... A 2-time 2nd-team all-area pick & 4-time all-league (twice on 1st team).



#9 ALICIA GARCIA

JR | P | 5-8 | R/R | San Diego, Calif. | Palomar College

	AVG.	OB%	SLG%	H	R	2B	3B	HR	RBI	SB
2019	.231	.310	.423	6	2	2	0	1	3	0
MW	--	--	--	--	--	--	--	--	--	--
Career	.231	.310	.423	6	2	2	0	1	3	0

**Career:** Joined the Aztecs in the summer... 2019: Started 13 of 15, going 6-for-26... 2 RBIs vs. Syracuse (2/8)... 2-for-2, R, BB vs. Charlotte (2/9)... 1st career homer vs. NIU (2/15)... Palomar: Batted .405 w/ 2 HR, 36 RBIs & 44 R, leading Palomar to 2018 state title game... Tyler CC: Hit .318 with 3 HR, 19 RBIs & 9 R in 2017... HS: All-league pick at Mira Mesa HS.

#9 ALICIA GARCIA

JR | P | 5-8 | R/R | San Diego, Calif. | Palomar College

	ERA	W-L	SV	APP	GS	IP	SO	BB	WHIP
2019	5.73	1-3	0	7	4	14.2	8	6	1.77
MW	--	--	--	--	--	--	--	--	--
Career	5.73	1-3	0	7	4	14.2	8	6	1.77

**Career:** Joined the Aztecs in the summer... 2019: Is 1-3 w/ a 5.73 ERA in 7 app. & 4 GS... Picked up 1st win in 0.2 scoreless innings vs. Syracuse (2/8)... 2.1 scoreless IP vs. #25/#23 TTU... Palomar: Was 27-1 w/ a 1.15 ERA in 2018 as California JUCO Pitcher of the Year... Tyler CC: Was 11-1 w/ a 1.82 ERA in 2017 at Tyler CC... HS: Prepped at Mira Mesa HS.



#27 MJ JAMES

RS-FR. | P | 6-0 | R/R | San Diego, Calif. | Ohio State

	ERA	W-L	SV	APP	GS	IP	SO	BB	WHIP
2019	5.88	2-1	0	7	4	25.0	8	10	2.16
MW	--	--	--	--	--	--	--	--	--
Career	5.88	2-1	0	7	4	25.0	8	10	2.16

**Career:** Joined SDSU in the summer after transferring from Ohio State... 2019: Is 2-1 with a 5.88 ERA in 25.0 IP over 7 appearances (4 GS)... As a starter is 2-1 with a 3.63 ERA in 17.1 IP... OSU: Redshirted at OSU, where she was a scholar-athlete... HS: 3-time 1st-team all-league & CIF... Helped Patrick Henry to 2 straight championship games.



#8 HANNAH JOHNSON

SO | P | 5-6 | R/R | La Habra, Calif. | Cal State Fullerton

	ERA	W-L	SV	APP	GS	IP	SO	BB	WHIP
2019	--	--	--	--	--	--	--	--	--
MW	--	--	--	--	--	--	--	--	--
Career	9.69	1-4	0	13	5	21.2	12	13	2.54

**Career:** Joined the Aztecs in the summer from Cal State Fullerton... Is expected to miss the season with a torn ACL... CSF: Spent 2018 at Cal State Fullerton, going 1-4 with a 9.69 ERA in 21.2 innings, striking out 12 with 13 walks... HS: Multi-time all-Orange County, all-Freeway League & team defensive player of the year at La Habra High School.



#8 JANINA JUSAY (JAH-neen-ah JU-say)

SO | OF | 5-5 | R/R | San Diego, Calif. | Rancho Bernardo HS

	AVG.	OB%	SLG%	H	R	2B	3B	HR	RBI	SB
2019	.000	.000	.000	0	2	0	0	0	0	0
MW	--	--	--	--	--	--	--	--	--	--
Career	.121	.171	.121	4	8	0	0	0	0	2

**Career:** 39 career GP (13 starts)... Has 8 runs & 2 SB... Majoring in kinesiology w/ emphasis as a fitness specialist... 2019: 0-for-5 w/ 2 runs in 7 GP (2 GS)... 2018: MW Spring All-Academic Team... Played in 32 games w/ 11 starts (9 in RF, 2 in LF)... 3 hits vs. UC Davis in 1st career start on Feb. 11... HS: Played OF & C at Rancho Bernardo HS, earning 2nd-team all-league.



#00 ARIS METCALFE (AIR-iss)

SR | OF | 5-4 | L/R | Compton, Calif. | King/Drew Magnet HS

	AVG.	OB%	SLG%	H	R	2B	3B	HR	RBI	SB
2019	.167	.167	.167	1	4	0	0	0	0	4
MW	--	--	--	--	--	--	--	--	--	--
Career	.150	.190	.150	3	52	0	0	0	0	30

**Career:** T-4th all-time at SDSU in stolen base pct. (.857 - 30/35)... Team's top PR... 131 career GP (7 GS)... 52 R... 2019: 7th in MW w/ 4 SB... 4 R in 14 GP (1 GS)... 2018: 2-for-12 in 1st 6 career starts... 12-for-13 SB... Career-high 17 R... 2017: 16 R & 7 SB in 35 GP... 2016: 39 of 52 GP as PR... HS: 204-for-207 SB at King/Drew Magnet HS... 3-time all-league pick.



#33 MARISSA MORENO

JR | P | 5-11 | R/R | Torrance, Calif. | Torrance HS

	ERA	W-L	SV	APP	GS	IP	SO	BB	WHIP
2019	3.81	5-3	1	14	7	53.1	48	23	1.65
MW	--	--	--	--	--	--	--	--	--
Career	3.47	23-25	2	83	59	304.2	188	99	1.47

**Career:** 23-25, 3.47 ERA, 83 app., 59 GS... 2019: Pitched 14 of SDSU's 15 games... MW rks: 1st in K (48), IP (53.1) & app. (14), & T-1st in W (5) & SV (1)... 2018: 6-16, 3.29 ERA... SDSU season rks: 4th in GS (37) & T-9th in app. (42)... MW Pitcher of the Wk vs. USU (2-0, 1.08 ERA, 12 K in 13 IP)... 2017: 12-6, 3.57 ERA... HS: Torrance records in wins (40) & K's (526)... 2016 2nd-tm all-state.





#26 KELSEY MUNOZ

SO | IF | 5-10 | R/R | Chula Vista, Calif. | Mater Dei Catholic HS

	AVG.	OB%	SLG%	H	R	2B	3B	HR	RBI	SB
2019	.326	.367	.522	15	6	3	0	2	10	0
MW	--	--	--	--	--	--	--	--	--	--
Career	.305	.355	.397	40	12	6	0	2	18	0

**Career:** .305 avg., starting all 43 app... Plays for Mexican nat'l tm... **2019:** MW rks: 1st in ast. (36), 5th in TB (24), T-5th in HR (2), T-8th in H (15) & T-10 in 2B (3)... 2/8 vs. Charlotte: 3-for-4, HR, 2 2B, 6 RBI... **2018:** MW Spring All-Academic... Missed 23 gms w/ broken hand, starting other 28... Hit .294 w/ 1 error in 88 chances at 3B... 4-for-4 at UNLV on 4/8... **HS:** 3-time 1st-tm all-league at nearby MDCHS.



#2 PARIS NGUYEN (WIN)

FR | SS/2B | 5-5 | R/R | Lake Elsinore, Calif. | Temescal Canyon HS

	AVG.	OB%	SLG%	H	R	2B	3B	HR	RBI	SB
2019	--	--	--	--	--	--	--	--	--	--
MW	--	--	--	--	--	--	--	--	--	--
Career	--	--	--	--	--	--	--	--	--	--

**Career:** Signed with the Aztecs in November 2017... **2019:** Has yet to appear in a game... **HS:** Was a 3-time all-Sunbelt League selection at Temescal Canyon HS & a 4-time all-academic team member... Helped TCHS to back-to-back league titles, going undefeated each of her final 2 seasons... Hit .480 as a senior.



#3 GABY OLIVARRRIA (OH-la-VERY-ah)

SO | UTIL | 5-5 | L/R | San Diego, Calif. | Helix Charter HS

	AVG.	OB%	SLG%	H	R	2B	3B	HR	RBI	SB
2018	.000	.000	.000	0	2	0	0	0	0	0
MW	--	--	--	--	--	--	--	--	--	--
Career	.250	.250	.250	1	2	0	0	0	0	0

**Career:** Played in 4 career games w/ 2 starts... Has 2 runs... **2019:** Scored 1st career 2 runs in only GP vs. Syracuse (2/8) & Charlotte (2/9)... **2018:** Was 1-for-4 in 2 GP (1 GS)... Started at CSF (3/11), going 1-for-3... **HS:** Prepped at nearby Helix Charter HS in La Mesa... Led Helix to 2 league titles (2016-17)... Was a 2-time 1st-team all-league pick & 2-time all-county pick.



#4 KRISTEN PARKER

JR | OF | 5-4 | R/R | Mira Mesa, Calif. | Mira Mesa HS

	AVG.	OB%	SLG%	H	R	2B	3B	HR	RBI	SB
2019	.182	.206	.182	6	2	0	0	0	3	0
MW	--	--	--	--	--	--	--	--	--	--
Career	.182	.206	.182	6	15	0	0	0	3	0

**Career:** 15 runs in 40 games with 1st career 12 starts this year... **2019:** Is 6-for-33 with 3 RBIs after being used as a pinch runner the 1st 27 games of her career... **2018:** Scored 1 run in 3 games... **2017:** Played in 24 games, scoring 12 runs... **HS:** Four-year letterwinner at nearby Mira Mesa HS... Was the Scholar-Athlete & Female Athlete of the Year at MMHS.



#1 MEGAN SMITH

JR | OF | 5-4 | L/R | Valencia, Calif. | West Ranch HS

	AVG.	OB%	SLG%	H	R	2B	3B	HR	RBI	SB
2019	.130	.231	.130	3	1	0	0	0	0	1
MW	--	--	--	--	--	--	--	--	--	--
Career	.193	.282	.214	28	28	3	0	0	7	3

**Career:** Over half of her games played (93) have been starts (47)... Has 28 runs & 28 hits... 2-time MW West All-Academic Team (2017-18)... Criminal justice major w/ plans to become an FBI agent... **2019:** Is 3-for-23 in 14 GP (8 GS)... **2018:** Hit .198 in 44 GP (31 GS)... **2017:** Batted .226 with 17 R in 35 GP (8 GS)... **HS:** 3-time all-league & 4-time scholar-athlete at WRHS.



#7 KAYLA SOK (SOCK)

SR | IF/OF | 5-4 | R/R | Glendora, Calif. | Mt. SAC

	AVG.	OB%	SLG%	H	R	2B	3B	HR	RBI	SB
2019	.000	.000	.000	0	0	0	0	0	0	0
MW	--	--	--	--	--	--	--	--	--	--
Career	.000	.182	.000	0	0	0	0	0	0	1

**Career:** Appeared in 22 games w/ 3 starts... Has yet to record a hit... **2019:** 5 games as a pinch runner... **2018:** Started 3 games & played in 17, going 0-for-9 w/ a walk & HBP for a .182 OB%... **JC:** Played 2 years at Mt. SAC, hitting .397 w/ 14 HR, 65 RBIs, 101 R, 17 2B, 8 3B & 81 SB... **HS:** Prepped at Glendora HS, earning 1st-team all-league honors.



#31 MOLLY STURDIVANT

SR | C/3B | 5-6 | R/R | Santa Ana, Calif. | El Modena HS

	AVG.	OB%	SLG%	H	R	2B	3B	HR	RBI	SB
2019	.300	.391	.400	12	3	4	0	0	4	0
MW	--	--	--	--	--	--	--	--	--	--
Career	.314	.393	.500	148	60	29	1	19	107	0

**Career:** SDSU rks: T-1st in SF (10), T-5th in HR (19), 7th in RBIs (107), 8th in SLG% (.500) & 10th in 2B (29)... 111 strt starts... **2019:** Reached base in 12 of 15 gms... T-2nd in MW in CS (3) & HBP (4), T-3rd in 2B (4)... **2018:** Led tm w/ 26 RBIs... **2017:** 2nd-team all-region & 1st-tm all-MW (.381/.482/.664)... **2016:** 6 HR & 32 RBIs were #3 in SDSU frosh history... **HS:** Team's MVP all 4 yrs.



#20 SHELBY THOMPSON

JR | SS | 5-6 | R/R | Benicia, Calif. | Benicia HS

	AVG.	OB%	SLG%	H	R	2B	3B	HR	RBI	SB
2019	.238	.370	.333	5	0	2	0	0	6	0
MW	--	--	--	--	--	--	--	--	--	--
Career	.294	.388	.487	90	53	14	3	13	56	13

**Career:** 2-time 1st-tm all-MW... 9th at SDSU in SLG% (.487)... 110 GP (109 GS)... **2019:** Missed 1st weekend (ankle)... 5-for-21 in 10 starts... **2018:** MW Def. PotY & 1st-tm all-MW (.347/.438/.627 in MW play w/ 5 HR, 15 RBIs, 20 R)... **2017:** MW PotY & 1st-tm all-MW (.391/.475/.739 in MW w/ 6 HR, 21 RBIs, 16 R)... **HS:** Led Benicia HS to 3 league titles (3-time all-league).



#15 ALIZAE UMI (Al-ah-zay 000-me)

SO | C | 5-5 | R/R | Torrance, Calif. | West HS

	AVG.	OB%	SLG%	H	R	2B	3B	HR	RBI	SB
2019	.000	.000	.000	0	0	0	0	0	0	0
MW	--	--	--	--	--	--	--	--	--	--
Career	.083	.190	.083	3	1	0	0	0	2	0

**Career:** 23 GP with 16 GS... Just 1 error in 68 chances (.985 fielding pct)... **2019:** 0-for-8 in 4 starts at catcher... **2018:** MW Scholar-Athlete... Hit .107 in 18 games & 12 starts (9 at C, 3 at DP)... **HS:** A 4-time all-league pick (2-time 1st team) at West HS... Was league MVP as a senior & a four-year scholar-athlete.



#22 KIERA WRIGHT (KEY-air-uh)

RS-JR | OF | 5-6 | L/R | Riverside, Calif. | Roosevelt HS

	AVG.	OB%	SLG%	H	R	2B	3B	HR	RBI	SB
2019	.333	.385	.396	16	12	1	1	0	3	6
MW	--	--	--	--	--	--	--	--	--	--
Career	.282	.343	.308	88	61	4	2	0	17	29

**Career:** Signed w/ 2015 class, but joined in 2016... .282 avg. in 106 GP (93 GS) w/ 29 SB... **2019:** 5 multi-hit gms & 5 multi-hit gms... MW rks: T-3rd in H & SB, T-5th in 3B & T-6th in R... **2018:** .240 avg., 21 R & 11 SB... **2017:** .305, 25 R & 11 SB... **2016:** RS after tearing ACL vs. Okla. St. on 2/25, after playing 11 of 12 games... **HS:** All-Inland by Riverside Press Enterprise.

AZTECS IN THE NATIONAL POLLS

USA TODAY/NFCA POLL

(Week #3 - Feb. 26)

No.	Team	Record	Pts.	Last
1.	Florida State (28)	17-0	794	1
2.	UCLA (4)	14-0	771	2
3.	Florida	18-0	732	3
4.	Oklahoma (L, 0-8 (5))	13-2	689	4
5.	Washington	14-1	681	5
6.	Alabama	15-0	648	6
7.	Tennessee	11-2	582	7
8.	Georgia	14-1	568	8
9.	Texas	12-1	528	11
10.	LSU	13-3	501	9
11.	Louisiana	14-2	449	10
12.	Arizona	9-5	417	14
13.	South Carolina	11-2	374	15
14.	Arkansas	12-3	367	12
15.	Arizona State	12-4	348	13
16.	Indiana	14-0	308	19
17.	Kentucky	9-7	267	16
18.	Texas Tech (L, 0-7)	13-1	238	23
19.	James Madison	5-2	223	18
20.	Oregon	11-4	179	17
21.	Oklahoma State (L, 5-15 (5))	10-5	170	20
22.	Auburn	13-3	145	22
23.	Minnesota	7-5	84	24
24.	Baylor	9-7	75	21
25.	Oregon State	12-2	65	RV

(2019 opponent in BOLD; first-place votes in parenthesis)

ESPN.COM/USA SOFTBALL POLL

(Week #3 - Feb. 26)

No.	Team	Record	Pts.	Last
1.	Florida State (11)	17-0	489	1
2.	UCLA (8)	14-0	488	2
3.	Florida	18-0	457	3
4.	Oklahoma (L, 0-8 (5))	13-2	416	4
5.	Alabama	15-0	415	6
6.	Washington (1)	14-1	410	5
7.	Tennessee	13-2	353	8
8.	Georgia	14-1	345	9
9.	LSU	13-3	344	7
10.	Texas	12-1	338	10
11.	Louisiana	14-2	260	11
12.	Arizona	9-5	256	13
13.	South Carolina	11-2	251	14
14.	Arkansas	12-3	224	12
15.	Indiana	14-0	200	19
16.	Texas Tech (L, 0-7)	13-1	178	25
17.	Arizona State	12-4	167	15
18.	Oklahoma State (L, 5-15 (5))	10-5	156	16
19.	James Madison	5-2	146	18
20.	Oregon	11-4	127	17
21.	Auburn	13-3	109	21
22.	Kentucky	9-7	81	20
23.	Northwestern	11-3	55	RV
24.	Oregon State	12-2	55	RV
25.	Illinois	10-3	41	24

(2019 opponent in BOLD; first-place votes in parenthesis)

SDSU IN THE POLLS

Release Week	NFCA	USA Softball
Preseason (Jan. 29)	NR	NR
Week 1 (Feb. 12)	NR	NR
Week 2 (Feb. 19)	NR	NR
Week 3 (Feb. 26)	NR	NR

**TEAM GAME HIGHS**

**Batting**

At-Bats .....34 vs. Cal Poly (Feb. 24)  
 Runs .....9 (2 times)  
 Hits .....15 vs. Cal Poly (Feb. 24)  
 RBIs .....9 vs. Charlotte (Feb. 8)  
 Doubles .....6 vs. Cal Poly (Feb. 24)  
 Triples .....1 vs. Northern Illinois (Feb. 15)  
 Home Runs .....2 vs. Northern Illinois (Feb. 15)  
 Total Bases .....21 vs. Cal Poly (Feb. 24)  
 Walks .....5 vs. Syracuse (Feb. 8)  
 Strikeouts .....8 vs. No. 4/4 Oklahoma (Feb. 10)  
 Sacrifice Hits .....3 vs. Charlotte (Feb. 9)  
 Sacrifice Flies .....1 at Cal State Fullerton (Feb. 20)  
 Stolen Bases .....3 vs. Charlotte (Feb. 9)  
 Hit By Pitch .....2 vs. Middle Tennessee (Feb. 15)  
 Caught Stealing .....1 vs. Middle Tennessee (Feb. 15)  
 Runners LOB .....12 vs. Charlotte (Feb. 9)  
 Hit into DP .....1 (6 times)

**Fielding**

Putouts .....21 (9 times)  
 Assists .....13 (2 times)  
 Errors .....4 vs. No. 4/4 Oklahoma (Feb. 10)  
 Passed Balls .....3 vs. No. 4/4 Oklahoma (Feb. 10)  
 DP Turned .....1 (5 times)

**Pitching**

Innings Pitched .....7.0 (9 times)  
 Runs Allowed .....15 vs. No. 16/20 Oklahoma State (Feb. 10)  
 Earned Runs Allowed...11 vs. No. 16/20 Oklahoma St. (Feb. 10)  
 Walks Allowed .....5 (2 times)  
 Strikeouts .....8 vs. Northern Illinois (Feb. 15)  
 Hits Allowed .....13 vs. Grand Canyon (Feb. 16)  
 Doubles Allowed .....3 (3 times)  
 Triples Allowed .....1 vs. No. 16/20 Oklahoma State (Feb. 10)  
 HR Allowed .....3 (2 times)  
 Wild Pitches .....2 (2 times)  
 Hit Batters .....3 at Cal State Fullerton (Feb. 20)

**INDIVIDUAL GAME HIGHS**

**Batting**

At-Bats .....5, Kiera Wright vs. Cal Poly (Feb. 24)  
 Runs .....3, Katie Byrd (once), Kiera Wright (once)  
 Hits .....3 (5 times)  
 RBIs .....6, Kelsey Munoz vs. Charlotte (Feb. 8)  
 Doubles .....2, Jessica Cordola (once), Kelsey Munoz (once)  
 Triples .....1, Kiera Wright vs. Northern Illinois (Feb. 15)  
 Home Runs .....1, Kelsey Munoz (twice), Alicia Garcia (once)  
 Total Bases .....8, Kelsey Munoz vs. Charlotte (Feb. 8)  
 Walks .....2, A. Garcia (once), K. Munoz (once), M. Smith (once)  
 Strikeouts .....3, Kylie Fraser vs. No. 25/23 Texas Tech (Feb. 23)  
 Sac Hits .....2, Paige Barth vs. Charlotte (Feb. 9)  
 Sacrifice Flies...1, Shelby Thompson at Cal St. Fullerton (Feb. 20)  
 Stolen Bases .....3, Kiera Wright vs. Charlotte (Feb. 9)  
 Hit By Pitch .....1 (7 times)  
 Caught Stealing .....1, Aris Metcalfe vs. Middle Tennessee (Feb. 15)  
 Runners LOB .....4, Katie Byrd (twice)

**Fielding**

Putouts .....10 (5 times)  
 Assists .....5, Molly Sturdivant vs. Charlotte (Feb. 8)  
 Errors .....2, Marissa Moreno vs. Oklahoma (Feb. 10)  
 Passed Balls.....2, M. Sturdivant vs. No. 4/4 Oklahoma (Feb. 10)

**Pitching**

Innings .....7.0, Marissa Moreno (3 times)  
 Runs Allowed .....9, MJ James vs. No. 16/20 Okla. St. (Feb. 22)  
 ER Allowed .....7, Marissa Moreno (twice)  
 BB Allowed .....4, Marissa Moreno (twice)  
 Strikeouts .....7, Marissa Moreno vs. Nebraska (Feb. 22)  
 Hits Allowed .....8, MJ James (once), Marissa Moreno (once)  
 Doubles Allowed .....3, MJ James at Grand Canyon (Feb. 9)  
 Triples Allowed...1, M. Moreno vs. No. 16/20 Okla. St. (Feb. 22)  
 HR Allowed .....3, MJ James (once), Marissa Moreno (once)  
 Wild Pitches .....2, MJ James (once), Marissa Moreno (once)  
 Hit Batters .....3, MJ James at Cal State Fullerton (Feb. 20)

**AZTEC STARTS**

**Overall (15)**  
*(Team's record in parenthesis)*  
 15: Katie Byrd (8-7), Kelsey Munoz (8-7), Molly Sturdivant (8-7), Kiera Wright (8-7)  
 13: Taylor Adams (8-5), Alicia Garcia (7-6)  
 12: Kristen Parker (7-5)  
 10: Shelby Thompson (5-5)  
 9: Marissa Moreno (5-4)  
 8: Megan Smith (3-5)  
 5: Paige Barth (4-1)  
 4: MJ James (3-1), Alizae Umi (2-2), Maddi Ayers (1-3)  
 3: Kylie Fraser (1-2)  
 2: Jessica Cordola (1-1), Janina Jusay (1-1)  
 1: Aris Metcalfe (0-1)

**Consecutive**  
*(Team's record in parenthesis)*  
 111: Molly Sturdivant (58-53)  
 90: Katie Byrd (43-47)  
 37: Kelsey Munoz (19-18)  
 36: Kiera Wright (19-17)  
 10: Shelby Thompson (5-5)  
 3: Taylor Adams (1-2)  
 2: Maddi Ayers (1-1), Jessica Cordola (1-1)  
 1: Alicia Garcia (0-1), Aris Metcalfe (0-1)

**By Position (15)**  
*(Team's record in parenthesis)*  
 P: Marissa Moreno - 7 (4-3), MJ James - 4 (3-1), Alicia Garcia - 4 (1-3)  
 C: Molly Sturdivant - 10 (6-4), Alizae Umi - 4 (2-2), Kylie Fraser - 1 (0-1)  
 1B: Taylor Adams - 13 (8-5), Paige Barth - 1 (0-1), Molly Sturdivant - 1 (0-1)  
 2B: Katie Byrd - 15 (8-7)  
 SS: Kelsey Munoz - 11 (6-5), Shelby Thompson - 4 (2-2)  
 3B: Alicia Garcia - 6 (4-2), Kelsey Munoz - 5 (2-3), Molly Sturdivant - 4 (2-2)  
 LF: Kristen Parker - 12 (7-5), Megan Smith - 2 (1-1), Aris Metcalfe - 1 (0-1)  
 CF: Kiera Wright - 15 (8-7)  
 RF: Megan Smith - 5 (2-3), Paige Barth - 4 (4-0), Maddi Ayers - 3 (1-2), Janina Jusay - 2 (1-1), Shelby Thompson - 1 (0-1)  
 DP: Shelby Thompson - 4 (3-1), Alicia Garcia - 3 (2-1), Jessica Cordola - 2 (1-1), Kylie Fraser - 2 (1-1), Marissa Moreno - 2 (1-1), Maddi Ayers - 1 (0-1), Megan Smith - 1 (0-1)

**By Batting Order (15)**  
*(Team's record in parenthesis)*  
 1st: Kiera Wright - 15 (8-7)  
 2nd: Katie Byrd - 12 (7-5), Kelsey Munoz - 3 (1-2)  
 3rd: Kelsey Munoz - 12 (7-5), Molly Sturdivant - 3 (1-2)  
 4th: Molly Sturdivant - 9 (6-3), Shelby Thompson - 6 (2-4)  
 5th: Alicia Garcia - 6 (3-3), Shelby Thompson - 4 (3-1), Jessica Cordola - 2 (1-1), Kylie Fraser - 2 (0-2), Taylor Adams - 1 (1-0)  
 6th: Kristen Parker - 6 (3-3), Alicia Garcia - 4 (3-1), Molly Sturdivant - 3 (1-2), Kylie Fraser - 1 (1-0), Taylor Adams - 1 (0-1)  
 7th: Maddi Ayers - 4 (1-3), Kristen Parker - 3 (2-1), Katie Byrd - 3 (1-2), Taylor Adams - 2 (2-0), Paige Barth - 1 (1-0), Alicia Garcia - 1 (1-0), Megan Smith - 1 (0-1)  
 8th: Megan Smith - 5 (2-3), Paige Barth - 4 (3-1), Alizae Umi - 3 (1-2), Kristen Parker - 2 (2-0), Aris Metcalfe - 1 (0-1)  
 9th: Taylor Adams - 9 (5-4), Janina Jusay - 2 (1-1), Megan Smith - 2 (1-1), Alizae Umi - 1 (1-0), Kristen Parker - 1 (0-1)

**MISCELLANEOUS STATS**

**Multi-Hit Games**

Player	2 Hits	3 Hits	4 Hits	5+ Hits	Total
Kelsey Munoz	3	2	-	-	5
Kiera Wright	3	2	-	-	5
Taylor Adams	2	-	-	-	2
Katie Byrd	2	-	-	-	2
Molly Sturdivant	2	-	-	-	2
Jessica Cordola	1	-	-	-	1
Alicia Garcia	1	-	-	-	1
Kristen Parker	1	-	-	-	1
Shelby Thompson	1	-	-	-	1
<b>9 Players</b>	<b>15</b>	<b>5</b>	<b>0</b>	<b>0</b>	<b>20</b>

**Multi-RBI Games**

Player	2 RBIs	3 RBIs	4 RBIs	5+ RBIs	Total
Kelsey Munoz	1	-	-	1	2
Taylor Adams	1	1	-	-	2
Shelby Thompson	2	-	-	-	2
Katie Byrd	1	-	-	-	1
Alicia Garcia	1	-	-	-	1
Kristen Parker	1	-	-	-	1
Molly Sturdivant	1	-	-	-	1
<b>7 Players</b>	<b>8</b>	<b>1</b>	<b>0</b>	<b>1</b>	<b>10</b>

**Multi-Run Games**

Player	2 Runs	3 Runs	4 Runs	5 Runs	Total
Katie Byrd	2	1	-	-	3
Kiera Wright	2	1	-	-	3
<b>2 Players</b>	<b>4</b>	<b>2</b>	<b>0</b>	<b>0</b>	<b>6</b>

**Tying RBIs/Runs (a run that ties the game up for SDSU)**

Player	TIE RBIs	TIE Runs	TIE Plays
Maddi Ayers	1	-	1
Taylor Adams	-	1	1
<b>2 Players</b>	<b>1</b>	<b>1</b>	<b>2</b>

**Go-Ahead RBIs/Runs (a run that puts SDSU in the lead)**

Player	GA RBIs	GA Runs	GA Plays
Katie Byrd	-	4	4
Kiera Wright	-	3	3
Kristen Parker	2	-	2
Molly Sturdivant	2	-	2
Shelby Thompson	2	-	2
Alicia Garcia	1	1	2
Kelsey Munoz	1	-	1
Aris Metcalfe	-	1	1
<b>8 Players</b>	<b>8</b>	<b>9</b>	<b>17</b>

**Game-Winning RBIs/Runs (a run that is 1 more than the other team's final score)**

Player	GW RBIs	GW Runs	GW Plays
Kelsey Munoz	3	1	4
Kiera Wright	1	3	4
Katie Byrd	1	2	3
Kristen Parker	1	1	2
Molly Sturdivant	1	-	1
Aris Metcalfe	-	1	1
<b>6 Players</b>	<b>7</b>	<b>8</b>	<b>15</b>

**Walk-Off RBIs/Runs (a run that ends the game on that play)**

Player	WO RBIs	WO Runs	WO Plays
Kiera Wright	1	2	3
Katie Byrd	1	-	1
Kelsey Munoz	1	-	1
Kristen Parker	-	1	1
<b>4 Players</b>	<b>3</b>	<b>3</b>	<b>6</b>



SEASON HIGHS/CAREER HIGHS

#99 • TAYLOR ADAMS

	Season	Career
Runs	1 - 4 times	1 - 16 times
Hits	2 - 2 times	3 vs. Colorado St., 4/29/18
RBI's	3 vs. Cal Poly, 2/24	3 - 2 times
Walks	-	1 - 6 times
Stolen Bases	-	1 - 3 times
Hitting Streak	3 - 2 times	7 - April 8-May 11, 2018
Reached Base	3 - 2 times	11 - Feb. 8-22, 2018

#12 • MADDI AYERS

	Season	Career
Runs	-	-
Hits	1 - 3 times	1 - 3 times
RBI's	1 vs. Charlotte, 2/9	1 vs. Charlotte, 2/9/19
Walks	1 vs. Oklahoma St., 2/22	1 vs. Oklahoma St., 2/22/19
Stolen Bases	-	-
Hitting Streak	2 - Feb. 24-current	2 - Feb. 24, 2019-current
Reached Base	3 - Feb. 22-current	3 - Feb. 22, 2019-current

#28 • PAIGE BARTH

	Season	Career
Runs	1 - 2 times	1 - 2 times
Hits	-	-
RBI's	1 vs. Syracuse, 2/8	1 vs. Syracuse, 2/8/19
Walks	1 vs. Charlotte, 2/9	1 vs. Charlotte, 2/9/19
Stolen Bases	-	-
Hitting Streak	-	-
Reached Base	1 - Feb. 9	1 - Feb. 9, 2019

#11 • KATIE BYRD

	Season	Career
Runs	3 vs. Charlotte, 2/8	3 - 4 times
Hits	2 - 2 times	4 vs. Weber St., 2/12/17
RBI's	2 vs. Syracuse, 2/8	4 - 4 times
Walks	1 - 5 times	3 vs. Northwestern, 2/9/18
Stolen Bases	1 - 2 times	1 - 7 times
Hitting Streak	5 - Feb. 20-24	8 - 2 times
Reached Base	5 - Feb. 20-24	9 - Feb. 25-March 7, 2017

#14 • JESSICA CORDOLA

	Season	Career
Runs	1 - 2 times	1 - 2 times
Hits	3 vs. Cal Poly, 2/24	3 vs. Cal Poly, 2/24/19
RBI's	1 vs. Cal Poly, 2/24	1 vs. Cal Poly, 2/24/19
Walks	-	-
Stolen Bases	-	-
Hitting Streak	1 - Feb. 24	1 - Feb. 24, 2019
Reached Base	1 - 2 times	1 - 2 times

#43 • KYLIE FRASER

	Season	Career
Runs	1 vs. Syracuse, 2/8	1 vs. Syracuse, 2/8/19
Hits	1 - 2 times	1 - 2 times
RBI's	-	-
Walks	1 vs. Syracuse, 2/8	1 vs. Syracuse, 2/8/19
Stolen Bases	-	-
Hitting Streak	1 - 2 times	1 - 2 times
Reached Base	1 - 3 times	1 - 3 times

#9 • ALICIA GARCIA

	Season	Career
Runs	1 - 2 times	1 - 2 times
Hits	2 vs. Charlotte, 2/9	2 vs. Charlotte, 2/9/19
RBI's	2 vs. Syracuse, 2/8	2 vs. Syracuse, 2/8/19
Walks	2 vs. Charlotte, 2/8	2 vs. Charlotte, 2/8/19
Stolen Bases	-	-
Hitting Streak	3 - Feb. 15-16	3 - Feb. 15-16, 2019
Reached Base	3 - 2 times	3 - 2 times
Innings Pitched	4.0 - 2 times	4.0 - 2 times
Strikeouts	2 - 3 times	2 - 3 times
Scoreless IP	4.1 - Feb. 8-9	4.1 - Feb. 8-9, 2019
Win Streak	1 - Feb. 8	1 - Feb. 8, 2019

#27 • MJ JAMES

	Season	Career
Innings Pitched	6.0 vs. Charlotte, 2/8	6.0 vs. Charlotte, 2/8/19
Strikeouts	2 vs. Northern Illinois, 2/15	2 vs. Northern Illinois, 2/15/19
Scoreless IP	4.2 - Feb. 9-15	4.2 - Feb. 9-15, 2019
Win Streak	2 - Feb. 8-15	2 - Feb. 8-15, 2019

#19 • HANNAH JOHNSON

	Season	Career
Innings Pitched	-	4.2 - 2 times
Strikeouts	-	4 vs. Utah State, 2/9/18
Scoreless IP	-	n/a
Win Streak	-	1 - Feb. 11, 2018

#8 • JANINA JUSAY

	Season	Career
Runs	1 - 2 times	1 - 8 times
Hits	-	3 vs. UC Davis, 2/11/18
RBI's	-	-
Walks	-	1 - 2 times
Stolen Bases	-	1 - 2 times
Hitting Streak	-	2 - Feb. 11-14, 2018
Reached Base	-	2 - Feb. 11-14, 2018

#00 • ARIS METCALFE

	Season	Career
Runs	1 - 4 times	1 - 51 times
Hits	1 - 2 times	1 - 4 times
RBI's	-	-
Walks	-	1 vs. Beth.-Cookman, 2/24/18
Stolen Bases	1 - 4 times	2 - 3 times
Hitting Streak	1 - Feb. 24	1 - 3 times
Reached Base	1 - Feb. 24	1 - 3 times

#33 • MARISSA MORENO

	Season	Career
Innings Pitched	7.0 - 3 times	7.0 - 7 times
Strikeouts	7 vs. Nebraska, 2/22	7 - 2 times
Scoreless IP	11.1 - Feb. 16-22	16.0 - Feb. 18-23, 2018
Win Streak	3 - Feb. 15-22	4 - 2 times

#26 • KELSEY MUNOZ

	Season	Career
Runs	1 - 6 times	1 - 12 times
Hits	3 - 2 times	4 at UNLV, 4/8/18
RBI's	6 vs. Charlotte, 2/8	6 vs. Charlotte, 2/8/18
Walks	2 vs. Syracuse, 2/8	2 vs. Syracuse, 2/8/18
Stolen Bases	-	-
Hitting Streak	4 - Feb. 22-current	4 - 2 times
Reached Base	4 - Feb. 22-current	4 - 2 times

#2 • PARIS NGUYEN

	Season	Career
Runs	-	-
Hits	-	-
RBI's	-	-
Walks	-	-
Stolen Bases	-	-
Hitting Streak	-	-
Reached Base	-	-

#3 • GABY OLIVARRIA

	Season	Career
Runs	1 - 2 times	1 - 2 times
Hits	-	1 at Cal St. Fullerton, 3/11/18
RBI's	-	-
Walks	-	-
Stolen Bases	-	-
Hitting Streak	-	1 - March 11, 2018-current
Reached Base	-	1 - March 11, 2018-current

#4 • KRISTEN PARKER

	Season	Career
Runs	1 - 2 times	1 - 15 times
Hits	2 vs. Syracuse, 2/8	2 vs. Syracuse, 2/8/19
RBI's	2 vs. Charlotte, 2/8	2 vs. Charlotte, 2/8/19
Walks	2 vs. Oklahoma St., 2/22	2 vs. Oklahoma St., 2/22/19
Stolen Bases	-	-
Hitting Streak	2 - Feb. 8	2 - Feb. 8, 2019
Reached Base	2 - 3 times	2 - 3 times

#1 • MEGAN SMITH

	Season	Career
Runs	1 vs. Northern Illinois, 2/15	3 at Utah St., 4/30/17
Hits	1 - 3 times	2 - 5 times
RBI's	-	1 - 7 times
Walks	2 at Cal St. Fullerton, 2/20	2 - 2 times
Stolen Bases	-	1 - 2 times
Hitting Streak	2 - Feb. 15	4 - May 4-10, 2018
Reached Base	3 - Feb. 10-15	7 - Feb. 22-March 18, 2018

#7 • KAYLA SOK

	Season	Career
Runs	-	-
Hits	-	-
RBI's	-	-
Walks	-	1 vs. Georgia, 2/8/18
Stolen Bases	-	1 vs. Georgia, 2/8/18
Hitting Streak	-	-
Reached Base	-	1 - Feb. 8, 2018

#31 • MOLLY STURDIVANT

	Season	Career
Runs	1 - 3 times	3 at New Mexico, 5/6/16
Hits	2 - 2 times	4 vs. Oklahoma St., 2/24/17
RBI's	2 vs. Nebraska, 2/22	4 - 3 times
Walks	1 - 2 times	3 vs. Ohio State, 3/16/16
Stolen Bases	-	-
Hitting Streak	4 - Feb. 8-9	11 - Feb. 12-March 2, 2017
Reached Base	6 - Feb. 8-15	19 - Feb. 12-March 11, 2017

#20 • SHELBY THOMPSON

	Season	Career
Runs	-	3 at Fresno St., 4/20/18
Hits	2 vs. Oklahoma St., 2/22	3 - 4 times
RBI's	2 - 2 times	4 - 3 times
Walks	1 - 5 times	2 - 3 times
Stolen Bases	-	1 - 13 times
Hitting Streak	2 - Feb. 22	12 - April 20-May 12, 2018
Reached Base	4 - Feb. 15-16	26 - March 27, 2018-Feb. 16, 2019

#15 • ALIZAE UMI

	Season	Career
Runs	-	1 vs. Minnesota, 3/2/18
Hits	-	1 - 3 times
RBI's	-	1 - 2 times
Walks	-	1 - 3 times
Stolen Bases	-	-
Hitting Streak	-	1 - 3 times
Reached Base	-	2 - Feb. 16-23, 2018

#22 • KIERA WRIGHT

	Season	Career
Runs	3 vs. Northern Ill., 2/15	3 - 4 times
Hits	3 - 2 times	3 - 6 times
RBI's	1 - 3 times	2 at Fresno St., 4/20/18
Walks	1 - 4 times	2 vs. Nevada, 4/13/18
Stolen Bases	3 vs. Charlotte, 2/9	3 - 2 times
Hitting Streak	3 - 2 times	11 - Feb. 11-March 2, 2017
Reached Base	6 - Feb. 15-22	12 - Feb. 11-March 2, 2017

2019 HOME RUNS

No.	Player	Gm#	Year Total	Date	Opponent	On	Inning	Outs	Count
1	Kelsey Munoz	2	1	Feb. 8	vs. Charlotte	2	6	0	3-2
2	Alicia Garcia	7	1	Feb. 15	Northern Illinois	0	2	1	1-0
3	Kelsey Munoz	7	2	Feb. 15	Northern Illinois	1	7	1	0-0

LEADOFF HOMERS (0):

BACK-TO-BACK HOMERS (0):

GRAND SLAMS (0):

PINCH-HIT HOMERS (0):

WALK-OFF HOMERS (1): Kelsey Munoz vs. Northern Illinois (Feb. 15)

MULTI-HOMER GAMES (0):

SDSU Home Run Team Records

2015	63
2012	58
2017	45
2013	45

2019 SDSU Home Runs By the Number

Record when hitting 1+ home runs	2-0
Record when hitting 2+ home runs	1-0
Record when hitting 3+ home runs	0-0
Record when homerless	6-7

2019 SDSU Top Home Run Games

Feb. 15 vs. Northern Illinois	2
Feb. 8 vs. Charlotte	1

2019 SDSU Individual Top HR Games

Kelsey Munoz vs. Northern Illinois (Feb. 15)	1
Alicia Garcia vs. Northern Illinois (Feb. 15)	1
Kelsey Munoz vs. Charlotte (Feb. 8)	1

2019 SDSU Home Run Breakdown

at home	2
on road	0
neutral	1
vs. non-MW	3
vs. MW	0
solo	1
two-run	1
three-run	1
grand slam	0
1st inning	0
2nd inning	1
3rd inning	0
4th inning	0
5th inning	0
6th inning	1
7th inning	1
with no outs	1
with one out	2
with two outs	0
0-0	1
1-0	1
2-0	0
3-0	0
0-1	0
1-1	0
2-1	0
3-1	0
0-2	0
1-2	0
2-2	0
3-2	1

**AZTEC CAREER RECORDS** (*BOLD* indicates 2019 player; ♦ indicates happened in Van Wyk era)

**OFFENSIVE RECORDS**

▷ **BATTING AVG.** (*min. 250 AB*)

1.	♦Jenavee Peres (2015-17)	.409
2.	Trish Mang (1987-88)	.358
3.	♦Lorena Bauer (2011-13, 15)	.351
4.	♦Zaria Meshack (2015-18)	.346
5.	♦Justeen Maeva (2010-12)	.345
5.	♦Brittany Knudsen (2007-10)	.343
6.	♦Kayla Jordan (2012-15)	.342
8.	♦Kellie Nordhagen (1999-02)	.336
9.	♦Erin Floros (2006-09)	.331
10.	♦Sydnee Cable (2014-17)	.330

▷ **ON-BASE PCT.** (*min. 250 AB*)

1.	♦Jenavee Peres (2015-17)	.466
2.	♦Hayley Miles (2011-12, 14-15)	.442
3.	♦Brittany Knudsen (2007-10)	.433
4.	Trish Mang (1987-88)	.431
5.	♦Sydnee Cable (2014-17)	.428
6.	♦Patrice Jackson (2010, 12-14)	.426
7.	♦Lorena Bauer (2011-13, 15)	.411
8.	♦Kayla Jordan (2012-15)	.408
9.	♦Erin Floros (2006-09)	.408
10.	♦Justeen Maeva (2010-12)	.406

▷ **SLUGGING PCT.** (*min. 250 AB*)

1.	♦Jenavee Peres (2015-17)	.743
2.	♦Lorena Bauer (2011-13, 15)	.737
3.	♦Patrice Jackson (2010, 12-14)	.641
4.	♦Hayley Miles (2011-12, 14-15)	.598
5.	Trish Mang (1987-88)	.541
6.	♦Justeen Maeva (2010-12)	.524
7.	♦Kayla Jordan (2012-15)	.519
8.	♦Molly Sturdivant (2016-)	.500
9.	♦Shelby Thompson (2017-)	.497
10.	♦Brittany Knudsen (2007-10)	.468

▷ **OPS PCT. (OB% + SLG%)** (*min. 250 AB*)

1.	♦Jenavee Peres (2015-17)	1.209
2.	♦Lorena Bauer (2011-13, 15)	1.148
3.	♦Patrice Jackson (2010, 12-14)	1.067
4.	♦Hayley Miles (2011-12, 14-15)	1.040
5.	Trish Mang (1987-88)	.972
6.	♦Justeen Maeva (2010-12)	.930
7.	♦Kayla Jordan (2012-15)	.927
8.	♦Brittany Knudsen (2007-10)	.900
9.	♦Molly Sturdivant (2016-)	.893
10.	♦Sydnee Cable (2014-17)	.889

▷ **GAMES PLAYED**

1.	♦Janna Kovensky (2001-04)	249
2.	♦Sarah Hershman (1999-02)	235
3.	♦Kellie Nordhagen (1999-02)	231
4.	♦Joann Figueroa (2001-04)	226
5.	♦Hayley Miles (2011-12, 14-15)	223
6.	♦Kayla Jordan (2012-15)	222
7.	♦Brittany Knudsen (2007-10)	220
	♦Erryn Gutjahr (1996-99)	220
9.	Stephanie Chapel (1990-93)	219
10.	♦Jen Wisneski (2008-11)	217

▷ **GAMES STARTED** (*since 1991*)

1.	♦Janna Kovensky (2001-04)	246
2.	♦Sarah Hershman (1999-02)	229
3.	♦Kellie Nordhagen (1999-02)	225
4.	♦Hayley Miles (2011-12, 14-15)	222
5.	♦Brittany Knudsen (2007-10)	218
	♦Erryn Gutjahr (1996-99)	218
7.	♦Jen Wisneski (2008-11)	216
8.	♦Joann Figueroa (2001-04)	215
9.	♦Kayla Jordan (2012-15)	212
10.	♦Chrystal Friesen (1993-96)	206

▷ **AT BATS**

1.	♦Kellie Nordhagen (1999-02)	755
2.	♦Janna Kovensky (2001-04)	737
3.	♦Kayla Jordan (2012-15)	699
4.	♦Sarah Hershman (1999-02)	685
5.	♦Joann Figueroa (2001-04)	675
6.	♦Brittany Knudsen (2007-10)	658
7.	Stephanie Chapel (1990-93)	657
8.	♦Erryn Gutjahr (1996-99)	642
9.	♦Hayley Miles (2011-12, 14-15)	637
10.	♦Lorena Bauer (2011-13, 15)	613

▷ **RUNS**

1.	♦Kayla Jordan (2012-15)	167
2.	♦Hayley Miles (2011-12, 14-15)	157
3.	♦Brittany Knudsen (2007-10)	134
	♦Janna Kovensky (2001-04)	134
5.	♦Kellie Nordhagen (1999-02)	126
6.	♦Jenavee Peres (2015-17)	112
7.	♦Tamani Wells (2005-08)	109
8.	♦Sarah Hershman (1999-02)	102
9.	♦Lorena Bauer (2011-13, 15)	101
10.	♦Patrice Jackson (2010, 12-14)	99

▷ **HITS**

1.	♦Kellie Nordhagen (1999-02)	254
2.	♦Kayla Jordan (2012-15)	239
3.	♦Janna Kovensky (2001-04)	227
4.	♦Brittany Knudsen (2007-10)	226
5.	♦Lorena Bauer (2011-13, 15)	215
6.	♦Sarah Hershman (1999-02)	212
7.	♦Hayley Miles (2011-12, 14-15)	210
8.	♦Joann Figueroa (2001-04)	193
9.	♦Sydnee Cable (2014-17)	187
10.	♦Erryn Gutjahr (1996-99)	184

▷ **EXTRA-BASE HITS**

1.	♦Lorena Bauer (2011-13, 15)	114
2.	♦Hayley Miles (2011-12, 14-15)	90
3.	♦Patrice Jackson (2010, 12-14)	81
4.	♦Kayla Jordan (2012-15)	72
5.	♦Jenavee Peres (2015-17)	63
6.	♦Brittany Knudsen (2007-10)	54
	♦Erryn Gutjahr (1996-99)	54
8.	♦Monica Alnes (2006-07, 09-10)	50
9.	♦Molly Sturdivant (2016-)	49
10.	♦Kellie Nordhagen (1999-02)	48

▷ **SINGLES**

1.	♦Kellie Nordhagen (1999-02)	206
2.	♦Janna Kovensky (2001-04)	180
3.	♦Joann Figueroa (2001-04)	175
4.	♦Brittany Knudsen (2007-10)	172
5.	♦Sarah Hershman (1999-02)	169
6.	♦Kayla Jordan (2012-15)	167
7.	♦Tamani Wells (2005-08)	156
8.	♦Sydnee Cable (2014-17)	144
9.	♦Leia Ruiz (2013-16)	141
10.	♦Erryn Gutjahr (1996-99)	130

▷ **DOUBLES**

1.	♦Lorena Bauer (2011-13, 15)	51
2.	♦Hayley Miles (2011-12, 14-15)	46
3.	♦Kayla Jordan (2012-15)	39
4.	♦Brittany Knudsen (2007-10)	36
5.	♦Monica Alnes (2006-07, 09-10)	35
6.	♦Kellie Nordhagen (1999-02)	34
	♦Erryn Gutjahr (1996-99)	34
8.	♦Patrice Jackson (2010, 12-14)	32
9.	♦Katie Byrd (2016-)	31
10.	♦Molly Sturdivant (2016-)	29

▷ **TRIPLES**

1.	♦Kayla Jordan (2012-15)	14
2.	♦Kellie Nordhagen (1999-02)	12
	Stephanie Chapel (1990-93)	12
4.	Robin Long (1987-89)	10
5.	♦Brittany Knudsen (2007-10)	8
	♦Tonye McCorkle (2008-09)	8
	♦Janna Kovensky (2001-04)	8
	♦Sarah Hershman (1999-02)	8
9.	♦Hayley Miles (2011-12, 14-15)	7
	♦Lindsey Marquez (2007-08, 10-11)	7
	♦Jen Wisneski (2008-11)	7
	♦Kelcy Murphy (2001-04)	7
	♦Shannon Poulsen (1992-95)	7
	Trish Mang (1987-88)	7
	Katy Murphy (1982-85)	7

▷ **HOME RUNS**

1.	♦Lorena Bauer (2011-13, 15)	60
2.	♦Patrice Jackson (2010, 12-14)	46
3.	♦Hayley Miles (2011-12, 14-15)	37
4.	♦Jenavee Peres (2015-17)	34
5.	♦Molly Sturdivant (2016-)	19
	♦Kayla Jordan (2012-15)	19
7.	♦Justeen Maeva (2010-12)	18
8.	♦Megan McDonald (2005-08)	17
	♦Erryn Gutjahr (1996-99)	17
10.	♦Jaylene Ignacio (2014-17)	16

▷ **RUNS BATTED IN**

1.	♦Lorena Bauer (2011-13, 15)	200
2.	♦Patrice Jackson (2010, 12-14)	138
3.	♦Jenavee Peres (2015-17)	131
4.	♦Hayley Miles (2011-12, 14-15)	130
5.	♦Justeen Maeva (2010-12)	117
6.	♦Sydnee Cable (2014-17)	113
7.	♦Molly Sturdivant (2016-)	107
8.	♦Kelcy Murphy (2001-04)	102
	♦Erryn Gutjahr (1996-99)	102
10.	♦Erin Floros (2006-09)	101

▷ **TOTAL BASES**

1.	♦Lorena Bauer (2011-13, 15)	452
2.	♦Hayley Miles (2011-12, 14-15)	381
3.	♦Kayla Jordan (2012-15)	363
4.	♦Patrice Jackson (2010, 12-14)	351
5.	♦Kellie Nordhagen (1999-02)	318
6.	♦Brittany Knudsen (2007-10)	308
7.	♦Janna Kovensky (2001-04)	306
8.	♦Jenavee Peres (2015-17)	298
9.	♦Sarah Hershman (1999-02)	281
10.	♦Erryn Gutjahr (1996-99)	275

▷ **WALKS**

1.	♦Hayley Miles (2011-12, 14-15)	120
2.	♦Patrice Jackson (2010, 12-14)	103
3.	♦Brittany Knudsen (2007-10)	99
4.	♦Sydnee Cable (2014-17)	77
5.	♦Janna Kovensky (2001-04)	71
6.	♦Megan McDonald (2005-08)	69
7.	♦Taylor Stewart (2015-18)	68
8.	♦Kayla Jordan (2012-15)	66
9.	♦Lorena Bauer (2011-13, 15)	62
	♦Erin Floros (2006-09)	62
	♦Chrystal Friesen (1993-96)	62

♦ **Molly Sturdivant (2016-)** 59

▷ **TIMES HIT BY PITCH** (*since 1981*)

1.	♦Sydnee Cable (2014-17)	25
2.	♦Megan McDonald (2005-08)	16
3.	♦Kayla Jordan (2012-15)	15
4.	♦Jenavee Peres (2015-17)	12
5.	♦Shelby Thompson (2017-)	11
	♦Hayley Miles (2011-12, 14-15)	11
	♦Monica Alnes (2006-07, 09-10)	11
	Robin Long (1987-89)	11
9.	♦Meagan Hartung (2003-06)	10
10.	♦Molly Sturdivant (2016-)	9
	♦Kelcy Murphy (2001-04)	9
	♦Amber Grahman (2002-03)	9
	♦Tashie Aguinaga (2000-01)	9

▷ **STOLEN BASES**

1.	♦Kayla Jordan (2012-15)	66
2.	♦Kelley Santa Cruz (1996-98)	59
3.	♦Janna Kovensky (2001-04)	57
4.	♦Tamani Wells (2005-08)	51
5.	♦Sarah Hershman (1999-02)	50
6.	♦Brittany Knudsen (2007-10)	45
7.	Lori Turken (1982-85)	43
8.	♦Stefanie Quichocho-Rosario (2007-10)	40
9.	♦Gina Punaro (1997-98)	39
10.	♦Felicia Reifschneider (2009-12)	38

▷ **STOLEN BASE %** (*since '83; min. 20 att*)

1.	♦Tami Simpson (1998-00)	.933
2.	Lori Turken (1982-85)	.896
3.	♦Janna Kovensky (2001-04)	.877
4.	♦Aris Metcalfe (2016-)	.857
	♦Kristy Hensel (1996-98)	.857
6.	♦Tonye McCorkle (2008-09)	.852
7.	♦Gina Punaro (1997-98)	.848
8.	♦Kayla Jordan (2012-15)	.846
9.	♦Chrystal Friesen (1993-96)	.833
10.	♦Dominique Dinner (2012-14)	.828

▷ **SACRIFICE BUNTS**

1.	♦Tamani Wells (2005-08)	53
2.	Tracy Stowe (1990-92)	50
3.	♦Sarah Hershman (1999-02)	43
4.	♦Joann Figueroa (2001-04)	42
5.	♦Janna Kovensky (2001-04)	38
6.	♦Bree Boyer (2003-06)	37
7.	♦Erin Mahoney (2003-05)	36
8.	Joyanne Vilarino (1984-85)	34
9.	Cindy Moser (1982-85)	32
10.	♦Leia Ruiz (2013-16)	29
	♦Brittany Knudsen (2007-10)	29
	Stacy Sullivan (1986-88)	29

▷ **SACRIFICE FLIES**

1.	♦Molly Sturdivant (2016-)	10
2.	♦Jenavee Peres (2015-17)	9
3.	♦Patrice Jackson (2010, 12-14)	9
4.	♦Sydnee Cable (2014-17)	8
	♦Megan McDonald (2005-08)	8
6.	♦Jaylene Ignacio (2014-17)	7
	♦Erryn Gutjahr (1996-99)	7
8.	♦Kristin May (2010-13)	6
	♦Lindsey Marquez (2007-08, 10-11)	6
10.	♦Justeen Maeva (2010-12)	5
	♦Monica Alnes (2006-07, 09-10)	5
	♦Brittany Knudsen (2007-10)	5
	♦Erin Floros (2006-09)	5
	♦Janna Kovensky (2001-04)	5
	Robin Long (1987-89)	5

▷ **AB/STRIKEOUT** (*since '81; min. 250 AB*)

1.	Trish Mang (1987-88)	76.75
2.	Julie Myers (1990-91)	22.21
3.	♦Tamani Wells (2005-08)	17.84
4.	Barbara Mays (1985-86)	17.70
5.	♦Jackie Eigner (1997-98)	16.24
6.	Jennifer Woolery (1993-94)	15.71
7.	♦Alicia Matulik (1994-96)	15.58
8.	Rachel Acuff (1993-94)	15.11
9.	♦Kellie Nordhagen (1999-02)	15.10
10.	Jennifer Hambly (1992-93)	14.37



**AZTEC CAREER RECORDS CONTINUED**

**PITCHING RECORDS**

**▷ WINS**

1. ♦Sandra Durazo (1998-01)	87
2. ♦Christina Ross (2006-08)	70
3. ♦Erica Romero (2014-17)	67
4. ♦Samantha Beasley (2008-11)	61
5. ♦Bailey Micetich (2009-12)	58
6. ♦Celena Velasquez (2003-06)	55
7. ♦Danielle O'Toole (2013-14)	45
Michelle Wesson (1988-91)	45
9. Bre DeSanta (2002-03)	38
♦MarQuessa Penrod (1993-96)	38

**▷ WIN PCT. (min. 30 decisions)**

1. ♦Danielle O'Toole (2013-14)	.726
2. ♦Bre DeSanta (2002-03)	.717
3. ♦Christina Ross (2006-08)	.660
4. ♦Erica Romero (2014-17)	.657
5. ♦Celena Velasquez (2003-06)	.647
6. ♦Bailey Micetich (2009-12)	.644
7. ♦Samantha Beasley (2008-11)	.642
8. ♦Sandra Durazo (1998-01)	.621
9. ♦Rebecca Arbino (2012-13)	.586
10. ♦Alex Formby (2016-18)	.519

**▷ EARNED RUN AVG. (min. 200 IP)**

1. Robyn Reid (1983-85)	0.77
2. Patty Mackey (1980-83)	0.95
3. Lisa Perettie (1989, 91)	1.12
4. Bonnie Rice (1984-85)	1.25
5. ♦Bre DeSanta (2002-03)	1.26
6. Lisa Michie (1983-86)	1.39
7. ♦Christina Ross (2006-08)	1.50
8. Michelle Wesson (1988-91)	1.55
9. Karen McCormick (1991-94)	1.62
10. Mya Sanders (1981-82)	1.68

**▷ APPEARANCES**

1. ♦Sandra Durazo (1998-01)	165
2. ♦Erica Romero (2014-17)	157
3. ♦Samantha Beasley (2008-11)	139
4. ♦Celena Velasquez (2003-06)	138
5. ♦Bailey Micetich (2009-12)	136
6. ♦MarQuessa Penrod (1993-96)	132
7. ♦Christina Ross (2006-08)	129
Michelle Wesson (1988-91)	129
9. Karen McCormick (1991-94)	119
10. Alex Formby (2016-18)	104

**▷ GAMES STARTED**

1. ♦Sandra Durazo (1998-01)	116
2. ♦Erica Romero (2014-17)	103
3. ♦Christina Ross (2006-08)	96
4. ♦Samantha Beasley (2008-11)	92
Karen McCormick (1991-94)	92
Michelle Wesson (1988-91)	92
7. ♦Bailey Micetich (2009-12)	91
8. ♦MarQuessa Penrod (1993-96)	88
9. ♦Celena Velasquez (2003-06)	82
10. Robyn Reid (1983-85)	72

**▷ COMPLETE GAMES**

1. ♦Sandra Durazo (1998-01)	95
2. ♦Christina Ross (2006-08)	72
3. Michelle Wesson (1988-91)	71
4. Karen McCormick (1991-94)	68
5. Robyn Reid (1983-85)	61
6. ♦MarQuessa Penrod (1993-96)	59
7. Patty Mackey (1980-83)	58
8. ♦Celena Velasquez (2003-06)	46
9. ♦Samantha Beasley (2008-11)	45
10. ♦Bailey Micetich (2009-12)	41

**▷ SOLO SHUTOUTS (since 1999)**

1. ♦Samantha Beasley (2008-11)	23
♦Christina Ross (2006-08)	23
3. ♦Celena Velasquez (2003-06)	20
4. ♦Sandra Durazo (1998-01)	19
5. ♦Bailey Micetich (2009-12)	17
6. ♦Bre DeSanta (2002-03)	12
7. ♦Danielle O'Toole (2013-14)	10
8. ♦Rebecca Arbino (2012-13)	9
9. ♦Erica Romero (2014-17)	8
♦Cori Janelli (2004-05)	8

**▷ TOTAL SHUTOUTS (since 1983)**

1. ♦Samantha Beasley (2008-11)	36
2. ♦Christina Ross (2006-08)	28
♦Sandra Durazo (1998-01)	28
4. ♦Bailey Micetich (2009-12)	27
5. ♦Celena Velasquez (2003-06)	25
6. Michelle Wesson (1988-91)	23
Robyn Reid (1983-85)	23
8. Karen McCormick (1991-94)	18
9. ♦Danielle O'Toole (2013-14)	17
10. ♦Bre DeSanta (2002-03)	16

**▷ SAVES**

1. ♦Alex Formby (2016-18)	12
♦Celena Velasquez (2003-06)	12
3. ♦Samantha Beasley (2008-11)	11
4. ♦Bre DeSanta (2002-03)	7
5. ♦Erica Romero (2014-17)	6
♦Rebecca Arbino (2012-13)	6
♦Christina Ross (2006-08)	6
8. ♦Renae Mohamed (1996-97)	5
9. ♦Bailey Micetich (2009-12)	4
10. ♦Sandra Durazo (1998-01)	3
♦Lisa Gonzales (1994-97)	3
Michelle Wesson (1988-91)	3

-----

**♦Marissa Moreno (2017-)** **2**

**▷ INNINGS PITCHED**

1. ♦Sandra Durazo (1998-01)	879.0
2. ♦Christina Ross (2006-08)	691.1
3. Michelle Wesson (1988-91)	681.2
4. ♦Erica Romero (2014-17)	659.0
5. ♦MarQuessa Penrod (1993-96)	641.0
6. ♦Samantha Beasley (2008-11)	639.2
7. Karen McCormick (1991-94)	632.1
8. ♦Bailey Micetich (2009-12)	602.0
9. ♦Celena Velasquez (2003-06)	584.2
10. Robyn Reid (1983-85)	544.1

**▷ STRIKEOUTS**

1. ♦Samantha Beasley (2008-11)	799
2. ♦Christina Ross (2006-08)	612
3. ♦Bailey Micetich (2009-12)	611
4. ♦Sandra Durazo (1998-01)	543
5. ♦Celena Velasquez (2003-06)	529
6. ♦Erica Romero (2014-17)	397
7. Robyn Reid (1983-85)	361
8. ♦Bre DeSanta (2002-03)	354
9. ♦Danielle O'Toole (2013-14)	317
10. ♦Rebecca Arbino (2012-13)	308

**▷ K'S PER 7 INNINGS (min. 200 IP)**

1. ♦Samantha Beasley (2008-11)	8.74
2. ♦Bailey Micetich (2009-12)	7.10
3. ♦Bre DeSanta (2002-03)	6.39
4. ♦Celena Velasquez (2003-06)	6.33
5. ♦Christina Ross (2006-08)	6.20
6. ♦Cori Janelli (2004-05)	6.03
7. ♦Rebecca Arbino (2012-13)	5.70
8. ♦Danielle O'Toole (2013-14)	5.39
9. Mya Sanders (1981-82)	4.66
10. Robyn Reid (1983-85)	4.64

**▷ WALKS PER 7 INNINGS (min. 200 IP)**

1. ♦Celena Velasquez (2003-06)	0.98
2. Sara Ahern (1989-91)	1.03
3. ♦Renae Mohamed (1996-97)	1.04
4. Robyn Reid (1983-85)	1.09
5. ♦Cori Janelli (2004-05)	1.20
6. Lisa Perettie (1989, 91)	1.21
7. ♦Deanna Richards (2003-04)	1.31
9. Patty Mackey (1980-83)	1.32
9. ♦Bailey Micetich (2009-12)	1.326
10. ♦Rebecca Arbino (2012-13)	1.332

**▷ K/BB RATIO (min. 200 IP)**

1. ♦Celena Velasquez (2003-06)	6.45
2. ♦Bailey Micetich (2009-12)	5.36
3. ♦Cori Janelli (2004-05)	5.02
4. ♦Rebecca Arbino (2012-13)	4.28
5. Robyn Reid (1983-85)	4.25
6. ♦Christina Ross (2006-08)	3.97
7. ♦Danielle O'Toole (2013-14)	3.96
8. ♦Samantha Beasley (2008-11)	3.86
9. ♦Deanna Richards (2003-04)	2.51
10. ♦Bre DeSanta (2002-03)	2.48

**▷ OPP. AVG. (min. 200 IP) (since 1991)**

1. ♦Bre DeSanta (2002-03)	.191
2. ♦Samantha Beasley (2008-11)	.207
3. ♦Celena Velasquez (2003-06)	.211
4. ♦Christina Ross (2006-08)	.218
5. ♦Cori Janelli (2004-05)	.225
6. Karen McCormick (1991-94)	.233
7. ♦Deanna Richards (2003-04)	.239
8. ♦Sandra Durazo (1998-01)	.240
9. ♦Danielle O'Toole (2013-14)	.242
10. ♦Bailey Micetich (2009-12)	.246

**▷ HITS PER 7 INNINGS (min. 200 IP)**

1. Robyn Reid (1983-85)	4.30
2. ♦Bre DeSanta (2002-03)	4.655
3. Mya Sanders (1981-82)	4.662
4. Patty Mackey (1980-83)	4.73
5. Bonnie Rice (1984-85)	5.11
6. Lisa Perettie (1989, 91)	5.27
7. ♦Samantha Beasley (2008-11)	5.36
8. ♦Celena Velasquez (2003-06)	5.44
9. Lisa Michie (1983-86)	5.57
10. ♦Cori Janelli (2004-05)	6.02

**▷ WHIP (Walks+Hits/IP) (min. 200 IP)**

1. Robyn Reid (1983-85)	0.770
2. Patty Mackey (1980-83)	0.858
3. Lisa Perettie (1989, 91)	0.926
4. ♦Celena Velasquez (2003-06)	0.917
5. Bonnie Rice (1984-85)	1.007
6. ♦Cori Janelli (2004-05)	1.032
7. ♦Bre DeSanta (2002-03)	1.034
8. ♦Christina Ross (2006-08)	1.041
9. Lisa Michie (1983-86)	1.064
10. ♦Samantha Beasley (2008-11)	1.090

**DEFENSIVE RECORDS**

**▷ FIELDING % (since '81, min. 300 chances)**

1. Debbie Burford (1991)	.998
2. Kathy Benson (1981)	.994
3. ♦Erin Floros (2006-09)	.993
4. Joey Clark (1994)	.9919
5. ♦Taylor Adams (2018-)	.991
6. ♦Kristin May (2010-13)	.990
7. ♦Jacque Vaca (2003)	.9891
8. ♦Eva Sahatdjan (2010-11)	.9888
9. ♦Danielle Touhey (2002-05)	.986
10. ♦Amber Grahman (2002-03)	.985

**▷ CHANCES (since 1981)**

1. ♦Erryn Gutjahr (1996-99)	1,626
2. ♦Monica Alnes (2006-07, 09-10)	1,191
3. ♦Summer Ehrsam (1999-02)	1,143
4. ♦Sydnee Cable (2014-17)	1,093
5. ♦Sarah Hershman (1999-02)	1,061
6. ♦Erin Floros (2006-09)	1,059
7. ♦Megan McDonald (2005-08)	1,033
8. Leslie Lung (1988-89)	1,001
9. Stacy Goff (1986-87)	987
10. ♦Kristin May (2010-13)	904

**▷ PUTOUTS (since 1981)**

1. ♦Erryn Gutjahr (1996-99)	1,453
2. ♦Monica Alnes (2006-07, 09-10)	1,051
3. ♦Sydnee Cable (2014-17)	1,020
4. ♦Megan McDonald (2005-08)	945
5. ♦Erin Floros (2006-09)	936
6. ♦Summer Ehrsam (1999-02)	923
7. Leslie Lung (1988-89)	920
8. Stacy Goff (1986-87)	880
9. ♦Kristin May (2010-13)	829
10. ♦Danielle Touhey (2002-05)	712

**▷ ASSISTS (since 1981)**

1. ♦Chrystal Friesen (1993-96)	412
2. ♦Joann Figueroa (2001-04)	409
3. ♦Kelcy Murphy (2001-04)	386
4. ♦Sarah Hershman (1999-02)	370
5. Barbara Mays (1985-86)	342
6. ♦Jen Wisneski (2008-11)	338
7. ♦Leia Ruiz (2013-16)	337
8. Julie Myers (1990-91)	322
9. ♦Tashie Aguinaga (2000-01)	311
10. ♦Vanessa Villegas (1999-01)	310

**▷ CAUGHT STEALING BY (Since 2000)**

1. ♦Megan McDonald (2005-08)	35
2. ♦Erin Floros (2006-09)	29
3. ♦Kristin May (2010-13)	23
4. ♦Brooke Johnson (1999-01)	20
5. ♦Jenavee Peres (2015-17)	19
6. ♦Danielle Touhey (2002-05)	18
7. ♦Molly Sturdivant (2016-)	13
♦Eva Sahatdjan (2010-11)	13

**▷ CAUGHT STEALING % (min. 20 att) (since '00)**

1. ♦Erin Floros (2006-09)	.483
2. ♦Megan McDonald (2005-08)	.398
3. ♦Jenavee Peres (2015-17)	.352
4. ♦Amber Grahman (2002-03)	.293
5. ♦Molly Sturdivant (2016-)	.250
6. ♦Brooke Johnson (1999-01)	.247
7. ♦Eva Sahatdjan (2010-11)	.236

2019 Statistics for Aztec Softball - Record: 8-7 (Home: 3-1; Away: 0-3; Neutral: 5-3; MW: 0-0)

Overall Batting Statistics

Player	AVG	GP-GS	AB	R	H	2B	3B	HR	RBI	TB	SLG%	BB	HBP	SO	GDP	OB%	SF	SH	SB-ATT	PO	A	E	FLD%
WRIGHT, Kiera	.333	15-15	48	12	16	1	1	0	3	19	.396	4	0	4	0	.385	0	0	6-6	8	0	0	1.000
MUNOZ, Kelsey	.326	15-15	46	6	15	3	0	2	10	24	.522	3	0	4	0	.367	0	0	0-0	15	36	3	.944
BYRD, Katie	.316	15-15	38	9	12	0	0	0	4	12	.316	5	2	1	1	.422	0	2	2-2	24	22	2	.958
STURDIVANT, Molly	.300	15-15	40	3	12	4	0	0	4	16	.400	2	4	6	0	.391	0	0	0-0	60	19	2	.975
ADAMS, Taylor	.270	14-13	37	4	10	4	0	0	6	14	.378	0	0	4	0	.270	0	1	0-0	100	4	1	.990
THOMPSON, Shelby	.238	10-10	21	0	5	2	0	0	6	7	.333	5	0	4	1	.370	1	1	0-0	9	6	2	.882
GARCIA, Alicia	.231	14-13	26	2	6	2	0	1	3	11	.423	3	0	5	0	.310	0	1	0-0	4	14	1	.947
PARKER, Kristen	.182	13-12	33	2	6	0	0	0	3	6	.182	1	0	4	1	.206	0	1	0-0	19	0	0	1.000
SMITH, Megan	.130	14-8	23	1	3	0	0	0	0	3	.130	3	0	3	0	.231	0	0	1-1	7	0	2	.778
-----																							
CORDOLA, Jessica	.333	6-2	9	2	3	2	0	0	1	5	.556	0	1	2	0	.400	0	0	0-0	0	2	0	1.000
AYERS, Maddi	.333	6-4	9	0	3	0	0	0	1	3	.333	1	0	0	1	.400	0	0	0-0	2	0	0	1.000
METCALFE, Aris	.167	14-1	6	4	1	0	0	0	0	1	.167	0	0	1	0	.167	0	1	4-5	3	0	0	1.000
FRASER, Kylie	.154	8-3	13	1	2	0	0	0	0	2	.154	1	0	4	0	.214	0	0	0-0	4	1	2	.714
BARTH, Paige	.000	7-5	11	2	0	0	0	0	1	0	.000	1	0	2	0	.083	0	2	0-0	8	1	0	1.000
UMI, Alizae	.000	5-4	8	0	0	0	0	0	0	0	.000	0	0	3	0	.000	0	1	0-0	14	2	0	1.000
JUSAY, Janina	.000	7-2	5	2	0	0	0	0	0	0	.000	0	0	2	0	.000	0	0	0-0	1	0	0	1.000
SOK, Kayla	.000	5-0	0	0	0	0	0	0	0	0	.000	0	0	0	0	.000	0	0	0-0	0	0	0	.000
OLIVARRIA, Gaby	.000	4-0	0	2	0	0	0	0	0	0	.000	0	0	0	0	.000	0	0	0-0	0	0	0	.000
JAMES, MJ	.000	7-4	0	0	0	0	0	0	0	0	.000	0	0	0	0	.000	0	0	0-0	1	8	0	1.000
MORENO, Marissa	.000	14-9	0	0	0	0	0	0	0	0	.000	0	0	0	0	.000	0	0	0-0	0	12	2	.857
<b>TOTALS</b>	<b>.252</b>	<b>15-15</b>	<b>373</b>	<b>52</b>	<b>94</b>	<b>18</b>	<b>1</b>	<b>3</b>	<b>42</b>	<b>123</b>	<b>.330</b>	<b>29</b>	<b>7</b>	<b>49</b>	<b>4</b>	<b>.317</b>	<b>1</b>	<b>10</b>	<b>13-14</b>	<b>279</b>	<b>127</b>	<b>17</b>	<b>.960</b>
<b>OPPONENTS</b>	<b>.309</b>	<b>15-15</b>	<b>391</b>	<b>76</b>	<b>121</b>	<b>22</b>	<b>1</b>	<b>12</b>	<b>63</b>	<b>181</b>	<b>.463</b>	<b>39</b>	<b>9</b>	<b>64</b>	<b>4</b>	<b>.381</b>	<b>4</b>	<b>8</b>	<b>15-20</b>	<b>281</b>	<b>136</b>	<b>22</b>	<b>.950</b>

Totals: LOB - Team (87), Opp (96). DPs turned - Team (5), Opp (6). IBB - Team (1), STURDIVANT 1.

Overall Pitching Statistics

Player	ERA	W-L	APP	GS	CG	SH/CBO	SV	IP	H	R	ER	BB	SO	2B	3B	HR	AB	B/Avg	WP	HBP	BK	SFA	SHA
MORENO, Marissa	3.81	5-3	14	7	3	2/0	1	53.1	57	37	29	23	48	8	1	4	211	.270	5	3	0	3	4
JAMES, MJ	5.88	2-1	7	4	1	0/0	0	25.0	44	25	21	10	8	10	0	4	118	.373	3	5	0	0	2
GARCIA, Alicia	5.73	1-3	7	4	0	0/0	0	14.2	20	14	12	6	8	4	0	4	62	.323	0	1	0	1	2
<b>TOTALS</b>	<b>4.67</b>	<b>8-7</b>	<b>15</b>	<b>15</b>	<b>4</b>	<b>2/0</b>	<b>1</b>	<b>93.0</b>	<b>121</b>	<b>76</b>	<b>62</b>	<b>39</b>	<b>64</b>	<b>22</b>	<b>1</b>	<b>12</b>	<b>391</b>	<b>.309</b>	<b>8</b>	<b>9</b>	<b>0</b>	<b>4</b>	<b>8</b>
<b>OPPONENTS</b>	<b>2.62</b>	<b>7-8</b>	<b>15</b>	<b>15</b>	<b>4</b>	<b>4/2</b>	<b>1</b>	<b>93.2</b>	<b>94</b>	<b>52</b>	<b>35</b>	<b>29</b>	<b>49</b>	<b>18</b>	<b>1</b>	<b>3</b>	<b>373</b>	<b>.252</b>	<b>4</b>	<b>7</b>	<b>0</b>	<b>1</b>	<b>10</b>

Overall Fielding Statistics

Player	C	PO	A	E	FLD%	DPs	SBA	CSB	SBA%	PB	CI
PARKER, Kristen	19	19	0	0	1.000	0	0	0	-	0	0
UMI, Alizae	16	14	2	0	1.000	0	5	1	.833	1	0
JAMES, MJ	9	1	8	0	1.000	0	0	0	-	0	0
BARTH, Paige	9	8	1	0	1.000	0	0	0	-	0	0
WRIGHT, Kiera	8	8	0	0	1.000	0	0	0	-	0	0
METCALFE, Aris	3	3	0	0	1.000	0	0	0	-	0	0
CORDOLA, Jessica	2	0	2	0	1.000	0	0	0	-	0	0
AYERS, Maddi	2	2	0	0	1.000	0	0	0	-	0	0
JUSAY, Janina	1	1	0	0	1.000	0	0	0	-	0	0
ADAMS, Taylor	105	100	4	1	.990	5	0	0	-	0	0
STURDIVANT, Molly	81	60	19	2	.975	1	8	3	.727	5	0
BYRD, Katie	48	24	22	2	.958	2	0	0	-	0	0
GARCIA, Alicia	19	4	14	1	.947	0	0	0	-	0	0
MUNOZ, Kelsey	54	15	36	3	.944	3	0	0	-	0	0
THOMPSON, Shelby	17	9	6	2	.882	1	0	0	-	0	0
MORENO, Marissa	14	0	12	2	.857	0	0	0	-	0	0
SMITH, Megan	9	7	0	2	.778	0	0	0	-	0	0
FRASER, Kylie	7	4	1	2	.714	0	2	1	.667	0	0
OLIVARRIA, Gaby	0	0	0	0	.000	0	0	0	-	0	0
SOK, Kayla	0	0	0	0	.000	0	0	0	-	0	0
<b>TOTALS</b>	<b>423</b>	<b>279</b>	<b>127</b>	<b>17</b>	<b>.960</b>	<b>5</b>	<b>15</b>	<b>5</b>	<b>.750</b>	<b>6</b>	<b>0</b>
<b>OPPONENTS</b>	<b>439</b>	<b>281</b>	<b>136</b>	<b>22</b>	<b>.950</b>	<b>6</b>	<b>13</b>	<b>1</b>	<b>.929</b>	<b>3</b>	<b>0</b>

Totals: PB - Team (6), STURDIVANT 5, UMI 1, Opp (3). SBA/ATT - STURDIVANT (8-11), UMI (5-6), FRASER (2-3).

Hitting minimums - 1 Game 1.0 TPA/Game

Pitching minimums - 1 Game 5 IP 1.0 IP/Game



# BROADCAST ROSTER



**00** Aris Metcalfe  
Sr. • OF • 5-4 • L/R  
Compton, Calif.



**1** Megan Smith  
Jr. • OF • 5-4 • L/R  
Valencia, Calif.



**2** Paris Nguyen  
Fr. • SS/2B • 5-5 • R/R  
Lake Elsinore, Calif.



**3** Gaby Olivarria  
So. • UTIL • 5-5 • L/R  
San Diego, Calif.



**4** Kristen Parker  
Jr. • OF • 5-4 • R/R  
San Diego, Calif.



**7** Kayla Sok  
Sr. • MI/OF • 5-4 • R/R  
Glendora, Calif.



**8** Janina Jusay  
So. • OF • 5-5 • R/R  
San Diego, Calif.



**9** Alicia Garcia  
Jr. • P • 5-8 • R/R  
San Diego, Calif.



**11** Katie Byrd  
Sr. • 2B • 5-6 • R/R  
Santee, Calif.



**12** Maddi Ayers  
Fr. • IF • 5-6 • R/R  
Sacramento, Calif.



**15** Jessica Cordola  
Fr. • IF • 5-9 • R/R  
Santa Clarita, Calif.



**15** Alizae Umi  
So. • C • 5-5 • R/R  
Torrance, Calif.



**19** Hannah Johnson  
So. • P • 5-6 • R/R  
La Habra, Calif.



**20** Shelby Thompson  
Jr. • SS • 5-6 • R/R  
Benicia, Calif.



**22** Kiera Wright  
Jr. • OF • 5-6 • L/R  
Riverside, Calif.



**26** Kelsey Munoz  
So. • 3B • 5-10 • R/R  
Chula Vista, Calif.



**27** MJ James  
RS-Fr. • P • 6-0 • R/R  
San Diego, Calif.



**28** Paige Barth  
Fr. • IF • 5-5 • R/R  
Newbury Park, Calif.



**31** Molly Sturdivant  
Sr. • C/3B • 5-6 • R/R  
Santa Ana, Calif.



**33** Marissa Moreno  
Jr. • P • 5-11 • R/R  
Torrance, Calif.



**43** Kylie Fraser  
Fr. • C/IF • 5-9 • R/R  
Redondo Beach, Calif.



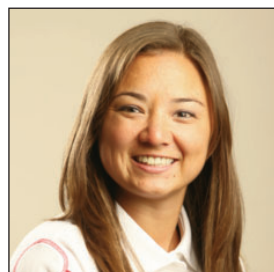
**99** Taylor Adams  
So. • 1B • 5-9 • R/R  
Mill Creek, Wash.



**Kathy Van Wyk**  
Head Coach - 23rd Season  
Cal State Fullerton, 1983



**Stacey Nuvevan Deniz**  
Associate Head Coach - 11th season  
UCLA, 2002



**Mia Longfellow**  
Assistant Coach - 10th season  
Oregon State, 2007