

SAN DIEGO STATE AZTECS

Table of Contents

Welcome to San Diego.	2	SDSU Campus Map.	13
Department of Athletics Staff.	3	Other Ticket Information.	14
Map to Qualcomm Stadium.	4	Transportation Information.	15
Qualcomm Stadium Map.	5	Hotels.	16-20
Advance Football Information.	6	Restaurants.	21-24
Football Ticket Information.	7	College Area Fast Food.	25
Map to Campus.	8	Movies & Shopping.	26
Campus Athletic Facilities Map.	9	Special Attractions.	27
Viejas Arena Map.	10	Radio Stations & Weather.	28
Men's Basketball Ticket Information.	11	Emergency & Miscellaneous Info.	29
Tony Gwynn Stadium Map.	12	Visiting Team Travel Info Form.	30

The California State University system is committed to providing equal opportunities for male and female students in all campus programs, including intercollegiate athletics.



SAN DIEGO STATE AZTECS

Welcome to San Diego

Dear Guest:

We look forward to your team's visit to San Diego. As you prepare for your visit, we hope you will utilize this guide as a resource. We have compiled some information to assist you with your travel plans. You will find information regarding travel, dining, lodging, entertainment attractions, and miscellaneous information, which will make your stay in San Diego even more enjoyable.

Parking Information

When you arrive at SDSU, it is important to remember that parking regulations are strictly enforced and we ask you to please follow event parking signs displayed throughout the campus.

Please refer to the map on page 13 for parking information at specific facilities. *For games, parking structure 5 (PS-5) requires the purchase of a parking permit at \$1 per hour. Yellow parking permit dispensers are located on both levels of PS-5 at both the north and south ends.* Parking lot "L" may be used for visiting men's and women's basketball teams only. For additional parking questions and/or instructions, please contact Event Management at (619) 594-3383.

Locker Rooms

It is recommended that all teams, except baseball, basketball, & football, dress at the hotel and arrive at the venue in uniform. Towels can be provided, upon request, for showers following the game. Please call the Equipment Room if your team requires any special needs (i.e., shower facilities and laundry services) at (619) 594-4951.

Athletic Medicine

The Aztec Athletic Medicine Facility is located in room 1400 of the Aztec Athletics Center. Their office hours are 8 a.m. to 6 p.m., Monday through Friday. Please contact the staff at (619) 594-5551 to coordinate any special training needs your team may require.

If you have additional questions or need further assistance, please refer to the department phone directory located on the following page.

We look forward to your visit and wish you good luck in your upcoming season.

Sincerely,

**SAN DIEGO STATE UNIVERSITY
DEPARTMENT OF ATHLETICS**



Hepler Hall

SAN DIEGO STATE AZTECS

Department of Athletics Staff

(619 area code)

Administration

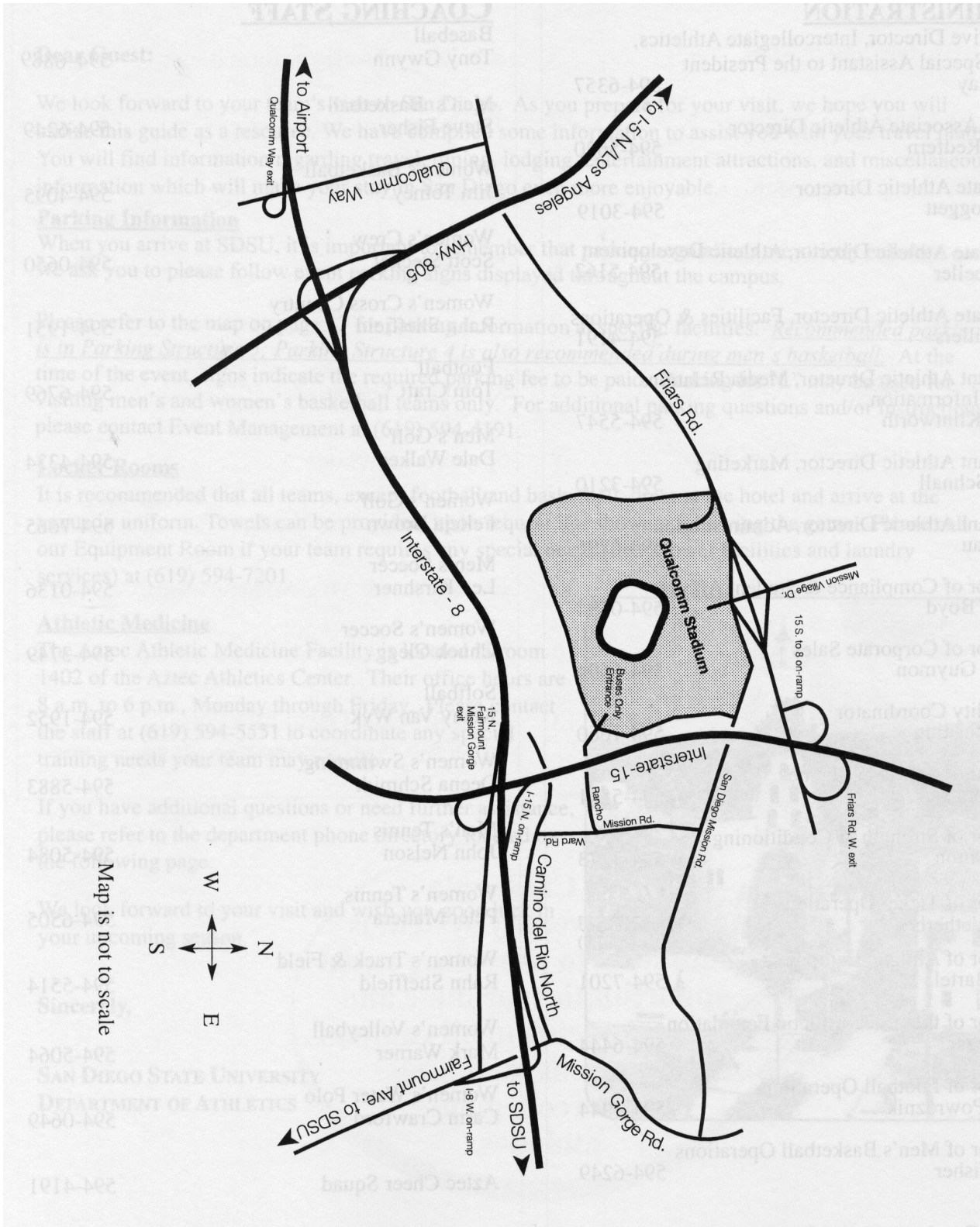
Director of Intercollegiate Athletics Jim Sterk	594-6357
Senior Associate Athletic Director John David Wicker	594-0589
Associate Athletic Director, Senior Woman Administrator Jenny Bramer	594-0394
Associate Athletic Director Steve Schnall	594-3210
Associate Athletic Director of Development/Major Gifts Bob Moosbrugger	594-0291
Associate Athletic Director, Facilities & Equipment Nick Pettit	594-7201
Assistant Athletic Director, Business Administration Chuck Lang	594-6296
Assistant Athletic Director, Compliance Jay Larson	594-7925
Assistant Athletic Director, Media Relations Mike May	594-5547
Assistant Athletic Director, Aztec Club/Annual Giving Mandy McKinley	594-7924
Director of Student Athlete Academic Support Services Lucas Moosman	594-5891
Head Athletic Trainer Tom Abdenour	594-7650
Director of Athletic Equipment Services Angie Garza	594-7201
Strength & Conditioning Jon Francis Adam Hall	594-7779 594-2070
Director of Football Operations Bobby Smitheran	594-4621
Director of Men's Basketball Operations Matt Soria	594-6249
Director of Women's Basketball Operations Tammy Stephens	594-0263
NCAA Faculty Athletics Representative Patrick Papin	594-3299
Eligibility Coordinator Mary Reading	594-1660

Coaching Staff

Baseball Tony Gwynn	594-6889
Men's Basketball Steve Fisher	594-6249
Women's Basketball Beth Burns	594-4095
Women's Crew Jennifer Lewis	594-0650
Women's Cross Country Sheila Burrell	594-5514
Football Rocky Long	594-7197
Men's Golf Ryan Donovan	594-4334
Women's Golf Leslie Spalding	594-7665
Women's Lacrosse Kylee White	594-6548
Men's Soccer Lev Kirshner	594-0136
Women's Soccer Mike Friesen	594-3749
Softball Kathy Van Wyk	594-1952
Women's Swimming Mike Shrader	594-5883
Men's Tennis Gene Carswell	594-5084
Women's Tennis Peter Mattera	594-6505
Women's Track & Field Shelia Burrell	594-5514
Women's Volleyball Deitre Collins-Parker	594-5064
Women's Water Polo Carin Crawford	594-0649
Aztec Marching Band, Director Bryan K. Ransom	594-1600
Aztec Cheer Squad	594-0760

SAN DIEGO STATE AZTECS

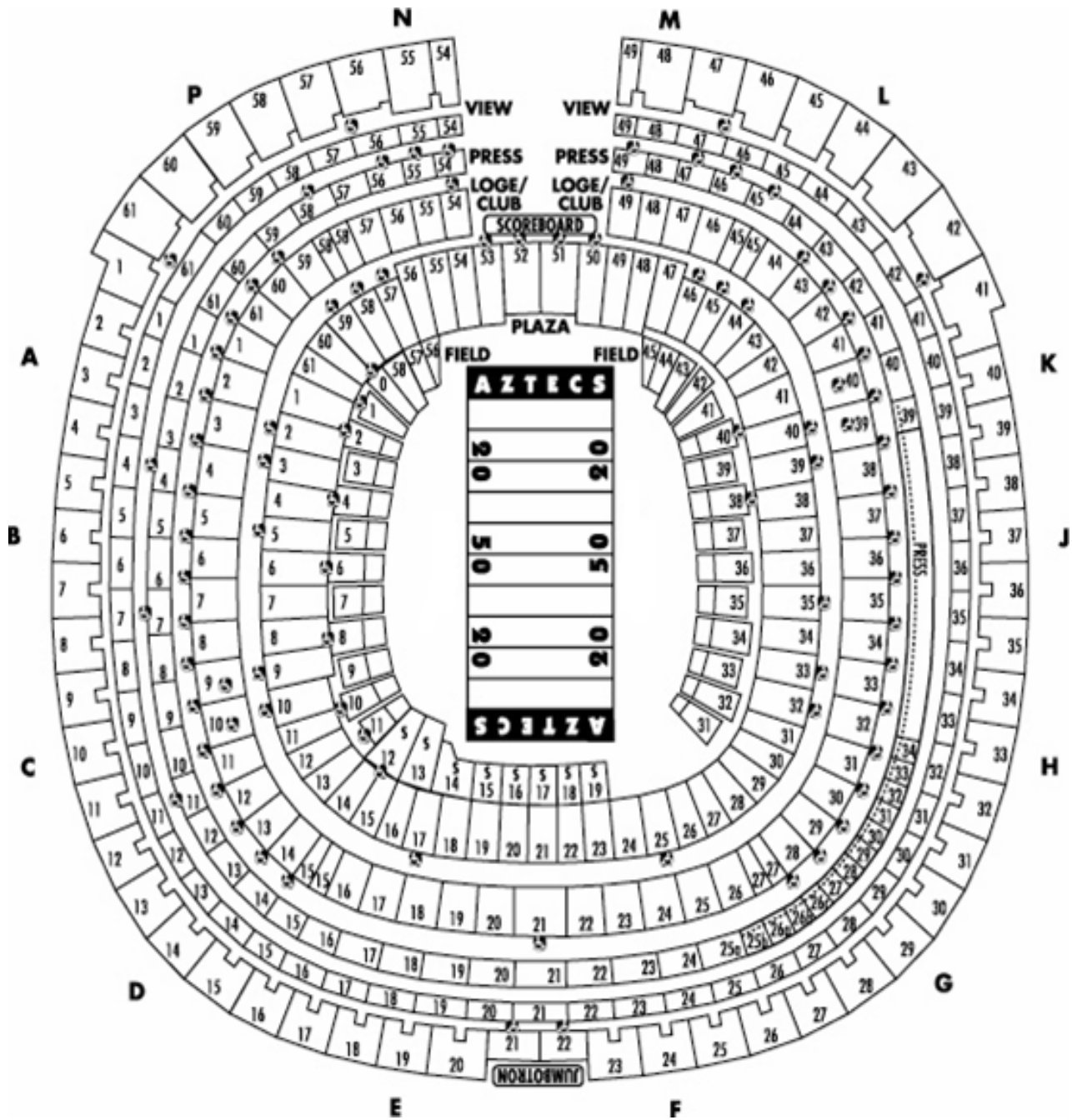
Map to Qualcomm Stadium



SAN DIEGO STATE AZTECS

Qualcomm Stadium

Home of the Aztecs



For consignment and ticket price information, please call
(619) 283-SDSU (7378)

SAN DIEGO STATE AZTECS

Advance Football Information

Aztec Uniform	Home: Black Jerseys, Black Pants, Red Helmets Away: White Jerseys, Black Pants, Red Helmets
Game Ball	Nike Vapor Elite
Stadium Information	Qualcomm Stadium (71,400 capacity) (619) 641-3100 Located in Mission Valley just northwest of Interstate 8 & 15
	Manager: Mike McSweeney (619) 641-3101 Turf: Grass Half-Time: 20 minutes Dressing Rooms: Under stands at west-end of stadium Towels: 300-400 Ice: 125 lbs.
	Sideline Communications: Gary Brashear (619) 281-1500
Requests	Scouting Films: Brian Murphy (619) 594-7617 Scouting Tickets: Mike May (619) 594-5547 Radio/TV/Press Box: Mike May (619) 594-5547 Workout Schedule: David Noll (619) 594-4191 Athletic Medicine: Tom Abdenour (619) 594-7650 Athletic Equipment: Sonny Sanfillipo (619) 594-5632 Coaches' Phones: Gary Brashear (619) 281-1500 Tailgate Reservations: ACE Parking (619) 277-6408
Parking Passes	Seven (7) parking passes for team vehicles
Credentials	Sixty (60) total in bench area, per MWC rules. Visiting Athletic Director suite. <i>Contact: David Noll (619) 594-4191</i> All team vehicles must enter through the main gate. A maximum of two (2) buses are allowed through the west tunnel.
Equipment Transportation	Contact Mike Akin at (858) 784-5200
Practice Time Information	If your team needs to make specific practice time arrangements, please contact David Noll at (619) 594-4191.
Will Call	The visiting team player "Will Call" is located at gate "H." * <i>subject to change</i> Public "Will Call" is located at gate "E."

SAN DIEGO STATE AZTECS

Football Ticket Information

TICKET PRICES (Prices are subject to change. Please call the Ticket Office for current information.)

\$31	Club Level -South
\$26	Plaza Level South / Plaza-Club-Press Level North
\$16	Field Level South / Plaza Level North / Plaza-Loge-Press Level Endzone
\$16	View Reserved (Sky Show Only)
\$11	Field Level North / Field Level Endzone
\$11	Upper View Reserved - Sky Show Only
FREE	Youth Ages 2 & Under, SDSU Students with valid Red ID

CONSIGNMENT

The Aztec Ticket Office will contact visiting teams regarding consignment ticket needs prior to the season. Requested tickets will be mailed, along with any contracted complimentary tickets, at least two to three weeks prior to the game. Any unsold tickets must be returned one week prior to the game. The Aztec Ticket Office is located at Qualcomm Stadium, ticket window "E." If other arrangements are needed, please call the Aztec Ticket Office at (619) 283-7378.

If you prefer to return your ticket consignment via express mail, please use the following address:

**Aztec Athletic Ticket Office
c/o Ticket Office Manager
Qualcomm Stadium– Window "E"
9449 Friars Road
San Diego, CA 92108**



Mission Bay

PLAYER GUEST PASS GATE

Player guest seats may be selected from your consignment or contracted complimentary allotment. A representative from your school should report to the ticket office **at least two (2) hours prior to game time** with the player guest tickets and an alphabetized list. They will be directed to gate "H." The gate opens an hour and a half before game time. The player's guest, after showing proper picture identification, will sign the list and be admitted into the stadium to receive a ticket stub. The school's representative must remain at the gate until all the tickets have been picked up, or when gate "H" closes at the end of halftime. **The ticket office will also close after halftime.**

DAY OF GAME WILL CALL

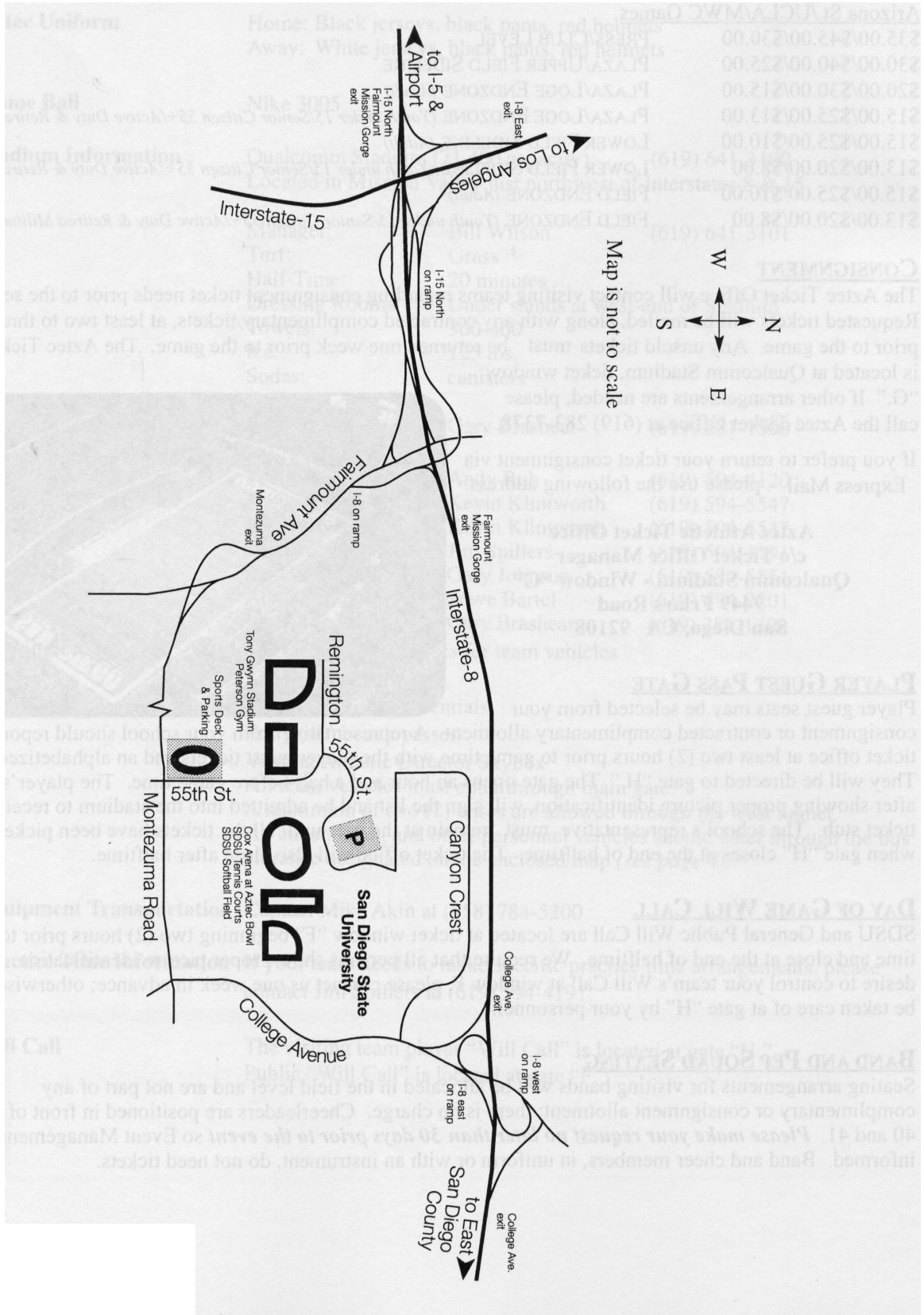
SDSU and General Public "Will Call" are located at ticket window "E" beginning two (2) hours prior to game time and close at the end of halftime. We require that all persons show proper picture identification. Please keep your team's "Will Call" at your player pass gate.

BAND & PEP SQUAD SEATING

Seating arrangements for visiting bands will be allocated in the field level and are not part of any complimentary or consignment allotment; there is no charge. Cheerleaders are positioned in front of Field Level 0 & 1. **Please make your request no later than 30 days prior to the event** so accommodations can be made. Band and cheer members, in uniform or with an instrument, do not need tickets.

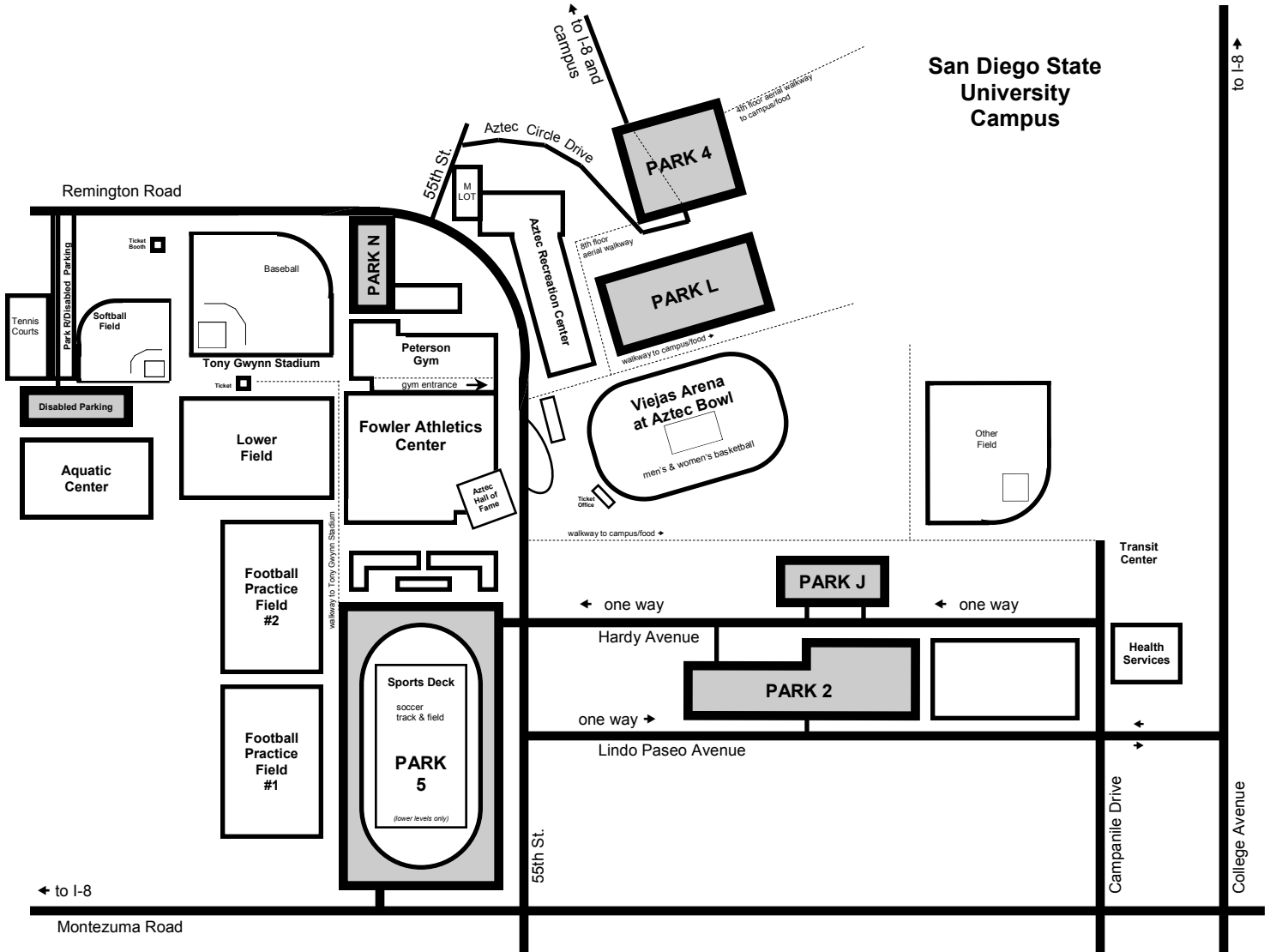
SAN DIEGO STATE AZTECS

Map to Campus



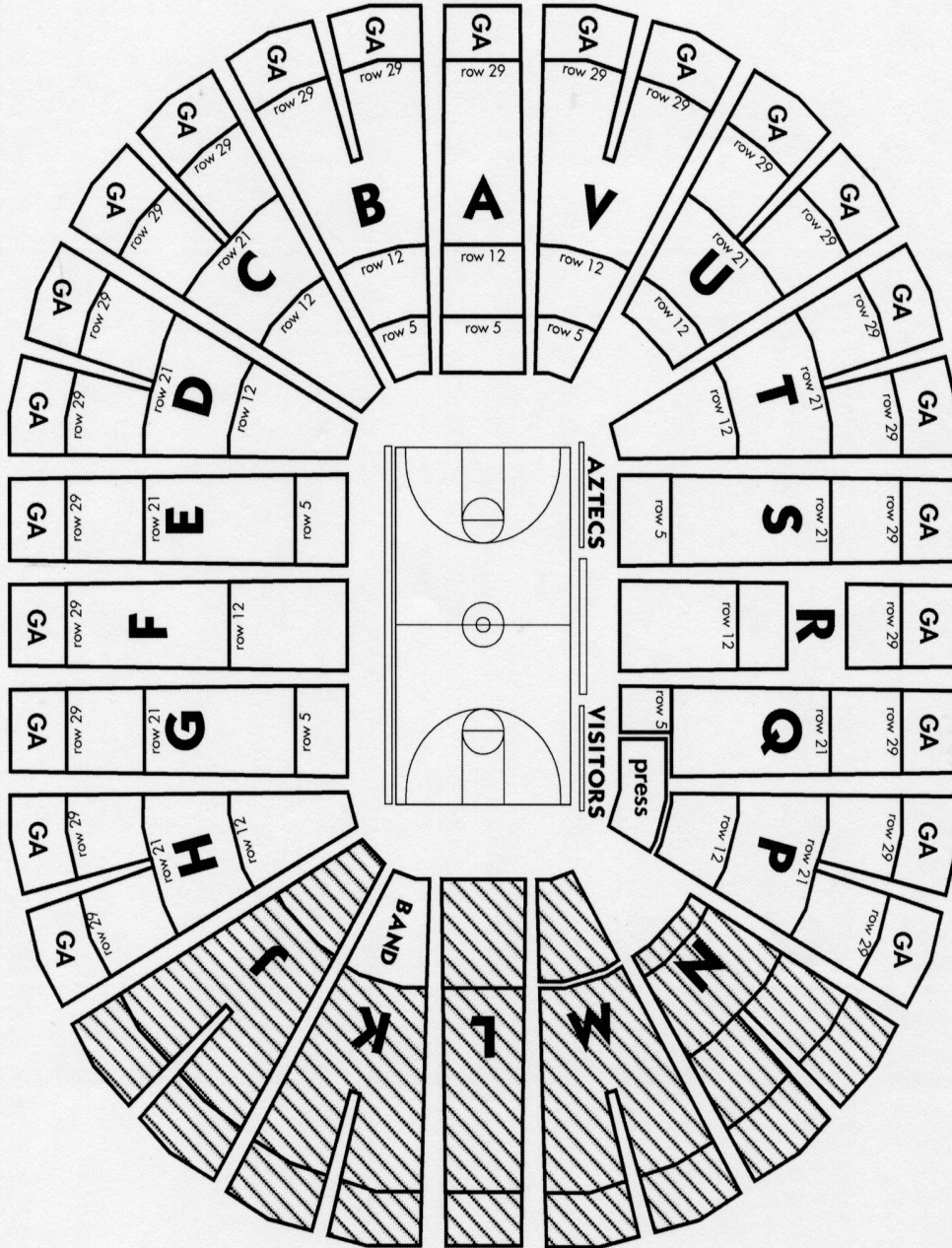
SAN DIEGO STATE AZTECS

Campus Athletic Facilities Map



SAN DIEGO STATE AZTECS

Viejas Arena Map



For consignment and ticket price information, please call
(619) 283-SDSU (7378)

SAN DIEGO STATE AZTECS

Men's Basketball Ticket Information

TICKET PRICES (Ticket windows and gates are open 90 minutes prior to tip-off; doors are open 60 minutes prior to tip-off.)

\$35.00	Reserved Chairback Seating
\$25.00	General Admission Bench Seating
FREE	SDSU Student Area General Admission (with current SDSU Card ID and validation)

CONSIGNMENT

Prior to the season, a written request should be made to the Athletic Ticket Office, PO Box 600215, San Diego, CA 92160, for consignment tickets. Requested tickets will be mailed, along with any contracted comps, at least two to three weeks prior to the game. Any unsold tickets must be returned at least twenty-four (24) hours prior to game day or the Friday preceding a weekend game; complimentary tickets cannot be returned. The ticket office opens at 10:00 a.m. on game day, and is located off 55th Street at the west entrance of Viejas Arena at Aztec Bowl. If other arrangements are needed, please call (619) 283-7378.



Viejas Arena at Aztec Bowl

If you prefer to return your ticket consignment via express mail, please use the following address:

**Aztec Athletic Ticket Office
c/o Ticket Office Manager
Qualcomm Stadium– Window “E”
9449 Friars Road
San Diego, CA 92108**

PLAYER GUEST PASS GATE

Player guest seats may be selected from your consignment or contracted complimentary allotment. A representative from your school should report to the ticket office **at least two (2) hours prior to the game** with the player guest tickets and an alphabetized list. They will be directed to the west entrance of Viejas Arena. The gate opens an hour and a half before tip-off. The player's guest, after showing proper picture identification, will sign the list and be admitted inside the gate to receive a ticket stub. The ticket office will also close after halftime.

TEAM PARKING

Visiting teams may park in parking lot “L,” which is located immediately north of Viejas Arena.

LOCKER ROOM INFORMATION

The locker rooms are located on the floor level, at the north end of the arena. Towels, ice, and water will be provided for all teams. For any additional equipment needs, please contact the Equipment Manager at (619) 594-4951.

PRACTICE TIME INFORMATION

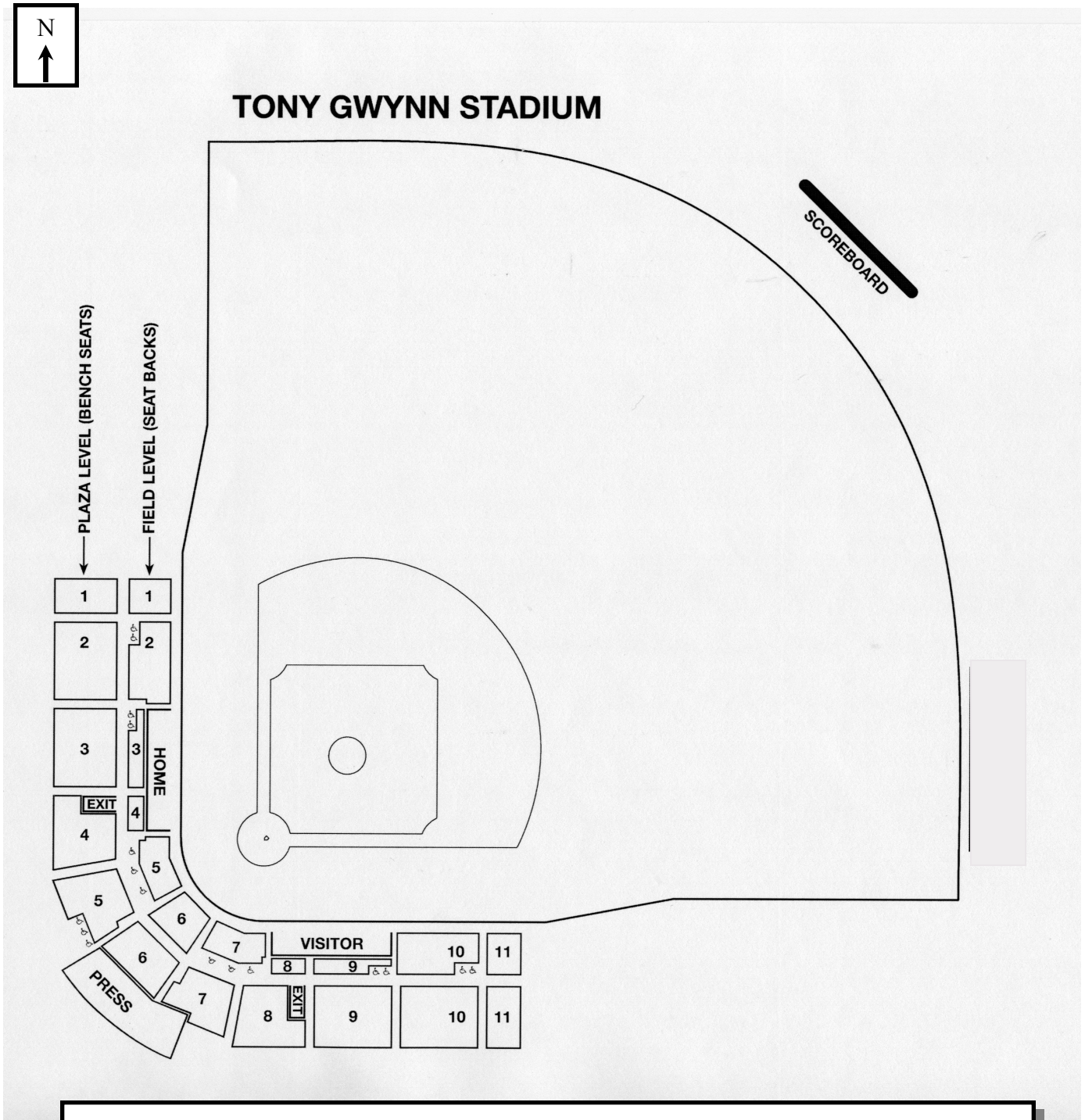
If your team needs to make specific practice time arrangements, please contact Event Management at (619) 594-0396.

BAND & PEP SQUAD SEATING

If your band or pep squad plans to participate in game activities, please contact Event Management at (619) 594-4191 or via fax at (619) 594-1334; they will coordinate the details. Band and cheer members, in uniform or with an instrument, do not need tickets.

SAN DIEGO STATE AZTECS

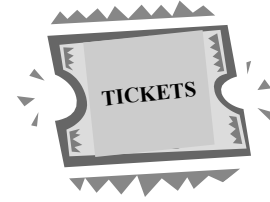
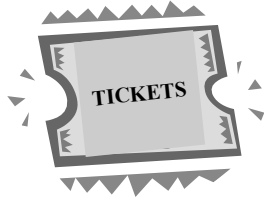
Tony Gwynn Stadium Map



**For consignment and ticket price information, please call
(619) 283-SDSU (7378)**

SAN DIEGO STATE AZTECS

Other Ticket Information



ON-CAMPUS DEPARTMENT OF ATHLETICS EVENTS

TICKETS

Locations of the necessary ticket booths are indicated on the Campus Athletic Facilities map (*see page 9*). Refunds are not available, so it is recommended to check the complimentary ticket list before purchasing a ticket. Ticket prices are listed below and are subject to change for tournaments and special games/events.

COMPLIMENTARY TICKETS

Complimentary admissions are allotted to visiting teams as per each individual game contract. The complimentary ticket list is supplied to the Event Supervisor thirty (30) minutes prior to the opening of the gates. There will be no further additions or changes after admission gates have opened. Guests on the pass list are required to show proper picture identification and sign his/her name on the list.

All NCAA rules regarding complimentary admissions will be enforced.

TICKET PRICES

BASEBALL @ Tony Gwynn Stadium (*gates/tickets open 90 minutes prior to the first pitch.*)
SOFTBALL @ the SDSU Softball Stadium (*gates/tickets open 60 minutes prior to the first pitch.*)
WOMEN'S VOLLEYBALL @ Peterson Gym (*gates/tickets open 60 minutes prior to game time.*)
WOMEN'S TRACK & FIELD @ the SportsDeck (*gates/tickets open 60 minutes prior to event time.*)

\$6.00 ADULTS
FREE CHILDREN 2 YEARS OLD & UNDER
FREE SDSU STUDENTS (*with current SDSU Card ID and validation*)

WOMEN'S BASKETBALL @ Viejas Arena
(*Ticket windows and gates open 60 minutes prior to tip-off.*)

\$20.00 COURTSIDE ROW
\$9.00 RESERVE SEATING
\$6.00 GENERAL ADMISSION
FREE CHILDREN 2 YEARS OLD & UNDER
FREE SDSU STUDENTS (*with current SDSU Card ID and validation*)

SAN DIEGO STATE AZTECS

Transportation Information

AIRPORTS



Lindbergh Field/San Diego International Airport, 3665 & 3707 North Harbor Drive
 Parking Info (619) 291-1343 portofsandiego.com

Montgomery Field, 3740 John Montgomery Drive, San Diego
 Airport Operations (858) 573-1440

AIRLINES



Alaska Airlines	(800) 252-7522	alaskaair.com
American	(800) 433-7300	im.aa.com
Continental	(800) 525-0280	continental.com
Frontier	(800) 432-1359	frontierairlines.com
Southwest	(800) 435-9792	southwest.com
United	(800) 241-6522	ual.com
US Airways	(800) 428-4322	usairways.com

AUTO RENTAL



Enterprise	(800) 736-8222	enterprise.com
Budget	(800) 283-4382	budget.com
Hertz	(800) 654-3131 or (619) 231-7000	hertz.com
Advantage	(800) 777-5500	arac.com

BUSES



Sun Diego Charter (619) 336-9200 **sundiegocharter.com**
Official Charter of SDSU Athletics

CITY TRANSIT



Cal Trans (Highway Conditions)	(800) 427-7623	dot.ca.gov
San Diego Transit	(619) 238-0100	sdcommute.com
San Diego Trolley	(619) 231-8549	sandiegotrolley.com
Route & Schedule Info	(619) 233-3004	sdcommute.com
Info Express	(619) 685-4900	
Transit Store	(619) 234-1060	sdcommute.com

TAXI/SHUTTLE SERVICE



Diamond Cab Company	(619) 474-1544	
Yellow Cab Company	(619) 234-6161	
Orange Cab Custom Tours	(619) 291-3333	
Orange Cab	(619) 291-4444	
Cloud Nine Shuttle (800)974-8885 or (858) 505-4950		cloud9shuttle.com

TRAINS



Amtrak (<i>Los Angeles info & reservations</i>)	(800) 872-7245	amtrak.com
San Diego: 1050 Kettner Blvd.	(619) 239-9021	
Oceanside: 235 S. Tremont	(760) 722-4622	

BOLD NAMES REPRESENT AZTEC SPONSORS. ANY PATRONAGE IS GREATLY APPRECIATED.

SAN DIEGO STATE AZTECS

SDSU Partner Hotels



Courtyard by Marriott - San Diego Central
8651 Spectrum Center Blvd.
San Diego, CA 92123

Carly McCormick, Sales Manager
(858) 633-9026
carlym@hhsocal.com

**Voted Top Hotel in San Diego &
Experienced Host Hotel of Collegiate
Sports!**

- **Rates Starting At \$99.00**
- **Includes: Full HOT Team Breakfast, Blocked-off Team/Bus Parking, and Internet**
- Approximately **10 Minutes** to San Diego State University & Qualcomm
- **Complimentary Suite for Coach**
- **Complimentary Meeting Space & Discounted Menus**
- **Double** Marriott Rewards Points



Hilton
San Diego Mission Valley

Hilton San Diego Mission Valley
901 Camino del Rio South
San Diego, CA 92108

Contact: Kyle Jones, SMERF Manager
Kyle.Jones@hilton.com
(619) 767-5560 Direct
(619) 296-9561 Fax

(619) 543-9000 Hotel Direct
(619) 543-9358 Hotel Fax

*Coming to play in San Diego in 2011-2012?
Here is what Hilton San Diego Mission Valley
has to offer ALL teams coming to Sunny San Di-
ego!*

- \$109 rate for king or double/double bedded rooms, based on availability
- Complimentary Full American Breakfast Buffet* for up to 2 people per room, *Offer applies to STISH breakfast buffet only; personalized menu will reflect banquet prices
- Complimentary wireless internet access in all sleeping rooms
- Upgraded Room for Head Coach
- Complimentary parking for team busses or vans

SAN DIEGO STATE AZTECS

SDSU Partner Hotels



Sheraton Mission Valley

SAN DIEGO
HOTEL

Sheraton Mission Valley - San Diego

1433 Camino Del Rio South
San Diego, CA 92108
www.sheratonmissionvalley.com

Contact: Johnathon Elko, Sales Manager
Johnathon.elko@sheratonmissionvalley.com
619-321-4604 Direct
619-497-0808 Fax

*Team Friendly, past host of NCAA tournament teams,
designated bus parking*

Centrally located off the 8 freeway just 5 miles from SDSU and 2 miles from Qualcomm Stadium; walking distance to Mission Valley Mall, San Diego Trolley stop and 30+ restaurants and just 10 minutes to all major attractions.

- Double Queen Beds with signature Sheraton Sweet Sleeper Mattresses
- Complimentary Room upgrade for Head Coach
- Double Starwood points
- Complimentary meeting space for team functions, based on availability
- Discounted menu options available
- Complimentary high speed internet



Doubletree Hotel San Diego Mission Valley

7450 Hazard Center Drive
San Diego, CA 92108

Contact: **Donle Chung, Sales Manager**
Direct: 619.270.2635 . Fax: 619.270.2601
Donle.Chung@hilton.com

Hotel Direct: 619.297.5466 . Hotel Fax: 619.297.5499
www.sandiegomissionvalley.doubletree.com

The Doubletree Hotel San Diego Mission Valley is located in the heart of Mission Valley just 10 minutes from the San Diego International Airport. The hotel features the **largest guest rooms in Mission Valley**, with convenient shopping and dining options directly adjacent to hotel. We are also located directly **ON the trolley line** making it accessible to our guests to move comfortably about the city!

- **Competitive group room rates**
- **Discounted room rates for parents and fans**
- **Complimentary upgrade for Head Coaches***
- **Complimentary meeting space***
- **Double Hilton Honor points**
- **Package rates include breakfast, complimentary parking (Buses OK), and complimentary wireless high-speed internet**

Amenities:

Indoor and outdoor heated pools
Complimentary 24 hour Fitness Center
Full-service restaurant serving breakfast, lunch, and dinner.
Casual lounge & Room Service
Great dining available within walking distance –
7 casual restaurants adjacently connected
Walking distance to the two premier shopping malls in San Diego

(*Based on availability)

SAN DIEGO STATE AZTECS SDSU Partner Hotels



Holiday Inn®

Holiday Inn Mission Valley Stadium
3805 Murphy Canyon Road, San Diego, CA
92123

www.hisandiegohotel.com

**For Group reservations at the SDSU Special
Rate, please contact:**

Nikki Bowler, Director of Sales

Direct Line: 858-503-2548 or nikki.bowler@gfhotels.com

**For Individual Fan and Family Rates, please call
858-278-9300**

Conveniently located only 4 miles from San Diego State University and only minutes from downtown San Diego, local area attractions and our beaches!

- Competitive rates offered for teams, parents and fans - \$89-\$129 - Ask about rates including a hot breakfast
- One Complimentary Suite Upgrade for the Head Coach
- Complimentary Parking and High-Speed WIFI
- Flat Screen Televisions with Complimentary HBO, ESPN, CNN and HD Programming
- Complimentary Meeting Space to Teams based on availability
- Fitness Center with brand new equipment
- Outdoor heated Pool and Jacuzzi
- Walking distance to several eateries/restaurants
- On-site restaurant, Rayo Bar & Grill featuring a Southwestern Cuisine



Courtyard by Marriott San Diego Downtown

530 Broadway
San Diego, CA 92101

www.marriott.com/sancd

Contact: Tiffany Marcelino, Senior Sales Manager
(619) 446-3009

Tiffany.Marcelino@cymssandiego.com

Enjoy the world-famous Gaslamp Quarter at our historic, downtown hotel! Welcome to an urban playground with over 200 restaurants and shops... just a few blocks from the Harbor!

Only 15 minutes from SDSU campus

Ranked in top 7% of all 240+ San Diego hotels on TripAdvisor

Marriott Rewards Points

Coach Upgrade to suite or harbor view

Meeting space, restaurant, room service

**Book group rates starting at \$119.00 including
Full hot buffet breakfast
Reserved bus parking
Wireless Internet in guestrooms & public space**

Special rates for family, friends, fans and alumni also available! Call Marriott Reservations at 1-800-321-2211 and ask for the SDSU Athletics rate.

SDSU Partner Hotels



Sheraton San Diego Hotel and Marina
1380 Harbor Island Drive
San Diego, CA 92101
866-716-8134 ask for SET Number 385648
www.sheratonsandiegohotel.com/sdsu

****For TEAM RATES** call Karie Staelgraeve,
Sports Manager, at 619-713-7226 or

karie.staelgraeve@starwoodhotels.com
Rates from \$99 per night – [Learn More](#)
www.sheratonsandiegohotel.com/sdsu

- Convenient location - less than 10 Minutes from San Diego State University & Qualcomm Stadium
- Complimentary Airport shuttle
- Complimentary high speed internet in all public areas at LINK@SHERATON
- 3 pools, 4 restaurants, extensive fitness center & tennis courts
- Newly renovated guestrooms & suites with balconies overlooking marina & harbor
- Extensive meeting/banquet space
- Plus, enjoy SPG Starpoints® for your stay

Enjoy rates starting at \$99 per night. [Book Online](#) (link to www.sheratonsandiegohotel.com/sdsu) or call 866-716-8134 and ask for SET Number 385648.



Marriott San Diego - Gaslamp Quarter
660 K St.
San Diego, CA 92101
www.sandiegogaslamphotel.com

Contact: John Parker - Associate Director of Sales
john.parker@gaslampmarriott.com

619-446-6082 Direct
619-232-4252 Fax

- Earn Double Marriott Rewards Points by booking your team at the San Diego Marriott Gaslamp Quarter
- Upgrades available for Coach and Staff
- 306 guest rooms including 15 suites
- All meeting space located on the 8th floor
- Team menus available
- Only 15 minutes from San Diego State campus

SDSU **Partner Hotels & Transportation** *SAN DIEGO STATE AZTECS*



Town and Country

RESORT HOTEL

500 Hotel Circle North, San Diego, CA 92108

Town and Country Resort Hotel
500 Hotel Circle North
San Diego, California 92108

Contact: Nicholas Gilbert
Senior Sales Manager
ngilbert@towncountry.com
1-800-445-2324
www.towncountry.com

- Competitive room rates based on availability
- Upgrade suite for coach based on availability
- Team menus available
- Complementary meeting space based on availability
- Discounted room rates for visiting fans and family
- Convenient central location, 8 miles from SDSU, 11 from QUALCOMM Stadium
- Walk to Fashion Valley Mall
- 3 pools, 5 restaurants
- Extensive Fitness Center and Spa

For individual reservations please visit our website and enter access code AZTECS or contact Terry Sobkowiak at tsobkowiak@towncountry.com



HANDLERY HOTEL
SAN DIEGO

Handlery Hotel San Diego

950 Hotel Circle North
San Diego, CA 92108

Contact: John Parker

Direct Line: 619.398-8338

jparker@handlery.com

- Team rates starting at \$99 plus tax (rates vary depending on time of year)
- Located 10 minutes from SDSU and QUALCOMM Stadium
- 10 minute walk to Fashion Valley Mall (20 restaurants and 200 stores)
- Discounted parking for visiting teams
- 40,000 square feet of meeting space for team meals and meetings
- Postcards American Bistro (Breakfast and Dinner)
- Oversized heated pool and Hot tub
- Complimentary in room internet
- Adjacent to Riverwalk Golf Club (27 hole championship course with preferred tee times and rates)

SAN DIEGO STATE AZTECS SDSU Partner Transportation



Official Transportation / Charter Service of SDSU Athletics

Sun Diego Charter Company is proud to represent San Diego State University as the exclusive provider of motorcoach charter transportation for the SDSU Athletics Program.

Highlights:

Largest provider of motorcoach charter services in San Diego

Newest fleet of vehicles in San Diego, including 49 pax and 56 pax deluxe motorcoaches

DVD, GPS, and WIFI equipped motorcoaches available (WIFI upon request)

Industry leading maintenance standards in accordance with CA-DOT & CHP

Exemplary customer service by experienced Sales and Operations professionals

Drivers are professionally trained by Sun Diego's own Safety & Training Managers

Driver requests are welcome

Mention that you were referred through San Diego State and receive our preferred customer discounted rates!

*Brian Webber, Business Development Manager
Sun Diego Charter Company*

*522 W 8th Street, National City CA 91950
(o) 619-336-9200 cell: 619-241-5113*

bwebber@sundiegocharter.com

www.sundiegocharter.com

VISITING TEAM GUIDE

SAN DIEGO STATE AZTECS

SDSU Partner Restaurants



Voted Best Sub In Virtually Every Market!

Always Fresh Sliced! Always Fresh Grilled!

Catering Available!
Campus Plaza Center
6083 El Cajon Blvd.
San Diego, CA 92115
Phone: 619 229 0820



John Mendiola 858-583-1953



Matt Lizalde 619-297-4330

VISITING TEAM GUIDE



Official Host Location of the Aztec Football and Basketball Coaches' Shows

The Aztec Football Coaches Show starts this August live on location at Hooleys Irish Pub and Grill located in the Grossmont Shopping Center.

5500 Grossmont Center Drive #277
La Mesa, CA 91942
619.713.6900

2955 Jamacha Road, Ste. 21
Rancho San Diego, CA 92019
619.670.4468



Beer King
5037 Shawline Street
San Diego, CA 92111
(800) 794-BEER (2337)
www.beerking.com

Beer King is your "One Stop Hospitality Shop". Pre and Post-game meal catering available. Plus, we handle everything for a stress free tailgate experience! Beer, wine, cocktails, soft drinks. Full service catering, rental equipment and entertainment for all age groups.

QUICK FACTS:

- Serving San Diego since 1971
- Open 7 days a week
- We deliver to all of San Diego
- Beer, Wine, & Liquor License
- Largest selection of draft beer in San Diego
- "A" rating from Health Department
- \$2 million liability insurance

SAN DIEGO STATE AZTECS

SDSU Partner Restaurants



VOTED BEST PIZZA for 25 years by San Diego State Students!

We specialize in catering large group orders, delivered anywhere in San Diego.

Or reserve space for your group at either of our San Diego locations:

6145 El Cajon Boulevard
Corner of College & El Cajon Boulevard,
just south of SDSU
(619)265-0999, www.woodstockssd.com

1221 Garnet Avenue, Pacific Beach
(858)642-6900, www.woodstockspb.com



Great for steak and so much more... Black Angus Steakhouse has built its reputation on providing a Genuine American Steakhouse experience to remember. Our Chefs are proud to serve only Black Angus steaks that are carefully aged and fresh-cut daily. We grill them over an open flame to sear in that under-the-stars, over-the-campfire flavor. Visit Black Angus for the best steak of your life!

Our Chula Vista, El Cajon and Friars Road locations have BullsEye Bars, a casual sports bar concept within the restaurant, which boasts 10 to 12 hi-def flat screen TVs and offers various types of viewing zones. Each seat in the bar gives Guests the ability to watch different sporting events simultaneously. Free Wi-Fi is also available for fantasy sports players, as well as an ongoing calendar of sports-related promotions and contests.



Pita Pit College Ave offers fresh-grilled, delicious pita sandwiches and salads, as well as California Tart frozen yogurt, and wide variety of chips, bottled sodas and fountain drinks. We deliver up to 3 miles, and cater anywhere in San Diego. Order over the phone or online!

Pita Pit College Ave
5131 College Ave, Suite D
Phone: 619-265-7482
Fax: 619-265-7483

SAN DIEGO, CA
2445 Hotel Circle/(619) 291-8074
OCEANSIDE, CA
1221 Vista Way/(760) 433-2633



WE'RE PROUD TO OFFER our authentic Santa Maria style barbecue for your next event. Our catering service can go anywhere. Our buck-board wagon barbecue grill can go-To the park, parking lot or even your backyard. From groups as small as fifty to as large as two thousand.

It's the perfect solution for any catering need. Maybe your next tail-gate party? We have a complete package of on-site barbecue specials, or we can deliver your prepared feast right to your location.

Contact us for more information and a price quote on your party or event. We're sure you'll agree, it's the most authentic Santa Maria style barbecue you'll find outside of the Valley.

Call ahead for reservations.
Contact John Rossotto
(760) 433-2633

SAN DIEGO STATE AZTECS SDSU Partner Restaurants



Souplantation features made-from-scratch soups and salads and handcrafted muffins, Focaccia, breads, and desserts. The menu is built around freshly made, great-tasting, wholesome recipes with a 55-foot salad bar full of fresh, seasonal vegetables and tossed salads prepared exhibition-style every 20 minutes. Unlimited and Included!

**6171 Mission Gorge Road #106
(619) 280-7087**

**5 minutes from San Diego State
Private room available for team meals**



Fresh, cooked to order burgers, fries and drinks. Dining Room and Drive-thru open daily from 10:30am to 1:00am. Friday and Saturday until 1:30am.

**2005 Camino Del Este,
San Diego, CA 92108
4.69 miles from SDSU**

Check us out at www.in-n-out.com for additional locations



**Better Ingredients.
Better Pizza.**

**Hillcrest
(619) 297-7272**

Pleased to serve you while staying at:
Sheraton - Mission Valley
Hilton - Mission Valley
DoubleTree - Mission Valley
or any other hotel in Hotel Circle

**Point Loma
(619) 225-1300**

Pleased to serve you while staying at:
Sheraton Hotel & Marina - Airport
or any other Harbor Island hotels

**Aero Drive
(858) 503-1400**

Pleased to serve you while staying at:
Courtyard by Marriott - Central San Diego

**Downtown San Diego
(619) 230-2100**

Pleased to serve you while staying at:
Courtyard by Marriott - Downtown San Diego

SAN DIEGO STATE AZTECS

SDSU Partner Restaurants



Downtown

1157 Columbia Street
San Diego, CA 92101
619.234.2739 (BREW)

La Jolla

1044 Wall Street
La Jolla, CA 92037
858.551.2739 (BREW)

Sorrento Mesa

9675 Scranton Road
San Diego, CA 92121
858.587.2739 (BREW)

Carlsbad

5801 Armada Drive
Carlsbad, CA 92008
760-431-2739 (BREW)

4S Ranch

10448 Reserve Dr.
San Diego, CA 92127
858-376-2739

www.karlstrauss.com



Please a crowd of any size with Rubio's A-Go-Go Catering. Rubio's can accommodate catering needs for groups as small as five to as large as 100+. Rubio's A-Go-Go Catering makes feeding a group as easy as a day at the beach.

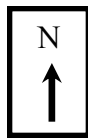
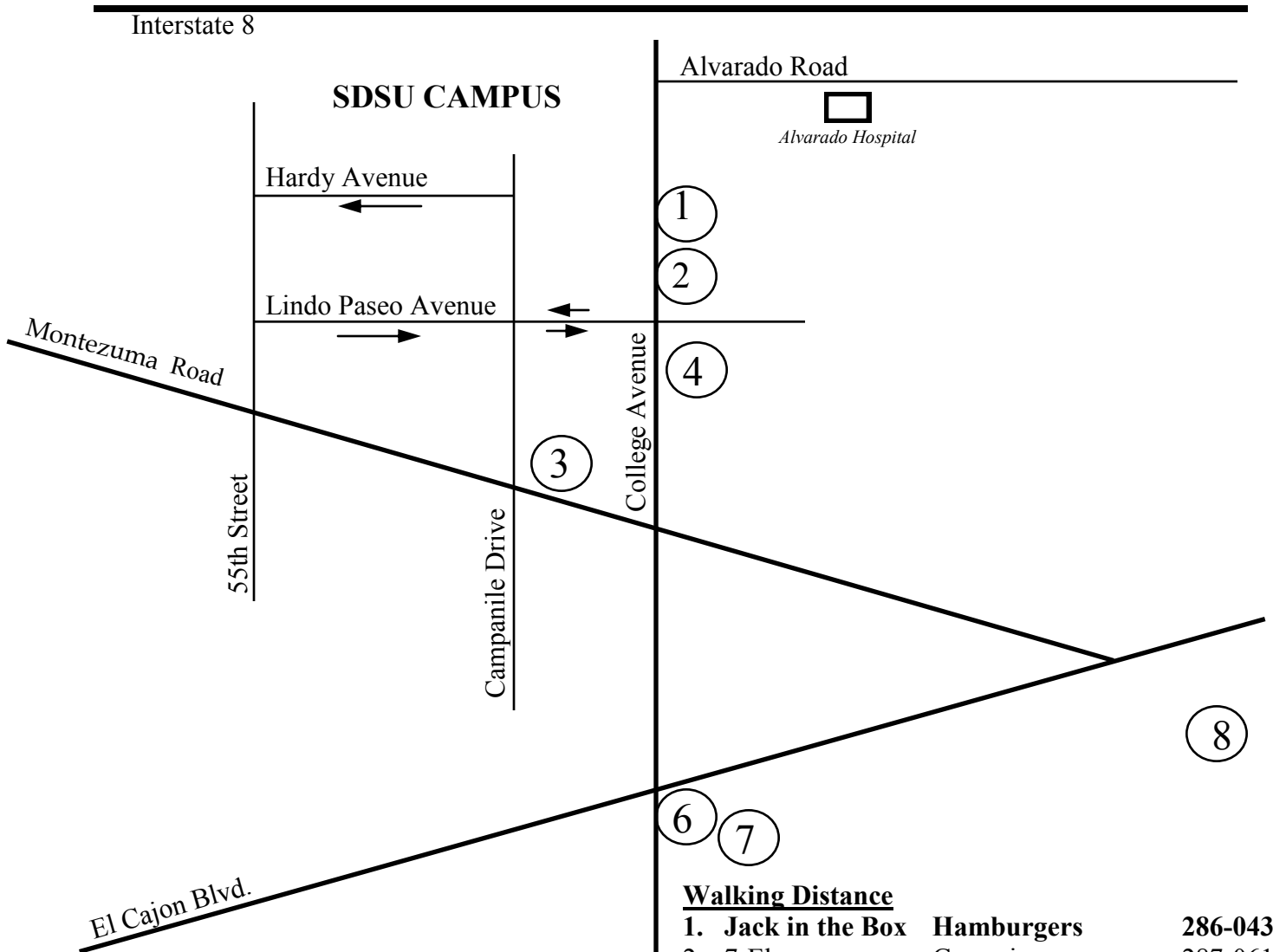
For catering needs contact: Sheena Severns, San Diego Marketing Coordinator, 760-889-7439



Jeff Rossman 619-293-7088

SAN DIEGO STATE AZTECS

College Area Fast Food



Map is not to scale

Walking Distance

1. Jack in the Box	Hamburgers	286-0433
2. 7-Eleven	Groceries	287-0616
3. 4.0 Deli	Sandwiches	281-4040
4. Pita Pit	Pita Wraps	265-7482
5. Buddies Burgers	Hamburgers	955-5323

5-Minute Drive

6. Jersey Mikes	Sub Sandwiches	229-0820
7. Woodstock's	Pizza	265-0999
8. Wings N' Things	Spicy Wings	462-9464
9. Papa Johns	Pizza	469-7272
10. D.Z. Akin's	Deli	265-0218
11. Denny's	Open 24 hours	461-2862
12. Chili's	American Food	280-7996
13. TOGO's	Deli Sandwiches	516-0010

BOLD NAMES REPRESENT AZTEC SPONSORS. ANY PATRONAGE IS GREATLY APPRECIATED.

SAN DIEGO STATE AZTECS

Movies & Shopping

MOVIE THEATERS

La Mesa

Pacific Grossmont Center 10 Grossmont Center 5500 Grossmont Center Dr. (619) 444-3456

Mission & Fashion Valleys

AMC Fashion Valley 18 Fashion Valley Center Off Hwy. 163 @ Friars Rd. West (858) 558-2262

AMC Mission Valley 20 Mission Valley Center I-8, exit Mission Center Road (619) 444-3456

UltraStar Mission Valley 7 Hazard Center Friars Road & Hwy. 163 (619) 685-2841

Downtown

Gaslamp 15 Cinema Gaslamp District 5th Avenue & G Street (619) 444-3456

United Artists 14 Horton Plaza F Street & 4th Avenue (619) 444-3456

Movie Phone

Movie listings, locations, times, previews, etc. (619) 444-FILM
www.moviefone.com (3456)

SHOPPING MALLS

La Mesa

Grossmont Center 5500 Grossmont Center Drive (619) 465-2900
www.grossmontcenter.com

Mission & Fashion Valleys

Bazaar Del Mundo 2754 Calhoun Street (619) 296-3161
www.bazaardelmundo.com

Mission Valley Center 1640 Camino Del Rio North (619) 296-6375
www.missionvalley.shoppingtown.com

Fashion Valley Mall Friars Road & Hwy. 163 (619) 297-3381
www.gothere.com/sandiego/FashionValley (includes *Aztec Store & More*)

Downtown

Horton Plaza F Street & 4th Avenue (619) 238-1596
www.gothere.com/sandiego/horton

Other Useful Websites:

www.sandiego.shoppingtowns.com

www.playsandiego.com

www.signonsandiego.com

SAN DIEGO STATE AZTECS

Special Attractions

Attractions	Area of San Diego	Phone Number/ Website	Description
Balboa Park & San Diego Zoo	Near downtown San Diego	(619) 239-0512 sandiegozoo.org	San Diego Zoo, Old Globe Theatre, Starlight Bowl, Rubeen H. Fleet Science Center, & numerous museums and art galleries.
Cabrillo National Monument	Point Loma	(619) 557-5450 nps.gov/cabr	The monument commemorates the arrival of explorer Juan Cabrillo in 1542. Offers an incredible view of the city and the ocean.
Double Decker Bus Tours	San Diego	(619) 702-9100 double-decker-buses.com	Enjoy a scenic San Diego tour in a historical London-style double-decker bus.
Gaslamp Quarter	Downtown San Diego	(619) 233-5227 gaslamp.org	A 16-block historical district featuring restored downtown San Diego structures. Several Continental and Italian restaurants and nightclubs. Adjacent to Horton Plaza.
Mission Bay Park	Mission Bay	(619) 236-1212 or (619) 221-8900 aboutmissionbay.com	The bay is an incredible 4,600 acre man-made aquatic park. It offers boating, beaches, and plenty of areas to picnic. Sea World & Belmont Park Rollercoaster are also located around the bay.
Mission Basilica San Diego de Alcala	Mission Valley	(619) 283-7319 missionsandiego.com	The first Franciscan mission in California, dating Mission Valley back to 1774.
Old Town State Historic Park	Old Town	(619) 220-5422 parks.ca.gov	Many historic buildings representing the birthplace of San Diego. Restored homes, hotels, shops, and several Mexican food restaurants.
San Diego Harbor Excursion	Downtown San Diego	(619) 234-4111 sdhe.com	Provides 1- or 2-hour guided tours of the harbor.
Sea World	Mission Bay	(619) 226-3901 seaworld.com	A 150-acre marine life park, with exhibits and shows presented throughout the day.
San Diego Trolley	San Diego County	(619) 231-8549 sandiegotrolley.com	The trolley has two lines. The Blue line runs from Qualcomm Stadium through Old Town and downtown to Tijuana. The Orange line starts downtown & continues east to El Cajon & Santee. In 2005, the trolley will open a line through SDSU.
Wild Animal Park	Escondido	(619) 234-6541 sandiegozoo.org	An extension of the San Diego Zoo, this wildlife Escondido reserve is home to 2,500 Asian and African animals.
Knott's Soak City U.S.A. (water park)	2052 Entertainment Cir., Chula Vista	(619) 661-7373 soakcityusa.com	805 South, exit Main Street; go east two miles; on right side, next to the Coors Amphitheater.
San Diego Hall of Champions Sports Museum	In Balboa Park, near downtown San Diego	(619) 234-2544 sdhoc.com	Celebrates hometown athletes with hands-on, interactive exhibits and participatory programs. Tours offered daily; call 619-699-2317.
<u>Other useful Websites:</u>	utsandiego.com sdchamber.org sandiego.org	San Diego Union-Tribune San Diego Chamber of Commerce San Diego Convention & Visitor's Bureau	

SAN DIEGO STATE AZTECS

Radio Stations & Weather

RADIO STATIONS-FM

88.3	KSDS	Jazz
89.5	KPBS	Public radio/SDSU
90.3	Z-90	Dance Hits
91.1	91X	Alternative Rock
92.5	XHRM	Oldies / Old School
93.3	Ch. 933	Top 40
94.1	STAR 94.1	Hit of the 80's, 90's and now
94.9	FM 94.9	Alternative
95.7	KOGO FM	News & Talk radio
96.5	KYXY	Soft Rock Favorites
97.3	KSON	Country
98.1	KIFM	Smooth jazz
100.7	JACK FM	Popular Rock
101.5	KGB	Classic Rock
102.1	KPRI	Authentic Rock
103.7	KEGY	Dance Hits
105.3	KIOZ	Hard Rock
106.5	KLNV	Spanish

RADIO STATIONS-AM

600	KOGO - Home of the Aztecs	News & Talk radio
760	KFMB	News & Talk radio
1000	KCEO	Business Talk
1090	XPRS	Sports Talk
1170	KCBQ	Conservative Talk
1360	KLSD	Sports Talk
1420	XEXX	Spanish

SAN DIEGO WEATHER

With an average daily temperature of 70°F, San Diego has an almost perfect climate. The average annual rainfall of 9.5 inches falls mainly during December, January, and February. Winters are mild, with daytime temperatures in the mid-60s and nights about 20° cooler. Because San Diego lies so close to the ocean, some days are punctuated by early morning and late night fog. Summers in the city are beautiful; temperatures reach about 76°F during the day and drop to about 64°F at night. August and September are the warmest months, but even mid-winter provides plenty of comfortable sunbathing days. The SDSU campus is located 13 miles inland of the airport where city temperatures are measured. SDSU generally has more sunshine & warmer temperatures. In the summer months SDSU can become 10°-15° warmer than the reported city temperatures.

For an updated local forecast, you can contact the National Weather Service at (858) 289-1212.

SAN DIEGO STATE AZTECS

Emergency & Miscellaneous Information

EMERGENCY NUMBERS

POLICE / FIRE / MEDICAL EMERGENCIES 911

Non-Emergency		(619) 531-2000
Anonymous Tips		(619) 235-8477
Dentist Referral	(San Diego County Dental Society)	(619) 275-0244
Doctor Referral	(San Diego County Medical Society)	(619) 565-8161

HOSPITALS

Mercy Hospital	4077 5th Avenue	San Diego, CA 92103	(619) 294-8111
Kaiser Permanente	4647 Zion Avenue	San Diego, CA 92120	(619) 528-5000
Sharp Memorial Hospital	7901 Frost Street	San Diego, CA 92123	(858) 541-3400
Alvarado Hospital	6655 Alvarado Rd	San Diego, CA 92120	(619) 287-3270

TOURISM

Visitor Services, Chamber of Commerce	sdchamber.org	(619) 232-0124
Convention & Visitors Bureau	sandiego.org	(619) 232-3101
Tijuana Tourism & Convention Bureau	travelfile.org	(619) 299-8518
Visitor Information Center	sandiego.org	(619) 236-1212
San Diego City Info Center	intraxenglish.com/sd_info	(619) 236-5555

MISCELLANEOUS INFORMATION

Western Union	westernunion.com	6155 El Cajon Blvd., San Diego 92115	(800) 325-6000
Express Mail	usps.com	Automated message	(800) 222-1811
Mail Boxes Etc.	mbe.com	6161 El Cajon Blvd., San Diego 92115	(619) 286-7888
Main Post Office	usps.com	6401 El Cajon Blvd., San Diego 92115	(800) 275-8777
Federal Express	fedex.com	Automated message	(800) 463-3339

Lost Credit Cards

American Express	americanexpress.com	(800) 528-2121
Discover Card	discovercard.com	(800) 347-2683
MasterCard	mastercard.com	(800) 826-2181
VISA	visa.com	(800) 336-8472

International Currency Writing

Thomas Cook usthomascook.com

Qualcomm Stadium goaztecs.com Aztec Info Line (619) 283-7096

Accessible San Diego accesssandiego.org Physically challenged persons (619) 279-0704

SAN DIEGO STATE AZTECS

Visiting Team Travel Info Form

Team

Visiting Team _____

Sport _____

Game Date _____

Time _____

Visiting Team Contact Person

Name _____

Position (or Title) _____

Office Phone () _____

Cell Phone () _____

Home Phone () _____

Fax Number () _____

Transportation/Lodging

Carrier _____ Flight # _____ Date _____ Time _____

Arrival in San Diego _____ Date _____ Time _____

Local Transportation _____

Hotel _____ Hotel Phone _____

Departure from San Diego _____ Date _____ Time _____

Parking Passes Needed _____

Number of Buses or Vans _____

Requested Practice Times

Day Prior _____

Game Day _____

Contact Person _____

Phone Number _____

Travel Party

Number of Athletes _____

Number of Cheerleaders _____

Number of Mascots _____

Number in Pep Band _____

Number of Coaches/Staff _____

Please complete and then mail or fax this form to the following address/fax number no later than 30 days prior to the event date:

Event Management
San Diego State University
Department of Athletics
5500 Campanile Drive
San Diego, CA 92182-4313

Questions? Please contact:
David Noll: 619-594-4191, dnoll@mail.sdsu.edu
Steve Bartel: 619-594-0396, sbartel@mail.sdsu.edu
Tim Baron: 619-594-4836, tbaron@mail.sdsu.edu
Fax: 619-594-1334