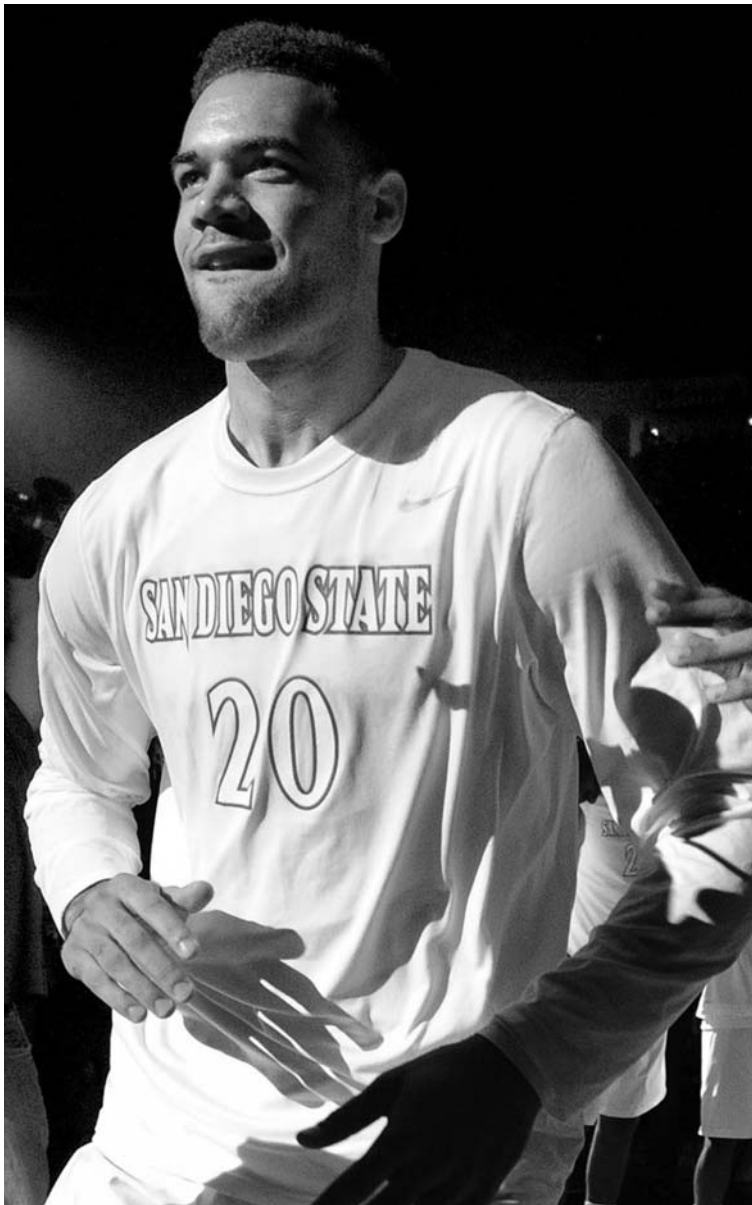


Table of Contents



2014 NCAA SWEET 16 ► FIVE CONSECUTIVE NCAA APPEARANCES ► EIGHT-TIME MW CHAMPIONS



The 2014-15 SDSU Men's Basketball Media Guide

The 2014-15 San Diego State University Men's Basketball Media Guide is a publication of the San Diego State University athletics media relations office. The publication was written, edited and designed by assistant media relations director Darin Wong and associate athletic director/media relations Mike May.

Assistance was provided by assistant media relations directors Dave Kuhn, Jamie McConeghy, Jim Solien and Victoria Valencia, media relations assistant Eric Harding and student assistants Vanessa Dominguez and Katie Willis.

Cover design by Darin Wong and Mike May.

Photography

Ernie Anderson, Ken Jacques, Laura Jacobson, Stan Liu, Derrick Tuskan, Mountain West, NCAA Photos, NBA Photos, NBAE/Getty Images, Philadelphia 76ers and the Associated Press.

Printing

Atlas Lithograph Company, Inc.



Introduction

Media Information 2 • Rosters 3 • Outlook 4 • Schedule 10 • Broadcast Roster 11

This is SDSU Basketball

Steve Fisher 14 • Fisher's Men in the Pros 16 • Viejas Arena 18 • Jeff Jacobs JAM Center 20 • Mountain West 22



Coaches and Staff

Steve Fisher 24 • Brian Dutcher 38 • Justin Hutson 39 • David Velasquez 40 • Mark Fisher 41 • Support Staff 42

Players

Dakarai Allen 46 • Angelo Chol 48 • JJ O'Brien 51 • Dwayne Polee II 55 • Aqeel Quinn 59 • Winston Shepard 62 • Matt Shrigley 65 • Skylar Spencer 67 • Parker U'u 70 • D'Erryl Williams 72 • Ryan Staten 74 • Niksha Federico 75 • Kibret Woldemichael 75 • Zylan Cheatham 76 • Trey Kell 76 • Malik Pope 76 • Kevin Zabo 76



2013-14 Review

Notes 78 • Results 80 • Game-By-Game Statistics 86 • Miscellaneous Statistics 92 • Departed Senior Bios 93 • Box Scores and Recaps 95 • Mountain West Statistics 107



Records

Team 110 • Team Season 112 • Individual Game 114 • Top Game Performances 116 • Miscellaneous Records 118 • Individual Season 120 • Individual Career 123 • Freshman Records 126 • Mountain West Records 127 • Viejas Arena Records 129



History

Year-By-Year Results 132 • vs. Nationally Ranked 145 • vs. All Opponents 146 • All-Time Series 147 • Jersey Numbers 157 • Year-By-Year Summary 158 • Statistical History 160 • Awards & Honors 162 • 1,000-Point Scorers 164 • Annual Stat Leaders 170 • Letterwinners 172 • Individual Div. I Stats 174 • National Postseason 179 • Conf. Tournaments 190 • Attendance/Home Record 193 • Rallies/Clutch Shots 194



University

SDSU 196 • Aztec Culture 199 • Dr. Elliot Hirshman 200 • Jim Sterk 201 • Media Information 202 • Opponent Directory 204 • Media Outlets 205 • Broadcast Partners 206 • Viejas Arena 207

Media Information



2014 NCAA SWEET 16 ► FIVE CONSECUTIVE NCAA APPEARANCES ► EIGHT-TIME MW CHAMPIONS

General Information

Location San Diego, Calif., 92182
 Founded 1897
 Enrollment 32,396
 Nickname Aztecs
 Colors Scarlet and Black
 PMS Color 185
 Arena Viejas Arena at Aztec Bowl
 Opened 1997
 Capacity 12,414
 Affiliation NCAA Division I
 Conference Mountain West
 President Dr. Elliot Hirshman
 Alma Mater (Year) Yale (1983)
 Athletics Director Jim Sterk
 Alma Mater (Year) Western Washington (1980)
 Athletic Department Phone 619-594-3019
 Ticket Office Phone 619-283-7378
 or 619-283-SDSU

History

Seasons of Basketball Entering 94th
 First Season of Basketball 1921-22
 All-Time Record 1,368-1,068-1
 NCAA Tournament Appearances 12
 Seasons of Div. I Basketball Entering 45th
 First Season of Div. I Basketball 1970-71
 All-Time Div. I Record 680-623
 NCAA Div. I Tournament Appearances 10
 Last NCAA Appearance 2014
 NIT Appearances 5
 Last NIT Appearance 2009

Media Relations

Associate AD/MBB Mike May
 May Cell Phone 619-957-8372
 May E-mail mmay@mail.sdsu.edu
 Assistant MRD/MBB Darin Wong
 Wong Cell Phone 310-489-2378
 Wong E-mail dwong@mail.sdsu.edu
 SID Mailing Address Aztec Media Relations
 Fowler Athletics Center
 5302 55th Street, Suite 3014
 San Diego State University
 San Diego, CA 92182
 SID Main Office Number 619-594-5547
 SID Fax Number 619-582-6541

Basketball Staff

Head Coach Steve Fisher
 Alma Mater (Year) Illinois State (1967)
 Record at SDSU (Years) 312-176 (15)
 Record Overall (Years) 496-258 (23 full)
 Basketball Office Phone 619-594-6249
 Best Time to Contact Fisher Contact May
 Associate Head Coach/
 Head Coach in Waiting Brian Dutcher
 Alma Mater (Year) Minnesota (1982)
 Assistant Coach Justin Hutson
 Alma Mater (Year) CSU Bakersfield (1994)
 Assistant Coach David Velasquez
 Alma Mater (Year) San Diego State (2007)
 Assistant to the Head Coach Mark Fisher
 Alma Mater (Year) Michigan (2001)
 Director of Basketball Operations Matt Soria
 Alma Mater (Year) San Diego State (2002)
 Director of Player Development Tim Shelton
 Alma Mater (Year) San Diego State (2011)
 Basketball Trainer Tom Abdenour
 Alma Mater (Year) Wayne State (1976)
 Administrative Assistant Leana DeKock

Team Information

	Total	Home	Away	Neu.
2013-14 Record	31-5	15-1	10-2	6-2
2013-14 MW Record	16-2	9-0	7-2	
Mountain West Finish 1st			
MW Tournament Finalist (2-1)			
Postseason NCAA			
NCAA Finish West Region Sweet 16 (2-1)			
Final Top-25 Ranking 13 (AP)/12 (Coaches)			
Starters Returning/Lost 3/2			
Letterwinners Returning/Lost 8/3			

Media Information

Radio Station The Mighty 1090
 Play-By-Play Announcer Ted Leitner
 PBP Phone Number 858-560-6671
 Video Footage Contact Jason Bott
 VFC Phone Number 619-594-2428
 Beat Writer Mark Zeigler
 U-T San Diego
 619-293-1341

Media Services

SID Office Phone 619-594-5547
 SID Office Fax 619-582-6541
 Viejas Arena Press Row 619-265-5853
 Website GoAztecs.com
 Twitter @GoAztecs/#AztecMBB
 Facebook facebook.com/goaztecs
 Instagram @GoAztecs
 YouTube youtube.com/goaztecscom

2014-15 Roster Breakdown

Starters Returning (3)

Player	Ht.	Wt.	Cl.	Pos.	PPG	RPG
JJ O'Brien	6-7	215	Sr.	F	7.8	4.7
Winston Shepard	6-8	210	Jr.	F	11.6	4.9
Skylar Spencer	6-10	240	Jr.	F	4.8	4.3

Total Letterwinners Returning (8)

Player	Ht.	Wt.	Cl.	Pos.	PPG	RPG
Dakarai Allen	6-5	190	So.	G	2.5	1.2
JJ O'Brien	6-7	215	Sr.	F	7.8	4.7
Dwayne Polee II	6-7	200	Sr.	F	8.5	3.3
Aqeel Quinn	6-3	200	Sr.	G	5.0	1.6
Winston Shepard	6-8	210	Jr.	F	11.6	4.9
Matt Shrigley	6-6	190	So.	F	5.2	1.6
Skylar Spencer	6-10	240	Jr.	F	4.8	4.3
D'Erryl Williams	6-2	195	So.	G	0.7	0.6

Others Returning (3)

Player	Ht.	Wt.	Cl.	Pos.	PPG	RPG
Niksha Federico	6-6	185	So.	F	2.8	0.8
Ryan Staten	6-2	185	Sr.	G	0.9	1.1
Kibret Woldemichael	5-7	150	So.	G	2.5	0.3

Newcomers (6)

Player	Ht.	Wt.	Cl.	Pos.
Zylan Cheatham	6-7	210	Fr.	F
Angelo Chol	6-9	225	Jr.	F
Trey Kell	6-4	215	Fr.	G
Malik Pope	6-10	205	Fr.	F
Parker U'u	6-4	220	So.	G
Kevin Zabo	6-2	185	Fr.	G

Starters Lost (2)

Player	Ht.	Wt.	Cl.	Pos.	PPG	RPG
Josh Davis	6-8	215	Sr.	F	7.7	10.1
Xavier Thames	6-3	195	Sr.	G	17.6	2.9

Total Letterwinners Lost (3)

Player	Ht.	Wt.	Cl.	Pos.	PPG	RPG
Josh Davis	6-8	215	Sr.	F	7.7	10.1
James Johnson	6-10	235	Jr.	F	1.8	1.5
Xavier Thames	6-3	195	Sr.	G	17.6	2.9

Honors Candidates

Angelo Chol - All-MW, All-Region, MW
 Newcomer of the Year
 JJ O'Brien - All-MW, All-Region
 Dwayne Polee II - All-MW, All-Region
 Skylar Spencer - All-MW, All-Region, MW
 Defensive Player of the Year
 Winston Shepard - All-MW, All Region

AZTEC BASKETBALL MEDIA GUIDE





2014-15 San Diego State Alphabetical Roster

No.	Name	Pos.	Ht.	Wt.	Yr.	Exp.	Most Recent Div. I Season			Hometown (High School/Previous School)
							PPG	RPG	APG	
4	Dakarai Allen	G	6-5	190	So.	1L	2.5	1.2	0.4	Elk Grove, Calif. (Sheldon High)
14	Zylan Cheatham	F	6-7	210	Fr.	HS	--	--	--	Phoenix, Ariz. (South Mountain High)
3	Angelo Chol	F	6-9	220	Jr.	TR	1.9	2.0	0.1	San Diego, Calif. (Hoover High/Arizona)
33	Niksha Federico	F	6-6	185	So.	SQ	2.8	0.8	0.3	San Diego, Calif. (Cathedral Catholic High)
12	Trey Kell	G	6-4	215	Fr.	HS	--	--	--	San Diego, Calif. (St. Augustine High)
20	JJ O'Brien	F	6-7	215	Sr.	2L	7.8	4.7	1.1	Rancho Cucamonga, Calif. (Alta Loma High/Utah)
5	Dwayne Polee II	F	6-7	200	Sr.	2L	8.5	3.3	0.4	Los Angeles, Calif. (Westchester High/St. John's)
21	Malik Pope	F	6-10	205	Fr.	HS	--	--	--	Sacramento, Calif. (Laguna Creek High)
10	Aqeel Quinn	G	6-3	200	Sr.	1L	5.0	1.6	1.0	Los Angeles, Calif. (Leuzinger High/CSUN)
13	Winston Shepard	F	6-8	210	Jr.	2L	11.6	4.9	2.1	Houston, Texas (Findlay Prep (Nev.))
40	Matt Shrigley	F	6-6	190	So.	1L	5.2	1.6	0.5	San Diego, Calif. (La Costa Canyon High)
0	Skylar Spencer	F	6-10	240	Jr.	2L	4.8	4.3	0.2	Inglewood, Calif. (Price High)
24	Ryan Staten	G	6-2	185	Sr.	SQ	0.9	1.1	0.1	San Pablo, Calif. (Piedmont High)
22	Parker U'u	G	6-4	220	So.	TR	1.4	1.1	0.2	Sacramento, Calif. (Jesuit High/Hartford)
11	D'Erryl Williams	G	6-2	195	So.	1L	0.7	0.6	0.4	Sacramento, Calif. (Sheldon High)
23	Kibret Woldemichael	G	5-7	150	So.	SQ	2.5	0.3	1.0	San Marcos, Calif. (Mission Hills High)
2	Kevin Zabo	G	6-2	185	Fr.	HS	--	--	--	Gatineau, Quebec, Canada (Brewster Academy (N.H.))

2014-15 San Diego State Numerical Roster

No.	Name	Pos.	Ht.	Wt.	Yr.	Exp.	Most Recent Div. I Season			Hometown (High School/Previous School)
							PPG	RPG	APG	
0	Skylar Spencer	F	6-10	240	Jr.	2L	4.8	4.3	0.2	Inglewood, Calif. (Price High)
2	Kevin Zabo	G	6-2	185	Fr.	HS	--	--	--	Gatineau, Quebec, Canada (Brewster Academy (N.H.))
3	Angelo Chol	F	6-9	220	Jr.	TR	1.9	2.0	0.1	San Diego, Calif. (Hoover High/Arizona)
4	Dakarai Allen	G	6-5	190	So.	1L	2.5	1.2	0.4	Elk Grove, Calif. (Sheldon High)
5	Dwayne Polee II	F	6-7	200	Sr.	2L	8.5	3.3	0.4	Los Angeles, Calif. (Westchester High/St. John's)
10	Aqeel Quinn	G	6-3	200	Sr.	1L	5.0	1.6	1.0	Los Angeles, Calif. (Leuzinger High/CSUN)
11	D'Erryl Williams	G	6-2	195	So.	1L	0.7	0.6	0.4	Sacramento, Calif. (Sheldon High)
12	Trey Kell	G	6-4	215	Fr.	HS	--	--	--	San Diego, Calif. (St. Augustine High)
13	Winston Shepard	F	6-8	210	Jr.	2L	11.6	4.9	2.1	Houston, Texas (Findlay Prep (Nev.))
14	Zylan Cheatham	F	6-7	210	Fr.	HS	--	--	--	Phoenix, Ariz. (South Mountain High)
20	JJ O'Brien	F	6-7	215	Sr.	2L	7.8	4.7	1.1	Rancho Cucamonga, Calif. (Alta Loma High/Utah)
21	Malik Pope	F	6-10	205	Fr.	HS	--	--	--	Sacramento, Calif. (Laguna Creek High)
22	Parker U'u	G	6-4	220	So.	TR	1.4	1.1	0.2	Sacramento, Calif. (Jesuit High/Hartford)
23	Kibret Woldemichael	G	5-7	150	So.	SQ	2.5	0.3	1.0	San Marcos, Calif. (Mission Hills High)
24	Ryan Staten	G	6-2	185	Sr.	SQ	0.9	1.1	0.1	San Pablo, Calif. (Piedmont High)
33	Niksha Federico	F	6-6	185	So.	SQ	2.8	0.8	0.3	San Diego, Calif. (Cathedral Catholic High)
40	Matt Shrigley	F	6-6	190	So.	1L	5.2	1.6	0.5	San Diego, Calif. (La Costa Canyon High)

Head Coach: Steve Fisher (Illinois State, 1967)
Associate Head Coach: Brian Dutcher (Minnesota, 1982)
Assistant Coaches: Justin Hutson (CSU Bakersfield, 1994), David Velasquez (San Diego State, 2007)
Assistant to the Head Coach: Mark Fisher (Michigan, 2001)
Director of Operations: Matt Soria (San Diego State, 2002)
Director of Player Development: Tim Shelton (San Diego State, 2011)

► Pronunciations Dakarai Allen Duh-kar-ree Allen Zylan Cheatham ZY-lin Cheatham Niksha Federico NEEK-sha Federico Aqeel Quinn Uh-keel Quinn Ryan Staten Ryan STATE-in Parker U'u Parker You-you	D'Erryl Williams DEE-air-ol Williams Kevin Zabo Kevin ZAH-bo	Sophomores (6) Dakarai Allen, Niksha Federico, Matt Shrigley, Parker U'u, D'Erryl Williams, Kibret Woldemichael Freshmen (4) Zylan Cheatham, Trey Kell, Malik Pope, Kevin Zabo	► By Position Guards (8) Dakarai Allen, Trey Kell, Aqeel Quinn, Ryan Staten, Parker U'u, D'Erryl Williams, Kibret Woldemichael, Kevin Zabo Forwards (9) Zylan Cheatham, Angelo Chol, Niksha Federico, JJ O'Brien, Malik Pope, Dwayne Polee II, Winston Shepard, Matt Shrigley,	Skylar Spencer Centers (0) None	
	► By Class Seniors (4) JJ O'Brien, Dwayne Polee II, Aqeel Quinn, Ryan Staten Juniors (3) Angelo Chol, Winston Shepard, Skylar Spencer				

The 2014-15 Season Outlook



Grand Dreams, Great Expectations

By Mick McGrane

If perception invites possibility, San Diego State men's basketball head coach Steve Fisher stands ready to welcome it with open arms.

In their blustery run up the ladder to the reaches of the nation's elite, the Aztecs enter the 2014-15 campaign with enough talent to topple the game's ruling class and enough questions to spark at least a modicum of concern.

How do you replace an All-American point guard (Xavier Thames) whose significance was gauged in gold?

Where do you locate a player (Josh Davis) with the ability to post 40 career double-doubles?

How do you navigate a non-conference schedule with enough hazards to warrant a warning bell?

And, ultimately, how do you find enough minutes for a roster billed as the best in school history?

Fisher and the Aztecs are about to find out.

"We've got good players returning, but when you take an Xavier Thames and a Josh Davis out of the equation, we're not the same team," said Fisher, whose 2013-14 squad finished 31-5 in advancing to the Sweet 16 for the sec-

ond time since 2011. "Even though people are saying, 'Look at all of these players you've got,' we lost a lot of firepower and a lot of leadership at both ends of the floor. So who will be able to step in and deliver, especially like (Thames) did offensively when you had to have a basket down the stretch? Will it be different guy-different game, or will we have a go-to guy?"

"A year ago, I knew better than the public that we were going to be good," Fisher added. "This year, there are great expectations from the outside. How will we deal with that? We had a forgiving fan base last year where people said, 'Well, we'll be pretty good and we'll be competitive, but wait until next year.' Now, next year is this year. When people write that you're supposed to be good will you look forward to embracing it or will you get nervous when stress hits? Guys are going to have to step up. We've been pretty good in the past at being able to deal with expectation."

If there is electricity in the air it is with ample reason. SDSU, which has won 25 or more games five of the last six seasons, has earned a berth in the NCAA tournament five straight times,





San Diego State celebrated with its fans in the final regular-season game of 2013-14 after defeating New Mexico to capture its Mountain West-best eighth conference championship.

Sophomore Matt Shrigley is one of six returning Aztecs who started at least once in 2013-14.



Team Breakdown

2013-14 Record	31-5
MW Record	16-2
MW Finish	1st
MW Tournament	2-1
NCAA Tournament	2-1

Starters Returning (3)

Player	Ht.	Wt.	Cl.	Pos.	PPG	RPG
JJ O'Brien	6-7	215	Sr.	F	7.8	4.7
Winston Shepard	6-8	210	Jr.	F	11.6	4.9
Skylar Spencer	6-10	240	Jr.	F	4.8	4.3

Total Letterwinners Returning (8)

Player	Ht.	Wt.	Cl.	Pos.	PPG	RPG
Dakarai Allen	6-5	190	So.	G	2.5	1.2
JJ O'Brien	6-7	215	Sr.	F	7.8	4.7
Dwayne Polee II	6-7	200	Sr.	F	8.5	3.3
Aqeel Quinn	6-3	200	Sr.	G	5.0	1.6
Winston Shepard	6-8	210	Jr.	F	11.6	4.9
Matt Shrigley	6-6	190	So.	F	5.2	1.6
Skylar Spencer	6-10	240	Jr.	F	4.8	4.3
D'Erryl Williams	6-2	195	So.	G	0.7	0.6

Others Returning (3)

Player	Ht.	Wt.	Cl.	Pos.	PPG	RPG
Niksha Federico	6-6	185	So.	F	2.8	0.8
Ryan Staten	6-2	185	Sr.	G	0.9	1.1
Kibret Woldemichael	5-7	150	So.	G	2.5	0.3

Newcomers (6)

Player	Ht.	Wt.	Cl.	Pos.
Zylan Cheatham	6-7	210	Fr.	F
Angelo Chol	6-9	225	Jr.	F
Trey Kell	6-4	215	Fr.	G
Malik Pope	6-10	205	Fr.	F
Parker U'u	6-4	220	So.	G
Kevin Zabo	6-2	185	Fr.	G

Starters Lost (2)

Player	Ht.	Wt.	Cl.	Pos.	PPG	RPG
Josh Davis	6-8	215	Sr.	F	7.7	10.1
Xavier Thames	6-3	195	Sr.	G	17.6	2.9

Total Letterwinners Lost (3)

Player	Ht.	Wt.	Cl.	Pos.	PPG	RPG
Josh Davis	6-8	215	Sr.	F	7.7	10.1
James Johnson	6-10	235	Jr.	F	1.8	1.5
Xavier Thames	6-3	195	Sr.	G	17.6	2.9

Season Outlook



2014 NCAA SWEET 16 ► FIVE CONSECUTIVE NCAA APPEARANCES ► EIGHT-TIME MW CHAMPIONS

SDSU's KenPom Defensive Adjusted Efficiency *(Since 2006-07)*

Season	National Rank
2006-07	18
2007-08	50
2008-09	22
2009-10	40
2010-11	2
2011-12	49
2012-13	17
2013-14	9

winning at least one game in three of the last four years. The Aztecs are ranked 17th in the preseason USA Today Coaches Top-25 Poll.

SDSU is welcoming the most heralded recruiting class in program history. Rated as one of the top 15 classes in the nation, the group includes a five-star player in forward Malik Pope; a pair of four-star players in forward Zylan Cheatham and guard Trey Kell; and three-star point guard Kevin Zabo.

Yet if any of the newcomers anticipate being gifted immediate playing time, they'll need to claw their way through the ranks of a team that returns 63.1 percent of its scoring; 65.2 percent of its rebounding; and 58.7 percent of its assists.

A squad that finished the 2013-14 season ranked 13th in the AP Top 25 Poll and 12th in the USA Today Coaches Poll returns three starters in senior forward JJ O'Brien, junior forward Skylar Spencer and junior forward Winston Shepard, who was named to the preseason all-Mountain West team.

Other letterwinners returning to the defending MW regular-season champion Aztecs include senior forward and preseason all-conference selection Dwayne Polee II, who was dubbed the league's Sixth Man of the Year last season and averaged 15.0 points in his final five games; senior guard Aqeel Quinn, whose average of 16.1 minutes per game last season ranked second among reserves; forward Matt Shrigley, who scored in double figures nine times in 2013-14 as a redshirt freshman; sophomore guard D'Erryl Williams, who saw action in 10 of the team's final 14 games; and sophomore guard Dakarai Allen.

And then there is the addition of junior Angelo Chol, a 6-9, 220-pound forward who sat out last season per NCAA rules after transferring from Arizona. Chol, a former prep stand-

out at San Diego's Hoover High, affords the Aztecs the option of simultaneously employing Spencer and him as one of the most foreboding shot-blocking/rebounding tandems in the history of the program.

"Angelo will be ready to go from the first tip," Fisher said of Chol, who was part of Arizona's Sweet 16 team in 2012-13. "Even though he didn't play competitively last year he practiced every day, so he's far ahead of any of the freshmen in terms of knowing what's expected from us. He obviously had two years of playing at Arizona before he came, so he hasn't forgotten how to play. It's going to be a battle between him and Skylar (Spencer) to find out who's going to be that starting post player. Then the question for us becomes how much we can play them together."

The prospect of Chol, who was tabbed the Mountain West Preseason Newcomer of the Year, and Spencer (a school-record 89 blocked shots last season) patrolling the rim only adds to the dynamic that has come to define San Diego State basketball: defense.

According to the KenPom ratings, the Aztecs last season ranked ninth nationally in adjusted defensive efficiency. No other Mountain West team finished in the top 30. SDSU has ranked among the top 50 teams in that category every season since 2006-07 and has finished among the top 25 five times during that span.

Maintaining that identity would seem particularly crucial in 2014-15 as the Aztecs begin their quest to fill the void created by the departure of Thames. Selected in the second round of the NBA Draft, Thames scored in double figures in 31 of the team's 36 games and averaged 26.0 points in the NCAA Tournament. He led the team in points, minutes, assists, steals, three-pointers and free throws and finished as the team's leading scorer 25 times.

Shepard's average of 11.6 points ranked second to Thames last season, while the high-flying Polee blossomed in the second half of the campaign. Over the final 16 games of the season, he averaged 10.8 points off the bench while finishing in double figures nine times.

"It will be virtually impossible for someone to have the same kind of season that (Thames) did last year," said Fisher, whose team received 34 of 35 first-place votes in the Mountain West preseason media poll. "Now, having said that, I didn't think he could have



Senior JJ O'Brien enters his final campaign as one of three returning starters and has a team-best 89 career starts to his credit.

the kind of season he did, so maybe I shouldn't say it's virtually impossible. What he did was extraordinary. If we have someone or someones do that, it will greatly enhance our chances to be really, really good. We've got a lot of guys that are going to be better, but whether they can play at that elite level with consistency is the challenge."

It's particularly a challenge when the largest piece missing from the puzzle also happens to be your point guard. While Shepard and O'Brien --- who has started 68 of 69 games since arriving as a transfer from Utah in 2011 --- are the only players on the roster with experience at the position, potential successors to Thames include Quinn, Williams and Kell, who prepped at San Diego's St. Augustine High. Zabo, who may be the early favorite to succeed Thames, was the first freshman of the recruiting class to arrive on campus and has been working with the team since his arrival.

Career Games Played/Started

Player	GP	GS
Dwayne Polee II	92	27
JJ O'Brien	91	89
Aqeel Quinn	87	11
Skylar Spencer	70	36
Winston Shepard	66	36
Angelo Chol	63	0
Matt Shrigley	36	3
Dakarai Allen	29	1
Parker U'u	29	0
D'Erryl Williams	20	0
Ryan Staten	14	0
Niksha Federico	4	0
Kibret Woldemichael	4	0
Totals	605	203

Includes games played and games started at all Division I schools for eligible players this season.



Sophomore Dakarai Allen played in 29 games, starting once, during his true freshman season in 2013-14.

Season Outlook



2014 NCAA SWEET 16 ► FIVE CONSECUTIVE NCAA APPEARANCES ► EIGHT-TIME MW CHAMPIONS



Aqeel Quinn, a senior, and sophomore D'Erryl Williams will look to take San Diego State back to the NCAA tournament for a sixth straight season.

"I have always been fairly steady in the approach that once we had a starting lineup that we stayed with it," Fisher said. "There's never been a lot of tinkering unless guys were injured. I don't know whether that will happen this year. I think we're better served to consistently stay with the same lineup, but I also see this year being --- maybe more than any other year --- a case where the separation is smaller (between the talent in players) as you start moving down the ranks. So, even if we do have a consistent starting lineup, I do believe we'll play more people and minutes will be doled out a little more evenly among more players."

Given the influx of talent, the Aztecs may have little choice. Pope ranked as high as No. 17 on the Rivals 150 at the time of his signing in 2013, while Cheatham was rated No. 78. Kell ranked No. 81 on the ESPN 100.

And given the early schedule, the Aztecs will need all hands on deck. After facing Utah at Viejas Arena on

Nov. 18, SDSU has a date with Brigham Young and potentially Pittsburgh and Arizona the following week at the EA SPORTS Maui Invitational. The Aztecs are also at Washington on Dec. 7 and visit

Cincinnati on Dec. 17.

"What it will do is show any imperfections we've got in our game," Fisher said. "We're going to be playing people that are good right out of the chute. It's not going to be fool's gold as we play the non-conference schedule. The opportunity we're going to have is to play good people and beat good people. That's the challenge. Playing them is one thing, but then you have to win. And we've done that in the past, which has clearly enhanced our perception."

Perception and possibility. And the talent to elevate one of the nation's top programs to dizzying heights.

"It (perception) enhances every aspect of the program," Fisher said. "I think that's what every coach, player or university wants in an athletic program. You want to be recognized, not just locally but nationally, as one of the better programs in the country. And we feel we are. Now we're getting others to say the same thing."

"In 2010, when we were ranked for the first time in the history of the school, we did backflips when we were rated 25th in the preseason. This year, it's just an assumption by everybody that we're going to be ready and we're going to be good. I like that and our players like that. It creates a responsibility for everybody. If that's who we are then we have a responsibility to come out every day and maintain and build upon that. That's what good programs do. You reach a certain level where you're no longer the forgotten child on someone else's schedule, whether it's conference or non-conference. They circle you in red and you're a big, big game for them. That's what we've become."

Among the Best Nationally (Entering 2014-15)

* San Diego State is one of 13 schools nationally to have won 20 or more games in nine straight seasons. The other 12 are Akron, Brigham Young, Duke, Florida, Gonzaga, Kansas, Louisville, Memphis, North Carolina, Ohio State, Pittsburgh and Syracuse.

* The Aztecs are the class of California having won 41 straight games vs. schools from the state (since 1996-97). It is the longest such streak vs. California teams in America and ranks ahead of second-place Duke's 10-game winning streak vs. the state.

* SDSU is one of 17 teams in the nation to have made at least two NCAA Sweet 16 appearances in the last four seasons (2010-11).

* San Diego State is one of 11 teams, and the only one from California, to have advanced to five straight NCAA tournaments.

* The Aztecs are one of seven teams in the country to have advanced to five straight NCAA tournaments and win at least 23 games in each of those seasons.

2014-15 Mountain West Preseason Poll

Rk.	Team	Points
1.	SDSU (34)	383
2.	Boise State (1)	275
3.	New Mexico	270
4.	UNLV	269
5.	Colorado State	258
6.	Wyoming	256
7.	Fresno State	232
8.	Nevada	126
9.	Air Force	102
10.	Utah State	98
11.	San José State	41

2014-15 Preseason Team Accolades

Top-25 Predictions

- No. 13**
- Athlon Sports
- No. 15**
- Jeff Eisenberg, Yahoo! Sports
- No. 16**
- Mike DeCourcy, Sporting News
- Sporting News
- No. 17**
- USA Today Coaches Poll
- Blue Ribbon
- Dick Vitale, ESPN
- No. 18**
- Rob Dauster, NBC Sports
- No. 19**
- Reid Forgrave, FOX Sports
- No. 25**
- Jason King, Bleacher Report

MW Predictions

- Champions**
- MW Media Poll
 - Matt Norlander, CBS Sports
 - Doug Gottlieb, CBS Sports
 - Jerry Palm, CBS Sports
 - Gary Parrish, CBS Sports
 - Jon Rothstein, CBS Sports
 - Chip Patterson, CBS Sports
 - Jeff Nusser, ESPN
 - Sporting News
 - Lindy's Sports
 - Athlon Sports

2014-15 Schedule



2014 NCAA SWEET 16 ► FIVE CONSECUTIVE NCAA APPEARANCES ► EIGHT-TIME MW CHAMPIONS

Date	Day	Opponent	Site	Time	TV
Exhibition Game					
Nov. 7	Fri.	POINT LOMA	Viejas Arena	7 p.m. PST	
EA SPORTS Maui Invitational - Opening Round (Campus Sites)					
Nov. 14	Fri.	CSUN	Viejas Arena	7 p.m. PST	FS San Diego
Nov. 18	Tue.	UTAH	Viejas Arena	1 p.m. PST	ESPN
Nov. 20	Thu.	BAKERSFIELD	Viejas Arena	7:30 p.m. PST	FS San Diego
EA SPORTS Maui Invitational - Championship Round (Lahaina Civic Center; Lahaina, Hawaii)					
Nov. 24	Mon.	vs. Brigham Young	Lahaina, Hawaii	6:30 p.m. HST	ESPN2
Nov. 25	Tue.	vs. Pittsburgh/at Chaminade	Lahaina, Hawaii	11:30 a.m./5 p.m. HST	ESPN2/ESPN
Nov. 26	Wed.	vs. Arizona/Kansas State/Missouri/Purdue	Lahaina, Hawaii	TBD	ESPN Networks
Dec. 4	Thu.	SAN DIEGO	Viejas Arena	8 p.m. PST	ESPNU
Dec. 7	Sun.	at Washington	Seattle, Wash.	6 p.m. PST	Pac-12 Network
Dec. 10	Wed.	LONG BEACH STATE	Viejas Arena	7 p.m. PST	ESPN3
Dec. 17	Wed.	at Cincinnati	Cincinnati, Ohio	9 p.m. EST	ESPN2
Dec. 20	Sat.	BALL STATE	Viejas Arena	7 p.m. PST	CI/MW Network
Dec. 22	Mon.	UC RIVERSIDE	Viejas Arena	8 p.m. PST	FS San Diego
Dec. 27	Sat.	SAN DIEGO CHRISTIAN	Viejas Arena	7 p.m. PST	FS San Diego
Dec. 31	Wed.	AIR FORCE*	Viejas Arena	2 p.m. PST	ESPN3
Jan. 3	Sat.	at Fresno State*	Fresno, Calif.	TBD	ESPNU
Jan. 6	Tue.	NEW MEXICO*	Viejas Arena	8 p.m. PST	CBSSN
Jan. 14	Wed.	at Wyoming*	Laramie, Wyo.	9 p.m. MST	ESPN2
Jan. 17	Sat.	UNLV*	Viejas Arena	3 p.m. PST	CBSSN
Jan. 20	Tue.	at Air Force*	USAF Academy, Colo.	7:30 p.m. MST	CBSSN
Jan. 24	Sat.	at Colorado State*	Fort Collins, Colo.	8 p.m. PST	ESPNU or ESPN3
Jan. 27	Tue.	FRESNO STATE*	Viejas Arena	6 p.m. PST	CBSSN
Jan. 31	Sat.	UTAH STATE*	Viejas Arena	5 p.m. PST	CBSSN
Feb. 4	Wed.	at Nevada*	Reno, Nev.	7 p.m. PST	ESPN3
Feb. 8	Sun.	at Boise State*	Boise, Idaho	4 p.m. PST	CBSSN
Feb. 11	Wed.	WYOMING*	Viejas Arena	8 p.m. PST	CBSSN
Feb. 14	Sat.	COLORADO STATE*	Viejas Arena	5 p.m. PST	CBSSN
Feb. 17	Tue.	at New Mexico*	Albuquerque, N.M.	7:30 p.m. MST	CBSSN
Feb. 21	Sat.	at San José State*	San Jose, Calif.	7 p.m. PST	ESPN3
Feb. 28	Sat.	BOISE STATE*	Viejas Arena	TBD	ESPN2 or ESPNU
March 4	Wed.	at UNLV*	Las Vegas, Nev.	8 p.m. PST	CBSSN
March 7	Sat.	NEVADA*	Viejas Arena	7 p.m. PST	CBSSN
March 12-14	Thu.-Sat.	at MW Championship	Las Vegas, Nev.	TBD	TBD

* - Indicates Mountain West game. CAPS indicates home games at Viejas Arena. All times subject to change.

2015 NCAA Div. I Men's Basketball Championship Dates and Sites

First Four

UD Arena
Dayton, Ohio
Host: Dayton
March 17 and 18

Moda Center
Portland, Ore.
Host: Oregon
March 19 and 21

Key Arena
Seattle, Wash.
Host: Washington
March 20 and 22

Carrier Dome
Syracuse, N.Y.
Host: Syracuse
March 27 and 29

Second/Third Rounds

Veterans Memorial Arena
Jacksonville, Fla.
Host: Jacksonville
March 19 and 21

Time Warner Cable Arena
Charlotte, N.C.
Host: UNC-Charlotte
March 20 and 22

Regionals
Quicken Loans Arena
Cleveland, Ohio
Host: Cleveland State/Mid-American Conference
March 26 and 28

Final Four
Lucas Oil Stadium
Indianapolis, Ind.
Host: Horizon League/IUPUI
April 4 and 6

KFC Yum! Center
Louisville, Ky.
Host: Louisville
March 19 and 21

Nationwide Arena
Columbus, Ohio
Host: Ohio State
March 20 and 22

Staples Center
Los Angeles, Calif.
Host: Pepperdine
March 26 and 28

Consol Energy Center
Pittsburgh, Pa.
Host: Duquesne
March 19 and 21

CenturyLink Center
Omaha, Neb.
Host: Creighton
March 20 and 22

Reliant Stadium
Houston, Texas
Host: Rice/Houston
March 27 and 29

Broadcast Roster



2014 NCAA SWEET 16 ► FIVE CONSECUTIVE NCAA APPEARANCES ► EIGHT-TIME MW CHAMPIONS

INTRODUCTION ► BROADCAST ROSTER



0 **Skylar Spencer**
Jr. • F • 6-10 • 240
Inglewood, Calif.



2 **Kevin Zabo**
Fr. • G • 6-2 • 185
Gatineau, Quebec, Canada



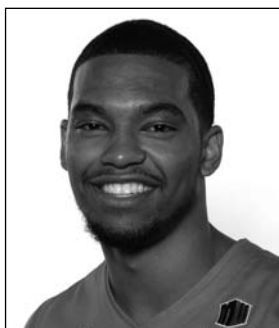
3 **Angelo Chol**
Jr. • F • 6-9 • 220
San Diego, Calif.



4 **Dakarai Allen**
So. • G • 6-5 • 190
Elk Grove, Calif.



5 **Dwayne Polee II**
Sr. • F • 6-7 • 200
Los Angeles, Calif.



10 **Aqeel Quinn**
Sr. • G • 6-3 • 200
Los Angeles, Calif.



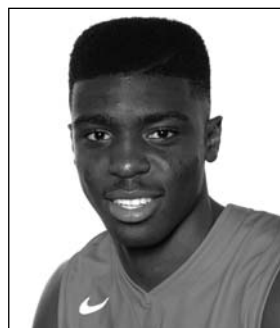
11 **D'Erryl Williams**
So. • G • 6-2 • 195
Sacramento, Calif.



12 **Trey Kell**
Fr. • G • 6-4 • 215
San Diego, Calif.



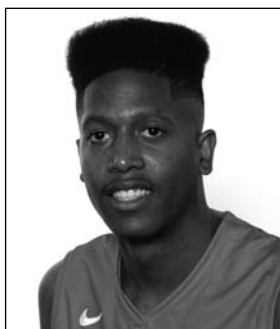
13 **Winston Shepard**
Jr. • F • 6-8 • 210
Houston, Texas



14 **Zylan Cheatham**
Fr. • F • 6-7 • 210
Phoenix, Ariz.



20 **JJ O'Brien**
Sr. • F • 6-7 • 215
Rancho Cucamonga, Calif.



21 **Malik Pope**
Fr. • F • 6-10 • 205
Sacramento, Calif.



22 **Parker U'u**
So. • G • 6-4 • 220
Sacramento, Calif.



23 **Kibret Woldemichael**
So. • G • 5-7 • 150
San Marcos, Calif.



24 **Ryan Staten**
Sr. • G • 6-2 • 185
San Pablo, Calif.



33 **Niksha Federico**
So. • F • 6-6 • 185
San Diego, Calif.



40 **Matt Shrigley**
So. • F • 6-6 • 190
San Diego, Calif.



Steve Fisher
Head Coach

► SDSU Pronunciation Guide

Dakarai Allen
Duh-kar-ree Allen

Zylan Cheatham
ZY-lin Cheatham

Niksha Federico
NEEK-sha Federico

Aqeel Quinn
Uh-keel Quinn

Ryan Staten
Ryan STATE-in

Parker U'u
Parker You-you

D'Erryl Williams
DEE-air-ol Williams

Kevin Zabo
Kevin ZAH-bo

AZTEC BASKETBALL MEDIA GUIDE

MOUNTAIN WEST MEN'S & WOMEN'S CHAMPIONSHIPS



MARCH 9-14, 2015



TheMW.com/2015

FOR TICKETS, PLEASE VISIT YOUR FAVORITE MOUNTAIN WEST INSTITUTION'S ATHLETIC TICKET OFFICE

