



SAN DIEGO STATE WOMEN'S BASKETBALL

2016-17 GAME NOTES

Jen Heisel, Assistant Media Relations Director • E-Mail: jheisel@mail.sdsu.edu • Office: 619-594-3014 • Cell: 862-432-5499

2016-17 SCHEDULE

Date	Opponent	Time
Nov. 4	CSU San Marcos (exh.)	W, 74-53
Nov. 11	at UC Riverside	L, 44-72
Nov. 14	San Diego Christian	W, 80-70
Nov. 17	at San Diego	L, 53-91
Nov. 20	Loyola Marymount	L, 53-60

Seton Hall Thanksgiving Classic (South Orange, N.J.)

Nov. 26	vs. UT Arlington	L, 58-64
Nov. 27	vs. Central Connecticut	W, 80-62

Dec. 2	at UC Davis	L, 55-75
Dec. 9	Michigan	L, 57-92
Dec. 11	UC Santa Barbara	W, 84-70
Dec. 22	at Cal State Fullerton	W, 71-61
Dec. 28	Biola	W, 63-48
Dec. 31	at New Mexico*	L, 42-85
Jan. 4	Nevada*	W, 83-78
Jan. 7	Boise State*	W, 84-77
Jan. 11	at San José State*	L (OT), 81-80
Jan. 14	at Utah State*	L, 47-53
Jan. 18	UNLV*	W, 87-68
Jan. 25	Air Force*	L, 59-62
Jan. 28	at Colorado State*	L, 43-60
Feb. 1	at Wyoming*	L, 67-80
Feb. 4	Fresno State*	L, 51-59
Feb. 8	San José State*	L, 90-99
Feb. 11	at Nevada*	L, 65-88
Feb. 15	Utah State*	W, 66-59
Feb. 18	at UNLV*	L, 62-80
Feb. 22	at Fresno State*	L, 50-59
Feb. 25	Colorado State*	L, 46-80
Feb. 28	at Air Force*	7 p.m.
March 3	New Mexico*	6:30 p.m.
March 6-10	MW Championship (Las Vegas, Nev.)	TBA

All times local to site | Home games in **Bold** at Viejas Arena
* = Mountain West game

GAME 28 | AIR FORCE (CLUNE ARENA) | TUES., FEB. 28 | 7 P.M. MT

LIVE MEDIA: Stats/Audio (GoAztecs.com), Video (Mountain West Network) | Series vs. AF: SDSU leads, 33-7 / Streak: AF won 1



SAN DIEGO STATE
2016-17 Record: 9-18 (4-12 MW)
Head Coach: Stacie Terry
Fourth Year at SDSU/Fourth overall

TOP PERFORMERS

Scoring	McKynzie Fort - 15.9
Rebounding	Khalia Lark - 6.1
Assists	Ariell Bostick - 9.8



AIR FORCE
2016-17 Record: 4-22 (2-14 MW)
Head Coach: Chris Gobrecht
Second Year at AF/37th overall

TOP PERFORMERS

Scoring	Mariah Forde - 10.4
Rebounding	Dee Bennett - 8.0
Assists	Cortney Porter - 8.4

• San Diego State heads to Air Force for its final road contest of the season, a 7 p.m. (MT) game on Tues., Feb. 28 at Clune Arena.

• In its last game, San Diego State women's basketball succumbed to the best team in the Mountain West, as the Aztecs fell to the conference champion Colorado State, 80-46, at Viejas Arena on Saturday afternoon.

• Air Force (4-22, 2-14 MW) is coming off of a thrilling win at home against Utah State, as freshman Kailin Davis nailed a three with three seconds remaining in regulation to seal the 64-61 victory. The Falcons' second win in conference play is their most against MW opponents since the 2012-13 season, when Air Force win three league games. Air Force has shown marked improvement from a year prior, scoring six-and-a-half points per game more than last season and, in conference play, improving its free-throw percentage by nearly seven percent.

• San Diego State and Air Force will meet for the 41st time, and the second time this season. In the teams' meeting earlier this year, the Scarlet and Black got within two points of the Falcons with just five seconds on the clock, but was unable to mount a comeback against Air Force, falling, 62-59, at Viejas Arena. SDSU made just three 3-pointers, its fewest against any conference opponent this season. Versus Air Force, San Diego State has its best series winning percentage against any MW team. The Aztecs have won an impressive 82.5 percent of their matchups versus the Falcons, taking 12 straight, starting with their second battle against Air Force during the 2010-11 season until their loss against the Falcons earlier this season.

• SDSU concludes its regular season and honors its seniors at home on Fri., March 3 with a 6:30 p.m. game vs. UNLV. Prior to the contest, the Aztecs will honor seniors Ariell Bostick, Aleiah Brandon and Kymberly Ellison.

SAN DIEGO STATE AZTECS (9-18, 4-12 MW)

No.	Name	Pos.	Ht.	Yr.	Exp.	PPG	RPG	APG	Individual Player Notes
1	Khalia Lark	F	6-0	Jr.	TR	9.0	6.1	1.1	Averaging 26.3 MPG for second on the team ... Career-high 22 pts. vs. NEV ... 12 rebounds vs. SJSU, CSU
3	Ariell Bostick	G	5-4	Sr.	3L	4.0	4.0	3.6	MW rankings: Fifth with 1.6 A/TO ratio ... Seventh with 1.6 steals/game ... Eighth in APG.
4	Kymberly Ellison	G	5-7	Sr.	1L	9.7	2.5	1.2	Third in MW with 2.1 threes/GM ... Career-highs in threes vs. UNM & SJSU (4), points vs. UNLV (21)
11	Arantxa Gómez Ferrer	F	6-0	So.	1L	1.8	2.3	0.2	Four starts ... 11.6 MPG per game ... First start, career-high 6 pts. vs. Utah State
13	Allison Brown	G	5-7	Jr.	SQ	1.2	0.3	0.3	Appearances in 6 games, playing a season-high 9 mins. vs. SDCC ... Career-high 4 points vs. Michigan
15	McKynzie Fort	G	5-9	Jr.	2L	15.9	3.9	2.4	Third in MW in PPG ... Team-high 31.7 MPG ... Career-high 29 pts. twice ... Double-double at SJSU
20	Geena Gomez	G	5-8	Jr.	1L	6.9	3.3	2.4	Career-high 20 pts., 4 treys at SJSU ... 11th in MW with .347 3-pt. FG PCT ... 10+ points in 9 games
21	Abby Lowe	G	5-11	Fr.	HS	1.3	0.7	0.1	Averaging 5.6 minutes per game ... Career-high 7 points at UC Davis
22	Lexy Thorderson	G/F	6-0	Jr.	2L	9.4	2.4	0.7	Second in MW, 77th nationally with 2.4 3-pointers per game ... Career-high 7 threes, 21 points vs. UNLV
30	Cheyenne Greenhouse	G	5-11	Jr.	2L	4.2	1.9	0.3	Six starts this season ... Season-high 10 points vs. UCSB ... Season-best five boards vs. Air Force
34	Baylee Vanderdoes	F	6-1	Fr.	HS	3.7	2.9	0.4	Playing 14.3 MPG with nine starts this year ... Double-double vs. SDCC was first for freshman since 2014
40	Monique Terry	F	6-2	Fr.	HS	2.8	2.0	0.1	Made 10 starts this season ... Averaging 12.7 minutes per game
44	Aleiah Brandon	F	6-1	Sr.	3L	0.0	0.0	0.0	Provides veteran leadership as a fifth-year senior
45	Naomi Ekwedike	F	6-6	Fr.	HS	1.9	1.2	0.0	Played double-digit minutes in three games ... Scored season-high 5 points vs. SDCC

Head Coach: Stacie Terry (UT Arlington, 1998) | 37-55 (Fourth Season at SDSU/Fourth Overall)

Assistant Coaches: Jesse Clark (Pacific Union, 2003); Ciara Carl (Point Loma Nazarene, 2005); Nick Grant (Baylor, 2010)

Director of Basketball Operations: Jon Silver (UCLA, 2009)

Director of Player Personnel: Paris Johnson (San Diego State, 2011)

Athletic Trainer: Queenie Soriano (San Diego State, 2004)

Head Manager: Chris Straker

SAN DIEGO STATE QUICK FACTS

GENERAL INFORMATION

Location: San Diego, Calif., 92182
 Founded: 1897
 Enrollment: 30,750
 Nickname: Aztecs
 School Colors: Scarlet and Black
 Affiliation: NCAA Division I
 Conference: Mountain West
 Home Arena (Capacity):
 Steve Fisher Court at Viejas Arena (12,414)
 President: Dr. Elliot Hirshman
 Director of Athletics: John David Wicker
 Faculty Athletic Representative: Patrick Papin
 Athletics Dept. Phone: 619-594-3019

AZTEC BASKETBALL FACTS

First Year of Basketball: 1976-77
 All-Time Record: 629-552 (.533) / 40 seasons
 Postseason Appearances/NCAA Appearances: 12/9
 Last Postseason Appearance: 2013--
 Lost to BYU (69-58) in WNIT Second Round

SDSU TEAM INFORMATION

2015-16 Record: 12-19 (.387)
 2015-16 MW Record/Finish: 6-12/T-8th
 2016 MW Tournament Record: 1-1
 2016 Final NCAA RPI: 238
 Letterwinners Returning/Lost: 9/2
 Starters Returning/Lost: 3/2
 Newcomers: 5

AZTEC BASKETBALL STAFF

Head Coach: Stacie Terry
 Alma Mater: UT Arlington, 1998
 Career Record/Years: 37-55/Fourth Year
 Record at SDSU: Same
 Best Time to Call: Contact SID
 Basketball Office Phone: 619-594-4095
 Basketball Office Fax: 619-594-8057
 Assistant Coaches:
 Jesse Clark, Fourth season at SDSU
 Alma Mater: Pacific Union, 2003
 Ciara Carl, Fourth season at SDSU
 Alma Mater: Point Loma Nazarene, 2005
 Nick Grant, Third season at SDSU
 Alma Mater: Baylor, 2010
 Director of Basketball Operations: Jon Silver
 First season at SDSU
 Alma Mater: UCLA, 2009
 Director of Player Personnel: Paris Johnson
 First season at SDSU
 Alma Mater: San Diego State, 2009
 Athletic Trainer: Queenie Soriano
 Head Manager: Chris Straker
 Academic Advisor: Dr. Bre White
 Strength and Conditioning: Eddie Padilla

SDSU MEDIA RELATIONS

Women's Basketball SID: Jen Heisel
 E-mail: jheisel@mail.sdsu.edu
 Office Phone: 619-594-3014
 Cell Phone: 862-432-5499

Scouting the Falcons

• Air Force (4-22, 2-14 MW) is coming off of a thrilling win at home against Utah State, as freshman Kailin Davis nailed a three with three seconds remaining in regulation to seal the 64-61 victory. The Falcons' second win in conference play is their most against MW opponents since the 2012-13 season, when Air Force win three league games.

• Air Force has shown marked improvement from a year prior, scoring six-and-a-half points per game more than last season and, in conference play, improving its free-throw percentage by nearly seven percent.

• A major component to the Falcons' improvement this season has been the play of their newcomers. Four of the team's top six point-getters did not see action last season, including the team's top offensive threat, freshman Mariah Forde. She currently leads all MW freshmen with 10.4 points per game, while Davis ranks second among conference first years with 9.8 points per game.

• The team is not without veteran leadership, however. Junior Cortney Porter is the program's Division I era career leader in assists and steals, leading the Falcons this season in both categories.

• Chris Gobrecht is in her second season as Air Force's head coach.

What to Watch: Air Force

• San Diego State and Air Force will meet for the 41st time, and the second time this season.

• In the teams' meeting earlier this year, the Scarlet and Black got within two points of the Falcons with just five seconds on the clock, but was unable to mount a comeback against Air Force, falling, 62-59, at Viejas Arena. SDSU made just three 3-pointers, its fewest against any conference opponent this season.

• Versus Air Force, San Diego State has its best series winning percentage against any MW team. The Aztecs have won an impressive 82.5 percent of their match-ups versus the Falcons, taking 12 straight, starting with their second battle against Air Force during the 2010-11 season until their loss against the Falcons earlier this season.

• In Colorado Springs, the Scarlet and Black has only lost a pair of games in the last decade, falling in those contests by an average of 5.5 points.

History Made from Beyond the Arc

• With their 190 made long balls on a program-high 585 attempts, the 2016-17 Aztecs are the program's best 3-point shooting team.

• Since the statistic started being recorded in the program's record book during the 1987-88 campaign, SDSU's most made threes came in the 2012-13 season with 164 3-pointers.

• The 2016-17 Aztecs are also sporting the best 3-point percentage at .325 (190-585) in seven years. The current single-season record is .404 (65-for-161) set during the 1991-92 season.

• As it stands, junior Lexy Thorderson's 60 made 3-point field goals are eighth in SDSU history, while senior Kymberly Ellison's 58 3-pointers are the ninth most.

Moral Support

• In Stacie Terry's fourth season, fans are showing their support for her program. The Aztecs have averaged 808 in attendance at the team's 13 home games thus far, up from 487 last season. Against Michigan, 2,632 fans were in attendance for the greatest showing since Jan. 24, 2009, when 2,792 were in Viejas Arena to see San Diego State play then-conference foe Brigham Young.

MW PRESEASON POLL

Rk.	Team	Pts.
1.	Colorado State (17)	283
2.	Boise State (11)	271
3.	Fresno State	225
4.	UNLV	201
5.	San José State	197
6.	New Mexico (1)	176
7.	San Diego State	126
8.	Wyoming	123
9.	Utah State	97
10.	Nevada	66
11.	Air Force	28

First-place votes in parentheses

MW PRESEASON HONORS

Preseason All-Mountain West Team

Brooke Pahukoa, Boise State
 Ellen Nystrom, Colorado State
 Bego Faz Davalos, Fresno State
 Cherise Beynon, New Mexico
 Dezz Ramos, San José State

Preseason Player of the Year

Ellen Nystrom, Colorado State

Preseason Newcomers of the Year:

Mykiel Bursleson, New Mexico

Preseason Freshman of the Year

Hallie Gennett, San José State

SDSU IN THE MW POLL

Year	Pre.	Final
1999-2000	6th	6th
2000-01	7th	6th
2001-02	7th	7th
2002-03	7th	7th
2003-04	6th	7th
2004-05	7th	t-7th
2005-06	8th	9th
2006-07	7th	7th
2007-08	7th	t-5th
2008-09	2nd	2nd
2009-10	1st	t-3rd
2010-11	2nd	6th
2011-12	2nd	1st
2012-13	1st	1st
2013-14	3rd	t-6th
2014-15	7th	7th
2015-16	6th	t-8th
2016-17	7th	--



You Get a Three! And You Get a Three!

- The Aztecs are second in MW play with 7.8 3-pointers per game, and have seven games this year with double-digit 3-pointers.
- Junior Lexy Thorderson is second in the league 2.9 threes per conference game and 2.4 long balls per game overall, while senior Kymberly Ellison ranks second with 2.1 3-pointers per game.
- Thorderson has had five games with five-or-more treys: a career-high seven against UNLV, six versus Boise State and five against Nevada, San José State and at UNLV. Her 3.1 treys per conference game are tied for the top the Mountain West.
- San Diego State had its most success beyond the arc against San José State. In their road game against the Spartans, SDSU knocked down 12 3-pointers, its third straight game with 10-or-more threes, and, when hosting SJSU, drilled 13 long balls.
- In the Scarlet and Black's home game against San José State, the teams combined for 25 threes, the most in a MW game this season. It was just the third time the feat was accomplished during the 2016-17 campaign.
- Versus UNLV, the Scarlet and Black knocked down 14 3-pointers for a season high and its most since Feb. 10, 2005 in a 91-45 win over Utah Valley State College. In the game, Thorderson drilled a career-best seven treys.
- Against Boise State, SDSU knocked down 11 3-pointers, five of which came in the fourth quarter (its second-straight game with five-or-more treys in a quarter after getting six in the first quarter vs. Nevada) following its 10 treys made against the Wolf Pack.
- SDSU was the first team in the conference to score double-digit threes in three straight Mountain West games, the first time since at least the 1999-2000 season that the Aztecs had consecutive games with 10-or-more 3-pointers.

Take Care

- This season, the Aztecs are doing a fine job taking care of the ball.
- SDSU ranks 46th nationally with 381 turnovers this season, and is 62nd in the country with 14.1 turnovers per game.
- San Diego State ranks fifth in the Mountain West with a +0.5 turnover margin and its 14.1 turnovers per game also sit fifth in the conference.
- At Wyoming, SDSU turned the ball over just six times, a season low.

Sharing is Caring

- The Scarlet and Black is a team that believes in spreading the love. SDSU has a 6-2 mark when garnering more assists than its opponent, is 9-7 when recording 10-or-more assists in a game and is 7-2 with 15+ total assists.
- In its home game versus UNLV, San Diego State notched a season-best 24 helpers, the most since the 2014-15 season opener against Sacramento State.
- Ariell Bostick, who earlier in the season had 10 assists against Biola for the most since the 2012-13 season, leads the team and has the Mountain West's eighth-most assists with 3.6 per game. She has a 1.6 assist-to-turnover ratio for fifth in the league.

- SDSU has three ranked among the top 15 in assists per MW game: Bostick (11th, 3.1), Geena Gomez (T-12th, 2.9) and McKynzie Fort (T-12th, 2.9).

LAST MEETING AIR FORCE												
Air Force at San Diego State Box Score (1-25-17)												
AF	FG	3FG	FT	REB	F	TP	A	T	B	S	MP	
Bennett	1-6	0-0	2-2	10	4	4	3	3	1	1	20	
Huffman	6-11	0-1	5-5	8	3	17	0	8	1	2	31	
Porter	3-9	0-0	0-0	8	5	6	5	2	0	1	32	
Davis	3-9	1-5	0-0	2	1	7	1	1	0	2	31	
Forde	6-14	2-7	3-4	1	2	17	1	5	0	0	27	
Itugbu	2-4	0-0	0-0	1	3	4	0	1	0	1	21	
Falvey	0-0	0-0	0-0	0	0	0	0	0	0	0	1	
Chapman	2-3	0-0	1-1	3	1	5	4	1	0	0	28	
Glaab	1-1	0-0	0-0	3	0	2	0	0	1	0	9	
Totals	24-57	3-13	11-12	36	19	62	14	21	3	7	200	
Pct.	42.1	23.1	91.7									
SDSU	FG	3FG	FT	REB	F	TP	A	T	B	S	MP	
Thorderson	1-4	1-4	0-0	0	0	3	1	4	1	2	25	
Lark	8-19	1-4	1-4	7	1	18	1	1	0	4	36	
Ellison	3-9	1-3	1-2	6	2	8	1	1	0	0	33	
Fort	4-9	0-0	8-9	1	2	16	0	1	2	1	39	
Gomez	1-7	0-2	0-0	4	2	2	3	4	1	2	24	
Bostick	1-4	0-0	2-2	4	3	4	2	3	0	2	19	
Gomez Ferrer	0-0	0-0	0-0	0	1	0	0	0	0	0	2	
Greenhouse	1-4	0-0	6-6	5	1	8	0	1	0	0	16	
Vanderdoes	0-0	0-0	0-0	2	2	0	0	0	0	0	2	
Terry	0-0	0-0	0-0	1	0	0	0	0	0	0	4	
Team				6				1				
Totals	19-56	3-13	18-23	36	14	59	8	16	4	11	200	
Pct.	33.9	23.1	78.3									
Officials: Michael Price, Kent Johnson, Cheryl Flores												
Technical fouls: None Attendance: 344												
Score by Periods												
	1st	2nd	3rd	4th	Total							
Air Force	11	14	18	19	62							
San Diego State	10	15	15	19	59							

AIR FORCE SERIES NOTES

SAN DIEGO STATE AT AIR FORCE

SDSU leads, 33-7

• 2016-17 Comparative Stats

SDSU		AF
9-18	Overall Record	4-22
4-12	League Record	2-14
.395	Field Goal Pct.	.341
.325	3-PT FG Pct.	.289
.714	Free Throw Pct.	.667
.460	Opp. FG Pct.	.430
.358	Opp. 3-PT FG Pct.	.335
.707	Opp. FT Pct.	.691
32.8	Rebound Avg.	35.0
-3.8	Rebound Margin	-4.5
63.7	Points/Game	54.3
71.6	Pts. Allowed/Game	68.1

• Series Numbers

Record at SDSU	16-3
Record at AF	15-4
Record at Neutral	2-0
Most Points SDSU	89, 1997
Most Points AF	79, 2002
Largest Margin SDSU	51, 2009
Largest Margin AF	29, 2006
Longest SDSU Win Streak	12
Longest AF Win Streak	2
Current Streak	AF 1

AZTECS VS. MOUNTAIN WEST

Air Force	33	7
Boise State	8	4
Colorado State	27	27
Fresno State	26	18
Nevada	9	8
New Mexico	26	33
San José State	20	7
UNLV	28	27
Utah State	6	4
Wyoming	27	27
Total	210	162

Kynz Can!

- Junior McKynzie Fort has proven herself to be an offensive stalwart for the Aztecs. This season, Fort is averaging 15.9 points per game to rank third in the Mountain West, helped by her best offensive performance in the Scarlet and Black with 29 points each at San José State and Cal State Fullerton.
- Proving she's an all-around player, Fort snatched a season-high four steals at Utah State and had back-to-back games with a career-high six assists against Nevada and Boise State. She currently ranks 12th in conference play with 2.9 assists per game.
- One of the Aztecs' most reliable performers, she leads the squad with 31.7 minutes per game, the 12th-most in the conference, and has already surpassed her career high with eight long balls.
- The Fontana, Calif., native got to 1,000 career points at San José State, becoming just the 21st member of the Aztecs' 1,000-point club and the eighth Aztec to reach that mark in her third season. Fort is the 27th Mountain West student-athlete to hit 1,000 points in her third season and is the first true Mountain West junior accomplish the feat since Wyoming had two student-athletes hit the mark during the 2013-14 season.

Not a Lark

- In her first 18 games as an Aztec following her transfer from Washington prior to the Spring 2015 semester, junior Khalia Lark has emerged as a vital component to SDSU's success.
- The Irvine, Calif., native has averaged 9.0 points and 6.1 boards, leading the Aztecs in rebounds in 12 of 18 games played and producing seven games with double-digit points. She also became the second Aztec this year to score 20-or-more points with a career-high 22 against Nevada.
- Lark ranks 20th in conference play with 6.0 rebounds per MW game.
- She grabbed 12 rebounds at San José State and Colorado State, a personal best and the most for any Aztec this year, and her four steals versus Air Force were a career high.
- Lark logs an average of 26.3 minutes per game, the second-most on the team, and has 10 starts.

SAN DIEGO STATE STREAKS

Most Consecutive Starts

	Consecutive	Total
McKynzie Fort	82	82
Geena Gomez*	19	21
Cheyenne Greenhouse	4	36
Arantxa Gomez Ferrer	4	4
Kymerly Ellison*	2	25
Ariell Bostick	0	53
Lexy Thorderson	0	18
Aleiah Brandon	0	18
Khalia Lark	0	11
Monique Terry	0	10
Baylee Vanderdoes	0	9

Most Consecutive Games

	Consecutive	Total
McKynzie Fort	90	90
Ariell Bostick	82	105
Kymerly Ellison*	58	58
Geena Gomez*	56	56
Cheyenne Greenhouse	25	89
Lexy Thorderson	25	86
Khalia Lark	18	18
Baylee Vanderdoes	8	19
Arantxa Gómez Ferrer	6	43
Monique Terry	1	25
Allison Brown	0	22
Abby Lowe	0	14
Aleiah Brandon	0	72
Naomi Ekwedike	0	9

Most Consecutive Games With A Point^

	Consecutive	Total
McKynzie Fort	90	90
Kymerly Ellison*	1	50
Lexy Thorderson	22	62
Khalia Lark*	18	18
Cheyenne Greenhouse	12	72
Ariell Bostick	11	92
Baylee Vanderdoes	8	18
Arantxa Gómez Ferrer	5	21
Geena Gomez*	4	41
Monique Terry	0	17
Allison Brown	0	5
Abby Lowe	0	6
Aleiah Brandon	0	39
Naomi Ekwedike	0	5

*SDSU totals only; ^must have played in the game

AZTECS IN THE NATION

Category	Team	Value	Rank
Fewest Turnovers		381	46
Turnovers Per Game		14.1	62
3-Point Field Goals Per Game		7.0	74
3-Point Field Goals Attempted		585	77
3-Point Field Goals Made		190	89
Fewest Fouls		451	89

Category	Lexy Thorderson	Value	Rank
3-Point Field Goals Per Game		2.40	77
3-Point Field Goal Percentage		36.6	90

Gee, Geena G.!

- Geena Gomez is in the midst of a breakout season in her junior year. In conference play, she is 10th with a .362 3-point field goal percentage and tied for 12th with 2.9 assists per game.
- Becoming an integral part of the Aztecs' play this season, she has started a career-high 20 games.
- A native of Huntington Beach, Calif., Gomez scored a career-high 20 points with four treys, a career best, at San José State.
- At the Seton Hall Thanksgiving Classic, she notched 17 points, previously a career-high by going 3-for-3 from beyond the arc and connecting on all six attempts at the free-throw line to earn All-Seton Hall Thanksgiving Classic tournament team honors.
- Gomez matched that total in her second start of the year against UC Santa Barbara.

Keeping it Fresh(men)

- Starting nine games this season, freshman Baylee Vanderdoes has a .456 (26-for-57) shooting percentage and her 2.9 rebounds per game are fifth on the team and first among freshmen Aztecs. Against San Diego Christian, the Auburn, Calif., native scored 10 points and added as many rebounds to become the first freshman with a double-double since Cheyenne Greenhouse accomplished the feat against Sacramento State (Nov. 14, 2014).
- Classmate Monique Terry has started 10 games for the Aztecs, averaging 12.7 minutes per game. She had a career game against Biola, netting a career-best eight points in 23 minutes logged, also a career best. In the previous game at Cal State Fullerton, she grabbed five boards, her most to date.

Aggies: Corralled. Streak: Snapped.

- Mired in a six-game losing streak, San Diego State used a complete team performance to topple Utah State at home, 66-59, on Weds., Feb. 15.
- In the win, the Aztecs took the lead 16 seconds in and never looked back, out-rebounding their opponent for the first time in four games to secure the victory.

Lassoing the Broncos

- San Diego State had its most tenacious win to date, using a come-from-behind fourth quarter to topple Boise State, 84-77, on Jan. 7. Trailing 61-56 heading into the final frame, San Diego State out-scored the Broncos, 30-16, and scored five 3-pointers in 2:55 for the win. Lexy Thorderson led the team with a career-high 20 points on six treys, also a career high. Boise State was picked to finish second in the conference in the preseason coaches' poll.

Packing in the Offense

- In the first half of a 83-78 win against Nevada on Jan. 4, the Aztecs scored a season-high 52 points, its highest point total in a first half since the 2014-15 season opener against Sacramento State, and knocked down nine 3-pointers, more than its total in 11 games this year.
- The nine treys were the most in a half since Feb. 10, 2005, when SDSU topped Utah Valley State College, 91-45. In the first quarter alone, the Aztecs scored 32 points for their highest point total in a single frame this year and knocked down six shots from beyond the 3-point arc.

Improving is Key!

- As the season has progressed, the Aztecs have shown marked improvement, and have displayed growth when compared to its non-conference slate last year. While the 2016-17 team had the same non-conference record as the 2015-16 team at 5-6, SDSU had a better shooting percentage (.407, 66-for-215 vs. .386, 238-for-617), a better 3-point shooting percentage (.307, 66-for-215 vs. .279, 51-for-183), an improved free-throw percentage (.750, 144-for-192 vs. .612, 126-for-206), more assists (125 vs. 120) and more points per game (63.5 vs. 59.4) in this year's non-conference slate.

Comeback Kids vs. Cal State Fullerton

- Behind McKynzie Fort's career-high 29 points and an outstanding second-half performance in which the Aztecs out-scored Cal State Fullerton, 44-27, San Diego State defeated the Titans, 71-61, on Dec. 22.

AIR FORCE SERIES HISTORY

1-11-97	San Diego	W	70-41
2-6-97	USAFA	W	89-57
2-7-98	USAFA	W	78-54
2-26-98	San Diego	W	68-59
1-22-00	USAFA	L	72-77
2-19-00	San Diego	W	70-38
1-18-01	USAFA	W	50-49
2-17-01	San Diego	W	57-30
1-26-02	San Diego	W	58-50
2-21-02	USAFA	W	83-79
2-1-03	USAFA	W	73-55
2-27-03	San Diego	W	69-57
1-31-04	USAFA	W	51-46
2-26-04	San Diego	W	52-50
1-27-05	San Diego	L	44-48
2-26-05	USAFA	W	77-61
1-7-06 (ot)	San Diego	L	59-63
2-8-06	USAFA	L	45-74
1-14-07	San Diego	W	60-51
2-15-07	USAFA	L	52-60
2-6-08	USAFA	W	62-45
3-8-08	San Diego	W	64-34
1-7-09	San Diego	W	79-28
2-7-09	USAFA	W	55-37
2-3-10	USAFA	W	68-48
3-6-10	San Diego	W	87-52
1-19-11	USAFA	L	58-61
2-19-11	San Diego	W	68-50
1-21-12	USAFA	W	75-62
2-18-12	San Diego	W	59-46
3-9-12	Neutral	W	68-58
2-2-13	San Diego	W	68-46
3-6-13	USAFA	W	73-55
1-11-14	San Diego	W	72-39
2-15-14	USAFA	W	77-66
3-10-14	Neutral	W	63-56
12-31-14	USAFA	W	74-65
1-21-15	San Diego	W	70-47
2-13-16	USAFA	W	69-66
1-25-17	San Diego	L	59-62

- Stringing together its first win streak of the season following an 84-70 win against UC Santa Barbara on Dec. 11, SDSU shot 47.4 percent (27-for-47) from the floor, led by Fort's career-best 29 points. She got 22 points in the second half, and added four assists and two steals during the game.
- In her San Diego State debut following a transfer from Washington after the Fall 2015 semester, and playing just 18 miles from her hometown of Irvine, Calif., Khalia Lark scored five points, added as many rebounds and notched two assists in 29 minutes on the floor, the second most on the team.

Grounding the Gauchos

- Against UC Santa Barbara on Dec. 11, SDSU used one of its most complete performances of the year to beat the Gauchos, generating its highest point total of the year in the 84-70 victory. Five Aztecs recorded double-digit points, led by juniors Lexy Thorderson and Geena Gomez each netting 17 points. Thorderson's total was a career-high, while Gomez matched her own career high, previously earned against Central Connecticut earlier this season. SDSU also made 10 3-pointers, its most since a 69-46 win over UC Santa Barbara on March 20, 2013 in the WNIT.

Last Meeting vs. Air Force Recap - Jan. 25, 2017

San Diego State women's basketball got within two with just five seconds on the clock but was unable to mount a comeback against Mountain West foe Air Force, falling to the Falcons, 62-59, on Wednesday night at Viejas Arena.

The win, Air Force's first in conference play, improves its record to 1-7 against MW opponents and 3-15 overall. SDSU, meanwhile, moves to 3-4 versus MW teams and is now 8-10 on the year.

Khalia Lark was the Aztecs' best player during the night, leading her team with a game-high 18 points to go alongside team highs of seven rebounds and four steals. McKynzie Fort put up 16 points and matched a career high with two blocks. Kymberly Ellison corralled a career-best six boards to go alongside eight points.

With three minutes on the clock and the Scarlet and Black trailing, 57-45, Fort made good on a 3-point play to cut Air Force's lead to 57-48. She knocked down another free throw at 2:23 and Greenhouse cashed in on a pair of her own at 2:03. As 1:35 remained, Lexy Thorderson drilled a three, putting the game within three points at 57-54.

With 31 seconds to go, Air Force's Mariah Forde got a jumper for the 59-54 advantage. Each team got two free throws and, with just five ticks on the clock, Lark nailed a long ball for the 61-59 score. But SDSU was unable to get anything else past Air Force and, with a made free shot by the Falcons, the final score was 62-59.

The first half was an offensive struggle for both teams, who were tied 25-25 at the intermission. For the first 20 minutes, San Diego State shot 39.3 percent (11-for-28) percent, while Air Force shot just 30 percent (9-for-30). Each team made just one three on a combined 13 attempts.

In the third quarter, the Falcons started to show signs of improvement, out-scoring the Aztecs, 18-15, in the frame to take a 43-40 lead after 30 minutes of play before pulling away in the early fourth quarter.

For the game, San Diego State shot just 33.9 percent (19-for-56), while Air Force shot 42.1 percent (24-for-57) from the floor. SDSU, the league's leader in made 3-pointers, made just three, its fewest since Nov. 17, 2016 at San Diego. Air Force matched that, with both teams recording 13 attempts from beyond the 3-point arc. Steals were in the Aztecs' favor, 11-7, and the Falcons recorded more assists, 14-8.

Last Outing Recap - vs. Colorado State - Feb. 25, 2017

San Diego State women's basketball succumbed to the best team in the Mountain West, as the Aztecs fell to the conference champion Colorado State, 80-46, at Viejas Arena on Saturday afternoon.

With the loss, San Diego State falls to 4-12 against conference opponents and the team is now 9-18 overall. Colorado State, meanwhile, clinched its fourth-straight MW Championship with the victory, becoming the first women's or men's Mountain West team to clinch a conference title in four consecutive seasons. The Rams are now 14-2 in MW play and are 22-6 this season.

"Kudos to Colorado State; they played a great game," head coach Stacie Terry said. "We have to figure out a way to score against that zone. We've been working hard the last two weeks against the zone offense and we're getting a lot of reps at it. We're just going to keep plugging away at it and see what we can do."

Junior McKynzie Fort led the Aztecs offensively for the 17th game this season with 15 points. Classmate Geena Gomez grabbed a team-high six boards and dished out five assists, while fellow junior Khalia Lark also brought down six rebounds.

The game started off promisingly for the Scarlet and Black, who did not allow a Ram field goal for nearly three minutes to open the contest. Led by long balls from Gomez and Fort, the Aztecs trailed just six points at the end of the first period.

Early in the second quarter, the Aztecs were able to keep the game within reach after threes by Lexy Thorderson and Kymberly Ellison, and a jumper by Fort for the 23-22 Colorado State advantage. But the Rams opened it up with a 14-point run, eventually increasing that margin to 17 points after 20 minutes of play for the 44-27 score in Colorado State's favor.

San Diego State was unable to get going in the third quarter, putting up its fewest points in a single quarter this season with four, while allowing 15 Colorado State points. SDSU trailed, 59-31, at the end of the third frame.

The Scarlet and Black was unable counteract that third frame and, despite recording a game-high 15 points in the final quarter, the Rams knocked down eight baskets on 15 attempts for the final 80-46 win.

Colorado State shot a blistering 52.8 percent from the floor (28-for-53), drilling 12 3-pointers on 20 tries while making 75 percent of its shots from the charity stripe. The Rams had three players score 15-or-more points, led by Elin Gustavsson. On the other hand, SDSU shot 27.3 percent (18-for-66), getting six threes and going 4-for-5 at the

MW STANDINGS

As of Feb. 26

	MW	Overall
Colorado State (RV/--)	14-2	22-6
UNLV	11-5	20-8
Wyoming	11-5	19-8
Boise State	10-6	20-7
New Mexico	10-7	15-13
Fresno State	8-8	15-12
Utah State	8-9	15-13
San José State	7-9	10-18
Nevada	4-12	10-17
San Diego State	4-12	9-18
Air Force	2-12	4-20

MW SCHEDULE

Tuesday, February 28

COLORADO STATE at WYOMING*, 6:30 p.m. MT
 SAN JOSÉ STATE at NEVADA*, 6:30 p.m. PT
 SAN DIEGO STATE at AIR FORCE*, 7 p.m. MT
 UNLV at UTAH STATE*, 7 p.m. MT
 BOISE STATE at FRESNO STATE*, 7 p.m. PT

Friday, March 3

FRESNO STATE at UNLV*, 6 p.m. PT
 NEW MEXICO at SAN DIEGO STATE*, 6:30 p.m. MT
 AIR FORCE at BOISE STATE*, 7 p.m. MT
 NEVADA at COLORADO STATE*, 7 p.m. MT
 WYOMING at SAN JOSÉ STATE*, 7 p.m. PT

MOUNTAIN WEST CHAMPIONSHIP

Monday, March 6

No. 8 Seed vs. No. 9 Seed, 2 p.m.
 No. 7 Seed vs. No. 10 Seed, 4:30 p.m.
 No. 6 Seed vs. No. 11 Seed, 7 p.m.

Tuesday, March 7

No. 1 Seed vs. Winner Game 1, Noon
 No. 4 Seed vs. No. 5 Seed, 2:30 p.m.
 No. 2 Seed vs. Winner Game 2, 6 p.m.
 No. 3 Seed vs. Winner Game 3, 8:30 p.m.

Wednesday, March 8

Winner Game 4 vs. Winner Game 5, 6:30 p.m.
 Winner Game 6 vs. Winner Game 7, 9 p.m.

Friday, March 10

Winner Game 8 vs. Winner Game 9, Noon

SDSU RECORD WHEN...

Playing at home	7-6
Playing on the road	1-11
Playing at a neutral site	1-1
Playing a night game (5 pm or later)	6-9
Playing a day game	3-9
Leading at halftime	8-1
Trailing at halftime	1-16
Tied at halftime	0-1
Leading with 5:00 left in regulation	9-1
Trailing with 5:00 left in regulation	0-17
Tied with 5:00 left	0-0
In overtime	0-1
Scoring less than 60 points	0-13
Scoring between 60-69 points	2-3
Scoring between 70-79 points	1-0
Scoring between 80-89 points	6-1
Scoring 90 or more points	0-1
Opponent scores less than 60 points	2-4
Opponent scores 60-69 points	3-4
Opponent scores 70-79 points	4-2
Opponent scores 80-89 points	0-6
Opponent scores 90 or more points	0-3
FG% .500 or better	7-0
FG% under .500	2-15
FG% .400-.499	2-3
FG% under .400	0-13
Opponent FG% .500 or better	1-9
Opponent FG% under .500	5-7
Opponent FG% .400-.499	5-7
Opponent FG% under .400	4-2
Better shooting %	9-0
Worse shooting %	0-18
More FG attempts	2-14
Fewer FG attempts	7-4
Same FG attempts	0-0
More FGs made	7-0
Fewer FGs made	1-18
Same FGs made	1-0
More FT attempts	5-9
Fewer FT attempts	3-9
Same FT attempts	1-0
More FTs made	7-8
Fewer FTs made	1-9
Same FTs made	1-1
More rebounds	4-5
Fewer rebounds	5-11
Same rebounds	0-2
More turnovers	3-9
Fewer turnovers	6-8
Same turnovers	0-1
More assists	5-1
Fewer assists	4-17
Same assists	0-0
More steals	5-6
Fewer steals	2-10
Same steals	2-2

SDSU STREAKS

Last 5 games	1-4
Last 10 games	1-9
Longest winning streak	3
Longest losing streak	6
Current streak	Lost 3

free-throw line. The Rams won the battle on the glass, 44-31, while the Aztecs grabbed more offensive boards, 11-8. CSU recorded more assists, 20-13, more steals, 7-4, and more blocks, 2-1.

"We had a moment in there where we could've quit," Terry said. "I called a timeout, burned an extra one just to remind them that we have to fight through this. We're playing for something bigger than this game. I thought they did a good job of refocusing and coming back and doing a better job. That's a positive, and that's what we're going to take into the next game."

Nationally-Ranked Class Joining Aztecs

• San Diego State women's basketball head coach Stacie Terry has announced the signing of a nationally-ranked class for the 2017-18 campaign. The 46th-ranked recruiting class in the country according to Blue Star Basketball, Te'a Adams, Jenay Bojorquez, Kiara Edwards, Najé Murray and Kennedi Villa have signed National-Letters-of-Intent to join the Aztecs next season.

• Adams, a nominee to compete in the 2017 McDonald's All-American Games, is a 5-9 guard from Kirkland, Wash. She is a three-star recruit according to ESPN and was given a scouts grade of 90. Entering her fourth year of varsity basketball at Juanita High School, Adams became her school's scoring leader as a senior and, heading into her final season, averaged 19.2 points per game, 3.4 steals per game and 2.5 assists and rebounds each per game during a career that has yielded three all-conference honors.

• Bojorquez, a 5-6 point guard from Phoenix, is in her third season of varsity ball at Sierra Linda High School. A three-and-a-half-star recruit according to Prospects Nation, Bojorquez has held the top spot on Sierra Linda High's varsity squad in assists per game for two consecutive years.

• Averaging nearly a double-double per game during her three-year varsity career at Valley Vista High School in Surprise, Ariz., Edwards, who was also nominated to compete in the McDonald's All-American Games, is a 6-1 forward. Ranked No. 119 by Prospects Nation, the four-star recruit is coming off of an invitation to the 2016 USA Basketball Women's U17 World Championship team trials this May.

• A 5-6 guard from perennial national powerhouse St. Mary's in Stockton, Calif., Murray earned three stars and a 90 scouts grade by ESPN. Led by head coach Tom Gonsalves, St. Mary's won 57 of its last 58 games and nine consecutive section championships heading into her senior season.

• Villa, a 6-0 guard from Oakland, Calif., attends Saint Mary's College High School in Berkeley, Calif. A three-star recruit according to ESPN, she earned a scouts grade of 88.

Jumpin' Jehosaphat, Juniors!

• The Aztecs' junior class has been anything but junior. During the 2015-16 season, Allison Brown, McKynzie Fort, Geena Gomez, Cheyenne Greenhouse and Lexy Thorderson averaged a combined 21.56 minutes per game, 7.17 points per game, 1.29 steals per game and 2.94 rebounds per game. The group accounted for 47.7 percent of SDSU's total offense a season ago, logging 41.2 percent of the team's total minutes played. Also excelling in the classroom, Greenhouse and Thorderson earned Academic All-Mountain West honors.

ASSOCIATED PRESS POLL

(Week 16 - Feb. 20)

Rk		Record	Pts
1	Connecticut (33)	26-0	825
2	Maryland	26-1	788
3	Mississippi State	27-1	755
4	Baylor	25-2	731
5	Notre Dame	25-3	682
6	Texas	21-5	608
7	South Carolina	22-4	602
8	Florida State	24-4	583
8	Stanford	24-4	583
10	Oregon State	25-3	528
11	Washington	25-4	494
12	Ohio State	23-5	469
13	Duke	24-4	467
14	Louisville	23-6	414
15	UCLA	20-7	350
16	Oklahoma	21-6	340
17	Miami	19-7	274
18	NC State	20-7	232
19	DePaul	22-6	208
20	Syracuse	18-9	162
21	Drake	22-4	123
22	Kentucky	19-8	110
23	Temple	21-5	99
24	Missouri	19-9	62
25	Michigan	21-7	53

First-place votes in parentheses

Others receiving votes: Texas A&M 45, Kansas State 45, Creighton 32, South Florida 27, Tennessee 9, Belmont University 7, Green Bay 4, West Virginia 4, Arizona State 3, Colorado State 2, Tulane 2, Wright State 1, LSU 1, Marquette 1

USA TODAY COACHES POLL

(Week 16 - Feb. 20)

Rk		Record	Pts
1	Connecticut (32)	26-0	800
2	Mississippi State	27-1	760
3	Baylor	26-2	738
4	Notre Dame	25-3	692
5	Maryland	26-2	677
6	Stanford	24-4	574
7	South Carolina	22-4	559
8	Oregon State	25-3	553
9	Ohio State	24-5	532
10	Texas	21-6	507
11	Florida State	24-4	501
12	Washington	25-4	491
13	Duke	24-4	439
14	Louisville	23-6	435
15	UCLA	20-7	346
16	Oklahoma	21-6	321
17	Miami	19-7	255
18	DePaul	22-6	252
19	NC State	20-7	204
20	Temple	21-5	168
21	Syracuse	18-9	167
22	Drake	22-4	89
23	Arizona State	17-10	74
24	Michigan	21-7	61
25	Creighton	20-6	50

First-place votes in parentheses

Others receiving votes: South Florida 39, Texas A&M 39, Kentucky 26, Missouri 14, Tennessee 9, Virginia 6, Marquette 4, Indiana 4, Kansas State 3, Tulane 2, West Virginia 2, Jacksonville 2, Little Rock 2, Elon 1, New Hampshire 1, Northwestern 1

PERSONNEL SUMMARY

Returning Starters (3):

Ariell Bostick, Sr., G (4.9 ppg, 4.2 rpg, 2.9 apg)

McKynzie Fort, Jr., G (14.3 ppg, 4.1 rpg, 2.4 apg)

Cheyenne Greenhouse, Jr., G (4.9 ppg, 3.2 rpg, 0.5 apg)

Starters Lost (2):

Ahjaleé Harvey, G (9.3 ppg, 3.6 rpg, 2.1 apg)

Deidra Smith, F (7.5 ppg, 4.9 rpg, 0.5 bpg)

Other Players Lost (1):

Kylie Herd, Jr., G (10.2 mpg, 1.3 rpg)

Other Letterwinners Returning (5):

Aleiah Brandon, Sr., F (3.4 ppg, 2.4 rpg)

Kymberly Ellison, Sr., G (4.5 ppg, 0.7 apg, 33 3FGs)

Arantxa Gómez Ferrer, So., F (0.6 ppg, 0.9 rpg)

Geena Gomez, Jr., G (3.4 ppg, 1.9 rpg, 1.3 apg)

Lexy Thorderson, Jr., F/G (5.2 ppg, 2.2 rpg, 40 3FGs)

Other Players Returning (1):

Allison Brown, Jr., G (9 gms)

Newcomers (5):

Naomi Ekwedike, Fr., F, 6-6, Lagos, Nigeria (Potter's House Christian Academy (Fla.))

Khalia Lark, Jr., G, 6-0, Santa Ana, Calif. (Washington/Mater Dei HS)

Abby Lowe, Fr., G, 5-11, Stockport, England (Barking Abbey Academy)

Monique Terry, Fr., F, 6-2, San Antonio, Texas (Brennan HS)

Baylee Vanderdoes, Fr., F, 6-2, Auburn, Calif. (Placer HS)

ROSTER BREAKDOWN

By Class**Seniors (3):** Bostick, Brandon, Ellison; **Juniors (6):** Brown, Fort, G. Gomez, Greenhouse, Lark, Thorderson; **Sophomore (1):** A. Gómez Ferrer; **Freshmen (4):** Ekwedike, Lowe, Terry, Vanderdoes**By State/Country****California (8):** Bostick, Brandon, Brown, Fort, G. Gomez, Greenhouse, Lark, Vanderdoes; **Colorado (1):** Thorderson; **Texas (1):** Terry; **Georgia (1):** Ellison; **Spain (1):** A. Gómez Ferrer; **England (1):** Lowe; **Nigeria (1):** Ekwedike**By Position****Centers (1):** Ekwedike; **Forwards (4):** Brandon, A. Gómez Ferrer, Terry, Thorderson, Vanderdoes; **Guards (8):** Bostick, Brown, Ellison, Fort, G. Gomez, Greenhouse, Lark, Lowe, Thorderson**By Height****6-6 (1):** Ekwedike; **6-2 (1):** Terry; **6-1 (2):** Brandon, Vanderdoes; **6-0 (3):** A. Gómez Ferrer, Lark, Thorderson; **5-11 (2):** Greenhouse, Lowe; **5-9 (1):** Fort; **5-8 (1):** G. Gomez; **5-7 (2):** Brown, Ellison; **5-4 (1):** Bostick

2016-17 NUMERICAL ROSTER

No.	Name	Pos.	Ht.	Yr.	Exp.	Hometown (Previous School/High School)
1	Khalia Lark	F	6-0	Jr.	TR	Santa Ana, Calif. (Washington/Mater Dei HS)
3	Ariell Bostick	G	5-4	Sr.	3L	Oakland, Calif. (Bishop O'Dowd HS)
4	Kymberly Ellison	G	5-7	Sr.	1L	Columbus, Ga. (Georgia Tech/Hardaway HS)
11	Arantxa Gómez Ferrer	F	6-0	So.	1L	Valencia, Spain (Parque Colegio Santa Ana HS)
13	Allison Brown	G	5-7	Jr.	SQ	Anaheim Hills, Calif. (Mater Dei HS)
15	McKynzie Fort	G	5-9	Jr.	2L	Fontana, Calif. (Etiwanda HS)
20	Geena Gomez	G	5-8	Jr.	1L	Huntington Beach, Calif. (St. Joseph's (Pa.)/Edison HS)
21	Abby Lowe	G	5-11	Fr.	HS	Stockport, England (Barking Abbey Academy)
22	Lexy Thorderson	G/F	6-0	Jr.	2L	Castle Rock, Colo. (Rock Canyon HS)
30	Cheyenne Greenhouse	G	5-11	Jr.	2L	Riverside, Calif. (Canyon Springs HS)
34	Baylee Vanderdoes	F	6-2	Fr.	HS	Auburn, Calif. (Placer HS)
40	Monique Terry	F	6-2	Fr.	HS	San Antonio, Texas (Brennan HS)
44	Aleiah Brandon	F	6-1	Sr.	3L	Corona, Calif. (Centennial HS)
45	Naomi Ekwedike	F	6-6	Fr.	HS	Lagos, Nigeria (Potters House Christian Academy)

2016-17 ALPHABETICAL ROSTER

No.	Name	Pos.	Ht.	Yr.	Exp.	Hometown (Previous School/High School)
3	Ariell Bostick	G	5-4	Sr.	3L	Oakland, Calif. (Bishop O'Dowd HS)
44	Aleiah Brandon	F	6-1	Sr.	3L	Corona, Calif. (Centennial HS)
13	Allison Brown	G	5-7	Jr.	SQ	Anaheim Hills, Calif. (Mater Dei HS)
45	Naomi Ekwedike	F	6-6	Fr.	HS	Lagos, Nigeria (Potters House Christian Academy (Fla.))
4	Kymberly Ellison	G	5-7	Sr.	1L	Columbus, Ga. (Georgia Tech/Hardaway HS)
15	McKynzie Fort	G	5-9	Jr.	2L	Fontana, Calif. (Etiwanda HS)
20	Geena Gomez	G	5-8	Jr.	1L	Huntington Beach, Calif. (St. Joseph's (Pa.)/Edison HS)
11	Arantxa Gómez Ferrer	F	6-0	So.	1L	Valencia, Spain (Parque Colegio Santa Ana HS)
30	Cheyenne Greenhouse	G	5-11	Jr.	2L	Riverside, Calif. (Canyon Springs HS)
1	Khalia Lark	F	6-0	Jr.	TR	Santa Ana, Calif. (Washington/Mater Dei HS)
21	Abby Lowe	G	5-11	Fr.	HS	Stockport, England (Barking Abbey HS)
40	Monique Terry	F	6-2	Fr.	HS	San Antonio, Texas (Brennan HS)
22	Lexy Thorderson	G/F	6-0	So.	1L	Castle Rock, Colo. (Rock Canyon HS)
34	Baylee Vanderdoes	F	6-2	Fr.	HS	Auburn, Calif. (Placer HS)

Head Coach: Stacie Terry (UT Arlington, 1998), Fourth season at SDSU/Fourth overall**Assistant Coach:** Jesse Clark (Pacific Union, 2003), Fourth season at SDSU**Assistant Coach:** Ciara Carl (Point Loma Nazarene, 2005), Fourth season at SDSU**Assistant Coach:** Nick Grant (Baylor, 2010), Third season at SDSU**Director of Operations:** Jon Silver (UCLA, 2009), First season at SDSU**Director of Player Personnel:** Paris Johnson (San Diego State, 2011), First season at SDSU

2016-17 PRONUNCIATION GUIDE

Ariell Bostick	arr-EE-ell
Aleiah Brandon	uh-LAY-uh
Naomi Ekwedike	nay-O-mee eck-wed-EE-kay
Arantxa Gómez Ferrer	uh-RON-cha GO-mez Fur-AIR
McKynzie Fort	ma-KYN-zee
Baylee Vanderdoes	VAN-der-doze
Ciara Carl	see-ARR-uh

STACIE TERRY

Head Coach
 Fourth Year at San Diego State; Fourth Year Overall
 UT Arlington, 1998



THE STACIE TERRY FILE

Hometown

San Diego, Calif.

Education

Bachelor of Arts -
 Broadcast Journalism
 UT Arlington, 1998

Playing Experience

1994-98
 UT Arlington

Head Coaching Experience

2013-present
 San Diego State

Previous Coaching Experience

2011-13
 LSU
 Assistant Coach

2008-11

UCLA
 Assistant Coach

2007-08

Southern Mississippi
 Recruiting Coordinator

2004-07

Illinois
 Assistant Coach

2003-04

Dayton
 Assistant Coach

2000-03

Louisville
 Assistant Coach

1999-2000

UT Arlington
 Graduate Assistant

San Diego native Stacie Terry enters her fourth year at the helm of the Aztec women's basketball team after she was named the eighth head coach in program history on May 15, 2013.

Under Terry's direction, SDSU has continued its trend of garnering all-conference honors. In 2015-16, following a campaign that saw her team finish sixth in the league with 14.4 points per game and was tied for third with two steals per game, sophomore McKynzie Fort earned nods on the MW All-Defensive Team and as an All-MW honorable mention pick. San Diego State's 34th All-MW recipient, the Aztecs have picked up a conference nod each of the last 17 seasons.

During her first season on Montezuma Mesa, Terry was saddled with the unenviable task of replacing four senior starters who accounted for nearly 64 percent of the team's scoring offense from the previous year, as well as overcoming the loss of two key players to injuries prior to conference play.

Despite those obstacles and a demanding schedule featuring nine games against teams that eventually advanced to postseason competition, Terry's squad flashed its resiliency during the 2013-14 campaign. The Aztecs led the league in rebounding margin and rebounding defense while ranking second in field-goal percentage.

Individually, Terry also oversaw the progress of senior center Cierra Warren, who became the fifth SDSU player in a six-year span to receive first-team all-MW recognition.

Prior to her arrival on The Mesa, Terry gained a wealth of experience as an assistant coach at the Division I level for 14 years, including five under head coach Nikki (Caldwell) Fargas, who transformed UCLA into a powerhouse before restoring LSU to national prominence.

During Terry's two seasons at LSU, the Lady Tigers compiled a 45-23 overall record and earned two NCAA tournament bids, including a Sweet 16 appearance during the 2012-13 campaign. During that season, the Lady Tigers also posted six victories against ranked opponents and finished with their second-highest scoring average (69.0) in the last seven years. Under Terry's guidance, forward LaShondra Barrett garnered first-team all-Southeastern Conference accolades and received honorable mention All-America distinction in 2012 before becoming a first-round draft choice of the WNBA's Washington Mystics.

Prior to her appointment at LSU, Terry served as an assistant under Fargas at UCLA from 2008-11, helping the Bruins gain national acclaim with a pair of NCAA tournament appearances. During Terry's tenure, UCLA posted 72 overall victories, as the 2010-11 squad finished with a 28-5 record, setting a school record for fewest losses in a single season to go with a No. 7 national ranking. In addition, the Bruins signed the fourth-ranked recruiting class that season, according to ESPN HoopGurlz, while Terry helped mentor first-team all-Pac-10 performers in Doreena Campbell, Darxia Morris and Jasmine Dixon, a 2012 honorable mention AP All-America selection, and all-conference freshman honorees Atonye Nyingifa and Markel Walker.

Terry spent the 2007-08 campaign at Southern Mississippi, as the Golden Eagles posted a 21-14 record and earned a postseason berth in the Women's National Invitation Tournament (WNIT). While at Southern Miss, Terry spearheaded the development and coordination of the Lady Eagle recruiting campaign. Her responsibilities also included working with the perimeter players, scouting opponents and film breakdown, as well as coordinating all of the team's community service events.

Terry also coached for three seasons from 2004-07 as an assistant under Hall of Fame head coach Theresa Grentz at Illinois, where the Fighting Illini had three straight recruiting classes

ranked among the top 25 in the nation, according to Blue Star Basketball, and made three consecutive trips to the WNIT. Her primary duties included defensive instruction and working with the perimeter players.

In addition, Terry coached at Dayton during the 2003-04 season following a three-year stint at Louisville from 2000-03. With the Cardinals, Terry's responsibilities encompassed recruiting, scouting, player development, summer camps and serving as a liaison for the program's community service outreach. Louisville captured the Conference USA regular-season title and earned a trip to the NCAA tournament in 2001 before making a WNIT appearance in 2002. She also assisted in signing the nation's 21st-ranked recruiting class in 2002-03, according to All-Star Girls Report. Terry recruited and coached all-Conference USA honoree Lori Nero, a draft choice of the WNBA's Houston Comets, as well as Sara Nord, who finished her collegiate career as the Cardinals' all-time assist leader and ranks among the top-15 scorers in school history.

Terry enjoyed a successful collegiate playing career at the University of Texas at Arlington, winning four varsity letters from 1994-98 under head coach Mike Dean. She earned first-team all-Southland Conference honors after leading the Mavericks in scoring with 17.4 points per game as a senior in 1997-98. Terry scored 1,169 points during her career at UTA and still ranks among the school's top 10 in 3-point field goals made (third), assists (sixth), steals (seventh), 3-point field goal percentage (ninth) and free-throw percentage (10th). Additionally, she is just one of 17 players in Maverick history to surpass the 1,000-point plateau.

Terry played one season of professional basketball in Warsaw, Poland, averaging 12.0 points and 6.0 assists with the Polonia Phoenix, before returning to UT Arlington to begin her coaching career as a graduate assistant in 1999.

Terry prepped at El Capitan High and held the Vaqueros' career scoring record for three years following her graduation. She was inducted into the school's athletic hall of fame in 2008.



#1 KHALIA LARK

Junior • TR

6-0

Guard

Irvine, Calif.

Washington / Mater Dei High School

A versatile wing shot who brings toughness to the team following a transfer from Washington

▶▶▶ GAME HIGHS

	CAREER	2016-17 SEASON	* AT WASHINGTON
Points	22, vs. Nevada (1-4-17)	22, vs. Nevada (1-4-17)	
Rebounds	12, Twice, Last: at Colorado State (1-28-17)	12, Twice, Last: at Colorado State (1-28-17)	
Assists	2, Five times, Last: at Colorado State (1-28-17)	2, Four times, Last: at Colorado State (1-28-17)	
Steals	4, vs. Air Force (1-25-17)	4, vs. Air Force (1-25-17)	
Blocks	N/A	N/A	
Field Goals	8, vs. Nevada (1-4-17)	8, Twice, Last: vs. Boise State (1-7-17)	
Field Goal Attempts	14, vs. Nevada (1-4-17)	14, vs. Nevada (1-4-17)	
3-pt. Field Goals	3, Twice, Last: vs. UNLV (1-18-17)	3, Twice, vs. UNLV (1-18-17)	
3-pt. Field Goal Attempts	6, vs. Nevada (1-4-17)	6, vs. Nevada (1-4-17)	
Free Throws	4, Twice, Last: vs. Seattle U (12-4-14)*	3, Twice, Last: at Wyoming (2-1-17)	
Free Throw Attempts	6, Twice, Last: vs. Nevada (1-4-17)	6, vs. Nevada (1-4-17)	
Double-Figure Scoring Games	8	7	
Double-Figure Rebounding Games	2	2	
Double-Doubles	N/A	N/A	

▶▶▶ 2016-17 GAME-BY-GAME STATISTICS

Opponent	Date	gs	min	Total		3-Pointers		Free throws		Rebounds				pf	a	t/o	blk	stl	pts	avg	
				fg-fga	pct	3fg-fga	pct	ft-fta	pct	off	def	tot	avg								
at Cal State Fullerton	12-22-16		29	2-9	.222	1-3	.333	0-0	.000	1	4	5	5.0	3	2	0	0	1	5	5.0	
BIOLA	12-28-16		25	6-9	.667	2-5	.400	0-0	.000	1	8	9	7.0	1	0	2	0	1	14	9.5	
at New Mexico	12-31-16 *		24	4-10	.400	1-3	.333	1-2	.500	2	5	7	7.0	3	1	3	0	1	10	9.7	
NEVADA	01-04-17		28	8-14	.571	3-6	.500	3-6	.500	3	3	6	6.8	3	1	0	0	1	22	12.8	
BOISE STATE	01-07-17		26	8-11	.727	0-2	.000	0-0	.000	0	4	4	6.2	2	1	3	0	0	16	13.4	
at San Jose State	01-11-17		26	1-8	.125	1-3	.333	1-2	.500	2	10	12	7.2	3	2	4	0	1	4	11.8	
at Utah State	01-14-17		27	2-7	.286	1-5	.200	0-0	.000	2	6	8	7.3	4	0	1	1	1	5	10.9	
UNLV	01-18-17 *		27	5-8	.625	3-4	.750	0-0	.000	2	5	7	7.3	3	2	2	0	1	13	11.1	
AIR FORCE	01-25-17 *		36	8-19	.421	1-4	.250	1-4	.250	4	3	7	7.2	1	1	1	0	4	18	11.9	
at Colorado State	01-28-17 *		36	3-8	.375	0-3	.000	2-4	.500	5	7	12	7.7	2	2	6	0	0	8	11.5	
at Wyoming Cowgirls	02-01-17 *		32	6-17	.353	1-3	.333	3-4	.750	4	1	5	7.5	0	0	1	0	0	16	11.9	
FRESNO STATE	02-04-17 *		35	3-12	.250	2-8	.250	0-0	.000	0	5	5	7.3	2	1	2	0	0	8	11.6	
SAN JOSE STATE	02-08-17 *		28	3-12	.250	1-4	.250	1-4	.250	2	3	5	7.1	3	1	2	0	0	8	11.3	
at Nevada	02-11-17 *		23	1-9	.111	0-3	.000	0-0	.000	1	3	4	6.9	4	2	4	0	0	2	10.6	
UTAH STATE	02-15-17 *		15	1-5	.200	1-4	.250	0-0	.000	0	2	2	6.5	2	2	1	0	0	3	10.1	
at UNLV	02-18-17 *		23	2-7	.286	0-4	.000	0-0	.000	2	1	3	6.3	1	1	4	0	0	4	9.8	
at Fresno State	02-22-17		11	1-7	.143	1-5	.200	0-2	.000	0	3	3	6.1	0	0	3	0	0	3	9.4	
COLORADO STATE	02-25-17		23	1-8	.125	1-5	.200	0-0	.000	2	4	6	6.1	2	1	1	0	0	3	9.0	
Totals			10	474	65-180	.361	20-74	.270	12-28	.429	33	77	110	6.1	39	20	40	1	11	162	9.0

LARK'S CAREER STATISTICS

Season	gp-gs	min/avg	Total		3-Point		F-Throws		Rebounds				pf	fo	ast	to	blk	stl	Scoring	
			fg-fga	pct	fg-fga	pct	ft-fta	pct	off	def	tot	avg							pts	avg
2014-15*	23-0	198/8.6	17-39	.436	11-27	.407	11-14	.786	10	21	31	1.3	12	0	5	13	0	3	56	2.4
2015-16*	6-0	83/13.8	5-15	.333	2-7	.286	5-11	.455	2	11	13	2.2	3	0	2	7	0	1	17	2.8
2016-17	17-10	451/26.5	64-172	.372	19-69	.275	12-28	.429	31	73	104	6.1	37	0	19	39	1	11	159	9.4
TOTAL	17-10	451/26.5	64-172	.372	19-69	.275	12-28	.429	31	73	104	6.1	37	0	19	39	1	11	159	9.4
All*	46-10	732/15.9	86-226	.381	32-103	.311	28-53	.528	43	105	148	3.2	52	0	26	59	1	15	232	5.0



#4 KYMBERLY ELLISON

Senior • 1L

5-7

Guard

Columbus, Ga.

Georgia Tech / Hardaway High School

A talented passer with strong floor vision who also excels at knocking down threes

▶▶▶ GAME HIGHS

	CAREER	2016-17 SEASON
Points	21, vs. UNLV (1-18-17)	21, vs. UNLV (1-18-17)
Rebounds	6, Twice, Last: at Colorado State (1-28-17)	6, Twice, Last: at Colorado State (1-28-17)
Assists	3, Four times, Last: vs. Colorado State (2-25-17)	3, Three times, Last: vs. Colorado State (2-25-17)
Steals	4, Twice, Last: at Fresno State (2-22-17)	4, at Fresno State (2-22-17)
Blocks	2, vs. Biola (12-28-16)	2, vs. Biola (12-28-16)
Field Goals	7, vs. UNLV (1-18-17)	7, vs. UNLV (1-18-17)
Field Goal Attempts	17, vs. San José State (2-8-17)	17, vs. San José State (2-8-17)
3-pt. Field Goals	4, Three times, Last: vs. San José State (2-8-17)	4, Three times, Last: vs. San José State (2-8-17)
3-pt. Field Goal Attempts	10, Twice, Last: at Fresno State (2-22-17)	10, Twice, Last: at Fresno State (2-22-17)
Free Throws	6, at San Diego (11-17-16)	6, at San Diego (11-17-16)
Free Throw Attempts	8, at San Diego (11-17-16)	8, at San Diego (11-17-16)
Double-Figure Scoring Games	15	13
Double-Figure Rebounding Games	N/A	N/A
Double-Doubles	N/A	N/A

▶▶▶ 2016-17 GAME-BY-GAME STATISTICS

Opponent	Date	gs	min	Total		3-Pointers		Free throws		Rebounds				Other				pts	avg		
				fg-fga	pct	3fg-fga	pct	ft-fla	pct	off	def	tot	avg	pf	a	t/o	blk			stl	
at UC Riverside	11-11-16	*	21	2-8	.250	2-6	.333	0-0	.000	0	1	1	1.0	4	0	2	0	0	6	6.0	
SAN DIEGO CHRISTIAN	11-14-16	*	35	4-6	.667	3-4	.750	1-2	.500	0	3	3	2.0	3	3	2	0	0	12	9.0	
at San Diego	11-17-16	*	25	0-9	.000	0-5	.000	6-8	.750	0	3	3	2.3	2	1	1	1	2	6	8.0	
LOYOLA MARYMOUNT	11-20-16	*	25	3-11	.273	2-8	.250	0-0	.000	2	3	5	3.0	1	1	3	0	2	8	8.0	
vs UT-Arlington	11-26-16	*	26	4-10	.400	3-9	.333	2-2	1.000	1	2	3	3.0	4	0	4	0	1	13	9.0	
vs Central Connecticut	11-27-16	*	24	3-7	.429	2-6	.333	2-2	1.000	0	0	0	2.5	4	2	0	0	1	10	9.2	
at UC Davis	12-02-16	*	20	3-10	.300	2-7	.286	0-0	.000	2	0	2	2.4	1	1	2	0	2	8	9.0	
MICHIGAN	12-09-16	*	27	4-8	.500	4-8	.500	0-0	.000	1	4	5	2.8	4	2	3	0	2	12	9.4	
UC SANTA BARBARA	12-11-16	*	26	4-7	.571	3-5	.600	2-2	1.000	1	2	3	2.8	2	1	0	0	1	13	9.8	
at Cal State Fullerton	12-22-16	*	25	4-11	.364	3-9	.333	1-2	.500	0	2	2	2.7	1	1	1	0	1	12	10.0	
BIOLA	12-28-16	*	24	3-7	.429	3-7	.429	0-0	.000	0	2	2	2.6	0	1	0	2	1	9	9.9	
at New Mexico	12-31-16	*	21	1-7	.143	0-4	.000	0-0	.000	0	1	1	2.5	3	0	1	0	0	2	9.3	
NEVADA	01-04-17	*	21	2-3	.667	1-2	.500	2-2	1.000	0	1	1	2.4	2	2	1	0	0	7	9.1	
BOISE STATE	01-07-17	*	30	4-7	.571	3-6	.500	2-4	.500	0	2	2	2.4	1	1	1	0	0	13	9.4	
at San Jose State	01-11-17	*	31	3-10	.300	2-7	.286	0-0	.000	0	1	1	2.3	3	2	1	0	1	8	9.3	
at Utah State	01-14-17	*	28	1-6	.167	1-4	.250	0-2	.000	1	1	2	2.3	1	0	1	1	1	3	8.9	
UNLV	01-18-17	*	27	7-11	.636	4-7	.571	3-3	1.000	0	2	2	2.2	1	1	2	0	0	21	9.6	
AIR FORCE	01-25-17	*	33	3-9	.333	1-3	.333	1-2	.500	1	5	6	2.4	2	1	1	0	0	8	9.5	
at Colorado State	01-28-17	*	34	4-14	.286	3-9	.333	2-2	1.000	1	5	6	2.6	2	1	3	0	0	13	9.7	
at Wyoming Cowgirls	02-01-17	*	23	4-7	.571	2-4	.500	2-2	1.000	1	2	3	2.7	2	0	0	0	2	12	9.8	
FRESNO STATE	02-04-17	*	28	2-5	.400	2-4	.500	0-0	.000	0	2	2	2.6	3	1	1	0	0	6	9.6	
SAN JOSE STATE	02-08-17	*	29	6-17	.353	4-10	.400	0-0	.000	0	3	3	2.6	2	3	1	0	0	16	9.9	
at Nevada	02-11-17	*	23	3-8	.375	1-5	.200	3-3	1.000	0	3	3	2.7	3	0	2	0	2	10	9.9	
UTAH STATE	02-15-17		20	1-5	.200	0-4	.000	5-5	1.000	0	1	1	2.6	0	1	2	0	0	7	9.8	
at UNLV	02-18-17		21	4-10	.400	3-6	.500	2-2	1.000	1	2	3	2.6	4	1	0	0	0	13	9.9	
at Fresno State	02-22-17	*	27	3-12	.250	3-10	.300	0-0	.000	0	2	2	2.6	5	2	2	0	4	9	9.9	
COLORADO STATE	02-25-17	*	25	2-8	.250	1-7	.143	0-0	.000	0	0	0	2.5	0	3	3	1	0	5	9.7	
Totals			25	699	84-233	.361	58-166	.349	36-45	.800	12	55	67	2.5	60	32	40	5	23	262	9.7

ELLISON'S CAREER STATISTICS

Season	gp-gs	min/avg	Total		3-Point		F-Throws		Rebounds				Other				Scoring			
			fg-fga	pct	fg-fga	pct	ft-fla	pct	off	def	tot	avg	pf	fo	ast	to	blk	stl	pts	avg
2012-13*	4-0	2/0.5	1-2	.500	1-2	.500	0-0	.000	0	0	0	0.0	0	0	0	0	0	0	3	0.8
2013-14*	11-0	21/1.9	1-5	.200	0-3	.000	0-0	.000	0	2	2	0.2	2	0	4	4	1	1	2	0.2
2015-16	31-0	396/12.8	47-155	.303	33-126	.262	13-18	.722	6	19	25	0.8	39	1	21	32	1	18	140	4.5
2016-17	26-24	674/25.9	82-225	.364	57-159	.358	36-45	.800	12	55	67	2.6	60	1	29	37	4	23	257	9.9
TOTAL	57-24	1070/18.8	129-380	.339	90-285	.316	49-63	.778	18	74	92	1.6	99	2	50	69	5	41	397	7.0
All*	72-24	1093/15.2	131-387	.339	91-290	.314	49-63	.778	18	76	94	1.3	101	2	54	73	6	42	402	5.6



#13 ALLISON BROWN

Junior • SQ

5-7

Guard

Anaheim Hills, Calif.

Mater Dei High School

A walk-on who earned a scholarship for the 2016-17 campaign

▶▶▶ GAME HIGHS

	CAREER	2016-17 SEASON
Points	4, vs. Michigan (12-9-16)	4, vs. Michigan (12-9-16)
Rebounds	3, vs. San Diego Christian (12-21-15)	1, Twice, Last: vs. Biola (12-28-16)
Assists	2, vs. Wyoming (1-14-15)	1, Twice, Last: vs. Biola (12-28-16)
Steals	1, at Loyola Marymount (12-10-15)	N/A
Blocks	N/A	N/A
Field Goals	1, Four times, Last: vs. Biola (12-28-16)	1, Twice, Last: vs. Biola (12-28-16)
Field Goal Attempts	3, Twice, Last: vs. Air Force (1-21-15)	2, vs. Michigan (12-9-16)
3-pt. Field Goals	1, Twice, Last: vs. San Diego Christian (12-21-15)	N/A
3-pt. Field Goal Attempts	4, Twice, Last: vs. Air Force (1-21-15)	N/A
Free Throws	2, vs. Michigan (12-9-16)	2, vs. Michigan (12-9-16)
Free Throw Attempts	2, Three times, Last: at UNLV (2-18-17)	2, Three times, Last: at UNLV (2-18-17)
Double-Figure Scoring Games	N/A	N/A
Double-Figure Rebounding Games	N/A	N/A
Double-Doubles	N/A	N/A

▶▶▶ 2016-17 GAME-BY-GAME STATISTICS

Opponent	Date	gs	min	Total		3-Pointers		Free throws		Rebounds				pf	a	t/o	blk	stl	pts	avg
				fg-fga	pct	3fg-fga	pct	ft-fta	pct	off	def	tot	avg							
at UC Riverside	11-11-16	dnp																		
SAN DIEGO CHRISTIAN	11-14-16	9		0-1	.000	0-0	.000	0-0	.000	0	1	1	1.0	1	1	2	0	0	0	0.0
at San Diego	11-17-16	dnp																		
LOYOLA MARYMOUNT	11-20-16	dnp																		
vs UT-Arlington	11-26-16	dnp																		
vs Central Connecticut	11-27-16	dnp																		
at UC Davis	12-02-16	dnp																		
MICHIGAN	12-09-16	2		1-1	1.000	0-0	.000	2-2	1.000	0	0	0	0.5	0	0	0	0	0	4	2.0
UC SANTA BARBARA	12-11-16	dnp																		
at Cal State Fullerton	12-22-16	dnp																		
BIOLA	12-28-16	3		1-1	1.000	0-0	.000	0-0	.000	0	1	1	0.7	1	1	0	0	0	2	2.0
at New Mexico	12-31-16	dnp																		
NEVADA	01-04-17	dnp																		
BOISE STATE	01-07-17	dnp																		
at San Jose State	01-11-17	dnp																		
at Utah State	01-14-17	dnp																		
UNLV	01-18-17	2		0-0	.000	0-0	.000	0-0	.000	0	0	0	0.5	2	0	0	0	0	0	1.5
AIR FORCE	01-25-17	dnp																		
at Colorado State	01-28-17	dnp																		
at Wyoming Cowgirls	02-01-17	1		0-0	.000	0-0	.000	0-0	.000	0	0	0	0.4	0	0	0	0	0	0	1.2
FRESNO STATE	02-04-17	dnp																		
SAN JOSE STATE	02-08-17	dnp																		
at Nevada	02-11-17	dnp																		
UTAH STATE	02-15-17	dnp																		
at UNLV	02-18-17	1		0-0	.000	0-0	.000	1-2	.500	0	0	0	0.3	0	0	0	0	0	1	1.2
at Fresno State	02-22-17	dnp																		
COLORADO STATE	02-25-17	dnp																		
Totals		0	18	2-3	.667	0-0	.000	3-4	.750	0	2	2	0.3	4	2	2	0	0	7	1.2

BROWN'S CAREER STATISTICS

Season	gp-gs	min/avg	Total		3-Point		F-Throws		Rebounds				Scoring							
			fg-fga	pct	fg-fga	pct	ft-fta	pct	off	def	tot	avg	pf	fo	ast	to	blk	stl	pts	avg
2014-15	7-0	26/3.7	1-9	.111	1-9	.111	0-2	.000	1	1	2	0.3	3	0	2	3	0	0	3	0.4
2015-16	9-0	19/2.1	1-4	.250	1-3	.333	0-0	.000	1	3	4	0.4	0	0	2	3	0	1	3	0.3
2016-17	6-0	18/3.0	2-3	.667	0-0	.000	3-4	.750	0	2	2	0.3	4	0	2	2	0	0	7	1.2
TOTAL	22-0	63/2.9	4-16	.250	2-12	.167	3-6	.500	2	6	8	0.4	7	0	6	8	0	1	13	0.6



#20 GEENA GOMEZ

Junior • 1L

5-8

Guard

Huntington Beach, Calif.

St. Joseph's (Pa.) / Edison High School

A heady decision-maker and knock-down shooter

▶▶▶ GAME HIGHS

	CAREER	2016-17 SEASON
Points	20, at San José State (1-11-17)	20, at San José State (1-11-17)
Rebounds	8, vs. Utah State (2-15-17)	8, vs. Utah State (2-15-17)
Assists	6, Three times, Last: at Fresno State (2-22-17)	6, Twice, Last: at Fresno State (2-22-17)
Steals	2, Five times, Last: vs. Air Force (1-25-17)	2, Three times, Last: vs. Air Force (1-25-17)
Blocks	1, Three times, Last: vs. Air Force (1-25-17)	1, vs. Air Force (1-25-17)
Field Goals	6, Twice, Last: at San José State (1-11-17)	6, Twice, Last: at San José State (1-11-17)
Field Goal Attempts	13, at San José State (1-11-17)	13, at San José State (1-11-17)
3-pt. Field Goals	4, Twice, Last: at San José State (1-11-17)	4, at San José State (1-11-17)
3-pt. Field Goal Attempts	9, at San José State (1-6-16)	7, at San José State (1-11-17)
Free Throws	6, Twice, Last: vs. San José State (2-8-17)	6, Twice, Last: vs. San José State (2-8-17)
Free Throw Attempts	6, Twice, Last: vs. Central Connecticut (11-27-16)	6, at San José State (1-11-17)
Double-Figure Scoring Games	10	9
Double-Figure Rebounding Games	N/A	N/A
Double-Doubles	N/A	N/A

▶▶▶ 2016-17 GAME-BY-GAME STATISTICS

Opponent	Date	gs	min	Total		3-Pointers		Free throws		Rebounds					pts	avg				
				fg-fga	pct	3fg-fga	pct	ft-fta	pct	off	def	tot	avg	pf			a	t/o	blk	stl
at UC Riverside	11-11-16		25	2-7	.286	1-3	.333	1-2	.500	1	1	2	2.0	2	0	3	0	1	6	6.0
SAN DIEGO CHRISTIAN	11-14-16 *	32	4-8	.500	2-5	.400	4-4	1.000	1	1	2	2.0	3	2	3	0	0	14	10.0	
at San Diego	11-17-16	27	0-9	.000	0-5	.000	2-2	1.000	1	3	4	2.7	3	0	4	0	2	2	7.3	
LOYOLA MARYMOUNT	11-20-16	23	0-3	.000	0-3	.000	0-0	.000	0	1	1	2.3	0	4	1	0	0	0	5.5	
vs UT-Arlington	11-26-16	29	2-6	.333	1-3	.333	1-2	.500	0	5	5	2.8	3	2	2	0	0	6	5.6	
vs Central Connecticut	11-27-16	24	4-7	.571	3-3	1.000	6-6	1.000	0	5	5	3.2	2	2	2	0	2	17	7.5	
at UC Davis	12-02-16	15	1-5	.200	0-1	.000	0-0	.000	1	0	1	2.9	0	2	0	0	0	2	6.7	
MICHIGAN	12-09-16	27	4-10	.400	2-3	.667	1-2	.500	1	1	2	2.8	1	1	2	0	0	11	7.3	
UC SANTA BARBARA	12-11-16 *	29	6-10	.600	3-5	.600	2-2	1.000	0	3	3	2.8	0	1	1	0	0	17	8.3	
at Cal State Fullerton	12-22-16 *	19	1-5	.200	0-4	.000	0-0	.000	0	0	0	2.5	1	2	2	0	0	2	7.7	
BIOLA	12-28-16 *	17	1-4	.250	0-2	.000	0-0	.000	0	1	1	2.4	1	3	2	0	1	2	7.2	
at New Mexico	12-31-16 *	26	0-7	.000	0-4	.000	0-0	.000	0	2	2	2.3	2	1	0	0	0	0	6.6	
NEVADA	01-04-17 *	24	4-12	.333	1-3	.333	2-3	.667	2	1	3	2.4	1	5	0	0	1	11	6.9	
BOISE STATE	01-07-17 *	22	4-7	.571	2-4	.500	0-1	.000	0	3	3	2.4	2	3	1	0	0	10	7.1	
at San Jose State	01-11-17 *	37	6-13	.462	4-7	.571	4-6	.667	3	4	7	2.7	2	4	1	0	0	20	8.0	
at Utah State	01-14-17 *	25	4-9	.444	2-3	.667	2-2	1.000	0	4	4	2.8	3	2	4	0	1	12	8.3	
UNLV	01-18-17 *	29	0-3	.000	0-2	.000	2-3	.667	1	3	4	2.9	1	6	2	0	0	2	7.9	
AIR FORCE	01-25-17 *	24	1-7	.143	0-2	.000	0-0	.000	1	3	4	2.9	2	3	4	1	2	2	7.6	
at Colorado State	01-28-17 *	25	1-5	.200	1-4	.250	0-0	.000	1	2	3	2.9	3	0	1	0	0	3	7.3	
at Wyoming Cowgirls	02-01-17 *	26	2-7	.286	1-4	.250	0-0	.000	1	0	1	2.9	1	2	1	0	1	5	7.2	
FRESNO STATE	02-04-17 *	20	1-5	.200	1-3	.333	0-0	.000	1	2	3	2.9	0	2	0	0	0	3	7.0	
SAN JOSE STATE	02-08-17 *	26	4-9	.444	3-6	.500	4-6	.667	1	6	7	3.0	2	4	1	0	1	15	7.4	
at Nevada	02-11-17 *	19	0-5	.000	0-2	.000	0-0	.000	0	0	0	2.9	0	1	2	0	0	0	7.0	
UTAH STATE	02-15-17 *	23	3-6	.500	3-4	.750	0-0	.000	1	7	8	3.1	1	0	5	0	0	9	7.1	
at UNLV	02-18-17 *	33	2-7	.286	2-5	.400	1-2	.500	1	2	3	3.1	4	2	2	0	0	7	7.1	
at Fresno State	02-22-17 *	28	1-2	.500	0-1	.000	0-0	.000	1	3	4	3.2	1	6	4	0	1	2	6.9	
COLORADO STATE	02-25-17 *	27	2-10	.200	1-4	.250	0-0	.000	2	4	6	3.3	0	5	3	0	0	5	6.9	
Totals		20	681	60-188	.319	33-95	.347	32-43	.744	21	67	88	3.3	41	65	53	1	13	185	6.9

GOMEZ'S CAREER STATISTICS

Season	gp-gs	min/avg	Total		3-Point		F-Throws		Rebounds				* - at St. Joseph's Scoring							
			fg-fga	pct	fg-fga	pct	ft-fta	pct	off	def	tot	avg	pf	fo	ast	to	blk	stl	pts	avg
2013-14*	24-1	114/4.8	10-34	.294	3-14	.214	5-7	.714	1	10	11	0.5	17	0	13	6	1	2	28	1.2
2015-16	29-0	426/14.7	30-107	.280	23-71	.324	15-22	.682	13	42	55	1.9	23	0	37	26	2	11	98	3.4
2016-17	26-19	654/25.2	58-178	.326	32-91	.352	32-43	.744	19	63	82	3.2	41	0	60	50	1	13	180	6.9
TOTAL	55-19	1080/19.6	88-285	.309	55-162	.340	47-65	.723	32	105	137	2.5	64	0	97	76	3	24	278	5.1
All*	79-20	1194/15.1	98-319	.307	58-176	.330	52-72	.722	33	115	148	1.9	81	0	110	82	4	26	306	3.9



#22 LEXY THORDERSON

Junior • 2L

6-0

Guard/Forward

Castle Rock, Colo.

Rock Canyon High School

Team's top three-point threat in 2015-16 who will be tasked with an expanded role

▶▶▶ GAME HIGHS

	CAREER	2016-17 SEASON
Points	21, vs. UNLV (1-18-17)	21, vs. UNLV (1-18-17)
Rebounds	7, vs. San Diego Christian (12-21-15)	6, at New Mexico (12-31-16)
Assists	3, vs. UT Arlington (11-26-16)	3, vs. UT Arlington (11-26-16)
Steals	4, vs. San José State (2-8-17)	4, vs. San José State (2-8-17)
Blocks	1, 14 times, Last: at Fresno State (2-22-17)	1, Eight times, Last: at Fresno State (2-22-17)
Field Goals	7, UNLV (1-18-17)	7, UNLV (1-18-17)
Field Goal Attempts	14, at UC Davis (12-2-16)	14, at UC Davis (12-2-16)
3-pt. Field Goals	7, vs. UNLV (1-18-17)	7, vs. UNLV (1-18-17)
3-pt. Field Goal Attempts	13, vs. UNLV (1-18-17)	13, vs. UNLV (1-18-17)
Free Throws	5, vs. UC Santa Barbara (12-11-16)	5, vs. UC Santa Barbara (12-11-16)
Free Throw Attempts	5, vs. UC Santa Barbara (12-11-16)	5, vs. UC Santa Barbara (12-11-16)
Double-Figure Scoring Games	19	13
Double-Figure Rebounding Games	N/A	N/A
Double-Doubles	N/A	N/A

▶▶▶ 2016-17 GAME-BY-GAME STATISTICS

Opponent	Date	gs	min	Total		3-Pointers		Free throws		Rebounds				pf	a	t/o	blk	stl	pts	avg	
				fg-fga	pct	3fg-fga	pct	ft-fta	pct	off	def	tot	avg								
at UC Riverside	11-11-16		dnp	-	-	-	-	-	-	-	-	-	-	-	-	-	-	-	-	-	
at San Diego	11-17-16		18	1-5	.200	1-2	.500	0-0	.000	1	0	1	1.0	0	0	0	1	0	3	3.0	
LOYOLA MARYMOUNT	11-20-16	*	19	2-12	.167	1-9	.111	1-2	.500	2	1	3	2.0	3	2	0	1	0	6	4.5	
vs UT-Arlington	11-26-16	*	22	0-4	.000	0-4	.000	0-0	.000	0	1	1	1.7	1	3	1	0	1	0	3.0	
vs Central Connecticut	11-27-16		20	3-6	.500	2-4	.500	2-2	1.000	0	1	1	1.5	4	0	0	0	1	10	4.8	
at UC Davis	12-02-16		23	4-14	.286	3-11	.273	0-0	.000	0	2	2	1.6	0	1	0	0	2	11	6.0	
MICHIGAN	12-09-16		20	1-6	.167	1-5	.200	0-0	.000	0	0	0	1.3	0	2	0	1	0	3	5.5	
UC SANTA BARBARA	12-11-16	*	28	5-11	.455	2-7	.286	5-5	1.000	0	4	4	1.7	0	2	1	0	1	17	7.1	
at Cal State Fullerton	12-22-16	*	28	5-7	.714	3-5	.600	0-0	.000	1	1	2	1.8	1	0	1	0	1	13	7.9	
BIOLA	12-28-16	*	22	2-9	.222	0-5	.000	0-0	.000	3	2	5	2.1	1	0	0	0	0	4	7.4	
at New Mexico	12-31-16	*	36	4-11	.364	2-8	.250	1-2	.500	1	5	6	2.5	3	1	1	0	2	11	7.8	
NEVADA	01-04-17	*	30	5-9	.556	5-9	.556	0-0	.000	3	2	5	2.7	3	1	0	0	1	15	8.5	
BOISE STATE	01-07-17	*	34	6-9	.667	6-9	.667	2-2	1.000	1	1	2	2.7	2	1	0	1	0	20	9.4	
at San Jose State	01-11-17	*	30	5-11	.455	3-9	.333	0-0	.000	3	2	5	2.8	4	0	1	0	0	13	9.7	
at Utah State	01-14-17	*	26	2-11	.182	1-8	.125	0-0	.000	0	4	4	2.9	1	0	0	0	1	5	9.4	
UNLV	01-18-17	*	31	7-14	.500	7-13	.538	0-0	.000	0	0	0	2.7	2	1	1	1	0	21	10.1	
AIR FORCE	01-25-17	*	25	1-4	.250	1-4	.250	0-0	.000	0	0	0	2.6	0	1	4	1	2	3	9.7	
at Colorado State	01-28-17	*	23	1-4	.250	1-3	.333	0-0	.000	0	2	2	2.5	5	0	1	0	0	3	9.3	
at Wyoming Cowgirls	02-01-17	*	31	2-4	.500	0-1	.000	1-2	.500	0	2	2	2.5	3	0	1	0	1	5	9.1	
FRESNO STATE	02-04-17	*	29	2-6	.333	2-5	.400	0-0	.000	1	2	3	2.5	0	0	1	0	3	6	8.9	
SAN JOSE STATE	02-08-17	*	29	6-9	.667	5-8	.625	0-0	.000	0	0	0	2.4	1	0	0	0	4	17	9.3	
at Nevada	02-11-17		18	4-8	.500	4-7	.571	1-2	.500	0	1	1	2.3	3	0	0	0	1	13	9.5	
UTAH STATE	02-15-17		23	4-8	.500	3-7	.429	0-0	.000	1	0	1	2.3	2	1	1	1	0	11	9.5	
at UNLV	02-18-17		24	5-10	.500	5-8	.625	1-3	.333	1	3	4	2.3	5	0	0	0	0	16	9.8	
at Fresno State	02-22-17		19	2-9	.222	1-7	.143	0-0	.000	0	4	4	2.4	2	0	0	1	0	5	9.6	
COLORADO STATE	02-25-17		25	2-8	.250	1-6	.167	0-0	.000	0	1	1	2.4	2	2	0	0	0	5	9.4	
Totals			16	633	81-209	.388	60-164	.366	14-20	.700	18	41	59	2.4	48	18	14	8	21	236	9.4

THORDERSON'S CAREER STATISTICS

Season	gp-gs	min/avg	Total		3-Point		F-Throws		Rebounds				Scoring							
			fg-fga	pct	fg-fga	pct	ft-fta	pct	off	def	tot	avg	pf	fo	ast	to	blk	stl	pts	avg
2014-15	30-0	226/7.5	20-70	.286	13-58	.224	4-4	1.000	7	12	19	0.6	15	0	8	18	1	3	57	1.9
2015-16	31-2	524/16.9	58-172	.337	40-124	.323	5-8	.625	16	51	67	2.2	33	0	4	9	8	10	161	5.2
2016-17	24-16	608/25.3	79-201	.393	59-158	.373	14-20	.700	18	40	58	2.4	46	2	16	14	8	21	231	9.6
TOTAL	85-18	1358/16.0	157-443	.354	112-340	.329	23-32	.719	41	103	144	1.7	94	2	28	41	17	34	449	5.3



#34 BAYLEE VANDERDOES

Freshman • HS

6-1

Forward

Auburn, Calif.

Placer High School

Extremely skilled offensively at the post position and shoots the ball very well from the outside

▶▶▶ GAME HIGHS

	2016-17 SEASON
Points	10, vs. San Diego Christian (11-14-16)
Rebounds	10, vs. San Diego Christian (11-14-16)
Assists	2, vs. Central Connecticut (11-27-16)
Steals	1, Six times, Last: vs. Utah State (2-15-17)
Blocks	1, Twice, Last: vs. Fresno State (2-4-17)
Field Goals	5, vs. San Diego Christian (11-14-16)
Field Goal Attempts	7, vs. San Diego Christian (11-14-16)
3-pt. Field Goals	N/A
3-pt. Field Goal Attempts	N/A
Free Throws	4, at San Diego (11-17-16)
Free Throw Attempts	4, Twice, Last: at San Diego (11-17-16)
Double-Figure Scoring Games	1
Double-Figure Rebounding Games	1
Double-Doubles	1

▶▶▶ 2016-17 GAME-BY-GAME STATISTICS

Opponent	Date	gs	min	Total		3-Pointers		Free throws		Rebounds				Other						pts	avg
				fg-fga	pct	3fg-fga	pct	ft-fta	pct	off	def	tot	avg	pf	a	t/o	blk	stl			
at UC Riverside	11-11-16	*	17	2-3	.667	0-0	.000	3-3	1.000	3	2	5	5.0	3	0	1	0	0	7	7.0	
SAN DIEGO CHRISTIAN	11-14-16	*	22	5-7	.714	0-0	.000	0-1	.000	2	8	10	7.5	1	0	2	1	0	10	8.5	
at San Diego	11-17-16	*	15	0-3	.000	0-0	.000	4-4	1.000	0	2	2	5.7	3	0	0	0	0	4	7.0	
LOYOLA MARYMOUNT	11-20-16	*	25	3-4	.750	0-0	.000	0-0	.000	0	6	6	5.8	2	1	1	0	0	6	6.8	
vs UT-Arlington	11-26-16	*	20	0-2	.000	0-0	.000	2-4	.500	2	2	4	5.4	2	0	1	0	1	2	5.8	
vs Central Connecticut	11-27-16	*	23	3-5	.600	0-0	.000	1-2	.500	1	1	2	4.8	4	2	3	0	0	7	6.0	
at UC Davis	12-02-16	*	16	1-5	.200	0-0	.000	0-0	.000	2	4	6	5.0	3	0	2	0	1	2	5.4	
MICHIGAN	12-09-16	*	20	0-1	.000	0-0	.000	1-2	.500	0	0	0	4.4	1	1	2	0	0	1	4.9	
at Cal State Fullerton	12-22-16	dnp		-	-	-	-	-	-	-	-	-	-	-	-	-	-	-	-	-	
at New Mexico	12-31-16	dnp		-	-	-	-	-	-	-	-	-	-	-	-	-	-	-	-	-	
NEVADA	01-04-17	dnp		-	-	-	-	-	-	-	-	-	-	-	-	-	-	-	-	-	
BOISE STATE	01-07-17		7	0-0	.000	0-0	.000	0-0	.000	2	0	2	4.1	0	0	0	0	0	0	4.3	
at San Jose State	01-11-17	dnp		-	-	-	-	-	-	-	-	-	-	-	-	-	-	-	-	-	
at Utah State	01-14-17		8	1-2	.500	0-0	.000	0-0	.000	0	2	2	3.9	0	0	0	0	0	2	4.1	
UNLV	01-18-17		6	0-1	.000	0-0	.000	1-2	.500	0	2	2	3.7	1	1	0	0	1	1	3.8	
AIR FORCE	01-25-17		2	0-0	.000	0-0	.000	0-0	.000	0	2	2	3.6	2	0	0	0	0	0	3.5	
at Colorado State	01-28-17	dnp		-	-	-	-	-	-	-	-	-	-	-	-	-	-	-	-	-	
at Wyoming Cowgirls	02-01-17		11	2-2	1.000	0-0	.000	0-1	.000	0	0	0	3.3	1	0	0	0	1	4	3.5	
FRESNO STATE	02-04-17		16	3-5	.600	0-0	.000	1-3	.333	0	2	2	3.2	3	1	0	1	0	7	3.8	
SAN JOSE STATE	02-08-17		13	1-4	.250	0-0	.000	3-3	1.000	1	0	1	3.1	3	0	0	0	1	5	3.9	
at Nevada	02-11-17	*	11	1-3	.333	0-0	.000	2-2	1.000	0	1	1	2.9	2	0	2	0	0	4	3.9	
UTAH STATE	02-15-17		13	1-1	1.000	0-0	.000	1-2	.500	1	0	1	2.8	5	0	2	0	1	3	3.8	
at UNLV	02-18-17		8	0-1	.000	0-0	.000	1-2	.500	0	2	2	2.8	1	0	1	0	0	1	3.7	
at Fresno State	02-22-17		16	1-3	.333	0-0	.000	0-0	.000	1	4	5	2.9	3	1	2	0	0	2	3.6	
COLORADO STATE	02-25-17		17	2-5	.400	0-0	.000	1-2	.500	2	1	3	2.9	1	0	0	0	0	5	3.7	
Totals			9	286	26-57	.456	0-0	.000	21-33	.636	17	41	58	2.9	41	7	19	2	6	73	3.7

VANDERDOES' CAREER STATISTICS

Season	gp-gs	min/avg	Total		3-Point		F-Throws		Rebounds				Scoring							
			fg-fga	pct	fg-fga	pct	ft-fta	pct	off	def	tot	avg	pf	fo	ast	to	blk	stl	pts	avg
2016-17	19-9	269/14.2	24-52	.462	0-0	.000	20-31	.645	15	40	55	2.9	40	1	7	19	2	6	68	3.6
TOTAL	19-9	269/14.2	24-52	.462	0-0	.000	20-31	.645	15	40	55	2.9	40	1	7	19	2	6	68	3.6



#40 MONIQUE TERRY

Freshman • HS

6-2

Forward

San Antonio, Texas

Brennan High School

Enthusiastic and hard-working utility player whose greatest strength is rebounding

▶▶▶ GAME HIGHS

2016-17 SEASON	
Points	8, vs. Biola (12-28-16)
Rebounds	5, at Cal State Fullerton (12-22-16)
Assists	2, vs. Central Connecticut (11-27-16)
Steals	2, vs. Biola (12-28-16)
Blocks	1, Three times, Last: vs. Nevada (1-4-17)
Field Goals	4, vs. Biola (12-28-16)
Field Goal Attempts	6, vs. Biola (12-28-16)
3-pt. Field Goals	N/A
3-pt. Field Goal Attempts	1, Three times, Last: vs. UT Arlington (11-26-16)
Free Throws	2, Twice, Last: at UNLV (2-18-17)
Free Throw Attempts	3, at Nevada (2-11-17)
Double-Figure Scoring Games	N/A
Double-Figure Rebounding Games	N/A
Double-Doubles	N/A

▶▶▶ 2016-17 GAME-BY-GAME STATISTICS

Opponent	Date	qs	min	Total		3-Pointers		Free throws		Rebounds				Other							
				fg-fga	pct	3fg-fga	pct	ft-fta	pct	off	def	tot	avg	pf	a	t/o	blk	stl	pts	avg	
at UC Riverside	11-11-16		14	0-1	.000	0-0	.000	2-2	1.000	0	1	1	1.0	1	0	1	0	0	2	2.0	
SAN DIEGO CHRISTIAN	11-14-16		15	1-2	.500	0-1	.000	0-0	.000	0	1	1	1.0	1	0	1	1	0	2	2.0	
at San Diego	11-17-16		14	3-4	.750	0-0	.000	1-1	1.000	1	3	4	2.0	3	0	2	0	0	7	3.7	
LOYOLA MARYMOUNT	11-20-16		5	0-1	.000	0-1	.000	0-0	.000	1	1	2	2.0	0	0	0	0	0	0	2.8	
vs UT-Arlington	11-26-16		18	2-4	.500	0-1	.000	0-0	.000	2	2	4	2.4	1	0	0	0	0	4	3.0	
vs Central Connecticut	11-27-16	*	13	3-3	1.000	0-0	.000	0-0	.000	1	1	2	2.3	4	2	2	0	1	6	3.5	
at UC Davis	12-02-16	*	18	1-2	.500	0-0	.000	0-0	.000	0	3	3	2.4	0	0	2	0	0	2	3.3	
MICHIGAN	12-09-16	*	15	0-3	.000	0-0	.000	1-2	.500	0	2	2	2.4	1	0	1	1	0	1	3.0	
UC SANTA BARBARA	12-11-16	*	13	2-3	.667	0-0	.000	1-2	.500	0	1	1	2.2	4	0	1	0	0	5	3.2	
at Cal State Fullerton	12-22-16	*	13	0-1	.000	0-0	.000	0-0	.000	2	3	5	2.5	2	0	1	0	0	0	2.9	
BIOLA	12-28-16	*	23	4-6	.667	0-0	.000	0-0	.000	3	0	3	2.5	1	0	1	0	2	8	3.4	
at New Mexico	12-31-16		20	3-10	.300	0-0	.000	0-2	.000	1	1	2	2.5	3	0	1	0	1	6	3.6	
NEVADA	01-04-17	*	22	2-2	1.000	0-0	.000	0-0	.000	1	2	3	2.5	0	1	1	1	0	4	3.6	
BOISE STATE	01-07-17	*	23	3-3	1.000	0-0	.000	0-0	.000	1	0	1	2.4	4	0	1	0	1	6	3.8	
at San Jose State	01-11-17	*	14	1-2	.500	0-0	.000	0-0	.000	1	2	3	2.5	1	0	1	0	0	2	3.7	
at Utah State	01-14-17	*	15	0-2	.000	0-0	.000	0-0	.000	0	1	1	2.4	0	0	0	0	0	0	3.4	
UNLV	01-18-17		13	3-3	1.000	0-0	.000	0-1	.000	1	2	3	2.4	0	0	0	0	1	6	3.6	
AIR FORCE	01-25-17		4	0-0	.000	0-0	.000	0-0	.000	0	1	1	2.3	0	0	0	0	0	0	3.4	
at Colorado State	01-28-17		2	0-0	.000	0-0	.000	0-0	.000	0	0	0	2.2	1	0	0	0	0	0	3.2	
at Wyoming Cowgirls	02-01-17		4	0-0	.000	0-0	.000	0-0	.000	0	1	1	2.2	0	0	0	0	0	0	3.1	
FRESNO STATE	02-04-17	dnp		-	-	-	-	-	-	-	-	-	-	-	-	-	-	-	-	-	
SAN JOSE STATE	02-08-17		2	0-0	.000	0-0	.000	1-2	.500	1	1	2	2.1	0	0	0	0	0	1	3.0	
at Nevada	02-11-17		17	2-3	.667	0-0	.000	1-3	.333	2	0	2	2.1	3	0	0	0	0	5	3.0	
UTAH STATE	02-15-17		4	0-0	.000	0-0	.000	0-0	.000	0	1	1	2.1	0	0	0	0	0	0	2.9	
at UNLV	02-18-17		13	1-1	1.000	0-0	.000	2-2	1.000	0	2	2	2.1	4	0	0	0	0	4	3.0	
at Fresno State	02-22-17	dnp		-	-	-	-	-	-	-	-	-	-	-	-	-	-	-	-	-	
COLORADO STATE	02-25-17		4	0-0	.000	0-0	.000	0-0	.000	0	1	1	2.0	2	0	0	0	0	0	2.8	
Totals			10	318	31-56	.554	0-3	.000	9-17	.529	18	33	51	2.0	36	3	16	3	6	71	2.8

TERRY'S CAREER STATISTICS

Season	gp-gs	min/avg	Total		3-Point		F-Throws		Rebounds				Scoring							
			fg-fga	pct	fg-fga	pct	ft-fta	pct	off	def	tot	avg	pf	fo	ast	to	blk	stl	pts	avg
2016-17	24-10	314/13.1	31-56	.554	0-3	.000	9-17	.529	18	32	50	2.1	34	0	3	16	3	6	71	3.0
TOTAL	24-10	314/13.1	31-56	.554	0-3	.000	9-17	.529	18	32	50	2.1	34	0	3	16	3	6	71	3.0



#44 ALEIAH BRANDON

Senior • 3L

6-1

Forward

Corona, Calif.

Centennial High School

Provides veteran leadership as a fifth-year senior

▶▶▶ GAME HIGHS

	CAREER	2016-17 SEASON
Points	11, Twice, Last: at Fresno State (1-20-16)	N/A
Rebounds	6, vs. UC Davis (11-19-16)	N/A
Assists	2, Five times, Last: vs. UNLV (1-30-16)	N/A
Steals	2, Six times, Last: at Fresno State (1-20-16)	N/A
Blocks	2, Three times, Last: vs. San José State (2-20-16)	N/A
Field Goals	5, at Fresno State (1-20-16)	N/A
Field Goal Attempts	9, at Fresno State (1-20-16)	N/A
3-pt. Field Goals	2, at Washington (11-13-15)	N/A
3-pt. Field Goal Attempts	5, Three times, Last: vs. Wisconsin (11-29-15)	N/A
Free Throws	2, Four times, Last: vs. San José State (2-20-16)	N/A
Free Throw Attempts	2, Five times, Last: vs. San José State (2-20-16)	N/A
Double-Figure Scoring Games	3	N/A
Double-Figure Rebounding Games	N/A	N/A
Double-Doubles	N/A	N/A

▶▶▶ 2016-17 GAME-BY-GAME STATISTICS

Opponent	GS	Min	TOTAL			3-PTS			FT	FTA	Pct	Off	REBOUNDS		PF	A	TO	Blk	Stl	Pts	Avg
			FG	FGA	Pct	3FG	FGA	Pct					Def	Tot							
at UC Riverside																					
SAN DIEGO CHRISTIAN																					
at San Diego																					
LOYOLA MARYMOUNT																					
vs. UT Arlington																					
vs. Central Connecticut																					
at UC Davis																					
MICHIGAN																					
UC SANTA BARBARA																					
at Cal State Fullerton																					
BIOLA																					
at New Mexico																					
NEVADA																					
BOISE STATE																					
at San José State																					
at Utah State																					
UNLV																					
AIR FORCE																					
at Colorado State																					
at Wyoming																					
FRESNO STATE																					
SAN JOSÉ STATE																					
at Nevada																					
UTAH STATE																					
at UNLV																					
at Fresno State																					
COLORADO STATE																					
at Air Force																					
NEW MEXICO																					
TOTALS																					

BRANDON'S CAREER STATISTICS

Season	gp-gs	min/avg	Total		3-Point		F-Throws		Rebounds				Scoring							
			fg-fga	pct	fg-fga	pct	ft-fta	pct	off	def	tot	avg	pf	fo	ast	to	blk	stl	pts	avg
2012-13	17-0	109/6.4	13-21	.619	0-0	.000	0-0	.000	3	11	14	0.8	9	0	0	5	5	2	26	1.5
2014-15	30-0	281/9.4	24-51	.471	10-29	.345	6-6	1.000	7	24	31	1.0	37	0	7	20	2	7	64	2.1
2015-16	26-18	494/19.0	37-111	.333	11-41	.268	3-4	.750	13	49	62	2.4	54	1	15	28	10	14	88	3.4
TOTAL	73-18	884/12.1	74-183	.404	21-70	.300	9-10	.900	23	84	107	1.5	100	1	22	53	17	23	178	2.4

All games

RECORD:	OVERALL	HOME	AWAY	NEUTRAL
ALL GAMES	9-18	7-6	1-11	1-1
CONFERENCE	4-12	4-4	0-8	0-0
NON-CONFERENCE	5-6	3-2	1-3	1-1

#	Player	gp-gs	min	Total		3-Point		F-Throw		Rebounds				pf	dq	a	to	blk	stl	pts	avg	
				fg-fga	fg%	3fg-fga	3fg%	ft-fa	ft%	off	def	tot	avg									
15	FORT, McKynzie	27-27	857	31.7	160-362	.442	8-40	.200	100-128	.781	38	68	106	3.9	56	2	65	62	5	27	428	15.9
04	ELLISON, Kymberly	27-25	699	25.9	84-233	.361	58-166	.349	36-45	.800	12	55	67	2.5	60	1	32	40	5	23	262	9.7
22	THORDERSON, Lexy	25-16	633	25.3	81-209	.388	60-164	.366	14-20	.700	18	41	59	2.4	48	2	18	14	8	21	236	9.4
01	LARK, Khalia	18-10	474	26.3	65-180	.361	20-74	.270	12-28	.429	33	77	110	6.1	39	0	20	40	1	11	162	9.0
20	GOMEZ, Geena	27-20	681	25.2	60-188	.319	33-95	.347	32-43	.744	21	67	88	3.3	41	0	65	53	1	13	185	6.9
30	GREENHOUSE, Chey	26-6	411	15.8	37-102	.363	3-17	.176	32-41	.780	26	24	50	1.9	24	1	9	19	0	4	109	4.2
03	BOSTICK, Ariell	27-8	617	22.9	37-94	.394	7-20	.350	26-32	.813	10	98	108	4.0	50	1	98	63	0	44	107	4.0
34	VANDERDOES, Bayle	20-9	286	14.3	26-57	.456	0-0	.000	21-33	.636	17	41	58	2.9	41	1	7	19	2	6	73	3.7
40	TERRY, Monique	25-10	318	12.7	31-56	.554	0-3	.000	9-17	.529	18	33	51	2.0	36	0	3	16	3	6	71	2.8
45	EKWEDIKE, Naomi	9-0	63	7.0	8-19	.421	0-0	.000	1-3	.333	5	6	11	1.2	10	0	0	13	0	0	17	1.9
11	GOMEZ, Arantxa	25-4	290	11.6	16-30	.533	0-0	.000	13-25	.520	29	28	57	2.3	30	0	5	16	8	4	45	1.8
21	LOWE, Abby	14-0	78	5.6	6-19	.316	1-6	.167	5-7	.714	5	5	10	0.7	12	0	2	8	1	0	18	1.3
13	BROWN, Allison	6-0	18	3.0	2-3	.667	0-0	.000	3-4	.750	0	2	2	0.3	4	0	2	2	0	0	7	1.2
Team											56	52	108				16					
Total.....		27	5425		613-1552	.395	190-585	.325	304-426	.714	288	597	885	32.8	451	8	326	381	34	159	1720	63.7
Opponents.....		27	5425		722-1568	.460	195-544	.358	294-416	.707	296	691	987	36.6	418	-	433	394	83	173	1933	71.6

Score by Periods	1st	2nd	3rd	4th	OT	Totals
SDSU	438	391	421	461	9	1720
Opponents	532	437	461	493	10	1933

Conference games

RECORD:	OVERALL	HOME	AWAY	NEUTRAL
ALL GAMES	4-12	4-4	0-8	0-0
CONFERENCE	4-12	4-4	0-8	0-0
NON-CONFERENCE	0-0	0-0	0-0	0-0

#	Player	gp-gs	min	Total		3-Point		F-Throw		Rebounds				pf	dq	a	to	blk	stl	pts	avg	
				fg-fga	fg%	3fg-fga	3fg%	ft-fa	ft%	off	def	tot	avg									
15	FORT, McKynzie	16-16	515	32.2	91-213	.427	4-21	.190	57-73	.781	25	43	68	4.3	29	0	46	33	3	18	243	15.2
22	THORDERSON, Lexy	16-11	433	27.1	58-135	.430	47-112	.420	6-11	.545	11	29	40	2.5	38	2	8	11	5	15	169	10.6
04	ELLISON, Kymberly	16-14	421	26.3	50-139	.360	31-92	.337	22-27	.815	5	33	38	2.4	34	1	19	22	2	10	153	9.6
01	LARK, Khalia	16-10	420	26.3	57-162	.352	17-66	.258	12-28	.429	31	65	96	6.0	35	0	18	38	1	9	143	8.9
20	GOMEZ, Geena	16-16	414	25.9	35-114	.307	21-58	.362	15-23	.652	16	46	62	3.9	25	0	46	31	1	7	106	6.6
03	BOSTICK, Ariell	16-0	324	20.3	21-57	.368	4-12	.333	12-13	.923	4	42	46	2.9	26	0	50	37	0	20	58	3.6
30	GREENHOUSE, Chey	16-4	244	15.3	18-57	.316	0-8	.000	16-21	.762	20	17	37	2.3	13	0	6	8	0	3	52	3.3
34	VANDERDOES, Bayle	12-1	128	10.7	12-27	.444	0-0	.000	10-17	.588	7	16	23	1.9	22	1	3	7	1	4	34	2.8
40	TERRY, Monique	14-4	157	11.2	15-26	.577	0-0	.000	4-10	.400	8	15	23	1.6	18	0	1	4	1	3	34	2.4
11	GOMEZ, Arantxa	14-4	147	10.5	10-18	.556	0-0	.000	5-9	.556	17	14	31	2.2	14	0	3	6	1	1	25	1.8
21	LOWE, Abby	5-0	18	3.6	2-4	.500	0-1	.000	0-0	.000	1	0	1	0.2	2	0	1	1	0	0	4	0.8
13	BROWN, Allison	3-0	4	1.3	0-0	.000	0-0	.000	1-2	.500	0	0	0	0.0	2	0	0	0	0	0	1	0.3
Team											36	32	68				9					
Total.....		16	3225		369-952	.388	124-370	.335	160-234	.684	181	352	533	33.3	258	4	201	207	15	90	1022	63.9
Opponents.....		16	3225		432-927	.466	117-323	.362	187-248	.754	172	418	590	36.9	220	-	259	220	55	105	1168	73.0

Score by Periods	1st	2nd	3rd	4th	OT	Totals
SDSU	257	239	257	260	9	1022
Opponents	314	248	277	319	10	1168

Home games

RECORD:	OVERALL	HOME	AWAY	NEUTRAL
ALL GAMES	7-6	7-6	0-0	0-0
CONFERENCE	4-4	4-4	0-0	0-0
NON-CONFERENCE	3-2	3-2	0-0	0-0

#	Player	gp-gs	min	Total		3-Point		F-Throw		Rebounds				pf	dq	a	to	blk	stl	pts	avg			
				fg-fga	fg%	3fg-fga	3fg%	ft-fa	ft%	off	def	tot	avg											
15	FORT, McKynzie	13-13	411	31.6	76-163	.466	4-17	.235	60-72	.833	13	36	49	3.8	20	0	34	24	2	12	216	16.6		
01	LARK, Khalia	9-5	243	27.0	43-98	.439	14-42	.333	5-14	.357	14	37	51	5.7	19	0	10	14	0	7	105	11.7		
22	THORNDERSON, Lexy	12-9	315	26.3	43-105	.410	34-87	.391	8-9	.889	11	13	24	2.0	16	0	13	8	6	11	128	10.7		
04	ELLISON, Kymberly	13-12	350	26.9	45-104	.433	31-75	.413	16-20	.800	5	30	35	2.7	21	0	21	20	3	6	137	10.5		
20	GOMEZ, Geena	13-11	323	24.8	34-94	.362	18-46	.391	15-21	.714	11	36	47	3.6	14	0	39	25	1	5	101	7.8		
30	GREENHOUSE, Chey	12-2	195	16.3	16-41	.390	3-9	.333	21-25	.840	11	13	24	2.0	16	1	6	12	0	1	56	4.7		
34	VANDERDOES, Bayle	10-3	141	14.1	15-28	.536	0-0	.000	8-15	.533	8	21	29	2.9	19	1	4	7	2	3	38	3.8		
03	BOSTICK, Ariell	13-3	282	21.7	17-40	.425	1-5	.200	11-14	.786	6	46	52	4.0	23	0	53	28	0	19	46	3.5		
40	TERRY, Monique	12-5	143	11.9	15-23	.652	0-2	.000	3-7	.429	8	13	21	1.8	13	0	1	6	3	4	33	2.8		
45	EKWEDIKE, Naomi	4-0	26	6.5	5-9	.556	0-0	.000	1-3	.333	2	1	3	0.8	5	0	0	4	0	0	11	2.8		
11	GOMEZ, Arantxa	12-2	125	10.4	9-15	.600	0-0	.000	5-6	.833	9	13	22	1.8	11	0	3	6	4	4	23	1.9		
13	BROWN, Allison	4-0	16	4.0	2-3	.667	0-0	.000	2-2	1.000	0	2	2	0.5	4	0	2	2	0	0	6	1.5		
21	LOWE, Abby	5-0	30	6.0	1-8	.125	0-3	.000	1-1	1.000	1	2	3	0.6	3	0	2	1	1	0	3	0.6		
Team											19	21	40											10
Total.....		13	2600	321-731		.439	105-286	.367	156-209	.746	118	284	402	30.9	184	2	188	167	22	72	903	69.5		
Opponents.....		13	2600	349-786		.444	104-287	.362	120-173	.694	174	302	476	36.6	192	-	203	183	33	72	922	70.9		

Score by Periods	1st	2nd	3rd	4th	Totals
SDSU	253	212	203	235	903
Opponents	247	194	248	233	922

Away games

RECORD:	OVERALL	HOME	AWAY	NEUTRAL
ALL GAMES	1-11	0-0	1-11	0-0
CONFERENCE	0-8	0-0	0-8	0-0
NON-CONFERENCE	1-3	0-0	1-3	0-0

#	Player	gp-gs	min	Total		3-Point		F-Throw		Rebounds				pf	dq	a	to	blk	stl	pts	avg			
				fg-fga	fg%	3fg-fga	3fg%	ft-fa	ft%	off	def	tot	avg											
15	FORT, McKynzie	12-12	391	32.6	73-182	.401	4-21	.190	36-49	.735	25	28	53	4.4	29	1	26	33	2	15	186	15.5		
22	THORNDERSON, Lexy	11-6	276	25.1	35-94	.372	24-69	.348	4-9	.444	7	26	33	3.0	27	2	2	5	2	8	98	8.9		
04	ELLISON, Kymberly	12-11	299	24.9	32-112	.286	22-76	.289	16-21	.762	6	23	29	2.4	31	1	9	16	2	15	102	8.5		
01	LARK, Khalia	9-5	231	25.7	22-82	.268	6-32	.188	7-14	.500	19	40	59	6.6	20	0	10	26	1	4	57	6.3		
20	GOMEZ, Geena	12-9	305	25.4	20-81	.247	11-43	.256	10-14	.714	10	21	31	2.6	22	0	22	24	0	6	61	5.1		
03	BOSTICK, Ariell	12-3	274	22.8	15-46	.326	4-13	.308	8-10	.800	3	38	41	3.4	21	0	39	27	0	19	42	3.5		
30	GREENHOUSE, Chey	12-4	192	16.0	17-53	.321	0-7	.000	7-10	.700	14	7	21	1.8	7	0	3	5	0	3	41	3.4		
34	VANDERDOES, Bayle	8-4	102	12.8	8-22	.364	0-0	.000	10-12	.833	6	17	23	2.9	16	0	1	8	0	2	26	3.3		
40	TERRY, Monique	11-4	144	13.1	11-26	.423	0-0	.000	6-10	.600	7	17	24	2.2	18	0	0	8	0	1	28	2.5		
45	EKWEDIKE, Naomi	3-0	18	6.0	3-6	.500	0-0	.000	0-0	.000	3	3	6	2.0	4	0	0	6	0	0	6	2.0		
21	LOWE, Abby	7-0	42	6.0	5-10	.500	1-3	.333	2-4	.500	4	2	6	0.9	7	0	0	6	0	0	13	1.9		
11	GOMEZ, Arantxa	11-2	149	13.5	6-14	.429	0-0	.000	6-17	.353	18	14	32	2.9	15	0	2	7	2	0	18	1.6		
13	BROWN, Allison	2-0	2	1.0	0-0	.000	0-0	.000	1-2	.500	0	0	0	0.0	0	0	0	0	0	0	1	0.5		
Team											37	23	60											4
Total.....		12	2425	247-728		.339	72-264	.273	113-172	.657	159	259	418	34.8	217	4	114	175	9	73	679	56.6		
Opponents.....		12	2425	330-671		.492	82-224	.366	143-196	.730	100	345	445	37.1	182	-	213	174	47	89	885	73.8		

Score by Periods	1st	2nd	3rd	4th	OT	Totals
SDSU	158	143	176	193	9	679
Opponents	247	215	185	228	10	885

Neutral site games

RECORD:	OVERALL	HOME	AWAY	NEUTRAL
ALL GAMES	1-1	0-0	0-0	1-1
CONFERENCE	0-0	0-0	0-0	0-0
NON-CONFERENCE	1-1	0-0	0-0	1-1

##	Player	gp-gs	min	avg	Total		3-Point		F-Throw		Rebounds				pf	dq	a	to	blk	stl	pts	avg
					fg-fga	fg%	3fg-fga	3fg%	ft-fa	ft%	off	def	tot	avg								
15	FORT, McKynzie	2-2	55	27.5	11-17	.647	0-2	.000	4-7	.571	0	4	4	2.0	7	1	5	5	1	0	26	13.0
04	ELLISON, Kymberly	2-2	50	25.0	7-17	.412	5-15	.333	4-4	1.000	1	2	3	1.5	8	0	2	4	0	2	23	11.5
20	GOMEZ, Geena	2-0	53	26.5	6-13	.462	4-6	.667	7-8	.875	0	10	10	5.0	5	0	4	4	0	2	23	11.5
03	BOSTICK, Ariell	2-2	61	30.5	5-8	.625	2-2	1.000	7-8	.875	1	14	15	7.5	6	1	6	8	0	6	19	9.5
30	GREENHOUSE, Chey	2-0	24	12.0	4-8	.500	0-1	.000	4-6	.667	1	4	5	2.5	1	0	0	2	0	0	12	6.0
40	TERRY, Monique	2-1	31	15.5	5-7	.714	0-1	.000	0-0	.000	3	3	6	3.0	5	0	2	2	0	1	10	5.0
22	THORDERSON, Lexy	2-1	42	21.0	3-10	.300	2-8	.250	2-2	1.000	0	2	2	1.0	5	0	3	1	0	2	10	5.0
34	VANDERDOES, Bayle	2-2	43	21.5	3-7	.429	0-0	.000	3-6	.500	3	3	6	3.0	6	0	2	4	0	1	9	4.5
11	GOMEZ, Arantxa	2-0	16	8.0	1-1	1.000	0-0	.000	2-2	1.000	2	1	3	1.5	4	0	0	3	2	0	4	2.0
21	LOWE, Abby	2-0	6	3.0	0-1	.000	0-0	.000	2-2	1.000	0	1	1	0.5	2	0	0	1	0	0	2	1.0
45	EKWEDIKE, Naomi	2-0	19	9.5	0-4	.000	0-0	.000	0-0	.000	0	2	2	1.0	1	0	0	3	0	0	0	0.0
Team											0	8	8				2					
Total.....		2	400		45-93	.484	13-35	.371	35-45	.778	11	54	65	32.5	50	2	24	39	3	14	138	69.0
Opponents.....		2	400		43-111	.387	9-33	.273	31-47	.660	22	44	66	33.0	44	-	17	37	3	12	126	63.0

Score by Periods	1st	2nd	3rd	4th	Totals
SDSU	27	36	42	33	138
Opponents	38	28	28	32	126

Games won

RECORD:	OVERALL	HOME	AWAY	NEUTRAL
ALL GAMES	9-0	7-0	1-0	1-0
CONFERENCE	4-0	4-0	0-0	0-0
NON-CONFERENCE	5-0	3-0	1-0	1-0

#	Player	gp-gs	min	avg	Total			3-Point		F-Throw		Rebounds				a	to	blk	stl	pts	avg	
					fg-fga	fg%	3fg-fga	3fg%	ft-fa	ft%	off	def	tot	avg	pf							dq
15	FORT, McKynzie	9-9	279	31.0	64-114	.561	3-9	.333	41-49	.837	9	24	33	3.7	17	0	33	16	1	10	172	19.1
22	THORDERSON, Lexy	8-6	216	27.0	37-73	.507	28-59	.475	9-9	1.000	9	11	20	2.5	15	0	6	4	3	4	111	13.9
01	LARK, Khalia	6-2	150	25.0	30-56	.536	10-24	.417	3-6	.500	7	26	33	5.5	14	0	8	8	0	4	73	12.2
04	ELLISON, Kymberly	9-8	232	25.8	32-64	.500	22-50	.440	18-22	.818	1	15	16	1.8	14	0	13	9	2	4	104	11.6
20	GOMEZ, Geena	9-8	219	24.3	27-62	.435	14-32	.438	16-19	.842	5	24	29	3.2	12	0	24	18	0	4	84	9.3
34	VANDERDOES, Bayle	5-2	71	14.2	9-14	.643	0-0	.000	3-7	.429	6	11	17	3.4	11	1	3	7	1	2	21	4.2
30	GREENHOUSE, Chey	8-1	102	12.8	10-19	.526	3-8	.375	10-13	.769	4	6	10	1.3	8	0	3	5	0	0	33	4.1
40	TERRY, Monique	9-6	139	15.4	18-23	.783	0-1	.000	1-3	.333	9	11	20	2.2	16	0	3	8	2	5	37	4.1
11	GOMEZ, Arantxa	9-1	118	13.1	11-16	.688	0-0	.000	6-8	.750	6	12	18	2.0	12	0	3	9	4	2	28	3.1
03	BOSTICK, Ariell	9-2	208	23.1	10-20	.500	1-2	.500	4-6	.667	2	41	43	4.8	12	0	51	22	0	16	25	2.8
45	EKWEDIKE, Naomi	3-0	24	8.0	2-6	.333	0-0	.000	1-2	.500	0	1	1	0.3	1	0	0	5	0	0	5	1.7
21	LOWE, Abby	4-0	28	7.0	1-9	.111	0-3	.000	1-1	1.000	1	3	4	1.0	4	0	2	2	0	0	3	0.8
13	BROWN, Allison	3-0	14	4.7	1-2	.500	0-0	.000	0-0	.000	0	2	2	0.7	4	0	2	2	0	0	2	0.7
Team											11	16	27				5					
Total.....		9	1800		252-478	.527	81-188	.431	113-145	.779	70	203	273	30.3	140	1	151	120	13	51	698	77.6
Opponents.....		9	1800		218-533	.409	69-210	.329	88-128	.688	122	166	288	32.0	144	-	126	127	19	49	593	65.9

Score by Periods	1st	2nd	3rd	4th	Totals
SDSU	183	158	164	193	698
Opponents	157	122	158	156	593

Games lost

RECORD:	OVERALL	HOME	AWAY	NEUTRAL
ALL GAMES	0-18	0-6	0-11	0-1
CONFERENCE	0-12	0-4	0-8	0-0
NON-CONFERENCE	0-6	0-2	0-3	0-1

#	Player	gp-gs	min	avg	Total			3-Point		F-Throw		Rebounds				a	to	blk	stl	pts	avg	
					fg-fga	fg%	3fg-fga	3fg%	ft-fa	ft%	off	def	tot	avg	pf							dq
15	FORT, McKynzie	18-18	578	32.1	96-248	.387	5-31	.161	59-79	.747	29	44	73	4.1	39	2	32	46	4	17	256	14.2
04	ELLISON, Kymberly	18-17	467	25.9	52-169	.308	36-116	.310	18-23	.783	11	40	51	2.8	46	1	19	31	3	19	158	8.8
01	LARK, Khalia	12-8	324	27.0	35-124	.282	10-50	.200	9-22	.409	26	51	77	6.4	25	0	12	32	1	7	89	7.4
22	THORDERSON, Lexy	17-10	417	24.5	44-136	.324	32-105	.305	5-11	.455	9	30	39	2.3	33	2	12	10	5	17	125	7.4
20	GOMEZ, Geena	18-12	462	25.7	33-126	.262	19-63	.302	16-24	.667	16	43	59	3.3	29	0	41	35	1	9	101	5.6
03	BOSTICK, Ariell	18-6	409	22.7	27-74	.365	6-18	.333	22-26	.846	8	57	65	3.6	38	1	47	41	0	28	82	4.6
30	GREENHOUSE, Chey	18-5	309	17.2	27-83	.325	0-9	.000	22-28	.786	22	18	40	2.2	16	1	6	14	0	4	76	4.2
34	VANDERDOES, Bayle	15-7	215	14.3	17-43	.395	0-0	.000	18-26	.692	11	30	41	2.7	30	0	4	12	1	4	52	3.5
40	TERRY, Monique	16-4	179	11.2	13-33	.394	0-2	.000	8-14	.571	9	22	31	1.9	20	0	0	8	1	1	34	2.1
45	EKWEDIKE, Naomi	6-0	39	6.5	6-13	.462	0-0	.000	0-1	.000	5	5	10	1.7	9	0	0	8	0	0	12	2.0
13	BROWN, Allison	3-0	4	1.3	1-1	1.000	0-0	.000	3-4	.750	0	0	0	0.0	0	0	0	0	0	0	5	1.7
21	LOWE, Abby	10-0	50	5.0	5-10	.500	1-3	.333	4-6	.667	4	2	6	0.6	8	0	0	6	1	0	15	1.5
11	GOMEZ, Arantxa	16-3	172	10.8	5-14	.357	0-0	.000	7-17	.412	23	16	39	2.4	18	0	2	7	4	2	17	1.1
Team											45	36	81				11					
Total.....		18	3625		361-1074	.336	109-397	.275	191-281	.680	218	394	612	34.0	311	7	175	261	21	108	1022	56.8
Opponents.....		18	3625		504-1035	.487	126-334	.377	206-288	.715	174	525	699	38.8	274	-	307	267	64	124	1340	74.4

Score by Periods	1st	2nd	3rd	4th	OT	Totals
SDSU	255	233	257	268	9	1022
Opponents	375	315	303	337	10	1340

TEAM STATISTICS

Opponent	Date	Score		Total		3-Pointers		Free throws		Rebounds				pf	a	t/o	blk	stl	pts	avg
				fg-fga	pct	3fg-fga	pct	ft-fa	pct	off	def	tot	avg							
at UC Riverside	11-11-16	44-72	L	16-55	.291	3-16	.188	9-14	.643	15	20	35	35.0	17	5	18	0	5	44	44.0
SAN DIEGO CHRISTIAN	11-14-16	80-70	W	31-56	.554	7-13	.538	11-14	.786	7	30	37	36.0	16	19	16	2	3	80	62.0
at San Diego	11-17-16	53-91	L	17-63	.270	2-17	.118	17-25	.680	15	16	31	34.3	25	2	17	3	7	53	59.0
LOYOLA MARYMOUNT	11-20-16	53-60	L	20-61	.328	4-29	.138	9-13	.692	12	25	37	35.0	19	10	17	2	8	53	57.5
vs UT-Arlington	11-26-16	58-64	L	16-45	.356	5-19	.263	21-27	.778	9	26	35	35.0	25	8	22	2	5	58	57.6
vs Central Connecticut	11-27-16	80-62	W	29-48	.604	8-16	.500	14-18	.778	2	28	30	34.2	25	16	17	1	9	80	61.3
at UC Davis	12-02-16	55-75	L	19-64	.297	6-23	.261	11-15	.733	14	21	35	34.3	13	12	14	2	9	55	60.4
MICHIGAN	12-09-16	57-92	L	17-45	.378	7-17	.412	16-21	.762	7	15	22	32.8	13	9	19	2	3	57	60.0
UC SANTA BARBARA	12-11-16	84-70	W	26-51	.510	10-20	.500	22-24	.917	3	23	26	32.0	12	14	8	2	4	84	62.7
at Cal State Fullerton	12-22-16	71-61	W	27-57	.474	8-23	.348	9-12	.750	12	17	29	31.7	17	15	15	0	8	71	63.5
BIOLA	12-28-16	63-48	W	26-55	.473	6-22	.273	5-9	.556	11	24	35	32.0	11	15	11	3	8	63	63.5
at New Mexico	12-31-16	42-85	L	17-67	.254	4-21	.190	4-10	.400	12	22	34	32.2	18	9	12	1	6	42	61.7
NEVADA	01-04-17	83-78	W	31-62	.500	10-21	.476	11-17	.647	14	19	33	32.2	12	21	10	1	6	83	63.3
BOISE STATE	01-07-17	84-77	W	29-52	.558	11-25	.440	15-19	.789	9	19	28	31.9	15	17	10	1	2	84	64.8
at San Jose State	01-11-17	80-81	Lot	30-79	.380	12-30	.400	8-16	.500	20	33	53	33.3	20	13	16	0	5	80	65.8
at Utah State	01-14-17	47-53	L	17-59	.288	5-22	.227	8-12	.667	12	26	38	33.6	11	6	13	2	8	47	64.6
UNLV	01-18-17	87-68	W	30-54	.556	14-27	.519	13-17	.765	4	23	27	33.2	18	24	13	1	6	87	65.9
AIR FORCE	01-25-17	59-62	L	19-56	.339	3-13	.231	18-23	.783	13	23	36	33.4	14	8	16	4	11	59	65.6
at Colorado State	01-28-17	43-60	L	16-56	.286	7-28	.250	4-6	.667	15	25	40	33.7	18	9	16	0	1	43	64.4
at Wyoming Cowgirls	02-01-17	67-80	L	26-56	.464	4-14	.286	11-14	.786	8	10	18	33.0	12	5	6	0	6	67	64.5
FRESNO STATE	02-04-17	51-59	L	20-58	.345	7-23	.304	4-9	.444	8	21	29	32.8	14	11	7	1	3	51	63.9
SAN JOSE STATE	02-08-17	90-99	L	31-72	.431	13-29	.448	15-23	.652	11	22	33	32.8	16	16	10	0	9	90	65.0
at Nevada	02-11-17	65-88	L	23-56	.411	5-18	.278	14-18	.778	11	19	30	32.7	21	11	18	0	7	65	65.0
UTAH STATE	02-15-17	66-59	W	23-43	.535	7-21	.333	13-15	.867	8	20	28	32.5	14	10	20	2	5	66	65.1
at UNLV	02-18-17	62-80	L	19-55	.345	10-24	.417	14-22	.636	15	22	37	32.6	25	11	16	0	2	62	65.0
at Fresno State	02-22-17	50-59	L	20-61	.328	6-28	.214	4-8	.500	10	28	38	32.8	20	16	14	1	9	50	64.4
COLORADO STATE	02-25-17	46-80	L	18-66	.273	6-26	.231	4-5	.800	11	20	31	32.8	10	14	10	1	4	46	63.7
SDSU		1720		613-1552	.395	190-585	.325	304-426	.714	288	597	885	32.8	451	326	381	34	159	1720	63.7
Opponents		1933		722-1568	.460	195-544	.358	294-416	.707	296	691	987	36.6	418	433	394	83	173	1933	71.6

Games played: 27
 Points/game: 63.7
 FG Pct: 39.5
 3FG Pct: 32.5
 FT Pct: 71.4

Rebounds/game: 32.8
 Assists/game: 12.1
 Turnovers/game: 14.1
 Assist/turnover ratio: 0.9
 Steals/game: 5.9
 Blocks/game: 1.3

STATISTICS - INDIVIDUAL GAME-BY-GAME / STARTING LINEUPS

Opponent	1 Khalia Lark	3 Ariell Bostick	4 Kymberly Ellison	11 Arantxa Gomez	13 Allison Brown	15 McKynzie Fort	20 Geena Gomez	21 Abby Lowe	22 Lexy Thorderson	30 Cheyenne Greenhouse	34 Baylee Vanderdoes	40 Monique Terry	45 Naomi Ekwedike
at UC Riverside	DNP	0-8-2	6-1-0	1-0-0	DNP	14-3-3	6-2-0	2-3-0	DNP	6-3-0	7-5-0	2-1-0	0-0-0
SAN DIEGO CHRISTIAN	DNP	4-6-8	12-3-3	2-2-0	0-0-1	28-7-4	14-2-2	3-3-1	DNP	DNP	10-10-0	2-1-0	5-0-0
at San Diego	DNP	9-1-1	6-3-1	3-3-0	DNP	12-1-0	2-4-0	0-2-0	3-1-0	2-0-0	4-2-0	7-4-0	2-3-0
LOYOLA MARYMOUNT	DNP	1-9-1	8-5-1	0-1-0	DNP	22-9-0	0-1-4	0-0-0	6-3-2	8-0-1	6-6-1	0-2-0	2-0-0
vs. UT Arlington	DNP	12-5-1	13-3-0	2-3-0	DNP	9-2-2	6-5-2	2-0-0	0-1-3	8-3-0	2-4-0	4-4-0	0-2-0
vs. Central Connecticut	DNP	7-10-5	10-0-2	2-0-0	DNP	17-2-3	17-5-2	0-1-0	10-1-0	4-2-0	7-2-2	6-2-2	0-0-0
at UC Davis	DNP	3-6-6	8-2-1	1-4-1	DNP	11-3-0	2-1-2	7-0-0	11-2-1	4-0-1	2-6-0	2-3-0	4-3-0
MICHIGAN	DNP	9-3-3	12-5-2	0-2-0	4-0-0	8-3-0	11-2-1	0-0-0	3-0-2	4-1-0	1-0-1	1-2-0	4-2-0
UC SANTA BARBARA	DNP	0-3-5	13-3-1	4-4-1	DNP	18-3-3	17-3-1	DNP	17-4-2	10-2-1	DNP	5-1-0	0-1-0
at Cal State Fullerton	5-5-2	2-4-6	12-2-1	5-5-0	DNP	29-4-4	2-0-2	DNP	13-2-0	3-1-0	DNP	0-5-0	DNP
BIOLA	14-9-0	2-7-10	9-2-1	0-2-0	2-1-1	14-1-0	2-1-3	0-0-0	4-5-0	8-1-0	DNP	8-3-0	DNP
at New Mexico	10-7-1	3-2-2	2-1-0	0-1-0	DNP	7-4-4	0-2-1	2-0-0	11-6-1	1-3-0	DNP	6-2-0	DNP
NEVADA	22-6-1	0-3-5	7-1-2	5-2-0	DNP	17-2-6	11-3-5	DNP	15-5-1	2-3-0	DNP	4-3-1	DNP
BOISE STATE	16-4-1	2-7-2	13-2-1	2-0-2	DNP	15-4-6	10-3-3	DNP	20-2-1	0-1-1	0-2-0	6-1-0	DNP
at San José State	4-12-2	0-1-5	8-1-2	0-4-0	DNP	29-11-0	20-7-4	DNP	13-5-0	4-2-0	DNP	2-3-0	DNP
at Utah State	5-8-0	0-3-0	3-2-0	2-4-1	DNP	17-2-2	12-4-2	DNP	5-4-0	1-2-1	2-2-0	0-1-0	DNP
UNLV	13-7-2	4-2-7	21-2-1	2-1-0	0-0-0	15-3-4	2-4-6	0-0-1	21-0-1	2-0-1	1-2-1	6-3-0	DNP
AIR FORCE	18-7-1	4-4-2	8-6-1	0-0-0	DNP	16-1-0	2-4-3	DNP	3-0-1	8-5-0	0-2-0	0-1-0	DNP
at Colorado State	8-12-2	5-3-3	13-6-1	DNP	DNP	9-7-3	3-3-0	DNP	3-2-0	2-4-0	DNP	0-0-0	DNP
at Wyoming	16-5-0	5-3-2	12-3-0	0-1-0	0-0-0	18-0-1	5-1-2	0-0-0	5-2-0	2-0-0	4-0-0	0-1-0	DNP
FRESNO STATE	8-5-1	4-2-3	6-2-1	DNP	DNP	14-3-3	3-3-2	DNP	6-3-0	3-4-0	7-2-1	DNP	DNP
SAN JOSÉ STATE	8-5-1	9-4-3	16-3-3	0-1-0	DNP	15-3-3	15-7-4	DNP	17-0-0	4-4-2	5-1-0	1-2-0	DNP
at Nevada	2-4-2	4-3-5	10-3-0	2-1-0	DNP	15-8-3	0-0-1	2-1-0	13-1-0	8-1-0	4-1-0	5-2-0	DNP
UTAH STATE	3-2-2	4-1-3	7-1-1	6-2-0	DNP	19-7-3	9-8-0	DNP	11-1-0	4-0-0	3-1-0	0-1-0	DNP
at UNLV	4-3-1	4-3-2	13-3-1	2-5-0	1-0-0	10-3-5	7-3-2	0-0-0	16-4-0	0-3-0	1-2-0	4-2-0	DNP
at Fresno State	3-3-0	7-4-5	9-2-2	2-4-0	DNP	12-7-1	2-4-6	DNP	5-4-0	8-2-1	2-5-1	DNP	DNP
COLORADO STATE	3-6-1	3-1-1	5-0-3	2-5-0	DNP	15-3-2	5-6-5	DNP	5-1-2	3-3-0	5-3-0	0-1-0	DNP
at Air Force													
NEW MEXICO													

DNP - Did Not Play

Game	Forward	Forward/Guard	Guard	Guard	Guard	Game	Forward	Forward/Guard	Guard	Guard	Guard
at UC Riverside	Vanderdoes	Greenhouse	Fort	Ellison	Bostick	SAN JOSÉ STATE	Thorderson	Lark	Fort	Ellison	Gomez
SAN DIEGO CHRISTIAN	Vanderdoes	Gomez	Fort	Ellison	Bostick	at Nevada	Vanderdoes	Lark	Fort	Ellison	Gomez
at San Diego	Vanderdoes	Greenhouse	Fort	Ellison	Bostick	UTAH STATE	Gomez Ferrer	Lark	Fort	Greenhouse	Gomez
LOYOLA MARYMOUNT	Vanderdoes	Thorderson	Fort	Ellison	Bostick	at UNLV	Gomez Ferrer	Lark	Fort	Greenhouse	Gomez
vs. UT Arlington	Vanderdoes	Thorderson	Fort	Ellison	Bostick	at Fresno State	Gomez Ferrer	Greenhouse	Fort	Ellison	Gomez
vs. Central Connecticut	Vanderdoes	Terry	Fort	Ellison	Bostick	COLORADO STATE	Gomez Ferrer	Greenhouse	Fort	Ellison	Gomez
at UC Davis	Vanderdoes	Terry	Fort	Ellison	Bostick	at Air Force					
MICHIGAN	Vanderdoes	Terry	Fort	Ellison	Bostick	NEW MEXICO					
UC SANTA BARBARA	Thorderson	Terry	Fort	Ellison	Gomez						
at Cal State Fullerton	Thorderson	Terry	Fort	Ellison	Gomez						
BIOLA	Thorderson	Terry	Fort	Ellison	Gomez						
at New Mexico	Thorderson	Lark	Fort	Ellison	Gomez						
NEVADA	Thorderson	Terry	Fort	Ellison	Gomez						
BOISE STATE	Thorderson	Terry	Fort	Ellison	Gomez						
at San José State	Thorderson	Terry	Fort	Ellison	Gomez						
at Utah State	Thorderson	Terry	Fort	Ellison	Gomez						
UNLV	Thorderson	Lark	Fort	Ellison	Gomez						
AIR FORCE	Thorderson	Lark	Fort	Ellison	Gomez						
at Colorado State	Thorderson	Lark	Fort	Ellison	Gomez						
at Wyoming	Thorderson	Lark	Fort	Ellison	Gomez						
FRESNO STATE	Thorderson	Lark	Fort	Ellison	Gomez						

Lineup Records

- Gomez Ferrer-Lark-Fort-Greenhouse-Gomez: 1-1
- Gomez Ferrer-Greenhouse-Fort-Ellison-Gomez: 0-2
- Thorderson-Terry-Fort-Thorderson-Gomez: 5-2
- Thorderson-Lark-Fort-Ellison-Gomez: 1-6
- Vanderdoes-Lark-Fort-Ellison-Gomez: 0-1
- Bostick-Ellison-Fort-Vanderdoes-Terry: 1-2
- Bostick-Ellison-Fort-Vanderdoes-Greenhouse: 0-2
- Bostick-Ellison-Fort-Vanderdoes-Thorderson: 0-2
- Bostick-Ellison-Fort-Vanderdoes-Gomez: 1-0

Aztec Team Highs

Points	90, vs. San José State (2-8-17)
Scoring Margin	19, vs. UNLV (1-18-17)
FG Made	31, Three times, Last: vs. San José State (2-8-17)
FG Attempts	79, at San José State (1-11-17)
FG Pct.	.604 (29-48), vs. Central Connecticut (11-27-16)
3-Point FG Made	14, vs. UNLV (1-18-17)
3-Point FG Attempts	30, at San José State (1-11-17)
3-Point FG Pct.	.538 (7-13), vs. San Diego Christian (11-14-16)
Free Throws Made	22, vs. UC Santa Barbara (12-11-16)
Free Throw Attempts	27, vs. UT Arlington (11-26-16)
Free Throw Pct.	.917 (22-24), vs. UC Santa Barbara (12-11-16)
Rebounds	53, at San José State (1-11-17)
Assists	24, vs. UNLV (1-18-17)
Steals	11, vs. Air Force (1-25-17)
Blocks	4, vs. Air Force (1-25-17)
Turnovers	22, vs. UT Arlington (11-26-16)
Fouls	25, Four times, Last: at UNLV (2-18-17)

Aztec Team Lows

Points	42, at New Mexico (12-31-16)
Scoring Margin	10, Twice, Last: at Cal State Fullerton (12-22-16)
FG Made	16, Three times, Last: at Colorado State (1-28-17)
FG Attempts	43, vs. Utah State (2-15-17)
FG Pct.	.254 (17-67), at New Mexico (12-31-16)
3-Point FG Made	2, at San Diego (11-17-16)
3-Point FG Attempts	13, Twice, Last: vs. Air Force (1-25-17)
3-Point FG Pct.	.118 (2-17), at San Diego (11-17-16)
Free Throws Made	4, Five times, Last: vs. Colorado State (2-25-17)
Free Throw Attempts	5, vs. Colorado State (2-25-17)
Free Throw Pct.	.400 (4-10), at New Mexico (12-31-16)
Rebounds	18, at Wyoming (2-1-17)
Assists	2, at San Diego (11-17-16)
Steals	1, at Colorado State (1-28-17)
Blocks	0, Eight times, Last: at UNLV (2-18-17)
Turnovers	8, Twice, Last: at UNLV (2-18-17)
Fouls	10, vs. Colorado State (2-25-17)

Aztec Scoring

First Half High	52, vs. Nevada (1-4-17)
First Quarter High	32, vs. Nevada (1-4-17)
Second Quarter High	24, vs. Central Connecticut (11-27-16)
Second Half High	46, vs. UC Santa Barbara (12-11-16)
Third Quarter High	26, vs. San José State (2-8-17)
Fourth Quarter High	30, vs. Boise State (1-7-17)
First Half Low	21, Three times, Last: at Utah State (1-14-17)
First Quarter Low	9, Twice, Last: at Fresno State (2-22-17)
Second Quarter Low	6, Twice, Last: at New Mexico (12-31-16)
Second Half Low	19, vs. Colorado State (2-25-17)
Third Quarter Low	4, vs. Colorado State (2-25-17)
Fourth Quarter Low	11, Twice, Last: vs. Loyola Marymount (11-20-16)
Largest Halftime Lead	17 (52-35), vs. Nevada (1-4-17)
Largest Halftime Deficit	30 (51-21), at New Mexico (12-31-16)
Largest Lead	29 (79-50), vs. UNLV (1-18-17)
Largest Deficit	44 (84-40), at New Mexico (12-31-16)
Largest Deficit in a Win	12 (29-41), at Cal State Fullerton (12-22-16)
Largest Lead in a Loss	11 (38-27), vs. San José State (2-8-17)

Opponent Team Highs

Points	99, vs. San José State (2-8-17)
Scoring Margin	43 (85-42), at New Mexico (12-31-16)
FG Made	37, Twice, Last: vs. Michigan (12-9-16)
FG Attempts	72, at San José State (1-11-17)
FG Pct.	.660 (33-50), at Wyoming (2-1-17)
3-Point FG Made	12, Three times, Last: vs. Colorado State (2-25-17)
3-Point FG Attempts	31, vs. San Diego Christian (11-14-16)
3-Point FG Pct.	.600 (12-20), vs. Colorado State (2-25-17)
Free Throws Made	22, at UNLV (2-18-17)
Free Throw Attempts	31, at UNLV (2-18-17)
Free Throw Pct.	.923 (12-13), at Colorado State (1-28-17)
Rebounds	51, at New Mexico (12-31-16)
Assists	27, vs. Michigan (12-9-16)
Steals	12, at UNLV (2-18-17)
Blocks	6, Twice, Last: vs. Fresno State (2-4-17)
Turnovers	21, vs. Air Force (1-25-17)
Fouls	26, Twice, Last: vs. UT Arlington (11-26-16)

Opponent Team Lows

Points	48, vs. Biola (12-28-16)
Scoring Margin	7 (60-53), vs. Loyola Marymount (11-20-16)
FG Made	19, Twice, Last: vs. Biola (12-28-16)
FG Attempts	48, Twice, Last: vs. Utah State (2-15-17)
FG Pct.	.345 (19-55), vs. Central Connecticut (11-27-16)
3-Point FG Made	2, Twice, Last: at Utah State (1-14-17)
3-Point FG Attempts	7, at San Diego (11-17-16)
3-Point FG Pct.	.167 (3-18), at Fresno State (2-22-17)
Free Throws Made	3, at UC Davis (12-2-16)
Free Throw Attempts	4, at UC Davis (12-2-16)
Free Throw Pct.	.500 (9-18), vs. Loyola Marymount (11-20-16)
Rebounds	19, vs. Utah State (2-15-17)
Assists	7, Last: vs. Central Connecticut (11-27-16)
Steals	1, at Wyoming (2-1-17)
Blocks	0, vs. Loyola Marymount (11-20-16)
Turnovers	8, vs. Boise State (1-7-17)
Fouls	7, Four times, Last: vs. Colorado State (2-25-17)

Opponent Scoring

First Half High	51, at New Mexico (12-31-16)
First Quarter High	31, at New Mexico (12-31-16)
Second Quarter High	26, Twice, Last: at UC Davis (12-2-16)
Second Half High	57, vs. San José State (2-8-17)
Third Quarter High	29, vs. Michigan (12-9-16)
Fourth Quarter High	32, at Nevada (2-11-17)
First Half Low	19, vs. Biola (12-28-16)
First Quarter Low	12, vs. Biola (12-28-16)
Second Quarter Low	7, vs. Biola (12-28-16)
Second Half Low	27, Twice, Last: at Fresno State (2-22-17)
Third Quarter Low	10, Twice, Last: at Colorado State (1-28-17)
Fourth Quarter Low	11, at Fresno State (2-22-17)
Largest Halftime Lead	30 (51-21), at New Mexico (12-31-16)
Largest Halftime Deficit	17 (52-32), vs. Nevada (1-4-17)
Largest Lead	44 (84-40), at New Mexico (12-31-16)
Largest Deficit	29 (79-50), vs. UNLV (1-18-17)
Largest Deficit in a Win	11 (38-27), vs. San José State (2-8-17)
Largest Lead in a Loss	12 (41-29), at Cal State Fullerton (12-22-16)

Aztec Individual Highs

Points

29, McKynzie Fort at San José State (1-11-17)
29, McKynzie Fort at Cal State Fullerton (12-22-16)

Field Goals Made

12, McKynzie Fort at San José State (1-11-17)

Field Goals Attempted

29, McKynzie Fort at San José State (1-11-17)

Field Goal Percentage (min. 5 made)

.750 (6-8), McKynzie Fort at Nevada (2-11-17)

3-Point Field Goals Made

7, Lexy Thorderson vs. UNLV (1-18-17)

3-Point Field Goals Attempted

13, Lexy Thorderson vs. UNLV (1-18-17)

3-Pt Field Goal Percentage (min. 2 made)

1.000 (3-3), Geena Gomez vs. Central Connecticut (11-27-16)
1.000 (2-2), McKynzie Fort vs. San Diego Christian (11-14-16)

Free Throws Made

9, McKynzie Fort vs. Boise State (1-7-17)

Free Throw Attempted

10, McKynzie Fort vs. Boise State (1-7-17)

Free Throw Percentage (min 4 made)

1.000 (7-7), McKynzie Fort at UC Davis (12-2-16)
1.000 (6-6), Cheyenne Greenhouse vs. Air Force (1-25-17)
1.000 (6-6), Geena Gomez vs. Central Connecticut (11-27-16)
1.000 (5-5), Kymberly Ellison vs. Utah State (2-15-17)
1.000 (5-5), McKynzie Fort at Utah State (1-14-17)
1.000 (5-5), Lexy Thorderson vs. UC Santa Barbara (12-11-16)
1.000 (4-4), Baylee Vanderdoes at San Diego (11-17-16)
1.000 (4-4), McKynzie Fort, Geena Gomez vs. San Diego Christian (11-14-16)

Rebounds

12, Khalia Lark at Colorado State (1-28-17)
12, Khalia Lark at San José State (1-11-17)

Assists

10, Ariell Bostick vs. Biola (12-28-16)

Steals

4, Kymberly Ellison at Fresno State (2-22-17)
4, Lexy Thorderson vs. San José State (2-8-17)
4, Khalia Lark vs. Air Force (1-25-17)
4, McKynzie Fort at Utah State (1-14-17)
4, Ariell Bostick at UC Davis (12-2-16)
4, Ariell Bostick vs. Central Connecticut (11-27-16)
4, Ariell Bostick vs. Loyola Marymount (11-20-16)

Blocked Shots

2, Khalia Lark vs. Air Force (1-25-17)
2, Kymberly Ellison vs. Biola (12-28-16)
2, Arantxa Gomez Ferrer vs. UC Santa Barbara (12-11-16)
2, Arantxa Gomez Ferrer at UC Davis (12-2-16)
2, Arantxa Gomez Ferrer vs. UT Arlington (11-26-16)

Turnovers

6, Khalia Lark at Colorado State (1-28-17)

Fouls

5, Kymberly Ellison at Fresno State (2-22-17)
5, Lexy Thorderson at UNLV (2-18-17)
5, Baylee Vanderdoes vs. Utah State (2-15-17)
5, Lexy Thorderson at Colorado State (1-28-17)
5, Ariell Bostick, McKynzie Fort vs. UT Arlington (11-26-16)
5, Cheyenne Greenhouse vs. Loyola Marymount (11-20-16)
5, McKynzie Fort at San Diego (11-17-16)

Opponent Individual Highs

Points

34, Dezz Ramos at San José State (1-11-17)

Field Goals Made

13, Elin Gustavsson at Colorado State (1-28-17)

Field Goals Attempted

30, Dezz Ramos at San José State (1-11-17)

Field Goal Percentage (min 5 made)

.857 (6-7), Bego Faz Davalos at Fresno State (2-22-17)

3-Point Field Goals Made

8, Dani Nafekh at UC Davis (12-2-16)

3-Point Field Goals Attempted

12, Coco Miller vs. UC Santa Barbara (12-11-16)

3-Pt Field Goal Percentage (min 2 made)

1.000 (3-3), Myanne Hamm vs. Colorado State (2-25-17)
1.000 (2-2), Myzhanique Ladd, Andrea Kohlhaas vs. San José State (2-8-17)
1.000 (2-2), Kayla Macedo vs. Biola (12-28-16)

Free Throws Made

9, Cebria Outlow vs. Central Connecticut (11-27-16)

Free Throws Attempted

11, Cebria Outlow vs. Central Connecticut (11-27-16)

Free Throw Percentage (min 4 made)

1.000 (6-6), Teige Zeller at Nevada (2-11-17)
1.000 (6-6), Stephanie Schmid at Nevada (2-11-17)
1.000 (5-5), Myzhanique Ladd vs. San José State (2-8-17)
1.000 (5-5), Kassady Huffman vs. Air Force (1-25-17)
1.000 (4-4), Candice White vs. Fresno State (2-4-17)
1.000 (4-4), Dylan Gonzalez vs. UNLV (1-18-17)
1.000 (4-4), Stephanie Schmid vs. Nevada (1-4-17)
1.000 (4-4), Cherise Beynon at New Mexico (12-31-16)

Rebounds

19, Bego Faz Davalos vs. Fresno State (2-4-17)

Assists

12, Dezz Ramos vs. San José State (2-8-17)

Steals

5, Hannah Tvrdy vs. Colorado State (2-25-17)
5, Dylan Gonzalez at UNLV (2-18-17)

Blocked Shots

5, Bego Faz Davalos vs. Fresno State (2-4-17)

Turnovers

8, Kassady Huffman vs. Air Force (1-25-17)
8, Cherise Beynon at New Mexico (12-31-16)

Fouls

5, Riana Everidge at Nevada (2-11-17)
5, Cartney Porter vs. Air Force (1-25-17)
5, Paris Strawther vs. UNLV (1-18-17)

2016-17 MISCELLANEOUS STATS

The Last Time an Aztec ...

Scored 20-24 points

21, Kymberly Ellison and Lexy Thorderson, 1-18-17 vs. UNLV

Scored 25-29 points

29, McKynzie Fort, 1-11-17 at San José State

Scored 30-39 points

31, Cierra Warren, 1-22-14 vs. San José State

Scored 40+ points

41, Chana Perry, 1-2-88 vs. Northern Illinois

Had 20+ rebounds

27, Chana Perry, 11-25-88 vs. Alabama State

Had 15-19 rebounds

17, Kristina Hunter, 1-11-14 vs. Air Force

Had 10-14 rebounds

12, Khalia Lark and 11, McKynzie Fort, 1-11-17 at San José State

Had 10+ assists

10, Ariell Bostick, 12-29-16 vs. Biola

Had A Double-Double

McKynzie Fort, 29 points, 11 rebounds, 1-11-17 at San José State

Had A Triple-Double

Chelsea Hopkins, 13 points, 11 rebounds, 12 assists, 3-9-13 vs. Boise State

The Last Time San Diego State ...

Had two players score 20 points in the same game

Kymberly Ellison (21) and Lexy Thorderson (21), 1-18-17 vs. UNLV

Had two players with a double-double in the same game

Erimma Amarikwa (19 points, 13 rebounds) and Cheyenne Greenhouse (19 points, 11 rebounds), 11-14-14 vs. Sacramento State

Scored 100+ points

101, vs. Colorado State (101-62), 1-25-92

Allowed 100+ points

104, vs. UCLA (56-104), 12-11-98

Won by 20+ points

35, vs. San Diego Christian (60-25), 12-21-15

Won by 30+ points

35, vs. San Diego Christian (60-25), 12-21-15

Won by 40+ points

41, vs. Boise State (86-45), 3-9-13

Won by 50+ points

51, vs. Air Force (79-28), 1-7-09

Won in Overtime

vs. Fresno State (65-54), 2-10-16

Lost in Overtime

at San José State (80-81), 1-11-17

2016-17 Aztec Leaders

Double-Figure Scoring Games

McKynzie Fort (23), Kymberly Ellison (13), Lexy Thorderson (13), Geena Gomez (11), Khalia Lark (7), Baylee Vanderdoes (1), Ariell Bostick (1), Cheyenne Greenhouse (1)

SDSU High Scorer

McKynzie Fort (17), Lexy Thorderson (6), Kymberly Ellison (4), Khalia Lark (3), Geena Gomez (1), Arantxa Gomez Ferrer (1)

Games Led SDSU In Rebounds

Khalia Lark (12), Ariell Bostick (6), Geena Gomez (5), McKynzie Fort (3), Arantxa Gomez Ferrer (2) Monique Terry (2), Baylee Vanderdoes (2), Kymberly Ellison (1), Lexy Thorderson (1)

Games Led SDSU In Assists

Ariell Bostick (15), McKynzie Fort (9), Geena Gomez (7), Kymberly Ellison (1), Lexy Thorderson (1)

Games Led SDSU In Steals

Ariell Bostick (14), McKynzie Fort (7), Kymberly Ellison (5), Lexy Thorderson (4), Monique Terry (2), Geena Gomez (1), Arantxa Gomez Ferrer (1), Cheyenne Greenhouse (1), Khalia Lark (1)

Games Led SDSU In Blocks

Lexy Thorderson (7), McKynzie Fort (4), Arantxa Gomez Ferrer (4), Kymberly Ellison (4), Monique Terry (3), Baylee Vanderdoes (2), Khalia Lark (1), Abby Lowe (1)

► 2016-17 SPECIALTY STATS

San Diego State/Opponent

	Points in Paint	Points off TOs	2nd Chance Points	Fast Break Points	Bench Points
at UC Riverside (L)	11/18	10/22	6/5	0/0	11/22
SAN DIEGO CHRISTIAN (W)	15/14	38/20	6/6	6/2	70/12
at San Diego (L)	18/44	13/23	6/8	0/0	17/39
LOYOLA MARYMOUNT (L)	26/32	17/20	10/15	5/2	10/3
vs. UT Arlington (L)	18/36	10/25	15/15	8/4	22/26
vs. Central Connecticut (W)	36/26	15/16	4/13	6/2	33/29
at UC Davis (L)	22/26	14/17	9/14	6/6	29/14
MICHIGAN (L)	14/38	8/21	9/14	2/6	26/40
UC SANTA BARBARA (W)	24/30	20/9	5/21	8/0	14/30
at Cal State Fullerton (W)	28/24	23/14	10/10	2/4	15/12
BIOLA (W)	36/22	14/10	2/9	8/0	26/6
at New Mexico (L)	16/36	6/11	9/15	2/18	12/32
NEVADA (W)	30/26	15/6	9/16	3/8	29/27
BOISE STATE (W)	28/36	13/9	7/19	0/6	20/18
at San José State (L-ot)	26/34	13/26	15/5	0/19	8/5
at Utah State (L)	20/28	19/6	5/6	6/8	10/11
UNLV (W)	28/20	17/16	3/18	10/2	15/4
AIR FORCE (L)	28/40	22/16	13/11	4/4	12/11
at Colorado State (L)	12/18	2/21	5/2	4/5	7/3
at Wyoming (L)	36/50	14/9	10/15	2/0	11/15
FRESNO STATE (L)	30/24	4/8	14/6	0/8	3/14
SAN JOSÉ STATE (L)	28/34	15/13	10/12	4/4	19/22
at Nevada (L)	34/36	16/22	8/19	9/8	34/28
UTAH STATE (W)	22/22	22/25	3/10	12/0	25/27
at UNLV (L)	12/16	9/14	18/11	0/9	39/32
at Fresno State (L)	16/24	13/15	9/7	4/6	17/12
COLORADO STATE (L)	14/26	9/11	10/10	2/6	16/18
at Air Force					
NEW MEXICO					



KHALIA LARK
Jr. | 6-0 | G
Irvine, Calif.
Mater Dei HS/Washington

1



ARIELL BOSTICK
Sr. | 5-4 | G
Oakland, Calif.
Bishop O'Dowd HS

3



KYMBERLY ELLISON
Sr. | 5-7 | G
Columbus, Ga.
Hardaway HS/Georgia Tech

4



ARANTXA GOMEZ FERRER
So. | 6-0 | F
Valencia, Spain
Parque Colegio Santa Ana HS

11



ALLISON BROWN
Jr. | 5-7 | G
Anaheim Hills, Calif.
Mater Dei HS

13



MCKYNZIE FORT
Jr. | 5-9 | G
Fontana, Calif.
Etiwanda HS

15



GEENA GOMEZ
Jr. | 5-8 | G
Huntington Beach, Calif.
Edison HS/St. Joseph's (Pa.)

20



ABBY LOWE
Fr. | 5-11 | G
Stockport, England
Barking Abbey Academy

21



LEXY THORDERSON
Jr. | 6-0 | G/F
Castle Rock, Colo.
Rock Canyon HS

22



CHEYENNE GREENHOUSE
Jr. | 5-11 | G
Riverside, Calif.
Canyon Springs HS

30



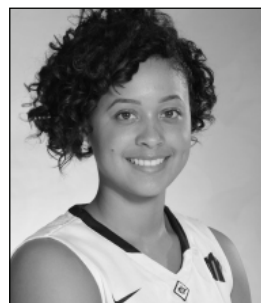
BAYLEE VANDERDOES
Fr. | 6-1 | F
Auburn, Calif.
Placer HS

34



MONIQUE TERRY
Fr. | 6-2 | F
San Antonio, Texas
Brennan HS

40



ALEIAH BRANDON
Sr. | 6-1 | F
Corona, Calif.
Centennial HS

44



NAOMI EKWEDIKE
Fr. | 6-6 | C
Lagos, Nigeria
Potters House Christian Academy (Fla.)

45



STACIE TERRY
Head Coach
Fourth Season



JESSE CLARK
Assistant Coach
Fourth Season



CIARA CARL
Assistant Coach
Fourth Season



NICK GRANT
Assistant Coach
Third Season