



# SAN DIEGO STATE WOMEN'S BASKETBALL

## 2017-18 GAME NOTES

Jim Solien, Assistant Media Relations Director (Interim Contact) • E-Mail: jsolien@mail.sdsu.edu • Office: 619-594-5547

### 2017-18 SCHEDULE

Date	Opponent	Time
Nov. 3	Cal State LA (exh.)	W, 71-50
Nov. 10	Presbyterian	W, 77-50
Nov. 14	CSUN	W, 58-55
Nov. 18	Cal State Fullerton	W, 59-58

#### Junkanoo Jam (Bimini, Bahamas)

Nov. 24	vs. Central Michigan	L-ot, 76-85
Nov. 25	vs. Tulane	L, 46-80

Nov. 29	San Diego	W, 77-76
Dec. 3	at Arizona	W, 78-67
Dec. 8	UC Irvine	Noon
Dec. 10	Hope International	1 p.m.
Dec. 14	Santa Clara	6:30 p.m.
Dec. 22	at UC Santa Barbara	7 p.m.
Dec. 28	Wyoming*	6:30 p.m.
Dec. 30	at Utah State*	2 p.m.
Jan. 3	Colorado State*	6:30 p.m.
Jan. 10	at San José State*	7 p.m.
Jan. 13	Boise State*	1 p.m.
Jan. 17	at Fresno State*	7 p.m.
Jan. 20	New Mexico*	1 p.m.
Jan. 24	at Colorado State*	7 p.m.
Jan. 27	UNLV*	1 p.m.
Feb. 3	at Air Force*	1 p.m.
Feb. 7	Fresno State*	Noon
Feb. 10	Nevada*	1 p.m.
Feb. 14	at Wyoming*	6:30 p.m.
Feb. 17	at UNLV*	3 p.m.
Feb. 21	Air Force*	6:30 p.m.
Feb. 24	San José State*	1 p.m.
Feb. 27	at Boise State*	7 p.m.
March 2	at Nevada*	2 p.m.

#### Mountain West Championship (Las Vegas, Nev.)

March 5-9	MW Championship	TBA
-----------	-----------------	-----

All times local to site | Home games in **Bold** at Viejas Arena

\* = Mountain West game

### GAMES 8 AND 9 | UC IRVINE (DEC. 8) | HOPE INTERNATIONAL (DEC. 10) | STEVE FISHER COURT

LIVE MEDIA: Streaming video via the Mountain West Network/Stadium on GoAztecs.com



#### SAN DIEGO STATE

2017-18 Record: 4-2 (0-0 MW)

Head Coach: Stacie Terry

Fifth Year at SDSU/Fifth overall



#### UC IRVINE

2017-18 Record: 4-5 (0-0 Big West)

Head Coach: Tamara Inoue

Second Year at UC Irvine/Second overall



#### HOPE INTERNATIONAL

2017-18 Record: 9-1 (0-0 GSAC)

Head Coach: Beck Flanagan

First Year at Hope Int'l/First overall

#### TOP PERFORMERS

Scoring	McKynzie Fort - 17.4
Rebounding	McKynzie Fort/Khalia Lark - 5.3
Assists	Geena Gomez - 4.9

#### TOP PERFORMERS

Scoring	Andee Ritter - 9.0
Rebounding	Tahlia Garza - 5.8
Assists	Lauren Saiki - 4.4

#### TOP PERFORMERS

Scoring	Emma Forel - 20.1
Rebounding	Emma Forel - 11.9
Assists	Nikki Andaya - 4.5

- San Diego State opens a three-game homestand on Friday, Dec. 8, when it plays host to UC Irvine in a matinee at Steve Fisher Court, beginning at noon PT.
- Following the Anteaters-Aztecs clash, the Scarlet and Black will square off against NAIA-member Hope International in a Sunday showdown on The Mesa, starting at 1 p.m. PT.
- In addition to live stats, both games will feature streaming video via the Mountain West Network/Stadium on GoAztecs.com.
- San Diego State is coming off an impressive 78-67 victory at Arizona on Dec. 3, connecting on 11 of 21 three-point field goal attempts and 21 of 25 free throws to help snap a five-game losing streak against Pac-12 schools dating back to 2012. In addition, the Aztecs came up huge down the stretch, holding the Wildcats scoreless over the final 3:05 to seal the win.
- Individually, SDSU was led by senior McKynzie Fort, who scored a season-high 26 points, highlighted by an 11-for-13 performance at the free-throw line, including a game-clinching 7-for-8 clip in the final three minutes.
- Coupled with her 24-point effort in the Aztecs' victory over San Diego, Fort earned MW Player of the Week honors for the third time in her career.
- As of Dec. 7, Fort occupies the No. 2 spot in the MW with an average of 17.4 points per game and finds herself among the MW leaders field-goal percentage (8th, 48.4), assists (11th, 3.6/gm) and assist-to-turnover ratio (7th, 1.7). In addition, Lexy Thorderson tops the conference with 3.4 three-pointers/gm and ranks second with a .511 clip from beyond the arc, while Geena Gomez climbed into the second slot this week with 4.9 assists /gm.
- The Aztecs hold a 19-6 advantage over UC Irvine in the all-time series, posting a 63-53 triumph at home in the last encounter between the two squads in 2012.
- Sunday's game will mark San Diego State's first-ever meeting with Hope International.

### SAN DIEGO STATE AZTECS (5-2, 0-0 MW)

No.	Name	Pos.	Ht.	Yr.	Exp.	PPG	RPG	APG	Individual Player Notes
0	Kennedi Villa	G	6-0	Fr.	HS	0.5	1.0	0.5	Has appeared in two games this season, playing a combined seven minutes vs. Presbyterian and Tulane.
1	Khalia Lark	G/F	6-0	Jr.	1L	3.9	5.3	1.0	Came up with game-clinching steal vs. USD ... Posted a season-high 13 points vs. CSUN.
3	Jenay Bojorquez	G	5-6	Fr.	HS	2.6	1.4	0.6	Saw action in the first five games ... Notched a season-high six points vs. Tulane.
5	Te'a Adams	G	5-9	Fr.	HS	3.0	1.7	1.3	Record a streak of three games with five points in each vs. Central Michigan, Tulane and USD.
10	Najé Murray	G	5-6	Fr.	HS	9.3	1.6	0.3	Ranks second on the team with 15 three-pointers ... Scored 14 pts in Aztec debut vs. Presbyterian.
11	Arantxa Gómez Ferrer	F	6-0	Jr.	2L	2.3	2.8	0.0	Chipped in a career-high eight points vs. USD ... Averaging 13.2 minutes in six appearances.
13	Allison Brown	G	5-7	Sr.	SQ	0.0	0.0	0.0	Logged career highs in 2016-17 in minutes played (39), points (12), rebounds (8) and assists (5).
15	McKynzie Fort	G	5-9	Sr.	3L	17.4	5.3	3.6	Reigning MW Player of the Week ... Averaged 25.0 pts, 6.0 rebs, 5.0 assists vs. USD and Arizona.
20	Geena Gomez	G	5-8	Sr.	2L	7.9	3.5	4.5	Scored GW basket with five seconds left vs. Cal St. Fullerton ... Dished out career-high 10 assists vs. CSUN.
21	Abby Lowe	G	5-11	So.	1L	5.0	3.0	0.0	Saw first game action this season, scoring five points in 12 minutes off the bench vs. Tulane.
22	Lexy Thorderson	G	6-0	Sr.	3L	11.4	3.0	0.4	Ranks 11th nationally with a 51.1 percent clip from beyond the arc and 14th with 3.43 treys per game.
23	Loli Gomez	G	5-10	Jr.	TR	0.0	0.0	0.0	Made Aztec debut vs. CMU ... Averaged 3.8 minutes in eight games at CSU San Bernardino in 2014-15.
24	Kiara Edwards	F	6-1	Fr.	HS	1.0	2.5	0.0	Tallied first collegiate field goal and grabbed season-high three rebounds vs. Tulane.
30	Cheyenne Greenhouse	G	5-11	Sr.	3L	3.1	2.7	1.2	Averaging 18.3 minutes of playing time off the bench over the last four games.
34	Baylee Vanderdoes	F	6-1	So.	1L	4.0	4.7	0.1	Came up huge with a career-high 3 blocks vs. USD ... Also logged a personal-best 13 rebs vs. CMU
40	Monique Terry	F	6-2	So.	1L	1.1	1.3	0.0	Has appeared in all seven games this season ... Logged a season-high 11 minutes off the bench vs. CMU.
45	Naomi Ekwedike	F	6-6	So.	SQ	1.6	3.0	0.4	Averaging 7.3 minutes per game ... Posted a career-high five rebounds vs. CSUN and CS Fullerton.

Head Coach: Stacie Terry (UT Arlington, 1998) | 53-76 (Fifth Season at SDSU/Fifth Overall)

Assistant Coaches: Jesse Clark (Pacific Union, 2003); Ciara Carl (Point Loma Nazarene, 2005); Nick Grant (Baylor, 2010)

Director of Basketball Operations: Jon Silver (UCLA, 2009) | Director of Player Personnel: Paris Johnson (San Diego State, 2011)

## SAN DIEGO STATE QUICK FACTS

### GENERAL INFORMATION

Location: San Diego, Calif., 92182  
 Founded: 1897  
 Enrollment: 33,726  
 Nickname: Aztecs  
 School Colors: Scarlet and Black  
 Affiliation: NCAA Division I  
 Conference: Mountain West  
 Home Arena (Capacity):  
 Steve Fisher Court at Viejas Arena (12,414)  
 President: Sally Roush  
 Director of Athletics: John David Wicker  
 Faculty Athletic Representative: Patrick Papin  
 Athletics Dept. Phone: 619-594-3019

### AZTEC BASKETBALL FACTS

First Year of Basketball: 1976-77  
 All-Time Record: 645-575 (.529) / 41 seasons  
 Postseason Appearances/NCAA Appearances: 12/9  
 Last Postseason Appearance: 2013--  
 Lost to BYU (69-58) in WNIT Second Round

### SDSU TEAM INFORMATION

2016-17 Record: 11-19 (.367)  
 2016-17 MW Record/Finish: 6-12/9th  
 2017 MW Tournament Record: 0-1  
 2017 Final NCAA RPI: 270  
 Letterwinners Returning/Lost: 9/2  
 Starters Returning/Lost: 4/2  
 Newcomers: 6

### AZTEC BASKETBALL STAFF

Head Coach: Stacie Terry  
 Alma Mater: UT Arlington, 1998  
 Career Record/Years: 53-76/Fifth Year  
 Record at SDSU: Same  
 Best Time to Call: Contact SID  
 Basketball Office Phone: 619-594-4095  
 Basketball Office Fax: 619-594-8057  
**Assistant Coaches:**  
 Jesse Clark, Fifth season at SDSU  
 Alma Mater: Pacific Union, 2003  
 Ciara Carl, Fifth season at SDSU  
 Alma Mater: Point Loma Nazarene, 2005  
 Nick Grant, Fourth season at SDSU  
 Alma Mater: Baylor, 2010  
 Director of Basketball Operations: Jon Silver  
 Second season at SDSU  
 Alma Mater: UCLA, 2009  
 Director of Player Personnel: Paris Johnson  
 Second season at SDSU  
 Alma Mater: San Diego State, 2009  
 Athletic Trainer: Queenie Soriano  
 Academic Advisor: Dr. Bre White  
 Strength and Conditioning: Eddie Padilla

### SDSU MEDIA RELATIONS

Interim Women's Basketball SID: Jim Solien  
 E-mail: jsolien@mail.sdsu.edu  
 Office Phone: 619-594-5547  
 Cell Phone: 619-341-9082

### Scouting the Anteaters

- After four consecutive defeats, UC Irvine (4-5) has won two straight, including a 71-64 triumph at Southern Utah on Dec. 5.
- Friday's clash marks the Anteaters' third game against a Mountain West opponent this season. UCI came away with an 87-84 decision over Utah State in its season opener at home on Nov. 10, before falling to UNLV by a 73-54 count on the road four days later.
- The Anteaters boast six Division I transfers on its roster, including senior Sabrina Englestad (Saint Mary's), juniors Morgan Green (Michigan State) and Deijah Blanks (Utah Valley), sophomores Yazzy Sa'Dullah and Lauren Saiki (West Virginia), along with redshirt freshman Autumn Baumgartner (Georgetown).
- Through nine games, junior Andee Ritter leads UCI with 9.0 points per game, while Saiki ranks third in the Big West with 4.4 assists per contest. Freshman Tahlia Garza also finds herself among the conference leaders with an average of 5.8 rebounds per game.
- Ritter is the Anteaters' top three-point threat, connecting on 17 of 55 attempts (.309) from beyond the arc, while Sa'Dullah (11) and Baumgartner (10) have each drained double-digit treys.
- As a team, UCI leads the Big West with a .719 free-throw percentage, with Blanks (.826) and freshman Haleigh Talbert (.818) ranking third and fourth individually.
- Collectively, the Anteaters occupy the fourth spot in their conference on both offense (66.1 ppg) and defense (72.1) and rank fifth in both 3-point field-goal percentage (.309) and rebounds (36.7/gm). However, opponents are out-rebounding UCI by almost five boards per contest.
- Head coach Tamara Inoue is in her second season at UC Irvine after serving a five-year stint as an assistant at New Mexico State. A native of Orange County, Inoue played collegiately at Long Beach State, earning all-Big West honorable mention on two occasions. She led the conference in assists (5.9) as a senior in 2002. Following her graduation, Inoue played and coached professionally in Australia before returning to the collegiate ranks as an assistant at Santa Clara.

### Notes with a 'W'

- An Aztec victory over UC Irvine on Friday will mean:
- SDSU improves to 6-2, notching its best seven-game stretch to start to a season since the 2007-08 campaign when it went 7-1.
  - The Aztecs remain undefeated at home this year at 5-0.
  - SDSU wins its third straight in the series, raising its record to 20-6 vs. the Anteaters.
  - The Aztecs move to 10-4 vs. UC Irvine in San Diego.
  - SDSU defeats its third straight Big West opponent, improving to 105-91 all-time against current members of that conference.

### Scouting the Royals

- Located in Fullerton, California, Hope International is off to a 9-1 start this year after defeating Bethesda University 92-70 in its last outing at home on Dec. 5.
- Members of the Golden State Athletic Conference, the Royals will square off against La Sierra University in Riverside on Friday evening prior to Sunday's clash at Steve Fisher Court.
- HIU suffered its lone defeat of the season in a 93-87 loss to Southern Oregon in a neutral-site contest at Santa Clarita, California, on Nov. 24.
- As of Dec. 6, the Royals have been led by freshman center Emma

## UCI/HIU SERIES NOTES

### UC IRVINE at SAN DIEGO STATE SDSU leads 19-6

#### • 2017-18 Comparative Stats

UCI		SDSU
4-5	Overall Record	5-2
0-0	League Record	0-0
.371	Field Goal Pct.	.382
.309	3-PT FG Pct.	.389
.719	Free Throw Pct.	.679
.413	Opp. FG Pct.	.409
.329	Opp. 3-PT FG Pct.	.309
.707	Opp. FT Pct.	.689
36.7	Rebound Avg.	39.4
-4.6	Rebound Margin	+0.9
66.1	Points/Game	67.3
72.1	Pts. Allowed/Game	67.3

#### • Series Numbers

Record at SDSU	9-4
Record at UCI	9-2
Record at Neutral	1-0
Most Points SDSU	93, 1977
Most Points UCI	82, 1986
Largest Margin SDSU	46, 1987
Largest Margin UCI	13, 1986
Longest SDSU Win Streak	7
Longest UCI Win Streak	1
Current Streak	SDSU won 2

#### • Series History

Date	Site	Result/Score
12-16-77	San Diego	W 93-55
12-19-78	San Diego	W 69-54
2-24-79	Irvine	W 54-53
12-8-79	San Diego	W 67-66
12-17-79	Irvine	W 47-42
1-18-82	Irvine	L 56-58
2-15-82	San Diego	W 64-60
1-30-86	Irvine	W 57-52
2-15-86	San Diego	L 69-82
3-6-86	Irvine	W 73-56
1-3-87	San Diego	L 48-50
1-26-87	Irvine	L 53-55
1-9-88	San Diego	W 91-45
2-4-88	Irvine	W 59-55
1-5-89	Irvine	W 78-47
2-13-89	San Diego	W 85-62
1-27-90	San Diego	W 67-39
2-22-90	Irvine	W 67-54
12-17-91	San Diego	W 70-49
12-4-02	San Diego	L (ot) 58-61
12-2-03	Irvine	W 51-40
11-13-09	Irvine	W 64-42
11-23-10	San Diego	L 68-66
12-16-11	Irvine	W 76-57
11-14-12	San Diego	W 63-53

### HOPE INTERNATIONAL at SAN DIEGO STATE First meeting

#### • 2017-18 Comparative Stats (As of Dec. 6)

HIU		SDSU
9-1	Overall Record	5-2
0-0	League Record	0-0
.437	Field Goal Pct.	.382
.300	3-PT FG Pct.	.389
.698	Free Throw Pct.	.679
.370	Opp. FG Pct.	.409
.259	Opp. 3-PT FG Pct.	.309
.671	Opp. FT Pct.	.689
50.3	Rebound Avg.	39.4
+11.3	Rebound Margin	+0.9
86.4	Points/Game	67.3
65.8	Pts. Allowed/Game	67.3

## LAST GAME VS. ARIZONA

### San Diego State at Arizona Box Score (12-3-17)

SDSU	FG	3FG	FT	REB	F	TP	A	T	B	S	MP
Vanderdoes	2-3	0-0	0-0	6	2	4	0	1	1	0	24
Lark	2-6	2-3	1-2	5	3	7	2	1	0	0	29
Fort	7-12	1-3	11-12	6	2	26	2	2	0	2	32
Gomez, G.	4-9	4-7	0-0	3	0	12	7	3	0	0	32
Thorderson	2-2	1-1	3-4	1	1	8	0	0	0	0	23
Adams	0-5	0-3	0-0	4	1	0	1	2	0	0	14
Murray	4-9	3-4	2-2	2	0	13	0	1	0	1	17
Greenhouse	1-2	0-0	2-2	2	2	4	0	0	0	0	17
Terry	1-2	0-0	2-2	3	1	4	0	0	0	0	12
TEAM				4							
<b>Totals</b>	<b>23-50</b>	<b>11-21</b>	<b>21-25</b>	<b>36</b>	<b>12</b>	<b>78</b>	<b>12</b>	<b>10</b>	<b>2</b>	<b>3</b>	<b>200</b>
Pct.	46.0	52.4	84.0								

UA	FG	3FG	FT	REB	F	TP	A	T	B	S	MP
Wright	1-6	1-4	0-0	2	1	3	1	1	0	1	28
Thomas	3-9	2-7	4-4	5	4	12	0	1	1	3	37
Graham	7-16	0-0	0-1	6	5	14	1	1	1	0	32
Bennett	10-21	1-3	1-3	6	3	23	1	1	1	1	32
Alonso	0-8	0-5	0-5	4	2	0	7	0	0	1	35
Fatkin	4-8	3-5	3-5	3	0	11	0	2	0	0	17
Kyles	2-4	0-1	0-1	6	2	4	0	2	1	0	19
TEAM				5							
<b>Totals</b>	<b>27-72</b>	<b>7-25</b>	<b>6-9</b>	<b>37</b>	<b>17</b>	<b>67</b>	<b>10</b>	<b>8</b>	<b>4</b>	<b>6</b>	<b>200</b>
Pct.	37.5	28.0	6.7								

**Officials:** Penny Davis, Richard Waters, Rochelle Bennett

**Technical fouls:** None

**Attendance:** 1,555

**Fouled out:** Arizona - Bennett @ 0:14 2nd half

Score by Periods	1st	2nd	3rd	4th	Total
San Diego State	21	20	16	21	78
Arizona	20	14	15	18	67

## AZTECS VS. BIG WEST

Cal Poly	9	2
Cal State Fullerton	21	17
CSUN	5	2
Hawai'i	14	12
Long Beach State	5	37
UC Davis	2	3
UC Irvine	19	6
UC Riverside	5	5
UC Santa Barbara	18	6
<b>Total</b>	<b>104</b>	<b>91</b>

and five boards of her own.

Despite getting outscored 30-18 in the paint, SDSU more than made up for it with an 11-for-21 effort (52.3 percent) from beyond the three-point arc to go with a 21-for-25 display (84 percent) at the charity stripe.

Clinging to a 69-67 lead, the Aztecs cemented the win after sinking seven of eight free throws in the final three minutes of the contest.

The two teams battled through seven ties and three lead changes before SDSU built a 36-25 bulge on a Fort jumper with 2:29 left in the second quarter.

Arizona responded with a 19-8 surge through intermission to tie the score at 44-44 by the 5:09 mark of the third quarter. JaLea Bennett scored 10 points during that span, while Destiny Graham added six.

However, the Aztecs quickly answered with a pivotal 13-2 blitz to vault in front for good. Senior Cheyenne Greenhouse sank two free throws to cap the run, giving the Scarlet and Black another 11-point cushion at 57-46 with 18 seconds to go in the period.

The Wildcats remained within striking distance for much of the fourth quarter, twice narrowing the gap to two, including a 69-67 spread following a Graham basket at the 3:05 mark, but could draw no closer.

Arizona was paced by Bennett's 23 points, while Graham totaled 14 in the loss. The host school also received 12 points from Sam Thomas, while Sammy Fatkin finished with 11, including a trio of three-pointers.

Forel, who is averaging 20.1 points and 11.9 rebounds per game. The Lyon, France, native is also shooting a crisp 57.0 percent from the field (90-158).

• In addition, HIU has received double-digit scoring averages from junior Lauren Davies (15.6) and senior Nikki Andaya (13.6), who tops the squad in assists (4.5) as well.

• Juniors Rhiana Dougan and Julia Pihl have been the Royals' top 3-point threats so far this year, sinking 19 triples apiece through 10 games

• With an average of 86.4 points per game, HIU has been outscoring its opponents (65.8) by nearly 20 points on each occasion.

• As a team, the Royals are shooting 43.7 percent from the field, 30.0 percent from 3-point range and 69.8 percent at the free-throw line.

• SDSU alumnus Beck Flanagan is in first year as head coach at Hope International after spending five years as an assistant at Loyola University in New Orleans. He also served as an assistant with the men's program at Alcorn State and an assistant with the women's team at Point Loma.

### Rewind: Aztecs Topple Arizona on the Road

McKynzie Fort scored a season-high 26 points to help San Diego State to a 78-67 conquest of Arizona in a non-conference game at McKale Center on Dec. 3.

Fort shot 58.3 percent from the floor on 7-of-12 field-goal attempts and matched her career-best with 11 free throws, as the Aztecs won their second straight and snapped a five-game losing streak against Pac-12 schools dating back to December 2012.

With the victory, SDSU sits at 5-2, marking its best seven-game start to a season since the 2007-08 squad went 6-1. Conversely, the Wildcats dropped their fifth straight to fall to 2-5 on the year.

In addition to Fort's heroics, the Aztecs received double-digit scoring totals from freshman Najé Murray (13 points) and senior Geena Gomez (12 points), who tied for game-high honors with seven assists.

Sophomore Baylee Vanderdoes also got into the act with six rebounds to tie Fort for the team lead, while senior Khalia Lark finished with seven points

## MOUNTAIN WEST STANDINGS

As of Dec. 5

	MW	Overall
New Mexico	0-0	9-0
San Diego State	0-0	5-2
Colorado State	0-0	5-2
Wyoming	0-0	5-3
UNLV	0-0	4-3
Boise State	0-0	3-3
Nevada	0-0	4-4
Fresno State	0-0	2-5
San José State	0-0	2-5
Utah State	0-0	1-6
Air Force	0-0	0-7

### UPCOMING MW SCHEDULE

**Friday, December 8**

**UC Irvine at SAN DIEGO STATE, Noon PT**

**Saturday, December 9**

AIR FORCE at Weber State, 2 p.m. MT

UNLV at Gonzaga, 2 p.m. PT

UTAH STATE at Utah Valley, 3 p.m. MT

NEVADA at Seattle, 4 p.m. PT

WYOMING at Idaho, 6 p.m. PT

**Sunday, December 10**

**Hope International at SAN DIEGO STATE, 1 p.m. PT**

Navy at NEW MEXICO, 1 p.m. MT

COLORADO STATE at Northern Colorado, 2 p.m. MT

Montana at FRESNO STATE, 2 p.m. PT

BOISE STATE at Portland, 2 p.m. PT

SAN JOSÉ STATE at Oregon State, 2 p.m. PT

**Tuesday, December 12**

Stanislaus State at NEVADA, 11 a.m. PT

Colorado Christian at WYOMING, 4 p.m. MT

**Thursday, December 14**

**Santa Clara at SAN DIEGO STATE, 6:30 p.m. PT**

**Friday, December 15**

Colorado at AIR FORCE, 7 p.m. MT

**Saturday, December 16**

NEW MEXICO at Oklahoma, 2 p.m. CT

Denver at UTAH STATE, 2 p.m. MT

UNLV at Stanford, 2 p.m. PT

Santa Clara at NEVADA, 2 p.m. MT

**Sunday, December 17**

Nebraska at SAN JOSÉ STATE, Noon PT

FRESNO STATE at San Francisco, 2 p.m. PT

**Monday, December 18**

Washington State at BOISE STATE, 7 p.m. MT

Utah at UTAH STATE, 7 p.m. MT

Prairie View A&M at COLORADO STATE, 7 p.m. MT

## SAN DIEGO STATE STREAKS

### Most Consecutive Starts

	Consecutive	Total
McKynzie Fort	88	92
Lexy Thorderson	10	27
Geena Gomez*	7	28
Khalia Lark	7	17
Baylee Vanderdoes	1	10
Cheyenne Greenhouse	0	37
Arantxa Gómez Ferrer	0	13
Monique Terry	0	10

### Most Consecutive Games

	Consecutive	Total
McKynzie Fort	99	99
Geena Gomez*	66	66
Cheyenne Greenhouse	35	99
Lexy Thorderson	35	96
Khalia Lark*	28	57
Baylee Vanderdoes	18	29
Monique Terry	11	35
Te'a Adams	7	7
Najé Murray	7	7
Arantxa Gómez Ferrer	0	52
Abby Lowe	0	16
Naomi Ekwedike	0	14
Jenay Bojorquez	0	5
Loli Gomez	0	2
Kiara Edwards	0	2
Kennedi Villa	0	1
Allison Brown	0	25

### Most Consecutive Games With A Point^

	Consecutive	Total
McKynzie Fort	99	99
Lexy Thorderson	31	72
Geena Gomez	14	51
Cheyenne Greenhouse	11	81
Baylee Vanderdoes	2	26
Najé Murray	2	6
Arantxa Gómez Ferrer	1	27
Khalia Lark*	1	25
Monique Terry	1	23
Abby Lowe	1	7
Naomi Ekwedike	0	7
Te'a Adams	0	6
Allison Brown	0	6
Kennedi Villa	0	1
Loli Gomez	0	0

\*SDSU totals only; ^must have played in the game

## @AZTECWBB TOP 75 IN THE NATION

Category	Team Value	Rank
3-Point Field Goals Per Game	9.0	25
3-Point Field Goal Percentage	38.9	33
3-Point Field Goals Made	63	68

Category	Lexy Thorderson Value	Rank
3-Point Field Goals Percentage	51.1	11
3-Point Field Goals Per Game	3.43	14
3-Point Field Goals Made	24	50

## Noting the Arizona Game

- The Aztecs snapped a five-game losing streak to a Pac-12 opponent. Prior to Sunday's contest, SDSU's last victory over a Pac-12 foe was recorded in 2012 with an 80-46 rout of USC at Viejas Arena.
- SDSU scored a season-high 78 points, eclipsing the 70-point barrier for the fourth time this season.
- The Aztecs posted season highs of 21 free throws, 25 free-throw attempts and a .840 free-throw percentage.
- SDSU's 21 first quarter points were also a season best.
- The Aztecs were whistled for just 12 fouls, marking the team's lowest total in a game this year
- SDSU moved to 4-1 on the year when outscoring the opposition's bench (21-15).
- McKynzie Fort jumped into ninth place on SDSU's all-time scoring list (1,355 pts) after scoring a game-high 26 points vs. the Wildcats. She also tied for the team lead with six rebounds.
- With her total, Fort needs just 16 points to move past Quenese Davis for eighth place on the program's career scoring charts.
- Najé Murray's 13 points marked the fifth time this season she has surpassed the double-digit scoring plateau.
- With her 3-for-4 performance from beyond the arc, Murray has also converted five of her last eight 3-point field-goal attempts over the last two games.
- Not to be outdone, Geena Gomez set season highs with a 4-for-9 clip from 3-point range.
- Lexy Thorderson (1-1) extended her streak of making at least one triple to seven straight games. Since the beginning of the 2016-17 campaign, she has recorded at least one 3-pointer in 32 of her last 36 appearances.

## Fort Named Mountain West Player of the Week

- For the third time in her career McKynzie Fort was tabbed MW Player of the Week after leading SDSU to victories over the University of San Diego and Arizona.
- For the week, Fort averaged 25.0 points, 6.0 rebounds and 5.0 assists while shooting a combined 60.7 percent from the field (17-28) and 78.9 percent from the free-throw line (15-19).
- Against USD at home on Nov. 29, Fort led all players with 24 points on 10-for-16 shooting (62.5 percent), including the game-winning layup with eight seconds remaining to help the Aztecs snap a four-game losing streak against the Toreros in a dramatic 77-76 triumph. She also dished out a career-high eight assists in that contest and grabbed a team-best six rebounds.
- Fort continued her stellar play at Arizona on Sunday, pouring in a game-high 26 points to go with six rebounds and two assists. The SDSU guard shot 58.3 percent from the floor (7-12) and tied her personal-best with an 11 free throws in 13 attempts.
- With the Aztecs nursing a slim 69-67 lead late in the fourth quarter, Fort came up huge down the stretch, sinking seven of eight free throws to help seal the win while contributing to a defense that held the Wildcats scoreless over the final 3:05 of the game.
- With her efforts, Fort has now surpassed the 20-point plateau 16 times in a Scarlet and Black uniform and moved into ninth place on SDSU's all-time scoring list with 1,355 career points

## Good Omen?

- For the first time since the 2011-12 campaign and the 10th time in program history, SDSU won its first three games to open a season.
- After starting the year 3-0, San Diego State has advanced to a postseason tournament or the MW Championship game all but one season (1981-82).
- In seven of the nine seasons in which the Aztecs won their first three games of the year, San Diego State won 20-or-more games.
- After defeating Arizona last Sunday, the Aztecs improved to 5-2 on the year.
- The last five times SDSU won at least five of its first seven games, it earned a berth in the NCAA Tournament on three occasions.
- In each of those campaigns, the Aztecs averaged 21 victories and won their conference tournament two times.

## It's Raining Threes

- A year removed from a historic season of shooting beyond the arc, San Diego State has kept up the trend, ranking third

## SDSU CAREER SCORING LIST

1.	Judy Porter	(1980-83)	2,318
2.	Falisha Wright	(1992-95)	1,733
3.	Paris Johnson	(2008-11)	1,598
4.	Jené Morris	(2008-10)	1,499
5.	Courtney Clements	(2011-13)	1,495
6.	Chana Perry	(1988-89)	1,445
7.	Jessica Haynes	(1986-88)	1,395
8.	Quenese Davis	(2007-10)	1,370
9.	<b>McKynzie Fort</b>	<b>(2015-)</b>	<b>1,355</b>
10.	Michelle Suman	(1992-95)	1,341
11.	Brooke Meadows	(1986-89)	1,310
12.	Jamey Cox	(2000-03)	1,275
13.	Marsha Overton	(1980-83)	1,273
14.	Tina Hutchinson	(1984-85)	1,256
15.	Christina Murguia	(1992-95)	1,237

in the Mountain West and 25th nationally in 3-point field goals made per game (9.0).

- In addition, the Scarlet and Black is 33rd in the country entering the weekend with a 38.9 percentage from beyond the arc and ranks 68th in triples made overall (63).
- As of Dec. 6, Lexy Thorderson leads the conference with a .511 three-point field-goal percentage and 3.43 triples per game, which rank 11th and 14th in the country, respectively. She also occupies the second spot in the MW with 24 total treys made, good for 50th nationally.

### What a Debut!

- San Diego State's 2017-18 season opener against Presbyterian was one of the ages, as the Aztecs toppled the Blue Hose, 77-50.
- The 27-point win was SDSU's largest margin of victory since a 60-25 home win against San Diego Christian on Dec. 21, 2015.
- The 27-point win was the greatest season-opening win since the 2011-12 Aztecs opened their campaign at home with an 86-43 victory over Arkansas-Pine Bluff.
- The 50 points scored against the Aztecs was the fewest allowed in a season opener since that win.
- SDSU's 12 long balls were the most in a campaign opener since at least the 1998-99 season.
- SDSU's 77 points in a first game was the most since the team scored 99 against Sacramento State to open the 2014-15 season.

### Making an Entrance

- Freshman Najé Murray made quite the impression in her first collegiate game, scoring 14 points in 13 minutes on the floor against Presbyterian.
- Murray was 4-for-7 from beyond the 3-point arc, drilling all four long balls in the fourth quarter and knocking down two in consecutive possessions.
- Murray's 14 points in her collegiate debut was the most by an Aztec since Aztec senior Cheyenne Greenhouse notched 19 points and 11 rebounds in a 99-91 win over Sacramento State to kick off the 2014-15 campaign.
- Two other freshmen, Jenay Bojorquez and Te'a Adams, also contributed in their first collegiate appearances, logging 19 and 17 minutes, respectively.
- Bojorquez, a point guard, grabbed three rebounds and served up a pair of assists with a steal while Adams also had a pair of assists and a steal to go alongside four points.

### Going Deep

- A hallmark of the 2017-18 Aztecs will be their depth. Against Presbyterian, SDSU's bench outscored the Blue Hose's bench, 39-5.
- Five Aztecs came off the bench to log 13 or more minutes: Najé Murray (13), Baylee Vanderdoes (16), Cheyenne Greenhouse (17), Te'a Adams (17) and Jenay Bojorquez (19).
- SDSU's reserves have outscored their opponents' five times this year, recording a 4-1 mark in those games.

### Fort-ifying the Aztecs' Offense

- Preseason all-MW honoree McKynzie Fort is making waves in her senior season, looking to climb her way to the top five in the Aztecs' all-time scoring list.
- With an average of 17.4 points through SDSU's first seven games, she currently boasts 1,355 career points, which ranks ninth on the school's all-time charts. She needs just 15 points to surpass Quenese Davis for eighth place on the program history.
- During the 2016-17 season, Fort became just the fourth Aztec to land a spot on an all-Mountain West team each of her first three seasons at San Diego State after collecting an all-Mountain West first-team nod last year.
- The only Aztec to start all 30 games, Fort finished the year in the league rankings: second in points per game (15.9), ninth in free throw percentage (.784), 11th in field goal percentage (.436), 12th in minutes played per game (31.9) and 13th in assists per game (2.5).
- The Fontana, Calif., native was 116-for-148 from the free-throw line, tied for the eighth-most made in SDSU single-season history.
- Fort reached the career 1,000-point mark at San José State (1-11-17), the 21st Aztec and eighth SDSU third-year to accomplish the feat, after notching season highs in points (29) and rebounds (11) for her second-career double-double.

### Captain, Captain, Captain

- The Aztecs' captains for the 2017-18 season are seniors McKynzie Fort, Geena Gomez and Lexy Thorderson.
- Fort, a three-year starter for the Aztecs, is a three-time all-MW selection and was named to the preseason all-MW team this season after spending much of the 2016-17 campaign atop most offensive categories.

## MW PRESEASON POLL

Rk.	Team	Pts.
1.	Boise State (7)	221
2.	Wyoming (6)	216
3.	Colorado State (6)	211
4.	New Mexico (4)	186
5.	UNLV (2)	185
6.	Utah State	136
7.	Fresno State	117
8.	San Diego State	102
9.	San José State	61
10.	Nevada	60
11.	Air Force	29

*First-place votes in parentheses*

## MW PRESEASON HONORS

### Preseason All-Mountain West Team

Shalen Shaw, Boise State  
 Candice White, Fresno State  
 Cherise Beynon, New Mexico  
 McKynzie Fort, San Diego State  
 Liv Roberts, Wyoming

### Preseason Player of the Year

Cherise Beynon, New Mexico

### Preseason Newcomers of the Year:

N'Dea Flye, New Mexico

### Preseason Freshman of the Year

Tesha Buck, New Mexico

## SDSU IN THE MW POLL

Year	Pre.	Final
1999-2000	6th	6th
2000-01	7th	6th
2001-02	7th	7th
2002-03	7th	7th
2003-04	6th	7th
2004-05	7th	t-7th
2005-06	8th	9th
2006-07	7th	7th
2007-08	7th	t-5th
2008-09	2nd	2nd
2009-10	1st	t-3rd
2010-11	2nd	6th
2011-12	2nd	1st
2012-13	1st	1st
2013-14	3rd	t-6th
2014-15	7th	7th
2015-16	6th	t-8th
2016-17	7th	8th
2017-18	8th	--



## SDSU RECORD WHEN...

Playing at home .....	4-0
Playing on the road .....	1-0
Playing at a neutral site .....	0-2
Playing a night game (5 p.m. or later) .....	2-1
Playing a day game .....	3-1
Leading at halftime .....	5-1
Trailing at halftime .....	0-1
Tied at halftime .....	0-0
Leading with 5:00 left in regulation .....	4-1
Trailing with 5:00 left in regulation .....	1-1
Tied with 5:00 left .....	0-0
In overtime .....	0-1
Scoring less than 60 points .....	2-1
Scoring between 60-69 points .....	0-0
Scoring between 70-79 points .....	3-1
Scoring between 80-89 points .....	0-0
Scoring 90 or more points .....	0-0
Opponent scores less than 60 points .....	3-0
Opponent scores 60-69 points .....	1-0
Opponent scores 70-79 points .....	1-0
Opponent scores 80-89 points .....	0-2
Opponent scores 90 or more points .....	0-0
FG% .500 or better .....	1-0
FG% under .500 .....	4-2
FG% .400-.499 .....	2-0
FG% under .400 .....	2-2
Opponent FG% .500 or better .....	0-1
Opponent FG% under .500 .....	4-1
Opponent FG% .400-.499 .....	1-1
Opponent FG% under .400 .....	4-0
Better shooting % .....	3-0
Worse shooting % .....	2-2
More FG attempts .....	3-1
Fewer FG attempts .....	2-1
Same FG attempts .....	0-0
More FGs made .....	3-0
Fewer FGs made .....	2-2
Same FGs made .....	0-0
More FT attempts .....	2-2
Fewer FT attempts .....	3-0
Same FT attempts .....	0-0
More FTs made .....	3-2
Fewer FTs made .....	2-0
Same FTs made .....	0-0
More rebounds .....	3-0
Fewer rebounds .....	2-2
Same rebounds .....	0-0
More turnovers .....	2-1
Fewer turnovers .....	1-1
Same turnovers .....	2-0
More assists .....	2-0
Fewer assists .....	3-2
Same assists .....	0-0
More steals .....	2-2
Fewer steals .....	3-0
Same steals .....	0-0

## SDSU STREAKS

Last 5 games .....	3-2
Last 10 games .....	5-2
Longest winning streak .....	3
Longest losing streak .....	2
Current streak .....	Won 2

- Gomez, a two-year letterwinner, is one of four returning starters for San Diego State. The catalyst behind the Aztecs' offense on the court, she shot at a .360 clip (36-for-100) from 3-point range last season, the league's sixth-best percentage.
- Three-time MW All-Academic Team honoree and three-year letterwinner Thorderson helped SDSU engineer the program's best 3-point shooting season last year and will be relied upon heavily from beyond the arc for her final campaign.

## Welcome Back!

- In addition to having six newcomers, including the nation's 23rd-ranked and the Mountain West's best incoming class, the 2017-18 Aztecs welcome back an impressive amount of offensive output from a year prior.
- Four starters from last year's team will once again don the Scarlet and Black: seniors McKynzie Fort, Geena Gomez, Lexy Thorderson and Khalia Lark.
- Five letterwinners from the 2016-17 squad are also expected to contribute this season: Arantxa Gómez Ferrer, Cheyenne Greenhouse, Abby Lowe, Monique Terry and Baylee Vanderdoes.
- Nearly 79 percent (78.9) of the team's scoring from last year returns, led by all-MW first-team pick McKynzie Fort, who single-handedly recorded almost one-fourth (24.9 percent) of SDSU's total points in 2016-17.

## Moral Support

- Stacie Terry's fourth season saw an increase in excitement surrounding the team, evidenced in home attendance. For the 2016-17 season, the Aztecs averaged 855 in attendance at the team's 14 home games, up from an average of 487 during the 2015-16 campaign (the previous high during the Terry era was for the 2014-15 season when SDSU averaged 604 fans per game). Against Michigan on Dec. 11, 2,632 fans were in attendance for the greatest showing since Jan. 24, 2009, when 2,792 were in Viejas Arena to see San Diego State play then-conference foe Brigham Young.

## History Made from Beyond the Arc

- With their 200 made long balls on a program-high 620 attempts, the 2016-17 Aztecs were the program's best 3-point shooting team.
- Since the statistic started being recorded in the program's record book during the 1987-88 campaign, SDSU's most made threes came in the 2012-13 season with 164 3-pointers.
- The 2016-17 Aztecs also sported the best 3-point percentage at .319 (204-639) in seven years. The single-season record is .404 (65-for-161) set during the 1991-92 season.
- Lexy Thorderson's 66 made 3-point field goals on 192 attempts were each fourth in SDSU history. She finished the year with the Mountain West's second-most made long balls, averaging 2.4 per game, and ranking 80th in the nation. In a single-game high, she drilled seven treys in a win against UNLV (1-18-17), tied for the third-most in SDSU history.
- Thorderson had five games last season with five-or-more treys: a career-high seven against UNLV, six versus Boise State and five against Nevada, San José State and at UNLV.
- San Diego State had its most success beyond the arc last season against San José State. In their road game against the Spartans, SDSU knocked down 12 3-pointers, its third straight game with 10-or-more threes, and, when hosting SJSU, drilled 13 long balls.
- In the Scarlet and Black's home game against San José State, the teams combined for 25 threes, the most in a MW game last season. It was just the third time the feat was accomplished during the 2016-17 campaign.
- Versus UNLV, the Scarlet and Black knocked down 14 3-pointers for a season high and its most since Feb. 10, 2005 in a 91-45 win over Utah Valley State College. In the game, Thorderson drilled a career-best seven treys.
- Against Boise State, SDSU knocked down 11 3-pointers, five of which came in the fourth quarter (its second-straight game with five-or-more treys in a quarter after getting six in the first quarter vs. Nevada) following its 10 treys made against the Wolf Pack.
- SDSU was the first team in the conference to score double-digit threes in three straight Mountain West games, the first time since at least the 1999-2000 season that the Aztecs had consecutive games with 10-or-more 3-pointers.

## The New Aztecs on the Block

- For the second consecutive year, San Diego State women's basketball head coach Stacie Terry has announced the signing of a nationally-ranked incoming class. Mallory Adams, Jayden Perez and Sophia Ramos comprise the nation's 57th-ranked class (according to Prospects Nation) and will join the Aztecs for the 2018-19 campaign.
- Adams, a 6-foot guard, is in her second season at Lone Star High School in Frisco, Texas. She is the 14th-ranked wing in the 2018 class, earning a 90 scouts grade and three stars from ESPN. She had a breakout season as a junior, her first at Lone Star High School. She garnered Texas Association of Basketball Coaches (TABC) and Texas Girls Coaches Association (TGCA) all-state, TABC all-region and District 13-5A Offensive MVP accolades after averaging 18.9 points and 9.0 rebounds en route to Lone

Star's district championship. The District 9-5A MVP, TGCA all-state and TABC all-region honoree as a sophomore at Centennial (Frisco, Texas) High School, she was the 2015 District 9-5A Newcomer of the Year, recording 18 points and 10 boards per game as a freshman. Adams' older sister, McKenzie, is a junior guard on SMU's women's basketball team. Their father, Gary, played four years of football at Arkansas and their mother, Michelle, played volleyball at Missouri Southern State. Adams plays AAU for Cy-Fair EYBL. She piqued interest from a number of schools, including SMU, Kansas, Alabama, Tulsa, Houston, Michigan, Penn, Rice, New Mexico and Rutgers.

- Perez is a 5-8 guard competing for Onate High School in Las Cruces, N.M. She has an 89 scouts grade and three stars from ESPN as the 73rd-ranked point guard in her class. Perez enters her senior year with 1,586 career points. As a junior last season, she averaged nearly 20 points, 5.8 rebounds, 2.7 assists and 1.7 steals. Selected to the 2017 All-U.S.A. New Mexico Girls Basketball Team, she led Onate to the Class 6A state tournament, earning Class 6A all-state second-team honors along the way. Perez played her freshman and sophomore seasons at Las Cruces High, capturing District 3-6A Player of the Year and Class 6A all-state second-team honors each year. Perez plays AAU for Team Fusion in El Paso, Texas, under head coach Lee Williams. A 4.0 student, she is ranked seventh in her class while also competing for Onate's volleyball team last season. She also had offers from New Mexico and Abilene Christian.

- Ramos, a 5-9 guard, is playing in her fourth season at Incarnate Word High School in San Antonio, Texas. She has four stars from Prospects Nation and is No. 87 at the guard position with three stars and an 88 scouts grade from ESPN. A three-time Texas Association of Private and Parochial Schools (TAPPS) All-State and All-District first-team pick, she was also a TAPPS Academic All-State honoree as a junior. Last season, Ramos averaged 16.6 points, 8.2 rebounds, 4.2 assists and 2.9 steals per game, leading Incarnate Word to a 27-6 record. Reaching the 1,500-career point mark as a junior, she is a two-time Express News MVP for private schools. Ramos plays AAU for SA Finest and coach Ray Caldwell. The team won the Super 64 National Championship with a buzzer-beater in 2017.

### 2017-18 Media Information

All media requests for interviews with the coaching staff or student-athletes should be directed to Jim Solien at jsolien@mail.sdsu.edu. Please submit your requests with a minimum of 24 hours notice. During the season, head coach Stacie Terry and the players are generally available to meet with the media following each workout, as requested.

There will be no interviews on game days until postgame. The Aztec basketball team officially began practice in early October. All workouts will take place at the Jeff Jacobs JAM Center with a few exceptions. Media wishing to attend practice should contact the Aztec media relations department at least one day in advance. Media desiring to cover Aztec practices on campus can park in Parking Structure 7 and obtain a special parking permit from the SDSU athletic media relations office. Media parking via permit only will be provided for all home games in PS12, adjacent to Viejas Arena.

## ASSOCIATED PRESS POLL

(Week Five - Dec. 4)

Rk		Record	Pts
1	Connecticut (32)	7-0	800
2	Texas	7-0	749
3	Notre Dame	7-1	717
4	Louisville	8-0	710
5	South Carolina	8-1	660
6	Mississippi State	8-0	632
7	UCLA	7-1	622
8	Baylor	7-1	606
9	Oregon	7-1	506
10	West Virginia	7-0	482
11	Tennessee	8-0	461
12	Ohio State	8-2	447
13	Florida State	8-0	418
14	Duke	6-2	390
15	Maryland	7-2	353
16	South Florida	7-1	284
17	Missouri	7-1	247
18	Stanford	5-4	220
19	Oregon State	5-2	198
20	Kentucky	7-1	170
21	Texas A&M	6-2	168
22	Villanova	7-0	131
23	Green Bay	6-1	96
24	Michigan	5-2	93
25	California	5-2	90

First-place votes in parentheses

**Others receiving votes:** Arizona State 41, New Mexico 26, Iowa 26, Marquette 13, Syracuse 12, Oklahoma State 8, DePaul 7, USC 7, Oklahoma 6, South Dakota State 4

## USA TODAY COACHES POLL

(Week Four - Nov. 28)

Rk		Record	Pts
1	Connecticut (32)	7-0	800
2	Notre Dame	7-1	721
3	Mississippi State	8-0	711
4	Texas	7-0	703
5	Louisville	8-0	697
6	South Carolina	8-1	658
7	UCLA	7-1	604
8	Baylor	7-1	580
9	Oregon	7-1	506
10	Florida State	8-0	487
11	West Virginia	7-0	466
12	Ohio State	8-2	439
13	Tennessee	8-0	427
14	Duke	6-2	342
14	Maryland	7-2	342
16	South Florida	7-1	323
17	Missouri	7-1	268
18	Stanford	5-4	265
19	Oregon State	5-2	224
20	Villanova	7-0	148
21	Michigan	6-2	128
22	Texas A&M	6-2	125
23	Kentucky	7-1	112
24	Syracuse	8-0	90
25	Green Bay	6-1	78

First-place votes in parentheses

**Others receiving votes:** DePaul 35, Iowa 35, New Mexico 19, California 18, Georgia Tech 15, Marquette 8, USC 6, Virginia Tech 5, Ole Miss 4, Oklahoma State 3, Rice 3, South Dakota State 2, Troy 1, Arizona State 1, Chattanooga 1

## PERSONNEL SUMMARY

## Returning Starters (3):

McKynzie Fort, Sr., G (14.3 ppg, 4.1 rpg, 31.9 mpg)  
 Geena Gomez, Sr., G (6.8 ppg, 3.2 rpg, 36 3FGs, 24.8 mpg)  
 Lexy Thorderson, Sr., G (9.5 ppg, 66 3FGs, 25.7 mpg)  
 Khalia Lark, Sr., G/F (25.9 mpg, 8.4 ppg, 6.1 rpg)

## Starters Lost (2):

Ariell Bostick, G (23.2 mpg, 4.2 rpg, 3.5 apg)  
 Kimberly Ellison, G (25.3 mpg, 9.2 ppg, 61 3FGs)

## Other Players Lost (1):

Aleiah Brandon, F

## Other Letterwinners Returning (5):

Arantxa Gómez Ferrer, Jr., F (0.6 ppg, 0.9 rpg)  
 Cheyenne Greenhouse, Sr., G (15.4 mpg, 4.2 ppg, 2.0 rpg)  
 Abby Lowe, So., G (15 gms, 1.2 ppg)  
 Monique Terry, So., F (12.3 mpg, 2.7 ppg, 2.0 rpg)  
 Baylee Vanderdoes, So., F (13.6 mpg, 3.9 ppg, 2.7 rpg)

## Other Players Returning (2):

Allison Brown, Sr., G (9 gms)  
 Naomi Ekwedike, So., C (9 gms)

## Newcomers (6):

Te'a Adams, Fr., G., 5-9, Kirkland, Wash.  
 Jenay Bojorquez, Fr., G, 5-6, Phoenix, Ariz.  
 Kiara Edwards, Fr., F, 6-1, Surprise, Ariz.  
 Loli Gomez, Jr., G., 5-8, Huntington Beach, Calif.  
 Najé Murray, Fr., G, 5-6, Stockton, Calif.  
 Kennedy Villa, Fr., G., 6-0, Oakland, Calif.

## ROSTER BREAKDOWN

## By Class

**Seniors (6):** Brown, Fort, G. Gomez, Greenhouse, Lark, Thorderson; **Juniors (2):** : A. Gómez Ferrer, L. Gomez;  
**Sophomore (4):** Ekwedike, Lowe, Terry, Vanderdoes;  
**Freshmen (5):** Adams, Bojorquez, Edwards, Murray, Villa

## By State/Country

**Arizona (2):** Bojorquez, Edwards; **California (9):** Brown, Fort, G. Gomez, L. Gomez, Greenhouse, Lark, Murray, Vanderdoes, Villa; **Colorado (1):** Thorderson; **Texas (1):** Terry; **Washington (1):** Adams; **Spain (1):** A. Gómez Ferrer; **England (1):** Lowe; **Nigeria (1):** Ekwedike

## By Position

**Centers (1):** Ekwedike; **Forwards (5):** A. Gómez Ferrer, Edwards, Lark, Terry, Vanderdoes; **Guards (12):** Adams, Bojorquez, Brown, Fort, G. Gomez, L. Gomez, Greenhouse, Lark, Lowe, Murray, Thorderson, Villa

## By Height

**6-6 (1):** Ekwedike; **6-2 (1):** Terry; **6-1 (2):** Edwards, Vanderdoes; **6-0 (4):** A. Gómez Ferrer, Lark, Thorderson, Villa; **5-11 (2):** Greenhouse, Lowe; **5-10 (1):** L. Gomez; **5-9 (2):** Adams, Fort; **5-8 (2):** G. Gomez; **5-7 (1):** Brown; **5-6 (2):** Bojorquez, Murray

## 2017-18 NUMERICAL ROSTER

No.	Name	Pos.	Ht.	Yr.	Exp.	Hometown (Previous School/High School)
0	Kennedi Villa	G	6-0	Fr.	HS	Oakland, Calif. (St. Mary's HS)
1	Khalia Lark	G/F	6-0	Sr.	1L	Irvine, Calif. (Washington/Mater Dei HS)
3	Jenay Bojorquez	G	5-6	Fr.	HS	Phoenix, Ariz. (Sierra Linda HS)
5	Te'a Adams	G	5-9	Fr.	HS	Kirkland, Wash. (Juanita HS)
10	Najé Murray	G	5-6	Fr.	HS	Stockton, Calif. (St. Mary's HS)
11	Arantxa Gómez Ferrer	F	6-0	Jr.	2L	Valencia, Spain (Parque Colegio Santa Ana HS)
13	Allison Brown	G	5-7	Sr.	SQ	Anaheim Hills, Calif. (Mater Dei HS)
15	McKynzie Fort	G	5-9	Sr.	3L	Fontana, Calif. (Etiwanda HS)
20	Geena Gomez	G	5-8	Sr.	2L	Huntington Beach, Calif. (Edison HS/St. Joseph's (Pa.))
21	Abby Lowe	G	5-11	So.	1L	Stockport, England (Barking Abbey Academy)
22	Lexy Thorderson	G	6-0	Sr.	3L	Castle Rock, Colo. (Rock Canyon HS)
23	Loli Gomez	G	5-8	Jr.	TR	Huntington Beach, Calif. (Edison HS/CSU San Bernardino)
24	Kiara Edwards	F	6-1	Fr.	HS	Surprise, Ariz. (Valley Vista HS)
30	Cheyenne Greenhouse	G	5-11	Sr.	3L	Riverside, Calif. (Canyon Springs HS)
34	Baylee Vanderdoes	F	6-1	So.	1L	Auburn, Calif. (Placer HS)
40	Monique Terry	F	6-2	So.	1L	San Antonio, Texas (Brennan HS)
45	Naomi Ekwedike	C	6-6	So.	SQ	Lagos, Nigeria (Potter's House Christian Academy (Fla.))

## 2017-18 ALPHABETICAL ROSTER

No.	Name	Pos.	Ht.	Yr.	Exp.	Hometown (Previous School/High School)
5	Te'a Adams	G	5-9	Fr.	HS	Kirkland, Wash. (Juanita HS)
3	Jenay Bojorquez	G	5-6	Fr.	HS	Phoenix, Ariz. (Sierra Linda HS)
13	Allison Brown	G	5-7	Sr.	SQ	Anaheim Hills, Calif. (Mater Dei HS)
24	Kiara Edwards	F	6-1	Fr.	HS	Surprise, Ariz. (Valley Vista HS)
45	Naomi Ekwedike	C	6-6	So.	SQ	Lagos, Nigeria (Potter's House Christian Academy (Fla.))
15	McKynzie Fort	G	5-9	Sr.	3L	Fontana, Calif. (Etiwanda HS)
20	Geena Gomez	G	5-8	Sr.	2L	Huntington Beach, Calif. (Edison HS/St. Joseph's (Pa.))
23	Loli Gomez	G	5-8	Jr.	TR	Huntington Beach, Calif. (Edison HS/CSU San Bernardino)
11	Arantxa Gómez Ferrer	F	6-0	Jr.	2L	Valencia, Spain (Parque Colegio Santa Ana HS)
30	Cheyenne Greenhouse	G	5-11	Sr.	3L	Riverside, Calif. (Canyon Springs HS)
1	Khalia Lark	G/F	6-0	Sr.	1L	Irvine, Calif. (Washington/Mater Dei HS)
21	Abby Lowe	G	5-11	So.	1L	Stockport, England (Barking Abbey Academy)
10	Najé Murray	G	5-6	Fr.	HS	Stockton, Calif. (St. Mary's HS)
40	Monique Terry	F	6-2	So.	1L	San Antonio, Texas (Brennan HS)
22	Lexy Thorderson	G	6-0	Sr.	3L	Castle Rock, Colo. (Rock Canyon HS)
34	Baylee Vanderdoes	F	6-1	So.	1L	Auburn, Calif. (Placer HS)
0	Kennedi Villa	G	6-0	Fr.	HS	Oakland, Calif. (St. Mary's HS)

**Head Coach:** Stacie Terry (UT Arlington, 1998), Fifth season at SDSU/Fifth overall

**Assistant Coach:** Jesse Clark (Pacific Union, 2003), Fifth season at SDSU

**Assistant Coach:** Ciara Carl (Point Loma Nazarene, 2005), Fifth season at SDSU

**Assistant Coach:** Nick Grant (Baylor, 2010), Fourth season at SDSU

**Director of Operations:** Jon Silver (UCLA, 2009), Second season at SDSU

**Director of Player Personnel:** Paris Johnson (San Diego State, 2011), Second season at SDSU

## 2017-18 PRONUNCIATION GUIDE

Jenay Bojorquez	Jen-AY bo-HOR-keh-z
Te'a Adams	TAY-uh
Naomi Ekwedike	nay-O-mee ECK-weh-DEE-kay
Arantxa Gómez Ferrer	uh-RON-cha fur-AIR
McKynzie Fort	ma-KEN-zee
Loli Gomez	LOW-lee
Najé Murray	Nah-ZHAY
Baylee Vanderdoes	VAN-der-doze
Kennedi Villa	VILL-uh
Ciara Carl	see-ARR-uh



CAREER HIGHS

Points  
1, vs. Presbyterian (11-10-17)

Rebounds  
2, vs. Tulane (11-25-17)

Assists  
1, vs. Presbyterian (11-10-17)

Steals  
N/A

Blocks  
N/A

Field Goals  
N/A

Field Goal Attempts  
N/A

3-Point Field Goals  
N/A

3-Point Field Goal Attempts  
N/A

Free Throws  
1, vs. Presbyterian (11-10-17)

Free Throw Attempts  
2, vs. Presbyterian (11-10-17)

MISC. CAREER STATS

Double-figure  
scoring games: 0

Double-figure  
rebounding games: 0



# #0 KENNEDI VILLA

Freshman • HS

6-0

Guard

Oakland, Calif.

St. Mary's HS

Opponent	Date	gs	min	Total		3-Pointers		Free throws		Rebounds					pf	a	t/o	blk	stl	pts	avg
				fg-fga	pct	3fg-fga	pct	ft-fta	pct	off	def	tot	avg								
PRESBYTERIAN	11-10-17		4	0-0	.000	0-0	.000	1-2	.500	0	0	0	0.0	0	1	0	0	0	0	1	1.0
CSUN	11-14-17		dnp	-	-	-	-	-	-	-	-	-	-	-	-	-	-	-	-	-	-
CAL STATE FULLERTON	11-18-17		dnp	-	-	-	-	-	-	-	-	-	-	-	-	-	-	-	-	-	-
vs Central Michigan	11-24-17		dnp	-	-	-	-	-	-	-	-	-	-	-	-	-	-	-	-	-	-
vs Tulane	11-25-17		3	0-0	.000	0-0	.000	0-0	.000	0	2	2	1.0	1	0	0	0	0	0	0	0.5
SAN DIEGO	11-29-17		dnp	-	-	-	-	-	-	-	-	-	-	-	-	-	-	-	-	-	-
at Arizona	12-03-17		dnp	-	-	-	-	-	-	-	-	-	-	-	-	-	-	-	-	-	-
Totals		0	7	0-0	.000	0-0	.000	1-2	.500	0	2	2	1.0	1	1	0	0	0	0	1	0.5

Games played: 2  
Minutes/game: 3.5  
Points/game: 0.5  
FT Pct: 50.0

Rebounds/game: 1.0  
Assists/game: 0.5  
Assist/turnover ratio: 99.9

CAREER STATISTICS

Season	gp-gs	min/avg	Total		3-Point		F-Throws		Rebounds				Scoring								
			fg-fga	pct	fg-fga	pct	ft-fta	pct	off	def	tot	avg	pf	fo	ast	to	blk	stl	pts	avg	
2017-18	2-0	7/3.5	0-0	.000	0-0	.000	1-2	.500	0	2	2	1.0	1	0	1	0	0	0	0	1	0.5
TOTAL	2-0	7/3.5	0-0	.000	0-0	.000	1-2	.500	0	2	2	1.0	1	0	1	0	0	0	0	1	0.5

CAREER HIGHS

Points  
22, vs. Nevada (1-4-17)

Rebounds  
12, Twice  
Last: at Colorado State (1-28-17)

Assists  
2, Six times  
Last: at Arizona (12-3-17)

Steals  
4, vs. Air Force (11-25-17)

Blocks  
1, Twice  
Last: vs. CSUN (11-14-17)

Field Goals  
8, vs. Nevada (1-4-17)

Field Goal Attempts  
14, vs. Nevada (1-4-17)

3-Point Field Goals  
3, Three times  
Last: vs. CSUN (11-14-17)

3-Point Field Goal Attempts  
6, Twice  
Last: vs. CSUN (11-14-17)

Free Throws  
4, Twice, Last: vs. Seattle U (12-4-14)\*

Free Throw Attempts  
6, Twice, Last: vs. Nevada (1-4-17)

MISC. CAREER STATS

Double-figure scoring games: 9

Double-figure rebounding games: 2

\* at Washington



# #1 KHALIA LARK

Senior • 1L

6-0

Guard/Forward

Irvine, Calif.

Univ. of Washington / Mater Dei High School

Opponent	Date	gs	min	Total		3-Pointers		Free throws		Rebounds				pf	a	t/o	blk	stl	pts	avg	
				fg-fga	pct	3fg-fga	pct	ft-fa	pct	off	def	tot	avg								
PRESBYTERIAN	11-10-17	*	16	0-2	.000	0-1	.000	0-0	.000	1	3	4	4.0	1	1	3	1	1	0	0.0	
CSUN	11-14-17	*	31	4-10	.400	3-6	.500	2-2	1.000	1	8	9	6.5	1	1	4	1	3	13	6.5	
CAL STATE FULLERTON	11-18-17	*	30	1-10	.100	1-4	.250	0-0	.000	4	6	10	7.7	4	1	3	0	0	3	5.3	
vs Central Michigan	11-24-17	*	25	0-5	.000	0-3	.000	2-2	1.000	2	2	4	6.8	4	0	0	0	1	2	4.5	
vs Tulane	11-25-17	*	11	1-3	.333	0-1	.000	0-0	.000	0	1	1	5.6	0	1	3	0	1	2	4.0	
SAN DIEGO	11-29-17	*	23	0-4	.000	0-1	.000	0-2	.000	2	2	4	5.3	0	1	1	0	1	0	3.3	
at Arizona	12-03-17	*	29	2-6	.333	2-3	.667	1-2	.500	1	4	5	5.3	3	2	1	0	0	7	3.9	
Totals			7	165	8-40	.200	6-19	.316	5-8	.625	11	26	37	5.3	13	7	15	2	7	27	3.9

Games played: 7  
Minutes/game: 23.6  
Points/game: 3.9  
FG Pct: 20.0  
3FG Pct: 31.6  
FT Pct: 62.5

Rebounds/game: 5.3  
Assists/game: 1.0  
Turnovers/game: 2.1  
Assist/turnover ratio: 0.5  
Steals/game: 1.0  
Blocks/game: 0.3

CAREER STATISTICS

Season	gp-gs	min/avg	Total		3-Point		F-Throws		Rebounds				Scoring							
			fg-fga	pct	fg-fga	pct	ft-fa	pct	off	def	tot	avg	pf	fo	ast	to	blk	stl	pts	avg
2014-15*	23-0	198/8.6	17-39	.436	11-27	.407	11-14	.786	10	21	31	1.3	12	0	5	13	0	3	56	2.4
2015-16*	6-0	83/13.8	5-15	.333	2-7	.286	5-11	.455	2	11	13	2.2	3	0	2	7	0	1	17	2.8
2016-17	21-10	544/25.9	72-202	.356	20-81	.247	12-28	.429	39	90	129	6.1	46	0	23	44	1	12	176	8.4
2017-18	7-7	165/23.6	8-40	.200	6-19	.316	5-8	.625	11	26	37	5.3	13	0	7	15	2	7	27	3.9
TOTAL	28-17	709/25.3	80-242	.331	26-100	.260	17-36	.472	50	116	166	5.9	59	0	30	59	3	19	203	7.3
All*	57-17	990/17.4	102-296	.345	39-134	.291	33-61	.541	62	148	210	3.7	74	0	37	79	3	23	276	4.8

CAREER HIGHS

Points  
6, vs. Tulane (11-25-17)

Rebounds  
3, vs. Presbyterian (11-10-17)

Assists  
2, vs. Presbyterian (11-10-17)

Steals  
1, Twice  
Last: vs. Tulane (11-25-17)

Blocks  
N/A

Field Goals  
2, vs. Tulane (11-25-17)

Field Goal Attempts  
5, vs. Tulane (11-25-17)

3-Point Field Goals  
1, vs. CSUN (11-14-17)

3-Point Field Goal Attempts  
1, vs. CSUN (11-14-17)

Free Throws  
2, vs. Tulane (11-25-17)

Free Throw Attempts  
3, vs. Tulane (11-25-17)

MISC. CAREER STATS

Double-figure  
scoring games: 0

Double-figure  
rebounding games: 0



# #3 JENAY BOJORQUEZ

Freshman • HS

5-6

Guard

Phoenix, Ariz.

Sierra Linda HS

Opponent	Date	gs	min	Total		3-Pointers		Free throws		Rebounds					pts	avg				
				fg-fga	pct	3fg-fga	pct	ft-fa	pct	off	def	tot	avg	pf			a	t/o	blk	stl
PRESBYTERIAN	11-10-17	19		0-2	.000	0-0	.000	0-0	.000	0	3	3	3.0	2	2	1	0	1	0	0.0
CSUN	11-14-17	7		1-3	.333	1-1	1.000	0-0	.000	0	1	1	2.0	3	0	0	0	0	3	1.5
CAL STATE FULLERTON	11-18-17	12		1-3	.333	0-0	.000	0-0	.000	0	1	1	1.7	1	0	2	0	0	2	1.7
vs Central Michigan	11-24-17	5		1-4	.250	0-0	.000	0-0	.000	0	0	0	1.3	0	0	0	0	0	2	1.8
vs Tulane	11-25-17	14		2-5	.400	0-0	.000	2-3	.667	1	1	2	1.4	1	1	3	0	1	6	2.6
SAN DIEGO	11-29-17	dnp		-	-	-	-	-	-	-	-	-	-	-	-	-	-	-	-	-
at Arizona	12-03-17	dnp		-	-	-	-	-	-	-	-	-	-	-	-	-	-	-	-	-
Totals		0	57	5-17	.294	1-1	1.000	2-3	.667	1	6	7	1.4	7	3	6	0	2	13	2.6

Games played: 5  
Minutes/game: 11.4  
Points/game: 2.6  
FG Pct: 29.4  
3FG Pct: 100.0  
FT Pct: 66.7

Rebounds/game: 1.4  
Assists/game: 0.6  
Turnovers/game: 1.2  
Assist/turnover ratio: 0.5  
Steals/game: 0.4

CAREER STATISTICS

Season	gp-gs	min/avg	Total		3-Point		F-Throws		Rebounds				Scoring							
			fg-fga	pct	fg-fga	pct	ft-fa	pct	off	def	tot	avg	pf	fo	ast	to	blk	stl	pts	avg
2017-18	5-0	57/11.4	5-17	.294	1-1	1.000	2-3	.667	1	6	7	1.4	7	0	3	6	0	2	13	2.6
TOTAL	5-0	57/11.4	5-17	.294	1-1	1.000	2-3	.667	1	6	7	1.4	7	0	3	6	0	2	13	2.6

**CAREER HIGHS**

**Points**  
 5, Three times  
 Last: vs. San Diego (11-29-17)

**Rebounds**  
 4, Twice  
 Last: at Arizona (12-3-17)

**Assists**  
 3, vs. Cal State Fullerton (11-18-17)

**Steals**  
 2, Twice  
 Last: vs. Tulane (11-25-17)

**Blocks**  
 1, vs. CSUN (11-14-17)

**Field Goals**  
 2, Twice  
 Last: vs. Central Michigan (11-24-17)

**Field Goal Attempts**  
 8, vs. Central Michigan (11-24-17)

**3-Point Field Goals**  
 1, vs. Tulane (11-25-17)

**3-Point Field Goal Attempts**  
 4, vs. Presbyterian (11-10-17)

**Free Throws**  
 3, vs. San Diego (11-29-17)

**Free Throw Attempts**  
 5, vs. San Diego (11-29-17)

---

**MISC. CAREER STATS**

Double-figure scoring games: 0

Double-figure rebounding games: 0



# #5 TE'A ADAMS

Freshman • HS

5-9

Guard

Kirkland, Wash.

Juanita HS

Opponent	Date	gs	min	Total		3-Pointers		Free throws		Rebounds				pf	a	t/o	blk	stl	pts	avg
				fg-fga	pct	3fg-fga	pct	ft-fa	pct	off	def	tot	avg							
PRESBYTERIAN	11-10-17	17	2-7	.286	0-4	.000	0-0	.000	0	0	0	0.0	3	2	1	0	1	4	4.0	
CSUN	11-14-17	4	0-3	.000	0-2	.000	0-0	.000	0	0	0	0.0	0	0	1	1	0	0	2.0	
CAL STATE FULLERTON	11-18-17	8	1-5	.200	0-1	.000	0-0	.000	0	1	1	0.3	1	3	1	0	2	2	2.0	
vs Central Michigan	11-24-17	13	2-8	.250	0-3	.000	1-1	1.000	1	0	1	0.5	1	1	0	0	1	5	2.8	
vs Tulane	11-25-17	5	1-3	.333	1-1	1.000	2-4	.500	1	1	2	0.8	0	0	1	0	2	5	3.2	
SAN DIEGO	11-29-17	15	1-7	.143	0-1	.000	3-5	.600	0	4	4	1.3	1	2	2	0	1	5	3.5	
at Arizona	12-03-17	14	0-5	.000	0-3	.000	0-0	.000	2	2	4	1.7	1	1	2	0	0	0	3.0	
<b>Totals</b>		<b>0</b>	<b>76</b>	<b>7-38</b>	<b>.184</b>	<b>1-15</b>	<b>.067</b>	<b>6-10</b>	<b>.600</b>	<b>4</b>	<b>8</b>	<b>12</b>	<b>1.7</b>	<b>7</b>	<b>9</b>	<b>8</b>	<b>1</b>	<b>7</b>	<b>21</b>	<b>3.0</b>

Games played: 7  
 Minutes/game: 10.9  
 Points/game: 3.0  
 FG Pct: 18.4  
 3FG Pct: 6.7  
 FT Pct: 60.0

Rebounds/game: 1.7  
 Assists/game: 1.3  
 Turnovers/game: 1.1  
 Assist/turnover ratio: 1.1  
 Steals/game: 1.0  
 Blocks/game: 0.1

**CAREER STATISTICS**

Season	gp-gs	min/avg	Total		3-Point		F-Throws		Rebounds				Scoring							
			fg-fga	pct	fg-fga	pct	ft-fa	pct	off	def	tot	avg	pf	fo	ast	to	blk	stl	pts	avg
2017-18	7-0	76/10.9	7-38	.184	1-15	.067	6-10	.600	4	8	12	1.7	7	0	9	8	1	7	21	3.0
<b>TOTAL</b>	<b>7-0</b>	<b>76/10.9</b>	<b>7-38</b>	<b>.184</b>	<b>1-15</b>	<b>.067</b>	<b>6-10</b>	<b>.600</b>	<b>4</b>	<b>8</b>	<b>12</b>	<b>1.7</b>	<b>7</b>	<b>0</b>	<b>9</b>	<b>8</b>	<b>1</b>	<b>7</b>	<b>21</b>	<b>3.0</b>

CAREER HIGHS

Points  
14, vs. Presbyterian (11-10-17)

Rebounds  
4, vs. San Diego (11-29-17)

Assists  
1, Twice  
Last: vs. San Diego (11-29-17)

Steals  
1, Twice  
Last: vs. San Diego (11-29-17)

Blocks  
N/A

Field Goals  
5, vs. Presbyterian (11-10-17)

Field Goal Attempts  
9, Three times  
Last: at Arizona (12-3-17)

3-Point Field Goals  
4, vs. Presbyterian (11-10-17)

3-Point Field Goal Attempts  
7, Twice  
Last: vs. Central Michigan (11-24-17)

Free Throws  
6, vs. Central Michigan (11-24-17)

Free Throw Attempts  
6, vs. Central Michigan (11-24-17)

MISC. CAREER STATS

Double-figure  
scoring games: 5

Double-figure  
rebounding games: 0



# #10 NAJÉ MURRAY

Freshman • HS

5-6

Guard

Stockton, Calif.

St. Mary's High School

Opponent	Date	gs	min	Total		3-Pointers		Free throws		Rebounds				pf	a	t/o	blk	stl	pts	avg
				fg-fga	pct	3fg-fga	pct	ft-fa	pct	off	def	tot	avg							
PRESBYTERIAN	11-10-17	13	5-9	.556	4-7	.571	0-0	.000	0	3	3	3.0	2	1	1	0	1	14	14.0	
CSUN	11-14-17	13	2-7	.286	1-5	.200	0-0	.000	0	0	0	1.5	0	0	1	0	0	5	9.5	
CAL STATE FULLERTON	11-18-17	16	4-6	.667	3-5	.600	0-0	.000	0	0	0	1.0	3	0	3	0	0	11	10.0	
vs Central Michigan	11-24-17	16	2-9	.222	2-7	.286	6-6	1.000	0	0	0	0.8	0	0	0	0	0	12	10.5	
vs Tulane	11-25-17	24	0-6	.000	0-4	.000	0-0	.000	0	2	2	1.0	3	0	1	0	0	0	8.4	
SAN DIEGO	11-29-17	13	3-8	.375	2-4	.500	2-2	1.000	1	3	4	1.5	2	1	1	0	1	10	8.7	
at Arizona	12-03-17	17	4-9	.444	3-4	.750	2-2	1.000	0	2	2	1.6	0	0	1	0	1	13	9.3	
Totals		0	112	20-54	.370	15-36	.417	10-10	1.000	1	10	11	1.6	10	2	8	0	3	65	9.3

Games played: 7  
Minutes/game: 16.0  
Points/game: 9.3  
FG Pct: 37.0  
3FG Pct: 41.7  
FT Pct: 100.0

Rebounds/game: 1.6  
Assists/game: 0.3  
Turnovers/game: 1.1  
Assist/turnover ratio: 0.3  
Steals/game: 0.4

CAREER STATISTICS

Season	gp-gs	min/avg	Total		3-Point		F-Throws		Rebounds				Scoring							
			fg-fga	pct	fg-fga	pct	ft-fa	pct	off	def	tot	avg	pf	fo	ast	to	blk	stl	pts	avg
2017-18	7-0	76/10.9	7-38	.184	1-15	.067	6-10	.600	4	8	12	1.7	7	0	9	8	1	7	21	3.0
TOTAL	7-0	76/10.9	7-38	.184	1-15	.067	6-10	.600	4	8	12	1.7	7	0	9	8	1	7	21	3.0

CAREER HIGHS

Points  
8, vs. San Diego (11-29-17)

Rebounds  
5, Four times  
Last: vs. CSUN (11-14-17)

Assists  
2, vs. Boise State (1-7-17)

Steals  
1, Eight times  
Last: vs. Colorado State (2-25-17)

Blocks  
2, Five times  
Last: vs. Cal State Fullerton (11-18-17)

Field Goals  
4, vs. San Diego (11-29-17)

Field Goal Attempts  
6, vs. San Diego (11-29-17)

3-Point Field Goals  
N/A

3-Point Field Goal Attempts  
N/A

Free Throws  
2, Four times  
Last: vs. Utah State (2-15-17)

Free Throw Attempts  
4, Three times  
Last: at San Diego (11-17-16)

MISC. CAREER STATS

Double-figure scoring games: 0

Double-figure rebounding games: 0



# #11 ARANTXA GÓMEZ FERRER

Junior • 2L

6-0

Forward

Valencia, Spain

Parque Colegio Santa Ana High School / Ros Casares Valencia Club

Opponent	Date	gs	min	Total		3-Pointers		Free throws		Rebounds					pts	avg					
				fg-fga	pct	3fg-fga	pct	ft-fa	pct	off	def	tot	avg	pf			a	t/o	blk	stl	
PRESBYTERIAN	11-10-17	*	14	2-3	.667	0-0	.000	0-0	.000	0	3	3	3.0	0	0	0	0	0	0	4	4.0
CSUN	11-14-17	*	24	1-3	.333	0-0	.000	0-0	.000	2	3	5	4.0	2	0	1	2	0	2	3.0	
CAL STATE FULLERTON	11-18-17	*	11	0-0	.000	0-0	.000	0-0	.000	1	1	2	3.3	2	0	1	2	0	0	2.0	
vs Central Michigan	11-24-17	*	5	0-1	.000	0-0	.000	0-0	.000	1	0	1	2.8	1	0	0	0	0	0	1.5	
vs Tulane	11-25-17	*	9	0-0	.000	0-0	.000	0-0	.000	1	2	3	2.8	1	0	1	0	0	0	1.2	
SAN DIEGO	11-29-17	*	16	4-6	.667	0-0	.000	0-0	.000	3	0	3	2.8	3	0	0	0	0	8	2.3	
at Arizona	12-03-17		dnp	-	-	-	-	-	-	-	-	-	-	-	-	-	-	-	-	-	
Totals			6	79	7-13	.538	0-0	.000	0-0	.000	8	9	17	2.8	9	0	3	4	0	14	2.3

Games played: 6  
Minutes/game: 13.2  
Points/game: 2.3  
FG Pct: 53.8

Rebounds/game: 2.8  
Turnovers/game: 0.5  
Blocks/game: 0.7

CAREER STATISTICS

Season	gp-gs	min/avg	Total		3-Point		F-Throws		Rebounds					Scoring						
			fg-fga	pct	fg-fga	pct	ft-fa	pct	off	def	tot	avg	pf	fo	ast	to	blk	stl	pts	avg
2015-16	18-0	118/6.6	5-12	.417	0-0	.000	0-12	.000	10	6	16	0.9	18	0	2	5	1	4	10	0.6
2016-17	28-7	322/11.5	18-34	.529	0-0	.000	13-27	.481	32	29	61	2.2	34	0	6	17	9	4	49	1.8
2017-18	6-6	79/13.2	7-13	.538	0-0	.000	0-0	.000	8	9	17	2.8	9	0	0	3	4	0	14	2.3
TOTAL	52-13	519/10.0	30-59	.508	0-0	.000	13-39	.333	50	44	94	1.8	61	0	8	25	14	8	73	1.4

CAREER HIGHS

**Points**  
5, at Air Force (2-28-17)

**Rebounds**  
4, at Air Force (2-28-17)

**Assists**  
2, Twice, Last: at Air Force (2-28-17)

**Steals**  
1, at Loyola Marymount (12-10-15)

**Blocks**  
N/A

**Field Goals**  
2, at Air Force (2-28-17)

**Field Goal Attempts**  
3, Twice  
Last: vs. Air Force (1-21-15)

**3-Point Field Goals**  
1, Twice  
Last: vs. San Diego Christian (12-21-15)

**3-Point Field Goal Attempts**  
4, Twice  
Last: vs. Air Force (1-21-15)

**Free Throws**  
2, vs. Michigan (12-9-16)

**Free Throw Attempts**  
2, Three times  
Last: at UNLV (2-18-17)

MISC. CAREER STATS

Double-figure scoring games: 0

Double-figure rebounding games: 0



# #13 ALLISON BROWN

Senior • SQ  
5-7  
Guard  
Anaheim Hills, Calif.  
Mater Dei High School

As A Junior (2016-17)

Made appearances in nine games, logging career highs in minutes played (39), points (12), rebounds (8) and assists (5) ... Had a career game in a win at Air Force (2-28-17), notching five points on two field goals and a free throw, grabbing four rebounds and dishing out two assists in a career-best 14 minutes played ... Made consecutive appearances for the first time in her career when she recorded one rebound each against New Mexico (3-3-17) and San José State in the Mountain West Tournament (3-6-17).

As A Sophomore (2015-16)

Played in a career-high nine games during her sophomore campaign ... Totaled three points, four rebounds, two assists and one steal in 19 minutes as a reserve ... Collected a personal-best three rebounds while sinking a three-point bucket against San Diego Christian (12-21-15) ... Finished with one assist in road contests at Loyola Marymount (12-10-15) and UNLV (3-4-16).

As A Freshman (2014-15)

Appeared in seven games after joining the squad in the fall as a walk-on ... Made her first collegiate basket a memorable one, providing the Aztecs' margin of victory with a three-pointer at the halftime buzzer vs. Wyoming (1-14-15) ... Logged a season-high 11 minutes against the Cowgirls, finishing with two rebounds and two assists ... Also attempted four field goals in seven minutes against Air Force (1-21-15).

At Mater Dei High School

Earned four varsity letters under head coach Kevin Kiernan ... Contributed to a powerful Monarchs program that amassed a 115-9 record during her prep career and captured four straight Trinity League championships to go with a pair of CIF Division I state titles in 2011 and 2012 ... The 2010-11 Mater Dei squad finished the year with a No. 1 national ranking ... Earned a spot on the academic honor roll ... Was also involved in student government.

Personal

Allison Brown was born in Placentia, Calif. ... Daughter of Tom and Melissa Brown ... Has one older brother, David, who was a member of the UCLA men's basketball team. ... Lists Michael Jordan as her favorite athlete ... Enjoys surfing and playing beach volleyball ... Majoring in biology at SDSU.

CAREER STATISTICS

Season	gp-gs	min/avg	Total		3-Point		F-Throws		Rebounds							Scoring				
			fg-fga	pct	fg-fga	pct	ft-fa	pct	off	def	tot	avg	pf	fo	ast	to	blk	stl	pts	avg
2014-15	7-0	26/3.7	1-9	.111	1-9	.111	0-2	.000	1	1	2	0.3	3	0	2	3	0	0	3	0.4
2015-16	9-0	19/2.1	1-4	.250	1-3	.333	0-0	.000	1	3	4	0.4	0	0	2	3	0	1	3	0.3
2016-17	9-0	39/4.3	4-5	.800	0-0	.000	4-5	.800	1	7	8	0.9	5	0	5	2	0	0	12	1.3
TOTAL	25-0	84/3.4	6-18	.333	2-12	.167	4-7	.571	3	11	14	0.6	8	0	9	8	0	1	18	0.7

CAREER HIGHS

Points  
29, Twice  
Last: at San José State (1-11-17)

Rebounds  
11, Twice  
Last: at San José State (1-11-17)

Assists  
8, vs. San Diego (11-29-17)

Steals  
5, Four times  
Last: at New Mexico (2-6-16)

Blocks  
2, Four times  
Last: vs. Air Force (1-25-17)

Field Goals  
12, at San José State (1-11-17)

Field Goal Attempts  
29, at San José State (1-11-17)

3-Point Field Goals  
2, Three times  
Last: vs. CSUN (11-14-17)

3-Point Field Goal Attempts  
6, Twice  
Last: vs. Loyola Marymount (11-20-16)

Free Throws  
11, Twice  
Last: at Arizona (12-3-17)

Free Throw Attempts  
13, at Arizona (12-3-17)

MISC. CAREER STATS

Double-figure scoring games: 74

Double-figure rebounding games: 2

Double-Doubles: 2



# #15 McKYNZIE FORT

Senior • 3L

5-9

Guard

Fontana, Calif.

Etiwanda High School

Opponent	Date	gs	min	Total		3-Pointers		Free throws		Rebounds				pf	a	t/o	blk	stl	pts	avg	
				fg-fga	pct	3fg-fga	pct	ft-fa	pct	off	def	tot	avg								
PRESBYTERIAN	11-10-17	*	25	5-9	.556	2-3	.667	4-4	1.000	2	5	7	7.0	0	2	3	0	1	16	16.0	
CSUN	11-14-17	*	34	6-17	.353	1-2	.500	3-5	.600	5	1	6	6.5	1	3	2	0	3	16	16.0	
CAL STATE FULLERTON	11-18-17	*	34	7-15	.467	1-2	.500	2-3	.667	1	5	6	6.3	1	4	1	0	2	17	16.3	
vs Central Michigan	11-24-17	*	37	9-19	.474	0-1	.000	3-4	.750	0	3	3	5.5	3	3	2	0	2	21	17.5	
vs Tulane	11-25-17	*	22	1-5	.200	0-0	.000	0-0	.000	1	2	3	5.0	1	3	2	0	0	2	14.4	
SAN DIEGO	11-29-17	*	34	10-16	.625	0-0	.000	4-6	.667	1	5	6	5.2	1	8	3	1	0	24	16.0	
at Arizona	12-03-17	*	32	7-12	.583	1-3	.333	11-13	.846	1	5	6	5.3	2	2	2	0	2	26	17.4	
Totals			7	218	45-93	.484	5-11	.455	27-35	.771	11	26	37	5.3	9	25	15	1	10	122	17.4

Games played: 7  
Minutes/game: 31.1  
Points/game: 17.4  
FG Pct: 48.4  
3FG Pct: 45.5  
FT Pct: 77.1

Rebounds/game: 5.3  
Assists/game: 3.6  
Turnovers/game: 2.1  
Assist/turnover ratio: 1.7  
Steals/game: 1.4  
Blocks/game: 0.1

CAREER STATISTICS

Season	gp-gs	min/avg	Total		3-Point		F-Throws		Rebounds				Scoring							
			fg-fga	pct	fg-fga	pct	ft-fa	pct	off	def	tot	avg	pf	fo	ast	to	blk	stl	pts	avg
2014-15	31-24	839/27.1	125-278	.450	2-13	.154	60-96	.625	35	64	99	3.2	55	0	59	94	5	30	312	10.1
2015-16	31-31	971/31.3	169-366	.462	3-12	.250	104-150	.693	44	83	127	4.1	71	0	73	93	8	62	445	14.4
2016-17	30-30	956/31.9	176-404	.436	8-41	.195	116-148	.784	41	80	121	4.0	65	2	75	74	6	29	476	15.9
2017-18	7-7	218/31.1	45-93	.484	5-11	.455	27-35	.771	11	26	37	5.3	9	0	25	15	1	10	122	17.4
TOTAL	99-92	2984/30.1	515-1141	.451	18-77	.234	307-429	.716	131	253	384	3.9	200	2	232	276	20	131	1355	13.7



CAREER HIGHS

Points  
20, at San José State (1-11-17)

Rebounds  
8, vs. Utah State (2-15-17)

Assists  
10, vs. CSUN (11-14-17)

Steals  
2, Six times  
Last: vs. CSUN (11-14-17)

Blocks  
1, Three times  
Last: vs. Air Force (1-25-17)

Field Goals  
6, Twice  
Last: at San José State (1-11-17)

Field Goal Attempts  
13, at San José State (1-11-17)

3-Point Field Goals  
4, Three times  
Last: at Arizona (12-3-17)

3-Point Field Goal Attempts  
9, at San José State (1-6-16)

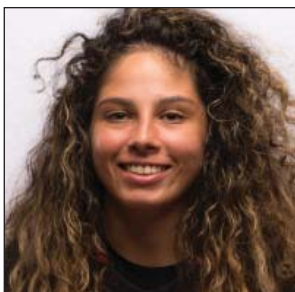
Free Throws  
6, Twice  
Last: vs. San José State (2-8-17)

Free Throw Attempts  
6, Twice  
Last: vs. Central Connecticut  
(11-27-16)

MISC. CAREER STATS

Double-figure  
scoring games: 13

Double-figure  
rebounding games: 0



# #20 GEENA GOMEZ

Senior • 2L

5-8

Guard

Huntington Beach, Calif.

St. Joseph's (Pa.) / Edison High School

Opponent	Date	gs	min	Total		3-Pointers		Free throws		Rebounds				pf	a	t/o	blk	stl	pts	avg	
				fg-fga	pct	3fg-fga	pct	ft-fa	pct	off	def	tot	avg								
PRESBYTERIAN	11-10-17	*	21	2-5	.400	2-4	.500	0-0	.000	1	1	2	2.0	1	6	5	0	0	6	6.0	
CSUN	11-14-17	*	32	1-6	.167	0-3	.000	0-0	.000	0	2	2	2.0	4	10	6	1	2	2	4.0	
CAL STATE FULLERTON	11-18-17	*	25	3-5	.600	1-3	.333	0-0	.000	1	5	6	3.3	1	1	1	0	0	7	5.0	
vs Central Michigan	11-24-17	*	34	5-11	.455	3-6	.500	2-5	.400	1	5	6	4.0	2	7	0	0	0	15	7.5	
vs Tulane	11-25-17	*	20	2-9	.222	0-2	.000	2-2	1.000	0	0	0	3.2	2	0	2	0	0	6	7.2	
SAN DIEGO	11-29-17	*	33	3-9	.333	0-4	.000	1-2	.500	1	4	5	3.5	3	3	1	0	1	7	7.2	
at Arizona	12-03-17	*	32	4-9	.444	4-7	.571	0-0	.000	0	3	3	3.4	0	7	3	0	0	12	7.9	
Totals			7	197	20-54	.370	10-29	.345	5-9	.556	4	20	24	3.4	13	34	18	1	3	55	7.9

Games played: 7  
Minutes/game: 28.1  
Points/game: 7.9  
FG Pct: 37.0  
3FG Pct: 34.5  
FT Pct: 55.6

Rebounds/game: 3.4  
Assists/game: 4.9  
Turnovers/game: 2.6  
Assist/turnover ratio: 1.9  
Steals/game: 0.4  
Blocks/game: 0.1

CAREER STATISTICS

Season	gp-gs	min/avg	Total		3-Point		F-Throws		Rebounds				Scoring							
			fg-fga	pct	fg-fga	pct	ft-fa	pct	off	def	tot	avg	pf	fo	ast	to	blk	stl	pts	avg
2013-14*	24-1	114/4.8	10-34	.294	3-14	.214	5-7	.714	1	10	11	0.5	17	0	13	6	1	2	28	1.2
2015-16	29-0	426/14.7	30-107	.280	23-71	.324	15-22	.682	13	42	55	1.9	23	0	37	26	2	11	98	3.4
2016-17	30-21	743/24.8	68-203	.335	36-100	.360	32-45	.711	22	75	97	3.2	44	0	72	58	1	13	204	6.8
2017-18	7-7	197/28.1	20-54	.370	10-29	.345	5-9	.556	4	20	24	3.4	13	0	34	18	1	3	55	7.9
TOTAL	66-28	1366/20.7	118-364	.324	69-200	.345	52-76	.684	39	137	176	2.7	80	0	143	102	4	27	357	5.4
All*	90-29	1480/16.4	128-398	.322	72-214	.336	57-83	.687	40	147	187	2.1	97	0	156	108	5	29	385	4.3

CAREER HIGHS

**Points**  
7, at UC Davis (12-2-16)

**Rebounds**  
3, Twice  
Last: vs. San Diego Christian (11-14-16)

**Assists**  
1, Twice, Last: vs. UNLV (1-18-17)

**Steals**  
N/A

**Blocks**  
1, at San Diego (11-20-16)

**Field Goals**  
2, at UC Davis (12-2-16)

**Field Goal Attempts**  
4, vs. San Diego Christian (11-14-16)

**3-Point Field Goals**  
1, at UC Davis (12-2-16)

**3-Point Field Goal Attempts**  
2, at UC Davis (12-2-16)

**Free Throws**  
2, Twice, Last: at UC Davis (12-2-16)

**Free Throw Attempts**  
2, Three times  
Last: at UC Davis (12-2-16)

MISC. CAREER STATS

Double-figure scoring games: 0

Double-figure rebounding games: 0



# #21 ABBY LOWE

Sophomore • 1L

5-11

Guard

Stockport, England

Barking Abbey Academy

Opponent	Date	gs	min	Total		3-Pointers		Free throws		Rebounds				pf	a	t/o	blk	stl	pts	avg
				fg-fga	pct	3fg-fga	pct	ft-fa	pct	off	def	tot	avg							
PRESBYTERIAN	11-10-17	dnp	-	-	-	-	-	-	-	-	-	-	-	-	-	-	-	-	-	-
CSUN	11-14-17	dnp	-	-	-	-	-	-	-	-	-	-	-	-	-	-	-	-	-	-
CAL STATE FULLERTON	11-18-17	dnp	-	-	-	-	-	-	-	-	-	-	-	-	-	-	-	-	-	-
vs Central Michigan	11-24-17	dnp	-	-	-	-	-	-	-	-	-	-	-	-	-	-	-	-	-	-
vs Tulane	11-25-17	12	2-3	.667	1-2	.500	0-2	.000	1	2	3	3.0	1	0	1	0	1	5	5.0	
SAN DIEGO	11-29-17	dnp	-	-	-	-	-	-	-	-	-	-	-	-	-	-	-	-	-	-
at Arizona	12-03-17	dnp	-	-	-	-	-	-	-	-	-	-	-	-	-	-	-	-	-	-
<b>Totals</b>		0	12	2-3	.667	1-2	.500	0-2	.000	1	2	3	3.0	1	0	1	0	1	5	5.0

Games played: 1  
Minutes/game: 12.0  
Points/game: 5.0  
FG Pct: 66.7  
3FG Pct: 50.0  
FT Pct: 0.0

Rebounds/game: 3.0  
Turnovers/game: 1.0  
Steals/game: 1.0

CAREER STATISTICS

Season	gp-gs	min/avg	Total		3-Point		F-Throws		Rebounds				Scoring							
			fg-fga	pct	fg-fga	pct	ft-fa	pct	off	def	tot	avg	pf	fo	ast	to	blk	stl	pts	avg
2016-17	15-0	79/5.3	6-19	.316	1-6	.167	5-7	.714	5	5	10	0.7	12	0	2	8	1	0	18	1.2
2017-18	1-0	12/12.0	2-3	.667	1-2	.500	0-2	.000	1	2	3	3.0	1	0	0	1	0	1	5	5.0
<b>TOTAL</b>	<b>16-0</b>	<b>91/5.7</b>	<b>8-22</b>	<b>.364</b>	<b>2-8</b>	<b>.250</b>	<b>5-9</b>	<b>.556</b>	<b>6</b>	<b>7</b>	<b>13</b>	<b>0.8</b>	<b>13</b>	<b>0</b>	<b>2</b>	<b>9</b>	<b>1</b>	<b>1</b>	<b>23</b>	<b>1.4</b>

CAREER HIGHS

**Points**  
21, vs. UNLV (1-18-17)

**Rebounds**  
9, vs. New Mexico (3-3-17)

**Assists**  
3, vs. UT Arlington (11-26-16)

**Steals**  
4, vs. San José State (2-8-17)

**Blocks**  
1, 17 times  
Last: vs. Tulane (11-25-17)

**Field Goals**  
7, UNLV (1-18-17)

**Field Goal Attempts**  
15, vs. New Mexico (3-3-17)

**3-Point Field Goals**  
7, vs. UNLV (1-18-17)

**3-Point Field Goal Attempts**  
13, vs. UNLV (1-18-17)

**Free Throws**  
5, vs. UC Santa Barbara (12-11-16)

**Free Throw Attempts**  
5, vs. UC Santa Barbara (12-11-16)

MISC. CAREER STATS

Double-figure  
scoring games: 25

Double-figure  
rebounding games: 0



# #22 LEXY THORDERSON

Senior • 3L

6-0

Guard

Castle Rock, Colo.

Rock Canyon High School

Opponent	Date	gs	min	Total		3-Pointers		Free throws		Rebounds				pf	a	t/o	blk	stl	pts	avg	
				fg-fga	pct	3fg-fga	pct	ft-fa	pct	off	def	tot	avg								
PRESBYTERIAN	11-10-17	*	20	4-7	.571	4-7	.571	0-0	.000	0	6	6	6.0	2	2	1	0	1	12	12.0	
CSUN	11-14-17	*	29	6-11	.545	5-10	.500	0-0	.000	0	6	6	6.0	1	1	0	0	2	17	14.5	
CAL STATE FULLERTON	11-18-17	*	24	2-8	.250	2-6	.333	0-0	.000	0	2	2	4.7	0	0	1	1	2	6	11.7	
vs Central Michigan	11-24-17	*	30	4-11	.364	4-10	.400	0-0	.000	1	2	3	4.3	2	0	1	0	0	12	11.8	
vs Tulane	11-25-17	*	15	3-6	.500	3-5	.600	0-0	.000	0	0	0	3.4	2	0	1	1	0	9	11.2	
SAN DIEGO	11-29-17	*	25	5-9	.556	5-8	.625	1-2	.500	1	0	1	3.0	4	0	1	0	1	16	12.0	
at Arizona	12-03-17	*	23	2-2	1.000	1-1	1.000	3-4	.750	0	1	1	2.7	1	0	0	0	0	8	11.4	
Totals			7	166	26-54	.481	24-47	.511	4-6	.667	2	17	19	2.7	12	3	5	2	6	80	11.4

Games played: 7  
Minutes/game: 23.7  
Points/game: 11.4  
FG Pct: 48.1  
3FG Pct: 51.1  
FT Pct: 66.7

Rebounds/game: 2.7  
Assists/game: 0.4  
Turnovers/game: 0.7  
Assist/turnover ratio: 0.6  
Steals/game: 0.9  
Blocks/game: 0.3

CAREER STATISTICS

Season	gp-gs	min/avg	Total		3-Point		F-Throws		Rebounds				Scoring							
			fg-fga	pct	fg-fga	pct	ft-fa	pct	off	def	tot	avg	pf	fo	ast	to	blk	stl	pts	avg
2014-15	30-0	226/7.5	20-70	.286	13-58	.224	4-4	1.000	7	12	19	0.6	15	0	8	18	1	3	57	1.9
2015-16	31-2	524/16.9	58-172	.337	40-124	.323	5-8	.625	16	51	67	2.2	33	0	4	9	8	10	161	5.2
2016-17	28-18	720/25.7	91-244	.373	66-192	.344	17-27	.630	21	56	77	2.8	51	2	22	16	9	24	265	9.5
2017-18	7-7	166/23.7	26-54	.481	24-47	.511	4-6	.667	2	17	19	2.7	12	0	3	5	2	6	80	11.4
TOTAL	96-27	1636/17.0	195-540	.361	143-421	.340	30-45	.667	46	136	182	1.9	111	2	37	48	20	43	563	5.9

CAREER HIGHS\*

Points  
6, vs. San Francisco State (1-29-15)\*

Rebounds  
5, vs. San Francisco State (1-29-15)\*

Assists  
1, vs. Chico State (2-21-15)

Steals  
N/A

Blocks  
N/A

Field Goals  
2, vs. San Francisco State (1-29-15)

Field Goal Attempts  
3, vs. San Francisco State (1-29-15)

3-Point Field Goals  
N/A

3-Point Field Goal Attempts  
2, vs. San Francisco State (11-14-14)

Free Throws  
2, vs. San Francisco State (1-29-15)

Free Throw Attempts  
5, vs. San Francisco State (1-29-15)

MISC. CAREER STATS

Double-figure  
scoring games: 0

Double-figure  
rebounding games: 0

\* at CSU San Bernardino



# #23 LOLI GOMEZ

Junior • TR

5-8

Guard

Huntington Beach, Calif.

Edison High School

Opponent	Date	gs	min	Total		3-Pointers		Free throws		Rebounds				pf	a	t/o	blk	stl	pts	avg
				fg-fga	pct	3fg-fga	pct	ft-fa	pct	off	def	tot	avg							
PRESBYTERIAN	11-10-17	dnp		-	-	-	-	-	-	-	-	-	-	-	-	-	-	-	-	-
CSUN	11-14-17	dnp		-	-	-	-	-	-	-	-	-	-	-	-	-	-	-	-	-
CAL STATE FULLERTON	11-18-17	dnp		-	-	-	-	-	-	-	-	-	-	-	-	-	-	-	-	-
vs Central Michigan	11-24-17	0	0-0	.000	0-0	.000	0-0	.000	0	0	0	0.0	0	0	0	0	0	0	0	0.0
vs Tulane	11-25-17	3	0-1	.000	0-0	.000	0-0	.000	0	0	0	0.0	0	0	1	0	0	0	0	0.0
SAN DIEGO	11-29-17	dnp		-	-	-	-	-	-	-	-	-	-	-	-	-	-	-	-	-
at Arizona	12-03-17	dnp		-	-	-	-	-	-	-	-	-	-	-	-	-	-	-	-	-
Totals		0	3	0-1	.000	0-0	.000	0-0	.000	0	0	0.0	0	0	1	0	0	0	0	0.0

Games played: 2  
Minutes/game: 1.5  
FG Pct: 0.0

Turnovers/game: 0.5

CAREER STATISTICS

Season	gp-gs	min/avg	Total		3-Point		F-Throws		Rebounds				Scoring							
			fg-fga	pct	fg-fga	pct	ft-fa	pct	off	def	tot	avg	pf	fo	ast	to	blk	stl	pts	avg
2014-15*	8-0	30/3.8	3-10	.300	0-5	.000	2-5	.400	3	5	8	1.0	4	0	2	1	0	0	8	1.0
2017-18	2-0	3/1.5	0-1	.000	0-0	.000	0-0	.000	0	0	0	0.0	0	0	0	1	0	0	0	0.0
TOTAL	2-0	3/1.5	0-1	.000	0-0	.000	0-0	.000	0	0	0	0.0	0	0	0	1	0	0	0	0.0
All*	10-0	33/3.3	3-11	.273	0-5	.000	2-5	.400	3	5	8	0.8	4	0	2	2	0	0	8	0.8

CAREER HIGHS

Points  
N/A

Rebounds  
2, vs. Presbyterian (11-10-17)

Assists  
N/A, vs. Presbyterian (11-10-17)

Steals  
N/A

Blocks  
N/A

Field Goals  
N/A

Field Goal Attempts  
1, vs. Presbyterian (11-10-17)

3-Point Field Goals  
N/A

3-Point Field Goal Attempts  
N/A

Free Throws  
N/A

Free Throw Attempts  
N/A

MISC. CAREER STATS

Double-figure  
scoring games: 0

Double-figure  
rebounding games: 0



# #24 KIARA EDWARDS

Freshman • HS

6-1

Forward

Surprise, Ariz.

Valley Vista High School

Opponent	Date	gs	min	Total		3-Pointers		Free throws		Rebounds				pf	a	t/o	blk	stl	pts	avg
				fg-fga	pct	3fg-fga	pct	ft-fa	pct	off	def	tot	avg							
PRESBYTERIAN	11-10-17	4		0-1	.000	0-0	.000	0-0	.000	0	2	2	2.0	0	0	0	0	0	0	0.0
CSUN	11-14-17	dnp		-	-	-	-	-	-	-	-	-	-	-	-	-	-	-	-	-
CAL STATE FULLERTON	11-18-17	dnp		-	-	-	-	-	-	-	-	-	-	-	-	-	-	-	-	-
vs Central Michigan	11-24-17	dnp		-	-	-	-	-	-	-	-	-	-	-	-	-	-	-	-	-
vs Tulane	11-25-17	8		1-5	.200	0-1	.000	0-0	.000	1	2	3	2.5	0	0	0	0	0	2	1.0
SAN DIEGO	11-29-17	dnp		-	-	-	-	-	-	-	-	-	-	-	-	-	-	-	-	-
at Arizona	12-03-17	dnp		-	-	-	-	-	-	-	-	-	-	-	-	-	-	-	-	-
Totals		0	12	1-6	.167	0-1	.000	0-0	.000	1	4	5	2.5	0	0	0	0	0	2	1.0

Games played: 2  
Minutes/game: 6.0  
Points/game: 1.0  
FG Pct: 16.7  
3FG Pct: 0.0

Rebounds/game: 2.5

CAREER STATISTICS

Season	gp-gs	min/avg	Total		3-Point		F-Throws		Rebounds				Scoring							
			fg-fga	pct	fg-fga	pct	ft-fa	pct	off	def	tot	avg	pf	fo	ast	to	blk	stl	pts	avg
2017-18	2-0	12/6.0	1-6	.167	0-1	.000	0-0	.000	1	4	5	2.5	0	0	0	0	0	0	2	1.0
TOTAL	2-0	12/6.0	1-6	.167	0-1	.000	0-0	.000	1	4	5	2.5	0	0	0	0	0	0	2	1.0

CAREER HIGHS

Points  
19, vs. Sacramento State  
(11-14-14)

Rebounds  
11, vs. Sacramento State  
(11-14-14)

Assists  
5, vs. Sacramento State  
(11-14-14)

Steals  
2, Twice  
Last at Air Force (2-13-16)

Blocks  
2, at Air Force (2-13-16)

Field Goals  
6, Three times  
Last at Wyoming (12-30-15)

Field Goal Attempts  
12, vs. Sacramento State  
(11-14-14)

3-Point Field Goals  
2, vs. UC Santa Barbara (12-11-16)

3-Point Field Goal Attempts  
3, Twice  
Last: vs. UC Santa Barbara (12-11-16)

Free Throws  
7, vs. Sacramento State (1-14-14)

Free Throw Attempts  
10, vs. Sacramento State  
(11-14-14)

MISC. CAREER STATS

Double-figure  
scoring games: 9

Double-figure  
rebounding games: 1

Double-doubles: 1



# #30 CHEYENNE GREENHOUSE

Senior • 3L

5-11

Guard

Riverside, Calif.

Canyon Springs High School

Opponent	Date	gs	min	Total		3-Pointers		Free throws		Rebounds				pf	a	t/o	blk	stl	pts	avg
				fg-fga	pct	3fg-fga	pct	ft-fla	pct	off	def	tot	avg							
PRESBYTERIAN	11-10-17	17	3-5	.600	0-0	.000	0-0	.000	1	3	4	4.0	0	4	0	0	1	6	6.0	
CSUN	11-14-17	10	0-3	.000	0-0	.000	0-0	.000	0	1	1	2.5	0	0	1	0	0	0	3.0	
CAL STATE FULLERTON	11-18-17	12	1-3	.333	0-1	.000	1-2	.500	2	1	3	2.7	0	0	0	0	1	3	3.0	
vs Central Michigan	11-24-17	20	2-5	.400	0-0	.000	0-0	.000	2	1	3	2.8	2	2	0	0	1	4	3.3	
vs Tulane	11-25-17	20	1-3	.333	0-0	.000	1-2	.500	2	3	5	3.2	0	1	2	0	0	3	3.2	
SAN DIEGO	11-29-17	16	1-2	.500	0-0	.000	0-0	.000	0	0	0	2.7	1	0	0	0	0	2	3.0	
at Arizona	12-03-17	17	1-2	.500	0-0	.000	2-2	1.000	0	2	2	2.6	2	0	0	0	0	4	3.1	
Totals		0	112	9-23	.391	0-1	.000	4-6	.667	7	11	18	2.6	5	7	3	0	3	22	3.1

Games played: 7  
Minutes/game: 16.0  
Points/game: 3.1  
FG Pct: 39.1  
3FG Pct: 0.0  
FT Pct: 66.7

Rebounds/game: 2.6  
Assists/game: 1.0  
Turnovers/game: 0.4  
Assist/turnover ratio: 2.3  
Steals/game: 0.4

CAREER STATISTICS

Season	gp-gs	min/avg	Total		3-Point		F-Throws		Rebounds				Scoring							
			fg-fga	pct	fg-fga	pct	ft-fla	pct	off	def	tot	avg	pf	fo	ast	to	blk	stl	pts	avg
2014-15	31-8	441/14.2	43-118	.364	1-4	.250	32-48	.667	40	47	87	2.8	23	0	21	35	1	8	119	3.8
2015-16	31-22	647/20.9	59-161	.366	2-9	.222	33-49	.673	53	47	100	3.2	35	0	17	30	6	9	153	4.9
2016-17	29-7	447/15.4	41-109	.376	3-17	.176	36-47	.766	29	28	57	2.0	26	1	9	22	0	6	121	4.2
2017-18	7-0	112/16.0	9-23	.391	0-1	.000	4-6	.667	7	11	18	2.6	5	0	7	3	0	3	22	3.1
TOTAL	98-37	1647/16.8	152-411	.370	6-31	.194	105-150	.700	129	133	262	2.7	89	1	54	90	7	26	415	4.2

CAREER HIGHS

Points  
10, vs. San Diego Christian (11-14-16)

Rebounds  
10, vs. San Diego Christian (11-14-16)

Assists  
2, vs. Central Connecticut (11-27-16)

Steals  
1, Six times  
Last: vs. Utah State (2-15-17)

Blocks  
3, vs. San Diego (11-29-17)

Field Goals  
5, vs. San Diego Christian (11-14-16)

Field Goal Attempts  
7, Twice  
Last: vs. Presbyterian (11-10-17)

3-Point Field Goals  
N/A

3-Point Field Goal Attempts  
N/A

Free Throws  
4, at San Diego (11-17-16)

Free Throw Attempts  
4, Twice  
Last: at San Diego (11-17-16)

MISC. CAREER STATS

Double-figure  
scoring games: 1

Double-figure  
rebounding games: 1

Double-Doubles: 1



# #34 BAYLEE VANDERDOES

Sophomore • 1L

6-1

Forward

Auburn, Calif.

Placer High School

Opponent	Date	gs	min	Total		3-Pointers		Free throws		Rebounds				pf	a	t/o	blk	stl	pts	avg	
				fg-fga	pct	3fg-fga	pct	ft-fa	pct	off	def	tot	avg								
PRESBYTERIAN	11-10-17		16	4-7	.571	0-0	.000	0-1	.000	2	3	5	5.0	0	1	0	1	0	8	8.0	
CSUN	11-14-17		7	0-1	.000	0-0	.000	0-0	.000	1	0	1	3.0	4	0	0	0	0	0	4.0	
CAL STATE FULLERTON	11-18-17		18	3-5	.600	0-0	.000	2-4	.500	3	0	3	3.0	3	0	0	1	0	8	5.3	
vs Central Michigan	11-24-17		29	1-9	.111	0-0	.000	1-3	.333	11	2	13	5.5	3	0	1	0	1	3	4.8	
vs Tulane	11-25-17		15	0-1	.000	0-0	.000	0-0	.000	1	1	2	4.8	1	0	0	0	2	0	3.8	
SAN DIEGO	11-29-17		15	1-6	.167	0-0	.000	3-5	.600	2	1	3	4.5	0	1	3	0	5	4.0		
at Arizona	12-03-17	*	24	2-3	.667	0-0	.000	0-0	.000	1	5	6	4.7	2	0	1	1	0	4	4.0	
Totals			1	124	11-32	.344	0-0	.000	6-13	.462	21	12	33	4.7	13	1	3	6	3	28	4.0

Games played: 7  
Minutes/game: 17.7  
Points/game: 4.0  
FG Pct: 34.4  
FT Pct: 46.2

Rebounds/game: 4.7  
Assists/game: 0.1  
Turnovers/game: 0.4  
Assist/turnover ratio: 0.3  
Steals/game: 0.4  
Blocks/game: 0.9

CAREER STATISTICS

Season	gp-gs	min/avg	Total		3-Point		F-Throws		Rebounds				Scoring							
			fg-fga	pct	fg-fga	pct	ft-fa	pct	off	def	tot	avg	pf	fo	ast	to	blk	stl	pts	avg
2016-17	23-9	312/13.6	33-67	.493	0-0	.000	23-37	.622	17	44	61	2.7	43	1	8	20	3	6	89	3.9
2017-18	7-1	124/17.7	11-32	.344	0-0	.000	6-13	.462	21	12	33	4.7	13	0	1	3	6	3	28	4.0
TOTAL	30-10	436/14.5	44-99	.444	0-0	.000	29-50	.580	38	56	94	3.1	56	1	9	23	9	9	117	3.9

CAREER HIGHS

**Points**  
8, vs. Biola (12-28-16)

**Rebounds**  
5, at Cal State Fullerton (12-22-16)

**Assists**  
2, vs. Central Connecticut (11-27-16)

**Steals**  
2, vs. Biola (12-28-16)

**Blocks**  
1, Three times  
Last: vs. Nevada (1-4-17)

**Field Goals**  
4, vs. Biola (12-28-16)

**Field Goal Attempts**  
6, vs. Biola (12-28-16)

**3-Point Field Goals**  
N/A

**3-Point Field Goal Attempts**  
1, Three times  
Last: vs. UT Arlington (11-26-16)

**Free Throws**  
2, Twice, Last: at UNLV (2-18-17)

**Free Throw Attempts**  
3, at Nevada (2-11-17)

MISC. CAREER STATS

Double-figure scoring games: 0

Double-figure rebounding games: 0



# #40 MONIQUE TERRY

Sophomore • 1L  
6-2  
Forward  
San Antonio, Texas  
Brennan HS

Opponent	Date	gs	min	Total		3-Pointers		Free throws		Rebounds				pf	a	t/o	blk	stl	pts	avg
				fg-fga	pct	3fg-fga	pct	ft-fa	pct	off	def	tot	avg							
PRESBYTERIAN	11-10-17		7	1-1	1.000	0-0	.000	0-0	.000	1	1	2	2.0	1	0	0	0	0	2	2.0
CSUN	11-14-17		1	0-0	.000	0-0	.000	0-0	.000	0	0	0	1.0	0	0	0	0	0	0	1.0
CAL STATE FULLERTON	11-18-17		2	0-0	.000	0-0	.000	0-0	.000	0	0	0	0.7	0	0	0	0	0	0	0.7
vs Central Michigan	11-24-17		11	0-0	.000	0-0	.000	0-0	.000	1	0	1	0.8	2	0	0	0	0	0	0.5
vs Tulane	11-25-17		8	1-1	1.000	0-0	.000	0-0	.000	0	1	1	0.8	2	0	0	0	0	2	0.8
SAN DIEGO	11-29-17		3	0-0	.000	0-0	.000	0-0	.000	1	1	2	1.0	1	0	1	0	0	0	0.7
at Arizona	12-03-17		12	1-2	.500	0-0	.000	2-2	1.000	1	2	3	1.3	1	0	0	0	0	4	1.1
Totals			44	3-4	.750	0-0	.000	2-2	1.000	4	5	9	1.3	7	0	1	0	0	8	1.1

Games played: 7  
Minutes/game: 6.3  
Points/game: 1.1  
FG Pct: 75.0  
FT Pct: 100.0

Rebounds/game: 1.3  
Turnovers/game: 0.1

CAREER STATISTICS

Season	gp-gs	min/avg	Total		3-Point		F-Throws		Rebounds				Scoring							
			fg-fga	pct	fg-fga	pct	ft-fa	pct	off	def	tot	avg	pf	fo	ast	to	blk	stl	pts	avg
2016-17	28-10	344/12.3	33-62	.532	0-3	.000	10-19	.526	19	38	57	2.0	38	0	3	16	3	7	76	2.7
2017-18	7-0	44/6.3	3-4	.750	0-0	.000	2-2	1.000	4	5	9	1.3	7	0	0	1	0	0	8	1.1
TOTAL	35-10	388/11.1	36-66	.545	0-3	.000	12-21	.571	23	43	66	1.9	45	0	3	17	3	7	84	2.4



CAREER HIGHS

Points  
5, vs. San Diego Christian (11-14-16)

Rebounds  
5, Twice  
Last: vs. Cal State Fullerton (11-18-17)

Assists  
N/A

Steals  
N/A

Blocks  
N/A

Field Goals  
2, Four times  
Last: vs. Presbyterian (11-10-17)

Field Goal Attempts  
4, vs. San Diego Christian (11-14-16)

3-Point Field Goals  
N/A

3-Point Field Goal Attempts  
N/A

Free Throws  
1, vs. San Diego Christian (11-14-16)

Free Throw Attempts  
2, vs. San Diego Christian (11-14-16)

MISC. CAREER STATS

Double-figure  
scoring games: 0

Double-figure  
rebounding games: 0



# #45 NAOMI EKWEDIKE

Sophomore • SQ

6-6

Center

Lagos, Nigeria

Potter's House Christian Academy

Opponent	Date	gs	min	Total		3-Pointers		Free throws		Rebounds				pf	a	t/o	blk	stl	pts	avg
				fg-fga	pct	3fg-fga	pct	ft-fa	pct	off	def	tot	avg							
PRESBYTERIAN	11-10-17	7		2-2	1.000	0-0	.000	0-0	.000	0	1	1	1.0	1	0	2	0	0	4	4.0
CSUN	11-14-17	8		0-0	.000	0-0	.000	0-0	.000	1	4	5	3.0	1	0	0	0	0	0	2.0
CAL STATE FULLERTON	11-18-17	8		0-1	.000	0-0	.000	0-0	.000	2	3	5	3.7	2	0	1	0	0	0	1.3
vs Central Michigan	11-24-17	dnp		-	-	-	-	-	-	-	-	-	-	-	-	-	-	-	-	-
vs Tulane	11-25-17	9		2-5	.400	0-0	.000	0-0	.000	2	1	3	3.5	0	1	1	0	0	4	2.0
SAN DIEGO	11-29-17	7		0-0	.000	0-0	.000	0-0	.000	0	1	1	3.0	1	1	0	0	0	0	1.6
at Arizona	12-03-17	dnp		-	-	-	-	-	-	-	-	-	-	-	-	-	-	-	-	-
Totals		0	39	4-8	.500	0-0	.000	0-0	.000	5	10	15	3.0	5	2	4	0	0	8	1.6

Games played: 5  
Minutes/game: 7.8  
Points/game: 1.6  
FG Pct: 50.0

Rebounds/game: 3.0  
Assists/game: 0.4  
Turnovers/game: 0.8  
Assist/turnover ratio: 0.5

CAREER STATISTICS

Season	gp-gs	min/avg	Total		3-Point		F-Throws		Rebounds				Scoring							
			fg-fga	pct	fg-fga	pct	ft-fa	pct	off	def	tot	avg	pf	fo	ast	to	blk	stl	pts	avg
2016-17	9-0	63/7.0	8-19	.421	0-0	.000	1-3	.333	5	6	11	1.2	10	0	0	13	0	0	17	1.9
2017-18	5-0	39/7.8	4-8	.500	0-0	.000	0-0	.000	5	10	15	3.0	5	0	2	4	0	0	8	1.6
TOTAL	14-0	102/7.3	12-27	.444	0-0	.000	1-3	.333	10	16	26	1.9	15	0	2	17	0	0	25	1.8

**2017 STATISTICS - OVERALL SEASON STATS**

Overall record: 5-2 Conf: 0-0 Home: 4-0 Away: 1-0 Neutral: 0-2

#	Player	gp-gs	min	avg	Total			3-Point		F-Throw		Rebounds				pf	dq	a	to	blk	stl	pts	avg
					fg-fga	fg%	3fg-fga	3fg%	ft-fta	ft%	off	def	tot	avg									
15	FORT, McKynzie	7-7	218	31.1	45-93	.484	5-11	.455	27-35	.771	11	26	37	5.3	9	0	25	15	1	10	122	17.4	
22	THORDERSON, Lexy	7-7	166	23.7	26-54	.481	24-47	.511	4-6	.667	2	17	19	2.7	12	0	3	5	2	6	80	11.4	
10	MURRAY, Naje	7-0	112	16.0	20-54	.370	15-36	.417	10-10	1.000	1	10	11	1.6	10	0	2	8	0	3	65	9.3	
20	GOMEZ, Geena	7-7	197	28.1	20-54	.370	10-29	.345	5-9	.556	4	20	24	3.4	13	0	34	18	1	3	55	7.9	
21	LOWE, Abby	1-0	12	12.0	2-3	.667	1-2	.500	0-2	.000	1	2	3	3.0	1	0	0	1	0	1	5	5.0	
34	VANDERDOES, Bayle	7-1	124	17.7	11-32	.344	0-0	.000	6-13	.462	21	12	33	4.7	13	0	1	3	6	3	28	4.0	
01	LARK, Khalia	7-7	165	23.6	8-40	.200	6-19	.316	5-8	.625	11	26	37	5.3	13	0	7	15	2	7	27	3.9	
30	GREENHOUSE, Chey	7-0	112	16.0	9-23	.391	0-1	.000	4-6	.667	7	11	18	2.6	5	0	7	3	0	3	22	3.1	
05	ADAMS, Te'a	7-0	76	10.9	7-38	.184	1-15	.067	6-10	.600	4	8	12	1.7	7	0	9	8	1	7	21	3.0	
03	BOJORQUEZ, Jenay	5-0	57	11.4	5-17	.294	1-1	1.000	2-3	.667	1	6	7	1.4	7	0	3	6	0	2	13	2.6	
11	GOMEZ, Arantxa	6-6	79	13.2	7-13	.538	0-0	.000	0-0	.000	8	9	17	2.8	9	0	0	3	4	0	14	2.3	
45	EKWEDIKE, Naomi	5-0	39	7.8	4-8	.500	0-0	.000	0-0	.000	5	10	15	3.0	5	0	2	4	0	0	8	1.6	
40	TERRY, Monique	7-0	44	6.3	3-4	.750	0-0	.000	2-2	1.000	4	5	9	1.3	7	0	0	1	0	0	8	1.1	
24	EDWARDS, Kiara	2-0	12	6.0	1-6	.167	0-1	.000	0-0	.000	1	4	5	2.5	0	0	0	0	0	0	2	1.0	
00	VILLA, Kennedy	2-0	7	3.5	0-0	.000	0-0	.000	1-2	.500	0	2	2	1.0	1	0	1	0	0	0	1	0.5	
23	GOMEZ, Loli	2-0	3	1.5	0-1	.000	0-0	.000	0-0	.000	0	0	0	0.0	0	0	0	1	0	0	0	0.0	
Team											11	16	27				3						
Total.....		7	1423		168-440	.382	63-162	.389	72-106	.679	92	184	276	39.4	112	0	94	94	17	45	471	67.3	
Opponents.....		7	1425		181-443	.409	55-178	.309	54-79	.684	82	188	270	38.6	104	-	118	95	20	39	471	67.3	

TEAM STATISTICS	SDSU	OPP	Date	Opponent	Score	Att.
SCORING	471	471	11-10-17	PRESBYTERIAN	w 77-50	464
Points per game	67.3	67.3	11-14-17	CSUN	w 58-55	366
Scoring margin	+0.0	-	11-18-17	CAL STATE FULLERTON	w 59-58	1108
FIELD GOALS-ATT	168-440	181-443	^ 11-24-17	vs Central Michigan	Lot 76-85	0
Field goal pct	.382	.409	^ 11-25-17	vs Tulane	L 46-80	0
3 POINT FG-ATT	63-162	55-178	11-29-17	SAN DIEGO	w 77-76	790
3-point FG pct	.389	.309	12-03-17	at Arizona	w 78-67	1555
3-pt FG made per game	9.0	7.9	^ = Junkanoo Jam - Bimini, Bahamas			
FREE THROWS-ATT	72-106	54-79	* = Mountain West game			
Free throw pct	.679	.684				
F-Throws made per game	10.3	7.7				
REBOUNDS	276	270				
Rebounds per game	39.4	38.6				
Rebounding margin	+0.9	-				
ASSISTS	94	118				
Assists per game	13.4	16.9				
TURNOVERS	94	95				
Turnovers per game	13.4	13.6				
Turnover margin	+0.1	-				
Assist/turnover ratio	1.0	1.2				
STEALS	45	39				
Steals per game	6.4	5.6				
BLOCKS	17	20				
Blocks per game	2.4	2.9				
ATTENDANCE	2728	1555				
Home games-Avg/Game	4-682	1-1555				
Neutral site-Avg/Game	-	2-0				

Score by Periods	1st	2nd	3rd	4th	OT	Totals
San Diego State	108	134	106	120	3	471
Opponents	126	95	120	118	12	471

Home games

RECORD:	OVERALL	HOME	AWAY	NEUTRAL
ALL GAMES	4-0	4-0	0-0	0-0
CONFERENCE	0-0	0-0	0-0	0-0
NON-CONFERENCE	4-0	4-0	0-0	0-0

#	Player	gp-gs	min	Total		3-Point		F-Throw		Rebounds				pf	dq	a	to	blk	stl	pts	a		
				avg	fg-fga	fg%	3fg-fga	3fg%	ft-fa	ft%	off	def	tot									avg	
15	FORT, McKynzie	4-4	127	31.8	28-57	.491	4-7	.571	13-18	.722	9	16	25	6.3	3	0	17	9	1	6	73	18	
22	THORDERSON, Lexy	4-4	98	24.5	17-35	.486	16-31	.516	1-2	.500	1	14	15	3.8	7	0	3	3	1	6	51	12	
10	MURRAY, Naje	4-0	55	13.8	14-30	.467	10-21	.476	2-2	1.000	1	6	7	1.8	7	0	2	6	0	2	40	10	
20	GOMEZ, Geena	4-4	111	27.8	9-25	.360	3-14	.214	1-2	.500	3	12	15	3.8	9	0	20	13	1	3	22	5	
34	VANDERDOES, Bayle	4-0	56	14.0	8-19	.421	0-0	.000	5-10	.500	8	4	12	3.0	7	0	1	1	5	0	21	5	
01	LARK, Khalia	4-4	100	25.0	5-26	.192	4-12	.333	2-4	.500	8	19	27	6.8	6	0	4	11	2	5	16	4	
11	GOMEZ, Arantxa	4-4	65	16.3	7-12	.583	0-0	.000	0-0	.000	6	7	13	3.3	7	0	0	2	4	0	14	3	
30	GREENHOUSE, Chey	4-0	55	13.8	5-13	.385	0-1	.000	1-2	.500	3	5	8	2.0	1	0	4	1	0	2	11	2	
05	ADAMS, Te'a	4-0	44	11.0	4-22	.182	0-8	.000	3-5	.600	0	5	5	1.3	5	0	7	5	1	4	11	2	
03	BOJORQUEZ, Jenay	3-0	38	12.7	2-8	.250	1-1	1.000	0-0	.000	0	5	5	1.7	6	0	2	3	0	1	5	1	
45	EKWEDIKE, Naomi	4-0	30	7.5	2-3	.667	0-0	.000	0-0	.000	3	9	12	3.0	5	0	1	3	0	0	4	1	
00	VILLA, Kennedy	1-0	4	4.0	0-0	.000	0-0	.000	1-2	.500	0	0	0	0.0	0	0	1	0	0	0	1	1	
40	TERRY, Monique	4-0	13	3.3	1-1	1.000	0-0	.000	0-0	.000	2	2	4	1.0	2	0	0	1	0	0	2	0	
24	EDWARDS, Kiara	1-0	4	4.0	0-1	.000	0-0	.000	0-0	.000	0	2	2	2.0	0	0	0	0	0	0	0	0	
Team											7	7	14										
Total.....		4	800		102-252	.405	38-95	.400	29-47	.617	51	113	164	41.0	65	0	62	61	15	29	271	67	
Opponents.....		4	800		92-242	.380	23-96	.240	32-47	.681	40	101	141	35.2	54	-	67	59	12	29	239	59	

Score by Periods	1st	2nd	3rd	4th	Totals
San Diego State	66	70	68	67	271
Opponents	54	53	64	68	239

Away/Neutral Games

RECORD:	OVERALL	HOME	AWAY	NEUTRAL
ALL GAMES	1-2	0-0	1-0	0-2
CONFERENCE	0-0	0-0	0-0	0-0
NON-CONFERENCE	1-2	0-0	1-0	0-2

#	Player	gp-gs	min	Total		3-Point		F-Throw		Rebounds				pf	dq	a	to	blk	stl	pts	avg		
				avg	fg-fga	fg%	3fg-fga	3fg%	ft-fa	ft%	off	def	tot									avg	
15	FORT, McKynzie	3-3	91	30.3	17-36	.472	1-4	.250	14-17	.824	2	10	12	4.0	6	0	8	6	0	4	49	16.3	
20	GOMEZ, Geena	3-3	86	28.7	11-29	.379	7-15	.467	4-7	.571	1	8	9	3.0	4	0	14	5	0	0	33	11.0	
22	THORDERSON, Lexy	3-3	68	22.7	9-19	.474	8-16	.500	3-4	.750	1	3	4	1.3	5	0	0	2	1	0	29	9.7	
10	MURRAY, Naje	3-0	57	19.0	6-24	.250	5-15	.333	8-8	1.000	0	4	4	1.3	3	0	0	2	0	1	25	8.3	
21	LOWE, Abby	1-0	12	12.0	2-3	.667	1-2	.500	0-2	.000	1	2	3	3.0	1	0	0	1	0	1	5	5.0	
03	BOJORQUEZ, Jenay	2-0	19	9.5	3-9	.333	0-0	.000	2-3	.667	1	1	2	1.0	1	0	1	3	0	1	8	4.0	
45	EKWEDIKE, Naomi	1-0	9	9.0	2-5	.400	0-0	.000	0-0	.000	2	1	3	3.0	0	0	1	1	0	0	4	4.0	
30	GREENHOUSE, Chey	3-0	57	19.0	4-10	.400	0-0	.000	3-4	.750	4	6	10	3.3	4	0	3	2	0	1	11	3.7	
01	LARK, Khalia	3-3	65	21.7	3-14	.214	2-7	.286	3-4	.750	3	7	10	3.3	7	0	3	4	0	2	11	3.7	
05	ADAMS, Te'a	3-0	32	10.7	3-16	.188	1-7	.143	3-5	.600	4	3	7	2.3	2	0	2	3	0	3	10	3.3	
34	VANDERDOES, Bayle	3-1	68	22.7	3-13	.231	0-0	.000	1-3	.333	13	8	21	7.0	6	0	0	2	1	3	7	2.3	
40	TERRY, Monique	3-0	31	10.3	2-3	.667	0-0	.000	2-2	1.000	2	3	5	1.7	5	0	0	0	0	0	6	2.0	
24	EDWARDS, Kiara	1-0	8	8.0	1-5	.200	0-1	.000	0-0	.000	1	2	3	3.0	0	0	0	0	0	0	2	2.0	
00	VILLA, Kennedy	1-0	3	3.0	0-0	.000	0-0	.000	0-0	.000	0	2	2	2.0	1	0	0	0	0	0	0	0.0	
23	GOMEZ, Loli	2-0	3	1.5	0-1	.000	0-0	.000	0-0	.000	0	0	0	0.0	0	0	0	1	0	0	0	0.0	
11	GOMEZ, Arantxa	2-2	14	7.0	0-1	.000	0-0	.000	0-0	.000	2	2	4	2.0	2	0	0	1	0	0	0	0.0	
Team											4	9	13										
Total.....		3	623		66-188	.351	25-67	.373	43-59	.729	41	71	112	37.3	47	0	32	33	2	16	200	66.7	
Opponents.....		3	625		89-201	.443	32-82	.390	22-32	.688	42	87	129	43.0	50	-	51	36	8	10	232	77.3	

Score by Periods	1st	2nd	3rd	4th	OT	Totals
San Diego State	42	64	38	53	3	200
Opponents	72	42	56	50	12	232



**2017-18 STATISTICS - TEAM GAME-BY-GAME**

Opponent	Date	Score		Total		3-Pointers		Free throws		Rebounds				pf	a	t/o	blk	stl	pts	avg
				fg-fga	pct	3fg-fga	pct	ft-fta	pct	off	def	tot	avg							
PRESBYTERIAN	11-10-17	77-50	W	30-60	.500	12-26	.462	5-7	.714	9	36	45	45.0	13	22	18	2	7	77	77.0
CSUN	11-14-17	58-55	W	21-64	.328	11-29	.379	5-7	.714	11	28	39	42.0	17	15	17	5	10	58	67.5
CAL STATE FULLERTON	11-18-17	59-58	W	23-61	.377	8-22	.364	5-9	.556	15	27	42	42.0	18	9	14	4	7	59	64.7
vs Central Michigan	11-24-17	76-85	Lot	26-82	.317	9-30	.300	15-21	.714	21	19	40	41.5	20	13	4	0	6	76	67.5
vs Tulane	11-25-17	46-80	L	17-56	.304	5-16	.313	7-13	.538	13	23	36	40.4	15	7	19	1	7	46	63.2
SAN DIEGO	11-29-17	77-76	W	28-67	.418	7-18	.389	14-24	.583	16	22	38	40.0	17	16	12	4	5	77	65.5
at Arizona	12-03-17	78-67	W	23-50	.460	11-21	.524	21-25	.840	7	29	36	39.4	12	12	10	1	3	78	67.3
San Diego State		471		168-440	.382	63-162	.389	72-106	.679	92	184	276	39.4	112	94	94	17	45	471	67.3
Opponents		471		181-443	.409	55-178	.309	54-79	.684	82	188	270	38.6	104	118	95	20	39	471	67.3

Games played: 7  
 Points/game: 67.3  
 FG Pct: 38.2  
 3FG Pct: 38.9  
 FT Pct: 67.9

Rebounds/game: 39.4  
 Assists/game: 13.4  
 Turnovers/game: 13.4  
 Assist/turnover ratio: 1.0  
 Steals/game: 6.4  
 Blocks/game: 2.4

► 2017-18 AZTEC GAME-BY-GAME POINTS-REBOUNDS-ASSISTS

Opponent	0 Kennedi Villa	1 Khalia Lark	3 Jenay Bojorquez	5 Te'a Adams	10 Najé Murray	11 Arantxa Gómez	15 McKynzie Fort	20 Geena Gomez	21 Abby Lowe	22 Lexy Thorderson	23 Loli Gomez	24 Kiara Edwards	30 Cheyenne Greenhouse	34 Baylee Vanderdoes	40 Monique Terry	45 Naomi Ekwedike
Presbyterian	1-0-1	0-4-1	0-3-2	4-0-2	14-3-1	4-3-0	16-7-2	6-2-6	DNP	12-6-2	DNP	0-2-0	6-4-4	8-5-1	2-2-0	4-1-0
CSUN	DNP	13-9-1	3-1-0	0-0-0	5-0-0	2-5-0	16-6-3	2-2-10	DNP	17-6-1	DNP	DNP	0-1-0	0-1-0	0-0-0	0-5-0
Cal State Fullerton	DNP	3-10-1	2-1-0	2-1-3	11-0-0	0-2-0	17-6-4	7-6-1	DNP	6-2-0	DNP	DNP	3-3-0	8-3-0	0-0-0	0-5-0
Central Michigan	DNP	2-4-0	2-0-0	5-1-1	12-0-0	0-1-0	21-3-3	15-6-7	DNP	12-3-0	0-0-0	DNP	4-3-2	3-13-0	0-1-0	DNP
Tulane	0-2-0	2-1-1	6-2-1	5-2-0	0-2-0	0-3-0	2-3-3	6-0-0	5-3-0	9-0-0	0-0-0	2-3-0	3-5-1	0-2-0	2-1-0	4-3-1
San Diego	DNP	0-4-1	DNP	5-4-2	10-4-1	8-3-0	24-6-8	7-5-3	DNP	16-1-0	DNP	DNP	2-0-0	5-3-0	0-2-0	0-1-1
Arizona	DNP	7-5-2	DNP	0-4-1	13-2-0	DNP	26-6-2	12-3-7	DNP	8-1-0	DNP	DNP	4-2-0	4-6-0	4-3-2	DNP

DNP - Did Not Play

2017-18 AZTEC GAME-BY-GAME STARTERS

Game	Forward	Forward/Guard	Guard	Guard	Guard
vs. Presbyterian (W)	Gómez Ferrer	Lark	Fort	Gomez	Thorderson
vs. CSUN (W)	Gómez Ferrer	Lark	Fort	Gomez	Thorderson
vs. Cal State Fullerton (W)	Gómez Ferrer	Lark	Fort	Gomez	Thorderson
vs. Central Michigan (L)	Gómez Ferrer	Lark	Fort	Gomez	Thorderson
vs. Tulane (L)	Gómez Ferrer	Lark	Fort	Gomez	Thorderson
vs. San Diego (W)	Gómez Ferrer	Lark	Fort	Gomez	Thorderson
at Arizona (W)	Vanderdoes	Lark	Fort	Gomez	Thorderson

Lineup Records

Gómez Ferrer-Lark-Fort-Gomez-Thorderson	4-2
Vanderdoes-Lark-Fort-Gomez- Thorderson	1-0

## TEAM SUPERLATIVES

### Aztec Team Highs

Points	78	at Arizona (12-3-17)
Field Goals Made	30	vs. Presbyterian (11-10-17)
Field Goal Attempts	82	vs. Central Michigan (11-24-17)
Field Goal Percentage	.500 (30-60)	vs. Presbyterian (11-10-17)
3-pt Field Goals Made	12	vs. Presbyterian (11-10-17)
3-pt Field Goals Attempted	30	vs. Central Michigan (11-24-17)
3-pt Field Goal Percentage	.524 (11-21)	at Arizona (12-3-17)
Free Throws Made	21	at Arizona (12-3-17)
Free Throw Attempts	25	at Arizona (12-3-17)
Free Throw Percentage	.840 (21-25)	at Arizona (12-3-17)
Rebounds	45	vs. Presbyterian (11-10-17)
Assists	22	vs. Presbyterian (11-10-17)
Steals	10	vs. CSUN (11-14-17)
Blocked Shots	5	vs. CSUN (11-14-17)
Turnovers	19	vs. Tulane (11-25-17)
Fouls	20	vs. Central Michigan (11-24-17)

### Aztec Team Lows

Points	46	vs. Tulane (11-25-17)
Field Goals Made	17	vs. Tulane (11-25-17)
Field Goal Attempts	50	at Arizona (12-3-17)
Field Goal Percentage	.304 (17-56)	vs. Tulane (11-25-17)
3-pt Field Goals Made	5	vs. Tulane (11-25-17)
3-pt Field Goals Attempted	16	vs. Tulane (11-25-17)
3-pt Field Goal Percentage	.300 (9-30)	vs. Central Michigan (11-24-17)
Free Throws Made	5	vs. Presbyterian (11-10-17)
Free Throws Attempted	7	vs. Presbyterian (11-10-17)
Free Throw Percentage	.538 (7-13)	vs. Tulane (11-25-17)
Rebounds	36	at Arizona (12-31-17) vs. Tulane (11-25-17)
Assists	7	vs. Tulane (11-25-17)
Steals	3	at Arizona (12-3-17)
Blocked Shots	0	vs. Central Michigan (11-24-17)
Turnovers	4	vs. Central Michigan (11-24-17)
Fouls	12	at Arizona (12-3-17)

### Aztec Scoring

First Half High	42	vs. Presbyterian (11-10-17)
First Quarter High	21	at Arizona (12-3-17)
Second Quarter High	27	vs. Central Michigan (11-24-17)
Second Half High	42	vs. San Diego (11-29-17)
Third Quarter High	23	vs. CSUN (11-14-17)
Fourth Quarter High	25	vs. San Diego (11-29-17)
First Half Low	27	vs. Tulane (11-25-17)
First Quarter Low	10	vs. Tulane (11-25-17)
Second Quarter Low	9	vs. Cal State Fullerton (11-18-17)
Second Half Low	19	vs. Tulane (11-25-17)
Third Quarter Low	5	vs. Tulane (11-25-17)
Fourth Quarter Low	4	vs. CSUN (11-14-17)
Largest Halftime Lead	15 (42-27)	vs. Presbyterian (11-10-17)
Largest Halftime Deficit	16 (27-43)	vs. Tulane (11-25-17)
Largest Lead	31 (71-40)	vs. Presbyterian (11-10-17)
Largest Deficit	36 (27-63)	vs. Tulane (11-25-17)
Largest Deficit in a Win	7 (40-47)	vs. Cal State Fullerton (11-18-17)
Largest Lead in a Loss	7 (70-63)	vs. Central Michigan (11-24-17)

### Opponent Team Highs

Points	85	vs. Central Michigan (11-24-17)
Field Goals Made	31	vs. Tulane (11-25-17) vs. Central Michigan (11-24-17)
Field Goal Attempts	72	at Arizona (12-3-17)
Field Goal Percentage	.500 (31-62)	vs. Tulane (11-25-17)
3-pt Field Goals Made	15	vs. Tulane (11-25-17)
3-pt Field Goals Attempted	32	vs. CSUN (11-14-17)
3-pt Field Goal Percentage	.556 (15-27)	vs. Tulane (11-25-17)
Free Throws Made	13	vs. San Diego (11-29-17) vs. Central Michigan (11-24-17)
Free Throws Attempted	18	vs. Central Michigan (11-24-17)
Free Throw Percentage	.800 (8-10)	vs. CSUN (11-14-17)
Rebounds	54	vs. Central Michigan (11-24-17)
Assists	22	vs. San Diego (11-29-17)
Steals	12	vs. Presbyterian (11-10-17)
Blocked Shots	5	vs. CSUN (11-14-17)
Turnovers	17	vs. CSUN (11-14-17)
Fouls	23	vs. San Diego (11-29-17)

### Opponent Team Lows

Points	50	vs. Presbyterian (11-10-17)
Field Goals Made	20	vs. CSUN (11-14-17)
Field Goal Attempts	57	vs. Cal State Fullerton (11-18-17)
Field Goal Percentage	.328 (20-61)	vs. CSUN (11-14-17)
3-pt Field Goals Made	4	vs. Presbyterian (11-10-17)
3-pt Field Goal Attempts	12	vs. San Diego (11-29-17)
3-pt Field Goal Percentage	.129 (4-31)	vs. Presbyterian (11-10-17)
Free Throws Made	4	vs. Presbyterian (11-10-17)
Free Throw Attempts	8	vs. Presbyterian (11-10-17)
Free Throw Percentage	.500 (4-8)	vs. Presbyterian (11-10-17)
Rebounds	26	vs. Presbyterian (11-10-17)
Assists	10	at Arizona (12-3-17)
Steals	4	vs. CSUN (11-14-17)
Blocked Shots	1	vs. Presbyterian (11-10-17)
Turnovers	8	at Arizona (12-3-17)
Fouls	7	vs. Cal State Fullerton (11-18-17)

### Opponent Scoring

First Half High	43	vs. Tulane (11-25-17)
First Quarter High	32	vs. Tulane (11-25-17)
Second Quarter High	17	vs. San Diego (11-29-17) 17 vs. Central Michigan (11-24-17) 17 vs. Presbyterian (11-10-17)
Second Half High	42	vs. San Diego (11-29-17)
Third Quarter High	20	vs. Tulane (11-25-17)
Fourth Quarter High	25	vs. San Diego (11-29-17)
First Half Low	22	vs. CSUN (11-14-17)
First Quarter Low	10	vs. Presbyterian (11-10-17)
Second Quarter Low	9	vs. CSUN (11-14-17)
Second Half Low	23	vs. Presbyterian (11-10-17)
Third Quarter Low	12	vs. Presbyterian (11-10-17)
Fourth Quarter Low	11	vs. Presbyterian (11-10-17)
Largest Halftime Lead	16 (43-27)	vs. Tulane (11-25-17)
Largest Halftime Deficit	15 (27-42)	vs. Presbyterian (11-10-17)
Largest Lead	36 (63-27)	vs. Tulane (11-25-17)
Largest Deficit	31 (40-71)	vs. Presbyterian (11-10-17)
Largest Deficit in a Win	7 (63-70)	vs. Central Michigan (11-24-17)
Largest Lead in a Loss	7 (40-47)	vs. Cal State Fullerton (11-18-17)

**Aztec Individual Highs**

**Points**  
26, McKynzie Fort at Arizona (12-3-17)

**Field Goals Made**  
10, McKynzie Fort vs. San Diego (11-29-17)

**Field Goals Attempted**  
19, McKynzie Fort vs. Central Michigan (11-24-17)

**Field Goal Percentage (min. 5 made)**  
.625 (10-16), McKynzie Fort vs. San Diego (11-29-17)

**3-Point Field Goals Made**  
5, Lexy Thorderson vs. San Diego (11-29-17)  
5, Lexy Thorderson vs. CSUN (11-14-17)

**3-Point Field Goals Attempted**  
10, Lexy Thorderson vs. Central Michigan (11-24-17)  
10, Lexy Thorderson vs. CSUN (11-14-17)

**3-Pt Field Goal Percentage (min. 2 made)**  
.750 (3-4), Najé Murray at Arizona (12-3-17)

**Free Throws Made**  
11, McKynzie Fort at Arizona (12-3-17)

**Free Throw Attempted**  
12, McKynzie Fort at Arizona (12-3-17)

**Free Throw Percentage (min 4 made)**  
1.000 (6-6), Najé Murray vs. Central Michigan (11-24-17)  
1.000 (4-4), McKynzie Fort vs. Presbyterian (11-10-17)

**Rebounds**  
10, Khalia Lark vs. Cal State Fullerton (11-18-17)

**Assists**  
10, Geena Gomez vs. CSUN (11-14-17)

**Steals**  
3, Khalia Lark vs. CSUN (11-14-17)  
3, McKynzie Fort vs. CSUN (11-14-17)

**Blocked Shots**  
3, Baylee Vanderdoes vs. San Diego (11-29-17)

**Turnovers**  
6, Geena Gomez vs. CSUN (11-14-17)

**Fouls**  
4, Lexy Thorderson vs. San Diego (11-29-17)  
4, Khalia Lark vs. Central Michigan (11-24-17)  
4, Khalia Lark vs. Cal State Fullerton (11-18-17)  
4, Geena Gomez vs. CSUN (11-14-17)  
4, Baylee Vanderdoes vs. CSUN (11-14-17)

**Opponent Individual Highs**

**Points**  
27, Kolby Morgan vs. Tulane (11-25-17)  
27, Tinara Moore vs. Central Michigan (11-24-17)

**Field Goals Made**  
11, Tinara Moore vs. Central Michigan (11-24-17)

**Field Goals Attempted**  
21, JaLea Bennett at Arizona (12-3-17)

**Field Goal Percentage (min 5 made)**  
.750 (6-8), Kayla Manuirangi vs. Tulane (11-25-17)

**3-Point Field Goals Made**  
7, Kolby Morgan vs. Tulane (11-25-17)

**3-Point Field Goals Attempted**  
11, Kolby Morgan vs. Tulane (11-25-17)

**3-Pt Field Goal Percentage (min 2 made)**  
1.000 (2-2) Sydney Williams vs. San Diego (11-29-17)

**Free Throws Made**  
5, Tinara Moore vs. Central Michigan (11-24-17)

**Free Throws Attempted**  
8, Tinara Moore vs. Central Michigan (11-24-17)

**Free Throw Percentage (min 4 made)**  
1.000 (4-4), Sam Thomas at Arizona (12-3-17)  
1.000 (4-4), Aubrey Ward-El vs. San Diego (11-29-17)  
1.000 (4-4), Presley Hudson vs. Central Michigan (11-24-17)  
1.000 (4-4), Channon Fluker vs. CSUN (11-14-17)

**Rebounds**  
19, Tinara Moore vs. Central Michigan (11-24-17)

**Assists**  
7, Myah Pace vs. San Diego (11-29-17)

**Steals**  
4, Kacie Hall vs. Presbyterian (11-10-17)

**Blocked Shots**  
4, Channon Fluker vs. CSUN (11-14-17)

**Turnovers**  
6, Presley Hudson vs. Central Michigan (11-24-17)

**Fouls**  
5, Destiny Graham at Arizona (12-3-17)  
5, Aubrey Ward-El vs. San Diego (11-29-17)  
5, Presley Hudson vs. Central Michigan (11-24-17)



►THE LAST TIME AN AZTEC...

**Scored 20-24 points**

24, McKynzie Fort, 11-29-17 vs. San Diego

**Scored 25-29 points**

26, McKynzie Fort, 12-3-17 at Arizona

**Scored 30-39 points**

31, Cierra Warren, 1-22-14 vs. San José State

**Scored 40+ points**

41, Chana Perry, 1-2-88 vs. Northern Illinois

**Had 20+ rebounds**

27, Chana Perry, 11-25-88 vs. Alabama State

**Had 15-19 rebounds**

17, Kristina Hunter, 1-11-14 vs. Air Force

**Had 10-14 rebounds**

10, Khalia Lark, 11-18-17 vs. Cal State Fullerton

**Had 10+ assists**

10, Geena Gomez, 11-14-17 vs. CSUN

**Had A Double-Double**

McKynzie Fort, 29 points, 11 rebounds, 1-11-17 at San José State

**Had A Triple-Double**

Chelsea Hopkins, 13 points, 11 rebounds, 12 assists, 3-9-13 vs. Boise State

**The Last Time San Diego State ...**

**Had two players score 20 points in the same game**

Kymerly Ellison (21) and Lexy Thorderson (21), 1-18-17 vs. UNLV

**Had two players with a double-double in the same game**

Erimma Amarikwa (19 points, 13 rebounds) and Cheyenne Greenhouse (19 points, 11 rebounds), 11-14-14 vs. Sacramento State

**Scored 100+ points**

101, vs. Colorado State (101-62), 1-25-92

**Allowed 100+ points**

104, vs. UCLA (56-104), 12-11-98

**Won by 20+ points**

27, vs. Presbyterian (77-50), 11-10-17

**Won by 30+ points**

35, vs. San Diego Christian (60-25), 12-21-15

**Won by 40+ points**

41, vs. Boise State (86-45), 3-9-13

**Won by 50+ points**

51, vs. Air Force (79-28), 1-7-09

**Won in Overtime**

vs. Fresno State (65-54), 2-10-16

**Lost in Overtime**

vs. Central Michigan (76-85), 11-24-17

►2017-18 AZTEC LEADERS

**Double-Figure Scoring Games**

McKynzie Fort (6), Najé Murray (5), Lexy Thorderson (4), Geena Gomez (2), Khalia Lark (1)

**SDSU High Scorer**

McKynzie Fort (5), Lexy Thorderson (2)

**Double-Figure Rebounding Games**

Khalia Lark (1), Baylee Vanderdoes (1)

**Games Led SDSU In Rebounds**

McKynzie Fort (3), Khalia Lark (2), Baylee Vanderdoes (2), Cheyenne Greenhouse (1)

**Games Led SDSU In Assists**

Geena Gomez (4), McKynzie Fort (3)

**Games Led SDSU In Steals**

McKynzie Fort (5), Te'a Adams (4), Khalia Lark (3), Lexy Thorderson (3), Najé Murray (2), Jenay Bojorquez (1), Geena Gomez (1), Cheyenne Greenhouse (1), Baylee Vanderdoes (1)

**Games Led SDSU In Blocks**

Arantxa Gómez Ferrer (2), Baylee Vanderdoes (2), Cheyenne Greenhouse (1), Khalia Lark (1), Lexy Thorderson (1)

►2017-18 SPECIALTY STATS

San Diego State/Opponent

	Points in Paint	Points off TOs	2nd Chance Points	Fast Break Points	Bench Points
vs. Presbyterian (W)	34/28	11/14	12/5	13/12	39/5
vs. CSUN (W)	10/18	9/7	5/6	4/5	8/7
vs. Cal State Fullerton (W)	26/26	11/7	11/9	9/2	26/27
vs. Central Michigan (L)	26/42	17/4	10/13	2/4	26/8
vs. Tulane (L)	18/22	6/28	9/9	2/0	27/23
vs. San Diego (W)	40/42	4/8	17/13	4/4	22/21
at Arizona (W)	18/30	5/6	6/11	5/10	21/15



**KENNEDI VILLA**  
Fr. | 6-0 | G  
Oakland, Calif.  
St. Mary's HS

0



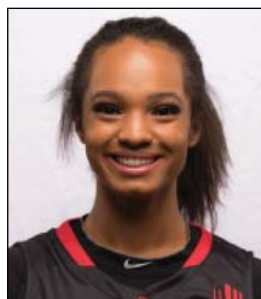
**KHALIA LARK**  
Sr. | 6-0 | G/F  
Irvine, Calif.  
Mater Dei HS/Washington

1



**JENAY BOJORQUEZ**  
Fr. | 5-6 | G  
Phoenix, Ariz.  
Sierra Linda HS

3



**TE'A ADAMS**  
Fr. | 5-9 | G  
Kirkland, Wash.  
Juanita HS

5



**NAJÉ MURRAY**  
Fr. | 5-6 | G  
Stockton, Calif.  
St. Mary's HS

10



**ARANTXA GÓMEZ FERRER**  
Jr. | 6-0 | F  
Valencia, Spain  
Parque Colegio Santa Ana HS

11



**ALLISON BROWN**  
Sr. | 5-7 | G  
Anaheim Hills, Calif.  
Mater Dei HS

13



**MCKYNZIE FORT**  
Jr. | 5-9 | G  
Fontana, Calif.  
Etiwanda HS

15



**GEENA GOMEZ**  
Sr. | 5-8 | G  
Huntington Beach, Calif.  
Edison HS/St. Joseph's (Pa.)

20



**ABBY LOWE**  
So. | 5-11 | G  
Stockport, England  
Barking Abbey Academy

21



**LEXY THORDERSON**  
Sr. | 6-0 | G  
Castle Rock, Colo.  
Rock Canyon HS

22



**LOLI GOMEZ**  
Jr. | 5-10 | G  
Huntington Beach, Calif.  
Edison HS/CSU San Bernardino

23



**KIARA EDWARDS**  
Fr. | 6-1 | F  
Surprise, Ariz.  
Valley Vista HS

24



**CHEYENNE GREENHOUSE**  
Sr. | 5-11 | G  
Riverside, Calif.  
Canyon Springs HS

30



**BAYLEE VANDERDOES**  
So. | 6-1 | F  
Auburn, Calif.  
Placer HS

34



**MONIQUE TERRY**  
So. | 6-2 | F  
San Antonio, Texas  
Brennan HS

40



**NAOMI EKWEDIKE**  
So. | 6-6 | C  
Lagos, Nigeria  
Potters House Christian Academy (Fla.)

45



**STACIE TERRY**  
Head Coach  
Fifth Season  
UT Arlington (1998)

HC

**JESSE CLARK**  
Assistant Coach  
Fifth Season  
Pacific Union (2003)

AC

**CIARA CARL**  
Assistant Coach  
Fifth Season  
Point Loma Nazarene (2005)

AC

**NICK GRANT**  
Assistant Coach  
Fourth Season  
Baylor (2010)

AC