



Alphabetical Index

100-Point Games	123	Player Bios	56
1,000-Point Scorers	170	Preview, 2009-10 Season	6
All Opponents, vs.	158	Overtime Games	122
Assistant Coaches	50	Postseason Tournaments	183
Athletics Director Jeff Schemmel	199	Recaps, 2008-09 Game	105
Athletics Directory	208	Results, 2008-09 Season	90
Attendance/Home Court Record	190	Results, All-Time	142
Basketball Support Staff	54	Roster, Broadcast	13
Division I Era Statistical Leaders	179	Roster, 2009-10	4
Double-Doubles	127	San Diego State University	194
Fisher, Bio Steve	38	Schedule, 2009-10	5
Freshman Season Records	136	Series, All-Time	159
Letterwinners	177	Series Superlatives	166
Media Information	200	Single-Game Performances, Individual	126
Media Outlets	204	Statistical History	156
MWC Records	137	Statistics, Division I Era Career	179
MWC Tournaments	188	Statistics, 2008-09 Season	91
NCAA Tournament History	183	Viejas Arena at Aztec Bowl	206
Opponent Directory	202	Viejas Arena Records	139

Table of Contents



FOUR STRAIGHT POSTSEASON APPEARANCES ► FOUR CONSECUTIVE 20-WIN SEASONS



Introduction

Index 1 • Table of Contents 2 • Quick Facts 3 • Rosters 4 • Schedule 5 • 2009-10 Season Preview 6 • Broadcast Roster 13

This is SDSU Basketball

Steve Fisher 16 • Fisher's Men in the Pros 18 • Viejas Arena 20 • Game Night at Viejas Arena 22 • Facilities 24 • National Attention 26 • Academic Success 28 • San Diego State University 30 • City of San Diego 32 • Aztec Excellence 34 • Mountain West Conference 36

Coaches and Staff

Steve Fisher 38 • Brian Dutcher 50 • Justin Hutson 51 • Mark Fisher 52 • Matt Soria 53 • David Velasquez 54 • Support Staff 54

Players

Brian Carlwell 56 • Mehdi Cheriet 59 • Kelvin Davis 62 • Jason Deutchman 66 • D.J. Gay 68 • Bryan Horton 72 • Tyrone Shelley 74 • Tim Shelton 76 • Billy White 79 • Malcolm Thomas 83 • Kawhi Leonard/Chase Tapley 84 • Alec Williams 85/Preseason Team & Individual Honors • James Rahon 86

2008-09 Review

2008-09 Notes 88 • Results 90 • Game-By-Game Statistics 94 • Miscellaneous Statistics 99 • Departed Senior Bios 100 • Box Scores and Recaps 105 • MWC Statistics 117

Records

Team 120 • Team Season 122 • Individual Game 124 • Top Game Performances 126 • Individual Season 130 • Individual Career 133 • Freshmen Records 136 • MWC Records 137 • Viejas Arena Records 139

History

Year-By-Year Results 142 • Year-By-Year Summary 154 • Statistical History 156 • vs. All Opponents 158 • All-Time Series 159 • Jersey Numbers 167 • Awards & Honors 168 • 1,000-Point Scorers 170 • Annual Stat Leaders 175 • Letterwinners 177 • Individual DI Stats 179 • National Postseason 183 • Conf. Tournaments 188 • Attendance/Home Record 190 • MWC Series 191 • Rallies/Clutch Shots 192

University

SDSU 194 • Aztec Culture 197 • Dr. Stephen Weber 198 • Jeff Schemmel 199 • Media Information 200 • Opponent Directory 202 • Media Outlets 204 • Broadcast Information 205 • Viejas Arena 206 • Directory 208



The 2009-10 SDSU Men's Basketball Media Guide

The 2009-10 San Diego State University Basketball Media Guide is a publication of the San Diego State University athletics media relations office. The publication was written, edited and designed by assistant athletic director/media relations Mike May and assistant media relations director Darin Wong.

Assistance was provided by assistant media relations directors Dave Kuhn, Peggy Curtin and Jamie McConeghy, Andrea Rogers, media relations student assistants Jenna Schuster, Tina Sturdevant, Jessica Burke and John Saraka.

Cover design by Jenna Schuster.

Photography

Ernie Anderson, Stan Liu, Ken Jacques, Kerry Snider, Derek Johnson, Mountain West Conference, NCAA Photos, NBA Photos, NBAE/Getty Images and Philadelphia 76ers.

Printing

Atlas Lithograph Company, Inc.

Media Information



FOUR STRAIGHT POSTSEASON APPEARANCES ► FOUR CONSECUTIVE 20-WIN SEASONS

General Information

Location San Diego, Calif., 92182
 Founded 1897
 Enrollment 34,360
 Nickname Aztecs
 Colors Scarlet and Black
 PMS Color 185
 Arena Viejas Arena at Aztec Bowl
 Opened 1997
 Capacity 12,414
 Affiliation NCAA Division I
 Conference Mountain West
 President Dr. Stephen Weber
 Alma Mater (Year) Bowling Green (1964)
 Athletics Director Jeff Schemmel
 Alma Mater (Year) Kansas State (1976)
 Athletic Department Phone 619-594-3019
 Ticket Office Phone 619-283-7378
 or 619-283-SDSU

History

Seasons of Basketball Entering 89th
 First Season of Basketball 1921-22
 All-Time Record 1,230-1,033
 NCAA Tournament Appearances 8
 Seasons of Div. I Basketball Entering 40th
 First Season of Div. I Basketball 1970-71
 All-Time Div. I Record 541-587
 NCAA Div. I Tournament Appearances 5
 Last NCAA Appearance 2006
 NIT Appearances 5
 Last NIT Appearance 2009

Media Relations

Assistant AD/MBB Mike May
 SID Main Office Number 619-594-5547
 May Cell Phone 619-957-8372
 SID Fax Number 619-582-6541
 May E-mail mmay@mail.sdsu.edu
 Assistant MRD/MBB Darin Wong
 Wong E-mail dwong@mail.sdsu.edu
 SID Mailing Address Aztec Media Relations
 3014 Aztec Athletics Center
 5302 55th Street
 San Diego State University
 San Diego, CA 92182



Basketball Staff

Head Coach Steve Fisher
 Alma Mater (Year) Illinois State (1967)
 Record at SDSU (Years) 173-140 (10)
 Record Overall (Years) 357-222 (18 full)
 Basketball Office Phone 619-594-6249
 Best Time to Contact Fisher Contact May
 Assistant Head Coach Brian Dutcher
 Alma Mater (Year) Minnesota (1982)
 Assistant Coach Justin Hutson
 Alma Mater (Year) CS Bakersfield (1994)
 Assistant Coach Mark Fisher
 Alma Mater (Year) Michigan (2001)
 Director of Basketball Operations Matt Soria
 Alma Mater (Year) San Diego State (2002)
 Director of Player Development David Velasquez
 Alma Mater (Year) San Diego State (2007)
 Basketball Trainer Mark Haines
 Alma Mater (Year) Metropolitan State (1987)
 Administrative Assistant Marty Malano

Team Information

	<i>Total</i>	<i>Home</i>	<i>Away</i>	<i>Neu.</i>
2008-09 Record	26-10	16-2	6-5	4-3
2008-09 MWC Record	11-5	7-1	4-4	
Mountain West Finish4th			
MWC Tournament	Finals (2-1)			
PostseasonNIT			
NIT FinishSemifinals (3-1)			
Starters Returning/Lost2/3			
Letterwinners Returning/Lost7/7			

Media Information

Radio Station AM 600 KOGO
 Play-By-Play Announcer Ted Leitner
 PBP Phone Number 858-560-6671
 Video Footage Contact David Berry
 VFC Phone Number 619-594-2428
 Beat Writer Mark Zeigler
 The San Diego Union-Tribune
 619-293-1341
 Beat Writer Dan Hayes, Brian Hiro
 North County Times
 760-739-6645

Media Services

SID Office Phone 619-594-5547
 SID Office Fax 619-582-6541
 Viejas Arena Press Row 619-265-5853
 SDSU Athletics Website www.GoAztecs.com

2009-10 Roster Breakdown

Starters Returning (2)

Player	Ht.	Wt.	Cl.	Pos.	PPG	RPG
D.J. Gay	6-0	167	Jr.	G	6.0	*1.8
Billy White	6-8	235	Jr.	F	8.8	3.8

Total Letterwinners Returning (7)

Player	Ht.	Wt.	Cl.	Pos.	PPG	RPG
Mehdi Cheriet	6-9	218	Sr.	F	4.6	2.2
Kelvin Davis	6-3	220	Sr.	G	2.5	1.8
Jason Deutchman	6-6	220	Jr.	G	0.0	0.6
D.J. Gay	6-0	167	Jr.	G	6.0	*1.8
Bryan Horton	6-1	205	So.	G	0.2	0.2
Tim Shelton	6-7	248	So.	F	7.9	4.7
Billy White	6-8	235	Jr.	F	8.8	3.8

Newcomers (6)

Player	Ht.	Wt.	Cl.	Pos.
Brian Carlwell	6-11	297	Jr.	C
Kawhi Leonard	6-7	225	Fr.	F
Tyrone Shelley	6-6	225	So.	G
Chase Tapley	6-2	205	Fr.	G
Malcolm Thomas	6-9	215	Jr.	F
Alec Williams	6-6	268	Fr.	F

Starters Lost (3)

Player	Ht.	Wt.	Cl.	Pos.	PPG	RPG
Ryan Amoroso	2-8	263	Sr.	F	7.5	4.5
Kyle Spain	6-5	220	Sr.	F	14.0	5.3
Richie Williams	5-10	162	Sr.	G	7.2	*3.5

Total Letterwinners Lost (7)

Player	Ht.	Wt.	Cl.	Pos.	PPG	RPG
Ryan Amoroso	6-8	263	Sr.	F	7.5	4.5
Tim Island	6-4	207	Sr.	G	0.3	0.7
Bryce Smith	6-3	202	Fr.	G	0.7	0.2
Kyle Spain	6-5	220	Sr.	F	14.0	5.3
Matt Thomas	6-4	213	Sr.	G	1.8	1.6
Lorenzo Wade	6-6	225	Sr.	F	14.1	4.6
Richie Williams	5-10	162	Sr.	G	7.2	*3.5

Honors Candidates
 D.J. Gay - All-Conference
 K. Leonard - Freshman of the Year
 T. Shelley - Newcomer of the Year, All-Conference, All-Region
 T. Shelton - All-Conference, All-Region
 M. Thomas - Newcomer of the Year, All-Conference, All-Region
 B. White - All-Conference, All-Region
 * - Indicates assists per game.

2009-10 San Diego State Alphabetical Roster

No.	Name	Pos.	Ht.	Wt.	Yr.	Exp.	Most Recent Div. I Season			Hometown (High School/Previous School)
							PPG	RPG	APG	
5	Brian Carlwell	C	6-11	297	Jr.	TR	0.0	0.0	0.0	Maywood, Ill. (Proviso East High/Illinois)
42	Mehdi Cheriet	F	6-9	218	Sr.	1L	4.6	2.2	0.6	Tarare, France (Arizona Western College)
40	Kelvin Davis	G	6-3	220	Sr.	1L	2.5	1.8	0.5	Waterbury, Conn. (Waterbury Sacred Heart/College of So. Idaho)
20	Jason Deutchman	G	6-6	220	Jr.	1L	0.0	0.6	0.1	Los Angeles, Calif. (Santa Monica High/Wisconsin-Milwaukee)
23	D.J. Gay	G	6-0	167	Jr.	2L	6.0	1.5	1.8	Sun Valley, Calif. (Poly High)
10	Bryan Horton	G	6-1	205	So.	1L	0.2	0.2	0.2	Anaheim, Calif. (Canyon High)
15	Kawhi Leonard	F	6-7	225	Fr.	HS	--	--	--	Riverside, Calif. (King High)
3	Tyrone Shelley	G	6-6	225	So.	TR	15.1	5.8	0.9	San Diego, Calif. (Crawford High/Pepperdine)
24	Tim Shelton	F	6-7	248	So.	1L	7.9	4.7	1.3	Fresno, Calif. (Clovis West High)
22	Chase Tapley	G	6-2	205	Fr.	HS	--	--	--	Sacramento, Calif. (Sacramento High)
4	Malcolm Thomas	F	6-9	215	Jr.	JC	12.5	8.8	1.6	San Diego, Calif. (Crawford High/San Diego City College)
32	Billy White	F	6-8	235	Jr.	2L	8.8	3.8	0.8	Las Vegas, Nev. (Green Valley High)
0	Alec Williams	F	6-6	268	Fr.	HS	--	--	--	San Juan Capistrano, Calif. (Serra Catholic High)

2009-10 San Diego State Numerical Roster

No.	Name	Pos.	Ht.	Wt.	Yr.	Exp.	Most Recent Div. I Season			Hometown (High School/Previous School)
							PPG	RPG	APG	
0	Alec Williams	F	6-6	268	Fr.	HS	--	--	--	San Juan Capistrano, Calif. (Serra Catholic High)
3	Tyrone Shelley	G	6-6	225	So.	TR	15.1	5.8	0.9	San Diego, Calif. (Crawford High/Pepperdine)
4	Malcolm Thomas	F	6-9	215	Jr.	JC	12.5	8.8	1.6	San Diego, Calif. (Crawford High/San Diego City College)
5	Brian Carlwell	C	6-11	297	Jr.	TR	0.0	0.0	0.0	Maywood, Ill. (Proviso East High/Illinois)
10	Bryan Horton	G	6-1	205	So.	1L	0.2	0.2	0.2	Anaheim, Calif. (Canyon High)
15	Kawhi Leonard	F	6-7	225	Fr.	HS	--	--	--	Riverside, Calif. (King High)
20	Jason Deutchman	G	6-6	220	Jr.	1L	0.0	0.6	0.1	Los Angeles, Calif. (Santa Monica High/Wisconsin-Milwaukee)
22	Chase Tapley	G	6-2	205	Fr.	HS	--	--	--	Sacramento, Calif. (Sacramento High)
23	D.J. Gay	G	6-0	167	Jr.	2L	6.0	1.5	1.8	Sun Valley, Calif. (Poly High)
24	Tim Shelton	F	6-7	248	So.	1L	7.9	4.7	1.3	Fresno, Calif. (Clovis West High)
32	Billy White	F	6-8	235	Jr.	2L	8.8	3.8	0.8	Las Vegas, Nev. (Green Valley High)
40	Kelvin Davis	G	6-3	220	Sr.	1L	2.5	1.8	0.5	Waterbury, Conn. (Waterbury Sacred Heart/College of So. Idaho)
42	Mehdi Cheriet	F	6-9	218	Sr.	1L	4.6	2.2	0.6	Tarare, France (Arizona Western College)

Head Coach: Steve Fisher (Illinois State, 1967)
Assistant Head Coach: Brian Dutcher (Minnesota, 1982)
Assistant Coaches: Justin Hutson (CS Bakersfield, 1994), Mark Fisher (Michigan, 2001)
Director of Operations: Matt Soria (San Diego State, 2002)
Director of Player Development: David Velasquez (San Diego State, 2007)
Athletic Trainer: Mark Haines (Metropolitan State College, 1987)

Eligible in 2010-11 Season

No.	Name	Pos.	Ht.	Wt.	Yr.	Exp.	Most Recent Div. I Season			Hometown (High School/Previous School)
							PPG	RPG	APG	
11	James Rahon	G	6-5	202	So.	TR	11.3	1.7	1.3	San Diego, Calif. (Torrey Pines High)

► Pronunciations

Mehdi Cheriet
Meh-DEE Shell-yet
Jason Deutchman
Jason DOY-tch-man
Kawhi Leonard
KUH-Why Leonard
Chase Tapley
Chase TAP-lee

By Class

Seniors (2)
Kelvin Davis, Mehdi Cheriet
Juniors (5)
Brian Carlwell, Jason Deutchman, D.J. Gay, Malcolm Thomas, Billy White

Sophomores (3)

Bryan Horton, Tyrone Shelley, Tim Shelton
Freshmen (3)
Kawhi Leonard, Chase Tapley, Alec Williams

► By Position

Guards (6)
Kelvin Davis, Jason Deutchman, D.J. Gay, Bryan Horton, Tyrone Shelley, Chase Tapley

Forwards (6)

Mehdi Cheriet, Kawhi Leonard, Tim Shelton, Malcolm Thomas, Billy White, Alec Williams
Centers (1)
Brian Carlwell

2009-10 Schedule



FOUR STRAIGHT POSTSEASON APPEARANCES ► FOUR CONSECUTIVE 20-WIN SEASONS

Date	Day	Opponent	Site	Time	TV
Exhibition Games					
Nov. 3	Tue.	CAL BAPTIST	Viejas Arena	7:00 p.m. PST	
Nov. 10	Tue.	POINT LOMA NAZARENE	Viejas Arena	7:00 p.m. PST	
Nov. 14	Sat.	UC SAN DIEGO	Viejas Arena	2:00 p.m. PST	
ESPN College Hoops Tip-Off Marathon					
Nov. 16	Mon.	at Saint Mary's	Moraga, Calif.	11:00 p.m. PST	ESPN
West Coast Classic (Campus Sites)					
Nov. 19	Thur.	SANTA CLARA	Viejas Arena	7:00 p.m. PST	
Nov. 23	Mon.	at Fresno State	Fresno, Calif.	7:00 p.m. PST	
Nov. 25	Wed.	at Pacific	Stockton, Calif.	7:00 p.m. PST	
Nov. 28	Sat.	NORTHERN ARIZONA	Viejas Arena	7:00 p.m. PST	
Dec. 2	Wed.	at San Diego	San Diego, Calif.	7:00 p.m. PST	4SD
Dec. 5	Sat.	at UC Santa Barbara	Santa Barbara, Calif.	7:00 p.m. PST	
Dec. 9	Wed.	CAL STATE FULLERTON	Viejas Arena	7:00 p.m. PST	
Dec. 12	Sat.	ARIZONA	Viejas Arena	7:00 p.m. PST	The Mtn.
Dec. 19	Sat.	at Arizona State	Tempe, Ariz.	4:30 p.m. MT	FS Arizona
Mountain West-Missouri Valley Challenge (Campus Sites)					
Dec. 22	Tue.	at Drake	Des Moines, Iowa	8:05 p.m. CST	
Dec. 29	Tue.	UC RIVERSIDE	Viejas Arena	7:00 p.m. PST	
Dec. 31	Thur.	POMONA-PITZER	Viejas Arena	7:00 p.m. PST	
Jan. 5	Tue.	*NEW MEXICO	Viejas Arena	7:30 p.m. PST	The Mtn.
Jan. 9	Sat.	*at Wyoming	Laramie, Wyo.	4:00 p.m. MST	The Mtn., 4SD
Jan. 13	Wed.	*at UNLV	Las Vegas, Nev.	7:05 p.m. PST	CBS College Sports
Jan. 16	Sat.	*TCU	Viejas Arena	7:00 p.m. PST	The Mtn.
Jan. 19	Tue.	*at Utah	Salt Lake City, Utah	8:00 p.m. MST	The Mtn., 4SD
Jan. 23	Sat.	*BRIGHAM YOUNG	Viejas Arena	7:00 p.m. PST	The Mtn.
Jan. 30	Sat.	*at Colorado State	Fort Collins, Colo.	4:00 p.m. MST	The Mtn., 4SD
Feb. 2	Tue.	*AIR FORCE	Viejas Arena	7:05 p.m. PST	CBS College Sports
Feb. 6	Sat.	*at New Mexico	Albuquerque, N.M.	4:00 p.m. MST	The Mtn., 4SD
Feb. 10	Wed.	*WYOMING	Viejas Arena	7:30 p.m. PST	The Mtn.
Feb. 13	Sat.	*UNLV	Viejas Arena	1:00 p.m. PST	VERSUS
Feb. 16	Tue.	*at TCU	Fort Worth, Texas	7:00 p.m. CST	The Mtn., 4SD
Feb. 20	Sat.	*UTAH	Viejas Arena	6:00 p.m. PST	The Mtn.
Feb. 24	Wed.	*at Brigham Young	Provo, Utah	7:05 p.m. MST	CBS College Sports
March 3	Wed.	*COLORADO STATE	Viejas Arena	7:30 p.m. PST	The Mtn.
March 6	Sat.	*at Air Force	USAF Academy, Colo.	7:00 p.m. MST	The Mtn.
March 10-13	Wed.-Sat.	at Conoco MWC Basketball Championships	Las Vegas, Nev.	TBD	

* - Indicates Mountain West Conference game. CAPS indicates home game at Viejas Arena. All times subject to change.

2010 NCAA Div. I Men's Basketball Championship Dates and Sites

Opening Round

UD Arena
Dayton, Ohio
Univ. of Dayton, host
March 16

HP Pavilion
San Jose, Calif.
Host: San Jose State Univ.
March 18 and 20

Host: Jacksonville Univ.
March 19 and 21

Energy Solutions Arena
Salt Lake City, Utah
Host: Univ. of Utah
March 25 and 27

First/Second Rounds

New Orleans Arena
New Orleans, La.
Host: Tulane Univ.
March 18 and 20

Dunkin Donuts Center
Providence, R.I.
Host: Big East Conference/Providence College
March 18 and 20

Spokane Veterans Memorial Arena
Spokane, Wash.
Host: Washington State Univ.
March 18 and 20

Bradley Center
Milwaukee, Wisc.
Host: Marquette Univ.
March 19 and 21

Edward Jones Dome
St. Louis, Mo.
Host: Missouri Valley Conference
March 26 and 28

HSBC Arena
Buffalo, N.Y.
Host: Metro Atlantic Athletic Conference/Canisius College/Niagara Univ.
March 19 and 21

Ford Center
Oklahoma City, Okla.
Host: Big 12 Conference
March 19 and 21

Reliant Stadium
Houston, Texas
Host: Univ. of Houston/Rice Univ.
March 26 and 28

Regionals

Carrier Dome
Syracuse, N.Y.
Host: Syracuse Univ.
March 25 and 27

Jacksonville Veterans Memorial Arena
Jacksonville, Fla.

Final Four

Lucas Oil Stadium
Indianapolis, Ind.
Host: Butler Univ./Horizon League
April 3 and 5

The 2009-10 Season Outlook



The Sky is the Limit for SDSU

How highly is the San Diego State Basketball Program regarded?

In 2008-09, San Diego State won a school-record 26 wins and eclipsed its total Division I era postseason victory total by winning three consecutive postseason games en route to a trip to the NIT national semifinals in New York.

Following the record-setting season, the Aztecs said good bye to five seniors, including two 1,000-point scorers, who helped San Diego State to the most successful four-year run in school history. Four straight postseason appearances. Four straight seasons with 20 or more wins.

The *Sporting News* has San Diego State picked to win the Mountain West Conference.

That is where 11th-year Steve Fisher has taken the San Diego State program. A program that once suffered through 13 losing seasons in the 14 years prior to his arrival, can now withstand major personnel losses and not miss a beat. A word that few thought would ever be used to summarize the Aztec program

now is appropriate.

Reloaded.

San Diego State returns a number of skilled players, led by junior forward Billy White, junior guard D.J. Gay and sophomore forward Tim Shelton. They are joined by a trio of high-profile Division I transfers and the most decorated recruiting class in school history, one that ranks among the best in the country.

"We have this program on real solid footing and I have said this before, we have a program," Fisher said. "We have a program where expectations are going to be high every year. We've done that. We've worked hard. We've gotten through the bumps. We've grown steadily and still have room to grow which is also nice.

"We have expectations that we want to get better. That's the goal. We want to continue to grow and get better. I have said that before we leave, our goal would be to bring a Final Four banner to San Diego State. That's about as lofty of expectations that one could have and yet that is where the state of our program is."





D.J. Gay returns as a two-year starter who has played in every game since stepping foot on campus.

Team Breakdown

2008-09 Record	26-10
MWC Record	11-5
MWC Finish	4th
MWC Tournament	2-1

Starters Returning (2)

Player	Ht.	Wt.	Cl.	Pos.	PPG	RPG
D.J. Gay	6-0	167	Jr.	G	6.0	*1.8
Billy White	6-8	235	Jr.	F	8.8	3.8

Total Letterwinners Returning (7)

Player	Ht.	Wt.	Cl.	Pos.	PPG	RPG
Mehdi Cheriet	6-9	218	Sr.	F	4.6	2.2
Kelvin Davis	6-3	220	Sr.	G	2.5	1.8
Jason Deutchman	6-6	220	Jr.	G	0.0	0.6
D.J. Gay	6-0	167	Jr.	G	6.0	*1.8
Bryan Horton	6-1	205	So.	G	0.2	0.2
Tim Shelton	6-7	248	So.	F	7.9	4.7
Billy White	6-8	235	Jr.	F	8.8	3.8

Newcomers (6)

Player	Ht.	Wt.	Cl.	Pos.
Brian Carlwell	6-11	297	Jr.	C
Kawhi Leonard	6-7	225	Fr.	F
Tyrone Shelley	6-6	225	So.	G
Chase Tapley	6-2	205	Fr.	G
Malcolm Thomas	6-9	215	Jr.	F
Alec Williams	6-6	268	Fr.	F

Starters Lost (3)

Player	Ht.	Wt.	Cl.	Pos.	PPG	RPG
Ryan Amoroso	2-8	263	Sr.	F	7.5	4.5
Kyle Spain	6-5	220	Sr.	F	14.0	5.3
Richie Williams	5-10	162	Sr.	G	7.2	*3.5

Total Letterwinners Lost (7)

Player	Ht.	Wt.	Cl.	Pos.	PPG	RPG
Ryan Amoroso	6-8	263	Sr.	F	7.5	4.5
Tim Island	6-4	207	Sr.	G	0.3	0.7
Bryce Smith	6-3	202	Fr.	G	0.7	0.2
Kyle Spain	6-5	220	Sr.	F	14.0	5.3
Matt Thomas	6-4	213	Sr.	G	1.8	1.6
Lorenzo Wade	6-6	225	Sr.	F	14.1	4.6
Richie Williams	5-10	162	Sr.	G	7.2	*3.5

* - Indicates assists per game.



Season Outlook



FOUR STRAIGHT POSTSEASON APPEARANCES ► FOUR CONSECUTIVE 20-WIN SEASONS

As for being selected to compete for a league title, it goes toward the respect San Diego State has earned.

"All teams that are good or viewed to be good, they don't care who you've got or who you lost," Fisher said. "That's Michigan State. That's Duke. That's North Carolina. That's UCLA. You are supposed to be good. That brings added pressure and I think that brings great pride in who you are.

"The fact that we lost four starters, more than anybody in the league, more points, rebounds, assists, more than anybody in the league, and we are still expected to be contending for a title, legitimately so, I think it speaks to the quality of what the program has become."

Point Guard

Ask of the so called basketball experts what one area will determine how successful the 2009-10 Aztec basketball team will be and they will answer with point guard play.

Gone is Richie Williams, a 5-10 guard who started 109 games during the past four seasons and not only initiated the Aztec offense, but also sparked a defense that held opponents to a school-record low 41.0 percent field-goal shooting last season. Williams left SDSU with not only a diploma, but also the Mountain West Conference career record for assists (479) and steals (246).

Aztec fans will recognize the heir apparent. D.J. Gay (6.0 ppg, 1.5 rpg, 1.8 apg) enters his junior campaign playing primarily the point guard spot for the first time in his collegiate career. A 6-0, 167-pound product from Sun Valley, Calif., Gay spent the off-season preparing for the challenge of playing the one-guard spot. He added 12 pounds of muscle and worked relentlessly on his ball-handling skills.

"D.J. is a two-year starter who will be our starting point guard," Fisher said. "Although he has played primarily the two-guard, he has played the point position for us and we are confident in his ability to run the team."

Although Gay has spent a majority of his minutes to date at the off-guard position, it is worth noting that he has just 84 career turnovers in 1,745 minutes of action. That equated into just one turnover every 20:46, showing he has the ability and maturity to make good decisions on the court. In fact, he ended last season committing one turnover or less in 12 of his final 13 games and has 19 turnover-free

games in his first two seasons.

One thing Gay will provide that previous San Diego State point guards during the Steve Fisher era have not, is the ability to be a genuine scoring threat. Gay already ranks 11th on the school's career three-point field-goal chart with 85 and has shown the ability to score in bunches with three, 20-plus scoring games, including a career-best 21 points at Utah as a freshman.

"He will still continue to be a guy we expect to score the basketball," Fisher said. "Right now he is one of, if not, our best catch-shoot players and will profit immensely from his two-year experience in the program."

With Gay set to log mammoth minutes at the point, the real question entering the season might be, who will run the point when he is off the court?

The leading candidate to fill that role will be true freshman Chase Tapley and sophomore walk-on Bryan Horton.

Although he spent last season leading Sacramento High to a 27-7 record and a trip to the Northern California state finals, Tapley shows maturity beyond his years. The 6-2, 205-pounder, who has been described by Fisher as a "gifted scorer," finished last season ranked 39th in the state in scoring. He will see time at both of the guard spots, but his ability to play the point will help him earn extra playing time in his first season on The Mesa.

"Chase is working extremely hard on his ball skills to be a secondary ball handler and point guard," Fisher said. "He knows how to score the ball. He can score in a variety of ways. He has the ability to shoot the three, but also score off the bounce and is a tremendously important addition to this year's team."

Coming off a redshirt season, Horton saw action in 17 games a year ago and played a total of 44 minutes.

"Bryan has improved every part of his game," Fisher said. "He is a very good on-ball defender. He's improved in ball-handling skills, his decision-making skills greatly, to where he could play either guard position for us."

Shooting Guard and Small Forward

In San Diego State's offense, the shooting guard and small forward spots are interchangeable wing positions, so we will combine the positions here and look at the personnel collectively.



Senior Kelvin Davis, who received a sixth year of eligibility from the NCAA, will be a three-point shooting threat for San Diego State.

In the Steve Fisher era, the wing positions have been defined by athletically gifted players that not only have served as the face of the program, but are synonymous with all-conference performers and Mountain West Conference player of the year candidates.

From Tony Bland to Brandon Heath to Kyle Spain to Lorenzo Wade, the Aztecs have had great wings that have served as the nucleus of very successful teams.

This season, San Diego State will introduce a pair of players that will likely add their names to those above. Freshman Kawhi Leonard and sophomore transfer Tyrone Shelley will log most of the minutes, with senior Kelvin Davis and junior walk-on Jason Deutchman providing quality depth.

San Diego State turned heads when they got the 6-7 Leonard to commit to attending the University. The student-athlete who ESPN's Doug Gottlieb said "one Pac-10 coach told me (Leonard) is better than anyone else who signed in the Pac-10," represents the biggest named recruit to sign with the Aztecs out of high school in Steve Fisher's 11 years.

Career Games Played/Started

Player	GP	GS
D.J. Gay	69	49
Billy White	66	58
Kelvin Davis	65	6
Tim Shelton	38	16
Mehdi Cheriet	35	2
Malcolm Thomas	32	28
Tyrone Shelley	32	19
Brian Carlwell	29	0
Bryan Horton	17	0
Jason Deutchman	8	0

includes games played and games started at all Division I schools.

*Tim Shelton returns
as San Diego State's
leading rebounder.*



Season Outlook

FOUR STRAIGHT POSTSEASON APPEARANCES ► FOUR CONSECUTIVE 20-WIN SEASONS



Sophomore Tyrone Shelley is expected to make an immediate impact for the Aztecs in his first season at San Diego State. Shelley was a freshman All-American in 2007-08 at Pepperdine.

"Kawhi is a tremendously hard-working, competitive player who will help us throughout his career," Fisher said. "He is a scorer and a great addition to the program. He will contribute immediately."

Leonard averaged 22.6 points a year ago for Riverside King High en route to earning California State Mr. Basketball honors by one recruiting web site as well as Los Angeles Times player-of-the-year accolades.

But as good of an offensive player Leonard is, he can also be a major factor on the defensive end.

"He brings great versatility to the game at both ends of the court," Fisher said. "Kawhi has long arms and big hands and can be disruptive on the defensive end. He can play multiple positions and is someone that we believe can guard anybody from the one through four positions and eventually will be able to play all of those offensive positions."

Shelley, a 6-6 sophomore guard, is eligible this season after playing as a freshman at Pepperdine in 2007-08. A native of San Diego, Shelly exploded on the West Coast Conference scene two seasons ago, earning mid-major All-America honors by one web site.

He was fourth in the WCC in scoring as a freshman, averaging 15.1

points and 5.8 rebounds per contest. He has the ability to score from anywhere on the court and has the capability of exploding for big numbers. In his fourth collegiate game, he made six three-point field goals and scored 34 points. He posted nine 20-point scoring games in 2007-08.

"Tyrone has the advantage of having been in the program a year even though he could not play (due to NCAA transfer rules)," Fisher said. "He is a scorer. He has the versatility to swing between a perimeter player or when necessary a post player. He knows he can score the ball in a variety of ways - from the three position, off the bounce, or with his back to the basket at the four spot. He brings great versatility to the game at both ends of the court."

Late this summer, San Diego State learned that the NCAA granted Davis an extra year of eligibility. A native of Waterbury, Conn., Davis played in just eight games last season as he spent much of the season sidelined as he received chemotherapy and radiation treatments for Hodgkin's lymphoma. Davis was recognized by the United States Basketball Writers Association (USBWA), earning their most courageous award at last season's Final Four weekend in Detroit.

Cancer-free, Davis is anxious to get back on the court for his second senior season. The 6-3 guard has 312 career points and is known as a deep threat, with 50 career treys. During his 2007-08 campaign with the Aztecs, he had 11 double-digit scoring games.

"We are thrilled that he's physically in good health," Fisher said. "He has been given the green light from all his doctors. He brings experience to a young team. Kelvin is a very good catch-and-shoot player and is as good of a streak scorer as there is in the conference. We are excited to have him back."

A 6-6 junior guard, Deutchman gives the Aztecs an experienced body at the wing position. A transfer from Wisconsin-Milwaukee, he played in eight games for the Aztecs a year ago. He also saw action in three of San Diego State's four postseason NIT games. His playing time has been limited due to injuries.

"Jason has continued to battle knee injuries," Fisher said. "We are hopeful that he will be physically able to be involved. He's a smart outside-inside player who brings a great attitude and effort every day."

Power Forward

Steve Fisher talks about the quality depth the Aztecs have with this year's team. Nowhere is that more apparent than at the power forward position.

San Diego State has a wealth of talent at the position, led by all-Mountain West Conference preseason selection Billy White (8.8 ppg, 3.8 rpg, 66.3 FG pct.), Tim Shelton (7.9 ppg, 4.7 rpg) and Mehdi Cheriet (4.6 ppg, 2.2 rpg). True freshman Alec Williams rounds out the position for the Aztecs.

Fisher certainly will have options of getting more than one of these players on the court at the same time.

With the departure of five seniors, White, a 6-8 junior, is SDSU's top returning scorer from the record-setting team a year ago. During the off-season, he was a near unanimous preseason first-team all-conference selection after earning third-team honors as a freshman and honorable mention accolades last season.

White is one of the premier players on the low block, with the ability to take his opponent off the dribble and finish well above the rim. One area where he has supplemented his game is with an improved mid-range jump shot.

"Billy is one of the premier athletes in the United States," Fisher said. "He has worked extremely hard at his

San Diego State 2009-10 Preseason Accolades

Team MWC Predictions

First Place

- *Sporting News*

Second Place

- MWC Preseason Poll

- *Blue Ribbon*

- *Athlon Sports*

- Doug Gottlieb, ESPN.com

Third Place

- *Lindy's*

- *Yahoo! Sports College*

Basketball

Other Team Accolades

Postseason Participants

- *Sporting News*

- *Lindy's*

- *Athlon Sports*

Top Recruits in MWC

- *Sporting News*

- *Lindy's*

Individual Honors

Billy White

All-MWC Team

- MWC Preseason Poll

- *Blue Ribbon*

- *Sporting News*

- *Lindy's*

- *Yahoo! Sports College*

Basketball

Tim Shelton

All-MWC Team

- *Lindy's*

Malcolm Thomas

Newcomer of the Year

- *Blue Ribbon*

Kawhi Leonard

Freshman of the Year

- MWC Preseason Poll

- *Sporting News*

All-MWC Team

- SLAM ONLINE

Season Outlook



FOUR STRAIGHT POSTSEASON APPEARANCES ► FOUR CONSECUTIVE 20-WIN SEASONS

Aztec Returning Leaders

Scoring	PPG
Billy White	8.8
Tim Shelton	7.9
D.J. Gay	6.0

Rebounding	RPG
Tim Shelton	4.7
Billy White	3.8
Mehdi Cheriet	2.2

Assists	APG
D.J. Gay	1.8
Tim Shelton	1.3
Billy White	0.8

perimeter offense. We expect to see much more consistency from him at both ends of the floor. He is a versatile athlete that can be the point of your press to a guy that can guard a post player on the other team. Billy is someone who has grown immensely in the program and we have high expectations for him."

White's ability to transition from a player who can produce big games – like 24 points and eight rebounds in 29 minutes on a school-record 12-for-12 shooting performance against Wyoming – to being able to produce night in and night out will go a long way toward determining how far this edition of the Aztecs will go.

In two seasons, White has tallied 27 double-digit scoring games, but his ability to be a constant scoring threat and implement his mid-range game will be watched closely as the season gets underway.

Sophomore forward Tim Shelton (7.9 ppg, 4.7 rpg, 1.3 apg) returns following yet another off-season knee surgery. With three knee surgeries behind him, Aztecs fans are hoping to see his smart play all season long.

A native of Fresno, Calif., the 6-7 Shelton played in four games during the 2007-08 season before knee surgery cut short his season. He received

a medical hardship from the NCAA, and had a redo for his freshman campaign last year.

Although he was limited last season, missing many practices and a pair of games due to knee injuries, he still started 13 times on a team dominated by seniors. Although he produces spotless stat lines with high rebound totals and very few turnovers, the best measurement of his worth can be told by the success of the team when he is on the court. In his 38 career games, SDSU has outscored its opponent when he is on the court 27 times.

While on the court, Shelton helped SDSU outscore its opponents by 228 points last season. That is good enough for third on the team and led the team based on minutes played.

"Tim is someone that brings more than just points and rebounds to the game," Fisher said. "He is a great leader both vocally and by example. He's a player who makes everyone around him better when he is on the floor. Tim has proven his worth over his career with us so far with how he's played. We need to have him on the floor. When he is physically able to perform, he is as good as any high post-low post player we have."

Senior Mehdi Cheriet (4.6 ppg, 2.2 rpg) gives the Aztecs a different look at the position. He has the ability to extend defenses with his outside shooting game as evidenced by his 14 three-point field goals last season. He is also a player who is comfortable guarding on the perimeter.

An award-winning student, Cheriet is in a five-year biology program at the University. That, coupled with the Aztecs depth at the position, will mean the Tarare, France, native will likely redshirt.

"It looks like it will be a great probability that he will redshirt this year," Fisher said. "What Mehdi brings to the table is size, and the ability to step out and be a perimeter player. He can swing between doing that and playing in the post. He is a very good face-up shooter, but he's also becoming much more skilled in the low post area. We really like Mehdi."

The new face at the power forward position is freshman Alec Williams. But to hear Fisher talk about him, it is hard to believe this will be his first year of college.

"Alec is skilled and knows how to play," Fisher said. "He knows how to score the ball and is working extremely hard in making the adjustment from high school to college. He

brings the ability to step away from the basket to draw a big man away from the basket. Alec has the strength and low post technique to score in the low post area."

Williams ranked among the top 100 players in the state of California in his senior year, averaging 21.3 points while leading JSerra High to the CIF Southern Section playoffs.

Center

For the first time in a long time, San Diego State has a center that has a major-college low post body.

At 6-11, 297-pounds, Illinois transfer Brian Carlwell will have a strength and leverage advantage when San Diego State goes up against the big bodies in the Mountain West.

Although injuries have allowed him to play in just three games since the completion of the 2006-07 campaign, the staff believes that his presence will help round out what will be an impressive lineup.

"He is a legitimate center," Fisher said. "He has the advantage of having been in the program last year as a redshirt. That should pay dividends. He runs the floor and communicates well. He should be a real defensive presence. He is working on continuing to grow his offensive game, but we really like the maturity he brings and the experience to help this team grow."

Although he can shift to the five spot when Carlwell is on the bench, junior forward Malcolm Thomas will also see plenty of playing time at the power forward position.

Thomas, who played his freshman season at Pepperdine before playing at San Diego City College last season, is 6-9 and 215. He is very athletic for his position on the floor and can cause matchup nightmares for defenses.

"Malcolm will be the best shot blocker that we will have had in my tenure at SDSU," Fisher said. "He is extremely quick off his feet at both ends and will be one of the premier post players in this league as a first year player at SDSU. We are very excited about Malcolm and his tenure with us."

As a freshman at Pepperdine, Thomas started 28 games and nearly averaged a double-double with 12.5 points and 8.8 rebounds. He blocked 64 shots that season, which is 38 more than any San Diego State player blocked a year ago.



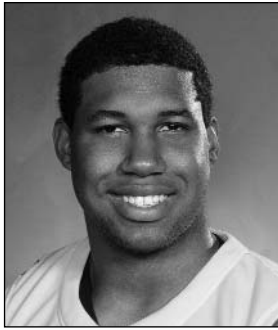
Senior Mehdi Cheriet provided San Diego State with solid minutes last year in his first season on Montezuma Mesa.

Broadcast Roster

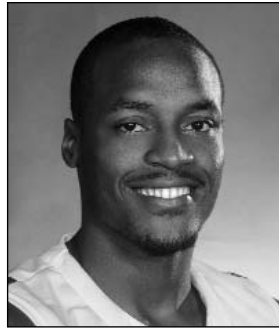


FOUR STRAIGHT POSTSEASON APPEARANCES ► FOUR CONSECUTIVE 20-WIN SEASONS

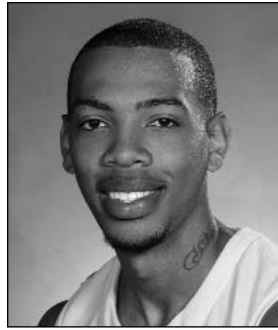
INTRODUCTION ► BROADCAST ROSTER
AZTEC BASKETBALL MEDIA GUIDE



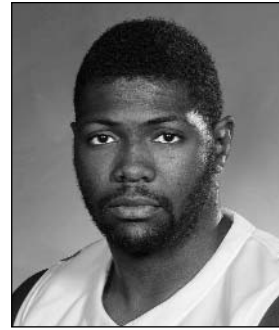
0 Alec Williams
Fr. • F • 6-6 • 268
San Juan Capistrano, Calif.



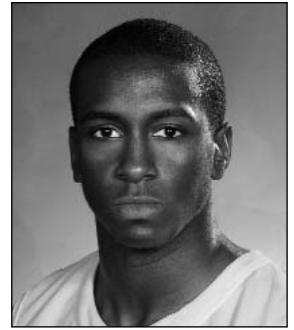
3 Tyrone Shelley
So. • G • 6-6 • 225
San Diego, Calif.



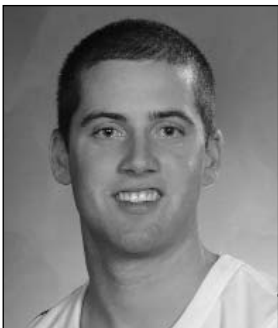
4 Malcolm Thomas
Jr. • F • 6-9 • 215
San Diego, Calif.



5 Brian Carlwell
Jr. • C • 6-10 • 297
Maywood, Ill.



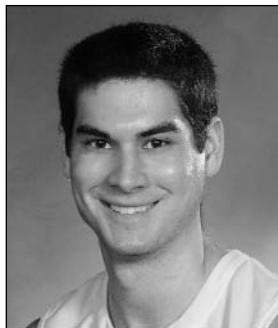
10 Bryan Horton
So. • G • 6-1 • 205
Anaheim, Calif.



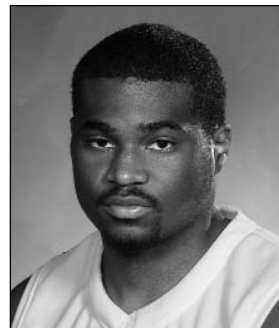
11 James Rahon
So. • G • 6-5 • 202
San Diego, Calif.



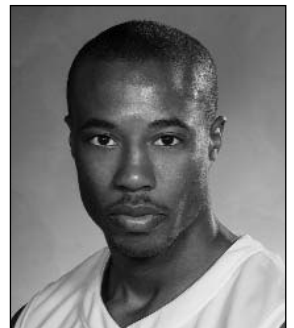
15 Kawhi Leonard
Fr. • F • 6-7 • 225
Riverside, Calif.



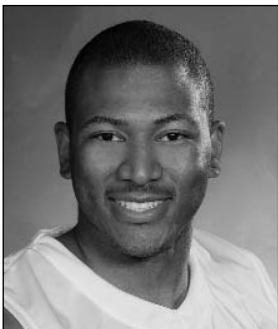
20 Jason Deutchman
Jr. • G • 6-6 • 220
Los Angeles, Calif.



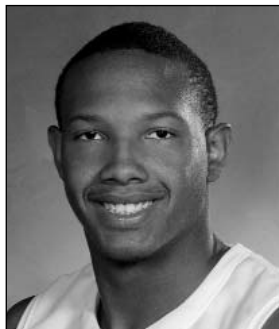
22 Chase Tapley
Fr. • G • 6-2 • 205
Sacramento, Calif.



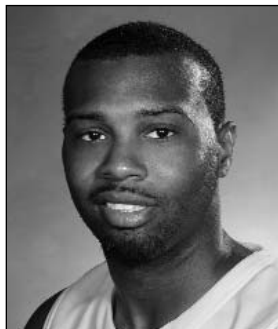
23 D.J. Gay
Jr. • G • 6-0 • 167
Sun Valley, Calif.



24 Tim Shelton
So. • F • 6-7 • 248
Fresno, Calif.



32 Billy White
Jr. • F • 6-8 • 235
Las Vegas, Nev.



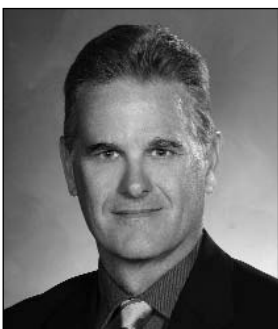
40 Kelvin Davis
Sr. • G • 6-3 • 220
Waterbury, Conn.



42 Mehdi Cheriet
Sr. • F • 6-9 • 218
Tarare, France



Steve Fisher
Head Coach



Brian Dutcher
Assistant Head Coach



Justin Hutson
Assistant Coach



Mark Fisher
Assistant Coach



Matt Soria
Director of Operations



David Velasquez
Dir. of Player Development

MEN'S & WOMEN'S BASKETBALL CHAMPIONSHIPS



MARCH
9-13,
2010

THOMAS
& MACK
CENTER
LAS VEGAS,
NEVADA

To purchase tickets, visit your favorite MWC institution's athletic box office or

TheMWC.com

For Las Vegas Room Reservations || Call 1-877-VISIT-LV || Visit LasVegas.com