

Table of Contents



2011 NCAA SWEET 16 ► BACK-TO-BACK MOUNTAIN WEST CONFERENCE CHAMPIONS



Introduction

Table of Contents 1 • Media Information 2 • Rosters 3 • Outlook 4 • Schedule 10 • Broadcast Roster 11

This is SDSU Basketball

Steve Fisher 14 • Fisher's Men in the Pros 16 • Viejas Arena 18 • Facilities 20 • National Attention 22 • San Diego State University 24 • City of San Diego 26 • Aztec Excellence 28 • Mountain West 30



Coaches and Staff

Steve Fisher 34 • Brian Dutcher 44 • Mark Fisher 45 • Tony Bland 46 • Support Staff 47

Players

Jamaal Franklin 50 • LaBradford Franklin 53 • James Rahon 56 • Tim Shelton 59 • Chase Tapley 64 • Xavier Thames 68 • Alec Williams 70 • Garrett Green 73 • DeShawn Stephens 77 • J.J. O'Brien 79 • Dwayne Polee II 80



2010-11 Review

Review 82 • Results 85 • Game-By-Game Statistics 90 • Miscellaneous Statistics 95 • Departed Senior Bios 96 • Box Scores and Recaps 102 • Mountain West Statistics 115



Records

Team 118 • Team Season 120 • Individual Game 122 • Top Game Performances 124 • Miscellaneous Records 126 • Individual Season 128 • Individual Career 131 • Freshmen Records 134 • Mountain West Records 135 • Viejas Arena Records 137

History

Year-By-Year Results 140 • Year-By-Year Summary 152 • Statistical History 154 • vs. All Opponents 156 • All-Time Series 157 • Jersey Numbers 165 • Awards & Honors 166 • 1,000-Point Scorers 168 • Annual Stat Leaders 173 • Letterwinners 175 • Individual DI Stats 177 • National Postseason 181 • Conf. Tournaments 188 • Attendance/Home Record 190 • Mountain West Series 191 • Rallies/Clutch Shots 192



University

SDSU 194 • Aztec Culture 197 • Dr. Elliot Hirshman 198 • Jim Sterk 199 • Media Information 200 • Opponent Directory 202 • Media Outlets 204 • Broadcast Information 205 • Viejas Arena 206 • Directory 208



The 2011-12 SDSU Men's Basketball Media Guide

The 2011-12 San Diego State University Basketball Media Guide is a publication of the San Diego State University athletics media relations office. The publication was written, edited and designed by assistant media relations director Darin Wong and associate athletic director/media relations Mike May.

Assistance was provided by assistant media relations directors Dave Kuhn, Peggy Curtin and Jamie McConeghy, Andrea Rogers, media relations student assistants Morgan Barrick, Beau Bearden and Ian Cornelison.

Cover design by Andrea Rogers.

Photography

Ernie Anderson, Stan Liu, Jeffrey Lamont Brown, Ken Jacques, Kerry Snider, Derek Johnson, Mountain West Conference, NCAA Photos, NBA Photos, NBAE/Getty Images and Philadelphia 76ers.

Printing

Atlas Lithograph Company, Inc.

Media Information



2011 NCAA SWEET 16 ► BACK-TO-BACK MOUNTAIN WEST CONFERENCE CHAMPIONS

General Information

Location San Diego, Calif., 92182
 Founded 1897
 Enrollment 32,396
 Nickname Aztecs
 Colors Scarlet and Black
 PMS Color 185
 Arena Viejas Arena at Aztec Bowl
 Opened 1997
 Capacity 12,414
 Affiliation NCAA Division I
 Conference Mountain West
 President Dr. Elliot Hirshman
 Alma Mater (Year) Yale (1983)
 Athletics Director Jim Sterk
 Alma Mater (Year) Western Washington (1980)
 Athletic Department Phone 619-594-3019
 Ticket Office Phone 619-283-7378
 or 619-283-SDSU

History

Seasons of Basketball Entering 91st
 First Season of Basketball 1921-22
 All-Time Record 1,288-1,044-1
 NCAA Tournament Appearances 9
 Seasons of Div. I Basketball Entering 42nd
 First Season of Div. I Basketball 1970-71
 All-Time Div. I Record 600-599
 NCAA Div. I Tournament Appearances 7
 Last NCAA Appearance 2011
 NIT Appearances 5
 Last NIT Appearance 2009

Media Relations

Assistant AD/MBB Mike May
 SID Main Office Number 619-594-5547
 May Cell Phone 619-957-8372
 SID Fax Number 619-582-6541
 May E-mail mmay@mail.sdsu.edu
 Assistant MRD/MBB Darin Wong
 Wong E-mail dwong@mail.sdsu.edu
 SID Mailing Address Aztec Media Relations
 Fowler Athletics Center
 5302 55th Street, Suite 3014
 San Diego State University
 San Diego, CA 92182

Basketball Staff

Head Coach Steve Fisher
 Alma Mater (Year) Illinois State (1967)
 Record at SDSU (Years) 232-152 (12)
 Record Overall (Years) 416-234^ (20 full)
 Basketball Office Phone 619-594-6249
 Best Time to Contact Fisher Contact May
 Associate Head Coach Brian Dutcher
 Alma Mater (Year) Minnesota (1982)
 Assistant Coach Mark Fisher
 Alma Mater (Year) Michigan (2001)
 Assistant Coach Tony Bland
 Alma Mater (Year) San Diego State (2009)
 Director of Basketball Operations Matt Soria
 Alma Mater (Year) San Diego State (2002)
 Director of Player Development David Velasquez
 Alma Mater (Year) San Diego State (2007)
 Basketball Trainer Tom Abdenour
 Alma Mater (Year) Wayne State (1976)
 Administrative Assistant Leana DeKock

Team Information

	<i>Total</i>	<i>Home</i>	<i>Away</i>	<i>Neu.</i>
2010-11 Record	34-3	14-1	12-1	8-1
2010-11 MWC Record	14-2	7-1	7-1	
Mountain West Finish	.T-1st			
MWC Tournament	.Champions (3-0)			
Postseason	.NCAA			
NCAA Finish	.West Region Semifinals (2-1)			
Starters Returning/Lost	.1-4			
Letterwinners Returning/Lost	.6/6			

Media Information

Radio Station AM 600 KOGO
 Play-By-Play Announcer Ted Leitner
 PBP Phone Number 858-560-6671
 Video Footage Contact David Berry
 VFC Phone Number 619-594-2428
 Beat Writer Mark Zeigler
 The San Diego Union-Tribune
 619-293-1341
 Beat Writer TBD
 North County Times
 760-739-6645

Media Services

SID Office Phone 619-594-5547
 SID Office Fax 619-582-6541
 Viejas Arena Press Row 619-265-5853
 SDSU Athletics Website www.GoAztecs.com

^ - Please refer to Steve Fisher's year-by-year record on page 35.

2011-12 Roster Breakdown

Starters Returning (1)

Player	Ht.	Wt.	Cl.	Pos.	PPG	RPG
Chase Tapley	6-3	195	Jr.	G	8.6	2.4

Total Letterwinners Returning (6)

Player	Ht.	Wt.	Cl.	Pos.	PPG	RPG
Jamaal Franklin	6-5	195	So.	G	2.9	1.9
LaBradford Franklin	6-2	175	So.	G	2.1	*1.4
James Rahon	6-5	210	Jr.	G	7.0	1.6
Tim Shelton	6-7	240	Sr.	F	1.6	1.5
Chase Tapley	6-3	195	Jr.	G	8.6	2.4
Alec Williams	6-7	245	Jr.	F	2.1	1.4

Newcomers (3)

Player	Ht.	Wt.	Cl.	Pos.
Garrett Green	6-11	240	Sr.	F
DeShawn Stephens	6-8	215	Jr.	F
Xavier Thames	6-3	195	So.	G

Starters Lost (4)

Player	Ht.	Wt.	Cl.	Pos.	PPG	RPG
D.J. Gay	6-0	170	Sr.	G	11.1	*3.1
Kawhi Leonard	6-7	225	So.	F	15.5	10.6
Malcolm Thomas	6-9	220	Sr.	F	11.4	8.1
Billy White	6-8	235	Sr.	F	10.3	4.4

Total Letterwinners Lost (6)

Player	Ht.	Wt.	Cl.	Pos.	PPG	RPG
Brian Carlwell	6-11	300	Sr.	C	3.8	2.7
Mehdi Cheriet	6-9	225	Sr.	F	1.8	1.0
D.J. Gay	6-0	170	Sr.	G	11.1	*3.1
Kawhi Leonard	6-7	225	So.	F	15.5	10.6
Malcolm Thomas	6-9	220	Sr.	F	11.4	8.1
Billy White	6-8	235	Sr.	F	10.3	4.4

Honors Candidates

James Rahon - All-Conference
 Chase Tapley - All-Conference
 Xavier Thames - All-Conference, Conference
 Newcomer of the Year
 Garrett Green - Newcomer of the Year

* - Indicates assists per game.



2011-12 San Diego State Alphabetical Roster

Most Recent Div. I Season										
No.	Name	Pos.	Ht.	Wt.	Yr.	Exp.	PPG	RPG	APG	Hometown (High School/Previous School)
21	Jamaal Franklin	G	6-5	195	So.	1L	2.9	1.9	0.5	Hawthorne, Calif. (Westwind Prep International (Ariz.))
3	LaBradford Franklin	G	6-2	175	So.	1L	2.1	0.9	1.4	Temecula, Calif. (Great Oak High)
5	Garrett Green	F	6-11	240	Sr.	TR	6.3	5.1	0.4	Woodland Hills, Calif. (Taft High/Louisiana State Univ.)
11	James Rahon	G	6-5	210	Jr.	1L	7.0	1.6	0.8	San Diego, Calif. (Torrey Pines High/Santa Clara Univ.)
10	Tim Shelton	F	6-7	240	Sr.	3L	1.6	1.5	0.4	Fresno, Calif. (Clovis West High)
23	DeShawn Stephens	F	6-8	215	Jr.	JC	--	--	--	Los Angeles, Calif. (Chatsworth High/Santa Monica College)
22	Chase Tapley	G	6-3	195	Jr.	2L	8.6	2.4	1.9	Sacramento, Calif. (Sacramento High)
2	Xavier Thames	G	6-3	195	So.	TR	4.6	1.5	1.2	Sacramento, Calif. (Pleasant Grove High/Washington State Univ.)
0	Alec Williams	F	6-7	245	Jr.	2L	2.1	1.4	0.0	San Juan Capistrano, Calif. (JSerra Catholic High)

2011-12 San Diego State Numerical Roster

Most Recent Div. I Season										
No.	Name	Pos.	Ht.	Wt.	Yr.	Exp.	PPG	RPG	APG	Hometown (High School/Previous School)
0	Alec Williams	F	6-6	245	Jr.	2L	2.1	1.4	0.0	San Juan Capistrano, Calif. (JSerra Catholic High)
2	Xavier Thames	G	6-3	195	So.	TR	4.6	1.5	1.2	Sacramento, Calif. (Pleasant Grove High/Washington State Univ.)
3	LaBradford Franklin	G	6-2	175	So.	1L	2.1	0.9	1.4	Temecula, Calif. (Great Oak High)
5	Garrett Green	F	6-11	240	Sr.	TR	6.3	5.1	0.4	Woodland Hills, Calif. (Taft High/Louisiana State Univ.)
10	Tim Shelton	F	6-7	240	Sr.	3L	1.6	1.5	0.4	Fresno, Calif. (Clovis West High)
11	James Rahon	G	6-5	210	Jr.	1L	7.0	1.6	0.8	San Diego, Calif. (Torrey Pines High/Santa Clara Univ.)
21	Jamaal Franklin	G	6-5	195	So.	1L	2.9	1.9	0.5	Hawthorne, Calif. (Westwind Prep International (Ariz.))
22	Chase Tapley	G	6-3	195	Jr.	2L	8.6	2.4	1.9	Sacramento, Calif. (Sacramento High)
23	DeShawn Stephens	F	6-8	215	Jr.	JC	--	--	--	Los Angeles, Calif. (Chatsworth High/Santa Monica College)

Head Coach: Steve Fisher (Illinois State, 1967)
Associate Head Coach: Brian Dutcher (Minnesota, 1982)
Assistant Coaches: Mark Fisher (Michigan, 2001), Tony Bland (San Diego State, 2009)
Director of Operations: Matt Soria (San Diego State, 2002)
Director of Player Development: David Velasquez (San Diego State, 2007)

Eligible in 2012-13 Season

Most Recent Div. I Season										
No.	Name	Pos.	Ht.	Wt.	Yr.	Exp.	PPG	RPG	APG	Hometown (High School/Previous School)
20	J.J. O'Brien	F	6-7	215	So.	TR	6.4	5.5	1.2	Rancho Cucamonga, Calif. (Alta Loma High/Univ. of Utah)
24	Dwayne Polee II	F	6-7	195	So.	TR	4.4	2.5	0.6	Los Angeles, Calif. (Westchester High/St. John's Univ.)

► Pronunciations Chase Tapley Chase TAP-lee Xavier Thames Xavier Th-AIMS James Rahon James RAY-hawn	By Class Seniors (2) Garrett Green, Tim Shelton Juniors (4) James Rahon, DeShawn Stephens, Chase Tapley, Alec Williams	Sophomores (3) Jamaal Franklin, LaBradford Franklin, Xavier Thames Freshmen (0) None	► By Position Guards (5) Jamaal Franklin, LaBradford Franklin, James Rahon, Chase Tapley, Xavier Thames Forwards (4) Garrett Green, Tim Shelton, DeShawn Stephens, Alec Williams Centers (0) None
--	---	---	---

The 2011-12 Season Outlook



Welcome to THE SHOW

The accomplishments of the 2010-11 San Diego State men's basketball team will not soon be forgotten. Banners hung in early November will remind fans of the many accomplishments which include a school-record 34 wins, 19 consecutive weeks in the national rankings, 13 home sell-outs, a co-regular-season Mountain West championship, a second consecutive conference tournament championship and an appearance in the NCAA Tournament Sweet 16.

The aftermath of San Diego State's historic season was felt long after the final game. Head coach Steve Fisher was named the national coach of the year for the second time in his career, having previously won the honor in 1989. He earned the Naismith and NABC National Coach of the Year award, was the recipient of the Adolph Rupp Cup, named MWC Co-Coach of the Year and won the USBWA and NABC District Coach of the Year award. In addition, Kawhi Leonard was the 15th overall selection in the NBA Draft.

"What the national ranking and recognition did was peak awareness not just locally but nationally that this

is a program that plays a style that every good player wants to play," Fisher said. "The program has won repeatedly, not just last year, but has proven they are going to win in an environment and atmosphere that is as good as there is in the country. The crowd energy, enthusiasm and excitement when you walk into the building, when you are a player or recruit, you say, 'This is the kind of environment that I want to be engaged and involved in.' The ripple of accomplishments should be there for an extended period of time."

San Diego State's follow up act to the historic season will be one of transition. The Aztecs return six letterwinners off the school-record squad from a year ago; however, the Aztecs will have to replace six letterwinners, including four starters, who accounted for 66.2 percent of the team's offense.

Gone from last season's squad is a first-round NBA Draft selection (Leonard), a three-time all-conference performer (Billy White), a two-time all-Mountain West performer (Malcolm Thomas) and an all-league and four year starter who served as team captain and played point guard (D.J. Gay).



Team Breakdown

2010-11 Record	34-3
MWC Record	14-2
MWC Finish	T-1st
MWC Tournament	3-0
NCAA Tournament	2-1

Starters Returning (1)

Player	Ht.	Wt.	Cl.	Pos.	PPG	RPG
Chase Tapley	6-3	195	Jr.	G	8.6	2.4

Total Letterwinners Returning (6)

Player	Ht.	Wt.	Cl.	Pos.	PPG	RPG
Jamaal Franklin	6-5	195	So.	G	2.9	1.9
LaBradford Franklin	6-2	175	So.	G	2.1	*1.4
James Rahon	6-5	210	Jr.	G	7.0	1.6
Tim Shelton	6-7	240	Sr.	F	1.6	1.5
Chase Tapley	6-3	195	Jr.	G	8.6	2.4
Alec Williams	6-7	245	Jr.	F	2.1	1.4

Newcomers (3)

Player	Ht.	Wt.	Cl.	Pos.
Garrett Green	6-11	240	Sr.	F
DeShawn Stephens	6-8	215	Jr.	F
Xavier Thames	6-3	195	So.	G

Starters Lost (4)

Player	Ht.	Wt.	Cl.	Pos.	PPG	RPG
D.J. Gay	6-0	170	Sr.	G	11.1	*3.1
Kawhi Leonard	6-7	225	So.	F	15.5	10.6
Malcolm Thomas	6-9	220	Sr.	F	11.4	8.1
Billy White	6-8	235	Sr.	F	10.3	4.4

Total Letterwinners Lost (6)

Player	Ht.	Wt.	Cl.	Pos.	PPG	RPG
Brian Carlwell	6-11	300	Sr.	C	3.8	2.7
Mehdi Cheriet	6-9	225	Sr.	F	1.8	1.0
D.J. Gay	6-0	170	Sr.	G	11.1	*3.1
Kawhi Leonard	6-7	225	So.	F	15.5	10.6
Malcolm Thomas	6-9	220	Sr.	F	11.4	8.1
Billy White	6-8	235	Sr.	F	10.3	4.4

* - Indicates assists per game.



Tim Shelton enters his final season in a San Diego State uniform as a fifth-year senior.

Season Outlook



2011 NCAA SWEET 16 ► BACK-TO-BACK MOUNTAIN WEST CONFERENCE CHAMPIONS

Although the personnel losses are significant, six straight 20-win seasons and six straight postseason appearances attest that the San Diego State program is one that reloads.

"My expectations are for us to be competitive every time we walk out on to the floor," Fisher said. "How many wins that will mean for us? I don't know. The challenge in the non-conference is going to be very significant. It is the hardest non-conference schedule, without question, that we have played while we have been here. We have a schedule that when you look at it, we are playing teams from other leagues that will contend and will be predicted to be the team to beat in their league, and legitimately so. We are going to be tested. When we go into our league, we will know all our blemishes, all the things we know we need to do to compete to win our own league.

"We need to go out and say, individually, how can we be as good as we can be, and then make the team the best possible team it can be. With that, maybe the whole will exceed the parts of each individual. I think that's possible. We are going to have some good individual players, but we are going to have to have to think, the team, the team, the team, and make that a top priority. If we do that, I am confident we are going to have an exciting, fun-filled successful season."

The lone returning starter from last season's team is junior guard Chase Tapley (6-3, 195). A native of Sacramento, Tapley played in 34 games a year ago and made 31 starts. He averaged a career-high 8.6 points, 2.4 rebounds and 1.9 assists. In just two seasons on The Mesa, he has 76 career three-point field goals and 27 career double-figure scoring games.

"Chase is a returning two-year starter who is an exceptional scorer with great versatility in his offensive game," Fisher said. "He is our best scorer off the dribble and will be counted on to be a huge piece to what we do at both ends of the floor. His defense has improved significantly."

Not only will Tapley will be counted on to beat defenders from beyond the arc and off the dribble, but he'll be relied upon to be a lockdown perimeter defender. This comes with being the most experienced player in the program, who will ultimately step into a leadership role because of it.

Joining Tapley as a dangerous long-range scoring threat is junior guard James Rahon (6-5, 210). Rahon, who transferred following his fresh-

man season at Santa Clara, played in all 37 games in his first year at SDSU. Rahon is pure scorer, who despite being surrounded by three career 1,000-point scorers a year ago, still has posted offensive numbers in his first two seasons that can rival anyone in the country.

Through his sophomore campaign and 69 career games, the San Diego native has 621 points (9.0 ppg) and 112 three-point field goals.

"Although James is not a returning starter, he played starter-like minutes a year ago and is an exceptional scorer," Fisher said. "He can score the ball in multiple ways. He is not only a catch-shoot player. He has the ability to score off the dribble. His size and ball skills give him the ability to play multiple spots offensively. He can play either guard spot. He will have a much greater role offensively this season."

Rahon will be counted on to provide the Aztecs with a consistent scoring threat in 2011-12.

The most experienced player in the program is fifth-year senior forward Tim Shelton (6-7, 240). The Fresno native made a splash as a true freshman in 2007-08, when he earned a starting spot to open the season. He earned a starting assignment in front of eventual three-time all-MW performer Billy White. But just five games into that campaign, Shelton had season-ending knee surgery and his battle with healthy knees started.

In the past four seasons, Shelton's playing time and effectiveness have been limited as he had four surgeries on his knees. The belief is that he enters his senior campaign in the best health since early in his freshman season.

"When healthy, Tim is as important a player as we have on our team," Fisher said. "He makes everyone better and does all the little things that you win with. He may lead the nation in charges taken for minutes played. Tim has lost some weight which has helped every part of his game. We are very excited that his knees are feeling good and that is a good sign for both Tim and our team."

A pair of transfers – one at point guard and one at forward – will have a big impact on the new look Aztecs.

Sophomore point guard Xavier Thames (6-3, 195) spent last season at San Diego State after transferring from Washington State following his 2009-10 freshman season. A native of Sacramento, Thames played in 31 games, making four starts, in his sea-



Guard LaBradford Franklin enters his sophomore season as a member of one of the best backcourts on the West Coast.

son with the Cougars, and had just 29 turnovers in 546 minutes of action.

"Xavier had an opportunity to be in the program last season as a redshirt and benefitted greatly," Fisher said. "He played significant minutes at Washington State as a true freshman. He is a true point guard, with exceptional passing skills and is an excellent defender. He will be counted on to be one of our leaders on both ends of the floor. Our fans are going to love the way he plays."

In a year in which San Diego State loses a four-year starter at the position, Thames gives San Diego State a point guard with Division I experience at the spot. His ability to penetrate opponent defenses and his pass-first mentality should pay big dividends for San Diego State's lethal shooters, Tapley and Rahon.

San Diego State's other Division I transfer is senior forward Garrett Green (6-11, 240). Green graduated last summer from LSU, making him eligible to transfer and play immediately. Green fills a major hole that existed for the Aztecs. He has played in 87 career games and made 17 starts. While playing for the Tigers last season, Green played in 32 games and averaged 6.3 points and 5.1 rebounds.

"Garrett is major college tested and proven," Fisher said. "He gives us the size that we desperately need. Garrett is a true low-post player who can step

Career Games Played/Started

Player	GP	GS
Garrett Green	87	17
Tim Shelton	78	18
Chase Tapley	67	48
James Rahon	69	23
Xavier Thames	31	4
Jamaal Franklin	22	0
Alec Williams	22	0
LaBradford Franklin	17	1

Includes games played and games started at all Division I schools.

James Rahon, a junior guard, is coming off a 2010-11 campaign in which he played in all 37 games and was the Aztecs' top three-point threat.



Season Outlook

2011 NCAA SWEET 16 ► BACK-TO-BACK MOUNTAIN WEST CONFERENCE CHAMPIONS



Sophomore Jamaal Franklin, who earned valuable playing time down the stretch last season, will be looked upon to provide solid minutes at the wing position in 2011-12.

out and make a face-up three. He will be counted on to play significant minutes in the post for us and is a very welcome addition."

As the only player taller than 6-8 on the active roster, Green will have the opportunity to grow with the position and make it his own.

There wasn't much room for personnel surprises a year ago when the Aztecs had four first-team all-conference caliber players, and yet Jamaal Franklin (6-5, 195) was just that. A player that many thought would red-shirt during his freshman season, Franklin worked his way onto the court and played significant minutes in the final month of the season. He ended up playing in 22 games and averaged 2.9 points and 1.9 rebounds, and added some high-flying highlight plays that earned him a spot in the hearts of the fans.

"Jamaal willed his way into the rotation at the end of last season," Fisher said. "He has improved his offensive game from last year to right now more than anyone on our team. He has become a very good catch-shoot player and can play multiple spots on the floor, both offensively and defensively. He will be an integral part and a key player on this year's ball club."

Another player who made a name for himself as a freshman last season is point guard LaBradford Franklin

(6-2, 175). Now a sophomore, Franklin backed-up Gay last season, playing in 17 games and logging 135 minutes.

"He is a legitimate point guard," Fisher said. "LaBradford learned all the intricate nuances of the position from a cerebral four-year player in D.J. Gay. He is much improved with his decision making and will compete for playing time at the point. He is continuing to grow in his defensive abilities. He has point guard leadership skills and will compete for significant playing time."

The lone junior college transfer on this season's team is junior forward DeShawn Stephens. A native of Los Angeles, Stephens averaged 12.0 points and 8.6 rebounds last season for Santa Monica College. A tremendous athletic player, Stephens has the ability to make an immediate impact in the program.

"DeShawn is our most athletic big man," Fisher said. "He plays with very high energy and will be a shot blocker inside. He is an offensive low-post player who is working on 15-foot shot. DeShawn will bring athleticism and a high motor to this year's team."

Junior forward Alec Williams (6-7, 245) enters his third year with the program. Although he has had a limited role in his first two seasons, the short bench will provide Williams an

opportunity to get meaningful minutes for the first time in his career.

"Alec will finally have an opportunity to play," Fisher said. "He is an undersized post player. He has the strength to be a low-post player, but has the versatility to step out and make an open three or put the ball to the floor. An intelligent player who will be in competition for one of our two big spots, Alec can create problems at both ends for the opponent."

Although the bench is small in numbers this season, the Aztecs are ready to add a pair of big-time players in 2012-13. St. John's transfer Dwayne Polee II and Utah transfer J.J. O'Brien will be eligible following this season and will provide the Aztecs with a pair of all-conference nominees.

O'Brien is a cerebral, versatile player who has the ability to play any of the one through four positions.

"J.J. will be someone who will not only make himself better in his red-shirt year, but will make everybody who plays better because of his consistency and his ability to treat every practice like games," Fisher said. "He will be a wonderful addition for us a year from now."

Polee II is an athletic player who will bring a season's worth of Big East experience to SDSU after starting for the Red Storm in 2010-11.

"Dwayne has the ability to play multiple spots both offensively and defensively," Fisher said. "He has the potential to be a lock-down defender and is working hard on his perimeter offensive game. He brings the type of athleticism and skill set that you win with at the highest level."

The result should be an exciting season and a worthy follow-up to the record-breaking campaign.

"This year we are going to count on a lot of first-time players for San Diego State and for greatly expanded roles for the returnees," Fisher said. "The challenge for everyone will be to accept their roles and then respond, to play with the type of enthusiasm and energy that we saw last year. That is critical. You have to believe you are good, you have to practice in a fashion that will allow you to play the way you practice and know that that will be successful. That's the challenge for all of us.

"It will be a different feel, to some degree, but the most important look and feel needs to be one of we expect to win, we believe we will win and we need everyone engaged in the same thought process in order to make sure that it happens."

2011-12 Preseason Accolades

MW Predictions

Third Place

- MW Media Poll
- *Sporting News*
- *Athlon Sports*
- *Lindy's*

Other Team Accolades

Postseason Participants

- *Athlon Sports*

Best Homecourt Advantage

- *Sporting News*

Individual Honors

Chase Tapley

- All-MW Team
- *Sporting News*
- *Lindy's*

MW Best Under Pressure

- *Sporting News*

Xavier Thames

- MW Newcomer of the Year
- MW Media Poll
- Division I Key Transfer
- *Athlon Sports*

Garrett Green

- Division I Key Transfer
- *Athlon Sports*

DeShawn Stephens

- MW Best Rebounding Newcomer
- *Lindy's*

Steve Fisher

- MW Best Coach
- *Sporting News*

2011-12 Schedule



2011 NCAA SWEET 16 ► BACK-TO-BACK MOUNTAIN WEST CONFERENCE CHAMPIONS

Date	Day	Opponent	Site	Time	TV
Exhibition Games					
Nov. 2	Wed.	CAL STATE SAN MARCOS	Viejas Arena	7:00 p.m. PST	
Nov. 7	Mon.	POINT LOMA NAZARENE	Viejas Arena	7:30 p.m. PST	
Basketball Travelers Classic (San Diego, Calif.)					
Nov. 11	Fri.	BRYANT	Viejas Arena	7:30 p.m. PST	
Nov. 12	Sat.	SOUTHERN UTAH	Viejas Arena	7:30 p.m. PST	
Nov. 13	Sun.	UC DAVIS	Viejas Arena	3:00 p.m. PST	
Nov. 15	Tues.	at Baylor	Waco, Texas	1:00 p.m. CST	ESPN
Nov. 17	Thurs.	USC	Viejas Arena	7:00 p.m. PST	The Mtn., 4SD
Nov. 19	Sat.	LONG BEACH STATE	Viejas Arena	1:30 p.m. PST	4SD
Nov. 23	Wed.	at Arizona	Tucson, Ariz.	6:30 p.m. MST	FS Arizona Plus
Nov. 26	Sat.	at UC Santa Barbara	Santa Barbara, Calif.	7:00 p.m. PST	
Mountain West-Missouri Valley Challenge					
Nov. 30	Wed.	CREIGHTON	Viejas Arena	7:30 p.m. PST	The Mtn., 4SD
Dec. 4	Sun.	CALIFORNIA	Viejas Arena	2:00 p.m. PST	The Mtn., 4SD
Dec. 7	Wed.	at San Diego	San Diego, Calif.	7:00 p.m. PST	4SD, The Mtn.
Dec. 19	Mon.	UC RIVERSIDE	Viejas Arena	7:00 p.m. PST	4SD
Dec. 22	Thurs.	ELON	Viejas Arena	4:30 p.m. PST	
Dec. 30	Fri.	REDLANDS	Viejas Arena	7:00 p.m. PST	
Jan. 5	Thurs.	SAN DIEGO CHRISTIAN	Viejas Arena	7:00 p.m. PST	
Jan. 10	Tue.	CHICAGO STATE	Viejas Arena	7:00 p.m. PST	4SD, The Mtn.
Jan. 14	Sat.	*UNLV	Viejas Arena	1:00 p.m. PST	NBC SN
Jan. 18	Wed.	*at New Mexico	Albuquerque, N.M.	8:00 p.m. MST	CBS SN, 4SD
Jan. 21	Sat.	*AIR FORCE	Viejas Arena	7:00 p.m. PST	The Mtn., 4SD
Jan. 24	Tue.	*at Wyoming	Laramie, Wyo.	6:30 p.m. MST	The Mtn., 4SD
Jan. 28	Sat.	*at Colorado State	Fort Collins, Colo.	2:00 p.m. MST	NBC SN
Feb. 1	Wed.	*BOISE STATE	Viejas Arena	7:00 p.m. PST	CBS SN, 4SD
Feb. 4	Sat.	*TCU	Viejas Arena	7:00 p.m. PST	The Mtn., 4SD
Feb. 11	Sat.	*at UNLV	Las Vegas, Nev.	1:00 p.m. PST	NBC SN
Feb. 15	Wed.	*NEW MEXICO	Viejas Arena	7:00 p.m. PST	CBS SN, 4SD
Feb. 18	Sat.	*at Air Force	USAF Academy, Colo.	2:00 p.m. MST	NBC SN
Feb. 22	Wed.	*WYOMING	Viejas Arena	7:30 p.m. PST	The Mtn., 4SD
Feb. 25	Sat.	*COLORADO STATE	Viejas Arena	7:00 p.m. PST	The Mtn., 4SD
Feb. 29	Wed.	*at Boise State	Boise, Idaho	8:00 p.m. MST	The Mtn., 4SD
March 3	Sat.	*at TCU	Fort Worth, Texas	6:00 p.m. CST	The Mtn., 4SD
March 8-10	Thurs.-Sat.	at Mountain West Championship	Las Vegas, Nev.	TBD	

* - Indicates Mountain West game. CAPS indicates home game at Viejas Arena. All times subject to change.

2012 NCAA Div. I Men's Basketball Championship Dates and Sites

First Round

UD Arena
Dayton, Ohio
Univ. of Dayton, host
March 13-14

Rose Garden Arena
Portland, Ore.
Host: Oregon
March 15 and 17

CenturyLink Center Omaha
Omaha, Neb.
Host: Creighton
March 16 and 18

Edward Jones Domes
St. Louis, Mo.
Host: St. Louis
March 23 and 25

Second/Third Rounds

The Pit
Albuquerque, N.M.
Host: New Mexico
March 15 and 17

Nationwide Arena
Columbus, Ohio
Host: Ohio State
March 16 and 18

Regionals
TD Garden
Boston, Mass.
Host: Boston College
March 22 and 24

Final Four
Louisiana Superdome
New Orleans, La.
Host: Tulane
March 31 and April 2

KFC Yum! Center
Louisville, Ky.
Host: Louisville
March 15 and 17

Greensboro Coliseum
Greensboro, N.C.
Host: Atlantic Coast Conference
March 16 and 18

US Airways Center
Phoenix, Ariz.
Host: Arizona State
March 22 and 24

Consol Energy Center
Pittsburgh, Pa.
Host: Duquesne
March 15 and 17

Bridgestone Arena
Nashville, Tenn.
Host: Ohio Valley Conference
March 16 and 18

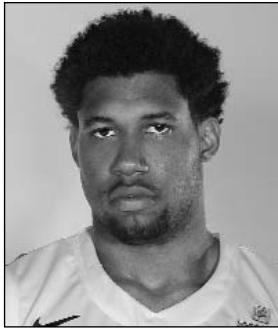
Georgia Dome
Atlanta, Ga.
Host: Georgia Tech
March 23 and 25

Broadcast Roster

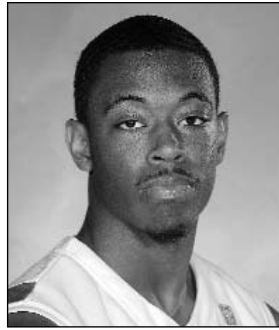


2011 NCAA SWEET 16 ► BACK-TO-BACK MOUNTAIN WEST CONFERENCE CHAMPIONS

INTRODUCTION ► BROADCAST ROSTER



0 **Alec Williams**
Jr. • F • 6-7 • 245
San Juan Capistrano, Calif.



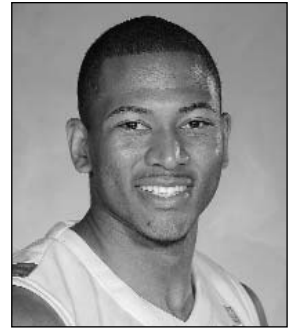
2 **Xavier Thames**
So. • G • 6-3 • 195
Sacramento, Calif.



3 **LaBradford Franklin**
So. • G • 6-2 • 175
Temecula, Calif.



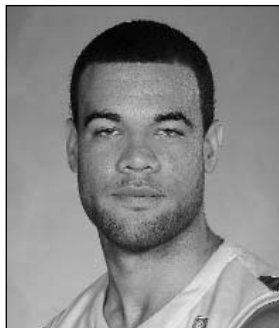
5 **Garrett Green**
Sr. • F • 6-11 • 240
Woodland Hills, Calif.



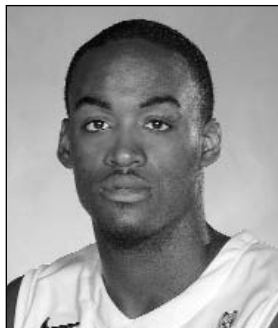
10 **Tim Shelton**
Sr. • F • 6-7 • 240
Fresno, Calif.



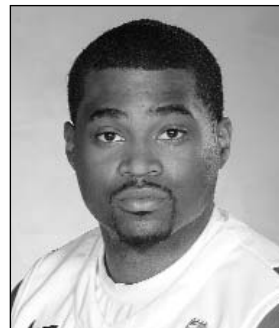
11 **James Rahon**
Jr. • G • 6-5 • 210
San Diego, Calif.



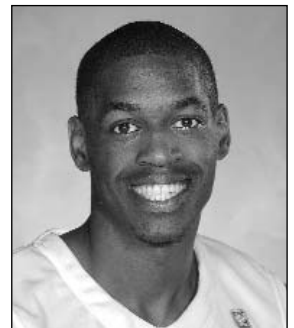
20 **J.J. O'Brien**
So. • F • 6-7 • 215
Rancho Cucamonga, Calif.



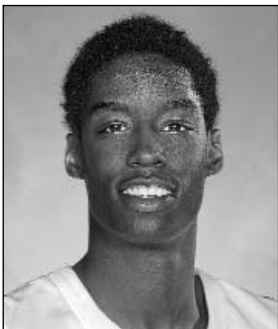
21 **Jamaal Franklin**
Fr. • G • 6-5 • 195
Hawthorne, Calif.



22 **Chase Tapley**
So. • G • 6-3 • 195
Sacramento, Calif.



23 **DeShawn Stephens**
Jr. • F • 6-8 • 215
Los Angeles, Calif.



24 **Dwayne Polee II**
So. • F • 6-7 • 195
Los Angeles, Calif.



Steve Fisher
Head Coach



Brian Dutcher
Associate Head Coach



Mark Fisher
Assistant Coach



Tony Bland
Assistant Coach



Matt Soria
Director of Operations



David Velasquez
Dir. of Player Development

AZTEC BASKETBALL MEDIA GUIDE

2012 CONOCO MOUNTAIN WEST



MEN'S & WOMEN'S BASKETBALL CHAMPIONSHIPS

MARCH 7-10, 2012
THOMAS & MACK CENTER

www.TheMWC.com/2012

For tickets, please visit your favorite MWC Institution's athletic ticket office.