

# Table of Contents



2010 NCAA TOURNAMENT ► 2010 MOUNTAIN WEST CONFERENCE CHAMPIONS



## The 2010-11 SDSU Men's Basketball Media Guide

The 2010-11 San Diego State University Basketball Media Guide is a publication of the San Diego State University athletics media relations office. The publication was written, edited and designed by assistant media relations director Darin Wong and assistant athletic director/media relations Mike May.

Assistance was provided by assistant media relations directors Dave Kuhn, Peggy Curtin and Jamie McConeghy, Andrea Rogers, media relations student assistants Ryan Balke, John Saraka and Kristen Beals.

Cover design by Andrea Rogers.

## Photography

Ernie Anderson, Stan Liu, Jeffrey Lamont Brown, Ken Jacques, Kerry Snider, Derek Johnson, Mountain West Conference, NCAA Photos, NBA Photos, NBAE/Getty Images and Philadelphia 76ers.

## Printing

Atlas Lithograph Company, Inc.



## Introduction

Table of Contents 1 • Media Information 2 • Rosters 3 • Outlook 4 • Schedule 10 • Broadcast Roster 11

## This is SDSU Basketball

Steve Fisher 13 • Fisher's Men in the Pros 16 • Viejas Arena 18 • Facilities 20 • National Attention 22 • Academic Success 24 • San Diego State University 26 • City of San Diego 28 • Aztec Excellence 30 • Mountain West Conference 32



## Coaches and Staff

Steve Fisher 34 • Brian Dutcher 46 • Justin Hutson 47 • Mark Fisher 48 • Support Staff 49

## Players

Brian Carlwell 52 • Mehdi Cheriet 56 • D.J. Gay 59 • Kawhi Leonard 64 • James Rahon 68 • Tim Shelton 70 • Chase Tapley 74 • Malcolm Thomas 77 • Billy White 80 • Alec Williams 85 • Jamaal Franklin/LaBradford Franklin 87 • Xavier Thames 88



## 2009-10 Review

Review 90 • Results 92 • Game-By-Game Statistics 96 • Miscellaneous Statistics 101 • Departed Senior Bios 102 • Box Scores and Recaps 105 • MWC Statistics 115



## Records

Team 118 • Team Season 120 • Individual Game 122 • Top Game Performances 124 • Miscellaneous Records 126 • Individual Season 128 • Individual Career 131 • Freshmen Records 134 • MWC Records 135 • Viejas Arena Records 137



## History

Year-By-Year Results 140 • Year-By-Year Summary 152 • Statistical History 154 • vs. All Opponents 156 • All-Time Series 157 • Jersey Numbers 165 • Awards & Honors 166 • 1,000-Point Scorers 168 • Annual Stat Leaders 173 • Letterwinners 175 • Individual DI Stats 177 • National Postseason 181 • Conf. Tournaments 188 • Attendance/Home Record 190 • MWC Series 191 • Rallies/Clutch Shots 192



## University

SDSU 194 • Aztec Culture 197 • Dr. Stephen Weber 198 • Jim Sterk 199 • Media Information 200 • Opponent Directory 202 • Media Outlets 204 • Broadcast Information 205 • Viejas Arena 206 • Directory 208

# Media Information



2010 NCAA TOURNAMENT ► 2010 MOUNTAIN WEST CONFERENCE CHAMPIONS

## General Information

Location . . . . . San Diego, Calif., 92182  
 Founded . . . . . 1897  
 Enrollment . . . . . 32,396  
 Nickname . . . . . Aztecs  
 Colors . . . . . Scarlet and Black  
 PMS Color . . . . . 185  
 Arena . . . . . Viejas Arena at Aztec Bowl  
 Opened . . . . . 1997  
 Capacity . . . . . 12,414  
 Affiliation . . . . . NCAA Division I  
 Conference . . . . . Mountain West  
 President . . . . . Dr. Stephen Weber  
 Alma Mater (Year) . . . . . Bowling Green (1964)  
 Athletics Director . . . . . Jim Sterk  
 Alma Mater (Year) . . . . . Western Washington (1980)  
 Athletic Department Phone . . . . . 619-594-3019  
 Ticket Office Phone . . . . . 619-283-7378  
 or 619-283-SDSU

## History

Seasons of Basketball . . . . . Entering 90th  
 First Season of Basketball . . . . . 1921-22  
 All-Time Record . . . . . 1,254-1,041-1  
 NCAA Tournament Appearances . . . . . 9  
 Seasons of Div. I Basketball . . . . . Entering 41st  
 First Season of Div. I Basketball . . . . . 1970-71  
 All-Time Div. I Record . . . . . 566-596  
 NCAA Div. I Tournament Appearances . . . . . 6  
 Last NCAA Appearance . . . . . 2010  
 NIT Appearances . . . . . 5  
 Last NIT Appearance . . . . . 2009

## Media Relations

Assistant AD/MBB . . . . . Mike May  
 SID Main Office Number . . . . . 619-594-5547  
 May Cell Phone . . . . . 619-957-8372  
 SID Fax Number . . . . . 619-582-6541  
 May E-mail . . . . . mmay@mail.sdsu.edu  
 Assistant MRD/MBB . . . . . Darin Wong  
 Wong E-mail . . . . . dwong@mail.sdsu.edu  
 SID Mailing Address . . . . . Aztec Media Relations  
 3014 Aztec Athletics Center  
 5302 55th Street  
 San Diego State University  
 San Diego, CA 92182

## Basketball Staff

Head Coach . . . . . Steve Fisher  
 Alma Mater (Year) . . . . . Illinois State (1967)  
 Record at SDSU (Years) . . . . . 198-149 (11)  
 Record Overall (Years) . . . . . 382-231 (19 full)  
 Basketball Office Phone . . . . . 619-594-6249  
 Best Time to Contact Fisher . . . . . Contact May  
 Assistant Head Coach . . . . . Brian Dutcher  
 Alma Mater (Year) . . . . . Minnesota (1982)  
 Assistant Coach . . . . . Justin Hutson  
 Alma Mater (Year) . . . . . CS Bakersfield (1994)  
 Assistant Coach . . . . . Mark Fisher  
 Alma Mater (Year) . . . . . Michigan (2001)  
 Director of Basketball Operations . . . . . Matt Soria  
 Alma Mater (Year) . . . . . San Diego State (2002)  
 Director of Player Development . . . . . David Velasquez  
 Alma Mater (Year) . . . . . San Diego State (2007)  
 Basketball Trainer . . . . . David Smith  
 Alma Mater (Year) . . . . . Biola (2004)  
 Administrative Assistant . . . . . Marty Malano

## Team Information

	<i>Total</i>	<i>Home</i>	<i>Away</i>	<i>Neu.</i>
2009-10 Record	25-9	14-1	9-7	2-1
2009-10 MWC Record	11-5	7-1	4-4	
Mountain West Finish	.T-3rd			
MWC Tournament	.Champions (3-0)			
Postseason	.NCAA			
NCAA Finish	.First Round (0-1)			
Starters Returning/Lost	.5/0			
Letterwinners Returning/Lost	.9-5			

## Media Information

Radio Station . . . . . AM 600 KOGO  
 Play-By-Play Announcer . . . . . Ted Leitner  
 PBP Phone Number . . . . . 858-560-6671  
 Video Footage Contact . . . . . David Berry  
 VFC Phone Number . . . . . 619-594-2428  
 Beat Writer . . . . . Mark Zeigler  
 The San Diego Union-Tribune  
 619-293-1341  
 Beat Writer . . . . . TBD  
 North County Times  
 760-739-6645

## Media Services

SID Office Phone . . . . . 619-594-5547  
 SID Office Fax . . . . . 619-582-6541  
 Viejas Arena Press Row . . . . . 619-265-5853  
 SDSU Athletics Website . . . . . www.GoAztecs.com

## 2010-11 Roster Breakdown

### Starters Returning (5)

Player	Ht.	Wt.	Cl.	Pos.	PPG	RPG
D.J. Gay	6-0	170	Sr.	G	10.5	*3.2
Kawhi Leonard	6-7	225	So.	F	12.7	9.9
Chase Tapley	6-2	200	So.	G	7.6	*2.2
Malcolm Thomas	6-9	220	Sr.	F	10.9	7.6
Billy White	6-8	235	Sr.	F	11.1	4.3

### Total Letterwinners Returning (9)

Player	Ht.	Wt.	Cl.	Pos.	PPG	RPG
Brian Carlwell	6-11	300	Sr.	C	4.7	2.8
Mehdi Cheriet	6-8	225	Sr.	F	4.6	2.2
D.J. Gay	6-0	170	Sr.	G	10.5	*3.2
Kawhi Leonard	6-7	225	So.	F	12.7	9.9
Tim Shelton	6-7	245	Jr.	F	3.3	2.0
Chase Tapley	6-2	200	So.	G	7.6	*2.2
Malcolm Thomas	6-9	220	Sr.	F	10.9	7.6
Billy White	6-8	235	Sr.	F	11.1	4.3
Alec Williams	6-6	245	So.	F	1.9	1.2

### Newcomers (3)

Player	Ht.	Wt.	Cl.	Pos.
Jamaal Franklin	6-5	185	Fr.	G
LaBradford Franklin	6-2	170	Fr.	G
James Rahon	6-5	205	So.	G

### Starters Lost (0)

Player	Ht.	Wt.	Cl.	Pos.	PPG	RPG
None						

### Total Letterwinners Lost (5)

Player	Ht.	Wt.	Cl.	Pos.	PPG	RPG
Kelvin Davis	6-3	220	Sr.	G	6.6	1.3
Jason Deutchman	6-6	220	Sr.	G	1.7	0.7
Bryan Horton	6-1	205	So.	G	0.8	0.5
Ben Kneller	6-6	200	Sr.	F	0.5	0.5
Tyrone Shelley	6-6	225	So.	G	6.1	3.5

### Honors Candidates

K. Leonard - All-America  
 D.J. Gay - All-Conference, All-Region  
 M. Thomas - All-Conference, All-Region  
 B. White - All-Conference, All-Region

\* - Indicates assists per game.

^ - Indicates 2008-09 averages (2009-10 redshirt)



## 2010-11 San Diego State Alphabetical Roster

No.	Name	Pos.	Ht.	Wt.	Yr.	Exp.	Most Recent Div. I Season			Hometown (High School/Previous School)
							PPG	RPG	APG	
5	Brian Carlwell	C	6-11	300	Sr.	1L	4.7	2.8	0.4	Maywood, Ill. (Proviso East High/Univ. of Illinois)
42	Mehdi Cheriet	F	6-9	225	Sr.	1L	4.6	2.2	0.6	Tarare, France (Arizona Western College)
21	Jamaal Franklin	G	6-5	185	Fr.	HS	--	--	--	Phelan, Calif. (Westwind Prep International (Ariz.) High)
3	LaBradford Franklin	G	6-2	170	Fr.	HS	--	--	--	Temecula, Calif. (Great Oak High)
23	D.J. Gay	G	6-0	170	Sr.	3L	10.5	2.2	3.2	Sun Valley, Calif. (Poly High)
15	Kawhi Leonard	F	6-7	225	So.	1L	12.7	9.9	1.9	Riverside, Calif. (King High)
11	James Rahon	G	6-5	205	So.	TR	11.3	1.7	1.3	San Diego, Calif. (Santa Clara Univ.)
10	Tim Shelton	F	6-7	245	Jr.	2L	3.3	2.0	1.4	Fresno, Calif. (Clovis West High)
22	Chase Tapley	G	6-2	200	So.	1L	7.6	2.3	2.2	Sacramento, Calif. (Sacramento High)
4	Malcolm Thomas	F	6-9	220	Sr.	1L	10.9	7.6	2.3	San Diego, Calif. (Crawford High/San Diego City College)
32	Billy White	F	6-8	235	Sr.	3L	11.1	4.3	1.4	Las Vegas, Nev. (Green Valley High)
0	Alec Williams	F	6-6	245	So.	1L	1.9	1.2	0.3	San Juan Capistrano, Calif. (JSerra Catholic High)

## 2010-11 San Diego State Numerical Roster

No.	Name	Pos.	Ht.	Wt.	Yr.	Exp.	Most Recent Div. I Season			Hometown (High School/Previous School)
							PPG	RPG	APG	
0	Alec Williams	F	6-6	245	So.	1L	1.9	1.2	0.3	San Juan Capistrano, Calif. (JSerra Catholic High)
3	LaBradford Franklin	G	6-2	170	Fr.	HS	--	--	--	Temecula, Calif. (Great Oak High)
4	Malcolm Thomas	F	6-9	220	Sr.	1L	10.9	7.6	2.3	San Diego, Calif. (Crawford High/San Diego City College)
5	Brian Carlwell	C	6-11	300	Sr.	1L	4.7	2.8	0.4	Maywood, Ill. (Proviso East High/Univ. of Illinois)
10	Tim Shelton	F	6-7	245	Jr.	2L	3.3	2.0	1.4	Fresno, Calif. (Clovis West High)
11	James Rahon	G	6-5	205	So.	TR	11.3	1.7	1.3	San Diego, Calif. (Santa Clara Univ.)
15	Kawhi Leonard	F	6-7	225	So.	1L	12.7	9.9	1.9	Riverside, Calif. (King High)
21	Jamaal Franklin	G	6-5	185	Fr.	HS	--	--	--	Phelan, Calif. (Westwind Prep International (Ariz.) High)
22	Chase Tapley	G	6-2	200	So.	1L	7.6	2.3	2.2	Sacramento, Calif. (Sacramento High)
23	D.J. Gay	G	6-0	170	Sr.	3L	10.5	2.2	3.2	Sun Valley, Calif. (Poly High)
32	Billy White	F	6-8	235	Sr.	3L	11.1	4.3	1.4	Las Vegas, Nev. (Green Valley High)
42	Mehdi Cheriet	F	6-9	225	Sr.	1L	4.6	2.2	0.6	Tarare, France (Arizona Western College)

**Head Coach:** Steve Fisher (Illinois State, 1967)  
**Assistant Head Coach:** Brian Dutcher (Minnesota, 1982)  
**Assistant Coaches:** Justin Hutson (CS Bakersfield, 1994), Mark Fisher (Michigan, 2001)  
**Director of Operations:** Matt Soria (San Diego State, 2002)  
**Director of Player Development:** David Velasquez (San Diego State, 2007)

## Eligible in 2011-12 Season

No.	Name	Pos.	Ht.	Wt.	Yr.	Exp.	Most Recent Div. I Season			Hometown (High School/Previous School)
							PPG	RPG	APG	
2	Xavier Thames	G	6-3	185	So.	TR	4.6	1.5	1.2	Sacramento, Calif. (Pleasant Grove High/Washington State)

<p>► <b>Pronunciations</b></p> <p><b>Mehdi Cheriet</b> Meh-DEE Shell-yet</p> <p><b>Kawhi Leonard</b> KUH-why Leonard</p> <p><b>Chase Tapley</b> Chase TAP-lee</p> <p><b>James Rahon</b> James RAY-hawn</p>	<p><b>By Class</b></p> <p><b>Seniors (5)</b> Brian Carlwell, Mehdi Cheriet, D.J. Gay, Malcolm Thomas, Billy White</p> <p><b>Juniors (1)</b> Tim Shelton</p>	<p><b>Sophomores (4)</b> Kawhi Leonard, James Rahon, Chase Tapley, Alec Williams</p> <p><b>Freshmen (2)</b> Jamaal Franklin, LaBradford Franklin</p>	<p>► <b>By Position</b></p> <p><b>Guards (5)</b> Jamaal Franklin, LaBradford Franklin, D.J. Gay, James Rahon, Chase Tapley</p> <p><b>Forwards (6)</b> Mehdi Cheriet, Kawhi Leonard, Tim Shelton, Malcolm Thomas, Billy White, Alec Williams</p> <p><b>Centers (1)</b> Brian Carlwell</p>
--	---	--	--

## The 2010-11 Season Outlook



# Heightened Expectations

San Diego State is no longer that little school from the Mountain West Conference that sneaks up on teams. SDSU has established itself as one of the premier programs, not only along the West Coast, but in the nation, especially after advancing to the postseason for the fifth straight year and winning 20 or more game for the fifth season in a row in 2010.

In past seasons, despite the Aztecs' run of success, San Diego State has been overlooked by the national media. This year, however, is the exception as many in the Pacific Time Zone and across America believe SDSU will be a force to be reckoned with in 2010-11. Many preseason pundits have tabbed the Aztecs as the best team in California and the Associated Press voters have them slotted at No. 25 in the preseason AP Top-25 poll, marking the first time SDSU has been ranked in school history.

Why all the hype? What makes this season different from years past?

The answer is simple. San Diego State 12th-year head coach Steve Fisher returns all five starters and a total of

nine letterwinners off a squad that won 25 games, claimed the Mountain West Conference championship, advanced to the NCAA Tournament and fell just short of defeating a Tennessee squad that was one win shy of reaching the Final Four.

History is on SDSU's side with Fisher at the helm. Twice before, Fisher has returned all five starters from the season before and both teams played deep into the postseason. The national championship head coach's 1992-93 team at Michigan reached the NCAA title game and finished with a 31-5 record. In 2008-09 at San Diego State, meanwhile, Fisher led the Aztecs to the NIT semifinals and won a school-record 26 games. Additionally, when Fisher returns at least four starters, which has happened nine previous times, his teams have gone a combined 220-83 (.726) and reached the postseason each year (6 NCAAs, 3 NITs).

The Aztecs are a senior-laden team, three of which have solidified spots in the starting rotation in guard D.J. Gay, and forwards Billy White and Malcolm Thomas.





## Team Breakdown

2009-10 Record	25-9
MWC Record	11-5
MWC Finish	T-3rd
MWC Tournament	3-0

### Starters Returning (5)

Player	Ht.	Wt.	Cl.	Pos.	PPG	RPG
D.J. Gay	6-0	170	Sr.	G	10.5	*3.2
Kawhi Leonard	6-7	225	So.	F	12.7	9.9
Chase Tapley	6-2	200	So.	G	7.6	*2.2
Malcolm Thomas	6-9	220	Sr.	F	10.9	7.6
Billy White	6-8	235	Sr.	F	11.1	4.3

### Total Letterwinners Returning (9)

Player	Ht.	Wt.	Cl.	Pos.	PPG	RPG
Brian Carlwell	6-11	300	Sr.	C	4.7	2.8
Mehdi Cheriet	6-8	225	Sr.	F	4.6	2.2
D.J. Gay	6-0	170	Sr.	G	10.5	*3.2
Kawhi Leonard	6-7	225	So.	F	12.7	9.9
Tim Shelton	6-7	245	Jr.	F	3.3	2.0
Chase Tapley	6-2	200	So.	G	7.6	*2.2
Malcolm Thomas	6-9	220	Sr.	F	10.9	7.6
Billy White	6-8	235	Sr.	F	11.1	4.3
Alec Williams	6-6	245	So.	F	1.9	1.2

### Newcomers (3)

Player	Ht.	Wt.	Cl.	Pos.
Jamaal Franklin	6-5	185	Fr.	G
LaBradford Franklin	6-2	170	Fr.	G
James Rahon	6-5	205	So.	G

### Starters Lost (0)

Player	Ht.	Wt.	Cl.	Pos.	PPG	RPG
None						

### Total Letterwinners Lost (5)

Player	Ht.	Wt.	Cl.	Pos.	PPG	RPG
Kelvin Davis	6-3	220	Sr.	G	6.6	1.3
Jason Deutchman	6-6	220	Sr.	G	1.7	0.7
Bryan Horton	6-1	205	So.	G	0.8	0.5
Ben Kneller	6-6	200	Sr.	F	0.5	0.5
Tyrone Shelley	6-6	225	So.	G	6.1	3.5

\* - Indicates assists per game.

^ - Indicates 2008-09 averages (2009-10 redshirt)

**Billy White returns as a three-year starter who is just 75 points shy of 1,000 career points.**

# Season Outlook



2010 NCAA TOURNAMENT ► 2010 MOUNTAIN WEST CONFERENCE CHAMPIONS

Gay is a three-year starter, who has played both guard positions and spent all of last season running the point. The Sun Valley, Calif., native earned honorable mention all-Mountain West honors in 2010 after averaging career numbers in points (10.5), rebounds (2.2) and assists (3.2). Gay has been a staple in Fisher's rotation from the minute he stepped foot on campus and the fact that he has played in every game since his arrival proves that.

"D.J. is our captain and I've said it before, he is our most important player," Fisher said. "He is also our best on-ball defender. D.J. continues to grow in his ability to run the team and has made himself into a basketball player who can score when needed and can also get others involved. He should have an outstanding senior season."

White, like Gay, is also a three-year starter, who is one of the most exciting and most athletic players on the West Coast. The 6-8 forward is a three-time all-conference selection and enters 2010-11 as the nation's active leader in career field-goal percentage (61.7 percent). The Las Vegas, Nev., product is coming off a career season in which he set personal bests in scoring average (11.1) and assists (44).

"Billy is looking forward to an injury-free senior season," Fisher said. "I cannot emphasize enough how tough he was about never complaining about a season-long series of problems last year.

"When he was physically at his best toward the end of the season, specifically the MWC and NCAA Tournaments, Billy played the best basketball of his career here at San Diego State. Our goal for him is to use his terrific athleticism and go from there. He is the front of our full-court defense and is also someone who has worked very hard in developing a 15-foot shot. I believe he is someone who will now have to be guarded on the perimeter and can use his ability to go by you off the bounce when you come out and guard him hard."

Thomas made a splash in his first season at SDSU a year ago after transferring from San Diego City College. The San Diego native immediately earned a starting spot and was a force on the low block on both sides of the ball. Defensively, the second-team all-MWC choice was San Diego State's top shot blocker and finished second in the MWC in the category, and ranked second on the team in

rebounding (7.6). Offensively, the 6-9 forward was efficient, shooting 54.3 percent from the floor, and averaged 10.9 points, while ranking second on the team in assists (2.3).

"Malcolm went from a guy who only thought about shooting when he got the ball in the post to a guy who is one of the best passing big men in the country," Fisher said. "When he feels double teams or when he feels the pressure of a secondary defender, he not only looks for, but finds players for easy baskets better than anybody in our league and as good as anybody in the country.

"He has also worked very hard at developing a 15-foot game and his free-throw shooting will be significantly improved, which will help every other part of his game. Defensively, Malcolm is a shot blocker, and changes the feel of the game inside. He is one of the best defenders in our league."

The player receiving all of the national attention entering the most anticipated season in school history is sophomore forward Kawhi Leonard. The 6-7 forward is coming off a campaign in which he was the first freshman in league history to be named to the all-MWC first team. He also earned MWC tournament MVP honors, MWC freshman of the year recognition and *Sporting News* all-freshman accolades. The spotlight is well deserved after he was one of four freshmen, and the only one on an NCAA Tournament team, to lead his squad in points (12.7) and rebounds (9.9). The Riverside, Calif., native was a double-double machine, logging 17 to rank 13th in Division I. His 9.9 rebounding average, meanwhile, was tops in the Mountain West and ranked 22nd nationally. He and Thomas are the top returning rebounding duo in Division I (17.5 rpg). All of this has many in the media tabbing him as a preseason All-America selection after his monster first season on Montezuma Mesa.

"Kawhi has done a very good job of saying, 'I need to get better in these areas,' and has worked extremely hard doing it during the offseason," Fisher said. "He is physically stronger and that will help his game. Kawhi is shooting the ball much better than he did a year ago from the perimeter.

"I said this before, for a guy coming in with all the hype that he had I was very, very proud of the way he was able to stand tall and perform, not try too hard but step in as a true freshman and have an outstanding fresh-



Senior Malcolm Thomas is a low-post scoring threat on the offensive side of the ball and one of the MWC's top shot blockers on defense.

man year. His and our hope is that he will grow from there in every part of his game."

The fifth member of the starting group is sophomore Chase Tapley. The guard from Sacramento, Calif., earned three starts in non-conference action and remained in the starting unit for the next 15 contests before an injury sidelined him for one game. The 6-2 guard averaged a steady 7.6 points, including 9.0 in conference play, 2.3 rebounds and 2.2 assists in 23.4 minutes. Tapley also had an assist-to-turnover ratio of 1.85 and shot 50.0 percent from the floor. It is this production that has Tapley penciled in this year's starting lineup.

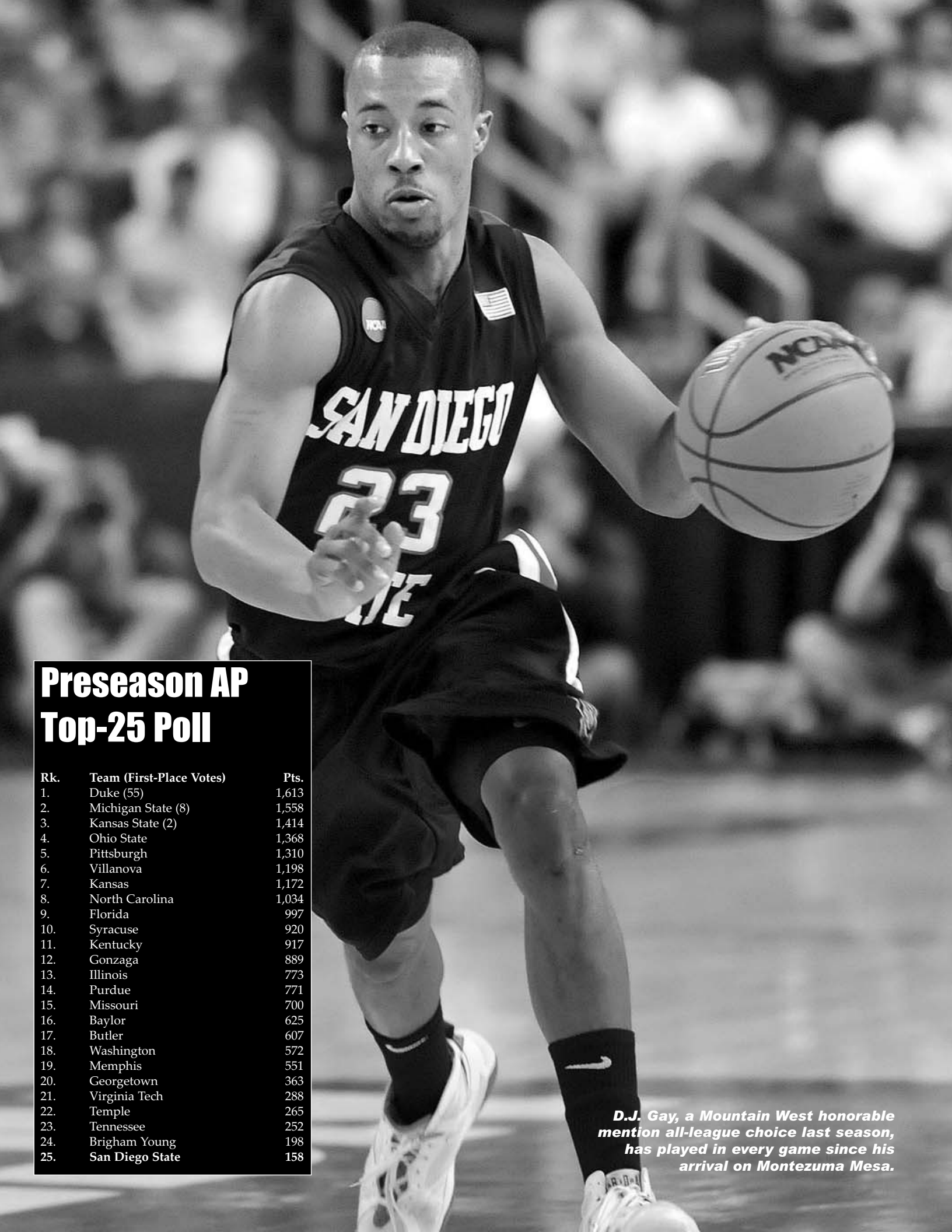
"From the time Chase walked in the door as a freshman to where he is at right now, he has made tremendous strides," Fisher said. "He has always had a knack for scoring; both from the perimeter and off the dribble. He scores in traffic as well as anybody we have. Chase may be as good a passer as anyone we have on our team, if not the best. He has diligently worked on his defense and he has taken pride in that. His body is better and I think all these things will be great for Chase and for us."

Also figuring to play significant minutes are seniors Brian Carlwell and Mehdi Cheriet, redshirt junior

## Career Games Played/Started

Player	GP	GS
D.J. Gay	103	83
Billy White	98	88
Malcolm Thomas	66	61
Brian Carlwell	63	3
Tim Shelton	47	18
Mehdi Cheriet	35	2
Kawhi Leonard	34	33
Chase Tapley	33	17
James Rahon	32	17
Alec Williams	12	0

*includes games played and games started at all Division I schools.*



## Preseason AP Top-25 Poll

Rk.	Team (First-Place Votes)	Pts.
1.	Duke (55)	1,613
2.	Michigan State (8)	1,558
3.	Kansas State (2)	1,414
4.	Ohio State	1,368
5.	Pittsburgh	1,310
6.	Villanova	1,198
7.	Kansas	1,172
8.	North Carolina	1,034
9.	Florida	997
10.	Syracuse	920
11.	Kentucky	917
12.	Gonzaga	889
13.	Illinois	773
14.	Purdue	771
15.	Missouri	700
16.	Baylor	625
17.	Butler	607
18.	Washington	572
19.	Memphis	551
20.	Georgetown	363
21.	Virginia Tech	288
22.	Temple	265
23.	Tennessee	252
24.	Brigham Young	198
25.	San Diego State	158

*D.J. Gay, a Mountain West honorable mention all-league choice last season, has played in every game since his arrival on Montezuma Mesa.*



# Season Outlook



2010 NCAA TOURNAMENT ► 2010 MOUNTAIN WEST CONFERENCE CHAMPIONS



Senior Brian Carlwell is a legitimate presence on the low block and brings leadership on and off the floor.

Tim Shelton, and sophomore James Rahon.

Carlwell, a 6-10 center, enters his final season having played in all 34 games in 2009-10. The former Illinois transfer provides SDSU with a physical presence down low and leadership on and off floor. Carlwell is a veteran player, who has the ability to step out and hit the mid-range jumper.

"Brian is a fifth-year senior, who brings leadership qualities that win. He is our most vocal leader," Fisher said. "He is a low-post presence and is a very smart basketball player. Brian is a very good low-post screener and defender."

Another big man who can score from the perimeter is Cheriet. The 6-8 forward from France redshirted a year ago, but demonstrated his silky smooth shot in his first season on campus in 2008-09. Cheriet has proven he can pull defenders away from the basket. The forward will provide solid minutes off the bench and can start if called upon.

"Mehdi is a fifth-year redshirt senior, who is an exceptional face up shooter for 6-9," Fisher said. "He will be very good in the team's ball screen pick-and-pop. He has gotten steadily better with his ability to defend and rebound the basketball. He will be a

very hard guard and gives us the ability to space the floor. Mehdi is as good a catch-shoot player as we have on the team."

Shelton was a part of the incoming class that included Gay and White, but knee injuries have derailed his playing time. The 6-7 forward was limited to four games his freshman season and just nine last season as a redshirt sophomore. Shelton played in 34 games in 2008-09 as a redshirt freshman, but was not fully healthy. All signs, to date, point to Shelton being healthy in 2010-11.

"All is better when Shelton is on the floor. He is a coach on the floor and a guy with a great sense of how to play," Fisher said. "He plays like someone a lot older than he is. He is a leader in every sense, both in actions and verbally."

"At this stage we feel he will be able to give us some very valuable minutes all season. He has the ability to shoot the three, he can defend a variety of positions, and he covers everyone else's sins defensively by taking charges, finding that open gap to help you until you can recover. He does all the little things that the average fan doesn't see, but can win you championships."

Rahon enters his first season at SDSU after sitting out last season fol-

lowing his transfer from Santa Clara. The 6-5 guard is San Diego State's top three-point shooter and brings valuable experience with him from SCU. At his previous stop, Rahon played in 32 of the Broncos' 33 games, starting 17 times, and shot a team-best 40.7 percent from behind the three-point arc. He scored in double figures 18 times for Santa Clara and averaged 11.3 points.

"James worked extremely hard during his redshirt season," Fisher said. "He is the first in the weight room and his body is different than it was a year ago; that will pay huge dividends for him. He has markedly improved his defense and that will show in his ability to guard several spots on the floor."

"He has always been a very talented scorer. He can score in a variety of ways, off the dribble, off the curl, and off the move, which makes him very, very difficult to guard. He will be somebody, when we are zoned, who we will run plays for to get him open threes and he will make them."

Others expected to see the floor for the Aztecs are sophomore forward Alec Williams and freshmen guards LaBradford Franklin and Jamaal Franklin.

"Alec has lost weight, which has improved his quickness. He is now a quick explosive inside player, a good face-up shooter and Alec presents a hard guard," Fisher said. "He is an undersized power forward who can stretch the defense by stepping out and shooting it. He has a good feel for how to play; he is in the mix with five other post players who he will be fighting for minutes. The future is bright for Alec in this program."

"LaBradford, meanwhile, is a legitimate point guard who sees the floor well, knows how to play, and is a very good passer who sometimes tries too hard to make the perfect pass," Fisher said of his freshman point guard. "He is a very capable long-range shooter and is good at finding the open man in traffic when he penetrates."

"Jamaal is a very, very explosive athlete," Fisher said of his other Franklin. "He brings high energy to the court and should be an exceptional defender out of the gate."

San Diego State has the weapons and the experience it needs to put together another fantastic season. Only time will tell if this team can surpass Fisher's other clubs that returned five starters. If they can, the 2010-11 team will go down as one of the best to ever take the floor.

## 2010-11 Preseason Accolades

### National Predictions

#### No. 21

- Andy Katz, ESPN.com

#### No. 22

- Lindy's

- Gary Parrish, CBSsports.com

- FOXSports.com

#### No. 23

- Dick Vitale, ESPN.com

#### No. 25

- Preseason AP Top 25

### MWC Predictions

#### First Place

- MWC Media Poll

- Blue Ribbon

- Yahoo! Sports

- Sporting News

- Lindy's

- Rivals.com

- SLAMOnline.com

- Doug Gottlieb, ESPN.com

#### Second Place

- Athlon Sports

### Other Team Accolades

#### Postseason Participants

- Sporting News

- Lindy's

- Athlon Sports

#### One of 23 Top Contenders

- Pat Forde, ESPN.com

#### One of 46 Teams to Watch

- Jeff Goodman, FoxSports.com

### Individual Honors

#### Kawhi Leonard

Wooden Award Top 50

All-American

- Dick Vitale, ESPN.com

- Athlon

All-MWC Team

- MWC Media Poll

- Blue Ribbon

- Yahoo! Sports

- Lindy's

- Sporting News

- Athlon

- Rivals.com

#### Malcolm Thomas

All-MWC Team

- Lindy's

- Sporting News

- Rivals.com

#### Billy White

All-MWC Team

- MWC Media Poll

- Blue Ribbon

- Lindy's

# 2010-11 Schedule



2010 NCAA TOURNAMENT ► 2010 MOUNTAIN WEST CONFERENCE CHAMPIONS

Date	Day	Opponent	Site	Time	TV
<b>Exhibition Game</b>					
Nov. 8	Mon.	POINT LOMA NAZARENE	Viejas Arena	7:00 p.m. PST	
Nov. 13	Sat.	at Long Beach State	Long Beach, Calif.	4:00 p.m. PST	
<b>O'Reilly Auto Parts CBE Classic</b>					
Nov. 16	Tues.	at Gonzaga	Spokane, Wash.	8:00 p.m. PST	ESPN2
Nov. 20	Sat.	vs. Green Bay	Oxford, Ohio	5:30 p.m. EST	
Nov. 21	Sun.	vs. IUPUI	Oxford, Ohio	5:30 p.m. EST	
Nov. 22	Mon.	at Miami (Ohio)	Oxford, Ohio	7:00 p.m. EST	
Nov. 26	Fri.	SAN DIEGO CHRISTIAN COLLEGE	Viejas Arena	7:00 p.m. PST	
Dec. 1	Wed.	SAINT MARY'S	Viejas Arena	7:30 p.m. PST	The Mtn.
<b>Mountain West-Missouri Valley Challenge (Campus Sites)</b>					
Dec. 4	Sat.	WICHITA STATE	Viejas Arena	7:00 p.m. PST	The Mtn.
Dec. 8	Wed.	at California	Berkeley, Calif.	7:30 p.m. PST	
Dec. 11	Sat.	SAN DIEGO	Viejas Arena	7:00 p.m. PST	Channel 4 San Diego
Dec. 13	Mon.	CAL POLY	Viejas Arena	7:00 p.m. PST	
Dec. 18	Sat.	UC SANTA BARBARA	Viejas Arena	7:00 p.m. PST	
<b>Las Vegas Holiday Hoops Classic (Las Vegas, Nev.)</b>					
Dec. 21	Tues.	vs. San Francisco	Las Vegas, Nev.	7:00 p.m. PST	
Dec. 22	Wed.	vs. IUPUI	Las Vegas, Nev.	7:00 p.m. PST	
Dec. 31	Fri.	OCCIDENTAL COLLEGE	Viejas Arena	1:00 p.m. PST	
Jan. 5	Wed.	*at TCU	Fort Worth, Texas	6:30 p.m. CST	The Mtn.
Jan. 8	Sat.	*at Utah	Salt Lake City, Utah	2:00 p.m. MST	VERSUS
Jan. 12	Wed.	*UNLV	Viejas Arena	7:00 p.m. PST	CBS College Sports
Jan. 15	Sat.	*at New Mexico	Albuquerque, N.M.	4:00 p.m. MST	CBS College Sports
Jan. 19	Wed.	*AIR FORCE	Viejas Arena	7:00 p.m. PST	
Jan. 26	Wed.	*at Brigham Young	Provo, Utah	8:00 p.m. MST	CBS College Sports
Jan. 29	Sat.	*WYOMING	Viejas Arena	7:00 p.m. PST	The Mtn.
Feb. 2	Wed.	*at Colorado State	Fort Collins, Colo.	7:00 p.m. MST	CBS College Sports
Feb. 5	Sat.	*TCU	Viejas Arena	7:30 p.m. PST	The Mtn.
Feb. 8	Tue.	*UTAH	Viejas Arena	7:30 p.m. PST	The Mtn.
Feb. 12	Sat.	*at UNLV	Las Vegas, Nev.	5:00 p.m. PST	CBS College Sports
Feb. 16	Wed.	*NEW MEXICO	Viejas Arena	7:30 p.m. PST	The Mtn.
Feb. 19	Sat.	*at Air Force	USAF Academy, Colo.	12:00 p.m. MST	The Mtn.
Feb. 26	Sat.	*BRIGHAM YOUNG	Viejas Arena	11:00 a.m. PST	CBS
March 1	Tue.	*at Wyoming	Laramie, Wyo.	8:00 p.m. MST	The Mtn.
March 5	Sat.	*COLORADO STATE	Viejas Arena	7:00 p.m. PST	The Mtn.
March 9-12	Wed.-Sat.	at MWC Championships	Las Vegas, Nev.	TBD	

\* - Indicates Mountain West Conference game. CAPS indicates home game at Viejas Arena. All times subject to change.

## 2011 NCAA Div. I Men's Basketball Championship Dates and Sites

Opening Round	First/Second Rounds	Regionals	Final Four
UD Arena Dayton, Ohio Univ. of Dayton, host March 15-16	St. Pete Times Forum Tampa, Fla. Host: Univ. of South Florida March 17 and 19	BOK Center Tulsa, Okla. Host: Univ. of Tulsa March 18 and 20	Alamodome San Antonio, Texas Host: Univ. of Texas-San Antonio March 25 and 27
Verizon Center Washington, D.C. Host: Georgetown Univ. March 17 and 19	Quicken Loans Arena Cleveland, Ohio Host: Cleveland State Univ. March 18 and 20	Spokane Veterans Memorial Arena Spokane, Wash. Host: Washington State Univ. March 18 and 20	Prudential Center Newark, N.J. Host: Seton Hall Univ. March 25 and 27
McKale Center Tucson, Ariz. Host: Univ. of Arizona March 17 and 19	Time Warner Cable Arena Charlotte, N.C. Host: Univ. of North Carolina-Charlotte March 18 and 20	Honda Center Anaheim, Calif. Host: Big West Conference March 24 and 26	Reliant Stadium Houston, Texas Host: Rice Univ./Univ. of Houston April 2 and 4
Pepsi Center Denver, Colo. Host: Mountain West Conference March 17 and 19	United Center Chicago, Ill. Host: Big Ten Conference March 18 and 20	Louisiana Superdome New Orleans, La. Host: Tulane Univ. March 24 and 26	

2010-11 SCHEDULE ◀ INTRODUCTION

AZTEC BASKETBALL MEDIA GUIDE

# Broadcast Roster



2010 NCAA TOURNAMENT ► 2010 MOUNTAIN WEST CONFERENCE CHAMPIONS



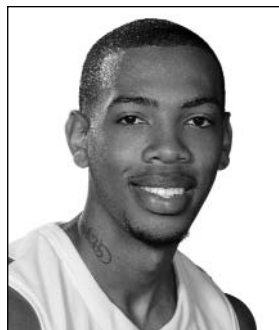
**0** **Alec Williams**  
So. • F • 6-6 • 245  
San Juan Capistrano, Calif.



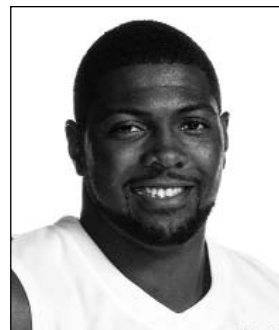
**2** **Xavier Thames**  
So. • G • 6-3 • 185  
Sacramento, Calif.



**3** **LaBradford Franklin**  
Fr. • G • 6-2 • 170  
Temecula, Calif.



**4** **Malcolm Thomas**  
Sr. • F • 6-9 • 220  
San Diego, Calif.



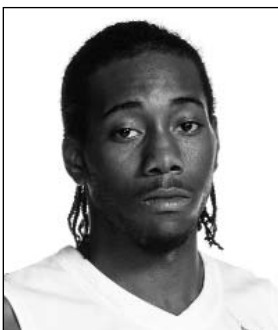
**5** **Brian Carlwell**  
Sr. • C • 6-11 • 300  
Maywood, Ill.



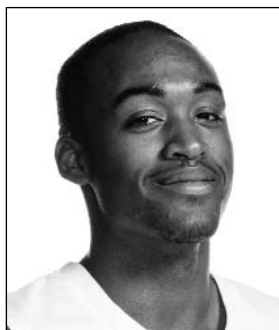
**10** **Tim Shelton**  
Jr. • F • 6-7 • 245  
Fresno, Calif.



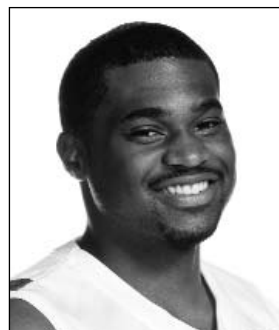
**11** **James Rahon**  
So. • G • 6-5 • 205  
San Diego, Calif.



**15** **Kawhi Leonard**  
So. • F • 6-7 • 225  
Riverside, Calif.



**21** **Jamaal Franklin**  
Fr. • G • 6-5 • 185  
Phelan, Calif.



**22** **Chase Tapley**  
So. • G • 6-2 • 200  
Sacramento, Calif.



**23** **D.J. Gay**  
Sr. • G • 6-0 • 170  
Sun Valley, Calif.



**32** **Billy White**  
Sr. • F • 6-8 • 235  
Las Vegas, Nev.



**42** **Mehdi Cheriet**  
Sr. • F • 6-9 • 225  
Tarare, France



**Steve Fisher**  
Head Coach



**Brian Dutcher**  
Assistant Head Coach



**Justin Hutson**  
Assistant Coach



**Mark Fisher**  
Assistant Coach



**Matt Soria**  
Director of Operations



**David Velasquez**  
Dir. of Player Development

# MEN'S & WOMEN'S BASKETBALL CHAMPIONSHIPS



MARCH 8-12, 2011

Thomas & Mack Center - Las Vegas, Nevada



The Conoco Mountain West Conference Basketball Championships return to Las Vegas.  
Catch all of the excitement with the best NCAA Basketball programs in the West!

[www.TheMWC.com/2011](http://www.TheMWC.com/2011)

 Follow us on Facebook and Twitter! 

Purchase tickets through your favorite MWC institution's athletic box office.



Air Force



BYU



Colorado State



New Mexico



San Diego State



TCU



UNLV



Utah



Wyoming