



SAN DIEGO STATE WOMEN'S BASKETBALL

2016-17 GAME NOTES

Jen Heisel, Assistant Media Relations Director • E-Mail: jheisel@mail.sdsu.edu • Office: 619-594-3014 • Cell: 862-432-5499

2016-17 SCHEDULE

Date	Opponent	Time
Nov. 4	CSU San Marcos (exh.)	W, 74-53
Nov. 11	at UC Riverside	L, 44-72
Nov. 14	San Diego Christian	W, 80-70
Nov. 17	at San Diego	L, 53-91
Nov. 20	Loyola Marymount	L, 53-60

Seton Hall Thanksgiving Classic (South Orange, N.J.)

Nov. 26	vs. UT Arlington	L, 58-64
Nov. 27	vs. Central Connecticut	W, 80-62

Dec. 2	at UC Davis	L, 55-75
Dec. 9	Michigan	Noon
Dec. 11	UC Santa Barbara	2 p.m.
Dec. 22	at Cal State Fullerton	7 p.m.
Dec. 28	Biola	6:30 p.m.
Dec. 31	at New Mexico*	2 p.m.
Jan. 4	Nevada*	6:30 p.m.
Jan. 7	Boise State*	2 p.m.
Jan. 11	at San José State*	7 p.m.
Jan. 14	at Utah State*	2 p.m.
Jan. 18	UNLV*	2 p.m.
Jan. 25	Air Force*	6:30 p.m.
Jan. 28	at Colorado State*	2 p.m.
Feb. 1	at Wyoming*	7 p.m.
Feb. 4	Fresno State*	2 p.m.
Feb. 8	San José State*	6:30 p.m.
Feb. 11	at Nevada*	4 p.m.
Feb. 15	Utah State*	6:30 p.m.
Feb. 18	at UNLV*	4 p.m.
Feb. 22	at Fresno State*	7 p.m.
Feb. 25	Colorado State*	2 p.m.
Feb. 28	at Air Force*	7 p.m.
March 3	New Mexico*	6:30 p.m.
March 6-10	MW Championship (Las Vegas, Nev.)	TBA

All times local to site | Home games in **Bold** at Viejas Arena
* = Mountain West game

GAME 8 | MICHIGAN (VIEJAS ARENA) | FRI., DEC. 2 | NOON PT

LIVE MEDIA: Stats (GoAztecs.com), Video/Audio (Mountain West Network) | Series vs. Michigan: Michigan leads, 1-0 / Streak: Michigan won 1



SAN DIEGO STATE
2016-17 Record: 2-5 (0-0 MW)
Head Coach: Stacie Terry
Fourth Year at SDSU/Fourth overall

TOP PERFORMERS

Scoring	McKynzie Fort - 16.6
Rebounding	Ariell Bostick - 6.4
Assists	Ariell Bostick - 24



MICHIGAN
2016-17 Record: 7-2 (0-0 Big Ten)
Head Coach: Kim Barnes Arico
Sixth Year at Michigan/20th overall

TOP PERFORMERS

Scoring	Katelynn Flaherty - 20.0
Rebounding	Jillian Dunston - 7.1
Assists	Siera Thompson - 42

GAME 9 | UC SANTA BARBARA (VIEJAS ARENA) | SUN., DEC. 11 | 2 P.M. PT

LIVE MEDIA: Stats (GoAztecs.com), Video/Audio (Mountain West Network) | Series vs. UC Santa Barbara: SDSU leads, 17-6 / Streak: SDSU won 3



SAN DIEGO STATE
2016-17 Record: 2-5 (0-0 MW)
Head Coach: Stacie Terry
Fourth Year at SDSU/Fourth overall

TOP PERFORMERS

Scoring	McKynzie Fort - 16.6
Rebounding	Ariell Bostick - 6.4
Assists	Ariell Bostick - 24



UC SANTA BARBARA
2016-17 Record: 2-5 (0-0 Big West)
Head Coach: Bonnie Henriksen
Second Year at UC Santa Barbara/20th overall

TOP PERFORMERS

Scoring	Sarah Porter - 11.0
Rebounding	Drew Edelman - 5.4
Assists	Onome Jemerigbe - 30

- After nearly a month away, San Diego State welcomes Michigan and UC Santa Barbara to Viejas Arena this weekend, hosting the Wolverines on Fri., Dec. 9 at noon and the Gauchos on Sun., Dec. 11 at 2 p.m. Chris Ello will be calling the play-by-play action for live video on the Mountain West Network, hosted by GoAztecs.com.
- Michigan is off to a blistering start this season, receiving votes in both national polls, but has slowed its roll somewhat, losing two of its last three contests against No. 10 Florida State and Xavier.
- After opening the season with a 2-1 mark, UC Santa Barbara experienced a skid, losing its last three games against West Coast Conference opponents San Diego, Santa Clara and Loyola Marymount.
- The last time San Diego State played both teams came during the 2014-15 season, when the Aztecs faced the Wolverines on Nov. 29 at the San Juan Shootout, then hosted the Gauchos in the next game on Dec. 7. The only meeting between the two programs, current Wolverines Siera Thompson and Katelynn Flaherty combined for 48 points and 11 threes to take down the Aztecs, 70-50. The Scarlet and Black rebounded against UC Santa Barbara, coming out on the top of a back-and-forth affair, 64-58.

SAN DIEGO STATE AZTECS (2-5, 0-0 MW)

No.	Name	Pos.	Ht.	Yr.	Exp.	PPG	RPG	APG	Individual Player Notes
1	Khalia Lark	F	6-0	Jr.	TR	0.0	0.0	0.0	Eligible Dec. 22 due to transfer from Washington prior to Spring 2016 semester
3	Ariell Bostick	G	5-4	Sr.	3L	5.1	6.4	3.4	Team-high 24 assists while averaging the second-most minutes on the team (27.7)
4	Kymberly Ellison	G	5-7	Sr.	1L	9.0	2.4	1.1	Leads team with 12 three-pointers on 38 attempts ... Has averaged 10.3 points in the last three games
11	Arantxa Gómez Ferrer	F	6-0	So.	1L	1.6	1.9	0.1	11.1 minutes per game ... Two blocks each against UT Arlington and UC Davis
13	Allison Brown	G	5-7	Jr.	SQ	0.0	1.0	1.0	Played nine minutes with a rebound vs. SDCC ... Walk-on who earned scholarship for 2016-17 campaign
15	McKynzie Fort	G	5-9	Jr.	2L	16.6	3.9	1.7	Ranks third in the MW with 16.6 PPG ... Team-high 31.7 MPG ... Career-high 28 pts. vs. SDCC
20	Geena Gomez	G	5-8	Jr.	1L	6.7	2.9	1.7	Breakout game vs. Central Connecticut, scoring a career-high 17 points for the team high
21	Abby Lowe	G	5-11	Fr.	HS	2.0	1.3	0.1	Averaging 6.6 minutes per game with appearances in every game ... Career-high 7 points at UC Davis
22	Lexy Thorderson	G/F	6-0	Jr.	2L	6.0	1.6	1.2	Scored 10 and 11 points respectively in last two games ... Season-high 23 minutes at UC Davis
30	Cheyenne Greenhouse	G	5-11	Jr.	2L	5.3	1.3	0.3	.375 field goal percentage in 18.3 minutes per game ... Season-high 8 points vs. UT Arlington and LMU
34	Baylee Vanderdoes	F	6-1	Fr.	HS	5.4	5.0	0.4	Second with 5.0 RPG, starting every game ... Double-double vs. SDCC was first for freshman since 2014
40	Monique Terry	F	6-2	Fr.	HS	3.3	2.4	0.3	Has started SDSU's last two games, averaging 16.33 MPG most recent three contests
44	Aleiah Brandon	F	6-1	Sr.	3L	0.0	0.0	0.0	Provides veteran leadership as a fifth-year senior
45	Naomi Ekwedike	F	6-6	Fr.	HS	1.9	1.1	0.0	Logged 12 and 10 minutes, respectively, in last two games ... Scored season-high 5 points vs. SDCC

Head Coach: Stacie Terry (UT Arlington, 1998) | 37-55 (Fourth Season at SDSU/Fourth Overall)

Assistant Coaches: Jesse Clark (Pacific Union, 2003); Ciara Carl (Point Loma Nazarene, 2005); Nick Grant (Baylor, 2010)

Director of Basketball Operations: Jon Silver (UCLA, 2009)

Director of Player Personnel: Paris Johnson (San Diego State, 2011)

Athletic Trainer: Queenie Soriano (San Diego State, 2004)

Head Manager: Chris Straker

SAN DIEGO STATE QUICK FACTS

GENERAL INFORMATION

Location: San Diego, Calif., 92182
 Founded: 1897
 Enrollment: 30,750
 Nickname: Aztecs
 School Colors: Scarlet and Black
 Affiliation: NCAA Division I
 Conference: Mountain West
 Home Arena (Capacity):
 Steve Fisher Court at Viejas Arena (12,414)
 President: Dr. Elliot Hirshman
 Director of Athletics: John David Wicker
 Faculty Athletic Representative: Patrick Papin
 Athletics Dept. Phone: 619-594-3019

AZTEC BASKETBALL FACTS

First Year of Basketball: 1976-77
 All-Time Record: 629-552 (.533) / 40 seasons
 Postseason Appearances/NCAA Appearances: 12/9
 Last Postseason Appearance: 2013--
 Lost to BYU (69-58) in WNIT Second Round

SDSU TEAM INFORMATION

2015-16 Record: 12-19 (.387)
 2015-16 MW Record/Finish: 6-12/T-8th
 2016 MW Tournament Record: 1-1
 2016 Final NCAA RPI: 238
 Letterwinners Returning/Lost: 9/2
 Starters Returning/Lost: 3/2
 Newcomers: 5

AZTEC BASKETBALL STAFF

Head Coach: Stacie Terry
 Alma Mater: UT Arlington, 1998
 Career Record/Years: 37-55/Fourth Year
 Record at SDSU: Same
 Best Time to Call: Contact SID
 Basketball Office Phone: 619-594-4095
 Basketball Office Fax: 619-594-8057
 Assistant Coaches:
 Jesse Clark, Fourth season at SDSU
 Alma Mater: Pacific Union, 2003
 Ciara Carl, Fourth season at SDSU
 Alma Mater: Point Loma Nazarene, 2005
 Nick Grant, Third season at SDSU
 Alma Mater: Baylor, 2010
 Director of Basketball Operations: Jon Silver
 First season at SDSU
 Alma Mater: UCLA, 2009
 Director of Player Personnel: Paris Johnson
 First season at SDSU
 Alma Mater: San Diego State, 2009
 Athletic Trainer: Queenie Soriano
 Head Manager: Chris Straker
 Academic Advisor: Dr. Bre White
 Strength and Conditioning: Eddie Padilla

SDSU MEDIA RELATIONS

Women's Basketball SID: Jen Heisel
 E-mail: jheisel@mail.sdsu.edu
 Office Phone: 619-594-3014
 Cell Phone: 862-432-5499

Scouting the Wolverines

Michigan is off to a blistering start this season, receiving votes in both national polls, but has slowed its roll somewhat, losing two of its last three contests against No. 10 Florida State and Xavier.

The Wolverines are one of the best ball handling teams in the nation, ranking 21st nationally with a 1.31 assist-to-turnover ratio and is eighth with 169 assists. The team is also sixth in the country with an outstanding 49.7 field goal percentage.

Katelyn Flaherty is the team's leading scorer, averaging 20 points per game, ranking 10th nationally with 67 made field goals. Michigan's leading rebounder is Jillian Dunston with 7.1 boards per game.

Kim Barnes Arico, the only coach is Michigan's history with four 20-win seasons, is in her fifth year as the Wolverines' head coach.

Scouting the Gauchos

After opening the season with a 2-1 mark, UC Santa Barbara experienced a skid, losing its last three games against West Coast Conference opponents San Diego, Santa Clara and Loyola Marymount.

San Diego native Sarah Porter is one of the Big West's best 3-point shooters, ranking second with 2.3 treys per game and fourth with a 42.5 3-point percentage. She leads the Gauchos with 11 points per game. Meanwhile, Onome Jemerigbe is UCSB's top playmaker with her 4.3 assists per game.

Defensively, the team is led by junior transfer Drew Edelman's 5.4 rebounds per game and Coco Miller's 1.9 steals per game.

Bonnie Henrickson is in her second season at UC Santa Barbara after previously serving at the helm of Kansas' program for 11 years.

Keeping it Fresh(men)

San Diego State's freshmen have wasted little time making their impact felt on the program.

With Monique Terry and Baylee Vanderdoes as two of the Aztecs' starting five, SDSU is one of just 12 schools nationally to have two first-years starting their contests.

Starting all six games this season, Vanderdoes is second on the squad with a .483 (14-for-29) shooting percentage and her 5.0 rebounds per game also rank second. Against San Diego Christian, the Auburn, Calif., native scored 10 points and added as many rebounds to become the first freshman with a double-double since Cheyenne Greenhouse accomplished the feat against Sacramento State (Nov. 14, 2014) with 19 points and 11 rebounds.

Terry is now leading the team with a .588 (10-for-17) field goal percentage, she had a breakout weekend at the Seton Hall Thanksgiving Classic, playing in a career-high 18 minutes against UT Arlington while grabbing four boards. In her first collegiate start against Central Connecticut, she was a perfect 3-for-3 from the floor.

Rounding out the first-year Aztecs are Naomi Ekwedike and Abby Lowe. Both have made appearances in all of SDSU's games this season, averaging 7.07 minutes per game as a pair.

Fort's On Fire

Junior McKynzie Fort has lived up to her moniker as the Aztecs' All-Mountain West honorable mention performer from a season prior. The Fontana, Calif., native is averaging a career-high 16.6 points per game to rank third in the Mountain West, helped by her

MW PRESEASON POLL

Rk.	Team	Pts.
1.	Colorado State (17)	283
2.	Boise State (11)	271
3.	Fresno State	225
4.	UNLV	201
5.	San José State	197
6.	New Mexico (1)	176
7.	San Diego State	126
8.	Wyoming	123
9.	Utah State	97
10.	Nevada	66
11.	Air Force	28

First-place votes in parentheses

MW PRESEASON HONORS

Preseason All-Mountain West Team

Brooke Pahukoa, Boise State
 Ellen Nystrom, Colorado State
 Bego Faz Davalos, Fresno State
 Cherise Beynon, New Mexico
 Dezz Ramos, San José State

Preseason Player of the Year

Ellen Nystrom, Colorado State

Preseason Newcomers of the Year:

Mykiel Bursleson, New Mexico

Preseason Freshman of the Year

Hallie Gennett, San José State

SDSU IN THE MW POLL

Year	Pre.	Final
1999-2000	6th	6th
2000-01	7th	6th
2001-02	7th	7th
2002-03	7th	7th
2003-04	6th	7th
2004-05	7th	t-7th
2005-06	8th	9th
2006-07	7th	7th
2007-08	7th	t-5th
2008-09	2nd	2nd
2009-10	1st	t-3rd
2010-11	2nd	6th
2011-12	2nd	1st
2012-13	1st	1st
2013-14	3rd	t-6th
2014-15	7th	7th
2015-16	6th	t-8th
2016-17	7th	--



best performance in the Scarlet and Black with 28 points against San Diego Christian.

Go Go Gomez

Geena Gomez had a weekend to remember at the Seton Hall Thanksgiving Classic. Gomez was named to the All-Tournament Team after averaging 11.5 points and five rebounds in games against UT Arlington and Central Connecticut. In SDSU's win over Central Connecticut, she scored a career-high 17 points, going 3-for-3 from beyond the arc and connecting on all six attempts at the free-throw line. Gomez has the team's best free-throw percentage, going 14-for-16 to open the year (.875).

UC Davis Recap

The San Diego State women's basketball team couldn't get past a powerful performance from beyond the arc by UC Davis and lost in non-conference action, 75-55, Friday night.

UC Davis improved to 5-1 on the season, while the Aztecs dropped to 2-5. The Aggies were outstanding from 3-point range, going 12-for-26 (46.2 percent). The 12 threes made was one shy of the most allowed in San Diego State history (13, at Wyoming, Feb. 21, 2004). UC Davis junior Dani Nafekh made eight treys on her own, garnering 28 points, which was easily a career high (previously 17 points).

The game started on the right foot for the Aztecs. Fifty-six seconds into the game, McKynzie Fort was fouled on a layup attempt and made the two ensuing free throws. Monique Terry fought through traffic to get her first two points of the game on the next possession. Fort matched that with a layup of her own, thanks to a long throw from Ariell Bostick. SDSU held a 6-3 lead 2:17 into the game.

Bostick got her second assist of the game three-and-a-half minutes later with a bounce pass to Lexy Thorderson, whose layup increased San Diego State's lead to 8-3.

The teams traded field goals until 2:35 when the Aggies' defense tightened. The Aztecs were unable to get a field goal for the duration of the quarter, allowing a pair of 3-pointers by Nafekh and a layup by Morgan Bertsch to trail 18-12 after 10 minutes of play.

UC Davis continued to fire shot after shot and with 6:42 to go in the second quarter, Ellison stopped a 13-0 run by the Aggies with a long three from the left corner, trimming the UC Davis lead to eight at 23-15. She nailed a second three on the Aztecs' next possession and matched that with a jumper on the ensuing possession from the right side for the 25-20 score.

Cheyenne Greenhouse's hitch shot from the front of the basket at 4:46 cut the UC Davis lead to three, but was SDSU's final field goal of the half, as the Aggies strung together 14 unanswered points before a good free throw by Arantxa Gomez Ferrer for the 39-23 margin. Nafekh added five points on her own in the final 27 seconds of the half for the 44-23 UC Davis advantage at halftime.

The second half started the same way the first half ended. San Diego State was shut out for nearly six-and-a-half minutes until Abby Lowe made a pair of free throws to cut the Aggies' lead to 49-25. After UC Davis got a jumper with exactly six minutes on the clock, Lowe got a layup precisely one minute later for the 51-27 score.

Led by Thorderson, San Diego State wasn't ready to back down just yet. She hit her first of three treys in the quarter at 4:23, getting her second on the next Aztec possession. Geena Gomez followed that up with a jumper, and Thorderson got her third three with two-and-a-half minutes to go for the 56-38 UC Davis lead.

But SDSU couldn't get anything else on the board and allowed Nafekh's sixth three of the game for the 59-38 score after 30 minutes.

Despite out-scoring UC Davis, 17-16, in the fourth quarter, which included freshman Abby Lowe's first collegiate three, the gulf was too wide for the Aztecs to overcome and the Scarlet and Black fell, 75-55.

Fort and Thorderson led the team with 11 points each, while Bostick's six assists and four steals were a team high. Lowe recorded a collegiate-best seven points, going 2-for-3 from the floor and 2-for-2 from the free-throw line in eight minutes logged. Gomez Ferrer had her second game in three outings where she made a pair of blocks (2 vs. UT Arlington).

San Diego State committed fewer turnovers, 18-14, but was out-rebounded, 40-35. For the game, the Aztecs shot 29.7 percent (19-for-64) as compared to the Aggies' 50 percent shooting performance (30-for-60).

Nationally-Ranked Class Joining Aztecs

San Diego State women's basketball head coach Stacie Terry has announced the signing of a nationally-ranked class for the 2017-18 campaign. The 46th-ranked recruiting class in the country according to Blue Star Basketball, Te'a Adams, Jenay Borjorquez, Kiara Edwards, Najé Murray and Kennedi Villa have signed National-Letters-of-Intent to join the Aztecs next season.

Adams, a 5-9 guard from Kirkland, Wash., is a three-star recruit according to ESPN and was given a scouts grade of 90. Entering her fourth year of varsity basketball at Juanita High School, Adams has averaged 19.2 points per game, 3.4 steals per game and 2.5 assists and rebounds each per game during a career that has yielded three

MICHIGAN SERIES NOTES

MICHIGAN AT SAN DIEGO STATE

Michigan leads, 1-0

• 2016-17 Comparative Stats

SDSU		MICH
2-5	Overall Record	7-2
0-0	League Record	0-0
.378	Field Goal Pct.	.497
.263	3-PT FG Pct.	.431
.730	Free Throw Pct.	.687
.453	Opp. FG Pct.	.343
.368	Opp. 3-PT FG Pct.	.274
.639	Opp. FT Pct.	.626
34.3	Rebound Avg.	41.0
-2.4	Rebound Margin	+11.1
60.4	Points/Game	52.6
70.6	Pts. Allowed/Game	83.2

• Series Numbers

Record at SDSU	0-0
Record at Michigan	0-0
Record at Neutral	0-1
Most Points SDSU	50, 2015
Most Points Michigan	70, 2015
Largest Margin SDSU	N/A
Largest Margin Michigan	20, 2015
Longest SDSU Win Streak	N/A
Longest Michigan Win Streak	1
Current Streak	Michigan 1

• Series History

Date	Site	Result
11-29-14	Neutral	L 50-70

LAST MEETING | MICHIGAN

Michigan vs. San Diego State Box Score (11-29-14) (Guyanabo, Puerto Rico)

MICH	FG	3FG	FT	REB	F	TP	A	T	B	S	MP
Ristovski	1-3	1-3	0-0	0	0	3	4	1	0	1	21
Thompson	6-12	5-9	8-8	1	0	25	4	3	0	1	36
Smith	3-9	0-0	0-0	5	5	6	5	4	0	0	25
Elmblad	1-4	0-0	2-3	6	3	4	0	4	0	2	28
Goree	3-6	0-0	1-1	8	3	7	2	3	1	4	37
Flaherty	8-14	6-10	1-2	2	3	23	2	1	0	0	30
Dunston	0-0	0-0	0-1	2	0	0	0	0	0	0	11
Williams	0-0	0-0	0-0	2	0	0	0	0	0	0	3
Backman	1-2	0-1	0-0	2	0	2	0	0	0	0	5
Jackson	0-0	0-0	0-0	0	0	0	0	0	0	0	1
Mitchell	0-1	0-0	0-0	0	1	0	0	0	0	0	3
TEAM				7							
Totals	23-51	12-23	12-15	35	15	70	17	17	1	8	200
Pct.	45.1	52.2	80.0								

SDSU	FG	3FG	FT	REB	F	TP	A	T	B	S	MP
Smith	1-3	0-1	0-0	2	2	2	0	1	2	0	25
Hunter	3-7	0-0	3-4	5	1	9	0	5	1	1	29
Culberson	1-5	0-2	0-0	5	2	2	3	1	0	0	25
Harvey	2-5	2-3	1-2	1	2	7	1	6	0	1	25
Johnson	2-4	0-0	0-0	0	3	4	1	0	0	1	15
Brown	0-1	0-1	0-2	0	0	0	0	0	0	0	1
Fort	2-4	0-0	0-0	1	2	4	1	2	0	0	21
Thorderson	0-0	0-0	0-0	1	0	0	0	3	0	0	3
Amarikwa	0-3	0-0	4-4	0	4	4	0	0	0	2	12
Greenhouse	6-9	0-0	1-1	4	0	13	1	0	0	0	29
Brandon	2-4	1-3	0-0	1	1	5	0	1	0	2	15
TEAM				3							
Totals	19-45	3-10	9-13	23	17	50	7	19	3	7	200
Pct.	42.2	30.0	69.2								

Officials: Jose Quinones, Eric Koch, Jody Cantrell

Technical fouls: None

Attendance: 112

Score by Periods

	1st	2nd	Total
Michigan	39	31	70

all-conference honors.

Bojorquez, a 5-6 point guard from Phoenix, is in her third season of varsity ball at Sierra Linda High School. A three-and-a-half-star recruit according to Prospects Nation, Bojorquez has held the top spot on Sierra Linda High's varsity squad in assists per game for two consecutive years.

Averaging nearly a double-double per game during her three-year varsity career at Valley Vista High School in Surprise, Ariz., Edwards is a 6-1 forward. Ranked No. 119 by Prospects Nation, the four-star recruit is coming off of an invitation to the 2016 USA Basketball Women's U17 World Championship team trials this May.

A 5-6 guard from perennial national powerhouse St. Mary's in Stockton, Calif., Murray earned three stars and a 90 scouts grade by ESPN. Led by head coach Tom Gonsalves, St. Mary's has won 57 of its last 58 games and nine consecutive section championships.

Villa, a 6-0 guard from Oakland, Calif., attends Saint Mary's College High School in Berkeley, Calif. A three-star recruit according to ESPN, she earned a scouts grade of 88.

Bringin' it Back

San Diego State returns 69.3 percent of its scoring, three starters and nine letterwinners from its 2015-16 team.

The team will be led this season by All-Mountain West honorable mention and All-Mountain West Defensive Team honoree McKynzie Fort. The 5-9 guard from Fontana, Calif., was just one of two Aztecs to start all 31 games, finishing sixth in the conference with an average of 14.4 points per game. She also ranked among the conference's leaders in steals (1-3rd -- 2.0/gm), free-throw percentage (6th -- (.693)) and field-goal percentage (11th -- (.462)).

Ariell Bostick will don the Scarlet and Black for the final time as the team's top assist-getter from the previous season. The senior from Oakland, Calif., finished 10th in the Mountain West with a team-high 2.9 assists per outing. Classmate Aleiah Brandon was a top defensive threat for the Aztecs during the 2015-16 season, blocking 10 shots, the second-most on the team, in 26 appearances and 18 starts.

The Aztecs' top three-point threat last season, Lexy Thorderson, a six-foot junior from Castle Rock, Colo., will be looked upon to fulfill a similar role. Appearing in all 31 of SDSU's games, she drained 40 of 124 shots from behind the arc, ranking 13th in the conference.

A steady presence, Cheyenne Greenhouse also played in every game for San Diego State, making 22 starts, including 18 to end the season. She averaged 20.9 minutes per game, the fifth-most on the squad.

In her first season in the Scarlet and Black after a transfer from Georgia Tech, senior Kymberly Ellison was another Aztec who appeared in every contest. In an average of 12.8 minutes per game, she posted a .722 free throw percentage, the second-best on the team.

Fellow newcomer Geena Gomez was also quick to make an impact after her transfer from St. John's. The junior from Huntington Beach, Calif., appeared in 29 of SDSU's 31 games, maintaining the squad's highest assist-to-turnover ratio (1.42) and ranking second on the team with a .324 three-point field goal percentage (23-of-71).

Gomez's classmate Allison Brown has also made an impact on the team. A walk-on prior to her freshman season, Brown earned a scholarship for the 2016-17 season after playing in a career-high nine games last year.

Jumpin' Jehosaphat, Juniors!

The Aztecs' junior class has been anything but junior. During the 2015-16 season, Allison Brown, McKynzie Fort, Geena Gomez, Cheyenne Greenhouse and Lexy Thorderson averaged a combined 21.56 minutes per game, 7.17 points per game, 1.29 steals per game and 2.94 rebounds per game. The group accounted for 47.7 percent of SDSU's total offense a season ago, logging 41.2 percent of the team's total minutes played. Also excelling in the classroom, Greenhouse and Thorderson earned Academic All-Mountain West honors.

The New Aztecs on the Block

San Diego State newcomers are looking to leave a legacy on Montezuma Mesa. Recent high school graduates Monique Terry (San Antonio, Texas), Baylee Vanderdoes (Auburn, Calif.), Naomi Ekwedike (Lagos, Nigeria) and Abby Lowe (Stockport, England) signed National Letters of Intent for the 2016-17 campaign. The four freshmen will join University of Washington transfer Khalia Lark (Irvine, Calif.), a junior for the 2016-17 season who enrolled at SDSU prior to the Spring 2016 semester and is eligible Dec. 22.

A McDonald's All-America nominee, Terry was rated a three-star recruit by espnW and was given a scouts grade of 89. During her junior season at Brennan High School, the 6-2 forward was the lone player in District 27-6A to average a double-double, posting 10.3 points and 10.4 rebounds per game while leading the district with a .540

UC SANTA BARBARA SERIES NOTES

UC SANTA BARBARA AT SAN DIEGO STATE SDSU leads, 17-6

• 2016-17 Comparative Stats

SDSU		UCSB
2-5	Overall Record	2-5
0-0	League Record	0-0
.378	Field Goal Pct.	.383
.263	3-PT FG Pct.	.311
.730	Free Throw Pct.	.727
.453	Opp. FG Pct.	.419
.368	Opp. 3-PT FG Pct.	.245
.639	Opp. FT Pct.	.694
34.3	Rebound Avg.	31.0
-2.4	Rebound Margin	-8.1
60.4	Points/Game	59.3
70.6	Pts. Allowed/Game	63.7

• Series Numbers

Record at SDSU	10-2
Record at UCSB	6-4
Record at Neutral	1-0
Most Points SDSU	122, 1984
Most Points UCSB	82, 1997
Largest Margin SDSU	60, 1984
Largest Margin UCSB	28, 1999
Longest SDSU Win Streak	6
Longest UCSB Win Streak	2
Current Streak	SDSU 3

• Series History

Date	Site	Result
2-12-77	UC Santa Barbara	L 43-56
1-20-78	San Diego	W 66-57
2-3-78	UC Santa Barbara	L 59-73
1-13-79	UC Santa Barbara	W 51-47
2-17-79	San Diego	W 55-37
11-16-79	Neutral	W 67-45
1-7-84	San Diego	W 122-62
1-25-86	San Diego	W 88-57
2-8-86	UC Santa Barbara	L 63-77
2-5-87	San Diego	W 67-57
2-19-87	UC Santa Barbara	W 69-57
1-7-88	San Diego	W 77-51
2-6-88	UC Santa Barbara	W 78-39
1-7-89	UC Santa Barbara	W 91-61
2-2-89	San Diego	W 69-55
1-25-90	San Diego	L 57-64
2-24-90	UC Santa Barbara	W 53-51
12-13-90	San Diego	W 76-71
12-15-97	San Diego	L 79-82
1-2-99	UC Santa Barbara	L 50-78
3-20-13	San Diego	W 68-45
11-30-13	UC Santa Barbara	W 71-67
12-7-14	San Diego	W 64-58

AZTECS VS. BIG WEST

Cal Poly	9	2
CS Fullerton	20	17
CS Northridge	9	3
Hawai'i	14	12
Long Beach State	5	37
UC Davis	2	3
UC Irvine	19	6
UC Riverside	5	5
UC Santa Barbara	17	6
Total	100	91

LAST MEETING | UC SANTA BARBARA

UCSB at San Diego State Box Score (11-29-14)

UCSB	FG	3FG	FT	REB	F	TP	A	T	B	S	MP
Durr	5-9	0-0	1-2	4	5	11	0	2	0	0	26
Watkins	0-5	0-0	3-4	5	1	3	0	2	5	1	25
Branche	3-7	0-2	1-1	1	3	7	0	0	0	0	27
Ware	9-15	0-3	2-2	3	4	20	2	3	0	1	40-
Jemerigbe	3-8	1-3	1-1	3	4	8	9	5	0	2	35
Maragnes	0-0	0-0	0-0	1	0	0	0	0	0	0	3
Morrison	1-1	0-0	0-0	2	0	2	1	1	0	0	9
Lopez	0-1	0-0	0-0	2	1	0	2	0	0	0	3
Roper	2-11	1-5	0-0	2	3	5	3	3	0	3	23
Wright	1-1	0-0	0-0	2	2	2	0	0	0	0	9
TEAM				7							
Totals	24-58	2-13	8-10	32	23	58	17	17	5	7	200
Pct.	48.4	12.5	60.0								

SDSU	FG	3FG	FT	REB	F	TP	A	T	B	S	MP
Hunter	4-5	0-0	7-8	6	0	15	1	1	0	1	32
Amarikwa	7-11	0-0	1-1	6	1	15	1	1	1	2	27
Harvey	2-7	2-5	2-4	1	0	8	3	2	0	1	28
Fort	2-8	0-0	0-4	3	2	4	2	1	1	0	25
Greenhouse	0-9	0-0	0-0	4	1	0	0	0	0	0	20
Smith	1-3	0-0	0-0	0	4	2	0	3	0	0	11
Culberson	2-6	1-1	4-6	2	0	9	1	0	0	3	20
Johnson	0-1	0-1	2-2	2	1	2	4	2	0	1	18
Thorderson	1-2	1-1	0-0	1	0	3	0	0	0	0	9
Brandon	2-2	0-0	2-2	4	1	6	0	1	0	0	10
TEAM				6							
Totals	21-54	4-8	18-27	35	10	64	12	13	2	8	200
Pct.	38.9	50.0	66.7								

Officials: Brenda Pantoja, Tiffany Bird, Janetta Graham
Technical fouls: None **Attendance:** 421

Score by Periods	1st	2nd	Total
UC Santa Barbara	24	34	58
San Diego State	34	30	64

SAN DIEGO STATE STREAKS

Most Consecutive Starts

	Consecutive	Total
McKynzie Fort	62	62
Ariell Bostick	34	52
Kymerly Ellison*	7	7
Baylee Vanderdoes	7	7
Monique Terry	2	2
Geena Gomez*	0	1
Cheyenne Greenhouse	0	32
Aleiah Brandon	0	18
Lexy Thorderson	0	4

Most Consecutive Games

	Consecutive	Total
McKynzie Fort	70	70
Ariell Bostick	62	85
Kymerly Ellison*	38	38
Geena Gomez*	36	36
Arantxa Gómez Ferrer	7	25
Naomi Ekwedike	7	7
Abby Lowe	7	7
Monique Terry	7	7
Baylee Vanderdoes	7	7
Cheyenne Greenhouse	5	69
Lexy Thorderson	5	66
Aleiah Brandon	0	72
Allison Brown	0	17

Most Consecutive Games With A Point^

	Consecutive	Total
McKynzie Fort	70	70
Kymerly Ellison*	7	29
Baylee Vanderdoes	7	7
Ariell Bostick	6	77
Cheyenne Greenhouse	5	54
Monique Terry	5	6
Geena Gomez*	3	23
Arantxa Gómez Ferrer	3	10
Lexy Thorderson	2	42
Abby Lowe	1	4
Naomi Ekwedike	1	4
Aleiah Brandon	0	39
Allison Brown	0	2

*SDSU totals only

^must have played in the game

@AZTECWBB IN THE NATION

Category	Team	Value	Rank
Free-Throw Percentage		73.0	67

Category	Ariell Bostick	Value	Rank
Steals		19	76
Steals Per Game		2.71	56

2016-17 By the Numbers

With a new season upon Montezuma Mesa, head coach Stacie Terry's fourth season is one brewing with promise. Below are trends to watch for in 2016-17:

- The Aztecs are true believers in the home court advantage. They enter the season with wins in 50 of its last 75 home games and have gone 82-37 on the Viejas Arena floor since the start of the 2008-09 campaign.

field-goal percentage She was also named the District 27-6A's defensive player of the year and received all-region honors.

Vanderdoes played prep ball at Placer High School, where she averaged 21.1 points, 11.0 rebounds and 3.6 blocks per contest as a senior, earning a spot on the MaxPreps Division IV all-California state second team. The 6-1 forward was also named the Pioneer Valley League's most valuable player on two occasions and received second-team all-metro honors from the Sacramento Bee. She holds Placer High's single-game record for points scored (41) and blocked shots (11). Like Terry, Vanderdoes received a scouts grade of 89 and was rated a three-star recruit by espnW. Her brother, Eddie, is a defensive lineman at UCLA.

A native of Lagos, Nigeria, Ekwedike is a 6-6 post player who prepped for three years at Potter's House Christian Academy in Jacksonville, Fla., where she was a member of two state championship teams and helped her squad win a national championship in the National Christian School Athletic Association tournament in 2015. Ekwedike was also rated a three-star recruit by espnW and given a scouts grade of 88.

Rounding out the 2016 recruiting class is Lowe, who played two years at the Barking Abbey Academy near London, helping the Crusaders capture the first-ever Women's Elite Academy Basketball League title last season. In addition, the 5-11 shooting guard earned a silver medal for the U16 squad representing England at the European Championships in 2014.

A highly successful prep player at powerhouse Mater Dei High School in Orange County, Lark helped the Monarchs win two CIF championships, one state title and one national championship alongside fellow Aztec Allison Brown. As a sophomore, Lark's Mater Dei squad posted a 34-3 record and captured the Southern Section Division IAA crown, where she scored 14 points in the championship game.

A 6-foot guard, Lark appeared in 29 games over one-and-a-half seasons at Washington, where she averaged 2.5 points and 1.5 rebounds while shooting 38 percent from three-point range. As a freshman, she scored a career-high 10 points in a victory over Seattle University and grabbed a personal-best five rebounds that season in the Pac-12 title game vs. California.

Stiff Slate

The Aztecs will have to contend with a challenging schedule for the 2016-17 campaign, as SDSU will face seven teams that advanced to the postseason.

San Diego State opens the season with a battle at UC Riverside, which played in the first round of the WNIT. Six days later, the Scarlet and Black visits crosstown rival San Diego, which advanced to the third round of the prestigious tournament. Over Thanksgiving Weekend, SDSU plays at the Seton Hall Tournament and could face the Pirates, returning in 2016-17 from a NCAA Tournament first-round showing. On Fri., Dec. 9, San Diego State welcomes Michigan to Viejas Arena, which is coming off of a WNIT semifinal appearance.

Additionally, SDSU faces conference foes Fresno State, New Mexico and Colorado State twice each, all of which made appearances in the WNIT.

MW STANDINGS

As of Dec. 7

	MW	Overall
Boise State (RV/-)	0-0	7-0
UNLV	0-0	6-1
Utah State	0-0	6-2
Wyoming	0-0	6-2
Colorado State	0-0	5-3
Fresno State	0-0	4-3
Nevada	0-0	4-4
New Mexico	0-0	3-5
San Diego State	0-0	2-5
Air Force	0-0	2-6
San José State	0-0	2-7

MW SCHEDULE

Wednesday, December 7

Concordia (Ore.) at BOISE STATE, 7 p.m. MT

Cal State Dominguez Hills at FRESNO STATE, 7 p.m. MT

Thursday, December 8

COLORADO STATE at 18/- Colorado, 7 p.m. MT

Friday, December 9

Michigan at SAN DIEGO STATE, Noon PT

UNLV at Pepperdine, 1 p.m. PT

Idaho at WYOMING, 6:30 p.m. MT

SAN JOSÉ STATE at Nebraska, 7 p.m. CT

Saturday, December 10

NEVADA at San Diego, 2 p.m. PT

Northern Colorado at AIR FORCE, 2:30 p.m. MT

FRESNO STATE at Pacifi c, 5 p.m. PT

Sunday, December 11

SAN JOSÉ STATE at South Dakota, Noon CT

New Mexico Highlands at COLORADO STATE, 2 p.m. MT

UTEP at NEW MEXICO, 2 p.m. MT

BOISE STATE at 11/11 Washington, 2 p.m. PT

UC Santa Barbara at SAN DIEGO STATE, 2 p.m. PT

Monday, December 12

UNLV at UC Irvine, 5 p.m. PT

Tuesday, December 13

Holy Names at NEVADA, 11 a.m. PT

SDSU RECORD WHEN...

Playing at home	1-1
Playing on the road	0-3
Playing at a neutral site	1-1
Playing a night game (5 pm or later)	1-3
Playing a day game	1-2
Leading at halftime	2-0
Trailing at halftime	0-5
Tied at halftime	0-0
Leading with 5:00 left in regulation	2-0
Trailing with 5:00 left in regulation	0-5
Tied with 5:00 left	0-0
In overtime	0-0
Scoring less than 60 points	0-5
Scoring between 60-69 points	0-0
Scoring between 70-79 points	0-0
Scoring between 80-89 points	2-0
Scoring 90 or more points	0-0
Opponent scores less than 60 points	0-0
Opponent scores 60-69 points	1-2
Opponent scores 70-79 points	1-2
Opponent scores 80-89 points	0-0
Opponent scores 90 or more points	0-1
FG% .500 or better	2-0
FG% under .500	0-5
FG% .400-.499	0-0
FG% under .400	0-5
Opponent FG% .500 or better	0-3
Opponent FG% under .500	2-1
Opponent FG% .400-.499	0-1
Opponent FG% under .400	2-1
Better shooting %	2-0
Worse shooting %	0-5
More FG attempts	0-4
Fewer FG attempts	2-1
Same FG attempts	0-0
More FGs made	2-0
Fewer FGs made	0-5
Same FGs made	0-0
More FT attempts	0-4
Fewer FT attempts	2-1
Same FT attempts	0-0
More FTs made	2-3
Fewer FTs made	0-1
Same FTs made	0-1
More rebounds	1-2
Fewer rebounds	1-3
Same rebounds	0-0
More turnovers	1-2
Fewer turnovers	1-2
Same turnovers	0-1
More assists	2-0
Fewer assists	0-5
Same assists	0-0
More steals	1-1
Fewer steals	0-3
Same steals	1-1

SDSU STREAKS

Last 5 games	1-4
Last 10 games	2-5
Longest winning streak	1
Longest losing streak	3
Current streak	Last 1

• With the game on the line, the Scarlet and Black gets the job done. The team has won 55 straight and has gone 86-1 since the beginning of the 2011-12 campaign when leading with five minutes left in the game. The Aztecs' lone blemish during that span occurred in a 59-58 heart-breaking loss at Washington on Dec. 5, 2012.

• The Aztecs are fond of closing out the calendar year on a high note. SDSU is 39-19 in December games dating back to the 2006-07 campaign, with seven of those losses coming against teams either ranked or receiving votes in the national polls.

• Over the last nine seasons, San Diego State has been solid in conference play. SDSU has recorded 87 Mountain West victories after posting 31 wins in the league's first nine years.

• The Aztecs have advanced to finals of the MW Championship in five of the last nine years, and advanced in the tournament every season since 2010-11, after not winning a single game in the tournament's first eight years of existence.

Listen Live

For the 16th consecutive year, Aztec women's basketball fans will have an opportunity to listen to live play-by-play of regular-season games over the internet at www.goaztecs.com.

SDSU alumnus Chris Ello begins his ninth season of calling the action and is a familiar voice in the San Diego area. In addition to his responsibilities with the Aztec women's basketball squad, Ello is a member of the football broadcast team as a sideline reporter for the school's flagship station, The Mighty 1090 AM.

Ello started his career in sports talk radio in San Diego on XTRA Sports 690 in the summer of 1994. He has accumulated a wealth of experience doing play-by-play for a variety of sports at every level, including stints with the SDSU football (1985), baseball (1998-99) and men's basketball (2006-07) squads.

From 1996-2006, Ello was the voice of the San Diego Gulls hockey team and has called the action for the San Diego Sockers (indoor soccer), San Diego Spirit (outdoor soccer), San Diego Wildcards (CBA) and San Diego Riptide (arena football). He also has experience broadcasting high school CIF football and basketball games since 2000.

For the fourth straight year, all regular-season Aztec home contests in 2016-17 will feature a live video stream via the Mountain West Network to supplement the audio call from Viejas Arena.

2016-17 Media Information

All media requests for interviews with the coaching staff or student-athletes should be directed to Jen Heisel at jheisel@mail.sdsu.edu. Please submit your requests with a minimum of 24 hours notice.

During the season, head coach Stacie Terry and the players are generally available to meet with the media following each workout, as requested. There will be no interviews on game days until postgame.

The Aztec basketball team officially began practice in early October. All workouts will take place at the Jeff Jacobs JAM Center with a few exceptions. Media wishing to attend practice should contact the Aztec media relations department at least one day in advance.

Media desiring to cover Aztec practices on campus can park in Parking Structure 7 and obtain a special parking permit from the SDSU athletic media relations office. Media parking via permit only will be provided for all home games in PS 4, adjacent to Viejas Arena.

ASSOCIATED PRESS POLL

(Week 5 - Dec. 5)

Rk		Record	Pts
1	Connecticut (18)	7-0	809
2	Notre Dame (15)	8-0	807
3	Baylor	9-1	750
4	Maryland	8-0	732
5	Mississippi State	8-0	668
6	South Carolina	6-1	660
7	Florida State	8-1	613
8	Louisville	7-2	574
9	UCLA	6-1	564
10	Stanford	8-1	525
11	Washington	8-1	487
12	Ohio State	6-3	403
13	West Virginia	9-0	401
14	Miami	7-1	398
15	Kentucky	6-2	338
16	DePaul	5-2	252
17	Texas	2-4	249
18	Colorado	8-0	231
19	Oklahoma	5-2	187
20	Syracuse	6-3	161
21	Duke	9-1	158
22	South Florida	6-0	109
23	Florida	6-2	105
24	Oregon State	5-1	70
25	Virginia Tech	7-0	668

First-place votes in parentheses

Others receiving votes: Oregon 65, Kansas State 48, Arizona State 48, Michigan 48, Tennessee 31, California 30, Auburn 28, Green Bay 22, Texas A&M 22, Northwestern 17, Marquette 15, Gonzaga 8, Oklahoma State 8, Michigan State 6, Boise State 6, USC 5, Vanderbilt 1

USA TODAY COACHES POLL

(Week 5 - Dec. 5)

Rk		Record	Pts
1	Notre Dame (18)	8-0	784
2	Connecticut (14)	7-0	781
3	Baylor	9-1	716
4	Maryland	8-0	715
5	Mississippi State	8-0	653
6	South Carolina	6-1	642
7	Florida State	8-1	602
8	Louisville	7-2	555
9	UCLA	6-1	554
10	Stanford	8-1	520
11	Washington	8-1	471
12	Ohio State	6-3	402
13	Miami	7-1	400
14	West Virginia	9-0	355
15	DePaul	6-2	323
16	Oregon State	5-1	255
17	Texas	2-4	239
18	Kentucky	6-2	230
19	Syracuse	6-3	196
20	Oklahoma	5-2	141
21	Duke	9-1	122
22	South Florida	6-0	120
23	Arizona State	5-2	105
24	California	7-0	74
25	Florida	6-2	60

First-place votes in parentheses

Others receiving votes: Michigan State 59, Virginia Tech 53, Colorado 51, Texas A&M 47, Green Bay 39, Oklahoma State 33, Michigan 27, South Dakota State 22, Oregon 20, Tennessee 15, Kansas State 6, Northwestern 6, Marquette 5, Gonzaga 1, Georgia Tech 1

PERSONNEL SUMMARY

Returning Starters (3):

Ariell Bostick, Sr., G (4.9 ppg, 4.2 rpg, 2.9 apg)
 McKynzie Fort, Jr., G (14.3 ppg, 4.1 rpg, 2.4 apg)
 Cheyenne Greenhouse, Jr., G (4.9 ppg, 3.2 rpg, 0.5 apg)

Starters Lost (2):

Ahijaleé Harvey, G (9.3 ppg, 3.6 rpg, 2.1 apg)
 Deidra Smith, F (7.5 ppg, 4.9 rpg, 0.5 bpg)

Other Players Lost (1):

Kylie Herd, Jr., G (10.2 mpg, 1.3 rpg)

Other Letterwinners Returning (5):

Aleiah Brandon, Sr., F (3.4 ppg, 2.4 rpg)
 Kymberly Ellison, Sr., G (4.5 ppg, 0.7 apg, 33 3FGs)
 Arantxa Gómez Ferrer, So., F (0.6 ppg, 0.9 rpg)
 Geena Gomez, Jr., G (3.4 ppg, 1.9 rpg, 1.3 apg)
 Lexy Thorderson, Jr., F/G (5.2 ppg, 2.2 rpg, 40 3FGs)

Other Players Returning (1):

Allison Brown, Jr., G (9 gms)

Newcomers (5):

Naomi Ekwedike, Fr., F, 6-6, Lagos, Nigeria
 (Potter's House Christian Academy (Fla.))
 Khalia Lark, Jr., G, 6-0, Santa Ana, Calif.
 (Washington/Mater Dei HS)
 Abby Lowe, Fr., G, 5-11, Stockport, England
 (Barking Abbey Academy)
 Monique Terry, Fr., F, 6-2, San Antonio, Texas
 (Brennan HS)
 Baylee Vanderdoes, Fr., F, 6-2, Auburn, Calif.
 (Placer HS)

ROSTER BREAKDOWN

By Class

Seniors (3): Bostick, Brandon, Ellison; **Juniors (6):** Brown, Fort, G. Gomez, Greenhouse, Lark, Thorderson; **Sophomore (1):** A. Gómez Ferrer; **Freshmen (4):** Ekwedike, Lowe, Terry, Vanderdoes

By State/Country

California (8): Bostick, Brandon, Brown, Fort, G. Gomez, Greenhouse, Lark, Vanderdoes; **Colorado (1):** Thorderson; **Texas (1):** Terry; **Georgia (1):** Ellison; **Spain (1):** A. Gómez Ferrer; **England (1):** Lowe; **Nigeria (1):** Ekwedike

By Position

Centers (1): Ekwedike; **Forwards (4):** Brandon, A. Gómez Ferrer, Terry, Thorderson, Vanderdoes; **Guards (8):** Bostick, Brown, Ellison, Fort, G. Gomez, Greenhouse, Lark, Lowe, Thorderson

By Height

6-6 (1): Ekwedike; **6-2 (1):** Terry; **6-1 (2):** Brandon, Vanderdoes; **6-0 (3):** A. Gómez Ferrer, Lark, Thorderson; **5-11 (2):** Greenhouse, Lowe; **5-9 (1):** Fort; **5-8 (1):** G. Gomez; **5-7 (2):** Brown, Ellison; **5-4 (1):** Bostick

2016-17 NUMERICAL ROSTER

No.	Name	Pos.	Ht.	Yr.	Exp.	Hometown (Previous School/High School)
1	Khaliya Lark	F	6-0	Jr.	TR	Santa Ana, Calif. (Washington/Mater Dei HS)
3	Ariell Bostick	G	5-4	Sr.	3L	Oakland, Calif. (Bishop O'Dowd HS)
4	Kymberly Ellison	G	5-7	Sr.	1L	Columbus, Ga. (Georgia Tech/Hardaway HS)
11	Arantxa Gómez Ferrer	F	6-0	So.	1L	Valencia, Spain (Parque Colegio Santa Ana HS)
13	Allison Brown	G	5-7	Jr.	SQ	Anaheim Hills, Calif. (Mater Dei HS)
15	McKynzie Fort	G	5-9	Jr.	2L	Fontana, Calif. (Etiwanda HS)
20	Geena Gomez	G	5-8	Jr.	1L	Huntington Beach, Calif. (St. Joseph's (Pa.)/Edison HS)
21	Abby Lowe	G	5-11	Fr.	HS	Stockport, England (Barking Abbey Academy)
22	Lexy Thorderson	G/F	6-0	Jr.	2L	Castle Rock, Colo. (Rock Canyon HS)
30	Cheyenne Greenhouse	G	5-11	Jr.	2L	Riverside, Calif. (Canyon Springs HS)
34	Baylee Vanderdoes	F	6-2	Fr.	HS	Auburn, Calif. (Placer HS)
40	Monique Terry	F	6-2	Fr.	HS	San Antonio, Texas (Brennan HS)
44	Aleiah Brandon	F	6-1	Sr.	3L	Corona, Calif. (Centennial HS)
45	Naomi Ekwedike	F	6-6	Fr.	HS	Lagos, Nigeria (Potters House Christian Academy)

2016-17 ALPHABETICAL ROSTER

No.	Name	Pos.	Ht.	Yr.	Exp.	Hometown (Previous School/High School)
3	Ariell Bostick	G	5-4	Sr.	3L	Oakland, Calif. (Bishop O'Dowd HS)
44	Aleiah Brandon	F	6-1	Sr.	3L	Corona, Calif. (Centennial HS)
13	Allison Brown	G	5-7	Jr.	SQ	Anaheim Hills, Calif. (Mater Dei HS)
45	Naomi Ekwedike	F	6-6	Fr.	HS	Lagos, Nigeria (Potters House Christian Academy (Fla.))
4	Kymberly Ellison	G	5-7	Sr.	1L	Columbus, Ga. (Georgia Tech/Hardaway HS)
15	McKynzie Fort	G	5-9	Jr.	2L	Fontana, Calif. (Etiwanda HS)
20	Geena Gomez	G	5-8	Jr.	1L	Huntington Beach, Calif. (St. Joseph's (Pa.)/Edison HS)
11	Arantxa Gómez Ferrer	F	6-0	So.	1L	Valencia, Spain (Parque Colegio Santa Ana HS)
30	Cheyenne Greenhouse	G	5-11	Jr.	2L	Riverside, Calif. (Canyon Springs HS)
1	Khaliya Lark	F	6-0	Jr.	TR	Santa Ana, Calif. (Washington/Mater Dei HS)
21	Abby Lowe	G	5-11	Fr.	HS	Stockport, England (Barking Abbey HS)
40	Monique Terry	F	6-2	Fr.	HS	San Antonio, Texas (Brennan HS)
22	Lexy Thorderson	G/F	6-0	So.	1L	Castle Rock, Colo. (Rock Canyon HS)
34	Baylee Vanderdoes	F	6-2	Fr.	HS	Auburn, Calif. (Placer HS)

Head Coach: Stacie Terry (UT Arlington, 1998), Fourth season at SDSU/Fourth overall

Assistant Coach: Jesse Clark (Pacific Union, 2003), Fourth season at SDSU

Assistant Coach: Ciara Carl (Point Loma Nazarene, 2005), Fourth season at SDSU

Assistant Coach: Nick Grant (Baylor, 2010), Third season at SDSU

Director of Operations: Jon Silver (UCLA, 2009), First season at SDSU

Director of Player Personnel: Paris Johnson (San Diego State, 2011), First season at SDSU

2016-17 PRONUNCIATION GUIDE

Ariell Bostick	arr-EE-ell
Aleiah Brandon	uh-LAY-uh
Naomi Ekwedike	nay-O-mee eck-wed-EE-kay
Arantxa Gómez Ferrer	uh-RON-cha GO-mez Fur-AIR
McKynzie Fort	ma-KEN-zee
Baylee Vanderdoes	VAN-der-doze
Ciara Carl	see-ARR-uh

STACIE TERRY

Head Coach
 Fourth Year at San Diego State; Fourth Year Overall
 UT Arlington, 1998



THE STACIE TERRY FILE

Hometown

San Diego, Calif.

Education

Bachelor of Arts -
 Broadcast Journalism
 UT Arlington, 1998

Playing Experience

1994-98
 UT Arlington

Head Coaching Experience

2013-present
 San Diego State

Previous Coaching Experience

2011-13
 LSU
 Assistant Coach

2008-11

UCLA
 Assistant Coach

2007-08

Southern Mississippi
 Recruiting Coordinator

2004-07

Illinois
 Assistant Coach

2003-04

Dayton
 Assistant Coach

2000-03

Louisville
 Assistant Coach

1999-2000

UT Arlington
 Graduate Assistant

San Diego native Stacie Terry enters her fourth year at the helm of the Aztec women's basketball team after she was named the eighth head coach in program history on May 15, 2013.

Under Terry's direction, SDSU has continued its trend of garnering all-conference honors. In 2015-16, following a campaign that saw her team finish sixth in the league with 14.4 points per game and was tied for third with two steals per game, sophomore McKynzie Fort earned nods on the MW All-Defensive Team and as an All-MW honorable mention pick. San Diego State's 34th All-MW recipient, the Aztecs have picked up a conference nod each of the last 17 seasons.

During her first season on Montezuma Mesa, Terry was saddled with the unenviable task of replacing four senior starters who accounted for nearly 64 percent of the team's scoring offense from the previous year, as well as overcoming the loss of two key players to injuries prior to conference play.

Despite those obstacles and a demanding schedule featuring nine games against teams that eventually advanced to postseason competition, Terry's squad flashed its resiliency during the 2013-14 campaign. The Aztecs led the league in rebounding margin and rebounding defense while ranking second in field-goal percentage.

Individually, Terry also oversaw the progress of senior center Cierra Warren, who became the fifth SDSU player in a six-year span to receive first-team all-MW recognition.

Prior to her arrival on The Mesa, Terry gained a wealth of experience as an assistant coach at the Division I level for 14 years, including five under head coach Nikki (Caldwell) Fargas, who transformed UCLA into a powerhouse before restoring LSU to national prominence.

During Terry's two seasons at LSU, the Lady Tigers compiled a 45-23 overall record and earned two NCAA tournament bids, including a Sweet 16 appearance during the 2012-13 campaign. During that season, the Lady Tigers also posted six victories against ranked opponents and finished with their second-highest scoring average (69.0) in the last seven years. Under Terry's guidance, forward LaShondra Barrett garnered first-team all-Southeastern Conference accolades and received honorable mention All-America distinction in 2012 before becoming a first-round draft choice of the WNBA's Washington Mystics.

Prior to her appointment at LSU, Terry served as an assistant under Fargas at UCLA from 2008-11, helping the Bruins gain national acclaim with a pair of NCAA tournament appearances. During Terry's tenure, UCLA posted 72 overall victories, as the 2010-11 squad finished with a 28-5 record, setting a school record for fewest losses in a single season to go with a No. 7 national ranking. In addition, the Bruins signed the fourth-ranked recruiting class that season, according to ESPN HoopGurlz, while Terry helped mentor first-team all-Pac-10 performers in Doreena Campbell, Darxia Morris and Jasmine Dixon, a 2012 honorable mention AP All-America selection, and all-conference freshman honorees Atonye Nyingifa and Markel Walker.

Terry spent the 2007-08 campaign at Southern Mississippi, as the Golden Eagles posted a 21-14 record and earned a postseason berth in the Women's National Invitation Tournament (WNIT). While at Southern Miss, Terry spearheaded the development and coordination of the Lady Eagle recruiting campaign. Her responsibilities also included working with the perimeter players, scouting opponents and film breakdown, as well as coordinating all of the team's community service events.

Terry also coached for three seasons from 2004-07 as an assistant under Hall of Fame head coach Theresa Grentz at Illinois, where the Fighting Illini had three straight recruiting classes

ranked among the top 25 in the nation, according to Blue Star Basketball, and made three consecutive trips to the WNIT. Her primary duties included defensive instruction and working with the perimeter players.

In addition, Terry coached at Dayton during the 2003-04 season following a three-year stint at Louisville from 2000-03. With the Cardinals, Terry's responsibilities encompassed recruiting, scouting, player development, summer camps and serving as a liaison for the program's community service outreach. Louisville captured the Conference USA regular-season title and earned a trip to the NCAA tournament in 2001 before making a WNIT appearance in 2002. She also assisted in signing the nation's 21st-ranked recruiting class in 2002-03, according to All-Star Girls Report. Terry recruited and coached all-Conference USA honoree Lori Nero, a draft choice of the WNBA's Houston Comets, as well as Sara Nord, who finished her collegiate career as the Cardinals' all-time assist leader and ranks among the top-15 scorers in school history.

Terry enjoyed a successful collegiate playing career at the University of Texas at Arlington, winning four varsity letters from 1994-98 under head coach Mike Dean. She earned first-team all-Southland Conference honors after leading the Mavericks in scoring with 17.4 points per game as a senior in 1997-98. Terry scored 1,169 points during her career at UTA and still ranks among the school's top 10 in 3-point field goals made (third), assists (sixth), steals (seventh), 3-point field goal percentage (ninth) and free-throw percentage (10th). Additionally, she is just one of 17 players in Maverick history to surpass the 1,000-point plateau.

Terry played one season of professional basketball in Warsaw, Poland, averaging 12.0 points and 6.0 assists with the Polonia Phoenix, before returning to UT Arlington to begin her coaching career as a graduate assistant in 1999.

Terry prepped at El Capitan High and held the Vaqueros' career scoring record for three years following her graduation. She was inducted into the school's athletic hall of fame in 2008.



#1 KHALIA LARK

Junior • TR

6-0

Guard

Irvine, Calif.

Washington / Mater Dei High School

A versatile wing shot who will bring toughness to the team when eligible Dec. 22

▶▶▶ GAME HIGHS

	CAREER	2016-17 SEASON	* AT WASHINGTON
Points	10, vs. Seattle U (12-4-14)*	N/A	
Rebounds	5, Twice, Last: vs. Seattle U (12-4-14)*	N/A	
Assists	2, at Arizona State (1-3-15)*	N/A	
Steals	1, Four times, Last: vs. Seattle U (12-4-14)*	N/A	
Blocks	N/A	N/A	
Field Goals	3, Twice, Last: vs. Seattle U (12-4-14)*	N/A	
Field Goal Attempts	6, vs. Seattle U (12-4-14)*	N/A	
3-pt. Field Goals	2, Three times, Last: vs. Seattle U (12-4-14)*	N/A	
3-pt. Field Goal Attempts	3, Twice, Last: vs. Seattle U (12-4-14)*	N/A	
Free Throws	4, Twice, Last: vs. Seattle U (12-4-14)*	N/A	
Free Throw Attempts	6, vs. Santa Clara (11-14-15)*	N/A	
Double-Figure Scoring Games	1	N/A	
Double-Figure Rebounding Games	N/A	N/A	
Double-Doubles	N/A	N/A	

▶▶▶ 2016-17 GAME-BY-GAME STATISTICS

Opponent	TOTAL			3-PTS			REBOUNDS										
	GS	Min	FG FGA Pct	3FG FGA Pct	FT FTA Pct	Off	Def	Tot	Avg	PF	A	TO	Blk	Stl	Pts	Avg	
at UC Riverside																	
SAN DIEGO CHRISTIAN																	
at San Diego																	
LOYOLA MARYMOUNT																	
vs. UT Arlington																	
vs. Central Connecticut																	
at UC Davis																	
MICHIGAN																	
UC SANTA BARBARA																	
at Cal State Fullerton																	
BIOLA																	
at New Mexico																	
NEVADA																	
BOISE STATE																	
at San Jose State																	
at Utah State																	
UNLV																	
AIR FORCE																	
at Colorado State																	
at Wyoming																	
FRESNO STATE																	
SAN JOSE STATE																	
at Nevada																	
UTAH STATE																	
at UNLV																	
at Fresno State																	
COLORADO STATE																	
at Air Force																	
NEW MEXICO																	
TOTALS																	

LARK'S CAREER STATISTICS														* - at Washington			
Year	GP-GS	MIN-AVG	FG-A	PCT	3P-A	PCT	FT-A	PCT	REB	AVG	PF-FO	A	TO	BLK	STL	PTS	AVG
2014-15	23-0	198-8.6	17-39	.436	11-27	.407	11-14	.786	31	1.3	12-0	5	13	0	3	56	2.4
2015-16	6-0	83-13.8	5-15	.385	2-7	.333	5-11	.455	13	2.2	3-0	2	7	0	1	17	2.8
2016-17	--	--	--	--	--	--	--	--	--	--	--	--	--	--	--	--	--
Totals	29-0	281-9.7	22-54	.423	13-34	.394	16-25	.640	44	1.5	15-0	7	20	0	4	73	2.5



#3 ARIELL BOSTICK

Senior • 3L

5-4

Guard

Oakland, Calif.

Bishop O'Dowd High School

Team's top facilitator who gets to the rim and free-throw line often with speed

▶▶▶ GAME HIGHS

	CAREER	2016-17 SEASON
Points	19, vs. Boise State (2-5-14)	12, vs. UT Arlington (11-26-16)
Rebounds	10, Twice, Last: vs. Central Connecticut (11-27-16)	10, vs. Central Connecticut (11-27-16)
Assists	8, Twice, Last: vs. San Diego Christian (11-14-16)	8, vs. San Diego Christian (11-14-16)
Steals	5, Twice, Last: at New Mexico (3-1-16)	4, Three times, Last: at UC Davis (12-2-16)
Blocks	1, Four times, Last: at Wyoming (12-30-15)	N/A
Field Goals	7, vs. Colorado State (1-2-14)	3, Twice, Last: vs. Central Connecticut (11-27-16)
Field Goal Attempts	16, Twice, Last: vs. Wyoming (2-12-14)	9, at San Diego (11-17-16)
3-pt. Field Goals	3, vs. San José State (1-22-14)	1, at San Diego (11-17-16)
3-pt. Field Goal Attempts	7, vs. Wyoming (2-12-14)	4, at San Diego (11-17-16)
Free Throws	7, vs. UT Arlington (11-26-16)	7, vs. UT Arlington (11-26-16)
Free Throw Attempts	8, Twice, Last: vs. UT Arlington (11-26-16)	8, vs. UT Arlington (11-26-16)
Double-Figure Scoring Games	19	1
Double-Figure Rebounding Games	2	1
Double-Doubles	N/A	N/A

▶▶▶ 2016-17 GAME-BY-GAME STATISTICS

Opponent	GS	Min	TOTAL			3-PTS			FT	FTA	Pct	REBOUNDS				PF	A	TO	Blk	Stl	Pts	Avg	
			FG	FGA	Pct	3FG	FGA	Pct				Off	Def	Tot	Avg								
at UC Riverside	*	25	0	2	.000	0	0	.000	0	0	.000	0	8	8	8.0	1	2	2	0	2	0	0.0	
SAN DIEGO CHRISTIAN	*	26	2	3	.666	0	0	.000	0	0	.000	0	6	6	7.0	1	8	2	0	1	4	2.0	
at San Diego	*	23	3	9	.333	1	4	.250	2	2	1.000	0	1	1	5.0	3	1	0	0	2	9	4.3	
LOYOLA MARYMOUNT	*	31	0	3	.000	0	1	.000	1	2	.500	2	7	9	6.0	3	1	3	0	4	1	3.5	
vs. UT Arlington	*	29	2	4	.500	1	1	1.000	7	8	.875	1	4	5	5.8	5	1	5	0	2	12	5.2	
vs. Central Connecticut	*	32	3	4	.750	1	1	1.000	0	0	.000	0	10	10	6.5	1	5	3	0	4	7	5.5	
at UC Davis	*	28	1	6	.167	0	1	.000	1	2	.500	2	4	6	6.4	1	6	1	0	4	3	5.1	
MICHIGAN																							
UC SANTA BARBARA																							
at Cal State Fullerton																							
BIOLA																							
at New Mexico																							
NEVADA																							
BOISE STATE																							
at San Jose State																							
at Utah State																							
UNLV																							
AIR FORCE																							
at Colorado State																							
at Wyoming																							
FRESNO STATE																							
SAN JOSE STATE																							
at Nevada																							
UTAH STATE																							
at UNLV																							
at Fresno State																							
COLORADO STATE																							
at Air Force																							
NEW MEXICO																							
TOTALS		7	194	11	31	.355	3	8	.375	11	14	.786	5	40	45	6.4	15	24	16	0	19	36	5.1

BOSTICK'S CAREER STATISTICS

Year	GP-GS	MIN-AVG	FG-A	PCT	3P-A	PCT	FT-A	PCT	REB	AVG	PF-FO	A	TO	BLK	STL	PTS	AVG
2013-14	23-13	576-25.0	79-203	.389	19-58	.328	39-57	.684	71	3.1	51-1	65	67	2	32	216	9.4
2014-15	23-5	476-21.6	44-144	.306	11-37	.297	25-38	.658	58	2.5	30-0	42	46	6	27	124	5.4
2015-16	31-27	805-26.0	54-149	.362	6-32	.188	37-57	.649	131	4.2	67-1	89	73	2	56	151	4.9
2016-17	7-7	194-27.7	11-31	.355	3-8	.375	11-14	.786	45	6.4	15-1	24	16	0	19	36	5.1
Totals	83-51	2023-24.4	187-521	.359	39-134	.291	111-164	.677	299	3.6	162-3	214	201	10	130	524	6.3



#4 KYMBERLY ELLISON

Senior • 1L
 5-7
 Guard
 Columbus, Ga.
 Georgia Tech / Hardaway High School

A talented passer with strong floor vision who also excels at knocking down threes

▶▶▶ GAME HIGHS

	CAREER	2016-17 SEASON
Points	14, vs. San Diego (12-3-15)	13, vs. UT Arlington (11-26-16)
Rebounds	5, vs. Loyola Marymount (11-20-16)	5, vs. Loyola Marymount (11-20-16)
Assists	3, Twice, Last: vs. San Diego Christian (11-14-16)	3, vs. San Diego Christian (11-14-16)
Steals	4, at Utah State (1-23-16)	2, Three times, Last: at UC Davis (12-2-16)
Blocks	1, Three times, Last: at San Diego (11-17-16)	1, at San Diego (11-17-16)
Field Goals	5, Twice, Last: vs. Nevada (1-27-16)	4, Twice, Last: vs. UT Arlington (11-26-16)
Field Goal Attempts	11, vs. Loyola Marymount (11-20-16)	11, vs. Loyola Marymount (11-20-16)
3-pt. Field Goals	3, Six times, Last: vs. UT Arlington (11-26-16)	3, Twice, Last: vs. UT Arlington (11-26-16)
3-pt. Field Goal Attempts	9, vs. UT Arlington (11-26-16)	9, vs. UT Arlington (11-26-16)
Free Throws	6, at San Diego (11-17-16)	6, at San Diego (11-17-16)
Free Throw Attempts	8, at San Diego (11-17-16)	8, at San Diego (11-17-16)
Double-Figure Scoring Games	7	3
Double-Figure Rebounding Games	N/A	N/A
Double-Doubles	N/A	N/A

▶▶▶ 2016-17 GAME-BY-GAME STATISTICS

Opponent	GS	Min	TOTAL			3-PTS			FT	FTA	Pct	Off	REBOUNDS				PF	A	TO	Blk	Stl	Pts	Avg
			FG	FGA	Pct	3FG	FGA	Pct					Def	Tot	Avg								
at UC Riverside	*	21	2	8	.250	2	6	.333	0	0	.000	0	1	1	1.0	4	0	2	0	0	0	6	6.0
SAN DIEGO CHRISTIAN	*	35	4	6	.666	3	4	.750	1	2	.500	0	3	3	2.0	3	3	2	0	0	0	12	9.0
at San Diego	*	25	0	9	.000	0	5	.000	6	8	.750	0	3	3	2.3	2	1	1	1	2	6	8.0	
LOYOLA MARYMOUNT	*	25	3	11	.273	2	8	.250	0	0	.000	2	3	5	3.0	1	1	3	0	2	8	8.0	
vs. UT Arlington	*	26	4	10	.400	3	9	.333	2	2	1.000	1	2	3	3.0	4	0	4	0	1	13	9.0	
vs. Central Connecticut	*	24	3	7	.429	2	6	.333	2	2	1.000	0	0	0	2.5	4	2	0	0	1	10	9.2	
at UC Davis	*	20	3	10	.300	2	7	.286	0	0	.000	2	0	2	2.4	1	1	2	0	2	8	9.0	
MICHIGAN																							
UC SANTA BARBARA																							
at Cal State Fullerton																							
BIOLA																							
at New Mexico																							
NEVADA																							
BOISE STATE																							
at San Jose State																							
at Utah State																							
UNLV																							
AIR FORCE																							
at Colorado State																							
at Wyoming																							
FRESNO STATE																							
SAN JOSE STATE																							
at Nevada																							
UTAH STATE																							
at UNLV																							
at Fresno State																							
COLORADO STATE																							
at Air Force																							
NEW MEXICO																							
TOTALS		7	176	19	61	.311	14	45	.311	11	14	.786	5	12	17	2.4	19	8	14	1	8	63	9.0

ELLISON'S CAREER STATISTICS

Year	GP-GS	MIN-AVG	FG-A	PCT	3P-A	PCT	FT-A	PCT	REB	AVG	PF-FO	A	TO	BLK	STL	PTS	AVG
2012-13*	4-0	2-0.5	1-2	.500	1-2	.500	0-0	.000	0	0.0	0-0	0	0	0	0	3	0.8
2013-14*	11-0	21-1.9	1-5	.200	0-3	.000	0-0	.000	2	0.2	2-0	4	4	1	1	2	0.2
2014-15	-	Redshirt Year	-	-	-	-	-	-	-	-	-	-	-	-	-	-	-
2015-16	31-0	396-12.8	47-155	.303	33-126	.262	13-18	.722	25	0.8	39-1	21	32	1	18	140	4.5
2016-17	7-7	176-25.1	19-61	.311	14-45	.311	11-14	.786	17	2.4	19-0	8	14	1	8	63	9.0
Totals	53-7	595-11.2	68-223	.305	48-176	.273	24-32	.750	44	0.8	60-1	33	50	3	27	208	3.9



#11 ARANTXA GOMEZ FERRER

Sophomore • 1L

6-0

Forward

Valencia, Spain

Parque Colegio Santa Ana High School / Ros Casares Valencia Club

A skilled inside threat who can stretch the floor

▶▶▶ GAME HIGHS

	CAREER	2016-17 SEASON
Points	3, at San Diego (11-17-16)	3, at San Diego (11-17-16)
Rebounds	4, at UC Davis (12-2-16)	4, at UC Davis (12-2-16)
Assists	1, Twice, Last: at Colorado State (2-3-16)	N/A
Steals	1, Six times, Last: at San Diego (11-17-16)	1, Twice, Last: at San Diego (11-17-16)
Blocks	1, vs. North Dakota State (11-27-15)	2, vs. UT Arlington (11-26-16)
Field Goals	2, Five times, Last: vs. Cal State Fullerton (12-19-15)	1, Three times, Last: vs. Central Connecticut (11-27-16)
Field Goal Attempts	3, Twice, Last: at San Diego (11-17-16)	3, Twice, Last: at San Diego (11-17-16)
3-pt. Field Goals	N/A	N/A
3-pt. Field Goal Attempts	N/A	N/A
Free Throws	1, Twice, Last: at UC Riverside (11-11-16)	2, vs. UT Arlington (11-26-16)
Free Throw Attempts	4, Three times, Last: at San Diego (11-17-16)	4, Twice, Last: at UC Davis (12-2-16)
Double-Figure Scoring Games	N/A	N/A
Double-Figure Rebounding Games	N/A	N/A
Double-Doubles	N/A	N/A

▶▶▶ 2016-17 GAME-BY-GAME STATISTICS

Opponent	GS	Min	TOTAL			3-PTS			FT	FTA	Pct	REBOUNDS				PF	A	TO	Blk	Stl	Pts	Avg
			FG	FGA	Pct	3FG	FGA	Pct				Off	Def	Tot	Avg							
at UC Riverside	16	0	0	.000	0	0	.000	1	2	.500	0	0	0	0.0	0	0	0	0	0	1	1.0	
SAN DIEGO CHRISTIAN at San Diego	8	1	3	.333	0	0	.000	0	0	.000	0	2	2	1.0	2	0	1	0	1	2	1.5	
LOYOLA MARYMOUNT vs. UT Arlington	15	1	3	.333	0	0	.000	1	4	.250	3	0	3	1.7	2	0	0	0	0	3	2.0	
vs. Central Connecticut at UC Davis	9	0	0	.000	0	0	.000	0	0	.000	0	1	1	1.5	1	0	0	0	1	0	1.5	
MICHIGAN UC SANTA BARBARA at Cal State Fullerton	11	0	0	.000	0	0	.000	2	2	1.000	2	1	3	1.8	2	0	2	2	0	2	1.6	
BIOLA at New Mexico	5	1	1	1.000	0	0	.000	0	0	.000	0	0	0	1.5	2	0	1	0	0	2	1.7	
NEVADA BOISE STATE at San Jose State at Utah State	14	0	1	.000	0	0	.000	1	4	.250	1	3	4	1.9	2	1	2	2	0	1	1.6	
UNLV AIR FORCE at Colorado State at Wyoming																						
FRESNO STATE SAN JOSE STATE at Nevada UTAH STATE at UNLV at Fresno State																						
COLORADO STATE at Air Force NEW MEXICO																						
TOTALS	0	78	3	.375	0	0	.000	5	12	.417	6	7	13	1.9	11	1	6	4	2	11	1.6	

GOMEZ FERRER'S CAREER STATISTICS

Year	GP-GS	MIN-AVG	FG-A	PCT	3P-A	PCT	FT-A	PCT	REB	AVG	PF-FO	A	TO	BLK	STL	PTS	AVG
2015-16	18-0	118-6.6	5-12	.417	0-0	.000	0-12	.000	16	0.9	18-0	2	5	1	4	10	0.6
2016-17	7-0	78-11.1	3-8	.375	0-0	.000	5-12	.417	13	1.9	11-0	1	6	4	2	11	1.6
Totals	25-0	196-7.8	8-20	.400	0-0	.000	5-24	.208	29	1.0	29-0	3	11	5	6	21	0.8



#13 ALLISON BROWN

Junior • SQ

5-7

Guard

Anaheim Hills, Calif.

Mater Dei High School

A walk-on who earned a scholarship for the 2016-17 campaign

▶▶▶ GAME HIGHS

	CAREER	2016-17 SEASON
Points	3, Twice, Last: vs. San Diego Christian (12-21-15)	N/A
Rebounds	3, vs. San Diego Christian (12-21-15)	1, vs. San Diego Christian (11-14-16)
Assists	2, vs. Wyoming (1-14-15)	1, vs. San Diego Christian (11-14-16)
Steals	1, at Loyola Marymount (12-10-15)	N/A
Blocks	N/A	N/A
Field Goals	1, Twice, Last: vs. San Diego Christian (12-21-15)	N/A
Field Goal Attempts	3, Twice, Last: vs. Air Force (1-21-15)	1, vs. San Diego Christian (11-14-16)
3-pt. Field Goals	1, Twice, Last: vs. San Diego Christian (12-21-15)	N/A
3-pt. Field Goal Attempts	4, Twice, Last: vs. Air Force (1-21-15)	N/A
Free Throws	N/A	N/A
Free Throw Attempts	2, vs. Michigan (11-29-14)	N/A
Double-Figure Scoring Games	N/A	N/A
Double-Figure Rebounding Games	N/A	N/A
Double-Doubles	N/A	N/A

▶▶▶ 2016-17 GAME-BY-GAME STATISTICS

Opponent	GS	Min	TOTAL			3-PTS			FT	FTA	Pct	Off	REBOUNDS		PF	A	TO	Blk	Stl	Pts	Avg
			FG	FGA	Pct	3FG	FGA	Pct					Def	Tot							
at UC Riverside									Did Not Play												
SAN DIEGO CHRISTIAN		9	0	1	.000	0	0	.000	0	0	.000	0	1	1	1.0	1	1	2	0	0	0.0
at San Diego									Did Not Play												
LOYOLA MARYMOUNT									Did Not Play												
vs. UT Arlington									Did Not Play												
vs. Central Connecticut									Did Not Play												
at UC Davis									Did Not Play												
MICHIGAN									Did Not Play												
UC SANTA BARBARA									Did Not Play												
at Cal State Fullerton									Did Not Play												
BIOLA									Did Not Play												
at New Mexico									Did Not Play												
NEVADA									Did Not Play												
BOISE STATE									Did Not Play												
at San Jose State									Did Not Play												
at Utah State									Did Not Play												
UNLV									Did Not Play												
AIR FORCE									Did Not Play												
at Colorado State									Did Not Play												
at Wyoming									Did Not Play												
FRESNO STATE									Did Not Play												
SAN JOSE STATE									Did Not Play												
at Nevada									Did Not Play												
UTAH STATE									Did Not Play												
at UNLV									Did Not Play												
at Fresno State									Did Not Play												
COLORADO STATE									Did Not Play												
at Air Force									Did Not Play												
NEW MEXICO									Did Not Play												
TOTALS																					

BROWN'S CAREER STATISTICS

Year	GP-GS	MIN-AVG	FG-A	PCT	3P-A	PCT	FT-A	PCT	REB	AVG	PF-FO	A	TO	BLK	STL	PTS	AVG
2014-15	7-0	26-4.3	1-9	.111	1-9	.111	0-2	.000	2	0.3	3-0	2	3	0	0	3	0.4
2015-16	9-0	19-2.1	1-4	.250	1-3	.333	0-0	.000	4	0.4	0-0	2	3	0	1	3	0.3
2016-17	1-0	9-9.0	0-1	.000	0-0	.000	0-0	.000	1	1.0	1-0	1	2	0	0	0	0.0
Totals	17-0	54-3.2	2-14	.143	2-12	.166	0-2	.000	7	0.41	4-0	2	8	0	1	6	0.35



#15 McKYNZIE FORT

Junior • 2L

5-9

Guard

Fontana, Calif.

Etiwanda High School

A two-time All-Mountain West honoree who's difficult to guard one-on-one and has an improved three-point shot

▶▶▶ GAME HIGHS

	CAREER	2016-17 SEASON
Points	28, vs. San Diego Christian (11-14-16)	28, vs. San Diego Christian (11-14-16)
Rebounds	11, vs. Fresno State (2-10-16)	9, vs. Loyola Marymount (11-20-16)
Assists	6, vs. UNLV (3-3-15)	4, vs. San Diego Christian (11-14-16)
Steals	5, Four times, Last: at New Mexico (2-6-16)	1, Four times, Last: vs. Loyola Marymount (11-20-16)
Blocks	2, Three times, Last: at New Mexico (2-6-16)	1, Twice, Last: vs. Central Connecticut (11-27-16)
Field Goals	11, vs. San Diego Christian (11-14-16)	11, vs. San Diego Christian (11-14-16)
Field Goal Attempts	21, Twice, Last: vs. Loyola Marymount (11-20-16)	21, Twice, Last: vs. Loyola Marymount (11-20-16)
3-pt. Field Goals	2, vs. San Diego Christian (11-14-16)	2, vs. San Diego Christian (11-14-16)
3-pt. Field Goal Attempts	6, Twice, Last: vs. Loyola Marymount (11-20-16)	6, vs. Loyola Marymount (11-20-16)
Free Throws	11, vs. UC Riverside (11-16-15)	7, at UC Davis (12-2-16)
Free Throw Attempts	12, Twice, Last: vs. Fresno State (2-10-16)	7, at UC Davis (12-2-16)
Double-Figure Scoring Games	45	6
Double-Figure Rebounding Games	1	N/A
Double-Doubles	1	N/A

▶▶▶ 2016-17 GAME-BY-GAME STATISTICS

Opponent	GS	Min	TOTAL			3-PTS			FT	FTA	Pct	REBOUNDS				PF	A	TO	Blk	Stl	Pts	Avg
			FG	FGA	Pct	3FG	FGA	Pct				Off	Def	Tot	Avg							
at UC Riverside	*	38	6	21	.286	0	5	.000	2	5	.400	0	3	3	3.0	2	3	3	0	1	14	14.0
SAN DIEGO CHRISTIAN	*	35	11	18	.611	2	2	1.000	4	4	1.000	2	5	7	5.0	2	4	1	0	1	28	21.0
at San Diego	*	28	7	12	.583	0	0	.000	1	2	.500	1	0	1	3.7	5	0	4	1	1	15	19.0
LOYOLA MARYMOUNT	*	36	9	21	.429	1	6	.167	3	3	1.000	5	4	9	5.0	2	0	4	0	1	22	19.8
vs. UT Arlington	*	20	3	6	.500	0	0	.000	3	5	.600	0	2	2	4.4	5	2	3	0	0	9	17.6
vs. Central Connecticut	*	35	8	11	.727	0	2	.000	1	2	.500	0	2	2	4.0	2	3	2	1	0	17	17.5
at UC Davis	*	30	2	10	.200	0	1	.000	7	7	1.000	1	2	3	3.9	2	0	3	0	0	11	16.6
MICHIGAN																						
UC SANTA BARBARA																						
at Cal State Fullerton																						
BIOLA																						
at New Mexico																						
NEVADA																						
BOISE STATE																						
at San Jose State																						
at Utah State																						
UNLV																						
AIR FORCE																						
at Colorado State																						
at Wyoming																						
FRESNO STATE																						
SAN JOSE STATE																						
at Nevada																						
UTAH STATE																						
at UNLV																						
at Fresno State																						
COLORADO STATE																						
at Air Force																						
NEW MEXICO																						
TOTALS	7	222	46	99	.465	3	16	.188	21	28	.750	9	18	27	3.9	20	12	20	2	4	116	16.6

FORT'S CAREER STATISTICS

Year	GP-GS	MIN-AVG	FG-A	PCT	3P-A	PCT	FT-A	PCT	REB	AVG	PF-FO	A	TO	BLK	STL	PTS	AVG
2014-15	31-24	839-27.1	125-278	.450	2-13	.154	60-96	.625	99	3.2	55-0	59	94	5	30	312	10.1
2015-16	31-31	971-31.3	169-366	.462	3-12	.250	104-150	.693	127	4.1	71-0	73	93	8	62	445	14.4
2016-17	7-7	222-31.7	46-99	.465	3-16	.188	21-28	.750	27	3.9	20-1	12	20	2	4	116	16.6
Totals	69-62	2032-29.4	340-743	.458	8-41	.195	185-274	.675	253	3.7	146-2	144	207	15	96	873	12.7



#20 GEENA GOMEZ

Junior • 1L

5-8

Guard

Huntington Beach, Calif.

St. Joseph's (Pa.) / Edison High School

A heady decision-maker and knock-down shooter

▶▶▶ GAME HIGHS

	CAREER	2016-17 SEASON
Points	17, vs. Central Connecticut (11-27-16)	17, vs. Central Connecticut (11-27-16)
Rebounds	5, Four times, Last: vs. Central Connecticut (11-27-16)	5, Twice, Last: vs. Central Connecticut (11-27-16)
Assists	6, vs. North Dakota State (1-27-15)	2, vs. San Diego Christian (11-14-16)
Steals	2, Four times, Last: vs. Central Connecticut (11-27-16)	2, Twice, Last: vs. Central Connecticut (11-27-16)
Blocks	1, Twice, Last: at UNLV (3-4-16)	N/A
Field Goals	4, Four times, Last: vs. Central Connecticut (11-27-16)	4, Twice, Last: vs. Central Connecticut (11-27-16)
Field Goal Attempts	12, Twice, Last: at San Jose State (1-6-16)	9, at San Diego (11-17-16)
3-pt. Field Goals	4, at San Jose State (1-6-16)	3, vs. Central Connecticut (11-27-16)
3-pt. Field Goal Attempts	9, at San Jose State (1-6-16)	5, Twice, Last: at San Diego (11-17-16)
Free Throws	6, vs. Central Connecticut (11-27-16)	6, vs. Central Connecticut (11-27-16)
Free Throw Attempts	6, Twice, Last: vs. Central Connecticut (11-27-16)	6, vs. Central Connecticut (11-27-16)
Double-Figure Scoring Games	2	1
Double-Figure Rebounding Games	N/A	N/A
Double-Doubles	N/A	N/A

▶▶▶ 2016-17 GAME-BY-GAME STATISTICS

Opponent	GS	Min	TOTAL			3-PTS			FT	FTA	Pct	REBOUNDS				PF	A	TO	Blk	Stl	Pts	Avg	
			FG	FGA	Pct	3FG	FGA	Pct				Off	Def	Tot	Avg								
at UC Riverside		25	2	7	.289	1	3	.333	1	2	.500	1	1	2	2.0	2	0	3	0	1	6	6.0	
SAN DIEGO CHRISTIAN	*	32	4	8	.500	2	5	.400	4	4	1.000	1	1	2	2.0	3	2	3	0	0	14	10.0	
at San Diego		27	0	9	.000	0	5	.000	2	2	1.000	1	3	4	2.7	3	0	4	0	2	2	7.3	
LOYOLA MARYMOUNT		23	0	3	.000	0	3	.000	0	0	.000	0	1	1	2.3	0	4	1	0	0	0	5.5	
vs. UT Arlington		29	2	6	.333	1	3	.333	1	2	.500	0	5	5	2.8	3	2	2	0	0	6	5.6	
vs. Central Connecticut		24	4	7	.571	3	3	1.000	6	6	1.000	0	5	5	3.2	2	2	2	0	2	17	7.5	
at UC Davis		15	1	5	.200	0	1	.000	0	0	.000	1	0	1	2.9	0	2	0	0	0	2	6.7	
MICHIGAN																							
UC SANTA BARBARA																							
at Cal State Fullerton																							
BIOLA																							
at New Mexico																							
NEVADA																							
BOISE STATE																							
at San Jose State																							
at Utah State																							
UNLV																							
AIR FORCE																							
at Colorado State																							
at Wyoming																							
FRESNO STATE																							
SAN JOSE STATE																							
at Nevada																							
UTAH STATE																							
at UNLV																							
at Fresno State																							
COLORADO STATE																							
at Air Force																							
NEW MEXICO																							
TOTALS		1	175	13	45	.289	7	23	.304	14	16	.875	4	16	20	2.9	13	12	15	0	5	47	6.7

GOMEZ'S CAREER STATISTICS

Year	GP-GS	MIN-AVG	FG-A	PCT	3P-A	PCT	FT-A	PCT	REB	AVG	PF-FO	A	TO	BLK	STL	PTS	AVG
2013-14*	24-1	114-4.8	10-34	.294	3-14	.214	5-7	.714	11	0.5	17-0	13	6	1	2	28	1.2
2014-15	-	Redshirt Year	-	-	-	-	-	-	-	-	-	-	-	-	-	-	-
2015-16	29-0	424-14.7	30-107	.280	23-71	.324	15-22	.682	55	1.9	23-0	37	26	2	11	98	3.4
2016-17	7-1	175-25.0	13-45	.289	7-23	.304	14-16	.875	20	2.9	13-0	12	15	0	5	47	6.7
Totals	60-2	715-11.9	53-186	.285	33-108	.306	34-45	.756	86	1.4	53-0	62	47	3	18	173	2.9



#21 ABBY LOWE

Freshman • HS

5-11

Guard

Stockport, England

Barking Abbey Academy

Slashing-type guard with a high basketball IQ who adds height and depth to wing position

▶▶▶ GAME HIGHS

2016-17 SEASON

Points	7, at UC Davis (12-2-16)
Rebounds	3, Twice, Last: vs. San Diego Christian (11-14-16)
Assists	1, vs. San Diego Christian (11-14-16)
Steals	N/A
Blocks	1, at San Diego (11-20-16)
Field Goals	2, at UC Davis (12-2-16)
Field Goal Attempts	4, vs. San Diego Christian (11-14-16)
3-pt. Field Goals	1, at UC Davis (12-2-16)
3-pt. Field Goal Attempts	2, at UC Davis (12-2-16)
Free Throws	2, Twice, Last: at UC Davis (12-2-16)
Free Throw Attempts	2, Three times, Last: at UC Davis (12-2-16)
Double-Figure Scoring Games	N/A
Double-Figure Rebounding Games	N/A
Double-Doubles	N/A

▶▶▶ 2016-17 GAME-BY-GAME STATISTICS

Opponent	GS	Min	TOTAL			3-PTS			FT	FTA	Pct	REBOUNDS					PF	A	TO	Blk	Stl	Pts	Avg
			FG	FGA	Pct	3FG	FGA	Pct				Off	Def	Tot	Avg								
at UC Riverside		12	1	2	.500	0	0	.000	0	0	.000	2	1	3	3.0	3	0	3	0	0	0	2	2.0
SAN DIEGO CHRISTIAN		8	1	4	.250	0	1	.000	1	1	1.000	1	2	3	3.0	1	1	1	0	0	0	3	2.5
at San Diego		9	0	2	.000	0	1	.000	0	2	.000	1	1	2	2.7	1	0	2	0	0	0	0	1.7
LOYOLA MARYMOUNT		3	0	0	.000	0	0	.000	0	0	.000	0	0	0	2.0	0	0	0	1	0	0	0	1.3
vs. UT Arlington		3	0	0	.000	0	0	.000	2	2	1.000	0	0	0	1.6	1	0	0	0	0	0	2	1.4
vs. Central Connecticut		3	0	1	.000	0	0	.000	0	0	.000	0	1	1	1.5	1	0	1	0	0	0	0	1.2
at UC Davis		8	2	3	.667	1	2	.500	2	2	1.000	0	0	0	1.3	2	0	0	0	0	0	7	2.0
MICHIGAN																							
UC SANTA BARBARA																							
at Cal State Fullerton																							
BIOLA																							
at New Mexico																							
NEVADA																							
BOISE STATE																							
at San Jose State																							
at Utah State																							
UNLV																							
AIR FORCE																							
at Colorado State																							
at Wyoming																							
FRESNO STATE																							
SAN JOSE STATE																							
at Nevada																							
UTAH STATE																							
at UNLV																							
at Fresno State																							
COLORADO STATE																							
at Air Force																							
NEW MEXICO																							
TOTALS		46	4	12	.333	1	4	.250	5	7	.714	4	5	9	1.3	9	1	7	1	0	14	2.0	

LOWE'S CAREER STATISTICS

Year	GP-GS	MIN-AVG	FG-A	PCT	3P-A	PCT	FT-A	PCT	REB	AVG	PF-FO	A	TO	BLK	STL	PTS	AVG
2016-17	7-0	46-6.6	4-12	.333	1-4	.250	5-7	.714	9	1.3	9-0	1	7	1	0	14	2.0
Totals	7-0	46-6.6	4-12	.333	1-4	.250	5-7	.714	9	1.3	9-0	1	7	1	0	14	2.0



#22 LEXY THORDERSON

Junior • 2L

6-0

Guard/Forward

Castle Rock, Colo.

Rock Canyon High School

Team's top three-point threat in 2015-16 who will be tasked with an expanded role

▶▶▶ GAME HIGHS

	CAREER	2016-17 SEASON
Points	12, Three times, Last: vs. North Dakota State (11-27-15)	11, at UC Davis (12-2-16)
Rebounds	7, vs. San Diego Christian (12-21-15)	3, vs. Loyola Marymount (11-20-16)
Assists	3, vs. UT Arlington (11-26-16)	3, vs. UT Arlington (11-26-16)
Steals	2, Three times, Last: at UC Davis (12-2-16)	2, at UC Davis (12-2-16)
Blocks	1, 10 times, Last: vs. Loyola Marymount (11-20-16)	1, Twice, Last: vs. Loyola Marymount (11-20-16)
Field Goals	5, at Colorado State (2-14-15)	4, at UC Davis (12-2-16)
Field Goal Attempts	14, at UC Davis (12-2-16)	14, at UC Davis (12-2-16)
3-pt. Field Goals	4, Twice, Last: vs. North Dakota State (11-27-15)	3, at UC Davis (12-2-16)
3-pt. Field Goal Attempts	11, at UC Davis (12-2-16)	11, at UC Davis (12-2-16)
Free Throws	2, Five times, Last: vs. Central Connecticut (11-27-16)	2, vs. Central Connecticut (11-27-16)
Free Throw Attempts	4, vs. Wyoming (3-7-16)	2, Twice, Last: vs. Central Connecticut (11-27-16)
Double-Figure Scoring Games	9	2
Double-Figure Rebounding Games	N/A	N/A
Double-Doubles	N/A	N/A

▶▶▶ 2016-17 GAME-BY-GAME STATISTICS

Opponent	GS	Min	TOTAL			3-PTS			FT			REBOUNDS				PF	A	TO	Blk	Stl	Pts	Avg
			FG	FGA	Pct	3FG	FGA	Pct	FT	FTA	Pct	Off	Def	Tot	Avg							
at UC Riverside																						
SAN DIEGO CHRISTIAN									Did Not Play	Did Not Play												
at San Diego		18	1	5	.200	1	2	.500	0	0	.000	1	0	1	1.0	0	0	0	1	0	3	3.0
LOYOLA MARYMOUNT	*	19	2	12	.167	1	9	.111	1	2	.500	2	1	3	2.0	3	2	0	1	0	6	4.5
vs. UT Arlington	*	22	0	4	.000	0	4	.000	0	0	.000	0	1	1	1.7	1	3	1	0	1	0	3.0
vs. Central Connecticut		20	3	6	.500	2	4	.500	2	2	1.000	0	1	1	1.5	4	0	0	0	1	10	4.8
at UC Davis		23	4	14	.286	3	11	.273	0	0	.000	0	2	2	1.6	0	1	0	0	2	11	6.0
MICHIGAN																						
UC SANTA BARBARA																						
at Cal State Fullerton																						
BIOLA																						
at New Mexico																						
NEVADA																						
BOISE STATE																						
at San Jose State																						
at Utah State																						
UNLV																						
AIR FORCE																						
at Colorado State																						
at Wyoming																						
FRESNO STATE																						
SAN JOSE STATE																						
at Nevada																						
UTAH STATE																						
at UNLV																						
at Fresno State																						
COLORADO STATE																						
at Air Force																						
NEW MEXICO																						
TOTALS	2	102	10	41	.244	7	30	.233	3	4	.750	3	5	8	1.6	8	6	1	2	4	30	6.0

THORDERSON'S CAREER STATISTICS

Year	GP-GS	MIN-AVG	FG-A	PCT	3P-A	PCT	FT-A	PCT	REB	AVG	PF-FO	A	TO	BLK	STL	PTS	AVG
2014-15	30-0	226-7.5	20-70	.286	13-58	.224	4-4	1.000	19	0.6	15-0	8	18	1	3	57	1.9
2015-16	31-2	524-16.9	58-172	.337	40-124	.323	5-8	.625	67	2.2	33-0	4	9	8	10	161	5.2
2016-17	6-2	102-20.4	10-41	.244	7-30	.233	3-4	.750	8	1.6	8-0	6	1	2	4	30	6.0
Totals	66-4	852-12.9	88-283	.311	60-212	.283	12-16	.750	94	1.4	53-0	18	28	11	17	248	3.8



#30 CHEYENNE GREENHOUSE

Junior • 2L

5-11

Guard

Riverside, Calif.

Canyon Springs High School

A talented and adaptable slasher who can fill multiple roles

▶▶▶ GAME HIGHS

	CAREER	2016-17 SEASON
Points	19, vs. Sacramento State (11-14-14)	8, Twice, Last: vs. UT Arlington (11-26-16)
Rebounds	11, vs. Sacramento State (11-14-14)	3, Twice, Last: vs. UT Arlington (11-26-16)
Assists	5, vs. Sacramento State (11-14-14)	1, Twice, Last: vs. Loyola Marymount (11-20-16)
Steals	2, Twice, Last: at Air Force (2-13-16)	1, at UC Riverside (11-11-16)
Blocks	2, at Air Force (2-13-16)	N/A
Field Goals	6, Three times, Last: at Wyoming (12-30-15)	3, Twice, Last: vs. UT Arlington (11-26-16)
Field Goal Attempts	12, vs. Sacramento State (11-14-14)	10, at UC Riverside (11-11-16)
3-pt. Field Goals	1, Three times, Last: at Air Force (2-13-16)	N/A
3-pt. Field Goal Attempts	3, vs. UC Riverside (11-16-15)	2, at UC Riverside (11-11-16)
Free Throws	7, vs. Sacramento State (11-14-14)	4, vs. Loyola Marymount (11-20-16)
Free Throw Attempts	10, vs. Sacramento State (11-14-14)	5, vs. Loyola Marymount (11-20-16)
Double-Figure Scoring Games	8	N/A
Double Figure Rebounding Games	1	N/A
Double-Doubles	1	N/A

▶▶▶ 2016-17 GAME-BY-GAME STATISTICS

Opponent	GS	Min	TOTAL			3-PTS			FT	FTA	Pct	REBOUNDS				PF	A	TO	Blk	Stl	Pts	Avg	
			FG	FGA	Pct	3FG	FGA	Pct				Off	Def	Tot	Avg								
at UC Riverside	*	30	3	10	.300	0	2	.000	0	0	.000	2	1	3	3.0	0	0	0	0	1	6	6.0	
SAN DIEGO CHRISTIAN									Did Not Play														
at San Diego	*	20	1	5	.200	0	0	.000	0	0	.000	0	0	0	1.5	1	0	1	0	0	2	4.0	
LOYOLA MARYMOUNT		18	2	4	.500	0	1	.000	4	5	.800	0	0	0	1.0	5	1	4	0	0	8	5.3	
vs. UT Arlington		15	3	7	.429	0	1	.000	2	2	1.000	1	2	3	1.5	0	0	2	0	0	8	6.0	
vs. Central Connecticut		9	1	1	1.000	0	0	.000	2	4	.500	0	2	2	1.6	1	0	0	0	0	4	5.6	
at UC Davis		18	2	5	.400	0	0	.000	0	0	.000	0	0	0	1.3	1	1	0	0	0	4	5.3	
MICHIGAN																							
UC SANTA BARBARA																							
at Cal State Fullerton																							
BIOLA																							
at New Mexico																							
NEVADA																							
BOISE STATE																							
at San Jose State																							
at Utah State																							
UNLV																							
AIR FORCE																							
at Colorado State																							
at Wyoming																							
FRESNO STATE																							
SAN JOSE STATE																							
at Nevada																							
UTAH STATE																							
at UNLV																							
at Fresno State																							
COLORADO STATE																							
at Air Force																							
NEW MEXICO																							
TOTALS		2	110	12	32	.375	0	4	.000	8	11	.727	3	5	8	1.3	8	2	7	0	1	32	5.3

GREENHOUSE'S CAREER STATISTICS

Year	GP-GS	MIN-AVG	FG-A	PCT	3P-A	PCT	FT-A	PCT	REB	AVG	PF-FO	A	TO	BLK	STL	PTS	AVG
2014-15	31-8	441-14.2	43-118	.364	1-4	.250	32-48	.667	87	2.8	23-0	21	35	1	8	119	3.8
2015-16	31-22	647-20.9	59-161	.366	2-9	.222	33-49	.673	100	3.2	35-0	17	30	6	9	153	4.9
2016-17	6-2	110-18.3	12-32	.375	0-4	.000	8-11	.727	8	1.3	8	2	7	0	1	32	5.3
Totals	68-32	1198-17.6	114-311	.367	3-17	.176	73-108	.676	195	2.9	66-1	40	72	7	18	304	4.5



#34 BAYLEE VANDERDOES

Freshman • HS

6-1

Forward

Auburn, Calif.

Placer High School

Extremely skilled offensively at the post position and shoots the ball very well from the outside

▶▶▶ GAME HIGHS

	2016-17 SEASON
Points	10, vs. San Diego Christian (11-14-16)
Rebounds	10, vs. San Diego Christian (11-14-16)
Assists	1, vs. Loyola Marymount (11-20-16)
Steals	1, vs. UT Arlington (11-26-16)
Blocks	1, vs. San Diego Christian (11-14-16)
Field Goals	5, vs. San Diego Christian (11-14-16)
Field Goal Attempts	7, vs. San Diego Christian (11-14-16)
3-pt. Field Goals	N/A
3-pt. Field Goal Attempts	N/A
Free Throws	4, Twice, Last: vs. UT Arlington (11-26-17)
Free Throw Attempts	4, Twice, Last: at San Diego (11-17-16)
Double-Figure Scoring Games	1
Double-Figure Rebounding Games	1
Double-Doubles	1

▶▶▶ 2016-17 GAME-BY-GAME STATISTICS

Opponent	GS	TOTAL					3-PTS			REBOUNDS													
		Min	FG	FGA	Pct	3FG	FGA	Pct	FT	FTA	Pct	Off	Def	Tot	Avg	PF	A	TO	Blk	Stl	Pts	Avg	
at UC Riverside	*	17	2	3	.667	0	0	.000	3	3	1.000	3	2	5	5.0	3	0	1	0	0	7	7.0	
SAN DIEGO CHRISTIAN	*	22	5	7	.714	0	0	.000	0	1	.000	2	8	10	7.5	1	0	2	1	0	10	8.5	
at San Diego	*	15	0	3	.000	0	0	.000	4	4	1.000	0	2	2	5.7	3	0	0	0	0	4	7.0	
LOYOLA MARYMOUNT	*	25	3	4	.750	0	0	.000	0	0	.000	0	6	6	5.8	2	1	1	0	0	6	6.8	
vs. UT Arlington	*	20	0	2	.000	0	0	.000	2	4	.500	2	2	4	5.4	2	0	1	0	1	2	5.8	
vs. Central Connecticut	*	23	3	5	.600	0	0	.000	1	2	.500	1	1	2	4.8	4	2	3	0	0	7	6.0	
at UC Davis	*	16	1	5	.200	0	0	.000	0	0	.000	2	4	6	5.0	3	0	2	0	1	2	5.4	
MICHIGAN																							
UC SANTA BARBARA																							
at Cal State Fullerton																							
BIOLA																							
at New Mexico																							
NEVADA																							
BOISE STATE																							
at San Jose State																							
at Utah State																							
UNLV																							
AIR FORCE																							
at Colorado State																							
at Wyoming																							
FRESNO STATE																							
SAN JOSE STATE																							
at Nevada																							
UTAH STATE																							
at UNLV																							
at Fresno State																							
COLORADO STATE																							
at Air Force																							
NEW MEXICO																							
TOTALS		7	138	14	29	.483	0	0	.000	10	14	.714	10	25	35	5.0	18	3	10	1	2	38	5.4

VANDERDOES' CAREER STATISTICS

Year	GP-GS	MIN-AVG	FG-A	PCT	3P-A	PCT	FT-A	PCT	REB	AVG	PF-FO	A	TO	BLK	STL	PTS	AVG
2016-17	7-7	138-19.7	14-29	.483	0-0	.000	10-14	.714	35	5.0	18-0	3	10	1	2	38	5.4
Totals	7-7	138-19.7	14-29	.483	0-0	.000	10-14	.714	35	5.0	18-0	3	10	1	2	38	5.4



#40 MONIQUE TERRY

Freshman • HS

6-2

Forward

San Antonio, Texas

Brennan High School

Enthusiastic and hard-working utility player whose greatest strength is rebounding

▶▶▶ GAME HIGHS

2016-17 SEASON	
Points	7, at San Diego (11-17-16)
Rebounds	4, Twice, Last: vs. UT Arlington (11-26-16)
Assists	2, vs. Central Connecticut (11-27-16)
Steals	1, vs. Central Connecticut (11-27-16)
Blocks	1, vs. San Diego Christian (11-14-16)
Field Goals	3, Twice, Last: vs. Central Connecticut (11-27-16)
Field Goal Attempts	4, Twice, Last: vs. UT Arlington (11-26-16)
3-pt. Field Goals	N/A
3-pt. Field Goal Attempts	1, Three times, Last: vs. UT Arlington (11-26-16)
Free Throws	2, at UC Riverside (11-11-16)
Free Throw Attempts	2, at UC Riverside (11-11-16)
Double-Figure Scoring Games	N/A
Double-Figure Rebounding Games	N/A
Double-Doubles	N/A

▶▶▶ 2016-17 GAME-BY-GAME STATISTICS

Opponent	GS	Min	TOTAL			3-PTS			FT	FTA	Pct	REBOUNDS				PF	A	TO	Blk	Stl	Pts	Avg
			FG	FGA	Pct	3FG	FGA	Pct				Off	Def	Tot	Avg							
at UC Riverside		14	0	1	.000	0	0	.000	2	2	1.000	0	1	1	1.0	1	0	1	0	0	2	2.0
SAN DIEGO CHRISTIAN		15	1	2	.500	0	1	.000	0	0	.000	0	1	1	1.0	1	0	1	1	0	2	2.0
at San Diego		14	3	4	.750	0	0	.000	1	1	1.000	1	3	4	2.0	3	0	2	0	0	7	3.7
LOYOLA MARYMOUNT		5	0	1	.000	0	1	.000	0	0	.000	1	1	2	2.0	0	0	0	0	0	0	2.8
vs. UT Arlington		18	2	4	.500	0	1	.00	0	0	.000	2	2	4	2.4	1	0	0	0	0	4	3.0
vs. Central Connecticut	*	13	3	3	1.000	0	0	.000	0	0	.000	1	1	2	2.3	4	2	2	0	1	6	3.5
at UC Davis	*	18	1	2	.500	0	0	.000	0	0	.000	0	3	3	2.4	0	0	2	0	0	2	3.3
MICHIGAN																						
UC SANTA BARBARA																						
at Cal State Fullerton																						
BIOLA																						
at New Mexico																						
NEVADA																						
BOISE STATE																						
at San Jose State																						
at Utah State																						
UNLV																						
AIR FORCE																						
at Colorado State																						
at Wyoming																						
FRESNO STATE																						
SAN JOSE STATE																						
at Nevada																						
UTAH STATE																						
at UNLV																						
at Fresno State																						
COLORADO STATE																						
at Air Force																						
NEW MEXICO																						
TOTALS		97	10	17	.588	0	3	.000	3	3	1.000	5	12	17	2.4	10	2	8	1	1	23	3.3

TERRY'S CAREER STATISTICS

Year	GP-GS	MIN-AVG	FG-A	PCT	3P-A	PCT	FT-A	PCT	REB	AVG	PF-FO	A	TO	BLK	STL	PTS	AVG
2016-17	7-2	97-13.9	10-17	.588	0-3	.000	3-3	1.000	17	2.4	10-0	2	8	1	1	23	3.3
Totals	7-2	97-13.9	10-17	.588	0-3	.000	3-3	1.000	17	2.4	10-0	2	8	1	1	23	3.3



#44 ALEIAH BRANDON

Senior • 3L

6-1

Forward

Corona, Calif.

Centennial High School

Provides veteran leadership as a fifth-year senior

▶▶▶ GAME HIGHS

	CAREER	2016-17 SEASON
Points	11, Twice, Last: at Fresno State (1-20-16)	N/A
Rebounds	6, vs. UC Davis (11-19-16)	N/A
Assists	2, Five times, Last: vs. UNLV (1-30-16)	N/A
Steals	2, Six times, Last: at Fresno State (1-20-16)	N/A
Blocks	2, Three times, Last: vs. San Jose State (2-20-16)	N/A
Field Goals	5, at Fresno State (1-20-16)	N/A
Field Goal Attempts	9, at Fresno State (1-20-16)	N/A
3-pt. Field Goals	2, at Washington (11-13-15)	N/A
3-pt. Field Goal Attempts	5, Three times, Last: vs. Wisconsin (11-29-15)	N/A
Free Throws	2, Four times, Last: vs. San Jose State (2-20-16)	N/A
Free Throw Attempts	2, Five times, Last: vs. San Jose State (2-20-16)	N/A
Double-Figure Scoring Games	3	N/A
Double-Figure Rebounding Games	N/A	N/A
Double-Doubles	N/A	N/A

▶▶▶ 2016-17 GAME-BY-GAME STATISTICS

Opponent	GS	Min	TOTAL			3-PTS			FT			REBOUNDS				PF	A	TO	Blk	Stl	Pts	Avg
			FG	FGA	Pct	3FG	FGA	Pct	FT	FTA	Pct	Off	Def	Tot	Avg							
at UC Riverside																						
SAN DIEGO CHRISTIAN																						
at San Diego																						
LOYOLA MARYMOUNT																						
vs. UT Arlington																						
vs. Central Connecticut																						
at UC Davis																						
MICHIGAN																						
UC SANTA BARBARA																						
at Cal State Fullerton																						
BIOLA																						
at New Mexico																						
NEVADA																						
BOISE STATE																						
at San Jose State																						
at Utah State																						
UNLV																						
AIR FORCE																						
at Colorado State																						
at Wyoming																						
FRESNO STATE																						
SAN JOSE STATE																						
at Nevada																						
UTAH STATE																						
at UNLV																						
at Fresno State																						
COLORADO STATE																						
at Air Force																						
NEW MEXICO																						

TOTALS

BRANDON'S CAREER STATISTICS

Year	GP-GS	MIN-AVG	FG-A	PCT	3P-A	PCT	FT-A	PCT	REB	AVG	PF-FO	A	TO	BLK	STL	PTS	AVG
2012-13	17-0	109-6.4	13-21	.619	0-0	.000	0-0	.000	14	0.8	9-0	0	5	5	2	26	1.5
2013-14	-	Redshirt Year	-	-	-	-	-	-	-	-	-	-	-	-	-	-	-
2014-15	30-0	281-9.4	24-51	.471	10-29	.345	6-6	1.000	31	1.0	37-0	7	20	2	7	64	2.1
2015-16	26-18	494-19.0	37-111	.333	11-41	.268	3-4	.750	62	2.4	54-1	15	28	10	14	88	3.4
2016-17	--	--	--	--	--	--	--	--	--	--	--	--	--	--	--	--	--
Totals	73-18	884-12.1	74-183	.404	21-70	.300	9-10	.900	107	1.5	100-1	22	53	17	23	178	2.4



#45 NAOMI EKWEDIKE

Freshman • HS

6-6

Center

Lagos, Nigeria

Potter's House Christian Academy (Fla.)

A quick learner who will be an asset on defense with great hands and footwork to finish around the rim

▶▶▶ GAME HIGHS

	2016-17 SEASON
Points	5, vs. San Diego Christian (11-14-16)
Rebounds	3, Twice, Last: at UC Davis (12-2-16)
Assists	N/A
Steals	N/A
Blocks	N/A
Field Goals	2, Twice, Last: at UC Davis (12-2-16)
Field Goal Attempts	4, vs. San Diego Christian (11-14-16)
3-pt. Field Goals	N/A
3-pt. Field Goal Attempts	N/A
Free Throws	1, vs. San Diego Christian (11-14-16)
Free Throw Attempts	2, vs. San Diego Christian (11-14-16)
Double-Figure Scoring Games	N/A
Double-Figure Rebounding Games	N/A
Double-Doubles	N/A

▶▶▶ 2016-17 GAME-BY-GAME STATISTICS

Opponent	GS	Min	TOTAL			3-PTS			FT	FTA	Pct	REBOUNDS				PF	A	TO	Blk	Stl	Pts	Avg
			FG	FGA	Pct	3FG	FGA	Pct				Off	Def	Tot	Avg							
at UC Riverside	2	0	1	.000	0	0	.000	0	0	.000	0	0	0	0.0	1	0	3	0	0	0	0.0	
SAN DIEGO CHRISTIAN	10	2	4	.500	0	0	.000	1	2	.500	0	0	0	0.0	1	0	1	0	0	5	2.5	
at San Diego	6	1	2	.500	0	0	.000	0	0	.000	1	2	3	1.0	2	0	1	0	0	2	2.3	
LOYOLA MARYMOUNT	6	1	2	.500	0	0	.000	0	1	.000	0	0	0	0.8	2	0	1	0	0	2	2.3	
vs. UT Arlington	7	0	2	.000	0	0	.000	0	0	.000	0	2	2	1.0	1	0	0	0	0	0	1.8	
vs. Central Connecticut	12	0	2	.000	0	0	.000	0	0	.000	0	0	0	0.8	0	0	3	0	0	0	1.5	
at UC Davis	10	2	3	.667	0	0	.000	0	0	.000	2	1	3	1.1	1	0	2	0	0	4	1.9	
MICHIGAN																						
UC SANTA BARBARA																						
at Cal State Fullerton																						
BIOLA																						
at New Mexico																						
NEVADA																						
BOISE STATE																						
at San Jose State																						
at Utah State																						
UNLV																						
AIR FORCE																						
at Colorado State																						
at Wyoming																						
FRESNO STATE																						
SAN JOSE STATE																						
at Nevada																						
UTAH STATE																						
at UNLV																						
at Fresno State																						
COLORADO STATE																						
at Air Force																						
NEW MEXICO																						
TOTALS	53	6	16	.375	0	0	.000	1	3	.333	3	5	8	1.1	8	0	11	0	0	13	1.9	

EKWEDIKE'S CAREER STATISTICS

Year	GP-GS	MIN-AVG	FG-A	PCT	3P-A	PCT	FT-A	PCT	REB	AVG	PF-FO	A	TO	BLK	STL	PTS	AVG
2016-17	7-0	53-7.6	6-16	.375	0-0	.000	1-3	.333	8	1.1	8-0	0	11	0	0	13	1.9
Totals	7-0	53-7.6	6-16	.375	0-0	.000	1-3	.333	8	1.1	8-0	0	11	0	0	13	1.9

All games

RECORD:	OVERALL	HOME	AWAY	NEUTRAL
ALL GAMES	2-5	1-1	0-3	1-1
CONFERENCE	0-0	0-0	0-0	0-0
NON-CONFERENCE	2-5	1-1	0-3	1-1

##	Player	gp-gs	min	avg	Total		3-Point		F-Throw		Rebounds				pf	dq	a	to	blk	stl	pts	avg
					fg-fga	fg%	3fg-fga	3fg%	ft-fa	ft%	off	def	tot	avg								
15	FORT, McKynzie	7-7	222	31.7	46-99	.465	3-16	.188	21-28	.750	9	18	27	3.9	20	2	12	20	2	4	116	16.6
04	ELLISON, Kymberly	7-7	176	25.1	19-61	.311	14-45	.311	11-14	.786	5	12	17	2.4	19	0	8	14	1	8	63	9.0
20	GOMEZ, Geena	7-1	175	25.0	13-45	.289	7-23	.304	14-16	.875	4	16	20	2.9	13	0	12	15	0	5	47	6.7
22	THORDERSON, Lexy	5-2	102	20.4	10-41	.244	7-30	.233	3-4	.750	3	5	8	1.6	8	0	6	1	2	4	30	6.0
34	VANDERDOES, Bayle	7-7	138	19.7	14-29	.483	0-0	.000	10-14	.714	10	25	35	5.0	18	0	3	10	1	2	38	5.4
30	GREENHOUSE, Chey	6-2	110	18.3	12-32	.375	0-4	.000	8-11	.727	3	5	8	1.3	8	1	2	7	0	1	32	5.3
03	BOSTICK, Ariell	7-7	194	27.7	11-31	.355	3-8	.375	11-14	.786	5	40	45	6.4	15	1	24	16	0	19	36	5.1
40	TERRY, Monique	7-2	97	13.9	10-17	.588	0-3	.000	3-3	1.000	5	12	17	2.4	10	0	2	8	1	1	23	3.3
21	LOWE, Abby	7-0	46	6.6	4-12	.333	1-4	.250	5-7	.714	4	5	9	1.3	9	0	1	7	1	0	14	2.0
45	EKWEDIKE, Naomi	7-0	53	7.6	6-16	.375	0-0	.000	1-3	.333	3	5	8	1.1	8	0	0	11	0	0	13	1.9
11	GOMEZ, Arantxa	7-0	78	11.1	3-8	.375	0-0	.000	5-12	.417	6	7	13	1.9	11	0	1	6	4	2	11	1.6
13	BROWN, Allison	1-0	9	9.0	0-1	.000	0-0	.000	0-0	.000	0	1	1	1.0	1	0	1	2	0	0	0	0.0
Team											17	15	32					4				
Total.....		7	1400		148-392	.378	35-133	.263	92-126	.730	74	166	240	34.3	140	4	72	121	12	46	423	60.4
Opponents.....		7	1400		185-408	.453	46-125	.368	78-122	.639	73	184	257	36.7	133	-	107	115	19	46	494	70.6

Score by Periods	1st	2nd	3rd	4th	Totals
SDSU	108	101	102	112	423
Opponents	139	130	108	117	494

Home games

RECORD:	OVERALL	HOME	AWAY	NEUTRAL
ALL GAMES	1-1	1-1	0-0	0-0
CONFERENCE	0-0	0-0	0-0	0-0
NON-CONFERENCE	1-1	1-1	0-0	0-0

#	Player	gp-gs	min	avg	Total		3-Point		F-Throw		Rebounds				pf	dq	a	to	blk	stl	pts	avg		
					fg-fga	fg%	3fg-fga	3fg%	ft-fta	ft%	off	def	tot	avg										
15	FORT, McKynzie	2-2	71	35.5	20-39	.513	3-8	.375	7-7	1.000	7	9	16	8.0	4	0	4	5	0	2	50	25.0		
04	ELLISON, Kymberly	2-2	60	30.0	7-17	.412	5-12	.417	1-2	.500	2	6	8	4.0	4	0	4	5	0	2	20	10.0		
30	GREENHOUSE, Chey	1-0	18	18.0	2-4	.500	0-1	.000	4-5	.800	0	0	0	0.0	5	1	1	4	0	0	8	8.0		
34	VANDERDOES, Bayle	2-2	47	23.5	8-11	.727	0-0	.000	0-1	.000	2	14	16	8.0	3	0	1	3	1	0	16	8.0		
20	GOMEZ, Geena	2-1	55	27.5	4-11	.364	2-8	.250	4-4	1.000	1	2	3	1.5	3	0	6	4	0	0	14	7.0		
22	THORDERSON, Lexy	1-1	19	19.0	2-12	.167	1-9	.111	1-2	.500	2	1	3	3.0	3	0	2	0	1	0	6	6.0		
45	EKWEDIKE, Naomi	2-0	16	8.0	3-6	.500	0-0	.000	1-3	.333	0	0	0	0.0	3	0	0	2	0	0	7	3.5		
03	BOSTICK, Ariell	2-2	57	28.5	2-6	.333	0-1	.000	1-2	.500	2	13	15	7.5	4	0	9	5	0	5	5	2.5		
21	LOWE, Abby	2-0	11	5.5	1-4	.250	0-1	.000	1-1	1.000	1	2	3	1.5	1	0	1	1	1	0	3	1.5		
11	GOMEZ, Arantxa	2-0	17	8.5	1-3	.333	0-0	.000	0-0	.000	0	3	3	1.5	3	0	0	1	0	2	2	1.0		
40	TERRY, Monique	2-0	20	10.0	1-3	.333	0-2	.000	0-0	.000	1	2	3	1.5	1	0	0	1	1	0	2	1.0		
13	BROWN, Allison	1-0	9	9.0	0-1	.000	0-0	.000	0-0	.000	0	1	1	1.0	1	0	1	2	0	0	0	0.0		
Team											1	2	3											
Total.....		2	400		51-117	.436	11-42	.262	20-27	.741	19	55	74	37.0	35	1	29	33	4	11	133	66.5		
Opponents.....		2	400		48-126	.381	16-47	.340	18-33	.545	29	47	76	38.0	32	-	30	28	2	11	130	65.0		

Score by Periods	1st	2nd	3rd	4th	Totals
SDSU	39	34	25	35	133
Opponents	40	29	28	33	130

Away games

RECORD:	OVERALL	HOME	AWAY	NEUTRAL
ALL GAMES	0-3	0-0	0-3	0-0
CONFERENCE	0-0	0-0	0-0	0-0
NON-CONFERENCE	0-3	0-0	0-3	0-0

#	Player	gp-gs	min	avg	Total		3-Point		F-Throw		Rebounds				pf	dq	a	to	blk	stl	pts	avg		
					fg-fga	fg%	3fg-fga	3fg%	ft-fta	ft%	off	def	tot	avg										
15	FORT, McKynzie	3-3	96	32.0	15-43	.349	0-6	.000	10-14	.714	2	5	7	2.3	9	1	3	10	1	2	40	13.3		
22	THORDERSON, Lexy	2-0	41	20.5	5-19	.263	4-13	.308	0-0	.000	1	2	3	1.5	0	0	1	0	1	2	14	7.0		
04	ELLISON, Kymberly	3-3	66	22.0	5-27	.185	4-18	.222	6-8	.750	2	4	6	2.0	7	0	2	5	1	4	20	6.7		
34	VANDERDOES, Bayle	3-3	48	16.0	3-11	.273	0-0	.000	7-7	1.000	5	8	13	4.3	9	0	0	3	0	1	13	4.3		
30	GREENHOUSE, Chey	3-2	68	22.7	6-20	.300	0-2	.000	0-0	.000	2	1	3	1.0	2	0	1	1	0	1	12	4.0		
03	BOSTICK, Ariell	3-3	76	25.3	4-17	.235	1-5	.200	3-4	.750	2	13	15	5.0	5	0	9	3	0	8	12	4.0		
40	TERRY, Monique	3-1	46	15.3	4-7	.571	0-0	.000	3-3	1.000	1	7	8	2.7	4	0	0	5	0	0	11	3.7		
20	GOMEZ, Geena	3-0	67	22.3	3-21	.143	1-9	.111	3-4	.750	3	4	7	2.3	5	0	2	7	0	3	10	3.3		
21	LOWE, Abby	3-0	29	9.7	3-7	.429	1-3	.333	2-4	.500	3	2	5	1.7	6	0	0	5	0	0	9	3.0		
45	EKWEDIKE, Naomi	3-0	18	6.0	3-6	.500	0-0	.000	0-0	.000	3	3	6	2.0	4	0	0	6	0	0	6	2.0		
11	GOMEZ, Arantxa	3-0	45	15.0	1-4	.250	0-0	.000	3-10	.300	4	3	7	2.3	4	0	1	2	2	0	5	1.7		
Team											16	5	21											
Total.....		3	600		52-182	.286	11-56	.196	37-54	.685	44	57	101	33.7	55	1	19	49	5	21	152	50.7		
Opponents.....		3	600		94-171	.550	21-45	.467	29-42	.690	22	93	115	38.3	57	-	60	50	14	23	238	79.3		

Score by Periods	1st	2nd	3rd	4th	Totals
SDSU	42	31	35	44	152
Opponents	61	73	52	52	238

Neutral site games

RECORD:	OVERALL	HOME	AWAY	NEUTRAL
ALL GAMES	1-1	0-0	0-0	1-1
CONFERENCE	0-0	0-0	0-0	0-0
NON-CONFERENCE	1-1	0-0	0-0	1-1

##	Player	gp-gs	min	avg	Total		3-Point		F-Throw		Rebounds				pf	dq	a	to	blk	stl	pts	avg
					fg-fga	fg%	3fg-fga	3fg%	ft-fa	ft%	off	def	tot	avg								
15	FORT, McKynzie	2-2	55	27.5	11-17	.647	0-2	.000	4-7	.571	0	4	4	2.0	7	1	5	5	1	0	26	13.0
04	ELLISON, Kymberly	2-2	50	25.0	7-17	.412	5-15	.333	4-4	1.000	1	2	3	1.5	8	0	2	4	0	2	23	11.5
20	GOMEZ, Geena	2-0	53	26.5	6-13	.462	4-6	.667	7-8	.875	0	10	10	5.0	5	0	4	4	0	2	23	11.5
03	BOSTICK, Ariell	2-2	61	30.5	5-8	.625	2-2	1.000	7-8	.875	1	14	15	7.5	6	1	6	8	0	6	19	9.5
30	GREENHOUSE, Chey	2-0	24	12.0	4-8	.500	0-1	.000	4-6	.667	1	4	5	2.5	1	0	0	2	0	0	12	6.0
40	TERRY, Monique	2-1	31	15.5	5-7	.714	0-1	.000	0-0	.000	3	3	6	3.0	5	0	2	2	0	1	10	5.0
22	THORDERSON, Lexy	2-1	42	21.0	3-10	.300	2-8	.250	2-2	1.000	0	2	2	1.0	5	0	3	1	0	2	10	5.0
34	VANDERDOES, Bayle	2-2	43	21.5	3-7	.429	0-0	.000	3-6	.500	3	3	6	3.0	6	0	2	4	0	1	9	4.5
11	GOMEZ, Arantxa	2-0	16	8.0	1-1	1.000	0-0	.000	2-2	1.000	2	1	3	1.5	4	0	0	3	2	0	4	2.0
21	LOWE, Abby	2-0	6	3.0	0-1	.000	0-0	.000	2-2	1.000	0	1	1	0.5	2	0	0	1	0	0	2	1.0
45	EKWEDIKE, Naomi	2-0	19	9.5	0-4	.000	0-0	.000	0-0	.000	0	2	2	1.0	1	0	0	3	0	0	0	0.0
Team											0	8	8				2					
Total.....		2	400		45-93	.484	13-35	.371	35-45	.778	11	54	65	32.5	50	2	24	39	3	14	138	69.0
Opponents.....		2	400		43-111	.387	9-33	.273	31-47	.660	22	44	66	33.0	44	-	17	37	3	12	126	63.0

Score by Periods	1st	2nd	3rd	4th	Totals
SDSU	27	36	42	33	138
Opponents	38	28	28	32	126

Games won

RECORD:	OVERALL	HOME	AWAY	NEUTRAL
ALL GAMES	2-0	1-0	0-0	1-0
CONFERENCE	0-0	0-0	0-0	0-0
NON-CONFERENCE	2-0	1-0	0-0	1-0

#	Player	gp-gs	min	avg	Total		3-Point		F-Throw		Rebounds				pf	dq	a	to	blk	stl	pts	avg		
					fg-fga	fg%	3fg-fga	3fg%	ft-fa	ft%	off	def	tot	avg										
15	FORT, McKynzie	2-2	70	35.0	19-29	.655	2-4	.500	5-6	.833	2	7	9	4.5	4	0	7	3	1	1	45	22.5		
20	GOMEZ, Geena	2-1	56	28.0	8-15	.533	5-8	.625	10-10	1.000	1	6	7	3.5	5	0	4	5	0	2	31	15.5		
04	ELLISON, Kymberly	2-2	59	29.5	7-13	.538	5-10	.500	3-4	.750	0	3	3	1.5	7	0	5	2	0	1	22	11.0		
22	THORDERSON, Lexy	1-0	20	20.0	3-6	.500	2-4	.500	2-2	1.000	0	1	1	1.0	4	0	0	0	0	1	10	10.0		
34	VANDERDOES, Bayle	2-2	45	22.5	8-12	.667	0-0	.000	1-3	.333	3	9	12	6.0	5	0	2	5	1	0	17	8.5		
03	BOSTICK, Ariell	2-2	58	29.0	5-7	.714	1-1	1.000	0-0	.000	0	16	16	8.0	2	0	13	5	0	5	11	5.5		
40	TERRY, Monique	2-1	28	14.0	4-5	.800	0-1	.000	0-0	.000	1	2	3	1.5	5	0	2	3	1	1	8	4.0		
30	GREENHOUSE, Chey	1-0	9	9.0	1-1	1.000	0-0	.000	2-4	.500	0	2	2	2.0	1	0	0	0	0	0	4	4.0		
45	EKWEDIKE, Naomi	2-0	22	11.0	2-6	.333	0-0	.000	1-2	.500	0	0	0	0.0	1	0	0	4	0	0	5	2.5		
11	GOMEZ, Arantxa	2-0	13	6.5	2-4	.500	0-0	.000	0-0	.000	0	2	2	1.0	4	0	0	2	0	1	4	2.0		
21	LOWE, Abby	2-0	11	5.5	1-5	.200	0-1	.000	1-1	1.000	1	3	4	2.0	2	0	1	2	0	0	3	1.5		
13	BROWN, Allison	1-0	9	9.0	0-1	.000	0-0	.000	0-0	.000	0	1	1	1.0	1	0	1	2	0	0	0	0.0		
Team											1	6	7											
Total.....		2	400		60-104	.577	15-29	.517	25-32	.781	9	58	67	33.5	41	0	35	33	3	12	160	80.0		
Opponents.....		2	400		44-121	.364	16-49	.327	28-40	.700	25	39	64	32.0	32	-	24	30	3	9	132	66.0		

Score by Periods	1st	2nd	3rd	4th	Totals
SDSU	37	44	36	43	160
Opponents	39	28	26	39	132

Games lost

RECORD:	OVERALL	HOME	AWAY	NEUTRAL
ALL GAMES	0-5	0-1	0-3	0-1
CONFERENCE	0-0	0-0	0-0	0-0
NON-CONFERENCE	0-5	0-1	0-3	0-1

#	Player	gp-gs	min	avg	Total		3-Point		F-Throw		Rebounds				pf	dq	a	to	blk	stl	pts	avg		
					fg-fga	fg%	3fg-fga	3fg%	ft-fa	ft%	off	def	tot	avg										
15	FORT, McKynzie	5-5	152	30.4	27-70	.386	1-12	.083	16-22	.727	7	11	18	3.6	16	2	5	17	1	3	71	14.2		
04	ELLISON, Kymberly	5-5	117	23.4	12-48	.250	9-35	.257	8-10	.800	5	9	14	2.8	12	0	3	12	1	7	41	8.2		
30	GREENHOUSE, Chey	5-2	101	20.2	11-31	.355	0-4	.000	6-7	.857	3	3	6	1.2	7	1	2	7	0	1	28	5.6		
22	THORDERSON, Lexy	4-2	82	20.5	7-35	.200	5-26	.192	1-2	.500	3	4	7	1.8	4	0	6	1	2	3	20	5.0		
03	BOSTICK, Ariell	5-5	136	27.2	6-24	.250	2-7	.286	11-14	.786	5	24	29	5.8	13	1	11	11	0	14	25	5.0		
34	VANDERDOES, Bayle	5-5	93	18.6	6-17	.353	0-0	.000	9-11	.818	7	16	23	4.6	13	0	1	5	0	2	21	4.2		
20	GOMEZ, Geena	5-0	119	23.8	5-30	.167	2-15	.133	4-6	.667	3	10	13	2.6	8	0	8	10	0	3	16	3.2		
40	TERRY, Monique	5-1	69	13.8	6-12	.500	0-2	.000	3-3	1.000	4	10	14	2.8	5	0	0	5	0	0	15	3.0		
21	LOWE, Abby	5-0	35	7.0	3-7	.429	1-3	.333	4-6	.667	3	2	5	1.0	7	0	0	5	1	0	11	2.2		
45	EKWEDIKE, Naomi	5-0	31	6.2	4-10	.400	0-0	.000	0-1	.000	3	5	8	1.6	7	0	0	7	0	0	8	1.6		
11	GOMEZ, Arantxa	5-0	65	13.0	1-4	.250	0-0	.000	5-12	.417	6	5	11	2.2	7	0	1	4	4	1	7	1.4		
Team											16	9	25											
Total.....		5	1000		88-288	.306	20-104	.192	67-94	.713	65	108	173	34.6	99	4	37	88	9	34	263	52.6		
Opponents.....		5	1000		141-287	.491	30-76	.395	50-82	.610	48	145	193	38.6	101	-	83	85	16	37	362	72.4		

Score by Periods	1st	2nd	3rd	4th	Totals
SDSU	71	57	66	69	263
Opponents	100	102	82	78	362

TEAM STATISTICS

Opponent	Date	Score		Total		3-Pointers		Free throws		Rebounds				pf	a	t/o	blk	stl	pts	avg
				fg-fga	pct	3fg-fga	pct	ft-fta	pct	off	def	tot	avg							
at UC Riverside	11/11/16	44-72	L	16-55	.291	3-16	.188	9-14	.643	15	20	35	35.0	17	5	18	0	5	44	44.0
SAN DIEGO CHRISTIAN	11-14-16	80-70	W	31-56	.554	7-13	.538	11-14	.786	7	30	37	36.0	16	19	16	2	3	80	62.0
at San Diego	11/17/16	53-91	L	17-63	.270	2-17	.118	17-25	.680	15	16	31	34.3	25	2	17	3	7	53	59.0
LOYOLA MARYMOUNT	11-20-16	53-60	L	20-61	.328	4-29	.138	9-13	.692	12	25	37	35.0	19	10	17	2	8	53	57.5
vs UT-Arlington	11/26/16	58-64	L	16-45	.356	5-19	.263	21-27	.778	9	26	35	35.0	25	8	22	2	5	58	57.6
vs Central Connecticut	11/27/16	80-62	W	29-48	.604	8-16	.500	14-18	.778	2	28	30	34.2	25	16	17	1	9	80	61.3
at UC Davis	12/02/16	55-75	L	19-64	.297	6-23	.261	11-15	.733	14	21	35	34.3	13	12	14	2	9	55	60.4
SDSU		423		148-392	.378	35-133	.263	92-126	.730	74	166	240	34.3	140	72	121	12	46	423	60.4
Opponents		494		185-408	.453	46-125	.368	78-122	.639	73	184	257	36.7	133	107	115	19	46	494	70.6

Games played: 7
 Points/game: 60.4
 FG Pct: 37.8
 3FG Pct: 26.3
 FT Pct: 73.0

Rebounds/game: 34.3
 Assists/game: 10.3
 Turnovers/game: 17.3
 Assist/turnover ratio: 0.6
 Steals/game: 6.6
 Blocks/game: 1.7

STATISTICS - INDIVIDUAL GAME-BY-GAME / STARTING LINEUPS

	1	3	4	11	13	15	20	21	22	30	34	40	45
Opponent	Khalia Lark	Ariell Bostick	Kymerly Ellison	Arantxa Gomez	Allison Brown	McKynzie Fort	Geena Gomez	Abby Lowe	Lexy Thorderson	Cheyenne Greenhouse	Baylee Vanderdoes	Monique Terry	Naomi Ekwedike
at UC Riverside	DNP	0-8-2	6-1-0	1-0-0	DNP	14-3-3	6-2-0	2-3-0	DNP	6-3-0	7-5-0	2-1-0	0-0-0
SAN DIEGO CHRISTIAN	DNP	4-6-8	12-3-3	2-2-0	0-0-1	28-7-4	14-2-2	3-3-1	DNP	DNP	10-10-0	2-1-0	5-0-0
at San Diego	DNP	9-1-1	6-3-1	3-3-0	DNP	12-1-0	2-4-0	0-2-0	3-1-0	2-0-0	4-2-0	7-4-0	2-3-0
LOYOLA MARYMOUNT	DNP	1-9-1	8-5-1	0-1-0	DNP	22-9-0	0-1-4	0-0-0	6-3-2	8-0-1	6-6-1	0-2-0	2-0-0
vs. UT Arlington	DNP	12-5-1	13-3-0	2-3-0	DNP	9-2-2	6-5-2	2-0-0	0-1-3	8-3-0	2-4-0	4-4-0	0-2-0
vs. Central Connecticut	DNP	7-10-5	10-0-2	2-0-0	DNP	17-2-3	17-5-2	0-1-0	10-1-0	4-2-0	7-2-2	6-2-2	0-0-0
at UC Davis	DNP	3-6-6	8-2-1	1-4-1	DNP	11-3-0	2-1-2	7-0-0	11-2-1	4-0-1	2-6-0	2-3-0	4-3-0
MICHIGAN													
UC SANTA BARBARA													
at Cal State Fullerton													
BIOLA													
at New Mexico													
NEVADA													
BOISE STATE													
at San Jose State													
at Utah State													
UNLV													
AIR FORCE													
at Colorado State													
at Wyoming													
FRESNO STATE													
SAN JOSE STATE													
at Nevada													
UTAH STATE													
at UNLV													
at Fresno State													
COLORADO STATE													
at Air Force													
NEW MEXICO													

DNP - Did Not Play

Game	Forward	Forward/Guard	Guard	Guard	Guard	Game	Forward	Forward/Guard	Guard	Guard	Guard
at UC Riverside	Vanderdoes	Greenhouse	Fort	Ellison	Bostick	SAN JOSE STATE					
SAN DIEGO CHRISTIAN	Vanderdoes	Gomez	Fort	Ellison	Bostick	at Nevada					
at San Diego	Vanderdoes	Greenhouse	Fort	Ellison	Bostick	UTAH STATE					
LOYOLA MARYMOUNT	Vanderdoes	Thorderson	Fort	Ellison	Bostick	at UNLV					
vs. UT Arlington	Vanderdoes	Thorderson	Fort	Ellison	Bostick	at Fresno State					
vs. Central Connecticut	Vanderdoes	Terry	Fort	Ellison	Bostick	COLORADO STATE					
at UC Davis	Vanderdoes	Terry	Fort	Ellison	Bostick	at Air Force					
MICHIGAN						NEW MEXICO					
UC SANTA BARBARA											
at Cal State Fullerton											
BIOLA											
at New Mexico											
NEVADA											
BOISE STATE											
at San Jose State											
at Utah State											
UNLV											
AIR FORCE											
at Colorado State											
at Wyoming											
FRESNO STATE											

Lineup Records

Bostick-Ellison-Fort-Vanderdoes-Terry: 1-1
 Bostick-Ellison-Fort-Vanderdoes-Greenhouse: 0-2
 Bostick-Ellison-Fort-Vanderdoes-Thorderson: 0-2
 Bostick-Ellison-Fort-Vanderdoes-Gomez: 1-0

Aztec Team Highs

Points	80, Twice, Last: vs. Central Connecticut (11-27-16)
Scoring Margin	18, vs. Central Connecticut (11-27-16)
FG Made	31, vs. San Diego Christian (11-14-16)
FG Attempts	64, at UC Davis (12-2-16)
FG Pct.	.604 (29-48), vs. Central Connecticut (11-27-16)
3-Point FG Made	8, vs. Central Connecticut (11-27-16)
3-Point FG Attempts	29, vs. Loyola Marymount (11-20-16)
3-Point FG Pct.	.538 (7-13), vs. San Diego Christian (11-14-16)
Free Throws Made	21, vs. UT Arlington (11-26-16)
Free Throw Attempts	27, vs. UT Arlington (11-26-16)
Free Throw Pct.	.786 (11-14), vs. San Diego Christian (11-14-16)
Total Rebounds	37, Twice, Last: vs. Loyola Marymount (11-20-16)
Assists	19, vs. San Diego Christian (11-14-16)
Steals	9, at UC Davis (12-2-16)
Blocks	3, at San Diego (11-17-16)
Turnovers	22, vs. UT Arlington (11-26-16)
Fouls	25, Three times, Last: vs. Central Connecticut (11-27-16)

Aztec Team Lows

Points	44, at UC Riverside (11-11-16)
Scoring Margin	10, vs. San Diego Christian (11-14-16)
FG Made	16, Twice, Last: vs. UT Arlington (11-26-16)
FG Attempts	45, vs. UT Arlington (11-26-16)
FG Pct.	.270 (17-63), at San Diego (11-17-16)
3-Point FG Made	2, at San Diego (11-17-16)
3-Point FG Attempts	13, at San Diego Christian (11-14-16)
3-Point FG Pct.	.118 (2-17), at San Diego (11-17-16)
Free Throws Made	9, Twice, Last: vs. Loyola Marymount (11-20-16)
Free Throw Attempts	13, vs. Loyola Marymount (11-20-16)
Free Throw Pct.	.643 (9-14), at UC Riverside (11-11-16)
Total Rebounds	30, vs. Central Connecticut (11-27-16)
Assists	2, at San Diego (11-17-16)
Steals	3, vs. San Diego Christian (11-14-16)
Blocks	0, at UC Riverside (11-11-16)
Turnovers	14, at UC Davis (12-2-16)
Fouls	13, at UC Davis (12-2-16)

Aztec Scoring

First Half High	45, vs. San Diego Christian (11-14-16)
Second Half High	44, vs. Central Connecticut (11-27-16)
First Half Low	21, at UC Riverside (11-11-16)
Second Half Low	23, at UC Riverside (11-11-16)
Largest Halftime Lead	8, vs. San Diego Christian (11-14-16)
Largest Halftime Deficit	21, Twice, Last: (23-44), at UC Davis (12-2-16)
Largest Lead	25 (73-48), vs. Central Connecticut (11-27-16)
Largest Deficit	38 (53-91), at San Diego (11-17-16)
Largest Deficit in a Win	7 (12-19), vs. Central Connecticut (11-27-16)
Largest Lead in a Loss	6 (40-34), vs. Loyola Marymount (11-20-16)

Opponent Team Highs

Points	91, at San Diego (11-17-16)
Scoring Margin	38 (91-53), at San Diego (11-17-16)
FG Made	37, at San Diego (11-17-16)
FG Attempts	66, vs. San Diego Christian (11-14-16)
FG Pct.	.649 (37-57), at San Diego (11-17-16)
3-Point FG Made	12, at UC Davis (12-2-16)
3-Point FG Attempts	31, vs. San Diego Christian (11-14-16)
3-Point FG Pct.	.583 (7-12), at UC Riverside (11-11-16)
Free Throws Made	19, vs. Central Connecticut (11-27-16)
Free Throw Attempts	25, vs. Central Connecticut (11-27-16)
Free Throw Pct.	.760 (19-25), vs. Central Connecticut (11-27-16)
Total Rebounds	44, Loyola Marymount (11-20-16)
Assists	23, at UC Davis (12-2-16)
Steals	10, at San Diego (11-17-16)
Blocks	5, Twice, Last: at UC Davis (12-2-16)
Turnovers	19, vs. Central Connecticut (11-27-16)
Fouls	26, Twice, Last: vs. UT Arlington (11-26-16)

Opponent Team Lows

Points	60, vs. Loyola Marymount (11-20-16)
Scoring Margin	7 (60-53), vs. Loyola Marymount (11-20-16)
FG Made	19, vs. Central Connecticut (11-27-16)
FG Attempts	54, at UC Riverside (11-11-16)
FG Pct.	.345 (19-55), vs. Central Connecticut (11-27-16)
3-Point FG Made	2, at San Diego (11-17-16)
3-Point FG Attempts	7, at San Diego (11-17-16)
3-Point FG Pct.	.267 (4-15), vs. UT Arlington (11-26-16)
Free Throws Made	3, at UC Davis (12-2-16)
Free Throw Attempts	4, at UC Davis (12-2-16)
Free Throw Pct.	.500 (9-18), vs. Loyola Marymount (11-20-16)
Total Rebounds	32, vs. San Diego Christian (11-14-16)
Assists	7, Twice, Last: vs. Central Connecticut (11-27-16)
Steals	3, vs. San Diego Christian (11-14-16)
Blocks	0, vs. Loyola Marymount (11-20-16)
Turnovers	11, vs. San Diego Christian (11-14-16)
Fouls	12, at UC Davis (12-2-16)

Opponent Scoring

First Half High	50, at San Diego (11-17-16)
Second Half High	41, at San Diego (11-17-16)
First Half Low	30, vs. Central Connecticut (11-27-16)
Second Half Low	28, Twice, Last: vs. UT Arlington (11-26-16)
Largest Halftime Lead	21, Twice, Last: (44-23), at UC Davis (12-2-16)
Largest Halftime Deficit	8 (37-45), vs. San Diego Christian (11-14-16)
Largest Lead	38 (91-53), at San Diego (11-17-16)
Largest Deficit	25 (48-73), vs. Central Connecticut (11-27-16)
Largest Deficit in a Win	6 (34-40), vs. Loyola Marymount (11-20-16)
Largest Lead in a Loss	7 (19-12), vs. Central Connecticut (11-27-16)

Aztec Individual Highs

Points

28, McKynzie Fort vs. San Diego Christian (11-14-16)

Field Goals Made

11, McKynzie Fort vs. San Diego Christian (11-14-16)

Field Goals Attempted

21, McKynzie Fort vs. Loyola Marymount (11-20-16)

21, McKynzie Fort at UC Riverside (11-11-16)

Field Goal Percentage (min. 5 made)

.611 (11-18), McKynzie Fort vs. San Diego Christian (11-14-16)

3-Point Field Goals Made

3, Lexy Thorderson at UC Davis (12-2-16)

3, Geena Gomez vs. Central Connecticut (11-27-16)

3, Kymberly Ellison vs. UT Arlington (11-26-16)

3, Kymberly Ellison vs. San Diego Christian (11-14-16)

3-Point Field Goals Attempted

9, Kymberly Ellison vs. UT Arlington (11-26-16)

3-Pt Field Goal Percentage (min. 2 made)

.750 (3-4), Kymberly Ellison vs. San Diego Christian (11-14-16)

Free Throws Made

7, McKynzie Fort at UC Davis (12-2-16)

7, Ariell Bostick vs. UT Arlington (11-26-16)

Free Throw Attempted

8, Ariell Bostick vs. UT Arlington (11-26-16)

8, Kymberly Ellison, at San Diego (11-17-16)

Free Throw Percentage (min 3 made)

1.000 (7-7), McKynzie Fort at UC Davis (12-2-16)

1.000 (6-6), Geena Gomez vs. Central Connecticut (11-27-16)

1.000 (4-4), Baylee Vanderdoes at San Diego (11-17-16)

1.000 (4-4), McKynzie Fort, Geena Gomez vs. San Diego Christian (11-14-16)

1.000 (3-3), McKynzie Fort vs. Loyola Marymount (11-20-16)

1.000 (3-3), Baylee Vanderdoes at UC Riverside (11-11-16)

Rebounds

10, Ariell Bostick vs. Central Connecticut (11-27-16)

10, Baylee Vanderdoes vs. San Diego Christian (11-14-16)

Assists

8, Ariell Bostick vs. San Diego Christian (11-14-16)

Steals

4, Ariell Bostick at UC Davis (12-2-16)

4, Ariell Bostick vs. Central Connecticut (11-27-16)

4, Ariell Bostick vs. Loyola Marymount (11-20-16)

Blocked Shots

2, Arantxa Gomez Ferrer at UC Davis (12-2-16)

2, Arantxa Gomez Ferrer vs. UT Arlington (11-26-16)

Turnovers

5, Ariell Bostick vs. UT Arlington (11-26-16)

Fouls

5, Ariell Bostick, McKynzie Fort vs. UT Arlington (11-26-16)

5, Cheyenne Greenhouse vs. Loyola Marymount (11-20-16)

5, McKynzie Fort at San Diego (11-17-16)

Opponent Individual Highs

Points

28, Dani Nafekh at UC Davis (12-2-16)

Field Goals Made

10, Dani Nafekh at UC Davis (12-2-16)

Field Goals Attempted

19, Nyadoup Lam vs. San Diego Christian (11-14-16)

Field Goal Percentage (min 5 made)

.800 (8-10), Maya Hood at San Diego (11-17-16)

3-Point Field Goals Made

8, Dani Nafekh at UC Davis (12-2-16)

3-Point Field Goals Attempted

11, Dani Nafekh at UC Davis (12-2-16)

3-Pt Field Goal Percentage (min 2 made)

.727 (8-11), Dani Nafekh at UC Davis (12-2-16)

Free Throws Made

9, Cebria Outlow vs. Central Connecticut (11-27-16)

Free Throws Attempted

11, Cebria Outlow vs. Central Connecticut (11-27-16)

Free Throw Percentage (min 3 made)

1.000 (3-3) Brianna Jacobs vs. Central Connecticut (11-27-16)

1.000 (3-3), Michelle Curry at UC Riverside (11-11-16)

Rebounds

15, Jackie Johnson vs. Loyola Marymount (11-20-16)

Assists

11, Rejane Verin at UC Riverside (11-11-16)

Steals

3, Cierra Johnson vs. UT Arlington (11-26-16)

3, Cheyanne Wallace vs. Loyola Marymount (11-20-16)

3, Patricia Brossmann at San Diego (11-17-16)

Blocked Shots

3, Marly Anderson at UC Davis (12-2-16)

Turnovers

6, Giocelis Reynoso vs. Central Connecticut (11-27-16)

Fouls

4, Cheyanne Wallace vs. Loyola Marymount (11-20-16)

4, Cierra Belvin vs. Loyola Marymount (11-20-16)

4, Alexandra Young at San Diego (11-17-16)

4, Nyadoup Lam vs. San Diego Christian (11-14-16)

4, Lauren Holt at UC Riverside (11-11-16)

The Last Time an Aztec ...

Scored 20-24 points
22, McKynzie Fort, 11-20-16 vs. Loyola Marymount

Scored 25-29 points
28, McKynzie Fort, 11-14-16 vs. San Diego Christian

Scored 30-39 points
31, Cierra Warren, 1-22-14 vs. San José State

Scored 40+ points
41, Chana Perry, 1-2-88 vs. Northern Illinois

Had 20+ rebounds
27, Chana Perry, 11-25-88 vs. Alabama State

Had 15-19 rebounds
17, Kristina Hunter, 1-11-14 vs. Air Force

Had 10-14 rebounds
10, Ariell Bostick, 11-27-16 vs. Central Connecticut

Had 10+ assists
14, Chelsea Hopkins, 3-14-13 vs. Nevada

Had A Double-Double
Baylee Vanderdoes (10 points, 10 rebounds), 11-14-16 vs. San Diego Christian

Had A Triple-Double
Chelsea Hopkins, 13 points, 11 rebounds, 12 assists, 3-9-13 vs. Boise State

The Last Time San Diego State ...

Had two players score 20 points in the same game
Deajanae Scurry (22) and Cierra Warren (20), 1-25-14 vs. Utah State

Had two players with a double-double in the same game
Erimma Amariqwa (19 points, 13 rebounds) and Cheyenne Greenhouse (19 points, 11 rebounds), 11-14-14 vs. Sacramento State

Scored 100+ points
101, vs. Colorado State (101-62), 1-25-92

Allowed 100+ points
104, vs. UCLA (56-104), 12-11-98

Won by 20+ points
35, vs. San Diego Christian (60-25), 12-21-15

Won by 30+ points
35, vs. San Diego Christian (60-25), 12-21-15

Won by 40+ points
41, vs. Boise State (86-45), 3-9-13

Won by 50+ points
51, vs. Air Force (79-28), 1-7-09

Won in Overtime
vs. Fresno State (65-54), 2-10-16

Lost in Overtime
vs. Utah (70-67), 1-8-11

2016-17 Aztec Leaders

Double-Figure Scoring Games
McKynzie Fort (6), Geena Gomez (2), Kymberly Ellison (3), Lexy Thorderson (2), Baylee Vanderdoes (1), Ariell Bostick (1)

SDSU High Scorer
McKynzie Fort (6), Kymberly Ellison (1), Geena Gomez (1), Lexy Thorderson (1)

Games Led SDSU In Rebounds
Ariell Bostick (5), McKynzie Fort (1), Geena Gomez (2), Baylee Vanderdoes (2), Monique Terry (1)

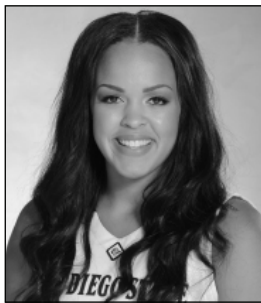
Games Led SDSU In Assists
Ariell Bostick (4), McKynzie Fort (1), Kymberly Ellison (1), Geena Gomez (1), Lexy Thorderson (1)

Games Led SDSU In Steals
Ariell Bostick (7), Kymberly Ellison (1), McKynzie Fort, Geena Gomez (1), Arantxa Gomez Ferrer (1)

Games Led SDSU In Blocks
McKynzie Fort (2), Arantxa Gomez Ferrer (2), Lexy Thorderson (2), Kymberly Ellison (1), Abby Lowe (1), Monique Terry (1), Baylee Vanderdoes (1)

► 2016-17 SPECIALTY STATS
San Diego State/Opponent

	Points in Paint	Points off TOs	2nd Chance Points	Fast Break Points	Bench Points
at UC Riverside (L)	11/18	10/22	6/5	0/0	11/22
SAN DIEGO CHRISTIAN	15/14	38/20	6/6	6/2	70/12
at San Diego	18/44	13/23	6/8	0/0	17/39
LOYOLA MARYMOUNT	26/32	17/20	10/15	5/2	10/3
vs. UT Arlington	18/36	10/25	15/15	8/4	22/26
vs. Central Connecticut	36/26	15/16	4/13	6/2	33/29
at UC Davis	22/26	14/17	9/14	6/6	29/14
MICHIGAN					
UC SANTA BARBARA					
at Cal State Fullerton					
BIOLA					
at New Mexico					
NEVADA					
BOISE STATE					
at San Jose State					
at Utah State					
UNLV					
AIR FORCE					
at Colorado State					
at Wyoming					
FRESNO STATE					
SAN JOSE STATE					
at Nevada					
UTAH STATE					
at UNLV					
at Fresno State					
COLORADO STATE					
at Air Force					
NEW MEXICO					



KHALIA LARK
Jr. | 6-0 | G
Irvine, Calif.
Mater Dei HS/Washington

1



ARIELL BOSTICK
Sr. | 5-4 | G
Oakland, Calif.
Bishop O'Dowd HS

3



KYMBERLY ELLISON
Sr. | 5-7 | G
Columbus, Ga.
Hardaway HS/Georgia Tech

4



ARANTXA GOMEZ FERRER
So. | 6-0 | F
Valencia, Spain
Parque Colegio Santa Ana HS

11



ALLISON BROWN
Jr. | 5-7 | G
Anaheim Hills, Calif.
Mater Dei HS

13



MCKYNZIE FORT
Jr. | 5-9 | G
Fontana, Calif.
Etiwanda HS

15



GEENA GOMEZ
Jr. | 5-8 | G
Huntington Beach, Calif.
Edison HS/St. Joseph's (Pa.)

20



ABBY LOWE
Fr. | 5-11 | G
Stockport, England
Barking Abbey Academy

21



LEXY THORDERSON
Jr. | 6-0 | G/F
Castle Rock, Colo.
Rock Canyon HS

22



CHEYENNE GREENHOUSE
Jr. | 5-11 | G
Riverside, Calif.
Canyon Springs HS

30



BAYLEE VANDERDOES
Fr. | 6-1 | F
Auburn, Calif.
Placer HS

34



MONIQUE TERRY
Fr. | 6-2 | F
San Antonio, Texas
Brennan HS

40



ALEIAH BRANDON
Sr. | 6-1 | F
Corona, Calif.
Centennial HS

44



NAOMI EKWEDIKE
Fr. | 6-6 | C
Lagos, Nigeria
Potters House Christian Academy (Fla.)

45



STACIE TERRY
Head Coach
Fourth Season



JESSE CLARK
Assistant Coach
Fourth Season



CIARA CARL
Assistant Coach
Fourth Season



NICK GRANT
Assistant Coach
Third Season