

Aztec Coaches



SIX CONSECUTIVE NCAA TOURNAMENT APPEARANCES ► NINE-TIME MW CHAMPIONS

Steve Fisher and his basketball staff look to guide the Aztecs to the postseason for an 11th consecutive year.



Inside:

| | |
|-----------------|----|
| Steve Fisher | 22 |
| Brian Dutcher | 36 |
| Justin Hutson | 37 |
| David Velasquez | 38 |
| Mark Fisher | 39 |
| Matt Soria | 40 |
| Tim Shelton | 40 |
| Support Staff | 41 |

Championship

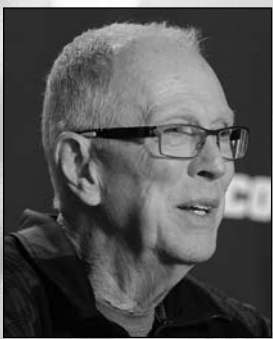
Leader

Aztec Head Coach Steve Fisher

Overall: 523-267* (24-Full Seasons) • San Diego State: 339-185 (16 Seasons)

NCAA Champion • Three NCAA Final Four Appearances

2-Time National Coach of the Year • 15 NCAA Tournament Berths • 21 Postseason Appearances



Steve Fisher has guided the Aztecs to postseason play in 12 of the past 14 seasons, including a school-record 10 straight years.

Steve Fisher has guided the San Diego State basketball program to unparalleled heights. In 16 seasons, he has taken a program that regularly missed out on the conference postseason tournament, to one which has become one of the elite programs on the West Coast and is respected nationally in all college basketball circles.

SDSU is not slowing down either. Fisher and his coaching staff continue to bring in high-

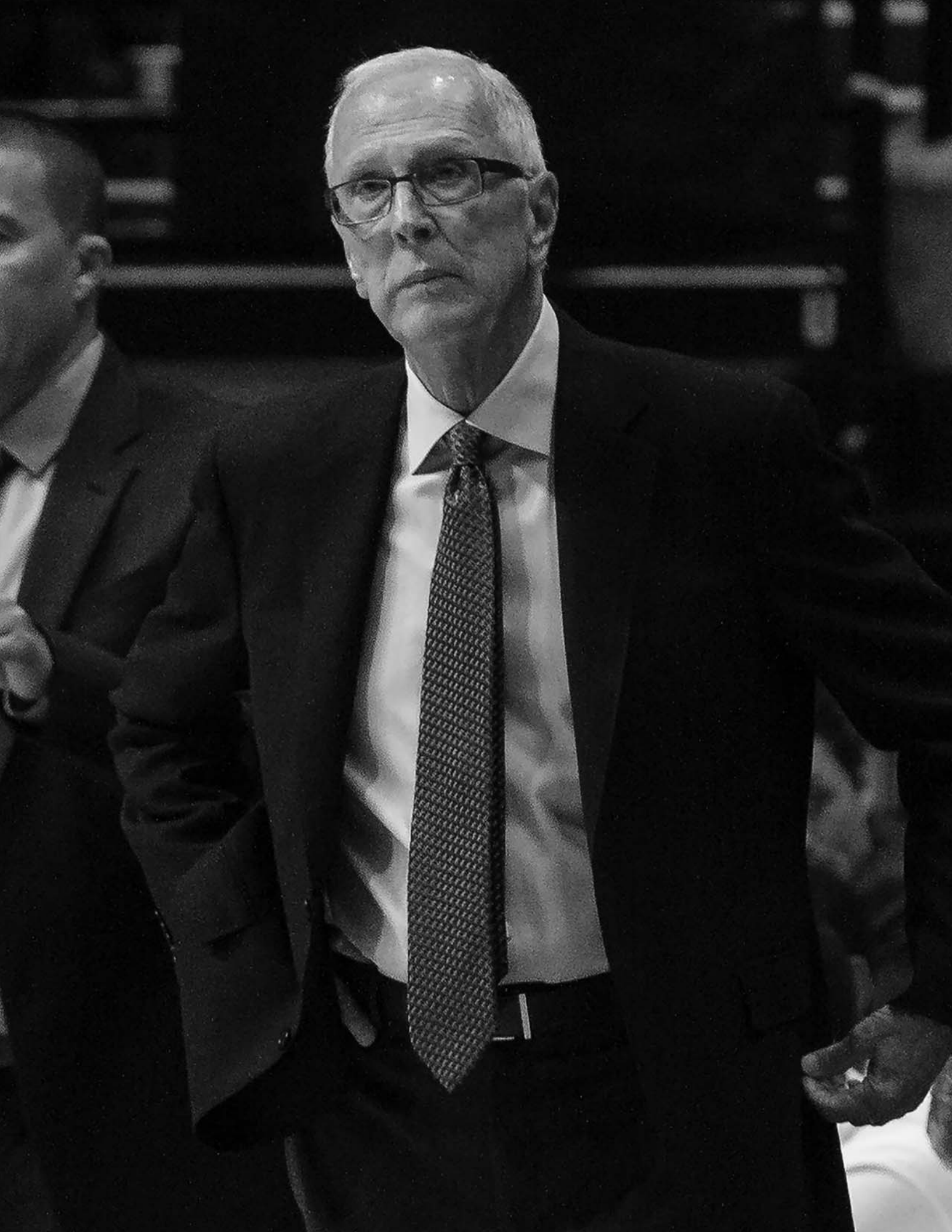
level talent, which has translated to six straight NCAA appearances and a pair of Sweet 16 berths in the last five seasons.

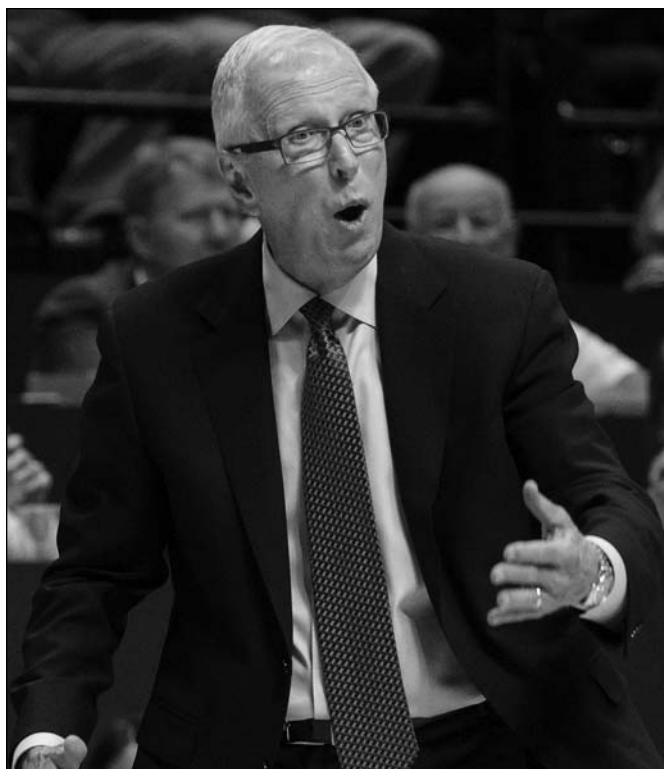
When Fisher arrived on the scene in March of 1999, he took over a basketball program that wasn't good enough to be called average. The Aztecs had suffered through 13 losing seasons in 14 years. Members of the school's last NCAA team were in the early stages of middle age. The expectations were set. The Aztecs were expected to lose. The year before Fisher's

arrival on campus, San Diego State won just four games.

Now those days are a distant memory. Fisher guided the Aztecs to the greatest season in school history in 2011 when they won 34 games, spent a majority of the year ranked in the top 10 and won the program's first-ever NCAA tournament games en route to the Sweet 16. Then after two more NCAA bids, including a third-round appearance in 2013, Fisher nearly led SDSU to an even better season in 2014 with 31 wins and a Sweet 16 berth.

** Please refer to Steve Fisher's year-by-year record on page 25.*





Collegiate Coaching Experience

1979-82 Assistant Coach, Western Michigan University

Coached under Les Wothke, the same coach that hired him for his first coaching position at Rich East (Ill.) High... Team won the 1981 conference championship.

1982-89 Assistant Coach, University of Michigan

In six full seasons as an assistant, Michigan made four trips to the NCAA Tournament and claimed the 1984 NIT championship... Michigan won Big Ten titles in both 1985 and 1986.

1989-97 Head Coach, University of Michigan

Claimed Michigan's only national championship to date in men's basketball (1989)... Guided the Wolverines to three of the school's five national championship game appearances... In eight full seasons, he compiled a 184-82 record (69.1 percent)... His teams made seven NCAA appearances and two postseason NIT trips... One of six coaches to win both an NCAA and NIT championship... Recorded five 20-win seasons, including a 31-5 record during the 1992-93 campaign... *Basketball Times* National Coach of the Year in 1992.

1999-Present Head Coach, San Diego State University

Authored one of the greatest turnarounds in college basketball history by taking a program that won four games the year before his arrival to four Mountain West tournament championships, five MW regular-season titles, eight NCAA tournament berths and four appearances in the postseason NIT... Team went 5-23 his first season (1999-00) and has gone on to post a .500 or better record 13 times, including seven straight campaigns with at least 23 wins... Won 20 or more games in 11 of the last 14 seasons, including 10 straight... Team has reached at least the third round of the NCAA tournament three consecutive years... The top 13 single-season home attendance marks have been set in the last 13 seasons.

In between Sweet 16 appearances, Fisher led San Diego State to the 2012 NCAA tournament following its second straight Mountain West co-regular-season title. Then in 2013, SDSU won 23 games, earned an at-large berth to NCAAs and advanced to the third round for the second time in three seasons.

In 2014, Fisher, who was named MW Coach of the Year, helped San Diego State bring back memories of 2010-11. The Aztecs won 31 games, which included a 20-game winning streak, captured the MW regular-season title outright and reached the Round of 16, a game in which SDSU led for 33 minutes.

More recently in 2015, San Diego State captured a share of its second straight conference title and made it to the third round of NCAAs en route to 27 wins.

The Aztecs have now appeared in six straight NCAA tournaments and have reached the postseason six other times under Fisher (NCAA: 2002, 2006; NIT: 2003, 2007, 2008, 2009). During his tenure, the Aztecs have also produced 11 20-win seasons, including seven straight with 23 or more victories, two of which were 30-plus-win efforts.

The ingredients for a successful basketball program seemed to have arrived at San Diego State at approximately the same time Fisher did.

Viejas Arena, formerly Cox Arena, was one of the glaring athletic upgrades on the west side of campus, and its opening signified the new-placed emphasis on basketball in the Aztec athletic department. The program moved from the aging San Diego Sports Arena on the west side of the city to an on-campus home.

After the arrival of Cox Arena, one important ingredient was lacking.

On March 26, 1999, SDSU announced its arrival on the basketball scene when it introduced Fisher as its new coach. Fresh from a stint with the Sacramento Kings and with three appearances in the Final Four and a national championship in his pocket, he rolled up his sleeves and went to work. The task looked to be daunting and yet the man with one of the highest winning percentages in NCAA tournament history had no reservations.

"We have everything here that we need to be successful at the highest level," Fisher said at the time. "We have a great campus in a great city. The arena is as good of a facility as you can find. Our league is very good

and getting better. Who wouldn't want to play here?"

Coming off a 4-22 season, not much was expected in the new coach's first year. The Aztecs finished 5-23, but never stopped working. The last game of the season was a near upset of UNLV in the first round of the MW tournament. The eventual champions bested the Aztecs in the final minutes.

"We worked hard, but we just weren't good enough," Fisher said of his first group of Aztecs. "They tried to do everything we wanted, but we spent the year dodging bullets."

It was year two (2000-01), when Fisher and SDSU served notice that better days were ahead and some, in fact, had arrived. The Aztecs were one of the nation's most improved teams, finishing 14-14 and in the process, ended several less-than-flattering losing streaks.

And then came year three. An indifferent start gave way to a downright slow beginning to conference play. But the Aztecs then unveiled a trait that has become synonymous with Fisher teams. They played their best when it mattered most.

The Aztecs roared down the stretch, winning eight of their final 10 and climbing to .500 in MW play, a major step for SDSU basketball.

Then came March, a month that has always been magical for Fisher.

The Aztecs headed to Las Vegas and picked up three straight wins to claim their first MW title, including victories over top-seeded Wyoming and home-standing UNLV.

The season ended with a 21-12 record and continued the upward surge of the program. San Diego State reached 21 wins for the first time since 1984-85 and returned to the NCAA tournament for the first time since that same '84-85 team.

However, it is what lies ahead and not the past that continues to drive the energetic Fisher.

"I have never said I wanted the program in a certain place by a certain time," he said. "You just work hard, prepare well and try to get lucky. We have probably done a little bit of each."

The Aztecs proved that they were more than a one-hit wonder in 2002-03 by returning to the postseason and claiming their first postseason victory in 33 seasons at the Division I level. San Diego State concluded its third straight season with a .500 or better record by going 16-14 and advancing to the second round of the NIT. Along the way, the Aztecs played before two



sellout crowds in Cox Arena en route to shattering the home attendance average (7,172).

Although SDSU struggled the following two seasons, Fisher and the Aztecs enjoyed one of the best seasons in school history in 2005-06. Expectations were high from the outset as the conference media picked SDSU as the team to beat in the MW, something that had never happened in the Scarlet and Black's Division I history. In addition, the league media also bestowed on SDSU the titles of player of the year (Marcus Slaughter), first-team all-conference (Slaughter and Brandon Heath) and newcomer of the year (Mohamed Abukar).

And that was just the beginning. San Diego State won a then-Division I school-record 24 games, the regular-season conference crown and the league tournament title en route to a bid in the NCAA tournament. At season's end, Heath was named an *AP* honorable mention All-American, the MW player of the year and a first-team all-

league selection, while teammates Slaughter (MW tournament MVP, first-team all-MW) and Abukar (second-team all-conference) also garnered attention.

The success from the Aztecs' magical year continued in 2006-07 as SDSU went on to win its first eight games, marking the best start to a season by a Fisher-coached team, and posted its second straight 20-plus win season (22-11), something that had not been accomplished on Montezuma Mesa during its time as a Division I program. In the process, SDSU earned a spot in the NIT and captured its first Division I postseason road victory before falling in the second round.

In 2007-08, the winning trend was carried on by a junior-laden team that finished 20-13 and earned another appearance in the NIT. The Aztecs became the first team in the school's Division I history to record three straight 20-win seasons and three consecutive postseason berths.

Then came 2008-09 when those aforementioned streaks were

extended to four after Fisher led SDSU to a 26-10 record and an appearance in the semifinals of the NIT. The 26 victories represented a new school record.

Despite losing 4,291 career points from the 2008-09 squad, Fisher and the 2009-10 Aztecs made it a point to not have a drop off, even with six newcomers. San Diego State finished at 25-9, won the MW tournament title and advanced to the NCAA tournament for the first time since 2006. SDSU was led by freshman Kawhi Leonard, who became the first freshman in league history to be voted onto the all-conference first team, all while being named league freshman of the year and MW tournament MVP.

All of the hard work from the aforementioned seasons paid off in 2010-11 when the Aztecs made the nation pay attention as they rattled off 20 straight wins to start the year.

SDSU had never been ranked prior to the season and it opened the campaign in the preseason *AP*

Top-25 poll. After five weeks, the Aztecs vaulted into the top 10 and earned a season-best ranking of No. 4, even garnering three first-place votes in the *ESPN/USA Today* Coaches' Poll.

When the dust settled, SDSU won the MW regular-season and tournament titles and earned the West Region's No. 2 seed in the NCAA tournament. The Aztecs won in the tournament for the first time in school history and advanced to the Sweet 16 before falling to the eventual national champion. Fisher guided San Diego State to a school-record 34 victories and finished the season ranked sixth in the *AP* and 11th in the Coaches' poll.

Leonard became an All-American and was drafted in the first round of the NBA Draft. Seniors D.J. Gay, Malcolm Thomas and Billy White, meanwhile, earned all-conference honors in leading San Diego State, which sold out 13 home games and set a school record for attendance, to one of the finest

Steve Fisher Year-By-Year

| Year | School | Conference | | | Conference | | | Postseason/Honors |
|---------------------------------|-----------------|------------|------------|-------------|------------|------------|-------------|---|
| | | W | L | Pct. | W | L | Pct. | |
| 1989 | Michigan | 6 | 0 | 1.000 | - | - | - | NCAA Champions |
| 1989-90 | Michigan | 23 | 8 | .742 | 12 | 6 | .667 | NCAA Second Round |
| 1990-91 | Michigan | 14 | 15 | .483 | 7 | 11 | .389 | NIT First Round |
| 1991-92 | Michigan | 25 | 9 | .735 | 11 | 7 | .611 | NCAA Runner-Up, <i>Basketball Times</i> Coach of the Year |
| 1992-93 | Michigan | 31 | 5 | .861 | 15 | 3 | .833 | NCAA Runner-Up |
| 1993-94 | Michigan | 24 | 8 | .750 | 13 | 5 | .722 | NCAA Regional Finalist |
| 1994-95 | Michigan | 17 | 14 | .548 | 11 | 7 | .611 | NCAA First Round |
| 1995-96 | Michigan | 20 | 12 | .625 | 10 | 8 | .556 | NCAA First Round |
| 1996-97 | Michigan | 24 | 11 | .686 | 9 | 9 | .500 | NIT Champions |
| Eight Full Seasons at UM | | 184 | 82 | .691 | 88 | 56 | .611 | 7 NCAA Tournaments, 9 Postseason Appearances |
| Year | School | W | L | Pct. | W | L | Pct. | Postseason/Notes |
| 1999-00 | San Diego State | 5 | 23 | .179 | 0 | 14 | .000 | |
| 2000-01 | San Diego State | 14 | 14 | .500 | 4 | 10 | .286 | 8th-most improved team in the country (Sagarin Ratings) |
| 2001-02 | San Diego State | 21 | 12 | .636 | 7 | 7 | .500 | NCAA First Round; Aztecs' first NCAA trip since 1985 |
| 2002-03 | San Diego State | 16 | 14 | .533 | 6 | 8 | .429 | NIT Second Round; First win in D-I postseason tourney |
| 2003-04 | San Diego State | 14 | 16 | .467 | 5 | 9 | .357 | Overcame loss of four starters for fourth straight season w/14 wins |
| 2004-05 | San Diego State | 11 | 18 | .379 | 4 | 10 | .286 | Young Aztecs drop seven gms. by four pts. or less or in OT |
| 2005-06 | San Diego State | 24 | 9 | .727 | 13 | 3 | .813 | NCAA First Round; MWC regular season and tourney champs |
| 2006-07 | San Diego State | 22 | 11 | .667 | 10 | 6 | .625 | NIT Second Round; First road win in D-I postseason tourney |
| 2007-08 | San Diego State | 20 | 13 | .606 | 9 | 7 | .563 | NIT First Round; Third straight 20-win season |
| 2008-09 | San Diego State | 26 | 10 | .722 | 11 | 5 | .688 | NIT Semifinals; Then SDSU-record 26 victories |
| 2009-10 | San Diego State | 25 | 9 | .735 | 11 | 5 | .688 | NCAA First Round; MWC tournament Champions |
| 2010-11 | San Diego State | 34 | 3 | .919 | 14 | 2 | .875 | NCAA Sweet 16; MWC reg.-season, tourney champs; SDSU-record 34 wins |
| 2011-12 | San Diego State | 26 | 8 | .765 | 10 | 4 | .714 | NCAA Second Round; MW regular-season champions |
| 2012-13 | San Diego State | 23 | 11 | .676 | 9 | 7 | .563 | NCAA Third Round; Fifth straight 23+ win season |
| 2013-14 | San Diego State | 31 | 5 | .861 | 16 | 2 | .889 | NCAA Sweet 16; MW regular-season champions |
| 2014-15 | San Diego State | 27 | 9 | .750 | 14 | 4 | .778 | NCAA Third Round; MW co-regular-season champions |
| 16 Seasons at SDSU | | 339 | 185 | .647 | 143 | 103 | .581 | 8 NCAA Tournaments, 12 Postseason Appearances |
| | | W | L | Pct. | W | L | Pct. | Postseason/Honors |
| 24-Season Career Totals | | 523 | 267 | .662 | 231 | 159 | .592 | 15 NCAA Tournaments, 21 Postseason Appearances |

In November of 2002, the University of Michigan chose to vacate a number of games from the 1992-1997 time period. Because of this, the NCAA no longer recognizes those contests and thus lists Steve Fisher's career coaching record differently. The chart above and all references in this publication include all games.

Steve Fisher



SIX CONSECUTIVE NCAA TOURNAMENT APPEARANCES ► NINE-TIME MW CHAMPIONS

The Steve Fisher File

Hometown: Herrin, Ill.

Family: wife Angie, sons Mark (37), Jay (28).

Education: Illinois State Univ. (B.S. in 1967 and M.S. in 1968)

National Honors

- 1992 *Basketball Times* Coach of the Year
- 2011 Naismith Coach of the Year
- 2011 NABC Coach of the Year
- 2011 Adolph Rupp Cup
- 2015 John R. Wooden Legends of Coaching Award

seasons in Division I college basketball.

Personally, Fisher was recognized for his team's success as he was named the Naismith and NABC Coach of the Year, MW Co-Coach of the Year, USBWA and NABC District Coach of the Year, and was the recipient of the Adolph Rupp Cup.

"In my 40-plus years of teaching and coaching, I have never enjoyed a season more," Fisher said. "I believe that could be said for anybody who was involved in any aspect with our team. From every coach, to every player, to our students, to our alums and to the community, it was truly a season to remember and to reflect on with great pride. Everyone knew that something very significant and special occurred and everyone benefited."

And Fisher was right.

The six letterwinners who returned in 2011-12 certainly benefitted from the earth-shaking 2010-11 campaign as they defied public opinion and finished with a record of 26-8 after claiming a share of the MW regular-season championship.

The Aztecs were led by sophomore Jamaal Franklin, who played just 22 games and averaged 2.9 points as a true freshman, and the lone returning starter in junior Chase Tapley. Franklin wound up earning AP All-America accolades, while Tapley picked up all-league honors. SDSU eventually earned its third consecutive NCAA appearance and a final AP national ranking of No. 22.

For his efforts, Fisher was named MW Coach of the Year and garnered district coach of the year honors from the USBWA, NABC and *Basketball Times*.

Just to show how far the program has come, one needs to look no further than the home attendance figures for 2012-13. The Aztecs sold out the entire campaign before the season started. San Diego State went 23-11 and were led by NBA draft pick and two-time AP All-American Jamaal Franklin. The squad did something only the 2011 team did and that was win in the NCAA tournament.

In 2013-14, when the experts thought the Aztecs were in rebuilding mode, all they did was go 31-5, win the MW regular-season crown and advance to the Sweet 16.

Led by AP All-American Xavier Thames, San Diego State defeated a school-record four nationally ranked teams, including at Kansas. The senior ended up being named the MW Player of the Year and was an NBA draft pick for a team that was ranked

as high as No. 5/5 before finishing the season ranked No. 13/12.

Last season, Fisher helped the Aztecs to another 27 victories and a conference-best ninth league title. For their efforts, SDSU earned an at-large bid to the NCAA tournament and reached the third round for the third year in a row before ultimately falling to the eventual national champion. At the end of the campaign, Fisher received the 2015 John R. Wooden Legends of Coaching Award.

Unfortunately for America, SDSU's winning ways do not look as if they will come to an end anytime soon either. Fisher is set to return another highly regarded squad, the school opened the brand new Jeff Jacobs JAM Center over the summer, which is the Aztecs' new on-campus practice facility, and excitement is at an all-time high within the community.

Prior to arriving in San Diego, Fisher spent one season as an assistant coach with the Sacramento Kings. However, he is best known for his efforts at the collegiate level. He became a household name at Michigan, where he transformed a prominent program into a perennial national championship contender and winner. Returning to the college game was returning home.

"I enjoyed the NBA," Fisher said. "It was all basketball all the time. But I always felt I belonged in the college game. If I have a calling, it is as a teacher. I enjoy teaching basketball. I think it is what I do best."

That point would be hard to argue.

No head-coaching career, at any level, started quicker than that of Fisher. Six games into his head-coaching career he was undefeated and sporting a national championship ring. And the success didn't stop with the national title.

Fisher spent eight-plus seasons at Michigan, won an NCAA title and an NIT championship and carved out one of the most glamorous periods in college basketball history during the Fab Five years.

Under Fisher, the Wolverines won at least 20 games four times and finished among the top three in the powerful Big Ten five times. In 1995, Michigan set a league record by holding opponents to just 39.4 percent shooting from the floor.

Fisher raised the bar even higher in the postseason. His seven NCAA tournament teams combined for a 20-6 record on the court for a winning percentage of .769 in the national bracket. Three of his teams advanced

to the Final Four.

Just seven head coaches have led schools to the championship of the NIT as well as the NCAA. The others to accomplish that feat are Bobby Knight, Adolph Rupp, Joe B. Hall, Al McGuire, Dean Smith and Jim Calhoun.

Add to the fact that Fisher coached perhaps the most famous group of players in modern NCAA history. In 1991, Fisher and Aztec associate head coach Brian Dutcher inked a recruiting class that would later be known as the "Fab Five." The group included Ray Jackson, Jimmy King and NBA stars Juwan Howard, Jalen Rose and Chris Webber. They were the heart, and indeed the starting five, of two consecutive NCAA runner-up teams in Ann Arbor. For his efforts with that group, Fisher was named the 1992 national coach of the year by *Basketball Times*.

During his stay in Michigan, Fisher coached seven players that would be taken in the first round of the NBA Draft, including the three members of the Fab Five.

Steve Fisher grew up in Herrin, Ill., and played his college basketball at Illinois State, where he earned two varsity letters. He was a member of the university's Division II Final Four team as a senior. In 1967, he completed work on his bachelor's degree at ISU in physical education and math. The following year he earned a master's degree in physical education.

Fisher began his climb up the coaching ladder in Park Forest, Ill., where he served as an assistant coach and later became head coach at Rich East High School. In eight years at the helm of the program, he built Rich East into one of the top programs in the Chicago area.

"I probably could have stayed in the high school ranks my entire career and been happy," Fisher said. "I coached basketball and taught math and that was fine with me."

In 1979, Fisher moved into the collegiate ranks at Western Michigan. He spent three years as an assistant under Les Wothke, who had hired him at Rich East. He helped build the Bronco program into a conference champion in 1981.

In 1982, he moved across the state to Michigan where he helped Bill Frieder lead the Wolverines to a pair of conference titles. As he was in high school, Fisher was happy sitting in the middle of the bench, removed from the spotlight. A career as an assistant would have worked just fine.



Seven years after his hiring and on the verge of the NCAA tournament, Frieder accepted the head-coaching job at Arizona State and Michigan athletic director Bo Schembechler quickly moved Fisher to the end of the bench. Fisher then moved himself into the national spotlight.

He assumed the role of interim head coach with no promise of a future. However, he made a strong case for the job when he promptly led a team that finished third in the Big Ten race to the national title. Included in that run was a win over Illinois in the national semifinals. The Illini were considered by many to be the best team in the country. The title was the first and remains the only championship in Michigan history.

The 1991-92 and 1992-93 seasons were the fanatical years of the Fab Five. Not only did the Wolverines achieve cult-like status, but they were the most successful group of underclassmen in college sports history.

In the years before the early entries into the NBA and before high school stars spent their lunch hours with agents, Michigan's successes were even more impressive. Two straight trips to the NCAA title game with five freshmen and then five sophomores in the starting lineup marked an incredible accomplishment. UM set a school record in 1992-93 by going 31-5.

In all, Steve Fisher carved out the most successful period in Michigan basketball history. His final club in Ann Arbor won the NIT. However, he is now clearly planted in America's Finest City.

"My family and I are elated to be at San Diego State," he said. "This program has unlimited potential. I have a responsibility to make sure the potential is realized."

Fisher's first full recruiting class was ranked among the nation's top 40. His second group was a consensus top-25 crop and the Aztecs keep moving up the chart. Potential no longer seems like a bad word.

The season-ticket base is at an all-time high. The community has an interest even in the offseason. Steve Fisher has led the Aztecs from the wasteland to the throne.

Fisher, the 14th head coach in Aztec history, is married to the former Angie Wilson, another former teacher at Rich East High School. They have two sons. Mark is a Michigan graduate who is in his 14th season overall with the SDSU program. Jay is a 2008 graduate from the University of Southern California.

Active National Championship Coaches

- Jim Boenheim, Syracuse
- Larry Brown, SMU
- John Calipari, Kentucky
- Steve Fisher, San Diego State
- Tom Izzo, Michigan State
- Mike Krzyzewski, Duke
- Kevin Ollie, Connecticut
- Rick Pitino, Louisville
- Bill Self, Kansas
- Tubby Smith, Texas Tech
- Roy Williams, North Carolina

Active Highest NCAA Tournament Winning Percentage

active coaches, minimum 20 games

1. Mike Krzyzewski, Duke 77.2
2. John Calipari, Kentucky 75.8
3. Rick Pitino, Louisville 74.6
4. Roy Williams, North Carolina 73.9
5. Tom Izzo, Michigan State 73.0
6. Larry Brown, SMU 70.0
7. Bill Self, Kansas 69.8
8. Tubby Smith, Texas Tech 65.2
9. ► Steve Fisher, SDSU 65.0
10. Thad Matta, Ohio State 64.9

Active Coaches Final Four Appearances

1. Mike Krzyzewski, Duke 13
2. Tom Izzo, Michigan State 7
- Rick Pitino, Louisville 7
- Roy Williams, North Carolina 7
5. John Calipari, Kentucky 6
6. ► Steve Fisher, SDSU 3
- Jim Boenheim, Syracuse 3

Active Coaches Most NBA Draft Picks

Active Coaches, Since 1989

1. Mike Krzyzewski, Duke 41
2. John Calipari, Kentucky 37
3. Roy Williams, North Carolina 33
4. Jim Boenheim, Syracuse 26
5. Rick Barnes, Tennessee 23
- Bill Self, Kansas 23
7. Rick Pitino, Louisville 18
8. ► Steve Fisher, SDSU 17
9. Tom Izzo, Michigan State 16
10. Bob Huggins, West Virginia 14

Coach listed with current school.

► Steve Fisher vs. All Foes

| | | | |
|-----------------------|-------|--------------------------|-------|
| Air Force | 22-12 | Monmouth | 1-0 |
| Alaska Fairbanks | 1-0 | Morgan State | 1-0 |
| Albany | 1-0 | Murray State | 1-0 |
| Arizona | 3-13 | Navy | 1-0 |
| Arizona State | 1-4 | Nebraska | 1-0 |
| Arkansas | 1-1 | New Mexico | 19-18 |
| Arkansas-Pine Bluff | 2-0 | New Mexico State | 2-2 |
| Auburn | 1-0 | Nevada | 5-0 |
| Bakersfield | 2-0 | Norfolk State | 2-0 |
| Ball State | 3-1 | North Carolina | 2-1 |
| Baylor | 0-2 | North Carolina State | 0-1 |
| Boise State | 7-3 | North Dakota State | 1-0 |
| Boston | 3-0 | Northern Arizona | 1-0 |
| Bowling Green | 1-0 | Northern Colorado | 2-1 |
| Bradley | 1-0 | Northern Iowa | 1-0 |
| Brigham Young | 12-18 | Northern Michigan | 1-0 |
| Bryant | 1-0 | Northwestern | 13-1 |
| Cal Poly | 3-0 | Notre Dame | 3-0 |
| California | 3-3 | Occidental | 1-0 |
| Campbell | 1-0 | Ohio State | 10-6 |
| CS Fullerton | 2-1 | Oklahoma | 1-0 |
| CSUN | 3-0 | Oklahoma State | 3-1 |
| Central Michigan | 5-0 | Pacific | 0-2 |
| Chaminade | 1-0 | Penn | 1-1 |
| Chattanooga | 2-0 | Penn State | 6-2 |
| Chicago State | 4-0 | Pepperdine | 1-0 |
| Cincinnati | 1-1 | Pittsburgh | 1-1 |
| Cleveland State | 5-0 | Point Loma | 2-0 |
| Coastal Carolina | 1-0 | Pomona-Pitzer | 1-0 |
| College of Charleston | 1-0 | Portland | 3-1 |
| Colorado | 0-1 | Providence | 0-2 |
| Colorado State | 26-11 | Purdue | 6-10 |
| Columbia | 1-0 | Redlands | 1-0 |
| Connecticut | 0-1 | Rice | 2-0 |
| Creighton | 1-1 | St. Francis | 1-0 |
| Davidson | 1-0 | St. John's | 2-1 |
| Dayton | 0-1 | St. Katherine College | 1-0 |
| DePaul | 1-0 | Sacramento State | 1-0 |
| Detroit | 6-0 | Saint Mary's | 3-5 |
| Drake | 1-0 | Sam Houston State | 1-0 |
| Duke | 3-8 | San Diego | 12-4 |
| East Tennessee State | 1-0 | San Diego Christian | 5-0 |
| Eastern Michigan | 4-0 | San Francisco | 2-0 |
| Eastern Washington | 2-1 | San José State | 3-0 |
| Elon | 1-0 | Santa Clara | 1-0 |
| Florida | 0-1 | Seattle | 1-0 |
| Florida Atlantic | 2-0 | Seattle Pacific | 1-0 |
| Florida Gulf Coast | 0-1 | Seton Hall | 2-0 |
| Florida State | 1-0 | South Alabama | 1-0 |
| Fresno State | 9-2 | South Carolina State | 1-0 |
| George Washington | 1-0 | South Dakota State | 2-0 |
| Georgia Tech | 1-1 | Southern California | 2-1 |
| Gonzaga | 1-0 | Southern Mississippi | 1-0 |
| Grambling State | 1-0 | Southern Utah | 2-0 |
| Green Bay | 1-0 | Syracuse | 0-2 |
| Hawai'i | 2-0 | TCU | 13-1 |
| Hampton | 1-0 | Temple | 3-0 |
| High Point | 1-0 | Tennessee | 0-1 |
| Houston | 2-0 | Texas A&M-Corpus Christi | 2-0 |
| Illinois | 13-5 | Texas Tech | 0-4 |
| Illinois-Chicago | 0-1 | Texas | 1-2 |
| Illinois State | 1-0 | Texas Southern | 1-0 |
| Indiana | 6-11 | Troy | 0-1 |
| Indiana State | 1-0 | Tulane | 2-0 |
| IPFW | 2-0 | UC Davis | 1-0 |
| IUPUI | 2-0 | UC Riverside | 7-0 |
| Iowa | 9-7 | UC San Diego | 9-0 |
| Iowa State | 3-2 | UC Santa Barbara | 10-2 |
| Jackson State | 1-0 | UCLA | 2-0 |
| Kansas | 2-0 | UMBC | 1-0 |
| Kansas State | 1-0 | UNLV | 23-19 |
| Kentucky | 1-0 | Utah | 13-17 |
| Lafayette | 1-0 | Utah State | 4-0 |
| Liberty | 1-0 | Virginia | 1-0 |
| Long Beach State | 5-0 | Virginia Tech | 1-0 |
| LSU | 2-0 | Washington | 2-4 |
| Loyola Marymount | 6-2 | Washington State | 1-2 |
| Marquette | 3-0 | Weber State | 2-0 |
| Maryland | 1-0 | Western Carolina | 1-0 |
| McNeese State | 1-0 | Western Kentucky | 0-1 |
| Memphis | 0-1 | Western Michigan | 1-1 |
| Miami (Fla.) | 1-0 | Wichita State | 1-0 |
| Miami (Ohio) | 1-0 | Wisconsin | 10-5 |
| Michigan State | 10-6 | Wyoming | 19-16 |
| Minnesota | 9-5 | Xavier | 1-0 |
| Missouri State | 2-0 | | |

Steve Fisher Era



SIX CONSECUTIVE NCAA TOURNAMENT APPEARANCES ► NINE-TIME MW CHAMPIONS

1999-2000 • 5-23 Overall/0-14 MW

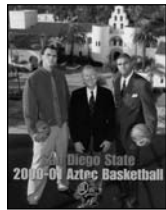


► First-year coach Steve Fisher instills a winning attitude and a belief that great things can happen at SDSU.
► Fisher instantly gives SDSU credibility and national attention. National media outlets such as ESPN, *Los Angeles Times*, *Chicago Tribune* and the *Philadelphia News* all do lengthy features on the first-year Aztec coach.

| | PPG | RPG | APG |
|--|------|-----|-----|
| Myron Epps (F, 6-6, 210, So., Tulare, Calif.) | 14.4 | 5.9 | 0.6 |
| Marcelo Correa (C, 6-10, 225, Jr., Franca, Brazil) | 10.2 | 6.4 | 1.3 |
| David Abramowitz (G, 6-0, 170, So., Tijuana, Mexico) | 7.6 | 1.9 | 3.0 |
| Bradley Jackson (G, 5-10, 165, Fr., Inglewood, Calif.) | 7.1 | 2.7 | 3.6 |
| Vincent Okotie (F, 6-7, 230, So., El Cajon, Calif.) | 6.6 | 2.6 | 1.3 |
| Michael Marion (G, 6-6, 190, Jr., Portland, Ore.) | 5.7 | 2.4 | 1.0 |
| Donte Wilson (G, 6-3, 175, Sr., McKinney, Texas) | 4.5 | 2.0 | 1.8 |
| Jeffrey Berokoff (G, 6-3, 190, So., Whittier, Calif.) | 3.8 | 1.2 | 0.9 |
| Walter Small (F, 6-4, 215, So., Lakewood, Calif.) | 2.8 | 1.4 | 0.1 |
| Joe Mann (C, 6-10, 265, So., San Diego, Calif.) | 1.9 | 2.3 | 0.1 |
| Eric Rohwer (F, 6-9, 235, Fr., Burbank, Calif.) | 0.5 | 0.0 | 0.0 |
| Jim Roban (F, 6-6, 210, Jr., Las Vegas, Nev.) | | DNP | |

Assistant Coaches: Brian Dutcher, Marvin Menzies, Jim Tomey

2000-01 • 14-14 Overall/4-10 MW



► San Diego State posts its second .500 or better season in the last 16 years.
► The 14 victories in 2000-01 equal the total number of wins SDSU posted in the 66 games prior to the season.
► The Sagarin Ratings show San Diego State is the eighth most improved team in the country, jumping from a preseason ranking of 262 to 143 in the final ratings.
► SDSU had a 73 percent increase in home attendance over the previous year, the second-largest jump nationally.

► SDSU breaks notable losing streaks like a 17-game overall losing streak, 17-game conference losing streak, 24-game conference road losing streak and a 30-game overall road losing streak.

| | PPG | RPG | APG |
|---|------|-----|-----|
| Randy Holcomb (F, 6-9, 219, Jr., Chicago, Ill.) | 15.9 | 6.6 | 1.4 |
| Myron Epps (F, 6-6, 210, Jr., Tulare, Calif.) | 11.1 | 4.5 | 1.0 |
| Al Faux (C, 6-2, 186, Jr., Los Angeles, Calif.) | 10.5 | 3.5 | 2.6 |
| Deandre Moore (G, 5-9, 179, So., Compton, Calif.) | 6.8 | 3.4 | 5.0 |
| Marcelo Correa (C, 6-10, 226, Sr., Franca, Brazil) | 6.4 | 4.0 | 1.0 |
| Karlo Kovacic (G, 6-5, 204, Jr., Rijeka, Croatia) | 5.3 | 1.8 | 0.7 |
| David Abramowitz (G, 6-0, 170, Jr., Tijuana, Mexico) | 5.0 | 1.3 | 1.9 |
| Jim Roban (F, 6-6, 210, Sr., Las Vegas, Nev.) | 4.6 | 1.3 | 0.3 |
| Aerick Sanders (F-C, 6-8, 192, So., Carson, Calif.) | 3.8 | 3.8 | 0.3 |
| Chris Walton (F, 6-8, 218, Fr., San Diego, Calif.) | 3.3 | 2.5 | 1.3 |
| Michael Marion (G, 6-7, 199, Sr., Portland, Ore.) | 1.9 | 0.6 | 0.6 |
| Tad Boyes (F, 6-6, 225, Fr., West Palm Beach, Fla.) | 1.3 | 0.0 | 0.0 |
| Ben Wardrop (G, 6-2, 185, So., Anaheim, Calif.) | 0.0 | 0.6 | 0.1 |
| Andre Torres (G, 5-9, 170, So., Chula Vista, Calif.) | 0.0 | 0.0 | 0.2 |
| Andy Ormsby (F, 6-7, 205, So., Glenwood Springs, Colo.) | | DNP | |

Assistant Coaches: Brian Dutcher, Marvin Menzies, Jim Tomey

2001-02 • 21-12/7-7 MW/NCAA Tournament/MW Champs



► San Diego State advanced to the NCAA tournament for the fourth time in the school's 32-year Division I history and earned its first NCAA berth since 1985.
► The 21 wins were the second most in the school's DI era and marked the third consecutive season the Aztecs improved their win total from the previous campaign.
► SDSU ended '01-02 with a final RPI of 39, marking the second consecutive season that SDSU jumped 100 positions from the previous season's final RPI.

| | PPG | RPG | APG |
|---|------|-----|-----|
| Al Faux (G, 6-2, 178, Sr., Los Angeles, Calif.) | 17.0 | 3.6 | 1.8 |
| Randy Holcomb (F, 6-9, 222, Sr., Chicago, Ill.) | 16.9 | 9.0 | 1.7 |
| Tony Bland (G, 6-5, 192, Jr., Los Angeles, Calif.) | 15.7 | 4.0 | 3.4 |
| Mike Mackell (C, 6-9, 241, Jr., Washington, D.C.) | 10.6 | 4.4 | 0.5 |
| Deandre Moore (G, 5-10, 195, Jr., Compton, Calif.) | 3.6 | 1.9 | 2.8 |
| Brandon Smith (G/F, 6-7, 215, Sr., Amarillo, Texas) | 3.3 | 2.2 | 2.1 |
| Chris Walton (F, 6-10, 230, So., San Diego, Calif.) | 2.8 | 3.1 | 0.9 |
| Aerick Sanders (F-C, 6-9, 203, So., Carson, Calif.) | 2.5 | 3.1 | 0.2 |
| Karlo Kovacic (G, 6-5, 196, Sr., Rijeka, Croatia) | 2.3 | 0.3 | 0.7 |
| Myron Epps (F, 6-6, 221, Sr., Tulare, Calif.) | 2.2 | 2.3 | 0.5 |

| | | | |
|---|-----|----------|-----|
| Tommy Johnson (G, 6-4, 184, Fr., Los Angeles, Calif.) | 1.5 | 0.9 | 0.4 |
| Ben Wardrop (G, 6-3, 201, So., Anaheim, Calif.) | 0.6 | 0.6 | 0.2 |
| Jim Roban (G, 6-7, 224, Sr., Las Vegas, Nev.) | | DNP | |
| Trimaime Davis (F, 6-7, 212, Fr., West Pittsburg, Calif.) | | REDSHIRT | |
| Steve Sir (G, 6-6, 192, Fr., Minnetonka, Minn.) | | REDSHIRT | |
| Andre Torres (G, 5-9, 170, Jr., Chula Vista, Calif.) | | REDSHIRT | |
| Markee White (F, 6-7, 184, Fr., Long Beach, Calif.) | | REDSHIRT | |

Assistant Coaches: Brian Dutcher, Marvin Menzies, Jim Tomey

2002-03 • 16-14 Overall/6-8 MW/NIT Second Round



► SDSU returns to the postseason for the second consecutive season, marking the first time since 1975 and 1976 that the Aztecs appeared in two straight national postseason tournaments.

► San Diego State claims the first victory in a national postseason tournament of its 33-year Division I era history with a win in the first round of the NIT. The Aztecs' last postseason victory came in 1968.

► The Aztecs have a school-record four players earn all-conference recognition as Tony Bland is named to the second team and Evan Burns, Mike Mackell and Deandre Moore earn honorable mention..

| | PPG | RPG | APG |
|---|------|----------|-----|
| Tony Bland (G, 6-5, 201, Sr., Los Angeles, Calif.) | 16.4 | 3.5 | 3.4 |
| Mike Mackell (C, 6-9, 250, Sr., Washington, D.C.) | 14.4 | 4.6 | 0.7 |
| Evan Burns (F, 6-8, 220, Fr., Los Angeles, Calif.) | 9.2 | 5.1 | 1.1 |
| Deandre Moore (G, 5-10, 191, Sr., Compton, Calif.) | 8.3 | 3.7 | 4.1 |
| Aerick Sanders (F, 6-8, 204, Jr., Carson, Calif.) | 6.1 | 7.6 | 1.2 |
| Tommy Johnson (G, 6-4, 185, So., Los Angeles, Calif.) | 5.6 | 2.6 | 1.8 |
| Steve Sir (G, 6-6, 201, Fr., Minnetonka, Minn.) | 5.5 | 1.1 | 0.9 |
| Travis Hanour (G, 6-7, 198, So., Laguna Beach, Calif.) | 3.1 | 3.1 | 1.0 |
| Chris Manker (C, 7-0, 209, So., West Des Moines, Iowa) | 2.9 | 1.2 | 0.2 |
| John Sharper (G, 6-0, 190, Fr., Oakland, Calif.) | 1.9 | 0.8 | 0.6 |
| Trimaime Davis (F, 6-7, 219, Fr., West Pittsburg, Calif.) | 1.5 | 1.1 | 0.0 |
| Ben Wardrop (G, 6-2, 189, Jr., Anaheim, Calif.) | 0.9 | 0.0 | 0.4 |
| Markee White (F, 6-7, 190, Fr., Long Beach, Calif.) | 0.3 | 0.5 | 0.5 |
| Andre Torres (G, 5-9, 170, Jr., Chula Vista, Calif.) | 0.0 | 0.0 | 0.0 |
| Chris Walton (F, 6-9, 227, Jr., San Diego, Calif.) | | REDSHIRT | |

Assistant Coaches: Brian Dutcher, Marvin Menzies, Gregg Gottlieb

2003-04 • 14-16 Overall/5-9 MW



► San Diego State survived the loss of four starters and the nation's 64th most difficult schedule (third toughest in the MW) to claim 14 victories, marking the fourth straight season SDSU won at least 14 games.

► San Diego State defeated Brigham Young and UNLV at home in the same season for just the second time in school history. The Aztecs also disposed of the Rebels and Cougars during the 1981-82 campaign.

► San Diego State's 11-4 record at Cox Arena marked the second best home winning percentage for an Aztec squad in the last 19 seasons (the 2001-02 team went 12-3 at home).

| | PPG | RPG | APG |
|---|------|----------|-----|
| Aerick Sanders (F-C, 6-9, 203, Sr., Carson, Calif.) | 16.1 | 9.8 | 1.0 |
| Brandon Heath (G, 6-3, 172, Fr., Los Angeles, Calif.) | 13.8 | 2.7 | 2.2 |
| Wesley Stokes (G, 6-0, 168, Jr., Long Beach, Calif.) | 12.1 | 2.3 | 5.8 |
| Chris Walton (F, 6-10, 230, Jr., San Diego, Calif.) | 8.7 | 4.9 | 2.3 |
| Marcus Slaughter (F, 6-9, 208, Fr., Riverside, Calif.) | 7.9 | 6.8 | 0.7 |
| John Sharper (G, 6-1, 198, So., Oakland, Calif.) | 4.1 | 0.9 | 0.9 |
| Tommy Johnson (G, 6-4, 188, Jr., Los Angeles, Calif.) | 4.0 | 1.9 | 1.0 |
| Chris Manker (C, 7-1, 215, Jr., West Des Moines, Iowa) | 3.4 | 2.3 | 0.3 |
| Trimaime Davis (F, 6-8, 223, So., West Pittsburg, Calif.) | 1.5 | 1.0 | 0.1 |
| Ben Wardrop (G, 6-3, 201, Sr., Anaheim, Calif.) | 0.2 | 0.6 | 0.2 |
| Steve Sir (G, 6-6, 205, So., Edmonton, Alberta) | 1.5 | 0.5 | 1.0 |
| Travis Hanour (G, 6-8, 216, Jr., Laguna Beach, Calif.) | | INJURED | |
| Shawn Weinstein (G, 6-1, 178, Fr., Rancho Palos Verdes, Calif.) | | REDSHIRT | |

Assistant Coaches: Brian Dutcher, Gregg Gottlieb, Gary Grant

2004-05 • 11-18 Overall/4-10 MW



► SDSU played the 75th-most difficult schedule while losing 65 games from the senior class due to injury, illness or suspension.

► San Diego State won at BYU and UNLV in the same season for the first time in school history.

► SDSU won at BYU for just the third time in 26 visits to

Steve Fisher Era



SIX CONSECUTIVE NCAA TOURNAMENT APPEARANCES ► NINE-TIME MW CHAMPIONS

Provo (3-23) and snapped a 17-game conference losing streak to the Cougars in Provo.

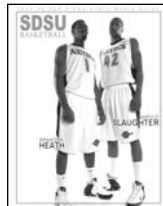
► San Diego State claimed its first regular-season victory at the Thomas & Mack Center, second win over UNLV in the building and third victory over the Rebels in Sin City in 19 games (3-16).

► SDSU swept Brigham Young for just the third time in school history and the first time since the 1984-85 season.

| | PPG | RPG | APG |
|---|------|----------|-----|
| Brandon Heath (G, 6-3, 183, So., Los Angeles, Calif.) | 18.3 | 3.5 | 3.7 |
| Marcus Slaughter (F, 6-8, 223, So., Riverside, Calif.) | 17.8 | 9.0 | 1.3 |
| Chris Manker (C, 7-0, 225, Sr., West Des Moines, Iowa) | 6.8 | 2.7 | 1.0 |
| Chris Walton (F, 6-8, 234, Sr., San Diego, Calif.) | 6.3 | 2.6 | 1.5 |
| Matt Thomas (G, 6-3, 191, Fr., Riverside, Calif.) | 6.1 | 3.4 | 1.5 |
| John Sharper (G, 6-0, 195, Jr., Oakland, Calif.) | 6.0 | 1.1 | 1.3 |
| Trimaine Davis (F, 6-8, 233, Jr., West Pittsburg, Calif.) | 5.2 | 2.3 | 0.2 |
| Mohamed Camara (C, 6-10, 265, Jr., Conakry, Guinea) | 2.4 | 3.8 | 0.5 |
| Tyler Smith (G, 6-2, 208, Fr., San Clemente, Calif.) | 2.2 | 1.6 | 1.2 |
| Jared Ines (F, 6-7, 234, Sr., Modesto, Calif.) | 1.6 | 0.0 | 0.0 |
| Tommy Johnson (G, 6-3, 186, Sr., Los Angeles, Calif.) | 1.0 | 0.8 | 0.5 |
| Travis Hanour (G, 6-6, 202, Sr., Laguna Beach, Calif.) | 1.0 | 1.0 | 0.7 |
| Shawn Weinstein (G, 6-0, 188, Fr., Rancho Palos Verdes, Calif.) | 0.0 | 0.0 | 0.0 |
| Tim McGrath (F, 6-5, 182, Fr., Santa Monica, Calif.) | | REDSHIRT | |
| Chris Lamb (F, 6-9, 205, Fr., Louisville, Colo.) | | REDSHIRT | |

Assistant Coaches: Brian Dutcher, Gregg Gottlieb, Mark Hughes

2005-06 • 24-9/13-3 MW/NCAA Tournament/MW Champs



► San Diego State advanced to the NCAA tournament for the fifth time in school history and the second time under Steve Fisher.

► SDSU won a school DI era-record 24 games and tied the school's all-time mark. It also broke the school record with 13 conference victories and tied the MW record.

► SDSU won its third conference championship of the DI era and its first outright title.

► The Aztecs claimed their second MW tournament crown and became the first in league history to win the tourney title twice.

► Junior Brandon Heath earned AP Honorable Mention All-America honors, was league MVP and was voted to the all-MW first team.

► Junior Marcus Slaughter earned first-team all-league honors and was the MW tournament MVP. Fellow junior Mohamed Abukar garnered all-league second-team accolades.

► With Abukar in the starting lineup, the Aztecs went 17-4.

| | PPG | RPG | APG |
|---|------|----------|-----|
| Brandon Heath (G, 6-4, 198, Jr., Los Angeles, Calif.) | 18.4 | 3.4 | 3.5 |
| Marcus Slaughter (F, 6-9, 220, Jr., Riverside, Calif.) | 16.5 | 11.0 | 1.9 |
| Mohamed Abukar (F, 6-10, 216, Jr., San Diego, Calif.) | 14.3 | 4.7 | 1.0 |
| Kyle Spain (F, 6-5, 218, Fr., Newark, Calif.) | 9.2 | 5.6 | 1.0 |
| John Sharper (G, 6-0, 190, Sr., Oakland, Calif.) | 8.8 | 1.4 | 0.9 |
| Richie Williams (G, 5-9, 158, Fr., San Diego, Calif.) | 6.6 | 2.6 | 3.8 |
| Trimaine Davis (F, 6-7, 235, Sr., West Pittsburg, Calif.) | 4.0 | 2.1 | 0.3 |
| Mohamed Camara (C, 6-10, 245, Sr., Conakry, Guinea) | 2.5 | 3.6 | 0.3 |
| Matt Thomas (G, 6-3, 200, So., Riverside, Calif.) | 1.3 | 1.2 | 1.1 |
| Brett Hoerner (F, 6-11, 206, Fr., Fullerton, Calif.) | 1.9 | 1.1 | 0.1 |
| Tim McGrath (F, 6-5, 187, Fr., Santa Monica, Calif.) | 0.6 | 1.1 | 0.4 |
| Chris Lamb (F, 6-10, 231, Fr., Louisville, Colo.) | 0.7 | 0.0 | 0.0 |
| Lorrenzo Wade (F, 6-6, 212, So., Las Vegas, Nev.) | | REDSHIRT | |

Assistant Coaches: Brian Dutcher, Gregg Gottlieb, Mark Hughes

2006-07 • 22-11/10-6 MW/NIT Second Round



► San Diego State advanced to postseason play in consecutive years for the third time in school history.

► SDSU earned a berth in the NIT for the second time under Steve Fisher and reached the postseason for the fourth time in the last six seasons.

► With its win over Missouri State in the first round of the NIT, SDSU recorded just its second postseason tournament win in school history.

► The Aztecs won 20 or more games in consecutive seasons for the first time in program history at the Division I level.

► San Diego State defeated (13/11) Air Force and (21/22) BYU, marking the third time in the DI era that the Aztecs have defeated a pair of nationally ranked teams in one season.

► Brandon Heath finished his career as the all-time leading scorer in school and MW history with 2,189 points.

| | PPG | RPG | APG |
|--|------|----------|-----|
| Brandon Heath (G, 6-4, 203, Sr., Los Angeles, Calif.) | 19.3 | 3.8 | 3.6 |
| Mohamed Abukar (F, 6-10, 229, Sr., San Diego, Calif.) | 15.8 | 5.8 | 1.6 |
| Lorrenzo Wade (F, 6-6, 228, So., Las Vegas, Nev.) | 10.5 | 5.3 | 2.6 |
| Jerome Habel (F, 6-10, 200, Jr., Rockville, Md.) | 10.9 | 6.2 | 0.8 |
| Richie Williams (G, 5-9, 162, So., San Diego, Calif.) | 7.0 | 4.0 | 4.6 |
| Kyle Spain (F, 6-5, 229, So., Newark, Calif.) | 6.6 | 4.6 | 0.9 |
| Jer'Vaughn Johnson (F, 6-6, 254, Fr., Compton, Calif.) | 2.4 | 1.9 | 0.1 |
| Jon Pastorek (F, 6-8, 209, Fr., Anaheim, Calif.) | 1.5 | 0.8 | 0.3 |
| Chris Lamb (C, 6-10, 245, So., Louisville, Colo.) | 1.4 | 0.9 | 0.3 |
| Matt Thomas (G, 6-4, 213, Jr., Riverside, Calif.) | 1.5 | 1.5 | 2.0 |
| Brandon Martin (G, 6-1, 175, Fr., Fremont, Calif.) | 0.2 | 0.6 | 0.2 |
| David Velasquez (G, 5-11, 175, Sr., Sunnyvale, Calif.) | 0.0 | 0.0 | 0.0 |
| Ryan Amoroso (F, 6-8, 272, Jr., Burnsville, Minn.) | | REDSHIRT | |

Assistant Coaches: Brian Dutcher, Gregg Gottlieb, Justin Hutson

2007-08 • 20-13/9-7 MW/NIT



► San Diego State advanced to postseason play and won at least 20 games for the third straight season for the first time in Division I history.

► SDSU earned a berth in the NIT for the third time under Steve Fisher and reached the postseason for the fifth time in the last seven seasons.

► The Aztecs reached the postseason for the third straight year for the first time since the 1939-40, 1940-41, and 1941-42 seasons.

► Lorrenzo Wade earned all-MW first-team recognition, while Ryan Amoroso and Billy White were third-team honorees. White was also named the MW freshman of the year.

| | PPG | RPG | APG |
|---|------|----------|-----|
| Lorrenzo Wade (F, 6-6, 226, Jr., Las Vegas, Nev.) | 14.8 | 4.5 | 3.6 |
| Ryan Amoroso (F, 6-8, 257, Jr., Burnsville, Minn.) | 11.4 | 6.5 | 0.8 |
| Billy White (F, 6-8, 212, Fr., Las Vegas, Nev.) | 8.5 | 5.9 | 1.0 |
| Kyle Spain (F, 6-5, 209, Jr., Newark, Calif.) | 13.2 | 5.4 | 1.2 |
| Kelvin Davis (G, 6-3, 215, Jr., Waterbury, Conn.) | 7.5 | 2.7 | 0.8 |
| D.J. Gay (G, 6-0, 156, Fr., Sun Valley, Calif.) | 5.8 | 1.5 | 1.7 |
| Richie Williams (G, 5-10, 152, Jr., San Diego, Calif.) | 6.9 | 2.7 | 3.0 |
| Matt Thomas (G, 6-4, 204, Sr., Riverside, Calif.) | 2.1 | 1.7 | 1.1 |
| Jon Pastorek (F, 6-10, 210, So., Anaheim, Calif.) | 1.9 | 1.2 | 0.4 |
| Tim Shelton (F, 6-7, 242, Fr., Fresno, Calif.) | 10.0 | 4.8 | 1.5 |
| Jer'Vaughn Johnson (F, 6-6, 240, So., Compton, Calif.) | 1.0 | 1.3 | 0.3 |
| Chris Lamb (C, 6-10, 223, Jr., Louisville, Colo.) | 0.7 | 0.6 | 0.2 |
| Jason Deutchman (G, 6-6, 209, So., Los Angeles, Calif.) | | REDSHIRT | |
| Bryan Horton (G, 6-1, 187, Fr., Anaheim, Calif.) | | REDSHIRT | |

Assistant Coaches: Brian Dutcher, Justin Hutson, Mark Fisher

2008-09 • 26-10/11-5 MW/NIT Semifinals



► For the fourth straight season, San Diego State won 20 or more games and advanced to the postseason.

► The Aztecs won a school-record 26 games.

► SDSU was the No. 1 overall seed in the NIT and advanced to the semifinals at Madison Square Garden in New York City.

► For the second time in school history, the Aztecs posted four consecutive 20-win seasons. The other occurrence was during a four-year run from 1938-41.

► Kyle Spain and Lorrenzo Wade earned all-MW second-team recognition, while Richie Williams earned third-team honors and was named to the all-defensive team. Billy White, meanwhile, garnered honorable mention accolades.

| | PPG | RPG | APG |
|--|------|-----|-----|
| Kyle Spain (F, 6-5, 220, Sr., Newark, Calif.) | 14.0 | 5.3 | 1.4 |
| Lorrenzo Wade (F, 6-6, 225, Sr., Las Vegas, Nev.) | 14.1 | 4.6 | 2.7 |
| Billy White (F, 6-8, 226, So., Las Vegas, Nev.) | 8.8 | 3.8 | 0.8 |
| Tim Shelton (F, 6-7, 241, RS-Fr., Fresno, Calif.) | 7.9 | 4.7 | 1.3 |
| Richie Williams (G, 5-10, 162, Sr., San Diego, Calif.) | 7.2 | 4.4 | 3.5 |
| Ryan Amoroso (F, 6-8, 263, Sr., Burnsville, Minn.) | 7.5 | 4.5 | 0.7 |
| D.J. Gay (G, 6-0, 155, So., Sun Valley, Calif.) | 6.0 | 1.5 | 1.8 |
| Mehdi Cheriet (F, 6-8, 212, Jr., Tarare, France) | 4.6 | 2.2 | 0.6 |
| Matt Thomas (G, 6-4, 213, Sr., Riverside, Calif.) | 1.8 | 1.6 | 0.9 |
| Kelvin Davis (G, 6-3, 215, Jr., Waterbury, Conn.) | 2.5 | 1.8 | 0.5 |
| Bryce Smith (G, 6-3, 202, Fr., Woodland Hills, Calif.) | 0.7 | 0.2 | 0.0 |
| Bryan Horton (G, 6-1, 196, RS-Fr., Anaheim, Calif.) | 0.2 | 0.2 | 0.2 |
| Tim Island (G, 6-4, 207, Jr., San Diego, Calif.) | 0.3 | 0.7 | 0.2 |

Steve Fisher Era

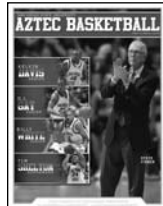


SIX CONSECUTIVE NCAA TOURNAMENT APPEARANCES ► NINE-TIME MW CHAMPIONS

Jason Deutchman (G, 6-6, 210, So., Los Angeles, Calif.)
 Brian Carlwell (C, 6-10, 296, Jr., Maywood, Ill.)
 Tyrone Shelley (G, 6-5, 217, So., San Diego, Calif.)
Assistant Coaches: Brian Dutcher, Justin Hutson, Mark Fisher

0.0 0.6 0.1
 REDSHIRT
 REDSHIRT

2009-10 • 25-9/11-5 MW/NCAA Tournament/MW Champs



- San Diego State won 20 or more games and advanced to the postseason for the fifth straight season.
- SDSU won the second-most games in school history.
- SDSU advanced to the NCAA tournament for the first time since 2006 and for the third time in the Fisher era.
- The Aztecs won their third Mountain West tournament championship.
- Kawhi Leonard became the first freshman in the history of the MW to earn all-conference first-team honors. The forward was also named MW freshman of the year and MW tournament MVP, all while being one of just four freshman nationally to lead his team in scoring and rebounding.

► Malcolm Thomas earned all-MW second-team recognition, while D.J. Gay and Billy White garnered honorable mention accolades.

► San Diego State defeated three nationally ranked teams (vs. No. 15/14 New Mexico, vs. No. 23/25 UNLV, vs. No. 8/8 New Mexico) for the first time in the school's Division I history.

► Leonard set the school record for double-doubles by a freshman with 17. Michael Cage previously held the record with 10.

► San Diego State defeated reigning conference champion Utah twice in 2009-10. The last time SDSU swept the season series was in 1982.

| | PPG | RPG | APG |
|---|------|----------|-----|
| Kawhi Leonard (F, 6-7, 225, Fr., Riverside, Calif.) | 12.7 | 9.9 | 1.9 |
| Malcolm Thomas (F, 6-9, 215, Jr., San Diego, Calif.) | 10.9 | 7.6 | 2.3 |
| D.J. Gay (G, 6-0, 167, Jr., Sun Valley, Calif.) | 10.5 | 2.2 | 3.2 |
| Billy White (F, 6-8, 235, Jr., Las Vegas, Nev.) | 11.1 | 4.3 | 1.4 |
| Chase Tapley (G, 6-2, 205, Fr., Sacramento, Calif.) | 7.6 | 2.3 | 2.2 |
| Kelvin Davis (G, 6-3, 220, Sr., Waterbury, Conn.) | 6.6 | 1.3 | 1.0 |
| Tyrone Shelley (G, 6-6, 225, So., San Diego, Calif.) | 6.1 | 3.5 | 0.8 |
| Brian Carlwell (C, 6-11, 297, Jr., Maywood, Ill.) | 4.7 | 2.8 | 0.4 |
| Tim Shelton (F, 6-7, 248, So., Fresno, Calif.) | 3.3 | 2.0 | 1.4 |
| Alec Williams (F, 6-6, 268, Fr., San Juan Capistrano, Calif.) | 1.9 | 1.2 | 0.3 |
| Bryan Horton (G, 6-1, 205, So., Anaheim, Calif.) | 0.8 | 0.5 | 0.3 |
| Jason Deutchman (G, 6-6, 220, Sr., Los Angeles, Calif.) | 1.7 | 0.7 | 0.0 |
| Ben Kneller (F, 6-6, 200, Sr., Westlake Village, Calif.) | 0.5 | 0.5 | 0.0 |
| Mehdi Cheriet (F, 6-9, 218, Sr., Tarare, France) | | REDSHIRT | |
| James Rahon (G, 6-5, 202, So., San Diego, Calif.) | | REDSHIRT | |

Assistant Coaches: Brian Dutcher, Justin Hutson, Mark Fisher

2010-11 • 34-3/14-2 MW/NCAA Tournament/MW Champs



- San Diego State won 20 or more games and advanced to the postseason for the sixth straight season.
- The Aztecs won a school-record 34 games.
- SDSU earned its first-ever national ranking and was ranked in the top 25 all season. It was ranked as high as No. 4 and earned three first-place votes in the Coaches' poll on Feb. 21.
- The Aztecs finished the year ranked No. 6 in the AP poll and 11th in the Coaches' poll.

► San Diego State won its first-ever Division I NCAA tournament games and advanced to the Sweet 16.

► The Aztecs won their second straight and fourth Mountain West tournament championship. SDSU also claimed a share of the regular-season crown, its second such title.

► Kawhi Leonard earned All-America honors from five different entities and garnered first-team all-conference accolades.

► D.J. Gay earned all-MW first-team recognition, Malcolm Thomas was selected to the second team and Billy White garnered honorable mention accolades.

► Steve Fisher was named Naismith and NABC National Coach of the Year. He also earned MW Co-Coach of the Year honors and won the Adolph Rupp Cup.

► Leonard tied Michael Cage for the most double-doubles in a single sea-

son (23). He finished his career with 40, the second-most in SDSU history.

► San Diego State won 20 straight games to open the season.

| | PPG | RPG | APG |
|---|------|----------|-----|
| Kawhi Leonard (F, 6-7, 225, So., Riverside, Calif.) | 15.5 | 10.6 | 2.5 |
| Malcolm Thomas (F, 6-9, 220, Sr., San Diego, Calif.) | 11.4 | 8.1 | 2.3 |
| D.J. Gay (G, 6-0, 170, Sr., Sun Valley, Calif.) | 11.1 | 2.2 | 3.1 |
| Billy White (F, 6-8, 235, Sr., Las Vegas, Nev.) | 10.3 | 4.4 | 1.6 |
| Chase Tapley (G, 6-2, 200, So., Sacramento, Calif.) | 8.6 | 2.4 | 1.9 |
| James Rahon (G, 6-5, 205, So., San Diego, Calif.) | 7.0 | 1.6 | 0.8 |
| Brian Carlwell (C, 6-11, 300, Sr., Maywood, Ill.) | 3.8 | 2.7 | 0.2 |
| Jamaal Franklin (G, 6-5, 185, Fr., Phelan, Calif.) | 2.9 | 1.9 | 0.5 |
| Tim Shelton (F, 6-7, 245, Jr., Fresno, Calif.) | 1.6 | 1.5 | 0.4 |
| Mehdi Cheriet (F, 6-9, 225, Sr., Tarare, France) | 1.8 | 1.0 | 0.2 |
| LaBradford Franklin (G, 6-2, 170, Fr., Temecula, Calif.) | 2.1 | 0.9 | 1.4 |
| Alec Williams (F, 6-6, 245, So., San Juan Capistrano, Calif.) | 2.1 | 1.4 | 0.0 |
| Xavier Thames (G, 6-3, 185, So., Sacramento, Calif.) | | REDSHIRT | |

Assistant Coaches: Brian Dutcher, Justin Hutson, Mark Fisher

2011-12 • 26-8/10-4 MW/NCAA Tournament/MW Champs



► San Diego State won 20 or more games and advanced to the postseason for the seventh straight season.

► The Aztecs won at least 25 games for the fourth year in a row.

► SDSU finished the campaign ranked No. 22 in the AP Poll and was ranked as high as No. 13 on three different occasions.

► The Aztecs were ranked as high as No. 12 in the USA Today/ESPN Coaches Poll.

► San Diego State was ranked in both top-25 polls for the final 11 weeks of the regular season.

► The Aztecs shared the Mountain West regular-season crown for the second straight season and reached the championship game of the MW tournament for the fourth consecutive year.

► SDSU advanced to the NCAA tournament for the third season in a row and was a No. 6 seed in the Midwest Region.

► Jamaal Franklin earned honorable mention All-America honors from the *Associated Press* after being voted MW Player of the Year and to the all-Mountain West first team.

► Chase Tapley earned all-MW second-team honors, while Xavier Thames and Tim Shelton garnered honorable mention accolades from the league. Shelton was also named to the all-MW defensive team.

► Steve Fisher was named MW Coach of the Year for the second straight year and was voted district coach of the year by the NABC, USBWA and *Basketball Times*.

► Steve Fisher was named MW Coach of the Year for the second straight year and was voted district coach of the year by the NABC, USBWA and *Basketball Times*.

| | PPG | RPG | APG |
|---|------|----------|-----|
| Jamaal Franklin (G, 6-5, 195, So., Hawthorne, Calif.) | 17.4 | 7.9 | 1.5 |
| Chase Tapley (G, 6-3, 195, Jr., Sacramento, Calif.) | 15.8 | 4.3 | 2.3 |
| Xavier Thames (G, 6-3, 195, So., Sacramento, Calif.) | 10.1 | 3.2 | 4.1 |
| James Rahon (G, 6-5, 210, Jr., San Diego, Calif.) | 8.9 | 2.7 | 0.8 |
| Garrett Green (F, 6-11, 240, Sr., Woodland Hills, Calif.) | 6.0 | 4.6 | 0.6 |
| DeShawn Stephens (F, 6-8, 215, Jr., Los Angeles, Calif.) | 5.2 | 4.9 | 0.3 |
| Tim Shelton (F, 6-7, 240, Sr., Fresno, Calif.) | 5.2 | 4.6 | 1.6 |
| LaBradford Franklin (G, 6-2, 175, So., Temecula, Calif.) | 2.8 | 1.4 | 1.6 |
| Alec Williams (F, 6-6, 245, Jr., San Juan Capistrano, Calif.) | 4.0 | 2.1 | 0.2 |
| Narbeh Ebrahimian (G, 6-3, 198, Jr., Glendale, Calif.) | 0.9 | 1.3 | 0.4 |
| Jeremy Castleberry (G, 5-10, 198, So., Upper Marlboro, Md.) | 1.0 | 0.2 | 0.0 |
| Ryan Staten (G, 6-1, 175, Fr., San Pablo, Calif.) | 1.5 | 0.5 | 0.0 |
| Aaron Douglas (G, 6-1, 195, Jr., San Diego, Calif.) | 0.5 | 0.0 | 0.0 |
| James Johnson (F, 6-9, 238, So., Wildomar, Calif.) | | REDSHIRT | |
| JJ O'Brien (F, 6-7, 215, So., Rancho Cucamonga, Calif.) | | REDSHIRT | |
| Dwayne Polee II (F, 6-7, 195, So., Los Angeles, Calif.) | | REDSHIRT | |

Assistant Coaches: Brian Dutcher, Mark Fisher, Tony Bland

2012-13 • 23-11/9-7 MW/NCAA Tournament



► San Diego State won 20 or more games and advanced to the postseason for the eighth straight season.

► SDSU won at least 23 games for the fifth year in a row.

► SDSU was ranked in the AP Poll for 12 weeks, including the first 11 of the season, and was ranked as high as No. 15.

► The Aztecs were ranked as high as No. 15 for three consecutive weeks in the USA Today/ESPN Coaches Poll.

Overall, SDSU was ranked the first 15 weeks of the year.

Steve Fisher Era/Game-By-Game



SIX CONSECUTIVE NCAA TOURNAMENT APPEARANCES ► NINE-TIME MW CHAMPIONS

- SDSU advanced to the NCAA tournament for the fourth season in a row and was a No. 7 seed in the South Region.
- The Aztecs advanced to the third round of the NCAA Tournament for the second time in three seasons and picked up their third NCAA victory in the process.
- Jamaal Franklin earned honorable mention All-America honors from the *Associated Press* for the second straight season, becoming the first Aztec to do so since Michael Cage in 1983-84.
- Franklin and Chase Tapley both earned all-MW accolades with Franklin landing on the first team and Tapley on the third.

| | PPG | RPG | APG |
|---|------|----------|-----|
| Jamaal Franklin (G, 6-5, 205, Jr., Hawthorne, Calif.) | 17.0 | 9.5 | 3.3 |
| Chase Tapley (G, 6-3, 195, Sr., Sacramento, Calif.) | 13.5 | 3.2 | 2.7 |
| Xavier Thames (G, 6-3, 190, Jr., Sacramento, Calif.) | 9.5 | 2.7 | 2.4 |
| JJ O'Brien (F, 6-7, 225, So., Rancho Cucamonga, Calif.) | 7.2 | 4.5 | 1.5 |
| James Rahon (G, 6-5, 205, Sr., San Diego, Calif.) | 7.0 | 1.8 | 0.6 |
| DeShawn Stephens (F, 6-8, 225, Sr., Los Angeles, Calif.) | 6.1 | 5.1 | 0.2 |
| Winston Shepard (F, 6-8, 210, Fr., Houston, Texas) | 5.7 | 3.5 | 2.0 |
| Skylar Spencer (F, 6-9, 235, Fr., Inglewood, Calif.) | 2.9 | 2.9 | 0.2 |
| Dwayne Polee II (F, 6-7, 195, So., Los Angeles, Calif.) | 2.8 | 1.9 | 0.2 |
| James Johnson (F, 6-9, 235, So., San Diego, Calif.) | 1.1 | 0.2 | 0.1 |
| LaBradford Franklin (G, 6-2, 175, Jr., Temecula, Calif.) | 3.0 | 0.7 | 0.7 |
| Aaron Douglas (G, 6-1, 195, Sr., San Diego, Calif.) | 1.3 | 0.0 | 0.0 |
| Narbeh Ebrahimiyan (G, 6-3, 200, Sr., Glendale, Calif.) | 0.5 | 0.0 | 0.1 |
| Ryan Staten (G, 6-1, 195, So., San Pablo, Calif.) | 0.4 | 0.2 | 0.0 |
| Jeremy Castleberry (G, 5-10, 205, Jr., Upper Marlboro, Md.) | 0.5 | 0.3 | 0.0 |
| Aqeel Quinn (G, 6-3, 200, Jr., Gardena, Calif.) | | REDSHIRT | |
| Matt Shrigley (F, 6-6, 195, Fr., San Diego, Calif.) | | REDSHIRT | |

Assistant Coaches: Brian Dutcher, Mark Fisher, Tony Bland

2013-14 • 31-5/16-2 MW/NCAA Tournament/MW Champs



- San Diego State won 30 or more games for the second time in four seasons and advanced to the NCAA tournament for the fifth straight year.
- The Aztecs won at least 23 games for the sixth year in a row, won their MW-leading eighth title and captured their second outright regular-season crown.
- SDSU was ranked in the *AP* Poll the final 16 weeks of the season and was ranked as high as No. 5 for three straight weeks. The Aztecs finished the year at No. 13.
- The Aztecs were ranked as high as No. 5 for three consecutive weeks in the *USA Today* Coaches Poll. Overall, SDSU was ranked the final 15 weeks of the regular season before finishing at No. 12 in the postseason poll.
- SDSU earned a No. 4 seed in the West Region and advanced to the Sweet 16 for the second time in four seasons.
- The Aztecs finished the season ranked in the top 10 nationally in scoring defense (2nd), three-point field-goal defense (5th), win percentage (5th), scoring margin (6th) and field-goal percentage defense (8th).
- Xavier Thames earned honorable mention All-America honors from the *Associated Press* after being named the MW Player of the Year.
- Steve Fisher was named the MW Coach of the Year, while Josh Davis and Dwayne Polee II were voted the MW Newcomer and Sixth Man of the Year, respectively.

| | PPG | RPG | APG |
|--|------|-----|-----|
| Xavier Thames (G, 6-3, 195, Sr., Sacramento, Calif.) | 17.6 | 2.9 | 3.2 |
| Winston Shepard (F, 6-8, 205, So., Houston, Texas) | 11.6 | 4.9 | 2.1 |

► 1989 • 6-0

NCAA Champions

Home: 0-0, Away: 0-0, Neutral: 6-0

Starting Lineup: Glen Rice (F, Sr., 25.6 ppg, 6.3 rpg), Loy Vaught (F, Jr., 12.6 ppg, 8.0 rpg), Terry Mills (C, Jr., 11.6 ppg, 5.9 rpg), Rumeal Robinson (G, Jr., 14.9 ppg, 6.3 apg), Michael Griffin (G, Jr., 2.7 ppg, 2.4 rpg)

NCAA 1ST/2ND ROUNDS - SOUTHEAST REGIONAL (Atlanta, Ga.)

M.17 vs. XavierW 92-87

M.19 vs. South AlabamaW 91-82

NCAA REGIONAL ROUNDS - SOUTHEAST REGIONAL (Lexington, Ky.)

M.23 vs. (5) North CarolinaW 92-87

M.25 vs. VirginiaW 102-65

NCAA FINAL FOUR (Seattle, Wash.)

A.1 vs. (3) IllinoisW 83-81

A.3 vs. (11) Seton Hallot-W 81-80

► 1989-90 • 23-8; 12-6 Big Ten

NCAA Second Round

Home: 15-1, Away: 6-5, Neutral: 2-2

Starting Lineup: Sean Higgins (F, Jr., 14.0 ppg, 3.6 rpg), Loy Vaught (F, Sr., 15.5 ppg, 11.2 rpg), Terry Mills (C, Sr., 18.1 ppg, 8.0 rpg), Rumeal Robinson (G, Jr., 19.2 ppg, 6.1 apg), Michael Griffin (G, Sr., 3.5 ppg, 2.6 apg)

TIP-OFF CLASSIC (Springfield, Mass.)

N.25 vs. (6) ArizonaL 75-82

N.27 at Boston UniversityW 73-65

N.29 Grambling StateW 85-70

D.2 Iowa StateW 101-78

D.6 Central MichiganW 100-51

D.9 (6) Dukeot-W 113-108

D.11 Chicago StateW 84-57

D.16 at MarquetteW 82-73

DUEL IN THE DESERT (Las Vegas, Nev.)

D.23 vs. Seton HallW 91-86

| | | | |
|---|-----|----------|-----|
| Dwayne Polee II (F, 6-7, 195, Jr., Los Angeles, Calif.) | 8.5 | 3.3 | 0.4 |
| JJ O'Brien (F, 6-7, 220, Jr., Rancho Cucamonga, Calif.) | 7.8 | 4.7 | 1.1 |
| Josh Davis (F, 6-8, 215, Sr., Raleigh, N.C.) | 7.7 | 10.1 | 0.9 |
| Matt Shrigley (F, 6-6, 195, RS-Fr., San Diego, Calif.) | 5.2 | 1.6 | 0.5 |
| Skylar Spencer (F, 6-10, 235, So., Inglewood, Calif.) | 4.8 | 4.3 | 0.2 |
| Aqeel Quinn (G, 6-3, 200, Jr., Gardena, Calif.) | 5.0 | 1.6 | 1.0 |
| Dakarai Allen (G, 6-5, 195, Fr., Elk Grove, Calif.) | 2.5 | 1.2 | 0.4 |
| James Johnson (F, 6-10, 235, Jr., San Diego, Calif.) | 1.8 | 1.5 | 0.1 |
| D'Erryl Williams (G, 6-2, 200, Fr., Sacramento, Calif.) | 0.7 | 0.6 | 0.4 |
| Niksha Federico (F, 6-6, 185, Fr., San Diego, Calif.) | 2.8 | 0.8 | 0.3 |
| Kibret Wolde michael (G, 5-7, 150, Fr., San Marcos, Calif.) | 2.5 | 0.3 | 1.0 |
| Desmond Maxwell (G, 6-0, 165, Fr., View Park, Calif.) | 2.0 | 0.8 | 0.5 |
| Ryan Staten (G, 6-2, 190, Jr., San Pablo, Calif.) | 0.9 | 1.1 | 0.1 |
| Angelo Chol (F, 6-9, 225, Jr., San Diego, Calif.) | | REDSHIRT | |
| Parker U'u (G, 6-4, 210, So., Sacramento, Calif.) | | REDSHIRT | |

Assistant Coaches: Brian Dutcher, Justin Hutson, David Velasquez

2014-15 • 27-9/14-4 MW/NCAA Tournament/MW Champs



- San Diego State advanced to the NCAA tournament for the sixth straight year and moved on to the Round of 32 for the third season in a row.
- The Aztecs won at least 23 games for the seventh year in a row and won their MW-leading ninth title (co-regular season).
- SDSU was ranked in the *AP* Poll seven times and rose to as high as No. 13.

- The Aztecs were ranked as high as No. 14 in the *USA Today* Coaches Poll. Overall, SDSU was ranked 11 times before receiving votes in the final poll.
- SDSU earned an at-large NCAA tournament berth and was a No. 8 seed in the South Region. The Aztecs fell to eventual national champion Duke in the third round.
- The Aztecs finished the season ranked in the top 10 nationally in scoring defense (2nd), fewest personal fouls per game (4th) and field-goal percentage defense (7th).
- Winston Shepard and JJ O'Brien were all-MW second-team honorees as voted by the MW media. Aqeel Quinn was a third-teamer. Skylar Spencer was named the defensive player of the year.
- Postseason awards by MW coaches: O'Brien (first team, all-defense), Shepard (second team), Quinn (third team), Spencer (co-defensive player of the year, all-defense).

| | PPG | RPG | APG |
|---|------|----------|-----|
| Winston Shepard (F, 6-8, 210, Jr., Houston, Texas) | 11.1 | 5.3 | 1.9 |
| JJ O'Brien (F, 6-7, 215, Sr., Rancho Cucamonga, Calif.) | 10.3 | 5.2 | 2.4 |
| Aqeel Quinn (G, 6-3, 200, Sr., Los Angeles, Calif.) | 10.7 | 2.8 | 1.5 |
| Trey Kell (G, 6-4, 215, Fr., San Diego, Calif.) | 5.6 | 2.8 | 1.6 |
| Malik Pope (F, 6-10, 205, Fr., Sacramento, Calif.) | 5.1 | 2.7 | 0.6 |
| Dwayne Polee II (F, 6-7, 200, Sr., Los Angeles, Calif.) | 7.8 | 2.6 | 0.8 |
| Angelo Chol (F, 6-9, 220, Jr., San Diego, Calif.) | 4.4 | 3.1 | 0.2 |
| Matt Shrigley (F, 6-6, 190, So., San Diego, Calif.) | 5.1 | 1.6 | 1.0 |
| Skylar Spencer (F, 6-10, 240 Jr., Inglewood, Calif.) | 3.7 | 5.1 | 0.3 |
| Dakarai Allen (G, 6-5, 190, So., Elk Grove, Calif.) | 2.6 | 1.7 | 0.4 |
| Kevin Zabo (G, 6-2, 185, Fr., Gatineau, Quebec, Canada) | 2.6 | 1.0 | 0.6 |
| D'Erryl Williams (G, 6-2, 195, So., Sacramento, Calif.) | 1.1 | 0.7 | 0.4 |
| Kibret Wolde michael (G, 5-7, 150, So., San Marcos, Calif.) | 1.2 | 0.3 | 0.0 |
| Parker U'u (G, 6-4, 220, So., Sacramento, Calif.) | 1.0 | 3.0 | 0.0 |
| Ryan Staten (G, 6-2, 185, Sr., San Pablo, Calif.) | 0.0 | 0.2 | 0.3 |
| Niksha Federico (F, 6-6, 185, So., San Diego, Calif.) | 0.0 | 0.2 | 0.0 |
| Zylan Cheatham (F, 6-7, 210, Fr., Phoenix, Ariz.) | | REDSHIRT | |

Assistant Coaches: Brian Dutcher, Justin Hutson, David Velasquez

| |
|---------------------------------------|
| D.28 Northern MichiganW 102-74 |
| D.30 Eastern MichiganW 107-83 |
| J.8 *at (9) IndianaL 67-69 |
| J.13 *(16) MinnesotaW 87-83 |
| J.15 *(8) IllinoisW 74-70 |
| J.18 *Ohio StateW 90-88 |
| J.20 *at Iowaot-L 76-78 |
| J.25 *at NorthwesternW 86-79 |
| J.27 *Michigan StateW 65-63 |
| J.31 *(8) PurdueL 73-91 |
| F.3 *at WisconsinW 77-63 |
| F.8 *(25) IndianaW 79-71 |
| F.11 *(12) IllinoisW 93-79 |
| F.15 *(17) MinnesotaW 77-73 |
| F.18 *at Ohio StateL 61-64 |
| F.24 *NorthwesternW 94-69 |
| M.1 *(14) Michigan StateL 70-78 |
| M.4 *(9) PurdueL 77-79 |

Steve Fisher Game-By-Game



SIX CONSECUTIVE NCAA TOURNAMENT APPEARANCES ► NINE-TIME MW CHAMPIONS

| | | | |
|---|---------------------------|---|---------|
| M.8 | *Wisconsin | W | 94-64 |
| M.10 | *Iowa | W | 127-96 |
| NCAA 1ST/2ND ROUNDS - WEST REGIONAL (Los Angeles, Calif) | | | |
| M.16 | vs. Illinois State | W | 76-70 |
| M.17 | vs. (21) Loyola Marymount | L | 115-149 |

* - Big Ten Conference Game.

► 1990-91 • 14-15; 7-11 Big Ten

Home: 10-5, Away: 3-9, Neutral: 1-1
Postseason NIT First Round

Starting Lineup: James Voskuil (F, So., 6.7 ppg, 2.9 rpg), Freddie Hunter (F, Jr., 3.6 ppg, 4.3 rpg), Eric Riley (C, So., 10.6 ppg, 8.6 rpg), Demetrius Calip (G, Sr., 20.5 ppg, 3.9 rpg), Michael Talley (G, So., 11.0 ppg, 3.2 apg)

| | | | |
|------|-------------------|---|--------|
| N.28 | Central Michigan | W | 72-63 |
| D.1 | Utah | W | 81-65 |
| D.4 | Eastern Michigan | W | 78-76 |
| D.8 | at (5) Duke | L | 68-75 |
| D.10 | Boston University | W | 90-68 |
| D.12 | Chicago State | W | 102-78 |
| D.15 | at Iowa State | L | 72-81 |
| D.22 | Marquette | W | 89-81 |

ASU CACTUS CLASSIC TOURNAMENT (Tempe, Ariz.)

| | | | |
|------|-------------------------|-------|--------|
| D.28 | vs. Texas | L | 74-76 |
| D.29 | vs. Pennsylvania | W | 84-62 |
| J.3 | *at (25) Michigan State | L | 70-85 |
| J.5 | * (6) Ohio State | L | 57-67 |
| J.10 | *at (22) Iowa | L | 78-79 |
| J.12 | *at Purdue | L | 69-86 |
| J.17 | *Northwestern | W | 79-68 |
| J.19 | *at Wisconsin | ot-W | 69-68 |
| J.24 | * (3) Indiana | L | 60-70 |
| J.26 | *Illinois | L | 67-72 |
| J.31 | *at Minnesota | W | 66-62 |
| F.9 | *Iowa | W | 84-70 |
| F.11 | *at (3) Ohio State | L | 65-81 |
| F.16 | *at Northwestern | W | 64-58 |
| F.18 | *Purdue | 2ot-L | 77-83 |
| F.21 | *Wisconsin | W | 65-62 |
| F.24 | *at (4) Indiana | L | 70-112 |
| F.28 | *at Illinois | L | 65-68 |
| M.3 | *Minnesota | W | 68-60 |
| M.9 | *Michigan State | L | 59-66 |

POSTSEASON NIT (Boulder, Colo.)

| | | | |
|------|-------------|---|-------|
| M.13 | at Colorado | L | 64-71 |
|------|-------------|---|-------|

* - Big Ten Conference Game.

► 1991-92 • 25-9; 11-7 Big Ten

NCAA Runner-Up

Home: 10-4, Away: 8-4, Neutral: 7-1

Starting Lineup: Chris Webber (F, Fr., 15.5 ppg, 10.0 rpg), Ray Jackson (F, Jr., 4.6 ppg, 3.0 rpg), Juwan Howard (C, Fr., 11.1 ppg, 6.2 rpg), Jalen Rose (G, Fr., 17.6 ppg, 4.3 rpg), Jimmy King (G, Fr., 9.9 ppg, 3.3 rpg)

| | | | |
|------|--------------------|------|--------|
| D.2 | at Detroit | W | 100-74 |
| D.7 | at Cleveland State | W | 80-61 |
| D.9 | Chicago State | W | 112-62 |
| D.12 | Eastern Michigan | W | 91-77 |
| D.14 | (1) Duke | ot-L | 77-85 |
| D.16 | Central Michigan | W | 86-70 |
| D.21 | Rice | W | 87-70 |

RED LOBSTER CLASSIC (Orlando, Fla.)

| | | | |
|------|-------------------------|------|-------|
| D.28 | vs. Brigham Young | W | 86-83 |
| D.30 | vs. Virginia Tech | W | 63-51 |
| J.9 | *at Iowa | ot-W | 80-77 |
| J.11 | *at Minnesota | L | 64-73 |
| J.15 | *Purdue | L | 60-65 |
| J.18 | *at Illinois | W | 68-61 |
| J.21 | *at (4) Indiana | L | 74-89 |
| J.25 | *Wisconsin | W | 98-83 |
| J.29 | *at (13) Michigan State | ot-W | 89-79 |
| F.2 | * (10) Ohio State | L | 58-68 |
| F.5 | *Northwestern | W | 81-58 |
| F.9 | at Notre Dame | W | 74-65 |
| F.12 | *Iowa | W | 79-74 |
| F.15 | * (12) Michigan State | L | 59-70 |
| F.19 | *Minnesota | W | 95-70 |
| F.22 | *at Northwestern | W | 76-63 |
| F.26 | *at Wisconsin | L | 78-96 |
| M.3 | *at (5) Ohio State | L | 66-77 |
| M.8 | * (2) Indiana | W | 68-60 |
| M.11 | *at Purdue | W | 70-61 |
| M.14 | *Illinois | W | 68-59 |

NCAA 1ST/2ND ROUNDS - SOUTHEAST REGIONAL (Atlanta, Ga.)

| | | | |
|------|----------------------|---|--------|
| M.20 | vs. Temple | W | 73-66 |
| M.22 | vs. E. Tennessee St. | W | 102-90 |

NCAA SOUTHEAST REGIONAL (Lexington, Ky.)

| | | | |
|------|-------------------------|---|-------|
| M.27 | vs. (11) Oklahoma State | W | 75-72 |
|------|-------------------------|---|-------|

| | | | |
|---|---------------------|------|-------|
| M.29 | vs. (3) Ohio State | ot-W | 76-72 |
| NCAA FINAL FOUR (Minneapolis, Minn.) | | | |
| A.4 | vs. (12) Cincinnati | W | 76-72 |
| A.6 | vs. (1) Duke | L | 51-71 |

* - Big Ten Conference Game.

► 1992-93 • 31-5; 15-3 Big Ten

NCAA Runner-Up

Home: 14-1, Away: 8-3, Neutral: 9-1

Starting Lineup: Chris Webber (F, So., 19.2 ppg, 10.1 rpg), Ray Jackson (F, So., 9.0 ppg, 4.1 rpg), Juwan Howard (C, So., 14.6 ppg, 7.4 rpg), Jalen Rose (G, So., 15.4, 4.2 rpg), Jimmy King (G, So., 10.8 ppg, 4.4 rpg)

| | | | |
|------|------------------|---|-------|
| D.1 | at Rice | W | 75-71 |
| D.5 | at (4) Duke | L | 68-79 |
| D.7 | Detroit | W | 92-77 |
| D.9 | Bowling Green | W | 79-68 |
| D.14 | Cleveland State | W | 88-56 |
| D.19 | ^Iowa State | W | 94-72 |
| D.21 | Central Michigan | W | 94-69 |

RAINBOW CLASSIC (Honolulu, Hawaii)

| | | | |
|------|-------------------------|---|-------|
| D.28 | vs. (20) Nebraska | W | 88-73 |
| D.29 | vs. (5) North Carolina | W | 79-78 |
| D.30 | vs. (2) Kansas | W | 86-74 |
| J.2 | Eastern Michigan | W | 88-58 |
| J.7 | *at (9) Purdue | W | 80-70 |
| J.9 | *at Wisconsin | W | 98-73 |
| J.12 | * (6) Indiana | L | 75-76 |
| J.16 | Notre Dame | W | 70-55 |
| J.20 | *at Minnesota | W | 80-73 |
| J.23 | *Illinois | W | 76-68 |
| J.28 | *Ohio State | W | 66-64 |
| J.31 | *at (11) Iowa | L | 80-88 |
| F.2 | *at (25) Michigan State | W | 73-69 |
| F.7 | * (19) Purdue | W | 84-76 |
| F.10 | *Wisconsin | W | 85-66 |
| F.14 | *at (1) Indiana | L | 92-93 |
| F.17 | *at Penn State | W | 80-70 |
| F.20 | *Minnesota | W | 84-69 |
| F.28 | *at Ohio State | W | 66-64 |

| | | | |
|------|-----------------|------|-------|
| M.2 | * (15) Iowa | W | 82-73 |
| M.7 | *Michigan State | ot-W | 87-81 |
| M.10 | *at Illinois | ot-W | 98-97 |
| M.13 | *Northwestern | W | 86-60 |

NCAA 1ST/2ND ROUNDS - WEST REGIONAL (Tucson, Ariz.)

| | | | |
|------|----------------------|------|-------|
| M.19 | vs. Coastal Carolina | W | 84-53 |
| M.21 | vs. UCLA | ot-W | 86-84 |

NCAA WEST REGIONAL (Tucson, Ariz.)

| | | | |
|------|-----------------------|---|-------|
| M.26 | vs. George Washington | W | 72-64 |
| M.28 | vs. Temple | W | 77-72 |

NCAA FINAL FOUR (New Orleans, La.)

| | | | |
|-----|------------------------|------|-------|
| A.3 | vs. (2) Kentucky | ot-W | 81-78 |
| A.5 | vs. (4) North Carolina | L | 71-77 |

* - Big Ten Conference Game. ^ - Palace of Auburn Hills (Auburn Hills, Mich.).

► 1993-94 • 24-8; 13-5 Big Ten

NCAA Regional Finalist

Home: 14-2, Away: 5-5, Neutral: 5-1

Starting Lineup: Ray Jackson (F, Jr., 11.4 ppg, 6.3 rpg), Juwan Howard (C, Jr., 20.8 ppg, 9.0 rpg), Jalen Rose (G, Jr., 19.9 ppg, 5.7 rpg), Jimmy King (Jr., G, 12.3 ppg, 3.9 rpg), Dugan Fife (So., G, 6.5 ppg, 2.7 rpg)

| | | | |
|---|-----------------------|---|-------|
| TIP-OFF CLASSIC (Springfield, Mass.) | | | |
| N.26 | vs. (13) Georgia Tech | W | 80-70 |
| N.29 | Cleveland State | W | 84-71 |
| D.1 | Tulane | W | 84-69 |
| D.4 | Tenn.-Chattanooga | W | 97-86 |
| D.6 | Detroit | W | 78-60 |
| D.11 | (4) Duke | L | 63-73 |
| D.20 | Central Michigan | W | 86-44 |

FIESTA BOWL CLASSIC (Tucson, Ariz.)

| | | | |
|------|--------------------|------|--------|
| D.28 | vs. Auburn | W | 102-81 |
| D.30 | at (12) Arizona | L | 95-119 |
| J.3 | Boston University | W | 111-84 |
| J.5 | *Michigan State | W | 75-64 |
| J.8 | *at Iowa | W | 71-70 |
| J.13 | *Ohio State | ot-W | 86-75 |
| J.16 | *at (11) Indiana | L | 62-72 |
| J.20 | *at (20) Minnesota | L | 58-63 |
| J.23 | *at Illinois | W | 74-70 |
| J.29 | * (16) Wisconsin | W | 79-75 |
| F.1 | *at (8) Purdue | W | 63-62 |
| F.5 | *at Michigan State | W | 59-51 |
| F.8 | * (12) Indiana | W | 91-67 |
| F.13 | *at Ohio State | W | 72-70 |
| F.16 | *Iowa | W | 89-76 |
| F.19 | * (20) Minnesota | W | 72-65 |
| F.22 | *Illinois | W | 79-70 |

| | | | |
|------|------------------|------|-------|
| M.2 | *at Wisconsin | L | 58-71 |
| M.6 | * (9) Purdue | L | 94-95 |
| M.9 | *Penn State | W | 81-72 |
| M.12 | *at Northwestern | ot-L | 93-97 |

NCAA 1ST/2ND ROUNDS - MIDEAST REGIONAL (Wichita, Kan.)

| | | | |
|------|----------------|------|-------|
| M.17 | vs. Pepperdine | ot-W | 78-74 |
| M.19 | vs. (20) Texas | W | 84-79 |

NCAA MIDEAST REGIONAL (Dallas, Texas)

| | | | |
|------|------------------|---|-------|
| M.24 | vs. Maryland | W | 78-71 |
| M.27 | vs. (2) Arkansas | L | 68-76 |

* - Big Ten Conference Game.

► 1994-95 • 17-14; 11-7 Big Ten

NCAA First Round

Home: 10-3, Away: 4-7, Neutral: 3-4

Starting Lineup: Ray Jackson (F, Sr., 15.8 ppg, 5.3 rpg), Maurice Taylor (F, Fr., 12.4 ppg, 5.1 rpg), Makhtar Ndiaye (C, So., 5.0 ppg, 5.2 rpg), Jimmy King (Sr., G, 14.7 ppg, 5.0 rpg), Dugan Fife (Jr., G, 3.4 ppg, 1.9 apg)

MAUI CLASSIC (Lahaina, Hawaii)

| | | | |
|------|-------------------|---|-------|
| N.21 | vs. Tulane | W | 75-73 |
| N.22 | vs. Arizona State | L | 62-79 |
| N.23 | vs. Utah | W | 73-69 |

GREAT EIGHT BASKETBALL CLASSIC (Auburn Hills, Mich.)

| | | | |
|------|----------------------|---|-------|
| N.30 | vs. (9) Arizona | L | 57-78 |
| D.3 | at Tenn.-Chattanooga | W | 83-71 |
| D.5 | Detroit | W | 87-76 |
| D.10 | at (9) Duke | L | 59-69 |
| D.13 | Pennsylvania | L | 60-62 |
| D.22 | Jackson State | W | 87-81 |

US WEST CELLULAR AIR TIME TOURNAMENT (Seattle, Wash.)

| | | | |
|------|----------------|------|-------|
| D.29 | vs. Portland | ot-W | 88-84 |
| D.30 | vs. Washington | L | 61-65 |

| | | | |
|------|-----------------------|-------|-------|
| J.3 | *Purdue | W | 71-61 |
| J.8 | *at Penn State | L | 63-73 |
| J.11 | * (19) Iowa | 2ot-W | 83-82 |
| J.14 | *at Northwestern | W | 92-70 |
| J.17 | *at (20) Illinois | W | 69-59 |
| J.22 | * (12) Michigan State | L | 71-73 |
| J.24 | *at Indiana | W | 65-52 |
| J.29 | St. John's | L | 77-82 |

| | | | |
|------|-------------------------|---|-------|
| F.1 | *Wisconsin | W | 62-58 |
| F.4 | *at Minnesota | L | 58-80 |
| F.8 | *Ohio State | W | 72-58 |
| F.11 | *at Wisconsin | L | 65-70 |
| F.19 | *Indiana | W | 61-50 |
| F.21 | *at (12) Michigan State | L | 64-67 |
| F.26 | *Illinois | W | 63-51 |
| M.1 | *Northwestern | W | 81-64 |
| M.5 | *at Iowa | L | 69-89 |

| | | | |
|------|-----------------|---|-------|
| M.8 | *Penn State | W | 67-60 |
| M.12 | *at (14) Purdue | L | 67-73 |

NCAA 1ST/2ND ROUNDS - MIDWEST REGIONAL (Dayton, Ohio)

| | | | |
|------|---------------------------|------|-------|
| M.16 | vs. (21) Western Kentucky | ot-L | 76-82 |
|------|---------------------------|------|-------|

* - Big Ten Conference Game.

► 1995-96 • 20-12; 10-8 Big Ten

NCAA First Round

Home: 11-2, Away: 6-6, Neutral: 3-4

Starting Lineup: Maurice Taylor (F, So., 14.0 ppg, 7.1 rpg), Maceo Baston (C, So., 11.7 ppg, 6.7 rpg), Louis Bullock (G, Fr., 13.5 ppg, 3.0 rpg), Travis Conlan (G, So., 4.5 ppg, 4.8 apg), Dugan Fife (G, Sr., 4.6 ppg, 2.3 rpg)

| | | | |
|------|-----------------------|---|-------|
| N.15 | vs. DePaul | W | 73-65 |
| N.17 | vs. Weber State | W | 80-62 |
| N.22 | vs. (4) Arizona | L | 79-86 |
| N.24 | vs. (25) Georgia Tech | L | 61-77 |
| N.27 | St. Francis | W | 84-52 |
| N.29 | at Ball State | W | 80-52 |
| D.2 | at Detroit | W | 68-48 |

| | | | |
|------|--------------------|---|-------|
| D.5 | at Louisiana State | W | 69-68 |
| D.9 | (18) Duke | W | 88-84 |
| D.16 | Washington | W | 60-59 |
| D.18 | Cleveland State | W | 84-55 |
| D.28 | vs. UNLV | L | 64-66 |
| D.30 | vs. Davidson | W | 82-70 |
| J.3 | *at Wisconsin | L | 46-51 |
| J.6 | *Northwestern | W | 83-51 |
| J.9 | * (21) Illinois | W | 83-68 |

| | | | |
|------|--------------------|---|-------|
| J.13 | *at Michigan State | W | 76-54 |
| J.21 | * (14) Penn State | W | 67-66 |
| J.23 | *at Indiana | L | 83-99 |
| J.28 | *at (22) Iowa | L | 61-70 |
| J.31 | * (17) Purdue | L | 64-69 |
| F.3 | *at Ohio State | W | 77-58 |
| F.10 | *at (14) Purdue | L | 64-69 |
| F.13 | * (19) Iowa | L | 55-62 |
| F.18 | *Indiana | W | 80-75 |

Steve Fisher Game-By-Game



SIX CONSECUTIVE NCAA TOURNAMENT APPEARANCES ► NINE-TIME MW CHAMPIONS

| | | | |
|---|---------------------|---|-------|
| F.22 | *at (14) Penn State | L | 57-67 |
| F.24 | *Minnesota | W | 65-62 |
| F.27 | *Michigan State | W | 75-46 |
| M.3 | *at Illinois | L | 62-73 |
| M.6 | *at Northwestern | W | 77-50 |
| M.9 | *Wisconsin | W | 65-51 |
| NCAA 1ST/2ND ROUNDS - MIDWEST REGIONAL (Milwaukee, Wis.) | | | |
| M.15 | vs. Texas | L | 76-80 |

* - Big Ten Conference Game.

► 1996-97 • 24-11; 9-9 Big Ten

Postseason NIT Champions

Home: 9-3, Away: 6-6, Neutral: 9-2

Starting Lineup: Maurice Taylor (F, Jr., 12.4 ppg, 6.2 rpg), Jerod Ward (F, Jr., 8.3 ppg, 3.5 rpg), Robert Traylor (C, So., 13.1 ppg, 7.7 rpg), Louis Bullock (G, So., 16.3 ppg, 3.0 rpg), Travis Conlan (G, Jr., 4.7 ppg, 3.7 rpg)

| | | | |
|------|----------------------|------|-------|
| N.26 | Ball State | W | 87-63 |
| N.30 | at Cleveland State | W | 80-74 |
| D.2 | Bradley | ot-W | 66-64 |
| D.5 | Detroit | W | 75-59 |
| D.8 | at (10) Duke | W | 62-61 |
| D.11 | vs. St. John's | W | 76-61 |
| D.15 | vs. Louisiana State | W | 70-59 |
| D.21 | vs. (6) Arizona | ot-W | 73-71 |
| D.28 | vs. Memphis | L | 72-73 |
| D.29 | vs. Washington State | W | 85-79 |
| D.30 | vs. Pittsburgh | L | 78-85 |
| J.2 | *Ohio State | L | 71-73 |
| J.4 | *at Northwestern | W | 75-57 |
| J.9 | *(25) Illinois | W | 88-74 |
| J.11 | *at (11) Minnesota | L | 64-70 |
| J.16 | *Purdue | W | 89-65 |
| J.19 | *Iowa | W | 79-71 |
| J.21 | *at (21) Indiana | L | 70-72 |
| J.25 | at Michigan State | W | 74-61 |
| J.28 | *at Penn State | W | 67-59 |
| F.1 | *Michigan State | W | 85-65 |
| F.6 | *at Wisconsin | L | 53-58 |
| F.8 | *Penn State | W | 81-64 |
| F.16 | *Indiana | ot-L | 81-84 |
| F.20 | *at Iowa | L | 75-80 |
| F.23 | *at Purdue | L | 58-67 |
| F.26 | *(2) Minnesota | L | 54-55 |
| M.2 | *at (21) Illinois | L | 51-70 |
| M.5 | *Northwestern | W | 93-76 |
| M.9 | *Ohio State | ot-W | 86-81 |

POSTSEASON NIT (Ann Arbor, Mich.)

| | | | |
|------|----------------|---|-------|
| M.13 | Miami (Fla.) | W | 76-63 |
| M.18 | Oklahoma State | W | 75-65 |

POSTSEASON NIT (Notre Dame, Ind.)

| | | | |
|------|---------------|---|-------|
| M.20 | at Notre Dame | W | 67-66 |
|------|---------------|---|-------|

POSTSEASON NIT (New York, N.Y.)

| | | | |
|------|-------------------|---|-------|
| M.25 | vs. Arkansas | W | 77-62 |
| M.27 | vs. Florida State | W | 82-73 |

* - Big Ten Conference Game.

► 1999-00 • 5-23; 0-14 Mountain West

Home: 5-10, Away: 0-13, Neutral: 0-0

Starting Lineup: Myron Epps (F, So., 14.4 ppg, 5.9 rpg), Vincent Okotie (F, So., 6.6, 2.6), Marcelo Correa (C, Jr., 10.2, 6.4), Bradley Jackson (G, Fr., 7.1, 2.7), Donte Wilson (G, Sr., 4.5, 2.0)

| | | | |
|------|---------------------------|-------|-------|
| N.24 | UC Riverside | W | 73-57 |
| N.30 | at New Mexico State | L | 49-66 |
| D.4 | at San Diego | L | 45-73 |
| D.12 | at (17/17) Oklahoma State | L | 63-97 |
| D.16 | South Carolina State | W | 72-57 |
| D.18 | at Arizona State | L | 85-99 |
| D.20 | Southern California | L | 54-87 |
| D.22 | UC Santa Barbara | W | 60-57 |
| D.27 | Ball State | L | 65-82 |
| D.30 | Loyola Marymount | W | 70-63 |
| J.2 | High Point | W | 74-63 |
| J.5 | Cal State Fullerton | L | 66-72 |
| J.8 | at Pacific | L | 63-74 |
| J.10 | *(-/24) Utah | L | 55-70 |
| J.20 | *Air Force | 3ot-L | 77-81 |
| J.22 | *at UNLV | L | 55-83 |
| J.27 | *at Colorado State | L | 67-75 |
| J.29 | *at Wyoming | L | 87-93 |
| F.3 | *Brigham Young | L | 50-72 |
| F.5 | *New Mexico | L | 57-78 |
| F.10 | *at (21/20) Utah | L | 65-83 |
| F.12 | *Colorado State | L | 46-74 |
| F.19 | *Wyoming | L | 57-71 |
| F.24 | *at Air Force | L | 55-63 |
| F.26 | *at New Mexico | L | 49-78 |
| M.2 | *UNLV | L | 64-85 |

| | | | |
|---|-------------------|---|-------|
| M.4 | *at Brigham Young | L | 50-67 |
| MWC CHAMPIONSHIP (Las Vegas, Nev.) | | | |
| M.9 | at (#1) UNLV (QF) | L | 72-77 |

* - Mountain West Conference game.

► 2000-01 • 14-14; 4-10 Mountain West

Home: 12-5, Away: 2-8, Neutral: 0-1

Starting Lineup: Randy Holcomb (F, Jr., 15.9 ppg, 6.6 rpg), Myron Epps (F, Jr., 11.1, 4.5), Marcelo Correa (C, Sr., 6.4, 4.0), Deandre Moore (G, So., 6.8, 3.4), Al Faux (G, Jr., 10.5, 3.5)

| | | | |
|------|---------------------|-------|--------|
| N.18 | UC San Diego | W | 80-48 |
| N.21 | New Mexico State | W | 77-62 |
| N.27 | at Fresno State | L | 62-70 |
| N.30 | Florida Atlantic | W | 90-57 |
| D.2 | Sacramento State | W | 92-69 |
| D.6 | at UC Santa Barbara | 3ot-L | 77-80 |
| D.9 | San Diego | L | 52-55 |
| D.16 | Arizona State | W | 64-62 |
| D.18 | Morgan State | W | 78-64 |
| D.21 | Norfolk State | W | 79-69 |
| D.30 | Oklahoma State | W | 87-66 |
| J.4 | Texas A&M-CC | W | 84-70 |
| J.6 | at Loyola Marymount | W | 61-58 |
| J.8 | *New Mexico | L | 67-75 |
| J.13 | *at Brigham Young | L | 50-79 |
| J.15 | *at Utah | L | 39-58 |
| J.20 | *Air Force | W | 67-43 |
| J.27 | *at UNLV | ot-L | 72-82 |
| F.3 | *at Wyoming | L | 66-101 |
| F.5 | *at Colorado State | L | 56-77 |
| F.10 | *Utah | L | 63-76 |
| F.12 | *Brigham Young | L | 66-69 |
| F.17 | *at New Mexico | L | 54-72 |
| F.19 | *at Air Force | W | 62-48 |
| F.24 | *UNLV | W | 83-66 |
| M.1 | *Wyoming | L | 62-69 |
| M.3 | *Colorado State | W | 78-73 |

MWC CHAMPIONSHIP (Las Vegas, Nev.)

| | | | |
|-----|-----------------------|---|-------|
| M.8 | vs. (#3) Wyoming (QF) | L | 58-73 |
|-----|-----------------------|---|-------|

* - Mountain West Conference game.

► 2001-02 • 21-12; 7-7 Mountain West

NCAA First Round

Home: 12-3, Away: 6-8, Neutral: 3-1

Starting Lineup: Randy Holcomb (F, Sr., 16.9 ppg, 9.0 rpg), Mike Mackell (C, Jr., 10.6, 4.4), Tony Bland (G, Jr., 15.7, 4.0), Al Faux (G, Sr., 17.0, 3.6), Deandre Moore (G, Jr., 3.6, 1.9)

FORD RED RAIDER CLASSIC (Lubbock, Texas)

| | | | |
|------|------------------------|------|-------|
| N.16 | vs. Northern Iowa (SF) | W | 71-57 |
| N.17 | at Texas Tech (CH) | L | 71-81 |
| N.21 | Norfolk State | W | 78-71 |
| N.24 | at New Mexico State | L | 79-94 |
| N.27 | UC San Diego | W | 98-53 |
| D.1 | Cal State Northridge | W | 80-70 |
| D.5 | at San Diego | L | 67-72 |
| D.8 | (21/16) Fresno State | W | 93-78 |
| D.14 | at Hawai'i | W | 61-58 |
| D.20 | Eastern Washington | W | 86-58 |
| D.29 | at (1/1) Duke | L | 79-92 |
| D.31 | Columbia | W | 75-59 |
| J.2 | IPFW | W | 90-72 |
| J.8 | at Texas A&M-CC | W | 82-79 |
| J.12 | *at Brigham Young | L | 64-75 |
| J.14 | *at Utah | L | 70-76 |
| J.19 | *Colorado State | W | 81-69 |
| J.21 | *Wyoming | ot-L | 85-88 |
| J.26 | *UNLV | ot-L | 79-80 |
| J.29 | Houston | W | 78-66 |
| F.2 | *at New Mexico | W | 78-65 |
| F.4 | *at Air Force | L | 54-67 |
| F.9 | *Utah | L | 53-70 |
| F.11 | *Brigham Young | W | 77-73 |
| F.16 | *at Colorado State | W | 75-63 |
| F.18 | *at Wyoming | W | 68-64 |
| F.23 | *at UNLV | ot-L | 76-83 |
| F.28 | *New Mexico | W | 84-71 |
| M.2 | *Air Force | W | 49-47 |

MWC CHAMPIONSHIP (Las Vegas, Nev.)

| | | | |
|-----|-----------------------|---|-------|
| M.7 | vs. (#4) BYU (QF) | W | 62-51 |
| M.8 | vs. (#1) Wyoming (SF) | W | 70-69 |
| M.9 | at (#3) UNLV (CH) | W | 78-75 |

NCAA 1ST/2ND ROUNDS - MIDWEST REGIONAL (Chicago, Ill.)

| | | | |
|------|---------------------------|---|-------|
| M.15 | vs. (13/16) (#4) Illinois | L | 64-93 |
|------|---------------------------|---|-------|

* - Mountain West Conference game.

► 2002-03 • 16-14; 6-8 Mountain West

NIT Second Round

Home: 11-6, Away: 5-8, Neutral: 0-0

Starting Lineup: Evan Burns (F, Fr., 9.2 ppg, 5.1 rpg), Aerick Sanders (F, Jr., 6.1 ppg, 7.6 rpg), Mike Mackell (C, Sr., 14.4 ppg, 4.6 rpg), Tony Bland (G, Sr., 16.4 ppg, 3.5 rpg), Deandre Moore (G, Sr., 8.3 ppg, 3.7 rpg)

| | | | |
|------|---------------------|---|--------|
| N.23 | Eastern Washington | L | 70-75 |
| N.27 | at Portland | L | 86-91 |
| N.30 | at Cal Poly | W | 65-62 |
| D.2 | UC San Diego | W | 87-57 |
| D.7 | (1/1) Arizona | L | 81-89 |
| D.10 | at Long Beach State | W | 64-55 |
| D.14 | Hawai'i | W | 60-49 |
| D.21 | at Houston | W | 71-61 |
| D.28 | Florida Atlantic | W | 91-75 |
| D.30 | IPFW | W | 74-58 |
| J.3 | Loyola Marymount | W | 76-69 |
| J.6 | (23/21) Texas Tech | L | 63-75 |
| J.8 | San Diego | W | 78-72 |
| J.11 | *at Air Force | W | 63-48 |
| J.18 | *Utah | W | 58-56 |
| J.20 | *Brigham Young | L | 69-80 |
| J.25 | *at New Mexico | L | 62-66 |
| F.1 | *Colorado State | L | 69-72 |
| F.3 | *Wyoming | W | 80-70 |
| F.11 | *UNLV | L | 64-79 |
| F.15 | *at Utah | L | 62-76 |
| F.17 | *at Brigham Young | L | 64-66 |
| F.22 | *Air Force | W | 67-53 |
| F.24 | *New Mexico | W | 89-73 |
| M.1 | *at Wyoming | W | 86-73 |
| M.3 | *at Colorado State | L | 89-102 |
| M.8 | *at UNLV | L | 72-83 |

MWC CHAMPIONSHIP (Las Vegas, Nev.)

| | | | |
|------|-------------------|---|-------|
| M.13 | at (#4) UNLV (QF) | L | 67-83 |
|------|-------------------|---|-------|

POSTSEASON NIT

| | | | |
|------|-----------------------|------|-------|
| M.19 | UC Santa Barbara (FR) | ot-W | 67-62 |
| M.21 | at Texas Tech (SR) | L | 48-57 |

* - Mountain West Conference game. ^ - Lubbock, Texas.

► 2003-04 • 14-16; 5-9 Mountain West

Home: 11-4, Away: 2-10, Neutral: 1-2

Starting Lineup: Marcus Slaughter (F, Fr., 7.9 ppg, 6.8 rpg), Chris Walton (F, Jr., 8.7 ppg, 4.9 rpg), Aerick Sanders (F, Sr., 16.1 ppg, 9.8 rpg), Brandon Heath (G, Fr., 13.8 ppg, 2.7 rpg), Wesley Stokes (G, Jr., 12.1 ppg, 2.3 rpg)

| | | | |
|--|---------------------|-------|-------|
| N.21 | Long Beach State | W | 74-44 |
| EA SPORTS MAUI INVITATIONAL (Lahaina, Hawaii) | | | |
| N.24 | vs. Ohio State (QF) | W | 83-61 |
| N.25 | vs. Dayton (SF) | L | 71-76 |
| N.26 | at Chaminade (3P) | W | 75-67 |
| N.30 | Troy State | L | 84-93 |
| D.3 | at San Diego | W | 66-63 |
| D.6 | UC San Diego | W | 76-51 |
| D.13 | at Texas Tech | L | 68-78 |
| D.18 | Cal Poly | W | 90-71 |
| D.20 | Eastern Washington | W | 79-66 |
| D.22 | at (5/5) Arizona | L | 71-83 |
| D.27 | Washington | L | 81-92 |
| D.31 | Portland | W | 67-61 |
| J.3 | Iowa State | W | 86-76 |
| J.6 | at Saint Mary's | L | 66-80 |
| J.12 | *Brigham Young | W | 65-61 |
| J.17 | *UNLV | W | 83-78 |
| J.24 | *at Colorado State | 2ot-L | 82-92 |
| J.26 | *at Wyoming | L | 71-79 |
| J.31 | *Air Force | L | 43-57 |
| F.2 | *New Mexico | W | 72-68 |
| F.7 | *at Utah | L | 61-65 |
| F.9 | *at Brigham Young | ot-L | 69-83 |
| F.17 | *at UNLV | L | 65-68 |
| F.21 | *Wyoming | W | 74-66 |
| F.23 | *Colorado State | W | 72-64 |
| F.28 | *at New Mexico | L | 60-72 |
| M.1 | *at Air Force | L | 49-61 |
| M.6 | *Utah | L | 53-66 |

MWC CHAMPIONSHIP (Denver, Colo.)

| | | | |
|------|-------------------|---|-------|
| M.11 | at (#3) Utah (QF) | L | 69-75 |
|------|-------------------|---|-------|

* - Mountain West Conference game.

► 2004-05 • 11-18; 4-10 Mountain West

Home: 7-9, Away: 3-8, Neutral: 1-1

Starting Lineup: Marcus Slaughter (F, So., 17.8 ppg, 9.0 rpg), Chris Walton (F, Sr., 6.3 ppg, 2.6 rpg), Mohamed Camara (C, Jr., 2.4 ppg, 3.8 rpg), John Sharper (G, Jr., 6.0 ppg, 1.1 rpg), Brandon Heath (G, So., 18.3 ppg, 3.5 rpg)

| | | | |
|------|------------------|------|-------|
| N.19 | UC Santa Barbara | ot-L | 72-80 |
|------|------------------|------|-------|

Steve Fisher Game-By-Game



SIX CONSECUTIVE NCAA TOURNAMENT APPEARANCES ► NINE-TIME MW CHAMPIONS

STEVE FISHER GAME-BY-GAME ◀ COACHES

| | | | |
|---|--------------------------|------|-------|
| N.22 | Monmouth | W | 69-65 |
| N.27 | UC San Diego | W | 86-51 |
| D.1 | San Diego | W | 83-63 |
| D.4 | at UC Santa Barbara | W | 73-55 |
| D.7 | at (16/21) Washington | L | 69-98 |
| SAN DIEGO SLAM (San Diego, Calif.) | | | |
| D.11 | California | L | 57-60 |
| D.14 | Saint Mary's | L | 64-73 |
| D.18 | at Loyola Marymount | L | 68-72 |
| D.21 | Cal State Fullerton | W | 63-60 |
| D.28 | at Iowa State | L | 59-69 |
| D.31 | Providence | L | 67-76 |
| J.3 | South Dakota State | W | 64-49 |
| J.8 | *at Brigham Young | W | 59-57 |
| J.15 | *at UNLV | W | 81-73 |
| J.22 | *Wyoming | ot-L | 81-88 |
| J.24 | *Colorado State | W | 84-77 |
| J.29 | *at Air Force | L | 50-62 |
| J.31 | *at New Mexico | L | 71-88 |
| F.5 | *(21/22) Utah | L | 41-61 |
| F.7 | *Brigham Young | W | 66-58 |
| F.12 | *UNLV | ot-L | 91-93 |
| F.19 | *at Colorado State | ot-L | 88-93 |
| F.21 | *at Wyoming | L | 65-69 |
| F.26 | *New Mexico | L | 61-78 |
| F.28 | *Air Force | L | 57-77 |
| M.5 | *at (16/15) Utah | L | 67-77 |
| MWC CHAMPIONSHIP (Denver, Colo.) | | | |
| M.10 | vs. (#3) Air Force (QF) | W | 73-68 |
| M.11 | vs. (#2) New Mexico (SF) | L | 67-77 |

* - Mountain West Conference game.

► 2005-06 • 24-9; 13-3 Mountain West

NCAA First Round

Home: 13-2, Away: 7-5, Neutral: 4-2

Starting Lineup: Marcus Slaughter (F, Jr., 16.5 ppg, 11.0 rpg), Mohamed Abukar (F, Jr., 14.3 ppg, 4.7 rpg), Kyle Spain (F, Fr., 9.2 ppg, 5.6 rpg), Brandon Heath (G, Jr., 18.4 ppg, 3.4 rpg), Richie Williams (G, Fr., 6.6 ppg, 3.8 apg)

BP TOP OF THE WORLD CLASSIC (Fairbanks, Alaska)

| | | | |
|------|-------------------------------|---|-------|
| N.17 | at Alaska Fairbanks (QF) | W | 67-55 |
| N.19 | vs. Illinois-Chicago (SF) | L | 63-66 |
| N.20 | vs. Southern Mississippi (3P) | W | 79-51 |
| N.26 | Albany | W | 80-53 |
| N.30 | at San Diego | L | 80-90 |
| D.3 | Point Loma Nazarene | W | 88-77 |
| D.6 | at California | L | 64-82 |

SAN DIEGO SLAM (San Diego, Calif.)

| | | | |
|------|------------------|---|-------|
| D.10 | Washington State | L | 49-60 |
| D.17 | UC Santa Barbara | W | 66-54 |
| D.20 | UMBC | W | 58-45 |
| D.27 | at Providence | L | 65-80 |
| D.31 | Loyola Marymount | W | 84-68 |

| | | | |
|------|--------------------|------|--------|
| J.4 | *Colorado State | W | 83-75 |
| J.7 | *at Air Force | L | 62-65 |
| J.11 | *at Utah | W | 72-67 |
| J.14 | *UNLV | W | 83-67 |
| J.18 | *at TCU | W | 76-57 |
| J.21 | *Brigham Young | W | 88-61 |
| J.25 | *New Mexico | W | 75-69 |
| J.28 | *at Wyoming | ot-W | 78-77 |
| F.4 | *at Colorado State | W | 85-81 |
| F.8 | *Air Force | W | 61-51 |
| F.11 | *Utah | L | 65-67 |
| F.16 | *at UNLV | W | 81-70 |
| F.18 | *TCU | W | 83-71 |
| F.22 | *at Brigham Young | L | 90-100 |
| F.25 | *at New Mexico | W | 73-66 |
| M.1 | *Wyoming | W | 91-72 |
| M.3 | South Dakota State | W | 88-63 |

MWC CHAMPIONSHIP (Denver, Colo.)

| | | | |
|------|------------------------------|------|-------|
| M.9 | vs. (#8) Colorado State (QF) | W | 64-52 |
| M.10 | vs. (#4) UNLV (SF) | W | 63-60 |
| M.11 | vs. (#7) Wyoming (CH) | ot-W | 69-64 |

NCAA 1ST/2ND ROUNDS-OAKLAND REGIONAL (Salt Lake City, Utah)

| | | | |
|------|-----------------------|---|-------|
| M.15 | vs. (#6) Indiana (FR) | L | 83-87 |
|------|-----------------------|---|-------|

* - Mountain West Conference game.

► 2006-07 • 22-11; 10-6 Mountain West

NIT Second Round

Home: 14-2, Away: 6-8, Neutral: 2-1

Starting Lineup: Mohamed Abukar (F, Sr., 15.8 ppg, 5.8 rpg), Jerome Habel (F, Jr., 10.9 ppg, 6.2 rpg), Lorenzo Wade (F, So., 10.5 ppg, 5.3 rpg), Brandon Heath (G, Sr., 19.3 ppg, 3.8 rpg), Richie Williams (G, So., 7.0 ppg, 4.6 apg)

SHAMROCK INVITATIONAL (Moraga, Calif.)

| | | | |
|------|------------------|---|-------|
| N.10 | vs. Murray State | W | 87-84 |
| N.11 | at Saint Mary's | W | 74-73 |

| | | | |
|------|---------------------|---|-------|
| N.12 | vs. Seattle Pacific | W | 76-73 |
| N.15 | UC San Diego | W | 84-48 |
| N.18 | California | W | 86-79 |
| N.21 | UC Riverside | W | 79-45 |
| N.25 | at UC Santa Barbara | W | 76-72 |
| N.29 | San Diego | W | 79-76 |
| D.2 | at Western Michigan | L | 73-84 |

SAN DIEGO SLAM (San Diego, Calif.)

| | | | |
|------|------------------------|------|--------|
| D.9 | (14/15) Arizona | L | 48-69 |
| D.12 | Campbell | W | 119-82 |
| D.16 | Loyola Marymount | W | 74-63 |
| D.21 | ^at Washington State | L | 54-64 |
| D.30 | Lafayette | W | 78-68 |
| J.3 | *Wyoming | L | 65-66 |
| J.6 | *at Brigham Young | L | 58-80 |
| J.13 | *Colorado State | W | 81-76 |
| J.17 | *New Mexico | W | 73-68 |
| J.20 | *at (13/11) Air Force | L | 51-56 |
| J.23 | *at UNLV | L | 61-68 |
| J.27 | *Utah | W | 63-53 |
| J.31 | *at TCU | W | 76-71 |
| F.6 | *(15/13) Air Force | W | 62-41 |
| F.10 | *at Colorado State | W | 81-66 |
| F.13 | *UNLV | W | 67-52 |
| F.17 | *at Wyoming | L | 71-80 |
| F.20 | *at New Mexico | ot-W | 81-74 |
| F.24 | *(21/22) Brigham Young | W | 86-74 |
| F.27 | *at Utah | L | 68-74 |
| M.3 | *TCU | W | 56-51 |

MWC CHAMPIONSHIP (Las Vegas, Nev.)

| | | | |
|-----|------------------------------|---|-------|
| M.8 | vs. (#6) Colorado State (QF) | L | 64-69 |
|-----|------------------------------|---|-------|

MASTERCARD NIT - SOUTH REGION

| | | | |
|------|------------------------------|---|-------|
| M.14 | +at (#3) Missouri State (FR) | W | 74-70 |
| M.19 | #at (#2) Syracuse (SR) | L | 64-80 |

^ - Seattle, Wash. * - Mountain West Conference game.

► 2007-08 • 20-13; 9-7 Mountain West

NIT First Round

Home: 11-3, Away: 6-8, Neutral: 3-2

Starting Lineup: Billy White (F, Fr., 8.5 ppg, 5.9 rpg), Lorenzo Wade (F, Jr., 14.8 ppg, 4.5 rpg), Ryan Amoroso (C, Jr., 11.4 ppg, 6.5 rpg), D.J. Gay (G, Fr., 5.8 ppg, 1.7 apg), Kyle Spain (G, Jr., 13.2 ppg, 5.4 rpg)

WORLD VISION CLASSIC (Fresno, Calif.)

| | | | |
|------|---------------------|---|-------|
| N.9 | vs. Liberty | W | 62-50 |
| N.10 | vs. Portland | W | 78-64 |
| N.11 | at Fresno State | W | 89-72 |
| N.17 | UC San Diego | W | 76-60 |
| N.19 | at San Diego | W | 69-64 |
| N.24 | at California | L | 69-77 |
| N.28 | at Loyola Marymount | W | 78-56 |
| D.1 | Western Michigan | W | 72-61 |
| D.4 | UC Riverside | W | 59-46 |

WOODEN CLASSIC (Anaheim, Calif.)

| | | | |
|--|--------------------|------|-------|
| D.8 | vs. Saint Mary's | L | 64-69 |
| D.17 | Navy | W | 86-76 |
| FIESTA BOWL CLASSIC (Tucson, Ariz.) | | | |
| D.22 | (19/19) at Arizona | L | 58-74 |
| D.28 | Sam Houston State | ot-W | 79-78 |
| J.5 | *TCU | W | 64-57 |
| J.9 | Northern Colorado | L | 56-62 |
| J.12 | *at New Mexico | W | 72-67 |
| J.16 | *Utah | ot-W | 64-56 |
| J.19 | *Wyoming | W | 70-43 |
| J.23 | *at Brigham Young | L | 56-59 |
| J.26 | *UNLV | L | 69-72 |
| J.29 | *at Colorado State | W | 83-82 |
| F.6 | *Air Force | W | 49-38 |
| F.9 | *at TCU | L | 62-68 |
| F.13 | *New Mexico | L | 63-73 |
| F.16 | *at Utah | L | 66-72 |
| F.19 | *at Wyoming | W | 79-68 |
| F.23 | *Brigham Young | W | 69-65 |
| F.26 | *at UNLV | L | 58-68 |
| M.1 | *Colorado State | W | 86-62 |
| M.8 | *at Air Force | L | 43-46 |

MWC CHAMPIONSHIP (Las Vegas, Nev.)

| | | | |
|------|-------------------------------------|---|-------|
| M.13 | vs. (#5) Air Force (QF) | W | 53-49 |
| M.14 | vs. (#1) (24/23) Brigham Young (SF) | L | 54-63 |

MASTERCARD NIT (Gainesville, Fla.)

| | | | |
|------|-----------------|---|-------|
| M.19 | at (#2) Florida | L | 49-73 |
|------|-----------------|---|-------|

* - Mountain West Conference game.

► 2008-09 • 26-10; 11-5 Mountain West

NIT Semifinals

Home: 16-2, Away: 6-5, Neutral: 4-3

Starting Lineup: Kyle Spain (F, Sr., 14.0 ppg, 5.3 rpg), Billy White (F, So., 8.8 ppg, 3.8 rpg), Ryan Amoroso (C, Sr., 7.5 ppg, 4.5 rpg), D.J. Gay (G, So., 6.0 ppg, 1.5 rpg), Richie Williams (G, Sr., 7.2 ppg, 3.5 apg)

| | | | |
|------|-----------------------|---|-------|
| N.15 | UC San Diego | W | 59-40 |
| N.18 | (15/15) Arizona State | L | 52-59 |
| N.22 | Fresno State | W | 80-56 |

GREAT ALASKA SHOOTOUT (Anchorage, Alaska)

| | | | |
|------|------------------------------|---|-------|
| N.27 | vs. W. Carolina (QF) (:11.2) | W | 59-58 |
| N.28 | vs. Seattle (SF) | W | 75-56 |
| N.29 | vs. Hampton (CH) | W | 76-47 |
| D.3 | at Northern Colorado | W | 73-62 |
| D.6 | San Diego | W | 57-46 |
| D.10 | at Arizona | L | 56-69 |

WOODEN CLASSIC (Anaheim, Calif.)

| | | | |
|------|----------------------|------|-------|
| D.13 | vs. Saint Mary's (D) | L | 64-67 |
| D.20 | UC Santa Barbara | W | 68-51 |
| D.22 | Cal State Northridge | W | 72-56 |
| D.29 | Arkansas Pine-Bluff | W | 93-61 |
| J.3 | *at Air Force | W | 61-44 |
| J.10 | *Utah | W | 72-63 |
| J.14 | *at Wyoming | L | 79-83 |
| J.21 | *New Mexico | W | 81-76 |
| J.24 | *at Brigham Young | L | 71-77 |
| J.28 | *TCU | W | 67-50 |
| J.31 | *at Colorado State | W | 78-59 |
| F.3 | *at UNLV | ot-W | 68-66 |
| F.7 | *Air Force | W | 65-34 |
| F.11 | *at Utah | L | 55-67 |
| F.14 | *Wyoming | W | 71-60 |
| F.21 | *at New Mexico | L | 49-75 |
| F.24 | *Brigham Young | L | 59-69 |
| F.28 | *at TCU | ot-W | 79-77 |
| M.4 | *Colorado State | W | 68-59 |
| M.7 | *UNLV | W | 57-46 |

MWC CHAMPIONSHIP (Las Vegas, Nev.)

| | | | |
|------|------------------------------------|---|-------|
| M.12 | at (#5) UNLV (QF) | W | 71-57 |
| M.13 | vs. (#1) (25/-) Brigham Young (SF) | W | 64-62 |
| M.14 | vs. (2) Utah (CH) | L | 50-52 |

NATIONAL INVITATION TOURNAMENT

| | | | |
|------|-------------------------|---|-------|
| M.17 | (#8) Weber State (FR) | W | 65-49 |
| M.20 | (#4) Kansas State (SR)^ | W | 70-52 |
| M.25 | (#2) Saint Mary's (QF) | W | 70-66 |
| M.31 | vs. (#3) Baylor (SF)+ | L | 62-76 |

* - Mountain West Conference game. ^ - Jenny Craig Pavilion (San Diego, Calif.). + - Madison Square Garden (New York, N.Y.)

► 2009-10 • 25-9; 11-5 Mountain West

NCAA First Round

Home: 14-1, Away: 9-7, Neutral: 2-1

Starting Lineup: Kawhi Leonard (F, Fr., 12.7 ppg, 9.9 rpg), Billy White (F, Jr., 11.1 ppg, 4.3 rpg), Malcolm Thomas (F, Jr., 10.9 ppg, 7.6 rpg), D.J. Gay (G, Jr., 10.5 ppg, 3.2 apg), Chase Tapley (G, Fr., 7.6 ppg, 2.1 apg)

| | | | |
|------|------------------|---|-------|
| N.14 | UC San Diego (D) | W | 77-52 |
| N.16 | at Saint Mary's | L | 58-80 |

WEST COAST CLASSIC (Campus Sites)

| | | | |
|------|----------------------|------|-------|
| N.19 | Santa Clara | W | 86-53 |
| N.23 | at Fresno State | W | 62-58 |
| N.25 | at Pacific | L | 63-71 |
| N.28 | Northern Arizona | W | 89-48 |
| D.2 | at San Diego | ot-W | 69-62 |
| D.5 | at UC Santa Barbara | W | 69-61 |
| D.9 | Cal State Fullerton | W | 82-68 |
| D.12 | Arizona | W | 63-46 |
| D.19 | at Arizona State (D) | L | 52-55 |
| D.22 | at Drake | ot-W | 76-73 |
| D.29 | UC Riverside | W | 58-53 |
| D.31 | Pomona-Pitzer (D) | W | 89-54 |

| | | | |
|------|------------------------------------|------|-------|
| J.5 | *(15/14) New Mexico | W | 74-64 |
| J.9 | *at Wyoming (:04.9) | L | 83-85 |
| J.13 | *at UNLV | L | 66-76 |
| J.16 | *TCU | W | 67-62 |
| J.19 | *at Utah | W | 70-68 |
| J.23 | *(14/13) Brigham Young | L | 69-71 |
| J.30 | *at Colorado State | W | 64-52 |
| F.2 | *Air Force | W | 70-48 |
| F.6 | *at (15/23) New Mexico (:02.7) (D) | ot-L | 86-88 |
| F.10 | *Wyoming | W | 88-57 |
| F.13 | *(23/25) UNLV (D) | W | 68-58 |
| F.16 | *at TCU | W | 68-51 |
| F.20 | *Utah | W | 68-61 |
| F.24 | *at (13/11) Brigham Young | L | 68-82 |
| M.3 | *Colorado State | W | 68-55 |
| M.6 | *at Air Force | W | 61-42 |

Steve Fisher Game-By-Game



SIX CONSECUTIVE NCAA TOURNAMENT APPEARANCES ► NINE-TIME MW CHAMPIONS

MWC CHAMPIONSHIP (Las Vegas, Nev.)

| | | | |
|------|----------------------------------|---|-------|
| M.11 | vs. (#5) Colorado State (QF) (D) | W | 72-71 |
| M.12 | vs. (#1) (8/8) New Mexico (SF) | W | 72-69 |
| M.13 | at (#3) UNLV (CH) (D) | W | 55-45 |

NCAA 1ST/2ND ROUNDS (Dunkin' Donuts Center, Providence, R.I.)

| | | | |
|------|-----------------------------|---|-------|
| M.18 | (#6) (15/14) Tennessee (FR) | L | 59-62 |
|------|-----------------------------|---|-------|

* - Mountain West Conference game.

► 2010-11 • 34-3; 14-2 Mountain West

NCAA Sweet 16

Home: 14-1, Away: 12-1, Neutral: 8-1

Final National Ranking (AP/Coaches): 6/11

Starting Lineup: Kawhi Leonard (F, So., 15.5 ppg, 10.6 rpg), Malcolm Thomas (F, Sr., 11.4 ppg, 8.1 rpg), Billy White (F, Sr., 10.3 ppg, 4.4 rpg), D.J. Gay (G, Sr., 10.3 ppg, 3.1 apg), Chase Tapley (G, So., 8.6 ppg, 2.4 rpg)

| | | | | |
|------|-------|-------------------------|---|-------|
| N.13 | 25/rv | at Long Beach State (D) | W | 81-65 |
|------|-------|-------------------------|---|-------|

O'REILLY AUTO PARTS CBE CLASSIC

| | | | | |
|------|-------|-----------------------------|---|-------|
| N.16 | 25/rv | at (11/12) Gonzaga | W | 79-76 |
| N.20 | 25/rv | vs. Green Bay + | W | 79-70 |
| N.21 | 25/rv | vs. IUPUI + | W | 61-46 |
| N.22 | 18/22 | at Miami (Ohio) | W | 77-56 |
| N.26 | 18/22 | San Diego Christian College | W | 88-69 |
| D.1 | 17/19 | Saint Mary's | W | 69-55 |
| D.4 | 17/19 | Wichita State | W | 83-69 |
| D.8 | 14/15 | at California | W | 77-57 |
| D.11 | 14/15 | San Diego | W | 77-49 |
| D.13 | 11/10 | Cal Poly | W | 51-45 |
| D.18 | 11/10 | UC Santa Barbara | W | 90-64 |

LAS VEGAS HOLIDAY HOOPS CLASSIC (Las Vegas, Nev.)

| | | | | |
|------|-----|----------------------------|---|-------|
| D.21 | 7/7 | vs. San Francisco | W | 62-56 |
| D.22 | 7/7 | vs. IUPUI | W | 56-54 |
| D.31 | 7/7 | Occidental College (D) | W | 93-50 |
| J.5 | 6/6 | *at TCU | W | 66-53 |
| J.8 | 6/6 | *at Utah (D) | W | 71-62 |
| J.12 | 6/6 | *UNLV | W | 55-49 |
| J.15 | 6/6 | *at New Mexico (D) | W | 87-77 |
| J.19 | 6/6 | *Air Force | W | 68-55 |
| J.26 | 4/4 | *(9/9) at Brigham Young | L | 58-71 |
| J.29 | 4/4 | *Wyoming | W | 96-57 |
| F.2 | 7/6 | *at Colorado State (#01.8) | W | 56-54 |
| F.5 | 7/6 | *TCU | W | 60-53 |
| F.8 | 6/6 | *Utah | W | 85-53 |
| F.12 | 6/6 | *at UNLV | W | 63-57 |
| F.16 | 6/6 | *New Mexico | W | 68-62 |
| F.19 | 6/6 | *at Air Force | W | 70-58 |
| F.26 | 6/4 | *(7/7) Brigham Young (D) | L | 67-80 |
| M.1 | 9/9 | *at Wyoming | W | 85-58 |
| M.5 | 9/9 | *Colorado State | W | 66-48 |

MWC CHAMPIONSHIP (Las Vegas, Nev.)

| | | | | |
|------|-----|---------------------------------------|---|-------|
| M.10 | 7/6 | vs. (#7) Utah (QF) | W | 64-50 |
| M.11 | 7/6 | at (#2) at UNLV (SF) (#04.9) | W | 74-72 |
| M.12 | 7/6 | vs. (#1) (8/8) Brigham Young (CH) (D) | W | 72-54 |

NCAA 2ND/3RD ROUNDS (McKale Center, Tucson, Ariz.)

| | | | | |
|------|-----|--------------------------------------|-------|-------|
| M.17 | 6/5 | vs. (#15) Northern Colorado (SR) (D) | W | 68-50 |
| M.19 | 6/5 | vs. (#7) Temple (3R) (D) | 2ot-W | 71-64 |

NCAA WEST REGIONAL (Honda Center, Anaheim, Calif.)

| | | | | |
|------|-----|---------------------------------------|---|-------|
| M.24 | 6/5 | vs. (#3) (9/8) Connecticut (R-SF) (D) | L | 67-74 |
|------|-----|---------------------------------------|---|-------|

* - Mountain West Conference game. + - Oxford, Ohio.

► 2011-12 • 26-8; 10-4 Mountain West

NCAA Second Round

Home: 17-2, Away: 7-4, Neutral: 2-2

Final National Ranking (AP/Coaches): 22/rv

Starting Lineup: Tim Shelton (F, Sr., 5.2 ppg, 4.6 rpg), Jamaal Franklin (G, So., 17.4 ppg, 7.9 rpg), Chase Tapley (G, Jr., 15.8 ppg, 4.3 rpg), Xavier Thames (G, So., 10.1 ppg, 4.1 apg), James Rahon (G, Jr., 8.9 ppg, 2.7 rpg)

BASKETBALL TRAVELERS CLASSIC (San Diego, Calif.)

| | | | |
|------|---------------------------------|------|-------|
| N.11 | Bryant | W | 75-63 |
| N.12 | Southern Utah | W | 70-37 |
| N.13 | UC Davis (D) | W | 89-74 |
| N.15 | at (11/12) Baylor (D) | L | 67-77 |
| N.17 | USC (#01.8) | W | 56-54 |
| N.19 | Long Beach State (D) | ot-W | 77-73 |
| N.23 | at (23/23) Arizona | W | 61-57 |
| N.26 | at UC Santa Barbara | ot-W | 76-75 |
| N.30 | (-/22) Creighton | L | 83-85 |
| D.4 | (24/23) California (D) | W | 64-63 |
| D.7 | at San Diego | W | 74-62 |
| D.19 | UC Riverside | W | 80-55 |
| D.22 | Elon (D) | W | 81-55 |
| D.30 | 25/- Redlands | W | 94-43 |
| J.5 | 24/25 San Diego Christian | W | 83-52 |
| J.10 | 22/22 Chicago State | W | 73-65 |
| J.14 | 22/22 *(12/12) UNLV (#00.3) (D) | W | 69-67 |
| J.18 | 16/16 *at New Mexico | W | 75-70 |
| J.21 | 16/16 *Air Force | W | 57-44 |

| | | | | |
|------|-------|------------------------|------|-------|
| J.24 | 13/12 | *at Wyoming | W | 52-42 |
| J.28 | 13/12 | *at Colorado State (D) | L | 60-77 |
| F.15 | 17/17 | *Boise State | W | 58-56 |
| F.4 | 17/17 | *TCU | W | 83-73 |
| F.11 | 13/14 | *at (14/16) UNLV (D) | L | 60-62 |
| F.15 | 13/15 | *New Mexico | L | 67-77 |
| F.18 | 13/15 | *at Air Force (D) | L | 56-58 |
| F.22 | 24/25 | *Wyoming | ot-W | 67-58 |
| F.25 | 24/25 | *Colorado State | W | 74-66 |
| F.29 | 21/23 | *at Boise State | W | 66-53 |
| M.3 | 21/23 | *at TCU | ot-W | 98-92 |

MW CHAMPIONSHIP (Las Vegas, Nev.)

| | | | | |
|------|-------|---|---|-------|
| M.8 | 18/21 | vs. (#8) Boise State (#00.0) (QF) (D) | W | 65-62 |
| M.9 | 18/21 | vs. (#4) Colorado State (SF) | W | 79-69 |
| M.10 | 18/21 | vs. (#2) New Mexico (CH) (D) | L | 59-68 |
| M.16 | 22/23 | vs. (#11) North Carolina State (SR) (D) | L | 65-79 |

* - Mountain West Conference game.

► 2012-13 • 23-11; 9-7 Mountain West

NCAA Third Round

Home: 14-1, Away: 4-6, Neutral: 5-4

Starting Lineup: JJ O'Brien (F, So., 7.2 ppg, 4.5 rpg), DeShawn Stephens (F, Sr., 6.1 ppg, 5.1 rpg), Jamaal Franklin (G, Jr., 17.0 ppg, 9.5 rpg), Chase Tapley (G, Sr., 13.5 ppg, 3.2 rpg), Xavier Thames (G, Jr., 9.5 ppg, 2.7 rpg)

NORTHROP GRUMMAN PRESENTS BATTLE ON THE MIDWAY (USS Midway, San Diego, Calif.)

| | | | | |
|------|-------|------------------------|---|-------|
| N.11 | 20/20 | vs. (9/9) Syracuse (D) | L | 49-62 |
| N.13 | 25/23 | San Diego Christian | W | 91-57 |
| N.17 | 25/23 | at Missouri State (D) | W | 60-44 |
| N.21 | 25/25 | Arkansas-Pine Bluff | W | 79-43 |
| N.25 | 25/25 | at USC | W | 66-60 |

WOODEN CLASSIC (Honda Center, Anaheim, Calif.)

| | | | | |
|------|-------|---------------------|---|-------|
| D.1 | 23/21 | vs. (-/24) UCLA | W | 78-69 |
| D.3 | 17/15 | Texas Southern | W | 74-62 |
| D.6 | 17/15 | UC Santa Barbara | W | 84-70 |
| D.15 | 18/15 | San Diego | W | 72-56 |
| D.18 | 18/15 | Point Loma Nazarene | W | 76-49 |

HAWAIIAN AIRLINES DIAMOND HEAD CLASSIC (Stan Sheriff Center, Honolulu, Hawaii)

| | | | | |
|------|--------|----------------------------|------|-------|
| D.22 | 18/15 | vs. San Francisco (D) | W | 80-58 |
| D.23 | 18/15 | vs. Indiana State (D) | W | 62-55 |
| D.25 | 17/16 | vs. (3/3) Arizona | L | 67-68 |
| J.2 | 19/17 | CSU Bakersfield | W | 72-57 |
| J.9 | 16/15 | *at Fresno State | W | 65-62 |
| J.12 | 16/15 | *Colorado State | ot-W | 79-72 |
| J.16 | 15/14 | *(-/23) UNLV | L | 75-82 |
| J.19 | 15/14 | *at Wyoming | L | 45-58 |
| J.23 | -/25 | *at Nevada | W | 78-57 |
| J.26 | -/25 | *(-/15/17) New Mexico | W | 55-34 |
| F.2 | 22/20 | *at Air Force | L | 67-70 |
| F.6 | -/T-25 | *Boise State (#02.8) | W | 63-62 |
| F.9 | -/T-25 | *Fresno State | W | 75-53 |
| F.13 | -/22 | *at (24/24) Colorado State | L | 60-66 |
| F.16 | -/22 | *at UNLV | L | 70-72 |
| F.19 | | *Wyoming | W | 79-51 |
| F.23 | | *Nevada | W | 88-75 |
| F.27 | | *at (14/14) New Mexico | L | 60-70 |
| M.6 | | *Air Force | W | 58-51 |
| M.9 | | *at Boise State | L | 65-69 |

MW CHAMPIONSHIP (Las Vegas, Nev.)

| | | | |
|------|----------------------------------|---|-------|
| M.13 | vs. (#5) Boise State (QF) | W | 73-67 |
| M.15 | vs. (#1) (15/14) New Mexico (SF) | L | 50-60 |

NCAA 2ND/3RD ROUNDS (Wells Fargo Center, Philadelphia, Pa.)

| | | | |
|------|-----------------------------------|---|-------|
| M.22 | vs. (#10) Oklahoma (SR) | W | 70-55 |
| M.24 | vs. (#15) Florida Gulf Coast (3R) | L | 71-81 |

* - Mountain West Conference game.

► 2013-14 • 31-5; 16-2 Mountain West

NCAA Sweet 16

Home: 15-1, Away: 10-2, Neutral: 6-2

Final National Ranking (AP/Coaches): 13/12

Starting Lineup: Josh Davis (F, Sr., 7.7 ppg, 10.1 rpg), JJ O'Brien (F, Jr., 7.8 ppg, 4.7 rpg), Winston Shepard (So, F, 11.6 ppg, 4.9 rpg), Skylar Spencer (F, So., 4.8 ppg, 4.3 rpg), Xavier Thames (G, Sr., 17.6 ppg, 2.9 rpg)

| | | | |
|------|---------------------|---|-------|
| N.8 | UC Riverside | W | 77-41 |
| N.14 | (6/5) Arizona | L | 60-69 |
| N.20 | San Diego Christian | W | 93-41 |

DIRECTV WOODEN LEGACY (Titan Gym, Fullerton, Calif. - N.28-29 | Honda Center, Anaheim, Calif. - D.1)

| | | | |
|------|---------------------------|---|-------|
| N.28 | vs. College of Charleston | W | 72-52 |
| N.29 | vs. (20/18) Creighton | W | 86-80 |
| D.1 | vs. (25/-) Marquette | W | 67-59 |
| D.5 | 24/- at San Diego | W | 65-64 |
| D.8 | 24/- Washington (D) | W | 70-63 |
| D.18 | 24/23 Southern Utah | W | 76-39 |

| | | | | |
|------|---------|-------------------------|------|--------|
| D.21 | 24/23 | McNeese State | W | 65-36 |
| D.27 | 20/20 | St. Katherine College | W | 118-35 |
| J.1 | 21/T-19 | *at Colorado State | W | 71-61 |
| J.5 | 21/T-19 | at (16/17) Kansas (D) | W | 61-57 |
| J.8 | 13/15 | *Boise State | W | 69-66 |
| J.12 | 13/15 | *at Air Force (D) | W | 79-72 |
| J.15 | 10/11 | *Fresno State | W | 68-60 |
| J.18 | 10/11 | *UNLV (D) | W | 63-52 |
| J.22 | 7/7 | *at San José State | W | 75-50 |
| J.25 | 7/7 | *at Utah State | ot-W | 74-69 |
| F.1 | 5/5 | *Colorado State (D) | W | 65-56 |
| F.5 | 5/5 | *at Boise State (#04.2) | W | 67-65 |
| F.8 | 5/5 | *Nevada | W | 73-58 |
| F.11 | 5/5 | *at Wyoming | L | 62-68 |
| F.15 | 5/5 | *Air Force | W | 64-56 |
| F.18 | 6/7 | *Utah State | W | 60-45 |
| F.22 | 6/7 | *at New Mexico | L | 44-58 |
| F.25 | 13/13 | *San José State | W | 90-64 |
| M.1 | 13/13 | *at Fresno State | W | 82-67 |
| M.5 | 10/10 | *at UNLV | W | 73-64 |
| M.8 | 10/10 | *(-/21/21) New Mexico | W | 51-48 |

MW CHAMPIONSHIP (Las Vegas, Nev.)

| | | | | |
|------|-------|--------------------------------------|---|-------|
| M.13 | T-8/7 | vs. (#8) Utah State (QF) (D) | W | 73-39 |
| M.14 | T-8/7 | at (#4) UNLV (SF) | W | 59-51 |
| M.15 | T-8/7 | vs. (#2) (20/20) New Mexico (CH) (D) | L | 58-64 |

NCAA 2ND/3RD ROUNDS (Spokane Veterans Memorial Arena, Spokane, Wash.)

| | | | | |
|------|-------|-----------------------------------|------|-------|
| M.20 | 13/11 | vs. (#13) New Mexico State (SR) | ot-W | 73-69 |
| M.22 | 13/11 | vs. (#12) North Dakota State (3R) | W | 63-44 |

NCAA WEST REGIONAL (Honda Center, Anaheim, Calif.)

| | | | | |
|------|-------|-------------------------------|---|-------|
| M.27 | 13/11 | vs. (#1) (4/5) Arizona (R-SF) | L | 64-70 |
|------|-------|-------------------------------|---|-------|

* - Mountain West Conference game.

► 2014-15 • 27-9; 14-4 Mountain West

NCAA Third Round

Home: 16-1, Away: 7-5, Neutral: 4-3

Head Coach: Steve Fisher

Starting Lineup: JJ O'Brien (F, Sr., 10.3 ppg, 5.2 rpg), Winston Shepard (Jr., F, 11.1 ppg, 5.3 rpg), Matt Shrigley (F, So., 5.1 ppg, 1.6 rpg), Skylar Spencer (F, Jr., 3.7 ppg, 5.1 rpg), Aqeel Quinn (G, Sr., 10.7 ppg, 2.8 rpg)

| | | | | |
|------|-------|-----------------|---|-------|
| N.14 | 16/17 | CSUN | W | 79-58 |
| N.18 | 16/16 | (25/-) Utah (D) | W | 53-49 |
| N.20 | 16/16 | Bakersfield | W | 51-27 |

EA SPORTS MAUI INVITATIONAL (Lahaina Civic Center, Lahaina, Hawaii)

| | | | | |
|------|-------|---------------------|-------|-------|
| N.24 | 15/15 | vs. Brigham Young | 2ot-W | 92-87 |
| N.25 | 15/15 | vs. Pittsburgh | W | 74-57 |
| N.26 | 15/15 | vs. (3/4) Arizona | L | 59-61 |
| D.4 | 13/14 | San Diego | W | 57-48 |
| D.7 | 13/14 | at Washington | L | 36-49 |
| D.10 | 18/16 | Long Beach State | W | 60-59 |
| D.17 | 19/17 | at Cincinnati | ot-L | 62-71 |
| D.20 | 19/17 | Ball State | W | 70-57 |
| D.22 | -/23 | UC Riverside | W | 61-33 |
| D.27 | -/23 | San Diego Christian | W | 72-50 |
| D.31 | -/25 | *Air Force (D) | W | 53-49 |
| J.3 | -/25 | *at Fresno State | L | 57-59 |
| J.6 | | *New Mexico | W | 56-42 |
| J.14 | | *at (25/-) Wyoming | W | 60-52 |
| J.17 | | *UNLV (D) | W | 53-47 |
| J.20 | | *at Air Force | W | 77-45 |
| J.24 | | *at Colorado State | L | 73-79 |
| J.27 | | *Fresno State | W | 58-47 |
| J.31 | | *Utah State | W | 62-42 |
| F.4 | | *at Nevada | W | 65-63 |
| F.8 | | *at Boise State (D) | L | 46-61 |
| F.11 | | *Wyoming | W | 67-41 |
| F.14 | | *Colorado State | W | 72-63 |
| F.17 | -/25 | *at New Mexico | W | 63-46 |
| F.21 | -/25 | *at San José State | W | 74-56 |
| F.28 | 24/22 | *Boise State | L | 46-56 |
| M.4 | | *at UNLV | W | 60-58 |
| M.7 | | *Nevada | W | 67-43 |

MW CHAMPIONSHIP (Las Vegas, Nev.)

| | | | | |
|------|------|------------------------------|---|-------|
| M.12 | -/25 | at (#7) UNLV (QF) | W | 67-64 |
| M.13 | -/25 | vs. (#3) Colorado State (SF) | W | 56-43 |
| M.14 | -/25 | vs. (#4) Wyoming (CH) | L | 43-45 |

NCAA 2ND/3RD ROUNDS (Time Warner Cable Arena, Charlotte, N.C.)

| | | | |
|------|--------------------------|-----|-------|
| M.20 | vs. (#9) St. John's (2R) | W | 76-64 |
| M.22 | vs. (#1) (4/5) Duke (3R) | L</ | |



Brian Dutcher

**Associate Head Coach/
Head Coach In Waiting**

Birthdate

October 30, 1959

Hometown

Alpena, Mich.

Education

1982 – B.S. degree from Minnesota.

1984 – M.S. degree from Illinois.

Marital Status

Married to Jan Dutcher

Children

Erin (27) and Liza (25)

Record Breakdown

SDSU assistant: 339-185

Division I career: 548-276

Brian Dutcher

Associate Head Coach/Head Coach In Waiting - 17th Season at SDSU Minnesota '82

One of Steve Fisher's first moves as head coach at San Diego State was to hire Brian Dutcher as his top assistant. Dutcher, 56, was a regional scout for the Sacramento Kings before assuming the role of assistant head coach at SDSU.

Now, Fisher's first hire will follow in his footsteps after he was named associate head coach/head coach in waiting in late August 2011.

Dutcher served as assistant coach and later associate head coach at Michigan under Fisher. He spent 10 seasons on the Wolverine staff, establishing himself as one of the nation's top assistant coaches. His first year in Ann Arbor was 1989 and resulted in a national title for Michigan as he assisted then-interim head coach Steve Fisher on the bench.

The Bloomington, Minn., native led UM's recruiting efforts in 1990-91 when the Wolverines inked Juwan Howard, Ray Jackson, Jimmy King, Jalen Rose and Chris Webber. The "Fab Five" is considered perhaps the best recruiting class in NCAA history. Dutcher helped lead that group to nearly 100 wins, two berths in the NCAA championship game and a regional final over a four-year period. He was also on the Michigan staff for an NIT championship (1997).

Dutcher's recruiting prowess, however, was demonstrated by more than just the "Fab Five" haul. Michigan had the nation's top-ranked recruiting class in 1993-94 and in 1994-95, with a group that included Maurice Taylor and Jerod Ward. The accomplishment marked the first time that a university had the nation's top class in consecutive years, according to recruiting analyst Bob Gibbons.

His efforts at SDSU have gained accolades as well. The first full-year recruiting effort by Fisher, Dutcher and Co., resulted in a consensus top-40 group. Their second resulted in a top-25 class without counting a pair of high-profile transfers. Twelve seasons ago, Dutcher helped attract SDSU's first McDonald's All-American. In 2004, freshmen Brandon Heath and Marcus Slaughter earned starting

spots and all-league recognition. Dutcher was a key figure in bringing in classes that produced three NBA draft picks (Kawhi Leonard, Jamaal Franklin, Xavier Thames) the last five seasons and the No. 24 class in 2012. He also helped land Tulane transfer Josh Davis, a 2014 all-MW performer and league newcomer of the year, and Arizona transfer Angelo Chol prior to the 2013-14 campaign.

More recently, Dutcher helped secure a top-15 recruiting class for the 2014-15 season, and this season's group, which features a pair of four-star athletes including the 2015 *Los Angeles Times* Player of the Year.

In fact, in a poll among Division I coaches conducted by ESPN's Jeff Goodman in the summer of 2013, Dutcher was considered the 19th-best recruiting assistant nationally and third-best on the West Coast.

Dutcher is firmly entrenched as one of the nation's top recruiters after showing that his rapport is as strong with potential student-athletes on the West Coast as it was in the vaunted Big Ten Conference.

Dutcher was born Oct. 30, 1959, in

Alpena, Mich. He attended Jefferson High School in Bloomington, Minn., and went on to earn a bachelor's degree in physical education from Minnesota in 1982. While an undergraduate, he worked for his father, then-Gopher head coach Jim Dutcher. He then spent one season in the prep ranks at Apple Valley (Minn.) High School before becoming a graduate assistant at Illinois, where he earned his master's degree in physical education and athletic administration.

While in Champaign, Dutcher helped Lou Henson lead the Illini to a Big Ten championship, two appearances in the Sweet 16 and one regional final.

Dutcher's first full-time coaching job came at South Dakota State, where he spent three seasons helping turn around the Division II program before departing in 1988 for Michigan.

His final season in Ann Arbor ended with the Wolverines claiming the first-ever Big Ten Tournament championship.

Dutcher and his wife Jan have two daughters, Erin (27) and Liza (25).





Justin Hutson

Assistant Coach - Eighth Season at SDSU
CSU Bakersfield '94

Justin Hutson enters his third season of his second stint at San Diego State after returning to Montezuma Mesa following a two-year stay at UNLV where he was the associate head coach. This year is his eighth overall at SDSU (2006-11, 2013-present).

When Hutson returned in April of 2013, he reunited with Fisher, Brian Dutcher, Mark Fisher, David Velasquez and Matt Soria, a group with which he spent five seasons. During their tenure, the Aztecs went to the postseason five times and averaged 25.4 wins per year, which included six postseason victories. In 2009, SDSU advanced to the NIT semifinals and reached the 2011 NCAA Sweet 16 en route to a 34-3 record and a No. 6/11 (AP/Coaches) final ranking. At the Mountain West level, the Aztecs won the 2010 and 2011 tournament titles and the 2011 regular season.

Hutson was part of a staff that set numerous school records and in the last three years of his first tenure, Hutson took on the role of defensive coordinator and helped SDSU lead the MW in scoring defense in 2009, 2010 and 2011.

Upon his return, Hutson helped the 2013-14 team to a 31-5 record, an MW regular-season title, an appearance in the Sweet 16 and a final national ranking of No. 13/12. Last year, he coached SDSU to a 27-9 mark, another MW regular-season crown and a spot in the NCAA third round.

Defensively, the Aztecs have been one of the best in the nation, finishing second in scoring defense the last two years and posting top-10 efforts in field-goal percentage defense (8th in 2014, 7th in 2015). San Diego State also produced the fifth-best three-point percentage defense in 2014 and the 16th-best effort in 2015.

In both of his stints, Hutson has played a pivotal part in San Diego State's recruiting efforts as the team's recruiting coordinator. He was instrumental in securing a pair of nationally recognized recruiting classes, including the No. 15 class leading into the 2009-10 campaign, which included 2011 NBA first-round draft pick Kawhi Leonard and four-year starter

Chase Tapley. That class was also rated the top group among non-automatic qualifying BCS schools by a pair of recruiting sites. Joining that class was Washington State transfer Xavier Thames, who ended up being a 2014 NBA draft pick and MW Player of the Year. Hutson also recruited Jamaal Franklin, a two-time All-American, and 2013 NBA draft pick of the Memphis Grizzlies. The 2014-15 incoming class, his first of his second stint at SDSU, meanwhile, was regarded as a top-15 class and this year, he helped secure a pair of four-star players.

In a poll among Division I coaches conducted by ESPN's Jeff Goodman in the summer of 2013, Hutson was considered the eighth-best recruiting assistant nationally and the best on the West Coast. More recently, ESPN's Adam Finkelstein listed Hutson as a top up-and-coming recruiter (May 2014) and Miles Simon placed him on his west region ultimate coaching staff (May 2014).

Prior to his decision to return to San Diego State, Hutson helped UNLV to a pair of 25-plus-win seasons and two NCAA tournament appearances. He played a key role in helping the Rebels bring in a highly regarded recruiting class in 2012-13, which included the 2013 No. 1 overall NBA draft selection, Anthony Bennett, a player he recruited.

Before arriving at SDSU in July 2006, Hutson served as an assistant coach at Cal Poly.

The Mustangs went 10-19 in 2005-

06, doubling their previous season's win total. He was responsible for recruiting the 2006 Big West Freshman of the Year and landing two freshmen on the Big West all-freshmen team, along with bringing two first-team all-Big West selections and the defensive player of the year to San Luis Obispo in 2006-07.

Prior to his stint at Cal Poly, Hutson served as the head varsity coach at Bakersfield High where he led the Drillers to a CIF Central Section title and four appearances in the playoffs in four seasons. His 2004 team was ranked as high as No. 22 in the nation and fourth in California, while his 2003 squad finished the season with a 25-5 record and won the section title. Prior to entering the high school ranks, he was an assistant coach at his alma mater CSU Bakersfield for two seasons (1999-00).

As a collegiate player, Hutson enjoyed a storied career, winning two NCAA Division II championships at CSU Bakersfield. In the 1993 championship season, the Roadrunners were undefeated with a 33-0 record and followed that up with a 27-6 record during the 1994 season.

A native of Bakersfield, Hutson earned his bachelor's degree in physical education in 1994 and a teaching credential in 1995 from CSU Bakersfield. He also received his master of arts in education from CSU Bakersfield in 2009.

Hutson has two children, Jada (13) and Janae (11).



Justin Hutson

Assistant Coach

Birthdate

Oct. 16, 1971

Education

1994 - B.S. degree from CSU Bakersfield.
1995 - teaching credential from CSU Bakersfield.
2009 - M.A. degree from CSU Bakersfield.

Children

Jada (13) and Janae (11)

Record Breakdown

SDSU assistant: 185-60
Division I career: 251-120





David Velasquez

Assistant Coach

Birthdate

Oct. 14, 1983

Education

2007 – B.A. degree from San Diego State.

Record Breakdown

SDSU assistant: 58-14
SDSU staff: 232-117
SDSU player: 9-5
SDSU/Div. I career: 299-136

David Velasquez

Assistant Coach - 14th Season at SDSU San Diego State '07

David Velasquez enters his 14th season at San Diego State and third as an assistant coach. Prior to his appointment as an assistant coach, he spent six seasons as the program's director of player development.

Velasquez's responsibilities include recruiting, on-court coaching, skill development and academics.

As an assistant, Velasquez is heavily involved in player development. In his previous role, he spent countless hours with former and current Aztecs analyzing their performance in games and in practice on video. Currently, he applies those sessions on the practice floor.

Velasquez also plays a huge role in the performance of Aztecs in the classroom. The Bay Area native works directly with San Diego State's academic advisors, tutors and mentors to ensure standards are met.

What may go unnoticed is his relationship with players. As a former SDSU men's basketball student-athlete and recruit host, Velasquez understands all of the virtues that an Aztec basketball player possesses, which allows him to relate to the entire roster.

In his first season as an assistant, Velasquez helped ink a consensus top-15 recruiting class, while helping the Aztecs enjoy one of their finest seasons ever, which culminated in 31 wins, a Mountain West regular-season title and an NCAA Sweet 16 berth. He was also key in the development of Xavier Thames, who was a 2014 All-American, Mountain West Player of the Year and NBA draft pick.

Last season, he coached SDSU to 27 victories, a second straight MW regular-season crown and an appearance in the third round of the NCAA tournament. Velasquez was also key in the Aztecs inking two four-star players for 2015-16.

As San Diego State's director of player development, Velasquez assisted the basketball coaching staff with video breakdown, film exchange, travel, community service and handled many of the day-to-day office duties.

Prior to working as the director of player development, Velasquez was a student manager for the 2002-03 season before serving as head manager from 2003-07.

In 2002-03, San Diego State earned a berth to postseason NIT, where the Aztecs picked up their first Division I postseason tournament victory en route to an appearance in the second round.

Then in 2005-06, San Diego State won the Mountain West with a 13-3 league record before winning the MW tournament. As a result, the Aztecs advanced to the NCAA Tournament for the second time under head coach Steve Fisher and won a then school-record 24 games.

Fisher awarded Velasquez a scholarship in December 2006 and was added to the active roster in January 2007.

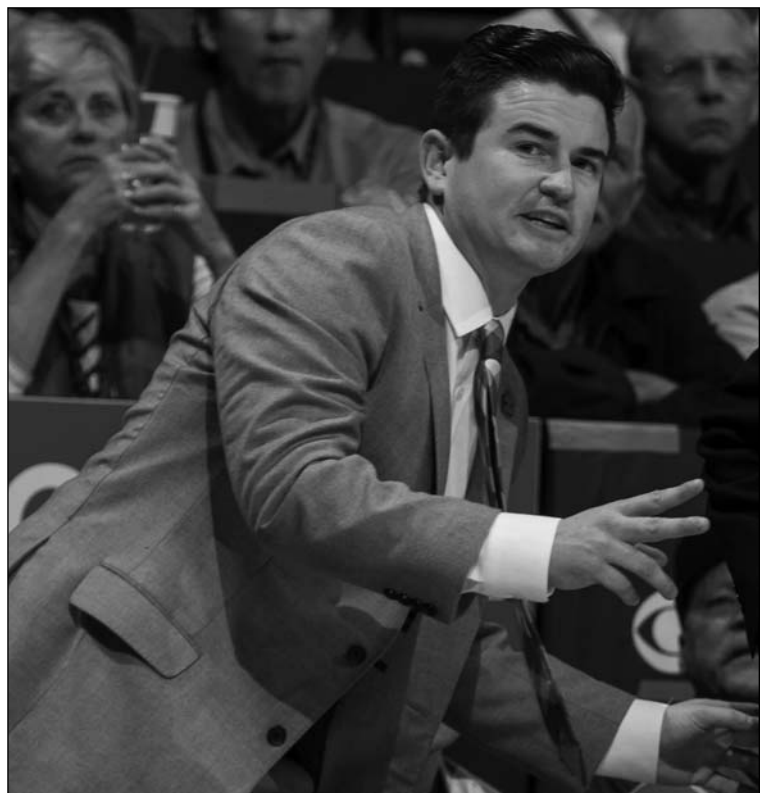
As an official playing member of the team, Velasquez played in four games and recorded a steal. He was a member of a team that finished with a

22-11 record and advanced to the second round of the postseason NIT.

In Velasquez's five seasons as manager, the Aztecs went to the postseason three times and won 22 or more games twice.

Following his graduation from San Diego State in May 2007, Velasquez was hired at the University of the Pacific later that month. As the Tigers' graduate manager, he assisted with UOP's camps, created highlight tapes and coordinated film exchange before returning to his alma mater.

Since his return, SDSU has recorded eight more 20-win seasons, including seven straight with at least 23 victories, and reached the postseason in each of the last eight years. More recently, Velasquez has helped the Aztecs earn an NCAA tournament berth six years in a row, win the first six NCAA tournament games in program history and reach at least the third round of the Big Dance in four of the last five seasons, including two Sweet 16 appearances.





Mark Fisher

Assistant to the Head Coach - 14th Season at SDSU
Michigan '01

Mark Fisher enters his third season as assistant to the head coach and 14th overall at San Diego State. He is the son of 17th-year Aztec head coach Steve Fisher.

Prior to his current role, Fisher was an assistant coach who helped the Aztecs to eight consecutive 20-wins seasons, including five straight years with at least 23 victories, to go with eight consecutive postseason berths. Among the highlights during that stretch were 2011's 34-3 record and Sweet 16 appearance. In 2012-13, SDSU advanced to the NCAA tournament for the fourth year in a row and moved on to the third round for the second time in three seasons.

During his tenure as an assistant, Fisher helped secure the 2009-10 incoming class, which featured the California Player of the Year Kawhi Leonard. The 2009-10 incoming group was ranked No. 15 in the nation by The HOOP SCOOP Online and was rated as the No. 1 class among non-automatic qualifying BCS schools by The HOOP SCOOP Online and *Rivals.com*. *ESPN.com* slotted the Aztec incoming class at No. 4 in its "mid-major recruiting."

The hype was well deserved as Leonard became the first freshman in MW history to be named to the all-conference first team, all while earning league freshman of the year honors and MW tournament MVP accolades. Leonard additionally was one of only four freshmen nationally to lead his team in scoring and rebounding. In 2011, Leonard was an all-conference first-team pick, All-American and first-round NBA Draft pick. He and classmate, Chase Tapley, were also regulars in the starting lineup together for two seasons. Tapley, meanwhile, was a four-year starter, all-conference selection and one of the winningest players in Aztec history.

In addition, Fisher was also the lead recruiter for James Rahon, who helped SDSU win 83 games during his three years of eligibility, including three in the NCAA Tournament. With Rahon in the fold for 2010-11, Fisher helped secure a 6-5 guard in Jamaal

Franklin. Three years later, Franklin became a 2013 NBA Draft pick.

The 2012-13 group, which Fisher also help secure, was acknowledged as one of the best in the country as *Rivals.com* tabbed the class as the 24th-best nationally. Fisher helped sign freshman Matt Shrigley and was responsible for landing JJ O'Brien, a transfer who started 33 of 34 games in 2012-13.

As the director of operations, Fisher handled many of the day-to-day operations, including scheduling, summer camps and organizing all aspects of team travel. He also represented the basketball program with the athletic administration.

During his time supervising the team's schedule, the Aztecs have played high-profile games against Arizona, California, Providence, Iowa State, Washington and Washington State among others. In addition, he arranged SDSU to play in the BP Top of the World Classic in Fairbanks, Alaska, the Shamrock Invitational in Moraga, Calif., the World Vision Classic in Fresno, Calif., and the prestigious John R. Wooden Classic in Anaheim, Calif., in past seasons.

In his four years as the team's schedule maker, the Aztecs won 92

games, for an average of 23 wins per season, and reached the postseason in each of those years.

In previous seasons, when SDSU had two assistant coaches, Fisher officially took on coaching responsibilities, including conducting individual workouts and off-campus recruiting.

Fisher, the oldest of Steve Fisher's two sons, graduated from the University of Michigan in December of 2001, with a bachelor's degree in psychology.

Around basketball a majority of his life, Mark Fisher has amassed a variety of experience in a short period of time.

From 1998-2001, Fisher worked in a variety of capacities for Lincoln High School in Ann Arbor, Mich. He served as the varsity assistant head coach, head junior varsity coach and the head freshman coach during his tenure, assisting in all areas of the program.

He served as associate head coach for an Ann Arbor AAU team in the summer of 2001. Many of the players on that squad went on to play college basketball.

Fisher and his wife, Jill, live in Escondido and have one son, Max.



Mark Fisher

Assistant to the Head Coach

Birthdate
Nov. 10, 1978

Education
2001 - B.A. degree from Michigan.

Marital Status
Married to Jill Fisher

Children
Max (2)

Record Breakdown
SDSU assistant: 154-54
SDSU staff: 145-82
SDSU/Div. I career: 299-136





Matt Soria

Director of Basketball Operations

Matt Soria

**Director of Basketball Operations - 16th Season at SDSU
San Diego State '02**

Matt Soria begins his 16th year with the San Diego State men's basketball program and his ninth as the director of basketball operations.

In November 2007, Soria was named the director of basketball operations after Mark Fisher, who previously held the position, was promoted to assistant coach.

Soria handles day-to-day operations, including scheduling, summer camps and organizing all aspects of team travel.

Prior to his current post, Soria was the basketball program's director of player development, a position he held for three years.

Soria assisted the basketball coaching staff with video breakdown, travel, community service and handled

many of the day-to-day office duties.

During his three-year tenure as the director of player development, the Aztecs went a combined 57-38, won the 2006 Mountain West Conference regular season and tournament championships, earned a berth to the 2006 NCAA tournament and advanced to the second round of the 2007 postseason NIT.

Prior to his promotion to director of player development, Soria was a three-year manager for the Aztecs, serving as the team's head manager for the 2001-02 and 2002-03 seasons. Both of those seasons SDSU advanced to postseason play.

Soria graduated from San Diego State with a bachelor's degree in political science in December 2002, and earned his master's degree in educational technology from SDSU in December 2006.

Soria played collegiate basketball for two seasons at Cabrillo College in Aptos, Calif., before transferring to San Diego State.

Soria, 36, is married to the former Melissa Schuetz. The couple has a five-year-old son, Dylan and a two-year old daughter, Riley. The Soria family resides in San Diego.



Tim Shelton

Director of Player Development

Tim Shelton

**Director of Player Development - Ninth Season at SDSU
San Diego State '11**

Tim Shelton continues his stint at San Diego State as the director of player development, just three seasons after serving as a graduate manager and completing his master's degree from the University. Shelton earned his bachelor's degree from SDSU in 2011.

The third-year director of player development assists with video breakdown, film exchange, travel, community service and many of the day-to-day office duties. Shelton took over for long-time staff member, David Velasquez, who was elevated to assistant coach prior to the 2013-14 campaign.

A native of Fresno, Calif., Shelton played five seasons on Montezuma Mesa and saw action in 109 games while helping the Aztecs reach the postseason in all five of his cam-

paigns, including three consecutive NCAA tournament berths. He is one of four players in the Steve Fisher era to have won three Mountain West championship rings.

Shelton, who earned a spot on the 2012 Mountain West all-defensive team, was a member of the record-setting 2010-11 squad that captured the Mountain West regular-season and tournament championships, won the school's first Division I NCAA Tournament game, advanced to the Sweet 16 and finished with a record of 34-3.

In 2011-12, Shelton, along with senior Garrett Green, began working toward their master's degrees in educational leadership. The duo became the first players under head coach Steve Fisher to start their graduate course work while still competing.

Following that season, Shelton

became a graduate manager while working on finishing his master's degree coursework. Shelton attended practices and traveled part time with the team as part of his duties as a manager. The Aztecs ended up advancing to the third round of the NCAA tournament and winning 23 games.



Tom Abdenour

Head Athletic Trainer - Fifth Season at SDSU
Wayne State '76

Tom Abdenour is in his fifth year as San Diego State's head athletic trainer after spending 24 seasons with the Golden State Warriors and eight years at Weber State.

Abdenour handles all of the medical needs for the men's basketball squad throughout the year. He also supervises and coordinates all rehabilitative efforts in case of injury.

In his first season, San Diego State claimed a share of the Mountain West regular-season title, reached the championship game of the MW tournament for the fourth straight year and advanced to its third consecutive NCAA tournament before completing the 2011-12 season with a 26-8 record. In 2013-14, the Aztecs won 23 games, were nationally ranked for a majority

of the season and advanced to the third round of the NCAA tournament for the second time in three years. Two years ago, SDSU went 31-5, won the Mountain West regular-season title and reached the NCAA Sweet 16. And last year, the winning continued as the Aztecs went 27-9, shared the conference regular-season crown and advanced to the NCAA third round.

A certified member of the National Athletic Trainers Association (NATA) and an active member of the California Athletic Trainer's Association, Abdenour was inducted into the National Athletic Trainers' Association Hall of Fame in 2007 and earned the Association's Most Distinguished Athletic Trainer Award in 2014. He also won the 2005 NATA Tim Kerin Award For Excellence In Athletic Training and was named the

NBA's Athletic Trainer of the Year (1990). In addition, he represented the United States Olympic Committee on the medical staff of the 2000 Olympic Games in Sydney, Australia.

Prior to joining the Warriors in 1987, Abdenour spent eight years at Weber State. His career began in 1978 at Hillsdale College in South Central, Mich., where he spent one year before moving on to Weber State.

A graduate of Wayne State, Abdenour received his bachelor's degree in biology and his master's degree in science education in 1978. In 2011, he earned his doctorate in health science from A.T. Still University.

Tom and his wife, Christine, have three children - Rebecca, Carolyn and Thomas.



Tom Abdenour

Head Athletic Trainer

Randy Shelton

Strength and Conditioning Coach - Sixth Season at SDSU
San Diego State '00

Randy Shelton is in his sixth season at San Diego State as the men's basketball team's strength and conditioning coach.

During his five seasons on Montezuma Mesa, the Aztecs have enjoyed the best five-year run in school history thanks in large part to their effort in the weight room during the season and in the offseason. Over the last five years, San Diego State has gone a combined 141-36 (school-record 34 wins in 2011; 31 in 2014), won five Mountain West titles (four regular season, one tournament) and advanced to the NCAA tournament, including 2011 and 2014's appearance in the Sweet 16.

A 2000 graduate of San Diego State, Shelton is a member of the National Strength and Conditioning Association and is a Certified

Strength and Conditioning Specialist (CSCS).

Shelton is married to the former Waleska Valle and the couple has a son, Darren, and a daughter, Farah.



Randy Shelton

Strength and Conditioning Coach



Megan Parry

Megan Parry

**Learning Specialist/Academic Advisor
2nd Season at SDSU (San Diego State '10)**

Megan Parry enters her second season at San Diego State and her first working with the men's basketball program as its academic advisor.

In her position, Parry serves as a mentor and tutor in the SDSU Student-Athlete Academic Support Services (SAASS) Department, teaches students skills and techniques to accommodate their learning disabilities, both in and out of the classroom, and assesses all incoming students for learning disabilities through educational assessments. Parry also advises students regarding graduation requirements, choosing a degree program, and maintaining academic eligibility.

In addition to her current position, Parry is an adjunct instructor and learning workshops coordinator at nearby Grossmont Community College. Following her graduation from SDSU, Parry was an English skills tutor at Grossmont (2011-12), a research and teaching assistant at SDSU (2013), a SDICCA intern at Grossmont (2013) and a teaching associate at San Diego State from 2012-13.

Parry graduated summa cum laude from SDSU in 2010 with a bachelor of arts degree in English and comparative literature. In 2013, she completed her master of arts at San Diego State in English and comparative literature with a concentration in children's literature.

Leana DeKock

**Administrative Assistant
5th Season at SDSU (San Diego State '11)**

Leana DeKock enters her fifth season as the administrative assistant for the San Diego State basketball program.

DeKock handles administrative duties in the day-to-day operations of the San Diego State basketball office. She works closely with Steve Fisher to organize his schedule.

In addition to assisting Fisher, DeKock assists the staff with schedules, travel and recruiting responsibilities.

Leana and her husband, David, have two daughters, Mallory and Natalia.



Leana DeKock

Marvin Adams

**Graduate Student Manager
1st Season at SDSU (Livingstone College '12)**

Marvin Adams enters his first season as a member of the SDSU program. The Los Angeles, California native is a graduate student manager as he works toward his master's degree in educational leadership.

Adams played collegiate basketball at Livingstone College in Salisbury, North Carolina where he helped the school reach the conference championship for the first time in the Blue Bears' 100-year history.

After graduating from Livingstone, Adams returned to his Southern California roots where he became the boy's basketball assistant varsity coach at Village Christian School in Sun Valley. During his three-year tenure, the Crusaders went 83-12 and won back-to-back CIF titles in 2014 and 2015.

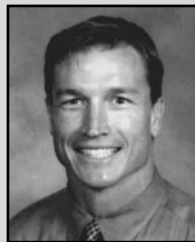


Marvin Adams

SDSU Men's Basketball Doctors and Managers



Christopher Behr
Head Orthopaedic Surgeon



Alan Richburg
Team Physician



Peter Wile
Team Physician



Dennis Brown
Equipment Attendant



Bryan Fisher
Student Manager



Adam Helmer
Student Manager



Chad Kutzke
Student Manager



Nick Robbin
Student Manager



Michael Sohikish
Student Manager