

SAN DIEGO STATE PLAYER NOTES

vs. [3] Washington
March 21, 2016

[2] San Diego State

2015-16 Record: 26-9; 16-2 MW (1st)
11 Straight NCAA/NIT Appearances, 10-Time MW Champions

- The Aztecs have won at least 20 games in a school record 11 straight seasons and 23 or more in eight consecutive seasons.
- San Diego State has advanced to postseason play each of the last 11 seasons (2006 NCAA, 2007-09 NIT, 2010-15 NCAA, 2016 NIT).

Trends:

- SDSU is 8th nationally in winning percentage since the beginning of 2010-11, trailing Wichita State, Gonzaga, Kansas, Duke, Kentucky, Arizona and Stephen F. Austin (through March 16).
- San Diego State is 233-2 the last 235 times it has led with five minutes remaining in the game.

Number	Name	Position	Height	Year	HS	PPG	RPG	APG	FG	3FG	FT	Notes
0	Skylar Spencer	Forward	6-10	Sr.	Price HS	15-16: 3.7 MW: 4.0	5.7 6.8	0.5 0.6	57.1 57.1	0/0 0/0	53.2 55.2	SDSU and MW career leader in wins (107)... SDSU, MW (all games, conf. games only) all-time leader in blocked shots (293) and is 5th nationally through 3/16... 1st in MW history in conference Ws (55)... At least one blk. 116x, 83 multi-block gms... 10 blocked shots in last four gms... Has played in every gm (141) since arriving on campus... Started 23 consecutive games... 4 games w/10+ rebounds this season.
3	Angelo Chol	Forward	6-9	Sr.	San Diego, Calif. (Arizona)	15-16: 3.9 MW: 3.6	3.1 2.8	0.3 0.3	49.5 50.9	0/0 0/0	70.0 73.3	Last 7 gms.: 37 pts., 17 rebs., 4 stls., 90 mins... Had his "best game as an Aztec" - Fisher, with CH 12 pts., 9 rebs. in 17 mins. vs. Utah St. in regular season... Career 52.2 pct. shooter... 41.0 pct. of career rebs. have come on the off. glass... 4th on team in blks. (21)... Made 15 of last 17 FTA... Started nine gms this season... Averaged 4.7 ppg, 2.7 rpg, 6-7 FTs in 2016 Mountain West tournament.
4	Dakarai Allen	Guard	6-5	Jr.	Elk Grove, Calif. (Sheldon HS)	15-16: 6.3 MW: 4.4	2.6 2.3	1.1 1.1	39.6 37.7	26.6 28.2	64.1 50.0	Pronounced Duh-KAR-ee... Started last three games and 14 times this season... Last six games: 10.0 ppg, 23-43 FGs (53.5 pct.), 3.7 rebs., 8 stls, 5 blocks... Last nine games: 8.1 ppg, 3.6 rpg, 1.7 apg... 97 career games played... 10+ pts. in 10 games this year (7 straight wins)... First on team in stls. (36)... Multiple 3FG 6x... In '16 MW tournament: 9.7 ppg, 4.0 rpg, 1.0 apg, 2.0 spg.
11	D'Erryl Williams	Guard	6-3	Jr.	Sacramento, Calif. (Sheldon HS)	15-16: 1.3 MW: 0.4	0.7 0.2	0.3 0.2	42.1 1/3	0/3 0/1	57.1 0/0	Pronounced Dee-AIR-ol... Played in 18 games... Committed only 20 turnovers in 386 career minutes... Has only three multi-turnover game in 55 career outings... Scored in 7 of 18 games... No 10s in last nine games (30 mins)... Averaging career-high 7.2 mins... Played 12 minutes and had 3 pts. and 2 rebs. vs. Illinois State... CH 9 pts. (3-3 FG, 3-3 FT) vs. San Diego Christian.
12	Trey Kell	Guard	6-4	So.	San Diego, Calif. (St. Augustine HS)	15-16: 12.5 MW: 16.2	4.0 4.4	1.5 1.7	39.9 43.2	37.2 39.3	65.6 66.7	Only SDSU player to start every game this season... Scored in double figures 20 straight (16.2 ppg) but has been held under that the last 2 gms. (13 total pts.)... 25 double-digit scoring games this season... 22 of last 23 games w/3FGM... 30 treys in last 11 gms. (30-68, 44.1 pct.)... 93 FTA in last 17 games... 1 TO or less 41x... 12.3 ppg, 3.7 rpg, all-tournament selection in '16 MW tournament.
13	Winston Shepard	Forward	6-8	Sr.	Houston, Texas (Findlay Prep)	15-16: 11.1 MW: 12.3	6.5 6.8	3.1 3.3	38.4 36.8	23.8 24.1	70.0 66.3	Recorded first triple-double in school history (10 pts., 10 rebs., 12 asts.) vs. IPFW last Tuesday... 1st in MW conference Ws (55)... 1,362 career pts. (7th at SDSU)... Only Aztec with 1K pts., 500 reb., 250 ast... 1 of 10 nationally to average at least 12 pts., 6.5 rebounds, 3.25 assists and 1 steals per conference game... 74 career double-fig. scoring games (SDSU is 61-13)... Double-doubles: 5 this season, 7 career... '16 MW tournament: 13.3 ppg, 7.7 rpg, all-tourney.
14	Zylan Cheatham	Forward	6-9	Fr.	Phoenix, Ariz. (South Mountain HS)	15-16: 8.1 MW: 7.7	5.4 5.3	1.0 0.8	53.0 54.5	17.6 1/8	70.7 75.7	Pronounced ZY-lin CHEAT-um... 3rd on team in rebounding, 2nd in free-throw attempts, 4th in scoring... 10 double-digit scoring games, 4 double-digit reb. games, 2 double-doubles... Made 10 of last 12 FGA (83.3 pct.) and 27 of last 48FGA (56.3 pct.)... 50.4+ FG pct. in 23 games... Multiple assists 9 times... Started 26 of last 31 games... 13 pts., 10 rebs. vs. No. 14/13 California... 12 pts., 8 rebs., CH 4 ast. vs. No. 2/3 Kansas.
15	Ben Perez	Guard	6-3	Fr.	San Marcos, Calif. (USAF Prep Academy)	15-16: 3.0 MW: 1.4	0.8 0.7	0.2 0.3	33.8 24.1	26.7 8.7	3/4 1/1	Preferred walk-on... Attended USAF Prep Academy last season led team in scoring... Averaging 10.3 minutes... 16 3FG rank 5th on team... Scored in 11 of last 17 games... Multiple 3FG five times over-all... Last 2 gms.: 5 pts., 2 stls (8 mins)... 10 pts. (4-4 FG, 2-2 3FG) at LBSU... DNP 2 gms. (concussion)... Returned vs. Nicholls: CH 11 pts., 2 stls... 8 pts. in career-high 21 mins. vs. No. 2/3 Kansas.
20	Matt Shrigley	Forward	6-6	Jr.	San Diego, Calif. (La Costa Canyon HS)	15-16: 1.6 MW: 1.9	1.0 1.1	0.6 0.8	21.1 22.2	20.0 2.0	0/0 0/0	Suffered a right ACL tear in his right knee on 7/20, underwent surgery 7/28 and made his playing return on 1/23... Was expected to miss eight months but return to action less than six months after the surgery... Played 15 of last 16 games (169 minutes)... 12 pts., career-high four three-pointers (4-9), career-high six assists vs. Air Force... 89 career three-pointers.
21	Malik Pope	Forward	6-10	So.	Sacramento, Calif. (Laguna Creek HS)	15-16: 7.3 MW: 7.3	4.6 4.5	0.8 1.2	41.3 48.5	38.7 44.7	67.3 66.7	Pronounced muh-LEEK... Julius Erving Award Watch List... Invited to USA Basketball's U19 World Championship Team training camp this past summer... Last 10 gms.: 13.0 ppg, 6.3 rpg, 52.7 FG pct., 56.4 3FG pct... Made 22 of last 39 3FGA (56.4 pct.)... 56 career 3FGs... 8 of 14 career double-digit scoring games have come away from home... Five 10+ pt. games in last 6 (14.8 ppg)... '16 MW tourney: 14.0 ppg, 7.3 rpg, 8-13 3FG, all-tourney.
22	Parker U'u	Guard	6-5	Jr.	Sacramento, Calif. (Hartford)	15-16: 0.5 MW: 0.0	0.5 0.3	0.6 0.8	1/5 0/2	0/3 0/2	2/2 0/0	Pronounced You-you... Suffered ACL injury last season; was limited to just two games last season as an Aztec after transferring from Hartford... Played in 39 career Division I games... Career averages: 1.2 pts., 1.1 rebs., 0.3 ast., 6.2 mins... Played 7 mins. in exhibition vs. CS San Marcos; finished with 3 pts., 1 reb., 1 ast., 1 blk... Played vs. ECU, Biola (1 min. each)... 2 pts., 2 rebs. vs. Nicholls.
42	Jeremy Hemsley	Guard	6-3	Fr.	Rancho Cucamonga, Calif. (Damien HS)	15-16: 12.3 MW: 13.1	2.6 2.7	1.9 1.7	44.2 45.0	36.9 39.1	77.1 75.4	One of 6 Div. I true freshman w/at least 12.0 ppg, 2.5 rpg, 1.5 apg, 44.0 FG, 36.0 3FG, 77.0 FT (thru 3/16)... 18 double-digit scoring games in last 24 gms... Multiple 3FG in 9 of last 21 games... SDSU 9-1 when he scores 15+ points... 25 double-digit scoring gms. (No turnovers in the last two games (33 minutes)... DNP vs. Air Force (bruised right foot)... Career-high 4 stls at Wyoming.

red indicates projected starter, black indicates reserve, gold indicates inactive.
in notes, red indicates pending record or honor; green indicates note applies to game opponent

SDSU BROADCAST ROSTER

[3] Washington at [2] San Diego State | Steve Fisher Court at Viejas Arena | March 21, 2016



0
SKYLAR SPENCER

Forward
6-10, 240, Senior-3L
Inglewood, Calif.
Price High

PPG: 3.7 RPG: 5.7 APG: 0.5
FG%: 57.1 3FG: 0/0 FT%: 53.2



3
ANGELO CHOL

Forward
6-9, 215, Senior-1L
San Diego, Calif.
Arizona

PPG: 3.9 RPG: 3.1 APG: 0.3
FG%: 49.5 3FG: 0/0 FT%: 70.0



4
DAKARAI ALLEN

Guard
6-5, 195, Junior-2L
Elk Grove, Calif.
Sheldon High

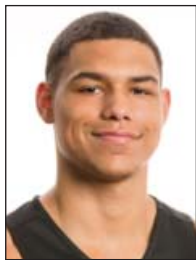
PPG: 6.3 RPG: 2.6 APG: 1.1
FG%: 39.6 3FG: 26.6 FT%: 64.1



11
D'ERRYL WILLIAMS

Guard
6-3, 195, Junior-2L
Sacramento, Calif.
Sheldon High

PPG: 1.3 RPG: 0.7 APG: 0.3
FG%: 42.1 3FG: 0/3 FT%: 57.1



12
TREY KELL

Guard
6-4, 210, Sophomore-1L
San Diego, Calif.
St. Augustine HS

PPG: 12.5 RPG: 4.0 APG: 1.5
FG%: 39.9 3FG: 37.2 FT%: 65.6



13
WINSTON SHEPARD

Forward
6-8, 210, Senior-3L
Houston, Texas
Findlay Prep

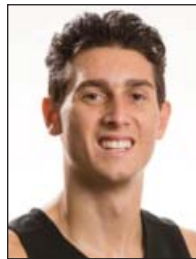
PPG: 11.1 RPG: 6.5 APG: 3.1
FG%: 38.4 3FG: 23.8 FT%: 70.0



14
ZYLAN CHEATHAM

Forward
6-9, 215, Freshman-RS
Phoenix, Ariz.
South Mountain High

PPG: 8.1 RPG: 5.4 APG: 1.0
FG%: 53.0 3FG: 17.6 FT%: 70.7



15
BEN PEREZ

Guard
6-3, 175, Freshman-HS
San Marcos, Calif.
USAF Prep Academy

PPG: 3.0 RPG: 0.8 APG: 0.2
FG%: 33.8 3FG: 26.7 FT%: 3/4



20
MATT SHRIGLEY

Guard
6-6, 180, Junior-2L
San Diego, Calif.
La Costa Canyon High

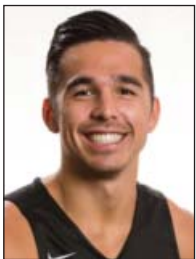
PPG: 1.9 RPG: 1.1 APG: 0.7
FG%: 23.3 3FG: 23.1 FT%: 0/1



21
MALIK POPE

Forward
6-10, 210, Sophomore-1L
Sacramento, Calif.
Laguna Creek High

PPG: 7.3 RPG: 4.6 APG: 0.8
FG%: 41.3 3FG: 38.7 FT%: 67.3



22
PARKER U'U

Guard
6-5, 220, Junior-SQ
Sacramento, Calif.
Hartford

PPG: 0.5 RPG: 0.5 APG: 0.6
FG%: 1/5 3FG: 0/3 FT%: 2/2



33
NIKSHA FEDERICO

Forward
6-7, 190, Junior-SQ
San Diego, Calif.
Cathedral Catholic High

PPG: 1.3 RPG: 0.2 APG: 0.2
FG%: 3/7 3FG: 2/5 FT%: 0/0



42
JEREMY HEMSLEY

Guard
6-3, 180, Freshman-HS
Rancho Cucamonga, Calif.
Damien High

PPG: 12.3 RPG: 2.6 APG: 1.9
FG%: 44.2 3FG: 36.9 FT%: 77.1



HEAD COACH
STEVE FISHER

- 25th full season (549-276)
- 17th year at SDSU (365-194)
- 1989 NCAA champion
- 3 NCAA title game appearances
- 15 NCAA tournament appearances
- Two-time national coach of the year