



TABLE OF CONTENTS

THE AZTEC EXPERIENCE

Aztec Basketball Tradition	1
San Diego State University	2
America's Finest City	3
Aztec Athletics Center	4
Aztec Facilities/Strength & Conditioning	5
Aztec Academic Commitment	6

GENERAL INFORMATION

Table of Contents	7
Media Information/Quick Facts	8
San Diego Media Outlets	9
Aztec Media	10

2007-08 SEASON PREVIEW

2007-08 Preview	12-13
2007-08 Rosters	14
2007-08 Roster Breakdown	15
2007-08 Schedule	16
2008 NCAA Tournament Information	16

COACHING STAFF

Head Coach Beth Burns	18-20
Associate Head Coach Heidi VanDerveer	21
Assistant Coach Jualeah Woods	22
Assistant Coach Renee Jimenez	23
Director of Operations Tammy Stephens	24
Support Staff	25-26



PLAYER PROFILES

Seniors	28-33
Juniors	34-37
Sophomores	38-40
Redshirt Freshmen	41
Freshmen	42

2007-08 OPPONENTS

Opponent Information	44-49
MWC Composite Schedule	50
SD Surf 'N Slam/MWC Tournaments	50
Series Records By Opponent/Conference	51-52
All-Time Scores Vs. Opponents	53-56



2006-07 SEASON REVIEW

2006-07 Results/Stats	58-61
2006-07 Superlatives	62
2006-07 Box Scores	63-67
2006-07 MWC Review	68-70

AZTEC RECORDS

Team Records	72
Individual Records	73
Single-Game Bests	74
Single-Season Leaders	75
Career Leaders	76
Annual Leaders	77
Year-By-Year Team Stats	78

AZTEC HISTORY

Coaching History	80
Year-By-Year Results	81-87
Postseason History	88-89
All-Time Letterwinners	90
Honors And Awards	91
1,000-Point Scorers	92-93
Aztec Hall of Fame Members	94

THE UNIVERSITY

San Diego State	96-99
Aztec Culture	100
City of San Diego	101
Cox Arena	102-03
Aztec Athletics Center	104-05
Athletic Facilities	106

Aztec Academic Commitment	107
Aztec Program History	108-109
Strength & Conditioning/Athletic Medicine	110
Media Exposure/Life Skills	111
The Full Court Press Club	112
University President/Director of Athletics	113-114
Athletic Department Directory	115
Aztec Summer Camps	116
2008 Phillips 66 MWC Championships	117
Mountain West Conference	118-119
Television/Radio Roster	120

2007-08 BASKETBALL MEDIA GUIDE

Aztec Media Relations Office
 San Diego St. University - Dept. of Athletics
 Aztec Athletics Center, Suite 3014
 5302 55th Street
 San Diego, CA 92182-4309
Office Phone:(619) 594-5547
Office Fax:(619) 582-6541
Press Row:(619) 265-5853
Web Site:www.goaztecs.com

MEDIA GUIDE CREDITS

Editor/Layout And Design:Peggy Curtin
Editorial Assistance: Jamie McConeghy, Christina Ross, Jeff Salmon, Andrea Ohta, Robin Shin and Darin Wong
Photography:Stan Liu Photography, Ernie Anderson, Peggy Curtin, Ken Jacques Photography, MWC and Joel Zwink
Cover Design:Jimmy Tang/Renee Jimenez
Printing:SDSU Reprographic Services



CSU COMMITMENT

The California State University is committed to providing equal opportunities to men and women CSU students in all campus programs, including intercollegiate athletics.



MEDIA INFORMATION/QUICK FACTS

GENERAL INFORMATION

Location: San Diego, Calif., 92182
 Founded: 1897
 Enrollment: 35,887
 Nickname: Aztecs
 Mascot: The Aztec Warrior
 Colors: Scarlet & Black
 Affiliation: NCAA Division I
 Conference: Mountain West
 Home Arena: Cox Arena at Aztec Bowl
 Arena Capacity: 12,414
 Univ. President: Dr. Stephen L. Weber
 Director of Athletics: Jeff Schemmel
 Faculty Athletic Rep.: Dr. Roger Caves
 Senior Woman Admin.: Jenny Bramer

AZTEC BASKETBALL STAFF

Head Coach: Beth Burns (Ohio Wesleyan, 1979)
 Career Record/Years:
 247-188 (.568)/15 Seasons
 Record at SDSU/Years:
 166-123 (.574)/10 Seasons (1989-97, 2005-)
 Best Time to Call: Contact SID
 Basketball Office Phone: 619-594-4095
 Basketball Office Fax: 619-594-8057
 Assoc. Head Coach: Heidi VanDerveer
 (College of Charleston, 1986)
 Asst. Coaches: Jualeah Woods (USC, 1994),
 Renee Jimenez (San Francisco St., 2004)
 Director of Basketball Operations: Tammy
 Stephens (Cal State Fullerton, 1981)
 Video Coordinator: Tara Morrison
 Student Managers: Emily Banville, Karla
 Moran
 Athletic Trainer: Gina Maggio
 Academic Advisor: Willie Judd
 Strength & Conditioning: Wendell Richards

AZTEC BASKETBALL FACTS

First Year of Aztec Basketball: 1976-77
 All-Time Record: 463-436 (.515)
 2006-07 Record: 12-16
 2006-07 Conf. Record/Finish: 5-11/7th
 Letterwinners Returning/Lost: 7/5
 Starters Returning/Lost: 4/1
 Newcomers: 3
 Postseason App./NCAA App.: 8/6
 Last Postseason Appearance:
 1997 (Lost vs. Oregon, NCAA First Round)

AZTEC MEDIA RELATIONS

Media Contact: Peggy Curtin
 Office Phone: 619-594-2576
 Cell Phone: 619-200-8776
 Fax: 619-582-6541
 E-Mail: mcurtin@mail.sdsu.edu
 Press Row Phone: 619-265-5853
 Mailing Address:
 San Diego State Media Relations
 Aztec Athletics Center, Suite 3014
 55th Street
 San Diego, Calif. 92182-4309
 Official Web Site: www.goaztecs.com

The 2007-08 SDSU basketball media guide has been prepared to assist media members in their coverage of the Aztecs. Additional information, including media releases and photographs, may be obtained by contacting assistant media relations director Peggy Curtin at 619-594-2576.

Credentials

All requests for working credentials (press, radio, television, scouting) should be directed to Peggy Curtin at least 24 hours prior to tip-off. Faxed inquiries may be sent to 619-582-6541. Credentials will not be mailed. They may be picked up at the media entrance at Cox Arena (lower level) two hours prior to the start of all home games.

Campus Parking

Media desiring to cover Aztec practices on campus can park in the Cox Arena lot L and obtain a special parking pass at the Cox Arena office. Media parking will be provided for all home games in Parking Structure IV, adjacent to Cox Arena.

Directions To Cox Arena

Take I-8 East to the College Avenue exit. Take College Avenue south towards SDSU. Turn right on Montezuma Road. Turn right on 55th Street. Cox Arena is on the right-hand side.

Practice And Interviews

Media wishing to attend practice should contact the Aztec media relations department at least one day in advance.

Head coach Beth Burns and the players are generally available to meet with the media following each workout, as requested. Coaches and players are also available to conduct television and radio interviews, which must be set up through the media relations office at 619-594-2576.

Please request all interviews with a minimum of 24 hours notice. San Diego State players and coaches will not be available for interviews on game days until postgame.

Game-Day Services

The Aztec media relations office furnishes game programs, pregame notes and media guides prior to each game in the media room at Cox Arena. Play-by-play accounts, halftime and final statistics and shot charts are also provided.

Telephones

Several phones are available in the media room and on press row, but are available on a first-come, first-serve

AZTEC MEDIA RELATIONS



Peggy Curtin
 Asst. Media Relations Dir.
 Primary Wbb Contact
 Office: 619-594-2576
 Cell: 619-200-8776
 E-Mail: mcurtin@mail.sdsu.edu



Jamie McConeghy
 Asst. Media Relations Dir.
 Secondary Wbb Contact
 Office: 619-594-4348
 Cell: 607-435-5577
 E-Mail:
jmcconeg@mail.sdsu.edu

basis. For more information on phone-line installation, contact Cox Arena at (619) 594-3533.

Phone lines for visiting radio broadcasts (one ISDN, one business) will be provided on a reciprocal basis.

Media Seating

Media will be assigned seats along press row tables located behind the visitor's bench. Please check the media seating chart in the media workroom.

Photographers

Photographers are restricted to either designated areas along the baseline and are not permitted near team benches during the game.

Weekly Press Release

Weekly Aztec basketball releases in pdf format (Acrobat) are available for download from the women's basketball page at www.goaztecs.com or via e-mail. Please contact assistant media relations director Peggy Curtin if you would like to be placed on the Aztec basketball e-mail list.

Aztec Web Casts

Aztec basketball fans will have an opportunity to listen to live play-by-play of regular season and MWC tournament games, both home and away, over the internet at www.goaztecs.com. In addition, for the second straight season all Aztec home games will feature a live video feed from Cox Arena. Both services will be available free of charge.

For the 14th year in a row, Bill Earley will do the play-by-play, while former Aztec Tammy Blackburn provides analysis.

On The Internet

Information on Aztec basketball is available on the Internet at www.goaztecs.com. Press releases and recaps, along with in-game and season statistics, are updated on a weekly basis. In addition, the basketball media guide is also located on the site and includes player profiles, school records and team history.





SAN DIEGO MEDIA OUTLETS

NEWSPAPERS

San Diego Union-Tribune

PO Box 120191
 San Diego, CA 92112
News Desk: (619) 293-1341
Fax: (619) 260-5078
E-Mail: sports@uniontrib.com
Website: signonsandiego.com
 Chuck Scott, Sports Editor: (619) 293-1804
 Nicole Vargas, Beat Writer: (619) 293-1390
 Mick McGrane, Sports: (619) 293-1850
 Nick Canepa, Columnist: (619) 293-1397
 Tim Sullivan, Columnist: (619) 293-1033

North County Times

207 Pennsylvania Ave.
 Escondido, CA 92025
News Desk: (800) 200-1601
Fax: (760) 740-5045
E-Mail: sports@nctimes.com
Website: nctimes.com
 Loren Nelson, Sports Editor: (760) 740-3551
 Mike Klitzing, Beat Writer: (760) 740-6643

Daily Aztec

San Diego State University, BAM-2
 San Diego, CA 92182-4591
News Desk: (619) 594-7817
Fax: (619) 594-7277
Email: sportseditor@thedailyaztec.com
Website: thedailyaztec.com
 David Biderman, Sports Editor

WIRE SERVICE

Associated Press

PO Box 191
 San Diego, CA 92112
News Desk: (619) 231-9365
Fax: (619) 291-2098
Email: Sandiego@ap.org
 Bernie Wilson, Sports Editor

TELEVISION STATIONS

Channel 4 San Diego

350 10th Avenue, Suite 500
 San Diego, CA 92101
News Desk: (619) 876-4817
Fax: (619) 595-0168
Website: 4sd.com
 Jason Bott, Sports Producer: (619) 876-4817
 Nick Davis, Sports Producer: (619) 876-4820
 Jenny Cavnar, Reporter: (619) 876-4859
 John Weisbarth, Reporter: (619) 876-4845



TELEVISION STATIONS (CONT.)

KFMB (CBS) Channel 8

PO Box 85888
 San Diego, CA 92186
News Desk: (858) 495-7587
Fax: (858) 560-0627
Website: kfmb.com
 Kyle Kraska, Sports Director: (858) 495-7588
 John Howard, Sports: (858) 495-7586
 Dan Roger, Producer: (858) 472-3589

KGTV (ABC) Channel 10

PO Box 85347
 San Diego, CA 92186
News Desk: (619) 237-6380
Fax: (619) 527-0369
Website: 10news.com
 Ben Higgins, Sports: (619) 237-6372
 Steve Smith, Sports: (619) 237-6314
 Jeff LeValley, Photographer: (619) 237-6316

KNSD (NBC) Channel 7/39

225 Broadway
 San Diego, CA 92101
News Desk: (619) 578-0201
Fax: (619) 578-0202
Website: nbcсандiego.com
 Jim Laslavic, Sports Director: (619) 578-0226
 Jim Stone, Sports: (619) 578-0227
 Derek Togerson, Sports: (619) 578-0215
 Dave Smith, Photographer: (619) 578-0243

KUSI (IND) Channel 51/9

PO Box 719051
 San Diego, CA 92171-9051
News Desk: (858) 505-5014
Fax: (858) 576-9317
Website: kusi.com
 Paul Rudy, Sports Director: (858) 505-5047
 Rick Willis, Sports: (858) 505-5032

TELEVISION STATIONS (CONT.)

XETV (FOX) Channel 6

8253 Ronson Road
 San Diego, CA 92111
News Desk: (858) 650-5401
Fax: (858) 279-0061
Website: fox6.com
 C.S. Keys, Sports Director: (858) 650-5482
 Andrea Nakano, Sports: (858) 650-5492
 Mike Lamar, Sports Producer: (858) 650-5489

RADIO STATIONS

XTRA SPORTS (1360 AM)

9660 Granite Ridge Drive
 San Diego, CA 92123-2657
News Desk: (619) 570-1360
Website: xtrasports1360.com

KOGO (600 AM)

9660 Granite Ridge Drive
 San Diego, CA 92123-2657
News Desk: (858) 560-6671
Fax: (858) 715-3363; (858) 715-3364
Website: kogo.com

ESPN Radio (800 AM)

1027 10th Avenue, Suite C
 San Diego, CA 92101
News Desk: (619) 696-9902
Website: web.espnradio800.com

XPRS Sports Radio (1090 AM/105.7 FM)

3655 Nobel Drive, #470
 San Diego, CA 92122
News Desk: (858) 453-9153
Fax: (858) 453-9157
Website: mighty1090.com



AZTEC MEDIA

SDSU BASKETBALL NETWORK



For the seventh straight year, Aztec women's basketball fans will have an opportunity to listen to live play-by-play of regular season and conference tournament games over the internet at www.goaztecs.com.

SDSU graduate Chris Ello (play-by-play) begins his first season with the team, but is a familiar voice in the San Diego area. He currently plays host to a daily sports talk radio show, "The World of Sports According to Chris", on the newly launched all-sports station, XTRA Sports 1360 AM.

Ello started his career in sports talk in San Diego on XTRA Sports 690 in the summer of 1994. He has experience doing play-by-play for a variety of different sports at every level, including stints with the Aztec football (1985), baseball (1998-99) and men's basketball (2006-07) squads.

From 1996-2006, he was the voice of the San Diego Gulls hockey team and has called the action for the San Diego Sockers (indoor soccer), San Diego Spirit (outdoor soccer), San Diego Wildcards (CBA) and San Diego Riptide (arena football). Ello also has experience broadcasting high school CIF football and basketball games since 2000.

Ello is a 1985 graduate of San Diego State with a bachelor's degree in journalism, where he spent two seasons with the baseball team from 1980-81 as a left-handed pitcher. A former sports editor at the *Daily Aztec*, he resides in Ranch San Diego with his wife, Lori.

Former Aztec standout Tammy Blackburn, who enters her 14th season, will join Ello on the broadcast team for selected home games.

Blackburn earned four letters in basketball at San Diego State from 1991-94, helping the Aztecs to a 26-5 record and an NCAA tournament bid her senior season.

Along with her radio duties at SDSU, she currently works for CSTV and the Mountain West Sports Network, providing analysis for a variety of sports, including football, basketball, volleyball, soccer and softball.

Blackburn spent 10 years with Fox Sports as a color commentator, broadcasting Pac-10 Conference women's basketball games, and has also worked for ESPN.

When she is not on the air, Blackburn, who earned both her bachelor's (1994) and master's (2001) degrees from San Diego State, is an associate director for the SDSU Alumni Association.

For the second consecutive year, all regular season Aztec home contests, with the exception of the two televised games, will also feature a live video feed to go along with the audio call from Cox Arena on www.goaztecs.com.

COLLEGE SPORTS TELEVISION

On Aug. 26, 2004, College Sports Television (CSTV) and the Mountain West Conference announced a visionary partnership that revolutionized the college sports landscape. The landmark agreement was the first NCAA Division I football and men's basketball conference-wide deal for CSTV.

The advent of the new television model gives the fastest-growing independent cable network exclusive rights to all conference events, including cable and satellite television coverage, national over-the-air and satellite radio, video-on-demand and online broadcast rights. The CSTV/MWC partnership has guaranteed greater levels of television exposure for all MWC sports and has resoundingly met the fundamental goals of more exposure, preferred start times and competition on select days of the week.

In the summer of 2006, the centerpiece of this historic relationship was realized with the launch of The Mtn. – MountainWest Sports Network - the first sports network dedicated to serving a single collegiate athletic conference 24 hours a day, seven days a week, 365 days a year. The Mtn. is jointly owned by CSTV and Comcast and operated by Comcast SportsNet.

The Mtn. showcases MWC athletics across multiple sports, including football, men's and women's basketball, and men's and women's Olympic sports. The Mtn. features more than just live games and has added its own original programming. Fans get a comprehensive array of news, features and analysis about their favorite MWC teams and players.

In the league's mission to promote its athletic events to national and regional television audiences, the 2006-07 academic year featured more than 250 MWC events live on The Mtn., CSTV and VERSUS.

The Mountain West Conference had an unprecedented 32 women's basketball games on regional and national television in 2006-07. Twenty-five games were shown on The Mtn., with seven games broadcast live nationally on CSTV.

In 2007-08, it only gets better. The Mtn. will televise 25 live women's basketball games, including both of the Aztecs' meetings with UNLV and SDSU's non-conference outing with perennial power Connecticut. The network will also produce halftime and post-game shows during the season.

The television schedule tips off Thursday, Nov. 15, with Wyoming playing host to Kansas State on The Mtn.. Conference play begins Wednesday, Jan. 9, with Wyoming traveling to New Mexico on CSTV.

Every game of the 2007 conference championships from Las Vegas, Nev., will also be shown on either The Mtn., CSTV or VERSUS.

POWERED BY

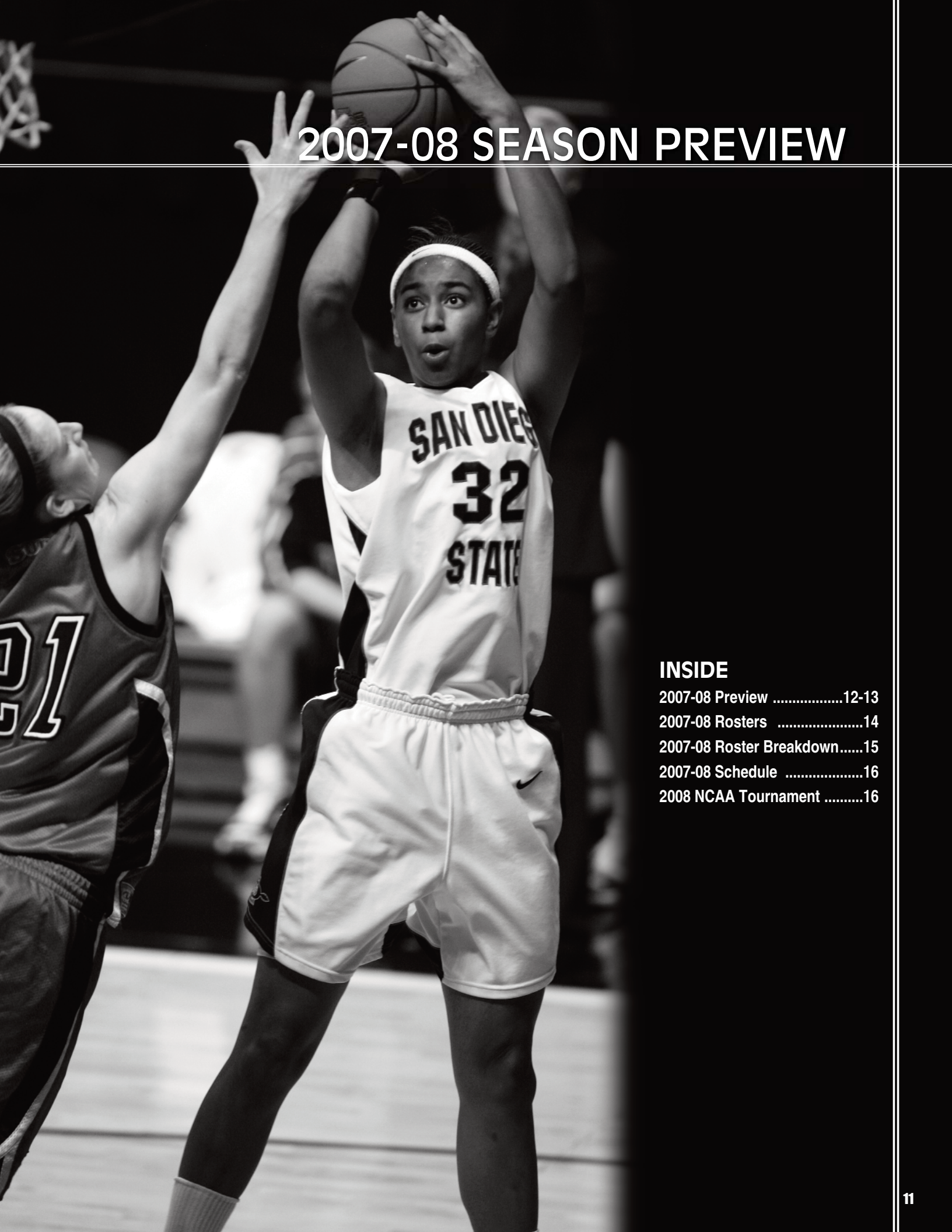


MountainWest Sports Network



SDSU WOMEN'S BASKETBALL GAMES TELEvised IN 2007

Date	Game	Location	TV	Time
Dec. 21	vs. UConn	San Diego, Calif.	The Mtn.	9 p.m. PT
Jan. 26	at UNLV	Las Vegas, Nev.	The Mtn.	7 p.m. PT
Feb. 27	vs. UNLV	San Diego, Calif.	The Mtn.	8 p.m. PT



2007-08 SEASON PREVIEW

INSIDE

2007-08 Preview	12-13
2007-08 Rosters	14
2007-08 Roster Breakdown.....	15
2007-08 Schedule	16
2008 NCAA Tournament	16

SEASON PREVIEW

With seven players returning, including four starters, and a strong contingent of newcomers ready to contribute, the San Diego State women's basketball team enters 2007-08 with all the pieces necessary to become a contender in the Mountain West Conference.

The Aztecs are fresh off a 2006-07 campaign in which they finished as the 11th-most improved team in the nation and recorded their most victories (12) since the 2000-01 season. SDSU also made the biggest turnaround in Mountain West Conference history, improving by five league wins, including victories over WNIT champion Wyoming and perennial power Utah.

Despite all the accomplishments of last year's squad, head coach Beth Burns, who enters the third year of her second tenure, knows that 2006-07 was only a stepping stone in the bright future of the Aztec basketball program.

"We finished on a relative upswing in terms of the marked improvement that we made, but we still have miles to go," Burns said. "We used the spring and summer to focus on those kind of things. We were able to have at least a measurable taste of success, especially in league when we had not had an opportunity to compete with anyone the year before. To turn that over into league wins gave us some confidence and something to build on. We played a lot of first-year players who gained valuable experience. I think we learned a lot, but that's what this year will tell us."

During the offseason, the Aztecs focused on their strength and conditioning, as well as their on-court toughness, which Burns believes will be a key in the team's success in 2007-08.

"The component we were missing last year was toughness - toughness to finish," Burns said. "That's been our goal of the offseason and that will be our goal as we start the season. We've got to be tough enough to finish the job. We were able to have success last year when things went well. When things didn't go well, we didn't show the resiliency that we would have liked to be



Coco Davis



Jené Morris

able to battle back. That's been a real focal point."

Below is a breakdown of the 2007-08 Aztec basketball team:

AZTEC BACKCOURT

Of the 13 players on the San Diego State roster this season, nine are listed as guards.

"We are really excited about our depth in the backcourt," Burns said. "We can play with great team speed and fly around. In order for us to be successful, we have to be able to play at warp speed, especially at altitude, because we will give up both pounds and inches against most every team that we play. But we have talent and without question, we can counter some of those things with our speed."

The entire SDSU starting backcourt remains in tact from the 2006-07 campaign, as junior Tamika Lipford and sophomore Quenese Davis combined to start in all but four contests.

Lipford has already played in 42 career games and provides the team with consistent play, especially on defense where she contributed 36 steals, which ranked third on the squad.

"Tamika got better and better as the season went on last year," Burns said. "Without question her experience level is what we're going to count on. She's also very fit and has worked hard to improve her shooting."

Quenese Davis is coming off an outstanding first collegiate campaign in which she led the league in assists (5.25/g), ranking first nationally among freshmen, an impressive stat considering the Aztecs averaged just over 56 points a contest. A team co-captain, she also contributed 9.8 points, 4.8 rebounds and nearly 2.0 steals per outing en route to third-team all-conference accolades.

"Q was the most valuable player on our team last year, which was an easy decision," Burns said. "Her im-

provement throughout the course of the season was tremendous. She wants to be great, works at it and has set high standards and goals for herself. She's a smart player and a student of the game, and I'm confident she will learn a lot from the experience she gained for the first time a year ago."

The reserves were also key to the Aztecs' success in 2006-07.

Senior guard Kate Eveland is the most experienced player on the roster, playing 83 career games, including 36 starts. She ranks ninth in school history in career three-pointers with 62, and averaged a career-high 6.6 points per game in 2006-07. Eveland is also a standout in the classroom, having earned a spot in the prestigious Phi Beta Kappa honor society as an international business major.

"Kate is humble, works hard and doesn't complain," Burns said. "She has the ability to be a player who you're surprised when she misses (shots). Kate also has good mental toughness, which we will depend on with a group that is relatively young in terms of game experience."

Junior guard LaSandra Dixon gives the team immediate energy off the bench and is a spark, especially on the defensive side of the ball. Dixon played in 22 games a year ago, starting twice, and contributed 16 steals and 16 assists.

"Sandy has probably the most consistent energy of any of our returning players - she always brings it," Burns said. "She is very coachable and is happy to be here everyday, which is an invaluable trait in a long season. We're going to use her as a wildcard all over the floor, because she, along with Tamika, are tempo changers and will always make things happen."

Sophomore Kim Spinardi should see more action this season, after appearing in nine contests a year ago.

"Spin is smart and understands what she needs to



SEASON PREVIEW

2007-08 TEAM INFORMATION

be successful," Burns said. "She's one of our better half court passers and if she can be consistent from the perimeter, then I see her helping us, especially against zones, because of her ability to pass the ball and to take and make shots."

While the Aztecs return five letterwinners in the back court, newcomers Jené Morris and Coco Davis will have an immediate impact and are expected to contribute in all areas.

Morris practiced with the team last season after transferring from California, where she started 21 games for an NCAA tournament team and was named a Pac-10 all-freshman honorable mention pick in 2005-06.

"Jené is ready to play," Burns said. "She comes in with a defensive reputation, but is also a very, very skilled offensive player. She gets to the rim, has a solid mid-range game and may be our most consistent three-point shooter. When you put in the fact that she does have a year of collegiate experience with Q's experience, it gives us a one-two punch in the back court that we wouldn't trade with anyone."

Coco Davis, the younger sister of Quenese, is a versatile back court player who can score, rebound and has tremendous court vision. One of the team's two true freshmen, as a prep she helped Sacramento High to a 29-4 record, a section title and a spot in the NorCal Division III final in 2007.

"Coco has ability to play any of the perimeter spots," Burns said. "She has a strong body and we're going to count on her to score and help us score with her passing ability. She's a good three-point shooter and rebounder, and as she gets comfortable, she has an opportunity to be in our top rotation."

Redshirt freshman Christen Myles is a solid defender who will be eligible to compete in December, while former local standout Jerica Williams, who will sit out the season after transferring from UCLA, will provide the team with valuable competition in practice.



Paris Johnson

"When you look at the players we have returning, plus the new talent we added this season with Christen, Coco and Jené, we're thrilled with the options we have on the perimeter," Burns said.

AZTEC FRONT COURT

While the Aztecs may not boast the same kind of depth in the frontcourt, one of the biggest differences this season will be the team's presence in the paint.

Two seniors, both of whom have starting experience, are among San Diego State's four players in the front court.

Shannon Clay, who missed the first six games a year ago due to injury, provided an instant offensive punch, scoring in double-figures seven times in 2006-07. She also averaged 4.8 rebounds a game and contributed 18 blocks, while shooting over 45 percent from the field.

"It was unfortunate that Shannon missed a good chunk of last season due to injury," Burns said. "But I'm excited for her this year, because she's had a very good offseason. She has great athletic skill and has a tremendous vertical. Her challenge will be to transfer all her physical skills into on-court performance and I'm confident that she will do that. I expect her to contribute and play early and often."

One of the top defensive players in the conference, Shanna Demus gives the Aztecs extreme versatility in the front court, especially with her ability to guard every position on the floor. She ranked third in the MWC in steals (2.14/g) in 2007, to garner honorable mention all-league honors, while she will continue her role as a team captain for the second year in a row.

"Shanna is the player who I depend on most," Burns said. "She has played every position on the floor and I thought she was the best defensive player in the conference a year ago. She has a great understanding of the game, and I'm counting on her to help with our young frontcourt."

Demus also showcased her offensive skills in her second season as an Aztec, tallying 10 double-figure scoring outings, including a pair of 20-point performances.

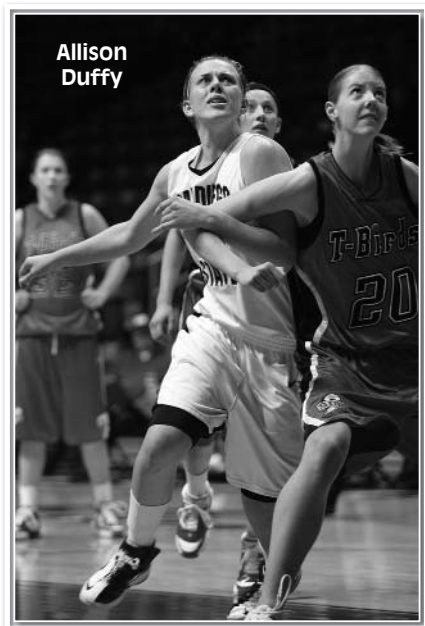
"Shanna's improved scoring from a year ago had a lot to do with Quenese," Burns said. "When you have a talented floor leader, players get the ball in spots where they can do something with it. But give credit to Shanna, she improved her shooting percentage, did a good job facing up and worked on her mid-range game."

The biggest impact by newcomers will more than likely come in the front court in redshirt freshman forward Allison Duffy and true freshman center Paris Johnson. Both played their high school careers in San Diego and will look to dominate the paint, an area where the Aztecs' have been thin the past few years.

"What Allison and Paris give us is someone who commands a double-team, which we haven't had before," Burns said. "The better that they play, the more opportunity everyone else will get."

Duffy averaged over 20 points in each of her final three seasons at El Capitan High School in nearby Lakeside, Calif. Over her prep career, she scored 2,190 points (21.1 ppg.), pulled down 1,291 rebounds (12.4 rpg.) in 104 career contests and was an all-state honoree.

"Allison gives us a power presence inside and paint



Allison Duffy

points on a consistent basis, which we didn't have in the past," Burns said. "She has both speed and power. She gets and-1's, is good around the hoop, has range to hit the three, and the thing that really stands out is her toughness."

Duffy's freshman counterpart, Johnson, is one of the most heralded recruits in Aztec history. She arrived on Montezuma Mesa this past summer, already boasting a connection to the program as her sister, Desiree, was SDSU's starting center each of the last two seasons.

The younger Johnson, however, made a name for herself as the top prep player in county the last two seasons, earning San Diego Section High School Player of the Year honors by the *San Diego Union-Tribune* as both a junior and senior. A standout scorer, rebounder and shot blocker, she was a two-time second team all-state pick and averaged 21.4 points and 10.7 rebounds in 2006-07.

"Paris is everything that we hoped she would be and then some," Burns said. "As talented a player as she is, she's an even better person and teammate. She's very committed to her work both on the court and in the classroom."

THE SCHEDULE

SDSU plays five of its first six games away from home, including two at a four-team tournament during the Thanksgiving break at Loyola Marymount.

The Aztecs' month-long, six-game homestand in December will be highlighted by a non-conference meeting with preseason No. 2 ranked Connecticut on Dec. 21, followed by the annual San Diego Surf 'N Slam, Dec. 28 and 30, at Cox Arena.

Mountain West Conference play begins Jan. 9., with SDSU opening at TCU. The Aztecs are on the road for three of their first four and four of their first six league contests overall. The conference championships takes place in Las Vegas for the second year in a row, March 11-15.





ROSTERS

2007-08 TEAM INFORMATION

AZTEC NUMERICAL ROSTER

No.	Name	Pos.	Ht.	Yr.	Exp.	Hometown (Previous School)
1	Tamika Lipford	G	5-4	Jr.	2L	Oceanside, Calif. (Bishop's HS)
2	Coco Davis	G	5-9	Fr.	HS	Sacramento, Calif. (Sacramento HS)
3	Quenese Davis	G	5-9	So.	1L	Sacramento, Calif. (Rio Americano HS)
4	Kim Spinardi	G	5-8	So.	1L	Merced, Calif. (Golden Valley HS)
5	Jené Morris	G	5-9	So.	RS	San Francisco, Calif. (California/Urban HS)
11	Kate Eveland	G	5-8	Sr.	3L	Southlake, Texas (Southlake Carroll HS)
21	Jerica Williams [^]	G	5-8	So.	TR	San Diego, Calif. (UCLA/Mt. Miguel HS)
22	Shanna Demus	F	5-8	Sr.	2L	Palmdale, Calif. (CS Los Angeles/Palmdale HS)
23	LaSandra Dixon	G	5-7	Jr.	2L	Azusa, Calif. (Azusa HS)
25	Shannon Clay	F	6-1	Sr.	1L	Inglewood, Calif. (West L.A. CC/St. Bernard HS)
31	Christen Myles*	G	5-10	Fr.	RS	Chino, Calif. (Bishop Amat HS)
32	Paris Johnson	C	6-4	Fr.	HS	San Diego, Calif. (San Diego HS)
34	Allison Duffy	F	6-2	Fr.	RS	Lakeside, Calif. (El Capitan HS)

AZTEC ALPHABETICAL ROSTER

No.	Name	Pos.	Ht.	Yr.	Exp.	Hometown (Previous School)
25	Shannon Clay	F	6-1	Sr.	1L	Inglewood, Calif. (West L.A. CC/St. Bernard HS)
2	Coco Davis	G	5-9	Fr.	HS	Sacramento, Calif. (Sacramento HS)
3	Quenese Davis	G	5-9	So.	1L	Sacramento, Calif. (Rio Americano HS)
22	Shanna Demus	F	5-8	Sr.	2L	Palmdale, Calif. (CS Los Angeles/Palmdale HS)
23	LaSandra Dixon	G	5-7	Jr.	2L	Azusa, Calif. (Azusa HS)
34	Allison Duffy	F	6-2	Fr.	RS	Lakeside, Calif. (El Capitan HS)
11	Kate Eveland	G	5-8	Sr.	3L	Southlake, Texas (Southlake Carroll HS)
32	Paris Johnson	C	6-4	Fr.	HS	San Diego, Calif. (San Diego HS)
1	Tamika Lipford	G	5-4	Jr.	2L	Oceanside, Calif. (Bishop's HS)
5	Jené Morris	G	5-9	So.	RS	San Francisco, Calif. (California/Urban HS)
31	Christen Myles*	G	5-10	Fr.	RS	Chino, Calif. (Bishop Amat HS)
4	Kim Spinardi	G	5-8	So.	1L	Merced, Calif. (Golden Valley HS)
21	Jerica Williams [^]	G	5-8	So.	TR	San Diego, Calif. (UCLA/Mt. Miguel HS)

* = eligible to play in December 2007

[^] = eligible to play in 2008-09

Head Coach: Beth Burns (Ohio Wesleyan, 1979), 3rd/11th season at SDSU; 16th overall
Associate Head Coach: Heidi VanDerveer (College of Charleston, 1986), 1st season at SDSU; 20th overall
Assistant Coaches: Jualeah Woods (USC, 1994), 3rd season at SDSU; 10th overall
 Renee Jimenez (San Fran. St., 2004), 3rd season at SDSU; 3rd overall
Dir. of Basketball Operations: Tammy Stephens (CS Fullerton, 1981), 3rd season at SDSU; 7th overall
Head Manager: Tara Morrison (Adams State, 2001), 1st season at SDSU

AZTEC PRONUNCIATION GUIDE

QUENESE Davis	QUINN-eese	TAMIKA Lipford	tuh-MEEK-uh	TARA Morrison	TEAR-uh
SHANNA DEMUS	shann-UH DEE-muss	JENE' Morris	juh-NAY	Heidi VanDERVEER	van-DER-veer
LaSANDRA Dixon	luh-SAND-ruh	Kim SPINARDI	SPIN-are-dee	JUALEAH Woods	WAH-lee-uh
Kate EVELAND	EVE-lund	Renee JIMENEZ	he-MEN-ez		





ROSTER BREAKDOWN

PERSONNEL SUMMARY



CLAY



Q. DAVIS



DEMUS



LIPFORD

Returning Starters (4)

Shannon Clay, Sr., F, 6.8 ppg., 4.8 rpg.
 Quenese Davis, So., G, 9.8 ppg., 5.3 apg.
 Shanna Demus, Sr., F, 8.5 ppg., 2.1 spg.
 Tamika Lipford, Jr., G, 2.8 ppg., 1.7 rpg.

Starter Lost (1)

Desiree Johnson, Sr., C, 6.3 ppg., 6.3 rpg.



DIXON



EVELAND



SPINARDI

Other Letterwinners Returning (3)

LaSandra Dixon, Jr., G, 2.7 ppg., 0.8 rpg.
 Kate Eveland, Sr., G, 6.6 ppg., 41 3FGs
 Kim Spinardi, So., G, 0.2 ppg., 0.4 rpg.

Other Letterwinners Lost (4)

Lauren Hoisington, F, 4.5 ppg., 3.0 rpg.
 Erin Jackson, F, 3.0 ppg., 1.5 rpg.
 Jennifer Layton, Sr., F, 10.6 ppg., 5.4 rpg.
 Chelsea Williamson, G, 0.6 ppg., 0.5 rpg.



MORRIS



DUFFY



MYLES

Redshirts (3)

Jené Morris, So., G
 Allison Duffy, Fr., F
 Christen Myles, Fr., G



C. DAVIS



JOHNSON



WILLIAMS

Newcomers (3)

CoCo Davis, 5-9, Fr., G, Sacramento, Calif. (Sacramento HS)
 Paris Johnson, 6-4, Fr., C, San Diego, Calif. (San Diego HS)
 Jerica Williams, 5-8, So., G, San Diego, Calif. (Mt. Miguel HS/UCLA)

ROSTER BREAKDOWN

By Class

Seniors (3): Clay, Demus, Eveland
 Juniors (2): Dixon, Lipford
 Sophomores (4): Q. Davis, Morris, Spinardi, Williams
 Redshirt Freshmen (2): Duffy, Myles
 Freshmen (2): C. Davis, Johnson

By State

California (12): Clay, C. Davis, Q. Davis, Demus, Dixon, Duffy, Johnson, Lipford, Morris, Myles, Spinardi, Williams;
 Texas (1): Eveland

By Position

Center (1): Johnson
 Forwards (3): Clay, Demus, Duffy
 Guards (9): C. Davis, Q. Davis, Dixon, Eveland, Lipford, Morris, Myles, Spinardi, Williams

By Height

6-4 (1): Johnson
 6-2 (1): Duffy
 6-1 (1): Clay
 5-10 (1): Myles
 5-9 (2): C. Davis, Q. Davis, Morris
 5-8 (4): Demus, Eveland, Spinardi, Williams
 5-7 (1): Dixon
 5-4 (1) Lipford

RETURNING CATEGORY LEADERS FROM 2006-07

Minutes Per Game

Quenese Davis32.3
 Shanna Demus.....30.2
 Kate Eveland27.9

Steals Per Game

Shanna Demus.....2.1
 Quenese Davis2.0
 Tamika Lipford1.4

Points Per Game

Quenese Davis9.8
 Shanna Demus.....8.5
 Shannon Clay.....6.8

Field-Goal Percentage

Shannon Clay44.8
 Shanna Demus34.9
 Quenese Davis.....34.1

Rebounds Per Game

Quenese Davis4.8
 Shannon Clay.....4.8
 Shanna Demus.....4.0

Free-Throw Percentage

Kate Eveland80.0
 Shanna Demus75.7
 Tamika Lipford72.2

Assists Per Game

Quenese Davis5.3
 Shanna Demus.....2.1
 Kate Eveland1.2

Three-Point Percentage

Kate Eveland35.0
 Tamika Lipford31.3
 Shanna Demus.....25.3

Blocks Per Game

Shannon Clay.....0.9
 Quenese Davis0.5
 Shanna Demus.....0.5



SCHEDULE/NCAA TOURNAMENT

2007-08 SCHEDULE

Date	Opponent	Time
Thurs., Nov. 8	Love & Basketball (Exhibition Game)	7 p.m.
Sun., Nov. 11	at Nevada	2 p.m.
Sat., Nov. 17	at Saint Mary's	2 p.m.
Tues., Nov. 20	Southern Utah University	7 p.m.

at Loyola Marymount University Thanksgiving Tournament
(San Diego State, Indiana State, Jackson State, Loyola Marymount)

Fri., Nov. 23	vs. Indiana State	2 p.m.
Sat., Nov. 24	Consolation/Championship Games	2 or 4 p.m.
Thurs., Nov. 29	at Cal Poly	7 p.m.
Sun., Dec. 2	Cal State Fullerton	2 p.m.
Wed., Dec. 5	University of San Diego	7 p.m.
Tues., Dec. 18	Navy	7 p.m.
Fri., Dec. 21	University of Connecticut (The Mtn.)	8 p.m.



San Diego Surf 'N Slam at Cox Arena

(Quinnipiac, Seton Hall, Western Michigan, San Diego State)

Fri., Dec. 28	Quinnipiac	2 p.m.
<i>Fri., Dec. 28</i>	<i>Seton Hall vs. Western Michigan</i>	<i>4 p.m.</i>
Sun., Dec. 30	Consolation/Championship Games	2/4 p.m.

Wed., Jan. 9	at TCU*	6:30 p.m.
Sat., Jan. 12	New Mexico*	2 p.m.
Wed., Jan. 16	at Utah*	7 p.m.
Sat., Jan. 19	at Wyoming*	2 p.m.
Wed., Jan. 23	BYU*	7 p.m.
Sat., Jan. 26	at UNLV* (The Mtn.)	7 p.m.
Wed., Jan. 30	Colorado State*	7 p.m.
Wed., Feb. 6	at Air Force*	7 p.m.
Sat., Feb. 9	TCU*	2 p.m.
Wed., Feb. 13	at New Mexico*	7 p.m.
Sat., Feb. 16	Utah*	2 p.m.
Wed., Feb. 20	Wyoming*	7 p.m.
Sat., Feb. 23	at BYU*	2 p.m.
Wed., Feb. 27	UNLV* (The Mtn.)	8 p.m.
Sat., March 1	at Colorado State*	2 p.m.
Sat., March 8	Air Force*	2 p.m.

Tues.-Sat., Mar. 11-15	2008 Phillips 66 MWC Championship Thomas & Mack (Las Vegas, Nev.)	TBA
Sat.-Tues. Mar. 22-25	NCAA First and Second Rounds (Location TBD)	TBA
Sat.-Tues. Mar. 29-Apr. 1	NCAA Regionals (Location TBD)	TBA
Sun & Tues. Apr. 6, 8	NCAA Final Four St. Pete Times Forum (Tampa, Fla.)	TBA

All times local to site

Home games in **Bold**

All home games at Cox Arena

* = Mountain West Conference game

Times and dates subject to change

2008 NCAA TOURNAMENT INFORMATION



NCAA First & Second Rounds

March 22 and 24

The Pit/Bob King Court (Albuquerque, N.M.)
Pete Maravich Assembly Center (Baton Rouge, La.)
Wells Fargo Arena at the Iowa Events Center (Des Moines, Iowa)
Maples Pavilion (Stanford, Calif.)

March 23 and 25

Bridgeport Arena at Harbor Yard (Bridgeport, Conn.)
Comcast Center (College Park, Md.)
Ted Constant Convocation Center (Norfolk, Va.)
Mackey Arena (West Lafayette, Ind.)

NCAA Regionals

March 29 and 31

New Orleans Regional

New Orleans Arena (17,500)
New Orleans, La.
Host: University of New Orleans

March 29 and 31

Spokane Regional

Spokane Veterans Memorial Arena (12,000)
Spokane, Wash.
Host: Washington State University

March 30 and April 1

Greensboro Regional

Greensboro Coliseum (12,005)
Greensboro, N.C.
Host: Atlantic Coast Conference

March 30 and April 1

Oklahoma City Regional

Ford Center (18,929)
Oklahoma City, Oklahoma
Host: Big 12 Conference

NCAA Final Four

April 6 and 8

St. Pete Times Forum (21,509)
Tampa, Fla.
Host: University of South Florida