



► 2007-08 Quick Facts

**General Information**

Location .....San Diego, CA 92182  
 Founded .....1897  
 Enrollment .....35,887  
 Nickname .....Aztecs  
 Mascot .. The Aztec Warrior  
 Colors .....Scarlet and Black  
 Affiliation .....NCAA Division I  
 Conference .....Mountain West  
 University President .....Dr. Stephen L. Weber  
 Director of Athletics .....Jeff Schemmel  
 Senior Woman Administrator .....Jenny Bramer

**Team Information**

Head Coach.....Felicia Brown, 6th year  
 Alma Mater .....Arizona 1989  
 Assistant Coach .....Doug Barba, 5th year  
 Alma Mater .....USIU 1990  
 Golf Office Phone .....619/594-7665  
 Athletic Trainer .....Gina Maggio  
 Strength/Conditioning .....Dave Ohton  
 Academic Advisor .....Kristie Smedsrud  
 Key Returnees .....Petra Cole, RS-So.  
 .....Maki Kamimura, Jr.  
 .....Jackie Kazarian, RS-Jr.  
 Newcomers .....Stephanie Arcala, Fr.  
 .....Kaitlen Miyajima, Fr.  
 .....Samantha Roberts, Fr.  
 Key Losses .....Jamie Oliver

**Media Information**

Golf Contact.....Peggy Curtin  
 Office Phone .....619/594-5547  
 Office Fax .....619/582-6541  
 Cell Phone .....619/540-6146  
 E-Mail .....mcurtin@mail.sdsu.edu  
 Mailing Address .....Aztec Media Relations  
 .....Aztec Athletics Center, Suite 3014  
 .....5302 55th Street  
 .....San Diego, CA 92182-4309  
 Official Web Site .....www.goaztecs.com

**Mountain West Conference Information**

Women's Golf Contact .....Becky Motchan  
 Office Phone .....(719) 488-4046  
 Fax .....(719) 487-7241  
 E-Mail .....BMotchan@TheMWC.com  
 Mailing Address .....  
 .....Mountain West Conference  
 .....15455 Gleneagle Drive, Suite 200  
 .....Colorado Springs, CO 80921  
 Official Web Site .....www.TheMWC.com

► Media Information

**Media Services**

Press releases, updated statistics, results and photographs can be obtained by contacting Peggy Curtin in the Aztec Media Relations Office at (619) 594-5547.

**Interview Policy**

Interviews with members of the San Diego State women's golf team can be arranged by contacting Peggy Curtin. Head coach Felicia Brown can be reached in her office weekday mornings.

**Aztecs On The Web**

For the most up-to-date information on San Diego State women's golf, check out the official web site of Aztec athletics at [www.goaztecs.com](http://www.goaztecs.com). News releases, updated statistics and day-to-day tournament recaps can be found on the women's golf page.

**CSU Commitment**

California State University is committed to providing equal opportunities to men and women CSU students in all campus programs, including intercollegiate athletics.

**Media Guide Credits**

Editor: .....Peggy Curtin  
 Editorial Assistance: Lindsey Mahan, Jim Solien  
 Photography: .....Stan Liu Photography,  
 .....Felicia Brown, Ernie Anderson,  
 .....Ken Jacques Photography,  
 .....Mountain West Conference,  
 .....Trevor Brown, Jr., /NCAA Photos  
 .....Jamie Schwaberow /NCAA Photos  
 Layout and Design: .....Peggy Curtin  
 Cover Design:.....Jim Solien  
 Printing:.....SDSU ReproGraphic Services

► Table of Contents

Quick Facts .....1  
 2007-08 Roster/Results .....2

**2007-08 Profiles**  
 Head Coach Felicia Brown .....3  
 Assistant Coach Doug Barba .....3  
 Booth/Carmody .....4  
 Erlandson/Kamimura .....5  
 Kazarian/Wilson .....6  
 Campbell/Cole/Wood .....7  
 Arcala/Butler/Coons .....8  
 De Guzman/Dyer/Miyajima/Roberts .....9

**2007-08 Statistics/Results**  
 2008 Spring Season Statistics .....10  
 2007 Fall Season Statistics .....11

**Aztec Women's Golf History**  
 Postseason History .....12  
 Records/Letterwinners .....13

**The Aztec Experience**  
 The University.....14  
 Aztec Culture .....15  
 SDSU Administration .....16  
 Aztec Athletics Center .....17  
 Aztec Home Courses .....18  
 Academic Commitment.....19  
 The Mountain West Conference.....20



The 2007-08 Aztec Women's Golf Team - top (left to right): Head coach Felicia Brown, Ashley Dyer, Kim Carmody, Jackie Kazarian, Madison Butler, Alana Erlandson, Samantha Roberts, Erin Coons and assistant coach Doug Barba. Bottom (left to right): Faith De Guzman, Maki Kamimura, Petra Cole, Anna Booth, Marcela Campbell, Heather Wilson, Ashley Wood, Stephanie Arcala and Kaitlen Miyajima.



### ► 2007-08 Roster Breakdown

#### By Class

##### Senior (2)

Anna Booth, Kim Carmody

##### Juniors (5)

Madison Butler, Alana Erlandson, Maki Kamimura, Jackie Kazarian, Heather Wilson

##### Sophomores (3)

Marcela Campbell, Petra Cole, Ashley Wood

##### Freshmen (6)

Stephanie Arcala, Erin Coons, Faith De Guzman, Ashley Dyer, Kaitlen Miyajima, Samantha Roberts

#### By State/Country

##### Australia (1)

Anna Booth

##### California (12)

Stephanie Arcala, Madison Butler, Marcela Campbell, Petra Cole, Faith De Guzman, Ashley Dyer, Alana Erlandson, Maki Kamimura, Jackie Kazarian, Samantha Roberts, Heather Wilson, Ashley Wood

##### Hawaii (1)

Kaitlen Miyajima

##### Illinois (1)

Kim Carmody

##### Massachusetts (1)

Erin Coons

#### By Height

##### 5-10 (1)

Jackie Kazarian

##### 5-9 (1)

Madison Butler

##### 5-8 (3)

Ashley Dyer, Alana Erlandson, Samantha Roberts

##### 5-7 (3)

Anna Booth, Kim Carmody, Erin Coons

##### 5-5 (1)

Heather Wilson

##### 5-4 (1)

Marcela Campbell

##### 5-3 (1)

Ashley Wood

##### 5-2 (3)

Stephanie Arcala, Maki Kamimura, Kaitlen Miyajima

##### 5-0 (2)

Petra Cole, Faith De Guzman

### ► 2007-08 Team Roster

Name	Yr.	Ht.	Exp.	Hometown (Last School)
Stephanie Arcala	Fr.	5-2	HS	Oceanside, Calif. (Vista HS)
Anna Booth	Sr.	5-7	2V	Coffs Harbour, Australia (Coffs Harbour Sr. College)
Madison Butler	Jr.	5-9	TR	Coto de Caza, Calif. (Santa Margarita Catholic HS/Cal Poly)
Marcela Campbell	So.	5-4	SQ	Glendale, Calif. (Flintridge Sacred Heart Academy)
Kim Carmody	Sr.	5-7	1V	Palatine, Ill. (Fremd HS/McLennan CC)
Petra Cole	RS-So.	5-0	SQ	San Diego, Calif. (West Hills HS)
Erin Coons	Fr.	5-7	HS	Wilbraham, Mass. (Minnechaug Regional HS)
Faith De Guzman	Fr.	5-0	HS	Sherman Oaks, Calif. (Notre Dame HS)
Ashley Dyer	Fr.	5-8	HS	Corcoran, Calif. (Kings Christian HS)
Alana Erlandson	Jr.	5-8	2V	Palm Desert, Calif. (Palm Desert HS)
Maki Kamimura	Jr.	5-2	2V	West Covina, Calif. (South Hills HS)
Jackie Kazarian	RS-Jr.	5-10	2V	Dana Point, Calif. (Dana Hills HS)
Kaitlen Miyajima	Fr.	5-2	HS	Wailuku, Maui, Hawaii (HP Baldwin HS)
Samantha Roberts	Fr.	5-8	HS	Carlsbad, Calif. (La Costa Canyon HS)
Heather Wilson	Jr.	5-5	SQ	Chula Vista, Calif. (Hilltop HS)
Ashley Wood	RS-So.	5-3	SQ	Lake Tahoe, Calif. (Incline HS)

**Head Coach:** Felicia Brown (Arizona '89), Sixth season/Seventh overall

**Assistant Coach:** Doug Barba (USIU '90), Fifth season

### ► Pronunciation Guide

Stephanie <b>ARCALA</b>	are-call-UH	Kim <b>CARMODY</b>	car-muh-DEE
Faith De <b>GUZMAN</b>	day-GOOZ-mon	<b>ALANA</b> Erlandson	UH-lawn-uh
<b>MAKI</b> Kamimura	mock-EE	Jackie <b>KAZARIAN</b>	kuh-czar-EE-un
Kaitlen <b>MIYAJIMA</b>	mia-JEEM-uh		

### ► 2007 Fall Results

Date	Tournament	Site	Result
9/17-18	at La Quinta Inn & Suites Shootout	Flagstaff, Ariz.	3rd of 8/641 (+67)
10/1-2	at CU Heather Farr Memorial Invite	Broomfield, Colo.	10th of 20/916 (+52)
10/15-16	Aztec Fall Classic	Chula Vista, Calif.	11th of 19/622 (+46)
10/30-31	at Kent Youel Invitational	Kapolei, Hawaii	15th of 19/951 (+87)

### ► 2008 Spring Results

Date	Tournament	Site	Result
2/11-12	at Lady Braveheart Challenge	Beaumont, Calif.	2nd of 16/645 (+69)
2/25-26	at Kitahara Fresno State Invitational	Fresno, Calif.	16th of 16/634 (+58)
3/17-19	at Dr. Donnis Thompson Invite	Kane'ohe, Hawaii	10th of 16/962 (+98)
3/27	vs. Brown	Chula Vista, Calif.	1st of 2/310 (+22)
3/31-4/1	at Sacramento State Preview	Lincoln, Calif.	10th of 19/914 (+50)

### ► 2008 Postseason Results

Date	Tournament	Site	Result
4/17-19	at MWC Championships	Albuquerque, N.M.	7th of 7/969 (+93)

*Junior Maki Kamimura hits out of a sand trap at the 2008 MWC Championships in New Mexico.*





# Felicia Brown

**Head Coach**  
**Sixth Year/Seventh Overall at San Diego State**  
**Arizona 1989**



A former collegiate and professional golfer, Felicia Brown recently finished her seventh season in the San Diego State women's golf program and her sixth as the Aztecs' head coach.

SDSU began the 2007-08 campaign with a fall-best third-place team finish at the La Quinta Inn & Suites Shootout. Individually, senior Anna Booth placed eighth at the Heather Farr Memorial Invitational in Colorado with a 4-over 220, including two rounds of 73, which tied her for 10th in the Aztec record book for a 54-hole event.

The Aztecs opened the spring of 2008 with a runner-up performance at the Lady Braveheart Challenge and had a true freshman finish as the team's No. 1 golfer in the first three tournaments.

In the spring of 2007, SDSU claimed a victory at the Lady Braveheart Challenge for the second consecutive season, carding a 36-hole score of 621 to tie for 10th in school history.

After the Aztecs won three tournaments in 2005-06 (two in the fall and one in the spring), Brown led Booth to her first individual title at the La Quinta Inn & Suites Shootout in Flagstaff, Ariz. in fall 2006. It was Booth's first career win and it was the best finish by an Aztec. In addition to Booth, Maki Kamimura also had her best career performance at La Quinta, ending up right behind Booth in second place.

In 2004, Brown directed SDSU to a record-setting campaign, including an appearance in the NCAA regional tournament, the program's first since 2001. The Aztecs finished 15th overall at the regional, the best ever performance in SDSU women's golf postseason history.

Over the 2003-04 season, SDSU placed in the top four in six different tournaments and finished the year at No. 40 in the *Golfweek* rankings.

Individually, Brown helped three players break the school's all-time average scoring record, including freshman Jenna Wilson, who was named all-Mountain West Conference, only the third Aztec and first freshman so honored.

In the fall of 2003, the Aztecs saw dramatic improvement under Brown, jumping 46 spots to No. 41 in Golfstat's rankings. Included in the outstanding fall was the program's first 54-hole victory in five years at the Lady Aztec Invitational, as SDSU broke the school's team scoring record by nine strokes with a total of 878 (+14).

The Aztecs also set a school record for 36 holes at the 2003 Heather Farr Invitational with a 597 (298-299), while Wilson set an individual 54-hole record at the Lady Aztec Invite with a 211, good for medalist honors.

In her first year at the helm of the program, Brown guided the Aztecs to three second-place finishes after inheriting a team that lost its top scorer and another regular in the lineup.

Brown served as assistant



coach in 2001-02, when the Aztecs claimed top-10 results in all 10 event, including a second-place finish at the 2002 Mountain West Conference Championship.

Brown is a local product who prepped at San Marcos High School, where she competed as the only female member of the boys' team.

Following high school, Brown played for one of the nation's premier collegiate programs at the University of Arizona from 1984-88, helping the Wildcats to a number of top-10 national rankings. She also earned scholar-athlete honors all four years.

After completing her bachelor's degree in 1988, Brown went on to play professionally on the Players' West Golf Tour, racking up three tournament victories and 26 top-10 finishes. She also competed on the Futures Tour from 2000-01.

Brown won the 2002 Ladies Professional Golf Association Touring and Club Professionals' Western Section and qualified for the McDonald's Championship in Wilmington, Del., one of the LPGA's four majors.

An eight-year member of the LPGA's teaching division, she possesses a Class A rating and previously served as the assistant men's golf coach from 1991-92 at Pima Community College in Tucson, Ariz.

Before joining the Aztec staff as an assistant coach in 2001, Brown worked in various capacities at the Lake San Marcos Resort and Country Club, including as a teaching professional.

# Doug Barba

**Assistant Coach**  
**Fifth Year at San Diego State**  
**USIU 1990**



Doug Barba completed his fifth season as assistant coach with the women's golf program.

In 2006-07, Barba helped lead the Aztecs to an individual title at La Quinta for the second straight year and its second consecutive team title at the Lady Braveheart Challenge in nearby Beaumont, Calif.

In his first year on The Mesa in 2003-04, Barba helped direct SDSU to the program's first NCAA regional appearance since 2001. The Aztecs ended up 15th overall at the regional, the best finish in school postseason history, and were ranked 40th nationally.

He also coached SDSU to a pair of team scoring records and top-four finishes in six tournaments.

Barba was first associated with SDSU as a teacher for five years, instructing classes for SDSU's Department of Exercise and Nutritional Sciences. He earned his Ph.D with an emphasis in motor behavior and sport psychology from the University of Florida.

Barba returned to coaching after several years off. Barba assisted the University of Florida's women's golf team from 1995-98 serving as the team's sport psychology consultant. He was instrumental in helping team members with the mental aspects of the sport of golf, and under his guidance, the Gators finished second at the 1998 NCAA Championship.

Barba played professional baseball for five seasons out of high school in the Cincinnati Reds and New York Mets organizations. After his playing days, he returned to school and earned his bachelor's and master's degree in psychology from United States International University in San Diego, which is now Alliant International University. While at USIU, Barba was also on the baseball coaching staff.

Barba and his wife, Laura, have two children, Gavin and Sam, and reside in San Diego.



## Anna Booth

5-7, Senior, 2 Letters

Coffs Harbour, Australia/Coffs Harbour Senior College



### As A Senior (2007-08 Season)

**Spring:** Competed in a pair of tournaments ... Tied for 43rd at the Lady Braveheart Challenge ... Best round came at the Dr. Donniss Thompson Invite, when she fired a second round 76.

**Fall:** Posted the team's top stroke average of 77.71 ... Competed in three tournaments for the Aztecs ... Finished in a tie for 21st at the season-opening event in Arizona, posting a final round 78 ... Best 54-hole tournament of her career at the Heather Farr Memorial Invite, tying for eighth

place with a 4-over 220 ... Score tied for 10th in school history and is the best performance by an Aztec since March 2006 ... Beat her previous career-low for 54 holes by seven strokes and her total through 36 holes (146) was an SDSU team season low.

### As A Junior (2006-07 Season)

**Spring:** Played in only one event, the Lady Braveheart Challenge, taking 18th at 17-over 161.

**Fall:** Won her first tournament at the La Quinta Inn & Suites Mountain Shootout in Flagstaff, Ariz., with a then personal-best 148 in 36 holes ... Carded a career-best 73 in the final round at the Ron Moore Women's Intercollegiate ... Finished the fall with a 78.00 stroke average.

### As A Sophomore (2005-06 Season)

**Spring:** Best finish came at the Lady Braveheart where she tied for sixth ... Finished her the year with a 79.80 stroke average ... Logged the second-most rounds on the team during the season with 24 ... Had two top-10 finishes and three top-20 showings for the year.

### Booth's SDSU Scorecard

<b>Spring 2008</b>	
Lady Braveheart	86-83—169 (T-43rd)
Thompson Inv.	86-76-87—249 (T-72nd)
<b>Fall 2007</b>	
La Quinta	86-78—164 (T-21st)
Heather Farr	73-73-74—220 (T-8th)
Aztec Fall Classic	79-81—160 (T-55th)
<b>Spring 2007</b>	
Lady Braveheart	81-80—161 (T-18th)
<b>Fall 2006</b>	
La Quinta	74-74—148 (1st)
Ron Moore	77-81-73—231 (T-43rd)
Aztec Fall Classic	75-79—154 (T-31st)
Kent Youel	79-87-81—247 (75th)
<b>Spring 2006</b>	
Lady Braveheart	80-76—156 (T-6th)
Kitahara	83-89—172 (99th)
Oregon Duck	77-79-79—232 (T-14th)
Dixie Classic	84-76-80—240 (30th)
MWC Champs.	80-90-81—251 (32nd)
<b>Fall 2005</b>	
La Quinta	79-81—160 (22nd)
Dick McGuire	76-78-75—229 (45th)
Lady Aztec	74-75-78—227 (10th)
Kent Youel	81-83-84—248 (73rd)
<b>Spring 2005</b>	
Bay Area	88-86—174 (54th)
Thompson Inv.	84-85-89—258 (21st)
Oregon Duck	84-82-88—254 (76th)
Dixie Classic	DQ-88—DQ (N/A)
MWC Champs.	79-83-81—243 (23rd)
<b>Fall 2004</b>	
Dick McGuire	79-77-79—235 (63rd)
Price's Int.	81-82-84—247 (63rd)
Lady Aztec	74-76—150 (14th)
Las Vegas	84-76-74—234 (56th)

**Fall:** Led SDSU's 'B' team with a 10th-place finish at the Lady Aztec Invitational, carding an 11-over 227 ... Competed in four of the five tournaments ... Finished second on the team at the Dick McGuire Invitational, shooting a 10-over 229 ... Also recorded a 14-over 160 at the La Quinta Inn & Suites Shootout ... Ended the fall season with a stroke average of 78.55 ... Her best 18-hole round of the fall was a 74 at the Lady Aztec.

### As A Freshman (2004-05 Season)

**Spring:** Competed in five tournaments ... Finished fifth on the squad in stroke average for both spring campaign and the entire season ... Ended the season with an 81.87 average ... Tied for 21st at the Donniss Thompson Invite, placing second on the team with a final score of 258.

**Fall:** Was SDSU's top finisher in three of four tournaments ... Was the Aztecs' No. 2 golfer during the fall in terms of stroke average, finishing with a 78.73 mark ... Started her career with a 16-over 235 at the Dick McGuire Invitational ... Tied for 14th at the Lady Aztec Invitational with a 36-hole total of 150 ... Carded a season-best 18-over 234 at the Las Vegas

Collegiate to tie for 56th place.

**High School:** One of the top junior golfers in her native Australia ... Placed fourth at the 2003 Australian school girls' championship ... Named to the six-player national school girls squad in 2003 ... Member of the New South Wales state junior and all schools golf teams.

**Personal:** Anna Rose Booth was born in Coffs Harbour, Australia ... Parents are Peaches and Barry Booth ... Majoring in management.

### Off The Course With Anna Booth

- ▶ **A talent I wish I had, but don't is:** To play the drums
- ▶ **Best thing about San Diego State:** The Aquaplex
- ▶ **Favorite golf course in San Diego:** Torrey Pines

## Kim Carmody

5-7, Senior, 1 Letter

Palatine, Ill./Fremd HS/McLennan CC



### As A Senior (2007-08 Season)

**Spring:** Logged rounds in three events ... Played as an individual in the season-opener in Beaumont, Calif., tying for 43rd place ... Was the team's top golfer against Brown, firing a season best 4-over 76 ... Posted a second round 78 at the Sacramento State tournament.

**Fall:** Competed in three tournaments ... Scored a top-10 finish in the La Quinta Shootout when she tied for fourth with a 14-over 158 ... Best round of the fall came at the CU Heather Farr Memorial

Invitational, where she logged a second-round 77.

### As A Junior (2006-07 Season)

**Spring:** Earned her first varsity letter, playing in all six events ... Fourth on the team in spring stroke average (79.50) ... Aztecs' top finisher in each of the final two tournaments, including the MWC championships ... Tied for 17th at the MWC tourney with a 24-over 237, including a final round 76 ... Was 21st of 81 golfers at the BYU Dixie Classic with a season-best 13-over 229, including a first-round 75 ... Top-20 finish at the Oregon Duck Invitational, coming in at 19-over 235.

**Fall:** Participated in two tournaments ... Played her best two rounds at the Aztec Fall Classic ... Recorded her best finish of the season at the La Quinta tourney (T-46th).

**At McLennan Community College:** Helped lead team to a second-place finish at the NJCAA nationals in Daytona Beach, Fla., during her freshman season ... Finished 17th as an individual in Daytona and was named to the all-tournament team ... Part of a Highlanders team that finished in third place during her sophomore year at the NJCAA regionals at Halifax in Ormond Beach, Fla. ... Finished in a 26th-place tie at the regionals in Ormond Beach ... Was ninth in the nation in par-4 scoring according to Golfstat.com ... Recipient of the presidential scholar award ... Was a member of the International Honor Society.

**High School:** Four-year letterwinner at Fremd High School in Palatine, Ill. ... Helped guide her high school team to a first-place finish in league her freshman and sophomore seasons ... Team finished second in conference, ninth in state her junior season ... Was first individually in the Mid-Suburban League her senior season and finished fourth at regionals ... Also a two-year letterwinner in track and a three-year letterwinner in bas-

### Carmody's SDSU Scorecard

<b>Spring 2008</b>	
Lady Braveheart	81-88—169 (T-43rd)
vs. Brown	76 (1st)
Sac. St.	80-78-81—239 (T-72nd)
<b>Fall 2007</b>	
LaQuinta	78-80—158 (T-4th)
Heather Farr	78-77-78—233 (T-49th)
Aztec Fall Classic	81-85—166 (T-80th)
<b>Spring 2007</b>	
Lady Braveheart	83-83—166 (T-38th)
Kitahara	83-85—168 (T-87th)
UNLV Spring Invite	79-82-76—237 (86th)
Oregon Duck	76-78-81—235 (20th)
Dixie Classic	75-77-77—229 (T-21st)
MWC Champs.	83-78-76—237 (T-17th)
<b>Fall 2006</b>	
La Quinta	87-91—178 (T-46th)
Aztec Fall Classic	83-83—166 (99th)



ketball ... Her basketball team was conference and regional champions three years in a row (2002-04) ... Finished second at the Optimist Junior International Qualifier in West Palm Beach, Fla., in 2004 ... Had a first-place finish at the Chicago District Golf Association junior tournament ... Played in the national qualifier for Calloway Junior World in 2003 and finished first in state qualifier ... Nominated to the Illinois High School Association (ISHA) All-State Academic Team ... Mid-Suburban League Senior Athlete award winner.

**Personal:** Kimberly Jordan Carmody was born April 10, 1986, in West Allis, Wis. ... Has one brother, T.J., and two sisters, Katie and Kristin ... Parents are Thomas and Paula Carmody ... Majoring in accounting.

**Off The Course With Kim Carmody**

- ▶ **My favorite food is:** Strawberries
- ▶ **My favorite place on campus is:** The Reserve Book Room
- ▶ **If a movie came out about my life, I'd want this actress to play me:** Kate Hudson

## Alana Erlandson

**5-8, Junior, 2 Letters**  
**Palm Desert, Calif./Palm Desert HS**



**As A Junior (2007-08 Season)**

**Spring:** Saw action in just one tournament, the season-opening Lady Braveheart Challenge, competing individually and tying for 34th with a 166.

**Fall:** Competed in three of four fall events ... Led the 'A' team at the Aztec Fall Classic, coming in at 11-over 155 to tie for 33rd place ... Season-low 73 on the first day at the home tournament.

**As A Sophomore (2006-07 Season)**

**Spring:** Participated in all six spring tournaments ... Third on the squad in stroke average at 79.00 ...

SDSU's top golfer at the Lady Braveheart Challenge, taking third overall at 8-over 152 ... Tied for 51st place at the Kitahara Fresno State Invite with a 157 ... Best 18 holes of golf came at the UNLV Spring Invitational, when she carded a first-round 73 ... Tied for 21st at the Mountain West Conference championships.

**Fall:** Led SDSU with a 76.88 stroke average ... Fired a career-best 1-under 71 in the first round of the Aztec Fall Classic ... Ended the tournament in 22nd place for her best finish of the fall season ... Her 151 at the Fall Classic is a career-best for 36 holes.

**Erlandson's SDSU Scorecard**

<b>Spring 2008</b>	
Lady Braveheart	81-85—166 (T-34th)
<b>Fall 2007</b>	
La Quinta	86-82—186 (T-28th)
Aztec Fall Classic	73-82—155 (T-33rd)
Kent Youel	89-77-83—249 (T-85th)
<b>Spring 2007</b>	
Lady Braveheart	77-75—152 (T-3rd)
Kitahara	80-77—157 (T-51st)
UNLV Spring Invite	73-DQ-81—(DQ)
Oregon Duck	83-79-79—241 (T-29th)
Dixie Classic	81-78-82—241 (T-62nd)
MWC Champs.	81-80-79—240 (T-21st)
<b>Fall 2006</b>	
Dick McGuire	76-79-76—231 (T-55th)
Ron Moore	76-78-79—233 (49th)
Aztec Fall Classic	71-80—151 (22nd)
<b>Spring 2006</b>	
Lady Braveheart	85-77—162 (T-14th)
MWC Champs.	75-76-80—231 (T-17th)
<b>Fall 2005</b>	
La Quinta	86-82—168 (T-34th)
Lady Aztec	78-81-77—236 (T-29th)
Lady Otter	80-80—160 (T-8th)

**As A Freshman (2005-06 Season)**

**Spring:** Her 14th place tie at the Lady Braveheart helped the Aztec squad win their third tournament of the season ... Carded a career-best 75 in the first round of the MWC Tournament ... Had her best 54-hole total of the season at the MWC Tournament (15-over 231).

**Fall:** Led all Aztecs on the 'B' team at the Lady Otter Invitational, carding a 14-over 160 and tying for eighth out of 116 golfers ... Finished the fall campaign with a stroke average of 80.57 ... Notched her lowest rounds of 77 and 78 at the Lady Aztec Invitational.

**High School:** Lettered all four years at Palm Desert High School and was a captain one year ... Graduated a semester early in January of 2005.

**Personal:** Alana Lauren Erlandson

was born on April 3, 1987, in Camarillo, Calif. ... Parents are Darryl and Susan Erlandson ... Took classes at Palomar JC and College of the Desert ... Majoring in political science.

**Off The Course With Alana Erlandson**

- ▶ **In 10 years, I want to:** Travel the world
- ▶ **My favorite place on campus is:** Meditation Garden
- ▶ **Favorite place in San Diego:** The beach

## Maki Kamimura

**5-2, Junior, 2 Letters**  
**West Covina, Calif./South Hills HS**



**As A Junior (2007-08 Season)**

**Spring:** Ended the campaign with the team's second-best stroke average of 79.57 ... Competed in four spring events ... Tied for 28th at the Lady Braveheart Challenge ... Was the team's No. 2 golfer at the Dr. Donniss Thompson Invite, recording a final round 77 ... Had three sub-80 rounds at the Sacramento State Women's Golf Preview to tie for 40th at 16-over 232 ... Had a first-round 78 and tied for 28th overall at the MWC tournament.

**Fall:** Competed in all four events and 10 rounds ... Tied as the top finisher for the Aztec 'A' squad at the La Quinta Inn & Suites Shootout, taking seventh with a 15-over 159 ... Tied for 37th at the CU Heather Farr Memorial Invite with a 15-over 230 ... Best 18 holes of the season came in the first round of the Colorado tournament, firing a 74.

**As A Sophomore (2006-07 Season)**

**Spring:** Ended the season with the team's top overall stroke average at 78.00 ... Three top-10 finishes and four top-20 performances, including three in the spring ... Logged SDSU's best 54-hole score of 224 at the UNLV Spring Invitational where she placed 44th ... Career-low round of 72 in the first 18 holes at UNLV ... Also was the Aztecs' top golfer at the Oregon Duck Invite, placing eighth with a 16-over 232 ... Tied for 11th at the spring opener in Beaumont, Calif. ... Ended up 19th at the MWC championships with a 25-over 238.

**Fall:** Finished second at the La Quinta Inn & Suites Shootout ... Had her best round of the fall at the B.L.F. Dick McGuire (even-par 73) ... Her 229 at the B.L.F. Dick McGuire was a season-best for 54 holes.

**As A Freshman (2005-06 Season)**

**Spring:** Competed in every spring event for the Aztecs ... Helped SDSU finish first at the Lady Braveheart Challenge ... Finished tied for 10th of 66 golfers at the Lady Braveheart ... Carded a career-best 3-under 69 at the UNLV Spring Invite ... Set a personal best for 54 holes at UNLV Spring Invite with an 8-over 224.

**Fall:** Finished fourth among the Aztecs for the fall with a stroke average of 78.27 ... Tied for seventh out of 72 golfers at the Lady Aztec Invitational ... Came in third for SDSU at the Dick McGuire Invitational and the Kent Youel

**Kamimura's SDSU Scorecard**

<b>Spring 2008</b>	
Lady Braveheart	85-80—165 (T-28th)
Thompson Inv.	82-81-77—240 (T-35th)
Sac. St.	78-77-77—232 (T-40th)
MWC Champs.	78-83-81—242 (T-28th)
<b>Fall 2007</b>	
La Quinta	82-77—159 (T-7th)
Heather Farr	74-78-78—230 (T-33rd)
Aztec Fall Classic	81-77—158 (T-50th)
Kent Youel Invite	82-82-81—245 (77th)
<b>Spring 2007</b>	
Lady Braveheart	78-79—157 (T-11th)
Kitahara	84-79—163 (T-81st)
UNLV Spring Invite	72-77-75—224 (T-44th)
Oregon Duck	75-79-78—232 (T-8th)
Dixie Classic	82-75-80—237 (T-47th)
MWC Champs.	80-79-79—238 (19th)
<b>Fall 2006</b>	
Dick McGuire	73-75-81—229 (T-44th)
La Quinta	74-75—149 (2nd)
Aztec Fall Classic	83-81—164 (T-86th)
Kent Youel	75-80-80—235 (T-31st)
<b>Spring 2006</b>	
Lady Braveheart	76-84—160 (T-10th)
Kitahara	81-81—162 (T-84th)
UNLV Spring Invite	77-69-78—224 (T-18th)
Oregon Duck	80-79-79—238 (T-30th)
BYU Dixie	82-83-82—247 (T-50th)
MWC Champs.	78-72-79—229 (13th)
<b>Fall 2005</b>	
La Quinta	80-80—160 (T-22nd)
McGuire	71-80-81—232 (T-62nd)
Lady Aztec	76-77-73—226 (T-7th)
Kent Youel	81-80-82—243 (T-60th)



Invitational ... Best round of 71 came on the first day of the Dick McGuire ... Had one top-10 finish.

**High School:** In her junior season, was voted most valuable player, recognized as a scholar-athlete, first team all-league and academic first-team all-league ... Voted first team all-league throughout her high school tenure ... Finished third out of 64 in the 2004 California Girls' Junior Championship in Monterey, Calif.

**Personal:** Charlene Maki Kamimura was born on April 29, 1987 ... Daughter of Aya and Akitoshi Kamimura ... Major is biology ... Volunteer at the the City of Hope National Medical Center.

**Off The Course With Maki Kamimura**

▶ **A talent I wish I had, but don't is:** Being able to cook delicious food from my own recipes

▶ **If I had a website, the address would be:** whatsupmak.com

▶ **My favorite person to play golf with is and why:** Ashley Wood, because she keeps me smiling and focused on what I have to do

## Jackie Kazarian

5-10, RS-Junior, 2 Letters

Dana Point, Calif./Dana Hills HS



**As A Junior (2007-08 Season)**

**Spring:** Served a team captain with junior Maki Kamimura ... Posted the Aztecs' top stroke average of 2007-08 with a 78.83 ... Golfed in five of six spring tournaments ... Tied for 17th at the Lady Braveheart Challenge with an 18-over 162 ... Tied for 21st place at the Sacramento State tournament, including an even-par 72, for a 54-hole total of 9-over 225 ... One of two Aztecs to finish 24th at the MWC tourney with a 22-over 241 ... Final round 73 tied as the second-best score on the day in the field.

**Fall:** Competed in three of four fall events ... Third on the squad in stroke average at 78.71 ... Team and career-low round of 71 at the CU Heather Farr Memorial Invitational ... Finished a squad-best third at the La Quinta Inn & Suites Shootout with a 13-over 157.

**Kazarian's SDSU Scorecard**

**Spring 2008**

Lady Braveheart	81-81—162 (T-17th)
Kitahara	82-79—161 (T-65th)
vs. Brown	79 (4th)
Sac. St.	76-77-72—225 (T-21st)
MWC Champs.	83-85-73—241 (T-24th)

**Fall 2007**

La Quinta	77-80—157 (3rd)
Heather Farr	83-71-84—238 (T-65th)
Aztec Fall Classic	76-80—156 (T-39th)

**Spring 2007**

Lady Braveheart	76-79—155 (T-7th)
Kitahara	80-80—160 (T-71st)
UNLV Spring Invite	77-76-78—231 (T-72nd)
Oregon Duck	82-82-81—245 (T-38th)
Dixie Classic	81-80-78—239 (T-52nd)
MWC Champs.	80-79-85—244 (T-27th)

**Fall 2006**

Dick McGuire	77-79-78—234 (T-64th)
Ron Moore	75-DQ-76—N/A (N/A)
Aztec Fall Classic	76-77—153 (T-26th)
Kent Youel	79-75-78—232 (T-19th)

**Spring 2005**

Bay Area	80-78—158 (16th)
Thompson Inv.	84-82-90—256 (18th)
Oregon Duck	88-85-76—249 (67th)
Dixie Classic	82-78—160 (15th)
MWC Champs.	82-81-89—252 (26th)

**Fall 2004**

Dick McGuire	83-82-81—246 (90th)
Lady Aztec	79-DQ—NA (N/A)
Las Vegas	87-76-79—242 (78th)

**As A Sophomore (2006-07 Season)**

**Spring:** One of five Aztecs to participate in all six tournaments ... Team-best 93.8 count percentage ... Tied for seventh at the Lady Braveheart Challenge with an 11-over 155 ... Season-low round of 76 on two occasions at the Lady Braveheart and at the UNLV Spring Invite ... Placed 27th at the MWC championships with a 31-over 244.

**Fall:** Had her best finish in the Aztecs' final fall tournament (19th at the Kent Youel) ... Carded a career best for 54 holes at the Kent Youel (16-over 232) ... Finished in a 26th place tie at the Aztec Fall Classic ... Her 153 at the Fall Classic was a career best for 36 holes.

**2005-06 Season:** Utilized her redshirt season.

**As A Freshman (2004-05 Season)**

**Spring:** Led the team in the first two tournaments of the spring season

with two top-20 finishes ... Shot a 14-over 158 at the Bay Area Classic, tying for 16th place ... Finished tied for 18th place at the Dr. Donnis Thompson Invitational, carding a 256 for the tournament ... Finished in 15th place at the BYU Dixie Classic ... Ended the spring campaign with a stroke average of 82.69, which was second on the squad.

**Fall:** Competed in three of four events during the fall campaign ... Shot a 246 in her first career tournament at the season-opening Dick McGuire Invitational in New Mexico ... Competed as an individual at the Lady Aztec Invitational ... Had her best round at the Las Vegas Collegiate Showdown, carding a 4-over 76 ... Season-best 242 in 54 holes in Las Vegas.

**High School:** Attended Dana Hills High for three years, after spending her freshman year at Palos Verdes Peninsula High in Rolling Hills Estates, Calif ... Was a four-year letterwinner and served as team captain two times ... Second all-league freshman and sophomore years ... Dana Hills won its league, placed first at CIF and was third at the state tournament her sophomore season ... First team all-league final two years ... Was South Coast League individual champion as a senior, recording birdies on three of her last four holes to edge the defending champion with a 158 ... Was a first team all-county selection in 2003.

**Personal:** Jacqueline Smyth Kazarian was born Nov. 13, 1986, in Dana Point, Calif. ... Parents are Barbara Smyth and Don Kazarian ... Enjoys surfing, snowboarding and water skiing ... Majoring in kinesiology.

**Off The Course With Jackie Kazarian**

▶ **Something people don't know about me is:** I went skydiving in Hawaii

▶ **Best memory from last season:** Breaking par (in Colorado)

▶ **My favorite person to play golf with is:** My dad, because he lets me win

## Heather Wilson

5-5, Junior

Chula Vista, Calif./Hilltop HS



**2007-08 Season:** Did not participate in any tournaments in her third year on campus.

**As A Sophomore (2006-07 Season)**

**Spring:** Did not see action during the spring season.

**Fall:** Played in three of the five fall tournaments, notching a 78.00 stroke average ... Posted her best finish at the Aztec Fall Classic, tying for 26th with a career-best 153 ... Shot a season-low 75 in the final round of the Ron Moore Intercollegiate.

**As A Freshman (2005-06 Season)**

**Spring:** Carded a career-best 160 (36 holes) at the Kitahara Invitational in Fresno, Calif. ... Had her best finish of the spring at the Lady Braveheart Challenge (T-14th).

**Fall:** Competed in two of the fall tournaments ... Finished third for SDSU in the fall campaign with a stroke average of 77.50 ... Came in 12th out of 72 golfers at the Lady Aztec Invitational, carding a 12-over 228 ... Was second among the Aztecs at the Kent Youel Invitational ... Shot her best round of 75 at both the Lady Aztec and the Kent Youel Invitationals.

**High School:** In 2004 won the Marvin K. Brown Match Play Championship with the San Diego Junior Golf Association ... Was the 2004-05 junior tournament player of the year and also voted an All-American ... League champion in her freshman and sophomore years and also was voted most valuable player all four years ... As a senior, team won its league, placed 12th in regionals and 23rd in state championships ... Competed in two tournaments with the American Junior Golf

**Wilson's SDSU Scorecard**

**Fall 2006**

Dick McGuire	82-80-78—240 (T-81st)
Ron Moore	78-78-75—231 (T-43rd)
Aztec Fall Classic	76-77—153 (T-26th)

**Spring 2006**

Lady Braveheart	82-80—162 (T-14th)
Kitahara	84-76—160 (T-75th)
Dixie Classic	80-79-80—239 (T-23rd)

**Fall 2005**

Lady Aztec	77-75-76—228 (12th)
Kent Youel	75-77-85—237 (39th)



Association ... Finished seventh in the Las Vegas Founders Junior Golf Championship and 11th in the Family Toyota/Family Honda Junior Tournament.

**Personal:** Heather Nicole Wilson was born on Aug. 11, 1987 ... Daughter of Keith and Deb Wilson... Major is communications ... Father Keith played baseball at Point Loma Nazarene.

**Off The Course With Heather Wilson**

- ▶Favorite golf course in San Diego: La Costa Canyon
- ▶Something people don't know about me is: I used to live on a ranch
- ▶My favorite food is: Mexican and sushi

## Marcela Campbell

5-4, Sophomore  
Glendale, Calif./Flintridge Sacred Heart Academy



**As A Sophomore (2007-08 Season)**

**Spring:** Did not compete in any events.

**Fall:** Competed as an individual at the season-opening La Quinta Inn & Suites Shootout, tying for 40th place at 32-over 176.

**As A Freshman (2006-07 Season)**

**Spring:** Did not participate in any tournaments during the spring campaign.

**Fall:** In her first semester on The Mesa, Campbell played in two of five tournaments ... Finished 48th at La Quinta ... Forced to withdraw

from the Aztec Fall Classic after the first round due to injury.

**High School:** Helped lead her high school team to a pair of second-place

Campbell's SDSU Scorecard	
Fall 2007	
La Quinta	95-81—176 (40th)
Fall 2006	
La Quinta	93-86—179 (48th)
Aztec Fall Classic	91-WD—N/A (N/A)

finishes and two third-place finishes in league during her four years at Flintridge ... Three-year captain and four-year letterwinner ... Was an All-Mission League player as a junior and senior ... Is the first female out of Flintridge to play Division I golf.

**Personal:** Marcela Louise Campbell was born on June 2, 1988, in Northridge, Calif ... Daughter of Mark and Sandra Campbell ... Has one brother, Christopher ... Is pursuing a degree in public administration.

**Off The Course With Marcela Campbell**

- ▶My favorite person to play golf with is and why: My brother because he always pushes me to do my best
- ▶Something people don't know about me is: I have been playing golf since I was four
- ▶If I had a super power it would be: Be in more than one place at one time

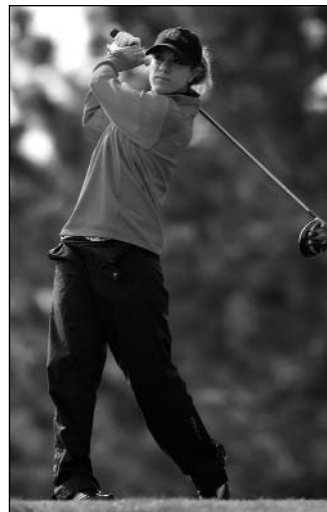
## Petra Cole

5-0, RS-Sophomore  
San Diego, Calif./West Hills HS



**As A Sophomore (2007-08 Season)**

**Spring:** One of only two Aztecs to play in all six spring tournaments ... Tied for 21st at the Lady Braveheart Challenge ... Helped the Aztecs earn a dual-match win over Brown with the second-best score on the afternoon with a 5-over 77 ... SDSU's top golfer at the Sacramento State Preview, posting a career-low by 11 strokes and season-low by 24 strokes of 6-over 222 to tie for 11th place out of 109 golfers ... Logged back-to-back career-best rounds with a 73, followed by an even-par 72 in the final



18 holes ... Played in her first MWC championships in mid-April.

**Fall:** Played in two events, including the fall opener, the La Quinta Inn & Suites Shootout, and the Aztec Fall Classic ... Placed 15th at the La Quinta tournament with a 17-over 161 ... Fired an 18-over 162 at the team's lone home event ... Won the San Diego City Amateur in mid-August with a 325, edging future teammate Samantha Roberts by one stroke.

**2006-07 Season:** Utilized her redshirt season.

**As A Freshman (2005-06 Season)**

**Spring:** Competed in three tournaments during the spring ... Had her best effort in the second and third rounds of the UNLV Spring Invitational, carding an 80.

**Fall:** Competed in four of the five fall tournaments ... Was second among the Aztecs 'B' team at the Lady Aztec Invitational, tying for 25th out of 70 golfers ... Had her best round of the fall at the Lady Aztec, carding a 75 ... Came in third among the Aztecs 'B' team at the Lady Otter Invitational.

**High School:** Finished her 10th at CIFs as a senior ... Team won its league all four years ... Went to the state championships as a freshman.

**Personal:** Petra Dominica Cole was born on Sept. 13 1986, in San Francisco, Calif. ... Parents are Karen and Bex Cole ... Is a criminal justice major.

**Cole's SDSU Scorecard**

Spring 2008	
Lady Braveheart	78-85—163 (T-21st)
Kitahara	82-82—164 (T-76th)
Thompson Inv.	79-83-84—246 (T-64th)
vs. Brown	77 (2nd)
Sac. St.	77-73-72—222 (T-11th)
MWC Champs.	84-82-87—253 (34th)
Fall 2007	
La Quinta	82-79—161 (15th)
Aztec Fall Classic	80-82—162 (T-64th)
Spring 2006	
Lady Braveheart	89-83—172 (T-45th)
UNLV Spring Inv.	81-80-80—241 (T-79th)
Oregon Duck	87-83-91—261 (70th)
Fall 2005	
La Quinta	78-76—154 (T-10th)
Dick McGuire	81-88-79—248 (96th)
Lady Aztec	80-75-78—233 (T-25th)
Lady Otter	85-82—167 (T-20th)

**Off The Course With Petra Cole**

- ▶If a movie came out about my life I'd want this actress to play me: Sandra Bullock
- ▶What I want to accomplish this golf season: Go to regionals
- ▶I know that I'm going to play a good round of golf when: I am confident and relaxed

## Ashley Wood

5-3, RS-Sophomore  
Lake Tahoe, Calif./Incline HS



**As A Sophomore (2007-08 Season)**

**Spring:** Competed as an individual in one tournament and also the dual match with Brown ... Placed 55th at the Lady Braveheart Challenge.

**Fall:** Carded a career-best 73 in the final round of the La Quinta Inn & Suites Shootout, finishing in a tie for 23rd place at 21-over 165 ... Also played in the Aztec Fall Classic as a member of the SDSU 'B' team, recording a 22-over 166, including an 81 on the second day.

**As A Freshman (2006-07 Season)**

**Spring:** Logged a 30-over 174 in her only action of the spring at the Lady Braveheart Challenge.

**Fall:** Competed in two tournaments as an individual ... Carded a 32-over 178 at La Quinta to place in a tie for 46th ... Shot a 21-over 165 at the Aztec



#### Wood's SDSU Scorecard

<b>Spring 2008</b>	
Lady Braveheart	87-86—173 (T-55th)
vs. Brown	87 (T-7th)
<b>Fall 2007</b>	
La Quinta	92-73—165 (T-23rd)
Aztec Fall Classic	85-81—166 (T-80th)
<b>Spring 2007</b>	
Lady Braveheart	82-92—174 (T-67th)
<b>Fall 2006</b>	
La Quinta	89-89—178 (T-46th)
Aztec Fall Classic	81-84—165 (T-92nd)

Fall Classic.

**2005-06 Season:** Redshirted the year. **High School:** Was the league's most valuable player as a senior in Northern Nevada and tied for first place at the state championships ... Finished third in the state championships her junior year, ending the tournament just two strokes behind the leader ... As a sophomore, was voted the league's most valuable player ... Was also a varsity softball

and basketball player ... Voted MVP for basketball in her junior year.

**Personal:** Ashley Elizabeth Wood was born on July 7, 1987, in Truckee, Calif. ... Daughter of Anna Buckner and Paul Wood ... Majoring in kinesiology.

#### Off The Course With Ashley Wood

- ▶ **Best memory from last season:** Team dinner at my house
- ▶ **What I want to accomplish this golf season:** Consistency
- ▶ **Favorite place in San Diego:** Sunset Cliffs

## Stephanie Arcala

### 5-2, Freshman

Oceanside, Calif./Vista HS



#### As A Freshman (2007-08 Season)

**Spring:** Played in five of six spring tournaments, including the MWC championships ... Team's top finisher at the Lady Braveheart Challenge, when she placed

10th out of 101 golfers with a 16-over 160, including a final round

78 ... Tied for 56th at the Dr. Donnis Thompson Invite with a 245, highlighted by a 79 in the first 18 holes ... Ended up 33rd at the MWC tourney.

**Fall:** Golfed in three events her first semester on campus ... Tied for 23rd place at the La Quinta Inn & Suites Shootout ... SDSU's top finisher at the Aztec Fall Classic, ending up tied for 17th at 8-over 152, including a final round 75 ... Was also the Aztecs' No. 1 golfer at the Kent Youel Invite with a 17-over 233, highlighted by a career-low 73.



**High School:** Lettered two years in golf at both Rancho Buena Vista and Vista High Schools ... Served as team captain one season ... Earned first-team all-league honors three years ... CIF San Diego Section individual champion as a sophomore in 2004, garnering North County and CIF Player-of-the-Year accolades ... Team finished first in league her sophomore and junior years.

**Personal:** Stephanie Vencilao Arcala was born on June 16, 1989, in Subic Bay, Philippines ... Daughter of Ellen and Napoleon Arcala ... Majoring in business.

#### Arcala's SDSU Scorecard

<b>Spring 2008</b>	
Lady Braveheart	82-78—160 (T-10th)
Kitahara	80-83—163 (T-74th)
Thompson Inv.	79-81-85—245 (T-56th)
vs. Brown	85 (6th)
MWC Champs.	83-84-81—248 (33rd)
<b>Fall 2007</b>	
La Quinta	86-79—165 (T-23rd)
Aztec Fall Classic	77-75—152 (T-17th)
Kent Youel	83-73-77—233 (T-33rd)

#### Off The Course With Stephanie Arcala

▶ **If a movie came out about my life I'd want this actress to play me:** Gabrielle Union

▶ **What I want to accomplish this golf season:** Consistency and a low stroke average

▶ **My favorite person to play golf with is and why:** The freshmen girls, because we make the best of any round

## Madison Butler

### 5-9, Junior

Coto de Caza, Calif./Santa Margarita Catholic HS/Cal Poly



**2007-08 Season:** Did compete after transferring from Cal Poly.

**At Cal Poly:** Began attending Cal Poly in 2004, where she was a member of the golf squad for two seasons ... Played in one event in 2005-06, the Cal Poly Invitational, tying for 56th place ... Tied for 20th at the 2004 Cal Poly Invite with a career-best 14-over 160, including a low round of 78 ... Best effort in a 54-hole tournament was at the 2004 Lady Vandal Invitational, where she carded a 245.

**High School:** Letterwinner her last three years at Santa Margarita Catholic High School ... Was team captain her senior year ... Serra League individual medalist as a senior ... Team MVP in 2003.

**Personal:** Madison Nicole Butler was born on April 27, 1986, in Newport Beach, Calif. ... Daughter of Jeff and Faith Butler ... Has one sister (Lauren) who is a freshman at San Diego State ... Father played basketball for UC Irvine ... Majoring in political science.

#### Off The Course With Madison Butler

▶ **Favorite song to dance to:** "Don't Stop Believin'" by Journey

▶ **My favorite food is:** Sushi

▶ **What I want to accomplish this golf season:** Improve my bunker shots and driving distance

## Erin Coons

### 5-7, Freshman

Wilbraham, Ma./Minnechaug Regional HS



**2007-08 Season:** Redshirted the year.

**High School:** Four-year letterwinner and team captain her senior year at Minnechaug Regional High School ... Played with the boys' varsity squad all four seasons ... As a senior, was named a first-team all-WMASS selection and also garnered all-academic honors ... NHSCA All-American as a junior ... Competed at the Callaway Golf Junior World Golf Championships in San Diego in 2006 ... Won the Western Mass. Girls Individual Championship and finished fourth at the NHSCA

tournament in Virginia in 2005 ... Member of the National Honor Society, graduating 19th in her class.

**Personal:** Erin Kathleen Coons was born on May 4, 1989, in Springfield, Mass. ... Daughter of Gregory and Amy Coons ... Hobbies include going to the beach, shopping and listening to music ... Majoring in international business.

#### Off The Course With Erin Coons

▶ **Best thing about San Diego State:** It never snows

▶ **Favorite food is:** My mom's chocolate chip pancakes

▶ **Something people don't know about me is:** I grew up on a farm





# Faith De Guzman

5-0, Freshman  
Sherman Oaks, Calif./Notre Dame HS



**As A Freshman (2007-08 Season)**  
**Spring:** Participated in the spring opener, the Lady Braveheart Classic, as an individual, carding a 27-over 171 to tied for 52nd place.  
**Fall:** Played as an individual at the Aztec Fall Classic, tying for 55th place with a 16-over 160, including an opening-round 79.  
**High School:** Helped Notre Dame HS to four-straight league titles ... Four-time first-team all-league pick ... Team captain and co-MVP of the Mission League as a senior ... Finished fourth with an 8-over 77 at the Southern Section Northern Individual Regional ...

De Guzman's SDSU Scorecard	
Spring 2008	
Lady Braveheart	87-84—171 (T-52nd)
Fall 2007	
Aztec Fall Classic	79-81—160 (T-55th)

Competed at the Callaway Junior Worlds in 2003 and 2004 ... Medalist honors at the 2006 AJGA Pinnacle Communities Junior Championship Section Qualifier with a 1-over-par 73 ... 2001 LPGA/Los Angeles Junior Chamber of Commerce Urban Youth Program Player of the Year.  
**Personal:** Faith Centeno De Guzman was born on March 27, 1989, in Upland, Calif. ... Daughter of Francisco and Leilani De Guzman ... Plays the piano ... Majoring in business.

**Off The Course With Faith De Guzman**  
▶ **A talent I wish I had, but don't is:** To be able to compete in a triathlon  
▶ **Best memory from this year:** Breaking 80 in my first college tournament  
▶ **My favorite place on campus is:** Kaitlen's (Miyajima) room, because it's always clean

# Ashley Dyer

5-8, Freshman  
Corcoran, Calif./Kings Christian HS



**As A Freshman (2007-08 Season)**  
**Spring:** Did not compete in any spring events.  
**Fall:** Played 36 holes in the team's first tournament, carding a 25-over 169 to tie for 30th place.  
**High School:** Lettered all four years on the boys' golf team at Kings Christian High in Lemoore, Calif. ... Four-time all-league pick and played as her team's No.1 golfer as a senior ... Fifth in the Central Sierra League tournament and was 15th at the boys' CIF central area championships as a senior ... First at CIF girls' sectionals her junior year to earn player-of-the-year honors ... Qualified for the Optimist International Championship four consecutive years and won three junior amateur events ... Female student-athlete of the year at the Central Valley ESPY Awards.  
**Personal:** Ashley A. Dyer was born on June 11, 1989, in Cedar Rapids, Iowa ... Daughter of Ken and Ronda Dyer ... Majoring in kinesiology.

Dyer's SDSU Scorecard	
Fall 2007	
La Quinta	86-83—169 (T-30th)

**Off The Course With Ashley Dyer**  
▶ **A talent I wish I had, but don't is:** Painting  
▶ **If I had a super power it would be:** To make everyone around me happy  
▶ **I know that I'm going to play a good round of golf when:** I am relaxed, confident and have anxious energy

# Kaitlen Miyajima

5-2, Freshman  
Wailuku, Maui, Hawaii/HP Baldwin HS



**As A Freshman (2007-08 Season)**  
**Spring:** Finished with the team's third-best spring stroke average of 79.75 ... Tied for 10th place at the Lady Braveheart Challenge at 16-over 160, including a final round 77 ... Aztecs' No. 2 golfer at Fresno State with a 15-over 159.  
**Fall:** Placed 32nd at her first collegiate event in Arizona ... Shot a 156 at the Aztec Fall Classic, including an opening round 76 ... SDSU's No. 2 golfer at the Kent Youel Invite, posting a 237.  
**High School:** Four-year letterwinner and two-time team captain at H.P. Baldwin ... Maui Interscholastic League first team in 2007 ... Baldwin won three league titles and was state runner-up her sophomore campaign ... Two-time team MVP ... Qualified for the 2005 U.S. Women's Amateur Public Links Championship ... Participated in the 2005 USGA Girls' Junior Championship and the Callaway World Juniors.

Miyajima's SDSU Scorecard	
Spring 2008	
Lady Braveheart	83-77—160 (T-10th)
Kitahara	82-77—159 (T-57th)
Fall 2007	
La Quinta	87-83—170 (T-32nd)
Aztec Fall Classic	76-80—156 (T-39th)
Kent Youel	79-77-81—237 (T-50th)

**Personal:** Kaitlen F. Miyajima was born on Aug. 17, 1989, in Wailuku, Hawaii ... Daughter of Eric and Elaine Miyajima ... Sister, Shayna, was a member of the SDSU golf team (2001-04) and plays on the Futures Tour ... Majoring in business.

**Off The Course With Kaitlen Miyajima**  
▶ **A talent I wish I had, but don't is:** To play the ukulele well  
▶ **Favorite food is:** Japanese and local Hawaiian food  
▶ **Favorite person to play golf with is:** My sister, because we challenge each other

# Samantha Roberts

5-8, Freshman  
Carlsbad, Calif./La Costa Canyon HS



**As A Freshman (2007-08 Season)**  
**Spring:** Only Aztec to compete in all 10 events, posting the third-best season stroke average of 79.79 ... SDSU's top golfer at three events ... Season-best 8-over 152 at the Fresno State tournament ... Followed that with a career-low 238 in Hawaii ... Tied for 24th at the MWC championships with a 22-over 241.  
**Fall:** Tied for seventh at the season-opener with a 15-over 159 ... Best round was a 75 at the Aztec Fall Classic.  
**High School:** Earned two letters at Carlsbad HS and was team co-MVP as a sophomore ... Attended La Costa Canyon HS her final two years and was team MVP as a senior ... Also lettered in track and field ... Runner-up at the 2007 San Diego City Amateur.

Roberts' SDSU Scorecard	
Spring 2008	
Lady Braveheart	83-82—165 (T-28th)
Kitahara	76-76—152 (T-30th)
Thompson Inv.	79-82-77—238 (T-30th)
vs. Brown	78 (3rd)
Sac. St.	84-74-82—240 (T-75th)
MWC Champs.	82-79-80—241 (T-24th)
Fall 2007	
La Quinta	78-81—159 (T-7th)
Heather Farr	81-83-81—245 (T-86th)
Aztec Fall Classic	80-75—155 (T-33rd)
Kent Youel	79-79-84—242 (T-71st)

**Personal:** Samantha Meredith Roberts was born on Oct. 30, 1987, in La Jolla, Calif. ... Parents are Steve and Ursula Roberts ... Father was a Pac-10 swimming champion at Cal ... Mother and grandmother also attended SDSU ... Undeclared major.

**Off The Course With Samantha Roberts**  
▶ **My favorite food is:** California burrito with guacamole  
▶ **Best memory from this season:** Getting an eagle on hole No. 16 at Salt Creek Golf Course from 150 yards out during the home tournament



## Spring 2008 Statistics/Results

### ► Tournament Results

Date	Tournament/Opponent (Host)	Golf Course (Site)	Result
Feb. 11-12	Lady Braveheart Challenge (UC Riverside)	Oak Valley Golf Club (Beaumont, Calif.)	2nd of 16/645 (+69)
Feb. 25-26	Kitahara Fresno State Invitational (Fresno St.)	Copper River Country Club (Fresno, Calif.)	16th of 16/634 (+58)
March 17-19	Dr. Donniss Thompson Invitational (Hawai'i)	Kane'ohē Klipper Golf Course (Kane'ohē, Hawaii)	10th of 16/962 (+98)
March 27	vs. Brown (SDSU)	Salt Creek Golf Course (Chula Vista, Calif.)	1st of 2/310 (+22)
March 31-April 1	Sac. St. Women's Golf Preview Tournament (Sac. St.)	Lincoln Hills Golf Club (Lincoln, Calif.)	10th of 19/914 (+50)
April 17-19	Mountain West Conference Championship (MWC)	UNM University Golf Course (Albuquerque, N.M.)	7th of 7/969 (+93)

### ► Individual Results

Stephanie Arcala	Score	Finish
Lady Braveheart	82-78—160 (+16)	T-10th
Kitahara Invite	80-83—163 (+19)	T-74th
Thompson Invite	79-81-85—245 (+29)	T-56th
Brown	85 (+13)	6th
MWC	83-84-81—248 (+29)	33rd

Anna Booth	Score	Finish
Lady Braveheart	86-83—169 (+25)	T-43rd
Thompson Invite	86-76-87—249 (+33)	T-72nd

Kim Carmody	Score	Finish
Lady Braveheart	81-88—169 (+25)	T-43rd
Brown	76 (+4)	1st
Sac. St. Preview	80-78-81—239 (+23)	T-72nd

Petra Cole	Score	Finish
Lady Braveheart	78-85—163 (+19)	T-21st
Kitahara Invite	82-82—164 (+20)	T-76th
Thompson Invite	79-83-84—246 (+30)	T-64th
Brown	77 (+5)	2nd
Sac. St. Preview	77-73-72—222 (+6)	T-11th
MWC	84-82-87—253 (+34)	34th

Faith De Guzman	Score	Finish
Lady Braveheart	87-84—171 (+27)	T-52nd

Alana Erlandson	Score	Finish
Lady Braveheart	81-85—166 (+22)	T-34th

Maki Kamimura	Score	Finish
Lady Braveheart	85-80—165 (+21)	T-28th
Thompson Invite	82-81-77—240 (+24)	T-35rd
Sac. St. Preview	78-77-77—232 (+16)	T-40th
MWC	78-83-81—242 (+23)	T-28th

Jackie Kazarian	Score	Finish
Lady Braveheart	81-81—162 (+18)	T-17th
Kitahara Invite	82-79—161 (+17)	T-65th
Brown	79 (+7)	4th
Sac. St. Preview	76-77-72—225 (+9)	T-21st
MWC	83-85-73—241 (+22)	T-24th

Kaitlen Miyajima	Score	Finish
Lady Braveheart	83-77—160 (+16)	T-10th
Kitahara Invite	82-77—159 (+15)	T-57th

Samantha Roberts	Score	Finish
Lady Braveheart	83-82—165 (+21)	T-28th
Kitahara Invite	76-76—152 (+8)	T-30th
Thompson Invite	79-82-77—238 (+22)	T-30th
Brown	78 (+6)	3rd
Sac. St. Preview	84-74-82—240 (+24)	T-75th
MWC	82-79-80—241 (+22)	T-24th

Ashley Wood	Score	Finish
Lady Braveheart	87-86—173 (+29)	T-55th
Brown	87 (+15)	T-7th

### ► Individual Statistics

Player	Events	Rounds	Strokes	Avg	Count	Low	Low	Top	Top	Top	Best
					Pct.	18	36	54	10	20	Finish
Jackie Kazarian	5	11	868	78.91	9.3/11 (.846)	72	149	225	1	2	4th
Samantha Roberts	6	14	1,114	79.57	12/14 (.857)	74	152	238	1	1	3rd
Kaitlen Miyajima	2	4	319	79.75	1.3/2 (.650)	77	159	—	1	1	T-10th
Maki Kamimura	4	11	879	79.91	10/11 (.909)	77	154	232	—	—	T-28th
Petra Cole	6	14	1,125	80.36	9.3/14 (.664)	72	145	222	2	3	2nd
Kim Carmody	3	6	484	80.67	3/4 (.750)	76	158	239	1	1	1st
Stephanie Arcala	5	11	901	81.91	9/11 (.818)	78	160	245	2	2	6th
Alana Erlandson	1	2	166	83.00	—	81	166	—	—	—	T-34th
Anna Booth	2	5	418	83.60	1/3 (.333)	76	162	249	—	—	T-43rd
Faith De Guzman	1	2	171	85.50	—	84	171	—	—	—	T-52nd
Ashley Wood	2	3	260	86.67	—	86	173	—	—	—	T-7th
<b>SDSU Team</b>	<b>6</b>	<b>14</b>	<b>4,434</b>	<b>316.7</b>	<b>—</b>	<b>301</b>	<b>603</b>	<b>914</b>	<b>5</b>	<b>6</b>	<b>1st</b>

### ► Tournament-By-Tournament Team Results

**Lady Braveheart Challenge**  
Feb. 11-12 • Oak Valley G.C. • Beaumont, Calif.  
16 teams • Par 72 • 6,089 yards

Stephanie Arcala	82-78—160 (+16)	T-10th
Jackie Kazarian	81-81—162 (+18)	T-17th
Petra Cole	78-85—163 (+19)	T-21st
Maki Kamimura	85-80—165 (+21)	T-28th
Samantha Roberts	83-82—165 (+21)	T-28th
*Kaitlen Miyajima	83-77—160 (+16)	T-10th
*Alana Erlandson	81-85—166 (+22)	T-34th
*Anna Booth	86-83—169 (+25)	T-43rd
*Kim Carmody	81-88—169 (+25)	T-43rd
*Faith De Guzman	87-84—171 (+27)	T-52nd
*Ashley Wood	87-86—173 (+29)	T-55th
<b>SDSU Team</b>	<b>324-321—645 (+69)</b>	<b>2nd</b>

**Tournament Champion:** Cal Poly, 629 (+53)  
**Ind. Champion:** Stephanie Yocum, Cal Poly, 151 (+7)  
\* = Competed as individuals

**Kitahara Fresno State Invitational**  
Feb. 25-26 • Copper River C.C. • Fresno, Calif.  
16 teams • Par 72 • 6,072 yards

Samantha Roberts	76-76—152 (+8)	T-30th
Kaitlen Miyajima	82-77—159 (+15)	T-57th
Jackie Kazarian	82-79—161 (+17)	T-65th
Stephanie Arcala	80-83—163 (+19)	T-74th
Petra Cole	82-82—164 (+20)	T-76th
<b>SDSU Team</b>	<b>320-314—634 (+58)</b>	<b>16th</b>

**Tournament Champion:** Tulsa, 590 (+14)  
**Ind. Champion:** Taylor Siebert, Fresno St., 144 (E)

**Dr. Donniss Thompson Invitational**  
March 17-19 • Kane'ohē Klipper Golf Course • Kane'ohē, Hawaii

Samantha Roberts	79-82-77—238 (+22)	T-30th
Maki Kamimura	82-81-77—240 (+24)	T-35th
Stephanie Arcala	79-81-85—245 (+29)	T-56th
Petra Cole	79-83-84—246 (+30)	T-64th
Anna Booth	86-76-87—249 (+33)	T-72th
<b>SDSU Team</b>	<b>319-320-323—962 (+98)</b>	<b>10th</b>

**Tournament Champion:** Oklahoma St., 880 (+16)  
**Ind. Champion:** Alison Walshe, Arizona, 213 (-3)

**vs. Brown**  
March 27 • Salt Creek Golf Course • Chula Vista, Calif.  
2 teams • Par 72 • 6,232 yards

Kim Carmody	76 (+4)	1st
Petra Cole	77 (+5)	2nd
Samantha Roberts	78 (+6)	3rd
Jackie Kazarian	79 (+7)	4th
Stephanie Arcala	85 (+13)	6th
*Ashley Wood	87 (+15)	T-7th
<b>SDSU Team</b>	<b>310 (+22)</b>	<b>1st</b>

**Tournament Champion:** San Diego St., 310 (+22)  
**Ind. Champion:** Kim Carmody, 76 (+4)

**Sac. St. Women's Golf Preview Tournament**  
March 31-April 1 • Lincoln Hills Golf Club • Lincoln, Calif.

Petra Cole	77-73-72—222 (+6)	T-11th
Jackie Kazarian	76-77-72—225 (+9)	T-21st
Maki Kamimura	78-77-77—232 (+16)	T-40th
Kim Carmody	80-78-81—239 (+23)	T-72nd
Samantha Roberts	84-74-82—240 (+24)	T-75th
<b>SDSU Team</b>	<b>311-301-302—914 (+50)</b>	<b>10th</b>

**Tournament Champion:** Denver, 880 (+16)  
**Ind. Champion:** Amy Eneroth, Wash. St., 216 (E)

**2008 MWC Championships**  
April 17-19 • UNM University Course • Albuquerque, N.M.

Jackie Kazarian	83-85-73—241 (+22)	T-24th
Samantha Roberts	82-79-80—241 (+22)	T-24th
Maki Kamimura	78-83-81—242 (+23)	T-28th
Stephanie Arcala	83-84-81—248 (+29)	33rd
Petra Cole	84-82-87—253 (+34)	34th
<b>SDSU Team</b>	<b>326-328-315—969 (+93)</b>	<b>7th</b>

**Tournament Champion:** New Mexico, 888 (+12)  
**Ind. Champion:** Jodi Ewart, UNM, 219 (E)



# Fall 2007 Statistics/Results

## ► Tournament Results

Date	Tournament/Opponent (Host)	Golf Course (Site)	Result
Sept. 17-18	La Quinta Inn & Suites Shootout (No. Arizona)	Aspen Valley Golf Club (Flagstaff, Ariz.)	3rd of 8/641 (+65)
Oct. 1-2	CU Heather Farr Memorial Invitational (Colorado)	Omni Interlocken Golf Club (Broomfield, Colo.)	10th of 20/916 (+52)
Oct. 15-16	Aztec Fall Classic (SDSU)	Salt Creek Golf Course (Chula Vista, Calif.)	11th of 19/622 (+46)
Oct. 30-31	Kent Youel Invitational (Hawai'i)	Kapolei Golf Course (Kapolei, Hawaii)	15th of 19/951 (+87)

## ► Individual Results

Stephanie Arcala	Score	Finish
La Quinta	86-79—165 (+19)	T-23rd
Aztec Fall Classic	77-75—152 (+8)	T-17th
Kent Youel Invite	83-73-77—233 (+17)	T-33rd

Anna Booth	Score	Finish
La Quinta	86-78—164 (+19)	T-21st
Heather Farr Invite	73-73-74—220 (+4)	T-8th
Aztec Fall Classic	79-81—160 (+16)	T-55th

Marcella Campbell	Score	Finish
La Quinta	95-81—176 (+32)	40th

Kim Carmody	Score	Finish
La Quinta	78-80—158 (+14)	T-4th
Heather Farr Invite	78-77-78—233 (+17)	T-49th
Aztec Fall Classic	81-85—166 (+22)	T-80th

Petra Cole	Score	Finish
La Quinta	82-79—161 (+17)	15th
Aztec Fall Classic	80-82—162 (+18)	T-64th

Faith De Guzman	Score	Finish
Aztec Fall Classic	79-81—160 (+16)	T-55th

Ashley Dyer	Score	Finish
La Quinta	86-83—169 (+25)	T-30th

Alana Erlandson	Score	Finish
La Quinta	86-82—186 (+24)	T-28th
Aztec Fall Classic	73-82—155 (+11)	T-33rd
Kent Youel Invite	89-77-83—249 (+33)	T-85th

Maki Kamimura	Score	Finish
La Quinta	82-77—159 (+15)	T-7th
Heather Farr Invite	74-78-78—230 (+14)	T-33rd
Aztec Fall Classic	81-77—158 (+14)	T-50th
Kent Youel Invite	82-82-81—245 (+29)	77th

Jackie Kazarian	Score	Finish
La Quinta	77-80—157 (+13)	3rd
Heather Farr Invite	83-71-84—238 (+22)	T-65th
Aztec Fall Classic	76-80—156 (+12)	T-39th

Kaitlen Miyajima	Score	Finish
La Quinta	87-83—170 (+26)	T-32nd
Aztec Fall Classic	76-80—156 (+12)	T-39th
Kent Youel Invite	79-77-81—237 (+21)	T-50th

Samantha Roberts	Score	Finish
La Quinta	78-81—159 (+15)	T-7th
Heather Farr Invite	81-83-81—245 (+29)	T-81st
Aztec Fall Classic	80-75—155 (+11)	T-33rd
Kent Youel Invite	79-79-84—242 (+26)	T-71st

Ashley Wood	Score	Finish
La Quinta	92-73—165 (+21)	T-23rd
Aztec Fall Classic	85-81—166 (+22)	T-80th

## ► Individual Statistics

Player	Events	Rounds	Strokes	Avg	Count Pct.	Low 18	Low 36	Top 54	Top 10	Top 20	Best Finish
Anna Booth	3	7	544	77.71	6.5/7 (.930)	73	146	220	1	1	T-8th
Stephanie Arcala	3	7	550	78.57	4.5/5 (.900)	73	150	233	—	1	T-17th
Jackie Kazarian	3	7	551	78.71	3/5 (.600)	71	154	238	1	1	3rd
Maki Kamimura	4	10	792	79.20	8/10 (.800)	74	152	230	1	1	T-7th
Kim Carmody	3	7	557	79.57	3/3	77	155	233	1	1	T-4th
Faith De Guzman	1	2	160	80.00	—	79	160	—	—	—	T-55th
Samantha Roberts	4	10	801	80.10	5/8 (.625)	75	155	242	1	1	T-7th
Kaitlen Miyajima	3	7	563	80.43	5/5 (1.000)	76	156	237	—	—	32nd
Petra Cole	2	4	321	80.75	2/2 (1.000)	79	161	—	—	1	15th
Alana Erlandson	3	7	572	81.71	3/5 (.600)	73	155	249	—	—	T-28th
Ashley Wood	2	4	331	82.75	—	73	165	—	—	—	T-23rd
Ashley Dyer	1	2	169	84.50	—	83	169	—	—	—	30th
Marcela Campbell	1	2	176	88.00	—	81	176	—	—	—	T-40th
<b>SDSU Team</b>	<b>4</b>	<b>10</b>	<b>3130</b>	<b>313.00</b>	<b>—</b>	<b>299</b>	<b>605</b>	<b>916</b>	<b>3</b>	<b>4</b>	<b>3rd</b>

## ► Tournament-By-Tournament Team Results

### La Quinta Inn & Suites Shootout

Sept. 17-18 • Aspen Valley Golf Club •  
Flagstaff, Ariz.,  
8 teams • Par 72 • 6,426 yards

#### SDSU 'A' Team

Jamie Oliver	76-76-75—227 (+8)	T-32nd
Maki Kamimura	73-75-81—229 (+10)	T-44th
Alana Erlandson	76-79-76—231 (+12)	T-55th
Jackie Kazarian	77-79-78—234 (+15)	T-64th
Heather Wilson	82-80-78—240 (+21)	T-81st

#### SDSU 'B' Team

Jackie Kazarian	77-80—157 (+13)	3rd
Ashley Wood	92-73—165 (+21)	T-23rd
Alana Erlandson	86-82—168 (+24)	T-28th
Ashley Dyer	86-83—169 (+25)	T-30th
Kaitlen Miyajima	87-83—170 (+26)	T-32nd
*Kim Carmody	78-80—158 (+14)	T-4th
*Marcela Campbell	95-81—176 (+32)	T-40th

**SDSU 'A' Team 328-313—641 (+67) 3rd**

**Tournament Champion:** NAU, 631 (+55)

**Ind. Champion:** Sophia Choi, NAU, 151 (+7)

\* = Competed as individuals

### CU Heather Farr Memorial Invitational

Oct. 1-2 • Omni Interlocken Golf Club •  
Broomfield, Colo.,  
20 teams • Par 72 • 6,211 yards

Anna Booth	73-73-74—220 (+4)	T-8th
Maki Kamimura	74-78-78—230 (+15)	T-37th
Kim Carmody	78-77-78—233 (+17)	T-49th
Jackie Kazarian	83-71-84—238 (+22)	T-65th
Samantha Roberts	81-83-81—245 (+29)	T-86th

**SDSU Team 306-299-311—916 (+52) 10th**

**Tournament Champion:** Colorado, 885 (+21)

**Ind. Champion:** Kayla Morinaga, PSU, 214 (-2)

### Aztec Fall Classic

Oct. 15-16 • Salt Creek Golf Course •  
Chula Vista, Calif.,  
19 teams • Par 72 • 6,216 yards

#### SDSU 'A' Team

Alana Erlandson	73-82—155 (+11)	T-33rd
Kaitlen Miyajima	76-80—156 (+12)	T-39th
Jackie Kazarian	76-80—156 (+12)	T-39th
Maki Kamimura	81-77—158 (+14)	T-50th
Anna Booth	79-81—160 (+16)	T-55th

#### SDSU 'B' Team

Stephanie Arcala	77-75—152 (+8)	T-17th
Samantha Roberts	80-75—155 (+11)	T-33rd
Petra Cole	80-82—162 (+18)	T-64th
Ashley Wood	85-81—166 (+22)	T-80th
Kim Carmody	81-85—166 (+22)	T-80th
*Faith De Guzman	79-81—160 (+16)	T-55th

**SDSU 'A' Team 304-318—622 (+46) 8th**

**Tournament Champion:** UC Irvine, 593 (+17)

**Ind. Champion:** Patty Chawalitmetha, UCI, 142 (-2)

\* = Competed as an individual

### Kent Youel Invitational

Oct. 30-31 • Kapolei Golf Course •  
Kapolei, Hawaii,  
19 teams • Par 72 • 6,150 yards

Stephanie Arcala	83-73-77—233 (+17)	T-33rd
Kaitlen Miyajima	79-77-81—237 (+21)	T-50th
Samantha Roberts	79-79-84—242 (+26)	T-71st
Maki Kamimura	82-82-81—245 (+29)	77th
Alana Erlandson	89-77-83—249 (+33)	T-85th

**SDSU Team 323-306-322—951 (+87) 15th**

**Tournament Champion:** UCLA, 881 (+17)

**Ind. Champion:** Tiffany Joh, Maria Jose Uribe, UCLA, 217 (+1)



# Aztec Postseason History

## ► Conference Championships

### West Coast Athletic Association

Year	SDSU Score	SDSU Finish	Top SDSU Player	Score	Finish
1981	1014	7th	Linda McEwen	87-81-81-249	25th
1982	987	6th	Linda McEwen	87-78-79-244	22nd
1983	654	7th	Patty Liscio	77-81-158	9th
1984	991	7th	Linda McEwen	82-72-80-234	11th
1985	978	6th	Donna Watson	82-78-78-238	17th

### Pacific Coast Athletic Association

Year	SDSU Score	SDSU Finish	Top SDSU Player	Score	Finish
1987	631	2nd	Joann Walker	79-76-155	4th
1988	1003	3rd	Wendy Modic	78-83-85-246	8th

### Big West Conference

Year	SDSU Score	SDSU Finish	Top SDSU Player	Score	Finish
1989	955	2nd	Wendy Modic	73-81-77-231	4th
1990	951	2nd	Joann Walker	75-73-75-223	2nd

### Western Athletic Conference

Year	SDSU Score	SDSU Finish	Top SDSU Player	Score	Finish
1991	n/a*	n/a*	Wendy Kaup	79-75-154	2nd
1992	1026	3rd	Melissa Messina	82-88-81-251	4th
1994	1072	6th	Melissa Messina	90-84-86-260	16th
1995	655	4th	Melissa Messina	81-78-159	10th
1996	947	3rd	Lindy Donnelly	73-79-79-231	6th
1997	974	7th	Christelle Cuzon	77-81-78-236	20th
1998	1009	8th	Joanne Clingan	81-76-81-238	11th
1999	625	6th	Hiroko Fukushima	77-77-154	12th
			Joanne Clingan	76-78-154	12th

### Mountain West Conference

Year	SDSU Score	SDSU Finish	Top SDSU Player	Score	Finish
2000	DQ^	DQ^	Asa Jankler	76-80-75-231	7th
2001	887	2nd	Joanne Clingan	71-72-74-218	5th
2002	893	2nd	Heather Rollo	73-72-73-218	2nd
2003	934	5th	Shayna Miyajima	79-73-76-228	9th
2004	885	4th	Jenna Wilson	73-71-71-215	5th
2005	954	4th	Jamie Oliver	74-73-79-226	7th
2006	930	5th	Maki Kamimura	78-72-79-229	13th
2007	956	6th	Kim Carmody	83-78-76-237	17th
2008	969	7th	Jackie Kazarian	83-85-73-241	24th
			Samantha Roberts	82-79-80-241	24th

\*SDSU sent only one player to the 1991 WAC Championships.

^SDSU had two players disqualified during the final round for turning in incorrect scorecards.



Jackie Kazarian

## ► Leon G. Baron Award

1993-94	Megan Mahoney	83.93
1994-95	Megan Mahoney	82.50
1995-96	Lindy Donnelly	78.63
1996-97	Christelle Cuzon	78.52
1997-98	Joanne Clingan	80.24
1998-99	Hiroko Fukushima	76.19
1999-00	Heather Rollo	78.36
2000-01	Joanne Clingan	76.10
2001-02	Heather Rollo	77.20
2002-03	Shayna Miyajima	76.68
2003-04	Jenna Wilson	74.69
2004-05	Jamie Oliver	81.48
2005-06	Maki Kamimura	78.75
2006-07	Maki Kamimura	78.00
2007-08	Jackie Kazarian	78.83

The Leon G. Baron Award goes to the SDSU individual with the lowest stroke average for the entire season.

Barbara Barrow



## ► AIAW Championships

Year	Player	Finish
1975	Barbara Barrow	1st
1976	Barbara Barrow	2nd

## ► NCAA Regionals

**1996 West Regional (Omaha, Neb.)**  
Lindy Donnelly .....78-81-76-235 ....32nd

**1997 West Regional (Tucson, Ariz.)**  
Christelle Cuzon .....74-75-77-226 ....42nd

**1999 West Regional (Houston, Texas)**  
Hiroko Fukushima .....77-74-151 .....18th  
Nikki Chigas .....76-87-163 .....83rd  
Heather Rollo .....80-83-163 .....83rd  
Joanne Clingan .....83-83-166 .....91st  
Nikki Stangarone .....85-81-166 .....91st  
SDSU .....316-321-637 .....18th

**2000 West Regional (Tempe, Ariz.)**  
Heather Rollo .....85-76-77-238 ....109th

**2001 East Regional (Chapel Hill, N.C.)**  
Joanne Clingan .....79-76-DNF-DNF .....n/a  
Heather Rollo .....77-77-DNF-DNF .....n/a  
Sandy Kim .....77-81-DNF-DNF .....n/a  
Jennifer Hoene .....77-82-DNF-DNF .....n/a  
Shayna Miyajima .....83-88-DNF-DNF .....n/a  
SDSU .....310-316-DNF-DNF .....15th\*  
\*SDSU along with three other teams were unable to finish due to inclement weather.

**2004 West Regional (Stanford, Calif.)**  
Heather MacRae .....75-71-74-220 ..T-11th  
Jenna Wilson .....78-72-75-225 ..T-30th  
Shayna Miyajima .....77-78-80-235 ..T-66th  
Sandy Kim .....80-83-82-245 ..T-96th  
Toni Lutz .....81-82-84-247 ..T-99th  
SDSU .....310-303-311-924 ..T-15th



## Aztec Records/Letterwinners

### ► Top 10 54-Hole Individual Scores

Player	Tournament	Score
1. Jenna Wilson	2003 Lady Aztec Invitational	70-74-67—211
2. Jenna Wilson	2004 Mountain West	73-71-71—215
3. Karen Engberg	1998 California Collegiate	71-71-75—217
Jenna Wilson	2004 Mtn. View Collegiate	72-71-74—217
5. Heather Rollo	2002 Mountain West	73-72-73—218
Joanne Clingan	2001 Mountain West	72-72-74—218
7. Shayna Miyajima	2003 Lady Aztec Invitational	75-70-74—219
Heather MacRae	2003 Las Vegas Showdown	75-71-73—219
Hiroko Fukushima	1998 Wahine Fall Classic	72-75-72—219
10. Shayna Miyajima	2002 Mountain West	71-73-76—220
Heather MacRae	2004 Mountain West	74-71-75—220
Heather MacRae	2004 NCAA West Regional	75-71-74—220
Heather MacRae	2006 UNLV Spring Invitational	73-74-73—220
<b>Anna Booth</b>	2007 CU Heather Farr Invite	73-73-74—220

### ► Top 10 36-Hole Individual Scores

Player	Tournament	Score
1. Joanne Clingan	2000 Heather Farr Memorial	69-71—140
2. Jenna Wilson	2003 Heather Farr Memorial	77-68—145
Heather Rollo	2000 Bay Area Classic	72-73—145
Megan McLeod	2005 La Quinta Inn & Suites Inv.	73-72—145
5. Sandy Kim	2001 Pioneer Intercollegiate	74-73—147
Heather MacRae	2006 Kitahara Invitational	73-74—147
Jamie Oliver	2006 TaylorMade Aztec Fall Classic	74-73—147
8. Heather MacRae	2003 Heather Farr Memorial	72-76—148
Shayna Miyajima	2002 Matador Fall Classic	77-71—148
Shayna Miyajima	2001 Pioneer Intercollegiate	74-74—148
Hiroko Fukushima	1999 Lady Aztec Invitational	74-74—148
<b>Anna Booth</b>	2006 La Quinta Inn & Suites Inv.	74-74—148

### ► Top 10 Individual Conference Scores

Player	Tournament	Score
1. Jenna Wilson	2004 Mountain West	73-71-71—215
2. Heather Rollo	2002 Mountain West	73-72-73—218
Joanne Clingan	2001 Mountain West	72-72-74—218
4. Shayna Miyajima	2002 Mountain West	71-73-76—220
Heather MacRae	2004 Mountain West	77-74-73—220
6. Jennifer Hoene	2002 Mountain West	74-74-74—222
Heather Rollo	2001 Mountain West	77-74-71—222
8. Shayna Miyajima	2004 Mountain West	77-78-80—224
9. Asa Jankler	2001 Mountain West	72-75-79—226
10. Shayna Miyajima	2003 Mountain West	79-73-76—228

### ► Top 10 54-Hole Team Scores

1. 2003 Lady Aztec Invitational	293-291-294—878
2. 2004 Mountain West Championship	301-292-292—885
3. 2001 Mountain West Championship	300-296-291—887
4. 2002 Mountain West Championship	296-298-299—893
5. 1998 NMSU Coke Classic	298-296-307—901
6. 1998 Wahine Fall Classic	297-303-302—902
7. 2004 Mountain View Collegiate	296-299-311—906
2005 Lady Aztec Invitational	300-305-301—906
9. 1989 Chris Johnson Invitational	306-297-306—909
10. 2003 Mountain View Collegiate	305-304-302—911
2000 Shanico Invitational	308-296-307—911

### ► Top 10 36-Hole Team Scores

1. 2003 Heather Farr Memorial	298-299—597
2. 2000 Heather Farr Memorial	301-299—600
3. 2002 Matador Fall Classic	305-301—606
2000 Bay Area Classic	306-300—606
5. 2001 Pioneer Intercollegiate	303-307—610
6. 2004 Lady Aztec Invitational	304-310—614
2005 La Quinta Inn & Suites Invitational	311-303—614
2006 TaylorMade Aztec Fall Classic	304-310—614
9. 1999 Bay Area Classic	317-300—617
10. 2002 Bay Area Classic	304-317—621
2006 Kitahara Invitational	316-305—621
2007 Lady Braveheart	309-312—621

### ► Aztec Letterwinners

<b>A</b>	MacFarland, Cameron - 2005 MacRae, Heather - 2004, 2006 Madsen, Robert - 1981-84 Mahoney, Megan - 1994-97 Marshall, Brooke - 1999-01 McEwen, Linda - 1981-84 McGowen, Courtney - 1997 McHeffey, Diane - 1979-80 McHugh, Lauren - 2000-01 Merritt, Maggie - 1995-97 Messina, Megan - 1992, 1994-95 Mickelson, Brooke - 1998-99 Miyajima, Shayna - 2001-04 Modic, Wendy - 1986-89 Montoya, Annette - 1982-83 Muhaupt, Megan - 2004-05-06 Musser, Cheryl - 1996-97
<b>B</b>	Baggs, Suzy - 1982-84 Baldwin, Cyndi - 1984 Banks, Sonja - 1986 Benefiel, Erica - 2000 Bettencourt, Jennifer - 1999 <b>Booth, Anna - 2005-06</b>
<b>C</b>	<b>Carmody, Kim - 2007</b> Chigas, Nikki - 1997-99 Clingan, Jo - 1999-01 <b>Cole, Petra - 2008</b> Connelly, Maura - 1992 Cox, Dallas - 1992 Crawford, Kelly - 1986 Cronin, Gigi - 1985-88 Cuzon, Christelle - 1997-98
<b>D</b>	Engberg, Karen - 1986-89 <b>Erlandson, Alana - 2006-07</b> Estep, Kim - 1992, 94
<b>E</b>	Fiala, Carol - 1983-84 Flanagan, Keltie - 1995-96 Fukushima, Hiroko - 1999
<b>F</b>	Fraser, Jo - 1984
<b>G</b>	Gambriel, Shelly - 1986-87, 89-90
<b>H</b>	Hawkins, Jennifer - 1998-00 Hoene, Jennifer - 2000-01, 03 Holt, Jennifer - 1990 Horsch, Annegret - 1999-01
<b>J</b>	Jankler, Asa - 2000-02 Janotta, Jill - 1998-00 Jacobsen, Nicole - 1995 Jennings, Debbie Lynn - 1980-81 Johnson, Lisa Marie - 1980-81 Jolly, Linda - 1983
<b>K</b>	<b>Kamimura, Maki - 2006-07-08</b> Kaupp, Wendy - 1987-90 <b>Kazarian, Jackie - 2005-07-08</b> Kelley, Lisa - 1979-82 Kim, Sandy - 2001-04
<b>L</b>	Lane, Vicky - 1986 Liscio, Patty - 1983-86 Lutz, Toni - 2003-05
<b>M</b>	MacFarland, Cameron - 2005 MacRae, Heather - 2004, 2006 Madsen, Robert - 1981-84 Mahoney, Megan - 1994-97 Marshall, Brooke - 1999-01 McEwen, Linda - 1981-84 McGowen, Courtney - 1997 McHeffey, Diane - 1979-80 McHugh, Lauren - 2000-01 Merritt, Maggie - 1995-97 Messina, Megan - 1992, 1994-95 Mickelson, Brooke - 1998-99 Miyajima, Shayna - 2001-04 Modic, Wendy - 1986-89 Montoya, Annette - 1982-83 Muhaupt, Megan - 2004-05-06 Musser, Cheryl - 1996-97
<b>N</b>	Nealy, Molly - 1996
<b>O</b>	Ojeda, Veronica - 2005 Oliver, Jamie - 2004-05-06-07 Overturf, Vivian - 1989
<b>P</b>	Paden, Michelle - 1987-88 Perry, Julie - 1990 Piper, Katrina - 1997-98
<b>R</b>	Rees, Carolyn - 1999 Riley, Claire - 2000-01, 03 <b>Roberts, Samantha - 2008</b> Roberts, Tiffany - 1994 Rollo, Heather - 1999-02
<b>S</b>	Scott, Katie - 1995 Siaggas, Lisa - 1985-86 Spada, Charisse - 1980-81 Stangarone, Nikki - 1999-00 Swecker, MacKenzie - 2005
<b>T</b>	Tabar, Pam - 1980-83 Trbovich, Kristen - 1998
<b>V</b>	Van Gilder, Jennifer - 1999-00
<b>W</b>	Walker, Joann - 1986-88, 1990 Watson, Donna - 1985 <b>Wilson, Heather - 2006</b> Wilson, Jenna - 2004
<b>Active golfers in bold</b>	
<i>List includes letterwinners from 1979-2008. Contact Aztec Media Relations with additions/corrections.</i>	



## San Diego State University



Beginning its 111th academic year in fall 2007, SDSU can take pride in more than a century of achievement in education, research and service. With an enrollment of more than 35,000 students, SDSU has grown into the largest institution of higher education in the San Diego region and one of the largest in California.

San Diego State currently grants bachelor's degrees in 81 academic areas, master's degrees in 73 and doctoral degrees in 16.

► One in seven adults in San Diego holds a degree from SDSU.



► San Diego State students volunteer more than three million hours annually in community service - which, if valued at minimum wage, would be a donation to the region worth more than \$20 million a year.

► SDSU is the No. 1 small research university in the nation, based on the Faculty Scholarly Productivity Index published by Academic Analytics.

► SDSU faculty received more than \$130 million in grants and contracts for research and administering programs during fiscal year 2005/2006, the most of any CSU campus. SDSU faculty members have received a total of more than \$880 million in external funding since 2000.

► SDSU ranks in the top 150 colleges and universities in research and development expenditures, according to the latest data available from the National Science Foundation (2005).

► San Diego State has been designated a "Research University" with high research activity by the Carnegie Foundation. Peers in this group include George Washington, Syracuse, Texas Tech and the University of Oregon.

► SDSU's undergraduate international business program ranks No. 15 in the nation, according to *U.S. News and World Report's* "America's Best Colleges 2008 Guide." The program is the largest undergraduate international business program in the country, serving 700 students annually.

► SDSU's undergraduate entrepreneur program was listed in *Fortune Magazine's* top 25 list of "America's Best Colleges for Entrepreneurs" in August 2007.

► The SDSU College of Business' Entrepreneurial Management Center is a Nasdaq Center of Excellence, which places it among the top eight such programs in the nation.

► SDSU ranks No. 22 in the nation for ethnic diversity - *U.S. News & World Report*, August 2006.

► SDSU is No. 14 in the nation for bachelor's degrees conferred to ethnic minorities - *Diverse Issues in Higher Education*, June 2006.

► SDSU ranks No. 2 among universities of its type nationwide and No. 1 in California, for students studying abroad as part of their college experience. - *Institute of International Education*, May 2006.

► SDSU is the first U.S. university to offer a transnational triple degree program in International Business. In fact, SDSU has the only two such programs in the country. Undergraduate students earn degrees from SDSU and universities in Mexico and Canada in the CaMexUs program, or degrees from SDSU, Mexico and Chile in the TransAmerica program.

► SDSU's International Security and Conflict Resolution (ISCOR) major is the first of its kind in California.





## Aztec Culture



place of the fruit of the cactus." A century later, the Mexica and two other Nahuatl-speaking city-states, Texcoco and Tlacopan, combined to create an entity popularly known as the Aztec Empire.

Boasting a strong military force, this new alliance commanded a sphere of influence that stretched across much of present-day Mexico.

Tenochtitlan and its surrounding valley evolved into a highly sophisticated, multicultural and multilingual city-state of several million inhabitants. At this same time, major European cities numbered only 30,000 to 40,000 in population. A cradle of innovation, the Aztec Empire developed advanced systems of trade, science, politics, religion, education and agriculture. The Aztecs also enjoyed sports and built grand ballcourts to accommodate team events.

### ► Aztecs and SDSU

San Diego State University first adopted the Aztec name in the 1920s as a nickname for the college's sports teams. In 1925, the student newspaper followed suit, changing its name from *The Paper Lantern* to *The Aztec*. Since that time, San Diego State's celebration of Aztec heritage has permeated the campus. In 1936, a Donald Hord sculpture of Montezuma II, the last Aztec emperor, became a welcoming campus icon. With the passing years, Aztec themes echoed in

### ► SDSU's Aztec Heritage

From the early decades of its history, San Diego State has identified itself with the Aztecs, one of the most sophisticated and distinctive societies in the history of the Western Hemisphere. A fitting choice for a university committed to internationalism and diversity, the Aztec identity evokes great pride in Mexico, as well as among many people in the United States, and certainly within the SDSU community. Consequently, San Diego State strives to honor the Aztec people by enhancing awareness, understanding and appreciation of Aztec culture and achievements.

### ► Aztec History

Aztec civilization dates back to at least the 12th century A.D. The precise location is still debated by scholars, but tradition tells us of a place somewhere north of modern-day Mexico City known at that time as Aztlan, which meant "the place of the cranes" or "the place of the herons." The people who lived in this land were called Azteca meaning "those of Aztlan."

The Azteca eventually left their homeland and became known as the Mexica. Native folklore attributes this name change to the instructions of the people's patron deity, Huitzilopochtli (Hummingbird on the Left).

Around 1325, the Mexica settled on an island in Lake Texcoco, an area that is now the heart of Mexico City, and named it Tenochtitlan or "the



SAN DIEGO STATE  
UNIVERSITY

the names, colors and architectural elements of new campus buildings. And Aztec culture became the subject of more than a dozen university courses.

In 1941, Monty Montezuma, a character based on Montezuma II, debuted at San Diego State athletic events as a symbolic personification of the Aztecs. Over time, the Montezuma character's look and activities have evolved from a sports mascot into a more dignified and accurate representation of the historical emperor. Montezuma now serves as the university's ambassador of Aztec culture, charged with the responsibility of informing and educating the San Diego community about Aztec civilization. SDSU continues to take pride in its affiliation with Aztec culture and to celebrate the Aztec virtues of strength, valor and intellectual achievement.





## Administration



**Dr. Stephen L. Weber**  
University President

Stephen L. Weber, the seventh president of San Diego State University, provides dynamic leadership to an institution that ranks among the largest in the nation. Educated as a philosopher, President Weber began his tenure at SDSU in July 1996 and shortly afterward initiated a broad-based dialogue intended to set the course for the university's future.

Under President Weber's guidance, students, faculty, staff, alumni, and community leaders participated in shaping this "Shared Vision." SDSU is now moving boldly ahead toward goals set by those discussions: reinforcing academic excellence, nurturing students, honoring diversity and social justice, carefully stewarding resources, and further developing global programs.

In the process, SDSU has become an increasingly popular and selective choice among college-bound students. For fall 2006, some 52,000 undergraduate applicants competed for 8,707 vacancies. Not surprising, the overall academic quality of SDSU students is also rising. In addition, alumni involvement and private financial support of the university have never been stronger.

A champion of community involvement as well as academic excellence, President Weber has been an advocate for community service. Leading by example, he is a past chair of the American Association of State Colleges and Universities Board of Directors and co chair of Partners for K-12 School Reform. He also serves on the boards of governors of The Peres Center for Peace and BIOCUM, and on the boards of directors of the San Diego Regional Economic Development Corporation and the San Diego Science and Technology Council. He co-chairs the College Presidents' Forum of the San Diego County Policy Panel on Youth Access to Alcohol.

President Weber is a member of the international advisory board for the Foundation for Children of the Californias, the advisory council of the San Diego Performing Arts League, the Community Advisory Board of Union Bank of California, and the advisory board for San Diego Gas & Electric (SDG&E). He serves on the National Collegiate Athletics Association (NCAA) Division I Board of Directors, the NCAA Executive Committee, and served on the Presidential Oversight Committee for the Bowl Championship Series. He is a member of the San Diego Rotary Club, an honorary director of the Japan Society of San Diego and Tijuana, and an honorary advisor to the Asia Desk of the San Diego World Trade Center.

Born in Boston, President Weber is a graduate of Bowling Green University with a B.A. in philosophy. He received his Ph.D. in philosophy from the University of Notre Dame in 1969 and is the author of numerous articles on philosophy and higher education.

President Weber's many awards include an honorary degree from Beijing Capital Normal University, and distinguished alumnus at his alma mater, Bowling Green University. He was named among the 1997 Headliners of the Year by the San Diego Press Club. Also in 1997, the San Diego Mediation Center honored him with its Peacemaker Award. In 1999, President Weber received the Executive Director's Award from the San Diego Education Association and the Gold Key Award from the San Diego Hospitality Association. He was recognized as a Leader of Vision by the league of Women Voters of San Diego in 2000.

Before coming to San Diego State University, President Weber served as interim provost of the State University of New York (SUNY); he previously served seven years as president of the SUNY Oswego campus. Prior to that, he was vice president of academic affairs at St. Cloud State University in Minnesota, dean of arts and sciences at Fairfield University in Connecticut, and assistant to the president of the University of Maine. While a faculty member at the University of Maine, he was recognized as the outstanding professor in humanities.

President Weber is married to Susan Keim Weber, who shares his enthusiastic commitment to SDSU. They have two sons.



**Jeff Schemmel**  
Director of Athletics

Jeff Schemmel, who brings a wealth of experience, a history of success and new expectations to Montezuma Mesa, was introduced as San Diego State's Director of Athletics on July 6, 2005.

Schemmel immediately became one of the most accomplished sitting athletic directors in the country. He is a former practicing attorney, has directed a Final Four, served as a senior administrator at Big 10 and Big 12 schools, and played a part in what might be the biggest football turnaround in the history of college athletics.

Schemmel arrived at San Diego State from Conference USA, where he had served as associate commissioner for governance and legal affairs since October of 2004. During his stay in Dallas, he helped the league negotiate television contracts with ESPN and College Sports Television that exceeded more than \$100 million in revenue, and he served as a member of the NCAA Division I Management Council.

From February of 2004 to October of 2004, Schemmel was the senior vice president and executive director of development for the Arizona State University Foundation, where he oversaw that school's fundraising efforts while supervising approximately 135 employees across the Tempe campus.

Schemmel was an administrator at the University of Minnesota from 1991 to 2003. During his stay in the Twin Cities, he advanced from associate athletic director for compliance to senior associate athletic director and chief operating officer for Gopher athletics.

Along with his departmental duties, Schemmel directed the school's efforts in hosting NCAA Championship events, including the 2001 Final Four, one of America's fastest growing events.

He also supervised and implemented a \$3 million capital improvement campaign, and was heavily involved in the hiring of Minnesota's head football and men's basketball coaches.

From 1988 to 1991, Schemmel was an administrator at his alma mater, Kansas State. He served as the school's assistant athletic director for development and later was the associate athletic director for compliance while supervising the school's Olympic sports.

Schemmel was part of the management team that hired Bill Snyder as the Wildcats head football coach. Under Snyder's direction, Kansas State executed what is considered one of the greatest turnarounds in college football history. K-State had made just one bowl appearance in its history prior to Snyder's arrival, did not win a single game in the two seasons before he took over in 1989, and had just three wins in the previous four seasons. Under Snyder, the Wildcats went to a bowl game 11 times and claimed their first-ever Big 12 title.

Schemmel was a decorated runner at Kansas State and was named the 1976 outstanding student athlete at the school. As a Wildcat, he was a four-time track and field All-American, a five-time Big 8 Conference champion, was a member of a national champion distance medley relay team and won the Big 8 Conference Medallion.

He also served as an ABC Television and Time Magazine correspondent for the 1976 Summer Olympics in Montreal.

After earning his undergraduate degree in political science, Schemmel earned his law degree at Washburn University in Topeka, Kan. He began his professional career as an attorney and later was a partner in his own firm, specializing in business and sports law.

Schemmel and his wife, Lori, have been married for 29 years. They have two adult sons, Justin, and Jon, who plays minor league baseball in the San Diego Padres organization.





## Aztec Athletics Center



In place now on Montezuma Mesa are arguably some of the finest facilities in the United States and San Diego State is certainly among the leaders on the west coast.

The athletic department is housed in the \$30 million, 130,000-square-foot Aztec Athletics Center. The centerpiece of the department, which was dedicated in February of 2002, is located just across the street from Cox Arena and just east of Tony Gwynn Stadium.

The four-story Athletics Center provides state-of-the-art facilities coupled with tremendous logistical advantages and a great location for studying, workouts, treatment, academic support or just stopping by between classes.

On the south, the AAC is buffered by the Sports Deck, where San Diego State's track and field team, along with both soccer squads, compete.

On the north side, it is connected to Peterson Gym, the home of Aztec volleyball and a part-time practice facility for the Aztec basketball teams.



The west exit of the building opens onto three 100-yard practice fields. One of the fields is natural grass and two utilize field-turf, providing San Diego State daily options for its workouts.

The entrance lobby of the Aztec Athletics Center houses the 5,000-square-foot Aztec Hall of Fame, presented by the Wise Foundation. The museum is the first permanent home of the Hall of Fame and features displays, informative kiosks, interactive video trivia games and a plaque commemorating the induction of each Hall of Fame member. Women's golfer Barbara Barrow is a member of the Hall of Fame and was inducted in 1992.

A state-of-the-art weight room, encompassing more than 15,000 square feet, is located on the first floor of the building. It includes a running track for indoor timing.

The sports medicine center and equipment operations are also located on the first floor and help provide incredible convenience to the locker rooms, weight room and other practice facilities.

A first-floor auditorium that seats more than 200 has already been the site of major news conferences, watch parties and public forums.

Each varsity sport, with the exception of the baseball squad which has a clubhouse at Tony Gwynn Stadium, has a plush locker room on the first floor of the building. The locker rooms include a lounge, television area and oak lockers.

The academic center, complete with two lecture halls, private tutorial rooms, and a new computer lab, is housed on the third floor. The computer lab and study areas are flanked by academic counselors, tutor offices and learning specialists.



The third floor is also home to the athletic administration and the men's and women's basketball staffs.

Women's golf coaches' offices and more administration offices are located on the fourth floor of the building, along with a recruiting lounge and a staff lunch room.

The Athletics Center also overlooks Tony Gwynn Stadium, the softball and tennis complexes and the brand new on-campus pool, the Aztec Aquaplex, where the swimming and diving and water polo teams compete.

All of SDSU's facilities, including the athletics center, Aztec Aquaplex, Cox Arena, Tony Gwynn Stadium, the Sports Deck, the tennis complex and softball stadium have opened since 1997.

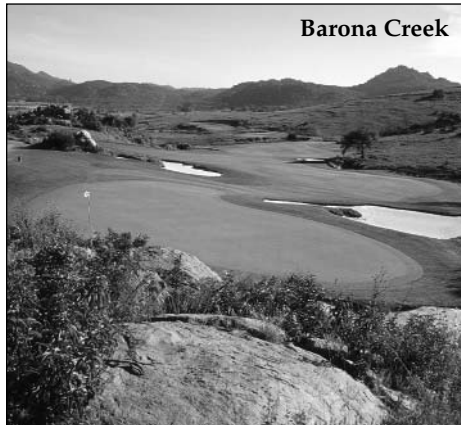
With the completion of its building plan, the San Diego State athletic complex and facilities rival any university in the western United States.





## Aztec Home Courses

Barona Creek

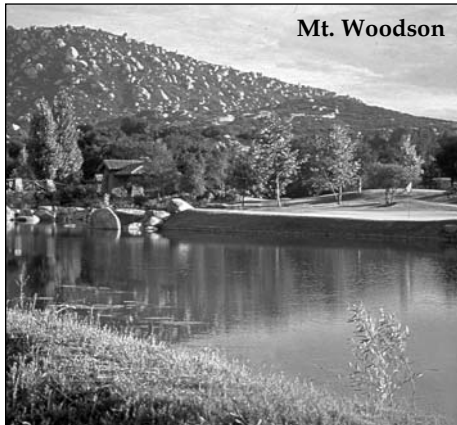


► **Salt Creek (Formerly The Auld Course)**  
Lying within the magnificent foothills of Mt. Miguel, this traditional John Cook and Cary Bickler designed course features 18 truly distinctive holes with five sets of tees, panoramic ocean and mountain views and acres of wetlands. Salt Creek (formerly The Auld Course,) which served as the site of the 2003 to 2007 Aztec Fall Classic, provides an unmatched golfing experience with its ideal setting.

► **Barona Creek**

An award-winning \$12 million golf course, Barona Creek takes advantage of the natural beauty and contours of the Barona Indian Reservation. The Barona course offers dramatic changes in elevation and stunning views of the surrounding valley. Designed by Gary Roger Baird Design International, the par 72, 7,393-yard course boasts nearly 100 bunkers, and a

Mt. Woodson



series of lakes and ponds that put a premium on shot-making.

► **Cottonwood**

Cottonwood offers two 18-hole mature tree-lined tournament-quality courses that allow the SDSU golf team to work on a variety of shots. The Ivanhoe Course allows the Aztecs to use every club in the bag with the tree-lined fairways placing a premium on accuracy. The Monte Vista Course is more wide open but still challenging due to its length. Both courses offer memorable scenic beauty plus the playability and feel of the classic traditional courses.

► **Mt. Woodson**

With breathtaking mountain and valley views, Mt. Woodson offers challenging play in one of the region's most dramatic golf course settings. Set amidst ancient towering oaks, huge granite

Sycuan Resort



boulders and sparkling lakes, the course is considered one of San Diego's best and most scenic. This beautifully maintained classic 18-hole Schmidt/Curley design was patterned after more traditional courses where shot-making is at a premium.

► **Rancho Bernardo**

Rancho Bernardo Inn and Country Club is an 18-hole championship course designed by William Bell, Jr. It is a par-72 course that plays to 6,877 yards. The Aztecs find this a good course for practicing because it allows them the opportunity to score and show low numbers. It also has excellent greens.

► **Steele Canyon**

Steele Canyon Golf Club is the home of three 18-hole courses designed by Gary Player, Canyon/Ranch (par 71, 6,741 yards), Ranch/Meadow (par 71, 6,808 yards) and Meadow/Canyon (par 72, 6,479 yards). Steele Canyon offers the Aztecs the opportunity to practice on difficult driving holes as well as short-game technique.

► **Sycuan Resort**

Sycuan Resort is the site of two 18-hole, par 72 courses, Oak Glen (6,597 yards) and Willow Glen (6,605). Sycuan allows San Diego State the opportunity to work on its short game.

Salt Creek





## Academic Commitment

2007 SDSU Women's Golf Scholar-Athletes



The dual role of student and athlete can be a daunting challenge for any person at the Division I level. Recognizing that academic challenge, the Student Athlete Academic Support Services program has been developed at San Diego State to assist all student-athletes in achieving academic excellence.

It is a source of pride within San Diego State athletics that the department has developed one of the most comprehensive academic support programs in the country.

### ► The Staff

The SAASS staff includes a director, a learning specialist, four academic advisors, the department's director and assistant director of



compliance, an eligibility coordinator, a financial aid coordinator as well as a recruitment coordinator.

In addition to the full-time staff, the department employs more than 20 mentors and tutors.

Collectively, they operate a program that enhances each student's satisfactory progress toward graduation.

### ► The Services

Throughout the academic year, advisors offer a variety of services to aid individuals in the development of their personal goals and the blueprint for pursuing those goals.

All new student-athletes are invited to an orientation that helps lay the foundation for future successes. Each advisor teaches a section of the University's Freshman Success course (General Studies 100), which deals with specific transition issues for student-athletes. Topics include time management, study skills and test taking. The course also introduces new students to services such as the Love Library, University Advising Center, Career Services, Health Services and the counseling center.

### ► The Resources

In the fall of 2001, the academic unit joined the rest of the athletic department in moving into the new \$30 million, 130,000-square-foot Aztec Athletics Center. The academic staff is located on the third floor of the complex and includes a new 40-station computer lab, individual study rooms and two lecture rooms.

### ► The Commitment

SDSU's annual Scholar-Athlete Awards

### SDSU Women's Golf Scholar-Athletes

#### MWC All-Academic Team (2006-07 season)

Maki Kamimura

Kim Carmody

#### SDSU Scholar-Athletes

(Semester GPA above 3.2,

Cumulative GPA above 3.0)

Kim Carmody (Spring 2007)

Petra Cole (Spring 2007, Fall 2007)

Erin Coons (Fall 2007)

Ashley Dyer (Fall 2007)

Maki Kamimura (Spring 2007, Fall 2007)

Jackie Kazarian (Spring 2007)

Samantha Roberts (Fall 2007)

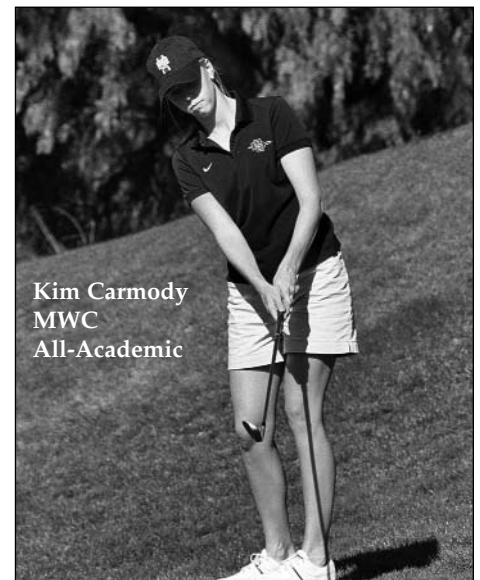
Ashley Wood (Spring 2007, Fall 2007)

Banquet honors students with at least a 3.0 cumulative or a 3.2 semester GPA during a calendar year. In 2008, 218 student-athletes, more than one-third of the student-athlete body, were honored for their work in the classroom.

### ► Life Skills

To further increase the opportunities for success, San Diego State is part of the NCAA's CHAMPS/Life Skills Program. The curriculum of Aztec Pride (Promoting Responsibility, Integrity, Diversity, Education) offers a wide range of programs and activities that enhance the educational experience. Special emphasis is placed on the areas of personal development, community service and career development.

In conjunction with SAAC, the Life Skills Program represents SDSU's total commitment to enhancing the quality of each student's experience.



Kim Carmody  
MWC  
All-Academic



## The Mountain West Conference



**Craig Thompson**  
Commissioner

From its inception in 1999, the Mountain West Conference has been committed to excellence in intercollegiate athletics, while promoting the academic missions of its member institutions. Progressive in its approach, the MWC continues to cultivate opportunities for student-athletes to compete at the highest level, while fostering academic achievement and sportsmanship. The MWC has been assertive in its involvement with the NCAA governance structure and has taken a leadership role in the overall administration of intercollegiate athletics.

The MWC is noted for its geographic diversity. Some of the most beautiful terrain and landscapes in the nation can be found within Mountain West Conference boundaries, including the majestic Rocky Mountain range, which borders four MWC schools (Utah, BYU, Air Force and Colorado State). The high plains of Wyoming (elevation 7,220 feet – the highest Division I campus in the nation) contrast with the desert city of Las Vegas (the fastest growing metropolitan area in the West) and the Pacific Ocean locale of San Diego State. The southwestern flavor of New Mexico complements the western heritage and culture of Fort Worth, Texas, home of the MWC's newest member, TCU.

The MWC was conceived on May 26, 1998, when the presidents of eight institutions — Air Force, Brigham Young, Colorado State, New Mexico, San Diego State, UNLV, Utah and Wyoming — decided to form a new NCAA Division I-A intercollegiate athletic conference. The split from the former 16-team Western Athletic Conference re-established continuity and stability among the membership within the new league and signaled the continuation of its tradition-rich, long-standing athletic rivalries. Five of the MWC's eight members have been conference rivals since the 1960s (Brigham Young, Utah, New Mexico, Wyoming, Colorado State), while San Diego State (1978) and Air Force (1980) were longtime members as well. UNLV entered the fold in 1996 and TCU began its first year of competition in 2005-06.

A new era began in the fall of 2006 as College Sports Television (CSTV) becomes the official television partner for the Conference. The MWC forged a potential 14-year agreement with CSTV, giving the fastest-growing independent cable network exclusive rights to Mountain West Conference football and men's basketball, plus coverage for all other MWC sports. With a "fans first" focus, CSTV has assured that MWC constituents will see more MWC sports at more convenient times and in more media platforms than ever before.

The agreement incorporates all Conference-related media and marketing rights, including all television, national over-the-air and satellite radio, video-on-demand, and online and broadband rights. The multi-media partnership also includes The Mtn., the first-ever regional sports network dedicated solely to an intercollegiate athletic conference.

The MWC has produced over 500 All-America selections among its 19 sponsored sports in the last eight years, including a league record 84 All-America honorees in 2004-05. Over 80 MWC student-athletes have also earned Academic All-America accolades in that span. The MWC has sent at least 30 teams to NCAA postseason events each of the past eight years.

The MWC has produced over 500 All-America selections among its 19 sponsored sports in the last eight years, including a league record 84 All-America honorees in 2004-05. Over 80 MWC student-athletes have also earned Academic All-America accolades in that span. The MWC has sent at least 30 teams to NCAA postseason events each of the past eight years.

The MWC has produced over 500 All-America selections among its 19 sponsored sports in the last eight years, including a league record 84 All-America honorees in 2004-05. Over 80 MWC student-athletes have also earned Academic All-America accolades in that span. The MWC has sent at least 30 teams to NCAA postseason events each of the past eight years.

**Mountain West Conference**  
15455 Gleneagle Drive, Suite 200  
Colorado Springs, CO 80921  
Ph.: (719) 488-4040/Fax: (719) 487-7241  
www.themwc.com

## Prospective Student-Athletes

### ► Recruiting Regulations

-When do I become a prospective student-athlete? When you start classes for the ninth grade. Before the ninth grade, you become a prospective student-athlete if an institution gives you (or your relatives or friends) any financial aid or other benefits that the college does not provide to all prospective students.

-When is a college considered to be recruiting me? If any coach or representative of the institution's interest approaches you (or any member of your family) about enrolling and participating in athletics at the institution.

-Who can recruit me? Only institution coaches can recruit you. Alumni and friends of the institution are NOT permitted to contact prospective student-athletes in any way.

### ► Official and Unofficial Visits

-How many official visits am I allowed to take and when can they begin? A prospect is limited to five official visits, which may be taken following the opening day of classes of your senior year of high school.

-Can I pay my own way to visit a college campus? You may visit an institution's campus at your own expense an unlimited number of times. This is an unofficial visit.

### ► Phone Calls

-Who can call me on the phone and how often? Coaches are permitted to call you or your parents once a week starting July 1, following your junior year. Boosters are not permitted to call you.

-When are coaches allowed unlimited calls to me? During the five days before your official visit to the institution; on the day of a coach's off-campus contact with you; during the time beginning with the initial National Letter of Intent (NLI) signing date in your sport through the two days after the signing date.

-Can I call a coach? You may call coaches or institutions at your own expense at any time, including before July 1, following your junior year in high school (NCAA Bylaw 13.1.3.2.2).

### ► Correspondence & Recruiting Materials

-From whom can I receive letters and beginning when? Coaches, faculty members and students (but not boosters) can send you letters, starting September 1 of your junior year in high school.

-What can an institution send me? A Division I institution may provide you with the following material: General correspondence, including letters, US Postal Service postcards and institutional note cards, and materials printed on plain white paper with blank ink; NCAA educational information, pre-enrollment information subsequent to signing a National Letter of Intent or a written offer of admissions; one athletic publication (media guide or recruiting guide), which may include only one color printing inside; official academic, admissions and student services publications or videotape produced by the institution and available to all the students; questionnaires.

-Can they send me anything prior to my junior year? Only questionnaires, summer camp brochures and NCAA educational materials.

### ► National Letter of Intent

A national letter of intent is the official document administered by the Collegiate Commissioners Association and used by colleges to establish a commitment to attend a particular college. Once you sign a NLI with an institution, you are bound to that school for one academic year. The early signing period is a seven-day time frame during the second week of November, while the late signing period begins the second week of April and ends August 1. You may get information on the NLI by visiting their website at [www.national-letter.org](http://www.national-letter.org).

### ► More Information

If you have any questions or concerns about NCAA rules and regulation or if you have eligibility questions, please contact SDSU's assistant athletic director of compliance Jay Larson or assistant director of compliance Genevieve Pascoe at (619) 594-3395.