



Official Basketball Box Score - Final  
**Washington at San Diego St.**  
 11/19/23 T-Mobile Arena, Las Vegas  
 2023-24 Men's Basketball

Game Time: 7:00 PM  
 Game Duration: 2:34  
 Attendance: 2,064

Officials: Tony Padilla, Ray Natili, Michael Irving

Washington - 97

Record: 3-2

| NO.           | Name                | Min     | FG    |      |       | Rebounds |    |     | Fouls |    | TP | AS | TO | ST | Blocks |    | +/- |
|---------------|---------------------|---------|-------|------|-------|----------|----|-----|-------|----|----|----|----|----|--------|----|-----|
|               |                     |         | M-A   | M-A  | M-A   | OR       | DR | TOT | PF    | FD |    |    |    |    | BS     | BA |     |
| 1             | Keion Brooks Jr.    | F 40:43 | 9-15  | 1-4  | 3-3   | 0        | 6  | 6   | 2     | 2  | 22 | 3  | 4  | 0  | 0      | 0  | -4  |
| 13            | Moses Wood          | F 35:48 | 7-15  | 4-11 | 0-0   | 0        | 4  | 4   | 4     | 1  | 18 | 1  | 2  | 0  | 0      | 1  | 0   |
| 11            | Franck Kepnang      | C 22:32 | 4-6   | 0-0  | 2-2   | 5        | 3  | 8   | 5     | 2  | 10 | 0  | 1  | 0  | 0      | 1  | -1  |
| 5             | Sahvir Wheeler      | G 42:28 | 8-13  | 2-5  | 1-1   | 0        | 2  | 2   | 3     | 3  | 19 | 6  | 4  | 4  | 0      | 0  | -4  |
| 9             | Paul Mulcahy        | G 39:21 | 3-9   | 0-0  | 5-8   | 1        | 3  | 4   | 3     | 4  | 11 | 13 | 1  | 3  | 1      | 2  | 0   |
| 0             | Koren Johnson       | 19:14   | 3-8   | 0-3  | 3-3   | 0        | 1  | 1   | 2     | 3  | 9  | 4  | 0  | 0  | 1      | 0  | -4  |
| 34            | Braxton Meah        | 13:44   | 2-2   | 0-0  | 4-4   | 0        | 4  | 4   | 5     | 4  | 8  | 0  | 1  | 0  | 0      | 0  | 13  |
| 23            | Anthony Holland     | 04:04   | 0-0   | 0-0  | 0-0   | 0        | 0  | 0   | 1     | 0  | 0  | 0  | 0  | 0  | 0      | 0  | -6  |
| 32            | Wilhelm Breidenbach | 07:06   | 0-0   | 0-0  | 0-0   | 0        | 2  | 2   | 2     | 0  | 0  | 0  | 0  | 0  | 0      | 0  | -9  |
| Team          |                     |         |       |      |       | 2        | 2  | 4   |       |    | 0  |    | 0  |    |        |    |     |
| <b>Totals</b> |                     |         | 36-68 | 7-23 | 18-21 | 8        | 27 | 35  | 27    | 19 | 97 | 27 | 13 | 7  | 2      | 4  | -3  |

| Shooting By Period |       |       |
|--------------------|-------|-------|
| 1st FG%            | 16-29 | 55.2% |
| 3PT%               | 5-13  | 38.5% |
| FT%                | 3-4   | 75%   |
| 2nd FG%            | 15-31 | 48.4% |
| 3PT%               | 2-9   | 22.2% |
| FT%                | 13-15 | 86.7% |
| OT FG%             | 5-8   | 62.5% |
| 3PT%               | 0-1   | 0.0%  |
| FT%                | 2-2   | 100%  |
| GM FG%             | 36-68 | 52.9% |
| 3PT%               | 7-23  | 30.4% |
| FT%                | 18-21 | 85.7% |

Technical Fouls::NONE

Dead Ball Rebounds: 2, 0

San Diego St. - 100

Record: 4-1

| NO.           | Name             | Min     | FG    |      |       | Rebounds |    |     | Fouls |    | TP  | AS | TO | ST | Blocks |    | +/- |
|---------------|------------------|---------|-------|------|-------|----------|----|-----|-------|----|-----|----|----|----|--------|----|-----|
|               |                  |         | M-A   | M-A  | M-A   | OR       | DR | TOT | PF    | FD |     |    |    |    | BS     | BA |     |
| 3             | Micah Parrish    | F 37:11 | 4-7   | 2-4  | 5-5   | 0        | 1  | 1   | 3     | 3  | 15  | 3  | 2  | 2  | 0      | 0  | 6   |
| 13            | Jaedon LeDee     | F 40:56 | 10-20 | 0-1  | 14-18 | 9        | 8  | 17  | 3     | 11 | 34  | 3  | 2  | 1  | 1      | 0  | 5   |
| 25            | Elijah Saunders  | F 35:23 | 4-8   | 3-3  | 5-6   | 3        | 5  | 8   | 2     | 3  | 16  | 1  | 1  | 1  | 1      | 0  | 4   |
| 5             | Lamont Butler    | G 31:34 | 3-7   | 1-3  | 0-3   | 1        | 2  | 3   | 3     | 2  | 7   | 4  | 1  | 5  | 1      | 0  | -2  |
| 14            | Reese Waters     | G 37:19 | 3-11  | 1-5  | 6-6   | 0        | 0  | 0   | 3     | 4  | 13  | 2  | 0  | 0  | 1      | 0  | 10  |
| 4             | Jay Pal          | 07:46   | 2-5   | 0-0  | 1-2   | 1        | 0  | 1   | 1     | 2  | 5   | 1  | 0  | 0  | 0      | 1  | 1   |
| 12            | Darrion Trammell | 19:32   | 1-5   | 1-4  | 0-0   | 0        | 3  | 3   | 1     | 1  | 3   | 4  | 1  | 0  | 0      | 0  | -3  |
| 21            | Miles Byrd       | 09:24   | 2-3   | 1-2  | 0-1   | 1        | 1  | 2   | 2     | 1  | 5   | 1  | 0  | 1  | 0      | 0  | -2  |
| 40            | Miles Heide      | 05:55   | 1-3   | 0-0  | 0-0   | 2        | 0  | 2   | 1     | 0  | 2   | 0  | 0  | 0  | 0      | 1  | -4  |
| Team          |                  |         |       |      |       | 0        | 5  | 5   |       |    | 0   |    | 1  |    |        |    |     |
| <b>Totals</b> |                  |         | 30-69 | 9-22 | 31-41 | 17       | 25 | 42  | 19    | 27 | 100 | 19 | 8  | 10 | 4      | 2  | 3   |

| Shooting By Period |       |        |
|--------------------|-------|--------|
| 1st FG%            | 15-34 | 44.1%  |
| 3PT%               | 5-12  | 41.7%  |
| FT%                | 8-12  | 66.7%  |
| 2nd FG%            | 12-31 | 38.7%  |
| 3PT%               | 3-9   | 33.3%  |
| FT%                | 15-21 | 71.4%  |
| OT FG%             | 3-4   | 75.0%  |
| 3PT%               | 1-1   | 100.0% |
| FT%                | 8-8   | 100%   |
| GM FG%             | 30-69 | 43.5%  |
| 3PT%               | 9-22  | 40.9%  |
| FT%                | 31-41 | 75.6%  |

Technical Fouls::NONE

Dead Ball Rebounds: 5, 0

|                  | WASH             | SDSU          |
|------------------|------------------|---------------|
| Biggest lead     | 7 (1st 7:27)     | 12 (2nd 5:14) |
| Best Scoring Run | 11 (1st OT 4:17) | 7 (2nd 18:54) |
| Lead Changes     | 13               |               |
| Times Tied       | 11               |               |
| Time with Lead   | 15:46            | 22:45         |

|               | WASH | SDSU |
|---------------|------|------|
| Points from   |      |      |
| Turnovers     | 13   | 22   |
| Paint         | 46   | 28   |
| Second Chance | 12   | 17   |
| Fast Breaks   | 22   | 15   |
| Bench         | 17   | 15   |

|      | Period by Period Scoring |     |     |     |
|------|--------------------------|-----|-----|-----|
|      | 1st                      | 2nd | OT1 | TOT |
| WASH | 40                       | 45  | 12  | 97  |
| SDSU | 43                       | 42  | 15  | 100 |



**Period 1**

**Quarter Starters:**

|             |                |             |             |              |               |
|-------------|----------------|-------------|-------------|--------------|---------------|
| <b>SDSU</b> | 3 Parrish M    | 5 Butler L  | 13 LeDee J  | 14 Waters R  | 25 Saunders E |
| <b>WASH</b> | 1 Brooks Jr. K | 5 Wheeler S | 9 Mulcahy P | 11 Kepnang F | 13 Wood M     |

| Game Time | SDSU  | Score        | Diff      | WASH   |
|-----------|---|--------------|-----------|--|
| 20:00     | 13 LEDEE J jumpball lost  |              |           | 11 KEPNANG F jumpball won  |
| 19:46     |   | <b>0-3</b>   | <b>-3</b> | 1 BROOKS JR. K 3pt FG , jump shot made (3)                           |
| 19:46     |   |              |           | 5 WHEELER S assist (1)   |
| 19:23     | 25 SAUNDERS E 3pt FG , jump shot made (3)                               | <b>3-3</b>   | <b>0</b>  |  |
| 19:23     | 13 LEDEE J assist (1)   |              |           |  |
| 18:56     |   |              |           | 13 WOOD M 3pt FG , jump shot missed                                  |
| 18:52     | 25 SAUNDERS E defensive rebound (1)                                     |              |           |  |
| 18:37     | 5 BUTLER L 2pt FG in the paint, driving layup made (2)                  | <b>5-3</b>   | <b>2</b>  |  |
| 18:30     |   |              |           | 5 WHEELER S 2pt FG outside the paint, floating jump shot missed      |
| 18:27     |   |              |           | 11 KEPNANG F offensive rebound (1)                                   |
| 18:27     | 13 LEDEE J foul personal (1 - 1)  |              |           | 11 KEPNANG F foul drawn (1)  |
| 18:25     |   | <b>5-5</b>   | <b>0</b>  | 13 WOOD M 2pt FG second chance outside the paint, jump shot made (2) |
| 18:25     |   |              |           | 9 MULCAHY P assist (1)   |
| 18:02     | 25 SAUNDERS E 2pt FG outside the paint, jump shot missed                |              |           |  |
| 17:58     |   |              |           | 9 MULCAHY P defensive rebound (1)                                    |
| 17:50     |   |              |           | 1 BROOKS JR. K 3pt FG , jump shot missed                             |
| 17:47     |   |              |           | 11 KEPNANG F offensive rebound (2)                                   |
| 17:45     |   | <b>5-8</b>   | <b>-3</b> | 13 WOOD M 3pt FG second chance, jump shot made (5)                   |
| 17:45     |   |              |           | 9 MULCAHY P assist (2)   |
| 17:29     | 13 LEDEE J 2pt FG outside the paint, jump shot missed                   |              |           |  |
| 17:25     | 25 SAUNDERS E offensive rebound (2)                                     |              |           |  |
| 17:13     | 14 WATERS R 3pt FG second chance, jump shot missed                      |              |           |  |
| 17:09     | 13 LEDEE J offensive rebound (1)  |              |           |  |
| 17:07     | 13 LEDEE J 2pt FG second chance in the paint, layup made (2)            | <b>7-8</b>   | <b>-1</b> |  |
| 16:45     |   |              |           | 1 BROOKS JR. K turnover lost ball (1)                                |
| 16:25     | 13 LEDEE J 2pt FG from turnover outside the paint, jump shot made (4)   | <b>9-8</b>   | <b>1</b>  |  |
| 16:25     | 3 PARRISH M assist (1)  |              |           |  |
| 16:01     |   |              |           | 9 MULCAHY P 2pt FG in the paint, layup missed                        |
| 15:57     |   |              |           | 11 KEPNANG F offensive rebound (3)                                   |
| 15:57     |   |              |           | 11 KEPNANG F 2pt FG second chance in the paint, layup blocked        |
| 15:57     | 25 SAUNDERS E block (1)   |              |           |  |
| 15:53     | 25 SAUNDERS E defensive rebound (3)                                     |              |           |  |
| 15:51     | 3 PARRISH M 3pt FG , jump shot missed                                   |              |           |  |
| 15:48     |   |              |           | 13 WOOD M defensive rebound (1)                                      |
| 15:46     | 25 SAUNDERS E steal (1)   |              |           | 13 WOOD M turnover lost ball (1)                                     |
| 15:42     | 13 LEDEE J 2pt FG fast break from turnover in the paint, dunk, made (6) | <b>11-8</b>  | <b>3</b>  |  |
| 15:42     | 5 BUTLER L assist (1)   |              |           |  |
| 15:38     |   |              |           | Timeout 30 Sec   |
| 15:38     |   |              |           | Timeout media  |
| 15:25     |   | <b>11-11</b> | <b>0</b>  | 5 WHEELER S 3pt FG , jump shot made (3)                              |



**Washington at San Diego St.**

11/19/23 T-Mobile Arena, Las Vegas  
2023-24 Men's Basketball

**Game Time:** 7:00 PM  
**Game Duration:** 2:34  
**Attendance:** 2,064

**Officials:** Tony Padilla, Ray Natili, Michael Irving

| Game Time | SDSU   | Score        | Diff      | WASH  |
|-----------|--|--------------|-----------|---|
| 15:25     |  |              |           | 9 MULCAHY P assist (3)                                  |
| 15:05     | 3 PARRISH M 2pt FG in the paint, layup made (2)            | <b>13-11</b> | <b>2</b>  |   |
| 14:44     |  | <b>13-14</b> | <b>-1</b> | 13 WOOD M 3pt FG , jump shot made (8)                   |
| 14:44     |  |              |           | 9 MULCAHY P assist (4)                                  |
| 14:14     | 25 SAUNDERS E 2pt FG outside the paint, jump shot missed   |              |           |   |
| 14:10     | 13 LEDEE J offensive rebound (2)                           |              |           |   |
| 14:10     | 13 LEDEE J 2pt FG second chance in the paint, layup missed |              |           |   |
| 14:07     |  |              |           | 1 BROOKS JR. K defensive rebound (1)                    |
| 14:02     |  |              |           | 13 WOOD M 3pt FG , jump shot missed                     |
| 13:59     | 5 BUTLER L defensive rebound (1)                           |              |           |   |
| 13:53     | 14 WATERS R 3pt FG , jump shot missed                      |              |           |   |
| 13:49     |  |              |           | 11 KEPNANG F defensive rebound (4)                      |
| 13:37     |  | <b>13-16</b> | <b>-3</b> | 11 KEPNANG F 2pt FG in the paint, hook shot made (2)    |
| 13:37     |  |              |           | 9 MULCAHY P assist (5)                                  |
| 13:16     | 14 WATERS R 3pt FG , jump shot made (3)                    | <b>16-16</b> | <b>0</b>  |   |
| 13:16     | 5 BUTLER L assist (2)                                      |              |           |   |
| 12:56     |  |              |           | 5 WHEELER S 3pt FG , jump shot missed                   |
| 12:53     | 25 SAUNDERS E defensive rebound (4)                        |              |           |   |
| 12:45     | 13 LEDEE J foul drawn (1)                                  |              |           | 11 KEPNANG F foul shooting (1 - 1)                      |
| 12:45     | 13 LEDEE J free throw 1 - 2 made (7)                       | <b>17-16</b> | <b>1</b>  |   |
| 12:45     | 3 PARRISH M substitution out                               |              |           |   |
| 12:45     | 14 WATERS R substitution out                               |              |           |   |
| 12:45     | 25 SAUNDERS E substitution out                             |              |           |   |
| 12:45     | 4 PAL J substitution in                                    |              |           |   |
| 12:45     | 12 TRAMMELL D substitution in                              |              |           |   |
| 12:45     | 21 BYRD M substitution in                                  |              |           |   |
| 12:45     |  |              |           | 1 BROOKS JR. K substitution out                         |
| 12:45     |  |              |           | 11 KEPNANG F substitution out                           |
| 12:45     |  |              |           | 0 JOHNSON K substitution in                             |
| 12:45     |  |              |           | 34 MEAH B substitution in                               |
| 12:45     | 13 LEDEE J free throw 2 - 2 made (8)                       | <b>18-16</b> | <b>2</b>  |   |
| 12:45     | 13 LEDEE J substitution out                                |              |           |   |
| 12:45     | 40 HEIDE M substitution in                                 |              |           |   |
| 12:32     | 21 BYRD M foul personal (1 - 2)                            |              |           | 13 WOOD M foul drawn (1)                                |
| 12:17     |  | <b>18-18</b> | <b>0</b>  | 5 WHEELER S 2pt FG in the paint, driving layup made (5) |
| 11:52     | 4 PAL J 2pt FG in the paint, dunk, missed                  |              |           |   |
| 11:49     |  |              |           | 34 MEAH B defensive rebound (1)                         |
| 11:46     |  | <b>18-21</b> | <b>-3</b> | 5 WHEELER S 3pt FG fast break, jump shot made (8)       |
| 11:46     |  |              |           | 0 JOHNSON K assist (1)                                  |
| 11:20     | Timeout media  |              |           |   |
| 11:20     | 5 BUTLER L substitution out                                |              |           |   |
| 11:20     | 14 WATERS R substitution in                                |              |           |   |
| 11:15     | 4 PAL J foul drawn (1)                                     |              |           | 34 MEAH B foul shooting (1 - 2)                         |
| 11:15     | 4 PAL J free throw 1 - 2 missed                            |              |           |   |
| 11:15     | offensive dead ball rebound (1)                            |              |           |   |
| 11:15     |  |              |           | 13 WOOD M substitution out                              |
| 11:15     |  |              |           | 1 BROOKS JR. K substitution in                          |
| 11:15     | 4 PAL J free throw 2 - 2 made (1)                          | <b>19-21</b> | <b>-2</b> |   |
| 11:00     |  |              |           | 0 JOHNSON K 3pt FG , jump shot missed                   |



**Washington at San Diego St.**

11/19/23 T-Mobile Arena, Las Vegas  
2023-24 Men's Basketball

**Game Time:** 7:00 PM  
**Game Duration:** 2:34  
**Attendance:** 2,064

**Officials:** Tony Padilla, Ray Natili, Michael Irving

| Game Time | SDSU   | Score        | Diff      | WASH   |
|-----------|--|--------------|-----------|--|
| 10:57     | 12 TRAMMELL D defensive rebound (1)                                  |              |           |  |
| 10:55     | 21 BYRD M 2pt FG fast break in the paint, layup made (2)             | <b>21-21</b> | <b>0</b>  |  |
| 10:55     | 12 TRAMMELL D assist (1)   |              |           |  |
| 10:55     | 12 TRAMMELL D foul drawn (1)   |              |           | 5 WHEELER S foul shooting (1 - 3)  |
| 10:55     | 21 BYRD M free throw fast break 1 - 1 missed                         |              |           |  |
| 10:54     |  |              |           | 34 MEAH B defensive rebound (2)  |
| 10:43     |  | <b>21-23</b> | <b>-2</b> | 34 MEAH B 2pt FG in the paint, dunk, made (2)                            |
| 10:43     |  |              |           | 9 MULCAHY P assist (6)   |
| 10:20     | 40 HEIDE M 2pt FG in the paint, layup missed                         |              |           |  |
| 10:16     | 21 BYRD M offensive rebound (1)                                      |              |           |  |
| 10:16     | jump ball situation  |              |           |  |
| 10:10     | 14 WATERS R 2pt FG second chance in the paint, layup missed          |              |           |  |
| 10:06     | 40 HEIDE M offensive rebound (1)                                     |              |           |  |
| 10:06     | 4 PAL J foul drawn (2)   |              |           | 34 MEAH B foul personal (2 - 4)  |
| 10:06     |  |              |           | 34 MEAH B substitution out   |
| 10:06     |  |              |           | 11 KEPNANG F substitution in   |
| 10:01     | 14 WATERS R 2pt FG second chance outside the paint, jump shot missed |              |           |  |
| 09:55     | 40 HEIDE M offensive rebound (2)                                     |              |           |  |
| 09:55     | 40 HEIDE M 2pt FG second chance in the paint, layup made (2)         | <b>23-23</b> | <b>0</b>  |  |
| 09:32     |  | <b>23-25</b> | <b>-2</b> | 1 BROOKS JR. K 2pt FG in the paint, floating jump shot made (5)          |
| 09:32     |  |              |           | 5 WHEELER S assist (2)   |
| 09:14     | 40 HEIDE M 2pt FG in the paint, layup blocked                        |              |           |  |
| 09:14     |  |              |           | 9 MULCAHY P block (1)  |
| 09:10     |  |              |           | 9 MULCAHY P defensive rebound (2)  |
| 09:09     | 21 BYRD M foul shooting (2 - 3)                                      |              |           | 9 MULCAHY P foul drawn (1)   |
| 09:09     |  | <b>23-26</b> | <b>-3</b> | 9 MULCAHY P free throw fast break 1 - 2 made (1)                         |
| 09:09     | 4 PAL J substitution out   |              |           |  |
| 09:09     | 21 BYRD M substitution out   |              |           |  |
| 09:09     | 40 HEIDE M substitution out  |              |           |  |
| 09:09     | 3 PARRISH M substitution in  |              |           |  |
| 09:09     | 13 LEDEE J substitution in   |              |           |  |
| 09:09     | 25 SAUNDERS E substitution in  |              |           |  |
| 09:09     |  |              |           | 5 WHEELER S substitution out   |
| 09:09     |  |              |           | 23 HOLLAND A substitution in   |
| 09:09     |  |              |           | 9 MULCAHY P free throw fast break 2 - 2 missed                           |
| 09:08     | 13 LEDEE J defensive rebound (3)                                     |              |           |  |
| 08:46     | 12 TRAMMELL D turnover lost ball (1)                                 |              |           | 9 MULCAHY P steal (1)  |
| 08:41     |  | <b>23-28</b> | <b>-5</b> | 0 JOHNSON K 2pt FG fast break from turnover in the paint, layup made (2) |
| 08:41     |  |              |           | 9 MULCAHY P assist (7)   |
| 08:32     | 13 LEDEE J foul drawn (2)  |              |           | 23 HOLLAND A foul personal (1 - 5)                                       |
| 08:28     | 14 WATERS R 2pt FG outside the paint, jump shot made (5)             | <b>25-28</b> | <b>-3</b> |  |
| 08:28     | 13 LEDEE J assist (2)  |              |           |  |
| 08:13     | 12 TRAMMELL D foul personal (1 - 4)                                  |              |           | 0 JOHNSON K foul drawn (1)   |
| 07:56     |  | <b>25-30</b> | <b>-5</b> | 11 KEPNANG F 2pt FG in the paint, layup made (4)                         |
| 07:56     |  |              |           | 9 MULCAHY P assist (8)   |
| 07:39     | 3 PARRISH M 3pt FG , jump shot missed                                |              |           |  |
| 07:34     |  |              |           | 0 JOHNSON K defensive rebound (1)  |



**Washington at San Diego St.**

11/19/23 T-Mobile Arena, Las Vegas  
2023-24 Men's Basketball

**Game Time:** 7:00 PM  
**Game Duration:** 2:34  
**Attendance:** 2,064

**Officials:** Tony Padilla, Ray Natili, Michael Irving

| Game Time | SDSU   | Score        | Diff      | WASH   |
|-----------|--|--------------|-----------|--|
| 07:27     |  | <b>25-32</b> | <b>-7</b> | 11 KEPNANG F 2pt FG in the paint, dunk, made (6)                   |
| 07:27     |  |              |           | 0 JOHNSON K assist (2)   |
| 07:04     | 25 SAUNDERS E 3pt FG , jump shot made (6)          | <b>28-32</b> | <b>-4</b> |  |
| 07:04     | 12 TRAMMELL D assist (2)                           |              |           |  |
| 06:44     |  |              |           | 11 KEPNANG F 2pt FG outside the paint, turnaround jump shot missed |
| 06:40     | 25 SAUNDERS E defensive rebound (5)                |              |           |  |
| 06:37     | 13 LEDEE J foul drawn (3)                          |              |           | 11 KEPNANG F foul shooting (2 - 6)                                 |
| 06:37     | Timeout media                                      |              |           |  |
| 06:37     | 12 TRAMMELL D substitution out                     |              |           |  |
| 06:37     | 5 BUTLER L substitution in                         |              |           |  |
| 06:37     |  |              |           | 9 MULCAHY P substitution out                                       |
| 06:37     |  |              |           | 11 KEPNANG F substitution out                                      |
| 06:37     |  |              |           | 5 WHEELER S substitution in  |
| 06:37     |  |              |           | 32 BREIDENBACH W substitution in                                   |
| 06:37     | 13 LEDEE J free throw fast break 1 - 2 missed      |              |           |  |
| 06:37     | offensive dead ball rebound (2)                    |              |           |  |
| 06:37     | 13 LEDEE J free throw fast break 2 - 2 made (9)    | <b>29-32</b> | <b>-3</b> |  |
| 06:23     | 3 PARRISH M steal (1)                              |              |           | 5 WHEELER S turnover lost ball (1)                                 |
| 06:17     | 14 WATERS R 3pt FG from turnover, jump shot missed |              |           |  |
| 06:15     | 13 LEDEE J offensive rebound (4)                   |              |           |  |
| 06:15     | 13 LEDEE J foul drawn (4)                          |              |           | 32 BREIDENBACH W foul personal (1 - 7)                             |
| 06:15     | 13 LEDEE J 1&1 free throw 1 made (10)              | <b>30-32</b> | <b>-2</b> |  |
| 06:15     | 13 LEDEE J 1&1 free throw 2 made (11)              | <b>31-32</b> | <b>-1</b> |  |
| 06:02     | 5 BUTLER L steal (1)                               |              |           | 1 BROOKS JR. K turnover lost ball (2)                              |
| 06:00     | 5 BUTLER L foul drawn (1)                          |              |           | 1 BROOKS JR. K foul personal (1 - 8)                               |
| 06:00     |  |              |           | 23 HOLLAND A substitution out                                      |
| 06:00     |  |              |           | 13 WOOD M substitution in  |
| 06:00     | 5 BUTLER L 1&1 free throw 1 missed                 |              |           |  |
| 05:59     |  |              |           | 1 BROOKS JR. K defensive rebound (2)                               |
| 05:54     |  |              |           | 1 BROOKS JR. K 3pt FG , jump shot missed                           |
| 05:50     | 5 BUTLER L defensive rebound (2)                   |              |           |  |
| 05:46     | 13 LEDEE J 3pt FG , jump shot missed               |              |           |  |
| 05:42     |  |              |           | 1 BROOKS JR. K defensive rebound (3)                               |
| 05:34     |  | <b>31-34</b> | <b>-3</b> | 0 JOHNSON K 2pt FG in the paint, layup made (4)                    |
| 05:34     | 25 SAUNDERS E foul shooting (1 - 5)                |              |           | 0 JOHNSON K foul drawn (2)   |
| 05:34     |  | <b>31-35</b> | <b>-4</b> | 0 JOHNSON K free throw 1 - 1 made (5)                              |
| 05:13     | 13 LEDEE J 2pt FG in the paint, layup made (13)    | <b>33-35</b> | <b>-2</b> |  |
| 05:13     | 25 SAUNDERS E assist (1)                           |              |           |  |
| 04:57     |  |              |           | 0 JOHNSON K 3pt FG , jump shot missed                              |
| 04:53     | 13 LEDEE J defensive rebound (5)                   |              |           |  |
| 04:27     | 5 BUTLER L 2pt FG in the paint, layup missed       |              |           |  |
| 04:27     |  |              |           | defensive rebound (14)   |
| 04:27     |  |              |           | 0 JOHNSON K substitution out                                       |
| 04:27     |  |              |           | 9 MULCAHY P substitution in  |
| 04:27     |  |              |           | 32 BREIDENBACH W substitution out                                  |
| 04:27     |  |              |           | 34 MEAH B substitution in  |
| 04:05     | 13 LEDEE J foul drawn (5)                          |              |           | 34 MEAH B foul offensive (3 - 9)                                   |
| 04:05     |  |              |           | 34 MEAH B turnover offensive (1)                                   |



Official Basketball Play by Play - First Half

**Washington at San Diego St.**

11/19/23 T-Mobile Arena, Las Vegas  
2023-24 Men's Basketball

**Game Time:** 7:00 PM  
**Game Duration:** 2:34  
**Attendance:** 2,064

**Officials:** Tony Padilla, Ray Natili, Michael Irving

| Game Time              | SDSU  | Score        | Diff      | WASH  |
|------------------------|---|--------------|-----------|---|
| 04:05                  |   |              |           | 34 MEAH B substitution out                          |
| 04:05                  |   |              |           | 32 BREIDENBACH W substitution in                    |
| 03:49                  | 3 PARRISH M 3pt FG from turnover, jump shot made (5)                | <b>36-35</b> | <b>1</b>  |   |
| 03:37                  | 5 BUTLER L steal (2)  |              |           | 5 WHEELER S turnover lost ball (2)                  |
| 03:17                  | 13 LEDEE J 2pt FG from turnover outside the paint, jump shot missed |              |           |   |
| 03:13                  |   |              |           | 32 BREIDENBACH W defensive rebound (1)              |
| 02:55                  |   | <b>36-37</b> | <b>-1</b> | 1 BROOKS JR. K 2pt FG in the paint, layup made (7)  |
| 02:55                  |   |              |           | 9 MULCAHY P assist (9)                              |
| 02:55                  | 14 WATERS R foul shooting (1 - 6)                                   |              |           | 1 BROOKS JR. K foul drawn (1)                       |
| 02:55                  | Timeout media   |              |           |   |
| 02:55                  | 5 BUTLER L substitution out   |              |           |   |
| 02:55                  | 12 TRAMMELL D substitution in                                       |              |           |   |
| 02:55                  |   | <b>36-38</b> | <b>-2</b> | 1 BROOKS JR. K free throw 1 - 1 made (8)            |
| 02:40                  | 14 WATERS R 2pt FG outside the paint, jump shot made (7)            | <b>38-38</b> | <b>0</b>  |   |
| 02:40                  | 13 LEDEE J assist (3)   |              |           |   |
| 02:11                  |   |              |           | 5 WHEELER S 3pt FG , jump shot missed               |
| 02:08                  | defensive rebound (17)  |              |           |   |
| 01:50                  | 14 WATERS R 2pt FG outside the paint, jump shot missed              |              |           |   |
| 01:47                  | 25 SAUNDERS E offensive rebound (6)                                 |              |           |   |
| 01:46                  | 25 SAUNDERS E foul drawn (1)  |              |           | 32 BREIDENBACH W foul shooting (2 - 10)             |
| 01:46                  | 25 SAUNDERS E free throw 1 - 2 made (7)                             | <b>39-38</b> | <b>1</b>  |   |
| 01:46                  | 25 SAUNDERS E free throw 2 - 2 made (8)                             | <b>40-38</b> | <b>2</b>  |   |
| 01:23                  |   | <b>40-40</b> | <b>0</b>  | 9 MULCAHY P 2pt FG in the paint, jump shot made (3) |
| 00:51                  | 14 WATERS R 3pt FG , jump shot missed                               |              |           |   |
| 00:48                  |   |              |           | 32 BREIDENBACH W defensive rebound (2)              |
| 00:30                  |   |              |           | 1 BROOKS JR. K 2pt FG in the paint, layup missed    |
| 00:27                  |   |              |           | offensive rebound (17)                              |
| 00:27                  | 13 LEDEE J substitution out   |              |           |   |
| 00:27                  | 40 HEIDE M substitution in  |              |           |   |
| 00:19                  | 3 PARRISH M steal (2)   |              |           | 5 WHEELER S turnover lost ball (3)                  |
| 00:02                  | 12 TRAMMELL D 3pt FG from turnover, jump shot made (3)              | <b>43-40</b> | <b>3</b>  |   |
| <b>END OF PERIOD</b>   |   |              |           |   |
| <b>SDSU 43-40 WASH</b> |   |              |           |   |



Officials: Tony Padilla, Ray Natili, Michael Irving

**Washington - 40**

| NO.           | Name                | F | Min   | FG    |      |     | Rebounds |    |     | Fouls |    | TP | AS | TO | ST | Blocks |    | +/- |
|---------------|---------------------|---|-------|-------|------|-----|----------|----|-----|-------|----|----|----|----|----|--------|----|-----|
|               |                     |   |       | M-A   | M-A  | M-A | OR       | DR | TOT | PF    | FD |    |    |    |    | BS     | BA |     |
| 1             | Keion Brooks Jr.    | F | 18:30 | 3-6   | 1-3  | 1-1 | 0        | 3  | 3   | 1     | 1  | 8  | 0  | 2  | 0  | 0      | 0  | -7  |
| 13            | Moses Wood          | F | 14:45 | 3-5   | 2-4  | 0-0 | 0        | 1  | 1   | 0     | 1  | 8  | 0  | 1  | 0  | 0      | 0  | -1  |
| 11            | Franck Kepnang      | C | 10:44 | 3-5   | 0-0  | 0-0 | 3        | 1  | 4   | 2     | 1  | 6  | 0  | 0  | 0  | 0      | 1  | 1   |
| 5             | Sahvir Wheeler      | G | 17:28 | 3-6   | 2-4  | 0-0 | 0        | 0  | 0   | 1     | 0  | 8  | 2  | 3  | 0  | 0      | 0  | -4  |
| 9             | Paul Mulcahy        | G | 17:50 | 1-2   | 0-0  | 1-2 | 0        | 2  | 2   | 0     | 1  | 3  | 9  | 0  | 1  | 1      | 0  | -1  |
| 0             | Koren Johnson       |   | 08:18 | 2-4   | 0-2  | 1-1 | 0        | 1  | 1   | 0     | 2  | 5  | 2  | 0  | 0  | 0      | 0  | 3   |
| 34            | Braxton Meah        |   | 03:01 | 1-1   | 0-0  | 0-0 | 0        | 2  | 2   | 3     | 0  | 2  | 0  | 1  | 0  | 0      | 0  | 3   |
| 23            | Anthony Holland     |   | 03:09 | 0-0   | 0-0  | 0-0 | 0        | 0  | 0   | 1     | 0  | 0  | 0  | 0  | 0  | 0      | 0  | -2  |
| 32            | Wilhelm Breidenbach |   | 06:15 | 0-0   | 0-0  | 0-0 | 0        | 2  | 2   | 2     | 0  | 0  | 0  | 0  | 0  | 0      | 0  | -7  |
| Team          |                     |   |       |       |      |     | 1        | 1  | 2   |       |    | 0  |    | 0  |    |        |    |     |
| <b>Totals</b> |                     |   |       | 16-29 | 5-13 | 3-4 | 4        | 13 | 17  | 10    | 6  | 40 | 13 | 7  | 1  | 1      | 1  | -3  |

| Shooting By Period |       |       |
|--------------------|-------|-------|
| 1st FG%            | 16-29 | 55.2% |
| 3PT%               | 5-13  | 38.5% |
| FT%                | 3-4   | 75%   |
| GM FG%             | 16-29 | 55.2% |
| 3PT%               | 5-13  | 38.5% |
| FT%                | 3-4   | 75.0% |

Dead Ball Rebounds: 0, 0

Technical Fouls::NONE

**San Diego St. - 43**

| NO.           | Name             | F | Min   | FG    |      |      | Rebounds |    |     | Fouls |    | TP | AS | TO | ST | Blocks |    | +/- |
|---------------|------------------|---|-------|-------|------|------|----------|----|-----|-------|----|----|----|----|----|--------|----|-----|
|               |                  |   |       | M-A   | M-A  | M-A  | OR       | DR | TOT | PF    | FD |    |    |    |    | BS     | BA |     |
| 3             | Micah Parrish    | F | 16:24 | 2-4   | 1-3  | 0-0  | 0        | 0  | 0   | 0     | 0  | 5  | 1  | 0  | 2  | 0      | 0  | 7   |
| 13            | Jaedon LeDee     | F | 15:56 | 4-8   | 0-1  | 5-6  | 3        | 2  | 5   | 1     | 5  | 13 | 3  | 0  | 0  | 0      | 0  | 5   |
| 25            | Elijah Saunders  | F | 16:24 | 2-4   | 2-2  | 2-2  | 2        | 4  | 6   | 1     | 1  | 8  | 1  | 0  | 1  | 1      | 0  | 7   |
| 5             | Lamont Butler    | G | 12:22 | 1-2   | 0-0  | 0-1  | 0        | 2  | 2   | 0     | 1  | 2  | 2  | 0  | 2  | 0      | 0  | 0   |
| 14            | Reese Waters     | G | 18:35 | 3-10  | 1-5  | 0-0  | 0        | 0  | 0   | 1     | 0  | 7  | 0  | 0  | 0  | 0      | 0  | 7   |
| 4             | Jay Pal          |   | 03:36 | 0-1   | 0-0  | 1-2  | 0        | 0  | 0   | 0     | 2  | 1  | 0  | 0  | 0  | 0      | 0  | -4  |
| 12            | Darrion Trammell |   | 09:03 | 1-1   | 1-1  | 0-0  | 0        | 1  | 1   | 1     | 1  | 3  | 2  | 1  | 0  | 0      | 0  | -1  |
| 21            | Miles Byrd       |   | 03:36 | 1-1   | 0-0  | 0-1  | 1        | 0  | 1   | 2     | 0  | 2  | 0  | 0  | 0  | 0      | 0  | -4  |
| 40            | Miles Heide      |   | 04:04 | 1-3   | 0-0  | 0-0  | 2        | 0  | 2   | 0     | 0  | 2  | 0  | 0  | 0  | 0      | 1  | -2  |
| Team          |                  |   |       |       |      |      | 0        | 1  | 1   |       |    | 0  |    | 0  |    |        |    |     |
| <b>Totals</b> |                  |   |       | 15-34 | 5-12 | 8-12 | 8        | 10 | 18  | 6     | 10 | 43 | 9  | 1  | 5  | 1      | 1  | 3   |

| Shooting By Period |       |       |
|--------------------|-------|-------|
| 1st FG%            | 15-34 | 44.1% |
| 3PT%               | 5-12  | 41.7% |
| FT%                | 8-12  | 66.7% |
| GM FG%             | 15-34 | 44.1% |
| 3PT%               | 5-12  | 41.7% |
| FT%                | 8-12  | 66.7% |

Dead Ball Rebounds: 2, 0

Technical Fouls::NONE

|                  | WASH          | SDSU          |
|------------------|---------------|---------------|
| Biggest lead     | 7 (1st 7:27)  | 3 (1st 15:42) |
| Best Scoring Run | 5 (1st 17:45) | 6 (1st 15:42) |
| Lead Changes     | 9             |               |
| Times Tied       | 9             |               |
| Time with Lead   | 10:48         | 03:21         |

| Points from   | WASH | SDSU |
|---------------|------|------|
| Turnovers     | 2    | 12   |
| Paint         | 20   | 14   |
| Second Chance | 5    | 8    |
| Fast Breaks   | 6    | 7    |
| Bench         | 7    | 8    |

|      | Period by Period Scoring |     |     |     |
|------|--------------------------|-----|-----|-----|
|      | 1st                      | 2nd | OT1 | TOT |
| WASH | 40                       | 45  | 12  | 97  |
| SDSU | 43                       | 42  | 15  | 100 |



**Period 2**

**Quarter Starters:**

|             |                |             |             |              |               |
|-------------|----------------|-------------|-------------|--------------|---------------|
| <b>SDSU</b> | 3 Parrish M    | 5 Butler L  | 13 LeDee J  | 14 Waters R  | 25 Saunders E |
| <b>WASH</b> | 1 Brooks Jr. K | 5 Wheeler S | 9 Mulcahy P | 11 Kepnang F | 13 Wood M     |

| Game Time | SDSU   | Score        | Diff     | WASH   |
|-----------|--|--------------|----------|--|
| 20:00     | 12 TRAMMELL D substitution out   |              |          |  |
| 20:00     | 40 HEIDE M substitution out  |              |          |  |
| 20:00     | 5 BUTLER L substitution in   |              |          |  |
| 20:00     | 13 LEDEE J substitution in   |              |          |  |
| 20:00     |  |              |          | 32 BREIDENBACH W substitution out                            |
| 20:00     |  |              |          | 11 KEPNANG F substitution in                                 |
| 19:48     | 5 BUTLER L steal (3)   |              |          | 11 KEPNANG F turnover lost ball (1)                          |
| 19:43     | 3 PARRISH M 2pt FG fast break from turnover in the paint, layup made (7) | <b>45-40</b> | <b>5</b> |  |
| 19:43     | 5 BUTLER L assist (3)  |              |          |  |
| 19:27     |  |              |          | 1 BROOKS JR. K 2pt FG outside the paint, jump shot missed    |
| 19:22     | 13 LEDEE J defensive rebound (6)   |              |          |  |
| 19:19     | 5 BUTLER L 3pt FG , jump shot missed                                     |              |          |  |
| 19:15     |  |              |          | 13 WOOD M defensive rebound (2)                              |
| 19:10     |  |              |          | 9 MULCAHY P turnover lost ball (1)                           |
| 18:54     | 3 PARRISH M foul drawn (1)   |              |          | 11 KEPNANG F foul shooting (3 - 1)                           |
| 18:54     | 3 PARRISH M free throw 1 - 2 made (8)                                    | <b>46-40</b> | <b>6</b> |  |
| 18:54     | 3 PARRISH M free throw 2 - 2 made (9)                                    | <b>47-40</b> | <b>7</b> |  |
| 18:28     |  |              |          | 9 MULCAHY P 2pt FG in the paint, turnaround jump shot missed |
| 18:24     | 25 SAUNDERS E defensive rebound (7)                                      |              |          |  |
| 18:21     | 25 SAUNDERS E 2pt FG in the paint, layup missed                          |              |          |  |
| 18:17     | 13 LEDEE J offensive rebound (7)   |              |          |  |
| 18:16     | 13 LEDEE J 2pt FG second chance in the paint, layup missed               |              |          |  |
| 18:14     |  |              |          | 11 KEPNANG F defensive rebound (5)                           |
| 18:10     |  |              |          | 13 WOOD M 2pt FG outside the paint, jump shot blocked        |
| 18:10     | 14 WATERS R block (1)  |              |          |  |
| 18:07     |  |              |          | 11 KEPNANG F offensive rebound (6)                           |
| 18:07     | 5 BUTLER L foul shooting (1 - 1)   |              |          | 11 KEPNANG F foul drawn (2)                                  |
| 18:07     |  | <b>47-41</b> | <b>6</b> | 11 KEPNANG F free throw 1 - 2 made (7)                       |
| 18:07     |  | <b>47-42</b> | <b>5</b> | 11 KEPNANG F free throw 2 - 2 made (8)                       |
| 17:43     | 25 SAUNDERS E 2pt FG in the paint, layup missed                          |              |          |  |
| 17:38     | 25 SAUNDERS E offensive rebound (8)                                      |              |          |  |
| 17:38     | 25 SAUNDERS E 2pt FG second chance in the paint, layup made (10)         | <b>49-42</b> | <b>7</b> |  |
| 17:25     |  | <b>49-44</b> | <b>5</b> | 13 WOOD M 2pt FG in the paint, driving layup made (10)       |
| 16:54     | 13 LEDEE J 2pt FG in the paint, layup missed                             |              |          |  |
| 16:52     |  |              |          | 1 BROOKS JR. K defensive rebound (4)                         |
| 16:49     | 3 PARRISH M foul personal (1 - 2)  |              |          | 5 WHEELER S foul drawn (1)                                   |
| 16:49     | 14 WATERS R substitution out   |              |          |  |
| 16:49     | 12 TRAMMELL D substitution in  |              |          |  |
| 16:46     |  |              |          | 1 BROOKS JR. K 2pt FG in the paint, jump shot missed         |
| 16:42     | 13 LEDEE J defensive rebound (8)   |              |          |  |
| 16:30     | 25 SAUNDERS E turnover bad pass (1)                                      |              |          | 5 WHEELER S steal (1)  |





| Game Time | SDSU   | Score | Diff | WASH  |
|-----------|--|-------|------|---|
| 16:25     |  | 49-46 | 3    | 5 WHEELER S 2pt FG fast break from turnover in the paint, layup made (10) |
| 16:09     | 12 TRAMMELL D 3pt FG , jump shot missed                    |       |      |   |
| 16:05     |  |       |      | 13 WOOD M defensive rebound (3)   |
| 16:03     |  | 49-48 | 1    | 5 WHEELER S 2pt FG fast break in the paint, floating jump shot made (12)  |
| 16:03     |  |       |      | 13 WOOD M assist (1)  |
| 15:43     | Timeout media  |       |      |   |
| 15:43     | 25 SAUNDERS E substitution out                             |       |      |   |
| 15:43     | 40 HEIDE M substitution in                                 |       |      |   |
| 15:43     |  |       |      | 11 KEPNANG F substitution out   |
| 15:43     |  |       |      | 34 MEAH B substitution in   |
| 15:43     | Timeout 30 Sec   |       |      |   |
| 15:43     | Timeout media  |       |      |   |
| 15:34     | 12 TRAMMELL D 3pt FG , jump shot missed                    |       |      |   |
| 15:31     |  |       |      | 5 WHEELER S defensive rebound (1)   |
| 15:25     | 3 PARRISH M foul personal (2 - 3)                          |       |      | 34 MEAH B foul drawn (1)  |
| 15:25     | 3 PARRISH M substitution out                               |       |      |   |
| 15:25     | 14 WATERS R substitution in                                |       |      |   |
| 15:14     |  |       |      | 13 WOOD M 3pt FG , jump shot missed                                       |
| 15:08     | 12 TRAMMELL D defensive rebound (2)                        |       |      |   |
| 15:04     | 5 BUTLER L turnover bad pass (1)                           |       |      | 5 WHEELER S steal (2)   |
| 15:00     | 5 BUTLER L foul personal (2 - 4)                           |       |      | 5 WHEELER S foul drawn (2)  |
| 15:00     | 5 BUTLER L substitution out                                |       |      |   |
| 15:00     | 21 BYRD M substitution in                                  |       |      |   |
| 14:55     |  |       |      | 13 WOOD M 3pt FG from turnover, jump shot missed                          |
| 14:51     | 13 LEDEE J defensive rebound (9)                           |       |      |   |
| 14:34     | 13 LEDEE J 2pt FG in the paint, layup missed               |       |      |   |
| 14:31     |  |       |      | 5 WHEELER S defensive rebound (2)   |
| 14:20     | 40 HEIDE M foul personal (1 - 5)                           |       |      | 34 MEAH B foul drawn (2)  |
| 14:17     |  | 49-50 | -1   | 1 BROOKS JR. K 2pt FG outside the paint, jump shot made (10)              |
| 14:17     |  |       |      | 9 MULCAHY P assist (10)   |
| 13:59     | 13 LEDEE J 2pt FG outside the paint, jump shot missed      |       |      |   |
| 13:56     | 13 LEDEE J offensive rebound (10)                          |       |      |   |
| 13:55     | 13 LEDEE J 2pt FG second chance in the paint, layup missed |       |      |   |
| 13:52     |  |       |      | defensive rebound (25)  |
| 13:52     | 40 HEIDE M substitution out                                |       |      |   |
| 13:52     | 4 PAL J substitution in                                    |       |      |   |
| 13:52     |  |       |      | 13 WOOD M substitution out  |
| 13:52     |  |       |      | 0 JOHNSON K substitution in   |
| 13:41     |  |       |      | 5 WHEELER S 3pt FG , jump shot missed                                     |
| 13:37     | 21 BYRD M defensive rebound (2)                            |       |      |   |
| 13:33     | 14 WATERS R foul drawn (1)                                 |       |      | 34 MEAH B foul personal (4 - 2)   |
| 13:33     |  |       |      | 34 MEAH B substitution out  |
| 13:33     |  |       |      | 11 KEPNANG F substitution in  |
| 13:28     | 21 BYRD M 3pt FG , jump shot made (5)                      | 52-50 | 2    |   |
| 13:28     | 4 PAL J assist (1)   |       |      |   |
| 13:06     | 21 BYRD M steal (1)  |       |      | 1 BROOKS JR. K turnover lost ball (3)                                     |
| 13:01     | 4 PAL J 2pt FG from turnover in the paint, layup blocked   |       |      |   |
| 13:01     |  |       |      | 0 JOHNSON K block (1)   |



**Washington at San Diego St.**

11/19/23 T-Mobile Arena, Las Vegas  
2023-24 Men's Basketball

**Game Time:** 7:00 PM  
**Game Duration:** 2:34  
**Attendance:** 2,064

**Officials:** Tony Padilla, Ray Natili, Michael Irving

| Game Time | SDSU  | Score        | Diff     | WASH  |
|-----------|---|--------------|----------|---|
| 12:57     | 4 PAL J offensive rebound (1)   |              |          |   |
| 12:56     | 4 PAL J 2pt FG from turnover second chance in the paint, layup made (3) | <b>54-50</b> | <b>4</b> |   |
| 12:53     |   |              |          | Timeout 60 Sec  |
| 12:53     |   |              |          | 1 BROOKS JR. K substitution out                                 |
| 12:53     |   |              |          | 13 WOOD M substitution in                                       |
| 12:44     |   |              |          | 0 JOHNSON K 2pt FG in the paint, jump shot missed               |
| 12:41     |   |              |          | 11 KEPNANG F offensive rebound (7)                              |
| 12:40     |   | <b>54-52</b> | <b>2</b> | 11 KEPNANG F 2pt FG second chance in the paint, layup made (10) |
| 12:24     | 14 WATERS R 2pt FG in the paint, jump shot missed                       |              |          |   |
| 12:22     | 13 LEDEE J offensive rebound (11)                                       |              |          |   |
| 12:22     | 13 LEDEE J foul drawn (6)   |              |          | 11 KEPNANG F foul shooting (4 - 3)                              |
| 12:22     | 13 LEDEE J free throw 1 - 2 made (14)                                   | <b>55-52</b> | <b>3</b> |   |
| 12:22     | 13 LEDEE J free throw 2 - 2 missed                                      |              |          |   |
| 12:22     |   |              |          | 9 MULCAHY P defensive rebound (3)                               |
| 12:07     |   | <b>55-55</b> | <b>0</b> | 13 WOOD M 3pt FG , jump shot made (13)                          |
| 12:07     |   |              |          | 0 JOHNSON K assist (3)  |
| 11:45     | 4 PAL J 2pt FG in the paint, layup made (5)                             | <b>57-55</b> | <b>2</b> |   |
| 11:45     | 21 BYRD M assist (1)  |              |          |   |
| 11:28     |   |              |          | 13 WOOD M 3pt FG , jump shot missed                             |
| 11:24     | 12 TRAMMELL D defensive rebound (3)                                     |              |          |   |
| 11:17     | 21 BYRD M 3pt FG , jump shot missed                                     |              |          |   |
| 11:13     | 13 LEDEE J offensive rebound (12)                                       |              |          |   |
| 11:12     | 13 LEDEE J foul drawn (7)   |              |          | 0 JOHNSON K foul shooting (1 - 4)                               |
| 11:12     | Timeout media   |              |          |   |
| 11:12     | 14 WATERS R substitution out  |              |          |   |
| 11:12     | 3 PARRISH M substitution in   |              |          |   |
| 11:12     | 13 LEDEE J free throw 1 - 2 made (15)                                   | <b>58-55</b> | <b>3</b> |   |
| 11:12     | 13 LEDEE J free throw 2 - 2 made (16)                                   | <b>59-55</b> | <b>4</b> |   |
| 11:00     |   | <b>59-57</b> | <b>2</b> | 9 MULCAHY P 2pt FG in the paint, layup made (5)                 |
| 11:00     |   |              |          | 0 JOHNSON K assist (4)  |
| 10:41     | 3 PARRISH M 3pt FG , jump shot made (12)                                | <b>62-57</b> | <b>5</b> |   |
| 10:41     | 12 TRAMMELL D assist (3)  |              |          |   |
| 10:40     | 3 PARRISH M foul drawn (2)  |              |          | 13 WOOD M foul shooting (1 - 5)                                 |
| 10:40     | 3 PARRISH M free throw 1 - 1 made (13)                                  | <b>63-57</b> | <b>6</b> |   |
| 10:19     |   |              |          | 0 JOHNSON K 3pt FG , jump shot missed                           |
| 10:16     | defensive rebound (32)  |              |          |   |
| 10:16     | 21 BYRD M foul drawn (1)  |              |          | 9 MULCAHY P foul personal (1 - 6)                               |
| 10:16     |   |              |          | 9 MULCAHY P substitution out                                    |
| 10:16     |   |              |          | 11 KEPNANG F substitution out                                   |
| 10:16     |   |              |          | 1 BROOKS JR. K substitution in                                  |
| 10:16     |   |              |          | 34 MEAH B substitution in                                       |
| 09:49     | 4 PAL J 2pt FG in the paint, layup missed                               |              |          |   |
| 09:46     |   |              |          | 1 BROOKS JR. K defensive rebound (5)                            |
| 09:42     |   | <b>63-59</b> | <b>4</b> | 5 WHEELER S 2pt FG fast break in the paint, layup made (14)     |
| 09:42     | 4 PAL J foul shooting (1 - 6)   |              |          | 5 WHEELER S foul drawn (3)                                      |
| 09:42     | 4 PAL J substitution out  |              |          |   |
| 09:42     | 25 SAUNDERS E substitution in   |              |          |   |
| 09:42     |   | <b>63-60</b> | <b>3</b> | 5 WHEELER S free throw fast break 1 - 1 made (15)               |



**Washington at San Diego St.**

11/19/23 T-Mobile Arena, Las Vegas  
2023-24 Men's Basketball

**Game Time:** 7:00 PM  
**Game Duration:** 2:34  
**Attendance:** 2,064

**Officials:** Tony Padilla, Ray Natili, Michael Irving

| Game Time | SDSU   | Score        | Diff      | WASH  |
|-----------|--|--------------|-----------|---|
| 09:21     | 12 TRAMMELL D 3pt FG , jump shot missed                  |              |           |   |
| 09:18     |  |              |           | 1 BROOKS JR. K defensive rebound (6)          |
| 09:15     |  |              |           | 5 WHEELER S 2pt FG in the paint, layup missed |
| 09:12     | 3 PARRISH M defensive rebound (1)                        |              |           |   |
| 09:12     | 3 PARRISH M foul drawn (3)                               |              |           | 5 WHEELER S foul personal (2 - 7)             |
| 09:12     | 21 BYRD M substitution out                               |              |           |   |
| 09:12     | 5 BUTLER L substitution in                               |              |           |   |
| 09:12     | 3 PARRISH M 1&1 free throw 1 made (14)                   | <b>64-60</b> | <b>4</b>  |   |
| 09:12     | 3 PARRISH M 1&1 free throw 2 made (15)                   | <b>65-60</b> | <b>5</b>  |   |
| 08:53     | 3 PARRISH M foul shooting (3 - 7)                        |              |           | 34 MEAH B foul drawn (3)                      |
| 08:53     |  | <b>65-61</b> | <b>4</b>  | 34 MEAH B free throw 1 - 2 made (3)           |
| 08:53     |  | <b>65-62</b> | <b>3</b>  | 34 MEAH B free throw 2 - 2 made (4)           |
| 08:33     | 13 LEDEE J 2pt FG outside the paint, jump shot made (18) | <b>67-62</b> | <b>5</b>  |   |
| 08:33     | 12 TRAMMELL D assist (4)                                 |              |           |   |
| 08:09     |  |              |           | 13 WOOD M 3pt FG , jump shot missed           |
| 08:05     | defensive rebound (34)                                   |              |           |   |
| 07:46     | 13 LEDEE J 2pt FG outside the paint, jump shot made (20) | <b>69-62</b> | <b>7</b>  |   |
| 07:19     |  | <b>69-64</b> | <b>5</b>  | 34 MEAH B 2pt FG in the paint, dunk, made (6) |
| 07:19     |  |              |           | 1 BROOKS JR. K assist (1)                     |
| 07:02     | 13 LEDEE J 2pt FG outside the paint, jump shot made (22) | <b>71-64</b> | <b>7</b>  |   |
| 07:02     | 3 PARRISH M assist (2)                                   |              |           |   |
| 06:47     | 25 SAUNDERS E foul personal (2 - 8)                      |              |           | 1 BROOKS JR. K foul drawn (2)                 |
| 06:47     | Timeout media  |              |           |   |
| 06:47     |  |              |           | 0 JOHNSON K substitution out                  |
| 06:47     |  |              |           | 34 MEAH B substitution out                    |
| 06:47     |  |              |           | 9 MULCAHY P substitution in                   |
| 06:47     |  |              |           | 11 KEPNANG F substitution in                  |
| 06:47     |  | <b>71-65</b> | <b>6</b>  | 1 BROOKS JR. K 1&1 free throw 1 made (11)     |
| 06:47     |  | <b>71-66</b> | <b>5</b>  | 1 BROOKS JR. K 1&1 free throw 2 made (12)     |
| 06:31     | 12 TRAMMELL D 2pt FG in the paint, layup missed          |              |           |   |
| 06:28     | 13 LEDEE J offensive rebound (13)                        |              |           |   |
| 06:25     | 5 BUTLER L foul drawn (2)                                |              |           | 9 MULCAHY P foul shooting (2 - 8)             |
| 06:25     | 5 BUTLER L free throw 1 - 2 missed                       |              |           |   |
| 06:25     | offensive dead ball rebound (3)                          |              |           |   |
| 06:25     | 12 TRAMMELL D substitution out                           |              |           |   |
| 06:25     | 14 WATERS R substitution in                              |              |           |   |
| 06:25     | 5 BUTLER L free throw 2 - 2 missed                       |              |           |   |
| 06:24     |  |              |           | 11 KEPNANG F defensive rebound (8)            |
| 06:10     |  |              |           | 9 MULCAHY P 2pt FG in the paint, layup missed |
| 06:08     | 13 LEDEE J defensive rebound (14)                        |              |           |   |
| 05:50     | 25 SAUNDERS E 3pt FG , jump shot made (13)               | <b>74-66</b> | <b>8</b>  |   |
| 05:50     | 3 PARRISH M assist (3)                                   |              |           |   |
| 05:37     |  |              |           | 1 BROOKS JR. K 3pt FG , jump shot missed      |
| 05:34     | 13 LEDEE J defensive rebound (15)                        |              |           |   |
| 05:22     | 14 WATERS R foul drawn (2)                               |              |           | 13 WOOD M foul personal (2 - 9)               |
| 05:22     | 14 WATERS R 1&1 free throw 1 made (8)                    | <b>75-66</b> | <b>9</b>  |   |
| 05:22     |  |              |           | 11 KEPNANG F substitution out                 |
| 05:22     |  |              |           | 0 JOHNSON K substitution in                   |
| 05:22     | 14 WATERS R 1&1 free throw 2 made (9)                    | <b>76-66</b> | <b>10</b> |   |



**Washington at San Diego St.**

11/19/23 T-Mobile Arena, Las Vegas  
2023-24 Men's Basketball

**Game Time:** 7:00 PM  
**Game Duration:** 2:34  
**Attendance:** 2,064

**Officials:** Tony Padilla, Ray Natili, Michael Irving

| Game Time | SDSU  | Score        | Diff      | WASH   |
|-----------|---|--------------|-----------|--|
| 05:18     | 5 BUTLER L steal (4)  |              |           | 5 WHEELER S turnover lost ball (4)   |
| 05:14     | 5 BUTLER L 2pt FG fast break from turnover in the paint, dunk, made (4) | <b>78-66</b> | <b>12</b> |  |
| 05:13     |   |              |           | Timeout 30 Sec   |
| 04:49     |   |              |           | 0 JOHNSON K 2pt FG outside the paint, floating jump shot missed              |
| 04:46     | defensive rebound (38)  |              |           |  |
| 04:46     |   |              |           | 13 WOOD M substitution out   |
| 04:46     |   |              |           | 34 MEAH B substitution in  |
| 04:23     | 13 LEDEE J 2pt FG outside the paint, jump shot missed                   |              |           |  |
| 04:20     |   |              |           | 34 MEAH B defensive rebound (3)  |
| 04:14     | 5 BUTLER L foul shooting (3 - 9)  |              |           | 0 JOHNSON K foul drawn (3)   |
| 04:14     |   | <b>78-67</b> | <b>11</b> | 0 JOHNSON K free throw 1 - 2 made (6)  |
| 04:14     |   |              |           | 34 MEAH B substitution out   |
| 04:14     |   |              |           | 11 KEPNANG F substitution in   |
| 04:14     |   | <b>78-68</b> | <b>10</b> | 0 JOHNSON K free throw 2 - 2 made (7)  |
| 03:45     | 13 LEDEE J turnover lost ball (1)                                       |              |           | 9 MULCAHY P steal (2)  |
| 03:41     |   | <b>78-70</b> | <b>8</b>  | 0 JOHNSON K 2pt FG fast break from turnover in the paint, layup made (9)     |
| 03:21     | 13 LEDEE J 2pt FG in the paint, dunk, made (24)                         | <b>80-70</b> | <b>10</b> |  |
| 03:21     | 5 BUTLER L assist (4)   |              |           |  |
| 03:10     | 14 WATERS R foul personal (2 - 10)                                      |              |           | 9 MULCAHY P foul drawn (2)   |
| 03:10     | Timeout media   |              |           |  |
| 03:10     |   |              |           | 9 MULCAHY P free throw 1 - 2 missed  |
| 03:10     |   |              |           | offensive dead ball rebound (1)  |
| 03:10     |   | <b>80-71</b> | <b>9</b>  | 9 MULCAHY P free throw 2 - 2 made (6)  |
| 02:39     | 5 BUTLER L 2pt FG in the paint, layup missed                            |              |           |  |
| 02:35     | 5 BUTLER L offensive rebound (3)  |              |           |  |
| 02:17     | 3 PARRISH M turnover lost ball (1)                                      |              |           | 5 WHEELER S steal (3)  |
| 02:11     |   | <b>80-73</b> | <b>7</b>  | 1 BROOKS JR. K 2pt FG fast break from turnover in the paint, layup made (14) |
| 02:11     |   |              |           | 5 WHEELER S assist (3)   |
| 01:48     | 25 SAUNDERS E foul drawn (2)  |              |           | 0 JOHNSON K foul personal (2 - 10)   |
| 01:48     | 25 SAUNDERS E free throw 1 - 2 made (14)                                | <b>81-73</b> | <b>8</b>  |  |
| 01:48     |   |              |           | 0 JOHNSON K substitution out   |
| 01:48     |   |              |           | 13 WOOD M substitution in  |
| 01:48     | 25 SAUNDERS E free throw 2 - 2 made (15)                                | <b>82-73</b> | <b>9</b>  |  |
| 01:44     |   | <b>82-76</b> | <b>6</b>  | 13 WOOD M 3pt FG , jump shot made (16)                                       |
| 01:44     |   |              |           | 5 WHEELER S assist (4)   |
| 01:25     | 25 SAUNDERS E foul drawn (3)  |              |           | 11 KEPNANG F foul shooting (5 - 11)  |
| 01:25     |   |              |           | 11 KEPNANG F substitution out  |
| 01:25     |   |              |           | 34 MEAH B substitution in  |
| 01:25     | 25 SAUNDERS E free throw 1 - 2 missed                                   |              |           |  |
| 01:25     | offensive dead ball rebound (4)   |              |           |  |
| 01:25     | 25 SAUNDERS E free throw 2 - 2 made (16)                                | <b>83-76</b> | <b>7</b>  |  |
| 01:14     | 13 LEDEE J steal (1)  |              |           | 13 WOOD M turnover lost ball (2)   |
| 01:13     | 13 LEDEE J foul drawn (8)   |              |           | 13 WOOD M foul personal (3 - 12)   |
| 01:13     | 13 LEDEE J free throw fast break 1 - 2 missed                           |              |           |  |
| 01:13     | offensive dead ball rebound (5)   |              |           |  |
| 01:13     | 13 LEDEE J free throw fast break 2 - 2 missed                           |              |           |  |



**Washington at San Diego St.**

11/19/23 T-Mobile Arena, Las Vegas  
2023-24 Men's Basketball

**Game Time:** 7:00 PM  
**Game Duration:** 2:34  
**Attendance:** 2,064

**Officials:** Tony Padilla, Ray Natili, Michael Irving

| Game Time              | SDSU                                   | Score        | Diff     | WASH   |
|------------------------|--|--------------|----------|--|
| 01:12                  |  |              |          | 34 MEAH B defensive rebound (4)                                |
| 01:05                  | 14 WATERS R foul shooting (3 - 11)     |              |          | 9 MULCAHY P foul drawn (3)                                     |
| 01:05                  |  | <b>83-77</b> | <b>6</b> | 9 MULCAHY P free throw fast break 1 - 2 made (7)               |
| 01:05                  |  | <b>83-78</b> | <b>5</b> | 9 MULCAHY P free throw fast break 2 - 2 made (8)               |
| 01:05                  |  |              |          | 1 BROOKS JR. K substitution out                                |
| 01:05                  |  |              |          | 0 JOHNSON K substitution in                                    |
| 01:02                  | jump ball situation                    |              |          |  |
| 00:55                  | 14 WATERS R foul drawn (3)             |              |          | 5 WHEELER S foul personal (3 - 13)                             |
| 00:55                  | 14 WATERS R free throw 1 - 2 made (10) | <b>84-78</b> | <b>6</b> |  |
| 00:55                  |  |              |          | 34 MEAH B substitution out                                     |
| 00:55                  |  |              |          | 1 BROOKS JR. K substitution in                                 |
| 00:55                  | 14 WATERS R free throw 2 - 2 made (11) | <b>85-78</b> | <b>7</b> |  |
| 00:55                  | 14 WATERS R substitution out           |              |          |  |
| 00:55                  | 12 TRAMMELL D substitution in          |              |          |  |
| 00:50                  |  | <b>85-80</b> | <b>5</b> | 5 WHEELER S 2pt FG fast break in the paint, layup made (17)    |
| 00:50                  |  |              |          | Timeout 30 Sec   |
| 00:50                  | 12 TRAMMELL D substitution out         |              |          |  |
| 00:50                  | 14 WATERS R substitution in            |              |          |  |
| 00:50                  | turnover sec 5 (6)                     |              |          |  |
| 00:50                  |  |              |          | 0 JOHNSON K substitution out                                   |
| 00:50                  |  |              |          | 34 MEAH B substitution in                                      |
| 00:44                  |  | <b>85-82</b> | <b>3</b> | 9 MULCAHY P 2pt FG from turnover in the paint, layup made (10) |
| 00:44                  |  |              |          | 1 BROOKS JR. K assist (2)                                      |
| 00:19                  | 5 BUTLER L 3pt FG , jump shot missed   |              |          |  |
| 00:15                  |  |              |          | 13 WOOD M defensive rebound (4)                                |
| 00:07                  |  | <b>85-84</b> | <b>1</b> | 5 WHEELER S 2pt FG in the paint, layup made (19)               |
| 00:07                  |  |              |          | 1 BROOKS JR. K assist (3)                                      |
| 00:07                  |  |              |          | 34 MEAH B substitution out                                     |
| 00:07                  |  |              |          | 0 JOHNSON K substitution in                                    |
| 00:07                  | Timeout 60 Sec                         |              |          |  |
| 00:05                  | jump ball situation                    |              |          |  |
| 00:05                  | 13 LEDEE J turnover lost ball (2)      |              |          | 5 WHEELER S steal (4)  |
| 00:05                  |  |              |          | 0 JOHNSON K substitution out                                   |
| 00:05                  |  |              |          | 34 MEAH B substitution in                                      |
| 00:01                  |  |              |          | 9 MULCAHY P 2pt FG from turnover in the paint, layup blocked   |
| 00:01                  | 13 LEDEE J block (1)                   |              |          |  |
| 00:01                  |  |              |          | 9 MULCAHY P offensive rebound (4)                              |
| 00:01                  | 13 LEDEE J foul personal (2 - 12)      |              |          | 9 MULCAHY P foul drawn (4)                                     |
| 00:01                  |  |              |          | 9 MULCAHY P free throw fast break 1 - 2 missed                 |
| 00:01                  |  |              |          | offensive dead ball rebound (2)                                |
| 00:01                  |  | <b>85-85</b> | <b>0</b> | 9 MULCAHY P free throw fast break 2 - 2 made (11)              |
| 00:01                  | Timeout 30 Sec                         |              |          |  |
| <b>END OF PERIOD</b>   |  |              |          |  |
| <b>SDSU 85-85 WASH</b> |  |              |          |  |



Washington at San Diego St.

11/19/23 T-Mobile Arena, Las Vegas  
2023-24 Men's Basketball

Game Time: 7:00 PM  
Game Duration: 2:34  
Attendance: 2,064

Officials: Tony Padilla, Ray Natili, Michael Irving

Washington - 45

| NO.           | Name                | Min     | FG    |     |       | Rebounds |    |     | Fouls |    | TP | AS | TO | ST | Blocks |    | +/- |
|---------------|---------------------|---------|-------|-----|-------|----------|----|-----|-------|----|----|----|----|----|--------|----|-----|
|               |                     |         | M-A   | M-A | M-A   | OR       | DR | TOT | PF    | FD |    |    |    |    | BS     | BA |     |
| 1             | Keion Brooks Jr.    | F 17:13 | 2-5   | 0-1 | 2-2   | 0        | 3  | 3   | 0     | 1  | 6  | 3  | 1  | 0  | 0      | 0  | 6   |
| 13            | Moses Wood          | F 16:03 | 3-8   | 2-6 | 0-0   | 0        | 3  | 3   | 3     | 0  | 8  | 1  | 1  | 0  | 0      | 1  | 4   |
| 11            | Franck Kepnang      | C 11:48 | 1-1   | 0-0 | 2-2   | 2        | 2  | 4   | 3     | 1  | 4  | 0  | 1  | 0  | 0      | 0  | -2  |
| 5             | Sahvir Wheeler      | G 20:00 | 5-7   | 0-1 | 1-1   | 0        | 2  | 2   | 2     | 3  | 11 | 2  | 1  | 4  | 0      | 0  | 3   |
| 9             | Paul Mulcahy        | G 16:31 | 2-5   | 0-0 | 4-6   | 1        | 1  | 2   | 2     | 3  | 8  | 1  | 1  | 1  | 0      | 1  | 4   |
| 32            | Wilhelm Breidenbach | 00:00   | 0-0   | 0-0 | 0-0   | 0        | 0  | 0   | 0     | 0  | 0  | 0  | 0  | 0  | 0      | 0  | 0   |
| 34            | Braxton Meah        | 07:29   | 1-1   | 0-0 | 2-2   | 0        | 2  | 2   | 1     | 3  | 4  | 0  | 0  | 0  | 0      | 0  | 7   |
| 0             | Koren Johnson       | 10:56   | 1-4   | 0-1 | 2-2   | 0        | 0  | 0   | 2     | 1  | 4  | 2  | 0  | 0  | 1      | 0  | -7  |
| Team          |                     |         |       |     |       | 0        | 1  | 1   |       |    | 0  |    | 0  |    |        |    |     |
| <b>Totals</b> |                     |         | 15-31 | 2-9 | 13-15 | 3        | 14 | 17  | 13    | 12 | 45 | 9  | 5  | 5  | 1      | 2  | 3   |

| Shooting By Period  |       |       |
|---------------------|-------|-------|
| 2 <sup>nd</sup> FG% | 15-31 | 48.4% |
| 3PT%                | 2-9   | 22.2% |
| FT%                 | 13-15 | 86.7% |
| GM FG%              | 15-31 | 48.4% |
| 3PT%                | 2-9   | 22.2% |
| FT%                 | 13-15 | 86.7% |

Dead Ball Rebounds: 2, 0

Technical Fouls::NONE

San Diego St. - 42

| NO.           | Name             | Min     | FG    |     |       | Rebounds |    |     | Fouls |    | TP | AS | TO | ST | Blocks |    | +/- |
|---------------|------------------|---------|-------|-----|-------|----------|----|-----|-------|----|----|----|----|----|--------|----|-----|
|               |                  |         | M-A   | M-A | M-A   | OR       | DR | TOT | PF    | FD |    |    |    |    | BS     | BA |     |
| 3             | Micah Parrish    | F 15:47 | 2-2   | 1-1 | 5-5   | 0        | 1  | 1   | 3     | 3  | 10 | 2  | 1  | 0  | 0      | 0  | -4  |
| 13            | Jaedon LeDee     | F 20:00 | 4-10  | 0-0 | 3-6   | 5        | 5  | 10  | 1     | 3  | 11 | 0  | 2  | 1  | 1      | 0  | -3  |
| 25            | Elijah Saunders  | F 13:59 | 2-4   | 1-1 | 3-4   | 1        | 1  | 2   | 1     | 2  | 8  | 0  | 1  | 0  | 0      | 0  | -6  |
| 5             | Lamont Butler    | G 14:12 | 1-4   | 0-2 | 0-2   | 1        | 0  | 1   | 3     | 1  | 2  | 2  | 1  | 2  | 0      | 0  | -5  |
| 14            | Reese Waters     | G 13:44 | 0-1   | 0-0 | 4-4   | 0        | 0  | 0   | 2     | 3  | 4  | 0  | 0  | 0  | 1      | 0  | 0   |
| 12            | Darrion Trammell | 10:29   | 0-4   | 0-3 | 0-0   | 0        | 2  | 2   | 0     | 0  | 0  | 2  | 0  | 0  | 0      | 0  | -2  |
| 40            | Miles Heide      | 01:51   | 0-0   | 0-0 | 0-0   | 0        | 0  | 0   | 1     | 0  | 0  | 0  | 0  | 0  | 0      | 0  | -2  |
| 21            | Miles Byrd       | 05:48   | 1-2   | 1-2 | 0-0   | 0        | 1  | 1   | 0     | 1  | 3  | 1  | 0  | 1  | 0      | 0  | 2   |
| 4             | Jay Pal          | 04:10   | 2-4   | 0-0 | 0-0   | 1        | 0  | 1   | 1     | 0  | 4  | 1  | 0  | 0  | 0      | 1  | 5   |
| Team          |                  |         |       |     |       | 0        | 3  | 3   |       |    | 0  |    | 1  |    |        |    |     |
| <b>Totals</b> |                  |         | 12-31 | 3-9 | 15-21 | 8        | 13 | 21  | 12    | 13 | 42 | 8  | 6  | 4  | 2      | 1  | -3  |

| Shooting By Period  |       |       |
|---------------------|-------|-------|
| 2 <sup>nd</sup> FG% | 12-31 | 38.7% |
| 3PT%                | 3-9   | 33.3% |
| FT%                 | 15-21 | 71.4% |
| GM FG%              | 12-31 | 38.7% |
| 3PT%                | 3-9   | 33.3% |
| FT%                 | 15-21 | 71.4% |

Dead Ball Rebounds: 3, 0

Technical Fouls::NONE

|                  | WASH                      | SDSU                      |
|------------------|---------------------------|---------------------------|
| Biggest lead     | 1 (2 <sup>nd</sup> 14:17) | 12 (2 <sup>nd</sup> 5:14) |
| Best Scoring Run | 8 (2 <sup>nd</sup> 14:17) | 7 (2 <sup>nd</sup> 5:14)  |
| Lead Changes     | 2                         |                           |
| Times Tied       | 2                         |                           |
| Time with Lead   | 00:49                     | 18:31                     |

| Points from   | WASH | SDSU |
|---------------|------|------|
| Turnovers     | 9    | 8    |
| Paint         | 24   | 12   |
| Second Chance | 5    | 7    |
| Fast Breaks   | 16   | 6    |
| Bench         | 8    | 7    |

|      | Period by Period Scoring |     |     |     |
|------|--------------------------|-----|-----|-----|
|      | 1st                      | 2nd | OT1 | TOT |
| WASH | 40                       | 45  | 12  | 97  |
| SDSU | 43                       | 42  | 15  | 100 |



**Overtime 1**

**Quarter Starters:**

|             |                |             |             |             |               |
|-------------|----------------|-------------|-------------|-------------|---------------|
| <b>SDSU</b> | 3 Parrish M    | 5 Butler L  | 13 LeDee J  | 14 Waters R | 25 Saunders E |
| <b>WASH</b> | 1 Brooks Jr. K | 5 Wheeler S | 9 Mulcahy P | 13 Wood M   | 34 Meah B     |

| Game Time | SDSU   | Score        | Diff      | WASH  |
|-----------|--|--------------|-----------|---|
| 05:00     | 13 LEDEE J jumpball lost                                 |              |           | 34 MEAH B jumpball won  |
| 04:46     | 13 LEDEE J foul personal (3 - 13)                        |              |           | 34 MEAH B foul drawn (4)  |
| 04:46     |  | <b>85-86</b> | <b>-1</b> | 34 MEAH B free throw 1 - 2 made (7)   |
| 04:46     |  | <b>85-87</b> | <b>-2</b> | 34 MEAH B free throw 2 - 2 made (8)   |
| 04:27     | 3 PARRISH M turnover bad pass (2)                        |              |           | 9 MULCAHY P steal (3)   |
| 04:21     |  |              |           | 9 MULCAHY P 2pt FG from turnover in the paint, layup blocked                    |
| 04:21     | 5 BUTLER L block (1)                                     |              |           |   |
| 04:21     |  |              |           | offensive rebound (35)  |
| 04:17     |  | <b>85-89</b> | <b>-4</b> | 1 BROOKS JR. K 2pt FG from turnover second chance in the paint, layup made (16) |
| 04:17     |  |              |           | 9 MULCAHY P assist (11)   |
| 03:56     | 3 PARRISH M 2pt FG in the paint, jump shot missed        |              |           |   |
| 03:53     | 13 LEDEE J offensive rebound (16)                        |              |           |   |
| 03:53     | 13 LEDEE J foul drawn (9)                                |              |           | 9 MULCAHY P foul personal (3 - 14)  |
| 03:53     | 13 LEDEE J free throw 1 - 2 made (25)                    | <b>86-89</b> | <b>-3</b> |   |
| 03:53     | 13 LEDEE J free throw 2 - 2 made (26)                    | <b>87-89</b> | <b>-2</b> |   |
| 03:39     |  | <b>87-91</b> | <b>-4</b> | 1 BROOKS JR. K 2pt FG outside the paint, jump shot made (18)                    |
| 03:39     |  |              |           | 5 WHEELER S assist (5)  |
| 03:18     | 13 LEDEE J 2pt FG outside the paint, jump shot made (28) | <b>89-91</b> | <b>-2</b> |   |
| 03:18     | 14 WATERS R assist (1)                                   |              |           |   |
| 02:52     |  | <b>89-93</b> | <b>-4</b> | 1 BROOKS JR. K 2pt FG outside the paint, jump shot made (20)                    |
| 02:52     |  |              |           | 9 MULCAHY P assist (12)   |
| 02:32     | 5 BUTLER L 3pt FG , jump shot made (7)                   | <b>92-93</b> | <b>-1</b> |   |
| 02:32     | 14 WATERS R assist (2)                                   |              |           |   |
| 02:14     |  | <b>92-95</b> | <b>-3</b> | 1 BROOKS JR. K 2pt FG outside the paint, jump shot made (22)                    |
| 02:14     |  |              |           | 5 WHEELER S assist (6)  |
| 01:46     | 13 LEDEE J foul drawn (10)                               |              |           | 34 MEAH B foul personal (5 - 15)  |
| 01:46     |  |              |           | 34 MEAH B substitution out  |
| 01:46     |  |              |           | 32 BREIDENBACH W substitution in  |
| 01:46     | 13 LEDEE J free throw 1 - 2 made (29)                    | <b>93-95</b> | <b>-2</b> |   |
| 01:46     | 13 LEDEE J free throw 2 - 2 made (30)                    | <b>94-95</b> | <b>-1</b> |   |
| 01:27     |  | <b>94-97</b> | <b>-3</b> | 13 WOOD M 2pt FG outside the paint, jump shot made (18)                         |
| 01:27     |  |              |           | 9 MULCAHY P assist (13)   |
| 01:13     | 13 LEDEE J foul drawn (11)                               |              |           | 1 BROOKS JR. K foul personal (2 - 16)   |
| 01:13     | 13 LEDEE J free throw 1 - 2 made (31)                    | <b>95-97</b> | <b>-2</b> |   |
| 01:13     | 13 LEDEE J free throw 2 - 2 made (32)                    | <b>96-97</b> | <b>-1</b> |   |
| 00:55     |  |              |           | 9 MULCAHY P 2pt FG in the paint, layup missed                                   |
| 00:55     | defensive rebound (41)                                   |              |           |   |
| 00:55     |  |              |           | 32 BREIDENBACH W substitution out   |
| 00:55     |  |              |           | 23 HOLLAND A substitution in  |
| 00:41     | Timeout 60 Sec   |              |           |   |
| 00:36     | 13 LEDEE J 2pt FG in the paint, layup made (34)          | <b>98-97</b> | <b>1</b>  |   |
| 00:14     | 5 BUTLER L steal (5)                                     |              |           | 1 BROOKS JR. K turnover lost ball (4)   |



Official Basketball Play by Play - 1st OT  
**Washington at San Diego St.**  
 11/19/23 T-Mobile Arena, Las Vegas  
 2023-24 Men's Basketball

**Game Time:** 7:00 PM  
**Game Duration:** 2:34  
**Attendance:** 2,064

**Officials:** Tony Padilla, Ray Natili, Michael Irving

| Game Time               | SDSU  | Score         | Diff     | WASH                                |
|-------------------------|---|---------------|----------|-------------------------------------|
| 00:09                   | 14 WATERS R foul drawn (4)                        |               |          | 13 WOOD M foul personal (4 - 17)    |
| 00:09                   | 14 WATERS R free throw fast break 1 - 2 made (12) | <b>99-97</b>  | <b>2</b> |                                     |
| 00:09                   |   |               |          | Timeout 30 Sec                      |
| 00:09                   | 14 WATERS R free throw fast break 2 - 2 made (13) | <b>100-97</b> | <b>3</b> |                                     |
| 00:02                   |   |               |          | 13 WOOD M 3pt FG , jump shot missed |
| 00:00                   | 13 LEDEE J defensive rebound (17)                 |               |          |                                     |
| <b>END OF GAME</b>      |   |               |          |                                     |
| <b>SDSU 100-97 WASH</b> |   |               |          |                                     |





Official Basketball Box Score - 1st OT  
**Washington at San Diego St.**  
 11/19/23 T-Mobile Arena, Las Vegas  
 2023-24 Men's Basketball

Game Time: 7:00 PM  
 Game Duration: 2:34  
 Attendance: 2,064

Officials: Tony Padilla, Ray Natili, Michael Irving

**Washington - 12**

| NO.           | Name                | F | Min   | FG  |     |     | 3P |    |     | FT |    |    | Rebounds |   |   | Fouls |   | TP | AS | TO | ST | Blocks |    | +/- |
|---------------|---------------------|---|-------|-----|-----|-----|----|----|-----|----|----|----|----------|---|---|-------|---|----|----|----|----|--------|----|-----|
|               |                     |   |       | M-A | M-A | M-A | OR | DR | TOT | PF | FD | BS | BA       |   |   |       |   |    |    |    |    |        |    |     |
| 1             | Keion Brooks Jr.    | F | 05:00 | 4-4 | 0-0 | 0-0 | 0  | 0  | 0   | 1  | 0  | 8  | 0        | 1 | 0 | 0     | 0 | 0  | 0  | 0  | 0  | 0      | -3 |     |
| 13            | Moses Wood          | F | 05:00 | 1-2 | 0-1 | 0-0 | 0  | 0  | 0   | 1  | 0  | 2  | 0        | 0 | 0 | 0     | 0 | 0  | 0  | 0  | 0  | 0      | -3 |     |
| 11            | Franck Kepnang      | C | 00:00 | 0-0 | 0-0 | 0-0 | 0  | 0  | 0   | 0  | 0  | 0  | 0        | 0 | 0 | 0     | 0 | 0  | 0  | 0  | 0  | 0      |    |     |
| 5             | Sahvir Wheeler      | G | 05:00 | 0-0 | 0-0 | 0-0 | 0  | 0  | 0   | 0  | 0  | 0  | 2        | 0 | 0 | 0     | 0 | 0  | 0  | 0  | 0  | -3     |    |     |
| 9             | Paul Mulcahy        | G | 05:00 | 0-2 | 0-0 | 0-0 | 0  | 0  | 0   | 1  | 0  | 0  | 3        | 0 | 1 | 0     | 1 | 0  | 1  | 0  | 1  | -3     |    |     |
| 34            | Braxton Meah        |   | 03:14 | 0-0 | 0-0 | 2-2 | 0  | 0  | 0   | 1  | 1  | 2  | 0        | 0 | 0 | 0     | 0 | 0  | 0  | 0  | 0  | 3      |    |     |
| 32            | Wilhelm Breidenbach |   | 00:51 | 0-0 | 0-0 | 0-0 | 0  | 0  | 0   | 0  | 0  | 0  | 0        | 0 | 0 | 0     | 0 | 0  | 0  | 0  | 0  | -2     |    |     |
| 23            | Anthony Holland     |   | 00:55 | 0-0 | 0-0 | 0-0 | 0  | 0  | 0   | 0  | 0  | 0  | 0        | 0 | 0 | 0     | 0 | 0  | 0  | 0  | 0  | -4     |    |     |
| Team          |                     |   |       |     |     |     |    |    |     |    |    | 1  | 0        | 1 |   | 0     |   | 0  |    |    |    |        |    |     |
| <b>Totals</b> |                     |   |       | 5-8 | 0-1 | 2-2 | 1  | 0  | 1   | 4  | 1  | 12 | 5        | 1 | 1 | 1     | 0 | 1  |    |    |    |        | -3 |     |

| Shooting By Period |     |        |
|--------------------|-----|--------|
| OT FG%             | 5-8 | 62.5%  |
| 3PT%               | 0-1 | 0.0%   |
| FT%                | 2-2 | 100%   |
| GM FG%             | 5-8 | 62.5%  |
| 3PT%               | 0-1 | 0.0%   |
| FT%                | 2-2 | 100.0% |

Dead Ball Rebounds: 0, 0

Technical Fouls::NONE

**San Diego St. - 15**

| NO.           | Name            | F | Min   | FG  |     |     | 3P |    |     | FT |    |    | Rebounds |   |   | Fouls |   | TP | AS | TO | ST | Blocks |   | +/- |
|---------------|-----------------|---|-------|-----|-----|-----|----|----|-----|----|----|----|----------|---|---|-------|---|----|----|----|----|--------|---|-----|
|               |                 |   |       | M-A | M-A | M-A | OR | DR | TOT | PF | FD | BS | BA       |   |   |       |   |    |    |    |    |        |   |     |
| 3             | Micah Parrish   | F | 05:00 | 0-1 | 0-0 | 0-0 | 0  | 0  | 0   | 0  | 0  | 0  | 0        | 0 | 1 | 0     | 0 | 0  | 0  | 0  | 0  | 3      |   |     |
| 13            | Jaedon LeDee    | F | 05:00 | 2-2 | 0-0 | 6-6 | 1  | 1  | 2   | 1  | 3  | 10 | 0        | 0 | 0 | 0     | 0 | 0  | 0  | 0  | 0  | 3      |   |     |
| 25            | Elijah Saunders | F | 05:00 | 0-0 | 0-0 | 0-0 | 0  | 0  | 0   | 0  | 0  | 0  | 0        | 0 | 0 | 0     | 0 | 0  | 0  | 0  | 0  | 3      |   |     |
| 5             | Lamont Butler   | G | 05:00 | 1-1 | 1-1 | 0-0 | 0  | 0  | 0   | 0  | 0  | 3  | 0        | 0 | 1 | 1     | 0 | 3  |    |    |    | 3      |   |     |
| 14            | Reese Waters    | G | 05:00 | 0-0 | 0-0 | 2-2 | 0  | 0  | 0   | 0  | 1  | 2  | 2        | 0 | 0 | 0     | 0 | 0  | 0  | 0  | 0  | 3      |   |     |
| Team          |                 |   |       |     |     |     |    |    |     |    |    | 0  | 1        | 1 |   | 0     |   | 0  |    |    |    |        |   |     |
| <b>Totals</b> |                 |   |       | 3-4 | 1-1 | 8-8 | 1  | 2  | 3   | 1  | 4  | 15 | 2        | 1 | 1 | 1     | 1 | 0  |    |    |    |        | 3 |     |

| Shooting By Period |     |        |
|--------------------|-----|--------|
| OT FG%             | 3-4 | 75.0%  |
| 3PT%               | 1-1 | 100.0% |
| FT%                | 8-8 | 100%   |
| GM FG%             | 3-4 | 75.0%  |
| 3PT%               | 1-1 | 100.0% |
| FT%                | 8-8 | 100.0% |

Dead Ball Rebounds: 0, 0

Technical Fouls::NONE

|                  | WASH                        | SDSU                        |
|------------------|-----------------------------|-----------------------------|
| Biggest lead     | 4 (1 <sup>st</sup> OT 4:17) | 3 (1 <sup>st</sup> OT 0:09) |
| Best Scoring Run | 4 (1 <sup>st</sup> OT 4:17) | 6 (1 <sup>st</sup> OT 0:09) |
| Lead Changes     | 2                           |                             |
| Times Tied       | 0                           |                             |
| Time with Lead   | 04:09                       | 00:37                       |

| Points from   | WASH | SDSU |
|---------------|------|------|
| Turnovers     | 2    | 2    |
| Paint         | 2    | 2    |
| Second Chance | 2    | 2    |
| Fast Breaks   | 0    | 2    |
| Bench         | 2    | 0    |

|      | Period by Period Scoring |     |     |     |
|------|--------------------------|-----|-----|-----|
|      | 1st                      | 2nd | OT1 | TOT |
| WASH | 40                       | 45  | 12  | 97  |
| SDSU | 43                       | 42  | 15  | 100 |



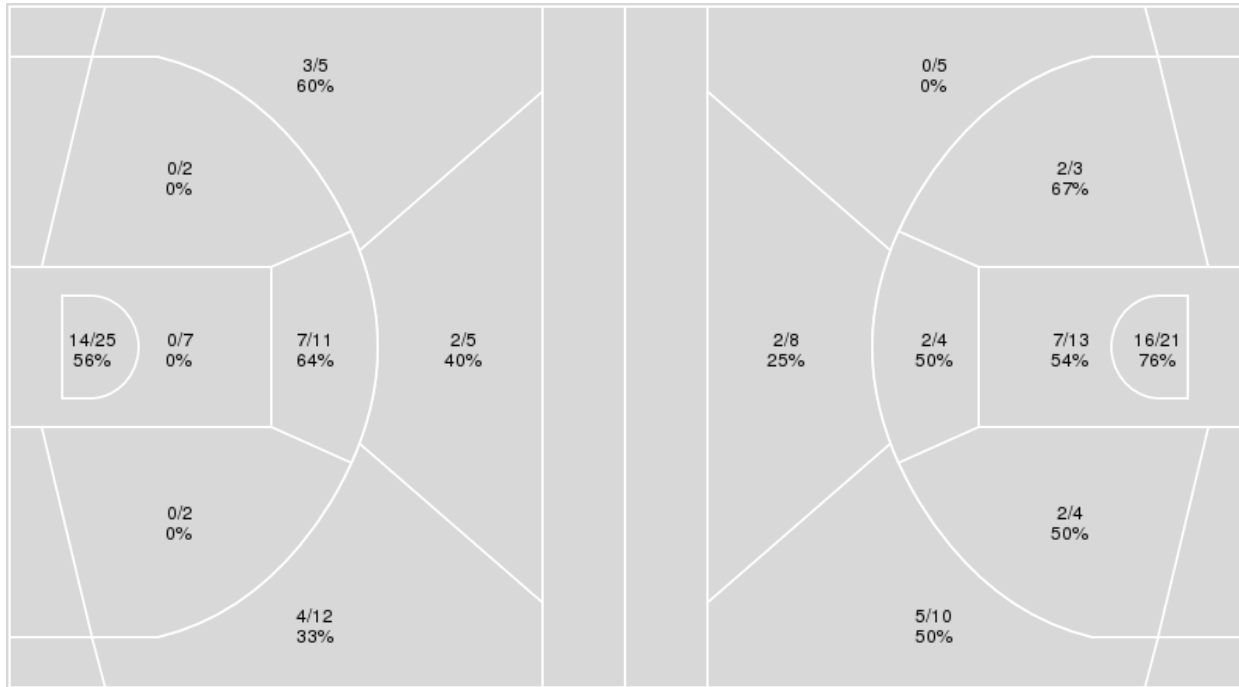
**Officials:** Tony Padilla, Ray Natili, Michael Irving

{ Players => 0, 2, 3, 4, 5, 8, 10, 11, 12, 13, 14, 21, 24, 25, 32, 40, 42; }  
 FG Types => All; Results => All;

{ Players => 0, 1, 4, 5, 7, 8, 9, 10, 11, 13, 21, 23, 31, 32, 33, 34, 35; }  
 FG Types => All; Results => All;

**San Diego St.**

**Washington**



| San Diego St. | M/A   | %  |
|---------------|-------|----|
| Field Goals   | 30/69 | 43 |
| 2 Points      | 21/47 | 45 |
| 3 Points      | 9/22  | 41 |
| Free Throws   | 31/41 | 76 |

| Washington  | M/A   | %  |
|-------------|-------|----|
| Field Goals | 36/68 | 53 |
| 2 Points    | 29/45 | 64 |
| 3 Points    | 7/23  | 30 |
| Free Throws | 18/21 | 86 |



**Washington at San Diego St.**

11/19/23 T-Mobile Arena, Las Vegas  
2023-24 Men's Basketball

Game Time: 7:00 PM  
Game Duration: 2:34  
Attendance: 2,064

Officials: Tony Padilla, Ray Natili, Michael Irving

**Washington**

| No | Name                | Mins  |       | Score   |         | Points Diff |     | Points per Min |      | Assists |     | Rebounds |     | Steals |     | Turnovers |     |
|----|---------------------|-------|-------|---------|---------|-------------|-----|----------------|------|---------|-----|----------|-----|--------|-----|-----------|-----|
|    |                     | On    | Off   | On      | Off     | On          | Off | On             | Off  | On      | Off | On       | Off | On     | Off | On        | Off |
| 0  | Koren Johnson       | 19:14 | 25:46 | 42 - 46 | 55 - 54 | -4          | 1   | 2.18           | 2.13 | 10      | 17  | 12       | 23  | 4      | 3   | 4         | 9   |
| 1  | Keion Brooks Jr.    | 40:43 | 04:17 | 85 - 89 | 12 - 11 | -4          | 1   | 2.09           | 2.80 | 24      | 3   | 32       | 3   | 7      | 0   | 13        | 0   |
| 5  | Sahvir Wheeler      | 42:28 | 02:32 | 91 - 95 | 6 - 5   | -4          | 1   | 2.14           | 2.37 | 24      | 3   | 34       | 1   | 6      | 1   | 13        | 0   |
| 9  | Paul Mulcahy        | 39:21 | 05:39 | 87 - 87 | 10 - 13 | 0           | -3  | 2.21           | 1.77 | 26      | 1   | 30       | 5   | 7      | 0   | 11        | 2   |
| 11 | Franck Kepnang      | 22:32 | 22:28 | 51 - 52 | 46 - 48 | -1          | -2  | 2.26           | 2.05 | 15      | 12  | 17       | 18  | 4      | 3   | 5         | 8   |
| 13 | Moses Wood          | 35:48 | 09:12 | 79 - 79 | 18 - 21 | 0           | -3  | 2.21           | 1.96 | 21      | 6   | 31       | 4   | 4      | 3   | 10        | 3   |
| 23 | Anthony Holland     | 04:04 | 40:56 | 6 - 12  | 91 - 88 | -6          | 3   | 1.47           | 2.22 | 3       | 24  | 1        | 34  | 1      | 6   | 3         | 10  |
| 32 | Wilhelm Breidenbach | 07:06 | 37:54 | 10 - 19 | 87 - 81 | -9          | 6   | 1.41           | 2.30 | 2       | 25  | 6        | 29  | 0      | 7   | 4         | 9   |
| 34 | Braxton Meah        | 13:44 | 31:16 | 34 - 21 | 63 - 79 | 13          | -16 | 2.48           | 2.01 | 10      | 17  | 12       | 23  | 2      | 5   | 2         | 11  |

**San Diego St.**

| No | Name             | Mins  |       | Score   |         | Points Diff |     | Points per Min |      | Assists |     | Rebounds |     | Steals |     | Turnovers |     |
|----|------------------|-------|-------|---------|---------|-------------|-----|----------------|------|---------|-----|----------|-----|--------|-----|-----------|-----|
|    |                  | On    | Off   | On      | Off     | On          | Off | On             | Off  | On      | Off | On       | Off | On     | Off | On        | Off |
| 3  | Micah Parrish    | 37:11 | 07:49 | 86 - 80 | 14 - 17 | 6           | -3  | 2.31           | 1.79 | 16      | 3   | 30       | 12  | 9      | 1   | 7         | 1   |
| 4  | Jay Pal          | 07:46 | 37:14 | 20 - 19 | 80 - 78 | 1           | 2   | 2.58           | 2.15 | 4       | 15  | 10       | 32  | 1      | 9   | 0         | 8   |
| 5  | Lamont Butler    | 31:34 | 13:26 | 69 - 71 | 31 - 26 | -2          | 5   | 2.19           | 2.31 | 12      | 7   | 25       | 17  | 8      | 2   | 7         | 1   |
| 12 | Darrion Trammell | 19:32 | 25:28 | 40 - 43 | 60 - 54 | -3          | 6   | 2.05           | 2.36 | 9       | 10  | 21       | 21  | 2      | 8   | 3         | 5   |
| 13 | Jaedon LeDee     | 40:56 | 04:04 | 92 - 87 | 8 - 10  | 5           | -2  | 2.25           | 1.97 | 18      | 1   | 38       | 4   | 9      | 1   | 8         | 0   |
| 14 | Reese Waters     | 37:19 | 07:41 | 85 - 75 | 15 - 22 | 10          | -7  | 2.28           | 1.95 | 16      | 3   | 37       | 5   | 10     | 0   | 7         | 1   |
| 21 | Miles Byrd       | 09:24 | 35:36 | 20 - 22 | 80 - 75 | -2          | 5   | 2.13           | 2.25 | 4       | 15  | 13       | 29  | 1      | 9   | 0         | 8   |
| 25 | Elijah Saunders  | 35:23 | 09:37 | 80 - 76 | 20 - 21 | 4           | -1  | 2.26           | 2.08 | 15      | 4   | 29       | 13  | 9      | 1   | 7         | 1   |
| 40 | Miles Heide      | 05:55 | 39:05 | 8 - 12  | 92 - 85 | -4          | 7   | 1.35           | 2.35 | 1       | 18  | 7        | 35  | 1      | 9   | 1         | 7   |

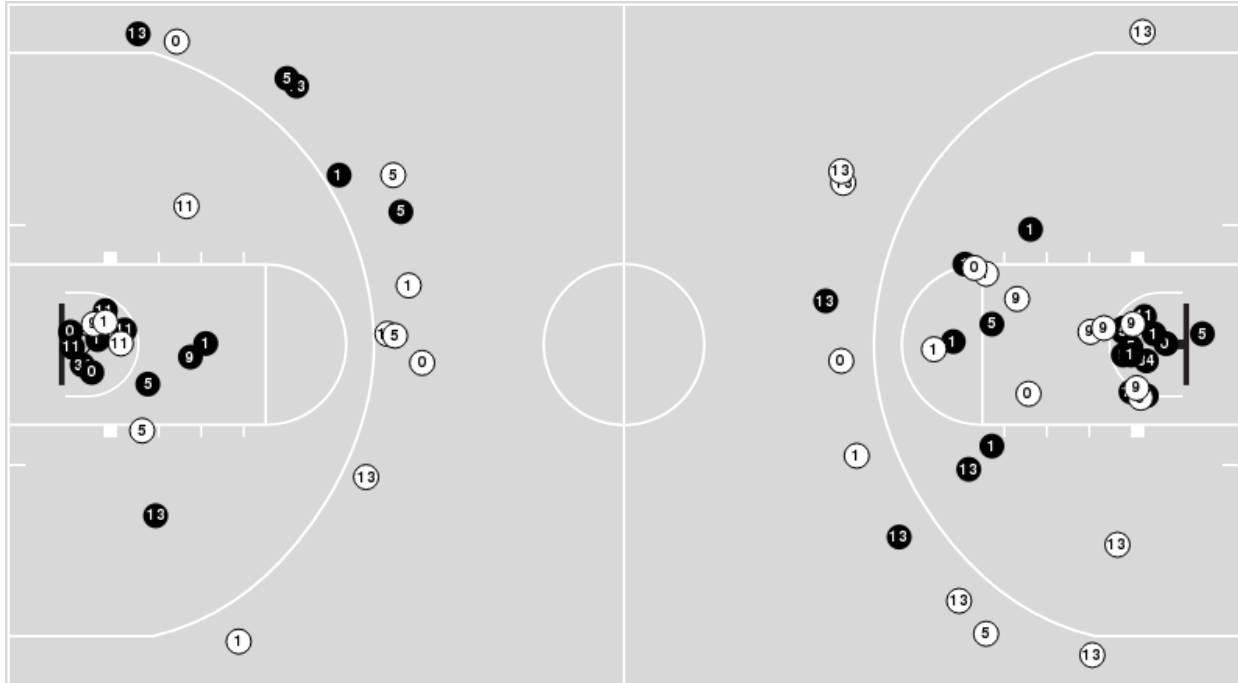


**Officials:** Tony Padilla, Ray Natili, Michael Irving

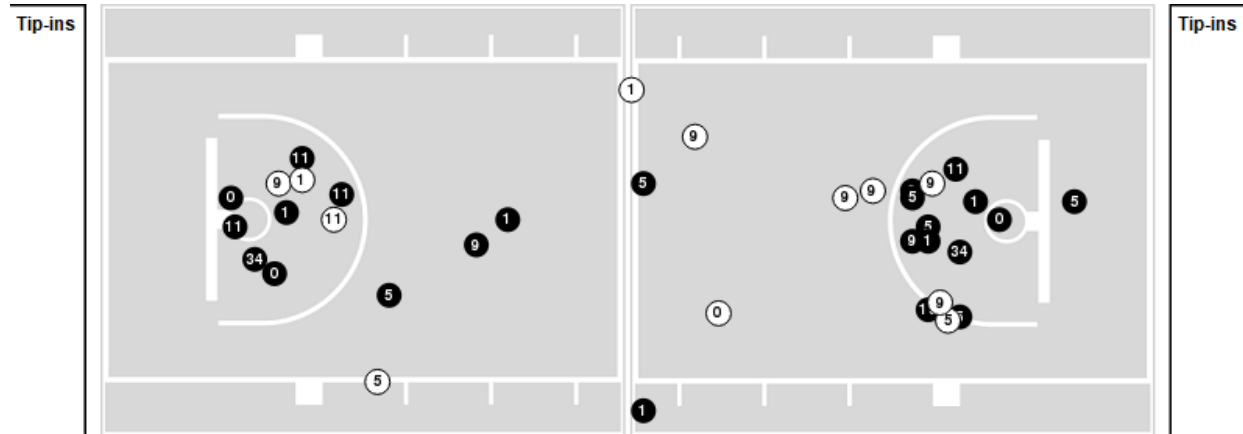
Players => 0, 1, 4, 5, 7, 8, 9, 10, 11, 13, 21, 23, 31, 32, 33, 34, 35FG Types=>AllResults=>All

## Washington

### All Field Goals



### Blow Up Chart



● Made    ○ Missed    N - Player Number

| Washington  | M/A   | %  |
|-------------|-------|----|
| Field Goals | 36/68 | 53 |
| 2 Points    | 29/45 | 64 |
| 3 Points    | 7/23  | 30 |
| Free Throws | 18/21 | 86 |

| Washington           | M/A          | %  |
|----------------------|--------------|----|
| Points in the Paint  | 46 (23 / 34) | 68 |
| Fast Break Points    | 22 (13/15)   | 87 |
| Second Chance Points | 12 (7/9)     | 78 |
| Effective FG%        | 58           |    |

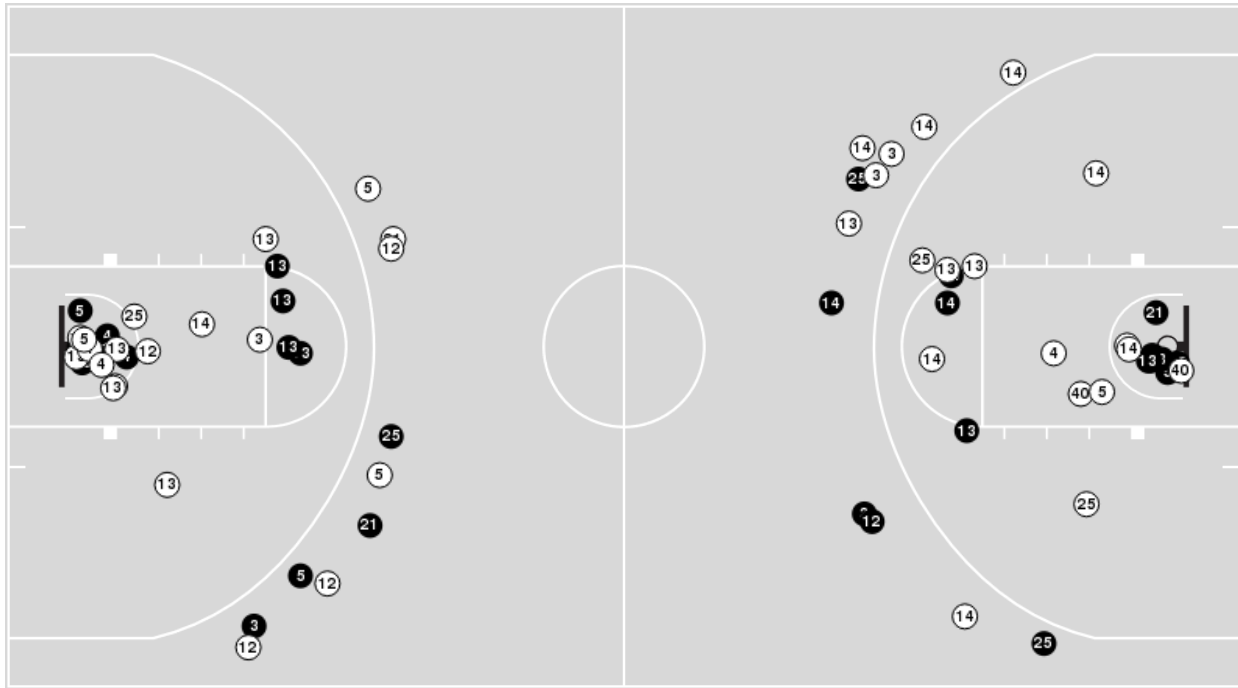


**Officials:** Tony Padilla, Ray Natili, Michael Irving

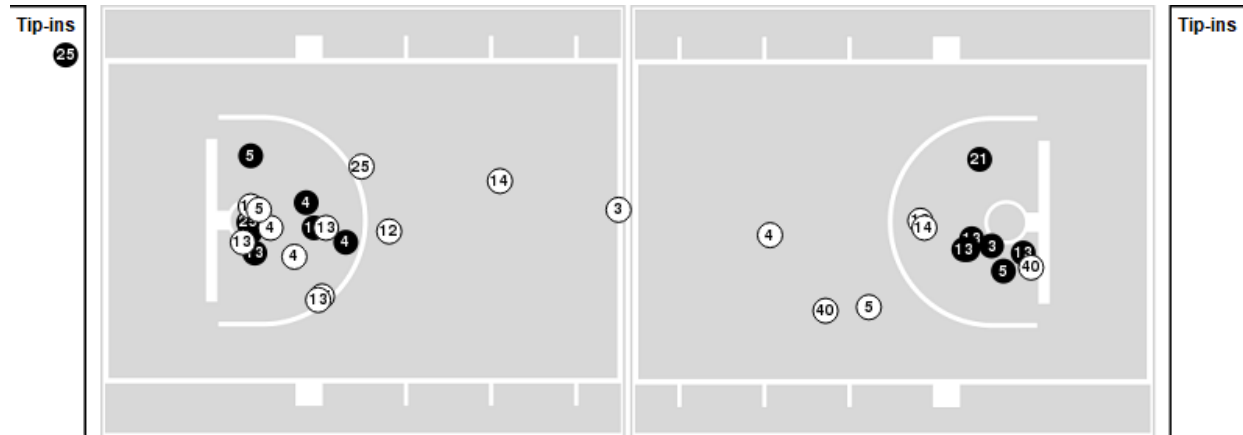
Players => 0, 2, 3, 4, 5, 8, 10, 11, 12, 13, 14, 21, 24, 25, 32, 40, 42FG Types=>AllResults=>All

**San Diego St.**

**All Field Goals**



**Blow Up Chart**



● Made    ○ Missed    N - Player Number

| San Diego St. | M/A   | %  |
|---------------|-------|----|
| Field Goals   | 30/69 | 43 |
| 2 Points      | 21/47 | 45 |
| 3 Points      | 9/22  | 41 |
| Free Throws   | 31/41 | 76 |

| San Diego St.        | M/A          | %  |
|----------------------|--------------|----|
| Points in the Paint  | 28 (14 / 32) | 44 |
| Fast Break Points    | 15 (11/16)   | 69 |
| Second Chance Points | 17 (13/22)   | 59 |
| Effective FG%        | 50           |    |



**Washington at San Diego St.**

11/19/23 T-Mobile Arena, Las Vegas  
2023-24 Men's Basketball

**Game Time:** 7:00 PM  
**Game Duration:** 2:34  
**Attendance:** 2,064

**Officials:** Tony Padilla, Ray Natili, Michael Irving

**Washington**

| Lineup   | Quarter On | Time On | Quarter Off | Time Off | Time on Court | Score | Score Diff | Reb | Stl | Tov | Ass | PPP    |
|--|------------|---------|-------------|----------|---------------|-------|------------|-----|-----|-----|-----|--------|
| 1- Brooks Jr. K/ 5- Wheeler S/ 9- Mulcahy P/ 11- Kepnang F/ 13- Wood M/        | 1          | 20:00   | 1           | 12:45    | 07:15         | 16-17 | -1         | 7   | 0   | 2   | 6   | 1.3333 |
| 0- Johnson K/ 5- Wheeler S/ 9- Mulcahy P/ 13- Wood M/ 34- Meah B/              | 1          | 12:45   | 1           | 11:15    | 01:30         | 5-1   | 4          | 1   | 0   | 0   | 1   | 2.5000 |
| 0- Johnson K/ 1- Brooks Jr. K/ 5- Wheeler S/ 9- Mulcahy P/ 34- Meah B/         | 1          | 11:15   | 1           | 10:06    | 01:09         | 2-3   | -1         | 1   | 0   | 0   | 1   | 1.0000 |
| 0- Johnson K/ 1- Brooks Jr. K/ 5- Wheeler S/ 9- Mulcahy P/ 11- Kepnang F/      | 1          | 10:06   | 1           | 09:09    | 00:57         | 3-2   | 1          | 1   | 0   | 0   | 1   | 2.0833 |
| 0- Johnson K/ 1- Brooks Jr. K/ 9- Mulcahy P/ 11- Kepnang F/ 23- Holland A/     | 1          | 09:09   | 1           | 06:37    | 02:32         | 6-5   | 1          | 1   | 1   | 0   | 3   | 1.3514 |
| 0- Johnson K/ 1- Brooks Jr. K/ 5- Wheeler S/ 23- Holland A/ 32- Breidenbach W/ | 1          | 06:37   | 1           | 06:00    | 00:37         | 0-3   | -3         | 0   | 0   | 2   | 0   | 0.0000 |
| 0- Johnson K/ 1- Brooks Jr. K/ 5- Wheeler S/ 13- Wood M/ 32- Breidenbach W/    | 1          | 06:00   | 1           | 04:27    | 01:33         | 3-2   | 1          | 3   | 0   | 0   | 0   | 0.8721 |
| 1- Brooks Jr. K/ 5- Wheeler S/ 9- Mulcahy P/ 13- Wood M/ 32- Breidenbach W/    | 1          | 04:27   | 1           | 04:27    | 00:00         | 0-0   | 0          | 0   | 0   | 0   | 0   | 0.0000 |
| 1- Brooks Jr. K/ 5- Wheeler S/ 9- Mulcahy P/ 13- Wood M/ 34- Meah B/           | 1          | 04:27   | 1           | 04:05    | 00:22         | 0-0   | 0          | 0   | 0   | 1   | 0   | 0.0000 |
| 1- Brooks Jr. K/ 5- Wheeler S/ 9- Mulcahy P/ 13- Wood M/ 32- Breidenbach W/    | 1          | 04:05   | 2           | 20:00    | 04:05         | 5-10  | -5         | 3   | 0   | 2   | 1   | 0.9191 |
| 1- Brooks Jr. K/ 5- Wheeler S/ 9- Mulcahy P/ 11- Kepnang F/ 13- Wood M/        | 2          | 20:00   | 2           | 15:43    | 04:17         | 8-6   | 2          | 5   | 1   | 2   | 1   | 0.9009 |
| 1- Brooks Jr. K/ 5- Wheeler S/ 9- Mulcahy P/ 13- Wood M/ 34- Meah B/           | 2          | 15:43   | 2           | 13:52    | 01:51         | 2-0   | 2          | 3   | 1   | 0   | 1   | 0.6667 |
| 0- Johnson K/ 1- Brooks Jr. K/ 5- Wheeler S/ 9- Mulcahy P/ 34- Meah B/         | 2          | 13:52   | 2           | 13:33    | 00:19         | 0-0   | 0          | 0   | 0   | 0   | 0   | 0.0000 |
| 0- Johnson K/ 1- Brooks Jr. K/ 5- Wheeler S/ 9- Mulcahy P/ 11- Kepnang F/      | 2          | 13:33   | 2           | 12:53    | 00:40         | 0-5   | -5         | 0   | 0   | 1   | 0   | 0.0000 |
| 0- Johnson K/ 5- Wheeler S/ 9- Mulcahy P/ 11- Kepnang F/ 13- Wood M/           | 2          | 12:53   | 2           | 10:16    | 02:37         | 7-9   | -2         | 2   | 0   | 0   | 2   | 1.4000 |
| 0- Johnson K/ 1- Brooks Jr. K/ 5- Wheeler S/ 13- Wood M/ 34- Meah B/           | 2          | 10:16   | 2           | 06:47    | 03:29         | 7-8   | -1         | 2   | 0   | 0   | 1   | 1.3158 |
| 1- Brooks Jr. K/ 5- Wheeler S/ 9- Mulcahy P/ 11- Kepnang F/ 13- Wood M/        | 2          | 06:47   | 2           | 05:22    | 01:25         | 2-4   | -2         | 1   | 0   | 0   | 0   | 0.6944 |
| 0- Johnson K/ 1- Brooks Jr. K/ 5- Wheeler S/ 9- Mulcahy P/ 13- Wood M/         | 2          | 05:22   | 2           | 04:46    | 00:36         | 0-3   | -3         | 0   | 0   | 1   | 0   | 0.0000 |
| 0- Johnson K/ 1- Brooks Jr. K/ 5- Wheeler S/ 9- Mulcahy P/ 34- Meah B/         | 2          | 04:46   | 2           | 04:14    | 00:32         | 1-0   | 1          | 1   | 0   | 0   | 0   | 2.2727 |
| 0- Johnson K/ 1- Brooks Jr. K/ 5- Wheeler S/ 9- Mulcahy P/ 11- Kepnang F/      | 2          | 04:14   | 2           | 01:48    | 02:26         | 6-3   | 3          | 0   | 2   | 0   | 1   | 1.8072 |
| 1- Brooks Jr. K/ 5- Wheeler S/ 9- Mulcahy P/ 11- Kepnang F/ 13- Wood M/        | 2          | 01:48   | 2           | 01:25    | 00:23         | 3-1   | 2          | 0   | 0   | 0   | 1   | 3.0000 |
| 1- Brooks Jr. K/ 5- Wheeler S/ 9- Mulcahy P/ 13- Wood M/ 34- Meah B/           | 2          | 01:25   | 2           | 01:05    | 00:20         | 2-1   | 1          | 1   | 0   | 1   | 0   | 1.0638 |
| 0- Johnson K/ 5- Wheeler S/ 9- Mulcahy P/ 13- Wood M/ 34- Meah B/              | 2          | 01:05   | 2           | 00:55    | 00:09         | 0-1   | -1         | 0   | 0   | 0   | 0   | 0.0000 |
| 0- Johnson K/ 1- Brooks Jr. K/ 5- Wheeler S/ 9- Mulcahy P/ 13- Wood M/         | 2          | 00:55   | 2           | 00:50    | 00:05         | 2-1   | 1          | 0   | 0   | 0   | 0   | 2.0000 |
| 1- Brooks Jr. K/ 5- Wheeler S/ 9- Mulcahy P/ 13- Wood M/ 34- Meah B/           | 2          | 00:50   | 2           | 00:07    | 00:42         | 4-0   | 4          | 1   | 0   | 0   | 2   | 2.0000 |
| 0- Johnson K/ 1- Brooks Jr. K/ 5- Wheeler S/ 9- Mulcahy P/ 13- Wood M/         | 2          | 00:07   | 2           | 00:05    | 00:02         | 0-0   | 0          | 0   | 1   | 0   | 0   | 0.0000 |
| 1- Brooks Jr. K/ 5- Wheeler S/ 9- Mulcahy P/ 13- Wood M/ 34- Meah B/           | 2          | 00:05   | OT1         | 01:46    | 03:19         | 11-7  | 4          | 2   | 1   | 0   | 4   | 1.9097 |
| 1- Brooks Jr. K/ 5- Wheeler S/ 9- Mulcahy P/ 13- Wood M/ 32- Breidenbach W/    | OT1        | 01:46   | OT1         | 00:55    | 00:50         | 2-4   | -2         | 0   | 0   | 0   | 1   | 1.0000 |
| 1- Brooks Jr. K/ 5- Wheeler S/ 9- Mulcahy P/ 13- Wood M/ 23- Holland A/        | OT1        | 00:55   | OT1         | 00:00    | 00:55         | 0-4   | -4         | 0   | 0   | 1   | 0   | 0.0000 |



**Washington at San Diego St.**

11/19/23 T-Mobile Arena, Las Vegas  
2023-24 Men's Basketball

**Game Time:** 7:00 PM  
**Game Duration:** 2:34  
**Attendance:** 2,064

**Officials:** Tony Padilla, Ray Natili, Michael Irving

**San Diego St.**

| Lineup   | Quarter On | Time On | Quarter Off | Time Off | Time on Court | Score | Score Diff | Reb | Stl | Tov | Ass | PPP    |
|--|------------|---------|-------------|----------|---------------|-------|------------|-----|-----|-----|-----|--------|
| 3- Parrish M/ 5- Butler L/ 13- LeDee J/ 14- Waters R/ 25- Saunders E/    | 1          | 20:00   | 1           | 12:45    | 07:15         | 17-16 | 1          | 7   | 1   | 0   | 4   | 1.4860 |
| 4- Pal J/ 5- Butler L/ 12- Trammell D/ 13- LeDee J/ 21- Byrd M/          | 1          | 12:45   | 1           | 12:45    | 00:00         | 1-0   | 1          | 0   | 0   | 0   | 0   | 2.2727 |
| 4- Pal J/ 5- Butler L/ 12- Trammell D/ 21- Byrd M/ 40- Heide M/          | 1          | 12:45   | 1           | 11:20    | 01:25         | 0-5   | -5         | 0   | 0   | 0   | 0   | 0.0000 |
| 4- Pal J/ 12- Trammell D/ 14- Waters R/ 21- Byrd M/ 40- Heide M/         | 1          | 11:20   | 1           | 09:09    | 02:11         | 5-5   | 0          | 4   | 0   | 0   | 1   | 1.1574 |
| 3- Parrish M/ 12- Trammell D/ 13- LeDee J/ 14- Waters R/ 25- Saunders E/ | 1          | 09:09   | 1           | 06:37    | 02:32         | 5-6   | -1         | 2   | 0   | 1   | 2   | 1.2500 |
| 3- Parrish M/ 5- Butler L/ 13- LeDee J/ 14- Waters R/ 25- Saunders E/    | 1          | 06:37   | 1           | 02:55    | 03:42         | 8-5   | 3          | 3   | 3   | 0   | 1   | 1.1111 |
| 3- Parrish M/ 12- Trammell D/ 13- LeDee J/ 14- Waters R/ 25- Saunders E/ | 1          | 02:55   | 1           | 00:27    | 02:27         | 4-3   | 1          | 2   | 0   | 0   | 1   | 1.3889 |
| 3- Parrish M/ 12- Trammell D/ 14- Waters R/ 25- Saunders E/ 40- Heide M/ | 1          | 00:27   | 2           | 20:00    | 00:27         | 3-0   | 3          | 0   | 1   | 0   | 0   | 3.0000 |
| 3- Parrish M/ 5- Butler L/ 13- LeDee J/ 14- Waters R/ 25- Saunders E/    | 2          | 20:00   | 2           | 16:49    | 03:11         | 6-4   | 2          | 4   | 1   | 0   | 1   | 1.0204 |
| 3- Parrish M/ 5- Butler L/ 12- Trammell D/ 13- LeDee J/ 25- Saunders E/  | 2          | 16:49   | 2           | 15:43    | 01:06         | 0-4   | -4         | 1   | 0   | 1   | 0   | 0.0000 |
| 3- Parrish M/ 5- Butler L/ 12- Trammell D/ 13- LeDee J/ 40- Heide M/     | 2          | 15:43   | 2           | 15:25    | 00:18         | 0-0   | 0          | 0   | 0   | 0   | 0   | 0.0000 |
| 5- Butler L/ 12- Trammell D/ 13- LeDee J/ 14- Waters R/ 40- Heide M/     | 2          | 15:25   | 2           | 15:00    | 00:25         | 0-0   | 0          | 1   | 0   | 1   | 0   | 0.0000 |
| 12- Trammell D/ 13- LeDee J/ 14- Waters R/ 21- Byrd M/ 40- Heide M/      | 2          | 15:00   | 2           | 13:52    | 01:08         | 0-2   | -2         | 2   | 0   | 0   | 0   | 0.0000 |
| 4- Pal J/ 12- Trammell D/ 13- LeDee J/ 14- Waters R/ 21- Byrd M/         | 2          | 13:52   | 2           | 11:12    | 02:40         | 8-5   | 3          | 5   | 1   | 0   | 2   | 2.0619 |
| 3- Parrish M/ 4- Pal J/ 12- Trammell D/ 13- LeDee J/ 21- Byrd M/         | 2          | 11:12   | 2           | 09:42    | 01:30         | 6-4   | 2          | 1   | 0   | 0   | 1   | 1.8072 |
| 3- Parrish M/ 12- Trammell D/ 13- LeDee J/ 21- Byrd M/ 25- Saunders E/   | 2          | 09:42   | 2           | 09:12    | 00:30         | 0-1   | -1         | 1   | 0   | 0   | 0   | 0.0000 |
| 3- Parrish M/ 5- Butler L/ 12- Trammell D/ 13- LeDee J/ 25- Saunders E/  | 2          | 09:12   | 2           | 06:25    | 02:47         | 8-6   | 2          | 2   | 0   | 0   | 2   | 1.8519 |
| 3- Parrish M/ 5- Butler L/ 13- LeDee J/ 14- Waters R/ 25- Saunders E/    | 2          | 06:25   | 2           | 00:55    | 05:29         | 14-12 | 2          | 4   | 2   | 2   | 2   | 1.2915 |
| 3- Parrish M/ 5- Butler L/ 12- Trammell D/ 13- LeDee J/ 25- Saunders E/  | 2          | 00:55   | 2           | 00:50    | 00:05         | 0-2   | -2         | 0   | 0   | 0   | 0   | 0.0000 |
| 3- Parrish M/ 5- Butler L/ 13- LeDee J/ 14- Waters R/ 25- Saunders E/    | 2          | 00:50   | OT1         | 00:00    | 05:50         | 15-17 | -2         | 3   | 1   | 3   | 2   | 1.4259 |



### Washington at San Diego St.

11/19/23 T-Mobile Arena, Las Vegas  
2023-24 Men's Basketball

Game Time: 7:00 PM  
Game Duration: 2:34  
Attendance: 2,064

Officials: Tony Padilla, Ray Natili, Michael Irving

## Washington

| Lineup   | Time  | Score | Score Diff | Pts/Min | Reb | Stl | Tov | Ass | PPP    |
|--|-------|-------|------------|---------|-----|-----|-----|-----|--------|
| 1- Brooks Jr. K/ 5- Wheeler S/ 9- Mulcahy P/ 11- Kepnang F/ 13- Wood M/        | 13:20 | 29-28 | 1          | 2.1750  | 13  | 1   | 4   | 8   | 1.1712 |
| 1- Brooks Jr. K/ 5- Wheeler S/ 9- Mulcahy P/ 13- Wood M/ 34- Meah B/           | 06:35 | 19-8  | 11         | 2.8853  | 7   | 2   | 2   | 7   | 1.3930 |
| 1- Brooks Jr. K/ 5- Wheeler S/ 9- Mulcahy P/ 13- Wood M/ 32- Breidenbach W/    | 04:55 | 7-14  | -7         | 1.4194  | 3   | 0   | 2   | 2   | 0.9409 |
| 0- Johnson K/ 1- Brooks Jr. K/ 5- Wheeler S/ 9- Mulcahy P/ 11- Kepnang F/      | 04:03 | 9-10  | -1         | 2.2222  | 1   | 2   | 1   | 2   | 1.5625 |
| 0- Johnson K/ 1- Brooks Jr. K/ 5- Wheeler S/ 13- Wood M/ 34- Meah B/           | 03:29 | 7-8   | -1         | 2.0096  | 2   | 0   | 0   | 1   | 1.3158 |
| 0- Johnson K/ 5- Wheeler S/ 9- Mulcahy P/ 11- Kepnang F/ 13- Wood M/           | 02:37 | 7-9   | -2         | 2.6752  | 2   | 0   | 0   | 2   | 1.4000 |
| 0- Johnson K/ 1- Brooks Jr. K/ 9- Mulcahy P/ 11- Kepnang F/ 23- Holland A/     | 02:32 | 6-5   | 1          | 2.3684  | 1   | 1   | 0   | 3   | 1.3514 |
| 0- Johnson K/ 1- Brooks Jr. K/ 5- Wheeler S/ 9- Mulcahy P/ 34- Meah B/         | 02:00 | 3-3   | 0          | 1.5000  | 2   | 0   | 0   | 1   | 0.8721 |
| 0- Johnson K/ 5- Wheeler S/ 9- Mulcahy P/ 13- Wood M/ 34- Meah B/              | 01:39 | 5-2   | 3          | 3.0060  | 1   | 0   | 0   | 1   | 2.5000 |
| 0- Johnson K/ 1- Brooks Jr. K/ 5- Wheeler S/ 13- Wood M/ 32- Breidenbach W/    | 01:33 | 3-2   | 1          | 1.9355  | 3   | 0   | 0   | 0   | 0.8721 |
| 1- Brooks Jr. K/ 5- Wheeler S/ 9- Mulcahy P/ 13- Wood M/ 23- Holland A/        | 00:55 | 0-4   | -4         | 0.0000  | 0   | 0   | 1   | 0   | 0.0000 |
| 0- Johnson K/ 1- Brooks Jr. K/ 5- Wheeler S/ 9- Mulcahy P/ 13- Wood M/         | 00:43 | 2-4   | -2         | 2.7842  | 0   | 1   | 1   | 0   | 0.6667 |
| 0- Johnson K/ 1- Brooks Jr. K/ 5- Wheeler S/ 23- Holland A/ 32- Breidenbach W/ | 00:37 | 0-3   | -3         | 0.0000  | 0   | 0   | 2   | 0   | 0.0000 |





**Washington at San Diego St.**

11/19/23 T-Mobile Arena, Las Vegas  
2023-24 Men's Basketball

**Game Time:** 7:00 PM  
**Game Duration:** 2:34  
**Attendance:** 2,064

**Officials:** Tony Padilla, Ray Natili, Michael Irving

**San Diego St.**

| Lineup   | Time  | Score | Score Diff | Pts/Min | Reb | Stl | Tov | Ass | PPP    |
|--|-------|-------|------------|---------|-----|-----|-----|-----|--------|
| 3- Parrish M/ 5- Butler L/ 13- LeDee J/ 14- Waters R/ 25- Saunders E/    | 25:27 | 60-54 | 6          | 2.3562  | 21  | 8   | 5   | 10  | 1.3078 |
| 3- Parrish M/ 12- Trammell D/ 13- LeDee J/ 14- Waters R/ 25- Saunders E/ | 04:59 | 9-9   | 0          | 1.8048  | 4   | 0   | 1   | 3   | 1.3081 |
| 3- Parrish M/ 5- Butler L/ 12- Trammell D/ 13- LeDee J/ 25- Saunders E/  | 03:58 | 8-12  | -4         | 2.0160  | 3   | 0   | 1   | 2   | 1.2658 |
| 4- Pal J/ 12- Trammell D/ 13- LeDee J/ 14- Waters R/ 21- Byrd M/         | 02:40 | 8-5   | 3          | 3.0000  | 5   | 1   | 0   | 2   | 2.0619 |
| 4- Pal J/ 12- Trammell D/ 14- Waters R/ 21- Byrd M/ 40- Heide M/         | 02:11 | 5-5   | 0          | 2.2901  | 4   | 0   | 0   | 1   | 1.1574 |
| 3- Parrish M/ 4- Pal J/ 12- Trammell D/ 13- LeDee J/ 21- Byrd M/         | 01:30 | 6-4   | 2          | 4.0000  | 1   | 0   | 0   | 1   | 1.8072 |
| 4- Pal J/ 5- Butler L/ 12- Trammell D/ 21- Byrd M/ 40- Heide M/          | 01:25 | 0-5   | -5         | 0.0000  | 0   | 0   | 0   | 0   | 0.0000 |
| 12- Trammell D/ 13- LeDee J/ 14- Waters R/ 21- Byrd M/ 40- Heide M/      | 01:08 | 0-2   | -2         | 0.0000  | 2   | 0   | 0   | 0   | 0.0000 |
| 3- Parrish M/ 12- Trammell D/ 13- LeDee J/ 21- Byrd M/ 25- Saunders E/   | 00:30 | 0-1   | -1         | 0.0000  | 1   | 0   | 0   | 0   | 0.0000 |
| 3- Parrish M/ 12- Trammell D/ 14- Waters R/ 25- Saunders E/ 40- Heide M/ | 00:27 | 3-0   | 3          | 6.4748  | 0   | 1   | 0   | 0   | 3.0000 |
| 5- Butler L/ 12- Trammell D/ 13- LeDee J/ 14- Waters R/ 40- Heide M/     | 00:25 | 0-0   | 0          | 0.0000  | 1   | 0   | 1   | 0   | 0.0000 |
| 3- Parrish M/ 5- Butler L/ 12- Trammell D/ 13- LeDee J/ 40- Heide M/     | 00:18 | 0-0   | 0          | 0.0000  | 0   | 0   | 0   | 0   | 0.0000 |
| 4- Pal J/ 5- Butler L/ 12- Trammell D/ 13- LeDee J/ 21- Byrd M/          | 00:00 | 1-0   | 1          | ∞       | 0   | 0   | 0   | 0   | 2.2727 |