

THIS IS SAN DIEGO STATE



Senior Daniel Ortega has appeared in 45 games over his three-year career with nine starts to his credit. The San Diego native has recorded six points on two goals and two assists.

THIS IS SAN DIEGO STATE

| | |
|----------------------------|-------|
| Captain Leadership | 36 |
| Aztec Leadership | 37 |
| Aztec Academics | 38-39 |
| Aztecs in the Community | 40-41 |
| San Diego State University | 42-43 |
| SDSU Sports Deck | 44 |
| Aztec Facilities | 45 |
| Aztec Excellence | 46-47 |
| America's Finest City | 48-49 |
| Aztec Culture | 50 |

Captain Leadership

INTRODUCTION

COACHING STAFF

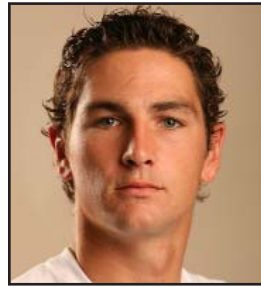
PLAYERS

REVIEW

THIS IS SDSU

HISTORY

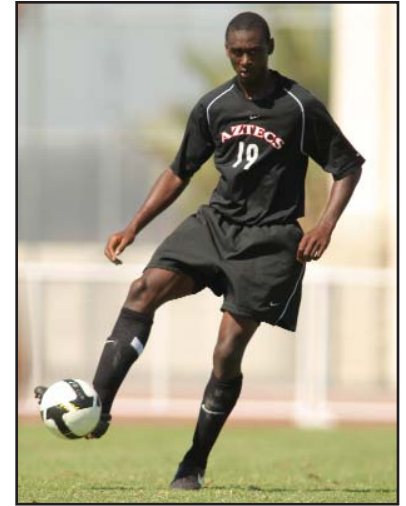
RECORDS



Nick Cardenas



Matt McManus



Jamel Wallace

CAPTAIN LEADERSHIP

Nick Cardenas (left), **Matt McManus** (center) and **Jamel Wallace** (right) will be looked upon to provide leadership and guidance to the 2009 Aztecs.

The three seniors have played a pivotal part in SDSU's transformation into a Pac-10 and national power. Together, the three have combined for 134 appearances, including 113 starts. Despite each playing the majority of their career in the backline, the trio has recorded 51 points (20 goals, 11 assists). Each player earned all-Pac-10 Conference honors a year ago (Cardenas and Wallace - second team, McManus - honorable mention), while helping the Aztecs to another top-tier finish in league play.

Each demonstrated their leadership over the course of their career, both on and off the field, while following the program's "One Team, One Family, One Mission" attitude.



CAPTAINS UNDER LEV KIRSHNER'S TENURE

- 2000 Milton Economy and Enrique Tovar
- 2001 Enrique Tovar
- 2002 Brian Barnes and Ryan Cook
- 2003 Ryan Curtis and Colin Hanke
- 2004 Heath Creager
- 2005 Raul Bautista, Heath Creager and Matt Couch
- 2006 Raul Bautista, Andrew DiCicco and Tally Hall
- 2007 Kraig Chiles and Freddy McDonald
- 2008 Danny Ortiz and Dennis Sanchez (pictured on left with staff)
- 2009 Nick Cardenas, Matt McManus and Jamel Wallace

NCAA TOURNAMENT APPEARANCES

1969, 1981, 1982, 1987, 1988, 1989, 2005, 2006

1987 NCAA NATIONAL FINALIST

Aztec Leadership



Dr. Stephen Weber
University President

Stephen L. Weber, the seventh president of San Diego State University, provides dynamic leadership to an institution that ranks among the largest in the nation and third largest in California. Educated as a philosopher, President Weber began his tenure at SDSU in July 1996 and shortly afterward initiated a broad-based dialog intended to set the course for the University's future.

Under President Weber's guidance, students, faculty, staff, alumni and community leaders participated in shaping this "Shared Vision." SDSU is now moving boldly ahead toward goals set by those discussions: reinforcing academic excellence, nurturing students, honoring diversity and social justice, carefully stewarding resources and further developing global programs.

A champion of community involvement as well as academic excellence, President Weber has been an advocate for community service. Leading by example, he is immediate past chair of the American Association of State Colleges and Universities Board of Directors and co-chairs Partners for K-12 School Reform. He also serves on the boards of governors of The Peres Center for Peace and the San Diego Foundation, and on the boards of directors of the San Diego Regional Economic Development Corporation, the San Diego Science and Technology Council, and the California Healthcare Institute. He co-chairs the College Presidents Forum of the San Diego County Policy Panel on Youth Access to Alcohol.

In addition, President Weber is a member of the international advisory board for the Foundation for Children of the Californias, the advisory council of the San Diego Performing Arts League, and the honorary advisory board of the San Diego Science Alliance. He is a member of the San Diego Rotary Club, an honorary director of the Japan Society of San Diego and Tijuana, and a member of the advisory

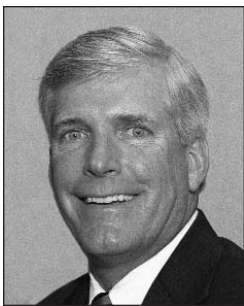
board for Bahcesehir University in Turkey.

Born in Boston, President Weber is a graduate of Bowling Green University with a B.A. in philosophy. He received his Ph.D. in philosophy from the University of Notre Dame in 1969 and is the author of numerous articles on philosophy and higher education.

President Weber's many awards include an honorary degree from Beijing Capital Normal University. He was named among the 1997 Headliners of the Year by the San Diego Press Club. Also in 1997, the San Diego Mediation Center honored him with its Peacemaker Award. In 1999, President Weber received the Executive Director's Award from the San Diego Education Association and the Gold Key Award from the San Diego Hospitality Association. He was recognized as a Leader of Vision by the League of Women Voters of San Diego in 2000.

Before coming to SDSU, President Weber served as interim provost of the State University of New York (SUNY). He also served seven years as president of the SUNY Oswego campus. Prior to that he was vice president of academic affairs at St. Cloud State University in Minnesota, dean of arts and sciences at Fairfield University in Connecticut, and assistant to the president of the University of Maine. While a faculty member at the University of Maine, he was recognized as the outstanding professor in humanities.

President Weber is married to Susan Keim Weber, who shares his enthusiastic commitment to SDSU. They have two sons.



Jeff Schemmel
Director of Athletics

Jeff Schemmel, who has elevated San Diego State athletics to unparalleled success, enters his fifth season on Montezuma Mesa. In 2008-09, San Diego State posted its best-ever finish in the 16-year history of the Division I U.S. Academy Director's Cup for on-field broad based success. It marked the second consecutive academic year that SDSU set a school record in the standings. Also, Aztec student-athletes continued to excel in the classroom as well, with 229 student-athletes earning 3.0 cumulative or 3.2 semester grade-point averages in 2008.

In addition, San Diego State is coming off one of the most successful final four months of anyone in the country, as six teams - women's basketball (NCAA), men's basketball (NIT), women's tennis (NCAA), men's golf (NCAA Regionals), softball (NCAA) and baseball (NCAA) - advanced to postseason play.

In June, 2008, Schemmel was tabbed as the chair of the NCAA Championships and Sports Management Cabinet, which directly oversees nearly every NCAA Division I championship. The Cabinet is one of six committees that make up the restructured NCAA Governance Structure.

Schemmel was named San Diego State's athletic director on July 6, 2005, and is recognized as one of the most accomplished sitting athletic directors in the country. He is a former practicing attorney, has directed a Final Four, served as a senior administrator at Big 10 and Big 12 schools, and played a part in what might be the biggest football turnaround in the history of college athletics.

Schemmel arrived at San Diego State from Conference USA, where he had served as associate commissioner for governance and legal affairs since October of 2004. During his stay in Dallas, he helped the league negotiate television contracts with ESPN and College Sports Television that exceeded more than \$100 million in revenue, and he served as a member of the NCAA Division I Management Council. From February of 2004 to October of 2004, Schemmel was the senior vice president and executive director of development for the Arizona State University Foundation, where he oversaw the school's fundraising efforts while supervising approximately 135 employees across the Tempe campus.

Schemmel was an administrator at the University of Minnesota from 1991 to 2003. During his stay in the Twin Cities, he advanced from associate athletic director for compliance to senior associate athletic director and chief operating officer for Gopher athletics. Along with his departmental duties, Schemmel directed the school's efforts in hosting NCAA Championship events, including the 2001 Final Four, one of America's fastest growing events.

He also supervised and implemented a \$3 million capital improvement campaign, and was heavily involved in the hiring of Minnesota's head football and men's basketball coaches.

From 1988 to 1991, Schemmel was an administrator at his alma mater, Kansas State. He served as the school's assistant athletic director for development and later was the associate athletic director for compliance while supervising the school's Olympic sports. Schemmel was part of the management team that hired Bill Snyder as the Wildcats head football coach. Under Snyder's direction, Kansas State executed what is considered one of the greatest turnarounds in college football history. K-State had made just one bowl appearance in its history prior to Snyder's arrival, did not win a single game in the two seasons before he took over in 1989, and had just three wins in the previous four seasons. Under Snyder, the Wildcats went to a bowl game 11 times and claimed their first-ever Big 12 title.

Schemmel was a decorated runner at Kansas State and was named the 1976 outstanding student-athlete at the school. As a Wildcat, he was a four-time track and field All-American, a five-time Big 8 Conference champion, was a member of a national champion distance medley relay team and won the Big 8 Conference Medallion.

He also served as an ABC Television and Time Magazine correspondent for the 1976 Summer Olympics in Montreal.

After earning his undergraduate degree in political science, Schemmel earned his law degree at Washburn University in Topeka, Kan. He began his professional career as an attorney and later was a partner in his own firm, specializing in business and sports law.

Schemmel and his wife, Lori, have been married for 32 years. They have two sons, Justin, and Jon.

NCAA TOURNAMENT APPEARANCES

1969, 1981, 1982, 1987, 1988, 1989, 2005, 2006

1987 NCAA NATIONAL FINALIST

AZTEC ACADEMICS

- Men's soccer player David Dally (pictured bottom right in his #3 jersey) along with 10 others were given Malik awards in 2009, which honor SDSU student-athletes with the highest semester GPAs.
- During the 2008-09 school year, 72 San Diego State student-athletes garnered all-academic honors from their respective conference, including men's soccer players Nick Collins and Raymundo Reza (Pac-10).
- A total of 229 scholar-athletes who achieved a semester GPA of 3.2 or higher were honored at the 15th annual SDSU Scholar-Athlete Awards Banquet.





AZTEC SOCCER ACADEMIC ACCOMPLISHMENTS

“AN EDUCATION IS WHAT YOU MAKE OF IT...”

The men’s soccer team has held the highest overall GPA for Aztec men’s sports seven times since head coach Lev Kirshner started at San Diego State University. The most recent achievement was last spring (2009).

In the spring of 1998, the men’s team had the highest GPA of all 18 sports in the San Diego State University athletic department.

Five different men’s players have had a total of 10 4.0 GPA’s since Kirshner took over the soccer program, the highest total of any sport on campus.

Thirty-two players have been academic all-conference selections in Kirshner’s tenure.

The program is proud to have eight Academic or Scholar All-American selections. Three of the eight selections have occurred with Kirshner as head coach.

AZTEC ACADEMICS

The dual role of student and athlete can be a daunting challenge for any person at the Division I level. Recognizing that academic challenge, the Student Athlete Academic Support Services program has been developed at San Diego State to assist all student-athletes in achieving academic excellence.

It is a source of pride within San Diego State athletics that the department has developed one of the most comprehensive academic support programs in the country.

THE STAFF

The SAASS staff includes a director, a learning specialist, four academic advisors, the department’s director of compliance, an eligibility coordinator, a financial aid coordinator as well as a recruitment coordinator.

In addition to the full-time staff, the department employs more than 20 mentors and tutors.

Collectively, they operate a program that enhances each student’s satisfactory progress toward graduation.

THE SERVICES

Throughout the academic year, advisors offer a variety of services to aid individuals in the development of their personal goals and the blueprint for pursuing those goals.

All new student-athletes are invited to an orientation that helps lay the foundation for future successes. Each advisor teaches a section of the University’s Freshman Success course (General Studies 100), which deals with specific transition issues for student-athletes. Topics include time management, study skills and test taking. In addition, the course also introduces new students to services such as the Love Library, University Advising Center, Career Services, Health Services and the counseling center.

THE RESOURCES

In the fall of 2001, the academic unit joined the rest of the athletic department in moving into the new \$30 million, 130,000-square-foot Aztec Athletics Center. The academic staff is located on the third floor of the complex and includes a new 40-station computer lab, individual study rooms and two lecture rooms.

THE COMMITMENT

San Diego State’s annual Scholar-Athlete Awards Banquet honors students with a grade-point average in excess of 3.2. In 2009, 229 student-athletes, more than one-third of the student-athlete body, were honored for their work in the classroom.

A new event was launched in 2005 with the inaugural Student-Athlete Advisory Committee (SAAC) Awards. SDSU’s student-athletes were treated to an awards banquet to recognize outstanding individual achievements throughout the athletic department.

ENDOWMENTS

WALSH FAMILY ENDOWED SCHOLARSHIP

| | | | |
|------|----------------|------|---------------|
| 2000 | Milton Economy | 2005 | Matt Couch |
| 2001 | Tim Edwards | 2006 | Raul Bautista |
| | Enrique Tovar | 2007 | Kraig Chiles |
| 2002 | Brian Barnes | 2008 | Danny Ortiz |
| 2003 | Ryan Curtis | 2009 | Matt McManus |
| 2004 | Heath Creager | | |

The Brad Walsh Endowed Scholarship was established in 1998 by Bruce and Margo Walsh in honor of their son, Brad. The generous endowment benefits future generations of Aztec men’s soccer players. Head coach Lev Kirshner and the Aztec Athletic Foundation are presently working on a new endowment fund in honor of former head coach George Logan.

ERIC WYNALDA ENDOWED SCHOLARSHIP

The Eric Wynalda Endowed Scholarship, established in 1995, also benefits SDSU men’s soccer. Wynalda received a Honda for winning the national player of the year award and donated it to Aztec athletics. Thanks to his generosity, the Eric Wynalda Endowed Scholarship was started and is now in its 14th year.

A gift of approximately \$50,000 is now needed to name an endowment. If you are interested in naming an endowment or donating toward an athletic scholarship, please contact Michelle McBride, Assistant Athletic Director of AAF at (619) 594-7924.



AZTECS IN THE COMMUNITY



Art Boards
Table Games

34.99
129
Soft-Sided Coolers

At San Diego State University, community outreach is an important component of campus life. Over the years, the San Diego State men's soccer team has been involved in numerous community outreach programs, including Habitat for Humanity, where the student-athletes helped build houses ruined from the San Diego wildfires, Special Olympics, Read Across America and Shop-With-A-Jock.

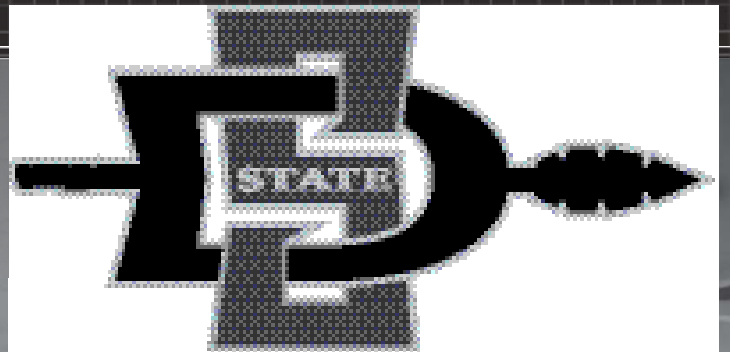
Visits to Children's Hospital, local elementary schools and special youth clinics are common events for the student-athletes.

The men's soccer team also participates in pregame and postgame clinics, both for coaches and aspiring collegiate players.

San Diego State University has a partnership with Encanto Elementary School in which the Aztec athletic department provides student-athlete tutors and mentors for the school. Tickets to SDSU athletic events are rewards for outstanding academic achievement by the elementary students.

Food drives, stuffed-animal drives and Christmas gift drives are annual featured at San Diego State University.

"The students are providing a community service," Assistant Director of Academic Services Bre White said. "However, I would say that often times the student-athletes may gain the most from the experience."



SAN DIEGO STATE UNIVERSITY



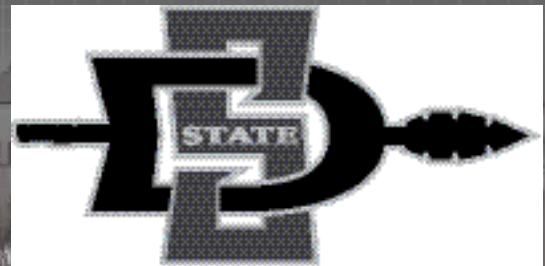


Beginning its 113th academic year in fall 2009, San Diego State University can take pride in more than a century of achievement in education, research and service. With an enrollment of more than 34,000 students, SDSU has grown into the largest institution of higher education in the San Diego region and one of the largest in California.

- San Diego State currently grants bachelor's degrees in 85 academic areas, master's degrees in 75 and doctoral degrees in 16.
- Sixty percent of SDSU graduates stay in San Diego to pursue their careers.
- SDSU's undergraduate international business program ranks No. 15 in the nation, according to U.S. News and World Report's "America's Best-Colleges 2008 Guide."
- The international business program at SDSU is the largest undergraduate international business program in the country, serving nearly 1,100 students annually.
- SDSU's international business MSBA program ranks No. 20 in the nation, according to U.S. News and World Report's "America's Best Graduate Schools 2010 Guide."
- SDSU ranked No. 4 among psychology programs nationwide for bachelor's degrees awarded to Hispanics. – Top 100 Colleges for Hispanics, Hispanic Outlook in Higher Education, May 2009
- SDSU was ranked No. 27 in entrepreneurship according to U.S. News & World Report's "America's Best Graduate Schools 2008 Guide."

Did You Know?

- SDSU has been designated a "Research University" with high research activity by the Carnegie Foundation. Peers in this group include George Washington University, Syracuse University, Texas Tech University and the University of Oregon.
- Since 2006, SDSU has been ranked the No. 1 most productive research university in the nation, among schools with 14 or fewer Ph.D. programs based on the Faculty Scholarly Productivity Index. – Academic Analytics.
- Forbes Magazine has ranked SDSU as one of the "top colleges for getting rich" among state universities nationwide. The ranking was based on the nation's leading public universities that produce top earning alums. SDSU ranked in the top 50.
- Since 2000, SDSU faculty and staff have attracted more than \$1 billion in grants and contracts for research and program administration.
- SDSU's School of Public Affairs is one of the top public affairs programs in the nation, according to U.S. News and World Report's "America's Best Graduate Schools 2009."
- SDSU is the first U.S. university to offer a transnational triple degree program in International Business. In fact, SDSU has the only two such programs in the country. Undergraduate students earn degrees from SDSU and universities in Mexico and Canada in the CalMexUs program, or degrees from SDSU, Mexico and Chile in the PanAmerica program.



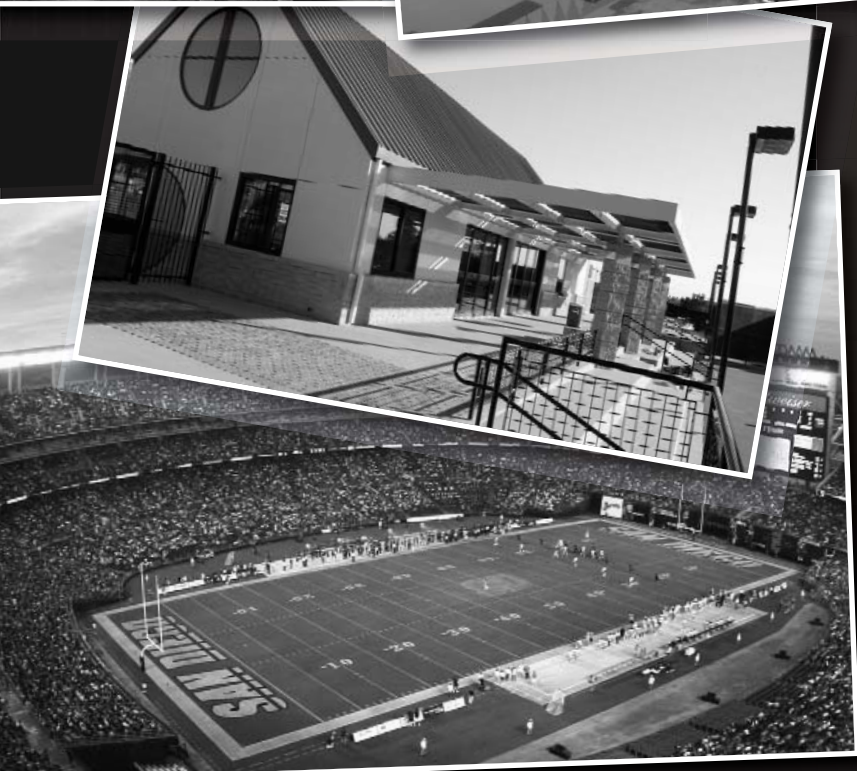
AZTEC FACILITIES



“When there’s no room to build out...build up.” That’s the mantra of modern-day engineers and contractors and is something San Diego State took to heart when designing its soccer/track facility. The six-year-old, \$13 million SDSU Sports Deck sits atop the university’s newest two-story parking structure (PS 5). The facility is located at 55th Street and Montezuma Avenue at the site of the old Choc Sportsman Oval.

- The Sports Deck serves as the home for the men’s and women’s soccer programs as well as the SDSU women’s track team. The track team competes on the Choc Sportsman Oval which surrounds the soccer field.
- The playing turf for soccer is a state-of-the-art natural grass surface with a built in automatic-drainage system. The facility features an all-weather track and was the site of the 2001 and 2007 Mountain West Conference track and field championships.
- The stadium seats about 1,500 people. The facility includes an electronic message/scoreboard, which is utilized for both soccer and track events. Future plans call for the facility to be lighted for night contests and seating capacity to be increased.
- The first official NCAA event was held at the Sports Deck on August 25, 2000, when the Aztec women’s soccer team faced Mississippi in its season opener. SDSU won that match, 2-1.
- The first men’s soccer contest at the site was held on Sept. 1, 2000, versus Christian Heritage. SDSU took that match, 5-0, making the occasion the facility’s first shutout.
- The facility was dedicated on Friday, Oct. 6, 2000, during a men’s and women’s soccer doubleheader.
- On Nov. 13, 2005, a stadium record 1,516 fans showed up for SDSU’s game against No. 6 UCLA.





In place now on Montezuma Mesa are arguably some of the finest facilities in the United States and San Diego State is certainly among the leaders on the West Coast.

The athletic department is housed in the \$30 million, 130,000-square-foot Aztec Athletics Center. The centerpiece of the department, which was dedicated in February of 2002, is located just across the street from Viejas Arena and just east of Tony Gwynn Stadium.

The four-story Athletics Center provides state-of-the-art facilities coupled with tremendous logistical advantages and a great location for studying, workouts, treatment, and academic support or just stopping by between classes.

On the south, the center is buffered by the Sports Deck where both San Diego State's soccer squads compete, as well as the track and field team.

On the north side, it is connected to Peterson Gym, the home of Aztec volleyball and a part-time practice facility for the SDSU basketball teams.

The west exit of the building opens onto three 100-yard practice fields. One of the fields is natural grass and two utilize field-turf, providing San Diego State daily options for its workouts.

All of San Diego State's new facilities, including the athletics center, Viejas Arena formerly Cox Arena, Tony Gwynn Stadium, SDSU Sports Deck, Aztec Tennis Center, SDSU Softball Stadium and Aztec Aquaplex have opened since 1997.

The buildings are not just sparkling new, but they are already postseason tested. Viejas Arena, the 12,414-seat basketball facility, has twice served as a site for the NCAA Men's Basketball Division I Championship (first and second rounds) as well as the NCAA Women's Volleyball Division I National Championship. In 2006, the venue also played host to the McDonald's High School All-American Basketball game. Additionally, Viejas Arena was one of 16 sites to welcome the first and second rounds of the NCAA Women's Basketball Division I Championships this past season.

The SDSU Sports Deck welcomed the Mountain West Conference outdoor track and field championships in 2001 and 2007. Tony Gwynn Stadium was the site of the MWC baseball tournament in 2001, while SDSU Softball Stadium played host to the 2005 Mountain West Conference softball championship. In 2010, the MWC baseball championships will return to Tony Gwynn Stadium.

In March 2007, the two-pool Aztec Aquaplex opened, giving both the Aztec water polo and swimming and diving programs a new on-campus home. The new aquatics center served as the site for the Mountain Pacific Sports Federation women's water polo championship in April of 2008 and will be the venue for the 2010 NCAA Women's Water Polo Championships.

In addition to all of the postseason events San Diego State has played host to, the facilities have also been the home to multiple in-season events. The SDSU track and field squad, along with the baseball, softball, swimming and diving, volleyball and water polo teams all put on their own multiple-team events throughout the season. Every spring, professional football scouts and coaches gather at and utilize the Aztec weight room and then move to the practice fields for NFL Pro Timing Day to catch an up-close glimpse of SDSU graduating football seniors.

Besides all of the school's on-campus facilities, the San Diego State football team plays at Qualcomm Stadium, home of the National Football League's San Diego Chargers, in Mission Valley. Qualcomm Stadium is the host of the Holiday and Poinsettia Bowls and was the home of Super Bowl XXXVII in 2003.

Tony Gwynn Stadium, the Aztec Athletics Center and Aztec Tennis Center were constructed thanks to donations by John and Becky Moores.



AZTEC EXCELLENCE

RICHE WILLIAMS

MWC Career Assists and Steals Leader



BAILEY MICETICH

2009 MWC Freshman of the Year

JENÉ MORRIS

2009 WBCA/State Farm Honorable Mention All-America

KAROLINE KOEHLER

Four-Time All-American

ANNA GONZALES

Three-Time ACWPC All-American

JOHAN CARLSSON

2009 All-MWC



San Diego State 2008-09 Athletic Highlights

San Diego State posted its highest finish ever in the 16-year history of the Learfield Sports Director's Cup.

The Aztecs had a school-record seven sports participate in NCAA championships (women's basketball, outdoor track and field, baseball, women's tennis, indoor track and field, men's golf and softball).

This marks the second consecutive athletic season that San Diego State has set a school record for best finish in the Directors' Cup.

Not included among the seven sports that advanced to NCAA postseason play were women's water polo (finished the season ranked 8th nationally) and men's basketball (advanced to the NIT national semifinals).

San Diego State had two teams finish in the top 25 nationally (women's basketball (T-17th) and outdoor track & field (25th)) marking the first time the Aztecs have had two sports finish among the top 25 in the same academic year since 2002-03.

San Diego State was one of 22 schools nationally to qualify for both the NCAA baseball and softball tournaments.



RUSSELL ALLEN

Two-Time Butkus Award Watch List Honoree



SDSU WOMEN'S BASKETBALL
2009 NCAA Tournament Second Round



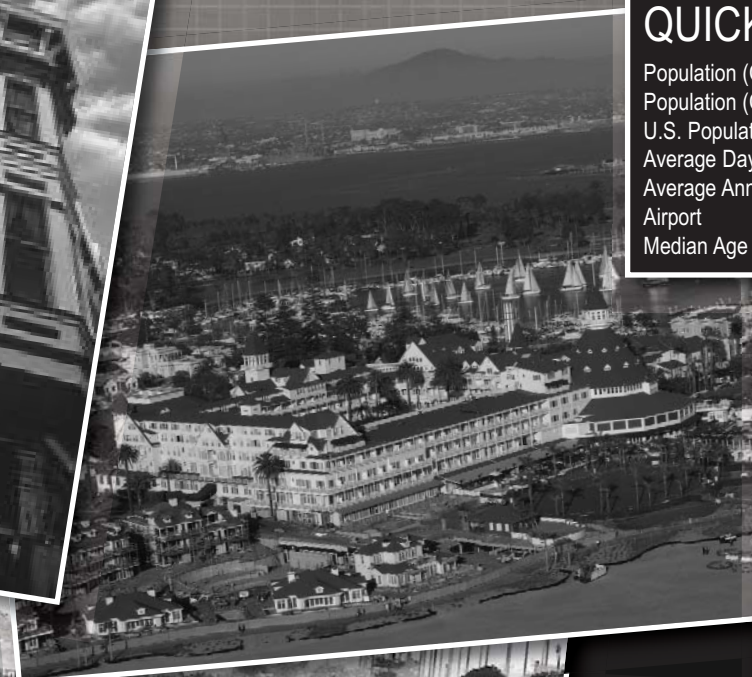
SDSU MEN'S BASKETBALL
2009 NIT National Semifinalists



STEPHEN STRASBURG

Two-Time Consensus First-Team All-American

AMERICA'S FINEST CITY



SAN DIEGO QUICK FACTS

| | |
|-----------------------------|-----------------------|
| Population (County) | 3,017,204 |
| Population (City) | 1,279,329 |
| U.S. Population Rank (City) | Ninth |
| Average Daytime Temperature | 70 |
| Average Annual Rain Fall | 10 inches |
| Airport | Lindbergh Field (SAN) |
| Median Age of Residents | 32 |



San Diego

Quite simply, San Diego State University and the City of San Diego, "America's Finest City," enjoy several advantages over virtually every other school in America. The climate, diversity, environment and sheer beauty of the city attracts people from all walks of life.

The City

Dubbed the "jewel" of the southern California coast, the city of San Diego has grown to surround its natural harbor and is the ninth-largest city in the United States and the second largest in California.

Diversity

The rich flavors and colors of this diverse population blends all ethnic groups and all walks of life to create an amazing quality of life that makes San Diego all things to all people.

Natural Beauty

As America's ninth-largest city, San Diego also protects vast areas of open space for riding, hiking, skiing, and camping. The region also boasts more than 70 miles of beaches along its coastline. From Torrey Pines and La Costa to Aviara, Mission Bay or Singing Hills, beautiful settings offer an abundance of golf and tennis options.

The Weather

Meteorologists claim San Diego as the country's only area with a perfect climate. This year-round environment posts an average daytime temperature of 70 degrees, with an annual rainfall average of less than 10 inches.

Ideal Living

Whether watching the sun rise over the east county mountains or the sun setting over the Pacific, in San Diego, one is surrounded by natural beauty, pampered by an ideal climate, immersed in old-world traditions and able to enjoy a comfortable, friendly lifestyle that no other city offers. What a treat to live, play and study in "America's Finest City."

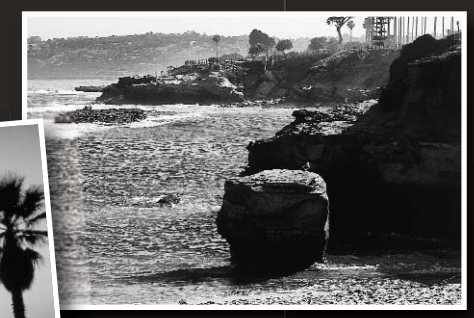
Places To Go

There's always something to do in San Diego. SeaWorld, the World-Famous San Diego Zoo and Wild Animal Park, LEGOLAND California, Balboa Park and historic Old Town are just some of the attractions San Diego has to offer.

If it's art and history you seek, you'll find it here. Did you know San Diego is the birthplace of California or that San Diego boasts the largest concentration of museums west of the Mississippi?

San Diego also offers Tony Award-winning theatre, opera, symphony, art galleries and performance art for the culturally curious.

For that "night on the town" San Diego's night life beckons with over 200 night-clubs that offer toe-tapping beats of everything from country western to R&B.



Aztec Culture

INTRODUCTION
 COACHING STAFF
 PLAYERS
 REVIEW
THIS IS SDSU
 HISTORY
 RECORDS

SDSU'S AZTEC HERITAGE

From the early decades of its history, San Diego State has identified itself with the Aztecs, one of the most sophisticated and distinctive societies in the history of the Western Hemisphere. A fitting choice for a university committed to internationalism and diversity, the Aztec identity evokes great pride in Mexico, as well as among many people in the United States, and certainly within the SDSU community. Consequently, San Diego State strives to honor the Aztec people by enhancing awareness, understanding and appreciation of Aztec culture and achievements.

AZTEC HISTORY

Aztec civilization dates back to at least the 12th century A.D. The precise location is still debated by scholars, but tradition tells us of a place somewhere north of modern-day Mexico City known at that time as Aztlan, which meant "the place of the cranes" or "the place of the herons." The people who lived in this land were called Azteca meaning "those of Aztlan."

The Azteca eventually left their homeland and

became known as the Mexica. Native folklore attributes this name change to the instructions of the people's patron deity, Huitzilopochtli (Hummingbird on the Left).

Around 1325, the Mexica settled on an island in Lake Texcoco, an area that is now the heart of Mexico City, and named it Tenochtitlan or "the place of the fruit of the cactus." A century later, the Mexica and two other Nahuatl-speaking city-states, Texcoco and Tlacopan, combined to create an entity popularly known as the Aztec Empire.

Boasting a strong military force, this new alliance commanded a sphere of influence that stretched across much of present-day Mexico.

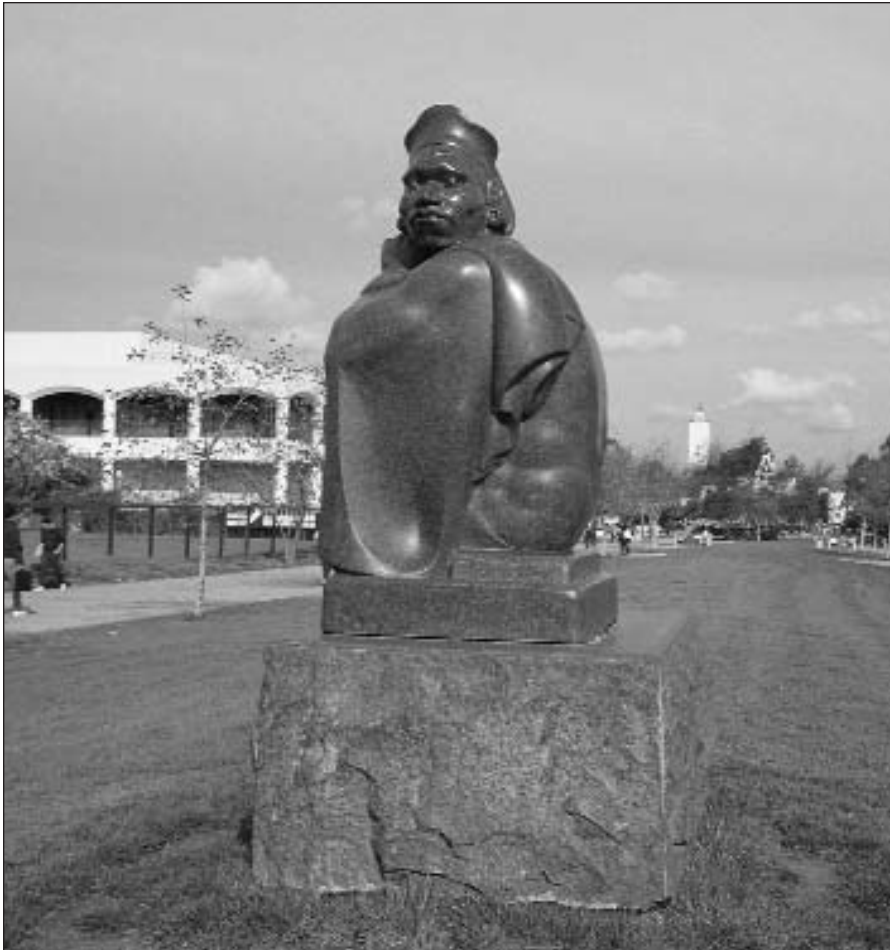
Tenochtitlan and its surrounding valley evolved into a highly sophisticated, multicultural and multilingual city-state of several million inhabitants. At this same time, major European cities numbered only 30,000 to 40,000 in population. A cradle of innovation, the Aztec Empire developed advanced systems of trade, science, politics, religion, education and agriculture. The Aztecs also enjoyed sports and built grand ballcourts to accommodate team events.



AZTECS AND SDSU

San Diego State University first adopted the Aztec name in the 1920s as a nickname for the college's sports teams. In 1925, the student newspaper followed suit, changing its name from The Paper Lantern to The Aztec. Since that time, San Diego State's celebration of Aztec heritage has permeated the campus. In 1936, a Donald Hord sculpture of Montezuma II, the last Aztec emperor, became a welcoming campus icon. With the passing years, Aztec themes echoed in the names, colors and architectural elements of new campus buildings. And Aztec culture became the subject of more than a dozen university courses.

In 1941, Monty Montezuma, a character based on Montezuma II, debuted at San Diego State athletic events as a symbolic personification of the Aztecs. Over time, the Montezuma character's look and activities have evolved from a sports mascot into a more dignified and accurate representation of the historical emperor. Montezuma now serves as the university's ambassador of Aztec culture, charged with the responsibility of informing and educating the San Diego community about Aztec civilization. SDSU continues to take pride in its affiliation with Aztec culture and to celebrate the Aztec virtues of strength, valor and intellectual achievement.



NCAA TOURNAMENT APPEARANCES

1969, 1981, 1982, 1987, 1988, 1989, 2005, 2006

1987 NCAA NATIONAL FINALIST