



SAN DIEGO STATE WOMEN'S BASKETBALL

2016-17 GAME NOTES

Jen Heisel, Assistant Media Relations Director • E-Mail: jheisel@mail.sdsu.edu • Office: 619-594-3014 • Cell: 862-432-5499

2016-17 SCHEDULE

Date	Opponent	Time
Nov. 4	CSU San Marcos (exh.)	W, 74-53
Nov. 11	at UC Riverside	L, 44-72
Nov. 14	San Diego Christian	W, 80-70
Nov. 17	at San Diego	7 p.m.
Nov. 20	Loyola Marymount	2 p.m.

Seton Hall Tournament (South Orange, N.J.)

Nov. 26	vs. UT Arlington	Noon
Nov. 27	vs. Seton Hall/Central Conn. State	TBA

Dec. 2	at UC Davis	7 p.m.
Dec. 9	Michigan	Noon
Dec. 11	UC Santa Barbara	2 p.m.
Dec. 22	at Cal State Fullerton	7 p.m.
Dec. 28	Biola	6:30 p.m.
Dec. 31	at New Mexico*	2 p.m.
Jan. 4	Nevada*	6:30 p.m.
Jan. 7	Boise State*	2 p.m.
Jan. 11	at San José State*	7 p.m.
Jan. 14	at Utah State*	2 p.m.
Jan. 18	UNLV*	2 p.m.
Jan. 25	Air Force*	6:30 p.m.
Jan. 28	at Colorado State*	2 p.m.
Feb. 1	at Wyoming*	7 p.m.
Feb. 4	Fresno State*	2 p.m.
Feb. 8	San José State*	6:30 p.m.
Feb. 11	at Nevada*	4 p.m.
Feb. 15	Utah State*	6:30 p.m.
Feb. 18	at UNLV*	4 p.m.
Feb. 22	at Fresno State*	7 p.m.
Feb. 25	Colorado State*	2 p.m.
Feb. 28	at Air Force*	7 p.m.
March 3	New Mexico*	6:30 p.m.
March 6-10	MW Championship (Las Vegas, Nev.)	TBA

All times local to site | Home games in **Bold** at Viejas Arena
* = Mountain West game

GAME 3 | SAN DIEGO (JENNY CRAIG PAVILION) | THURS., NOV. 17 | 6 P.M. PT

LIVE MEDIA: Stats and Audio (GoAztecs.com), Stream (WCCSports.com) | Series vs. San Diego: SDSU leads, 28-11 / Streak: USD won 3



SAN DIEGO STATE
2016-17 Record: 1-1 (0-0 MW)
Head Coach: Stacie Terry
Fourth Year at SDSU/Fourth overall

TOP PERFORMERS

Scoring	McKynzie Fort - 21.0
Rebounding	Baylee Vanderdoes - 7.5
Assists	Ariell Bostick - 10



SAN DIEGO
2016-17 Record: 2-0 (0-0 WCC)
Head Coach: Cindy Fisher
12th Year at USD/17th overall

TOP PERFORMERS

Scoring	Maya Hood - 19.0
Rebounding	Maya Hood - 9.0
Assists	Cori Woodward - 12

GAME 4 | LOYOLA MARYMOUNT (VIEJAS ARENA) | SUN., NOV. 20 | 2 P.M. PT

LIVE MEDIA: Stats (GoAztecs.com), Video/Audio (Mountain West Network) | Series vs. LMU: SDSU leads, 6-3 / Streak: LMU won 1



SAN DIEGO STATE
2016-17 Record: 1-1 (0-0 MW)
Head Coach: Stacie Terry
Fourth Year at SDSU/Fourth overall

TOP PERFORMERS

Scoring	McKynzie Fort - 21.0
Rebounding	Baylee Vanderdoes - 7.5
Assists	Ariell Bostick - 10



LOYOLA MARYMOUNT
2016-17 Record: 0-2 (0-0 WCC)
Head Coach: Charity Elliott
Fifth Year at LMU/14th overall

TOP PERFORMERS

Scoring	Jackie Johnson - 15.0
Rebounding	Jackie Johnson - 10.0
Assists	Andee Velasco - 8

- San Diego State takes on a pair of West Coast Conference (WCC) foes with games against Southern California rivals San Diego and Loyola Marymount this weekend.
- All-time against WCC teams, the Aztecs are 76-65, sporting a 28-11 mark against San Diego and holding a 6-3 all-time advantage against Loyola Marymount.
- Junior McKynzie Fort has been outstanding in the early part of the season, netting a career-high 28 points against the Hawks and 14 points at UC Riverside. Her 21.0 points per game rank second in the Mountain West.
- Freshman Baylee Vanderdoes has emerged as a vital part of the Aztecs' play, putting up a double-double vs. San Diego Christian. In the early part of the season, she has a team-best 7.5 rebounds per game.

SAN DIEGO STATE AZTECS (1-1, 0-0 MW)

No.	Name	Pos.	Ht.	Yr.	Exp.	PPG	RPG	APG	Individual Player Notes
1	Khalia Lark	F	6-0	Jr.	TR	0.0	0.0	0.0	Eligible Dec. 22 due to transfer from Washington prior to Spring 2016 semester
3	Ariell Bostick	G	5-4	Sr.	3L	2.0	7.0	5.0	Team-high 10 assists while also sporting the team's highest assist-to-turnover ratio (2.5)
4	Kymerly Ellison	G	5-7	Sr.	1L	9.0	2.0	1.5	Leads team with five three-pointers on 10 attempts ... Ranks third with 9.0 PPG
11	Arantxa Gómez Ferrer	F	6-0	So.	1L	1.5	1.0	0.0	12.0 minutes per game ... Returns after missing final 18 games last season with knee injury
13	Allison Brown	G	5-7	Jr.	SQ	0.0	1.0	0.0	Played nine minutes with a rebound vs. SDCC ... Walk-on who earned scholarship for 2016-17 campaign
15	McKynzie Fort	G	5-9	Jr.	2L	21.0	5.0	3.5	Ranks second in the MW with 21.0 PPG ... Career-high 28 pts. vs. SDCC
20	Geena Gomez	G	5-8	Jr.	1L	10.0	2.0	1.0	Earned first career start vs. SDCC ... Second on the team with 10 points per game
21	Abby Lowe	G	5-11	Fr.	HS	2.5	3.0	0.5	Second among freshmen with three rebounds per game and 2.5 points per game
22	Lexy Thorderson	G/F	6-0	Jr.	2L	0.0	0.0	0.0	Team's top three-point threat in 2015-16, coming off the bench in all 31 games
30	Cheyenne Greenhouse	G	5-11	Jr.	2L	6.0	3.0	0.0	In 30 minutes logged, scored six points and added three rebounds vs. the Highlanders
34	Baylee Vanderdoes	F	6-1	Fr.	HS	8.5	7.5	0.0	Leads team with 7.5 rebounds per game ... Double-double vs. SDCC was first for freshman since 2014
40	Monique Terry	F	6-2	Fr.	HS	2.0	1.0	0.0	Made her first collegiate field goal vs. SDCC ... One rebound in each game this season
44	Aleiah Brandon	F	6-1	Sr.	3L	0.0	0.0	0.0	Provides veteran leadership as a fifth-year senior
45	Naomi Ekwedike	F	6-6	Fr.	HS	2.5	0.0	0.0	Breakout game vs. SDCC with 5 points, going 2-for-4 from the floor in 10 minutes logged

Head Coach: Stacie Terry (UT Arlington, 1998) | 37-55 (Fourth Season at SDSU/Fourth Overall)

Assistant Coaches: Jesse Clark (Pacific Union, 2003); Ciara Carl (Point Loma Nazarene, 2005); Nick Grant (Baylor, 2010)

Director of Basketball Operations: Jon Silver (UCLA, 2009)

Director of Player Personnel: Paris Johnson (San Diego State, 2011)

Athletic Trainer: Queenie Soriano (San Diego State, 2004)

Head Manager: Chris Straker

SAN DIEGO STATE QUICK FACTS

GENERAL INFORMATION

Location: San Diego, Calif., 92182
 Founded: 1897
 Enrollment: 30,750
 Nickname: Aztecs
 School Colors: Scarlet and Black
 Affiliation: NCAA Division I
 Conference: Mountain West
 Home Arena (Capacity):
 Steve Fisher Court at Viejas Arena (12,414)
 President: Dr. Elliot Hirshman
 Director of Athletics: John David Wicker
 Faculty Athletic Representative: Patrick Papin
 Athletics Dept. Phone: 619-594-3019

AZTEC BASKETBALL FACTS

First Year of Basketball: 1976-77
 All-Time Record: 629-552 (.533) / 40 seasons
 Postseason Appearances/NCAA Appearances: 12/9
 Last Postseason Appearance: 2013--
 Lost to BYU (69-58) in WNIT Second Round

SDSU TEAM INFORMATION

2015-16 Record: 12-19 (.387)
 2015-16 MW Record/Finish: 6-12/T-8th
 2016 MW Tournament Record: 1-1
 2016 Final NCAA RPI: 238
 Letterwinners Returning/Lost: 9/2
 Starters Returning/Lost: 3/2
 Newcomers: 5

AZTEC BASKETBALL STAFF

Head Coach: Stacie Terry
 Alma Mater: UT Arlington, 1998
 Career Record/Years: 37-55/Fourth Year
 Record at SDSU: Same
 Best Time to Call: Contact SID
 Basketball Office Phone: 619-594-4095
 Basketball Office Fax: 619-594-8057
 Assistant Coaches:
 Jesse Clark, Fourth season at SDSU
 Alma Mater: Pacific Union, 2003
 Ciara Carl, Fourth season at SDSU
 Alma Mater: Point Loma Nazarene, 2005
 Nick Grant, Third season at SDSU
 Alma Mater: Baylor, 2010
 Director of Basketball Operations: Jon Silver
 First season at SDSU
 Alma Mater: UCLA, 2009
 Director of Player Personnel: Paris Johnson
 First season at SDSU
 Alma Mater: San Diego State, 2009
 Athletic Trainer: Queenie Soriano
 Head Manager: Chris Straker
 Academic Advisor: Dr. Bre White
 Strength and Conditioning: Eddie Padilla

SDSU MEDIA RELATIONS

Women's Basketball SID: Jen Heisel
 E-mail: jheisel@mail.sdsu.edu
 Media Relations Phone: 619-594-3014
 Fax: 619-582-6541

Scouting the Toreros

San Diego, which advanced to the Sweet 16 of the WNIT a season ago, is off to a blistering start this season. The team is 2-0 with convincing wins against Big West foes in Cal State Fullerton and CSU Northridge.

USD opened the season with a dominating 103-50 win over the Titans. Four of the five Torero starters scored in double figures, paced by Katherine Hamilton's 17 points. On Monday, San Diego got powerful performances from senior Maya Hood and freshman Patricia Brossman, who put up 22 and 17 points respectively in a 76-67 win over CSU Northridge. Hood is the team's top point-getter and also tops her squad with nine rebounds per game.

In her 12th year as the Toreros head coach is Cindy Fisher. The Cheyenne, Wyo., native previously coached at SDSU's Mountain West foe Wyoming for five years before starting her tenure at San Diego.

Scouting the Lions

Loyola Marymount has suffered a pair of tough losses against Washington State and Saint Louis to open the season, allowing an average of 91 points in each contest.

Jackie Johnson, who tops the team with a double-double per game (15 points, 10 rebounds), set career-highs against Saint Louis on Sun., Nov. 13 with 21 points and 12 rebounds. Cheyenne Wallace put up a career-high 26 points in the loss. Andee Velasco, who set LMU's freshman record last year with 125, leads the team in that category this season with eight assists.

Head coach Charity Elliott is in her fifth season as the Lions' head coach. She previously served at the helm of UC San Diego's program for a five-year run.

Before visiting Viejas Arena, the Lions will visit Oklahoma State on Thurs., Nov. 17.

San Diego Christian Recap

Junior McKynzie Fort scored a career-high 28 points and freshman Baylee Vanderdoes posted a double-double in an 80-70 victory for San Diego State women's basketball over San Diego Christian in the Aztecs' home opener Monday night.

San Diego State's first win of the season puts their record at 1-1 to open the 2016-17 campaign.

The game was in the Aztecs' favor before the opening tip. San Diego Christian failed to put their starters in the scorebook prior to the game and was assessed a technical foul. Kymberly Ellison made the shot for the 1-0 lead prior to the opening tip.

After that, the first quarter was a back-and-forth affair. SDSU's largest lead of the frame was a 19-14 advantage as 1:50 was on the clock. But SDCC went on a 6-0 run to take its only lead of the game at 20-19. The Scarlet and Black were able to match that, possessing a 25-20 margin at the end of the first.

The next quarter was speckled with highlight reel shots. As 3:57 remained in the second quarter, Fort, while was falling on to her back, lifted a left-handed shot that swirled through the hoop for the 34-30 lead.

Minutes later, as the buzzer to send both teams to the intermission was sounding, Ellison released a half-court shot than sailed through the basket, giving SDSU a 45-37 lead into halftime.

The offense continued to fire in the third quarter. With just over six minutes remaining in the frame, Monique Terry's three-point attempt fell just short but Vanderdoes scooped up the rebound and

MW PRESEASON POLL

Rk.	Team	Pts.
1.	Colorado State (17)	283
2.	Boise State (11)	271
3.	Fresno State	225
4.	UNLV	201
5.	San José State	197
6.	New Mexico (1)	176
7.	San Diego State	126
8.	Wyoming	123
9.	Utah State	97
10.	Nevada	66
11.	Air Force	28

First-place votes in parentheses

MW PRESEASON HONORS

Preseason All-Mountain West Team

Brooke Pahukoa, Boise State
 Ellen Nystrom, Colorado State
 Bego Faz Davalos, Fresno State
 Cherise Beynon, New Mexico
 Dezz Ramos, San José State

Preseason Player of the Year

Ellen Nystrom, Colorado State

Preseason Newcomers of the Year:

Mykiel Burlison, New Mexico

Preseason Freshman of the Year

Hallie Gennett, San José State

SDSU IN THE MW POLL

Year	Pre.	Final
1999-2000	6th	6th
2000-01	7th	6th
2001-02	7th	7th
2002-03	7th	7th
2003-04	6th	7th
2004-05	7th	t-7th
2005-06	8th	9th
2006-07	7th	7th
2007-08	7th	t-5th
2008-09	2nd	2nd
2009-10	1st	t-3rd
2010-11	2nd	6th
2011-12	2nd	1st
2012-13	1st	1st
2013-14	3rd	t-6th
2014-15	7th	7th
2015-16	6th	t-8th
2016-17	7th	--



laid in the shot for SDSU's 52-37 lead.

As the quarter progressed, San Diego State's defense stiffened, shutting the Hawks out from any field goal attempts until 2:50 remained in the period. At that point, San Diego Christian tightened the Aztecs' margin, going on a 9-2 run to end the frame and make the score 56-50.

But the Aztecs' shooting caught fire again in the final frame, as the team shot 64.3 percent (9-for-14) in the fourth period, outshooting the Hawks, 24-20, to get the final 80-70 win.

With 10 points and 10 rebounds, Vanderdoes became the first freshman to notch a double-double since Cheyenne Greenhouse accomplished the feat against Sacramento State (Nov. 14, 2014) with 19 points and 11 rebounds.

Fort's career-high 28 points went alongside 11 made field goals and 18 attempts, both career bests. Geena Gomez, who was 4-for-8 with two treys for 14 points, logged 32 minutes, her most in the Scarlet and Black. Also recording double-digit points was Ellison, whose three three-pointers tied a career-high mark. Meanwhile, Bostick's eight helpers matched her most as an Aztec.

Nationally-Ranked Class Joining Aztecs

San Diego State women's basketball head coach Stacie Terry has announced the signing of a nationally-ranked class for the 2017-18 campaign. The 46th-ranked recruiting class in the country according to Blue Star Basketball, Te'a Adams, Jenay Borjorquez, Kiara Edwards, Najé Murray and Kennedy Villa have signed National-Letters-of-Intent to join the Aztecs next season.

Adams, a 5'9 guard from Kirkland, Wash., is a three-star recruit according to ESPN and was given a scouts grade of 90. Entering her fourth year of varsity basketball at Juanita High School, Adams has averaged 19.2 points per game, 3.4 steals per game and 2.5 assists and rebounds each per game during a career that has yielded three all-conference honors.

Borjorquez, a 5'6 point guard from Phoenix, is in her third season of varsity ball at Sierra Linda High School. A three-and-a-half-star recruit according to Prospects Nation, Borjorquez has held the top spot on Sierra Linda High's varsity squad in assists per game for two consecutive years.

Averaging nearly a double-double per game during her three-year varsity career at Valley Vista High School in Surprise, Ariz., Edwards is a 6'1 forward. Ranked No. 119 by Prospects Nation, the four-star recruit is coming off of an invitation to the 2016 USA Basketball Women's U17 World Championship team trials this May.

A 5'6 guard from perennial national powerhouse St. Mary's in Stockton, Calif., Murray earned three stars and a 90 scouts grade by ESPN. Led by head coach Tom Gonsalves, St. Mary's has won 57 of its last 58 games and nine consecutive section championships.

Villa, a 6'0 guard from Oakland, Calif., attends Saint Mary's College High School in Berkeley, Calif. A three-star recruit according to ESPN, she earned a scouts grade of 88.

Aztecs Picked Seventh in MW Preseason Poll

San Diego State has been picked to finish seventh in the 2016-17 Mountain West Women's Basketball Preseason Poll, the league office announced today. The voting panel consisted of the MW's 11 head coaches and select women's basketball media from around the conference.

The Aztecs collected 126 points in the poll, topping Wyoming, with whom they tied for eighth in the conference standings last season, by three points (123).

Three-time defending Mountain West champion Colorado State is expected to repeat as the league's top team, garnering 17 first-place points and 283 total points from the panel. Boise State picked up 11 first-place points and 271 total points for second place. Fresno State's 225 points ranked third in the poll. After finishing the season as the league's top-three teams, the trio represented the Mountain West in the 2016 Women's NIT.

Bringin' it Back

San Diego State returns 69.3 percent of its scoring, three starters and nine letterwinners from its 2015-16 team.

The team will be led this season by All-Mountain West honorable mention and All-Mountain West Defensive Team honoree McKynzie Fort. The 5-9 guard from Fontana, Calif., was just one of two Aztecs to start all 31 games, finishing sixth in the conference with an average of 14.4 points per game. She also ranked among the conference's leaders in steals (t-3rd -- 2.0/gm), free-throw percentage (6th -- (.693)) and field-goal percentage (11th -- (.462)).

Ariell Bostick will don the Scarlet and Black for the final time as the team's top assist-getter from the previous

USD SERIES NOTES

SAN DIEGO AT SAN DIEGO STATE
Aztecs lead series 28-11

• 2016-17 Comparative Stats

USD	Overall Record	SDSU
2-0	League Record	0-0
.486	Field Goal Pct.	.386
.308	3-PT FG Pct.	.283
.673	Free Throw Pct.	.606
.361	Opp. FG Pct.	.457
.321	Opp. 3-PT FG Pct.	.359
.786	Opp. FT Pct.	.752
42.5	Rebound Avg.	31.7
+3.5	Rebound Margin	-5.5
89.5	Points/Game	59.0
58.5	Pts. Allowed/Game	69.2

• Series Numbers

Record at SDSU	19-6
Record at USD	9-5
Record at Neutral	0-0
Most Points SDSU	98, 1978
Most Points USD	76, twice
Largest Margin SDSU	81, 1978
Largest Margin USD	30, 2006
Longest SDSU Win Streak	17
Longest USD Win Streak	5
Current Streak	USD 3

• Series History

Date	Site	Result
2-28-78	at SDSU	W 83-31
12-11-78	at SDSU	W 98-17
3-2-79	at SDSU	W 74-35
1-22-80	at SDSU	W 80-41
2-28-80	at USD	W 75-21
12-2-80	at SDSU	W 79-34
2-26-81	at USD	W 65-46
12-10-81	at SDSU	W 76-57
2-10-82	at USD	W 72-46
1-8-83	at SDSU	W 83-56
12-3-83	at SDSU	W 74-51
12-6-83	at USD	W 73-44
12-4-84	at SDSU	W 97-57
12-11-85	at USD	W 67-54
12-21-86	at SDSU	W 73-63
12-1-87	at USD	W 85-61
12-6-88	at SDSU	W 82-47
12-6-89	at SDSU	L 68-76
11-27-90	at SDSU	W 79-75
11-23-91	at USD	W 72-68
12-2-92	at SDSU	W 72-66
12-4-93	at USD	W 72-51
11-30-94	at SDSU	W 67-62
11-28-95	at USD	W 60-47
11-26-96	at SDSU	W 55-34
12-11-02	at USD	L 53-72
12-10-03	at SDSU	L 60-65
11-23-04	at USD	L 49-64
11-22-05	at SDSU	L 57-67
11-19-06	at USD	L 46-76
12-5-07	at SDSU	W 58-53
11-25-08	at USD	L 60-63
11-17-09	at SDSU	W 79-52
11-30-10	at USD (ot)	W 72-63
12-5-11	at SDSU	L 45-56
12-8-12	at USD	W 58-54
11-18-13	at SDSU	L 45-48
12-9-14	at USD	L 44-66
12-3-15	at SDSU	L 53-60

LAST MEETING | SAN DIEGO

USD at San Diego State Box Score (12-3-15)

USD	FG	3FG	FT	REB	F	TP	A	T	B	S	MP
Malina Hood	7-13	3-6	4-6	8	3	21	1	2	2	3	37
Maya Hood	2-6	0-2	3-5	3	5	7	0	0	0	3	29
Woodward	1-4	1-3	6-8	3	2	9	5	2	0	1	36
Williams	3-9	1-4	2-3	6	0	9	3	2	0	3	39
Hamilton	1-1	0-0	1-2	3	3	3	2	2	0	0	14
Hepburn	0-0	0-0	0-0	0	1	0	0	0	0	0	2
Ward-El	3-7	0-0	0-0	2	0	6	0	3	0	0	20
Hagen	0-0	0-0	0-0	0	0	0	0	0	0	0	3
Buhr	2-5	0-0	1-2	0	1	5	0	2	0	2	20
TM				2							
Totals	19-45	5-15	17-26	27	15	60	11	15	2	12	200
Pct.	42.2	33.3	65.4								

SDSU	FG	3FG	FT	REB	F	TP	A	T	B	S	MP
Herd	1-1	0-0	0-0	1	1	2	0	1	0	0	9
Brandon	0-0	0-0	0-0	2	4	0	1	3	0	2	24
Bostick	1-2	0-1	0-0	2	1	2	3	3	0	1	22
Harvey	3-5	0-0	0-2	4	3	6	2	5	0	0	32
Fort	5-13	0-0	4-5	8	3	14	2	1	0	5	31
Smith	1-6	0-0	1-1	3	3	3	0	2	0	0	20
Ellison	5-9	3-7	1-1	1	3	14	0	2	0	1	16
Gomez	0-3	0-2	0-0	1	1	0	1	0	0	0	10
Thorderson	2-6	1-3	0-0	2	1	5	0	0	0	0	15
Greenhouse	2-5	0-0	3-4	5	3	7	0	0	0	0	21
TEAM				6				2			
Totals	20-50	4-13	9-13	35	23	53	9	19	0	9	200
Pct.	40.0	30.8	69.2								

Officials: Kyle Bacon, Anita Ortega, Clarke Stevens

Technical fouls: None

Attendance: 370

Score by Periods	1st	2nd	3rd	4th	Total
San Diego	13	12	17	18	60
San Diego State	16	11	6	20	53

season. The senior from Oakland, Calif., finished 10th in the Mountain West with a team-high 2.9 assists per outing.

Classmate Aleiah Brandon was a top defensive threat for the Aztecs during the 2015-16 season, blocking 10 shots, the second-most on the team, in 26 appearances and 18 starts.

The Aztecs' top three-point threat last season, Lexy Thorderson, a six-foot junior from Castle Rock, Colo., will be looked upon to fulfill a similar role. Appearing in all 31 of SDSU's games, she drained 40 of 124 shots from behind the arc, ranking 13th in the conference.

A steady presence, Cheyenne Greenhouse also played in every game for San Diego State, making 22 starts, including 18 to end the season. She averaged 20.9 minutes per game, the fifth-most on the squad.

In her first season in the Scarlet and Black after a transfer from Georgia Tech, senior Kymberly Ellison was another Aztec who appeared in every contest. In an average of 12.8 minutes per game, she posted a .722 free throw percentage, the second-best on the team.

Fellow newcomer Geena Gomez was also quick to make an impact after her transfer from St. John's. The junior from Huntington Beach, Calif., appeared in 29 of SDSU's 31 games, maintaining the squad's highest assist-to-turnover ratio (1.42) and ranking second on the team with a .324 three-point field goal percentage (23-of-71).

Gomez's classmate Allison Brown has also made an impact on the team. A walk-on prior to her freshman season, Brown earned a scholarship for the 2016-17 season after playing in a career-high nine games last year.

Jumpin' Jehosaphat, Juniors!

The Aztecs' junior class has been anything but junior. During the 2015-16 season, Allison Brown, McKynzie Fort, Geena Gomez, Cheyenne Greenhouse and Lexy Thorderson averaged a combined 21.56 minutes per game, 7.17 points per game, 1.29 steals per game and 2.94 rebounds per game. The group accounted for 47.7 percent of SDSU's total offense a season ago, logging 41.2 percent of the team's total minutes played. Also excelling in the classroom, Greenhouse and Thorderson earned Academic All-Mountain West honors.

The New Aztecs on the Block

San Diego State signed recent high school graduates Monique Terry (San Antonio, Texas), Baylee Vanderdoes (Auburn, Calif.), Naomi Ekwedike (Lagos, Nigeria) and Abby Lowe (Stockport, England) to National Letters of Intent for the 2016-17 campaign. The four incoming freshmen will join University of Washington transfer Khalia Lark (Irvine, Calif.), a junior for the 2016-17 season who enrolled at SDSU prior to the Spring 2016 semester and is eligible Dec. 22.

A McDonald's All-America nominee, Terry was rated a three-star recruit by espnW and was given a scouts grade of 89. During her junior season at Brennan High School, the 6-2 forward was the lone player in District 27-6A to average a double-double, posting 10.3 points and 10.4 rebounds per game while leading the district with a .540 field-goal percentage. She was also named the District 27-6A's defensive player of the year and received all-region honors.

Vanderdoes played prep ball at Placer High School, where she averaged 21.1 points, 11.0 rebounds and 3.6 blocks per contest as a senior, earning a spot on the MaxPreps Division IV all-California state second team. The 6-1 forward was also named the Pioneer Valley League's most valuable player on two occasions and received second-team all-metro honors from the Sacramento Bee. She holds Placer High's single-game record for points scored (41) and blocked shots (11). Like Monique Terry, Vanderdoes received a scouts grade of 89 and was rated a three-star recruit by espnW. Her brother, Eddie, is a defensive lineman at UCLA.

A native of Lagos, Nigeria, Ekwedike is a 6-6 post player who prepped for three years at Potter's House Christian Academy in Jacksonville, Fla., where she was a member of two state championship teams and helped her squad win a national championship in the National Christian School Athletic Association tournament in 2015. Ekwedike was also rated a three-star recruit by espnW and given a scouts grade of 88.

Rounding out the 2016 recruiting class is Lowe, who played two years at the Barking Abbey Academy near London, helping the Crusaders capture the first-ever Women's Elite Academy Basketball League title last season. In addition, the 5-11 shooting guard earned a silver medal for the U16 squad representing England at the European Championships in 2014.

A highly successful prep player at powerhouse Mater Dei High School in Orange County, Lark helped the Monarchs win two CIF championships, one state title and one national championship alongside

LMU SERIES NOTES

SAN DIEGO AT SAN DIEGO STATE
Aztecs lead series 6-3

• 2016-17 Comparative Stats

LMU	Overall Record	SDSU
0-2	League Record	1-1
0-0	Field Goal Pct.	0-0
.352	3-PT FG Pct.	.423
.256	Free Throw Pct.	.345
.600	Opp. FG Pct.	.714
.420	Opp. 3-PT FG Pct.	.433
.396	Opp. FT Pct.	.419
.729	Rebound Avg.	.625
36.0	Rebound Margin	36.0
-15.5	Points/Game	+3.5
60.5	Pts. Allowed/Game	62.0
91.0		71.0

• Series Numbers

Record at SDSU.....	3-1
Record at LMU.....	3-2
Record at Neutral.....	0-0
Most Points SDSU.....	85, 2008
Most Points LMU.....	92, 2016
Largest Margin SDSU.....	40, 1994
Largest Margin LMU.....	27, 2016
Longest SDSU Win Streak.....	4
Longest LMU Win Streak.....	2
Current Streak.....	LMU 1

• Series History

Date	Site	Result
1-5-92	A	W 65-54
12-4-92	H	W 59-45
12-1-93	A	W 60-49
12-17-94	H	W 72-32
12-19-99	H	L 51-62
11-21-00	A	L 59-69
12-21-08	H	W 85-70
12-21-09	A	W 75-54
12-10-15	A	L 65-92

AZTECS VS. WEST COAST CONF.

Team	W	L
Brigham Young	14	29
Gonzaga	3	0
Loyola Marymount	6	3
Pacific	6	5
Pepperdine	13	7
Portland	0	2
Saint Mary's	2	3
San Diego	28	11
San Francisco	3	4
Santa Clara	1	1
Total	76	65

LAST MEETING | LOYOLA MARYMOUNT

San Diego State at Loyola Marymount Box Score (12-10-15)

SDSU	FG	3FG	FT	REB	F	TP	A	T	B	S	MP
Herd	0-0	0-0	2-2	1	1	2	0	2	0	0	6
Brandon	2-3	1-2	0-0	2	1	5	1	2	0	1	23
Bostick	1-3	0-1	4-6	2	2	6	0	1	0	0	22
Harvey	2-6	0-0	5-6	4	1	9	4	5	0	0	26
Fort	6-13	0-0	3-6	9	3	15	2	3	0	1	30
Smith	2-6	0-0	3-4	2	0	7	1	0	0	1	21
Ellison	1-7	1-5	1-2	3	2	4	1	1	0	1	13
Brown	0-1	0-0	0-0	0	0	0	1	2	0	1	3
Gomez	1-4	0-2	0-0	1	2	2	1	1	0	0	9
Thorderson	3-8	3-8	0-0	1	1	9	0	0	0	2	17
Greenhouse	2-7	0-1	0-0	2	1	4	0	2	0	0	19
Gomez Ferrer	1-1	0-0	0-2	0	2	2	0	1	0	0	11
TM				6							
Totals	21-59	5-19	18-28	33	16	65	11	20	0	8	200
Pct.	35.6	26.3	64.3								

LMU	FG	3FG	FT	REB	F	TP	A	T	B	S	MP
Taylor	7-14	0-4	7-7	9	1	21	1	1	2	2	31
Alford	3-4	0-0	0-1	4	4	6	3	2	0	4	21
B. Velasco	3-6	3-4	0-0	2	5	9	0	3	0	1	17
A. Velasco	4-9	1-4	3-4	3	3	12	6	3	0	1	31
Lopez-Wood	6-8	5-6	0-0	3	0	17	2	0	0	2	24
Aimonetti	0-1	0-1	0-0	3	3	0	1	1	0	1	10
Hughes	0-1	0-0	0-0	0	0	0	2	1	0	0	10
Wallace	7-12	0-1	6-8	3	3	20	2	3	5	1	23
Ilang	1-2	0-0	0-0	1	5	2	2	2	0	0	11
Cast	2-5	1-3	0-0	3	1	5	1	2	0	1	22
TEAM				7							
Totals	33-62	10-23	16-20	38	25	92	20	18	7	13	200
Pct.	53.2	43.5	80.0								

Officials: Melissa Barlow, Brittany Groves, Wanda Szeremeta
Technical fouls: San Diego State - Kymberly Ellison
Attendance: 610

SAN DIEGO STATE STREAKS

Most Consecutive Starts

	Consecutive	Total
McKynzie Fort	57	57
Ariell Bostick	29	47
Kymberly Ellison*	2	2
Baylee Vanderdoes	2	2
Geena Gomez*	1	1
Cheyenne Greenhouse	0	31
Aleiah Brandon	0	18
Lexy Thorderson	0	2

Most Consecutive Games

	Consecutive	Total
McKynzie Fort	65	65
Ariell Bostick	57	80
Kymberly Ellison*	33	33
Geena Gomez*	31	31
Arantxa Gómez	2	20
Naomi Ekwedike	2	2
Abby Lowe	2	2
Monique Terry	2	2
Baylee Vanderdoes	2	2
Allison Brown	1	17
Cheyenne Greenhouse	0	64
Lexy Thorderson	0	61
Aleiah Brandon	0	72

Most Consecutive Games With A Point^

	Consecutive	Total
McKynzie Fort	65	65
Geena Gomez*	5	19
Kymberly Ellison*	2	24
Abby Lowe	2	2
Monique Terry	2	2
Baylee Vanderdoes	2	2
Ariell Bostick	1	72
Arantxa Gómez Ferrer	1	6
Naomi Ekwedike	1	1
Cheyenne Greenhouse	0	49
Lexy Thorderson	0	38
Aleiah Brandon	0	39
Allison Brown	0	2

*SDSU totals only

^must have played in the game

@AZTECWBB IN THE NATION

SDSU Rankings In National Top 100 (2015-16)

Category	Value	Rank
Fewest Fouls	477	45
Fewest Turnovers	463	84
Personal Fouls Per Game	15.4	50
Turnovers Per Game	14.9	100

fellow Aztec Allison Brown. As a sophomore, Lark's Mater Dei squad posted a 34-3 record and captured the Southern Section Division IAA crown, where she scored 14 points in the championship game.

A 6-foot guard, Lark appeared in 29 games over one-and-a-half seasons at Washington, where she averaged 2.5 points and 1.5 rebounds while shooting 38 percent from three-point range. As a freshman, she scored a career-high 10 points in a victory over Seattle University and grabbed a personal-best five rebounds that season in the Pac-12 title game vs. California.

Stiff Slate

The Aztecs will have to contend with a challenging schedule for the 2016-17 campaign, as SDSU will face seven teams that advanced to the postseason.

San Diego State opens the season with a battle at UC Riverside, which played in the first round of the WNIT. Six days later, the Scarlet and Black visits crosstown rival San Diego, which advanced to the third round of the prestigious tournament. Over Thanksgiving Weekend, SDSU plays at the Seton Hall Tournament and could face the Pirates, returning in 2016-17 from a NCAA Tournament first-round showing. On Fri., Dec. 9, San Diego State welcomes Michigan to Viejas Arena, which is coming off of a WNIT semifinal appearance.

Additionally, SDSU faces conference foes Fresno State, New Mexico and Colorado State twice each, all of which made appearances in the WNIT.

2016-17 By the Numbers

With a new season upon Montezuma Mesa, head coach Stacie Terry's fourth season is one brewing with promise. Below are trends to watch for in 2016-17:

- The Aztecs are true believers in the home court advantage. They enter the season with wins in 50 of its last 75 home games and have gone 82-37 on the Viejas Arena floor since the start of the 2008-09 campaign.
- With the game on the line, the Scarlet and Black gets the job done. The team has won 55 straight and has gone 85-1 since the beginning of the 2011-12 campaign when leading with five minutes left in the game. The Aztecs' lone blemish during that span occurred in a 59-58 heart-breaking loss at Washington on Dec. 5, 2012.
- The Aztecs are fond of closing out the calendar year on a high note. SDSU is 39-19 in December games dating back to the 2006-07 campaign, with seven of those losses coming against teams either ranked or receiving votes in the national polls.
- Over the last nine seasons, San Diego State has been solid in conference play. SDSU has recorded 87 Mountain West victories after posting 31 wins in the league's first nine years.
- The Aztecs have advanced to finals of the MW Championship in five of the last nine years, and advanced in the tournament every season since 2010-11, after not winning a single game in the tournament's first eight years of existence.

Paris Johnson Named Director of Player Personnel

One of 20 1,000-point scorers in Aztec Women's Basketball history, Paris Johnson has joined San Diego State women's basketball as the team's director of player personnel, head coach Stacie Terry announced.

In her role, Johnson will coordinate film exchange, edit game and practice film and develop team highlight videos. She will assist in the Aztecs' recruiting efforts and oversee the team's student managers. Additionally, Johnson will lend support to director of basketball operations Jon Silver in the planning and preparation of all women's basketball events.

Before joining the Aztecs' staff, Johnson served as the camp director at Skyhawks Sports Academy's San Diego camp

MW STANDINGS

	MW	Overall
Utah State	0-0	2-0
Boise State (RV/-)	0-0	1-0
Fresno State	0-0	1-0
New Mexico	0-0	1-0
UNLV	0-0	1-0
Colorado State (RV/RV)	0-0	1-1
Nevada	0-0	1-1
San Diego State	0-0	1-1
Wyoming	0-0	1-1
Air Force	0-0	0-2
San José State	0-0	0-2

MW SCHEDULE

Tuesday, November 15

New Mexico State at New Mexico, 6 p.m.

Houston at UNLV, 6 p.m. PT

Utah at Fresno State, 7 p.m. PT

Wednesday, November 16

Portland State at Boise State, 4:30 p.m. PT

Nevada at Sacramento State, 7:05 p.m. PT

Thursday, November 17

Preseason WNIT

COLORADO STATE at Nebraska, 7 p.m. CT

UC Irvine at UTAH STATE, 11 a.m. MT

SAN DIEGO STATE at San Diego, 6 p.m. PT

Denver at WYOMING, 6:30 p.m. M

Friday, November 18

CSUN at FRESNO STATE, 7 p.m. PT

Pacific at SAN JOSÉ STATE, 7 p.m. PT

Saturday, November 19

Weber State at AIR FORCE, 4 p.m. MT

USC at UNLV^, 4 p.m. PT

Sunday, November 20

Cal State Fullerton at WYOMING, 1 p.m. MT

NEVADA at Pepperdine, 1 p.m. PT

NEW MEXICO at Texas Tech, 2 p.m. CT

Seattle at BOISE STATE, 2 p.m. MT

Loyola Marymount at SAN DIEGO STATE, 2 p.m. PT

Santa Clara at SAN JOSÉ STATE, 2 p.m. PT

SDSU RECORD WHEN...

Playing at home	1-0
Playing on the road	0-1
Playing at a neutral site	0-0
Playing a night game (5 pm or later)	1-1
Playing a day game	0-0
Leading at halftime	1-0
Trailing at halftime	0-1
Tied at halftime	0-0
Leading with 5:00 left in regulation	1-0
Trailing with 5:00 left in regulation	0-1
Tied with 5:00 left	0-0
In overtime	0-0
Scoring less than 60 points	0-1
Scoring between 60-69 points	0-0
Scoring between 70-79 points	0-0
Scoring between 80-89 points	1-0
Scoring 90 or more points	0-0
Opponent scores less than 60 points	0-0
Opponent scores 60-69 points	0-0
Opponent scores 70-79 points	1-1
Opponent scores 80-89 points	0-0
Opponent scores 90 or more points	0-0
FG% .500 or better	1-0
FG% under .500	0-0
FG% .400-.500	0-0
FG% under .400	0-1
Opponent FG% .500 or better	0-1
Opponent FG% under .500	1-0
Opponent FG% .400-.500	0-0
Opponent FG% under .400	1-0
Better shooting %	1-0
Worse shooting %	0-1
More FG attempts	0-1
Fewer FG attempts	1-0
Same FG attempts	0-0
More FGs made	1-0
Fewer FGs made	0-1
Same FGs made	0-0
More FT attempts	0-1
Fewer FT attempts	1-0
Same FT attempts	0-0
More FTs made	1-0
Fewer FTs made	0-1
Same FTs made	0-0
More rebounds	1-1
Fewer rebounds	0-0
Same rebounds	0-0
More turnovers	1-1
Fewer turnovers	0-0
Same turnovers	0-0
More assists	1-0
Fewer assists	0-1
Same assists	0-0
More steals	0-0
Fewer steals	0-1
Same steals	1-0

SDSU STREAKS

Last 5 games	1-1
Last 10 games	1-1
Longest winning streak	1
Longest losing streak	1
Current streak	Won 1

from May-August 2015, supervising coaching staffs and coordinating daily lessons.

Johnson, an Aztec letterwinner from 2008-11, scored 1,598 points over her four-year career. San Diego State's career (267) and single season (94, 2009) blocks record holder, she garnered all-Mountain West honors each season she donned the Scarlet and Black. She also helped San Diego State to its first Mountain West tournament championship in 2010, a team that advanced to the NCAA Sweet 16.

After graduating with her bachelor's degree in social science, Johnson, a San Diego native, played overseas in Poland (Gorzow, 2011-12; Gdynia, 2015-16), Spain (Zamora, 2012-13), Australia (Brisbane and Sydney, 2014-15), the United Arab Emirates and Kuwait.

Listen Live

For the 16th consecutive year, Aztec women's basketball fans will have an opportunity to listen to live play-by-play of regular-season games over the internet at www.goaztecs.com.

SDSU alumnus Chris Ello begins his ninth season of calling the action and is a familiar voice in the San Diego area. In addition to his responsibilities with the Aztec women's basketball squad, Ello is a member of the football broadcast team as a sideline reporter for the school's flagship station, The Mighty 1090 AM.

Ello started his career in sports talk radio in San Diego on XTRA Sports 690 in the summer of 1994. He has accumulated a wealth of experience doing play-by-play for a variety of sports at every level, including stints with the SDSU football (1985), baseball (1998-99) and men's basketball (2006-07) squads.

From 1996-2006, Ello was the voice of the San Diego Gulls hockey team and has called the action for the San Diego Sockers (indoor soccer), San Diego Spirit (outdoor soccer), San Diego Wildcards (CBA) and San Diego Riptide (arena football). He also has experience broadcasting high school CIF football and basketball games since 2000.

For the fourth straight year, all regular-season Aztec home contests in 2016-17 will feature a live video stream via the Mountain West Network to supplement the audio call from Viejas Arena.

2016-17 Media Information

All media requests for interviews with the coaching staff or student-athletes should be directed to Jen Heisel at jheisel@mail.sdsu.edu. Please submit your requests with a minimum of 24 hours notice.

During the season, head coach Stacie Terry and the players are generally available to meet with the media following each workout, as requested. There will be no interviews on game days until postgame.

The Aztec basketball team officially began practice in early October. All workouts will take place at the Jeff Jacobs JAM Center with a few exceptions. Media wishing to attend practice should contact the Aztec media relations department at least one day in advance.

Media desiring to cover Aztec practices on campus can park in Parking Structure 7 and obtain a special parking permit from the SDSU athletic media relations office. Media parking via permit only will be provided for all home games in PS 4, adjacent to Viejas Arena.

ASSOCIATED PRESS POLL

(Week 2 - Nov. 14)

Rk		Record	Pts
1	Notre Dame (14)	1-0	794
2	Baylor (12)	1-0	790
3	Connecticut (6)	0-0	743
4	South Carolina (1)	0-0	720
5	Louisville	2-0	713
6	Maryland	1-0	638
7	Ohio State	1-0	633
8	Texas	0-0	605
9	UCLA	1-0	557
10	Mississippi State	2-0	522
11	Stanford	1-0	473
12	Florida State	1-0	437
13	Tennessee	2-0	413
14	Syracuse	1-0	344
15	Kentucky	2-0	343
16	Oklahoma	1-0	289
17	Washington	1-0	286
18	Arizona State	2-0	261
19	Florida	1-0	188
20	DePaul	2-0	169
21	West Virginia	1-0	168
22	Miami	1-1	163
23	Indiana	2-0	120
24	Oregon State	1-0	94
25	Missouri	1-0	76

First-place votes in parentheses

Others receiving votes: Michigan State 72, Auburn 38, Texas A&M 20, Duke 14, Colorado State 8, South Florida 7, Temple 5, Creighton 4, Green Bay 3, NC State 3, Saint Louis 2, Boise State 2, California 2, South Dakota State 2, Chattanooga 2, Belmont 1, Oregon 1

USA TODAY COACHES POLL

(Week 2 - Nov. 15)

Rk		Record	Pts
1	Notre Dame (13)	2-0	765
2	Connecticut (13)	1-0	758
3	South Carolina (4)	1-0	748
4	Baylor (2)	2-0	712
5	Maryland	1-0	646
6	Louisville	2-0	630
7	Stanford	2-0	584
8	Ohio State	1-1	548
9	Mississippi State	2-0	521
10	Texas	0-1	507
11	UCLA	1-1	463
12	Florida State	1-1	462
13	Tennessee	2-0	394
14	Syracuse	2-0	382
15	Washington	2-0	343
16	Arizona State	2-0	326
17	Oklahoma	1-0	273
18	Oregon State	2-0	241
19	Kentucky	2-0	233
20	DePaul	2-0	155
21	Michigan State	2-0	126
22	Miami	1-1	107
23	Florida	2-0	97
24	Texas A&M	1-0	82
25	West Virginia	1-0	62

First-place votes in parentheses

Others receiving votes: Indiana 59, Michigan 34, South Dakota State 25, Missouri 22, Duke 16, Auburn 15, South Florida 14, St John's 11, Western Kentucky 6, NC State 5, Oklahoma State 5, Temple 4, California 4, Saint Louis 3, Drake 3, Georgia 3, Green Bay 2, Gonzaga 2, Tulane 1, Georgia Tech 1

PERSONNEL SUMMARY

Returning Starters (3):

Ariell Bostick, Sr., G (4.9 ppg, 4.2 rpg, 2.9 apg)

McKynzie Fort, Jr., G (14.3 ppg, 4.1 rpg, 2.4 apg)

Cheyenne Greenhouse, Jr., G (4.9 ppg, 3.2 rpg, 0.5 apg)

Starters Lost (2):

Ahjaleé Harvey, G (9.3 ppg, 3.6 rpg, 2.1 apg)

Deidra Smith, F (7.5 ppg, 4.9 rpg, 0.5 bpg)

Other Players Lost (1):

Kylie Herd, Jr., G (10.2 mpg, 1.3 rpg)

Other Letterwinners Returning (5):

Aleiah Brandon, Sr., F (3.4 ppg, 2.4 rpg)

Kymberly Ellison, Sr., G (4.5 ppg, 0.7 apg, 33 3FGs)

Arantxa Gómez Ferrer, So., F (0.6 ppg, 0.9 rpg)

Geena Gomez, Jr., G (3.4 ppg, 1.9 rpg, 1.3 apg)

Lexy Thorderson, Jr., F/G (5.2 ppg, 2.2 rpg, 40 3FGs)

Other Players Returning (1):

Allison Brown, Jr., G (9 gms)

Newcomers (5):

Naomi Ekwedike, Fr., F, 6-6, Lagos, Nigeria (Potter's House Christian Academy (Fla.))

Khalia Lark, Jr., G, 6-0, Santa Ana, Calif. (Washington/Mater Dei HS)

Abby Lowe, Fr., G, 5-11, Stockport, England (Barking Abbey Academy)

Monique Terry, Fr., F, 6-2, San Antonio, Texas (Brennan HS)

Baylee Vanderdoes, Fr., F, 6-2, Auburn, Calif. (Placer HS)

ROSTER BREAKDOWN

By Class**Seniors (3):** Bostick, Brandon, Ellison; **Juniors (6):** Brown, Fort, G. Gomez, Greenhouse, Lark, Thorderson; **Sophomore (1):** A. Gómez Ferrer; **Freshmen (4):** Ekwedike, Lowe, Terry, Vanderdoes**By State/Country****California (8):** Bostick, Brandon, Brown, Fort, G. Gomez, Greenhouse, Lark, Vanderdoes; **Colorado (1):** Thorderson; **Texas (1):** Terry; **Georgia (1):** Ellison; **Spain (1):** A. Gómez Ferrer; **England (1):** Lowe; **Nigeria (1):** Ekwedike**By Position****Centers (1):** Ekwedike; **Forwards (4):** Brandon, A. Gómez Ferrer, Terry, Thorderson, Vanderdoes; **Guards (8):** Bostick, Brown, Ellison, Fort, G. Gomez, Greenhouse, Lark, Lowe, Thorderson**By Height****6-6 (1):** Ekwedike; **6-2 (1):** Terry; **6-1 (2):** Brandon, Vanderdoes; **6-0 (3):** A. Gómez Ferrer, Lark, Thorderson; **5-11 (2):** Greenhouse, Lowe; **5-9 (1):** Fort; **5-8 (1):** G. Gomez; **5-7 (2):** Brown, Ellison; **5-4 (1):** Bostick

2016-17 NUMERICAL ROSTER

No.	Name	Pos.	Ht.	Yr.	Exp.	Hometown (Previous School/High School)
1	Khalia Lark	F	6-0	Jr.	TR	Santa Ana, Calif. (Washington/Mater Dei HS)
3	Ariell Bostick	G	5-4	Sr.	3L	Oakland, Calif. (Bishop O'Dowd HS)
4	Kymberly Ellison	G	5-7	Sr.	1L	Columbus, Ga. (Georgia Tech/Hardaway HS)
11	Arantxa Gómez Ferrer	F	6-0	So.	1L	Valencia, Spain (Parque Colegio Santa Ana HS)
13	Allison Brown	G	5-7	Jr.	SQ	Anaheim Hills, Calif. (Mater Dei HS)
15	McKynzie Fort	G	5-9	Jr.	2L	Fontana, Calif. (Etiwanda HS)
20	Geena Gomez	G	5-8	Jr.	1L	Huntington Beach, Calif. (St. Joseph's (Pa.)/Edison HS)
21	Abby Lowe	G	5-11	Fr.	HS	Stockport, England (Barking Abbey Academy)
22	Lexy Thorderson	G/F	6-0	Jr.	2L	Castle Rock, Colo. (Rock Canyon HS)
30	Cheyenne Greenhouse	G	5-11	Jr.	2L	Riverside, Calif. (Canyon Springs HS)
34	Baylee Vanderdoes	F	6-2	Fr.	HS	Auburn, Calif. (Placer HS)
40	Monique Terry	F	6-2	Fr.	HS	San Antonio, Texas (Brennan HS)
44	Aleiah Brandon	F	6-1	Sr.	3L	Corona, Calif. (Centennial HS)
45	Naomi Ekwedike	F	6-6	Fr.	HS	Lagos, Nigeria (Potters House Christian Academy)

2016-17 ALPHABETICAL ROSTER

No.	Name	Pos.	Ht.	Yr.	Exp.	Hometown (Previous School/High School)
3	Ariell Bostick	G	5-4	Sr.	3L	Oakland, Calif. (Bishop O'Dowd HS)
44	Aleiah Brandon	F	6-1	Sr.	3L	Corona, Calif. (Centennial HS)
13	Allison Brown	G	5-7	Jr.	SQ	Anaheim Hills, Calif. (Mater Dei HS)
45	Naomi Ekwedike	F	6-6	Fr.	HS	Lagos, Nigeria (Potters House Christian Academy (Fla.))
4	Kymberly Ellison	G	5-7	Sr.	1L	Columbus, Ga. (Georgia Tech/Hardaway HS)
15	McKynzie Fort	G	5-9	Jr.	2L	Fontana, Calif. (Etiwanda HS)
20	Geena Gomez	G	5-8	Jr.	1L	Huntington Beach, Calif. (St. Joseph's (Pa.)/Edison HS)
11	Arantxa Gómez Ferrer	F	6-0	So.	1L	Valencia, Spain (Parque Colegio Santa Ana HS)
30	Cheyenne Greenhouse	G	5-11	Jr.	2L	Riverside, Calif. (Canyon Springs HS)
1	Khalia Lark	F	6-0	Jr.	TR	Santa Ana, Calif. (Washington/Mater Dei HS)
21	Abby Lowe	G	5-11	Fr.	HS	Stockport, England (Barking Abbey HS)
40	Monique Terry	F	6-2	Fr.	HS	San Antonio, Texas (Brennan HS)
22	Lexy Thorderson	G/F	6-0	So.	1L	Castle Rock, Colo. (Rock Canyon HS)
34	Baylee Vanderdoes	F	6-2	Fr.	HS	Auburn, Calif. (Placer HS)

Head Coach: Stacie Terry (UT Arlington, 1998), Fourth season at SDSU/Fourth overall**Assistant Coach:** Jesse Clark (Pacific Union, 2003), Fourth season at SDSU**Assistant Coach:** Ciara Carl (Point Loma Nazarene, 2005), Fourth season at SDSU**Assistant Coach:** Nick Grant (Baylor, 2010), Third season at SDSU**Director of Operations:** Jon Silver (UCLA, 2009), First season at SDSU**Director of Player Personnel:** Paris Johnson (San Diego State, 2011), First season at SDSU

2016-17 PRONUNCIATION GUIDE

Ariell Bostick	arr-EE-ell
Aleiah Brandon	uh-LAY-uh
Naomi Ekwedike	nay-O-mee eck-wed-EE-kay
Arantxa Gómez	uh-RON-cha
McKynzie Fort	ma-KEN-zee
Baylee Vanderdoes	VAN-der-doze
Ciara Carl	see-ARR-uh

STACIE TERRY

Head Coach
 Fourth Year at San Diego State; Fourth Year Overall
 UT Arlington, 1998



THE STACIE TERRY FILE

Hometown

San Diego, Calif.

Education

Bachelor of Arts -
 Broadcast Journalism
 UT Arlington, 1998

Playing Experience

1994-98
 UT Arlington

Head Coaching Experience

2013-present
 San Diego State

Previous Coaching Experience

2011-13
 LSU
 Assistant Coach

2008-11

UCLA
 Assistant Coach

2007-08

Southern Mississippi
 Recruiting Coordinator

2004-07

Illinois
 Assistant Coach

2003-04

Dayton
 Assistant Coach

2000-03

Louisville
 Assistant Coach

1999-2000

UT Arlington
 Graduate Assistant

San Diego native Stacie Terry enters her fourth year at the helm of the Aztec women's basketball team after she was named the eighth head coach in program history on May 15, 2013.

Under Terry's direction, SDSU has continued its trend of garnering all-conference honors. In 2015-16, following a campaign that saw her team finish sixth in the league with 14.4 points per game and was tied for third with two steals per game, sophomore McKynzie Fort earned nods on the MW All-Defensive Team and as an All-MW honorable mention pick. San Diego State's 34th All-MW recipient, the Aztecs have picked up a conference nod each of the last 17 seasons.

During her first season on Montezuma Mesa, Terry was saddled with the unenviable task of replacing four senior starters who accounted for nearly 64 percent of the team's scoring offense from the previous year, as well as overcoming the loss of two key players to injuries prior to conference play.

Despite those obstacles and a demanding schedule featuring nine games against teams that eventually advanced to postseason competition, Terry's squad flashed its resiliency during the 2013-14 campaign. The Aztecs led the league in rebounding margin and rebounding defense while ranking second in field-goal percentage.

Individually, Terry also oversaw the progress of senior center Cierra Warren, who became the fifth SDSU player in a six-year span to receive first-team all-MW recognition.

Prior to her arrival on The Mesa, Terry gained a wealth of experience as an assistant coach at the Division I level for 14 years, including five under head coach Nikki (Caldwell) Fargas, who transformed UCLA into a powerhouse before restoring LSU to national prominence.

During Terry's two seasons at LSU, the Lady Tigers compiled a 45-23 overall record and earned two NCAA tournament bids, including a Sweet 16 appearance during the 2012-13 campaign. During that season, the Lady Tigers also posted six victories against ranked opponents and finished with their second-highest scoring average (69.0) in the last seven years. Under Terry's guidance, forward LaShondra Barrett garnered first-team all-Southeastern Conference accolades and received honorable mention All-America distinction in 2012 before becoming a first-round draft choice of the WNBA's Washington Mystics.

Prior to her appointment at LSU, Terry served as an assistant under Fargas at UCLA from 2008-11, helping the Bruins gain national acclaim with a pair of NCAA tournament appearances. During Terry's tenure, UCLA posted 72 overall victories, as the 2010-11 squad finished with a 28-5 record, setting a school record for fewest losses in a single season to go with a No. 7 national ranking. In addition, the Bruins signed the fourth-ranked recruiting class that season, according to ESPN HoopGurlz, while Terry helped mentor first-team all-Pac-10 performers in Doreena Campbell, Darxia Morris and Jasmine Dixon, a 2012 honorable mention AP All-America selection, and all-conference freshman honorees Atonye Nyingifa and Markel Walker.

Terry spent the 2007-08 campaign at Southern Mississippi, as the Golden Eagles posted a 21-14 record and earned a postseason berth in the Women's National Invitation Tournament (WNIT). While at Southern Miss, Terry spearheaded the development and coordination of the Lady Eagle recruiting campaign. Her responsibilities also included working with the perimeter players, scouting opponents and film breakdown, as well as coordinating all of the team's community service events.

Terry also coached for three seasons from 2004-07 as an assistant under Hall of Fame head coach Theresa Grentz at Illinois, where the Fighting Illini had three straight recruiting classes

ranked among the top 25 in the nation, according to Blue Star Basketball, and made three consecutive trips to the WNIT. Her primary duties included defensive instruction and working with the perimeter players.

In addition, Terry coached at Dayton during the 2003-04 season following a three-year stint at Louisville from 2000-03. With the Cardinals, Terry's responsibilities encompassed recruiting, scouting, player development, summer camps and serving as a liaison for the program's community service outreach. Louisville captured the Conference USA regular-season title and earned a trip to the NCAA tournament in 2001 before making a WNIT appearance in 2002. She also assisted in signing the nation's 21st-ranked recruiting class in 2002-03, according to All-Star Girls Report. Terry recruited and coached all-Conference USA honoree Lori Nero, a draft choice of the WNBA's Houston Comets, as well as Sara Nord, who finished her collegiate career as the Cardinals' all-time assist leader and ranks among the top-15 scorers in school history.

Terry enjoyed a successful collegiate playing career at the University of Texas at Arlington, winning four varsity letters from 1994-98 under head coach Mike Dean. She earned first-team all-Southland Conference honors after leading the Mavericks in scoring with 17.4 points per game as a senior in 1997-98. Terry scored 1,169 points during her career at UTA and still ranks among the school's top 10 in 3-point field goals made (third), assists (sixth), steals (seventh) and free-throw percentage (10th). She is just one of 17 players in Maverick history to surpass the 1,000-point plateau, while her .335 career 3-point field-goal percentage is also a school and Southland Conference career record.

Terry played one season of professional basketball in Warsaw, Poland, averaging 12.0 points and 6.0 assists with the Polonia Phoenix, before returning to UT Arlington to begin her coaching career as a graduate assistant in 1999.

Terry prepped at El Capitan High and held the Vaqueros' career scoring record for three years following her graduation. She was inducted into the school's athletic hall of fame in 2008.



#3 ARIELL BOSTICK

Senior • 3L

5-4

Guard

Oakland, Calif.

Bishop O'Dowd High School

Team's top facilitator who gets to the rim and free-throw line often with speed

▶▶▶ GAME HIGHS

	CAREER	2016-17 SEASON
Points	19, vs. Boise State (2-5-14)	4, vs. San Diego Christian (11-14-16)
Rebounds	10, at Wyoming (12-30-15)	8, at UC Riverside (11-11-16)
Assists	8, Twice, Last: vs. San Diego Christian (11-14-16)	8, vs. San Diego Christian (11-14-16)
Steals	5, Twice, Last: at New Mexico (3-1-16)	2, at UC Riverside (11-11-16)
Blocks	1, Four times, Last: at Wyoming (12-30-15)	N/A
Field Goals	7, vs. Colorado State (1-2-14)	2, vs. San Diego Christian (11-14-16)
Field Goal Attempts	16, Twice, Last: vs. Wyoming (2-12-14)	3, vs. San Diego Christian (11-14-16)
3-pt. Field Goals	3, vs. San José State (1-22-14)	N/A
3-pt. Field Goal Attempts	7, vs. Wyoming (2-12-14)	N/A
Free Throws	5, Four times, Last: vs. Boise State (2-15-14)	N/A
Free Throw Attempts	8, at UC Santa Barbara (11-30-13)	N/A
Double-Figure Scoring Games	18	N/A
Double-Figure Rebounding Games	1	N/A
Double-Doubles	N/A	N/A

▶▶▶ 2016-17 GAME-BY-GAME STATISTICS

Opponent	GS	Min	TOTAL			3-PTS			FT	FTA	Pct	Off	REBOUNDS				PF	A	TO	Blk	Stl	Pts	Avg
			FG	FGA	Pct	3FG	FGA	Pct					Def	Tot	Avg								
at UC Riverside	*	25	0	2	.000	0	0	.000	0	0	.000	0	8	8	8.0	1	2	2	0	2	0	0	0.0
SAN DIEGO CHRISTIAN	*	26	2	3	.666	0	0	.000	0	0	.000	0	6	6	7.0	1	8	2	0	1	4	2.0	
at San Diego																							
LOYOLA MARYMOUNT																							
vs. UT Arlington																							
vs. Cen. Conn. St./Seton Hall																							
at UC Davis																							
MICHIGAN																							
UC SANTA BARBARA																							
at Cal State Fullerton																							
BIOLA																							
at New Mexico																							
NEVADA																							
BOISE STATE																							
at San Jose State																							
at Utah State																							
UNLV																							
AIR FORCE																							
at Colorado State																							
at Wyoming																							
FRESNO STATE																							
SAN JOSE STATE																							
at Nevada																							
UTAH STATE																							
at UNLV																							
at Fresno State																							
COLORADO STATE																							
at Air Force																							
NEW MEXICO																							
TOTALS		2	51	2	5	.400	0	0	.000	0	0	.000	0	14	14	7.0	2	10	4	0	3	4	2.0

BOSTICK'S CAREER STATISTICS

Year	GP-GS	MIN-AVG	FG-A	PCT	3P-A	PCT	FT-A	PCT	REB	AVG	PF-FO	A	TO	BLK	STL	PTS	AVG
2013-14	23-13	576-25.0	79-203	.389	19-58	.328	39-57	.684	71	3.1	51-1	65	67	2	32	216	9.4
2014-15	23-5	476-21.6	44-144	.306	11-37	.297	25-38	.658	58	2.5	30-0	42	46	6	27	124	5.4
2015-16	31-27	805-26.0	54-149	.362	6-32	.188	37-57	.649	131	4.2	67-0	89	73	2	56	151	4.9
2016-17	2-2	51-25.5	2-5	.400	0-0	.000	0-0	.000	14	7.0	2-0	10	4	0	3	4	2.0
Totals	79-45	1908-24.2	179-503	.356	36-127	.283	101-152	.664	274	3.5	150-1	206	190	10	118	495	6.3



#44 ALEIAH BRANDON

Senior • 3L

6-1

Forward

Corona, Calif.

Centennial High School

Provides veteran leadership as a fifth-year senior

▶▶▶ GAME HIGHS

	CAREER	2016-17 SEASON
Points	11, Twice, Last: at Fresno State (1-20-16)	N/A
Rebounds	6, vs. UC Davis (11-19-16)	N/A
Assists	2, Five times, Last: vs. UNLV (1-30-16)	N/A
Steals	2, Six times, Last: at Fresno State (1-20-16)	N/A
Blocks	2, Three times, Last: vs. San Jose State (2-20-16)	N/A
Field Goals	5, at Fresno State (1-20-16)	N/A
Field Goal Attempts	9, at Fresno State (1-20-16)	N/A
3-pt. Field Goals	2, at Washington (11-13-15)	N/A
3-pt. Field Goal Attempts	5, Three times, Last: vs. Wisconsin (11-29-15)	N/A
Free Throws	2, Four times, Last: vs. San Jose State (2-20-16)	N/A
Free Throw Attempts	2, Five times, Last: vs. San Jose State (2-20-16)	N/A
Double-Figure Scoring Games	3	N/A
Double-Figure Rebounding Games	N/A	N/A
Double-Doubles	N/A	N/A

▶▶▶ 2016-17 GAME-BY-GAME STATISTICS

Opponent	GS	Min	TOTAL			3-PTS			FT			REBOUNDS				PF	A	TO	Blk	Stl	Pts	Avg
			FG	FGA	Pct	3FG	FGA	Pct	FT	FTA	Pct	Off	Def	Tot	Avg							
at UC Riverside																						
SAN DIEGO CHRISTIAN									Did Not Play													
at San Diego									Did Not Play													
LOYOLA MARYMOUNT																						
vs. UT Arlington																						
vs. Cen. Conn. St./Seton Hall																						
at UC Davis																						
MICHIGAN																						
UC SANTA BARBARA																						
at Cal State Fullerton																						
BIOLA																						
at New Mexico																						
NEVADA																						
BOISE STATE																						
at San Jose State																						
at Utah State																						
UNLV																						
AIR FORCE																						
at Colorado State																						
at Wyoming																						
FRESNO STATE																						
SAN JOSE STATE																						
at Nevada																						
UTAH STATE																						
at UNLV																						
at Fresno State																						
COLORADO STATE																						
at Air Force																						
NEW MEXICO																						

BRANDON'S CAREER STATISTICS																		
Year	GP-GS	MIN-AVG	FG-A	PCT	3P-A	PCT	FT-A	PCT	REB	AVG	PF-FO	A	TO	BLK	STL	PTS	AVG	
2012-13	17-0	109-6.4	13-21	.619	0-0	.000	0-0	.000	14	0.8	9-0	0	5	5	2	26	1.5	
2013-14	-	Redshirt Year	-	-	-	-	-	-	-	-	-	-	-	-	-	-	-	
2014-15	30-0	281-9.4	24-51	.471	10-29	.345	6-6	1.000	31	1.0	37-0	7	20	2	7	64	2.1	
2015-16	26-18	494-19.0	37-111	.333	11-41	.268	3-4	.750	62	2.4	54-1	15	28	10	14	88	3.4	
2016-17	--	--	--	--	--	--	--	--	--	--	--	--	--	--	--	--	--	
Totals	73-18	884-12.1	74-183	.404	21-70	.300	9-10	.900	107	1.5	100-1	22	53	17	23	178	2.4	



#4 KYMBERLY ELLISON

Senior • 1L
 5-7
 Guard
 Columbus, Ga.
 Georgia Tech / Hardaway High School

A talented passer with strong floor vision who also excels at knocking down threes

▶▶▶ GAME HIGHS

	CAREER	2016-17 SEASON
Points	14, vs. San Diego (12-3-15)	12, vs. San Diego Christian (11-14-16)
Rebounds	3, Three times, Last: vs. Nevada (1-27-16)	3, vs. San Diego Christian (11-14-16)
Assists	3, at Utah State (1-23-16)	3, vs. San Diego Christian (11-14-16)
Steals	4, at Utah State (1-23-16)	N/A
Blocks	1, Twice, Last: vs. Fresno State (2-10-16)	N/A
Field Goals	5, Twice, Last: vs. Nevada (1-27-16)	4, vs. San Diego Christian (11-14-16)
Field Goal Attempts	10, Twice, Last: vs. UNLV (1-30-16)	8, at UC Riverside (11-11-16)
3-pt. Field Goals	3, Four times, Last: vs. San Jose State (2-20-16)	3, vs. San Diego Christian (11-14-16)
3-pt. Field Goal Attempts	8, vs. UNLV (1-30-16)	6, at UC Riverside (11-11-16)
Free Throws	3, at Wyoming (12-30-15)	1, vs. San Diego Christian (11-14-16)
Free Throw Attempts	4, at Wyoming (12-30-15)	2, vs. San Diego Christian (11-14-16)
Double-Figure Scoring Games	5	1
Double-Figure Rebounding Games	N/A	N/A
Double-Doubles	N/A	N/A

▶▶▶ 2016-17 GAME-BY-GAME STATISTICS

Opponent	GS	Min	TOTAL			3-PTS			FT	FTA	Pct	Off	REBOUNDS				PF	A	TO	Blk	Stl	Pts	Avg	
			FG	FGA	Pct	3FG	FGA	Pct					Def	Tot	Avg									
at UC Riverside	*	21	2	8	.250	2	6	.333	0	0	.000	0	1	1	1.0	4	0	2	0	0	0	6	6.0	
SAN DIEGO CHRISTIAN at San Diego	*	35	4	6	.666	3	4	.750	1	2	.500	0	3	3	2.0	3	3	2	0	0	0	12	9.0	
LOYOLA MARYMOUNT vs. UT Arlington																								
vs. Cen. Conn. St./Seton Hall																								
at UC Davis																								
MICHIGAN																								
UC SANTA BARBARA																								
at Cal State Fullerton																								
BIOLA																								
at New Mexico																								
NEVADA																								
BOISE STATE																								
at San Jose State																								
at Utah State																								
UNLV																								
AIR FORCE																								
at Colorado State																								
at Wyoming																								
FRESNO STATE																								
SAN JOSE STATE																								
at Nevada																								
UTAH STATE																								
at UNLV																								
at Fresno State																								
COLORADO STATE																								
at Air Force																								
NEW MEXICO																								
TOTALS	2	56	6	14	.429	5	10	.500	1	2	.500	0	4	4	.0	7	3	4	0	0	0	18	9.0	

ELLISON'S CAREER STATISTICS

Year	GP-GS	MIN-AVG	FG-A	PCT	3P-A	PCT	FT-A	PCT	REB	AVG	PF-FO	A	TO	BLK	STL	PTS	AVG
2012-13*	4-0	2-0.5	1-2	.500	1-2	.500	0-0	.000	0	0.0	0-0	0	0	0	0	3	0.8
2013-14*	11-0	21-1.9	1-5	.200	0-3	.000	0-0	.000	2	0.2	2-0	4	4	1	1	2	0.2
2014-15	-	Redshirt Year	-	-	-	-	-	-	-	-	-	-	-	-	-	-	-
2015-16	31-0	396-12.8	47-155	.303	33-126	.262	13-18	.722	25	0.8	39-1	21	32	1	18	140	4.5
2016-17	2-2	56-28.0	6-14	.429	5-10	.500	1-2	.500	4	2.0	7-0	3	4	0	0	18	9.0
Totals	48-2	475-9.9	55-176	.313	39-141	.277	14-20	.600	31	0.7	48-1	28	40	2	19	163	3.4



#13 ALLISON BROWN

Junior • SQ

5-7

Guard

Anaheim Hills, Calif.

Mater Dei High School

A walk-on who earned a scholarship for the 2016-17 campaign

▶▶▶ GAME HIGHS

	CAREER	2016-17 SEASON
Points	3, Twice, Last: vs. San Diego Christian (12-21-15)	N/A
Rebounds	3, vs. San Diego Christian (12-21-15)	1, vs. San Diego Christian (11-14-16)
Assists	2, vs. Wyoming (1-14-15)	1, vs. San Diego Christian (11-14-16)
Steals	1, at Loyola Marymount (12-10-15)	N/A
Blocks	N/A	N/A
Field Goals	1, Twice, Last: vs. San Diego Christian (12-21-15)	N/A
Field Goal Attempts	3, Twice, Last: vs. Air Force (1-21-15)	1, vs. San Diego Christian (11-14-16)
3-pt. Field Goals	1, Twice, Last: vs. San Diego Christian (12-21-15)	N/A
3-pt. Field Goal Attempts	4, Twice, Last: vs. Air Force (1-21-15)	N/A
Free Throws	N/A	N/A
Free Throw Attempts	2, vs. Michigan (11-29-14)	N/A
Double-Figure Scoring Games	N/A	N/A
Double-Figure Rebounding Games	N/A	N/A
Double-Doubles	N/A	N/A

▶▶▶ 2016-17 GAME-BY-GAME STATISTICS

Opponent	GS	Min	TOTAL			3-PTS			FT	FTA	Pct	Off	REBOUNDS				PF	A	TO	Blk	Stl	Pts	Avg		
			FG	FGA	Pct	3FG	FGA	Pct					Def	Tot	Avg										
at UC Riverside																									
SAN DIEGO CHRISTIAN		9	0	1	.000	0	0	.000	0	0	.000	0	1	1	1.0	1	1	2	0	0	0	0	0.0		
at San Diego																									
LOYOLA MARYMOUNT																									
vs. UT Arlington																									
vs. Cen. Conn. St./Seton Hall																									
at UC Davis																									
MICHIGAN																									
UC SANTA BARBARA																									
at Cal State Fullerton																									
BIOLA																									
at New Mexico																									
NEVADA																									
BOISE STATE																									
at San Jose State																									
at Utah State																									
UNLV																									
AIR FORCE																									
at Colorado State																									
at Wyoming																									
FRESNO STATE																									
SAN JOSE STATE																									
at Nevada																									
UTAH STATE																									
at UNLV																									
at Fresno State																									
COLORADO STATE																									
at Air Force																									
NEW MEXICO																									
TOTALS																									

BROWN'S CAREER STATISTICS

Year	GP-GS	MIN-AVG	FG-A	PCT	3P-A	PCT	FT-A	PCT	REB	AVG	PF-FO	A	TO	BLK	STL	PTS	AVG
2014-15	7-0	26-4.3	1-9	.111	1-9	.111	0-2	.000	2	0.3	3-0	2	3	0	0	3	0.4
2015-16	9-0	19-2.1	1-4	.250	1-3	.333	0-0	.000	4	0.4	0-0	2	3	0	1	3	0.3
2016-17	1-0	9-9.0	0-1	.000	0-0	.000	0-0	.000	1	1.0	1-0	1	2	0	0	0	0.0
Totals	17-0	54-3.2	2-14	.143	2-12	.166	0-2	.000	7	0.41	4-0	2	8	0	1	6	0.35



#45 NAOMI EKWEDIKE

Freshman • HS

6-6

Center

Lagos, Nigeria

Potter's House Christian Academy (Fla.)

A quick learner who will be an asset on defense with great hands and footwork to finish around the rim

▶▶▶ GAME HIGHS

2016-17 SEASON	
Points	N/A
Rebounds	N/A
Assists	N/A
Steals	N/A
Blocks	N/A
Field Goals	N/A
Field Goal Attempts	1, at UC Riverside (11-11-16)
3-pt. Field Goals	N/A
3-pt. Field Goal Attempts	N/A
Free Throws	N/A
Free Throw Attempts	N/A
Double-Figure Scoring Games	N/A
Double-Figure Rebounding Games	N/A
Double-Doubles	N/A

▶▶▶ 2016-17 GAME-BY-GAME STATISTICS

Opponent	GS	Min	TOTAL			3-PTS			FT	FTA	Pct	Off	REBOUNDS				PF	A	TO	Blk	Stl	Pts	Avg
			FG	FGA	Pct	3FG	FGA	Pct					Def	Tot	Avg								
at UC Riverside		2	0	1	.000	0	0	.000	0	0	.000	0	0	0	0.0	1	0	3	0	0	0	0.0	
SAN DIEGO CHRISTIAN		10	2	4	.500	0	0	.000	1	2	.500	0	0	0	0.0	1	0	1	0	0	5	2.5	
at San Diego																							
LOYOLA MARYMOUNT																							
vs. UT Arlington																							
vs. Cen. Conn. St./Seton Hall																							
at UC Davis																							
MICHIGAN																							
UC SANTA BARBARA																							
at Cal State Fullerton																							
BIOLA																							
at New Mexico																							
NEVADA																							
BOISE STATE																							
at San Jose State																							
at Utah State																							
UNLV																							
AIR FORCE																							
at Colorado State																							
at Wyoming																							
FRESNO STATE																							
SAN JOSE STATE																							
at Nevada																							
UTAH STATE																							
at UNLV																							
at Fresno State																							
COLORADO STATE																							
at Air Force																							
NEW MEXICO																							
TOTALS		12	2	5	.400	0	0	.000	1	2	.500	0	0	0	0.0	2	0	4	0	0	5	2.5	

EKWEDIKE'S CAREER STATISTICS

Year	GP-GS	MIN-AVG	FG-A	PCT	3P-A	PCT	FT-A	PCT	REB	AVG	PF-FO	A	TO	BLK	STL	PTS	AVG
2016-17	2-0	12-6.0	2-5	.400	0-0	.000	1-2	.500	0	0.0	2-0	0	4	0	0	5	2.5
Totals	2-0	12-6.0	2-5	.400	0-0	.000	1-2	.500	0	0.0	2-0	0	4	0	0	5	2.5



#20 GEENA GOMEZ

Junior • 1L

5-8

Guard

Huntington Beach, Calif.

St. Joseph's (Pa.) / Edison High School

A heady decision-maker and knock-down shooter

▶▶▶ GAME HIGHS

	CAREER	2016-17 SEASON
Points	15, at San Jose State (1-6-16)	14, vs. San Diego Christian (11-14-16)
Rebounds	5, Twice, Last: vs. Utah State (1-2-16)	2, at UC Riverside (11-11-16), vs. San Diego Christian (11-14-16)
Assists	6, vs. North Dakota State (1-27-15)	2, vs. San Diego Christian (11-14-16)
Steals	2, Twice, Last: at Washington (11-23-15)	1, at UC Riverside (11-11-16)
Blocks	1, Twice, Last: at UNLV (3-4-16)	N/A
Field Goals	4, Three times, Last: vs. San Diego Christian (11-14-16)	4, vs. San Diego Christian (11-14-16)
Field Goal Attempts	12, Twice, Last: at San Jose State (1-6-16)	8, vs. San Diego Christian (11-14-16)
3-pt. Field Goals	4, at San Jose State (1-6-16)	2, vs. San Diego Christian (11-14-16)
3-pt. Field Goal Attempts	9, at San Jose State (1-6-16)	5, vs. San Diego Christian (11-14-16)
Free Throws	4, vs. Cal State Fullerton (12-19-15), vs. San Diego Christian (11-14-16)	4, vs. San Diego Christian (11-14-16)
Free Throw Attempts	6, at San Jose State (1-6-16)	4, vs. San Diego Christian (11-14-16)
Double-Figure Scoring Games	2	1
Double-Figure Rebounding Games	N/A	N/A
Double-Doubles	N/A	N/A

▶▶▶ 2016-17 GAME-BY-GAME STATISTICS

Opponent	GS	Min	TOTAL			3-PTS			FT	FTA	Pct	REBOUNDS				PF	A	TO	Blk	Stl	Pts	Avg	
			FG	FGA	Pct	3FG	FGA	Pct				Off	Def	Tot	Avg								
at UC Riverside		25	2	7	.289	1	3	.333	1	2	.500	1	1	2	2.0	2	0	3	0	1	6	6.0	
SAN DIEGO CHRISTIAN	*	32	4	8	.500	2	5	.400	4	4	1.000	1	1	2	2.0	3	2	3	0	0	14	10.0	
at San Diego																							
LOYOLA MARYMOUNT																							
vs. UT Arlington																							
vs. Gen. Conn. St./Seton Hall																							
at UC Davis																							
MICHIGAN																							
UC SANTA BARBARA																							
at Cal State Fullerton																							
BIOLA																							
at New Mexico																							
NEVADA																							
BOISE STATE																							
at San Jose State																							
at Utah State																							
UNLV																							
AIR FORCE																							
at Colorado State																							
at Wyoming																							
FRESNO STATE																							
SAN JOSE STATE																							
at Nevada																							
UTAH STATE																							
at UNLV																							
at Fresno State																							
COLORADO STATE																							
at Air Force																							
NEW MEXICO																							
TOTALS		0	25	2	7	.289	1	3	.333	1	2	.500	1	1	2	2.0	2	0	3	0	1	6	6.0

GOMEZ'S CAREER STATISTICS

Year	GP-GS	MIN-AVG	FG-A	PCT	3P-A	PCT	FT-A	PCT	REB	AVG	PF-FO	A	TO	BLK	STL	PTS	AVG
2013-14*	24-1	114-4.8	10-34	.294	3-14	.214	5-7	.714	11	0.5	17-0	13	6	1	2	28	1.2
2014-15	-	Redshirt Year	-	-	-	-	-	-	-	-	-	-	-	-	-	-	-
2015-16	29-0	424-14.7	30-107	.280	23-71	.324	15-22	.682	55	1.9	23-0	37	26	2	11	98	3.4
2016-17	2-1	57-28.5	6-15	.400	3-8	.375	5-6	.833	4	2.0	5-0	2	6	0	1	20	10.0
Totals	55-2	620-11.3	46-156	.295	29-93	.312	25-35	.714	70	1.27	45-0	52	38	3	14	146	2.66

* - at St. Joseph's



#11 ARANTXA GOMEZ FERRER

Sophomore • 1L

6-0

Forward

Valencia, Spain

Parque Colegio Santa Ana High School / Ros Casares Valencia Club

A skilled inside threat who can stretch the floor

►►► GAME HIGHS

	CAREER	2016-17 SEASON
Points	2, Six times, Last: vs. San Diego Christian (11-14-16)	2, vs. San Diego Christian (11-14-16)
Rebounds	3, Three times, Last: vs. San Diego Christian (11-14-16)	2, vs. San Diego Christian (11-14-16)
Assists	1, Twice, Last: at Colorado State (2-3-16)	N/A
Steals	1, Five times, Last: vs. San Diego Christian (11-14-16)	1, vs. San Diego Christian (11-14-16)
Blocks	1, vs. North Dakota State (11-27-15)	N/A
Field Goals	2, Five times, Last: vs. Cal State Fullerton (12-19-15)	1, vs. San Diego Christian (11-14-16)
Field Goal Attempts	2, Twice, Last: vs. Cal State Fullerton (12-19-15)	3, vs. San Diego Christian (11-14-16)
3-pt. Field Goals	N/A	N/A
3-pt. Field Goal Attempts	N/A	N/A
Free Throws	1, at UC Riverside (11-11-16)	1, at UC Riverside (11-11-16)
Free Throw Attempts	4, Twice, Last: vs. San Diego Christian (12-21-15)	2, at UC Riverside (11-11-16)
Double-Figure Scoring Games	N/A	N/A
Double-Figure Rebounding Games	N/A	N/A
Double-Doubles	N/A	N/A

►►► 2016-17 GAME-BY-GAME STATISTICS

Opponent	GS	Min	TOTAL			3-PTS			FT	FTA	Pct	Off	REBOUNDS				PF	A	TO	Blk	Stl	Pts	Avg
			FG	FGA	Pct	3FG	FGA	Pct					Def	Tot	Avg								
at UC Riverside		16	0	0	.000	0	0	.000	1	2	.500	0	0	0	0.0	0	0	0	0	0	1	1.0	
SAN DIEGO CHRISTIAN at San Diego		8	1	3	.333	0	0	.000	0	0	.000	0	2	2	1.0	2	0	1	0	1	2	1.5	
LOYOLA MARYMOUNT vs. UT Arlington																							
vs. Cen. Conn. St./Seton Hall at UC Davis																							
MICHIGAN UC SANTA BARBARA at Cal State Fullerton																							
BIOLA at New Mexico																							
NEVADA BOISE STATE at San Jose State																							
at Utah State UNLV AIR FORCE at Colorado State at Wyoming																							
FRESNO STATE SAN JOSE STATE at Nevada UTAH STATE at UNLV at Fresno State																							
COLORADO STATE at Air Force NEW MEXICO																							
TOTALS	0	24	1	3	.333	0	0	.000	1	2	.500	0	2	2	1.0	2	0	1	0	1	3	1.5	

GOMEZ FERRER'S CAREER STATISTICS

Year	GP-GS	MIN-AVG	FG-A	PCT	3P-A	PCT	FT-A	PCT	REB	AVG	PF-FO	A	TO	BLK	STL	PTS	AVG
2015-16	18-0	118-6.6	5-12	.417	0-0	.000	0-12	.000	16	0.9	18-0	2	5	1	4	10	0.6
2016-17	2-0	24-12.0	1-3	.333	0-0	.000	1-2	.500	2	1.0	2-0	0	1	0	1	3	1.5
Totals	20-0	142-7.1	6-15	.400	0-0	.000	1-14	.071	18	0.9	18-0	2	6	1	5	14	0.7



#30 CHEYENNE GREENHOUSE

Junior • 2L

5-11

Guard

Riverside, Calif.

Canyon Springs High School

A talented and adaptable slasher who can fill multiple roles

▶▶▶ GAME HIGHS

	CAREER	2016-17 SEASON
Points	19, vs. Sacramento State (11-14-14)	6, at UC Riverside (11-11-16)
Rebounds	11, vs. Sacramento State (11-14-14)	3, at UC Riverside (11-11-16)
Assists	5, vs. Sacramento State (11-14-14)	N/A
Steals	2, Twice, Last: at Air Force (2-13-16)	1, at UC Riverside (11-11-16)
Blocks	2, at Air Force (2-13-16)	N/A
Field Goals	6, Three times, Last: at Wyoming (12-30-15)	3, at UC Riverside (11-11-16)
Field Goal Attempts	12, vs. Sacramento State (11-14-14)	10, at UC Riverside (11-11-16)
3-pt. Field Goals	1, Three times, Last: at Air Force (2-13-16)	N/A
3-pt. Field Goal Attempts	3, vs. UC Riverside (11-16-15)	2, at UC Riverside (11-11-16)
Free Throws	7, vs. Sacramento State (11-14-14)	N/A
Free Throw Attempts	10, vs. Sacramento State (11-14-14)	N/A
Double-Figure Scoring Games	8	N/A
Double Figure Rebounding Games	1	N/A
Double-Doubles	1	N/A

▶▶▶ 2016-17 GAME-BY-GAME STATISTICS

Opponent	GS	Min	TOTAL			3-PTS			FT	FTA	Pct	REBOUNDS				PF	A	TO	Blk	Stl	Pts	Avg
			FG	FGA	Pct	3FG	FGA	Pct				Off	Def	Tot	Avg							
at UC Riverside	*	30	3	10	.300	0	2	.000	0	0	.000	2	1	3	3.0	0	0	0	0	1	6	6.0
SAN DIEGO CHRISTIAN									Did Not Play													
at San Diego																						
LOYOLA MARYMOUNT																						
vs. UT Arlington																						
vs. Cen. Conn. St./Seton Hall																						
at UC Davis																						
MICHIGAN																						
UC SANTA BARBARA																						
at Cal State Fullerton																						
BIOLA																						
at New Mexico																						
NEVADA																						
BOISE STATE																						
at San Jose State																						
at Utah State																						
UNLV																						
AIR FORCE																						
at Colorado State																						
at Wyoming																						
FRESNO STATE																						
SAN JOSE STATE																						
at Nevada																						
UTAH STATE																						
at UNLV																						
at Fresno State																						
COLORADO STATE																						
at Air Force																						
NEW MEXICO																						
TOTALS	1	30	3	10	.300	0	2	.000	0	0	.000	2	1	3	3.0	0	0	0	0	1	6	6.0

GREENHOUSE'S CAREER STATISTICS

Year	GP-GS	MIN-AVG	FG-A	PCT	3P-A	PCT	FT-A	PCT	REB	AVG	PF-FO	A	TO	BLK	STL	PTS	AVG
2014-15	31-8	441-14.2	43-118	.364	1-4	.250	32-48	.667	87	2.8	23-0	21	35	1	8	119	3.8
2015-16	31-22	647-20.9	59-161	.366	2-9	.222	33-49	.673	100	3.2	35-0	17	30	6	9	153	4.9
2016-17	1-1	30-30.0	3-10	.300	0-2	.000	0-0	.000	3	3.0	0-0	0	0	0	1	6	6.0
Totals	63-31	1118-17.7	105-289	.363	3-15	.200	65-97	.670	190	3.02	58-0	38	65	7	18	278	4.4



#1 KHALIA LARK

Junior • TR

6-0

Guard

Irvine, Calif.

Washington / Mater Dei High School

A versatile wing shot who will bring toughness to the team when eligible Dec. 22

▶▶▶ GAME HIGHS

	CAREER	2016-17 SEASON	* AT WASHINGTON
Points	10, vs. Seattle U (12-4-14)*	N/A	
Rebounds	5, Twice, Last: vs. Seattle U (12-4-14)*	N/A	
Assists	2, at Arizona State (1-3-15)*	N/A	
Steals	1, Four times, Last: vs. Seattle U (12-4-14)*	N/A	
Blocks	N/A	N/A	
Field Goals	3, Twice, Last: vs. vs. Seattle U (12-4-14)*	N/A	
Field Goal Attempts	6, vs. Seattle U (12-4-14)*	N/A	
3-pt. Field Goals	2, Three times, Last: vs. Seattle U (12-4-14)*	N/A	
3-pt. Field Goal Attempts	3, Twice, Last: vs. Seattle U (12-4-14)*	N/A	
Free Throws	4, Twice, Last: vs. Seattle U (12-4-14)*	N/A	
Free Throw Attempts	6, vs. Santa Clara (11-14-15)*	N/A	
Double-Figure Scoring Games	1	N/A	
Double-Figure Rebounding Games	N/A	N/A	
Double-Doubles	N/A	N/A	

▶▶▶ 2016-17 GAME-BY-GAME STATISTICS

Opponent	TOTAL			3-PTS			REBOUNDS																
	GS	Min	FG	FGA	Pct	3FG	FGA	Pct	FT	FTA	Pct	Off	Def	Tot	Avg	PF	A	TO	Blk	Stl	Pts	Avg	
at UC Riverside																							
SAN DIEGO CHRISTIAN																							
at San Diego																							
LOYOLA MARYMOUNT																							
vs. UT Arlington																							
vs. Cen. Conn. St./Seton Hall																							
at UC Davis																							
MICHIGAN																							
UC SANTA BARBARA																							
at Cal State Fullerton																							
BIOLA																							
at New Mexico																							
NEVADA																							
BOISE STATE																							
at San Jose State																							
at Utah State																							
UNLV																							
AIR FORCE																							
at Colorado State																							
at Wyoming																							
FRESNO STATE																							
SAN JOSE STATE																							
at Nevada																							
UTAH STATE																							
at UNLV																							
at Fresno State																							
COLORADO STATE																							
at Air Force																							
NEW MEXICO																							
TOTALS																							

LARK'S CAREER STATISTICS

Year	GP-GS	MIN-AVG	FG-A	PCT	3P-A	PCT	FT-A	PCT	REB	AVG	PF-FO	A	TO	BLK	STL	PTS	AVG
2014-15	23-0	198-8.6	17-39	.436	11-27	.407	11-14	.786	31	1.3	12-0	5	13	0	3	56	2.4
2015-16	6-0	83-13.8	5-15	.385	2-7	.333	5-11	.455	13	2.2	3-0	2	7	0	1	17	2.8
2016-17	--	--	--	--	--	--	--	--	--	--	--	--	--	--	--	--	--
Totals	29-0	281-9.7	22-54	.423	13-34	.394	16-25	.640	44	1.5	15-0	7	20	0	4	73	2.5



#21 ABBY LOWE

Freshman • HS

5-11

Guard

Stockport, England

Barking Abbey Academy

Slashing-type guard with a high basketball IQ who adds height and depth to wing position

▶▶▶ GAME HIGHS

2016-17 SEASON	
Points	3, vs. San Diego Christian (11-14-16)
Rebounds	3, at UC Riverside (11-11-16), vs. San Diego Christian (11-14-16)
Assists	1, vs. San Diego Christian (11-14-16)
Steals	N/A
Blocks	N/A
Field Goals	1, at UC Riverside (11-11-16), vs. San Diego Christian (11-14-16)
Field Goal Attempts	4, vs. San Diego Christian (11-14-16)
3-pt. Field Goals	N/A
3-pt. Field Goal Attempts	1, vs. San Diego Christian (11-14-16)
Free Throws	1, vs. San Diego Christian (11-14-16)
Free Throw Attempts	1, vs. San Diego Christian (11-14-16)
Double-Figure Scoring Games	N/A
Double-Figure Rebounding Games	N/A
Double-Doubles	N/A

▶▶▶ 2016-17 GAME-BY-GAME STATISTICS

Opponent	GS	Min	TOTAL			3-PTS			FT	FTA	Pct	Off	REBOUNDS				PF	A	TO	Blk	Stl	Pts	Avg
			FG	FGA	Pct	3FG	FGA	Pct					Def	Tot	Avg								
at UC Riverside		12	1	2	.500	0	0	.000	0	0	.000	2	1	3	3.0	3	0	3	0	0	2	2.0	
SAN DIEGO CHRISTIAN		8	1	4	.250	0	1	.000	1	1	1.000	1	2	3	3.0	1	1	1	0	0	3	2.5	
at San Diego																							
LOYOLA MARYMOUNT																							
vs. UT Arlington																							
vs. Cen. Conn. St./Seton Hall																							
at UC Davis																							
MICHIGAN																							
UC SANTA BARBARA																							
at Cal State Fullerton																							
BIOLA																							
at New Mexico																							
NEVADA																							
BOISE STATE																							
at San Jose State																							
at Utah State																							
UNLV																							
AIR FORCE																							
at Colorado State																							
at Wyoming																							
FRESNO STATE																							
SAN JOSE STATE																							
at Nevada																							
UTAH STATE																							
at UNLV																							
at Fresno State																							
COLORADO STATE																							
at Air Force																							
NEW MEXICO																							
TOTALS		20	2	6	.333	0	1	.000	1	1	1.000	3	3	6	3.0	4	0	1	4	0	5	2.5	

LOWE'S CAREER STATISTICS

Year	GP-GS	MIN-AVG	FG-A	PCT	3P-A	PCT	FT-A	PCT	REB	AVG	PF-FO	A	TO	BLK	STL	PTS	AVG
2016-17	2-0	20-10.0	2-6	.333	0-1	.000	1-1	1.000	6	3.0	4-0	0	1	4	0	5	2.5
Totals	2-0	20-10.0	2-6	.333	0-1	.000	1-1	1.000	6	3.0	4-0	0	1	4	0	5	2.5



#40 MONIQUE TERRY

Freshman • HS

6-2

Forward

San Antonio, Texas

Brennan High School

Enthusiastic and hard-working utility player whose greatest strength is rebounding

▶▶▶ GAME HIGHS

	2016-17 SEASON
Points	2, at UC Riverside (11-11-16), vs. San Diego Christian (11-14-16)
Rebounds	1, at UC Riverside (11-11-16), vs. San Diego Christian (11-14-16)
Assists	N/A
Steals	N/A
Blocks	1, vs. San Diego Christian (11-14-16)
Field Goals	1, vs. San Diego Christian (11-14-16)
Field Goal Attempts	2, vs. San Diego Christian (11-14-16)
3-pt. Field Goals	N/A
3-pt. Field Goal Attempts	1, vs. San Diego Christian (11-14-16)
Free Throws	2, at UC Riverside (11-11-16)
Free Throw Attempts	2, at UC Riverside (11-11-16)
Double-Figure Scoring Games	N/A
Double-Figure Rebounding Games	N/A
Double-Doubles	N/A

▶▶▶ 2016-17 GAME-BY-GAME STATISTICS

Opponent	GS	Min	TOTAL			3-PTS			FT	FTA	Pct	REBOUNDS								PF	A	TO	Blk	Stl	Pts	Avg
			FG	FGA	Pct	3FG	FGA	Pct				Off	Def	Tot	Avg											
at UC Riverside		14	0	1	.000	0	0	.000	2	2	1.000	0	1	1	1.0	1	0	1	0	0	0	2	2.0			
SAN DIEGO CHRISTIAN		15	1	2	.500	0	1	.000	0	0	.000	0	1	1	1.0	1	0	1	1	0	2	2.0				
at San Diego																										
LOYOLA MARYMOUNT																										
vs. UT Arlington																										
vs. Cen. Conn. St./Seton Hall																										
at UC Davis																										
MICHIGAN																										
UC SANTA BARBARA																										
at Cal State Fullerton																										
BIOLA																										
at New Mexico																										
NEVADA																										
BOISE STATE																										
at San Jose State																										
at Utah State																										
UNLV																										
AIR FORCE																										
at Colorado State																										
at Wyoming																										
FRESNO STATE																										
SAN JOSE STATE																										
at Nevada																										
UTAH STATE																										
at UNLV																										
at Fresno State																										
COLORADO STATE																										
at Air Force																										
NEW MEXICO																										
TOTALS	29	14.5	1	3	.333	0	1	.000	2-2	1.000	0	2	2	1.0	2	0	0	2	1	0	4	2.0				

TERRY'S CAREER STATISTICS

Year	GP-GS	MIN-AVG	FG-A	PCT	3P-A	PCT	FT-A	PCT	REB	AVG	PF-FO	A	TO	BLK	STL	PTS	AVG
2016-17	2-0	29-14.5	1-3	.333	0-1	.000	2-2	1.000	2	1.0	2-0	0	2	1	0	4	2.0
Totals	2-0	29-14.5	1-3	.333	0-1	.000	2-2	1.000	2	1.0	2-0	0	2	1	0	4	2.0



#22 LEXY THORDERSON

Junior • 2L

6-0

Guard/Forward

Castle Rock, Colo.

Rock Canyon High School

Team's top three-point threat in 2015-16 who will be tasked with an expanded role

▶▶▶ GAME HIGHS

	CAREER	2016-17 SEASON
Points	12, Three times, Last: vs. North Dakota State (11-27-15)	N/A
Rebounds	7, vs. San Diego Christian (12-21-15)	N/A
Assists	2, Three times, Last: vs. UNLV (3-3-15)	N/A
Steals	2, Twice, Last: vs. Fresno State (2-10-16)	N/A
Blocks	1, Eight times, Last: at UNLV (3-4-16)	N/A
Field Goals	5, at Colorado State (2-14-15)	N/A
Field Goal Attempts	12, at Fresno State (2-10-16)	N/A
3-pt. Field Goals	4, Twice, Last: vs. North Dakota State (11-27-15)	N/A
3-pt. Field Goal Attempts	8, at Loyola Marymount (12-10-15)	N/A
Free Throws	2, Four times, Last: vs. Wyoming (2-24-16)	N/A
Free Throw Attempts	4, vs. Wyoming (3-7-16)	N/A
Double-Figure Scoring Games	8	N/A
Double-Figure Rebounding Games	N/A	N/A
Double-Doubles	N/A	N/A

▶▶▶ 2016-17 GAME-BY-GAME STATISTICS

Opponent	TOTAL			3-PTS			REBOUNDS				PF	A	TO	Blk	Stl	Pts	Avg	
	GS	Min	FG	FGA	Pct	3FG	FGA	Pct	FT	FTA								Pct
at UC Riverside																		
SAN DIEGO CHRISTIAN									Did Not Play									
at San Diego									Did Not Play									
LOYOLA MARYMOUNT																		
vs. UT Arlington																		
vs. Cen. Conn. St./Seton Hall																		
at UC Davis																		
MICHIGAN																		
UC SANTA BARBARA																		
at Cal State Fullerton																		
BIOLA																		
at New Mexico																		
NEVADA																		
BOISE STATE																		
at San Jose State																		
at Utah State																		
UNLV																		
AIR FORCE																		
at Colorado State																		
at Wyoming																		
FRESNO STATE																		
SAN JOSE STATE																		
at Nevada																		
UTAH STATE																		
at UNLV																		
at Fresno State																		
COLORADO STATE																		
at Air Force																		
NEW MEXICO																		
TOTALS																		

THORDERSON'S CAREER STATISTICS

Year	GP-GS	MIN-AVG	FG-A	PCT	3P-A	PCT	FT-A	PCT	REB	AVG	PF-FO	A	TO	BLK	STL	PTS	AVG
2014-15	30-0	226-7.5	20-70	.286	13-58	.224	4-4	1.000	19	0.6	15-0	8	18	1	3	57	1.9
2015-16	31-2	524-16.9	58-172	.337	40-124	.323	5-8	.625	67	2.2	33-0	4	9	8	10	161	5.2
2016-17	--	--	--	--	--	--	--	--	--	--	--	--	--	--	--	--	--
Totals	61-2	750-12.3	78-242	.322	53-182	.291	9-12	0.75	86	1.41	48-0	12	27	9	13	218	3.8



#34 BAYLEE VANDERDOES

Freshman • HS

6-1

Forward

Auburn, Calif.

Placer High School

Extremely skilled offensively at the post position and shoots the ball very well from the outside

▶▶▶ GAME HIGHS

	2016-17 SEASON
Points	10, vs. San Diego Christian (11-14-16)
Rebounds	10, vs. San Diego Christian (11-14-16)
Assists	N/A
Steals	N/A
Blocks	1, vs. San Diego Christian (11-14-16)
Field Goals	7, vs. San Diego Christian (11-14-16)
Field Goal Attempts	10, vs. San Diego Christian (11-14-16)
3-pt. Field Goals	N/A
3-pt. Field Goal Attempts	N/A
Free Throws	3, at UC Riverside (11-11-16), vs. San Diego Christian (11-14-16)
Free Throw Attempts	4, vs. San Diego Christian (11-14-16)
Double-Figure Scoring Games	1
Double-Figure Rebounding Games	1
Double-Doubles	1

▶▶▶ 2016-17 GAME-BY-GAME STATISTICS

Opponent	GS	Min	TOTAL			3-PTS			FT	FTA	Pct	REBOUNDS				PF	A	TO	Blk	Stl	Pts	Avg	
			FG	FGA	Pct	3FG	FGA	Pct				Off	Def	Tot	Avg								
at UC Riverside	*	17	2	3	.667	0	0	.000	3	3	1.000	3	2	5	5.0	3	0	1	0	0	7	7.0	
SAN DIEGO CHRISTIAN	*	22	5	7	.714	0	0	.000	0	1	.000	2	8	10	7.5	1	0	2	1	0	10	8.5	
at San Diego																							
LOYOLA MARYMOUNT																							
vs. UT Arlington																							
vs. Cen. Conn. St./Seton Hall																							
at UC Davis																							
MICHIGAN																							
UC SANTA BARBARA																							
at Cal State Fullerton																							
BIOLA																							
at New Mexico																							
NEVADA																							
BOISE STATE																							
at San Jose State																							
at Utah State																							
UNLV																							
AIR FORCE																							
at Colorado State																							
at Wyoming																							
FRESNO STATE																							
SAN JOSE STATE																							
at Nevada																							
UTAH STATE																							
at UNLV																							
at Fresno State																							
COLORADO STATE																							
at Air Force																							
NEW MEXICO																							
TOTALS		2	39	7	10	.700	0	0	.000	3	4	.750	5	10	15	7.5	4	0	1	0	0	17	8.5

VANDERDOES' CAREER STATISTICS

Year	GP-GS	MIN-AVG	FG-A	PCT	3P-A	PCT	FT-A	PCT	REB	AVG	PF-FO	A	TO	BLK	STL	PTS	AVG
2016-17	2-2	39-19.5	7-10	.700	0-0	.000	3-4	.750	15	7.5	4-0	0	3	1	0	17	8.5
Totals	2-2	39-19.5	7-10	.700	0-0	.000	3-4	.750	15	7.5	4-0	0	3	1	0	17	8.5

All games

RECORD:	OVERALL	HOME	AWAY	NEUTRAL
ALL GAMES	1-1	1-0	0-1	0-0
CONFERENCE	0-0	0-0	0-0	0-0
NON-CONFERENCE	1-1	1-0	0-1	0-0

##	Player	gp-gs	min	avg	Total		3-Point		F-Throw		Rebounds				pf	dq	a	to	blk	stl	pts	avg
					fg-fga	fg%	3fg-fga	3fg%	ft-fta	ft%	off	def	tot	avg								
15	FORT, McKynzie	2-2	73	36.5	17-39	.436	2-7	.286	6-9	.667	2	8	10	5.0	4	0	7	4	0	2	42	21.0
20	GOMEZ, Geena	2-1	57	28.5	6-15	.400	3-8	.375	5-6	.833	2	2	4	2.0	5	0	2	6	0	1	20	10.0
04	ELLISON, Kymberly	2-2	56	28.0	6-14	.429	5-10	.500	1-2	.500	0	4	4	2.0	7	0	3	4	0	0	18	9.0
34	VANDERDOES, Bayle	2-2	39	19.5	7-10	.700	0-0	.000	3-4	.750	5	10	15	7.5	4	0	0	3	1	0	17	8.5
30	GREENHOUSE, Chey	1-1	30	30.0	3-10	.300	0-2	.000	0-0	.000	2	1	3	3.0	0	0	0	0	0	1	6	6.0
21	LOWE, Abby	2-0	20	10.0	2-6	.333	0-1	.000	1-1	1.000	3	3	6	3.0	4	0	1	4	0	0	5	2.5
45	EKWEDIKE, Naomi	2-0	12	6.0	2-5	.400	0-0	.000	1-2	.500	0	0	0	0.0	2	0	0	4	0	0	5	2.5
03	BOSTICK, Ariell	2-2	51	25.5	2-5	.400	0-0	.000	0-0	.000	0	14	14	7.0	2	0	10	4	0	3	4	2.0
40	TERRY, Monique	2-0	29	14.5	1-3	.333	0-1	.000	2-2	1.000	0	2	2	1.0	2	0	0	2	1	0	4	2.0
11	GOMEZ, Arantxa	2-0	24	12.0	1-3	.333	0-0	.000	1-2	.500	0	2	2	1.0	2	0	0	1	0	1	3	1.5
13	BROWN, Allison	1-0	9	9.0	0-1	.000	0-0	.000	0-0	.000	0	1	1	1.0	1	0	1	2	0	0	0	0.0
Team											8	3	11									
Total.....		2	400		47-111	.423	10-29	.345	20-28	.714	22	50	72	36.0	33	0	24	34	2	8	124	62.0
Opponents.....		2	400		52-120	.433	18-43	.419	20-32	.625	21	44	65	32.5	33	-	38	25	6	11	142	71.0

Score by Periods	1st	2nd	3rd	4th	Totals
San Diego State	40	26	23	35	124
Opponents	39	38	27	38	142

Home games

RECORD:	OVERALL	HOME	AWAY	NEUTRAL
ALL GAMES	1-0	1-0	0-0	0-0
CONFERENCE	0-0	0-0	0-0	0-0
NON-CONFERENCE	1-0	1-0	0-0	0-0

#	Player	gp-gs	min	avg	Total		3-Point		F-Throw		Rebounds				pf	dq	a	to	blk	stl	pts	avg		
					fg-fga	fg%	3fg-fga	3fg%	ft-fta	ft%	off	def	tot	avg										
15	FORT, McKynzie	1-1	35	35.0	11-18	.611	2-2	1.000	4-4	1.000	2	5	7	7.0	2	0	4	1	0	1	28	28.0		
20	GOMEZ, Geena	1-1	32	32.0	4-8	.500	2-5	.400	4-4	1.000	1	1	2	2.0	3	0	2	3	0	0	14	14.0		
04	ELLISON, Kymberly	1-1	35	35.0	4-6	.667	3-4	.750	1-2	.500	0	3	3	3.0	3	0	3	2	0	0	12	12.0		
34	VANDERDOES, Bayle	1-1	22	22.0	5-7	.714	0-0	.000	0-1	.000	2	8	10	10.0	1	0	0	2	1	0	10	10.0		
45	EKWEDIKE, Naomi	1-0	10	10.0	2-4	.500	0-0	.000	1-2	.500	0	0	0	0.0	1	0	0	1	0	0	5	5.0		
03	BOSTICK, Ariell	1-1	26	26.0	2-3	.667	0-0	.000	0-0	.000	0	6	6	6.0	1	0	8	2	0	1	4	4.0		
21	LOWE, Abby	1-0	8	8.0	1-4	.250	0-1	.000	1-1	1.000	1	2	3	3.0	1	0	1	1	0	0	3	3.0		
40	TERRY, Monique	1-0	15	15.0	1-2	.500	0-1	.000	0-0	.000	0	1	1	1.0	1	0	0	1	1	0	2	2.0		
11	GOMEZ, Arantxa	1-0	8	8.0	1-3	.333	0-0	.000	0-0	.000	0	2	2	2.0	2	0	0	1	0	1	2	2.0		
13	BROWN, Allison	1-0	9	9.0	0-1	.000	0-0	.000	0-0	.000	0	1	1	1.0	1	0	1	2	0	0	0	0.0		
Team											1	1	2											
Total.....		1	200		31-56	.554	7-13	.538	11-14	.786	7	30	37	37.0	16	0	19	16	2	3	80	80.0		
Opponents.....		1	200		25-66	.379	11-31	.355	9-15	.600	14	18	32	32.0	14	-	17	11	2	3	70	70.0		

Score by Periods	1st	2nd	3rd	4th	Totals
San Diego State	25	20	11	24	80
Opponents	20	17	13	20	70

Away games

RECORD:	OVERALL	HOME	AWAY	NEUTRAL
ALL GAMES	0-1	0-0	0-1	0-0
CONFERENCE	0-0	0-0	0-0	0-0
NON-CONFERENCE	0-1	0-0	0-1	0-0

#	Player	gp-gs	min	avg	Total		3-Point		F-Throw		Rebounds				pf	dq	a	to	blk	stl	pts	avg		
					fg-fga	fg%	3fg-fga	3fg%	ft-fta	ft%	off	def	tot	avg										
15	FORT, McKynzie	1-1	38	38.0	6-21	.286	0-5	.000	2-5	.400	0	3	3	3.0	2	0	3	3	0	1	14	14.0		
34	VANDERDOES, Bayle	1-1	17	17.0	2-3	.667	0-0	.000	3-3	1.000	3	2	5	5.0	3	0	0	1	0	0	7	7.0		
30	GREENHOUSE, Chey	1-1	30	30.0	3-10	.300	0-2	.000	0-0	.000	2	1	3	3.0	0	0	0	0	0	1	6	6.0		
20	GOMEZ, Geena	1-0	25	25.0	2-7	.286	1-3	.333	1-2	.500	1	1	2	2.0	2	0	0	3	0	1	6	6.0		
04	ELLISON, Kymberly	1-1	21	21.0	2-8	.250	2-6	.333	0-0	.000	0	1	1	1.0	4	0	0	2	0	0	6	6.0		
40	TERRY, Monique	1-0	14	14.0	0-1	.000	0-0	.000	2-2	1.000	0	1	1	1.0	1	0	0	1	0	0	2	2.0		
21	LOWE, Abby	1-0	12	12.0	1-2	.500	0-0	.000	0-0	.000	2	1	3	3.0	3	0	0	3	0	0	2	2.0		
11	GOMEZ, Arantxa	1-0	16	16.0	0-0	.000	0-0	.000	1-2	.500	0	0	0	0.0	0	0	0	0	0	0	1	1.0		
03	BOSTICK, Ariell	1-1	25	25.0	0-2	.000	0-0	.000	0-0	.000	0	8	8	8.0	1	0	2	2	0	2	0	0.0		
45	EKWEDIKE, Naomi	1-0	2	2.0	0-1	.000	0-0	.000	0-0	.000	0	0	0	0.0	1	0	0	3	0	0	0	0.0		
Team											7	2	9											
Total.....		1	200		16-55	.291	3-16	.188	9-14	.643	15	20	35	35.0	17	0	5	18	0	5	44	44.0		
Opponents.....		1	200		27-54	.500	7-12	.583	11-17	.647	7	26	33	33.0	19	-	21	14	4	8	72	72.0		

Score by Periods	1st	2nd	3rd	4th	Totals
San Diego State	15	6	12	11	44
Opponents	19	21	14	18	72

Games won

RECORD:	OVERALL	HOME	AWAY	NEUTRAL
ALL GAMES	1-0	1-0	0-0	0-0
CONFERENCE	0-0	0-0	0-0	0-0
NON-CONFERENCE	1-0	1-0	0-0	0-0

#	Player	gp-gs	min	avg	Total		3-Point		F-Throw		Rebounds				pf	dq	a	to	blk	stl	pts	avg	
					fg-fga	fg%	3fg-fga	3fg%	ft-fa	ft%	off	def	tot	avg									
15	FORT, McKynzie	1-1	35	35.0	11-18	.611	2-2	1.000	4-4	1.000	2	5	7	7.0	2	0	4	1	0	1	28	28.0	
20	GOMEZ, Geena	1-1	32	32.0	4-8	.500	2-5	.400	4-4	1.000	1	1	2	2.0	3	0	2	3	0	0	14	14.0	
04	ELLISON, Kymberly	1-1	35	35.0	4-6	.667	3-4	.750	1-2	.500	0	3	3	3.0	3	0	3	2	0	0	12	12.0	
34	VANDERDOES, Bayle	1-1	22	22.0	5-7	.714	0-0	.000	0-1	.000	2	8	10	10.0	1	0	0	2	1	0	10	10.0	
45	EKWEDIKE, Naomi	1-0	10	10.0	2-4	.500	0-0	.000	1-2	.500	0	0	0	0.0	1	0	0	1	0	0	5	5.0	
03	BOSTICK, Ariell	1-1	26	26.0	2-3	.667	0-0	.000	0-0	.000	0	6	6	6.0	1	0	8	2	0	1	4	4.0	
21	LOWE, Abby	1-0	8	8.0	1-4	.250	0-1	.000	1-1	1.000	1	2	3	3.0	1	0	1	1	0	0	3	3.0	
40	TERRY, Monique	1-0	15	15.0	1-2	.500	0-1	.000	0-0	.000	0	1	1	1.0	1	0	0	1	1	0	2	2.0	
11	GOMEZ, Arantxa	1-0	8	8.0	1-3	.333	0-0	.000	0-0	.000	0	2	2	2.0	2	0	0	1	0	1	2	2.0	
13	BROWN, Allison	1-0	9	9.0	0-1	.000	0-0	.000	0-0	.000	0	1	1	1.0	1	0	1	2	0	0	0	0.0	
Team											1	1	2										
Total.....		1	200		31-56	.554	7-13	.538	11-14	.786	7	30	37	37.0	16	0	19	16	2	3	80	80.0	
Opponents.....		1	200		25-66	.379	11-31	.355	9-15	.600	14	18	32	32.0	14	-	17	11	2	3	70	70.0	

Score by Periods	1st	2nd	3rd	4th	Totals
San Diego State	25	20	11	24	80
Opponents	20	17	13	20	70

Games lost

RECORD:	OVERALL	HOME	AWAY	NEUTRAL
ALL GAMES	0-1	0-0	0-1	0-0
CONFERENCE	0-0	0-0	0-0	0-0
NON-CONFERENCE	0-1	0-0	0-1	0-0

#	Player	gp-gs	min	avg	Total		3-Point		F-Throw		Rebounds				pf	dq	a	to	blk	stl	pts	avg	
					fg-fga	fg%	3fg-fga	3fg%	ft-fa	ft%	off	def	tot	avg									
15	FORT, McKynzie	1-1	38	38.0	6-21	.286	0-5	.000	2-5	.400	0	3	3	3.0	2	0	3	3	0	1	14	14.0	
34	VANDERDOES, Bayle	1-1	17	17.0	2-3	.667	0-0	.000	3-3	1.000	3	2	5	5.0	3	0	0	1	0	0	7	7.0	
30	GREENHOUSE, Chey	1-1	30	30.0	3-10	.300	0-2	.000	0-0	.000	2	1	3	3.0	0	0	0	0	0	1	6	6.0	
20	GOMEZ, Geena	1-0	25	25.0	2-7	.286	1-3	.333	1-2	.500	1	1	2	2.0	2	0	0	3	0	1	6	6.0	
04	ELLISON, Kymberly	1-1	21	21.0	2-8	.250	2-6	.333	0-0	.000	0	1	1	1.0	4	0	0	2	0	0	6	6.0	
40	TERRY, Monique	1-0	14	14.0	0-1	.000	0-0	.000	2-2	1.000	0	1	1	1.0	1	0	0	1	0	0	2	2.0	
21	LOWE, Abby	1-0	12	12.0	1-2	.500	0-0	.000	0-0	.000	2	1	3	3.0	3	0	0	3	0	0	2	2.0	
11	GOMEZ, Arantxa	1-0	16	16.0	0-0	.000	0-0	.000	1-2	.500	0	0	0	0.0	0	0	0	0	0	0	1	1.0	
03	BOSTICK, Ariell	1-1	25	25.0	0-2	.000	0-0	.000	0-0	.000	0	8	8	8.0	1	0	2	2	0	2	0	0.0	
45	EKWEDIKE, Naomi	1-0	2	2.0	0-1	.000	0-0	.000	0-0	.000	0	0	0	0.0	1	0	0	3	0	0	0	0.0	
Team											7	2	9										
Total.....		1	200		16-55	.291	3-16	.188	9-14	.643	15	20	35	35.0	17	0	5	18	0	5	44	44.0	
Opponents.....		1	200		27-54	.500	7-12	.583	11-17	.647	7	26	33	33.0	19	-	21	14	4	8	72	72.0	

Score by Periods	1st	2nd	3rd	4th	Totals
San Diego State	15	6	12	11	44
Opponents	19	21	14	18	72

TEAM STATISTICS

Opponent	Date	Score		Total		3-Pointers		Free throws		Rebounds				pf	a	t/o	blk	stl	pts	avg
				fg-fga	pct	3fg-fga	pct	ft-fta	pct	off	def	tot	avg							
at UC Riverside	11/11/16	44-72	L	16-55	.291	3-16	.188	9-14	.643	15	20	35	35.0	17	5	18	0	5	44	44.0
SAN DIEGO CHRISTIAN	11-14-16	80-70	W	31-56	.554	7-13	.538	11-14	.786	7	30	37	36.0	16	19	16	2	3	80	62.0
San Diego State		124		47-111	.423	10-29	.345	20-28	.714	22	50	72	36.0	33	24	34	2	8	124	62.0
Opponents		142		52-120	.433	18-43	.419	20-32	.625	21	44	65	32.5	33	38	25	6	11	142	71.0

Games played: 2
 Points/game: 62.0
 FG Pct: 42.3
 3FG Pct: 34.5
 FT Pct: 71.4

Rebounds/game: 36.0
 Assists/game: 12.0
 Turnovers/game: 17.0
 Assist/turnover ratio: 0.7
 Steals/game: 4.0
 Blocks/game: 1.0

STATISTICS - INDIVIDUAL GAME-BY-GAME / STARTING LINEUPS

	1	3	4	11	13	15	20	21	22	30	34	40	45
Opponent	Khalia Lark	Ariell Bostick	Kymerly Ellison	Arantxa Gomez	Allison Brown	McKynzie Fort	Geena Gomez	Abby Lowe	Lexy Thorderson	Cheyenne Greenhouse	Baylee Vanderdoes	Monique Terry	Naomi Ekwedike
at UC Riverside	DNP	0-8-2	6-1-0	1-0-0	DNP	14-3-3	6-2-0	2-3-0	DNP	6-3-0	7-5-0	2-1-0	0-0-0
SAN DIEGO CHRISTIAN	DNP	4-6-8	12-3-3	2-2-0	0-0-1	28-7-4	14-2-2	3-3-1	DNP	DNP	10-10-0	2-1-0	5-0-0
at San Diego													
LOYOLA MARYMOUNT													
vs. UT Arlington													
vs. Cen. Conn. St./Seton Hall													
at UC Davis													
MICHIGAN													
UC SANTA BARBARA													
at Cal State Fullerton													
BIOLA													
at New Mexico													
NEVADA													
BOISE STATE													
at San Jose State													
at Utah State													
UNLV													
AIR FORCE													
at Colorado State													
at Wyoming													
FRESNO STATE													
SAN JOSE STATE													
at Nevada													
UTAH STATE													
at UNLV													
at Fresno State													
COLORADO STATE													
at Air Force													
NEW MEXICO													

DNP - Did Not Play

Game	Forward	Forward/Guard	Guard	Guard	Guard	Game	Forward	Forward/Guard	Guard	Guard	Guard
at UC Riverside	Vanderdoes	Ellison	Fort	Greenhouse	Bostick	SAN JOSE STATE					
SAN DIEGO CHRISTIAN	Vanderdoes	Ellison	Fort	Gomez	Bostick	at Nevada					
at San Diego						UTAH STATE					
LOYOLA MARYMOUNT						at UNLV					
vs. UT Arlington						at Fresno State					
vs. Cen. Conn. St./Seton Hall						COLORADO STATE					
at UC Davis						at Air Force					
MICHIGAN						NEW MEXICO					
UC SANTA BARBARA											
at Cal State Fullerton											
BIOLA											
at New Mexico											
NEVADA											
BOISE STATE											
at San Jose State											
at Utah State											
UNLV											
AIR FORCE											
at Colorado State											
at Wyoming											
FRESNO STATE											

Lineup Records
 Bostick-Ellison-Fort-Greenhouse-Vanderdoes: 0-1
 Bostick-Ellison-Fort-Gomez-Vanderdoes: 1-0

Aztec Team Highs

Points	80, vs. San Diego Christian (11-14-16)
Scoring Margin	10, vs. San Diego Christian (11-14-16)
FG Made	31, vs. San Diego Christian (11-14-16)
FG Attempts	56, vs. San Diego Christian (11-14-16)
FG Pct.	.554 (31-56), vs. San Diego Christian (11-14-16)
3-Point FG Made	7, vs. San Diego Christian (11-14-16)
3-Point FG Attempts	13, vs. San Diego Christian (11-14-16)
3-Point FG Pct.	.538 (7-13), vs. San Diego Christian (11-14-16)
Free Throws Made	11, vs. San Diego Christian (11-14-16)
Free Throw Attempts	14, Twice, Last: vs. San Diego Christian (11-14-16)
Free Throw Pct.	.786 (11-14), vs. San Diego Christian (11-14-16)
Offensive Rebounds	15, at UC Riverside (11-11-16)
Defensive Rebounds	30, vs. San Diego Christian (11-14-16)
Total Rebounds	37, vs. San Diego Christian (11-14-16)
Assists	19, vs. San Diego Christian (11-14-16)
Steals	5, at UC Riverside (11-11-16)
Blocks	2, vs. San Diego Christian (11-14-16)
Turnovers	18, at UC Riverside (11-11-16)
Fouls	17, at UC Riverside (11-11-16)

Aztec Team Lows

Points	44, at UC Riverside (11-11-16)
Scoring Margin	10, vs. San Diego Christian (11-14-16)
FG Made	16, at UC Riverside (11-11-16)
FG Attempts	55, at UC Riverside (11-11-16)
FG Pct.	.291 (16-55), at UC Riverside (11-11-16)
3-Point FG Made	3, at UC Riverside (11-11-16)
3-Point FG Attempts	16, at UC Riverside (11-11-16)
3-Point FG Pct.	.188 (3-16), at UC Riverside (11-11-16)
Free Throws Made	9, at UC Riverside (11-11-16)
Free Throw Attempts	14, at UC Riverside (11-11-16)
Free Throw Pct.	.643 (9-14), at UC Riverside (11-11-16)
Offensive Rebounds	7, vs. San Diego Christian (11-14-16)
Defensive Rebounds	20, at UC Riverside (11-11-16)
Total Rebounds	35, at UC Riverside (11-11-16)
Assists	5, at UC Riverside (11-11-16)
Steals	3, vs. San Diego Christian (11-14-16)
Blocks	2, vs. San Diego Christian (11-14-16)
Turnovers	16, vs. San Diego Christian (11-14-16)
Fouls	16, vs. San Diego Christian (11-14-16)

Aztec Scoring

First Half High	45, vs. San Diego Christian (11-14-16)
Second Half High	35, vs. San Diego Christian (11-14-16)
First Half Low	21, at UC Riverside (11-11-16)
Second Half Low	23, at UC Riverside (11-11-16)
Largest Halftime Lead	8, vs. San Diego Christian (11-14-16)
Largest Halftime Deficit	19 (21-40), at UC Riverside (11-11-16)
Largest Lead	15 (52-37), vs. San Diego Christian (11-14-16)
Largest Deficit	19 (21-40), at UC Riverside (11-11-16)
Largest Deficit in a Win	1 (19-20), vs. San Diego Christian (11-14-16)
Largest Lead in a Loss	4 (12-8), at UC Riverside (11-11-16)

Opponent Team Highs

Points	72, at UC Riverside (11-11-16)
Scoring Margin	28 (72-44), at UC Riverside (11-11-16)
FG Made	27, at UC Riverside (11-11-16)
FG Attempts	66, vs. San Diego Christian (11-14-16)
FG Pct.	.500 (27-54), at UC Riverside (11-11-16)
3-Point FG Made	11, vs. San Diego Christian (11-14-16)
3-Point FG Attempts	31, vs. San Diego Christian (11-14-16)
3-Point FG Pct.	.583 (7-12), at UC Riverside (11-11-16)
Free Throws Made	11, at UC Riverside (11-11-16)
Free Throw Attempts	17, at UC Riverside (11-11-16)
Free Throw Pct.	.647 (11-17), at UC Riverside (11-11-16)
Offensive Rebounds	14, vs. San Diego Christian (11-14-16)
Defensive Rebounds	26, at UC Riverside (11-11-16)
Total Rebounds	33, at UC Riverside (11-11-16)
Assists	21, at UC Riverside (11-11-16)
Steals	8, at UC Riverside (11-11-16)
Blocks	4, at UC Riverside (11-11-16)
Turnovers	14, at UC Riverside (11-11-16)
Fouls	19, at UC Riverside (11-11-16)

Opponent Team Lows

Points	70, vs. San Diego Christian (11-14-16)
Scoring Margin	10 (70-80), vs. San Diego Christian (11-14-16)
FG Made	25, vs. San Diego Christian (11-14-16)
FG Attempts	54, at UC Riverside (11-11-16)
FG Pct.	.379 (25-66), vs. San Diego Christian (11-14-16)
3-Point FG Made	7, at UC Riverside (11-11-16)
3-Point FG Attempts	12, at UC Riverside (11-11-16)
3-Point FG Pct.	.355 (11-31), vs. San Diego Christian (11-14-16)
Free Throws Made	9, vs. San Diego Christian (11-14-16)
Free Throw Attempts	15, vs. San Diego Christian (11-14-16)
Free Throw Pct.	.600 (9-15), vs. San Diego Christian (11-14-16)
Offensive Rebounds	7, at UC Riverside (11-11-16)
Defensive Rebounds	18, vs. San Diego Christian (11-14-16)
Total Rebounds	32, vs. San Diego Christian (11-14-16)
Assists	17, vs. San Diego Christian (11-14-16)
Steals	3, vs. San Diego Christian (11-14-16)
Blocks	2, vs. San Diego Christian (11-14-16)
Turnovers	11, vs. San Diego Christian (11-14-16)
Fouls	14, vs. San Diego Christian (11-14-16)

Opponent Scoring

First Half High	40, at UC Riverside (11-11-16)
Second Half High	33, vs. San Diego Christian (11-14-16)
First Half Low	37, vs. San Diego Christian (11-14-16)
Second Half Low	32, at UC Riverside (11-11-16)
Largest Halftime Lead	19 (40-21), at UC Riverside (11-11-16)
Largest Halftime Deficit	8 (37-45), vs. San Diego Christian (11-14-16)
Largest Lead	27 (65-38), at UC Riverside (11-11-16)
Largest Deficit	4 (8-12), at UC Riverside (11-11-16)
Largest Deficit in a Win	4 (8-12), at UC Riverside (11-11-16)
Largest Lead in a Loss	1 (19-20), vs. San Diego Christian (11-14-16)

Aztec Individual Highs

Points

28, McKynzie Fort vs. San Diego Christian (11-14-16)

Field Goals Made

11, McKynzie Fort vs. San Diego Christian (11-14-16)

Field Goals Attempted

21, McKynzie Fort at UC Riverside (11-11-16)

Field Goal Percentage (min. 5 made)

.611 (11-18), McKynzie Fort vs. San Diego Christian (11-14-16)

3-Point Field Goals Made

3, Kymberly Ellison vs. San Diego Christian (11-14-16)

3-Point Field Goals Attempted

6, Kymberly Ellison at UC Riverside (11-11-16)

3-Pt Field Goal Percentage (min. 2 made)

.750 (3-4), Kymberly Ellison vs. San Diego Christian (11-14-16)

Free Throws Made

4, McKynzie Fort, Geena Gomez vs. San Diego Christian (11-14-16)

Free Throw Attempted

5, McKynzie Fort at UC Riverside (11-11-16)

Free Throw Percentage (min 3 made)

1.000 (4-4), McKynzie Fort, Geena Gomez vs. San Diego Christian (11-14-16)

1.000 (3-3), Baylee Vanderdoes at UC Riverside (11-11-16)

Rebounds

10, Baylee Vanderdoes vs. San Diego Christian (11-14-16)

Assists

8, Ariell Bostick vs. San Diego Christian (11-14-16)

Steals

2, Ariell Bostick at UC Riverside (11-11-16)

Blocked Shots

1, Baylee Vanderdoes vs. San Diego Christian (11-14-16)

1, Monique Terry vs. San Diego Christian (11-14-16)

Turnovers

3, Geena Gomez vs. San Diego Christian (11-14-16)

3, McKynzie Fort, Geena Gomez, Abby Lowe, Naomi Ekwedike at UC Riverside (11-11-16)

Fouls

4, Kymberly Ellison at UC Riverside (11-11-16)

Opponent Individual Highs

Points

22, Lauren Holt at UC Riverside (11-11-16)

Field Goals Made

8, Lauren Holt at UC Riverside (11-11-16)

Field Goal Att.

19, Nyadoup Lam vs. San Diego Christian (11-14-16)

Field Goal Percentage (min 5 made)

.625 (5-8), Danna Robles vs. San Diego Christian (11-14-16)

.625 (5-8), Michelle Curry at UC Riverside (11-11-16)

3-Point Field Goals Made

5, Lauren Holt at UC Riverside (11-11-16)

3-Point Field Goals Attempted

7, Nyadoup Lam vs. San Diego Christian (11-14-16)

7, Lauren Holt at UC Riverside (11-11-16)

3-Pt Field Goal Percentage (min 2 made)

.714 (5-7), Lauren Holt at UC Riverside (11-11-16)

Free Throws Made

3, Danna Robles vs. San Diego Christian (11-14-16)

3, Michelle Curry at UC Riverside (11-11-16)

Free Throws Attempted

5, Danna Robles vs. San Diego Christian (11-14-16)

Free Throw Percentage (min 3 made)

1.000 (3-3), Michelle Curry at UC Riverside (11-11-16)

Rebounds

9, Nyadoup Lam vs. San Diego Christian (11-14-16)

9, Simone deCoud at UC Riverside (11-11-16)

Assists

11, Rejane Verin at UC Riverside (11-11-16)

Steals

2, Malou de Kergret, Lauren Holt, Skyler Lewis at UC Riverside (11-11-16)

Blocked Shots

1, Saskia Giesselbach, Nyadoup Lam vs. San Diego Christian (11-14-16)

1, Malou de Kergret, Lauren Holt, Marina Ewoda, Skyler Lewis at UC Riverside (11-11-16)

Turnovers

5, Saskia Giesselbach vs. San Diego Christian (11-14-16)

Fouls

4, Nyadoup Lam vs. San Diego Christian (11-14-16)

4, Lauren Holt at UC Riverside (11-11-16)

The Last Time an Aztec ...

Scored 20-24 points
22, McKynzie Fort, 2-10-16 vs. Fresno State (20T)

Scored 25-29 points
28, McKynzie Fort, 11-14-16 vs. San Diego Christian

Scored 30-39 points
31, Cierra Warren, 1-22-14 vs. San José State

Scored 40+ points
41, Chana Perry, 1-2-88 vs. Northern Illinois

Had 20+ rebounds
27, Chana Perry, 11-25-88 vs. Alabama State

Had 15-19 rebounds
17, Kristina Hunter, 1-11-14 vs. Air Force

Had 10-14 rebounds
10, Baylee Vanderdoes, 11-14-16 vs. San Diego Christian

Had 10+ assists
14, Chelsea Hopkins, 3-14-13 vs. Nevada

Had A Double-Double
Baylee Vanderdoes (10 points, 10 rebounds), 11-14-16 vs. San Diego Christian

Had A Triple-Double
Chelsea Hopkins, 13 points, 11 rebounds, 12 assists, 3-9-13 vs. Boise State

The Last Time San Diego State ...

Had two players score 20 points in the same game
Deajanae Scurry (22) and Cierra Warren (20), 1-25-14 vs. Utah State

Had two players with a double-double in the same game
Erimma Amarikwa (19 points, 13 rebounds) and Cheyenne Greenhouse (19 points, 11 rebounds), 11-14-14 vs. Sacramento State

Scored 100+ points
101, vs. Colorado State (101-62), 1-25-92

Allowed 100+ points
104, vs. UCLA (56-104), 12-11-98

Won by 20+ points
35, vs. San Diego Christian (60-25), 12-21-15

Won by 30+ points
35, vs. San Diego Christian (60-25), 12-21-15

Won by 40+ points
41, vs. Boise State (86-45), 3-9-13

Won by 50+ points
51, vs. Air Force (79-28), 1-7-09

Won in Overtime
vs. Fresno State (65-54), 2-10-16

Lost in Overtime
vs. Utah (70-67), 1-8-11

2016-17 Aztec Leaders

Double-Figure Scoring Games
McKynzie Fort (2), Geena Gomez (1), Kymberly Ellison (1), Baylee Vanderdoes (1)

SDSU High Scorer
McKynzie Fort (2)

Games Led SDSU In Rebounds
Ariell Bostick (1), Baylee Vanderdoes (1)

Games Led SDSU In Assists
McKynzie Fort (1), Ariell Bostick (1)

Games Led SDSU In Steals
Ariell Bostick (2), McKynzie Fort, Arantxa Gomez Ferrer (1)

Games Led SDSU In Blocks
Monique Terry (1), Baylee Vanderdoes (1)

► 2016-17 SPECIALTY STATS
San Diego State/Opponent

	Points in Paint	Points off TOs	2nd Chance Points	Fast Break Points	Bench Points
at UC Riverside (L)	11/18	10/22	6/5	0/0	11/22
SAN DIEGO CHRISTIAN at San Diego	15/14	38/20	6/6	6/2	70/12
LOYOLA MARYMOUNT vs. UT Arlington					
vs. Cen. Conn. St./Seton Hall at UC Davis					
MICHIGAN UC SANTA BARBARA at Cal State Fullerton					
BIOLA at New Mexico					
NEVADA BOISE STATE at San Jose State					
at Utah State UNLV AIR FORCE at Colorado State					
at Wyoming FRESNO STATE SAN JOSE STATE at Nevada					
UTAH STATE at UNLV at Fresno State					
COLORADO STATE at Air Force					
NEW MEXICO					



KHALIA LARK
Jr. | 6-0 | G
Irvine, Calif.
Mater Dei HS/Washington

1



ARIELL BOSTICK
Sr. | 5-4 | G
Oakland, Calif.
Bishop O'Dowd HS

3



KYMBERLY ELLISON
Sr. | 5-7 | G
Columbus, Ga.
Hardaway HS/Georgia Tech

4



ARANTXA GOMEZ FERRER
So. | 6-0 | F
Valencia, Spain
Parque Colegio Santa Ana HS

11



ALLISON BROWN
Jr. | 5-7 | G
Anaheim Hills, Calif.
Mater Dei HS

13



MCKYNZIE FORT
Jr. | 5-9 | G
Fontana, Calif.
Etiwanda HS

15



GEENA GOMEZ
Jr. | 5-8 | G
Huntington Beach, Calif.
Edison HS/St. Joseph's (Pa.)

20



ABBY LOWE
Fr. | 5-11 | G
Stockport, England
Barking Abbey Academy

21



LEXY THORDERSON
Jr. | 6-0 | G/F
Castle Rock, Colo.
Rock Canyon HS

22



CHEYENNE GREENHOUSE
Jr. | 5-11 | G
Riverside, Calif.
Canyon Springs HS

30



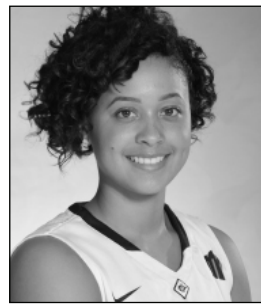
BAYLEE VANDERDOES
Fr. | 6-1 | F
Auburn, Calif.
Placer HS

34



MONIQUE TERRY
Fr. | 6-2 | F
San Antonio, Texas
Brennan HS

40



ALEIAH BRANDON
Sr. | 6-1 | F
Corona, Calif.
Centennial HS

44



NAOMI EKWEDIKE
Fr. | 6-6 | C
Lagos, Nigeria
Potters House Christian Academy (Fla.)

45



STACIE TERRY
Head Coach
Fourth Season



JESSE CLARK
Assistant Coach
Fourth Season



CIARA CARL
Assistant Coach
Fourth Season



NICK GRANT
Assistant Coach
Third Season