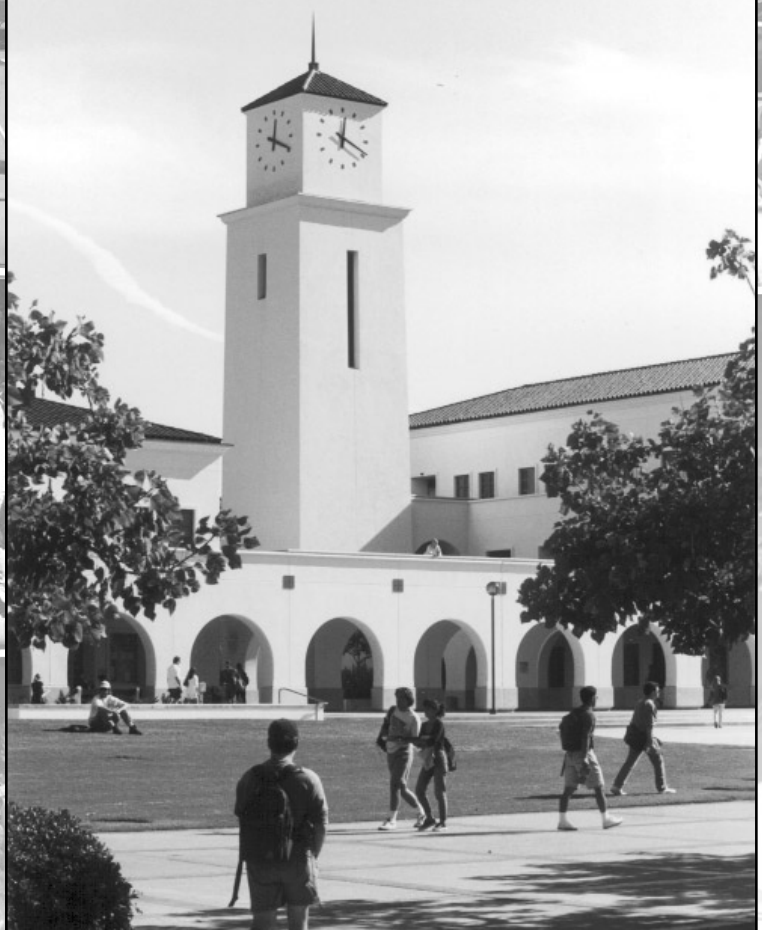




TOURNAMENT CHAMPIONS
2002



University

- 154** San Diego State
- 158** Dr. Stephen Weber, President
- 159** Mike Bohn, Athletics Director
- 160** Media Information
- 162** Opponent Directory
- 164** Media Outlets
- 165** Broadcast Information
- 166** Cox Arena
- 168** SDSU Athletic Directory

San Diego State University



The University

SAN DIEGO STATE



BASKETBALL

Founded March 13, 1897, San Diego State University began as the San Diego Normal School, a training facility for elementary school teachers. Seven faculty and 91 students met in temporary quarters over a downtown drug store before moving to a newly constructed 17-acre campus on Park Boulevard.

The curriculum was limited at first to English, history and mathematics, but course offerings broadened rapidly under the leadership of Samuel T. Black, who left his position as state superintendent of public instruction to become the school's first president. Black served from 1898 to 1910.



From 1910 to 1935, President Edward L. Hardy headed a vigorous administration that oversaw major changes to the fledgling institution. In 1921, the Normal School became San Diego State Teachers College, a four-year public institution controlled by the state Board of Education. In that same year, the two-year San Diego Junior College, forerunner of today's local community colleges, became a branch of San Diego State, creating a

union that lasted until 1946.

By the 1920s, San Diego State was already beginning to outgrow its Park Boulevard location, and San Diegans launched a campaign to build a new campus on the city's eastern border. In February 1931, students, faculty and staff moved into seven Mission-style buildings surrounding a common area still known as the Main Quad.

Four years later, the Legislature authorized expansion of degree programs beyond teacher education, and San Diego State Teachers College became San Diego State College. Also in 1935, Walter R. Hepner took the helm as president, beginning a 17-year tenure. Over that time, the college continued to grow, reaching an enrollment of more than 25,000 students during the administration of Malcolm A. Love, who served as president from 1952 to 1971.

In 1960, San Diego State became part of the newly created California State College system, now known as the California State University system. In the early 1970s, with legislative approval, San Diego State College became San Diego State University.

Leading the institution during the 1970s were Acting President Donald E. Walker (1971-1972), President Brage Golding (1972-1977), Acting President Trevor Colbourn (1977-1978) and President Thomas B. Day, whose tenure spanned from 1978 to 1996. In 1996, Stephen L. Weber became the university's seventh president.

Beginning its 106th academic year in fall 2002, San Diego State University can take pride in more than a century of achievement in education, research and service. With an enrollment of approximately 34,000 students, SDSU has grown into the largest institution of higher education in the San Diego region and one of the largest in California.

Renowned for its academic excellence, the university is home to top-ranking programs in education, business, social work, speech-language and public administration,





to name just a few. Overall, San Diego State students can choose from 79 undergraduate majors, 61 master's programs and 13 doctoral degree programs.

One in seven San Diegians with a college degree attended SDSU, making San Diego State a primary educator of the region's work force, as well as a leader in expanding access to higher education. Committed to serving the richly diverse San Diego region, SDSU ranks among the top 10 universities nationwide in terms of ethnic and racial diversity among its student body, as well as the number of bachelor's degrees conferred upon students of color.

Increasingly recognized for innovative research, San Diego State has achieved the prestigious Doctoral/Research University-Intensive designation granted by the Carnegie Foundation to the top seven percent of the nation's research universities. In fiscal year 2001-2002, SDSU faculty attracted approximately \$135 million in grants and contracts for research and program administration, representing a 58 percent increase in funding over the previous six years.

Private giving to San Diego State is also rising dramatically year by year, reaching a record \$42.1 million in the 2000-2001 fiscal year. Because state funds provide only 35 percent of the university's annual operating requirements, with tuition and fees adding only 17 percent more, the support of alumni, friends and community partners is providing a crucial margin of excellence at San Diego State, enabling the university to fulfill its mission and expand its service to the San Diego region and beyond.

SDSU welcomes opportunities to bring the university's full resources to bear in analyzing and resolving complex community problems. A prime example is the City Heights Educational Pilot, a six-year partnership with San Diego City Schools, the San Diego Education Association, teachers and parents. Funded with an \$18 million grant from Price Charities, the Pilot is improving

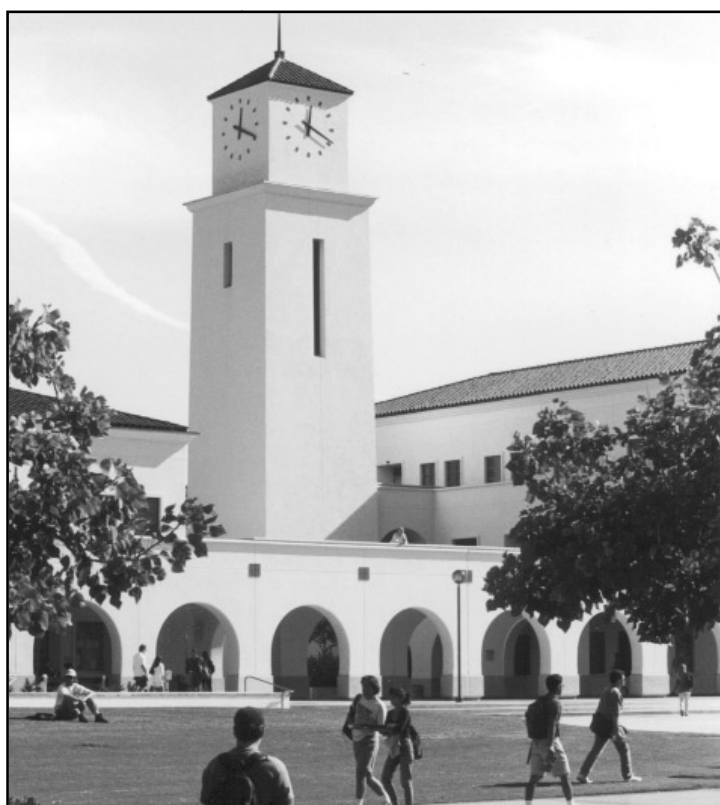
instruction for students and professional development for teachers in three inner-city schools managed by the university.

The Compact for Success, another initiative blending service with education and research, partners SDSU with the Sweetwater Union High School District. The Compact's mission is to nurture student's college aspirations through curriculum support, guaranteed admission and free tuition for those who meet specific academic benchmarks.

Yet another example of San Diego State's innovative community engagement is Nurses Now, a partnership with local hospitals designed to alleviate the region's nursing shortage. With funding from these health care partners, SDSU has increased its nursing faculty, enabling the university to educate more future nurses.

Perhaps the most visible evidence of SDSU's continu-

ing growth is a recent flurry of campus construction on The Mesa. New facilities completed in the past year, totaling more than \$200 million in value, include Cuicacalli, a dining and residence complex; the Chemical Sciences Laboratory, a showcase of leading-edge technology and infrastructure; a 2,458-space parking structure,



the largest in the California State University system; and the Aztec Athletics Center, housing coaches' offices, training facilities and the Wise Foundation Hall of Fame. Construction continues on the SDSU trolley station and tunnel, part of the Metropolitan Transit Development Board's \$431 million Mission Valley East extension scheduled to open in 2005.

Beyond accolades and campus expansion, San Diego State University remains, as always, most proud of its alumni family, now 200,000 strong. Among those who call SDSU their alma mater are Federal Trade Commission Chairman Timothy Muris, former Air Force Chief of Staff, Gen. Merrill A. "Tony" McPeak, San Diego County supervisors Greg Cox, Dianne Jacob, Pam Slater, Ron Roberts and Bill Horn; former San Diego Mayor Maureen O'Connor, San Diego city council members Byron Wear, George Stevens and Jim Madaffer, 1990 and 1994 National Teachers of the Year Janis Gabay and Sandra McBrayer, astronaut Ellen Ochoa and Costco CEO and co-founder Jim Sinegal.

Aztec alumni also include entertainers Gregory Peck, Art Linkletter, Marion Ross, Julie Kavner and Kathy Nijimy; Hollywood producer Kathleen Kennedy; golfers Lon Hinkle and Gene Littler; baseball players Tony Gwynn, Mark Grace, Travis Lee and Graig Nettles; football players Marshall Faulk, Brian Sipe, Fred Dryer and Carl Weathers; America's Cup skipper Dennis Conner; U.S. World Cup team members Marcelo Balboa, Cle Kooiman, Chris Sullivan and Eric Wynalda; and basketball player Michael Cage.

The success of these individuals and thousands of other SDSU alumni attest eloquently to the success of their alma mater. From modest beginnings, San Diego State University has evolved into a premier center of learning, research and service.





SDSU's Aztec Heritage

From the early decades of its 105-year history, San Diego State has identified itself with the Aztecs, one of the most sophisticated and distinctive societies in the history of the Western Hemisphere. A fitting choice for a university committed to internationalism and diversity, the Aztec identity evokes great pride in Mexico, as well as among many people in the United States, and certainly within the SDSU community. Consequently, San Diego State strives to honor the Aztec people by enhancing

awareness, understanding and appreciation of Aztec culture and achievements.

Aztec History

Aztec civilization dates back at least to the 12th century A.D. The precise location is still debated by scholars, but tradition tells us of a place somewhere north of modern-day Mexico City known at that time as Aztlan, which meant "the place of the cranes" or "the place of the herons." The people who lived in this land were called Azteca, meaning "those of Aztlan."

The Azteca eventually left their homeland and became known as the Mexica. Native folklore attributes this name change to the instructions of the people's patron deity, Huitzilopochtli (Hummingbird on the Left).

Around 1325, the Mexica settled on an island in Lake Texcoco, an area that is now the heart of Mexico City, and named it Tenochtitlan or "the place of the fruit of the cactus." A century later, the Mexica and two other Nahuatl-speaking city-states, Texcoco and Tlacopan, combined to create an entity popularly known as the Aztec Empire. Boasting a strong military force, this new alliance commanded a sphere of influence that stretched across much of present-day Mexico.

Tenochtitlan and its surrounding valley evolved into a highly sophisticated, multicultural and multilingual city-state of several million inhabitants. At this same time, major

European cities numbered only 30,000 to 40,000 in population. A cradle of innovation, the Aztec Empire developed advanced systems of trade, science, politics, religion, education and agriculture. The Aztecs also enjoyed sports and built grand ballcourts to accommodate team events.

Aztecs and SDSU

San Diego State University first adopted the Aztec name in the 1920s as a nickname for the college's sports teams. In 1925, the student newspaper followed suit, changing its name from *The Paper Lantern* to *The Aztec*. Since that time, San Diego State's celebration of Aztec heritage has permeated the campus. In 1936, a Donal Hord sculpture of Montezuma II, the last Aztec emperor, became a welcoming campus icon. With the passing years, Aztec themes echoed in the names, colors and architectural elements of new campus buildings. And Aztec culture became the subject of more than a dozen university courses.

In 1941, Monty Montezuma, a character based on Montezuma II, debuted at San Diego State athletic events as a symbolic personification of the Aztecs. Over time, the Montezuma character's look and activities have evolved from a sports mascot into a more dignified and

accurate representation of the historical emperor. Montezuma now serves as the university's ambassador of Aztec culture, charged with the responsibility of informing and educating the San Diego community about Aztec civilization. As it begins its 106th year of education, research and service, SDSU continues to take pride in its affiliation with Aztec culture and to celebrate the Aztec virtues of strength, valor and intellectual achievement.



Dr. Stephen L. Weber



Dr. Stephen L. Weber

**University President
Eighth Year at SDSU**

Stephen L. Weber, the seventh president of San Diego State University, provides dynamic leadership to an institution that ranks among the largest in the nation and third-largest in California. Educated as a philosopher, President Weber began his tenure at SDSU in July 1996 and shortly afterward initiated a broad-based dialog intended to set the course for the university's future.

Under President Weber's guidance, students, faculty, staff, alumni and community leaders participated in shaping this "Shared Vision." SDSU is now moving boldly ahead toward goals set by those discussions: reinforcing academic excellence, nurturing students, honoring diversity and social justice, carefully stewarding resources and further developing global programs.

In the process, SDSU has become an increasingly popular and selective choice among college-bound students. For fall 2003, SDSU has received more than 39,000 undergraduate applicants for 7,283 vacancies. Not surprisingly, the overall academic quality of SDSU students is also rising. In addition, alumni involvement and private financial support of the university have never been stronger.

A champion of community involvement as well as academic excellence, President Weber has been an advocate for community service. Leading by example, he is immediate past chair of the American Association of State Colleges and Universities Board of Directors and co-chairs Partners for K-12 School Reform. He also serves on the boards of governors of The Peres Center for Peace and the San Diego Foundation, and on the boards of directors of the San Diego Regional Economic Development Corporation, the San Diego Science and Technology Council, and the California Healthcare Institute.

In addition, President Weber is a member of the international advisory board for the Foundation for Children of the Californias, the advisory council of the San Diego Performing Arts League, and co-chair of the Technology, Entrepreneurship and Management Advisory

Council. He is a member of the San Diego Rotary Club, an honorary director of the Japan Society of San Diego and Tijuana, and a member of the advisory board for Bahcesehir University in Turkey.

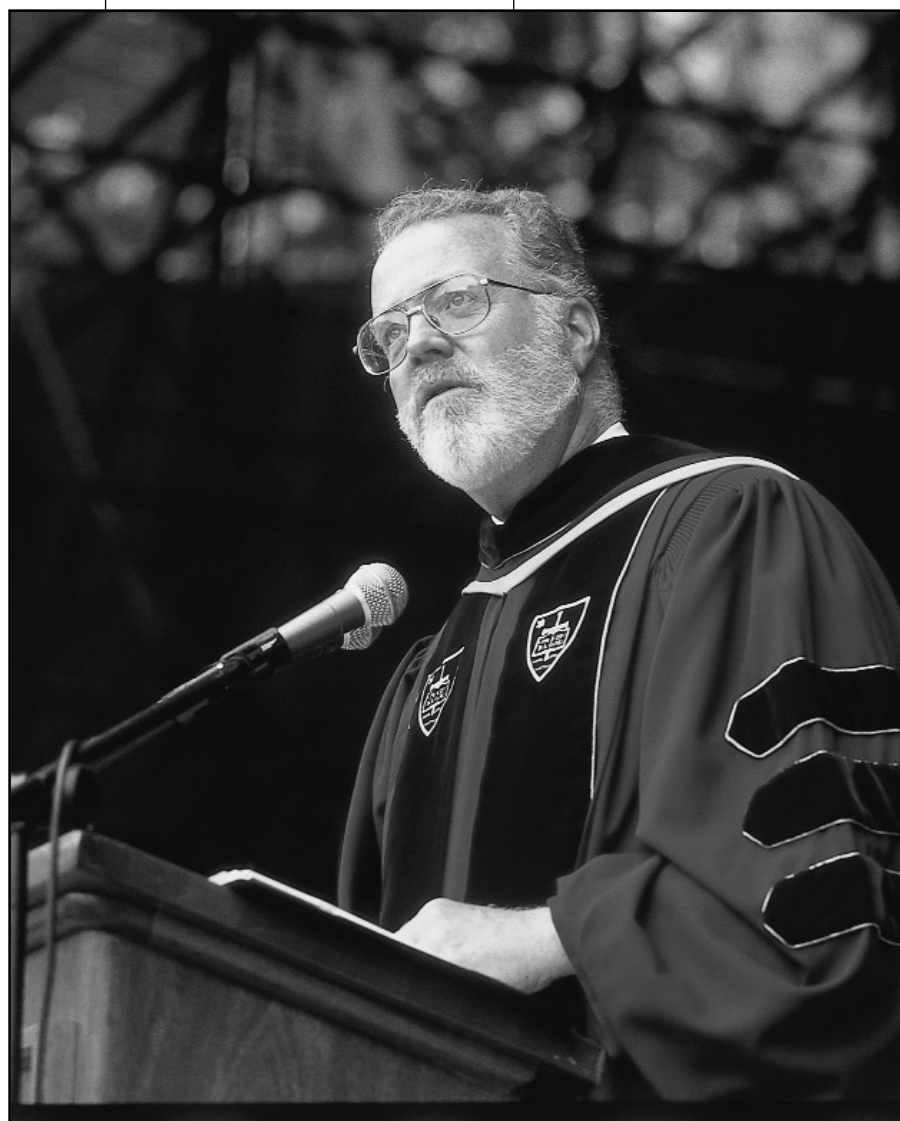
Born in Boston, President Weber is a graduate of Bowling Green University with a B.A. in philosophy. He received his Ph.D. in philosophy from the University of Notre Dame in 1969 and is the author of numerous articles on philosophy and higher education.

President Weber's many awards include an honorary degree from Beijing Capital Normal University. He was named among the 1997 Headliners of the Year by the San Diego Press Club. Also in 1997, the San Diego Mediation Center honored him with its Peacemaker Award. In 1999, President Weber received the Executive Director's Award from the San Diego Education

Association and the Gold Key Award from the San Diego Hospitality Association. He was recognized as a Leader of Vision by the League of Women Voters of San Diego in 2000.

Before coming to San Diego State University, President Weber served as interim provost of the State University of New York (SUNY). He also served seven years as president of the SUNY Oswego campus. Prior to that he was vice president of academic affairs at St. Cloud State University in Minnesota, dean of arts and sciences at Fairfield University in Connecticut, and assistant to the president of the University of Maine. While a faculty member at the University of Maine, he was recognized as the outstanding professor in humanities.

President Weber is married to Susan Keim Weber, who shares his enthusiastic commitment to SDSU. They have two sons.





Mike Bohn, who developed new facilities, grew community and corporate support, and produced balanced budgets for the University of Idaho's athletics department, was named Director of Intercollegiate Athletics at San Diego State on Oct. 6, 2003.

Bohn brings new energy and a new direction for Aztec Athletics and he has hit the ground running, reaching out to all Aztec constituencies.

"My family and I are very honored to have the opportunity to join San Diego State University and lead the Aztec athletics department, which has a distinguished history and bright future," Bohn said. "There is tremendous coaching talent, outstanding facilities and potential in this program. Our goal is to take advantage of all these things in ways that pull together people from every corner of the campus and the community. Aztec Athletics should be a rallying point for building collective pride for the university and San Diego."

Bohn spent just over five years directing the athletic program at Idaho. During his tenure in Moscow, he successfully completed the move of the Vandals to the Division IA ranks from the Big Sky Conference. He also balanced the department's budget in consecutive years after inheriting an operation that exceeded over \$1 million of debt in the three years prior to his arrival.

Under Bohn, Idaho began construction on the Vandal Athletics Center, the first facilities improvement for Idaho athletics in two decades. He was also the driving force behind a 20-percent increase in the Vandal Scholarship Fund, and a \$350,000 surge in annual corporate support.

Bohn arrived in Moscow after a three-year stint at Colorado State University. As associate athletics director for the Rams, he was responsible for all external revenue-producing operations, including ticket sales, fund raising through the Greater Ram Club, licensing, corporate sales, signage, capital campaigns, broadcasting rights fees, as well as special events.

Along with increasing revenue on several fronts, Bohn helped escalate student inter-

est in CSU athletics while working with Associated Students of Colorado State University.

From 1992 to 1995, Bohn served as Director of Marketing for the College Football Association. The CFA consisted of six major football conferences encompassing 67 universities. Bohn was involved in many facets of the organization's operations, including the administration of a \$60 million television package. He also formulated a blueprint for the promotion and development of the image of college football as a whole.

Bohn's first job in administration came at the Air Force Academy, where he worked from 1984 to 1992. During his tenure in Colorado Springs, Bohn advanced from an intern position to assistant athletic director. He served as executive director of the Blue and Silver Club, as well as other external opera-

tions throughout his stay at the academy.

Bohn is a graduate of Boulder (Colo.) High School. He played football and baseball at Kansas, and was a member of the Jayhawk football and baseball squads. He graduated from KU in 1983 with a Bachelor of Arts degree. He earned a Master's degree in sports administration at Ohio University in 1984. He also spent one year as a graduate assistant football coach at Ohio.

Bohn is a member of the NCAA Championships Cabinet and the Division IA Athletics Directors Association Executive Council. During his stay at Idaho, he was a member of the Big West Conference executive committee and he served on the University of Idaho executive council.

Bohn is married to the former Kim Zeren. They have two children: Michaelyn is 19 and Brandon is 17.



Mike Bohn

Athletics Director

First Year at SDSU

Kansas '83



Mike May



Kevin Klintworth



Dave Kuhn



Peggy Curtin



Dan Gisel



Matt MacDonald



Media Credentials

Arrangements for media credentials for San Diego State's 2003-04 home basketball season must be made through the Aztec media relations office. Requests by accredited media members should be made in writing and submitted on company letterhead to Mike May, assistant director of media relations, at least 48 hours before tipoff.

Priority for the issuance of credentials will be given to daily newspapers and television stations which cover San Diego State University or its game-day opponent on a regular basis. Due to space limitations, weekly publications, non-broadcasting radio representatives and individuals representing web sites may not be granted credentials.

Requests should be made on official letterhead and can be faxed to the media relations office at (619) 582-6541. Credentials will not be mailed. Credentials may be picked up in person or will be left at the press entrance in the north tunnel of Cox Arena.

Photographers

Photographers are restricted to either designated areas along the baseline and are not permitted along courtside during the game.

Media Seating

Media will be assigned seats on the scorer's table (live media only) and along press row tables located behind the visitor's bench. Please check the media seating chart posted in the media workroom.

Non-Originating Radio

Individuals representing radio stations which are not originating the broadcast of the game will be considered on a space-available basis.

Interviews During the Week

All interview requests for Aztec players, coaches and administrators should be directed to the media relations office at least one day prior to the interview.

This season, Steve Fisher and selected players will be available at a weekly news conference to be held in Cox Arena. Lunch will be provided by Quiznos Sub (College Ave. and El Cajon Blvd.). Please contact the media relations office for specific dates and times.

Players and coaches are generally available after practices, although you should confirm this through the media relations office the day prior to the interview.

San Diego State Athletic Media Relations Staff

Office: (619) 594-5547 • Fax: (619) 582-6541

Mailing Address: 5500 Campanile Road; San Diego, CA 92182-4309

Mike May, assistant media relations director/men's basketball contact

Home: (619) 644-1767 • Mobile: (619) 957-8372

E-mail: mmay@mail.sdsu.edu

Kevin Klintworth, associate athletic director/media relations

Home: (858) 586-9214 • Mobile: (619) 957-8370

E-mail: kklintwo@mail.sdsu.edu

Dave Kuhn, assistant athletic media relations director

Home: (858) 582-8965 • Mobile: (619) 957-8371

E-mail: dkuhn@mail.sdsu.edu

Peggy Curtin, assistant media relations director

Home: (619) 450-6146 • Mobile: (619) 200-8776

E-mail: mcurtin@mail.sdsu.edu

Dan Gisel, media relations assistant

Home: (619) 284-0927

E-mail: dgisel@projects.sdsu.edu

Matt MacDonald, media relations assistant

Home: (619) 287-0763

E-mail: mmacdonald@projects.sdsu.edu

On game days, no Aztec players will be available until the postgame media sessions.

Postgame Interviews

Coach Steve Fisher and selected players will be available for interviews following a brief cooling-off period after games. Normally postgame interviews will be conducted in the women's team lounge.

The postgame interview schedule will vary slightly depending on tipoff time. Contact a member of the media relations office for the postgame interview schedule.

The San Diego State lockerroom is closed.

Parking

On game day, media parking is located on the first level of Parking Structure 4, just north of the arena. Game credentials provide admittance to the structure.

Practices

Media wishing to attend practice should contact the Aztec media relations office one day in advance, to ensure the practice is open and will be conducted at Cox Arena.

Media attending practice are asked to sit at least 10 rows off the floor. This includes videographers and still photog-

raphers.

When covering practice, obtain a special parking permit from the Cox Arena administrative offices and show your media parking credential. Permits for parking during practice are available in the Cox Arena offices, and allow vehicle parking in the tunnel entrance lot. Those offices close at 4:30 p.m.

All game-day practices and road practices are closed to the media.

Media Releases

Note packages will be available at least one day prior to each game and in many instances, much earlier.

The game notes will be e-mailed to local and national outlets and posted on San Diego State's official athletic web site. If you wish to be added to the distribution list, please e-mail Mike May at mmay@mail.sdsu.edu or call (619) 594-5547.

Pregame packets, including notes and statistics, will be available prior to tipoff. Timeout, halftime and final statistics, plus a running play-by-play and postgame notes will be provided. Media monitors will allow broadcasters access to updated information. A light meal will be provided during pregame.

Lockerrooms

Both the San Diego State and visiting lockerrooms are located behind the north

side of the court at Cox Arena.

At home games, the San Diego State lockerroom is closed to the media, although coach Fisher and players are available for interviews in a postgame interview location, normally the women's team lounge. A representative of the media relations office will gather interview requests during the second half.

On the road, San Diego State's lockerroom is closed. Please contact a member of the media relations office to request interviews.

Telephones

The media relations office provides three charge-a-call phones in the press room off the arena floor. The phones are available on a first-come, first-served basis. For courtside phone service, contact Don Crowell (Cox Arena) at (619) 594-3386. Phone lines for visiting originating radio broadcasts (one ISDN, one business) will be provided on a reciprocal basis.

Aztec Access

The official website of San Diego State athletics, goaztecs.com, includes rosters, schedules, statistics, player bios, press releases and game notes. The website is updated daily.

Each game, San Diego State press releases, notes and statistics are e-mailed to a large contingent of media locally, regionally and nationally. If you would like to be added to the list, please contact Mike May (mmay@mail.sdsu.edu).

Aztec Weekly Press Conferences

For the third consecutive season, Steve Fisher will conduct a weekly news conference, followed by selected players. Media members should contact the media relations office for accurate dates and times.

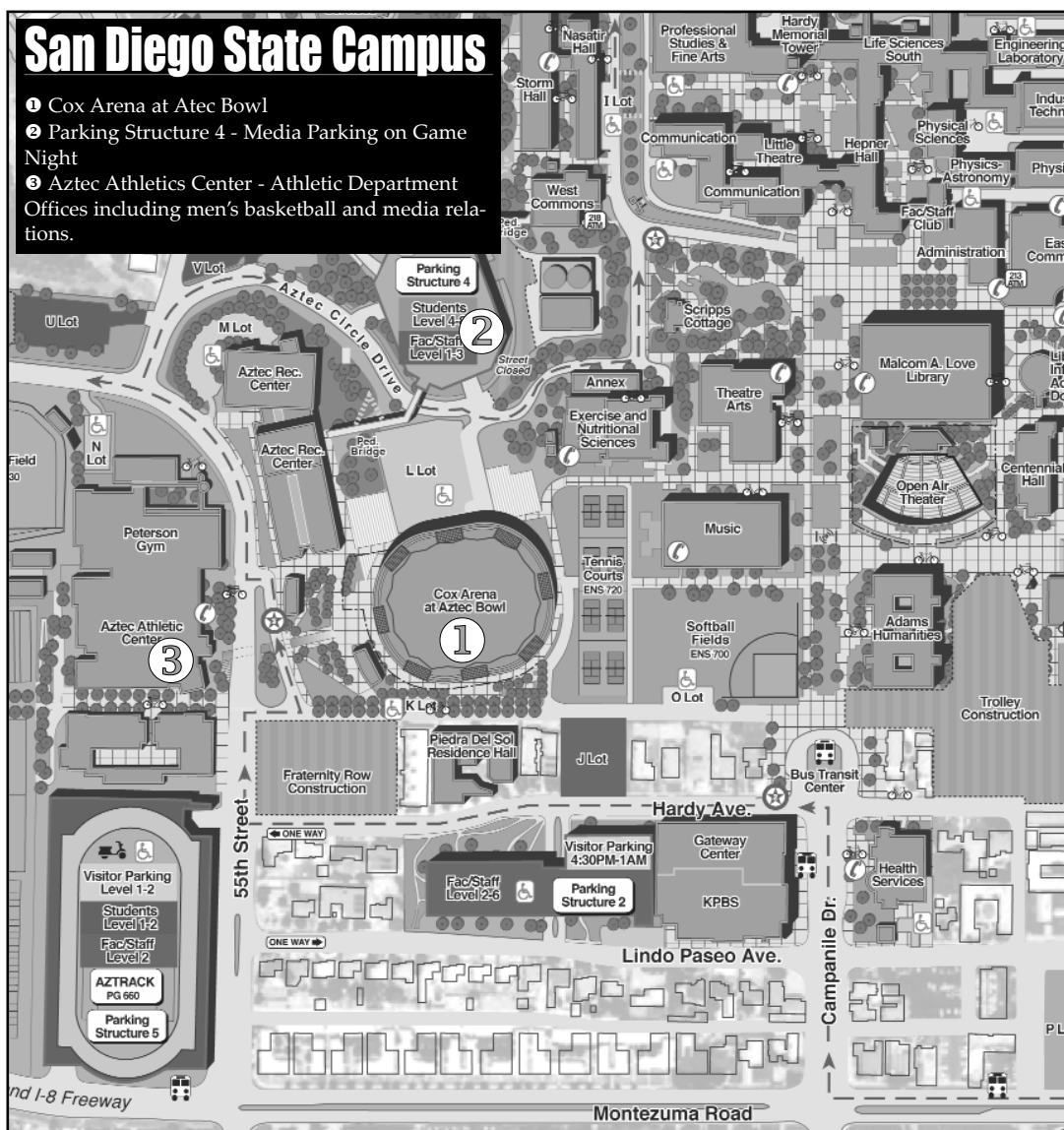
Sandwiches will be provided at the event, courtesy of Quiznos Sub (College Ave. & El Cajon Blvd.).

Media Entrance

Members of the media must enter through the loading dock doors of Cox Arena located through the L Lot.

Media Room

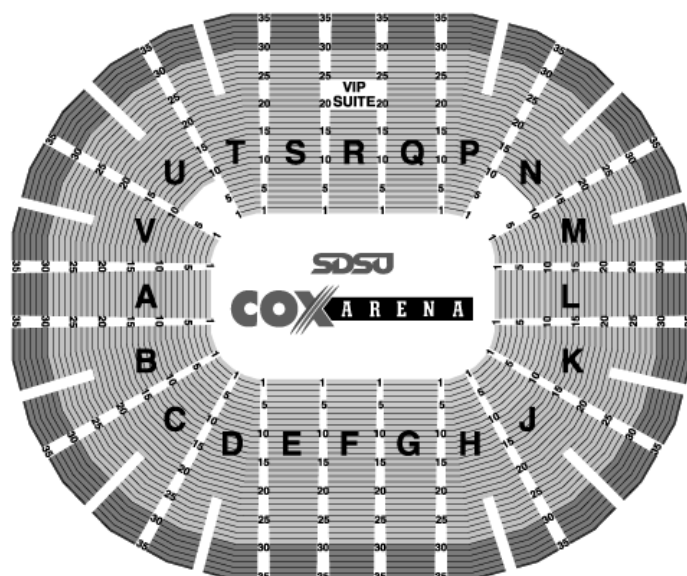
The media room and all postgame activities will be conducted in rooms located underneath the arena seating. Media should exit the tunnel located beneath gate N.



Directions to Cox Arena

To Cox Arena: From Interstate 8, take the College Avenue exit and go south. Turn right at Montezuma (second stop light at the top of the hill). Go to the second stop light (55th Street) and turn right. Cox Arena is located one-half mile up on the right hand side.

To Media Parking Lot: Continue driving north on 55th Street past Cox Arena and make a right at the stop light on to Aztec Circle Drive. Follow Aztec Circle Drive to the bottom of the hill and turn left into Parking Structure 4. Present your credential to the attendant and you will be directed on where to park.



Opponent Directory

SAN DIEGO STATE



BASKETBALL

Long Beach State

Location: Long Beach, Calif.
Enrollment: 34,566
Conference: Big West
Colors: Black & Gold
Nickname: 49ers

MBB Coach: Larry Reynolds
Alma Mater: UC-Riverside '76
Record at School: 5-22
Career Record: 115-57

2002-03 Record: 5-22
Conference Record: 4-14
Postseason: none
Starters Returning/Lost: 3/2
Letterwinners Returning/Lost: 9/3

MBB SID: Steve Janisch
Office Phone: (562) 985-7797
E-mail: sjanisch@csulb.edu
Website: longbeachstate.com
Fax: (562) 985-8197

Series: SDSU, 33-22
Streak: SDSU, 1
In San Diego: SDSU, 18-10
In Long Beach: SDSU, 15-12
Neutral Site: none

Ohio State (Quarterfinal Round EA Sports Maui Invitational)

Location: Columbus, Ohio
Enrollment: 55,043
Conference: Big Ten
Colors: Scarlet & Gray
Nickname: Buckeyes

MBB Coach: Jim O'Brien
Alma Mater: Boston College '71
Record at School: 119-72
Career Record: 354-289

2002-03 Record: 17-15
Conference Record: 7-9
Postseason: NIT 0-1
Starters Returning/Lost: 3/2
Letterwinners Returning/Lost: 8/7

MBB SID: Dan Wallenberg
Office Phone: (614) 292-4095
E-mail: wallenberg.1@osu.edu
Website: ohiostatebuckeyes.com
Fax: (614) 292-8547

Series: Tied, 1-1
Streak: SDSU, 1
In San Diego: SDSU, 1-0
In Columbus: OSU, 1-0
Neutral Site: none

Troy State

Location: Troy, Ala.
Enrollment: 18,222
Conference: Atlantic Sun
Colors: Cardinal, Silver & Black
Nickname: Trojans

MBB Coach: Don Maestri
Alma Mater: Southern Miss. '69
Record at School: 357-242
Career Record: 357-242

2002-03 Record: 26-6
Conference Record: 14-2
Postseason: NCAA 0-1
Starters Returning/Lost: 2/3
Letterwinners Returning/Lost: 6/4

MBB SID: Tom Strother
Office Phone: (334) 670-3229
E-mail: stroth@troyst.edu
Website: troystate.com
Fax: (334) 670-5665

Series: 1st meeting
Streak: none
In San Diego: none
In Troy: none
Neutral Site: none

San Diego

Location: San Diego, Calif.
Enrollment: 7,062
Conference: West Coast
Colors: Columbia Blue, Navy & White
Nickname: Toreros

MBB Coach: Brad Holland
Alma Mater: UCLA '79
Record at School: 144-111
Career Record: 167-142

2002-03 Record: 18-12
Conference Record: 10-4
Postseason: NCAA 0-1
Starters Returning/Lost: 1/4
Letterwinners Returning/Lost: 6/5

MBB SID: Ted Gosen
Office Phone: (619) 260-4745
E-mail: tgosen@sandiego.edu
Website: usdtoreros.com
Fax: (619) 260-2990

Series: SDSU, 18-16
Streak: SDSU, 1
At SDSU: SDSU, 14-8
At USD: USD, 7-4
Neutral Site: USD, 1-0

UC San Diego

Location: San Diego, Calif.
Enrollment: 23,548
Conference: CCAA
Colors: Royal Blue & Gold
Nickname: Tritons

MBB Coach: Greg Lanthier
Alma Mater: Point Loma '87
Record at School: 102-131
Career Record: 102-131

2002-03 Record: 7-20
Conference Record: 6-16
Postseason: none
Starters Returning/Lost: x
Letterwinners Returning/Lost: x

MBB SID: Doga Gur
Office Phone: (858) 534-8435
E-mail: dgur@ucsd.edu
Website: athletics.ucsd.edu
Fax: (858) 534-8475

Series: SDSU, 5-0
Streak: SDSU, 5
At SDSU: SDSU, 5-0
At UCSD: none
Neutral Site: none

Texas Tech

Location: Lubbock, Texas
Enrollment: 28,712
Conference: Big 12
Colors: Scarlet & Black
Nickname: Red Raiders

MBB Coach: Bob Knight
Alma Mater: Ohio State '62
Record at School: 45-22
Career Record: 809-311

2002-03 Record: 22-13
Conference Record: 6-10
Postseason: NIT 4-1
Starters Returning/Lost: 3/2
Letterwinners Returning/Lost: 6/5

MBB SID: Randy Farley
Office Phone: (806) 742-7600
E-mail: randy.farley@ttu.edu
Website: texastech.com
Fax: (806) 742-7414

Series: Texas Tech, 5-2
Streak: Texas Tech, 3
In San Diego: SDSU, 2-1
In Lubbock: Texas Tech, 4-0
Neutral Site: none

Cal Poly

Location: San Luis Obispo, Calif.
Enrollment: 17,500
Conference: Big West
Colors: Forest Green & Gold
Nickname: Mustangs

MBB Coach: Kevin Bromley
Alma Mater: Colorado State '83
Record at School: 35-38
Career Record: 35-38

2002-03 Record: 16-14
Conference Record: 10-8
Postseason: none
Starters Returning/Lost: 3/2
Letterwinners Returning/Lost: 7/7

MBB SID: Brian Thurmond
Office Phone: (805) 756-6531
E-mail: bthurmon@calpoly.com
Website: GoPoly.com
Fax: (805) 756-2650

Series: SDSU, 33-16
Streak: SDSU, 3
In San Diego: SDSU, 20-4
In San Luis Obispo: Tied, 12-12
Neutral Site: SDSU, 1-0

Eastern Washington

Location: Cheney, Wash.
Enrollment: 8,597
Conference: Big Sky
Colors: Red & White
Nickname: Eagles

MBB Coach: Ray Giaconetti
Alma Mater: Minot State '85
Record at School: 52-37
Career Record: 100-70

2002-03 Record: 18-13
Conference Record: 9-5
Postseason: NIT 0-1
Starters Returning/Lost: 3/2
Letterwinners Returning/Lost: 6/4

MBB SID: Dave Cook
Office Phone: (509) 359-6334
E-mail: dcook@mail.ewu.edu
Website: goeags.com
Fax: (509) 359-2828

Series: EWU, 3-2
Streak: EWU, 1
In San Diego: SDSU, 2-1
In Cheney: EWU, 1-0
Neutral Site: EWU, 1-0

Arizona

Location: Tucson, Ariz.
Enrollment: 35,500
Conference: Pacific 10
Colors: Cardinal & Navy
Nickname: Wildcats

MBB Coach: Lute Olson
Alma Mater: Augsburg '56
Record at School: 499-147
Career Record: 691-239

2002-03 Record: 28-4
Conference Record: 17-1
Postseason: NCAA 3-1
Starters Returning/Lost: 2/3
Letterwinners Returning/Lost: 8/3

MBB SID: Richard Paige
Office Phone: (520) 621-4163
E-mail: rpaige@email.arizona.edu
Website: arizonaathletics.edu
Fax: (520) 621-2681

Series: UA, 16-5
Streak: UA, 3
In San Diego: UA, 5-4
In Tucson: UA, 11-1
Neutral Site: none

Washington

Location: Seattle, Wash.
Enrollment: 37,000
Conference: Pacific 10
Colors: Purple & Gold
Nickname: Huskies

MBB Coach: Lorenzo Romar
Alma Mater: Washington '80
Record at School: 10-17
Career Record: 103-105

2002-03 Record: 10-17
Conference Record: 5-13
Postseason: none
Starters Returning/Lost: 4/1
Letterwinners Returning/Lost: 7/5

MBB SID: Dan Lepse
Office Phone: (206) 685-3120
E-mail: dsarge@u.washington.edu
Website: gohuskies.com
Fax: (206) 543-5000

Series: 1st meeting
Streak: none
In San Diego: none
In Seattle: none
Neutral Site: none

Opponent Directory

SAN DIEGO STATE



BASKETBALL

Portland

Location: Portland, Ore.
Enrollment: 2,750
Conference: West Coast
Colors: Purple & White
Nickname: Pilots

MBB Coach: Michael Holton
Alma Mater: UCLA '83
Record at School: 17-41
Career Record: 17-41

2002-03 Record: 11-17
Conference Record: 4-10
Postseason: none
Starters Returning/Lost: 5/0
Letterwinners Returning/Lost: 9/6

MBB SID: Julie Lapomarda
Office Phone: (503) 943-7731
E-mail: lapomard@up.edu
Website: portlandpilots.com
Fax: (503) 943-7242

Series: Portland, 5-1
Streak: Portland, 4
In San Diego: SDSU, 1-0
In Portland: Portland, 0-5
Neutral Site: none

Iowa State

Location: Ames, Iowa
Enrollment: 27,898
Conference: Big 12
Colors: Cardinal & Gold
Nickname: Cyclones

MBB Coach: Wayne Morgan
Alma Mater: St. Lawrence '73
Record at School: First year
Career Record: 91-84

2002-03 Record: 17-14
Conference Record: 5-11
Postseason: NIT, 1-1
Starters Returning/Lost: 4/1
Letterwinners Returning/Lost: 8/3

MBB SID: Mike Green
Office Phone: (515) 294-7019
E-mail: mgreen@iastate.edu
Website: cyclones.com
Fax: (515) 294-0558

Series: Iowa State, 2-1
Streak: SDSU, 1
In San Diego: Tied, 1-1
In Ames: Iowa State, 1-0
Neutral Site: none

Saint Mary's

Location: Moraga, Calif.
Enrollment: 2,500
Conference: West Coast
Colors: Navy Blue & Red
Nickname: Gaels

MBB Coach: Randy Bennett
Alma Mater: UC San Diego '86
Record at School: 24-35
Career Record: 24-35

2002-03 Record: 15-15
Conference Record: 6-8
Postseason: none
Starters Returning/Lost: 3/2
Letterwinners Returning/Lost: 8/5

MBB SID: Rich Davi
Office Phone: (925) 631-4402
E-mail: rdavi@stmays-ca.edu
Website: SMCGaels.com
Fax: (925) 631-4405

Series: SDSU, 2-1
Streak: SMC, 1
In San Diego: SDSU, 2-0
In Moraga: SMC, 1-0
Neutral Site: none

Brigham Young

Location: Provo, Utah
Enrollment: 32,122
Conference: Mountain West
Colors: Blue, White & Tan
Nickname: Cougars

MBB Coach: Steve Cleveland
Alma Mater: UC Irvine '76
Record at School: 108-78
Career Record: 108-78

2002-03 Record: 23-9
Conference Record: 11-3
Postseason: NCAA, 0-1
Starters Returning/Lost: 4/1
Letterwinners Returning/Lost: 11/3

MBB SID: Brett Pyne
Office Phone: (801) 378-4912
E-mail: brett_pyne@byu.edu
Website: byucougars.com
Fax: (801) 378-3520

Series: BYU, 37-15
Streak: BYU, 2
In San Diego: BYU, 15-12
In Provo: BYU, 22-2
Neutral Site: SDSU, 1-0

UNLV

Location: Las Vegas, Nev.
Enrollment: 24,000
Conference: Mountain West
Colors: Scarlet & Gray
Nickname: Runnin' Rebels

MBB Coach: Charlie Spoonhour
Alma Mater: Univ. of the Ozarks '61
Record at School: 42-22
Career Record: 361-193

2002-03 Record: 21-11
Conference Record: 8-6
Postseason: NIT, 0-1
Starters Returning/Lost: 3/3
Letterwinners Returning/Lost: 4/7

MBB SID: Andy Grossman
Office Phone: (702) 895-3995
E-mail: agrossman@ccmail.nevada.edu
Website: unlvrebels.com
Fax: (702) 895-0989

Series: UNLV, 25-6
Streak: UNLV, 2
In San Diego: UNLV, 9-3
In Las Vegas: UNLV, 14-2
Neutral Site: UNLV, 2-1

Colorado State

Location: Fort Collins, Colo.
Enrollment: 23,934
Conference: Mountain West
Colors: Green & Gold
Nickname: Rams

MBB Coach: Dale Layer
Alma Mater: Eckerd '80
Record at School: 46-45
Career Record: 213-132

2002-03 Record: 19-14
Conference Record: 5-9
Postseason: NCAA, 0-1
Starters Returning/Lost: 3/2
Letterwinners Returning/Lost: 8/4

MBB SID: Gary Ozzello
Office Phone: (970) 491-5067
E-mail: ramsid@lamar.colostate.edu
Website: csurams.com
Fax: (970) 491-1348

Series: CSU, 32-15
Streak: CSU, 2
In San Diego: Tied, 12-12
In Fort Collins: CSU, 20-3
Neutral Site: none

Wyoming

Location: Laramie, Wyo.
Enrollment: 12,402
Conference: Mountain West
Colors: Brown & Wyoming Prairie Gold
Nickname: Cowboys

MBB Coach: Steve McClain
Alma Mater: Chadron State '84
Record at School: 100-53
Career Record: 100-53

2002-03 Record: 21-11
Conference Record: 8-6
Postseason: NIT, 1-1
Starters Returning/Lost: 3/2
Letterwinners Returning/Lost: 8/4

MBB SID: Kevin McKinney
Office Phone: (307) 766-2256
E-mail: kevinm@uwyo.edu
Website: wyomingathletics.com
Fax: (307) 766-2346

Series: UW, 30-22
Streak: SDSU, 4
In San Diego: SDSU, 14-9
In Laramie: UW, 19-4
Neutral Site: SDSU, 4-2

Air Force

Location: Colorado Springs, Colo.
Enrollment: 4,000
Conference: Mountain West
Colors: Blue & Silver
Nickname: Falcons

MBB Coach: Joe Scott
Alma Mater: Princeton '87
Record at School: 29-56
Career Record: 29-56

2002-03 Record: 12-16
Conference Record: 3-11
Postseason: none
Starters Returning/Lost: 3/2
Letterwinners Returning/Lost: 10/5

MBB SID: Jerry Cross
Office Phone: (719) 333-3950
E-mail: jerry.cross@usafa.af.mil
Website: airforcesports.com
Fax: (719) 333-3798

Series: SDSU, 35-13
Streak: SDSU, 3
In San Diego: SDSU, 19-4
In Colorado Springs: SDSU, 14-8
Neutral Site: SDSU, 2-1

New Mexico

Location: Albuquerque, N.M.
Enrollment: 24,250
Conference: Mountain West
Colors: Cherry & Silver
Nickname: Lobos

MBB Coach: Ritchie McKay
Alma Mater: Seattle Pacific '87
Record at School: 10-18
Career Record: 93-107

2002-03 Record: 10-18
Conference Record: 4-10
Postseason: none
Starters Returning/Lost: 6/5
Letterwinners Returning/Lost: 4/1

MBB SID: Greg Remington
Office Phone: (505) 925-5520
E-mail: gregrem@unm.edu
Website: golobos.com
Fax: (505) 925-5529

Series: UNM, 31-20
Streak: SDSU, 1
In San Diego: SDSU, 15-9
In Albuquerque: UNM, 21-4
Neutral Site: Tied, 1-1

Utah

Location: Salt Lake City, Utah
Enrollment: 28,300
Conference: Mountain West
Colors: Crimson & White
Nickname: Utes

MBB Coach: Rick Majerus
Alma Mater: Marquette '70
Record at School: 308-90
Career Record: 407-142

2002-03 Record: 25-8
Conference Record: 11-3
Postseason: NCAA, 1-1
Starters Returning/Lost: 3/2
Letterwinners Returning/Lost: 6/4

MBB SID: Mike Lageschulte
Office Phone: (801) 581-3510
E-mail: mlageschulte@huntsman.utah.edu
Website: utahutes.com
Fax: (801) 581-4358

Series: Utah, 43-9
Streak: Utah, 1
In San Diego: Utah, 16-7
In Salt Lake City: Utah, 25-1
Neutral Site: Utah, 2-1



Aztecs Road Headquarters

EA Sports Maui Invitational (Nov. 22-27)
The Westin Maui
2365 Ka'anapali Parkway
Lahaina, Hawaii
(808) 667-2525
Fax: (808) 661-5764

Texas Tech (Dec. 12-13)
Holiday Inn Hotel & Towers
801 Avenue Q
Lubbock, Texas 79401
(806) 740-9947
Fax: (806) 753-4830

Arizona (Dec. 21-22)
University Park Marriott
880 E. Second Street
Tucson, Ariz. 85719
(520) 792-4100
Fax: (520) 903-9906

Saint Mary's (Jan. 5-6)
Marriott Walnut Creek
2355 N. Main Street
Walnut Creek, Calif. 94596
(925) 927-1124
Fax: (925) 933-6043

Colorado State/Wyoming (Jan. 23-26)
Marriott Fort Collins
350 E. Horsetooth Rd.
Fort Collins, Colo. 80525
(970) 226-5200
Fax: (970) 282-0561

Utah (Feb. 6-7)
Marriott Salt Lake City
75 S. West Temple
Salt Lake City, Utah 84116
(801) 364-5800
Fax: (801) 364-5823

Brigham Young (Feb. 8-9)
Marriott Provo
101 W. 100 N.
Provo, Utah 84601
(801) 377-4700
Fax: (801) 377-4708

UNLV (Feb. 16-17)
Embassy Suites
4315 Swenson Street
Las Vegas, Nev. 89119
(702) 795-2800
Fax: (702) 765-6899

New Mexico (Feb. 27-28)
Wyndham Garden Hotel
6000 Pan American Fwy. NE
Albuquerque, N.M. 87109
(505) 798-4300
Fax: (505) 798-4355

Air Force (Jan. 11)
Hilton Garden Inn
1810 Briargate Parkway
Colorado Springs, Colo. 80920
(719) 598-6866
Fax: (719) 598-8846

Newspapers

San Diego Union-Tribune

PO Box 120191
San Diego, CA 92112
News Desk: 619-293-1341
Fax: 619-293-2443
E-Mail: sports@uniontrib.com
▶ Chuck Scott, Sports Editor293-1804
▶ Doug Williams, Deputy Sports Editor ..293-1817
▶ Ed Graney, Beat Writer293-2203
ed.graney@uniontrib.com
▶ Mick McGrane, Writer293-1850
mick.mcgrane@uniontrib.com
▶ Nick Canepa, Columnist293-1397
nick.canepa@uniontrib.com
▶ Tim Sullivan, Columnist293-1033
tim.sullivan@uniontrib.com

North County Times

207 Pennsylvania Ave.
Escondido, CA 92025
News Desk: 800-200-1601
FAX: 760-740-5045
E-Mail: sports@nctimes.com
▶ Gary Hyvonen, Sports Editor..740-3551
▶ Mike Sullivan, Beat Writer739-6645
mrsportsinsd@webtv.net
▶ Steve Scholfield, Columnist ..433-3225

Daily Aztec

San Diego State University, BAM-2
San Diego, CA 92182-4591
Phone: 619-594-7817
Fax: 619-594-7277
E-Mail: sportseditor@thedailyaztec.com
▶ Mike Klitzing, Sports Editor

Wire Service

Associated Press

PO Box 191
San Diego, CA 92112
News Desk: 619-231-9365
Fax: 619-291-2098
▶ Bernie Wilson, Sports Editor
bwilson@ap.org

Television Stations

Channel 4 San Diego (IND)

1370 India Street
San Diego, CA 92101
Phone: 619-266-5061
Fax: 619-595-0168
▶ Jason Bott, Sports Producer ..266-5236
jason.bott@cox.com
▶ Nick Davis, Sports Producer 266-5063
nick.davis@cox.com
▶ Argy Stathopoulos, Reporter ..266-5024
argy.stathopoulos@cox.com
▶ John Weisbarth, Reporter266-5029
john.weisbarth@cox.com

KFMB (CBS) Channel 8

PO Box 85888
San Diego, CA 92186
News Desk: 858-571-5155
Fax: 858-560-0627
▶ Kyle Kraska, Sports Director 495-7588
hankbauer@kfmb.com
▶ John Howard, Sports495-7586
jhoward@kfmb.com

KGTV (ABC) Channel 10

PO Box 85347
San Diego, CA 92186
News Desk: 619-237-6380, 619-237-6383
Fax: 619-527-0369
▶ Jeff Cawley, Sports Director ..237-6324
jcawley@kgtv.com
▶ Julie Browman, Sports237-6372
jbrowman@kgtv.com

KNSD (NBC) Channel 7/39

225 Broadway
San Diego, CA 92101
News Desk: 619-578-0201
Fax: 619-578-0202
▶ Jim Laslavic, Sports Director ..578-0226
jim.laslavic@nbc.com
▶ Jim Stone, Sports578-0227
jim.stone@nbc.com
▶ Dave Smith, Photographer578-0243
dave.smith@nbc.com

KSWB (WB) Channel 5

7191 Engineer Road
San Diego, CA 92111
News Desk: 858-573-6500
Fax: 858-573-6600
▶ Kevin Garcia, Sports Director ..573-6528
kgarcia@tribune.com
▶ Troy Hirsch, Sports573-6529

KUSI (IND) Channel 51/9

PO Box 719051
San Diego, CA 92171-9051
News Desk: 858-505-5014
Fax: 858-576-9317
▶ Paul Rudy, Sports Director505-5047
sports@kusi.com
▶ Steve Quis, Sports505-5033

XETV (FOX) Channel 6

8253 Ronson Road
San Diego, CA 92111
News Desk: 858-650-5401
Fax: 858-279-0061
▶ Kirby Maus, Sports Director..650-5482
kirbym@fox6.com
▶ Katy Temple, Sports650-5492
katyt@fox6.com
▶ Jeff Wyngaert, Producer650-5493
jeffw@fox6.com

Radio Stations

KFMB Radio (760 AM)

7677 Engineer Road
San Diego, CA 92111
Phone: 858-292-7600
Fax: 858-279-7676

KOGO (600 AM)

9660 Granite Ridge Drive
San Diego, CA 92123-2657
News Desk: 858-560-6671
Fax: 858-715-3363; 858-715-3364
▶ Cliff Albert, Program Dir.715-3361
calbert@clearchannel.com
▶ Jim Charvet, Sports715-3394
jcharvet@clearchannel.com
▶ Phil Farrar, Sports715-3628
pfarrar@clearchannel.com

XPRS (1090 AM)

SDSU Flagship Station

3655 Nobel Drive, #470
San Diego, CA 92122
News Desk: 858-453-9153
Fax: 858-453-9157
▶ Joe Tutino, Executive Prod.....535-2517
calbert@clearchannel.com
▶ John Fricke, 1-3 p.m./SDSU PXP
jfricke@mtv1090.com
▶ John Kentera, 1-3 p.m./SDSU Color
coach@mtv1090.com
▶ Billy Ray Smith, 6-10 a.m./Aztec Sports Weekly
brsmith@mtv1090.com
▶ Scott Kaplan's, 6-10 a.m.
skaplan@mtv1090.com
▶ Ted Leitner, 10 a.m.-1 p.m.
▶ Steve Mason, 3-7 p.m.
smason@mtv1090.com
▶ Bill Werndl, 3-7 p.m.
phillybilly@mtv1090.com
▶ Mike Costa, 7-10 p.m.
mcosta@mtv1090.com
▶ Brian Wilson, 7-10 p.m.
bwilson@mtv1090.com

XEMM (ESPN 800 AM)

1027 10th Ave, Suite C
San Diego, 92101
(619) 696-9902
▶ Dave Palet, Sports696-9902
espn1@espnradio800.com

XTRA Radio (690 AM)

9660 Granite Ridge Drive
San Diego, CA 92123-2657
Phone: 858-296-1690
Fax: 858-291-5622
▶ Lee Hamilton, Sports522-5454
leehamilton@clearchannel.com



Aztecs Game Day Radio



In 2003, San Diego State athletics has joined forces with The Mighty 1090 AM (XPRS) for broadcast of all Aztec home and away games.

The station will serve as the flagship for San Diego State football and men's basketball broadcasts, and will

also feature a variety of other Aztec programming, including coaches shows. The station may also feature play-by-play of other Aztec sporting events.

John Fricke will serve as the play-by-play voice for the 2003 Aztec basketball season, bringing national experience in both television and radio. He will be joined courtside at home games by John Kentera.

Fricke began his career as an original member of the Cable News Network (CNN) in Atlanta in 1980. He spent 10 years as a sports anchor at CNN and also served as a senior producer at the network. Fricke was the host of CNN's College Football Preview and anchored the first-ever sportscast on CNN2, now Headline News, in 1982.

On the collegiate level, Fricke was the play-by-play announcer for both football and men's basketball at Wake Forest (1989) and Tennessee-Chattanooga (1992-94). He has also spent time at the University of Nebraska.

Locally, Fricke was the studio host for Fox Sports Net's Southern California Sports Report and was the host of the Emmy-award winning Monday Night Football show on San Diego's ABC affiliate, KGTV.

Prior to joining 1090 AM, Fricke was the morning show host with former NFL football players Sean Salisbury and Billy Ray Smith on XTRA Sports 690.

Currently, Fricke is The Mighty 1090's mid-day host alongside Kentera from 1 p.m. to 3 p.m.

Kentera, who has served as the basketball analyst on Channel 4 San Diego's coverage of Aztec basketball, will provide analysis during Aztec home games.

A San Diego native, Kentera has called all levels of basketball and football action. This past fall, he provided color commentary on the Aztec football broadcasts for the fourth consecutive season.

He is a former basketball player at U.S. International and a former assistant baseball coach at Texas Tech.

The Mighty 1090, with studios in La Jolla, was launched in March, 2003. It has an all-sports format with heavy emphasis on local programming. The station's 50,000-watt signal blankets the Los Angeles and San Diego markets and extends north of Santa Barbara. It will also be the flagship station for the San Diego Padres, beginning with the 2004 season.

The Steve Fisher Show

During the 2003-04 basketball season, The Steve Fisher Show will air each Thursday evening from 7-7:30 p.m. on the The Mighty 1090 AM (XPRS).

The show, which will be hosted by John Kentera and features coach Fisher, will take an in-depth look at the past week's games and preview upcoming contests.

Aztecs Game Day Television



For the third consecutive season Channel 4 San Diego will produce and broadcast games locally that are not already produced by ESPN, ESPN2, ESPN+Plus or SportsWest.

This season, Channel 4 San Diego will produce 13 Aztec games bringing the total number of San Diego State games on television to more than 20 for the third consecutive season.

In addition to its own production, Channel 4 San Diego also serves as the local affiliate for ESPN+Plus and SportsWest. That means that at least 20 Aztec games will be seen locally on Channel 4 San Diego.

Matt Vasgersian and Chris Marlowe will split play-by-play duties, with Jim Brogan providing analysis on many of the broadcasts.

Aztecs Sports Weekly

For the fifth consecutive year, San Diego State University is teaming up with Channel 4 San Diego to produce Aztec Sports Weekly.

The 30-minute sports magazine show highlights the week in San Diego State athletics with action footage, interviews, and features. In the winter months, the show will have an emphasis on the Aztec men's basketball program.

Each week head coach Steve Fisher and a men's basketball player will review the previous week's action and look ahead to upcoming games.

The show is hosted by Billy Ray Smith. The former Arkansas Razorback is well known in southern California for his broadcasting work as well as his days as a member of the San Diego Chargers.

The show is produced by Emmy-award nominee Jason Bott. Each edition of Aztec Sports Weekly is telecast several times with the initial broadcast taking place each Wednesday evening.

All local telecasts of San Diego State University sporting events, including men's basketball, football and women's basketball can be seen on Channel 4-San Diego. The station is a member of San Diego State and Mountain West Conference television agreements with ESPN+Plus and SportsWest.

In addition to the Aztecs, Channel 4 San Diego is also the local home of the San Diego Padres.

Aztecs on Television

Continuing a trend that started with Steve Fisher's hiring at San Diego State, the Aztecs will once again have a majority of their game televised.

San Diego State has had 47 of 63 games (74.6 percent) carried live either locally, regionally or nationally the past two seasons.

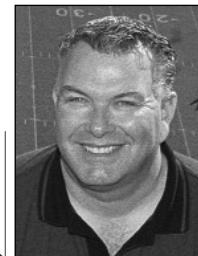
The 2003-04 season will be no different as the Aztecs are scheduled to make a minimum of 22 appearances on television. That figure is likely to go up with as networks finalize their schedule and possible additional exposures in the Maui Invitational and the Mountain West Conference Tournament.

This season marks the third consecutive that at least 20 games have been on television. In 2000-01, the Aztecs had a school-record 25 games televised en route to winning the Mountain West Conference championship and advancing to the NCAA Tournament.

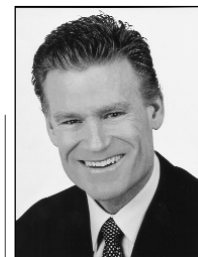
John Fricke



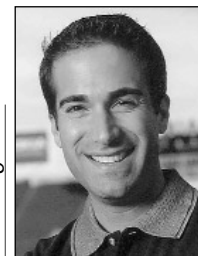
John Kentera



Chris Marlowe



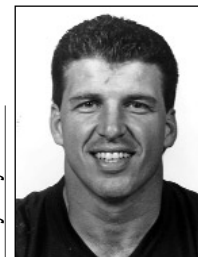
Matt Vasgersian



Jim Brogan



Billy Ray Smith



Cox Arena at Aztec Bowl

SAN DIEGO STATE



BASKETBALL



The photo above shows a sold-out Cox Arena at Aztec Bowl for San Diego State's 2003 game against Texas Tech. The Aztecs set a single-season attendance record in 2002-03 by averaging 7,172 fans per contest.

- ▶ Cox Arena photo spread on pages 26 and 27
- ▶ Cox Arena records on pages 117 and 118

- ▶ Top San Diego State attended games on page 137
- ▶ Directions to Cox Arena on page 16

One of the premier on-campus basketball arenas in all of America, Cox Arena at Aztec Bowl provides a 12,414-seat, state-of-the-art venue while keeping fans close to the floor and part of the action.

Opened in 1997, the facility is the home of San Diego State Basketball and provides a venue for university functions, cultural events, concerts and other special-event programming. It features a unique open-air concourse design that allows fans to enjoy the excellent San Diego climate and add a new experience to attending arena-type events.

The arena is built on the site of the old Aztec Bowl stadium which hosted San Diego State football games as well as other athletic, entertainment and cultural events from the time of its construction in 1936 until 1967.

Built directly into a canyon hillside, Cox Arena encloses one end of the old horseshoe-shaped Aztec Bowl. Two sections of the stadium's original

concrete bleachers and cobblestone walls frame each side of the arena's north entrance. In addition, the university's 10-ton granite boulder, a California landmark commemorating President John F. Kennedy's 1963 commencement address at Aztec Bowl, has also been placed in this area.

In addition to Aztec basketball contests, Cox Arena has played host to concerts by such artists as Cher, Eric Clapton, Britney Spears, No Doubt, Barry Manilow and Aerosmith. In spring of 2001, Billy Joel and Elton John opened their world tour with a sold-out show at Cox Arena.

Cox Arena seats 12,414 for sporting events. The seating includes the top nine rows consisting of bench seats with the remaining areas as chairbacks. The total seating is approximately 3,935 bench seats and 8,065 chairs. In the special event/concert configuration there are approximately 11,500 seats. All seating configurations are flexible and can be adjusted.

The facility features a \$1.2 million octagonal scoreboard with video-replay capabilities. The

board also includes up-to-the-minute statistical information on individual players.

The facility is equipped with seven locker rooms, two of which are complete with team rooms, equipment rooms, and a shared training room.

The men's team lounge was recently renovated and now includes three large-screen television sets, individual leather recliners and track lighting.

The Mezzanine Level houses a VIP Room for banquets, pre and post-game functions, and other formal and informal gatherings. The room consists of a 2,200 square-foot space that can be divided into two rooms of 800 and 1,400 square feet. The 800-square foot area can also serve as an interview room for sporting events.

After serving as host to the first and second rounds of the NCAA men's basketball championship in 2001, the building was the home of the 2001 NCAA women's volleyball and has been awarded the 2006 NCAA men's basketball first and second rounds.

Cox Arena at Aztec Bowl



Cox Arena Facts

First Game	Brigham Young 73, SDSU 59 (11-14-97)
Aztecs' First Win	SDSU 79, Southwest Texas 57 (11-26-97)
Aztecs' 50th Victory	SDSU 89, New Mexico 73 (3-24-03)
Basketball Capacity	12,414
Seasons	Entering 7th

San Diego State in Cox Arena

SDSU's All-Time Record in Cox Arena	51-42 (.548)
SDSU Record in Cox Under Steve Fisher	40-24 (.625)
Longest Win Streak in Cox History	9
Longest Losing Streak in Cox History	6

The Playing Floor

The court was originally used at the 1997 NCAA Final Four in Indianapolis. In the semifinals of the '97 championship, Kentucky defeated Minnesota, 78-69, and Arizona beat North Carolina, 66-58. In the championship game, Miles Simon scored 30 points and Mike Bibby added 19 as Arizona defeated Kentucky, 84-79, on March 31, 1997.

Postseason Events Held in Cox Arena

2001	NCAA 1st & 2nd Round Div. I Men's Basketball Championship
2001	NCAA Division I Women's Volleyball Semifinals and Finals
2003	Coren Owens Corning Men's NIT (First Round)
2006	NCAA 1st & 2nd Round Div. I Men's Basketball Championship

Cox Arena Home Record and Attendance

Year	Gms.	Record	Total	Average
1997-98	14	7 - 7	60,363	4,312
1998-99	15	4 - 11	47,035	3,136
1999-00	15	5 - 10	39,266	2,618
2000-01	17	12 - 5	77,104	4,528
2001-02	15	12 - 3	92,475	6,165
2002-03	17	11 - 6	121,926	7,172
Cox Totals	93	51 - 42	438,169	4,711

Largest Cox Arena Crowds

Rk.	Att.	Day	Opponent	Date	Result
1.	12,414 (c)	Mon.	(23/21) Texas Tech	Jan. 6, 2003	L, 63-75
	12,414 (c)	Sat.	(1/1) Arizona	Dec. 7, 2002	L, 81-89
3.	11,764	Sat.	UNLV*	Jan. 26, 2002	L, 79-80 (ot)
4.	11,334	Sat.	Fresno State*	Jan. 31, 1998	L, 94-97
5.	8,554	Sat.	Colorado State*	Feb. 1, 2003	L, 69-72
6.	8,497	Mon.	Brigham Young*	Jan. 20, 2003	L, 69-80
7.	8,438	Sat.	(21/16) Fresno State	Dec. 8, 2001	W, 93-78
8.	8,186	Sat.	San Diego	Dec. 9, 2000	L, 52-55
9.	8,078	Wed.	San Diego	Jan. 8, 2003	W, 78-72
10.	7,575	Tues.	UNLV	Feb. 11, 2003	L, 64-79
11.	7,232	Sat.	Utah* (D)	Feb. 9, 2002	L, 53-70
12.	7,164	Sat.	Utah*	Feb. 10, 2001	L, 63-76
13.	7,102	Sat.	Utah* (D)	Jan. 18, 2003	W, 58-56
14.	6,967	Sat.	Air Force*	Mar. 2, 2002	W, 49-47
15.	6,950	Sat.	Air Force*	Feb. 22, 2003	W, 67-53
16.	6,739	Mon.	New Mexico*	Jan. 8, 2001	L, 67-75
17.	6,553	Sat.	Colorado State*	Jan. 19, 2002	W, 81-69
18.	6,184	Mon.	Wyoming*	Feb. 3, 2003	W, 80-70
19.	6,183	Sat.	E. Washington (SO)	Nov. 23, 2002	L, 70-75
20.	6,171	Mon.	Wyoming*	Jan. 21, 2002	L, 85-88 (ot)
21.	6,164	Sat.	Utah*	Jan. 16, 1999	L, 53-79
22.	6,138	Sat.	Hawai'i	Dec. 14, 2002	W, 60-49
23.	6,117	Mon.	New Mexico*	Feb. 24, 2003	W, 89-73
24.	6,089	Sat.	UNLV*	Feb. 24, 2001	W, 83-66
25.	5,941	Thur.	New Mexico*	Feb. 28, 2002	W, 84-71

Opponent Associated Press national ranking at game time left of team name. SO - Indicates season opener. D - Indicates day game. * - Indicates conference game.

SDSU Record vs. Opponents in Cox Arena

Opponent	W	L	Streak	Last	Opponent	W	L	Streak	Last
Air Force	4	1	Won 3	F.22.03	Oklahoma State	1	0	Won 1	D.30.00
Arizona	0	1	Lost 1	D.7.02	Oregon	1	0	Won 1	D.2.97
Arizona State	1	0	Won 1	D.16.00	Pacific	1	0	Won 1	J.2.99
Arkansas State	0	1	Lost 1	D.27.98	Rice	1	0	Won 1	F.21.98
Ball State	0	1	Lost 1	D.27.99	San Diego	1	2	Won 1	J.8.03
Brigham Young	1	5	Lost 1	J.20.03	San Jose State	2	0	Won 2	F.27.99
Cal State Fullerton	0	1	Lost 1	J.5.00	South Carolina State	1	0	Won 1	D.16.99
Cal State Northridge	1	0	Won 1	D.1.01	Southern California	0	2	Lost 2	D.20.99
Cal State Sacramento	1	0	Won 1	D.2.00	So. Calif. College	2	0	Won 2	D.2.98
Colorado State	2	2	Lost 1	F.1.03	Southern Methodist	0	1	Lost 1	J.15.98
Columbia	1	0	Won 1	D.31.01	Southwest Texas	1	0	Won 1	N.26.97
Eastern Washington	1	1	Lost 1	N.23.02	Stanford	0	1	Lost 1	D.16.97
Florida Atlantic	2	0	Won 2	D.28.02	Texas A&M-CC	1	0	Won 1	J.4.01
Fresno State	1	2	Won 1	D.8.01	Texas Christian	0	1	Lost 1	J.17.98
Hawai'i	3	0	Won 3	D.14.02	Texas-El Paso	0	1	Lost 1	F.6.99
High Point	1	0	Won 1	J.2.00	Texas Tech	0	1	Lost 1	J.6.03
Houston	1	0	Won 1	J.29.02	Tulsa	0	1	Lost 1	F.19.98
IPFW	2	0	Won 2	D.30.02	UC Riverside	1	0	Won 1	N.24.99
Long Beach State	0	1	Lost 1	N.28.98	UC San Diego	3	0	Won 3	D.2.02
Loyola Marymount	2	0	Won 2	J.3.03	UC Santa Barbara	2	0	Won 2	M.19.03
Morgan State	1	0	Won 1	D.18.00	UNLV	1	3	Lost 2	F.11.03
New Mexico	2	3	Won 2	F.24.03	Utah	1	4	Won 1	J.18.03
New Mexico State	1	1	Won 1	N.21.00	Utah State	0	1	Lost 1	N.24.98
Nevada	0	1	Lost 1	N.14.98	Wyoming	1	3	Won 1	F.3.03
Norfolk State	2	0	Won 2	N.21.01					

By Conference

Atlantic Sun	2	0	Won 2	D.28.02
Big Sky	2	1	Lost 1	N.23.02
Big South	1	0	Won 1	J.2.00
Big 12	1	1	Lost 1	J.6.03
Big West	5	3	Won 4	M.19.03
Conference USA	1	1	Won 1	J.29.02
Independents	3	0	Won 3	D.30.02
Ivy	1	0	Won 1	D.31.01
Mid-American	0	1	Lost 1	D.27.99
Mid-Eastern Athletic	4	0	Won 4	N.21.01
Mountain West	12	21	Won 2	F.24.03
Pac-10	2	4	Lost 1	D.7.02
Southland	1	0	Won 1	N.26.97
Sun Belt	1	2	Won 1	N.21.00
West Coast	3	2	Won 2	J.8.03
Western Athletic	7	6	Won 3	D.12.02
Division II	3	0	Won 3	D.2.02
NAIA	2	0	Won 2	D.2.98

By Time Zone

Eastern	10	1	Won 8	D.30.02
Central	5	5	Lost 1	J.6.03
Mountain	13	22	Won 3	F.24.03
Pacific	20	14	Won 1	M.19.03
Hawaii	3	0	Won 3	D.14.02



Athletic Director's Staff

Mike Bohn 619-594-6357
Athletics Director

Joe Moeller 619-594-5162
Sr. Associate Athletic Director/External Relations

Kevin Klintworth 619-594-5547
Associate Athletic Director/Media Relations

Steve Schnall 619-594-4549
Associate Athletic Director/Marketing

Jim Spillers 619-594-4191
Associate Athletic Director/Facilities & Operations

Al Zitlau 619-594-6296
Associate Athletic Director/Administration

Jenny Bramer 619-594-0394
Assistant Athletic Director/Compliance

Mark Gumble 619-594-3395
Assistant Athletic Director/Academic Services

Wayne Guymon 619-594-4549
Assistant Athletic Director/Corporate Sales

Academics

Mark Gumble 619-594-3395
Assistant Athletic Director/Academic Services

Bre White 619-594-4126
Assistant Director of Academic Services

Kristen Evans 619-594-4056
Academic Advisor

Todd Snedden 619-594-7001
Academic Advisor

Kristie Smedsrud 619-594-7002
Academic Advisor

Mary Reading 619-594-1660
Eligibility Coordinator

Business

Al Zitlau 619-594-6296
Associate Athletic Director/Administration

Donna Bell 619-594-7664
Business Office Manager

Sherry Bertram 619-594-4996
Accounting Technician

Compliance

Jenny Bramer 619-594-0394
Assistant Athletic Director/Compliance

Julie Fitzgerald 619-594-4152
Financial Aid Coordinator

Daniel Lopez 619-594-7925
Recruiting/Student Affairs Coordinator

Development

Joe Moeller 619-594-5162
Sr. Associate Athletic Director/External Relations

Bob Moosbrugger 619-594-3223
Assistant Director Aztec Athletic Foundation

Ed White 619-594-5303
Athletic Development Officer

Cara Rodiles 619-594-7924
Development Assistant

Rosanna Santos 619-594-5162
Administrative Support

Equipment

Nick Pettit 619-594-7201
Interim Manager, Athletics Equipment Room

Dennis Brown 619-594-4951
Assistant Equipment Manager

Chuck Hart 619-594-4951
Assistant Equipment Manager

Frank Montes de Oca 619-594-4951
Assistant Equipment Manager

Event Management

Jim Spillers 619-594-4191
Associate Athletic Director/Facilities & Operations

Joe Erbland 619-594-5624
Assistant Director of Facilities & Operations

Arnold Baldeaux 619-594-3383
Athletic Event Planner

Marketing and Corporate Sales

Steve Schnall 619-594-4549
Associate Athletic Director/Marketing

Wayne Guymon 619-594-4549
Assistant Athletic Director/Corporate Sales

Alice Tym 619-594-4285
Corporate & Group Sales Representative

Madaline Cerrato 619-594-4549
Administrative Assistant

Media Relations

Kevin Klintworth 619-594-5547
Associate AD/MRD Home: 858-586-9214

Mike May 619-594-5547
Assistant MRD Home: 619-644-1767

Peggy Curtin 619-594-5547
Assistant MRD Home: 619-540-6146

Dave Kuhn 619-594-5547
Assistant MRD Home: 619-582-8965

Dan Gisel 619-594-5547
Media Relations Assistant Home: 619-284-0927

Matt MacDonald 619-594-5547
Media Relations Assistant Home: 619-287-0763

Sports Medicine

Gary Johnson 619-594-5551
Director of Sports Medicine

Mark Haines 619-594-5551
Assistant Athletic Trainer

Carolyn Peters 619-594-5551
Assistant Athletic Trainer

Sara Williamson 619-594-5551
Assistant Athletic Trainer

Pat Dulin 619-594-5551
Administrative Support

Strength and Conditioning

David Ohton 619-594-4273
Director of Strength and Conditioning

Courtney Bale 619-594-5258
Assistant Director Strength and Conditioning

Ticket Office

Ellen Crowell 619-594-7892
Interim Athletics Ticket Office Manager

Gina Balistriero 619-594-7892
Assistant Ticket Office Manager

Sharon Carnevale 619-594-7892
Ticket Office Assistant

Video Staff

Brian Murphy 619-594-7617
Video Coordinator

Coaching Staff

Baseball

Head Coach: Tony Gwynn 619-594-6889

Asst. Coach: Rusty Filter 619-594-6889

Asst. Coach: Jay Martel 619-594-6889

Dir. of Operations: Mike Sweet 619-594-6889

Men's Basketball

Head Coach: Steve Fisher 619-594-6249

Asst. Head Coach: Brian Dutcher 619-594-6249

Asst. Coach: Gregg Gottlieb 619-594-6249

Asst. Coach: Gary Grant 619-594-6249

Dir. of Operations: Mark Fisher 619-594-6249

Dir. of Player Dev.: Matt Soria 619-594-6249

Admin. Assistant: Marty Malano 619-594-6249

Women's Basketball

Head Coach: Jim Tomey 619-594-4095

Asst. Coach: Matt Hart 619-594-4095

Asst. Coach: Nicole Anderson 619-594-4095

Asst. Coach: Jennifer Gross 619-594-4095

Admin. Assistant: Paula Davila 619-594-4095

Women's Crew

Head Coach: Jennifer Zebroski 619-594-0650

Asst. Coach: Colin Truex 619-594-8911

Women's Track and Cross Country

Head Coach: Rahn Sheffield 619-594-5514

Asst. Coach: Jennifer Nanista 619-594-1951

Football

Head Coach: Tom Craft 619-594-6769

Asst. Head Coach: Jim House 619-594-6769

Asst. Coach: Damon Baldwin 619-594-6769

Asst. Coach: Fred Bleil 619-594-6769

Asst. Coach: Andy Buh 619-594-6769

Asst. Coach: Walter Gaskins 619-594-6769

Asst. Coach: Matt Irvin 619-594-6769

Asst. Coach: Thom Kaumeyer 619-594-6769

Asst. Coach: Ray Peterson 619-594-6769

Asst. Coach: Brian Stark 619-594-6769

Dir. of Operations: Dave Powroznik 619-594-6769

Admin. Assistant: Deanna Gonzales 619-594-6769

Admin. Assistant: Bonnie Hoolahan 619-594-6769

Men's Golf

Head Coach: Dale Walker 619-594-4334

Asst. Coach: Ryan Donovan 619-594-4334

Women's Golf

Head Coach: Felicia Brown 619-594-7665

Men's Soccer

Head Coach: Lev Kirshner 619-594-0136

Asst. Coach: Matt Hall 619-594-0463

Asst. Coach: Dave Siracusa 619-594-0463

Women's Soccer

Head Coach: Chuck Clegg 619-594-3749

Assistant Coach: Angela Morrison 619-594-1916

Softball

Head Coach: Kathy Van Wyk 619-594-1952

Asst. Coach: Kelly Howard 619-594-5853

Asst. Coach: Jennifer Milo 619-594-1850

Women's Swimming and Diving

Head Coach: Deena Schmidt 619-594-5883

Asst. Coach: Greg Hutt 619-594-0395

Men's Tennis

Head Coach: Gene Carswell 619-594-5084

Asst. Coach: Oliver Maiberger 619-594-5084

Women's Tennis

Head Coach: Peter Mattera 619-594-6505

Asst. Coach: Christy Panter 619-594-5900

Women's Volleyball

Head Coach: Mark Warner 619-594-5064

Asst. Coach: John Ross 619-594-1797

Asst. Coach: John Shirk 619-594-5266

Women's Water Polo

Head Coach: Carin Crawford 619-594-0649