



SAN DIEGO STATE AZTECS

2021 Volleyball Weekly Notes

Jim Solien (Primary Contact)
 Assistant Media Relations Director
Office Phone Number: (619) 594-2576
E-Mail Address: jsolien@sdsu.edu
News Release Date: Sept. 22, 2021

SDSU Official Athletics Website: goaztecs.com
SDSU Official Athletics Twitter: @GoAztecs
SDSU Official Athletics Instagram: @GoAztecs
SDSU Official Athletics Facebook: facebook.com/goaztecs
SDSU Official Athletics YouTube: youtube.com/goaztecs.com

2021 AZTEC VOLLEYBALL SCHEDULE

Day/Date	Opponent	Time
Friday, Aug. 27	vs. Houston Baptist [^]	L, 0-3
Friday, Aug. 27	at Sam Houston [^]	L, 0-3
Saturday, Aug. 28	at Sam Houston [^]	L, 2-3
Friday, Sept. 3	at UC Santa Barbara [#]	W, 3-0
Saturday, Sept. 4	vs. No. 21 Pepperdine [#]	L, 1-3
Saturday, Sept. 4	vs. Kansas State [#]	L, 1-3
Friday, Sept. 10	No. 16 UCLA+ (MWN)	L, 0-3
Saturday, Sept. 11	No. 25 San Diego+ (MWN)	L, 1-3
Tuesday, Sept. 14	at Long Beach State	L, 0-3
Friday, Sept. 17	vs. Texas Southern [~]	W, 3-0
Friday, Sept. 17	at Arizona [~]	L, 0-3
Saturday, Sept. 18	vs. UC Riverside [~]	W, 3-0
Thursday, Sept. 23	at Nevada* (MWN)	6 p.m. PT
Saturday, Sept. 25	at San José State* (MWN)	1 p.m. PT
Thursday, Sept. 30	New Mexico* (MWN)	7 p.m. PT
Saturday, Oct. 2	Air Force* (MWN)	1 p.m. PT
Tuesday, Oct. 5	UNLV* (MWN)	7 p.m. PT
Thursday, Oct. 7	Fresno State* (MWN)	7 p.m. PT
Thursday, Oct. 14	at Boise State* (MWN)	7 p.m. MT
Saturday, Oct. 16	at Utah State* (MWN)	1 p.m. MT
Thursday, Oct. 21	Colorado State* (MWN)	7 p.m. PT
Saturday, Oct. 23	at Wyoming* (MWN)	6:30 p.m. MT
Thursday, Oct. 28	Utah State* (MWN)	7 p.m. PT
Saturday, Oct. 30	Boise State* (MWN)	7 p.m. PT
Tuesday, Nov. 2	at UNLV* (MWN)	6:30 p.m. PT
Saturday, Nov. 6	at Fresno State* (MWN)	11 a.m. PT
Thursday, Nov. 11	at Air Force* (MWN)	6 p.m. MT
Saturday, Nov. 13	at New Mexico* (MWN)	1 p.m. MT
Thursday, Nov. 18	Nevada* (MWN)	7 p.m. PT
Saturday, Nov. 20	San José State* (MWN)	1 p.m. PT

[^] - Bearkat Invitational (Huntsville, Texas)
[#] - Gaucho Invitational (Santa Barbara, Calif.)
⁺ - SDSU/USD Invitational (San Diego, Calif.)
[~] - Wildcat Classic (Tucson, Ariz.)
^{*} - Mountain West match
 (MWN) - Mountain West Network match

Socially

Twitter: @AztecVB
 Instagram: @Aztec_WVB

Match Week Preview

San Diego State (3-9, 0-0 MW) at Nevada (3-8, 0-0 MW)
 Thursday, Sept. 23 | 6 p.m. PT | Virginia Street Gym | Reno, Nev.
 Live Stats | MW Network
 Series: SDSU leads 11-6



San Diego State (3-9, 0-0 MW) at San José State (6-4, 0-0 MW)
 Saturday, Sept. 25 | 1 p.m. PT | Spartan Gym at Yosh Uchida Hall | San Jose, Calif.
 Live Stats | MW Network
 Series: SDSU leads 22-13



AZTEC VOLLEYBALL COMMENCES MW PLAY THIS WEEKEND

- > San Diego State opens its 23rd season of Mountain West competition this weekend when it hits the road to face Nevada and San José State.
- > The Aztecs will square off against the Wolf Pack on Thursday, Sept. 23, beginning at 6 p.m. PT before engaging the Spartans on Saturday, Sept. 25, starting at 1 p.m.
- > In addition to live stats, both contests will be streamed live via the Mountain West Network on GoAztecs.com.
- > SDSU wrapped up its non-conference slate last weekend by winning two of three matches at the Wildcat Classic in Tucson, Arizona. The Aztecs split two matches on Sept. 17, opening with a 3-0 sweep (25-17, 25-22, 25-17) of Texas Southern, which snapped a five before suffering the identical fate against host Arizona (20-25, 22-25, 15-25) in the evening. However, the Scarlet and Black took care of business in its tournament finale with three-set whitewash of UC Riverside (25-15, 25-21, 25-19).
- > Senior Victoria O'Sullivan ranks sixth in the Mountain West with an average of 3.45 kills per set. The Aztec outside hitter has posted double-digit kills in nine consecutive starts and has surpassed that plateau in 41 of her last 54 appearances dating back to the start of the 2019 campaign.
- > SDSU has compiled a 175-178 record in MW competition since the league's inception in 1999. However, The Aztecs are 244-167 in program history against teams in the current conference alignment thanks in part to renewed rivalries with Fresno State and San José State.
- > The Aztecs are 11-11 all-time in MW openers and have dropped three out of the last four conference lid-lifters after falling to UNLV in three sets on the road last spring.
- > SDSU will play 18 conference matches, including home-and-away contests against eight league rivals while facing Colorado State and Wyoming just once.

SERIES RECORD VS. NEVADA

- > San Diego State is 11-6 vs. the Wolf Pack in 17 meetings dating back to 2011.
- > However, Nevada has won three straight encounters, including a pair of victories in a weekend series at Aztec Court last spring. SDSU fell short by a 3-1 count in the opener (25-20, 14-25, 20-25, 15-25) before dropping a three-set decision (21-25, 22-25, 13-25) in the finale.
- > In that series, the Aztecs were led by Heipua Tautua'a, who stepped into the spotlight with an average of 3.14 kills per set (22 overall) and 2.14 digs per frame, highlighted by a career-high 15 kills in the opener.
- > Despite receiving double-digit kills from three players in the first match and maintaining a slight edge in digs (54-53), San Diego State was out-hit (.318 to .194) and trailed in team blocks (13.0-5.0).
- > The following day, the Aztec attack was stymied, as Nevada maintained a sizable advantage in hitting percentage (.293 to .080) and team blocks (14.0-5.0).
- > SDSU is 3-4 vs. the Wolf Pack in Reno after suffering a 3-1 setback in its last trip to Virginia Street Gym on Sept. 28, 2019. Among this fall's returners, Victoria O'Sullivan tied for team-high honors with 14 kills and finished with three total blocks, including a solo stuff.

SERIES RECORD VS. SAN JOSÉ STATE

- > The Aztecs lead the all-time series 22-13 in 35 varsity meetings vs. the Spartans since 1977.
- > San Diego State sports a 12-4 record at home vs. SJSU, a 7-9 mark in Silicon Valley and a 3-0 ledger on a neutral court.
- > Since San José State joined the Mountain West in 2013, the Aztecs have posted a 7-6 record in 13 meetings against the Spartans, including a 3-4 mark in San Jose.
- > San Diego State faced SJSU just once last spring, suffering a 3-0 setback (18-25, 18-25, 17-25) at Spartan Gym in the penultimate match of the shortened campaign.
- > The Aztecs were out-hit .372 to .169 in that contest, as the SJSU maintained a 43-29 advantage in kills and a 6.0 to 4.0 edge in team blocks to help fuel its victory.
- > Individually, SDSU was led by Victoria O'Sullivan, who blasted eight kills, while Heipua Tautua'a displayed her versatility with seven put-aways of her own to go with eight digs and a pair of blocks, including a solo stuff.

GENERAL INFORMATION

Location San Diego, Calif.
 Founded 1897
 Enrollment 33,870
 Nickname Aztecs
 Colors Scarlet and Black (Pantone 187)
 Conference Mountain West
 Affiliation Division I
 President Dr. Adela de la Torre
 Director of Athletics John David Wicker
 Faculty Representative Dr. Frank Harris III
 Home Facility Aztec Court at Peterson Gym (2,000)

TEAM INFORMATION

Head Coach Brent Hilliard
 Alma Mater Long Beach State '93
 Record at SDSU 9-18 (second year)
 Career Record 63-29 (Third year)
 E-Mail bhilliard@sdsu.edu
 Volleyball Office Phone (619) 594-5064
 Volleyball Office Fax (619) 594-1674
 Assistant Coach/Recruiting Coordinator Melanie Greene
 Assistant Coach Steve Timmons
 Volleyball Operations Assistant Kara Barkdoll
 Spring 2021 Record 6-9
 Spring 2021 Conference Record 6-9 (Eighth)
 Spring 2021 Home Record 5-4
 Spring 2021 Road Record 1-5
 Letterwinners Returning/Lost 8/7
 Starters Returning/Lost 4/2+Libero

PROGRAM HISTORY

First Year of Volleyball 1976
 Overall Record 889-628 (.586)
 NCAA Appearances 14
 Last Postseason Appearance 2012
 NCAA Postseason Record 15-14

MEDIA RELATIONS

Assistant Media Relations Director Jim Solien
 E-Mail jsolien@sdsu.edu
 SID Office Phone (619) 594-2576
 SID Office Fax (619) 582-6541
 Official Athletic Website www.GoAztecs.com

2021 AZTEC VOLLEYBALL STATISTICAL LEADERS
(min. 50 percent of team sets played)

Hitting Percentage*	.264	Victoria O'Sullivan
Kills	131	Victoria O'Sullivan
Kills per set	3.45	Victoria O'Sullivan
Assists	177	Noa Miller
Assists per set	5.90	Noa Miller
Digs	186	Natalie Smith
Digs per set	4.54	Natalie Smith
Blocks	25.0	Julia Haynie
Blocks per set	0.81	Sara Mukaj
Service Aces	7	S. Mukaj/A.Vanderpan
Service Aces per set	0.26	Sara Mukaj

*. min 3.0 attempts per set

2021 AZTEC VOLLEYBALL FALL ROSTER

No.	Player	Pos.	Ht.	Yr.	Hometown (Last School)
1	Zoi Faki	OH	6-1	Sr.	Athens, Greece (Pittsburgh)
2	Heipua Tautua'a	OH	6-2	So.	Wai'anae, Hawai'i (Wai'anae HS)
3	Andrea Walker	MB	6-0	Sr.	Fairfield, Calif. (Vanden HS)
4	Kennedy Feuerborn	S	6-3	So.	Overland Park, Kan. (Johnson County CC)
5	Serena Hodson	MB	6-2	Jr.	Mission Viejo, Calif. (Trabuco Hills HS)
6	Jordyn Goldsmith	OPP	6-1	Fr.	Valleyford, Wash. (Freeman HS)
7	Ashley Vanderpan	S	6-1	Jr.	Elk Grove, Calif. (Syracuse)
8	Natalie Smith	DS/L	5-7	Sr.	Weatherford, Texas (Michigan)
9	Sara Mukaj	MB	6-3	Fr.	Modena, Italy (Istituto Scaruffi-Levi Tricolore)
10	Kalani Ruri	S/OPP	6-2	Fr.	Kawerau, New Zealand (Trident HS)
11	Brooklynn Hill	DS/L	5-8	Sr.	Rancho Cucamonga, Calif. (Penn State)
13	Julia Haynie	MB	6-2	Jr.	Temecula, Calif. (Portland State)
14	Reagan Merk	OH	5-11	Fr.	Huntington Beach, Calif. (Mater Dei HS)
15	Mikela Labno	OH	6-2	Fr.	Hilmar, Calif. (Hilmar HS)
16	Carsyn Schuch	DS	5-6	Fr.	Phoenix, Ariz. (Deer Valley HS)
17	Nadia Barkclay	DS	5-2	So.	Foster City, Calif. (Hillsdale HS)
19	Noa Miller	S	5-10	Sr.	Douglasville, Ga. (Arizona State)
21	Victoria O'Sullivan	OH	6-0	Sr.	Albany, Calif. (Saint. Mary's HS)

Head Coach: Brent Hilliard (Long Beach State, 1993), Second season at SDSU
Assistant Coach/Recruiting Coordinator: Melanie Greene (San Diego State, 2007), 11th season at SDSU
Assistant Coach: Steve Timmons (USC), Second season at SDSU
Volleyball Operations Assistant: Kara Barkdoll (Cal State San Marcos, 2015), Fourth season at SDSU

Pronunciations

#1 ZOI FAKI	Zoey FAH-key
#2 HEIPUA TAUTUA'A	HEY-poo-ah taw-TOO-ah-ah
#9 Sara MUKAJ	MOO-kye
#4 Kennedy FEUERBORN	FEWER-born
#15 MIKELA Labno	ma-KAY-la
#16 CARSYN SCHUCH	Carson Shook



OPPONENT COMPARISON

2021 Stats	SDSU	MW Rank	OPP	NEV	MW Rank	OPP	SJSU	MW Rank	OPP
Hitting Percentage	.201	8	.231	.166	11	.27	.203	7	.201
Kills per set	12.10	8	12.71	11.47	9	13.00	13.50	2	12.1
Assists per set	11.29	7	11.73	10.26	10	11.26	12.53	1	9.21
Digs per set	13.88	4	12.83	12.89	9	13.66	15.44	2	12.35
Blocks per set	1.90	8	2.61	1.89	9	2.74	1.41	11	2.09
Service Aces per set	0.98	11	1.56	1.47	8	1.47	2.24	1	1.21

SCOUTING THE OPPOSITION

> Nevada won two matches in its home tournament last weekend, defeating both Sacramento State (25-19, 23-25, 25-16, 25-22) and Cal State Northridge (25-19, 25-19, 18-25, 25-23) in three sets. With the victories, the Wolf Pack improved to 3-8. Nevada's only other win was recorded in a narrow 3-0 sweep of San Francisco (25-22, 25-21, 25-23) at the UC Davis Tournament on Sept. 4. The Wolf Pack were picked to finish 11th in the Mountain West preseason coaches poll. Offensively, Nevada has been led by sophomore outside hitter Reka Montealeone, who enters the weekend ranked 10th in the conference with an average of 2.89 kills per set. In addition, the Wolf Pack boast three other players who averaging over two kills per frame, including junior middle blocker Sydney Petersen (2.50), senior right-side hitter Kyla Waiters (2.43) and freshman outside hitter Sia Liliili (2.08). Peterson currently occupies the third spot in conference with a .404 hitting percentage, while senior libero Kalia Spevak (3.89 digs/set) and junior setter Andrea Alcaraz (7.92 assists/set) rank fifth in their respective statistical categories. Alcaraz played prep volleyball in San Diego County at Poway High School. As a team, the Wolf Pack finds itself at the bottom of the league this week with a collective .166 hitting percentage while ranking ninth in kills (11.47/set), digs (12.89/set) and blocks (1.89/set). Nevada is coached by Lee Nelson, who is in his seventh season on the Reno campus after spending three years as an assistant at Miami (Fla.) from 2012-14. Prior to his stint with the Hurricanes, Nelson was the associate head coach of the men's program at UC Santa Barbara. His career record stands at 72-103.

> San José State put the brakes on a three-match slide with a pair of home victories last weekend, sweeping San Francisco (25-14, 25-17, 25-21) before toppling UC San Diego in four sets (23-25, 25-16, 25-13, 25-19). With their results, the Spartans concluded their non-conference slate with a 6-4 record. Prior to Saturday's clash with the Aztecs, SJSU will play host to defending league champion UNLV on Thursday night. Individually, the Spartans have three players among the Mountain West top 10 list in kills this week, by senior outside hitter Latahevaui Lousi, who ranks second with 3.80 put-aways per set, followed by junior outside hitter Amethyst Harper (4th, 3.68/set) and senior opposite hitter Haylee Nelson (7th, 3.32/set). In addition, sophomore setter Mia Schafer finds herself atop the conference perch with 11.1 assists per set while ranking third in service aces (0.56/set), followed closely by Nelson, who occupies the fifth spot (0.50/set). Not to be outdone, senior libero Sarah Smevov ranks fourth in the MW this week in digs (4.53/set), just behind SDSU's Natalie Smith. As of Sept. 22, the Spartans lead the league collectively in assists (12.53/set) and service aces (2.24/set) while ranking second in kills (13.50/set) and digs (15.44/set). Elsewhere, SJSU occupies the seventh spot in the MW with a .203 hitting percentage, while opponents have posted a .213 efficiency against the Spartans, which is also seventh in the league. San José State sports three players from San Diego County on its roster, including Schafer (La Costa Canyon HS), sophomore middle blocker Allyson Alden (San Marcos HS) and junior middle blocker Yazmin Pitipit (Scripps Ranch HS). Head coach Trent Kersten is in his first year

2021 MOUNTAIN WEST STANDINGS (AS OF SEPT. 22)

Team	---Conference---			-----Overall-----			
	W	L	Pct.	W	L	Pct.	Strk
New Mexico	1	0	1.000	10	2	.818	W2
Boise State	0	0	.000	11	1	.900	W9
UNLV	0	0	.000	9	2	.818	W7
Utah State	0	0	.000	8	4	.667	W2
Wyoming	0	0	.000	8	4	.667	W2
San José State	0	0	.000	6	4	.600	W2
Fresno State	0	0	.000	4	4	.500	W1
Colorado State	0	0	.000	4	5	.571	L2
Nevada	0	0	.000	3	8	.273	W2
San Diego State	0	0	.000	3	9	.250	W1
Air Force	0	1	.000	3	8	.300	L1

Upcoming Matches in the MW

Thursday, Sept. 23

San Diego State at Nevada, 6 p.m. PT
 UNLV at San José State, 6 p.m. PT
 Fresno State at New Mexico, 6:30 p.m. MT
 Utah State at Wyoming, 6:30 p.m. MT
 Boise State at Colorado State, 7 p.m. MT

Saturday, Sept. 25

San Diego State at San José State, 1 p.m. PT
 Fresno State at Air Force, noon MT
 Boise State at Wyoming, 1 p.m. MT
 Utah State at Colorado State, 1 p.m. MT
 UNLV at Nevada, 1 p.m. PT

Tuesday, Sept. 28

Wyoming at Colorado State, 7 p.m. MT

Thursday, Sept. 30

New Mexico at San Diego State, 7 p.m. PT
 Colorado State at Fresno State, 6 p.m. PT
 Air Force at UNLV, 6:30 p.m. PT
 San José State at Boise State, 7 p.m. MT
 Nevada at Utah State, 7 p.m. MT

Saturday, Oct. 2

Air Force at San Diego State, 1 p.m. PT
 Nevada at Boise State, noon MT
 Wyoming at Fresno State, noon PT
 San José State at Utah State, 1 p.m. MT
 New Mexico at UNLV, 1 p.m. PT

Tuesday, Oct. 5

UNLV at San Diego State, 7 p.m. PT

at the helm of the Spartan program after spending five years as an assistant coach and recruiting coordinator at TCU from 2015-19. During his tenure with the Horned Frogs staff, Kersten's 2019 recruiting class was ranked fifth in the country by Volleyball Magazine and sixth by Prep Volleyball. Kersten played three seasons at UCLA, where he ranked among the nation's top 15 in hitting percentage (.387) and blocks (1.08/set) as a senior in 2015.

WILDCAT CLASSIC REWIND

- > San Diego State concluded its non-conference schedule last weekend, winning two of three matches at the Wildcat Classic in Tucson, Arizona.
- > The Aztecs put the brakes on a five-match slide with a 3-0 sweep of Texas Southern (25-17, 25-22, 25-17) in the tournament opener on Sept. 17 before having the tables turned against them vs. host Arizona (20-25, 22-25, 15-25).
- > However, the Scarlet and Black rebounded in style the following day with another whitewash against UC Riverside (25-15, 25-21, 25-19) in its weekend finale.
- > Victoria O'Sullivan posted double-digit kills in all three matches, averaging a team-high 3.89 kills per set while hitting .389 for the weekend to go with eight digs and five total blocks.
- > In the opener vs. TSU, the Aztecs out-hit the Tigers .255 to .049, blasting more kills (42-26) while owning the edge in digs (50-48) and team blocks (6.0 to 2.0).
- > O'Sullivan led a balanced SDSU attack with a match-high 11 kills, while freshman Reagan Merk came off the bench to record a season-best seven put-aways of her own. In addition, junior Julia Haynie (4 block assists) collected six kills and hit .455, while freshmen Kalani Ruri (2 block assists) and Mikela Labno launched five non-returnables apiece.
- > The Aztec fortunes were also buoyed by senior Natalie Smith, who tied for match-high honors with 14 digs, while classmate Noa Miller led all players with 20 assists and registered seven digs. Not to be outdone, sophomore Heipua Tautua'a contributed to the SDSU defensive efforts with eight scoops of her own, as the Scarlet and Black limited the Tigers to a .000 hitting percentage over the first two sets.
- > San Diego State was unable to duplicate the same success in the nightcap vs. Arizona, as the Wildcats served up seven aces while recording more kills (41-30) and team blocks (8.0 to 4.0) to help fuel their win.
- > Once again, O'Sullivan paced the Aztec offense with 10 kills, while Labno racked up six put-aways, followed by Jordyn Goldsmith's five. In addition, Smith anchored SDSU's back row with a match-high 13 digs, while Ashley Vanderpan (14 assists) handled the bulk of the setting responsibilities, along with Miller (10 assists).
- > The teams combined for 14 ties and three lead changes in the first two sets; however, the Aztecs were unable to respond to timely Wildcat runs.
- > The following day vs. UCR, San Diego State posted its second-highest team hitting percentage of the season with a .303 clip, maintaining a sizable 43-31 advantage in kills while committing just 13 attack errors on 99 attempts. In addition, the Scarlet and Black held the statistical edge in team blocks (9.0 to 2.0), digs (57-35) and service aces (5-2) to help secure the victory.
- > Conversely, the Highlanders were limited to a .086 pace, marking the second-lowest efficiency by an SDSU opponent this year.
- > O'Sullivan led all players with 14 kills and did not commit an attack error until her penultimate attempt of the match, finishing with a .500 hitting percentage. In addition, the Aztecs received seven kills apiece from Ruri (.385) and Merk, while Miller fell two assists shy of her season high after dishing out 26 helpers.
- > Not to be outdone, Haynie (.455) knocked down six kills and totaled four blocks, including a solo stuff, while Goldsmith assisted on four stops at the net as well. SDSU's defensive efforts were also buoyed by Smith's match-high 22 digs, while Labno (5 kills) contributed a season-best 13 scoops of her own.
- > The teams combined for 18 ties and nine lead changes in the first two sets, but this time it was the Aztecs who fashioned timely runs to seize the momentum.

SDSU IN MW RANKINGS

- > As of Sept. 22, libero Natalie Smith climbed to third in the Mountain West with an average of 4.54 digs per set (186 overall).
- > In addition, outside hitter Victoria O'Sullivan moved up one spot into the fifth position with 3.45 kills per set, while setter Noa Miller ranks eighth with 5.90 assists per frame.
- > Smith's 27 digs vs. Houston Baptist on Aug. 27 is tied for the third-best performance in the conference this season.
- > Meanwhile, O'Sullivan's 19 kills vs. San Diego on Sept. 11 are the tied for the fourth-best effort in the league this year, while her 15 put-aways at UC Santa Barbara on Sept. 3 are also tied for the fourth-highest in a three-set match.
- > Not to be outdone, the Aztecs own three of the top individual hitting percentages with a minimum of 12 kills in the Mountain West this season. Mikela Labno's .522 clip against (13-1-23) against Pepperdine at the Gaucho Invitational is seventh entering the weekend, while O'Sullivan's .519 efficiency (15-1-27) at UC Santa Barbara in the same tournament and .500 pace (14-1-26) vs. UC Riverside at the Wildcat Classic rank eighth and 10th, respectively.
- > Elsewhere, Serena Hodson's eight total blocks at Sam Houston on Aug. 28 is tied for the seventh-best total in the MW thus far, while Sara Mukaj's four service aces the previous day against the same Bearkat squad is tied for eighth.
- > Collectively, the Aztecs occupy the fourth spot in the conference with an average of 13.88 digs per set while ranking eighth in team kills (12.10/set) and hitting percentage (.201).

LONG BEACH STATE MATCH RECAP

- > San Diego State traveled up the freeway to Long Beach State on Sept. 14, but fell short in hard-fought three-set defeat (23-25, 19-25, 23-25).
- > Despite maintaining the statistical edge in team blocks (8.0 to 5.0), the Aztecs (1-8) suffered their fifth straight defeat after mustering just 29 kills for the night. SDSU was unable to capitalize on 13 errant serves by the Beach, committing 14 attack errors on 95 attempts for a .158 hitting percentage.
- > Conversely, LBSU (5-5) knocked down 50 kills with a .309 efficiency while owning a 44-39 advantage in digs to help snap a three-match losing streak to the Aztecs.

- > SDSU was paced by Zoi Faki's eight kills, while Heipua Tautua'a and Reagan Merk launched five put-aways apiece.
- > In addition, Natalie Smith led all players with 14 digs, while Jordyn Goldsmith made her first collegiate start a memorable one with a match-high four blocks, including a solo stop.
- > The Aztec cause was also aided by Noa Miller (10 assists) and Kennedy Feuerborn (3 kills, 7 assists), who split the setting duties, while Mikela Labno served up two aces. Like Goldsmith, Labno also earned her first start in an SDSU uniform vs. the Beach.

NEWCOMERS MAKING THEIR MARK

- > The Aztecs boast 10 newcomers on their 2021 fall roster, with several providing key contributions during the first four weeks of play.
- > Senior outside hitter Zoi Faki ranks second on the team with an average of 2.50 kills (80 overall) and 2.25 digs per set (72 overall) while tying for the fourth spot with three service aces. Against Sam Houston on Aug. 28, the Pitt transfer logged her first double-double in an Aztec uniform with 14 kills and 12 digs.
- > Fellow classmate Natalie Smith, who received all-tournament recognition at the Bearkat Invitational, ranks fourth in the Mountain West with an average of 4.54 digs per set. In the season opener vs. Houston Baptist, the Michigan transfer posted 27 digs, which is tied for the third-best total in the conference so far this year.
- > Freshman Mikela Labno saw her first extended action of the season at the Gaucho Invitational, averaging 2.64 kills in all 11 sets while hitting at a .292 clip. The Aztec outside hitter knocked down a career-high 13 kills against Pepperdine, hitting .522 for the match, which ranks as the sixth-best individual efficiency in

the Mountain West thus far. For the season, Labno is tied for third on the squad with 2.00 kills per set. She earned her first career start at Long Beach State on Sept. 14 and scooped up a collegiate-best 13 digs in SDSU's 3-0 sweep of UC Riverside at the Wildcat Classic.

- > Arizona State transfer Noa Miller made her San Diego State debut at the Gaucho Invitational and has started the last eight matches, averaging 5.76 assists, which ranks eighth in the Mountain West, to go with 1.62 digs per frame. In her first start for the Aztecs vs. UCSB, Miller dished out 22 assists and scooped up seven digs, helping the Scarlet and Black to its first victory of the season. She also added 25 helpers and another seven digs the following day against Kansas State. Against No. 25 USD on Sept. 11, Miller racked up her first double-double as an Aztec and 12th of her career after posting a season-high 28 assists and 11 digs.
- > Freshman Sara Mukaj has started seven of eight matches she has played and leads the Scarlet and Black with 0.81 blocks per set (22 overall). In the first match vs. Sam Houston at the Bearkat Invite on Aug. 27, the Aztec middle blocker served up four aces, which is tied for the eighth-best effort in the MW this year. In the rematch against the Bearkats, Mukaj returned the following day and led the Aztecs with a .636 hitting percentage, launching seven kills on 11 swings without an error to go with five digs and four block assists.
- > Another freshman Jordyn Goldsmith received her first starting assignment at Long Beach State on State after coming off the bench in five previous appearances. She ranks seventh on the squad with 1.36 kills per set (34 overall). Against LBSU, the San Diego State opposite hitter led all players with a career-high four blocks, including a solo stop. Against Pepperdine at the Gaucho Invitational on Sept. 4, Goldsmith recorded a season-best .385 hitting percentage, blasting seven kills on 13 swings with just two errors. At the Bearkat Invite the previous week, She also launched seven put-aways to go with a season-best three digs in the weekend finale vs. Sam Houston.

2021 AZTEC SUPERLATIVES

Individual

HITTING PERCENTAGE (min. 12 kills)

.522 (13-1-23) Mikela Labno vs. No. 21 Pepperdine (Sept. 4)

KILLS

19 Victoria O'Sullivan vs. No. 25 San Diego (Sept. 11)
 5 sets 14 Victoria O'Sullivan and Zoi Faki at Sam Houston (Aug. 28)
 4 sets 19 Victoria O'Sullivan vs. No. 25 San Diego (Sept. 11)
 3 sets 15 Victoria O'Sullivan at UC Santa Barbara (Sept. 3)

TOTAL ATTEMPTS

43 Victoria O'Sullivan vs. No. 25 San Diego (Sept. 11) and Zoi Faki at Sam Houston (Aug. 28)
 5 sets 43 Zoi Faki at Sam Houston (Aug. 28)
 4 sets 43 Victoria O'Sullivan vs. No. 25 San Diego (Sept. 11)
 3 sets 33 Zoi Faki vs. Houston Baptist (Aug. 27)

ASSISTS

28 Noa Miller vs. No. 25 San Diego (Sept. 11)
 5 sets 26 Ashley Vanderpan at Sam Houston (Aug. 28)
 4 sets 28 Noa Miller vs. No. 25 San Diego (Sept. 11)
 3 sets 26 Noa Miller at UC Riverside (Sept. 18)

DIGS

27 Natalie Smith vs. Houston Baptist (Aug. 27)
 5 sets 16 Natalie Smith at Sam Houston (Aug. 28)
 4 sets 21 Natalie Smith vs. No. 25 San Diego (Sept. 11)
 3 sets 27 Natalie Smith vs. Houston Baptist (Aug. 27)

SERVICE ACES

4 Sara Mukaj at Sam Houston (Aug. 27)

BLOCK SOLOS

2 Mikela Labno vs. No. 25 San Diego (Sept. 11) and Serena Hodson at Sam Houston (Aug. 28)

BLOCK ASSISTS

6 Serena Hodson at Sam Houston (Aug. 28)

TOTAL BLOCKS

8 Serena Hodson at Sam Houston (Aug. 28)

Team

HITTING PERCENTAGE

.384 (49-11-99) at UC Santa Barbara (Sept. 3)

KILLS

59 at Sam Houston (Aug. 28)
 5 sets 59 at Sam Houston (Aug. 28)
 4 sets 57 vs. No. 25 San Diego (Sept. 11)
 3 sets 49 at UC Santa Barbara (Sept. 3)

TOTAL ATTEMPTS

161 at Sam Houston (Aug. 28)
 5 sets 161 at Sam Houston (Aug. 28)
 4 sets 148 vs. No. 25 San Diego (Sept. 11)
 3 sets 111 vs. Houston Baptist (Aug. 27)

ASSISTS

56 vs. No. 25 San Diego (Sept. 11)
 5 sets 53 at Sam Houston (Aug. 28)
 4 sets 56 vs. No. 25 San Diego (Sept. 11)
 3 sets 46 at UC Santa Barbara (Sept. 3)

DIGS

70 at Sam Houston (Aug. 28)
 5 sets 70 at Sam Houston (Aug. 28)
 4 sets 63 vs. No. 25 San Diego (Sept. 11)
 3 sets 57 vs. UC Riverside (Sept. 18)

SERVICE ACES

7 at Sam Houston (Aug. 27)

TOTAL BLOCKS

12.0 at Sam Houston (Aug. 28)

- > Former Portland State middle blocker Julia Haynie has started all 11 matches she has played and leads the squad with 25 total blocks while adding 38 kills. The SDSU junior enjoyed a pair of breakout performances at the Wildcat Classic, matching her season highs with six kills and four total blocks in victories over Texas Southern and UC Riverside while posting a .455 hitting percentage, her highest in an Aztec uniform. The Temecula native also knocked down six kills and hit .444 in her Scarlet and Black debut vs. Houston Baptist on Aug. 27. She has multiple block assists in seven of 11 outings this year.
- > Freshman outside hitter Reagan Merk has seen extended action in four straight matches, earning her first career start in SDSU's sweep of UC Riverside at the Wildcat Classic, where she tied her career-highs with seven kills and six digs while recording her first three blocks in an Aztec uniform, including a solo stop. The Huntington Beach native also launched seven put-aways and posted six digs the previous day in SDSU's blanking of Texas Southern. Earlier in the week at Long Beach State, Merk knocked down five kills while committing just one error on seven attempts for a sparkling .714 hitting percentage. She also served up aces on her first two collegiate serves in the second set vs. Sam Houston on Aug. 27.
- > Likewise, freshman opposite hitter Kalani Ruri made the most of her two appearances at the Wildcat Classic last weekend. The native New Zealander opened the tournament with five kills against Texas Southern, hitting a season-best .556 with no errors on nine swings while adding a pair of block assists, as the Aztecs snapped a five-match losing streak. The following day, Ruri helped SDSU roll to another sweep after posting a season-best seven kills and hit at a .385 clip to go with another pair of block assists.

REWIND: SDSU/USD INVITATIONAL

- > With packed houses providing an electric atmosphere, San Diego State squared off against a pair of ranked opponents at the SDSU/USD Invitational last weekend, falling to No. 16 UCLA in three sets (17-25, 18-25, 13-25) before suffering a 3-1 setback to No. 25 San Diego.
- > Against the Toreros on Sept. 11, the Aztecs had three players record double-digit kills, including Victoria O'Sullivan, who launched a match-high 19 non-returnables and hit .349, while Mikela Labno collected 11, followed by Heipua Tautua'a, who totaled 10 kills and 12 digs for her second career double-double.
- > In addition, senior transfer Noa Miller logged her first double-double as an Aztec with a season-high 28 assists and 11 digs, while fellow classmate Natalie Smith led all competitors with 21 scoops, marking her second-best total of the year.
- > Despite holding the statistical advantage in kills (57-49) and digs (63-51), SDSU was undone by 27 attack errors and was out-blocked (15.0-7.0) en route to its fourth straight loss.
- > The previous night vs. UCLA, the Aztecs kept within striking distance in each of the first two sets; however, the Bruins used an efficient attack, timely runs and a tight defense to keep the host school at bay.
- > SDSU was out-hit .346 to .056 for the match, while UCLA maintained a statistical advantage in kills (39-28), team blocks (13.0-7.0) and digs (29-27) to help key its victory.
- > Once again, O'Sullivan surpassed double figures in kills after posting a team-high 10 put-aways to go with a trio of blocks, including one solo stop, while Sara Mukaj and Julia Haynie totaled three block assists apiece.
- > Additionally, Tautua'a launched seven kills, while Smith tied for match-high honors with 11 digs. Smith also dealt a pair of service aces, while Miller finished with 17 assists.
- > SDSU's clashes with the Bruins and Toreros marked the first time it played ranked opponents since it battled No. 25 Wyoming and No. 20 Colorado State on Oct. 1-3, 2015.

GAUCHO INVITATIONAL REDUX

- > San Diego State rolled to its first victory of the season on Sept. 3 with a 3-0 triumph (25-20, 25-19, 25-15) over host UC Santa Barbara on opening night at the Gaucho Invitational.
- > However, the Aztecs were unable to maintain the momentum the following day, dropping a pair of four-set decisions to then-No. 21 Pepperdine (19-25, 16-25, 25-21, 18-25) and Kansas State (19-25, 25-18, 23-25, 16-25).
- > SDSU was victimized by a combined 21 service errors in their two defeats while trailing in kills (115-94), hitting percentage (.280 to .227) and team blocks (21.0 to 14.0).
- > On the flip side, the Aztecs logged their highest efficiency of the season vs. UCSB, hitting at a .384 clip with 49 kills on 99 attempts with just 11 errors. In addition, SDSU's 49 kills marked the team's second-best this year despite a match duration of just three sets.
- > Individually, the Aztecs had three players finish with double-digs kills in a match for the first time this fall, as Victoria O'Sullivan led all players with a season-high 15 put-aways and hit .519, while Zoi Faki (.455) launched 12 non-returnables of her own.
- > Not to be outdone, SDSU received a spark from Heipua Tautua'a (.409), who collected 11 kills, while Mikela Labno floored seven shots off the bench.
- > In her first appearance after transferring from Arizona State, Noa Miller started at setter against the Gauchos, handing out a match-high 22 assists, while Ashley Vanderpan contributed 13 helpers of her own.
- > Natalie Smith once again secured the back row for the Aztecs, finishing with 11 digs, while Faki just missed a double-double after posting nine scoops.
- > The SDSU defense also received four total blocks from Sara Mukaj, including a solo stuff, while O'Sullivan and Julia Haynie came through with a pair of block assists.
- > The Aztecs saved their best for last, powering down 20 kills in the third set on 32 attempts with just three errors for a blazing .531 efficiency.
- > Faki (.714) launched five kills in the final frame without a miscue, matching O'Sullivan (.571), who committed her only error of the night in the set, while Tautua'a (.667) provided four put-aways of her own. Clinging to a slim 10-8 lead, SDSU switched on the afterburners, finishing with a strong 15-7 blitz to secure the sweep.
- > Unfortunately, the Aztecs were unable to duplicate the feat in two encounters the following day vs. Pepperdine and Kansas State.
- > Against the Waves, the SDSU attack was paced by Labno, who hit .522 with a season-best 13 kills on 22 attempts and just one error, while O'Sullivan finished with 10 put-aways of her own. Elsewhere, Smith tied for match-high with 17 digs, while Haynie and Mukaj notched four block assists each.
- > In the finale against the Wildcats, Faki and O'Sullivan led the SDSU offense with 13 kills apiece, while Labno launched nine put-aways of her own. Faki also hit .323 for the match while contributing seven digs and pair of aces.
- > In addition, Miller handed out a season-high 25 assists and racked up seven scoops as well in her third start for the Scarlet and Black, while Tautua'a and Mukaj finished with three block assists each.
- > With the match tied at one set apiece and the teams deadlocked at 22-22 in the third stanza, K-State closed with a 3-1 spurt to escape.

2021 SITUATIONAL RECORDS

GENERAL

Overall.....	3-9
Mountain West.....	0-0
Home.....	0-2
Away.....	1-4
Neutral.....	2-3
vs. Ranked Teams.....	0-3
vs. Unranked Teams.....	3-6
Matches Following a Win.....	0-2
Matches Following a Loss.....	3-6
Longest Winning Streak.....	1
Longest Losing Streak.....	5
Current Streak.....	Won 1

BY SETS

3 Sets.....	3-5
4 Sets.....	0-3
5 Sets.....	0-1
Leading After Two.....	3-0
Trailing After Two.....	0-6
Tied After Two.....	0-3
Leading 2-1.....	0-1
Trailing 2-1.....	0-3

BY MONTH

August.....	0-3
September.....	3-6
October.....	0-0
November.....	0-0

BY DAY

Tuesday.....	0-1
Thursday.....	0-0
Friday.....	2-4
Saturday.....	1-4

BY KILLS

Leading in Kills.....	3-2
Trailing in Kills.....	0-7
Tied in Kills.....	0-0

BY DIGS

Leading in Digs.....	3-5
Trailing in Digs.....	0-3
Tied in Digs.....	0-1

BY BLOCKS

Leading in Blocks.....	2-2
Trailing in Blocks.....	1-7
Tied in Blocks.....	0-0

BY ATTACK PERCENTAGE

Greater Attack Percentage.....	3-1
Lower Attack Percentage.....	0-8
Equal Attack Percentage.....	0-0
Hitting above .300.....	2-0
Hitting between .200 and .300.....	1-4
Hitting between .100 and .200.....	0-3
Hitting below .100.....	0-2
Opponent Hitting above .300.....	0-3
Opponent Hitting between .200 and .300.....	0-3
Opponent Hitting between .100 and .200.....	0-3
Opponent Hitting below .100.....	2-1

BY INDIVIDUAL KILLS

3+ Double-Digit Individual Kill Totals.....	1-1
2 Double-Digit Individual Kill Totals.....	0-3
1 Double-Digit Individual Kill Totals.....	2-3
0 Double-Digit Individual Kill Totals.....	0-2

2021 MATCH-BY-MATCH LEADERS

Date	Opponent	Kills	Hitting Pct.*	Assists	Aces	Digs	Blocks
A.27	vs. Houston Baptist	Faki - 11	Faki (.242)	Vanderpan - 19	Vanderpan - 1	Smith - 27	Hodson - 2
A.27	at Sam Houston	O'Sullivan/Tautua'a - 8	Tautua'a (.111)	Vanderpan - 15	Mukaj - 4	Smith - 11	Haynie/O'Sullivan - 2
A.28	at Sam Houston	Faki/O'Sullivan - 14	Mukaj (.636)	Vanderpan - 26	Vanderpan - 2	Smith - 16	Hodson - 8
S.3	at UC Santa Barbara	O'Sullivan - 15	O'Sullivan (.519)	Miller - 22	Tautua'a - 1	Smith - 11	Mukaj - 4
S.4	vs. No. 21 Pepperdine	Labno - 13	Labno (.522)	Miller - 19	Vanderpan - 1	Smith - 17	Haynie/Mukaj - 4
S.4	vs. Kansas State	Faki/O'Sullivan - 13	Faki (.323)	Miller - 25	Faki - 2	Smith - 9	Mukaj/Tautua'a - 3
S.10	No. 16 UCLA	O'Sullivan - 10	O'Sullivan (.160)	Miller - 17	Smith - 2	Smith - 11	Mukaj/Haynie/O'Sullivan - 3
S.11	No. 25 San Diego	O'Sullivan - 19	O'Sullivan (.349)	Miller - 28	Miller - 2	Smith - 21	Labno/Mukaj - 3
S.14	at Long Beach State	Faki - 8	Faki (.273)	Miller - 10	Labno - 2	Smith - 14	Goldsmith - 4
S.17	vs. Texas Southern	O'Sullivan - 12	Merk (.385)	Miller - 21	Hill/Miller - 1	Smith - 14	Haynie - 4
S.17	at Arizona	O'Sullivan - 10	O'Sullivan (.381)	Vanderpan - 14	Miller/Smith - 1	Smith - 13	Labno/Walker - 2
S.18	vs. UC Riverside	O'Sullivan - 14	O'Sullivan (.500)	Miller - 26	Vanderpan - 2	Smith - 22	Goldsmith/Haynie - 4
S.23	at Nevada						
S.25	at San José State						
S.30	New Mexico						
O.2	Air Force						
O.5	UNLV						
O.7	Fresno State						
O.14	at Boise State						
O.16	at Utah State						
O.21	Colorado State						
O.23	at Wyoming						
O.28	Utah State						
O.30	Boise State						
N.2	at UNLV						
N.6	at Fresno State						
N.11	at Air Force						
N.13	at New Mexico						
N.18	Nevada						
N.20	San José State						

* - min. 7 kills

ALL-TOURNAMENT AZTECS PART II

- > For the second consecutive weekend, outside hitter Victoria O'Sullivan earned a spot on an all-tournament team following her performance at the Gaucho Invitational in Santa Barbara, Calif.
- > In three matches, O'Sullivan led the Aztecs with an average of 3.45 kills per set (38 overall) and hit .295 to go with seven digs and five block assists.
- > For the season, O'Sullivan has recorded double-digit kills in nine straight matches, including season highs of 19 kills vs. No. 25 San Diego along with a .519 efficiency in SDSU's triumph over UCSB.

BEARKAT INVITATIONAL WRAP

- > San Diego State came up empty in its season-opening road trip to the Bearkat Invitational, Aug. 27-28, in Huntsville, Texas, falling to Houston Baptist before dropping consecutive matches to tournament host Sam Houston.
- > Against HBU, the Aztecs were out-hit .306 to .153, committing 10 more attack errors (19-9) while nine service attempts went awry. Conversely, the Huskies totaled more kills (42-36) and team blocks (10.0-2.0) to help fuel their 3-0 victory.
- > Individually, SDSU was led by senior transfer Zoi Faki, who knocked down 11 kills in her Aztec debut, while Victoria O'Sullivan collected seven put-aways of her own.
- > Natalie Smith, a senior transfer from Michigan, also impressed in her first match for the Scarlet and Black, anchoring the Aztec back row with a match-high 27 digs, while Ashley Vanderpan dished out 19 assists.
- > In the second match of the weekend, SDSU experienced another whitewash, this time at the hands of Sam Houston, as the visitors were plagued by 26 attack errors, hitting just .029 overall. On the flip side, the Bearkats posted a .299 efficiency, holding a sizable advantage in kills (38-29) and total blocks (15.0-3.0) while owning a slight edge in digs (41-39).
- > The Aztecs were paced by O'Sullivan and Heipua Tautua'a, who blasted eight kills each, while Faki and freshman Jordyn Goldsmith finished with five non-returnables apiece. Vanderpan (15 assists) and Kennedy Feuerborn (11 assists) split the setting duties, while Smith scooped up a team-high 11 digs.
- > The SDSU cause was also advanced by freshmen Sara Mukaj (4) and Reagan Merk (2), who combined for six aces.
- > A late schedule switch provided the Aztecs a rematch against Sam Houston the following day after Central Arkansas withdrew from the tournament for contact tracing. However, SDSU found victory elusive once again, as the Bearkats dealt the Scarlet and Black a five-set heart-breaker.
- > Incredibly, the Aztecs maintained the statistical edge in most categories, including kills (59-52), hitting percentage (.230 to .179), aces (5-4), digs (70-68) and team blocks (12.0-7.0).

- > After hitting at a brisk .351 clip over the first three sets with just eight attack errors, however, SDSU faltered in the final two frames, posting a combined .060 hitting percentage with 14 miscues to finish its venture to the Lone Star State with an 0-3 record.
- > O'Sullivan (.324) and Faki led the Aztecs with 14 kills apiece, while Serena Hodson (.300) posted career-high numbers with nine put-aways of her own and eight total blocks, including two solo stops.
- > In addition, Faki logged her first double-double in a Scarlet and Black uniform after logging 12 digs, while Vanderpan accomplished the feat for the first time this year with 26 assists and 10 digs.
- > Mukaj also boosted the SDSU fortunes with a crisp .636 hitting percentage, recording seven kills on 11 attempts with no errors, while Tautu'a and Goldsmith also floored seven shots.
- > Smith once again anchored the Aztec defense by tying for match-high honors with 16 digs, while Feuerborn came off the bench to hand out 18 assists.

ALL-TOURNAMENT AZTECS PART I

- > Outside hitter Victoria O'Sullivan and libero Natalie Smith were each named to the all-tournament team at the Bearkat Invitational, Aug. 27-28, in Huntsville, Texas.
- > In three matches, O'Sullivan knocked down 29 kills (2.64/set) to go with 11 digs and seven block assists while adding one setting assist and one service ace.
- > In SDSU's tough 3-2 loss to Sam Houston on Aug. 28, O'Sullivan hit .324 and tied for the team lead with 14 kills, including six in the opening set.
- > Meanwhile, Smith played in all 11 sets as well, averaging 4.91 digs (54 overall) to go with six setting assists in her debut event for the Aztecs.
- > In SDSU's 3-0 setback to Houston Baptist on Aug. 27, Smith posted a whopping 27 digs (9.0/set), falling just two short of tying her career-high of 29 scoops at Notre Dame on Sept. 18, 2019, as a member of the Michigan Wolverines.
- > In addition, Smith tied for match-high honors with 16 digs in the weekend finale at Sam Houston.

WELCOME BACK

- > Outside hitter Victoria O'Sullivan leads the group of eight Aztec letterwinners who return for the 2021 fall campaign.
- > O'Sullivan earned all-Mountain West honors for the first time in her career last spring after leading the Scarlet and Black with 3.25 kills per set, which ranked seventh in the league. Not to be outdone, the SDSU senior surpassed the double-digit kill plateau in 11 of 15 matches and ranked second on the squad with 32.0 total blocks.

- > O'Sullivan led or tied for the team lead in kills 11 times, including six straight to start the spring. Entering MW play this fall, she has recorded 10 or more kills in 41 of her last 54 appearances dating back to the start of the 2019 campaign.
- > The Aztecs will also look for senior leadership from Andrea Walker after the SDSU middle blocker finished third on the team with an average of 2.09 kills per set and 24.0 total blocks. She helped the Aztecs snap a five-match losing streak last March with season highs of 11 kills and a .529 hitting percentage in a come-from-behind 3-2 victory over Utah State.
- > In addition, San Diego State is expecting continued improvement from sophomore Heipua Tautua'a, who ranked second on the squad with 99 kills and 140 digs (2.86/set) during her first season on The Mesa last spring. The Aztec outside hitter turned in a superlative performance in SDSU's 3-2 upset at Boise State on March 20, finishing with 14 kills, nine digs and a career-high six block assists while hitting at a .462 clip, which marked the Scarlet and Black's highest individual hitting percentage of the year (min. 12 kills).
- > Tautua'a also posted her first collegiate double-double in the Aztecs' 3-2 thriller over Utah State with 11 kills and 11 digs on March 12, after recording a career-high 22 digs in the team's four-set triumph over New Mexico two weeks earlier on Feb. 20.
- > Also back in the mix for the Scarlet and Black this fall are tandem setters Ashley Vanderpan and Kennedy Feuerborn, who combined for 601 kills last spring, which marked the first season of intercollegiate competition for both players.
- > Vanderpan, who sat out the 2019 campaign after transferring from Syracuse, ranked ninth in the MW with a team-high 6.53 assists per set (334 overall) in nine starts as a sophomore last spring. The Elk Grove, California, native also topped the squad with 11 service aces and three double-doubles (assists-digs) while ranking fourth with 78 digs (1.53/set).
- > Vanderpan surpassed the 30-assist plateau in her first four starts, as the Aztecs posted a 3-1 record during that stretch. In a home sweep over New Mexico last February, she combined for 78 assists, dishing out a career-high 40 helpers in the series finale.
- > Feuerborn , meanwhile, earned six starting assignments in 13 appearances during her rookie campaign, averaging 4.0 helpers per set (164 overall). She also finished with 31 kills (0.76/set), 19 digs (0.46/set) and 14 blocks (0.34/set) for the year. Feuerborn racked up double-digit assists on six occasions, including a career-high 27 helpers at UNLV in just her second match on Feb. 5.

NEW KIDS IN TOWN

- > San Diego State head coach Brent Hilliard continued to reshape the Aztec roster with the addition of 10 newcomers for the 2021 fall campaign.
- > SDSU's early signing class last November consisted of four incoming freshmen in outside hitter Mikela Labno (Hilmar, Calif.), middle blocker Sara Mukaj (Modena, Italy), setter/opposite Kalani Ruri (Kawerau, New Zealand) and defensive specialist Carsyn Schuch (Phoenix, Ariz.)
- > Over the spring and summer, the Aztecs signed six more players, including four Division I transfers in senior libero Natalie Smith (Michigan), senior outside hitter Zoi Faki (Pittsburgh), senior setter Noa Miller (Arizona State) and junior middle blocker Julia Haynie (Portland State).
- > Also eager to put their stamp on the Scarlet and Black this fall are former prep standouts Jordyn Goldsmith (opposite/Valleyford, Wash.) and Reagan Merk (outside hitter/Huntington Beach, Calif.)
- > Smith was a member of three consecutive NCAA Tournament teams at Michigan from 2017-19. In her last season of competition on the Ann Arbor campus in 2019, the Weatherford, Texas, native set career highs in digs (390), assists (102) and service aces (18). Smith also totaled double-digit digs in 21 matches that year, including 20 or more scoops on three occasions.
- > Faki also brings a winning pedigree with her to "America's Finest City" after playing on three NCAA Tournament teams herself at Pittsburgh from 2016-21. Last spring, she contributed to Pitt's longest postseason run in program history, with the Panthers reaching the Elite Eight as the final unseeded team in the field. Faki served up a career-high three aces in Pitt's upset of No. 3 Minnesota in the NCAA Round of 16 last April.
- > Miller will help bolster the Aztecs setter position after competing for Wofford College and Arizona State in 2018 and 2019, respectively. As a freshman at Wofford, she surpassed the 20-assist plateau on eight occasions before compiling six double-doubles (assist-digs) at ASU. An elite club player, Miller led to her Volley One Academy squad to a national championship in 2016, earning MVP honors for her performance.
- > Haynie is a Southern California product who prepped at Chaparral High School in Temecula before starting 44 of 46 matches in two years at Portland State. As a sophomore last spring, the middle blocker ranked 10th in the Big Sky Conference with a .261 hitting percentage and
- > Among the incoming freshmen, Labno was a multi-sport standout at Hilmar (Calif.) High School, where she garnered a trio of all-conference accolades after leading the Yellowjackets to three straight Trans Valley League championships, along with a pair of CIF Sac-Joaquin Section Division IV titles. Labno, who also competed in basketball and track & field as a prep, recorded a .311 hitting percentage for her career with an average of 3.48 kills and 1.82 digs to go with 163 total blocks and 80 aces, according to MaxPreps.
- > Mukaj starred for elite clubs over the past five years in her native Italy, including Igor Volley Trecate Novara II and Exacer Montale, leading the latter to a second-place finish in the Italian Serie B1 Group C tournament in 2019. She also another one of her club teams to the 2016-17 Serie C championship and a third-place standing at the Italian national U16 championships. In addition, Mukaj was named MVP and voted best middle blocker in the U16 regional finals that year.
- > Likewise, Ruri was a standout performer for numerous prep and national teams at the junior and senior levels in her home country of New Zealand. A versatile player with five years of experience as a setter, opposite and right-side hitter, Ruri most recently collected most valuable player honors and earned a spot on the all-tournament team after leading her squad to a gold medal at the New Zealand U19 Inter Provincial Championships in June 2021.
- > Schuch adds depth to the Aztec back row after starring at Deer Valley High School in Phoenix, Arizona, where she garnered 4A West Valley Region Defensive Player of the Year accolades all four years as a prep, earning first-team all-region honors during that span as well. For her career, Schuch tallied 1,742 digs (4.2/sets) along with 176 service aces and 186 assists, according to MaxPreps.
- > Goldsmith also excelled at the prep level at Freeman High School in Rockford, Washington, where she helped her squad to three top-10 state finishes, including a fourth-place showing as a junior in 2019. This past spring, Goldsmith collected 1A Northeast League MVP honors after leading the Scotties to a conference title with an undefeated 9-0 record during an abbreviated 2021 spring season in which her team did not drop a set (36-0). In addition to volleyball, she also won three letters in both basketball and golf during high school, as well as one in tennis.
- > Rounding out the Aztec rookie class is Merk, who was a three-year letterwinner at prep powerhouse Mater Dei High School in Santa Ana, California. During her high school career, Merk amassed 430 kills, 600 digs, 64 total blocks and 44 service aces, according to MaxPreps. She received all-state recognition as a senior in 2019 from Cal-Hi-Sports and earned Under Armour All-America honors.

2021 SPRING REWIND

- > San Diego State ushered in the Brent Hilliard era with a 6-9 record in 15 matches during its abbreviated spring season, all against Mountain West opponents, as the Aztecs finished eighth in the conference standings.

MISCELLANEOUS STATS

DOUBLE-DOUBLES

Zoi Faki (1 season, 3 career (2 at Pittsburgh))

14 kills, 12 digs at Sam Houston, 8/28/21

Ashley Vanderpan (1 season, 4 career)

26 assists, 10 digs at Sam Houston, 8/28/21

Noa Miller (1 season, 12 career (6 at Arizona State, 5 at Wofford))

28 assists, 11 digs vs. No. 25 San Diego

Heipua Tautua'a (1 season, 1 career)

10 kills, 12 digs vs. No. 25 San Diego

20+ KILLS IN A MATCH

Player	2021	Career
Victoria O'Sullivan	0	3

10+ KILLS IN A MATCH

Player	2021	Career
Victoria O'Sullivan	9	44
Zoi Faki	4	6
Heipua Tautua'a	2	5
Mikela Labno	2	2
Andrea Walker	0	5
Julia Haynie	0	1

20+ DIGS IN A MATCH

Natalie Smith	3	6
Zoi Faki	0	1
Heipua Tautua'a	0	1

10+ DIGS IN A MATCH

Natalie Smith	11	40
Heipua Tautua'a	2	8
Noa Miller	1	13
Ashley Vanderpan	1	4
Zoi Faki	1	3
Mikela Labno	1	1
Brooklynn Hill	0	1

10+ BLOCKS IN A MATCH

Julia Haynie	0	1
--------------	---	---

5+ BLOCKS IN A MATCH

Victoria O'Sullivan	1	3
Serena Hodson	1	3
Julia Haynie	0	6
Andrea Walker	0	5
Heipua Tautua'a	0	1

3+ SERVICE ACES IN A MATCH

Sara Mukaj	1	1
Natalie Smith	0	4
Brooklynn Hill	0	2
Ashley Vanderpan	0	2
Zoi Faki	0	1
Julia Haynie	0	1
Noa Miller	0	1

- > SDSU posted a 5-4 record at home and a 1-5 mark on the road. With the results, the Aztecs have fashioned a winning record at home in 10 of the last 12 seasons.
- > The 2021 spring campaign marked the first time in program history that San Diego State did not play at a neutral site. The Aztecs completed two neutral-site matches in 1976, 1987 and 1998.
- > SDSU logged a 3-6 record in three-set matches, a 1-3 mark in four-set affairs, and a 2-0 ledger in five-set affairs.
- > The Aztecs were 6-0 when recording more kills and posting a greater attack percentage than their opponents. SDSU also crafted a 6-0 mark when the opposition was limited to a .200 hitting percentage or lower.
- > In addition, the Aztecs went 4-0 when leading after two sets and were 3-0 when leading in team blocks.
- > SDSU went 4-3 during Saturday matches last spring, marking its lone winning day of the week. The Aztecs were 0-2 in Thursday matches and 2-4 in Friday contests.
- > San Diego State's opponents averaged the third-lowest kills (11.70/set) in the Mountain West last spring. However, the Aztecs yielded the highest team blocks in the conference (140.0, 2.64/set) and the second-most service aces (98, 1.85/set).
- > Despite its modest record, SDSU proved itself a competitive bunch toward the end of last spring, punctuated by a resounding sweep of perennial Mountain West contender Colorado State (25-14, 25-20, 25-19) at home in the season finale on April 3.
- > With the victory, the Aztecs snapped an 11-match losing streak to the Rams dating back to the 2014 campaign. In addition, the win was SDSU's first over CSU in San Diego since 2012.
- > In that contest, Victoria O'Sullivan led all players with 16 kills and posted a season-best .371 hitting percentage, while former Aztec Erin Gillcrist tied for match-high honors with six block assists and scooped up a career-best six digs to garner MW Defensive Player of the Week accolades following her final collegiate match.
- > As a team, SDSU recorded its highest hitting percentage of the year (.299) while limiting the Rams to their lowest clip of the season (.076) after CSU entered the match with the second-best mark (.232) in the Mountain West.
- > Two weeks earlier on March 20, the Aztecs recorded a dramatic 3-2 upset at Boise State (25-20, 23-25, 25-21, 24-26, 15-13), defeating a Bronco squad that entered the match with four straight 3-0 sweeps under their belts.
- > SDSU maintained the upper hand in team blocks, finishing with a 15.0-7.0 advantage while holding the statistical edge in kills (62-59), assists (60-53) and digs (73-62) to help fuel its win.
- > Among the fall returners, O'Sullivan launched 15 kills in that contest, while Heipua Tautua'a blasted 14 put-aways of her own and finished with a season-high .462 hitting percentage. O'Sullivan, who had a pair of solo stops, also matched Tautua'a with six blocks on the day.
- > Not to be outdone, former Aztec libero Lauren Lee finished with a career-high 36 digs, which was tied for the highest total in the Mountain West last spring and ranks fifth in school history. For her efforts, Lee earned MW Defensive Player of the Week honors.
- > With back-to-back victories over New Mexico at home on Feb. 19-20, SDSU extended its winning streak to eight straight over the Lobos.
- > Following the season, O'Sullivan received all-Mountain West recognition for the first time in her career, giving SDSU at least one all-MW honoree for the sixth year in a row.
- > In addition, Lee was named to the College Sports Information Directors of America (CoSIDA) District 8 All-Academic Team.

PRESEASON PROGNOSTICATIONS

- > San Diego State was picked to finish sixth this year in the Mountain West preseason coaches poll released on Aug. 18.
- > In the 21-year history of the Mountain West, SDSU has finished first (2012), second (2002, 2011), fourth (2000, 2001, 2003, 2013, 2017), fifth (2005, 2015, 2019), sixth (1999, 2004, 2006, 2009, 2010, 2014, 2016), seventh (2008) and eighth (2007, 2018, 2020) in the final league standings.

2021 Mountain West Preseason Poll

Rk.	Team (1st-place votes)	Pts.
1.	UNLV (8)	98
2.	Boise State (2)	90
3.	Colorado State (1)	80
4.	Wyoming	69
5.	Fresno State	61
6.	San Diego State	53
7.	Air Force	46
8.	San José State	41
9.	Utah State	29
10.	New Mexico	26
11.	Nevada	12

CATCH AZTEC VOLLEYBALL ON THE MOUNTAIN WEST NETWORK

- > The Mountain West Network is scheduled to stream 19 Aztec volleyball matches during the 2021 fall season. A link to MWN matches will be available on GoAztecs.com.
- > SDSU is slated to live stream eight of its nine remaining home matches, including encounters with defending Mountain West champion UNLV (Oct. 5) along with perennial conference contenders Colorado State (Oct. 21) and Boise State (Oct. 30).
- > In addition, all nine of the Aztecs' conference road matches are scheduled to be streamed live via the MWN.

ON THE HORIZON

- > Following this weekend's matches, San Diego State returns to "America's Finest City" to open a four-match homestand, welcoming New Mexico on Thursday, Sept. 30, before playing host to Air Force on Saturday, Oct. 2.



Brent HILLIARD

Head Coach - Second Season at San Diego State

San Diego State Director of Athletics John David Wicker ushered in a new era for the Aztec volleyball team with the hiring of Brent Hilliard as the fifth head coach in program history on Jan. 31, 2020.

In his first year on The Mesa, Hilliard endured a challenging season fraught with COVID-19 protocols, an abbreviated schedule that was postponed until spring, along with injuries to key players.

However, Hilliard and the Aztecs persevered through the 2021 spring campaign, posting a 6-9 record, highlighted by thrilling victories over Boise State on the road and Colorado State at home in the season finale, respectively. Against the Broncos, SDSU defeated a Boise State team that entered the contest with four consecutive 3-0 sweeps. Two weeks later, the Aztecs snapped an 11-match to the Rams dating back to 2014 and logged their first win over CSU in San Diego since 2012.

Under Hilliard's guidance, Victoria O'Sullivan garnered all-Mountain West accolades for the first time in her career, as the SDSU outside hitter led the squad with 3.25 kills per set, which ranked seventh in the conference. In addition, seniors Lauren Lee and Erin Gillcrst received MW Defensive Player of the Week recognition following the team's aforementioned wins over Boise State and Colorado State, respectively.

Hilliard's Aztecs also excelled in the classroom, with 12 student-athlete earning a spot on the Mountain West all-academic team, including Lauren Lee, who also merited first-team all-District 8 academic honors from the College Sports Information Directors of America (CoSIDA).

A 2018 inductee to the Southern California Indoor Volleyball Hall of Fame, Hilliard arrived at SDSU with a wealth of experience after achieving 19 years of unparalleled success as an assistant coach at the University of San Diego, where he served as the Toreros' associate head coach since 2007.

During his fruitful tenure, the Toreros qualified for the NCAA Tournament in all but one of his 19 seasons, advancing to the Sweet 16 in 2004, 2006, 2013 and 2018. In addition, Hilliard helped guide the Toreros to nine West Coast Conference championships while his players earned six All-America awards, 12 All-America honorable mentions, 44 all-WCC accolades and 15 freshman all-conference certificates.

Hilliard twice assumed the reins of the USD program on an interim basis while head coach Jennifer Petrie was absent on maternity leave. In 2006, Hilliard was honored as WCC Coach of the Year after guiding the Toreros to a conference championship and a Sweet 16 appearance in the NCAA Tournament. That season, he coached five all-conference honorees, including WCC Player of the Year Kristen Carlson, as USD finished 14th in the final USA Today/Coaches Poll.

The Toreros also flourished under Hilliard's guidance in 2011, racing to a 13-0 start en route a program-best 28-5 record, highlighted by a spot in the second round of the NCAA Tournament. Throughout his stint, USD was consistently ranked among the nation's top 25, climbing to as high as No. 2 during the 2013 campaign and rising to No. 5 in 2016.

"I would like to thank John David Wicker, Jenny Bramer, Dr. Adela de la Torre and the rest of the SDSU search committee for making me feel so welcome during the interview process," Hilliard said upon his hiring. "To be the head coach of such a remarkable women's volleyball program in my family's hometown is truly a once in a lifetime opportunity."

"We are fully committed to work tirelessly to elevate this program back to an elite status on the college volleyball landscape, one that the student body, faculty, community, alumni and, of course, all future Aztecs will take great pride in."

Hilliard played collegiately at Long Beach State, earning All-America honors in each of his four years from 1990-93, including first-team recognition over his final three seasons. A right-side hitter for the 49ers, Hilliard was named the NCAA Men's Volleyball Player of the Year as a junior in 1992 after leading LBSU to a 31-1 record.

In 1991, Hilliard and the 49ers captured the NCAA Championship with a 3-1 victory over USC in the finals, avenging a loss to the Trojans in the title match the year before. He finished his career as the NCAA all-time leader with 3,034 kills.

Additionally, Hilliard was selected to play for Team USA in the 1992 Summer Olympics in Barcelona, Spain, where he helped the Americans capture the bronze medal. The following year, he won a silver medal at the 1993 Pan American Games in Argentina and also owns a bronze medal from the 1991 World Cup.

After receiving his undergraduate degree in 1993 from Long Beach State in political science, Hilliard continued his volleyball career as a professional in Europe from 1995-98, playing two seasons in Belgium and another in the Netherlands. In 1996, Hilliard and the Masiek Volleyball Club captured the Belgian national championship and competed in the European Champions League.

In addition to his collegiate experience, which included a stint as head coach at nearby Cuyamaca College in 1999 and 2000, Hilliard has also coached for the past 11 years at Wave Volleyball Club in Del Mar, the premier volleyball club in San Diego County.

"Our priority at SDSU will be to engage, attract and secure exceptional student-athletes that strive for both academic and athletic excellence in their everyday lives," Hilliard added. "From day one, we will set expectations high and build from there. I am incredibly excited to get started and I look forward to the bright future ahead."

HILLIARD'S COLLEGIATE COACHING LEDGER (As an Assistant at USD)

Year	Overall Record	WCC Record (Finish)	Postseason
2001	22-9	10-4 (3rd)	NCAA Second Round
2002	25-8	10-4 (3rd)	NCAA First Round
2003	17-13	6-8 (T-5th)	NCAA First Round
2004	24-5	14-0 (1st)	NCAA Sweet 16
2005	23-6	10-4 (T-2nd)	NCAA Second Round
2006*	26-6	13-1 (1st)	NCAA Sweet 16
2007	21-8	11-3 (1st)	NCAA First Round
2008	23-5	12-2 (1st)	NCAA First Round
2009	18-7	10-4 (2nd)	None
2010	24-8	13-1 (1st)	NCAA Second Round
2011*	28-5	12-4 (2nd)	NCAA Second Round
2012	21-7	13-3 (T-1st)	NCAA First Round
2013	26-4	16-2 (1st)	NCAA Sweet 16
2014	19-12	12-6 (T-3rd)	NCAA First Round
2015	22-10	14-4 (2nd)	NCAA Second Round
2016	24-6	15-3 (2nd)	NCAA First Round
2017	25-5	17-1 (T-1st)	NCAA Second Round
2018	18-13	13-5 (3rd)	NCAA Sweet 16
2019	25-6	17-1 (1st)	NCAA Second Round
USD Total		431-143 (.751)	
WCC Total		238-60 (.799)	

As Head Coach at SDSU

Year	Overall Record	MW Record (Finish)	Postseason
2020	6-9	6-9 (8th)	
2021	3-9	0-0	
SDSU Total		9-18 (.333)	
Career as Head Coach		63-29 (.692)	
Overall Total		440-161 (.732)	

Notes

- * - Served as interim head coach during the 2006 and 2011 seasons at USD. Record reflected in career totals.
- > Qualified for the NCAA Tournament in 18 of his 19 seasons at USD
- > Reached the NCAA Sweet 16 four times in 2004, 2006, 2013 and 2018
- > Won nine West Coast Conference championships

2021 AZTEC PHOTO ROSTER



Zoi FAKI
OH | 6-1 | Sr.

1



Heipua TAUTUA'A
OH | 6-2 | So.

2



Andrea WALKER
MB | 6-0 | Sr.

3



Kennedy FEUERBORN
S | 6-3 | So.

4



Serena HODSON
MB | 6-2 | Jr.

5



Jordyn GOLDSMITH
OPP | 6-1 | Fr.

6



Ashley VANDERPAN
S | 6-1 | Jr.

7



Natalie SMITH
DS/L | 5-7 | Sr.

8



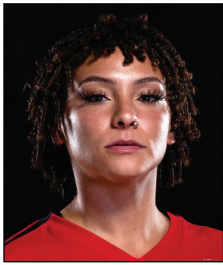
Sara MUKAJ
MB | 6-3 | Fr.

9



Kalani RURI
S/OPP | 6-2 | Fr.

10



Brooklyn HILL
DS/L | 5-8 | Sr.

11



Julia HAYNIE
MB | 6-1 | Jr.

13



Reagan MERK
OH | 5-11 | Fr.

14



Mikela LABNO
OH | 6-2 | Fr.

15



Carsyn SCHUCH
DS | 5-6 | Fr.

16



Nadia BARCKLAY
DS/L | 5-2 | So.

17



Noa MILLER
S | 5-10 | Sr.

19



Victoria O'SULLIVAN
OH | 6-0 | Sr.

21



Brent HILLIARD
Head Coach



Melanie GREENE
Assistant Coach/
Recruiting Coordinator



STEVE TIMMONS
Assistant Coach



Kara BARKDOLL
Volleyball Operations
Assistant



**2021-22 San Diego St. Women's Volleyball
Combined Team Statistics
All games**

as of Sep 22, 2021

Game Records

Overall	Conference	Home	Away	Neutral
3 - 9	0 - 0	0 - 2	1 - 4	2 - 3

Team Box Score

#	Player	SP	Attack					Set		Serve			Dig		Blocking				PTS			
			K	K/S	E	TA	PCT	A	A/S	SA	SE	SA/S	RE	DIG	DIG/S	BS	BA	TOT/S		BLK/S	BE	BHE
1	Faki, Zoi	32	80	2.50	32	227	.211	3	0.09	3	11	0.09	12	72	2.25	1	6	7	0.22	1	0	87.0
2	Tautua'a, Heipua	37	73	1.97	41	251	.127	13	0.35	2	15	0.05	6	72	1.95	0	16	16	0.43	2	0	83.0
3	Walker, Andrea	3	3	1.00	0	8	.375	0	0.00	0	0	0.00	0	2	0.67	1	1	2	0.67	1	0	4.5
4	Feuerborn, Kennedy	24	6	0.25	4	14	.143	56	2.33	0	0	0.00	0	9	0.38	0	2	2	0.08	0	1	7.0
5	Hodson, Serena	9	12	1.33	6	30	.200	0	0.00	0	0	0.00	0	0	0.00	2	8	10	1.11	1	0	18.0
6	Goldsmith, Jordyn	24	34	1.42	19	91	.165	3	0.13	0	0	0.00	0	10	0.42	1	13	14	0.58	2	1	41.5
7	Vanderpan, Ashley	34	0	0.00	2	6	-.333	154	4.53	7	4	0.21	0	54	1.59	0	1	1	0.03	0	7	7.5
8	Smith, Natalie	41	0	0.00	0	3	.000	35	0.85	5	8	0.12	14	186	4.54	0	0	0	0.00	0	1	5.0
9	Mukaj, Sara	27	16	0.59	4	36	.333	11	0.41	7	7	0.26	0	16	0.59	1	21	22	0.81	2	1	34.5
10	Ruri, Kalani	6	12	2.00	2	22	.455	0	0.00	0	1	0.00	0	3	0.50	0	4	4	0.67	0	0	14.0
11	Hill, Brooklynn	15	0	0.00	0	0	.000	0	0.00	3	6	0.20	0	5	0.33	0	0	0	0.00	0	0	3.0
13	Haynie, Julia	36	38	1.06	21	94	.181	2	0.06	0	3	0.00	0	9	0.25	2	23	25	0.69	3	0	51.5
14	Merk, Reagan	11	22	2.00	9	47	.277	1	0.09	2	8	0.18	0	17	1.55	1	2	3	0.27	0	0	26.0
15	Labno, Mikela	32	64	2.00	38	183	.142	3	0.09	3	3	0.09	5	29	0.91	4	10	14	0.44	0	1	76.0
17	Barcklay, Nadia	3	0	0.00	0	0	.000	0	0.00	1	0	0.33	0	1	0.33	0	0	0	0.00	0	0	1.0
19	Miller, Noa	30	5	0.17	1	15	.267	177	5.90	6	5	0.20	0	52	1.73	0	1	1	0.03	1	3	11.5
21	O'Sullivan, Victoria	38	131	3.45	46	322	.264	5	0.13	1	6	0.03	0	32	0.84	2	18	20	0.53	3	2	143.0
SAN DIEGO ST.		41	496	12.10	225	1349	.201	463	11.29	40	77	0.98	64	569	13.88	15	126	78	1.90	16	17	614.0
Opponents		41	521	12.71	204	1372	.231	477	11.63	64	92	1.56	40	527	12.85	20	174	107	2.61	12	8	692.0

Team statistics

	SDSU	OPP
ATTACK		
Kills	496	521
Errors	225	204
Total Attacks	1349	1372
Attack Pct	.201	.231
Kills/Set	12.1	12.7
SET		
Assists	463	477
Attempts	1389	1345
Assist Pct	.333	.355
Assists/Set	11.3	11.6
SERVE		
Aces	40	64
Errors	77	92
Attempts	854	909
Serve Pct	.910	.899
Aces/Set	1	1.6
SERVE RECEPTIONS		
Errors	64	40
Errors/Set	1.6	1
Attempts	817	777
Reception Pct	.922	.999
DEFENSE		
Digs	569	527
Digs/Set	13.9	12.9
BLOCKING		
Block solo	15	20
Block Assist	126	174
Total Blocks	78	107
Blocks/Set	1.9	2.6
Block Errors	16	12
Ball handling errors	17	8
ATTENDANCE		
Total	1542	2418
Dates/Avg Per Date	2/771	5/484
Neutral Site #/Avg	5/58	-
Current win streak	0	-
Home win streak	0	-

Team Results

Date	Opponent	Score	Score-by-set	Att.
08/27/2021	vs Houston Baptist	L 0-3	17-25,22-25,16-25	151
08/27/2021	at Sam Houston	L 0-3	18-25,18-25,20-25	228
08/28/2021	at Sam Houston	L 2-3	23-25,25-13,25-14,15-25,9-15	160
09/03/2021	at UC Santa Barbara	W 3-0	25-20,25-19,25-15	200
09/04/2021	vs Pepperdine	L 1-3	19-25,16-25,25-21,18-25	60
09/04/2021	vs Kansas St.	L 1-3	19-25,25-18,23-25,16-25	80
09/10/2021	UCLA	L 0-3	17-25,18-25,13-25	717
09/11/2021	San Diego	L 1-3	25-20,20-25,20-25,18-25	825
09/14/2021	at Long Beach St.	L 0-3	23-25,19-25,23-25	769
09/17/2021	vs Texas Southern	W 3-0	25-17,25-22,25-17	0
09/17/2021	at Arizona	L 0-3	20-25,22-25,15-25	1061
09/18/2021	vs UC Riverside	W 3-0	25-15,25-21,25-19	0



**2021-22 San Diego St. Women's Volleyball
Individual Match-by-Match
All games**

as of Sep 22, 2021

#1 FAKI, Zoi

Date	Opponent	SP	Attack				Set			Serve				Receipt			Blocking				Team				
			K	E	TA	PCT	A	TA	PCT	SA	SE	TA	PCT	RE	TA	PCT	DIG	BS	BA	BE	TOTAL	BHE	POINTS	HIT%	SCORE
08/27/2021	vs Houston Baptist	*3	11	3	33	.242	1	3	.333	0	1	10	.900	1	31	.968	6	0	1	1	1.0	0	11.5	.153	0-3
08/27/2021	at Sam Houston	*3	5	4	20	.050	0	3	.000	0	1	9	.889	0	18	1.000	8	0	0	0	0.0	0	5.0	.029	0-3
08/28/2021	at Sam Houston	*5	14	8	43	.140	0	9	.000	1	3	18	.833	2	24	.917	12	0	1	0	1.0	0	15.5	.230	2-3
09/03/2021	at UC Santa Barbara	*3	12	2	22	.455	0	3	.000	0	0	8	1.000	0	22	1.000	9	0	1	0	1.0	0	12.5	.384	3-0
09/04/2021	vs Pepperdine	*4	5	1	15	.267	1	4	.250	0	1	11	.909	3	21	.857	7	0	2	0	2.0	0	6.0	.242	1-3
09/04/2021	vs Kansas St.	*4	13	3	31	.323	0	6	.000	2	1	13	.923	1	22	.955	7	0	0	0	0.0	0	15.0	.213	1-3
09/10/2021	UCLA	*3	3	4	13	-.077	1	4	.250	0	1	6	.833	1	25	.960	7	0	0	0	0.0	0	3.0	.056	0-3
09/11/2021	San Diego	*4	9	5	28	.143	0	5	.000	0	2	14	.857	4	43	.907	8	1	1	0	2.0	0	10.5	.203	1-3
09/14/2021	at Long Beach St.	*3	8	2	22	.273	0	1	.000	0	1	7	.857	0	10	1.000	8	0	0	0	0.0	0	8.0	.158	0-3
Totals			32	80	32	.227	.211	3	38	.079	3	11	.96	.885	12	216	.944	72	1	6	1	7.0	0	87.0	

Player Averages

Sets Played	Kills per set	Assists per set	Service aces per set	Digs per set	Blocks per set	Points per set
32	2.50	0.09	0.09	2.25	0.22	2.72

#2 TAUTUA'A, Heipua

Date	Opponent	SP	Attack				Set			Serve				Receipt			Blocking				Team				
			K	E	TA	PCT	A	TA	PCT	SA	SE	TA	PCT	RE	TA	PCT	DIG	BS	BA	BE	TOTAL	BHE	POINTS	HIT%	SCORE
08/27/2021	vs Houston Baptist	*3	6	4	23	.087	1	5	.200	0	4	14	.714	0	19	1.000	5	0	0	0	0.0	0	6.0	.153	0-3
08/27/2021	at Sam Houston	*3	8	5	27	.111	0	3	.000	0	1	8	.875	0	13	1.000	3	0	1	1	1.0	0	8.5	.029	0-3
08/28/2021	at Sam Houston	*5	7	5	32	.063	2	5	.400	0	1	16	.938	0	34	1.000	15	0	1	1	1.0	0	7.5	.230	2-3
09/03/2021	at UC Santa Barbara	*3	11	2	22	.409	2	4	.500	1	1	14	.929	0	9	1.000	6	0	1	0	1.0	0	12.5	.384	3-0
09/04/2021	vs Pepperdine	*4	9	8	32	.031	2	7	.286	0	1	12	.917	1	22	.955	5	0	2	0	2.0	0	10.0	.242	1-3
09/04/2021	vs Kansas St.	*4	4	2	13	.154	1	6	.167	0	2	13	.846	1	13	.923	5	0	3	0	3.0	0	5.5	.213	1-3
09/10/2021	UCLA	*3	7	4	23	.130	1	2	.500	0	0	10	1.000	0	10	1.000	3	0	2	0	2.0	0	8.0	.056	0-3
09/11/2021	San Diego	*4	10	6	27	.148	2	7	.286	1	2	18	.889	0	24	1.000	12	0	2	0	2.0	0	12.0	.203	1-3
09/14/2021	at Long Beach St.	*3	5	2	18	.167	1	3	.333	0	1	7	.857	1	9	.889	6	0	3	0	3.0	0	6.5	.158	0-3
09/17/2021	vs Texas Southern	*2	3	0	19	.158	1	4	.250	0	2	8	.750	1	11	.909	8	0	1	0	1.0	0	3.5	.255	3-0
09/17/2021	at Arizona	*3	3	3	15	.000	0	4	.000	0	0	9	1.000	2	16	.875	4	0	0	0	0.0	0	3.0	.144	0-3
Totals			37	73	41	.127	13	50	.260	2	15	129	.884	6	180	.967	72	0	16	2	16.0	0	83.0		

Player Averages

Sets Played	Kills per set	Assists per set	Service aces per set	Digs per set	Blocks per set	Points per set
37	1.97	0.35	0.05	1.95	0.43	2.24

#3 WALKER, Andrea

Date	Opponent	SP	Attack				Set			Serve				Receipt			Blocking				Team				
			K	E	TA	PCT	A	TA	PCT	SA	SE	TA	PCT	RE	TA	PCT	DIG	BS	BA	BE	TOTAL	BHE	POINTS	HIT%	SCORE
09/17/2021	at Arizona	*3	3	0	8	.375	0	1	.000	0	0	0	.000	0	1	1.000	2	1	1	1	2.0	0	4.5	.144	0-3
Totals			3	0	8	.375	0	1	.000	0	0	0	.000	0	1	1.000	2	1	1	1	2.0	0	4.5		

Player Averages

Sets Played	Kills per set	Assists per set	Service aces per set	Digs per set	Blocks per set	Points per set
3	1.00	0.00	0.00	0.67	0.67	1.50



**2021-22 San Diego St. Women's Volleyball
Individual Match-by-Match
All games**

as of Sep 22, 2021

#4 FEUERBORN, Kennedy

Date	Opponent	SP	Attack				Set			Serve				Receipt			Blocking				Team				
			K	E	TA	PCT	A	TA	PCT	SA	SE	TA	PCT	RE	TA	PCT	DIG	BS	BA	BE	TOTAL	BHE	POINTS	HIT%	SCORE
08/27/2021	vs Houston Baptist	3	3	1	4	.500	8	23	.348	0	0	0	.000	0	0	.000	1	0	1	0	1.0	0	3.5	.153	0-3
08/27/2021	at Sam Houston	3	0	0	0	.000	11	41	.268	0	0	0	.000	0	1	1.000	2	0	0	0	0.0	0	0.0	.029	0-3
08/28/2021	at Sam Houston	5	0	0	1	.000	18	56	.321	0	0	0	.000	0	0	.000	5	0	0	0	0.0	0	0.0	.230	2-3
09/04/2021	vs Pepperdine	1	0	0	0	.000	1	2	.500	0	0	0	.000	0	0	.000	1	0	0	0	0.0	0	0.0	.242	1-3
09/04/2021	vs Kansas St.	1	0	0	0	.000	2	2	1.000	0	0	0	.000	0	0	.000	0	0	0	0	0.0	0	0.0	.213	1-3
09/10/2021	UCLA	1	0	0	1	.000	1	7	.143	0	0	0	.000	0	0	.000	0	0	0	0	0.0	0	0.0	.056	0-3
09/11/2021	San Diego	2	0	0	0	.000	2	5	.400	0	0	0	.000	0	0	.000	0	0	0	0	0.0	0	0.0	.203	1-3
09/14/2021	at Long Beach St.	3	3	1	6	.333	7	29	.241	0	0	0	.000	0	0	.000	0	0	1	0	1.0	0	3.5	.158	0-3
09/17/2021	vs Texas Southern	1	0	2	2	-1.000	2	4	.500	0	0	0	.000	0	0	.000	0	0	0	0	0.0	0	0.0	.255	3-0
09/17/2021	at Arizona	3	0	0	0	.000	1	7	.143	0	0	0	.000	0	0	.000	0	0	0	0	0.0	1	0.0	.144	0-3
09/18/2021	vs UC Riverside	1	0	0	0	.000	3	13	.231	0	0	0	.000	0	0	.000	0	0	0	0	0.0	0	0.0	.303	3-0
Totals		24	6	4	14	.143	56	189	.296	0	0	0	.000	0	1	1.000	9	0	2	0	2.0	1	7.0		

Player Averages

Sets Played	Kills per set	Assists per set	Service aces per set	Digs per set	Blocks per set	Points per set
24	0.25	2.33	0.00	0.38	0.08	0.29

#5 HODSON, Serena

Date	Opponent	SP	Attack				Set			Serve				Receipt			Blocking				Team				
			K	E	TA	PCT	A	TA	PCT	SA	SE	TA	PCT	RE	TA	PCT	DIG	BS	BA	BE	TOTAL	BHE	POINTS	HIT%	SCORE
08/27/2021	vs Houston Baptist	*3	3	2	8	.125	0	4	.000	0	0	0	.000	0	1	1.000	0	0	2	0	2.0	0	4.0	.153	0-3
08/27/2021	at Sam Houston	1	0	1	2	.500	0	0	.000	0	0	0	.000	0	0	.000	0	0	0	0	0.0	0	0.0	.029	0-3
08/28/2021	at Sam Houston	*5	9	3	20	.300	0	2	.000	0	0	0	.000	0	0	.000	0	2	6	1	8.0	0	14.0	.230	2-3
Totals		9	12	6	30	.200	0	6	.000	0	0	0	.000	0	1	1.000	0	2	8	1	10.0	0	18.0		

Player Averages

Sets Played	Kills per set	Assists per set	Service aces per set	Digs per set	Blocks per set	Points per set
9	1.33	0.00	0.00	0.00	1.11	2.00

#6 GOLDSMITH, Jordyn

Date	Opponent	SP	Attack				Set			Serve				Receipt			Blocking				Team				
			K	E	TA	PCT	A	TA	PCT	SA	SE	TA	PCT	RE	TA	PCT	DIG	BS	BA	BE	TOTAL	BHE	POINTS	HIT%	SCORE
08/27/2021	at Sam Houston	3	5	1	12	.333	0	1	.000	0	0	0	.000	0	0	.000	1	0	0	0	0.0	0	5.0	.029	0-3
08/28/2021	at Sam Houston	5	7	3	19	.211	0	1	.000	0	0	0	.000	0	0	.000	3	0	3	1	3.0	0	8.5	.230	2-3
09/04/2021	vs Pepperdine	2	7	2	13	.385	1	2	.500	0	0	0	.000	0	0	.000	1	0	1	1	1.0	0	7.5	.242	1-3
09/04/2021	vs Kansas St.	1	2	3	6	-.167	0	0	.000	0	0	0	.000	0	0	.000	0	0	0	0	0.0	0	2.0	.213	1-3
09/10/2021	UCLA	1	0	0	0	.000	0	0	.000	0	0	0	.000	0	0	.000	0	0	0	0	0.0	0	0.0	.056	0-3
09/14/2021	at Long Beach St.	*3	2	2	7	.000	1	1	1.000	0	0	0	.000	0	0	.000	1	1	3	0	4.0	0	4.5	.158	0-3
09/17/2021	vs Texas Southern	*3	3	3	6	.000	0	1	.000	0	0	1	1.000	0	0	.000	1	0	1	0	1.0	0	3.5	.255	3-0
09/17/2021	at Arizona	3	5	4	21	.048	1	1	1.000	0	0	0	.000	0	0	.000	3	0	1	0	1.0	0	5.5	.144	0-3
09/18/2021	vs UC Riverside	*3	3	1	7	.286	0	1	.000	0	0	0	.000	0	0	.000	0	0	4	0	4.0	1	5.0	.303	3-0
Totals		24	34	19	91	.165	3	8	.375	0	0	1	1.000	0	0	0.000	10	1	13	2	14.0	1	41.5		

Player Averages

Sets Played	Kills per set	Assists per set	Service aces per set	Digs per set	Blocks per set	Points per set
24	1.42	0.13	0.00	0.42	0.58	1.73



2021-22 San Diego St. Women's Volleyball
Individual Match-by-Match
All games

as of Sep 22, 2021

#7 VANDERPAN, Ashley

Date	Opponent	SP	Attack				Set			Serve			Receipt			Blocking				Team					
			K	E	TA	PCT	A	TA	PCT	SA	SE	TA	PCT	RE	TA	PCT	DIG	BS	BA	BE	TOTAL	BHE	POINTS	HIT%	SCORE
08/27/2021	vs Houston Baptist	*3	0	0	1	.000	19	64	.297	1	1	10	.900	0	0	.000	4	0	0	0	0.0	3	1.0	.153	0-3
08/27/2021	at Sam Houston	*3	0	0	0	.000	15	46	.326	1	0	8	1.000	0	0	.000	7	0	0	0	0.0	0	1.0	.029	0-3
08/28/2021	at Sam Houston	*5	0	0	0	.000	26	69	.377	2	1	16	.938	0	0	.000	10	0	0	0	0.0	1	2.0	.230	2-3
09/03/2021	at UC Santa Barbara	3	0	0	1	.000	13	27	.481	0	0	12	1.000	0	0	.000	6	0	0	0	0.0	1	0.0	.384	3-0
09/04/2021	vs Pepperdine	3	0	0	1	.000	14	32	.438	1	0	15	1.000	0	0	.000	6	0	1	0	1.0	1	1.5	.242	1-3
09/04/2021	vs Kansas St.	3	0	2	2	-1.000	14	30	.467	0	2	7	.714	0	1	1.000	6	0	0	0	0.0	0	0.0	.213	1-3
09/10/2021	UCLA	2	0	0	0	.000	6	20	.300	0	0	4	1.000	0	0	.000	1	0	0	0	0.0	0	0.0	.056	0-3
09/11/2021	San Diego	4	0	0	0	.000	18	47	.383	0	0	13	1.000	0	0	.000	5	0	0	0	0.0	1	0.0	.203	1-3
09/17/2021	vs Texas Southern	2	0	0	0	.000	8	17	.471	0	0	13	1.000	0	0	.000	4	0	0	0	0.0	0	0.0	.255	3-0
09/17/2021	at Arizona	3	0	0	0	.000	14	34	.412	0	0	9	1.000	0	0	.000	2	0	0	0	0.0	0	0.0	.144	0-3
09/18/2021	vs UC Riverside	3	0	0	1	.000	7	22	.318	2	0	16	1.000	0	0	.000	3	0	0	0	0.0	0	2.0	.303	3-0
Totals		34	0	2	6	-.333	154	408	.377	7	4	123	.967	0	1	1.000	54	0	1	0	1.0	7	7.5		

Player Averages

Sets Played	Kills per set	Assists per set	Service aces per set	Digs per set	Blocks per set	Points per set
34	0.00	4.53	0.21	1.59	0.03	0.22

#8 SMITH, Natalie

Date	Opponent	SP	Attack				Set			Serve			Receipt			Blocking				Team					
			K	E	TA	PCT	A	TA	PCT	SA	SE	TA	PCT	RE	TA	PCT	DIG	BS	BA	BE	TOTAL	BHE	POINTS	HIT%	SCORE
08/27/2021	vs Houston Baptist	3	0	0	1	.000	3	10	.300	0	0	9	1.000	0	12	1.000	27	0	0	0	0.0	0	0.0	.153	0-3
08/27/2021	at Sam Houston	3	0	0	1	.000	1	6	.167	0	0	5	1.000	1	20	.950	11	0	0	0	0.0	0	0.0	.029	0-3
08/28/2021	at Sam Houston	5	0	0	0	.000	2	11	.182	0	1	13	.923	2	26	.923	16	0	0	0	0.0	0	0.0	.230	2-3
09/03/2021	at UC Santa Barbara	3	0	0	0	.000	5	13	.385	0	0	18	1.000	1	18	.944	11	0	0	0	0.0	0	0.0	.384	3-0
09/04/2021	vs Pepperdine	4	0	0	0	.000	4	15	.267	0	0	10	1.000	2	24	.917	17	0	0	0	0.0	0	0.0	.242	1-3
09/04/2021	vs Kansas St.	4	0	0	0	.000	2	13	.154	1	0	16	1.000	3	30	.900	9	0	0	0	0.0	0	1.0	.213	1-3
09/10/2021	UCLA	3	0	0	0	.000	0	6	.000	2	2	9	.778	2	18	.889	11	0	0	0	0.0	0	2.0	.056	0-3
09/11/2021	San Diego	4	0	0	0	.000	4	16	.250	0	2	17	.882	0	17	1.000	21	0	0	0	0.0	0	0.0	.203	1-3
09/14/2021	at Long Beach St.	3	0	0	0	.000	4	6	.667	1	0	12	1.000	3	33	.909	14	0	0	0	0.0	0	1.0	.158	0-3
09/17/2021	vs Texas Southern	3	0	0	1	.000	3	17	.176	0	2	13	.846	0	10	1.000	14	0	0	0	0.0	0	0.0	.255	3-0
09/17/2021	at Arizona	3	0	0	0	.000	3	9	.333	1	1	10	.900	0	13	1.000	13	0	0	0	0.0	0	1.0	.144	0-3
09/18/2021	vs UC Riverside	3	0	0	0	.000	4	8	.500	0	0	7	1.000	0	14	1.000	22	0	0	0	0.0	1	0.0	.303	3-0
Totals		41	0	0	3	.000	35	130	.269	5	8	139	.942	14	235	.940	186	0	0	0	0.0	1	5.0		

Player Averages

Sets Played	Kills per set	Assists per set	Service aces per set	Digs per set	Blocks per set	Points per set
41	0.00	0.85	0.12	4.54	0.00	0.12



2021-22 San Diego St. Women's Volleyball
Individual Match-by-Match
All games

as of Sep 22, 2021

#9 MUKAJ, Sara

Date	Opponent	SP	Attack				Set			Serve				Recept			Blocking					Team			
			K	E	TA	PCT	A	TA	PCT	SA	SE	TA	PCT	RE	TA	PCT	DIG	BS	BA	BE	TOTAL	BHE	POINTS	HIT%	SCORE
08/27/2021	vs Houston Baptist	1	0	1	2	.500	0	1	.000	0	0	1	1.000	0	0	.000	0	0	0	0	0.0	0	0.0	.153	0-3
08/27/2021	at Sam Houston	*3	1	2	7	.143	0	2	.000	4	0	13	1.000	0	0	.000	4	0	1	0	1.0	0	5.5	.029	0-3
08/28/2021	at Sam Houston	*5	7	0	11	.636	3	7	.429	1	2	22	.909	0	0	.000	5	0	4	0	4.0	1	10.0	.230	2-3
09/03/2021	at UC Santa Barbara	*3	1	1	3	.000	4	5	.800	0	1	11	.909	0	0	.000	2	1	3	0	4.0	0	3.5	.384	3-0
09/04/2021	vs Pepperdine	*4	1	0	3	.333	2	4	.500	0	0	12	1.000	0	0	.000	4	0	4	1	4.0	0	3.0	.242	1-3
09/04/2021	vs Kansas St.	*4	2	0	4	.500	0	4	.000	1	1	16	.938	0	0	.000	0	0	3	0	3.0	0	4.5	.213	1-3
09/10/2021	UCLA	*3	0	0	1	.000	1	1	1.000	0	1	6	.833	0	0	.000	0	0	3	1	3.0	0	1.5	.056	0-3
09/11/2021	San Diego	*4	4	0	5	.800	1	5	.200	1	2	10	.800	0	0	.000	1	0	3	0	3.0	0	6.5	.203	1-3
Totals		27	16	4	36	.333	11	29	.379	7	7	91	.923	0	0	.000	16	1	21	2	22.0	1	34.5		

Player Averages

Sets Played	Kills per set	Assists per set	Service aces per set	Digs per set	Blocks per set	Points per set
27	0.59	0.41	0.26	0.59	0.81	1.28

#10 RURI, Kalani

Date	Opponent	SP	Attack				Set			Serve				Recept			Blocking					Team			
			K	E	TA	PCT	A	TA	PCT	SA	SE	TA	PCT	RE	TA	PCT	DIG	BS	BA	BE	TOTAL	BHE	POINTS	HIT%	SCORE
08/27/2021	vs Houston Baptist	1	0	0	0	.000	0	0	.000	0	1	2	.500	0	0	.000	1	0	0	0	0.0	0	0.0	.153	0-3
09/17/2021	vs Texas Southern	2	5	0	9	.556	0	2	.000	0	0	0	.000	0	0	.000	0	0	2	0	2.0	0	6.0	.255	3-0
09/18/2021	vs UC Riverside	3	7	2	13	.385	0	0	.000	0	0	0	.000	0	0	.000	2	0	2	0	2.0	0	8.0	.303	3-0
Totals		6	12	2	22	.455	0	2	.000	0	1	2	.500	0	0	.000	3	0	4	0	4.0	0	14.0		

Player Averages

Sets Played	Kills per set	Assists per set	Service aces per set	Digs per set	Blocks per set	Points per set
6	2.00	0.00	0.00	0.50	0.67	2.33

#11 HILL, Brooklynn

Date	Opponent	SP	Attack				Set			Serve				Recept			Blocking					Team			
			K	E	TA	PCT	A	TA	PCT	SA	SE	TA	PCT	RE	TA	PCT	DIG	BS	BA	BE	TOTAL	BHE	POINTS	HIT%	SCORE
09/04/2021	vs Kansas St.	2	0	0	0	.000	0	1	.000	0	0	0	.000	0	4	1.000	1	0	0	0	0.0	0	0.0	.213	1-3
09/10/2021	UCLA	1	0	0	0	.000	0	0	.000	0	0	1	1.000	0	4	1.000	0	0	0	0	0.0	0	0.0	.056	0-3
09/14/2021	at Long Beach St.	3	0	0	0	.000	0	0	.000	1	2	10	.800	0	0	.000	1	0	0	0	0.0	0	1.0	.158	0-3
09/17/2021	vs Texas Southern	3	0	0	0	.000	0	1	.000	1	1	6	.833	0	0	.000	0	0	0	0	0.0	0	1.0	.255	3-0
09/17/2021	at Arizona	3	0	0	0	.000	0	0	.000	1	2	8	.750	0	0	.000	0	0	0	0	0.0	0	1.0	.144	0-3
09/18/2021	vs UC Riverside	3	0	0	0	.000	0	1	.000	0	1	13	.923	0	0	.000	3	0	0	0	0.0	0	0.0	.303	3-0
Totals		15	0	0	0	.000	0	3	.000	3	6	38	.842	0	8	1.000	5	0	0	0	0.0	0	3.0		

Player Averages

Sets Played	Kills per set	Assists per set	Service aces per set	Digs per set	Blocks per set	Points per set
15	0.00	0.00	0.20	0.33	0.00	0.20



2021-22 San Diego St. Women's Volleyball
Individual Match-by-Match
All games

as of Sep 22, 2021

#13 HAYNIE, Julia

Date	Opponent	SP	Attack				Set			Serve				Recept			Blocking					Team				
			K	E	TA	PCT	A	TA	PCT	SA	SE	TA	PCT	RE	TA	PCT	DIG	BS	BA	BE	TOTAL	BHE	POINTS	HIT%	SCORE	
08/27/2021	vs Houston Baptist	*3	6	2	9	.444	0	0	.000	0	2	3	.333	0	0	.000	1	0	0	0	0.0	0	6.0	.153	0-3	
08/27/2021	at Sam Houston	*3	2	3	9	-.111	1	1	1.000	0	0	1	1.000	0	1	1.000	1	0	2	0	2.0	0	3.0	.029	0-3	
09/03/2021	at UC Santa Barbara	*3	3	0	4	.750	0	0	.000	0	0	0	.000	0	0	.000	1	0	2	0	2.0	0	4.0	.384	3-0	
09/04/2021	vs Pepperdine	*4	2	0	5	.400	0	0	.000	0	0	0	.000	0	0	.000	1	0	4	0	4.0	0	4.0	.242	1-3	
09/04/2021	vs Kansas St.	*4	3	2	6	.167	0	1	.000	0	0	0	.000	0	1	1.000	1	1	1	0	2.0	0	4.5	.213	1-3	
09/10/2021	UCLA	*3	3	5	13	-.154	0	1	.000	0	0	0	.000	0	1	1.000	0	0	3	1	3.0	0	4.5	.056	0-3	
09/11/2021	San Diego	*4	4	4	12	.000	0	2	.000	0	0	0	.000	0	0	.000	1	0	1	1	1.0	0	4.5	.203	1-3	
09/14/2021	at Long Beach St.	*3	2	2	12	.000	0	0	.000	0	0	0	.000	0	0	.000	1	0	3	1	3.0	0	3.5	.158	0-3	
09/17/2021	vs Texas Southern	*3	6	1	11	.455	1	3	.333	0	0	1	1.000	0	2	1.000	2	0	4	0	4.0	0	8.0	.255	3-0	
09/17/2021	at Arizona	*3	1	1	2	.000	0	1	.000	0	1	1	.000	0	0	.000	0	0	0	0	0.0	0	1.0	.144	0-3	
09/18/2021	vs UC Riverside	*3	6	1	11	.455	0	1	.000	0	0	1	1.000	0	0	.000	0	1	3	0	4.0	0	8.5	.303	3-0	
Totals			36	38	21	94	.181	2	10	.200	0	3	7	.571	0	5	1.000	9	2	23	3	25.0	0	51.5		

Player Averages

Sets Played	Kills per set	Assists per set	Service aces per set	Digs per set	Blocks per set	Points per set
36	1.06	0.06	0.00	0.25	0.69	1.43

#14 MERK, Reagan

Date	Opponent	SP	Attack				Set			Serve				Recept			Blocking					Team				
			K	E	TA	PCT	A	TA	PCT	SA	SE	TA	PCT	RE	TA	PCT	DIG	BS	BA	BE	TOTAL	BHE	POINTS	HIT%	SCORE	
08/27/2021	at Sam Houston	1	0	0	0	.000	0	0	.000	2	0	3	1.000	0	0	.000	0	0	0	0	0.0	0	2.0	.029	0-3	
09/10/2021	UCLA	1	1	0	1	1.000	0	0	.000	0	0	2	1.000	0	0	.000	0	0	0	0	0.0	0	1.0	.056	0-3	
09/14/2021	at Long Beach St.	1	5	0	7	.714	1	2	.500	0	1	3	.667	0	3	1.000	0	0	0	0	0.0	0	5.0	.158	0-3	
09/17/2021	vs Texas Southern	3	7	2	13	.385	0	0	.000	0	3	6	.500	0	8	1.000	6	0	0	0	0.0	0	7.0	.255	3-0	
09/17/2021	at Arizona	2	2	0	6	.333	0	1	.000	0	1	5	.800	0	16	1.000	5	0	0	0	0.0	0	2.0	.144	0-3	
09/18/2021	vs UC Riverside	*3	7	7	20	.000	0	6	.000	0	3	8	.625	0	17	1.000	6	1	2	0	3.0	0	9.0	.303	3-0	
Totals			11	22	9	47	.277	1	9	.111	2	8	27	.704	0	44	1.000	17	1	2	0	3.0	0	26.0		

Player Averages

Sets Played	Kills per set	Assists per set	Service aces per set	Digs per set	Blocks per set	Points per set
11	2.00	0.09	0.18	1.55	0.27	2.36



**2021-22 San Diego St. Women's Volleyball
Individual Match-by-Match
All games**

as of Sep 22, 2021

#15 LABNO, Mikela

Date	Opponent	SP	Attack				Set			Serve				Receipt			Blocking				Team				
			K	E	TA	PCT	A	TA	PCT	SA	SE	TA	PCT	RE	TA	PCT	DIG	BS	BA	BE	TOTAL	BHE	POINTS	HIT%	SCORE
08/27/2021	at Sam Houston	1	0	1	1	-1.000	0	0	.000	0	0	1	1.000	0	5	1.000	1	0	0	0	0.0	0	0.0	.029	0-3
08/28/2021	at Sam Houston	1	1	0	1	1.000	0	0	.000	0	0	0	.000	0	0	.000	0	0	0	0	0.0	0	1.0	.230	2-3
09/03/2021	at UC Santa Barbara	3	7	5	18	.111	0	0	.000	0	0	0	.000	0	0	.000	0	0	1	0	1.0	0	7.5	.384	3-0
09/04/2021	vs Pepperdine	4	13	1	23	.522	0	0	.000	0	0	5	1.000	1	11	.909	1	0	1	0	1.0	0	13.5	.242	1-3
09/04/2021	vs Kansas St.	4	9	4	24	.208	0	1	.000	0	0	2	1.000	0	11	1.000	2	0	0	0	0.0	0	9.0	.213	1-3
09/10/2021	UCLA	3	4	4	11	.000	0	1	.000	0	0	1	1.000	0	6	1.000	0	0	2	0	2.0	0	5.0	.056	0-3
09/11/2021	San Diego	4	11	8	33	.091	0	0	.000	0	0	0	.000	0	3	1.000	0	2	1	0	3.0	0	13.5	.203	1-3
09/14/2021	at Long Beach St.	*3	3	4	20	-.050	0	0	.000	2	0	13	1.000	1	6	.833	6	1	2	0	3.0	0	7.0	.158	0-3
09/17/2021	vs Texas Southern	*3	5	3	16	.125	2	2	1.000	0	2	6	.667	2	16	.875	3	1	1	0	2.0	0	6.5	.255	3-0
09/17/2021	at Arizona	*3	6	7	17	-.059	0	3	.000	0	1	5	.800	1	18	.944	3	0	2	0	2.0	0	7.0	.144	0-3
09/18/2021	vs UC Riverside	*3	5	1	19	.211	1	4	.250	1	0	16	1.000	0	18	1.000	13	0	0	0	0.0	1	6.0	.303	3-0
Totals		32	64	38	183	.142	3	11	.273	3	3	49	.939	5	94	.947	29	4	10	0	14.0	1	76.0		

Player Averages

Sets Played	Kills per set	Assists per set	Service aces per set	Digs per set	Blocks per set	Points per set
32	2.00	0.09	0.09	0.91	0.44	2.38

#17 BARCKLAY, Nadia

Date	Opponent	SP	Attack				Set			Serve				Receipt			Blocking				Team				
			K	E	TA	PCT	A	TA	PCT	SA	SE	TA	PCT	RE	TA	PCT	DIG	BS	BA	BE	TOTAL	BHE	POINTS	HIT%	SCORE
08/27/2021	vs Houston Baptist	2	0	0	0	.000	0	0	.000	0	0	2	1.000	0	0	.000	1	0	0	0	0.0	0	0.0	.153	0-3
09/18/2021	vs UC Riverside	1	0	0	0	.000	0	0	.000	1	0	2	1.000	0	1	1.000	0	0	0	0	0.0	0	1.0	.303	3-0
Totals		3	0	0	0	.000	0	0	.000	1	0	4	1.000	0	1	1.000	1	0	0	0	0.0	0	1.0		

Player Averages

Sets Played	Kills per set	Assists per set	Service aces per set	Digs per set	Blocks per set	Points per set
3	0.00	0.00	0.33	0.33	0.00	0.33

#19 MILLER, Noa

Date	Opponent	SP	Attack				Set			Serve				Receipt			Blocking				Team				
			K	E	TA	PCT	A	TA	PCT	SA	SE	TA	PCT	RE	TA	PCT	DIG	BS	BA	BE	TOTAL	BHE	POINTS	HIT%	SCORE
09/03/2021	at UC Santa Barbara	*3	0	0	2	.000	22	45	.489	0	0	11	1.000	0	0	.000	7	0	0	0	0.0	0	0.0	.384	3-0
09/04/2021	vs Pepperdine	*4	0	0	1	.000	19	53	.358	0	0	11	1.000	0	0	.000	4	0	0	0	0.0	0	0.0	.242	1-3
09/04/2021	vs Kansas St.	*4	1	0	2	.500	25	66	.379	0	0	14	1.000	0	0	.000	7	0	1	0	1.0	0	1.5	.213	1-3
09/10/2021	UCLA	*3	0	0	2	.000	17	50	.340	0	1	10	.900	0	1	1.000	3	0	0	0	0.0	1	0.0	.056	0-3
09/11/2021	San Diego	*4	0	0	0	.000	28	67	.418	2	0	12	1.000	0	0	.000	11	0	0	0	0.0	0	2.0	.203	1-3
09/14/2021	at Long Beach St.	*3	1	1	3	.000	10	43	.233	1	1	14	.929	0	0	.000	2	0	0	1	0.0	0	2.0	.158	0-3
09/17/2021	vs Texas Southern	*3	2	0	3	.667	20	51	.392	1	1	16	.938	0	0	.000	7	0	0	0	0.0	0	3.0	.255	3-0
09/17/2021	at Arizona	*3	0	0	0	.000	10	40	.250	1	1	11	.909	0	0	.000	6	0	0	0	0.0	1	1.0	.144	0-3
09/18/2021	vs UC Riverside	*3	1	0	2	.500	26	56	.464	1	1	10	.900	0	0	.000	5	0	0	0	0.0	1	2.0	.303	3-0
Totals		30	5	1	15	.267	177	471	.376	6	5	109	.954	0	1	1.000	52	0	1	1	1.0	3	11.5		

Player Averages

Sets Played	Kills per set	Assists per set	Service aces per set	Digs per set	Blocks per set	Points per set
30	0.17	5.90	0.20	1.73	0.03	0.38



2021-22 San Diego St. Women's Volleyball
Individual Match-by-Match
All games

as of Sep 22, 2021

#21 O'SULLIVAN, Victoria

Date	Opponent	SP	Attack				Set			Serve				Recept			Blocking				Team				
			K	E	TA	PCT	A	TA	PCT	SA	SE	TA	PCT	RE	TA	PCT	DIG	BS	BA	BE	TOTAL	BHE	POINTS	HIT%	SCORE
08/27/2021	vs Houston Baptist	*3	7	6	30	.033	1	1	1.000	0	0	6	1.000	0	0	.000	6	0	0	1	0.0	0	7.0	.153	0-3
08/27/2021	at Sam Houston	*3	8	9	25	-.040	0	2	.000	0	2	9	.778	0	0	.000	1	0	2	1	2.0	0	9.0	.029	0-3
08/28/2021	at Sam Houston	*5	14	3	34	.324	0	3	.000	1	1	13	.923	0	0	.000	4	0	5	0	5.0	2	17.5	.230	2-3
09/03/2021	at UC Santa Barbara	*3	15	1	27	.519	0	0	.000	0	0	0	.000	0	0	.000	3	0	2	0	2.0	0	16.0	.384	3-0
09/04/2021	vs Pepperdine	*4	10	6	27	.148	0	4	.000	0	1	3	.667	0	0	.000	3	0	1	1	1.0	0	10.5	.242	1-3
09/04/2021	vs Kansas St.	*4	13	5	34	.235	0	1	.000	0	1	3	.667	0	0	.000	1	0	2	0	2.0	0	14.0	.213	1-3
09/10/2021	UCLA	*3	10	6	25	.160	0	2	.000	0	1	1	.000	0	1	1.000	2	1	2	0	3.0	0	12.0	.056	0-3
09/11/2021	San Diego	*4	19	4	43	.349	1	3	.333	0	0	0	.000	0	0	.000	4	0	0	0	0.0	0	19.0	.203	1-3
09/17/2021	vs Texas Southern	*3	11	3	30	.267	3	5	.600	0	0	4	1.000	0	1	1.000	5	0	1	0	1.0	0	11.5	.255	3-0
09/17/2021	at Arizona	*3	10	2	21	.381	0	2	.000	0	0	0	.000	0	0	.000	0	1	0	0	1.0	0	11.0	.144	0-3
09/18/2021	vs UC Riverside	*3	14	1	26	.500	0	1	.000	0	0	0	.000	0	0	.000	3	0	3	0	3.0	0	15.5	.303	3-0
Totals		38	131	46	322	.264	5	24	.208	1	6	39	.846	0	2	1.000	32	2	18	3	20.0	2	143.0		

Player Averages

Sets Played	Kills per set	Assists per set	Service aces per set	Digs per set	Blocks per set	Points per set
38	3.45	0.13	0.03	0.84	0.53	3.76



San Diego St. Women's Volleyball
Individual Career Summaries
All games

Page 1/9
as of Sep 22, 2021

BARCKLAY, Nadia

SEASON	TEAM	SM-MP	K	K/S	E	TA	PCT	A	A/S	SA	SA/S	SE	DIG	D/S	RE	BS	BA	TB	B/S	BE	BHE	PTS	PTS/S
2020-21	SDSU	8-3	0	0.0	0	0	.000	1	0.1	1	0.1	1	1	0.1	0	1	0	1	0.1	0	0	2.0	0.3
2021-22	SDSU	3-2	0	0.0	0	0	.000	0	0.0	1	0.3	0	1	0.3	0	0	0	0	0.0	0	0	1.0	0.3
TOTAL		11 - 5	0	0.0	0	0	.000	1	0.1	2	0.2	1	2	0.2	0	1	0	1	0.1	0	0	3.0	0.3

Single Game Highs

Statistic	Value	
Assists	1	vs Fresno St. 02/13/21
Serve Aces	1	vs Fresno St. 02/13/21, vs UC Riverside 09/18/21
Digs	1	vs Fresno St. 02/13/21, vs Houston Baptist 08/27/21
Block solos	1	vs New Mexico 02/20/21

FAKI, Zoi

SEASON	TEAM	SM-MP	K	K/S	E	TA	PCT	A	A/S	SA	SA/S	SE	DIG	D/S	RE	BS	BA	TB	B/S	BE	BHE	PTS	PTS/S
2016-17	Pitt	14-8	0	0.0	0	0	.000	0	0.0	3	0.2	9	4	0.3	0	0	0	0	0.0	0	0	3.0	0.2
2018-19	Pitt	35-18	30	0.9	14	85	.188	6	0.2	5	0.1	9	46	1.3	3	0	3	3	0.1	2	0	36.5	1.0
2019-20	Pitt	107-32	36	0.3	16	84	.238	6	0.1	14	0.1	30	64	0.6	4	1	9	10	0.1	1	1	55.5	0.5
2020-21	Pitt	72-24	23	0.3	9	63	.222	9	0.1	10	0.1	9	41	0.6	6	1	3	4	0.1	1	1	35.5	0.5
2021-22	SDSU	32-9	80	2.5	32	227	.211	3	0.1	3	0.1	11	72	2.3	12	1	6	7	0.2	1	0	87.0	2.7
TOTAL FOR SDSU		32 - 9	80	2.5	32	227	.211	3	0.1	3	0.1	11	72	2.3	12	1	6	7	0.2	1	0	87.0	2.7
TOTAL		260 - 91	169	0.7	71	459	.214	24	0.1	35	0.1	68	227	0.9	25	3	21	24	0.1	5	2	217.5	0.8

Single Game Highs

Statistic	Value	
Kills	14	at Sam Houston 08/28/21
Attacks	43	at Sam Houston 08/28/21
Assists	4	vs Boston College 10/09/20
Serve Aces	3	vs Minnesota 04/18/21
Digs	23	vs Michigan 12/01/18
Blocks	2	at Notre Dame 10/16/20, vs Pepperdine 09/04/21
Block solos	1	at Syracuse 10/11/19, at Notre Dame 10/16/20, vs San Diego 09/11/21
Block assists	3	vs Duquesne 09/07/19



San Diego St. Women's Volleyball
Individual Career Summaries
All games

Page 2/9
as of Sep 22, 2021

FEUERBORN, Kennedy

SEASON	TEAM	SM-MP	K	K/S	E	TA	PCT	A	A/S	SA	SA/S	SE	DIG	D/S	RE	BS	BA	TB	B/S	BE	BHE	PTS	PTS/S
2020-21	SDSU	41-13	31	0.8	13	78	.231	162	4.0	1	0.0	5	19	0.5	0	2	12	14	0.3	0	5	40.0	1.0
2021-22	SDSU	24-11	6	0.3	4	14	.143	56	2.3	0	0.0	0	9	0.4	0	0	2	2	0.1	0	1	7.0	0.3
TOTAL		65 - 24	37	0.6	17	92	.217	218	3.4	1	0.0	5	28	0.4	0	2	14	16	0.2	0	6	47.0	0.7

Single Game Highs

Statistic	Value	
Kills	6	at UNLV 02/05/21
Attacks	12	at Boise St. 03/20/21
Assists	26	vs Fresno St. 02/12/21, at UNLV 02/05/21
Serve Aces	1	at Wyoming 03/05/21
Digs	7	vs Fresno St. 02/12/21
Blocks	1	6 times
Block solos	1	vs Fresno St. 02/12/21, at UNLV 02/05/21
Block assists	4	vs Colorado St. 04/03/21
PCT	.500	vs Houston Baptist 08/27/21

GOLDSMITH, Jordyn

SEASON	TEAM	SM-MP	K	K/S	E	TA	PCT	A	A/S	SA	SA/S	SE	DIG	D/S	RE	BS	BA	TB	B/S	BE	BHE	PTS	PTS/S
2021-22	SDSU	24-9	34	1.4	19	91	.165	3	0.1	0	0.0	0	10	0.4	0	1	13	14	0.6	2	1	41.5	1.7
TOTAL		24 - 9	34	1.4	19	91	.165	3	0.1	0	0.0	0	10	0.4	0	1	13	14	0.6	2	1	41.5	1.7

Single Game Highs

Statistic	Value	
Kills	7	at Sam Houston 08/28/21, vs Pepperdine 09/04/21
Attacks	21	at Arizona 09/17/21
Assists	1	at Long Beach St. 09/14/21, at Arizona 09/17/21, vs Pepperdine 09/04/21
Digs	3	at Arizona 09/17/21, at Sam Houston 08/28/21
Blocks	4	vs UC Riverside 09/18/21, at Long Beach St. 09/14/21
Block solos	1	at Long Beach St. 09/14/21
Block assists	4	vs UC Riverside 09/18/21
PCT	.385	vs Pepperdine 09/04/21



San Diego St. Women's Volleyball
Individual Career Summaries
All games

Page 3/9
 as of Sep 22, 2021

HAYNIE, Julia

SEASON	TEAM	SM-MP	K	K/S	E	TA	PCT	A	A/S	SA	SA/S	SE	DIG	D/S	RE	BS	BA	TB	B/S	BE	BHE	PTS	PTS/S
2019-20	PSU	99-28	70	0.7	43	205	.132	4	0.0	6	0.1	7	40	0.4	0	4	70	74	0.7	4	0	115.0	1.2
2020-21	PSU	71-18	95	1.3	36	226	.261	5	0.1	8	0.1	7	24	0.3	1	5	42	47	0.7	2	1	129.0	1.8
2021-22	SDSU	36-11	38	1.1	21	94	.181	2	0.1	0	0.0	3	9	0.3	0	2	23	25	0.7	3	0	51.5	1.4
TOTAL FOR SDSU		36 - 11	38	1.1	21	94	.181	2	0.1	0	0.0	3	9	0.3	0	2	23	25	0.7	3	0	51.5	1.4
TOTAL		206 - 57	203	1.0	100	525	.196	11	0.1	14	0.1	17	73	0.4	1	11	135	146	0.7	9	1	295.5	1.4

Single Game Highs

Statistic	Value	
Kills	11	vs Idaho 01/25/21
Attacks	25	vs Idaho 01/25/21
Assists	1	11 times
Serve Aces	3	vs UC Davis 09/07/19
Digs	5	at Utah Valley 09/06/19
Blocks	7	vs Northern Ariz. 01/31/21
Block solos	2	vs Idaho 11/02/19, vs Montana 03/08/21
Block assists	9	vs Eastern Wash. 10/31/19

HILL, Brooklynn

SEASON	TEAM	SM-MP	K	K/S	E	TA	PCT	A	A/S	SA	SA/S	SE	DIG	D/S	RE	BS	BA	TB	B/S	BE	BHE	PTS	PTS/S
2018-19	PSU	8-7	0	0.0	0	0	.000	0	0.0	1	0.1	3	2	0.3	1	0	0	0	0.0	0	1	1.0	0.1
2019-20	PSU	11-7	0	0.0	0	0	.000	0	0.0	3	0.3	1	3	0.3	0	0	0	0	0.0	0	0	3.0	0.3
2020-21	SDSU	50-15	1	0.0	1	3	.000	12	0.2	10	0.2	11	77	1.5	18	0	0	0	0.0	0	1	11.0	0.2
2021-22	SDSU	15-6	0	0.0	0	0	.000	0	0.0	3	0.2	6	5	0.3	0	0	0	0	0.0	0	0	3.0	0.2
TOTAL FOR SDSU		65 - 21	1	0.0	1	3	.000	12	0.2	13	0.2	17	82	1.3	18	0	0	0	0.0	0	1	14.0	0.2
TOTAL		84 - 35	1	0.0	1	3	.000	12	0.1	17	0.2	21	87	1.0	19	0	0	0	0.0	0	2	18.0	0.2

Single Game Highs

Statistic	Value	
Kills	1	at Boise St. 03/20/21
Attacks	2	at Boise St. 03/20/21
Assists	3	vs Nevada 02/27/21
Serve Aces	3	vs New Mexico 02/19/21, vs Utah St. 03/12/21, vs Towson 12/07/19
Digs	10	at Boise St. 03/20/21



San Diego St. Women's Volleyball
Individual Career Summaries
All games

Page 4/9
as of Sep 22, 2021

HODSON, Serena

SEASON	TEAM	SM-MP	K	K/S	E	TA	PCT	A	A/S	SA	SA/S	SE	DIG	D/S	RE	BS	BA	TB	B/S	BE	BHE	PTS	PTS/S
2018-19	SDSU	18-5	15	0.8	4	36	.306	0	0.0	0	0.0	1	1	0.1	0	1	14	15	0.8	0	0	23.0	1.3
2020-21	SDSU	20-9	17	0.9	8	45	.200	0	0.0	1	0.1	3	4	0.2	0	1	15	16	0.8	2	0	26.5	1.3
2021-22	SDSU	9-3	12	1.3	6	30	.200	0	0.0	0	0.0	0	0	0.0	0	2	8	10	1.1	1	0	18.0	2.0
TOTAL		47 - 17	44	0.9	18	111	.234	0	0.0	1	0.0	4	5	0.1	0	4	37	41	0.9	3	0	67.5	1.4

Single Game Highs

Statistic	Value	
Kills	9	at Sam Houston 08/28/21
Attacks	20	at Sam Houston 08/28/21
Serve Aces	1	at UNLV 02/04/21
Digs	2	at Wyoming 03/05/21
Blocks	8	at Sam Houston 08/28/21
Block solos	2	at Sam Houston 08/28/21
Block assists	7	vs Seattle U 08/25/18

LABNO, Mikela

SEASON	TEAM	SM-MP	K	K/S	E	TA	PCT	A	A/S	SA	SA/S	SE	DIG	D/S	RE	BS	BA	TB	B/S	BE	BHE	PTS	PTS/S
2021-22	SDSU	32-11	64	2.0	38	183	.142	3	0.1	3	0.1	3	29	0.9	5	4	10	14	0.4	0	1	76.0	2.4
TOTAL		32 - 11	64	2.0	38	183	.142	3	0.1	3	0.1	3	29	0.9	5	4	10	14	0.4	0	1	76.0	2.4

Single Game Highs

Statistic	Value	
Kills	13	vs Pepperdine 09/04/21
Attacks	33	vs San Diego 09/11/21
Assists	2	vs Texas Southern 09/17/21
Serve Aces	2	at Long Beach St. 09/14/21
Digs	13	vs UC Riverside 09/18/21
Blocks	3	at Long Beach St. 09/14/21
Block solos	2	vs San Diego 09/11/21
Block assists	2	at Arizona 09/17/21, vs UCLA 09/10/21, at Long Beach St. 09/14/21
PCT	1.000	at Sam Houston 08/28/21



San Diego St. Women's Volleyball
Individual Career Summaries
All games

MERK, Reagan

SEASON	TEAM	SM-MP	K	K/S	E	TA	PCT	A	A/S	SA	SA/S	SE	DIG	D/S	RE	BS	BA	TB	B/S	BE	BHE	PTS	PTS/S
2021-22	SDSU	11-6	22	2.0	9	47	.277	1	0.1	2	0.2	8	17	1.5	0	1	2	3	0.3	0	0	26.0	2.4
TOTAL		11 - 6	22	2.0	9	47	.277	1	0.1	2	0.2	8	17	1.5	0	1	2	3	0.3	0	0	26.0	2.4

Single Game Highs

Statistic	Value	
Kills	7	vs Texas Southern 09/17/21, vs UC Riverside 09/18/21
Attacks	20	vs UC Riverside 09/18/21
Assists	1	at Long Beach St. 09/14/21
Serve Aces	2	at Sam Houston 08/27/21
Digs	6	vs UC Riverside 09/18/21, vs Texas Southern 09/17/21
Blocks	3	vs UC Riverside 09/18/21
Block solos	1	vs UC Riverside 09/18/21
Block assists	2	vs UC Riverside 09/18/21
PCT	1.000	vs UCLA 09/10/21

MILLER, Noa

SEASON	TEAM	SM-MP	K	K/S	E	TA	PCT	A	A/S	SA	SA/S	SE	DIG	D/S	RE	BS	BA	TB	B/S	BE	BHE	PTS	PTS/S
2018-19	WOF	108-30	31	0.3	5	95	.274	481	4.5	16	0.1	52	194	1.8	0	0	2	2	0.0	2	15	48.0	0.4
2019-20	ASU	70-26	10	0.1	4	29	.207	283	4.0	4	0.1	13	151	2.2	0	0	1	1	0.0	0	4	14.5	0.2
2021-22	SDSU	30-9	5	0.2	1	15	.267	177	5.9	6	0.2	5	52	1.7	0	0	1	1	0.0	1	3	11.5	0.4
TOTAL FOR SDSU		30 - 9	5	0.2	1	15	.267	177	5.9	6	0.2	5	52	1.7	0	0	1	1	0.0	1	3	11.5	0.4
TOTAL		208 - 65	46	0.2	10	139	.259	941	4.5	26	0.1	70	397	1.9	0	0	4	4	0.0	3	22	74.0	0.4

Single Game Highs

Statistic	Value	
Kills	5	at Chattanooga 09/21/18
Attacks	10	at Chattanooga 09/21/18, at Samford 09/22/18
Assists	31	at Chattanooga 09/21/18
Serve Aces	3	vs Western Caro. 11/02/18
Digs	13	at Washington 10/18/19, at Samford 09/22/18
Blocks	1	vs Kansas St. 09/04/21
Block assists	1	at Chattanooga 09/21/18, at Samford 09/22/18, at Oklahoma 09/13/19, vs Kansas St. 09/04/21



San Diego St. Women's Volleyball
Individual Career Summaries
All games

Page 6/9
as of Sep 22, 2021

MUKAJ, Sara

SEASON	TEAM	SM-MP	K	K/S	E	TA	PCT	A	A/S	SA	SA/S	SE	DIG	D/S	RE	BS	BA	TB	B/S	BE	BHE	PTS	PTS/S
2021-22	SDSU	27-8	16	0.6	4	36	.333	11	0.4	7	0.3	7	16	0.6	0	1	21	22	0.8	2	1	34.5	1.3
TOTAL		27 - 8	16	0.6	4	36	.333	11	0.4	7	0.3	7	16	0.6	0	1	21	22	0.8	2	1	34.5	1.3

Single Game Highs

Statistic	Value	
Kills	7	at Sam Houston 08/28/21
Attacks	11	at Sam Houston 08/28/21
Assists	4	at UC Santa Barbara 09/03/21
Serve Aces	4	at Sam Houston 08/27/21
Digs	5	at Sam Houston 08/28/21
Blocks	4	vs Pepperdine 09/04/21, at Sam Houston 08/28/21, at UC Santa Barbara 09/03/21
Block solos	1	at UC Santa Barbara 09/03/21
Block assists	4	vs Pepperdine 09/04/21, at Sam Houston 08/28/21
PCT	.800	vs San Diego 09/11/21

O'SULLIVAN, Victoria

SEASON	TEAM	SM-MP	K	K/S	E	TA	PCT	A	A/S	SA	SA/S	SE	DIG	D/S	RE	BS	BA	TB	B/S	BE	BHE	PTS	PTS/S
2018-19	SDSU	57-24	109	1.9	54	309	.178	0	0.0	0	0.0	0	23	0.4	1	1	14	15	0.3	3	0	117.0	2.1
2019-20	SDSU	110-29	352	3.2	145	872	.237	2	0.0	0	0.0	0	57	0.5	9	14	38	52	0.5	11	0	385.0	3.5
2020-21	SDSU	53-15	172	3.2	84	453	.194	6	0.1	2	0.0	3	23	0.4	3	8	24	32	0.6	3	1	194.0	3.7
2021-22	SDSU	38-11	131	3.4	46	322	.264	5	0.1	1	0.0	6	32	0.8	0	2	18	20	0.5	3	2	143.0	3.8
TOTAL		258 - 79	764	3.0	329	1956	.222	13	0.1	3	0.0	9	135	0.5	13	25	94	119	0.5	20	3	839.0	3.3

Single Game Highs

Statistic	Value	
Kills	22	vs West Virginia 09/06/19
Attacks	43	at Boise St. 11/23/19, vs San Diego 09/11/21
Assists	3	vs Texas Southern 09/17/21
Serve Aces	2	vs Colorado St. 04/03/21
Digs	7	at Utah St. 11/21/19
Blocks	6	at Boise St. 03/20/21
Block solos	2	6 times
Block assists	6	vs Colorado St. 04/03/21



San Diego St. Women's Volleyball
Individual Career Summaries
All games

RURI, Kalani

SEASON	TEAM	SM-MP	K	K/S	E	TA	PCT	A	A/S	SA	SA/S	SE	DIG	D/S	RE	BS	BA	TB	B/S	BE	BHE	PTS	PTS/S
2021-22	SDSU	6-3	12	2.0	2	22	.455	0	0.0	0	0.0	1	3	0.5	0	0	4	4	0.7	0	0	14.0	2.3
TOTAL		6 - 3	12	2.0	2	22	.455	0	0.0	0	0.0	1	3	0.5	0	0	4	4	0.7	0	0	14.0	2.3

Single Game Highs

Statistic	Value	
Kills	7	vs UC Riverside 09/18/21
Attacks	13	vs UC Riverside 09/18/21
Digs	2	vs UC Riverside 09/18/21
Blocks	2	vs UC Riverside 09/18/21, vs Texas Southern 09/17/21
Block assists	2	vs Texas Southern 09/17/21, vs UC Riverside 09/18/21
PCT	.556	vs Texas Southern 09/17/21

SMITH, Natalie

SEASON	TEAM	SM-MP	K	K/S	E	TA	PCT	A	A/S	SA	SA/S	SE	DIG	D/S	RE	BS	BA	TB	B/S	BE	BHE	PTS	PTS/S
2017-18	Mich	88-29	0	0.0	0	1	.000	23	0.3	12	0.1	27	128	1.5	10	0	0	0	0.0	0	2	12.0	0.1
2018-19	Mich	105-34	2	0.0	0	3	.667	32	0.3	11	0.1	25	208	2.0	12	0	0	0	0.0	0	1	13.0	0.1
2019-20	Mich	117-32	2	0.0	1	7	.143	104	0.9	18	0.2	30	401	3.4	57	0	0	0	0.0	1	2	20.0	0.2
2021-22	SDSU	41-12	0	0.0	0	3	.000	35	0.9	5	0.1	8	186	4.5	14	0	0	0	0.0	0	1	5.0	0.1
TOTAL FOR SDSU		41 - 12	0	0.0	0	3	.000	35	0.9	5	0.1	8	186	4.5	14	0	0	0	0.0	0	1	5.0	0.1
TOTAL		351 - 107	4	0.0	1	14	.214	194	0.6	46	0.1	90	923	2.6	93	0	0	0	0.0	1	6	50.0	0.1

Single Game Highs

Statistic	Value	
Kills	1	at Dayton 09/07/19, at Iowa 09/23/18, at Purdue 11/23/19, vs Oakland 09/07/18
Attacks	2	at Dayton 09/07/19, at Northwestern 11/02/19
Assists	8	vs Illinois 11/09/19
Serve Aces	3	vs Northern Ariz. 08/30/19, vs Ohio St. 09/29/17, vs Iowa 11/13/19, at Pittsburgh 12/01/18
Digs	29	at Notre Dame 09/18/19



San Diego St. Women's Volleyball
Individual Career Summaries
All games

Page 8/9
as of Sep 22, 2021

TAUTUA'A, Heipua

SEASON	TEAM	SM-MP	K	K/S	E	TA	PCT	A	A/S	SA	SA/S	SE	DIG	D/S	RE	BS	BA	TB	B/S	BE	BHE	PTS	PTS/S
2020-21	SDSU	49-14	99	2.0	62	313	.118	25	0.5	6	0.1	26	140	2.9	29	7	15	22	0.4	4	1	119.5	2.4
2021-22	SDSU	37-11	73	2.0	41	251	.127	13	0.4	2	0.1	15	72	1.9	6	0	16	16	0.4	2	0	83.0	2.2
TOTAL	86 - 25	172	2.0	103	564	.122	38	0.4	8	0.1	41	212	2.5	35	7	31	38	0.4	6	1	202.5	2.4	

Single Game Highs

Statistic	Value	
Kills	15	vs Nevada 02/26/21
Attacks	38	vs Nevada 02/26/21
Assists	4	vs Nevada 02/26/21, at UNLV 02/04/21
Serve Aces	2	vs New Mexico 02/20/21, at Boise St. 03/20/21
Digs	22	vs New Mexico 02/20/21
Blocks	6	at Boise St. 03/20/21
Block solos	3	at Wyoming 03/05/21
Block assists	6	at Boise St. 03/20/21

VANDERPAN, Ashley

SEASON	TEAM	SM-MP	K	K/S	E	TA	PCT	A	A/S	SA	SA/S	SE	DIG	D/S	RE	BS	BA	TB	B/S	BE	BHE	PTS	PTS/S
2020-21	SDSU	49-14	15	0.3	12	52	.058	325	6.6	11	0.2	11	77	1.6	0	1	9	10	0.2	0	8	31.5	0.6
2021-22	SDSU	34-11	0	0.0	2	6	-.333	154	4.5	7	0.2	4	54	1.6	0	0	1	1	0.0	0	7	7.5	0.2
TOTAL	83 - 25	15	0.2	14	58	.017	479	5.8	18	0.2	15	131	1.6	0	1	10	11	0.1	0	15	39.0	0.5	

Single Game Highs

Statistic	Value	
Kills	3	vs New Mexico 02/20/21, vs Nevada 02/26/21
Attacks	9	vs New Mexico 02/20/21, vs Nevada 02/26/21
Assists	40	vs New Mexico 02/20/21
Serve Aces	3	at Boise St. 03/20/21, vs Nevada 02/27/21
Digs	12	vs Nevada 02/26/21
Blocks	1	at Boise St. 03/20/21, at San Jose St. 03/27/21, at UNLV 02/04/21, vs Pepperdine 09/04/21
Block solos	1	at Boise St. 03/20/21
Block assists	2	vs Fresno St. 02/13/21, vs New Mexico 02/19/21



San Diego St. Women's Volleyball
Individual Career Summaries
All games

WALKER, Andrea

SEASON	TEAM	SM-MP	K	K/S	E	TA	PCT	A	A/S	SA	SA/S	SE	DIG	D/S	RE	BS	BA	TB	B/S	BE	BHE	PTS	PTS/S
2018-19	SDSU	7-4	7	1.0	4	16	.188	0	0.0	0	0.0	0	0	0.0	0	0	5	5	0.7	0	0	9.5	1.4
2019-20	SDSU	70-23	129	1.8	45	273	.308	1	0.0	0	0.0	0	7	0.1	0	6	55	61	0.9	7	0	162.5	2.3
2020-21	SDSU	33-9	69	2.1	28	145	.283	3	0.1	0	0.0	0	4	0.1	0	3	21	24	0.7	1	0	82.5	2.5
2021-22	SDSU	3-1	3	1.0	0	8	.375	0	0.0	0	0.0	0	2	0.7	0	1	1	2	0.7	1	0	4.5	1.5
TOTAL	113 - 37	208	1.8	77	442	.296	4	0.0	0	0.0	0	13	0.1	0	10	82	92	0.8	9	0	259.0	2.3	

Single Game Highs

Statistic	Value	
Kills	13	at Utah St. 11/21/19
Attacks	26	at Utah St. 11/21/19
Assists	2	at Boise St. 03/20/21
Digs	2	at Arizona 09/17/21, at Air Force 10/19/19, vs New Mexico 02/20/21
Blocks	6	at Utah St. 11/21/19
Block solos	2	vs Boise St. 10/24/19
Block assists	7	at Air Force 10/19/19