



Alphabetical Index

100-Point Games	121	NCAA Tournament History	181
1,000-Point Scorers	168	Opponent Directory	202
All Opponents, vs.	156	Player Bios	56
Assistant Coaches	50	Preview, 2007-08 Season	6
Athletics Director Jeff Schemmel	195	Overtime Games	120
Athletic Directory	208	Postseason Tournaments	180
Attendance/Home Court Record	187	Recaps, 2006-07 Game	104
Basketball Support Staff	54	Results, 2006-07 Season	92
Cox Arena at Aztec Bowl	206	Results, All-Time	140
Cox Arena Records	137	Roster, Broadcast	14
Division I Era Statistical Leaders	179	Roster, 2007-08	4
Double-Doubles	125	San Diego State University	190
Fisher, Bio Steve	38	Schedule, 2007-08	5
Freshman Season Records	134	Series, All-Time	157
Letterwinners	174	Series Superlatives	164
Media Information	200	Single-Game Performances, Individual	124
Media Outlets	204	Specialty Games	151
MWC Records	135	Statistics, Division I Era Career	176
MWC Tournaments	185	Statistics, 2006-07 Season	93

Table of Contents



2002 NCAA TOURNAMENT ▶ 2003 NIT ▶ 2006 NCAA TOURNAMENT ▶ 2007 NIT



Introduction

Index 1 • Table of Contents 2 • Quick Facts 3 • Rosters 4 • Schedule 5 • 2007-08 Season Preview 6 • Broadcast Roster 14

This is SDSU Basketball

Steve Fisher 16 • Fisher's Men in the NBA 18 • Cox Arena 20 • Game Night at Cox Arena 22 • Facilities 24 • National Attention 26 • Community Service 28 • Academics 29 • San Diego State University 30 • City of San Diego 32 • Aztec Excellence 34 • Mountain West Conference 36



Coaches and Staff

Steve Fisher 38 • Brian Dutcher 50 • Justin Hutson 51 • Mark Fisher 52 • Matt Soria 53 • Support Staff 54



Players

Ryan Amoroso 56 • Jer'Vaughn Johnson 59 • Chris Lamb 62 • Jon Pastorek 65 • Kyle Spain 68 • Matt Thomas 72 • Lorenzo Wade 76 • Richie Williams 80 • Kelvin Davis 84 • D.J. Gay/Tim Shelton 85 • Billy White/Bryan Horton 86 • Career Stats vs. MWC 88

2006-07 Review

2006-07 Notes 90 • Results 92 • Game-By-Game Statistics 94 • Miscellaneous Statistics 96 • Departed Letterwinners 102 • Box Scores and Recaps 104 • MWC Statistics 115



Records

Team 118 • Team Season 120 • Individual Game 122 • Top Game Performances 124 • Individual Season 128 • Individual Career 131 • Freshmen Records 134 • MWC Records 135 • Cox Arena Records 137



History

Year-By-Year Results 140 • Year-By-Year Summary 152 • Statistical History 154 • vs. All Opponents 156 • All-Time Series 157 • Jersey Numbers 165 • Awards and Honors 166 • 1,000-Point Scorers 168 • Annual Statistical Leaders 172 • Letterwinners 174 • Individual Div. I Stats 176 • National Postseason 180 • Conference Tournaments 185 • Attendance/Home Record 187 • MWC Series 188



University

San Diego State 190 • Dr. Stephen Weber 194 • Jeff Schemmel 195 • Support Staff 196 • Media Information 200 • Opponent Directory 202 • Media Outlets 204 • Broadcast Information 205 • Cox Arena 206 • Directory 208

The 2007-08 SDSU Men's Basketball Media Guide

The 2007-08 San Diego State University Basketball Media Guide is a publication of the San Diego State University athletics media relations office. The publication was written, edited and designed by assistant athletic director/media relations Mike May and assistant media relations director Darin Wong.

Assistance was provided by assistant media relations directors Dave Kuhn, Peggy Curtin and Jamie McConeghy, media relations assistants Andrea Ohta, Jeff Salmon and Jim Solien, Lesley Fong, Richard Groves, media relations student assistants Christina Ross, Robin Shin and Lindsey Mahan.

Cover design by SDSU Reprographic Services.

Photography

Ernie Anderson, Stan Liu, Ken Jacques, Kerry Snider, Mountain West Conference, NBAE/Getty Images, National Basketball Association, Philadelphia 76ers and Greg Wall/Wall to Wall Photography.

Printing

SDSU Reprographic Services

Media Information



2002 NCAA TOURNAMENT ▶ 2003 NIT ▶ 2006 NCAA TOURNAMENT ▶ 2007 NIT

General Information

Location San Diego, Calif., 92182
 Founded 1897
 Enrollment 35,887
 Nickname Aztecs
 Colors Scarlet and Black
 PMS Color 185
 Arena Cox Arena at Aztec Bowl
 Opened 1997
 Capacity 12,414
 Affiliation NCAA Division I
 Conference Mountain West
 President Dr. Stephen Weber
 Alma Mater (Year) Bowling Green (1964)
 Athletics Director Jeff Schemmel
 Alma Mater (Year) Kansas State (1976)
 Athletic Department Phone 619-594-3019
 Ticket Office Phone 619-283-7378
 or 619-283-SDSU

History

Seasons of Basketball Entering 87th
 First Season of Basketball 1921-22
 All-Time Record 1,184-1,010
 NCAA Tournament Appearances 8
 Seasons of Div. I Basketball Entering 38th
 First Season of Div. I Basketball 1970-71
 All-Time Div. I Record 495-564
 NCAA Div. I Tournament Appearances 5
 Last NCAA Appearance 2006
 NIT Appearances 3
 Last NIT Appearance 2007

Media Relations

Assistant AD/MBB Mike May
 SID Main Office Number 619-594-5547
 May Cell Phone 619-957-8372
 SID Fax Number 619-582-6541
 May E-mail mmay@mail.sdsu.edu
 Assistant MRD/MBB Darin Wong
 Wong E-mail dwong@mail.sdsu.edu
 SID Mailing Address Aztec Media Relations
 3014 Aztec Athletics Center
 5302 55th Street
 San Diego State University
 San Diego, CA 92182

Basketball Staff

Head Coach Steve Fisher
 Alma Mater (Year) Illinois State (1967)
 Record at SDSU (Years) 127-117 (8)
 Record Overall (Years) 311-199 (16 full)
 Basketball Office Phone 619-594-6249
 Best Time to Contact Fisher Contact May
 Assistant Head Coach Brian Dutcher
 Alma Mater (Year) Minnesota (1982)
 Assistant Coach Justin Hutson
 Alma Mater (Year) CS Bakersfield (1994)
 Assistant Coach Mark Fisher
 Alma Mater (Year) Michigan (2001)
 Director of Basketball Operations Matt Soria
 Alma Mater (Year) San Diego State (2002)
 Basketball Trainer Mark Haines
 Alma Mater (Year) Metropolitan State (1987)
 Administrative Assistant Marty Malano

Team Information

	Total	Home	Away	Neu.
2006-07 Record	22-11	14-2	6-8	2-1
2006-07 MWC Record	10-6	7-1	3-5	
Mountain West Finish	.T-3rd			
MWC Tournament	.Quarterfinals (0-1)			
Postseason	.NIT			
NIT Finish	.Second Round (1-1)			
Starters Returning/Lost	.2/3			
Letterwinners Returning/Lost	.7/4			

Media Information

Radio Station AM 600 KOGO
 Play-By-Play Announcer Ted Leitner
 PBP Phone Number 858-560-6671
 Video Footage Contact Brian Murphy
 VFC Phone Number 619-594-7617
 Beat Writer Mick McGrane
 The San Diego Union-Tribune
 619-293-1341
 Beat Writer Michael Klitzing
 North County Times
 760-739-6645

Media Services

SID Office Phone 619-594-5547
 SID Office Fax 619-582-6541
 Cox Arena Press Row 619-265-5853
 SDSU Athletics Website www.goaztecs.com

2007-08 Roster Breakdown

Starters Returning (2)

Player	Ht	Wt	Cl	Pos.	PPG	RPG
Lorenzo Wade	6-6	228	Jr.	F	10.5	5.3
Richie Williams	5-9	162	Jr.	G	7.0	4.6*

Total Letterwinners Returning (7)

Player	Ht	Wt	Cl	Pos.	PPG	RPG
Jer'Vaughn Johnson	6-6	254	So.	F	2.4	1.9
Chris Lamb	6-10	245	Jr.	C	1.4	0.9
Jon Pastorek	6-8	209	So.	F	1.5	0.8
Kyle Spain	6-5	229	Jr.	F	6.6	4.6
Matt Thomas	6-4	213	Sr.	G	1.5	1.5
Richie Williams	5-9	162	Jr.	G	7.0	4.6*
Lorenzo Wade	6-6	228	Jr.	F	10.5	5.3

Newcomers (6)

Player	Ht	Wt	Cl	Pos.
Ryan Amoroso	6-8	272	Jr.	F
Kelvin Davis	6-4	210	Jr.	G
D.J. Gay	6-0	165	Fr.	G
Bryan Horton	6-3	189	Fr.	G
Tim Shelton	6-6	225	Fr.	F
Billy White	6-7	190	Fr.	F

Starters Lost (3)

Player	Ht	Wt	Cl.	Pos.	PPG	RPG
Mohamed Abukar	6-10	229	Exp.	F	15.8	5.8
Brandon Heath	6-4	203	Exp.	G	19.3	3.8
Jerome Habel	6-10	200	Jr.	F	10.9	6.2

Total Letterwinners Lost (4)

Player	Ht	Wt	Cl.	Pos.	PPG	RPG
Mohamed Abukar	6-10	229	Exp.	F	15.8	5.8
Jerome Habel	6-10	200	Jr.	F	10.9	6.2
Brandon Heath	6-4	203	Exp.	G	19.3	3.8
David Velasquez	5-11	175	Exp.	G	0.0	0.0

Honors Candidates

- L. Wade - All-America, All-Conference, All-Region
- R. Williams - All-Conference, All-Region
- K. Spain - All-Conference
- R. Amoroso - MWC Newcomer of the Year

* - Indicates assists per game.



2007-08 San Diego State Alphabetical Roster

No.	Name	Pos.	Ht.	Wt.	Yr.	Exp.	Most Recent Div. I Season			Hometown (High School/Previous School)
							PPG	RPG	APG	
43	Ryan Amoroso	F	6-8	257	Jr.	TR	5.6	4.0	0.5	Burnsville, Minn. (Burnsville High/Marquette Univ.)
40	Kelvin Davis	G	6-3	215	Jr.	JC	--	--	--	Waterbury, Conn. (Waterbury Sacred Heart/College of So. Idaho)
23	D.J. Gay	G	6-0	156	Fr.	HS	--	--	--	Sun Valley, Calif. (Poly High)
10	Bryan Horton	G	6-1	187	Fr.	HS	--	--	--	Anaheim, Calif. (Canyon High)
2	Jer'Vaughn Johnson	F	6-6	240	So.	1L	2.4	1.9	0.1	Compton, Calif. (Centennial High)
30	Chris Lamb	C	6-10	223	Jr.	2L	1.4	0.9	0.3	Louisville, Colo. (Monarch High)
5	Jon Pastorek	F	6-10	210	So.	1L	1.5	0.8	0.3	Anaheim, Calif. (Canyon High)
24	Tim Shelton	F	6-7	242	Fr.	HS	--	--	--	Fresno, Calif. (Clovis West High)
15	Kyle Spain	F	6-5	209	Jr.	2L	6.6	4.6	0.9	Newark, Calif. (Newark Memorial High)
21	Matt Thomas	G	6-4	204	Sr.	2L	1.5	1.5	2.0	Riverside, Calif. (Martin Luther King High)
31	Lorenzo Wade	F	6-6	226	Jr.	1L	10.5	5.3	2.6	Las Vegas, Nev. (Hargrave Military (Va.) Academy/Univ. of Louisville)
32	Billy White	F	6-8	212	Fr.	HS	--	--	--	Las Vegas, Nev. (Green Valley High)
3	Richie Williams	G	5-10	152	Jr.	2L	7.0	4.0	4.6	San Diego, Calif. (Steele Canyon High)

2007-08 San Diego State Numerical Roster

No.	Name	Pos.	Ht.	Wt.	Yr.	Exp.	Most Recent Div. I Season			Hometown (High School/Previous School)
							PPG	RPG	APG	
2	Jer'Vaughn Johnson	F	6-6	240	So.	1L	2.4	1.9	0.1	Compton, Calif. (Centennial High)
3	Richie Williams	G	5-10	152	Jr.	2L	7.0	4.0	4.6	San Diego, Calif. (Steele Canyon High)
5	Jon Pastorek	F	6-10	210	So.	1L	1.5	0.8	0.3	Anaheim, Calif. (Canyon High)
10	Bryan Horton	G	6-1	187	Fr.	HS	--	--	--	Anaheim, Calif. (Canyon High)
15	Kyle Spain	F	6-5	209	Jr.	2L	6.6	4.6	0.9	Newark, Calif. (Newark Memorial High)
21	Matt Thomas	G	6-4	204	Sr.	2L	1.5	1.5	2.0	Riverside, Calif. (Martin Luther King High)
23	D.J. Gay	G	6-0	156	Fr.	HS	--	--	--	Sun Valley, Calif. (Poly High)
24	Tim Shelton	F	6-7	242	Fr.	HS	--	--	--	Fresno, Calif. (Clovis West High)
30	Chris Lamb	C	6-10	223	Jr.	2L	1.4	0.9	0.3	Louisville, Colo. (Monarch High)
31	Lorenzo Wade	F	6-6	226	Jr.	1L	10.5	5.3	2.6	Las Vegas, Nev. (Hargrave Military (Va.) Academy/Univ. of Louisville)
32	Billy White	F	6-8	212	Fr.	HS	--	--	--	Las Vegas, Nev. (Green Valley High)
40	Kelvin Davis	G	6-3	215	Jr.	JC	--	--	--	Waterbury, Conn. (Waterbury Sacred Heart/College of So. Idaho)
43	Ryan Amoroso	F	6-8	257	Jr.	TR	5.6	4.0	0.5	Burnsville, Minn. (Burnsville High/Marquette Univ.)

Head Coach: Steve Fisher (Illinois State, 1967)
Assistant Head Coach: Brian Dutcher (Minnesota, 1982)
Assistant Coaches: Justin Hutson (CS Bakersfield, 1994), Mark Fisher (Michigan, 2001)
Director of Operations: Matt Soria (San Diego State, 2002)
Athletic Trainer: Mark Haines (Metropolitan State College, 1987)

Eligible in 2008-09 Season

No.	Name	Pos.	Ht.	Wt.	Yr.	Exp.	Most Recent Div. I Season			Hometown (High School/Previous School)
							PPG	RPG	APG	
20	Jason Deutchman	G	6-6	209	So.	TR	--	--	--	Los Angeles, Calif. (Santa Monica High/Wisconsin-Milwaukee)

► Pronunciations

Ryan Amoroso
 Ryan AM-or-roso
 Jason Deutchman
 Jason DOY-tch-man
 Jon Pastorek
 Jon PASS-stor-ick

► By Class

Seniors (1)
 Matt Thomas
Juniors (6)
 Ryan Amoroso, Kelvin Davis, Chris Lamb, Kyle Spain, Lorenzo Wade, Richie Williams

Sophomores (2)

Jer'Vaughn Johnson, Jon Pastorek

Freshmen (4)

D.J. Gay, Bryan Horton, Tim Shelton, Billy White

► By Position

Guards (5)
 Kelvin Davis, D.J. Gay, Bryan Horton, Matt Thomas, Richie Williams
Forwards (7)
 Ryan Amoroso, Jer'Vaughn Johnson, Jon Pastorek, Tim Shelton, Kyle Spain, Lorenzo Wade, Billy White

Centers (1)

Chris Lamb

2007-08 Schedule



2002 NCAA TOURNAMENT ▶ 2003 NIT ▶ 2006 NCAA TOURNAMENT ▶ 2007 NIT

Date	Day	Opponent	Site	Time	TV
Exhibition Game					
Nov. 5	Mon.	POINT LOMA NAZARENE	Cox Arena	7:00 p.m. PST	
World Vision Classic (Fresno, Calif.)					
Nov. 9	Fri.	vs. Liberty	Fresno, Calif.	5:30 p.m. PST	
Nov. 10	Sat.	vs. Portland	Fresno, Calif.	8:00 p.m. PST	
Nov. 11	Sun.	at Fresno State	Fresno, Calif.	4:00 p.m. PST	
Nov. 17	Sat.	UC SAN DIEGO	Cox Arena	7:00 p.m. PST	
Nov. 19	Mon.	at San Diego	San Diego, Calif.	7:00 p.m. PST	
Nov. 24	Sat.	at California	Berkeley, Calif.	TBD	
Nov. 28	Wed.	at Loyola Marymount	Los Angeles, Calif.	TBD	
Dec. 1	Sat.	WESTERN MICHIGAN	Cox Arena	7:00 p.m. PST	
Dec. 4	Tue.	UC RIVERSIDE	Cox Arena	7:00 p.m. PST	
John R. Wooden Classic (Anaheim, Calif.)					
Dec. 8	Sat.	vs. Saint Mary's	Anaheim, Calif.	Noon PST	
Dec. 17	Mon.	NAVY	Cox Arena	7:00 p.m. PST	CSTV
Dec. 22	Sat.	at Arizona	Tucson, Ariz.	TBD	
Dec. 28	Fri.	SAM HOUSTON STATE	Cox Arena	8:00 p.m. PST	The Mtn.
Jan. 5	Sat.	*TCU	Cox Arena	7:00 p.m. PST	The Mtn.
Jan. 9	Wed.	NORTHERN COLORADO	Cox Arena	7:00 p.m. PST	
Jan. 12	Sat.	*at New Mexico	Albuquerque, N.M.	7:00 p.m. MST	The Mtn.
Jan. 16	Wed.	*UTAH	Cox Arena	8:00 p.m. PST	The Mtn.
Jan. 19	Sat.	*WYOMING	Cox Arena	8:00 p.m. PST	CSTV
Jan. 23	Wed.	*at Brigham Young	Provo, Utah	6:00 p.m. MST	The Mtn.
Jan. 26	Sat.	*UNLV	Cox Arena	1:00 p.m. PST	VERSUS
Jan. 29	Tue.	*at Colorado State	Fort Collins, Colo.	7:00 p.m. MST	The Mtn.
Feb. 6	Wed.	*AIR FORCE	Cox Arena	8:00 p.m. PST	The Mtn.
Feb. 9	Sat.	*at TCU	Fort Worth, Texas	2:00 p.m. CST	The Mtn.
Feb. 13	Wed.	*NEW MEXICO	Cox Arena	8:00 p.m. PST	The Mtn.
Feb. 16	Sat.	*at Utah	Salt Lake City, Utah	2:00 p.m. MST	VERSUS
Feb. 19	Tue.	*at Wyoming	Laramie, Wyo.	7:00 p.m. MST	The Mtn.
Feb. 23	Sat.	*BRIGHAM YOUNG	Cox Arena	8:00 p.m. PST	CSTV
Feb. 26	Tue.	*at UNLV	Las Vegas, Nev.	7:00 p.m. PST	CSTV
March 1	Sat.	*COLORADO STATE	Cox Arena	7:00 p.m. PST	The Mtn.
March 8	Sat.	*at Air Force	Colorado Springs, Colo.	1:00 p.m. MST	The Mtn.
March 12-15	Wed.-Sat.	at Phillips 66 MWC Basketball Championships	Las Vegas, Nev.	TBD	

* - Indicates Mountain West Conference game. All times subject to change.

2008 NCAA Div. I Men's Basketball Championship Dates and Sites

Opening Round	First/Second Rounds	Regionals	Final Four
UD Arena Dayton, Ohio Dayton, host March 18	Honda Center Anaheim, Calif. Big West Conference, host March 20 and 22	Charlotte Bobcat Arena Charlotte, N.C. UNC-Charlotte, host March 27 and 29	Alamodome San Antonio, Texas Texas-San Antonio, host April 5 and 7
	Qwest Center Omaha Omaha, Neb. Creighton and Missouri Valley Conference, hosts March 20 and 22	RBC Center Raleigh, N.C. North Carolina State, host March 21 and 23	Ford Field Detroit, Mich. Detroit-Mercy, host March 28 and 30
	Verizon Center Washington, D.C. Georgetown, host March 20 and 22	St. Pete Times Forum Tampa, Fla. South Florida, host March 21 and 23	Reliant Stadium Houston, Texas Houston and Rice, hosts March 28 and 30
	BJCC Arena Birmingham, Ala. Southeastern Conference, host March 21 and 23	US Airways Center Phoenix, Ariz. Arizona State, host March 27 and 29	
	Alltel Arena Little Rock, Ark. Arkansas-Little Rock, host March 21 and 23		

The 2007-08 Season Outlook



A New Look, Same Success

Don't look now, but even though San Diego State lost 3,359 career points off last season's team and has just one senior on the 2007-08 squad, the Aztecs are once again poised to compete for another conference title and make a run at a third consecutive berth in the postseason, something no SDSU team has done in 68 years.

Career Games Played/Started

Player	GP	GS
Lorenzo Wade	68	24
Richie Williams	66	64
Kyle Spain	59	43
Matt Thomas	59	18
Ryan Amoroso	57	8
Jer'Vaughn Johnson	31	1
Chris Lamb	27	4
Kelvin Davis	24	1
Jon Pastorek	23	0

includes games played and games started at all Division I schools.

How far has the San Diego State basketball program progressed?

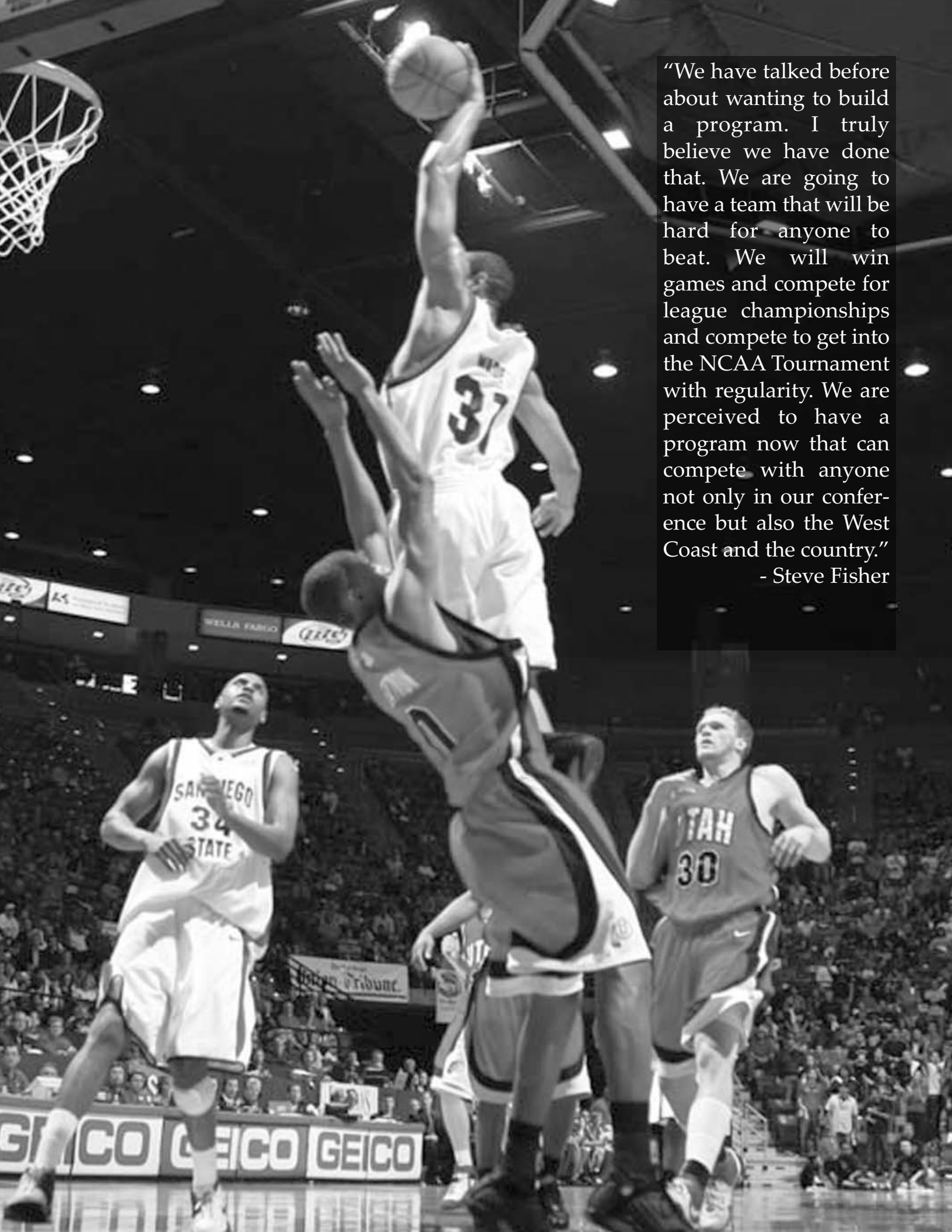
The Aztecs have won 46 games the past two seasons, advanced to the 2006 NCAA Tournament and the 2007 Postseason NIT and boasted three of arguably the best players in school history. During that time, the school's all-time leading scorer, one of the top rebounders in school history and the man with the highest individual winning percentage in the Division I era have departed the program and yet, many pundits are still picking the Aztecs to compete for the

Mountain West Conference championship.

Life is good at the top.

"We have talked before about wanting to build a program," head coach Steve Fisher said. "I truly believe we have done that. We are going to have a team that will be hard for anyone to beat. We may not win the league year in and year out, but we will win games and compete for league championships and compete to get into the NCAA Tournament with regularity. We are perceived to have a program now that can compete with anyone not only in our conference but also the West Coast and the country."





“We have talked before about wanting to build a program. I truly believe we have done that. We are going to have a team that will be hard for anyone to beat. We will win games and compete for league championships and compete to get into the NCAA Tournament with regularity. We are perceived to have a program now that can compete with anyone not only in our conference but also the West Coast and the country.”

- Steve Fisher

Team Breakdown

2006-07 Record	22-11
MWC Record	10-6
MWC Finish	T-3rd
MWC Tournament	0-1

Starters Returning (2)

Player	Ht	Wt	Cl	Pos.	PPG	RPG
Lorenzo Wade	6-6	228	Jr.	F	10.5	5.3
Richie Williams	5-9	162	Jr.	G	7.0	4.6*

Total Letterwinners Returning (7)

Player	Ht	Wt	Cl	Pos.	PPG	RPG
Jer'Vaughn Johnson	6-6	254	So.	F	2.4	1.9
Chris Lamb	6-10	245	Jr.	C	1.4	0.9
Jon Pastorek	6-8	209	So.	F	1.5	0.8
Kyle Spain	6-5	229	Jr.	F	6.6	4.6
Matt Thomas	6-4	213	Sr.	G	1.5	1.5
Richie Williams	5-9	162	Jr.	G	7.0	4.6*
Lorenzo Wade	6-6	228	Jr.	F	10.5	5.3

Newcomers (5)

Player	Ht	Wt	Cl	Pos.
Ryan Amoroso	6-8	272	Jr.	F
Kelvin Davis	6-4	210	Jr.	G
D.J. Gay	6-0	165	Fr.	G
Tim Shelton	6-6	225	Fr.	F
Billy White	6-7	190	Fr.	F

Starters Lost (3)

Player	Ht	Wt	Cl.	Pos.	PPG	RPG
Mohamed Abukar	6-10	229	Exp.	F	15.8	5.8
Jerome Habel	6-10	200	Sr.	F	10.9	6.2
Brandon Heath	6-4	203	Exp.	G	19.3	3.8

Total Letterwinners Lost (4)

Player	Ht	Wt	Cl.	Pos.	PPG	RPG
Mohamed Abukar	6-10	229	Exp.	F	15.8	5.8
Jerome Habel	6-10	200	Sr.	F	10.9	6.2
Brandon Heath	6-4	203	Exp.	G	19.3	3.8
David Velasquez	5-11	175	Exp.	G	0.0	0.0

* - Indicates assists per game.

Lorenzo Wade is one of two returning starters off last year's team that finished with a 22-11 record and an appearance in the second round of the NIT.

Season Outlook



2002 NCAA TOURNAMENT ▶ 2003 NIT ▶ 2006 NCAA TOURNAMENT ▶ 2007 NIT

Naysayers will look at the departure of graduated senior Brandon Heath (19.3 ppg, 3.8 rpg, 3.6 apg) and Mohamed Abukar (15.8 ppg, 5.8 rpg, 1.6) as irreplaceable losses, but the collective sum of the returnees plus a recruiting class that may go down as the most influential in Steve Fisher's tenure with the Aztecs, gives San Diego State fans plenty of reasons to believe the glass is half full.

Start with three returning players that give San Diego State plenty of experience. Junior forward Lorenzo Wade (10.5 ppg, 5.3 rpg, 2.6 apg) may be the best all-around player in the Mountain West Conference. He is joined by the MWC's returning assist leader in junior two-year starter Richie Williams (7.0 ppg, 4.6 apg, 4.0 rpg) and a healthy forward in junior Kyle Spain (6.6 ppg, 4.6 rpg).

Those three will be joined by players with quality experience, in newcomers Ryan Amoroso, a Marquette-transfer center, and former UTEP player Kelvin Davis. Both are juniors and both have played on 20-win teams that advanced to the NCAA Tournament.

Add to that a three-man freshmen class of guard D.J. Gay and forwards Tim Shelton and Billy White and San Diego State is poised to add to its streak of two consecutive trips to the postseason and two straight seasons with 22 or more wins.

"This is probably the deepest team we have had since I have been here," Fisher said. "Both Ryan and Kelvin have major Division I college experience at Marquette and UTEP. The three freshmen, scholarship players, are very talented and there is opportunity for them to come in and earn playing time. They will have the opportunity to play and they are good, skilled basketball players. They are physically a little bit more ready to play than some that come in as young freshmen. I think mentally as a group, they are going to be better prepared."

With a deeper team, look for the Aztecs to change their style of play a bit in 2007-08.

"We are going to try to run a little bit more," Fisher said. "I think we have the potential to score easy baskets and we have to take advantage of that. We have the potential to have a lot of players play a lot of different positions on the floor, which has not always been the case. We have the potential to play a very difficult lineup to guard with four perimeter players and one big guy. Whether that

means we are going to press a little bit more, we will see. I do think we are going to be a more effective running team than we have been of late. The challenge will be rebounding the ball and defending bigger post players that will be all over this league."

It may be surprising to some that although the Aztecs lost players that accounted for 1,464 points last season and 3,359 career points, scoring is not a major concern for the staff.

"I think we have the potential to have five guys average in double figures," Fisher said. "On any night, any one of five or six guys can score 18 to 20 points. I don't think we will have the leading scorer in the conference but we may have more double-figure scorers than anyone else in the conference. We have the ability to have a lot of people score."

Point Guard

The Aztecs return a pair of established point guards in 2007-08. Junior Richie Williams is back having started 64 games the past two seasons and is the Mountain West Conference's returning leader in assists and steals. Senior Matt Thomas appears to be healthy after a back injury limited him to just two games in 2006-07. Williams and Thomas have combined to play 125 games and have 82 starts between them.

Listed at 5-10, Williams showed great improvement between his freshman campaign and last season's sophomore year. A San Diego native, Williams increased his overall scoring by taking fewer shots, doubled his three-point field goals and significantly increased his assist total while decreasing his turnovers per minute played.

Williams averaged 7.0 points, 4.6 assists, 4.0 rebounds and 2.1 steals during his sophomore season. Most impressive, was his improved shooting touch as the lightning quick guard became a threat from beyond the arc, going 38-of-83 from three-point range (45.8 percent). That was an improvement of nearly 14 percent over his freshman numbers.

With 66 games played and 2,058 minutes logged to his credit, Williams, as a junior, is the Aztecs' most experienced player.

"Richie has been a very clutch performer under fire," Fisher said. "The thing that he has worked extremely hard on is his perimeter shooting. I think you will see a guy with more confidence and will shoot the ball well for us this year.



Kyle Spain enters his junior season having played in 59 career games while earning the starting nod 43 times the past two seasons.

"He needs to continue to lead and continue to grow as a point guard in decision making. He will now be one of the premier players on our team and we are going to need him for us to be successful in our league."

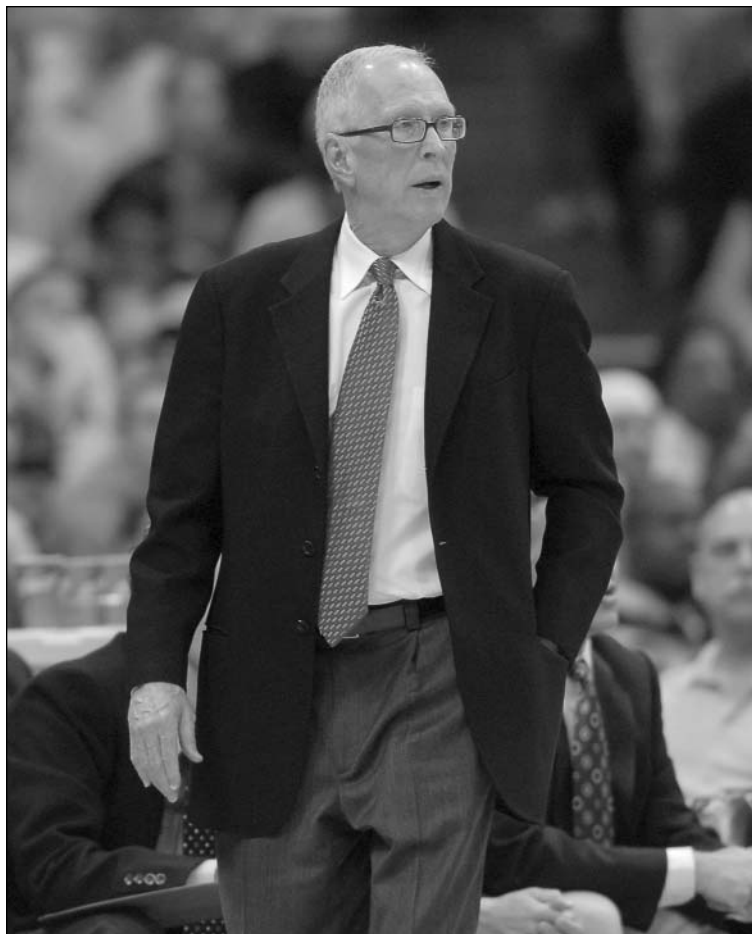
Williams, who has played in every game since stepping foot on campus, has led the Aztecs in assists 64 times during the past two seasons.

"He is a relentless, tireless worker, who sometimes tries too hard, but has continued to grow steadily as a basketball player," Fisher said. "There were higher expectations his second year, which always increases your stress level, but he handled it extremely well and we are hopeful that he will continue to grow as a player and as a young person as he has from year one to year two and from year two to year three."

One of the major frustrations for the Aztecs during the 2006-07 season was the health of Matt Thomas. Thomas, who had off-season back surgery during the summer of 2006, was never 100 percent healthy last season, saw action in only two games during the campaign after playing in 57 games and making 17 starts during his first two seasons on The Mesa.

Richie Williams returns as the Aztecs' and the Mountain West Conference's leader in assists and steals.





Steve Fisher enters his ninth season at San Diego State looking to guide the Aztecs to their third consecutive postseason appearance after reaching the 2006 NCAA Tournament and the 2007 MasterCard NIT.

Thomas has taken part in all off-season workouts and appears to be completely healthy for the first time in well over a year. For his career, Thomas has averaged 3.7 points, 2.3 rebounds and 1.3 assists. The most impressive stats for the Riverside, Calif., native, is that he averages just one turnover every 16:49 seconds he is on the court.

"Matt is playing pain free, which has not been the case the past two years," Fisher said. "We are excited about the progress he continues to make. He brings experience, size and a toughness about him that should be very helpful to the team this year. We are very optimistic that he will not only be on the team, but will be able to perform pain free which again has not been the case. If he can, he will be a factor for us."

A healthy Thomas gives the Aztecs more options not only at the point guard spot but could allow Fisher the flexibility of playing the 6-4 senior at the same time as Williams.

"I would say that the position is

going to be open, but as a two-year starter, Richie is going to be a hard guy to keep out of the lineup," Fisher said. "But with Matt's size, I think there is going to be an opportunity for the two of them to play at the same time."

Freshman D.J. Gay gives San Diego State a different look at the point guard spot. At 6-0, the Sun Valley, Calif., native, is a scoring threat at the point guard position. He averaged 29.4 points per game in high school and scored a school-record 56 points in a game. Although a natural at the point, he could also move to the two-guard position as well.

"D.J. was one of the leading scorers in the state of California last year and brings a scoring point guard mentality," Fisher said. "He can score in a variety of ways. I have been impressed with his physical and mental toughness so far. He is a sponge in terms of wanting to learn and grow as a basketball player. He will compete for playing time on the perimeter."

Shooting Guard and Small Forward

The two and three spots on the floor for San Diego State will once again be more of a semantic difference than actual distinction between the two wing spots, hence we will combine the positions here and look at the personnel collectively.

Theses two spots have been a gold mine of talent for the Aztecs during the Steve Fisher era. From Al Faux to Tony Bland to Brandon Heath, the wing positions have produced all-conference caliber players year in and year out.

It is hard to believe that after four years, 125 games, 120 starts and 2,189 points, the departure of Heath doesn't appear to leave the position void. Don't make any mistake, Heath, who became the face of the SDSU basketball program his final two years on campus, will be missed. But somehow, the depth of the position appears to be stronger than ever.

The Aztecs have proven commodities in juniors Lorenzo Wade and Kyle Spain returning, along with junior transfer Kelvin Davis. The Aztecs are once again deep and talented on the wings, with the biggest problem likely being trying to figure out how to best utilize the abundance of talent at the positions.

One of the most underrated players not only in the Mountain West Conference but the entire West Coast may be forward Lorenzo Wade. A native of Las Vegas, Nev., the 6-6 Wade worked a majority of his first season at San Diego State in the background of Heath and Mohamed Abukar's spotlight.

Nonetheless, Wade still earned honorable mention all-conference honors, averaging 10.5 points, 5.3 rebounds and 2.6 assists. Arguably the premier defensive player in the conference, he set a school-record as a sophomore last season with 101 combined steals and blocked shots.

"Lorenzo is one of our most explosive athletes," Fisher said. "He is a hard guard with his size and strength. He is very good at penetrating the defense and makes great decisions, whether it is to score or give the ball up. He has the potential to be a lock down, premier defender for us."

Wade will be counted on not only for added scoring this season, but also to provide leadership for a squad that has only one senior.

"I think Lorenzo is another one who has the ability to score in a variety of ways and he will have more

Mountain West Conference Statistical Returning Leaders

Assists Avg.

1. **Richie Williams, SD** 4.58
2. Brad Jones, WY 4.50
3. Darren Prentice, NM 3.26
4. Brandon Ewing, WY 3.06
5. Tim Anderson, AF 2.89

9. Lorenzo Wade, SD 2.58

Steals Avg.

1. **Richie Williams, SD** 2.09
2. **Lorenzo Wade, SD** 1.88
3. Tim Anderson, AF 1.77
4. Brad Jones, WY 1.50
5. Wink Adams, LV 1.49

Blocked Shots Avg.

1. Stuart Creason, CS 2.13
2. Alvarado Parker, TC 2.00
3. Joseph Taylor, WY 1.50
4. Trent Plaisted, BY 1.35
5. **Lorenzo Wade, SD** 1.18

Offensive Rebounds Avg.

1. Luke Nevill, UT 2.48
2. Trent Plaisted, BY 2.47
3. Alvarado Parker, TC 2.43
4. Kevin Langford, TC 2.30
5. Joseph Taylor, WY 1.89

8. Kyle Spain, SD 1.68

Defensive Rebounds Avg.

1. J.R. Giddens, NM 5.31
2. Luke Nevill, UT 5.21
3. Shaun Green, UT 4.43
4. Neiman Owens, TC 4.20
5. **Lorenzo Wade, SD** 3.97

Assist/TO Ratio Ratio

1. Darren Prentice, NM 1.91
2. **Richie Williams, SD** 1.51
3. Brandon Ewing, WY 1.14
4. Brad Jones, WY 1.04

* all stats are for all games during the 2006-07 season

Season Outlook



2002 NCAA TOURNAMENT ▶ 2003 NIT ▶ 2006 NCAA TOURNAMENT ▶ 2007 NIT

Aztec Returning Leaders

Scoring	PPG
Lorrenzo Wade	10.5
Richie Williams	7.0
Kyle Spain	6.6

Rebounding	RPG
Lorrenzo Wade	5.3
Kyle Spain	4.6
Richie Williams	4.0

Assists	APG
Richie Williams	4.6
Lorrenzo Wade	2.6
Kyle Spain	0.9

opportunities to do that this year with Brandon and Mohamed no longer being a part of this program," Fisher said. "I think he will have more responsibility. That will be in scoring, guarding, and in the locker room. We are going to need his leadership. He is a natural leader, vocal leader, and we need that."

Wade quietly put together one of the best inaugural seasons in SDSU history last season. With an increase in his scoring, look for him to garner more attention this season.

"I think the confidence that he gained from being a starter for us last year and going through the wars of this league and seeing what it takes will help," Fisher said. "I think his savvy, his leadership and intelligence will come in to play this year."

Junior forward Kyle Spain returns healthy for his third season as an Aztec. Plagued by injuries during his sophomore season, Spain hopes to return to the shooting form he showed during a breakout freshman

season.

"Last year he struggled with one physical ailment after another that prevented him from ever, all season long, capturing the spark he had as a freshman," Fisher said. "I think he will be back to the old Kyle and then some with his play."

Last season, Spain averaged 6.6 points and 4.6 rebounds playing in 31 games and making 18 starts. Solid numbers for most sophomores, but the fact that Spain didn't reach the plateau some thought he might, shows just how high expectations were after a sensational freshman season in which he produced better numbers than former Aztec first-team all-conference performer Marcus Slaughter did his first season on campus.

"Kyle has not only changed his number (from 33 to 15), but I think he has a new outlook on this season," Fisher said. "He is playing with great confidence, shooting the ball very well, and has continued to be more

proficient in putting the ball to the floor and making good decisions off the bounce."

A newcomer who is getting little attention but could potentially burst onto the scene is junior Kelvin Davis. The 6-3 guard played at UTEP in 2004-05 and he redshirted in 2005-06 before transferring to the College of Southern Idaho last season. A native of Waterbury, Conn., Davis is one of nine players on the roster with Division I playing experience.

One recruiting service called him the 11th-best junior college player in the nation and he helped lead the College of Southern Idaho to a 30-7 record and an appearance in the national semifinals last season.

"Kelvin brings age, maturity, experience, and high basketball intelligence and will be very much a factor on the wings for us this year. He is a skilled player who knows how to play the game. He runs the floor very well

and is pretty good with the ball. He can get in the cracks, he is strong, and can score from the perimeter and off the dribble."

Finding ways to get these three players on the court will be a nice problem for the Aztec coaching staff this season.

Walk-on Bryan Horton, a 6-1 guard from Anaheim, Calif., will give San Diego State added depth at the position.

"Bryan is a recruited walk-on who is working extremely hard on his perimeter skills," Fisher said. "He will grow with the program."

Power Forward

No position appears to be more open entering fall practice than the power forward spot, where two newcomers and a pair of sophomores are in the mix.

Two high-profile freshmen will likely make an immediate impact as 6-7 Tim Shelton and 6-8 Billy White arrive on The Mesa.

A native of Fresno, Calif., Shelton possesses the ability to stretch the defense with his inside-outside game. An athletic player, he is the son of former NBA player Lonnie Shelton.

"I have been impressed with his intelligence and basketball skill level," Fisher said. "He is someone that you feel comfortable, even as a young, first-year player in this program, will make good decisions with the ball. He is a smart rebounder. He gets his hands on a lot of balls because he knows where they are coming off the rim. He plays with a lot of toughness, both physically and mentally."

A native of Las Vegas, Nev., White has been called one of the best athletes on the team. He has a tremendous upside.

"He is extremely long and runs exceptionally well," Fisher said. "He is someone that is more effective running the floor and on the inside, as opposed to perimeter shooting and putting the ball on the floor. Yet he is a good passer, makes good decisions with the ball on the perimeter and will be an extremely exciting player to watch and will be fun for us to watch grow as a basketball player. He has so much athleticism."

Both players are expected to see a lot of playing time as true freshmen this season.

The Aztecs have a pair of returning players that continue to improve.

Jer'Vaughn Johnson saw action in 31 games as a true freshman last season. At 6-6, Johnson is a bit under-



Senior Matt Thomas enters his final season on Montezuma Mesa looking to provide leadership in one of the Mountain West Conference's most experienced backcourts.

Season Outlook



2002 NCAA TOURNAMENT ▶ 2003 NIT ▶ 2006 NCAA TOURNAMENT ▶ 2007 NIT



Chris Lamb enters the 2007-08 season as a two-time letterwinner who will be counted on to provide quality minutes at the center position as junior.

sized at the four position, but has phenomenal strength for a 240-pound sophomore.

Although he saw limited action, averaging 8.4 minutes per game, Johnson connected on 58.0 percent from the field and averaged 8.9 rebounds per 40 minutes. He also showed a glimpse of his potential against Campbell when he went for 17 points and six rebounds in 18 minutes of action.

"Jer'Vaughn has worked diligently in the weight room and on his low post game," Fisher said. "He has improved his ability to make big man moves inside and use his quickness and strength to compensate for his lack of size. He has done what you would hope he would do. He has worked hard over the summer to improve on the things that he was lacking as a freshman."

Classmate Jon Pastorek played in 23 games as a freshman last season. A native of Anaheim, Calif., he has a good inside-outside game that can stretch the defense. At 6-10, Pastorek is capable of playing both the four

and five positions for the Aztecs. A legitimate outside threat, more than half of his field goal attempts last season were from three-point range.

"Jon is transitioning into a high/low post player from a wing player," Fisher said. "He is one of our taller players and his opportunities will be greater playing more of a high post/low post and he is working tirelessly in the weight room to continue to add strength, which he did from the start of his freshman year to the start of his sophomore year, and to refine, and to some degree to learn, the nuances of playing with your back to the basket as opposed to always facing the basket."

The position is full of players with raw talent and the ability to find consistent production could go a long way toward determining the success of the 2007-08 season for the Aztecs.

Center

San Diego State has benefited from some great Division I transfers during the Steve Fisher era. Randy Holcomb,

Deandre Moore, Tony Bland and Mohamed Abukar are just a few of the players that have had great success as Aztecs after beginning their career elsewhere.

Ryan Amoroso appears to be the next in the long line of successful transfer players. A trendy preseason pick for newcomer of the year in the league, the 6-8 junior, played two seasons at Marquette. A veteran of the Big East wars, Amoroso played in 57 games and made eight starts on two Golden Eagle teams that advanced to postseason play.

Amoroso practiced with the Aztecs all of last season as he sat out the season due to NCAA transfer rules.

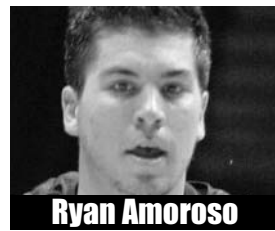
"He had the luxury of practicing last year to get acclimated to our team," Fisher said. "He brings size, both height and girth. He will be a very physical, low post player and yet is a skilled basketball player that can shoot the ball from the perimeter. He can put the ball on the floor and pass the ball with effectiveness. He is going to be a very important piece to this basketball team."

This will mark the first time in a while that the Aztecs have had the Mountain West Conference prototypical center. At 6-8 and 257 pounds, Amoroso will be called upon to bang with the big bodies in the conference. At the same time, he has the ability to step out and stretch defenses as he has shown with 19 career three-point field goals.

"I think from a versatility standpoint he is a little different because not only can he go in and be a back to the basket player, which we expect him to do, he can step out and make the open jump shot," Fisher said. "He has in early practices, really run the floor well. So we think he can make it hard on other post players to keep up with him getting down the floor. He brings a dimension that you like in every category."

Joining Amoroso at the center position, is junior Chris Lamb. A two-year letterwinner, Lamb continues to add strength to his 6-10 frame. A native of Louisville, Colo., Lamb has played in 27 career games and got the starting nod on four occasions last season.

"Chris brings size, strength, a measure of experience, having started for us in some games last year," Fisher said. "I think he will very much contend for playing time on the front line. His assets do include his ability to run the floor, rebound the basketball and defend in and around the post area."



INTRODUCTION ▶ SEASON OUTLOOK

AZTEC BASKETBALL MEDIA GUIDE

Broadcast Roster

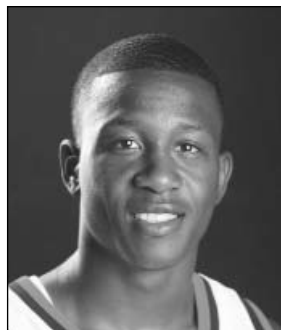


2002 NCAA TOURNAMENT ▶ 2003 NIT ▶ 2006 NCAA TOURNAMENT ▶ 2007 NIT

BROADCAST ROSTER ◀ INTRODUCTION
AZTEC BASKETBALL MEDIA GUIDE



2 Jer'Vaughn Johnson
So. • F • 6-6 • 240
Compton, Calif.



3 Richie Williams
Jr. • G • 5-10 • 152
San Diego, Calif.



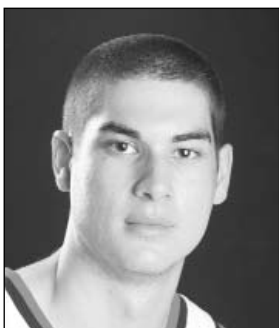
5 Jon Pastorek
So. • F • 6-10 • 210
Anaheim, Calif.



10 Bryan Horton
Fr. • G • 6-1 • 187
Anaheim, Calif.



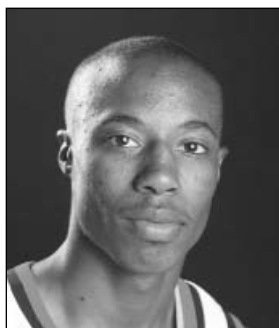
15 Kyle Spain
Jr. • F • 6-5 • 209
Newark, Calif.



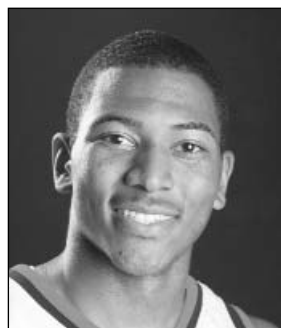
20 Jason Deutchman
So. • G • 6-6 • 209
Los Angeles, Calif.



21 Matt Thomas
Sr. • G • 6-4 • 204
Riverside, Calif.



23 D.J. Gay
Fr. • G • 6-0 • 156
Sun Valley, Calif.



24 Tim Shelton
Fr. • F • 6-7 • 242
Fresno, Calif.



30 Chris Lamb
Jr. • C • 6-10 • 223
Louisville, Colo.



31 Lorrenzo Wade
Jr. • F • 6-6 • 226
Las Vegas, Nev.



32 Billy White
Fr. • F • 6-8 • 212
Las Vegas, Nev.



40 Kelvin Davis
Jr. • G • 6-3 • 215
Waterbury, Conn.



43 Ryan Amoroso
Jr. • F • 6-8 • 257
Burnsville, Minn.



Steve Fisher
Head Coach



Brian Dutcher
Assistant Head Coach



Justin Hutson
Assistant Coach



Mark Fisher
Assistant Coach



Matt Soria
Director of Operations



Mark Haines
Athletic Trainer