

Table of Contents



THREE STRAIGHT NCAA APPEARANCES ► BACK-TO-BACK MOUNTAIN WEST REGULAR-SEASON CHAMPIONS



The 2012-13 SDSU Men's Basketball Media Guide

The 2012-13 San Diego State University Men's Basketball Media Guide is a publication of the San Diego State University athletics media relations office. The publication was written, edited and designed by assistant media relations director Darin Wong and associate athletic director/media relations Mike May.

Assistance was provided by assistant media relations directors Dave Kuhn and Jamie McConeghy, media relations assistant Beau Bearden, Andrea Rogers, Michael Bynum, Eric Harding, and media relations student assistant Morgan Barrick.

Cover design by Andrea Rogers.

Photography

Ernie Anderson, Stan Liu, Mountain West Conference, NCAA Photos, NBA Photos, NBAE/Getty Images, Philadelphia 76ers and the *Associated Press*.

Printing

Atlas Lithograph Company, Inc.



Introduction

Media Information 2 • Rosters 3 • Outlook 4 • Schedule 10 • Broadcast Roster 11

This is SDSU Basketball

Steve Fisher 14 • Fisher's Men in the Pros 16 • Viejas Arena 18 • Facilities 20 • City of San Diego 22 • Aztec Excellence 24 • Mountain West 26



Coaches and Staff

Steve Fisher 28 • Brian Dutcher 41 • Mark Fisher 42 • Tony Bland 43 • Support Staff 45

Players

Narbeh Ebrahimian 48 • Jamaal Franklin 50 • LaBradford Franklin 54 • JJ O'Brien 57 • Dwayne Polee II 59 • James Rahon 61 • DeShawn Stephens 65 • Chase Tapley 68 • Xavier Thames 73 • James Johnson 76 • Winston Shepard 77 • Matt Shrigley 77 • Skylar Spencer 77 • Jeremy Castleberry 77 • Aaron Douglas 78 • Ryan Staten 78 • Aqeel Quinn 78



2011-12 Review

Review 80 • Results 82 • Game-By-Game Statistics 87 • Miscellaneous Statistics 92 • Departed Senior Bios 94 • Box Scores and Recaps 97 • Mountain West Statistics 109



Records

Team 112 • Team Season 114 • Individual Game 116 • Top Game Performances 118 • Miscellaneous Records 120 • Individual Season 122 • Individual Career 125 • Freshmen Records 128 • Mountain West Records 129 • Viejas Arena Records 131

History

Year-By-Year Results 134 • vs. All Opponents 147 • All-Time Series 148 • Jersey Numbers 157 • Year-By-Year Summary 158 • Statistical History 160 • Awards & Honors 162 • 1,000-Point Scorers 164 • Annual Stat Leaders 170 • Letterwinners 172 • Individual Div. I Stats 174 • National Postseason 179 • Conf. Tournaments 187 • Attendance/Home Record 190 • Mountain West Series 191 • Rallies/Clutch Shots 192



University

SDSU 194 • Aztec Culture 197 • Dr. Elliot Hirshman 198 • Jim Sterk 199 • Media Information 200 • Opponent Directory 202 • Media Outlets 204 • Broadcast Partners 205 • Viejas Arena 206 • Athletics Directory 208



Media Information



THREE STRAIGHT NCAA APPEARANCES ► BACK-TO-BACK MOUNTAIN WEST REGULAR-SEASON CHAMPIONS

General Information

Location San Diego, Calif., 92182
 Founded 1897
 Enrollment 32,396
 Nickname Aztecs
 Colors Scarlet and Black
 PMS Color 185
 Arena Viejas Arena at Aztec Bowl
 Opened 1997
 Capacity 12,414
 Affiliation NCAA Division I
 Conference Mountain West
 President Dr. Elliot Hirshman
 Alma Mater (Year) Yale (1983)
 Athletics Director Jim Sterk
 Alma Mater (Year) Western Washington (1980)
 Athletic Department Phone 619-594-3019
 Ticket Office Phone 619-283-7378
 or 619-283-SDSU

History

Seasons of Basketball Entering 92nd
 First Season of Basketball 1921-22
 All-Time Record 1,314-1,052-1
 NCAA Tournament Appearances 10
 Seasons of Div. I Basketball Entering 43rd
 First Season of Div. I Basketball 1970-71
 All-Time Div. I Record 626-607
 NCAA Div. I Tournament Appearances 8
 Last NCAA Appearance 2012
 NIT Appearances 5
 Last NIT Appearance 2009

Media Relations

Assistant AD/MBB Mike May
 SID Main Office Number 619-594-5547
 May Cell Phone 619-957-8372
 SID Fax Number 619-582-6541
 May E-mail mmay@mail.sdsu.edu
 Assistant MRD/MBB Darin Wong
 Wong E-mail dwong@mail.sdsu.edu
 SID Mailing Address Aztec Media Relations
 Fowler Athletics Center
 5302 55th Street, Suite 3014
 San Diego State University
 San Diego, CA 92182

Basketball Staff

Head Coach Steve Fisher
 Alma Mater (Year) Illinois State (1967)
 Record at SDSU (Years) 258-160 (13)
 Record Overall (Years) 442-242 (21 full)
 Basketball Office Phone 619-594-6249
 Best Time to Contact Fisher Contact May
 Assistant Head Coach Brian Dutcher
 Alma Mater (Year) Minnesota (1982)
 Assistant Coach Mark Fisher
 Alma Mater (Year) Michigan (2001)
 Assistant Coach Tony Bland
 Alma Mater (Year) San Diego State (2009)
 Director of Basketball Operations Matt Soria
 Alma Mater (Year) San Diego State (2002)
 Director of Player Development David Velasquez
 Alma Mater (Year) San Diego State (2007)
 Basketball Trainer Tom Abdenour
 Alma Mater (Year) Wayne State (1976)
 Administrative Assistant Leana DeKock

Team Information

	<i>Total</i>	<i>Home</i>	<i>Away</i>	<i>Neu.</i>
2011-12 Record	26.8	17-2	7-4	2-2
2011-12 MW Record	10-4	6-1	4-3	
Mountain West Finish	.T-1st			
MW Tournament	.Finalist (2-1)			
Postseason	.NCAA			
NCAA Finish	.Midwest Second Round (0-1)			
Starters Returning/Lost	.4/1			
Letterwinners Returning/Lost	.7/3			

Media Information

Radio Station AM 600 KOGO
 Play-By-Play Announcer Ted Leitner
 PBP Phone Number 858-560-6671
 Video Footage Contact David Berry
 VFC Phone Number 619-594-2428
 Beat Writer Mark Zeigler
 The San Diego Union-Tribune
 619-293-1341
 Beat Writer TBD
 North County Times
 760-739-6645

Media Services

SID Office Phone 619-594-5547
 SID Office Fax 619-582-6541
 Viejas Arena Press Row 619-265-5853
 SDSU Athletics Website www.GoAztecs.com

2012-13 Roster Breakdown

Starters Returning (4)

Player	Ht.	Wt.	Cl.	Pos.	PPG	RPG
Jamaal Franklin	6-5	205	Jr.	G	17.4	7.9
James Rahon	6-5	205	Sr.	G	8.9	2.7
Chase Tapley	6-3	195	Sr.	G	15.8	4.3
Xavier Thames	6-3	190	Jr.	G	10.1	*4.1

Total Letterwinners Returning (7)

Player	Ht.	Wt.	Cl.	Pos.	PPG	RPG
Narbeh Ebrahimiyan	6-3	200	Sr.	G	0.9	1.3
Jamaal Franklin	6-5	205	Jr.	G	17.4	7.9
LaBradford Franklin	6-2	175	Jr.	G	2.8	*1.6
James Rahon	6-5	205	Sr.	G	8.9	2.7
DeShawn Stephens	6-8	225	Sr.	F	5.2	4.9
Chase Tapley	6-3	195	Sr.	G	15.8	4.3
Xavier Thames	6-3	190	Jr.	G	10.1	*4.1

Other Returners (3)

Player	Ht.	Wt.	Cl.	Pos.
Jeremy Castleberry	5-10	205	Jr.	G
Aaron Douglas	6-1	195	Sr.	G
Ryan Staten	6-1	195	So.	G

Newcomers (6)

Player	Ht.	Wt.	Cl.	Pos.
James Johnson	6-9	235	So.	F
JJ O'Brien	6-7	225	So.	F
Dwayne Polee II	6-7	195	So.	F
Winston Shepard	6-8	210	Fr.	F
Matt Shrigley	6-6	195	Fr.	F
Skylar Spencer	6-9	235	Fr.	F

Starters Lost (1)

Player	Ht.	Wt.	Cl.	Pos.	PPG	RPG
Tim Shelton	6-7	240	Sr.	F	5.2	4.6

Total Letterwinners Lost (3)

Player	Ht.	Wt.	Cl.	Pos.	PPG	RPG
Garrett Green	6-11	240	Sr.	F	6.0	4.6
Tim Shelton	6-7	240	Sr.	F	5.2	4.6
Alec Williams	6-6	245	Sr.	F	4.0	2.1

Honors Candidates

Jamaal Franklin - All-America, All-MW, All-Region
 JJ O'Brien - MW Newcomer of the Year
 Dwayne Polee II - MW Newcomer of the Year
 James Rahon - All-MW, All-Region
 Winston Shepard - MW Freshman of the Year
 Chase Tapley - All-America, All-MW, All-Region
 Xavier Thames - All-MW, All-Region

* - Indicates assists per game.



2012-13 San Diego State Alphabetical Roster

No.	Name	Pos.	Ht.	Wt.	Yr.	Exp.	Most Recent Div. I Season			Hometown (High School/Previous School)
							PPG	RPG	APG	
33	Jeremy Castleberry	G	5-10	205	Jr.	SQ	1.0	0.2	0.0	Upper Marlboro, Md. (Martin Luther King High (Calif.))
32	Aaron Douglas	G	6-1	195	Sr.	SQ	0.5	0.0	0.0	San Diego, Calif. (Charter School of San Diego/Cuyamaca College)
25	Narbeh Ebrahimian	G	6-3	200	Sr.	1L	0.9	1.3	0.4	Glendale, Calif. (Crescenta Valley High/Glendale Community College)
21	Jamaal Franklin	G	6-5	205	Jr.	2L	17.4	7.9	1.5	Hawthorne, Calif. (Westwind Prep International (Ariz.))
3	LaBradford Franklin	G	6-2	175	Jr.	2L	2.8	1.4	1.6	Temecula, Calif. (Great Oak High)
12	James Johnson	F	6-9	235	So.	TR	1.5	1.3	0.3	San Diego, Calif. (Elsinore High/Univ. of Virginia)
20	JJ O'Brien	F	6-7	225	So.	TR	6.4	5.5	1.2	Rancho Cucamonga, Calif. (Alta Loma High/Univ. of Utah)
5	Dwayne Polee II	F	6-7	195	So.	TR	4.4	2.5	0.6	Los Angeles, Calif. (Westchester High/St. John's)
11	James Rahon	G	6-5	205	Sr.	2L	8.9	2.7	0.8	San Diego, Calif. (Torrey Pines High/Santa Clara Univ.)
13	Winston Shepard	F	6-8	210	Fr.	HS	--	--	--	Houston, Texas (Findlay Prep (Nev.))
40	Matt Shrigley	F	6-6	195	Fr.	HS	--	--	--	San Diego, Calif. (La Costa Canyon High)
0	Skylar Spencer	F	6-9	235	Fr.	HS	--	--	--	Inglewood, Calif. (Price High)
4	Ryan Staten	G	6-1	195	So.	SQ	1.5	0.5	0.0	San Pablo, Calif. (Piedmont High)
23	DeShawn Stephens	F	6-8	225	Sr.	1L	5.2	4.9	0.3	Los Angeles, Calif. (Chatsworth High/Santa Monica College)
22	Chase Tapley	G	6-3	195	Sr.	3L	15.8	4.3	2.3	Sacramento, Calif. (Sacramento High)
2	Xavier Thames	G	6-3	190	Jr.	1L	10.1	3.2	4.1	Sacramento, Calif. (Pleasant Grove High/Washington State Univ.)

2012-13 San Diego State Numerical Roster

No.	Name	Pos.	Ht.	Wt.	Yr.	Exp.	Most Recent Div. I Season			Hometown (High School/Previous School)
							PPG	RPG	APG	
0	Skylar Spencer	F	6-9	235	Fr.	HS	--	--	--	Inglewood, Calif. (Price High)
2	Xavier Thames	G	6-3	190	Jr.	1L	10.1	3.2	4.1	Sacramento, Calif. (Pleasant Grove High/Washington State Univ.)
3	LaBradford Franklin	G	6-2	175	Jr.	2L	2.8	1.4	1.6	Temecula, Calif. (Great Oak High)
4	Ryan Staten	G	6-1	195	So.	SQ	1.5	0.5	0.0	San Pablo, Calif. (Piedmont High)
5	Dwayne Polee II	F	6-7	195	So.	TR	4.4	2.5	0.6	Los Angeles, Calif. (Westchester High/St. John's)
11	James Rahon	G	6-5	205	Sr.	2L	8.9	2.7	0.8	San Diego, Calif. (Torrey Pines High/Santa Clara Univ.)
12	James Johnson	F	6-9	235	So.	TR	1.5	1.3	0.3	San Diego, Calif. (Elsinore High/Univ. of Virginia)
13	Winston Shepard	F	6-8	210	Fr.	HS	--	--	--	Houston, Texas (Findlay Prep (Nev.))
20	JJ O'Brien	F	6-7	225	So.	TR	6.4	5.5	1.2	Rancho Cucamonga, Calif. (Alta Loma High/Univ. of Utah)
21	Jamaal Franklin	G	6-5	205	Jr.	2L	17.4	7.9	1.5	Hawthorne, Calif. (Westwind Prep International (Ariz.))
22	Chase Tapley	G	6-3	195	Sr.	3L	15.8	4.3	2.3	Sacramento, Calif. (Sacramento High)
23	DeShawn Stephens	F	6-8	225	Sr.	1L	5.2	4.9	0.3	Los Angeles, Calif. (Chatsworth High/Santa Monica College)
25	Narbeh Ebrahimian	G	6-3	200	Sr.	1L	0.9	1.3	0.4	Glendale, Calif. (Crescenta Valley High/Glendale Community College)
32	Aaron Douglas	G	6-1	195	Sr.	SQ	0.5	0.0	0.0	San Diego, Calif. (Charter School of San Diego/Cuyamaca College)
33	Jeremy Castleberry	G	5-10	205	Jr.	SQ	1.0	0.2	0.0	Upper Marlboro, Md. (Martin Luther King High (Calif.))
40	Matt Shrigley	F	6-6	195	Fr.	HS	--	--	--	San Diego, Calif. (La Costa Canyon High)

Head Coach: Steve Fisher (Illinois State, 1967)
Associate Head Coach/
Head Coach In Waiting: Brian Dutcher (Minnesota, 1982)
Assistant Coaches: Mark Fisher (Michigan, 2001), Tony Bland (San Diego State, 2009)
Director of Operations: Matt Soria (San Diego State, 2002)
Director of Player Development: David Velasquez (San Diego State, 2007)

Eligible in 2013-14 Season

No.	Name	Pos.	Ht.	Wt.	Yr.	Exp.	Most Recent Div. I Season			Hometown (High School/Previous School)
							PPG	RPG	APG	
14	Aqeel Quinn	G	6-3	200	Jr.	TR	6.8	2.1	1.7	Gardena, Calif. (Leuzinger High/CS Northridge)

► Pronunciations	By Class	Franklin, Xavier Thames	► By Position	Forwards (7)
Narbeh Ebrahimian	Seniors (5)	Sophomores (4)	Guards (9)	James Johnson, JJ O'Brien, Dwayne Polee II, Winston Shepard, Matt Shrigley, Skylar Spencer, DeShawn Stephens
Nar-BAY E-bra-he-me-en	Aaron Douglas, Narbeh Ebrahimian, James Rahon, DeShawn Stephens, Chase Tapley,	JJ O'Brien, Dwayne Polee II, James Johnson, Ryan Staten	Jeremy Castleberry, Aaron Douglas, Narbeh Ebrahimian, Jamaal Franklin, LaBradford Franklin, James Rahon, Ryan Staten, Chase Tapley, Xavier Thames	
Ryan Staten	Tapley,	Freshmen (3)		
Ryan State-en	Juniors (4)	Winston Shepard, Matt Shrigley, Skylar Spencer		
Chase Tapley	Jeremy Castleberry, Jamaal Franklin, LaBradford			Centers (0)
Chase TAP-lee	Franklin, LaBradford			None
Xavier Thames				
Xavier Th-AIMS				

The 2012-13 Season Outlook



Defending the Throne

The term “excitement” does not even begin to describe the feeling surrounding the San Diego State men’s basketball team.

Schools around the nation are excited, eager, anxious for the season to start. That’s normal. But very few schools sellout its entire home schedule ... in August.

The Aztecs are among the elite now and the community, the state, the region and the country are now taking notice.

Head coach Steve Fisher has built a national powerhouse on The Mesa and San Diego State is now a game opponents and fans alike circle when schedules are released in the offseason.

The Aztecs are no longer the hunter, they are hunted. And for good reason.

SDSU enters the campaign ranked No. 20 in both preseason top-25 polls, something that has never been accomplished in school history, and is the preseason favorite to defend its Mountain West crown for the third straight year.

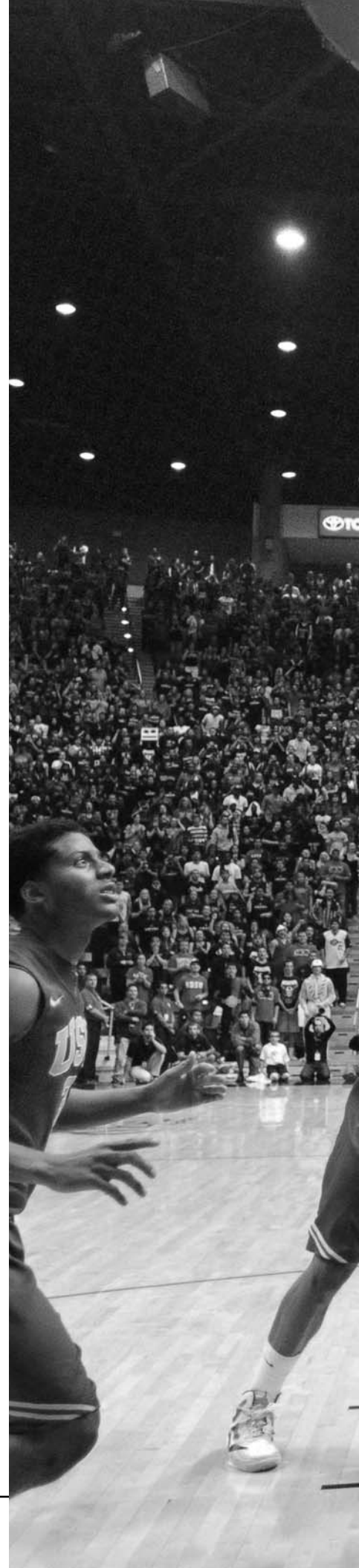
The excitement in the air is warranted after finishing the 2011-12 campaign ranked 22nd in the final Associated Press Top-25 Poll, logging the pro-

gram’s fourth straight 25-win season and advancing to the NCAA Tournament for the third year in a row.

The scary part is that four starters and seven letterwinners off the 2011-12 team are back for more. As nice as it is to have so much experience returning, what is joining the fray has fans and the media thinking something grander than 2010-11’s 34-3 record and run to the Sweet 16.

Entering the mix are three Division I transfers and three freshmen, who make up a top-25 recruiting class. It is these six players that have people thinking sky is the limit. And why not? San Diego State is no stranger to success. It is not a program that has experienced a few good seasons and fallen off the map. The program is on solid ground after seven consecutive seasons with 20 or more victories and seven straight trips to the postseason.

The Aztecs are here to stay and they are here to defend their Mountain West throne one last time. They have the personnel to do it and more importantly they have a leader that knows what is required to get the job done. It will not be easy, but nothing has up to this point.





Jamaal Franklin, the reigning Mountain West Player of the Year, is one of four returning starters.

Team Breakdown

2011-12 Record	26-8
MW Record	10-4
MW Finish	T-1st
MW Tournament	2-1
NCAA Tournament	0-1

Starters Returning (4)

Player	Ht.	Wt.	Cl.	Pos.	PPG	RPG
Jamaal Franklin	6-5	195	Jr.	G	17.4	7.9
James Rahon	6-5	210	Sr.	G	8.9	2.7
Chase Tapley	6-3	195	Sr.	G	15.8	4.3
Xavier Thames	6-3	195	Jr.	G	10.1	*4.1

Total Letterwinners Returning (7)

Player	Ht.	Wt.	Cl.	Pos.	PPG	RPG
Narbeh Ebrahimian	6-3	198	Sr.	G	0.9	1.3
Jamaal Franklin	6-5	195	Jr.	G	17.4	7.9
LaBradford Franklin	6-2	175	Jr.	G	2.8	*1.6
James Rahon	6-5	210	Sr.	G	8.9	2.7
DeShawn Stephens	6-8	215	Sr.	F	5.2	4.9
Chase Tapley	6-3	195	Sr.	G	15.8	4.3
Xavier Thames	6-3	195	Jr.	G	10.1	*4.1

Other Returners (3)

Player	Ht.	Wt.	Cl.	Pos.
Jeremy Castleberry	5-10	205	Jr.	G
Aaron Douglas	6-1	195	Sr.	G
Ryan Staten	6-1	195	So.	G

Newcomers (6)

Player	Ht.	Wt.	Cl.	Pos.
James Johnson	6-9	238	So.	F
JJ O'Brien	6-7	215	So.	F
Dwayne Polee II	6-7	195	So.	F
Winston Shepard	6-8	205	Fr.	F
Matt Shrigley	6-6	195	Fr.	F
Skylar Spencer	6-9	210	Fr.	F

Starters Lost (1)

Player	Ht.	Wt.	Cl.	Pos.	PPG	RPG
Tim Shelton	6-7	240	Sr.	F	5.2	4.6

Total Letterwinners Lost (3)

Player	Ht.	Wt.	Cl.	Pos.	PPG	RPG
Garrett Green	6-11	240	Sr.	F	6.0	4.6
Tim Shelton	6-7	240	Sr.	F	5.2	4.6
Alec Williams	6-6	245	Sr.	F	4.0	2.1

* - Indicates assists per game.



Season Outlook



THREE STRAIGHT NCAA APPEARANCES ► BACK-TO-BACK MOUNTAIN WEST REGULAR-SEASON CHAMPIONS

The cornerstone on which lofty expectations are based entering the 2012-13 campaign is that four Aztec starters return off a team that went 26-8 last season, advanced to its third consecutive NCAA Tournament and earned a share of a second consecutive Mountain West title.

SDSU's starting backcourt returns as intact from a year ago and can rival that of not only any school on the west coast, but can be mentioned with those among the elite in the country.

Jamaal Franklin, a 6-5 wing player burst on to the national stage last season. As a freshman in 2010-11, the Hawthorne, Calif., native had to talk his head coach into not redshirting him. Despite playing on the best team in school history, Franklin saw action in 22 games, including 10 of the final 13, as his role increased on a team that won the regular season title, conference tournament and advanced to the Sweet 16 of the NCAA Tournament.

Last season, Franklin progressed from being a role player to being the best player in one of the premier conferences in the country. He earned MW Player of the Year accolades as he averaged a conference-leading 17.4 points and 7.9 rebounds, which ranked fourth in the league.

Franklin emerged as one of the nation's biggest surprises a year ago, earning CBSsports.com's most improved player award. Gifted with a work ethic that is second to none, the rising junior has once again reshaped his game in the offseason and has turned into a more complete player.

As he enters his third season on campus, Franklin sports a long-range jumper can rival that of the best three-point specialists and whose athletic ability makes him a matchup nightmare for the opposition. Respect his shot and you are susceptible to be taken off the dribble. Franklin made a living at the free-throw line a year ago, converting 80.0 percent of his attempts. More impressive was his ability to draw contact as got to the charity stripe an average of 6.3 times a game, the 34th-highest total in the nation and tops in the league.

If opponents decide to play off him to not get beat, Franklin can knock down the outside shot, which is something he improved on during the offseason. A year ago, Franklin made 51 treys, which was the second-highest total on the team.

What is scary is that Franklin has more components around him this season. Although he may have a hard time matching his point total from

last season, he should benefit from logging more minutes at the small forward position than a year ago when he played at the four.

Chase Tapley returns for his senior season as one of the most accomplished players in school history. A career 1,000-point scorer, the 6-3 guard will depart with more career victories than any player in school history.

A native of Sacramento, Tapley is a three-year returning starter who saw his role grow significantly last season en route to earning second-team all-conference accolades and being named to the MW all-tournament team in March. He transitioned from a role starter to one of a primary scorer. He averaged 15.8 points as a junior and nearly equaled his scoring output in 2011-12 (537), to that from his first two seasons combined (542).

The ease at which Tapley transitioned to one of the key components on a championship team last season may have caught some off guard. But Tapley has all the tools to affect play on both ends of the court. He has an outstanding three-point shot, connecting on 75 treys and making 43.3 percent of his attempts during his junior campaign. He is also equally proficient at utilizing his outside shooting abilities to set up his mid-range game and has proven he is crafty enough to finish at the rim.

At the other end of the court, Tapley used his quick hands to be one of the league leaders in steals as he ranked third last season. His ability on both ends of the court and experience playing in big games will be a valuable asset to the Aztecs.

SDSU returns their starting point guard from last season in junior Xavier Thames, who enjoyed a productive first season on The Mesa. After transferring from Washington State, Thames made 30 starts in 2011-12 and was one of three San Diego State players to average in double figures in scoring (10.1), while pacing the team in assists (4.1).

At 6-3, Thames gives the Aztecs good size at the point and a physical presence at the position. Thames was among the league leaders in many categories, including third in free-throw percentage and minutes played, and fifth in assists and assist-to-turnover ratio. Another category that may get overlooked is Thames averaged the sixth-most free-throw attempts per game last season in the Mountain West. The ability to initiate contact and draw the foul in the low



Guard James Rahon enters his senior campaign looking to lead San Diego State to a third straight Mountain West championship.

post is another facet to his all-around game.

As good as Thames was a year ago, he has undoubtedly gotten better. He has a significantly improved three-point shot, one that he showed off when he won the team's three-point shooting contest at Madness on the Mesa.

Also listed as a returning starter is senior guard James Rahon. One of three current Aztecs that call San Diego home, Rahon brings a wealth of experience with him entering his final campaign. The Torrey Pines High product has played in 100 games, made 53 starts, and logged 896 points and 118 three-point field goals in his career.

Nagged by a foot injury most of last season, Rahon still averaged 8.9 points and 2.7 rebounds in 31 games, 30 of which were starts, for the Aztecs. The influx of quality depth in both the freshman class and transfer group should lower the minute count not only for Rahon, but for the entire team.

Rahon's three-point field goal shooting dipped below the 40 percent mark for the first time in his career in 2011-12. With off-season surgery behind him, the coaching staff is looking forward to seeing a healthy Rahon return to his old form for his collegiate swan song.

Ask San Diego State coaches which

Career Games Played/Started

Player	GP	GS
Chase Tapley	101	82
James Rahon	100	53
Xavier Thames	62	34
Jamaal Franklin	54	22
LaBradford Franklin	50	1
DeShawn Stephens	34	3
Dwayne Polee II	33	27
JJ O'Brien	22	21
Narbeh Ebrahimian	8	0
James Johnson	6	0
Jeremy Castleberry	5	0
Aaron Douglas	2	0
Ryan Staten	2	0
Totals	479	243

Includes games played and games started at all Division I schools for eligible players this season.

Chase Tapley, a three-year returning starter, is looking to guide San Diego State to the NCAA Tournament for the fourth straight season.



Season Outlook

THREE STRAIGHT NCAA APPEARANCES ► BACK-TO-BACK MOUNTAIN WEST REGULAR-SEASON CHAMPIONS



Junior LaBradford Franklin begins his third season at San Diego State and will provide the Aztecs with solid depth at the guard position.

returning player is likely to make the biggest improvement this season and the response you will get is senior forward DeShawn Stephens. The 6-8 post player will have ample opportunity to show his improvement at a position where SDSU has its least amount of experience.

Stephens did not play organized basketball in high school, but burst onto the scene at Santa Monica College where he played two seasons. Last year as a junior, Stephens showed glimpses of the bright future he possesses with an 18-point scoring outing and eight contests with nine rebounds.

Stephens is an athletic player who has the ability to make the spectacular play. What he lacked last season was experience. With another year of organized basketball under his belt and the work he put in during the off-season knowing that he would likely be the opening night starter should make for a very productive senior campaign.

The Aztecs also welcome back point guard LaBradford Franklin. The junior saw his playing time increase last year and as a result, enjoyed a career season. He gives SDSU another experienced ball-handler.

Joining the core group of five returnees are three high-profile transfers. The trio, which practiced with the Aztecs last season, is entering its

sophomore season, meaning they will have the 2012-13 campaign plus two additional seasons to play.

Two of the three, JJ O'Brien and Dwayne Polee II, are available to play immediately. James Johnson, meanwhile, will sit out the first semester to complete NCAA transfer rules and will be eligible when fall semester grades are posted at San Diego State.

O'Brien, a 6-7, 225-pound sophomore forward from Rancho Cucamonga, Calif., returns to his home state after playing at Utah in 2010-11. He started 21 games his freshman campaign and averaged 6.4 points and 5.5 rebounds.

O'Brien is a smart player who reads the court well and has reminded some of former Aztec Tim Shelton. Opponents would be wise to not sleep on his athletic ability or his perimeter game, which he worked on during his redshirt season last year.

Polee has become a household name despite the fact that he has yet to play in a game. He was voted the preseason MW co-newcomer of the year by the media in October.

The 6-7 forward played in 33 games and made 27 starts as a freshman on a St. John's team that advanced to the NCAA Tournament in 2010-11. He averaged 4.4 points and 2.5 rebounds and was one of just five players to see action in every game for the Red Storm that season.

Polee's athletic ability puts him in very rare company. His YouTube dunks have become a favorite pastime for Aztec fans anxious to see him on the court. He is still scratching the surface of his potential, but there is no doubt that he will have opportunities to showcase his talents in 2012-13 for SDSU.

Although not eligible until late December, Johnson may be the most important of the three transfers this season. At 6-9, 235 pounds, he will provide the Aztecs with an additional body in the low post. Johnson played six games in the early part of the 2011-12 campaign at Virginia before electing to transfer to San Diego State.

He has excellent low post moves and very quick feet for someone with his size. His ability to shoot mid-range jumpers coupled with his quick release give him the potential to see a lot of action this season.

As if the returners and the Division I transfers were not enough, SDSU welcomes three freshmen that comprise the most heralded recruiting class in school history. The coaching staff will likely use the preseason and exhibition games to determine who will fit into this year's rotation.

Winston Shepard became San Diego State's most decorated signee in school history when he chose to come to The Mesa. A product of Findlay Prep in Henderson, Nev., Shepard was rated a five-star recruit and was ranked as high No. 21 among all players in the class.

Shepard has sensational athleticism and the ability to play the one through four positions on the court. Despite being 6-8, he has the skill to be the primary ball handler on the court and can create matchup problems wherever the coaching staff elects to play him.

Skylar Spencer is a 6-9 freshman from Inglewood, Calif., who will give the Aztecs a presence inside. He was rated among the top 125 players nationally coming out of Price High and was consistently listed as one of the top 25 centers in the country. Spencer can finish at the rim and runs the floor well for a player his size.

A local product out of San Diego, Matt Shrigley is a 6-8 forward who will give Fisher another option on the wing. Shrigley possesses a deadly outside shot and an understanding of the game that is rare for a freshman. He helped lead La Costa Canyon High to the CIF Division II state championship game and was listed as one of the top 10 players in California.

2012-13 Preseason Accolades

National Rankings

- No. 8**
 - Adam Zagoria, *Sheridan Hoops*
- No. 9**
 - Jon Wilner, *San Jose Mercury News*
- No. 10**
 - Marlen Garcia, *USA Today*
- No. 13**
 - CBSSports.com
 - Mike Huguenin, *Yahoo! Sports*
- No. 14**
 - John Akers, *Basketball Times*
- No. 15**
 - Lindy's
 - Athlon
- No. 16**
 - Andy Katz, *ESPN.com*
 - Dick Vitale, *ESPN.com*
- No. 18**
 - Jon Rothstein, *CBS Sports*
- No. 20**
 - Associated Press Poll
 - USA Today Coaches' Poll

MW Predictions

- Champions**
 - MW Media Poll
 - Lindy's
- Second Place**
 - Athlon Sports
 - Jon Rothstein, *CBS Sports*
 - Jeff Borzello, *CBSSports.com*

Other Team Accolades

NCAA Participants

- Athlon Sports
- Lindy's
- ESPN.com

Recruiting Class

- No. 24: Lindy's
- No. 24: Rivals.com

2012-13 Schedule



THREE STRAIGHT NCAA APPEARANCES ► BACK-TO-BACK MOUNTAIN WEST REGULAR-SEASON CHAMPIONS

Date	Day	Opponent	Site	Time	TV
Exhibition Games					
Nov. 1	Thu.	CS SAN MARCOS	Viejas Arena	7:00 p.m. PST	
Nov. 5	Mon.	UC SAN DIEGO	Viejas Arena	7:00 p.m. PST	
Northrop Grumman Presents Battle on the Midway (USS Midway; San Diego, Calif.)					
Nov. 11	Sun.	vs. Syracuse	San Diego, Calif.	5:00 p.m. PST	Fox Sports Net
Nov. 13	Tue.	SAN DIEGO CHRISTIAN	Viejas Arena	7:00 p.m. PST	FS San Diego
Mountain West-Missouri Valley Challenge					
Nov. 17	Sat.	at Missouri State	Springfield, Mo.	1:00 p.m. CST	
Nov. 21	Wed.	ARKANSAS-PINE BLUFF	Viejas Arena	7:30 p.m. PST	FS San Diego
Nov. 25	Sun.	at USC	Los Angeles, Calif.	7:00 p.m. PST	Fox Sports Net
John R. Wooden Classic (Honda Center; Anaheim, Calif.)					
Dec. 1	Sat.	vs. UCLA	Anaheim, Calif.	7:00 p.m. PST	ESPNU
Dec. 3	Mon.	TEXAS SOUTHERN	Viejas Arena	7:00 p.m. PST	TWCSN
Dec. 6	Thu.	UC SANTA BARBARA	Viejas Arena	7:00 p.m. PST	TWCSN
Dec. 15	Sat.	SAN DIEGO	Viejas Arena	7:00 p.m. PST	TBD
Dec. 18	Tue.	POINT LOMA NAZARENE	Viejas Arena	7:00 p.m. PST	FS San Diego
Hawaiian Airlines Diamond Head Classic (Stan Sheriff Center; Honolulu, Hawaii)					
Dec. 22	Sat.	vs. San Francisco	Honolulu, Hawaii	1:00 p.m. HST	ESPNU
Dec. 23	Sun.	vs. Ole Miss/Indiana State	Honolulu, Hawaii	10:00 a.m./Noon HST	ESPNU
Dec. 25	Tue.	vs. TBD	Honolulu, Hawaii	TBD	TBD
Jan. 2	Wed.	CSU BAKERSFIELD	Viejas Arena	7:00 p.m. PST	TWCSN
Jan. 9	Wed.	at Fresno State*	Fresno, Calif.	8:30 p.m. PST	TWCSN
Jan. 12	Sat.	COLORADO STATE*	Viejas Arena	5:00 p.m. PST	NBCSN
Jan. 16	Wed.	UNLV*	Viejas Arena	7:00 p.m. PST	CBSSN
Jan. 19	Sat.	at Wyoming*	Laramie, Wyo.	5:30 p.m. MST	TWCSN
Jan. 23	Wed.	at Nevada*	Reno, Nev.	7:00 p.m. PST	CBSSN
Jan. 26	Sat.	NEW MEXICO*	Viejas Arena	1:00 p.m. PST	NBCSN
Feb. 2	Sat.	at Air Force*	USAF Academy, Colo.	1:00 p.m. MST	TWCSN
Feb. 6	Wed.	BOISE STATE*	Viejas Arena	8:00 p.m. PST	TWCSN
Feb. 9	Sat.	FRESNO STATE*	Viejas Arena	3:00 p.m. PST	CBSSN
Feb. 13	Wed.	at Colorado State*	Fort Collins, Colo.	8:00 p.m. MST	CBSSN
Feb. 16	Sat.	at UNLV*	Las Vegas, Nev.	6:00 p.m. PST	NBCSN
Feb. 19	Tue.	WYOMING*	Viejas Arena	7:00 p.m. PST	TWCSN
Feb. 23	Sat.	NEVADA	Viejas Arena	3:00 p.m. PST	NBCSN
Feb. 27	Wed.	at New Mexico*	Albuquerque, N.M.	8:00 p.m. MST	CBSSN
March 6	Wed.	AIR FORCE*	Viejas Arena	8:30 p.m. PST	TWCSN
March 9	Sat.	at Boise State*	Boise, Idaho	1:30 p.m. MST	NBCSN
March 12-16	Tue.-Sat.	at Reese's MW Championship	Las Vegas, Nev.	TBD	TBD

* - Indicates Mountain West game. CAPS indicates home game at Viejas Arena. All times subject to change.

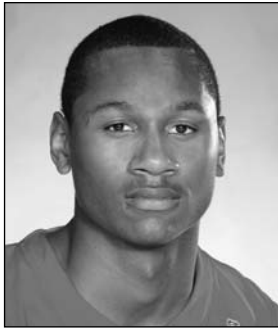
2013 NCAA Div. I Men's Basketball Championship Dates and Sites

<p>First Round</p> <p>UD Arena Dayton, Ohio Host: Univ. of Dayton March 19 and 20</p> <p>Second/Third Rounds</p> <p>Palace of Auburn Hills Auburn Hills, Mich. Host: Oakland Univ. March 21 and 23</p> <p>Rupp Arena Lexington, Ky. Host: Univ. of Kentucky March 21 and 23</p> <p>Energy Solutions Arena Salt Lake City, Utah Host: Univ. of Utah March 21 and 23</p>	<p>HP Pavilion San Jose, Calif. Host: West Coast Conference March 21 and 23</p> <p>Frank Erwin Center Austin, Texas Host: Univ. of Texas March 22 and 24</p> <p>UD Arena Dayton, Ohio Host: Univ. of Dayton March 22 and 24</p> <p>Sprint Center Kansas City, Mo. Host: Missouri Valley Conference March 22 and 24</p>	<p>Wells Fargo Center Philadelphia, Pa. Host: Temple Univ. March 22 and 24</p> <p>Regionals</p> <p>Staples Center Los Angeles, Calif. Host: Pepperdine Univ. March 28 and 30</p> <p>Verizon Center Washington, D.C. Host: Georgetown Univ. March 28 and 30</p> <p>Cowboys Stadium Arlington, Texas Host: Big 12 Conference March 29 and 31</p>	<p>Lucas Oil Stadium Indianapolis, Ind. Host: IUPUI, Horizon League March 29 and 31</p> <p>Final Four</p> <p>Georgia Dome Atlanta, Ga. Host: Georgia Tech April 6 and 8</p>
--	--	---	--

Broadcast Roster



THREE STRAIGHT NCAA APPEARANCES ► BACK-TO-BACK MOUNTAIN WEST REGULAR-SEASON CHAMPIONS



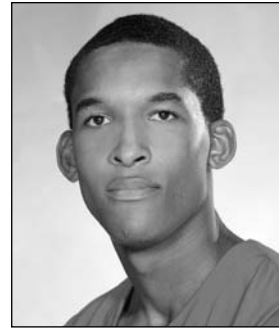
0 Skylar Spencer
Fr. • F • 6-9 • 235
Inglewood, Calif.



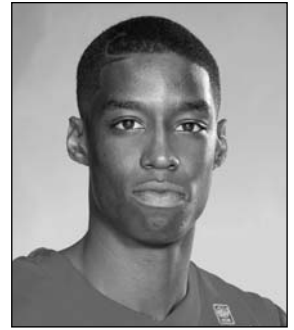
2 Xavier Thames
Jr. • G • 6-3 • 190
Sacramento, Calif.



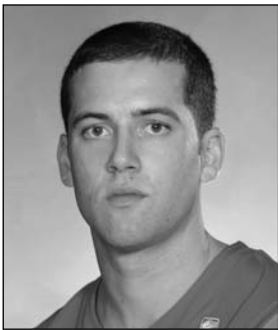
3 LaBradford Franklin
Jr. • G • 6-2 • 175
Temecula, Calif.



4 Ryan Staten
So. • G • 6-1 • 195
San Pablo, Calif.



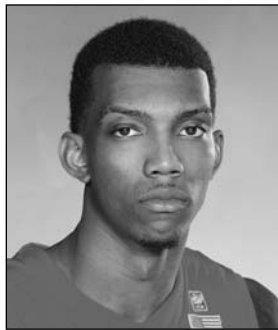
5 Dwayne Polee II
So. • F • 6-7 • 195
Los Angeles, Calif.



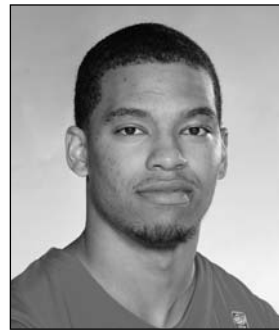
11 James Rahon
Sr. • G • 6-5 • 205
San Diego, Calif.



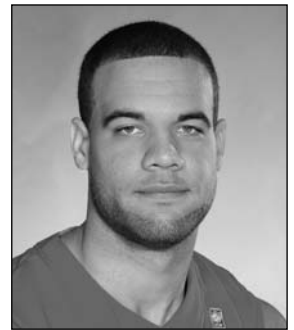
12 James Johnson
So. • F • 6-9 • 235
San Diego, Calif.



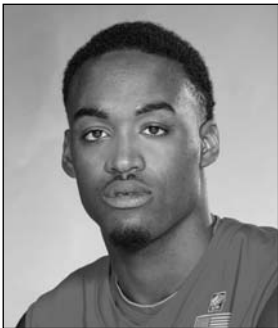
13 Winston Shepard
Fr. • F • 6-8 • 210
Houston, Texas



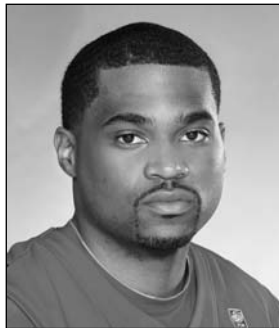
14 Aqeel Quinn
Jr. • G • 6-3 • 200
Gardena, Calif.



20 JJ O'Brien
So. • F • 6-7 • 225
Rancho Cucamonga, Calif.



21 Jamaal Franklin
Jr. • G • 6-5 • 205
Hawthorne, Calif.



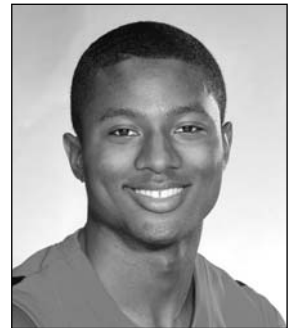
22 Chase Tapley
Sr. • G • 6-3 • 195
Sacramento, Calif.



23 DeShawn Stephens
Sr. • F • 6-8 • 225
Los Angeles, Calif.



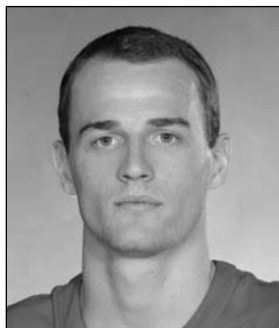
25 Narbeh Ebrahimian
Sr. • G • 6-3 • 200
Glendale, Calif.



32 Aaron Douglas
Sr. • G • 6-1 • 195
San Diego, Calif.



33 Jeremy Castleberry
Jr. • G • 5-10 • 205
Upper Marlboro, Md.



40 Matt Shrigley
Fr. • F • 6-6 • 195
San Diego, Calif.



**REESE'S
MOUNTAIN WEST
MEN'S & WOMEN'S
BASKETBALL CHAMPIONSHIPS**

MARCH 12-16, 2013

THOMAS & MACK CENTER • LAS VEGAS

FOR TICKET, HOTEL AND SCHEDULE INFORMATION,
AS WELL AS PROMOTIONAL OPPORTUNITIES, PLEASE VISIT
www.TheMWC.com/2013

