



Alphabetical Index

100-Point Games	121	NCAA Tournament History	181
1,000-Point Scorers	168	Opponent Directory	202
All Opponents, vs.	156	Player Bios	56
Assistant Coaches	50	Preview, 2006-07 Season	6
Athletics Director Jeff Schemmel	195	Overtime Games	120
Athletic Directory	208	Postseason Tournaments	180
Attendance/Home Court Record	187	Recaps, 2005-06 Game	104
Basketball Support Staff	54	Results, 2005-06 Season	90
Cox Arena at Aztec Bowl	206	Results, All-Time	140
Cox Arena Records	137	Roster, Broadcast	14
Division I Era Statistical Leaders	179	Roster, 2006-07	4
Double-Doubles	125	San Diego State University	190
Fisher, Bio Steve	38	Schedule, 2006-07	5
Freshman Season Records	134	Series, All-Time	157
Letterwinners	174	Series Superlatives	164
Media Information	200	Single-Game Performances, Individual	124
Media Outlets	204	Specialty Games	151
MWC Records	135	Statistics, Division I Era Career	176
MWC Tournaments	185	Statistics, 2005-06 Season	91

Table of Contents



2006 NCAA TOURNAMENT ► 2006 MOUNTAIN WEST CHAMPIONS

TABLE OF CONTENTS ◀ INTRODUCTION



Introduction

Index 1 • Table of Contents 2 • Quick Facts 3 • Rosters 4 • Schedule 5 • 2006-07 Season Preview 6 • Broadcast Roster 14

This is SDSU Basketball

Steve Fisher 16 • Fisher's Men in the NBA 18 • Cox Arena 20 • Game Night at Cox Arena 22 • Facilities 24 • National Attention 26 • Community Service 28 • Academics 29 • San Diego State University 30 • City of San Diego 32 • Aztec Excellence 34 • Mountain West Conference 36

Coaches and Staff

Steve Fisher 38 • Brian Dutcher 50 • Gregg Gottlieb 51 • Justin Hutson 52 • Mark Fisher 53 • Support Staff 54

Players

Mohamed Abukar 56 • Brandon Heath 60 • Brett Hoerner 67 • Chris Lamb 69 • Kyle Spain 71 • Matt Thomas 74 • Lorenzo Wade 78 • Richie Williams 80 • Jerome Habel/Jer'Vaughn Johnson 83 • Jon Pastorek/Ryan Amoroso 84 • Career Stats vs. MWC 86

2005-06 Review

2005-06 Notes 88 • Results 90 • Game-By-Game Statistics 92 • Miscellaneous Statistics 94 • Departed Letterwinners 100 • Box Scores and Recaps 104 • MWC Statistics 115

Records

Team 118 • Team Season 120 • Individual Game 122 • Top Game Performances 124 • Individual Season 128 • Individual Career 131 • Freshmen Records 134 • MWC Records 135 • Cox Arena Records 137

History

Year-By-Year Results 140 • Year-By-Year Summary 152 • Statistical History 154 • vs. All Opponents 156 • All-Time Series 157 • Jersey Numbers 165 • Awards and Honors 166 • 1,000-Point Scorers 168 • Annual Statistical Leaders 172 • Letterwinners 174 • Individual Div. I Stats 176 • National Postseason 180 • Conference Tournaments 185 • Attendance/Home Record 187 • MWC Series 188

University

San Diego State 190 • Dr. Stephen Weber 194 • Jeff Schemmel 195 • Support Staff 196 • Media Information 200 • Opponent Directory 202 • Media Outlets 204 • Broadcast Information 205 • Cox Arena 206 • Directory 208



The 2006-07 SDSU Men's Basketball Media Guide

The 2006-07 San Diego State University Basketball Media Guide is a publication of the San Diego State University athletic media relations office. The publication was written, edited and designed by assistant athletic director/media relations Mike May and assistant media relations director Darin Wong.

Assistance was provided by assistant media relations directors Dave Kuhn, Peggy Curtin and Jamie McConeghy, media relations assistants Jim Solien and Mike Passanisi, Lesley Fong, Richard Groves, media relations student assistants Keith Kawamura, Marc Feller, Courtney Bylund, Cody Jenkins, Christina Ross, Alli Novak, Kenny Esquivel and Jason Tutone.

Cover design by Darin Wong, Jim Solien and Mike May.

Photography

Ernie Anderson, Stan Liu, Ken Jacques, Kerry Snider, Paul McCarthy (Fairbanks, Alaska), Cal Poly Media Relations, Mountain West Conference, NBAE/Getty Images, National Basketball Association, Philadelphia 76ers and Kelly Ayers.

Printing

SDSU Reprographic Services

AZTEC BASKETBALL MEDIA GUIDE

Media Information



2006 NCAA TOURNAMENT ► 2006 MOUNTAIN WEST CHAMPIONS

General Information

Location San Diego, Calif., 92182
 Founded 1897
 Enrollment 35,887
 Nickname Aztecs
 Colors Scarlet and Black
 PMS Color 185
 Arena Cox Arena at Aztec Bowl
 Opened 1997
 Capacity 12,414
 Affiliation NCAA Division I
 Conference Mountain West
 President Dr. Stephen Weber
 Alma Mater (Year) Bowling Green (1964)
 Athletics Director Jeff Schemmel
 Alma Mater (Year) Kansas State (1976)
 Athletic Department Phone 619-594-3019
 Ticket Office Phone 619-283-7378
 or 619-283-SDSU

History

Seasons of Basketball Entering 86th
 First Season of Basketball 1921-22
 All-Time Record 1,162-999
 NCAA Tournament Appearances 8
 Seasons of Div. I Basketball Entering 37th
 First Season of Div. I Basketball 1970-71
 All-Time Div. I Record 473-553
 NCAA Div. I Tournament Appearances 5
 Last NCAA Appearance 2006
 NIT Appearances 2
 Last NIT Appearance 2003

Media Relations

Assistant AD/MBB Mike May
 SID Main Office Number 619-594-5547
 May Cell Phone 619-957-8372
 SID Fax Number 619-582-6541
 May E-mail mmay@mail.sdsu.edu
 Assistant MRD/MBB Darin Wong
 Wong E-mail dwong@mail.sdsu.edu
 SID Mailing Address Aztec Media Relations
 3014 Aztec Athletics Center
 5302 55th Street
 San Diego State University
 San Diego, CA 92182



Basketball Staff

Head Coach Steve Fisher
 Alma Mater (Year) Illinois State (1967)
 Record at SDSU (Years) 105-106 (7)
 Record Overall (Years) 289-188 (15 full)
 Basketball Office Phone 619-594-6249
 Best Time to Contact Fisher Contact May
 Assistant Head Coach Brian Dutcher
 Alma Mater (Year) Minnesota (1982)
 Assistant Coach Gregg Gottlieb
 Alma Mater (Year) UCLA (1995)
 Assistant Coach Justin Hutson
 Alma Mater (Year) CS Bakersfield (1994)
 Director of Basketball Operations . Mark Fisher
 Alma Mater (Year) Michigan (2001)
 Director of Player Development . . . Matt Soria
 Alma Mater (Year) San Diego State (2002)
 Basketball Trainer Mark Haines
 Alma Mater (Year) Metropolitan State (1987)
 Administrative Assistant Marty Malano

Team Information

	Total	Home	Away	Neu.
2005-06 Record	24-9	13-2	7-5	4-2
2005-06 MWC Record	13-3	7-1	6-2	
Mountain West Finish	.1st			
MWC Tournament	.Champions (3-0)			
Postseason	.NCAA			
NCAA Finish	.First Round (0-1)			
Starters Returning/Lost	.4/1			
Letterwinners Returning/Lost	.7/5			

Media Information

Radio Station XX Sports Radio 1090 AM/105.7 FM
 Play-By-Play Announcer Ted Leitner
 PBP Phone Number 858-453-9153
 Radio Analyst John Kentera
 Analyst Phone Number 858-453-9153
 Video Footage Contact Brian Murphy
 VFC Phone Number 619-594-7617
 Beat Writer Mick McGrane
 The San Diego Union-Tribune
 619-293-1341
 Beat Writer Mike Sullivan
 North County Times
 760-739-6645

Media Services

SID Office Phone 619-594-5547
 SID Office Fax 619-582-6541
 Cox Arena Press Row 619-265-5853
 SDSU Athletics Website www.goaztecs.com

2006-07 Roster Breakdown

Starters Returning (4)

Player	Ht	Wt	Cl	Pos.	PPG	RPG
Mohamed Abukar	6-10	229	Sr.	F	14.3	4.7
Brandon Heath	6-4	203	Sr.	G	18.4	3.5*
Kyle Spain	6-5	229	So.	F	9.2	5.6
Richie Williams	5-9	162	So.	G	6.6	3.8*

Total Letterwinners Returning (7)

Player	Ht	Wt	Cl	Pos.	PPG	RPG
Mohamed Abukar	6-10	229	Sr.	F	14.3	4.7
Brandon Heath	6-4	203	Sr.	G	18.4	3.5*
Brett Hoerner	6-11	223	So.	C	1.9	1.1
Chris Lamb	6-10	245	So.	C	0.7	0.0
Kyle Spain	6-5	229	So.	F	9.2	5.6
Matt Thomas	6-4	213	Jr.	G	1.3	1.2
Richie Williams	5-9	162	So.	G	6.6	3.8*

Newcomers (4)

Player	Ht	Wt	Cl	Pos.
Jerome Habel	6-8	200	Jr.	F
Jer'Vaughn Johnson	6-6	254	Fr.	F
Jon Pastorek	6-8	209	Fr.	F
Lorenzo Wade	6-6	228	So.	F

Starters Lost (1)

Player	Ht	Wt	Cl.	Pos.	PPG	RPG
Marcus Slaughter	6-9	220	Jr.	F	16.5	11.0

Total Letterwinners Lost (5)

Player	Ht	Wt	Cl.	Pos.	PPG	RPG
Mohamed Camara	6-10	245	Exp.	C	2.5	3.6
Trimaine Davis	6-7	235	Exp.	C	4.0	2.1
Tim McGrath	6-5	187	Fr.	F	0.6	1.1
John Sharper	6-0	190	Exp.	G	8.8	1.4
Marcus Slaughter	6-9	220	Jr.	F	16.5	11.0

Honors Candidates

- B. Heath - MWC Player of the Year, All-America, All-Region
- M. Abukar - All-Conference, All-Region
- K. Spain - All-Conference
- R. Williams - All-Conference
- L. Wade - MWC Newcomer of the Year, All-Conference
- J. Habel - MWC Newcomer of the Year

* - Indicates assists per game.

Aztec Players



2006 NCAA TOURNAMENT ► 2006 MOUNTAIN WEST CHAMPIONS

2006-07 San Diego State Alphabetical Roster

No.	Name	Pos.	Ht.	Wt.	Yr.	Exp.	Most Recent Div. I Season			Hometown (High School/Previous School)
							PPG	RPG	APG	
34	Mohamed Abukar	F	6-10	229	Sr.	1L	14.3	4.7	1.0	San Diego, Calif. (Rancho Bernardo High/Univ. of Florida)
4	Jerome Habel	F	6-8	200	Jr.	JC	---	---	---	Rockville, Md. (Walt Whitman (Md.) High/San Bernardino Valley College)
1	Brandon Heath	G	6-4	203	Sr.	3L	18.4	3.4	3.5	Los Angeles, Calif. (Westchester High)
00	Brett Hoerner	C	6-11	223	So.	1L	1.9	1.1	0.1	Fullerton, Calif. (Fullerton High)
2	Jer'Vaughn Johnson	F	6-6	254	Fr.	HS	---	---	---	Compton, Calif. (Centennial High)
30	Chris Lamb	C	6-10	245	So.	1L	0.7	0.0	0.0	Louisville, Colo. (Monarch High)
5	Jon Pastorek	F	6-8	209	Fr.	HS	---	---	---	Anaheim, Calif. (Canyon High)
33	Kyle Spain	F	6-5	229	So.	1L	9.2	5.6	1.0	Newark, Calif. (Newark Memorial High)
21	Matt Thomas	G	6-4	213	Jr.	2L	1.3	1.2	1.1	Riverside, Calif. (Martin Luther King High)
12	Lorenzo Wade	F	6-6	228	So.	TR	3.9	1.7	0.2	Las Vegas, Nev. (Hargrave Military (Va.) Academy/Univ. of Louisville)
3	Richie Williams	G	5-9	162	So.	1L	6.6	2.6	3.8	San Diego, Calif. (Steele Canyon High)

2006-07 San Diego State Numerical Roster

No.	Name	Pos.	Ht.	Wt.	Yr.	Exp.	Most Recent Div. I Season			Hometown (High School/Previous School)
							PPG	RPG	APG	
00	Brett Hoerner	C	6-11	223	So.	1L	1.9	1.1	0.1	Fullerton, Calif. (Fullerton High)
1	Brandon Heath	G	6-4	203	Sr.	3L	18.4	3.4	3.5	Los Angeles, Calif. (Westchester High)
2	Jer'Vaughn Johnson	F	6-6	254	Fr.	HS	---	---	---	Compton, Calif. (Centennial High)
3	Richie Williams	G	5-9	162	So.	1L	6.6	2.6	3.8	San Diego, Calif. (Steele Canyon High)
4	Jerome Habel	F	6-8	200	Jr.	JC	---	---	---	Rockville, Md. (Walt Whitman (Md.) High/San Bernardino Valley College)
5	Jon Pastorek	F	6-8	209	Fr.	HS	---	---	---	Anaheim, Calif. (Canyon High)
21	Matt Thomas	G	6-4	213	Jr.	2L	1.3	1.2	1.1	Riverside, Calif. (Martin Luther King High)
30	Chris Lamb	C	6-10	245	So.	1L	0.7	0.0	0.0	Louisville, Colo. (Monarch High)
31	Lorenzo Wade	F	6-6	228	So.	TR	3.9	1.7	0.2	Las Vegas, Nev. (Hargrave Military (Va.) Academy/Univ. of Louisville)
33	Kyle Spain	F	6-5	229	So.	1L	9.2	5.6	1.0	Newark, Calif. (Newark Memorial High)
34	Mohamed Abukar	F	6-10	229	Sr.	1L	14.3	4.7	1.0	San Diego, Calif. (Rancho Bernardo High/Univ. of Florida)

Head Coach: Steve Fisher (Illinois State, 1967)
Assistant Head Coach: Brian Dutcher (Minnesota, 1982)
Assistant Coaches: Gregg Gottlieb (UCLA, 1995), Justin Hutson (CS Bakersfield, 1994)
Director of Operations: Mark Fisher (Michigan, 2001)
Dir. of Player Development: Matt Soria (San Diego State, 2002)
Athletic Trainer: Mark Haines (Metropolitan State College, 1987)

Eligible in 2007-08 Season

No.	Name	Pos.	Ht.	Wt.	Yr.	Exp.	Most Recent Div. I Season			Hometown (High School/Previous School)
							PPG	RPG	APG	
40	Ryan Amoroso	F	6-8	272	Jr.	TR	5.6	4.0	0.5	Burnsville, Minn. (Burnsville High/Marquette Univ.)

<p>► Pronunciations</p> <p>Ryan Amoroso Ryan AM-or-roso</p> <p>Mohamed Abukar Mohamed AH-boo-kar</p> <p>Jerome Habel Jerome Habel (rhymes with ABLE)</p> <p>Brett Hoerner Brett HORN-er</p> <p>John Pastorek John PASS-stor-ick</p>	<p>► By Class</p> <p>Seniors (2) Mohamed Abukar, Brandon Heath</p> <p>Juniors (2) Jerome Habel, Matt Thomas</p>	<p>Sophomores (5) Brett Hoerner, Chris Lamb, Kyle Spain, Lorenzo Wade, Richie Williams</p> <p>Freshmen (2) Jer'Vaughn Johnson, Jon Pastorek</p>	<p>► By Position</p> <p>Centers (2) Brett Hoerner, Chris Lamb</p> <p>Guards (3) Brandon Heath, Matt Thomas, Richie Williams</p> <p>Forwards (6) Mohamed Abukar, Jerome Habel, Jer'Vaughn Johnson, Jon Pastorek, Kyle Spain, Lorenzo Wade</p>
---	--	---	--

AZTEC PLAYERS ◀ INTRODUCTION

AZTEC BASKETBALL MEDIA GUIDE

2006-07 Schedule



2006 NCAA TOURNAMENT ▶ 2006 MOUNTAIN WEST CHAMPIONS

Date	Day	Opponent	Site	Time	TV
Exhibition Game					
Nov. 1	Wed.	POINT LOMA NAZARENE	Cox Arena	7:00 p.m. PST	
Shamrock Invitational (Moraga, Calif.)					
Nov. 10	Fri.	vs. Murray State	Moraga, Calif.	5:00 p.m. PST	
Nov. 11	Sat.	at Saint Mary's	Moraga, Calif.	7:30 p.m. PST	
Nov. 12	Sun.	vs. Seattle Pacific	Moraga, Calif.	5:00 p.m. PST	
Nov. 15	Wed.	UC SAN DIEGO	Cox Arena	7:00 p.m. PST	The mtn.
Nov. 18	Sat.	CALIFORNIA	Cox Arena	4:30 p.m. PST	Versus
Nov. 21	Tue.	UC RIVERSIDE	Cox Arena	7:00 p.m. PST	
Nov. 25	Sat.	at UC Santa Barbara	Santa Barbara, Calif.	7:00 p.m. PST	
Nov. 29	Wed.	SAN DIEGO	Cox Arena	7:00 p.m. PST	
Dec. 2	Sat.	at Western Michigan	Kalamazoo, Mich.	2:00 p.m. EST	
San Diego SLAM (Cox Arena; San Diego, Calif.)					
Dec. 9	Sat.	Oklahoma State vs. Ball State	Cox Arena	4:00 p.m. PST	Channel 4 San Diego
Dec. 9	Sat.	SDSU vs. ARIZONA	Cox Arena	6:30 p.m. PST	Channel 4 San Diego
Dec. 12	Tue.	CAMPBELL	Cox Arena	7:00 p.m. PST	
Dec. 16	Sat.	LOYOLA MARYMOUNT	Cox Arena	7:00 p.m. PST	The mtn.
Dec. 21	Thur.	at Washington State	Seattle, Wash.	7:30 p.m. PST	FSN Northwest
Dec. 30	Sat.	LAFAYETTE	Cox Arena	7:00 p.m. PST	The mtn.
Jan. 3	Wed.	*WYOMING	Cox Arena	7:00 p.m. PST	
Jan. 6	Sat.	*at Brigham Young	Provo, Utah	3:30 p.m. MST	Versus
Jan. 13	Sat.	*COLORADO STATE	Cox Arena	1:00 p.m. PST	CSTV
Jan. 17	Wed.	*NEW MEXICO	Cox Arena	7:30 p.m. PST	The mtn.
Jan. 20	Sat.	*at Air Force	Colorado Springs, Colo.	3:00 p.m. MST	Versus
Jan. 23	Tue.	*at UNLV	Las Vegas, Nev.	7:00 p.m. PST	Versus
Jan. 27	Sat.	*UTAH	Cox Arena	3:00 p.m. PST	CSTV
Jan. 31	Wed.	*at TCU	Fort Worth, Texas	6:30 p.m. CST	The mtn.
Feb. 6	Tue.	*AIR FORCE	Cox Arena	7:00 p.m. PST	CSTV
Feb. 10	Sat.	*at Colorado State	Fort Collins, Colo.	1:00 p.m. MST	The mtn.
Feb. 13	Tue.	*UNLV	Cox Arena	8:00 p.m. PST	The mtn.
Feb. 17	Sat.	*at Wyoming	Laramie, Wyo.	1:00 p.m. MST	The mtn.
Feb. 20	Tue.	*at New Mexico	Albuquerque, N.M.	7:00 p.m. MST	The mtn.
Feb. 24	Sat.	*BRIGHAM YOUNG	Cox Arena	3:00 p.m. PST	CSTV
Feb. 27	Tue.	*at UTAH	Salt Lake City, Utah	7:00 p.m. MST	The mtn.
Mar. 3	Sat.	*TCU	Cox Arena	3:00 p.m. PST	The mtn.
Mar. 6-10	Tue.-Sat.	at Mountain West Conference Basketball Tournament (Thomas & Mack Center; Las Vegas, Nev.)			

* - Indicates Mountain West Conference game. All times subject to change.

Aztecs Travel Plans

▶ Hotel information on page 204.

Shamrock Invitational
 ▶ Depart: Thursday, Nov. 9 at 4:25 p.m. on Southwest Airlines #1760, arriving in Oakland at 5:55 p.m.
 ▶ Return: Sunday, Nov. 12 at 9:10 p.m. on Southwest Airlines #2186, arriving in San Diego at 10:35 p.m.

UC Santa Barbara
 ▶ Charter bus (details TBD)

Western Michigan
 ▶ Depart: Thursday, Nov. 30 at 10:45 a.m. on American Airlines #1956, arriving in Chicago at 4:40 p.m.
 ▶ Return: Saturday, Dec. 2 at 8:00 p.m. on American Airlines #1605, arriving in San Diego at 10:20 p.m.

Washington State
 ▶ Depart: Wednesday, Dec. 20 at 12:50 p.m. on Southwest Airlines #1997, through Las Vegas, arriving in Seattle at 5:15 p.m.
 ▶ Return: Friday, Dec. 22 at 8:10 a.m. on Southwest Airlines #2510, through San Jose, arriving in San Diego at noon.

Brigham Young
 ▶ Depart: Friday, Jan. 5 at 9:29 a.m. on Delta Airlines #4035, arriving in Salt Lake City at 12:25 p.m.
 ▶ Return: Saturday, Jan. 6 at 9:07 p.m. on Delta Airlines #1806, arriving in San Diego at 10:04 p.m.

Air Force
 ▶ Depart: Friday, Jan. 19 at 10:33 a.m. on United Airlines #0362, arriving in Denver at 1:43 p.m.
 ▶ Return: Saturday, Jan. 20 at 8:36 p.m. on United Airlines #1227, arriving in San Diego at 9:51 p.m.

UNLV
 ▶ Depart: Monday, Jan. 22 at 4:55 p.m. on Southwest Airlines #1011, arriving in Las Vegas at 6:05 p.m.
 ▶ Return: Tuesday, Jan. 23 at 11:59 p.m. on America West #0532, arriving in San Diego on Wednesday at 1:05 a.m.

TCU
 ▶ Depart: Tuesday, Jan. 30 at 2:30 p.m. on American Airlines #540, arriving in Fort Worth at 7:30 p.m.
 ▶ Return: Thursday, Feb. 1 at 11:30 a.m., on American Airlines #465, arriving in San Diego at 12:40 p.m.

Colorado State
 ▶ Depart: Friday, Feb. 9 at 10:33 a.m. on United Airlines #0362, arriving in Denver at 1:43 p.m.
 ▶ Return: Saturday, Feb. 10 at 7:35 p.m. on United Airlines #1241, arriving in San Diego at 8:47 p.m.

Wyoming
 ▶ Depart: Friday, Feb. 16 at 10:33 a.m. on United Airlines #0362, arriving in Denver at 1:43 p.m.
 ▶ Return: Saturday, Feb. 17 at 8:36 p.m. on United Airlines #1241, arriving in San Diego at 9:51 p.m.

New Mexico
 ▶ Depart: Monday, Feb. 19 at 2:10 p.m. on Southwest Airlines #2044, through Tucson, arriving in Albuquerque at 5:45 p.m.
 ▶ Return: Wednesday, Feb. 21 at 10:30 a.m. on Southwest Airlines #1117, through Tucson, arriving in San Diego at 12:20 p.m.

Utah
 ▶ Depart: Monday, Feb. 26 at 1 p.m. on Delta Airlines #1272, arriving in Salt Lake City at 3:50 p.m.
 ▶ Return: Wednesday, Feb. 28 at 11:20 a.m. on Delta Airlines #1003, arriving in San Diego at 12:15 p.m.

2007 NCAA Div. I Men's Basketball Championship Dates and Sites

Opening Round

Univ. of Dayton Arena
Dayton, Ohio
Dayton, host
March 13

First/Second Rounds

HSBC Arena
Buffalo, N.Y.
Metro Atlantic Athletic Conference, Canisius College and Niagara Univ., hosts
March 15 and 17

ARCO Arena
Sacramento, Calif.
Univ. of the Pacific, host
March 15 and 17

Rupp Arena
Lexington, Ky.
Univ. of Kentucky, host
March 15 and 17

Lawrence Joel Veterans Memorial Coliseum
Winston-Salem, N.C.
Wake Forest Univ., host
March 15 and 17

United Center
Chicago, Ill.
Big Ten Conference, host
March 16 and 18

Nationwide Arena
Columbus, Ohio
Ohio State Univ., host
March 16 and 18

Spokane Memorial Arena
Spokane, Wash.
Washington State Univ., host
March 16 and 18

New Orleans Arena
New Orleans, La.
Tulane Univ., host
March 16 and 18

Regionals

Alamodome
San Antonio, Texas
Univ. of Texas-San Antonio, host
March 22 and 24

HP Pavilion
San Jose, Calif.
San Jose State Univ., host
March 22 and 24

Continental Airlines Arena
East Rutherford, N.J.
Rutgers Univ., host
March 23 and 25

Edward Jones Dome
St. Louis, Mo.
Missouri Valley Conference, host
March 23 and 25

Final Four

Georgia Dome
Atlanta, Ga.
Georgia Institute of Technology, host
March 31 and April 2

The 2006-07 Season Outlook



San Diego State enjoyed unparalleled success on the court in 2005-06. But a school-record 24 Division I victories, the first outright conference title of the Division I era, the second conference tournament championship of the Mountain West Conference era and a return trip to the NCAA Tournament did not take away the sting of a first round loss in the NCAA Tournament. Now, with four starters and seven letterwinners returning, the Aztecs are looking to put a happier ending on the remarkable story of one of the greatest turnarounds in NCAA history.

Unfinished Business

Percentage Returning in '06-07

Category	Pct. Back
Points	59.8
Field Goals	60.8
Three-Point FGs	63.6
Free Throws	55.2
Rebounds	43.4
Assists	75.0
Blocks	36.6
Steals	71.8
Minutes	58.9

Career Games Played/Started

Player	GP	GS
Brandon Heath	92	87
Mohamed Abukar	59	21
Matt Thomas	57	17
Lorenzo Wade	35	0
Richie Williams	33	32
Kyle Spain	28	25
Brett Hoerner	15	0
Chris Lamb	6	0

Times have changed for the basketball program at San Diego State.

As the University and community celebrated the most successful basketball campaign in the school's 36 Division I seasons, the individuals responsible for that magical run in 2005-06, thought about what could have been.

The SDSU basketball program is now in a position where a 24-9 record, a Mountain West Conference regular-season title and conference championship are not

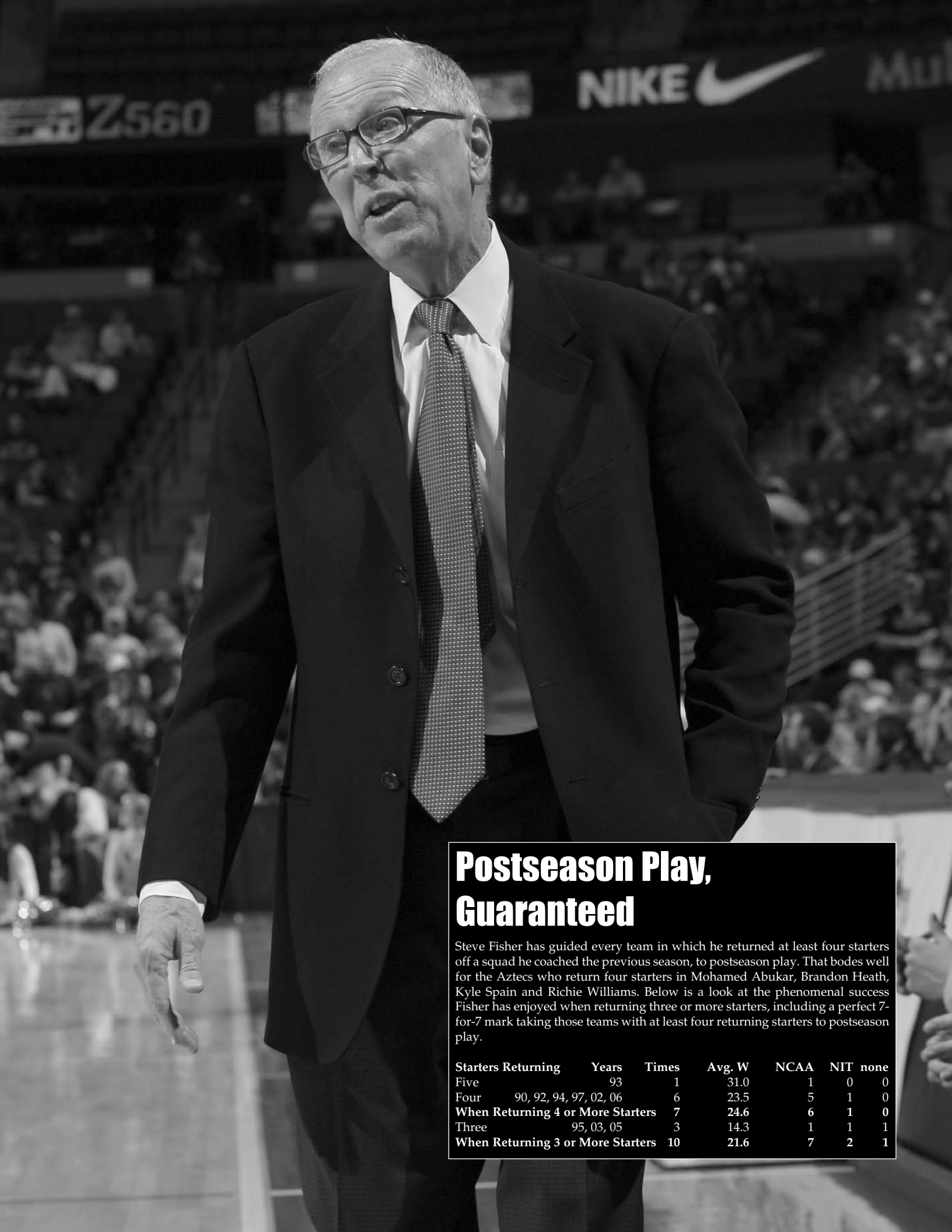
enough to satisfy its national championship coach and its soon to be most prolific scorer in school history.

And that may be the single most impressive example of where the Aztecs' basketball program has come.

Gone are the days when San Diego State went 16 consecutive seasons without reaching the postseason (from 1985 to 2001), or failing to make the conference postseason tournament twice in a three-year period, and averaging just 9.1 victories in the eight seasons from 1991-92 to 1999-00.

That has been replaced by a program that in 2006-07 will look to become the first Mountain West Conference team to win consecutive outright conference titles and attempt to return to the NCAA Tournament in consecutive seasons for the first time since 1975-76.

That is where the 2006-07 story begins, with four starters and seven letterwinners back from last season's squad that flirted with the first NCAA Tournament victory and changed the perception of Aztec basketball nationally.



Postseason Play, Guaranteed

Steve Fisher has guided every team in which he returned at least four starters off a squad he coached the previous season, to postseason play. That bodes well for the Aztecs who return four starters in Mohamed Abukar, Brandon Heath, Kyle Spain and Richie Williams. Below is a look at the phenomenal success Fisher has enjoyed when returning three or more starters, including a perfect 7-for-7 mark taking those teams with at least four returning starters to postseason play.

Starters Returning	Years	Times	Avg. W	NCAA	NIT	none
Five	93	1	31.0	1	0	0
Four	90, 92, 94, 97, 02, 06	6	23.5	5	1	0
When Returning 4 or More Starters		7	24.6	6	1	0
Three	95, 03, 05	3	14.3	1	1	1
When Returning 3 or More Starters		10	21.6	7	2	1

Team Breakdown

2005-06 Record	24-9
MWC Record	13-3
MWC Finish	1st
MWC Tournament	3-0

Starters Returning (4)

Player	Ht	Wt	Cl	Pos.	PPG	RPG
Mohamed Abukar	6-10	229	Sr.	F	14.3	4.7
Brandon Heath	6-4	203	Sr.	G	18.4	3.5*
Kyle Spain	6-5	229	So.	F	9.2	5.6
Richie Williams	5-9	162	So.	G	6.6	3.8*

Total Letterwinners Returning (7)

Player	Ht	Wt	Cl	Pos.	PPG	RPG
Mohamed Abukar	6-10	229	Sr.	F	14.3	4.7
Brandon Heath	6-4	203	Sr.	G	18.4	3.5*
Brett Hoerner	6-11	223	So.	C	1.9	1.1
Chris Lamb	6-10	245	So.	C	0.7	0.0
Kyle Spain	6-5	229	So.	F	9.2	5.6
Matt Thomas	6-4	213	Jr.	G	1.3	1.2
Richie Williams	5-9	162	So.	G	6.6	3.8*

Newcomers (4)

Player	Ht	Wt	Cl	Pos.
Jerome Habel	6-8	200	Jr.	F
Jer'Vaughn Johnson	6-6	254	Fr.	F
Jon Pastorek	6-8	209	Fr.	F
Lorenzo Wade	6-6	228	So.	F

Starters Lost (1)

Player	Ht	Wt	Cl	Pos.	PPG	RPG
Marcus Slaughter	6-9	220	Jr.	F	16.5	11.0

Total Letterwinners Lost (5)

Player	Ht	Wt	Cl	Pos.	PPG	RPG
Mohamed Camara	6-10	245	Exp.	C	2.5	3.6
Trimaine Davis	6-7	235	Exp.	C	4.0	2.1
Tim McGrath	6-5	187	So.	F	0.6	1.1
John Sharper	6-0	190	Exp.	G	8.8	1.4
Marcus Slaughter	6-9	220	Jr.	F	16.5	11.0

* - Indicates assists per game.

Kyle Spain is one of four returning starters off last year's team that finished with a 24-9 record and an appearance in the NCAA Tournament.

Season Outlook



2006 NCAA TOURNAMENT ► 2006 MOUNTAIN WEST CHAMPIONS

"We have come a long way from where we started," head coach Steve Fisher said. "Given what we accomplished last year and what we have returning this year, starting with Brandon Heath, we have a good feeling about the 2006-07 season," Fisher said. "We have successful experience with four starters returning, which is always good. Our expectation is that our young players, starting with Kyle Spain and Richie Williams, will be significantly better and our veteran players in Brandon Heath and Mohamed Abukar will be great leaders for us this year. We have great anticipation with genuine excitement for the upcoming season."

The four starters returning off that team include *Associated Press* honorable mention All-American Brandon Heath and second-team all-MWC performer Mohamed Abukar. Richie Williams and Kyle Spain, who started and played instrumental roles in the Aztecs' success a year ago, return for their sophomore seasons.

Fisher has proved to be automatic with this much talent returning. He is 7-for-7 at guiding teams with at least four starters returning from a team that he coached to postseason play.

And as if optimism wasn't running high enough, *Street & Smith's* Preseason College Basketball magazine picked San Diego State 24th in its preseason poll. That marks the first time a major preseason publication has tabbed the Aztecs as a top-25 team.

There are plenty of reasons a majority of the summer magazines pick San Diego State to repeat as Mountain West Conference champions.

Start with the fact that the Aztecs return four starters and seven letterwinners off a team that posted a 24-9 record last season, and won the regular-season title with a conference record-tying 13 victories.

"The experience having gone through last season will certainly pay dividends for our returning players," head coach Steve Fisher said.

The following is a position-by-position breakdown of the Aztecs as they head into the 2006-07 season.

Point Guard

On paper, this position appears to be as deep as at any time during Steve Fisher's era. However, lingering questions regarding Matt

Thomas' health puts a shadow of doubt into a position that returns all three players from last season's depth chart.

Sophomore Richie Williams burst onto the scene last season, playing in all 33 games and making 32 starts. The 5-9 guard played the third most minutes on the team and gave San Diego State a stabilizing force running the offense.

Lightning quick, Williams brought a true point guard mentality to the position. He initiated the half-court offense and was able to lead the Aztecs in transition.

"Richie had a wonderful freshman season for us," Fisher said. "He did a great job last season of distributing the ball and making good decisions. We expect with a year of starting experience behind him, he will be even more effective this season."

If all goes as planned, Williams could likely become the first player to lead San Diego State in assists per game in consecutive seasons in more than a decade. The last player to do it was Chad Nelson in 1993-94 and 1994-95 seasons.

The Aztecs have quality depth at the position in junior Matt Thomas. Thomas, who started 11 games as a freshman and six games last season, battled back problems to play in 28 contests in 2006. At 6-4, Thomas brings a different look to the position for the Aztecs, particularly on the defensive side of the ball. He averaged 1.3 points and 1.2 rebounds, but committed just 20 turnovers in 320 minutes of action and had just two turnovers in the final 11 games of the season.

Thomas played through pain last season and had off-season back surgery. Recovery from the surgery has kept the junior off the court and out of many of the off-season conditioning programs.

"Matt stepped up and gave us some quality minutes in key situations last season," Fisher said. "We hope that his back will heal and he will be able to consistently perform the way we know he can."

The Aztecs other option at the point guard position is reigning Mountain West Conference Player of the Year Brandon Heath. Heath, who led the Aztecs in assists as a sophomore, will primarily play the two guard, but is more than capable of running the offense.



With 127 assists and 58 steals last season, Richie Williams finished second all-time in San Diego State history for assists and steals by a freshman.

Shooting Guard

An *Associated Press* honorable mention All-American last season, Heath returns for his senior campaign. Heath led the league in scoring last season at 18.4 points per game and was one of only three players in the country to rank in the NAAs top 75 in scoring and top 40 in free throw percentage and three-point field goals made.

Heath also led the league in free throw percentage, three-point field goals made and ranked among the league's top 10 in four additional categories.

More than just a statistical leader, Heath has become the heart and soul of the Aztec squad. He is a leader on and off the court and after testing the NBA Draft waters over the summer, elected to come back to school for his senior season and finish the six units needed to earn his degree.

"Brandon was instrumental in the success we had last season not only in his ability to play, but also in instilling an attitude of winning," Fisher said. "Nobody works harder at getting better than Brandon. This season we will need Brandon to be

San Diego State Preseason Honors

Brandon Heath

- * - All-American (*Athlon Sports*, *ESPN's Jay Bilas*)
- * - MWC Player of the Year (*Athlon Sports*, *Blue Ribbon*, *Lindy's*)
- * - All-MWC (*Athlon Sports*, *Lindy's*, *Street & Smith's*)
- * - Top Shooter (*Athlon Sports*)
- * - Top NBA Prospect (*Lindy's*)

Mohamed Abukar

- * - All-MWC (*Blue Ribbon*, *Street & Smith's*)

Kyle Spain

- * - All-MWC (*Lindy's*)

Lorenzo Wade

- * - Top Transfer (*Athlon Sports*)

Richie Williams

- * - Top Playmaker (*Lindy's*)

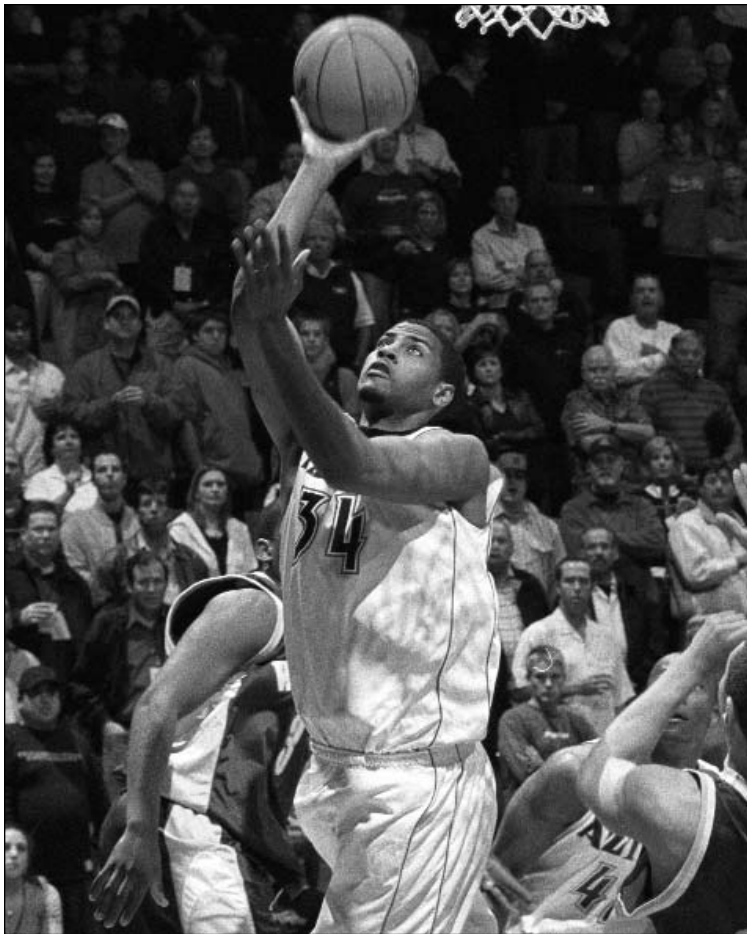
Brandon Heath became the first Aztec since 1984 to earn All-America honors when he was named Associated Press honorable mention All-American last season.



Season Outlook



2006 NCAA TOURNAMENT ► 2006 MOUNTAIN WEST CHAMPIONS



Mohamed Abukar, who became eligible in mid-December last season, stepped into the rotation and became the team's third scoring option as he averaged 14.3 points per game.

the kind of leader I know he can be."

Heath has shown tremendous abilities in the big game. In road victories at Utah, UNLV and New Mexico last season, the senior averaged 26.0 points, 7.0 assists, 3.7 rebounds and connected on 17-of-31 three-point field goal attempts (54.8 percent).

In addition, barring injury, Heath will surpass Michael Cage to become the school's all-time leading scorer this season.

"Brandon came in as a freshman thinking that contributing means shoot the ball when you get it," Fisher said. "He has grown into a complete basketball player. The fact that he is the returning leading scorer in the conference is indicative of the fact that he can score.

"Earning Mountain West Conference most valuable player is indicative of not only what we think of him but also what the league coaches and media think of him. He is a guy that does whatever he has to

do to help you win. He will probably leave San Diego State as the leading scorer in school history, breaking the great Michael Cage's scoring record. That is part of the legacy he will leave. But more importantly, he wants to leave a legacy of banners and championships."

Heath will take most of the minutes at the two-guard position this season. When he shifts to the point, look for Kyle Spain or Lorrenzo Wade to shift from the small forward spot to the off-guard position. Spain and Wade will bring a different look to the position bringing big-man frames to the guard position. Both players can cause matchup difficulties for opponents at the position.

Small Forward

Trying to break SDSU's roster into specific positions can be a challenging project. One example of the danger in doing that is at the small forward position.

Sophomore Kyle Spain will be the

primary person profiled at this position, but newcomers Lorrenzo Wade and Jon Pastorek are also candidates to play this spot. And there will certainly be times when Spain and Wade are on the floor at the same time.

But we will start with the incumbent, Kyle Spain.

Spain may have been the surprise of the league last season. He played in 28 games a year ago, making 25 starts and averaged 9.2 points and 5.6 rebounds. He ended the season ranked third on the team in scoring average and second on the squad in rebounding.

He shot remarkably well for a freshman, connecting on 49.5 percent of all of his attempts, and he became the first player in school history to make at least 15 three-point field goals and shoot above 50 percent from beyond the arc (15-of-29, 51.7 percent).

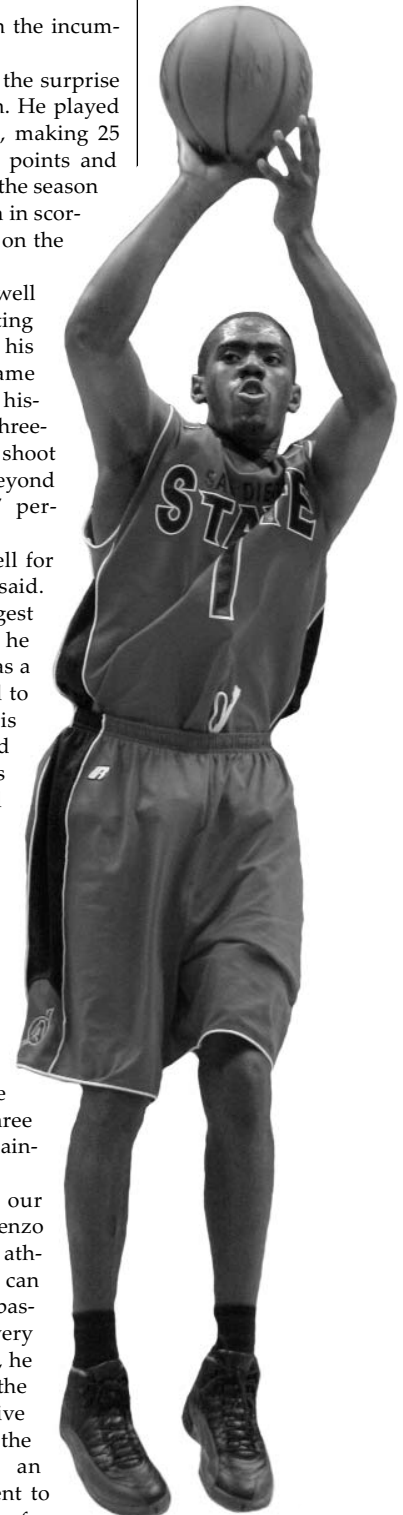
"Kyle played very well for us last season," Fisher said. "He is one of the strongest players on our team and he proved that last season as a freshman. Now we need to have him continue his development and improve upon his strengths. We will need him to rebound the basketball for us this season."

Once again this season, San Diego State welcomes in a Division I transfer in Lorrenzo Wade. Wade practiced with the Aztecs last season after transferring from Louisville and the Las Vegas native has three years of eligibility remaining.

"No disrespect to our other players, but Lorrenzo Wade will be our best athlete," Fisher said. "He can blend athleticism with basketball skills, which is very important. With his size, he can play anywhere on the floor at both the offensive and defensive ends of the court. He will bring an added level of excitement to Aztec basketball that our fans will grow to love."

Wade will find a lot of minutes

Brandon Heath was named the nation's top shooter by Athlon Sports.



Season Outlook



2006 NCAA TOURNAMENT ► 2006 MOUNTAIN WEST CHAMPIONS

Aztec Returning Leaders

Scoring	PPG
Brandon Heath	18.4
Mohamed Abukar	14.3
Kyle Spain	9.2

Rebounding	RPG
Kyle Spain	5.6
Mohamed Abukar	4.7
Brandon Heath	3.4

Assists	APG
Richie Williams	3.8
Brandon Heath	3.5
Matt Thomas	1.1

this season but can spread them out between the two, three and four positions. At 6-6, 228 pounds he is physical enough to play the power forward position, but is a good enough athlete and has perimeter position skills that allow him to play the off-guard and small-forward positions.

Wade has already made an impact on Aztec fans, claiming the slam dunk contest at Midnight Madness in October.

Freshman Jon Pastorek is listed at both the small and power forward positions.

Power Forward

Probably the deepest position on the team, many players in this group will find themselves playing the three or the four as the Aztecs look to put their best unit on the floor.

You can't start the discussion at power forward without talking

about senior Mohamed Abukar. When he became eligible in late December of last season, San Diego State became one of the better teams in the country, posting an 18-4 record over its last 22 games.

Abukar averaged 14.3 points and 4.7 rebounds a year ago. He was very efficient from the field, connecting on 48.8 percent of his field goal attempts en route to earning second-team all-conference honors.

"Mohamed may have been the single most significant part of changing our season around last year," Fisher said. "When he became eligible, it wasn't just coincidence that our season became much more successful. He is a scorer who can shoot the ball very well for someone his size. He has the unique ability to shoot the ball well from the perimeter and go inside. We are looking forward to a full healthy season with him. He is someone that I believe will have numbers that match his ability."

The most amazing thing about Abukar's junior campaign was that he battled a stress fracture in his shin. He had surgery during the offseason and although that has slowed his summer conditioning, the senior is expected to be able to practice with the Aztecs this October.

"The nice thing is he wants to win more than anything," Fisher said. "He is a huge part of the success we had last year and he will play an even bigger role in the accomplishments that our team is able to achieve this year."

A newcomer sure to see action somewhere in the Aztec lineup is newcomer Jerome Habel. A junior college transfer from San Bernardino Valley College, Habel was ranked as the No. 2 junior college player by one magazine. At 6-8, 200, he can play both positions and has the ability to score with

his back to the basket.

He is also quick for a player his size which should make him a threat in transition.

"Jerome has good skills for a player his size," Fisher said. "He has nice range and can really run the floor which places nicely into what we like to do."

Freshmen Jon Pastorek and Jer'Vaughn Johnson are two other newcomers who will fit into the equation for San Diego State at the four spot.

At 6-8, Pastorek will see time at both forward positions for the Aztecs. Another big man with the ability to run the floor, will likely see more time at the four position as he adds body mass during his Aztec tenure.

Johnson is 6-6 and already weighs 254 pounds and has a body well beyond his freshman classification. He has the ability to muscle the ball to the basket a la Kyle Spain.

Center

The Aztecs have a pair of returnees at center in sophomores Brett Hoerner and Chris Lamb and have the option of playing Mohamed Abukar or Jerome Habel at the position.

Hoerner played 15 games last season and totaled 29 points and 17 rebounds. He gained valuable experience early during the campaign as he played in 11 of the first 12 games and played 10 or more minutes in four outings when the Aztecs were shorthanded in the post.

At 6-11, Hoerner is the tallest member of the team. He has an excellent touch around the basket.

"He is 6-11 but needs to continue to get stronger," Fisher said. "He has basketball skills and can run the floor well. We think he will have a great career here."

Chris Lamb is the only other player listed at center on the roster. The 6-10, sophomore saw action in six games last season. Nobody has worked harder than Lamb in the weight room, as he gone from 205 when he arrived on campus in 2004 to 245 this fall.

"He has worked so hard in the weight room," Fisher said. "We are looking forward to seeing that carry over on to the floor."



Junior Matt Thomas enters the 2006-07 campaign second behind Brandon Heath in most games played among Aztec returners.

Preseason Notes



2006 NCAA TOURNAMENT ► 2006 MOUNTAIN WEST CHAMPIONS

Why Be Optimistic?

- San Diego State has unanimous Mountain West Conference first-team selection, reigning MWC Player of the Year and AP honorable mention All-American Brandon Heath and second-team All-MWC honoree Mohamed Abukar returning.
- San Diego State returns four starters off last season's 24-9 squad. Steve Fisher has returned at least four starters off a team he has coached seven times, advancing to the NCAA Tournament on six occasions and winning the postseason NIT the other season.
- San Diego State returns five players that have started at least 17 games in their career.
- San Diego State welcomes University of Louisville transfer Lorenzo Wade to the lineup. Wade, clearly the team's most athletic player, sat out last season due to NCAA transfer rules, but is eligible this season after playing on the 2005 Louisville squad that advanced to the Final Four. As a freshman, Wade played in 35 games and scored a career-high 14 points on two different occasions.
- In addition to Heath returning, the Aztecs also welcome back sophomore Richie Williams. Last season's starting point guard, Williams led the team in assists and steals and ranked among the MWC's best in assists, steals and assist-to-turnover ratio. With both Heath and Williams back, they help SDSU return 75 percent of its assist total from 2005-06.
- Sophomore Kyle Spain, one of the team's four returning starters, will provide a different look in the frontcourt with Abukar next to him. Spain, a quick, physical player, heads into the season having averaged 9.2 points and 5.6 rebounds per game in 2005-06. More importantly is the fact that as a freshman, he played in 28 games, made 25 starts and averaged the fifth-most minutes on the team at 25.7.
- Besides the four starters and seven letterwinners returning, San Diego State brings in a talented group of newcomers. Joining the aforementioned Wade is junior college transfer Jerome Habel and true freshmen Jer'Vaughn Johnson and Jon Pastorek. Habel comes to SDSU as one of the top junior college players in America out of San Bernardino Valley College and was ranked as the No. 2-rated player by Jucojunction.com. Johnson, a highly-touted high school player, brings a physical presence to the team and has the ability to hit the mid-range jumper. Lastly, Pastorek, who led his high school league in blocked shots his final two years, is a fundamentally sound player who is active around the basket and has a ton of upside.

Four Starters Returning for Fisher Equals Postseason

In his coaching history, Steve Fisher plus four or more returning starters has resulted in tremendous success. Seven previous times Steve Fisher has returned four or more starters from a team he coached, with those clubs advancing to NCAA Tournament play on six occasions and winning the postseason NIT championship once. Below is a look at those clubs.

Season	Returning Starters	Final Record	Postseason (Record)
1989-90	4	23-8	NCAA Second Round (1-1)
1991-92	4	25-9	NCAA Runner-Up (5-1)
1992-93	5	31-5	NCAA Runner-Up (5-1)
1993-94	4	24-8	NCAA Regional Finalist (3-1)
1996-97	4	24-11	NIT Champions (5-0)
2001-02	4	21-12	NCAA First Round (0-1)
2005-06	4	24-9	NCAA First Round (0-1)
2006-07	4		

Those seven teams have posted a combined 172-62 (73.5 percent) winning percentage, have never failed to win at least 21 games and have an unbelievable 19-6 (76.0 percent) record in postseason games.

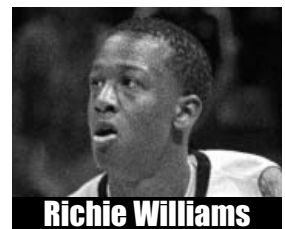
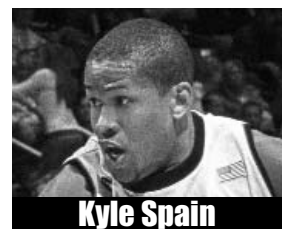
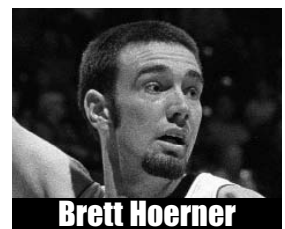
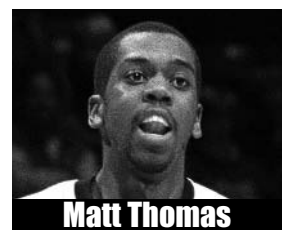
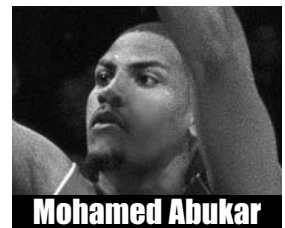
National Run

Coming off a successful 2005-06 campaign and with what San Diego State has returning, many around the country are taking notice. All summer long and throughout the fall, prognosticators have predicted the Aztecs to win the Mountain West Conference and earn a second consecutive bid to the NCAA Tournament. In addition to team accolades, college basketball experts have identified Brandon Heath and Mohamed Abukar as just a couple of Aztecs to watch out for this season.

As a team, SDSU has been picked to win the league by *Street & Smith's*, *Athlon Sports* and *Blue Ribbon*. On a national scale, *Street & Smith's* picked the Aztecs as its No. 24 team, while ESPN's Dick Vitale and Andy Katz ranked SDSU No. 30 and 38, respectively. In addition, Katz, along with *Athlon Sports* believe the Aztecs could reach the second round of the NCAA Tournament. Other accolades San Diego State received in the offseason include having the league's best frontcourt and second-best backcourt according to *Blue Ribbon* and the MWC's top group of recruits by *Lindy's*.

Individually, Heath captured the nation's attention as he was tabbed an All-American by *Athlon Sports* and Jay Bilas of ESPN. As reigning conference player of the year, Heath was selected to repeat that feat by *Athlon Sports*, *Blue Ribbon* and *Lindy's* and was an all-MWC selection by *Athlon Sports*, *Lindy's* and *Street & Smith's*. As one of the Mountain West's best perimeter players, *Athlon Sports* named him America's top collegiate shooter, while Gary Parrish of cbs.sportsline.com listed him as the fifth-best shooter in college basketball. The honors didn't stop there as he was also picked as the MWC's top NBA prospect and the most entertaining by *Lindy's*.

Other Aztecs to receive national recognition were Jerome Habel (top NBA prospect among MWC newcomers by *Lindy's*), Kyle Spain (all-MWC by *Lindy's*), Lorenzo Wade (top transfer by *Athlon Sports*) and Richie Williams (top playmaker by *Lindy's*).

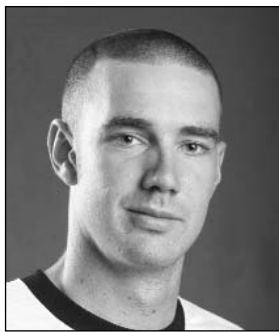


Aztec Players

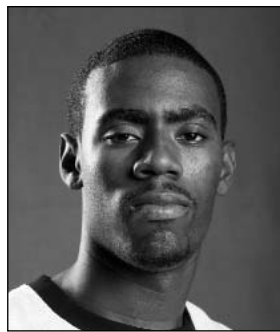


2006 NCAA TOURNAMENT ► 2006 MOUNTAIN WEST CHAMPIONS

AZTEC PLAYERS ◀ INTRODUCTION



00 **Brett Hoerner**
So. • C • 6-11 • 223
Fullerton, Calif.



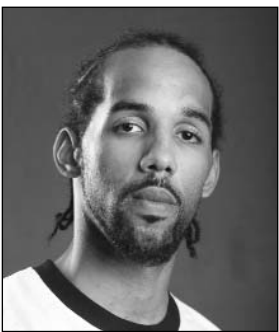
1 **Brandon Heath**
Sr. • G • 6-4 • 203
Los Angeles, Calif.



2 **Jer Vaughn Johnson**
Fr. • F • 6-6 • 254
Compton, Calif.



3 **Richie Williams**
So. • G • 5-9 • 162
San Diego, Calif.



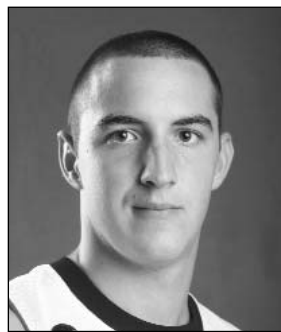
4 **Jerome Habel**
Jr. • F • 6-8 • 200
Rockville, Md.



5 **Jon Pastorek**
Fr. • F • 6-8 • 209
Anaheim, Calif.



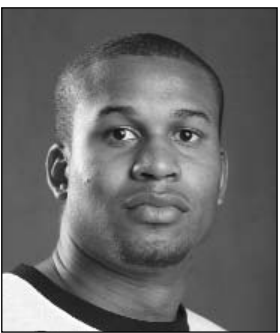
21 **Matt Thomas**
Jr. • G • 6-4 • 213
Riverside, Calif.



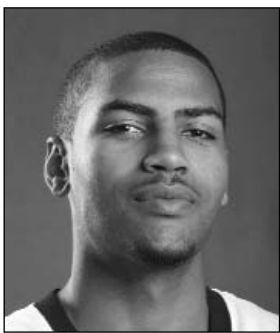
30 **Chris Lamb**
So. • C • 6-10 • 245
Louisville, Colo.



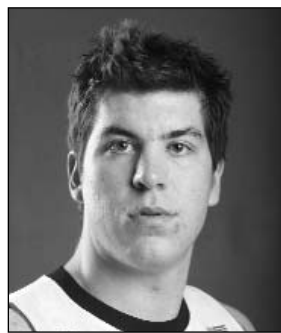
31 **Lorenzo Wade**
So. • F • 6-6 • 228
Las Vegas, Nev.



33 **Kyle Spain**
So. • F • 6-5 • 229
Newark, Calif.



34 **Mohamed Abukar**
Sr. • F • 6-10 • 229
San Diego, Calif.



40 **Ryan Amoroso**
Jr. • F • 6-8 • 272
Burnsville, Minn.



Steve Fisher
Head Coach



Brian Dutcher
Assistant Head Coach



Gregg Gottlieb
Assistant Coach



Justin Hutson
Assistant Coach