



SAN DIEGO STATE WOMEN'S BASKETBALL

2017-18 GAME NOTES

Jim Solien, Assistant Media Relations Director (Interim Contact) • E-Mail: jsolien@mail.sdsu.edu • Office: 619-594-5547

2017-18 SCHEDULE

Date	Opponent	Time
Nov. 3	Cal State LA (exh.)	W, 71-50
Nov. 10	Presbyterian	W, 77-50
Nov. 14	CSUN	W, 58-55
Nov. 18	Cal State Fullerton	W, 59-58

Junkanoo Jam (Bimini, Bahamas)

Nov. 24	vs. Central Michigan	L-ot, 76-85
Nov. 25	vs. Tulane	L, 46-80

Nov. 29	San Diego	W, 77-76
Dec. 3	at Arizona	W, 78-67
Dec. 8	UC Irvine	L, 65-67
Dec. 10	Hope International	W, 92-68
Dec. 14	Santa Clara	L, 34-48
Dec. 22	at UC Santa Barbara	7 p.m.
Dec. 28	Wyoming*	6:30 p.m.
Dec. 30	at Utah State*	2 p.m.
Jan. 3	Colorado State*	6:30 p.m.
Jan. 10	at San José State*	7 p.m.
Jan. 13	Boise State*	1 p.m.
Jan. 17	at Fresno State*	7 p.m.
Jan. 20	New Mexico*	1 p.m.
Jan. 24	at Colorado State*	7 p.m.
Jan. 27	UNLV*	1 p.m.
Feb. 3	at Air Force*	1 p.m.
Feb. 7	Fresno State*	Noon
Feb. 10	Nevada*	1 p.m.
Feb. 14	at Wyoming*	6:30 p.m.
Feb. 17	at UNLV*	3 p.m.
Feb. 21	Air Force*	6:30 p.m.
Feb. 24	San José State*	1 p.m.
Feb. 27	at Boise State*	7 p.m.
March 2	at Nevada*	2 p.m.

Mountain West Championship (Las Vegas, Nev.)

March 5-9	MW Championship	TBA
-----------	-----------------	-----

All times local to site | Home games in **Bold** at Viejas Arena
* = Mountain West game

GAME 11 | AT UC SANTA BARBARA (FRIDAY, DEC. 22) | THE THUNDERDOME | SANTA BARBARA, CALIF.

LIVE MEDIA: Live audio on GoAztecs.com/Live video stream via Big West TV



SAN DIEGO STATE

2017-18 Record: 6-4 (0-0 MW)

Head Coach: Stacie Terry

Fifth Year at SDSU/Fifth overall



UC SANTA BARBARA

2017-18 Record: 1-9 (0-0 Big West)

Head Coach: Bonnie Henrickson

Third Year at UCSB/21st overall

TOP PERFORMERS

Scoring	McKynzie Fort - 16.4
Rebounding	McKynzie Fort - 5.4
Assists	Geena Gomez - 4.8

TOP PERFORMERS

Scoring	Drew Edelman - 14.7
Rebounding	Drew Edelman - 7.8
Assists	Danae Miller - 3.4

- San Diego State wraps up its non-conference slate this week when it ventures up the coast for a clash at UC Santa Barbara on Friday, Dec. 22. Game time inside the Thunderdome is set for 7 p.m. PT.
- In addition to live stats, the Aztecs-Gauchos clash will feature an audio webcast on GoAztecs.com with SDSU alumnus Chris Ello handling the play-by-play responsibilities, as well as a streaming video link courtesy of Big West TV.
- The Aztecs have been idle since Dec. 14, when they dropped a 48-34 decision to Santa Clara in a defensive battle at Steve Fisher Court.
- SDSU, which had been lighting up the scoreboard from three-point range this season, connected on just 3 of 28 attempts from beyond the arc against the Broncos, shooting just 22 percent for the game (13-59).
- After sitting out the previous contest against Hope International with an injury, senior McKynzie Fort returned to the starting lineup last Thursday to record her 76th career game with a double-digit scoring tally after finishing with 10 points to go with a season-high eight rebounds.
- In addition, the Aztecs received nine points and three boards from freshman Najé Murray, while senior Geena Gomez turned in a steady all-round performance with seven points, six rebounds, three assists and a career-best four steals.
- As of Dec. 20, Fort occupies the fourth spot in the MW with an average of 16.4 points per game and finds herself among the league leaders field-goal percentage (10th, .461) and assists (11th, 3.2/gm). In addition, fellow classmate Lexy Thorderson ranks second and sixth in the conference, respectively in three-pointers made (2.8/gm) and three-point field-goal percentage (.431), while Gomez landed in the third slot this week with 4.8 assists per game.
- SDSU leads the all-time series vs. UCSB 18-6 and has won four consecutive meetings, including an 84-70 conquest in San Diego last year.
- The Aztecs were also triumphant in their last trip to Santa Barbara in 2013, when they outlasted the Gauchos 71-67 to give Stacie Terry her first career victory as a head coach.
- Following Friday's encounter, San Diego State opens its Mountain West schedule on Thursday, Dec. 28, when it plays host to Wyoming, starting at 6:30 p.m. PT.

SAN DIEGO STATE AZTECS (6-4, 0-0 MW)

No.	Name	Pos.	Ht.	Yr.	Exp.	PPG	RPG	APG	Individual Player Notes
0	Kennedi Villa	G	6-0	Fr.	HS	0.3	1.0	0.3	Has logged 13 minutes in three appearances this year vs. Presbyterian, Tulane and Hope Int'l.
1	Khalia Lark	G/F	6-0	Jr.	1L	5.3	4.8	0.8	Came up with game-clinching steal vs. USD ... Posted a season-high 14 points vs. Hope Int'l.
5	Te'a Adams	G	5-9	Fr.	HS	4.5	2.6	1.8	Career-high 20 pts vs. Hope Int'l ... Most points by SDSU freshman since Paris Johnson in 2008 (23).
10	Najé Murray	G	5-6	Fr.	HS	10.0	1.6	0.7	Has hit 12 of 24 treys over last five games ... Ranks 69th nationally with .423 clip on 3FGs.
11	Arantxa Gómez Ferrer	F	6-0	Jr.	2L	2.0	2.8	0.0	Chipped in a career-high eight points vs. USD ... Averaging 12.4 minutes in eight appearances.
13	Allison Brown	G	5-7	Sr.	SQ	0.0	1.0	0.0	Played a career-high 16 minutes in first appearance of the season vs. Hope Int'l, grabbing one rebound.
15	McKynzie Fort	G	5-9	Sr.	3L	16.4	5.4	3.2	MW Player of the Week on Dec. 4 ... Averaged 25.0 pts, 6.0 rebs, 5.0 assists vs. USD and Arizona.
20	Geena Gomez	G	5-8	Sr.	2L	8.4	3.3	4.8	Ranks 89th nationally with 4.8 assists per game ... Dished out career-high 10 helpers vs. CSUN.
21	Abby Lowe	G	5-11	So.	1L	2.5	2.0	0.5	Has played a combined 20 minutes in two games ... Scored five points off the bench vs. Tulane.
22	Lexy Thorderson	G	6-0	Sr.	3L	9.5	3.0	0.4	Ranks 60th nationally in both in treys per game (2.80) and 3FG pct (.431); 86th in triples overall (28)
23	Loli Gomez	G	5-10	Jr.	TR	0.0	0.0	0.3	Made SDSU debut vs. Central Michigan ... Dished out first assist as an Aztec vs. Hope Int'l.
24	Kiara Edwards	F	6-1	Fr.	HS	2.0	2.5	0.0	Tallied first collegiate field goal and grabbed season-high three rebounds vs. Tulane.
30	Cheyenne Greenhouse	G	5-11	Sr.	3L	3.2	2.7	1.4	Recorded season highs of 10 pts, 6 rebounds, 4 assists, 2 steals in just 16 minutes vs. Hope Int'l.
34	Baylee Vanderdoes	F	6-1	So.	1L	3.0	4.2	0.1	Came up huge with a career-high 3 blocks vs. USD ... Also logged a personal-best 13 rebounds vs. CMU.
40	Monique Terry	F	6-2	So.	1L	1.0	1.3	0.0	Has appeared in all 10 games this season ... Logged a season-high 3 rebs off the bench vs. Arizona.
45	Naomi Ekwedike	F	6-6	So.	SQ	2.8	3.0	0.5	Averaging 9.0 minutes in seven games ... Tallied a season-high six points vs. UCI and Hope Int'l.

Head Coach: Stacie Terry (UT Arlington, 1998) | 54-78 (Fifth Season at SDSU/Fifth Overall)

Assistant Coaches: Jesse Clark (Pacific Union, 2003); Ciara Carl (Point Loma Nazarene, 2005); Nick Grant (Baylor, 2010)

Director of Basketball Operations: Jon Silver (UCLA, 2009) | Director of Player Personnel: Paris Johnson (San Diego State, 2011)

SAN DIEGO STATE QUICK FACTS

GENERAL INFORMATION

Location: San Diego, Calif., 92182
 Founded: 1897
 Enrollment: 33,726
 Nickname: Aztecs
 School Colors: Scarlet and Black
 Affiliation: NCAA Division I
 Conference: Mountain West
 Home Arena (Capacity):
 Steve Fisher Court at Viejas Arena (12,414)
 President: Sally Roush
 Director of Athletics: John David Wicker
 Faculty Athletic Representative: Patrick Papin
 Athletics Dept. Phone: 619-594-3019

AZTEC BASKETBALL FACTS

First Year of Basketball: 1976-77
 All-Time Record: 646-577 (.528) / 41 seasons
 Postseason Appearances/NCAA Appearances: 12/9
 Last Postseason Appearance: 2013--
 Lost to BYU (69-58) in WNIT Second Round

SDSU TEAM INFORMATION

2016-17 Record: 11-19 (.367)
 2016-17 MW Record/Finish: 6-12/9th
 2017 MW Tournament Record: 0-1
 2017 Final NCAA RPI: 270
 Letterwinners Returning/Lost: 9/2
 Starters Returning/Lost: 4/2
 Newcomers: 5

AZTEC BASKETBALL STAFF

Head Coach: Stacie Terry
 Alma Mater: UT Arlington, 1998
 Career Record/Years: 54-78/Fifth Year
 Record at SDSU: Same
 Best Time to Call: Contact SID
 Basketball Office Phone: 619-594-4095
 Basketball Office Fax: 619-594-8057
Assistant Coaches:
 Jesse Clark, Fifth season at SDSU
 Alma Mater: Pacific Union, 2003
 Ciara Carl, Fifth season at SDSU
 Alma Mater: Point Loma Nazarene, 2005
 Nick Grant, Fourth season at SDSU
 Alma Mater: Baylor, 2010
 Director of Basketball Operations: Jon Silver
 Second season at SDSU
 Alma Mater: UCLA, 2009
 Director of Player Personnel: Paris Johnson
 Second season at SDSU
 Alma Mater: San Diego State, 2009
 Athletic Trainer: Queenie Soriano
 Academic Advisor: Dr. Bre White
 Strength and Conditioning: Eddie Padilla

SDSU MEDIA RELATIONS

Interim Women's Basketball SID: Jim Solien
 E-mail: jsolien@mail.sdsu.edu
 Office Phone: 619-594-5547
 Cell Phone: 619-341-9082

Scouting the Gauchos

- After claiming a wild 96-93 victory in its season opener at Northern Arizona on Nov. 10, UC Santa Barbara (1-9) has lost nine straight, including a 67-61 setback at Loyola Marymount on Monday night. The Gauchos-Lions clash was originally scheduled to be played at UCSB on Dec. 7; however, the game was moved to Los Angeles due to unpredictable air quality resulting from nearby fires affecting the Santa Barbara region.
- The Gauchos and Aztecs have played two common opponents during their respective non-conference schedules this year. UCSB dropped a 68-63 decision at Santa Clara on Nov. 18, before falling to San Diego at home by a 71-58 count on Nov. 27.
- In addition, SDSU is the Gauchos' second Mountain West adversary of the season after coming up on the short end of a 64-57 score at home vs. Fresno State on Nov. 30.
 - Individually, UCSB is led by Drew Edelman, a redshirt senior who occupies the fifth spot in the Big West in scoring (14.7 ppg), while ranking fourth in rebounds (7.8/gm) and sixth in field-goal percentage (.519, 54-104).
 - The Gauchos have also received a double-digit scoring average from junior guard and San Diego native Sarah Porter (10.3 ppg), who is also UCSB's top threat beyond the arc with a team-high 21 three-pointers made, while freshman point guard Danae Miller ranks sixth in the Big West with 3.4 assists per contest.
 - Elsewhere, the Gauchos have benefited from the play of freshman Sarah Bates (7.2 ppg) and sophomore Aliceah Hernandez (7.2 ppg), who have combined for 33 three-point field goals and a .407 clip from beyond the arc.
 - As a team, UCSB finds itself among the Big West leaders in three-pointers made (2nd, 79), three-point field-goal percentage (2nd, .329), assists (4th, 15.1/gm) and free-throw percentage (4th, .685).
 - However, the Gauchos are last in the conference in opponent field-goal percentage (.470) and rank just sixth in scoring offense (61.2 ppg) and eighth in scoring defense (74.4 ppg).
 - Head coach Bonnie Henrickson is in her third season at UC Santa Barbara women's program after spending the previous 11 years at Kansas. During her tenure with the Jayhawks, Henrickson led her squad to consecutive NCAA Sweet 16 appearances in 2012 and 2013 to go with five berths in the WNIT.

Notes with a 'W'

An Aztec victory over UC Santa Barbara on Friday will mean:

- SDSU improves to 7-4, marking the program's best 11-game stretch to start a season since the 2012-13 campaign when it went 8-3.
- The Aztecs raise their record to 2-0 in true road games this year.
- SDSU moves to 44-23 in December games played since 2006.
- The Aztecs finishes 3-1 against Big West conference foes this season, raising their record to 105-92 against current members of that conference.

Flashback: Aztecs-Gauchos 2016 San Diego Edition

San Diego State used one of its best all-around offensive performances of the season to overpower UC Santa Barbara by an 84-70 count at Steve Fisher Court on Dec. 11, 2016.

The Aztecs connected on 10 of 20 three-point field-goal attempts, including three each by Geena Gomez and Kymberly Ellison, while Lexy

UCSB SERIES NOTES

SAN DIEGO STATE AT UC SANTA BARBARA

Aztecs lead series 18-6

• 2017-18 Comparative Stats

SDSU		UCSB
6-4	Overall Record	1-9
0-0	League Record	0-0
.386	Field Goal Pct.	.382
.355	3-PT FG Pct.	.329
.685	Free Throw Pct.	.685
.403	Opp. FG Pct.	.470
.314	Opp. 3-PT FG Pct.	.368
.667	Opp. FT Pct.	.705
39.6	Rebound Avg.	32.8
+2.2	Rebound Margin	-5.9
66.2	Points/Game	61.2
65.4	Pts. Allowed/Game	74.4

• Series Numbers

Record at SDSU	11-2
Record at UCSB	6-4
Record at Neutral	1-0
Most Points SDSU	122, 1984
Most Points UCSB	82, 1997
Largest Margin SDSU	60, 1984
Largest Margin UCSB	28, 1999
Longest SDSU Win Streak	6
Longest UCSB Win Streak	2
Current Streak	SDSU won 4

• Series History

Date	Site	Result/Score
2-12-77	Santa Barbara	L 43-56
1-20-78	San Diego	W 66-57
2-3-78	Santa Barbara	L 59-73
1-13-79	Santa Barbara	W 51-47
2-17-79	San Diego	W 55-37
11-16-79	San Luis Obispo	W 67-45
1-7-84	San Diego	W 122-62
1-25-86	San Diego	W 88-57
2-8-86	Santa Barbara	L 63-77
2-5-87	San Diego	W 67-57
2-19-87	Santa Barbara	W 69-57
1-7-88	San Diego	W 77-51
2-6-88	Santa Barbara	W 78-39
1-7-89	Santa Barbara	W 91-61
2-2-89	San Diego	W 69-55
1-25-90	San Diego	L 57-64
2-24-90	UC Santa Barbara	W 53-51
12-13-90	San Diego	W 76-71
12-15-97	San Diego	L 79-82
1-2-99	Santa Barbara	L 50-78
3-20-13	San Diego	W 68-45
11-30-13	Santa Barbara	W 71-67
12-7-14	San Diego	W 64-58
12-11-16	Santa Barbara	W 84-70

AZTECS VS. BIG WEST

Cal Poly	9	2
Cal State Fullerton	21	17
CSUN	5	2
Hawai'i	14	12
Long Beach State	5	37
UC Davis	2	3
UC Irvine	19	7
UC Riverside	5	5
UC Santa Barbara	18	6
Total	104	92

LAST MEETING VS. UC SANTA BARBARA

UCSB at San Diego State Box Score (12-11-16)

UCSB	FG	3FG	FT	REB	F	TP	A	T	B	S	MP
Edelman	5-9	0-0	0-0	7	2	10	1	5	0	0	19
Durr	4-6	0-0	0-0	4	2	8	0	1	0	0	19
Jemerigbe	1-2	0-0	0-0	1	0	2	2	2	0	0	16
Porter	3-10	2-6	0-2	5	4	8	2	2	0	0	27
Miller	3-13	3-12	3-4	10	2	12	2	0	0	1	38
Toler	2-10	0-3	1-2	5	3	5	6	0	0	0	23
Hernandez	0-0	0-0	0-0	0	0	0	0	0	0	0	7
Roper	4-12	4-8	2-2	4	0	14	2	3	0	1	28
Farris	0-0	0-0	0-0	0	0	0	0	0	0	0	1
Bruening	4-6	0-0	3-4	6	4	11	0	0	1	1	22
TEAM				2							
Totals	26-68	9-29	9-14	44	17	70	15	13	1	3	200
Pct.	38.2	31.0	64.3								

SDSU	FG	3FG	FT	REB	F	TP	A	T	B	S	MP
Thorderson	5-11	2-7	5-5	4	0	17	2	1	0	1	28
Terry	2-3	0-0	1-2	1	4	5	0	1	0	0	13
Ellison	4-7	3-5	2-2	3	2	13	1	0	0	1	26
Fort	5-13	0-0	8-9	3	2	18	3	1	0	1	35
Gomez, G.	6-10	3-5	2-2	3	0	17	1	1	0	0	29
Bostick	0-1	0-0	0-0	3	2	0	5	1	0	1	29
Gómez-Ferrer	1-2	0-0	2-2	4	1	4	1	0	2	0	25
Greenhouse	3-4	2-3	2-2	2	1	10	1	0	0	0	13
Ekwedike	0-0	0-1	0-0	1	0	0	0	1	0	0	2
TEAM				2				2			
Totals	26-51	10-20	22-24	26	12	84	14	8	2	4	200
Pct.	51.0	50.0	91.7								

Officials: Brenda Pantoja, Benito Luna, Kent Johnson
Technical fouls: None **Attendance:** 460

Score by Periods	1st	2nd	3rd	4th	Total
UC Santa Barbara	22	14	22	12	70
San Diego State	27	11	19	27	84

Thorderson and Cheyenne Greenhouse finished with two apiece.

Despite getting out-rebounded 44-26, the Scarlet and Black benefited from a stellar 22-for-24 (.917) effort at the free-throw line to help key its win.

As a team, SDSU shot 51 percent from the floor, with five Aztecs recording double-figure scoring totals

McKynzie Fort led the way with a game-high 18 points, highlighted by an 8-for-9 clip at the charity stripe, while Thorderson and Gomez chipped in 17 points each. In addition, the Aztec cause was aided by Ellison, who contributed 13 points of her own, while Greenhouse finished with 10.

"We've spent a lot of time offensively in practice just making sure that we're getting great shots," head coach Stacie Terry said. "What I thought we did a good job of today was creating for our teammates. When we would drive in the lane, we would find the open person and they were wide open, which takes some of the pressure off of making that shot. I thought we did a good job of sharing the ball and because of that, we had 14 assists."

Leading 38-36 at halftime, SDSU upped its advantage to 10 points on two occasions in the third quarter, including a 52-42 spread at the 4:22 mark after a Fort layup.

However, the Gauchos responded with a 16-5 run to close the frame, as Drea Toler's buzzer-beating layup gave the visitors a 58-57 lead heading into the final quarter.

The Aztecs stormed back with a vengeance at this juncture, as Ellison drained a pair of treys sandwiched around another triple by Gomez to put the host school in front for good, 66-58. SDSU gave itself some additional breathing room down the stretch, draining all 14 free-throw attempts in the final 3:08 to put the game out of reach.

Said Terry of the team's ability to battle back, "I thought they did a great job of recognizing the moment that Santa Barbara made a great run and knowing when it was time for us to make our run."

Rewind: SDSU vs. Santa Clara

Five days after scoring a season-high 92 points, San Diego State was unable to find its offensive rhythm in a 48-34 setback to visiting Santa Clara at Steve Fisher Court on Dec. 14.

With the loss, the Aztecs slip to 6-4 on the season, while the Broncos improve to 4-5 overall.

SDSU, which has thrived on its three-point shooting all year, connected on just 3 of 28 attempts from beyond the arc, finishing with a 22.0 percent clip from the field overall (13-59).

Conversely, SCU drained 19 of 50 shots from the floor (38.0 percent), including a 7-for-10 spree in the fourth quarter to break open a tight 30-27 score.

Individually, the Aztecs were led by McKynzie Fort, who scored 10 points and grabbed a season-high eight

MOUNTAIN WEST STANDINGS

As of Dec. 20

	MW	Overall
New Mexico	0-0	12-1
Colorado State	0-0	7-3
Wyoming	0-0	7-3
Nevada	0-0	7-4
San Diego State	0-0	6-4
Boise State	0-0	5-5
UNLV	0-0	5-5
Fresno State	0-0	5-6
San José State	0-0	3-8
Utah State	0-0	2-9
Air Force	0-0	0-11

UPCOMING MW SCHEDULE

Thursday, December 22

Morgan State at Colorado State, Noon MT
 Wyoming at Duke, 7 p.m. ET
 Saint Francis (Pa.) at Boise State, 5:30 p.m. MT

Friday, December 22

San Diego State at UC Santa Barbara, 7 p.m. PT
 Syracuse at UNLV, 2 p.m. PT

Thursday, December 28

Wyoming at San Diego State, 6:30 p.m. PT
 New Mexico at Air Force, 6 p.m. MT
 Boise State at Colorado State, 7 p.m. MT
 Fresno State at Nevada, 6:30 p.m. PT
 Utah State at San José State, 7 p.m. PT

Saturday, December 30

San Diego State at Utah State, 2 p.m. MT
 Nevada at New Mexico, 1 p.m. MT
 Fresno State at Air Force, 1 p.m. MT
 San José State at Colorado State, 2 p.m. MT

Wednesday, January 3

Colorado State at San Diego State, 6:30 p.m. PT
 Nevada at Wyoming, 6:30 p.m. MT
 San José State at UNLV, 6 p.m. PT
 Boise State at New Mexico, 7 p.m. MT
 Utah State at Fresno State, 7 p.m. PT

Saturday, January 6

Wyoming at Boise State, 2 p.m. MT
 UNLV at Utah State, 2 p.m. MT
 Air Force at Nevada, 2 p.m. PT
 New Mexico at San José State, 2 p.m. PT
 Colorado State at Fresno State, 2 p.m. PT

Wednesday, January 10

San Diego State at San José State, 7 p.m. PT
 New Mexico at Wyoming, 6:30 p.m. MT
 Air Force at UNLV, 6 p.m. PT
 Utah State at Colorado State, 7 p.m. MT
 Fresno State at Boise State, 7 p.m. PT

LAST GAME VS. SANTA CLARA

Santa Clara at San Diego State Box Score (12-14-17)

SCU	FG	3FG	FT	REB	F	TP	A	T	B	S	MP
McGwire	4-13	0-2	1-2	8	0	9	0	4	2	2	32
Berry	2-5	0-0	5-10	9	3	9	1	2	0	2	32
Tolefoafo	3-9	1-4	0-0	10	3	7	0	1	0	1	25
Martin	3-10	0-0	0-0	1	0	6	6	6	0	1	36
Jimenez	2-4	1-1	0-0	2	3	5	3	0	0	0	35
Herlihy	4-6	2-3	0-0	2	1	10	2	0	0	2	25
Brigham	0-1	0-1	0-0	1	0	0	0	0	0	0	4
Flor	0-0	0-0	0-0	0	0	0	0	1	0	0	3
Braggs	1-2	0-0	0-0	0	1	2	0	0	0	0	8
TEAM				5				2			
Totals	19-50	4-11	6-12	38	11	48	12	16	2	8	200
Pct.	38.0	36.4	50.0								

SDSU	FG	3FG	FT	REB	F	TP	A	T	B	S	MP
Thorderson	0-4	0-4	0-0	2	4	0	0	0	0	0	17
Vanderdoes	0-2	0-0	0-0	2	1	0	0	0	0	2	14
Lark	1-6	0-5	0-0	2	0	2	0	0	0	0	27
Fort	3-13	1-5	3-4	8	1	10	1	6	0	2	35
Gomez, G.	3-9	1-3	0-0	6	1	7	3	2	0	4	30
Adams	1-9	0-4	0-0	3	0	2	0	2	0	1	15
Murray	3-9	1-6	2-3	3	4	9	0	2	0	1	22
Gómez-Ferrer	1-1	0-0	0-2	2	0	2	0	1	0	1	11
Edwards	0-0	0-0	0-0	0	0	0	0	0	0	0	3
Greenhouse	0-4	0-1	0-0	2	1	0	2	0	0	1	13
Terry	0-0	0-0	0-0	2	0	0	0	1	0	0	3
Ekwedike	1-2	0-0	0-0	1	3	2	0	1	0	0	10
TEAM				5							
Totals	13-59	3-28	5-9	38	15	34	6	15	0	12	200
Pct.	22.0	10.7	55.6								

Officials: Melissa Barlow, Cheryl Flores, Brian Woods
Technical fouls: None **Attendance:** 617

Score by Periods	1st	2nd	3rd	4th	Total
Santa Clara	11	5	14	18	48
San Diego State	9	10	8	7	34

SAN DIEGO STATE STREAKS

Most Consecutive Starts

	Consecutive	Total
Lexy Thorderson	13	30
Geena Gomez*	10	31
Khalia Lark	10	20
Baylee Vanderdoes	4	13
McKynzie Fort	1	94
Najé Murray	1	1
Cheyenne Greenhouse	0	37
Arantxa Gómez Ferrer	0	13
Monique Terry	0	10

Most Consecutive Games

	Consecutive	Total
Geena Gomez*	69	69
Cheyenne Greenhouse	38	101
Lexy Thorderson	38	99
Khalia Lark*	31	60
Baylee Vanderdoes	21	33
Monique Terry	14	38
Te'a Adams	10	10
Najé Murray	10	10
Naomi Ekwedike	3	17
Kiara Edwards	2	4
McKynzie Fort	1	101
Arantxa Gómez Ferrer -	1	54
Abby Lowe	0	17
Allison Brown	0	26
Loli Gomez	0	3
Kennedi Villa	0	3

Most Consecutive Games With A Point^

	Consecutive	Total
McKynzie Fort	101	101
Geena Gomez	16	53
Najé Murray	5	8
Khalia Lark*	4	27
Naomi Ekwedike	3	9
Te'a Adams	3	8
Arantxa Gómez Ferrer	1	28
Lexy Thorderson	0	74
Cheyenne Greenhouse	0	83
Baylee Vanderdoes	0	27
Monique Terry	0	24
Abby Lowe	0	7
Allison Brown	0	6
Kennedi Villa	0	1
Loli Gomez	0	0

*SDSU totals only; ^must have played in the game

@AZTECWBB TOP 75 IN THE NATION

As of Dec. 20

Category	Value	Rank
3-Point Field Goals Per Game	8.7	32
3-Point Field Goals Made	87	56
3-Point Field Goal Percentage	35.5	64
3-Point Field Goals Attempted	245	72
Fewest Fouls	148	23

Lexy Thorderson

Category	Value	Rank
3-Point Field Goals Per Game	2.80	60
3-Point Field Goals Percentage	43.1	60

Najé Murray

Category	Value	Rank
3-Point Field Goals Percentage	42.3	69

rebounds, while Najé Murray finished with nine points, three boards and a steal. In addition, the Scarlet and Black received a steady all-round effort from Geena Gomez, who contributed seven points, six rebounds, three assists and a personal-best four takeaways.

SDSU took its biggest lead of the evening with 1:34 mark left in the second quarter after a layup by Arantxa Gómez Ferrer gave the host school a 19-14 advantage.

However, the Broncos seized the upper hand with a 14-2 run through intermission, ultimately vaulting in front 28-21 by the 3:52 mark of the third period. Ashlyn Herlihy scored five straight points on a triple and a layup, while Naomi Jimenez capped the surge with a jumper to put the visitors ahead to stay.

Shortly thereafter, the Aztecs narrowed the gap to 30-27 on Murray's old fashioned three-point play with 45 seconds left in the quarter, but could draw no closer.

SCU gave itself some separation to start the fourth period, as Toleafoa scored five of the Broncos' first seven points, and San Diego State never threatened again. The Aztecs were unable to rally from a 37-27 deficit, stymied by a 3-for-12 effort from the field in the quarter.

The Broncos were paced by Herlihy's 10 points, while Morgan McGwire and Taylor Berry (9 rebounds) finished with nine points of their own. In addition, SCU profited from Toleafoa's 10-rebound performance, while Kyla Martin dished out a game-high six assists.

Good Omen?

- For the first time since the 2011-12 campaign and the 10th time in program history, SDSU won its first three games to open a season.
- After starting the year 3-0, San Diego State has advanced to a postseason tournament or the MW Championship game all but one season (1981-82).
- In seven of the nine seasons in which the Aztecs won their first three games of the year, San Diego State won 20 or more games.
- After defeating Hope International on Dec. 10, the Aztecs assured themselves of their first winning non-conference slate since the 2012-13 campaign.
- Dating back to the 1983-84 season, SDSU has won at least six of its first 10 games 15 times, earning a berth in the NCAA Tournament on eight occasions while twice landing a spot in the WNIT.
- In each of those seasons, the Aztecs averaged 21.8 victories and captured a regular-season conference title four times.

It's Raining Threes

- A year removed from a historic season of shooting beyond the arc, San Diego State has kept up the trend, ranking third in the Mountain West and 32nd nationally in 3-point field goals made per game (8.7).
- In addition, the Scarlet and Black is 56th in the country entering the weekend with 87 triples made overall and ranks 65th with a 35.5 percent clip from beyond the arc.
- As of Dec. 20, Lexy Thorderson occupies the second spot in the conference in three-pointers per game (2.80), which ranks 60th in the country. She also landed in the third position with a .431 three-point field-goal percentage and 28 triples overall, good for 60th and 86th in the nation, respectively.
- Buoyed by her 12-for-24 effort from three-point range over the last five games, Najé Murray moved up to fourth in the league with a 42.3 percent clip for the season, which ranks 69th in the country.

Stepping Up

- With McKynzie Fort sidelined with an injury, freshmen Te'a Adams and Najé Murray picked up the scoring slack against Hope International on Dec. 10, combining for 30 points on 15-for-24 shooting (.625).
- Adams turned in a superlative effort with a career-high 20 points, connecting on 9 of 13 field-goal attempts while chipping in personal-bests of eight rebounds and seven assists.
- With her effort, Adams produced the highest scoring total by an Aztec freshman in a single game since current director of player personnel Paris Johnson poured in 23 points vs. Air Force on March 8, 2008.
- Likewise, Murray contributed a career-high 16 points of her own vs. the Royals, highlighted by a 4-for-7 effort from beyond the three-point arc.

SDSU CAREER SCORING LIST

1.	Judy Porter	(1980-83)	2,318
2.	Falisha Wright	(1992-95)	1,733
3.	Paris Johnson	(2008-11)	1,598
4.	Jené Morris	(2008-10)	1,499
5.	Courtney Clements	(2011-13)	1,495
6.	Chana Perry	(1988-89)	1,445
7.	Jessica Haynes	(1986-88)	1,395
8.	McKynzie Fort	(2015-)	1,381
9.	Quenese Davis	(2007-10)	1,370
10.	Michelle Suman	(1992-95)	1,341
11.	Brooke Meadows	(1986-89)	1,310
12.	Jamey Cox	(2000-03)	1,275
13.	Marsha Overton	(1980-83)	1,273
14.	Tina Hutchinson	(1984-85)	1,256
15.	Christina Murguia	(1992-95)	1,237

Spreading the Wealth

- A total of seven Aztecs have scored in double digits at least once this season, while five have accomplished the feat on three or more occasions.
- In addition, SDSU has had seven games this season in which at least three players scored in double figures (Presbyterian, CSUN, Central Michigan, USD, Arizona, UC Irvine and Hope International).

Fort Named Mountain West Player of the Week

- For the third time in her career McKynzie Fort was tabbed MW Player of the Week on Dec. 4, after leading SDSU to victories over the University of San Diego and Arizona.
- In those two triumphs, Fort averaged 25.0 points, 6.0 rebounds and 5.0 assists while shooting a combined 60.7 percent from the field (17-28) and 78.9 percent from the free-throw line (15-19).
- Against USD at home on Nov. 29, Fort led all players with 24 points on 10-for-16 shooting (62.5 percent), including the game-winning layup with eight seconds remaining to help the Aztecs snap a four-game losing streak against the Toreros in a dramatic 77-76 triumph. She also dished out a career-high eight assists in that contest and grabbed a team-best six rebounds.
- Fort continued her stellar play at Arizona on Dec. 3, pouring in a game-high 26 points to go with six rebounds and two assists. The SDSU guard shot 58.3 percent from the floor (7-12) and tied her personal-best with an 11 free throws in 13 attempts.
- With the Aztecs nursing a slim 69-67 lead late in the fourth quarter, Fort came up huge down the stretch, sinking seven of eight free throws to help seal the win while contributing to a defense that held the Wildcats scoreless over the final 3:05 of the game.

What a Debut!

- San Diego State's 2017-18 season opener against Presbyterian was one of the ages, as the Aztecs toppled the Blue Hose, 77-50.
- The 27-point win was SDSU's largest margin of victory since a 60-25 home win against San Diego Christian on Dec. 21, 2015.
- The 27-point win was the greatest season-opening win since the 2011-12 Aztecs opened their campaign at home with an 86-43 victory over Arkansas-Pine Bluff.
- The 50 points scored against the Aztecs was the fewest allowed in a season opener since that win.
- SDSU's 12 long balls were the most in a campaign opener since at least the 1998-99 season.
- SDSU's 77 points in a first game was the most since the team scored 99 against Sacramento State to open the 2014-15 season.

Making an Entrance

- Freshman Najé Murray made quite the impression in her first collegiate game, scoring 14 points in 13 minutes on the floor against Presbyterian.
- Murray was 4-for-7 from beyond the 3-point arc, drilling all four long balls in the fourth quarter and knocking down two in consecutive possessions.
- Murray's 14 points in her collegiate debut was the most by an Aztec in that category since Cheyenne Greenhouse notched 19 points and 11 rebounds in a 99-91 win over Sacramento State to kick off the 2014-15 campaign.
- Another freshman Te'a Adams contributed in her first collegiate appearance as well, logging four points, two assists and one steal in 17 minutes.

Going Deep

- A hallmark of the 2017-18 Aztecs will be their depth. Against Presbyterian, SDSU's bench outscored the Blue Hose's bench, 39-5.
- Four Aztecs came off the bench to log 13 or more minutes: Najé Murray (13), Baylee Vanderdoes (16), Cheyenne Greenhouse (17), Te'a Adams (17) and Jenay Bojorquez (19).
- SDSU's reserves have outscored their opponents' seven times this year, recording a 5-2 mark in those games.

Fort-ifying the Aztecs' Offense

- Preseason all-MW honoree McKynzie Fort is making waves in her senior season, looking to climb her way to the top five in the Aztecs' all-time scoring list.
- With an average of 17.3 points in nine appearances, Fort currently boasts 1,381 career points, which ranks eighth on the school's all-time charts. She needs just 15 points to surpass Jessica Haynes for seventh place in program history.
- During the 2016-17 season, Fort became just the fourth Aztec to land a spot on an all-Mountain West team each of her first three seasons at San Diego State after collecting an all-Mountain West first-team nod last year.
- The only Aztec to start all 30 games, Fort finished the year in the league rankings: second in points per game (15.9), ninth

MW PRESEASON POLL

Rk.	Team	Pts.
1.	Boise State (7)	221
2.	Wyoming (6)	216
3.	Colorado State (6)	211
4.	New Mexico (4)	186
5.	UNLV (2)	185
6.	Utah State	136
7.	Fresno State	117
8.	San Diego State	102
9.	San José State	61
10.	Nevada	60
11.	Air Force	29

First-place votes in parentheses

MW PRESEASON HONORS

Preseason All-Mountain West Team

Shalen Shaw, Boise State
 Candice White, Fresno State
 Cherise Beynon, New Mexico
 McKynzie Fort, San Diego State
 Liv Roberts, Wyoming

Preseason Player of the Year

Cherise Beynon, New Mexico

Preseason Newcomers of the Year:

N'Dea Flye, New Mexico

Preseason Freshman of the Year

Tesha Buck, New Mexico

SDSU IN THE MW POLL

Year	Pre.	Final
1999-2000	6th	6th
2000-01	7th	6th
2001-02	7th	7th
2002-03	7th	7th
2003-04	6th	7th
2004-05	7th	t-7th
2005-06	8th	9th
2006-07	7th	7th
2007-08	7th	t-5th
2008-09	2nd	2nd
2009-10	1st	t-3rd
2010-11	2nd	6th
2011-12	2nd	1st
2012-13	1st	1st
2013-14	3rd	t-6th
2014-15	7th	7th
2015-16	6th	t-8th
2016-17	7th	8th
2017-18	8th	--



SDSU RECORD WHEN...

Playing at home	5-2
Playing on the road	1-0
Playing at a neutral site	0-2
Playing a night game (5 p.m. or later)	2-2
Playing a day game	4-2
Leading at halftime	6-3
Trailing at halftime	0-1
Tied at halftime	0-0
Leading with 5:00 left in regulation	5-2
Trailing with 5:00 left in regulation	1-2
Tied with 5:00 left	0-0
In overtime	0-1
Scoring less than 60 points	2-2
Scoring between 60-69 points	0-1
Scoring between 70-79 points	3-1
Scoring between 80-89 points	0-0
Scoring 90 or more points	1-0
Opponent scores less than 60 points	3-1
Opponent scores 60-69 points	2-1
Opponent scores 70-79 points	1-0
Opponent scores 80-89 points	0-2
Opponent scores 90 or more points	0-0
FG% .500 or better	2-0
FG% under .500	4-4
FG% .400-.499	2-1
FG% under .400	2-3
Opponent FG% .500 or better	0-1
Opponent FG% under .500	6-3
Opponent FG% .400-.499	1-1
Opponent FG% under .400	5-2
Better shooting %	4-1
Worse shooting %	2-3
More FG attempts	4-2
Fewer FG attempts	2-2
Same FG attempts	0-0
More FGs made	4-0
Fewer FGs made	2-4
Same FGs made	0-0
More FT attempts	2-2
Fewer FT attempts	4-2
Same FT attempts	0-0
More FTs made	3-2
Fewer FTs made	3-2
Same FTs made	0-0
More rebounds	4-1
Fewer rebounds	2-2
Same rebounds	0-1
More turnovers	2-2
Fewer turnovers	2-2
Same turnovers	2-0
More assists	3-1
Fewer assists	3-3
Same assists	0-0
More steals	3-3
Fewer steals	3-1
Same steals	0-0

SDSU STREAKS

Last 5 games	3-2
Last 10 games	6-4
Longest winning streak	3
Longest losing streak	2
Current streak	Last 1

in free-throw percentage (.784), 11th in field goal percentage (.436), 12th in minutes played per game (31.9) and 13th in assists per game (2.5).

- The Fontana, Calif., native was 116-for-148 from the free-throw line, tied for the eighth-most made in SDSU single-season history.

- Fort reached the career 1,000-point mark at San José State (1-11-17), the 21st Aztec and eighth SDSU third-year to accomplish the feat, after notching season highs in points (29) and rebounds (11) for her second-career double-double.

Captain, Captain, Captain

- The Aztecs' captains for the 2017-18 season are seniors McKynzie Fort, Geena Gomez and Lexy Thorderson.

- Fort, a three-year starter for the Aztecs, is a three-time all-MW selection and was named to the preseason all-MW team this season after spending much of the 2016-17 campaign atop most offensive categories.

- Gomez, a two-year letterwinner, is one of four returning starters for San Diego State. The catalyst behind the Aztecs' offense on the court, she shot at a .360 clip (36-for-100) from 3-point range last season, the league's sixth-best percentage.

- Three-time MW All-Academic Team honoree and three-year letterwinner Thorderson helped SDSU engineer the program's best 3-point shooting season last year and will be relied upon heavily from beyond the arc for her final campaign.

Welcome Back!

- In addition to having five newcomers, including the nation's 23rd-ranked and the Mountain West's best incoming class, the 2017-18 Aztecs welcome back an impressive amount of offensive output from a year prior.

- Four starters from last year's team will once again don the Scarlet and Black: seniors McKynzie Fort, Geena Gomez, Lexy Thorderson and Khalia Lark.

- Five letterwinners from the 2016-17 squad are also expected to contribute this season: Arantxa Gómez Ferrer, Cheyenne Greenhouse, Abby Lowe, Monique Terry and Baylee Vanderdoes.

- Nearly 79 percent (78.9) of the team's scoring from last year returns, led by all-MW first-team pick McKynzie Fort, who single-handedly recorded almost one-fourth (24.9 percent) of SDSU's total points in 2016-17.

Moral Support

- Stacie Terry's fourth season saw an increase in excitement surrounding the team, evidenced in home attendance. For the 2016-17 season, the Aztecs averaged 855 in attendance at the team's 14 home games, up from an average of 487 during the 2015-16 campaign (the previous high during the Terry era was for the 2014-15 season when SDSU averaged 604 fans per game). Against Michigan on Dec. 11, 2,632 fans were in attendance for the greatest showing since Jan. 24, 2009, when 2,792 were in Viejas Arena to see San Diego State play then-conference foe Brigham Young.

History Made from Beyond the Arc

- With their 200 made long balls on a program-high 620 attempts, the 2016-17 Aztecs were the program's best 3-point shooting team.

- Since the statistic started being recorded in the program's record book during the 1987-88 campaign, SDSU's most made threes came in the 2012-13 season with 164 3-pointers.

- The 2016-17 Aztecs also sported the best 3-point percentage at .319 (204-639) in seven years. The single-season record is .404 (65-for-161) set during the 1991-92 season.

- Lexy Thorderson's 66 made 3-point field goals on 192 attempts were each fourth in SDSU history. She finished the year with the Mountain West's second-most made long balls, averaging 2.4 per game, and ranking 80th in the nation. In a single-game high, she drilled seven treys in a win against UNLV (1-18-17), tied for the third-most in SDSU history.

- Thorderson had five games last season with five-or-more treys: a career-high seven against UNLV, six versus Boise State and five against Nevada, San José State and at UNLV.

- San Diego State had its most success beyond the arc last season against San José State. In their road game against the Spartans, SDSU knocked down 12 three-pointers, its third straight game with 10 or more threes, and, when hosting SJSU, drilled 13 long balls.

- In the Scarlet and Black's home game against San José State, the teams combined for 25 threes, the most in a MW game last season. It was just the third time the feat was accomplished during the 2016-17 campaign.

- Versus UNLV, the Aztecs knocked down 14 three-pointers for a season high and their most since Feb. 10, 2005, in a 91-45 win over Utah Valley. In the game, Thorderson drilled a career-best seven treys.

- Against Boise State, SDSU knocked down 11 triples, five of which came in the fourth quarter, finishing its second straight game with five or more treys in a quarter after notching six in the first period vs. Nevada (10 overall).

• SDSU was the first team in the conference to score double-digit threes in three straight Mountain West games, the first time since at least the 1999-2000 season that the Aztecs had consecutive games with 10-or-more 3-pointers.

The New Aztecs on the Block

• For the second consecutive year, San Diego State women's basketball head coach Stacie Terry has announced the signing of a nationally-ranked incoming class. Mallory Adams, Jayden Perez and Sophia Ramos comprise the nation's 57th-ranked class (according to Prospects Nation) and will join the Aztecs for the 2018-19 campaign.

• Adams, a 6-foot guard, is in her second season at Lone Star High School in Frisco, Texas. She is the 14th-ranked wing in the 2018 class, earning a 90 scouts grade and three stars from ESPN. She had a breakout season as a junior, her first at Lone Star High School. She garnered Texas Association of Basketball Coaches (TABC) and Texas Girls Coaches Association (TGCA) all-state, TABC all-region and District 13-5A Offensive MVP accolades after averaging 18.9 points and 9.0 rebounds en route to Lone Star's district championship. The District 9-5A MVP, TGCA all-state and TABC all-region honoree as a sophomore at Centennial (Frisco, Texas) High School, she was the 2015 District 9-5A Newcomer of the Year, recording 18 points and 10 boards per game as a freshman. Adams' older sister, McKenzie, is a junior guard on SMU's women's basketball team. Their father, Gary, played four years of football at Arkansas and their mother, Michelle, played volleyball at Missouri Southern State. Adams plays AAU for Cy-Fair EYBL. She piqued interest from a number of schools, including SMU, Kansas, Alabama, Tulsa, Houston, Michigan, Penn, Rice, New Mexico and Rutgers.

• Perez is a 5-8 guard competing for Onate High School in Las Cruces, N.M. She has an 89 scouts grade and three stars from ESPN as the 73rd-ranked point guard in her class. Perez enters her senior year with 1,586 career points. As a junior last season, she averaged nearly 20 points, 5.8 rebounds, 2.7 assists and 1.7 steals. Selected to the 2017 All-U.S.A. New Mexico Girls Basketball Team, she led Onate to the Class 6A state tournament, earning Class 6A all-state second-team honors along the way. Perez played her freshman and sophomore seasons at Las Cruces High, capturing District 3-6A Player of the Year and Class 6A all-state second-team honors each year. Perez plays AAU for Team Fusion in El Paso, Texas, under head coach Lee Williams. A 4.0 student, she is ranked seventh in her class while also competing for Onate's volleyball team last season. She also had offers from New Mexico and Abilene Christian.

• Ramos, a 5-9 guard, is playing in her fourth season at Incarnate Word High School in San Antonio, Texas. She has four stars from Prospects Nation and is No. 87 at the guard position with three stars and an 88 scouts grade from ESPN. A three-time Texas Association of Private and Parochial Schools (TAPPS) All-State and All-District first-team pick, she was also a TAPPS Academic All-State honoree as a junior. Last season, Ramos averaged 16.6 points, 8.2 rebounds, 4.2 assists and 2.9 steals per game, leading Incarnate Word to a 27-6 record. Reaching the 1,500-career point mark as a junior, she is a two-time Express News MVP for private schools. Ramos plays AAU for SA Finest and coach Ray Caldwell. The team won the Super 64 National Championship with a buzzer-beater in 2017.

2017-18 Media Information

All media requests for interviews with the coaching staff or student-athletes should be directed to Jim Solien at jsolien@mail.sdsu.edu. Please submit your requests with a minimum of 24 hours notice. During the season, head coach Stacie Terry and the players are generally available to meet with the media following each workout, as requested.

There will be no interviews on game days until postgame. The Aztec basketball team officially began practice in early October. All workouts will take place at the Jeff Jacobs JAM Center with a few exceptions. Media wishing to attend practice should contact the Aztec media relations department at least one day in advance. Media desiring to cover Aztec practices on campus can park in Parking Structure 7 and obtain a special parking permit from the SDSU athletic media relations office. Media parking via permit only will be provided for all home games in PS12, adjacent to Viejas Arena.

ASSOCIATED PRESS POLL

(Week Seven - Dec. 18)

Rk		Record	Pts
1	Connecticut (32)	8-0	800
2	Notre Dame	10-1	748
3	Louisville	13-0	740
4	South Carolina	10-1	686
5	Mississippi State	11-0	672
6	Baylor	9-1	627
7	Tennessee	11-0	620
8	Texas	9-1	595
9	West Virginia	10-0	505
10	Oregon	9-2	487
11	UCLA	8-2	467
12	Ohio State	11-2	442
13	Florida State	10-1	408
14	Duke	8-2	401
15	Maryland	10-2	365
16	Missouri	10-1	313
17	Oregon State	8-2	248
18	Stanford	6-4	218
19	Texas A&M	9-2	193
20	Villanova	9-0	189
21	Green Bay	9-1	142
22	South Florida	9-2	122
23	Michigan	10-2	114
24	California	8-2	100
25	Iowa	11-1	71

First-place votes in parentheses

Others receiving votes: Oklahoma State 57, Syracuse 22, Oklahoma 18, Arizona State 10, Marquette 6, Rutgers 5, New Mexico 3, USC 2, Kentucky 2, Depaul 1, Ball State 1

USA TODAY COACHES POLL

(Week Seven - Dec. 18)

Rk		Record	Pts
1	Connecticut (32)	8-0	800
2	Notre Dame	10-1	745
3	Mississippi State	11-0	725
4	Louisville	13-0	719
5	South Carolina	10-1	677
6	Baylor	10-1	632
7	Tennessee	11-0	595
8	Texas	9-1	571
9	West Virginia	11-0	505
10	Oregon	9-2	493
11	Ohio State	11-2	448
12	UCLA	8-2	443
13	Florida State	10-1	434
14	Maryland	10-2	382
15	Duke	8-2	374
16	Missouri	11-1	301
17	Oregon State	8-2	277
18	Villanova	9-0	222
19	South Florida	9-2	179
20	Texas A&M	9-2	160
21	Michigan	10-2	157
22	Syracuse	11-0	149
23	Green Bay	9-1	110
24	Stanford	6-5	109
25	Iowa	11-1	88

First-place votes in parentheses

Others receiving votes: California 21, Oklahoma State 21, Depaul 18, New Mexico 12, Georgia Tech 11, Virginia Tech 6, Rutgers 4, Kentucky 3, Georgia 2, USC 2, Oklahoma 2, Miami 1, Ole Miss 1, Arizona State 1

PERSONNEL SUMMARY

Returning Starters (3):

McKynzie Fort, Sr., G (14.3 ppg, 4.1 rpg, 31.9 mpg)
 Geena Gomez, Sr., G (6.8 ppg, 3.2 rpg, 36 3FGs, 24.8 mpg)
 Lexy Thorderson, Sr., G (9.5 ppg, 66 3FGs, 25.7 mpg)
 Khalia Lark, Sr., G/F (25.9 mpg, 8.4 ppg, 6.1 rpg)

Starters Lost (2):

Ariell Bostick, G (23.2 mpg, 4.2 rpg, 3.5 apg)
 Kimberly Ellison, G (25.3 mpg, 9.2 ppg, 61 3FGs)

Other Players Lost (1):

Aleiah Brandon, F

Other Letterwinners Returning (5):

Arantxa Gómez Ferrer, Jr., F (0.6 ppg, 0.9 rpg)
 Cheyenne Greenhouse, Sr., G (15.4 mpg, 4.2 ppg, 2.0 rpg)
 Abby Lowe, So., G (15 gms, 1.2 ppg)
 Monique Terry, So., F (12.3 mpg, 2.7 ppg, 2.0 rpg)
 Baylee Vanderdoes, So., F (13.6 mpg, 3.9 ppg, 2.7 rpg)

Other Players Returning (2):

Allison Brown, Sr., G (9 gms)
 Naomi Ekwedike, So., C (9 gms)

Newcomers (5):

Te'a Adams, Fr., G., 5-9, Kirkland, Wash.
 Kiara Edwards, Fr., F, 6-1, Surprise, Ariz.
 Loli Gomez, Jr., G., 5-8, Huntington Beach, Calif.
 Najé Murray, Fr., G, 5-6, Stockton, Calif.
 Kennedy Villa, Fr., G., 6-0, Oakland, Calif.

ROSTER BREAKDOWN

By Class

Seniors (6): Brown, Fort, G. Gomez, Greenhouse, Lark, Thorderson; **Juniors (2):** : A. Gómez Ferrer, L. Gomez; **Sophomore (4):** Ekwedike, Lowe, Terry, Vanderdoes; **Freshmen (4):** Adams, Edwards, Murray, Villa

By State/Country

Arizona (1): Edwards; **California (9):** Brown, Fort, G. Gomez, L. Gomez, Greenhouse, Lark, Murray, Vanderdoes, Villa; **Colorado (1):** Thorderson; **Texas (1):** Terry; **Washington (1):** Adams; **Spain (1):** A. Gómez Ferrer; **England (1):** Lowe; **Nigeria (1):** Ekwedike

By Position

Centers (1): Ekwedike; **Forwards (5):** A. Gómez Ferrer, Edwards, Lark, Terry, Vanderdoes; **Guards (11):** Adams, Brown, Fort, G. Gomez, L. Gomez, Greenhouse, Lark, Lowe, Murray, Thorderson, Villa

By Height

6-6 (1): Ekwedike; **6-2 (1):** Terry; **6-1 (2):** Edwards, Vanderdoes; **6-0 (4):** A. Gómez Ferrer, Lark, Thorderson, Villa; **5-11 (2):** Greenhouse, Lowe; **5-10 (1):** L. Gomez; **5-9 (2):** Adams, Fort; **5-8 (2):** G. Gomez; **5-7 (1):** Brown; **5-6 (1):** Murray

2017-18 NUMERICAL ROSTER

No.	Name	Pos.	Ht.	Yr.	Exp.	Hometown (Previous School/High School)
0	Kennedi Villa	G	6-0	Fr.	HS	Oakland, Calif. (St. Mary's HS)
1	Khaliya Lark	G/F	6-0	Sr.	1L	Irvine, Calif. (Washington/Mater Dei HS)
5	Te'a Adams	G	5-9	Fr.	HS	Kirkland, Wash. (Juanita HS)
10	Najé Murray	G	5-6	Fr.	HS	Stockton, Calif. (St. Mary's HS)
11	Arantxa Gómez Ferrer	F	6-0	Jr.	2L	Valencia, Spain (Parque Colegio Santa Ana HS)
13	Allison Brown	G	5-7	Sr.	SQ	Anaheim Hills, Calif. (Mater Dei HS)
15	McKynzie Fort	G	5-9	Sr.	3L	Fontana, Calif. (Etiwanda HS)
20	Geena Gomez	G	5-8	Sr.	2L	Huntington Beach, Calif. (Edison HS/St. Joseph's (Pa.))
21	Abby Lowe	G	5-11	So.	1L	Stockport, England (Barking Abbey Academy)
22	Lexy Thorderson	G	6-0	Sr.	3L	Castle Rock, Colo. (Rock Canyon HS)
23	Loli Gomez	G	5-8	Jr.	TR	Huntington Beach, Calif. (Edison HS/CSU San Bernardino)
24	Kiara Edwards	F	6-1	Fr.	HS	Surprise, Ariz. (Valley Vista HS)
30	Cheyenne Greenhouse	G	5-11	Sr.	3L	Riverside, Calif. (Canyon Springs HS)
34	Baylee Vanderdoes	F	6-1	So.	1L	Auburn, Calif. (Placer HS)
40	Monique Terry	F	6-2	So.	1L	San Antonio, Texas (Brennan HS)
45	Naomi Ekwedike	C	6-6	So.	SQ	Lagos, Nigeria (Potter's House Christian Academy (Fla.))

2017-18 ALPHABETICAL ROSTER

No.	Name	Pos.	Ht.	Yr.	Exp.	Hometown (Previous School/High School)
5	Te'a Adams	G	5-9	Fr.	HS	Kirkland, Wash. (Juanita HS)
13	Allison Brown	G	5-7	Sr.	SQ	Anaheim Hills, Calif. (Mater Dei HS)
24	Kiara Edwards	F	6-1	Fr.	HS	Surprise, Ariz. (Valley Vista HS)
45	Naomi Ekwedike	C	6-6	So.	SQ	Lagos, Nigeria (Potter's House Christian Academy (Fla.))
15	McKynzie Fort	G	5-9	Sr.	3L	Fontana, Calif. (Etiwanda HS)
20	Geena Gomez	G	5-8	Sr.	2L	Huntington Beach, Calif. (Edison HS/St. Joseph's (Pa.))
23	Loli Gomez	G	5-8	Jr.	TR	Huntington Beach, Calif. (Edison HS/CSU San Bernardino)
11	Arantxa Gómez Ferrer	F	6-0	Jr.	2L	Valencia, Spain (Parque Colegio Santa Ana HS)
30	Cheyenne Greenhouse	G	5-11	Sr.	3L	Riverside, Calif. (Canyon Springs HS)
1	Khaliya Lark	G/F	6-0	Sr.	1L	Irvine, Calif. (Washington/Mater Dei HS)
21	Abby Lowe	G	5-11	So.	1L	Stockport, England (Barking Abbey Academy)
10	Najé Murray	G	5-6	Fr.	HS	Stockton, Calif. (St. Mary's HS)
40	Monique Terry	F	6-2	So.	1L	San Antonio, Texas (Brennan HS)
22	Lexy Thorderson	G	6-0	Sr.	3L	Castle Rock, Colo. (Rock Canyon HS)
34	Baylee Vanderdoes	F	6-1	So.	1L	Auburn, Calif. (Placer HS)
0	Kennedi Villa	G	6-0	Fr.	HS	Oakland, Calif. (St. Mary's HS)

Head Coach: Stacie Terry (UT Arlington, 1998), Fifth season at SDSU/Fifth overall

Assistant Coach: Jesse Clark (Pacific Union, 2003), Fifth season at SDSU

Assistant Coach: Ciara Carl (Point Loma Nazarene, 2005), Fifth season at SDSU

Assistant Coach: Nick Grant (Baylor, 2010), Fourth season at SDSU

Director of Operations: Jon Silver (UCLA, 2009), Second season at SDSU

Director of Player Personnel: Paris Johnson (San Diego State, 2011), Second season at SDSU

2017-18 PRONUNCIATION GUIDE

Te'a Adams	TAY-uh
Naomi Ekwedike	nay-O-mee ECK-weh-DEE-kay
Arantxa Gómez Ferrer	uh-RON-cha fur-AIR
McKynzie Fort	ma-KEN-zee
Loli Gomez	LOW-lee
Najé Murray	Nah-ZHAY
Baylee Vanderdoes	VAN-der-doze
Kennedi Villa	VILL-uh
Ciara Carl	see-ARR-uh

CAREER HIGHS

Points
1, vs. Presbyterian (11-10-17)

Rebounds
2, vs. Tulane (11-25-17)

Assists
1, vs. Presbyterian (11-10-17)

Steals
N/A

Blocks
N/A

Field Goals
N/A

Field Goal Attempts
N/A

3-Point Field Goals
N/A

3-Point Field Goal Attempts
N/A

Free Throws
1, vs. Presbyterian (11-10-17)

Free Throw Attempts
2, vs. Presbyterian (11-10-17)

MISC. CAREER STATS

Double-figure
scoring games: 0

Double-figure
rebounding games: 0



#0 KENNEDI VILLA

Freshman • HS

6-0

Guard

Oakland, Calif.

St. Mary's HS

Opponent	Date	gs	min	Total		3-Pointers		Free throws		Rebounds				pf	a	t/o	blk	stl	pts	avg	
				fg-fga	pct	3fg-fga	pct	ft-fta	pct	off	def	tot	avg								
PRESBYTERIAN	11-10-17		4	0-0	.000	0-0	.000	1-2	.500	0	0	0	0.0	0	1	0	0	0	1	1.0	
CSUN	11-14-17		dnp	-	-	-	-	-	-	-	-	-	-	-	-	-	-	-	-	-	
CAL STATE FULLERTON	11-18-17		dnp	-	-	-	-	-	-	-	-	-	-	-	-	-	-	-	-	-	
vs Central Michigan	11-24-17		dnp	-	-	-	-	-	-	-	-	-	-	-	-	-	-	-	-	-	
vs Tulane	11-25-17		3	0-0	.000	0-0	.000	0-0	.000	0	2	2	1.0	1	0	0	0	0	0	0.5	
SAN DIEGO	11-29-17		dnp	-	-	-	-	-	-	-	-	-	-	-	-	-	-	-	-	-	
at Arizona	12-03-17		dnp	-	-	-	-	-	-	-	-	-	-	-	-	-	-	-	-	-	
UC IRVINE	12-08-17		dnp	-	-	-	-	-	-	-	-	-	-	-	-	-	-	-	-	-	
HOPE INTERNATIONAL	12-10-17		6	0-0	.000	0-0	.000	0-0	.000	0	1	1	1.0	0	0	0	0	0	0	0.3	
SANTA CLARA	12-14-17		dnp	-	-	-	-	-	-	-	-	-	-	-	-	-	-	-	-	-	
Totals			0	13	0-0	.000	0-0	.000	1-2	.500	0	3	3	1.0	1	1	0	0	0	1	0.3

Games played: 3
Minutes/game: 4.3
Points/game: 0.3
FT Pct: 50.0

Rebounds/game: 1.0
Assists/game: 0.3
Assist/turnover ratio: 99.9

CAREER STATISTICS

Season	gp-gs	min/avg	Total		3-Point		F-Throws		Rebounds				Scoring							
			fg-fga	pct	fg-fga	pct	ft-fta	pct	off	def	tot	avg	pf	fo	ast	to	blk	stl	pts	avg
2017-18	3-0	13/4.3	0-0	.000	0-0	.000	1-2	.500	0	3	3	1.0	1	0	1	0	0	0	1	0.3
TOTAL	3-0	13/4.3	0-0	.000	0-0	.000	1-2	.500	0	3	3	1.0	1	0	1	0	0	0	1	0.3

CAREER HIGHS

Points
22, vs. Nevada (1-4-17)

Rebounds
12, Twice
Last: at Colorado State (1-28-17)

Assists
2, Eight times
Last: at Arizona (12-3-17)

Steals
4, vs. Air Force (1-25-17)

Blocks
1, Twice
Last: vs. CSUN (11-14-17)

Field Goals
8, Twice,
Last: vs. Air Force (1-25-17)

Field Goal Attempts
19, vs. Air Force (1-25-17)

3-Point Field Goals
4, vs. Hope International (12-10-17)

3-Point Field Goal Attempts
8, vs. Fresno State (2-4-17)

Free Throws
4, Twice, Last: vs. Seattle (12-4-14)*

Free Throw Attempts
6, Twice, Last: vs. Nevada (1-4-17)

MISC. CAREER STATS

Double-figure scoring games: 11

Double-figure rebounding games: 4

* at Washington



#1 KHALIA LARK

Senior • 1L

6-0

Guard/Forward

Irvine, Calif.

Univ. of Washington / Mater Dei High School

Opponent	Date	gs	min	Total		3-Pointers		Free throws		Rebounds				pf	a	t/o	blk	stl	pts	avg
				fg-fga	pct	3fg-fga	pct	ft-fa	pct	off	def	tot	avg							
PRESBYTERIAN	11-10-17	*	16	0-2	.000	0-1	.000	0-0	.000	1	3	4	4.0	1	1	3	1	1	0	0.0
CSUN	11-14-17	*	31	4-10	.400	3-6	.500	2-2	1.000	1	8	9	6.5	1	1	4	1	3	13	6.5
CAL STATE FULLERTON	11-18-17	*	30	1-10	.100	1-4	.250	0-0	.000	4	6	10	7.7	4	1	3	0	0	3	5.3
vs Central Michigan	11-24-17	*	25	0-5	.000	0-3	.000	2-2	1.000	2	2	4	6.8	4	0	0	0	1	2	4.5
vs Tulane	11-25-17	*	11	1-3	.333	0-1	.000	0-0	.000	0	1	1	5.6	0	1	3	0	1	2	4.0
SAN DIEGO	11-29-17	*	23	0-4	.000	0-1	.000	0-2	.000	2	2	4	5.3	0	1	1	0	1	0	3.3
at Arizona	12-03-17	*	29	2-6	.333	2-3	.667	1-2	.500	1	4	5	5.3	3	2	1	0	0	7	3.9
UC IRVINE	12-08-17	*	29	4-7	.571	2-4	.500	0-0	.000	2	3	5	5.3	1	0	2	0	0	10	4.6
HOPE INTERNATIONAL	12-10-17	*	18	5-9	.556	4-7	.571	0-0	.000	0	4	4	5.1	0	1	0	0	0	14	5.7
SANTA CLARA	12-14-17	*	27	1-6	.167	0-5	.000	0-0	.000	0	2	2	4.8	0	0	0	0	0	2	5.3
Totals			10	239	.290	12-35	.343	5-8	.625	13	35	48	4.8	14	8	17	2	7	53	5.3

Games played: 10
Minutes/game: 23.9
Points/game: 5.3
FG Pct: 29.0
3FG Pct: 34.3
FT Pct: 62.5

Rebounds/game: 4.8
Assists/game: 0.8
Turnovers/game: 1.7
Assist/turnover ratio: 0.5
Steals/game: 0.7
Blocks/game: 0.2

CAREER STATISTICS

Season	gp-gs	min/avg	Total		3-Point		F-Throws		Rebounds				Scoring							
			fg-fga	pct	fg-fga	pct	ft-fa	pct	off	def	tot	avg	pf	fo	ast	to	blk	stl	pts	avg
2014-15*	23-0	198/8.6	17-39	.436	11-27	.407	11-14	.786	10	21	31	1.3	12	0	5	13	0	3	56	2.4
2015-16*	6-0	83/13.8	5-15	.333	2-7	.286	5-11	.455	2	11	13	2.2	3	0	2	7	0	1	17	2.8
2016-17	21-10	544/25.9	72-202	.356	20-81	.247	12-28	.429	39	90	129	6.1	46	0	23	44	1	12	176	8.4
2017-18	10-10	239/23.9	18-62	.290	12-35	.343	5-8	.625	13	35	48	4.8	14	0	8	17	2	7	53	5.3
TOTAL	31-20	783/25.3	90-264	.341	32-116	.276	17-36	.472	52	125	177	5.7	60	0	31	61	3	19	229	7.4
All*	60-20	1064/17.7	112-318	.352	45-150	.300	33-61	.541	64	157	221	3.7	75	0	38	81	3	23	302	5.0

CAREER HIGHS

Points
20, vs. Hope International (12-10-17)

Rebounds
8, vs. Hope International (12-10-17)

Assists
7, vs. Hope International (12-10-17)

Steals
4, vs. Hope International (12-10-17)

Blocks
1, vs. CSUN (11-14-17)

Field Goals
9, vs. Hope International (12-10-17)

Field Goal Attempts
13, vs. Hope International (12-10-17)

3-Point Field Goals
2, vs. Hope International (12-10-17)

3-Point Field Goal Attempts
4, Three times
Last: vs. Santa Clara (12-14-17)

Free Throws
3, vs. San Diego (11-29-17)

Free Throw Attempts
5, vs. San Diego (11-29-17)

MISC. CAREER STATS

Double-figure
scoring games: 1

Double-figure
rebounding games: 0



#5 TE'A ADAMS

Freshman • HS

5-9

Guard

Kirkland, Wash.

Juanita HS

Opponent	Date	gs	min	Total		3-Pointers		Free throws		Rebounds					pts	avg					
				fg-fga	pct	3fg-fga	pct	ft-fa	pct	off	def	tot	avg	pf			a	t/o	blk	stl	
PRESBYTERIAN	11-10-17		17	2-7	.286	0-4	.000	0-0	.000	0	0	0	0.0	3	2	1	0	1	4	4.0	
CSUN	11-14-17		4	0-3	.000	0-2	.000	0-0	.000	0	0	0	0.0	0	0	1	1	0	0	2.0	
CAL STATE FULLERTON	11-18-17		8	1-5	.200	0-1	.000	0-0	.000	0	1	1	0.3	1	3	1	0	2	2	2.0	
vs Central Michigan	11-24-17		13	2-8	.250	0-3	.000	1-1	1.000	1	0	1	0.5	1	1	0	0	1	5	2.8	
vs Tulane	11-25-17		5	1-3	.333	1-1	1.000	2-4	.500	1	1	2	0.8	0	0	1	0	2	5	3.2	
SAN DIEGO	11-29-17		15	1-7	.143	0-1	.000	3-5	.600	0	4	4	1.3	1	2	2	0	1	5	3.5	
at Arizona	12-03-17		14	0-5	.000	0-3	.000	0-0	.000	2	2	4	1.7	1	1	2	0	0	0	3.0	
UC IRVINE	12-08-17		15	1-7	.143	0-2	.000	0-0	.000	1	2	3	1.9	1	2	1	0	1	2	2.9	
HOPE INTERNATIONAL	12-10-17		22	9-13	.692	2-4	.500	0-0	.000	0	8	8	2.6	0	7	1	0	4	20	4.8	
SANTA CLARA	12-14-17		15	1-9	.111	0-4	.000	0-0	.000	0	3	3	2.6	0	0	2	0	1	2	4.5	
Totals			0	128	18-67	.269	3-25	.120	6-10	.600	5	21	26	2.6	8	18	12	1	13	45	4.5

Games played: 10
Minutes/game: 12.8
Points/game: 4.5
FG Pct: 26.9
3FG Pct: 12.0
FT Pct: 60.0

Rebounds/game: 2.6
Assists/game: 1.8
Turnovers/game: 1.2
Assist/turnover ratio: 1.5
Steals/game: 1.3
Blocks/game: 0.1

CAREER STATISTICS

Season	gp-gs	min/avg	Total		3-Point		F-Throws		Rebounds				Scoring							
			fg-fga	pct	fg-fga	pct	ft-fa	pct	off	def	tot	avg	pf	fo	ast	to	blk	stl	pts	avg
2017-18	10-0	128/12.8	18-67	.269	3-25	.120	6-10	.600	5	21	26	2.6	8	0	18	12	1	13	45	4.5
TOTAL	10-0	128/12.8	18-67	.269	3-25	.120	6-10	.600	5	21	26	2.6	8	0	18	12	1	13	45	4.5

CAREER HIGHS

Points
16, vs. Hope International (12-10-17)

Rebounds
4, vs. San Diego (11-29-17)

Assists
4, vs. Hope International (12-10-17)

Steals
1, Five times
Last: vs. Santa Clara (12-14-17)

Blocks
N/A

Field Goals
6, vs. Hope International (12-10-17)

Field Goal Attempts
11, vs. Hope International (12-10-17)

3-Point Field Goals
4, Twice,
Last: vs. Hope Int'l (12-10-17)

3-Point Field Goal Attempts
7, Three times,
Last: vs. vs. Hope Int'l (12-10-17)

Free Throws
6, vs. Central Michigan (11-24-17)

Free Throw Attempts
6, vs. Central Michigan (11-24-17)

MISC. CAREER STATS

Double-figure
scoring games: 7

Double-figure
rebounding games: 0



#10 NAJÉ MURRAY

Freshman • HS

5-6

Guard

Stockton, Calif.

St. Mary's High School

Opponent	Date	gs	min	Total		3-Pointers		Free throws		Rebounds				pf	a	t/o	blk	stl	pts	avg	
				fg-fga	pct	3fg-fga	pct	ft-fa	pct	off	def	tot	avg								
PRESBYTERIAN	11-10-17		13	5-9	.556	4-7	.571	0-0	.000	0	3	3	3.0	2	1	1	0	1	14	14.0	
CSUN	11-14-17		13	2-7	.286	1-5	.200	0-0	.000	0	0	0	1.5	0	0	1	0	0	5	9.5	
CAL STATE FULLERTON	11-18-17		16	4-6	.667	3-5	.600	0-0	.000	0	0	0	1.0	3	0	3	0	0	11	10.0	
vs Central Michigan	11-24-17		16	2-9	.222	2-7	.286	6-6	1.000	0	0	0	0.8	0	0	0	0	0	12	10.5	
vs Tulane	11-25-17		24	0-6	.000	0-4	.000	0-0	.000	0	2	2	1.0	3	0	1	0	0	8	8.4	
SAN DIEGO	11-29-17		13	3-8	.375	2-4	.500	2-2	1.000	1	3	4	1.5	2	1	1	0	1	10	8.7	
at Arizona	12-03-17		17	4-9	.444	3-4	.750	2-2	1.000	0	2	2	1.6	0	0	1	0	1	13	9.3	
UC IRVINE	12-08-17		13	4-6	.667	2-3	.667	0-0	.000	0	1	1	1.5	2	1	2	0	0	10	9.4	
HOPE INTERNATIONAL	12-10-17	*	26	6-11	.545	4-7	.571	0-0	.000	0	1	1	1.4	2	4	4	0	1	16	10.1	
SANTA CLARA	12-14-17		22	3-9	.333	1-6	.167	2-3	.667	0	3	3	1.6	4	0	2	0	1	9	10.0	
Totals			1	173	33-80	.413	22-52	.423	12-13	.923	1	15	16	1.6	18	7	16	0	5	100	10.0

Games played: 10
Minutes/game: 17.3
Points/game: 10.0
FG Pct: 41.3
3FG Pct: 42.3
FT Pct: 92.3

Rebounds/game: 1.6
Assists/game: 0.7
Turnovers/game: 1.6
Assist/turnover ratio: 0.4
Steals/game: 0.5

CAREER STATISTICS

Season	gp-gs	min/avg	Total		3-Point		F-Throws		Rebounds				Scoring							
			fg-fga	pct	fg-fga	pct	ft-fa	pct	off	def	tot	avg	pf	fo	ast	to	blk	stl	pts	avg
2017-18	10-1	173/17.3	33-80	.413	22-52	.423	12-13	.923	1	15	16	1.6	18	0	7	16	0	5	100	10.0
TOTAL	10-1	173/17.3	33-80	.413	22-52	.423	12-13	.923	1	15	16	1.6	18	0	7	16	0	5	100	10.0

CAREER HIGHS

Points
8, vs. San Diego (11-29-17)

Rebounds
5, Four times
Last: vs. CSUN (11-14-17)

Assists
2, vs. Boise State (1-7-17)

Steals
1, Nine times
Last: vs. Santa Clara (12-14-17)

Blocks
2, Six times
Last: vs. UC Irvine (12-8-17)

Field Goals
4, vs. San Diego (11-29-17)

Field Goal Attempts
6, vs. San Diego (11-29-17)

3-Point Field Goals
N/A

3-Point Field Goal Attempts
N/A

Free Throws
2, Four times
Last: vs. Utah State (2-15-17)

Free Throw Attempts
4, Three times
Last: at San Diego (11-17-16)

MISC. CAREER STATS

Double-figure
scoring games: 0

Double-figure
rebounding games: 0



#11 ARANTXA GÓMEZ FERRER

Junior • 2L

6-0

Forward

Valencia, Spain

Parque Colegio Santa Ana High School / Ros Casares Valencia Club

Opponent	Date	gs	min	Total		3-Pointers		Free throws		Rebounds				pf	a	t/o	blk	stl	pts	avg
				fg-fga	pct	3fg-fga	pct	ft-fa	pct	off	def	tot	avg							
PRESBYTERIAN	11-10-17	*	14	2-3	.667	0-0	.000	0-0	.000	0	3	3	3.0	0	0	0	0	0	4	4.0
CSUN	11-14-17	*	24	1-3	.333	0-0	.000	0-0	.000	2	3	5	4.0	2	0	1	2	0	2	3.0
CAL STATE FULLERTON	11-18-17	*	11	0-0	.000	0-0	.000	0-0	.000	1	1	2	3.3	2	0	1	2	0	0	2.0
vs Central Michigan	11-24-17	*	5	0-1	.000	0-0	.000	0-0	.000	1	0	1	2.8	1	0	0	0	0	0	1.5
vs Tulane	11-25-17	*	9	0-0	.000	0-0	.000	0-0	.000	1	2	3	2.8	1	0	1	0	0	0	1.2
SAN DIEGO	11-29-17	*	16	4-6	.667	0-0	.000	0-0	.000	3	0	3	2.8	3	0	0	0	0	8	2.3
at Arizona	12-03-17	dnp	-	-	-	-	-	-	-	-	-	-	-	-	-	-	-	-	-	-
UC IRVINE	12-08-17	9	0-0	.000	0-0	.000	0-0	.000	0	3	3	2.9	1	0	1	2	0	0	2.0	
HOPE INTERNATIONAL	12-10-17	dnp	-	-	-	-	-	-	-	-	-	-	-	-	-	-	-	-	-	-
SANTA CLARA	12-14-17	11	1-1	1.000	0-0	.000	0-2	.000	0	2	2	2.8	0	0	1	0	1	2	2.0	
Totals		6	99	8-14	.571	0-0	.000	0-2	.000	8	14	22	2.8	10	0	5	6	1	16	2.0

Games played: 8
Minutes/game: 12.4
Points/game: 2.0
FG Pct: 57.1
FT Pct: 0.0

Rebounds/game: 2.8
Turnovers/game: 0.6
Steals/game: 0.1
Blocks/game: 0.8

CAREER STATISTICS

Season	gp-gs	min/avg	Total		3-Point		F-Throws		Rebounds				Scoring							
			fg-fga	pct	fg-fga	pct	ft-fa	pct	off	def	tot	avg	pf	fo	ast	to	blk	stl	pts	avg
2015-16	18-0	118/6.6	5-12	.417	0-0	.000	0-12	.000	10	6	16	0.9	18	0	2	5	1	4	10	0.6
2016-17	28-7	322/11.5	18-34	.529	0-0	.000	13-27	.481	32	29	61	2.2	34	0	6	17	9	4	49	1.8
2017-18	8-6	99/12.4	8-14	.571	0-0	.000	0-2	.000	8	14	22	2.8	10	0	0	5	6	1	16	2.0
TOTAL	54-13	539/10.0	31-60	.517	0-0	.000	13-41	.317	50	49	99	1.8	62	0	8	27	16	9	75	1.4

CAREER HIGHS

Points
5, at Air Force (2-28-17)

Rebounds
4, at Air Force (2-28-17)

Assists
2, Twice, Last: at Air Force (2-28-17)

Steals
1, at Loyola Marymount (12-10-15)

Blocks
1, vs. Hope International (12-10-17)

Field Goals
2, at Air Force (2-28-17)

Field Goal Attempts
3, Twice
Last: vs. Air Force (1-21-15)

3-Point Field Goals
1, Twice
Last: vs. San Diego Christian (12-21-15)

3-Point Field Goal Attempts
4, Twice
Last: vs. Air Force (1-21-15)

Free Throws
2, vs. Michigan (12-9-16)

Free Throw Attempts
2, Three times
Last: at UNLV (2-18-17)

MISC. CAREER STATS

Double-figure scoring games: 0

Double-figure rebounding games: 0



#13 ALLISON BROWN

Senior • SQ

5-7

Guard

Anaheim Hills, Calif.

Mater Dei High School

Opponent	Date	gs	min	Total		3-Pointers		Free throws			Rebounds				pf	a	t/o	blk	stl	pts	avg
				fg-fga	pct	3fg-fga	pct	ft-fa	pct	off	def	tot	avg								
PRESBYTERIAN	11-10-17		dnp	-	-	-	-	-	-	-	-	-	-	-	-	-	-	-	-	-	-
CSUN	11-14-17		dnp	-	-	-	-	-	-	-	-	-	-	-	-	-	-	-	-	-	-
CAL STATE FULLERTON	11-18-17		dnp	-	-	-	-	-	-	-	-	-	-	-	-	-	-	-	-	-	-
vs Central Michigan	11-24-17		dnp	-	-	-	-	-	-	-	-	-	-	-	-	-	-	-	-	-	-
vs Tulane	11-25-17		dnp	-	-	-	-	-	-	-	-	-	-	-	-	-	-	-	-	-	-
SAN DIEGO	11-29-17		dnp	-	-	-	-	-	-	-	-	-	-	-	-	-	-	-	-	-	-
at Arizona	12-03-17		dnp	-	-	-	-	-	-	-	-	-	-	-	-	-	-	-	-	-	-
UC IRVINE	12-08-17		dnp	-	-	-	-	-	-	-	-	-	-	-	-	-	-	-	-	-	-
HOPE INTERNATIONAL	12-10-17		16	0-2	.000	0-2	.000	0-0	.000	0	1	1	1.0	1	0	3	1	0	0	0.0	
SANTA CLARA	12-14-17		dnp	-	-	-	-	-	-	-	-	-	-	-	-	-	-	-	-	-	-
Totals			0	16	0-2	.000	0-2	.000	0-0	.000	0	1	1	1.0	1	0	3	1	0	0	0.0

Games played: 1
Minutes/game: 16.0
FG Pct: 0.0
3FG Pct: 0.0

Rebounds/game: 1.0
Turnovers/game: 3.0
Blocks/game: 1.0

CAREER STATISTICS

Season	gp-gs	min/avg	fg-fga	pct	fg-fga	pct	ft-fa	pct	off	def	tot	avg	pf	fo	ast	to	blk	stl	pts	avg
2014-15	7-0	26/3.7	1-9	.111	1-9	.111	0-2	.000	1	1	2	0.3	3	0	2	3	0	0	3	0.4
2015-16	9-0	19/2.1	1-4	.250	1-3	.333	0-0	.000	1	3	4	0.4	0	0	2	3	0	1	3	0.3
2016-17	9-0	39/4.3	4-5	.800	0-0	.000	4-5	.800	1	7	8	0.9	5	0	5	2	0	0	12	1.3
2017-18	1-0	16/16.0	0-2	.000	0-2	.000	0-0	.000	0	1	1	1.0	1	0	0	3	1	0	0	0.0
TOTAL	26-0	100/3.8	6-20	.300	2-14	.143	4-7	.571	3	12	15	0.6	9	0	9	11	1	1	18	0.7

CAREER HIGHS

Points
29, Twice
Last: at San José State (1-11-17)

Rebounds
11, Twice
Last: at San José State (1-11-17)

Assists
8, vs. San Diego (11-29-17)

Steals
5, Four times
Last: at New Mexico (2-6-16)

Blocks
2, Four times
Last: vs. Air Force (1-25-17)

Field Goals
12, at San José State (1-11-17)

Field Goal Attempts
29, at San José State (1-11-17)

3-Point Field Goals
2, Four times
Last: vs. Presbyterian (11-10-17)

3-Point Field Goal Attempts
7, at Colorado State (1-28-17)

Free Throws
11, Twice
Last: at Arizona (12-3-17)

Free Throw Attempts
13, at Arizona (12-3-17)

MISC. CAREER STATS

Double-figure
scoring games: 76

Double-figure
rebounding games: 2

Double-Doubles: 2



#15 McKYNZIE FORT

Senior • 3L

5-9

Guard

Fontana, Calif.

Etiwanda High School

Opponent	Date	qs	min	Total		3-Pointers		Free throws		Rebounds				pf	a	t/o	blk	stl	pts	avg	
				fg-fga	pct	3fg-fga	pct	ft-fa	pct	off	def	tot	avg								
PRESBYTERIAN	11-10-17	*	25	5-9	.556	2-3	.667	4-4	1.000	2	5	7	7.0	0	2	3	0	1	16	16.0	
CSUN	11-14-17	*	34	6-17	.353	1-2	.500	3-5	.600	5	1	6	6.5	1	3	2	0	3	16	16.0	
CAL STATE FULLERTON	11-18-17	*	34	7-15	.467	1-2	.500	2-3	.667	1	5	6	6.3	1	4	1	0	2	17	16.3	
vs Central Michigan	11-24-17	*	37	9-19	.474	0-1	.000	3-4	.750	0	3	3	5.5	3	3	2	0	2	21	17.5	
vs Tulane	11-25-17	*	22	1-5	.200	0-0	.000	0-0	.000	1	2	3	5.0	1	3	2	0	0	2	14.4	
SAN DIEGO	11-29-17	*	34	10-16	.625	0-0	.000	4-6	.667	1	5	6	5.2	1	8	3	1	0	24	16.0	
at Arizona	12-03-17	*	32	7-12	.583	1-3	.333	11-13	.846	1	5	6	5.3	2	2	2	0	2	26	17.4	
UC IRVINE	12-08-17	*	32	5-9	.556	0-2	.000	6-7	.857	2	2	4	5.1	1	3	6	0	0	16	17.3	
HOPE INTERNATIONAL	12-10-17		dnp	-	-	-	-	-	-	-	-	-	-	-	-	-	-	-	-	-	
SANTA CLARA	12-14-17	*	35	3-13	.231	1-5	.200	3-4	.750	4	4	8	5.4	1	1	6	0	2	10	16.4	
Totals			9	285	53-115	.461	6-18	.333	36-46	.783	17	32	49	5.4	11	29	27	1	12	148	16.4

Games played: 9
Minutes/game: 31.7
Points/game: 16.4
FG Pct: 46.1
3FG Pct: 33.3
FT Pct: 78.3

Rebounds/game: 5.4
Assists/game: 3.2
Turnovers/game: 3.0
Assist/turnover ratio: 1.1
Steals/game: 1.3
Blocks/game: 0.1

CAREER STATISTICS

Season	gp-gs	min/avg	Total		3-Point		F-Throws		Rebounds				Scoring							
			fg-fga	pct	fg-fga	pct	ft-fa	pct	off	def	tot	avg	pf	fo	ast	to	blk	stl	pts	avg
2014-15	31-24	839/27.1	125-278	.450	2-13	.154	60-96	.625	35	64	99	3.2	55	0	59	94	5	30	312	10.1
2015-16	31-31	971/31.3	169-366	.462	3-12	.250	104-150	.693	44	83	127	4.1	71	0	73	93	8	62	445	14.4
2016-17	30-30	956/31.9	176-404	.436	8-41	.195	116-148	.784	41	80	121	4.0	65	2	75	74	6	29	476	15.9
2017-18	9-9	285/31.7	53-115	.461	6-18	.333	36-46	.783	17	32	49	5.4	11	0	29	27	1	12	148	16.4
TOTAL	101-94	3051/30.2	523-1163	.450	19-84	.226	316-440	.718	137	259	396	3.9	202	2	236	288	20	133	1381	13.7

CAREER HIGHS

Points
20, at San José State (1-11-17)

Rebounds
8, vs. Utah State (2-15-17)

Assists
10, vs. CSUN (11-14-17)

Steals
4, vs. Santa Clara (12-14-17)

Blocks
1, Four times
Last: vs. CSUN (11-14-17)

Field Goals
6, Twice
Last: at San José State (1-11-17)

Field Goal Attempts
14, vs. UC Irvine (12-8-17)

3-Point Field Goals
4, Three times
Last: at Arizona (12-3-17)

3-Point Field Goal Attempts
9, at San José State (1-6-16)

Free Throws
6, vs. Central Connecticut (11-27-16)

Free Throw Attempts
6, Twice
Last: vs. Central Connecticut (11-27-16)

MISC. CAREER STATS

Double-figure scoring games: 16

Double-figure rebounding games: 0



#20 GEENA GOMEZ

Senior • 2L

5-8

Guard

Huntington Beach, Calif.

St. Joseph's (Pa.) / Edison High School

Opponent	Date	gs	min	Total		3-Pointers		Free throws		Rebounds			pf	a	t/o	blk	stl	pts	avg		
				fg-fga	pct	3fg-fga	pct	ft-fa	pct	off	def	tot								avg	
PRESBYTERIAN	11-10-17	*	21	2-5	.400	2-4	.500	0-0	.000	1	1	2	2.0	1	6	5	0	0	6	6.0	
CSUN	11-14-17	*	32	1-6	.167	0-3	.000	0-0	.000	0	2	2	2.0	4	10	6	1	2	2	4.0	
CAL STATE FULLERTON	11-18-17	*	25	3-5	.600	1-3	.333	0-0	.000	1	5	6	3.3	1	1	1	0	0	7	5.0	
vs Central Michigan	11-24-17	*	34	5-11	.455	3-6	.500	2-5	.400	1	5	6	4.0	2	7	0	0	0	15	7.5	
vs Tulane	11-25-17	*	20	2-9	.222	0-2	.000	2-2	1.000	0	0	0	3.2	2	0	2	0	0	6	7.2	
SAN DIEGO	11-29-17	*	33	3-9	.333	0-4	.000	1-2	.500	1	4	5	3.5	3	3	1	0	1	7	7.2	
at Arizona	12-03-17	*	32	4-9	.444	4-7	.571	0-0	.000	0	3	3	3.4	0	7	3	0	0	12	7.9	
UC IRVINE	12-08-17	*	36	5-14	.357	2-5	.400	0-0	.000	1	1	2	3.3	2	7	5	0	3	12	8.4	
HOPE INTERNATIONAL	12-10-17	*	19	3-7	.429	1-3	.333	3-3	1.000	0	1	1	3.0	1	4	0	0	0	10	8.6	
SANTA CLARA	12-14-17	*	30	3-9	.333	1-3	.333	0-0	.000	1	5	6	3.3	1	3	2	0	4	7	8.4	
Totals			10	282	31-84	.369	14-40	.350	8-12	.667	6	27	33	3.3	17	48	25	1	10	84	8.4

Games played: 10
Minutes/game: 28.2
Points/game: 8.4
FG Pct: 36.9
3FG Pct: 35.0
FT Pct: 66.7

Rebounds/game: 3.3
Assists/game: 4.8
Turnovers/game: 2.5
Assist/turnover ratio: 1.9
Steals/game: 1.0
Blocks/game: 0.1

CAREER STATISTICS

Season	gp-gs	min/avg	Total		3-Point		F-Throws		Rebounds				Scoring							
			fg-fga	pct	fg-fga	pct	ft-fa	pct	off	def	tot	avg	pf	fo	ast	to	blk	stl	pts	avg
2013-14*	24-1	114/4.8	10-34	.294	3-14	.214	5-7	.714	1	10	11	0.5	17	0	13	6	1	2	28	1.2
2015-16	29-0	426/14.7	30-107	.280	23-71	.324	15-22	.682	13	42	55	1.9	23	0	37	26	2	11	98	3.4
2016-17	30-21	743/24.8	68-203	.335	36-100	.360	32-45	.711	22	75	97	3.2	44	0	72	58	1	13	204	6.8
2017-18	10-10	282/28.2	31-84	.369	14-40	.350	8-12	.667	6	27	33	3.3	17	0	48	25	1	10	84	8.4
TOTAL	69-31	1451/21.0	129-394	.327	73-211	.346	55-79	.696	41	144	185	2.7	84	0	157	109	4	34	386	5.6
All*	93-32	1565/16.8	139-428	.325	76-225	.338	60-86	.698	42	154	196	2.1	101	0	170	115	5	36	414	4.5

CAREER HIGHS

Points
7, at UC Davis (12-2-16)

Rebounds
3, Three times,
Last: vs. Tulane (11-25-17)

Assists
1, Three times,
Last: vs. Hope Int'l (12-10-17)

Steals
1, vs. Tulane (11-25-17)

Blocks
1, vs. Loyola Marymount (11-20-16)

Field Goals
2, Twice,
Last: vs. Tulane (11-25-17)

Field Goal Attempts
4, vs. San Diego Christian (11-14-16)

3-Point Field Goals
1, Twice,
Last: vs. Tulane (11-25-17)

3-Point Field Goal Attempts
2, Twice,
Last: vs. Tulane (11-25-17)

Free Throws
2, Twice,
Last: at UC Davis (12-2-16)

Free Throw Attempts
2, Four times
Last: vs. Tulane (11-25-17)

MISC. CAREER STATS

Double-figure
scoring games: 0

Double-figure
rebounding games: 0



#21 ABBY LOWE

Sophomore • 1L

5-11

Guard

Stockport, England

Barking Abbey Academy

Opponent	Date	gs	min	Total		3-Pointers		Free throws		Rebounds				pf	a	t/o	blk	stl	pts	avg
				fg-fga	pct	3fg-fga	pct	ft-fa	pct	off	def	tot	avg							
PRESBYTERIAN	11-10-17		dnp	-	-	-	-	-	-	-	-	-	-	-	-	-	-	-	-	-
CSUN	11-14-17		dnp	-	-	-	-	-	-	-	-	-	-	-	-	-	-	-	-	-
CAL STATE FULLERTON	11-18-17		dnp	-	-	-	-	-	-	-	-	-	-	-	-	-	-	-	-	-
vs Central Michigan	11-24-17		dnp	-	-	-	-	-	-	-	-	-	-	-	-	-	-	-	-	-
vs Tulane	11-25-17	12		2-3	.667	1-2	.500	0-2	.000	1	2	3	3.0	1	0	1	0	1	5	5.0
SAN DIEGO	11-29-17		dnp	-	-	-	-	-	-	-	-	-	-	-	-	-	-	-	-	-
at Arizona	12-03-17		dnp	-	-	-	-	-	-	-	-	-	-	-	-	-	-	-	-	-
UC IRVINE	12-08-17		dnp	-	-	-	-	-	-	-	-	-	-	-	-	-	-	-	-	-
HOPE INTERNATIONAL	12-10-17	8		0-1	.000	0-1	.000	0-0	.000	0	1	1	2.0	1	1	0	0	0	0	2.5
SANTA CLARA	12-14-17		dnp	-	-	-	-	-	-	-	-	-	-	-	-	-	-	-	-	-
Totals		0	20	2-4	.500	1-3	.333	0-2	.000	1	3	4	2.0	2	1	1	0	1	5	2.5

Games played: 2
Minutes/game: 10.0
Points/game: 2.5
FG Pct: 50.0
3FG Pct: 33.3
FT Pct: 0.0

Rebounds/game: 2.0
Assists/game: 0.5
Turnovers/game: 0.5
Assist/turnover ratio: 1.0
Steals/game: 0.5

CAREER STATISTICS

Season	gp-gs	min/avg	Total		3-Point		F-Throws		Rebounds				Scoring							
			fg-fga	pct	fg-fga	pct	ft-fa	pct	off	def	tot	avg	pf	fo	ast	to	blk	stl	pts	avg
2016-17	15-0	79/5.3	6-19	.316	1-6	.167	5-7	.714	5	5	10	0.7	12	0	2	8	1	0	18	1.2
2017-18	2-0	20/10.0	2-4	.500	1-3	.333	0-2	.000	1	3	4	2.0	2	0	1	1	0	1	5	2.5
TOTAL	17-0	99/5.8	8-23	.348	2-9	.222	5-9	.556	6	8	14	0.8	14	0	3	9	1	1	23	1.4

CAREER HIGHS

Points
21, vs. UNLV (1-18-17)

Rebounds
9, vs. New Mexico (3-3-17)

Assists
3, vs. UT Arlington (11-26-16)

Steals
4, vs. San José State (2-8-17)

Blocks
1, 21 times
Last: vs. Hope Int'l (12-10-17)

Field Goals
7, UNLV (1-18-17)

Field Goal Attempts
15, vs. New Mexico (3-3-17)

3-Point Field Goals
7, vs. UNLV (1-18-17)

3-Point Field Goal Attempts
13, vs. UNLV (1-18-17)

Free Throws
5, vs. UC Santa Barbara (12-11-16)

Free Throw Attempts
5, Twice,
Last: vs. UC Irvine (12-8-17)

MISC. CAREER STATS

Double-figure
scoring games: 27

Double-figure
rebounding games: 0



#22 LEXY THORDERSON

Senior • 3L

6-0

Guard

Castle Rock, Colo.

Rock Canyon High School

Opponent	Date	gs	min	Total		3-Pointers		Free throws		Rebounds				pf	a	t/o	blk	stl	pts	avg	
				fg-fga	pct	3fg-fga	pct	ft-fa	pct	off	def	tot	avg								
PRESBYTERIAN	11-10-17	*	20	4-7	.571	4-7	.571	0-0	.000	0	6	6	6.0	2	2	1	0	1	12	12.0	
CSUN	11-14-17	*	29	6-11	.545	5-10	.500	0-0	.000	0	6	6	6.0	1	1	0	0	2	17	14.5	
CAL STATE FULLERTON	11-18-17	*	24	2-8	.250	2-6	.333	0-0	.000	0	2	2	4.7	0	0	1	1	2	6	11.7	
vs Central Michigan	11-24-17	*	30	4-11	.364	4-10	.400	0-0	.000	1	2	3	4.3	2	0	1	0	0	12	11.8	
vs Tulane	11-25-17	*	15	3-6	.500	3-5	.600	0-0	.000	0	0	0	3.4	2	0	1	1	0	9	11.2	
SAN DIEGO	11-29-17	*	25	5-9	.556	5-8	.625	1-2	.500	1	0	1	3.0	4	0	1	0	1	16	12.0	
at Arizona	12-03-17	*	23	2-2	1.000	1-1	1.000	3-4	.750	0	1	1	2.7	1	0	0	0	0	8	11.4	
UC IRVINE	12-08-17	*	25	2-9	.222	2-8	.250	3-5	.600	2	3	5	3.0	1	0	2	0	1	9	11.1	
HOPE INTERNATIONAL	12-10-17	*	20	2-7	.286	2-6	.333	0-0	.000	1	3	4	3.1	0	1	0	1	1	6	10.6	
SANTA CLARA	12-14-17	*	17	0-4	.000	0-4	.000	0-0	.000	0	2	2	3.0	4	0	0	0	0	0	9.5	
Totals			10	228	30-74	.405	28-65	.431	7-11	.636	5	25	30	3.0	17	4	7	3	8	95	9.5

Games played: 10
Minutes/game: 22.8
Points/game: 9.5
FG Pct: 40.5
3FG Pct: 43.1
FT Pct: 63.6

Rebounds/game: 3.0
Assists/game: 0.4
Turnovers/game: 0.7
Assist/turnover ratio: 0.6
Steals/game: 0.8
Blocks/game: 0.3

CAREER STATISTICS

Season	gp-gs	min/avg	Total		3-Point		F-Throws		Rebounds				Scoring							
			fg-fga	pct	fg-fga	pct	ft-fa	pct	off	def	tot	avg	pf	fo	ast	to	blk	stl	pts	avg
2014-15	30-0	226/7.5	20-70	.286	13-58	.224	4-4	1.000	7	12	19	0.6	15	0	8	18	1	3	57	1.9
2015-16	31-2	524/16.9	58-172	.337	40-124	.323	5-8	.625	16	51	67	2.2	33	0	4	9	8	10	161	5.2
2016-17	28-18	720/25.7	91-244	.373	66-192	.344	17-27	.630	21	56	77	2.8	51	2	22	16	9	24	265	9.5
2017-18	10-10	228/22.8	30-74	.405	28-65	.431	7-11	.636	5	25	30	3.0	17	0	4	7	3	8	95	9.5
TOTAL	99-30	1698/17.2	199-560	.355	147-439	.335	33-50	.660	49	144	193	1.9	116	2	38	50	21	45	578	5.8

CAREER HIGHS*

Points
6, vs. San Francisco State (1-29-15)*

Rebounds
5, vs. San Francisco State (1-29-15)*

Assists
1, Twice,
Last: vs. Hope Int'l (12-10-17)

Steals
N/A

Blocks
N/A

Field Goals
2, vs. San Francisco State (1-29-15)*

Field Goal Attempts
3, vs. San Francisco State (1-29-15)*

3-Point Field Goals
N/A

3-Point Field Goal Attempts
2, vs. San Francisco State (11-14-14)*

Free Throws
2, vs. San Francisco State (1-29-15)*

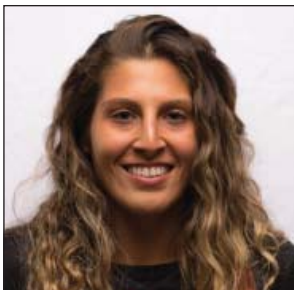
Free Throw Attempts
5, vs. San Francisco State (1-29-15)*

MISC. CAREER STATS

Double-figure
scoring games: 0

Double-figure
rebounding games: 0

* at CSU San Bernardino



#23 LOLI GOMEZ

Junior • TR

5-8

Guard

Huntington Beach, Calif.

Edison High School

Opponent	Date	gs	min	Total		3-Pointers		Free throws		Rebounds				pf	a	t/o	blk	stl	pts	avg	
				fg-fga	pct	3fg-fga	pct	ft-fa	pct	off	def	tot	avg								
PRESBYTERIAN	11-10-17	dnp	-	-	-	-	-	-	-	-	-	-	-	-	-	-	-	-	-	-	
CSUN	11-14-17	dnp	-	-	-	-	-	-	-	-	-	-	-	-	-	-	-	-	-	-	
CAL STATE FULLERTON	11-18-17	dnp	-	-	-	-	-	-	-	-	-	-	-	-	-	-	-	-	-	-	
vs Central Michigan	11-24-17	0	0-0	.000	0-0	.000	0-0	.000	0-0	.000	0	0	0	0.0	0	0	0	0	0	0.0	
vs Tulane	11-25-17	3	0-1	.000	0-0	.000	0-0	.000	0-0	.000	0	0	0	0.0	0	0	1	0	0	0.0	
SAN DIEGO	11-29-17	dnp	-	-	-	-	-	-	-	-	-	-	-	-	-	-	-	-	-	-	
at Arizona	12-03-17	dnp	-	-	-	-	-	-	-	-	-	-	-	-	-	-	-	-	-	-	
UC IRVINE	12-08-17	dnp	-	-	-	-	-	-	-	-	-	-	-	-	-	-	-	-	-	-	
HOPE INTERNATIONAL	12-10-17	2	0-0	.000	0-0	.000	0-0	.000	0-0	.000	0	0	0	0.0	0	1	1	0	0	0.0	
SANTA CLARA	12-14-17	dnp	-	-	-	-	-	-	-	-	-	-	-	-	-	-	-	-	-	-	
Totals		0	5	0-1	.000	0-0	.000	0-0	.000	0-0	.000	0	0	0	0.0	0	1	2	0	0	0.0

Games played: 3
Minutes/game: 1.7
FG Pct: 0.0

Assists/game: 0.3
Turnovers/game: 0.7
Assist/turnover ratio: 0.5

CAREER STATISTICS

Season	gp-gs	min/avg	Total		3-Point		F-Throws		Rebounds				Scoring							
			fg-fga	pct	fg-fga	pct	ft-fa	pct	off	def	tot	avg	pf	fo	ast	to	blk	stl	pts	avg
2014-15*	8-0	30/3.8	3-10	.300	0-5	.000	2-5	.400	3	5	8	1.0	4	0	2	1	0	0	8	1.0
2017-18	3-0	5/1.7	0-1	.000	0-0	.000	0-0	.000	0	0	0	0.0	0	0	1	2	0	0	0	0.0
TOTAL	3-0	5/1.7	0-1	.000	0-0	.000	0-0	.000	0	0	0	0.0	0	0	1	2	0	0	0	0.0
All*	11-0	35/3.2	3-11	.273	0-5	.000	2-5	.400	3	5	8	0.7	4	0	3	3	0	0	8	0.7

CAREER HIGHS

Points
6, vs. Hope International (12-10-17)

Rebounds
5, vs. Hope International (12-10-17)

Assists
N/A, vs. Presbyterian (11-10-17)

Steals
N/A

Blocks
N/A

Field Goals
3, vs. Hope International (12-10-17)

Field Goal Attempts
5, Twice,
Last: vs. Hope Int'l (12-10-17)

3-Point Field Goals
N/A

3-Point Field Goal Attempts
1, vs. Tulane (11-25-17)

Free Throws
N/A

Free Throw Attempts
N/A

MISC. CAREER STATS

Double-figure
scoring games: 0

Double-figure
rebounding games: 0



#24 KIARA EDWARDS

Freshman • HS

6-1

Forward

Surprise, Ariz.

Valley Vista High School

Opponent	Date	gs	min	Total		3-Pointers		Free throws		Rebounds				pf	a	t/o	blk	stl	pts	avg
				fg-fga	pct	3fg-fga	pct	ft-fta	pct	off	def	tot	avg							
PRESBYTERIAN	11-10-17	4	0-1	.000	0-0	.000	0-0	.000	0	2	2	2.0	0	0	0	0	0	0	0	0.0
CSUN	11-14-17	dnp	-	-	-	-	-	-	-	-	-	-	-	-	-	-	-	-	-	-
CAL STATE FULLERTON	11-18-17	dnp	-	-	-	-	-	-	-	-	-	-	-	-	-	-	-	-	-	-
vs Central Michigan	11-24-17	dnp	-	-	-	-	-	-	-	-	-	-	-	-	-	-	-	-	-	-
vs Tulane	11-25-17	8	1-5	.200	0-1	.000	0-0	.000	1	2	3	2.5	0	0	0	0	0	0	2	1.0
SAN DIEGO	11-29-17	dnp	-	-	-	-	-	-	-	-	-	-	-	-	-	-	-	-	-	-
at Arizona	12-03-17	dnp	-	-	-	-	-	-	-	-	-	-	-	-	-	-	-	-	-	-
UC IRVINE	12-08-17	dnp	-	-	-	-	-	-	-	-	-	-	-	-	-	-	-	-	-	-
HOPE INTERNATIONAL	12-10-17	15	3-5	.600	0-0	.000	0-0	.000	1	4	5	3.3	0	0	3	0	0	0	6	2.7
SANTA CLARA	12-14-17	3	0-0	.000	0-0	.000	0-0	.000	0	0	0	2.5	0	0	0	0	0	0	0	2.0
Totals		0	30	4-11	.364	0-1	.000	0-0	.000	2	8	10	2.5	0	0	3	0	0	8	2.0

Games played: 4
Minutes/game: 7.5
Points/game: 2.0
FG Pct: 36.4
3FG Pct: 0.0

Rebounds/game: 2.5
Turnovers/game: 0.8

CAREER STATISTICS			Total		3-Point		F-Throws		Rebounds				Scoring							
Season	gp-gs	min/avg	fg-fga	pct	fg-fga	pct	ft-fta	pct	off	def	tot	avg	pf	fo	ast	to	blk	stl	pts	avg
2017-18	4-0	30/7.5	4-11	.364	0-1	.000	0-0	.000	2	8	10	2.5	0	0	0	3	0	0	8	2.0
TOTAL	4-0	30/7.5	4-11	.364	0-1	.000	0-0	.000	2	8	10	2.5	0	0	0	3	0	0	8	2.0

CAREER HIGHS

Points
19, vs. Sacramento State
(11-14-14)

Rebounds
11, vs. Sacramento State
(11-14-14)

Assists
5, vs. Sacramento State
(11-14-14)

Steals
2, Four times
Last: vs. Hope Int'l (12-10-17)

Blocks
2, at Air Force (2-13-16)

Field Goals
6, Three times,
Last at Wyoming (12-30-15)

Field Goal Attempts
12, vs. Sacramento State
(11-14-14)

3-Point Field Goals
2, vs. UC Santa Barbara (12-11-16)

3-Point Field Goal Attempts
3, Twice,
Last: vs. UC Santa Barbara (12-11-16)

Free Throws
7, vs. Sacramento State (1-14-14)

Free Throw Attempts
10, vs. Sacramento State
(11-14-14)

MISC. CAREER STATS

Double-figure
scoring games: 10

Double-figure
rebounding games: 1

Double-doubles: 1



#30 CHEYENNE GREENHOUSE

Senior • 3L

5-11

Guard

Riverside, Calif.

Canyon Springs High School

Opponent	Date	gs	min	Total		3-Pointers		Free throws		Rebounds				pf	a	t/o	blk	stl	pts	avg
				fg-fga	pct	3fg-fga	pct	ft-fa	pct	off	def	tot	avg							
PRESBYTERIAN	11-10-17		17	3-5	.600	0-0	.000	0-0	.000	1	3	4	4.0	0	4	0	0	1	6	6.0
CSUN	11-14-17		10	0-3	.000	0-0	.000	0-0	.000	0	1	1	2.5	0	0	1	0	0	0	3.0
CAL STATE FULLERTON	11-18-17		12	1-3	.333	0-1	.000	1-2	.500	2	1	3	2.7	0	0	0	0	1	3	3.0
vs Central Michigan	11-24-17		20	2-5	.400	0-0	.000	0-0	.000	2	1	3	2.8	2	2	0	0	1	4	3.3
vs Tulane	11-25-17		20	1-3	.333	0-0	.000	1-2	.500	2	3	5	3.2	0	1	2	0	0	3	3.2
SAN DIEGO	11-29-17		16	1-2	.500	0-0	.000	0-0	.000	0	0	0	2.7	1	0	0	0	0	2	3.0
at Arizona	12-03-17		17	1-2	.500	0-0	.000	2-2	1.000	0	2	2	2.6	2	0	0	0	0	4	3.1
UC IRVINE	12-08-17		8	0-1	.000	0-0	.000	0-0	.000	0	1	1	2.4	0	1	0	0	0	0	2.8
HOPE INTERNATIONAL	12-10-17		16	5-8	.625	0-1	.000	0-0	.000	4	2	6	2.8	1	4	2	0	2	10	3.6
SANTA CLARA	12-14-17		13	0-4	.000	0-1	.000	0-0	.000	2	0	2	2.7	1	2	0	0	1	0	3.2
Totals		0	149	14-36	.389	0-3	.000	4-6	.667	13	14	27	2.7	7	14	5	0	6	32	3.2

Games played: 10
Minutes/game: 14.9
Points/game: 3.2
FG Pct: 38.9
3FG Pct: 0.0
FT Pct: 66.7

Rebounds/game: 2.7
Assists/game: 1.4
Turnovers/game: 0.5
Assist/turnover ratio: 2.8
Steals/game: 0.6

CAREER STATISTICS

Season	gp-gs	min/avg	Total		3-Point		F-Throws		Rebounds				Scoring							
			fg-fga	pct	fg-fga	pct	ft-fa	pct	off	def	tot	avg	pf	fo	ast	to	blk	stl	pts	avg
2014-15	31-8	441/14.2	43-118	.364	1-4	.250	32-48	.667	40	47	87	2.8	23	0	21	35	1	8	119	3.8
2015-16	31-22	647/20.9	59-161	.366	2-9	.222	33-49	.673	53	47	100	3.2	35	0	17	30	6	9	153	4.9
2016-17	29-7	447/15.4	41-109	.376	3-17	.176	36-47	.766	29	28	57	2.0	26	1	9	22	0	6	121	4.2
2017-18	10-0	149/14.9	14-36	.389	0-3	.000	4-6	.667	13	14	27	2.7	7	0	14	5	0	6	32	3.2
TOTAL	101-37	1684/16.7	157-424	.370	6-33	.182	105-150	.700	135	136	271	2.7	91	1	61	92	7	29	425	4.2

CAREER HIGHS

Points
12, vs. San José State (3-6-17)

Rebounds
13, vs. Central Michigan (11-24-17)

Assists
2, vs. Central Connecticut (11-27-16)

Steals
2, Three times,
Last: vs. Santa Clara (12-14-17)

Blocks
3, vs. San Diego (11-29-17)

Field Goals
5, Twice,
Last: vs. San José State (3-6-17)

Field Goal Attempts
9, vs. Central Michigan (11-24-17)

3-Point Field Goals
N/A

3-Point Field Goal Attempts
N/A

Free Throws
4, at San Diego (11-17-16)

Free Throw Attempts
5, vs. San Diego (11-29-17)

MISC. CAREER STATS

Double-figure
scoring games: 2

Double-figure
rebounding games: 2

Double-Doubles: 1



#34 BAYLEE VANDERDOES

Sophomore • 1L

6-1

Forward

Auburn, Calif.

Placer High School

Opponent	Date	gs	min	Total		3-Pointers		Free throws		Rebounds				pf	a	t/o	blk	stl	pts	avg	
				fg-fga	pct	3fg-fga	pct	ft-fa	pct	off	def	tot	avg								
PRESBYTERIAN	11-10-17		16	4-7	.571	0-0	.000	0-1	.000	2	3	5	5.0	0	1	0	1	0	8	8.0	
CSUN	11-14-17		7	0-1	.000	0-0	.000	0-0	.000	1	0	1	3.0	4	0	0	0	0	0	4.0	
CAL STATE FULLERTON	11-18-17		18	3-5	.600	0-0	.000	2-4	.500	3	0	3	3.0	3	0	0	1	0	8	5.3	
vs Central Michigan	11-24-17		29	1-9	.111	0-0	.000	1-3	.333	11	2	13	5.5	3	0	1	0	1	3	4.8	
vs Tulane	11-25-17		15	0-1	.000	0-0	.000	0-0	.000	1	1	2	4.8	1	0	0	0	2	0	3.8	
SAN DIEGO	11-29-17		15	1-6	.167	0-0	.000	3-5	.600	2	1	3	4.5	0	0	1	3	0	5	4.0	
at Arizona	12-03-17	*	24	2-3	.667	0-0	.000	0-0	.000	1	5	6	4.7	2	0	1	1	0	4	4.0	
UC IRVINE	12-08-17	*	20	0-1	.000	0-0	.000	0-0	.000	4	1	5	4.8	0	0	1	2	0	0	3.5	
HOPE INTERNATIONAL	12-10-17	*	7	1-3	.333	0-0	.000	0-0	.000	2	0	2	4.4	0	0	0	0	2	2	3.3	
SANTA CLARA	12-14-17	*	14	0-2	.000	0-0	.000	0-0	.000	1	1	2	4.2	1	0	0	0	2	0	3.0	
Totals			4	165	12-38	.316	0-0	.000	6-13	.462	28	14	42	4.2	14	1	4	8	7	30	3.0

Games played: 10
Minutes/game: 16.5
Points/game: 3.0
FG Pct: 31.6
FT Pct: 46.2

Rebounds/game: 4.2
Assists/game: 0.1
Turnovers/game: 0.4
Assist/turnover ratio: 0.3
Steals/game: 0.7
Blocks/game: 0.8

CAREER STATISTICS

Season	gp-gs	min/avg	Total		3-Point		F-Throws		Rebounds				Scoring							
			fg-fga	pct	fg-fga	pct	ft-fa	pct	off	def	tot	avg	pf	fo	ast	to	blk	stl	pts	avg
2016-17	23-9	312/13.6	33-67	.493	0-0	.000	23-37	.622	17	44	61	2.7	43	1	8	20	3	6	89	3.9
2017-18	10-4	165/16.5	12-38	.316	0-0	.000	6-13	.462	28	14	42	4.2	14	0	1	4	8	7	30	3.0
TOTAL	33-13	477/14.5	45-105	.429	0-0	.000	29-50	.580	45	58	103	3.1	57	1	9	24	11	13	119	3.6

CAREER HIGHS

Points
8, vs. Biola (12-28-16)

Rebounds
5, at Cal State Fullerton (12-22-16)

Assists
2, vs. Central Connecticut (11-27-16)

Steals
2, vs. Biola (12-28-16)

Blocks
2, vs. Hope Int'l (12-10-17)

Field Goals
4, vs. Biola (12-28-16)

Field Goal Attempts
10, at New Mexico (12-31-16)

3-Point Field Goals
N/A

3-Point Field Goal Attempts
1, Three times
Last: vs. UT Arlington (11-26-16)

Free Throws
2, Three times,
Last: at Arizona (12-3-17)

Free Throw Attempts
3, at Nevada (2-11-17)

MISC. CAREER STATS

Double-figure
scoring games: 0

Double-figure
rebounding games: 0



#40 MONIQUE TERRY

Sophomore • 1L

6-2

Forward

San Antonio, Texas

Brennan HS

Opponent	Date	gs	min	Total		3-Pointers		Free throws		Rebounds				pf	a	t/o	blk	stl	pts	avg
				fg-fga	pct	3fg-fga	pct	ft-fa	pct	off	def	tot	avg							
PRESBYTERIAN	11-10-17	7	1-1	1.000	0-0	.000	0-0	.000	1	1	2	2.0	1	0	0	0	0	2	2.0	
CSUN	11-14-17	1	0-0	.000	0-0	.000	0-0	.000	0	0	0	1.0	0	0	0	0	0	0	1.0	
CAL STATE FULLERTON	11-18-17	2	0-0	.000	0-0	.000	0-0	.000	0	0	0	0.7	0	0	0	0	0	0	0.7	
vs Central Michigan	11-24-17	11	0-0	.000	0-0	.000	0-0	.000	1	0	1	0.8	2	0	0	0	0	0	0.5	
vs Tulane	11-25-17	8	1-1	1.000	0-0	.000	0-0	.000	0	1	1	0.8	2	0	0	0	0	2	0.8	
SAN DIEGO	11-29-17	3	0-0	.000	0-0	.000	0-0	.000	1	1	2	1.0	1	0	1	0	0	0	0.7	
at Arizona	12-03-17	12	1-2	.500	0-0	.000	2-2	1.000	1	2	3	1.3	1	0	0	0	0	4	1.1	
UC IRVINE	12-08-17	2	0-0	.000	0-0	.000	0-0	.000	0	0	0	1.1	0	0	0	0	0	0	1.0	
HOPE INTERNATIONAL	12-10-17	13	1-1	1.000	0-0	.000	0-0	.000	1	1	2	1.2	2	0	1	2	1	2	1.1	
SANTA CLARA	12-14-17	3	0-0	.000	0-0	.000	0-0	.000	1	1	2	1.3	0	0	1	0	0	0	1.0	
Totals		0	62	4-5	.800	0-0	.000	2-2	1.000	6	7	13	1.3	9	0	3	2	1	10	1.0

Games played: 10
Minutes/game: 6.2
Points/game: 1.0
FG Pct: 80.0
FT Pct: 100.0

Rebounds/game: 1.3
Turnovers/game: 0.3
Steals/game: 0.1
Blocks/game: 0.2

CAREER STATISTICS

Season	gp-gs	min/avg	Total		3-Point		F-Throws		Rebounds				Scoring							
			fg-fga	pct	fg-fga	pct	ft-fa	pct	off	def	tot	avg	pf	fo	ast	to	blk	stl	pts	avg
2016-17	28-10	344/12.3	33-62	.532	0-3	.000	10-19	.526	19	38	57	2.0	38	0	3	16	3	7	76	2.7
2017-18	10-0	62/6.2	4-5	.800	0-0	.000	2-2	1.000	6	7	13	1.3	9	0	0	3	2	1	10	1.0
TOTAL	38-10	406/10.7	37-67	.552	0-3	.000	12-21	.571	25	45	70	1.8	47	0	3	19	5	8	86	2.3

CAREER HIGHS

Points
6, Twice,
Last: vs. Hope Int'l (12-10-17)

Rebounds
5, Three times
Last: vs. UC Irvine (12-8-17)

Assists
2, vs. Hope International (12-10-17)

Steals
2, vs. UC Irvine (12-8-17)

Blocks
2, vs. UC Irvine (12-8-17)

Field Goals
3, Twice,
Last: Hope Int'l (12-10-17)

Field Goal Attempts
5, Twice,
Last: vs. UC Irvine (12-8-17)

3-Point Field Goals
N/A

3-Point Field Goal Attempts
N/A

Free Throws
1, vs. San Diego Christian (11-14-16)

Free Throw Attempts
2, vs. San Diego Christian (11-14-16)

MISC. CAREER STATS

Double-figure scoring games: 0

Double-figure rebounding games: 0



#45 NAOMI EKWEDIKE

Sophomore • SQ

6-6

Center

Lagos, Nigeria

Potter's House Christian Academy

Opponent	Date	gs	min	Total		3-Pointers		Free throws		Rebounds				pf	a	t/o	blk	stl	pts	avg
				fg-fga	pct	3fg-fga	pct	ft-fa	pct	off	def	tot	avg							
PRESBYTERIAN	11-10-17	7	2-2	1.000	0-0	.000	0-0	.000	0	1	1	1.0	1	0	2	0	0	4	4.0	
CSUN	11-14-17	8	0-0	.000	0-0	.000	0-0	.000	1	4	5	3.0	1	0	0	0	0	0	2.0	
CAL STATE FULLERTON	11-18-17	8	0-1	.000	0-0	.000	0-0	.000	2	3	5	3.7	2	0	1	0	0	0	1.3	
vs Central Michigan	11-24-17	dnp	-	-	-	-	-	-	-	-	-	-	-	-	-	-	-	-	-	
vs Tulane	11-25-17	9	2-5	.400	0-0	.000	0-0	.000	2	1	3	3.5	0	1	1	0	0	4	2.0	
SAN DIEGO	11-29-17	7	0-0	.000	0-0	.000	0-0	.000	0	1	1	3.0	1	1	0	0	0	0	1.6	
at Arizona	12-03-17	dnp	-	-	-	-	-	-	-	-	-	-	-	-	-	-	-	-	-	
UC IRVINE	12-08-17	11	3-5	.600	0-0	.000	0-0	.000	0	5	5	3.3	2	0	0	2	2	6	2.3	
HOPE INTERNATIONAL	12-10-17	12	3-4	.750	0-0	.000	0-0	.000	1	2	3	3.3	2	2	1	0	0	6	2.9	
SANTA CLARA	12-14-17	10	1-2	.500	0-0	.000	0-0	.000	0	1	1	3.0	3	0	1	0	0	2	2.8	
Totals		0	72	11-19	.579	0-0	.000	0-0	.000	6	18	24	3.0	12	4	6	2	2	22	2.8

Games played: 8
Minutes/game: 9.0
Points/game: 2.8
FG Pct: 57.9

Rebounds/game: 3.0
Assists/game: 0.5
Turnovers/game: 0.8
Assist/turnover ratio: 0.7
Steals/game: 0.3
Blocks/game: 0.3

CAREER STATISTICS

Season	gp-gs	min/avg	Total		3-Point		F-Throws		Rebounds				Scoring							
			fg-fga	pct	fg-fga	pct	ft-fa	pct	off	def	tot	avg	pf	fo	ast	to	blk	stl	pts	avg
2016-17	9-0	63/7.0	8-19	.421	0-0	.000	1-3	.333	5	6	11	1.2	10	0	0	13	0	0	17	1.9
2017-18	8-0	72/9.0	11-19	.579	0-0	.000	0-0	.000	6	18	24	3.0	12	0	4	6	2	2	22	2.8
TOTAL	17-0	135/7.9	19-38	.500	0-0	.000	1-3	.333	11	24	35	2.1	22	0	4	19	2	2	39	2.3

2017 STATISTICS - OVERALL SEASON STATS

Overall record: 6-4 Conf: 0-0 Home: 5-2 Away: 1-0 Neutral: 0-2

#	Player	gp-gs	min	avg	Total		3-Point		F-Throw		Rebounds					pts	avg					
					fg-fga	fg%	3fg-fga	3fg%	ft-fa	ft%	off	def	tot	avg	pf			dq	a	to	blk	stl
15	FORT, McKynzie	9-9	285	31.7	53-115	.461	6-18	.333	36-46	.783	17	32	49	5.4	11	0	29	27	1	12	148	16.4
10	MURRAY, Naje	10-1	173	17.3	33-80	.413	22-52	.423	12-13	.923	1	15	16	1.6	18	0	7	16	0	5	100	10.0
22	THORDERSON, Lexy	10-10	228	22.8	30-74	.405	28-65	.431	7-11	.636	5	25	30	3.0	17	0	4	7	3	8	95	9.5
20	GOMEZ, Geena	10-10	282	28.2	31-84	.369	14-40	.350	8-12	.667	6	27	33	3.3	17	0	48	25	1	10	84	8.4
01	LARK, Khalia	10-10	239	23.9	18-62	.290	12-35	.343	5-8	.625	13	35	48	4.8	14	0	8	17	2	7	53	5.3
05	ADAMS, Te'a	10-0	128	12.8	18-67	.269	3-25	.120	6-10	.600	5	21	26	2.6	8	0	18	12	1	13	45	4.5
30	GREENHOUSE, Chey	10-0	149	14.9	14-36	.389	0-3	.000	4-6	.667	13	14	27	2.7	7	0	14	5	0	6	32	3.2
34	VANDERDOES, Bayle	10-4	165	16.5	12-38	.316	0-0	.000	6-13	.462	28	14	42	4.2	14	0	1	4	8	7	30	3.0
45	EKWEDIKE, Naomi	8-0	72	9.0	11-19	.579	0-0	.000	0-0	.000	6	18	24	3.0	12	0	4	6	2	2	22	2.8
11	GOMEZ, Arantxa	8-6	99	12.4	8-14	.571	0-0	.000	0-2	.000	8	14	22	2.8	10	0	0	5	6	1	16	2.0
03	BOJORQUEZ, Jenay	5-0	57	11.4	5-17	.294	1-1	1.000	2-3	.667	1	6	7	1.4	7	0	3	6	0	2	13	2.6
40	TERRY, Monique	10-0	62	6.2	4-5	.800	0-0	.000	2-2	1.000	6	7	13	1.3	9	0	0	3	2	1	10	1.0
24	EDWARDS, Kiara	4-0	30	7.5	4-11	.364	0-1	.000	0-0	.000	2	8	10	2.5	0	0	0	3	0	0	8	2.0
21	LOWE, Abby	2-0	20	10.0	2-4	.500	1-3	.333	0-2	.000	1	3	4	2.0	2	0	1	1	0	1	5	2.5
00	VILLA, Kennedi	3-0	13	4.3	0-0	.000	0-0	.000	1-2	.500	0	3	3	1.0	1	0	1	0	0	0	1	0.3
13	BROWN, Allison	1-0	16	16.0	0-2	.000	0-2	.000	0-0	.000	0	1	1	1.0	1	0	0	3	1	0	0	0.0
23	GOMEZ, Loli	3-0	5	1.7	0-1	.000	0-0	.000	0-0	.000	0	0	0	0.0	0	0	1	2	0	0	0	0.0
Team											18	23	41				4					
Total.....		10	2023		243-629	.386	87-245	.355	89-130	.685	130	266	396	39.6	148	0	139	146	27	75	662	66.2
Opponents.....		10	2025		249-618	.403	76-242	.314	80-120	.667	111	263	374	37.4	136	-	161	141	30	71	654	65.4

TEAM STATISTICS	SDSU	OPP	Date	Opponent	Score	Att.
SCORING	662	654	11-10-17	PRESBYTERIAN	W 77-50	464
Points per game	66.2	65.4	11-14-17	CSUN	W 58-55	366
Scoring margin	+0.8	-	11-18-17	CAL STATE FULLERTON	W 59-58	1108
FIELD GOALS-ATT	243-629	249-618	^ 11-24-17	vs Central Michigan	Lot 76-85	0
Field goal pct	.386	.403	^ 11-25-17	vs Tulane	L 46-80	0
3 POINT FG-ATT	87-245	76-242	11-29-17	SAN DIEGO	W 77-76	790
3-point FG pct	.355	.314	12-03-17	at Arizona	W 78-67	1555
3-pt FG made per game	8.7	7.6	12-08-17	UC IRVINE	L 65-67	4148
FREE THROWS-ATT	89-130	80-120	12-10-17	HOPE INTERNATIONAL	W 92-68	588
Free throw pct	.685	.667	12-14-17	SANTA CLARA	L 34-48	617
F-Throws made per game	8.9	8.0				
REBOUNDS	396	374				
Rebounds per game	39.6	37.4				
Rebounding margin	+2.2	-				
ASSISTS	139	161				
Assists per game	13.9	16.1				
TURNOVERS	146	141				
Turnovers per game	14.6	14.1				
Turnover margin	-0.5	-				
Assist/turnover ratio	1.0	1.1				
STEALS	75	71				
Steals per game	7.5	7.1				
BLOCKS	27	30				
Blocks per game	2.7	3.0				
ATTENDANCE	8081	1555				
Home games-Avg/Game	7-1154	1-1555				
Neutral site-Avg/Game	-	2-0				

^ = Junkanoo Jam - Bimini, Bahamas
* = Mountain West game

Score by Periods	1st	2nd	3rd	4th	OT	Totals
San Diego State	153	184	156	166	3	662
Opponents	162	129	176	175	12	654

Home games

RECORD:	OVERALL	HOME	AWAY	NEUTRAL
ALL GAMES	5-2	5-2	0-0	0-0
CONFERENCE	0-0	0-0	0-0	0-0
NON-CONFERENCE	5-2	5-2	0-0	0-0

#	Player	gp-gs	min	avg	Total		3-Point		F-Throw		Rebounds				a	to	blk	stl	pts	avg		
					fg-fga	fg%	3fg-fga	3fg%	ft-fa	ft%	off	def	tot	avg							pf	dq
15	FORT, McKynzie	6-6	194	32.3	36-79	.456	5-14	.357	22-29	.759	15	22	37	6.2	5	0	21	21	1	8	99	16.5
10	MURRAY, Naje	7-1	116	16.6	27-56	.482	17-37	.459	4-5	.800	1	11	12	1.7	15	0	7	14	0	4	75	10.7
22	THORDERSON, Lexy	7-7	160	22.9	21-55	.382	20-49	.408	4-7	.571	4	22	26	3.7	12	0	4	5	2	8	66	9.4
20	GOMEZ, Geena	7-7	196	28.0	20-55	.364	7-25	.280	4-5	.800	5	19	24	3.4	13	0	34	20	1	10	51	7.3
01	LARK, Khalia	7-7	174	24.9	15-48	.313	10-28	.357	2-4	.500	10	28	38	5.4	7	0	5	13	2	5	42	6.0
05	ADAMS, Te'a	7-0	96	13.7	15-51	.294	2-18	.111	3-5	.600	1	18	19	2.7	6	0	16	9	1	10	35	5.0
34	VANDERDOES, Bayle	7-3	97	13.9	9-25	.360	0-0	.000	5-10	.500	15	6	21	3.0	8	0	1	2	7	4	23	3.3
30	GREENHOUSE, Chey	7-0	92	13.1	10-26	.385	0-3	.000	1-2	.500	9	8	17	2.4	3	0	11	3	0	5	21	3.0
45	EKWEDIKE, Naomi	7-0	63	9.0	9-14	.643	0-0	.000	0-0	.000	4	17	21	3.0	12	0	3	5	2	2	18	2.6
11	GOMEZ, Arantxa	6-4	85	14.2	8-13	.615	0-0	.000	0-2	.000	6	12	18	3.0	8	0	0	4	6	1	16	2.7
24	EDWARDS, Kiara	3-0	22	7.3	3-6	.500	0-0	.000	0-0	.000	1	6	7	2.3	0	0	0	3	0	0	6	2.0
03	BOJORQUEZ, Jenay	3-0	38	12.7	2-8	.250	1-1	1.000	0-0	.000	0	5	5	1.7	6	0	2	3	0	1	5	1.7
40	TERRY, Monique	7-0	31	4.4	2-2	1.000	0-0	.000	0-0	.000	4	4	8	1.1	4	0	0	3	2	1	4	0.6
00	VILLA, Kennedy	2-0	10	5.0	0-0	.000	0-0	.000	1-2	.500	0	1	1	0.5	0	0	1	0	0	0	1	0.5
13	BROWN, Allison	1-0	16	16.0	0-2	.000	0-2	.000	0-0	.000	0	1	1	1.0	1	0	0	3	1	0	0	0.0
21	LOWE, Abby	1-0	8	8.0	0-1	.000	0-1	.000	0-0	.000	0	1	1	1.0	1	0	1	0	0	0	0	0.0
23	GOMEZ, Loli	1-0	2	2.0	0-0	.000	0-0	.000	0-0	.000	0	0	0	0.0	0	0	1	1	0	0	0	0.0
Team											14	14	28				4					
Total.....		7	1400		177-441	.401	62-178	.348	46-71	.648	89	195	284	40.6	101	0	107	113	25	59	462	66.0
Opponents.....		7	1400		160-417	.384	44-160	.275	58-88	.659	69	176	245	35.0	86	-	110	105	22	61	422	60.3

Score by Periods	1st	2nd	3rd	4th	Totals
San Diego State	111	120	118	113	462
Opponents	90	87	120	125	422

Away/Neutral Games

RECORD:	OVERALL	HOME	AWAY	NEUTRAL
ALL GAMES	1-2	0-0	1-0	0-2
CONFERENCE	0-0	0-0	0-0	0-0
NON-CONFERENCE	1-2	0-0	1-0	0-2

#	Player	gp-gs	min	avg	Total		3-Point		F-Throw		Rebounds				a	to	blk	stl	pts	avg		
					fg-fga	fg%	3fg-fga	3fg%	ft-fa	ft%	off	def	tot	avg							pf	dq
15	FORT, McKynzie	3-3	91	30.3	17-36	.472	1-4	.250	14-17	.824	2	10	12	4.0	6	0	8	6	0	4	49	16.3
20	GOMEZ, Geena	3-3	86	28.7	11-29	.379	7-15	.467	4-7	.571	1	8	9	3.0	4	0	14	5	0	0	33	11.0
22	THORDERSON, Lexy	3-3	68	22.7	9-19	.474	8-16	.500	3-4	.750	1	3	4	1.3	5	0	0	2	1	0	29	9.7
10	MURRAY, Naje	3-0	57	19.0	6-24	.250	5-15	.333	8-8	1.000	0	4	4	1.3	3	0	0	2	0	1	25	8.3
21	LOWE, Abby	1-0	12	12.0	2-3	.667	1-2	.500	0-2	.000	1	2	3	3.0	1	0	1	0	1	0	5	5.0
03	BOJORQUEZ, Jenay	2-0	19	9.5	3-9	.333	0-0	.000	2-3	.667	1	1	2	1.0	1	0	1	3	0	1	8	4.0
45	EKWEDIKE, Naomi	1-0	9	9.0	2-5	.400	0-0	.000	0-0	.000	2	1	3	3.0	0	0	1	1	0	0	4	4.0
30	GREENHOUSE, Chey	3-0	57	19.0	4-10	.400	0-0	.000	3-4	.750	4	6	10	3.3	4	0	3	2	0	1	11	3.7
01	LARK, Khalia	3-3	65	21.7	3-14	.214	2-7	.286	3-4	.750	3	7	10	3.3	7	0	3	4	0	2	11	3.7
05	ADAMS, Te'a	3-0	32	10.7	3-16	.188	1-7	.143	3-5	.600	4	3	7	2.3	2	0	2	3	0	3	10	3.3
34	VANDERDOES, Bayle	3-1	68	22.7	3-13	.231	0-0	.000	1-3	.333	13	8	21	7.0	6	0	0	2	1	3	7	2.3
40	TERRY, Monique	3-0	31	10.3	2-3	.667	0-0	.000	2-2	1.000	2	3	5	1.7	5	0	0	0	0	0	6	2.0
24	EDWARDS, Kiara	1-0	8	8.0	1-5	.200	0-1	.000	0-0	.000	1	2	3	3.0	0	0	0	0	0	0	2	2.0
00	VILLA, Kennedy	1-0	3	3.0	0-0	.000	0-0	.000	0-0	.000	0	2	2	2.0	1	0	0	0	0	0	0	0.0
23	GOMEZ, Loli	2-0	3	1.5	0-1	.000	0-0	.000	0-0	.000	0	0	0	0.0	0	0	0	1	0	0	0	0.0
11	GOMEZ, Arantxa	2-2	14	7.0	0-1	.000	0-0	.000	0-0	.000	2	2	4	2.0	2	0	0	1	0	0	0	0.0
Team											4	9	13									
Total.....		3	623		66-188	.351	25-67	.373	43-59	.729	41	71	112	37.3	47	0	32	33	2	16	200	66.7
Opponents.....		3	625		89-201	.443	32-82	.390	22-32	.688	42	87	129	43.0	50	-	51	36	8	10	232	77.3

Score by Periods	1st	2nd	3rd	4th	OT	Totals
San Diego State	42	64	38	53	3	200
Opponents	72	42	56	50	12	232

Games won

RECORD:	OVERALL	HOME	AWAY	NEUTRAL
ALL GAMES	6-0	5-0	1-0	0-0
CONFERENCE	0-0	0-0	0-0	0-0
NON-CONFERENCE	6-0	5-0	1-0	0-0

#	Player	gp-gs	min	avg	Total		3-Point		F-Throw		Rebounds				pf	dq	a	to	blk	stl	pts	avg
					fg-fga	fg%	3fg-fga	3fg%	ft-fa	ft%	off	def	tot	avg								
15	FORT, McKynzie	5-5	159	31.8	35-69	.507	5-10	.500	24-31	.774	10	21	31	6.2	5	0	19	11	1	8	99	19.8
10	MURRAY, Naje	6-1	98	16.3	24-50	.480	17-32	.531	4-4	1.000	1	9	10	1.7	9	0	6	11	0	4	69	11.5
22	THORDERSON, Lexy	6-6	141	23.5	21-44	.477	19-38	.500	4-6	.667	2	18	20	3.3	8	0	4	3	2	7	65	10.8
20	GOMEZ, Geena	6-6	162	27.0	16-41	.390	8-24	.333	4-5	.800	3	16	19	3.2	10	0	31	16	1	3	44	7.3
01	LARK, Khalia	6-6	147	24.5	12-41	.293	10-22	.455	3-6	.500	9	27	36	6.0	9	0	7	12	2	5	37	6.2
05	ADAMS, Te'a	6-0	80	13.3	13-40	.325	2-15	.133	3-5	.600	2	15	17	2.8	6	0	15	8	1	8	31	5.2
34	VANDERDOES, Bayle	6-2	87	14.5	11-25	.440	0-0	.000	5-10	.500	11	9	20	3.3	9	0	1	2	6	2	27	4.5
30	GREENHOUSE, Chey	6-0	88	14.7	11-23	.478	0-2	.000	3-4	.750	7	9	16	2.7	4	0	8	3	0	4	25	4.2
11	GOMEZ, Arantxa	4-4	65	16.3	7-12	.583	0-0	.000	0-0	.000	6	7	13	3.3	7	0	0	2	4	0	14	3.5
45	EKWEDIKE, Naomi	5-0	42	8.4	5-7	.714	0-0	.000	0-0	.000	4	11	15	3.0	7	0	3	4	0	0	10	2.0
40	TERRY, Monique	6-0	38	6.3	3-4	.750	0-0	.000	2-2	1.000	4	5	9	1.5	5	0	0	2	2	1	8	1.3
24	EDWARDS, Kiara	2-0	19	9.5	3-6	.500	0-0	.000	0-0	.000	1	6	7	3.5	0	0	0	3	0	0	6	3.0
03	BOJORQUEZ, Jenay	3-0	38	12.7	2-8	.250	1-1	1.000	0-0	.000	0	5	5	1.7	6	0	2	3	0	1	5	1.7
00	VILLA, Kennedy	2-0	10	5.0	0-0	.000	0-0	.000	1-2	.500	0	1	1	0.5	0	0	1	0	0	0	1	0.5
13	BROWN, Allison	1-0	16	16.0	0-2	.000	0-2	.000	0-0	.000	0	1	1	1.0	1	0	0	3	1	0	0	0.0
21	LOWE, Abby	1-0	8	8.0	0-1	.000	0-1	.000	0-0	.000	0	1	1	1.0	1	0	1	0	0	0	0	0.0
23	GOMEZ, Loli	1-0	2	2.0	0-0	.000	0-0	.000	0-0	.000	0	0	0	0.0	0	0	1	1	0	0	0	0.0
Team											8	12	20					3				
Total.....		6	1200		163-373	.437	62-147	.422	53-75	.707	68	173	241	40.2	87	0	99	87	20	43	441	73.5
Opponents.....		6	1200		143-376	.380	42-153	.275	46-67	.687	64	143	207	34.5	79	-	95	84	16	45	374	62.3

Score by Periods	1st	2nd	3rd	4th	Totals
San Diego State	107	111	109	114	441
Opponents	87	81	101	105	374

Games lost

RECORD:	OVERALL	HOME	AWAY	NEUTRAL
ALL GAMES	0-4	0-2	0-0	0-2
CONFERENCE	0-0	0-0	0-0	0-0
NON-CONFERENCE	0-4	0-2	0-0	0-2

#	Player	gp-gs	min	avg	Total		3-Point		F-Throw		Rebounds				pf	dq	a	to	blk	stl	pts	avg
					fg-fga	fg%	3fg-fga	3fg%	ft-fa	ft%	off	def	tot	avg								
15	FORT, McKynzie	4-4	126	31.5	18-46	.391	1-8	.125	12-15	.800	7	11	18	4.5	6	0	10	16	0	4	49	12.3
20	GOMEZ, Geena	4-4	120	30.0	15-43	.349	6-16	.375	4-7	.571	3	11	14	3.5	7	0	17	9	0	7	40	10.0
10	MURRAY, Naje	4-0	75	18.8	9-30	.300	5-20	.250	8-9	.889	0	6	6	1.5	9	0	1	5	0	1	31	7.8
22	THORDERSON, Lexy	4-4	87	21.8	9-30	.300	9-27	.333	3-5	.600	3	7	10	2.5	9	0	0	4	1	1	30	7.5
01	LARK, Khalia	4-4	92	23.0	6-21	.286	2-13	.154	2-2	1.000	4	8	12	3.0	5	0	1	5	0	2	16	4.0
05	ADAMS, Te'a	4-0	48	12.0	5-27	.185	1-10	.100	3-5	.600	3	6	9	2.3	2	0	3	4	0	5	14	3.5
45	EKWEDIKE, Naomi	3-0	30	10.0	6-12	.500	0-0	.000	0-0	.000	2	7	9	3.0	5	0	1	2	2	2	12	4.0
03	BOJORQUEZ, Jenay	2-0	19	9.5	3-9	.333	0-0	.000	2-3	.667	1	1	2	1.0	1	0	1	3	0	1	8	4.0
30	GREENHOUSE, Chey	4-0	61	15.3	3-13	.231	0-1	.000	1-2	.500	6	5	11	2.8	3	0	6	2	0	2	7	1.8
21	LOWE, Abby	1-0	12	12.0	2-3	.667	1-2	.500	0-2	.000	1	2	3	3.0	1	0	0	1	0	1	5	5.0
34	VANDERDOES, Bayle	4-2	78	19.5	1-13	.077	0-0	.000	1-3	.333	17	5	22	5.5	5	0	0	2	2	5	3	0.8
11	GOMEZ, Arantxa	4-2	34	8.5	1-2	.500	0-0	.000	0-2	.000	2	7	9	2.3	3	0	0	3	2	1	2	0.5
40	TERRY, Monique	4-0	24	6.0	1-1	1.000	0-0	.000	0-0	.000	2	2	4	1.0	4	0	0	1	0	0	2	0.5
24	EDWARDS, Kiara	2-0	11	5.5	1-5	.200	0-1	.000	0-0	.000	1	2	3	1.5	0	0	0	0	0	0	2	1.0
00	VILLA, Kennedy	1-0	3	3.0	0-0	.000	0-0	.000	0-0	.000	0	2	2	2.0	1	0	0	0	0	0	0	0.0
23	GOMEZ, Loli	2-0	3	1.5	0-1	.000	0-0	.000	0-0	.000	0	0	0	0.0	0	0	0	1	0	0	0	0.0
Team											10	11	21					1				
Total.....		4	823		80-256	.313	25-98	.255	36-55	.655	62	93	155	38.8	61	0	40	59	7	32	221	55.2
Opponents.....		4	825		106-242	.438	34-89	.382	34-53	.642	47	120	167	41.8	57	-	66	57	14	26	280	70.0

Score by Periods	1st	2nd	3rd	4th	OT	Totals
San Diego State	46	73	47	52	3	221
Opponents	75	48	75	70	12	280

TEAM STATISTICS

Opponent	Date	Score		Total		3-Pointers		Free throws		Rebounds				pf	a	t/o	blk	stl	pts	avg
				fg-fga	pct	3fg-fga	pct	ft-fta	pct	off	def	tot	avg							
PRESBYTERIAN	11-10-17	77-50	W	30-60	.500	12-26	.462	5-7	.714	9	36	45	45.0	13	22	18	2	7	77	77.0
CSUN	11-14-17	58-55	W	21-64	.328	11-29	.379	5-7	.714	11	28	39	42.0	17	15	17	5	10	58	67.5
CAL STATE FULLERTON	11-18-17	59-58	W	23-61	.377	8-22	.364	5-9	.556	15	27	42	42.0	18	9	14	4	7	59	64.7
vs Central Michigan	11-24-17	76-85	Lot	26-82	.317	9-30	.300	15-21	.714	21	19	40	41.5	20	13	4	0	6	76	67.5
vs Tulane	11-25-17	46-80	L	17-56	.304	5-16	.313	7-13	.538	13	23	36	40.4	15	7	19	1	7	46	63.2
SAN DIEGO	11-29-17	77-76	W	28-67	.418	7-18	.389	14-24	.583	16	22	38	40.0	17	16	12	4	5	77	65.5
at Arizona	12-03-17	78-67	W	23-50	.460	11-21	.524	21-25	.840	7	29	36	39.4	12	12	10	1	3	78	67.3
UC IRVINE	12-08-17	65-67	L	24-59	.407	8-24	.333	9-12	.750	16	25	41	39.6	11	14	21	6	7	65	67.0
HOPE INTERNATIONAL	12-10-17	92-68	W	38-71	.535	13-31	.419	3-3	1.000	10	31	41	39.8	10	25	16	4	11	92	69.8
SANTA CLARA	12-14-17	34-48	L	13-59	.220	3-28	.107	5-9	.556	12	26	38	39.6	15	6	15	0	12	34	66.2
San Diego State		662		243-629	.386	87-245	.355	89-130	.685	130	266	396	39.6	148	139	146	27	75	662	66.2
Opponents		654		249-618	.403	76-242	.314	80-120	.667	111	263	374	37.4	136	161	141	30	71	654	65.4

Games played: 10
 Points/game: 66.2
 FG Pct: 38.6
 3FG Pct: 35.5
 FT Pct: 68.5

Rebounds/game: 39.6
 Assists/game: 13.9
 Turnovers/game: 14.6
 Assist/turnover ratio: 1.0
 Steals/game: 7.5
 Blocks/game: 2.7

► 2017-18 AZTEC GAME-BY-GAME POINTS-REBOUNDS-ASSISTS

Opponent	0 Kennedi Villa	1 Khalia Lark	5 Te'a Adams	10 Najé Murray	11 Arantxa Gómez	13 Allison Brown	15 McKynzie Fort	20 Geena Gomez	21 Abby Lowe	22 Lexy Thorderson	23 Loli Gomez	24 Kiara Edwards	30 Cheyenne Greenhouse	34 Baylee Vanderdoes	40 Monique Terry	45 Naomi Ekwedike
Presbyterian	1-0-1	0-4-1	4-0-2	14-3-1	4-3-0	DNP	16-7-2	6-2-6	DNP	12-6-2	DNP	0-2-0	6-4-4	8-5-1	2-2-0	4-1-0
CSUN	DNP	13-9-1	0-0-0	5-0-0	2-5-0	DNP	16-6-3	2-2-10	DNP	17-6-1	DNP	DNP	0-1-0	0-1-0	0-0-0	0-5-0
Cal State Fullerton	DNP	3-10-1	2-1-3	11-0-0	0-2-0	DNP	17-6-4	7-6-1	DNP	6-2-0	DNP	DNP	3-3-0	8-3-0	0-0-0	0-5-0
Central Michigan	DNP	2-4-0	5-1-1	12-0-0	0-1-0	DNP	21-3-3	15-6-7	DNP	12-3-0	0-0-0	DNP	4-3-2	3-13-0	0-1-0	DNP
Tulane	0-2-0	2-1-1	5-2-0	0-2-0	0-3-0	DNP	2-3-3	6-0-0	5-3-0	9-0-0	0-0-0	2-3-0	3-5-1	0-2-0	2-1-0	4-3-1
San Diego	DNP	0-4-1	5-4-2	10-4-1	8-3-0	DNP	24-6-8	7-5-3	DNP	16-1-0	DNP	DNP	2-0-0	5-3-0	0-2-0	0-1-1
Arizona	DNP	7-5-2	0-4-1	13-2-0	DNP	DNP	26-6-2	12-3-7	DNP	8-1-0	DNP	DNP	4-2-0	4-6-0	4-3-2	DNP
UC Irvine	DNP	10-5-0	2-3-2	10-1-1	0-3-0	DNP	16-4-3	12-2-7	DNP	9-5-0	DNP	DNP	0-1-1	0-5-0	0-0-0	6-5-0
Hope Int'l	0-1-0	14-4-1	20-8-7	16-1-4	DNP	0-1-0	DNP	10-1-4	0-1-1	6-4-1	0-0-1	6-5-0	10-6-4	2-2-0	2-2-0	6-3-2
Santa Clara	DNP	2-2-0	2-3-0	9-3-0	2-2-0	DNP	10-8-1	7-6-3	DNP	0-2-0	DNP	0-0-0	0-2-2	0-2-0	0-2-0	2-1-0

DNP - Did Not Play

2017-18 AZTEC GAME-BY-GAME STARTERS

Game	Forward	Forward/Guard	Guard	Guard	Guard
vs. Presbyterian (W)	Gómez Ferrer	Lark	Fort	G. Gomez	Thorderson
vs. CSUN (W)	Gómez Ferrer	Lark	Fort	G. Gomez	Thorderson
vs. Cal State Fullerton (W)	Gómez Ferrer	Lark	Fort	G. Gomez	Thorderson
vs. Central Michigan (L)	Gómez Ferrer	Lark	Fort	G. Gomez	Thorderson
vs. Tulane (L)	Gómez Ferrer	Lark	Fort	G. Gomez	Thorderson
vs. San Diego (W)	Gómez Ferrer	Lark	Fort	G. Gomez	Thorderson
at Arizona (W)	Vanderdoes	Lark	Fort	G. Gomez	Thorderson
vs. UC Irvine (L)	Vanderdoes	Lark	Fort	G. Gomez	Thorderson
vs. Hope Int'l (W)	Vanderdoes	Lark	Murray	G. Gomez	Thorderson
vs. Santa Clara (L)	Vanderdoes	Lark	Fort	G. Gomez	Thorderson

Lineup Records

Gómez Ferrer-Lark-Fort-G. Gomez-Thorderson	4-2
Vanderdoes-Lark-Fort-G. Gomez-Thorderson	1-2
Vanderdoes-Lark-Murray-G. Gomez-Thorderson	1-0

Aztec Team Highs

Points	92	vs. Hope International (12-10-17)
Field Goals Made	38	vs. Hope International (12-10-17)
Field Goal Attempts	82	vs. Central Michigan (11-24-17)
Field Goal Percentage	.500 (30-60)	vs. Presbyterian (11-10-17)
3-pt Field Goals Made	13	vs. Hope International (12-10-17)
3-pt Field Goals Attempted	31	vs. Hope International (12-10-17)
3-pt Field Goal Percentage	.524 (11-21)	at Arizona (12-3-17)
Free Throws Made	21	at Arizona (12-3-17)
Free Throw Attempts	25	at Arizona (12-3-17)
Free Throw Percentage	.840 (21-25)	at Arizona (12-3-17)
Rebounds	45	vs. Presbyterian (11-10-17)
Assists	25	vs. Hope International (12-10-17)
Steals	12	vs. Santa Clara (12-14-17)
Blocked Shots	6	vs. UC Irvine (12-8-17)
Turnovers	21	vs. UC Irvine (12-8-17)
Fouls	20	vs. Central Michigan (11-24-17)

Aztec Team Lows

Points	34	vs. Santa Clara (12-14-17)
Field Goals Made	13	vs. Santa Clara (12-14-17)
Field Goal Attempts	50	at Arizona (12-3-17)
Field Goal Percentage	.220 (13-59)	vs. Santa Clara (12-14-17)
3-pt Field Goals Made	3	vs. Santa Clara (12-14-17)
3-pt Field Goals Attempted	16	vs. Tulane (11-25-17)
3-pt Field Goal Percentage	.300 (9-30)	vs. Central Michigan (11-24-17)
Free Throws Made	3	vs. Hope International (12-10-17)
Free Throws Attempted	3	vs. Hope International (12-10-17)
Free Throw Percentage	.538 (7-13)	vs. Tulane (11-25-17)
Rebounds	36	at Arizona (12-31-17) vs. Tulane (11-25-17)
Assists	6	vs. Santa Clara (12-14-17)
Steals	3	at Arizona (12-3-17)
Blocked Shots	0	vs. Santa Clara (12-14-17) vs. Central Michigan (11-24-17)
Turnovers	4	vs. Central Michigan (11-24-17)
Fouls	12	at Arizona (12-3-17)

Aztec Scoring

First Half High	42	vs. Presbyterian (11-10-17)
First Quarter High	21	at Arizona (12-3-17)
Second Quarter High	27	vs. Central Michigan (11-24-17)
Second Half High	42	vs. San Diego (11-29-17)
Third Quarter High	23	vs. CSUN (11-14-17)
Fourth Quarter High	25	vs. San Diego (11-29-17)
First Half Low	27	vs. Tulane (11-25-17)
First Quarter Low	9	vs. Santa Clara (12-14-17)
Second Quarter Low	9	vs. Cal State Fullerton (11-18-17)
Second Half Low	19	vs. Tulane (11-25-17)
Third Quarter Low	5	vs. Tulane (11-25-17)
Fourth Quarter Low	4	vs. CSUN (11-14-17)
Largest Halftime Lead	15 (42-27)	vs. Presbyterian (11-10-17)
Largest Halftime Deficit	16 (27-43)	vs. Tulane (11-25-17)
Largest Lead	31 (71-40)	vs. Presbyterian (11-10-17)
Largest Deficit	36 (27-63)	vs. Tulane (11-25-17)
Largest Deficit in a Win	7 (40-47)	vs. Cal State Fullerton (11-18-17)
Largest Lead in a Loss	10 (35-25)	vs. UC Irvine (12-10-17)

Opponent Team Highs

Points	85	vs. Central Michigan (11-24-17)
Field Goals Made	31	vs. Tulane (11-25-17) vs. Central Michigan (11-24-17)
Field Goal Attempts	72	at Arizona (12-3-17)
Field Goal Percentage	.500 (31-62)	vs. Tulane (11-25-17)
3-pt Field Goals Made	15	vs. Tulane (11-25-17)
3-pt Field Goals Attempted	32	vs. Hope International (12-10-17)
3-pt Field Goal Percentage	.556 (15-27)	vs. Tulane (11-25-17)
Free Throws Made	13	vs. San Diego (11-29-17) vs. Central Michigan (11-24-17)
Free Throws Attempted	18	vs. UC Irvine (12-10-17) vs. Central Michigan (11-24-17)
Free Throw Percentage	.800 (8-10)	vs. CSUN (11-14-17)
Rebounds	54	vs. Central Michigan (11-24-17)
Assists	22	vs. San Diego (11-29-17)
Steals	14	vs. UC Irvine (12-8-17)
Blocked Shots	8	vs. UC Irvine (12-8-17)
Turnovers	17	vs. Hope International (12-10-17) vs. CSUN (11-14-17)
Fouls	23	vs. San Diego (11-29-17)

Opponent Team Lows

Points	48	vs. Santa Clara (12-14-17)
Field Goals Made	19	vs. Santa Clara (12-14-17)
Field Goal Attempts	50	vs. Santa Clara (12-14-17)
Field Goal Percentage	.328 (20-61)	vs. CSUN (11-14-17)
3-pt Field Goals Made	4	vs. Santa Clara (12-14-17) vs. Presbyterian (11-10-17)
3-pt Field Goal Attempts	11	vs. Santa Clara (12-14-17)
3-pt Field Goal Percentage	.129 (4-31)	vs. Presbyterian (11-10-17)
Free Throws Made	4	vs. Presbyterian (11-10-17)
Free Throw Attempts	8	vs. Presbyterian (11-10-17)
Free Throw Percentage	.500 (4-8)	vs. Presbyterian (11-10-17)
Rebounds	26	vs. Presbyterian (11-10-17)
Assists	10	at Arizona (12-3-17)
Steals	4	vs. CSUN (11-14-17)
Blocked Shots	0	vs. Hope International (12-10-17)
Turnovers	8	at Arizona (12-3-17)
Fouls	7	vs. Cal State Fullerton (11-18-17)

Opponent Scoring

First Half High	43	vs. Tulane (11-25-17)
First Quarter High	32	vs. Tulane (11-25-17)
Second Quarter High	17	vs. San Diego (11-29-17) 17 vs. Central Michigan (11-24-17) 17 vs. Presbyterian (11-10-17)
Second Half High	42	vs. San Diego (11-29-17)
Third Quarter High	20	vs. Tulane (11-25-17)
Fourth Quarter High	25	vs. San Diego (11-29-17)
First Half Low	16	vs. Santa Clara (12-14-17)
First Quarter Low	10	vs. Presbyterian (11-10-17)
Second Quarter Low	5	vs. Santa Clara (12-14-17)
Second Half Low	23	vs. Presbyterian (11-10-17)
Third Quarter Low	12	vs. Presbyterian (11-10-17)
Fourth Quarter Low	11	vs. Presbyterian (11-10-17)
Largest Halftime Lead	16 (43-27)	vs. Tulane (11-25-17)
Largest Halftime Deficit	15 (27-42)	vs. Presbyterian (11-10-17)
Largest Lead	36 (63-27)	vs. Tulane (11-25-17)
Largest Deficit	31 (40-71)	vs. Presbyterian (11-10-17)
Largest Deficit in a Win	10 (25-35)	vs. UC Irvine (12-8-17)
Largest Lead in a Loss	7 (40-47)	vs. Cal State Fullerton (11-18-17)

Aztec Individual Highs

Points

26, McKynzie Fort at Arizona (12-3-17)

Field Goals Made

10, McKynzie Fort vs. San Diego (11-29-17)

Field Goals Attempted

19, McKynzie Fort vs. Central Michigan (11-24-17)

Field Goal Percentage (min. 5 made)

.692 (9-13), Te'a Adams vs. Hope International (12-10-17)

3-Point Field Goals Made

5, Lexy Thorderson vs. San Diego (11-29-17)

5, Lexy Thorderson vs. CSUN (11-14-17)

3-Point Field Goals Attempted

10, Lexy Thorderson vs. Central Michigan (11-24-17)

10, Lexy Thorderson vs. CSUN (11-14-17)

3-Pt Field Goal Percentage (min. 2 made)

.750 (3-4), Najé Murray at Arizona (12-3-17)

Free Throws Made

11, McKynzie Fort at Arizona (12-3-17)

Free Throws Attempted

13, McKynzie Fort at Arizona (12-3-17)

Free Throw Percentage (min 4 made)

1.000 (6-6), Najé Murray vs. Central Michigan (11-24-17)

1.000 (4-4), McKynzie Fort vs. Presbyterian (11-10-17)

Rebounds

13, Baylee Vanderdoes vs. Central Michigan (11-24-17)

Assists

10, Geena Gomez vs. CSUN (11-14-17)

Steals

4, Geena Gomez vs. Santa Clara (12-14-17)

4, Te'a Adams vs. Hope International (12-10-17)

Blocked Shots

3, Baylee Vanderdoes vs. San Diego (11-29-17)

Turnovers

6, McKynzie Fort vs. Santa Clara (12-14-17)

6, McKynzie Fort vs. UC Irvine (12-8-17)

6, Geena Gomez vs. CSUN (11-14-17)

Fouls

4, Najé Murray vs. Santa Clara (12-14-17)

4, Lexy Thorderson vs. Santa Clara (12-14-17)

4, Lexy Thorderson vs. San Diego (11-29-17)

4, Khalia Lark vs. Central Michigan (11-24-17)

4, Khalia Lark vs. Cal State Fullerton (11-18-17)

4, Geena Gomez vs. CSUN (11-14-17)

4, Baylee Vanderdoes vs. CSUN (11-14-17)

Opponent Individual Highs

Points

27, Kolby Morgan vs. Tulane (11-25-17)

27, Tinara Moore vs. Central Michigan (11-24-17)

Field Goals Made

11, Tinara Moore vs. Central Michigan (11-24-17)

Field Goals Attempted

21, JaLea Bennett at Arizona (12-3-17)

Field Goal Percentage (min 5 made)

.750 (6-8), Kayla Manuirirangi vs. Tulane (11-25-17)

3-Point Field Goals Made

7, Kolby Morgan vs. Tulane (11-25-17)

3-Point Field Goals Attempted

12, Julia Pihl vs. Hope International (12-10-17)

3-Pt Field Goal Percentage (min 2 made)

1.000 (2-2), Vanessa DeSimone vs. Hope International (12-10-17)

1.000 (2-2), Sydney Williams vs. San Diego (11-29-17)

Free Throws Made

5, Taylor Berry vs. Santa Clara (12-14-17)

5, Tinara Moore vs. Central Michigan (11-24-17)

Free Throws Attempted

10, Taylor Berry vs. Santa Clara (12-14-17)

Free Throw Percentage (min 4 made)

1.000 (4-4), Brooke Bayman vs. UC Irvine (12-8-17)

1.000 (4-4), Sabrina Engelstad vs. UC Irvine (12-8-17)

1.000 (4-4), Sam Thomas at Arizona (12-3-17)

1.000 (4-4), Aubrey Ward-El vs. San Diego (11-29-17)

1.000 (4-4), Presley Hudson vs. Central Michigan (11-24-17)

1.000 (4-4), Channon Fluker vs. CSUN (11-14-17)

Rebounds

19, Tinara Moore vs. Central Michigan (11-24-17)

Assists

7, Lucia Alonso at Arizona (12-3-17)

7, Myah Pace vs. San Diego (11-29-17)

Steals

4, Kacie Hall vs. Presbyterian (11-10-17)

Blocked Shots

4, Channon Fluker vs. CSUN (11-14-17)

Turnovers

6, Kyla Martin vs. Santa Clara (12-14-17)

6, Presley Hudson vs. Central Michigan (11-24-17)

Fouls

5, Destiny Graham at Arizona (12-3-17)

5, Aubrey Ward-El vs. San Diego (11-29-17)

5, Presley Hudson vs. Central Michigan (11-24-17)

► **THE LAST TIME AN AZTEC...**

Scored 20-24 points

20, Te'a Adams, 12-10-17 vs. Hope International

Scored 25-29 points

26, McKynzie Fort, 12-3-17 at Arizona

Scored 30-39 points

31, Cierra Warren, 1-22-14 vs. San José State

Scored 40+ points

41, Chana Perry, 1-2-88 vs. Northern Illinois

Had 20+ rebounds

27, Chana Perry, 11-25-88 vs. Alabama State

Had 15-19 rebounds

17, Kristina Hunter, 1-11-14 vs. Air Force

Had 10-14 rebounds

10, Khalia Lark, 11-18-17 vs. Cal State Fullerton

Had 10+ assists

10, Geena Gomez, 11-14-17 vs. CSUN

Had A Double-Double

McKynzie Fort, 29 points, 11 rebounds, 1-11-17 at San José State

Had A Triple-Double

Chelsea Hopkins, 13 points, 11 rebounds, 12 assists, 3-9-13 vs. Boise State

The Last Time San Diego State ...

Had two players score 20 points in the same game

Kymerly Ellison (21) and Lexy Thorderson (21), 1-18-17 vs. UNLV

Had two players with a double-double in the same game

Erimma Amarikwa (19 points, 13 rebounds) and Cheyenne Greenhouse (19 points, 11 rebounds), 11-14-14 vs. Sacramento State

Scored 100+ points

101, vs. Colorado State (101-62), 1-25-92

Allowed 100+ points

104, vs. UCLA (56-104), 12-11-98

Won by 20+ points

24, vs. Hope International (92-68), 12-10-17

Won by 30+ points

35, vs. San Diego Christian (60-25), 12-21-15

Won by 40+ points

41, vs. Boise State (86-45), 3-9-13

Won by 50+ points

51, vs. Air Force (79-28), 1-7-09

Won in Overtime

vs. Fresno State (65-54), 2-10-16

Lost in Overtime

vs. Central Michigan (76-85), 11-24-17

► **2017-18 AZTEC LEADERS**

Double-Figure Scoring Games

McKynzie Fort (8), Najé Murray (7), Geena Gomez (4), Lexy Thorderson (4), Khalia Lark (3), Te'a Adams (1), Cheyenne Greenhouse (1)

SDSU High Scorer

McKynzie Fort (7), Lexy Thorderson (2), Te'a Adams (1)

Double-Figure Rebounding Games

Khalia Lark (1), Baylee Vanderdoes (1)

Games Led SDSU In Rebounds

McKynzie Fort (4), Khalia Lark (3), Baylee Vanderdoes (3), Te'a Adams (1), Naomi Ekwedike (1), Cheyenne Greenhouse (1), Lexy Thorderson (1)

Games Led SDSU In Assists

Geena Gomez (6), McKynzie Fort (3), Te'a Adams (1)

Games Led SDSU In Steals

McKynzie Fort (5), Te'a Adams (5), Geena Gomez (3), Khalia Lark (3), Lexy Thorderson (3), Najé Murray (2), Jenay Bojorquez (1), Cheyenne Greenhouse (1), Baylee Vanderdoes (1)

Games Led SDSU In Blocks

Baylee Vanderdoes (3), Arantxa Gómez Ferrer (2), Cheyenne Greenhouse (1), Khalia Lark (1), Monique Terry (1), Lexy Thorderson (1)

► **2017-18 SPECIALTY STATS**

San Diego State/Opponent

	Points in Paint	Points off TOs	2nd Chance Points	Fast Break Points	Bench Points
vs. Presbyterian (W)	34/28	11/14	12/5	13/12	39/5
vs. CSUN (W)	10/18	9/7	5/6	4/5	8/7
vs. Cal State Fullerton (W)	26/26	11/7	11/9	9/2	26/27
vs. Central Michigan (L)	26/42	17/4	10/13	2/4	26/8
vs. Tulane (L)	18/22	6/28	9/9	2/0	27/23
vs. San Diego (W)	40/42	4/8	17/13	4/4	22/21
at Arizona (W)	18/30	5/6	6/11	5/10	21/15
vs. UC Irvine (L)	20/36	16/29	9/16	2/9	18/37
vs. Hope Int'l (W)	44/22	26/17	8/4	12/7	44/18
vs. Santa Clara (L)	18/22	9/12	4/7	6/2	15/12



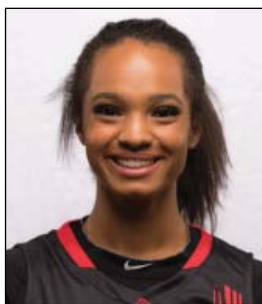
KENNEDI VILLA
Fr. | 6-0 | G
Oakland, Calif.
St. Mary's HS

0



KHALIA LARK
Sr. | 6-0 | G/F
Irvine, Calif.
Mater Dei HS/Washington

1



TE'A ADAMS
Fr. | 5-9 | G
Kirkland, Wash.
Juanita HS

5



NAJÉ MURRAY
Fr. | 5-6 | G
Stockton, Calif.
St. Mary's HS

10



ARANTXA GÓMEZ FERRER
Jr. | 6-0 | F
Valencia, Spain
Parque Colegio Santa Ana HS

11



ALLISON BROWN
Sr. | 5-7 | G
Anaheim Hills, Calif.
Mater Dei HS

13



MCKYNZIE FORT
Jr. | 5-9 | G
Fontana, Calif.
Etiwanda HS

15



GEENA GOMEZ
Sr. | 5-8 | G
Huntington Beach, Calif.
Edison HS/St. Joseph's (Pa.)

20



ABBY LOWE
So. | 5-11 | G
Stockport, England
Barking Abbey Academy

21



LEXY THORDERSON
Sr. | 6-0 | G
Castle Rock, Colo.
Rock Canyon HS

22



LOLI GOMEZ
Jr. | 5-10 | G
Huntington Beach, Calif.
Edison HS/CSU San Bernardino

23



KIARA EDWARDS
Fr. | 6-1 | F
Surprise, Ariz.
Valley Vista HS

24



CHEYENNE GREENHOUSE
Sr. | 5-11 | G
Riverside, Calif.
Canyon Springs HS

30



BAYLEE VANDERDOES
So. | 6-1 | F
Auburn, Calif.
Placer HS

34



MONIQUE TERRY
So. | 6-2 | F
San Antonio, Texas
Brennan HS

40



NAOMI EKWEIKE
So. | 6-6 | C
Lagos, Nigeria
Potlars House Christian Academy (Fla.)

45



STACIE TERRY
Head Coach
Fifth Season
UT Arlington (1998)

HC



JESSE CLARK
Assistant Coach
Fifth Season
Pacific Union (2003)

AC



CIARA CARL
Assistant Coach
Fifth Season
Point Loma Nazarene (2005)

AC



NICK GRANT
Assistant Coach
Fourth Season
Baylor (2010)

AC