



## AZTECS GENERAL INFORMATION

### SAN DIEGO STATE UNIVERSITY

Location .....San Diego  
 Founded .....1897  
 Enrollment .....34,171  
 Team Nickname .....Aztecs  
 Colors .....Scarlet and Black  
 Conference .....Mountain West  
 Home Field.....SDSU Sports Deck  
 Seating Capacity.....1,000  
 President .....Dr. Stephen L. Weber  
 Athletic Director.....Gene Bartow (Interim)  
 Faculty Representative .....Dr. Roger Caves

### SDSU WOMEN'S SOCCER

Head Coach .....Chuck Clegg  
 Career Record.....115-71-6 (10 years)  
 SDSU Record .....115-71-6  
 Office Phone .....(619) 594-3749  
 E-mail.....clegg@mail.sdsu.edu  
 Assistant Coaches .....Angela Morrison  
 .....Tina Morse  
 2002 Record.....13-7-0  
 2002 MWC Record.....3-3-0 (4th)  
 2002 MWC Tournament .....Semifinalist  
 2002 Final RPI .....65th  
 Letterwinners Returning/Lost .....15/6  
 Starters Returning/Lost.....10/5  
 First Year of Soccer .....1989  
 All-Time Record .....147-96-15  
 All-Time Conference Tourney Record ..10-5  
 All-Time NCAA Record.....1-2  
 Last NCAA Appearance .....1999

### MEDIA RELATIONS

Media Relations Director..Kevin Klintworth  
 Women's Soccer SID.....Matt MacDonald  
 Office Phone .....(619) 594-4348  
 Home Phone .....(619) 287-0763  
 Fax.....(619) 582-6541  
 E-mail .....mmacdonald@projects.sdsu.edu  
 Mailing Address .....  
 .....San Diego State University  
 .....Media Relations Office  
 .....Department of Athletics  
 .....San Diego, CA 92182-4309  
 Aztec Web site .....www.goaztecs.com

### ON THE COVER

Front L-R:Shelia Dayog, Kim Castellanos  
 Top L-R:Stephanie Pearson, Hannah Garl,  
 Becky Perilaman, Annette Shinn

### BACK INSIDE COVER

San Diego photos copyright 2003 Andrew  
 Hudson. Used by permission.

### MEDIA INFORMATION

To be added to the press release e-mail or fax list for women's soccer, please contact Matt MacDonald. All releases will also be posted on [www.goaztecs.com](http://www.goaztecs.com).

Media intending to staff women's soccer home matches and/or conduct interviews with players and coaches are asked to contact Matt MacDonald.

Postgame interviews take place after a 10-minute cooling-off period following the conclusion of the match. All interview requests should be directed to Matt MacDonald prior to the conclusion of the contest.



### DIRECTIONS

Directions from I-8 to the SDSU Sports Deck: Take the College Avenue South exit and take College Avenue to Montezuma Road. Take a right on Montezuma Road to 55th Street. The Sports Deck will be across the street and on the right. Parking is available in Parking Structure 5, located beneath the SDSU Sports Deck.

### CREDITS

The San Diego State women's soccer media guide was written, designed and edited by Media Relations Assistant Matt MacDonald. Additional editorial assistance provided by Associate Athletics Director and Media Relations Director Kevin Klintworth, Assistant Media Relations directors Dave Kuhn, Mike May, Peggy Curtin and Media Relations Assistant Dan Gisel. Photographs provided by Chuck Gawlik, Stan Liu, Ernie Anderson and Donna Clegg. Printed by Reprographics.

### TABLE OF CONTENTS

Head Coach Chuck Clegg .....	2
Assistant Coaches .....	3
2003 Outlook .....	4
2003 Rosters.....	5
The Players .....	6
Aztecs Off the Field .....	14
SDSU Athletics.....	15
Soccer Facilities .....	16
Academic Support .....	17
2003 Opponents .....	18
2002 Results .....	20
2002 Statistics.....	21
Series Records.....	21
2002 MWC Recap .....	22
All-time Letterwinners.....	23
WAC Standings 1995-98 .....	24
MWC Standings 1999-2001 .....	25
All-Time Records .....	26
All-Time Honors .....	27
Year-By-Year Results.....	28
Administration .....	30
Aztec Heritage .....	31
The University .....	32

### 2003 SCHEDULE

<b>Aug. 29</b> .....	<b>OREGON STATE</b>
Sept. 1 .....	UC Irvine (at Cal St. Fullerton)
<b>Sept. 4</b> .....	<b>LONG BEACH STATE</b>
Sept. 12 .....	UCF (at Kansas)
Sept. 14 .....	Florida State (at Kansas)
Sept. 19 .....	Southern Utah
Sept. 20 .....	Weber State (at SUU)
<b>Sept. 26</b> .....	<b>NEVADA</b>
Oct. 1 .....	UC Riverside
<b>Oct. 3</b> .....	<b>ARIZONA STATE</b>
Oct. 5 .....	San Francisco
Oct. 10 .....	Colorado College
Oct. 12 .....	Wyoming*
<b>Oct. 16</b> .....	<b>BRIGHAM YOUNG*</b>
<b>Oct. 18</b> .....	<b>UTAH*</b>
Oct. 24 .....	Air Force*
Oct. 26 .....	New Mexico*
<b>Oct. 31</b> .....	<b>GONZAGA</b>
Nov. 1 .....	UNLV*
Nov. 5 .....	MWC Quarterfinals (at Utah)
Nov. 6 .....	MWC Semifinals (at Utah)
Nov. 8 .....	MWC Championship (at Utah)

**BOLD CAPS** indicates home match  
 \*Mountain West Conference game  
 Game times listed on back cover.



## HEAD COACH CHUCK CLEGG

Chuck Clegg has been associated with San Diego State soccer as either a player, assistant or head coach since 1969.

In 1994, he assumed the helm of both the men's and women's programs after having coached the men's team since 1982 and the women's team in its inaugural 1989 season. After 18 years as the men's head coach, he announced his retirement from that program at the conclusion of the 1999 season.

In his tenure with the men, Clegg produced three national and 13 regional All-Americans and coached the 1987 team all the way to the NCAA championship game, falling to Clemson at Clemson, 2-0. Clegg and the 1987 team were inducted into the SDSU Hall of Fame in 2002 for that remarkable year.

Twenty-six of his former players have been drafted or signed by professional teams. His ability to recognize and develop talent was documented with the selection of a two-time Olympian and three players on each of the U.S Men's World Cup squads in 1990 and 1994. The 1990 World Cup starting 11 included seven players Clegg had coached at some point in their careers. In 1998, two former Aztecs competed in their third World Cup. Five former Aztecs, including Marcelo Balboa and Eric Wynalda, have played for Major League Soccer teams and five have also competed on the international scene at Division I and II.

Clegg also coached two women

players who have led their respective countries internationally. Goalkeeper Linnea Quinones started all three of Mexico's games in the 1999 Women's World Cup. FIFA voted her save against Germany the second best save of the WWC that year. Danielle Small, a midfielder, was named an alternate to Australia's 2000 Olympic team and will compete for the Matildas in the 2003 Women's World Cup. Clegg is only the second coach nationally to coach players representing their respective countries on both men's and women's national teams.

Current Aztec forward Listette Martinez also has international experience, having played for the Mexican team that competed at the FIFA U-19 Women's World Championship held in western Canada in 2002. She scored the final goal of a wild 5-3 loss to Brazil.

In 1998, Clegg coached the Aztec women's team to a 19-3-1 record, a No. 8 national ranking and their first-ever appearance in the NCAA tournament. The Aztecs beat USC to reach the round of 16. For his efforts, he was named the West region coach of the year by *Soccer Buzz*. Western Athletic Conference coaches voted Clegg WAC Coach of the Year for his 6-0 conference record. The Aztecs' WAC tournament championship was their second in four years.



**Head Coach Chuck Clegg and the 1987 men's soccer national finalist team was inducted into the Aztec Hall of Fame in 2002.**

In 1999, Clegg's women's team made its second consecutive NCAA tournament appearance after posting a 15-7-0 mark and earning a share of the first Mountain West Conference championship. That team produced one West region All-American, five all-conference players and three MWC players of the week, marking the program's second consecutive season with at least 15 wins.

Clegg started his women's head coaching career at San Diego State in 1989, assuming duties for the women's team. With no time to recruit or any funding in place, he was able to field a team, put together a schedule and post a winning record of 5-4-0, including a win over a funded Division I program.

He relinquished those duties the following year to Leslie Gallimore, but was again called to the helm of the women's program in 1994. Despite another late entry into the recruiting season, he landed three impact players, tied the school record for wins in a single season with a 10-8-0 mark, had three players set or tie individual school records and guided the players through a schedule that included seven top-20 teams. The following year, Aztec women's soccer won the inaugural WAC tournament, finished 13-5-3 and broke the school scoring and win records.

Clegg began his tenure with the Aztec men's soccer program in 1982 after being an assistant for George Logan for five seasons. As a head coach, he earned 194 victories and four NCAA playoff appearances in 18 years. In the memorable national runner-up season of 1987, he coached the West squad to a 3-2 win in the Senior Bowl.

Clegg's career record stands at 194-134-39 for the men's program and 115-71-6 on the women's side. In 1993, he moved ahead of veteran coach George Logan's 148-win total to become the men's all-time victories leader.

In Clegg's four-year playing career at San Diego State (1970, 74-76) he was twice named most inspirational player by his teammates. His college career was interrupted by a draft notice from the U.S Army and a stint in Vietnam.

Earning his degree in physical education from SDSU in 1977, Clegg's soccer qualifications include a United States Soccer Federation "A" license and both English and Scottish badges. He represented Region VIII, encompassing eight western states, on the NSCAA Board of Directors for six years, was on the NCAA playoff committee and rated teams for the NSCAA National Ranking Board.

Clegg and his wife, Donna, reside in La Mesa. They have two sons, Kenny, 33, a production assistant, and Ryan, 24, a 2002 SDSU graduate currently working for San Diego County.





## ASSISTANT COACH ANGELA MORRISON



Angela Morrison, from Economy, Nova Scotia, came to SDSU in 2002 from the University of North Dakota. She served as head coach of UND for the 2001 season, guiding the Fighting Sioux to a 9-6-1 record. Prior to taking over North Dakota's program, Morrison spent two years as the graduate assistant coach.

"Being a head coach at a Division II level, Angela is knowledgeable about recruiting and understands the decision-making process," SDSU head coach Chuck Clegg said. "She knows what is necessary for the overall good of a program. We are very fortunate to have her on our staff."

Morrison is involved with every aspect of the team, including assisting with team and individual training of field players and goalkeepers. She also acts as the recruiting coordinator.

During the summers of 1998 and 1999, Morrison worked in Halifax, Nova Scotia, as the technical director for the Halifax City Wanderers Soccer Club. The club encompasses nearly 1,500 members. Morrison was an associate head coach at the University of Maine-Presque Isle in 1998 doing field and goalkeeper specialty training.

As a player, Morrison played professionally for the Tasaki Perule Football Club of Kobe-City. While in Japan, she competed against such soccer notables as U.S. National Team members Tiffeny

Milbrett and Shannon MacMillan, as well as other international stars. The team advanced to the club quarterfinal round of the national championships.

At the collegiate level, Morrison was a starter for the Acadia University Axewomen of Wolfville, Nova Scotia, for five years (Canadian college eligibility runs five seasons). She was an all-conference selection and the starting goalkeeper for the 1996-97 team that set a national Division I record posting a no-goals-against average the entire season and finished 14-0-3. The team won the AUAA Conference championship in her third, fourth and fifth years. She was part of the Canadian National Team pool for two years.

Morrison, who graduated from Acadia University with a bachelor's degree in physical education with a specialization in sport management, has continued her pursuit of higher education by earning a bachelor's degree in education from the University of Maine-Presque Isle and is currently completing a master's of science in educational leadership through the University of North Dakota.

She holds a "C" National Canadian coaching license and earned a National Soccer Coaches of America advanced national license.



## ASSISTANT COACH TINA MORSE



Tina Morse, from Roseville, Minn., traded the unpredictable weather of the midwest for the southern California sunshine, arriving at SDSU in the spring of 2002.

After a successful playing career at North Dakota from 1999-2001, Morse embarked on her coaching career with a brief six-month stint at UND, while completing her student teaching and earning her bachelor's of science degree in physical education. She was an Arthur Ashe Sport Scholar from 1999-2001 and served as team captain in 2001.

At SDSU, Morse is completing her master's degree in biomechanics. Making the coaching jump to NCAA Division I soccer from UND, a Division II team, meant enough to her that she volunteered her time in 2002, bringing her valuable coaching ability to SDSU.

Appreciated for those efforts, Morse begins her first year as a paid assistant coach. Morse brings club coaching experience from Grand Forks, N.D., where she coached for the Grand Forks Soccer Club, coaching competitive level soccer teams in 2001 and 2002.

Morse assists in a variety of capacities for the Aztec women's soccer program. She is instrumental in planning and implementing training sessions applying her knowledge in biomechanics. She participates in everything from recruiting to administrative tasks to team coaching.



### Soccer Support Staff



**Carolyn Peters**  
Senior  
Athletic Trainer



**Courtney Bale**  
Strength and  
Conditioning Coach



**Matt MacDonald**  
Media  
Relations Assistant



# STATE

## 2003 OUTLOOK

The San Diego State women's soccer team enters the 2003 season full of optimism and hope.

The Aztecs return 15 letterwinners from a 2002 squad that finished 13-7-0, ending a skid of two consecutive losing seasons, only the second and third in the program's 14-year history. The talented team this year is working extremely hard to make this year a continuation of the winning tradition that is San Diego State women's soccer.

"We will be a more competitive, tougher team and we will always be in every game," head coach Chuck Clegg said. "Our goal is to challenge for the Mountain West Conference title."



Junior Gina Salinas

Clegg has led the Aztec women in all but four of the team's seasons, compiling a 115-71-6 record. He led the team to consecutive trips to the NCAA tournament in 1998 and 1999, including advancement to the round of 16 in 1998.

The Aztecs play only two home MWC games with four road games this year. SDSU is playing host to Utah and Brigham Young, last year's two MWC teams to qualify for the NCAA Tournament. Non-conference highlights include Florida State (in the Kansas Tournament on Sept. 14) and a home battle with Arizona State on Oct. 3. The Seminoles advanced to the third round of last year's NCAA Tournament, while the Sun Devils reached the second round.

### Goalkeepers

San Diego State is solid at goalkeeper with the return of senior Stephanie Pearson.

"She brings a good deal of experience to the back line as a fifth-year senior," assistant coach Angela Morrison said. "She is very vocal, helps organize the defense and can be counted on for game-winning saves."

Pearson played in 17 of the Aztecs' 20 games in 2002 and ranked fifth in the MWC in saves with 54 and fourth in shutouts with four.

Senior goalkeeper Sophia Perez faces overcoming a knee injury to start 2003. "She has a tremendous amount of athleticism," Morrison said. "The injury has slowed her down a bit, but she is training hard to improve technically and tactically".

### Defenders

The leader of the defense is Hannah Garl. She is a fifth-year senior who sustained an injury in the fourth game of 2002 and was granted a medical redshirt season by the NCAA.

"We really missed Hannah last year," Clegg said. "It was a blow to the team to have her injured."

Senior Annette Shinn will start as a central defender.

"She's a dedicated player and has worked as hard as anyone in the offseason to win her position," Clegg said.

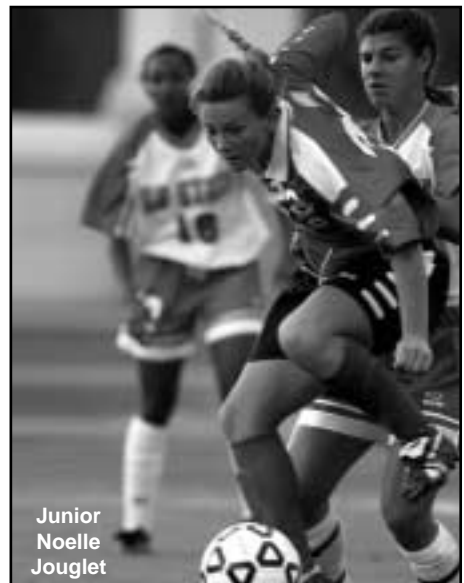
Sophomore Amanda Swiader has become a physical player who will anchor the defense. Senior Shella Dayog, juniors Shannon McBride, Noelle Jouglet, sophomores Erica Lopez, Ashley Cooper and freshman Heather Sullivan all are competing to make an impact defensively for the 2003 Aztecs.

### Midfielders

Junior Jessica Korpela, a transfer from San Jose State, had a strong spring.

"Sophomore Alexis Solovij is poised to have a breakout season," Clegg said. "Tactically, she is probably the strongest defender on the team. She has great soccer vision and protects the ball under pressure very well."

Junior Brianna Weymouth and promising freshmen Taviania Shabestari, Amanda



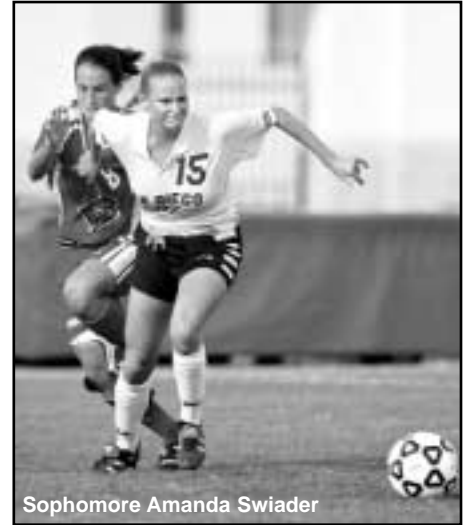
Junior Noelle Jouglet

McKay, Jen Klunder and Lindsay Minor add valuable depth to SDSU's midfield, creating lots of lineup choices.

### Forwards

Senior Kim Castellanos, a three-time first team all-MWC selection, leads the talented group of forwards. She has scored 10 goals in each of her first three seasons at San Diego State.

"Kim is one of the best pure goalscorers



Sophomore Amanda Swiader

in the nation," Clegg said.

Sophomore Lisette Martinez is among the most crafty at holding the ball and finding teammates with on-target passes.

"Technically, she is great at possessing the ball up top," Clegg said.

Juniors Gina Salinas and Courtney Burns bring necessary speed to the team and will primarily play the wide sides of the field. Senior Becky Prilaman adds experience with her tremendous work ethic.

Freshmen Holly Huppert and JoBette Nabarro are working hard to break into the strong front line for the Aztecs. Huppert played in the U-18 national championship club final. Nabarro joins the team fresh off a stellar high school career in Hawaii. She was female athlete of the year and was named to the Big Island Interscholastic Federation All-Star Team all four years. She set the state goal-scoring record in 2003.

Senior Jini Hogg moves to soccer from the SDSU track and field team and adds a burst of speed to the forward position. She was an All-American with the SDSU 4x400-meter team that finished eighth at the NCAA meet.

The 2003 Aztecs combine the experience of the returning players with the promising abilities of the new additions.

"We're ready for the whistle to blow," says Clegg.



## 2003 ROSTERS

<u>No.</u>	<u>Name</u>	<u>Pos.</u>	<u>Ht.</u>	<u>Yr.</u>	<u>Hometown (Previous School)</u>
00	Stephanie Pearson	GK	5-6	Sr.	Los Gatos, Calif. (Hawai'i)
1	Sophia Perez	GK	5-9	Sr.	Bonita, Calif. (Mesa College)
2	Kim Castellanos	F	5-2	Sr.	Escondido, Calif. (Rancho Bernardo HS)
3	Hannah Garl	D	5-6	Sr.	Tacoma, Wash. (Stadium HS)
4	Jessica Korpela	MF	5-3	Jr.	Highlands Ranch, Colo. (San Jose State)
5	Erica Lopez	D	5-5	So.	Vista, Calif. (Vista HS)
6	JoBette Nabarro	F	5-8	Fr.	Hilo, Hawaii (Waiakea HS)
7	Alexis Solovij	MF	5-2	So.	Santa Barbara, Calif. (Dos Pueblos HS)
8	Brianna Weymouth	MF	5-7	Jr.	Phoenix, Ariz. (Massachusetts)
9	Gina Salinas	F	5-5	Jr.	Yorba Linda, Calif. (Esperanza HS)
10	Lisette Martinez	F	5-4	So.	Chula Vista, Calif. (Hilltop HS)
11	Taviana Shabestari	MF	5-5	Fr.	Manhattan Beach, Calif. (Mira Costa HS)
12	Courtney Burns	F	5-2	Jr.	Grand Terrace, Calif. (UC Riverside)
14	Amanda McKay	MF	5-8	Fr.	Bellflower, Calif. (Mayfair HS)
15	Amanda Swiader	D	5-9	So.	Virginia Beach, Va. (Frank W. Cox HS)
16	Holly Huppert	F	5-7	Fr.	Littleton, Colo. (Chatfield HS)
17	Becky Prilaman	F	5-9	Sr.	Lakeside, Calif. (El Capitan HS)
18	Sheila Dayog	D	5-1	Sr.	San Jose, Calif. (Mesa College)
19	Annette Shinn	D	5-7	Sr.	Littleton, Colo. (Columbine HS)
20	Shannon McBride	D	5-8	Jr.	St. Charles, Ill. (Southwest Missouri State)
21	Jen Klunder	MF	5-9	Fr.	La Mirada, Calif. (La Mirada HS)
22	Ashley Cooper	D	5-8	So.	San Diego, Calif. (Mira Mesa HS)
23	Noelle Jouglet	D	5-6	Jr.	La Mesa, Calif. (Helix HS)
24	Jini Hogg	F	5-7	Sr.	San Francisco, Calif. (International Studies Academy)
26	Lindsay Minor	MF	5-2	Fr.	Dixon, Calif. (Dixon HS)
27	Heather Sullivan	D	5-9	Fr.	San Diego, Calif. (Rancho Bernardo HS)

**Head Coach:** Chuck Clegg, 11th year (San Diego State '77)

**Assistant Coaches:** Angela Morrison, 2nd year (Acadia '96), Tina Morse, 2nd year (North Dakota '02)

### Alphabetical Roster

<u>No.</u>	<u>Name</u>
12	Burns, Courtney
2	Castellanos, Kim
22	Cooper, Ashley
18	Dayog, Sheila
3	Garl, Hannah
24	Hogg, Jini
16	Huppert, Holly
23	Jouglet, Noelle
21	Klunder, Jen
4	Korpela, Jessica
5	Lopez, Erica
10	Martinez, Lisette
20	McBride, Shannon
14	McKay, Amanda
26	Minor, Lindsay
6	Nabarro, JoBette
00	Pearson, Stephanie
1	Perez, Sophia
17	Prilaman, Becky
9	Salinas, Gina
11	Shabestari, Taviana
19	Shinn, Annette
7	Solovij, Alexis
27	Sullivan, Heather
15	Swiader, Amanda
8	Weymouth, Brianna

### Pronunciation Guide

Castellanos	. . .cast-a-YAWN-ohs
Dayog	. . . . .DAY-og
Jini	. . . . .Gin-ee
Noelle Jouglet	. . .no-Ell joo-LAY
Korpela	. . . . .COR-pell-a
JoBette Nabarro	. . . . .Joe-Bet
	. . . . .Na-bar-o
Prilaman	. . . . .PEARL-a-man
Salinas	. . . . .Sah-LEEN-us
Solovij	. . . . .so-lo-vee
Swiader	. . . . .SWAY-der
Taviana Shabestari	TAVEE-ana
	. . . . .Shaw-best-eri
Weymouth	. . . . .WAY-muth

### Roster Breakdown By Position

Forwards	. . . . .8
Midfielders	. . . . .7
Defenders	. . . . .9
Goalkeepers	. . . . .2

### By Class

Seniors	. . . . .8
Juniors	. . . . .6
Sophomores	. . . . .5
Freshmen	. . . . .7

### By State

California	. . . . .18
Arizona	. . . . .1
Colorado	. . . . .3
Hawaii	. . . . .1
Illinois	. . . . .1
Virginia	. . . . .1





THE PLAYERS



**Stephanie Pearson**  
 00 Senior  
 Goalkeeper  
 5-6  
 Los Gatos, Calif.  
 University of Hawai'i



**Kim Castellanos**  
 2 Senior  
 Forward  
 5-2  
 Escondido, Calif.  
 Rancho Bernardo HS

**2002:** Started in 15 games and appeared in two others...Posted a complete game 11 times...Ranked fifth in the Mountain West Conference for saves (54) and fourth in shutouts (4)...Named to the MWC all-academic team...Finished the season with an 8-2 record as the starting goalkeeper.

**2001:** Saw limited time in the net behind senior goalkeepers Linnea Quiñones and Erin Haentjens...Appeared in one game and did not allow a goal.

**1999 Hawai'i:** Was the No. 2 keeper for the Rainbow Wahine as a freshman...Compiled an 0.70 goals against average over eight games, including four starts...Allowed only three goals and posted a 3-0 mark...Notched one shutout.

**High School:** Four-year varsity letterwinner at Los Gatos High School...Earned first team and second team all-league honors her junior and senior years...Played club soccer for the Los Gatos Pumas...Starting goalie for the Pumas for seven seasons...Member of the state Olympic Development team in 1995 and first alternate in 1996.

**Personal:** Stephanie Jean Pearson...Born Nov. 14, 1980, in San Jose, Calif....Daughter of Walter and Jennifer Pearson...Sister, Kelly, played soccer at UC San Diego...Hobbies include ceramics and snowboarding...Majoring in social science.



**2002:** First team all-MWC for the third time in as many years...Ranked third in shots per game, second in points, third in goals and second in assists in the Mountain West Conference...Scored six goals in her first six games and four goals in her last four games...Led the team in every offensive category: goals (10), assists (6), points (26), shots (54)...Third on the all-time SDSU list for career goals with 30 and third in career points with 69...Featured in *Sports Illustrated's* "Faces in the Crowd" on Aug. 15, 2002.

**2001:** Led the team in goals (10), points (22) and shots (66)...Ranked third in the MWC for goals, sixth for points and fifth for shots in a single season...First-team all-MWC...Scored a goal in seven of the first eight matches of the season...Named to the 2001 all-MWC Tournament Team...Earned MVP and the Golden Boot award at the U-19 national club championships.

**2000:** Got her career off to a smashing start with a goal the first time she touched the ball against Indiana on Sept. 8...Named the MWC co-Freshman of the Year...Freshman all-far West region selection...First-team all-MWC...Led the team with 10 goals...The second-highest output ever by a freshman at SDSU...Her 10 goals are a MWC record for a freshman...Led the MWC with eight goals in conference action...Named Mountain West Player of the Week...Became the first Aztec ever to record two hat tricks in a career against New Mexico and UNLV (and did so in a three-day span)...Her three goals against New Mexico marked the first time a freshman recorded a hat trick in a conference match...Only the second freshman in MWC history to record a hat trick and the first to accomplish the feat twice...Established a MWC freshman record by taking 10 shots in a game against Wyoming.

**Personal:** Kimberlie Ann Castellanos...Born Dec. 2, 1982, in Panorama City, Calif.... Daughter of Carlos and Josie Castellanos...Majoring in criminal justice with a minor in sociology...Established a Rancho Bernardo High School record scoring 105 goals in her career.



San Diego State and Hawai'i Stats					
Year	G-GS	Min.	G	Sv	GAA
2002	17-15	1318	28	54	1.91
2001	1-0	25	0	3	0.00
1999*	8-4	387	3	16	0.70
<b>Total</b>	<b>26-19</b>	<b>1730</b>	<b>31</b>	<b>73</b>	<b>1.61</b>

\*Hawai'i

San Diego State Stats					
Year	G-GS	Sh	G	A	Pts.
2002	18-13	54	10	6	26
2001	18-15	66	10	2	22
2000	16-9	46	10	1	21
<b>Total</b>	<b>52-37</b>	<b>166</b>	<b>30</b>	<b>9</b>	<b>69</b>



## THE PLAYERS



**Hannah  
Garl**  
Senior  
Defender  
3  
5-6  
Tacoma, Wash.  
Stadium HS



**Becky  
Prilaman**  
Senior  
Midfielder  
17  
5-9  
Lakeside, Calif.  
El Capitan HS

**2002:** Sustained an injury in the fourth game of the season...A letterwinner for the Aztecs in 1999, 2000 and 2001, she was last year's co-captain...Has played in more games (64) than any other Aztec on the 2003 roster.

**2001:** Started 15 of 17 games during the season...Knocked in the first goal of her collegiate career during the season-opener against Montana...Named SDSU Student-Athlete of the Month in November 2001.

**2000:** Recorded her first assist as an Aztec on the game-winning goal in SDSU's 4-2 victory over UNLV on Oct. 22...Added an assist against Fresno State...Had a pair of assists in the Aztecs' MWC tournament contest vs. New Mexico, a 3-0 win...Solidified the SDSU defense during the conference season...Member of the Mountain West Conference all-academic team...Named team's MVP for her outstanding year.



**1999:** Appeared in all 22 matches, starting in eight...Started four straight games against Loyola Marymount, UCLA, Montana and Kentucky.

**High School:** Four-year varsity letterwinner at Stadium High School in Tacoma, Wash...Named Narrows League MVP as a senior and was selected to the all-area team...Three-time first-team all-league honoree...Stadium High's MVP in both 1997 and 1998...Played for FC Royals

club team that won the Region IV championships in 1995 and 1997...Team was a national USYSA finalist in 1997...Team won the Washington state championship on five occasions.

**Personal:** Hannah Elizabeth Garl...Born Sept. 29, 1980, in Tacoma, Wash....Daughter of William and Theresa Garl... Sports enthusiast who enjoys basketball and mountain biking...A business administration major with an emphasis in marketing.

San Diego State Stats						
Year	G-GS	Sh	G	A	Pts.	
2002	4-4	1	0	1	1	
2001	17-15	2	1	0	2	
2000	21-21	3	0	4	4	
1999	22-8	2	0	0	0	
<b>Totals</b>	<b>64-48</b>	<b>8</b>	<b>1</b>	<b>5</b>	<b>7</b>	

**2002:** Saw action in 11 games...Scored a goal in SDSU's 5-1 victory over Nevada on Oct. 13...Took two shots against UNLV in the Aztecs' final conference game of the season.

**2001:** Appeared in all 18 SDSU games...One of just three Aztecs to start a team-high 16 matches...Had an assist against South Carolina...Took 10 shots on the season.

**2000:** Played defense and in the midfield...Was one of only three Aztecs and the only freshman to start every match...One of two walk-on freshmen to make the starting roster...Ranked seventh on the team and third among Aztec freshmen with four points...Her points came on assists against Mississippi, Indiana, Long Beach State and UNLV...Took three shots against Indiana and New Mexico.

**High School:** Four-year varsity letterwinner at El Capitan...First team all-league and second team all-CIF in 2000...Coca-Cola MVP in 1999...Second-team league pick in 1997...The Vaqueros were CIF champs in 1997, finalists in 1999 and semifinalists in 2000...Member of the principal's honor roll.

**Personal:** Rebecca Nicole Prilaman...Born Aug. 17, 1982, in San Diego...Daughter of Terry and Bobbi Prilaman...A volunteer coach in the AYSO...Works at the Nomads soccer camp during the summer...Names Michael Jordan as her favorite athlete...Majoring in nutrition...Enjoys wakeboarding and going to the beach.



San Diego State Stats						
Year	G-GS	Sh	G	A	Pts.	
2002	11-0	4	1	0	2	
2001	18-16	10	0	1	1	
2000	21-21	19	1	4	6	
<b>Totals</b>	<b>50-37</b>	<b>33</b>	<b>2</b>	<b>5</b>	<b>9</b>	



THE PLAYERS



**18**

**Sheila Dayog**  
 Senior Defender  
 5-1  
 San Jose, Calif.  
 Mesa College



**19**

**Annette Shinn**  
 Senior Midfielder  
 5-7  
 Littleton, Colo.  
 Columbine HS

**2002:** A walk-on who earned playing time through work ethic and will...Ended the season having played in all 20 Aztec games...Started five contests...Scored her first collegiate goal in Oct. 13 in SDSU's 5-1 win at Nevada...Credited with two assists and five shots on goal...A MWC all-academic selection.

**2001 Mesa College:** Played one season for the Olympians after recovering from a knee injury and not playing in 2000...Named to the first team all-Pacific Coast Conference...Mesa's Olympian of the Year.

**1999 San Diego City College:** Named to the first team all-Pacific Coast Conference while playing for the Knights...SDCC defender of the year.



**High School:** Won four varsity letters in soccer for the Santa Teresa Saints as a defender...Received freshman of the year honors...All-league three years...Played for the Cal North Olympic Development Program three years.

**Personal:** Sheila Louise Dayog...Born Oct. 25, 1972, in San Diego...Daughter of Doris Dayog...Turned 30 on a road trip to Utah last season and will turn 31 on the off-day during a trip to Air Force and New Mexico...Received playing extension beyond the NCAA Division I age limit due to military service...Veteran of six years in the Navy,

reaching the rank of Petty Officer 2nd Class...A Gulf War veteran...Currently works as an operating room nurse...Majoring in computer science with career plans to become a computer programmer.

San Diego State Stats					
Year	G-GS	Sh	G	A	Pts.
2002	20-5	5	1	2	4

**2002:** Mountain West Conference all-academic team...Took two shots on the year while sustaining a controlled midfield...Continued to work hard and improve tactically...Physical presence.

**2001:** Appeared in six games during the 2001 campaign...Took two shots on the season, one each against Eastern Washington and Air Force.

**2000:** Recorded her first collegiate point on an assist to Fay deLeon against Cincinnati on Sept. 10...Played against every Mountain West opponent with the exception of Air Force...Member of the 2000 Mountain West Conference all-academic team.

**High School:** One-year varsity letterwinner at Columbine High School...Team placed second in the state during her senior year...Member of the academic honor roll...Participated in cross country, swimming and track and field, lettering in all three.

**Personal:** Annette Margaret Shinn...Born April 9, 1982, in Englewood, Colo....Daughter of Chuck and Emma Shinn...Names five-time Tour de France winner cyclist Lance Armstrong as her favorite athlete...Majoring in biology with an emphasis in zoology...Hobbies include art, fish hooking and outdoor activities...Enjoys beach activities such as wakeboarding and surfing.



San Diego State Stats					
Year	G-GS	Sh	G	A	Pts.
2002	17-4	2	0	0	0
2001	6-0	2	0	0	0
2000	16-0	1	0	1	1
<b>Total</b>	<b>39-4</b>	<b>5</b>	<b>0</b>	<b>1</b>	<b>1</b>





THE PLAYERS



1

**Sophia Perez**  
Senior  
Goalkeeper  
5-9  
Bonita, Calif.  
Mesa College

**2002:** Started four of the seven games she played in...Ranked seventh in the Mountain West Conference for saves per game in conference play with a 3.25 average...Finished the year with 24 saves, No. 10 in the MWC...3-1 record as a starter.

**Mesa College:** Two-year letterwinner and all-conference selection for Mesa College in 2000 and 2001...Named the team's MVP in 2001...Mesa's athletic player of the year...Member of the 2001 squad that advanced to the conference quarterfinals...Started 25 games, notched 64 saves and posted a 0.54 goals-against average.

**High School:** Competed for the Bonita Vista Barons for two years...Appeared in the CIF Tournament finals...A three-year letterwinner in basketball.

**Personal:** Sophia Perez...Born June 6, 1982, in Ventura, Calif...Daughter of Cynthia Rodriguez and Luis Perez...Majoring in communications.

San Diego State Stats						
Year	G-GS	Min.	G	S	GAA	
2002	9-0	445	9	26	1.82	



5

**Erica Lopez**  
Sophomore  
Defender  
5-5  
Vista, Calif.  
Vista HS

**2002:** Appeared in 16 games, starting seven...Recorded two assists for two points in the opener against UC Riverside...Finished the year with one goal and three assists.

**High School:** A two-time first-team all-Palomar League selection...All-league second team in 2000...Received honorable mention honors in 1998...First athlete in the history of Vista HS to be a four-year letterwinner in three sports, competing in soccer, cross country and track and field...Athlete of the year in 2002...Named CIF's "Woman of the Year in Sports"...*San Diego Union-Tribune* Player of the Week in 1999, 2001 and 2002.

**Personal:** Erica Marie Lopez...Born Nov. 11, 1984, in Oceanside...Daughter of Pedro and Connie Lopez...Undeclared major.

San Diego State Stats						
Year	G-GS	Sh	G	A	Pts.	
2002	16-7	6	1	3	5	



4

**Jessica Korpela**  
Junior  
Midfielder  
5-3  
Highlands Ranch, Colo.  
San Jose State

**2002 San Jose State:** Started 18 of 20 games for the Spartans, scored three goals and recorded two assists for eight points...Scored the overtime game-winner in a home match against Vermont.

**2001 San Jose State:** Played in 16 of SJSU's 18 games, starting eight.

**High School:** Played three years varsity combined for Columbine and Thunder Ridge...First team all-Prairie League...All-league in swimming...Lettered two years in softball...Her club soccer team, The Rush, qualified for state and regionals...Named to the honor roll.

**Personal:** Jessica Korpela...Born Dec. 21, 1982, in Seattle, Wash...Daughter of Cheryl and Dave Korpela...Major is communications and has career plans in public relations.

San Jose State Stats						
Year	G-GS	Sh	G	A	Pts.	
2002	20-18	14	3	2	8	
2001	16-8	2	1	1	3	
<b>Total</b>	<b>36-26</b>	<b>16</b>	<b>4</b>	<b>3</b>	<b>11</b>	



6

**JoBette Nabarro**  
Freshman  
Forward  
5-8  
Hilo, Hawaii  
Waiakea HS

**High School:** Four letters in soccer, two in basketball and one in volleyball for Waiakea HS...BIIF (Big Island Interscholastic Federation) all-star team all four years...First team in 2000, 2002 and 2003...Second team in 1999...BIIF player of the year...Set Hawaii state single-season goal scoring record in 2003...MVP of her soccer and basketball teams in 2003...Class secretary in 2002, 2003...Plays for the Hawaiian Bulls club soccer team...Flew to Honolulu from the big island for practices and games.

**Personal:** JoBette Corrina Nabarro...Born March 8, 1985, in Hilo, Hawaii...Daughter of Barbette and Royden Nabarro.



### THE PLAYERS

## Alexis Solovij

7  
Sophomore  
Midfielder  
5-2  
Santa Barbara, Calif.  
Dos Pueblos HS

**2002:** Worked in the midfield for 16 games, starting 13...Recorded three shots on the season.  
**High School:** Santa Barbara County Player of the Year in 2002...Four-year letterwinner for the Dos Pueblos Chargers...All-Channel League selection her sophomore through senior seasons...Team's defensive MVP in 2002...Team captain for three years...Named school's athlete of the year for 2001-02.  
**Personal:** Alexis Marie Solovij...Born March 27, 1984, in Annapolis, Md....Daughter of Jurij and Irene Solovij...Undeclared major, considering a career in education.

San Diego State Stats					
Year	G-GS	Sh	G	A	Pts.
2002	16-13	3	0	0	0



## Gina Salinas

9  
Junior  
Forward  
5-5  
Yorba Linda, Calif.  
Esperanza HS

**2002:** One of only two players to start all 20 contests...Recorded two points and had two shots on goal.  
**2001:** Competed in all 18 matches...Knocked in the first goal of her collegiate career in SDSU's 3-2 victory over UNLV...Earned academic all-Mountain West honors.  
**High School:** Two-time first team all-Sunset League...Led her squad to two league championships and appearances in the 1999 CIF quarterfinals and the 2000 and 2001 CIF semifinals...Named school's defensive player of the year...Her club team, the So Cal Blues, advanced to the 2000 State Cup finals and the Surf Cup Championship...Academic honor roll and named a scholar-athlete... "Who's Who List" among high school students in the United States.  
**Personal:** Gina Marie Salinas...Born April 29, 1983, in Anaheim, Calif....Daughter of Al and Diane Salinas...Takes part in charity work for underprivileged children and at the Casa Theresa Home...Major is communications.

San Diego State Stats					
Year	G-GS	Sh	G	A	Pts.
2001	18-4	12	1	0	2
2002	20-20	2	0	2	2
<b>Total</b>	<b>38-24</b>	<b>14</b>	<b>1</b>	<b>2</b>	<b>4</b>



## Brianna Weymouth

8  
Junior  
Midfielder  
5-7  
Phoenix, Ariz.  
Massachusetts

**2002:** Played in nine of SDSU's 20 games at midfield...Recorded her first assist as an Aztec on Oct. 1 vs. Long Beach State...Finished the season with one point.  
**2001 Massachusetts:** Lettered one year for the Minutewomen...Team was ranked 19th in the nation for three weeks.  
**High School:** Four-year letterwinner at Chaparral HS...An all-region selection each year in high school...Earned all-state recognition from 1999-2001...All-Arizona selection in 2001...Firebirds were two-time state champs, in 1997 and 2000.  
**Personal:** Brianna Renée Weymouth...Born Oct. 8, 1982, in Mesa, Ariz....Daughter of Brian and Renée Weymouth...Enjoys art and singing...Plans on a career in architecture.

San Diego State and UMass Stats					
Year	G-GS	Sh	G	A	Pts.
2002	9-0	0	0	1	1
2001*	12-1	5	0	0	0
<b>Total</b>	<b>21-1</b>	<b>5</b>	<b>0</b>	<b>1</b>	<b>1</b>

\*Massachusetts



## Lisette Martinez

10  
Sophomore  
Forward  
5-4  
Chula Vista, Calif.  
Hilltop HS

**2002:** Started 11 games, appeared in all 20...Ranked eighth in the MWC for assists with four...Scored two game-winning goals, coming against UC Riverside and Cal State Northridge.  
**2002 U-19:** Scored the final goal of a wild 5-3 loss to Brazil for Mexico in the U-19 Women's World Cup.  
**High School:** Four-year letterwinner...First-team all-South Bay League... First-team all-CIF 2000, 2001...The Lancers were the 2000-01 South Bay Champions and Spartan Tournament Champions...First-team all-metro honors in 1999 and first-team all-CIF in 1998...Member of the *San Diego Union-Tribune's* all-academic team...Three-year letterwinner in field hockey.  
**Personal:** Lisette Martinez...Born July 6, 1984, in San Diego...A business administration major.

San Diego State Stats					
Year	G-GS	Sh	G	A	Pts.
2002	20-11	23	4	4	12



## THE PLAYERS



**Tavana  
Shabestari**

11

Freshman  
Midfielder  
5-5

Manhattan Beach, Calif.  
Mira Costa HS



**Amanda  
McKay**

14

Freshman  
Midfielder  
5-8

Bellflower, Calif.  
Mayfair HS

**High School:** Played two years for the Mira Costa Mustangs...*Daily Breeze* Athlete of the Year...Bay League champions...Played two years of basketball, earning one letter.

**Personal:** Tavana Shabestari...Born March 6, 1985, in Redondo Beach, Calif...Daughter of Tony and Donna Shabestari...Major in communications.

**High School:** Played four years for the Mayfair Monsoons...Played club soccer with the Infinity team, winning the Premier League championship.

**Personal:** Amanda Rachelle McKay...Daughter of Tim and Anita McKay...Majoring in sports medicine...Plans to major in kinesiology and sports medicine.



**Courtney  
Burns**

12

Junior  
Forward  
5-2

Grand Terrace, Calif.  
UC Riverside



**Amanda  
Swiader**

15

Sophomore  
Defender  
5-9

Virginia Beach, Va.  
Frank W. Cox HS

**2002:** Action in 16 games, starting four...Three shots and one goal.

**2001 UC Riverside:** Started 11 games and played in 11 for the Highlanders...Scored three goals and added an assist for seven points.

**High School:** Four-year letterwinner for Colton High School...All-league, all-county in 1999 and 2000...League MVP...Yellowjackets were league champs in 1999, 2000 and 2001.

**Personal:** Courtney Ann Burns...Born July 3, 1983, in Santa Ana, Calif...Daughter of Jim and Barbara Burns...Majoring in communications.

**San Diego State and UCR Stats**

Year	G-GS	Sh	G	A	Pts.
2002	16-4	3	1	0	2
2001*	17-11	18	3	1	7
<b>Total</b>	<b>33-15</b>	<b>21</b>	<b>4</b>	<b>1</b>	<b>9</b>

\*UC Riverside

**2002:** Appeared in all but one game, started in 16 of 20...Scored the first goal of her Aztec career against North Carolina State...Took six shots, scoring one goal with three assists for five points...MWC all-academic team.

**High School:** All-Tidewater player of the year, all-Beach district player of the year, all-Eastern region player of the year, all-state...The Falcons advanced to the state semifinals in 2001 and 2002...Norfolk Sports Club Female Soccer Athlete of the Year in 2001 and 2002...Member of the Region I ODP team in 2001...Played on the school's field hockey team that won the state championship.

**Personal:** Amanda Michelle Swiader...Born Aug. 3, 1983, in Virginia Beach, Va...Daughter of Robert and Carol Swiader...Majoring in business.

**San Diego State Stats**

Year	G-GS	Sh	G	A	Pts.
2002	19-16	6	1	3	5



# STATE

## THE PLAYERS



**16**  
**Holly Huppert**  
 Freshman  
 Forward  
 5-7  
 Littleton, Colo.  
 Chatfield HS

**High School:** Played four years for the Chatfield Chargers...Named all-state in 2001 and 2002...Team finished second in state in 2001 and 2002...Member of the National Honor Society...Student body treasurer and in student government all four years...Named to the honor roll...Played club ball for the Colorado Girls Academy that appeared in the national championship final in 2003.  
**Personal:** Holly Wood Huppert...Born Aug. 30, 1984, in Littleton, Colo....Daughter of Nancy and Allen Huppert.



**21**  
**Jen Klunder**  
 Freshman  
 Midfielder  
 5-9  
 La Mirada, Calif.  
 La Mirada HS

**High School:** First team all-Suburban League all four years for the Matadores...Suburban League player of the year in 2003...Team MVP in 2001 and 2003...Team offensive MVP in 2000...Career scoring leader at La Mirada HS with 38 goals and 13 assists...All-area first-team in 2001, 2002 and 2003, while earning second-team honors her freshman year in 2000...All-CIF first-team in 2003...Named athlete of the week twice each by the *Whittier Daily News* and the *Long Beach Press-Telegram*...Team captain for three years...Suburban League champions in 2001, 2002 and 2003...Team made the CIF quarterfinals in 2003, the second round in 2002 and the first round in 2000 and 2001.

**Personal:** Jennifer Lee Klunder...Born March 14, 1985, in Downey, Calif....Daughter of Jack and DeeDee Klunder...Major is communications...Hobbies include surfing and snowboarding.



**20**  
**Shannon McBride**  
 Junior  
 Defender  
 5-8  
 St. Charles, Ill.  
 SMS

**2002 Southwest Missouri State:** Started 17 of the 18 games for the Bears...Recorded 13 shots, had one assist.

**2001 Southwest Missouri State:** Honorable mention all-Missouri Valley Conference...Started all 20 games and recorded four assists.

**High School:** McBride was a four-year varsity letterwinner at St. Charles High...All-state honorable mention honors as a senior and led the Fighting Saints to regional and sectional championships and a top-20 national ranking that season...As a junior, McBride helped lead the Fighting Saints to their fifth consecutive state championship...All-state tournament honors, all-conference, all-area as a junior...Named all-conference in basketball.

**Personal:** Shannon Lynn McBride...Born March 31, 1983, in Elgin, Ill....Daughter of Jim and Gloria McBride...Major is marketing and has career plans in sports marketing.

Southwest Missouri State Stats					
Year	G-GS	Sh	G	A	Pts.
2002	17-17	13	0	1	1
2001	20-20	19	0	4	4
<b>Total</b>	<b>37-37</b>	<b>32</b>	<b>0</b>	<b>5</b>	<b>5</b>



**22**  
**Ashley Cooper**  
 Sophomore  
 Defender  
 5-8  
 San Diego, Calif.  
 Mira Mesa HS

**2002:** Played in four games, starting one...Had one shot on goal.

**High School:** Four-year letterwinner at Mira Mesa...All-Eastern League team 2000, 2001, 2002...Eastern League Player of the Year...All-CIF in 2001 and 2002...Division II champion in 2001 and advanced to the semifinals in 2002...Also lettered in softball and cross country.

**Personal:** Ashley Lynn Cooper...Born April 24, 1984, in San Diego...Daughter of Steve and Diane Cooper...A business major.

San Diego State Stats					
Year	G-GS	Sh	G	A	Pts.
2002	4-1	1	0	0	0



THE PLAYERS



**23**  
**Noelle Jouglet**  
 Junior  
 Defender  
 5-6  
 La Mesa, Calif.  
 Helix HS



**26**  
**Lindsay Minor**  
 Freshman  
 Midfielder  
 5-2  
 Dixon, Calif.  
 Dixon HS

**2002:** Started in seven games, appeared in three others...Took 10 shots on goal and netted her first goal Sept. 15 against Montana, winning the game 2-1...Recorded an assist against North Carolina State to finish the year with three points.  
**2001:** Started five games as center midfielder and competed in 12...Took five shots on the season...Emerged as a freshman leader...Earned academic all-MWC honors.  
**High School:** Played four seasons of varsity soccer at Helix High School for former Aztec goalkeeper Garry Wilcox...Named all-league in 1999 and 2001...All-CIF in 1999 and 2001...High school team won the Grossmont South League title in 1998 and 2001 and finished second in 1999 and 2000...Selected to the *San Diego Union-Tribune* all-academic team.

**High School:** Earned three letters for the Dixon Rams...All-league in her sophomore and junior years, league MVP her senior year...The Rams were two-time league champions.  
**Personal:** Lindsay Renee Minor...Born Oct. 8, 1985, in Chico, Calif....Daughter of Susan and Ettore Minor...Her hobby is swimming.

**Personal:** Noelle Christine Jouglet...Born Dec. 28, 1982, in San Diego...Daughter of Roland and Lynn Jouglet...A communications major...Enjoys cooking and skimboarding in her spare time.

San Diego State Stats					
Year	G-GS	Sh	G	A	Pts.
2002	10-7	10	1	1	3
2001	12-5	5	0	0	0
<b>Total</b>	<b>22-12</b>	<b>15</b>	<b>1</b>	<b>1</b>	<b>3</b>



**24**  
**Jini Hogg**  
 Senior  
 Forward  
 5-7  
 San Francisco, Calif.  
 Int. Studies Academy



**27**  
**Heather Sullivan**  
 Freshman  
 Defender  
 5-9  
 San Diego, Calif.  
 Rancho Bernardo HS

**2002:** Competed for the San Diego State track and field team...Ran on SDSU's 4x400-meter team that finished eighth at the NCAA meet, earning All-America status.  
**High School:** Honor roll student...All-league in 200- and 400-meters...Also competed in basketball and soccer for International Studies Academy.  
**Personal:** Leona Jini Hogg...Born Oct. 18, 1981, in San Francisco, Calif....Daughter of Leroy and Daisy Hogg...Majoring in public administration.

**High School:** Second- and honorable mention all-Palomar League teams...Co-captain of the Broncos...All-academic recognition  
**Personal:** Heather Allison Sullivan...Born Dec. 1, 1983, in Pensacola, Fla....Daughter of Kevin and Deborah Sullivan...Dean's List at SDSU for 2002-03...Played club soccer at SDSU last season...Team finished third at NIRSA nationals...Majoring in business.



STATE

### AZTECS OFF THE FIELD



December fun helping children and the Seau Foundation's Shop with a Jock program. Joining Aztec team members are Women's World Cup players Joy Fawcett and Shannon MacMillan.



The Aztecs signed autographs for players from the Crusaders Soccer Club after a game. The Crusader players served as ballgirls for the game.



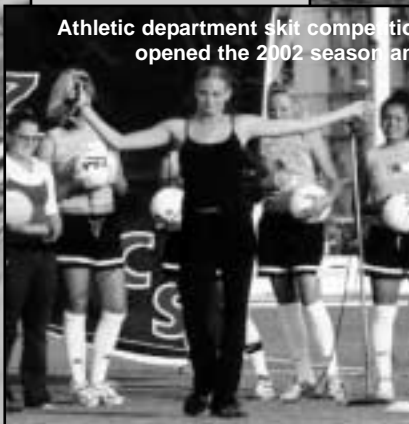
Women's soccer players visit with Santa.



The Aztecs take a team picture with the Crusaders.



Olympic Venue Ski Jump Hill Park City, Utah



Athletic department skit competition opened the 2002 season and



the MWC banquet was a fitting close.



2003 Alumni Game



SDSU ATHLETICS





# STATE

## Soccer Facilities

"When there's no room to build out ... build up." That's the mantra of modern-day engineers and contractors and is something San Diego State took to heart in designing the SDSU Sports Deck, the university's soccer and track facility.

The SDSU Sports Deck sits atop the university's Parking Structure 5 (PS 5). The facility is located at 55th Street and Montezuma Avenue at the site of the old Choc Sportsman Track.

The playing turf is a state-of-the-art natural grass surface with an automatic drainage system. The stadium seats 1,000 and includes an electron-

ic message/scoreboard. Final plans for the facility include lights and additional seating.

The facility also features an all-weather track and is home to not only the SDSU women's soccer team, but also the men's soccer team and the women's track and field team.

The Sports Deck hosted the 2001 Mountain West Conference track & field championships in 2001.

The San Diego State women's soccer team has enjoyed success at the Sports Deck, compiling an 18-10 record overall, and an impressive 8-2 record in MWC contests.



### SDSU Sports Deck Records

- First Game:** SDSU vs. Mississippi (W, 2-1, 8-25-00)
- First SDSU Win:** SDSU 2, Mississippi 1 (8-25-00)
- First SDSU Shutout:** SDSU 1, Long Beach State 0 (9-24-00)
- First SDSU Goal:** Nicole Findlay, vs. Mississippi (W, 2-1, 8-25-00)
- First SDSU Assist:** Becky Prilaman, vs. Mississippi (W, 2-1, 8-25-00)
- First SDSU Hat Trick:** Kim Castellanos, vs. New Mexico (W, 4-0, 10-20-00)
- First MWC Game:** SDSU 1, Air Force 0 (10-6-00)
- Longest Sports Deck Winning Streak:** 4 games (three times and current)
- Largest Margin of Victory:** 4-0 (vs. New Mexico, 10-20-00), 5-1 (vs. UC Riverside, 8-30-02)
- Most Goals in a Game:** SDSU 5, UC Riverside 1 (8-30-02)
- Most Shots in a Game:** 25 (SDSU 4, New Mexico 0, 10-20-00)
- Most Assists in a Game:** 6 (SDSU 5, UC Riverside 1, 8-30-02)
- Most Corner Kicks in a Game:** 13 (SDSU 2, UNLV 1, 11-2-02)
- Most Individual Goals in a Game:** 3 (Kim Castellanos, SDSU 4, New Mexico 0, 10-20-00 and SDSU 4, UNLV 2, 10-22-00)
- Most Individual Shots in a Game:** 10 (Kim Castellanos, SDSU 2, Wyoming 1, 10-8-00)
- Most Individual Assists in a Game:** 2 (eight times)
- Largest Crowd:** 431 (SDSU 4, UNLV 2, 10-22-01)



Aztec Sports Medicine Center



Athletic trainers assess, treat and rehabilitate injured athletes.



Wise Foundation Aztec Hall of Fame



15,000-Square-Foot Weight Room



Athletic Center Auditorium





## ACADEMIC SUPPORT

### STUDENT-ATHLETE

The dual role of student and athlete can be a daunting challenge for any person at the Division I level. Recognizing that academic challenge, the Student-Athlete Academic Support Services program has been developed at San Diego State to assist all student-athletes in achieving academic excellence.

It is a source of pride within San Diego State athletics that the department has developed one of the most comprehensive academic support programs in the country.

### THE STAFF

The SAASS staff includes a learning specialist, four academic advisors, the department's director of compliance, an eligibility coordinator, a financial aid coordinator as well as a recruitment coordinator.

In addition to the full-time staff, the department employs more than 20 mentors and tutors. Collectively, they operate a program that enhances each student's satisfactory progress toward graduation.

### THE SERVICES

Throughout the academic year, advisors offer a variety of services to aid individuals in the development of their personal goals and the blueprint for pursuing those goals.

All new student-athletes are invited to an orientation that helps lay the foundation for academic future successes. Each advisor teaches a section of the university's Freshman Success course (General Studies 100), which deals with specific transition issues for student-athletes. Topics include time management, study skills and test taking. In addition,

the course also introduces new students to services such as the Love Library, University Advising Center, Career Services, Health Services and the counseling center.

### THE RESOURCES

In the fall of 2001, the academic unit joined the rest of the athletic department in moving into the new \$30 million, 130,000-square-foot Aztec Athletics Center. The academic



**Coach Chuck Clegg at former player Bethany (Boo) Tinling's graduation**

staff is located on the third floor of the complex and includes a new 40-station computer lab, individual study rooms and two lecture rooms.

### THE COMMITMENT

San Diego State's annual Scholar-Athlete Awards Banquet honors students with a grade-point average in excess of 3.2. In 2002, 177 student-athletes, more than one-third of the SDSU student-athlete body, were honored at the Scholar-Athlete Awards Banquet and attended a theatrical production downtown.

### LIFE SKILLS

To further increase the opportunities for success, San Diego State is part of the NCAA's CHAMPS/Life Skills Program. The curriculum of Aztec Pride (Promoting Responsibility, Integrity, Diversity, Education) offers a wide range of programs and activities that enhance the educational experience. Special emphasis is placed on the areas of personal development, community service

and career development. Aztec Pride awards honor a student-athlete each month.

In conjunction with the Student-Athlete Advisory Committee, the Life Skills Program represents San Diego State's total commitment to enhancing the quality of each student's experience.



### AZTEC ACADEMIC SUPPORT TEAM



**Mark Gumble**  
Asst. A.D. - Dir. of  
Academics



**Bre White**  
Asst. Director



**Todd Snedden**  
Academic Advisor



## 2003 OPPONENTS



**Oregon State**  
4 p.m. Aug. 29  
San Diego.

Location .....Corvallis, Ore.  
Enrollment .....19,000  
Nickname .....Beavers  
Colors .....Orange & Black  
Conference .....Pacific-10  
Home Field .....Lorenz Field  
Capacity .....1,500  
Head Coach .....Steve Fennah  
2002 Record .....9-9-2  
2002 Pacific-10 Record .....2-7 (8th)  
2002 Final RPI .....89th  
Letterwinners Returning/Lost .....11/9  
Starters Returning/Lost .....6/6  
Soccer SID .....Travis Lahman  
Phone .....(541) 737-8588  
Fax .....(541) 737-3072 or 4171  
E-mail .....travis.lahman@or.st.edu  
Web site .....www.osubeavers.com



**UC Irvine**  
1 p.m. Sept. 1  
Fullerton, Calif.

Location .....Irvine, Calif.  
Enrollment .....24,200  
Nickname .....Anteaters  
Colors .....Blue & Gold  
Conference .....Big West  
Home Field .....Anteater Stadium  
Capacity .....2,500  
Head Coach .....Marine Cano  
2002 Record .....8-10-1  
2002 Big West Record .....5-3-1 (4th)  
2002 Final RPI .....124th  
Letterwinners Returning/Lost .....8/3  
Starters Returning/Lost .....14/5  
Soccer SID .....Eric Wirtanen  
Phone .....(949) 824-8934  
Fax .....(949) 824-5260  
E-mail .....ewirtane@uci.edu  
Web site .....www.athletics.uci.edu



**Long Beach State**  
3 p.m. Sept. 4  
San Diego

Location .....Long Beach, Calif.  
Enrollment .....32,126  
Nickname .....49ers  
Colors .....Black & Gold  
Conference .....Big West  
Home Field .....George Allen  
Capacity .....1,000  
Head Coach .....Peter Reynaud  
2002 Record .....6-9-5  
2002 Big West Record .....4-2-3 (5th)  
2002 Final RPI .....130th  
Letterwinners Returning/Lost .....14/8  
Starters Returning/Lost .....7/5  
Soccer SID .....Niall T. Adler  
Phone .....(562) 985-7565  
Fax .....(562) 985-1549  
E-mail .....nadler@csulb.edu  
Web site .....www.longbeachstate.com



**UCF**  
2:30 p.m. Sept. 12  
Lawrence, Kan.

Location .....Orlando, Fla.  
Enrollment .....42,000  
Nickname .....Golden Knights  
Colors .....Black & Gold  
Conference .....Atlantic Sun  
Home Field .....UCF Soccer Field  
Capacity .....1,000  
Head Coach .....Amanda Cromwell  
2002 Record .....18-5  
2002 Atlantic Sun Record .....10-1 (1st)  
2002 ASC Tournament .....Champions  
2002 NCAA Championship .....1st Round  
2002 Final RPI .....63rd  
Letterwinners Returning/Lost .....10/7  
Starters Returning/Lost .....7/4  
Soccer SID .....Chris Showiak  
Phone .....(407) 823-2142  
Fax .....(407) 823-5266  
E-mail .....cshowiak@mail.ucf.edu  
Web site .....www.ucfathletics.com



**Florida State**  
9:30 a.m. Sept. 14  
Lawrence, Kan.

Location .....Tallahassee, Fla.  
Enrollment .....35,462  
Symbol .....Seminoles  
Colors .....Garnet & Gold  
Conference .....Atlantic Coast  
Home Field .....Seminoles Soccer Complex  
Capacity .....1,500  
Head Coach .....Patrick Baker  
2002 Record .....13-7-3  
2002 Atlantic Coast Record .....3-3-1 (3rd)  
2002 ACC Tournament .....Quarterfinalist  
2002 NCAA Championship .....3rd Round  
2002 Final NSCC Ranking .....19th  
2002 Final RPI .....20th  
Letterwinners Returning/Lost .....15/7  
Starters Returning/Lost .....8/3  
Soccer SID .....Elliott Finebloom  
Phone .....(850) 644-5656  
Fax .....(850) 644-3820  
E-mail .....efineblm@mailers.fsu.edu  
Web site .....www.seminoles.com



**Southern Utah**  
4 p.m. Sept. 19  
Cedar City, Utah

Location .....Cedar City, Utah  
Enrollment .....6,200  
Nickname .....Thunderbirds  
Colors .....Scarlet & White  
Conference .....Mid-Continent  
Home Field .....Thunderbird Soccer Field  
Capacity .....600  
Head Coach .....Brian Stock  
2002 Record .....2-17  
2002 Mid-Continent Record .....1-4 (T-4th)  
2002 MCC Tournament .....Semifinalist  
2002 Final RPI .....281st  
Letterwinners Returning/Lost .....11/9  
Starters Returning/Lost .....7/4  
Soccer SID .....Steve Johnson  
Phone .....(435) 586-7752  
Fax .....(435) 865-8037  
E-mail .....johnsons@suu.edu  
Web site .....www.suu.edu/athletics



**Weber State**  
3 p.m. Sept. 20  
Cedar City, Utah

Location .....Ogden, Utah  
Enrollment .....18,000  
Nickname .....Wildcats  
Colors .....Purple & White  
Conference .....Big Sky  
Home Field .....P.E. Playfield  
Capacity .....4,000  
Head Coaches .....Lynn Kofoed,  
.....Tom VudhiVadhana  
2002 Record .....5-12-1  
2002 Big Sky Record .....1-5 (T-6th)  
2002 BSC Tournament .....Did not qualify  
2002 Final RPI .....233rd  
Letterwinners Returning/Lost .....17/6  
Starters Returning/Lost .....10/5  
Soccer SID .....Darin Hogge  
Phone .....(801) 626-7414  
Fax .....(801) 626-6490  
E-mail .....dhogge@weber.edu  
Web site .....www.weber.edu/athletics



**Nevada**  
1 p.m. Sept. 26  
San Diego

Location .....Reno, Nev.  
Enrollment .....15,300  
Nickname .....Wolf Pack  
Colors .....Navy Blue & Silver  
Conference .....Western Athletic  
Home Field .....Mackay Stadium  
Capacity .....31,545  
Head Coach .....Dang Pibulvech  
2002 Record .....4-14-1  
2002 WAC Record .....1-6-1 (8th)  
2002 WAC Tournament .....Did not qualify  
2002 Final RPI .....259th  
Letterwinners Returning/Lost .....10/5  
Starters Returning/Lost .....9/2  
Soccer SID .....Jason Houston  
Phone .....(775) 784-6900 ext. 237  
Fax .....(775) 784-4386  
E-mail .....jhoust@unr.edu  
Web site .....www.nevadawolfpack.com



**UC Riverside**  
3 p.m. Oct. 1  
Riverside, Calif.

Location .....Riverside, Calif.  
Enrollment .....17,000  
Nickname .....Highlanders  
Colors .....Blue & Gold  
Conference .....Big West  
Home Field .....UCR Soccer Field  
Capacity .....500  
Head Coach .....Veronica O'Brien  
2002 Record .....10-8-1  
2002 Big West Record .....4-4-1 (6th)  
2002 Final RPI .....163rd  
Letterwinners Returning/Lost .....27/6  
Starters Returning/Lost .....8/3  
Soccer SID .....Brian Blank  
Phone .....(909) 787-5438  
Fax .....(909) 787-3569  
E-mail .....bblank@housing.ucr.edu  
Web site .....www.athletics.ucr.edu



**Arizona State**  
3 p.m. Oct. 3  
San Diego

Location .....Tempe, Ariz.  
Enrollment .....45,693  
Nickname .....Sun Devils  
Colors .....Maroon & Gold  
Conference .....Pacific-10  
Home Field .....Sun Devil Soccer Stadium  
Capacity .....1,050  
Head Coach .....Ray Leone  
2002 Record .....12-7-2  
2002 Pacific-10 Record .....4-5 (T-6th)  
2002 NCAA Championship .....2nd Round  
2002 Final RPI .....29th  
Letterwinners Returning/Lost .....18/3  
Starters Returning/Lost .....11/0  
Soccer SID .....Will Phillips  
Phone .....(480) 965-1237  
Fax .....(480) 965-5408  
E-mail .....will.phillips@asu.edu  
Web site .....www.thesundevils.com



**San Francisco**  
1 p.m. Oct. 5  
San Francisco

Location .....San Francisco, Calif.  
Enrollment .....7,800  
Nickname .....Dons  
Colors .....Green & Gold  
Conference .....West Coast  
Home Field .....Negoesco Stadium  
Capacity .....3,000  
Head Coach .....Pamela Kalinoski  
2002 Record .....8-10-1  
2002 West Coast Record .....1-6 (7th)  
2002 Final RPI .....132nd  
Letterwinners Returning/Lost .....16/10  
Starters Returning/Lost .....5/6  
Soccer SID .....Ryan McCrary  
Phone .....(415) 422-6162  
Fax .....(415) 422-2929  
E-mail .....mccrary@usfca.edu  
Web site .....www.usfdons.com



**Colorado College**  
3:30 p.m. Oct. 10  
Colorado Springs, Colo.

Location .....Colorado Springs, Colo.  
Enrollment .....1,900  
Nickname .....Tigers  
Colors .....Black & Gold  
Conference .....Independent  
Home Field .....Stewart Field  
Capacity .....1,000  
Head Coach .....Erik Oman  
2002 Record .....8-7-2  
2002 Final RPI .....97th  
Letterwinners Returning/Lost .....16/4  
Starters Returning/Lost .....9/2  
Soccer SID .....Dave Moross  
Phone .....(719) 389-6755 or 6105  
Fax .....(719) 389-6256  
E-mail .....dmoross@coloradocollege.edu  
Web site .....www.cctigers.com

## 2003 OPPONENTS



**Wyoming**  
1 p.m. Oct. 12  
Laramie, Wyo.

Location . . . . .Laramie, Wyo.  
Enrollment . . . . .12,766  
Nickname . . . . .Cowgirls  
Colors . . . . .Brown & Gold  
Conference . . . . .Mountain West  
Home Field . . . . .UW Soccer Stadium  
Capacity . . . . .1,500  
Head Coach . . . . .Anne Moore  
2002 Record . . . . .4-13-2  
2002 MWC Record . . . . .0-6 (7th)  
2002 MWC Tournament . . . . .Quarterfinalist  
2002 Final RPI . . . . .191st  
Letterwinners Returning/Lost . . . . .15/2  
Starters Returning/Lost . . . . .9/2  
Soccer SID . . . . .John Paradis  
Phone . . . . .(307) 766-2256  
Fax . . . . .(307) 766-2346  
E-mail . . . . .jp12@uwyo.edu  
Web site . . . . .www.wyomingathletics.com



**Brigham Young**  
3 p.m. Oct. 16  
San Diego, Calif.

Location . . . . .Provo, Utah  
Enrollment . . . . .32,122  
Nickname . . . . .Cougars  
Colors . . . . .Blue, White & Tan  
Conference . . . . .Mountain West  
Home Field . . . . .South Stadium  
Capacity . . . . .2,000  
Head Coach . . . . .Jennifer Rockwood  
2002 Record . . . . .16-6  
2002 MWC Record . . . . .6-0 (1st)  
2002 MWC Tournament . . . . .Champion  
2002 NCAA Championship . . . . .1st Round  
2002 Final NSCAA Ranking . . . . .23rd  
2002 Final RPI . . . . .23rd  
Letterwinners Returning/Lost . . . . .11/5  
Starters Returning/Lost . . . . .8/3  
Soccer SID . . . . .Jason Wells  
Phone . . . . .(801) 422-8999  
Fax . . . . .(801) 422-0633  
E-mail . . . . .soccer\_sid@byu.edu  
Web site . . . . .www.byucougars.com




**Utah**  
1 p.m. Oct. 18  
San Diego, Calif.

Location . . . . .Salt Lake City, Utah  
Enrollment . . . . .28,300  
Nickname . . . . .Utes  
Colors . . . . .Crimson & White  
Conference . . . . .Mountain West  
Home Field . . . . .Ute Field  
Capacity . . . . .2,000  
Head Coach . . . . .Rich Manning  
2002 Record . . . . .13-4-3  
2002 MWC Record . . . . .4-1-1 (2nd)  
2002 MWC Tournament . . . . .Semifinalist  
2002 NCAA Championship . . . . .2nd Round  
2002 Final RPI . . . . .39th  
Letterwinners Returning/Lost . . . . .14/8  
Starters Returning/Lost . . . . .6/6  
Soccer SID . . . . .Mike Lageschulte  
Phone . . . . .(801) 587-9162  
Fax . . . . .(801) 581-4358  
E-mail . . . . .mlageschulte@huntsman.utah.edu  
Web site . . . . .www.utahutes.com



**Air Force**  
4 p.m. Oct. 24  
USAFA, Colo.

Location . . . . .USAFA, Colo.  
Enrollment . . . . .4,000  
Nickname . . . . .Falcons  
Colors . . . . .Blue & Silver  
Conference . . . . .Mountain West  
Home Field . . . . .Cadet Soccer Stadium  
Capacity . . . . .1,000  
Head Coach . . . . .Marty Buckley  
2002 Record . . . . .7-12  
2002 MWC Finish . . . . .2-4 (6th)  
2002 MWC Tournament . . . . .Quarterfinalist  
2002 Final RPI . . . . .121st  
Letterwinners Returning/Lost . . . . .19/6  
Starters Returning/Lost . . . . .8/3  
Soccer SID . . . . .Dave Toller  
Phone . . . . .(719) 333-3478  
Fax . . . . .(719) 333-3798  
E-mail . . . . .dave.toller@usafa.af.mil  
Web site . . . . .www.airforcesports.com



**New Mexico**  
Noon Oct. 26  
Albuquerque

Location . . . . .Albuquerque, N.M.  
Enrollment . . . . .24,250  
Nickname . . . . .Lobos  
Colors . . . . .Cherry & Silver  
Conference . . . . .Mountain West  
Home Field . . . . .UNM Soccer Complex  
Capacity . . . . .5,000  
Head Coach . . . . .Kit Vela  
2002 Record . . . . .12-7-1  
2002 MWC Record . . . . .3-2-1 (3rd)  
2002 MWC Tournament . . . . .Runner-up  
2002 Final RPI . . . . .81st  
Letterwinners Returning/Lost . . . . .14/6  
Starters Returning/Lost . . . . .9/3  
Soccer SID . . . . .RaeAnn Feenaughty  
Phone . . . . .(505) 925-5851  
Fax . . . . .(505) 925-5529  
E-mail . . . . .feenaurm@unm.edu  
Web site . . . . .www.golobos.com



**Gonzaga**  
1 p.m. Oct. 31  
San Diego, Calif.

Location . . . . .Spokane, Wash.  
Enrollment . . . . .5,206  
Nickname . . . . .Bulldogs; Zags  
Colors . . . . .Navy Blue, White & Red  
Conference . . . . .West Coast  
Home Field . . . . .Martin Field  
Capacity . . . . .500  
Head Coach . . . . .Shannon Stiles  
2002 Record . . . . .6-13  
2002 West Coast Record . . . . .0-7 (8th)  
2002 Final RPI . . . . .198th  
Letterwinners Returning/Lost . . . . .13/7  
Starters Returning/Lost . . . . .9/2  
Soccer SID . . . . .Sara Rathbun  
Phone . . . . .(509)323-4227  
Fax . . . . .(509) 323-5730  
E-mail . . . . .rathbun@athletics.gonzaga.edu  
Web site . . . . .www.gozags.com



**UNLV**  
7:30 p.m. Nov. 1  
Las Vegas, Nev.

Location . . . . .Las Vegas, Nev.  
Enrollment . . . . .25,000  
Nickname . . . . .Rebels  
Colors . . . . .Scarlet & Gray  
Conference . . . . .Mountain West  
Home Field . . . . .Peter Johann Memorial  
Capacity . . . . .Field  
Capacity . . . . .2,500  
Head Coach . . . . .Dan Abdalla  
2002 Record . . . . .10-8-1  
2002 MWC Record . . . . .2-4 (T-5th)  
2002 MWC Tournament . . . . .Quarterfinalist  
2002 Final RPI . . . . .145th  
Letterwinners Returning/Lost . . . . .21/6  
Starters Returning/Lost . . . . .15/6  
Soccer SID . . . . .Mark Wasik  
Phone . . . . .(702) 895-3208  
Fax . . . . .(702) 895-0989  
E-mail . . . . .mark.wasik@ccmail.nevada.edu  
Web site . . . . .www.unlvrebels.com



**Mountain West Conference**  
Nov. 5-6, 8  
Salt Lake City, Utah

Location . . . . .Colorado Springs, Colo.  
Number of Women's Soccer Teams . . . . .7  
2002 Non-Conference Record . . . . .48-31-5  
2002 NCAA Championship Record . . . . .1-2  
2002 Final RPI . . . . .9th  
Soccer SID . . . . .Marlon Edge  
Phone . . . . .(719) 488-4052  
Fax . . . . .(719) 487-7241  
E-mail . . . . .medge@themwc.com  
Web site . . . . .www.themwc.com

**2003 Mountain West Conference Championship--Salt Lake City**

November 5-6, 8, 2003

Seed #1

Seed #4

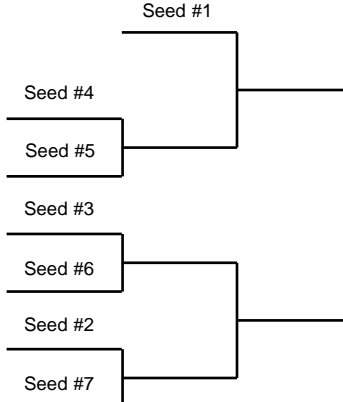
Seed #5


Seed #3

Seed #6

Seed #2

Seed #7





**MWC Tournament  
Champion  
Automatically  
Qualifies for  
NCAA Tournament**



**2003 NCAA Tournament**

First Round-Nov. 14 on campus  
Second Round-Nov. 16 on campus  
Third Round-Nov. 22, 23 or 24 on campus  
Quarterfinals-Nov. 28, 29 or 30 on campus

**College Cup-Cary, N.C.**  
Semifinals-Noon and 2:30 p.m. EST Dec. 5  
Championship-2:30 p.m. EST Dec. 7  
*All College Cup games televised live on ESPN2*



# STATE

## 2002 RESULTS

### San Diego State 5, UC Riverside 1 August 30 at SDSU Sports Deck

UC Riverside	1	0	-	1
San Diego State	4	1	-	5

#### Scoring

- 8:17 - Kim Castellanos, SDSU (Alvarez, Salinas)
- 14:05 - Jessica Arnel, UCR (Schachetti)
- 29:02 - Lisette Martinez, SDSU (Castellanos)
- 32:40 - Arinda Alvarez, SDSU (Salinas)
- 35:51 - Lisette Martinez, SDSU (Lopez)
- 84:10 - Kim Castellanos, SDSU (Lopez)

Shots - UCR 3, SDSU 15. Corner Kicks - UCR 0, SDSU 5

### Loyola Marymount 1, San Diego State 0 (OT) September 2 at Sullivan Field

San Diego State	0	0	0	-	0
Loyola Marymount	0	0	1	-	1

#### Scoring

- 94:54 - Jessica Hanson, LMU (unassisted)

Shots - SDSU 6, LMU 17. Corner Kicks - SDSU 4, LMU 1

### San Diego State 2, Cal State Northridge 1 September 4 at SDSU Sports Deck

Cal State Northridge	1	0	-	1
San Diego State	0	2	-	2

#### Scoring

- 15:05 - Melissa Cleal, CSUN (Blumstein)
- 52:20 - Kim Castellanos, SDSU (Findlay, Martinez)
- 89:56 - Lisette Martinez, SDSU (Findlay, Castellanos)

Shots - CSUN 3, SDSU 14. Corner Kicks - CSUN 1, SDSU 6

### San Diego State 3, North Carolina State 1 September 6 at SDSU Sports Deck

North Carolina State	0	1	-	1
San Diego State	2	1	-	3

#### Scoring

- 14:10 - Kim Castellanos, SDSU (Dayog)
- 25:04 - Michelle Wagner, SDSU (Jouglet, Lopez)
- 74:17 - Amanda Swiader, SDSU (Tinling, Castellanos)
- 83:36 - Lindsay Underwood, NCSU (unassisted)

Shots - NCSU 13, SDSU 14. Corner Kicks - NCSU 5, SDSU 4

### San Diego State 2, Weber State 0 September 13 at Johann Field (UNLV)

Weber State	0	0	-	0
San Diego State	1	1	-	2

#### Scoring

- 38:12 - Nicole Findlay, SDSU (Dayog)
- 57:31 - Kim Castellanos, SDSU (Swiader)

Shots - WSU 6, SDSU 16. Corner Kicks - WSU 4, SDSU 4

### San Diego State 2, Montana 1 September 15 at Johann Field (UNLV)

Montana	0	1	-	1
San Diego State	0	2	-	2

#### Scoring

- 53:12 - Kim Castellanos, SDSU (Wagner)
- 53:28 - Erin Smith, UM (Liz Roberts)
- 83:15 - Noelle Jouglet, SDSU (unassisted)

Shots - UM 5, SDSU 13. Corner Kicks - UM 1, SDSU 2

### Cal State Fullerton 4, San Diego State 0 September 27 at Titan Stadium

San Diego State	0	0	-	0
Cal State Fullerton	2	2	-	4

#### Scoring

- 18:02 - Marlene Sandoval, CSUF (unassisted)
- 38:19 - Michelle Bannister, CSUF (unassisted)
- 47:51 - Kim Houg, CSUF (Mescher)
- 67:56 - Nicole Mularkey, CSUF (Jacalone)

Shots - SDSU 10, CSUF 17. Corner Kicks - SDSU 4, CSUF 5

### San Diego State 2, UC Santa Barbara 1 September 29 at SDSU Sports Deck

UC Santa Barbara	1	0	-	1
San Diego State	2	0	-	2

#### Scoring

- 28:57 - Erica Lopez, SDSU (Castellanos)
- 31:26 - Arinda Alvarez, SDSU (Castellanos)
- 41:58 - Krystal Sandza, UCSB (unassisted)

Shots - UCSB 15, SDSU 9. Corner Kicks - UCSB 6, SDSU 2

### San Diego State 3, Long Beach State 0 October 1 at George Allen Field

San Diego State	1	2	-	3
Long Beach State	0	0	-	0

#### Scoring

- 34:06 - Arinda Alvarez, SDSU (Weymouth)
- 66:10 - Nicole Findlay, SDSU (Swiader)
- 69:00 - Nicole Findlay, SDSU (Wagner)

Shots - SDSU 9, LBSU 12. Corner Kicks - SDSU 4, LBSU 3

### Pepperdine 4, San Diego State 1 October 6 at Tari Fahm Rokus Field

San Diego State	1	0	-	1
Pepperdine	2	2	-	4

#### Scoring

- 4:56 - Kristi Bissonnette, Pepp (unassisted)
- 8:44 - Ali Pavoni, Pepp (Ubaldi, Blaker)
- 19:59 - Lisette Martinez, SDSU (unassisted)
- 85:29 - Jenna Fodor, Pepp (penalty kick)
- 88:29 - Jenna Fodor, Pepp (Ainsworth)

Shots - SDSU 6, Pepp 17. Corner Kicks - SDSU 2, Pepp 6

### New Mexico 1, San Diego State 0\* October 11 at SDSU Sports Deck

New Mexico	1	0	-	1
San Diego State	0	0	-	0

#### Scoring

- 23:56 - Rachael Addison, UNM (Theys)

Shots - UNM 8, SDSU 9. Corner Kicks - UNM 6, SDSU 3

### San Diego State 5, Nevada 1 October 13 at Mackay Stadium

San Diego State	3	2	-	5
Nevada	0	1	-	1

#### Scoring

- 7:58 - Nicole Findlay, SDSU (Swiader)
- 28:15 - Sheila Dayog, SDSU (unassisted)
- 44:21 - Jamie Harlor, SDSU (unassisted)
- 55:59 - Leisha Makinano, UN (Baxter)
- 70:32 - Becky Pirlaman, SDSU (Findlay)
- 89:21 - Boo Tinling, SDSU (unassisted)

Shots - SDSU 18, UN 7. Corner Kicks - SDSU 5, UN 3

### San Diego State 2, Wyoming 1\* October 18 at SDSU Sports Deck

Wyoming	0	1	-	1
San Diego State	2	0	-	2

#### Scoring

- 2:17 - Shawni Flint, SDSU (Findlay)
- 16:54 - Michelle Wagner, SDSU (Castellanos)
- 48:45 - Renee Minero, UW (Gulbrandsen)

Shots - UW 6, SDSU 16. Corner Kicks - UW 2, SDSU 5

### San Diego State 1, Air Force 0 (OT)\* October 20 at SDSU Sports Deck

Air Force	0	0	0	-	0
San Diego State	0	0	1	-	1

#### Scoring

- 90:13 - Nicole Findlay, SDSU (Tinling, Castellanos)

Shots - AFA 2, SDSU 18. Corner Kicks - AFA 2, SDSU 6

### Utah 5, San Diego State 1\* October 24 at Ute Field

San Diego State	1	0	-	1
Utah	3	2	-	5

#### Scoring

- 1:33 - Shauna Gurr-Bingham, Utah (Benegas)
- 10:51 - Arinda Alvarez, SDSU (Flint)
- 27:54 - Megan Maxwell, Utah (Battazzo)
- 41:21 - Shauna Gurr-Bingham, Utah (unassisted)
- 82:04 - Shauna Gurr-Bingham, Utah (unassisted)
- 83:11 - Jen Williams, Utah (Field)

Shots - SDSU 6, Utah 16. Corner Kicks - SDSU 3, Utah 2

### Brigham Young 5, San Diego State 1\* October 26 at South Field

San Diego State	1	0	-	1
Brigham Young	2	3	-	5

#### Scoring

- 1:26 - Jeni Viemes, BYU (Bigelow)
- 27:21 - Arinda Alvarez, SDSU (unassisted)
- 29:44 - Charlene Liu, BYU (Hoecherl, Cramer-Rose)
- 56:32 - Brooke Bowman, BYU (Ojuka)
- 68:05 - Jamie Rendich, BYU (Thulin)
- 76:55 - Davia King, BYU (unassisted)

Shots - SDSU 5, BYU 29. Corner Kicks - SDSU 4, BYU 10

### San Diego State 3, San Francisco 0 October 31 at SDSU Sports Deck

San Francisco	0	0	-	0
San Diego State	3	0	-	3

#### Scoring

- 13:58 - Shawni Flint, SDSU (Findlay, Martinez)
- 14:56 - Kim Castellanos, SDSU (Findlay, Martinez)
- 39:58 - Courtney Burns, SDSU (Flint)

Shots - USF 11, SDSU 8. Corner Kicks - USF 8, SDSU 2

### San Diego State 2, UNLV 1 (OT)\* November 2 at SDSU Sports Deck

UNLV	0	1	0	-	1
San Diego State	1	0	1	-	2

#### Scoring

- 43:01 - Kim Castellanos, SDSU (Flint, Tinling)
- 88:15 - Nickie Olson, UNLV (Packer)
- 93:05 - Kim Castellanos, SDSU (Martinez)

Shots - UNLV 8, SDSU 24. Corner Kicks - UNLV 3, SDSU 13

### San Diego State 2, UNLV 1\*\* November 6 at South Field (BYU)

UNLV	0	1	-	1
San Diego State	0	2	-	2

#### Scoring

- 59:04 - Shawni Flint, SDSU (Lopez)
- 61:44 - Annii Magliulo, UNLV (unassisted)
- 88:38 - Kim Castellanos, SDSU (penalty kick)

Shots - UNLV 15, SDSU 16. Corner Kicks - UNLV 4, SDSU 4

### Brigham Young 9, San Diego State 2\*\* November 7 at South Field

San Diego State	0	2	-	2
Brigham Young	5	4	-	9

#### Scoring

- 12:20 - Brooke Bowman, BYU (Cramer-Rose)
- 17:13 - Jennifer Fielding, BYU (Campbell)
- 24:05 - Britney Holman, BYU (unassisted)
- 26:13 - Jamie Rendich, BYU (Fielding)
- 41:02 - Lydia Ojuka, BYU (Bigelow)
- 49:37 - Jeni Viemes, BYU (unassisted)
- 53:16 - Jennifer Fielding, BYU (Phillips)
- 78:34 - Jamie Rendich, BYU (Ojuka)
- 84:57 - Boo Tinling, SDSU (unassisted)
- 84:57 - Davia King, BYU (unassisted)
- 90:00 - Boo Tinling, SDSU (Harlor)

Shots - SDSU 5, BYU 29. Corner Kicks - SDSU 4, BYU 10

\* Mountain West Conference Game  
 \*\* Mountain West Conference Quarterfinal and Semifinal



## 2002 STATISTICS

## SERIES RECORDS

Overall: 13-7-0 Conf: 3-3-0 Home: 8-1-0 Away: 2-6-0 Neutral: 3-0-0

### Scoring Statistics

Name	GP/GS	Sh	G	A	Pts.	YC	RC	GW
Kim Castellanos	18/13	54	10	6	26	0	0	3
Nicole Findlay	20/19	40	5	6	16	0	0	2
Arinda Alvarez	20/18	34	5	2	12	0	0	1
Lisette Martinez	20/11	23	4	4	12	0	0	2
Boo Tinling	20/16	13	3	3	9	0	0	0
Shawni Flint	19/18	5	3	2	8	1	0	2
Michele Wagner	20/20	18	2	2	6	0	0	0
Amanda Swiader	19/16	6	1	3	5	0	0	0
Erica Lopez	16/7	6	1	3	5	0	0	1
Sheila Dayog	20/5	5	1	2	4	2	0	0
Jamie Harlor	19/4	11	1	1	3	0	0	0
Noelle Jouglet	10/7	10	1	1	3	1	0	1
Becky Prilaman	11/0	4	1	0	2	0	0	0
Courtney Burns	16/4	3	1	0	2	0	0	0
Gina Salinas	20/20	2	0	2	2	0	0	0
Hannah Garl	4/4	1	0	1	1	0	0	0
Brianna Weymouth	9/0	0	0	1	1	0	0	0
Alexis Solovij	16/13	3	0	0	0	0	0	0
Annette Shinn	17/4	2	0	0	0	0	0	0
Ashley Cooper	4/1	1	0	0	0	0	0	0
<b>San Diego State</b>	<b>20</b>	<b>241</b>	<b>39</b>	<b>39</b>	<b>117</b>	<b>4</b>	<b>0</b>	<b>12</b>
<b>Opponents</b>	<b>20</b>	<b>235</b>	<b>37</b>	<b>26</b>	<b>100</b>	<b>18</b>	<b>0</b>	<b>6</b>

### Goalkeeping Statistics

Name	GP/GS	Min.	GA	SV	GAA	SHO
Sophia Perez	9/4	445:26	9	26	1.82	1
Stephanie Pearson	17/15	1317:46	28	54	1.91	4
Bethany Tinling	1/1	45:00	1	0	2.00	0
<b>San Diego State</b>	<b>20</b>	<b>1808:12</b>	<b>38</b>	<b>84</b>	<b>1.89</b>	<b>5</b>
<b>Opponents</b>	<b>20</b>	<b>1808:12</b>	<b>39</b>	<b>109</b>	<b>1.94</b>	<b>3</b>

Goals	1st	2nd	OT	Total
SDSU	22	15	2	39
Opponents	18	19	1	38
<b>Saves</b>	<b>1st</b>	<b>2nd</b>	<b>OT</b>	<b>Total</b>
SDSU	37	47	0	84
Opponents	48	60	1	109
<b>Shots</b>	<b>1st</b>	<b>2nd</b>	<b>OT</b>	<b>Total</b>
SDSU	114	122	5	241
Opponents	106	128	1	235
<b>Corner Kicks</b>	<b>1st</b>	<b>2nd</b>	<b>OT</b>	<b>Total</b>
SDSU	45	40	0	85
Opponents	36	39	0	75
<b>Fouls</b>	<b>1st</b>	<b>2nd</b>	<b>OT</b>	<b>Total</b>
SDSU	114	108	3	225
Opponents	129	137	0	266



Midfielder Alexis Solovij gets into the action.

Team	W	L	T
Air Force	.5	.1	.0
Arizona	.2	.0	.0
Arizona State	.2	.0	.0
Azusa Pacific	.2	.0	.0
Brigham Young	.5	.7	.0
Brown	.1	.0	.0
California	.3	.5	.0
Cal Baptist	.2	.0	.0
Cal Lutheran	.1	.0	.0
Cal Poly Pomona	.1	.1	.0
Cal Poly SLO	.2	.1	.0
Cincinnati	.1	.1	.0
Colorado College	.1	.0	.1
CSU Chico	.0	.1	.0
CSU Dominguez Hills	.1	.3	.1
CSU Fullerton	.6	.2	.0
CSU Hayward	.1	.0	.0
CSU Northridge	.3	.0	.0
CSU San Bernardino	.3	.1	.1
Eastern Washington	.1	.0	.0
Fresno State	.6	.2	.0
George Washington	.1	.0	.0
Gonzaga	.1	.0	.0
Harvard	.0	.1	.0
Hawai'i	.4	.0	.0
Indiana	.1	.1	.0
James Madison	.0	.1	.0
Kansas	.1	.1	.0
Kentucky	.0	.1	.0
LaVerne	.1	.0	.0
Long Beach State	.3	.0	.0
Loyola Marymount	.4	.2	.0
Massachusetts	.0	.1	.0
Minnesota	.1	.0	.0
Mississippi	.2	.0	.0
Montana	.3	.1	.0
Navy	.1	.0	.0
Nevada	.1	.0	.0
UNLV	.6	.0	.0
New Mexico	.5	.3	.1
UNC Greensboro	.1	.0	.0
North Carolina State	.2	.0	.0
Oklahoma	.1	.0	.0
Oregon State	.1	.4	.0
Pepperdine	.2	.3	.0
Portland	.0	.6	.0
Portland State	.1	.0	.0
Redlands	.1	.0	.0
St. Mary's	.2	.4	.0
San Diego	.5	.2	.1
San Francisco	.2	.1	.1
San Francisco State	.1	.0	.0
San Jose State	.2	.1	.0
Santa Clara	.0	.5	.1
South Carolina	.0	.1	.0
Southern Methodist	.1	.0	.0
Stanford	.0	.5	.1
Texas Christian	.2	.0	.0
Tulsa	.1	.1	.0
UC Irvine	.6	.3	.3
UCF	.1	.0	.0
UCLA	.1	.5	.1
UC Riverside	.2	.0	.0
UC San Diego	.1	.0	.1
UC Santa Barbara	.6	.2	.0
UC Santa Cruz	.1	.0	.0
USC	.5	.3	.0
U.S. International	.3	.1	.0
Utah	.3	.6	.0
Washington	.0	.4	.1
Washington State	.3	.1	.0
Weber State	.1	.0	.0
Whittier	.2	.0	.0
William & Mary	.0	.1	.0
Wyoming	.3	.0	.1



# STATE

## 2002 MWC RECAP

### 2002 Final Mountain West Standings

Mountain West Conference					Overall			
Team	W	L	T	Pct.	W	L	T	Pct.
Brigham Young	6	0	0	1.000	16	6	0	.727
Utah	4	1	1	.750	13	4	3	.725
New Mexico	3	2	1	.583	12	8	1	.595
<b>San Diego State</b>	<b>3</b>	<b>3</b>	<b>0</b>	<b>.500</b>	<b>13</b>	<b>7</b>	<b>0</b>	<b>.650</b>
UNLV	2	4	0	.333	10	8	1	.553
Air Force	2	4	0	.333	7	12	0	.368
Wyoming	0	6	0	.000	4	13	2	.263

### 2002 Mountain West Conference Tournament at BYU

Quarterfinals - November 6  
 Utah 1, Wyoming 0  
 New Mexico 1, Air Force 0  
**San Diego State 2, UNLV 1**  
 Semifinals - November 7  
 New Mexico 1, Utah 0  
**Brigham Young 9, San Diego State 2**  
 Championship - November 9  
 Brigham Young 5, New Mexico 1

### MWC Teams at the 2002 NCAA Tournament

First Round at Brigham Young - November 14  
 Utah 3, Brigham Young 2 (OT)  
 Second Round at Brigham Young - November 16  
 Portland 3, Utah 0

### TEAM

#### Goals

Team	GP	No.	Avg/G
Brigham Young	22	59	2.68
<b>San Diego State</b>	<b>20</b>	<b>39</b>	<b>1.95</b>
Utah	20	39	1.95
New Mexico	21	37	1.76
UNLV	19	36	1.89
Air Force	19	25	1.32
Wyoming	19	20	1.05

#### Assists

Team	GP	No.	Avg/G
Brigham Young	22	50	2.27
<b>San Diego State</b>	<b>20</b>	<b>39</b>	<b>1.95</b>
Utah	20	28	1.40
UNLV	19	25	1.32
New Mexico	21	19	0.90
Air Force	19	14	0.74
Wyoming	19	11	0.58

#### Points

Team	GP	No.	Avg/G
Brigham Young	22	168	7.64
<b>San Diego State</b>	<b>20</b>	<b>117</b>	<b>5.85</b>
Utah	20	106	5.30
UNLV	19	97	5.11
New Mexico	21	93	4.43
Air Force	19	64	3.37
Wyoming	19	51	2.68

#### Shots

Team	GP	No.	Avg/G
Brigham Young	22	441	20.05
Utah	20	361	18.05
New Mexico	21	261	12.43
UNLV	19	254	13.37
Air Force	19	242	12.74
<b>San Diego State</b>	<b>20</b>	<b>241</b>	<b>12.05</b>
Wyoming	19	196	10.32

#### Saves

Team	GP	No.	Avg/G
Air Force	19	143	7.53
Wyoming	19	133	7.00
New Mexico	21	103	4.90
UNLV	19	95	5.00
<b>San Diego State</b>	<b>20</b>	<b>84</b>	<b>4.20</b>
Brigham Young	22	83	3.77
Utah	20	68	3.40

### Corners

Team	GP	No.	Avg/G
Brigham Young	22	111	5.05
Utah	20	100	5.00
New Mexico	21	87	4.14
<b>San Diego State</b>	<b>20</b>	<b>85</b>	<b>4.25</b>
UNLV	19	66	3.47
Air Force	19	64	3.37
Wyoming	19	51	2.68

### INDIVIDUAL

#### Goals

Player (Team)	GP	No.	Avg/G
Jeni Viernes (BYU)	22	17	0.77
Annie Magliulo (UNLV)	19	11	0.58
<b>Kim Castellanos (SDSU)</b>	<b>18</b>	<b>10</b>	<b>0.56</b>
Missy Dennis (Utah)	20	9	0.45
Shauna Gurr-Bingham (Utah)	19	8	0.42
Brooke Bowman (BYU)	20	8	0.40
Nickie Olson (UNLV)	17	7	0.41
Jennifer Fielding (BYU)	20	7	0.35
Marte Dolva (UNM)	21	7	0.33
Cosette Packer (UNLV)	19	6	0.32
Erchen Theys (UNM)	20	6	0.30
Rachael Addison (UNM)	21	6	0.29
Aleisha Cramer-Rose (BYU)	22	6	0.27

#### Assists

Player (Team)	GP	No.	Avg/G
Aleisha Cramer-Rose (BYU)	22	12	0.55
<b>Kim Castellanos (SDSU)</b>	<b>18</b>	<b>6</b>	<b>0.33</b>
<b>Nicole Findlay (SDSU)</b>	<b>20</b>	<b>6</b>	<b>0.30</b>
Kelly Janke (UNLV)	18	5	0.28
Shauna Gurr-Bingham (Utah)	19	5	0.26
Jennifer Fielding (BYU)	20	5	0.25
Jeni Viernes (BYU)	22	5	0.23
Terra Bigelow (BYU)	18	4	0.22
Raegan McDowell (AFA)	19	4	0.21
Erchen Theys (UNM)	20	4	0.20
Brooke Bowman (BYU)	20	4	0.20
<b>Lisette Martinez (SDSU)</b>	<b>20</b>	<b>4</b>	<b>0.20</b>
Bobbie Benegas (Utah)	20	4	0.20
LeAnne Hendren (UNM)	21	4	0.19
Michelle Longmire (UNM)	21	4	0.19
Lydia Ojuka (BYU)	22	4	0.18

#### Points

Player (Team)	GP	No.	Avg/G
Jeni Viernes (BYU)	22	39	1.77
<b>Kim Castellanos (SDSU)</b>	<b>18</b>	<b>26</b>	<b>1.44</b>
Annie Magliulo (UNLV)	19	25	1.32
Aleisha Cramer-Rose (BYU)	22	24	1.09
Shauna Gurr-Bingham (Utah)	19	21	1.11
Missy Dennis (Utah)	20	21	1.05
Brooke Bowman (BYU)	20	20	1.00
Jennifer Fielding (BYU)	20	20	1.00
Marte Dolva (UNM)	21	17	0.81

Nickie Olson (UNLV)	17	16	0.94
Erchen Theys (UNM)	20	16	0.80
<b>Nicole Findlay (SDSU)</b>	<b>20</b>	<b>16</b>	<b>0.80</b>

### Shots

Player (Team)	GP	No.	Avg/G
Shauni Gurr-Bingham (Utah)	19	99	5.21
Jeni Viernes (BYU)	22	87	3.95
Marte Dolva (UNM)	21	58	2.76
<b>Kim Castellanos (SDSU)</b>	<b>18</b>	<b>54</b>	<b>3.00</b>
Mary Cholko (AFA)	19	52	2.74
Brooke Bowman (BYU)	20	52	2.60
Jennifer Fielding (BYU)	20	49	2.45
Aleisha Cramer-Rose (BYU)	22	49	2.23
Rachael Addison (UNM)	21	43	2.05
Katie Tate (Utah)	20	42	2.10

### Saves

Player (Team)	GP	No.	Avg/G
Lori Scheider (UW)	19	129	6.79
Jennifer Wolf (AFA)	16	101	6.31
Kristen Winters (UNM)	21	99	4.71
Jenna Huff (UNLV)	16	67	4.19
<b>Stephanie Pearson (SDSU)</b>	<b>17</b>	<b>54</b>	<b>3.18</b>
Mandy Gott (BYU)	15	52	3.47
Courtney Hills-McBeth (Utah)	11	37	3.36
Jennifer Monson (AFA)	7	34	4.86
<b>Sophia Perez (SDSU)</b>	<b>8</b>	<b>26</b>	<b>3.25</b>
Ashley Smith (BYU)	8	26	3.25

### Goal Against Average

Player (Team)	GP	G	GAA
Lynnsey Asay (Utah)	11	8	0.74
Courtney Hills-McBeth (Utah)	11	10	0.95
Ashley Smith (BYU)	8	8	1.02
Jenna Huff (UNLV)	16	19	1.28
Kristen Winters (UNM)	21	31	1.46
Jennifer Wolf (AFA)	16	22	1.55
Sarah Kuyper (UW)	2	1	1.58
Desiree Kelly (UNLV)	6	8	1.64
Lori Scheider (UW)	19	32	1.69
Mandy Gott (BYU)	15	25	1.71



Lisette Martinez, tied for 10th in the MWC with four assists.



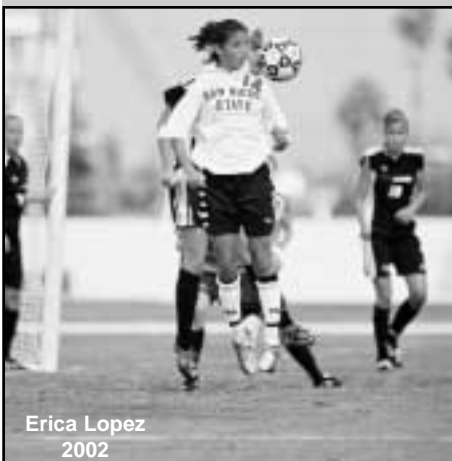
## LETTERWINNERS

### -A-

Alvarez, Arinda - 2001-02  
 Angeles, Joy - 1989-90-91  
 Atwood, Tina - 1999-00  
 August, Tina - 1996-97-98

### -B-

Bandel, Nicole - 1998  
 Black, Katy - 1989  
 Blevins, Kim - 2001  
 Briscoe, Jenny - 1994-95  
**Burns, Courtney - 2002**



**Erica Lopez**  
2002

### -C-

Camacho, Adrienne - 1994  
 Case, Stefanie - 1992-93  
**Castellanos, Kim - 2000-01-02**  
 Charette, Nikki - 1992-93-94  
 Christensen, Laurie - 1990  
 Cicchinelli, Reese - 1991-92-94-95  
 Connelly, Jackie - 1995  
 Cuthbertson, Shannon - 1995-96

### -D-

**Dayog, Sheila - 2002**  
 DeJarlais, Julie - 1990-93  
 Delaney, Diane - 1992-95  
 deLeon, Fay - 1998-99-00-01  
 Dennis, Shannon - 1989  
 Dillon, Marie - 1995-96  
 Dryden, Denise - 1989

### -E-

Elliot, Kristin - 1997

### -F-

Findlay, Nicole - 2000-02  
 Flint, Shawni - 2000-01-02  
 Fortier, Nan - 1989

### -G-

**Garl, Hannah - 1999-00-01**  
 Gee, Jennifer - 1989-90  
 Gideon, Aimee - 1989  
 Gladden, Pam - 1989  
 Grogg, Kelly - 1996-97-98-99

### -H-

Haentjens, Erin - 2000-01  
 Hagouel, Nicole - 1999  
 Hale, Kelly - 1991-92-93-94  
 Hamilton, Katie - 1997-98-99  
 Hamm, Holly - 1989  
 Harlor, Jamie - 2001-02  
 Hawkins, Carrie - 1998-99  
 Hicks, Kristine - 1989

Holt, Kelly - 1990  
 Hoshimiya, Stacy - 1991-92-93  
 Hurl, Kellie - 1995

### -J-

Jacobs, Aimee - 1993-94-95-96  
 James, Nicole - 1998  
 Jay, Leanna - 1991-92  
 Jones, Bronwyn - 1989  
 Jones, Kim - 1996  
**Joulet, Noelle - 2001-02**  
 Judkins, Elizabeth - 1994-95  
 Judkins, Katherine - 1996-97-98-99

### -K-

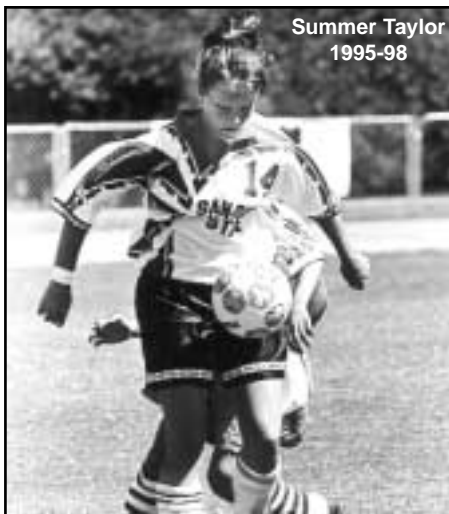
Kalmanovitz, Sara - 1996-97  
 Kaminski, Sherri - 1993-94  
 Kloos, Jen - 1996  
 Klotovich, Annie - 2001  
 Kolodziej, Karen - 1993-94  
 Komara, Kim - 1991-93  
 Kyes, Kelly - 1998  
 Kyle, Shari - 1989-90

### -L-

LaCoursiere, Lori - 1996-97-98-99  
**Lopez, Erica - 2002**

### -M-

Manzer, Julie - 1989-90-91  
**Martinez, Lisette - 2002**  
 Mathews, Stefanie - 1995-96  
 Mattes, Megan - 1999  
 McElree, Kaycee - 1998-99  
 McGuire, Catherine - 1995-96-97-98  
 McHorney, Erica - 1989  
 Mendez, Susan - 1995-96-97-98  
 Merritt, Maggie - 1997  
 Mills, Sandi - 1989  
 Miranda, Theresa - 1990-91-92-93  
 Mitchell, Meghan - 1993-94-95-96  
 Montoya, Maria - 2001  
 Murray, Lynn - 1991-92-94-95



**Summer Taylor**  
1995-98

### -N-

Norris, Jill - 1998

### -O-

O'Grady, Suzie - 1989-90-91  
 Olson, Cindi - 1989  
 Orsini, Alicia - 1997-98-99, 2001  
 Ortiz, Kristina - 1999

### -P-

Parkhill, Jackie - 1997  
 Pearson, Serena - 1999-2000  
**Pearson, Stephanie - 2001-02**  
**Perez, Sophia - 2002**  
 Perrault, Tami - 1994  
 Petre, Elicia - 1997-98-99-00  
 Pietila, Ronnie - 1990-91  
**Prilaman, Rebecca - 2000-01-02**  
 Prochaska, Gabrielle - 1994  
 Prunk, Jenny - 1996-97

### -Q-

Qually, Kate - 1998-99  
 Quiñones, Linnea - 1998-99-00-01

### -R-

Rang, Catherine - 1997-98  
 Robinson, Jackie - 1998  
 Roche, Nicole - 1991  
 Rogers, Kim - 2000, 2001  
 Rogers, Kristin - 2000  
 Ross, Alyson - 1994-95-96  
 Roysdon, Jessica - 2001  
 Ryan, Erin - 1992-94

### -S-

**Salinas, Gina - 2001-02**  
 Schlom, Laura - 1990-91-92  
**Shinn, Annette - 2000-01-02**  
 Sibold, Jaynia - 1991  
 Small, Danielle - 1999-01  
 Snyder, Lorena - 1990-91-92-93  
**Solovij, Alexis - 2002**  
 Specht, Jane - 2000-01  
 Splittgerber, Lyn - 2000-01  
 Stankevich, Lea - 1994  
 Stucker, Shellee - 1995-96-97-98  
 Stucker, Stefanie - 1992-93-94-95  
 Stokes, Hilary - 1989  
 Sullivan, Katie - 1997-98  
 Suzuki, Shelly - 2000  
**Swiader, Amanda - 2002**

### -T-

Taylor, Summer - 1995-96-97-98  
 Thompson, Tina - 1993  
 Tinling (Robingson), Boo - 1999-00-01-02  
 Tocco, Gina - 1995-96-97-98  
 Torruella, Nikki - 2000-01  
 Tucker, Shana - 1989

### -V-

Vahlstrom, Shelly - 1989  
 Van Berckelaer, Sommer - 1996  
 VanDyken, Melissa - 1993  
 Viloría, Shawn - 1992-93-94

### -W-

Wagner, Michele - 1999-01-02  
 Walshe, Laura - 1995  
 Wali, Sufia - 1996-97-98  
 Walters, Heidi - 1990-91-92-93  
 Ward, Amy - 1990-91  
 Ward, Katie - 1993-94  
 Welch, Merris - 1989-90-91  
**Weymouth, Brianna - 2002**  
 Wilson, Heather - 1989-90

### -Y-

Yoshioka, Christine - 1989

**Bold indicates active player**



## WESTERN ATHLETIC CONFERENCE STANDINGS 1995-98

### 1995 WAC Tournament at SDSU

Quarterfinals  
 Brigham Young 7, Wyoming 0  
 Fresno State 2, Utah 1

Consolation  
 Utah 1, Wyoming 0

Semifinals  
 New Mexico 3, Brigham Young 1  
**San Diego State 2, Fresno State 1**

Championship  
 San Diego State 2, New Mexico 1

### 1997 WAC Tournament at SMU

Quarterfinals  
 San Jose State 2, New Mexico 0  
 Brigham Young 3, TCU 0  
 Tulsa 2, Utah 1  
 SMU 4, Fresno State 1

Semifinals  
 Brigham Young 1, San Jose State 0  
 SMU 1, Tulsa 0 (OT)

Championship  
 SMU 2, Brigham Young 0

### 1996 WAC Final Standings

Team	Pacific Division				Overall			
	W	L	T	Pct.	W	L	T	Pct.
Brigham Young	4	1	0	.800	22	1	0	.957
<b>San Diego State</b>	<b>4</b>	<b>1</b>	<b>0</b>	<b>.800</b>	<b>16</b>	<b>7</b>	<b>0</b>	<b>.696</b>
San Jose State	3	1	1	.700	13	7	1	.650
Utah	1	3	1	.300	12	6	1	.658
Fresno State	1	3	1	.300	9	11	1	.450
Hawai'i	0	4	1	.100	4	14	2	.250
Team	Mountain Division				Overall			
	W	L	T	Pct.	W	L	T	Pct.
SMU	5	0	1	.917	11	6	4	.647
New Mexico	4	2	0	.667	11	9	0	.550
Tulsa	3	1	2	.667	11	6	3	.647
Air Force	3	2	1	.583	8	10	2	.444
TCU	2	4	0	.333	7	13	0	.350
UTEP	1	3	2	.333	4	12	2	.278
Wyoming	0	6	0	.000	2	18	0	.100

### WAC Teams at the 1997 NCAA Tournament

First Round at Santa Clara and Texas A&M  
 Santa Clara 1, Brigham Young 0  
 SMU 1, Texas A&M 0

Second Round at SMU  
 UCLA 3, SMU 2

### 1998 WAC Final Standings

Team	Pacific Division				Overall			
	W	L	T	Pct.	W	L	T	Pct.
<b>San Diego State</b>	<b>6</b>	<b>0</b>	<b>0</b>	<b>1.000</b>	<b>19</b>	<b>3</b>	<b>1</b>	<b>.848</b>
Brigham Young	5	1	0	.833	21	4	0	.840
Fresno State	2	3	1	.417	9	10	3	.477
San Jose State	2	4	0	.333	6	16	0	.273
Utah	2	4	0	.333	12	7	0	.632
Hawai'i	1	4	1	.250	8	10	1	.447
Team	Mountain Division				Overall			
	W	L	T	Pct.	W	L	T	Pct.
SMU	5	1	0	.833	9	10	0	.474
UTEP	5	1	0	.833	13	7	0	.650
Tulsa	4	2	0	.667	12	7	0	.632
TCU	2	4	0	.333	9	11	0	.450
New Mexico	2	4	0	.333	4	13	2	.263
Air Force	2	4	0	.333	6	12	0	.333
Wyoming	1	5	0	.167	5	12	0	.294

### 1996 WAC Tournament at BYU

Quarterfinals  
 San Jose State 3, New Mexico 1  
 SMU 2, Fresno State 1

**San Diego State 3, Tulsa 1**  
 Brigham Young 4, Air Force 0

Semifinals  
**San Diego State 3, SMU 1**  
 Brigham Young 3, San Jose State 0

Championship  
 Brigham Young 3, San Diego State 1

### 1998 WAC Tournament at BYU

Quarterfinals  
 Fresno State 2, UTEP 1 (PK)  
 San Jose State 1, SMU 0

**San Diego State 6, TCU 0**  
 Brigham Young 3, Tulsa 2

Semifinals  
**San Diego State 2, Fresno State 0**  
 Brigham Young 2, San Jose State 0

Championship  
**San Diego State 2, Brigham Young 1 (OT)**

### 1997 WAC Final Standings

Team	Pacific Division				Overall			
	W	L	T	Pct.	W	L	T	Pct.
Brigham Young	4	1	0	.800	19	4	0	.826
Utah	3	2	0	.600	9	11	1	.452
San Jose State	3	2	0	.600	12	8	1	.595
Fresno State	3	2	0	.600	12	9	0	.571
<b>San Diego State</b>	<b>2</b>	<b>3</b>	<b>0</b>	<b>.400</b>	<b>10</b>	<b>6</b>	<b>1</b>	<b>.618</b>
Hawai'i	0	5	0	.000	7	12	1	.375
Team	Mountain Division				Overall			
	W	L	T	Pct.	W	L	T	Pct.
SMU	6	0	0	1.000	17	5	1	.761
New Mexico	4	2	0	.667	15	5	0	.750
Tulsa	3	2	1	.583	11	8	2	.571
TCU	3	3	0	.500	10	11	0	.476
Air Force	2	3	1	.417	7	10	1	.417
UTEP	2	4	0	.333	9	10	1	.475
Wyoming	0	6	0	.000	1	16	0	.059

### WAC Teams at the 1998 NCAA Tournament

First Round at BYU  
 Brigham Young 6, Stanford 1

Second Round at UCLA and SDSU  
 Brigham Young 2, UCLA 0  
**San Diego State 1, USC 0 (3OT)**

Third Round at Santa Clara and Portland  
 Santa Clara 3, Brigham Young 0  
 Portland 5, San Diego State 0



The 1995 team with their WAC trophy.





## MOUNTAIN WEST CONFERENCE STANDINGS 1999-2001

### 1999 MWC Final Standings

Team					Overall			
	W	L	T	Pct.	W	L	T	Pct.
<b>San Diego State</b>	<b>5</b>	<b>1</b>	<b>0</b>	<b>.833</b>	<b>15</b>	<b>7</b>	<b>0</b>	<b>.681</b>
Brigham Young	5	1	0	.833	21	4	0	.840
Utah	5	1	0	.833	13	7	0	.650
Air Force	3	3	0	.500	11	10	0	.524
UNLV	1	5	0	.167	7	11	1	.417
New Mexico	1	5	0	.167	6	13	1	.325
Wyoming	1	5	0	.167	4	14	1	.237

### 2001 MWC Final Standings

Team					Overall			
	W	L	T	Pct.	W	L	T	Pct.
Brigham Young	5	1	0	.833	14	7	1	.659
New Mexico	3	2	1	.583	4	12	2	.278
UNLV	3	3	0	.500	12	7	2	.619
Utah	3	3	0	.500	11	7	0	.611
<b>San Diego State</b>	<b>2</b>	<b>3</b>	<b>1</b>	<b>.417</b>	<b>6</b>	<b>11</b>	<b>1</b>	<b>.361</b>
Air Force	2	4	0	.333	8	11	1	.425
Wyoming	1	3	2	.333	4	11	3	.306

### 1999 MWC Tournament at SDSU

Quarterfinals

Air Force 5, UNLV 2

Utah 4, New Mexico 2

Brigham Young 1, Wyoming 0

Semifinals

Brigham Young 4, Utah 3

**San Diego State 3, Air Force 1**

Championship

**Brigham Young 2, San Diego State 1 (OT)**

### MWC Teams at the 1999 NCAA Tournament

First Round at BYU / San Diego

Brigham Young 2, California 0

**San Diego 2, San Diego State 1**

Second Round at Santa Clara

Santa Clara 2, Brigham Young 0

### 2001 MWC Tournament at UNLV

Quarterfinals

**Utah 3, San Diego State 0**

Air Force 2, New Mexico 1

UNLV 1, Wyoming 0

Semifinals

Brigham Young 2, Utah 0

UNLV 2, Air Force 1

Championship

Brigham Young 2, UNLV 1

### MWC Teams at the 2001 NCAA Tournament

First Round at Nebraska

Brigham Young 1, Kansas 0

Second Round at Nebraska

Nebraska 3, Brigham Young 0

### 2000 MWC Final Standings

Team					Overall			
	W	L	T	Pct.	W	L	T	Pct.
Brigham Young	6	0	0	1.000	19	4	1	.813
Utah	4	2	0	.667	13	7	1	.643
<b>San Diego State</b>	<b>4</b>	<b>2</b>	<b>0</b>	<b>.667</b>	<b>8</b>	<b>13</b>	<b>0</b>	<b>.380</b>
UNLV	3	3	0	.500	11	9	0	.550
Air Force	2	4	0	.333	6	14	1	.310
New Mexico	2	4	0	.333	7	12	0	.368
Wyoming	0	6	0	.000	7	11	1	.395

### 2000 MWC Tournament at UNLV

Quarterfinals

**San Diego State 3, New Mexico 0**

Utah 4, Wyoming 0

Air Force 4, UNLV 1

Semifinals

**Utah 2, San Diego State 1**

Brigham Young 8, Air Force 1

Championship

Brigham Young 6, Utah 1

### MWC Teams at the 2000 NCAA Tournament

Second Round at BYU

Brigham Young 5, Stanford 0

Third Round at BYU

Santa Clara 2, Brigham Young 1 (OT)



Susan Mendez with a diving header for a goal.



# STATE

## ALL-TIME RECORDS

### SINGLE-GAME RECORDS

#### Goals

Lynn Murray . . . . . 4  
vs. Cal Poly Pomona 10/23/95

#### Assists

Lori LaCoursiere . . . . . 3  
vs. Air Force 11/4/99

Susan Mendez . . . . . 3  
vs. Southern Methodist 11/7/96

Stefanie Mathews . . . . . 3  
vs. Hawai'i 9/29/95

Jennifer Gee . . . . . 3  
vs. LaVerne 9/25/89

#### Points

Lynn Murray (4g, 1a) . . . . . 9  
vs. Cal Poly Pomona 10/23/95

#### Aztec Hat Tricks

Lynn Murray . . . . . 4 goals  
vs. Cal Poly Pomona 10/23/95

**Kim Castellanos . . . . . 3 goals**  
vs. UNLV 10/22/00

**Kim Castellanos . . . . . 3 goals**  
vs. New Mexico 10/20/00

Megan Mattes . . . . . 3 goals  
vs. New Mexico 10/22/99

Kate Qually . . . . . 3 goals  
vs. Cincinnati 9/12/99

Lori LaCoursiere . . . . . 3 goals  
vs. Fresno State 9/2/96

Suzie O'Grady . . . . . 3 goals  
vs. CSU San Bernardino 9/19/90

#### Goalkeeper Saves

Katherine Judkins . . . . . 13  
vs. BYU 11/9/96

Tina Thompson . . . . . 13  
vs. Pepperdine 9/19/93

Linnea Quiñones . . . . . 10  
vs. Santa Clara 9/30/01

### SINGLE-SEASON RECORDS

#### Goals

Lori LaCoursiere, 1996 . . . . . 18

Lori LaCoursiere, 1998 . . . . . 13

Lynn Murray, 1995 . . . . . 13

Catherine McGuire, 1996 . . . . . 12

Lori LaCoursiere, 1999 . . . . . 11

Shawn Viloría, 1993 . . . . . 11

**Kim Castellanos, 2002 . . . . . 10**

**Kim Castellanos, 2001 . . . . . 10**

**Kim Castellanos, 2000 . . . . . 10**

Lori LaCoursiere, 1997 . . . . . 10

Megan Mattes, 1999 . . . . . 10

Stefanie Mathews, 1996 . . . . . 10

Sufia Wali, 1996 . . . . . 10

#### Assists

Lori LaCoursiere, 1999 . . . . . 14

Catherine McGuire, 1998 . . . . . 11

Lori LaCoursiere, 1998 . . . . . 10

Lori LaCoursiere, 1997 . . . . . 10

Lori LaCoursiere, 1996 . . . . . 10

Stefanie Mathews, 1995 . . . . . 10

Fay deLeon, 2000 . . . . . 9

Fay deLeon, 1999 . . . . . 9

Catherine McGuire, 1997 . . . . . 9

Catherine McGuire, 1996 . . . . . 9

Kelly Grogg, 1998 . . . . . 8

#### Total Points

Lori LaCoursiere, 1996 . . . . . 46

Lori LaCoursiere, 1999 . . . . . 36

Lori LaCoursiere, 1998 . . . . . 36

Catherine McGuire, 1996 . . . . . 33

Lynn Murray, 1995 . . . . . 32

Catherine McGuire, 1998 . . . . . 31

Lori LaCoursiere, 1997 . . . . . 30

Sufia Wali, 1996 . . . . . 27

Shawn Viloría, 1993 . . . . . 27

**Kim Castellanos, 2002 . . . . . 26**

Stefanie Mathews, 1996 . . . . . 26

#### Goalkeeper Saves

Elizabeth Judkins, 1994 . . . . . 99

Linnea Quiñones, 2001 . . . . . 90

Lorena Snyder, 1991 . . . . . 75

Katherine Judkins, 1996 . . . . . 73

Linnea Quiñones, 2000 . . . . . 64

Katherine Judkins, 1998 . . . . . 59

**Stephanie Pearson, 2002 . . . . . 54**

Tina Thompson, 1993 . . . . . 54

#### Goals Against Average (minimum 750 minutes)

Katherine Judkins, 1998 . . . . . 0.61

Lorena Snyder, 1993 . . . . . 0.99

Lorena Snyder, 1990 . . . . . 1.01

Katherine Judkins, 1999 . . . . . 1.04

Lorena Snyder, 1991 . . . . . 1.09

Katherine Judkins, 1996 . . . . . 1.12

Linnea Quiñones, 1999 . . . . . 1.16

Lorena Snyder, 1992 . . . . . 1.19

Tina Thompson, 1993 . . . . . 1.20

Elizabeth Judkins, 1995 . . . . . 1.25

### CAREER RECORDS

#### Goals

Lori LaCoursiere, 1996-99 . . . . . 52

Catherine McGuire, 1995-98 . . . . . 34

**Kim Castellanos, 2000- . . . . . 30**

Lynn Murray, 1991-95 . . . . . 25

Shawn Viloría, 1992-94 . . . . . 22

Sufia Wali, 1996-98 . . . . . 19

Elicia Petre, 1997-2000 . . . . . 18

Susan Mendez, 1995-98 . . . . . 16

Aimee Jacobs, 1993-96 . . . . . 16

Stefanie Mathews, 1995-96 . . . . . 16

#### Assists

Lori LaCoursiere, 1996-99 . . . . . 44

Catherine McGuire, 1995-98 . . . . . 35

Fay deLeon, 1998-2001 . . . . . 27

Shawn Viloría, 1992-94 . . . . . 18

Kelly Grogg, 1996-99 . . . . . 17

Elicia Petre, 1997-2000 . . . . . 15

Aimee Jacobs, 1993-96 . . . . . 13

Lynn Murray, 1991-95 . . . . . 13

Sufia Wali, 1996-98 . . . . . 10

Nicole Findlay, 2000-02 . . . . . 9

**Kim Castellanos, 2000- . . . . . 9**

Reese Cicchinelli, 1991-95 . . . . . 9

Shari Kyle, 1989-90 . . . . . 9

Joy Angeles, 1989-90 . . . . . 9

#### Total Points

Lori LaCoursiere, 1996-99 . . . . . 148

Catherine McGuire, 1995-98 . . . . . 103

**Kim Castellanos, 2000- . . . . . 69**

Lynn Murray, 1991-95 . . . . . 63

Shawn Viloría, 1992-94 . . . . . 62

Elicia Petre, 1997-2000 . . . . . 58

Fay deLeon, 1998-2001 . . . . . 57

Sufia Wali, 1996-98 . . . . . 48

Stefanie Mathews, 1995-96 . . . . . 48

Aimee Jacobs, 1993-96 . . . . . 45

#### Goalkeeper Saves

Lorena Snyder, 1990-93 . . . . . 204

Katherine Judkins, 1996-99 . . . . . 192

Linnea Quiñones, 1998-2001 . . . . . 186

Elizabeth Judkins, 1994-95 . . . . . 133

**Stephanie Pearson, 2001- . . . . . 57**

Tina Thompson, 1993 . . . . . 54

Marie Dillon, 1995-96 . . . . . 34

Erin Haentjens, 2000-2001 . . . . . 32

#### Goals Against Average (minimum 1500 minutes)

Katherine Judkins, 1996-99 . . . . . 0.97

Lorena Snyder, 1990-93 . . . . . 1.08

Elizabeth Judkins, 1994-95 . . . . . 1.54

Linnea Quiñones, 1998-2001 . . . . . 1.74



Goals against average leader  
Katherine Judkins



## ALL-TIME HONORS

### ALL-AMERICAN

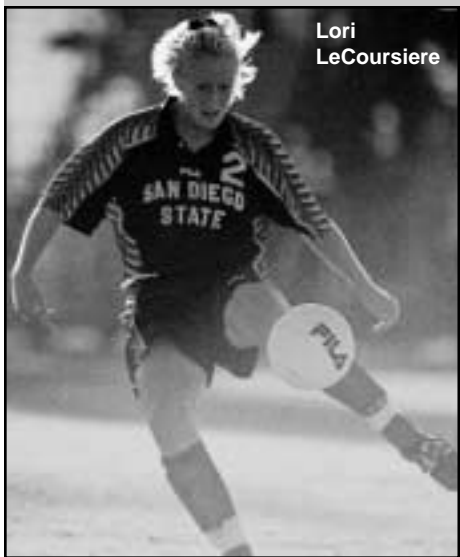
- 1998 . . . . .Catherine McGuire  
                                   NSCAA-Third Team  
                                   Soccer America-Third Team  
                                   Soccer Buzz-Third Team  
                                   College Soccer Weekly-Hon. Mention

### FAR WEST REGION ALL-AMERICAN (NSCAA)

- 1993 First Team . . . . .Shawn Viloría
- 1996 First Team . . . . .Lori LaCoursiere
- 1997 Second Team . . . . .Tina August  
       Second Team . . . . .Lori LaCoursiere
- 1998 First Team . . . . .Catherine McGuire  
       Second Team . . . . .Lori LaCoursiere
- 1999 Second Team . . . . .Lori LaCoursiere

### FAR WEST REGION ALL-AMERICAN (SOCCER BUZZ)

- 1996 First Team . . . . .Lori LaCoursiere  
       Third Team . . . . .Shellee Stucker
- 1997 Second Team . . . . .Lori LaCoursiere  
       Third Team . . . . .Tina August
- 1998 First Team . . . . .Lori LaCoursiere  
       Second Team . . . . .Tina August  
       Third Team . . . . .Elicia Petre
- 1999 Second Team . . . . .Lori LaCoursiere
- 2000 Third Team . . . . .Fay deLeon



### FRESHMAN ALL-AMERICAN (SOCCER BUZZ)

- 1996 First Team . . . . .Lori LaCoursiere
- 1998 Third Team . . . . .Fay deLeon
- 2000 Hon. Mention . . . . .Kim Castellanos

### FRESHMAN ALL-FAR WEST REGION (SOCCER BUZZ)

- 1996 . . . . .Lori LaCoursiere
- 1998 . . . . .Fay deLeon  
                                   Kaycee McElree
- 2000 . . . . .Kim Castellanos

### WAC FRESHMAN OF THE YEAR

- 1996 . . . . .Lori LaCoursiere

### ALL-WESTERN ATHLETIC CONFERENCE

- 1996 First Team . . . . .Lori LaCoursiere  
                                   Catherine McGuire  
       Second Team . . . . .Stefanie Mathews  
                                   Shellee Stucker
- 1997 First Team . . . . .Tina August  
                                   Lori LaCoursiere  
       Second Team . . . . .Catherine McGuire  
                                   Elicia Petre
- 1998 First Team . . . . .Tina August  
                                   Katherine Judkins  
                                   Lori LaCoursiere  
                                   Catherine McGuire  
                                   Elicia Petre

### ALL-WAC TOURNAMENT

- 1995 . . . . .Aimee Jacobs  
                                   Stefanie Mathews  
                                   Catherine McGuire  
                                   Shellee Stucker
- 1996 . . . . .Lori LaCoursiere  
                                   Stefanie Mathews  
                                   Catherine McGuire  
                                   Shellee Stucker
- 1998 . . . . .Tina August  
                                   Lori LaCoursiere  
                                   Catherine McGuire  
                                   Elicia Petre

### WEST REGION COACH OF THE YEAR (SOCCER BUZZ)

- 1998 . . . . .Chuck Clegg

### ALL-MOUNTAIN WEST CONFERENCE

- 1999 First Team . . . . .Lori LaCoursiere  
       Second Team . . . . .Fay deLeon  
                                   Megan Mattes  
                                   Kaycee McElree  
                                   Danielle Small
- 2000 First Team . . . . .Kim Castellanos  
                                   Fay deLeon  
                                   Linnea Quiñones
- 2001 First Team . . . . .Kim Castellanos  
                                   Kim Rogers  
       Second Team . . . . .Linnea Quiñones
- 2002 First Team . . . . .Arinda Alvarez  
                                   Kim Castellanos

### MOUNTAIN WEST CONFERENCE

#### ALL-TOURNAMENT TEAM

- 1999 . . . . .Lori LaCoursiere  
                                   Megan Mattes  
                                   Elicia Petre
- 2000 . . . . .Linnea Quiñones  
                                   Kim Rogers  
                                   Jane Specht
- 2001 . . . . .Kim Castellanos  
                                   Linnea Quiñones
- 2002 . . . . .Boo Tinling



### MWC FRESHMAN OF THE YEAR

- 2000 . . . . .Kim Castellanos

### MOUNTAIN WEST CONFERENCE

#### ALL-ACADEMIC

- 1999 . . . . .Elicia Petre  
                                   Boo Robinson  
                                   Danielle Small  
                                   Michele Wagner
- 2000 . . . . .Tina Atwood  
                                   Hannah Garl  
                                   Stephanie Pearson  
                                   Elicia Petre  
                                   Boo Robinson  
                                   Annette Shinn  
                                   Shelly Suzuki  
                                   Nikki Torruella
- 2001 . . . . .Noelle Jouglet  
                                   Annie Klotovich  
                                   Gina Salinas  
                                   Danielle Small
- 2002 . . . . .Sheila Dayog  
                                   Stephanie Pearson  
                                   Annette Shinn  
                                   Amanda Swaider  
                                   Boo Tinling

Bold indicates active player





YEAR-BY-YEAR RESULTS

1989 (5-4-0)

S16	Whittier	W	6-0
S20	at U.S. International	L	2-11
S25	at LaVerne	W	10-0
S27	at Cal Poly Pomona	L	0-3
O14	at Azusa Pacific	W	3-0
O15	at CS San Bernardino	L	0-1
O26	at UC Irvine	W	1-0
O28	CS Dominguez Hills	L	0-3
N3	Redlands	W	2-0

1990 (7-5-1)

S1	at CS Dominguez Hills	L	0-1
S11	Stanford	L	0-1
S14	at UC San Diego	W	1-0
S19	at CS San Bernardino	W	4-2
S22	at UC Irvine	L	0-1
S26	at San Francisco State	W	4-1
S27	at San Francisco	T	2-2OT
S29	USC	W	4-0
O6	Oregon State	L	1-2
O11	U.S. International	W	2-0
O13	UC Irvine	W	2-0
O18	California	L	0-2
O24	at Whittier	W	1-0

1991 (9-6-3)

S7	San Francisco	W	1-0
S8	Washington	L	0-2
S14	TCU	W	2-0
S15	at Saint Mary's	L	0-1
S18	Oregon State	W	1-0
S21	CS Dominguez Hills	T	1-1OT
S26	at California	L	1-2
S27	at CS Hayward	W	1-0
S29	at Santa Clara	L	0-3
O5	Azusa Pacific	W	5-0
O9	Cal Baptist	W	5-0
O13	at UC Santa Barbara	L	0-3
O15	Cal Lutheran	W	3-1
O22	at UC Irvine	W	2-1
O24	Washington State	W	3-1
O27	CS San Bernardino	T	1-1OT
O30	UC San Diego	T	1-1OT
N1	UC Irvine	L	1-2

1992 (6-7-3)

S8	Santa Clara	L	0-3
S11	UC Santa Barbara	W	3-0
S14	at San Diego	L	1-2
S18	Cal Poly SLO	W	2-1OT
S20	at CS Dominguez Hills	L	1-2OT
S23	UC Irvine	T	0-0OT
S25	Chico State	L	0-1
O6	Cal Baptist	W	9-0
O9	California	W	4-1
O11	Colorado College	T	2-2
O16	at Washington	T	1-1
O18	at Washington State	W	2-0
O23	Portland	L	1-3
O25	at San Francisco	L	1-2
O27	at Stanford	L	1-2
N1	Saint Mary's	W	3-0

1993 (10-7-2)

S5	CS Fullerton	W	5-0
----	--------------	---	-----

S7	CS Dominguez Hills	W	5-0
S10	at California	L	0-1



Gina Tocco

S12	at Saint Mary's	L	0-1
S15	at Loyola Marymount	W	4-0
S19	Pepperdine	W	2-1OT
S24	at Oregon State	L	0-2
S26	at Portland	L	0-3
S29	San Diego	W	2-1
O3	at New Mexico	T	1-1OT
O8	USC	W	5-0
O10	Stanford	T	0-0
O15	at UC Irvine	W	3-1
O17	Washington	L	1-5
O21	Colorado College	W	5-0
O22	at UC Santa Barbara	L	0-2OT
O29	Washington State	W	1-0
O31	Air Force	W	4-0
N5	UCLA	L	1-4

1994 (10-8-0)

S3	at Santa Clara	L	1-5
S5	at Stanford	L	1-2
S12	New Mexico	W	3-2
S14	at CS Fullerton	W	3-2
S17	at San Diego	W	2-0
S20	at Arizona	W	3-0
S24	CS San Bernardino	W	2-1
S30	at USC	L	0-1
O2	at Saint Mary's	L	1-5
O7	UC Irvine	W	3-2OT
O9	Oregon State	L	1-4
O16	at Washington	L	0-1
O21	California	W	3-1

O23	at UCLA	L	0-1
O28	Loyola Marymount	W	3-1
O30	Minnesota	W	2-1
N4	UC Santa Barbara	W	3-0
N6	Portland	L	1-3

1995 (13-5-3)

S3	at Portland	L	2-6
S4	at Oregon State	L	0-3
S8	UCLA	T	2-2OT
S10	Stanford	L	0-6
S16	Brown*	W	2-0
S17	Gonzaga*	W	4-0
S19	at New Mexico*	L	0-1
S23	USC	W	1-0
S25	at CS San Bernardino	W	3-0
S29	Hawai'i	W	4-0
O1	CS Fullerton	L	2-4
O6	Brigham Young	W	2-0
O8	Fresno State	W	4-1
O12	Arizona	W	4-1
O15	Cal Poly SLO	W	2-0
O21	San Diego	T	1-1OT
O23	at Cal Poly Pomona	W	5-0
O27	at UC Irvine	T	3-3OT
O28	U.S. International	W	5-0
N2	Fresno State#	W	2-1
N4	New Mexico#	W	2-1

\*Tomato Cafe Soccer Showcase at New Mexico  
#WAC Tournament at San Diego State

1996 (16-7-0, 5-2-0 WAC)

A31	Loyola Marymount	W	3-0
S2	at Fresno State	W	6-0
S6	UC Santa Barbara	W	4-1
S10	at USC	W	3-1
S13	at CS Fullerton	W	3-1
S15	at San Diego	W	1-0
S20	at Washington State	L	1-2
S21	Montana	L	0-1
S24	UC Irvine	L	1-2
S28	Tulsa	L	0-2
S29	Arizona State	W	6-0
O1	CS Northridge	W	5-0
O4	Saint Mary's	W	4-1
O6	at UCLA	L	1-2
O11	Fresno State*	W	3-0
O13	San Jose State*	W	3-0
O18	at Hawai'i*	W	3-2
O24	at Brigham Young*	L	2-3OT
O26	at Utah	W	2-0
N2	at U.S. International	W	4-0
N6	Tulsa#	W	3-1
N7	Southern Methodist#	W	3-1
N9	at Brigham Young#	L	1-3

\*Western Athletic Conference Game  
#WAC Tournament at Brigham Young

1997 (10-6-1, 2-3-0 WAC)

A30	UCLA	L	0-2
S1	at UC Santa Barbara	W	1-0
S5	Indiana	W	3-1
S7	Portland State	W	4-0
S14	USC	L	1-4
S18	at Santa Clara	T	1-1OT
S21	at Pepperdine	W	2-1

## YEAR-BY-YEAR RESULTS

S26	at Saint Mary's	L	1-2
O5	San Diego	W	5-1
O9	BYU*	W	3-0
O12	Utah*	L	2-4
O17	Hawai'i*	W	5-1
O19	UC Irvine	W	3-0
O24	at Fresno State*	L	2-3
O26	at San Jose State*	L	1-2
O28	UCF	W	4-1
N1	CS Fullerton	W	4-0

\*Western Athletic Conference Game

### 1998 (19-3-1, 6-0-0 WAC)

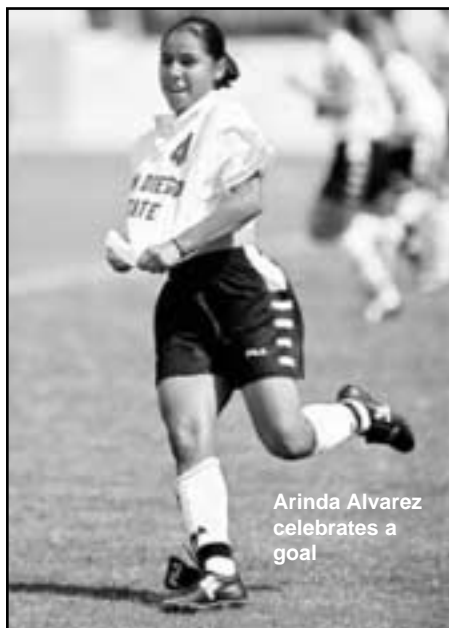
S1	at CS Fullerton	W	4-2
S4	at USC	W	2-0
S6	UCLA	W	1-0
S11	at Cal Poly SLO	L	1-3
S13	California	W	2-0
S18	at Arizona State	W	5-1
S25	NC State	W	1-0
S27	at UNC Greensboro	W	3-1
O2	CS Northridge	W	1-0 <sup>OT</sup>
O7	at San Diego	W	4-2
O9	San Jose State*	W	4-0
O11	Fresno State*	W	4-0
O14	UNLV*	W	4-0
O16	at Hawai'i*	W	2-1 <sup>OT</sup>
O22	at Utah*	W	4-0
O24	at Brigham Young*	W	1-0
O30	Santa Clara	L	0-2
N1	UC Irvine	T	1-1
N4	TCU&	W	6-0
N5	Fresno State&	W	2-0
N7	Brigham Young&	W	2-1 <sup>OT</sup>
N15	USC%	W	1-0 <sup>OT</sup>
N22	at Portland%	L	0-5

\*Western Athletic Conference Game  
&WAC Tournament at Brigham Young  
%NCAA Tournament Second and Third Rounds

### 1999 (15-7-0, 5-1-0 MWC)

A27	UC Santa Barbara	W	5-1
S1	at Long Beach State	W	3-2
S4	George Washington	W	2-0
S5	at California	L	0-1
S10	Oklahoma	W	2-0
S12	Cincinnati	W	5-0
S19	at William & Mary	L	1-4
S24	at Loyola Marymount	W	2-1
S26	UCLA	L	0-3
O1	Montana	W	3-2
O3	Kentucky	L	2-3
O8	at Air Force*	W	2-0
O10	at Wyoming*	W	6-0
O14	Utah*	L	0-1
O16	BYU*	W	2-1
O22	at New Mexico*	W	3-1
O24	at UNLV*	W	4-0
O30	Kansas	W	3-0
O31	at Mississippi	W	2-1
N4	Air Force+	W	3-1
N6	Brigham Young+	L	1-2
N10	at San Diego\$	L	1-2

\*Mountain West Conference Game  
+MWC Tournament at San Diego State  
\$NCAA Tournament First Round



Arinda Alvarez celebrates a goal

### 2000 (8-13-0, 4-2-0 MWC)

A25	Mississippi	W	2-1
A29	Loyola Marymount	L	0-1
S1	Navy#	W	2-1
S3	James Madison#	L	0-2
S8	at Indiana	L	1-2
S10	at Cincinnati	L	2-5
S16	at Portland%	L	0-4
S17	Washington%	L	2-5
S22	Massachusetts^	L	1-2
S24	Long Beach State	W	1-0
S28	Pepperdine	L	0-2
O1	Harvard	L	0-1 <sup>OT</sup>
O6	Air Force*	W	1-0
O8	Wyoming*	W	2-1
O12	at Brigham Young*	L	0-4
O14	at Utah*	L	0-2
O20	New Mexico*	W	3-0
O22	UNLV*	W	4-2
O27	at Fresno State	L	2-4
N1	New Mexico+	W	3-0
N3	Utah+	L	1-2

\*Mountain West Conference Game  
+MWC Tournament at Brigham Young  
# Cal Invitational  
%Adidas Invitational at Portland  
^at Arizona State

### 2001 (6-11-1, 2-3-1 MWC)

A31	Montana^	W	3-0
S2	Eastern Washington^	W	3-0
S7	South Carolina!	L	1-2
S9	Kansas!	L	0-2
S17	CS Fullerton	W	3-2 <sup>OT</sup>
S18	at UC Riverside	W	2-0
S23	California	L	1-3
S28	Stanford#	L	1-2
S30	Santa Clara#	L	0-2
O5	Pepperdine	L	1-3
O7	USC	L	1-2
O11	Utah*	W	2-1 <sup>OT</sup>

O13	Brigham Young*	L	2-3
O19	at Wyoming*	T	1-1 <sup>OT</sup>
O21	at Air Force*	L	0-3
O28	at New Mexico*	L	0-3
N3	at UNLV*	W	3-2
N7	Utah+	L	0-3

\*Mountain West Conference Game  
+MWC Tournament at UNLV  
^Montana Diadora Cup  
!San Diego State Tournament  
#Santa Clara Adidas Classic

### 2002 (13-7-0, 3-3-0 MWC)

A30	UC Riverside	W	5-1
S2	at Loyola Marymount	L	0-1 <sup>OT</sup>
S4	CS Northridge!	W	2-1
S6	North Carolina State!	W	3-1
S13	Weber State^	W	2-0
S15	Montana^	W	2-1
S27	at CS Fullerton	L	0-4
S29	UC Santa Barbara	W	2-1
O1	at Long Beach State	W	3-0
O6	at Pepperdine	L	1-4
O11	New Mexico*	L	0-1
O13	at Nevada	W	5-1
O18	Wyoming*	W	2-1
O20	Air Force*	W	1-0 <sup>OT</sup>
O24	at Utah*	L	1-5
O26	at Brigham Young*	L	1-5
O31	San Francisco	W	3-0
N2	UNLV*	W	2-1 <sup>OT</sup>
N6	UNLV+	W	2-1
N7	Brigham Young+	L	2-9

\*Mountain West Conference Game  
+MWC Tournament at Brigham Young  
!SDSU Tournament  
^UNLV Tournament

## SDSU All-Time Coaching Records



1989, 94-present  
Chuck Clegg  
115-71-6



1990-93  
Leslie Gallimore  
32-25-9



## ADMINISTRATION



**Dr. Stephen L. Weber**  
University  
President

Stephen L. Weber, the seventh president of San Diego State University, provides dynamic leadership to an institution that ranks among the largest in the nation and third-largest in California. Educated as a philosopher, President Weber began his tenure at SDSU in July 1996 and shortly afterward initiated a broad-based

dialog intended to set the course for the university's future.

Under President Weber's guidance, students, faculty, staff, alumni and community leaders participated in shaping this "Shared Vision." SDSU is now moving boldly ahead toward goals set by those discussions: reinforcing academic excellence, nurturing students, honoring diversity and social justice, carefully stewarding resources and further developing global programs.

In the process, SDSU has become an increasingly popular and selective choice among college-bound students. For fall 2003, SDSU received more than 39,000 undergraduate applicants for 7,283 vacancies. Not surprisingly, the overall academic quality of SDSU students is also rising. In addition, alumni involvement and private financial support of the university have never been stronger.

A champion of community involvement as well as academic excellence, President Weber has been an advocate for community service. Leading by example, he is immediate past chair of the American Association of State Colleges and Universities Board of Directors and co-chairs Partners for K-12 School Reform. He also serves on the boards of governors of The Peres Center for Peace and the San Diego Foundation, and on the boards of directors of the San Diego Regional Economic Development Corporation, the San Diego Science and Technology Council, and the California Healthcare Institute.

In addition, President Weber is a member of the international advisory board for the Foundation for Children of the Californias, the advisory council of the San Diego Performing Arts League, and co-chair of the Technology, Entrepreneurship and Management Advisory Council. He is a member of the San Diego Rotary Club, an honorary director of the Japan Society of San Diego and Tijuana, and a member of the advisory board for Bahcesehir University in Turkey.

Born in Boston, President Weber is a graduate of Bowling Green University with a B.A. in philosophy. He received his Ph.D. in philosophy from the University of Notre Dame in 1969 and is the author of numerous articles on philosophy and higher education.

President Weber's many awards include an honorary degree from Beijing Capital Normal University. He was named among the 1997 Headliners of the Year by the San Diego Press Club. Also in 1997, the San Diego Mediation Center honored him with its Peacemaker Award. In 1999, President Weber received the Executive Director's Award from the San Diego Education Association and the Gold Key Award from the San Diego Hospitality Association. He was recognized as a Leader of Vision by the League of Women Voters of San Diego in 2000.

Before coming to San Diego State University, President Weber served as interim provost of the State University of New York (SUNY). He also served seven years as president of the SUNY Oswego campus. Prior to that he was vice president of academic affairs at St. Cloud State University in Minnesota, dean of arts and sciences at Fairfield University in Connecticut, and assistant to the president of the University of Maine.

President Weber is married to Susan Keim Weber, who shares his enthusiastic commitment to SDSU. They have two sons.



**Gene Bartow**  
Interim Director  
of Athletics

Gene Bartow, one of the most respected and experienced figures in intercollegiate athletics, joined the San Diego State administration in June of 2003 to serve as the interim athletics director. He oversees the day-to-day operations of the athletic department and will run the Aztec operation until October.

Bartow returned to the NCAA ranks after taking a leave of absence from the Memphis Grizzlies, where he served as a special advisor and was involved in the basketball and business operations, as well as special projects. He will return to his position with the Grizzlies in October.

Bartow is a legendary figure in Memphis, stemming from his days as head basketball coach at Memphis State. He led the Tigers to the 1973 national-championship game. He is also the former head coach at UCLA, Illinois, Valparaiso, Central Missouri State and Alabama-Birmingham. In his coaching career, Bartow made two trips to the Final Four, three regional-final appearances and participated in 12 NCAA Tournaments.

He coached at UCLA for two seasons and posted a 52-9 record while following in the footsteps of John Wooden. He led the 1976 Bruins to the Final Four just three years after coaching Memphis State to the championship game.

When he retired from coaching, he left the game with 647 victories to rank 17th all-time in that category.

"We are pleased and fortunate to have someone as accomplished and skilled as Mr. Bartow assume interim leadership of our athletic program," said San Diego State President Dr. Stephen L. Weber. "He brings everything we could possibly ask for in experience and eagerness. He is an accomplished leader who will serve our student-athletes, our coaches, our staff and our fans well."

Despite his success on the hardwood, Bartow's greatest achievement may have come as an administrator. He is considered the "Father of Athletics" at Alabama-Birmingham, where he built the Division I athletic program. Bartow served as athletic director at the school from 1977-2000 and for 18 years he served as the athletic director as well as head basketball coach. He led the UAB athletic department through three league changes and eventually into Conference USA prior to his retirement.

Under his direction, the UAB athletic program grew to 17 sports with more than 400 student-athletes.

Bartow is a member of five hall of fames, including the Alabama Sports Hall of Fame, the Missouri Sports Hall of Fame and the Northeast Missouri Athletic Hall of Fame. In addition, the UAB arena is now known as Bartow Arena. The facility at St. Charles High School (Mo.), which Bartow coached to the 1957 state championship, plays its games in Gene Bartow-Ernie Hedge Gymnasium.

Bartow was named by the *Birmingham News* as one of the 10 most influential sports figures in Alabama for the past century.

"San Diego State has state-of-the-art facilities, a large base of alumni and an exciting cadre of coaches who have their programs on the right track," Bartow said. "My goal is to help this department run as smoothly as possible."

Bartow and his wife, Ruth, have three children and six grandchildren.



## AZTEC HERITAGE

### SDSU'S AZTEC HERITAGE

From the early decades of its history, San Diego State has identified itself with the Aztecs, one of the most sophisticated and distinctive societies in the history of the Western Hemisphere. A fitting choice for a university committed to internationalism and diversity, the Aztec identity evokes great pride in Mexico, as well as among many people in the United States, and certainly within the SDSU community. Consequently, San Diego State strives to honor the Aztec people by enhancing awareness, understanding and appreciation of Aztec culture and achievements.

### AZTEC HISTORY

Aztec civilization dates back at least to the 12th century A.D. The precise location is still debated by scholars, but tradition tells us of a place somewhere north of modern-day Mexico City known at that time as Aztlan, which meant "the place of the cranes" or "the place of the herons." The people who lived in this land were called Azteca, meaning "those of Aztlan."

The Azteca eventually left their homeland and became known as the Mexica. Native folklore attributes this name

change to the instructions of the people's patron deity, Huitzilopochtli (Hummingbird on the Left).

Around 1325, the Mexica settled on an island in Lake Texcoco, an area that is now the heart of Mexico City, and named it Tenochtitlan or "the place of the fruit of the cactus." A century later, the Mexica and two other Nahuatl-speaking city-states, Texcoco and Tlacopan, combined to create an entity popularly known as the Aztec Empire. Boasting a strong military force, this new alliance commanded a sphere of influence that stretched across much of present-day Mexico.

Tenochtitlan and its surrounding valley evolved into a highly sophisticated, multicultural and multilingual city-state of several million inhabitants. At this same time, major European cities numbered only 30,000 to 40,000 in population. A cradle of innovation, the Aztec Empire developed advanced systems of trade, science, politics, religion, education and agriculture. The Aztecs also enjoyed sports and built grand ballcourts to accommodate team events.



### AZTECS AND SDSU

San Diego State University first adopted the Aztec name in the 1920s as a nickname for the college's sports teams. In 1925, the student newspaper followed suit, changing its name from *The Paper Lantern* to *The Aztec*. Since that time, San Diego State's celebration of Aztec heritage has permeated the campus. In 1936, a Donald Hord sculpture of Montezuma II, the last Aztec emperor, became a welcoming campus icon. With the passing years, Aztec themes echoed in the names, colors and architectural elements of new campus buildings. And Aztec culture became the subject of more than a dozen university courses.

In 1941, Monty Montezuma, a character based on Montezuma II, debuted at San Diego State athletic events as a symbolic personification of the Aztecs. Over time, the Montezuma character's look and activities have evolved from a sports mascot into a more dignified and accurate representation of the historical emperor. Montezuma now serves as the university's ambassador of Aztec culture, charged with the responsibility of informing and educating the San Diego community about Aztec civilization. SDSU continues to take pride in its affiliation with Aztec culture and to celebrate the Aztec virtues of strength, valor and intellectual achievement.





# STATE

## THE UNIVERSITY



Beginning its 107th academic year in fall 2003, San Diego State University can take pride in more than a century of achievement in education, research and service. With an enrollment of more than 33,000 students, SDSU has grown into the largest institution of higher education in the San Diego region and one of the largest in California.

- San Diego State is the only member of the 23-campus California State University system designated as a "Doctoral/Research University-Intensive" by the Carnegie Foundation, placing it among the top 6.7 percent of higher education institutions in the United States.
- San Diego State currently grants bachelor's degrees in 78 academic areas and master's degrees in 60.
- One in 13 adults in San Diego holds a



degree from San Diego State.

- San Diego State ranked 10th nationally in 1999-2000 for bachelor's degrees awarded to minorities, according to *Black Issues In Higher Education*.
- In 2002, San Diego State's International Business program was ranked 15th in the country by *U.S. News and World Report*. The magazine, along with *Success* magazine, also named San Diego State's College of Business as one of the top in the country for entrepreneurs.
- The School of Accountancy was the first and one of only four accredited accounting programs in California. Student test



scores on the CPA exam consistently rank among the top five in the nation.

- Three times during the past 15 years the College of Education has been ranked among the top three programs in the country for teacher education by the Association of Teacher Educators. On two occasions the college has been ranked best in the country.
- Increasingly recognized for innovative research, San Diego State has achieved the prestigious Doctoral/Research University-Intensive designation. This is granted by the Carnegie Foundation to the top 6.7 percent of the nation's research-conducting universities. In fiscal year 2001-2002, SDSU faculty attracted \$140.4 million in grants and contracts

for research and program administration, representing a 65 percent increase in funding from five years ago.

- In 2002, San Diego State was ranked among the 31 hottest and trendiest universities in the nation according to Kaplan's Annual National High School Guidance Counselor Survey.
- Recently completed facilities, totaling more than \$200 million in value, include Cuicacalli, a dining and residence complex; the Chemical Sciences Laboratory,



a showcase of leading-edge laboratories and infrastructure; a 2,458-space parking structure, the largest in the California State University system; and the Aztec Athletics Center, housing coaches' offices, training facilities and the Wise Foundation Hall of Fame. Construction continues on the SDSU trolley station and tunnel, part of the Metropolitan Transit Development Board's Mission Valley East extension of the San Diego Trolley system scheduled to open in 2005.

