



# SAN DIEGO STATE WOMEN'S BASKETBALL

## 2017-18 GAME NOTES

Ben Pearson, Assistant Media Relations Director • E-Mail: ben.pearson@sdsu.edu • Office: 619-594-5547

### 2017-18 SCHEDULE

Date	Opponent	Time
Nov. 3	Cal State LA (exh.)	W, 71-50
Nov. 10	Presbyterian	W, 77-50
Nov. 14	CSUN	W, 58-55
Nov. 18	Cal State Fullerton	W, 59-58

Junkanoo Jam (Bimini, Bahamas)		
Nov. 24	vs. Central Michigan	L, 76-85 (OT)
Nov. 25	vs. Tulane	L, 46-80

Nov. 29	San Diego	W, 77-76
Dec. 3	at Arizona	W, 78-67
Dec. 8	UC Irvine	L, 65-67
Dec. 10	Hope International	W, 92-68
Dec. 14	Santa Clara	L, 34-48
Dec. 22	at UC Santa Barbara	L, 64-77
Dec. 28	Wyoming*	W, 68-62
Dec. 30	at Utah State*	L, 58-62
Jan. 3	Colorado State*	L, 63-65
Jan. 10	at San José State*	W, 75-65
Jan. 13	Boise State*	L, 70-86
Jan. 17	at Fresno State*	L, 53-64
Jan. 20	New Mexico*	W, 97-89
Jan. 24	at Colorado State*	L, 43-72
Jan. 27	UNLV*	L, 64-75
Feb. 3	at Air Force*	L, 51-61
Feb. 7	Fresno State*	L, 66-60
Feb. 10	Nevada*	W, 75-72
Feb. 14	at Wyoming*	L, 70-50
Feb. 17	at UNLV*	L, 73-67 (OT)
Feb. 21	Air Force*	L, 56-48
Feb. 24	San José State*	W, 85-78
Feb. 27	at Boise State*	L, 53-64
March 2	at Nevada*	L, 84-72

Mountain West Tournament (Las Vegas, Nev.)		
March 5	Nevada	4:30 p.m.
March 6	UNLV (if necessary)	6:00 p.m.

All times local to site | Home games in **Bold** at Viejas Arena  
\* = Mountain West game

### MOUNTAIN WEST TOURNAMENT | Thomas & Mack Center | Las Vegas, Nev. | March 5-9

**LIVE MEDIA:** Mountain West Network on Stadium/Aztec Radio Network (XTRA 1360)



#### SAN DIEGO STATE

2017-18 Record: 11-18 (5-13 MW)

Head Coach: Stacie Terry

Fifth Year at SDSU/Fifth overall



#### NEVADA

2017-18 Record: 14-15 (7-11 MW)

Head Coach: Amanda Levens

1st year at UNR/5th overall

#### TOP PERFORMERS

Scoring	McKynzie Fort - 16.1
Rebounding	McKynzie Fort - 5.9
Assists	Geena Gomez - 3.8

#### TOP PERFORMERS

Scoring	Teige Zeller - 14.0
Rebounding	Teige Zeller - 8.6
Assists	T Moe - 3.3

- The Aztecs finished the regular season in a three-way tie for eighth place with Utah State and Air Force at 5-13. Since they went 0-3 against those teams, they will be the No. 10 seed in the Mountain West Tournament. San Diego State's first round game will be Monday at 4:30 p.m. PT against No. 7 seed Nevada, the team the Aztecs closed out the regular season against. If the Aztecs advance, they will take on the No. 2 seed, UNLV, Tuesday evening at 6:00 p.m. All MW Tournament games take place at UNLV's Thomas & Mack Center.
- All MW Tournament games will be streamed live on the Mountain West Network. Additionally there will be live audio on the Aztec Radio Network (XTRA 1360 AM) with Chris Ello calling the action courtside.
- The Aztecs fell at Nevada 84-72 Friday evening, SDSU shot an efficient 50 percent from the field, but the Wolf Pack scored 24 points off of Aztec turnovers and outscored San Diego State 50-34 in the paint.
- McKynzie Fort led the Aztecs with 19 points and Geena Gomez continued her stellar senior season with 16. Baylee Vanderdoes chipped in 13 points, on 5-for-5 shooting, which set a new career-high.
- McKynzie Fort now has 1,683 career points, good for third on the Aztecs' all-time scoring list. Next up is Falisha Wright (1992-95) with 1,733 career points.
- Entering the week, Fort occupies the fifth spot in the Mountain West with an average of 16.1 points per game. She is also third in minutes (34.6/gm), fourth in field-goal percentage amongst qualified players (.460) and ninth in steals (1.5/gm). In addition, senior Geena Gomez (11.1 ppg) is seventh in three-point accuracy (.385) is eighth in assists (3.8/gm).
- The Aztecs have set a program record for season attendance. The Aztecs had 22,069 fans over their 16 games for an average of 1,379. This breaks the total and average attendance records set in 2007-08, when the Aztecs drew 14,730 fans for an average of 1,133 per game.
- Collectively, the Aztecs are slotted sixth in the MW in three-point field goal percentage (33.9) and in three-pointers made (6.7/gm). They also rank fifth in rebounding margin (-0.4) and in rebounds per game (37.2).
- As a team, SDSU is averaging 64.8 points per game while yielding 68.8 on the defensive side of the ball. In addition, the Aztecs are shooting 39.2 percent from the floor and 33.9 percent from three-point territory.

### SAN DIEGO STATE AZTECS (11-18, 5-13 MW)

No.	Name	Pos.	Ht.	Yr.	Exp.	PPG	RPG	APG	Individual Player Notes
0	Kennedi Villa	G	6-0	Fr.	HS	0.3	1.0	0.3	Has logged 13 minutes in three appearances this year vs. Presbyterian, Tulane and Hope Int'l.
1	Khalia Lark	G/F	6-0	Jr.	1L	6.5	5.2	0.8	One of two Aztecs to start all 29 games this year ... Posted a season-high 17 points vs. UNLV on 7-10 FGs.
5	Te'a Adams	G	5-9	Fr.	HS	4.6	1.8	1.6	Career-high 20 pts vs. Hope Int'l ... Had 2nd double-digit scoring game vs. Fresno St. 2/7/18 (10 pts).
10	Najé Murray	G	5-6	Fr.	HS	9.3	3.0	1.1	Scored a career-high 29 pts vs. UNM ... Had career-high 8 rebounds last Saturday at Nevada (3/2/18).
11	Arantxa Gómez Ferrer	F	6-0	Jr.	2L	2.3	2.4	0.3	Has started 19 games... Had career-highs in points (11) and rebounds (6) vs. SJSU (2/24/18).
13	Allison Brown	G	5-7	Sr.	SQ	0.0	0.5	0.4	Has played in 45 minutes across eighth games ... Played a career-high 16 mins vs. Hope Int'l.
15	McKynzie Fort	G	5-9	Sr.	3L	16.1	5.8	3.2	Scored a career-high 32 points vs. New Mexico ... Set career-high with nine assists vs. Fresno St. (2/7/18).
20	Geena Gomez	G	5-8	Sr.	2L	11.1	3.4	3.8	Scored career-high 22 points vs SJSU (2/24/18) ... Has scored 10+ points in 10 of last 11 games.
21	Abby Lowe	G	5-11	So.	1L	0.9	0.4	0.1	Has appeared in nine straight games ... Scored four points off the bench vs. AF (2/21/18)
22	Lexy Thorderson	G	6-0	Sr.	3L	7.7	2.5	0.4	Started vs. SJSU for senior day ... Averaged 2.4 three-pointers per game on .407 shooting before injury.
23	Loli Gomez	G	5-10	Jr.	TR	0.0	0.1	0.1	Has appeared in eight games... Grabbed first rebound last Saturday at Nevada.
24	Kiara Edwards	F	6-1	Fr.	HS	1.8	1.6	0.0	Hit first collegiate 3-pointer at Wyoming (2/14/18)... Grabbed season-high 3 rebounds vs. Tulane.
30	Cheyenne Greenhouse	G	5-11	Sr.	3L	5.3	2.7	1.0	Had season-high 8 rebounds vs. AF (2/21/18)... Has scored season-high 12 points three times.
34	Baylee Vanderdoes	F	6-1	So.	1L	3.2	3.8	0.2	Scored a career-high 13 points last Saturday at Nevada... Grabbed a personal-best 13 rebounds vs. CMU.
40	Monique Terry	F	6-2	So.	1L	1.0	1.3	0.0	Has missed the last 18 games ... Logged a season-high 3 rebs off the bench vs. Arizona.
45	Naomi Ekwedike	F	6-6	So.	SQ	2.0	2.5	0.2	Grabbed career-high seven rebounds at UNLV (2/17/18) while tying career-high with six points..

**Head Coach:** Stacie Terry (UT Arlington, 1998) | 57-86 (Fifth Season at SDSU/Fifth Overall)

**Assistant Coaches:** Jesse Clark (Pacific Union, 2003); Ciara Carl (Point Loma Nazarene, 2005); Nick Grant (Baylor, 2010)

**Director of Basketball Operations:** Jon Silver (UCLA, 2009) | **Director of Player Personnel:** Paris Johnson (San Diego State, 2011)

## SAN DIEGO STATE QUICK FACTS

### GENERAL INFORMATION

Location: San Diego, Calif., 92182  
 Founded: 1897  
 Enrollment: 33,726  
 Nickname: Aztecs  
 School Colors: Scarlet and Black  
 Affiliation: NCAA Division I  
 Conference: Mountain West  
 Home Arena (Capacity):  
 Steve Fisher Court at Viejas Arena (12,414)  
 President: Sally Roush  
 Director of Athletics: John David Wicker  
 Faculty Athletic Representative: Patrick Papin  
 Athletics Dept. Phone: 619-594-3019

### AZTEC BASKETBALL FACTS

First Year of Basketball: 1976-77  
 All-Time Record: 649-585 (.526) / 41 seasons  
 Postseason Appearances/NCAA Appearances: 12/9  
 Last Postseason Appearance: 2013--  
 Lost to BYU (69-58) in WNIT Second Round

### SDSU TEAM INFORMATION

2016-17 Record: 11-19 (.367)  
 2016-17 MW Record/Finish: 6-12/9th  
 2017 MW Tournament Record: 0-1  
 2017 Final NCAA RPI: 270  
 Letterwinners Returning/Lost: 9/2  
 Starters Returning/Lost: 4/2  
 Newcomers: 5

### AZTEC BASKETBALL STAFF

Head Coach: Stacie Terry  
 Alma Mater: UT Arlington, 1998  
 Career Record/Years: 57-86/Fifth Year  
 Record at SDSU: Same  
 Best Time to Call: Contact SID  
 Basketball Office Phone: 619-594-4095  
 Basketball Office Fax: 619-594-8057

#### Assistant Coaches:

Jesse Clark, Fifth season at SDSU  
 Alma Mater: Pacific Union, 2003  
 Ciara Carl, Fifth season at SDSU  
 Alma Mater: Point Loma Nazarene, 2005  
 Nick Grant, Fourth season at SDSU  
 Alma Mater: Baylor, 2010  
 Director of Basketball Operations: Jon Silver  
 Second season at SDSU  
 Alma Mater: UCLA, 2009  
 Director of Player Personnel: Paris Johnson  
 Second season at SDSU  
 Alma Mater: San Diego State, 2009  
 Athletic Trainer: Queenie Soriano  
 Academic Advisor: Dr. Bre White  
 Strength and Conditioning: Eddie Padilla

### SDSU MEDIA RELATIONS

Women's Basketball SID: Ben Pearson  
 E-mail: ben.pearson@sdsu.edu  
 Office Phone: 619-594-5547  
 Cell Phone: 253-569-2055

### All-Time Series vs. Nevada

- Friday's game will be the 20th meeting between the two schools.
- Neither team has won two in a row in the series since 2014 when the Wolf Pack won two straight.
- The Aztecs have met the Wolf Pack in the Mountain West Tournament three times, facing off three straight years from 2013-15. San Diego State went 2-1 in those games.
- The Aztecs split the season series with Nevada this year, with the home team winning both games. SDSU won 75-72 Feb. 10 and Nevada beat the Aztecs last Saturday 84-72.
- Since Nevada joined the Mountain West in the 2012-13 season, the Aztecs are 7-6 against Nevada.
- Their first meeting was in 1984, a big 90-44 win for the Aztecs on their home floor.

### Scouting the Wolf Pack

- Nevada finished the regular season 14-15 overall and 7-11 in conference play.
- They finished the season with wins over UNLV and San Diego State.
- Nevada has lost eight of their past 11 games.
- Teige Zeller is second in the conference in rebounds (8.8/gm) and field-goal percentage (.503). She leads the team with 14.0 points per game.
- T Moe is second in the Mountain West in free-throws made and attempted.
- Nevada is third in the conference in rebound margin (+4.1).
- They are tenth in the MW in field goal percentage defense (.436) and last in three-point field goal defense (.387).
- Head coach Amanda Levens is in her first year as Nevada's Head Coach. She had spent the previous five years as the Associate Head Coach at her alma mater, Arizona State. Prior to her time at ASU, she was the head coach at Southern Illinois-Edwardsville for four years.

### Aztecs Mountain West Tournament History

- The Aztecs are 14-14 all-time in the MW Tournament and 2-1 against Nevada.
- They have won at least one game in the tournament in five of the past six seasons.
- From 2008-2013, they claimed two MW Tournament championships (2010 & 2012) and were runners-up three times (2008, 2009 & 2013).
- Overall, the Aztecs are 26-24 in conference tournaments.

### Last Time Out: Aztecs Fall at Nevada 84-72

The Aztecs fell at Nevada 84-72 Friday evening, SDSU shot an efficient 50 percent from the field, but the Wolf Pack scored 24 points off of Aztec turnovers and outscored San Diego State 50-34 in the paint.

McKynzie Fort led the Aztecs with 19 points and Geena Gomez continued her stellar senior season with 16. Baylee Vanderdoes chipped in 13 points, on 5-for-5 shooting, which set a new career-high.

The Aztecs scored the game's first seven points and maintained a lead until midway through the second quarter. After Nevada cut the lead to three (9-6), the Aztecs used another 7-0 run to push their lead to 16-6. San Diego State shot 63 percent from the field in the first quarter, highlighted by three Baylee Vanderdoes power lay-ins, taking a 22-15 lead at the end of the first quarter.

After committing just one turnover in the first quarter, the Aztecs turned it over six times in the first five minutes of the second quarter. This led to a 7-0 Wolf Pack run, giving them their first lead (26-25). Nevada was held to 37 percent

## NEVADA SERIES NOTES

### SAN DIEGO STATE at Nevada SDSU leads series 10-9

#### • 2017-18 Comparative Stats

NEV	Overall Record	SDSU
14-15	11-18	
6-12	League Record	5-13
.415	Field Goal Pct.	.392
.348	3-PT FG Pct.	.339
.717	Free Throw Pct.	.712
.436	Opp. FG Pct.	.418
.387	Opp. 3-PT FG Pct.	.317
1.2	Turnover Margin	-1.7
38.7	Rebound Avg.	37.2
+4.1	Rebound Margin	-0.4
68.1	Points/Game	64.8
68.5	Pts. Allowed/Game	68.8

#### • Series Numbers

##### San Diego State (10-9)

Record at SDSU.....	6-2
Record at Nevada.....	2-6
Record at Neutral.....	2-1
Most Points SDSU.....	90, 1984
Most Points Nevada.....	88, 2017
Largest Margin SDSU.....	46, 1984
Largest Margin Nevada.....	23, 2017
Longest SDSU Win Streak.....	3
Longest Nevada Win Streak.....	2
Current Streak.....	Nevada, 1

1-2-84.....	H.....	W.....	90-44
11-24-03.....	H.....	W.....	67-52
12-7-04.....	A.....	L.....	55-74
11-14-06.....	H.....	L.....	62-68
11-11-07.....	A.....	W.....	67-61
11-27-10.....	A.....	L.....	61-63
1-23-13.....	H.....	W.....	69-57
2-23-13.....	A.....	W.....	58-45
3-14-13.....	N.....	W.....	67-39
2-8-14.....	A.....	L.....	65-84
3-11-14.....	N.....	L.....	48-53
2-4-15.....	H.....	W.....	57-49
3-6-15.....	A.....	L.....	44-50
3-9-15.....	N.....	W.....	70-48
1-27-16.....	H.....	L.....	64-70
1-4-17.....	H.....	W.....	83-78
2-11-17.....	A.....	L.....	65-88
2-10-18.....	H.....	W.....	75-72
3-2-18.....	A.....	L.....	72-84

shooting in the first half, but had nine offensive rebounds that led to 10 second chance points.

Plagued by turnovers, the Aztecs made just one second quarter field goal, and none over the final eight minutes, but still took a 32-30 lead in to the haltime break. Geena Gomez led the Aztecs with eight points at the break.

The Aztecs continued to struggle to keep the Wolf Pack off the offensive glass in the third quarter and Nevada pushed their lead to 11 with a minute left in the third quarter (58-47).

A Khalia Lark three-pointer with 7:39 left cut the Aztecs' deficit to six points, but that would be the closest SDSU would get.

Nevada outrebounded San Diego State 33-32, but had a 16-9 advantage on the offensive glass, which allowed them to outscore the Aztecs 17-4 in second chance points.

The Wolf Pack turned the ball over just seven times while the Aztecs had 15 turnovers, leading to Nevada having 24 points off Aztec turnovers.

The Wolf Pack were led by Teige Zeller's 20 points. Halie Bergman (19), Terae Briggs (15) and T Moe (12) also scored in double-digits.

### Noting the Nevada Game

- Najé Murray set a new career-high with eight rebounds. The 5'6" freshman guard is averaging 7.5 rebounds the past five games.
- Baylee Vanderdoes set a new career-high with 13 points. She went 5-for-5 from the floor becoming the first Aztec this season to have a perfect shooting percentage.
- The Wolf Pack scored 50 points in the paint, the most the Aztecs have allowed this season.
- The Aztecs shot 50 percent or better from the field for the fourth time this season, although this was the first time the Aztecs accomplished this feat and didn't pick up the W.
- San Diego State went 6-for-10 from behind the three-point arc, their highest three-point field goal percentage in a game this season.
- Nevada scored 54 points in the second half, the most the Aztecs have allowed this season.
- Abby Lowe played just five minutes but had a team-high and career-high two steals.
- Geena Gomez has scored in double-digits in ten of the past 11 games, averaging 14.5 points per game in that span.
- Geena Gomez and Khalia Lark remain the only two Aztecs to start all 29 games this season.

### Senior Sendoff

- The Aztecs honored six seniors before last Saturday's game vs SJSU: Allison Brown, McKynzie Fort, Geena Gomez, Cheyenne Greenhouse, Khalia Lark, and Lexy Thorderson.
- Allison Brown (Anaheim Hills, Calif.) joined the team as a walk-on in 2014 and has appeared in 33 games and scored 18 points over the past four years.
- Khalia Lark (Irvine, Calif.) transferred to SDSU after 1.5 seasons at Washington. Since arriving she has appeared in every game and is one of two Aztecs to start every game this season (Geena Gomez).
- Cheyenne Greenhouse (Riverside, Calif.) has become a symbol of durability for the Aztecs. Over her four years on the Mesa, she has missed just one game and will finish her career in the top ten all-time for games played.
- Lexy Thorderson (Castle Rock, Colo.) is known for her long range accuracy and is top five all-time in career three-point field goals made and attempted. This season as a team captain, she posted career highs for three-point and field goal percentage before a devastating knee injury ended her season in early January. Despite the injury, she started Saturday's game, before being immediately subbed out.
- Geena Gomez (Huntington Beach, Calif.) came to SDSU after playing her freshman year at Saint Joseph's. She hasn't missed a single game since joining the Aztecs, appearing in 88 contests and making 50 starts. She has scored in double-digits 29 times and her 36.3 career three-point percentage as an Aztec is the third best in program history. Additionally, she is in the top ten all-time in three-point makes and attempts.
- McKynzie Fort (Fontana, Calif.) will go down as one of the greatest Aztecs to ever don the scarlet and black. Her name is scattered throughout the record books, highlighted by having the third most career points in program history. She has scored in double-digits in 93 of her 120 career games and has missed just one game in her entire career. She is top five all-time in points, field goals made and attempted, and free-throws made and attempted.

### Of Note

- SDSU finishes the regular season with a 9-7 record at home, giving the Aztecs a winning home record in 10 of the past 12 seasons.
- San Diego State is 8-5 this season when holding the opposition to under 40 percent shooting from the field.

## MOUNTAIN WEST STANDINGS

	MW	Overall
Boise State	14-4	20-9
UNLV	14-4	19-10
Wyoming	13-5	20-9
Colorado State	11-7	19-10
Fresno State	11-7	17-12
New Mexico	10-8	22-9
Nevada	7-11	14-15
Air Force	5-13	5-24
Utah State	5-13	7-22
<b>San Diego State</b>	<b>5-13</b>	<b>11-18</b>
San José State	4-14	7-22

## MW TOURNAMENT SCHEDULE

Las Vegas, Nev. - Thomas & Mack Center

### Monday, March 5

- #9 Utah State vs. #8 Air Force, 2:00 p.m. PT
- #10 San Diego State vs. #7 Nevada, 4:30 p.m. PT
- #11 San José State vs. #6 New Mexico, 7:00 p.m. PT

### Tuesday, March 6

- #8 Air Force/#9 Utah State vs. #1 Boise State, 12:00 p.m. PT
- #4 Fresno State vs. #5 Colorado State, 2:30 p.m. PT
- #7 Nevada/#10 San Diego State vs. #2 UNLV, 6:00 p.m. PT
- #6 New Mexico/#11 San José St vs. #3 Wyoming, 8:30 p.m. PT

### Wednesday, March 7

- Semi-Final #1, 6:30 p.m.
- Semi-Final #2, 9:00 p.m.

### Friday, March 9

- Mountain West Championship Game, 12:00 p.m. PT

## AZTECS VS. MOUNTAIN WEST

Air Force	34	9
Boise State	8	6
Colorado State	27	29
Fresno State	26	20
Nevada	10	9
New Mexico	28	33
San José State	22	8
UNLV	28	29
Utah State	6	5
Wyoming	28	28
<b>Total</b>	<b>217</b>	<b>175</b>

## SAN DIEGO STATE STREAKS

### Most Consecutive Starts

	Consecutive	Total
Geena Gomez*	29	50
Khalia Lark	29	39
McKynzie Fort	20	114
Arantxa Gómez Ferrer	2	25
Najé Murray	2	15
Cheyenne Greenhouse	0	38
Lexy Thorderson	0	35
Baylee Vanderdoes	0	17
Monique Terry	0	10
Naomi Ekwedike	0	1

### Most Consecutive Games

	Consecutive	Total
Geena Gomez*	88	88
Cheyenne Greenhouse	57	120
Khalia Lark*	50	80
Baylee Vanderdoes	40	52
Najé Murray	29	29
McKynzie Fort	20	120
Arantxa Gómez Ferrer	20	73
Te'a Adams	15	29
Abby Lowe	9	29
Allison Brown	1	33
Naomi Ekwedike	1	30
Loli Gomez	1	8
Lexy Thorderson	0	104
Kiara Edwards	0	9
Monique Terry	0	38
Kennedi Villa	0	3

### Most Consecutive Games With A Point^

	Consecutive	Total
McKynzie Fort	120	120
Geena Gomez	35	71
Khalia Lark*	23	45
Najé Murray	12	26
Cheyenne Greenhouse	9	101
Arantxa Gómez Ferrer	3	42
Te'a Adams	3	24
Baylee Vanderdoes	2	41
Naomi Ekwedike	1	15
Kiara Edwards	1	5
Abby Lowe	0	9
Lexy Thorderson	0	77
Monique Terry	0	24
Allison Brown	0	6
Kennedi Villa	0	1
Loli Gomez	0	0

\*SDSU totals only; ^must have played in the game

- The Aztecs are 8-3 when scoring 70 points or more and 3-15 when they don't.
- In addition, the Aztecs are 7-4 on the year when out-rebounding their foes.
- In 11 wins this season, SDSU is averaging 76.5 points per game and is shooting 44.5 percent from the floor, including a 40.5 percent pace on three-pointers.
- In 18 defeats, however, the Aztecs are averaging just 57.6 points per contest, connecting on 35.7 percent of their field-goal attempts, including a 29.1 clip on treys.
- Similarly, the Aztecs have fared better statistically in home games compared to road contests. In 16 home games, SDSU is averaging 68.2 points while draining 40.9 percent of its field-goal attempts and 35.5 percent of its tries from long-range. However, in 11 road games, the Scarlet and Black is averaging 60.4 points while shooting 38.4 percent from the floor, including a 31.9 percent pace from outside the arc.

### Fort-ifying the Aztecs' Offense

- Preseason all-MW honoree McKynzie Fort is making waves in her senior season, climbing her way into the top three on the Aztecs' all-time scoring list.
- With an average of 16.1 points in 28 starts, Fort currently boasts 1,683 career points, which ranks third on the school's all-time charts. She also ranks second in free-throws made (372) and third field goals attempted (1,424), free-throws attempted (517) and in field goals made (643).
- Fort ranks in the top 45 amongst all active Division-I players in the above categories, including 36th in career points.
- During the 2016-17 season, Fort became just the fourth Aztec to land a spot on an all-Mountain West team each of her first three seasons at San Diego State after collecting an all-Mountain West first-team nod last year.
- The only Aztec to start all 30 games, Fort finished the 2016-17 season in the league rankings: second in points per game (15.9), ninth in free-throw percentage (.784), 11th in field-goal percentage (.436), 12th in minutes played per game (31.9) and 13th in assists per game (2.5).
- The Fontana, Calif., native was 116-for-148 from the free-throw line, tied for the eighth-most made in SDSU single-season history.
- Fort reached the career 1,000-point mark at San José State (1-11-17), the 21st Aztec and eighth SDSU third-year to accomplish the feat, after notching season highs in points (29) and rebounds (11) for her second-career double-double.

### Iron Women

- Seniors McKynzie Fort and Cheyenne Greenhouse have both appeared in 120 of the Aztecs' 121 games over the past four seasons. Their 120 games, put them in eighth place all-time for games played in a career. With a minimum of one game remaining, barring injury, they will move into a tie for seventh with 121 games played. Greenhouse has appeared in 57 consecutive games, but the team's current leader is Geena Gomez, who has appeared in 88 consecutive games.

### Nothin' Like Home Cookin'

- After posting a 9-7 home record so far this year, San Diego State has now claimed 67 of its last 101 games on Montezuma Mesa and has gone 98-50 (.662) at Steve Fisher Court since the start of the 2008-09 campaign. The Aztecs have finished with a winning record at home in 10 of the last 12 years.

### Good Omen?

- For the first time since the 2011-12 campaign and the 10th time in program history, SDSU won its first three games to open a season.
- After starting the year 3-0, San Diego State has advanced to a postseason tournament or the MW Championship game all but one season (1981-82).
- In seven of the nine seasons in which the Aztecs won their first three games of the year, San Diego State won 20 or more games.
- After defeating Hope International on Dec. 10, the Aztecs assured themselves of their first winning non-conference slate since the 2012-13 campaign.

### Taking Care of the Ball

- San Diego State has demonstrated its ball-handling capabilities this season, ranking sixth in the Mountain West in fewest turnovers (430), which is good for 108th nationally.
- Against Central Michigan at the Junkanoo Jam on Nov. 24, SDSU set a program record with just four turnovers, eclipsing the previous standard of six set twice previously against Wyoming on March 9, 2012, and Feb. 1, 2017.
- Over the past two seasons, the Scarlet and Black posted fewer than 10 turnovers seven times, compared to just three during the 2013-14 and 2014-15 campaigns combined.

### Block Party

- San Diego State matched its season high with six blocked shots in a 75-65 victory at San José State on Jan. 10.

## @AZTECWBB TOP 100 IN THE NATION

As of March 2

Category	Team	Value	Rank
3-Point Field Goal Percentage		33.9	87
3-Point Field Goals Per Game		6.7	97



- With two rejections apiece against the Spartans, Te'a Adams set a career-high in that statistic, while Arantxa Gómez Ferrer tied her personal best.
- The Aztecs' six blocks were the most since the squad recorded that same total earlier in the year vs. UC Irvine (Dec. 8).
- Before this season, the last time SDSU blocked six shots occurred in the 2015-16 opener at Long Beach State.

### Spreading the Wealth

- A total of eight Aztecs have scored in double digits at least once this season, while five have accomplished the feat on six or more occasions.
- In addition, SDSU has had 19 games this year in which at least three players scored 10+ points (Presbyterian, CSUN, Cent. Michigan, USD, Arizona, UC Irvine, Hope Int'l, UCSB, Colorado St., San José St., Boise St., New Mexico, UNLV, Fresno St., Nevada, UNLV, San José St. Boise State & Nevada).

### Offensive Bonanza

- San Diego State produced its highest scoring output of the season so far when it registered a 97-89 triumph over New Mexico at home on Jan. 20. In addition, the Aztecs' 97 points were the program's most since posting a 99-91 victory at home over Sacramento State on Nov. 14, 2014.
- For just the third time this season, SDSU shot over 50 percent from the field (51.4), moving to 3-0 in those encounters.
- Against the Lobos, the Aztecs fell one short of a season high in field goals (37) and three-pointers made (12). SDSU drained 38 shots from the floor and connected on 13 triples in a 92-68 triumph over Hope International on Dec. 10.
- With their career-high scoring totals, McKynzie Fort (32 pts) and Najé Murray (29 pts) gave the Scarlet two 20-point scorers in the same game for the first time since Kymberly Ellison (21 pts) and Lexy Thorderson (21 pts) accomplished the feat Jan. 17, 2017, vs. UNLV.
- In addition to her point-total, Fort matched her career-high with 12 field goals made.
- With her stellar 7-for-13 effort from three-point range, Murray came up one triple shy of a school record. Carmelia Bloodsow (1/19/91) and Falisha Wright (2/25/92) top the Aztecs' single-game charts with 8 three-pointers apiece.

### Super Subs

- With McKynzie Fort sidelined with an injury, freshmen Te'a Adams and Najé Murray picked up the scoring slack against Hope International on Dec. 10, combining for 30 points on 15-for-24 shooting (.625).
- Adams turned in a superlative effort with a career-high 20 points, connecting on 9 of 13 field-goal attempts while chipping in personal-bests of eight rebounds and seven assists.
- With her effort, Adams produced the highest scoring total by an Aztec freshman in a single game since current director of player personnel Paris Johnson poured in 23 points vs. Air Force on March 8, 2008.
- Likewise, Murray contributed 16 points of her own vs. the Royals, highlighted by a 4-for-7 effort from beyond the three-point arc.

### Fort Named Mountain West Player of the Week

- For the third time in her career McKynzie Fort was tabbed MW Player of the Week on Dec. 4, after leading SDSU to victories over over the University of San Diego and Arizona.
- In those two triumphs, Fort averaged 25.0 points, 6.0 rebounds and 5.0 assists while shooting a combined 60.7 percent from the field (17-28) and 78.9 percent from the free-throw line (15-19).
- Against USD at home on Nov. 29, Fort led all players with 24 points on 10-for-16 shooting (62.5 percent), including the game-winning layup with eight seconds remaining to help the Aztecs snap a four-game losing streak against the Toreros in a dramatic 77-76 triumph. She also dished out a career-high eight assists in that contest and grabbed a team-best six rebounds.
- Fort continued her stellar play at Arizona on Dec. 3, pouring in a game-high 26 points to go with six rebounds and two assists. The SDSU guard shot 58.3 percent from the floor (7-12) and tied her personal-best with an 11 free throws in 13 attempts.
- With the Aztecs nursing a slim 69-67 lead late in the fourth quarter, Fort came up huge down the stretch, sinking seven of eight free throws to help seal the win while contributing to a defense that held the Wildcats scoreless over the final 3:05 of the game.

### What a Debut!

- San Diego State's 2017-18 season opener against Presbyterian was one of the ages, as the Aztecs toppled the Blue Hose, 77-50.
- The 27-point win was SDSU's largest margin of victory since a 60-25 home win against San Diego Christian on Dec. 21, 2015.
- The 27-point win was the greatest season-opening win since the 2011-12 Aztecs opened their campaign at home with an 86-43 victory over Arkansas-Pine Bluff.
- The 50 points scored against the Aztecs were the fewest allowed in a season opener since that win.
- SDSU's 12 long balls were the most in a campaign opener since at least the 1998-99 season.
- SDSU's 77 points in a first game was the most since the team scored 99 against Sacramento State to open the 2014-15 season.

### Making an Entrance

- Freshman Najé Murray made quite the impression in her first collegiate game, scoring 14 points in 13 minutes on the floor against

### MW PRESEASON POLL

Rk.	Team	Pts.
1.	Boise State (7)	221
2.	Wyoming (6)	216
3.	Colorado State (6)	211
4.	New Mexico (4)	186
5.	UNLV (2)	185
6.	Utah State	136
7.	Fresno State	117
8.	San Diego State	102
9.	San José State	61
10.	Nevada	60
11.	Air Force	29

*First-place votes in parentheses*

### MW PRESEASON HONORS

#### Preseason All-Mountain West Team

Shalen Shaw, Boise State  
Candice White, Fresno State  
Cherise Beynon, New Mexico  
McKynzie Fort, San Diego State  
Liv Roberts, Wyoming

#### Preseason Player of the Year

Cherise Beynon, New Mexico

#### Preseason Newcomer of the Year:

N'Dea Flye, New Mexico

#### Preseason Freshman of the Year

Tesha Buck, New Mexico

### SDSU IN THE MW POLL

Year	Pre.	Final
1999-2000	6th	6th
2000-01	7th	6th
2001-02	7th	7th
2002-03	7th	7th
2003-04	6th	7th
2004-05	7th	t-7th
2005-06	8th	9th
2006-07	7th	7th
2007-08	7th	t-5th
2008-09	2nd	2nd
2009-10	1st	t-3rd
2010-11	2nd	6th
2011-12	2nd	1st
2012-13	1st	1st
2013-14	3rd	t-6th
2014-15	7th	7th
2015-16	6th	t-8th
2016-17	7th	8th
2017-18	8th	t-8th



## SDSU RECORD WHEN...

Playing at home .....	9-7
Playing on the road .....	2-9
Playing at a neutral site .....	0-2
Playing a night game (5 p.m. or later) .....	4-10
Playing a day game .....	7-8
Leading at halftime .....	10-8
Trailing at halftime .....	1-9
Tied at halftime .....	0-1
Leading with 5:00 left in regulation .....	10-2
Trailing with 5:00 left in regulation .....	1-15
Tied with 5:00 left .....	0-1
In overtime .....	0-3
Scoring less than 60 points .....	2-9
Scoring between 60-69 points .....	1-6
Scoring between 70-79 points .....	5-3
Scoring between 80-89 points .....	1-0
Scoring 90 or more points .....	2-0
Opponent scores less than 60 points .....	3-2
Opponent scores 60-69 points .....	4-7
Opponent scores 70-79 points .....	3-5
Opponent scores 80-89 points .....	1-4
Opponent scores 90 or more points .....	0-0
FG% .500 or better .....	3-1
FG% under .500 .....	8-17
FG% .400-.499 .....	6-5
FG% under .400 .....	2-12
Opponent FG% .500 or better .....	0-2
Opponent FG% under .500 .....	11-16
Opponent FG% .400-.499 .....	3-11
Opponent FG% under .400 .....	8-5
Better shooting % .....	9-3
Worse shooting % .....	2-15
More FG attempts .....	5-7
Fewer FG attempts .....	6-10
Same FG attempts .....	0-1
More FGs made .....	8-1
Fewer FGs made .....	3-15
Same FGs made .....	0-2
More FT attempts .....	4-11
Fewer FT attempts .....	7-7
Same FT attempts .....	0-0
More FTs made .....	5-10
Fewer FTs made .....	6-6
Same FTs made .....	0-2
More rebounds .....	7-4
Fewer rebounds .....	4-13
Same rebounds .....	0-1
More turnovers .....	4-12
Fewer turnovers .....	5-6
Same turnovers .....	2-0
More assists .....	6-3
Fewer assists .....	5-15
Same assists .....	0-0
More steals .....	6-5
Fewer steals .....	5-13
Same steals .....	0-0

## SDSU STREAKS

Last 5 games .....	1-4
Last 10 games .....	2-8
Longest winning streak .....	3
Longest losing streak .....	4
Current streak .....	Last 2

Presbyterian.

- Murray was 4-for-7 from beyond the 3-point arc, drilling all four long balls in the fourth quarter and knocking down two in consecutive possessions.
- Murray's 14 points in her collegiate debut was the most by an Aztec in that category since Cheyenne Greenhouse notched 19 points and 11 rebounds in a 99-91 win over Sacramento State to tip off the 2014-15 campaign.
- Another freshman Te'a Adams contributed in her first collegiate appearance as well, logging four points, two assists and one steal in 17 minutes.

## Going Deep

- A hallmark of the 2017-18 Aztecs will be their depth. Against Presbyterian, SDSU's bench outscored the Blue Hose's bench, 39-5.
- Four Aztecs came off the bench to log 13 or more minutes, including Najé Murray (13), Baylee Vanderdoes (16), Cheyenne Greenhouse (17) and Te'a Adams (17)
- SDSU's reserves have outscored their opponents' 14 times this year, recording a 7-7 mark in those games.

## Captain, Captain, Captain

- The Aztecs' captains for the 2017-18 season are seniors McKynzie Fort, Geena Gomez and Lexy Thorderson.
- Fort, a three-year starter for the Aztecs, is a three-time all-MW selection and was named to the preseason all-MW team this season after spending much of the 2016-17 campaign atop most offensive categories.
- Gomez, a two-year letterwinner, is one of four returning starters for San Diego State. The catalyst behind the Aztecs' offense on the court, she shot at a .360 clip (36-for-100) from 3-point range last season, the league's sixth-best percentage.
- Three-time MW All-Academic Team honoree and three-year letterwinner Thorderson helped SDSU engineer the program's best 3-point shooting season last year and will be relied upon heavily from beyond the arc for her final campaign.

## Welcome Back!

- In addition to having five newcomers, including the nation's 23rd-ranked and the Mountain West's best incoming class, the 2017-18 Aztecs welcome back an impressive amount of offensive output from a year prior.
- Four starters from last year's team will once again don the Scarlet and Black: seniors McKynzie Fort, Geena Gomez, Lexy Thorderson and Khalia Lark.
- Five letterwinners from the 2016-17 squad are also expected to contribute this season: Arantxa Gómez Ferrer, Cheyenne Greenhouse, Abby Lowe, Monique Terry and Baylee Vanderdoes.
- Nearly 79 percent of the team's scoring from last year returns, led by all-MW first-team pick McKynzie Fort, who single-handedly recorded almost one-fourth (24.9 percent) of SDSU's total points in 2016-17.

## Moral Support

- The Aztecs set a program record for season attendance. The Aztecs had 22,069 fans over their 16 games for an average of 1,379. This breaks the total and average attendance records set in 2007-08, when the Aztecs drew 14,730 fans for an average of 1,133 per game.
- Stacie Terry's fourth season saw an increase in excitement surrounding the team, evidenced in home attendance. For the 2016-17 season, the Aztecs averaged 855 fans for the team's 14 home games, up from an average of 487 during the 2015-16 campaign (the previous high during the Terry era was for the 2014-15 season when SDSU averaged 604 fans per game).
- There have been three games this season with 4,000+ fans: UC Irvine game (4,148 Dec. 8), UNLV clash (4,568 Jan. 2) and Fresno State (4,306 Feb. 7).
- Their January 27th game against UNLV for National Girls and Women in Sports Day brought 4,568 fans to Steve Fisher Court, the Aztecs biggest crowd since drawing 5,271 against No. 2 UConn December 21, 2007.

## History Made from Beyond the Arc

- The Aztecs have made 195 three-pointers on the season and have a chance to break their program record of 204 set last season.
- San Diego State has a three-point percentage of .339, which would be their best rate since the 2009-10 season (.344).
- The Aztecs have had six games of hitting at least 10 three-pointers. Their season-high was 13 against Hope International (12-10-17).
- With their 204 made long balls on 639 attempts, the 2016-17 Aztecs set school records for three-pointers made and attempted
- The 2016-17 Aztecs also sported the best 3-point percentage at .319 (204-639) in seven years. The single-season record is .404 (65-for-161) set during the 1991-92 season.
- Lexy Thorderson's 66 made 3-point field goals on 192 attempts were each fourth in SDSU history. She finished the year with the Mountain West's second-most made long balls, averaging 2.4 per game, and ranking 80th in the nation. In a single-game high, she drilled seven treys in a win against UNLV (1-18-17), tied for the third-most in SDSU history.
- Thorderson had five games last season with five-or-more treys: a career-high seven against UNLV, six versus Boise State and five against Nevada, San José State and at UNLV.

- San Diego State had its most success beyond the arc last season against San José State. In their road game against the Spartans, SDSU knocked down 12 three-pointers, its third straight game with 10 or more threes, and, when hosting SJSU, drilled 13 long balls.
- In the Scarlet and Black's home game against San José State, the teams combined for 25 threes, the most in a MW game last season. It was just the third time the feat was accomplished during the 2016-17 campaign.
- Versus UNLV, the Aztecs knocked down 14 three-pointers for a season high and their most since Feb. 10, 2005, in a 91-45 win over Utah Valley. In the game, Thorderson drilled a career-best seven treys.
- Against Boise State, SDSU knocked down 11 triples, five of which came in the fourth quarter, finishing its second straight game with five or more treys in a quarter after notching six in the first period vs. Nevada (10 overall).
- SDSU was the first team in the conference to score double-digit threes in three straight Mountain West games, the first time since at least the 1999-2000 season that the Aztecs had consecutive games with 10-or-more 3-pointers.

### The New Aztecs on the Block

- For the second consecutive year, San Diego State women's basketball head coach Stacie Terry has announced the signing of a nationally ranked incoming class. Mallory Adams, Jayden Perez and Sophia Ramos comprise the nation's 60th-ranked class (according to Prospects Nation) and will join the Aztecs for the 2018-19 campaign.
- Adams, a 6-foot wing, is in her second season at Lone Star High School in Frisco, Texas. She is the 14th-ranked wing in the 2018 class, earning a 90 scouts grade and three stars from ESPN. She had a breakout season as a junior, her first at Lone Star High School. She garnered Texas Association of Basketball Coaches (TABC) and Texas Girls Coaches Association (TGCA) all-state, TABC all-region and District 13-5A Offensive MVP accolades after averaging 18.9 points and 9.0 rebounds en route to Lone Star's district championship. The District 9-5A MVP, TGCA all-state and TABC all-region honoree as a sophomore at Centennial (Frisco, Texas) High School, she was the 2015 District 9-5A Newcomer of the Year, recording 18 points and 10 boards per game as a freshman. Adams' older sister, McKenzie, is a junior guard on SMU's women's basketball team. Their father, Gary, played four years of football at Arkansas and their mother, Michelle, played volleyball at Missouri Southern State. Adams plays AAU for Cy-Fair EYBL. She piqued interest from a number of schools, including SMU, Kansas, Alabama, Tulsa, Houston, Michigan, Penn, Rice, New Mexico and Rutgers.
- Perez is a 5-8 guard competing for Onate High School in Las Cruces, N.M. She has an 89 scouts grade and three stars from ESPN as the 73rd-ranked point guard in her class. Perez enters her senior year with 1,586 career points. As a junior last season, she averaged nearly 20 points, 5.8 rebounds, 2.7 assists and 1.7 steals. Selected to the 2017 All-U.S.A. New Mexico Girls Basketball Team, she led Onate to the Class 6A state tournament, earning Class 6A all-state second-team honors along the way. Perez played her freshman and sophomore seasons at Las Cruces High, capturing District 3-6A Player of the Year and Class 6A all-state second-team honors each year. Perez plays AAU for Team Fusion in El Paso, Texas, under head coach Lee Williams. A 4.0 student, she is ranked seventh in her class while also competing for Onate's volleyball team last season. She also had offers from New Mexico and Abilene Christian.
- Ramos, a 5-9 guard, is playing in her fourth season at Incarnate Word High School in San Antonio, Texas. She has four stars from Prospects Nation and is No. 87 at the guard position with three stars and an 88 scouts grade from ESPN. A three-time Texas Association of Private and Parochial Schools (TAPPS) All-State and All-District first-team pick, she was also a TAPPS Academic All-State honoree as a junior. Last season, Ramos averaged 16.6 points, 8.2 rebounds, 4.2 assists and 2.9 steals per game, leading Incarnate Word to a 27-6 record. Reaching the 1,500-career point mark as a junior, she is a two-time Express News MVP for private schools. Ramos plays AAU for SA Finest and coach Ray Caldwell. The team won the Super 64 National Championship with a buzzer-beater in 2017.
- Recently, Adams and Ramos were named McDonald's All-American nominees.

### 2017-18 Media Information

All media requests for interviews with the coaching staff or student-athletes should be directed to Ben Pearson at [ben.pearson@sdsu.edu](mailto:ben.pearson@sdsu.edu). Please submit your requests with a minimum of 24 hours notice. During the season, head coach Stacie Terry and the players are generally available to meet with the media following each workout, as requested.

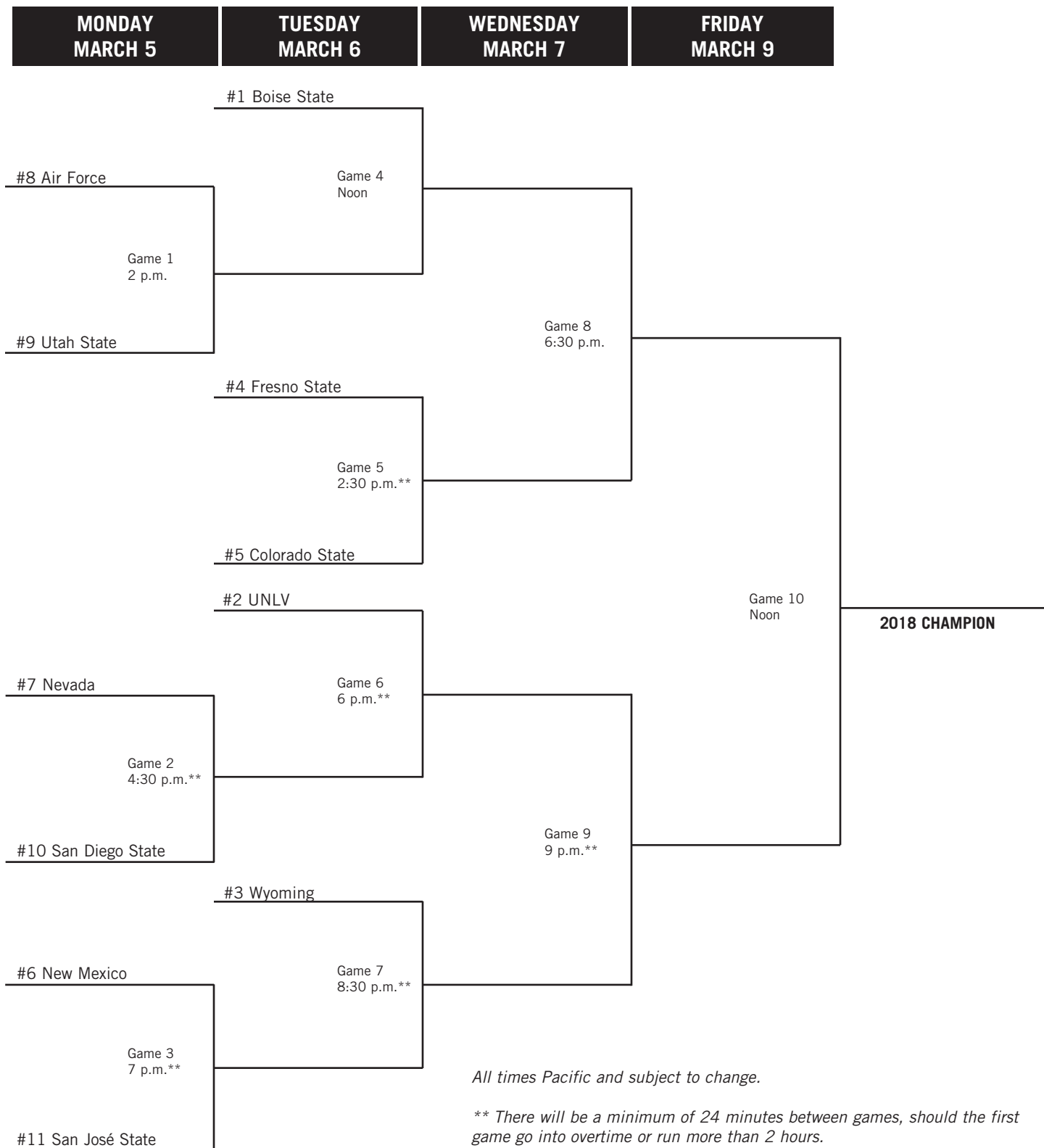
There will be no interviews on game days until postgame. The Aztec basketball team officially began practice in early October. All workouts will take place at the Jeff Jacobs JAM Center with a few exceptions. Media wishing to attend practice should contact the Aztec media relations department at least one day in advance. Media desiring to cover Aztec practices on campus can park in Parking Structure 7 and obtain a special parking permit from the SDSU athletic media relations office. Media parking via permit only will be provided for all home games in PS12, adjacent to Viejas Arena.

### SDSU CAREER SCORING LIST

1.	Judy Porter	(1980-83)	2,318
2.	Faisha Wright	(1992-95)	1,733
3.	<b>McKynzie Fort</b>	<b>(2015-)</b>	<b>1,683</b>
4.	Paris Johnson	(2008-11)	1,598
5.	Jené Morris	(2008-10)	1,499
6.	Courtney Clements	(2011-13)	1,495
7.	Chana Perry	(1988-89)	1,445
8.	Jessica Haynes	(1986-88)	1,395
9.	Quenese Davis	(2007-10)	1,370
10.	Michelle Suman	(1992-95)	1,341
11.	Brooke Meadows	(1986-89)	1,310
12.	Jamey Cox	(2000-03)	1,275
13.	Marsha Overton	(1980-83)	1,273
14.	Tina Hutchinson	(1984-85)	1,256
15.	Christina Murguia	(1992-95)	1,237

# 2018 MOUNTAIN WEST WOMEN'S BASKETBALL CHAMPIONSHIP

MONDAY-WEDNESDAY, FRIDAY, MARCH 5-7, 9  
THOMAS & MACK CENTER  
LAS VEGAS, NEVADA





## PERSONNEL SUMMARY

## Returning Starters (3):

McKynzie Fort, Sr., G (14.3 ppg, 4.1 rpg, 31.9 mpg)  
 Geena Gomez, Sr., G (6.8 ppg, 3.2 rpg, 36 3FGs, 24.8 mpg)  
 Lexy Thorderson, Sr., G (9.5 ppg, 66 3FGs, 25.7 mpg)  
 Khalia Lark, Sr., G/F (25.9 mpg, 8.4 ppg, 6.1 rpg)

## Starters Lost (2):

Ariell Bostick, G (23.2 mpg, 4.2 rpg, 3.5 apg)  
 Kymberly Ellison, G (25.3 mpg, 9.2 ppg, 61 3FGs)

## Other Players Lost (1):

Aleiah Brandon, F

## Other Letterwinners Returning (5):

Arantxa Gómez Ferrer, Jr., F (0.6 ppg, 0.9 rpg)  
 Cheyenne Greenhouse, Sr., G (15.4 mpg, 4.2 ppg, 2.0 rpg)  
 Abby Lowe, So., G (15 gms, 1.2 ppg)  
 Monique Terry, So., F (12.3 mpg, 2.7 ppg, 2.0 rpg)  
 Baylee Vanderdoes, So., F (13.6 mpg, 3.9 ppg, 2.7 rpg)

## Other Players Returning (2):

Allison Brown, Sr., G (9 gms)  
 Naomi Ekwedike, So., C (9 gms)

## Newcomers (5):

Te'a Adams, Fr., G., 5-9, Kirkland, Wash.  
 Kiara Edwards, Fr., F, 6-1, Surprise, Ariz.  
 Loli Gomez, Jr., G., 5-8, Huntington Beach, Calif.  
 Najé Murray, Fr., G, 5-6, Stockton, Calif.  
 Kennedy Villa, Fr., G., 6-0, Oakland, Calif.

## ROSTER BREAKDOWN

## By Class

**Seniors (6):** Brown, Fort, G. Gomez, Greenhouse, Lark, Thorderson; **Juniors (2):** : A. Gómez Ferrer, L. Gomez;  
**Sophomore (4):** Ekwedike, Lowe, Terry, Vanderdoes;  
**Freshmen (4):** Adams, Edwards, Murray, Villa

## By State/Country

**Arizona (1):** Edwards; **California (9):** Brown, Fort, G. Gomez, L. Gomez, Greenhouse, Lark, Murray, Vanderdoes, Villa; **Colorado (1):** Thorderson; **Texas (1):** Terry; **Washington (1):** Adams; **Spain (1):** A. Gómez Ferrer; **England (1):** Lowe; **Nigeria (1):** Ekwedike

## By Position

**Centers (1):** Ekwedike; **Forwards (5):** A. Gómez Ferrer, Edwards, Lark, Terry, Vanderdoes; **Guards (11):** Adams, Brown, Fort, G. Gomez, L. Gomez, Greenhouse, Lark, Lowe, Murray, Thorderson, Villa

## By Height

**6-6 (1):** Ekwedike; **6-2 (1):** Terry; **6-1 (2):** Edwards, Vanderdoes; **6-0 (4):** A. Gómez Ferrer, Lark, Thorderson, Villa; **5-11 (2):** Greenhouse, Lowe; **5-10 (1):** L. Gomez; **5-9 (2):** Adams, Fort; **5-8 (2):** G. Gomez; **5-7 (1):** Brown; **5-6 (1):** Murray

## 2017-18 NUMERICAL ROSTER

No.	Name	Pos.	Ht.	Yr.	Exp.	Hometown (Previous School/High School)
0	Kennedi Villa	G	6-0	Fr.	HS	Oakland, Calif. (St. Mary's HS)
1	Khaliya Lark	G/F	6-0	Sr.	1L	Irvine, Calif. (Washington/Mater Dei HS)
5	Te'a Adams	G	5-9	Fr.	HS	Kirkland, Wash. (Juanita HS)
10	Najé Murray	G	5-6	Fr.	HS	Stockton, Calif. (St. Mary's HS)
11	Arantxa Gómez Ferrer	F	6-0	Jr.	2L	Valencia, Spain (Parque Colegio Santa Ana HS)
13	Allison Brown	G	5-7	Sr.	SQ	Anaheim Hills, Calif. (Mater Dei HS)
15	McKynzie Fort	G	5-9	Sr.	3L	Fontana, Calif. (Etiwanda HS)
20	Geena Gomez	G	5-8	Sr.	2L	Huntington Beach, Calif. (Edison HS/St. Joseph's (Pa.))
21	Abby Lowe	G	5-11	So.	1L	Stockport, England (Barking Abbey Academy)
22	Lexy Thorderson	G	6-0	Sr.	3L	Castle Rock, Colo. (Rock Canyon HS)
23	Loli Gomez	G	5-8	Jr.	TR	Huntington Beach, Calif. (Edison HS/CSU San Bernardino)
24	Kiara Edwards	F	6-1	Fr.	HS	Surprise, Ariz. (Valley Vista HS)
30	Cheyenne Greenhouse	G	5-11	Sr.	3L	Riverside, Calif. (Canyon Springs HS)
34	Baylee Vanderdoes	F	6-1	So.	1L	Auburn, Calif. (Placer HS)
40	Monique Terry	F	6-2	So.	1L	San Antonio, Texas (Brennan HS)
45	Naomi Ekwedike	C	6-6	So.	SQ	Lagos, Nigeria (Potter's House Christian Academy (Fla.))

## 2017-18 ALPHABETICAL ROSTER

No.	Name	Pos.	Ht.	Yr.	Exp.	Hometown (Previous School/High School)
5	Te'a Adams	G	5-9	Fr.	HS	Kirkland, Wash. (Juanita HS)
13	Allison Brown	G	5-7	Sr.	SQ	Anaheim Hills, Calif. (Mater Dei HS)
24	Kiara Edwards	F	6-1	Fr.	HS	Surprise, Ariz. (Valley Vista HS)
45	Naomi Ekwedike	C	6-6	So.	SQ	Lagos, Nigeria (Potter's House Christian Academy (Fla.))
15	McKynzie Fort	G	5-9	Sr.	3L	Fontana, Calif. (Etiwanda HS)
20	Geena Gomez	G	5-8	Sr.	2L	Huntington Beach, Calif. (Edison HS/St. Joseph's (Pa.))
23	Loli Gomez	G	5-8	Jr.	TR	Huntington Beach, Calif. (Edison HS/CSU San Bernardino)
11	Arantxa Gómez Ferrer	F	6-0	Jr.	2L	Valencia, Spain (Parque Colegio Santa Ana HS)
30	Cheyenne Greenhouse	G	5-11	Sr.	3L	Riverside, Calif. (Canyon Springs HS)
1	Khaliya Lark	G/F	6-0	Sr.	1L	Irvine, Calif. (Washington/Mater Dei HS)
21	Abby Lowe	G	5-11	So.	1L	Stockport, England (Barking Abbey Academy)
10	Najé Murray	G	5-6	Fr.	HS	Stockton, Calif. (St. Mary's HS)
40	Monique Terry	F	6-2	So.	1L	San Antonio, Texas (Brennan HS)
22	Lexy Thorderson	G	6-0	Sr.	3L	Castle Rock, Colo. (Rock Canyon HS)
34	Baylee Vanderdoes	F	6-1	So.	1L	Auburn, Calif. (Placer HS)
0	Kennedi Villa	G	6-0	Fr.	HS	Oakland, Calif. (St. Mary's HS)

**Head Coach:** Stacie Terry (UT Arlington, 1998), Fifth season at SDSU/Fifth overall

**Assistant Coach:** Jesse Clark (Pacific Union, 2003), Fifth season at SDSU

**Assistant Coach:** Ciara Carl (Point Loma Nazarene, 2005), Fifth season at SDSU

**Assistant Coach:** Nick Grant (Baylor, 2010), Fourth season at SDSU

**Director of Operations:** Jon Silver (UCLA, 2009), Second season at SDSU

**Director of Player Personnel:** Paris Johnson (San Diego State, 2011), Second season at SDSU

## 2017-18 PRONUNCIATION GUIDE

Te'a Adams	TAY-uh
Naomi Ekwedike	nay-O-mee ECK-weh-DEE-kay
Arantxa Gómez Ferrer	uh-RON-cha fur-AIR
McKynzie Fort	ma-KEN-zee
Loli Gomez	LOW-lee
Najé Murray	Nah-ZHAY
Baylee Vanderdoes	VAN-der-doze
Kennedi Villa	VILL-uh
Ciara Carl	see-ARR-uh

## CAREER HIGHS

## Points

1, vs. Presbyterian (11-10-17)

## Rebounds

2, vs. Tulane (11-25-17)

## Assists

1, vs. Presbyterian (11-10-17)

## Steals

N/A

## Blocks

N/A

## Field Goals

N/A

## Field Goal Attempts

N/A

## 3-Point Field Goals

N/A

## 3-Point Field Goal Attempts

N/A

## Free Throws

1, vs. Presbyterian (11-10-17)

## Free Throw Attempts

2, vs. Presbyterian (11-10-17)

## MISC. CAREER STATS

## Double-figure

scoring games: 0

## Double-figure

rebounding games: 0



## #0 KENNEDI VILLA

Freshman • HS

6-0

Guard

Oakland, Calif.

St. Mary's HS

Opponent	Date	gs	min	Total		3-Pointers		Free throws		Rebounds				pf	a	t/o	blk	stl	pts	avg
				fg-fga	pct	3fg-fga	pct	ft-fga	pct	off	def	tot	avg							
PRESBYTERIAN	11-10-17	4		0-0	.000	0-0	.000	1-2	.500	0	0	0	0.0	0	1	0	0	0	1	1.0
vs Tulane	11-25-17	3		0-0	.000	0-0	.000	0-0	.000	0	2	2	1.0	1	0	0	0	0	0	0.5
HOPE INTERNATIONAL	12-10-17	6		0-0	.000	0-0	.000	0-0	.000	0	1	1	1.0	0	0	0	0	0	0	0.3
Totals		0	13	0-0	.000	0-0	.000	1-2	.500	0	3	3	1.0	1	1	0	0	0	1	0.3

Games played: 3

Minutes/game: 4.3

Points/game: 0.3

FT Pct: 50.0

Rebounds/game: 1.0

Assists/game: 0.3

Assist/turnover ratio: 99.9

## CAREER STATISTICS

CAREER STATISTICS			Total		3-Point		F-Throws		Rebounds										Scoring	
Season	gp-gs	min/avg	fg-fga	pct	fg-fga	pct	ft-fga	pct	off	def	tot	avg	pf	fo	ast	to	blk	stl	pts	avg
2017-18	3-0	13/4.3	0-0	.000	0-0	.000	1-2	.500	0	3	3	1.0	1	0	1	0	0	0	1	0.3
TOTAL	3-0	13/4.3	0-0	.000	0-0	.000	1-2	.500	0	3	3	1.0	1	0	1	0	0	0	1	0.3

## CAREER HIGHS

## Points

22, vs. Nevada (1-4-17)

## Rebounds

12, Twice

Last: at Colorado State (1-28-17)

## Assists

4, vs. San José State (2-24-18)

## Steals

4, vs. Air Force (1-25-17)

## Blocks

1, Four times

Last: at Air Force (2-3-18)

## Field Goals

8, Twice,

Last: vs. Air Force (1-25-17)

## Field Goal Attempts

19, vs. Air Force (1-25-17)

## 3-Point Field Goals

4, vs. Hope International (12-10-17)

## 3-Point Field Goal Attempts

8, vs. Fresno State (2-4-17)

## Free Throws

4, Twice, Last: vs. Seattle (12-4-14)\*

## Free Throw Attempts

6, Twice, Last: vs. Nevada (1-4-17)

## MISC. CAREER STATS

Double-figure  
scoring games: 15Double-figure  
rebounding games: 4

\* at Washington



## #1 KHALIA LARK

Senior • 1L

6-0

Guard/Forward

Irvine, Calif.

Univ. of Washington / Mater Dei High School

				Total		3-Pointers		Free throws		Rebounds											
Opponent	Date	gs	min	fg-fga	pct	3fg-fga	pct	ft-fa	pct	off	def	tot	avg	pf	a	t/o	blk	stl	pts	avg	
PRESBYTERIAN	11-10-17	*	16	0-2	.000	0-1	.000	0-0	.000	1	3	4	4.0	1	1	3	1	1	0	0.0	
CSUN	11-14-17	*	31	4-10	.400	3-6	.500	2-2	1.000	1	8	9	6.5	1	1	4	1	3	13	6.5	
CAL STATE FULLERTON	11-18-17	*	30	1-10	.100	1-4	.250	0-0	.000	4	6	10	7.7	4	1	3	0	0	3	5.3	
vs Central Michigan	11-24-17	*	25	0-5	.000	0-3	.000	2-2	1.000	2	2	4	6.8	4	0	0	0	1	2	4.5	
vs Tulane	11-25-17	*	11	1-3	.333	0-1	.000	0-0	.000	0	1	1	5.6	0	1	3	0	1	2	4.0	
SAN DIEGO	11-29-17	*	23	0-4	.000	0-1	.000	0-2	.000	2	2	4	5.3	0	1	1	0	1	0	3.3	
at Arizona	12-03-17	*	29	2-6	.333	2-3	.667	1-2	.500	1	4	5	5.3	3	2	1	0	0	7	3.9	
UC IRVINE	12-08-17	*	29	4-7	.571	2-4	.500	0-0	.000	2	3	5	5.3	1	0	2	0	0	10	4.6	
HOPE INTERNATIONAL	12-10-17	*	18	5-9	.556	4-7	.571	0-0	.000	0	4	4	5.1	0	1	0	0	0	14	5.7	
SANTA CLARA	12-14-17	*	27	1-6	.167	0-5	.000	0-0	.000	0	2	2	4.8	0	0	0	0	0	2	5.3	
at UC Santa Barbara	12-22-17	*	26	5-8	.625	1-2	.500	3-5	.600	3	2	5	4.8	2	0	2	0	0	14	6.1	
WYOMING	12-28-17	*	27	3-7	.429	2-5	.400	2-2	1.000	0	4	4	4.8	1	0	1	1	1	10	6.4	
at Utah State	12-30-17	*	28	2-5	.400	2-5	.400	0-0	.000	0	3	3	4.6	1	0	0	0	0	6	6.4	
COLORADO STATE	01-03-18	*	32	0-6	.000	0-3	.000	2-2	1.000	0	5	5	4.6	1	0	1	0	0	2	6.1	
at San Jose State	01-10-18	*	27	4-8	.500	1-3	.333	2-4	.500	2	6	8	4.9	3	0	5	0	0	11	6.4	
BOISE STATE	01-13-18	*	24	3-6	.500	2-3	.667	0-0	.000	0	6	6	4.9	1	1	1	0	0	8	6.5	
at Fresno State	01-17-18	*	30	3-7	.429	1-4	.250	0-0	.000	0	8	8	5.1	1	0	4	0	2	7	6.5	
NEW MEXICO	01-20-18	*	24	2-6	.333	0-3	.000	0-0	.000	1	5	6	5.2	3	1	2	0	0	4	6.4	
at Colorado State	01-24-18	*	26	2-5	.400	1-2	.500	0-0	.000	0	6	6	5.2	1	1	4	0	0	5	6.3	
UNLV	01-27-18	*	25	7-10	.700	3-4	.750	0-0	.000	1	4	5	5.2	5	1	3	0	0	17	6.9	
at Air Force	02-03-18	*	27	4-8	.500	2-6	.333	0-0	.000	0	4	4	5.1	3	1	4	1	1	10	7.0	
FRESNO STATE	02-07-18	*	32	2-7	.286	0-3	.000	0-0	.000	1	6	7	5.2	3	1	4	0	2	4	6.9	
NEVADA	02-10-18	*	14	2-5	.400	2-3	.667	0-0	.000	0	2	2	5.1	3	0	1	0	0	6	6.8	
at Wyoming	2/14/18	*	23	2-3	.667	0-1	.000	0-0	.000	0	5	5	5.1	2	1	0	0	0	4	6.7	
at UNLV	02/17/18	*	38	1-6	.167	0-3	.000	2-2	1.000	2	6	8	5.2	3	2	5	0	0	4	6.6	
AIR FORCE	02-21-18	*	33	3-6	.500	1-3	.333	0-0	.000	0	4	4	5.2	1	0	2	0	1	7	6.6	
SAN JOSE STATE	02-24-18	*	27	3-11	.273	1-7	.143	0-0	.000	2	5	7	5.2	1	4	1	0	2	7	6.6	
at Boise State	02/27/18	*	26	1-6	.167	1-3	.333	0-0	.000	2	5	7	5.3	1	1	1	0	0	3	6.5	
at Nevada	3/2/18	*	22	2-2	1.000	2-2	1.000	0-0	.000	1	2	3	5.2	1	0	2	0	0	6	6.5	
Totals			29	750	69-184	.375	34-100	.340	16-23	.696	28	123	151	5.2	51	22	60	4	16	188	6.5

Games played: 29  
 Minutes/game: 25.9  
 Points/game: 6.5  
 FG Pct: 37.5  
 3FG Pct: 34.0  
 FT Pct: 69.6

Rebounds/game: 5.2  
 Assists/game: 0.8  
 Turnovers/game: 2.1  
 Assist/turnover ratio: 0.4  
 Steals/game: 0.6  
 Blocks/game: 0.1

## CAREER STATISTICS

CAREER STATISTICS			Total		3-Point		F-Throws		Rebounds											Scoring	
Season	gp-gs	min/avg	fg-fga	pct	fg-fga	pct	ft-fla	pct	off	def	tot	avg	pf	fo	ast	to	blk	stl	pts	avg	
2014-15*	23-0	198/8.6	17-39	.436	11-27	.407	11-14	.786	10	21	31	1.3	12	0	5	13	0	3	56	2.4	
2015-16*	6-0	83/13.8	5-15	.333	2-7	.286	5-11	.455	2	11	13	2.2	3	0	2	7	0	1	17	2.8	
2016-17	21-10	544/25.9	72-202	.356	20-81	.247	12-28	.429	39	90	129	6.1	46	0	23	44	1	12	176	8.4	
2017-18	29-29	750/25.9	69-184	.375	34-100	.340	16-23	.696	28	123	151	5.2	51	1	22	60	4	16	188	6.5	
TOTAL	50-39	1294/25.9	141-386	.365	54-181	.298	28-51	.549	67	213	280	5.6	97	1	45	104	5	28	364	7.3	
All*	79-39	1575/19.9	163-440	.370	67-215	.312	44-76	.579	79	245	324	4.1	112	1	52	124	5	32	437	5.5	

## CAREER HIGHS

## Points

20, vs. Hope International (12-10-17)

## Rebounds

8, vs. Hope International (12-10-17)

## Assists

7, vs. Hope International (12-10-17)

## Steals

4, vs. Hope International (12-10-17)

## Blocks

2, at San José State (1-10-18)

## Field Goals

9, vs. Hope International (12-10-17)

## Field Goal Attempts

13, vs. Hope International (12-10-17)

## 3-Point Field Goals

2, vs. Hope International (12-10-17)

## 3-Point Field Goal Attempts

4, Three times

Last: vs. Santa Clara (12-14-17)

## Free Throws

4, at Wyoming (2-14-18)

## Free Throw Attempts

5, vs. San Diego (11-29-17)

## MISC. CAREER STATS

## Double-figure

scoring games: 2

## Double-figure

rebounding games: 0



## #5 TE'A ADAMS

Freshman • HS

5-9

Guard

Kirkland, Wash.

Juanita HS

Opponent	Date	gs	min	Total		3-Pointers		Free throws		Rebounds				pf	a	t/o	blk	stl	pts	avg
				fg-fga	pct	3fg-fga	pct	ft-fa	pct	off	def	tot	avg							
PRESBYTERIAN	11-10-17	17		2-7	.286	0-4	.000	0-0	.000	0	0	0	0.0	3	2	1	0	1	4	4.0
CSUN	11-14-17	4		0-3	.000	0-2	.000	0-0	.000	0	0	0	0.0	0	0	1	1	0	0	2.0
CAL STATE FULLERTON	11-18-17	8		1-5	.200	0-1	.000	0-0	.000	0	1	1	0.3	1	3	1	0	2	2	2.0
vs Central Michigan	11-24-17	13		2-8	.250	0-3	.000	1-1	1.000	1	0	1	0.5	1	1	0	0	1	5	2.8
vs Tulane	11-25-17	5		1-3	.333	1-1	1.000	2-4	.500	1	1	2	0.8	0	0	1	0	2	5	3.2
SAN DIEGO	11-29-17	15		1-7	.143	0-1	.000	3-5	.600	0	4	4	1.3	1	2	2	0	1	5	3.5
at Arizona	12-03-17	14		0-5	.000	0-3	.000	0-0	.000	2	2	4	1.7	1	1	2	0	0	0	3.0
UC IRVINE	12-08-17	15		1-7	.143	0-2	.000	0-0	.000	1	2	3	1.9	1	2	1	0	1	2	2.9
HOPE INTERNATIONAL	12-10-17	22		9-13	.692	2-4	.500	0-0	.000	0	8	8	2.6	0	7	1	0	4	20	4.8
SANTA CLARA	12-14-17	15		1-9	.111	0-4	.000	0-0	.000	0	3	3	2.6	0	0	2	0	1	2	4.5
at UC Santa Barbara	12-22-17	15		2-8	.250	0-3	.000	1-2	.500	0	0	0	2.4	2	0	2	0	0	5	4.5
WYOMING	12-28-17	19		3-8	.375	1-1	1.000	2-2	1.000	0	0	0	2.2	1	1	0	0	1	9	4.9
at Utah State	12-30-17	18		1-3	.333	0-2	.000	3-4	.750	0	3	3	2.2	4	2	0	0	0	5	4.9
at San Jose State	01-10-18	21		0-3	.000	0-1	.000	2-3	.667	0	1	1	2.1	4	1	1	2	2	2	4.7
BOISE STATE	01-13-18	23		2-6	.333	0-1	.000	0-0	.000	0	1	1	2.1	5	0	2	0	1	4	4.7
at Fresno State	01-17-18	26		3-8	.375	0-2	.000	0-2	.000	0	1	1	2.0	2	2	1	0	0	6	4.8
NEW MEXICO	01-20-18	20		3-7	.429	1-3	.333	0-0	.000	1	3	4	2.1	1	5	2	0	0	7	4.9
at Colorado State	01-24-18	14		1-6	.167	0-0	.000	0-0	.000	0	2	2	2.1	3	1	2	0	1	2	4.7
UNLV	01-27-18	21		2-9	.222	1-4	.250	2-4	.500	0	0	0	2.0	2	1	3	0	0	7	4.8
at Air Force	02-03-18	21		2-7	.286	0-2	.000	0-0	.000	0	0	0	1.9	2	0	3	0	0	4	4.8
FRESNO STATE	02-07-18	20		4-8	.500	0-1	.000	2-2	1.000	0	1	1	1.9	3	1	1	0	1	10	5.0
NEVADA	02-10-18	23		4-12	.333	0-0	.000	0-0	.000	0	5	5	2.0	1	3	0	0	1	8	5.2
at Wyoming	2/14/18	21		1-8	.125	0-0	.000	4-4	1.000	1	2	3	2.0	1	1	0	0	0	6	5.2
at UNLV	02/17/18	13		0-3	.000	0-0	.000	0-0	.000	0	0	0	2.0	1	0	3	0	0	0	5.0
AIR FORCE	02-21-18	14		0-4	.000	0-0	.000	0-0	.000	0	0	0	1.9	2	0	1	0	0	0	4.8
SAN JOSE STATE	02-24-18	13		2-5	.400	0-0	.000	0-0	.000	0	0	0	1.8	2	3	1	0	2	4	4.8
at Boise State	02/27/18	18		1-3	.333	0-0	.000	0-0	.000	0	1	1	1.8	0	2	3	0	0	2	4.7
at Nevada	3/2/18	16		1-1	1.000	0-0	.000	1-2	.500	0	3	3	1.8	1	4	2	0	0	3	4.6
Totals		0	464	50-176	.284	6-45	.133	23-35	.657	7	44	51	1.8	45	45	39	3	22	129	4.6

Games played: 28  
 Minutes/game: 16.6  
 Points/game: 4.6  
 FG Pct: 28.4  
 3FG Pct: 13.3  
 FT Pct: 65.7

Rebounds/game: 1.8  
 Assists/game: 1.6  
 Turnovers/game: 1.4  
 Assist/turnover ratio: 1.2  
 Steals/game: 0.8  
 Blocks/game: 0.1

## CAREER STATISTICS

SENIOR STATISTICS																																									
Season		gp-gs		min/avg		fg-fga		pct		fg-fga		pct		ft-fa		pct		off		def		tot		avg		pf		fo		ast		to		blk		stl		pts		avg	
2017-18		28-0	464	16.6	50-176	.284	6-45	.133	23-35	.657	7	44	51	1.8	45	1	45	39	3	22	129	4.6																			
TOTAL		28-0	464	16.6	50-176	.284	6-45	.133	23-35	.657	7	44	51	1.8	45	1	45	39	3	22	129	4.6																			

## CAREER HIGHS

## Points

29, vs. New Mexico (1-20-18)

## Rebounds

8, at Nevada (3-2-18)

## Assists

8, vs. San Jose State (2-24-18)

## Steals

4, Twice

Last vs. Air Force (2-21-18)

## Blocks

1, Three times

Last vs. Nevada (2-10-18)

## Field Goals

11, vs. New Mexico (1-20-18)

## Field Goal Attempts

18, vs. New Mexico (1-20-18)

## 3-Point Field Goals

7, vs. New Mexico (1-20-18)

## 3-Point Field Goal Attempts

13, vs. New Mexico (1-20-18)

## Free Throws

6, vs. Central Michigan (11-24-17)

## Free Throw Attempts

6, vs. Central Michigan (11-24-17)

## MISC. CAREER STATS

## Double-figure

scoring games: 14

## Double-figure

rebounding games: 0



## #10 NAJÉ MURRAY

Freshman • HS

5-6

Guard

Stockton, Calif.

St. Mary's High School

				Total		3-Pointers		Free throws		Rebounds											
Opponent	Date	gs	min	fg-fga	pct	3fg-fga	pct	ft-fga	pct	off	def	tot	avg	pf	a	t/o	blk	stl	pts	avg	
PRESBYTERIAN	11-10-17	13		5-9	.556	4-7	.571	0-0	.000	0	3	3	3.0	2	1	1	0	1	14	14.0	
CSUN	11-14-17	13		2-7	.286	1-5	.200	0-0	.000	0	0	0	1.5	0	0	1	0	0	5	9.5	
CAL STATE FULLERTON	11-18-17	16		4-6	.667	3-5	.600	0-0	.000	0	0	0	1.0	3	0	3	0	0	11	10.0	
vs Central Michigan	11-24-17	16		2-9	.222	2-7	.286	6-6	1.000	0	0	0	0.8	0	0	0	0	0	12	10.5	
vs Tulane	11-25-17	24		0-6	.000	0-4	.000	0-0	.000	0	2	2	1.0	3	0	1	0	0	0	8.4	
SAN DIEGO	11-29-17	13		3-8	.375	2-4	.500	2-2	1.000	1	3	4	1.5	2	1	1	0	1	10	8.7	
at Arizona	12-03-17	17		4-9	.444	3-4	.750	2-2	1.000	0	2	2	1.6	0	0	1	0	1	13	9.3	
UC IRVINE	12-08-17	13		4-6	.667	2-3	.667	0-0	.000	0	1	1	1.5	2	1	2	0	0	10	9.4	
HOPE INTERNATIONAL	12-10-17	*	26	6-11	.545	4-7	.571	0-0	.000	0	1	1	1.4	2	4	4	0	1	16	10.1	
SANTA CLARA	12-14-17	22		3-9	.333	1-6	.167	2-3	.667	0	3	3	1.6	4	0	2	0	1	9	10.0	
at UC Santa Barbara	12-22-17	13		4-5	.800	2-2	1.000	2-2	1.000	0	3	3	1.7	5	2	0	0	2	12	10.2	
WYOMING	12-28-17	13		1-7	.143	0-3	.000	1-1	1.000	0	2	2	1.8	2	0	1	0	1	3	9.6	
at Utah State	12-30-17	20		1-8	.125	1-5	.200	0-0	.000	3	3	6	2.1	2	0	2	0	2	3	9.1	
COLORADO STATE	01-03-18	23		5-12	.417	2-5	.400	0-1	.000	2	3	5	2.3	2	1	1	0	1	12	9.3	
at San Jose State	01-10-18	*	20	2-8	.250	0-4	.000	2-2	1.000	1	2	3	2.3	2	0	1	1	0	6	9.1	
BOISE STATE	01-13-18	*	17	2-6	.333	0-1	.000	0-0	.000	0	1	1	2.3	2	0	2	0	0	4	8.8	
at Fresno State	01-17-18	*	12	0-5	.000	0-2	.000	0-0	.000	0	1	1	2.2	3	0	1	0	1	0	8.2	
NEW MEXICO	01-20-18	*	36	11-18	.611	7-13	.538	0-0	.000	1	5	6	2.4	3	1	0	0	1	29	9.4	
at Colorado State	01-24-18	*	26	5-13	.385	2-6	.333	0-0	.000	1	4	5	2.5	1	2	2	0	2	12	9.5	
UNLV	01-27-18	*	22	2-10	.200	1-5	.200	0-0	.000	0	4	4	2.6	3	2	2	0	0	5	9.3	
at Air Force	02-03-18	*	22	2-7	.286	1-2	.500	0-0	.000	0	1	1	2.5	3	0	0	1	1	5	9.1	
FRESNO STATE	02-07-18	*	27	2-13	.154	1-10	.100	2-2	1.000	1	2	3	2.5	3	4	1	0	0	7	9.0	
NEVADA	02-10-18	*	25	4-9	.444	2-5	.400	1-2	.500	1	3	4	2.6	2	3	3	1	0	11	9.1	
at Wyoming	2/14/18	*	22	1-7	.143	1-3	.333	1-2	.500	0	0	0	2.5	3	0	1	0	1	4	8.9	
at UNLV	02/17/18	*	36	6-13	.462	4-9	.444	0-0	.000	1	6	7	2.7	5	0	6	0	4	16	9.2	
AIR FORCE	02-21-18	*	30	4-8	.500	1-2	.500	0-0	.000	0	2	2	2.7	2	0	5	0	4	9	9.2	
SAN JOSE STATE	02-24-18		27	5-14	.357	3-8	.375	2-4	.500	1	1	2	2.6	2	8	2	0	2	15	9.4	
at Boise State	02/27/18	*	37	4-15	.267	1-9	.111	3-4	.750	2	5	7	2.8	3	0	0	0	3	12	9.5	
at Nevada	3/2/18	*	33	1-7	.143	1-3	.333	2-2	1.000	0	8	8	3.0	2	2	1	0	0	5	9.3	
Totals		15	634	95-265	.358	52-149	.349	28-35	.800	15	71	86	3.0	68	32	47	3	30	270	9.3	

Games played: 29

Minutes/game: 21.9

Points/game: 9.3

FG Pct: 35.8

3FG Pct: 34.9

FT Pct: 80.0

Rebounds/game: 3.0

Assists/game: 1.1

Turnovers/game: 1.6

Assist/turnover ratio: 0.7

Steals/game: 1.0

Blocks/game: 0.1

## CAREER STATISTICS

CAREER STATISTICS			Total		3-Point		F-Throws		Rebounds										Scoring	
Season	gp-gs	min/avg	fg-fga	pct	fg-fga	pct	ft-fga	pct	off	def	tot	avg	pf	fo	ast	to	blk	stl	pts	avg
2017-18	29-15	634/21.9	95-265	.358	52-149	.349	28-35	.800	15	71	86	3.0	68	2	32	47	3	30	270	9.3
TOTAL	29-15	634/21.9	95-265	.358	52-149	.349	28-35	.800	15	71	86	3.0	68	2	32	47	3	30	270	9.3



## CAREER HIGHS

## Points

11, vs. San José State (2-24-18)

## Rebounds

6, Twice  
Last: vs. San José State (2-24-18)

## Assists

2, Twice  
Last: vs. San José State (2-24-18)

## Steals

2, Twice  
Last: at Air Force (2-3-18)

## Blocks

2, Seven times  
Last: at San José State (1-10-18)

## Field Goals

5, vs. San José State (2-24-18)

## Field Goal Attempts

6, Twice  
Last: vs. San José State (2-24-18)

## 3-Point Field Goals

N/A

## 3-Point Field Goal Attempts

N/A

## Free Throws

2, Five times  
Last: at Nevada (3-2-18)

## Free Throw Attempts

4, Four times  
Last: at Nevada (3-2-18)

## MISC. CAREER STATS

Double-figure  
scoring games: 1Double-figure  
rebounding games: 0

## #11 ARANTXA GÓMEZ FERRER

Junior • 2L

6-0

Forward

Valencia, Spain

Parque Colegio Santa Ana High School / Ros Casares Valencia Club

				Total		3-Pointers		Free throws		Rebounds											
Opponent	Date	gs	min	fg-fga	pct	3fg-fga	pct	ft-fa	pct	off	def	tot	avg	pf	a	t/o	blk	stl	pts	avg	
PRESBYTERIAN	11-10-17	*	14	2-3	.667	0-0	.000	0-0	.000	0	3	3	3.0	0	0	0	0	0	4	4.0	
CSUN	11-14-17	*	24	1-3	.333	0-0	.000	0-0	.000	2	3	5	4.0	2	0	1	2	0	2	3.0	
CAL STATE FULLERTON	11-18-17	*	11	0-0	.000	0-0	.000	0-0	.000	1	1	2	3.3	2	0	1	2	0	0	2.0	
vs Central Michigan	11-24-17	*	5	0-1	.000	0-0	.000	0-0	.000	1	0	1	2.8	1	0	0	0	0	0	1.5	
vs Tulane	11-25-17	*	9	0-0	.000	0-0	.000	0-0	.000	1	2	3	2.8	1	0	1	0	0	0	1.2	
SAN DIEGO	11-29-17	*	16	4-6	.667	0-0	.000	0-0	.000	3	0	3	2.8	3	0	0	0	0	8	2.3	
at Arizona	12-03-17	dnp	-	-	-	-	-	-	-	-	-	-	-	-	-	-	-	-	-	-	
UC IRVINE	12-08-17	9	0-0	.000	0-0	.000	0-0	.000	0	3	3	2.9	1	0	1	2	0	0	2.0	-	
HOPE INTERNATIONAL	12-10-17	dnp	-	-	-	-	-	-	-	-	-	-	-	-	-	-	-	-	-	-	
SANTA CLARA	12-14-17	11	1-1	1.000	0-0	.000	0-2	.000	0	2	2	2.8	0	0	1	0	1	2	2.0	-	
at UC Santa Barbara	12-22-17	7	0-0	.000	0-0	.000	0-0	.000	0	1	1	2.6	3	0	1	0	0	0	0	1.8	
WYOMING	12-28-17	*	20	1-2	.500	0-0	.000	1-2	.500	0	2	2	2.5	3	0	0	1	1	3	1.9	
at Utah State	12-30-17	*	18	2-3	.667	0-0	.000	0-0	.000	1	1	2	2.5	1	0	1	0	2	4	2.1	
COLORADO STATE	01-03-18	*	21	1-2	.500	0-0	.000	0-0	.000	2	1	3	2.5	1	0	0	0	0	2	2.1	
at San Jose State	01-10-18	*	19	1-3	.333	0-0	.000	0-0	.000	2	4	6	2.8	2	1	2	2	0	2	2.1	
BOISE STATE	01-13-18	*	15	2-2	1.000	0-0	.000	0-0	.000	0	2	2	2.7	1	0	0	0	0	4	2.2	
at Fresno State	01-17-18	*	17	1-1	1.000	0-0	.000	0-0	.000	2	2	4	2.8	1	0	0	0	0	2	2.2	
NEW MEXICO	01-20-18	*	15	2-2	1.000	0-0	.000	0-0	.000	0	1	1	2.7	3	2	1	0	0	4	2.3	
at Colorado State	01-24-18	*	8	0-0	.000	0-0	.000	1-2	.500	0	0	0	2.5	0	1	0	0	0	1	2.2	
UNLV	01-27-18	*	18	2-2	1.000	0-0	.000	0-0	.000	2	2	4	2.6	1	1	0	0	0	4	2.3	
at Air Force	02-03-18	*	19	1-1	1.000	0-0	.000	0-0	.000	0	1	1	2.5	1	0	1	0	2	2	2.3	
FRESNO STATE	02-07-18	*	9	0-1	.000	0-0	.000	0-0	.000	1	1	2	2.5	0	0	0	0	0	0	2.2	
NEVADA	02-10-18	18	1-2	.500	0-0	.000	0-0	.000	1	2	3	2.5	5	1	0	0	0	2	2.2	-	
at Wyoming	2/14/18	15	0-1	.000	0-0	.000	0-0	.000	1	1	2	2.5	1	0	1	0	0	0	2.1	-	
at UNLV	02/17/18	5	0-1	.000	0-0	.000	0-0	.000	0	0	0	2.4	2	0	1	0	0	0	2.0	-	
AIR FORCE	02-21-18	4	0-0	.000	0-0	.000	0-0	.000	0	0	0	2.3	0	0	0	0	1	0	1.9	-	
SAN JOSE STATE	02-24-18	24	5-6	.833	0-0	.000	1-1	1.000	1	5	6	2.4	3	2	0	1	0	11	2.3	-	
at Boise State	02/27/18	*	18	2-4	.500	0-0	.000	0-0	.000	4	0	4	2.5	2	0	3	0	0	4	2.3	-
at Nevada	3/2/18	*	8	0-0	.000	0-0	.000	2-4	.500	0	0	0	2.4	5	0	1	1	0	2	2.3	-
Totals		19	377	29-47	.617	0-0	.000	5-11	.455	25	40	65	2.4	45	8	17	11	7	63	2.3	

Games played: 27

Minutes/game: 14.0

Points/game: 2.3

FG Pct: 61.7

FT Pct: 45.5

Rebounds/game: 2.4

Assists/game: 0.3

Turnovers/game: 0.6

Assist/turnover ratio: 0.5

Steals/game: 0.3

Blocks/game: 0.4

## CAREER STATISTICS

			Total		3-Point		F-Throws			Rebounds										Scoring	
Season	gp-gs	min/avg	fg-fga	pct	fg-fga	pct	ft-fa	pct	off	def	tot	avg	pf	fo	ast	to	blk	stl	pts	avg	
2015-16	18-0	118/6.6	5-12	.417	0-0	.000	0-12	.000	10	6	16	0.9	18	0	2	5	1	4	10	0.6	
2016-17	28-7	322/11.5	18-34	.529	0-0	.000	13-27	.481	32	29	61	2.2	34	0	6	17	9	4	49	1.8	
2017-18	27-19	377/14.0	29-47	.617	0-0	.000	5-11	.455	25	40	65	2.4	45	2	8	17	11	7	63	2.3	
TOTAL	73-26	817/11.2	52-93	.559	0-0	.000	18-50	.360	67	75	142	1.9	97	2	16	39	21	15	122	1.7	

## CAREER HIGHS

## Points

5, at Air Force (2-28-17)

## Rebounds

4, at Air Force (2-28-17)

## Assists

2, Three times

Last: vs. San Jose State (2-24-18)

## Steals

1, at Loyola Marymount (12-10-15)

## Blocks

1, vs. Hope International (12-10-17)

## Field Goals

2, at Air Force (2-28-17)

## Field Goal Attempts

3, Twice

Last: vs. Air Force (1-21-15)

## 3-Point Field Goals

1, Twice

Last: vs. San Diego Christian (12-21-15)

## 3-Point Field Goal Attempts

4, Twice

Last: vs. Air Force (1-21-15)

## Free Throws

2, vs. Michigan (12-9-16)

## Free Throw Attempts

2, Three times

Last: at UNLV (2-18-17)

## MISC. CAREER STATS

Double-figure

scoring games: 0

Double-figure

rebounding games: 0



## #13 ALLISON BROWN

Senior • SQ

5-7

Guard

Anaheim Hills, Calif.

Mater Dei High School

Opponent	Date	gs	min	Total		3-Pointers		Free throws		Rebounds				pf	a	t/o	blk	stl	pts	avg
				fg-fga	pct	3fg-fga	pct	ft-fga	pct	off	def	tot	avg							
HOPE INTERNATIONAL	12-10-17		16	0-2	.000	0-2	.000	0-0	.000	0	1	1	1.0	1	0	3	1	0	0	0.0
BOISE STATE	01-13-18		0	0-0	.000	0-0	.000	0-0	.000	0	0	0	0.5	0	0	0	0	0	0	0.0
at Fresno State	01-17-18		7	0-2	.000	0-0	.000	0-0	.000	0	1	1	0.7	1	1	0	0	0	0	0.0
at Colorado State	01-24-18		8	0-2	.000	0-2	.000	0-0	.000	0	1	1	0.8	1	0	1	0	0	0	0.0
at Air Force	02-03-18		1	0-0	.000	0-0	.000	0-0	.000	0	0	0	0.6	0	0	0	0	0	0	0.0
at Wyoming	2/14/18		3	0-0	.000	0-0	.000	0-0	.000	0	1	1	0.7	0	0	1	0	0	0	0.0
SAN JOSE STATE	02-24-18		9	0-1	.000	0-0	.000	0-0	.000	0	0	0	0.6	2	2	1	0	0	0	0.0
at Nevada	3/2/18		1	0-1	.000	0-0	.000	0-0	.000	0	0	0	0.5	0	0	0	0	0	0	0.0
Totals		0	45	0-8	.000	0-4	.000	0-0	.000	0	4	4	0.5	5	3	6	1	0	0	0.0

Games played: 8

Minutes/game: 5.6

FG Pct: 0.0

3FG Pct: 0.0

Rebounds/game: 0.5

Assists/game: 0.4

Turnovers/game: 0.8

Assist/turnover ratio: 0.5

Blocks/game: 0.1

## CAREER STATISTICS

Season	gp-gs	min/avg	fg-fga	pct	fg-fga	pct	ft-fga	pct	off	def	tot	avg	pf	fo	ast	to	blk	stl	pts	avg
2014-15	7-0	26/3.7	1-9	.111	1-9	.111	0-2	.000	1	1	2	0.3	3	0	2	3	0	0	3	0.4
2015-16	9-0	19/2.1	1-4	.250	1-3	.333	0-0	.000	1	3	4	0.4	0	0	2	3	0	1	3	0.3
2016-17	9-0	39/4.3	4-5	.800	0-0	.000	4-5	.800	1	7	8	0.9	5	0	5	2	0	0	12	1.3
2017-18	8-0	45/5.6	0-8	.000	0-4	.000	0-0	.000	0	4	4	0.5	5	0	3	6	1	0	0	0.0
TOTAL	33-0	129/3.9	6-26	.231	2-16	.125	4-7	.571	3	15	18	0.5	13	0	12	14	1	1	18	0.5

## CAREER HIGHS

## Points

32, vs. New Mexico (1-20-18)

## Rebounds

16, Twice

Last: vs. San Jose State (2-24-18)

## Assists

9, vs. Fresno State (2-7-18)

## Steals

5, Four times

Last: at New Mexico (2-6-16)

## Blocks

2, Five times

Last: vs. UNLV (1-27-18)

## Field Goals

12, Twice,

Last: vs. New Mexico (1-20-18)

## Field Goal Attempts

29, at San José State (1-11-17)

## 3-Point Field Goals

2, Five times

Last: vs. New Mexico (1-20-18)

## 3-Point Field Goal Attempts

7, at Colorado State (1-28-17)

## Free Throws

11, Twice

Last: at Arizona (12-3-17)

## Free Throw Attempts

13, at Arizona (12-3-17)

## MISC. CAREER STATS

## Double-figure

scoring games: 92

## Double-figure

rebounding games: 5

Double-Doubles: 5



## #15 McKYNZIE FORT

Senior • 3L

5-9

Guard

Fontana, Calif.

Etiwanda High School

				Total		3-Pointers		Free throws		Rebounds											
Opponent	Date	qs	min	fg-fga	pct	3fg-fga	pct	ft-fla	pct	off	def	tot	avg	pf	a	t/o	blk	stl	pts	avg	
PRESBYTERIAN	11-10-17	*	25	5-9	.556	2-3	.667	4-4	1.000	2	5	7	7.0	0	2	3	0	1	16	16.0	
CSUN	11-14-17	*	34	6-17	.353	1-2	.500	3-5	.600	5	1	6	6.5	1	3	2	0	3	16	16.0	
CAL STATE FULLERTON	11-18-17	*	34	7-15	.467	1-2	.500	2-3	.667	1	5	6	6.3	1	4	1	0	2	17	16.3	
vs Central Michigan	11-24-17	*	37	9-19	.474	0-1	.000	3-4	.750	0	3	3	5.5	3	3	2	0	2	21	17.5	
vs Tulane	11-25-17	*	22	1-5	.200	0-0	.000	0-0	.000	1	2	3	5.0	1	3	2	0	0	2	14.4	
SAN DIEGO	11-29-17	*	34	10-16	.625	0-0	.000	4-6	.667	1	5	6	5.2	1	8	3	1	0	24	16.0	
at Arizona	12-03-17	*	32	7-12	.583	1-3	.333	11-13	.846	1	5	6	5.3	2	2	2	0	2	26	17.4	
UC IRVINE	12-08-17	*	32	5-9	.556	0-2	.000	6-7	.857	2	2	4	5.1	1	3	6	0	0	16	17.3	
HOPE INTERNATIONAL	12-10-17	dnp	-	-	-	-	-	-	-	-	-	-	-	-	-	-	-	-	-	-	
SANTA CLARA	12-14-17	*	35	3-13	.231	1-5	.200	3-4	.750	4	4	8	5.4	1	1	6	0	2	10	16.4	
at UC Santa Barbara	12-22-17	*	38	5-12	.417	0-1	.000	0-1	.000	0	1	1	5.0	3	4	2	0	0	10	15.8	
WYOMING	12-28-17	*	36	9-15	.600	0-0	.000	2-6	.333	2	1	3	4.8	1	1	2	0	3	20	16.2	
at Utah State	12-30-17	*	33	8-12	.667	0-1	.000	3-4	.750	2	4	6	4.9	4	3	4	0	1	19	16.4	
COLORADO STATE	01-03-18	*	36	8-14	.571	0-1	.000	6-8	.750	5	11	16	5.8	2	7	3	0	0	22	16.8	
at San Jose State	01-10-18	*	39	8-15	.533	0-0	.000	3-4	.750	0	9	9	6.0	2	7	4	0	2	19	17.0	
BOISE STATE	01-13-18	*	35	4-9	.444	0-0	.000	5-6	.833	0	1	1	5.7	1	4	1	0	1	13	16.7	
at Fresno State	01-17-18	*	39	8-17	.471	1-2	.500	3-4	.750	0	5	5	5.6	3	1	6	0	3	20	16.9	
NEW MEXICO	01-20-18	*	34	12-19	.632	2-2	1.000	6-8	.750	3	6	9	5.8	4	4	3	0	0	32	17.8	
at Colorado State	01-24-18	*	35	2-10	.200	1-5	.200	2-2	1.000	2	1	3	5.7	1	3	1	0	1	7	17.2	
UNLV	01-27-18	*	40	4-12	.333	0-4	.000	2-4	.500	2	3	5	5.6	4	8	5	2	1	10	16.8	
at Air Force	02-03-18	*	33	6-12	.500	0-0	.000	8-9	.889	2	6	8	5.8	1	1	5	0	1	20	17.0	
FRESNO STATE	02-07-18	*	40	3-16	.188	0-1	.000	2-2	1.000	4	6	10	6.0	2	9	3	0	3	8	16.6	
NEVADA	02-10-18	*	36	6-15	.400	0-0	.000	3-4	.750	2	0	2	5.8	0	1	2	0	3	15	16.5	
at Wyoming	2/14/18	*	32	6-12	.500	1-1	1.000	4-5	.800	1	2	3	5.7	0	0	0	0	0	17	16.5	
at UNLV	02/17/18	*	43	10-18	.556	0-1	.000	4-5	.800	2	6	8	5.8	5	3	4	0	3	24	16.8	
AIR FORCE	02-21-18	*	33	1-8	.125	0-0	.000	0-0	.000	1	1	2	5.6	3	1	4	0	2	2	16.2	
SAN JOSE STATE	02-24-18	*	38	5-15	.333	1-2	.500	1-2	.500	6	10	16	6.0	1	2	1	0	2	12	16.1	
at Boise State	02/27/18	*	33	6-16	.375	0-1	.000	1-1	1.000	1	4	5	6.0	2	1	3	0	3	13	16.0	
at Nevada	3/2/18	*	32	9-14	.643	0-0	.000	1-2	.500	2	2	4	5.9	0	1	3	0	0	19	16.1	
Totals			28	970	173-376	.460	12-40	.300	92-123	.748	54	111	165	5.9	50	90	83	3	41	450	16.1

Games played: 28

Minutes/game: 34.6

Points/game: 16.1

FG Pct: 46.0

3FG Pct: 30.0

FT Pct: 74.8

Rebounds/game: 5.9

Assists/game: 3.2

Turnovers/game: 3.0

Assist/turnover ratio: 1.1

Steals/game: 1.5

Blocks/game: 0.1

## CAREER STATISTICS

CAREER STATISTICS			Total		3-Point		F-Throws		Rebounds										Scoring	
Season	gp-gs	min/avg	fg-fga	pct	fg-fga	pct	ft-fga	pct	off	def	tot	avg	pf	fo	ast	to	blk	stl	pts	avg
2014-15	31-24	839/27.1	125-278	.450	2-13	.154	60-96	.625	35	64	99	3.2	55	0	59	94	5	30	312	10.1
2015-16	31-31	971/31.3	169-366	.462	3-12	.250	104-150	.693	44	83	127	4.1	71	0	73	93	8	62	445	14.4
2016-17	30-30	956/31.9	176-404	.436	8-41	.195	116-148	.784	41	80	121	4.0	65	2	75	74	6	29	476	15.9
2017-18	28-28	970/34.6	173-376	.460	12-40	.300	92-123	.748	54	111	165	5.9	50	1	90	83	3	41	450	16.1
TOTAL	120-113	3736/31.1	643-1424	.452	25-106	.236	372-517	.720	174	338	512	4.3	241	3	297	344	22	162	1683	14.0

## CAREER HIGHS

## Points

22, vs. San José State (2-24-18)

## Rebounds

8, vs. Utah State (2-15-17)

## Assists

11, vs. New Mexico (1-20-18)

## Steals

4, vs. Santa Clara (12-14-17)

## Blocks

1, Five times

Last: vs. UNLV (1-27-18)

## Field Goals

8, Twice

Last: vs. San José State (2-24-18)

## Field Goal Attempts

20, vs. Colorado State (1-3-18)

## 3-Point Field Goals

5, vs. UNLV (1-27-18)

## 3-Point Field Goal Attempts

10, at Boise State (2-27-18)

## Free Throws

12, vs. Air Force (2-21-18)

## Free Throw Attempts

13, vs. Air Force (2-21-18)

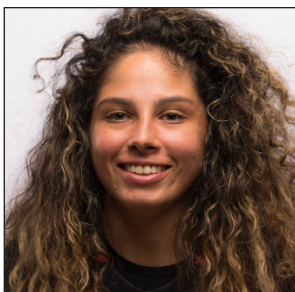
## MISC. CAREER STATS

## Double-figure

scoring games: 29

## Double-figure

rebounding games: 0



## #20 GEENA GOMEZ

Senior • 2L

5-8

Guard

Huntington Beach, Calif.

St. Joseph's (Pa.) / Edison High School

				Total		3-Pointers		Free throws		Rebounds											
Opponent	Date	gs	min	fg-fga	pct	3fg-fga	pct	ft-fga	pct	off	def	tot	avg	pf	a	t/o	blk	stl	pts	avg	
PRESBYTERIAN	11-10-17	*	21	2-5	.400	2-4	.500	0-0	.000	1	1	2	2.0	1	6	5	0	0	6	6.0	
CSUN	11-14-17	*	32	1-6	.167	0-3	.000	0-0	.000	0	2	2	2.0	4	10	6	1	2	2	4.0	
CAL STATE FULLERTON	11-18-17	*	25	3-5	.600	1-3	.333	0-0	.000	1	5	6	3.3	1	1	1	0	0	7	5.0	
vs Central Michigan	11-24-17	*	34	5-11	.455	3-6	.500	2-5	.400	1	5	6	4.0	2	7	0	0	0	15	7.5	
vs Tulane	11-25-17	*	20	2-9	.222	0-2	.000	2-2	1.000	0	0	0	3.2	2	0	2	0	0	6	7.2	
SAN DIEGO	11-29-17	*	33	3-9	.333	0-4	.000	1-2	.500	1	4	5	3.5	3	3	1	0	1	7	7.2	
at Arizona	12-03-17	*	32	4-9	.444	4-7	.571	0-0	.000	0	3	3	3.4	0	7	3	0	0	12	7.9	
UC IRVINE	12-08-17	*	36	5-14	.357	2-5	.400	0-0	.000	1	1	2	3.3	2	7	5	0	3	12	8.4	
HOPE INTERNATIONAL	12-10-17	*	19	3-7	.429	1-3	.333	3-3	1.000	0	1	1	3.0	1	4	0	0	0	10	8.6	
SANTA CLARA	12-14-17	*	30	3-9	.333	1-3	.333	0-0	.000	1	5	6	3.3	1	3	2	0	4	7	8.4	
at UC Santa Barbara	12-22-17	*	30	3-10	.300	1-2	.500	2-2	1.000	1	0	1	3.1	2	3	4	0	1	9	8.5	
WYOMING	12-28-17	*	31	3-8	.375	0-2	.000	3-4	.750	0	3	3	3.1	2	3	5	0	1	9	8.5	
at Utah State	12-30-17	*	27	1-13	.077	0-7	.000	2-2	1.000	0	1	1	2.9	0	3	4	0	0	4	8.2	
COLORADO STATE	01-03-18	*	38	5-20	.250	3-8	.375	1-2	.500	2	3	5	3.1	3	1	4	0	0	14	8.6	
at San Jose State	01-10-18	*	39	8-15	.533	3-7	.429	2-2	1.000	0	3	3	3.1	3	2	3	0	2	21	9.4	
BOISE STATE	01-13-18	*	36	3-13	.231	1-4	.250	7-8	.875	1	3	4	3.1	3	0	4	1	1	14	9.7	
at Fresno State	01-17-18	*	38	1-9	.111	1-4	.250	0-2	.000	0	1	1	3.0	4	5	2	1	2	3	9.3	
NEW MEXICO	01-20-18	*	30	2-8	.250	2-6	.333	0-0	.000	1	3	4	3.1	3	11	1	0	1	6	9.1	
at Colorado State	01-24-18	*	34	4-8	.500	4-6	.667	0-0	.000	0	0	0	2.9	2	1	5	0	1	12	9.3	
UNLV	01-27-18	*	37	6-12	.500	5-8	.625	0-0	.000	1	5	6	3.1	4	6	0	1	1	17	9.7	
at Air Force	02-03-18	*	31	1-6	.167	0-2	.000	3-3	1.000	0	7	7	3.2	0	2	4	0	1	5	9.4	
FRESNO STATE	02-07-18	*	34	5-9	.556	4-6	.667	0-0	.000	1	4	5	3.3	3	1	7	1	2	14	9.6	
NEVADA	02-10-18	*	35	4-9	.444	4-8	.500	6-6	1.000	0	3	3	3.3	4	6	5	0	1	18	10.0	
at Wyoming	2/14/18	*	32	5-10	.500	1-4	.250	0-0	.000	0	5	5	3.4	0	1	2	0	0	11	10.0	
at UNLV	02/17/18	*	42	3-13	.231	2-6	.333	7-7	1.000	0	4	4	3.4	1	1	2	0	1	15	10.2	
AIR FORCE	02-21-18	*	34	3-14	.214	0-2	.000	12-13	.923	2	3	5	3.5	0	3	3	0	1	18	10.5	
SAN JOSE STATE	02-24-18	*	33	8-13	.615	4-6	.667	2-2	1.000	0	3	3	3.4	3	6	3	0	2	22	11.0	
at Boise State	02/27/18	*	31	4-16	.250	3-10	.300	0-0	.000	1	1	2	3.4	2	3	1	0	0	11	11.0	
at Nevada	3/2/18	*	32	4-11	.364	3-5	.600	5-5	1.000	0	4	4	3.4	4	5	2	0	0	16	11.1	
Totals			29	926	104-301	.346	55-143	.385	60-70	.857	16	83	99	3.4	60	111	86	5	28	323	11.1

Games played: 29

Minutes/game: 31.9

Points/game: 11.1

FG Pct: 34.6

3FG Pct: 38.5

FT Pct: 85.7

Rebounds/game: 3.4

Assists/game: 3.8

Turnovers/game: 3.0

Assist/turnover ratio: 1.3

Steals/game: 1.0

Blocks/game: 0.2

## CAREER STATISTICS

CAREER STATISTICS			Total		3-Point		F-Throws		Rebounds											Scoring	
Season	gp-gs	min/avg	fg-fga	pct	fg-fga	pct	ft-fa	pct	off	def	tot	avg	pf	fo	ast	to	blk	stl	pts	avg	
2013-14*	24-1	114/4.8	10-34	.294	3-14	.214	5-7	.714	1	10	11	0.5	17	0	13	6	1	2	28	1.2	
2015-16	29-0	426/14.7	30-107	.280	23-71	.324	15-22	.682	13	42	55	1.9	23	0	37	26	2	11	98	3.4	
2016-17	30-21	743/24.8	68-203	.335	36-100	.360	32-45	.711	22	75	97	3.2	44	0	72	58	1	13	204	6.8	
2017-18	29-29	926/31.9	104-301	.346	55-143	.385	60-70	.857	16	83	99	3.4	60	0	111	86	5	28	323	11.1	
TOTAL	88-50	2095/23.8	202-611	.331	114-314	.363	107-137	.781	51	200	251	2.9	127	0	220	170	8	52	625	7.1	
All*	112-51	2209/19.7	212-645	.329	117-328	.357	112-144	.778	52	210	262	2.3	144	0	233	176	9	54	653	5.8	

## CAREER HIGHS

## Points

7, at UC Davis (12-2-16)

## Rebounds

3, Three times,  
Last: vs. Tulane (11-25-17)

## Assists

1, Three times,  
Last: vs. Hope Int'l (12-10-17)

## Steals

2, at Nevada (3-2-18)

## Blocks

1, vs. Loyola Marymount (11-20-16)

## Field Goals

2, Twice,  
Last: vs. Tulane (11-25-17)

## Field Goal Attempts

4, vs. San Diego Christian (11-14-16)

## 3-Point Field Goals

1, Twice,  
Last: vs. Tulane (11-25-17)

## 3-Point Field Goal Attempts

2, Twice,  
Last: vs. Tulane (11-25-17)

## Free Throws

2, Twice,  
Last: at UC Davis (12-2-16)

## Free Throw Attempts

2, Four times  
Last: vs. Tulane (11-25-17)

## MISC. CAREER STATS

Double-figure  
scoring games: 0Double-figure  
rebounding games: 0

## #21 ABBY LOWE

Sophomore • 1L

5-11

Guard

Stockport, England

Barking Abbey Academy

Opponent	Date	gs	min	Total		3-Pointers		Free throws		Rebounds				pf	a	t/o	blk	stl	pts	avg
				fg-fga	pct	3fg-fga	pct	ft-fa	pct	off	def	tot	avg							
vs Tulane	11-25-17	12		2-3	.667	1-2	.500	0-2	.000	1	2	3	3.0	1	0	1	0	1	5	5.0
HOPE INTERNATIONAL	12-10-17	8		0-1	.000	0-1	.000	0-0	.000	0	1	1	2.0	1	1	0	0	0	0	2.5
at San Jose State	01-10-18	3		0-0	.000	0-0	.000	0-0	.000	0	0	0	1.3	1	0	1	0	0	0	1.7
BOISE STATE	01-13-18	1		0-0	.000	0-0	.000	0-0	.000	0	0	0	1.0	0	0	1	0	0	0	1.3
at Colorado State	01-24-18	4		0-2	.000	0-1	.000	0-0	.000	0	0	0	0.8	0	0	0	0	0	0	1.0
at Air Force	02-03-18	13		1-2	.500	0-0	.000	0-0	.000	0	0	0	0.7	0	0	0	0	0	2	1.2
FRESNO STATE	02-07-18	0		0-0	.000	0-0	.000	0-0	.000	0	0	0	0.6	0	0	0	0	0	0	1.0
NEVADA	02-10-18	1		0-0	.000	0-0	.000	0-0	.000	0	0	0	0.5	0	0	0	0	0	0	0.9
at Wyoming	2/14/18	9		0-1	.000	0-0	.000	0-0	.000	0	0	0	0.4	2	0	1	0	0	0	0.8
at UNLV	02/17/18	0		0-0	.000	0-0	.000	0-0	.000	0	0	0	0.4	0	0	0	0	0	0	0.7
AIR FORCE	02-21-18	8		1-1	1.000	0-0	.000	2-2	1.000	1	0	1	0.5	2	0	0	0	0	4	1.0
SAN JOSE STATE	02-24-18	2		1-1	1.000	0-0	.000	0-0	.000	0	0	0	0.4	0	0	0	0	0	2	1.1
at Boise State	02/27/18	1		0-0	.000	0-0	.000	0-0	.000	0	0	0	0.4	0	0	0	0	0	0	1.0
at Nevada	3/2/18	5		0-1	.000	0-0	.000	0-0	.000	0	0	0	0.4	0	0	2	0	2	0	0.9
Totals		0	67	5-12	.417	1-4	.250	2-4	.500	2	3	5	0.4	7	1	6	0	3	13	0.9

Games played: 14

Minutes/game: 4.8

Points/game: 0.9

FG Pct: 41.7

3FG Pct: 25.0

FT Pct: 50.0

Rebounds/game: 0.4

Assists/game: 0.1

Turnovers/game: 0.4

Assist/turnover ratio: 0.2

Steals/game: 0.2

## CAREER STATISTICS

			Total		3-Point		F-Throws		Rebounds											Scoring	
Season	gp-gs	min/avg	fg-fga	pct	fg-fga	pct	ft-fga	pct	off	def	tot	avg	pf	fo	ast	to	blk	stl	pts	avg	
2016-17	15-0	79/5.3	6-19	.316	1-6	.167	5-7	.714	5	5	10	0.7	12	0	2	8	1	0	18	1.2	
2017-18	14-0	67/4.8	5-12	.417	1-4	.250	2-4	.500	2	3	5	0.4	7	0	1	6	0	3	13	0.9	
TOTAL	29-0	146/5.0	11-31	.355	2-10	.200	7-11	.636	7	8	15	0.5	19	0	3	14	1	3	31	1.1	



## CAREER HIGHS

## Points

21, vs. UNLV (1-18-17)

## Rebounds

9, vs. New Mexico (3-3-17)

## Assists

3, vs. UT Arlington (11-26-16)

## Steals

4, vs. San José State (2-8-17)

## Blocks

1, 21 times

Last: vs. Hope Int'l (12-10-17)

## Field Goals

7, UNLV (1-18-17)

## Field Goal Attempts

15, vs. New Mexico (3-3-17)

## 3-Point Field Goals

7, vs. UNLV (1-18-17)

## 3-Point Field Goal Attempts

13, vs. UNLV (1-18-17)

## Free Throws

5, vs. UC Santa Barbara (12-11-16)

## Free Throw Attempts

5, Twice,

Last: vs. UC Irvine (12-8-17)

## MISC. CAREER STATS

## Double-figure

scoring games: 28

## Double-figure

rebounding games: 0



## #22 LEXY THORDERSON

Senior • 3L

6-0

Guard

Castle Rock, Colo.

Rock Canyon High School

				Total		3-Pointers		Free throws		Rebounds											
Opponent	Date	gs	min	fg-fga	pct	3fg-fga	pct	ft-fa	pct	off	def	tot	avg	pf	a	t/o	blk	stl	pts	avg	
PRESBYTERIAN	11-10-17	*	20	4-7	.571	4-7	.571	0-0	.000	0	6	6	6.0	2	2	1	0	1	12	12.0	
CSUN	11-14-17	*	29	6-11	.545	5-10	.500	0-0	.000	0	6	6	6.0	1	1	0	0	2	17	14.5	
CAL STATE FULLERTON	11-18-17	*	24	2-8	.250	2-6	.333	0-0	.000	0	2	2	4.7	0	0	1	1	2	6	11.7	
vs Central Michigan	11-24-17	*	30	4-11	.364	4-10	.400	0-0	.000	1	2	3	4.3	2	0	1	0	0	12	11.8	
vs Tulane	11-25-17	*	15	3-6	.500	3-5	.600	0-0	.000	0	0	0	3.4	2	0	1	1	0	9	11.2	
SAN DIEGO	11-29-17	*	25	5-9	.556	5-8	.625	1-2	.500	1	0	1	3.0	4	0	1	0	1	16	12.0	
at Arizona	12-03-17	*	23	2-2	1.000	1-1	1.000	3-4	.750	0	1	1	2.7	1	0	0	0	0	8	11.4	
UC IRVINE	12-08-17	*	25	2-9	.222	2-8	.250	3-5	.600	2	3	5	3.0	1	0	2	0	1	9	11.1	
HOPE INTERNATIONAL	12-10-17	*	20	2-7	.286	2-6	.333	0-0	.000	1	3	4	3.1	0	1	0	1	1	6	10.6	
SANTA CLARA	12-14-17	*	17	0-4	.000	0-4	.000	0-0	.000	0	2	2	3.0	4	0	0	0	0	0	9.5	
at UC Santa Barbara	12-22-17	*	24	0-2	.000	0-2	.000	0-0	.000	1	2	3	3.0	0	1	2	0	0	0	8.6	
WYOMING	12-28-17	*	21	1-2	.500	0-1	.000	2-2	1.000	1	0	1	2.8	3	0	0	0	0	4	8.3	
at Utah State	12-30-17	*	23	3-8	.375	3-8	.375	2-2	1.000	1	0	1	2.7	3	1	0	1	0	11	8.5	
COLORADO STATE	01-03-18	*	23	2-5	.400	2-5	.400	0-0	.000	0	2	2	2.6	2	0	1	0	0	6	8.3	
SAN JOSE STATE	02-24-18	*	0	0-0	.000	0-0	.000	0-0	.000	0	0	0	2.5	0	0	0	0	0	0	7.7	
Totals		15	319	36-91	.396	33-81	.407	11-15	.733	8	29	37	2.5	25	6	10	4	8	116	7.7	

Games played: 15

Minutes/game: 21.3

Points/game: 7.7

FG Pct: 39.6

3FG Pct: 40.7

FT Pct: 73.3

Rebounds/game: 2.5

Assists/game: 0.4

Turnovers/game: 0.7

Assist/turnover ratio: 0.6

Steals/game: 0.5

Blocks/game: 0.3

## CAREER STATISTICS

			Total		3-Point		F-Throws		Rebounds										Scoring	
Season	gp-gs	min/avg	fg-fga	pct	fg-fga	pct	ft-fa	pct	off	def	tot	avg	pf	fo	ast	to	blk	stl	pts	avg
2014-15	30-0	226/7.5	20-70	.286	13-58	.224	4-4	1.000	7	12	19	0.6	15	0	8	18	1	3	57	1.9
2015-16	31-2	524/16.9	58-172	.337	40-124	.323	5-8	.625	16	51	67	2.2	33	0	4	9	8	10	161	5.2
2016-17	28-18	720/25.7	91-244	.373	66-192	.344	17-27	.630	21	56	77	2.8	51	2	22	16	9	24	265	9.5
2017-18	15-15	319/21.3	36-91	.396	33-81	.407	11-15	.733	8	29	37	2.5	25	0	6	10	4	8	116	7.7
TOTAL	104-35	1789/17.2	205-577	.355	152-455	.334	37-54	.685	52	148	200	1.9	124	2	40	53	22	45	599	5.8

## CAREER HIGHS\*

## Points

6, vs. San Francisco State (1-29-15)\*

## Rebounds

5, vs. San Francisco State (1-29-15)\*

## Assists

1, Twice,

Last: vs. Hope Int'l (12-10-17)

## Steals

N/A

## Blocks

N/A

## Field Goals

2, vs. San Francisco State (1-29-15)\*

## Field Goal Attempts

3, vs. San Francisco State (1-29-15)\*

## 3-Point Field Goals

N/A

## 3-Point Field Goal Attempts

2, vs. San Francisco State (11-14-14)\*

## Free Throws

2, vs. San Francisco State (1-29-15)\*

## Free Throw Attempts

5, vs. San Francisco State (1-29-15)\*

## MISC. CAREER STATS

## Double-figure

scoring games: 0

## Double-figure

rebounding games: 0

\* at CSU San Bernardino



## #23 LOLI GOMEZ

Junior • TR

5-8

Guard

Huntington Beach, Calif.

Edison High School

Opponent	Date	gs	min	Total		3-Pointers		Free throws		Rebounds				pf	a	t/o	blk	stl	pts	avg
				fg-fga	pct	3fg-fga	pct	ft-fga	pct	off	def	tot	avg							
vs Central Michigan	11-24-17		0	0-0	.000	0-0	.000	0-0	.000	0	0	0	0.0	0	0	0	0	0	0	0.0
vs Tulane	11-25-17		3	0-1	.000	0-0	.000	0-0	.000	0	0	0	0.0	0	0	1	0	0	0	0.0
HOPE INTERNATIONAL	12-10-17		2	0-0	.000	0-0	.000	0-0	.000	0	0	0	0.0	0	1	1	0	0	0	0.0
at Utah State	12-30-17		0	0-0	.000	0-0	.000	0-0	.000	0	0	0	0.0	0	0	0	0	0	0	0.0
at Colorado State	01-24-18		2	0-0	.000	0-0	.000	0-0	.000	0	0	0	0.0	0	0	1	0	0	0	0.0
at Wyoming	2/14/18		2	0-0	.000	0-0	.000	0-0	.000	0	0	0	0.0	0	0	0	0	0	0	0.0
SAN JOSE STATE	02-24-18		1	0-0	.000	0-0	.000	0-0	.000	0	0	0	0.0	1	0	0	0	0	0	0.0
at Nevada	3/2/18		1	0-0	.000	0-0	.000	0-0	.000	1	0	1	0.1	0	0	0	0	0	0	0.0
Totals			0	11	0-1	.000	0-0	.000	0-0	.000	1	0	1	0.1	1	1	3	0	0	0.0

Games played: 8

Minutes/game: 1.4

FG Pct: 0.0

Rebounds/game: 0.1

Assists/game: 0.1

Turnovers/game: 0.4

Assist/turnover ratio: 0.3

## CAREER STATISTICS

			Total		3-Point		F-Throws		Rebounds										Scoring	
Season	gp-gs	min/avg	fg-fga	pct	fg-fga	pct	ft-fga	pct	off	def	tot	avg	pf	fo	ast	to	blk	stl	pts	avg
2017-18	8-0	11/1.4	0-1	.000	0-0	.000	0-0	.000	1	0	1	0.1	1	0	1	3	0	0	0	0.0
TOTAL	8-0	11/1.4	0-1	.000	0-0	.000	0-0	.000	1	0	1	0.1	1	0	1	3	0	0	0	0.0

## CAREER HIGHS

## Points

6, vs. Hope International (12-10-17)

## Rebounds

5, vs. Hope International (12-10-17)

## Assists

N/A, vs. Presbyterian (11-10-17)

## Steals

1, vs. UNLV (1-27-18)

## Blocks

N/A

## Field Goals

3, vs. Hope International (12-10-17)

## Field Goal Attempts

5, Twice,

Last: vs. Hope Int'l (12-10-17)

## 3-Point Field Goals

1, at Wyoming (2-14-18)

## 3-Point Field Goal Attempts

1, Twice

Last: at Wyoming (2-14-18)

## Free Throws

1, at Colorado State (1-24-18)

## Free Throw Attempts

2, at Colorado State (1-24-18)

## MISC. CAREER STATS

## Double-figure

scoring games: 0

## Double-figure

rebounding games: 0



## #24 KIARA EDWARDS

Freshman • HS

6-1

Forward

Surprise, Ariz.

Valley Vista High School

Opponent	Date	qs	min	Total		3-Pointers		Free throws		Rebounds				pf	a	t/o	blk	stl	pts	avg
				fg-fga	pct	3fg-fga	pct	ft-fa	pct	off	def	tot	avg							
PRESBYTERIAN	11-10-17	4		0-1	.000	0-0	.000	0-0	.000	0	2	2	2.0	0	0	0	0	0	0	0.0
vs Tulane	11-25-17	8		1-5	.200	0-1	.000	0-0	.000	1	2	3	2.5	0	0	0	0	0	2	1.0
HOPE INTERNATIONAL	12-10-17	15		3-5	.600	0-0	.000	0-0	.000	1	4	5	3.3	0	0	3	0	0	6	2.7
SANTA CLARA	12-14-17	3		0-0	.000	0-0	.000	0-0	.000	0	0	0	2.5	0	0	0	0	0	0	2.0
BOISE STATE	01-13-18	1		0-0	.000	0-0	.000	0-0	.000	0	0	0	2.0	0	0	0	0	0	0	1.6
at Colorado State	01-24-18	7		1-2	.500	0-1	.000	1-2	.500	0	3	3	2.2	1	0	2	0	0	3	1.8
UNLV	01-27-18	3		0-0	.000	0-0	.000	0-0	.000	0	0	0	1.9	0	0	1	0	1	0	1.6
at Wyoming	2/14/18	4		1-2	.500	1-1	1.000	0-0	.000	0	1	1	1.8	0	0	0	0	0	3	1.8
SAN JOSE STATE	02-24-18	1		1-1	1.000	0-0	.000	0-0	.000	0	0	0	1.6	1	0	1	0	0	2	1.8
Totals		0	46	7-16	.438	1-3	.333	1-2	.500	2	12	14	1.6	2	0	7	0	1	16	1.8

Games played: 9

Minutes/game: 5.1

Points/game: 1.8

FG Pct: 43.8

3FG Pct: 33.3

FT Pct: 50.0

Rebounds/game: 1.6

Turnovers/game: 0.8

Steals/game: 0.1

## CAREER STATISTICS

CAREER STATISTICS			Total		3-Point		F-Throws		Rebounds											Scoring	
Season	gp-gs	min/avg	fg-fga	pct	fg-fga	pct	ft-fga	pct	off	def	tot	avg	pf	fo	ast	to	blk	stl	pts	avg	
2017-18	9-0	46/5.1	7-16	.438	1-3	.333	1-2	.500	2	12	14	1.6	2	0	0	7	0	1	16	1.8	
TOTAL	9-0	46/5.1	7-16	.438	1-3	.333	1-2	.500	2	12	14	1.6	2	0	0	7	0	1	16	1.8	

## CAREER HIGHS

## Points

19, vs. Sacramento State  
(11-14-14)

## Rebounds

11, vs. Sacramento State  
(11-14-14)

## Assists

5, vs. Sacramento State  
(11-14-14)

## Steals

3, vs. Colorado State (1-3-18)

## Blocks

2, at Air Force (2-13-16)

## Field Goals

6, Three times,  
Last at Wyoming (12-30-15)

## Field Goal Attempts

12, vs. Sacramento State  
(11-14-14)

## 3-Point Field Goals

2, vs. UC Santa Barbara (12-11-16)

## 3-Point Field Goal Attempts

3, Twice,  
Last: vs. UC Santa Barbara (12-11-16)

## Free Throws

7, vs. Sacramento State (1-14-14)

## Free Throw Attempts

10, vs. Sacramento State  
(11-14-14)

## MISC. CAREER STATS

Double-figure  
scoring games: 15

Double-figure  
rebounding games: 1

Double-doubles: 1



## #30 CHEYENNE GREENHOUSE

Senior • 3L

5-11

Guard

Riverside, Calif.

Canyon Springs High School

				Total		3-Pointers		Free throws		Rebounds											
Opponent	Date	gs	min	fg-fga	pct	3fg-fga	pct	ft-fa	pct	off	def	tot	avg	pf	a	t/o	blk	stl	pts	avg	
PRESBYTERIAN	11-10-17	17		3-5	.600	0-0	.000	0-0	.000	1	3	4	4.0	0	4	0	0	1	6	6.0	
CSUN	11-14-17	10		0-3	.000	0-0	.000	0-0	.000	0	1	1	2.5	0	0	1	0	0	0	3.0	
CAL STATE FULLERTON	11-18-17	12		1-3	.333	0-1	.000	1-2	.500	2	1	3	2.7	0	0	0	0	1	3	3.0	
vs Central Michigan	11-24-17	20		2-5	.400	0-0	.000	0-0	.000	2	1	3	2.8	2	2	0	0	1	4	3.3	
vs Tulane	11-25-17	20		1-3	.333	0-0	.000	1-2	.500	2	3	5	3.2	0	1	2	0	0	3	3.2	
SAN DIEGO	11-29-17	16		1-2	.500	0-0	.000	0-0	.000	0	0	0	2.7	1	0	0	0	0	2	3.0	
at Arizona	12-03-17	17		1-2	.500	0-0	.000	2-2	1.000	0	2	2	2.6	2	0	0	0	0	4	3.1	
UC IRVINE	12-08-17	8		0-1	.000	0-0	.000	0-0	.000	0	1	1	2.4	0	1	0	0	0	0	2.8	
HOPE INTERNATIONAL	12-10-17	16		5-8	.625	0-1	.000	0-0	.000	4	2	6	2.8	1	4	2	0	2	10	3.6	
SANTA CLARA	12-14-17	13		0-4	.000	0-1	.000	0-0	.000	2	0	2	2.7	1	2	0	0	1	0	3.2	
at UC Santa Barbara	12-22-17	15		4-4	1.000	0-0	.000	2-2	1.000	2	0	2	2.6	0	0	0	0	0	10	3.8	
WYOMING	12-28-17	14		1-1	1.000	0-0	.000	4-4	1.000	0	3	3	2.7	1	0	1	0	1	6	4.0	
at Utah State	12-30-17	12		2-4	.500	0-0	.000	0-1	.000	1	0	1	2.5	2	0	0	0	0	4	4.0	
COLORADO STATE	01-03-18	15		1-2	.500	0-0	.000	0-0	.000	0	0	0	2.4	1	1	0	0	3	2	3.9	
at San Jose State	01-10-18	19		4-10	.400	0-1	.000	3-4	.750	3	1	4	2.5	1	2	2	0	0	11	4.3	
BOISE STATE	01-13-18	25		4-7	.571	0-0	.000	4-5	.800	1	2	3	2.5	1	2	1	0	0	12	4.8	
at Fresno State	01-17-18	15		3-6	.500	0-0	.000	6-7	.857	4	0	4	2.6	1	1	0	0	0	12	5.2	
NEW MEXICO	01-20-18	21		4-7	.571	0-0	.000	3-4	.750	0	3	3	2.6	0	2	0	0	0	11	5.6	
at Colorado State	01-24-18	21		0-1	.000	0-0	.000	0-2	.000	0	1	1	2.5	0	1	0	0	0	0	5.3	
UNLV	01-27-18	12		2-4	.500	0-0	.000	0-0	.000	0	1	1	2.5	0	0	0	0	0	4	5.2	
at Air Force	02-03-18	12		0-0	.000	0-0	.000	0-0	.000	0	2	2	2.4	0	0	2	0	1	0	5.0	
FRESNO STATE	02-07-18	17		5-8	.625	0-0	.000	2-5	.400	3	2	5	2.5	1	0	1	0	0	12	5.3	
NEVADA	02-10-18	25		4-7	.571	0-0	.000	1-2	.500	2	2	4	2.6	1	1	1	0	0	9	5.4	
at Wyoming	2/14/18	19		2-4	.500	0-0	.000	0-0	.000	0	2	2	2.6	1	1	1	0	0	4	5.4	
at UNLV	02/17/18	8		1-1	1.000	0-0	.000	0-1	.000	1	0	1	2.5	2	1	1	0	0	2	5.2	
AIR FORCE	02-21-18	28		2-7	.286	0-0	.000	2-2	1.000	2	6	8	2.7	2	0	1	0	1	6	5.3	
SAN JOSE STATE	02-24-18 *	21		5-11	.455	0-0	.000	0-0	.000	1	2	3	2.7	2	2	2	0	0	10	5.4	
at Boise State	02/27/18	16		1-3	.333	0-0	.000	0-0	.000	1	2	3	2.8	0	1	0	0	0	2	5.3	
at Nevada	3/2/18	19		1-3	.333	0-0	.000	2-2	1.000	0	0	0	2.7	0	1	0	0	0	4	5.3	
Totals		1	483	60-126	.476	0-4	.000	33-47	.702	34	43	77	2.7	23	30	18	0	12	153	5.3	

Games played: 29  
Minutes/game: 16.7  
Points/game: 5.3  
FG Pct: 47.6  
3FG Pct: 0.0  
FT Pct: 70.2

Rebounds/game: 2.7  
Assists/game: 1.0  
Turnovers/game: 0.6  
Assist/turnover ratio: 1.7  
Steals/game: 0.4

## CAREER STATISTICS

CAREER STATISTICS

			Total		3-Point		F-Throws			Rebounds										Scoring	
Season	gp-gs	min/avg	fg-fga	pct	fg-fga	pct	ft-fa	pct	off	def	tot	avg	pf	fo	ast	to	blk	stl	pts	avg	
2014-15	31-8	441/14.2	43-118	.364	1-4	.250	32-48	.667	40	47	87	2.8	23	0	21	35	1	8	119	3.8	
2015-16	31-22	647/20.9	59-161	.366	2-9	.222	33-49	.673	53	47	100	3.2	35	0	17	30	6	9	153	4.9	
2016-17	29-7	447/15.4	41-109	.376	3-17	.176	36-47	.766	29	28	57	2.0	26	1	9	22	0	6	121	4.2	
2017-18	29-1	483/16.7	60-126	.476	0-4	.000	33-47	.702	34	43	77	2.7	23	0	30	18	0	12	153	5.3	
TOTAL	120-38	2018/16.8	203-514	.395	6-34	.176	134-191	.702	156	165	321	2.7	107	1	77	105	7	35	546	4.6	

## CAREER HIGHS

## Points

13, at Nevada (3-2-18)

## Rebounds

13, vs. Central Michigan (11-24-17)

## Assists

2, vs. Central Connecticut (11-27-16)

## Steals

2, Three times,

Last: vs. Santa Clara (12-14-17)

## Blocks

3, Twice

Last: at Air Force (2-3-18)

## Field Goals

5, Three Times

Last: at Nevada (3-2-18)

## Field Goal Attempts

9, vs. Central Michigan (11-24-17)

## 3-Point Field Goals

N/A

## 3-Point Field Goal Attempts

1, at New Mexico (1-20-18)

## Free Throws

5, vs. Boise State (1-13-18)

## Free Throw Attempts

7, at Boise State (2-27-18)

## MISC. CAREER STATS

## Double-figure

scoring games: 4

## Double-figure

rebounding games: 2

## Double-Doubles: 1



## #34 BAYLEE VANDERDOES

Sophomore • 1L

6-1

Forward

Auburn, Calif.

Placer High School

Opponent	Date	gs	min	Total		3-Pointers		Free throws		Rebounds				pf	a	t/o	blk	stl	pts	avg
				fg-fga	pct	3fg-fga	pct	ft-fga	pct	off	def	tot	avg							
PRESBYTERIAN	11-10-17	16		4-7	.571	0-0	.000	0-1	.000	2	3	5	5.0	0	1	0	1	0	8	8.0
CSUN	11-14-17	7		0-1	.000	0-0	.000	0-0	.000	1	0	1	3.0	4	0	0	0	0	0	4.0
CAL STATE FULLERTON	11-18-17	18		3-5	.600	0-0	.000	2-4	.500	3	0	3	3.0	3	0	0	1	0	8	5.3
vs Central Michigan	11-24-17	29		1-9	.111	0-0	.000	1-3	.333	11	2	13	5.5	3	0	1	0	1	3	4.8
vs Tulane	11-25-17	15		0-1	.000	0-0	.000	0-0	.000	1	1	2	4.8	1	0	0	0	2	0	3.8
SAN DIEGO	11-29-17	15		1-6	.167	0-0	.000	3-5	.600	2	1	3	4.5	0	0	1	3	0	5	4.0
at Arizona	12-03-17	*	24	2-3	.667	0-0	.000	0-0	.000	1	5	6	4.7	2	0	1	1	0	4	4.0
UC IRVINE	12-08-17	*	20	0-1	.000	0-0	.000	0-0	.000	4	1	5	4.8	0	0	1	2	0	0	3.5
HOPE INTERNATIONAL	12-10-17	*	7	1-3	.333	0-0	.000	0-0	.000	2	0	2	4.4	0	0	0	0	2	2	3.3
SANTA CLARA	12-14-17	*	14	0-2	.000	0-0	.000	0-0	.000	1	1	2	4.2	1	0	0	0	2	0	3.0
at UC Santa Barbara	12-22-17	17		0-2	.000	0-0	.000	0-2	.000	0	0	0	3.8	1	0	1	0	0	0	2.7
WYOMING	12-28-17	18		1-3	.333	0-0	.000	2-2	1.000	2	7	9	4.3	3	1	4	0	0	4	2.8
at Utah State	12-30-17	12		0-1	.000	0-0	.000	0-0	.000	1	3	4	4.2	1	0	2	0	0	0	2.6
COLORADO STATE	01-03-18	12		1-2	.500	0-0	.000	1-2	.500	2	3	5	4.3	1	0	1	0	0	3	2.6
at San Jose State	01-10-18	13		1-5	.200	0-0	.000	1-2	.500	3	1	4	4.3	3	0	0	1	1	3	2.7
BOISE STATE	01-13-18	23		3-3	1.000	0-0	.000	5-5	1.000	4	4	8	4.5	4	0	3	0	1	11	3.2
at Fresno State	01-17-18	13		1-2	.500	0-0	.000	1-2	.500	3	3	6	4.6	1	0	3	1	0	3	3.2
NEW MEXICO	01-20-18	18		1-3	.333	0-1	.000	2-2	1.000	1	5	6	4.7	1	2	2	0	1	4	3.2
at Colorado State	01-24-18	9		0-1	.000	0-0	.000	0-0	.000	0	2	2	4.5	3	0	0	1	0	0	3.1
UNLV	01-27-18	19		0-1	.000	0-0	.000	0-0	.000	1	1	2	4.4	1	0	1	0	0	0	2.9
at Air Force	02-03-18	19		0-2	.000	0-0	.000	3-4	.750	1	4	5	4.4	1	0	1	3	0	3	2.9
FRESNO STATE	02-07-18	18		2-3	.667	0-0	.000	1-3	.333	1	2	3	4.4	1	0	0	0	0	5	3.0
NEVADA	02-10-18	*	19	2-2	1.000	0-0	.000	0-0	.000	0	2	2	4.3	4	1	0	0	1	4	3.0
at Wyoming	2/14/18	*	18	0-5	.000	0-0	.000	1-2	.500	1	1	2	4.2	1	1	1	1	0	1	3.0
at UNLV	02/17/18	*	25	0-1	.000	0-0	.000	0-0	.000	0	2	2	4.1	1	1	2	2	0	0	2.8
AIR FORCE	02-21-18	*	13	0-1	.000	0-0	.000	2-4	.500	0	0	0	3.9	2	0	0	1	0	2	2.8
SAN JOSE STATE	02-24-18	4		0-0	.000	0-0	.000	0-0	.000	0	1	1	3.8	1	0	0	0	0	0	2.7
at Boise State	02/27/18	20		1-4	.250	0-0	.000	4-7	.571	4	2	6	3.9	1	0	4	1	0	6	2.8
at Nevada	3/2/18	24		5-5	1.000	0-0	.000	3-4	.750	0	2	2	3.8	3	0	0	0	0	13	3.2
Totals		8	479	30-84	.357	0-1	.000	32-54	.593	52	59	111	3.8	48	7	29	19	11	92	3.2

Games played: 29

Minutes/game: 16.5

Points/game: 3.2

FG Pct: 35.7

3FG Pct: 0.0

FT Pct: 59.3

Rebounds/game: 3.8

Assists/game: 0.2

Turnovers/game: 1.0

Assist/turnover ratio: 0.2

Steals/game: 0.4

Blocks/game: 0.7

## CAREER STATISTICS

			Total		3-Point		F-Throws		Rebounds										Scoring	
Season	gp-gs	min/avg	fg-fga	pct	fg-fga	pct	ft-fga	pct	off	def	tot	avg	pf	fo	ast	to	blk	stl	pts	avg
2016-17	23-9	312/13.6	33-67	.493	0-0	.000	23-37	.622	17	44	61	2.7	43	1	8	20	3	6	89	3.9
2017-18	29-8	479/16.5	30-84	.357	0-1	.000	32-54	.593	52	59	111	3.8	48	0	7	29	19	11	92	3.2
TOTAL	52-17	791/15.2	63-151	.417	0-1	.000	55-91	.604	69	103	172	3.3	91	1	15	49	22	17	181	3.5



## CAREER HIGHS

## Points

8, vs. Biola (12-28-16)

## Rebounds

5, at Cal State Fullerton (12-22-16)

## Assists

2, vs. Central Connecticut (11-27-16)

## Steals

2, vs. Biola (12-28-16)

## Blocks

2, vs. Hope Int'l (12-10-17)

## Field Goals

4, vs. Biola (12-28-16)

## Field Goal Attempts

10, at New Mexico (12-31-16)

## 3-Point Field Goals

N/A

## 3-Point Field Goal Attempts

1, Three times

Last: vs. UT Arlington (11-26-16)

## Free Throws

2, Three times,

Last: at Arizona (12-3-17)

## Free Throw Attempts

3, at Nevada (2-11-17)

## MISC. CAREER STATS

## Double-figure

scoring games: 0

## Double-figure

rebounding games: 0



## #40 MONIQUE TERRY

Sophomore • 1L

6-2

Forward

San Antonio, Texas

Brennan HS

Opponent	Date	qs	min	Total		3-Pointers		Free throws		Rebounds										
				fg-fga	pct	3fg-fga	pct	ft-fga	pct	off	def	tot	avg	pf	a	t/o	blk	stl	pts	avg
PRESBYTERIAN	11-10-17	7	1-1	1.000	0-0	.000	0-0	0-0	.000	1	1	2	2.0	1	0	0	0	0	2	2.0
CSUN	11-14-17	1	0-0	.000	0-0	.000	0-0	0-0	.000	0	0	0	1.0	0	0	0	0	0	0	1.0
CAL STATE FULLERTON	11-18-17	2	0-0	.000	0-0	.000	0-0	0-0	.000	0	0	0	0.7	0	0	0	0	0	0	0.7
vs Central Michigan	11-24-17	11	0-0	.000	0-0	.000	0-0	0-0	.000	1	0	1	0.8	2	0	0	0	0	0	0.5
vs Tulane	11-25-17	8	1-1	1.000	0-0	.000	0-0	0-0	.000	0	1	1	0.8	2	0	0	0	0	2	0.8
SAN DIEGO	11-29-17	3	0-0	.000	0-0	.000	0-0	0-0	.000	1	1	2	1.0	1	0	1	0	0	0	0.7
at Arizona	12-03-17	12	1-2	.500	0-0	.000	0-0	2-2	1.000	1	2	3	1.3	1	0	0	0	0	4	1.1
UC IRVINE	12-08-17	2	0-0	.000	0-0	.000	0-0	0-0	.000	0	0	0	1.1	0	0	0	0	0	0	1.0
HOPE INTERNATIONAL	12-10-17	13	1-1	1.000	0-0	.000	0-0	0-0	.000	1	1	2	1.2	2	0	1	2	1	2	1.1
SANTA CLARA	12-14-17	3	0-0	.000	0-0	.000	0-0	0-0	.000	1	1	2	1.3	0	0	1	0	0	0	1.0
Totals		0	62	4-5	.800	0-0	.000	2-2	1.000	6	7	13	1.3	9	0	3	2	1	10	1.0

Games played: 10

Minutes/game: 6.2

Points/game: 1.0

FG Pct: 80.0

FT Pct: 100.0

Rebounds/game: 1.3

Turnovers/game: 0.3

Steals/game: 0.1

Blocks/game: 0.2

## CAREER STATISTICS

			Total		3-Point		F-Throws		Rebounds											Scoring	
Season	gp-gs	min/avg	fg-fga	pct	fg-fga	pct	ft-fga	pct	off	def	tot	avg	pf	fo	ast	to	blk	stl	pts	avg	
2016-17	28-10	344/12.3	33-62	.532	0-3	.000	10-19	.526	19	38	57	2.0	38	0	3	16	3	7	76	2.7	
2017-18	10-0	62/6.2	4-5	.800	0-0	.000	2-2	1.000	6	7	13	1.3	9	0	0	3	2	1	10	1.0	
TOTAL	38-10	406/10.7	37-67	.552	0-3	.000	12-21	.571	25	45	70	1.8	47	0	3	19	5	8	86	2.3	

## CAREER HIGHS

Points  
6, Three times,  
Last: at UNLV (2-17-18)

Rebounds  
7, at UNLV (2-17-18)

Assists  
2, vs. Hope International (12-10-17)

Steals  
2, vs. UC Irvine (12-8-17)

Blocks  
2, vs. UC Irvine (12-8-17)

Field Goals  
3, Twice,  
Last: Hope Int'l (12-10-17)

Field Goal Attempts  
5, Twice,  
Last: vs. UC Irvine (12-8-17)

3-Point Field Goals  
N/A

3-Point Field Goal Attempts  
N/A

Free Throws  
2, at Nevada (3-2-18)

Free Throw Attempts  
4, at Nevada (3-2-18)

## MISC. CAREER STATS

Double-figure  
scoring games: 0

Double-figure  
rebounding games: 0



## #45 NAOMI EKWEDIKE

Sophomore • SQ

6-6

Center

Lagos, Nigeria

Potter's House Christian Academy

Opponent	Date	qs	min	Total		3-Pointers		Free throws		Rebounds				pf	a	t/o	blk	stl	pts	avg
				fg-fga	pct	3fg-fga	pct	ft-fa	pct	off	def	tot	avg							
PRESBYTERIAN	11-10-17	7		2-2	1.000	0-0	.000	0-0	.000	0	1	1	1.0	1	0	2	0	0	4	4.0
CSUN	11-14-17	8		0-0	.000	0-0	.000	0-0	.000	1	4	5	3.0	1	0	0	0	0	0	2.0
CAL STATE FULLERTON	11-18-17	8		0-1	.000	0-0	.000	0-0	.000	2	3	5	3.7	2	0	1	0	0	0	1.3
vs Tulane	11-25-17	9		2-5	.400	0-0	.000	0-0	.000	2	1	3	3.5	0	1	1	0	0	4	2.0
SAN DIEGO	11-29-17	7		0-0	.000	0-0	.000	0-0	.000	0	1	1	3.0	1	1	0	0	0	0	1.6
UC IRVINE	12-08-17	11		3-5	.600	0-0	.000	0-0	.000	0	5	5	3.3	2	0	0	2	2	6	2.3
HOPE INTERNATIONAL	12-10-17	12		3-4	.750	0-0	.000	0-0	.000	1	2	3	3.3	2	2	1	0	0	6	2.9
SANTA CLARA	12-14-17	10		1-2	.500	0-0	.000	0-0	.000	0	1	1	3.0	3	0	1	0	0	2	2.8
at UC Santa Barbara	12-22-17 *	15		2-3	.667	0-0	.000	0-2	.000	2	2	4	3.1	5	1	2	1	0	4	2.9
WYOMING	12-28-17	1		0-1	.000	0-0	.000	0-0	.000	0	0	0	2.8	0	0	0	0	0	0	2.6
at Utah State	12-30-17	9		1-1	1.000	0-0	.000	0-1	.000	1	0	1	2.6	3	0	1	0	1	2	2.5
at Fresno State	01-17-18	3		0-0	.000	0-0	.000	0-0	.000	0	0	0	2.4	0	0	0	0	0	0	2.3
NEW MEXICO	01-20-18	2		0-2	.000	0-0	.000	0-0	.000	1	1	2	2.4	1	0	1	0	0	0	2.2
at Colorado State	01-24-18	6		0-2	.000	0-0	.000	1-2	.500	3	1	4	2.5	0	0	1	0	0	1	2.1
UNLV	01-27-18	3		0-1	.000	0-0	.000	0-0	.000	0	1	1	2.4	0	0	0	0	0	0	1.9
at Air Force	02-03-18	2		0-1	.000	0-0	.000	0-0	.000	1	0	1	2.3	0	0	0	0	0	0	1.8
FRESNO STATE	02-07-18	3		0-0	.000	0-0	.000	0-0	.000	0	2	2	2.3	0	0	0	0	0	0	1.7
NEVADA	02-10-18	4		1-1	1.000	0-0	.000	0-0	.000	1	1	2	2.3	0	0	1	0	0	2	1.7
at UNLV	02/17/18	15		3-4	.750	0-0	.000	0-2	.000	4	3	7	2.5	2	0	1	0	0	6	1.9
AIR FORCE	02-21-18	3		0-1	.000	0-0	.000	0-0	.000	0	0	0	2.4	2	0	1	0	0	0	1.9
at Nevada	3/2/18	7		1-3	.333	0-0	.000	2-4	.500	3	1	4	2.5	2	0	0	1	0	4	2.0
Totals		1	145	19-39	.487	0-0	.000	3-11	.273	22	30	52	2.5	27	5	14	4	3	41	2.0

Games played: 21  
Minutes/game: 6.9  
Points/game: 2.0  
FG Pct: 48.7  
FT Pct: 27.3

Rebounds/game: 2.5  
Assists/game: 0.2  
Turnovers/game: 0.7  
Assist/turnover ratio: 0.4  
Steals/game: 0.1  
Blocks/game: 0.2

## CAREER STATISTICS

			Total		3-Point		F-Throws		Rebounds											Scoring	
Season	gp-gs	min/avg	fg-fga	pct	fg-fga	pct	ft-fa	pct	off	def	tot	avg	pf	fo	ast	to	blk	stl	pts	avg	
2016-17	9-0	63/7.0	8-19	.421	0-0	.000	1-3	.333	5	6	11	1.2	10	0	0	13	0	0	17	1.9	
2017-18	21-1	145/6.9	19-39	.487	0-0	.000	3-11	.273	22	30	52	2.5	27	1	5	14	4	3	41	2.0	
TOTAL	30-1	208/6.9	27-58	.466	0-0	.000	4-14	.286	27	36	63	2.1	37	1	5	27	4	3	58	1.9	

**Official Basketball Box Score -- Game Totals -- Final Statistics**  
**San Diego State vs Nevada**  
**3/2/18 6:30 p.m. at Reno, Nev. | Lawlor Events Center**

**San Diego State 72 • 11-18, 5-13 MW**

#	Player		Total		3-Ptr	Rebounds			PF	TP	A	TO	Blk	Stl	Min
			FG-FGA	FG-FGA	FT-FTA	Off	Def	Tot							
11	GOMEZ, Arantxa	f	0-0	0-0	2-4	0	0	0	5	2	0	1	1	0	8
01	LARK, Khalia	g	2-2	2-2	0-0	1	2	3	1	6	0	2	0	0	22
10	MURRAY, Naje	g	1-7	1-3	2-2	0	8	8	2	5	2	1	0	0	33
15	FORT, McKynzie	g	9-14	0-0	1-2	2	2	4	0	19	1	3	0	0	32
20	GOMEZ, Geena	g	4-11	3-5	5-5	0	4	4	4	16	5	2	0	0	32
05	ADAMS, Te'a		1-1	0-0	1-2	0	3	3	1	3	4	2	0	0	16
13	BROWN, Allison		0-1	0-0	0-0	0	0	0	0	0	0	0	0	0	1
21	LOWE, Abby		0-1	0-0	0-0	0	0	0	0	0	0	2	0	2	5
23	GOMEZ, Loli		0-0	0-0	0-0	1	0	1	0	0	0	0	0	0	1
30	GREENHOUSE, Cheyen		1-3	0-0	2-2	0	0	0	0	4	1	0	0	0	19
34	VANDERDOES, Baylee		5-5	0-0	3-4	0	2	2	3	13	0	0	0	0	24
45	EKWEDIKE, Naomi		1-3	0-0	2-4	3	1	4	2	4	0	0	1	0	7
Team						2	1	3				2			
Totals			24-48	6-10	18-25	9	23	32	18	72	13	15	2	2	200

1st - FG %: 10-16 62.5%    2nd: 1-5 20.0%    3rd: 6-11 54.5%    4th: 7-16 43.8%    Game: 24-48 50.0%    Deadball  
 3FG %: 2-3 66.7%    1-2 50.0%    2-3 66.7%    1-2 50.0%    6-10 60.0%    Rebounds  
 FT %: 0-0 0.0%    7-9 77.8%    6-8 75.0%    5-8 62.5%    18-25 72.0%    5

**Nevada 84 • 14-15, 7-11 MW**

#	Player		Total		3-Ptr	Rebounds			PF	TP	A	TO	Blk	Stl	Min
			FG-FGA	FG-FGA	FT-FTA	Off	Def	Tot							
03	ZELLER, Teige	f	8-13	0-0	4-5	3	1	4	4	20	1	3	0	0	25
11	BRIGGS, Terae	f	6-12	0-0	3-4	2	2	4	2	15	1	0	0	3	33
04	BERGMAN, Halie	g	8-11	3-4	0-0	6	3	9	2	19	4	0	0	0	25
13	MOE, T	g	2-7	1-3	7-8	1	2	3	4	12	8	0	0	1	23
34	REDMON, Jade	g	0-2	0-0	0-0	0	2	2	3	0	1	3	0	1	30
00	SUMILONG, Janelle		2-3	0-0	1-2	0	2	2	4	5	1	0	0	1	13
01	JONES, Ashlee		1-4	0-2	0-2	0	1	1	0	2	1	0	0	0	7
24	KING, Camariah		4-8	1-2	0-0	0	2	2	0	9	2	1	0	0	23
32	CEPHAS, AJ		1-7	0-0	0-0	3	2	5	3	2	0	0	0	1	21
Team						1	0	1							
Totals			32-67	5-11	15-21	16	17	33	22	84	19	7	0	7	200

1st - FG %: 7-16 43.8%    2nd: 7-22 31.8%    3rd: 10-19 52.6%    4th: 8-10 80.0%    Game: 32-67 47.8%    Deadball  
 3FG %: 1-3 33.3%    1-3 33.3%    2-3 66.7%    1-2 50.0%    5-11 45.5%    Rebounds  
 FT %: 0-0 0.0%    0-0 0.0%    8-11 72.7%    7-10 70.0%    15-21 71.4%    2

Officials: Jack Jones, Robert Strong, Alecia Murray  
 Technical fouls: San Diego State-None. Nevada-None.  
 Attendance: 2122

Score by periods	1st	2nd	3rd	4th	Total
San Diego State	22	10	20	20	<b>72</b>
Nevada	15	15	30	24	<b>84</b>

	In	Off	2nd	Fast	
Points	Paint	T/O	Chance	Break	Bench
SDSU	34	6	4	2	24
NV	50	24	17	8	18

Last FG - SDSU 4th-00:32, NV 4th-01:28.  
 Largest lead - SDSU by 10 1st-03:37, NV by 15 4th-01:08.  
 SDSU led for 18:34. NV led for 19:03. Game was tied for 02:23.

Score tied - 3 times.  
 Lead changed - 7 times.

**Official Basketball Box Score -- Game Totals -- Final Statistics**  
**Nevada vs San Diego State**  
**02-10-18 1:00 pm PT at Steve Fisher Court (San Diego, Calif.)**

**Nevada 72 • 11-12 (4-8 MW)**

##	Player		Total		3-Ptr	Rebounds			PF	TP	A	TO	Blk	Stl	Min
			FG-FGA	FG-FGA	FT-FTA	Off	Def	Tot							
03	ZELLER, Teige	f	8-14	0-0	3-4	4	5	9	4	19	0	5	1	0	25
32	CEPHAS, AJ	f	7-10	0-0	1-2	7	11	18	1	15	2	2	1	0	31
04	BERGMAN, Halie	g	2-6	1-3	0-0	1	1	2	3	5	3	1	0	1	16
13	MOE, T	g	3-12	0-3	3-5	1	2	3	4	9	4	4	0	0	34
34	REDMON, Jade	g	4-11	0-1	3-4	2	1	3	3	11	3	0	0	3	37
00	SUMILONG, Janelle		0-3	0-2	0-0	0	0	0	0	0	0	0	0	0	5
11	BRIGGS, Terae		2-3	0-0	2-2	2	3	5	2	6	3	0	0	1	24
12	TOBEY, MorningRose		0-0	0-0	0-0	0	0	0	0	0	0	0	0	0	1
24	KING, Camariah		3-10	1-3	0-0	0	1	1	2	7	4	2	0	3	27
Team						1	0	1							
Totals			29-69	2-12	12-17	18	24	42	19	72	19	14	2	8	200

1st - FG %: 4-15 26.7% 2nd: 7-17 41.2% 3rd: 9-19 47.4% 4th: 9-18 50.0% Game: 29-69 42.0% Deadball  
 3FG %: 0-1 0.0% 1-3 33.3% 0-3 0.0% 1-5 20.0% 2-12 16.7% Rebounds  
 FT %: 6-8 75.0% 0-0 0.0% 2-4 50.0% 4-5 80.0% 12-17 70.6% 4,1

**San Diego State 75 • 10-13 (4-8 MW)**

##	Player		Total		3-Ptr	Rebounds			PF	TP	A	TO	Blk	Stl	Min
			FG-FGA	FG-FGA	FT-FTA	Off	Def	Tot							
34	VANDERDOES, Baylee	f	2-2	0-0	0-0	0	2	2	4	4	1	0	0	1	19
01	LARK, Khalia	g	2-5	2-3	0-0	0	2	2	3	6	0	1	0	0	14
10	MURRAY, Naje	g	4-9	2-5	1-2	1	3	4	2	11	3	3	1	0	25
15	FORT, McKynzie	g	6-15	0-0	3-4	2	0	2	0	15	1	2	0	3	36
20	GOMEZ, Geena	g	4-9	4-8	6-6	0	3	3	4	18	6	5	0	1	35
05	ADAMS, Te'a		4-12	0-0	0-0	0	5	5	1	8	3	0	0	1	23
11	GOMEZ, Arantxa		1-2	0-0	0-0	1	2	3	5	2	1	0	0	0	18
21	LOWE, Abby		0-0	0-0	0-0	0	0	0	0	0	0	0	0	0	1
30	GREENHOUSE, Cheyen		4-7	0-0	1-2	2	2	4	1	9	1	1	0	0	25
45	EKWEDIKE, Naomi		1-1	0-0	0-0	1	1	2	0	2	0	1	0	0	4
Team						2	3	5							
Totals			28-62	8-16	11-14	9	23	32	20	75	16	13	1	6	200

1st - FG %: 8-19 42.1% 2nd: 5-15 33.3% 3rd: 5-15 33.3% 4th: 10-13 76.9% Game: 28-62 45.2% Deadball  
 3FG %: 4-7 57.1% 0-3 0.0% 1-3 33.3% 3-3 100.0% 8-16 50.0% Rebounds  
 FT %: 0-0 0.0% 0-0 0.0% 5-6 83.3% 6-8 75.0% 11-14 78.6% 3

Officials: Benny Luna, Kaili Kimura, Peter Contreras  
 Technical fouls: Nevada-None. San Diego State-None.  
 Attendance: 812

Score by periods	1st	2nd	3rd	4th	Total
Nevada	14	15	20	23	72
San Diego State	20	10	16	29	75

	In	Off	2nd	Fast	
Points	Paint	T/O	Chance	Break	Bench
NV	48	15	18	4	13
SDSU	34	23	14	11	21

Last FG - NV 4th-01:06, SDSU 4th-03:03.  
 Largest lead - NV by 7 3rd-01:49, SDSU by 7 1st-05:35.  
 NV led for 06:54. SDSU led for 29:24. Game was tied for 03:42.

Score tied - 9 times.  
 Lead changed - 11 times.

## All games

Overall record: 11-18 Conf: 5-13 Home: 9-7 Away: 2-9 Neutral: 0-2

##	Player	gp-gs	min	avg	Total		3-Point		F-Throw		Rebounds				pf	dq	a	to	blk	stl	pts	avg
					fg-fga	fg%	3fg-fga	3fg%	ft-fa	ft%	off	def	tot	avg								
15	FORT, McKynzie	28-28	970	34.6	173-376	.460	12-40	.300	92-123	.748	54	111	165	5.9	50	1	90	83	3	41	450	16.1
20	GOMEZ, Geena	29-29	926	31.9	104-301	.346	55-143	.385	60-70	.857	16	83	99	3.4	60	0	111	86	5	28	323	11.1
10	MURRAY, Naje	29-15	634	21.9	95-265	.358	52-149	.349	28-35	.800	15	71	86	3.0	68	2	32	47	3	30	270	9.3
22	THORDERSON, Lexy	15-15	319	21.3	36-91	.396	33-81	.407	11-15	.733	8	29	37	2.5	25	0	6	10	4	8	116	7.7
01	LARK, Khalia	29-29	750	25.9	69-184	.375	34-100	.340	16-23	.696	28	123	151	5.2	51	1	22	60	4	16	188	6.5
30	GREENHOUSE, Chey	29-1	483	16.7	60-126	.476	0-4	.000	33-47	.702	34	43	77	2.7	23	0	30	18	0	12	153	5.3
05	ADAMS, Te'a	28-0	464	16.6	50-176	.284	6-45	.133	23-35	.657	7	44	51	1.8	45	1	45	39	3	22	129	4.6
34	VANDERDOES, Bayle	29-8	479	16.5	30-84	.357	0-1	.000	32-54	.593	52	59	111	3.8	48	0	7	29	19	11	92	3.2
03	BOJORQUEZ, Jenay	5-0	57	11.4	5-17	.294	1-1	1.000	2-3	.667	1	6	7	1.4	7	0	3	6	0	2	13	2.6
11	GOMEZ, Arantxa	27-19	377	14.0	29-47	.617	0-0	.000	5-11	.455	25	40	65	2.4	45	2	8	17	11	7	63	2.3
45	EKWEDIKE, Naomi	21-1	145	6.9	19-39	.487	0-0	.000	3-11	.273	22	30	52	2.5	27	1	5	14	4	3	41	2.0
24	EDWARDS, Kiara	9-0	46	5.1	7-16	.438	1-3	.333	1-2	.500	2	12	14	1.6	2	0	0	7	0	1	16	1.8
40	TERRY, Monique	10-0	62	6.2	4-5	.800	0-0	.000	2-2	1.000	6	7	13	1.3	9	0	0	3	2	1	10	1.0
21	LOWE, Abby	14-0	67	4.8	5-12	.417	1-4	.250	2-4	.500	2	3	5	0.4	7	0	1	6	0	3	13	0.9
00	VILLA, Kennedi	3-0	13	4.3	0-0	.000	0-0	.000	1-2	.500	0	3	3	1.0	1	0	1	0	0	0	1	0.3
13	BROWN, Allison	8-0	45	5.6	0-8	.000	0-4	.000	0-0	.000	0	4	4	0.5	5	0	3	6	1	0	0	0.0
23	GOMEZ, Loli	8-0	11	1.4	0-1	.000	0-0	.000	0-0	.000	1	0	1	0.1	1	0	1	3	0	0	0	0.0
Team											61	77	138	11								
Total.....		29	5848		686-1748	.392	195-575	.339	311-437	.712	334	745	1079	37.2	474	8	365	445	59	185	1878	64.8
Opponents.....		29	5850		750-1796	.418	201-634	.317	294-408	.721	331	761	1092	37.7	447	-	453	395	72	215	1995	68.8

TEAM STATISTICS	SDSU	OPP
SCORING	1878	1995
Points per game	64.8	68.8
Scoring margin	-4.0	-
FIELD GOALS-ATT	686-1748	750-1796
Field goal pct	.392	.418
3 POINT FG-ATT	195-575	201-634
3-point FG pct	.339	.317
3-pt FG made per game	6.7	6.9
FREE THROWS-ATT	311-437	294-408
Free throw pct	.712	.721
F-Throws made per game	10.7	10.1
REBOUNDS	1079	1092
Rebounds per game	37.2	37.7
Rebounding margin	-0.4	-
ASSISTS	365	453
Assists per game	12.6	15.6
TURNOVERS	445	395
Turnovers per game	15.3	13.6
Turnover margin	-1.7	-
Assist/turnover ratio	0.8	1.1
STEALS	185	215
Steals per game	6.4	7.4
BLOCKS	59	72
Blocks per game	2.0	2.5
ATTENDANCE	22069	14164
Home games-Avg/Game	16-1379	11-1257
Neutral site-Avg/Game	-	2-168

Score by Periods	1st	2nd	3rd	4th	OT	Totals
San Diego State	467	462	432	506	11	1878
Opponents	463	435	528	543	26	1995

Date	Opponent		Score	Att.
11-10-17	PRESBYTERIAN	W	77-50	464
11-14-17	CSUN	W	58-55	366
11-18-17	CAL STATE FULLERTON	W	59-58	1108
^ 11-24-17	vs Central Michigan	Lot	76-85	150
^ 11-25-17	vs Tulane	L	46-80	186
11-29-17	SAN DIEGO	W	77-76	790
12-03-17	at Arizona	W	78-67	1555
12-08-17	UC IRVINE	L	65-67	4148
12-10-17	HOPE INTERNATIONAL	W	92-68	588
12-14-17	SANTA CLARA	L	34-48	617
12-22-17	at UC Santa Barbara	L	64-77	638
* 12-28-17	WYOMING	W	68-62	1325
* 12-30-17	at Utah State	L	58-62	368
* 01-03-18	COLORADO STATE	L	63-65	490
* 01-10-18	at San Jose State	W	75-65	813
* 01-13-18	BOISE STATE	L	70-86	674
* 01-17-18	at Fresno State	L	53-64	2122
* 01-20-18	NEW MEXICO	W	97-89	886
* 01-24-18	at Colorado State	L	43-72	1175
* 01-27-18	UNLV	L	64-75	4568
* 02-03-18	at Air Force	L	51-61	918
* 02-07-18	FRESNO STATE	L	60-66	4306
* 02-10-18	NEVADA	W	75-72	812
* 2/14/18	at Wyoming	L	50-70	2525
* 02/17/18	at UNLV	Lot	67-73	783
* 02-21-18	AIR FORCE	L	48-56	414
* 02-24-18	SAN JOSE STATE	W	85-78	513
* 02/27/18	at Boise State	L	53-64	809
* 3/2/18	at Nevada	L	72-84	2122

^ = Junkanoo Jam - Bimini, Bahamas

\* = Mountain West game



## Conference games

RECORD:	OVERALL	HOME	AWAY	NEUTRAL
ALL GAMES	5-13	4-5	1-8	0-0
CONFERENCE	5-13	4-5	1-8	0-0
NON-CONFERENCE	0-0	0-0	0-0	0-0

#	Player	gp-gs	min	avg	Total		3-Point		F-Throw		Rebounds										pts	avg
					fg-fga	fg%	3fg-fga	3fg%	ft-fa	ft%	off	def	tot	avg	pf	dq	a	to	blk	stl		
15	FORT, McKynzie	18-18	647	35.9	115-249	.462	6-21	.286	56-76	.737	37	78	115	6.4	36	1	57	54	2	29	292	16.2
20	GOMEZ, Geena	18-18	614	34.1	70-207	.338	40-101	.396	50-56	.893	9	56	65	3.6	41	0	60	57	4	17	230	12.8
10	MURRAY, Naje	18-14	448	24.9	58-180	.322	28-95	.295	14-20	.700	14	53	67	3.7	45	1	23	31	3	23	158	8.8
01	LARK, Khalia	18-18	485	26.9	46-114	.404	21-63	.333	8-10	.800	12	86	98	5.4	35	1	14	41	2	9	121	6.7
30	GREENHOUSE, Chey	18-1	319	17.7	42-86	.488	0-1	.000	27-39	.692	19	29	48	2.7	16	0	16	13	0	6	111	6.2
22	THORDERSON, Lexy	4-4	67	16.8	6-15	.400	5-14	.357	4-4	1.000	2	2	4	1.0	8	0	1	1	1	0	21	5.3
05	ADAMS, Te'a	17-0	321	18.9	30-101	.297	3-17	.176	16-23	.696	2	23	25	1.5	35	1	27	25	2	9	79	4.6
34	VANDERDOES, Bayle	18-4	297	16.5	18-44	.409	0-1	.000	26-39	.667	24	45	69	3.8	33	0	6	24	11	4	62	3.4
11	GOMEZ, Arantxa	18-13	271	15.1	21-33	.636	0-0	.000	5-9	.556	17	25	42	2.3	32	2	8	11	5	6	47	2.6
24	EDWARDS, Kiara	5-0	16	3.2	3-5	.600	1-2	.500	1-2	.500	0	4	4	0.8	2	0	0	4	0	1	8	1.6
45	EKWEDIKE, Naomi	12-0	58	4.8	6-17	.353	0-0	.000	3-9	.333	14	10	24	2.0	10	0	0	6	1	1	15	1.3
21	LOWE, Abby	12-0	47	3.9	3-8	.375	0-1	.000	2-2	1.000	1	0	1	0.1	5	0	0	5	0	2	8	0.7
13	BROWN, Allison	7-0	29	4.1	0-6	.000	0-2	.000	0-0	.000	0	3	3	0.4	4	0	3	3	0	0	0	0.0
23	GOMEZ, Loli	5-0	6	1.2	0-0	.000	0-0	.000	0-0	.000	1	0	1	0.2	1	0	0	1	0	0	0	0.0
Team											42	52	94					7				
Total.....		18	3625		418-1065	.392	104-318	.327	212-289	.734	194	466	660	36.7	303	6	215	283	31	107	1152	64.0
Opponents.....		18	3625		476-1128	.422	116-369	.314	196-267	.734	208	475	683	37.9	292	-	271	236	41	138	1264	70.2

TEAM STATISTICS	SDSU	OPP	Date	Opponent	Score	Att.
SCORING	1152	1264	* 12-28-17	WYOMING	w 68-62	1325
Points per game	64.0	70.2	* 12-30-17	at Utah State	L 58-62	368
Scoring margin	-6.2	-	* 01-03-18	COLORADO STATE	L 63-65	490
FIELD GOALS-ATT	418-1065	476-1128	* 01-10-18	at San Jose State	w 75-65	813
Field goal pct	.392	.422	* 01-13-18	BOISE STATE	L 70-86	674
3 POINT FG-ATT	104-318	116-369	* 01-17-18	at Fresno State	L 53-64	2122
3-point FG pct	.327	.314	* 01-20-18	NEW MEXICO	w 97-89	886
3-pt FG made per game	5.8	6.4	* 01-24-18	at Colorado State	L 43-72	1175
FREE THROWS-ATT	212-289	196-267	* 01-27-18	UNLV	L 64-75	4568
Free throw pct	.734	.734	* 02-03-18	at Air Force	L 51-61	918
F-Throws made per game	11.8	10.9	* 02-07-18	FRESNO STATE	L 60-66	4306
REBOUNDS	660	683	* 02-10-18	NEVADA	w 75-72	812
Rebounds per game	36.7	37.9	* 2/14/18	at Wyoming	L 50-70	2525
Rebounding margin	-1.3	-	* 02/17/18	at UNLV	Lot 67-73	783
ASSISTS	215	271	* 02-21-18	AIR FORCE	L 48-56	414
Assists per game	11.9	15.1	* 02-24-18	SAN JOSE STATE	w 85-78	513
TURNOVERS	283	236	* 02/27/18	at Boise State	L 53-64	809
Turnovers per game	15.7	13.1	* 3/2/18	at Nevada	L 72-84	2122
Turnover margin	-2.6	-				
Assist/turnover ratio	0.8	1.1	^ = Junkanoo Jam - Bimini, Bahamas			
STEALS	107	138	* = Mountain West game			
Steals per game	5.9	7.7				
BLOCKS	31	41				
Blocks per game	1.7	2.3				
ATTENDANCE	13988	11635				
Home games-Avg/Game	9-1554	9-1293				
Neutral site-Avg/Game	-	0-0				

Score by Periods	1st	2nd	3rd	4th	OT	Totals
San Diego State	298	268	262	316	8	1152
Opponents	294	283	325	348	14	1264

## Home games

RECORD:	OVERALL	HOME	AWAY	NEUTRAL
ALL GAMES	9-7	9-7	0-0	0-0
CONFERENCE	4-5	4-5	0-0	0-0
NON-CONFERENCE	5-2	5-2	0-0	0-0

##	Player	gp-gs	min	avg	Total		3-Point		F-Throw		Rebounds				pf	dq	a	to	blk	stl	pts	avg
					fg-fga	fg%	3fg-fga	3fg%	ft-fa	ft%	off	def	tot	avg								
15	FORT, McKynzie	15-15	522	34.8	88-202	.436	8-24	.333	49-69	.710	40	61	101	6.7	23	0	58	45	3	23	233	15.5
20	GOMEZ, Geena	16-16	504	31.5	59-161	.366	30-75	.400	35-40	.875	13	49	62	3.9	38	0	71	52	4	20	183	11.4
10	MURRAY, Naje	16-7	336	21.0	63-153	.412	34-89	.382	10-15	.667	7	34	41	2.6	36	0	26	31	1	13	170	10.6
22	THORDERSON, Lexy	10-10	204	20.4	24-62	.387	22-55	.400	6-9	.667	5	24	29	2.9	17	0	4	6	2	8	76	7.6
01	LARK, Khalia	16-16	412	25.8	40-112	.357	21-62	.339	6-8	.750	15	69	84	5.3	26	1	13	29	3	11	107	6.7
30	GREENHOUSE, Chey	16-1	270	16.9	38-80	.475	0-3	.000	17-24	.708	18	29	47	2.9	12	0	19	10	0	10	93	5.8
05	ADAMS, Te'a	15-0	249	16.6	35-110	.318	5-28	.179	9-13	.692	2	28	30	2.0	23	1	30	19	1	16	84	5.6
34	VANDERDOES, Bayle	16-5	241	15.1	19-43	.442	0-1	.000	18-28	.643	26	31	57	3.6	26	0	5	13	8	7	56	3.5
11	GOMEZ, Arantxa	15-10	229	15.3	22-32	.688	0-0	.000	2-5	.400	13	28	41	2.7	25	1	6	5	8	3	46	3.1
03	BOJORQUEZ, Jenay	3-0	38	12.7	2-8	.250	1-1	1.000	0-0	.000	0	5	5	1.7	6	0	2	3	0	1	5	1.7
45	EKWEDIKE, Naomi	13-0	79	6.1	10-20	.500	0-0	.000	0-0	.000	6	22	28	2.2	15	0	3	8	2	2	20	1.5
24	EDWARDS, Kiara	6-0	27	4.5	4-7	.571	0-0	.000	0-0	.000	1	6	7	1.2	1	0	0	5	0	1	8	1.3
21	LOWE, Abby	6-0	20	3.3	2-3	.667	0-1	.000	2-2	1.000	1	1	2	0.3	3	0	1	1	0	0	6	1.0
40	TERRY, Monique	7-0	31	4.4	2-2	1.000	0-0	.000	0-0	.000	4	4	8	1.1	4	0	0	3	2	1	4	0.6
00	VILLA, Kennedi	2-0	10	5.0	0-0	.000	0-0	.000	1-2	.500	0	1	1	0.5	0	0	1	0	0	0	1	0.5
23	GOMEZ, Loli	2-0	3	1.5	0-0	.000	0-0	.000	0-0	.000	0	0	0	0.0	1	0	1	1	0	0	0	0.0
13	BROWN, Allison	3-0	25	8.3	0-3	.000	0-2	.000	0-0	.000	0	1	1	0.3	3	0	2	4	1	0	0	0.0
Team											34	40	74					7				
Total.....		16	3200		408-998	.409	121-341	.355	155-215	.721	185	433	618	38.6	259	3	242	242	35	116	1092	68.2
Opponents.....		16	3200		400-981	.408	106-349	.304	165-229	.721	164	413	577	36.1	238	-	252	218	47	133	1071	66.9

Score by Periods	1st	2nd	3rd	4th	Totals
San Diego State	271	250	259	312	1092
Opponents	229	228	281	333	1071

## Away games

RECORD:	OVERALL	HOME	AWAY	NEUTRAL
ALL GAMES	2-9	0-0	2-9	0-0
CONFERENCE	1-8	0-0	1-8	0-0
NON-CONFERENCE	1-1	0-0	1-1	0-0

##	Player	gp-gs	min	avg	Total		3-Point		F-Throw		Rebounds				pf	dq	a	to	blk	stl	pts	avg
					fg-fga	fg%	3fg-fga	3fg%	ft-fa	ft%	off	def	tot	avg								
15	FORT, McKynzie	11-11	389	35.4	75-150	.500	4-15	.267	40-50	.800	13	45	58	5.3	23	1	26	34	0	16	194	17.6
20	GOMEZ, Geena	11-11	368	33.5	38-120	.317	22-60	.367	21-23	.913	2	29	31	2.8	18	0	33	32	1	8	119	10.8
10	MURRAY, Naje	11-8	258	23.5	30-97	.309	16-49	.327	12-14	.857	8	35	43	3.9	29	2	6	15	2	17	88	8.0
01	LARK, Khalia	11-11	302	27.5	28-64	.438	13-34	.382	8-13	.615	11	51	62	5.6	21	0	8	28	1	3	77	7.0
22	THORDERSON, Lexy	3-3	70	23.3	5-12	.417	4-11	.364	5-6	.833	2	3	5	1.7	4	0	2	2	1	0	19	6.3
30	GREENHOUSE, Chey	11-0	173	15.7	19-38	.500	0-1	.000	15-21	.714	12	10	22	2.0	9	0	8	6	0	1	53	4.8
40	TERRY, Monique	1-0	12	12.0	1-2	.500	0-0	.000	2-2	1.000	1	2	3	3.0	1	0	0	0	0	0	4	4.0
05	ADAMS, Te'a	11-0	197	17.9	12-55	.218	0-13	.000	11-17	.647	3	15	18	1.6	21	0	14	19	2	3	35	3.2
24	EDWARDS, Kiara	2-0	11	5.5	2-4	.500	1-2	.500	1-2	.500	0	4	4	2.0	1	0	0	2	0	0	6	3.0
34	VANDERDOES, Bayle	11-3	194	17.6	10-31	.323	0-0	.000	13-23	.565	14	25	39	3.5	18	0	2	15	11	1	33	3.0
45	EKWEDIKE, Naomi	7-1	57	8.1	7-14	.500	0-0	.000	3-11	.273	14	7	21	3.0	12	1	1	5	2	1	17	2.4
11	GOMEZ, Arantxa	10-7	134	13.4	7-14	.500	0-0	.000	3-6	.500	10	10	20	2.0	18	1	2	11	3	4	17	1.7
21	LOWE, Abby	7-0	35	5.0	1-6	.167	0-1	.000	0-0	.000	0	0	0	0.0	3	0	0	4	0	2	2	0.3
13	BROWN, Allison	5-0	20	4.0	0-5	.000	0-2	.000	0-0	.000	0	3	3	0.6	2	0	1	2	0	0	0	0.0
23	GOMEZ, Loli	4-0	5	1.3	0-0	.000	0-0	.000	0-0	.000	1	0	1	0.3	0	0	0	1	0	0	0	0.0
Team											24	31	55					4				
Total.....		11	2225		235-612	.384	60-188	.319	134-188	.713	115	270	385	35.0	180	5	103	180	23	56	664	60.4
Opponents.....		11	2225		288-686	.420	70-228	.307	113-156	.724	142	281	423	38.5	176	-	160	149	21	78	759	69.0

Score by Periods	1st	2nd	3rd	4th	OT	Totals
San Diego State	175	168	151	162	8	664
Opponents	182	179	206	178	14	759

## Games won

<b>RECORD:</b>	<b>OVERALL</b>	<b>HOME</b>	<b>AWAY</b>	<b>NEUTRAL</b>
ALL GAMES	11-0	9-0	2-0	0-0
CONFERENCE	5-0	4-0	1-0	0-0
NON-CONFERENCE	6-0	5-0	1-0	0-0

#	Player	gp-gs	min	avg	Total		3-Point		F-Throw		Rebounds				pf	dq	a	to	blk	stl	pts	avg
					fg-fga	fg%	3fg-fga	3fg%	ft-fita	ft%	off	def	tot	avg								
15	FORT, McKynzie	10-10	342	34.2	75-148	.507	8-14	.571	39-55	.709	23	47	70	7.0	13	0	34	23	1	18	197	19.7
10	MURRAY, Naje	11-4	219	19.9	47-106	.443	29-65	.446	10-13	.769	5	22	27	2.5	20	0	18	18	2	8	133	12.1
20	GOMEZ, Geena	11-11	330	30.0	41-94	.436	21-53	.396	17-19	.895	4	31	35	3.2	25	0	59	33	1	10	120	10.9
22	THORDERSON, Lexy	8-8	162	20.3	22-46	.478	19-39	.487	6-8	.750	3	18	21	2.6	11	0	4	3	2	7	69	8.6
01	LARK, Khalia	11-11	266	24.2	26-78	.333	16-43	.372	7-12	.583	14	49	63	5.7	20	0	12	22	3	8	75	6.8
30	GREENHOUSE, Chey	11-1	188	17.1	29-59	.492	0-3	.000	14-18	.778	13	20	33	3.0	9	0	15	9	0	5	72	6.5
05	ADAMS, Te'a	11-0	176	16.0	25-75	.333	4-20	.200	7-10	.700	3	24	27	2.5	15	0	28	12	3	14	61	5.5
11	GOMEZ, Arantxa	9-7	161	17.9	17-27	.630	0-0	.000	2-3	.667	10	21	31	3.4	23	1	6	5	8	1	36	4.0
34	VANDERDOES, Bayle	11-3	159	14.5	16-38	.421	0-1	.000	10-16	.625	17	25	42	3.8	21	0	5	8	7	5	42	3.8
24	EDWARDS, Kiara	3-0	20	6.7	4-7	.571	0-0	.000	0-0	.000	1	6	7	2.3	1	0	0	4	0	0	8	2.7
03	BOJORQUEZ, Jenay	3-0	38	12.7	2-8	.250	1-1	1.000	0-0	.000	0	5	5	1.7	6	0	2	3	0	1	5	1.7
45	EKWEDIKE, Naomi	8-0	49	6.1	6-11	.545	0-0	.000	0-0	.000	6	13	19	2.4	8	0	3	6	0	0	12	1.5
40	TERRY, Monique	6-0	38	6.3	3-4	.750	0-0	.000	2-2	1.000	4	5	9	1.5	5	0	0	2	2	1	8	1.3
21	LOWE, Abby	4-0	14	3.5	1-2	.500	0-1	.000	0-0	.000	0	1	1	0.3	2	0	1	1	0	0	2	0.5
00	VILLA, Kennedy	2-0	10	5.0	0-0	.000	0-0	.000	1-2	.500	0	1	1	0.5	0	0	1	0	0	0	1	0.5
23	GOMEZ, Lori	2-0	3	1.5	0-0	.000	0-0	.000	0-0	.000	0	0	0	0.0	1	0	1	1	0	0	0	0.0
13	BROWN, Allison	2-0	25	12.5	0-3	.000	0-2	.000	0-0	.000	0	1	1	0.5	3	0	2	4	1	0	0	0.0
Team											21	34	55					5				
Total.....		11	2200		314-706	.445	98-242	.405	115-158	.728	124	323	447	40.6	183	1	191	159	30	78	841	76.5
Opponents.....		11	2200		276-727	.380	77-274	.281	111-150	.740	133	273	406	36.9	172	-	167	149	28	76	740	67.3

Score by Periods	1st	2nd	3rd	4th	Totals
San Diego State	203	201	190	247	841
Opponents	165	171	184	220	740

## Games lost

<b>RECORD:</b>	<b>OVERALL</b>	<b>HOME</b>	<b>AWAY</b>	<b>NEUTRAL</b>
ALL GAMES	0-18	0-7	0-9	0-2
CONFERENCE	0-13	0-5	0-8	0-0
NON-CONFERENCE	0-5	0-2	0-1	0-2

#	Player	gp-gs	min	avg	Total		3-Point		F-Throw		Rebounds				pf	dq	a	to	blk	stl	pts	avg
					fg-fga	fg%	3fg-fga	3fg%	ft-fita	ft%	off	def	tot	avg								
15	FORT, McKynzie	18-18	628	34.9	98-228	.430	4-26	.154	53-68	.779	31	64	95	5.3	37	1	56	60	2	23	253	14.1
20	GOMEZ, Geena	18-18	596	33.1	63-207	.304	34-90	.378	43-51	.843	12	52	64	3.6	35	0	52	53	4	18	203	11.3
10	MURRAY, Naje	18-11	415	23.1	48-159	.302	23-84	.274	18-22	.818	10	49	59	3.3	48	2	14	29	1	22	137	7.6
22	THORDERSON, Lexy	7-7	157	22.4	14-45	.311	14-42	.333	5-7	.714	5	11	16	2.3	14	0	2	7	2	1	47	6.7
01	LARK, Khalia	18-18	484	26.9	43-106	.406	18-57	.316	9-11	.818	14	74	88	4.9	31	1	10	38	1	8	113	6.3
30	GREENHOUSE, Chey	18-0	295	16.4	31-67	.463	0-1	.000	19-29	.655	21	23	44	2.4	14	0	15	9	0	7	81	4.5
03	BOJORQUEZ, Jenay	2-0	19	9.5	3-9	.333	0-0	.000	2-3	.667	1	1	2	1.0	1	0	1	3	0	1	8	4.0
05	ADAMS, Te'a	17-0	288	16.9	25-101	.248	2-25	.080	16-25	.640	4	20	24	1.4	30	1	17	27	0	8	68	4.0
34	VANDERDOES, Bayle	18-5	320	17.8	14-46	.304	0-0	.000	22-38	.579	35	34	69	3.8	27	0	2	21	12	6	50	2.8
45	EKWEDIKE, Naomi	13-1	96	7.4	13-28	.464	0-0	.000	3-11	.273	16	17	33	2.5	19	1	2	8	4	3	29	2.2
11	GOMEZ, Arantxa	18-12	216	12.0	12-20	.600	0-0	.000	3-8	.375	15	19	34	1.9	22	1	2	12	3	6	27	1.5
24	EDWARDS, Kiara	6-0	26	4.3	3-9	.333	1-3	.333	1-2	.500	1	6	7	1.2	1	0	0	3	0	1	8	1.3
21	LOWE, Abby	10-0	53	5.3	4-10	.400	1-3	.333	2-4	.500	2	2	4	0.4	5	0	0	5	0	3	11	1.1
40	TERRY, Monique	4-0	24	6.0	1-1	1.000	0-0	.000	0-0	.000	2	2	4	1.0	4	0	0	1	0	0	2	0.5
00	VILLA, Kennedy	1-0	3	3.0	0-0	.000	0-0	.000	0-0	.000	0	2	2	2.0	1	0	0	0	0	0	0	0.0
23	GOMEZ, Lori	6-0	8	1.3	0-1	.000	0-0	.000	0-0	.000	1	0	1	0.2	0	0	0	2	0	0	0	0.0
13	BROWN, Allison	6-0	20	3.3	0-5	.000	0-2	.000	0-0	.000	0	3	3	0.5	2	0	1	2	0	0	0	0.0
Team											40	43	83					6				
Total.....		18	3648		372-1042	.357	97-333	.291	196-279	.703	210	422	632	35.1	291	7	174	286	29	107	1037	57.6
Opponents.....		18	3650		474-1069	.443	124-360	.344	183-258	.709	198	488	686	38.1	275	-	286	246	44	139	1255	69.7

Score by Periods	1st	2nd	3rd	4th	OT	Totals
San Diego State	264	261	242	259	11	1037
Opponents	298	264	344	323	26	1255

## TEAM STATISTICS

Opponent	Date	Score		Total		3-Pointers		Free throws		Rebounds				pf	a	t/o	blk	stl	pts	avg
				fg-fga	pct	3fg-fga	pct	ft-fa	pct	off	def	tot	avg							
PRESBYTERIAN	11-10-17	77-50	W	30-60	.500	12-26	.462	5-7	.714	9	36	45	45.0	13	22	18	2	7	77	77.0
CSUN	11-14-17	58-55	W	21-64	.328	11-29	.379	5-7	.714	11	28	39	42.0	17	15	17	5	10	58	67.5
CAL STATE FULLERTON	11-18-17	59-58	W	23-61	.377	8-22	.364	5-9	.556	15	27	42	42.0	18	9	14	4	7	59	64.7
vs Central Michigan	11-24-17	76-85	Lot	26-82	.317	9-30	.300	15-21	.714	21	19	40	41.5	20	13	4	0	6	76	67.5
vs Tulane	11-25-17	46-80	L	17-56	.304	5-16	.313	7-13	.538	13	23	36	40.4	15	7	19	1	7	46	63.2
SAN DIEGO	11-29-17	77-76	W	28-67	.418	7-18	.389	14-24	.583	16	22	38	40.0	17	16	12	4	5	77	65.5
at Arizona	12-03-17	78-67	W	23-50	.460	11-21	.524	21-25	.840	7	29	36	39.4	12	12	10	1	3	78	67.3
UC IRVINE	12-08-17	65-67	L	24-59	.407	8-24	.333	9-12	.750	16	25	41	39.6	11	14	21	6	7	65	67.0
HOPE INTERNATIONAL	12-10-17	92-68	W	38-71	.535	13-31	.419	3-3	1.000	10	31	41	39.8	10	25	16	4	11	92	69.8
SANTA CLARA	12-14-17	34-48	L	13-59	.220	3-28	.107	5-9	.556	12	26	38	39.6	15	6	15	0	12	34	66.2
at UC Santa Barbara	12-22-17	64-77	L	25-54	.463	4-12	.333	10-18	.556	10	13	23	38.1	23	11	16	1	3	64	66.0
WYOMING	12-28-17	68-62	W	23-54	.426	3-12	.250	19-25	.760	7	29	36	37.9	17	6	14	2	9	68	66.2
at Utah State	12-30-17	58-62	L	21-58	.362	6-28	.214	10-14	.714	13	21	34	37.6	21	9	14	1	6	58	65.5
COLORADO STATE	01-03-18	63-65	L	23-63	.365	7-22	.318	10-15	.667	13	28	41	37.9	13	10	11	0	4	63	65.4
at San Jose State	01-10-18	75-65	W	28-67	.418	4-16	.250	15-21	.714	15	35	50	38.7	21	13	20	6	7	75	66.0
BOISE STATE	01-13-18	70-86	L	23-52	.442	3-9	.333	21-24	.875	8	21	29	38.1	18	7	15	1	4	70	66.2
at Fresno State	01-17-18	53-64	L	20-57	.351	3-14	.214	10-17	.588	10	26	36	37.9	17	10	17	2	8	53	65.5
NEW MEXICO	01-20-18	97-89	W	37-72	.514	12-28	.429	11-14	.786	11	34	45	38.3	19	28	12	0	3	97	67.2
at Colorado State	01-24-18	43-72	L	15-52	.288	8-23	.348	5-10	.500	8	23	31	37.9	13	10	20	1	5	43	65.9
UNLV	01-27-18	64-75	L	25-61	.410	10-25	.400	4-8	.500	9	27	36	37.8	20	19	16	3	3	64	65.8
at Air Force	02-03-18	51-61	L	17-46	.370	3-12	.250	14-16	.875	7	25	32	37.6	11	4	20	5	7	51	65.1
FRESNO STATE	02-07-18	60-66	L	23-65	.354	5-21	.238	9-14	.643	15	28	43	37.8	16	16	18	1	8	60	64.9
NEVADA	02-10-18	75-72	W	28-62	.452	8-16	.500	11-14	.786	9	23	32	37.6	20	16	13	1	6	75	65.3
at Wyoming	2/14/18	50-70	L	18-53	.340	4-10	.400	10-13	.769	6	24	30	37.2	11	5	8	1	1	50	64.7
at UNLV	02/17/18	67-73	Lot	24-60	.400	6-19	.316	13-17	.765	13	28	41	37.4	22	8	25	2	8	67	64.8
AIR FORCE	02-21-18	48-56	L	14-50	.280	2-7	.286	18-21	.857	10	19	29	37.1	16	4	17	1	10	48	64.2
SAN JOSE STATE	02-24-18	85-78	W	35-78	.449	9-23	.391	6-9	.667	14	29	43	37.3	19	29	13	1	10	85	64.9
at Boise State	02/27/18	53-64	L	20-67	.299	5-23	.217	8-12	.667	17	23	40	37.4	11	8	15	1	6	53	64.5
at Nevada	3/2/18	72-84	L	24-48	.500	6-10	.600	18-25	.720	9	23	32	37.2	18	13	15	2	2	72	64.8
San Diego State		1878		686-1748	.392	195-575	.339	311-437	.712	334	745	1079	37.2	474	365	445	59	185	1878	64.8
Opponents		1995		750-1796	.418	201-634	.317	294-408	.721	331	761	1092	37.7	447	453	395	72	215	1995	68.8

Games played: 29  
Points/game: 64.8  
FG Pct: 39.2  
3FG Pct: 33.9  
FT Pct: 71.2

Rebounds/game: 37.2  
Assists/game: 12.6  
Turnovers/game: 15.3  
Assist/turnover ratio: 0.8  
Steals/game: 6.4  
Blocks/game: 2.0

## ► 2017-18 AZTEC GAME-BY-GAME POINTS-REBOUNDS-ASSISTS

Opponent	0 Kennedi Villa	1 Khalia Lark	5 Te'a Adams	10 Najé Murray	11 Arantxa Gómez	13 Allison Brown	15 McKynzie Fort	20 Geena Gomez	21 Abby Lowe	22 Lexy Thorderson	23 Loli Gomez	24 Kiara Edwards	30 Cheyenne Greenhouse	34 Baylee Vanderdoes	40 Monique Terry	45 Naomi Ekwedike
Presbyterian	1-0-1	0-4-1	4-0-2	14-3-1	4-3-0	DNP	16-7-2	6-2-6	DNP	12-6-2	DNP	0-2-0	6-4-4	8-5-1	2-2-0	4-1-0
CSUN	DNP	13-9-1	0-0-0	5-0-0	2-5-0	DNP	16-6-3	2-2-10	DNP	17-6-1	DNP	DNP	0-1-0	0-1-0	0-0-0	0-5-0
Cal State Fullerton	DNP	3-10-1	2-1-3	11-0-0	0-2-0	DNP	17-6-4	7-6-1	DNP	6-2-0	DNP	DNP	3-3-0	8-3-0	0-0-0	0-5-0
Central Michigan	DNP	2-4-0	5-1-1	12-0-0	0-1-0	DNP	21-3-3	15-6-7	DNP	12-3-0	0-0-0	DNP	4-3-2	3-13-0	0-1-0	DNP
Tulane	0-2-0	2-1-1	5-2-0	0-2-0	0-3-0	DNP	2-3-3	6-0-0	5-3-0	9-0-0	0-0-0	2-3-0	3-5-1	0-2-0	2-1-0	4-3-1
San Diego	DNP	0-4-1	5-4-2	10-4-1	8-3-0	DNP	24-6-8	7-5-3	DNP	16-1-0	DNP	DNP	2-0-0	5-3-0	0-2-0	0-1-1
Arizona	DNP	7-5-2	0-4-1	13-2-0	DNP	DNP	26-6-2	12-3-7	DNP	8-1-0	DNP	DNP	4-2-0	4-6-0	4-3-2	DNP
UC Irvine	DNP	10-5-0	2-3-2	10-1-1	0-3-0	DNP	16-4-3	12-2-7	DNP	9-5-0	DNP	DNP	0-1-1	0-5-0	0-0-0	6-5-0
Hope Int'l	0-1-0	14-4-1	20-8-7	16-1-4	DNP	0-1-0	DNP	10-1-4	0-1-1	6-4-1	0-0-1	6-5-0	10-6-4	2-2-0	2-2-0	6-3-2
Santa Clara	DNP	2-2-0	2-3-0	9-3-0	2-2-0	DNP	10-8-1	7-6-3	DNP	0-2-0	DNP	0-0-0	0-2-2	0-2-0	0-2-0	2-1-0
UCSB	DNP	14-5-0	5-0-0	12-3-2	0-1-0	DNP	10-1-4	9-1-3	DNP	0-3-1	DNP	DNP	10-2-2	0-0-0	DNP	4-4-1
Wyoming	DNP	10-4-0	9-0-1	3-2-0	3-2-0	DNP	20-3-1	9-3-3	DNP	4-1-0	DNP	DNP	6-3-0	4-9-1	DNP	0-0-0
Utah State	DNP	6-3-0	5-3-2	6-2-0	4-2-0	DNP	19-6-3	4-1-3	DNP	11-1-1	0-0-0	DNP	4-1-0	0-4-0	DNP	2-1-0
Colorado State	DNP	2-5-0	DNP	12-5-1	2-3-0	DNP	22-16-7	14-5-1	DNP	6-2-0	DNP	DNP	2-0-1	3-5-0	DNP	DNP
San José State	DNP	11-8-0	2-1-1	6-3-0	2-6-1	DNP	19-9-7	21-3-2	0-0-0	DNP	DNP	DNP	11-4-2	3-4-0	DNP	DNP
Boise State	DNP	8-6-1	4-1-0	4-1-0	4-2-0	0-0-0	13-1-4	14-4-0	0-0-0	DNP	DNP	0-0-0	12-3-2	11-8-0	DNP	DNP
Fresno State	DNP	7-8-0	6-1-2	0-1-0	2-4-0	0-1-1	20-5-1	3-1-5	DNP	DNP	DNP	DNP	12-4-1	3-6-0	DNP	0-0-0
New Mexico	DNP	4-6-1	7-4-5	29-6-1	4-1-2	DNP	32-9-4	6-4-11	DNP	DNP	DNP	DNP	11-3-2	4-6-2	DNP	0-2-0
Colorado State	DNP	5-6-1	2-2-1	12-5-1	1-0-1	0-1-0	7-3-3	12-0-1	0-0-0	DNP	0-0-0	3-3-0	0-1-1	0-2-0	DNP	1-4-0
UNLV	DNP	17-5-1	7-0-1	5-4-2	4-4-1	DNP	10-5-8	17-6-6	DNP	DNP	DNP	0-0-0	4-1-1	0-2-0	DNP	0-1-0
Air Force	DNP	10-4-1	4-0-0	5-1-0	2-1-0	0-0-0	20-8-1	5-7-2	2-0-0	DNP	DNP	DNP	0-2-0	3-5-0	DNP	0-1-0
Fresno State	DNP	4-7-1	10-1-1	7-2-4	0-1-0	DNP	8-10-9	14-4-1	DNP	DNP	DNP	DNP	12-2-0	5-2-0	DNP	0-2-0
Nevada	DNP	6-2-0	8-5-3	11-4-3	2-3-1	DNP	15-2-1	18-3-6	0-0-0	DNP	DNP	DNP	9-4-1	4-2-1	DNP	2-2-0
at Wyoming	DNP	4-5-1	6-3-1	4-0-0	0-2-0	0-1-0	17-3-0	11-5-1	0-0-0	DNP	0-0-0	3-1-0	4-2-1	1-2-1	DNP	DNP
at UNLV	DNP	4-8-2	0-0-0	16-7-0	0-0-0	DNP	24-8-3	15-4-1	0-0-0	DNP	DNP	DNP	2-1-1	0-2-1	DNP	6-7-0
Air Force	DNP	7-4-0	0-0-0	9-2-0	0-0-0	DNP	2-2-1	18-5-3	4-1-0	DNP	DNP	DNP	6-8-0	2-0-0	DNP	0-0-0
San José State	DNP	7-7-4	4-0-3	15-2-8	11-6-2	0-0-2	12-16-12	22-3-6	2-0-0	0-0-0	0-0-0	2-0-0	10-3-2	0-1-0	DNP	DNP
at Boise State	DNP	3-7-1	2-1-2	12-7-0	4-4-0	DNP	13-5-1	11-2-3	0-0-0	DNP	DNP	DNP	2-3-1	6-6-0	DNP	DNP
at Nevada	DNP	6-3-0	3-3-4	5-8-2	2-0-0	0-0-0	19-4-1	16-4-5	0-0-0	DNP	0-1-0	DNP	4-0-1	13-2-0	DNP	4-4-0

DNP - Did Not Play

## 2017-18 AZTEC GAME-BY-GAME STARTERS

Game	Forward	Forward/Guard	Guard	Guard	Guard	Lineup Records
vs. Presbyterian (W)	Gómez Ferrer	Lark	Fort	G. Gomez	Thorderson	Thorderson-Lark-Fort-G. Gomez-Greenhouse 1-0
vs. CSUN (W)	Gómez Ferrer	Lark	Fort	G. Gomez	Thorderson	Vanderdoes-Lark-Fort-G. Gomez-Murray 1-3
vs. Cal State Fullerton (W)	Gómez Ferrer	Lark	Fort	G. Gomez	Thorderson	Gómez Ferrer-Lark-Fort-G. Gomez-Thorderson 5-4
vs. Central Michigan (L)	Gómez Ferrer	Lark	Fort	G. Gomez	Thorderson	Vanderdoes-Lark-Fort-G. Gomez-Thorderson 1-2
vs. Tulane (L)	Gómez Ferrer	Lark	Fort	G. Gomez	Thorderson	Vanderdoes-Lark-Murray-G. Gomez-Thorderson 1-0
vs. San Diego (W)	Gómez Ferrer	Lark	Fort	G. Gomez	Thorderson	Ekwedike-Lark-Murray-G. Gomez-Thorderson 0-1
at Arizona (W)	Vanderdoes	Lark	Fort	G. Gomez	Thorderson	Gómez Ferrer-Lark-Fort-G. Gomez-Murray 2-8
vs. UC Irvine (L)	Vanderdoes	Lark	Fort	G. Gomez	Thorderson	
vs. Hope Int'l (W)	Vanderdoes	Lark	Murray	G. Gomez	Thorderson	
vs. Santa Clara (L)	Vanderdoes	Lark	Fort	G. Gomez	Thorderson	
at UC Santa Barbara (L)	Ekwedike	Lark	Fort	G. Gomez	Thorderson	
vs. Wyoming (W)	Gómez Ferrer	Lark	Fort	G. Gomez	Thorderson	
at Utah State (L)	Gómez Ferrer	Lark	Fort	G. Gomez	Thorderson	
vs. Colorado State (L)	Gómez Ferrer	Lark	Fort	G. Gomez	Thorderson	
at San José State (W)	Gómez Ferrer	Lark	Fort	G. Gomez	Murray	
vs. Boise State (L)	Gómez Ferrer	Lark	Fort	G. Gomez	Murray	
at Fresno State (L)	Gómez Ferrer	Lark	Fort	G. Gomez	Murray	
vs. New Mexico (W)	Gómez Ferrer	Lark	Fort	G. Gomez	Murray	
at Colorado State (L)	Gómez Ferrer	Lark	Fort	G. Gomez	Murray	
vs. UNLV (L)	Gómez Ferrer	Lark	Fort	G. Gomez	Murray	
at Air Force (L)	Gómez Ferrer	Lark	Fort	G. Gomez	Murray	
Fresno State (L)	Gómez Ferrer	Lark	Fort	G. Gomez	Murray	
Nevada (W)	Vanderdoes	Lark	Fort	G. Gomez	Murray	
at Wyoming (L)	Vanderdoes	Lark	Fort	G. Gomez	Murray	
at UNLV (L)	Vanderdoes	Lark	Fort	G. Gomez	Murray	
Air Force (L)	Vanderdoes	Lark	Fort	G. Gomez	Murray	
San José State (W)	Thorderson	Lark	Fort	G. Gomez	Greenhouse	
at Boise State (L)	Gómez Ferrer	Lark	Fort	G. Gomez	Murray	
at Nevada (L)	Gómez Ferrer	Lark	Fort	G. Gomez	Murray	



## Aztec Team Highs

Points	97	vs. New Mexico (1-20-18)
Field Goals Made	38	vs. Hope International (12-10-17)
Field Goal Attempts	82	vs. Central Michigan (11-24-17)
Field Goal Percentage	.535 (38-71)	vs. Hope International (12-10-17)
3-pt Field Goals Made	13	vs. Hope International (12-10-17)
3-pt Field Goals Attempted	31	vs. Hope International (12-10-17)
3-pt Field Goal Percentage	.600 (6-11)	at Nevada (3-2-18)
Free Throws Made	21	vs. Boise State (1-13-18) at Arizona (12-3-17)
Free Throw Attempts	25	at Nevada (3-2-18) vs. Wyoming (12-28-17) at Arizona (12-3-17)
Free Throw Percentage	.875	21-24 vs. Boise State (1-13-18) 14-16 at Air Force (2-3-18) at San José State (1-10-18)
Rebounds	50	vs. San José State (2-24-18)
Assists	29	vs. Santa Clara (12-14-17)
Steals	12	at San José State (1-10-18)
Blocked Shots	6	vs. UC Irvine (12-8-17)
Turnovers	25	at UNLV (2-17-18)
Fouls	23	at UC Santa Barbara (12-22-17)

## Aztec Team Lows

Points	34	vs. Santa Clara (12-14-17)
Field Goals Made	13	vs. Santa Clara (12-14-17)
Field Goal Attempts	46	at Air Force (2-3-18)
Field Goal Percentage	.220 (13-59)	vs. Santa Clara (12-14-17)
3-pt Field Goals Made	2	vs. Air Force (2-21-18)
3-pt Field Goals Attempted	7	vs. Air Force (2-21-18)
3-pt Field Goal Percentage	.107 (3-28)	vs. Santa Clara (12-14-17)
Free Throws Made	3	vs. Hope International (12-10-17)
Free Throws Attempted	3	vs. Hope International (12-10-17)
Free Throw Percentage	.500 (4-8)	vs. UNLV (1-27-18)
	.500 (5-10)	at Colorado State (1-24-18)
Rebounds	23	at UC Santa Barbara (12-22-17)
Assists	4	at Air Force (2-3-18)
Steals	1	at Wyoming (2-14-18)
Blocked Shots	0	vs. Colorado State (1-3-18) vs. Santa Clara (12-14-17) vs. Central Michigan (11-24-17)
Turnovers	4	vs. Central Michigan (11-24-17)
Fouls	10	vs. Hope International (12-10-17)

## Aztec Scoring

First Half High	46	at San José State (1-10-18)
First Quarter High	28	vs. New Mexico (1-20-18)
Second Quarter High	27	vs. Central Michigan (11-24-17)
Second Half High	49	vs. San José State (2-24-18) vs. New Mexico (1-20-18)
Third Quarter High	23	vs. CSUN (11-14-17)
Fourth Quarter High	34	vs. San José State (2-24-18)
First Half Low	15	vs. Air Force (2-21-18)
First Quarter Low	6	vs. Wyoming (12-28-17)
Second Quarter Low	7	vs. Air Force (2-21-18)
Second Half Low	14	at Colorado State (1-24-18)
Third Quarter Low	5	vs. Tulane (11-25-17)
Fourth Quarter Low	2	at Air Force (2-3-18)
Largest Halftime Lead	15 (42-27)	vs. Presbyterian (11-10-17)
Largest Halftime Deficit	17 (15-32)	vs. Air Force (2-21-18)
Largest Lead	31 (71-40)	vs. Presbyterian (11-10-17)
Largest Deficit	36 (27-63)	vs. Tulane (11-25-17)
Largest Deficit in a Win	10 (11-21)	vs. New Mexico (1-20-18)
Largest Lead in a Loss	18 (35-17)	vs. UNLV (1-27-18)

## Opponent Team Highs

Points	89	vs. New Mexico (1-20-18)
Field Goals Made	33	vs. New Mexico (1-20-18)
Field Goal Attempts	81	at San José State (1-10-18)
Field Goal Percentage	.500	(31-62) vs. Tulane (11-25-17) (25-50) at UC Santa Barbara (12-22-17)
3-pt Field Goals Made	15	vs. Tulane (11-25-17)
3-pt Field Goals Attempts	32	vs. Hope International (12-10-17)
	32	vs. CSUN (11-14-17)
3-pt Field Goal Percentage	.556 (15-27)	vs. Tulane (11-25-17)
Free Throws Made	19	vs. UNLV (1-27-18)
Free Throws Attempts	26	vs. UNLV (1-27-18)
Free Throw Percentage	.923 (12-13)	vs. Air Force (2-21-18)
Rebounds	54	vs. Central Michigan (11-24-17)
Assists	25	vs. Boise State (1-13-18)
Steals	14	vs. UC Irvine (12-8-17)
Blocked Shots	8	vs. UC Irvine (12-8-17)
Turnovers	19	at UNLV (2-17-18)
Fouls	23	vs. San Diego (11-29-17)

## Opponent Team Lows

Points	48	vs. Santa Clara (12-14-17)
Field Goals Made	19	vs. Santa Clara (12-14-17)
Field Goal Attempts	50	at UC Santa Barbara (12-22-17) vs. Santa Clara (12-14-17)
Field Goal Percentage	.296 (24-81)	at San José State (1-10-18)
3-pt Field Goals Made	2	vs. Nevada (2-10-18) vs. Air Force (2-21-18)
3-pt Field Goal Attempts	11	at Nevada (3-2-18) vs. Santa Clara (12-14-17)
3-pt Field Goal Percentage	.118 (2-17)	vs. Air Force (2-21-18)
Free Throws Made	3	at Wyoming (2-14-18)
Free Throw Attempts	3	at Wyoming (2-14-18)
Free Throw Percentage	.444 (4-9)	vs. Colorado State (1-3-18)
Rebounds	26	vs. Presbyterian (11-10-17)
Assists	9	vs. Colorado State (1-3-18)
Steals	2	at Wyoming (2-14-18) vs. Tulane (11-25-17) vs. Central Michigan (11-24-17)
Blocked Shots	0	at Nevada (3-2-18) vs. Hope International (12-10-17)
Turnovers	4	vs. New Mexico (1-20-18)
Fouls	7	vs. Cal State Fullerton (11-18-17)

## Opponent Scoring

First Half High	44	vs. New Mexico (1-20-18)
First Quarter High	32	vs. Tulane (11-25-17)
Second Quarter High	23	at UC Santa Barbara (12-22-17)
Second Half High	54	at Nevada (3-2-18)
Third Quarter High	30	at Nevada (3-2-18) at Colorado State (1-24-18)
Fourth Quarter High	30	vs. San José State (2-24-18)
First Half Low	16	vs. Santa Clara (12-14-17)
First Quarter Low	7	at UC Santa Barbara (12-22-17)
Second Quarter Low	5	vs. Santa Clara (12-14-17)
Second Half Low	23	vs. Presbyterian (11-10-17)
Third Quarter Low	11	at Utah State (12-30-17)
Fourth Quarter Low	9	vs. Air Force (2-21-18)
Largest Halftime Lead	16 (43-27)	vs. Tulane (11-25-17)
Largest Halftime Deficit	17 (15-32)	vs. Air Force (2-21-18)
Largest Lead	36 (63-27)	vs. Tulane (11-25-17)
Largest Deficit	31 (40-71)	vs. Presbyterian (11-10-17)
Largest Deficit in a Win	18 (17-35)	vs. UNLV (1-27-18)
Largest Lead in a Loss	10 (21-11)	vs. New Mexico (1-20-18)

**Aztec Individual Highs**

**Points**

32, McKynzie Fort vs. New Mexico (1-20-18)

**Field Goals Made**

12, McKynzie Fort vs. New Mexico (11-29-17)

**Field Goals Attempted**

20, Geena Gomez vs. Colorado State (1-3-18)

**Field Goal Percentage (min. 5 made)**

1.000 (5-5), Baylee Vanderdoes at Nevada (3-2-18)

**3-Point Field Goals Made**

7, Najé Murray vs. New Mexico (1-20-18)

**3-Point Field Goals Attempted**

13, Najé Murray vs. New Mexico (1-20-18)

**3-Pt Field Goal Percentage (min. 2 made)**

1.000 (2-2), Khalia Lark at Nevada (3-2-18)

1.000 (2-2), McKynzie Fort vs. New Mexico (1-20-18)

1.000 (2-2), Najé Murray at UC Santa Barbara (12-22-17)

**Free Throws Made**

12, Geena Gomez vs. Air Force (2-21-18)

**Free Throws Attempted**

13, McKynzie Fort at Arizona (12-3-17)

13, Geena Gomez vs. Air Force (2-21-18)

**Free Throw Percentage (min 4 made)**

1.000 (7-7), Geena Gomez at UNLV (2-17-18)

1.000 (6-6), Najé Murray vs. Central Michigan (11-24-17)

1.000 (6-6), Geena Gomez vs. Nevada (2-10-18)

1.000 (5-5), Geena Gomez at Nevada (3-2-18)

**Rebounds**

16, McKynzie Fort vs. San José State (2-24-18)

16, McKynzie Fort vs. Colorado State (1-3-18)

**Assists**

11, Geena Gomez vs. New Mexico (1-20-18)

**Steals**

4, Najé Murray vs. Air Force (2-21-18)

4, Najé Murray at UNLV (2-17-18)

4, Geena Gomez vs. Santa Clara (12-14-17)

4, Te'a Adams vs. Hope International (12-10-17)

**Blocked Shots**

3, Baylee Vanderdoes at Air Force (2-3-18)

3, Baylee Vanderdoes vs. San Diego (11-29-17)

**Turnovers**

7, Geena Gomez vs. Fresno State (2-7-18)

**Minutes**

43, McKynzie Fort at UNLV (2-17-18)

**Opponent Individual Highs**

**Points**

41, Cherise Beynon vs. New Mexico (1-20-18)

**Field Goals Made**

17, Cherise Beynon vs. New Mexico (1-20-18)

**Field Goals Attempted**

31, Cherise Beynon vs. New Mexico (1-20-18)

**Field Goal Percentage (min 5 made)**

.833 (5-6), Veronika Mirkovic at Colorado State (1-24-18)

**3-Point Field Goals Made**

7, Riley Lupfer vs. Boise State (1-13-18)

7, Kolby Morgan vs. Tulane (11-25-17)

**3-Point Field Goals Attempted**

12, Riley Lupfer vs. Boise State (1-13-18)

12, Julia Pihl vs. Hope International (12-10-17)

**3-Pt Field Goal Percentage (min 2 made)**

1.000 (2-2) Danae Miller at UC Santa Barbara (12-22-17)

1.000 (2-2) Sarah Porter at UC Santa Barbara (12-22-17)

1.000 (2-2) Vanessa DeSimone vs. Hope International (12-10-17)

1.000 (2-2) Sydney Williams vs. San Diego (11-29-17)

**Free Throws Made**

9, Brooke Johnson vs. UNLV (1-27-18)

9, Drew Edelman at UC Santa Barbara (12-22-17)

**Free Throws Attempted**

10, Brooke Johnson vs. UNLV (1-27-18)

10, Taylor Berry vs. Santa Clara (12-14-17)

**Free Throw Percentage (min 4 made)**

1.000 (9-9) Drew Edelman at UC Santa Barbara (12-22-17)

1.000 (8-8) Victoria Price at Utah State (12-30-17)

1.000 (6-6) Cydni Lewis vs. San José State (2-24-18)

1.000 (5-5) Erika Chapman vs. Air Force (2-21-18)

1.000 (5-5) Liv Roberts vs. Wyoming (12-28-17)

**Rebounds**

19, Tinara Moore vs. Central Michigan (11-24-17)

**Assists**

10, Braydey Hodgins vs. Boise State (1-13-18)

**Steals**

5, Kaelin Immel at Air Force (2-3-18)

**Blocked Shots**

4, Channon Fluker vs. CSUN (11-14-17)

**Turnovers**

8, Kaelin Immel vs. Air Force (2-21-18)

## ►THE LAST TIME AN AZTEC...

**Scored 20-24 points**

22, Geena Gomez, 2-24-18 vs. San José State

**Scored 25-29 points**

26, McKynzie Fort, 12-3-17 at Arizona

**Scored 30-39 points**

32, McKynzie Fort, 1-20-18 vs. San José State

**Scored 40+ points**

41, Chana Perry, 1-2-88 vs. Northern Illinois

**Had 20+ rebounds**

27, Chana Perry, 11-25-88 vs. Alabama State

**Had 15-19 rebounds**

16, McKynzie Fort, 2-24-18 vs. San José State

**Had 10-14 rebounds**

10, McKynzie Fort, 2-7-18 vs. Fresno State

**Had 10+ assists**

11, Geena Gomez, 1-20-18 vs. New Mexico

**Had A Double-Double**

McKynzie Fort, 12 points, 16 rebounds, 2-24-18 vs. San José State

**Had A Triple-Double**

Chelsea Hopkins, 13 points, 11 rebounds, 12 assists, 3-9-13 vs. Boise State

**The Last Time San Diego State ...****Had two players score 20 points in the same game**

McKynzie Fort (32) and Najé Murray (29), 1-20-18 vs. New Mexico

**Had two players with a double-double in the same game**

Erimma Amariqwa (19 points, 13 rebounds) and Cheyenne Greenhouse (19 points, 11 rebounds), 11-14-14 vs. Sacramento State

**Scored 100+ points**

101, vs. Colorado State (101-62), 1-25-92

**Allowed 100+ points**

104, vs. UCLA (56-104), 12-11-98

**Won by 20+ points**

24, vs. Hope International (92-68), 12-10-17

**Won by 30+ points**

35, vs. San Diego Christian (60-25), 12-21-15

**Won by 40+ points**

41, vs. Boise State (86-45), 3-9-13

**Won by 50+ points**

51, vs. Air Force (79-28), 1-7-09

**Won in Overtime**

vs. Fresno State (65-54), 2-10-16

**Lost in Overtime**

at UNLV (67-73), 2-17-18

## ►2017-18 AZTEC LEADERS

**Double-Figure Scoring Games**

McKynzie Fort (24), Geena Gomez (16), Najé Murray (15), Khalia Lark (8), Cheyenne Greenhouse (7), Lexy Thorderson (5), Te'a Adams (1), Baylee Vanderdoes (2), Arantxa Gomez Ferrer (1)

**SDSU High Scorer**

McKynzie Fort (17), Geena Gomez (6), Khalia Lark (2), Lexy Thorderson (2), Te'a Adams (1), Najé Murray (1)

**Double-Figure Rebounding Games**

McKynzie Fort (3), Khalia Lark (1), Baylee Vanderdoes (1)

**Games Led SDSU In Rebounds**

McKynzie Fort (11), Khalia Lark (8), Baylee Vanderdoes (5), Najé Murray (4), Te'a Adams (2), Naomi Ekwedike (1), Geena Gomez (2), Cheyenne Greenhouse (2), Lexy Thorderson (1)

**Games Led SDSU In Assists**

Geena Gomez (16), McKynzie Fort (11), Te'a Adams (2), Baylee Vanderdoes (1), Khalia Lark (1), Cheyenne Greenhouse (1), Najé Murray (1)

**Games Led SDSU In Steals**

McKynzie Fort (13), Najé Murray (11), Te'a Adams (8), Geena Gomez (8), Khalia Lark (4), Baylee Vanderdoes (3), Lexy Thorderson (3), Arantxa Gómez Ferrer (2), Cheyenne Greenhouse (2), Jenay Bojorquez (1), Kiara Edwards (1), Abby Lowe (1)

**Games Led SDSU In Blocks**

Baylee Vanderdoes (10), Arantxa Gómez Ferrer (6), Geena Gomez (2), Khalia Lark (2), Naomi Ekwedike (2), Lexy Thorderson (2), Najé Murray (1), Te'a Adams (1), McKynzie Fort (1), Cheyenne Greenhouse (1), Monique Terry (1)

## ►2017-18 SPECIALTY STATS

## San Diego State/Opponent

	Points in Paint	Points off TOs	2nd Chance Points	Fast Break Points	Bench Points
vs. Presbyterian (W)	34/28	11/14	12/5	13/12	39/5
vs. CSUN (W)	10/18	9/7	5/6	4/5	8/7
vs. Cal State Fullerton (W)	26/26	11/7	11/9	9/2	26/27
vs. Central Michigan (L)	26/42	17/4	10/13	2/4	26/8
vs. Tulane (L)	18/22	6/28	9/9	2/0	27/23
vs. San Diego (W)	40/42	4/8	17/13	4/4	22/21
at Arizona (W)	18/30	5/6	6/11	5/10	21/15
vs. UC Irvine (L)	20/36	16/29	9/16	2/9	18/37
vs. Hope Int'l (W)	44/22	26/17	8/4	12/7	44/18
vs. Santa Clara (L)	18/22	9/12	4/7	6/2	15/12
at UC Santa Barbara (L)	28/38	17/19	9/12	10/12	27/21
vs. Wyoming (W)	32/19	20/13	1/10	4/2	22/15
at Utah State (L)	26/28	8/15	6/10	2/2	14/12
vs. Colorado State (L)	28/38	11/15	12/9	5/16	17/7
at San José State (W)	34/36	19/13	11/13	2/4	16/24
vs. Boise State (L)	38/36	12/19	9/9	6/13	27/15
at Fresno State (L)	24/42	15/20	12/8	4/6	21/29
vs. New Mexico (W)	36/38	8/15	8/10	13/13	22/14
at Colorado State (L)	10/38	6/16	5/6	4/11	6/20
vs. UNLV (L)	22/36	14/17	3/15	7/4	11/11
at Air Force (L)	24/22	8/16	4/5	2/0	9/9
vs. Fresno State (L)	32/40	15/12	12/0	10/8	27/24
vs. Nevada (W)	34/48	23/15	14/18	11/4	21/13
at Wyoming (L)	14/22	9/10	5/4	0/2	13/21
at UNLV (L, OT)	14/32	17/23	12/9	6/4	8/10
Air Force (L)	20/28	13/15	12/13	8/4	10/14
vs. San José State (W)	44/32	11/9	17/17	17/11	36/16
at Boise State (L)	28/32	17/8	8/14	8/4	10/8
at Nevada (L)	34/50	6/24	4/17	2/8	24/18



**KENNEDI VILLA**Fr. | 6-0 | G  
Oakland, Calif.  
St. Mary's HS

0

**KHALIA LARK**Sr. | 6-0 | G/F  
Irvine, Calif.  
Mater Dei HS/Washington

1

**TE'A ADAMS**Fr. | 5-9 | G  
Kirkland, Wash.  
Juanita HS

5

**NAJÉ MURRAY**Fr. | 5-6 | G  
Stockton, Calif.  
St. Mary's HS

10

**ARANTXA GÓMEZ FERRER**Jr. | 6-0 | F  
Valencia, Spain  
Parque Colegio Santa Ana HS

11

**ALLISON BROWN**Sr. | 5-7 | G  
Anaheim Hills, Calif.  
Mater Dei HS

13

**MCKYNZIE FORT**Jr. | 5-9 | G  
Fontana, Calif.  
Etiwanda HS

15

**GEENA GOMEZ**Sr. | 5-8 | G  
Huntington Beach, Calif.  
Edison HS/St. Joseph's (Pa.)

20

**ABBY LOWE**So. | 5-11 | G  
Stockport, England  
Barking Abbey Academy

21

**LEXY THORDERSON**Sr. | 6-0 | G  
Castle Rock, Colo.  
Rock Canyon HS

22

**LOLI GOMEZ**Jr. | 5-10 | G  
Huntington Beach, Calif.  
Edison HS/CSU San Bernardino

23

**KIARA EDWARDS**Fr. | 6-1 | F  
Surprise, Ariz.  
Valley Vista HS

24

**CHEYENNE GREENHOUSE**Sr. | 5-11 | G  
Riverside, Calif.  
Canyon Springs HS

30

**BAYLEE VANDERDOES**So. | 6-1 | F  
Auburn, Calif.  
Placer HS

34

**MONIQUE TERRY**So. | 6-2 | F  
San Antonio, Texas  
Brennan HS

40

**NAOMI EKWEIKE**So. | 6-6 | C  
Lagos, Nigeria  
Potters House Christian Academy (Fla.)

45

**STACIE TERRY**Head Coach  
Fifth Season  
UT Arlington (1998)

HC

**JESSE CLARK**Assistant Coach  
Fifth Season  
Pacific Union (2003)

AC

**CIARA CARL**Assistant Coach  
Fifth Season  
Point Loma Nazarene (2005)

AC

**NICK GRANT**Assistant Coach  
Fourth Season  
Baylor (2010)

AC