

Founded in 1897, SDSU is the fifth largest university in California.



Inside:

San Diego State University	190
Dr. Stephen L. Weber	194
Jeff Schemmel	195
Athletic Department Staff	196
Media Information	200
Opponent Directory	202
Media Outlets	204
Broadcast Media	205
Cox Arena at Aztec Bowl	206
Athletics Directory	208



Founded March 13, 1897, San Diego State University began as the San Diego Normal School, a training facility for elementary school teachers. Seven faculty and 91 students met in temporary quarters over a downtown drugstore before moving to a newly constructed 17-acre campus on Park Boulevard.

The curriculum was limited at first to English, history and mathematics, but course offerings broadened rapidly under the leadership of Samuel T. Black, who left his position as state superintendent of public instruction to become the new school's first president. Black served from 1898 to 1910.

From 1910 to 1935, President Edward L. Hardy headed a vigorous administration that oversaw major changes to the fledgling institution. In 1921, the Normal School became San Diego State Teachers College, a four-year public institution controlled by the state Board of Education. In that same year, the two-year San Diego Junior College, forerunner of today's local community colleges, became a branch of San Diego State, creating a union that lasted until 1946.

By the 1920s, San Diego State was already beginning to outgrow its Park Boulevard location, and San Diegans launched a campaign to build a new campus on the city's eastern border. In February 1931, students, faculty and staff moved into seven Mission-style buildings surrounding a common area still known as the Main Quad.

San Diego State University



2002 NCAA TOURNAMENT ▶ 2005 NIT ▶ 2006 NCAA TOURNAMENT ▶ 2007 NIT



universities nationwide in terms of ethnic and racial diversity among its student body, as well as the number of bachelor's degrees conferred upon students of color.

Increasingly recognized for innovative research, San Diego State has achieved the prestigious designation of "Research University" with high research activity granted by the Carnegie Foundation. Since 2000, SDSU faculty and staff have attracted more than \$880 million in grants and contracts for research and program administration. SDSU ranks among the top 100 public universities

nationwide in research expenditures, and SDSU's research funding has doubled from a decade ago.

Private giving to San Diego State has also risen sharply in recent years, reaching a record \$65 million in the 2003-2004 fiscal year. Because state funds and student fees provide only slightly more than half of the university's annual operating requirements, the support of alumni, friends and community partners is providing a crucial margin of excellence at SDSU, enabling the university to fulfill its mission and expand its service to the San Diego region and beyond.

SDSU welcomes opportunities to bring the university's full resources

Founded

1897

Cal State System

Member since 1960

Local Presence

One in seven college graduates in San Diego are SDSU alums

Four years later, the Legislature authorized expansion of degree programs beyond teacher education, and San Diego State Teachers College became San Diego State College. Also in 1935, Walter R. Hepner took the helm as president, beginning a 17-year tenure. The college continued to grow over time, reaching an enrollment of more than 25,000 students during the administration of Malcolm A. Love, who served as president from 1952 to 1971.

In 1960, San Diego State became part of the newly created California State College system, now known as the California State University system. In the early 1970s, with legislative approval, San Diego State College became San Diego State University.

Leading the institution during the 1970s were Acting President Donald E. Walker (1971-1972), President Brage Golding (1972-1977), Acting President Trevor Colbourn (1977-1978) and President Thomas B. Day, whose tenure spanned from 1978 to 1996. In 1996, Stephen L. Weber became the university's seventh president.

Beginning its 111th academic year in fall 2007, SDSU can take pride in more than a century of achievement in education, research and service. With an enrollment of more than 34,000 students, SDSU has grown into the largest institution of higher education in the San Diego region and one of the

largest in California.

Renowned for its academic excellence, the university is home to top-ranking programs in education, international business, social work, speech-language pathology, biology and public administration, to name just a few. Overall, SDSU students can choose from 81 undergraduate majors, 73 master's programs and 16 doctoral degree programs.

One in seven San Diegans with a college degree attended SDSU, making San Diego State a primary educator of the region's work force, as well as a leader in expanding access to higher education. Committed to serving the richly diverse San Diego region, SDSU ranks among the top





Grants

\$130 million during fiscal year 2005-06

External Funding

More than \$880 million since 2000

to bear in analyzing and resolving complex community problems. A prime example is the City Heights Educational Collaborative, an ongoing partnership with San Diego City Schools, the San Diego Education Association, teachers and parents. Funded with an \$18 million grant from Price Charities, the Collaborative is improving instruction for students and professional development for teachers in three inner-city schools managed by the university.

Another initiative to improve education in the San Diego region and beyond is the QUALCOMM Institute for Innovation and Educational Success, launched in 2004 with a record \$14.5 million corporate gift from QUALCOMM. The Institute supports programs that aim to enhance math and engineering education across the K-12 spectrum, and supports efforts to revitalize performance in urban school districts nationwide.

Yet another example of San Diego State's innovative community engagement is SDSU Nurses Now, a

program that over the years has partnered with more than 10 local hospitals and health organizations in an effort to alleviate the region's nursing shortage. With more than \$3 million in funding commitment from these health care partners secured so far, SDSU has increased its nursing faculty, enabling the university to educate more future nurses. To date the program has helped SDSU produce an additional 300 nurses.

Perhaps the most visible evidence of SDSU's continuing growth is a recent flurry of campus construction on Montezuma Mesa. Completed facilities over the past decade, totaling more than \$600 million in value, include Cuicacalli, a dining and residence complex; the Chemical Sciences Laboratory and the BioScience Center, both with leading-edge laboratories and infrastructure; a 2,458-space parking structure, the largest in the California State University system; and the Aztec Athletics Center, housing coaches' offices, training facilities and the Wise Foundation Hall of Fame. Summer 2005 also marked the long-awaited

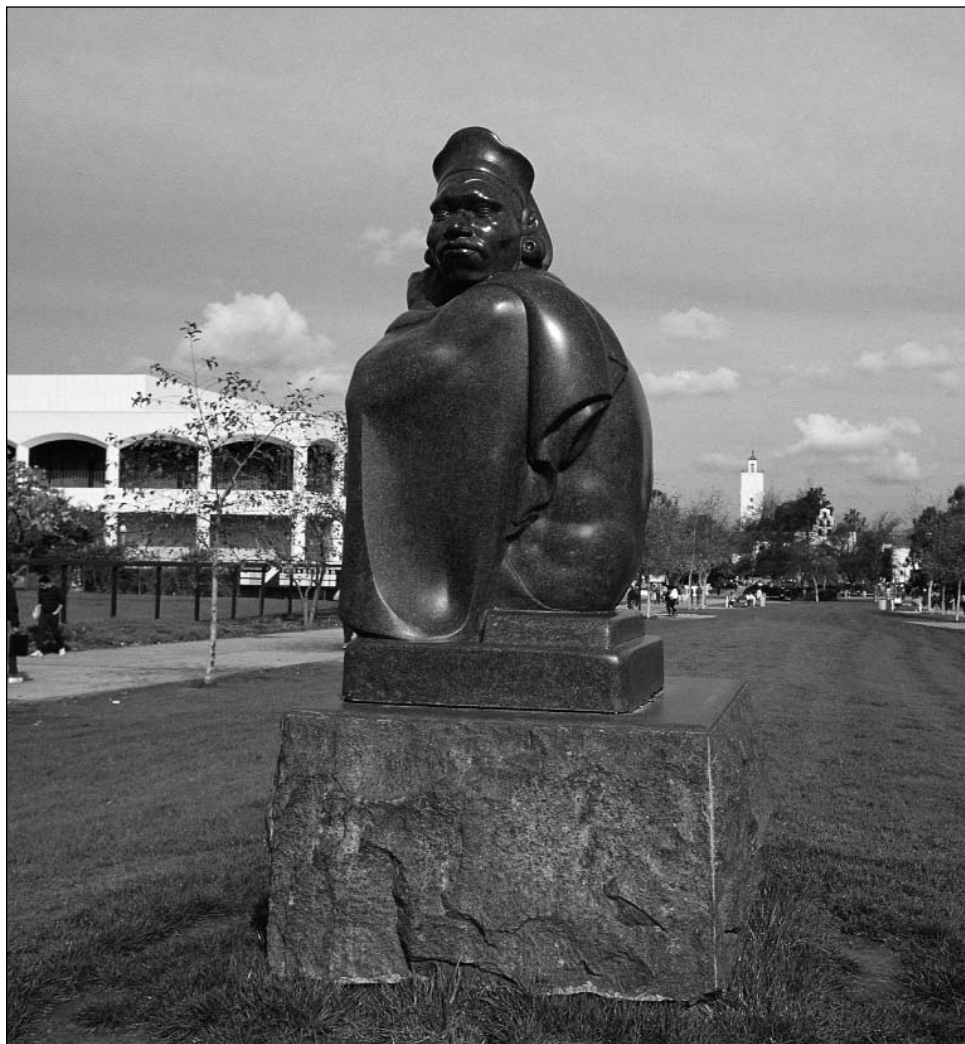
completion of the SDSU trolley station and tunnel, part of the Metropolitan Transit Development Board's Mission Valley East extension of the San Diego Trolley system.

In fall 2006, SDSU dedicated a new home for the College of Arts & Letters; and the state-of-the-art Calpulli Center, a \$26 million facility housing Student Health Services, Counseling and Psychological Services and Student Disability Services. In spring 2007, the university opened the Aztec Aquaplex, a \$10 million aquatic center. Future campus improvements set to take place include renovation of Nasitir and Storm Halls and construction of a new student union building. As part of the Campus Master Plan, the university also plans to build on-campus housing for additional students.

Beyond accolades and campus expansion, San Diego State University remains, as always, most proud of its alumni family, now more than 210,000 strong. Among those who call SDSU their alma mater are Federal Trade Commission Chairman Timothy Muris, former Air Force Chief of Staff, Gen. Merrill A. "Tony" McPeak, San Diego County supervisors Greg Cox, Dianne Jacob, Pam Slater, Ron Roberts and Bill Horn; former San Diego Mayor Maureen O'Connor, San Diego city council members Jim Madaffer and Kevin Faulconer, National Teachers of the Year Janis Gabay (1990) and Sandra McBrayer (1994), restaurant executives Ralph Rubio, CEO of Rubio's Fresh Mexican Grill and Linda A. Lang, CEO of Jack In the Box restaurants; astronaut Ellen Ochoa and Costco CEO and co-founder Jim Sinegal.

Aztec alumni also include entertainers Gregory Peck, Art Linkletter, Marion Ross, Julie Kavner and Kathy Najimy; Hollywood producer Kathleen Kennedy; golfers Lon Hinkle and Gene Littler; baseball players Tony Gwynn, Mark Grace, Travis Lee and Graig Nettles; football players Marshall Faulk, Brian Sipe, Fred Dryer, Kyle Turley and Kirk Morrison; America's Cup skipper Dennis Conner; and basketball player Michael Cage.

The success of these individuals and thousands of other SDSU alumni attest eloquently to the success of their alma mater. From modest beginnings, San Diego State University has evolved into a premier center of learning, research and service.



Aztecs and SDSU

San Diego State University first adopted the Aztec name in the 1920s as a nickname for the college's sports teams. In 1925, the student newspaper followed suit, changing its name from *The Paper Lantern* to *The Aztec*. Since that time, San Diego State's celebration of Aztec heritage has permeated the campus. In 1936, a Donald Hord sculpture of Montezuma II, the last Aztec emperor, became a welcoming campus icon. With the passing years, Aztec themes echoed in the names, colors and architectural elements of new campus buildings. And Aztec culture became the subject of more than a dozen university courses.

In 1941, Monty Montezuma, a character based on Montezuma II, debuted at San Diego State athletic events as a symbolic personification of the Aztecs. Over time, the Montezuma character's look and activities have evolved from a sports mascot into a more dignified and accurate representation of the historical emperor. Montezuma now serves as the university's ambassador of Aztec culture, charged with the responsibility of informing and educating the San Diego community about Aztec civilization. SDSU continues to take pride in its affiliation with Aztec culture and to celebrate the Aztec virtues of strength, valor and intellectual achievement.

SDSU'S Aztec Heritage

From the early decades of its history, San Diego State has identified itself with the Aztecs, one of the most sophisticated and distinctive societies in the history of the Western Hemisphere. A fitting choice for a university committed to internationalism and diversity, the Aztec identity evokes great pride in Mexico, as well as among many people in the United States, and certainly within the SDSU community. Consequently, San Diego State strives to honor the Aztec people by enhancing awareness, understanding and appreciation of Aztec culture and achievements.

Aztec History

Aztec civilization dates back to at least the 12th century A.D. The precise location is still debated by scholars, but tradition tells us of a place somewhere north of modern-day Mexico City known at that time as Aztlan, which meant "the place of the cranes" or "the place of the herons." The people who lived in this land were called Azteca meaning "those of Aztlan."

The Azteca eventually left their homeland and

became known as the Mexica. Native folklore attributes this name change to the instructions of the people's patron deity, Huitzilopochtli (Hummingbird on the Left).

Around 1325, the Mexica settled on an island in Lake Texcoco, an area that is now the heart of Mexico City, and named it Tenochtitlan or "the place of the fruit of the cactus." A century later, the Mexica and two other Nahuatl-speaking city-states, Texcoco and Tlacopan, combined to create an entity popularly known as the Aztec Empire.

Boasting a strong military force, this new alliance commanded a sphere of influence that stretched across much of present-day Mexico.

Tenochtitlan and its surrounding valley evolved into a highly sophisticated, multicultural and multilingual city-state of several million inhabitants. At this same time, major European cities numbered only 30,000 to 40,000 in population. A cradle of innovation, the Aztec Empire developed advanced systems of trade, science, politics, religion, education and agriculture. The Aztecs also enjoyed sports and built grand ballcourts to accommodate team events.



Dr. Stephen L. Weber



2002 NCAA TOURNAMENT ▶ 2003 NIT ▶ 2006 NCAA TOURNAMENT ▶ 2007 NIT



Dr. Stephen L. Weber

University President
12th Year at SDSU

Stephen L. Weber, the seventh president of San Diego State University, provides dynamic leadership to an institution that ranks among the largest in the nation. Educated as a philosopher, President Weber began his tenure at SDSU in July 1996 and shortly afterward initiated a broad-based dialogue intended to set the course for the university's future.

Under President Weber's guidance, students, faculty, staff, alumni, and community leaders participated in shaping this "Shared Vision." SDSU is now moving boldly ahead toward goals set by those discussions: reinforcing academic excellence, nurturing students, honoring diversity and social justice, carefully stewarding resources, and further developing global programs.

In the process, SDSU has become an increasingly popular and selective choice among college-bound students. For fall 2006, some 52,000 undergraduate applicants competed for 8,707 vacancies. Not surprising, the overall academic quality of SDSU students is also rising. In addition, alumni involvement and private financial support of the university have never been stronger.

A champion of community involvement as well as academic excellence, President Weber has been an advocate for community service. Leading by example, he is a past chair of the American Association of State Colleges and Universities Board of Directors and co chair of Partners for K-12 School Reform. He also serves on the boards of governors of The Peres Center for Peace and BIO-COM, and on the boards of directors of the San Diego Regional Economic Development Corporation and the San Diego Science and Technology Council. He co-chairs the College Presidents' Forum of the San Diego County Policy Panel on Youth Access to Alcohol.

President Weber is a member of the international advisory board for the Foundation for Children of the Californias, the advisory council of the San Diego Performing Arts League, the Community Advisory Board of Union Bank of California, and the advisory board for San Diego Gas & Electric (SDG&E). He serves on the National Collegiate Athletics Association (NCAA) Division I Board of Directors, the NCAA Executive Committee, and served on the Presidential Oversight Committee for the Bowl Championship Series. He is

a member of the San Diego Rotary Club, an honorary director of the Japan Society of San Diego and Tijuana, and an honorary advisor to the Asia Desk of the San Diego World Trade Center.

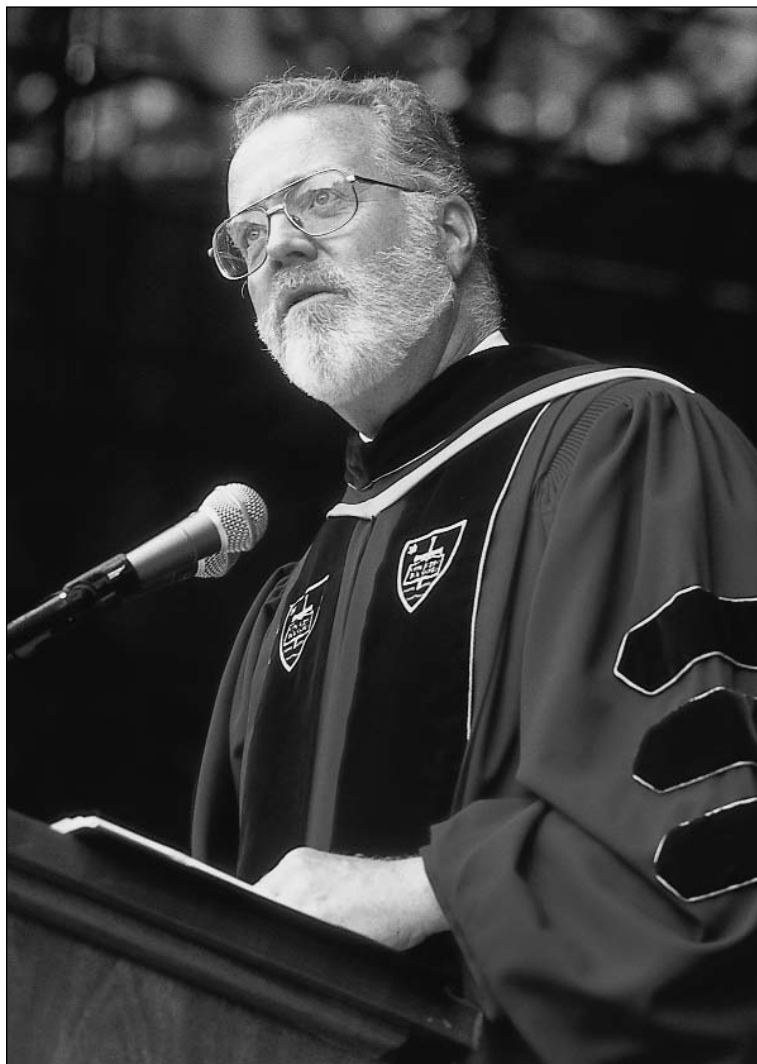
Born in Boston, President Weber is a graduate of Bowling Green University with a B.A. in philosophy. He received his Ph.D. in philosophy from the University of Notre Dame in 1969 and is the author of numerous articles on philosophy and higher education.

President Weber's many awards include an honorary degree from Beijing Capital Normal University, and distinguished alumnus at his alma mater, Bowling Green University. He was named among the 1997 Headliners of the Year by the San Diego Press Club. Also in 1997, the San Diego Mediation Center honored him with its Peacemaker Award. In 1999, President Weber received the Executive Director's Award from the

San Diego Education Association and the Gold Key Award from the San Diego Hospitality Association. He was recognized as a Leader of Vision by the league of Women Voters of San Diego in 2000.

Before coming to San Diego State University, President Weber served as interim provost of the State University of New York (SUNY); he previously served seven years as president of the SUNY Oswego campus. Prior to that, he was vice president of academic affairs at St. Cloud State University in Minnesota, dean of arts and sciences at Fairfield University in Connecticut, and assistant to the president of the University of Maine. While a faculty member at the University of Maine, he was recognized as the outstanding professor in humanities.

President Weber is married to Susan Keim Weber, who shares his enthusiastic commitment to SDSU. They have two sons.



Jeff Schemmel



2002 NCAA TOURNAMENT ▶ 2003 NIT ▶ 2006 NCAA TOURNAMENT ▶ 2007 NIT

Jeff Schemmel, who brings a wealth of experience, a history of success and new expectations to Montezuma Mesa, was introduced as San Diego State's Director of Athletics on July 6, 2005.

Schemmel immediately became one of the most accomplished sitting athletic directors in the country. He is a former practicing attorney, has directed a Final Four, served as a senior administrator at Big 10 and Big 12 schools, and played a part in what might be the biggest football turnaround in the history of college athletics.

Schemmel arrived at San Diego State from Conference USA, where he had served as associate commissioner for governance and legal affairs since October of 2004. During his stay in Dallas, he helped the league negotiate television contracts with ESPN and College Sports Television that exceeded more than \$100 million in revenue, and he served as a member of the NCAA Division I Management Council.

From February of 2004 to October of 2004, Schemmel was the senior vice president and executive director of development for the Arizona State University Foundation, where he oversaw that school's fundraising efforts while supervising approximately 135 employees across the Tempe campus.

Schemmel was an administrator at the University of Minnesota from 1991 to 2003. During his stay in the Twin Cities, he advanced from associate athletic director for compliance to senior associate athletic director and chief operating officer for Gopher athletics.

Along with his departmental duties, Schemmel directed the school's efforts in hosting NCAA Championship events, including the 2001 Final Four, one of America's fastest growing events.

He also supervised and implemented a \$3 million capital improvement campaign, and was heavily involved in the hiring of Minnesota's head football and men's basketball coaches.

From 1988 to 1991, Schemmel was an administrator at his alma mater, Kansas State. He served as the school's assistant athletic director for development and later was the associate athletic director for compliance while supervising the school's Olympic sports.

Schemmel was part of the management team that hired Bill Snyder as the Wildcats head football coach. Under Snyder's direction, Kansas State executed what is considered one of the greatest turnarounds in college football history. K-State had made just one bowl appearance in its history prior to Snyder's arrival, did not win a single game in the two seasons before he took over in 1989, and had just three wins in the previous four seasons. Under Snyder, the Wildcats went to a bowl game 11 times and claimed their first-ever Big 12 title.

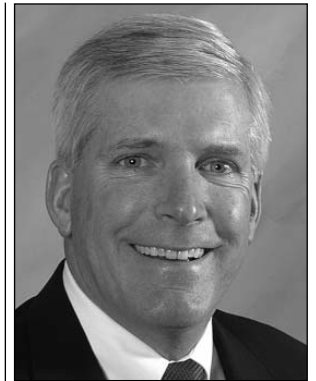
Schemmel was a decorated runner at Kansas State and was named the 1976 outstanding student athlete at the school. As a Wildcat, he was a four-time track and field All-American, a five-time Big 8 Conference champion, was a member of a national champion distance medley relay team and won the Big 8 Conference Medallion.

He also served as an ABC Television and Time Magazine correspondent for the 1976 Summer Olympics in Montreal.



After earning his undergraduate degree in political science, Schemmel earned his law degree at Washburn University in Topeka, Kan. He began his professional career as an attorney and later was a partner in his own firm, specializing in business and sports law.

Schemmel and his wife, Lori, have been married for 29 years. They have two adult sons, Justin, and Jon, who plays minor league baseball in the San Diego Padres organization.



Jeff Schemmel

Director of Athletics
Third Year at SDSU
Kansas State '76

Education

1976 - B.S. degree from Kansas State.

1979 - Juris Doctor from Washburn University School of Law

Career Experience

1988-1991
Assistant/Associate Director of Athletics
Kansas State University

1991-1994
Associate Director of Athletics - Director of Compliance
University of Minnesota

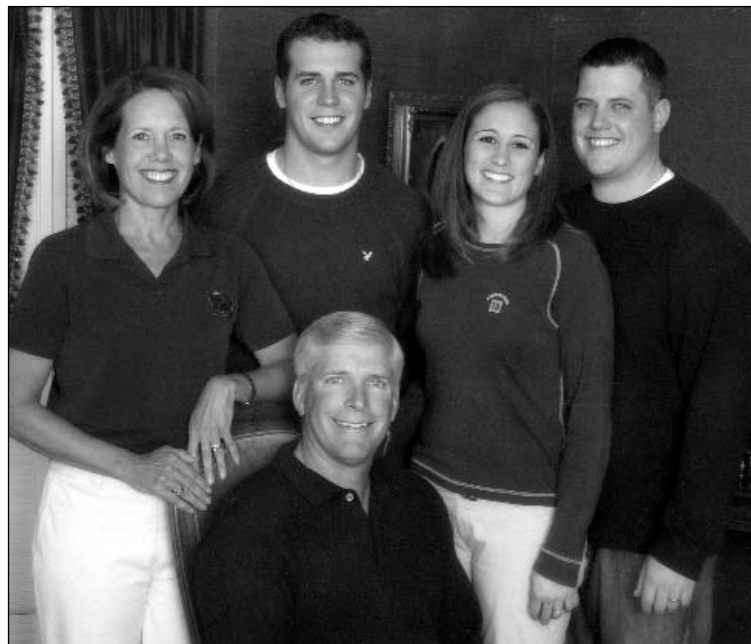
2001
Executive Director
2001 NCAA Men's Basketball Final Four

1994-2003
Senior Assoc. Athletics Director - Chief Operating Officer
University of Minnesota

2003-2004
Senior V.P., ASUF Executive Director of Development
Arizona State University

2004-2005
Associate Commissioner - Governance and Legal Affairs
Conference USA

2005-present
Director of Athletics
San Diego State University



San Diego State University Director of Athletics Jeff Schemmel with wife Lori, sons Jonathan and Justin, and daughter-in-law Carrie.

Athletic Department Staff



2002 NCAA TOURNAMENT ▶ 2003 NIT ▶ 2006 NCAA TOURNAMENT ▶ 2007 NIT

ATHLETIC DEPARTMENT STAFF ◀ UNIVERSITY



Alison Abrams
Women's Crew Assistant Coach



Fatema Arefi
Assistant to Athletic Director



Chris Ash
Football Assistant Coach



Courtney Bale
Assistant Strength & Conditioning Coach



Gina Balistrieri
Associate Ticket Manager



Doug Barba
Women's Golf Assistant Coach



Tim Baron
Facilities & Operations Assistant



Danni Barrall
Special Events Coordinator



Steve Bartel
Event Management Asst. of Facilities & Operations



Steve Becvar
Executive Associate Athletic Director



Donna Bell
Business Office Manager



Sherry Bertram
Assistant Director of AAF/Annual Giving



Robin Blackwell
Director of Corporate & Community Relations



Miranda Bleisch
Director of Softball Operations



Jenny Bramer
Associate Athletic Director/SWA



Brendon Bray
Women's Swimming Assistant Coach



Sean Briner
Associate Athletic Director of Marketing & Sales



Felicia Brown
Women's Golf Head Coach



Beth Burns
Women's Basketball Head Coach



Chris Carlson
Director of Marketing & Ticket Sales



Gene Carswell
Men's Tennis Head Coach



Dr. Roger Caves
Faculty Athletics Representative



Joe Bob Clements
Football Assistant Coach



Jim Cordova
Assistant Athletic Director of Ticket Operations



Meghan Cowen
Football Administrative Assistant



Carin Crawford
Women's Water Polo Head Coach



Jennifer Daniels
Assistant Athletic Director of Compliance



Paula Davila
Olympic Sports Administrative Assistant



Ryan Donovan
Men's Golf Head Coach



Pat Dulin
Student-Athlete Insurance Coordinator



Kelli Edelbrock
Ticket Office Assistant



Bob Elliott
Football Assistant Head Coach



Joe Erbland
Associate Director of Facilities & Operations



Rusty Filter
Baseball Associate Head Coach



Julie Fitzgerald
Financial Aid Coordinator

Athletic Department Staff



2002 NCAA TOURNAMENT ▶ 2003 NIT ▶ 2006 NCAA TOURNAMENT ▶ 2007 NIT



Lesley Fong
Director of Special
Projects/Campus Liaison



Joy Francis
Director of Athletic
Development



Mike Friesen
Women's Soccer Head
Coach



Lindsey Gamp
Women's Tennis Assistant
Coach



Angie Garza
Assistant Equipment
Manager



Nat Gonzalez
Women's Soccer Assistant
Coach



Allison Gregory
Women's Water Polo
Assistant Coach



Tony Gwynn
Baseball Head Coach



Matt Hall
Men's Soccer Assistant
Coach



Sara Hayes
Softball Assistant Coach



Ben Herman
Equipment Attendant



Jon Himebauch
Football Assistant Coach



Larry Holton
Football Assistant Coach



Chris Hoppe
Admissions/Eligibility
Coordinator



Scott Horvath
Information Technology
Coordinator



Dana Imperatore
Accounting Tech



William Inge
Football Assistant Coach



Renee Jimenez
Women's Basketball
Assistant Coach



Helen Kanavel
Women's Basketball
Administrative Assistant



Don Kessler
Head Athletic Trainer



Erica Keus
Women's Soccer Assistant
Coach



Linda Kimzey
Administrative Services
Coordinator



Lev Kirshner
Men's Soccer Head Coach



Jennifer Kwappenberg
Cheer Coach



Chuck Lang
Assistant Athletic Director
of Business Administration



Guillermo Lemus
Women's Crew Assistant
Coach



Mike LoBue
Women's Track and Field
Assistant Coach



Chuck Long
Football Head Coach



Gina Maggio
Assistant Athletic Trainer



Mark Martinez
Baseball Assistant Coach



Peter Mattera
Women's Tennis Head
Coach



Michelle McBride
Assistant Athletic Director
of AAF/Annual Giving



LeCharls McDaniel
Football Assistant Coach



Del Miller
Football Assistant Coach



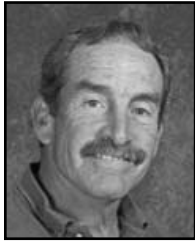
Allison Miner
Physical Therapist/Athletic
Trainer

Athletic Department Staff



2002 NCAA TOURNAMENT ▶ 2003 NIT ▶ 2006 NCAA TOURNAMENT ▶ 2007 NIT

ATHLETIC DEPARTMENT STAFF ◀ UNIVERSITY



Steven Miner
Softball Assistant Coach



Bob Moosbrugger
Assoc. Athletic Director of
Development/Major Gifts



Brian Murphy
Video Coordinator



Pat Murray
Equipment Attendant



Jennifer Nanista
Women's Track and Cross
Country Assistant Coach



Toby Neinas
Football Assistant



Dave Noll
Assistant Director of
Facilities & Operations



Don Oberhelman
Senior Associate Athletic
Director/COO



David Ohton
Strength & Conditioning
Coach



Leah Owczarczak
Football Administrative
Assistant



Genieve Pascoe
Assistant Director of
Compliance



Carolyn Peters
Assistant Athletic Trainer



Nick Pettit
Director of Athletic
Equipment Services



Bryan Ransom
Band Director



Mary Reading
Eligibility Coordinator



Ryan Redondo
Men's Tennis Assistant
Coach



Rachel Richards
Exec. Staff & Marketing
Administrative Assistant



Wendell Richards
Assistant Strength &
Conditioning Coach



John Ross
Women's Volleyball
Associate Head Coach



Steve Schnall
Associate Athletic Director
of Operations



Rahn Sheffield
Women's Track and Cross
Country Head Coach



John Shirk
Women's Volleyball
Assistant Coach



Mike Shrader
Women's Swimming and
Diving Coach



Jennifer Slaughter
Ticket Office Associate



Brian Stark
Director of Football
Operations



Jesse Stephens
Accounting Tech



Tammy Stephens
Women's Basketball
Director of Operations



Mike Sweet
Baseball Director of
Operations



Heidi VanDerveer
Women's Basketball
Associate Head Coach



Kathy Van Wyk
Softball Head Coach



Dale Walker
Director of Golf
Operations



Mark Warner
Women's Volleyball Head
Coach



Jualeah Woods
Women's Basketball
Assistant Coach



Jim Wynne
Women's Diving Assistant
Coach



Jennifer Zebroski
Women's Crew Head
Coach

MOUNTAIN WEST CONFERENCE
BASKETBALL
Championships
LAS VEGAS



MARCH 11-15, 2008



For ticket information, contact your institutional ticket office or visit www.TheMWC.com

BOOK HOTELS NOW!

For Las Vegas hotel opportunities, call 877.VISIT.LV or visit www.VisitLasVegas.com



Thomas & Mack Center, Las Vegas, NV

www.TheMWC.com

Media Information



2002 NCAA TOURNAMENT ▶ 2003 NIT ▶ 2006 NCAA TOURNAMENT ▶ 2007 NIT

MEDIA INFORMATION ◀ UNIVERSITY
AZTEC BASKETBALL MEDIA GUIDE



Mike May



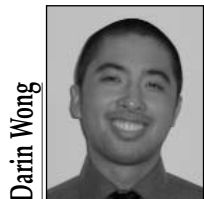
Dave Kuhn



Peggy Curtin



Jamie McConeghy



Darin Wong



Andrea Ohta



Jeff Salmon



Andrea Rogers

Media Credentials

Credentials for San Diego State home games are issued to working media only and should be requested as early as possible and at least 48 hours prior to tipoff. Requests should be made in writing on company letterhead.

Season credentials will be granted only to daily newspapers and television/radio stations that cover Aztec Basketball on a regular basis. Otherwise, television/radio station and weekly newspapers will be granted credentials on a single-game space-available basis.

Membership in a writers' association does not automatically qualify an individual or outlet for credentials.

There is a limited amount of press seating available and a season credential does not guarantee a seat in the media area. Media agencies with season credentials still need to contact the media relations office to request media seating.

Single-game credentials should be requested at least 48 hours in advance. To confirm receipt of credential requests or to check the status of a credential request, please contact the San Diego State Media Relations Office. All requests for credentials should be faxed to the media relations office at (619) 582-6541.

San Diego State reserves the right to deny media credentials to any individual who is not affiliated with an official news gathering organization.

Internet Sites

Only the official website of the opponent will be issued credentials. Only the official website of an opponent will be allowed "real time" transmissions of San Diego State home athletic events. Those rights are owned by San Diego State, the Mountain West Conference and its television partners.

Non-Originating Radio

Individuals representing radio stations which are not originating the broadcast of the game will be considered on a space-available basis.

Scouting Tickets

Due to limited media seating at Cox Arena, professional basketball scouts must purchase a ticket. Requests should be made to Mike May in the SDSU Media Relations Office. Scouts are permitted access to the media work room for access to game notes and statistics.

San Diego State Athletic Media Relations Staff

Office: (619) 594-5547 • Fax: (619) 582-6541

Mailing Address: 5500 Campanile Road; San Diego, CA 92182-4309

Mike May, assistant athletic director - media relations/men's basketball contact
Home: (619) 644-1767 • Mobile: (619) 957-8372 • E-mail: mmay@mail.sdsu.edu

Darin Wong, assistant media relations director/men's basketball contact
Mobile: (310) 489-2378 • E-mail: dwong@mail.sdsu.edu

Dave Kuhn, assistant media relations director
Home: (858) 582-8965 • Mobile: (619) 957-8371 • E-mail: dkuhn@mail.sdsu.edu

Peggy Curtin, assistant media relations director
Home: (619) 450-6146 • Mobile: (619) 200-8776 • E-mail: mcurtin@mail.sdsu.edu

Jamie McConeghy, assistant media relations director
Mobile: (607) 435-5577 • E-mail: jmcconeg@mail.sdsu.edu

Andrea Ohta, media relations assistant
Mobile: (562) 544-4785 • E-mail: aohta@projects.sdsu.edu

Jeff Salmon, media relations assistant
Mobile: (630) 272-7317 • E-mail: jsalmon@projects.sdsu.edu

Parking

On game day, media parking is located on the first level of Parking Structure 4, just north of the arena. Game credentials provide admittance to the structure.

Do not park in the tunnel entrance lot at any point on game days. Violators will be towed.

Will Call/Media Entrance

Members of the media must enter through the loading dock doors of Cox Arena located through the L Lot. This also serves as the media will call location.

Media Room

The media room and all postgame activities will be conducted in rooms located underneath the arena seating. Media should exit the tunnel located beneath gate N.

Photographers

Photographers are restricted to either designated areas along the baseline and are not permitted along courtside during the game.

Media Seating

Media will be assigned seats along press row tables located behind the visitor's bench. Please check the media seating chart posted in the media workroom.

Seating is extremely limited and a credential does not guarantee a seat in the press area. Season credential holders are asked to call and confirm when they are

covering a game to receive an assigned seat.

Postgame Interviews

Home Games - The San Diego State locker room is closed to the media, although selected players will be available for interviews in the women's team lounge. A representative of the SDSU Media Relations office will escort members of the media to the postgame interview area.

SDSU players and Coach Steve Fisher, following a short postgame radio session, will be available to the media in the postgame interview area. Typically, players are available between five and 10 minutes following the departure of the team off the court, followed by Coach Fisher.

Only the television network broadcasting the game live may request coaches and players on the court following the game. Those requests must be made through Mike May.

Opponent Interviews at Cox Arena - Typically, interviews of opposing players/coaches take place outside the visitor locker room. Contact the visiting SID for his or her policy prior to the game.

Road Games - The SDSU locker room is closed. Following a brief cooling off period, Aztec players are available for interviews. Fisher will meet with the media upon completion of his postgame radio interview.

Telephones

The media relations office provides several charge-a-call phones in the press room off the arena floor. The

Media Information



2002 NCAA TOURNAMENT ▶ 2003 NIT ▶ 2006 NCAA TOURNAMENT ▶ 2007 NIT

phones are available on a first-come, first-served basis. For courtside phone service, contact Mike Dils (Cox Arena) at (619) 594-3533. Phone lines for visiting originating radio broadcasts (one ISDN, one business) will be provided on a reciprocal basis.

Weekly Interviews

All interview requests for Aztec players, coaches and administrators should be directed to the Media Relations office at least one day prior to the interview.

This season, Steve Fisher and selected players will be available at a weekly news conference to be held in Cox Arena. Please contact the media relations office for specific dates and times.

Players and coaches are generally available after practices, although media are asked to confirm this through the media relations office the day prior to the interview.

On game days, no Aztec players will be available until the postgame media sessions.

Practices

Media wishing to attend practice should contact the Aztec Media Relations office one day in advance, to ensure the practice is open and will be conducted at Cox Arena.

Media attending practice are asked to sit at least 10 rows off the floor. This includes videographers and still photographers.

When covering practice, obtain a special parking permit from the Cox Arena administrative offices and show media parking credential. Permits for parking during practice are available in the Cox Arena offices, and allow vehicle parking in the tunnel entrance lot. Those offices close at 4:30 p.m.

All game-day practices and road practices are closed to the media.

Media Releases

Note packages will be available at least one day prior to each game and in many instances, much earlier.

The game notes will be e-mailed to local and national outlets and posted on San Diego State's official athletic web site. If you wish to be added to the distribution list, please e-mail Mike May at mmay@mail.sdsu.edu or call (619) 594-5547.

Pregame packets, including notes and statistics, will be available prior to tipoff. Timeout, halftime and final statistics, plus a running play-by-play and postgame notes will be provided. Media monitors will allow broadcasters access to updated information. A light meal will be provided during pregame.



San Diego State Campus

- 1 Cox Arena at Aztec Bowl
- 2 Parking Structure 4 - Media Parking on Game Night
- 3 Aztec Athletics Center - Athletic Department Offices including men's basketball and media relations.

Aztec Access

The official website of San Diego State athletics, goaztecs.com, includes rosters, schedules, statistics, player bios, press releases and game notes. The website is updated daily.

Each game, San Diego State press releases, notes and statistics are e-mailed to a large contingent of media locally, regionally and nationally. If you would like to be added to the list, please contact Mike May (mmay@mail.sdsu.edu).

Aztec Weekly Press Conferences

For the seventh straight season, Steve Fisher will conduct a weekly news conference, followed by selected players. Media members should contact the media relations office for accurate dates and times.

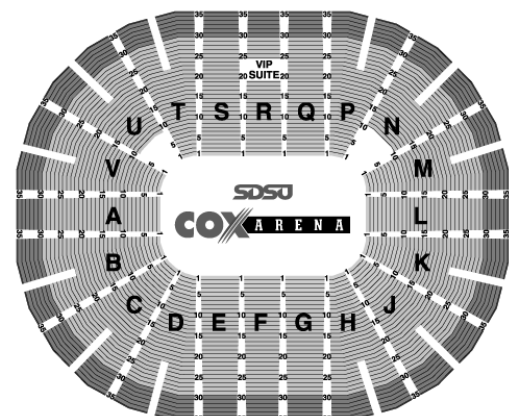
Food courtesy of Da Kine's will be provided prior to the news conference.

Directions to Cox Arena

To Cox Arena: From Interstate 8, take the College Avenue exit and go south.

Turn right at Montezuma (second stop light at the top of the hill). Go to the second stop light (55th Street) and turn right. Cox Arena is located one-half mile up on the right hand side.

To Media Parking Lot: Continue driving north on 55th Street past Cox Arena and make a right at the stop light on to Aztec Circle Drive. Follow Aztec Circle Drive to the bottom of the hill and turn left into Parking Structure 4. Present your credential to the attendant and you will be directed on where to park.



Opponents



2002 NCAA TOURNAMENT ▶ 2003 NIT ▶ 2006 NCAA TOURNAMENT ▶ 2007 NIT

Liberty

Location: Lynchburg, Va. Enrollment: 26,600 Conference: Big South Colors: Red, White and Blue Nickname: Flames	MBB Coach: Ritchie McKay Alma Mater: Seattle Pacific '87 Record at School: First Year Career Record: 165-158	2006-07 Record: 14-17 Conference Record: 8-6 Postseason: none Starters Returning/Lost: 3/2 Letterwinners Returning/Lost: 7/3	MBB SID: Vincent Briedis Office Phone: (434) 582-2292 E-mail: vebriedis@liberty.edu Website: libertyflames.com Fax: (434) 582-2076	Series: first meeting Streak: none In San Diego: none In Lynchburg: none Neutral Site: none
---	---	---	---	--

Portland

Location: Portland, Ore. Enrollment: 3,300 Conference: West Coast Colors: Purple and White Nickname: Pilots	MBB Coach: Eric Reveno Alma Mater: Stanford '89 Record at School: 9-23 Career Record: Same	2006-07 Record: 9-23 Conference Record: 4-10 Postseason: none Starters Returning/Lost: 2/3 Letterwinners Returning/Lost: 5/7	MBB SID: Jason Brough Office Phone: (503) 943-8439 E-mail: brough@up.edu Website: portlandpilots.com Fax: (503) 943-7242	Series: Portland, 5-2 Streak: SDSU, 1 In San Diego: SDSU, 2-0 In Portland: Portland, 5-0 Neutral Site: none
--	---	---	---	--

Fresno State

Location: Fresno, Calif. Enrollment: 20,299 Conference: Western Athletic Colors: Red and Blue Nickname: Bulldogs	MBB Coach: Steve Cleveland Alma Mater: UC Irvine '76 Record at School: 37-23 Career Record: 175-131	2006-07 Record: 22-10 Conference Record: 10-6 Postseason: NIT - 1st Round, 0-1 Starters Returning/Lost: 3/2 Letterwinners Returning/Lost: 7/4	MBB SID: Ryan Reggiani Office Phone: (559) 278-2509 E-mail: rreggiani@csufresno.edu Website: gobulldogs.com Fax: (559) 278-4689	Series: SDSU, 51-48 Streak: SDSU, 1 In San Diego: SDSU, 34-17 In Fresno: FSU, 29-16 Neutral Site: FSU, 2-1
---	--	--	--	---

UC San Diego

Location: La Jolla, Calif. Enrollment: 27,500 Conference: CCAA (Div. II) Colors: Blue and Gold Nickname: Tritons	MBB Coach: Chris Carlson Alma Mater: UCSB Record at School: First Year Career Record: First Year	2006-07 Record: 12-17 Conference Record: 10-12 Postseason: none Starters Returning/Lost: 4/1 Letterwinners Returning/Lost: 14/1	MBB SID: David Wahlstrom Office Phone: (858) 534-8437 E-mail: dwahlstrom@ucsd.edu Website: ucسدtriton.com Fax: (858) 534-8475	Series: SDSU, 7-0 Streak: SDSU, 7 In San Diego: 7-0 In La Jolla: none Neutral Site: none
---	---	--	--	---

Saint Mary's

Location: Moraga, Calif. Enrollment: 4,768 Conference: West Coast Colors: Navy, Red and Silver Nickname: Gaels	MBB Coach: Randy Bennett Alma Mater: UC San Diego '86 Record at School: 102-83 Career Record: Same	2006-07 Record: 17-15 Conference Record: 8-6 Postseason: none Starters Returning/Lost: 4/1 Letterwinners Returning/Lost: 8/3	MBB SID: Rich Davi Office Phone: (925) 631-4402 E-mail: rdavi@stmarys-ca.edu Website: smcgaels.com Fax: (925) 631-4405	Series: Tied, 3-3 Streak: SDSU, 1 In San Diego: SMC, 2-1 In Moraga: SDSU, 2-1 Neutral Site: none
---	---	---	---	---

San Diego

Location: San Diego, Calif. Enrollment: 7,600 Conference: West Coast Colors: Torero Blue, Navy and White Nickname: Toreros	MBB Coach: Bill Grier Alma Mater: Oregon '90 Record at School: First Year Career Record: First Year	2006-07 Record: 18-14 Conference Record: 6-8 Postseason: none Starters Returning/Lost: 4/1 Letterwinners Returning/Lost: 8-3	MBB SID: Ted Gosen Office Phone: (619) 260-4745 E-mail: tgosen@sandiego.edu Website: usdtoreros.com Fax: (619) 260-2990	Series: SDSU, 21-17 Streak: SDSU, 1 At SDSU: SDSU, 16-8 At USD: USD, 8-5 Neutral Site: USD, 1-0
---	--	---	--	--

California

Location: Berkeley, Calif. Enrollment: 33,000 Conference: Pacific-10 Colors: Blue and Gold Nickname: Golden Bears	MBB Coach: Ben Braun Alma Mater: Wisconsin '75 Record at School: 202-138 Career Record: 535-373	2006-07 Record: 16-17 Conference Record: 6-12 Postseason: none Starters Returning/Lost: 3/2 Letterwinners Returning/Lost: 7/3	MBB SID: Herb Benenson Office Phone: (510) 642-0515 E-mail: benenson@berkeley.edu Website: calbears.com Fax: (510) 643-7778	Series: Tied, 3-3 Streak: SDSU, 1 In San Diego: Tied, 2-2 In Berkeley: Tied, 1-1 Neutral Site: none
--	--	--	--	--

Loyola Marymount

Location: Los Angeles, Calif. Enrollment: 8,300 Conference: West Coast Colors: Crimson, Navy and Gray Nickname: Lions	MBB Coach: Rodney Tention Alma Mater: San Francisco '88 Record at School: 25-36 Career Record: Same	2006-07 Record: 13-18 Conference Record: 5-9 Postseason: none Starters Returning/Lost: 1/4 Letterwinners Returning/Lost: 7/6	MBB SID: John Shaffer Office Phone: (310) 338-7643 E-mail: jshaffer@lmu.edu Website: lmulions.com Fax: (310) 338-2703	Series: SDSU, 32-26 Streak: SDSU, 2 In San Diego: SDSU, 25-9 In Los Angeles: LMU, 17-7 Neutral Site: none
--	--	---	--	--

Western Michigan

Location: Kalamazoo, Mich. Enrollment: 24,841 Conference: Mid-American Colors: Brown and Gold Nickname: Broncos	MBB Coach: Steve Hawkins Alma Mater: South Alabama '87 Record at School: 76-51 Career Record: 213-162	2006-07 Record: 16-16 Conference Record: 9-7 Postseason: none Starters Returning/Lost: 4/0 Letterwinners Returning/Lost: 13/1	MBB SID: Matt Holmes Office Phone: (269) 387-3168 E-mail: matt.holmes@wmich.edu Website: wmubroncos.com Fax: (269) 387-4139	Series: WMU, 2-1 Streak: WMU, 1 In San Diego: SDSU, 1-0 In Kalamazoo: WMU, 2-0 Neutral Site: none
--	--	--	--	--

UC Riverside

Location: Riverside, Calif. Enrollment: 17,000 Conference: Big West Colors: Blue and Gold Nickname: Highlanders	MBB Coach: Jim Wooldridge Alma Mater: Louisiana Tech '77 Record at School: 34-52 Career Record: 312-237	2006-07 Record: 7-24 Conference Record: 1-13 Postseason: none Starters Returning/Lost: 3/2 Letterwinners Returning/Lost: 5/6	MBB SID: Ross French Office Phone: (951) 827-5438 E-mail: ross.french@ucr.edu Website: athletics.ucr.edu Fax: (951) 827-5889	Series: SDSU, 6-0 Streak: SDSU, 6 In San Diego: SDSU, 6-0 In Riverside: none Neutral Site: none
--	--	---	---	--

Navy

Location: Annapolis, Md. Enrollment: 4,000 Conference: Patriot League Colors: Navy Blue and Gold Nickname: Midshipmen	MBB Coach: Billy Lange Alma Mater: Rowan '94 Record at School: 34-52 Career Record: 73-71	2006-07 Record: 14-16 Conference Record: 4-10 Postseason: none Starters Returning/Lost: 2/3 Letterwinners Returning/Lost: 6/4	MBB SID: Chris Forman Office Phone: (410) 293-8774 E-mail: forman@usna.edu Website: navysports.com Fax: (410) 293-8954	Series: SDSU, 2-0 Streak: SDSU, 2 In San Diego: SDSU, 2-0 In Annapolis: none Neutral Site: none
--	--	--	---	--

Opponents



2002 NCAA TOURNAMENT ▶ 2003 NIT ▶ 2006 NCAA TOURNAMENT ▶ 2007 NIT

Arizona

Location: Tucson, Ariz. Enrollment: 37,000 Conference: Pacific-10 Colors: Cardinal and Navy Nickname: Wildcats	MBB Coach: Lute Olson Alma Mater: Augsburg '56 Record at School: 589-187 Career Record: 780-280	2006-07 Record: 20-11 Conference Record: 11-7 Postseason: NCAA-1st Round, 0-1 Starters Returning/Lost: 2/3 Letterwinners Returning/Lost: 10/3	MBB SID: Richard Paige Office Phone: (520) 621-4163 E-mail: rpaige@email.arizona.edu Website: arizonaathletics.com Fax: (520) 621-2681	Series: Arizona, 18-5 Streak: Arizona, 5 In San Diego: Arizona, 6-4 In Tucson: Arizona, 12-1 Neutral Site: none
---	--	--	---	--

Sam Houston State

Location: Huntsville, Texas Enrollment: 15,916 Conference: Southland Colors: Orange and White Nickname: Barkats	MBB Coach: Bob Marlin Alma Mater: Mississippi State '81 Record at School: 159-103 Career Record: Same	2006-07 Record: 21-10 Conference Record: 13-3 Postseason: none Starters Returning/Lost: 2/3 Letterwinners Returning/Lost: 7/3	MBB SID: Paul Ridings Office Phone: (936) 294-1764 E-mail: ridings@shsu.edu Website: gobarkats.com Fax: (936) 294-3538	Series: first meeting Streak: none In San Diego: none In Huntsville: none Neutral Site: none
--	--	--	---	---

TCU

Location: Fort Worth, Texas Enrollment: 8,749 Conference: Mountain West Colors: Purple and White Nickname: Horned Frogs	MBB Coach: Neil Dougherty Alma Mater: Cameron '84 Record at School: 61-92 Career Record: Same	2006-07 Record: 13-17 Conference Record: 4-12 Postseason: none Starters Returning/Lost: 4/1 Letterwinners Returning Lost: 8/3	MBB SID: TBA Office Phone: TBA E-mail: TBA Website: gofrogs.com Fax: (817) 257-7964	Series: SDSU, 4-3 Streak: SDSU, 4 In San Diego: Tied, 2-2 In Fort Worth: SDSU, 2-1 Neutral Site: none
--	--	--	--	--

Northern Colorado

Location: Greeley, Colo. Enrollment: 10,831 Conference: Big Sky Colors: Blue and Gold Nickname: Bears	MBB Coach: Tad Boyle Alma Mater: Kansas '85 Record at School: 4-24 Career Record: Same	2006-07 Record: 4-24 Conference Record: 2-14 Postseason: none Starters Returning/Lost: 3/2 Letterwinners Returning/Lost: 8/5	MBB SID: Joe Prisco Office Phone: (970) 351-2522 E-mail: joseph.prisco@unco.edu Website: uncbears.com Fax: (970) 351-1995	Series: SDSU, 2-0 Streak: SDSU, 2 In San Diego: SDSU, 1 In Greeley: SDSU, 1 Neutral Site: none
--	---	---	--	---

New Mexico

Location: Albuquerque, N.M. Enrollment: 26,500 Conference: Mountain West Colors: Cherry and Silver Nickname: Lobos	MBB Coach: Steve Alford Alma Mater: Indiana '87 Record at School: First Year Career Record: 308-183	2006-07 Record: 15-17 Conference Record: 4-12 Postseason: none Starters Returning/Lost: 4/1 Letterwinners Returning Lost: 8/6	MBB SID: Jay Blackman Office Phone: (505) 925-5528 E-mail: blackman@unm.edu Website: golobos.com Fax: (505) 925-5529	Series: UNM, 35-25 Streak: SDSU, 4 In San Diego: SDSU, 18-10 In Albuquerque: UNM, 23-6 Neutral Site: New Mexico, 2-1
---	--	--	---	---

Utah

Location: Salt Lake City, Utah Enrollment: 29,019 Conference: Mountain West Colors: Crimson and White Nickname: Utes	MBB Coach: Jim Boylen Alma Mater: Maine '87 Record at School: First Year Career Record: First Year	2006-07 Record: 11-19 Conference Record: 6-10 Postseason: none Starters Returning/Lost: 4/1 Letterwinners Returning Lost: 9/4	MBB SID: Andy Seeley Office Phone: (801) 581-3771 E-mail: aseely@huntsman.utah.edu Website: utahutes.com Fax: (801) 581-4358	Series: Utah, 50-11 Streak: Utah, 1 In San Diego: Utah, 19-8 In Salt Lake City: Utah, 27-2 Neutral Site: Utah, 4-1
---	---	--	---	---

Wyoming

Location: Laramie, Wyo. Enrollment: 13,207 Conference: Mountain West Colors: Brown and Gold Nickname: Cowboys	MBB Coach: Heath Schroyer Alma Mater: Armstrong Atlantic State '95 Record at School: First Year Career Record: 35-47	2006-07 Record: 17-15 Conference Record: 7-9 Postseason: none Starters Returning/Lost: 3/2 Letterwinners Returning Lost: 5/3	MBB SID: Tim Harkins Office Phone: (307) 766-2321 E-mail: tharkins@uwyo.edu Website: wyomingathletics.com Fax: (307) 766-2346	Series: Wyoming, 35-26 Streak: WYO, 2 In San Diego: SDSU, 16-11 In Laramie: Wyoming, 22-5 Neutral Site: SDSU, 5-2
--	---	---	--	--

Brigham Young

Location: Provo, Utah Enrollment: 29,854 Conference: Mountain West Colors: Blue, White & Tan Nickname: Cougars	MBB Coach: Dave Rose Alma Mater: Houston '83 Record at School: 45-18 Career Record: Same	2006-07 Record: 25-9 Conference Record: 13-3 Postseason: NCAA-1st Round, 0-1 Starters Returning/Lost: 2/3 Letterwinners Returning Lost: 8/6	MBB SID: Brett Pyne Office Phone: (801) 422-4912 E-mail: brett_pyne@byu.edu Website: byucougars.com Fax: (801) 422-0633	Series: BYU, 40-20 Streak: SDSU, 1 In San Diego: SDSU, 16-15 In Provo: BYU, 25-3 Neutral Site: SDSU, 1-0
---	---	--	--	---

UNLV

Location: Las Vegas, Nev. Enrollment: 28,000 Conference: Mountain West Colors: Scarlet and Gray Nickname: Runnin' Rebels	MBB Coach: Lon Kruger Alma Mater: Kansas State '75 Record at School: 64-34 Career Record: 382-267	2006-07 Record: 30-7 Conference Record: 12-4 Postseason: NCAA-Sweet 16, 2-1 Starters Returning/Lost: 1/4 Letterwinners Returning Lost: 8/6	MBB SID: Andy Grossman Office Phone: (702) 895-3995 E-mail: andy.grossman@unlv.edu Website: unlvrebels.com Fax: (702) 895-0989	Series: UNLV, 29-12 Streak: SDSU, 1 In San Diego: UNLV, 10-7 In Las Vegas: UNLV, 17-4 Neutral Site: UNLV, 2-1
---	--	---	---	--

Colorado State

Location: Fort Collins, Colo. Enrollment: 24,983 Conference: Mountain West Colors: Green and Gold Nickname: Rams	MBB Coach: Tim Miles Alma Mater: Univ. of Mary '90 Record at School: First Year Career Record: 212-132	2006-07 Record: 17-13 Conference Record: 6-10 Postseason: none Starters Returning/Lost: 1/4 Letterwinners Returning Lost: 2/7	MBB SID: Joanna Riley Office Phone: (970) 491-6494 E-mail: joanna.riley@colostate.edu Website: csurams.com Fax: (970) 491-1348	Series: CSU, 35-24 Streak: CSU, 1 In San Diego: SDSU, 18-12 In Fort Collins: CSU, 22-5 Neutral Site: Tied, 1-1
---	---	--	---	---

Air Force

Location: USAF Academy, Colo. Enrollment: 4,000 Conference: Mountain West Colors: Blue and Silver Nickname: Falcons	MBB Coach: Jeff Reynolds Alma Mater: UNC Greensboro '78 Record at School: First Year Career Record: 82-34	2006-07 Record: 26-9 Conference Record: 10-6 Postseason: NIT - Semifinals, 3-1 Starters Returning/Lost: 1/4 Letterwinners Returning Lost: 10/7	MBB SID: Jerry Cross Office Phone: (719) 333-3950 E-mail: jerry.cross@usafa.af.mil Website: goairforcefalcons.com Fax: (719) 333-3798	Series: SDSU, 38-19 Streak: SDSU, 1 In San Diego: SDSU, 21-6 In USAFA: SDSU, 14-12 Neutral Site: SDSU, 1-0
--	--	---	--	---

Newspapers

San Diego Union-Tribune

PO Box 120191
San Diego, CA 92112
News Desk: 619-293-1341
Fax: 619-260-5078
E-Mail: sports@uniontrib.com
Website: signonsandiego.com

- ▶ Chuck Scott, Sports Editor293-2203
- ▶ Mick McGrane, Beat Writer293-1850
- ▶ Nick Canepa, Columnist293-1397
- ▶ Tim Sullivan, Columnist293-1033

North County Times

207 Pennsylvania Ave.
Escondido, CA 92025
News Desk: 800-200-1601
Fax: 760-740-5045
E-Mail: sports@nctimes.com
Website: nctimes.com

- ▶ Loren Nelson, Sports Editor740-3551
- ▶ Mike Klitzing, Beat Writer740-6643

The Daily Aztec

San Diego State University, BAM-2
San Diego, CA 92182-4591
Phone: 619-594-7817
Fax: 619-594-7277
E-Mail: sportseditor@thedailyaztec.com
Website: thedailyaztec.com

- ▶ David Biderman, Sports Editor

Wire Service

Associated Press

PO Box 191
San Diego, CA 92112
News Desk: 619-231-9365
Fax: 619-291-2098
E-Mail: sandiego@ap.org

- ▶ Bernie Wilson, Sports Editor

Television Stations

Channel 4 San Diego (IND)

1370 India Street
San Diego, CA 92101
Phone: 619-266-5061
Fax: 619-595-0168

- ▶ Jason Bott, Producer876-4817
- ▶ Nick Davis, Producer876-4820
- ▶ Jenny Cavnar, Reporter876-4859
- ▶ John Weisbarth, Reporter876-4845

XETV (FOX) Channel 6

8253 Ronson Road
San Diego, CA 92111
News Desk: 858-650-5401
Fax: 858-279-0061

- ▶ C.S. Keys, Sports Director650-5482
- ▶ Andrea Taylor, Sports650-5492
- ▶ Mike Lamar, Sports Producer650-5489
- ▶ Doug Downing, Producer650-5489

KNSD (NBC) Channel 7/39

225 Broadway
San Diego, CA 92101
News Desk: 619-578-0201
Fax: 619-578-0202

- ▶ Jim Laslavic, Sports Director578-0226
- ▶ Jim Stone, Sports578-0227
- ▶ Derek Togerson, Sports578-0215
- ▶ Dave Smith, Photographer578-0243

KFMB (CBS) Channel 8

PO Box 85888
San Diego, CA 92186
News Desk: 858-495-7587
Fax: 858-560-0627

- ▶ Kyle Kraska, Sports Director495-7588
- ▶ John Howard, Sports495-7586
- ▶ Jaymee Sire, Sports472-3589
- ▶ Dan Roger, Producer472-3589

KUSI (IND) Channel 9/51

PO Box 719051
San Diego, CA 92171-9051
News Desk: 858-505-5014
Fax: 858-576-9317

- ▶ Paul Rudy, Sports Director505-5047
- ▶ Rick Willis, Sports505-5032

KGTV (ABC) Channel 10

PO Box 85347
San Diego, CA 92186
News Desk: 619-237-6380, 619-237-6383
Fax: 619-527-0369

- ▶ Ben Higgins, Sports237-6372
- ▶ Steve Smith, Sports237-6314
- ▶ Todd Salkowski, Sports237-6314
- ▶ Jeff LeValley, Photographer273-6316

Radio Stations

KOGO (600 AM)

SDSU Flagship Station
9660 Granite Ridge Drive
San Diego, CA 92123-2657
News Desk: 858-560-6671
Fax: 858-715-3363; 858-715-3364

- ▶ Jim Charvet, Sports715-3394
- ▶ Phil Farrar, Sports715-3628
- ▶ Ted Leitner, SDSU Play-By-Play

KFMB Radio (760 AM)

7677 Engineer Road
San Diego, CA 92111
Phone: 858-292-7600
Fax: 858-279-7676

XX Sports Radio (1090 AM/105.7 FM)

3655 Nobel Drive, #470
San Diego, CA 92122
News Desk: 858-453-9153
Fax: 858-453-9157

ESPN Radio (800 AM)

1027 10th Ave, Suite C
San Diego, 92101
(619) 696-9902

AM 600 KOGO

In 2007, San Diego State basketball will have a new home, AM 600 KOGO, the highest rated AM station in the San Diego market.

Aztec Sports Properties, the Division of Learfield Sports that holds multi-media rights for San Diego State University Athletics, signed a five-year agreement in late March that will make Clear Channel Broadcasting in San Diego and AM 600 KOGO the radio home of Aztec athletics beginning with the 2007-08 academic year.

The station is serving as the flagship for San Diego State men's basketball and football broadcasts both on the road and at home, and will also feature a variety of other Aztec programming, including coaches shows and other live events.

KOGO's signal stretches from north of Santa Barbara to south of Tijuana. In addition, Clear Channel will showcase 15 additional live sporting events, including baseball and women's basketball games.

"We are pleased that Learfield has been able to put together a new radio deal for San Diego State," San Diego State Athletic Director Jeff Schemmel said. "Having our football and men's basketball games and coaches shows all on one station and to have that be the highest rated AM station in the market gives us a great opportunity to better serve our Aztec fan base. In addition, Clear Channel's commitment to provide coverage to additional sports, as well as its ability to help promote San Diego State athletics to a variety of demographics, will help our entire athletic program grow."

"We are proud and privileged to be the new home of the Aztecs and begin a strong new partnership with SDSU," Clear Channel Vice President and Marketing Manager Bob Bolinger said. "We know the Aztecs are committed to a winning program and we are committed to providing the best college sports broadcast in the country for the fans, the alumni and the community."

San Diego State has partnered with Clear Channel the past three years to play host to the annual KGB SkyShow event in conjunction with an Aztec football game. The results have been successful as the SkyShow event has accounted for three of the five largest home crowds in school history.

"We have worked with Clear Channel on other initiatives and they have a proven and exceptional reach in the San Diego marketplace," said Steve Becvar, General Manager of Aztec Sports Properties. "It's important to be creative and find ways to grow our fan base and the Clear Channel partnership will allow us to do that."

KOGO, San Diego's News and Talk Station, is owned by Clear Channel Communications. Clear Channel Communications is a global leader in out-of-home advertising and entertainment.

The company owns radio and television stations, outdoor advertising displays, produces live entertainment productions and owns venues in 65 countries, including throughout the United States. In San Diego, Clear Channel owns a total of six radio stations in addition to AM 600 KOGO: KGB-FM (101.5), KIOZ-FM (Rock 105.3), KMYI-FM (STAR 94.1), KHTS-FM (Channel 933), KUSS-FM (US 95.7 FM) and KLSD-AM (AM 1360).



VERSUS, CSTV, and The Mtn.

On Aug. 26, 2004, College Sports Television (CSTV) and the Mountain West Conference announced a visionary partnership that revolutionized the college sports landscape. The landmark agreement was the first NCAA Division I football and men's basketball conference-wide deal for CSTV. The advent of the new television model gives the fastest-growing independent cable network exclusive rights to all conference events, including cable and satellite television coverage, national over-the-air and satellite radio, video-on-demand and online broadcast rights. The CSTV/MWC partnership has guaranteed greater levels of television exposure for all MWC sports and has resoundingly met the fundamental goals of more exposure, preferred start times and competition on select days of the week.

A succession of events since the fall of 2004 have improved the new television model, including the CBS purchase of CSTV, and the merger with Comcast SportsNet to create The Mtn. - MountainWest Sports Network. The centerpiece of this historic relationship was the launch of The Mtn. - the first sports network dedicated to serving a single collegiate athletic conference 24 hours a day, 7 days a week, 365 days a year.

The relationship with Comcast also delivered a new national broadcast partner in VERSUS. The MWC was the first exclusive college programming provider for the Comcast-owned entity, with football and both men's and women's basketball games.

CSTV Networks, Inc., the new 24-hour power in college sports, is the nation's leading digital and cable programming company dedicated to college sports. CSTV (CSTV.com), part of CBS Corporation, connects more fans to more college sports than any other company and is now available to more than 65 million households across the nation.

Building upon a successful inaugural season of MWC football in 2006, CSTV will broadcast 14 MWC football games this year. In addition, CSTV offers a variety of original programming and studio shows featuring expert analysis and in-depth coverage of the Mountain West Conference, in addition to the entire landscape of college football. Together, CSTV, VERSUS and The Mtn. will showcase all of the passion and rivalries of the Mountain West Conference, while delivering unparalleled 24/7 coverage to fans across the nation.

The Mtn. - MountainWest Sports Network is a partnership between CSTV and Comcast. It's the first sports network dedicated to a collegiate athletic conference. The Mtn. provides sports fans blanket coverage of MWC athletics across multiple sports. The Mtn. features more MWC games on television than ever before, including 30 live MWC football games, 75 live men's basketball games, 23 live women's basketball games, conference championships and men's and women's Olympic sports. In addition to live game coverage, fans get original programming and a comprehensive array of news, features and analysis about their favorite MWC teams and players.



POWERED BY



MountainWest Sports Network

Cox Arena at Aztec Bowl



2002 NCAA TOURNAMENT ▶ 2003 NIT ▶ 2006 NCAA TOURNAMENT ▶ 2007 NIT



The photo above shows a sold-out Cox Arena at Aztec Bowl for San Diego State's 2003 game against Texas Tech. The Aztecs set a single-season attendance record in 2002-03 by averaging 7,172 fans per contest and averaged a school-record 8,305 per Mountain West Conference game in 2003-04.

- ▶ Cox Arena photo spread on pages 20 and 21
- ▶ Cox Arena records on pages 137 and 138

- ▶ Top San Diego State attended games on page 187
- ▶ Directions to Cox Arena on page 201

One of the premier on-campus basketball arenas in all of America, Cox Arena at Aztec Bowl provides a 12,414-seat, state-of-the-art venue while keeping fans close to the floor and part of the action.

Opened in 1997, the facility is the home of San Diego State Basketball and provides a venue for university functions, cultural events, concerts and other special-event programming. It features a unique open-air concourse design that allows fans to enjoy the excellent San Diego climate and adds a new experience to attending arena-type events.

The arena is built on the site of the old Aztec Bowl stadium which hosted San Diego State football games as well as other athletic, entertainment and cultural events from the time of its construction in 1936 until 1967.

Built directly into a canyon hillside, Cox Arena encloses one end of the old horseshoe-shaped Aztec Bowl. Two sections of the stadium's original concrete bleachers and cobblestone walls frame each side of the arena's north

entrance. In addition, the university's 10-ton granite boulder, a California landmark commemorating President John F. Kennedy's 1963 commencement address at Aztec Bowl, has also been placed in this area.

In addition to Aztec basketball contests, Cox Arena has played host to concerts by such artists as Cher, Eric Clapton, Britney Spears, No Doubt, Barry Manilow and Aerosmith. In spring of 2001, Billy Joel and Elton John opened their world tour with a sold-out show at Cox Arena.

Cox Arena seats 12,414 for sporting events. The seating includes the top nine rows consisting of bench seats with the remaining areas as chairbacks. The total seating is approximately 3,935 bench seats and 8,065 chairs. In the special event/concert configuration there are approximately 11,500 seats. All seating configurations are flexible and can be adjusted.

The facility features a \$1.2 million octagonal scoreboard with video-replay capabilities. The board also includes up-to-the-minute statistical information on individual players.

The facility is equipped with seven locker

rooms, two of which are complete with team rooms, equipment rooms, and a shared training room.

The men's team lounge was recently renovated and now includes three large-screen television sets, individual leather recliners and track lighting.

The Mezzanine Level houses a VIP Room for banquets, pre- and postgame functions, and other formal and informal gatherings. The room consists of a 2,200 square-foot space that can be divided into two rooms of 800 and 1,400 square feet. The 800-square foot area can also serve as an interview room for sporting events.

After serving as host to the first and second rounds of the NCAA men's basketball championship in 2001, the building was the home of the 2001 NCAA women's volleyball national championship. In 2006, the building played host to the NCAA men's basketball first and second rounds, along with the McDonald's All-American High School Basketball games.

Athletics Directory



2002 NCAA TOURNAMENT ▶ 2003 NIT ▶ 2006 NCAA TOURNAMENT ▶ 2007 NIT

General Information

General Phone Number - (619) 594-3019

Mailing Address

SDSU Department of Athletics
5500 Campanile Drive
San Diego, CA 92182-4313

Staff

Administration - (619) 594-3019

Jeff Schemmel, Athletic Director
Don Oberhelman, Senior Assoc. Ath. Dir./COO
Steve Becvar, Executive Assoc. Athletic Director
Jenny Bramer, Assoc. Athletic Director/SWA
Fatema Arefi, Administrative Assistant
Lesley Fong, Dir. of Special Projects/Campus Liaison
Linda Kimzey, Administrative Services Coordinator

Academic Services - (619) 594-3395

Colleen Evans, Director of Academic Services
Bre White, Asst. Director of Academic Services
Willie Judd, Academic Advisor
Jessica Simmons, Academic Advisor
Kristie Smedsrud, Academic Advisor
Maria Moreno-Pardo, Learning Specialist
Chris Hoppe, Admissions/Eligibility Coordinator

Business Office - (619) 594-4996

Chuck Lang, Assoc. A.D. - Administration
Donna Bell, Business Office Manager
Dana Imperatore, Accounting Technician
Jesse Stephens, Accounting Technician

Compliance - (619) 594-3395

Jennifer Daniels, Asst. A.D. - Compliance
Genevieve Pascoe, Asst. Director of Compliance
Julie Fitzgerald, Financial Aid Coordinator
Lori Mitchell, Administrative Assistant

Development - (619) 594-5162

Bob Moosbrugger, Assoc. A.D. - Development/Major Gifts
Michelle McBride, Asst. Athletic Director - AAF
Joy Francis, Director of Athletic Development
Sherry Bertram, Assistant Director - AAF
Danni Barrall, Special Events Coordinator

Equipment - (619) 594-4951

Nick Pettit, Director - Ath. Equipment Services
Angie Garza, Assistant Equipment Manager
Dennis Brown, Equipment Attendant
Ben Herman, Equipment Attendant
Pat Murray, Equipment Attendant

Facilities & Operations - (619) 594-4191

Steve Schnell, Assoc. A.D. - Operations
Joe Erbland, Assoc. Dir. of Facilities & Operations
Steve Bartel, Event Management Assistant
Dave Noll, Asst. Dir. of Facilities and Operations
Tim Baron, Facilities and Operations Assistant
Scott Horvath, Info. Technology Coordinator

Marketing & Corp. Sales - (619) 594-4549

Sean Briner, Assoc. Ath. Dir. - Marketing/Sales
Robin Blackwell, Director of Corporate Relations
Chris Carlson, Dir. of Marketing and Ticket Sales

Media Relations - (619) 594-5547

Mike May, Asst. Ath. Dir. - Media Relations
Peggy Curtin, Asst. Dir. - Media Relations
Dave Kuhn, Asst. Dir. - Media Relations
Jamie McConeghy, Asst. Dir. - Media Relations
Darin Wong, Asst. Dir. - Media Relations
Andrea Ohta, Media Relations Assistant
Jeff Salmon, Media Relations Assistant
Andrea Rogers, Administrative Assistant

Sports Medicine - (619) 594-5551

Don Kessler, Head Athletic Trainer
Mark Haines, Assistant Athletic Trainer
Carolyn Peters, Assistant Athletic Trainer
Gina Maggio, Physical Therapist/Athletic Trainer
Allison Miner, Physical Therapist/Ath. Trainer
Pat Dulin, S.A. Insurance Coordinator

Strength & Conditioning - (619) 594-4273

Jon Francis, Director of Strength & Conditioning
David Ohton, Strength & Conditioning Coach
Courtney Bale, Asst. Strength & Conditioning Coach
Wendell Richards, Asst. Strength & Conditioning Coach

Ticket Office - (619) 594-7892

Jim Cordova, Asst. A.D. - Ticket Office Operations
Gina Balistrieri, Assistant Ticket Office Manager
Jennifer Slaughter, Ticket Office Associate
Kelli Edelbrock, Ticket Office Assistant

Video Staff - (619) 594-7617

Brian Murphy, Video Coordinator

Coaching Staffs

Baseball - (619) 594-6889

Tony Gwynn, Head Coach
Rusty Filter, Associate Head Coach
Mark Martinez, Assistant Coach
Jody Stevens, Assistant Coach
Mike Sweet, Director of Operations

Men's Basketball - (619) 594-6249

Steve Fisher, Head Coach
Brian Dutcher, Assistant Head Coach
Justin Hutson, Assistant Coach
Mark Fisher, Assistant Coach
Matt Soria, Director of Operations
Marty Malano, Administrative Assistant

Women's Basketball - (619) 594-4095

Beth Burns, Head Coach
Heidi VanDerveer, Associate Head Coach
Renee Jimenez, Assistant Coach
Jualeah Woods, Assistant Coach
Tammy Stephens, Director of Operations
Helen Kanavel, Administrative Assistant

Women's Crew - (619) 594-0650

Jennifer Zebroski, Head Coach
Alison Abrams, Assistant Coach
Guillermo Lemus, Assistant Coach

Women's Track & Cross Country - (619) 594-1951

Rahn Sheffield, Head Coach
Jennifer Nanista, Assistant Coach
Michael LoBue, Assistant Coach
Richard Fox, Volunteer Assistant Coach

Football - (619) 594-6769

Chuck Long, Head Coach
Chris Ash, Assistant Coach
Joe Bob Clements, Assistant Coach
Bob Elliott, Assistant Coach
Jonathan Himebauch, Assistant Coach
Larry Holton, Assistant Coach
William Inge, Assistant Coach
LeCharls McDaniel, Assistant Coach
Del Miller, Assistant Coach
Toby Neimas, Assistant Coach
Brian Stark, Director of Operations
Leah Owczarczak, Administrative Assistant
Meghan Crowen, Administrative Assistant

Men's Golf - (619) 594-4334

Ryan Donovan, Head Coach
Dale Walker, Director of Operations

Women's Golf - (619) 594-7665

Felicia Brown, Head Coach
Doug Barba, Assistant Coach

Men's Soccer - (619) 594-0136

Lev Kirshner, Head Coach
Matt Hall, Assistant Coach
Oscar Rodriguez, Assistant Coach
Kevin Sapanli, Assistant Coach
Andrew DiCicco, Director of Operations

Women's Soccer - (619) 594-3749

Mike Friesen, Head Coach
Nat Gonzalez, Assistant Coach
Erica Keus, Assistant Coach

Softball - (619) 594-1952

Kathy Van Wyk, Head Coach
Sara Hayes, Assistant Coach
Steve Miner, Assistant Coach
Miranda Bleisch, Director of Operations

Women's Swimming & Diving - (619) 594-5883

Mike Shrader, Head Coach
Brendon Bray, Assistant Coach
Jim Wynne, Diving Coach

Men's Tennis - (619) 594-5084

Gene Carswell, Head Coach
Ryan Redondo, Assistant Coach

Women's Tennis - (619) 594-6505

Peter Mattered, Head Coach
Lindsey Gamp, Assistant Coach

Women's Volleyball - (619) 594-5064

Mark Warner, Head Coach
John Ross, Associate Head Coach
John Shirk, Assistant Coach

Women's Water Polo - (619) 594-0649

Carin Crawford, Head Coach
Allison Gregory, Assistant Coach

Band - (619) 594-1600

Bryan Ransom, Band Director

Cheerleading - (619) 594-4549

Jennifer Kwappenberg, Cheer Coach