



SAN DIEGO STATE WOMEN'S BASKETBALL

2016-17 GAME NOTES

Jen Heisel, Assistant Media Relations Director • E-Mail: jheisel@mail.sdsu.edu • Office: 619-594-3014 • Cell: 862-432-5499

2016-17 SCHEDULE

Date	Opponent	Time
Nov. 4	CSU San Marcos (exh.)	W, 74-53
Nov. 11	at UC Riverside	L, 44-72
Nov. 14	San Diego Christian	W, 80-70
Nov. 17	at San Diego	L, 53-91
Nov. 20	Loyola Marymount	L, 53-60

Seton Hall Thanksgiving Classic (South Orange, N.J.)

Nov. 26	vs. UT Arlington	L, 58-64
Nov. 27	vs. Central Connecticut	W, 80-62

Dec. 2	at UC Davis	L, 55-75
Dec. 9	Michigan	L, 57-92
Dec. 11	UC Santa Barbara	W, 84-70
Dec. 22	at Cal State Fullerton	W, 71-61
Dec. 28	Biola	W, 63-48
Dec. 31	at New Mexico*	L, 42-85
Jan. 4	Nevada*	W, 83-78
Jan. 7	Boise State*	W, 84-77
Jan. 11	at San José State*	L (OT), 81-80
Jan. 14	at Utah State*	L, 47-53
Jan. 18	UNLV*	W, 87-68
Jan. 25	Air Force*	6:30 p.m.
Jan. 28	at Colorado State*	2 p.m.
Feb. 1	at Wyoming*	7 p.m.
Feb. 4	Fresno State*	2 p.m.
Feb. 8	San José State*	6:30 p.m.
Feb. 11	at Nevada*	4 p.m.
Feb. 15	Utah State*	6:30 p.m.
Feb. 18	at UNLV*	4 p.m.
Feb. 22	at Fresno State*	7 p.m.
Feb. 25	Colorado State*	2 p.m.
Feb. 28	at Air Force*	7 p.m.
March 3	New Mexico*	6:30 p.m.
March 6-10	MW Championship (Las Vegas, Nev.)	TBA

All times local to site | Home games in **Bold** at Viejas Arena
* = Mountain West game

GAME 18 | AIR FORCE (VIEJAS ARENA) | WEDS., JAN. 25 | 6:30 P.M. PT

LIVE MEDIA: Stats (GoAztecs.com), Audio/Video (Mountain West Network) | Series vs. AF: SDSU leads, 33-6 / Streak: SDSU won 12



SAN DIEGO STATE
2016-17 Record: 8-9 (3-3 MW)
Head Coach: Stacie Terry
Fourth Year at SDSU/Fourth overall



AIR FORCE
2016-17 Record: 2-15 (0-7 MW)
Head Coach: Chris Gobrecht
Second Year at AF/37th overall

TOP PERFORMERS

Scoring	McKynzie Fort - 16.8
Rebounding	Khalia Lark - 7.3
Assists	Ariell Bostick - 6.9

TOP PERFORMERS

Scoring	Sarah Pierce - 11.0
Rebounding	Dee Bennett - 8.5
Assists	Cortney Porter - 5.0

- San Diego State makes its return to Viejas Arena following a bye to take on Air Force in a Mountain West showdown on Weds., Jan. 25 at 6:30 p.m. Chris Ello will call the play-by-play action for a live stream on the Mountain West Network.
- The Aztecs fashioned one of their most exhilarating games of the season on Jan. 18, using a season-high 14 long balls, their most in nearly 13 years, to take down UNLV in home Mountain West action, 87-68. SDSU knocked down 14 3-pointers for a season high and their most since the 2004-05 season, while recording 24 assists, the most since the 2014-15 season opener against Sacramento State.
- Since the start of conference play, San Diego State's play from beyond the arc has been phenomenal. The Aztecs lead the league in MW play with 9.3 3-pointers per game, and is one of four MW teams to have five-or-more games this year with double-digit 3-pointers. Junior Lexy Thorderson has had three games with five-or-more treys: seven against UNLV, six versus Boise State and five against Nevada. Her 2.5 3-pointers per game and 4.0 threes per conference game are the most in the Mountain West.
- SDSU takes its home court advantage to the next level. The Aztecs are 6-2 this season when playing at Viejas Arena, shooting 48.2 percent from the floor and holding opponents to a .423 shooting percentage, while narrowly edging opponents in assists (129-128), steals (40-39) and points per game (73.9-70.4). At home, four Aztecs are averaging double-digit points, led by junior McKynzie Fort's 17.1 points per game.
- Air Force (2-15, 0-7 MW) has yet to win a game in Mountain West play, but have lost their most recent two games by five and four points, respectively. The Falcons rely heavily on their newcomers, who account for 65.3 percent of its scoring and 54.9 percent of its minutes logged. Freshman Mariah Forde is a major component of the Falcons' first-year success, as she is the conference's leading scorer among freshmen with 9.9 points per game. Classmate Kailin Davis, meanwhile, ranks third among freshmen with 9.2 points per game.

SAN DIEGO STATE AZTECS (8-9, 3-3 MW)

No.	Name	Pos.	Ht.	Yr.	Exp.	PPG	RPG	APG	Individual Player Notes
1	Khalia Lark	F	6-0	Jr.	TR	11.1	7.3	1.1	Averaging 26.5 MPG for second on the team ... Career-high 22 pts. vs. Nevada ... 12 rebounds vs. SJSU
3	Ariell Bostick	G	5-4	Sr.	3L	3.4	4.7	4.1	Team-high 69 assists ... Fourth in MW with 1.8 steals/game ... 10 assists vs. Biola most since 2012-13
4	Kymberly Ellison	G	5-7	Sr.	1L	9.6	2.2	1.1	Second on team, third in MW with 37 treys ... Career-highs in threes vs. UNM (4), points vs. UNLV (21)
11	Arantxa Gómez Ferrer	F	6-0	So.	1L	1.8	2.2	0.3	Averaging 11.7 MPG per game ... Leads team with 7 blocks, getting 2 in 3 games this season
13	Allison Brown	G	5-7	Jr.	SQ	1.5	0.5	0.5	Appearances in 4 games, playing a season-high 9 mins. vs. SDCC ... Career-high 4 points vs. Michigan
15	McKynzie Fort	G	5-9	Jr.	2L	16.8	3.8	2.3	Second in MW in PPG ... Team-high 30.8 MPG ... Career-high 29 pts. twice ... Double-double at SJSU
20	Geena Gomez	G	5-8	Jr.	1L	7.9	2.9	2.4	Career-high 20 pts., 4 3-pointers at SJSU ... 8 games with double-digit points
21	Abby Lowe	G	5-11	Fr.	HS	1.5	0.8	0.2	Averaging 6.3 minutes per game ... Career-high 7 points at UC Davis
22	Lexy Thorderson	G/F	6-0	Jr.	2L	10.1	2.7	0.9	Conference leader with 2.5 treys per game ... Career-high 7 threes, 21 points vs. UNLV
30	Cheyenne Greenhouse	G	5-11	Jr.	2L	4.2	1.5	0.4	Season-high 10 points vs. UC Santa Barbara ... Averaging 14.4 minutes per game
34	Baylee Vanderdoes	F	6-1	Fr.	HS	3.8	3.7	0.5	Fourth with 3.7 RPG, starting eight games ... Double-double vs. SDCC was first for freshman since 2014
40	Monique Terry	F	6-2	Fr.	HS	3.6	2.4	0.2	Has started 10 of SDSU's last 12 games ... Averaging 15.8 minutes per game
44	Aleiah Brandon	F	6-1	Sr.	3L	0.0	0.0	0.0	Provides veteran leadership as a fifth-year senior
45	Naomi Ekwedike	F	6-6	Fr.	HS	1.9	1.2	0.0	Played double-digit minutes in three games ... Scored season-high 5 points vs. SDCC

Head Coach: Stacie Terry (UT Arlington, 1998) | 37-55 (Fourth Season at SDSU/Fourth Overall)

Assistant Coaches: Jesse Clark (Pacific Union, 2003); Ciara Carl (Point Loma Nazarene, 2005); Nick Grant (Baylor, 2010)

Director of Basketball Operations: Jon Silver (UCLA, 2009)

Director of Player Personnel: Paris Johnson (San Diego State, 2011)

Athletic Trainer: Queenie Soriano (San Diego State, 2004)

Head Manager: Chris Straker

SAN DIEGO STATE QUICK FACTS

GENERAL INFORMATION

Location: San Diego, Calif., 92182
 Founded: 1897
 Enrollment: 30,750
 Nickname: Aztecs
 School Colors: Scarlet and Black
 Affiliation: NCAA Division I
 Conference: Mountain West
 Home Arena (Capacity):
 Steve Fisher Court at Viejas Arena (12,414)
 President: Dr. Elliot Hirshman
 Director of Athletics: John David Wicker
 Faculty Athletic Representative: Patrick Papin
 Athletics Dept. Phone: 619-594-3019

AZTEC BASKETBALL FACTS

First Year of Basketball: 1976-77
 All-Time Record: 629-552 (.533) / 40 seasons
 Postseason Appearances/NCAA Appearances: 12/9
 Last Postseason Appearance: 2013--
 Lost to BYU (69-58) in WNIT Second Round

SDSU TEAM INFORMATION

2015-16 Record: 12-19 (.387)
 2015-16 MW Record/Finish: 6-12/T-8th
 2016 MW Tournament Record: 1-1
 2016 Final NCAA RPI: 238
 Letterwinners Returning/Lost: 9/2
 Starters Returning/Lost: 2/2
 Newcomers: 5

AZTEC BASKETBALL STAFF

Head Coach: Stacie Terry
 Alma Mater: UT Arlington, 1998
 Career Record/Years: 37-55/Fourth Year
 Record at SDSU: Same
 Best Time to Call: Contact SID
 Basketball Office Phone: 619-594-4095
 Basketball Office Fax: 619-594-8057
 Assistant Coaches:
 Jesse Clark, Fourth season at SDSU
 Alma Mater: Pacific Union, 2003
 Ciara Carl, Fourth season at SDSU
 Alma Mater: Point Loma Nazarene, 2005
 Nick Grant, Third season at SDSU
 Alma Mater: Baylor, 2010
 Director of Basketball Operations: Jon Silver
 First season at SDSU
 Alma Mater: UCLA, 2009
 Director of Player Personnel: Paris Johnson
 First season at SDSU
 Alma Mater: San Diego State, 2009
 Athletic Trainer: Queenie Soriano
 Head Manager: Chris Straker
 Academic Advisor: Dr. Bre White
 Strength and Conditioning: Eddie Padilla

SDSU MEDIA RELATIONS

Women's Basketball SID: Jen Heisel
 E-mail: jheisel@mail.sdsu.edu
 Office Phone: 619-594-3014
 Cell Phone: 862-432-5499

Scouting the Falcons

- Air Force (2-15, 0-7 MW) has yet to win a game in Mountain West play, most recently falling in a close contest to UNLV, 60-56.
- Despite possessing an 0-7 mark in conference play, the Falcons are scratching the surface of a win. They have lost their most recent two games by five and four points, respectively.
- Air Force relies heavily on its newcomers, who account for 65.3 percent of its scoring and 54.9 percent of its minutes logged. Freshman Mariah Forde is a major component of the Falcons' first-year success, as she is the conference's leading scorer among freshmen with 9.9 points per game. Classmate Kailin Davis, meanwhile, ranks third among freshmen with 9.2 points per game.
- Another newcomer that the Aztecs' offense will have to contend with is freshman Kassady Huffman, who is just seven blocks shy of Air Force's single-season Division I-era record with 37 blocks.
- Chris Gobrecht is in her second season at the helm of Air Force's program.

Welcome to Our House

- San Diego State takes its home court advantage to the next level. The Aztecs are 6-2 this season when playing on Steve Fisher Court at Viejas Arena, shooting 48.2 (320-for-436) percent from the floor while holding opponents to a .423 (214-for-506) shooting percentage, and narrowly edging opponents in assists (129-128), steals (40-39) and points per game (73.9-70.4).
- At home, four Aztecs are averaging double-digit points, led by junior McKynzie Fort's 17.1 points per game.

It's Raining Threes!

- Since the start of conference play, San Diego State's play from beyond the arc has been phenomenal.
- The Aztecs lead the league in MW play with 9.3 3-pointers per game, and are one of four MW teams to have five-or-more games this year with double-digit 3-pointers (Colorado State - 7; Boise State - 6, New Mexico and San Diego State - 5).
- Junior Lexy Thorderson has had three games with five-or-more treys: a career-high seven against UNLV, six versus Boise State and five against Nevada. Her 2.5 3-pointers per game this season and 4.0 threes per conference game are the most in the Mountain West.
- Senior Kymberly Ellison is averaging 2.2 threes per game for second on the team and third in the Mountain West.
- Versus UNLV, the Scarlet and Black knocked down 14 3-pointers for a season high and its most since Feb. 10, 2005 in a 91-45 win over Utah Valley State College. In the game, Lexy Thorderson drilled a career-best seven treys.
- Against San José State, SDSU drilled 12 3-pointers, its third straight game with 10-or-more threes. Versus Boise State, SDSU knocked down 11 3-pointers, five of which came in the fourth quarter (its second-straight game with five-or-more treys in a quarter after getting six in the first quarter vs. Nevada) following its 10 treys made against the Wolf Pack.
- SDSU was the first team in the conference to score double-digit threes in three straight Mountain West games, the first time since at least the 1999-2000 season that the Aztecs had consecutive games with 10-or-more 3-pointers

Sharing is Caring

- The Scarlet and Black is a team that believes in spreading the love. SDSU has a perfect 5-0 mark when garnering more assists than its

MW PRESEASON POLL

Rk.	Team	Pts.
1.	Colorado State (17)	283
2.	Boise State (11)	271
3.	Fresno State	225
4.	UNLV	201
5.	San José State	197
6.	New Mexico (1)	176
7.	San Diego State	126
8.	Wyoming	123
9.	Utah State	97
10.	Nevada	66
11.	Air Force	28

First-place votes in parentheses

MW PRESEASON HONORS

Preseason All-Mountain West Team

Brooke Pahukoa, Boise State
 Ellen Nystrom, Colorado State
 Bego Faz Davalos, Fresno State
 Cherise Beynon, New Mexico
 Dezz Ramos, San José State

Preseason Player of the Year

Ellen Nystrom, Colorado State

Preseason Newcomers of the Year:

Mykiel Bursleson, New Mexico

Preseason Freshman of the Year

Hallie Gennett, San José State

SDSU IN THE MW POLL

Year	Pre.	Final
1999-2000	6th	6th
2000-01	7th	6th
2001-02	7th	7th
2002-03	7th	7th
2003-04	6th	7th
2004-05	7th	t-7th
2005-06	8th	9th
2006-07	7th	7th
2007-08	7th	t-5th
2008-09	2nd	2nd
2009-10	1st	t-3rd
2010-11	2nd	6th
2011-12	2nd	1st
2012-13	1st	1st
2013-14	3rd	t-6th
2014-15	7th	7th
2015-16	6th	t-8th
2016-17	7th	--



opponent, is 8-3 when recording 10-or-more assists in a game and is 7-0 with 15+ total assists.

- In its home game versus UNLV, San Diego State notched a season-best 24 helpers, the most since the 2014-15 season opener against Sacramento State.
- Ariell Bostick, who earlier in the season had 10 assists against Biola for the most since the 2012-13 season, leads the team and ranks seventh in the conference with 4.1 assists per game.
- Since the start of MW play, the Aztecs rank fourth with 15.0 assists per game.

Moral Support

- In Stacie Terry's fourth season, fans are showing their support for her program. The Aztecs have averaged 788 in attendance at the team's eight home games thus far, up from 487 last season. Against Michigan, 2,632 fans were in attendance for the greatest showing since Jan. 24, 2009, when 2,792 were in Viejas Arena to see San Diego State play then-conference foe Brigham Young.

Kynz Can!

- Junior McKynzie Fort has proven herself to be an offensive stalwart for the Aztecs. The Fontana, Calif., native got to 1,000 career points at San José State, becoming just the 21st member of the Aztecs' 1,000-point club and the eighth Aztec to reach that mark in her third season. Fort is the 27th Mountain West student-athlete to hit 1,000 points in her third season and is the first true Mountain West junior accomplish the feat since Wyoming had two student-athletes hit the mark during the 2013-14 season.
- This season, Fort is averaging 16.8 points per game to rank second in the Mountain West, helped by her best offensive performance in the Scarlet and Black with 29 points each at San José State and Cal State Fullerton.
- Proving she's an all-around player, Fort snatched a season-high four steals at Utah State and had back-to-back games with a career-high six assists against Nevada and Boise State.
- One of the Aztecs' most reliable performers, she leads the squad with 30.8 minutes per game and has already surpassed her career high with six long balls.

Not a Lark

- In her first eight games as an Aztec following her transfer from Washington prior to the Spring 2015 semester, junior Khalia Lark has emerged as a vital component to SDSU's success.
- The Irvine, Calif., native has averaged 11.1 points and 7.3 boards in her first eight games, leading the Aztecs in rebounds in seven

of eight games played and becoming just the second Aztec this year to score 20-or-more points with a career-high 22 against Nevada.

- She grabbed 12 rebounds at San José State for a personal best and the most for any Aztec this year.
- In total, Lark has averaged 26.5 minutes, the second-most on the team, and has two starts: against New Mexico and UNLV.

Gee, Geena G.!

- Geena Gomez is in the midst of a breakout season in her junior year. She ranks second in the conference with a 2.6 assist-to-turnover ratio against MW opponents.
- A native of Huntington Beach, Calif., Gomez scored a career-high 20 points with four treys, a career best, at San José State.
- At the Seton Hall Thanksgiving Classic, she notched 17 points, previously a career-high by going 3-for-3 from beyond the arc and connecting on all six attempts at the free-throw line to earn All-Seton Hall Thanksgiving Classic tournament team honors.
- Gomez matched that total in her second start of the year against UC Santa Barbara.

Lassoing the Broncos

- San Diego State had its most tenacious win to date, using a come-from-behind fourth quarter to topple Boise State, 84-77, on Jan. 7. Trailing 61-56 heading into the final frame, San Diego State out-scored the Broncos, 30-16, and scored five 3-pointers in 2:55 for the win. Lexy Thorderson led the team with a career-high 20 points on six treys, also a career high. Boise State was picked to finish second in the conference in the preseason coaches' poll.

Packing in the Offense

- In the first half of a 83-78 win against Nevada on Jan. 4, the Aztecs scored a season-high 52 points, its highest point total in a first half since the 2014-15 season opener against Sacramento State, and knocked down nine 3-pointers, more than its total in 11 games this year.
- The nine treys were the most in a half since Feb. 10, 2005, when SDSU topped Utah Valley State College, 91-45. In the first quarter alone, the Aztecs scored 32 points for their highest point total in a single frame this year and knocked down six shots from beyond the 3-point arc.

AIR FORCE SERIES NOTES

AIR FORCE AT SAN DIEGO STATE

SDSU leads, 33-6

• 2016-17 Comparative Stats

SDSU		AF
8-9	Overall Record	2-15
3-3	League Record	0-7
.409	Field Goal Pct.	.333
.338	3-PT FG Pct.	.288
.717	Free Throw Pct.	.642
.446	Opp. FG Pct.	.411
.346	Opp. 3-PT FG Pct.	.341
.669	Opp. FT Pct.	.708
33.2	Rebound Avg.	36.3
-4.3	Rebound Margin	-4.4
65.9	Points/Game	53.1
71.0	Pts. Allowed/Game	67.9

• Series Numbers

Record at SDSU	16-2
Record at AF	15-4
Record at Neutral	2-0
Most Points SDSU	89, 1997
Most Points AF	79, 2002
Largest Margin SDSU	51, 2009
Largest Margin AF	29, 2006
Longest SDSU Win Streak	12
Longest AF Win Streak	2
Current Streak	SDSU 12

AZTECS VS. MOUNTAIN WEST

Air Force	33	6
Boise State	8	4
Colorado State	27	25
Fresno State	26	16
Nevada	9	7
New Mexico	26	33
San José State	20	6
UNLV	28	26
Utah State	5	4
Wyoming	27	26
Total	209	153

LAST MEETING | AIR FORCE

San Diego State at Air Force Box Score (2-13-16)

SDSU	FG	3FG	FT	REB	F	TP	A	T	B	S	MP
Smith	4-7	0-0	2-2	3	1	10	0	2	0	0	18
Bostick	1-1	0-0	2-2	4	2	4	5	1	0	0	20
Harvey	4-6	1-3	0-0	5	1	9	3	5	0	1	35
Fort	6-10	0-0	4-5	2	1	16	2	4	0	1	29
Greenhouse	1-2	1-1	2-2	1	1	5	1	1	2	2	18
Ellison	2-5	2-3	1-2	1	1	7	0	0	0	0	15
Gomez	2-3	1-2	2-2	3	1	7	2	1	0	1	17
Thorderson	3-6	3-5	0-0	4	4	9	1	0	0	0	23
Herd	1-2	0-0	0-0	1	2	2	0	0	0	0	9
Gomez Ferrer	0-0	0-0	0-2	0	0	0	0	0	0	0	2
Brandon	0-2	0-0	0-0	4	2	0	0	1	0	1	14
Team				5				2			
Totals	24-44	8-14	13-17	33	16	69	14	17	2	6	200
Pct.	54.4	57.1	76.5								

AFA	FG	3FG	FT	REB	F	TP	A	T	B	S	MP
Parker	3-4	0-0	0-0	2	3	6	1	2	0	0	27
Fotsch	0-4	0-1	0-2	5	1	0	1	0	0	0	31
Bennett	1-6	0-0	3-5	6	1	5	1	0	0	1	29
Itugbu	1-1	0-0	0-0	1	5	2	0	3	1	3	21
Porter	10-20	0-5	5-6	8	1	25	3	3	0	2	30
Jackson	0-0	0-0	0-0	0	1	0	0	0	0	0	2
Clarke	0-4	0-1	2-2	1	0	2	1	0	0	1	12
Graham	0-2	0-1	0-0	0	0	0	0	0	0	0	1
Falvey	0-0	0-0	0-0	1	2	0	1	0	0	0	7
Wall	2-6	0-0	2-2	1	1	6	0	2	0	0	13
Cantu	7-12	5-8	1-1	1	1	20	1	0	0	0	27
Team				1							
Totals	24-59	5-16	13-18	27	16	66	9	10	1	7	200
Pct.	40.7	31.3	72.2								

Officials: Clarke Stevens, Kelly Murray, Jess Martine
Technical fouls: None **Attendance:** 321

Score by Periods	1st	2nd	3rd	4th	Total
San Diego State	23	17	16	13	69
Air Force	13	21	16	16	66

SAN DIEGO STATE STREAKS

Most Consecutive Starts

	Consecutive	Total
McKynzie Fort	72	72
Kymberly Ellison*	17	17
Lexy Thorderson	9	13
Geena Gomez*	9	11
Khalia Lark	1	2
Ariell Bostick	0	53
Cheyenne Greenhouse	0	32
Aleiah Brandon	0	18
Monique Terry	0	10
Baylee Vanderdoes	0	8

Most Consecutive Games

	Consecutive	Total
McKynzie Fort	80	80
Ariell Bostick	72	95
Kymberly Ellison*	48	48
Geena Gomez*	46	46
Arantxa Gómez Ferrer	17	35
Monique Terry	17	17
Cheyenne Greenhouse	15	79
Lexy Thorderson	15	76
Khalia Lark	8	8
Baylee Vanderdoes	2	10
Allison Brown	1	20
Abby Lowe	1	11
Aleiah Brandon	0	72
Naomi Ekwedike	0	9

Most Consecutive Games With A Point^

	Consecutive	Total
McKynzie Fort	80	80
Kymberly Ellison*	17	40
Lexy Thorderson	12	52
Khalia Lark	8	8
Geena Gomez*	5	32
Cheyenne Greenhouse	3	63
Arantxa Gómez Ferrer	2	16
Baylee Vanderdoes	2	10
Ariell Bostick	1	83
Monique Terry	1	14
Aleiah Brandon	0	39
Naomi Ekwedike	0	5
Abby Lowe	0	5
Allison Brown	0	4

*SDSU totals only; ^must have played in the game

AZTECS IN THE NATION

Category	Team	Value	Rank
Fewest Turnovers		248	27
Fewest Fouls		588	51
Turnovers Per Game		14.6	91
Free-Throw Percentage		71.7	99

McKynzie Fort			
Category	Value	Rank	
Free Throws Made	69	98	
Points Per Game	16.8	93	

Lexy Thorderson			
Category	Value	Rank	
3-Point Field Goals Per Game	2.47	70	

Keeping it Fresh(men)

• Freshman Monique Terry has started 10 of the Aztecs' last 12 games, averaging 18.6 minutes per game in the last seven contests. She had a career game against Biola, netting a career-best eight points in 23 minutes logged, also a career best. In the previous game at Cal State Fullerton, she grabbed five boards, her most to date.

• Starting the first eight games of the season, classmate Baylee Vanderdoes has a .455 (15-for-33) shooting percentage and her 3.7 rebounds per game are fourth on the team. Against San Diego Christian, the Auburn, Calif., native scored 10 points and added as many rebounds to become the first freshman with a double-double since Cheyenne Greenhouse accomplished the feat against Sacramento State (Nov. 14, 2014).

Improving is Key!

• As the season has progressed, the Aztecs have shown marked improvement, and have displayed growth when compared to its non-conference slate last year. While the 2016-17 team had the same non-conference record as the 2015-16 team at 5-6, SDSU had a better shooting percentage (.407, 66-for-215 vs. .386, 238-for-617), a better 3-point shooting percentage (.307, 66-for-215 vs. .279, 51-for-183), an improved free-throw percentage (.750, 144-for-192 vs. .612, 126-for-206), more assists (125 vs. 120) and more points per game (63.5 vs. 59.4) in this year's non-conference slate.

Comeback Kids vs. Cal State Fullerton

• Behind McKynzie Fort's career-high 29 points and an outstanding second-half performance in which the Aztecs out-scored Cal State Fullerton, 44-27, San Diego State defeated the Titans, 71-61, on Dec. 22.

• Stringing together its first win streak of the season following an 84-70 win against UC Santa Barbara on Dec. 11, SDSU shot 47.4 percent (27-for-47) from the floor, led by Fort's career-best 29 points. She got 22 points in the second half, and added four assists and two steals during the game.

• In her San Diego State debut following a transfer from Washington after the Fall 2015 semester, and playing just 18 miles from her hometown of Irvine, Calif., Khalia Lark scored five points, added as many rebounds and notched two assists in 29 minutes on the floor, the second most on the team.

Grounding the Gauchos

• Against UC Santa Barbara on Dec. 11, SDSU used one of its most complete performances of the year to beat the Gauchos, generating its highest point total of the year in the 84-70 victory. Five Aztecs recorded double-digit points, led by juniors Lexy Thorderson and Geena Gomez each netting 17 points. Thorderson's total was a career-high, while Gomez matched her own career high, previously earned against Central Connecticut earlier this season. SDSU also made 10 3-pointers, its most since a 69-46 win over UC Santa Barbara on March 20, 2013 in the WNIT.

Last Meeting vs. Air Force Recap - Feb. 13, 2016

Behind sophomore McKynzie Fort's (Fontana, Calif) 16 points and some timely three-point shooting, San Diego State won its third straight game on Sat., Feb. 13 with a hard-fought 69-66 triumph over Air Force at Clune Arena.

SDSU shot a season-best 54.5 percent from the field (24-44), including a 57.1 percent clip (8-14) from beyond the arc, while maintaining a 33-27 rebounding advantage to help the Scarlet and Black capture its 12th consecutive victory over the Falcons (1-23, 1-12 MW).

However, Air Force nearly pulled off the upset thanks to the 1-2 combo of Cortney Porter (25 pts) and Sarah Cantu (20 pts), who combined for 45 of the team's 66 points. The Falcons matched the Aztecs with 24 field goals on the night, connecting on 40.7 percent of attempts from the floor while forcing 17 SDSU turnovers.

Leading 65-55 with just 3:26 left in the game following a layup by junior Kylie Herd (Phoenix, Ariz.), the Aztecs survived some anxious moments down the stretch after Air Force engineered an 11-2 spurt to cut the deficit to 67-66 with seven seconds to go. Porter scored four points during the run on a jumper and two free throws, while Cantu drained a triple.

Following an Aztec timeout, Fort calmly sank two free throws with 4.9 seconds remaining to provide for the margin of victory. The Falcons had one last chance to send the contest into overtime, but Porter's desperation three-point attempt caromed harmlessly off the glass.

AIR FORCE SERIES HISTORY

1-11-97	San Diego	W	70-41
2-6-97	USAFA	W	89-57
2-7-98	USAFA	W	78-54
2-26-98	San Diego	W	68-59
1-22-00	USAFA	L	72-77
2-19-00	San Diego	W	70-38
1-18-01	USAFA	W	50-49
2-17-01	San Diego	W	57-30
1-26-02	San Diego	W	58-50
2-21-02	USAFA	W	83-79
2-1-03	USAFA	W	73-55
2-27-03	San Diego	W	69-57
1-31-04	USAFA	W	51-46
2-26-04	San Diego	W	52-50
1-27-05	San Diego	L	44-48
2-26-05	USAFA	W	77-61
1-7-06 (ot)	San Diego	L	59-63
2-8-06	USAFA	L	45-74
1-14-07	San Diego	W	60-51
2-15-07	USAFA	L	52-60
2-6-08	USAFA	W	62-45
3-8-08	San Diego	W	64-34
1-7-09	San Diego	W	79-28
2-7-09	USAFA	W	55-37
2-3-10	USAFA	W	68-48
3-6-10	San Diego	W	87-52
1-19-11	USAFA	L	58-61
2-19-11	San Diego	W	68-50
1-21-12	USAFA	W	75-62
2-18-12	San Diego	W	59-46
3-9-12	Neutral	W	68-58
2-2-13	San Diego	W	68-46
3-6-13	USAFA	W	73-55
1-11-14	San Diego	W	72-39
2-15-14	USAFA	W	77-66
3-10-14	Neutral	W	63-56
12-31-14	USAFA	W	74-65
1-21-15	San Diego	W	70-47
2-13-16	USAFA	W	69-66

In addition to Fort's effort, SDSU received 10 points from Deidra Smith (Aurora, Colo.), including a clutch jumper from the top of the key with 1:33 to go in the game. Lexy Thorderson (Castle Rock, Colo.) also came up huge with 9 points on three triples, while junior Kymberly Ellison (Columbus, Ga.) and sophomore Geena Gomez (Huntington Beach, Calif.) finished with seven points apiece.

The Aztecs fashioned their biggest lead of the evening at 33-17 after Fort sank a jumper with 6:34 remaining in the second quarter. Air Force responded with 12 straight points over the next three minutes and change to climb back into contention. SDSU countered with a 7-0 run of its own, highlighted by Fort's old-fashioned three-point play followed by a quick steal and a layup by senior Ahjalee Harvey (Mountain View, Calif.). However, the Falcons closed the period with a 5-0 surge over the final 1:20 to give the contest its 40-34 score at intermission.

Air Force narrowed the gap to 44-41 in the third quarter after Porter converted an and-one opportunity at the 7:37 mark. The Aztecs managed to keep the Falcons at bay for the remainder of the period, building a pair of 10-point bulges, including a 56-46 spread following two Cheyenne Greenhouse (Riverside, Calif.) free throws with 1:56 to go. Air Force maintained its composure, however, as Porter tallied a layup and two free throws to trim the margin to 56-50.

SDSU opened the fourth quarter with five straight points, capped by Thorderson's triple at the 7:26 mark that seemingly put the visitors in control. However, Cantu promptly drilled a three-pointer of her own to short-circuit the Aztecs' momentum and help set the stage for a nail-biting finish.

Last Outing Recap - vs. UNLV - Jan. 18, 2017

San Diego State women's basketball fashioned one of its most exhilarating games of the season, using a season-high 14 long balls, its most in nearly 13 years, to take down UNLV in Mountain West action, 87-68, on Weds., Jan. 18 at Viejas Arena.

As has been the modus operandi for the Aztecs since conference play began, they continued their incredible play from beyond the 3-point arc, knocking down 14 3-pointers for a season high and their most since Feb. 10, 2005 in a 91-45 win over Utah Valley State College. San Diego State's ball movement was a major reason for its success, as the team recorded 24 helpers, the most since the 2014-15 season opener against Sacramento State.

San Diego State shot 55.6 percent (30-for-54) from the floor, its second-best shooting performance of the year after shooting 55.8 percent against Boise State (29-for-52). UNLV, which had held its previous three opponents to 55-or-fewer points, connected on 40 percent of its attempts (24-for-60).

Lexy Thorderson and Kymberly Ellison paced the Scarlet and Black with 21 points apiece. Thorderson drilled a career-best seven treys, while Ellison was 7-for-11 from the floor. Ariell Bostick posted a team-best seven helpers, slightly ahead of Geena Gomez, who matched a career-high with six assists. Khalia Lark got an SDSU-best seven boards alongside 13 points, while McKynzie Fort was 5-for-7 versus the Rebels for 15 points.

SDSU got off to a slower start in the game, trailing 12-5 with 3:37 remaining in the first. But Thorderson and the Aztecs' first three of the contest got the momentum to swing in the Scarlet and Black's direction, as the team proceeded to go on a 18-5 run to end the frame.

After Kymberly Ellison made a pair of free throws, Fort displayed an awesome individual effort at 2:54 when she tapped the ball out of Brooke Johnson's hands and raced it down the court for a layup.

Thorderson then hit threes on back-to-back possessions to give SDSU its first lead of the game at 18-17 with 1:31 to go in the period. After Fort made a pair of free throws on a technical foul called against UNLV's Dakota Gonzalez, Lark drilled San Diego State's fourth 3-pointer of the game with just four seconds remaining in the frame for the 23-17 score after 10 minutes.

In the second quarter, UNLV was able to get the game within three at 33-30 as 3:14 was on the clock. But SDSU out-scored the Rebels, 11-2, to end the first half and take a 44-32 advantage into the intermission. The third quarter started with UNLV scoring five unanswered points. The Scarlet and Black, however, was undeterred, going on a 24-9 run for the remainder of the third quarter to snag a 68-46 lead heading into the final frame. In the fourth quarter, San Diego State was out-scored, 22-19, but its cushion was too great for the Rebels to overcome for the final 87-68 Aztec victory.

During the game, Aztecs' play in transition was promising, as the team out-paced the Rebels on fast break points, 10-2. SDSU utilized its lineup to its full potential, with 10 players recording points and earning the 15-4 advantage on bench points. San Diego State also held margins in steals (6-5), assists (24-9) and points off turnovers (17-16).

Nationally-Ranked Class Joining Aztecs

- San Diego State women's basketball head coach Stacie Terry has announced the signing of a nationally-ranked class for the 2017-18 campaign. The 46th-ranked recruiting class in the country according to Blue Star Basketball, Te'a Adams, Jenay Borjorquez, Kiara Edwards, Najé Murray and Kennedy Villa have signed National-Letters-of-Intent to join the Aztecs next season.
- Adams, a nominee to compete in the 2017 McDonald's All-American Games, is a 5-9 guard from Kirkland, Wash. She is a three-star recruit according to ESPN and was given a scouts grade of 90. Entering her fourth year of varsity basketball at Juanita High School, Adams has averaged 19.2 points per game, 3.4 steals per game and 2.5 assists and rebounds each per game during a career that has yielded three all-conference honors.
- Borjorquez, a 5-6 point guard from Phoenix, is in her third season of varsity ball at Sierra Linda High School. A three-and-a-half-star recruit according to Prospects Nation, Borjorquez has held the top spot on Sierra Linda High's varsity squad in assists per game for two consecutive years.
- Averaging nearly a double-double per game during her three-year varsity career at Valley Vista High School in Surprise, Ariz., Edwards, who was also nominated to compete in the McDonald's All-American Games, is a 6-1 forward. Ranked No. 119 by Prospects Nation, the four-star recruit is coming off of an invitation to the 2016 USA Basketball

MW STANDINGS

As of Jan. 21

	MW	Overall
Wyoming	7-0	15-3
Colorado State	6-1	14-5
New Mexico	5-3	9-9
Boise State	4-3	14-4
UNLV	4-3	13-6
Fresno State	4-4	11-8
San Diego State	3-3	8-9
San José State	3-4	6-13
Utah State	2-5	9-9
Nevada	1-6	7-11
Air Force	0-7	2-15

MW SCHEDULE

Wednesday, January 25

WYOMING at UNLV*, 6 p.m. PT
 BOISE STATE at NEVADA*, 6:30 p.m. PT
 AIR FORCE at SAN DIEGO STATE*, 6:30 p.m. PT
 NEW MEXICO at UTAH STATE*, 7 p.m. MT
 COLORADO STATE at SAN JOSÉ STATE*, 7 p.m. PT

Saturday, January 28

WYOMING at BOISE STATE*, 2 p.m. MT
 SAN DIEGO STATE at COLORADO STATE*, 2 p.m. MT
 UTAH STATE at FRESNO STATE*, 2 p.m. PT
 SAN JOSÉ STATE at UNLV*, 4 p.m. PT
 NEVADA at NEW MEXICO*, 7 p.m. MT

Sunday, January 29

Northern New Mexico at NEW MEXICO, 2 p.m. MT

Wednesday, February 1

SAN DIEGO STATE at WYOMING*, 6:30 p.m. MT
 UTAH STATE at NEVADA*, 6:30 p.m. PT
 FRESNO STATE at AIR FORCE*, 7 p.m. MT
 COLORADO STATE at BOISE STATE*, 7 p.m. MT
 UNLV at NEW MEXICO*, 7 p.m. MT

Saturday, February 4

UNLV at COLORADO STATE*, 2 p.m. MT
 BOISE STATE at UTAH STATE*, 2 p.m. MT
 AIR FORCE at WYOMING*, 2 p.m. MT
 FRESNO STATE at SAN DIEGO STATE*, 2 p.m. PT
 NEW MEXICO at SAN JOSÉ STATE*, 2 p.m. PT

SDSU RECORD WHEN...

Playing at home	6-2
Playing on the road	1-6
Playing at a neutral site	1-1
Playing a night game (5 pm or later)	5-5
Playing a day game	3-4
Leading at halftime	7-0
Trailing at halftime	1-9
Tied at halftime	0-0
Leading with 5:00 left in regulation	8-1
Trailing with 5:00 left in regulation	0-8
Tied with 5:00 left	0-0
In overtime	0-1
Scoring less than 60 points	0-8
Scoring between 60-69 points	1-0
Scoring between 70-79 points	1-0
Scoring between 80-89 points	6-1
Scoring 90 or more points	0-0
Opponent scores less than 60 points	1-1
Opponent scores 60-69 points	3-2
Opponent scores 70-79 points	4-2
Opponent scores 80-89 points	0-2
Opponent scores 90 or more points	0-2
FG% .500 or better	6-0
FG% under .500	2-9
FG% .400-.499	2-0
FG% under .400	0-8
Opponent FG% .500 or better	1-5
Opponent FG% under .500	4-3
Opponent FG% .400-.499	4-2
Opponent FG% under .400	4-2
Better shooting %	8-0
Worse shooting %	0-9
More FG attempts	2-7
Fewer FG attempts	6-2
Same FG attempts	0-0
More FGs made	6-0
Fewer FGs made	1-9
Same FGs made	1-0
More FT attempts	4-6
Fewer FT attempts	3-3
Same FT attempts	1-0
More FTs made	6-5
Fewer FTs made	1-3
Same FTs made	1-1
More rebounds	3-3
Fewer rebounds	5-6
Same rebounds	0-0
More turnovers	2-4
Fewer turnovers	6-4
Same turnovers	0-1
More assists	5-0
Fewer assists	3-9
Same assists	0-0
More steals	5-2
Fewer steals	1-5
Same steals	2-2

SDSU STREAKS

Last 5 games	3-2
Last 10 games	6-4
Longest winning streak	3
Longest losing streak	3
Current streak	Won 1

Women's U17 World Championship team trials this May.

• A 5-6 guard from perennial national powerhouse St. Mary's in Stockton, Calif., Murray earned three stars and a 90 scouts grade by ESPN. Led by head coach Tom Gonsalves, St. Mary's has won 57 of its last 58 games and nine consecutive section championships.

• Villa, a 6-0 guard from Oakland, Calif., attends Saint Mary's College High School in Berkeley, Calif. A three-star recruit according to ESPN, she earned a scouts grade of 88.

Jumpin' Jehosaphat, Juniors!

• The Aztecs' junior class has been anything but junior. During the 2015-16 season, Allizon Brown, McKynzie Fort, Geena Gomez, Cheyenne Greenhouse and Lexy Thorderson averaged a combined 21.56 minutes per game, 7.17 points per game, 1.29 steals per game and 2.94 rebounds per game. The group accounted for 47.7 percent of SDSU's total offense a season ago, logging 41.2 percent of the team's total minutes played. Also excelling in the classroom, Greenhouse and Thorderson earned Academic All-Mountain West honors.

The New Aztecs on the Block

• A McDonald's All-America nominee, Monique Terry (San Antonio, Texas) was rated a three-star recruit by espnW and was given a scouts grade of 89. During her junior season at Brennan High School, the 6-2 forward was the lone player in District 27-6A to average a double-double, posting 10.3 points and 10.4 rebounds per game while leading the district with a .540 field-goal percentage. She was also named the District 27-6A's defensive player of the year and received all-region honors.

• Baylee Vanderdoes (Auburn, Calif.) played prep ball at Placer High School, where she averaged 21.1 points, 11.0 rebounds and 3.6 blocks per contest as a senior, earning a spot on the MaxPreps Division IV all-California state second team. The 6-1 forward was also named the Pioneer Valley League's most valuable player on two occasions and received second-team all-metro honors from the Sacramento Bee. She holds Placer High's single-game record for points scored (41) and blocked shots (11). Like Terry, Vanderdoes received a scouts grade of 89 and was rated a three-star recruit by espnW. Her brother, Eddie, is a defensive lineman at UCLA.

• Naomi Ekwedike (Lagos, Nigeria) is a 6-6 post player who prepped for three years at Potter's House Christian Academy in Jacksonville, Fla., where she was a member of two state championship teams and helped her squad win a national championship in the National Christian School Athletic Association tournament in 2015. Ekwedike was also rated a three-star recruit by espnW and given a scouts grade of 88.

• Abby Lowe (Stockport, England) played two years at the Barking Abbey Academy near London, helping the Crusaders capture the first-ever Women's Elite Academy Basketball League title last season. In addition, the 5-11 shooting guard earned a silver medal for the U16 squad representing England at the European Championships in 2014.

• A highly successful prep player at powerhouse Mater Dei High School in Orange County, Khalia Lark (Irvine, Calif.) helped the Monarchs win two CIF championships, one state title and one national championship alongside fellow Aztec Allizon Brown. As a sophomore, Lark's Mater Dei squad posted a 34-3 record and captured the Southern Section Division IAA crown, where she scored 14 points in the championship game. A 6-foot guard, Lark appeared in 29 games over one-and-a-half seasons at Washington, where she averaged 2.5 points and 1.5 rebounds while shooting 38 percent from three-point range. As a freshman, she scored a previous career-high of 10 points in a victory over Seattle University and grabbed a personal-best five rebounds that season in the Pac-12 title game vs. California.

ASSOCIATED PRESS POLL

(Week 12 - Jan. 23)

Rk		Record	Pts
1	Connecticut (33)	18-0	825
2	Baylor	19-1	787
3	Maryland	19-1	743
4	Mississippi State	20-0	734
5	South Carolina	16-1	702
6	Florida State	19-2	657
7	Washington	19-2	616
8	Notre Dame	18-3	576
9	Louisville	18-4	545
10	Stanford	17-3	515
11	Oregon State	18-2	506
12	Texas	14-4	460
13	UCLA	15-4	434
14	Duke	17-3	405
15	Ohio State	17-5	384
16	Arizona State	14-5	271
17	Miami	14-5	254
18	NC State	15-5	247
19	Virginia Tech	16-3	221
20	Oklahoma	15-5	202
21	DePaul	16-5	159
22	West Virginia	15-5	104
23	South Florida	15-3	102
24	Green Bay	17-2	90
25	Kansas State	15-5	54

First-place votes in parentheses

Others receiving votes: Syracuse 44, Kentucky 15, Temple 13, Texas A&M 13, Tennessee 11, Michigan 10, Marquette 8, Northwestern 7, California 3, Drake 3, Oregon 2, Wyoming 2, Harvard 1

USA TODAY COACHES POLL

(Week 11 - Jan. 16)

Rk		Record	Pts
1	Connecticut (32)	16-0	800
2	Baylor	17-1	762
3	Maryland	17-1	722
4	Mississippi State	19-0	706
5	South Carolina	15-1	687
6	Florida State	17-2	628
7	Washington	18-2	597
8	Louisville	16-4	551
9	Notre Dame	16-3	542
10	Stanford	15-3	504
11	UCLA	13-4	475
12	Oregon State	16-2	464
13	Ohio State	15-5	370
14	Texas	12-4	368
15	Miami	14-4	368
16	Virginia Tech	16-1	283
17	Duke	15-3	283
18	DePaul	16-4	259
19	Arizona State	13-4	254
20	Oklahoma	14-4	143
21	NC State	14-5	139
22	South Florida	14-2	132
23	West Virginia	14-4	80
24	Syracuse	13-6	66
25	Green Bay	15-2	52

First-place votes in parentheses

Others receiving votes: California 40, Michigan 26, Kansas State 21, Tennessee 18, Texas A&M 16, Michigan State 15, Temple 14, Northwestern 8, Oklahoma State 4, Creighton 2, Tulane 1

PERSONNEL SUMMARY

Returning Starters (3):

Ariell Bostick, Sr., G (4.9 ppg, 4.2 rpg, 2.9 apg)
 McKynzie Fort, Jr., G (14.3 ppg, 4.1 rpg, 2.4 apg)
 Cheyenne Greenhouse, Jr., G (4.9 ppg, 3.2 rpg, 0.5 apg)

Starters Lost (2):

Ahijalee Harvey, G (9.3 ppg, 3.6 rpg, 2.1 apg)
 Deidra Smith, F (7.5 ppg, 4.9 rpg, 0.5 bpg)

Other Players Lost (1):

Kylie Herd, Jr., G (10.2 mpg, 1.3 rpg)

Other Letterwinners Returning (5):

Aleiah Brandon, Sr., F (3.4 ppg, 2.4 rpg)
 Kymberly Ellison, Sr., G (4.5 ppg, 0.7 apg, 33 3FGs)
 Arantxa Gómez Ferrer, So., F (0.6 ppg, 0.9 rpg)
 Geena Gomez, Jr., G (3.4 ppg, 1.9 rpg, 1.3 apg)
 Lexy Thorderson, Jr., F/G (5.2 ppg, 2.2 rpg, 40 3FGs)

Other Players Returning (1):

Allison Brown, Jr., G (9 gms)

Newcomers (5):

Naomi Ekwedike, Fr., F, 6-6, Lagos, Nigeria
 (Potter's House Christian Academy (Fla.))
 Khalia Lark, Jr., G, 6-0, Santa Ana, Calif.
 (Washington/Mater Dei HS)
 Abby Lowe, Fr., G, 5-11, Stockport, England
 (Barking Abbey Academy)
 Monique Terry, Fr., F, 6-2, San Antonio, Texas
 (Brennan HS)
 Baylee Vanderdoes, Fr., F, 6-2, Auburn, Calif.
 (Placer HS)

ROSTER BREAKDOWN

By Class

Seniors (3): Bostick, Brandon, Ellison; **Juniors (6):** Brown, Fort, G. Gomez, Greenhouse, Lark, Thorderson; **Sophomore (1):** A. Gómez Ferrer; **Freshmen (4):** Ekwedike, Lowe, Terry, Vanderdoes

By State/Country

California (8): Bostick, Brandon, Brown, Fort, G. Gomez, Greenhouse, Lark, Vanderdoes; **Colorado (1):** Thorderson; **Texas (1):** Terry; **Georgia (1):** Ellison; **Spain (1):** A. Gómez Ferrer; **England (1):** Lowe; **Nigeria (1):** Ekwedike

By Position

Centers (1): Ekwedike; **Forwards (4):** Brandon, A. Gómez Ferrer, Terry, Thorderson, Vanderdoes; **Guards (8):** Bostick, Brown, Ellison, Fort, G. Gomez, Greenhouse, Lark, Lowe, Thorderson

By Height

6-6 (1): Ekwedike; **6-2 (1):** Terry; **6-1 (2):** Brandon, Vanderdoes; **6-0 (3):** A. Gómez Ferrer, Lark, Thorderson; **5-11 (2):** Greenhouse, Lowe; **5-9 (1):** Fort; **5-8 (1):** G. Gomez; **5-7 (2):** Brown, Ellison; **5-4 (1):** Bostick

2016-17 NUMERICAL ROSTER

No.	Name	Pos.	Ht.	Yr.	Exp.	Hometown (Previous School/High School)
1	Khali Lark	F	6-0	Jr.	TR	Santa Ana, Calif. (Washington/Mater Dei HS)
3	Ariell Bostick	G	5-4	Sr.	3L	Oakland, Calif. (Bishop O'Dowd HS)
4	Kymberly Ellison	G	5-7	Sr.	1L	Columbus, Ga. (Georgia Tech/Hardaway HS)
11	Arantxa Gómez Ferrer	F	6-0	So.	1L	Valencia, Spain (Parque Colegio Santa Ana HS)
13	Allison Brown	G	5-7	Jr.	SQ	Anaheim Hills, Calif. (Mater Dei HS)
15	McKynzie Fort	G	5-9	Jr.	2L	Fontana, Calif. (Etiwanda HS)
20	Geena Gomez	G	5-8	Jr.	1L	Huntington Beach, Calif. (St. Joseph's (Pa.)/Edison HS)
21	Abby Lowe	G	5-11	Fr.	HS	Stockport, England (Barking Abbey Academy)
22	Lexy Thorderson	G/F	6-0	Jr.	2L	Castle Rock, Colo. (Rock Canyon HS)
30	Cheyenne Greenhouse	G	5-11	Jr.	2L	Riverside, Calif. (Canyon Springs HS)
34	Baylee Vanderdoes	F	6-2	Fr.	HS	Auburn, Calif. (Placer HS)
40	Monique Terry	F	6-2	Fr.	HS	San Antonio, Texas (Brennan HS)
44	Aleiah Brandon	F	6-1	Sr.	3L	Corona, Calif. (Centennial HS)
45	Naomi Ekwedike	F	6-6	Fr.	HS	Lagos, Nigeria (Potters House Christian Academy)

2016-17 ALPHABETICAL ROSTER

No.	Name	Pos.	Ht.	Yr.	Exp.	Hometown (Previous School/High School)
3	Ariell Bostick	G	5-4	Sr.	3L	Oakland, Calif. (Bishop O'Dowd HS)
44	Aleiah Brandon	F	6-1	Sr.	3L	Corona, Calif. (Centennial HS)
13	Allison Brown	G	5-7	Jr.	SQ	Anaheim Hills, Calif. (Mater Dei HS)
45	Naomi Ekwedike	F	6-6	Fr.	HS	Lagos, Nigeria (Potters House Christian Academy (Fla.))
4	Kymberly Ellison	G	5-7	Sr.	1L	Columbus, Ga. (Georgia Tech/Hardaway HS)
15	McKynzie Fort	G	5-9	Jr.	2L	Fontana, Calif. (Etiwanda HS)
20	Geena Gomez	G	5-8	Jr.	1L	Huntington Beach, Calif. (St. Joseph's (Pa.)/Edison HS)
11	Arantxa Gómez Ferrer	F	6-0	So.	1L	Valencia, Spain (Parque Colegio Santa Ana HS)
30	Cheyenne Greenhouse	G	5-11	Jr.	2L	Riverside, Calif. (Canyon Springs HS)
1	Khali Lark	F	6-0	Jr.	TR	Santa Ana, Calif. (Washington/Mater Dei HS)
21	Abby Lowe	G	5-11	Fr.	HS	Stockport, England (Barking Abbey HS)
40	Monique Terry	F	6-2	Fr.	HS	San Antonio, Texas (Brennan HS)
22	Lexy Thorderson	G/F	6-0	So.	1L	Castle Rock, Colo. (Rock Canyon HS)
34	Baylee Vanderdoes	F	6-2	Fr.	HS	Auburn, Calif. (Placer HS)

Head Coach: Stacie Terry (UT Arlington, 1998), Fourth season at SDSU/Fourth overall

Assistant Coach: Jesse Clark (Pacific Union, 2003), Fourth season at SDSU

Assistant Coach: Ciara Carl (Point Loma Nazarene, 2005), Fourth season at SDSU

Assistant Coach: Nick Grant (Baylor, 2010), Third season at SDSU

Director of Operations: Jon Silver (UCLA, 2009), First season at SDSU

Director of Player Personnel: Paris Johnson (San Diego State, 2011), First season at SDSU

2016-17 PRONUNCIATION GUIDE

Ariell Bostick	arr-EE-ell
Aleiah Brandon	uh-LAY-uh
Naomi Ekwedike	nay-O-mee eck-wed-EE-kay
Arantxa Gómez Ferrer	uh-RON-cha GO-mez Fur-AIR
McKynzie Fort	ma-KYN-zee
Baylee Vanderdoes	VAN-der-doze
Ciara Carl	see-ARR-uh



THE STACIE TERRY FILE

Hometown

San Diego, Calif.

EducationBachelor of Arts -
Broadcast Journalism
UT Arlington, 1998**Playing Experience**1994-98
UT Arlington**Head Coaching Experience**2013-present
San Diego State**Previous Coaching Experience**2011-13
LSU
Assistant Coach

2008-11

UCLA
Assistant Coach

2007-08

Southern Mississippi
Recruiting Coordinator

2004-07

Illinois
Assistant Coach

2003-04

Dayton
Assistant Coach

2000-03

Louisville
Assistant Coach

1999-2000

UT Arlington
Graduate Assistant

STACIE TERRY

Head CoachFourth Year at San Diego State; Fourth Year Overall
UT Arlington, 1998

San Diego native Stacie Terry enters her fourth year at the helm of the Aztec women's basketball team after she was named the eighth head coach in program history on May 15, 2013.

Under Terry's direction, SDSU has continued its trend of garnering all-conference honors. In 2015-16, following a campaign that saw her team finish sixth in the league with 14.4 points per game and was tied for third with two steals per game, sophomore McKynzie Fort earned nods on the MW All-Defensive Team and as an All-MW honorable mention pick. San Diego State's 34th All-MW recipient, the Aztecs have picked up a conference nod each of the last 17 seasons.

During her first season on Montezuma Mesa, Terry was saddled with the unenviable task of replacing four senior starters who accounted for nearly 64 percent of the team's scoring offense from the previous year, as well as overcoming the loss of two key players to injuries prior to conference play.

Despite those obstacles and a demanding schedule featuring nine games against teams that eventually advanced to postseason competition, Terry's squad flashed its resiliency during the 2013-14 campaign. The Aztecs led the league in rebounding margin and rebounding defense while ranking second in field-goal percentage.

Individually, Terry also oversaw the progress of senior center Cierra Warren, who became the fifth SDSU player in a six-year span to receive first-team all-MW recognition.

Prior to her arrival on The Mesa, Terry gained a wealth of experience as an assistant coach at the Division I level for 14 years, including five under head coach Nikki (Caldwell) Fargas, who transformed UCLA into a powerhouse before restoring LSU to national prominence.

During Terry's two seasons at LSU, the Lady Tigers compiled a 45-23 overall record and earned two NCAA tournament bids, including a Sweet 16 appearance during the 2012-13 campaign. During that season, the Lady Tigers also posted six victories against ranked opponents and finished with their second-highest scoring average (69.0) in the last seven years. Under Terry's guidance, forward LaShondra Barrett garnered first-team all-Southeastern Conference accolades and received honorable mention All-America distinction in 2012 before becoming a first-round draft choice of the WNBA's Washington Mystics.

Prior to her appointment at LSU, Terry served as an assistant under Fargas at UCLA from 2008-11, helping the Bruins gain national acclaim with a pair of NCAA tournament appearances. During Terry's tenure, UCLA posted 72 overall victories, as the 2010-11 squad finished with a 28-5 record, setting a school record for fewest losses in a single season to go with a No. 7 national ranking. In addition, the Bruins signed the fourth-ranked recruiting class that season, according to ESPN HoopGurlz, while Terry helped mentor first-team all-Pac-10 performers in Doreena Campbell, Darxia Morris and Jasmine Dixon, a 2012 honorable mention AP All-America selection, and all-conference freshman honorees Atonye Nyingifa and Markel Walker.

Terry spent the 2007-08 campaign at Southern Mississippi, as the Golden Eagles posted a 21-14 record and earned a postseason berth in the Women's National Invitation Tournament (WNIT). While at Southern Miss, Terry spearheaded the development and coordination of the Lady Eagle recruiting campaign. Her responsibilities also included working with the perimeter players, scouting opponents and film breakdown, as well as coordinating all of the team's community service events.

Terry also coached for three seasons from 2004-07 as an assistant under Hall of Fame head coach Theresa Grentz at Illinois, where the Fighting Illini had three straight recruiting classes

ranked among the top 25 in the nation, according to Blue Star Basketball, and made three consecutive trips to the WNIT. Her primary duties included defensive instruction and working with the perimeter players.

In addition, Terry coached at Dayton during the 2003-04 season following a three-year stint at Louisville from 2000-03. With the Cardinals, Terry's responsibilities encompassed recruiting, scouting, player development, summer camps and serving as a liaison for the program's community service outreach. Louisville captured the Conference USA regular-season title and earned a trip to the NCAA tournament in 2001 before making a WNIT appearance in 2002. She also assisted in signing the nation's 21st-ranked recruiting class in 2002-03, according to All-Star Girls Report. Terry recruited and coached all-Conference USA honoree Lori Nero, a draft choice of the WNBA's Houston Comets, as well as Sara Nord, who finished her collegiate career as the Cardinals' all-time assist leader and ranks among the top-15 scorers in school history.

Terry enjoyed a successful collegiate playing career at the University of Texas at Arlington, winning four varsity letters from 1994-98 under head coach Mike Dean. She earned first-team all-Southland Conference honors after leading the Mavericks in scoring with 17.4 points per game as a senior in 1997-98. Terry scored 1,169 points during her career at UTA and still ranks among the school's top 10 in 3-point field goals made (third), assists (sixth), steals (seventh), 3-point field goal percentage (ninth) and free-throw percentage (10th). Additionally, she is just one of 17 players in Maverick history to surpass the 1,000-point plateau.

Terry played one season of professional basketball in Warsaw, Poland, averaging 12.0 points and 6.0 assists with the Polonia Phoenix, before returning to UT Arlington to begin her coaching career as a graduate assistant in 1999.

Terry prepped at El Capitan High and held the Vaqueros' career scoring record for three years following her graduation. She was inducted into the school's athletic hall of fame in 2008.



#1 KHALIA LARK

Junior • TR

6-0

Guard

Irvine, Calif.

Washington / Mater Dei High School

A versatile wing shot who brings toughness to the team following a transfer from Washington

▶▶▶ GAME HIGHS

	CAREER	2016-17 SEASON
Points	22, vs. Nevada (1-4-17)	22, vs. Nevada (1-4-17)
Rebounds	12, at San José State (1-11-17)	12, at San José State (1-11-17)
Assists	2, Four times, Last: vs. UNLV (1-18-17)	2, Three times, Last: vs. UNLV (1-18-17)
Steals	1, 10 times, Last: vs. UNLV (1-18-17)	1, Seven times, Last: vs. UNLV (1-18-17)
Blocks	N/A	N/A
Field Goals	8, vs. Nevada (1-4-17)	8, Twice, Last: vs. Boise State (1-7-17)
Field Goal Attempts	14, vs. Nevada (1-4-17)	14, vs. Nevada (1-4-17)
3-pt. Field Goals	3, Twice, Last: vs. UNLV (1-18-17)	3, Twice, vs. UNLV (1-18-17)
3-pt. Field Goal Attempts	6, vs. Nevada (1-4-17)	6, vs. Nevada (1-4-17)
Free Throws	4, Twice, Last: vs. Seattle U (12-4-14)*	3, vs. Nevada (1-4-17)
Free Throw Attempts	6, Twice, Last: vs. Nevada (1-4-17)	6, vs. Nevada (1-4-17)
Double-Figure Scoring Games	5	4
Double-Figure Rebounding Games	1	1
Double-Doubles	N/A	N/A

* AT WASHINGTON

▶▶▶ 2016-17 GAME-BY-GAME STATISTICS

Opponent	Date	gs	min	Total		3-Pointers		Free throws		Rebounds				pf	a	t/o	blk	stl	pts	avg
				fg-fga	pct	3fg-fga	pct	ft-fta	pct	off	def	tot	avg							
at Cal State Fullerton	12-22-16		29	2-9	.222	1-3	.333	0-0	.000	1	4	5	5.0	3	2	0	0	1	5	5.0
BIOLA	12-28-16		25	6-9	.667	2-5	.400	0-0	.000	1	8	9	7.0	1	0	2	0	1	14	9.5
at New Mexico	12-31-16	*	24	4-10	.400	1-3	.333	1-2	.500	2	5	7	7.0	3	1	3	0	1	10	9.7
NEVADA	01-04-17		28	8-14	.571	3-6	.500	3-6	.500	3	3	6	6.8	3	1	0	0	1	22	12.8
BOISE STATE	01-07-17		26	8-11	.727	0-2	.000	0-0	.000	0	4	4	6.2	2	1	3	0	0	16	13.4
at San Jose State	01-11-17		26	1-8	.125	1-3	.333	1-2	.500	2	10	12	7.2	3	2	4	0	1	4	11.8
at Utah State	01-14-17		27	2-7	.286	1-5	.200	0-0	.000	2	6	8	7.3	4	0	1	1	1	5	10.9
UNLV	01-18-17	*	27	5-8	.625	3-4	.750	0-0	.000	2	5	7	7.3	3	2	2	0	1	13	11.1
Totals		2	212	36-76	.474	12-31	.387	5-10	.500	13	45	58	7.3	22	9	15	1	7	89	11.1

Games played: 8
Minutes/game: 26.5
Points/game: 11.1
FG Pct: 47.4
3FG Pct: 38.7
FT Pct: 50.0

Rebounds/game: 7.3
Assists/game: 1.1
Turnovers/game: 1.9
Assist/turnover ratio: 0.6
Steals/game: 0.9
Blocks/game: 0.1

LARK'S CAREER STATISTICS

																			* - at Washington	
Season	gp-gs	min/avg	Total		3-Point		F-Throws		Rebounds				pf	fo	ast	to	blk	stl	Scoring	
			fg-fga	pct	fg-fga	pct	ft-fta	pct	off	def	tot	avg							pts	avg
2014-15*	23-0	198/8.6	17-39	.436	11-27	.407	11-14	.786	10	21	31	1.3	12	0	5	13	0	3	56	2.4
2015-16*	6-0	83/13.8	5-15	.333	2-7	.286	5-11	.455	2	11	13	2.2	3	0	2	7	0	1	17	2.8
2016-17	8-2	212/26.5	36-76	.474	12-31	.387	5-10	.500	13	45	58	7.3	22	0	9	15	1	7	89	11.1
TOTAL	8-2	212/26.5	36-76	.474	12-31	.387	5-10	.500	13	45	58	7.3	22	0	9	15	1	7	89	11.1
All*	37-2	493/13.3	58-130	.446	25-65	.385	21-35	.600	25	77	102	2.8	37	0	16	35	1	11	162	4.4



5-4

Oakland, Calif.

Bishop O'Dowd High School

Team's top facilitator who gets to the rim and free-throw line often with speed

CAREER

Points	19, vs. Boise State (2-5-14)
Rebounds	10, Twice, Last: vs. Central Connecticut (11-27-16)
Assists	10, vs. Biola (12-28-16)
Steals	5, Twice, Last: at New Mexico (3-1-16)
Blocks	1, Four times, Last: at Wyoming (12-30-15)
Field Goals	7, vs. Colorado State (1-2-14)
Field Goal Attempts	16, Twice, Last: vs. Wyoming (2-12-14)
3-pt. Field Goals	3, vs. San José State (1-22-14)
3-pt. Field Goal Attempts	7, vs. Wyoming (2-12-14)
Free Throws	7, vs. UT Arlington (11-26-16)
Free Throw Attempts	8, Twice, Last: vs. UT Arlington (11-26-16)
Double-Figure Scoring Games	19
Double-Figure Rebounding Games	2
Double-Doubles	N/A

2016-17 SEASON

12, vs. UT Arlington (11-26-16)
10, vs. Central Connecticut (11-27-16)
10, vs. Biola (12-28-16)
4, Three times, Last: at UC Davis (12-2-16)
N/A
3, Three times, Last: vs. Michigan (12-9-16)
9, at San Diego (11-17-16)
1, Five times, Last: vs. Boise State (1-7-17)
4, at San Diego (11-17-16)
7, vs. UT Arlington (11-26-16)
8, vs. UT Arlington (11-26-16)
1
1
N/A

Opponent	Date			Total		3-Pointers		Free throws		Rebounds										
		gs	min	fg-fga	pct	3fg-fga	pct	ft-fa	pct	off	def	tot	avg	pf	a	t/o	blk	stl	pts	avg
at UC Riverside	11-11-16	*	25	0-2	.000	0-0	.000	0-0	.000	0	8	8	8.0	1	2	2	0	2	0	0.0
SAN DIEGO CHRISTIAN	11-14-16	*	26	2-3	.667	0-0	.000	0-0	.000	0	6	6	7.0	1	8	2	0	1	4	2.0
at San Diego	11-17-16	*	23	3-9	.333	1-4	.250	2-2	1.000	0	1	1	5.0	3	1	0	0	2	9	4.3
LOYOLA MARYMOUNT	11-20-16	*	31	0-3	.000	0-1	.000	1-2	.500	2	7	9	6.0	3	1	3	0	4	1	3.5
vs UT-Arlington	11-26-16	*	29	2-4	.500	1-1	1.000	7-8	.875	1	4	5	5.8	5	1	5	0	2	12	5.2
vs Central Connecticut	11-27-16	*	32	3-4	.750	1-1	1.000	0-0	.000	0	10	10	6.5	1	5	3	0	4	7	5.5
at UC Davis	12-02-16	*	28	1-6	.167	0-1	.000	1-2	.500	2	4	6	6.4	1	6	1	0	4	3	5.1
MICHIGAN	12-09-16	*	23	3-3	1.000	0-0	.000	3-3	1.000	0	3	3	6.0	3	3	4	0	0	9	5.6
UC SANTA BARBARA	12-11-16		29	0-1	.000	0-0	.000	0-0	.000	0	3	3	5.7	2	5	1	0	1	0	5.0
at Cal State Fullerton	12-22-16		24	1-1	1.000	0-0	.000	0-0	.000	1	3	4	5.5	3	6	4	0	3	2	4.7
BIOLA	12-28-16		23	1-1	1.000	0-0	.000	0-2	.000	0	7	7	5.6	1	10	1	0	1	2	4.5
at New Mexico	12-31-16		20	1-4	.250	1-1	1.000	0-0	.000	0	2	2	5.3	1	2	2	0	2	3	4.3
NEVADA	01-04-17		23	0-3	.000	0-0	.000	0-0	.000	0	3	3	5.2	1	5	3	0	1	0	4.0
BOISE STATE	01-07-17		19	0-2	.000	0-1	.000	2-2	1.000	1	6	7	5.3	0	2	2	0	0	2	3.9
at San Jose State	01-11-17		24	0-2	.000	0-0	.000	0-0	.000	0	1	1	5.0	2	5	3	0	2	0	3.6
at Utah State	01-14-17		17	0-2	.000	0-1	.000	0-0	.000	0	3	3	4.9	1	0	2	0	0	0	3.4
UNLV	01-18-17		15	1-3	.333	0-0	.000	2-2	1.000	0	2	2	4.7	3	7	3	0	2	4	3.4
Totals		8	411	18-53	.340	4-11	.364	18-23	.783	7	73	80	4.7	32	69	41	0	31	58	3.4

			Total		3-Point		F-Throws		Rebounds										Scoring	
Season	gp-gs	min/avg	fg-fga	pct	fg-fga	pct	ft-fita	pct	off	def	tot	avg	pf	fo	ast	to	blk	stl	pts	avg
2013-14	23-13	576/25.0	79-203	.389	19-58	.328	39-57	.684	10	61	71	3.1	51	1	65	67	2	32	216	9.4
2014-15	23-5	476/20.7	44-144	.306	11-37	.297	25-38	.658	7	51	58	2.5	30	0	42	46	6	27	124	5.4
2015-16	31-27	805/26.0	54-149	.362	6-32	.188	37-57	.649	20	111	131	4.2	67	1	89	73	2	56	151	4.9
2016-17	17-8	411/24.2	18-53	.340	4-11	.364	18-23	.783	7	73	80	4.7	32	1	69	41	0	31	58	3.4
TOTAL	94-53	2268/24.1	195-549	.355	40-138	.290	119-175	.680	44	296	340	3.6	180	3	265	227	10	146	549	5.8



#4 KYMBERLY ELLISON

Senior • 1L

5-7

Guard

Columbus, Ga.

Georgia Tech / Hardaway High School

A talented passer with strong floor vision who also excels at knocking down threes

▶▶▶ GAME HIGHS

	CAREER	2016-17 SEASON
Points	21, vs. UNLV (1-18-17)	21, vs. UNLV (1-18-17)
Rebounds	5, vs. Loyola Marymount (11-20-16)	5, Twice, Last: vs. Michigan (12-9-16)
Assists	3, Twice, Last: vs. San Diego Christian (11-14-16)	3, vs. San Diego Christian (11-14-16)
Steals	4, at Utah State (1-23-16)	2, Four times, Last: vs. Michigan (12-9-16)
Blocks	2, vs. Biola (12-28-16)	2, vs. Biola (12-28-16)
Field Goals	7, vs. UNLV (1-18-17)	7, vs. UNLV (1-18-17)
Field Goal Attempts	11, Three times, Last: vs. UNLV (1-18-17)	11, Three times, Last: vs. UNLV (1-18-17)
3-pt. Field Goals	4, Twice, Last: vs. UNLV (1-18-17)	4, Twice, Last: vs. UNLV (1-18-17)
3-pt. Field Goal Attempts	9, Twice, Last: at Cal State Fullerton (12-22-16)	9, Twice, Last: at Cal State Fullerton (12-22-16)
Free Throws	6, at San Diego (11-17-16)	6, at San Diego (11-17-16)
Free Throw Attempts	8, at San Diego (11-17-16)	8, at San Diego (11-17-16)
Double-Figure Scoring Games	9	7
Double-Figure Rebounding Games	N/A	N/A
Double-Doubles	N/A	N/A

▶▶▶ 2016-17 GAME-BY-GAME STATISTICS

Opponent	Date	gs	min	Total		3-Pointers		Free throws		Rebounds											
				fg-fga	pct	3fg-fga	pct	ft-fa	pct	off	def	tot	avg	pf	a	t/o	blk	stl	pts	avg	
at UC Riverside	11-11-16	*	21	2-8	.250	2-6	.333	0-0	.000	0	1	1	1.0	4	0	2	0	0	6	6.0	
SAN DIEGO CHRISTIAN	11-14-16	*	35	4-6	.667	3-4	.750	1-2	.500	0	3	3	2.0	3	3	2	0	0	12	9.0	
at San Diego	11-17-16	*	25	0-9	.000	0-5	.000	6-8	.750	0	3	3	2.3	2	1	1	1	2	6	8.0	
LOYOLA MARYMOUNT	11-20-16	*	25	3-11	.273	2-8	.250	0-0	.000	2	3	5	3.0	1	1	3	0	2	8	8.0	
vs UT-Arlington	11-26-16	*	26	4-10	.400	3-9	.333	2-2	1.000	1	2	3	3.0	4	0	4	0	1	13	9.0	
vs Central Connecticut	11-27-16	*	24	3-7	.429	2-6	.333	2-2	1.000	0	0	0	2.5	4	2	0	0	1	10	9.2	
at UC Davis	12-02-16	*	20	3-10	.300	2-7	.286	0-0	.000	2	0	2	2.4	1	1	2	0	2	8	9.0	
MICHIGAN	12-09-16	*	27	4-8	.500	4-8	.500	0-0	.000	1	4	5	2.8	4	2	3	0	2	12	9.4	
UC SANTA BARBARA	12-11-16	*	26	4-7	.571	3-5	.600	2-2	1.000	1	2	3	2.8	2	1	0	0	1	13	9.8	
at Cal State Fullerton	12-22-16	*	25	4-11	.364	3-9	.333	1-2	.500	0	2	2	2.7	1	1	1	0	1	12	10.0	
BIOLA	12-28-16	*	24	3-7	.429	3-7	.429	0-0	.000	0	2	2	2.6	0	1	0	2	1	9	9.9	
at New Mexico	12-31-16	*	21	1-7	.143	0-4	.000	0-0	.000	0	1	1	2.5	3	0	1	0	0	2	9.3	
NEVADA	01-04-17	*	21	2-3	.667	1-2	.500	2-2	1.000	0	1	1	2.4	2	2	1	0	0	7	9.1	
BOISE STATE	01-07-17	*	30	4-7	.571	3-6	.500	2-4	.500	0	2	2	2.4	1	1	1	0	0	13	9.4	
at San Jose State	01-11-17	*	31	3-10	.300	2-7	.286	0-0	.000	0	1	1	2.3	3	2	1	0	1	8	9.3	
at Utah State	01-14-17	*	28	1-6	.167	1-4	.250	0-2	.000	1	1	2	2.3	1	0	1	1	1	3	8.9	
UNLV	01-18-17	*	27	7-11	.636	4-7	.571	3-3	1.000	0	2	2	2.2	1	1	2	0	0	21	9.6	
Totals			17	436	52-138	.377	38-104	.365	21-29	.724	8	30	38	2.2	37	19	25	4	15	163	9.6

Games played: 17
 Minutes/game: 25.6
 Points/game: 9.6
 FG Pct: 37.7
 3FG Pct: 36.5
 FT Pct: 72.4

Rebounds/game: 2.2
 Assists/game: 1.1
 Turnovers/game: 1.5
 Assist/turnover ratio: 0.8
 Steals/game: 0.9
 Blocks/game: 0.2

ELLISON'S CAREER STATISTICS

Season	gp-gs	min/avg	Total		3-Point		F-Throws		Rebounds				pf	fo	ast	to	blk	stl	Scoring	
			fg-fga	pct	fg-fga	pct	ft-fa	pct	off	def	tot	avg							pts	avg
2012-13*	4-0	2/0.5	1-2	.500	1-2	.500	0-0	.000	0	0	0	0.0	0	0	0	0	0	0	3	0.8
2013-14*	11-0	21/1.9	1-5	.200	0-3	.000	0-0	.000	0	2	2	0.2	2	0	4	4	1	1	2	0.2
2015-16	31-0	396/12.8	47-155	.303	33-126	.262	13-18	.722	6	19	25	0.8	39	1	21	32	1	18	140	4.5
2016-17	17-17	436/25.6	52-138	.377	38-104	.365	21-29	.724	8	30	38	2.2	37	0	19	25	4	15	163	9.6
TOTAL	48-17	832/17.3	99-293	.338	71-230	.309	34-47	.723	14	49	63	1.3	76	1	40	57	5	33	303	6.3
All*	63-17	855/13.6	101-300	.337	72-235	.306	34-47	.723	14	51	65	1.0	78	1	44	61	6	34	308	4.9

* - at Georgia Tech



#11 ARANTXA GOMEZ FERRER

Sophomore • 1L

6-0

Forward

Valencia, Spain

Parque Colegio Santa Ana High School / Ros Casares Valencia Club

A skilled inside threat who can stretch the floor

▶▶▶ GAME HIGHS

	CAREER	2016-17 SEASON
Points	5, Twice, Last: vs. Nevada (1-4-17)	5, Twice, Last: vs. Nevada (1-4-17)
Rebounds	5, at Cal State Fullerton (12-22-16)	5, at Cal State Fullerton (12-22-16)
Assists	2, vs. Boise State (1-7-17)	2, vs. Boise State (1-7-17)
Steals	1, Seven times, Last: vs. Biola (12-28-16)	1, Three times, Last: vs. Biola (12-28-16)
Blocks	2, Three times, Last: vs. UC Santa Barbara (12-11-16)	2, Three times, Last: vs. UC Santa Barbara (12-11-16)
Field Goals	2, Seven times, Last: vs. Nevada (1-4-17)	2, Twice, Last: vs. Nevada (1-4-17)
Field Goal Attempts	4, at Utah State (1-14-17)	4, at Utah State (1-14-17)
3-pt. Field Goals	N/A	N/A
3-pt. Field Goal Attempts	N/A	N/A
Free Throws	2, Twice, Last: vs. UC Santa Barbara (12-11-16)	2, Twice, Last: vs. UC Santa Barbara (12-11-16)
Free Throw Attempts	4, Three times, Last: at San Diego (11-17-16)	4, Twice, Last: at UC Davis (12-2-16)
Double-Figure Scoring Games	N/A	N/A
Double-Figure Rebounding Games	N/A	N/A
Double-Doubles	N/A	N/A

▶▶▶ 2016-17 GAME-BY-GAME STATISTICS

Opponent	Date	gs	min	Total		3-Pointers		Free throws		Rebounds				pf	a	t/o	blk	stl	pts	avg
				fg-fga	pct	3fg-fga	pct	ft-fta	pct	off	def	tot	avg							
at UC Riverside	11-11-16		16	0-0	.000	0-0	.000	1-2	.500	0	0	0	0.0	0	0	0	0	0	1	1.0
SAN DIEGO CHRISTIAN	11-14-16		8	1-3	.333	0-0	.000	0-0	.000	0	2	2	1.0	2	0	1	0	1	2	1.5
at San Diego	11-17-16		15	1-3	.333	0-0	.000	1-4	.250	3	0	3	1.7	2	0	0	0	0	3	2.0
LOYOLA MARYMOUNT	11-20-16		9	0-0	.000	0-0	.000	0-0	.000	0	1	1	1.5	1	0	0	0	1	0	1.5
vs UT-Arlington	11-26-16		11	0-0	.000	0-0	.000	2-2	1.000	2	1	3	1.8	2	0	2	2	0	2	1.6
vs Central Connecticut	11-27-16		5	1-1	1.000	0-0	.000	0-0	.000	0	0	0	1.5	2	0	1	0	0	2	1.7
at UC Davis	12-02-16		14	0-1	.000	0-0	.000	1-4	.250	1	3	4	1.9	2	1	2	2	0	1	1.6
MICHIGAN	12-09-16		7	0-0	.000	0-0	.000	0-0	.000	2	0	2	1.9	0	0	0	0	0	0	1.4
UC SANTA BARBARA	12-11-16		25	1-2	.500	0-0	.000	2-2	1.000	0	4	4	2.1	1	1	0	2	0	4	1.7
at Cal State Fullerton	12-22-16		20	2-2	1.000	0-0	.000	1-2	.500	3	2	5	2.4	3	0	2	0	0	5	2.0
BIOLA	12-28-16		13	0-0	.000	0-0	.000	0-0	.000	1	1	2	2.4	1	0	2	1	1	0	1.8
at New Mexico	12-31-16		9	0-0	.000	0-0	.000	0-0	.000	0	1	1	2.3	0	0	1	0	0	0	1.7
NEVADA	01-04-17		10	2-2	1.000	0-0	.000	1-2	.500	1	1	2	2.2	1	0	2	0	0	5	1.9
BOISE STATE	01-07-17		5	1-2	.500	0-0	.000	0-0	.000	0	0	0	2.1	0	2	0	0	0	2	1.9
at San Jose State	01-11-17		10	0-0	.000	0-0	.000	0-2	.000	2	2	4	2.2	3	0	1	0	0	0	1.8
at Utah State	01-14-17		14	1-4	.250	0-0	.000	0-1	.000	1	3	4	2.3	0	1	0	0	0	2	1.8
UNLV	01-18-17		8	1-2	.500	0-0	.000	0-0	.000	0	1	1	2.2	0	0	0	0	0	2	1.8
Totals		0	199	11-22	.500	0-0	.000	9-21	.429	16	22	38	2.2	20	5	14	7	3	31	1.8

Games played: 17

Minutes/game: 11.7

Points/game: 1.8

FG Pct: 50.0

FT Pct: 42.9

Rebounds/game: 2.2

Assists/game: 0.3

Turnovers/game: 0.8

Assist/turnover ratio: 0.4

Steals/game: 0.2

Blocks/game: 0.4

GOMEZ FERRER'S CAREER STATISTICS

			Total		3-Point		F-Throws		Rebounds											Scoring	
Season	gp-gs	min/avg	fg-fga	pct	fg-fga	pct	ft-fta	pct	off	def	tot	avg	pf	fo	ast	to	blk	stl	pts	avg	
2015-16	18-0	118/6.6	5-12	.417	0-0	.000	0-12	.000	10	6	16	0.9	18	0	2	5	1	4	10	0.6	
2016-17	17-0	199/11.7	11-22	.500	0-0	.000	9-21	.429	16	22	38	2.2	20	0	5	14	7	3	31	1.8	
TOTAL	35-0	317/9.1	16-34	.471	0-0	.000	9-33	.273	26	28	54	1.5	38	0	7	19	8	7	41	1.2	



#13 ALLISON BROWN

Junior • SQ

5-7

Guard

Anaheim Hills, Calif.

Mater Dei High School

A walk-on who earned a scholarship for the 2016-17 campaign

▶▶▶ GAME HIGHS

	CAREER	2016-17 SEASON
Points	4, vs. Michigan (12-9-16)	4, vs. Michigan (12-9-16)
Rebounds	3, vs. San Diego Christian (12-21-15)	1, Twice, Last: vs. Biola (12-28-16)
Assists	2, vs. Wyoming (1-14-15)	1, Twice, Last: vs. Biola (12-28-16)
Steals	1, at Loyola Marymount (12-10-15)	N/A
Blocks	N/A	N/A
Field Goals	1, Four times, Last: vs. Biola (12-28-16)	1, Twice, Last: vs. Biola (12-28-16)
Field Goal Attempts	3, Twice, Last: vs. Air Force (1-21-15)	2, vs. Michigan (12-9-16)
3-pt. Field Goals	1, Twice, Last: vs. San Diego Christian (12-21-15)	N/A
3-pt. Field Goal Attempts	4, Twice, Last: vs. Air Force (1-21-15)	N/A
Free Throws	2, vs. Michigan (12-9-16)	2, vs. Michigan (12-9-16)
Free Throw Attempts	2, Twice, Last: vs. Michigan (12-9-16)	2, vs. Michigan (12-9-16)
Double-Figure Scoring Games	N/A	N/A
Double-Figure Rebounding Games	N/A	N/A
Double-Doubles	N/A	N/A

▶▶▶ 2016-17 GAME-BY-GAME STATISTICS

Opponent	Date	gs	min	Total		3-Pointers		Free throws		Rebounds				pf	a	t/o	blk	stl	pts	avg
				fg-fga	pct	3fg-fga	pct	ft-fta	pct	off	def	tot	avg							
at UC Riverside	11-11-16	dnp		-	-	-	-	-	-	-	-	-	-	-	-	-	-	-	-	-
SAN DIEGO CHRISTIAN	11-14-16	9		0-1	.000	0-0	.000	0-0	.000	0	1	1	1.0	1	1	2	0	0	0	0.0
at San Diego	11-17-16	dnp		-	-	-	-	-	-	-	-	-	-	-	-	-	-	-	-	-
LOYOLA MARYMOUNT	11-20-16	dnp		-	-	-	-	-	-	-	-	-	-	-	-	-	-	-	-	-
vs UT-Arlington	11-26-16	dnp		-	-	-	-	-	-	-	-	-	-	-	-	-	-	-	-	-
vs Central Connecticut	11-27-16	dnp		-	-	-	-	-	-	-	-	-	-	-	-	-	-	-	-	-
at UC Davis	12-02-16	dnp		-	-	-	-	-	-	-	-	-	-	-	-	-	-	-	-	-
MICHIGAN	12-09-16	2		1-1	1.000	0-0	.000	2-2	1.000	0	0	0	0.5	0	0	0	0	0	4	2.0
UC SANTA BARBARA	12-11-16	dnp		-	-	-	-	-	-	-	-	-	-	-	-	-	-	-	-	-
at Cal State Fullerton	12-22-16	dnp		-	-	-	-	-	-	-	-	-	-	-	-	-	-	-	-	-
BIOLA	12-28-16	3		1-1	1.000	0-0	.000	0-0	.000	0	1	1	0.7	1	1	0	0	0	2	2.0
at New Mexico	12-31-16	dnp		-	-	-	-	-	-	-	-	-	-	-	-	-	-	-	-	-
NEVADA	01-04-17	dnp		-	-	-	-	-	-	-	-	-	-	-	-	-	-	-	-	-
BOISE STATE	01-07-17	dnp		-	-	-	-	-	-	-	-	-	-	-	-	-	-	-	-	-
at San Jose State	01-11-17	dnp		-	-	-	-	-	-	-	-	-	-	-	-	-	-	-	-	-
at Utah State	01-14-17	dnp		-	-	-	-	-	-	-	-	-	-	-	-	-	-	-	-	-
UNLV	01-18-17	2		0-0	.000	0-0	.000	0-0	.000	0	0	0	0.5	2	0	0	0	0	0	1.5
Totals		0	16	2-3	.667	0-0	.000	2-2	1.000	0	2	2	0.5	4	2	2	0	0	6	1.5

Games played: 4
 Minutes/game: 4.0
 Points/game: 1.5
 FG Pct: 66.7
 FT Pct: 100.0

Rebounds/game: 0.5
 Assists/game: 0.5
 Turnovers/game: 0.5
 Assist/turnover ratio: 1.0

BROWN'S CAREER STATISTICS

BROWN'S CAREER STATISTICS			Total		3-Point		F-Throws		Rebounds											Scoring	
Season	gp-gs	min/avg	fg-fga	pct	fg-fga	pct	ft-fta	pct	off	def	tot	avg	pf	fo	ast	to	blk	stl	pts	avg	
2014-15	7-0	26/3.7	1-9	.111	1-9	.111	0-2	.000	1	1	2	0.3	3	0	2	3	0	0	3	0.4	
2015-16	9-0	19/2.1	1-4	.250	1-3	.333	0-0	.000	1	3	4	0.4	0	0	2	3	0	1	3	0.3	
2016-17	4-0	16/4.0	2-3	.667	0-0	.000	2-2	1.000	0	2	2	0.5	4	0	2	2	0	0	6	1.5	
TOTAL	20-0	61/3.1	4-16	.250	2-12	.167	2-4	.500	2	6	8	0.4	7	0	6	8	0	1	12	0.6	



5-9

Fontana, Calif.

Etiwanda High School

A two-time All-Mountain West honoree who's difficult to guard one-on-one and has an improved three-point shot

CAREER

Points	29, Twice, Last: at San José State (1-11-17)
Rebounds	11, Twice, Last: at San José State (1-11-17)
Assists	6, Three times, Last: vs. Boise State (1-7-17)
Steals	5, Four times, Last: at New Mexico (2-6-16)
Blocks	2, Three times, Last: at New Mexico (2-6-16)
Field Goals	12, at San José State (1-11-17)
Field Goal Attempts	29, at San José State (1-11-17)
3-pt. Field Goals	2, Twice, Last: at San José State (1-11-17)
3-pt. Field Goal Attempts	6, Twice, Last: vs. Loyola Marymount (11-20-16)
Free Throws	11, vs. UC Riverside (11-16-15)
Free Throw Attempts	12, Twice, Last: vs. Fresno State (2-10-16)
Double-Figure Scoring Games	51
Double-Figure Rebounding Games	2
Double-Doubles	2

2016-17 SEASON

29, Twice, Last: at San José State (1-11-17)
11, at San José State (1-11-17)
6, Twice, Last: vs. Boise State (1-7-17)
4, at Utah State (1-14-17)
1, Three times, Last: at New Mexico (12-31-16)
12, at San José State (1-11-17)
29, at San José State (1-11-17)
2, Twice, Last: at San José State (1-11-17)
6, vs. Loyola Marymount (11-20-16)
9, vs. Boise State (1-7-17)
10, vs. Boise State (1-7-17)
13
1
1

Opponent	Date	gs	min	Total		3-Pointers		Free throws		Rebounds											
				fg-fga	pct	3fg-fga	pct	ft-fa	pct	off	def	tot	avg	pf	a	t/o	blk	stl	pts	avg	
at UC Riverside	11-11-16	*	38	6-21	.286	0-5	.000	2-5	.400	0	3	3	3.0	2	3	3	0	1	14	14.0	
SAN DIEGO CHRISTIAN	11-14-16	*	35	11-18	.611	2-2	1.000	4-4	1.000	2	5	7	5.0	2	4	1	0	1	28	21.0	
at San Diego	11-17-16	*	28	7-12	.583	0-0	.000	1-2	.500	1	0	1	3.7	5	0	4	1	1	15	19.0	
LOYOLA MARYMOUNT	11-20-16	*	36	9-21	.429	1-6	.167	3-3	1.000	5	4	9	5.0	2	0	4	0	1	22	19.8	
vs UT-Arlington	11-26-16	*	20	3-6	.500	0-0	.000	3-5	.600	0	2	2	4.4	5	2	3	0	0	9	17.6	
vs Central Connecticut	11-27-16	*	35	8-11	.727	0-2	.000	1-2	.500	0	2	2	4.0	2	3	2	1	0	17	17.5	
at UC Davis	12-02-16	*	30	2-10	.200	0-1	.000	7-7	1.000	1	2	3	3.9	2	0	3	0	0	11	16.6	
MICHIGAN	12-09-16	*	26	1-7	.143	0-1	.000	6-8	.750	0	3	3	3.8	0	0	4	0	1	8	15.5	
UC SANTA BARBARA	12-11-16	*	35	5-13	.385	0-0	.000	8-9	.889	1	2	3	3.7	2	3	1	0	1	18	15.8	
at Cal State Fullerton	12-22-16	*	36	11-20	.550	1-2	.500	6-7	.857	2	2	4	3.7	3	4	3	0	2	29	17.1	
BIOLA	12-28-16	*	23	6-10	.600	0-0	.000	2-3	.667	1	0	1	3.5	2	0	1	0	1	14	16.8	
at New Mexico	12-31-16	*	29	3-13	.231	0-1	.000	1-2	.500	2	2	4	3.5	2	4	3	1	0	7	16.0	
NEVADA	01-04-17	*	31	7-14	.500	0-0	.000	3-4	.750	0	2	2	3.4	1	6	2	0	2	17	16.1	
BOISE STATE	01-07-17	*	24	3-10	.300	0-2	.000	9-10	.900	2	2	4	3.4	4	6	2	0	1	15	16.0	
at San Jose State	01-11-17	*	39	12-29	.414	2-3	.667	3-5	.600	6	5	11	3.9	0	0	3	0	1	29	16.9	
at Utah State	01-14-17	*	32	6-14	.429	0-0	.000	5-5	1.000	1	1	2	3.8	1	2	5	0	4	17	16.9	
UNLV	01-18-17	*	27	5-7	.714	0-0	.000	5-6	.833	0	3	3	3.8	1	4	2	0	1	15	16.8	
Totals			17	524	105-236	.445	6-25	.240	69-87	.793	24	40	64	3.8	36	41	46	3	18	285	16.8

Games played: 17
Minutes/game: 30.8
Points/game: 16.8
FG Pct: 44.5
3FG Pct: 24.0
FT Pct: 79.3

Rebounds/game: 3.8
Assists/game: 2.4
Turnovers/game: 2.7
Assist/turnover ratio: 0.9
Steals/game: 1.1
Blocks/game: 0.2

FORT'S CAREER STATISTICS

Season		gp-gs		min/avg		Total		3-Point		F-Throws		Rebounds				Scoring					
		fg-fga	pct	fg-fga	pct	ft-fa	pct	off	def	tot	avg	pf	fo	ast	to	blk	stl	pts	avg		
2014-15	31-24	839	27.1	125-278	.450	2-13	.154	60-96	.625	35	64	99	3.2	55	0	59	94	5	30	312	10.1
2015-16	31-31	971	31.3	169-366	.462	3-12	.250	104-150	.693	44	83	127	4.1	71	0	73	93	8	62	445	14.4
2016-17	17-17	524	30.8	105-236	.445	6-25	.240	69-87	.793	24	40	64	3.8	36	2	41	46	3	18	285	16.8
TOTAL	79-72	2334	29.5	399-880	.453	11-50	.220	233-333	.700	103	187	290	3.7	162	2	173	233	16	110	1042	13.2



#20 GEENA GOMEZ

Junior • 1L

5-8

Guard

Huntington Beach, Calif.

St. Joseph's (Pa.) / Edison High School

A heady decision-maker and knock-down shooter

▶▶▶ GAME HIGHS

	CAREER	2016-17 SEASON
Points	20, at San José State (1-11-17)	20, at San José State (1-11-17)
Rebounds	7, at San José State (1-11-17)	7, at San José State (1-11-17)
Assists	6, Twice, Last: vs. UNLV (1-18-17)	6, vs. UNLV (1-18-17)
Steals	2, Four times, Last: vs. Central Connecticut (11-27-16)	2, Twice, Last: vs. Central Connecticut (11-27-16)
Blocks	1, Twice, Last: at UNLV (3-4-16)	N/A
Field Goals	6, Twice, Last: at San José State (1-11-17)	6, Twice, Last: at San José State (1-11-17)
Field Goal Attempts	13, at San José State (1-11-17)	13, at San José State (1-11-17)
3-pt. Field Goals	4, Twice, Last: at San José State (1-11-17)	4, at San José State (1-11-17)
3-pt. Field Goal Attempts	9, at San José State (1-6-16)	7, at San José State (1-11-17)
Free Throws	6, vs. Central Connecticut (11-27-16)	6, vs. Central Connecticut (11-27-16)
Free Throw Attempts	6, Twice, Last: vs. Central Connecticut (11-27-16)	6, at San José State (1-11-17)
Double-Figure Scoring Games	9	8
Double-Figure Rebounding Games	N/A	N/A
Double-Doubles	N/A	N/A

▶▶▶ 2016-17 GAME-BY-GAME STATISTICS

Opponent	Date	gs	min	Total		3-Pointers		Free throws		Rebounds				pf	a	t/o	blk	stl	pts	avg	
				fg-fga	pct	3fg-fga	pct	ft-fa	pct	off	def	tot	avg								
at UC Riverside	11-11-16		25	2-7	.286	1-3	.333	1-2	.500	1	1	2	2.0	2	0	3	0	1	6	6.0	
SAN DIEGO CHRISTIAN	11-14-16	*	32	4-8	.500	2-5	.400	4-4	1.000	1	1	2	2.0	3	2	3	0	0	14	10.0	
at San Diego	11-17-16		27	0-9	.000	0-5	.000	2-2	1.000	1	3	4	2.7	3	0	4	0	2	2	7.3	
LOYOLA MARYMOUNT	11-20-16		23	0-3	.000	0-3	.000	0-0	.000	0	1	1	2.3	0	4	1	0	0	0	5.5	
vs UT-Arlington	11-26-16		29	2-6	.333	1-3	.333	1-2	.500	0	5	5	2.8	3	2	2	0	0	6	5.6	
vs Central Connecticut	11-27-16		24	4-7	.571	3-3	1.000	6-6	1.000	0	5	5	3.2	2	2	2	0	2	17	7.5	
at UC Davis	12-02-16		15	1-5	.200	0-1	.000	0-0	.000	1	0	1	2.9	0	2	0	0	0	2	6.7	
MICHIGAN	12-09-16		27	4-10	.400	2-3	.667	1-2	.500	1	1	2	2.8	1	1	2	0	0	11	7.3	
UC SANTA BARBARA	12-11-16	*	29	6-10	.600	3-5	.600	2-2	1.000	0	3	3	2.8	0	1	1	0	0	17	8.3	
at Cal State Fullerton	12-22-16	*	19	1-5	.200	0-4	.000	0-0	.000	0	0	0	2.5	1	2	2	0	0	2	7.7	
BIOLA	12-28-16	*	17	1-4	.250	0-2	.000	0-0	.000	0	1	1	2.4	1	3	2	0	1	2	7.2	
at New Mexico	12-31-16	*	26	0-7	.000	0-4	.000	0-0	.000	0	2	2	2.3	2	1	0	0	0	0	6.6	
NEVADA	01-04-17	*	24	4-12	.333	1-3	.333	2-3	.667	2	1	3	2.4	1	5	0	0	1	11	6.9	
BOISE STATE	01-07-17	*	22	4-7	.571	2-4	.500	0-1	.000	0	3	3	2.4	2	3	1	0	0	10	7.1	
at San Jose State	01-11-17	*	37	6-13	.462	4-7	.571	4-6	.667	3	4	7	2.7	2	4	1	0	0	20	8.0	
at Utah State	01-14-17	*	25	4-9	.444	2-3	.667	2-2	1.000	0	4	4	2.8	3	2	4	0	1	12	8.3	
UNLV	01-18-17	*	29	0-3	.000	0-2	.000	2-3	.667	1	3	4	2.9	1	6	2	0	0	2	7.9	
Totals			10	430	43-125	.344	21-60	.350	27-35	.771	11	38	49	2.9	27	40	30	0	8	134	7.9

Games played: 17

Minutes/game: 25.3

Points/game: 7.9

FG Pct: 34.4

3FG Pct: 35.0

FT Pct: 77.1

Rebounds/game: 2.9

Assists/game: 2.4

Turnovers/game: 1.8

Assist/turnover ratio: 1.3

Steals/game: 0.5

GOMEZ'S CAREER STATISTICS

* - at St. Joseph's

Season	gp-gs	min/avg	Total		3-Point		F-Throws		Rebounds				pf	fo	ast	to	blk	stl	Scoring	
			fg-fga	pct	fg-fga	pct	ft-fa	pct	off	def	tot	avg							pts	avg
2013-14*	24-1	114/4.8	10-34	.294	3-14	.214	5-7	.714	1	10	11	0.5	17	0	13	6	1	2	28	1.2
2015-16	29-0	426/14.7	30-107	.280	23-71	.324	15-22	.682	13	42	55	1.9	23	0	37	26	2	11	98	3.4
2016-17	17-10	430/25.3	43-125	.344	21-60	.350	27-35	.771	11	38	49	2.9	27	0	40	30	0	8	134	7.9
TOTAL	46-10	856/18.6	73-232	.315	44-131	.336	42-57	.737	24	80	104	2.3	50	0	77	56	2	19	232	5.0
All*	70-11	970/13.9	83-266	.312	47-145	.324	47-64	.734	25	90	115	1.6	67	0	90	62	3	21	260	3.7



5-11

Stockport, England

Barking Abbey Academy

Slashing-type guard with a high basketball IQ who adds height and depth to wing position

2016-17 SEASON

Points	7, at UC Davis (12-2-16)
Rebounds	3, Twice, Last: vs. San Diego Christian (11-14-16)
Assists	1, Twice, Last: vs. UNLV (1-18-17)
Steals	N/A
Blocks	1, at San Diego (11-20-16)
Field Goals	2, at UC Davis (12-2-16)
Field Goal Attempts	4, vs. San Diego Christian (11-14-16)
3-pt. Field Goals	1, at UC Davis (12-2-16)
3-pt. Field Goal Attempts	2, at UC Davis (12-2-16)
Free Throws	2, Twice, Last: at UC Davis (12-2-16)
Free Throw Attempts	2, Three times, Last: at UC Davis (12-2-16)
Double-Figure Scoring Games	N/A
Double-Figure Rebounding Games	N/A
Double-Doubles	N/A

Opponent	Date	gs		Total		3-Pointers		Free throws		Rebounds											
			min	fg-fga	pct	3fg-fga	pct	ft-fa	pct	off	def	tot	avg	pf	a	t/o	blk	stl	pts	avg	
at UC Riverside	11-11-16		12	1-2	.500	0-0	.000	0-0	.000	2	1	3	3.0	3	0	3	0	0	2	2.0	
SAN DIEGO CHRISTIAN	11-14-16		8	1-4	.250	0-1	.000	1-1	1.000	1	2	3	3.0	1	1	1	0	0	3	2.5	
at San Diego	11-17-16		9	0-2	.000	0-1	.000	0-2	.000	1	1	2	2.7	1	0	2	0	0	0	1.7	
LOYOLA MARYMOUNT	11-20-16		3	0-0	.000	0-0	.000	0-0	.000	0	0	0	2.0	0	0	0	1	0	0	1.3	
vs UT-Arlington	11-26-16		3	0-0	.000	0-0	.000	2-2	1.000	0	0	0	1.6	1	0	0	0	0	2	1.4	
vs Central Connecticut	11-27-16		3	0-1	.000	0-0	.000	0-0	.000	0	1	1	1.5	1	0	1	0	0	0	1.2	
at UC Davis	12-02-16		8	2-3	.667	1-2	.500	2-2	1.000	0	0	0	1.3	2	0	0	0	0	7	2.0	
MICHIGAN	12-09-16		2	0-0	.000	0-0	.000	0-0	.000	0	0	0	1.1	0	0	0	0	0	0	1.8	
UC SANTA BARBARA	12-11-16		dnp	-	-	-	-	-	-	-	-	-	-	-	-	-	-	-	-	-	
at Cal State Fullerton	12-22-16		dnp	-	-	-	-	-	-	-	-	-	-	-	-	-	-	-	-	-	
BIOLA	12-28-16		12	0-3	.000	0-1	.000	0-0	.000	0	0	0	1.0	1	0	0	0	0	0	1.6	
at New Mexico	12-31-16		4	1-1	1.000	0-0	.000	0-0	.000	0	0	0	0.9	0	0	0	0	0	2	1.6	
NEVADA	01-04-17		dnp	-	-	-	-	-	-	-	-	-	-	-	-	-	-	-	-	-	
BOISE STATE	01-07-17		dnp	-	-	-	-	-	-	-	-	-	-	-	-	-	-	-	-	-	
at San Jose State	01-11-17		dnp	-	-	-	-	-	-	-	-	-	-	-	-	-	-	-	-	-	
at Utah State	01-14-17		dnp	-	-	-	-	-	-	-	-	-	-	-	-	-	-	-	-	-	
UNLV	01-18-17		5	0-1	.000	0-1	.000	0-0	.000	0	0	0	0.8	1	1	0	0	0	0	1.5	
Totals		0	69	5-17	.294	1-6	.167	5-7	.714	4	5	9	0.8	11	2	7	1	0	16	1.5	

Rebounds/game: 0.8
Assists/game: 0.2
Turnovers/game: 0.6
Assist/turnover ratio: 0.3
Blocks/game: 0.1

Season			Total		3-Point		F-Throws		Rebounds										Scoring	
gp-gs	min/avg		fg-fga	pct	fg-fga	pct	ft-fta	pct	off	def	tot	avg	pf	fo	ast	to	blk	stl	pts	avg
2016-17	11-0	69/6.3	5-17	.294	1-6	.167	5-7	.714	4	5	9	0.8	11	0	2	7	1	0	16	1.5
TOTAL	11-0	69/6.3	5-17	.294	1-6	.167	5-7	.714	4	5	9	0.8	11	0	2	7	1	0	16	1.5



#22 LEXY THORDERSON

Junior • 2L

6-0

Guard/Forward

Castle Rock, Colo.

Rock Canyon High School

Team's top three-point threat in 2015-16 who will be tasked with an expanded role

▶▶▶ GAME HIGHS

	CAREER	2016-17 SEASON
Points	21, vs. UNLV (1-18-17)	21, vs. UNLV (1-18-17)
Rebounds	7, vs. San Diego Christian (12-21-15)	6, at New Mexico (12-31-16)
Assists	3, vs. UT Arlington (11-26-16)	3, vs. UT Arlington (11-26-16)
Steals	2, Three times, Last: at UC Davis (12-2-16)	2, Twice, Last: at New Mexico (12-31-16)
Blocks	1, 12 times, Last: vs. UNLV (1-18-17)	1, Five times, Last: vs. UNLV (1-18-17)
Field Goals	6, vs. Boise State (1-7-17)	6, vs. Boise State (1-7-17)
Field Goal Attempts	14, at UC Davis (12-2-16)	14, at UC Davis (12-2-16)
3-pt. Field Goals	7, vs. UNLV (1-18-17)	7, vs. UNLV (1-18-17)
3-pt. Field Goal Attempts	13, vs. UNLV (1-18-17)	13, vs. UNLV (1-18-17)
Free Throws	5, vs. UC Santa Barbara (12-11-16)	5, vs. UC Santa Barbara (12-11-16)
Free Throw Attempts	5, vs. UC Santa Barbara (12-11-16)	5, vs. UC Santa Barbara (12-11-16)
Double-Figure Scoring Games	15	8
Double-Figure Rebounding Games	N/A	N/A
Double-Doubles	N/A	N/A

▶▶▶ 2016-17 GAME-BY-GAME STATISTICS

Opponent	Date	gs	min	Total		3-Pointers		Free throws		Rebounds				pf	a	t/o	blk	stl	pts	avg
				fg-fga	pct	3fg-fga	pct	ft-fa	pct	off	def	tot	avg							
at UC Riverside	11-11-16		dnp	-	-	-	-	-	-	-	-	-	-	-	-	-	-	-	-	-
at San Diego	11-17-16		18	1-5	.200	1-2	.500	0-0	.000	1	0	1	1.0	0	0	0	1	0	3	3.0
LOYOLA MARYMOUNT	11-20-16	*	19	2-12	.167	1-9	.111	1-2	.500	2	1	3	2.0	3	2	0	1	0	6	4.5
vs UT-Arlington	11-26-16	*	22	0-4	.000	0-4	.000	0-0	.000	0	1	1	1.7	1	3	1	0	1	0	3.0
vs Central Connecticut	11-27-16		20	3-6	.500	2-4	.500	2-2	1.000	0	1	1	1.5	4	0	0	0	1	10	4.8
at UC Davis	12-02-16		23	4-14	.286	3-11	.273	0-0	.000	0	2	2	1.6	0	1	0	0	2	11	6.0
MICHIGAN	12-09-16		20	1-6	.167	1-5	.200	0-0	.000	0	0	0	1.3	0	2	0	1	0	3	5.5
UC SANTA BARBARA	12-11-16	*	28	5-11	.455	2-7	.286	5-5	1.000	0	4	4	1.7	0	2	1	0	1	17	7.1
at Cal State Fullerton	12-22-16	*	28	5-7	.714	3-5	.600	0-0	.000	1	1	2	1.8	1	0	1	0	1	13	7.9
BIOLA	12-28-16	*	22	2-9	.222	0-5	.000	0-0	.000	3	2	5	2.1	1	0	0	0	0	4	7.4
at New Mexico	12-31-16	*	36	4-11	.364	2-8	.250	1-2	.500	1	5	6	2.5	3	1	1	0	2	11	7.8
NEVADA	01-04-17	*	30	5-9	.556	5-9	.556	0-0	.000	3	2	5	2.7	3	1	0	0	1	15	8.5
BOISE STATE	01-07-17	*	34	6-9	.667	6-9	.667	2-2	1.000	1	1	2	2.7	2	1	0	1	0	20	9.4
at San Jose State	01-11-17	*	30	5-11	.455	3-9	.333	0-0	.000	3	2	5	2.8	4	0	1	0	0	13	9.7
at Utah State	01-14-17	*	26	2-11	.182	1-8	.125	0-0	.000	0	4	4	2.9	1	0	0	0	1	5	9.4
UNLV	01-18-17	*	31	7-14	.500	7-13	.538	0-0	.000	0	0	0	2.7	2	1	1	1	0	21	10.1
Totals		11	387	52-139	.374	37-108	.343	11-13	.846	15	26	41	2.7	25	14	6	5	10	152	10.1

Games played: 15
 Minutes/game: 25.8
 Points/game: 10.1
 FG Pct: 37.4
 3FG Pct: 34.3
 FT Pct: 84.6

Rebounds/game: 2.7
 Assists/game: 0.9
 Turnovers/game: 0.4
 Assist/turnover ratio: 2.3
 Steals/game: 0.7
 Blocks/game: 0.3

THORDERSON'S CAREER STATISTICS

			Total		3-Point		F-Throws		Rebounds										Scoring	
Season	gp-gs	min/avg	fg-fga	pct	fg-fga	pct	ft-fa	pct	off	def	tot	avg	pf	fo	ast	to	blk	stl	pts	avg
2014-15	30-0	226/7.5	20-70	.286	13-58	.224	4-4	1.000	7	12	19	0.6	15	0	8	18	1	3	57	1.9
2015-16	31-2	524/16.9	58-172	.337	40-124	.323	5-8	.625	16	51	67	2.2	33	0	4	9	8	10	161	5.2
2016-17	15-11	387/25.8	52-139	.374	37-108	.343	11-13	.846	15	26	41	2.7	25	0	14	6	5	10	152	10.1
TOTAL	76-13	1137/15.0	130-381	.341	90-290	.310	20-25	.800	38	89	127	1.7	73	0	26	33	14	23	370	4.9



#30 CHEYENNE GREENHOUSE

Junior • 2L

5-11

Guard

Riverside, Calif.

Canyon Springs High School

A talented and adaptable slasher who can fill multiple roles

▶▶▶ GAME HIGHS

	CAREER	2016-17 SEASON
Points	19, vs. Sacramento State (11-14-14)	10, vs. UC Santa Barbara (12-11-16)
Rebounds	11, vs. Sacramento State (11-14-14)	3, Four times, Last: vs. Nevada (1-4-17)
Assists	5, vs. Sacramento State (11-14-14)	1, Six times, Last: vs. UNLV (1-18-17)
Steals	2, Twice, Last: at Air Force (2-13-16)	1, at UC Riverside (11-11-16)
Blocks	2, at Air Force (2-13-16)	N/A
Field Goals	6, Three times, Last: at Wyoming (12-30-15)	3, Three times, Last: vs. UC Santa Barbara (12-11-16)
Field Goal Attempts	12, vs. Sacramento State (11-14-14)	10, at UC Riverside (11-11-16)
3-pt. Field Goals	2, vs. UC Santa Barbara (12-11-16)	2, vs. UC Santa Barbara (12-11-16)
3-pt. Field Goal Attempts	3, Twice, Last: vs. UC Santa Barbara (12-11-16)	3, vs. UC Santa Barbara (12-11-16)
Free Throws	7, vs. Sacramento State (11-14-14)	4, vs. Loyola Marymount (11-20-16)
Free Throw Attempts	10, vs. Sacramento State (11-14-14)	5, vs. Loyola Marymount (11-20-16)
Double-Figure Scoring Games	9	1
Double Figure Rebounding Games	1	N/A
Double-Doubles	1	N/A

▶▶▶ 2016-17 GAME-BY-GAME STATISTICS

Opponent	Date	gs	min	Total		3-Pointers		Free throws		Rebounds				pf	a	t/o	blk	stl	pts	avg
				fg-fga	pct	3fg-fga	pct	ft-fa	pct	off	def	tot	avg							
at UC Riverside	11-11-16	*	30	3-10	.300	0-2	.000	0-0	.000	2	1	3	3.0	0	0	0	0	1	6	6.0
SAN DIEGO CHRISTIAN	11-14-16		dnp	-	-	-	-	-	-	-	-	-	-	-	-	-	-	-	-	-
at San Diego	11-17-16	*	20	1-5	.200	0-0	.000	0-0	.000	0	0	0	1.5	1	0	1	0	0	2	4.0
LOYOLA MARYMOUNT	11-20-16		18	2-4	.500	0-1	.000	4-5	.800	0	0	0	1.0	5	1	4	0	0	8	5.3
vs UT-Arlington	11-26-16		15	3-7	.429	0-1	.000	2-2	1.000	1	2	3	1.5	0	0	2	0	0	8	6.0
vs Central Connecticut	11-27-16		9	1-1	1.000	0-0	.000	2-4	.500	0	2	2	1.6	1	0	0	0	0	4	5.6
at UC Davis	12-02-16		18	2-5	.400	0-0	.000	0-0	.000	0	0	0	1.3	1	1	0	0	0	4	5.3
MICHIGAN	12-09-16		23	1-3	.333	0-0	.000	2-2	1.000	0	1	1	1.3	1	0	2	0	0	4	5.1
UC SANTA BARBARA	12-11-16		13	3-4	.750	2-3	.667	2-2	1.000	1	1	2	1.4	1	1	0	0	0	10	5.8
at Cal State Fullerton	12-22-16		6	1-1	1.000	0-0	.000	1-1	1.000	1	0	1	1.3	0	0	1	0	0	3	5.4
BIOLA	12-28-16		15	2-5	.400	1-2	.500	3-4	.750	1	0	1	1.3	1	0	1	0	0	8	5.7
at New Mexico	12-31-16		11	0-4	.000	0-0	.000	1-2	.500	2	1	3	1.5	1	0	0	0	0	1	5.3
NEVADA	01-04-17		11	1-3	.333	0-1	.000	0-0	.000	1	2	3	1.6	0	0	0	0	0	2	5.0
BOISE STATE	01-07-17		10	0-1	.000	0-1	.000	0-0	.000	0	1	1	1.5	0	1	0	0	0	0	4.6
at San Jose State	01-11-17		14	2-4	.500	0-1	.000	0-1	.000	2	0	2	1.6	2	0	0	0	0	4	4.6
at Utah State	01-14-17		8	0-2	.000	0-1	.000	1-2	.500	1	1	2	1.6	0	1	0	0	0	1	4.3
UNLV	01-18-17		10	1-1	1.000	0-0	.000	0-0	.000	0	0	0	1.5	4	1	1	0	0	2	4.2
Totals		2	231	23-60	.383	3-13	.231	18-25	.720	12	12	24	1.5	18	6	12	0	1	67	4.2

Games played: 16
 Minutes/game: 14.4
 Points/game: 4.2
 FG Pct: 38.3
 3FG Pct: 23.1
 FT Pct: 72.0

Rebounds/game: 1.5
 Assists/game: 0.4
 Turnovers/game: 0.8
 Assist/turnover ratio: 0.5
 Steals/game: 0.1

GREENHOUSE'S CAREER STATISTICS

GREENHOUSE 5 CARLTON CAMPBELL																				
			Total		3-Point		F-Throws		Rebounds										Scoring	
Season	gp-gs	min/avg	fg-fga	pct	fg-fga	pct	ft-fa	pct	off	def	tot	avg	pf	fo	ast	to	blk	stl	pts	avg
2014-15	31-8	441/14.2	43-118	.364	1-4	.250	32-48	.667	40	47	87	2.8	23	0	21	35	1	8	119	3.8
2015-16	31-22	647/20.9	59-161	.366	2-9	.222	33-49	.673	53	47	100	3.2	35	0	17	30	6	9	153	4.9
2016-17	16-2	231/14.4	23-60	.383	3-13	.231	18-25	.720	12	12	24	1.5	18	1	6	12	0	1	67	4.2
TOTAL	78-32	1319/16.9	125-339	.369	6-26	.231	83-122	.680	105	106	211	2.7	76	1	44	77	7	18	339	4.3



#34 BAYLEE VANDERDOES

Freshman • HS

6-1

Forward

Auburn, Calif.

Placer High School

Extremely skilled offensively at the post position and shoots the ball very well from the outside

▶▶▶ GAME HIGHS

Points	10, vs. San Diego Christian (11-14-16)
Rebounds	10, vs. San Diego Christian (11-14-16)
Assists	2, vs. Central Connecticut (11-27-16)
Steals	1, Three times, Last: vs. UNLV (1-18-17)
Blocks	1, vs. San Diego Christian (11-14-16)
Field Goals	5, vs. San Diego Christian (11-14-16)
Field Goal Attempts	7, vs. San Diego Christian (11-14-16)
3-pt. Field Goals	N/A
3-pt. Field Goal Attempts	N/A
Free Throws	4, at San Diego (11-17-16)
Free Throw Attempts	4, Twice, Last: at San Diego (11-17-16)
Double-Figure Scoring Games	1
Double-Figure Rebounding Games	1
Double-Doubles	1

▶▶▶ 2016-17 GAME-BY-GAME STATISTICS

Opponent	Date	gs	min	Total		3-Pointers		Free throws		Rebounds				pf	a	t/o	blk	stl	pts	avg
				fg-fga	pct	3fg-fga	pct	ft-fta	pct	off	def	tot	avg							
at UC Riverside	11-11-16	*	17	2-3	.667	0-0	.000	3-3	1.000	3	2	5	5.0	3	0	1	0	0	7	7.0
SAN DIEGO CHRISTIAN	11-14-16	*	22	5-7	.714	0-0	.000	0-1	.000	2	8	10	7.5	1	0	2	1	0	10	8.5
at San Diego	11-17-16	*	15	0-3	.000	0-0	.000	4-4	1.000	0	2	2	5.7	3	0	0	0	0	4	7.0
LOYOLA MARYMOUNT	11-20-16	*	25	3-4	.750	0-0	.000	0-0	.000	0	6	6	5.8	2	1	1	0	0	6	6.8
vs UT-Arlington	11-26-16	*	20	0-2	.000	0-0	.000	2-4	.500	2	2	4	5.4	2	0	1	0	1	2	5.8
vs Central Connecticut	11-27-16	*	23	3-5	.600	0-0	.000	1-2	.500	1	1	2	4.8	4	2	3	0	0	7	6.0
at UC Davis	12-02-16	*	16	1-5	.200	0-0	.000	0-0	.000	2	4	6	5.0	3	0	2	0	1	2	5.4
MICHIGAN	12-09-16	*	20	0-1	.000	0-0	.000	1-2	.500	0	0	0	4.4	1	1	2	0	0	1	4.9
at Cal State Fullerton	12-22-16	dnp		-	-	-	-	-	-	-	-	-	-	-	-	-	-	-	-	-
at New Mexico	12-31-16	dnp		-	-	-	-	-	-	-	-	-	-	-	-	-	-	-	-	-
NEVADA	01-04-17	dnp		-	-	-	-	-	-	-	-	-	-	-	-	-	-	-	-	-
BOISE STATE	01-07-17	7		0-0	.000	0-0	.000	0-0	.000	2	0	2	4.1	0	0	0	0	0	0	4.3
at San Jose State	01-11-17	dnp		-	-	-	-	-	-	-	-	-	-	-	-	-	-	-	-	-
at Utah State	01-14-17	8		1-2	.500	0-0	.000	0-0	.000	0	2	2	3.9	0	0	0	0	0	2	4.1
UNLV	01-18-17	6		0-1	.000	0-0	.000	1-2	.500	0	2	2	3.7	1	1	0	0	1	1	3.8
Totals		8	179	15-33	.455	0-0	.000	12-18	.667	12	29	41	3.7	20	5	12	1	3	42	3.8

Games played: 11
 Minutes/game: 16.3
 Points/game: 3.8
 FG Pct: 45.5
 FT Pct: 66.7

Rebounds/game: 3.7
 Assists/game: 0.5
 Turnovers/game: 1.1
 Assist/turnover ratio: 0.4
 Steals/game: 0.3
 Blocks/game: 0.1

VANDERDOES' CAREER STATISTICS

			Total		3-Point		F-Throws		Rebounds										Scoring	
Season	gp-gs	min/avg	fg-fga	pct	fg-fga	pct	ft-fta	pct	off	def	tot	avg	pf	fo	ast	to	blk	stl	pts	avg
2016-17	11-8	179/16.3	15-33	.455	0-0	.000	12-18	.667	12	29	41	3.7	20	0	5	12	1	3	42	3.8
TOTAL	11-8	179/16.3	15-33	.455	0-0	.000	12-18	.667	12	29	41	3.7	20	0	5	12	1	3	42	3.8



6-2

San Antonio, Texas

Brennan High School

Enthusiastic and hard-working utility player whose greatest strength is rebounding

2016-17 SEASON

▶▶▶ 2016-17 GAME-BY-GAME STATISTICS

Games played: 17
Minutes/game: 15.8
Points/game: 3.6
FG Pct: 53.8
3FG Pct: 0.0
FT Pct: 50.0

Rebounds/game: 2.4
Assists/game: 0.2
Turnovers/game: 0.9
Assist/turnover ratio: 0.2
Steals/game: 0.4
Blocks/game: 0.2

Season		gp-gs		Total		3-Point		F-Throws		Rebounds				Other Stats						Scoring	
		min	avg	fg-fga	pct	fg-fga	pct	ft-fa	pct	off	def	tot	avg	pf	fo	ast	to	blk	stl	pts	avg
2016-17		17-10	268/15.8	28-52	.538	0-3	.000	5-10	.500	15	26	41	2.4	26	0	3	16	3	6	61	3.6
TOTAL		17-10	268/15.8	28-52	.538	0-3	.000	5-10	.500	15	26	41	2.4	26	0	3	16	3	6	61	3.6



#44 ALEIAH BRANDON

Senior • 3L

6-1

Forward

Corona, Calif.

Centennial High School

Provides veteran leadership as a fifth-year senior

▶▶▶ GAME HIGHS

	CAREER	2016-17 SEASON
Points	11, Twice, Last: at Fresno State (1-20-16)	N/A
Rebounds	6, vs. UC Davis (11-19-16)	N/A
Assists	2, Five times, Last: vs. UNLV (1-30-16)	N/A
Steals	2, Six times, Last: at Fresno State (1-20-16)	N/A
Blocks	2, Three times, Last: vs. San José State (2-20-16)	N/A
Field Goals	5, at Fresno State (1-20-16)	N/A
Field Goal Attempts	9, at Fresno State (1-20-16)	N/A
3-pt. Field Goals	2, at Washington (11-13-15)	N/A
3-pt. Field Goal Attempts	5, Three times, Last: vs. Wisconsin (11-29-15)	N/A
Free Throws	2, Four times, Last: vs. San José State (2-20-16)	N/A
Free Throw Attempts	2, Five times, Last: vs. San José State (2-20-16)	N/A
Double-Figure Scoring Games	3	N/A
Double-Figure Rebounding Games	N/A	N/A
Double-Doubles	N/A	N/A

▶▶▶ 2016-17 GAME-BY-GAME STATISTICS

Opponent	GS	Min	TOTAL			3-PTS			FT	FTA	Pct	Off	REBOUNDS				PF	A	TO	Blk	Stl	Pts	Avg
			FG	FGA	Pct	3FG	FGA	Pct					Def	Tot	Avg								
at UC Riverside										Did Not Play													
SAN DIEGO CHRISTIAN										Did Not Play													
at San Diego										Did Not Play													
LOYOLA MARYMOUNT										Did Not Play													
vs. UT Arlington										Did Not Play													
vs. Central Connecticut										Did Not Play													
at UC Davis										Did Not Play													
MICHIGAN										Did Not Play													
UC SANTA BARBARA										Did Not Play													
at Cal State Fullerton										Did Not Play													
BIOLA										Did Not Play													
at New Mexico										Did Not Play													
NEVADA										Did Not Play													
BOISE STATE										Did Not Play													
at San José State										Did Not Play													
at Utah State										Did Not Play													
UNLV										Did Not Play													
AIR FORCE										Did Not Play													
at Colorado State										Did Not Play													
at Wyoming										Did Not Play													
FRESNO STATE										Did Not Play													
SAN JOSÉ STATE										Did Not Play													
at Nevada										Did Not Play													
UTAH STATE										Did Not Play													
at UNLV										Did Not Play													
at Fresno State										Did Not Play													
COLORADO STATE										Did Not Play													
at Air Force										Did Not Play													
NEW MEXICO										Did Not Play													

TOTALS

BRANDON'S CAREER STATISTICS

Season	gp-gs	min/avg	Total		3-Point		F-Throws		Rebounds				Scoring							
			fg-fga	pct	fg-fga	pct	ft-fa	pct	off	def	tot	avg	pf	fo	ast	to	blk	stl	pts	avg
2012-13	17-0	109/6.4	13-21	.619	0-0	.000	0-0	.000	3	11	14	0.8	9	0	0	5	5	2	26	1.5
2014-15	30-0	281/9.4	24-51	.471	10-29	.345	6-6	1.000	7	24	31	1.0	37	0	7	20	2	7	64	2.1
2015-16	26-18	494/19.0	37-111	.333	11-41	.268	3-4	.750	13	49	62	2.4	54	1	15	28	10	14	88	3.4
TOTAL	73-18	884/12.1	74-183	.404	21-70	.300	9-10	.900	23	84	107	1.5	100	1	22	53	17	23	178	2.4



#45 NAOMI EKWEDIKE

Freshman • HS

6-6

Center

Lagos, Nigeria

Potter's House Christian Academy (Fla.)

A quick learner who will be an asset on defense with great hands and footwork to finish around the rim

** Suffered season-ending injury at Cal State Fullerton (12-22-16)*

▶▶▶ GAME HIGHS

Points	5, vs. San Diego Christian (11-14-16)
Rebounds	3, Twice, Last: at UC Davis (12-2-16)
Assists	N/A
Steals	N/A
Blocks	N/A
Field Goals	2, Three times, Last: vs. Michigan (12-9-16)
Field Goal Attempts	4, vs. San Diego Christian (11-14-16)
3-pt. Field Goals	N/A
3-pt. Field Goal Attempts	N/A
Free Throws	1, vs. San Diego Christian (11-14-16)
Free Throw Attempts	2, vs. San Diego Christian (11-14-16)
Double-Figure Scoring Games	N/A
Double-Figure Rebounding Games	N/A
Double-Doubles	N/A

▶▶▶ 2016-17 GAME-BY-GAME STATISTICS

Opponent	Date	gs	min	Total		3-Pointers		Free throws		Rebounds				pf	a	t/o	blk	stl	pts	avg
				fg-fga	pct	3fg-fga	pct	ft-fa	pct	off	def	tot	avg							
at UC Riverside	11-11-16		2	0-1	.000	0-0	.000	0-0	.000	0	0	0	0.0	1	0	3	0	0	0	0.0
SAN DIEGO CHRISTIAN	11-14-16		10	2-4	.500	0-0	.000	1-2	.500	0	0	0	0.0	1	0	1	0	0	5	2.5
at San Diego	11-17-16		6	1-2	.500	0-0	.000	0-0	.000	1	2	3	1.0	2	0	1	0	0	2	2.3
LOYOLA MARYMOUNT	11-20-16		6	1-2	.500	0-0	.000	0-1	.000	0	0	0	0.8	2	0	1	0	0	2	2.3
vs UT-Arlington	11-26-16		7	0-2	.000	0-0	.000	0-0	.000	0	2	2	1.0	1	0	0	0	0	0	1.8
vs Central Connecticut	11-27-16		12	0-2	.000	0-0	.000	0-0	.000	0	0	0	0.8	0	0	3	0	0	0	1.5
at UC Davis	12-02-16		10	2-3	.667	0-0	.000	0-0	.000	2	1	3	1.1	1	0	2	0	0	4	1.9
MICHIGAN	12-09-16		8	2-3	.667	0-0	.000	0-0	.000	2	0	2	1.3	2	0	1	0	0	4	2.1
UC SANTA BARBARA	12-11-16		2	0-0	.000	0-0	.000	0-0	.000	0	1	1	1.2	0	0	1	0	0	0	1.9
at Cal State Fullerton	12-22-16		dnp	-	-	-	-	-	-	-	-	-	-	-	-	-	-	-	-	-
BIOLA	12-28-16		dnp	-	-	-	-	-	-	-	-	-	-	-	-	-	-	-	-	-
at New Mexico	12-31-16		dnp	-	-	-	-	-	-	-	-	-	-	-	-	-	-	-	-	-
NEVADA	01-04-17		dnp	-	-	-	-	-	-	-	-	-	-	-	-	-	-	-	-	-
BOISE STATE	01-07-17		dnp	-	-	-	-	-	-	-	-	-	-	-	-	-	-	-	-	-
at San Jose State	01-11-17		dnp	-	-	-	-	-	-	-	-	-	-	-	-	-	-	-	-	-
at Utah State	01-14-17		dnp	-	-	-	-	-	-	-	-	-	-	-	-	-	-	-	-	-
UNLV	01-18-17		dnp	-	-	-	-	-	-	-	-	-	-	-	-	-	-	-	-	-
Totals		0	63	8-19	.421	0-0	.000	1-3	.333	5	6	11	1.2	10	0	13	0	0	17	1.9

Games played: 9
Minutes/game: 7.0
Points/game: 1.9
FG Pct: 42.1
FT Pct: 33.3

Rebounds/game: 1.2
Turnovers/game: 1.4

EKWEDIKE'S CAREER STATISTICS

Season	gp-gs	min/avg	Total		3-Point		F-Throws		Rebounds				pf	fo	ast	to	blk	stl	Scoring	
			fg-fga	pct	fg-fga	pct	ft-fa	pct	off	def	tot	avg							pts	avg
2016-17	9-0	63/7.0	8-19	.421	0-0	.000	1-3	.333	5	6	11	1.2	10	0	0	13	0	0	17	1.9
TOTAL	9-0	63/7.0	8-19	.421	0-0	.000	1-3	.333	5	6	11	1.2	10	0	0	13	0	0	17	1.9

All games

RECORD:	OVERALL	HOME	AWAY	NEUTRAL
ALL GAMES	8-9	6-2	1-6	1-1
CONFERENCE	3-3	3-0	0-3	0-0
NON-CONFERENCE	5-6	3-2	1-3	1-1

##	Player	gp-gs	min	avg	Total	fg%	3-Point	3fg%	F-Throw	ft%	Rebounds				pf	dq	a	to	blk	stl	pts	avg
					fg-fga		3fg-fga		ft-fa		off	def	tot	avg								
15	FORT, McKynzie	17-17	524	30.8	105-236	.445	6-25	.240	69-87	.793	24	40	64	3.8	36	2	41	46	3	18	285	16.8
01	LARK, Khalia	8-2	212	26.5	36-76	.474	12-31	.387	5-10	.500	13	45	58	7.3	22	0	9	15	1	7	89	11.1
22	THORDERSON, Lexy	15-11	387	25.8	52-139	.374	37-108	.343	11-13	.846	15	26	41	2.7	25	0	14	6	5	10	152	10.1
04	ELLISON, Kymberly	17-17	436	25.6	52-138	.377	38-104	.365	21-29	.724	8	30	38	2.2	37	0	19	25	4	15	163	9.6
20	GOMEZ, Geena	17-10	430	25.3	43-125	.344	21-60	.350	27-35	.771	11	38	49	2.9	27	0	40	30	0	8	134	7.9
30	GREENHOUSE, Chey	16-2	231	14.4	23-60	.383	3-13	.231	18-25	.720	12	12	24	1.5	18	1	6	12	0	1	67	4.2
34	VANDERDOES, Bayle	11-8	179	16.3	15-33	.455	0-0	.000	12-18	.667	12	29	41	3.7	20	0	5	12	1	3	42	3.8
40	TERRY, Monique	17-10	268	15.8	28-52	.538	0-3	.000	5-10	.500	15	26	41	2.4	26	0	3	16	3	6	61	3.6
03	BOSTICK, Ariell	17-8	411	24.2	18-53	.340	4-11	.364	18-23	.783	7	73	80	4.7	32	1	69	41	0	31	58	3.4
45	EKWEDIKE, Naomi	9-0	63	7.0	8-19	.421	0-0	.000	1-3	.333	5	6	11	1.2	10	0	0	13	0	0	17	1.9
11	GOMEZ, Arantxa	17-0	199	11.7	11-22	.500	0-0	.000	9-21	.429	16	22	38	2.2	20	0	5	14	7	3	31	1.8
13	BROWN, Allison	4-0	16	4.0	2-3	.667	0-0	.000	2-2	1.000	0	2	2	0.5	4	0	2	2	0	0	6	1.5
21	LOWE, Abby	11-0	69	6.3	5-17	.294	1-6	.167	5-7	.714	4	5	9	0.8	11	0	2	7	1	0	16	1.5
Team											36	33	69					9				
Total.....		17	3425		398-973	.409	122-361	.338	203-283	.717	178	387	565	33.2	288	4	215	248	25	102	1121	65.9
Opponents.....		17	3425		458-1027	.446	123-355	.346	168-251	.669	207	430	637	37.5	288	-	274	257	51	100	1207	71.0

Score by Periods	1st	2nd	3rd	4th	OT	Totals
SDSU	289	245	271	307	9	1121
Opponents	347	274	287	289	10	1207

Conference games

RECORD:	OVERALL	HOME	AWAY	NEUTRAL
ALL GAMES	3-3	3-0	0-3	0-0
CONFERENCE	3-3	3-0	0-3	0-0
NON-CONFERENCE	0-0	0-0	0-0	0-0

##	Player	gp-gs	min	avg	Total	fg%	3-Point	3fg%	F-Throw	ft%	Rebounds				pf	dq	a	to	blk	stl	pts	avg
					fg-fga		3fg-fga		ft-fa		off	def	tot	avg								
15	FORT, McKynzie	6-6	182	30.3	36-87	.414	2-6	.333	26-32	.813	11	15	26	4.3	9	0	22	17	1	9	100	16.7
22	THORDERSON, Lexy	6-6	187	31.2	29-65	.446	24-56	.429	3-4	.750	8	14	22	3.7	15	0	4	3	2	4	85	14.2
01	LARK, Khalia	6-2	158	26.3	28-58	.483	9-23	.391	5-10	.500	11	33	44	7.3	18	0	7	13	1	5	70	11.7
20	GOMEZ, Geena	6-6	163	27.2	18-51	.353	9-23	.391	10-15	.667	6	17	23	3.8	11	0	21	8	0	2	55	9.2
04	ELLISON, Kymberly	6-6	158	26.3	18-44	.409	11-30	.367	7-11	.636	1	8	9	1.5	11	0	6	7	1	2	54	9.0
40	TERRY, Monique	6-4	107	17.8	12-22	.545	0-0	.000	0-3	.000	5	8	13	2.2	8	0	1	4	1	3	24	4.0
11	GOMEZ, Arantxa	6-0	56	9.3	5-10	.500	0-0	.000	1-5	.200	4	8	12	2.0	4	0	3	4	0	0	11	1.8
30	GREENHOUSE, Chey	6-0	64	10.7	4-15	.267	0-4	.000	2-5	.400	6	5	11	1.8	7	0	3	1	0	0	10	1.7
03	BOSTICK, Ariell	6-0	118	19.7	2-16	.125	1-3	.333	4-4	1.000	1	17	18	3.0	8	0	21	15	0	7	9	1.5
34	VANDERDOES, Bayle	3-0	21	7.0	1-3	.333	0-0	.000	1-2	.500	2	4	6	2.0	1	0	1	0	0	1	3	1.0
21	LOWE, Abby	2-0	9	4.5	1-2	.500	0-1	.000	0-0	.000	0	0	0	0.0	1	0	1	0	0	0	2	1.0
13	BROWN, Allison	1-0	2	2.0	0-0	.000	0-0	.000	0-0	.000	0	0	0	0.0	2	0	0	0	0	0	0	0.0
Team											16	13	29					2				
Total.....		6	1225		154-373	.413	56-146	.384	59-91	.648	71	142	213	35.5	95	0	90	74	6	33	423	70.5
Opponents.....		6	1225		168-386	.435	45-134	.336	61-83	.735	83	157	240	40.0	90	-	100	83	23	32	442	73.7

Score by Periods	1st	2nd	3rd	4th	OT	Totals
------------------	-----	-----	-----	-----	----	--------

Home games

RECORD:	OVERALL	HOME	AWAY	NEUTRAL
ALL GAMES	6-2	6-2	0-0	0-0
CONFERENCE	3-0	3-0	0-0	0-0
NON-CONFERENCE	3-2	3-2	0-0	0-0

##	Player	gp-gs	min	avg	Total		3-Point		F-Throw		Rebounds				pf	dq	a	to	blk	stl	pts	avg
					fg-fga	fg%	3fg-fga	3fg%	ft-fa	ft%	off	def	tot	avg								
15	FORT, McKynzie	8-8	237	29.6	47-100	.470	3-11	.273	40-47	.851	11	21	32	4.0	14	0	23	17	0	9	137	17.1
01	LARK, Khalia	4-1	106	26.5	27-42	.643	8-17	.471	3-6	.500	6	20	26	6.5	9	0	4	7	0	3	65	16.3
22	THORNDERSON, Lexy	7-6	184	26.3	28-70	.400	22-57	.386	8-9	.889	9	10	19	2.7	11	0	9	2	4	2	86	12.3
04	ELLISON, Kymberly	8-8	215	26.9	31-60	.517	23-47	.489	10-13	.769	4	19	23	2.9	14	0	12	12	2	6	95	11.9
20	GOMEZ, Geena	8-6	203	25.4	23-57	.404	10-27	.370	11-15	.733	5	14	19	2.4	9	0	25	12	0	2	67	8.4
30	GREENHOUSE, Chey	7-0	100	14.3	10-21	.476	3-8	.375	11-13	.846	3	5	8	1.1	12	1	4	8	0	0	34	4.9
40	TERRY, Monique	8-5	129	16.1	15-23	.652	0-2	.000	2-5	.400	7	9	16	2.0	11	0	1	6	3	4	32	4.0
34	VANDERDOES, Bayle	5-3	80	16.0	8-13	.615	0-0	.000	2-5	.400	4	16	20	4.0	5	0	3	5	1	1	18	3.6
45	EKWEDIKE, Naomi	4-0	26	6.5	5-9	.556	0-0	.000	1-3	.333	2	1	3	0.8	5	0	0	4	0	0	11	2.8
03	BOSTICK, Ariell	8-3	189	23.6	7-19	.368	0-2	.000	8-11	.727	3	37	40	5.0	14	0	41	19	0	10	22	2.8
11	GOMEZ, Arantxa	8-0	85	10.6	6-11	.545	0-0	.000	3-4	.750	4	10	14	1.8	6	0	3	5	3	3	15	1.9
13	BROWN, Allison	4-0	16	4.0	2-3	.667	0-0	.000	2-2	1.000	0	2	2	0.5	4	0	2	2	0	0	6	1.5
21	LOWE, Abby	5-0	30	6.0	1-8	.125	0-3	.000	1-1	1.000	1	2	3	0.6	3	0	2	1	1	0	3	0.6
Team											8	12	20					4				
Total.....		8	1600		210-436	.482	69-174	.397	102-134	.761	67	178	245	30.6	117	1	129	104	14	40	591	73.9
Opponents.....		8	1600		214-506	.423	67-194	.345	68-104	.654	124	170	294	36.8	126	-	128	106	18	39	563	70.4

Score by Periods	1st	2nd	3rd	4th	Totals
SDSU	169	133	129	160	591
Opponents	160	114	158	131	563

Away games

RECORD:	OVERALL	HOME	AWAY	NEUTRAL
ALL GAMES	1-6	0-0	1-6	0-0
CONFERENCE	0-3	0-0	0-3	0-0
NON-CONFERENCE	1-3	0-0	1-3	0-0

##	Player	gp-gs	min	avg	Total		3-Point		F-Throw		Rebounds				pf	dq	a	to	blk	stl	pts	avg
					fg-fga	fg%	3fg-fga	3fg%	ft-fa	ft%	off	def	tot	avg								
15	FORT, McKynzie	7-7	232	33.1	47-119	.395	3-12	.250	25-33	.758	13	15	28	4.0	15	1	13	24	2	9	122	17.4
22	THORNDERSON, Lexy	6-4	161	26.8	21-59	.356	13-43	.302	1-2	.500	6	14	20	3.3	9	0	2	3	1	6	56	9.3
04	ELLISON, Kymberly	7-7	171	24.4	14-61	.230	10-42	.238	7-12	.583	3	9	12	1.7	15	0	5	9	2	7	45	6.4
20	GOMEZ, Geena	7-4	174	24.9	14-55	.255	7-27	.259	9-12	.750	6	14	20	2.9	13	0	11	14	0	4	44	6.3
01	LARK, Khalia	4-1	106	26.5	9-34	.265	4-14	.286	2-4	.500	7	25	32	8.0	13	0	5	8	1	4	24	6.0
34	VANDERDOES, Bayle	4-3	56	14.0	4-13	.308	0-0	.000	7-7	1.000	5	10	15	3.8	9	0	0	3	0	1	15	3.8
30	GREENHOUSE, Chey	7-2	107	15.3	9-31	.290	0-4	.000	3-6	.500	8	3	11	1.6	5	0	2	2	0	1	21	3.0
21	LOWE, Abby	4-0	33	8.3	4-8	.500	1-3	.333	2-4	.500	3	2	5	1.3	6	0	0	5	0	0	11	2.8
40	TERRY, Monique	7-4	108	15.4	8-22	.364	0-0	.000	3-5	.600	5	14	19	2.7	10	0	0	8	0	1	19	2.7
03	BOSTICK, Ariell	7-3	161	23.0	6-26	.231	2-7	.286	3-4	.750	3	22	25	3.6	12	0	22	14	0	15	17	2.4
45	EKWEDIKE, Naomi	3-0	18	6.0	3-6	.500	0-0	.000	0-0	.000	3	3	6	2.0	4	0	0	6	0	0	6	2.0
11	GOMEZ, Arantxa	7-0	98	14.0	4-10	.400	0-0	.000	4-15	.267	10	11	21	3.0	10	0	2	6	2	0	12	1.7
Team											28	13	41					3				
Total.....		7	1425		143-444	.322	40-152	.263	66-104	.635	100	155	255	36.4	121	1	62	105	8	48	392	56.0
Opponents.....		7	1425		201-410	.490	47-128	.367	69-100	.690	61	216	277	39.6	118	-	129	114	30	49	518	74.0

Score by Periods	1st	2nd	3rd	4th	OT	Totals
SDSU	93	76	100	114	9	392
Opponents	149	132	101	126	10	518

Neutral site games

RECORD:	OVERALL	HOME	AWAY	NEUTRAL
ALL GAMES	1-1	0-0	0-0	1-1
CONFERENCE	0-0	0-0	0-0	0-0
NON-CONFERENCE	1-1	0-0	0-0	1-1

##	Player	gp-gs	min	avg	Total		3-Point		F-Throw		Rebounds				pf	dq	a	to	blk	stl	pts	avg
					fg-fga	fg%	3fg-fga	3fg%	ft-fa	ft%	off	def	tot	avg								
15	FORT, McKynzie	2-2	55	27.5	11-17	.647	0-2	.000	4-7	.571	0	4	4	2.0	7	1	5	5	1	0	26	13.0
04	ELLISON, Kymberly	2-2	50	25.0	7-17	.412	5-15	.333	4-4	1.000	1	2	3	1.5	8	0	2	4	0	2	23	11.5
20	GOMEZ, Geena	2-0	53	26.5	6-13	.462	4-6	.667	7-8	.875	0	10	10	5.0	5	0	4	4	0	2	23	11.5
03	BOSTICK, Ariell	2-2	61	30.5	5-8	.625	2-2	1.000	7-8	.875	1	14	15	7.5	6	1	6	8	0	6	19	9.5
30	GREENHOUSE, Chey	2-0	24	12.0	4-8	.500	0-1	.000	4-6	.667	1	4	5	2.5	1	0	0	2	0	0	12	6.0
40	TERRY, Monique	2-1	31	15.5	5-7	.714	0-1	.000	0-0	.000	3	3	6	3.0	5	0	2	2	0	1	10	5.0
22	THORDERSON, Lexy	2-1	42	21.0	3-10	.300	2-8	.250	2-2	1.000	0	2	2	1.0	5	0	3	1	0	2	10	5.0
34	VANDERDOES, Bayle	2-2	43	21.5	3-7	.429	0-0	.000	3-6	.500	3	3	6	3.0	6	0	2	4	0	1	9	4.5
11	GOMEZ, Arantxa	2-0	16	8.0	1-1	1.000	0-0	.000	2-2	1.000	2	1	3	1.5	4	0	0	3	2	0	4	2.0
21	LOWE, Abby	2-0	6	3.0	0-1	.000	0-0	.000	2-2	1.000	0	1	1	0.5	2	0	0	1	0	0	2	1.0
45	EKWEDIKE, Naomi	2-0	19	9.5	0-4	.000	0-0	.000	0-0	.000	0	2	2	1.0	1	0	0	3	0	0	0	0.0
Team											0	8	8					2				
Total.....		2	400		45-93	.484	13-35	.371	35-45	.778	11	54	65	32.5	50	2	24	39	3	14	138	69.0
Opponents.....		2	400		43-111	.387	9-33	.273	31-47	.660	22	44	66	33.0	44	-	17	37	3	12	126	63.0

Score by Periods	1st	2nd	3rd	4th	Totals
SDSU	27	36	42	33	138
Opponents	38	28	28	32	126

Games won

RECORD:	OVERALL	HOME	AWAY	NEUTRAL
ALL GAMES	8-0	6-0	1-0	1-0
CONFERENCE	3-0	3-0	0-0	0-0
NON-CONFERENCE	5-0	3-0	1-0	1-0

#	Player	gp-gs	min	avg	Total		3-Point		F-Throw		Rebounds				pf	dq	a	to	blk	stl	pts	avg
					fg-fga	fg%	3fg-fga	3fg%	ft-fa	ft%	off	def	tot	avg								
15	FORT, McKynzie	8-8	246	30.8	56-103	.544	3-8	.375	38-45	.844	8	18	26	3.3	17	0	30	14	1	9	153	19.1
22	THORDERSON, Lexy	7-6	193	27.6	33-65	.508	25-52	.481	9-9	1.000	8	11	19	2.7	13	0	5	3	2	4	100	14.3
01	LARK, Khalia	5-1	135	27.0	29-51	.569	9-20	.450	3-6	.500	7	24	31	6.2	12	0	6	7	0	4	70	14.0
04	ELLISON, Kymberly	8-8	212	26.5	31-59	.525	22-46	.478	13-17	.765	1	14	15	1.9	14	0	12	7	2	4	97	12.1
20	GOMEZ, Geena	8-7	196	24.5	24-56	.429	11-28	.393	16-19	.842	4	17	21	2.6	11	0	24	13	0	4	75	9.4
40	TERRY, Monique	8-6	135	16.9	18-23	.783	0-1	.000	1-3	.333	9	10	19	2.4	16	0	3	8	2	5	37	4.6
34	VANDERDOES, Bayle	4-2	58	14.5	8-13	.615	0-0	.000	2-5	.400	5	11	16	4.0	6	0	3	5	1	1	18	4.5
30	GREENHOUSE, Chey	7-0	74	10.6	9-16	.563	3-7	.429	8-11	.727	4	6	10	1.4	7	0	3	3	0	0	29	4.1
11	GOMEZ, Arantxa	8-0	94	11.8	9-14	.643	0-0	.000	4-6	.667	5	11	16	2.0	10	0	3	8	3	2	22	2.8
03	BOSTICK, Ariell	8-2	191	23.9	8-18	.444	1-2	.500	4-6	.667	2	40	42	5.3	12	0	48	19	0	13	21	2.6
45	EKWEDIKE, Naomi	3-0	24	8.0	2-6	.333	0-0	.000	1-2	.500	0	1	1	0.3	1	0	0	5	0	0	5	1.7
21	LOWE, Abby	4-0	28	7.0	1-9	.111	0-3	.000	1-1	1.000	1	3	4	1.0	4	0	2	2	0	0	3	0.8
13	BROWN, Allison	3-0	14	4.7	1-2	.500	0-0	.000	0-0	.000	0	2	2	0.7	4	0	2	2	0	0	2	0.7
Team											8	15	23					4				
Total.....		8	1600		229-435	.526	74-167	.443	100-130	.769	62	183	245	30.6	127	0	141	100	11	46	632	79.0
Opponents.....		8	1600		196-485	.404	62-192	.323	80-116	.690	113	156	269	33.6	126	-	111	112	16	40	534	66.8

Score by Periods	1st	2nd	3rd	4th	Totals
SDSU	171	135	145	181	632
Opponents	146	111	140	137	534

Games lost

RECORD:	OVERALL	HOME	AWAY	NEUTRAL
ALL GAMES	0-9	0-2	0-6	0-1
CONFERENCE	0-3	0-0	0-3	0-0
NON-CONFERENCE	0-6	0-2	0-3	0-1

#	Player	gp-gs	min	avg	Total		3-Point		F-Throw		Rebounds				pf	dq	a	to	blk	stl	pts	avg
					fg-fga	fg%	3fg-fga	3fg%	ft-fa	ft%	off	def	tot	avg								
15	FORT, McKynzie	9-9	278	30.9	49-133	.368	3-17	.176	31-42	.738	16	22	38	4.2	19	2	11	32	2	9	132	14.7
04	ELLISON, Kymberly	9-9	224	24.9	21-79	.266	16-58	.276	8-12	.667	7	16	23	2.6	23	0	7	18	2	11	66	7.3
20	GOMEZ, Geena	9-3	234	26.0	19-69	.275	10-32	.313	11-16	.688	7	21	28	3.1	16	0	16	17	0	4	59	6.6
22	THORDERSON, Lexy	8-5	194	24.3	19-74	.257	12-56	.214	2-4	.500	7	15	22	2.8	12	0	9	3	3	6	52	6.5
01	LARK, Khalia	3-1	77	25.7	7-25	.280	3-11	.273	2-4	.500	6	21	27	9.0	10	0	3	8	1	3	19	6.3
30	GREENHOUSE, Chey	9-2	157	17.4	14-44	.318	0-6	.000	10-14	.714	8	6	14	1.6	11	1	3	9	0	1	38	4.2
03	BOSTICK, Ariell	9-6	220	24.4	10-35	.286	3-9	.333	14-17	.824	5	33	38	4.2	20	1	21	22	0	18	37	4.1
13	BROWN, Allison	1-0	2	2.0	1-1	1.000	0-0	.000	2-2	1.000	0	0	0	0.0	0	0	0	0	0	0	4	4.0
34	VANDERDOES, Bayle	7-6	121	17.3	7-20	.350	0-0	.000	10-13	.769	7	18	25	3.6	14	0	2	7	0	2	24	3.4
40	TERRY, Monique	9-4	133	14.8	10-29	.345	0-2	.000	4-7	.571	6	16	22	2.4	10	0	0	8	1	1	24	2.7
45	EKWEDIKE, Naomi	6-0	39	6.5	6-13	.462	0-0	.000	0-1	.000	5	5	10	1.7	9	0	0	8	0	0	12	2.0
21	LOWE, Abby	7-0	41	5.9	4-8	.500	1-3	.333	4-6	.667	3	2	5	0.7	7	0	0	5	1	0	13	1.9
11	GOMEZ, Arantxa	9-0	105	11.7	2-8	.250	0-0	.000	5-15	.333	11	11	22	2.4	10	0	2	6	4	1	9	1.0
Team											28	18	46					5				
Total.....		9	1825		169-538	.314	48-194	.247	103-153	.673	116	204	320	35.6	161	4	74	148	14	56	489	54.3
Opponents.....		9	1825		262-542	.483	61-163	.374	88-135	.652	94	274	368	40.9	162	-	163	145	35	60	673	74.8

Score by Periods	1st	2nd	3rd	4th	OT	Totals
SDSU	118	110	126	126	9	489

TEAM STATISTICS

Opponent	Date	Score		Total		3-Pointers		Free throws		Rebounds				pf	a	t/o	blk	stl	pts	avg
				fg-fga	pct	3fg-fga	pct	ft-fta	pct	off	def	tot	avg							
at UC Riverside	11-11-16	44-72	L	16-55	.291	3-16	.188	9-14	.643	15	20	35	35.0	17	5	18	0	5	44	44.0
SAN DIEGO CHRISTIAN	11-14-16	80-70	W	31-56	.554	7-13	.538	11-14	.786	7	30	37	36.0	16	19	16	2	3	80	62.0
at San Diego	11-17-16	53-91	L	17-63	.270	2-17	.118	17-25	.680	15	16	31	34.3	25	2	17	3	7	53	59.0
LOYOLA MARYMOUNT	11-20-16	53-60	L	20-61	.328	4-29	.138	9-13	.692	12	25	37	35.0	19	10	17	2	8	53	57.5
vs UT-Arlington	11-26-16	58-64	L	16-45	.356	5-19	.263	21-27	.778	9	26	35	35.0	25	8	22	2	5	58	57.6
vs Central Connecticut	11-27-16	80-62	W	29-48	.604	8-16	.500	14-18	.778	2	28	30	34.2	25	16	17	1	9	80	61.3
at UC Davis	12-02-16	55-75	L	19-64	.297	6-23	.261	11-15	.733	14	21	35	34.3	13	12	14	2	9	55	60.4
MICHIGAN	12-09-16	57-92	L	17-45	.378	7-17	.412	16-21	.762	7	15	22	32.8	13	9	19	2	3	57	60.0
UC SANTA BARBARA	12-11-16	84-70	W	26-51	.510	10-20	.500	22-24	.917	3	23	26	32.0	12	14	8	2	4	84	62.7
at Cal State Fullerton	12-22-16	71-61	W	27-57	.474	8-23	.348	9-12	.750	12	17	29	31.7	17	15	15	0	8	71	63.5
BIOLA	12-28-16	63-48	W	26-55	.473	6-22	.273	5-9	.556	11	24	35	32.0	11	15	11	3	8	63	63.5
at New Mexico	12-31-16	42-85	L	17-67	.254	4-21	.190	4-10	.400	12	22	34	32.2	18	9	12	1	6	42	61.7
NEVADA	01-04-17	83-78	W	31-62	.500	10-21	.476	11-17	.647	14	19	33	32.2	12	21	10	1	6	83	63.3
BOISE STATE	01-07-17	84-77	W	29-52	.558	11-25	.440	15-19	.789	9	19	28	31.9	15	17	10	1	2	84	64.8
at San Jose State	01-11-17	80-81	Lot	30-79	.380	12-30	.400	8-16	.500	20	33	53	33.3	20	13	16	0	5	80	65.8
at Utah State	01-14-17	47-53	L	17-59	.288	5-22	.227	8-12	.667	12	26	38	33.6	11	6	13	2	8	47	64.6
UNLV	01-18-17	87-68	W	30-54	.556	14-27	.519	13-17	.765	4	23	27	33.2	19	24	13	1	6	87	65.9
SDSU		1121		398-973	.409	122-361	.338	203-283	.717	178	387	565	33.2	288	215	248	25	102	1121	65.9
Opponents		1207		458-1027	.446	123-355	.346	168-251	.669	207	430	637	37.5	288	274	257	51	100	1207	71.0

Games played: 17

Points/game: 65.9

FG Pct: 40.9

3FG Pct: 33.8

FT Pct: 71.7

Rebounds/game: 33.2

Assists/game: 12.6

Turnovers/game: 14.6

Assist/turnover ratio: 0.9

Steals/game: 6.0

Blocks/game: 1.5

STATISTICS - INDIVIDUAL GAME-BY-GAME / STARTING LINEUPS

	1	3	4	11	13	15	20	21	22	30	34	40	45
Opponent	Khalia	Ariell	Kymberly	Arantxa	Allison	McKynzie	Geena	Abby	Lexy	Cheyenne	Baylee	Monique	Naomi
at UC Riverside	Lark	Bostick	Ellison	Gomez	Brown	Fort	Gomez	Lowe	Thorderson	Greenhouse	Vanderdoes	Terry	Ekwedike
SAN DIEGO CHRISTIAN	DNP	0-8-2	6-1-0	1-0-0	DNP	14-3-3	6-2-0	2-3-0	DNP	6-3-0	7-5-0	2-1-0	0-0-0
at San Diego	DNP	4-6-8	12-3-3	2-2-0	0-0-1	28-7-4	14-2-2	3-3-1	DNP	DNP	10-10-0	2-1-0	5-0-0
LOYOLA MARYMOUNT	DNP	9-1-1	6-3-1	3-3-0	DNP	12-1-0	2-4-0	0-2-0	3-1-0	2-0-0	4-2-0	7-4-0	2-3-0
vs. UT Arlington	DNP	1-9-1	8-5-1	0-1-0	DNP	22-9-0	0-1-4	0-0-0	6-3-2	8-0-1	6-6-1	0-2-0	2-0-0
vs. Central Connecticut	DNP	12-5-1	13-3-0	2-3-0	DNP	9-2-2	6-5-2	2-0-0	0-1-3	8-3-0	2-4-0	4-4-0	0-2-0
at UC Davis	DNP	7-10-5	10-0-2	2-0-0	DNP	17-2-3	17-5-2	0-1-0	10-1-0	4-2-0	7-2-2	6-2-2	0-0-0
MICHIGAN	DNP	3-6-6	8-2-1	1-4-1	DNP	11-3-0	2-1-2	7-0-0	11-2-1	4-0-1	2-6-0	2-3-0	4-3-0
UC SANTA BARBARA	DNP	9-3-3	12-5-2	0-2-0	4-0-0	8-3-0	11-2-1	0-0-0	3-0-2	4-1-0	1-0-1	1-2-0	4-2-0
at Cal State Fullerton	DNP	0-3-5	13-3-1	4-4-1	DNP	18-3-3	17-3-1	DNP	17-4-2	10-2-1	DNP	5-1-0	0-1-0
BIOLA	5-5-2	2-4-6	12-2-1	5-5-0	DNP	29-4-4	2-0-2	DNP	13-2-0	3-1-0	DNP	0-5-0	DNP
at New Mexico	14-9-0	2-7-10	9-2-1	0-2-0	2-1-1	14-1-0	2-1-3	0-0-0	4-5-0	8-1-0	DNP	8-3-0	DNP
NEVADA	10-7-1	3-2-2	2-1-0	0-1-0	DNP	7-4-4	0-2-1	2-0-0	11-6-1	1-3-0	DNP	6-2-0	DNP
BOISE STATE	22-6-1	0-3-5	7-1-2	5-2-0	DNP	17-2-6	11-3-5	DNP	15-5-1	2-3-0	DNP	4-3-1	DNP
at San José State	16-4-1	2-7-2	13-2-1	2-0-2	DNP	15-4-6	10-3-3	DNP	20-2-1	0-1-1	0-2-0	6-1-0	DNP
at Utah State	4-12-2	0-1-5	8-1-2	0-4-0	DNP	29-11-0	20-7-4	DNP	13-5-0	4-2-0	DNP	2-3-0	DNP
UNLV	5-8-0	0-3-0	3-2-0	2-4-1	DNP	17-2-2	12-4-2	DNP	5-4-0	1-2-1	2-2-0	0-1-0	DNP
AIR FORCE	13-7-2	4-2-7	21-2-1	2-1-0	0-0-0	15-3-4	2-4-6	0-0-1	21-0-1	2-0-1	1-2-1	6-3-0	DNP
at Colorado State													
at Wyoming													
FRESNO STATE													
SAN JOSÉ STATE													
at Nevada													
UTAH STATE													
at UNLV													
at Fresno State													
COLORADO STATE													
at Air Force													
NEW MEXICO													

DNP - Did Not Play

Game	Forward	Forward/Guard	Guard	Guard	Guard	Game	Forward	Forward/Guard	Guard	Guard	Guard
at UC Riverside	Vanderdoes	Greenhouse	Fort	Ellison	Bostick	SAN JOSÉ STATE					
SAN DIEGO CHRISTIAN	Vanderdoes	Gomez	Fort	Ellison	Bostick	at Nevada					
at San Diego	Vanderdoes	Greenhouse	Fort	Ellison	Bostick	UTAH STATE					
LOYOLA MARYMOUNT	Vanderdoes	Thorderson	Fort	Ellison	Bostick	at UNLV					
vs. UT Arlington	Vanderdoes	Thorderson	Fort	Ellison	Bostick	at Fresno State					
vs. Central Connecticut	Vanderdoes	Terry	Fort	Ellison	Bostick	COLORADO STATE					
at UC Davis	Vanderdoes	Terry	Fort	Ellison	Bostick	at Air Force					
MICHIGAN	Vanderdoes	Terry	Fort	Ellison	Bostick	NEW MEXICO					
UC SANTA BARBARA	Thorderson	Terry	Fort	Ellison	Gomez						
at Cal State Fullerton	Thorderson	Terry	Fort	Ellison	Gomez						
BIOLA	Thorderson	Terry	Fort	Ellison	Gomez						
at New Mexico	Thorderson	Lark	Fort	Ellison	Gomez						
NEVADA	Thorderson	Terry	Fort	Ellison	Gomez						
BOISE STATE	Thorderson	Terry	Fort	Ellison	Gomez						
at San José State	Thorderson	Terry	Fort	Ellison	Gomez						
at Utah State	Thorderson	Terry	Fort	Ellison	Gomez						
UNLV	Thorderson	Lark	Fort	Ellison	Gomez						
AIR FORCE											
at Colorado State											
at Wyoming											
FRESNO STATE											

Lineup Records

Thorderson-Terry-Fort-Thorderson-Gomez: 5-2
 Bostick-Ellison-Fort-Vanderdoes-Terry: 1-2
 Bostick-Ellison-Fort-Vanderdoes-Greenhouse: 0-2
 Bostick-Ellison-Fort-Vanderdoes-Thorderson: 0-2
 Bostick-Ellison-Fort-Vanderdoes-Gomez: 1-0
 Thorderson-Lark-Fort-Ellison-Gomez: 1-1

Aztec Team Highs

Points	87, vs. UNLV (1-18-17)
Scoring Margin	19, vs. UNLV (1-18-17)
FG Made	31, Twice, Last: vs. Nevada (1-4-17)
FG Attempts	79, at San José State (1-11-17)
FG Pct.	.604 (29-48), vs. Central Connecticut (11-27-16)
3-Point FG Made	14, vs. UNLV (1-18-17)
3-Point FG Attempts	30, at San José State (1-11-17)
3-Point FG Pct.	.538 (7-13), vs. San Diego Christian (11-14-16)
Free Throws Made	22, vs. UC Santa Barbara (12-11-16)
Free Throw Attempts	27, vs. UT Arlington (11-26-16)
Free Throw Pct.	.917 (22-24), vs. UC Santa Barbara (12-11-16)
Rebounds	53, at San José State (1-11-17)
Assists	24, vs. UNLV (1-18-17)
Steals	9, Twice, Last: at UC Davis (12-2-16)
Blocks	3, Twice, Last: vs. Biola (12-28-16)
Turnovers	22, vs. UT Arlington (11-26-16)
Fouls	25, Three times, Last: vs. Central Connecticut (11-27-16)

Aztec Team Lows

Points	42, at New Mexico (12-31-16)
Scoring Margin	10, Twice, Last: at Cal State Fullerton (12-22-16)
FG Made	16, Twice, Last: vs. UT Arlington (11-26-16)
FG Attempts	45, Twice, Last: vs. Michigan (12-9-16)
FG Pct.	.254 (17-67), at New Mexico (12-31-16)
3-Point FG Made	2, at San Diego (11-17-16)
3-Point FG Attempts	13, at San Diego Christian (11-14-16)
3-Point FG Pct.	.118 (2-17), at San Diego (11-17-16)
Free Throws Made	4, at New Mexico (12-31-16)
Free Throw Attempts	9, vs. Biola (12-28-16)
Free Throw Pct.	.400 (4-10), at New Mexico (12-31-16)
Rebounds	22, vs. Michigan (12-9-16)
Assists	2, at San Diego (11-17-16)
Steals	3, Twice, Last: vs. Michigan (12-9-16)
Blocks	0, Three times, Last: at San José State (1-11-17)
Turnovers	8, vs. UC Santa Barbara (12-11-16)
Fouls	11, Twice, Last: at Utah State (1-14-17)

Aztec Scoring

First Half High	52, vs. Nevada (1-4-17)
First Quarter High	32, vs. Nevada (1-4-17)
Second Quarter High	24, vs. Central Connecticut (11-27-16)
Second Half High	46, vs. UC Santa Barbara (12-11-16)
Third Quarter High	25, vs. Central Connecticut (11-27-16)
Fourth Quarter High	30, vs. Boise State (1-7-17)
First Half Low	21, Three times, Last: at Utah State (1-14-17)
First Quarter Low	9, at Utah State (1-14-17)
Second Quarter Low	6, Twice, Last: at New Mexico (12-31-16)
Second Half Low	21, at New Mexico (12-31-16)
Third Quarter Low	8, at San Diego (11-17-16)
Fourth Quarter Low	11, Twice, Last: vs. Loyola Marymount (11-20-16)
Largest Halftime Lead	17 (52-35), vs. Nevada (1-4-17)
Largest Halftime Deficit	30 (51-21), at New Mexico (12-31-16)
Largest Lead	29 (79-50), vs. UNLV (1-18-17)
Largest Deficit	44 (84-40), at New Mexico (12-31-16)
Largest Deficit in a Win	12 (29-41), at Cal State Fullerton (12-22-16)
Largest Lead in a Loss	8 (69-61), at San José State (1-11-17)

Opponent Team Highs

Points	92, vs. Michigan (12-9-16)
Scoring Margin	43 (85-42), at New Mexico (12-31-16)
FG Made	37, Twice, Last: vs. Michigan (12-9-16)
FG Attempts	72, at San José State (1-11-17)
FG Pct.	.649 (37-57), at San Diego (11-17-16)
3-Point FG Made	12, at UC Davis (12-2-16)
3-Point FG Attempts	31, vs. San Diego Christian (11-14-16)
3-Point FG Pct.	.583 (7-12), at UC Riverside (11-11-16)
Free Throws Made	19, vs. Central Connecticut (11-27-16)
Free Throw Attempts	25, vs. Central Connecticut (11-27-16)
Free Throw Pct.	.800 (12-15), Twice, Last: vs. UNLV (1-18-17)
Rebounds	51, at New Mexico (12-31-16)
Assists	27, vs. Michigan (12-9-16)
Steals	10, at San Diego (11-17-16)
Blocks	6, at New Mexico (12-31-16)
Turnovers	19, vs. Central Connecticut (11-27-16)
Fouls	26, Twice, Last: vs. UT Arlington (11-26-16)

Opponent Team Lows

Points	48, vs. Biola (12-28-16)
Scoring Margin	7 (60-53), vs. Loyola Marymount (11-20-16)
FG Made	19, Twice, Last: vs. Biola (12-28-16)
FG Attempts	49, at Cal State Fullerton (12-22-16)
FG Pct.	.345 (19-55), vs. Central Connecticut (11-27-16)
3-Point FG Made	2, Twice, Last: at Utah State (1-14-17)
3-Point FG Attempts	7, at San Diego (11-17-16)
3-Point FG Pct.	.222 (6-27), vs. Biola (12-28-16)
Free Throws Made	3, at UC Davis (12-2-16)
Free Throw Attempts	4, at UC Davis (12-2-16)
Free Throw Pct.	.500 (9-18), vs. Loyola Marymount (11-20-16)
Rebounds	27, at Cal State Fullerton (12-22-16)
Assists	7, Last: vs. Central Connecticut (11-27-16)
Steals	3, Twice, Last: vs. UC Santa Barbara (12-11-16)
Blocks	0, vs. Loyola Marymount (11-20-16)
Turnovers	8, vs. Boise State (1-7-17)
Fouls	10, vs. Biola (12-28-16)

Opponent Scoring

First Half High	51, at New Mexico (12-31-16)
First Quarter High	31, at New Mexico (12-31-16)
Second Quarter High	26, Twice, Last: at UC Davis (12-2-16)
Second Half High	43, vs. Michigan (12-9-16)
Third Quarter High	29, vs. Michigan (12-9-16)
Fourth Quarter High	23, at San José State (1-11-17)
First Half Low	19, vs. Biola (12-28-16)
First Quarter Low	12, vs. Biola (12-28-16)
Second Quarter Low	7, vs. Biola (12-28-16)
Second Half Low	27, at Cal State Fullerton (12-22-16)
Third Quarter Low	10, at Utah State (1-14-17)
Fourth Quarter Low	14, at Cal State Fullerton (12-22-16)
Largest Halftime Lead	30 (51-21), at New Mexico (12-31-16)
Largest Halftime Deficit	17 (52-32), vs. Nevada (1-4-17)
Largest Lead	44 (84-40), at New Mexico (12-31-16)
Largest Deficit	29 (79-50), vs. UNLV (1-18-17)
Largest Deficit in a Win	8 (61-69), at San José State (1-11-17)
Largest Lead in a Loss	12 (41-29), at Cal State Fullerton (12-22-16)

Aztec Individual Highs

Points

29, McKynzie Fort at San José State (1-11-17)
29, McKynzie Fort at Cal State Fullerton (12-22-16)

Field Goals Made

12, at San José State (1-11-17)

Field Goals Attempted

29, at San José State (1-11-17)

Field Goal Percentage (min. 5 made)

.727 (8-11), Khalia Lark vs. Boise State (1-7-17)
.727 (8-11), McKynzie Fort vs. Central Connecticut (11-27-16)

3-Point Field Goals Made

7, Lexy Thorderson vs. UNLV (1-18-17)

3-Point Field Goals Attempted

13, Lexy Thorderson vs. UNLV (1-18-17)

3-Pt Field Goal Percentage (min. 2 made)

1.000 (3-3), Geena Gomez vs. Central Connecticut (11-27-16)
1.000 (2-2), McKynzie Fort vs. San Diego Christian (11-14-16)

Free Throws Made

9, McKynzie Fort vs. Boise State (1-7-17)

Free Throw Attempted

10, McKynzie Fort vs. Boise State (1-7-17)

Free Throw Percentage (min 3 made)

1.000 (7-7), McKynzie Fort at UC Davis (12-2-16)
1.000 (6-6), Geena Gomez vs. Central Connecticut (11-27-16)
1.000 (5-5), McKynzie Fort at Utah State (1-14-17)
1.000 (5-5), Lexy Thorderson vs. UC Santa Barbara (12-11-16)
1.000 (4-4), Baylee Vanderdoes at San Diego (11-17-16)
1.000 (4-4), McKynzie Fort, Geena Gomez vs. San Diego Christian (11-14-16)
1.000 (3-3), Kymberly Ellison vs. UNLV (1-18-17)
1.000 (3-3), Ariell Bostick vs. Michigan (12-9-16)
1.000 (3-3), McKynzie Fort vs. Loyola Marymount (11-20-16)
1.000 (3-3), Baylee Vanderdoes at UC Riverside (11-11-16)

Rebounds

12, Khalia Lark at San José State (1-11-17)

Assists

10, Ariell Bostick vs. Biola (12-28-16)

Steals

4, McKynzie Fort at Utah State (1-14-17)
4, Ariell Bostick at UC Davis (12-2-16)
4, Ariell Bostick vs. Central Connecticut (11-27-16)
4, Ariell Bostick vs. Loyola Marymount (11-20-16)

Blocked Shots

2, Kymberly Ellison vs. Biola (12-28-16)
2, Arantxa Gomez Ferrer vs. UC Santa Barbara (12-11-16)
2, Arantxa Gomez Ferrer at UC Davis (12-2-16)
2, Arantxa Gomez Ferrer vs. UT Arlington (11-26-16)

Turnovers

5, McKynzie Fort at Utah State (1-14-17)
5, Ariell Bostick vs. UT Arlington (11-26-16)

Fouls

5, Ariell Bostick, McKynzie Fort vs. UT Arlington (11-26-16)
5, Cheyenne Greenhouse vs. Loyola Marymount (11-20-16)
5, McKynzie Fort at San Diego (11-17-16)

Opponent Individual Highs

Points

34, Dezz Ramos at San José State (1-11-17)

Field Goals Made

12, Dezz Ramos at San José State (1-11-17)

Field Goals Attempted

30, Dezz Ramos at San José State (1-11-17)

Field Goal Percentage (min 5 made)

.833 (5-6), Antonia Robinson at Utah State (1-14-17)

3-Point Field Goals Made

8, Dani Nafekh at UC Davis (12-2-16)

3-Point Field Goals Attempted

12, Coco Miller vs. UC Santa Barbara (12-11-16)

3-Pt Field Goal Percentage (min 2 made)

1.000 (2-2), Kayla Macedo vs. Biola (12-28-16)

Free Throws Made

9, Cebria Outlow vs. Central Connecticut (11-27-16)

Free Throws Attempted

11, Cebria Outlow vs. Central Connecticut (11-27-16)

Free Throw Percentage (min 3 made)

1.000 (4-4), Dylan Gonzalez vs. UNLV (1-18-17)
1.000 (4-4), Stephanie Schmid vs. Nevada (1-4-17)
1.000 (4-4), Cherise Beynon at New Mexico (12-31-16)
1.000 (3-3), Mykiel Burleson at New Mexico (12-31-16)
1.000 (3-3) Brianna Jacobs vs. Central Connecticut (11-27-16)
1.000 (3-3), Michelle Curry at UC Riverside (11-11-16)

Rebounds

15, Jackie Johnson vs. Loyola Marymount (11-20-16)

Assists

11, Yaiza Rodriguez vs. Boise State (1-7-17)
11, Siera Thompson vs. Michigan (12-9-16)
11, Rejane Verin at UC Riverside (11-11-16)

Steals

4, Rachel Brewster at Utah State (1-14-17)
4, Cherise Beynon at New Mexico (12-31-16)

Blocked Shots

4, Richelle Van Der Keijl at New Mexico (12-31-16)

Turnovers

8, Cherise Beynon at New Mexico (12-31-16)

Fouls

5, Paris Strawther vs. UNLV (1-18-17)
4, Rachel Brewster at Utah State (1-14-17)
4, Paris Baird at San José State (1-11-17)
4, AJ Cephas vs. Nevada (1-4-17)
4, Richelle Van Der Keijl at New Mexico (12-31-16)
4, Jade Vega, Dhanyel Johnson at Cal State Fullerton (12-22-16)
4, Natalia Bruening, Sarah Porter vs. UC Santa Barbara (12-11-16)
4, Hallie Thome vs. Michigan (12-9-16)
4, Cheyanne Wallace vs. Loyola Marymount (11-20-16)
4, Cierra Belvin vs. Loyola Marymount (11-20-16)
4, Alexandra Young at San Diego (11-17-16)
4, Nyadoup Lam vs. San Diego Christian (11-14-16)
4, Lauren Holt at UC Riverside (11-11-16)

2016-17 MISCELLANEOUS STATS

The Last Time an Aztec ...

Scored 20-24 points
21, Kymberly Ellison and Lexy Thorderson, 1-18-17 vs. UNLV

Scored 25-29 points
29, McKynzie Fort, 1-11-17 at San José State

Scored 30-39 points
31, Cierra Warren, 1-22-14 vs. San José State

Scored 40+ points
41, Chana Perry, 1-2-88 vs. Northern Illinois

Had 20+ rebounds
27, Chana Perry, 11-25-88 vs. Alabama State

Had 15-19 rebounds
17, Kristina Hunter, 1-11-14 vs. Air Force

Had 10-14 rebounds
12, Khalia Lark and 11, McKynzie Fort, 1-11-17 at San José State

Had 10+ assists
10, Ariell Bostick, 12-29-16 vs. Biola

Had A Double-Double
McKynzie Fort, 29 points, 11 rebounds, 1-11-17 at San José State

Had A Triple-Double
Chelsea Hopkins, 13 points, 11 rebounds, 12 assists, 3-9-13 vs. Boise State

The Last Time San Diego State ...

Had two players score 20 points in the same game
Kymberly Ellison (21) and Lexy Thorderson (21), 1-18-17 vs. UNLV

Had two players with a double-double in the same game
Erimma Amariqua (19 points, 13 rebounds) and Cheyenne Greenhouse (19 points, 11 rebounds), 11-14-14 vs. Sacramento State

Scored 100+ points
101, vs. Colorado State (101-62), 1-25-92

Allowed 100+ points
104, vs. UCLA (56-104), 12-11-98

Won by 20+ points
35, vs. San Diego Christian (60-25), 12-21-15

Won by 30+ points
35, vs. San Diego Christian (60-25), 12-21-15

Won by 40+ points
41, vs. Boise State (86-45), 3-9-13

Won by 50+ points
51, vs. Air Force (79-28), 1-7-09

Won in Overtime
vs. Fresno State (65-54), 2-10-16

Lost in Overtime
at San José State (80-81), 1-11-17

2016-17 Aztec Leaders

Double-Figure Scoring Games
McKynzie Fort (14), Geena Gomez (10), Lexy Thorderson (9), Kymberly Ellison (8), Khalia Lark (5), Baylee Vanderdoes (1), Ariell Bostick (1), Cheyenne Greenhouse (1)

SDSU High Scorer
McKynzie Fort (11), Lexy Thorderson (4), Kymberly Ellison (3), Khalia Lark (2), Geena Gomez (1)

Games Led SDSU In Rebounds
Khalia Lark (7), Ariell Bostick (6), Geena Gomez (2), Arantxa Gomez Ferrer (2) Monique Terry (2), Baylee Vanderdoes (2), Kymberly Ellison (1), McKynzie Fort (1), Lexy Thorderson (1)

Games Led SDSU In Assists
Ariell Bostick (10), McKynzie Fort (5), Geena Gomez (2), Kymberly Ellison (1), Lexy Thorderson (1)

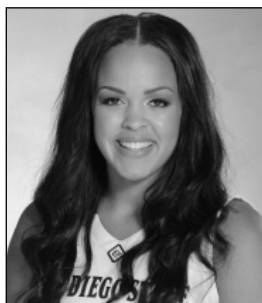
Games Led SDSU In Steals
Ariell Bostick (12), McKynzie Fort (5), Kymberly Ellison (3), Monique Terry (2), Lexy Thorderson (2), Geena Gomez (1), Arantxa Gomez Ferrer (1)

Games Led SDSU In Blocks
Lexy Thorderson (5), Arantxa Gomez Ferrer (3), Kymberly Ellison (3), McKynzie Fort (3), Monique Terry (3), Khalia Lark (1), Abby Lowe (1), Baylee Vanderdoes (1)

► 2016-17 SPECIALTY STATS

San Diego State/Opponent

	Points in Paint	Points off TOs	2nd Chance Points	Fast Break Points	Bench Points
at UC Riverside (L)	11/18	10/22	6/5	0/0	11/22
SAN DIEGO CHRISTIAN (W)	15/14	38/20	6/6	6/2	70/12
at San Diego (L)	18/44	13/23	6/8	0/0	17/39
LOYOLA MARYMOUNT (L)	26/32	17/20	10/15	5/2	10/3
vs. UT Arlington (L)	18/36	10/25	15/15	8/4	22/26
vs. Central Connecticut (W)	36/26	15/16	4/13	6/2	33/29
at UC Davis (L)	22/26	14/17	9/14	6/6	29/14
MICHIGAN (L)	14/38	8/21	9/14	2/6	26/40
UC SANTA BARBARA (W)	24/30	20/9	5/21	8/0	14/30
at Cal State Fullerton (W)	28/24	23/14	10/10	2/4	15/12
BIOLA (W)	36/22	14/10	2/9	8/0	26/6
at New Mexico (L)	16/36	6/11	9/15	2/18	12/32
NEVADA (W)	30/26	15/6	9/16	3/8	29/27
BOISE STATE (W)	28/36	13/9	7/19	0/6	20/18
at San José State (L-ot)	26/34	13/26	15/5	0/19	8/5
at Utah State (L)	20/28	19/6	5/6	6/8	10/11
UNLV (W)	28/20	17/16	3/18	10/2	15/4
AIR FORCE					
at Colorado State					
at Wyoming					
FRESNO STATE					
SAN JOSÉ STATE					
at Nevada					
UTAH STATE					
at UNLV					
at Fresno State					
COLORADO STATE					
at Air Force					
NEW MEXICO					


KHALIA LARK

Jr. | 6-0 | G
Irvine, Calif.
Mater Dei HS/Washington


ARIELL BOSTICK

Sr. | 5-4 | G
Oakland, Calif.
Bishop O'Dowd HS


KYMBERLY ELLISON

Sr. | 5-7 | G
Columbus, Ga.
Hardaway HS/Georgia Tech


ARANTXA GOMEZ FERRER

So. | 6-0 | F
Valencia, Spain
Parque Colegio Santa Ana HS


ALLISON BROWN

Jr. | 5-7 | G
Anaheim Hills, Calif.
Mater Dei HS


MCKYNZIE FORT

Jr. | 5-9 | G
Fontana, Calif.
Etiwanda HS


GEENA GOMEZ

Jr. | 5-8 | G
Huntington Beach, Calif.
Edison HS/St. Joseph's (Pa.)


ABBY LOWE

Fr. | 5-11 | G
Stockport, England
Barking Abbey Academy


LEXY THORDERSON

Jr. | 6-0 | G/F
Castle Rock, Colo.
Rock Canyon HS


CHEYENNE GREENHOUSE

Jr. | 5-11 | G
Riverside, Calif.
Canyon Springs HS


BAYLEE VANDERDOES

Fr. | 6-1 | F
Auburn, Calif.
Placer HS


MONIQUE TERRY

Fr. | 6-2 | F
San Antonio, Texas
Brennan HS


ALEIAH BRANDON

Sr. | 6-1 | F
Corona, Calif.
Centennial HS


NAOMI EKWEDIKE

Fr. | 6-6 | C
Lagos, Nigeria
Potters House Christian Academy (Fla.)


STACIE TERRY

Head Coach
Fourth Season


JESSE CLARK

Assistant Coach
Fourth Season


CIARA CARL

Assistant Coach
Fourth Season


NICK GRANT

Assistant Coach
Third Season