

SDSU MEN'S SOCCER

2005 OPPONENTS

RUTGERS scarlet knights

Sept. 2, 8 p.m. EDT at Piscataway, N.J.

Location Piscataway, N.J.
 Enrollment 33,583
 Colors Scarlet
 Conference Big East
 Facility Yurcak Field
 Capacity 5,000
 Head Coach Bob Reasso
 2004 Record (Conf.) 6-8-4 (2-5-3)
 Starters R/L 7/4
 Letterwinners R/L 13/12
 SID Mike Basford
 E-mail mbasford@scarletknights.com
 Phone (732) 445-4200
 Fax (732) 445-3063
 Website scarletknights.com

ST. JOHN'S red storm

Sept. 3, 2:30 p.m. EDT at Piscataway, N.J.

Location Queens, N.Y.
 Enrollment 18,600
 Colors Red and White
 Conference Big East
 Facility Belson Stadium
 Capacity 3,000
 Head Coach Dave Masur
 2004 Record (Conf.) 12-6-4 (6-1-3)
 Starters R/L 6/5
 Letterwinners R/L 16/6
 SID Mike Carey
 E-mail careym@stjohns.edu
 Phone (718) 990-1521
 Fax (718) 969-8468
 Website redstormsports.com

UC RIVERSIDE highlanders

Sept. 10, 4 p.m. at SDSU Sports Deck

Location Riverside, Calif.
 Enrollment 17,000
 Colors Blue and Gold
 Conference Big West
 Facility UCR Soccer Stadium
 Capacity 2,000
 Head Coach Junior Gonzales
 2004 Record (Conf.) 7-10-1 (4-5-1)
 Starters R/L 7/4
 Letterwinners R/L 14/4
 SID Mark Dodson
 E-mail mark.dodson@ucr.edu
 Phone (951) 827-5438
 Fax (951) 827-5889
 Website athletics.ucr.edu

PLNU sea lions

Sept. 15, 4 p.m. at SDSU Sports Deck

Location San Diego, Calif.
 Enrollment 2,998
 Colors Green and Gold
 Conference Golden State Athletic
 Facility Point Loma Field
 Capacity 500
 Head Coach Tim Hall
 2004 Record (Conf.) 12-5-1 (6-3-1)
 Starters R/L 6/5
 Letterwinners R/L 13/6
 SID Jorge de la Torre
 E-mail jtorre@ptloma.edu
 Phone (619) 849-2441
 Fax (619) 849-2553
 Website ptloma.edu/athletics

UMKC kangaroos

Sept. 18, 2 p.m. at SDSU Sports Deck

Location Kansas City, Mo.
 Enrollment 13,000
 Colors Blue and Gold
 Conference Mid-Continent
 Facility Swope Park
 Capacity 1,000
 Head Coach Rick Benben
 2004 Record (Conf.) 4-11-2 (3-3-0)
 Starters R/L 8/3
 Letterwinners R/L 13/5
 SID Pat Madden
 E-mail maddenp@umkc.edu
 Phone (816) 235-1034
 Fax (816) 235-1035
 Website umckkangaroos.com

ALABAMA A&M bulldogs

Sept. 22, 4 p.m. at SDSU Sports Deck

Location Normal, Ala.
 Enrollment 6,000
 Colors Maroon and White
 Conference Independent
 Facility A&M Soccer Complex
 Capacity 1,000
 Head Coach Salah Youusif
 2004 Record (Conf.) 5-9-3 (none)
 Starters R/L n/a
 Letterwinners R/L n/a
 SID tba
 E-mail sports.info@aamu.edu
 Phone (256) 372-4005
 Fax (256) 372-5919
 Website aamu.edu/PR/sports/athletics

DUQUESNE dukes

Sept. 25, 1 p.m. at SDSU Sports Deck

Location Pittsburgh, Pa.
 Enrollment 10,000
 Colors Red and Blue
 Conference Atlantic 10
 Facility Arthur J. Rooney Field
 Capacity 4,500
 Head Coach Wade Jean
 2004 Record (Conf.) 13-6-1 (9-2-0)
 Starters R/L 8/3
 Letterwinners R/L 14/7
 SID George Nieman
 E-mail nieman@duq.edu
 Phone (412) 396-5376
 Fax (412) 396-6210
 Website goduquesne.com

STANFORD cardinal

Sept. 30, 4 p.m. at SDSU Sports Deck
 Nov. 6, 1 p.m. at Palo Alto, Calif.

Location Stanford, Calif.
 Enrollment 6,556
 Colors Cardinal and White
 Conference Pac-10
 Facility Maloney Field
 Capacity 2,000
 Head Coach Bret Simon
 2004 Record (Conf.) 7-6-5 (2-4-2)
 Starters R/L 4/7
 Letterwinners R/L 17/9
 SID Aimee Dombroski
 E-mail aimeed@stanford.edu
 Phone (650) 725-7277
 Fax (650) 725-2957
 Website gostanford.com

CALIFORNIA golden bears

Oct. 2, 2:30 p.m. at SDSU Sports Deck
 Nov. 4, 2 p.m. at Berkeley, Calif.

Location Berkeley, Calif.
 Enrollment 33,000
 Colors Blue and Gold
 Conference Pac-10
 Facility Edwards Stadium
 Capacity 22,000
 Head Coach Kevin Grimes
 2004 Record (Conf.) 13-4-3 (4-3-1)
 Starters R/L 6/5
 Letterwinners R/L 18/7
 SID tba
 E-mail tba
 Phone (510) 643-5846
 Fax (510) 643-7778
 Website calbears.com

OREGON STATE beavers

Oct. 7, 1 p.m. at Corvallis, Ore.
 Oct. 30, 1 p.m. at SDSU Sports Deck

Location Corvallis, Ore.
 Enrollment 19,000
 Colors Orange and Black
 Conference Pac-10
 Facility Paul Lorenz Field
 Capacity 1,500
 Head Coach Dana Taylor
 2004 Record (Conf.) 8-10-1 (2-6-0)
 Starters R/L 9/2
 Letterwinners R/L 13/9
 SID Roger Horne
 E-mail roger.horne@oregonstate.edu
 Phone (541) 737-7473
 Fax (541) 737-3072
 Website osubeavers.com

WASHINGTON huskies

Oct. 9, 1 p.m. at Seattle, Wash.
 Oct. 28, 3 p.m. at SDSU Sports Deck

Location Seattle, Wash.
 Enrollment 42,000
 Colors Purple and Gold
 Conference Pac-10
 Facility Husky Soccer Stadium
 Capacity 1,500
 Head Coach Dean Wurzberger
 2004 Record (Conf.) 11-7-2 (4-3-1)
 Starters R/L 8/3
 Letterwinners R/L 14/4
 SID Erin Rowley
 E-mail erowley@u.washington.edu
 Phone (206) 685-3118
 Fax (206) 543-5000
 Website gohuskies.com

UCLA bruins

Oct. 16, 1 p.m. at Los Angeles, Calif.
 Nov. 13, 1 p.m. at SDSU Sports Deck

Location Los Angeles, Calif.
 Enrollment 34,000
 Colors Blue and Gold
 Conference Pac-10
 Facility Drake Stadium
 Capacity 11,700
 Head Coach Jorge Salcedo
 2004 Record (Conf.) 14-4-2 (6-2-0)
 Starters R/L 8/3
 Letterwinners R/L 22/6
 SID Liza David
 E-mail ldavid@athletics.ucla.edu
 Phone (310) 206-8140
 Fax (310) 825-8664
 Website uclabruins.com

SAN DIEGO toreros

Oct. 24, 7 p.m. at San Diego, Calif.

Location San Diego, Calif.
 Enrollment 7,200
 Colors Torero Blue, Navy and White
 Conference West Coast
 Facility Torero Stadium
 Capacity 7,000
 Head Coach Seamus McFadden
 2004 Record (Conf.) 7-10-3 (4-6-3)
 Starters R/L 10/1
 Letterwinners R/L 17/4
 SID Roland Hu
 E-mail tgosen@sandiego.edu
 Phone (619) 260-4745
 Fax (619) 260-2990
 Website usdtoreros.com

PACIFIC-10 conference

Conference of Champions

Location 800 South Broadway
 Suite 400
 Walnut Creek, CA 94596
 Contact Noah Cohan
 E-mail ncohan@pac-10.org
 Phone (925) 932-4411
 Fax (925) 932-4601
 Website pac-10.org



2005 Men's College Cup
 December 9 and 11, 2005
 SAS Soccer Stadium
 Cary, N.C.
 Hosts: North Carolina State
 University and Capital Area
 Soccer League

introduction

coaches

team

'05 season

history

this is sdsu

PAC-10 CONFERENCE

Entering the 2005-06 season, the Pacific-10 Conference continues to uphold its tradition as the "Conference of Champions."® Pac-10 members have claimed an incredible 90 NCAA team titles over the past 11 seasons, for an average of more than eight championships per academic year.

Even more impressive is the breadth of the Pac-10's success, as those 90 team titles have come in 21 different men's and women's sports. The Pac-10 has led the nation in NCAA Championships 39 of the last 45 years and finished second five times.

Spanning nearly a century of outstanding athletic achievement, the Pac-10 has captured 342 NCAA titles (248 men's, 94 women's), far outdistancing the runner-up Big Ten Conference's 201 titles.

The Conference's reputation is further proven in the annual United States Sports Academy Directors' Cup competition, the prestigious award that honors the best overall collegiate athletics programs in the country. STANFORD continued its remarkable run in the 2004-05 season, winning its 11th consecutive Directors' Cup. In the 2004-05 competition, seven of the top-20 Division I programs were Pac-10 members: No. 1 STANFORD, No. 3 UCLA, No. 10 USC, No. 11 ARIZONA STATE, No. 14 WASHINGTON, No. 15 CALIFORNIA and No. 18 ARIZONA. The Pac-10 landed six programs in the top-15, twice as many as any other conference, with the ACC and SEC at three each.

The Pac-10 captured six NCAA titles in 2004-05, third-most in the nation. And it should be noted that the Pac-10 total does not include USC's national championship in football or CALIFORNIA's in rugby, as they are not counted as NCAA titles. The Pac-10 tied the Big 12 for the most NCAA titles in women's sports with four.

NCAA team champions from the Pac-10 in 2004-05 came from UCLA (men's tennis, men's water polo and women's water polo), STANFORD (women's volleyball and women's tennis) and CALIFORNIA (women's rowing). The Pac-10 also had runners-up in eight NCAA Championship events: women's golf (UCLA), soccer (UCLA) softball (UCLA), track and field (UCLA) and water polo (Stanford) and men's water polo (Stanford), swimming (Stanford) and volleyball (UCLA). Overall, the Conference had 20 teams finish in the top three at NCAA Championship events.

Participation in the postseason was a common occurrence for the Pac-10 in 2004-05. Of the 22 sports sponsored by the Pac-10, 19 witnessed at least half its teams participating in the postseason. The men sent 55 of a possible 89 teams into the postseason, while the women sent 68 of a possible 98 teams into NCAA Tournament action.

The Conference also swept NCAA team tennis and water polo honors. Stanford captured the women's tennis title while UCLA garnered the men's tennis, men's water polo and women's water polo hardware. Women's volleyball proved to be another showcase of Pac-10 talent, as a record six teams advanced to NCAA regional action. The Pac-10 had three teams in the Final Four — STANFORD, USC and WASHINGTON — while the Cardinal won its sixth NCAA title, the Pac-10's 12th volleyball crown overall. The Huskies claimed their first ever Pac-10 volleyball title.

Individually, the Conference has produced an impressive number of NCAA men's individual champions as well, claiming 1,096 NCAA individual crowns.

Pac-10 women athletes shine nationally on an individual basis

as well, having captured an unmatched 439 NCAA individual titles, an average of more than 19 champions per season.

The roots of the Pacific-10 Conference go back nearly 90 years to December 15, 1915, when the Pacific Coast Conference (PCC) was founded at a meeting at the Oregon Hotel in Portland, Ore. Original membership consisted of four schools - the University of California at Berkeley, the University of Washington, the University of Oregon, and Oregon State College (now Oregon State University). All still are charter members of the Conference.

Pacific Coast Conference play began in 1916. One year later, Washington State College (now Washington State University), was accepted into the Conference, and Stanford University joined in 1918.

In 1922, the PCC expanded to eight teams with the admission of the University of Southern California and the University of Idaho. Montana joined the Conference in 1924, and in 1928, the PCC grew to 10 members with the addition of UCLA.

The Pacific Coast Conference competed as a 10-team league until 1950, with the exception of 1943-45, when World War II curtailed intercollegiate athletic competition to a minimum. In 1950, Montana resigned from the Conference and joined the Mountain States Conference. The PCC continued as a nine-team Conference through 1958.

In 1959, the PCC was dissolved and a new Conference was formed - the Athletic Association of Western Universities. Original AAWU membership consisted of California, Stanford, Southern California, UCLA, and Washington. Washington State became a member in 1962, while Oregon and Oregon State joined in 1964. In 1968, the name Pacific-8 Conference was adopted.

Ten years later, on July 1, 1978, the University of Arizona and Arizona State University were admitted and the Pacific-10 Conference became a reality. In 1986-87, the league took on a new look, expanding to include 10 women's sports.

Currently, the Pac-10 sponsors 11 men's sports and 11 women's sports. Additionally, the Conference is a member of the Mountain Pacific Sports Federation (MPSF) in four other men's sports and two other women's sports.

Edwin N. Atherton was named the Conference's first Commissioner in 1940. He has been succeeded by Victor O. Schmidt (1944), Thomas J. Hamilton (1959), Wiles Hallock (1971), and current Commissioner Thomas C. Hansen in 1983.

The Pacific-10 Conference offices are located 25 miles east of San Francisco in Walnut Creek, Calif.

Pacific-10 Conference
800 South Broadway, Suite 400
Walnut Creek, CA 94596

Phone (925) 932-4411
Fax (925) 932-4601
www.pac-10.org



introduction

coaches

team

'05 season

history

this is sdsu

SDSU MEN'S SOCCER

2004 SEASON RECAP

Despite finishing the season 4-13-2, SDSU ended the year on a strong note, tying second-ranked New Mexico and closing out the season with home wins over Sacramento State and UNLV.

The season began with a home contest against eventual national runner-up UC Santa Barbara. Despite outshooting and outplaying the Gauchos for most of regulation, the Aztecs allowed an own-goal to seal the victory for UCSB.

A tough road trip followed the heartbreaking season-opening loss, with SDSU losing to 10th-ranked and NCAA tournament participant California, 4-0, and UC Riverside, 2-0.

Then after three tough losses, the schedule brought the Aztecs home for the San Diego State/University of San Diego Tournament. Over the course of the tournament, the Aztecs faced two NCAA tournament participants - Michigan State, losing 2-0, and playing to a 1-1 tie with Dartmouth. San Diego State nearly picked up a win, but the Big Green tied the game on a last minute penalty kick.

SDSU hit the road again for a season-long four-game road trip. The Aztecs started off by shutting out UNLV, 2-0, in the Mountain Pacific Sports Federation opener. Unfortunately, the Aztecs could not build on their momentum as they dropped three straight, losing at UC Davis, Saint Mary's and No. 5 New Mexico.

Despite the 1-3 trip, SDSU returned home and dominated Air Force, winning 3-0. Thanks to a pair of goals from Matt Couch, the Aztecs improved to 2-1 in the MPSF. Two days later, after controlling much of the play, SDSU fell to Denver, 2-1.

Following a brief homestand, SDSU found itself on the road again with games at Sacramento State and San Jose State on the slate. The Aztecs fell to both the Hornets and Spartans by 2-0 margins. It was at this point in the season that SDSU was forced to play without six starters due to injury.

As the injuries continued to mount, the Aztecs regrouped just in time to play second-ranked New Mexico at SDSU Sports Deck.

Trailing 1-0 late against the Lobos, Heath Creager grabbed a cross and, in the 89th minute, willed his way through five New



Kenny Fechner was one of two Aztecs to start every game in 2004.



Eric Wohl earned MPSF co-player-of-the-week honors with fellow senior Frank Caruso after helping SDSU defeat UNLV on Senior Day.

Mexico defenders to score the tying goal. The Aztec defense stood strong in double-overtime and maintained the draw, despite hitting the Lobo post in the first overtime period. The tie earned SDSU its first result against a top-five team in head coach Lev Kirshner's tenure.

Following an overtime home loss to San Jose State, a team the Aztecs dominated on the field, SDSU redeemed itself on Halloween against Sacramento State. The Aztecs used strong performances from Frank Caruso and Trey Meek, who each had a goal and an assist, to record a 2-1 victory.

After a pair of road losses to Denver and Air Force, SDSU returned home looking to send the seniors off with a victory over UNLV on Senior Day. The Rebels never stood a chance as SDSU dominated from the outset and never looked back, claiming a 4-2 win.

Seniors Eric Wohl and Caruso capped their final season as Aztecs with career games against the Rebels. Both scored a goal and tallied a pair of assists. Their performances did not go unnoticed as the MPSF named the duo co-players of the week.

Caruso, in his only season on Montezuma Mesa, finished the year as the Aztecs' leader in goals (four), assists (three), points (11) and shots-on-goal (17). He became the first SDSU player to lead the team in those four categories since Enrique Tovar in 2000.

For their solid year-round play, Creager was selected to the all-MPSF second team as a midfielder, while Colin Jennings earned honorable mention all-MPSF accolades as a defender.

Freddy McDonald garnered honorable mention freshman All-America honors from the *Top Drawer Soccer* website. It was the first such award for an Aztec freshman since Jeff Betts was selected as a Top 10 Freshman by *Soccer America* in 1988.

introduction

coaches

team

'05 season

history

this is sdsu

2004 SEASON REVIEW

San Diego State Men's Soccer Results

Overall Record: 4-13-2 (Home: 3-4-2, Away 1-9-0, Neutral 0-0-0);

MPSF: 4-7-1 (Home: 3-2-1, Away: 1-5-0, Neutral: 0-0-0)

Date	Opp. NR	Opponent	Result	Score	Streak	Overall Record	MPSF Record	Shots SDSU-Opp.	Corners SDSU-Opp.	Fouls SDSU-Opp.	Saves SDSU-Opp.
Sept. 1	13	UC SANTA BARBARA	L	0-1	L1	0-1-0		16-11	2-6	16-13	2-7
Sept. 4	10	at California	L	0-4	L2	0-2-0		4-26	1-2	13-6	11-0
Sept. 9		at UC Riverside	L	0-2	L3	0-3-0		11-16	2-2	6-13	4-2
Sept. 17		MICHIGAN STATE [^]	L	0-2	L4	0-4-0		12-14	1-6	24-15	5-5
Sept. 19		DARTMOUTH [^]	T-2ot	1-1	T1	0-4-1		19-20	8-9	20-17	10-8
Sept. 22		at UNLV*	W	2-0	W1	1-4-1	1-0-0	13-21	2-10	24-12	3-6
Sept. 24		at UC Davis	L	0-1	L1	1-5-1		12-11	5-4	20-19	3-4
Sept. 26		at St. Mary's	L	1-2	L2	1-6-1		8-9	2-10	16-12	4-2
Sept. 30	5	at New Mexico*	L	0-3	L3	1-7-1	1-1-0	7-17	3-8	11-16	3-1
Oct. 8		AIR FORCE*	W	3-0	W1	2-7-1	2-1-0	16-20	5-3	25-17	10-5
Oct. 10		DENVER*	L	1-2	L1	2-8-1	2-2-0	11-13	1-4	13-14	3-4
Oct. 15		at Sacramento State*	L	0-2	L2	2-9-1	2-3-0	15-12	4-3	20-9	6-4
Oct. 17		at San Jose State*	L	0-2	L3	2-10-1	2-4-0	14-20	5-4	18-7	5-6
Oct. 24	2	NEW MEXICO*	T-2ot	1-1	T1	2-10-2	2-4-1	9-22	3-9	17-14	4-2
Oct. 29		SAN JOSE STATE*	L-2ot	1-2	L1	2-11-2	2-5-1	13-17	2-4	18-17	2-2
Oct. 31		SACRAMENTO STATE*	W	2-1	W1	3-11-2	3-5-1	21-9	6-5	14-14	2-9
Nov. 5		at Denver*	L	0-2	L1	3-12-2	3-6-1	8-18	7-5	10-19	7-3
Nov. 7		at Air Force*	L	0-4	L2	3-13-2	3-7-1	12-16	2-2	10-13	4-1
Nov. 14		UNLV*	W	4-2	W1	4-13-2	4-7-1	22-11	2-6	18-12	2-8

[^] - SDSU/USD Tournament. * - Mountain Pacific Sports Federation match.

San Diego State Men's Soccer Statistics

Name	OVERALL											CONFERENCE					
	GP	GS	G	A	Pts.	Sh.	Shot Pct.	SOG	SOG Pct.	GW	PK	YC-RC	GP	GS	G	A	Pts.
Caruso, Frank	18	8	4	3	11	26	.154	17	.654	1	0-0	1-0	11	7	3	3	9
Wohl, Eric	15	13	2	2	6	21	.095	10	.476	1	0-0	3-0	8	7	2	2	6
Couch, Matt	15	13	2	2	6	11	.182	2	.182	1	0-0	1-0	9	7	2	2	6
Meek, Trey	16	10	2	1	5	39	.051	14	.359	1	0-0	8-0	9	5	2	1	5
Creager, Heath	18	18	1	2	4	33	.030	11	.333	0	0-0	5-0	11	11	1	1	3
DiCicco, Andrew	19	18	1	2	4	17	.059	6	.353	0	0-0	4-0	12	11	1	1	3
Dally, David	14	1	1	1	3	13	.077	6	.462	0	0-0	2-0	11	1	1	1	3
McDonald, Freddy	18	18	1	0	2	15	.067	6	.400	0	0-0	5-0	11	11	1	0	2
Scott, Dione	13	6	1	0	2	11	.091	1	.091	0	0-0	0-0	6	3	0	0	0
Fechner, Kenny	19	19	0	2	2	8	.000	2	.250	0	0-0	1-0	12	12	0	1	1
Clemens, Nick	17	16	0	2	2	6	.000	1	.167	0	0-0	7-1	11	10	0	2	2
McArdle, Colter	11	0	0	2	2	4	.000	2	.500	0	0-0	1-0	10	0	0	2	2
Hall, Tally	19	19	0	2	2	0	.000	0	.000	0	0-0	0-0	12	12	0	2	2
Diaz, Robbie	17	6	0	1	1	2	.000	1	.500	0	0-0	0-0	11	6	0	1	1
Jennings, Colin	18	17	0	0	0	18	.000	5	.278	0	0-0	5-0	11	10	0	0	0
Perry, Blake	17	10	0	0	0	15	.000	8	.533	0	0-0	5-0	11	6	0	0	0
Mercuriali, Mike	15	6	0	0	0	2	.000	1	.500	0	0-0	4-0	8	5	0	0	0
Bodnar, Travis	2	1	0	0	0	1	.000	0	.000	0	0-0	0-0	2	1	0	0	0
McKee, Jordan	14	4	0	0	0	1	.000	1	1.000	0	0-0	0-0	8	3	0	0	0
Santiago, Eric	13	6	0	0	0	0	.000	0	.000	0	0-0	0-0	9	3	0	0	0
Team												2-1					
SDSU TOTALS	19		16	22	54	243	.066	94	.391	4	0-0	55-2	12		14	19	47
OPPONENTS	19		33	30	96	303	.109	125	.413	11	1-1	25-0	12		21	19	61

Name	OVERALL											CONFERENCE				
	GP	GS	Min.	GA	GAA	Sv.	Pct.	W	L	T	Sho.	GP	GS	Min.	GA	GAA
Tally Hall	19	19	1770:00	34	1.73	88	.721	4	13	2	2	12	12	1120:00	21	1.69
Team			0:00	0	0.00	2	1.000	0	0	0	0					
SDSU TOTALS	19		1770:00	34	1.73	90	.726	4	13	2	2	12	12	1120:00	21	1.69
OPPONENTS	19		1770:00	16	0.81	79	.832	13	4	2	10	12	12	1120:00	14	1.13

SDSU MEN'S SOCCER

2004 MPSF REVIEW

Mountain Pacific Sports Federation Standings

Pl. Team	Conference						Overall							
	W	L	T	Pts.	Home	Away	W	L	T	Pct.	Home	Away	Neutral	Streak
1. New Mexico	10	1	0	31	6-0-0	4-1-1	16	1	1	.917	8-0-0	6-1-1	2-0-0	Won 5
2. Denver	9	3	0	27	7-0-0	2-3-0	12	5	1	.694	10-1-0	2-3-1	0-1-0	Won 4
3. Sacramento State	5	7	0	15	4-2-0	1-5-0	6	12	1	.342	5-3-1	1-8-0	0-1-0	Won 1
UNLV	5	7	0	15	4-2-0	1-5-0	6	12	0	.333	4-4-0	1-7-0	1-1-0	Lost 3
5. San Diego State	4	7	1	13	3-2-1	1-5-0	4	13	2	.263	3-4-2	1-9-0	0-0-0	Won 1
6. Air Force	4	8	0	12	4-1-0	0-7-0	8	10	1	.447	5-2-1	2-8-0	1-0-0	Lost 2
San Jose State	4	8	0	12	3-3-0	1-5-0	5	13	1	.289	4-4-0	1-8-1	0-1-0	Lost 4

MPSF Men's Soccer Stats

Points Per Game

Name	G	GS	GL	AST	PTS	PPG
1. Rowland, Jeff, Jr., UNM	18	18	18	5	41	2.28
2. Hendricks, Travis, Jr., DEN	18	18	9	3	21	1.17
3. Watson, Lance, Jr., UNM	17	17	7	4	18	1.06
4. Dyachenko, Rod, Jr., UNLV	16	16	7	2	16	1.00
5. Sagastume, Marcus, Sr., AFA	19	19	7	4	18	0.95
6. Rhoads, Ryan, So., SAC	17	17	8	0	16	0.94
7. Bowers, Christian, Sr., DEN	18	18	6	4	16	0.89
8. Eames, Colin, So., AFA	19	19	6	4	16	0.84
McKinney, Tim, Sr., SJSU	19	17	6	4	16	0.84
10. Christensen, Kyle, So., DEN	18	18	5	4	14	0.78
Danaher, Blake, Fr., UNM	18	0	5	4	14	0.78
Grange, Patrick, Sr., UNM	18	18	5	4	14	0.78
13. Gonzalez, Johnny, So., SJSU	17	16	4	4	12	0.71
14. Merriman, James, So., DEN	18	18	3	6	12	0.67
15. Muir, Scott, Jr., AFA	19	19	5	2	12	0.63
Rodriguez, Ricky, Jr., SAC	19	19	3	6	12	0.63
17. Bevers, Hans, Sr., UNM	18	0	2	7	11	0.61
18. Millan, Eli, So., SAC	17	17	5	0	10	0.59
19. Caruso, Frank, Sr., SDSU	19	19	4	3	11	0.58
Sanders, Josh, So., AFA	19	19	4	3	11	0.58

Goals Per Game

Name	G	GS	GL	GPG
1. Rowland, Jeff, Jr., UNM	18	18	18	1.00
2. Hendricks, Travis, Jr., DEN	18	18	9	0.50
3. Rhoads, Ryan, So., SAC	17	17	8	0.47
4. Dyachenko, Rod, Jr., UNLV	16	16	7	0.44
5. Watson, Lance, Jr., UNM	17	17	7	0.41
6. Sagastume, Marcus, Sr., AFA	19	19	7	0.37
7. Bowers, Christian, Sr., DEN	18	18	6	0.33
8. Eames, Colin, So., AFA	19	19	6	0.32
McKinney, Tim, Sr., SJSU	19	16	6	0.32
10. Millan, Eli, So., SAC	17	17	5	0.29

Assists Per Game

Name	G	GS	AST	APG
1. Bevers, Hans, Sr., UNM	18	18	7	0.39
2. Sorto, Marvin, Jr., SJSU	19	0	7	0.37
3. Rodriguez, Ricky, Jr., SAC	19	19	6	0.32
4. Rowland, Jeff, Jr., UNM	18	18	5	0.28
5. Christensen, Kyle, So., DEN	16	16	4	0.25
Seager, Mike, So., DEN	16	0	4	0.25
7. Ashwill, Ben, Jr., UNM	17	17	4	0.24
Danaher, Blake, Fr., UNM	17	0	4	0.24
Gonzalez, Johnny, So., SJSU	17	16	4	0.24
McKinney, Tim, Sr., SJSU	17	14	4	0.24
Watson, Lance, Jr., UNM	17	17	4	0.24

Goals Against Average

Name	G	MP	SV	GA	SHO	GAA
1. Weber, Andrew, Sr., UNM	18	1598	55	9	9	0.51
2. Bredehoff, Matt, Fr., DEN	13	1099	52	12	3	0.98
3. Elsbernd, Paul, So., AFA	13	932	40	16	1	1.54
4. Benton, Daniel, Sr., SJSU	18	1638	91	31	2	1.70
5. Hall, Tally, So. SDSU	19	1770	88	34	2	1.73
6. McDougall, Matt, Jr., SAC	17	1760	103	34	2	1.74
7. Clitheroe, Peter, Jr., UNLV	16	1301	79	26	4	1.80

Saves Per Game

Name	G	GS	SV	SPG
1. McDougall, Matt, SAC	19	19	109	5.74
2. Benton, Daniel, Sr., SJSU	18	18	91	5.06
3. Clitheroe, Peter, Jr., UNLV	16	16	79	4.94
4. Hall, Tally, So., SDSU	19	19	88	4.63
5. Bredehoff, Matt, Fr., DEN	13	13	52	4.00
6. Elsbernd, Paul, So., AFA	13	11	40	3.08
7. Weber, Andrew, Sr., UNM	18	18	55	3.06

All-MPSF Team

► First Team

Boyens, Andrew, So., Defender, UNM
 Rowlands, Jeff, Jr., Forward, UNM
 Dyachenko, Rod, Jr., Forward, UNLV
 Sagastume, Marcus, Sr., Midfielder, AFA
 Arbelaez, Boomer, Jr. Midfielder, UNLV
 Watson, Lance, Jr. Midfielder, UNM
 Girard, Liam, Jr., Defender, DEN
 Christensen, Kyle, So., Midfielder, DEN
 Bowers, Christian, Sr. Forward, DEN
 Gonzalez, Johnny, Jr., Forward, SJSU
 Weber, Andrew, Sr. Goalkeeper, UNM

► Second Team

Bolin, Daniel, Sr., Midfielder, AFA
 Moss, Brandon, Jr., Defender, UNM
 Hendricks, Travis, Jr. Midfielder, DEN
 McDougall, Matt, Jr., Goalkeeper, SAC
 Nelle, Pat, Sr., Forward, SAC
 Mata, Frank, Sr. Defender, SJSU
 Bain, Brendon, Sr. Midfielder, UNLV
 Madu, Utodi, So., Defender, SAC
Creager, Heath, Jr. Midfielder, SDSU
 Halvorsen, Rich, Sr. Defender, SJSU

► Honorable Mention

Ashwill, Ben, Jr. Defender, UNM
 Mercado, Marcos, Sr., Defender, SAC
Jennings, Colin, So., Defender, SDSU
 Bevers, Hans, Sr., Midfielder, UNM
 Krause, Jeff, Sr., Midfielder, UNM
 Myers, Todd, Sr., Defender, AFA
 McKinney, Tim, Sr., Forward, SJSU

ALL-TIME RESULTS



George Logan

1968-81
14 Seasons
Record: 148-48-17

► 1968 • 6-2-0

at UC San Diego	.W	5-1
UC San Diego	.W	5-0
CETYS	.W	3-0
at Long Beach State	.W	4-3
at CETYS	.L	3-8
CS Fullerton	.W	3-0
Long Beach State	.W	5-0
Corinthian SC	.L	1-9

► 1969 • 9-1-1 NCAA Tournament

at Cal Poly Pomona	.L	1-2
at UC San Diego	.W	5-0
Long Beach State	.W	5-3
CS Los Angeles	.W	5-3
Cal Poly Pomona	.W	5-1
UC San Diego	.W	6-1
at Long Beach State	.W	3-2
vs. CS Fullerton +	.W-ot	2-1
vs. UCLA +	.W-ot	2-1
San Francisco *	.T-ot	2-2
Westmont	.W	2-1
+ - NCAA qualifying game at Pacific. * - NCAA Tournament (USF advances on corners).		

► 1970 • 8-1-1

UC San Diego	.W	6-0
CETYS	.W	9-2
UC Riverside	.W	7-0
at Cal Poly Pomona	.W	2-1
CS Fullerton	.W	3-0
at Westmont	.L	1-2
Cal Poly Pomona	.W	3-2
at Biola	.T	2-2
Chapman	.W	3-0
U.S. International	.W	9-0

► 1971 • 10-3-1

vs. San Francisco State +	.L	0-1
vs. Pacific +	.W	2-1
vs. CS Los Angeles +	.W	1-0
U.S. International	.W	10-0
UCLA	.L	3-5
Camp Pendleton	.W	8-1
Biola	.W	1-0
UC San Diego	.W	6-1
Westmont	.W	1-0
at CETYS	.T	1-1
SD Rep. XI Club	.W	4-1
at CS Fullerton	.W	3-2
Long Beach State	.W	4-1
at San Jose State *	.L	1-2
+ - PCAA Invitational Tournament at San Jose State. * - Pacific Coast Athletic Association tournament		

► 1972 • 6-4-1

Whittier	.W	4-1
at UCLA	.L	0-4
CS Fullerton	.L	1-3
at Fresno State	.L	0-2
at Westmont	.L-ot	2-3
CETYS (forfeit)	.W	1-0
at Biola	.T-ot	4-4
Southern California	.W	5-0
UC Riverside	.W	3-1
U.S. International	.W	5-2
UC San Diego	.W	8-0

► 1973 • 11-6-3

Arizona State	.W	12-0
at Loyola Marymount	.W	9-1
at CS Fullerton	.T	1-1
Whittier	.W	6-1

CS Fullerton	.L	0-2
Biola	.W	3-1
Univ. of Guadalajara +	.L	1-4
Free Univ. of Berlin +	.L	1-2
vs. Texas #	.W	1-0
vs. Brigham Young #	.W	4-0
at Chico State #	.L	1-2
UC San Diego	.L	3-4
Westmont	.T-ot	2-2
at UC Santa Barbara	.W	4-1
CETYS	.W	7-1
Fresno State	.W	2-1
at Southern California	.W	1-0
at UC Riverside	.T-ot	2-2
U.S. International	.W	2-1
UCLA	.L	1-5
+ - Aztec Invitational at SDSU. # - Chico State Invitational.		

► 1974 • 10-1-2

Arizona	.W	6-3
CS Fullerton	.L	2-3
UC Riverside	.W	3-0
California +	.W	3-1
UC San Diego +	.W	2-1
Westmont	.T-ot	0-0
at Biola	.W	4-0
Southern California	.W	3-2
at UNLV	.W	4-0
U.S. International	.W	2-1
Pepperdine	.W	5-1
at Fresno State	.W	3-0
at UCLA	.T-ot	2-2
+ - Aztec Invitational at SDSU.		

► 1975 • 10-4-1

vs. UC San Diego +	.W	9-1
at U.S. International +	.L	1-4
UC San Diego	.W	3-2
Fresno State	.W	2-1
So. California College	.W	4-0
U.S. International	.W	5-0
at San Jose State	.L	1-3
at California	.L	2-3
Biola	.W	4-0
UNLV	.W	4-1
at CS Fullerton	.W	3-2
at UC Riverside	.W	10-2
at Southern California	.W	4-1
at Westmont	.L	1-2
UCLA	.T-ot	3-3
+ - USIU Invitational.		

► 1976 • 10-5-1

Whittier	.W	5-2
vs. San Francisco State +	.W	5-0
at U.S. International +	.W	3-2
Point Loma Nazarene	.W	6-1
at UC Santa Barbara	.L	1-3
UC San Diego	.W	3-2
CS Fullerton	.W	2-0
Santa Clara	.L	0-1
Westmont	.W	2-0
at Stanford	.W	2-1
at San Francisco	.L	1-4
at UCLA	.L-ot	1-2
Chapman	.W	4-0
at Biola	.T-ot	1-1
Southern California	.W	2-1
California	.L	1-4
+ - USIU Invitational.		

► 1977 • 13-4-1

at Westmont	.W	1-0
at Chapman	.W	7-1
Chico State	.T-ot	1-1
at U.S. International +	.W	4-2
vs. Long Beach State +	.W	5-0
at UC San Diego	.W	3-1
at Southern California	.L	1-2
Biola	.W	5-0
at California	.W	3-2

at Santa Clara	.W	1-0
at UNLV	.W	3-1
Point Loma Nazarene	.W	7-0
San Francisco	.L	0-1
UC Santa Barbara	.L	1-2
at CS Fullerton	.W	4-1
U.S. International	.W	3-0
Stanford	.W	1-0
UCLA	.L	0-1
+ - USIU Invitational.		

► 1978 • 13-7-0

Chapman	.W	4-2
Santa Clara	.L-ot	1-2
Southern California	.W	3-1
Westmont	.W-ot	3-2
vs. Southern California +	.W	3-1
at U.S. International +	.L	0-1
at Point Loma Nazarene	.W	7-0
at UNLV	.L	0-3
at Azusa Pacific	.L	0-1
U.S. International	.W-ot	2-0
Simon Fraser	.W	2-1
at UC Santa Barbara	.W	2-0
CS Fullerton	.W	1-0
UC San Diego	.W	4-0
California	.L	0-3
Colorado College	.W	3-1
at UCLA	.L	0-2
at San Francisco	.L	0-2
at CS Hayward	.W	3-1
at CS Los Angeles	.W	3-0
+ - USIU Invitational.		

► 1979 • 14-3-2

Pomona Pitzer	.W	4-0
CS Los Angeles	.W	3-2
at Westmont	.W	3-2
at UC San Diego	.W	3-0
at Southern California	.W	2-1
Point Loma Nazarene	.W	9-0
Midwestern	.W	3-0
vs. Brigham Young +	.W	6-1
at U.S. International +	.W	2-1
Azusa Pacific	.W	6-0
UNLV	.W	4-0
CS Hayward	.T-ot	2-2
UCLA	.L	1-2
at Santa Clara	.L	0-1
at California	.W	6-1
at CS Fullerton	.L	0-1
UC Santa Barbara	.W	2-1
at Biola	.W	3-1
U.S. International	.T-ot	1-1
+ - USIU Invitational.		

► 1980 • 12-4-2

at San Diego	.W	5-0
at CS Los Angeles	.W	5-0
at UCLA	.L	0-2
at UC Santa Barbara	.W	2-0
Simon Fraser	.T-ot	3-3
San Jose State	.W	3-0
California	.W	5-3
at Azusa Pacific	.L-ot	2-3
CS Fullerton	.L	2-4
at UNLV	.W	4-0
Biola	.T-ot	0-0
at Point Loma Nazarene	.W	4-0
Santa Clara	.W	2-1
San Francisco	.L	1-2
U.S. International	.W	2-0
Southern California	.W	4-1
Westmont	.W	4-0
UC San Diego	.W	4-0

► 1981 • 16-3-1 NCAA Tournament

at Loyola Marymount	.W	9-0
at UC San Diego	.W	3-1
at California	.L	0-2
at San Jose State	.W-ot	3-2
Fresno State	.W	2-1

UC Santa Barbara	.W	3-0
Point Loma Nazarene	.W	6-0
Long Beach State	.W	5-2
at Westmont	.W	2-1
at San Francisco	.W-ot	2-0
at Santa Clara	.L	1-3
San Diego	.W	4-1
Brigham Young	.W	7-0
UCLA	.T-ot	0-0
U.S. International	.W	3-0
UNLV	.W	6-2
CS Los Angeles	.L	0-1
at CS Fullerton	.W	2-1
at California *	.W	4-0
at San Francisco * #	.W-ot	2-1
* - NCAA tournament. # - SDSU advances on penalty kicks. SDSU's participation in the NCAA Tournament was later vacated.		



Chuck Clegg

1982-1999
18 Seasons
Record: 194-134-39

► 1982 • 20-3-0 NCAA Tournament

Wisconsin-Green Bay	.W	4-1
at Brigham Young	.W	2-1
at UNLV	.W	2-1
Westmont	.W	9-0
Seattle Pacific	.W	2-0
at San Francisco	.W	2-0
UC San Diego	.W	3-0
Santa Clara	.W	1-0
Portland	.W	1-0
at San Diego	.W	4-1
California	.W	1-0
at Fresno State	.L	0-1
at UCLA	.L	1-4
Biola	.W	2-1
at Long Beach State	.W	5-2
vs. Air Force +	.W	2-1
Loyola Marymount	.W	4-0
at CS Los Angeles (forfeit)	.W	1-0
CS Fullerton	.W	1-0
at UC Santa Barbara	.W	4-2
at U.S. International	.W	2-1
Fresno State *	.W	1-0
San Francisco *	.L	0-2
+ - Played at Westmont College. * - NCAA Tournament.		

► 1983 • 9-9-4

S.1 UC San Diego	.W	2-1
S.4 vs. Florida International +	L	1-3
S.5 vs. Washington +	.L	0-2
S.14 at Biola	.W	3-0
S.17 at Westmont	.T-ot	1-1
S.23 UCLA	.L	0-3
S.25 at Loyola Marymount	W	13-0
S.28 Brigham Young	.W	5-0
S.30 at Pacific	.W	4-0
O.1 at St. Mary's	.W	2-1
O.3 at Stanford	.L	2-4
O.12 San Diego	.W	1-0
O.14 San Francisco	.L	1-2
O.18 at Long Beach State	T-ot	0-0
O.21 at Santa Clara	.L	0-1
O.23 at California	.L-ot	0-1
O.26 UC Santa Barbara	.T-ot	3-3
O.30 at CS Fullerton	.T-ot	0-0
N.2 UNLV	.L	1-4
N.4 CS Los Angeles	.W	2-0
N.9 Fresno State	.L	0-2
N.11 U.S. International	.W	1-0
+ - Fresno State Goal Rush Classic.		

introduction

coaches

team

'05 season

history

this is sdsu

SDSU MEN'S SOCCER

ALL-TIME RESULTS

▶ 1984 • 14-6-0

introduction

S.1	vs. Indiana	.L	1-2
S.2	vs. San Jose State	.W-ot	2-
S.7	Loyola Marymount	.W	6-2
S.12	Biola	.W	1-0
S.15	at Westmont	.W	2-1
S.21	at Pacific	.W	3-1
S.23	Santa Clara	.L	2-3
S.26	at San Diego	.W	1-0
S.30	at UCLA	.L	0-1
O.5	at San Francisco	.L	1-3
O.6	at Sonoma State	.W	3-1
O.13	at Fresno State	.W	2-1
O.14	at CS Bakersfield	.W	13-0
O.16	at CS Los Angeles	.L	0-2
O.19	St. Mary's	.W	2-0
O.21	California	.W	2-1
O.27	at UC Santa Barbara	.W	4-1
O.31	CS Fullerton	.W	3-0
N.7	Long Beach State	.W	3-0
N.9	at UNLV	.L	1-3

▶ 1985 • 8-8-4

coaches

S.1	vs. North Texas State	+L	0-4
S.2	at New Mexico	+ .W-ot	3-2
S.8	Cal Poly SLO	.T-ot	0-0
S.13	vs. CS Northridge	# .L	2-3
S.14	vs. Bowling Green	# .W	2-0
S.20	at California	.W	0-1
S.22	at Santa Clara	.T-ot	1-1
S.27	Fresno State	.W	1-0
O.2	at CS Los Angeles	.L	0-1
O.6	San Francisco	.L-ot	3-4
O.9	at UC Irvine	.W	1-0
O.16	Westmont	.W	4-0
O.18	UNLV	.T-ot	1-1
O.20	at Loyola Marymount	.W	4-1
O.23	UC Santa Barbara	.W	2-0
O.25	UCLA	.L	1-2
O.30	at CS Fullerton	.L	0-1
N.4	CS Dominguez Hills	.T-ot	0-0
N.6	San Diego	.W	1-0
N.9	at U.S. International	.L	0-3

+ - New Mexico Invitational. # - UNLV Rebel Roundup.

▶ 1986 • 14-3-4

team

A.30	CS Fullerton	.W	6-1
S.6	vs. Washington	+ .W	3-2
S.7	at Portland	+ .W	3-2
S.10	at Pacific Lutheran	.W	3-0
S.13	Stanford	.W	3-1
S.17	at Fresno State	.L	1-3
S.21	at CS Dominguez Hills	.W	2-0
S.26	Santa Clara	.W	1-0
O.3	CS Northridge	.L	2-4
O.5	at UC Santa Barbara	.W	4-1
O.8	UC Irvine	.W	5-0
O.11	New Mexico	.W	1-0
O.12	at UNLV	.T-ot	1-1
O.19	at UCLA	.T-ot	1-1
O.24	CS Los Angeles	.T-ot	1-1
O.27	at San Diego	.T-ot	3-3
O.29	U.S. International	.W	3-0
O.31	Saint Mary's	.W	3-0
N.5	Loyola Marymount	.W	8-0
N.8	vs. Southern Methodist	# .W	3-0
N.9	vs. Wisc.-Milwaukee	# L-ot	1-2

+ - Cosmopolitan Tournament at Portland. # - UNLV Coors Invitational.

▶ 1987 • 20-6-0 NCAA Tournament

history

S.1	Cal Poly SLO	.W	2-0
S.5	at CS Northridge	.L-ot	2-3
S.7	California	.W	3-0
S.11	at CS Fullerton	.L	2-3
S.13	Chapman	.W	4-0
S.15	Pt. Loma Nazarene	.W	4-0
S.18	UNLV	.W	2-0
S.23	UC Santa Barbara	.W	2-0
S.25	at San Francisco	.L	1-2
S.27	at Santa Clara	.W	1-0

this is sdsu

S.29	Portland	.W	3-2
O.7	San Diego	.W	2-0
O.9	at CS Los Angeles	.W	4-0
O.10	CS San Bernardino	.W	2-0
O.18	at UC Irvine	.W	3-1
O.23	at Stanford	.W	4-0
O.25	at Saint Mary's	.W	6-1
O.31	vs. Indiana	+ .L	2-3
N.1	vs. Notre Dame	+ .W	1-0
N.4	UCLA	.L	1-3
N.7	Loyola Marymount	.W	4-0
N.15	at St. Louis	* .W	2-1
N.21	at So. Methodist	*W-ot/pk	2-1
N.29	at UCLA	* .W	2-1
D.5	vs. Harvard	# .W-ot/pk	2-1
D.6	at Clemson	# & .L	0-2

+ - Met Life Classic at UCLA. * - NCAA Tournament. # - NCAA Final Four at Clemson. & - National Championship game.

▶ 1988 • 15-3-4 NCAA Tournament

S.1	Master's College	.W	3-0
S.5	Fresno State	.W	2-1
S.7	UC Irvine	.W	1-0
S.9	at UC Santa Barbara	.W	3-2
S.12	CS Fullerton	.W	2-0
S.16	at UNLV	.L	0-1
S.20	CS Dominguez Hills	.W	3-0
S.23	at Southern Methodist	+T-ot	1-1
S.24	vs. Old Dominion	+ .W	1-0
S.28	Cal Poly SLO	.W	3-1
O.2	CS Northridge	.W	1-0
O.5	at San Diego	.W	6-0
O.12	CS Los Angeles	.L	0-1
O.14	CS San Bernardino	.W	3-0
O.16	Saint Mary's	.W	2-0
O.22	vs. South Carolina	# T-ot	0-0
O.23	vs. Navy	# .W	2-0
O.26	at Chapman	.W	2-0
O.30	Santa Clara	.T-ot	0-0
N.4	Loyola Marymount	.W	12-0
N.6	at UCLA	.T-ot	1-1
N.13	at UCLA	* .L	1-2

+ - Lettermen's Classic at SMU. # - Met Life Classic at UCLA. * - NCAA Tournament.

▶ 1989 • 14-5-3 NCAA Tournament

S.3	at CS Dominguez Hills	.W	2-0
S.8	at UC Irvine	.W	1-0
S.10	Cal Poly SLO	.T-ot	2-2
S.12	UC Davis	.W	3-1
S.15	UNLV	.W	4-0
S.17	at CS Fullerton	.L	0-1
S.22	at Saint Mary's	.L	0-2
S.24	at Santa Clara	.L-ot	2-3
S.29	vs. North Texas State	+W	3-0
S.30	at Southern Methodist	+W	2-1
O.6	at Stanford	.W	2-0
O.8	at California	.W	2-0
O.11	UCLA	.W-ot	3-2
O.15	at CS San Bernardino	.W	5-0
O.17	San Diego	.T-ot	1-1
O.20	vs. Rutgers	# .L	1-2
O.22	vs. Wisc.-Green Bay	# .W	6-0
O.27	San Francisco	.W	3-0
O.29	Chapman	.W	4-1
N.1	at CS Northridge	.T-ot	0-0
N.5	UC Santa Barbara	.W	1-0
N.12	UCLA	* .L-ot/pk	1-2

+ - Lettermen's Classic at SMU. # - Met Life Classic at UCLA. * - NCAA Tournament.

▶ 1990 • 11-6-3

S.1	at CS Dominguez Hills	.W	1-0
S.3	CS San Bernardino	.W	2-1
S.7	vs. South Alabama	+W	3-1
S.8	at UNLV	+ .L	2-3
S.11	at UC Irvine	.W-ot	4-2
S.14	CS Northridge	.W-ot	1-0
S.16	Washington	.L-ot	1-2
S.21	Cal Poly SLO	.W	2-0
S.23	at Fresno State	.L	0-1
S.28	at Stanford	.T-ot	2-2

S.30	at California	.L	0-2
O.3	Biola	.W	4-0
O.9	Master's College	.T-ot	0-0
O.12	CS Bakersfield	.W	2-0
O.14	Pennsylvania	.L	0-2
O.19	vs. Wake Forest	# .L-ot	2-3
O.21	vs. Air Force	# .W	1-0
O.26	Saint Mary's	.W	1-0
O.28	Santa Clara	.W	1-0
N.4	at UCLA	.T-ot	1-1

+ - UNLV Invitational. # - Met Life Classic at UCLA.

▶ 1991 • 10-4-4

A.30	at CS San Bernardino	.W-ot	3-1
S.8	San Jose State	.W	3-1
S.10	Cal Lutheran	.W	2-1
S.14	at San Diego	.W	1-0
S.18	Cal Poly SLO	.W	3-1
S.21	CS Dominguez Hills	.W	6-0
S.27	at Saint Mary's	.W	1-0
S.29	at Santa Clara	.L	1-2
O.5	at St. Louis	.T-ot	0-0
O.11	Grand Canyon	.W	4-3
O.13	at UC Santa Barbara	T-ot	1-1
O.16	UC Irvine	.W	3-0
O.20	CS Bakersfield	.W	3-0
O.25	California	.T-ot	1-1
O.27	Stanford	.T-ot	2-2
O.30	UCLA	.L	1-4
N.3	CS Northridge	.L	0-2
N.10	UNLV	.L	0-2

▶ 1992 • 10-8-1; 3-4-0 MPSF

S.7	CS San Bernardino	.W	3-1
S.9	Cal Lutheran	.W	3-1
S.11	Biola	.W	6-0
S.13	CS Sacramento	.T-ot	1-1
S.16	at CS Los Angeles	.L	0-4
S.18	Cal Poly SLO	.W	1-0
S.25	at Old Dominion	+ .L	0-3
S.27	vs. William & Mary	+ L	1-2
O.4	at UCLA	.L	0-4
O.9	at UC Santa Barbara	*W	3-1
O.11	at CS Northridge	* .L	1-2
O.19	Pt. Loma Nazarene	.W	4-0
O.21	at Christian Heritage	.W	6-0
O.23	vs. UNLV	* .W	3-1
O.25	New Mexico	* .L	2-3
O.27	Christian Heritage	.W	4-2
O.29	at CS Fullerton	* .L	0-1
N.1	UC Irvine	* .W	4-3
N.3	at CS Dominguez Hills	.L	0-2

+ - Met Life Classic at Old Dominion. * - Mountain Pacific Sports Federation match.

▶ 1993 • 7-9-1; 2-4-1 MPSF

S.4	at CS San Bernardino	.L	1-3
S.6	CS Bakersfield	.W	5-1
S.8	at Loyola Marymount	.W-ot	3-2
S.12	Cal Poly SLO	.L	0-1
S.17	Creighton	+ .L-ot	3-5
S.19	Navy	+ .W	2-0
S.24	at Saint Mary's	# .L	2-3
S.26	vs. Santa Clara	# .L-ot	0-1
O.3	CS Fullerton	* .L	0-1
O.8	UC Santa Barbara	*W	1-0
O.10	CS Northridge	* .W	3-1
O.15	at UNLV	* .T-ot	2-2
O.17	at New Mexico	* .L	1-2
O.22	UCLA	* .L	0-2
O.24	UC Irvine	* .L-ot	3-4
O.26	Pt. Loma Nazarene	.W	4-0
N.3	CS Dominguez Hills	.W	3-0

+ - UNLV Rebel Classic. # - Fall Soccer Classic at Saint Mary's. * - Mountain Pacific Sports Federation match.

▶ 1994 • 10-9-0; 5-5-0 MPSF

S.3	at Grand Canyon	.L	1-2
S.6	Christian Heritage	.W	9-0
S.9	vs. CS San Bernardino	+W	5-0
S.11	vs. San Jose State	+W	1-0
S.16	CS Northridge	* .W	1-0

S.19	So. California College	.L	0-1
S.22	at CS Fullerton	* .L	0-2
S.25	Loyola Marymount	.W	4-2
S.30	vs. Michigan State	# .W	2-1
O.2	vs. Saint Mary's	# .L	0-2
O.7	at CS Northridge	* .W	1-0
O.9	at UC Santa Barbara	*L	0-2
O.14	New Mexico	* .L	2-3
O.16	UNLV	* .W	3-1
O.21	at UC Irvine	* .L	0-1
O.23	at UCLA	* .L	0-4
O.28	at Cal Poly SLO	.L	2-4
N.6	California	* .W	1-0
N.11	UC Santa Barbara	* .W	3-2

+ - Nike Men's Soccer Classic at UC Irvine. # - Coors Light Soccer Classic at UNLV. * - Mountain Pacific Sports Federation match.

▶ 1995 • 6-10-4; 1-6-2 MPSF

S.2	vs. Washington	+ .W	2-1
S.3	at Portland	+ .L	0-4
S.8	vs. Boston	# .L	0-2
S.10	vs. Marquette	# .T-ot	3-3
S.15	Gonzaga	.W	4-1
S.17	Tampa	.L	2-5
S.20	Grand Canyon	.T-ot	1-1
S.24	Cal Poly SLO	.W	5-0
O.1	CS Fullerton	.W	3-2
O.6	at CS Northridge	* .T-ot	3-3
O.8	UC Santa Barbara	* .L	2-3
O.13	at New Mexico	* .L	0-3
O.15	at UNLV	* .L	1-2
O.20	at UC Irvine	* .T-ot	1-1
O.22	UCLA	* .L	0-3
O.26	UC Irvine	* .W	2-1
O.29	CS Northridge	* .L	2-3
N.3	at California	* .L	3-5
N.5	at CS Sacramento	.W	3-1
N.8	at Loyola Marymount	.L	1-5

+ - adidas Invitational at Portland. # - Snickers Umbro Rebel Classic at UNLV. * - Mountain Pacific Sports Federation match.

▶ 1996 • 7-10-3; 2-5-1 WAC

A.31	at CS Northridge	.W	2-1
S.3	at Cal Poly Pomona	.W	5-2
S.6	Stanford	.T-ot	3-3
S.8	at UC Santa Barbara	.L	1-2
S.13	at CS Fullerton	.L	0-3
S.15	at UC Irvine	.W	4-3
S.20	vs. UNC Charlotte	+ L	1-4
S.22	vs. Michigan State	+ T-ot	1-1
S.27	U.S. International	.W	2-0
O.2	Loyola Marymount	.L	0-2
O.6	at UCLA	.L	0-6
O.11	Air Force	* .L	1-3
O.13	New Mexico	* .T-ot	1-1
O.18	at Fresno State	* .L	0-9
O.20	at San Jose State	* .L	0-5
O.25	at U.S. International	.W	5-1
O.27	UNLV	* .W	3-1
N.1	Southern Methodist	*L	2-6
N.3	Texas Christian	* .W	2-0
N.8	at Tulsa	* .L	0-6

+ - Met Life Classic at USD. * - Western Athletic Conference match.

▶ 1997 • 7-8-3; 2-6-0 WAC

A.29	at UC Irvine	.T-ot	2-2
A.31	at Loyola Marymount	T-ot	0-0
S.4	at CS Fullerton	.L	1-2
S.11	at CS Northridge	.L	0-2
S.13	Seattle Pacific	.W	2-1
S.19	CS Northridge	.W	1-0
S.25	Pt. Loma Nazarene	.W	6-0
S.29	UC Irvine	.T-ot	2-2
O.5	UC Santa Barbara	.W	1-0
O.10	at Southern Methodist	*L	0-2
O.12	at Texas Christian	* .W	2-1
O.17	Christian Heritage	.W	7-0
O.19	at UNLV	* .L	0-4
O.24	Fresno State	* .L	0-1
O.26	San Jose State	* .L	1-2
O.31	at Air Force	* .L	0-3

N.2 at New Mexico*L 0-1
 N.7 Tulsa*W 1-0
 * - Western Athletic Conference match.

► 1998 • 8-11-1; 2-6-0 WAC

S.1 at UC Santa Barbara W 2-1
 S.5 DenverW 2-0
 S.7 GonzagaL 1-3
 S.10 Pt. Loma Nazarene .T-ot 1-1
 S.15 BiolaW 3-0
 S.18 Loyola Marymount . .L 0-1
 S.22 CS NorthridgeL 1-5
 S.25 CS Sacramento . . .W 1-0
 S.29 at (25) Cal Poly SLO .L 0-2
 O.4 UC IrvineW 1-0
 O.9 New Mexico*L 0-1
 O.11 Air Force*L 0-2
 O.16 at (9) San Jose State* .L 0-2
 O.18 at Fresno State* . .L 0-1
 O.22 ChapmanW-ot 2-1
 O.25 UNLV*W 4-2
 O.30 at Oral Roberts . . .L 0-1
 N.1 at Tulsa*L 0-2
 N.6 Texas Christian* . .W 1-0
 N.8 (16) Southern Methodist* L-ot 3-4
 * - Western Athletic Conference match.

► 1999 • 4-15-0; 0-8-0 MPSF

S.1 ConcordiaW 6-0
 S.5 Oregon StateL 1-2
 S.8 UC IrvineL 0-4
 S.14 Hope International .W 2-0
 S.17 vs. Gonzaga +L 0-2
 S.19 vs. Md.-Baltimore Co. +L 0-2
 S.23 at Santa Clara # . . .L 1-4
 S.25 vs. San Francisco # .W 3-1
 S.30 at U.S. International .L 1-2
 O.3 at CS Northridge . .L 0-1
 O.9 at U.S. International .W 2-0
 O.15 UC Santa Barbara* .L 0-1
 O.17 CS Northridge* . .L-2ot 4-5
 O.22 at CS Fullerton* . .L 0-5
 O.24 at UCLA*L 0-2
 O.29 New Mexico*L 0-1
 O.31 at UNLV*L 0-1
 N.3 at California*L 0-2
 N.7 at UC Irvine*L-ot 1-2
 + - Coors Soccer Classic at UNLV. # - Nike-Coca Cola Classic at Santa Clara. * - Mountain Pacific Sports Federation match.



Lev Kirshner
 2000-Present
 Five Seasons
 Record: 30-55-12

► 2000 • 6-12-1; 2-4-1 MPSF

S.1 Christian Heritage . .W 5-0
 S.6 at (1) UCLAL 0-5
 S.9 vs. Washington + . . .L 0-3
 S.10 at (5) Portland + . . .L 1-2
 S.15 Saint Mary'sL 0-1
 S.18 Cal BaptistW 5-0
 S.21 vs. Loyola-Chicago # .W 4-1
 S.23 vs. Loyola Marymount # L-2ot 0-1
 S.26 CS NorthridgeL 2-1
 S.29 vs. Louisville % . . .L 0-2
 O.1 vs. Drury %L 2-4
 O.6 CS Fullerton*L 0-1
 O.13 at Cal Poly*L-ot 1-2
 O.20 at CS Northridge* . .L 1-2
 O.22 at UC Santa Barbara* .T-2ot 1-1
 O.27 at New Mexico* . . .L 1-2
 O.29 UNLV*W 1-0
 N.5 UC Irvine*L 1-0
 N.7 at San DiegoL 0-2
 + - Portland adidas Tournament. # - Loyola Marymount Fall Classic. % - Coors Light Classic at UNLV. * - Mountain Pacific Sports Federation match.

► 2001 • 7-9-4; 3-2-2 MPSF

A.31 (13) Santa Clara . .L-ot 0-1
 S.2 Notre Dame Belmont T-2ot 1-1
 S.6 UC Santa Barbara . .L 1-3
 S.19 at Christian Heritage W 3-0
 S.21 vs. Gonzaga +L 2-3
 S.23 at Oregon State + . . .L 1-4
 S.28 UC RiversideW 3-2
 S.30 BrownW-ot 2-1
 O.4 Christian Heritage . .W 7-0
 O.7 (23) UCLAL 1-2
 O.12 (25) Denver*W 2-0
 O.14 Air Force*L 0-1
 O.19 at San Jose State* .T-2ot 1-1
 O.21 at Fresno State* . .W 2-0
 O.26 UNLV*T-2ot 2-2
 O.28 New Mexico*W-2ot 2-1
 O.31 at CS Fullerton . . .L-2ot 2-3
 N.4 at CS Sacramento* .L 1-3
 N.8 vs. UNLV ~^T-2ot 3-3
 N.18 (15) San Diego . . .L 2-4
 + - Diadora Classic in Corvallis, Ore. * - Mountain Pacific Sports Federation match. ~ - MPSF Championship (Fresno, Calif.). ^ - UNLV advances by virtue of 4-1 shootout win.

► 2002 • 4-13-2; 0-5-1 MPSF

A.30 at UC Riverside . . .T-2ot 1-1
 S.2 St. Mary'sL 3-4
 S.12 (11) San DiegoL 0-3
 S.14 WestmontW 2-1
 S.20 IUPUI^W 4-1
 S.22 Drake^L 0-1
 S.27 at CS Northridge . .L-2ot 1-2
 S.29 at (16) UCLAL 0-7
 O.4 at (25) UC Santa Barbara .L 0-3
 O.6 CS FullertonW 1-0
 O.10 at Santa ClaraL 1-5
 O.16 (7) Loyola Marymount .W-ot 3-2
 O.18 UNLV*L 1-2
 O.20 at New Mexico* . . .L 1-2
 O.25 San Jose State* . . .L 0-2
 O.27 Sacramento State* .T-2ot 0-0
 N.1 at Air Force*L 1-5
 N.3 at Denver*L 0-3
 N.8 GonzagaL 2-4

* - Mountain Pacific Sports Federation match. ~ - MPSF Championship (Fresno, Calif.). ^ - SDSU/USD Tournament.

► 2003 • 9-8-3; 2-2-2 MPSF

A.29 Oregon State^W-ot 2-1
 A.31 Long Island^W 2-0
 S.4 at Pt. Loma Nazarene .L 0-2
 S.13 UC RiversideW 2-1
 S.19 vs. Bowling Green@ T-2ot 1-1
 S.21 vs. Drake@W-2ot 2-1
 S.26 HofstraW 2-1
 S.28 AlbanyW 2-0
 O.3 at (11) Rutgers% . . .L 1-4
 O.5 vs. (14) St. John's% .L 0-1
 O.11 San DiegoL 0-2
 O.20 at UNLV*W 3-1
 O.24 Denver*T-2ot 1-1
 O.31 at Sacramento State* T-2ot 1-1
 N.2 at San Jose State* . .L 1-2
 N.5 at Loyola Marymount .L 0-2
 N.7 vs. Air Force*W 3-2
 N.9 New Mexico*L-ot 2-3
 N.13 at Sacramento State~ .W 3-1
 N.14 vs. San Jose State~ .L 1-2
 * - Mountain Pacific Sports Federation match. ~ - MPSF Championship (Sacramento, Calif.). ^ - SDSU Soccer Classic. @ - UNLV Tournament. % - Rutgers Classic.

► 2004 • 4-13-2; 4-7-1 MPSF

S.1 (13) UC Santa Barbara L 0-1
 S.4 at (10) California . .L 0-4
 S.9 at UC Riverside . . .L 0-2
 S.17 Michigan State^ . . .L 0-2
 S.19 Dartmouth^T-2ot 1-1
 S.22 at UNLV*W 2-0

S.24 at UC DavisL 0-1
 S.26 at St. Mary'sL 1-2
 S.30 at (5) New Mexico* .L 0-3
 O.8 Air Force*W 3-0
 O.10 Denver*L 1-2
 O.15 at Sacramento State* L 0-2
 O.17 at San Jose State* . .L 0-2
 O.24 (2) New Mexico* . .T-2ot 1-1
 O.29 San Jose State* . . .L-2ot 1-2
 O.31 Sacramento State* . .W 2-1
 N.5 at Denver*L 0-2
 N.7 at Air Force*L 0-4
 N.14 UNLV*W 4-2
 ^ - SDSU/USD Tournament. * - Mountain Pacific Sports Federation match.

All-Time Record

Home227-83-32
 Away103-121-30
 Neutral42-32-6
Overall372-236-68

Key

W-L - Game won/lost
 (#) - Number indicates opponents' national ranking at game time
 Game dates only available from 1983-Present.

ALL-TIME SERIES RECORDS

Team	W-L-T	Mtg.	Mtg.	Team	W-L-T	Mtg.	Mtg.
Alabama A&M		First Meeting		Midwestern	1-0-0	79	79
Albany	1-0-0	03	03	UMKC		First Meeting	
Air Force	4-6-0	82	04	Navy	2-0-0	88	93
Arizona	1-0-0	74	74	New Mexico	3-11-2	85	04
Arizona State	1-0-0	73	73	UNC Charlotte	0-1-0	96	96
Azusa Pacific	1-2-0	78	80	North Texas State	1-1-0	85	89
Berlin (W. Germany)	0-1-0	73	73	Notre Dame	1-0-0	87	87
Biola	12-0-4	70	98	ND-Belmont	1-0-0	01	01
Boston	0-1-0	95	95	Old Dominion	1-1-0	88	92
Bowling Green	1-0-1	85	03	Oral Roberts	0-1-0	98	98
Brigham Young	5-0-0	73	83	Oregon State	1-2-0	99	03
Brown	1-0-0	01	01	Pacific	3-0-0	71	84
California	10-10-1	74	04	Pacific Lutheran	1-0-0	86	86
Cal Baptist	1-0-0	00	00	Pennsylvania	0-1-0	90	90
Cal Lutheran	2-0-0	91	92	Pepperdine	1-0-0	74	74
Cal Poly Pomona	4-1-0	69	96	Pt. Loma Nazarene	10-1-0	76	03
Cal Poly	6-4-2	85	00	Pomona Pitzer	1-0-0	79	79
CS Bakersfield	4-0-0	84	93	Portland	3-2-0	82	00
CS Dominguez Hills	6-1-1	85	93	Rutgers	0-2-0	89	03
CS Fullerton	15-16-2	68	02	St. John's	0-1-0	03	03
CS Hayward	1-0-1	78	79	St. Louis	1-0-1	87	91
CS Los Angeles	8-5-1	69	92	Sacramento State	4-2-3	92	04
CS Northridge	8-12-2	85	02	Saint Mary's	7-6-0	83	04
CS San Bernardino	7-1-0	87	94	San Diego	9-4-2	80	04
Camp Pendleton	1-0-0	71	71	SD Rep. XI Club	1-0-0	71	71
CETYS	4-1-1	68	73	San Francisco	4-10-1	69	99
Chapman	8-0-0	70	98	San Francisco State	1-1-0	71	76
Chico State	0-1-1	73	77	San Jose State	5-10-1	71	04
Christian Heritage	7-0-0	92	01	Santa Clara	6-12-2	76	02
Clemson	0-1-0	87	87	Seattle Pacific	2-0-0	82	97
Colorado College	1-0-0	78	78	Simon Fraser	1-0-1	78	80
Concordia	1-0-0	99	99	Sonoma State	1-0-0	84	84
Corinthian (S.C.)	0-1-0	68	68	South Carolina	0-0-1	88	88
Creighton	0-1-0	93	93	South Alabama	1-0-0	90	90
Dartmouth	0-0-1	04	04	Southern California	9-1-0	72	80
Denver	2-3-1	98	04	So. California College	1-1-0	75	94
Drake	1-1-0	02	03	Southern Methodist	3-3-1	86	98
Drury College	0-1-0	00	00	Stanford	5-1-3	76	96
Duquesne		First Meeting		Tampa	0-1-0	95	95
Florida International	0-1-0	83	83	Texas	1-0-0	73	73
Fresno State	9-8-0	72	01	Texas Christian	3-0-0	96	98
Gonzaga	1-4-0	95	02	Tulsa	1-2-0	96	98
Grand Canyon	1-1-1	91	95	UC Davis	1-1-0	89	04
Guadalajara	0-1-0	73	73	UC Irvine	12-4-3	85	00
Harvard	1-0-0	87	87	UCLA	3-25-6	69	02
Hofstra	1-0-0	03	03	UC Riverside	6-1-2	70	04
Hope International	1-2-0	99	99	UC San Diego	18-1-0	68	83
Indiana	0-2-0	84	87	UC Santa Barbara	17-9-3	73	04
IUPUI	1-0-0	02	02	UNLV	17-10-5	74	04
Long Beach State	9-0-1	68	84	U.S. International	19-4-1	70	99
Long Island	1-0-0	03	03	Wake Forest	0-1-0	90	90
Loyola-Chicago	1-0-0	00	00	Washington	2-3-0	83	00
Loyola Marymount	12-5-1	73	03	Westmont	12-3-3	69	02
Louisville	0-1-0	00	00	Whittier	3-0-0	72	76
Marquette	0-0-1	95	95	William & Mary	0-1-0	92	92
Md.-Baltimore Co.	0-1-0	99	99	Wis.-Green Bay	2-0-0	82	89
Master's College	1-0-1	88	90	Wis.-Milwaukee	0-1-0	86	86
Michigan State	1-1-1	94	04	Bold indicates 2005 opponents.			

introduction

coaches

team

'05 season

history

this is dsu

SDSU MEN'S SOCCER

ALL-TIME NCAA TOURNAMENT APPEARANCES

1969 - First Round

Head Coach: George Logan

Overall Record: 9-1-1

Opponent	Round	Result
CS Fullerton	Qualifying	W, 2-1(ot)
UCLA	Qualifying	W, 2-1(ot)
San Francisco	First	T, 2-2(ot)*

* San Francisco advances on corner kicks.

1981 - Second Round

Head Coach: George Logan

Overall Record: 16-3-1

Opponent	Round	Result
at California	First	W, 4-0
at San Francisco	Second	W, 2-1(ot)*

* San Diego State advances on penalty kick
SDSU's participation in the 1981 NCAA tournament was later vacated.

1982 - Second Round

Head Coach: Chuck Clegg

Overall Record: 20-3-0

Date	Opponent	Round	Result
Nov. 17	Fresno State*	First	W, 1-0
Nov. 21	San Francisco*	Second	L, 0-2

* NCAA Tournament at Fresno State.

1987 - Finals

Head Coach: Chuck Clegg

Overall Record: 20-6-0

Date	Opponent	Round	Result
Nov. 15	at St. Louis	First	W, 2-1
Nov. 21	at So. Methodist	Second	W, 2-1(ot)*
Nov. 29	at UCLA	Third	W, 2-1
Dec. 5	vs. Harvard#	Semis	W, 2-1*
Dec. 6	at Clemson#	Finals	L, 0-2

* San Diego State advances on penalty kicks.

NCAA Final Four at Clemson.

1988 - First Round

Head Coach: Chuck Clegg

Overall Record: 15-3-4

Date	Opponent	Round	Result
Nov. 13	at UCLA	First	L, 1-2

1989 - First Round

Head Coach: Chuck Clegg

Overall Record: 14-5-3

Date	Opponent	Round	Result
Nov. 12	vs. UCLA#	First	L, 1-2(ot)*

* UCLA advances on penalty kicks.

at El Camino College (Torrance, Calif.)

SDSU All-Time NCAA Tournament Record

Overall: 9-4-1 (.679)

Under George Logan: 4-0-1 (.900)

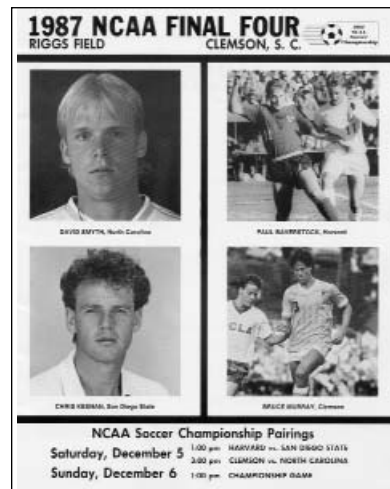
Under Chuck Clegg: 5-4-0 (.556)



1981 Tournament Team



Fresno State vs. San Diego State
NCAA Action! Photo by Dan Swartz
Senior Wright HERRING, San Diego State
First Round: Far West Region
NCAA Playoffs Bulldog Stadium Nov. 17, 1982
50 cents



1987 NCAA FINAL FOUR
RIGGS FIELD CLEMSON, S. C.
NCAA Soccer Championship Pairings
Saturday, December 5 1:00 pm HARVARD vs. SAN DIEGO STATE
Sunday, December 6 3:00 pm CLEMSON vs. NORTH CAROLINA
1:00 pm CHAMPIONSHIP GAME



1987 NCAA CHAMPIONSHIP FINAL
SAN DIEGO STATE UNIVERSITY



1988 Tournament Team

introduction

coaches

team

'05 season

history

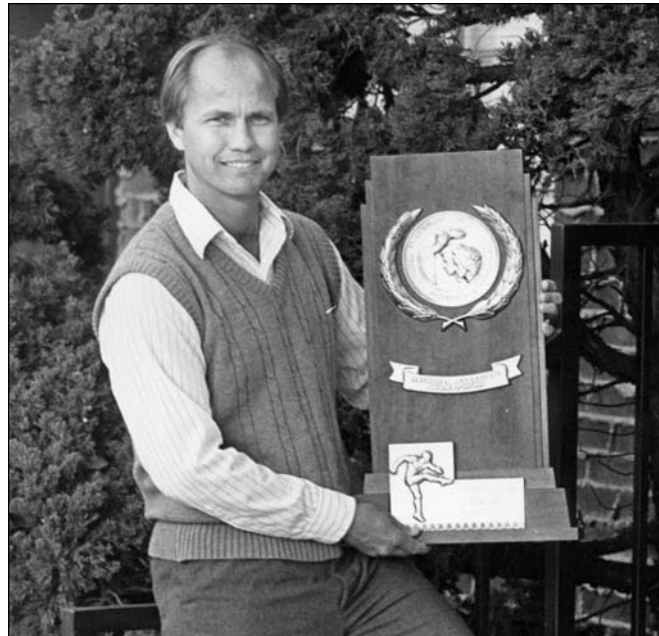
this is sdsu

AZTEC SOCCER TRADITION

The San Diego State men's soccer program has a rich tradition that dates all the way back to 1968. In its 37 competitive seasons, the Aztecs have accumulated 25 winning seasons and six NCAA tournament appearances, including a runner-up finish in the 1987 NCAA tournament final. Individually, players who have attended San Diego State have gone on to earn national and regional recognition and play on some of the highest stages around the world. Here is a quick look at the accomplishments of those who have contributed to San Diego State's rich soccer tradition.

Notable Aztec Soccer Highlights

- ◆ 1987 NCAA Tournament Finalists
- ◆ Two National Soccer Hall of Fame Members
- ◆ Four Hermann Trophy Finalists
- ◆ Six NCAA Tournament Appearances
- ◆ Eight All-America Selections
- ◆ Eight World Cup Participants
- ◆ 25 All-Conference Academic Team Selections
- ◆ 25 Winning Seasons
- ◆ 27 National Team Members
- ◆ 33 All-Far West Selections
- ◆ 44 Professional Soccer Players



Chuck Clegg displays the 1987 NCAA tournament runner-up trophy.

introduction

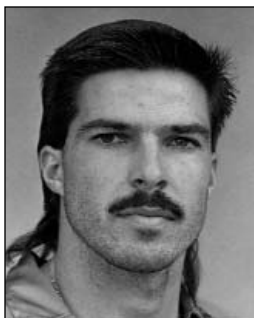
coaches

team

'05 season

history

this is sdsu



Marcelo Balboa

Hermann Trophy Finalist (1988-89)
All-American (1988-89)
World Cup (1990, 94, 98)
National Soccer Hall of Fame (2005)



Vidal Fernandez

Team America (1983)
NASL-New York Cosmos (1979)
Aztec Hall of Fame (1993)



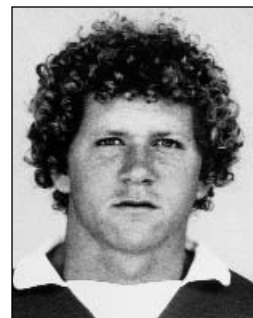
Pete Goossens

All-American (1969)
Four-time Letterwinner



Alan Kelly

All-American (1976-77)
NASL-Los Angeles Aztecs (1977)
Four-time Letterwinner



Clee Kooiman

All-Far West (1982)
National Sports Festival (1982)
U.S. National Team (1994)
MSL-Los Angeles Lazars (1982)



Chris Sullivan

U.S. National Team (1987, 90)
World Cup (1990)
MLS-San Jose Clash (1998)
Two-time Letterwinner



Kyle Whittemore

Hermann Trophy Finalist (1988)
All-American (1987)
All-Far West (1984, 86-88)
Academic All-American (1986-88)
Senior Bowl MVP (1988)



Eric Wynalda

All-Far West (1987-88)
Soccer America Top 10 Freshmen (1987)
U.S. Nat'l Team (1990, 94, 98)
World Cup (1990, 94, 98)
National Soccer Hall of Fame (2004)



Marcelo Balboa, Chuck Clegg and Eric Wynalda at the World Cup.

SDSU MEN'S SOCCER

AZTEC SOCCER YEAR-BY-YEAR



George Logan, SDSU's first head coach, compiled a 148-48-17 record from 1968 until 1981.

1968

San Diego State's first year of Division I soccer. George Logan was the first head coach and the architect of 148 future wins. The Aztecs defeated UC San Diego, 5-1, in the school's first match. SDSU started the year winning its first four matches as the Aztecs finished with a 6-2 record.

1969

SDSU defeated CS Los Angeles, CS Fullerton and UCLA on its way to a 9-1-1 season. Jim Tollerton and Oscar Gonzalez shared the goal-scoring leadership with 12 apiece. The Aztecs played three overtime NCAA playoff games, defeating CS Fullerton and UCLA 2-1 before battling San Francisco to a 2-2 tie in four OTs. The game was decided by which team had taken more corner kicks, making USF the winner.

1970

Al Limahelu tallied 26 points and Choo Chowana-Bandu scored 12 goals to lead the team. The largest margin of victory in Aztec soccer history came when San Diego State defeated Chapman College, 13-0. The Aztecs outscored opponents 55-9 on their way to an 8-1-1 mark.

1971

SDSU posted a 10-3-1 record with the help of Tollerton's 11 goals and Chowana-Bandhu's 10 scores. The Aztecs made their first appearance in the Pacific Coast Athletic Association tournament, losing to San Jose State in the first round, 2-1.

1972

After starting the season 1-4, San Diego State went unbeaten in its last six games to boost its season record to 6-4-1. Chowana-Bandu led the team with nine goals.

1973

The season began with a 12-0 white-wash of Arizona State and a 9-1 victory over Loyola. The team struggled at mid-season but regrouped to win six of its last seven to finish 11-6-3. The schedule included games with international teams from Mexico and Germany.

1974

Goal-scoring machine Steve Robertson arrived on Montezuma Mesa. He netted 14 goals in 13 games, including one in nine different contests. The only loss in a 10-1-2 season came against CS Fullerton in the second match of the season.

1975

Robertson again averaged more than a goal per game as the Aztecs put together a 10-4-1 season. Future stars Alan Kelly and Jan Norby arrived at SDSU and made an immediate impact. Kelly scored eight goals and Norby provided strength on defense.

1976

Three players each scored seven goals on the year, leading the Aztecs to a 10-5-1 record. Kelly, Carlos Sainz and Lauri Somersalmi stood out in the Aztecs' ninth-straight winning season, including victories over San Francisco State and USIU on the way to the championship of the USIU Invitational.

1977

Vidal Fernandez burst onto the scene at SDSU, leading the Aztecs to a 13-4-1 record. The future New York Cosmos and San Diego Sockers star tallied 13 goals on the year to lead the team. Kelly and Sainz each had nine goals. Four-year letterman and future head coach, Chuck Clegg, finished his first year as Logan's assistant coach.

1978

Playing its longest schedule ever, SDSU went 13-7. The Aztecs posted an 8-2 mark at home, but were 5-5 on the road. Fernandez again led the team in scoring with nine goals. Chris Hull and Norby each tallied five goals. During a three-game stretch early in the year, Fernandez scored five times to pace three Aztec victories. Gordon Dallas wore the scarlet and black for the first time, notching four goals to go along with eight assists.

1979

The golden era of SDSU soccer begins with the arrival of several outstanding play-

ers. Micael Holmstedt, Dida Menders, Vince Bucelli and Kevin Crow all make their initial appearances for the Aztecs. In his final campaign, Fernandez scored 12 goals and had 10 assists, leading the team to a 14-3-2 mark. For the first time in SDSU soccer history, three players scored in double figures as Fernandez and Holmstedt had 12 goals each and Menders added 10.

1980

Holmstedt set the school's single-season scoring mark, netting 17 goals in 18 games. His 42 points also set a standard for SDSU. The team went on to compile a record of 12-4-2.

1981

The Aztecs returned to the NCAA playoffs for the first time in 10 years, compiling a 16-3-1 overall record. SDSU trounced California, 4-0, in the first round of the playoffs. In the second round, the Aztecs again met San Francisco. After regulation and four 15-minute overtimes failed to produce a winner, SDSU won on penalty kicks, 2-1. Following the victory, a player was declared ineligible for the Aztecs, forcing them out of further competition.

1982

Clegg took over as head coach and guided the Aztecs to their best record in history, winning 20 games for the first time. Clegg inherited a talented group that included seniors Holmstedt, Bucelli, Menders and Crow. The Aztecs won their first 11 games as they finished 20-3 and went to the NAACAs again. SDSU eliminat-



Kevin Crow (left), a 1981 All-American, went on to play for the San Diego Sockers.

introduction

coaches

team

'05 season

history

this is sdsu

ed Fresno State in the first round, 1-0, before falling to USF, 2-0. Holmstedt led the team with 33 points.

1983

With heavy graduation losses, the team struggled to a 9-9-4 record. Goal scoring was the problem most of the year, with the exception being a 13-0 win over Loyola Marymount. In the game against the Lions, Jeff Ryder scored three goals. Nineteen different players tallied at least one point during the season.

1984

Kyle Whittemore arrived on Montezuma Mesa to set single-season scoring and points marks. The Seattle product beat opposing keepers 21 times during the course of the season, tallying 45 points. Eric Drabb was the team's second-leading scorer with six goals and six assists. The team tied the school record, set the year before, for goals in a game with a 13-0 drubbing of CS Bakersfield. Its final record was 14-6.

1985

With Whittemore gone for the year with a broken leg, SDSU had trouble scoring. Steve Boardman and Steve Guillot shared the team lead with five goals. Boardman set a single-season record for assists with 12. The team averted a losing record with a late goal against cross-town rival USD to win, 1-0, in the next-to-last contest of the year to finish 8-8-4.

1986

Whittemore returned from his injury to break his own point-scoring record, earning a point in 17 different contests. His 20 goals and 10 assists led the team to a 14-3-4 record. Goalkeeper Felipe Hernandez posted a 0.71 goals-against average and six shutouts. The season ended on a sour note with a loss to Wisconsin-Milwaukee in the final game. SDSU did not get the win it needed to advance to the NCAAs.

1987

With teams keying more and more on Whittemore, freshman Eric Wynalda was a welcome addition to the Aztecs' scoring punch. As the lowest-seeded team in the NCAA playoffs, SDSU made a storybook run all the way to the NCAA finals. The Aztecs' finish included playoff victories against St. Louis, SMU and UCLA before beating undefeated Harvard in the semifinals. In the national championship game, SDSU lost to Clemson on the Tigers' home field, 2-0. Whittemore had 17 goals to lead

the way and Wynalda had 11 goals and 11 assists. Goalkeepers Bryan Finnerty and Felipe Hernandez combined for a school-record 13 shutouts. A key to the Aztec season was the play of Chris Keenan and Gerardo Jimenez, both of whom had transferred to SDSU for their senior years.

1988

The Aztecs made their second consecutive trip to the NCAA playoffs, losing to UCLA in the first round. Defender Marcelo Balboa was named a first-team All-American. Wynalda (14), Whittemore (10) and Betts (10) finished in double figures for goal scoring. Finnerty set a pair of goal-keeping records as he helped the Aztecs establish a school record of 14 shutouts in a season. Finishing the season 15-3-4, the Aztecs continued to establish themselves as one of the premier programs in the nation. Whittemore capped his career as the MVP of the Senior Bowl in St. Louis at Budweiser Soccer Park, leading the West to a 2-0 victory and scoring the game-winning goal.

1989

Continuing to solidify their role as a national contender, the Aztecs appeared in the NCAA playoffs for the third straight year. In the playoff game, UCLA defeated the Aztecs 2-1, with a penalty kick shootout deciding the game. Senior goalkeeper Bryan Finnerty recorded the third best single-season goals-against average (0.66), and became the Aztecs' career leader in GAA (0.69) and shutouts (26.5). Betts led Aztec scorers with 32 points and



Marcelo Balboa, a two-time All-American, was inducted into the Aztec Hall of Fame in 1996.

U.S. National Team members, Wynalda and Balboa, finished with 24 and 23 points, respectively. SDSU finished the decade with the 15th best winning percentage (.722) among Division I programs. The Aztecs ended the season 14-5-3.

1990

The Aztecs began the season basking in the accomplishments of three former players, Balboa, Wynalda and Chris Sullivan. All represented the United States on the national team in Italy for World Cup '90. The Aztecs had more players compete for the national team than any university in the United States. On Montezuma Mesa, Patrick Merrell and company recorded an 11-6-3 record, barely missing the NCAA playoffs. The defense was anchored by Dain DeForest, but speedsters Jason French, Bill Demke and Chris Stephens combined with Brian Craft-Negrete and Merrell for 31 goals and 28 assists. Goalkeeper Curtis McAlister recorded an 0.92 GAA.

1991

Posting a 10-4-4 record, Craft-Negrete led the team with nine goals and eight assists. Captain Merrell directed the attack from the midfield, scoring two goals and adding six assists. Goalkeepers Dan Dalzochio, Chris Volk and Shannon Storey amassed 59 saves.

1992

Due to an injury-plagued season, SDSU's final tally of 10-8-1 was impressive. From the midfield, senior Andy Morrone scored seven goals and seven assists. The season saw 15 players score at least one goal. The year also marked the Aztecs' entry into league play with the creation of the Mountain Pacific Sports Federation. The MPSF will prove to be one of the strongest soccer conferences in the nation.

1993

As predicted, the MPSF's strength was evidenced by four teams qualifying for the NCAA tournament. The Aztecs struggled, posting their first losing season in 25 years, going 7-9-1. Injuries again played a major role with nine of the starting 11 sidelined for part of the season. Senior Bill Demke led the Aztec attack, scoring 11 goals and two assists on the season.

introduction

coaches

team

'05 season

history

this is sdsu

SDSU MEN'S SOCCER

AZTEC SOCCER YEAR-BY-YEAR

1994

The strongest freshmen recruiting class in recent history arrived on Montezuma Mesa. The rollercoaster season ended up 10-9, but six freshmen broke into the starting lineup. Senior Willie Franklin's career ended with four goals and three assists. The freshmen gained valuable Division I experience against top-20 teams. Sophomore Aaron Susi led the team with 22 points and began maturing into a top forward. The team recorded 241 shots on goal.

1995

As a junior, Susi led the Aztecs with 10 goals and 10 assists for a total of 30 points. The Aztecs posted a less-than-stellar record of 6-10-4, for only their second losing season in 27 years. Eleven different players scored for a total of 38 goals. Senior Pablo Nunnally recorded two assists from the defense. The freshman class contributed seven players who put the ball in the net. The year also marked the end of defender Jeff Baxter's outstanding career. The MPSF again proved to be a powerhouse in the ratings.

1996

Darren and Derek Drago and Mark Rogondino joined the team for their final year of eligibility. Those three, plus transfers Juan Velasco and John Browne, added maturity to the squad. Aztec soccer followed other SDSU sports into the Western Athletic Conference as did fellow MPSF schools, Air Force, Fresno State, New Mexico, San Jose State, SMU, TCU, Tulsa and UNLV. The WAC certainly rivaled the MPSF in strength. Six freshmen again found playing time and the Aztecs finished 7-10-3.

1997

Coach Clegg was pleased to announce the addition of his first salaried men's assistant coach, Lev Kirshner. A northern California native, Kirshner played collegiately for Rutgers University. Sophomore goalkeeper Matt Hall came into his own, posting a 1.25 GAA, recording 80 saves and four shutouts. The overall record of 7-8-3 did not reflect the intensity of play that returned to the team. Four of the losses were by one goal and the team took three opponents to overtime. Again freshmen made an impact with six consistently in the starting lineup. Senior Raja Hawa led the team in scoring, but 13 different Aztecs scored. SDSU remained somewhat young with only three seniors graduating.

1998

A rebuilding Aztec squad held its own throughout a competitive season, finishing with a record of 8-11-1. Junior David Beltran and Darren Parker shared goal-scoring honors with five apiece, while freshman Mike Bradbury also had five goals and four assists in his inaugural campaign at SDSU. Goalie Hall was stellar in the nets, fashioning a 1.42 goals-against average while performing brilliantly between the posts. The Aztecs posted impressive WAC wins over UNLV and TCU at home and finished the season narrowly losing to 16th-ranked Southern Methodist (4-3 in overtime), a team that went on to the NCAA quarterfinals.

1999

With the creation of the Mountain West Conference, SDSU returned to the MPSF. The young Aztec team showed signs of improvement but finished the season with a 4-15-0 record. Three of the team's wins came in the form of shutouts, including an impressive 6-0 season-opening victory over Concordia. Freshman keeper Brian Barnes was the team's primary starter seeing action in 16-of-19 matches, earning 64 saves. Junior midfielder/forward Milton Economy led the team with four goals and two assists (10 points), with two of those goals being game-winners. Senior Darren Parker trailed Economy in the scoring category carding three goals and two assists (eight points).

2000

Assistant coach Kirshner took over the head coaching reins and with it, the job of returning the program to the success it once knew. Junior midfielder Enrique Tovar led the team in goals (4), assists (6) and points (14). Tovar, who came to Montezuma Mesa from De Anza Junior College, also was first on the team in shots with 55. The story of the campaign was sophomore goalkeeper Barnes, who finished the year with a MPSF Pacific Division-leading 90 saves. Combined with 64 saves from his rookie season, his total of 154 saves placed him third on SDSU's career top-10 list. The team finished the year with a 6-12-1 record, and was 2-4-1 in the Mountain Pacific Sports Federation-Pacific Division after an injury-plagued campaign in which seven players underwent surgery.

2001

San Diego State completed one of the program's most successful campaigns in recent years with a 7-9-4 overall mark and

a 3-2-2 MPSF record. The Aztecs entered the final weekend of regular season play in contention for their first MPSF title. Sophomore Kevin Sapanli's earned all-conference and all-tournament honors. He also was a third-team selection on the Verizon Academic All-America team. Seniors Enrique Tovar and Tim Edwards also earned all-conference accolades.

2002

After entering the season with great optimism a rash of injuries to several key returnees turned the year sour. SDSU posted a 4-13-2 overall record, but the young Aztecs did show signs of greatness. The highlight of the year was a 3-2 overtime victory over Loyola Marymount, which was ranked seventh in the country at the time. Barnes earned second-team all-MPSF honors after another solid year at goalkeeper, and Ryan Cook was awarded all-MPSF honorable mention plaudits.

2003

The 2003 Aztec squad went against the pundits and posted their first winning season since the 1994 campaign. The year also marked the Aztecs return to the MPSF Championships, for the second time under fourth-year coach Kirshner. The season started out with a bang as the Aztecs pulled out a 2-1 overtime victory over Oregon State. SDSU would go 6-1-1 through the month of September before injuries and depth caught up with the Aztecs, who finished a remarkable 9-8-3, including a 3-1 win over Sacramento State in the MPSF Championships. The showing marked the second appearance in post-season play since 1989 for SDSU.

2004

Coming off a winning season, the Aztecs were excited about the prospects of 2004. Unfortunately, injuries sidelined two starters before the season began and by midseason, the team was without six players. Despite finishing the year with a record of 4-13-2, SDSU ended the campaign on a high note, defeating Sacramento State and UNLV and tying No. 2 New Mexico at home. Throughout the year, the team suffered some close losses, but none closer than its season-opening 1-0 loss to eventual national runner-up UC Santa Barbara. Individually, Heath Creager and Colin Jennings were honored by the MPSF. Creager, a junior forward, was named to the second team, while Jennings, a sophomore midfielder, earned honorable mention accolades.

introduction

coaches

team

'05 season

history

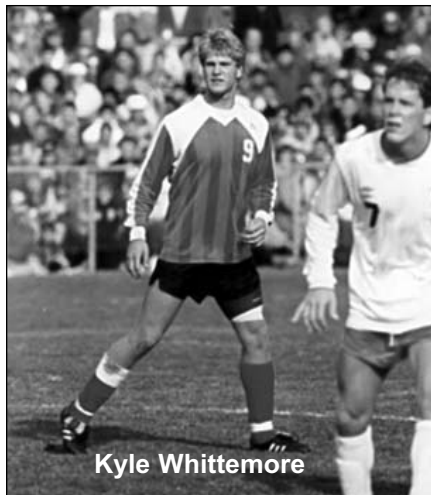
this is sdsu

AZTEC RECORD BOOK

Single-Season Records

Goals

1. Kyle Whittemore, 1984	.21
2. Kyle Whittemore, 1986	.20
3. Steve Robertson, 1975	.18
4. Kyle Whittemore, 1987	.17
Micael Holmstedt, 1980	.17
Micael Holmstedt, 1981	.17
7. Eric Wynalda, 1988	.14
Steve Robertson, 1974	.14
9. Vidal Fernandez, 1977	.13
Vince Bucelli, 1982	.13



Kyle Whittemore

Points

1. Kyle Whittemore, 1986	.50
2. Kyle Whittemore, 1984	.45
3. Micael Holmstedt, 1980	.42
4. Kyle Whittemore, 1987	.39
Micael Holmstedt, 1981	.39
6. Eric Wynalda, 1988	.36
Steve Robertson, 1975	.36
8. Vidal Fernandez, 1979	.34
9. Eric Wynalda, 1987	.33
Micael Holmstedt, 1982	.33

Assists

1. Jeff Betts, 1989	.12
Chris Keenan, 1987	.12
Steve Boardman, 1985	.12
4. Micael Holmstedt, 1982	.11
Ken Taylor, 1989	.11
Eric Wynalda, 1987	.11
7. Aaron Susi, 1995	.10
Eric Drabb, 1987	.10
Kyle Whittemore, 1986	.10
Dida Mendes, 1980	.10
Kenneth Fechner, 2003	.10

Saves

1. Brian Barnes, 2002	.98
2. Brian Barnes, 2000	.90
3. Matt Hall, 1998	.89
Bryan Finnerty, 1989	.89
5. Tally Hall, 2004	.88

6. Colin Hanke, 2003	.87
7. Curtis McAlister, 1990	.85
8. Matt Hall, 1997	.80
9. Brett Weaver, 1993	.79
10. Bryan Finnerty, 1988	.65

Shutouts

1. Bryan Finnerty, 1989	10.0
2. Bryan Finnerty, 1988	9.5
3. Curtis McAlister, 1990	8.5
4. Garry Wilcox, 1985	8.0
5. Mark Stepovich, 1980	7.5
6. Mark Stepovich, 1981	7.0
Mark Stepovich, 1982	7.0
Bryan Finnerty, 1987	7.0

Goals-Against Average

(Minimum 750 minutes)

1. Bryan Finnerty, 1988	0.54
2. Mark Stepovich, 1981	0.63
3. Bryan Finnerty, 1989	0.66
4. Felipe Hernandez, 1987	0.71
5. Mark Stepovich, 1982	0.81
6. Willem Van Der Wall, 1970	0.88
7. Bryan Finnerty, 1997	0.91
8. Curtis McAlister, 1990	0.92
9. Dan Dalzochio, 1991	0.93

Career Records

Goals

1. Kyle Whittemore, 1984, 86-88	.68
2. Micael Holmstedt, 1979-82	.57
3. Steve Robertson, 1974-75	.37
4. Eric Wynalda, 1987-89	.34
Vidal Fernandez, 1977-79	.34
6. Jim Tollerton, 1969-71	.32
7. C. Chowanda-Bandhu, 1969-72	.31
8. Alan Kelly, 1974-77	.28
9. Aaron Susi, 1993-96	.25
Dida Mendes, 1979-82	.25
Vince Bucelli, 1979, 81-82	.25



Eric Wynalda

Points

1. Kyle Whittemore, 1984, 86-88	.160
2. Micael Holmstedt, 1979-82	.141
3. Eric Wynalda, 1987-89	.101
4. Dida Mendes, 1979-82	.83
5. Aaron Susi, 1993-96	.78
Vidal Fernandez, 1977-79	.78
7. Steve Robertson, 1974-76	.68
Jim Tollerton, 1969-71	.68
9. Brian Craft-Negrete, 1988-91	.63
Vince Bucelli, 1979, 81-82	.63

Assists

1. Dida Mendes, 1979-82	.33
2. C. Chowanda-Bandhu, 1969-72	.31
3. Aaron Susi, 1993-96	.28
Alan Kelly, 1974-77	.28
5. Micael Holmstedt, 1979-82	.27
6. Eric Wynalda, 1987-89	.25
Eric Drabb, 1984-87	.25
Vince Bucelli, 1979, 81-82	.25
9. Kyle Whittemore, 1984, 86-88	.24
10. Steve Boardman, 1983-86	.22

Saves

1. Brian Barnes, 1999-02	.282
2. Matt Hall, 1996-98	.213
3. Bryan Finnerty, 1987-89	.210
4. Brett Weaver, 1993-94	.111
5. Curtis McAlister, 1988-90	.106
6. Tally Hall, 2003-04	.96
7. Colin Hanke, 2002-03	.90
8. Felipe Hernandez, 1986-87	.84
9. Greg Cohn, 1992-94	.78
10. Tim Edwards, 2000-01	.76

Shutouts

1. Bryan Finnerty, 1987-89	26.5
2. Mark Stepovich, 1979-82	21.5
3. Curtis McAlister, 1988-90	16
4. Peter Gisslow, 1974-76	13
Garry Wilcox, 1984-85	13

Goals-Against Average

(Minimum 1,500 minutes)

1. Bryan Finnerty, 1987-89	0.69
2. Curtis McAlister, 1988-90	0.79
3. Mark Stepovich, 1979-82	0.81
4. Felipe Hernandez, 1986-87	0.82
5. Garry Wilcox, 1984-85	0.96
6. W. Van Der Wall, 1969-70	0.99
7. Dan Dalzochio, 1991-92	1.17
8. Colin Hanke, 2002-03	1.35
9. Tim Edwards, 2000-01	1.45
10. Brett Weaver, 1993-94	1.47

introduction

coaches

team

'05 season

history

this is sdsu

SDSU MEN'S SOCCER

AZTEC HONORS

Hermann Trophy Finalists

- 1987 Chris Keenan
- 1988 Marcelo Balboa
Kyle Whittemore
- 1989 Marcelo Balboa

All-Americans

- 1969 Pete Goossens First Team
- 1976 Alan Kelly Second Team
- 1977 Alan Kelly First Team
- 1981 Kevin Crow Second Team
- 1982 Kevin Crow Third Team
- 1987 Kyle Whittemore Second Team
- 1988 Marcelo Balboa First Team
- 1989 Marcelo Balboa Second Team

All-Far West

- 1970 Glenn Campbell
- 1975 Steve Robertson
- 1978 Vidal Fernandez
- 1980 Micael Holmstedt
- 1981 Kevin Crow
Micael Holmstedt
- 1982 Kevin Crow
Cle Kooiman
Micael Holmstedt
- 1984 Steve Boardman
Kyle Whittemore
- 1985 Steve Boardman
- 1986 Steve Boardman
Curt Lewis
Kyle Whittemore
- 1987 Kyle Whittemore
Eric Wynalda
- 1988 Kyle Whittemore
Eric Wynalda
Jeff Betts
Marcelo Balboa
- 1989 Jeff Betts
Marcelo Balboa
- 1990 Brian Craft-Negrete
Pat Merrell
- 1991 Brian Craft-Negrete
Pat Merrell
Dain Deforest
- 1992 Bill Demke
- 1993 Bill Demke
- 1995 Aaron Susi
- 1996 Aaron Susi
- 2001 Enrique Tovar

All-Conference

Western Athletic Conference

- 1996 Aaron Susi All-WAC

Mountain Pacific Sports Federation

- 1992 Bill Demke
- 1993 Bill Demke
Jack Holt
- 1994 Jack Holt
Aaron Susi
- 1995 Aaron Susi
- 2000 Brian Barnes First Team-Pacific Division
Tyler Tinling Second Team-Pacific Division



Kevin Crow was a two-time all-Far West selection in 1981 and 1982.

- Enrique Tovar Second Team-Pacific Division
- 2001 Tim Edwards First Team
Enrique Tovar First Team
Ryan Cook Second Team
Kevin Sapanli Second Team
- 2002 Brian Barnes Second Team
Ryan Cook Honorable Mention
- 2003 Ryan Curtis Second Team
Kevin Sapanli Second Team
Heath Creager Honorable Mention
Kenny Fechner Honorable Mention
- 2004 Heath Creager Second Team
Colin Jennings Honorable Mention

Players of the Week

- Oct. 12, 1993 Juan Viveros MPSF
- Sept. 27, 1995 Aaron Susi MPSF
- Nov. 9, 1995 Aaron Susi MPSF
- Oct. 27, 1998 Darren Parker WAC
- Oct. 1, 2001 Enrique Tovar MPSF
- Nov. 19, 2001 Eric Wohl MPSF
- Oct. 26, 2003 Kevin Sapanli MPSF
- Nov. 14, 2004 Eric Wohl and Frank Caruso MPSF

Soccer America Top Ten

- 1987 Chris Keenan
- 1988 Marcelo Balboa

Freshman Honors

- 1987 Eric Wynalda Soccer America Top 10 Freshmen
- 1988 Jeff Betts Soccer America Top 10 Freshmen
- 2004 Freddy McDonald ... Top Drawer Freshman All-American

Academic All-Americans

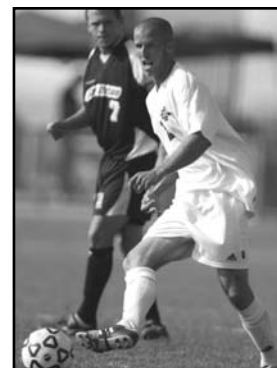
- 1981 Mark Stepovich Second Team
- 1982 Mark Stepovich First Team
- 1986 Kyle Whittemore Second Team
- 1987 Kyle Whittemore First Team
- 1988 Kyle Whittemore First Team
- 2002 Kevin Sapanli Third Team
- 2003 Kevin Sapanli Third Team

Academic All-Far West

- 2002 Brian Barnes
Abraham Martinez

MPSF All-Academic

- 1999 Abraham Martinez
Scott Schmid
Kyle Wiggs
- 2000 Travis Baker
Brian Barnes
Abraham Martinez
Tyler Tinling
Kyle Wiggs
- 2001 Abraham Martinez
Kevin Sapanli
Tyler Tinling
- 2002 Brian Barnes
Abraham Martinez
Chris Novak
Paul Szefer
Tyler Tinling



Ryan Curtis earned second team all-MPSF accolades in 2003.

introduction

coaches

team

'05 preview

history

this is sdsu

- 2003 Colin Hanke
Kevin Sapanli
Eric Wohl
- 2004 Tally Hall

WAC All-Academic

- 1997 John Browne
Christian Thiele
- 1998 Jon Browne
Tim Lebold
Scott Schmid

National Team Members

- 1974 Doug Spunaugle U.S. Under-23
- 1981 Kevin Crow National Sports Festival
- 1981 Roberto Santana Puerto Rico
- 1981 Steve Kim South Korean National B Team
- 1982 Cle Kooiman National Sports Festival
- 1983 Vidal Fernandez Team America
- 1984 Kevin Crow U.S. Olympic Team
- 1985 Kyle Whittemore National Sports Festival
- 1987 Marcelo Balboa U.S. National Team
- Chris Sullivan U.S. National Team
- 1988 Jeff Betts National Sports Festival
- Kevin Crow U.S. Olympic Team
- Eric Wynalda U.S. National B Team
- 1990 Marcelo Balboa U.S. National Team
- Jeff Betts National Sports Festival
- Chris Sullivan U.S. National Team
- Eric Wynalda U.S. National Team
- 1994 Marcelo Balboa U.S. National Team
- Cle Kooiman U.S. National Team
- David Quesada U.S. National Team
- Eric Wynalda U.S. National Team
- 1995 Curtis McAlister U.S. National Futsal Team
- 1997 Ted Chronopolous U.S. National Team
- 1998 Marcelo Balboa U.S. National Team
- Eric Wynalda U.S. National Team
- 2000 Enrique Tovar U.S. National Futsal Team
- 2002 Carlos Menjivar El Salvador National Team

World Cup Participants

- 1990 Marcelo Balboa
Chris Sullivan
Eric Wynalda
- 1994 Marcelo Balboa
Cle Kooiman
Eric Wynalda
- 1998 Marcelo Balboa
Eric Wynalda

National Soccer Hall of Fame

- 2004 Eric Wynalda
- 2005 Marcelo Balboa

Senior Bowl Participants

- 1972 Glenn Campbell
Choo Chowanda-Bandhu
- 1982 Kevin Crow
- 1986 Steve Boardman
- 1987 Chuck Clegg (West Head Coach)
Chris Keenan
- 1988 Kyle Whittemore (MVP)

Aztecs in the Pros (first signing)

- 1974 Charlie Delong Dallas Tornado
- Fernando Walker Los Angeles Aztecs
- Dean Wurzberger Seattle Sounders
- 1975 Sean McFadden San Diego Jaws
- Rich Reinecke Tacoma-ASL
- 1976 Mike Young S.B. Condors-ASL
- 1977 Alan Kelly Los Angeles Aztecs
- Steve Robertson San Diego Sockers
- 1978 Ward Macauley San Diego Sockers
- Jan Norby San Diego Sockers
- 1979 Vidal Fernandez New York Cosmos
- 1980 Gordon Dallas San Diego Sockers
- 1982 Vince Bucelli San Diego Sockers
- Kevin Crow San Diego Sockers
- Cle Kooiman Los Angelesazers
- Dida Mendes Cleveland Force
- 1983 Anders Erlandsson Swedish First Div.
- 1985 Keenan Mikal Ft. Lauderdale Strikers
- Jeff Rogers Dallas
- 1986 Steve Boardman Los Angelesazers
- Doug Neely Los Angelesazers
- 1987 Chris Keenan San Diego Sockers
- 1988 Felipe Hernandez San Diego Sockers
- 1989 Bryan Finnerty Detroit Rockers
- Chris Keenan Detroit Rockers
- 1990 Kyle Whittemore S.F. Blackhawks
- Eric Wynalda FC Saarbrucken-Germany
- 1991 Curtis McAlister La Raza-Mexico
- 1992 Jeff Betts Portland
- Dan Dalzochio San Diego Sockers
- Brian Craft-Negrete San Diego Sockers
- Shane Hickson Anaheim Splash
- 1993 Marcelo Balboa Leon-Mexico
- Tim Foster Minnesota Thunder
- 1994 Ryan Lau Hawaii Tsunami
- 1995 Bret Weaver California Jaguars
- Eric Wynalda FC Bochum-Germany
- 1996 Renato Capobianco T.B. Assistant Coach
- Ted Chronopolous New England Revolution
- 1997 Rene Miramontes Colorado Asst. Coach
- Aaron Susi Arizona Sandsharks
- 1998 Chris Sullivan San Jose Clash
- 2001 David Beltran San Diego Sockers
- Matt Hall San Diego Flash
- 2002 Carlos Menjivar FAS-El Salvador

Walsh Family Endowed Scholarship

- 2000 Milton Economy
- 2001 Tim Edwards
Enrique Tovar
- 2002 Brian Barnes
- 2003 Ryan Curtis
- 2004 Heath Creager
- 2005 Matt Couch



A four-time team captain, Milton Economy played for the Aztecs from 1997-2000 and was the team's leading scorer in 1999.

introduction

coaches

team

'05 season

history

this is sdsu

SDSU MEN'S SOCCER

AZTEC LETTERWINNERS

A

Aarnio, Johan - 1974-75
Abele, Steve - 1989
Adair, Chugger - 1989
Adams, Russ - 1996
Adamson, Peter - 1977
Albuquerque, Jevin -1990-91
Allen, Jason - 1992
Anderson, Daron - 1983
Arellano, Aaron - 1992
Arenas, Josh - 2003

B

Baardson, Steve - 1976-79
Baker, Travis - 1999-2002
Balboa, Marcelo - 1988-89
Barajas, Joe - 1971-72
Barnes, Brian - 1999-2002
Barr, Kevin - 1985
Bautista, Raul - 2002-03
Baxter, Jeff - 1992-95
Becerra, Charles - 1997
Beltran, David - 1996-99
Bengtsson, Henrik - 2000
Betts, Jeff - 1988-89
Blackbourne, Steve - 1982-84
Blubaugh, Rick - 1984
Boardman, Steve - 1983-86
Bodnar, Travis - 2003
Boyajian, Ryan - 1994-95
Boys, Josh - 2003
Bradbury, Michael - 1998
Brantuas, Joao - 1986
Brodnick, Bruce - 1983
Brown, Aerick - 1985
Browne, John - 1996-98
Bru, Chris - 1980-81
Bucelli, Greg - 1979-81
Bucelli, Vince - 1979, 81-82

C

Calori, Ronald - 1968
Campbell, Glenn - 1969-72
Cano, Juan - 1979-80
Capobianco, Renato - 1981-84
Caruso, Frank - 2004
Chavez, Jose - 1977-78
Chiles, Kraig - 2003
Chowanda-Bandhu, Choo - 1970-72
Chronopoulos, Ted - 1989
Cipolla, Greg - 1989-90
Clark, Don - 1973
Clark, Taylor - 1997
Clegg, Chuck - 1970, 74-76
Clemens, Nick - 2003-04
Cochrane, Bruce - 1981-83
Cohen, Sheldon - 1980-83
Cohn, Greg - 1993-94
Conrad, Jimmy - 1994-95
Cook, Ryan - 1998-99, 2001-02
Corr, Pat - 1977
Costello, Dennis - 1975-77
Cota, Arturo - 1969
Cota, Luis - 1969-70
Couch, Matt - 2002-04
Craft-Negrete, Brian - 1988-91
Creager, Heath - 2003-04
Crow, Kevin - 1979-82
Curtis, Ryan - 2000-03

D

Dahl, Kurt - 1972
Dallas, Gordon - 1977-80
Dally, David - 2004
Dalzochio, Dan - 1992
Dartt, Ralph - 1997-2000
Dasilva, Paul - 1974
Davis Steve - 1984
DeForest, Dain - 1989-90
DeLong, Charles - 1968-71
Demke, Bill - 1990-93
Derosa, Marcello - 1968
Diaz, Robbie - 2003-04
DiCicco, Andrew - 2003-04
Dietz, Adam - 1998
Drabb, Eric - 1984-87
Drago, Darren - 1996
Drago, Derek - 1996
Dullaghan, Joe - 1996-97, 99
Dye, Richard - 1968

E

Early, Chaplin - 1999
Economy, Milton - 1997-2000
Edwards, Tim - 2000-01
Ekenberg, Nathan - 1999
Eisele, John - 1968-69
Endsley, Mike - 1976
Escobar, Dave - 1981-82
Erlandsson, Anders - 1981
Escobosa, Alberto - 1978
Esparza, Rafa - 1979
Ettl, Fritz - 1997

F

Farnsworth, Chris - 1998
Fechner, Kenny - 2003-04
Fernandez, Alex - 1978
Fernandez, Marvin - 1976
Fernandez, Vidal - 1977-79
Fett, Gabe - 2002
Fielder, Alan - 1999-2000
Finnerty, Brian - 1987-89
Flores, Eduardo - 1973
Fonseca, Kirk - 1999
Foster, Tim - 1987-88, 91-92
Foster, Tom - 1996
Francis, Mike - 1994
Franklin, Willie - 1991-94
French, Jason - 1989-90
Frimkess, Aaron - 2001

G

Garcia, Julian - 1968
Garcia, Miguel - 1983
Gardner, Gale - 1968
Garnica, Ignacio - 1977
Garretson, John - 1983
Gaske, P.J. - 1997
Geary, Lee - 1980
Geenan, John - 1977-78
George, Chris - 1992-93
Gill, John - 1972-75
Gillett, Jeff - 1971
Gilson, John - 1985
Gisslow, Pete - 1974-76
Giudicelli, Chris - 2001
Goff, Robi - 1988
Gonzalez, Jesus - 1969
Gonzalez, Oscar - 1969-71
Goossens, Jack - 1968-70

Goossens, Peter - 1969-72
Goossens, Robert - 1970-71
Gotvald, Dan - 1998-99
Goudey, Steve - 1986
Guillot, Steve - 1984-85
Gunn, Ken - 1986

H

Hall, Matt - 1996-98
Hall, Tally - 2003-04
Hanano, Ezra - 1970
Hanke, Colin - 2002-03
Hawa, Raja - 1997
Hawkins, Chuck - 1979-80
Henderson, Pat - 1984-87
Hernandez, Felipe - 1986-87
Heyer, Dennis - 1969
Hesse, Steve - 1991
Hickson, Shane - 1990
Hidalgo, Milton - 1981-82
Holmstedt, Micael - 1979-82
Holt, Jack - 1992-94
Homan, Tim - 1985-86
Hull, Chris - 1978
Hulse, John - 1977-79

I

Ish, Mark - 1994, 96
Iversen, Rick - 1987
Ivkovich, Ryan - 1999-2000
Ingrassia, Mauricio - 1989-90

J

Jackson, Colby - 1995-96
James, Aaron - 1990-93
Jarvis, Aaron - 1990-92
Jauch, Kevin - 1988, 90
Jennings, Colin - 2003-04
Jimenez, Gerardo - 1987
Johur, John - 1979, 81-82

K

Kangas, Erik - 1994
Kaplan, Greg - 2001
Kazan, Craig - 1979-82
Keenan, Chris - 1987
Kelley, Jose - 1976
Kelly, Alan - 1974-77
Kepper, Jeff - 1980-83
Kersker, Mike - 1993-94
Kim, Ricky - 1994-95
Kim, Steve - 1981-82
Klaass, Pete - 1986-87
Klotovich, Mike - 2000
Kooiman, Cle - 1981-82
Kulpa, Adam - 2001-02
Kuntz, Tom - 1985
Kupritz, Garth - 1982-85

L

Lacher, Scott - 1987-88
LaFond, Dan - 1991
Larsen, Kris - 1994-95
Lasby, Brett - 1999-2000
Lau, Ryan - 1993
Lebold, Tim - 1997-2000
Lederer, Don - 1968-70
Leitner, Jeff - 1997-99
Lewis, Curt - 1986-87
Lim, Ricky - 1968

introduction

coaches

team

'05 season

history

this is sdsu

Limahelu, Al - 1970-71
 Linenberger, Dave - 1979-82
 Lyon, Boyd - 1991-92

M

Macauley, Ward - 1976-78
 Mandle, Scott - 1984
 Marchosky, Ruben - 1968-70
 Margeson, Mike - 1994-95
 Martinez, Abraham - 1999-2002
 Mason, Jay - 1979-80
 Maurer, Eric - 1996
 Maxwell, Steve - 1983
 McAlister, Curtis - 1988-90
 McArdle, Colter - 2004
 McDonald, Freddy - 2004
 McDowell, Jim - 1971-73
 McFadden, Seamus - 1974-76
 McKee, Jordan - 2003-04
 McGuckin, Scott - 1995-97
 McGuire, Tim - 1981
 Meek, Trey - 2004
 Mendes, Dida - 1979-82
 Menjivar, Carlos - 2000
 Mercuriali, Mike - 2003-04
 Merrell, Patrick - 1989-90
 Mikal, Keenan - 1984-85
 Milburn, Brian - 1997
 Miller, Bill - 1969-72
 Miramontes, Rene - 1976-77, 79-80
 Montes, Hector - 1972-75
 Morlett, Gary - 1974
 Morrone, Andy - 1989-92

N

Natale, Nick - 2001-02
 Neely, Doug - 1983-84
 Neville, Rob - 1981-82
 Niyati, Steve - 1994-95
 Norby, Jan - 1975-78
 Norgan, Adam - 1993
 Novak, Chris - 2000-02
 Nunnally, Paul - 1994-95

O

Oakes, Randy - 1977-78
 Oberkirch, Luke - 1984-85
 Ochoa, Shawn - 1996-98
 Oliveira, Ruben - 1992-93
 Olson, Jim - 1971
 Overweg, Ray - 1979
 Owens, Jack - 1968

P

Palacios, Jorge - 1970
 Papke, Bob - 1969
 Paquette, Nathan - 1997
 Parker, Darren - 1995, 98-99
 Parker, Keg - 1993
 Parker, Tim - 1986-88
 Parra, Robert - 1981
 Pater, Daryl - 1983-85
 Paullo, Fortunato - 1995
 Perez, Jose - 1993-96
 Perry, Blake - 2002-04
 Perry, E.T. - 1997-2000
 Peterson, Ron - 1986
 Pickett, Derek - 2002
 Picone, Drew - 2001-02
 Pipe, Keeble - 1975-76

Plemons, Bill - 1968-70
 Polios, Nick - 1968-69
 Povey, Jon - 2000-01
 Powell, Chris - 1992-94

Q

Quesada, David - 1990-91

R

Ratajczak, Jeff - 1982-83
 Reinecke, Gary - 1978-79
 Reinecke, Richard - 1973-76
 Reinecke, Roger - 1977
 Rhodes, Rich - 1975
 Rich, Chris - 1992-93
 Riley, Bill - 1997
 Robertson, Dave - 1983
 Robertson, Steve - 1974-76
 Roche, Bob - 1987-88
 Rodriguez, Jesus - 1988
 Rodriguez, Marco - 1969-70
 Rodriguez, Oscar - 1998-99
 Rodriguez, Ricardo - 1971, 73
 Rogondino, Mark - 1996
 Rogers, Jeff - 1983
 Rouse, Mark - 1975-76
 Ruff, Ken - 1968-71
 Ryder, Jeff - 1983-86

S

Sager, Paul - 1975-76, 78
 Sainz, Carlos - 1976-78
 Samuelsson, Tommy - 80-81
 San-Martin, Jim - 1992
 Sanchez, Gilbert - 1980-82
 Sanchez, Luis - 1997
 Sanchez, Michael - 2001
 SantaMaria, Juan - 1988-90
 Santana, Roberto - 1982
 Santiago, Eric - 2004
 Sapanli, Kevin - 2001-03
 Schmid, Scott - 1997-99
 Scott, Dione - 2003-04
 Scott, Geoff - 1998-99
 Shutt, Greg - 1983
 Silva, Ronnie - 2000
 Slesnick, Nate - 2002-03
 Smith, Joe - 1973
 Smith, Kyle - 1996
 Snyder, Steve - 1982-85
 Soler, Mauricio - 2001
 Solomon, Adam - 1995-96
 Somersalmi, Lauri - 1972-73, 75-76
 Sproule, Chris - 1996
 Sproveiro, Bryan - 1998
 Spunaugle, Doug - 1974-75
 Steinreichter, Dieter - 1969
 Stephens, Chris - 1989-92
 Stepovich, Mark - 1979-82
 Stewart, Dennis - 1968
 Storey, Shannon - 1991-92
 Strait, Pat - 2001-02
 Stumpf, Paul - 1985-86
 Sullivan, Chris - 1983-84
 Susi, Aaron - 1993-96
 Svensson, Bengt-Olaf - 1982
 Sweet, Mark - 1988
 Szeffler, Paul - 2001-02

T

Taylor, Ken - 1986-89
 Thiele, Christian - 1997
 Thompson, Ryan - 1995
 Tinling, Tyler - 1997, 2000-02
 Tollerton, Jim - 1969-71
 Tollerton, Pete - 1972
 Tomlin, Dan - 1993-95
 Tonne, Ted - 1983
 Tovar, Enrique - 2000-01
 Tovey, Malcom - 1978
 Trakas, Andy - 1993
 Tweedie, Tom - 1975-76
 Tyburski, Mike - 1971

U

Union, Eric - 1980
 Uyellet, Dennis - 1968

V

Van Bloemenwaanders, Bart - 1977, 79
 Van Der Wall, Willem - 69-70
 Van Zee, Gerald - 1977
 Van Zee, Jimmy - 1976-79
 Vasquez, Juan - 1996
 Vasquez, Miguel - 1973
 Velasco, Juan - 1997
 Viveros, Juan - 1993
 Volk, Chris - 1989-91

W

Wacker, Ted - 1983-86
 Wale, Jeff - 1990
 Walker, Fernando - 1971-73
 Walsh, Brad - 1986-89
 Watson, Darren - 1995-96
 Weaver, Bret - 1993-94
 Wells, John - 1972-73
 Whiddon, John - 1972
 Whittemore, Kyle - 1984, 86-88
 Whitton, Jeff - 2000-03
 Wiggs, Kyle - 1998
 Wilcox, Garry - 1984-85
 Wilhelm, George - 1971
 Williams, Bob - 1971
 Williams, Matt - 1999
 Wingate, John - 1984
 Wohl, Eric - 2001-04
 Wollrabe, Jeff - 1976, 78-80
 Wurzberger, Dean - 1971-74
 Wynalda, Eric - 1987-89

Y

Yamada, Kobi - 1986-87, 89-90
 Young, Mike - 1974-76
 Younger, Lance - 1973

Z

Zarick, John - 1999
 Zarlengo, Alfie - 1988
 Zeidell, Marshall - 1968-69
 Zenjeddas, Luis - 1974
 Zoric, Anthony - 2001-02

introduction

coaches

team

'05 season

history

this is sdsu