

AZTEC HISTORY AND RECORDS



Tally Hall was a 2007 semifinalist for the M.A.C. Hermann Award, given annually to the top player in collegiate soccer. Hall would later be named an All-American and a Scholar All-American, just the second Aztec

HISTORY AND RECORDS

| | |
|---------------------------|-------|
| All-Time Results | 46-48 |
| All-Time Letterwinners | 49 |
| Aztec Soccer Year-by-Year | 50-51 |
| Aztec Tradition | 52 |
| Aztec All-Americans | 53 |
| Aztec Honors | 54-55 |
| Aztec Records | 56 |

AZTEC SOCCER

ALL-TIME RESULTS

INTRODUCTION

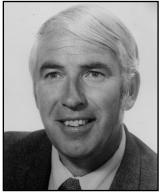
REVIEW

COACHING STAFF

PLAYERS

THIS IS SDSU

HISTORY/RECORDS



George Logan

1968-81
14 Seasons
Record: 148-48-17

► 1968 • 6-2-0

| | | |
|---------------------|---|-----|
| at UC San Diego | W | 5-1 |
| UC San Diego | W | 5-0 |
| CETYS | W | 3-0 |
| at Long Beach State | W | 4-3 |
| at CETYS | L | 3-8 |
| CS Fullerton | W | 3-0 |
| Long Beach State | W | 5-0 |
| Corinthian SC | L | 1-9 |

► 1969 • 9-1-1; NCAAs

| | | |
|---------------------|------|-----|
| at Cal Poly Pomona | L | 1-2 |
| at UC San Diego | W | 5-0 |
| Long Beach State | W | 5-3 |
| CS Los Angeles | W | 5-3 |
| Cal Poly Pomona | W | 5-1 |
| UC San Diego | W | 6-1 |
| at Long Beach State | W | 3-2 |
| + vs. CS Fullerton | W-ot | 2-1 |
| + vs. UCLA | W-ot | 2-1 |
| * San Francisco | T-ot | 2-2 |
| Westmont | W | 2-1 |

+ - NCAA qualifying game at Pacific. * - NCAA Tournament (USF advances on corners).

► 1970 • 8-1-1

| | | |
|--------------------|---|-----|
| UC San Diego | W | 6-0 |
| CETYS | W | 9-2 |
| UC Riverside | W | 7-0 |
| at Cal Poly Pomona | W | 2-1 |
| CS Fullerton | W | 3-0 |
| at Westmont | L | 1-2 |
| Cal Poly Pomona | W | 3-2 |
| at Biola | T | 2-2 |
| Chapman | W | 3-0 |
| U.S. International | W | 9-0 |

► 1971 • 10-3-1

| | | |
|---------------------------|---|------|
| + vs. San Francisco State | L | 0-1 |
| + vs. Pacific | W | 2-1 |
| + vs. CS Los Angeles | W | 1-0 |
| U.S. International | W | 10-0 |
| UCLA | L | 3-5 |
| Camp Pendleton | W | 8-1 |
| Biola | W | 1-0 |
| UC San Diego | W | 6-1 |
| Westmont | W | 1-0 |
| at CETYS | T | 1-1 |
| SD Rep. XI Club | W | 4-1 |
| at CS Fullerton | W | 3-2 |
| Long Beach State | W | 4-1 |
| * at San Jose State | L | 1-2 |

+ - PCAA Invitational Tournament at San Jose State. * - Pacific Coast Athletic Association tournament.

► 1972 • 6-4-1

| | | |
|---------------------|------|-----|
| Whittier | W | 4-1 |
| at UCLA | L | 0-4 |
| CS Fullerton | L | 1-3 |
| at Fresno State | L | 0-2 |
| at Westmont | L-ot | 2-3 |
| CETYS (forfeit) | W | 1-0 |
| at Biola | T-ot | 4-4 |
| Southern California | W | 5-0 |
| UC Riverside | W | 3-1 |
| U.S. International | W | 5-2 |
| UC San Diego | W | 8-0 |

► 1973 • 11-6-3

| | | |
|------------------------|---|------|
| Arizona State | W | 12-0 |
| at Loyola Marymount | W | 9-1 |
| at CS Fullerton | T | 1-1 |
| Whittier | W | 6-1 |
| CS Fullerton | L | 0-2 |
| Biola | W | 3-1 |
| + Univ. of Guadalajara | L | 1-4 |
| + Free Univ. of Berlin | L | 1-2 |
| # vs. Texas | W | 1-0 |

| | | |
|------------------------|------|-----|
| # vs. Brigham Young | W | 4-0 |
| # at Chico State | L | 1-2 |
| UC San Diego | L | 3-4 |
| Westmont | T-ot | 2-2 |
| at UC Santa Barbara | W | 4-1 |
| CETYS | W | 7-1 |
| Fresno State | W | 2-1 |
| at Southern California | W | 1-0 |
| at UC Riverside | T-ot | 2-2 |
| U.S. International | W | 2-1 |
| UCLA | L | 1-5 |

+ - Aztec Invitational at SDSU. # - Chico State Invitational.

► 1974 • 10-1-2

| | | |
|---------------------|------|-----|
| Arizona | W | 6-3 |
| CS Fullerton | L | 2-3 |
| UC Riverside | W | 3-0 |
| + California | W | 3-1 |
| + UC San Diego | W | 2-1 |
| Westmont | T-ot | 0-0 |
| at Biola | W | 4-0 |
| Southern California | W | 3-2 |
| at UNLV | W | 4-0 |
| U.S. International | W | 2-1 |
| Pepperdine | W | 5-1 |
| at Fresno State | W | 3-0 |
| at UCLA | T-ot | 2-2 |

+ - Aztec Invitational at SDSU.

► 1975 • 10-4-1

| | | |
|-------------------------|------|------|
| + vs. UC San Diego | W | 9-1 |
| + at U.S. International | L | 1-4 |
| UC San Diego | W | 3-2 |
| Fresno State | W | 2-1 |
| So. California College | W | 4-0 |
| U.S. International | W | 5-0 |
| at San Jose State | L | 1-3 |
| at California | L | 2-3 |
| Biola | W | 4-0 |
| UNLV | W | 4-1 |
| at CS Fullerton | W | 3-2 |
| at UC Riverside | W | 10-2 |
| at Southern California | W | 4-1 |
| at Westmont | L | 1-2 |
| UCLA | T-ot | 3-3 |

+ - USIU Invitational.

► 1976 • 10-5-1

| | | |
|---------------------------|------|-----|
| Whittier | W | 5-2 |
| + vs. San Francisco State | W | 5-0 |
| + at U.S. International | W | 3-2 |
| Point Loma Nazarene | W | 6-1 |
| at UC Santa Barbara | L | 1-3 |
| UC San Diego | W | 3-2 |
| CS Fullerton | W | 2-0 |
| Santa Clara | L | 0-1 |
| Westmont | W | 2-0 |
| at Stanford | W | 2-1 |
| at San Francisco | L | 1-4 |
| at UCLA | L-ot | 1-2 |
| Chapman | W | 4-0 |
| at Biola | T-ot | 1-1 |
| Southern California | W | 2-1 |
| California | L | 1-4 |

+ - USIU Invitational.

► 1977 • 13-4-1

| | | |
|-------------------------|------|-----|
| at Westmont | W | 1-0 |
| at Chapman | W | 7-1 |
| Chico State | T-ot | 1-1 |
| + at U.S. International | W | 4-2 |
| + vs. Long Beach State | W | 5-0 |
| at UC San Diego | W | 3-1 |
| at Southern California | L | 1-2 |
| Biola | W | 5-0 |
| at California | W | 3-2 |
| at Santa Clara | W | 1-0 |
| at UNLV | W | 3-1 |
| Point Loma Nazarene | W | 7-0 |
| San Francisco | L | 0-1 |
| UC Santa Barbara | L | 1-2 |
| at CS Fullerton | W | 4-1 |
| U.S. International | W | 3-0 |
| Stanford | W | 1-0 |
| UCLA | L | 0-1 |

+ - USIU Invitational.

► 1978 • 13-7-0

| | | |
|---------------------------|------|-----|
| Chapman | W | 4-2 |
| Santa Clara | L-ot | 1-1 |
| Southern California | W | 3-2 |
| Westmont | W-ot | 3-2 |
| + vs. Southern California | W | 3-1 |
| + at U.S. International | L | 0-1 |
| at Point Loma Nazarene | W | 7-0 |
| at UNLV | L | 0-3 |
| at Azusa Pacific | L | 0-1 |
| U.S. International | W-ot | 2-0 |
| Simon Fraser | W | 2-1 |
| at UC Santa Barbara | W | 2-0 |
| CS Fullerton | W | 1-0 |
| UC San Diego | W | 4-0 |
| California | L | 0-3 |
| Colorado College | W | 3-1 |
| at UCLA | L | 0-2 |
| at San Francisco | L | 0-2 |
| at CS Hayward | W | 3-1 |
| at CS Los Angeles | W | 3-0 |

+ - USIU Invitational.

► 1979 • 14-3-2

| | | |
|-------------------------|------|-----|
| Pomona Pitzer | W | 4-0 |
| CS Los Angeles | W | 3-2 |
| at Westmont | W | 3-2 |
| at UC San Diego | W | 3-0 |
| at Southern California | W | 2-1 |
| Point Loma Nazarene | W | 9-0 |
| Midwestern | W | 3-0 |
| + vs. Brigham Young | W | 6-1 |
| + at U.S. International | W | 2-1 |
| Azusa Pacific | W | 6-0 |
| UNLV | W | 4-0 |
| CS Hayward | T-ot | 2-2 |
| UCLA | L | 1-2 |
| at Santa Clara | L | 0-1 |
| at California | W | 6-1 |
| at CS Fullerton | L | 0-1 |
| UC Santa Barbara | W | 2-1 |
| at Biola | W | 3-1 |
| U.S. International | T-ot | 1-1 |

+ - USIU Invitational.

► 1980 • 12-4-2

| | | |
|------------------------|------|-----|
| at San Diego | W | 5-0 |
| at CS Los Angeles | W | 5-0 |
| at UCLA | L | 0-2 |
| at UC Santa Barbara | W | 2-0 |
| Simon Fraser | T-ot | 3-3 |
| San Jose State | W | 3-0 |
| California | W | 5-3 |
| at Azusa Pacific | L-ot | 2-3 |
| CS Fullerton | L | 2-4 |
| at UNLV | W | 4-0 |
| Biola | T-ot | 0-0 |
| at Point Loma Nazarene | W | 4-0 |
| Santa Clara | W | 2-1 |
| San Francisco | L | 1-2 |
| U.S. International | W | 2-0 |
| Southern California | W | 4-1 |
| Westmont | W | 4-0 |
| UC San Diego | W | 4-0 |

► 1981 • 16-3-1; NCAAs

| | | |
|----------------------|------|-----|
| at Loyola Marymount | W | 9-0 |
| at UC San Diego | W | 3-1 |
| at California | L | 0-2 |
| at San Jose State | W-ot | 3-2 |
| Fresno State | W | 2-1 |
| UC Santa Barbara | W | 3-0 |
| Point Loma Nazarene | W | 6-0 |
| Long Beach State | W | 5-2 |
| at Westmont | W | 2-1 |
| at San Francisco | W-ot | 2-0 |
| at Santa Clara | L | 1-3 |
| San Diego | W | 4-1 |
| Brigham Young | W | 7-0 |
| UCLA | T-ot | 0-0 |
| U.S. International | W | 3-0 |
| UNLV | W | 6-2 |
| CS Los Angeles | L | 0-1 |
| at CS Fullerton | W | 2-1 |
| * at California | W | 4-0 |
| * # at San Francisco | W-ot | 2-1 |

* - NCAA tournament. # - SDSU advances on penalty kicks. SDSU's participation in the NCAA tournament was later vacated.



Chuck Clegg

1982-1999
18 Seasons
Record: 194-134-39

► 1982 • 20-3-0; NCAAs

| | | |
|-----------------------------|---|-----|
| Wisconsin-Green Bay | W | 4-1 |
| at Brigham Young | W | 2-1 |
| at UNLV | W | 2-1 |
| Westmont | W | 9-0 |
| Seattle Pacific | W | 2-0 |
| at San Francisco | W | 2-0 |
| UC San Diego | W | 3-0 |
| Santa Clara | W | 1-0 |
| Portland | W | 1-0 |
| at San Diego | W | 4-1 |
| California | W | 1-0 |
| at Fresno State | L | 0-1 |
| at UCLA | L | 1-4 |
| Biola | W | 2-1 |
| at Long Beach State | W | 5-2 |
| + vs. Air Force | W | 2-1 |
| Loyola Marymount | W | 4-0 |
| at CS Los Angeles (forfeit) | W | 1-0 |
| CS Fullerton | W | 1-0 |
| at UC Santa Barbara | W | 4-2 |
| at U.S. International | W | 2-1 |
| * Fresno State | W | 1-0 |
| * San Francisco | L | 0-2 |

+ - Played at Westmont College. * - NCAA Tournament

► 1983 • 9-9-4

| | | |
|------------------------------|------|------|
| S.1 UC San Diego | W | 2-1 |
| S.4 + vs. Fla. International | L | 1-3 |
| S.5 + vs. Washington | L | 0-2 |
| S.14 at Biola | W | 3-0 |
| S.17 at Westmont | T-ot | 1-1 |
| S.23 UCLA | L | 0-3 |
| S.25 at Loyola Marymount | W | 13-0 |
| S.28 Brigham Young | W | 5-0 |
| S.30 at Pacific | W | 4-0 |
| O.1 at St. Mary's | W | 2-1 |
| O.3 at Stanford | L | 2-4 |
| O.12 San Diego | W | 1-0 |
| O.14 San Francisco | L | 1-2 |
| O.18 at Long Beach State | T-ot | 0-0 |
| O.21 at Santa Clara | L | 0-1 |
| O.23 at California | L-ot | 0-1 |
| O.26 UC Santa Barbara | T-ot | 3-3 |
| O.30 at CS Fullerton | T-ot | 0-0 |
| N.2 UNLV | L | 1-4 |
| N.4 CS Los Angeles | W | 2-0 |
| N.9 Fresno State | L | 0-2 |
| N.11 U.S. International | W | 1-0 |

+ - Fresno State Goal Rush Classic

► 1984 • 14-6-0

| | | |
|--------------------------|------|------|
| S.1 vs. Indiana | L | 1-2 |
| S.2 vs. San Jose State | W-ot | 2-1 |
| S.7 Loyola Marymount | W | 6-2 |
| S.12 Biola | W | 1-0 |
| S.15 at Westmont | W | 2-1 |
| S.21 at Pacific | W | 3-1 |
| S.23 Santa Clara | L | 2-3 |
| S.26 at San Diego | W | 1-0 |
| S.30 at UCLA | L | 0-1 |
| O.5 at San Francisco | L | 1-3 |
| O.6 at Sonoma State | W | 3-1 |
| O.13 at Fresno State | W | 2-1 |
| O.14 at CS Bakersfield | W | 13-0 |
| O.16 at CS Los Angeles | L | 0-2 |
| O.19 St. Mary's | W | 2-0 |
| O.21 California | W | 2-1 |
| O.27 at UC Santa Barbara | W | 4-1 |
| O.31 CS Fullerton | W | 3-0 |
| N.7 Long Beach State | W | 3-0 |
| N.9 at UNLV | L | 1-3 |

► 1985 • 8-8-4

| | | |
|---------------------------|------|-----|
| S.1 + vs. North Texas St. | L | 0-4 |
| S.2 + at New Mexico | W-ot | 3-2 |
| S.8 Cal Poly SLO | T-ot | 0-0 |



AZTEC SOCCER

ALL-TIME RESULTS

| | | | |
|------|-----------------------|------|-----|
| S.13 | # vs. CS Northridge | L | 2-3 |
| S.14 | # vs. Bowling Green | W | 2-0 |
| S.20 | at California | L | 0-1 |
| S.22 | at Santa Clara | T-ot | 1-1 |
| S.27 | Fresno State | W | 1-0 |
| O.2 | at CS Los Angeles | L | 0-1 |
| O.6 | San Francisco | L-ot | 3-4 |
| O.9 | at UC Irvine | W | 1-0 |
| O.16 | Westmont | W | 4-0 |
| O.18 | UNLV | T-ot | 1-1 |
| O.20 | at Loyola Marymount | W | 4-1 |
| O.23 | UC Santa Barbara | W | 2-0 |
| O.25 | UCLA | L | 1-2 |
| O.30 | at CS Fullerton | L | 0-1 |
| N.4 | CS Dominguez Hills | T-ot | 0-0 |
| N.6 | San Diego | W | 1-0 |
| N.9 | at U.S. International | L | 0-3 |

+ - New Mexico Invitational. # - UNLV Rebel Roundup.

▶ 1986 • 14-3-4

| | | | |
|------|-----------------------|------|-----|
| A.30 | CS Fullerton | W | 6-1 |
| S.6 | + vs. Washington | W | 3-2 |
| S.7 | + at Portland | W | 3-2 |
| S.10 | at Pacific Lutheran | W | 3-0 |
| S.13 | Stanford | W | 3-1 |
| S.17 | at Fresno State | L | 1-3 |
| S.21 | at CS Dominguez Hills | W | 2-0 |
| S.26 | Santa Clara | W | 1-0 |
| O.3 | CS Northridge | L | 2-4 |
| O.5 | at UC Santa Barbara | W | 4-1 |
| O.8 | UC Irvine | W | 5-0 |
| O.11 | New Mexico | W | 1-0 |
| O.12 | at UNLV | T-ot | 1-1 |
| O.19 | at UCLA | T-ot | 1-1 |
| O.24 | CS Los Angeles | T-ot | 1-1 |
| O.27 | at San Diego | T-ot | 3-3 |
| O.29 | U.S. International | W | 3-0 |
| O.31 | Saint Mary's | W | 3-0 |
| N.5 | Loyola Marymount | W | 8-0 |
| N.8 | # vs. SMU | W | 3-0 |
| N.9 | # vs. Wisc.-Milwaukee | L-ot | 1-2 |

+ - Cosmopolitan Tournament at Portland. # - UNLV Coors Invitational.

▶ 1987 • 20-6-0; NCAAs

| | | | |
|------|-------------------|---------|-----|
| S.1 | Cal Poly SLO | W | 2-0 |
| S.5 | at CS Northridge | L-ot | 2-3 |
| S.7 | California | W | 3-0 |
| S.11 | at CS Fullerton | L | 2-3 |
| S.13 | Chapman | W | 4-0 |
| S.15 | Pt. Loma Nazarene | W | 4-0 |
| S.18 | UNLV | W | 2-0 |
| S.23 | UC Santa Barbara | W | 2-0 |
| S.25 | at San Francisco | L | 1-2 |
| S.27 | at Santa Clara | W | 1-0 |
| S.29 | Portland | W | 3-2 |
| O.7 | San Diego | W | 2-0 |
| O.9 | at CS Los Angeles | W | 4-0 |
| O.10 | CS San Bernardino | W | 2-0 |
| O.18 | at UC Irvine | W | 3-1 |
| O.23 | at Stanford | W | 4-0 |
| O.25 | at Saint Mary's | W | 6-1 |
| O.31 | + vs. Indiana | L | 2-3 |
| N.1 | + vs. Notre Dame | W | 1-0 |
| N.4 | UCLA | L | 1-3 |
| N.7 | Loyola Marymount | W | 4-0 |
| N.15 | * at St. Louis | W | 2-1 |
| N.21 | * at SMU | W-ot/pk | 2-1 |
| N.29 | * at UCLA | W | 2-1 |
| D.5 | # vs. Harvard | W-ot/pk | 2-1 |
| D.6 | # & at Clemson | L | 0-2 |

+ - Met Life Classic at UCLA. * - NCAA Tournament. # - NCAA Final Four at Clemson. & - National championship game.

▶ 1988 • 15-3-4; NCAAs

| | | | |
|------|---------------------|------|-----|
| S.1 | Master's College | W | 3-0 |
| S.5 | Fresno State | W | 2-1 |
| S.7 | UC Irvine | W | 1-0 |
| S.9 | at UC Santa Barbara | W | 3-2 |
| S.12 | CS Fullerton | W | 2-0 |
| S.16 | at UNLV | L | 0-1 |
| S.20 | CS Dominguez Hills | W | 3-0 |
| S.23 | + at SMU | T-ot | 1-1 |
| S.24 | + vs. Old Dominion | W | 1-0 |
| S.28 | Cal Poly SLO | W | 3-1 |
| O.2 | CS Northridge | W | 1-0 |
| O.5 | at San Diego | W | 6-0 |
| O.12 | CS Los Angeles | L | 0-1 |

| | | | |
|------|----------------------|------|------|
| O.14 | CS San Bernardino | W | 3-0 |
| O.16 | Saint Mary's | W | 2-0 |
| O.22 | # vs. South Carolina | T-ot | 0-0 |
| O.23 | # vs. Navy | W | 2-0 |
| O.26 | at Chapman | W | 2-0 |
| O.30 | Santa Clara | T-ot | 0-0 |
| N.4 | Loyola Marymount | W | 12-0 |
| N.6 | at UCLA | T-ot | 1-1 |
| N.13 | * at UCLA | L | 1-2 |

+ - Letterman's Classic at SMU. # - Met Life Classic at UCLA. * - NCAA Tournament.

▶ 1989 • 14-5-3; NCAAs

| | | | |
|------|-----------------------|---------|-----|
| S.3 | at CS Dominguez Hills | W | 2-0 |
| S.8 | at UC Irvine | W | 1-0 |
| S.10 | Cal Poly SLO | T-ot | 2-2 |
| S.12 | UC Davis | W | 3-1 |
| S.15 | UNLV | W | 4-0 |
| S.17 | at CS Fullerton | L | 0-1 |
| S.22 | at Saint Mary's | L | 0-2 |
| S.24 | at Santa Clara | L | 2-3 |
| S.29 | + vs. North Texas St. | W | 3-0 |
| S.30 | + at SMU | W | 2-1 |
| O.6 | at Stanford | W | 2-0 |
| O.8 | at California | W | 2-0 |
| O.11 | UCLA | W-ot | 3-2 |
| O.15 | at CS San Bernardino | W | 5-0 |
| O.17 | San Diego | T-ot | 1-1 |
| O.20 | # vs. Rutgers | L | 1-2 |
| O.22 | # vs. Wisc.-Green Bay | W | 6-0 |
| O.27 | San Francisco | W | 3-0 |
| O.29 | Chapman | W | 4-1 |
| N.1 | at CS Northridge | T-ot | 0-0 |
| N.5 | UC Santa Barbara | W | 1-0 |
| N.12 | * UCLA | L-ot/pk | 1-2 |

+ - Letterman's Classic at SMU. # - Met Life Classic at UCLA. * - NCAA Tournament.

▶ 1990 • 11-6-3

| | | | |
|------|-----------------------|------|-----|
| S.1 | at CS Dominguez Hills | W | 1-0 |
| S.3 | CS San Bernardino | W | 2-1 |
| S.7 | + vs. South Alabama | W | 3-1 |
| S.8 | + at UNLV | L | 2-3 |
| S.11 | at UC Irvine | W-ot | 4-2 |
| S.14 | CS Northridge | W-ot | 1-0 |
| S.16 | Washington | L-ot | 1-2 |
| S.21 | Cal Poly SLO | W | 2-0 |
| S.23 | at Fresno State | L | 0-1 |
| S.28 | at Stanford | T-ot | 2-2 |
| S.30 | at California | L | 0-2 |
| O.3 | Biola | W | 4-0 |
| O.9 | Master's College | T-ot | 0-0 |
| O.12 | CS Bakersfield | W | 2-0 |
| O.14 | Pennsylvania | L | 0-2 |
| O.19 | # vs. Wake Forest | L-ot | 2-3 |
| O.21 | # vs. Air Force | W | 1-0 |
| O.26 | Saint Mary's | W | 1-0 |
| O.28 | Santa Clara | W | 1-0 |
| N.4 | at UCLA | T-ot | 1-1 |

+ - UNLV Invitational. # - Met Life Classic at UCLA.

▶ 1991 • 10-4-4

| | | | |
|------|----------------------|------|-----|
| A.30 | at CS San Bernardino | W-ot | 3-1 |
| S.8 | San Jose State | W | 3-1 |
| S.10 | Cal Lutheran | W | 2-1 |
| S.14 | at San Diego | W | 1-0 |
| S.18 | Cal Poly SLO | W | 3-1 |
| S.21 | CS Dominguez Hills | W | 6-0 |
| S.27 | at Saint Mary's | W | 1-0 |
| S.29 | at Santa Clara | L | 1-2 |
| O.5 | at St. Louis | T-ot | 0-0 |
| O.11 | Grand Canyon | W | 4-3 |
| O.13 | at UC Santa Barbara | T-ot | 1-1 |
| O.16 | UC Irvine | W | 3-0 |
| O.20 | CS Bakersfield | W | 3-0 |
| O.25 | California | T-ot | 1-1 |
| O.27 | Stanford | T-ot | 2-2 |
| O.30 | UCLA | L | 1-4 |
| N.3 | CS Northridge | L | 0-2 |
| N.10 | UNLV | L | 0-2 |

▶ 1992 • 10-8-1; 3-4-0 MPSF

| | | | |
|------|-------------------|------|-----|
| S.7 | CS San Bernardino | W | 3-1 |
| S.9 | Cal Lutheran | W | 3-1 |
| S.11 | Biola | W | 6-0 |
| S.13 | CS Sacramento | T-ot | 1-1 |
| S.16 | at CS Los Angeles | L | 0-4 |
| S.18 | Cal Poly SLO | W | 1-0 |

| | | | |
|------|-----------------------|---|-----|
| S.25 | + at Old Dominion | L | 0-3 |
| S.27 | + vs. William & Mary | L | 1-2 |
| O.4 | * at UCLA | L | 0-4 |
| O.9 | * at UC Santa Barbara | W | 3-1 |
| O.11 | * at CS Northridge | L | 1-2 |
| O.19 | Pt. Loma Nazarene | W | 4-0 |
| O.21 | at Christian Heritage | W | 6-0 |
| O.23 | * UNLV | W | 3-1 |
| O.25 | * New Mexico | L | 2-3 |
| O.27 | Christian Heritage | W | 4-2 |
| O.29 | * at CS Fullerton | L | 0-1 |
| N.1 | * UC Irvine | W | 4-3 |
| N.3 | at CS Dominguez Hills | L | 0-2 |

+ - Met Life Classic at Old Dominion. * - Mountain Pacific Sports Federation match.

▶ 1993 • 7-9-1; 2-4-1 MPSF

| | | | |
|------|----------------------|------|-----|
| S.4 | at CS San Bernardino | L | 1-3 |
| S.6 | CS Bakersfield | W | 5-1 |
| S.8 | at Loyola Marymount | W-ot | 3-2 |
| S.12 | Cal Poly SLO | L | 0-1 |
| S.17 | + vs. Creighton | L-ot | 3-5 |
| S.19 | + vs. Navy | W | 2-0 |
| S.24 | # at Saint Mary's | L | 2-3 |
| S.26 | # vs. Santa Clara | L-ot | 0-1 |
| O.3 | * CS Fullerton | L | 0-1 |
| O.8 | * UC Santa Barbara | W | 1-0 |
| O.10 | * CS Northridge | W | 3-1 |
| O.15 | * at UNLV | T-ot | 2-2 |
| O.17 | * at New Mexico | L | 1-2 |
| O.22 | * UCLA | L | 0-2 |
| O.24 | * UC Irvine | L-ot | 3-4 |
| O.26 | Pt. Loma Nazarene | W | 4-0 |
| N.3 | CS Dominguez Hills | W | 3-0 |

+ - UNLV Rebel Classic. # - Fall Soccer Classic at Saint Mary's.

- Mountain Pacific Sports Federation match.

▶ 1994 • 10-9-0; 5-5-0 MPSF

| | | | |
|------|-----------------------|---|-----|
| S.3 | at Grand Canyon | L | 1-2 |
| S.6 | Christian Heritage | W | 9-0 |
| S.9 | vs. CS San Bernardino | W | 5-0 |
| S.11 | + vs. San Jose State | W | 1-0 |
| S.16 | * CS Northridge | W | 1-0 |
| S.19 | So. Calif. College | L | 0-1 |
| S.22 | * at CS Fullerton | L | 0-2 |
| S.25 | Loyola Marymount | W | 4-2 |
| S.30 | # vs. Michigan State | W | 2-1 |
| O.2 | # vs. Saint Mary's | L | 0-2 |
| O.7 | * at CS Northridge | W | 1-0 |
| O.9 | * at UC Santa Barbara | L | 0-2 |
| O.14 | * New Mexico | L | 2-3 |
| O.16 | * UNLV | W | 3-1 |
| O.21 | * at UC Irvine | L | 0-1 |
| O.23 | * at UCLA | L | 0-4 |
| O.28 | at Cal Poly SLO | L | 2-4 |
| N.6 | * California | W | 1-0 |
| N.11 | * UC Santa Barbara | W | 3-2 |

+ - Nike Men's Soccer Classic at UC Irvine. # - Coors Light Soccer Classic at UNLV. * - Mountain Pacific Sports Federation match.

▶ 1995 • 6-10-4; 1-6-2 MPSF

| | | | |
|------|---------------------|------|-----|
| S.2 | + vs. Washington | W | 2-1 |
| S.3 | + at Portland | L | 0-4 |
| S.8 | # vs. Boston | L | 0-2 |
| S.10 | # vs. Marquette | T-ot | 3-3 |
| S.15 | Gonzaga | W | 4-1 |
| S.17 | Tampa | L | 2-5 |
| S.20 | Grand Canyon | T-ot | 1-1 |
| S.24 | Cal Poly SLO | W | 5-0 |
| O.1 | CS Fullerton | W | 3-2 |
| O.6 | * at CS Northridge | T-ot | 3-3 |
| O.8 | * UC Santa Barbara | L | 2-3 |
| O.13 | * at New Mexico | L | 0-3 |
| O.15 | * at UNLV | L | 1-2 |
| O.20 | * at UC Irvine | T-ot | 1-1 |
| O.22 | * UCLA | L | 0-3 |
| O.26 | * UC Irvine | W | 2-1 |
| O.29 | * CS Northridge | L | 2-3 |
| N.3 | * at California | L | 3-5 |
| N.5 | * at CS Sacramento | W | 3-1 |
| N.8 | at Loyola Marymount | L | 1-5 |

+ - addas Invitational at Portland. # - Snickers Umbro Rebel Classic at UNLV. * - Mountain Pacific Sports Federation match.

▶ 1996 • 7-10-3; 2-5-1 WAC

| | | | |
|------|--------------------|------|-----|
| A.31 | at CS Northridge | W | 2-1 |
| S.3 | at Cal Poly Pomona | W | 5-2 |
| S.6 | Stanford | T-ot | 3-3 |

| | | | |
|------|-----------------------|------|-----|
| S.8 | at UC Santa Barbara | L | 1-2 |
| S.13 | at CS Fullerton | L | 0-3 |
| S.15 | at UC Irvine | W | 4-3 |
| S.20 | * vs. UNC Charlotte | L | 1-4 |
| S.22 | * vs. Michigan State | T-ot | 1-1 |
| S.27 | U.S. International | W | 2-0 |
| O.2 | Loyola Marymount | L | 0-2 |
| O.6 | at UCLA | L | 0-6 |
| O.11 | * Air Force | L | 1-3 |
| O.13 | * New Mexico | T-ot | 1-1 |
| O.18 | * at Fresno State | L | 0-9 |
| O.20 | * at San Jose State | L | 0-5 |
| O.25 | at U.S. International | W | 5-1 |
| O.27 | * UNLV | W | 3-1 |
| N.1 | * SMU | L | 2-6 |
| N.3 | * Texas Christian | W | 2-0 |
| N.8 | * at Tulsa | L | 0-6 |

+ - Met Life Classic at USD. * - Western Athletic Conference match.

▶ 1997 • 7-8-3; 2-6-0 WAC

| | | | |
|------|----------------------|------|-----|
| A.29 | at UC Irvine | T-ot | 2-2 |
| A.31 | at Loyola Marymount | T-ot | 0-0 |
| S.4 | at CS Fullerton | L | 1-2 |
| S.11 | at CS Northridge | L | 0-2 |
| S.13 | Seattle Pacific | W | 2-1 |
| S.19 | CS Northridge | W | 1-0 |
| S.25 | Pt. Loma Nazarene | W | 6-0 |
| S.29 | UC Irvine | T-ot | 2-2 |
| O.5 | UC Santa Barbara | W | 1-0 |
| O.10 | * at SMU | L | 0-2 |
| O.12 | * at Texas Christian | W | 2-1 |
| O.17 | Christian Heritage | W | 7-0 |
| O.19 | * at UNLV | L | 0-4 |
| O.24 | * Fresno State | L | 0-1 |
| O.26 | * San Jose State | L | 1-2 |
| O.31 | * at Air Force | L | 0-3 |
| N.2 | * at New Mexico | L | 0-1 |
| N.7 | * Tulsa | W | 1-0 |

* - Western Athletic Conference match.

▶ 1998 • 8-11-1; 2-6-0 WAC

| | | | |
|------|-------------------------|------|-----|
| S.1 | at UC Santa Barbara | W | 2-1 |
| S.5 | Denver | W | 2-0 |
| S.7 | Gonzaga | L | 1-3 |
| S.10 | Pt. Loma Nazarene | T-ot | 1-1 |
| S.15 | Biola | W | 3-0 |
| S.18 | Loyola Marymount | L | 0-1 |
| S.22 | CS Northridge | L | 1-5 |
| S.25 | CS Sacramento | W | 1-0 |
| S.29 | at (25) Cal Poly SLO | L | 0-2 |
| O.4 | UC Irvine | W | 1-0 |
| O.9 | * New Mexico | L | 0-1 |
| O.11 | * Air Force | L | 0-2 |
| O.16 | * at (9) San Jose State | L | 0-2 |
| O.18 | * at Fresno State | L | 0-1 |
| O.22 | Chapman | W-ot | 2-1 |
| O.25 | * UNLV | W | 4-2 |
| O.30 | at Oral Roberts | L | 0-1 |
| N.1 | * at Tulsa | L | 0-2 |
| N.6 | * Texas Christian | W | 1-0 |
| N.8 | * (16) SMU | L-ot | 3-4 |

* - Western Athletic Conference match.

▶ 1999 • 4-15-0; 0-8-0 MPSF

| | | | |
|------|-------------------------|---|-----|
| S.1 | Concordia | W | 6-0 |
| S.5 | Oregon State | L | 1-2 |
| S.8 | UC Irvine | L | 0-4 |
| S.14 | Hope International | W | 2-0 |
| S.17 | + vs. Gonzaga | L | 0-2 |
| S.19 | + vs. Md.-Baltimore Co. | L | 0-2 |
| S.23 | # at Santa Clara | L | 1-4 |
| S.25 | # vs. San Francisco | W | 3-1 |
| S | | | |

AZTEC SOCCER

ALL-TIME RESULTS

INTRODUCTION
REVIEW
COACHING STAFF
PLAYERS
THIS IS SDSU
HISTORY/RECORDS



Lev Kirshner
2000-Present
Seven Seasons
Record: 48-65-22

► 2000 • 6-12-1; 2-4-1 MPSF

| | | | |
|------|-----------------------|-------|-----|
| S.1 | Christian Heritage | W | 5-0 |
| S.6 | at (1) UCLA | L | 0-5 |
| S.9 | + vs. Washington | L | 0-3 |
| S.10 | + at (5) Portland | L | 1-2 |
| S.15 | St. Mary's | L | 0-1 |
| S.18 | Cal Baptist | W | 5-0 |
| S.21 | # vs. Loyola-Chicago | W | 4-1 |
| S.23 | # at Loyola Marymount | L-2ot | 0-1 |
| S.26 | CS Northridge | W | 2-1 |
| S.29 | % vs. Louisville | L | 0-2 |
| O.1 | % vs. Drury | L | 2-4 |
| 0.6 | * CS Fullerton | L | 0-1 |
| O.13 | * at Cal Poly | L-ot | 1-2 |
| O.20 | * at CS Northridge | L | 1-2 |
| O.22 | * at UC Santa Barbara | T-2ot | 1-1 |
| O.27 | * at New Mexico | L | 1-2 |
| O.29 | * UNLV | W | 1-0 |
| N.5 | * UC Irvine | W | 1-0 |
| N.7 | at San Diego | L | 0-2 |

+ - Portland adidas Tournament. # - Loyola Marymount Fall Classic. % - Coors Light Classic at UNLV. * - Mountain Pacific Sports Federation match.

► 2001 • 7-9-4; 3-2-2 MPSF

| | | | |
|------|-----------------------|-------|-----|
| A.31 | (13) Santa Clara | L-ot | 0-1 |
| S.2 | Notre Dame Belmont | T-2ot | 1-1 |
| S.6 | UC Santa Barbara | L | 1-3 |
| S.19 | at Christian Heritage | W | 3-0 |
| S.21 | + vs. Gonzaga | L | 2-3 |
| S.23 | + at Oregon State | L | 1-4 |
| S.28 | UC Riverside | W | 3-2 |
| S.30 | Brown | W-ot | 2-1 |
| O.4 | Christian Heritage | W | 7-0 |
| O.7 | (23) UCLA | L | 1-2 |
| O.12 | * (25) Denver | W | 2-0 |
| O.14 | * Air Force | L | 0-1 |
| O.19 | * at San Jose State | T-2ot | 1-1 |
| O.21 | * at Fresno State | W | 2-0 |
| O.26 | * UNLV | T-2ot | 2-2 |
| O.28 | * New Mexico | W-2ot | 2-1 |
| O.31 | at CS Fullerton | L-2ot | 2-3 |
| N.4 | * at CS Sacramento | L | 1-3 |
| N.8 | ~^ vs. UNLV | T-2ot | 3-3 |
| N.18 | (15) San Diego | L | 2-4 |

+ - Diadora Classic in Corvallis, Ore. * - Mountain Pacific Sports Federation match. ~ - MPSF Championship (Fresno, Calif.). ^ - UNLV advances in 4-1 shootout win.

► 2002 • 4-13-2; 0-5-1 MPSF

| | | | |
|------|--------------------------|-------|-----|
| A.30 | at UC Riverside | T-2ot | 1-1 |
| S.2 | St. Mary's | L | 3-4 |
| S.12 | (11) San Diego | L | 0-3 |
| S.14 | Westmont | W | 2-1 |
| S.20 | ^ IUPUI | W | 4-1 |
| S.22 | ^ Drake | L | 0-1 |
| S.27 | at CS Northridge | L-2ot | 1-2 |
| S.29 | at (16) UCLA | L | 0-7 |
| O.4 | at (25) UC Santa Barbara | L | 0-3 |
| O.6 | CS Fullerton | W | 1-0 |
| O.10 | at Santa Clara | L | 1-5 |
| O.16 | (7) Loyola Marymount | W-ot | 3-2 |
| O.18 | * UNLV | L | 1-2 |
| O.20 | * at New Mexico | L | 1-2 |
| O.25 | * San Jose State | L | 0-2 |
| O.27 | * Sacramento State | T-2ot | 0-0 |
| N.1 | * at Air Force | L | 1-5 |
| N.3 | * at Denver | L | 0-3 |
| N.8 | Gonzaga | L | 2-4 |

* - Mountain Pacific Sports Federation match. ^ - SDSU/USD Tournament.

► 2003 • 9-8-3; 2-2-2 MPSF

| | | | |
|------|----------------------|------|-----|
| A.29 | ^ Oregon State | W-ot | 2-1 |
| A.31 | ^ Long Island | W | 2-0 |
| S.4 | at Pt. Loma Nazarene | L | 0-2 |
| S.13 | UC Riverside | W | 2-1 |

| | | | |
|------|-----------------------|-------|-----|
| S.19 | @ vs. Bowling Green | T-2ot | 1-1 |
| S.21 | @ vs. Drake | W-2ot | 2-1 |
| S.26 | Hofstra | W | 2-1 |
| S.28 | Albany | W | 2-0 |
| O.3 | % at (11) Rutgers | L | 1-4 |
| O.5 | % vs. (14) St. John's | L | 0-1 |
| O.11 | San Diego | L | 0-2 |
| O.20 | * at UNLV | W | 3-1 |
| O.24 | * Denver | T-2ot | 1-1 |
| O.31 | * at Sacramento State | T-2ot | 1-1 |
| N.2 | * at San Jose State | L | 1-2 |
| N.5 | at Loyola Marymount | L | 0-2 |
| N.7 | * vs. Air Force | W | 3-2 |
| N.9 | * New Mexico | L-ot | 2-3 |
| N.13 | ~ at Sacramento State | W | 3-1 |
| N.14 | ~ vs. San Jose State | L | 1-2 |

~ - MPSF Championship (Sacramento, Calif.). ^ - SDSU Soccer Classic. @ - UNLV Tournament. % - Rutgers Classic. * - Mountain Pacific Sports Federation match.

► 2004 • 4-13-2; 4-7-1 MPSF

| | | | |
|------|-----------------------|-------|-----|
| S.1 | (13) UC Santa Barbara | L | 0-1 |
| S.4 | at (10) California | L | 0-4 |
| S.9 | at UC Riverside | L | 0-2 |
| S.17 | ^ Michigan State | L | 0-2 |
| S.19 | ^ Dartmouth | T-2ot | 1-1 |
| S.22 | * at UNLV | W | 2-0 |
| S.24 | at UC Davis | L | 0-1 |
| S.26 | at St. Mary's | L | 1-2 |
| S.30 | * at (5) New Mexico | L | 0-3 |
| O.8 | * Air Force | W | 3-0 |
| O.10 | * Denver | L | 1-2 |
| O.15 | * at Sacramento State | L | 0-2 |
| O.17 | * at San Jose State | L | 0-2 |
| O.24 | * (2) New Mexico | T-2ot | 1-1 |
| O.29 | * San Jose State | L-2ot | 1-2 |
| O.31 | * Sacramento State | W | 2-1 |
| N.5 | * at Denver | L | 0-2 |
| N.7 | * at Air Force | L | 0-4 |
| N.14 | * UNLV | W | 4-2 |

^ - SDSU/USD Tournament. * - Mountain Pacific Sports Federation match.

► 2005 • 9-4-6; 2-3-5 Pac-10; NCAA

| | | | |
|------|----------------------------|-------|-----|
| S.2 | ^ at Rutgers | W | 1-0 |
| S.3 | ^ vs. (5) St. John's | T-2ot | 0-0 |
| S.10 | UC Riverside | W | 3-0 |
| S.15 | Pt. Loma Nazarene | W | 1-0 |
| S.18 | UMKC | W | 4-2 |
| S.22 | Alabama A&M | W | 1-0 |
| S.25 | Duquesne | W | 3-0 |
| S.30 | * Stanford | T-2ot | 1-1 |
| O.2 | * California | W | 1-0 |
| O.7 | * at Oregon State | L | 1-2 |
| O.9 | * at Washington | T-2ot | 0-0 |
| O.16 | * at (12) UCLA | T-2ot | 0-0 |
| O.24 | * at San Diego | W | 1-0 |
| O.28 | * Washington | T-2ot | 0-0 |
| O.30 | * Oregon State | W | 2-1 |
| N.4 | * at California | L-ot | 1-2 |
| N.6 | * at Stanford | T-2ot | 0-0 |
| N.13 | * (6) UCLA | L-2ot | 0-1 |
| N.19 | ! at (14) UC Santa Barbara | L | 0-2 |

^ - Phillips/adidas Classic (Piscataway, N.J.). * - Pacific-10 match. ! - NCAA Tournament.

► 2006 • 9-6-4; 5-2-3 Pac-10; NCAA

| | | | |
|------|--------------------------|-------|-----|
| A.25 | ^ Albany | W | 3-2 |
| A.27 | ^ Rutgers | W-ot | 1-0 |
| S.2 | at (14) UC Santa Barbara | L | 0-1 |
| S.6 | at UC Riverside | L | 2-3 |
| S.9 | UNLV | W | 4-2 |
| S.15 | & Rider | T-2ot | 0-0 |
| S.17 | & Long Island | W-ot | 2-1 |
| S.22 | * at Stanford | L | 1-2 |
| S.24 | * at (18) California | W | 2-0 |
| S.29 | * Oregon State | W | 2-1 |
| O.1 | * (4) Washington | W | 1-0 |
| O.8 | * (16) UCLA | L | 1-2 |
| O.14 | at (21) UC Irvine | L | 1-2 |
| O.20 | * at (23) Washington | T-2ot | 0-0 |
| O.22 | * at Oregon State | T-2ot | 2-2 |
| O.27 | * (6) California | W | 3-1 |
| O.29 | * Stanford | W | 1-0 |
| N.3 | * (10) at UCLA | T-2ot | 1-1 |
| N.11 | ! at UC Santa Barbara | L | 1-2 |

^ - The Soccer Post/Aztec Classic. & - USD/SDSU Soccer Tournament. * - Pacific-10 match. ! - NCAA Tournament.

All-Time Record

| | |
|----------------|-------------------|
| Home | 242-85-35 |
| Away | 116-138-36 |
| Neutral | 32-24-7 |
| Overall | 390-247-78 |

Key

W-L - Game won lost
(#) - Number indicates opponents' national ranking at game time

| Team | W-L-T | First Mtg. | Last Mtg. | Team | W-L-T | First Mtg. | Last Mtg. |
|----------------------------|----------------|----------------------|-----------|-------------------------------------|---------------|----------------------|-----------|
| Alabama A&M | 1-0-0 | 05 | 05 | Missouri State | | First Meeting | |
| Albany | 2-0-0 | 03 | 06 | UMKC | 1-0-0 | 05 | 05 |
| Air Force | 4-6-0 | 82 | 04 | Navy | 2-0-0 | 88 | 93 |
| Arizona | 1-0-0 | 74 | 74 | NJIT | | First Meeting | |
| Arizona State | 1-0-0 | 73 | 73 | New Mexico | 3-11-2 | 85 | 04 |
| Azusa Pacific | 1-2-0 | 78 | 80 | UNC Charlotte | 0-1-0 | 96 | 96 |
| Berlin (W. Germany) | 0-1-0 | 73 | 73 | North Texas State | 1-1-0 | 85 | 89 |
| Biola | 12-0-4 | 70 | 98 | Notre Dame | 1-0-0 | 87 | 87 |
| Boston | 0-1-0 | 95 | 95 | ND-Belmont | 1-0-0 | 01 | 01 |
| Bowling Green | 1-0-1 | 85 | 03 | Old Dominion | 1-1-0 | 88 | 92 |
| Brigham Young | 5-0-0 | 73 | 83 | Oral Roberts | 0-1-0 | 98 | 98 |
| Brown | 1-0-0 | 01 | 01 | Oregon State | 3-3-1 | 99 | 06 |
| California | 13-11-1 | 74 | 06 | Pacific | 3-0-0 | 71 | 84 |
| Cal Baptist | 1-0-0 | 00 | 00 | Pacific Lutheran | 1-0-0 | 86 | 86 |
| Cal Lutheran | 2-0-0 | 91 | 92 | Pennsylvania | 0-1-0 | 90 | 90 |
| Cal Poly Pomona | 4-1-0 | 69 | 96 | Pepperdine | 1-0-0 | 74 | 74 |
| Cal Poly | 6-4-2 | 85 | 00 | Pt. Loma Nazarene | 11-1-1 | 76 | 05 |
| CS Bakersfield | 4-0-0 | 84 | 93 | Pomona Pitzer | 1-0-0 | 79 | 79 |
| CS Dominguez Hills | 6-1-1 | 85 | 93 | Portland | 3-2-0 | 82 | 00 |
| CS Fullerton | 15-16-2 | 68 | 02 | Rider | 0-0-1 | 06 | 06 |
| CS Hayward | 1-0-1 | 78 | 79 | Rutgers | 2-2-0 | 89 | 06 |
| CS Los Angeles | 8-5-1 | 69 | 92 | St. John's | 0-1-1 | 03 | 05 |
| CS Northridge | 8-12-2 | 85 | 02 | St. Louis | 1-0-1 | 87 | 91 |
| CS San Bernardino | 7-1-0 | 87 | 94 | Sacramento State | 4-2-3 | 92 | 04 |
| Camp Pendleton | 1-0-0 | 71 | 71 | Saint Mary's | 7-6-0 | 83 | 04 |
| CETYS | 4-1-1 | 68 | 73 | San Diego | 10-4-2 | 80 | 05 |
| Chapman | 8-0-0 | 70 | 98 | SD Rep. XI Club | 1-0-0 | 71 | 71 |
| Chico State | 0-1-1 | 73 | 77 | San Francisco | 4-10-1 | 69 | 99 |
| Christian Heritage | 7-0-0 | 92 | 01 | San Francisco State | 1-1-0 | 71 | 76 |
| Clemson | 0-1-0 | 87 | 87 | San Jose State | 5-10-1 | 71 | 04 |
| Colorado College | 1-0-0 | 78 | 78 | Santa Clara | 6-12-2 | 76 | 02 |
| Concordia | 1-0-0 | 99 | 99 | Seattle Pacific | 2-0-0 | 82 | 97 |
| Corinthian (S.C.) | 0-1-0 | 68 | 68 | Simon Fraser | 1-0-1 | 78 | 80 |
| Creighton | 0-1-0 | 93 | 93 | Sonoma State | 1-0-0 | 84 | 84 |
| Dartmouth | 0-0-1 | 04 | 04 | South Carolina | 0-0-1 | 88 | 88 |
| Denver | 2-3-1 | 98 | 04 | South Alabama | 1-0-0 | 90 | 90 |
| Drake | 1-1-0 | 02 | 03 | Southern California | 9-1-0 | 72 | 80 |
| Drury College | 0-1-0 | 00 | 00 | So. California College | 1-1-0 | 75 | 94 |
| Duquesne | 1-0-0 | 05 | 05 | Southern Methodist | 3-3-1 | 86 | 98 |
| Fairleigh Dickinson | | First Meeting | | Stanford | 6-2-5 | 76 | 06 |
| Florida International | 0-1-0 | 83 | 83 | Tampa | 0-1-0 | 95 | 95 |
| Fresno State | 9-8-0 | 72 | 01 | Texas | 1-0-0 | 73 | 73 |
| Gonzaga | 1-4-0 | 95 | 02 | Texas Christian | 3-0-0 | 96 | 98 |
| Grand Canyon | 1-1-1 | 91 | 95 | Tulsa | 1-2-0 | 96 | 98 |
| Guadalajara | 0-1-0 | 73 | 73 | UC Davis | 1-1-0 | 89 | 04 |
| Harvard | 1-0-0 | 87 | 87 | UC Irvine | 12-2-3 | 85 | 06 |
| Hofstra | 1-0-0 | 03 | 03 | UCLA | 3-27-8 | 69 | 06 |
| Hope International | 1-2-0 | 99 | 99 | UC Riverside | 7-2-2 | 70 | 06 |
| Indiana | 0-2-0 | 84 | 87 | UC San Diego | 18-1-0 | 68 | 83 |
| IUPUI | 1-0-0 | 02 | 02 | UC Santa Barbara | 17-12-3 | 73 | 06 |
| Long Beach State | 9-0-1 | 68 | 84 | UNLV | 1-10-5 | 74 | 04 |
| Long Island | 2-0-0 | 03 | 06 | U.S. International | 19-4-1 | 70 | 99 |
| Loyola-Chicago | 1-0-0 | 00 | 00 | Wake Forest | 0-1-0 | 90 | 90 |
| Loyola Marymount | 12-5-1 | 73 | 03 | Washington | 3-3-3 | 83 | 06 |
| Louisville | 0-1-0 | 00 | 00 | Westmont | 12-3-3 | 69 | 02 |
| Marquette | 0-0-1 | 95 | 95 | Whittier | 3-0-0 | 72 | 76 |
| Md.-Baltimore County | 0-1-0 | 99 | 99 | William & Mary | 0-1-0 | 92 | 92 |
| Master's College | 1-0-1 | 88 | 90 | Wis.-Green Bay | 2-0-0 | 82 | 89 |
| Michigan State | 1-1-1 | 94 | 04 | Wis.-Milwaukee | 0-1-0 | 86 | 86 |
| Midwestern | 1-0-0 | 79 | 79 | Bold indicates 2007 opponent | | | |



AZTEC SOCCER

ALL-TIME LETTER WINNERS

A
Aarnio, Johan - 1974-75
Abele, Steve - 1989
Adair, Chugger - 1989
Adams, Russ - 1996
Adamson, Peter - 1977
Albuquerque, Jevin - 1990-91
Allen, Jason - 1992
Anderson, Daron - 1983
Arellano, Aaron - 1992
Arenas, Josh - 2003

B
Baardson, Steve - 1976-79
Baker, Travis - 1999-2002
Balboa, Marcelo - 1988-89
Barajas, Joe - 1971-72
Barnes, Brian - 1999-2002
Barr, Kevin - 1985
Bautista, Raul - 2002-06
Baxter, Jeff - 1992-95
Becerra, Charles - 1997
Beitashour, Steve - 2006
Beltran, David - 1996-99
Bengtsson, Henrik - 2000
Betts, Jeff - 1988-89
Blackbourne, Steve - 1982-84
Blubaugh, Rick - 1984
Boardman, Steve - 1983-86
Bodnar, Travis - 2003
Bowie, Ryan - 2005-2006
Boyajian, Ryan - 1994-95
Boys, Josh - 2003
Bradbury, Michael - 1998
Brantuas, Joao - 1986
Britnitzer, Cameron - 2006
Brodnick, Bruce - 1983
Brown, Aerick - 1985
Browne, John - 1996-98
Bru, Chris - 1980-81
Bucelli, Greg - 1979-81
Bucelli, Vince - 1979, 81-82

C
Calori, Ronald - 1968
Campbell, Glenn - 1969-72
Cano, Juan - 1979-80
Capobianco, Renato - 1981-84
Cardenas, Nick - 2006
Caruso, Frank - 2004
Chavez, Jose - 1977-78
Chiles, Kraig - 2003, 05-06
Chowanda-Bandhu, Choo - 1970-72
Chronopoulos, Ted - 1989
Cipolla, Greg - 1989-90
Clark, Don - 1973
Clark, Taylor - 1997
Clegg, Chuck - 1970, 74-76
Clemens, Nick - 2003-05
Cochrane, Bruce - 1981-83
Cohen, Sheldon - 1980-83
Cohn, Greg - 1993-94
Collins, Nick - 2005
Conrad, Jimmy - 1994-95
Cook, Ryan - 1998-99, 2001-02
Corr, Pat - 1977
Costello, Dennis - 1975-77
Cota, Arturo - 1969
Cota, Luis - 1969-70
Couch, Matt - 2002-05
Craft-Negrete, Brian - 1988-91

Creager, Heath - 2003-05
Gonzalez, Kevin - 1979-82
Curtis, Ryan - 2000-03

D
Dahl, Kurt - 1972
Dallas, Gordon - 1977-80
Dally, David - 2004-06
Dalzochio, Dan - 1992
Dartt, Ralph - 1997-2000
Dasilva, Paul - 1974
Davis, Steve - 1984
DeForest, Dain - 1989-90
Delong, Charles - 1968-71
Demke, Bill - 1990-93
Derosa, Marcello - 1968
Diaz, Robbie - 2003-06
DiCiccio, Andrew - 2003-06
Dietz, Adam - 1998
Drabb, Eric - 1984-87
Drago, Darren - 1996
Drago, Derek - 1996
Dullaghan, Joe - 1996-97, 99
Dye, Richard - 1968

E
Early, Chaplin - 1999
Economy, Milton - 1997-2000
Edwards, Tim - 2000-01
Ekenberg, Nathan - 1999
Eisele, John - 1968-69
Endsley, Mike - 1976
Escobar, Dave - 1981-82
Erlandsson, Anders - 1981
Escobosa, Alberto - 1978
Esparza, Rafa - 1979
Ettl, Fritz - 1997

F
Farnsworth, Chris - 1998
Fechner, Kenny - 2003-04
Fernandez, Alex - 1978
Fernandez, Marvin - 1976
Fernandez, Vidal - 1977-79
Fett, Gabe - 2002
Fielder, Alan - 1999-2000
Finnerty, Brian - 1987-89
Flores, Eduardo - 1973
Fonseca, Kirk - 1999
Foster, Tim - 1987-88, 91-92
Foster, Tom - 1996
Francis, Mike - 1994
Franklin, Willie - 1991-94
French, Jason - 1989-90
Frimkess, Aaron - 2001

G
Garcia, Julian - 1968
Garcia, Miguel - 1983
Gardner, Gale - 1968
Garnica, Ignacio - 1977
Garretson, John - 1983
Gaske, P.J. - 1997
Geary, Lee - 1980
Geenan, John - 1977-78
George, Chris - 1992-93
Gill, John - 1972-75
Gillett, Jeff - 1971
Gilson, John - 1985
Gisslow, Pete - 1974-76
Giudicelli, Chris - 2001
Goff, Robi - 1988

Gonzalez, Jesus - 1969
Gonzalez, Oscar - 1969-71
Goossens, Jack - 1968-70
Goossens, Peter - 1969-72
Goossens, Robert - 1970-71
Gotvald, Dan - 1998-99
Goudey, Steve - 1986
Guillot, Steve - 1984-85
Gunn, Ken - 1986

H
Hall, Matt - 1996-98
Hall, Tally - 2003-06
Hanano, Ezra - 1970
Hanke, Colin - 2002-03
Hawa, Raja - 1997
Hawkins, Chuck - 1979-80
Henderson, Pat - 1984-87
Hernandez, Felipe - 1986-87
Heyer, Dennis - 1969
Hesse, Steve - 1991
Hickson, Shane - 1990
Hidalgo, Milton - 1981-82
Holmstedt, Micael - 1979-82
Holt, Jack - 1992-94
Homan, Tim - 1985-86
Hull, Chris - 1978
Hulseay, John - 1977-79

I
Ish, Mark - 1994, 96
Iversen, Rick - 1987
Ivkovich, Ryan - 1999-2000
Ingrassia, Mauricio - 1989-90

J
Jackson, Colby - 1995-96
James, Aaron - 1990-93
Jarvis, Aaron - 1990-92
Jauch, Kevin - 1988, 90
Jennings, Colin - 2003-04
Jimenez, Gerardo - 1987
Johur, John - 1979, 81-82

K
Kangas, Erik - 1994
Kaplan, Greg - 2001
Kazan, Craig - 1979-82
Keenan, Chris - 1987
Kelley, Jose - 1976
Kelly, Alan - 1974-77
Kepper, Jeff - 1980-83
Kersker, Mike - 1993-94
Kim, Ricky - 1994-95
Kim, Steve - 1981-82
Klaass, Pete - 1986-87
Klotovich, Mike - 2000
Kooiman, Cle - 1981-82
Kulpa, Adam - 2001-02
Kuntz, Tom - 1985
Kupritz, Garth - 1982-85

L
Lacher, Scott - 1987-88
LaFond, Dan - 1991
Larsen, Kris - 1994-95
Lasby, Brett - 1999-2000
Lau, Ryan - 1993
Lebold, Tim - 1997-2000
Lederer, Don - 1968-70
Leitner, Jeff - 1997-99
Lewis, Curt - 1986-87

Lim, Ricky - 1968
Limahelu, Al - 1970-71
Linenberger, Dave - 1979-82
Lyon, Boyd - 1991-92

M
Maccauley, Ward - 1976-78
Mandle, Scott - 1984
Marchosky, Ruben - 1968-70
Margeson, Mike - 1994-95
Martinez, Abraham - 1999-2002
Mason, Jay - 1979-80
Maurer, Eric - 1996
Maxwell, Steve - 1983
McAlister, Curtis - 1988-90
McArdle, Colter - 2004
McDonald, Freddy - 2004-06
McDowell, Jim - 1971-73
McFadden, Seamus - 1974-76
McKee, Jordan - 2003-04
McGuckin, Scott - 1995-97
McGuire, Tim - 1981
Meek, Trey - 2004
Mendes, Dida - 1979-82
Menjivar, Carlos - 2000
Mercuriali, Mike - 2003-05
Merrell, Patrick - 1989-90
Mikal, Keenan - 1984-85
Milburn, Brian - 1997
Miller, Bill - 1969-72
Miramontes, Rene - 1976-77, 79-80
Montes, Hector - 1972-75
Morlett, Gary - 1974
Morrone, Andy - 1989-92

N
Natale, Nick - 2001-02
Neely, Doug - 1983-84
Neville, Rob - 1981-82
Niyati, Steve - 1994-95
Norby, Jan - 1975-78
Norgan, Adam - 1993
Novak, Chris - 2000-02
Nunnally, Paul - 1994-95

O
Oakes, Randy - 1977-78
Oberkirch, Luke - 1984-85
Ochoa, Shawn - 1996-98
Oliveira, Ruben - 1992-93
Olson, Jim - 1971
Ortega, Daniel - 2006
Ortiz, Danny - 2005-06
Overweg, Ray - 1979
Owens, Jack - 1968

P
Palacios, Jorge - 1970
Papke, Bob - 1969
Paquette, Nathan - 1997
Parker, Darren - 1995, 98-99
Parker, Keg - 1993
Parker, Tim - 1986-88
Parra, Robert - 1981
Pater, Daryl - 1983-85
Paullo, Fortunato - 1995
Perez, Jose - 1993-96
Pernicano, Santo - 2006
Perry, Blake - 2002-04
Perry, E.T. - 1997-2000
Persad, Omar - 2005-06
Peterson, Ron - 1986

Piazza, Mike - 2006
Pickett, Derek - 2002
Picone, Drew - 2001-02
Pipe, Keeble - 1975-76
Plemons, Bill - 1968-70
Polios, Nick - 1968-69
Povey, Jon - 2000-01
Powell, Chris - 1992-94

Q
Quesada, David - 1990-91

R
Ratajczak, Jeff - 1982-83
Reinecke, Gary - 1978-79
Reinecke, Richard - 1973-76
Reinecke, Roger - 1977
Reott, Ryan - 2005-06
Rhodes, Rich - 1975
Rich, Chris - 1992-93
Riley, Bill - 1997
Robertson, Dave - 1983
Robertson, Steve - 1974-76
Roche, Bob - 1987-88
Rodriguez, Jesus - 1988
Rodriguez, Marco - 1969-70
Rodriguez, Oscar - 1998-99
Rodriguez, Ricardo - 1971, 73
Rogondino, Mark - 1996
Rogers, Jeff - 1983
Rouse, Mark - 1975-76
Ruff, Ken - 1968-71
Ryder, Jeff - 1983-86

S
Sager, Paul - 1975-76, 78
Sainz, Carlos - 1976-78
Samuelsson, Tommy - 80-81
San-Martin, Jim - 1992
Sanchez, Dennis - 2005-06
Sanchez, Gilbert - 1980-82
Sanchez, Luis - 1997
Sanchez, Michael - 2001
SantaMaria, Juan - 1988-90
Santana, Roberto - 1982
Santiago, Eric - 2004-05
Sapanli, Kevin - 2001-03
Schmid, Scott - 1997-99
Scott, Dione - 2003-04
Scott, Geoff - 1998-99
Shutt, Greg - 1983
Silva, Ronnie - 2000
Slesnick, Nate - 2002-03
Smith, Joe - 1973
Smith, Kyle - 1996
Snyder, Steve - 1982-85
Soler, Mauricio - 2001
Solomon, Adam - 1995-96
Somersalmi, Lauri - 1972-73, 75-76
Sproule, Chris - 1996
Sproveiro, Bryan - 1998
Spunaugle, Doug - 1974-75
Steinreichter, Dieter - 1969
Stephens, Chris - 1989-92
Stepovich, Mark - 1979-82
Stewart, Dennis - 1968
Storey, Shannon - 1991-92
Strait, Pat - 2001-02
Stumpf, Paul - 1985-86
Sullivan, Chris - 1983-84
Susi, Aaron - 1993-96
Svensson, Bengt-Olaf - 1982

Sweet, Mark - 1988
Szeffler, Paul - 2001-02

T
Taylor, Ken - 1986-89
Thiele, Christian - 1997
Thompson, Ryan - 1995
Tinling, Tyler - 1997, 2000-02
Toft, Evan - 2006
Tollerton, Jim - 1969-71
Tollerton, Pete - 1972
Tomlin, Dan - 1993-95
Tonne, Ted - 1983
Tovar, Enrique - 2000-01
Tovey, Malcom - 1978
Trakas, Andy - 1993
Treas, Luis - 2005
Turner, Eric - 2005-06
Tweedie, Tom - 1975-76
Tyburski, Mike - 1971

U
Union, Eric - 1980
Uyellet, Dennis - 1968

V
Van Bloemenwaanders, Bart - 1977, 79
Van Der Wall, Willem - 69-70
Van Zee, Gerald - 1977
Van Zee, Jimmy - 1976-79
Vasquez, Juan - 1996
Vasquez, Miguel - 1973
Velasco, Juan - 1997
Viveros, Juan - 1993
Volk, Chris - 1989-91

W
Wacker, Ted - 1983-86
Wale, Jeff - 1990
Walker, Fernando - 1971-73
Wallace, Jamel - 2005
Walsh, Brad - 1986-89
Watson, Darren - 1995-96
Weaver, Bret - 1993-94
Wells, John - 1972-73
Werbner, Kevin - 2005-06
Whidder, John - 1972
Whittemore, Kyle - 1984, 86-88
Whitton, Jeff - 2000-03
Wiggs, Kyle - 1998-00
Wilcox, Garry - 1984-85
Wilhelm, George - 1971
Williams, Bob - 1971
Williams, Matt - 1999
Wingate, John - 1984
Wohl, Eric - 2001-04
Wollrabe, Jeff - 1976, 78-80
Wurzberger, Dean - 1971-74
Wynalda, Eric - 1987-89

Y
Yamada, Kobi - 1986-87, 89-90
Young, Mike - 1974-76
Younger, Lance - 1973

Z
Zarick, John - 1999
Zarlenigo, Alfie - 1988
Zeidell, Marshall - 1968-69
Zenjedas, Luis - 1974
Zoric, Anthony - 2001-02

Current Aztecs in bold

INTRODUCTION

REVIEW

COACHING STAFF

PLAYERS

THIS IS SDSU

HISTORY/RECORDS



NCAA TOURNAMENT APPEARANCES
1969, 1981, 1982, 1987, 1988, 1989, 2005, 2006
1987 NCAA NATIONAL FINALIST



AZTEC SOCCER

Y E A R - B Y - Y E A R

INTRODUCTION

REVIEW

COACHING STAFF

PLAYERS

THIS IS SDSU

HISTORY/RECORDS

1968

San Diego State's first year of Division I soccer. George Logan was the first head coach and the architect of 148 future wins. The Aztecs defeated UC San Diego, 5-1, in the school's first match. SDSU started the year winning its first four matches as the Aztecs finished with a 6-2 record.

1969

SDSU defeated CS Los Angeles, CS Fullerton and UCLA on its way to a 9-1-1 season. Jim Tollerton and Oscar Gonzalez shared the goal-scoring leadership with 12 apiece. The Aztecs played three overtime NCAA playoff games, defeating CS Fullerton and UCLA, 2-1, before battling San Francisco to a 2-2 tie in four OTs. The game was decided by which team had taken more corner kicks, making USF the winner.

1970

Al Limahelu tallied 26 points and Choo Chowana-Bandu scored 12 goals to lead the team. The largest margin of victory in Aztec soccer history came when San Diego State defeated Chapman College, 13-0. The Aztecs outscored opponents 55-9 on their way to an 8-1-1 mark.

1971

SDSU posted a 10-3-1 record with the help of Tollerton's 11 goals and Chowana-Bandu's 10 scores. The Aztecs made their first appearance in the Pacific Coast Athletic Association tournament, losing to San Jose State in the first round, 2-1.

1972

After starting the season 1-4, San Diego State went unbeaten in its last six games to boost its season record to 6-4-1, securing its fifth straight winning campaign of the program. Chowana-Bandu led the team with nine goals.

1973

The season began with a 12-0 whitewash of Arizona State and a 9-1 victory over Loyola. The team struggled at mid-year but regrouped to win six of its last seven to finish 11-6-3. The schedule included games with international teams from Mexico and Germany.

1974

Goal-scoring machine Steve Robertson arrived on Montezuma Mesa. He netted 14 goals in 13 games, including at least one tally in nine contests. The only loss in a 10-1-2 season came against CS Fullerton in the Aztecs' second match.

1975

Robertson again averaged more than a goal per game as the Aztecs put

together a 10-4-1 season. Future stars Alan Kelly and Jan Norby arrived at SDSU and made an immediate impact. Kelly scored eight goals and Norby provided strength on defense.

1976

Three players scored seven goals apiece, leading the Aztecs to a 10-5-1 record. Kelly, Carlos Sainz and Lauri Somersalmi stood out in the Aztecs' ninth-straight winning season, including victories over San Francisco State and USIU on the way to the championship of the USIU Invitational.

1977

Vidal Fernandez burst onto the scene at SDSU, leading the Aztecs to a 13-4-1 record. The future New York Cosmos and San Diego Sockers star tallied 13 goals on the year to lead the team. Kelly and Sainz each had nine tallies. Four-year letterman and future head coach, Chuck Clegg, finished his first year as Logan's assistant coach.

1978

Playing its longest schedule ever, SDSU went 13-7, including a 8-2 mark at home. Fernandez again led the team in scoring with nine goals, while Chris Hull and Norby each scored five times. During a three-game stretch early in the year, Fernandez scored five times to pace three Aztec victories. Gordon Dallas wore the scarlet and black for the first time, notching four goals to go along with eight assists.

1979

The golden era of SDSU soccer begins with the arrival of several outstanding players. Micael Holmstedt, Dida Menders, Vince Bucelli and Kevin Crow all make their initial appearances for the Aztecs. In his final campaign, Fernandez scored 12 goals and had 10 assists, leading the team to a 14-3-2 mark. For the first time in SDSU soccer history, three players had double figures in goals as Fernandez and Holmstedt had 12 goals each and Menders added 10.

1980

Holmstedt set the school's single-season scoring mark, netting 17 goals in 18 games. His 42 points also set a standard for SDSU. The team went on to compile a record of 12-4-2.

1981

The Aztecs returned to the NCAA playoffs for the first time in 10 years, compiling a 16-3-1 overall record. SDSU trounced California, 4-0, in the first round of the playoffs. In the second round, the Aztecs again met San Francisco. After regulation and four 15-minute overtimes failed to produce a winner, SDSU won on penalty kicks, 2-1. Following the victory, a player was

declared ineligible for the Aztecs, forcing them out of further competition.

1982

Clegg took over as head coach and guided the Aztecs to their best record in history, winning 20 games for the first time. Clegg inherited a talented group that included seniors Holmstedt, Bucelli, Menders and Crow. The Aztecs won their first 11 games as they finished 20-3 and went to the NAAs again. SDSU eliminated Fresno State in the first round, 1-0, before falling to USF, 2-0. Holmstedt led the team with 33 points.

1983

With heavy graduation losses, the team struggled to a 9-9-4 record. Goal scoring was the problem most of the year, with the exception being a 13-0 win over Loyola Marymount. In the game against the Lions, Jeff Ryder scored three goals. Nineteen different players tallied at least one point during the season.

1984

Kyle Whittemore arrived on Montezuma Mesa to set single-season scoring and points marks. The Seattle product beat opposing keepers 21 times during the course of the season, tallying 45 points. Eric Drabb was the team's second-leading scorer with six goals and six assists. The team tied the school record set in 1983 for goals in a game with a 13-0 drubbing of CS Bakersfield. Its final record was 14-6.

1985

With Whittemore gone for the year with a broken leg, SDSU had trouble scoring. Steve Boardman and Steve Guillot shared the team lead with five goals. Boardman set a single-season record for assists with 12. The team averted its first-ever losing record with a late goal against cross-town rival USD to win, 1-0, in the next-to-last contest of the year to finish 8-8-4.

1986

Whittemore returned from his injury to break his own point-scoring record, earning a point in 17 different contests. His 20 goals and 10 assists led the team to a 14-3-4 record. Goalkeeper Felipe Hernandez posted a 0.71 goals-against average and six shutouts. The season ended on a sour note with a loss to Wisconsin-Milwaukee in the final game, keeping the team out of the NCAA playoffs.

1987

With teams keying more and more on Whittemore, freshman Eric Wynalda was a welcome addition to the Aztecs' scoring punch. As the lowest-seeded team in the NCAA playoffs, SDSU made a storybook run all the way to the NCAA finals. The Aztecs'

finish included playoff victories against St. Louis, SMU and UCLA before beating undefeated Harvard in the semifinals. In the national championship game, SDSU lost to Clemson on the Tigers' home field, 2-0. Whittemore had 17 goals to lead the way and Wynalda had 11 goals and 11 assists. Goalkeepers Bryan Finnerty and Felipe Hernandez combined for a school-record 13 shutouts. A key to the Aztec season was the play of Chris Keenan and Gerardo Jimenez, both of whom had transferred to SDSU for their senior years.

1988

The Aztecs made their second consecutive trip to the NCAA playoffs, losing to UCLA in the first round. Defender Marcelo Balboa was named a first-team All-American. Wynalda (14), Whittemore (10) and Betts (10) finished in double figures for goal scoring. Finnerty set a pair of goalkeeping records as he helped the Aztecs establish a school record of 14 shutouts in a season. Finishing the season 15-3-4, SDSU continued to establish themselves as one of the premier programs in the nation. Whittemore capped his career as the MVP of the Senior Bowl in St. Louis at Budweiser Soccer Park, leading the West to a 2-0 victory and scoring the game-winning goal.

1989

Continuing to solidify their role as a national contender, the Aztecs appeared in the NCAA playoffs for the third straight year, a first in their storied history. In the playoff game, UCLA defeated the Aztecs 2-1, in a penalty kick shootout. Senior goalkeeper Bryan Finnerty recorded the third best single-season goals-against average (0.66), and became the Aztecs' career leader in GAA (0.69) and shutouts (26.5). Betts led Aztec scorers with 32 points and U.S. National Team members Wynalda and Balboa finished with 24 and 23 points, respectively. SDSU finished the decade with the 15th-best winning percentage (.722) among Division I programs. The Aztecs ended the season 14-5-3.

1990

The Aztecs began the season basking in the accomplishments of three former players, Balboa, Wynalda and Chris Sullivan. All represented the United States on the national team in Italy for World Cup 1990. The Aztecs had more players compete for the national team than any university in the United States. On Montezuma Mesa, Patrick Merrell and company recorded an 11-6-3 record, barely missing the NCAA playoffs. The defense was anchored by Dain DeForest, but speedsters Jason French, Bill Demke and Chris Stephens combined with



NCAA TOURNAMENT APPEARANCES

1969, 1981, 1982, 1987, 1988, 1989, 2005, 2006

1987 NCAA NATIONAL FINALIST



AZTEC SOCCER

Y E A R - B Y - Y E A R

Brian Craft-Negrete and Merrell for 31 goals and 28 assists. Goalkeeper Curtis McAlister recorded an 0.92 GAA.

1991

Posting a 10-4-4 record, Craft-Negrete led the team with nine goals and eight assists. Captain Merrell directed the attack from the midfield, scoring two goals and adding six assists. Goalkeepers Dan Dalzochio, Chris Volk and Shannon Storey amassed 59 saves.

1992

Due to an injury-plagued season, SDSU's final tally of 10-8-1 was impressive. From the midfield, senior Andy Morrone scored seven goals and seven assists. The season saw 15 players score at least one goal. The year also marked the Aztecs' entry into league play with the creation of the Mountain Pacific Sports Federation. The MPSF will prove to be one of the strongest soccer conferences in the nation.

1993

As predicted, the MPSF's strength was evidenced by four teams qualifying for the NCAA tournament. The Aztecs struggled, posting their first losing season in 25 years, going 7-9-1. Injuries again played a major role with nine of the starting 11 sidelined for part of the season. Senior Bill Demke led the Aztec attack, scoring 11 goals and two assists on the season.

1994

The strongest freshman recruiting class in recent history arrived on Montezuma Mesa. The rollercoaster season ended up 10-9, but six freshmen broke into the starting lineup. Senior Willie Franklin's career ended with four goals and three assists. The freshmen gained valuable Division I experience against top-20 teams. Sophomore Aaron Susi led the team with 22 points and began maturing into a top forward. The team recorded 241 shots on goal.

1995

As a junior, Susi led the Aztecs with 10 goals and 10 assists for a total of 30 points. The Aztecs posted a less-than-stellar record of 6-10-4, for only their second losing season in 27 years. Eleven different players scored for a total of 38 goals. Senior Pablo Nunnally recorded two assists from the defense. The freshman class contributed seven players who put the ball in the net. The year also marked the end of defender Jeff Baxter's outstanding career. The MPSF again proved to be a powerhouse in the ratings.

1996

Darren and Derek Drago and Mark Rogondino joined the team for their final year of eligibility. Those three, plus transfers Juan Velasco and John Browne, added maturity to the squad. Aztec soccer followed other SDSU sports into the Western Athletic Conference, as did fellow MPSF schools, Air Force, Fresno State, New Mexico, San Jose State, SMU, TCU, Tulsa and UNLV. The WAC certainly rivaled the MPSF in strength. Six freshmen again found playing time and the Aztecs finished 7-10-3.

1997

Coach Clegg was pleased to announce the addition of his first salaried men's assistant coach, Lev Kirshner. A northern California native, Kirshner played collegiately for Rutgers University. Sophomore goalkeeper Matt Hall came into his own, posting a 1.25 GAA, recording 80 saves and four shutouts. The overall record of 7-8-3 did not reflect the intensity of play as four of the losses were by one goal and the team took three opponents to overtime. Again freshmen made an impact with six consistently in the starting lineup. Senior Raja Hawa led the team in scoring, but 13 different Aztecs scored. SDSU remained somewhat young with only three seniors graduating.

1998

A rebuilding Aztec squad held its own throughout a competitive season, finishing with a record of 8-11-1. Junior David Beltran and Darren Parker shared goal-scoring honors with five apiece, while freshman Mike Bradbury added five goals and four assists in his inaugural campaign at SDSU. Goalie Hall was stellar in the nets, fashioning a 1.42 goals-against average. The Aztecs posted impressive WAC wins over UNLV and TCU at home and finished the season with a 4-3 overtime loss to 16th-ranked Southern Methodist, a team that went on to the NCAA quarterfinals.

1999

With the creation of the Mountain West Conference, SDSU returned to the MPSF. The young Aztec team showed signs of improvement but finished the season with a 4-15-0 record. Three of the team's wins came in the form of shutouts, including an impressive 6-0 season-opening victory over Concordia. Freshman keeper Brian Barnes was the team's primary starter seeing action in 16-of-19 matches, earning 64 saves. Junior midfielder/forward Milton Economy led the team with four goals and two assists (10 points), including two game-winners.

2000

Assistant coach Kirshner took over the head coaching reins and with it, the job of returning the program to the success it once knew. Junior midfielder Enrique Tovar led the team in goals (4), assists (6) and points (14). The story of the campaign was sophomore goalkeeper Barnes, who finished the year with a MPSF Pacific Division-leading 90 saves. Combined with 64 saves from his rookie season, his total of 154 saves placed him third on SDSU's career top-10 list. The team finished the year with a 6-12-1 record, and was 2-4-1 in the MPSF-Pacific Division after an injury-plagued campaign in which seven players underwent surgery.

2001

San Diego State completed one of the program's most successful seasons in recent years with a 7-9-4 overall mark and a 3-2-2 MPSF record. The Aztecs entered the final weekend of regular season play in contention for their first MPSF title. Sophomore Kevin Sapanli's earned all-conference and all-tournament honors. He also was a third-team selection on the Verizon Academic All-America team. Seniors Enrique Tovar and Tim Edwards joined Sapanli on the all-conference squad.

2002

After entering the season with great optimism, a rash of injuries to several key returnees turned the year sour. SDSU posted a 4-13-2 overall record, but the young Aztecs did show signs of optimism. The highlight of the year was a 3-2 overtime victory over No. 7 Loyola Marymount. Barnes earned second-team all-MPSF honors after another solid year at goalkeeper, and Ryan Cook was awarded all-MPSF honorable mention plaudits.

2003

The 2003 Aztec squad went against the pundits and posted their first winning season since the 1994 campaign. The year also marked the Aztecs return to the MPSF championships for the second time under fourth-year coach Kirshner. The season started out with a bang as the Aztecs pulled out a 2-1 overtime victory over Oregon State. SDSU would go 6-1-1 through the month of September before injuries and a lack of depth caught up with the Aztecs, who finished a remarkable 9-8-3, including a 3-1 win over Sacramento State in the MPSF championships. The showing marked the second appearance in postseason play since 1989 for SDSU.

2004

Coming off a winning season, the Aztecs were excited about the prospects of 2004. Unfortunately,

injuries sidelined two starters before the season began and by mid-year, the team was without six starters. Despite finishing with a record of 4-13-2, SDSU ended the campaign on a high note, defeating Sacramento State and UNLV and tying No. 2 New Mexico at home. Throughout the year, the team suffered some close losses, but none closer than its season-opening 1-0 loss to eventual national runner-up UC Santa Barbara. Individually, Heath Creager and Colin Jennings were honored by the MPSF. Creager, a junior forward, was named to the second team, while Jennings, a sophomore midfielder, earned honorable mention accolades.

2005

With its first healthy team in some time and a nationally ranked recruiting class, SDSU finished the season with a 9-4-6 record and its first trip to the NCAA tournament since 1989, where it would fall to UC Santa Barbara, 2-0. In their first season of play in the Pac-10, the Aztecs finished with a respectable record of 2-3-5, with two losses coming in overtime. SDSU began the season with a 1-0 road win over perennial power Rutgers and followed it up with a 0-0 tie to then No. 5 St. John's. The Aztecs never looked back from there, going unbeaten (6-0-1) over their next seven games. SDSU was led by junior goalkeeper Tally Hall, who led the nation with an 88.9 shot-on-goal save percentage and was second in the country with a 0.49 goals against average, both school records. Hall's performance between the posts didn't go unrecognized as he became the first Aztec All-American since 1989 (Marcelo Balboa). Hall was joined on the all-Pac-10 team by senior Matt Couch and sophomore Kraig Chiles.

2006

The 2006 Aztecs continued where last year's team left off, advancing to the NCAA tournament for the second consecutive season, a feat they hadn't done since 1988 and 1989. SDSU finished the season with a 9-6-4 record, including a 5-2-3 record in its second year of Pac-10 play, good enough for sole possession of second place. Tally Hall had a brilliant season between the posts once again, going 9-5-4 with a 1.04 goals against average. He went on to become a M.A.C. Hermann Award semifinalist, an All-American for the second straight season and an all-conference performer. Nick Cardenas made an immediate impact, scoring six times en route to being named the Pac-10 Freshman of the Year. Raul Bautista (second team), Andrew DiCicco (honorable mention), Kraig Chiles (honorable mention), Danny Ortiz (honorable mention) and Dennis Sanchez (honorable mention) were also honored by the league.

INTRODUCTION

REVIEW

COACHING STAFF

PLAYERS

THIS IS SDSU

HISTORY/RECORDS



NCAA TOURNAMENT APPEARANCES
1969, 1981, 1982, 1987, 1988, 1989, 2005, 2006
1987 NCAA NATIONAL FINALIST



AZTEC SOCCER

A Z T E C T R A D I T I O N

INTRODUCTION

REVIEW

COACHING STAFF

PLAYERS

THIS IS SDSU

HISTORY/RECORDS

NCAA TOURNAMENT APPEARANCES

1969 - First Round

Head Coach: George Logan
Overall Record: 9-1-1

| Opponent | Round | Result |
|---------------|------------|--------------|
| CS Fullerton | Qualifying | W, 2-1(ot) |
| UCLA | Qualifying | W, 2-1(ot) |
| San Francisco | First | T, 2-2 (ot)* |

* San Francisco advances on corner kicks.

1981 - Second Round

Head Coach: George Logan
Overall Record: 16-3-1

| Opponent | Round | Result |
|------------------|--------|--------------|
| at California | First | W, 4-0 |
| at San Francisco | Second | W, 2-1 (ot)* |

* San Diego State advances on penalty kick
SDSU's participation in the 1981 NCAA tournament was later vacated.

1982 - Second Round

Head Coach: Chuck Clegg
Overall Record: 20-3-0

| Date | Opponent | Round | Result |
|---------|----------------|--------|--------|
| Nov. 17 | Fresno State* | First | W, 1-0 |
| Nov. 21 | San Francisco* | Second | L, 0-2 |

* NCAA tournament at Fresno State.

1987 - Finals

Head Coach: Chuck Clegg
Overall Record: 20-6-0

| Date | Opponent | Round | Result |
|---------|------------------|--------|--------------|
| Nov. 15 | at St. Louis | First | W, 2-1 |
| Nov. 21 | at So. Methodist | Second | W, 2-1 (ot)* |
| Nov. 29 | at UCLA | Third | W, 2-1 |
| Dec. 5 | vs. Harvard# | Semis | W, 2-1* |
| Dec. 6 | at Clemson# | Finals | L, 0-2 |

* San Diego State advances on penalty kicks.
NCAA Final Four at Clemson.

1988 - First Round

Head Coach: Chuck Clegg
Overall Record: 15-3-4

| Date | Opponent | Round | Result |
|---------|----------|-------|--------|
| Nov. 13 | at UCLA | First | L, 1-2 |

1989 - First Round

Head Coach: Chuck Clegg
Overall Record: 14-5-3

| Date | Opponent | Round | Result |
|---------|-----------|-------|--------------|
| Nov. 12 | vs. UCLA# | First | L, 1-2 (ot)* |

* UCLA advances on penalty kicks.
at El Camino College (Torrance, Calif.)

2005 - First Round

Head Coach: Lev Kirshner
Overall Record: 9-4-6

| Date | Opponent | Round | Result |
|---------|---------------------|-------|--------|
| Nov. 19 | at UC Santa Barbara | First | L, 0-2 |

2006 - First Round

Head Coach: Lev Kirshner
Overall Record: 9-6-4

| Date | Opponent | Round | Result |
|---------|---------------------|-------|--------|
| Nov. 11 | at UC Santa Barbara | First | L, 1-2 |

SDSU All-Time NCAA Tournament Record

Overall: 9-6-1 (.594)
Under George Logan: 4-0-1 (.900)
Under Chuck Clegg: 5-4-0 (.556)
Under Lev Kirshner: 0-2-0 (.000)

The San Diego State men's soccer program has a rich tradition that dates all the way back to 1968. In its 38 competitive seasons, the Aztecs have accumulated 27 winning seasons and eight NCAA tournament appearances, including a runner-up finish in the 1987 NCAA tournament final. Individually, players who have attended San Diego State have gone on to earn national and regional recognition and play on some of the highest stages around the world. Here is a quick look at the accomplishments of those who have contributed to San Diego State's rich soccer tradition.

NOTABLE AZTEC SOCCER HIGHLIGHTS

- 1987 NCAA Tournament Finalists
- Two National Soccer Hall of Fame Members
- Four Hermann Trophy Finalists
- Eight NCAA Tournament Appearances
- 10 All-Americans
- Eight World Cup Participants
- 27 Winning Seasons
- 28 National Team Members
- 29 All-Conference Academic Team Selections
- 36 All-Far West Selections
- 47 Professional Soccer Players



1987 NCAA FINAL FOUR
RIGGS FIELD
CLEMSON, S. C.

| | |
|-----------------------------------|------------------------------|
| DAVID SMYTH, North Carolina | PAUL BEYERBROCK, Harvard |
| CHRIS KEENAN, San Diego State | BRUCE MURRAY, Clemson |

NCAA Soccer Championship Pairings
Saturday, December 5 1:00 pm HARVARD vs. SAN DIEGO STATE
3:00 pm CLEMSON vs. NORTH CAROLINA
Sunday, December 6 1:00 pm CHAMPIONSHIP GAME



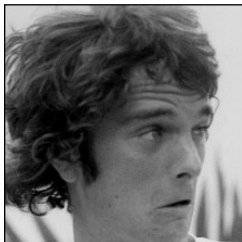
AZTEC SOCCER

A Z T E C A L L - A M E R I C A N S



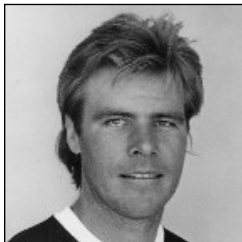
Pete Goossens, 1969

Goossens became the first All-American in school history and the first ever from Southern California. Goossens, a defender, helped the Aztecs to the Southern California Intercollegiate Soccer Association championship. An all-Southern California and all-Southern Section performer, he backed a defense that allowed just 14 goals (12 from the opposition) in 11 games. The Aztecs defeated UCLA, Cal State Fullerton and Cal State Los Angeles en route to a 9-1-1 record and the program's first trip to the NCAA tournament. SDSU played three overtime NCAA playoff games, defeating the Bruins and Titans before battling San Francisco to a 2-2 tie in four overtimes.



Alan Kelly, 1976-77

Kelly earned second-team All-America honors in 1976, after leading SDSU to its ninth straight winning season and a 10-5-1 record. A midfielder, Kelly tied for the team lead with seven goals. The Aztecs posted impressive wins over San Francisco State and U.S. International on the way to the championship of the USIU Invitational. In 1977, Kelly became the first two-time All-American in school history when he garnered first-team accolades. Playing in his final season, Kelly recorded nine goals, tied for second most on the team, as SDSU went 13-4-1. The Aztecs once again won the USIU Invitational, as they beat the hosts, 4-2, and Long Beach State, 5-0, in the championship game.



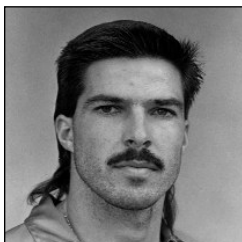
Kevin Crow, 1981-82

Crow helped the 1981 Aztecs (16-3-1) return to the NCAA tournament for the first time in 10 seasons and finish with a school record 16 victories. The second SDSU defender to be named an All-American, Crow anchored a defense that allowed just 18 goals, or 0.90 goals per game, over the entire season. Crow joined Alan Kelly as the Aztecs' second two-time All-American after he was named to the third team the following season. The 1982 team established a new record with 20 wins, a mark which is still tied with the 1987 national runner-up squad for the most victories in the program's history. SDSU (20-3-0), which won its first 11 games and made its second straight trip to the NCAA tournament before falling to San Francisco, 2-0, in the second round.



Kyle Whittemore, 1987

One season after setting a SDSU record that still stands with 50 points on 20 goals and 10 assists, Whittemore struck for 17 goals and contributed five helpers, despite being double-teamed for most of the year. His 39 points led the squad and for his efforts was named to the All-America second team. He helped the Aztecs, the lowest seeded team in the NCAA tournament, all the way to the NCAA championship game before falling to Clemson, 2-0. SDSU would defeat St. Louis (2-1), SMU (2-1, ot/pk) and UCLA (2-1) on the road before taking down undefeated Harvard, 2-1, in penalty kicks, in the semifinals.



Marcelo Balboa, 1988-89

Balboa became the first Aztec first-team All-American since 1977 (Alan Kelly) after leading SDSU to its second straight NCAA tournament in 1988. Balboa, a future National Soccer Hall of Fame member, backed a defense that allowed only 10 goals in 22 games, as SDSU finished 15-3-4. He also scored four goals and added six assists for 14 points. Later on in the year, he was named a U.S. U-20 World Cup team captain. The following season, Balboa was a second-team selection to become the third Aztec two-time honoree. A captain from his sweeper position, Balboa tallied 23 points on eight goals and seven assists in leading SDSU to its third consecutive trip to the NCAA tournament, the only time in school history that has happened. The 1989 Aztecs finished 14-5-3.



Tally Hall, 2005-06

Hall led the nation in 2005 with a 88.9 shot-on-goal percentage and was second with a 0.49 goals against average, both school single-season records. He helped the Aztecs to their first trip to the NCAA tournament since 1989, recording a school-record 12 shutouts, as the SDSU defense gave up 11 goals in 19 games en route to a 9-4-6 mark. In 2006, Hall became SDSU's fourth two-time All-American after helping the squad to the NCAA tournament for the second straight season. Despite falling to eventual national champion UC Santa Barbara, 2-1, in the NCAA first round, Hall went 9-5-4 with a 1.04 goals against average and six shutouts. He would end his four-year career second on the all-time list with 256 saves.

INTRODUCTION

REVIEW

COACHING STAFF

PLAYERS

THIS IS SDSU

HISTORY/RECORDS



NCAA TOURNAMENT APPEARANCES
1969, 1981, 1982, 1987, 1988, 1989, 2005, 2006
1987 NCAA NATIONAL FINALIST



AZTEC SOCCER

ALL-TIME HONORS

INTRODUCTION
 REVIEW
 COACHING STAFF
 PLAYERS
 THIS IS SDSU
 HISTORY/RECORDS

NATIONAL SOCCER HALL OF FAME

2004 Eric Wynalda
 2005 Marcelo Balboa

WORLD CUP PARTICIPANTS

| | | |
|------|----------------|---------------|
| 1990 | Marcelo Balboa | United States |
| | Chris Sullivan | United States |
| | Eric Wynalda | United States |
| 1994 | Marcelo Balboa | United States |
| | Cle Kooiman | United States |
| | Eric Wynalda | United States |
| 1998 | Marcelo Balboa | United States |
| | Eric Wynalda | United States |

OLYMPIANS

| | | |
|------|------------|---------------|
| 1984 | Kevin Crow | United States |
| 1988 | Kevin Crow | United States |

NATIONAL TEAM MEMBERS

| | | |
|------|------------------|------------------------------|
| 1974 | Doug Spunaugle | U.S. Under-23 |
| 1981 | Kevin Crow | National Sports Festival |
| 1981 | Roberto Santana | Puerto Rico |
| 1981 | Steve Kim | South Korean National B Team |
| 1982 | Cle Kooiman | National Sports Festival |
| 1983 | Vidal Fernandez | Team America |
| 1985 | Kyle Whittemore | National Sports Festival |
| 1987 | Marcelo Balboa | U.S. National Team |
| | Chris Sullivan | U.S. National Team |
| 1988 | Jeff Betts | National Sports Festival |
| | Eric Wynalda | U.S. National B Team |
| 1990 | Marcelo Balboa | U.S. National Team |
| | Jeff Betts | National Sports Festival |
| | Chris Sullivan | U.S. National Team |
| | Eric Wynalda | U.S. National Team |
| 1994 | Marcelo Balboa | U.S. National Team |
| | Cle Kooiman | U.S. National Team |
| | David Quesada | U.S. National Team |
| | Eric Wynalda | U.S. National Team |
| 1995 | Curtis McAlister | U.S. National Futsal Team |
| 1997 | Ted Chronopolous | U.S. National Team |
| 1998 | Marcelo Balboa | U.S. National Team |
| | Eric Wynalda | U.S. National Team |
| 2000 | Enrique Tovar | U.S. National Futsal Team |
| 2002 | Carlos Menjivar | El Salvador National Team |
| 2007 | Omar Persad | Jamaica U-20 National Team |



Eric Wynalda

HERMANN TROPHY CANDIDATES

| | | |
|------|-----------------|--------------|
| 1987 | Chris Keenan | Finalist |
| 1988 | Marcelo Balboa | Finalist |
| | Kyle Whittemore | Finalist |
| 1989 | Marcelo Balboa | Finalist |
| 2006 | Tally Hall | Semifinalist |

ALL-AMERICANS

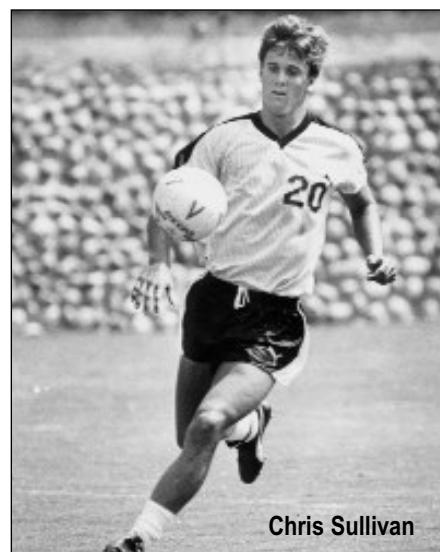
| | | |
|------|-----------------|---|
| 1969 | Pete Goossens | First Team |
| 1976 | Alan Kelly | Second Team |
| 1977 | Alan Kelly | First Team |
| 1981 | Kevin Crow | Second Team |
| 1982 | Kevin Crow | Third Team |
| 1987 | Kyle Whittemore | Second Team |
| 1988 | Marcelo Balboa | First Team |
| 1989 | Marcelo Balboa | Second Team |
| 2005 | Tally Hall | First Team (CSN) Third Team (NSCAA) Honorable Mention (ST) Second Team (NSCAA) Third Team (CSN) |
| 2006 | Tally Hall | Second Team (NSCAA) Third Team (CSN) |

ACADEMIC ALL-AMERICANS

| | | |
|------|-----------------|-------------|
| 1981 | Mark Stepovich | Second Team |
| 1982 | Mark Stepovich | First Team |
| 1986 | Kyle Whittemore | Second Team |
| 1987 | Kyle Whittemore | First Team |
| 1988 | Kyle Whittemore | First Team |
| 2001 | Kevin Sapanli | Third Team |
| 2003 | Kevin Sapanli | Third Team |
| 2006 | Tally Hall | First Team |

NSCAA ALL-FAR WEST

| | | |
|------|---------------------|-------------|
| 1970 | Glenn Campbell | |
| 1975 | Steve Robertson | |
| 1978 | Vidal Fernandez | |
| 1980 | Micael Holmstedt | |
| 1981 | Kevin Crow | |
| | Micael Holmstedt | |
| 1982 | Kevin Crow | |
| | Cle Kooiman | |
| | Micael Holmstedt | |
| 1984 | Steve Boardman | |
| | Kyle Whittemore | |
| 1985 | Steve Boardman | |
| 1986 | Steve Boardman | |
| | Curt Lewis | |
| | Kyle Whittemore | |
| 1987 | Kyle Whittemore | |
| | Eric Wynalda | |
| 1988 | Kyle Whittemore | |
| | Eric Wynalda | |
| | Jeff Betts | |
| | Marcelo Balboa | |
| 1989 | Jeff Betts | |
| | Marcelo Balboa | |
| 1990 | Brian Craft-Negrete | |
| | Pat Merrell | |
| 1991 | Brian Craft-Negrete | |
| | Pat Merrell | |
| | Dain Deforest | |
| 1992 | Bill Demke | |
| 1993 | Bill Demke | |
| 1995 | Aaron Susi | |
| 1996 | Aaron Susi | |
| 2001 | Enrique Tovar | Second Team |
| 2005 | Tally Hall | First Team |
| 2006 | Tally Hall | First Team |
| | Nick Cardenas | Second Team |



Chris Sullivan

NSCAA ACADEMIC ALL-FAR WEST

| | | |
|------|------------------|-------------------|
| 2002 | Brian Barnes | |
| | Abraham Martinez | |
| 2006 | Tally Hall | First Team |
| | Freddy McDonald | Honorable Mention |

SOCCER AMERICA TOP TEN

1987 Chris Keenan
 1988 Marcelo Balboa

SOCCER AMERICA TOP 10 FRESHMEN

1987 Eric Wynalda
 1988 Jeff Betts

COLLEGE SOCCER NEWS ALL-FRESHMEN

2006 Nick Cardenas

TOP DRAWER SOCCER ALL-ROOKIE TEAM

| | | |
|------|-----------------|-------------|
| 2004 | Freddy McDonald | |
| 2005 | Dennis Sanchez | |
| 2006 | Nick Cardenas | First Team |
| | Evan Toft | Second Team |

SAN DIEGO STATE HALL OF FAME

1989 Kevin Crow
 1993 Vidal Fernandez
 1995 Marcelo Balboa
 1996 Eric Wynalda
 2002 1987 NCAA Runner-Up Team

PACIFIC-10 CONFERENCE (PAC-10) FRESHMAN OF THE YEAR

2006 Nick Cardenas

AII-CONFERENCE

| | | |
|------|----------------|-------------------|
| 2005 | Tally Hall | First Team |
| | Kraig Chiles | Second Team |
| | Matt Couch | Second Team |
| | Heath Creager | Honorable Mention |
| | Eric Santiago | Honorable Mention |
| 2006 | Tally Hall | First Team |
| | Nick Cardenas | Second Team |
| | Raul Bautista | Second Team |
| | Kraig Chiles | Honorable Mention |
| | Andrew DiCicco | Honorable Mention |

NCAA TOURNAMENT APPEARANCES

1969, 1981, 1982, 1987, 1988, 1989, 2005, 2006

1987 NCAA NATIONAL FINALIST



AZTEC SOCCER

ALL-TIME HONORS

INTRODUCTION
REVIEW
COACHING STAFF
PLAYERS
THIS IS SDSU
HISTORY/RECORDS

Danny Ortiz
Dennis Sanchez

Honorable Mention
Honorable Mention

ALL-ACADEMIC

| | | |
|------|-----------------|-------------------|
| 2005 | Tally Hall | Second Team |
| | David Dally | Honorable Mention |
| 2006 | Freddy McDonald | First Team |
| | Tally Hall | Second Team |

PLAYER OF THE WEEK

| | |
|----------------|---------------|
| Oct. 3, 2005 | Kraig Chiles |
| Sept. 26, 2006 | Tally Hall |
| Oct. 3, 2006 | Raul Bautista |
| Oct. 31, 2006 | Nick Cardenas |

MOUNTAIN PACIFIC SPORTS FEDERATION (MPSF)

ALL-CONFERENCE

| | | |
|------|----------------|---------------------------|
| 1992 | Bill Demke | |
| 1993 | Bill Demke | |
| | Jack Holt | |
| 1994 | Jack Holt | |
| | Aaron Susi | |
| 1995 | Aaron Susi | |
| 2000 | Brian Barnes | First Team-Pac. Division |
| | Tyler Tinling | Second Team-Pac. Division |
| | Enrique Tovar | Second Team-Pac. Division |
| 2001 | Tim Edwards | First Team |
| | Enrique Tovar | First Team |
| | Ryan Cook | Second Team |
| | Kevin Sapanli | Second Team |
| 2002 | Brian Barnes | Second Team |
| | Ryan Cook | Honorable Mention |
| 2003 | Ryan Curtis | Second Team |
| | Kevin Sapanli | Second Team |
| | Heath Creager | Honorable Mention |
| | Kenny Fechner | Honorable Mention |
| 2004 | Heath Creager | Second Team |
| | Colin Jennings | Honorable Mention |

ALL-ACADEMIC

| | | |
|------|------------------|--|
| 1999 | Abraham Martinez | |
| | Scott Schmid | |
| | Kyle Wiggs | |
| 2000 | Travis Baker | |
| | Brian Barnes | |
| | Abraham Martinez | |
| | Tyler Tinling | |
| | Kyle Wiggs | |
| 2001 | Abraham Martinez | |
| | Kevin Sapanli | |
| | Tyler Tinling | |
| 2002 | Brian Barnes | |
| | Abraham Martinez | |
| | Chris Novak | |
| | Paul Szefer | |
| | Tyler Tinling | |
| 2003 | Colin Hanke | |
| | Kevin Sapanli | |
| | Eric Wohl | |
| 2004 | Tally Hall | |

PLAYER OF THE WEEK

| | |
|----------------|----------------------------|
| Oct. 12, 1993 | Juan Viveros |
| Sept. 27, 1995 | Aaron Susi |
| Nov. 9, 1995 | Aaron Susi |
| Oct. 1, 2001 | Enrique Tovar |
| Nov. 19, 2001 | Eric Wohl |
| Oct. 26, 2003 | Kevin Sapanli |
| Nov. 14, 2004 | Eric Wohl and Frank Caruso |

WESTERN ATHLETIC CONFERENCE (WAC)

ALL-CONFERENCE

1996 Aaron Susi

ALL-ACADEMIC

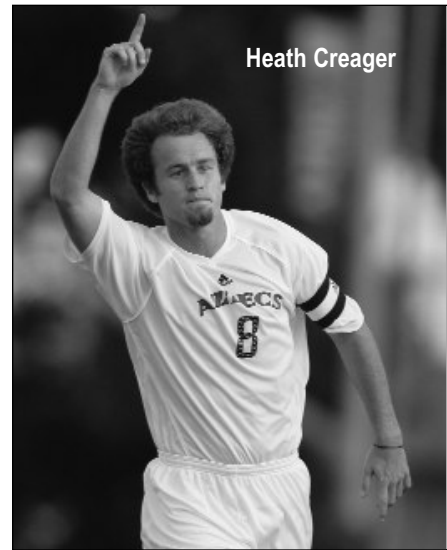
| | |
|------|------------------|
| 1997 | John Browne |
| | Christian Thiele |
| 1998 | Jon Browne |
| | Tim Lebold |
| | Scott Schmid |

PLAYER OF THE WEEK

Oct. 27, 1998 Darren Parker

AZTECS IN THE PROS (FIRST SIGNING)

| | | |
|------|---------------------|-------------------------|
| 1974 | Charlie Delong | Dallas Tornado |
| | Fernando Walker | Los Angeles Aztecs |
| | Dean Wurzberger | Seattle Sounders |
| 1975 | Sean McFadden | San Diego Jaws |
| | Rich Reinecke | Tacoma-ASL |
| 1976 | Mike Young | S.B. Condors-ASL |
| 1977 | Alan Kelly | Los Angeles Aztecs |
| | Steve Robertson | San Diego Sockers |
| 1978 | Ward Macauley | San Diego Sockers |
| | Jan Norby | San Diego Sockers |
| 1979 | Vidal Fernandez | New York Cosmos |
| 1980 | Gordon Dallas | San Diego Sockers |
| 1982 | Vince Bucelli | San Diego Sockers |
| | Kevin Crow | San Diego Sockers |
| | Cle Kooiman | Los Angeles Lazers |
| | Dida Mendes | Cleveland Force |
| 1983 | Anders Erlandsson | Swedish First Div. |
| 1985 | Keenan Mikal | Ft. Lauderdale Strikers |
| | Jeff Rogers | Dallas |
| 1986 | Steve Boardman | Los Angeles Lazers |
| | Doug Neely | Los Angeles Lazers |
| 1987 | Chris Keenan | San Diego Sockers |
| 1988 | Felipe Hernandez | San Diego Sockers |
| 1989 | Bryan Finnerty | Detroit Rockers |
| 1990 | Kyle Whittemore | S.F. Blackhawks |
| | Eric Wynalda | FC Saarbrucken-Germany |
| 1991 | Curtis McAlister | La Raza-Mexico |
| | Brad Walsh | Colorado Foxes |
| 1992 | Jeff Betts | Portland |
| | Dan Dalzochio | San Diego Sockers |
| | Brian Craft-Negrete | San Diego Sockers |
| | Shane Hickson | Anaheim Splash |
| 1993 | Marcelo Balboa | Leon-Mexico |
| | Tim Foster | Minnesota Thunder |
| 1994 | Ryan Lau | Hawaii Tsunami |
| 1995 | Bret Weaver | California Jaguars |
| 1996 | Renato Capobianco | T.B. Assistant Coach |
| | Ted Chronopoulos | New England Revolution |
| 1997 | Rene Miramontes | Colorado Asst. Coach |
| | Aaron Susi | Arizona Sandsharks |
| 1998 | Chris Sullivan | San Jose Clash |
| 2001 | David Beltran | San Diego Sockers |
| | Matt Hall | San Diego Flash |
| 2002 | Carlos Menjivar | FAS-El Salvador |
| 2005 | Enrique Tovar | California Cougars |
| 2006 | Johann Helgason | U.M.F. Grindavik |
| 2007 | Tally Hall | Esbjerg FB |



Heath Creager

TEAM AWARDS UNDER LEV KIRSHNER'S TENURE

MOST VALUABLE PLAYER

| | |
|------|----------------------------|
| 2000 | Brian Barnes |
| 2001 | Tim Edwards, Enrique Tovar |
| 2002 | Brian Barnes |
| 2003 | Ryan Curtis |
| 2004 | Heath Creager |
| 2005 | Tally Hall |
| 2006 | Tally Hall |

TOP NEWCOMER

| | |
|------|-----------------|
| 2000 | Ryan Curtis |
| 2001 | Eric Wohl |
| 2002 | Raul Bautista |
| 2003 | Colin Jennings |
| 2004 | Freddy McDonald |
| 2005 | Johan Helgasson |
| 2006 | Nick Cardenas |

MOST INSPIRATIONAL

| | |
|------|---------------|
| 2000 | Tyler Tinling |
| 2001 | Brian Barnes |
| 2002 | Brian Barnes |
| 2003 | Colin Hanke |
| 2004 | Nick Clemens |
| 2005 | Matt Couch |
| 2006 | Raul Bautista |

COACH'S AWARD

| | |
|------|-----------------|
| 2000 | Milton Economy |
| 2001 | Ryan Cook |
| 2002 | Travis Baker |
| 2003 | Josh Boys |
| 2004 | Eric Wohl |
| 2005 | Mike Mercuriali |
| 2006 | Raul Bautista |

CAPTAIN'S AWARD

| | |
|------|---|
| 2000 | Milton Economy, Enrique Tovar |
| 2001 | Enrique Tovar |
| 2002 | Brian Barnes, Ryan Cook |
| 2003 | Ryan Curtis, Colin Hanke |
| 2004 | Heath Creager |
| 2005 | Raul Bautista, Heath Creager, Matt Couch |
| 2006 | Raul Bautista, Andrew DiCicco, Tally Hall |



NCAA TOURNAMENT APPEARANCES

1969, 1981, 1982, 1987, 1988, 1989, 2005, 2006

1987 NCAA NATIONAL FINALIST



AZTEC SOCCER

A Z T E C R E C O R D S

INTRODUCTION

REVIEW

COACHING STAFF

PLAYERS

THIS IS SDSU

HISTORY/RECORDS

SINGLE-SEASON RECORDS

GOALS

| | |
|--------------------------|----|
| 1. Kyle Whittemore, 1984 | 21 |
| 2. Kyle Whittemore, 1986 | 20 |
| 3. Steve Robertson, 1975 | 18 |
| 4. Kyle Whittemore, 1987 | 17 |
| Micael Holmstedt, 1980 | 17 |
| Micael Holmstedt, 1981 | 17 |
| 7. Eric Wynalda, 1988 | 14 |
| Steve Robertson, 1974 | 14 |
| 9. Vidal Fernandez, 1977 | 13 |
| Vince Bucelli, 1982 | 13 |

POINTS

| | |
|---------------------------|----|
| 1. Kyle Whittemore, 1986 | 50 |
| 2. Kyle Whittemore, 1984 | 45 |
| 3. Micael Holmstedt, 1980 | 42 |
| 4. Kyle Whittemore, 1987 | 39 |
| Micael Holmstedt, 1981 | 39 |
| 6. Eric Wynalda, 1988 | 36 |
| Steve Robertson, 1975 | 36 |
| 8. Vidal Fernandez, 1979 | 34 |
| 9. Eric Wynalda, 1987 | 33 |
| Micael Holmstedt, 1982 | 33 |

ASSISTS

| | |
|---------------------------|----|
| 1. Jeff Betts, 1989 | 12 |
| Chris Keenan, 1987 | 12 |
| Steve Boardman, 1985 | 12 |
| 4. Micael Holmstedt, 1982 | 11 |
| Ken Taylor, 1989 | 11 |
| Eric Wynalda, 1987 | 11 |
| 7. Aaron Susi, 1995 | 10 |
| Eric Drabb, 1987 | 10 |
| Kyle Whittemore, 1986 | 10 |
| Dida Mendes, 1980 | 10 |
| Kenny Fechner, 2003 | 10 |

Melteades "Milton" Economy, the only four-year captain in Aztec soccer history.



SAVES

| | |
|---------------------------|----|
| 1. Brian Barnes, 2002 | 98 |
| 2. Brian Barnes, 2000 | 90 |
| 3. Matt Hall, 1998 | 89 |
| Bryan Finnerty, 1989 | 89 |
| 5. Tally Hall, 2004 | 88 |
| 6. Colin Hanke, 2003 | 87 |
| 7. Curtis McAlister, 1990 | 85 |
| 8. Tally Hall, 2006 | 80 |
| Tally Hall, 2005 | 80 |
| Matt Hall, 1997 | 80 |

SHUTOUTS

| | |
|---------------------------|------|
| 1. Tally Hall, 2005 | 12.0 |
| 2. Bryan Finnerty, 1989 | 10.0 |
| 3. Bryan Finnerty, 1988 | 9.5 |
| 4. Curtis McAlister, 1990 | 8.5 |
| 5. Garry Wilcox, 1985 | 8.0 |
| 6. Mark Stepovich, 1980 | 7.5 |
| 7. Mark Stepovich, 1981 | 7.0 |
| Mark Stepovich, 1982 | 7.0 |
| Bryan Finnerty, 1987 | 7.0 |

GOALS-AGAINST AVERAGE

(Minimum 750 minutes)

| | |
|------------------------------|------|
| 1. Tally Hall, 2005 | 0.49 |
| 2. Bryan Finnerty, 1988 | 0.54 |
| 3. Mark Stepovich, 1981 | 0.63 |
| 4. Bryan Finnerty, 1989 | 0.66 |
| 5. Felipe Hernandez, 1987 | 0.71 |
| 6. Mark Stepovich, 1982 | 0.81 |
| 7. Willem Van Der Wall, 1970 | 0.88 |
| 8. Bryan Finnerty, 1997 | 0.91 |
| 9. Curtis McAlister, 1990 | 0.92 |
| 10. Dan Dalzochio, 1991 | 0.93 |

CAREER RECORDS

GOALS

| | |
|----------------------------------|----|
| 1. Kyle Whittemore, 1984, 86-88 | 68 |
| 2. Micael Holmstedt, 1979-82 | 57 |
| 3. Steve Robertson, 1974-75 | 37 |
| 4. Eric Wynalda, 1987-89 | 34 |
| Vidal Fernandez, 1977-79 | 34 |
| 6. Jim Tollerton, 1969-71 | 32 |
| 7. Choo Chowanda-Bandhu, 1969-72 | 31 |
| 8. Alan Kelly, 1974-77 | 28 |
| 9. Aaron Susi, 1993-96 | 25 |
| Dida Mendes, 1979-82 | 25 |
| Vince Bucelli, 1979, 81-82 | 25 |

POINTS

| | |
|---------------------------------|-----|
| 1. Kyle Whittemore, 1984, 86-88 | 160 |
| 2. Micael Holmstedt, 1979-82 | 141 |
| 3. Eric Wynalda, 1987-89 | 101 |
| 4. Dida Mendes, 1979-82 | 83 |
| 5. Aaron Susi, 1993-96 | 78 |
| Vidal Fernandez, 1977-79 | 78 |
| 7. Steve Robertson, 1974-76 | 68 |
| Jim Tollerton, 1969-71 | 68 |
| 9. Brian Craft-Negrete, 1988-91 | 63 |
| Vince Bucelli, 1979, 81-82 | 63 |

ASSISTS

| | |
|----------------------------------|----|
| 1. Dida Mendes, 1979-82 | 33 |
| 2. Choo Chowanda-Bandhu, 1969-72 | 31 |
| 3. Aaron Susi, 1993-96 | 28 |
| Alan Kelly, 1974-77 | 28 |
| 5. Micael Holmstedt, 1979-82 | 27 |
| 6. Eric Wynalda, 1987-89 | 25 |
| Eric Drabb, 1984-87 | 25 |
| Vince Bucelli, 1979, 81-82 | 25 |
| 9. Kyle Whittemore, 1984, 86-88 | 24 |
| 10. Steve Boardman, 1983-86 | 22 |

SAVES

| | |
|------------------------------|-----|
| 1. Brian Barnes, 1999-02 | 282 |
| 2. Tally Hall, 2003-06 | 256 |
| 3. Matt Hall, 1996-98 | 213 |
| 4. Bryan Finnerty, 1987-89 | 210 |
| 5. Brett Weaver, 1993-94 | 111 |
| 6. Curtis McAlister, 1988-90 | 106 |
| 7. Colin Hanke, 2002-03 | 90 |
| 8. Felipe Hernandez, 1986-87 | 84 |
| 9. Greg Cohn, 1992-94 | 78 |
| 10. Tim Edwards, 2000-01 | 76 |

SHUTOUTS

| | |
|------------------------------|------|
| 1. Bryan Finnerty, 1987-89 | 26.5 |
| 2. Mark Stepovich, 1979-82 | 21.5 |
| 3. Tally Hall, 2003-06 | 21 |
| 4. Curtis McAlister, 1988-90 | 16 |
| 5. Peter Gisslow, 1974-76 | 13 |
| Garry Wilcox, 1984-85 | 13 |

GOALS-AGAINST AVERAGE

(Minimum 1,500 minutes)

| | |
|---------------------------------|------|
| 1. Bryan Finnerty, 1987-89 | 0.69 |
| 2. Curtis McAlister, 1988-90 | 0.79 |
| 3. Mark Stepovich, 1979-82 | 0.81 |
| 4. Felipe Hernandez, 1986-87 | 0.82 |
| 5. Garry Wilcox, 1984-85 | 0.96 |
| 6. Willem Van Der Wall, 1969-70 | 0.99 |
| 7. Tally Hall, 2003-06 | 1.11 |
| 8. Dan Dalzochio, 1991-92 | 1.17 |
| 9. Colin Hanke, 2002-03 | 1.35 |
| 10. Tim Edwards, 2000-01 | 1.45 |

SDSU SPORTS DECK FIRSTS

FIRST GOAL

Carlos Menjivar vs. Christian Heritage, 9/1/00

FIRST ASSIST

Carlos Menjivar vs. Christian Heritage, 9/1/00

FIRST SDSU WIN

Defeated Christian Heritage, 5-0, 9/1/00

FIRST SDSU SHUTOUT

Defeated Christian Heritage, 5-0, 9/1/00

SDSU SPORTS DECK RECORDS

MOST GOALS

7, vs. Christian Heritage, 10/4/01

MOST ASSISTS

5 (twice), last vs. Christian Heritage, 10/4/01

MOST POINTS

19, vs. Christian Heritage, 10/4/01

MOST SHOTS

28 (twice), last vs. Rider, 9/15/06

MOST SAVES

10 (four times), last vs. Air Force, 10/8/04

HIGHEST ATTENDANCE

1,516 vs. UCLA, 11/13/05

