

Aztec Coaches



THREE STRAIGHT NCAA APPEARANCES ► BACK-TO-BACK MOUNTAIN WEST REGULAR-SEASON CHAMPIONS



Steve Fisher and his basketball staff look to guide the Aztecs to the postseason for an eighth consecutive year.

Inside:

Steve Fisher	28
Brian Dutcher	41
Mark Fisher	42
Tony Bland	43
Matt Soria	44
David Velasquez	44
Support Staff	45

On Top Of The

Mountain

Aztec Head Coach Steve Fisher

Overall: 442-242* (21-Full Seasons) ♦ San Diego State: 258-160 (13 Seasons)

NCAA National Championship ♦ Three NCAA Final Four Appearances

2-Time National Coach of the Year ♦ 12 NCAA Tournament Berths ♦ 18 Postseason Appearances



Steve Fisher has guided the Aztecs to postseason play in nine of the past 11 seasons, including a school-record seven straight years.

Steve Fisher has guided the San Diego State basketball program to unparalleled heights. In 13 seasons, he has taken a program that regularly missed out on the conference postseason tournament, to one which has become one of the best programs on the West Coast and one that is respected nationally in all college basketball circles.

The best news for San Diego State fans is that the school extended Fisher's contract prior

to the 2011-12 campaign, which will keep the national championship coach in San Diego for the foreseeable future.

When Fisher arrived on the scene in March of 1999, he found a basketball program that wasn't good enough to be called average. The Aztecs had suffered through 13 losing seasons in 14 years. Members of the school's last NCAA team were in the early stages of middle age. The expectations were set. The Aztecs were expected to lose. The year before Fisher's arrival on campus, San Diego

State won just four games.

Now those days are a distant memory. Fisher guided the Aztecs to the greatest season in school history in 2011 as they won 34 games, spent a majority of the year ranked in the top 10 and won the program's first-ever NCAA Tournament games en route to the Sweet 16. And what did he do for an encore in 2012? Fisher took San Diego State back to the NCAA Tournament after earning a share of the Mountain West regular-season crown for the second straight season.

** Please refer to Steve Fisher's year-by-year record on page 31.*

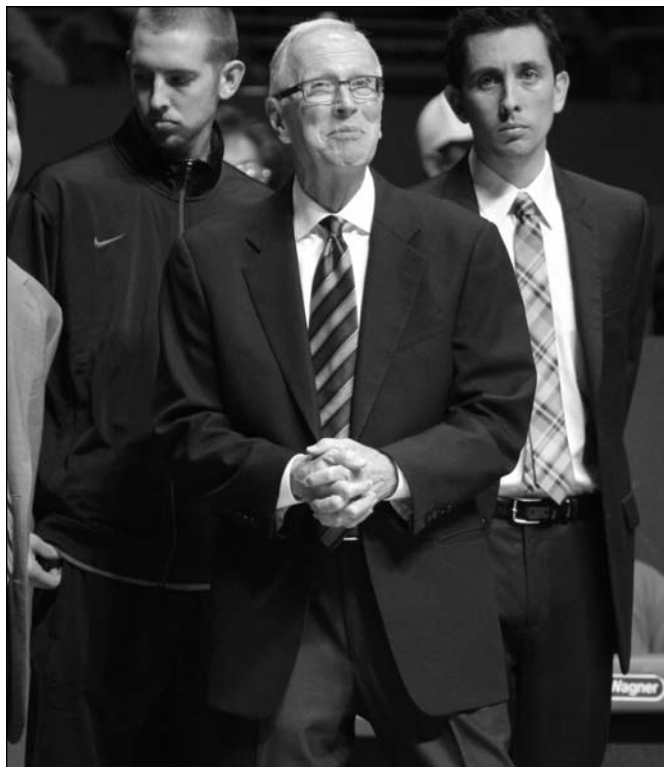


Steve Fisher



THREE STRAIGHT NCAA APPEARANCES ► BACK-TO-BACK MOUNTAIN WEST REGULAR-SEASON CHAMPIONS

STEVE FISHER ◀ COACHES



Collegiate Coaching Experience

1979-82 Assistant Coach, Western Michigan University

Coached under Les Wothke, the same coach that hired him for his first coaching position at Rich East (Ill.) High... Team won the 1981 conference championship.

1982-89 Assistant Coach, University of Michigan

In six full seasons as an assistant, Michigan made four trips to the NCAA Tournament and claimed the 1984 NIT championship... Michigan won Big Ten titles in both 1985 and 1986.

1989-97 Head Coach, University of Michigan

Claimed Michigan's only national championship to date in men's basketball (1989)... Guided the Wolverines to three of the school's five national championship game appearances... In eight full seasons, he compiled a 184-82 record (69.1 percent)... His teams made seven NCAA appearances and two postseason NIT trips... One of six coaches to win both an NCAA and NIT championship... Recorded five 20-win seasons, including a 31-5 record during the 1992-93 campaign... *Basketball Times* National Coach of the Year in 1992.

1999-Present Head Coach, San Diego State University

Authored one of the greatest turnarounds in college basketball history by taking a program that won four games the year before his arrival to four Mountain West Conference Tournament championships, three MW regular season titles, five NCAA tournament berths and four appearances in the postseason NIT... Team went from 5-23 his first season (1999-00) to post 10 .500 or better seasons: 14-14 (2000-01), 21-12 (2001-02), 16-14 (2002-03), 24-9 (2005-06), 22-11 (2006-07), 20-13 (2007-08), 26-10 (2008-09), 25-9 (2009-10), 34-3 (2010-11), 26-8 (2011-12)... Won 20 or more games in eight of the last 11 seasons, including seven straight... The top 10 single-season home attendance marks have been set in the last 10 seasons.

In addition to 2012, Fisher helped SDSU reach the NCAA Tournament in 2002, 2006, 2010 and 2011, and the postseason NIT in 2003, 2007, 2008 and 2009. During his tenure, the Aztecs have also produced eight 20-win seasons, including four straight with 25 or more victories.

The ingredients for a successful basketball program seemed to have arrived at San Diego State at approximately the same time Fisher did.

Viejas Arena, formerly Cox Arena, was one of the glaring athletic upgrades on the west side of campus, and its opening signified the new-placed emphasis on basketball in the Aztec athletic department. The program moved from the aging San Diego Sports Arena on the west side of the city to an on-campus home located just steps away from fraternities and sororities.

After the arrival of Cox Arena, one important ingredient was lacking.

On March 26, 1999, SDSU announced its arrival on the basketball scene in a news conference to introduce its new coach, Steve Fisher. Fresh from a stint with the Sacramento Kings and with three appearances in the Final Four and a national championship in his pocket, he rolled up his sleeves and went to work. And work was needed. It looked to be a daunting challenge and yet the man with one of the highest winning percentages in NCAA Tournament history had no reservations.

"We have everything here that we need to be successful at the highest level," Fisher said at the time. "We have a great campus in a great city. The arena is as good of a facility as you can find. Our league is very good and getting better. Who wouldn't want to play here?"

Coming off a 4-22 season, not much was expected of the Aztecs in the new coach's first year. The Aztecs finished 5-23 but never stopped working. The last game of the season was a near upset of UNLV in the first round of the MW Tournament. The eventual champions bested the Aztecs in the final minutes.

"We worked hard - we just weren't good enough," Fisher said of his first group of Aztecs. "They tried to do everything we wanted, but we spent the year dodging bullets."

It was year two, the 2000-01 campaign, when Fisher and SDSU served notice that better days were ahead and some, in fact, had arrived. The Aztecs were one of the nation's most

improved teams, finishing the year at 14-14 and in the process, ending several less-than-flattering streaks, including a long road losing streak, a long conference losing streak and an overall losing streak. Attendance jumped by an astounding 73 percent and by spring, the stars of tomorrow became more receptive when Fisher and his staff came calling to talk about Aztec basketball.

And then came year three. An indifferent start gave way to a down-right slow beginning to conference play. But the Aztecs then unveiled a trait that has become synonymous with Steve Fisher teams. They played their best when it mattered most.

The Aztecs roared down the stretch, winning eight of their final 10 games and climbing to .500 in Mountain West play, a major step for San Diego State basketball.

Then came March, a month that has always been magical for Steve Fisher.

The Aztecs headed to Las Vegas and picked up three straight wins to claim their first MW title, including victories over top-seeded Wyoming and home-standing UNLV.

The season ended with a 21-12 record and continued the upward surge of the program. And SDSU was close to so much more. The Aztecs dropped three overtime games, lost a hard-fought battle at Utah and went on the road to push Duke. San Diego State reached 21 wins for the first time since the 1984-85 season and returned to the NCAA Tournament for the first time since that same '84-85 team.

Along the way there were more glaring landmarks. SDSU picked up its first win at New Mexico since 1984 and swept the Colorado State-Wyoming swing, considered one of the toughest in college basketball, for the first time ever.

However, it is what lies ahead and not the past that continues to drive the energetic Fisher.

"I have never said I wanted the program in a certain place by a certain time," he said. "You just work hard, prepare well and try to get lucky. We have probably done a little bit of each."

The Aztecs proved that they were more than a one-hit wonder in 2002-03 by returning to the postseason and claiming their first postseason victory in 33 seasons at the Division I level. San Diego State concluded its third straight season with a .500 or better record by going 16-14 and advancing to the second round of the NIT. Along the way, the Aztecs played before two

AZTEC BASKETBALL MEDIA GUIDE

Steve Fisher



THREE STRAIGHT NCAA APPEARANCES ► BACK-TO-BACK MOUNTAIN WEST REGULAR-SEASON CHAMPIONS

sellout crowds in Cox Arena en route to shattering the home attendance average (7,172).

Although SDSU struggled the following two seasons, Fisher and the Aztecs enjoyed one of the best seasons in school history in 2005-06. Expectations were high from the outset as the conference media picked SDSU as the team to beat in the MW, something that had never happened in the Scarlet and Black's Division I history. In addition, the league media also bestowed on SDSU the titles of player of the year (Marcus Slaughter), first-team all-conference (Slaughter and Brandon Heath) and newcomer of the year (Mohamed Abukar).

And that was just the beginning. San Diego State won a then-Division I school-record 24 games, the regular season conference crown and the league tournament title en route to a bid in the NCAA Tournament. At season's end, Heath had been named an AP honorable mention All-American, the MW player of the year and a first-

team all-league selection, while teammates Slaughter (MW tournament MVP, first-team all-MW) and Abukar (second-team all-conference) also garnered attention.

The success from the Aztecs' magical year continued in 2006-07 as SDSU went on to win its first eight games, marking the best start to a season by a Fisher-coached team, and posted its second straight 20-plus win season with a record of 22-11, something that had not been accomplished on Montezuma Mesa during the Aztecs' time as a Division I program. In the process, SDSU earned a spot in the MasterCard NIT and captured its first Division I postseason road victory before falling in the second round.

In 2007-08, the winning trend was carried on by a junior-laden team that finished 20-13 and earned another appearance in the NIT. The Aztecs became the first team in the school's Division I history to record three straight 20-win seasons and three consecutive postseason

berths.

Then came 2008-09 when those aforementioned streaks were extended to four straight seasons after Fisher led San Diego State to a 26-10 record and an appearance in the semifinals of the NIT. The 26 victories represented a new school record.

Despite losing 4,291 career points from the 2008-09 squad, Fisher and the 2009-10 Aztecs made it a point to not have a drop off, even with six newcomers. San Diego State finished with a 25-9 record, won the MW tournament title and advanced to the NCAA Tournament for the first time since 2006. SDSU was led by a freshman in Kawhi Leonard, who became the first freshman in league history to be voted onto the all-conference first team, all while being named league freshman of the year and MW tournament MVP.

All of the hard work from the aforementioned seasons paid off in 2010-11 when the Aztecs made the nation pay attention to them as they

rattled off 20 straight wins to start the season.

SDSU had never been ranked prior to the season and it opened the campaign in the preseason AP Top-25 poll. After five weeks, the Aztecs vaulted into the top 10 and earned a season-best ranking of No. 4, even garnering three first-place votes in the ESPN/USA Today Coaches' Poll.

When the dust settled, SDSU won the MW regular-season and tournament titles and earned the West Region's No. 2 seed in the NCAA Tournament. The Aztecs won in the Tournament for the first time in school history and advanced to the Sweet 16 before falling to the eventual national champion. Fisher guided San Diego State to a school-record 34 victories and finished the season ranked sixth in the AP and 11th in the Coaches' poll.

Leonard, who led the team in scoring and rebounding, became an All-American and was drafted in the first round of the NBA Draft.

Steve Fisher Year-By-Year

Year	School				Conference			Postseason/Honors
		W	L	Pct.	W	L	Pct.	
1989	Michigan	6	0	1.000	-	-	-	NCAA Champions
1989-90	Michigan	23	8	.742	12	6	.667	NCAA Second Round
1990-91	Michigan	14	15	.483	7	11	.389	NIT First Round
1991-92	Michigan	25	9	.735	11	7	.611	NCAA Runner-Up, <i>Basketball Times</i> Coach of the Year
1992-93	Michigan	31	5	.861	15	3	.833	NCAA Runner-Up
1993-94	Michigan	24	8	.750	13	5	.722	NCAA Regional Finalist
1994-95	Michigan	17	14	.548	11	7	.611	NCAA First Round
1995-96	Michigan	20	12	.625	10	8	.556	NCAA First Round
1996-97	Michigan	24	11	.686	9	9	.500	NIT Champions
Eight Full Seasons at UM		184	82	.691	88	56	.611	7 NCAA Tournaments, 9 Postseason Appearances
Year	School	W	L	Pct.	W	L	Pct.	Postseason/Notes
1999-00	San Diego State	5	23	.179	0	14	.000	
2000-01	San Diego State	14	14	.500	4	10	.286	8th-most improved team in the country (Sagarin Ratings)
2001-02	San Diego State	21	12	.636	7	7	.500	NCAA First Round; Aztecs' first NCAA trip since 1985
2002-03	San Diego State	16	14	.533	6	8	.429	NIT Second Round; First win in D-I postseason tourney
2003-04	San Diego State	14	16	.467	5	9	.357	Overcame loss of four starters for fourth straight season w/14 wins
2004-05	San Diego State	11	18	.379	4	10	.286	Young Aztecs drop seven gms. by four pts. or less or in OT
2005-06	San Diego State	24	9	.727	13	3	.813	NCAA First Round; MWC regular season and tourney champs
2006-07	San Diego State	22	11	.667	10	6	.625	NIT Second Round; First road win in D-I postseason tourney
2007-08	San Diego State	20	13	.606	9	7	.563	NIT First Round; Third straight 20-win season
2008-09	San Diego State	26	10	.722	11	5	.688	NIT Semifinals; Then SDSU-record 26 victories
2009-10	San Diego State	25	9	.735	11	5	.688	NCAA First Round; MWC tournament Champions
2010-11	San Diego State	34	3	.919	14	2	.875	NCAA Sweet 16; MWC regular season, tourney champs; SDSU-record 34 wins
2011-12	San Diego State	26	8	.765	10	4	.714	NCAA Second Round; MW regular-season champions
13 Seasons at SDSU		258	160	.617	104	90	.536	5 NCAA Tournaments, 9 Postseason Appearances
		W	L	Pct.	W	L	Pct.	Postseason/Honors
21-Season Career Totals		442	242	.646	192	146	.568	12 NCAA Tournaments, 18 Postseason Appearances

In November of 2002, the University of Michigan chose to vacate a number of games from the 1992-1997 time period. Because of this, the NCAA no longer recognizes those contests and thus lists Steve Fisher's career coaching record differently. The chart above and all references in this publication include all games.

Steve Fisher



THREE STRAIGHT NCAA APPEARANCES ► BACK-TO-BACK MOUNTAIN WEST REGULAR-SEASON CHAMPIONS

The Steve Fisher File

Hometown: Herrin, Ill.

Family: wife Angie, sons Mark (34), Jay (25).

Education: Illinois State Univ. (B.S. in 1967 and M.S. in 1968)

National Coach of the Year Honors

► 1992 *Basketball Times* Coach of the Year

► 2011 Naismith Coach of the Year

► 2011 NABC Coach of the Year

Seniors D.J. Gay, Malcolm Thomas and Billy White, meanwhile, earned all-conference honors in leading San Diego State, which sold out 13 home games and set a school record for attendance, to one of the finest seasons in Division I college basketball.

Personally, Fisher was recognized for his team's success as he was named the Naismith and NABC National Coach of the Year, MW Co-Coach of the Year, USBWA and NABC District Coach of the Year, and was the recipient of the Adolph Rupp Cup.

"In my 40-plus years of teaching and coaching, I have never enjoyed a season more," Fisher said. "I believe that could be said for anybody who was involved in any aspect with our team. From every coach, to every player, to our students, to our alums and to the community, it was truly a season to remember and to reflect on with great pride. Everyone knew that something very significant and special occurred and everyone benefited."

And Fisher was right.

The six letterwinners who returned in 2011-12 certainly benefitted from the earth-shaking 2010-11 campaign as they defied public opinion and finished with a record of 26-8 after claiming a share of the Mountain West regular-season championship.

The Aztecs were led by sophomore Jamaal Franklin, who played just 22 games and averaged 2.9 points as a true freshman, and the lone returning starter in junior Chase Tapley. Franklin wound up earning AP honorable mention All-America accolades, while Tapley established himself as one of the top shooting guards in the nation after picking up all-league honors.

The aforementioned duo along with the senior leadership of Tim Shelton and Garrett Green, and a supporting cast that had been through the rigors of a 34-3 campaign, willed the program to its third consecutive NCAA Tournament appearance and a final AP national ranking of No. 22.

For his efforts, Fisher was named MW Coach of the Year and garnered district coach of the year honors from the USBWA, NABC and *Basketball Times*.

SDSU's winning ways do not look as if they will come to an end anytime soon either. Fisher is set to return four starters, three high-level Division I transfers and a top-25 recruiting class this season, and excitement surrounding the program is at an all-time high,

both locally and nationally.

Prior to arriving in San Diego, Fisher spent one season as an assistant coach with the Sacramento Kings. However, he is best known for his efforts at the collegiate level. He became a household name at Michigan, where he transformed a prominent program into a perennial national championship contender and winner. Returning to the college game was returning home.

"I enjoyed the NBA," Fisher said. "It was all basketball all the time. But I always felt I belonged in the college game. If I have a calling, it is as a teacher. I enjoy teaching basketball. I think it is what I do best."

That point would be hard to argue.

No head-coaching career, at any level, started quicker than that of Steve Fisher. Six games into his head-coaching career he was undefeated and sporting a national championship ring. And the success didn't stop with the national title.

Fisher spent eight-plus seasons, won an NCAA title and an NIT championship and carved out one of the most glamorous periods in college basketball history during the Fab Five years.

Under Fisher, the Wolverines won at least 20 games four times and finished among the top three in the powerful Big Ten Conference five times. In 1995, Michigan set a league record by holding opponents to just 39.4 percent shooting from the floor.

Fisher and company raised the bar even higher in the postseason. His seven NCAA Tournament teams combined for a 20-6 record on the court for a winning percentage of .769 in the national bracket. Three of his teams advanced to the Final Four.

Just seven head coaches have led schools to the championship of the NIT as well as the NCAA. The others to accomplish that feat are Bobby Knight, Adolph Rupp, Joe B. Hall, Al McGuire, Dean Smith and Jim Calhoun.

Add to the accolades the fact that Fisher coached perhaps the most famous group of players in modern NCAA history. In 1991, Fisher and Aztec assistant head coach Brian Dutcher inked a recruiting class that would later be known as the "Fab Five." The group included Ray Jackson, Jimmy King and NBA stars Juwan Howard, Jalen Rose and Chris Webber. They were the heart, and indeed the starting five, of two consecutive NCAA runner-up teams in Ann Arbor. For his efforts with that

group, Fisher was named the 1992 national coach of the year by *Basketball Times*.

During his stay in Michigan, Fisher coached seven players that would be taken in the first round of the NBA draft, including the three members of the Fab Five.

His accomplishments may be even greater at SDSU. In 2001-02 he led the Aztecs to the postseason for the first time since 1985 and for just the fourth time ever. The 21 wins were second most for the school as a Division I program and the most since 1985.

That was followed by a berth in the NIT in 2002-03 and the Aztecs' first Division I postseason victory.

The fact that those numbers came in his first four years at SDSU signifies what is one of the great recent turn-arounds in college basketball.

Steve Fisher grew up in Herrin, Ill., and played his college basketball at Illinois State University, where he earned two varsity letters. He was a member of the university's Division II Final Four team as a senior. In 1967, he completed work on his bachelor's degree at ISU in physical education and math. The following year he earned a master's degree in physical education.

Fisher began his climb up the coaching ladder in Park Forest, Ill., where he served as an assistant coach and later became head coach at Rich East High School. In eight years at the helm of the program, he built Rich East into one of the top programs in the Chicago area.

"I probably could have stayed in the high school ranks my entire career and been happy," Fisher said. "I coached basketball and taught math and that was fine with me."

In 1979, Fisher moved into the collegiate ranks at Western Michigan. He spent three years as an assistant under Les Wothke, who had hired him at Rich East. He helped build the Bronco program into a conference champion in 1981.

In 1982, he moved across the state to Michigan where he helped Bill Frieder lead the Wolverines to a pair of conference titles. As he was in high school, Fisher was happy sitting in the middle of the bench, removed from the spotlight. A career as an assistant would have worked just fine.

Seven years after his hiring and on the verge of the NCAA Tournament, Frieder accepted the head-coaching job at Arizona State and Michigan athletic director Bo Schembechler quickly moved Fisher to the end of

the bench. Fisher then moved himself into the national spotlight.

He assumed the role of interim head coach with no promise of a future. However, he made a strong case for the job when he promptly led a team that finished third in the Big Ten race to the national title. Included in that run was a win over Illinois in the national semifinals. The Illini were considered by many to be the best team in the country. The title was the first and remains the only championship in Michigan history.

The 1991-92 and 1992-93 seasons were the fanatical years of the Fab Five. Not only did the Wolverines achieve cult-like status, but they were the most successful group of underclassmen in the history of college sports.

In the years before the early entries into the NBA and before high school stars spent their lunch hours with agents, Michigan's successes were even more impressive. Two straight trips to the NCAA title game with five freshmen and then five sophomores in the starting lineup marked an incredible accomplishment. UM set a school record in 1992-93 by going 31-5.

In all, Steve Fisher carved out the most successful period in Michigan basketball history. His final club in Ann Arbor won the NIT. However, he is now clearly planted in Southern California.

"My family and I are elated to be at San Diego State," he said. "This program has unlimited potential. I have a responsibility to make sure the potential is realized."

Fisher's first full recruiting class was ranked among the nation's top 40. His second group was a consensus top-25 crop and the Aztecs keep moving up the chart. Potential no longer seems like a bad word.

The season-ticket base is at an all-time high. The community has an interest even in the off-season. Steve Fisher has led the Aztecs from the wasteland to the throne room.

Fisher, the 14th head coach in Aztec history, is married to the former Angie Wilson, another former teacher at Rich East High School. They have two sons. Mark is a Michigan graduate who is in his sixth year as an assistant coach and 11th season overall at SDSU. Jay is a 2008 graduate from the University of Southern California.

Active National Championship Coaches

- Jim Boeheim, Syracuse
- John Calipari, Kentucky
- Billy Donovan, Florida
- Steve Fisher, San Diego State
- Tom Izzo, Michigan State
- Mike Krzyzewski, Duke
- Rick Pitino, Louisville
- Bill Self, Kansas
- Tubby Smith, Minnesota
- Roy Williams, North Carolina

Active Highest NCAA Tournament Winning Percentage

active coaches, minimum 10 games

1. Mike Krzyzewski, Duke 76.7
2. Roy Williams, North Carolina 75.5
3. Billy Donovan, Florida 73.7
4. Brad Stevens, Butler 73.3
5. John Calipari, Kentucky 72.5
- Tom Izzo, Michigan State 72.5
7. Rick Pitino, Louisville 72.4
8. Bill Self, Kansas 71.7
9. ► Steve Fisher, SDSU 68.8
10. Ben Howland, UCLA 67.9

Active Coaches Final Four Appearances

1. Mike Krzyzewski, Duke 11
2. Roy Williams, North Carolina 7
3. Tom Izzo, Michigan State 6
- Rick Pitino, Louisville 6
5. John Calipari, Kentucky 4
6. ► Steve Fisher, SDSU 3
- Jim Boeheim, Syracuse 3
- Billy Donovan, Florida 3
- Ben Howland, UCLA 3

Active Coaches Most NBA Draft Picks

Active Coaches, Since 1989

1. Mike Krzyzewski, Duke 34
2. Roy Williams, North Carolina 31
3. John Calipari, Kentucky 27
4. Rick Barnes, Texas 22
5. Jim Boeheim, Syracuse 21
6. Bill Self, Kansas 18
7. ► Steve Fisher, SDSU 15
9. Bob Huggins, West Virginia 14
10. Tom Izzo, Michigan State 13
- Rick Pitino, Louisville 13

Coach listed with current school.

► Steve Fisher vs. All Foes

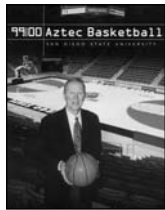
Air Force	17-11	Monmouth	1-0
Alaska Fairbanks	1-0	Morgan State	1-0
Albany	1-0	Murray State	1-0
Arizona	3-9	Navy	1-0
Arizona State	1-4	Nebraska	1-0
Arkansas	1-1	New Mexico	15-14
Arkansas-Pine Bluff	1-0	New Mexico State	1-2
Auburn	1-0	Norfolk State	2-0
Ball State	2-1	North Carolina	2-1
Baylor	0-2	North Carolina State	0-1
Boise State	3-0	Northern Arizona	1-0
Boston	3-0	Northern Colorado	2-1
Bowling Green	1-0	Northern Iowa	1-0
Bradley	1-0	Northern Michigan	1-0
Brigham Young	11-18	Northwestern	13-1
Bryant	1-0	Notre Dame	3-0
Cal Poly	3-0	Occidental	1-0
California	3-3	Ohio State	10-6
Campbell	1-0	Oklahoma State	3-1
CS Fullerton	2-1	Pacific	0-2
CS Northridge	2-0	Penn	1-1
Central Michigan	5-0	Penn State	6-2
Chaminade	1-0	Pepperdine	1-0
Chicago State	4-0	Pittsburgh	0-1
Cincinnati	1-0	Pomona-Pitzer	1-0
Cleveland State	5-0	Portland	3-1
Coastal Carolina	1-0	Providence	0-2
Colorado	0-1	Purdue	6-10
Colorado State	21-9	Redlands	1-0
Columbia	1-0	Rice	2-0
Connecticut	0-1	St. Francis	1-0
Creighton	0-1	St. John's	1-1
Davidson	1-0	Sacramento State	1-0
Dayton	0-1	Saint Mary's	3-5
DePaul	1-0	Sam Houston State	1-0
Detroit	6-0	San Diego	9-4
Drake	1-0	San Diego Christian	2-0
Duke	3-7	San Francisco	1-0
East Tennessee State	1-0	Santa Clara	1-0
Eastern Michigan	4-0	Seattle	1-0
Eastern Washington	2-1	Seattle Pacific	1-0
Elon	1-0	Seton Hall	2-0
Florida	0-1	South Alabama	1-0
Florida Atlantic	2-0	South Carolina State	1-0
Florida State	1-0	South Dakota State	2-0
Fresno State	4-1	Southern California	1-1
George Washington	1-0	Southern Mississippi	1-0
Georgia Tech	1-1	Southern Utah	1-0
Gonzaga	1-0	Syracuse	0-1
Grambling State	1-0	TCU	13-1
Green Bay	1-0	Temple	3-0
Hawai'i	2-0	Tennessee	0-1
Hampton	1-0	Texas A&M-Corpus Christi	2-0
High Point	1-0	Texas Tech	0-4
Houston	2-0	Texas	1-2
Illinois	13-5	Troy State	0-1
Illinois-Chicago	0-1	Tulane	2-0
Illinois State	1-0	UC Davis	1-0
Indiana	6-11	UC Riverside	5-0
IPFW	2-0	UC San Diego	9-0
IUPUI	2-0	UC Santa Barbara	9-2
Iowa	9-7	UCLA	1-0
Iowa State	3-2	UMBC	1-0
Jackson State	1-0	UNLV	17-17
Kansas	1-0	UT-Chattanooga	2-0
Kansas State	1-0	Utah	12-17
Kentucky	1-0	Virginia	1-0
Lafayette	1-0	Virginia Tech	1-0
Liberty	1-0	Washington	1-3
Long Beach State	4-0	Washington State	1-2
LSU	2-0	Weber State	2-0
Loyola Marymount	6-2	Western Carolina	1-0
Marquette	2-0	Western Kentucky	0-1
Maryland	1-0	Western Michigan	1-1
Memphis	0-1	Wichita State	1-0
Miami (Fla.)	1-0	Wisconsin	10-5
Miami (Ohio)	1-0	Wyoming	16-13
Michigan State	10-6	Xavier	1-0
Minnesota	9-5		
Missouri State	1-0		

Steve Fisher Era



THREE STRAIGHT NCAA APPEARANCES ► BACK-TO-BACK MOUNTAIN WEST REGULAR-SEASON CHAMPIONS

1999-2000 • 5-23 Overall/0-14 MW

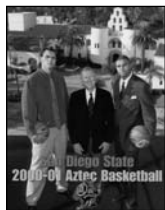


► First-year coach Steve Fisher instills a winning attitude and a belief that great things can happen at San Diego State.

► Fisher instantly gives SDSU credibility and national attention. National media outlets such as ESPN, *Los Angeles Times*, *Chicago Tribune* and the *Philadelphia News* all do lengthy features on the first-year Aztec coach.

	PPG	RPG	APG
Myron Epps (F, 6-6, 210, Sr., Tulare, Calif.)	14.4	5.9	0.6
Marcelo Correa (C, 6-10, 225, Jr., Franca, Brazil)	10.2	6.4	1.3
David Abramowitz (G, 6-0, 170, So., Tijuana, Mexico)	7.6	1.9	3.0
Bradley Jackson (G, 5-10, 165, Fr., Inglewood, Calif.)	7.1	2.7	3.6
Vincent Okotie (F, 6-7, 230, So., El Cajon, Calif.)	6.6	2.6	1.3
Michael Marion (G, 6-6, 190, Jr., Portland, Ore.)	5.7	2.4	1.0
Donte Wilson (G, 6-3, 175, Sr., McKinney, Texas)	4.5	2.0	1.8
Jeffrey Berokoff (G, 6-3, 190, So., Whittier, Calif.)	3.8	1.2	0.9
Walter Small (F, 6-4, 215, So., Lakewood, Calif.)	2.8	1.4	0.1
Joe Mann (C, 6-10, 265, So., San Diego, Calif.)	1.9	2.3	0.1
Eric Rohwer (F, 6-9, 235, Fr., Burbank, Calif.)	0.5	0.0	0.0
Jim Roban (F, 6-6, 210, Jr., Las Vegas, Nev.)		DNP	

2000-01 • 14-14 Overall/4-10 MW



► San Diego State posts its second .500 or better season in the last 16 years.

► The 14 victories in 2000-01 equal the total number of wins SDSU posted in the 66 games prior to the season.

► The Sagarin Ratings show San Diego State is the eighth most improved team in the country, jumping from a preseason ranking of 262 to 143 in the final ratings.

► SDSU had a 73 percent increase in home attendance over the previous year, the second-largest jump nationally.

► SDSU breaks notable losing streaks like a 17-game overall losing streak, 17-game conference losing streak, 24-game conference road losing streak and a 30-game overall road losing streak.

	PPG	RPG	APG
Randy Holcomb (F, 6-9, 219, Jr., Chicago, Ill.)	15.9	6.6	1.4
Myron Epps (F, 6-6, 210, Jr., Tulare, Calif.)	11.1	4.5	1.0
Al Faux (G, 6-2, 186, Jr., Los Angeles, Calif.)	10.5	3.5	2.6
Deandre Moore (G, 5-9, 179, So., Compton, Calif.)	6.8	3.4	5.0
Marcelo Correa (C, 6-10, 226, Sr., Franca, Brazil)	6.4	4.0	1.0
Karlo Kovacic (G, 6-5, 204, Jr., Rijeka, Croatia)	5.3	1.8	0.7
David Abramowitz (G, 6-0, 170, Jr., Tijuana, Mexico)	5.0	1.3	1.9
Jim Roban (F, 6-6, 210, Sr., Las Vegas, Nev.)	4.6	1.3	0.3
Aerick Sanders (F-C, 6-8, 192, So., Carson, Calif.)	3.8	3.8	0.3
Chris Walton (F, 6-8, 218, Fr., San Diego, Calif.)	3.3	2.5	1.3
Michael Marion (G, 6-7, 199, Sr., Portland, Ore.)	1.9	0.6	0.6
Tad Boyes (F, 6-6, 225, Fr., West Palm Beach, Fla.)	1.3	0.0	0.0
Ben Wardrop (G, 6-2, 185, So., Anaheim, Calif.)	0.0	0.6	0.1
Andre Torres (G, 5-9, 170, So., Chula Vista, Calif.)	0.0	0.0	0.2
Andy Ormsby (F, 6-7, 205, So., Glenwood Springs, Colo.)		DNP	

2001-02 • 21-12/7-7 MW/NCAA Tournament/MW Champs



► San Diego State advanced to the NCAA Tournament for the fourth time in the school's 32-year Division I history and earned its first NCAA berth since 1985.

► The 21 wins were the second most in the school's DI era and marked the third consecutive season the Aztecs improved their win total from the previous campaign.

► SDSU ended '01-02 with a final RPI of 39, marking the second consecutive season that SDSU jumped 100 positions from the previous season's final RPI.

	PPG	RPG	APG
Al Faux (G, 6-2, 178, Sr., Los Angeles, Calif.)	17.0	3.6	1.8
Randy Holcomb (F, 6-9, 222, Sr., Chicago, Ill.)	16.9	9.0	1.7
Tony Bland (G, 6-5, 192, Jr., Los Angeles, Calif.)	15.7	4.0	3.4
Mike Mackell (C, 6-9, 241, Jr., Washington, D.C.)	10.6	4.4	0.5
Deandre Moore (G, 5-10, 195, Jr., Compton, Calif.)	3.6	1.9	2.8
Brandon Smith (G/F, 6-7, 215, Sr., Amarillo, Texas)	3.3	2.2	2.1
Chris Walton (F, 6-10, 230, So., San Diego, Calif.)	2.8	3.1	0.9
Aerick Sanders (F-C, 6-9, 203, Sr., Carson, Calif.)	2.5	3.1	0.2
Karlo Kovacic (G, 6-5, 196, Sr., Rijeka, Croatia)	2.3	0.3	0.7

Myron Epps (F, 6-6, 221, Sr., Tulare, Calif.)	2.2	2.3	0.5
Tommy Johnson (G, 6-4, 184, Fr., Los Angeles, Calif.)	1.5	0.9	0.4
Ben Wardrop (G, 6-3, 201, So., Anaheim, Calif.)	0.6	0.6	0.2
Jim Roban (G, 6-7, 224, Sr., Las Vegas, Nev.)		DNP	
Trimaime Davis (F, 6-7, 212, Fr., West Pittsburg, Calif.)		REDSHIRT	
Steve Sir (G, 6-6, 192, Fr., Minnetonka, Minn.)		REDSHIRT	
Andre Torres (G, 5-9, 170, Jr., Chula Vista, Calif.)		REDSHIRT	
Markee White (F, 6-7, 184, Fr., Long Beach, Calif.)		REDSHIRT	

Assistant Coaches: Brian Dutcher, Marvin Menzies, Jim Tomey

2002-03 • 16-14 Overall/6-8 MW/NIT Second Round



► SDSU returns to the postseason for the second consecutive season, marking the first time since 1975 and 1976 that the Aztecs appeared in two straight national postseason tournaments.

► San Diego State claims the first victory in the national postseason tournament of its 33-year Division I era history with a win in the first round of the NIT. The Aztecs' last postseason victory came in 1968.

► The Aztecs have a school-record four players earn all-conference recognition as Tony Bland is named to the second team and Evan Burns, Mike Mackell and Deandre Moore earn honorable mention..

	PPG	RPG	APG
Tony Bland (G, 6-5, 201, Sr., Los Angeles, Calif.)	16.4	3.5	3.4
Mike Mackell (C, 6-9, 250, Sr., Washington, D.C.)	14.4	4.6	0.7
Evan Burns (F, 6-8, 220, Fr., Los Angeles, Calif.)	9.2	5.1	1.1
Deandre Moore (G, 5-10, 191, Sr., Compton, Calif.)	8.3	3.7	4.1
Aerick Sanders (F, 6-8, 204, Jr., Carson, Calif.)	6.1	7.6	1.2
Tommy Johnson (G, 6-4, 185, So., Los Angeles, Calif.)	5.6	2.6	1.8
Steve Sir (G, 6-6, 201, Fr., Minnetonka, Minn.)	5.5	1.1	0.9
Travis Hanour (G, 6-7, 198, So., Laguna Beach, Calif.)	3.1	3.1	1.0
Chris Manker (C, 7-0, 209, So., West Des Moines, Iowa)	2.9	1.2	0.2
John Sharper (G, 6-0, 190, Fr., Oakland, Calif.)	1.9	0.8	0.6
Trimaime Davis (F, 6-7, 219, Fr., West Pittsburg, Calif.)	1.5	1.1	0.0
Ben Wardrop (G, 6-2, 189, Jr., Anaheim, Calif.)	0.9	0.0	0.4
Markee White (F, 6-7, 190, Fr., Long Beach, Calif.)	0.3	0.5	0.5
Andre Torres (G, 5-9, 170, Jr., Chula Vista, Calif.)	0.0	0.0	0.0
Chris Walton (F, 6-9, 227, Jr., San Diego, Calif.)		REDSHIRT	

Assistant Coaches: Brian Dutcher, Marvin Menzies, Gregg Gottlieb

2003-04 • 14-16 Overall/5-9 MW



► San Diego State survived the loss of four starters and the nation's 64th most difficult schedule (third toughest in the MW) to claim 14 victories marking the fourth straight season SDSU has won at least 14 games.

► San Diego State defeated Brigham Young and UNLV at home in the same season for just the second time in school history. The Aztecs also disposed of the Rebels and Cougars during the 1981-82 campaign.

► San Diego State's 11-4 record at Cox Arena marked the second best home winning percentage for an Aztec squad in the last 19 seasons (the 2001-02 team went 12-3 at home).

	PPG	RPG	APG
Aerick Sanders (F-C, 6-9, 203, Sr., Carson, Calif.)	16.1	9.8	1.0
Brandon Heath (G, 6-3, 172, Fr., Los Angeles, Calif.)	13.8	2.7	2.2
Wesley Stokes (G, 6-0, 168, Jr., Long Beach, Calif.)	12.1	2.3	5.8
Chris Walton (F, 6-10, 230, Jr., San Diego, Calif.)	8.7	4.9	2.3
Marcus Slaughter (F, 6-9, 208, Fr., Riverside, Calif.)	7.9	6.8	0.7
John Sharper (G, 6-1, 198, So., Oakland, Calif.)	4.1	0.9	0.9
Tommy Johnson (G, 6-4, 188, Jr., Los Angeles, Calif.)	4.0	1.9	1.0
Chris Manker (C, 7-1, 215, Jr., West Des Moines, Iowa)	3.4	2.3	0.3
Trimaime Davis (F, 6-8, 223, So., West Pittsburg, Calif.)	1.5	1.0	0.1
Ben Wardrop (G, 6-3, 201, Sr., Anaheim, Calif.)	0.2	0.6	0.2
Steve Sir (G, 6-6, 205, So., Edmonton, Alberta)	1.5	0.5	1.0
Travis Hanour (G, 6-8, 216, Jr., Laguna Beach, Calif.)		INJURED	
Shawn Weinstein (G, 6-1, 178, Fr., Rancho Palos Verdes, Calif.)		REDSHIRT	

Assistant Coaches: Brian Dutcher, Gregg Gottlieb, Gary Grant

2004-05 • 11-18 Overall/4-10 MW

► SDSU played the 75th-most difficult schedule while losing 65 games from the senior class due to injury, illness or suspension.

► San Diego State won at BYU and UNLV in the same season for the first time in school history.

► SDSU won at BYU for just the third time in 26 visits to Provo (3-23) and

Steve Fisher Era



THREE STRAIGHT NCAA APPEARANCES ► BACK-TO-BACK MOUNTAIN WEST REGULAR-SEASON CHAMPIONS



snapped a 17-game conference losing streak to the Cougars in Provo.

► San Diego State claimed its first regular-season victory at the Thomas & Mack Center, second win over UNLV in the building and third victory over the Rebels in Sin City in 19 games (3-16).

► SDSU swept Brigham Young for just the third time in school history and the first time since the 1984-85 season.

	PPG	RPG	APG
Brandon Heath (G, 6-3, 183, So., Los Angeles, Calif.)	18.3	3.5	3.7
Marcus Slaughter (F, 6-8, 223, So., Riverside, Calif.)	17.8	9.0	1.3
Chris Manker (C, 7-0, 225, Sr., West Des Moines, Iowa)	6.8	2.7	1.0
Chris Walton (F, 6-8, 234, Sr., San Diego, Calif.)	6.3	2.6	1.5
Matt Thomas (G, 6-3, 191, Fr., Riverside, Calif.)	6.1	3.4	1.5
John Sharper (G, 6-0, 195, Jr., Oakland, Calif.)	6.0	1.1	1.3
Trimaime Davis (F, 6-8, 233, Jr., West Pittsburg, Calif.)	5.2	2.3	0.2
Mohamed Camara (C, 6-10, 265, Jr., Conakry, Guinea)	2.4	3.8	0.5
Tyler Smith (G, 6-2, 208, Fr., San Clemente, Calif.)	2.2	1.6	1.2
Jared Ines (F, 6-7, 234, Sr., Modesto, Calif.)	1.6	0.0	0.0
Tommy Johnson (G, 6-3, 186, Sr., Los Angeles, Calif.)	1.0	0.8	0.5
Travis Hanour (G, 6-6, 202, Sr., Laguna Beach, Calif.)	1.0	1.0	0.7
Shawn Weinstein (G, 6-0, 188, Fr., Rancho Palos Verdes, Calif.)	0.0	0.0	0.0
Tim McGrath (F, 6-5, 182, Fr., Santa Monica, Calif.)		REDSHIRT	
Chris Lamb (F, 6-9, 205, Fr., Louisville, Colo.)		REDSHIRT	

Assistant Coaches: Brian Dutcher, Gregg Gottlieb, Mark Hughes

2005-06 • 24-9/13-3 MW/NCAA Tournament/MW Champs



► San Diego State advanced to the NCAA Tournament for the fifth time in school history and the second time under Steve Fisher.

► SDSU won a school DI era-record 24 games and tied the school's all-time mark. It also broke the school record with 13 conference victories and tied the MW record.

► SDSU won its third conference championship of the DI era and its first outright title.

► The Aztecs claimed their second MW tournament crown and became the first in league history to win the tourney title twice.

► Junior Brandon Heath earned AP Honorable Mention All-America honors, was league MVP and was voted to the all-MW first team.

► Junior Marcus Slaughter earned first-team all-league honors and was the MW tournament MVP. Fellow junior Mohamed Abukar garnered all-league second-team accolades.

► With Abukar in the starting lineup, the Aztecs went 17-4.

	PPG	RPG	APG
Brandon Heath (G, 6-4, 198, Jr., Los Angeles, Calif.)	18.4	3.4	3.5
Marcus Slaughter (F, 6-9, 220, Jr., Riverside, Calif.)	16.5	11.0	1.9
Mohamed Abukar (F, 6-10, 216, Jr., San Diego, Calif.)	14.3	4.7	1.0
Kyle Spain (F, 6-5, 218, Fr., Newark, Calif.)	9.2	5.6	1.0
John Sharper (G, 6-0, 190, Sr., Oakland, Calif.)	8.8	1.4	0.9
Richie Williams (G, 5-9, 158, Fr., San Diego, Calif.)	6.6	2.6	3.8
Trimaime Davis (F, 6-7, 235, Sr., West Pittsburg, Calif.)	4.0	2.1	0.3
Mohamed Camara (C, 6-10, 245, Sr., Conakry, Guinea)	2.5	3.6	0.3
Matt Thomas (G, 6-3, 200, So., Riverside, Calif.)	1.3	1.2	1.1
Brett Hoerner (F, 6-11, 206, Fr., Fullerton, Calif.)	1.9	1.1	0.1
Tim McGrath (F, 6-5, 187, Fr., Santa Monica, Calif.)	0.6	1.1	0.4
Chris Lamb (F, 6-10, 231, Fr., Louisville, Colo.)	0.7	0.0	0.0
Lorenzo Wade (F, 6-6, 212, So., Las Vegas, Nev.)		REDSHIRT	

Assistant Coaches: Brian Dutcher, Gregg Gottlieb, Mark Hughes

2006-07 • 22-11/10-6 MW/NIT Second Round



► San Diego State advanced to postseason play in consecutive years for the third time in school history.

► SDSU earned a berth in the NIT for the second time under Steve Fisher and reached the postseason for the fourth time in the last six seasons.

► With its win over Missouri State in the first round of the NIT, SDSU recorded just its second postseason tournament win in school history.

► The Aztecs won 20 or more games in consecutive seasons for the first time in program history at the Division I level.

► San Diego State defeated (13/11) Air Force and (21/22) BYU, marking the third time in the DI era that the Aztecs have defeated a pair of nationally

ranked teams in one season.

► Brandon Heath finished his career as the all-time leading scorer in school and MW history with 2,189 points.

	PPG	RPG	APG
Brandon Heath (G, 6-4, 203, Sr., Los Angeles, Calif.)	19.3	3.8	3.6
Mohamed Abukar (F, 6-10, 229, Sr., San Diego, Calif.)	15.8	5.8	1.6
Lorenzo Wade (F, 6-6, 228, So., Las Vegas, Nev.)	10.5	5.3	2.6
Jerome Habel (F, 6-10, 200, Jr., Rockville, Md.)	10.9	6.2	0.8
Richie Williams (G, 5-9, 162, So., San Diego, Calif.)	7.0	4.0	4.6
Kyle Spain (F, 6-5, 229, So., Newark, Calif.)	6.6	4.6	0.9
Jer' Vaughn Johnson (F, 6-6, 254, Fr., Compton, Calif.)	2.4	1.9	0.1
Jon Pastorek (F, 6-8, 209, Fr., Anaheim, Calif.)	1.5	0.8	0.3
Chris Lamb (C, 6-10, 245, So., Louisville, Colo.)	1.4	0.9	0.3
Matt Thomas (G, 6-4, 213, Jr., Riverside, Calif.)	1.5	1.5	2.0
Brandon Martin (G, 6-1, 175, Fr., Fremont, Calif.)	0.2	0.6	0.2
David Velasquez (G, 5-11, 175, Sr., Sunnysvale, Calif.)	0.0	0.0	0.0
Ryan Amoroso (F, 6-8, 272, Jr., Burnsville, Minn.)		REDSHIRT	

Assistant Coaches: Brian Dutcher, Gregg Gottlieb, Justin Hutson

2007-08 • 20-13/9-7 MW/NIT



► San Diego State advanced to postseason play and won at least 20 games for the third straight season and for the first time in Division I history.

► SDSU earned a berth in the NIT for the third time under Steve Fisher and reached the postseason for the fifth time in the last seven seasons.

► The Aztecs reached the postseason for the third straight year for the first time since the 1939-40, 1940-41, and 1941-42 seasons.

► Lorenzo Wade earned all-MW first-team recognition, while Ryan Amoroso and Billy White were third-team honorees. White was also named the MW freshman of the year.

	PPG	RPG	APG
Lorenzo Wade (F, 6-6, 226, Jr., Las Vegas, Nev.)	14.8	4.5	3.6
Ryan Amoroso (F, 6-8, 257, Jr., Burnsville, Minn.)	11.4	6.5	0.8
Billy White (F, 6-8, 212, Fr., Las Vegas, Nev.)	8.5	5.9	1.0
Kyle Spain (F, 6-5, 209, Jr., Newark, Calif.)	13.2	5.4	1.2
Kelvin Davis (G, 6-3, 215, Jr., Waterbury, Conn.)	7.5	2.7	0.8
D.J. Gay (G, 6-0, 156, Fr., Sun Valley, Calif.)	5.8	1.5	1.7
Richie Williams (G, 5-10, 152, Jr., San Diego, Calif.)	6.9	2.7	3.0
Matt Thomas (G, 6-4, 204, Sr., Riverside, Calif.)	2.1	1.7	1.1
Jon Pastorek (F, 6-10, 210, So., Anaheim, Calif.)	1.9	1.2	0.4
Tim Shelton (F, 6-7, 242, Fr., Fresno, Calif.)	10.0	4.8	1.5
Jer' Vaughn Johnson (F, 6-6, 240, So., Compton, Calif.)	1.0	1.3	0.3
Chris Lamb (C, 6-10, 223, Jr., Louisville, Colo.)	0.7	0.6	0.2
Jason Deutchman (G, 6-6, 209, So., Los Angeles, Calif.)		REDSHIRT	
Bryan Horton (G, 6-1, 187, Fr., Anaheim, Calif.)		REDSHIRT	

Assistant Coaches: Brian Dutcher, Justin Hutson, Mark Fisher

2008-09 • 26-10/11-5 MW/NIT Semifinals



► For the fourth straight season, San Diego State won 20 or more games and advanced to the postseason.

► The Aztecs won a school-record 26 games.

► SDSU was the No. 1 overall seed in the NIT and advanced to the semifinals at Madison Square Garden in New York City.

► For the second time in school history, the Aztecs posted four consecutive 20-win seasons. The other occurrence was during a four-year run from 1938-41.

► Kyle Spain and Lorenzo Wade earned all-MW second-team recognition, while Richie Williams earned third-team honors and was named to the all-defensive team. Billy White, meanwhile, garnered honorable mention accolades.

	PPG	RPG	APG
Kyle Spain (F, 6-5, 220, Sr., Newark, Calif.)	14.0	5.3	1.4
Lorenzo Wade (F, 6-6, 225, Sr., Las Vegas, Nev.)	14.1	4.6	2.7
Billy White (F, 6-8, 226, So., Las Vegas, Nev.)	8.8	3.8	0.8
Tim Shelton (F, 6-7, 241, RS-Fr., Fresno, Calif.)	7.9	4.7	1.3
Richie Williams (G, 5-10, 162, Sr., San Diego, Calif.)	7.2	4.4	3.5
Ryan Amoroso (F, 6-8, 263, Sr., Burnsville, Minn.)	7.5	4.5	0.7
D.J. Gay (G, 6-0, 155, So., Sun Valley, Calif.)	6.0	1.5	1.8
Mehdi Cheriet (F, 6-8, 212, Jr., Tarare, France)	4.6	2.2	0.6
Matt Thomas (G, 6-4, 213, Sr., Riverside, Calif.)	1.8	1.6	0.9
Kelvin Davis (G, 6-3, 215, Jr., Waterbury, Conn.)	2.5	1.8	0.5
Bryce Smith (G, 6-3, 202, Fr., Woodland Hills, Calif.)	0.7	0.2	0.0
Bryan Horton (G, 6-1, 196, RS-Fr., Anaheim, Calif.)	0.2	0.2	0.2

Steve Fisher Era

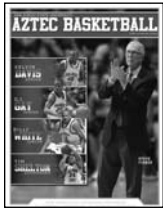


THREE STRAIGHT NCAA APPEARANCES ► BACK-TO-BACK MOUNTAIN WEST REGULAR-SEASON CHAMPIONS

Tim Island (G, 6-4, 207, Jr., San Diego, Calif.)	0.3	0.7	0.2
Jason Deutchman (G, 6-6, 210, So., Los Angeles, Calif.)	0.0	0.6	0.1
Brian Carlwell (C, 6-10, 296, Jr., Maywood, Ill.)	REDSHIRT		
Tyrone Shelley (G, 6-5, 217, So., San Diego, Calif.)	REDSHIRT		

Assistant Coaches: Brian Dutcher, Justin Hutson, Mark Fisher.

2009-10 • 25-9/11-5 MW/NCAA Tournament/MW Champs



- San Diego State won 20 or more games and advanced to the postseason for the fifth straight season.
- SDSU won 25 games, the second most in school history.
- SDSU advanced to the NCAA Tournament for the first time since 2006 and for the third time in the Fisher era.
- The Aztecs won their third Mountain West tournament championship.

- Kawhi Leonard became the first freshman in the history of the MW to earn all-conference first-team honors. The forward was also named MW freshman of the year and MW tournament MVP, all while being one of just four freshman nationally to lead his team in scoring and rebounding.
- Malcolm Thomas earned all-MW second-team recognition, while D.J. Gay and Billy White garnered honorable mention accolades.
- San Diego State defeated three nationally ranked teams (vs. No. 15/14 New Mexico, vs. No. 23/25 UNLV, vs. No. 8/8 New Mexico) for the first time in the school's Division I history.
- Leonard set the school record for double-doubles by a freshman with 17. Michael Cage previously held the record with 10.
- San Diego State defeated reigning conference champion Utah twice in 2009-10. The last time SDSU swept the season series was in 1982.

	PPG	RPG	APG
Kawhi Leonard (F, 6-7, 225, Fr., Riverside, Calif.)	12.7	9.9	1.9
Malcolm Thomas (F, 6-9, 215, Jr., San Diego, Calif.)	10.9	7.6	2.3
D.J. Gay (G, 6-0, 167, Jr., Sun Valley, Calif.)	10.5	2.2	3.2
Billy White (F, 6-8, 235, Jr., Las Vegas, Nev.)	11.1	4.3	1.4
Chase Tapley (G, 6-2, 205, Fr., Sacramento, Calif.)	7.6	2.3	2.2
Kelvin Davis (G, 6-3, 220, Sr., Waterbury, Conn.)	6.6	1.3	1.0
Tyrone Shelley (G, 6-6, 225, So., San Diego, Calif.)	6.1	3.5	0.8
Brian Carlwell (C, 6-11, 297, Jr., Maywood, Ill.)	4.7	2.8	0.4
Tim Shelton (F, 6-7, 248, So., Fresno, Calif.)	3.3	2.0	1.4
Alec Williams (F, 6-6, 268, Fr., San Juan Capistrano, Calif.)	1.9	1.2	0.3
Bryan Horton (G, 6-1, 205, So., Anaheim, Calif.)	0.8	0.5	0.3
Jason Deutchman (G, 6-6, 220, Sr., Los Angeles, Calif.)	1.7	0.7	0.0
Ben Kneller (F, 6-6, 200, Sr., Westlake Village, Calif.)	0.5	0.5	0.0
Mehdi Cheriet (F, 6-9, 218, Sr., Tarare, France)	REDSHIRT		
James Rahon (G, 6-5, 202, So., San Diego, Calif.)	REDSHIRT		

Assistant Coaches: Brian Dutcher, Justin Hutson, Mark Fisher.

2010-11 • 34-3/14-2 MW/NCAA Tournament/MW Champs



- San Diego State won 20 or more games and advanced to the postseason for the sixth straight season.
- The Aztecs won a school-record 34 games.
- SDSU earned its first-ever national ranking and was ranked in the top 25 all season. It was ranked as high as No. 4 and earned three first-place votes in the Coaches' poll on Feb. 21.
- The Aztecs finished the year ranked No. 6 in the AP poll and 11th in the Coaches' poll.

- San Diego State won its first-ever Division I NCAA Tournament games and advanced to the Sweet 16.
- The Aztecs won their second straight and fourth Mountain West tournament championship. SDSU also claimed a share of the regular-season crown, its second such title.
- Kawhi Leonard earned All-America honors from five different entities and garnered first-team all-conference accolades.
- D.J. Gay earned all-MW first-team recognition, Malcolm Thomas was selected to the second team and Billy White garnered honorable mention accolades.
- Steve Fisher was named Naismith and NABC National Coach of the Year. He also earned MW Co-Coach of the Year honors and won the Adolph Rupp Cup.
- Leonard tied Michael Cage for the most double-doubles in a single sea-

son with 23. He finished his career with 40, the second-most in SDSU history.

- San Diego State won 20 straight games to open the season.

	PPG	RPG	APG
Kawhi Leonard (F, 6-7, 225, So., Riverside, Calif.)	15.5	10.6	2.5
Malcolm Thomas (F, 6-9, 220, Sr., San Diego, Calif.)	11.4	8.1	2.3
D.J. Gay (G, 6-0, 170, Sr., Sun Valley, Calif.)	11.1	2.2	3.1
Billy White (F, 6-8, 235, Sr., Las Vegas, Nev.)	10.3	4.4	1.6
Chase Tapley (G, 6-2, 200, So., Sacramento, Calif.)	8.6	2.4	1.9
James Rahon (G, 6-5, 205, So., San Diego, Calif.)	7.0	1.6	0.8
Brian Carlwell (C, 6-11, 300, Sr., Maywood, Ill.)	3.8	2.7	0.2
Jamaal Franklin (G, 6-5, 185, Fr., Phelan, Calif.)	2.9	1.9	0.5
Tim Shelton (F, 6-7, 245, Jr., Fresno, Calif.)	1.6	1.5	0.4
Mehdi Cheriet (F, 6-9, 225, Sr., Tarare, France)	1.8	1.0	0.2
LaBradford Franklin (G, 6-2, 170, Fr., Temecula, Calif.)	2.1	0.9	1.4
Alec Williams (F, 6-6, 245, So., San Juan Capistrano, Calif.)	2.1	1.4	0.0
Xavier Thames (G, 6-3, 185, So., Sacramento, Calif.)	REDSHIRT		

Assistant Coaches: Brian Dutcher, Justin Hutson, Mark Fisher.

2011-12 • 26-8/10-4 MW/NCAA Tournament/MW Champs



- San Diego State won 20 or more games and advanced to the postseason for the seventh straight season.
- The Aztecs won at least 25 games for the fourth year in a row.
- SDSU finished the campaign ranked No. 22 in the AP Poll and was ranked as high as No. 13 on three different occasions.
- The Aztecs were ranked as high as No. 12 in the USA Today/ESPN Coaches Poll.

► San Diego State was ranked in both top-25 polls for the final 11 weeks of the regular season.

- The Aztecs shared the Mountain West regular-season crown for the second straight season and reached the championship game of the MW tournament for the fourth consecutive year.
- SDSU advanced to the NCAA Tournament for the third season in a row and was a No. 6 seed in the Midwest Region.
- Jamaal Franklin earned honorable mention All-America honors from the *Associated Press* after being voted MW Player of the Year and to the all-Mountain West first team.
- Chase Tapley earned all-MW second-team honors, while Xavier Thames and Tim Shelton garnered honorable mention accolades from the league. Shelton was also named to the all-MW defensive team.
- Steve Fisher was named MW Coach of the Year for the second straight year and was voted district coach of the year by the NABC, USBWA and *Basketball Times*.

	PPG	RPG	APG
Jamaal Franklin (G, 6-5, 195, So., Hawthorne, Calif.)	17.4	7.9	1.5
Chase Tapley (G, 6-3, 195, Jr., Sacramento, Calif.)	15.8	4.3	2.3
Xavier Thames (G, 6-3, 195, So., Sacramento, Calif.)	10.1	3.2	4.1
James Rahon (G, 6-5, 210, Jr., San Diego, Calif.)	8.9	2.7	0.8
Garrett Green (F, 6-11, 240, Sr., Woodland Hills, Calif.)	6.0	4.6	0.6
DeShawn Stephens (F, 6-8, 215, Jr., Los Angeles, Calif.)	5.2	4.9	0.3
Tim Shelton (F, 6-7, 240, Sr., Fresno, Calif.)	5.2	4.6	1.6
LaBradford Franklin (G, 6-2, 175, So., Temecula, Calif.)	2.8	1.4	1.6
Alec Williams (F, 6-6, 245, Jr., San Juan Capistrano, Calif.)	4.0	2.1	0.2
Narbeh Ebrahimian (G, 6-3, 198, Jr., Glendale, Calif.)	0.9	1.3	0.4
Jeremy Castleberry (G, 5-10, 198, So., Upper Marlboro, Md.)	1.0	0.2	0.0
Ryan Staten (G, 6-1, 175, Fr., San Pablo, Calif.)	1.5	0.5	0.0
Aaron Douglas (G, 6-1, Jr., San Diego, Calif.)	0.5	0.0	0.0
James Johnson (F, 6-9, 238, So., Wildomar, Calif.)	REDSHIRT		
JJ O'Brien (F, 6-7, 215, So., Rancho Cucamonga, Calif.)	REDSHIRT		
Dwayne Polee II (F, 6-7, 195, So., Los Angeles, Calif.)	REDSHIRT		

Assistant Coaches: Brian Dutcher, Mark Fisher, Tony Bland.

Steve Fisher Game-By-Game



THREE STRAIGHT NCAA APPEARANCES ► BACK-TO-BACK MOUNTAIN WEST REGULAR-SEASON CHAMPIONS

COACHES ► STEVE FISHER GAME-BY-GAME AZTEC BASKETBALL MEDIA GUIDE

► 1989-90 • 6-0

NCAA Champions
Home: 0-0, **Away:** 0-0, **Neutral:** 6-0
Starting Lineup: Glen Rice (F, Sr., 25.6 ppg, 6.3 rpg), Loy Vaught (F, Jr., 12.6 ppg, 8.0 rpg), Terry Mills (C, Jr., 11.6 ppg, 5.9 rpg), Rumeal Robinson (G, Jr., 14.9 ppg, 6.3 apg), Michael Griffin (G, Jr., 2.7 ppg, 2.4 rpg)
NCAA 1ST/2ND ROUNDS - SOUTHEAST REGIONAL (Atlanta, Ga.)
M.17 vs. XavierW 92-87
M.19 vs. South AlabamaW 91-82
NCAA REGIONAL ROUNDS - SOUTHEAST REGIONAL (Lexington, Ky.)
M.23 vs. (5) North CarolinaW 92-87
M.25 vs. VirginiaW 102-65
NCAA FINAL FOUR (Seattle, Wash.)
A.1 vs. (3) IllinoisW 83-81
A.3 vs. (11) Seton Hallot-W 81-80

► 1989-90 • 23-8; 12-6 Big Ten

NCAA Second Round
Home: 15-1, **Away:** 6-5, **Neutral:** 2-2
Starting Lineup: Sean Higgins (F, Jr., 14.0 ppg, 3.6 rpg), Loy Vaught (F, Sr., 15.5 ppg, 11.2 rpg), Terry Mills (C, Sr., 18.1 ppg, 8.0 rpg), Rumeal Robinson (G, Jr., 19.2 ppg, 6.1 apg), Michael Griffin (G, Sr., 3.5 ppg, 2.6 apg)
TIP-OFF CLASSIC (Springfield, Mass.)
N.25 vs. (6) ArizonaL 75-82
N.27 at Boston UniversityW 73-65
N.29 Grambling StateW 85-70
D.2 Iowa StateW 101-78
D.6 Central MichiganW 100-51
D.9 (6) Dukeot-W 113-108
D.11 Chicago StateW 84-57
D.16 at MarquetteW 82-73
DUEL IN THE DESERT (Las Vegas, Nev.)
D.23 vs. Seton HallW 91-86
D.28 Northern MichiganW 102-74
D.30 Eastern MichiganW 107-83
J.8 *at (9) IndianaL 67-69
J.13 *(16) MinnesotaW 87-83
J.15 *at (8) IllinoisW 74-70
J.18 *Ohio StateW 90-88
J.20 *at Iowaot-L 76-78
J.25 *at NorthwesternW 86-79
J.27 *Michigan StateW 65-63
J.31 *(8) PurdueL 73-91
F.3 *at WisconsinW 77-63
F.8 *(25) IndianaW 79-71
F.11 *(12) IllinoisW 93-79
F.15 *at (17) MinnesotaW 77-73
F.18 *at Ohio StateL 61-64
F.24 *NorthwesternW 94-69
M.1 *at (14) Michigan StateL 70-78
M.4 *at (9) PurdueL 77-79
M.8 *WisconsinW 94-64
M.10 *IowaW 127-96
NCAA 1ST/2ND ROUNDS - WEST REGIONAL (Los Angeles, Calif.)
M.16 vs. Illinois StateW 76-70
M.17 vs. (21) Loyola MarymountL 115-149
* - Big Ten Conference Game.

► 1990-91 • 14-15; 7-11 Big Ten

Home: 10-5, **Away:** 3-9, **Neutral:** 1-1
Postseason NIT First Round
Starting Lineup: James Voskuil (F, So., 6.7 ppg, 2.9 rpg), Freddie Hunter (F, Jr., 3.6 ppg, 4.3 rpg), Eric Riley (C, So., 10.6 ppg, 8.6 rpg), Demetrius Calip (G, Sr., 20.5 ppg, 3.9 rpg), Michael Talley (G, So., 11.0 ppg, 3.2 apg)
N.28 Central MichiganW 72-63
D.1 UtahW 81-65
D.4 Eastern MichiganW 78-76
D.8 at (5) DukeL 68-75
D.10 Boston UniversityW 90-68
D.12 Chicago StateW 102-78
D.15 at Iowa StateL 72-81
D.22 MarquetteW 89-81
ASU CACTUS CLASSIC TOURNAMENT (Tempe, Ariz.)
D.28 vs. TexasL 74-76
D.29 vs. PennsylvaniaW 84-62
J.3 *at (25) Michigan StateL 70-85
J.5 *(6) Ohio StateL 57-67
J.10 *at (22) IowaL 78-79
J.12 *at PurdueL 69-86
J.17 *NorthwesternW 79-68
J.19 *at Wisconsinot-W 69-68
J.24 *(3) IndianaL 60-70
J.26 *IllinoisL 67-72
J.31 *at MinnesotaW 66-62
F.9 *IowaW 84-70

F.11 *at (3) Ohio StateL 65-81
F.16 *at NorthwesternW 64-58
F.18 *Purdueot-L 77-83
F.21 *WisconsinW 65-62
F.24 *at (4) IndianaL 70-112
F.28 *at IllinoisL 65-68
M.3 *MinnesotaW 68-60
M.9 *Michigan StateL 59-66
POSTSEASON NIT (Boulder, Colo.)
M.13 at ColoradoL 64-71
* - Big Ten Conference Game.

► 1991-92 • 25-9; 11-7 Big Ten

NCAA Runner-Up
Home: 10-4, **Away:** 8-4, **Neutral:** 7-1
Starting Lineup: Chris Webber (F, Fr., 15.5 ppg, 10.0 rpg), Ray Jackson (F, Fr., 4.6 ppg, 3.0 rpg), Juwan Howard (C, Fr., 11.1 ppg, 6.2 rpg), Jalen Rose (G, Fr., 17.6 ppg, 4.3 rpg), Jimmy King (G, Fr., 9.9 ppg, 3.3 rpg)
D.2 at DetroitW 100-74
D.7 at Cleveland StateW 80-61
D.9 Chicago StateW 112-62
D.12 Eastern MichiganW 91-77
D.14 (1) Dukeot-L 77-85
D.16 Central MichiganW 86-70
D.21 RiceW 87-70
RED LOBSTER CLASSIC (Orlando, Fla.)
D.28 vs. Brigham YoungW 86-83
D.30 vs. Virginia TechW 63-51
J.9 *at Iowaot-W 80-77
J.11 *at MinnesotaL 64-73
J.15 *PurdueL 60-65
J.18 *at IllinoisW 68-61
J.21 *at (4) IndianaL 74-89
J.25 *WisconsinW 98-83
J.29 *at (13) Michigan Stateot-W 89-79
F.2 *(10) Ohio StateL 58-68
F.5 *NorthwesternW 81-58
F.9 at Notre DameW 74-65
F.12 *IowaW 79-74
F.15 *(12) Michigan StateL 59-70
F.19 *MinnesotaW 95-70
F.22 *at NorthwesternW 76-63
F.26 *at WisconsinL 78-96
M.3 *at (5) Ohio StateL 66-77
M.8 *(2) IndianaW 68-60
M.11 *at PurdueW 70-61
M.14 *IllinoisW 68-59
NCAA 1ST/2ND ROUNDS - SOUTHEAST REGIONAL (Atlanta, Ga.)
M.20 vs. TempleW 73-66
M.22 vs. E. Tennessee St.W 102-90
NCAA SOUTHEAST REGIONAL (Lexington, Ky.)
M.27 vs. (11) Oklahoma StateW 75-72
M.29 vs. (3) Ohio Stateot-W 76-72
NCAA FINAL FOUR (Minneapolis, Minn.)
A.4 vs. (12) CincinnatiW 76-72
A.6 vs. (1) DukeL 51-71
* - Big Ten Conference Game.

► 1992-93 • 31-5; 15-3 Big Ten

NCAA Runner-Up
Home: 14-1, **Away:** 8-3, **Neutral:** 9-1
Starting Lineup: Chris Webber (F, So., 19.2 ppg, 10.1 rpg), Ray Jackson (F, So., 9.0 ppg, 4.1 rpg), Juwan Howard (C, So., 14.6 ppg, 7.4 rpg), Jalen Rose (G, So., 15.4, 4.2 rpg), Jimmy King (G, So., 10.8 ppg, 4.4 rpg)
D.1 at RiceW 75-71
D.5 at (4) DukeL 68-79
D.7 DetroitW 92-77
D.9 Bowling GreenW 79-68
D.14 Cleveland StateW 88-56
D.19 ^Iowa StateW 94-72
D.21 Central MichiganW 94-69
RAINBOW CLASSIC (Honolulu, Hawaii)
D.28 vs. (20) NebraskaW 88-73
D.29 vs. (5) North CarolinaW 79-78
D.30 vs. (2) KansasW 86-74
J.2 Eastern MichiganW 88-58
J.7 *at (9) PurdueW 80-70
J.9 *at WisconsinW 98-73
J.12 *(6) IndianaL 75-76
J.16 Notre DameW 70-55
J.20 *at MinnesotaW 80-73
J.23 *IllinoisW 76-67
J.28 *Ohio StateW 66-64
J.31 *at (11) IowaL 80-88
F.2 *at (25) Michigan StateW 73-69
F.7 *(19) PurdueW 84-76

F.10 *WisconsinW 85-66
F.14 *at (1) IndianaL 92-93
F.17 *at Penn StateW 80-70
F.20 *MinnesotaW 84-69
F.28 *at Ohio StateW 66-64
M.2 *(15) IowaW 82-73
M.7 *Michigan Stateot-W 87-81
M.10 *at Illinoisot-W 98-97
M.13 *NorthwesternW 86-60
NCAA 1ST/2ND ROUNDS - WEST REGIONAL (Tucson, Ariz.)
M.19 vs. Coastal CarolinaW 84-53
M.21 vs. UCLAot-W 86-84
NCAA WEST REGIONAL (Tucson, Ariz.)
M.26 vs. George WashingtonW 72-64
M.28 vs. TempleW 77-72
NCAA FINAL FOUR (New Orleans, La.)
A.3 vs. (2) Kentuckyot-W 81-78
A.5 vs. (4) North CarolinaL 71-77
* - Big Ten Conference Game. ^ - Palace of Auburn Hills (Auburn Hills, Mich.).

► 1993-94 • 24-8; 15-3 Big Ten

NCAA Regional Finalist
Home: 14-2, **Away:** 5-5, **Neutral:** 5-1
Starting Lineup: Ray Jackson (F, Jr., 11.4 ppg, 6.3 rpg), Juwan Howard (C, Jr., 20.8 ppg, 9.0 rpg), Jalen Rose (G, Jr., 19.9 ppg, 5.7 rpg), Jimmy King (Jr., G, 12.3 ppg, 3.9 rpg), Dugan Fife (So., G, 6.5 ppg, 2.7 rpg)
TIP-OFF CLASSIC (Springfield, Mass.)
N.26 vs. (13) Georgia TechW 80-70
N.29 Cleveland StateW 84-71
D.1 TulaneW 84-69
D.4 Tenn.-ChattanoogaW 97-86
D.6 DetroitW 78-60
D.11 (4) DukeL 63-73
D.20 Central MichiganW 86-44
FIESTA BOWL CLASSIC (Tucson, Ariz.)
D.28 vs. AuburnW 102-81
D.30 at (12) ArizonaL 95-119
J.3 Boston UniversityW 111-84
J.5 *Michigan StateW 75-64
J.8 *at IowaW 71-70
J.13 *Ohio Stateot-W 86-75
J.16 *at (11) IndianaL 62-72
J.20 *at (20) MinnesotaL 58-63
J.23 *at IllinoisW 74-70
J.29 *(16) WisconsinW 79-75
F.1 *at (8) PurdueW 63-62
F.5 *at Michigan StateW 59-51
F.8 *(12) IndianaW 91-67
F.13 *at Ohio StateW 72-70
F.16 *IowaW 89-76
F.19 *(20) MinnesotaW 72-65
F.22 *IllinoisW 79-70
M.2 *at WisconsinL 58-71
M.6 *(9) PurdueL 94-95
M.9 *Penn StateW 81-72
M.12 *at Northwesternot-L 93-97
NCAA 1ST/2ND ROUNDS - MIDEAST REGIONAL (Wichita, Kan.)
M.17 vs. Pepperdineot-W 78-74
M.19 vs. (20) TexasW 84-79
NCAA MIDEAST REGIONAL (Dallas, Texas)
M.24 vs. MarylandW 78-71
M.27 vs. (2) ArkansasL 68-76
* - Big Ten Conference Game.

► 1994-95 • 17-14; 11-7 Big Ten

NCAA First Round
Home: 10-3, **Away:** 4-7, **Neutral:** 3-4
Starting Lineup: Ray Jackson (F, Sr., 15.8 ppg, 5.3 rpg), Maurice Taylor (F, Fr., 12.4 ppg, 5.1 rpg), Makhtar Ndiaye (C, So., 5.0 ppg, 5.2 rpg), Jimmy King (Sr., G, 14.7 ppg, 5.0 rpg), Dugan Fife (Jr., G, 3.4 ppg, 1.9 apg)
MAUI CLASSIC (Lahaina, Hawaii)
N.21 vs. TulaneW 75-73
N.22 vs. Arizona StateL 62-79
N.23 vs. UtahW 73-69
GREAT EIGHT BASKETBALL CLASSIC (Auburn Hills, Mich.)
N.30 vs. (9) ArizonaL 57-78
D.3 at Tenn.-ChattanoogaW 83-71
D.5 DetroitW 87-76
D.10 at (9) DukeL 59-69
D.13 PennsylvaniaL 60-62
D.22 Jackson StateW 87-81
US WEST CELLULAR AIR TIME TOURNAMENT (Seattle, Wash.)
D.29 vs. Portlandot-W 88-84
D.30 vs. WashingtonL 61-65
J.3 *PurdueW 71-61
J.8 *at Penn StateL 63-73

Steve Fisher Game-By-Game



THREE STRAIGHT NCAA APPEARANCES ▶ BACK-TO-BACK MOUNTAIN WEST REGULAR-SEASON CHAMPIONS

J.11	* (19) Iowa	2ot-W	83-82
J.14	*at Northwestern	W	92-70
J.17	*at (20) Illinois	W	69-59
J.22	* (12) Michigan State	L	71-73
J.24	*at Indiana	W	65-52
J.29	St. John's	L	77-82
F.1	*Wisconsin	W	62-58
F.4	*at Minnesota	L	58-80
F.8	*Ohio State	W	72-58
F.11	*at Wisconsin	L	65-70
F.19	*Indiana	W	61-50
F.21	*at (12) Michigan State	L	64-67
F.26	*Illinois	W	63-51
M.1	*Northwestern	W	81-64
M.5	*at Iowa	L	69-89
M.8	*Penn State	W	67-60
M.12	*at (14) Purdue	L	67-73

NCAA 1ST/2ND ROUNDS - MIDWEST REGIONAL (Dayton, Ohio)
M.16 vs. (21) Western Kentuckyot-L 76-82
* - Big Ten Conference Game.

▶ 1995-96 • 20-12; 10-8 Big Ten

NCAA First Round
Home: 11-2, **Away:** 6-6, **Neutral:** 3-4
Starting Lineup: Maurice Taylor (F, So., 14.0 ppg, 7.1 rpg), Maceo Baston (C, So., 11.7 ppg, 6.7 rpg), Louis Bullock (G, Fr., 13.5 ppg, 3.0 rpg), Travis Conlan (G, So., 4.5 ppg, 4.8 rpg), Dugan Fife (G, Sr., 4.6 ppg, 2.3 rpg)

N.15	vs. DePaul	W	73-65
N.17	vs. Weber State	W	80-62
N.22	vs. (4) Arizona	L	79-86
N.24	vs. (25) Georgia Tech	L	61-77
N.27	St. Francis	W	84-52
N.29	at Ball State	W	80-52
D.2	at Detroit	W	68-48
D.5	at Louisiana State	W	69-68
D.9	(18) Duke	W	88-84
D.16	Washington	W	60-59
D.18	Cleveland State	W	84-55
D.28	vs. UNLV	L	64-66
D.30	vs. Davidson	W	82-70
J.3	*at Wisconsin	L	46-51
J.6	*Northwestern	W	83-51
J.9	* (21) Illinois	W	83-68
J.13	*at Michigan State	W	76-54
J.21	* (14) Penn State	W	67-66
J.23	*at Indiana	L	83-99
J.28	*at (22) Iowa	L	61-70
J.31	* (17) Purdue	L	64-69
F.3	*at Ohio State	W	77-58
F.10	*at (14) Purdue	L	64-69
F.13	* (19) Iowa	L	55-62
F.18	*Indiana	W	80-75
F.22	*at (14) Penn State	L	57-67
F.24	*Minnesota	W	65-62
F.27	*Michigan State	W	75-46
M.3	*at Illinois	L	62-73
M.6	*at Northwestern	W	77-50
M.9	*Wisconsin	W	65-51

NCAA 1ST/2ND ROUNDS - MIDWEST REGIONAL (Milwaukee, Wis.)
M.15 vs. TexasL 76-80
* - Big Ten Conference Game.

▶ 1996-97 • 24-11; 9-9 Big Ten

Postseason NIT Champions
Home: 9-3, **Away:** 6-6, **Neutral:** 9-2
Starting Lineup: Maurice Taylor (F, Jr., 12.4 ppg, 6.2 rpg), Jerod Ward (F, Jr., 8.3 ppg, 3.5 rpg), Robert Traylor (C, So., 13.1 ppg, 7.7 rpg), Louis Bullock (G, So., 16.3 ppg, 3.0 rpg), Travis Conlan (G, Jr., 4.7 ppg, 3.7 rpg)

N.26	Ball State	W	87-63
N.30	at Cleveland State	W	80-74
D.2	Bradley	ot-W	66-64
D.5	Detroit	W	75-59
D.8	at (10) Duke	W	62-61
D.11	vs. St. John's	W	76-61
D.15	vs. Louisiana State	W	70-59
D.21	vs. (6) Arizona	ot-W	73-71
D.28	vs. Memphis	L	72-73
D.29	vs. Washington State	W	85-79
D.30	vs. Pittsburgh	L	78-85
J.2	*Ohio State	L	71-73
J.4	*at Northwestern	W	75-57
J.9	* (25) Illinois	W	88-74
J.11	*at (11) Minnesota	L	64-70
J.16	*Purdue	W	89-65
J.19	*Iowa	W	79-71
J.21	*at (21) Indiana	L	70-72

J.25	at Michigan State	W	74-61
J.28	*at Penn State	W	67-59
F.1	*Michigan State	W	85-65
F.6	*at Wisconsin	L	53-58
F.8	*Penn State	W	81-64
F.16	*Indiana	ot-L	81-84
F.20	*at Iowa	L	75-80
F.23	*at Purdue	L	58-67
F.26	* (2) Minnesota	L	54-55
M.2	*at (21) Illinois	L	51-70
M.5	*Northwestern	W	93-76
M.9	*Ohio State	ot-W	86-81

POSTSEASON NIT (Ann Arbor, Mich.)
M.13 Miami (Fla.)W 76-63
M.18 Oklahoma StateW 75-65

POSTSEASON NIT (Notre Dame, Ind.)
M.20 at Notre DameW 67-66

POSTSEASON NIT (New York, N.Y.)
M.25 vs. ArkansasW 77-62
M.27 vs. Florida StateW 82-73
* - Big Ten Conference Game.

▶ 1999-00 • 5-23; 0-14 Mountain West

Home: 5-10, **Away:** 0-13, **Neutral:** 0-0
Starting Lineup: Myron Epps (F, So., 14.4 ppg, 5.9 rpg), Vincent Kotkie (F, So., 6.6, 2.6), Marcelo Correa (C, Jr., 10.2, 6.4), Bradley Jackson (G, Fr., 7.1, 2.7), Donte Wilson (G, Sr., 4.5, 2.0)

N.24	UC Riverside	W	73-57
N.30	at New Mexico State	L	49-66
D.4	at San Diego	L	45-73
D.12	at (17/17) Oklahoma State	L	63-97
D.16	South Carolina State	W	72-57
D.18	at Arizona State	L	85-99
D.20	Southern California	L	54-87
D.22	UC Santa Barbara	W	60-57
D.27	Ball State	L	65-82
D.30	Loyola Marymount	W	70-63
J.2	High Point	W	74-63
J.5	CS Fullerton	L	66-72
J.8	at Pacific	L	63-74
J.10	* (24) Utah	L	55-70
J.20	*Air Force	3ot-L	77-81
J.22	*at UNLV	L	55-83
J.27	*at Colorado State	L	67-75
J.29	*at Wyoming	L	87-93
F.3	*Brigham Young	L	50-72
F.5	*New Mexico	L	57-78
F.10	*at (21/20) Utah	L	65-83
F.12	*Colorado State	L	46-74
F.19	*Wyoming	L	57-71
F.24	*at Air Force	L	55-63
F.26	*at New Mexico	L	49-78
M.2	*UNLV	L	64-85
M.4	*at Brigham Young	L	50-67

MWC CHAMPIONSHIP (Las Vegas, Nev.)
M.9 at (#1) UNLV (QF)L 72-77
* - Mountain West Conference game.

▶ 2000-01 • 14-14; 4-10 Mountain West

Home: 12-5, **Away:** 2-8, **Neutral:** 0-1
Starting Lineup: Randy Holcomb (F, Jr., 15.9 ppg, 6.6 rpg), Myron Epps (F, Jr., 11.1, 4.5), Marcelo Correa (C, Sr., 6.4, 4.0), Deandre Moore (G, So., 6.8, 3.4), Al Faux (G, Jr., 10.5, 3.5)

N.18	UC San Diego	W	80-48
N.21	New Mexico State	W	77-62
N.27	at Fresno State	L	62-70
N.30	Florida Atlantic	W	90-57
D.2	CS Sacramento	W	92-69
D.6	at UC Santa Barbara	3ot-L	77-80
D.9	San Diego	L	52-55
D.16	Arizona State	W	64-62
D.18	Morgan State	W	78-64
D.21	Norfolk State	W	79-69
D.30	Oklahoma State	W	87-66
J.4	Texas A&M-CC	W	84-70
J.6	at Loyola Marymount	L	61-58
J.8	*New Mexico	L	67-75
J.13	*at Brigham Young	L	50-79
J.15	*at Utah	L	39-58
J.20	*Air Force	W	67-43
J.27	*at UNLV	ot-L	72-82
F.3	*at Wyoming	L	66-101
F.5	*at Colorado State	L	56-77
F.10	*Utah	L	63-76
F.12	*Brigham Young	L	66-69
F.17	*at New Mexico	L	54-72
F.19	*at Air Force	W	62-48
F.24	*UNLV	W	83-66

M.1	*Wyoming	L	62-69
M.3	*Colorado State	W	78-73

MWC CHAMPIONSHIP (Las Vegas, Nev.)
M.8 vs. (#3) Wyoming (QF)L 58-73
* - Mountain West Conference game.

▶ 2001-02 • 21-12; 7-7 Mountain West

NCAA First Round
Home: 12-3, **Away:** 6-8, **Neutral:** 3-1
Starting Lineup: Randy Holcomb (F, Sr., 16.9 ppg, 9.0 rpg), Mike Mackell (C, Jr., 10.6, 4.4), Tony Bland (G, Jr., 15.7, 4.0), Al Faux (G, Sr., 17.0, 3.6), Deandre Moore (G, Jr., 3.6, 1.9)

FORD RED RAIDER CLASSIC (Lubbock, Texas)

N.16	vs. Northern Iowa (SF)	W	71-57
N.17	at Texas Tech (CH)	L	71-81
N.21	Norfolk State	W	78-71
N.24	at New Mexico State	L	79-94
N.27	UC San Diego	W	98-53
D.1	CS Northridge	W	80-70
D.5	at San Diego	L	67-72
D.8	(21/16) Fresno State	W	93-78
D.14	at Hawai'i	W	61-58
D.20	Eastern Washington	W	86-58
D.29	at (1/1) Duke	L	79-92
D.31	Columbia	W	75-59
J.2	IPFW	W	90-72
J.8	at Texas A&M-CC	W	82-79
J.12	*at Brigham Young	L	64-75
J.14	*at Utah	L	70-76
J.19	*Colorado State	W	81-69
J.21	*Wyoming	ot-L	85-88
J.26	*UNLV	ot-L	79-80
J.29	Houston	W	78-66
F.2	*at New Mexico	W	78-65
F.4	*at Air Force	L	54-67
F.9	*Utah	L	53-70
F.11	*Brigham Young	W	77-73
F.16	*at Colorado State	W	75-63
F.18	*at Wyoming	W	68-64
F.23	*at UNLV	ot-L	76-83
F.28	*New Mexico	W	84-71
M.2	*Air Force	W	49-47

MWC CHAMPIONSHIP (Las Vegas, Nev.)
M.7 vs. (#4) BYU (QF)W 62-51
M.8 vs. (#1) Wyoming (SF)W 70-69
M.9 at (#3) UNLV (CH)W 78-75

NCAA 1ST/2ND ROUNDS - MIDWEST REGIONAL (Chicago, Ill.)
M.15 vs. (13/16) (#4) IllinoisL 64-93
* - Mountain West Conference game.

▶ 2002-03 • 16-14; 6-8 Mountain West

NIT Second Round
Home: 11-6, **Away:** 5-8, **Neutral:** 0-0
Starting Lineup: Evan Burns (F, Fr., 9.2 ppg, 5.1 rpg), Aerick Sanders (F, Jr., 6.1 ppg, 7.6 rpg), Mike Mackell (C, Sr., 14.4 ppg, 4.6 rpg), Tony Bland (G, Sr., 16.4 ppg, 3.5 rpg), Deandre Moore (G, Sr., 8.3 ppg, 3.7 rpg)

N.23	Eastern Washington	L	70-75
N.27	at Portland	L	86-91
N.30	at Cal Poly	W	65-62
D.2	UC San Diego	W	87-57
D.7	(1/1) Arizona	L	81-89
D.10	at Long Beach State	W	64-55
D.14	Hawai'i	W	60-49
D.21	at Houston	W	71-61
D.28	Florida Atlantic	W	91-75
D.30	IPFW	W	74-58
J.3	Loyola Marymount	W	76-69
J.6	(23/21) Texas Tech	L	63-75
J.8	San Diego	W	78-72
J.11	*at Air Force	W	63-48
J.18	*Utah	W	58-56
J.20	*Brigham Young	L	69-80
J.25	*at New Mexico	L	62-66
F.1	*Colorado State	L	69-72
F.3	*Wyoming	W	80-70
F.11	*UNLV	L	64-79
F.15	*at Utah	L	62-76
F.17	*at Brigham Young	L	64-66
F.22	*Air Force	W	67-53
F.24	*New Mexico	W	89-73
M.1	*at Wyoming	W	86-73
M.3	*at Colorado State	L	89-102
M.8	*at UNLV	L	72-83

MWC CHAMPIONSHIP (Las Vegas, Nev.)
M.13 at (#4) UNLV (QF)L 67-83

POSTSEASON NIT
M.19 UC Santa Barbara (FR)ot-W 67-62

Steve Fisher Game-By-Game



THREE STRAIGHT NCAA APPEARANCES ▶ BACK-TO-BACK MOUNTAIN WEST REGULAR-SEASON CHAMPIONS

M.21 at Texas Tech (SR) L 48-57
 * - Mountain West Conference game. ^ - Lubbock, Texas.

▶ 2003-04 • 14-16; 5-9 Mountain West

Home: 11-4, Away: 2-10, Neutral: 1-2

Starting Lineup: Marcus Slaughter (F, Fr., 7.9 ppg, 6.8 rpg), Chris Walton (F, Jr., 8.7 ppg, 4.9 rpg), Aerick Sanders (F, Sr., 16.1 ppg, 9.8 rpg), Brandon Heath (G, Fr., 13.8 ppg, 2.7 rpg), Wesley Stokes (G, Jr., 12.1 ppg, 2.3 rpg)

N.21	Long Beach StateW	74-44
EA SPORTS MAUI INVITATIONAL (Lahaina, Hawaii)			
N.24	vs. Ohio State (QF)W	83-61
N.25	vs. Dayton (SF)L	71-76
N.26	at Chaminade (3P)W	75-67
N.30	Troy StateL	84-93
D.3	at San DiegoW	66-63
D.6	UC San DiegoW	76-51
D.13	at Texas TechL	68-78
D.18	Cal PolyW	90-71
D.20	Eastern WashingtonW	79-66
D.22	at (5/5) ArizonaL	71-83
D.27	WashingtonL	81-92
D.31	PortlandW	67-61
J.3	Iowa StateW	86-76
J.6	at Saint Mary'sL	66-80
J.12	*Brigham YoungW	65-61
J.17	*UNLVW	83-78
J.24	*at Colorado State2ot-L	82-92
J.26	*at WyomingL	71-79
J.31	*Air ForceL	43-57
F.2	*New MexicoW	72-68
F.7	*at UtahL	61-65
F.9	*at Brigham Youngot-L	69-83
F.17	*at UNLVL	65-68
F.21	*WyomingW	74-66
F.23	*Colorado StateW	72-64
F.28	*at New MexicoL	60-72
M.1	*at Air ForceL	49-61
M.6	*UtahL	53-66

MWC CHAMPIONSHIP (Denver, Colo.)			
M.11	at (#3) Utah (QF)L	69-75

* - Mountain West Conference game.			
▶ 2004-05 • 11-18; 4-10 Mountain West			
Home: 7-9, Away: 3-8, Neutral: 1-1			
Starting Lineup: Marcus Slaughter (F, So., 17.8 ppg, 9.0 rpg), Chris Walton (F, Sr., 6.3 ppg, 2.6 rpg), Mohamed Camara (C, Jr., 2.4 ppg, 3.8 rpg), John Sharper (G, Jr., 6.0 ppg, 1.1 rpg), Brandon Heath (G, So., 18.3 ppg, 3.5 rpg)			
N.19	UC Santa Barbaraot-L	72-80
N.22	MonmouthW	69-65
N.27	UC San DiegoW	86-51
D.1	San DiegoW	83-63
D.4	at UC Santa BarbaraW	73-55
D.7	at (16/21) WashingtonL	69-98

SAN DIEGO SLAM (San Diego, Calif.)			
D.11	CaliforniaL	57-60
D.14	Saint Mary'sL	64-73
D.18	at Loyola MarymountL	68-72
D.21	CS FullertonW	63-60
D.28	at Iowa StateL	59-69
D.31	ProvidenceL	67-76
J.3	South Dakota StateW	64-49
J.8	*at Brigham YoungW	59-57
J.15	*at UNLVW	81-73
J.22	*Wyomingot-L	81-88
J.24	*Colorado StateW	84-77
J.29	*at Air ForceL	50-62
J.31	*at New MexicoL	71-88
F.5	*(21/22) UtahL	41-61
F.7	*Brigham YoungW	66-58
F.12	*UNLVot-L	91-93
F.19	*at Colorado Stateot-L	88-93
F.21	*at WyomingL	65-69
F.26	*New MexicoL	61-78
F.28	*Air ForceL	57-77
M.5	*at (16/15) UtahL	67-77

MWC CHAMPIONSHIP (Denver, Colo.)			
M.10	vs. (#3) Air Force (QF)W	73-68
M.11	vs. (#2) New Mexico (SF)L	67-77

* - Mountain West Conference game.			
▶ 2005-06 • 24-9; 13-3 Mountain West			
NCAA First Round			
Home: 13-2, Away: 7-5, Neutral: 4-2			
Starting Lineup: Marcus Slaughter (F, Jr., 16.5 ppg, 11.0 rpg), Mohamed Abukar (F, Jr., 14.3 ppg, 4.7 rpg), Kyle Spain (F, Fr., 9.2 ppg, 5.6 rpg), Brandon Heath (G, Jr., 18.4 ppg, 3.4 rpg), Richie Williams (G, Fr., 6.6 ppg, 3.8 rpg)			
BP TOP OF THE WORLD CLASSIC (Fairbanks, Alaska)			
N.17	at Alaska Fairbanks (QF)W	67-55
N.19	vs. Illinois-Chicago (SF)L	63-66
N.20	vs. Southern Mississippi (3P)W	79-51
N.26	AlbanyW	80-53
N.30	at San DiegoL	80-90
D.3	Point Loma NazareneW	88-77
D.6	at CaliforniaL	64-82

SAN DIEGO SLAM (San Diego, Calif.)			
D.10	Washington StateL	49-60
D.17	UC Santa BarbaraW	66-54
D.20	UMBCW	58-45
D.27	at ProvidenceL	65-80
D.31	Loyola MarymountW	84-68
J.4	*Colorado StateW	83-75
J.7	*at Air ForceL	62-65
J.11	*at UtahW	72-67
J.14	*UNLVW	83-67
J.18	*at TCUW	76-57
J.21	*Brigham YoungW	88-61
J.25	*New MexicoW	75-69
J.28	*at Wyomingot-W	78-77
F.4	*at Colorado StateW	85-81
F.8	*Air ForceW	61-51
F.11	*UtahL	65-67
F.16	*at UNLVW	81-70
F.18	*TCUW	83-71
F.22	*at Brigham YoungL	90-100
F.25	*at New MexicoW	73-66
M.1	*WyomingW	91-72
M.3	South Dakota StateW	88-63

MWC CHAMPIONSHIP (Denver, Colo.)			
M.9	vs. (#8) Colorado State (QF)W	64-52
M.10	vs. (#4) UNLV (SF)W	63-60
M.11	vs. (#7) Wyoming (CH)ot-W	69-64

NCAA 1ST/2ND ROUNDS-OAKLAND REGIONAL (Salt Lake City, Utah)			
M.15	vs. (#6) Indiana (FR)L	83-87

* - Mountain West Conference game.			
▶ 2006-07 • 22-11; 10-6 Mountain West			
NIT Second Round			
Home: 14-2, Away: 6-8, Neutral: 2-1			
Starting Lineup: Mohamed Abukar (F, Sr., 15.8 ppg, 5.8 rpg), Jerome Habel (F, Jr., 10.9 ppg, 6.2 rpg), Lorenzo Wade (F, So., 10.5 ppg, 5.3 rpg), Brandon Heath (G, Sr., 19.3 ppg, 3.8 rpg), Richie Williams (G, So., 7.0 ppg, 4.6 rpg)			
SHAMROCK INVITATIONAL (Moraga, Calif.)			
N.10	vs. Murray StateW	87-84
N.11	at Saint Mary'sW	74-73
N.12	vs. Seattle PacificW	76-73
N.15	UC San DiegoW	84-48
N.18	CaliforniaW	86-79
N.21	UC RiversideW	79-45
N.25	at UC Santa BarbaraW	76-72
N.29	San DiegoW	79-76
D.2	at Western MichiganL	73-84

SAN DIEGO SLAM (San Diego, Calif.)			
D.9	(14/15) ArizonaL	48-69
D.12	CampbellW	119-82
D.16	Loyola MarymountW	74-63
D.21	at Washington StateL	54-64
D.30	LafayetteW	78-68
J.3	*WyomingL	65-66
J.6	*at Brigham YoungL	58-80
J.13	*Colorado StateW	81-76
J.17	*New MexicoW	73-68
J.20	*at (13/11) Air ForceL	51-56
J.23	*at UNLVL	61-68
J.27	*UtahW	63-53
J.31	*at TCUW	76-71
F.6	*(15/13) Air ForceW	62-41
F.10	*at Colorado StateW	81-66
F.13	*UNLVW	67-52
F.17	*at WyomingL	71-80
F.20	*at New Mexicoot-W	81-74
F.24	*(21/22) Brigham YoungW	86-74
F.27	*at UtahL	68-74
M.3	*TCUW	56-51

MWC CHAMPIONSHIP (Las Vegas, Nev.)			
M.8	vs. (#6) Colorado State (QF)L	64-69

* - Mountain West Conference game.			
▶ 2007-08 • 20-13; 9-7 Mountain West			
NIT First Round			
Home: 11-3, Away: 6-8, Neutral: 3-2			
Starting Lineup: Billy White (F, Fr., 8.5 ppg, 5.9 rpg), Lorenzo Wade (F, Jr., 14.8 ppg, 4.5 rpg), Ryan Amoroso (C, Jr., 11.4 ppg, 6.5 rpg), D.J. Gay (G, Fr., 5.8 ppg, 1.7 rpg), Kyle Spain (G, Jr., 13.2 ppg, 5.4 rpg)			
WORLD VISION CLASSIC (Fresno, Calif.)			
N.9	vs. LibertyW	62-50
N.10	vs. PortlandW	78-64
N.11	at Fresno StateW	89-72
N.17	UC San DiegoW	76-60
N.19	at San DiegoW	69-64
N.24	at CaliforniaL	69-77
N.28	at Loyola MarymountW	78-56
D.1	Western MichiganW	72-61
D.4	UC RiversideW	59-46

WOODEN CLASSIC (Anaheim, Calif.)			
D.8	vs. Saint Mary'sL	64-69
D.17	NavyW	86-76
FIESTA BOWL CLASSIC (Tucson, Ariz.)			
D.22	(19/19) at ArizonaL	58-74
D.28	Sam Houston Stateot-W	79-78
J.5	*TCUW	64-57
J.9	Northern ColoradoL	56-62
J.12	*at New MexicoW	72-67
J.16	*Utahot-W	64-56
J.19	*WyomingW	70-43
J.23	*at Brigham YoungL	56-59
J.26	*UNLVL	69-72
J.29	*at Colorado StateW	83-82
F.6	*Air ForceW	49-38
F.9	*at TCUL	62-68
F.13	*New MexicoL	63-73
F.16	*at UtahL	66-72
F.19	*at WyomingW	79-68
F.23	*Brigham YoungW	69-65
F.26	*UNLVL	58-68
M.1	*Colorado StateW	86-62
M.8	*at Air ForceL	43-46

MWC CHAMPIONSHIP (Las Vegas, Nev.)			
M.13	vs. (#5) Air Force (QF)W	53-49
M.14	vs. (#1) (24/23) Brigham Young (SF)L	54-63

MASTERCARD NIT - SOUTH REGION

M.14	*at (#3) Missouri State (FR)W	74-70
M.19	*at (#2) Syracuse (SR)L	64-80

^ - Seattle, Wash. * - Mountain West Conference game. + - Springfield, Mo. # - Syracuse, N.Y.

▶ 2007-08 • 20-13; 9-7 Mountain West			
NIT First Round			
Home: 11-3, Away: 6-8, Neutral: 3-2			
Starting Lineup: Billy White (F, Fr., 8.5 ppg, 5.9 rpg), Lorenzo Wade (F, Jr., 14.8 ppg, 4.5 rpg), Ryan Amoroso (C, Jr., 11.4 ppg, 6.5 rpg), D.J. Gay (G, Fr., 5.8 ppg, 1.7 rpg), Kyle Spain (G, Jr., 13.2 ppg, 5.4 rpg)			

WORLD VISION CLASSIC (Fresno, Calif.)			
N.9	vs. LibertyW	62-50
N.10	vs. PortlandW	78-64
N.11	at Fresno StateW	89-72
N.17	UC San DiegoW	76-60
N.19	at San DiegoW	69-64
N.24	at CaliforniaL	69-77
N.28	at Loyola MarymountW	78-56
D.1	Western MichiganW	72-61
D.4	UC RiversideW	59-46

WOODEN CLASSIC (Anaheim, Calif.)			
D.8	vs. Saint Mary'sL	64-69
D.17	NavyW	86-76
FIESTA BOWL CLASSIC (Tucson, Ariz.)			
D.22	(19/19) at ArizonaL	58-74
D.28	Sam Houston Stateot-W	79-78
J.5	*TCUW	64-57
J.9	Northern ColoradoL	56-62
J.12	*at New MexicoW	72-67
J.16	*Utahot-W	64-56
J.19	*WyomingW	70-43
J.23	*at Brigham YoungL	56-59
J.26	*UNLVL	69-72
J.29	*at Colorado StateW	83-82
F.6	*Air ForceW	49-38
F.9	*at TCUL	62-68
F.13	*New MexicoL	63-73
F.16	*at UtahL	66-72
F.19	*at WyomingW	79-68
F.23	*Brigham YoungW	69-65
F.26	*UNLVL	58-68
M.1	*Colorado StateW	86-62
M.8	*at Air ForceL	43-46

MWC CHAMPIONSHIP (Las Vegas, Nev.)			
M.13	vs. (#5) Air Force (QF)W	53-49
M.14	vs. (#1) (24/23) Brigham Young (SF)L	54-63

MASTERCARD NIT (Gainesville, Fla.)			
M.19	at (#2) Florida (FR)L	49-73

* - Mountain West Conference game.			
▶ 2008-09 • 26-10; 11-5 Mountain West			
NIT Semifinals			
Home: 16-2, Away: 6-5, Neutral: 4-3			
Starting Lineup: Kyle Spain (F, Sr., 14.0 ppg, 5.3 rpg), Billy White (F, So., 8.8 ppg, 3.8 rpg), Ryan Amoroso (C, Sr., 7.5 ppg, 4.5 rpg), D.J. Gay (G, So., 6.0 ppg, 1.5 rpg), Richie Williams (G, Sr., 7.2 ppg, 3.5 rpg)			
N.15	UC San DiegoW	59-40
N.18	(15/15) Arizona StateL	52-59
N.22	Fresno StateW	80-56

GREAT ALASKA SHOOTOUT (Anchorage, Alaska)			
N.27	vs. W. Carolina (QF) (:11.2)W	59-58
N.28	vs. Seattle (SF)W	75-56
N.29	vs. Hampton (CH)W	76-47

Steve Fisher Game-By-Game



THREE STRAIGHT NCAA APPEARANCES ► BACK-TO-BACK MOUNTAIN WEST REGULAR-SEASON CHAMPIONS

F.28	*at TCU	ot-W	79-77
M.4	*Colorado State	W	68-59
M.7	*UNLV	W	57-46
MWC CHAMPIONSHIP (Las Vegas, Nev.)			
M.12	at (#5) UNLV (QF)	W	71-57
M.13	vs. (#1) (25/-) Brigham Young (SF)	W	64-62
M.14	vs. (2) Utah (CH)	L	50-52
NATIONAL INVITATION TOURNAMENT			
M.17	(#8) Weber State (FR)	W	65-49
M.20	(#4) Kansas State (SR)^	W	70-52
M.25	(#2) Saint Mary's (QF)	W	70-66
M.31	vs. (#3) Baylor (SF)+	L	62-76

* - Mountain West Conference game. ^ - Jenny Craig Pavilion (San Diego, Calif.). + - Madison Square Garden (New York, N.Y.)

► **2009-10 • 25-9; 11-5 Mountain West**

NCAA First Round

Home: 14-1, Away: 9-7, Neutral: 2-1

Starting Lineup: Kawhi Leonard (F, Fr., 12.7 ppg, 9.9 rpg), Billy White (F, Jr., 11.1 ppg, 4.3 rpg), Malcolm Thomas (F, Jr., 10.9 ppg, 7.6 rpg), D.J. Gay (G, Jr., 10.5 ppg, 3.2 app), Chase Tapley (G, Fr., 7.6 ppg, 2.1 app)

N.14	UC San Diego (D)	W	77-52
N.16	at Saint Mary's	L	58-80

WEST COAST CLASSIC (Campus Sites)

N.19	Santa Clara	W	86-53
N.23	at Fresno State	W	62-58
N.25	at Pacific	L	63-71
N.28	Northern Arizona	W	89-48
D.2	at San Diego	ot-W	69-62
D.5	at UC Santa Barbara	W	69-61
D.9	Cal State Fullerton	W	82-68
D.12	Arizona	W	63-46
D.19	at Arizona State (D)	L	52-55
D.22	at Drake	ot-W	76-73
D.29	UC Riverside	W	58-53
D.31	Pomona-Pitzer (D)	W	89-54
J.5	*(15/14) New Mexico	W	74-64
J.9	*at Wyoming (:04.9)	L	83-85
J.13	*at UNLV	L	66-76
J.16	*TCU	W	67-62
J.19	*at Utah	W	70-68
J.23	*(14/13) Brigham Young	L	69-71
J.30	*at Colorado State	W	64-52
F.2	*Air Force	W	70-48
F.6	*at (15/23) New Mexico (:02.7) (D)	ot-L	86-88
F.10	*Wyoming	W	88-57
F.13	*(23/25) UNLV (D)	W	68-58
F.16	*at TCU	W	68-51
F.20	*Utah	W	68-61
F.24	*at (13/11) Brigham Young	L	68-82
M.3	*Colorado State	W	68-55
M.6	*at Air Force	W	61-42

MWC CHAMPIONSHIP (Las Vegas, Nev.)

M.11	vs. (#5) Colorado State (QF) (D)	W	72-71
M.12	vs. (#1) (8/8) New Mexico (SF)	W	72-69
M.13	at (#3) UNLV (CH) (D)	W	55-45

NCAA 1ST/2ND ROUNDS (Dunkin' Donuts Center; Providence, R.I.)

M.18	(#6) (15/14) Tennessee (FR)	L	59-62
------	-----------------------------	---	-------

* - Mountain West Conference game.

► **2010-11 • 34-3; 14-2 Mountain West**

NCAA Sweet 16

Home: 14-1, Away: 12-1, Neutral: 8-1

Final National Ranking (AP/Coaches): 6/11

Starting Lineup: Kawhi Leonard (F, So., 15.5 ppg, 10.6 rpg), Malcolm Thomas (F, Sr., 11.4 ppg, 8.1 rpg), Billy White (F, Sr., 10.3 ppg, 4.4 rpg), D.J. Gay (G, Sr., 10.3 ppg, 3.1 app), Chase Tapley (G, So., 8.6 ppg, 2.4 rpg)

N.13	25/rv at Long Beach State (D)	W	81-65
------	-------------------------------	---	-------

O'REILLY AUTO PARTS CBE CLASSIC

N.16	25/rv at (11/12) Gonzaga	W	79-76
N.20	25/rv vs. Green Bay +	W	79-70
N.21	25/rv vs. IUPUI +	W	61-46
N.22	18/22 at Miami (Ohio)	W	77-56
N.26	18/22 San Diego Christian College	W	88-69
D.1	17/19 Saint Mary's	W	69-55
D.4	17/19 Wichita State	W	83-69
D.8	14/15 at California	W	77-57
D.11	14/15 San Diego	W	77-49
D.13	11/10 Cal Poly	W	51-45
D.18	11/10 UC Santa Barbara	W	90-64

LAS VEGAS HOLIDAY HOOPS CLASSIC (Las Vegas, Nev.)

D.21	7/7 vs. San Francisco	W	62-56
D.22	7/7 vs. IUPUI	W	56-54
D.31	7/7 Occidental College (D)	W	93-50
J.5	6/6 *at TCU	W	66-53
J.8	6/6 *at Utah (D)	W	71-62

J.12	6/6 *UNLV	W	55-49
J.15	6/6 *at New Mexico (D)	W	87-77
J.19	6/6 *Air Force	W	68-55
J.26	4/4 *(9/9) at Brigham Young	L	58-71
J.29	4/4 *Wyoming	W	96-57
F.2	7/6 *at Colorado State (:01.8)	W	56-54
F.5	7/6 *TCU	W	60-53
F.8	6/6 *Utah	W	85-53
F.12	6/6 *at UNLV	W	63-57
F.16	6/6 *New Mexico	W	68-62
F.19	6/6 *at Air Force	W	70-58
F.26	6/4 *(7/7) Brigham Young (D)	L	67-80
M.1	9/9 *at Wyoming	W	85-58
M.5	9/9 *Colorado State	W	66-48

MWC CHAMPIONSHIP (Las Vegas, Nev.)

M.10	7/6 vs. (#7) Utah (QF)	W	64-50
M.11	7/6 at (#2) at UNLV (SF) (:04.9)	W	74-72
M.12	7/6 vs. (#1) (8/8) Brigham Young (CH) (D) W	72-54	

NCAA 2ND/3RD ROUNDS (McKale Center; Tucson, Ariz.)

M.17	6/5 vs. (#15) Northern Colorado (SR) (D)	W	68-50
M.19	6/5 vs. (#7) Temple (3R) (D)	ot-W	71-64

NCAA WEST REGIONAL (Honda Center; Anaheim, Calif.)

M.24	6/5 vs. (#3) (9/8) Connecticut (R-SF) (D)	L	67-74
------	---	---	-------

* - Mountain West Conference game. + - Oxford, Ohio.

► **2011-12 • 26-8; 10-4 Mountain West**

NCAA Second Round

Home: 17-2, Away: 7-4, Neutral: 2-2

Final National Ranking (AP/Coaches): 22/rv

Head Coach: Steve Fisher

Starting Lineup: Tim Shelton (F, Sr., 5.2 ppg, 4.6 rpg), Jamaal Franklin (G, So., 17.4 ppg, 7.9 rpg), Chase Tapley (G, Jr., 15.8 ppg, 4.3 rpg), Xavier Thames (G, So., 10.1 ppg, 4.1 app), James Rahon (G, Jr., 8.9 ppg, 2.7 rpg)

BASKETBALL TRAVELERS CLASSIC (San Diego, Calif.)

N.11	Bryant	W	75-63
N.12	Southern Utah	W	70-37
N.13	UC Davis (D)	W	89-74
N.15	at (11/12) Baylor (D)	L	67-77
N.17	USC (:01.8)	W	56-54
N.19	Long Beach State (D)	ot-W	77-73
N.23	at (23/23) Arizona	W	61-57

N.26	at UC Santa Barbara	ot-W	76-75
N.30	(-/22) Creighton	L	83-85
D.4	(24/23) California (D)	W	64-63
D.7	at San Diego	W	74-62
D.19	UC Riverside	W	80-55
D.22	Elon (D)	W	81-55
D.30	25/- Redlands	W	94-43
J.5	24/25 San Diego Christian	W	83-52
J.10	22/22 Chicago State	W	73-65
J.14	22/22 *(12/12) UNLV (:00.3) (D)	W	69-67
J.18	16/16 *at New Mexico	W	75-70
J.21	16/16 *Air Force	W	57-44
J.24	13/12 *at Wyoming	W	52-42
J.28	13/12 *at Colorado State (D)	L	60-77
F.1	17/17 *Boise State	W	58-56
F.4	17/17 *TCU	W	83-73
F.11	13/14 *at (14/16) UNLV (D)	L	60-62
F.15	13/15 *New Mexico	L	67-77
F.18	13/15 *at Air Force (D)	L	56-58
F.22	24/25 *Wyoming	ot-W	67-58
F.25	24/25 *Colorado State	W	74-66
F.29	21/23 *at Boise State	W	66-53
M.3	21/23 *at TCU	ot-W	98-92

MW CHAMPIONSHIP (Las Vegas, Nev.)

M.8	18/21 vs. (#8) Boise State (:00.0) (QF) (D)	W	65-62
M.9	18/21 vs. (#4) Colorado State (SF)	W	79-69
M.10	18/21 vs. (#2) New Mexico (CH) (D)	L	59-68

NCAA 2ND/3RD ROUNDS (Nationwide Arena; Columbus, Ohio)

M.16	22/23 vs. (#11) North Carolina State (SR) (D)	L	65-79
------	---	---	-------

* - Mountain West Conference game.

AP/USA Today Polls - The number prior to the opponent is SDSU's national ranking. The number in front of the opponent is its national ranking. Prior to 1999-2000, ranking refers to only the AP poll.

#X - Indicates seed of opponent in a tournament; FR - First round; SR - Second round; QF - Quarterfinals; SF - Semifinals; CH - Championship.



Steve Fisher and the 2011-12 San Diego State Aztecs claimed their second straight Mountain West regular-season championship

STEVE FISHER GAME-BY-GAME ◀ COACHES

AZTEC BASKETBALL MEDIA GUIDE

Brian Dutcher

Associate Head Coach/Head Coach In Waiting - 14th Season at SDSU Minnesota '82

One of Steve Fisher's first moves as head coach at San Diego State was to hire Brian Dutcher as his top assistant. Dutcher, 53, was a regional scout for the Sacramento Kings before assuming the role of assistant head coach at SDSU.

Now, Fisher's first hire will follow in his footsteps as he was named Associate Head Coach/Head Coach In Waiting in late August 2011.

Dutcher served as assistant coach and later associate head coach at Michigan under Fisher. He spent 10 seasons on the Wolverine staff, establishing himself as one of the nation's top assistant coaches. His first year in Ann Arbor was 1989 and resulted in a national title for Michigan as he assisted then-interim head coach Steve Fisher on the bench.

The Bloomington, Minn., native headed up UM's recruiting efforts in 1990-91 when the Wolverines inked Juwan Howard, Ray Jackson, Jimmy King, Jalen Rose and Chris Webber. The "Fab Five" is considered perhaps the best recruiting class in NCAA history. Dutcher helped lead that group to nearly 100 wins, two berths in the NCAA championship game and a regional final over a four-year period. He was also on the Michigan staff for an NIT championship (1997).

Dutcher's recruiting prowess, however, was demonstrated by more than just the "Fab Five" haul. Michigan had the nation's top-ranked recruiting class in 1993-94 and in 1994-95, with a group that included Maurice Taylor and Jerod Ward. The accomplishment marked the first time that a university had the nation's top class in consecutive years, according to recruiting analyst Bob Gibbons.

His efforts at SDSU quickly gained accolades as well. The first full-year recruiting effort by Steve Fisher, Brian Dutcher and Co., resulted in a class that was a consensus top-40 group. Their second effort resulted in a top-25 recruiting class without counting a pair of high-profile transfers. In 2002-03, Dutcher helped the Aztecs attract SDSU's first McDonald's All-American. In 2004, Aztec freshmen

Brandon Heath and Marcus Slaughter earned starting spots en route to earning all-league recognition. Dutcher was also instrumental in the recruitment of Ryan Amoroso, who earned all-league honors in 2007, and the four most recent incoming classes, which produced Kawhi Leonard and three-year starter Chase Tapley. Leonard went on to become a two-time MWC first-team honoree, 2011 All-American and 2011 first-round NBA Draft pick. This season's incoming group, meanwhile, arrives on campus as the No. 24 class in the nation, according to *Rivals.com*.

Dutcher is firmly entrenched as one of the nation's top recruiters after showing that his rapport is as strong with potential student-athletes on the West Coast as it was in the vaunted Big Ten Conference.

Dutcher was born Oct. 30, 1959, in Alpena, Mich. He attended Bloomington (Minn.) Jefferson High School and went on to earn a bachelor's degree in physical education

from Minnesota in 1982. While an undergraduate, he worked for his father, then-Minnesota head coach Jim Dutcher. He then spent one season in the prep ranks at Apple Valley (Minn.) High School before becoming a graduate assistant at Illinois, where he earned his master's degree in physical education and athletic administration.

While in Champaign, Dutcher helped Lou Henson lead the Illini to a Big Ten championship, two appearances in the Sweet 16 and one regional final.

Dutcher's first full-time coaching job came at South Dakota State, where he spent three seasons helping turn around the Division II program before departing in 1988 for Michigan.

His final season in Ann Arbor ended with the Wolverines claiming the first-ever Big Ten Tournament championship.

Dutcher and his wife, Jan, have two daughters, Erin (24) and Liza (22).



Brian Dutcher

**Associate Head Coach/
Head Coach In Waiting**

Birthdate

October 30, 1959

Hometown

Alpena, Mich.

Education

1982 - B.S. degree from Minnesota. 1984 - M.S. degree from Illinois

Marital Status

Married to Jan Dutcher

Children

Erin (24) and Liza (22)





Mark Fisher

Assistant Coach

Birthdate

Nov. 10, 1978

Education

2001 – B.A. degree from Michigan

Marital Status

Married to Jill Fisher

Mark Fisher

Assistant Coach - 11th Season at SDSU Michigan '01

Mark Fisher enters his sixth season as assistant coach and 11th overall at San Diego State. The son of 14th-year San Diego State head coach Steve Fisher, Mark Fisher has taken on assistant coach duties after being the program's director of operations the five previous seasons.

Fisher's responsibilities include on-court coaching and skill development with San Diego State's post players, opponent scouting, player development and recruiting. Fisher is responsible for the Aztecs' offensive concepts, such as spacing, ball screening, play implementation and the like.

In his first five years of coaching at SDSU, Fisher helped the Aztecs to their seventh straight 20-win season, which includes four consecutive years of at least 25 victories, and seventh consecutive appearance in the postseason, including 2011's 34-3 record and Sweet 16 appearance.

When not on the practice court, Fisher can be found on the road in high school gyms around America recruiting.

The sixth-year assistant helped secure the 2009-10 incoming class, which featured the California Player of the Year Kawhi Leonard. The 2009-10 incoming group was ranked No. 15 in the nation by The HOOP SCOOP Online and was rated as the No. 1 class among non-automatic qualifying BCS schools by The HOOP SCOOP Online and *Rivals.com*. *ESPN.com* slotted the Aztec incoming class at No. 4 in its "mid-major recruiting."

The hype was well deserved as Leonard became the first freshman in MW history to be named to the all-conference first team, all while earning league freshman of the year honors and being named the MW tournament MVP in 2010. Leonard additionally was one of only four freshmen nationally to lead his team in scoring and rebounding. In 2011, Leonard was an all-conference first-team pick, All-American and first-round NBA Draft pick. He and classmate, Chase Tapley, were also regulars in the starting lineup together for two seasons.

Tapley, meanwhile, returns for his senior campaign this year and is a three-year starter.

In addition, Fisher was also the lead recruiter for James Rahon, who is entering his senior season on The Mesa and is one of the top three-point shooters on the West Coast.

The 2012-13 group, which Fisher also help land, is also acknowledged as one of the best in the country as *Rivals.com* tabbed the class as the 24th-best nationally. Fisher helped sign freshman Matt Shrigley and was responsible for landing sophomore transfer JJ O'Brien.

As the director of operations, Fisher handled many of the day-to-day operations, including scheduling, summer camps and organizing all aspects of team travel. He represented the basketball program with the athletic administration.

During his time supervising scheduling, the Aztecs have played high-profile games against Arizona, California, Providence, Iowa State, Washington and Washington State among others. In addition, he arranged SDSU to play in the BP Top of the World Classic in Fairbanks, Alaska, the Shamrock Invitational in Moraga, Calif., the World Vision Classic in Fresno, Calif., and the prestigious John R. Wooden Classic in

Anaheim, Calif., in past seasons.

In his four years as the team's schedule maker, the Aztecs won 92 games, for an average of 23 wins per season, and reached the postseason in each of those years.

In previous seasons, when SDSU had two assistant coaches, Fisher officially took on coaching responsibilities, including conducting individual workouts and off-campus recruiting.

Fisher, the oldest of Steve Fisher's two sons, graduated from the University of Michigan in December of 2001. He graduated with a bachelor's degree in psychology.

Around basketball a majority of his life, Mark Fisher has amassed a variety of experience in a short period of time.

From 1998-2001, Fisher worked in a variety of capacities for Lincoln High School in Ann Arbor, Mich. He served as the varsity assistant head coach, head junior varsity coach and the head freshman coach during his tenure, assisting in all areas of the program.

He served as associate head coach for an Ann Arbor AAU team in the summer of 2001. Many of the players on that squad went on to play college basketball.

Fisher and his wife, Jill, live in Solana Beach.



Tony Bland

Assistant Coach - Second Season at SDSU
San Diego State '09

Tony Bland, a two-time all-Mountain West Conference selection who guided the Aztecs to an NCAA and postseason NIT appearance in his two seasons on Montezuma Mesa, enters his second season as an assistant coach at his alma mater.

Bland, 32, is the first San Diego State graduate to serve as a full-time assistant coach since the 1977-78 campaign. He also becomes the third former Steve Fisher-coached player to serve as a full-time member of the coaching staff at SDSU, following Gary Grant and Mark Hughes.

His duties as an assistant coach include on-court coaching, opponent scouting and recruiting.

In his first full season as an assistant, Bland helped secure the 24th-best recruiting class, according to *Rivals.com*, which was highlighted by five-star recruit Winston Shepard and Rivals 150 player Skylar Spencer.

Bland transferred to San Diego State after playing two seasons at Syracuse. A native of Los Angeles, Bland played college basketball for two national championship coaches in Jim Boeheim and Fisher and was part of teams that won 84 games and advanced to three NCAA Tournaments and a postseason NIT in his four seasons at the collegiate level.

As a college player at San Diego State and Syracuse, Bland recorded 1,368 points, 331 rebounds, 319 assists while playing in 127 games and making 95 starts.

Bland, a captain on the 2001-02 Aztec squad, led the team to its first Division I postseason victory in school history, a 67-62 overtime win over UC Santa Barbara in the NIT. That year, as a senior, Bland averaged a career-high 16.4 points, 3.5 rebounds and 3.4 assists. He earned second-team all-conference honors and was named a member of the NABC District 13 and USBWA District IX teams.

As a junior, Bland led San Diego State's magical run to a Mountain West tournament championship and the school's first NCAA Tournament berth since 1985. He averaged 15.7

points, 4.0 rebounds and 3.4 assists, in becoming the first player in the history of the Mountain West to rank among the league's top-10 players in scoring and assists and top-20 players in rebounding.

After college, Bland earned an invitation to take part in the Indiana Pacers training camp before playing in the United States Basketball League (USBL) where he played for former NBA player John Starks. During his stint in the USBL, Bland averaged 18.7 points, 5.1 rebounds and 5.7 assists en route to earning the league's Rookie of the Year award. From there, Bland participated in the Sacramento Kings' training camp in the fall of 2004 before signing a contract with the team.

Following his stay with Sacramento, Bland played in Russia before moving on to the NBDL's Albuquerque Thunderbirds, where he played for two seasons under former NBA player Michael Cooper and won a championship in 2005-06. Shortly thereafter, Bland went overseas to play in Europe before returning to San Diego State prior to the 2008-09

campaign to serve as the team's head manager and ultimately finishing his degree in social science. That season, the Aztecs won a then-school-record 26 games en route to the postseason NIT semifinals.

Prior to his return to San Diego State, Bland was the personal trainer for Trevor Ariza, a forward for the New Orleans Hornets, for two seasons.

Bland has three sons, Anthony (10), Landon (5) and Axl (2), and is engaged to Tasia Jackson.



Tony Bland

Assistant Coach

Birthdate

Jan. 27, 1980

Education

2009 – B.A. degree from San Diego State





Matt Soria

Director of Basketball Operations

Matt Soria

**Director of Basketball Operations - 13th Season at SDSU
San Diego State '02**

Matt Soria begins his 13th year with the San Diego State men's basketball program and his sixth as the director of basketball operations.

In November 2007, Soria was named the director of basketball operations after Mark Fisher, who previously held the position, was promoted to assistant coach.

Soria handles day-to-day operations, including scheduling, summer camps and organizing all aspects of team travel.

Prior to his current post, Soria was the basketball program's director of player development, a position he held for three years.

Soria assisted the basketball coaching staff with video breakdown, travel, community service and handled many of the day-to-day office duties.

During his three-year tenure as the director of player development, the Aztecs went a combined 57-38, won the 2006 Mountain West Conference regular season and tournament championships, earned a berth to the 2006 NCAA Tournament and advanced to the second round of the 2007 postseason NIT.

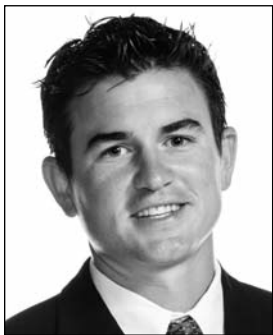
Prior to being the director of player development, Soria was a three-year manager for the Aztecs where he served as the team's head manager for the 2001-02 and 2002-03 seasons. Both of those seasons SDSU advanced to postseason play.

Soria graduated from San Diego State with a bachelor's degree in political science in December 2002, and earned his master's degree in educational technology from SDSU in December 2006.

Soria played collegiate basketball

for two seasons at Cabrillo College in Aptos, Calif., before transferring to San Diego State.

Soria, 33, is married to the former Melissa Schuetz. The couple has a two-year-old son, Dylan, and the family resides in San Diego.



David Velasquez

Director of Player Development

David Velasquez

**Director of Player Development - 11th Season at SDSU
San Diego State '07**

David Velasquez enters his 11th season at San Diego State and his sixth as the Aztecs' director of player development.

Velasquez assists the basketball coaching staff with video breakdown, film exchange, travel, community service and handles many of the day-to-day office duties.

Prior to his current position, Velasquez was a student manager for the 2002-03 season before serving as head manager from 2003-07.

In 2002-03, San Diego State earned a berth to postseason NIT where the Aztecs picked up their first Division I postseason tournament victory en route to an appearance in the second round.

Then in 2005-06, San Diego State won the Mountain West Conference by going 13-3 and went on to win the

MW tournament. As a result, the Aztecs advanced to the NCAA Tournament for the second time under head coach Steve Fisher and won a then school-record 24 ballgames.

During the 2006-07 season, Fisher awarded Velasquez a scholarship in December 2006 and was added to the active roster in January 2007.

As an official playing member of the team, Velasquez played in four games and recorded a steal. He was a member of a team that finished with a 22-11 record and advanced to the second round of the postseason NIT.

In Velasquez's five seasons as manager, the Aztecs went to the postseason three times and won 22 or more games twice.

Following his graduation from San Diego State in May 2007, Velasquez was hired at the University of the

Pacific later that month. As the Tigers' graduate manager, he assisted with Pacific's camps, created highlight tapes and coordinated film exchange before returning to his alma mater.

Since his return, SDSU has recorded five more 20-win seasons, including four with at least 25 victories, and reached the postseason in each of the last five years.

Tom Abdenour

Head Athletic Trainer - Second Season at SDSU
Wayne State '76

Tom Abdenour is in his second year as San Diego State's head athletic trainer after spending 24 seasons with the Golden State Warriors and eight years at Weber State.

Abdenour handles all of the medical needs for the men's basketball squad throughout the year. He supervises and coordinates all rehabilitative efforts in case of injury.

In his first season, San Diego State claimed a share of the Mountain West regular-season title, reached the championship game of the MW tournament for the fourth straight year and advanced to its third consecutive NCAA Tournament before completing the 2011-12 season with a 26-8 record.

A certified member of the National

Athletic Trainers Association (NATA) and an active member of the California Athletic Trainer's Association, Abdenour was inducted into the National Athletic Trainers' Association Hall of Fame in 2007. He also won the 2005 NATA Tim Kerin Award For Excellence In Athletic Training and was named the NBA's Athletic Trainer of the Year (1990). Also he represented the United States Olympic Committee on the medical staff of the 2000 Olympic Games in Sydney, Australia.

Prior to joining the Warriors in 1987, Abdenour spent eight years at Weber State. His career began in 1978 at Hillsdale College in South Central, Mich., where he spent one year before moving on to Weber State.

A graduate of Wayne State, Abdenour received his bachelor's

degree in biology and his master's degree in science education in 1978. In 2011, he earned his doctorate in health science from A.T. Still University.

Tom and his wife, Christine, have three children - Rebecca, Carolyn and Thomas.



Tom Abdenour

Head Athletic Trainer

Randy Shelton

Strength and Conditioning Coach - Third Season at SDSU
San Diego State '00

Randy Shelton is in his third season at San Diego State as the men's basketball team's strength and conditioning coach. Shelton is also entering his second campaign as the women's basketball program's strength and conditioning coach.

During his two seasons on Montezuma Mesa, the Aztecs have enjoyed the best two-year run in school history thanks in large part to their effort in the weight room during the season and in the offseason. Over the last two seasons, San Diego State has gone a combined 60-11 (school-record 34 wins in 2011), won three Mountain West titles (two regular season, one tournament) and advanced to the NCAA Tournament, including 2011's appearance in the Sweet 16.

Shelton, the owner and operator of

High Voltage Fitness in nearby La Jolla, was the personal training coordinator at the Aztec Recreation Center (1998-2008) on campus at San Diego State, as well as the owner and operator of Rapid Speed for seven years prior to coming to Montezuma Mesa.

In the past, Shelton has worked with ex-Aztec men's basketball players Mohamed Abukar, Brandon Heath, Aerick Sanders, John Sharper, Marcus Slaughter and Chris Walton after they left San Diego State.

He has also worked with over 50 NFL players including, Femi and Brandon Ayanbadejo, Will Dumps, A.J. Feeley, Robert Griffith, Freddie Jones, Freddy Keiaho and Matt McCoy.

A 2000 graduate of San Diego State, Shelton is a member of the National Strength and Conditioning Association and is a Certified

Strength and Conditioning Specialist (CSCS).

Shelton is married to the former Waleska Valle and the couple has a son, Darren.



Randy Shelton

Strength and Conditioning Coach



Tim Shelton

Tim Shelton

Graduate Manager

6th Season at SDSU (San Diego State '11)

Tim Shelton continues his stint at San Diego State as a graduate manager as he works toward earning his master's degree from the University after completing his undergraduate course work in 2011 and his playing eligibility in 2012.

A native of Fresno, Calif., Shelton played five seasons on Montezuma Mesa and saw action in 109 games while helping the Aztecs reach the postseason in all five of his campaigns, including three consecutive NCAA Tournament berths.

Shelton, who averaged 5.0 points and 3.6 rebounds in his career, was a member of the record-setting 2010-11 squad that captured the Mountain West regular-season and tournament championships, won the school's first Division I NCAA Tournament game, advanced to the Sweet 16 and finished with a record of 34-3.

A year ago, Shelton, along with senior Garrett Green, began working toward their master's degrees in educational leadership. The duo became the first players under head coach Steve Fisher to start their graduate course work while still competing. Shelton earned his bachelor's degree in history in Spring 2011.

and exams. She also oversees the study hall and tutorial services for the team - both in San Diego and on the road.

The former Kristie Smedsrud came to San Diego State from Butler University, where she was the Assistant Athletic Director for Compliance and Academic Support. Prior to her stint at Butler, she was in academic advising at Texas A&M for one year. A 2000 graduate of Texas A&M, Smedsrud also earned her master's degree at the school in 2001.

While in College Station, Smedsrud, who was a 1996 Academic All-District VI first-team choice and 1996-97 Big 12 All-Academic first-teamer, played volleyball for Texas A&M from 1994-97, where she was a four-time all-conference first-team selection and a four-time all-region honoree (one second-team, three first-team). The 1994 Southwest Conference Freshman of the Year later went on to earn Volleyball Magazine third-team All-America accolades as a junior in 1996, before closing her career as the 1997-98 Texas A&M Female Athlete of the Year.

During her playing days, Smedsrud led the Aggies to the second round of the NCAA Tournament as a freshman and junior, and to the Sweet 16 as a sophomore and senior.

Dock, who played professional volleyball in Switzerland, is married to her husband, Tim.



Kristie Dock

Kristie Dock

Academic Counselor

10th Season at SDSU (Texas A&M '00)

Kristie Dock is in her 10th season as an academic counselor at San Diego State. Dock is responsible for monitoring the Aztecs' academic progress.

In addition to advising players, Dock works one-on-one with members of the team on a daily basis to assist the student-athletes with tutors, professors, monitoring deadlines



Leana DeKock

Leana DeKock

Administrative Assistant

2nd Season at SDSU (San Diego State '11)

Leana DeKock enters her second season as the administrative assistant for the San Diego State basketball program.

DeKock handles administrative duties in the day-to-day operations of the San Diego State basketball office. She works closely with Steve Fisher to organize his schedule.

In addition to assisting Fisher, DeKock assists the staff with schedules, travel and recruiting responsibilities.

Leana and her husband, David, have two daughters - Mallory and Natalia.

SDSU Men's Basketball Doctors and Managers

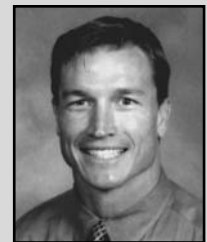


SDSU Student Managers (L-R): Tyler Warren, John Van Houten, Bharat Mohan, Head Coach Steve Fisher, Rick Hague, Bryan Fisher, Allen Cooper, Nick Robbin.



Christopher Behr

Team Physician



Alan Richburg

Team Physician



Peter Wile

Team Physician



Dennis Brown

Equipment Attendant