



SAN DIEGO STATE BASKETBALL

2017-18 MEN'S BASKETBALL GAME NOTES

Mike May, Senior Associate Athletics Director of Communications and Media Relations ♦ E-Mail: mmay@mail.sdsu.edu ♦ Office: 619.594.5547 ♦ Cell: 619.957.8372
Darin Wong, Assistant Athletics Director of Media Relations ♦ E-Mail: dwong@mail.sdsu.edu ♦ Office: 619.594.5548 ♦ Cell: 310.489.2378

GAME INFORMATION

Date / Time: Friday, November 24 / 4 p.m. PT

Site: Titan Gym (4,000) / Fullerton, Calif.

Television: ESPN2

Talent: Steve Quis (play-by-play), Corey Williams (analysis)

SDSU Radio: 101.5 KGB, XTRA 1360, FOX Sports IE 1350

Talent: Jon Schaeffer (play-by-play; pre, half and post)

Live Stats: GoAztecs.com

Series vs. Georgia: First Meeting

Streak: N/A

at San Diego: N/A

at Athens: N/A

Neutral: N/A

First Meeting: N/A

Last Meeting: N/A

Dutcher vs. Georgia: First Meeting

SCHEDULE / RESULTS

Date	SDSU	Opp.	Opponent (TV/Stream)	Time / Result
N.2			UC San Diego - Exhibition	W, 98-79
N.10			San Diego Christian	W, 91-52
N.14			at Arizona State (Pac-12 Networks)	L, 68-90
N.17			McNeese (FOX Sports SD/Prime Ticket)	W, 83-52
N.20			Eastern Illinois (FOX Sports SD/Prime Ticket)	W, 94-63
N.23			#vs. Sacramento State (ESPN)	W, 89-52
N.24	--/rv	#vs. Georgia (ESPN2)		4 p.m. PT
N.26			#vs. TBD (ESPN Networks)	TBD
N.30			at San Diego (FOX Sports West)	8 p.m. PT
D.3			Bradley (MW Network on STADIUM/Facebook)	3 p.m. PT
D.9			California (CBS Sports Network)	2 p.m. PT
D.21			Gonzaga (CBS Sports Network)	7 p.m. PT
D.27			*at Wyoming (ESPN3)	7 p.m. MT
D.30			*Utah State (ESPN3)	7 p.m. PT
J.2			*at Colorado State (CBS Sports Network)	7 p.m. MT
J.9			*San José State (CBS Sports Network)	8 p.m. PT
J.13			*at Boise State (ESPN2)	8 p.m. MT
J.17			*Fresno State (ESPN/3)	8 p.m. PT
J.20			*at New Mexico (CBS Sports Network)	5 p.m. MT
J.24			*Colorado State (CBS Sports Network)	8 p.m. PT
J.27			*at UNLV (CBS Sports Network)	7 p.m. PT
F.3			*Air Force (ESPN/3)	5 p.m. PT
F.6			*at Fresno State (CBS Sports Network)	8 p.m. PT
F.10			*at Nevada (ESPN2)	5 p.m. PT
F.14			*Wyoming (CBS Sports Network)	8 p.m. PT
F.17			*UNLV (CBS Sports Network)	1 p.m. PT
F.21			*at Air Force (CBS Sports Network)	7:30 p.m. MT
F.24			*at San José State (ESPN/3)	7 p.m. PT
F.27			*Boise State (CBS Sports Network)	8 p.m. PT
M.3			*Nevada (CBS Sports Network)	7 p.m. PT
M.7-10			+at MW Championship (TBD)	TBD

- Wooden Legacy (Titan Gym; Fullerton, Calif.); * - Mountain West game;
+ - Mountain West Championship (Thomas & Mack Center; Las Vegas, Nev.)

GAME 6



SAN DIEGO STATE AZTECS

Record: 4-1 (0-0 Mountain West)

Head Coach: Brian Dutcher

Career Record: 4-1 (1st Season), **Record at San Diego State:** Same



GEORGIA BULLDOGS

Record: 4-0 (0-0 SEC)

Head Coach: Mark Fox

Career Record: 272-161 (14th Season), **Record at Georgia:** 149-118 (9th Season)

NEWS AND NOTES

- San Diego State continues Wooden Legacy action on Friday when it faces Georgia in the semifinal round. Game time at Titan Gym in Fullerton is scheduled for 4 p.m. PT and the contest will air on ESPN2. Ted Leitner will have the call on 101.5 KGB, XTRA 1360 and FOX Sports IE 1350.
- The Aztecs won their third straight game, defeating Sacramento State late Thursday night. The win upped SDSU's record to 14-2 in eight-team in-season tournaments since 2008-09. San Diego State is also 4-0 in the Wooden Legacy after going 3-0 in 2013 to win the tourney.
- SDSU, which led Sacramento State by as many as 47 points, rested its starters for much of the second half with only two logging 20 or more minutes (Devin Watson - 24, Matt Mitchell - 20). Even with the limited minutes, three starters reached double figures in scoring (Watson - 12, Mitchell - 11, Trey Kell - 11).
- The Aztecs' other two starters, Malik Pope and Kameron Rooks, had productive nights as well. Pope in just 16 minutes had seven points (3-5 FG, 1-1 3FG), five rebounds and two assists. His double-figure scoring streak, however, ended at a career-high seven games in a row. Rooks, meanwhile, had six points and a season-high nine rebounds.
- With the starters sitting out nearly half of the game, others took center stage, starting with Jalen McDaniels. The redshirt freshman played a career-high 28 minutes and put up eight points and a career-high 13 rebounds. The 13 boards were the most of any Aztec this season, surpassing Pope's 11 vs. Eastern Illinois. Jeremy Hemsley added 10 points and three assists off the bench, marking the fifth straight game in which he has had multiple assists. The junior guard is averaging 3.6 assists, trailing only Watson's 4.8 per game.
- All 11 Aztecs who saw the floor vs. Sacramento State scored, with 10 scoring at least five points. Eight had at least seven points, including Montaque Gill-Caesar (9) and Nolan Narain (8).
- For the third straight game, SDSU scored at least 83 points and its 89-point effort raised its season scoring average by one full point. The Aztecs go into the tilt with Georgia averaging 85 points on 48.4-percent shooting.
- Defensively, San Diego State brought its opponent scoring average down almost three full points. SDSU was giving up 64.2 points entering the tournament and now has its scoring defense down to 61.8 points. The Aztecs also lowered their field-goal percentage defense from 37.6 percent to 37.3.
- With a 10 p.m. PT tip on Thursday and a 4 p.m. PT start set for the game vs. Georgia, the Aztecs have little time to prepare. The circumstances have not hindered the success of the program as SDSU has posted a 17-2 record in its last 19 regular-season outings when given less than 24 hours to gameplan.
- San Diego State is facing a Bulldogs team it has never faced before. The last time the Aztecs faced a team from the SEC was in the 2010 NCAA tournament when they played Tennessee.
- Georgia, which is receiving votes in the USA Today Coaches Poll, rallied to defeat Cal State Fullerton, 64-57, on Thursday.
- The game vs. the Bulldogs is the fourth of a five-games-in-10-days stretch for the Aztecs. After its date with Georgia, San Diego State will face either Saint Mary's or Washington State on Sunday. So far, SDSU is 3-0 during the span.

CONSECUTIVE 19-WIN SEASONS

Below is a list of the longest active 19-win seasons entering 2017-18.

School	No.	School	No.
Kansas	34	San Diego State	12
Duke	21	Belmont	12
Gonzaga	20	Brigham Young	12
Louisville	16		
Wisconsin	16		
North Carolina	15		
VCU	14		
Akron	13		
Michigan State	13		

CLASS OF THE MOUNTAIN WEST

Below is a list of the most men's basketball conference championships (regular season and tournament) won by current Mountain West institutions entering 2017-18.

School	No.	School	No.
San Diego State	10	Colorado State	1
New Mexico	8	Fresno State	1
UNLV	4	San José State	0
Wyoming	3	Utah State	0
Nevada	2		
Air Force	1		
Boise State	1		

BEST RECORD SINCE '10-11

Below is a list of the highest win percentages since the start of '10-11 (through Nov. 23).

School	W-L	Pct.
Gonzaga	216-40	84.4
Kansas	218-45	82.9
Wichita State	212-44	82.8
Kentucky	219-51	81.1
Duke	209-51	80.4
Arizona	207-53	79.6
Louisville	199-57	77.7
Saint Mary's	187-55	77.3
North Carolina	206-61	77.2
San Diego State	192-61	75.9

San Diego State Aztecs

2017-18 Record: 4-1; 0-0 MW
11 Postseason Berths in Last 12 Years, 10-Time MW Champions

- The Aztecs have won at least 19 games 12 straight years, which is tied for the 10th-longest active streak in the nation.
- San Diego State has advanced to postseason play in 11 of the last 12 seasons (2006 NCAA, 2007-09 NIT, 2010-15 NCAA, 2016 NIT).

Trends:

- SDSU is 10th nationally in winning percentage since the beginning of 2010-11, trailing Gonzaga, Kansas, Wichita State, Kentucky, Duke, Arizona, Louisville, Saint Mary's and North Carolina.
- San Diego State has won 60 straight games when shooting 50 percent or better from the field.

0	Devin Watson Guard, 6-1, 172, Jr.-TR Oceanside, Calif. (San Francisco)	17-18 MW Career Highs:	PPG 11.6 -- Points: 33 - two times Rebounds: 8 vs. Coppin State (12-18-15) Assists: 9 at Arizona State (11-14-17)	RPG 2.6 -- --	APG 4.8 -- --	FG 41.7 -- --	3FG 26.7 -- --	FT 87.5 -- --	Transfer from San Francisco... Averaged 20.3 points and 4.9 assists as a sophomore in 2015-16... 2016 all-WCC first team... 927 career points... Scored in double figures 45 times in his career... 14.0 career scoring average... 248 assists, 158 turnovers in his career (1.57 a/to)... 24 asts., 10 TO this season (2.40 a/to)... Career-high 9 asts. at ASU... Game-high 20 pts. and 8 asts. vs. McNeese... 12 pts., 3 stl. vs. Sac St.
2	Adam Seiko Guard, 6-3, 195, Fr.-HS Boston, Mass. (Sierra Canyon HS (Calif.))	17-18 MW Career Highs:	PPG -- -- Points: -- Rebounds: -- Assists: --	-- -- --	-- -- --	-- -- --	-- -- --	-- -- --	Pronounced SAY-ko... Redshirt candidate... Three-star signee by Rivals... Averaged 10.4 points, 3.2 rebounds, 2.0 assists, 1.6 steals as a senior at Sierra Canyon High... Sierra Canyon went 27-3, and was ranked No. 5 in California and No. 15 nationally his senior year... Known for defending opposing team's best perimeter player in high school... Strong guard who can shoot the three-point shot.
3	Trey Kell Guard, 6-4, 216, Sr.-3L San Diego, Calif. (St. Augustine HS)	17-18 MW Career Highs:	PPG 12.6 -- Points: 27 vs. Fresno State (1-19-16) Rebounds: 12 vs. Air Force (3-1-17) Assists: 7 - three times	RPG 3.6 -- --	APG 3.0 -- --	FG 50.0 -- --	3FG 56.3 -- --	FT 75.0 -- --	Preseason all-MW... Team co-captain... Scored 1,172 career points... 18 of last 23 gms. w/10+ pts.... Scored in double figures 62x (7 20-pt gms.)... 1 TO or less 57x... Averaged career highs in points (13.2), rebounds (4.9) and assists (2.9) last season... Averaged 6.7 rebounds the last two months of the season last year (12 games)... Team-high 16 pts., 10 rebs. at ASU... 14 pts., 7 asts. vs. EUU... 11 pts. vs. Sac State.
5	Jalen McDaniels Forward, 6-10, 195, Fr.-RS Federal Way, Wash. (Federal Way HS)	17-18 MW Career Highs:	PPG 3.2 -- Points: 8 vs. Sacramento State (11-23-17) Rebounds: 13 vs. Sacramento State (11-23-17) Assists: 2 vs. SD Christian (11-10-17)	RPG 5.0 -- --	APG 0.4 -- --	FG 33.3 -- --	3FG 0/4 -- --	FT 4/8 -- --	Named the preseason MW Co-Freshman of the Year last season... Redshirted last year, but played in both exhibitions... 4-stars by Scout and 247Sports at the time of his signing... No. 98 on Rivals 150... Led his high school to a 29-0 record and a state title, its second straight, as a senior in 2015-16... 16.8 mpg... 4 pts., 4 rebs., 17 mins. vs. McNeese... Career-high 8 pts., 13 rebs. vs. Sac State.
10	Max Montana Forward, 6-9, 210, Jr.-1L Calabasas, Calif. (Indiana)	17-18 MW Career Highs:	PPG 12.0 -- Points: 21 vs. Boise State (3-9-17) Rebounds: 9 - two times Assists: 2 - four times	RPG 3.0 -- --	APG 0.5 -- --	FG 50.0 -- --	3FG 45.5 -- --	FT 5/6 -- --	Started 10 of 29 games last year, his first at SDSU... 40 3FG in last 21 games played... Min. 1 3FG in 24 of 31 games at SDSU... Career-high five 3FG three times last season... 15 gms. w/multiple 3FG... Has 12 career double-figure scoring games (11 at SDSU)... Led the Aztecs in scoring once and in rebounding six times... 15 pts. (4-6 3FG; 4-4 3FG in 1st half) at ASU... Hyperextended knee at ASU, DNP since injury.
11	Matt Mitchell Foward, 6-6, 230, Fr.-HS Riverside, Calif. (Roosevelt HS)	17-18 MW Career Highs:	PPG 10.6 -- Points: 31 vs. Eastern Illinois (11-20-17) Rebounds: 8 vs. SD Christian (11-10-17) Assists: 3 - two times	RPG 4.4 -- --	APG 2.0 -- --	FG 37.5 -- --	3FG 33.3 -- --	FT 82.4 -- --	3-star signee (Rivals and Scout)... The Press-Enterprise's Player of the Year in 2016-17... 25.4 points, 9.5 rebounds, 3.0 assists and 2.2 steals as a senior... Started four times this season, including opener... Career-high 31 pts. (was fourth most by Div. I freshman this season), (10-14 FG, 7-11 3FG), 6 rebs., 3 ast. vs. Eastern Illinois... 11 pts., 3 rebs. vs. Sacramento State.
20	Jordan Schakel Guard, 6-6, 195, Fr.-HS Torrance, Calif. (Bishop Montgomery HS)	17-18 MW Career Highs:	PPG 5.2 -- Points: 8 vs. McNeese (11-17-17) Rebounds: 4 - two times Assists: 1 vs. Eastern Illinois (11-20-17)	RPG 3.0 -- --	APG 0.4 -- --	FG 39.1 -- --	3FG 31.3 -- --	FT 3/4 -- --	4-star signee by ESPN and Scout... No. 137 on the Rivals 150 at the time of his signing... Won a school-record 118 games in his prep career at Bishop Montgomery... Scored 1,607 points to rank 10th at BMHS... Helped Knights win a 2017 CIF State Open Division title and a Southern Section Open Division championship... Averaging 17.0 mins. and 1.0 3FGM this season... 5 pts., 4 rebs. vs. Sac State.
21	Malik Pope Forward, 6-10, 220, Sr.-3L Sacramento, Calif. (Laguna Creek HS)	17-18 MW Career Highs:	PPG 14.8 -- Points: 22 - two times Rebounds: 12 - two times Assists: 5 vs. UNLV (3-5-16)	RPG 7.8 -- --	APG 1.0 -- --	FG 63.3 -- --	3FG 6/9 -- --	FT 50.0 -- --	Team co-captain... SDSU is 24-9 when he scores 10+ pts... 32 career double-figure scoring games, including a career-high 13 in '16-17... Increased single-game rebounding total each outing this season... Game-high 20 pts. (9-11 FG) vs. SD Christian... 14 pts., 8 rebs., 3 stls. at ASU... 16 pts., 9 rebs. vs. McNeese... 17 pts., 11 rebs. vs. EUU... 7 pts., 5 rebs., 2 asts., 1 stl. in 16 mins. vs. Sac State.
24	Nolan Narain Forward, 6-10, 226, So.-1L Hamilton, Ontario, Canada (La Lumiere School (Ind.))	17-18 MW Career Highs:	PPG 6.6 -- Points: 9 vs. SD Christian (11-10-17) Rebounds: 7 vs. SD Christian (11-10-17) Assists: 1 - two times	RPG 2.6 -- --	APG 0.4 -- --	FG 77.8 -- --	3FG 1/2 -- --	FT 4/7 -- --	One of six returners from last season... Is in his third season overall at SDSU... Is a former 4-star high school player by Scout... Arrived on campus early and redshirted the 2015-16 campaign... Averaging 16.6 minutes... Has made 14 of 18 FGA this season... Had 9 pts., 7 rebs. vs. San Diego Christian... 5 pts. vs. McNeese... 7 pts. (3-3 FG) vs. EUU... 8 pts., in career-high 24 mins. vs. Sacramento State.
31	Montaque Gill-Caesar Guard, 6-6, 216, Jr.-1L Vaughn, Ontario, Canada (Missouri)	17-18 MW Career Highs:	PPG 4.0 -- Points: 21 vs. UMKC (11-14-14) Rebounds: 7 vs. UMKC (11-14-14) Assists: 3 vs. Florida (2-24-15)	RPG 2.0 -- --	APG 0.8 -- --	FG 5.7 -- --	3FG 2/7 -- --	FT 4/6 -- --	Pronounced MON-take... Played in 26 of 33 games last season... Averaged 12.3 mpg last year... Started 2 games in his first season w/SDSU in 2016-17... Had 4 games with at least 10+ pts. last season... Has 17 career double-figure scoring games... Played his true freshman campaign at Missouri (2014-15)... Played in 4 games this season... 10.8 mpg this year... 9 pts., 5 rebs. vs. Sacramento State.
42	Jeremy Hemsley Guard, 6-3, 200, Jr.-2L Rancho Cucamonga, Calif. (Damien HS)	17-18 MW Career Highs:	PPG 7.6 -- Points: 30 at Nevada (11-4-17) Rebounds: 7 vs. San José State (11-10-17) Assists: 9 vs. Savannah State (11-28-16)	RPG 2.6 -- --	APG 3.6 -- --	FG 44.8 -- --	3FG 2/8 -- --	FT 58.8 -- --	MW honorable mention by the coaches in 2016-17... One of three returning starters... Started 57 of 74 games in his career... Led team in scoring 26 times and in assists 27 times... SDSU is 12-1 when he has at least four assists and 24-7 when he has one TO or less... Has nine career 20-pt. games... Double figures in scoring 49 times... 10 pts., game-high 6 ast. and 3 stls. vs. SD Christian... 10 pts., 3 rebs. 3 asts. vs. Sac State.
45	Kameron Rooks Center, 7-1, 266, Sr.-TR San Marcos, Calif. (California)	17-18 MW Career Highs:	PPG 3.6 -- Points: 15 vs. UC Irvine (11-16-16) Rebounds: 14 at Washington (2-18-16) Assists: 2 - two times	RPG 5.0 -- --	APG 0.2 -- --	FG 61.5 -- --	3FG 0/0 -- --	FT 2/2 -- --	Grad transfer from California... Has 66 career blocked shots... Has 4 career double-figure scoring games with three coming last year... Is a career 54.5 percent shooter from the floor... Career-high 60.0 percent from the FT line last year... Cousin of former SDSU forward and MW champ JJ O'Brien... Son of the late Sean Rooks... 7 rebs., 3 blks., 2 stls. vs. McNeese... 6 pts., season-high 9 rebs. in 12 mins. vs. Sac State.

red indicates probable starter, black indicates reserve, gold indicates inactive.

SDSU BROADCAST ROSTER

Georgia vs. San Diego State | Titan Gym | November 24, 2017



0
DEVIN WATSON

Guard
6-1, 172, Junior-TR
Oceanside, Calif.
San Francisco

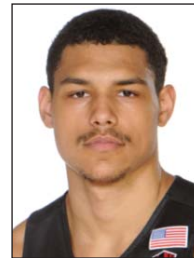
PPG: 11.6 RPG: 2.6 APG: 4.8
FG%: 41.7 3FG: 26.7 FT%: 87.5



2
ADAM SEIKO

Guard
6-3, 195, Freshman-HS
Boston, Mass.
Sierra Canyon High (Calif.)

PPG: -- RPG: -- APG: --
FG%: -- 3FG: -- FT%: --



3
TREY KELL

Guard
6-4, 216, Senior-3L
San Diego, Calif.
St. Augustine High

PPG: 12.6 RPG: 3.6 APG: 3.0
FG%: 50.0 3FG: 56.3 FT%: 75.0



4
MICHAEL SOHIKISH

Guard
5-9, 160, Junior-HS
San Diego, Calif.
University City High

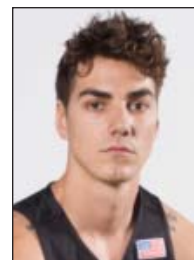
PPG: 1.2 RPG: 0.4 APG: 0.2
FG%: 2/4 3FG: 0/1 FT%: 2/2



5
JALEN MCDANIELS

Forward
6-10, 195, Freshman-RS
Federal Way, Wash.
Federal Way High

PPG: 3.2 RPG: 5.0 APG: 0.4
FG%: 33.3 3FG: 0/4 FT%: 4/8



10
MAX MONTANA

Forward
6-9, 210, Junior-1L
Calabasas, Calif.
Indiana

PPG: 12.0 RPG: 3.0 APG: 0.5
FG%: 50.0 3FG: 45.5 FT%: 5/6



11
MATT MITCHELL

Forward
6-6, 230, Freshman-HS
Riverdale, Calif.
Roosevelt High

PPG: 10.6 RPG: 4.4 APG: 2.0
FG%: 37.5 3FG: 33.3 FT%: 82.4



20
JORDAN SCHAKEL

Guard
6-6, 195, Freshman-HS
Torrance, Calif.
Bishop Montgomery High

PPG: 5.2 RPG: 3.0 APG: 0.4
FG%: 39.1 3FG: 31.3 FT%: 3/4



21
MALIK POPE

Forward
6-10, 220, Senior-3L
Sacramento, Calif.
Laguna Creek High

PPG: 14.8 RPG: 7.8 APG: 1.0
FG%: 63.3 3FG: 6/9 FT%: 50.0



24
NOLAN NARAIN

Forward
6-10, 226, Sophomore-1L
Hamilton, Ontario, Canada
La Lumiere School (Ind.)

PPG: 6.6 RPG: 2.6 APG: 0.4
FG%: 77.8 3FG: 1/2 FT%: 4/7



31
MONTAQUE GILL-CAESAR

Guard
6-6, 216, Junior-1L
Vaughan, Ontario, Canada
Huntington Prep (W.Va.)

PPG: 4.0 RPG: 2.0 APG: 0.8
FG%: 35.7 3FG: 2/7 FT%: 4/6



42
JEREMY HEMSLEY

Guard
6-3, 200, Junior-2L
Rancho Cucamonga, Calif.
Damien High

PPG: 7.6 RPG: 2.6 APG: 3.6
FG%: 44.8 3FG: 2/8 FT%: 58.8



45
KAMERON ROOKS

Center
7-1, 266, Senior-TR
San Marcos, Calif.
California

PPG: 3.6 RPG: 5.0 APG: 0.2
FG%: 61.5 3FG: 0/0 FT%: 2/2



HEAD COACH
BRIAN DUTCHER

- 1st season as head coach
- 19th year at SDSU
- 1989 NCAA champion
- 3 NCAA title game appearances
- 16 NCAA tournament appearances
- 10-time Mountain West champion

2017-18 San Diego State Men's Basketball
SAN DIEGO STATE Combined Team Statistics (as of Nov 24, 2017)
All games

RECORD:	OVERALL	HOME	AWAY	NEUTRAL
ALL GAMES	4-1	3-0	0-1	1-0
CONFERENCE	0-0	0-0	0-0	0-0
NON-CONFERENCE	4-1	3-0	0-1	1-0

#	Player	gp-gs	min	avg	Total		3-Point		F-Throw		Rebounds								a	to	blk	stl	pts	avg
					fg-fga	fg%	3fg-fga	3fg%	ft-fa	ft%	off	def	tot	avg	pf	dq								
21	POPE, Malik	5-5	115	23.0	31-49	.633	6-9	.667	6-12	.500	9	30	39	7.8	6	0	5	4	3	5	74	14.8		
03	KELL, Trey	5-5	119	23.8	21-42	.500	9-16	.563	12-16	.750	3	15	18	3.6	8	0	15	9	1	0	63	12.6		
00	WATSON, Devin	5-5	136	27.2	20-48	.417	4-15	.267	14-16	.875	2	11	13	2.6	6	0	24	10	0	8	58	11.6		
11	MITCHELL, Matt	5-4	103	20.6	15-40	.375	9-27	.333	14-17	.824	3	19	22	4.4	9	1	10	9	1	5	53	10.6		
42	HEMSLEY, Jeremy	5-1	105	21.0	13-29	.448	2-8	.250	10-17	.588	1	12	13	2.6	8	0	18	10	2	6	38	7.6		
24	NARAIN, Nolan	5-0	83	16.6	14-18	.778	1-2	.500	4-7	.571	8	5	13	2.6	13	0	2	6	0	1	33	6.6		
20	SCHAKEL, Jordan	5-0	85	17.0	9-23	.391	5-16	.313	3-4	.750	2	13	15	3.0	6	0	2	2	1	2	26	5.2		
10	MONTANA, Max	2-0	40	20.0	7-14	.500	5-11	.455	5-6	.833	1	5	6	3.0	3	0	1	3	0	3	24	12.0		
45	ROOKS, Kameron	5-5	73	14.6	8-13	.615	0-0	.000	2-2	1.000	13	12	25	5.0	6	0	1	3	6	3	18	3.6		
05	MCDANIELS, Jalen	5-0	84	16.8	6-18	.333	0-4	.000	4-8	.500	6	19	25	5.0	7	0	2	4	4	0	16	3.2		
31	GILL-CAESAR, Monta	4-0	43	10.8	5-14	.357	2-7	.286	4-6	.667	2	6	8	2.0	3	0	3	6	0	2	16	4.0		
04	SOHIKISH, Michael	5-0	14	2.8	2-4	.500	0-1	.000	2-2	1.000	0	2	2	0.4	1	0	1	1	0	1	6	1.2		
	Team										11	3	14											
	Total.....	5	1000		151-312	.484	43-116	.371	80-113	.708	61	152	213	42.6	76	1	84	67	18	36	425	85.0		
	Opponents.....	5	1000		115-308	.373	33-130	.254	46-66	.697	47	119	166	33.2	102	-	65	83	16	34	309	61.8		

TEAM STATISTICS	SDSU	OPP
SCORING	425	309
Points per game	85.0	61.8
Scoring margin	+23.2	-
FIELD GOALS-ATT	151-312	115-308
Field goal pct	.484	.373
3 POINT FG-ATT	43-116	33-130
3-point FG pct	.371	.254
3-pt FG made per game	8.6	6.6
FREE THROWS-ATT	80-113	46-66
Free throw pct	.708	.697
F-Throws made per game	16.0	9.2
REBOUNDS	213	166
Rebounds per game	42.6	33.2
Rebounding margin	+9.4	-
ASSISTS	84	65
Assists per game	16.8	13.0
TURNOVERS	67	83
Turnovers per game	13.4	16.6
Turnover margin	+3.2	-
Assist/turnover ratio	1.3	0.8
STEALS	36	34
Steals per game	7.2	6.8
BLOCKS	18	16
Blocks per game	3.6	3.2
ATTENDANCE	31808	8771
Home games-Avg/Game	3-10603	1-6640
Neutral site-Avg/Game	-	1-2131

Date	Opponent		Score	Att.
11-10-17	SAN DIEGO CHRISTIAN	w	91-52	11285
11-14-17	at ARIZONA STATE	L	68-90	6640
11-17-17	MCNEESE	w	83-52	10702
11-20-17	EASTERN ILLINOIS	w	94-63	9821
# 11-23-17	vs SACRAMENTO STATE	w	89-52	2131

= Wooden Legacy (Fullerton, Calif.)

* = Conference game

Score by Periods	1st	2nd	Totals
SAN DIEGO STATE	221	204	425
Opponents	116	193	309