

# Table of Contents



FOUR CONSECUTIVE NCAA TOURNAMENT APPEARANCES ► SEVEN-TIME MOUNTAIN WEST CHAMPIONS



## The 2013-14 SDSU Men's Basketball Media Guide

The 2013-14 San Diego State University Men's Basketball Media Guide is a publication of the San Diego State University athletics media relations office. The publication was written, edited and designed by assistant media relations director Darin Wong and associate athletic director/media relations Mike May.

Assistance was provided by assistant media relations directors Dave Kuhn, Jamie McConeghy, Jim Solien and Victoria Valencia, and media relations assistant Eric Harding.

Cover design by Jim Solien, Darin Wong and Mike May.

## Photography

Ernie Anderson, Stan Liu, Mountain West, NCAA Photos, NBA Photos, NBAE/Getty Images, Philadelphia 76ers and the *Associated Press*.

## Printing

Atlas Lithograph Company, Inc.



## Introduction

Media Information 2 • Rosters 3 • Outlook 4 • Schedule 10 • Broadcast Roster 11

## This is SDSU Basketball

Steve Fisher 14 • Fisher's Men in the Pros 16 • Viejas Arena 18 • Aztec Excellence 20 • Mountain West 22



## Coaches and Staff

Steve Fisher 24 • Brian Dutcher 38 • Justin Hutson 39 • David Velasquez 40 • Mark Fisher 41 • Support Staff 42

## Players

James Johnson 46 • JJ O'Brien 48 • Dwayne Polee II 51 • Winston Shepard 54 • Skylar Spencer 57 • Xavier Thames 60 • Josh Davis 64 • Aqeel Quinn 67 • Matt Shrigley 69 • Ryan Staten 70 • Dakarai Allen 71 • D'Erryl Williams 71 • Angelo Chol 72 • Parker U'u 74



## 2012-13 Review

Review 76 • Results 78 • Game-By-Game Statistics 83 • Miscellaneous Statistics 88 • Departed Senior Bios 90 • Box Scores and Recaps 95 • Mountain West Statistics 107



## Records

Team 110 • Team Season 112 • Individual Game 114 • Top Game Performances 116 • Miscellaneous Records 118 • Individual Season 120 • Individual Career 123 • Freshmen Records 126 • Mountain West Records 127 • Viejas Arena Records 129

## History

Year-By-Year Results 132 • vs. Nationally Ranked 145 • vs. All Opponents 146 • All-Time Series 147 • Jersey Numbers 157 • Year-By-Year Summary 158 • Statistical History 160 • Awards & Honors 162 • 1,000-Point Scorers 164 • Annual Stat Leaders 170 • Letterwinners 172 • Individual Div. I Stats 174 • National Postseason 179 • Conf. Tournaments 188 • Attendance/Home Record 191 • Rallies/Clutch Shots 192



## University

SDSU 194 • Aztec Culture 197 • Dr. Elliot Hirshman 198 • Jim Sterk 199 • Media Information 200 • Opponent Directory 202 • Media Outlets 204 • Broadcast Partners 205 • Viejas Arena 206 • Athletics Directory 208



# Media Information



FOUR CONSECUTIVE NCAA TOURNAMENT APPEARANCES ► SEVEN-TIME MOUNTAIN WEST CHAMPIONS

## General Information

Location . . . . . San Diego, Calif., 92182  
 Founded . . . . . 1897  
 Enrollment . . . . . 32,396  
 Nickname . . . . . Aztecs  
 Colors . . . . . Scarlet and Black  
 PMS Color . . . . . 185  
 Arena . . . . . Viejas Arena at Aztec Bowl  
 Opened . . . . . 1997  
 Capacity . . . . . 12,414  
 Affiliation . . . . . NCAA Division I  
 Conference . . . . . Mountain West  
 President . . . . . Dr. Elliot Hirshman  
 Alma Mater (Year) . . . . . Yale (1983)  
 Athletics Director . . . . . Jim Sterk  
 Alma Mater (Year) . . . . . Western Washington (1980)  
 Athletic Department Phone . . . . . 619-594-3019  
 Ticket Office Phone . . . . . 619-283-7378  
 or 619-283-SDSU

## History

Seasons of Basketball . . . . . Entering 93rd  
 First Season of Basketball . . . . . 1921-22  
 All-Time Record . . . . . 1,337-1,063-1  
 NCAA Tournament Appearances . . . . . 11  
 Seasons of Div. I Basketball . . . . . Entering 44th  
 First Season of Div. I Basketball . . . . . 1970-71  
 All-Time Div. I Record . . . . . 649-618  
 NCAA Div. I Tournament Appearances . . . . . 9  
 Last NCAA Appearance . . . . . 2013  
 NIT Appearances . . . . . 5  
 Last NIT Appearance . . . . . 2009

## Media Relations

Assistant AD/MBB . . . . . Mike May  
 May Cell Phone . . . . . 619-957-8372  
 May E-mail . . . . . mmay@mail.sdsu.edu  
 Assistant MRD/MBB . . . . . Darin Wong  
 Wong Cell Phone . . . . . 310-489-2378  
 Wong E-mail . . . . . dwong@mail.sdsu.edu  
 SID Mailing Address . . . . . Aztec Media Relations  
 Fowler Athletics Center  
 5302 55th Street, Suite 3014  
 San Diego State University  
 San Diego, CA 92182  
 SID Main Office Number . . . . . 619-594-5547  
 SID Fax Number . . . . . 619-582-6541

## Basketball Staff

Head Coach . . . . . Steve Fisher  
 Alma Mater (Year) . . . . . Illinois State (1967)  
 Record at SDSU (Years) . . . . . 281-171 (14)  
 Record Overall (Years) . . . . . 465-253 (22 full)  
 Basketball Office Phone . . . . . 619-594-6249  
 Best Time to Contact Fisher . . . . . Contact May  
 Associate Head Coach/  
 Head Coach in Waiting . . . . . Brian Dutcher  
 Alma Mater (Year) . . . . . Minnesota (1982)  
 Assistant Coach . . . . . Justin Hutson  
 Alma Mater (Year) . . . . . CSU Bakersfield (1994)  
 Assistant Coach . . . . . David Velasquez  
 Alma Mater (Year) . . . . . San Diego State (2007)  
 Assistant to the Head Coach . . . . . Mark Fisher  
 Alma Mater (Year) . . . . . Michigan (2001)  
 Director of Basketball Operations . . . . . Matt Soria  
 Alma Mater (Year) . . . . . San Diego State (2002)  
 Director of Player Development . . . . . Tim Shelton  
 Alma Mater (Year) . . . . . San Diego State (2011)  
 Basketball Trainer . . . . . Tom Abdenour  
 Alma Mater (Year) . . . . . Wayne State (1976)  
 Administrative Assistant . . . . . Leana DeKock

## Team Information

	<i>Total</i>	<i>Home</i>	<i>Away</i>	<i>Neu.</i>
2012-13 Record	23-11	14-1	4-6	5-4
2012-13 MW Record	9-7	7-1	2-6	
Mountain West Finish	.T-4th			
MW Tournament	.Semifinalist (1-1)			
Postseason	.NCAA			
NCAA Finish	.South Third Round (1-1)			
Starters Returning/Lost	.2/3			
Letterwinners Returning/Lost	.6/8			

## Media Information

Radio Station . . . . . The Mighty 1090  
 Play-By-Play Announcer . . . . . Ted Leitner  
 PBP Phone Number . . . . . 858-560-6671  
 Video Footage Contact . . . . . Jason Bott  
 VFC Phone Number . . . . . 619-594-2428  
 Beat Writer . . . . . Mark Zeigler  
 U-T San Diego  
 619-293-1341

## Media Services

SID Office Phone . . . . . 619-594-5547  
 SID Office Fax . . . . . 619-582-6541  
 Viejas Arena Press Row . . . . . 619-265-5853  
 Website . . . . . GoAztecs.com  
 Twitter . . . . . @GoAztecs  
 Facebook . . . . . facebook.com/goaztecs  
 Instagram . . . . . @GoAztecs

## 2013-14 Roster Breakdown

### Starters Returning (2)

Player	Ht.	Wt.	Cl.	Pos.	PPG	RPG
JJ O'Brien	6-7	220	Jr.	F	7.2	4.5
Xavier Thames	6-3	195	Sr.	G	9.5	*2.4

### Total Letterwinners Returning (6)

Player	Ht.	Wt.	Cl.	Pos.	PPG	RPG
James Johnson	6-10	235	Jr.	F	1.1	0.2
JJ O'Brien	6-7	220	Jr.	F	7.2	4.5
Dwayne Polee II	6-7	195	Jr.	F	2.8	1.9
Winston Shepard	6-8	205	So.	F	5.7	3.5
Skylar Spencer	6-10	235	So.	F	2.9	2.9
Xavier Thames	6-3	195	Sr.	G	9.5	*2.4

### Others Returning (1)

Player	Ht.	Wt.	Cl.	Pos.	PPG	RPG
Ryan Staten	6-2	190	Jr.	G	0.4	0.2

### Newcomers (5)

Player	Ht.	Wt.	Cl.	Pos.
Dakarai Allen	6-5	195	Fr.	G
Josh Davis	6-8	215	Sr.	F
Aqeel Quinn	6-3	200	Jr.	G
Matt Shrigley	6-6	195	RFr.	F
D'Erryl Williams	6-2	200	Fr.	G

### Starters Lost (3)

Player	Ht.	Wt.	Cl.	Pos.	PPG	RPG
Jamaal Franklin	6-5	205	Jr.	G	17.0	9.5
DeShawn Stephens	6-8	225	Sr.	F	6.1	5.1
Chase Tapley	6-3	195	Sr.	G	13.5	3.2

### Total Letterwinners Lost (8)

Player	Ht.	Wt.	Cl.	Pos.	PPG	RPG
Jeremy Castleberry	5-10	205	Jr.	G	0.5	0.3
Aaron Douglas	6-1	195	Sr.	G	1.3	0.0
Narbeh Ebrahimian	6-3	200	Sr.	G	0.5	0.0
LaBradford Franklin	6-2	175	Jr.	G	3.0	0.7
Jamaal Franklin	6-5	205	Jr.	G	17.0	9.5
James Rahon	6-5	205	Sr.	G	7.0	1.8
DeShawn Stephens	6-8	225	Sr.	F	6.1	5.1
Chase Tapley	6-3	195	Sr.	G	13.5	3.2

### Honors Candidates

Josh Davis - All-America, All-MW, All-Region,  
 MW Newcomer of the Year  
 Xavier Thames - All-MW, All-Region  
 JJ O'Brien - All-MW, All-Region  
 Skylar Spencer - All-MW, MW Defensive Player  
 of the Year  
 Winston Shepard - All-MW  
 Dakarai Allen - MW Freshman of the Year

\* - Indicates assists per game.

MEDIA INFORMATION ◀ INTRODUCTION

AZTEC BASKETBALL MEDIA GUIDE





## 2013-14 San Diego State Alphabetical Roster

No.	Name	Pos.	Ht.	Wt.	Yr.	Exp.	Most Recent Div. I Season			Hometown (High School/Previous School)
							PPG	RPG	APG	
4	Dakarai Allen	G	6-5	195	Fr.	HS	--	--	--	Elk Grove, Calif. (Sheldon High)
22	Josh Davis	F	6-8	215	Sr.	TR	17.6	10.7	1.7	Raleigh, N.C. (Athens Drive High (N.C)/Tulane Univ.)
12	James Johnson	F	6-10	235	Jr.	1L	1.1	0.2	0.1	San Diego, Calif. (Elsinore High/Univ. of Virginia)
20	JJ O'Brien	F	6-7	220	Jr.	1L	7.2	4.5	1.5	Rancho Cucamonga, Calif. (Alta Loma High/Univ. of Utah)
5	Dwayne Polee II	F	6-7	195	Jr.	1L	2.8	1.9	0.2	Los Angeles, Calif. (Westchester High/St. John's Univ.)
10	Aqeel Quinn	G	6-3	200	Jr.	TR	6.8	2.1	1.7	Gardena, Calif. (Leuzinger High/Cal State Northridge)
13	Winston Shepard	F	6-8	205	So.	1L	5.7	3.5	2.0	Houston, Texas (Findlay Prep (Nev.))
40	Matt Shrigley	F	6-6	195	Fr.	RS	--	--	--	San Diego, Calif. (La Costa Canyon High)
0	Skylar Spencer	F	6-10	235	So.	1L	2.9	2.9	0.2	Inglewood, Calif. (Price High)
24	Ryan Staten	G	6-2	190	Jr.	SQ	0.4	0.2	0.0	San Pablo, Calif. (Piedmont High)
2	Xavier Thames	G	6-3	195	Sr.	2L	9.5	2.7	2.4	Sacramento, Calif. (Pleasant Grove High/Washington State Univ.)
11	D'Erryl Williams	G	6-2	200	Fr.	HS	--	--	--	Sacramento, Calif. (Sheldon High)

## 2013-14 San Diego State Numerical Roster

No.	Name	Pos.	Ht.	Wt.	Yr.	Exp.	Most Recent Div. I Season			Hometown (High School/Previous School)
							PPG	RPG	APG	
0	Skylar Spencer	F	6-10	235	So.	1L	2.9	2.9	0.2	Inglewood, Calif. (Price High)
2	Xavier Thames	G	6-3	195	Sr.	2L	9.5	2.7	2.4	Sacramento, Calif. (Pleasant Grove High/Washington State Univ.)
4	Dakarai Allen	G	6-5	195	Fr.	HS	--	--	--	Elk Grove, Calif. (Sheldon High)
5	Dwayne Polee II	F	6-7	195	Jr.	1L	2.8	1.9	0.2	Los Angeles, Calif. (Westchester High/St. John's Univ.)
10	Aqeel Quinn	G	6-3	200	Jr.	TR	6.8	2.1	1.7	Gardena, Calif. (Leuzinger High/Cal State Northridge)
11	D'Erryl Williams	G	6-2	200	Fr.	HS	--	--	--	Sacramento, Calif. (Sheldon High)
12	James Johnson	F	6-10	235	Jr.	1L	1.1	0.2	0.1	San Diego, Calif. (Elsinore High/Univ. of Virginia)
13	Winston Shepard	F	6-8	205	So.	1L	5.7	3.5	2.0	Houston, Texas (Findlay Prep (Nev.))
20	JJ O'Brien	F	6-7	220	Jr.	1L	7.2	4.5	1.5	Rancho Cucamonga, Calif. (Alta Loma High/Univ. of Utah)
22	Josh Davis	F	6-8	215	Sr.	TR	17.6	10.7	1.7	Raleigh, N.C. (Athens Drive High (N.C)/Tulane Univ.)
24	Ryan Staten	G	6-2	190	Jr.	SQ	0.4	0.2	0.0	San Pablo, Calif. (Piedmont High)
40	Matt Shrigley	F	6-6	195	Fr.	RS	--	--	--	San Diego, Calif. (La Costa Canyon High)

**Head Coach:** Steve Fisher (Illinois State, 1967)  
**Associate Head Coach:** Brian Dutcher (Minnesota, 1982)  
**Assistant Coaches:** Justin Hutson (CSU Bakersfield, 1994), David Velasquez (San Diego State, 2007)  
**Assistant to the Head Coach:** Mark Fisher (Michigan, 2001)  
**Director of Operations:** Matt Soria (San Diego State, 2002)  
**Director of Player Development:** Tim Shelton (San Diego State, 2011)

## Eligible in 2014-15 Season

No.	Name	Pos.	Ht.	Wt.	Yr.	Exp.	Most Recent Div. I Season			Hometown (High School/Previous School)
							PPG	RPG	APG	
3	Angelo Chol	F	6-9	225	Jr.	TR	1.9	2.0	0.1	San Diego, Calif. (Hoover High/Univ. of Arizona)
14	Parker U'u	G	6-4	210	So.	TR	1.4	1.1	0.2	Sacramento, Calif. (Jesuit High/Univ. of Hartford)

<b>► Pronunciations</b> Dakarai Allen Duh-kar-ree Allen Aqeel Quinn Uh-keel Quinn Xavier Thames Xavier Th-AIMS D'Erryl Williams Dee-air-ol Williams	<b>► By Class</b> <b>Seniors (2)</b> Josh Davis, Xavier Thames <b>Juniors (5)</b> James Johnson, JJ O'Brien, Dwayne Polee II, Aqeel Quinn, Ryan Staten	<b>Sophomores (2)</b> Winston Shepard, Skylar Spencer <b>Freshmen (3)</b> Dakarai Allen, Matt Shrigley, D'Erryl Williams	<b>► By Position</b> <b>Guards (5)</b> Dakarai Allen, Aqeel Quinn, Ryan State, Xavier Thames, D'Erryl Williams <b>Forwards (7)</b> Josh Davis, James Johnson, JJ O'Brien, Dwayne Polee II, Winston Shepard, Matt	Shrigley, Skylar Spencer <b>Centers (0)</b> None
---	--	---	--	--

## The 2013-14 Season Outlook



# The Bar Has Been Set

**A** new season, higher expectations. San Diego State is on the college basketball map and is here to stay. This is a program that has been proven as one to be reckoned with.

The Aztecs have been regulars at the NCAA tournament and routinely been in the hunt for Mountain West championships.

Let's just say this: San Diego State's jewelry box is not empty with its five MW rings representing seven league titles.

All of the success for nearly a decade has created a culture of winning never seen before on Montezuma Mesa. Success breeds success and that is never more true when talking about the Aztecs and the San Diego State community.

In a we-want-more world, SDSU also wants more. And this season, the Aztecs are poised to go after a ninth straight postseason appearance and a ninth consecutive 20-win campaign. And as impressive as that sounds, San Diego State is looking at loftier goals.

In 2013-14, the Aztecs are looking to advance to their fifth NCAA tournament in a row and win at least 23

games for a sixth straight year. In addition, San Diego State is not only trying to reach the NCAAs, but win once it gets there.

A season ago, the Aztecs reached the third round of the Big Dance for the second time in three years, but are still hungry for more.

This season, San Diego State is geared to make another run for the second weekend and beyond at the NCAA tournament using its staple – defense.

Defense wins championships, the cliché goes, but it is never more true for the Aztecs.

San Diego State will play a brand of basketball that pressures the ball full-court, at mid-court and can turn up the heat whenever it chooses. The 2013-14 Aztecs are long and athletic, and might be the most rangy team in head coach Steve Fisher's 15-year history on Montezuma Mesa.

This bodes well for an SDSU squad that has routinely been one of the best defensive teams in the nation over the last seven seasons.

According to the KenPom ratings, the Aztecs ranked 17th nationally in adjusted defensive efficiency last year





**Sophomore Winston Shepard is one of three returning Aztecs who started a game in 2012-13.**



## Team Breakdown

2012-13 Record	23-11
MW Record	9-7
MW Finish	T-4th
MW Tournament	1-1
NCAA Tournament	1-1

### Starters Returning (2)

Player	Ht.	Wt.	Cl.	Pos.	PPG	RPG
JJ O'Brien	6-7	220	Jr.	F	7.2	4.5
Xavier Thames	6-3	195	Sr.	G	9.5	*2.4

### Total Letterwinners Returning (6)

Player	Ht.	Wt.	Cl.	Pos.	PPG	RPG
James Johnson	6-10	235	Jr.	F	1.1	0.2
JJ O'Brien	6-7	220	Jr.	F	7.2	4.5
Dwayne Polee II	6-7	195	Jr.	F	2.8	1.9
Winston Shepard	6-8	205	So.	F	5.7	3.5
Skylar Spencer	6-10	235	So.	F	2.9	2.9
Xavier Thames	6-3	195	Sr.	G	9.5	*2.4

### Others Returning (1)

Player	Ht.	Wt.	Cl.	Pos.	PPG	RPG
Ryan Staten	6-2	190	Jr.	G	0.4	0.2

### Newcomers (5)

Player	Ht.	Wt.	Cl.	Pos.
Dakarai Allen	6-5	195	Fr.	G
Josh Davis	6-8	215	Sr.	F
Aqeel Quinn	6-3	200	Jr.	G
Matt Shrigley	6-6	195	RFr.	F
D'Erryl Williams	6-2	200	Fr.	G

### Starters Lost (3)

Player	Ht.	Wt.	Cl.	Pos.	PPG	RPG
Jamaal Franklin	6-5	205	Jr.	G	17.0	9.5
DeShawn Stephens	6-8	225	Sr.	F	6.1	5.1
Chase Tapley	6-3	195	Sr.	G	13.5	3.2

### Total Letterwinners Lost (8)

Player	Ht.	Wt.	Cl.	Pos.	PPG	RPG
Jeremy Castleberry	5-10	205	Jr.	G	0.5	0.3
Aaron Douglas	6-1	195	Sr.	G	1.3	0.0
Narbeh Ebrahimian	6-3	200	Sr.	G	0.5	0.0
LaBradford Franklin	6-2	175	Jr.	G	3.0	0.7
Jamaal Franklin	6-5	205	Jr.	G	17.0	9.5
James Rahon	6-5	205	Sr.	G	7.0	1.8
DeShawn Stephens	6-8	225	Sr.	F	6.1	5.1
Chase Tapley	6-3	195	Sr.	G	13.5	3.2

\* - Indicates assists per game.

# Season Outlook



FOUR CONSECUTIVE NCAA TOURNAMENT APPEARANCES ► SEVEN-TIME MOUNTAIN WEST CHAMPIONS

## SDSU's KenPom Defensive Adjusted Efficiency *(Since 2006-07)*

Season	National Rank
2006-07	18
2007-08	50
2008-09	22
2009-10	40
2010-11	2
2011-12	49
2012-13	17

and have been a top-50 team dating to 2006-07. In fact, San Diego State has finished the season ranked among the top-25 defensive clubs four times during that span.

The team that is enlisted to return the Aztecs to the NCAA tournament and do damage is one that returns just two starters, but welcomes a potent blend of experience and talented youth.

Although there will be players with higher scoring averages and better all-around stat lines, the most important player for San Diego State is Xavier Thames, the 6-3, 195-pound point guard.

As the lone returning senior, Thames enters his third year starting at the one. He has been a part of two NCAA tournament teams and a Mountain West championship squad.

On-going battles with a back ailment kept Thames from playing at 100-percent efficiency the final three months of last season. Nonetheless, Thames started 25 times and saw action in 30 games en route to averaging 9.5 points, 2.7 rebounds and 2.4 assists. His hard work leading into last year paid dividends, as he connected on a career-high 37 three-point field goals and connected on 35.6 percent of his shots from beyond the arc.

Last season, the Aztecs were at their best when Thames was healthy. San Diego State was 12-2 and ranked 17th nationally after a win over nationally ranked UCLA and losses only to ninth-ranked Syracuse on the USS Midway and a one-point setback to third-ranked Arizona, before the point guard suffered the aforementioned back injury on Jan. 2.

Thames would miss four of the next eight games and had a pair of scoreless outings for the first time since his freshman season. He returned and helped guide the Aztecs to 23 wins and an appearance in the third round of the NCAA tournament, but Thames was never the same player.

With a healthy back, Thames has returned to his old form during early season workouts. The guard has helped orchestrate a group that features a big-time transfer, a five-star high school recruit, highly touted newcomers and quality role players. Individually, Thames looks like the Thames of old, the one who could make the open three-pointer, get to the rim off the dribble and find any teammate no matter how obscure the passing angle.

In short, San Diego State has its point guard back.

Joining Thames in the lineup is returning starter JJ O'Brien. The junior is coming off a solid first season in an Aztec uniform, after he averaged 7.2 points on 52.6 percent from the floor and 4.5 rebounds.

As the season moved along, O'Brien put up even better numbers, averaging 9.1 points on 54.2 percent shooting, and 5.6 rebounds during Mountain West action. With one season at San Diego State under his belt, O'Brien is poised to build off his sophomore campaign and become a force in 2013-14.

O'Brien, in fact, may benefit the most from the addition of graduate transfer Josh Davis. O'Brien routinely played the power forward position last season, and with Davis in the fold, O'Brien will be able to utilize his all-around game.

Davis, the Mountain West preseason newcomer of the year, comes to Montezuma Mesa after a stellar season at Tulane where he completed his undergraduate degree. The Raleigh, N.C., native is enrolled at SDSU as a graduate student and is eligible immediately.

The 6-8, 215-pound forward was one of the best players in the country a season ago when he finished fourth nationally in double-doubles (19) and eighth in rebounding (10.7), while averaging 17.6 points en route to first-team all-Conference USA honors.

At San Diego State, Davis will be able to use his size and agility to duplicate his effort at Tulane. Davis is a good ball-handler for a player his size and has worked hard to improve his jumpshot, something that he is expected to showcase from the mid-range area.

Getting Davis the ball in the spots he likes it will not only fall on the shoulders of Thames, but Winston Shepard's as well.

The sophomore, who was a five-star recruit coming out of high school, made huge strides to his all-around



Junior JJ O'Brien enters his junior campaign as one of two returning starters and has started the third-most games among all Aztecs.

game in the off-season. Shepard boasts an improved perimeter and free-throw stroke and takes better care of the ball.

The ultra-versatile Shepard has been able to get to the rack at will in early season practices, but it is his ability to defend and play multiple positions that will benefit the Aztecs the most in 2013-14.

Shepard's classmate, Skylar Spencer, is back for his sophomore campaign. The Inglewood, Calif., product was one of three Aztecs a year ago to play in all 34 games, and set the San Diego State and Mountain West freshman record for blocks in a season with 51. The scary part is Spencer is better than a season ago and without any mention of his offensive game yet.

On the offensive side, Spencer has added inside post moves and improved his free-throw shooting, which will allow him to be on the floor in late-game situations. Expect the sophomore to be a force on both

## Career Games Played/Started

Player	GP	GS
Josh Davis	97	68
Xavier Thames	92	59
Dwayne Polee II	59	27
JJ O'Brien	56	54
Aqeel Quinn	55	10
Skylar Spencer	34	0
Winston Shepard	31	2
James Johnson	19	0
Ryan Staten	7	0
<b>Totals</b>	<b>450</b>	<b>220</b>

*Includes games played and games started at all Division I schools for eligible players this season.*



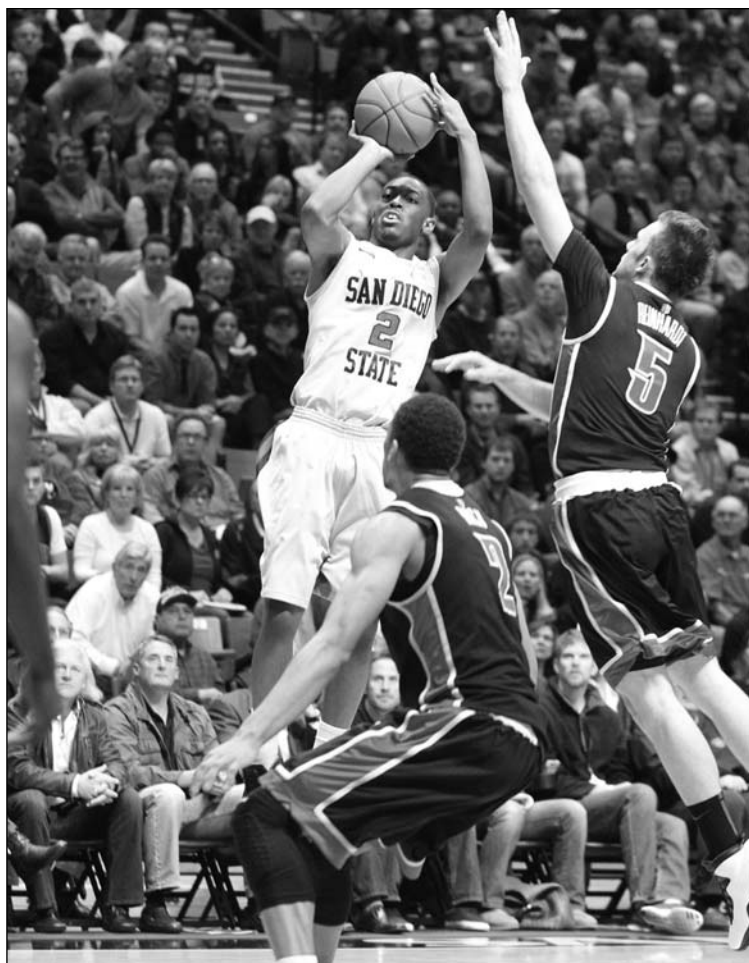
***Dwayne Polee II, who is one of six returning letterwinners, played in 26 games last season as a sophomore.***



# Season Outlook



FOUR CONSECUTIVE NCAA TOURNAMENT APPEARANCES ► SEVEN-TIME MOUNTAIN WEST CHAMPIONS



Senior Xavier Thames looks to guide the Aztecs back to the NCAA tournament for the fifth straight campaign.

sides of the floor.

Another threat on both ends of the floor is Dwayne Polee II. The junior is coming off a year in which he saw action in 26 games. But now in his second year, the spotlight turns to him.

During the offseason, Polee II made huge strides in becoming a more accurate shooter from beyond the arc and is now one of the team's top deep threats.

Standing at 6-7, Polee II figures to play a main role in the Aztecs' defensive scheme. The forward will be able to use his length and athleticism to get into passing lanes and cause havoc for opposing teams, creating easy buckets for SDSU.

A beneficiary of some of those easy looks could be Matt Shrigley, a red-shirt freshman forward who runs the floor well and can throw it down with the best of them.

A 6-6, 195-pound native of San Diego, Shrigley, similar to Polee II, is one of the Aztecs' top spot-up shooters. During his redshirt campaign,

Shrigley worked on his defense, shooting and strength, all of which has been showcased early on.

Aqeel Quinn joins Shrigley in uniform this season after sitting out the 2012-13 campaign following his transfer from Cal State Northridge.

The 6-3 guard is a knock-down jump-shooter, who can also get to the rim off the bounce. His previous Division I experience will help the Aztecs navigate through perhaps its toughest non-conference schedule in school history.

On the defensive side of the ball, Quinn is a tenacious on-ball defender, which should prove valuable in helping San Diego State maintain its reputation as one of the top defensive teams in the nation.

The play of big man James Johnson is also critical to the success of the Aztecs. The 6-10, 235-pound forward is a load inside and should help spell Davis and Spencer.

Johnson performs well with his back to the basket, but is not afraid to

sweep and put the ball on the floor.

At his size, Johnson will be able to play against any post player in the country on the defensive end.

New to the squad are a pair of freshmen who were also teammates at Sacramento's Sheldon High School in Dakarai Allen and D'Erryl Williams.

As teammates, Allen and Williams led Sheldon to a No. 5 ranking in the state of California and guided the Huskies to a league championship and the semifinals of the CIF tournament.

Individually, Allen graduated from Sheldon as a four-star recruit and brings a high motor with him to SDSU. A *Rivals 150* performer out of high school, Allen is beast on the defensive end, using his length to create problems for ball-handlers.

Offensively, Allen can get to the rim without breaking a sweat and is a great interior passer. From the outside, Allen is an above-average shooter that will force opponents to have a hand up at all times.

Williams, meanwhile, is a big guard who stands at 6-2, 200 pounds. The freshman has quick feet and is a relentless defender. His size will be an asset on both ends of the floor.

Offensively, Williams can drive the lane and is never bothered by contact. The guard is also a reliable perimeter shooter.

In the backcourt and in the fold for a third season is walk-on guard Ryan Sater. The San Pablo, Calif., product has seen action in seven career games and is a valuable member to the success of the team.

Waiting in the wings to compete, but valuable nonetheless are Division I transfers Angelo Chol and Parker U'u. The pair will sit out the 2013-14 season, but will see plenty of action on the scout team.

Chol is a 6-9, 225-pound forward from San Diego. The junior is at San Diego State after transferring from Arizona, where he helped the squad reach the NCAA tournament in 2013. At his size, Chol will give the Aztecs the kind of strength and ability they will see on a nightly basis.

The same goes for U'u, who heads west from Hartford. The Sacramento native is a 6-4, 210-pound guard who can really shoot the lights out.

With this group of players, Fisher and Co., should enjoy another successful season. The non-league schedule is one of the toughest in the nation and should prepare SDSU for the Mountain West, which is coming off its best season ever as a league.

## 2013-14 Mountain West Preseason Poll

Rk.	Team	Points
1.	New Mexico (23)	263
2.	UNLV (1)	214
	Boise State	214
4.	<b>San Diego State</b>	<b>212</b>
5.	Utah State	156
6.	Colorado State	142
7.	Wyoming	112
8.	Fresno State	96
9.	Nevada	84
10.	Air Force	61
11.	San José State	30

## 2013-14 Preseason Accolades

### MW Predictions

#### Champions

- Matt Norlander, CBS Sports

#### Second Place

- Doug Gottlieb, CBS Sports

#### Fourth Place

- Jeff Borzello, CBS Sports
- Jeff Eisenberg, Yahoo! Sports
- Fran Fraschilla, ESPN
- Jeff Nusser, ESPN
- Jerry Palm, CBS Sports
- Gary Parrish, CBS Sports
- Jon Rothstein, CBS Sports
- Sporting News

### Team/Individual Honors

#### NCAA Participants

- Scott Gleeson, USA Today
- Joe Lunardi, ESPN
- Jon Rothstein, CBS Sports

#### Josh Davis

##### All-MW First Team

- Jeff Eisenberg, Yahoo! Sports
- Jon Rothstein, CBS Sports

##### MW Newcomer of the Year

- MW Media Poll
- Jeff Borzello, CBS Sports
- Jeff Eisenberg, Yahoo! Sports

# 2013-14 Schedule



FOUR CONSECUTIVE NCAA TOURNAMENT APPEARANCES ► SEVEN-TIME MOUNTAIN WEST CHAMPIONS

Date	Day	Opponent	Site	Time	TV
<b>Exhibition Game</b>					
Nov. 1	Fri.	CS SAN MARCOS	Viejas Arena		
Nov. 8	Fri.	UC RIVERSIDE	Viejas Arena	7 p.m. PST	
Nov. 14	Thu.	ARIZONA	Viejas Arena	7 p.m. PST	CBSSN
Nov. 20	Wed.	SAN DIEGO CHRISTIAN	Viejas Arena	7:30 p.m. PST	FS San Diego
<b>Wooden Legacy (Titan Gym; Fullerton, Calif.   Honda Center; Anaheim, Calif.)</b>					
Nov. 28	Thu.	vs. College of Charleston	Fullerton, Calif.	5:30 p.m. PST	ESPNU
Nov. 29	Fri.	vs. Creighton or Arizona State	Fullerton, Calif.	6:30 or 9 p.m. PST	ESPN2 or ESPNU
Dec. 1	Sun.	vs. TBD	Anaheim, Calif.	TBD	ESPN Networks
Dec. 5	Thu.	at San Diego	San Diego, Calif.	8 p.m. PST	FS San Diego
Dec. 8	Sun.	WASHINGTON	Viejas Arena	Noon p.m. PST	CBSSN
Dec. 18	Wed.	SOUTHERN UTAH	Viejas Arena	7 p.m. PST	4SD
Dec. 21	Sat.	MCNEESE STATE	Viejas Arena	7 p.m. PST	4SD
Dec. 27	Fri.	ST. KATHERINE COLLEGE	Viejas Arena	7 p.m. PST	FS San Diego
Jan. 1	Wed.	at Colorado State*	Fort Collins, Colo.	7 p.m. MST	CBSSN
Jan. 5	Sun.	at Kansas	Lawrence, Kan.	12:30 or 3:30 CST	CBS
Jan. 8	Wed.	BOISE STATE*	Viejas Arena	8 p.m. PST	ESPNU or ESPN3
Jan. 12	Sun.	at Air Force*	USAF Academy, Colo.	2 p.m. PST	ESPN3
Jan. 15	Wed.	FRESNO STATE*	Viejas Arena	7 p.m. PST	ESPN3
Jan. 18	Sat.	UNLV*	Viejas Arena	3 p.m. PST	CBSSN
Jan. 22	Wed.	at San José State*	San Jose, Calif.	7 p.m. PST	ESPN3
Jan. 25	Sat.	at Utah State*	Logan, Utah	9 p.m. MST	ESPNU or ESPN3
Feb. 1	Sat.	COLORADO STATE*	Viejas Arena	4 p.m. PST	ESPNU
Feb. 5	Wed.	at Boise State*	Boise, Idaho	7:15 p.m. MST	CBSSN
Feb. 8	Sat.	NEVADA*	Viejas Arena	7 p.m. PST	ESPN3
Feb. 11	Tue.	at Wyoming*	Laramie, Wyo.	9 p.m. MST	ESPNU
Feb. 15	Sat.	AIR FORCE*	Viejas Arena	5 p.m. PST	CBSSN
Feb. 18	Tue.	UTAH STATE*	Viejas Arena	8 p.m. PST	ESPNU or ESPN3
Feb. 22	Sat.	at New Mexico*	Albuquerque, N.M.	8 p.m. MST	ESPN2
Feb. 25	Tue.	SAN JOSÉ STATE*	Viejas Arena	8 p.m. PST	CBSSN
March 1	Sat.	at Fresno State*	Fresno, Calif.	7 p.m. PST	CBSSN
March 5	Wed.	at UNLV*	Las Vegas, Nev.	8 p.m. PST	CBSSN
March 8	Sat.	NEW MEXICO*	Viejas Arena	7 p.m. PST	CBSSN
March 12-15	Wed.-Sat.	at Reese's MW Championship	Las Vegas, Nev.	TBD	TBD

\* - Indicates Mountain West game. CAPS indicates home games at Viejas Arena. All times subject to change.

## 2014 NCAA Div. I Men's Basketball Championship Dates and Sites

### First Four

UD Arena  
Dayton, Ohio  
Host: Univ. of Dayton  
March 18 and 19

### Second/Third Rounds

First Niagara Center  
Buffalo, N.Y.  
Host: Metro Atlantic Athletic Conference  
March 20 and 22

BMO Harris Bradley Center  
Milwaukee, Wis.  
Host: Marquette Univ.  
March 20 and 22

Amway Center  
Orlando, Fla.  
Host: Stetson Univ.  
March 20 and 22

Spokane Veterans Memorial Arena  
Spokane, Wash.  
Host: Washington State Univ.  
March 20 and 22

PNC Arena  
Raleigh, N.C.  
Host: North Carolina State Univ.  
March 21 and 23

AT&T Center  
San Antonio, Texas  
Host: Univ. of Texas - San Antonio  
March 21 and 23

Viejas Arena  
San Diego, Calif.  
Host: San Diego State Univ.  
March 21 and 23

Scottrade Center  
St. Louis, Mo.  
Host: Missouri Valley Conference  
March 21 and 23

### Regionals

Honda Center  
Anaheim, Calif.  
Host: Big West Conference  
March 27 and 29

FedEx Forum  
Memphis, Tenn.  
Host: Univ. of Memphis  
March 27 and 29

Lucas Oil Stadium  
Indianapolis, Ind.  
Host: Horizon League/IUPUI  
March 28 and 30

Madison Square Garden  
New York, N.Y.  
Host: St. John's Univ./Big East Conference  
March 28 and 30

### Final Four

AT&T Stadium  
Arlington, Texas  
Host: Big 12 Conference  
April 5 and 7

2013-14 SCHEDULE ◀ INTRODUCTION

AZTEC BASKETBALL MEDIA GUIDE

# Broadcast Roster



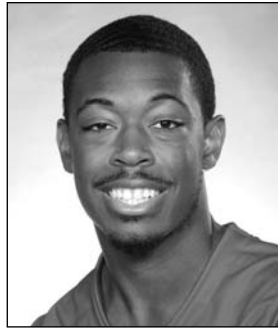
FOUR CONSECUTIVE NCAA TOURNAMENT APPEARANCES ► SEVEN-TIME MOUNTAIN WEST CHAMPIONS

INTRODUCTION ► BROADCAST ROSTER

AZTEC BASKETBALL MEDIA GUIDE



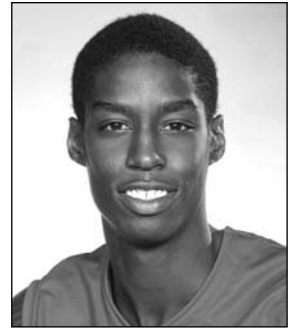
**0** Skylar Spencer  
So. • F • 6-10 • 235  
Inglewood, Calif.



**2** Xavier Thames  
Sr. • G • 6-3 • 195  
Sacramento, Calif.



**4** Dakarai Allen  
Fr. • G • 6-5 • 195  
Elk Grove, Calif.



**5** Dwayne Polee II  
Jr. • F • 6-7 • 195  
Los Angeles, Calif.



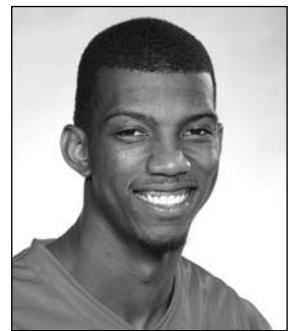
**10** Aqeel Quinn  
Jr. • G • 6-3 • 200  
Gardena, Calif.



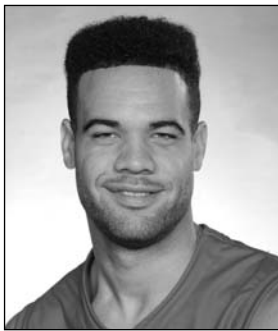
**11** D'Erryl Williams  
Fr. • G • 6-2 • 200  
Sacramento, Calif.



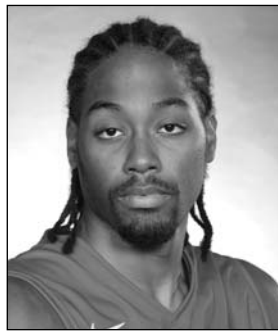
**12** James Johnson  
Jr. • F • 6-10 • 235  
San Diego, Calif.



**13** Winston Shepard  
So. • F • 6-8 • 205  
Houston, Texas



**20** JJ O'Brien  
Jr. • F • 6-7 • 220  
Rancho Cucamonga, Calif.



**22** Josh Davis  
Sr. • F • 6-8 • 215  
Raleigh, N.C.



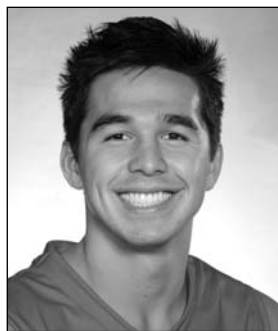
**24** Ryan Staten  
Jr. • G • 6-2 • 190  
San Pablo, Calif.



**40** Matt Shrigley  
R-Fr. • F • 6-6 • 195  
San Diego, Calif.



**RS** Angelo Chol  
Jr. • F • 6-9 • 225  
San Diego, Calif.



**RS** Parker U'u  
So. • G • 6-4 • 210  
Sacramento, Calif.



Steve Fisher  
Head Coach

# REESE'S MOUNTAIN WEST MEN'S & WOMEN'S BASKETBALL CHAMPIONSHIPS



**MARCH 10 - 15, 2014**

**THOMAS & MACK CENTER  
LAS VEGAS, NEVADA**

**LAS  
Vegas**

[www.TheMW.com/2014](http://www.TheMW.com/2014)

For tickets, please visit your favorite MW institution's athletic ticket office.

MW CHAMPIONSHIPS ◀ INTRODUCTION

AZTEC BASKETBALL MEDIA GUIDE