



# SAN DIEGO STATE AZTECS

## 2024 Volleyball Weekly Notes

**Jim Solien (Primary Contact)**  
 Assistant Athletic Communications Director  
**Office Phone Number:** (619) 594-2576  
**E-Mail Address:** jsolien@sdsu.edu  
**News Release Date:** Sept. 25, 2024

**SDSU Official Athletics Website:** goaztecs.com  
**SDSU Official Athletics Twitter:** @GoAztecs  
**SDSU Official Athletics Instagram:** @GoAztecs  
**SDSU Official Athletics Facebook:** facebook.com/goaztecs  
**SDSU Official Athletics YouTube:** youtube.com/goaztecs.com

### 2024 AZTEC VOLLEYBALL SCHEDULE

Day/Date	Opponent	Time
Aug. 30	at Idaho State <sup>^</sup> (ESPN+)	W, 3-0
Aug. 31	vs. CSUN <sup>^</sup> (ESPN+)	L, 2-3
Sept. 1	vs. Seattle U <sup>^</sup> (ESPN+)	W, 3-0
<b>Sept. 5</b>	<b>DePaul~ (MWN)</b>	<b>W, 3-1</b>
<b>Sept. 6</b>	<b>Portland State~</b>	<b>W, 3-2</b>
<b>Sept. 7</b>	<b>Tulane~ (MWN)</b>	<b>L, 1-3</b>
Sept. 13	vs. UC Riverside+	W, 3-1
Sept. 14	at California Baptist+ (ESPN+)	W, 3-0
Sept. 20	at Gonzaga# (ESPN+)	W, 3-2
Sept. 21	vs. Eastern Washington#	W, 3-2
Sept. 26	at Air Force* (MWN)	6 p.m. MT
Sept. 28	at New Mexico* (MWN)	1 p.m. MT
<b>Oct. 3</b>	<b>Utah State* (MWN)</b>	<b>6 p.m. PT</b>
<b>Oct. 5</b>	<b>Nevada* (MWN)</b>	<b>Noon MT</b>
Oct. 10	at San José State* (MWN)	7 p.m. PT
Oct. 12	at Fresno State* (MWN)	TBA
<b>Oct. 17</b>	<b>Colorado State* (MWN)</b>	<b>6 p.m. PT</b>
<b>Oct. 19</b>	<b>Wyoming* (MWN)</b>	<b>Noon PT</b>
<b>Oct. 22</b>	<b>UNLV* (MWN)</b>	<b>6 p.m. PT</b>
Oct. 31	at Wyoming* (MWN)	6:30 p.m. MT
Nov. 2	at Colorado State* (MWN)	1 p.m. MT
<b>Nov. 7</b>	<b>Fresno State* (MWN)</b>	<b>6 p.m. PT</b>
<b>Nov. 9</b>	<b>San José State* (MWN)</b>	<b>Noon PT</b>
Nov. 14	at Nevada* (MWN)	6 p.m. PT
Nov. 16	at Utah State* (MWN)	7 p.m. MT
<b>Nov. 21</b>	<b>New Mexico* (MWN)</b>	<b>6 p.m. PT</b>
<b>Nov. 23</b>	<b>Air Force* (MWN)</b>	<b>Noon PT</b>

<sup>^</sup> - Idaho State Tournament (Portland, Ore.)  
 ~ - SDSU Invitational (San Diego, Calif.)  
 + - CBU/UCR Challenge (Riverside, Calif.)  
 # - Gonzaga Invitational (Spokane, Wash.)

\* - Mountain West match  
 (MWN) - Mountain West Network match

**Socially**  
 Twitter: @AztecVB

#### Match Week Preview

Links to Mountain West Network streaming video and live stats on GoAztecs.com

**San Diego State (8-2, 0-0 MW) at Air Force (1-10, 0-0 MW)**  
 Thursday, Sept. 26 | 6 p.m. MT (5 p.m. PT) | Live Stats | MW Network  
 Series: SDSU leads 40-11

**San Diego State (8-2, 0-0 MW) at New Mexico (7-3, 0-0)**  
 Saturday, Sept. 28 | 1 p.m. MT (noon PT) | Live Stats | MW Network  
 Series: SDSU leads 45-25



#### AZTECS TO OPEN 2024 MOUNTAIN WEST SCHEDULE AT AIR FORCE, NEW MEXICO

- > San Diego State opens its 26th season of Mountain West competition this weekend when it visits Air Force and New Mexico.
- > The Aztecs will battle the Falcons on Thursday, Sept. 26, starting at 6 p.m. MT/5 p.m. PT, before facing the Lobos on Saturday, Sept. 28, beginning at 1 p.m. MT/noon PT.
- > Along with live stats, both matches will air live on the Mountain West Network with links available on GoAztecs.com. Fans can also catch the live action on their smartphones or TVs by downloading the MW app.
- > SDSU has compiled a 192-216 record against MW competition in the regular season since the league's inception in 1999. However, The Aztecs are 274-210 in program history against teams in the current conference alignment thanks in part to renewed rivalries with Fresno State and San José State.
- > San Diego State is 12-13 all-time in Mountain West openers after dropping a tough five-set decision to UNLV on the road last season.
- > The Aztecs will play 18 conference matches, including home-and-away contests against eight league rivals while facing Boise State and UNLV just once.

#### QUICK HITS

- > San Diego State defeated Gonzaga and Eastern Washington in a pair of five-set nail-biters at the Gonzaga Invitational, Sept. 20-21, in Spokane, Washington. With their victories, the Aztecs improve to 8-2 after 10 matches for the first time since 2007.
- > Following the event, Shea Rubright, Taylor Underwood and Jasmine Davis were named to the all-tournament team.
- > Not to be outdone, Gianna Bender garnered Mountain West Freshman of the Week accolades, giving SDSU its first conference weekly award winner of the season.
- > In addition, setter Sarena Gonzalez finished with a career-high 60 assists against EWU last Saturday, marking the Aztecs' highest individual output in that statistic since Gabi Peoples dished out 62 helpers in a home victory over Boise State on Oct. 19, 2017.
- > For the season, Rubright owns a league-leading .500 hitting percentage, which ranks fourth in the nation as of Sept. 25.
- > San Diego State has posted more kills than the opposition in all 10 matches this year and has logged a greater hitting percentage on nine occasions. In 2023, the Aztecs recorded a higher efficiency in 11 matches for the entire season, finishing with an 8-3 ledger in that category.

#### SERIES RECORD VS. AIR FORCE

- > San Diego State holds a sizable 40-11 advantage over Air Force in the all-time series dating back to 1996. However, Falcons have captured nine of the last 15 encounters, including a season sweep during the 2023 campaign. After dropping a hard-fought decision in five sets at Peterson Gym, the Aztecs were dealt a 3-0 whitewash at the Academy.
- > In that home clash with Air Force, Taylor Underwood hit .481 and blasted a career-high 31 kills, which marked the third-highest figure in the Mountain West during the 2023 campaign. Additionally, the SDSU opposite hitter established a school record for put-aways in the rally scoring era (since 2001) and logged the highest kill total by an SDSU player since Martina Vitkova-Engels (37) and Carrie Mapes (33) combined for 70 non-returnables in the Aztecs' five-set victory over Wyoming in the first round of the Western Athletic Conference tournament during the sideout era on Nov. 25, 1997.

#### SERIES RECORD VS. NEW MEXICO

- > Despite falling short against the Lobos in its last five meetings, San Diego State still leads the all-time series 45-25 dating back to 1976.
- > The Aztecs sport a 24-9 record against New Mexico in San Diego, a 16-16 mark in Albuquerque and a 5-0 ledger on a neutral court.
- > SDSU will be looking to snap a three-match slide against the Lobos in the Duke City after dropping a four-set decision at Johnson Center in 2023 (25-19, 21-25, 26-28, 16-25).
- > In that match, the Aztecs maintained a 54-49 advantage in kills, but the Lobos held the edge in team blocks (12.0 to 8.0) and aces (7-2), overcoming nine service errors as well.
- > After posting a .256 efficiency in the opening set with 14 kills against just four errors in 39 attempts, SDSU hit just .081 for the remainder of the contest, including a minus-.032 clip in the fourth stanza when it committed nine miscues against eight kills in 31 swings. Conversely, UNM logged a .296 hitting percentage in the final set with 12 put-aways against four errors in 27 attempts to close out the match.

**GENERAL INFORMATION**

Location ..... San Diego, Calif.  
 Founded ..... 1897  
 Enrollment ..... 37,539  
 Nickname ..... Aztecs  
 Colors ..... Scarlet and Black (Pantone 187)  
 Conference ..... Mountain West  
 Affiliation ..... Division I  
 President ..... Dr. Adela de la Torre  
 Director of Athletics ..... John David Wicker  
 Faculty Representative ..... Dr. Frank Harris III  
 Home Facility ..... Aztec Court at Peterson Gym (2,000)

**TEAM INFORMATION**

Head Coach ..... Brent Hilliard  
 Alma Mater ..... Long Beach State '93  
 Record at SDSU ..... 42-73 (Fifth year)  
 Career Record ..... 96-84 (Seventh year)  
 E-Mail ..... bhilliard@sdsu.edu  
 Volleyball Office Phone ..... (619) 594-5064  
 Assistant Coach ..... Steve Timmons  
 Assistant Coach/Recruiting Coordinator ..... Kristen Gengenbacher  
 Assistant Coach ..... Noly Mon  
 Director of Volleyball Operations ..... Bethany Kepner  
 2023 Record ..... 9-20  
 2023 Conference Record ..... 4-14 (T-9th)  
 2023 Home Record ..... 3-9  
 2023 Road/Neutral Record ..... 6-11  
 Letterwinners Returning/Lost ..... 11/6  
 Starters Returning/Lost ..... 3 + libero/3  
 Incoming Freshmen ..... 2  
 Division I Transfers ..... 4

**PROGRAM HISTORY**

First Year of Volleyball ..... 1976  
 Overall Record ..... 922-683 (.574)  
 NCAA Appearances/Last ..... 14/2012  
 NCAA Postseason Record ..... 15-14

**MEDIA RELATIONS**

Assistant Athletic Communications Director ..... Jim Solien  
 E-Mail ..... jsolien@sdsu.edu  
 SID Office Phone ..... (619) 594-2576  
 Official Athletic Website ..... www.GoAztecs.com

**2024 AZTEC VOLLEYBALL STATISTICAL LEADERS**  
*(min. 50 percent of team sets played)*

Hitting Percentage*	500	Shea Rubright
Kills	134	Taylor Underwood
Kills per set	3.27	Taylor Underwood
Assists	184	Andrea Campos
Assists per set	6.76	Sarena Gonzalez
Service Aces	14	Shea Rubright
Service Aces per set	0.40	Jasmine Davis
Digs	134	Gianna Bender
Digs per set	3.35	Gianna Bender
Blocks	45.0	Shea Rubright
Blocks per set	1.10	Shea Rubright

\*. min 3.0 attempts per set

**2024 AZTEC VOLLEYBALL FALL ROSTER**

No.	Player	Pos.	Ht.	Yr.	Hometown (Last School)
1	Fatimah Hall	S	5-9	So.	Long Beach, Calif. (Lakewood HS)
2	Gianna Bender	DS/L	6-2	Fr.	Hudsonville, Mich. (Hudsonville HS)
3	McKenna Douglas	DS/L	5-7	Jr.	Phoenix, Ariz. (Notre Dame Prep)
4	Amber Keen	MB	6-5	So.	Reno, Nev. (Reno HS)
5	Talea Mitchell	MB/OH	6-1	Jr.	Goodyear, Ariz. (Millennium HS)
7	Madison Corf	OH	5-11	So.	Kansas City, Mo. (Liberty HS)
9	Shea Rubright	MB	6-5	Gr.	Spokane, Wash. (Washington State)
10	Taylor Underwood	OPP/OH	6-2	Jr.	Norco, Calif. (DePaul)
11	Campbell Hague	MB/OH	6-2	So.	Cheney, Kan. (Cheney HS)
12	Cara Braun	OH	6-1	So.	Tempe, Ariz. (Valley Christian HS)
13	Jasmine Davis	OH	6-1	Gr.	Redondo Beach, Calif. (UConn)
15	Mikela Labno	OH	6-2	Jr.	Hilmar, Calif. (Hilmar HS)
16	Sarena Gonzalez	S	5-8	Sr.	Temecula, Calif. (Temecula Valley HS)
17	Andrea Campos	S	5-8	Gr.	Pacific Palisades, Calif. (Villanova)
19	Natalie Hughes	OPP	6-4	So.	McKinney, Texas (McKinney North HS)
20	Keira Herron	DS/L	5-7	Jr.	College Station, Texas (Oregon State)
21	Kat Cooper	MB	6-1	Jr.	Springdale, Ark. (Har-Ber HS)

**Head Coach:** Brent Hilliard (Long Beach State, 1993), Fifth season at SDSU  
**Assistant Coach:** Steve Timmons (USC), Fifth season at SDSU  
**Asst. Coach/Recruiting Coordinator:** Kristen Gengenbacher (USD, 2018; Washington, 2019), First season at SDSU  
**Assistant Coach:** Noly Mon, Second season at SDSU  
**Director of Volleyball Operations:** Bethany Kepner (Oregon, 2022), Second season at SDSU

**Pronunciations**

#1 FATIMAH Hall	fa-TEE-mah	#2 GIANNA Bender	jee-ON-ah
#5 TALEA Mitchell	ta-LEE-ah	#9 SHEA RUBRIGHT	SHAY ROO-bright
#11 Campbell HAGUE	HAIG	#15 MIKELA Labno	ma-KAY-la
#17 ANDREA CAMPOS	on-DRAY-ah COM-pos	#20 KEIRA HERRON	KEER-ah HAIR-en

**OPPONENT COMPARISON**

2024 Overall Stats	SDSU	MW Rank	OPP	AFA	MW Rank	OPP	UNM	MW Rank	OPP
Hitting Percentage	.283	1	.201	.135	11	.254	.187	9	.177
Kills per set	13.85	2	11.68	10.63	11	14.29	12.38	8	12.97
Assists per set	13.10	1	11.00	9.57	11	13.03	11.72	6	11.85
Service Aces per set	1.63	2	1.78	1.14	11	1.49	1.26	T8	1.44
Digs per set	13.15	8	12.20	13.57	7	15.80	16.46	1	15.54
Blocks per set	2.20	6	1.76	1.84	11	3.13	2.23	5	1.95

**SCOUTING THE OPPOSITION**

> Picked to finish 10th in the Mountain West preseason coaches poll, Air Force has dropped 10 straight after a season-opening whitewash of Fordham at the Falcons' own Amy Svoboda Memorial Classic on Aug. 30. Air Force has played just three home matches thus far, posting a 1-2 mark to go with a winless 0-8 ledger in road/neutral contests. Last year, the Falcons compiled a 17-12 overall record, tying for seventh with a 9-9 mark in conference. The Falcons are led by senior outside hitter Ella Tschuur, who is averaging 2.31 kills per set, followed by junior Ashley Bible (1.91/set) and senior Mekayla Dedo (1.78/set). Elsewhere, sophomore Jordan Suan ranks fourth in Mountain West with 3.97 digs per set, while freshman Mia Loyd (4.83 assists/set) and junior Greta Hans (3.50 assists) have split the setting responsibilities. At the net, Tschuur and Bible top the squad with 14.0 blocks apiece, followed closely by freshman Lainie Stapleton (12), who has missed the last two matches. Collectively, Air Force ranks seventh in the conference with 13.57 digs per set, but occupies the basement in most statistical categories, including opponent hitting percentage (.254). The Falcons are guided by first-year head coach Macey Donathon, who previously served as an assistant coach at Arkansas (2019-22), Arizona State (2017-18) and Liberty (2016). The former Macey Gardner played collegiately at Arizona State, where she finished as the program's all-time leader with 1,882 kills, which ranks 18th in Pac-12 conference history.

> New Mexico is coming off a two-match sweep against intrastate rival New Mexico State, posting a four-set triumph at home on Sept. 17, before recording a three-set whitewash on the road two days later. For the season, the Lobos have recorded a 3-1 mark at home and a combined 4-2 ledger in road/neutral contests. Last month, UNM was pegged for an eighth-place finish behind the Aztecs in the MW preseason coaches poll. The Aztecs and Lobos have faced one common opponent in their respective non-conference schedules, as UNM captured a 3-1 victory over Tulane in its season opener on Aug. 30. However, SDSU was not as fortunate in its encounter with the Green Wave at the San Diego State Invitational, dropping a four-set decision on Sept. 7. The Lobos are led by VCU transfer Kialah Jefferson, who is slotted 10th in the Mountain West this week with 3.00 kills per set, while junior Lauryn Payne (2.97) and graduate student Jada Bouyer (2.38) are averaging over two put-aways per frame. Along the back row, Temple transfer Falanika Danielson, the reigning Mountain West Defensive Player of the Week, enters the week ranked third in the conference with 4.13 digs per set, while native Norwegian Liepa Lavickyte is slotted fifth with 1.21 blocks per frame. Lavickyte and Aztec libero Keira Herron were teammates at Oregon State during the 2023 campaign. Elsewhere, sophomore setter Madeleine Miller occupies the sixth spot in the MW with 7.74 assists per set. Collectively, UNM leads the league in digs (16.46/set), which ranks 34th in the nation as of Sept. 25, while occupying the fifth position in the MW in blocks (2.23/set). Consequently, the Lobos are slotted third in the league with a .177 opponent hitting percentage. However, UNM occupies the eighth spot in kills (12.38/set) and ranks ninth in hitting percentage (.187). The Lobos are under the direction of sixth-year head coach Jon Newman-Gonchar, who arrived on the Albuquerque campus after spending the previous

2024 MOUNTAIN WEST STANDINGS (AS OF SEPT. 25)

Team	---Conference---			-----Overall-----			
	W	L	Pct.	W	L	Pct.	Strk
San José State	1	0	1.000	9	0	1.000	W9
San Diego State	0	0	.000	8	2	.800	W4
Wyoming	0	0	.000	8	3	.727	L1
New Mexico	0	0	.000	7	3	.700	W2
Boise State	0	0	.000	8	4	.667	W2
UNLV	0	0	.000	7	4	.636	L2
Nevada	0	0	.000	7	5	.583	L2
Colorado State	0	0	.000	4	6	.400	W1
Utah State	0	0	.000	3	8	.273	W1
Air Force	0	0	.500	1	10	.091	L10
Fresno State	0	1	.000	4	8	.333	L2

Upcoming Matches in the MW

Thursday, Sept. 26

San Diego State at Air Force, 6 p.m. MT

Wyoming at Nevada, 5 p.m. PT

UNLV at New Mexico, 6:30 p.m. MT

Colorado State at Utah State, 7 p.m. MT

Boise State at Fresno State, 6 p.m. PT

Saturday, Sept. 28

San Diego State at New Mexico, 1 p.m. MT

Colorado State at Nevada, noon PT

UNLV at Air Force, 1 p.m. MT

Wyoming at Utah State, 1 p.m. MT

Boise State at San José State, 2 p.m. PT

Tuesday, Oct. 1

New Mexico at Air Force, 6 p.m. PT

Thursday, Oct. 3

Utah State at San Diego State, 6 p.m. PT

Air Force at Boise State, 6 p.m. MT

Fresno State at Wyoming, 6:30 p.m. MT

San José State at Colorado State, 7 p.m. MT

Nevada at UNLV, 6:30 p.m. PT

Saturday, Oct. 5

Utah State at San Diego State, noon PT

New Mexico at Boise State, noon MT

Fresno State at Colorado State, 1 p.m. MT

San José State at Wyoming, 1 p.m. MT

Utah State at UNLV, 1 p.m. PT

Tuesday, Oct. 8

Wyoming at Colorado State, 6 p.m. MT



three seasons at Arkansas as associate head coach. Newman-Gonchar has also had stints as an assistant coach at Iowa State (2013-15), Loyola Marymount (2010-12), as well as UC San Diego with both the men's and women's teams (2007-09).

SDSU IN MW RANKINGS

- > Entering the weekend, Shea Rubright leads the Mountain West with a .500 hitting percentage, which ranks fourth in the nation as of Sept. 25. The Aztec middle blocker is also slotted seventh in the league in blocks (1.10/set).
- > Additionally, Taylor Underwood tops the squad with 3.27 kills and 3.73 points per set, both of which rank seventh in the conference.
- > Elsewhere, the setting trio of Sarena Gonzalez (6.76/set), Fatimah Hall (5.83/set) and Andrea Campos (5.41/set) find themselves among the MW leaders in assists, occupying the seventh, eighth and 10th spots, respectively.
- > Gonzalez has logged the league's highest assist total in a single match this season, dishing out 60 helpers against Eastern Washington.
- > The Aztecs boast three of the top 10 hitting performances in the Mountain West thus far, including Talea Mitchell's second-best .696 clip vs. Seattle, while Rubright's two percentages from the SDSU Invitational (.667 vs. Tulane) and (.640 vs. Portland State) rank fourth (tie) and seventh, respectively.
- > Three Aztecs share the fourth spot in the conference with four service aces in a match, including Rubright (vs. Seattle), Jasmine Davis (vs. UC Riverside) and Keira Herron (at Gonzaga). Rubright also finished with a season-high eight blocks assists against UCR, which is tied for eighth.
- > Elsewhere, Mitchell's 16 kills against Seattle represents the sixth-best total for a three-set match in the MW this season, while Bender's 19 digs against DePaul mark the 10th-best total for a four-set contest.
- > As a team, the Aztecs lead the Mountain West in hitting percentage (.283) and assists (13.10/set) while ranking second in kills (13.85/set) and service aces (1.63/set). On the national level, SDSU is slotted 19th in assists, 21st in hitting percentage and 25th in kills.
- > San Diego State's 68 kills against CSUN is tied for the third-highest team performance in the MW thus far, while three of its best attack percentages rank among the league's top 10, including .366 vs. Seattle (6th), .352 vs. CBU (8th) and .348 against Portland State (10th).

BENDER RECEIVES MW FRESHMAN OF THE WEEK RECOGNITION

- > San Diego State volleyball player Gianna Bender was named Mountain West Freshman of the Week after helping the Aztecs to a 2-0 record at the Gonzaga Invitational, Sept. 20-21, in Spokane, Washington. With her award, Bender garnered her first career MW weekly accolade and SDSU's first of the season.
- > A former AVCA High School All-American from Hudsonville, Michigan, Bender led the team with 37 digs and 3.70 digs per set in a pair of thrilling victories over Gonzaga and Eastern Washington, anchoring an Aztec defense that held their two opponents to a combined .188 hitting percentage for the weekend.
- > Against the host Zags, Bender topped the squad with a career-high 20 digs (4.00/set), as the Scarlet and Black prevailed in five sets. Thanks to her contributions, SDSU limited Gonzaga to a .154 efficiency for the match, including a .043 clip in the decisive fifth set.
- > In addition, Bender gave the Aztecs an important boost with eight setting assists last Friday, including three in the pivotal fifth stanza.
- > Bender returned the following day to post a match-high 17 digs against Eastern Washington, dishing out four additional setting assists to help San Diego State emerge victorious in another five-set nail-biter.
- > With Bender's support, the Aztecs limited the Eagles to a .202 hitting percentage, including a .077 pace in the deciding fifth set. The SDSU libero also served up an ace during a 3-0 spurt in the final frame, which broke a 5-5 deadlock that gave the Scarlet and Black a lead it would not relinquish. Additionally, Bender did not commit a reception error in 15 attempts vs. EWU.
- > For the season, Bender leads the Aztecs with 3.35 digs per set (134 overall), which ranks eighth in the Mountain West. She also occupies the fourth spot on the squad with nine service aces (0.23/set).

ALL-TOURNAMENT AZTECS

- > San Diego State boasted three players who were selected to the Gonzaga Invitational all-tournament team in Taylor Underwood, Shea Rubright and Jasmine Davis.
- > Underwood led the field with 35 kills, 3.50 kills per set and 40.5 points, hitting a combined .286 for the weekend. The Aztec opposite hitter led all players with 17 kills against Gonzaga and displayed her versatility with four block assists to tie a career high.
- > Underwood continued her hot hitting the next day with 18 kills vs. Eastern Washington to tie for team-high honors and match her season best. The Norco, California, native posted a .300 hitting percentage or better for the fourth time this year with a .342 clip vs. the Eagles and set a season high with three service aces.
- > Underwood blasted a clutch kill in the fifth set during a 7-2 run that broke a 5-5 tie and put the Aztecs in front for good. She additionally served up an ace in that decisive stretch.
- > For the season, Underwood occupies the seventh spot in the Mountain West in both kills (3.27/set) and points (3.73/set) while ranking third on the team among qualifiers with a .274 hitting percentage.
- > Elsewhere, Rubright maintained her stellar all-round play this past weekend, totaling a team-high 10 blocks (1.00/set) while hitting .480 for the tournament with 14 kills to go with four aces. The SDSU middle blocker posted a match-high six blocks against Gonzaga, including three solo stuffs, which tied a career best. Her final solo block occurred at a critical juncture in the fifth set, giving the Aztecs a 13-11 lead after they trailed earlier 9-5.
- > Against EWU, Rubright tied for team-high with four additional blocks, including a solo rejection. The Aztec graduate student assisted on one block in the fifth and deciding set, giving SDSU some early momentum with a 3-1 lead.
- > Through 10 matches, Rubright finds herself among the MW leaders with a conference-best .500 hitting percentage, which ranks fourth in the nation as of Sept. 23, while occupying the seventh position in the league with 1.10 blocks per set.
- > Not to be outdone, Davis ranked second on the Aztecs at the Gonzaga Invitational with 29 kills, 2.90 kills per set and 31.5 points. The SDSU outside hitter posted her second-best hitting percentage of the year with a .370 clip in Friday's triumph over the Zags, knocking down 11 kills while collecting 16 digs for her second double-double in a Scarlet and Black uniform.
- > In the deciding fifth set, Davis provided two kills during a furious 10-3 run that erased a 9-5 deficit, allowing the Aztecs to avoid

the upset.

- > The following day against EWU, Davis finished with a season-best 18 kills to go with one ace and a block assists. The UConn graduate transfer launched five kills in both the second and third stanzas, helping SDSU overcome an early 1-0 deficit in sets.
- > For the season, Davis ranks third on the squad with 2.52 kills per set and 10 service aces while occupying the second position with 2.80 digs per frame. She is also slotted fourth in the MW with 0.40 aces per set.
- > The Aztecs have landed at least one player receive all-tournament honors for each of its other non-conference events: CBU/UCR Challenge (Jasmine Davis, Andrea Campos); SDSU Invitational (Shea Rubright) and Idaho State Tournament (Rubright, Underwood, Gianna Bender).

**UNDERWOOD EARNS PRESEASON ALL-MW HONORS**

- > San Diego State junior Taylor Underwood was named to the seven-player all-Mountain West preseason volleyball team in a vote of the league's 11 head coaches on Aug. 14.
- > A 2023 transfer from DePaul, Underwood made a huge splash in her first year on The Mesa, earning first-team all-MW honors after finishing sixth in the league with 3.38 kills and 3.88 points per set against conference foes during the regular season.
- > The Norco, California, native compiled double-digit kill totals in 16 of 18 MW matches and led the Aztecs with 20 service aces (0.28/set) vs. MW opponents.
- > In a home match against Air Force, Underwood (.481) smashed a career-high 31 kills, which marked the third-highest figure in the conference during the 2023 campaign. Additionally, the Aztec opposite hitter set a school record for put-aways in the rally scoring era (since 2001) and logged the highest kill total by an SDSU player since Martina Vitkova-Engels (37) and Carrie Mapes (33) combined for 70 non-returnables in

the Aztecs' five-set victory over Wyoming in the first round of the Western Athletic Conference tournament during the sideout era on Nov. 25, 1997.

- > For all matches, Underwood led the Aztecs with 3.12 kills per set, surpassing the double-digit plateau in that statistic in 20 of 29 contests. She also ranked sixth in the MW with an average of 0.35 services per set (37 overall) during the regular season.
- > Earlier in the year, Underwood served up a career-high five aces in a pair of victories over Denver and Eastern Washington, which was tied for the sixth-best output in the conference last season. She was one of just three players to appear in all 107 sets for the Scarlet and Black last year and was the lone Aztec to start all 29 matches.

**WELCOME BACK**

- > Along with Underwood, the Aztecs return 10 additional letterwinners this season, including fellow juniors Madison Corf and McKenna Douglas.
- > After receiving all-MW honorable mention as a freshman, Corf was slowed by an ankle injury in 2023, missing five matches after making 16 consecutive starts to begin the year. Still, the Aztec outside hitter ranked second on the team with 213 kills and 2.57 kills per set while occupying the fourth spot with 34 total blocks.
- > For the season, Corf posted 10 or more kills in eight matches and was slotted fourth on the squad with 34 blocks while ranking fifth with 74 digs.
- > Corf logged her best efficiency of the year against UC San Diego at the Tritons' home tournament, hitting at a .565 clip with a match-high 14 kills against one error in 23 attempts.
- > Douglas returns to anchor SDSU's back row after finishing third in the MW with 3.83 digs per set in

**2024 AZTEC SUPERLATIVES**

**Individual**

**HITTING PERCENTAGE (min. 12 kills)**

.696 (16-0-23) ..... Talea Mitchell vs. Seattle (Sept. 1)

**KILLS**

18..... Three times, last: Jasmine Davis and Taylor Underwood vs. Eastern Washington (Sept. 21)  
 5 sets.....18 ..... Three times, last: Jasmine Davis and Taylor Underwood vs. Eastern Wash. (Sept. 21)  
 4 sets.....16 ..... Three times, last: Taylor Underwood vs. UC Riverside (Sept. 13)  
 3 sets.....16 ..... Talea Mitchell vs. Seattle (Sept. 1)

**TOTAL ATTEMPTS**

58..... Jasmine Davis vs. Eastern Washington (Sept. 21)  
 5 sets.....58 ..... Jasmine Davis vs. Eastern Washington (Sept. 21)  
 4 sets.....38 ..... Taylor Underwood and Madison Corf vs. DePaul (Sept. 5)  
 3 sets.....25 ..... Taylor Underwood at Idaho State (Aug. 30)

**ASSISTS**

60..... Sarena Gonzalez vs. Eastern Washington (Sept. 21)  
 5 sets.....60 ..... Sarena Gonzalez vs. Eastern Washington (Sept. 21)  
 4 sets.....29 ..... Andrea Campos vs. Tulane (Sept. 7)  
 3 sets.....22 ..... Fatimah Hall at Idaho State (Aug. 30)

**DIGS**

20..... Gianna Bender vs. Eastern Washington (Sept. 21)  
 5 sets.....20 ..... Gianna Bender vs. Eastern Washington (Sept. 21)  
 4 sets.....19 ..... Gianna Bender vs. DePaul (Sept. 5)  
 3 sets.....16 ..... Gianna Bender vs. Seattle (Sept. 1)

**SERVICE ACES**

4..... Three times, last: Keira Herron at Gonzaga (Sept. 20)

**BLOCK SOLOS**

3..... Shea Rubright at Gonzaga (Sept. 20)

**BLOCK ASSISTS**

8..... Shea Rubright vs. UC Riverside (Sept. 13)

**TOTAL BLOCKS**

8..... Shea Rubright vs. UC Riverside (Sept. 13)

**Team**

**HITTING PERCENTAGE**

.366 (47-10-101) ..... vs. Seattle (Sept. 1)

**KILLS**

68..... vs. Eastern Washington (Sept. 21) and vs. CSUN (Aug. 31)  
 5 sets.....68 ..... vs. Eastern Washington (Sept. 21) and vs. CSUN (Aug. 31)  
 4 sets.....63 ..... vs. Tulane (Sept. 7)  
 3 sets.....47 ..... vs. Seattle (Sept. 1)

**TOTAL ATTEMPTS**

182..... vs. CSUN (Aug. 31)  
 5 sets.....182 ..... vs. CSUN (Aug. 31)  
 4 sets.....148 ..... vs. DePaul (Sept. 5)  
 3 sets.....103 ..... at Idaho State (Aug. 30)

**ASSISTS**

68..... vs. Eastern Washington (Sept. 21)  
 5 sets.....68 ..... vs. Eastern Washington (Sept. 21)  
 4 sets.....60 ..... vs. Tulane (Sept. 7)  
 3 sets.....42 ..... vs. Seattle (Sept. 1)

**DIGS**

69..... at Gonzaga (Sept. 20)  
 5 sets.....69 ..... at Gonzaga (Sept. 20)  
 4 sets.....61 ..... vs. UC Riverside (Sept. 13)  
 3 sets.....44 ..... vs. Seattle (Sept. 1)

**SERVICE ACES**

10..... vs. Eastern Washington (Sept. 21)

**TOTAL BLOCKS**

12.0..... Three times, last: at Gonzaga (Sept. 20)



conference matches. The Aztec libero was also slotted fifth in the league with 3.72 digs per set for all 29 matches (398 overall) and ranked third on the squad with 66 setting assists while serving up 17 aces.

- > Also back in the mix for SDSU is the setting duo of Fatimah Hall and Sarena Gonzalez.
- > As a freshman, Hall led the Scarlet and Black with 627 assists and 5.86 assists per set, which ranked 10th in the Mountain West. She was also slotted third on the team with 129 digs while occupying the fourth spot with 1.79 digs per set.
- > A native of Long Beach, California, Hall compiled five double-doubles on the year (assists-digs) and surpassed the 20-assist plateau on 17 occasions.
- > Hall enjoyed an impressive collegiate debut in 2023 against Cal State Fullerton at the Rose City Showdown where she racked up a career-high 47 assists and four kills while adding 12 digs and one block assist in the season-opening victory over the Titans.
- > Meanwhile, Gonzalez played in 28 matches with six starts, averaging 4.94 assists and 1.37 digs in the Aztecs' 6-2 rotation. She also broke the 20-assist barrier in 11 appearances.
- > Gonzalez contributed to the Aztecs' whitewash of Denver at the UCSD Invitational where she recorded season highs of 28 assists and two service aces to go with a career-high two kills.
- > Additionally, the Aztecs are looking for the continued development of middle blockers, Kat Cooper, Campbell Hague and Amber Keen.
- > Cooper was slowed by an injury during her sophomore season in 2023, appearing in just 14 matches with nine starts. The Springdale, Arkansas, native tied her career high with five blocks (1 solo) in SDSU's season-opening victory over Cal State Fullerton before finishing the year with 48 kills (1.30/set), 22 blocks (0.59/set) and 10 digs (0.27/set) across 37 sets.
- > As a freshman last season, Hague played in 54 sets across 18 matches primarily as a reserve, compiling 71 kills (1.31/set), 13 block assists and 11 digs. The Cheney, Kansas, native totaled a career-high eight kills and four digs in the Aztecs' 3-1 victory at Wyoming, helping the Scarlet and Black defeat the Cowgirls in Laramie for the second year in a row.
- > Meanwhile, Keen earned a starting assignment in six of 14 matches during her rookie campaign in 2023, racking up 38 kills (1.06/set) and 24 blocks (0.67) across 36 sets. She hit .296 for the season, finishing without an attack error in seven matches while recording at least one block assist in nine different contests.
- > Rounding out the list of Aztec veterans are Mikela Labno, Cara Braun and Natalie Hughes.
- > An outside hitter, Labno came off the bench in 26 matches as a junior last season, ranking fifth on the team in kills (151) and kills per set (1.86). She also surpassed the double-digit kill plateau on six occasions while contributing 36 digs, 21 total blocks and four assists across 81 sets.
- > Braun played seven matches as a reserve in her first tour of duty with the Scarlet and Black, posting 28 kills (1.65/set), three digs and two blocks across 17 sets. The SDSU outside hitter set career highs with 14 kills and a .346 hitting percentage while adding a block assist in a tough five-set loss at eventual Mountain West tournament champion Fresno State.
- > Meanwhile, Hughes saw limited action as well in 2023, appearing in eight matches with seven kills, three block assists and one dig.

**NEW KIDS IN TOWN**

- > The prospects for the San Diego State volleyball program continue to improve after head coach Brent Hilliard retooled the Aztec roster with another stellar newcomer class for the 2024 campaign.
- > SDSU's early signing class last November featured UConn transfer Jasmine Davis along with prep standout Talea Mitchell (Goodyear, Ariz.), while another Division I transfer Shea Rubright joined the program at the semester break after two seasons at Washington State.
- > During the spring and summer, the Aztecs inked two additional transfers in setter Andrea Campos (Villanova) and defensive specialist Keira Herron (Oregon State) while securing another high school star in Gianna Bender (Hudsonville, Mich.).
- > An outside hitter, Davis enjoyed four productive seasons at UConn (2019-22), where she posted 897 kills (2.62/set), 830 digs (2.43/set), 151.0 blocks (0.40/set) and 91 service aces (0.20/set) while completing 22 double-doubles (kills-digs).
- > As a junior in 2021, Davis enjoyed her finest campaign with the Huskies, logging career highs of 337 kills (2.74/set), 305 digs (2.48/set) and 68.0 blocks to lift the Huskies to a 24-11 overall record and a Final Four appearance in the National Invitational Volleyball Championship (NIVC).
- > Rubright brings a wealth of experience with her to The Mesa as a middle blocker after competing for nationally ranked programs at Minnesota (2019-21) and Washington State (2022-23).
- > A heavily decorated prep star at West Valley High School in Yakima, Washington, Rubright was a two-time state Gatorade Player of the Year and twice earned Columbia Basin/Big Nine Conference Player of the Year honors before receiving first-team Under Armour All-America recognition.
- > As a senior, Rubright led her Rams squad to the Washington 4A state championship, posting 340 kills (4.3/set), a .505 hitting percentage, 78 blocks (1.0/set) and 47 aces (0.6/set), according to MaxPreps. She was listed as the No. 12 recruit nationally by PrepVolleyball.com and was invited to play in the Under Armour All-America match in conjunction with the NCAA Division I Volleyball Championship.
- > Meanwhile, Campos arrives on The Mesa to bolster the Aztecs' setting corps after starting 58 of 79 matches at Villanova from 2020-23. The Pacific Palisades native finished her East Coast tenure with the ninth-best assist total in program history, dishing out 2,103 helpers to go with 497 digs and 70 service aces.
- > During 2023 campaign, Campos started all 31 matches, ranking second in the Big East with a team-high 1,161 assists (9.84/set), which was slotted 47th nationally. She also occupied the third position on the squad in service aces (37, 0.31/set) while ranking fourth in digs (241, 2.04/set) and fifth in blocks (28, 0.24/set).
- > Last season, Campos set a career high with 59 assists in a five-set thriller over Milwaukee at the Western Michigan Tournament and racked up over 50 helpers in back-to-back home victories over Seton Hall (52) and St. John's (53).
- > Elsewhere, Mitchell will provides additional depth at middle blocker, while Bender and Herron support the Aztecs' back-row efforts.
- > A graduate of Millennium High School in Goodyear, Arizona, Mitchell received AVCA All-America honorable mention and all-Region 9 honors following her senior season, capped by a third consecutive state runner-up finish. She also garnered first-team all-Conference 5A accolades and was named the 5A Desert West Section co-Offensive Player of the Year after leading her squad with a .429 hitting percentage while ranking third with 244 kills.
- > Bender earned second-team AVCA All-America honors following her senior season after leading Michigan's Hudsonville High to a 45-3 overall record, as the Eagles finished with a No. 1 state and No. 19 national ranking, according to MaxPreps. She also garnered all-state, all-region and all-conference accolades after racking up 635 digs (5.3/set) during the 2023 campaign.
- > In two seasons at Oregon State, Herron played 130 sets across 42 matches, compiling 150 digs, 20 setting assists and 15 service aces. Last year, she made 14 starts in 19 appearances, posting career highs with 113 digs (1.61/set), 14 assists and eight service aces.
- > A former prep star at College Station High School in her native Texas, Herron received PrepVolleyball.com High School All-America honorable mention as a senior and twice appeared on the AVCA Phenom list.

**2024 SITUATIONAL RECORDS**

**GENERAL**

Overall.....	8-2
Mountain West.....	0-0
Home.....	2-1
Away.....	3-0
Neutral.....	3-1
vs. Ranked Teams.....	0-0
vs. Unranked Teams.....	8-2
Matches Following a Win.....	5-2
Matches Following a Loss.....	2-0
Longest Winning Streak.....	4
Longest Losing Streak.....	1
Current Streak.....	Won 4

**BY SETS**

3 Sets.....	3-0
4 Sets.....	2-1
5 Sets.....	3-1
Leading After Two.....	4-0
Trailing After Two.....	0-0
Tied After Two.....	4-1
Leading 2-1.....	4-0
Trailing 2-1.....	1-2

**BY MONTH**

August.....	1-1
September.....	7-1
October.....	0-0
November.....	0-0

**BY DAY**

Tuesday.....	0-0
Thursday.....	1-0
Friday.....	4-0
Saturday.....	2-2
Sunday.....	1-0

**BY KILLS**

Leading in Kills.....	8-2
Trailing in Kills.....	0-0
Tied in Kills.....	0-0

**BY DIGS**

Leading in Digs.....	7-1
Trailing in Digs.....	1-1
Tied in Digs.....	0-0

**BY BLOCKS**

Leading in Blocks.....	6-1
Trailing in Blocks.....	2-1
Tied in Blocks.....	0-0

**BY ATTACK PERCENTAGE**

Greater Attack Percentage.....	8-1
Lower Attack Percentage.....	0-1
Equal Attack Percentage.....	0-0
Hitting above .300.....	3-1
Hitting between .200 and .300.....	5-1
Hitting between .100 and .200.....	0-0
Hitting below .100.....	0-0
Opponent Hitting above .300.....	0-1
Opponent Hitting between .200 and .300.....	2-1
Opponent Hitting between .100 and .200.....	6-0
Opponent Hitting below .100.....	0-0

**BY INDIVIDUAL KILLS**

3+ Double-Digit Individual Kill Totals.....	3-2
2 Double-Digit Individual Kill Totals.....	3-0
1 Double-Digit Individual Kill Totals.....	2-0
0 Double-Digit Individual Kill Totals.....	0-0

## 2024 MATCH-BY-MATCH LEADERS

Date	Opponent	Kills	Hitting Pct.*	Assists	Aces	Digs	Blocks
A.30	at Idaho State	Keen - 13	Rubright (.600)	Hall - 22	Three with - 1	Davis - 8	Rubright - 5
A.31	vs. CSUN	Underwood - 18	Rubright (.393)	Campos - 31	Four with - 1	Bender - 18	Keen - 7
S.1	vs. Seattle	Mitchell - 16	Mitchell (.696)	Hall - 19	Rubright - 4	Bender - 16	Mitchell - 6
S.5	DePaul	Corf/Underwood - 16	Corf (.316)	Hall - 27	Corf/Hall - 2	Bender - 19	Rubright - 6
S.6	Portland State	Rubright - 16	Rubright (.600)	Hall - 27	Bender - 3	Corf - 13	Rubright - 3
S.7	Tulane	Rubright - 15	Rubright (.667)	Campos - 29	Campos/Hall - 2	Bender - 16	Rubright/Underwood - 2
S.13	vs. UC Riverside	Underwood - 16	Cooper (.500)	Campos - 25	Davis - 4	Herron - 18	Rubright - 8
S.14	at California Baptist	Cooper - 10	Rubright (.700)	Gonzalez - 20	Davis - 3	Bender/Davis - 7	Braun/Rubright - 3
S.20	at Gonzaga	Underwood - 17	Rubright (.500)	Gonzalez - 32	Herron - 4	Bender - 20	Rubright - 6
S.21	vs. E. Washington	Underwood - 18	Underwood (.342)	Gonzalez - 60	Rubright/Underwood - 3	Bender - 17	Hughes/Rubright - 4
S.26	at Air Force						
S.28	at New Mexico						
O.3	Utah State						
O.5	Nevada						
O.10	at San José State						
O.12	at Fresno State						
O.17	Colorado State						
O.19	Wyoming						
O.22	UNLV						
O.24	at Boise State						
O.31	at Wyoming						
N.2	at Colorado State						
N.7	Fresno State						
N.9	San José State						
N.14	at Nevada						
N.16	at Utah State						
N.21	New Mexico						
N.23	Air Force						

\* - min. 7 kills

### PRESEASON PROGNOSTICATIONS

- > In a vote of the league's 11 head coaches, San Diego State was pegged for a seventh-place finish in the 2024 Mountain West preseason coaches poll released on Aug. 14.
- > The Aztecs collected 47 points, topping New Mexico (39 pts), San José State (32 pts), Air Force (25 pts) and Nevada (12 pts).
- > Colorado State (98 pts) finished comfortably ahead of defending regular-season champion Utah State (84 pts) for the top spot, garnering eight first-place votes compared to the Aggies' two. In addition, Boise State (77 pts) occupied the third position, followed by defending conference tournament champion Fresno State (71 pts) and UNLV (65 pts), which received the remaining first-place vote, while Wyoming (56 pts) was sixth.
- > The top six teams in the conference standings will qualify for the Mountain West Championship, set for Nov. 27-30 in Las Vegas, Nevada.
- > In the 25-year history of the Mountain West, SDSU has finished first (2012), second (2002, 2011), fourth (2000, 2001, 2003, 2013, 2017), fifth (2005, 2015, 2019), sixth (1999, 2004, 2006, 2009, 2010, 2014, 2016, 2022), seventh (2008), eighth (2007, 2018, 2020), and ninth (2021, 2023) in the final league standings.

### 2024 Mountain West Preseason Poll

Rk. Team (1st-place votes), Pts.

1. Colorado State (8) - 98
2. Utah State (2) - 84
3. Boise State - 77
4. Fresno State - 71
5. UNLV (1) - 65
6. Wyoming - 56
7. San Diego State - 47
8. New Mexico - 39
9. San José State - 32
10. Air Force - 25
11. Nevada - 12

### NEW FACE ON COACHING STAFF

- > San Diego State volleyball head coach Brent Hilliard announced the hiring of Kristen Gengenbacher as assistant coach and recruiting coordinator for the Aztec program on June 6, 2024.
- > Gengenbacher is no stranger to the local volleyball scene, earning four varsity letters from 2014-17 as

a star setter at the University of San Diego, where she played for Hilliard during his previous tenure as the Toreros' associate head coach.

- > A highly decorated player at USD, Gengenbacher dished out 3,729 assists for her career, which ranks third in program history. As a senior, she garnered West Coast Conference Player of the Year accolades and received third-team AVCA All-America recognition after leading the Toreros to the WCC championship and a second-round appearance in the NCAA Tournament.
- > In addition, Gengenbacher merited all-WCC honorable mention following her sophomore and junior campaigns after earning a spot on the WCC all-freshman team in 2014.
- > Following her stint with the Toreros, Gengenbacher played one season of beach volleyball at the University of Washington, where she served as team captain and led the Huskies with 13 dual victories while qualifying for a spot in the USAV Collegiate Championships.
- > Gengenbacher also gained valuable international experience as a member of the U.S. National Collegiate Team that toured Europe in the summer of 2017.
- > Gengenbacher received her bachelor's degree in communications from San Diego in 2018 before earning her master's in intercollegiate athletic leadership from Washington in 2019.
- > Upon completing her collegiate studies, Gengenbacher played professionally with the Porfyras volleyball club in Piraeus, Greece, from August 2019 to March 2020.
- > Most recently, Gengenbacher served as head coach of the 18-1 squad at the 540 Volleyball Academy in Fredericksburg, Virginia, preparing a vast array of elite club performers to excel at the collegiate level.
- > Prior to her move to the east coast, Gengenbacher spent one season as an assistant coach with the indoor and beach volleyball programs at MiraCosta College in Oceanside during the 2021-22 campaign, which overlapped a two-year stint in the same capacity with the WAVE Volleyball Club in Del Mar.
- > A native of Quincy, Illinois, Gengenbacher helped her prep team Notre Dame High School capture the Illinois Class 2A state championship as a sophomore. She also lettered in basketball and softball as a prep.

### ON THE HORIZON

- > Following its excursion to the Mountain time zone, San Diego State returns home for a pair of conference matches against Utah State and Nevada. The Aztecs will battle the Aggies on Thursday, Oct. 3, starting at 6 pm. PT, before entertaining the Wolf Pack on Saturday, Oct. 5, beginning at noon.

## 2024 SDSU STARTING LINEUPS

Date	Opponent	Starters						Libero
A.30	at Idaho State	Corf	Underwood	Davis	Hall	Rubright	Keen	Bender
A.31	vs. CSUN	Corf	Underwood	Davis	Hall	Rubright	Keen	Bender
S.1	vs. Seattle	Corf	Underwood	Herron	Hall	Rubright	Mitchell	Bender
S.5	DePaul	Corf	Underwood	Herron	Hall	Rubright	Mitchell	Bender
S.6	Portland State	Corf	Underwood	Hague	Hall	Rubright	Keen	Bender
S.7	Tulane	Corf	Underwood	Hague	Hall	Rubright	Keen	Bender
S.13	vs. UC Riverside	Corf	Underwood	Davis	Campos	Rubright	Cooper	Bender
S.14	at California Baptist	Braun	Underwood	Davis	Campos	Rubright	Cooper	Bender
S.20	at Gonzaga	Braun	Underwood	Davis	Gonzalez	Rubright	Cooper	Bender
S.21	vs. E. Washington	Hughes	Underwood	Davis	Gonzalez	Rubright	Cooper	Bender
S.28	at New Mexico							
S.30	at Air Force							
Q.3	Utah State							
Q.5	Nevada							
Q.10	at San José State							
Q.12	at Fresno State							
Q.17	Colorado State							
Q.19	Wyoming							
Q.22	UNLV							
Q.24	at Boise State							
Q.31	at New Mexico							
N.2	at Colorado State							
N.7	Fresno State							
N.9	San José State							
N.14	at Nevada							
N.16	at Utah State							
N.21	New Mexico							
N.23	Air Force							



# Brent HILLIARD

## Head Coach - Fifth Season at San Diego State

Now entering his fifth season on The Mesa, Hilliard continues his mission to return the Aztecs to elite status in the Mountain West.

In 2023, Hilliard coached a youthful squad that was hounded by nagging injuries throughout the season. Nevertheless, the Scarlet and Black soldiered on, defeating Wyoming on the road in consecutive years after suffering 10 straight defeats there from 2012-21. SDSU also overcame some early adversity to knock off Boise State for the fourth time in the last six meetings.

In addition, the Aztecs experienced several near misses, dropping a trio of five-set thrillers to Mountain West tournament champion Fresno State as well as conference tournament participants Utah State and UNLV.

Under Hilliard's direction, Taylor Underwood garnered all-Mountain West accolades in her first season at San Diego State after transferring from DePaul, finishing sixth in the league with 3.38 kills and 3.88 points per set against conference opponents during the regular season.

In a home match against Air Force, Underwood (.481) blasted a career-high 31 kills, which marked the third-highest figure in the conference during the 2023 campaign. Additionally, the Aztec opposite hitter set a school record for put-aways in the rally scoring era (since 2001) and logged the highest kill total by an SDSU player since 1997.

Scholastic achievement has been a trademark for the Aztec volleyball program, and the 2023 campaign was no different, as seven players landed on the Mountain West all-academic team following the fall semester.

Hilliard continued his success on the recruiting trail, securing the fourth and fifth AVCA High School All-Americans in the past three years with the addition of defensive specialist Gianna Bender and middle blocker/outside hitter Talea Mitchell, who joins Natalie Hughes (2022), Madison Corf (2021) and Kat Cooper (2021) on the Aztecs' talented roster.

In his third season at SDSU in 2022, Hilliard's directed the Aztecs to a late-season surge, as the Scarlet and Black won seven of its last 11 matches to secure the sixth and final spot in the Mountain West Championship. Facing elimination, SDSU rounded into tournament shape with a pair of crucial road victories over Nevada and San José State in the final two matches of the regular season before utilizing that momentum to pull off a thrilling 3-2 upset over No. 3 seed Colorado State in the first round of the MW Championship. The Aztecs' triumph over the Rams marked their first victory over CSU in Fort Collins since 2013, a span of eight visits.

SDSU showed dramatic statistical improvement for its stretch run, posting greater per-set averages and marks in most categories over the final 11 matches compared to the first 20 contests, including kills (13.6 to 12.1), hitting percentage (.222 to .174), service aces (1.58 to 1.24), digs (13.09 to 11.73) and blocks (2.16 to 1.78).

Under Hilliard's tutelage, outside hitter Madison Corf, a former AVCA High School All-American, received all-Mountain West honorable mention during her freshman season after she topped the squad with an average of 2.61 kills per set while ranking second with 282 kills overall.

In addition, opposite hitter Kayla Rivera blossomed under Hilliard's direction, earning all-tournament honors at the MW Championship after tying for the team lead with 25 kills (2.89/set) and seven total blocks (0.78/set) while ranking second with a .362 hitting percentage in two matches.

SDSU also excelled in the classroom that season, as eight players were named to the Mountain West all-academic team.

In the fall of 2021, Hilliard and the Aztecs were faced with another demanding schedule, squaring off against 10 teams that qualified for postseason play.

However, San Diego State had its moments of glory, posting a 3-0 sweep at eventual Mountain West tournament champion Boise State before recording a five-set thriller on the road at UNLV, which went on to capture the NIVC crown.

Individually, Hilliard oversaw the continued rise to prominence of Victoria O'Sullivan, who received all-Mountain West recognition for the second straight season after ranking second in the conference with 3.71 kills per set, as the SDSU outside hitter concluded her illustrious career with 1,026 kills overall.

Hilliard's charges enjoyed another successful year scholastically, with nine Aztecs landing on the Mountain West all-academic team, including Ashley Vanderpan, Kennedy Feuerborn and Serena Hodson, who were presented with the Malik Award, given to SDSU student-athletes who attain a 4.0 GPA.

In his first season with the Scarlet and Black, Hilliard endured a challenging season fraught with COVID-19 protocols, an abbreviated schedule that was postponed until spring, along with injuries to key players.

However, Hilliard and the Aztecs persevered through the 2021 spring campaign, posting a 6-9 record, highlighted by thrilling victories over Boise State on the road and Colorado State at home in the season finale, respectively. Against the Broncos, SDSU defeated a Boise State team that entered the contest with four consecutive 3-0 sweeps. Two weeks later, the Aztecs snapped an 11-match to the Rams dating back to 2014 and logged their first win over CSU in San Diego since 2012.

Under Hilliard's guidance, O'Sullivan garnered all-Mountain West accolades for the first time in her career, as the SDSU junior led the squad with 3.25 kills per set, which ranked seventh in the conference. In addition, seniors Lauren Lee and Erin Gillcrist received MW Defensive Player of the Week recognition following the team's aforementioned wins over Boise State and Colorado State, respectively.

Hilliard's Aztecs also excelled in the classroom, with 12 student-athletes selected to the Mountain West all-academic team, including Lauren Lee, who also merited first-team all-District 8 academic honors from the College Sports Information Directors of America (CoSIDA).

A 2018 inductee to the Southern California Indoor Volleyball Hall of Fame, Hilliard arrived at SDSU with a wealth of experience after achieving 19 years of unparalleled success as an assistant coach at the University of San Diego, where he served as the Toreros' associate head coach since 2007.

During his fruitful tenure, the Toreros qualified for the NCAA Tournament in all but one of his 19 seasons, advancing to the Sweet 16 in 2004, 2006, 2013 and 2018. In addition, Hilliard helped guide the Toreros to nine West Coast Conference championships while his players earned six All-America awards, 12 All-America honorable mentions, 44 all-WCC accolades and 15 freshman all-conference certificates.

Hilliard twice assumed the reins of the USD program on an interim basis while head coach Jennifer Petrie was absent on maternity leave. In 2006, Hilliard was honored as WCC Coach of the Year after guiding the Toreros to a conference championship and a Sweet 16 appearance in the NCAA Tournament. That season, he coached five all-conference honorees, including WCC Player of the Year Kristen Carlson, as USD finished 14th in the final USA Today/Coaches Poll.

The Toreros also flourished under Hilliard's guidance in 2011, racing to a 13-0 start en route a program-best 28-5 record, highlighted by a spot in the second round of the NCAA Tournament. Throughout his stint, USD was consistently ranked among the nation's top 25, climbing to as high as No. 2 during the 2013 campaign and rising to No. 5 in 2016.

"I would like to thank John David Wicker, Jenny Bramer, Dr. Adela de la Torre and the rest of the SDSU search committee for making me feel so welcome during the interview process," Hilliard said. "To be the head coach of such a remarkable women's volleyball program in my family's hometown is truly a once in a lifetime opportunity.

"We are fully committed to work tirelessly to elevate this program back to an elite status on the college volleyball landscape, one that the student body, faculty, community, alumni and, of course, all future Aztecs will take great pride in."

Hilliard played collegiately at Long Beach State, earning All-America honors in each of his four years from 1990-93, including first-team recognition over his final three seasons. A right-side hitter for the 49ers, Hilliard was named the NCAA Men's Volleyball Player of the Year as a junior in 1992 after leading LBSU to a 31-1 record.

In 1991, Hilliard and the 49ers captured the NCAA Championship with a 3-1 victory over USC in the finals, avenging a loss to the Trojans in the title match the year before. He finished his career as the NCAA all-time leader with 3,034 kills.

Additionally, Hilliard was selected to play for Team USA in the 1992 Summer Olympics in Barcelona, Spain, where he helped the Americans capture the bronze medal. The following year, he won a silver medal at the 1993 Pan American Games in Argentina and also owns a bronze medal from the 1991 World Cup.

After receiving his undergraduate degree in 1993 from Long Beach State in political science, Hilliard continued his volleyball career as a professional in Europe from 1995-98, playing two seasons in Belgium and another in the Netherlands. In 1996, Hilliard and the Mastek Volleyball Club captured the Belgian national championship and competed in the European Champions League.

In addition to his collegiate experience, which included a stint as head coach at nearby Cuyamaca College in 1999 and 2000, Hilliard has also coached for the past 11 years at Wave Volleyball Club in Del Mar, the premier volleyball club in San Diego County.

Hilliard resides in San Diego with his wife Beth, daughter Audrey and son Christopher.



# 2024 AZTEC VOLLEYBALL PHOTO ROSTER



**Fatimah HALL**  
S | 5-9 | So.

1



**Gianna BENDER**  
DS/L | 5-6 | Fr.

2



**McKenna DOUGLAS**  
DS/L | 5-7 | Jr.

3



**Amber KEEN**  
MB | 6-5 | So.

4



**Talea MITCHELL**  
MB/OH | 6-1 | Fr.

5



**Madison CORF**  
OH | 5-11 | Jr.

7



**Shea RUBRIGHT**  
MB | 6-5 | Gr.

9



**Taylor UNDERWOOD**  
OPP/OH | 6-2 | Jr.

10



**Campbell HAGUE**  
MB/OPP | 6-2 | So.

11



**Cara BRAUN**  
OH | 6-1 | So.

12



**Jasmine DAVIS**  
OH | 6-1 | Gr.

13



**Mikela LABNO**  
OH | 6-2 | Sr.

15



**Sarena GONZALEZ**  
S | 5-8 | Jr.

16



**Andrea CAMPOS**  
S | 5-8 | Gr.

17



**Natalie HUGHES**  
OPP | 6-4 | So.

19



**Keira HERRON**  
DS/L | 5-7 | Jr.

20

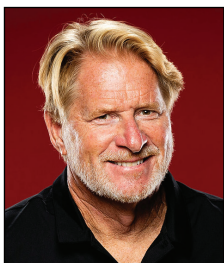


**Kat COOPER**  
MB | 6-1 | Jr.

21



**Brent HILLIARD**  
Head Coach



**Steve TIMMONS**  
Assistant Coach



**Kristen GENGENBACHER**  
Assistant Coach/  
Recruiting Coordinator



**Noly MON**  
Assistant Coach



**Bethany KEPNER**  
Director of  
Volleyball Operations



### 2024-25 San Diego St. Women's Volleyball Combined Team Statistics All games

**Game Records**

Overall	Conference	Home	Away	Neutral
8 - 2	0 - 0	2 - 1	3 - 0	3 - 1

**Team Box Score**

##	Player	SP	Attack					Set		Serve			Dig			Blocking					PTS	
			K	K/S	E	TA	PCT	A	A/S	SA	SE	SA/S	RE	DIG	DIG/S	BS	BA	TOT/S	BLK/S	BE		BHE
1	Hall, Fatimah	24	2	0.08	0	2	1.000	140	5.83	5	8	0.21	0	33	1.38	0	0	0	0.00	0	0	7.0
2	Bender, Gianna	40	0	0.00	0	4	.000	37	0.93	9	18	0.23	17	134	3.35	0	0	0	0.00	0	0	9.0
4	Keen, Amber	19	31	1.63	9	65	.338	2	0.11	0	0	0.00	0	2	0.11	2	13	15	0.79	0	0	39.5
5	Mitchell, Talea	19	26	1.37	9	60	.283	0	0.00	0	0	0.00	0	1	0.05	2	10	12	0.63	0	0	33.0
7	Corf, Madison	25	65	2.60	25	157	.255	5	0.20	3	12	0.12	5	45	1.80	0	11	11	0.44	1	0	73.5
9	Rubright, Shea	41	98	2.39	11	174	.500	4	0.10	14	19	0.34	0	16	0.39	11	34	45	1.10	1	1	140.0
10	Underwood, Taylor	41	134	3.27	50	307	.274	1	0.02	5	6	0.12	0	27	0.66	2	24	26	0.63	1	0	153.0
11	Hague, Campbell	25	35	1.40	22	117	.111	3	0.12	0	1	0.00	4	7	0.28	1	4	5	0.20	0	0	38.0
12	Braun, Cara	20	18	0.90	11	53	.132	3	0.15	0	1	0.00	4	23	1.15	0	8	8	0.40	0	0	22.0
13	Davis, Jasmine	25	63	2.52	16	178	.264	5	0.20	10	2	0.40	16	70	2.80	0	3	3	0.12	2	0	74.5
16	Gonzalez, Sarena	21	1	0.05	1	9	.000	142	6.76	2	5	0.10	0	35	1.67	1	0	1	0.05	0	0	4.0
17	Campos, Andrea	34	1	0.03	0	4	.250	184	5.41	7	3	0.21	0	48	1.41	0	0	0	0.00	0	0	8.0
19	Hughes, Natalie	38	46	1.21	15	130	.238	0	0.00	0	1	0.00	0	10	0.26	1	19	20	0.53	2	0	56.5
20	Herron, Keira	41	2	0.05	1	3	.333	11	0.27	12	8	0.29	9	83	2.02	0	0	0	0.00	0	0	14.0
21	Cooper, Kat	23	46	2.00	15	91	.341	0	0.00	0	0	0.00	0	5	0.22	1	12	13	0.57	1	0	53.0
<b>SAN DIEGO ST.</b>		<b>41</b>	<b>568</b>	<b>13.85</b>	<b>185</b>	<b>1354</b>	<b>.283</b>	<b>537</b>	<b>13.10</b>	<b>67</b>	<b>84</b>	<b>1.63</b>	<b>73</b>	<b>539</b>	<b>13.15</b>	<b>21</b>	<b>138</b>	<b>90</b>	<b>2.20</b>	<b>8</b>	<b>1</b>	<b>725.0</b>
<b>Opponents</b>		<b>41</b>	<b>479</b>	<b>11.68</b>	<b>213</b>	<b>1323</b>	<b>.201</b>	<b>451</b>	<b>11.00</b>	<b>73</b>	<b>68</b>	<b>1.78</b>	<b>67</b>	<b>500</b>	<b>12.20</b>	<b>22</b>	<b>100</b>	<b>72</b>	<b>1.76</b>	<b>11</b>	<b>1</b>	<b>624.0</b>

**Team statistics**

	SDSU	OPP
<b>ATTACK</b>		
Kills	568	479
Errors	185	213
Total Attacks	1354	1323
Attack Pct	.283	.201
Kills/Set	13.85	11.68
<b>SET</b>		
Assists	537	451
Attempts	1384	1374
Assist Pct	.388	.328
Assists/Set	13.10	11.00
<b>SERVE</b>		
Aces	67	73
Errors	84	68
Attempts	926	838
Serve Pct	.909	.919
Aces/Set	1.63	1.78
<b>SERVE RECEPTIONS</b>		
Errors	73	67
Errors/Set	1.78	1.63
Attempts	770	842
Reception Pct	.905	.998
<b>DEFENSE</b>		
Digs	539	500
Digs/Set	13.15	12.20
<b>BLOCKING</b>		
Block solo	21	22
Block Assist	138	100
Total Blocks	90	72
Blocks/Set	2.20	1.76
Block Errors	8	11
Ball handling errors	1	1
<b>ATTENDANCE</b>		
Total	827	576
Dates/Avg Per Date	3/276	3/192
Neutral Site #/Avg	4/86	-
Current win streak	0	-
Home win streak	0	-

**Team Results**

Date	Opponent	Score	Score-by-set	Att.
08/30/2024	at Idaho St.	W 3-0	25-22,25-23,25-18	0
08/31/2024	vs CSUN	L 2-3	25-19,21-25,14-25,32-30,10-15	50
09/01/2024	vs Seattle U	W 3-0	25-18,25-16,25-14	0
09/05/2024	DePaul	W 3-1	25-21,20-25,25-16,25-22	266
09/06/2024	Portland St.	W 3-2	25-10,21-25,18-25,25-21,15-13	287
09/07/2024	Tulane	L 1-3	26-28,21-25,25-14,24-26	274
09/13/2024	vs UC Riverside	W 3-1	23-25,25-20,25-23,25-21	74
09/14/2024	at California Baptist	W 3-0	25-11,25-22,25-22	282
09/20/2024	at Gonzaga	W 3-2	25-14,25-14,21-25,18-25,15-12	294
09/21/2024	vs Eastern Wash.	W 3-2	23-25,25-19,25-20,21-25,15-12	218



**San Diego St. Women's Volleyball**  
**Individual Career Summaries**  
**All games**

**BENDER, Gianna**

SEASON	TEAM	SM-MP	K	K/S	E	TA	PCT	A	A/S	SA	SA/S	SE	DIG	D/S	RE	BS	BA	TB	B/S	BE	BHE	PTS	PTS/S
2024-25	SDSU	40-10	0	0.00	0	4	.000	37	0.93	9	0.23	18	134	3.35	17	0	0	0	0.00	0	0	9.0	0.23
<b>TOTAL</b>		<b>40 - 10</b>	<b>0</b>	<b>0.00</b>	<b>0</b>	<b>4</b>	<b>.000</b>	<b>37</b>	<b>0.93</b>	<b>9</b>	<b>0.23</b>	<b>18</b>	<b>134</b>	<b>3.35</b>	<b>17</b>	<b>0</b>	<b>0</b>	<b>0</b>	<b>0.00</b>	<b>0</b>	<b>0</b>	<b>9.0</b>	<b>0.23</b>

**Single Game Highs**

Statistic	Value	
Attacks	2	vs CSUN 08/31/24
Assists	8	at Gonzaga 09/20/24
Serve Aces	3	vs Portland St. 09/06/24
Digs	20	at Gonzaga 09/20/24
PCT	.000	vs CSUN 08/31/24, vs Seattle U 09/01/24, at California Baptist 09/14/24

**BRAUN, Cara**

SEASON	TEAM	SM-MP	K	K/S	E	TA	PCT	A	A/S	SA	SA/S	SE	DIG	D/S	RE	BS	BA	TB	B/S	BE	BHE	PTS	PTS/S
2023-24	SDSU	17-7	28	1.65	16	60	.200	0	0.00	1	0.06	3	3	0.18	3	1	1	2	0.12	1	0	30.5	1.79
2024-25	SDSU	20-7	18	0.90	11	53	.132	3	0.15	0	0.00	1	23	1.15	4	0	8	8	0.40	0	0	22.0	1.10
<b>TOTAL</b>		<b>37 - 14</b>	<b>46</b>	<b>1.24</b>	<b>27</b>	<b>113</b>	<b>.168</b>	<b>3</b>	<b>0.08</b>	<b>1</b>	<b>0.03</b>	<b>4</b>	<b>26</b>	<b>0.70</b>	<b>7</b>	<b>1</b>	<b>9</b>	<b>10</b>	<b>0.27</b>	<b>1</b>	<b>0</b>	<b>52.5</b>	<b>1.42</b>

**Single Game Highs**

Statistic	Value	
Kills	14	at Fresno St. 10/12/23
Attacks	26	at Fresno St. 10/12/23
Assists	1	vs UC Riverside 09/13/24, at Gonzaga 09/20/24, vs Eastern Wash. 09/21/24
Serve Aces	1	vs UC Santa Barbara 09/02/23
Digs	10	vs Eastern Wash. 09/21/24
Blocks	3	at California Baptist 09/14/24, at Gonzaga 09/20/24
Block solos	1	vs Cal St. Fullerton 08/25/23
Block assists	3	at Gonzaga 09/20/24, at California Baptist 09/14/24
PCT	1.000	vs Portland St. 09/06/24



**San Diego St. Women's Volleyball**  
**Individual Career Summaries**  
**All games**

**CAMPOS, Andrea**

SEASON	TEAM	SM-MP	K	K/S	E	TA	PCT	A	A/S	SA	SA/S	SE	DIG	D/S	RE	BS	BA	TB	B/S	BE	BHE	PTS	PTS/S
2020-21	VU	23-6	3	0.13	1	7	.286	94	4.09	2	0.09	4	22	0.96	0	0	1	1	0.04	0	0	5.5	0.24
2021-22	VU	40-15	15	0.38	1	39	.359	297	7.43	5	0.13	8	72	1.80	0	0	1	1	0.03	3	3	20.5	0.51
2022-23	VU	91-27	27	0.30	4	104	.221	551	6.05	26	0.29	20	162	1.78	0	2	7	9	0.10	1	3	58.5	0.64
2023-24	VU	118-31	45	0.38	13	185	.173	1161	9.84	37	0.31	28	241	2.04	0	3	25	28	0.24	1	7	97.5	0.83
2024-25	SDSU	34-9	1	0.03	0	4	.250	184	5.41	7	0.21	3	48	1.41	0	0	0	0	0.00	0	0	8.0	0.24
<b>TOTAL FOR SDSU</b>		<b>34 - 9</b>	<b>1</b>	<b>0.03</b>	<b>0</b>	<b>4</b>	<b>.250</b>	<b>184</b>	<b>5.41</b>	<b>7</b>	<b>0.21</b>	<b>3</b>	<b>48</b>	<b>1.41</b>	<b>0</b>	<b>0</b>	<b>0</b>	<b>0</b>	<b>0.00</b>	<b>0</b>	<b>0</b>	<b>8.0</b>	<b>0.24</b>
<b>TOTAL</b>		<b>306 - 88</b>	<b>91</b>	<b>0.30</b>	<b>19</b>	<b>339</b>	<b>.212</b>	<b>2287</b>	<b>7.47</b>	<b>77</b>	<b>0.25</b>	<b>63</b>	<b>545</b>	<b>1.78</b>	<b>0</b>	<b>5</b>	<b>34</b>	<b>39</b>	<b>0.13</b>	<b>5</b>	<b>13</b>	<b>190.0</b>	<b>0.62</b>

**Single Game Highs**

Statistic	Value	
Kills	5	vs Providence 11/12/21, vs Milwaukee 08/26/23
Attacks	17	vs Seton Hall 10/01/22
Assists	59	vs Milwaukee 08/26/23
Serve Aces	4	6 times
Digs	17	at Lehigh 09/13/23
Blocks	4	at Penn 09/06/23
Block solos	1	5 times
Block assists	4	at Penn 09/06/23
PCT	1.000	vs Tulane 09/07/24

**COOPER, Kat**

SEASON	TEAM	SM-MP	K	K/S	E	TA	PCT	A	A/S	SA	SA/S	SE	DIG	D/S	RE	BS	BA	TB	B/S	BE	BHE	PTS	PTS/S
2022-23	SDSU	80-26	81	1.01	37	231	.190	3	0.04	2	0.03	12	25	0.31	1	5	30	35	0.44	3	1	103.0	1.29
2023-24	SDSU	37-14	48	1.30	27	121	.174	3	0.08	3	0.08	5	10	0.27	0	1	21	22	0.59	5	0	62.5	1.69
2024-25	SDSU	23-7	46	2.00	15	91	.341	0	0.00	0	0.00	0	5	0.22	0	1	12	13	0.57	1	0	53.0	2.30
<b>TOTAL</b>		<b>140 - 47</b>	<b>175</b>	<b>1.25</b>	<b>79</b>	<b>443</b>	<b>.217</b>	<b>6</b>	<b>0.04</b>	<b>5</b>	<b>0.04</b>	<b>17</b>	<b>40</b>	<b>0.29</b>	<b>1</b>	<b>7</b>	<b>63</b>	<b>70</b>	<b>0.50</b>	<b>9</b>	<b>1</b>	<b>218.5</b>	<b>1.56</b>

**Single Game Highs**

Statistic	Value	
Kills	12	vs Eastern Wash. 09/21/24
Attacks	26	vs Eastern Wash. 09/21/24
Assists	1	6 times
Serve Aces	2	vs Kansas St. 08/26/23
Digs	5	vs UC San Diego 08/27/22
Blocks	5	vs Cal St. Fullerton 08/25/23
Block solos	1	7 times
Block assists	4	6 times
PCT	1.000	vs Seattle U 09/01/24





**San Diego St. Women's Volleyball**  
**Individual Career Summaries**  
**All games**

**CORF, Madison**

SEASON	TEAM	SM-MP	K	K/S	E	TA	PCT	A	A/S	SA	SA/S	SE	DIG	D/S	RE	BS	BA	TB	B/S	BE	BHE	PTS	PTS/S
2022-23	SDSU	108-31	282	2.61	180	732	.139	12	0.11	16	0.15	39	172	1.59	63	5	20	25	0.23	10	2	313.0	2.90
2023-24	SDSU	83-24	213	2.57	121	544	.169	5	0.06	7	0.08	19	74	0.89	25	8	26	34	0.41	6	0	241.0	2.90
2024-25	SDSU	25-7	65	2.60	25	157	.255	5	0.20	3	0.12	12	45	1.80	5	0	11	11	0.44	1	0	73.5	2.94
<b>TOTAL</b>		<b>216 - 62</b>	<b>560</b>	<b>2.59</b>	<b>326</b>	<b>1433</b>	<b>.163</b>	<b>22</b>	<b>0.10</b>	<b>26</b>	<b>0.12</b>	<b>70</b>	<b>291</b>	<b>1.35</b>	<b>93</b>	<b>13</b>	<b>57</b>	<b>70</b>	<b>0.32</b>	<b>17</b>	<b>2</b>	<b>627.5</b>	<b>2.91</b>

**Single Game Highs**

Statistic	Value	
Kills	22	vs Nevada 09/24/22
Attacks	47	vs Nevada 09/24/22
Assists	2	at Nevada 11/17/22, vs UNLV 11/10/22, vs Colorado St. 10/15/22, vs Navy 09/09/23
Serve Aces	4	vs Pepperdine 09/01/23
Digs	19	at Nevada 11/17/22
Blocks	4	at Wyoming 09/30/23
Block solos	2	vs Fresno St. 11/04/23
Block assists	3	at Wyoming 09/30/23, at New Mexico 10/26/23, at San Jose St. 11/16/23, vs DePaul 09/05/24
PCT	1.000	vs UC Riverside 09/13/24

**DAVIS, Jasmine**

SEASON	TEAM	SM-MP	K	K/S	E	TA	PCT	A	A/S	SA	SA/S	SE	DIG	D/S	RE	BS	BA	TB	B/S	BE	BHE	PTS	PTS/S
2019-20	UConn	86-25	203	2.36	96	656	.163	16	0.19	15	0.17	9	220	2.56	21	5	25	30	0.35	6	2	235.5	2.74
2020-21	UConn	33-9	65	1.97	30	204	.172	3	0.09	7	0.21	7	67	2.03	17	0	9	9	0.27	2	0	76.5	2.32
2021-22	UConn	123-34	337	2.74	158	992	.180	26	0.21	34	0.28	28	305	2.48	44	19	49	68	0.55	5	0	414.5	3.37
2022-23	UConn	101-27	292	2.89	129	888	.184	23	0.23	35	0.35	20	238	2.36	34	11	33	44	0.44	4	1	354.5	3.51
2024-25	SDSU	25-6	63	2.52	16	178	.264	5	0.20	10	0.40	2	70	2.80	16	0	3	3	0.12	2	0	74.5	2.98
<b>TOTAL FOR SDSU</b>		<b>25 - 6</b>	<b>63</b>	<b>2.52</b>	<b>16</b>	<b>178</b>	<b>.264</b>	<b>5</b>	<b>0.20</b>	<b>10</b>	<b>0.40</b>	<b>2</b>	<b>70</b>	<b>2.80</b>	<b>16</b>	<b>0</b>	<b>3</b>	<b>3</b>	<b>0.12</b>	<b>2</b>	<b>0</b>	<b>74.5</b>	<b>2.98</b>
<b>TOTAL</b>		<b>368 - 101</b>	<b>960</b>	<b>2.61</b>	<b>429</b>	<b>2918</b>	<b>.182</b>	<b>73</b>	<b>0.20</b>	<b>101</b>	<b>0.27</b>	<b>66</b>	<b>900</b>	<b>2.45</b>	<b>132</b>	<b>35</b>	<b>119</b>	<b>154</b>	<b>0.42</b>	<b>19</b>	<b>3</b>	<b>1156</b>	<b>3.14</b>

**Single Game Highs**

Statistic	Value	
Kills	22	at Houston 11/10/19
Attacks	61	vs Bryant 09/17/22
Assists	3	vs NJIT 09/18/21
Serve Aces	5	vs Providence 10/19/22, at St. John's (NY) 11/12/21
Digs	19	vs UCF 11/16/19
Blocks	6	vs Bryant 09/17/22
Block solos	4	vs Villanova 10/13/22
Block assists	6	vs Bryant 09/17/22



**San Diego St. Women's Volleyball**  
**Individual Career Summaries**  
**All games**

**DOUGLAS, Mckenna**

SEASON	TEAM	SM-MP	K	K/S	E	TA	PCT	A	A/S	SA	SA/S	SE	DIG	D/S	RE	BS	BA	TB	B/S	BE	BHE	PTS	PTS/S
2022-23	SDSU	37-10	2	0.05	0	7	.286	38	1.03	12	0.32	10	112	3.03	10	0	0	0	0.00	0	1	14.0	0.38
2023-24	SDSU	107-29	2	0.02	1	7	.143	66	0.62	17	0.16	27	398	3.72	57	0	0	0	0.00	0	1	19.0	0.18
<b>TOTAL</b>		<b>144 - 39</b>	<b>4</b>	<b>0.03</b>	<b>1</b>	<b>14</b>	<b>.214</b>	<b>104</b>	<b>0.72</b>	<b>29</b>	<b>0.20</b>	<b>37</b>	<b>510</b>	<b>3.54</b>	<b>67</b>	<b>0</b>	<b>0</b>	<b>0</b>	<b>0.00</b>	<b>0</b>	<b>2</b>	<b>33.0</b>	<b>0.23</b>

**Single Game Highs**

Statistic	Value	
Kills	1	vs UC San Diego 08/27/22, at Fresno St. 09/27/22, at UNLV 09/19/23, vs New Mexico 10/07/23
Attacks	4	at UNLV 10/01/22
Assists	7	vs Nevada 09/24/22
Serve Aces	5	at Fresno St. 09/27/22
Digs	26	vs Nevada 09/24/22

**GONZALEZ, Sarena**

SEASON	TEAM	SM-MP	K	K/S	E	TA	PCT	A	A/S	SA	SA/S	SE	DIG	D/S	RE	BS	BA	TB	B/S	BE	BHE	PTS	PTS/S
2022-23	SDSU	107-31	3	0.03	0	13	.231	490	4.58	10	0.09	22	107	1.00	1	0	0	0	0.00	0	11	13.0	0.12
2023-24	SDSU	103-28	5	0.05	2	20	.150	509	4.94	4	0.04	14	141	1.37	0	0	0	0	0.00	0	14	9.0	0.09
2024-25	SDSU	21-7	1	0.05	1	9	.000	142	6.76	2	0.10	5	35	1.67	0	1	0	1	0.05	0	0	4.0	0.19
<b>TOTAL</b>		<b>231 - 66</b>	<b>9</b>	<b>0.04</b>	<b>3</b>	<b>42</b>	<b>.143</b>	<b>1141</b>	<b>4.94</b>	<b>16</b>	<b>0.07</b>	<b>41</b>	<b>283</b>	<b>1.23</b>	<b>1</b>	<b>1</b>	<b>0</b>	<b>1</b>	<b>0.00</b>	<b>0</b>	<b>25</b>	<b>26.0</b>	<b>0.11</b>

**Single Game Highs**

Statistic	Value	
Kills	2	vs Denver 09/08/23
Attacks	6	at UNLV 10/01/22
Assists	60	vs Eastern Wash. 09/21/24
Serve Aces	3	vs Maryland 09/09/22
Digs	14	vs Eastern Wash. 09/21/24
Blocks	1	at Gonzaga 09/20/24
Block solos	1	at Gonzaga 09/20/24
PCT	1.000	at California Baptist 09/14/24



**San Diego St. Women's Volleyball**  
**Individual Career Summaries**  
**All games**

**HAGUE, Campbell**

SEASON	TEAM	SM-MP	K	K/S	E	TA	PCT	A	A/S	SA	SA/S	SE	DIG	D/S	RE	BS	BA	TB	B/S	BE	BHE	PTS	PTS/S
2023-24	SDSU	54-18	71	1.31	44	232	.116	2	0.04	0	0.00	2	11	0.20	1	0	13	13	0.24	0	1	77.5	1.44
2024-25	SDSU	25-8	35	1.40	22	117	.111	3	0.12	0	0.00	1	7	0.28	4	1	4	5	0.20	0	0	38.0	1.52
<b>TOTAL</b>		<b>79 - 26</b>	<b>106</b>	<b>1.34</b>	<b>66</b>	<b>349</b>	<b>.115</b>	<b>5</b>	<b>0.06</b>	<b>0</b>	<b>0.00</b>	<b>3</b>	<b>18</b>	<b>0.23</b>	<b>5</b>	<b>1</b>	<b>17</b>	<b>18</b>	<b>0.23</b>	<b>0</b>	<b>1</b>	<b>115.5</b>	<b>1.46</b>

**Single Game Highs**

Statistic	Value	
Kills	10	vs DePaul 09/05/24, vs Tulane 09/07/24
Attacks	25	vs DePaul 09/05/24, vs Portland St. 09/06/24
Assists	2	at San Jose St. 11/16/23
Digs	4	at Wyoming 09/30/23
Blocks	3	vs Nevada 11/02/23, vs Fresno St. 11/04/23
Block solos	1	vs Seattle U 09/01/24
Block assists	3	vs Nevada 11/02/23, vs Fresno St. 11/04/23

**HALL, Fatimah**

SEASON	TEAM	SM-MP	K	K/S	E	TA	PCT	A	A/S	SA	SA/S	SE	DIG	D/S	RE	BS	BA	TB	B/S	BE	BHE	PTS	PTS/S
2023-24	SDSU	107-29	13	0.12	8	53	.094	627	5.86	10	0.09	27	179	1.67	0	0	6	6	0.06	0	22	26.0	0.24
2024-25	SDSU	24-6	2	0.08	0	2	1.000	140	5.83	5	0.21	8	33	1.38	0	0	0	0	0.00	0	0	7.0	0.29
<b>TOTAL</b>		<b>131 - 35</b>	<b>15</b>	<b>0.11</b>	<b>8</b>	<b>55</b>	<b>.127</b>	<b>767</b>	<b>5.85</b>	<b>15</b>	<b>0.11</b>	<b>35</b>	<b>212</b>	<b>1.62</b>	<b>0</b>	<b>0</b>	<b>6</b>	<b>6</b>	<b>0.05</b>	<b>0</b>	<b>22</b>	<b>33.0</b>	<b>0.25</b>

**Single Game Highs**

Statistic	Value	
Kills	4	vs Cal St. Fullerton 08/25/23
Attacks	8	vs Cal St. Fullerton 08/25/23
Assists	47	vs Cal St. Fullerton 08/25/23
Serve Aces	2	vs Boise St. 10/19/23, vs DePaul 09/05/24, vs Tulane 09/07/24
Digs	13	vs Air Force 10/05/23
Blocks	1	6 times
Block assists	1	6 times
PCT	1.000	at Idaho St. 08/30/24, vs Tulane 09/07/24



**San Diego St. Women's Volleyball**  
**Individual Career Summaries**  
**All games**

**HERRON, Keira**

SEASON	TEAM	SM-MP	K	K/S	E	TA	PCT	A	A/S	SA	SA/S	SE	DIG	D/S	RE	BS	BA	TB	B/S	BE	BHE	PTS	PTS/S
2022-23	OSU	62-25	0	0.00	0	2	.000	6	0.10	7	0.11	15	38	0.61	4	0	0	0	0.00	0	0	7.0	0.11
2023-24	OSU	70-19	1	0.01	1	7	.000	14	0.20	8	0.11	15	113	1.61	27	0	0	0	0.00	0	1	9.0	0.13
2024-25	SDSU	41-10	2	0.05	1	3	.333	11	0.27	12	0.29	8	83	2.02	9	0	0	0	0.00	0	0	14.0	0.34
<b>TOTAL FOR SDSU</b>		<b>41 - 10</b>	<b>2</b>	<b>0.05</b>	<b>1</b>	<b>3</b>	<b>.333</b>	<b>11</b>	<b>0.27</b>	<b>12</b>	<b>0.29</b>	<b>8</b>	<b>83</b>	<b>2.02</b>	<b>9</b>	<b>0</b>	<b>0</b>	<b>0</b>	<b>0.00</b>	<b>0</b>	<b>0</b>	<b>14.0</b>	<b>0.34</b>
<b>TOTAL</b>		<b>173 - 54</b>	<b>3</b>	<b>0.02</b>	<b>2</b>	<b>12</b>	<b>.083</b>	<b>31</b>	<b>0.18</b>	<b>27</b>	<b>0.16</b>	<b>38</b>	<b>234</b>	<b>1.35</b>	<b>40</b>	<b>0</b>	<b>0</b>	<b>0</b>	<b>0.00</b>	<b>0</b>	<b>1</b>	<b>30.0</b>	<b>0.17</b>

**Single Game Highs**

Statistic	Value	
Kills	1	vs Utah 11/05/23, vs Portland St. 09/06/24, vs UC Riverside 09/13/24
Attacks	3	vs California 10/22/23
Assists	3	vs Colorado 11/03/23
Serve Aces	4	at Gonzaga 09/20/24
Digs	18	vs California 10/22/23, vs UC Riverside 09/13/24
PCT	1.000	vs Portland St. 09/06/24, vs UC Riverside 09/13/24

**HUGHES, Natalie**

SEASON	TEAM	SM-MP	K	K/S	E	TA	PCT	A	A/S	SA	SA/S	SE	DIG	D/S	RE	BS	BA	TB	B/S	BE	BHE	PTS	PTS/S
2023-24	SDSU	13-8	7	0.54	8	32	-.031	1	0.08	0	0.00	0	1	0.08	0	0	3	3	0.23	0	0	8.5	0.65
2024-25	SDSU	38-10	46	1.21	15	130	.238	0	0.00	0	0.00	1	10	0.26	0	1	19	20	0.53	2	0	56.5	1.49
<b>TOTAL</b>		<b>51 - 18</b>	<b>53</b>	<b>1.04</b>	<b>23</b>	<b>162</b>	<b>.185</b>	<b>1</b>	<b>0.02</b>	<b>0</b>	<b>0.00</b>	<b>1</b>	<b>11</b>	<b>0.22</b>	<b>0</b>	<b>1</b>	<b>22</b>	<b>23</b>	<b>0.45</b>	<b>2</b>	<b>0</b>	<b>65.0</b>	<b>1.27</b>

**Single Game Highs**

Statistic	Value	
Kills	11	vs Eastern Wash. 09/21/24
Attacks	25	vs Eastern Wash. 09/21/24
Assists	1	vs New Mexico 10/07/23
Digs	4	vs Eastern Wash. 09/21/24
Blocks	4	vs Eastern Wash. 09/21/24, vs CSUN 08/31/24
Block solos	1	vs CSUN 08/31/24
Block assists	4	vs Eastern Wash. 09/21/24





**San Diego St. Women's Volleyball**  
**Individual Career Summaries**  
**All games**

**KEEN, Amber**

SEASON	TEAM	SM-MP	K	K/S	E	TA	PCT	A	A/S	SA	SA/S	SE	DIG	D/S	RE	BS	BA	TB	B/S	BE	BHE	PTS	PTS/S
2023-24	SDSU	36-14	38	1.06	9	98	.296	1	0.03	0	0.00	1	7	0.19	1	4	20	24	0.67	2	0	52.0	1.44
2024-25	SDSU	19-7	31	1.63	9	65	.338	2	0.11	0	0.00	0	2	0.11	0	2	13	15	0.79	0	0	39.5	2.08
<b>TOTAL</b>		<b>55 - 21</b>	<b>69</b>	<b>1.25</b>	<b>18</b>	<b>163</b>	<b>.313</b>	<b>3</b>	<b>0.05</b>	<b>0</b>	<b>0.00</b>	<b>1</b>	<b>9</b>	<b>0.16</b>	<b>1</b>	<b>6</b>	<b>33</b>	<b>39</b>	<b>0.71</b>	<b>2</b>	<b>0</b>	<b>91.5</b>	<b>1.66</b>

**Single Game Highs**

Statistic	Value	
Kills	13	at Idaho St. 08/30/24
Attacks	20	at Idaho St. 08/30/24
Assists	2	at Idaho St. 08/30/24
Digs	1	9 times
Blocks	7	vs CSUN 08/31/24
Block solos	3	at Utah St. 10/21/23
Block assists	6	vs CSUN 08/31/24
PCT	1.000	at California Baptist 09/14/24

**LABNO, Mikela**

SEASON	TEAM	SM-MP	K	K/S	E	TA	PCT	A	A/S	SA	SA/S	SE	DIG	D/S	RE	BS	BA	TB	B/S	BE	BHE	PTS	PTS/S
2021-22	SDSU	73-24	132	1.81	79	391	.136	4	0.05	3	0.04	16	65	0.89	19	7	18	25	0.34	0	1	151.0	2.07
2022-23	SDSU	95-26	204	2.15	106	559	.175	9	0.09	0	0.00	2	44	0.46	12	4	21	25	0.26	0	0	218.5	2.30
2023-24	SDSU	81-26	151	1.86	68	379	.219	4	0.05	0	0.00	1	36	0.44	10	5	16	21	0.26	3	0	164.0	2.02
<b>TOTAL</b>		<b>249 - 76</b>	<b>487</b>	<b>1.96</b>	<b>253</b>	<b>1329</b>	<b>.176</b>	<b>17</b>	<b>0.07</b>	<b>3</b>	<b>0.01</b>	<b>19</b>	<b>145</b>	<b>0.58</b>	<b>41</b>	<b>16</b>	<b>55</b>	<b>71</b>	<b>0.29</b>	<b>3</b>	<b>1</b>	<b>533.5</b>	<b>2.14</b>

**Single Game Highs**

Statistic	Value	
Kills	16	at Boise St. 10/08/22
Attacks	35	at New Mexico 10/20/22
Assists	2	vs Texas Southern 09/17/21, at Fresno St. 09/27/22, vs Maryland 09/09/22, at San Jose St. 11/16/23
Serve Aces	2	at Long Beach St. 09/14/21
Digs	13	vs UC Riverside 09/18/21
Blocks	4	at Wyoming 10/29/22
Block solos	2	vs San Diego 09/11/21, vs San Jose St. 09/23/23, at Utah St. 10/21/23
Block assists	4	at Wyoming 10/29/22



**San Diego St. Women's Volleyball**  
**Individual Career Summaries**  
**All games**

**MITCHELL, Talea**

SEASON	TEAM	SM-MP	K	K/S	E	TA	PCT	A	A/S	SA	SA/S	SE	DIG	D/S	RE	BS	BA	TB	B/S	BE	BHE	PTS	PTS/S
2024-25	SDSU	19-7	26	1.37	9	60	.283	0	0.00	0	0.00	0	1	0.05	0	2	10	12	0.63	0	0	33.0	1.74
<b>TOTAL</b>		<b>19 - 7</b>	<b>26</b>	<b>1.37</b>	<b>9</b>	<b>60</b>	<b>.283</b>	<b>0</b>	<b>0.00</b>	<b>0</b>	<b>0.00</b>	<b>0</b>	<b>1</b>	<b>0.05</b>	<b>0</b>	<b>2</b>	<b>10</b>	<b>12</b>	<b>0.63</b>	<b>0</b>	<b>0</b>	<b>33.0</b>	<b>1.74</b>

**Single Game Highs**

Statistic	Value	
Kills	16	vs Seattle U 09/01/24
Attacks	23	vs Seattle U 09/01/24
Digs	1	vs Portland St. 09/06/24
Blocks	6	vs Seattle U 09/01/24
Block solos	1	vs Seattle U 09/01/24, vs DePaul 09/05/24
Block assists	5	vs Seattle U 09/01/24
PCT	1.000	at Gonzaga 09/20/24, vs Eastern Wash. 09/21/24

**RUBRIGHT, Shea**

SEASON	TEAM	SM-MP	K	K/S	E	TA	PCT	A	A/S	SA	SA/S	SE	DIG	D/S	RE	BS	BA	TB	B/S	BE	BHE	PTS	PTS/S
2019-20	MINN	27-13	3	0.11	2	6	.167	0	0.00	0	0.00	0	1	0.04	0	0	11	11	0.41	1	0	8.5	0.31
2020-21	MINN	47-13	36	0.77	13	84	.274	2	0.04	0	0.00	0	5	0.11	1	3	48	51	1.09	2	0	63.0	1.34
2021-22	MINN	54-19	39	0.72	10	93	.312	6	0.11	0	0.00	0	12	0.22	1	6	39	45	0.83	3	0	64.5	1.19
2022-23	WSU	3-1	4	1.33	2	7	.286	0	0.00	0	0.00	0	0	0.00	1	0	2	2	0.67	1	0	5.0	1.67
2023-24	WSU	20-10	17	0.85	7	44	.227	0	0.00	0	0.00	0	2	0.10	0	0	16	16	0.80	2	0	25.0	1.25
2024-25	SDSU	41-10	98	2.39	11	174	.500	4	0.10	14	0.34	19	16	0.39	0	11	34	45	1.10	1	1	140.0	3.41
<b>TOTAL FOR SDSU</b>		<b>41 - 10</b>	<b>98</b>	<b>2.39</b>	<b>11</b>	<b>174</b>	<b>.500</b>	<b>4</b>	<b>0.10</b>	<b>14</b>	<b>0.34</b>	<b>19</b>	<b>16</b>	<b>0.39</b>	<b>0</b>	<b>11</b>	<b>34</b>	<b>45</b>	<b>1.10</b>	<b>1</b>	<b>1</b>	<b>140.0</b>	<b>3.41</b>
<b>TOTAL</b>		<b>192 - 66</b>	<b>197</b>	<b>1.03</b>	<b>45</b>	<b>408</b>	<b>.373</b>	<b>12</b>	<b>0.06</b>	<b>14</b>	<b>0.07</b>	<b>19</b>	<b>36</b>	<b>0.19</b>	<b>3</b>	<b>20</b>	<b>150</b>	<b>170</b>	<b>0.89</b>	<b>10</b>	<b>1</b>	<b>306.0</b>	<b>1.59</b>

**Single Game Highs**

Statistic	Value	
Kills	17	vs Portland St. 09/06/24
Attacks	28	vs CSUN 08/31/24
Assists	2	at Indiana 10/27/21, vs CSUN 08/31/24
Serve Aces	4	vs Seattle U 09/01/24
Digs	4	at Indiana 10/27/21, vs Tulane 09/07/24
Blocks	9	at Northwestern 03/26/21
Block solos	3	at Indiana 10/27/21, at Gonzaga 09/20/24
Block assists	9	at Northwestern 03/26/21



**San Diego St. Women's Volleyball  
Individual Career Summaries  
All games**

**UNDERWOOD, Taylor**

SEASON	TEAM	SM-MP	K	K/S	E	TA	PCT	A	A/S	SA	SA/S	SE	DIG	D/S	RE	BS	BA	TB	B/S	BE	BHE	PTS	PTS/S
2022-23	DePaul	107-28	264	2.47	109	780	.199	10	0.09	9	0.08	11	78	0.73	2	3	33	36	0.34	2	0	292.5	2.73
2023-24	SDSU	107-29	334	3.12	127	844	.245	4	0.04	37	0.35	56	56	0.52	1	4	34	38	0.36	6	2	392.0	3.66
2024-25	SDSU	41-10	134	3.27	50	307	.274	1	0.02	5	0.12	6	27	0.66	0	2	24	26	0.63	1	0	153.0	3.73
<b>TOTAL FOR SDSU</b>		<b>148 - 39</b>	<b>468</b>	<b>3.16</b>	<b>177</b>	<b>1151</b>	<b>.253</b>	<b>5</b>	<b>0.03</b>	<b>42</b>	<b>0.28</b>	<b>62</b>	<b>83</b>	<b>0.56</b>	<b>1</b>	<b>6</b>	<b>58</b>	<b>64</b>	<b>0.43</b>	<b>7</b>	<b>2</b>	<b>545.0</b>	<b>3.68</b>
<b>TOTAL</b>		<b>255 - 67</b>	<b>732</b>	<b>2.87</b>	<b>286</b>	<b>1931</b>	<b>.231</b>	<b>15</b>	<b>0.06</b>	<b>51</b>	<b>0.20</b>	<b>73</b>	<b>161</b>	<b>0.63</b>	<b>3</b>	<b>9</b>	<b>91</b>	<b>100</b>	<b>0.39</b>	<b>9</b>	<b>2</b>	<b>837.5</b>	<b>3.28</b>

**Single Game Highs**

Statistic	Value	
Kills	31	vs Air Force 10/05/23
Attacks	54	vs Air Force 10/05/23
Assists	2	at SMU 08/26/22
Serve Aces	5	vs Denver 09/08/23, vs Eastern Wash. 09/16/23
Digs	11	vs Marquette 10/26/22
Blocks	5	vs CSUN 08/31/24
Block solos	2	at Fresno St. 10/12/23
Block assists	4	vs Saint Louis 09/10/22, vs CSUN 08/31/24, vs Seattle U 09/01/24, at Gonzaga 09/20/24