

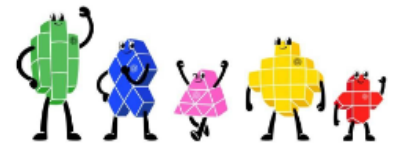
| No | SPORTS | MEDAL | DAYS | Nov. | December | | | | | | | | | | | | | | | | VENUE | | | | | |
|----|---------------------------|--------|------|------|----------|---|---|---|---|-----|---|-----|-----|-----|----|-----|-----|-----|-----|----|-------|-----|----|----|--|-----------------------------|
| | | EVENTS | | 30 | 1 | 2 | 3 | 4 | 5 | 6 | 7 | 8 | 9 | 10 | 11 | 12 | 13 | 14 | 15 | 16 | | 17 | 18 | 19 | 20 | |
| | Opening Ceremony | | | | | | | | | | | | | | | | | | | | | | | | Bangkok Royal Plaza (Sanam Luang) | |
| 1 | Aquatics | | | | | | | | | | | | | | | | | | | | | | | | | |
| | - Swimming | 38 | 6 | | | | | | | | | | Δ/O | 6 | 7 | 6 | 6 | 6 | 7 | | | | | | | Swimming Pool, SAT, Bangkok |
| | - Diving | 4 | 3 | | | | | | | | | | | | | | | Δ/O | 1 | 1 | 2 | | | | Aquatic Center, Assumption University Suvarnabhumi Campus, Samut Prakan | |
| | - Water Polo | 2 | 5 | | | | | | | | | | | | | Δ/O | | | | | | 2 | | | Thammasat Water Sports Center, Thammasat University Rangsit Campus, Pathum Thani | |
| | - Artistic Swimming | 3 | 4 | | | | | | | | | | Δ/O | | | 2 | 1 | | | | | | | | Aquatic Center, Assumption University Suvarnabhumi Campus, Samut Prakan | |
| | - Open Water Swimming | 3 | 3 | | | | | | | | | | | | | | | | Δ/O | 2 | R | 1 | | | Jomtien Beach, Pattaya City, Chon Buri | |
| 2 | Archery | | | | | | | | | | | | | | | | | | | | | | | | | |
| | - Compound | 5 | 5 | | | | | | | | | | | | | Δ/O | | | | | | 5 | | | Football Field 1, Sports Authority of Thailand, Bangkok | |
| | - Recurve | 5 | 4 | | | | | | | | | | | | | Δ/O | | | | | 5 | | | | Football Field 1, Sports Authority of Thailand, Bangkok | |
| 3 | Athletics | 47 | 6 | | | | | | | | | | | Δ/O | 8 | 8 | 11 | R | 10 | 10 | | | | | Suphachalasai Stadium, National Stadium, Bangkok | |
| 4 | Badminton | 7 | 8 | | | | | | | Δ/O | | | R | 2 | | | | 5 | | | | | | | Gymnasium 4, Thammasat University Rangsit Campus, Pathum Thani | |
| 5 | Baseball and Softball | | | | | | | | | | | | | | | | | | | | | | | | | |
| | - Baseball | 1 | 6 | | | | | | | | | | | | | Δ/O | | | R | | | | 1 | | Baseball Stadium, Queen Sirikit Sports Center, Pathum Thani | |
| | - Baseball 5 | 1 | 4 | | | | | | | | | | | Δ/O | | | | 1 | | | | | | | Multi - purpose Venue, Sports Authority of Thailand, Bangkok | |
| | - Softball | 2 | 8 | | | | | | | | | | Δ/O | | | | 1 | Δ/O | | | | | 1 | | Rajamangala University of Technology Thanyaburi, Pathum Thani | |
| 6 | Basketball | | | | | | | | | | | | | | | | | | | | | | | | | |
| | - 3X3 | 2 | 2 | | | | | | | | | | Δ/O | | 2 | | | | | | | | | | Nimibutr Stadium, National Stadium, Bangkok | |
| | - 5X5 | 2 | 7 | | | | | | | | | | | | | Δ/O | | | | | | | 2 | | Nimibutr Stadium, National Stadium, Bangkok | |
| 7 | Billiards and Snooker | | | | | | | | | | | | | | | | | | | | | | | | | |
| | - Billiards | 2 | 8 | | | | | | | | | | Δ/O | | | | 1 | | | | | 1 | | | Hall B&C Ambassador city hotel Jomtien, Pattaya City, Chonburi | |
| | - Snooker | 3 | 9 | | | | | | | | | | Δ/O | | 1 | | | | | 1 | | 1 | | | Hall B&C Ambassador city hotel Jomtien, Pattaya City, Chonburi | |
| | - 6 Red Snooker | 5 | 9 | | | | | | | | | | Δ/O | | | 1 | 1 | | 1 | 1 | | 1 | | | Hall B&C Ambassador city hotel Jomtien, Pattaya City, Chonburi | |
| 8 | Bowling | 6 | 6 | | | | | | | | | | | | | | Δ/O | 1 | 1 | 1 | 1 | | 2 | | Blu-O Rhythm & Bowl, Major Cineplex Ratchayothin, Bangkok | |
| 9 | Boxing | 17 | 10 | | | | | | | | | | Δ/O | | | | | | | | | R | 17 | | Thailand International Boxing Training Center, SAT, Bangkok | |
| 10 | Canoe and Rowing | | | | | | | | | | | | | | | | | | | | | | | | | |
| | - Canoe Slalom | 4 | 2 | | | | | | | | | | Δ/O | 2 | 2 | | | | | | | | | | The Royal Thai Navy Rowing and Canoeing Training Center, Rayong | |
| | - Canoe Sprint | 10 | 3 | | | | | | | | | | Δ/O | 4 | 3 | 3 | | | | | | | | | The Royal Thai Navy Rowing and Canoeing Training Center, Rayong | |
| | - Classic Rowing | 8 | 4 | | | | | | | | | | | | | | Δ/O | | | | 4 | 4 | | | The Royal Thai Navy Rowing and Canoeing Training Center, Rayong | |
| | - Rowing Beach Sprint | 2 | 1 | | | | | | | | | | | | | | | | | | | Δ/O | 2 | | Ambarssador City Jomtien Pattaya , Chonburi | |
| | - Dragon Boat | 6 | 2 | | | | | | | | | | | | | | | | | | Δ/O | 3 | 3 | | The Royal Thai Navy Rowing and Canoeing Training Center, Rayong | |
| 11 | Chess | 8 | 10 | | | | | | | | | | Δ/O | 1 | | | 1 | R | | 2 | 1 | | 3 | | Prem Auditorium, Thaksin University Songkhla Campus, Songkhla | |
| 12 | Cricket | 4 | 11 | | | | | | | | | Δ/O | | | | 1 | | | 1 | | R | | 2 | | TerdThai Cricket Grounds & Asian Institute of Technology ,Bangkok | |
| 13 | Cycling | | | | | | | | | | | | | | | | | | | | | | | | | |
| | - Road | 7 | 4 | | | | | | | | | | | | | | Δ/O | 2 | 2 | 2 | 1 | | | | Kamol Sports Park, Bangkok | |
| | - Track | 5 | 2 | | | | | | | | | | | | | | | | | | Δ/O | 2 | 3 | | Hua Mark Velodrome, Bangkok | |
| | - Mountain Bike MTB | 3 | 3 | | | | | | | | | | Δ/O | | | 2 | 1 | | | | | | | | Khao Kheow Open Zoo, Chon Buri | |
| | - BMX | 2 | 2 | | | | | | | | | | Δ/O | 1 | 1 | | | | | | | | | | BMX Stadium, Kamol Sports Park, Bangkok | |
| 14 | Equestrian | | | | | | | | | | | | | | | | | | | | | | | | | |
| | - Equestrian Dressage | 2 | 3 | | | | | | | | | | | | | | Δ/O | 1 | | 1 | | | | | Thai Polo & Equestrian Club Pattaya, Chonburi | |
| | - Equestrian Show Jumping | 2 | 3 | | | | | | | | | | | | | | | | Δ/O | | | | 2 | | Thai Polo & Equestrian Club Pattaya, Chonburi | |
| | - Equestrian Eventing | 2 | 1 | | | | | | | | | | | | | Δ/O | 2 | | | | | | | | Thai Polo & Equestrian Club Pattaya, Chonburi | |
| | - Polo | 2 | 17 | Δ/O | | | | | | R | | R | | R | 1 | R | | | R | | R | | 1 | | VS Sports Club & Siam Polo Park, Samutprakan | |
| 15 | E-sports | 6 | 7 | | | | | | | | | | | | | Δ/O | | | | 2 | 2 | 1 | 1 | | Huamark Sports Training Center, Bangkok | |
| 16 | Extreme | | | | | | | | | | | | | | | | | | | | | | | | | |
| | - Sport Climbling | 6 | 5 | | | | | | | | | | | | | Δ/O | | 2 | 2 | | 2 | | | | SAT Extreme Sports Park, Bangkok | |
| | - Water Ski & Wakeboard | 4 | 7 | | | | | | | | | | Δ/O | | 3 | | | | 1 | | | | | | Waterski (Boat) @ Rabbit lake/Cable Wakeboard @ ESC wake park, Pathum Thani | |
| | - Skateboard | 4 | 6 | | | | | | | | | | Δ/O | | | | 2 | 2 | | | | | | | SAT Extreme Sports Park, Bangkok | |
| | - Jetski | 6 | 4 | | | | | | | | | | | Δ/O | | | | 1 | 5 | | | | | | Jomtien Beach, Pattaya City, Chonburi | |
| 17 | Fencing | 12 | 4 | | | | | | | | | | | | | | | | Δ/O | 3 | 3 | 3 | 3 | | Island Hall 3rd Floor , Fashion Island Shopping Mall, Bangkok | |

Tentative Competition Schedule
The 33rd SEA Games Bangkok - Chonburi - Songkhla (9 - 20 Dec 2025)



| No | SPORTS | MEDAL | DAYS | Nov. | December | | | | | | | | | | | | | | | | VENUE | | | | | |
|----|-----------------------------|--------|------|------|----------|---|-----|-----|---|-----|---|---|---|-----|-----|-----|-----|-----|-----|-----|-------|----|----|----|---|---|
| | | EVENTS | | 30 | 1 | 2 | 3 | 4 | 5 | 6 | 7 | 8 | 9 | 10 | 11 | 12 | 13 | 14 | 15 | 16 | | 17 | 18 | 19 | 20 | |
| 18 | Floorball | 2 | 7 | | | | | | | | | | | | | Δ/O | | | | | | | 2 | | Thailand National Sport University Chonburi, Chonburi | |
| 19 | Football and Futsal | | | | | | | | | | | | | | | | | | | | | | | | | |
| | - Football (Men) | | 8 | | | | | Δ/O | G | R | R | G | R | R | R | G | | | | | | | | | 700th Anniversary Chiangmai Stadium, Chiangmai | |
| | - Football (Men) | | 8 | | | | | Δ/O | G | R | R | G | R | R | R | G | | | | | | | | | Tinsulanonda Stadium, Songkhla | |
| | - Football (Men) | 1 | 16 | | | | Δ/O | G | R | R | G | R | R | R | G | R | G | R | R | SF | R | R | 1 | | Rajamangala National Stadium, SAT, Bangkok | |
| | - Football (Women) | | 8 | | | | | Δ/O | G | G | R | G | G | R | G | G | | | | | | | | | National Sports University Chonburi, Chonburi | |
| | - Football (Women) | 1 | 14 | | | | | Δ/O | G | G | R | G | G | R | G | G | R | R | SF | R | R | 1 | | | Chonburi Stadium, Chonburi | |
| | - Futsal (Men) | 1 | 7 | | | | | | | | | | | | | Δ/O | G | G | G | R | SF | R | 1 | | Nonthaburi Province Stadium, Nonthaburi | |
| | - Futsal (Women) | 1 | 7 | | | | | | | | | | | | | Δ/O | G | G | G | R | SF | R | 1 | | Bangkokthonburi University, Samut Prakan | |
| 20 | Golf | 4 | 4 | | | | | | | | | | | | Δ/O | | | | 4 | | | | | | Siam Country Club Pattaya, Chonburi | |
| 21 | Gymnastics | | | | | | | | | | | | | | | | | | | | | | | | | |
| | - Artistic | 10 | 3 | | | | | | | | | | | | Δ/O | | 5 | 5 | | | | | | | | Gymnasium 6, Thammasat University Rangsit Campus, Pathum Thani |
| | - Rhythmic | 4 | 2 | | | | | | | | | | | | | | | | Δ/O | 1 | 3 | | | | | Gymnasium 6, Thammasat University Rangsit Campus, Pathum Thani |
| | - Aerobic | 2 | 2 | | | | | | | | | | | | | | | | | | Δ/O | | 2 | | | Gymnasium 6, Thammasat University Rangsit Campus, Pathum Thani |
| 22 | Handball | 2 | 10 | | | | | | | | | | | | Δ/O | | | | R | | | | R | 2 | | Indoor Athletics stadium Pattaya, Chonburi |
| 23 | Hockey | | | | | | | | | | | | | | | | | | | | | | | | | |
| | - Hockey 5's | 2 | 6 | | | | | | | Δ/O | | | | R | | | 2 | | | | | | | | | RTAF Hockey Stadium, Bangkok |
| | - Field Hockey | 2 | 7 | | | | | | | | | | | | | Δ/O | | | | | | | | 2 | | Thailand National Sport University Chonburi, Chonburi |
| | - Indoor Hockey | 2 | 7 | | | | | | | | | | | | | Δ/O | | | | | | | | 2 | | Wet Gymnasium1 Bangkok Youth Center (Thai - Japan), Bangkok |
| 24 | Ice Hockey | 2 | 10 | | | | | | | | | | | | Δ/O | | | | | 1 | | | | 1 | | Thailand International Ice Hockey Arena, Bangkok |
| 25 | Ice Skating | | | | | | | | | | | | | | | | | | | | | | | | | |
| | - Figure Skating | 2 | 2 | | | | | | | | | | | | | Δ/O | | 2 | | | | | | | | IWIS International Ice Skating Training Center (Imperial World Samrong), Samut Prakan |
| | - Short Track Speed Skating | 7 | 2 | | | | | | | | | | | | | | | | | Δ/O | | 1 | 6 | | | IWIS International Ice Skating Training Center (Imperial World Samrong), Samut Prakan |
| 26 | Judo | 12 | 4 | | | | | | | | | | | | Δ/O | 2 | 4 | 5 | 1 | | | | | | | Chaloem Phrakiat Auditorium 80th Anniversary, (5 December 2007), Songkhla Rajabhat University, Songkhla |
| 27 | Ju-jitsu | | | | | | | | | | | | | | | | | | | | | | | | | |
| | - Ne-waza | 7 | 2 | | | | | | | | | | | Δ/O | | 4 | 3 | | | | | | | | | Recreation Buiding, Rangsit University, Pathum Thani |
| | - Fighting | 4 | 1 | | | | | | | | | | | Δ/O | 4 | | | | | | | | | | | Recreation Buiding, Rangsit University, Pathum Thani |
| | - Duo Classic | 7 | 4 | | | | | | | | | | | Δ/O | 2 | 2 | 2 | 1 | | | | | | | | Recreation Buiding, Rangsit University, Pathum Thani |
| 28 | Kabaddi | 6 | 8 | | | | | | | | | | | | Δ/O | | | | | 2 | | 2 | | 2 | | Panishad Hall, Thaksin University Songkhla Campus, Songkhla |
| 29 | Karate | 15 | 4 | | | | | | | | | | | | Δ/O | 4 | 5 | 4 | 2 | | | | | | | Convention Hall, Central Festival Hatyai, Songkhla |
| 30 | Kickboxing | | | | | | | | | | | | | | | | | | | | | | | | | |
| | - Ring : K-1 | 2 | 4 | | | | | | | | | | | | | | Δ/O | | | | | 2 | | | | John Paul II Sports Center, Assumption University, Samut Prakan |
| | - Ring : Low Kick | 2 | 4 | | | | | | | | | | | | | | Δ/O | | | | | 2 | | | | John Paul II Sports Center, Assumption University, Samut Prakan |
| | - Ring : Full Contact | 1 | 4 | | | | | | | | | | | | | | Δ/O | | | | | 1 | | | | John Paul II Sports Center, Assumption University, Samut Prakan |
| | - Tatami: Kick Light | 1 | 3 | | | | | | | | | | | | | | Δ/O | | | | 1 | | | | | John Paul II Sports Center, Assumption University, Samut Prakan |
| | - Tatami: Point Fighting | 2 | 3 | | | | | | | | | | | | | | Δ/O | | | | 2 | | | | | John Paul II Sports Center, Assumption University, Samut Prakan |
| 31 | Modern Pentathlon | 6 | 3 | | | | | | | | | | | | | | | | | Δ/O | 2 | 2 | 2 | | | Jomtien Beach, Pattaya City, Chonburi |
| 32 | Muay | 18 | 7 | | | | | | | | | | | | | | Δ/O | | | | | | | 18 | | Southern Major City Stadium, Songkhla |
| 33 | Netball | 1 | 6 | | | | | | | | | | | | | Δ/O | | | | | | 1 | | | | Chantana Yingyong Stadium, Chulalongkorn University |
| 34 | Pencak Silat | 13 | 5 | | | | | | | | | | | | | | Δ/O | | 3 | | | 10 | | | | Suwannawong Bid, Jiranakorn Stadium Gymnasium, Songkhla |
| 35 | Petanque | 11 | 6 | | | | | | | | | | | | Δ/O | 2 | 2 | 2 | 1 | 2 | 2 | | | | | Prince of Songkhla University, Songkhla |
| 36 | Rugby | 2 | 2 | | | | | | | | | | | | | | Δ/O | | 2 | | | | | | | Dhupateme Royal Thai Air Force Sports Stadium, Bangkok |
| 37 | Sailing | | | | | | | | | | | | | | | | | | | | | | | | | |
| | - Sailing | 7 | 9 | | | | | | | | | | | Δ/O | | | | | | | | | 7 | | | Samudara Klia Yachting Center, Sattahip, Chonburi |
| | | 1 | 4 | | | | | | | | | | | | | | | | | | | | 1 | | | Ocean Marina Yacht club, Chonburi |
| | - Kite Boarding | 2 | 5 | | | | | | | | | | | | | | | Δ/O | | | | | 2 | | | Beach of Ambassador City Jomtien Hotel, Chonburi |
| | - Windsurfer | 4 | 7 | | | | | | | | | | | | | | Δ/O | | | | R | | 4 | | | Jomtien Beach Pattaya, Chonburi |
| 38 | Sepak Takraw | 11 | 10 | | | | | | | | | | | | Δ/O | | 4 | | 2 | | | | 3 | 2 | | Gymnasium 5, Thammasat University Rangsit Campus, Pathum Thani |

Tentative Competition Schedule
The 33rd SEA Games Bangkok - Chonburi - Songkhla (9 - 20 Dec 2025)



| No | SPORTS | MEDAL | DAYS | Nov. | December | | | | | | | | | | | | | | | | | VENUE | | | | |
|----|----------------------|--------|------|------|----------|---|---|---|---|---|---|---|---|-----|----|-----|-----|----|-----|-----|----|-------|----|-----|----|---|
| | | EVENTS | | 30 | 1 | 2 | 3 | 4 | 5 | 6 | 7 | 8 | 9 | 10 | 11 | 12 | 13 | 14 | 15 | 16 | 17 | | 18 | 19 | 20 | |
| 39 | Shooting | | | | | | | | | | | | | | | | | | | | | | | | | |
| | - Pistol and Rifle | 16 | 10 | | | | | | | | | | | Δ/O | | | 1 | 2 | 4 | 1 | | 4 | | 4 | | Shooting Range, Sports Authority of Thailand, Bangkok |
| | - Shotgun Skeet-Trap | 4 | 8 | | | | | | | | | | | Δ/O | | 2 | | Δ | | 2 | | | | | | Photharam Shooting Range, Ratchaburi |
| | - Shotgun Compak | 2 | | | | | | | | | | | | | | Δ | | 1 | | Δ | | 1 | | | | |
| | - Practical Shooting | 8 | 3 | | | | | | | | | | | | Δ | O | | | 8 | | | | | | | Eastern National Sport Training Center, Chonburi |
| 40 | Squash | 4 | 6 | | | | | | | | | | | | | | Δ/O | | 2 | | | | 2 | | | Vajiravudh College, Bangkok |
| 41 | Table Tennis | 7 | 8 | | | | | | | | | | | | | Δ/O | | | 2 | R | | 3 | | 2 | | Westgate Hall (4th Floor) , Central Westgate, Nonthaburi |
| 42 | Taekwondo | 20 | 4 | | | | | | | | | | | Δ/O | 6 | 4 | 5 | 5 | | | | | | | | Island Hall 3rd Floor , Fashion Island Shopping Mall, Bangkok |
| 43 | Tennis | 7 | 10 | | | | | | | | | | | Δ/O | | | | 2 | | | | | 2 | 3 | | National Tennis Development Center, Nonthaburi |
| 44 | Teqball | 5 | 4 | | | | | | | | | | | Δ/O | | | | 5 | | | | | | | | The Multipurpose Gymnasium Chonburi Sports School, Chonburi |
| 45 | Triathlon | | | | | | | | | | | | | | | | | | | | | | | | | |
| | - Triathlon | 5 | 2 | | | | | | | | | | | | | | | | Δ/O | | 3 | | 2 | | | Leam Mae Phim, Klaeng distic, Rayong |
| | - Duathlon | 3 | 1 | | | | | | | | | | | | | | | | Δ/O | | | 3 | | | | Leam Mae Phim, Klaeng distic, Rayong |
| | - Aquathlon | 3 | 1 | | | | | | | | | | | | | | | | Δ/O | 3 | | | | | | Leam Mae Phim, Klaeng distic, Rayong |
| 46 | Volleyball | | | | | | | | | | | | | | | | | | | | | | | | | |
| | - Indoor | 2 | 10 | | | | | | | | | | | Δ/O | | | | | | 1 | | | | 1 | | Indoor Stadium Huamark, Sports Authority of Thailand, Bangkok |
| | - Beach | 2 | 8 | | | | | | | | | | | | | Δ/O | | | | | | | 2 | | | Beach Volleyball Stadium, Sports Authority of Thailand, Bangkok |
| 47 | Weightlifting | 14 | 5 | | | | | | | | | | | | | Δ/O | | 3 | 3 | 3 | 3 | 2 | | | | Chonburi Sports School, Chonburi |
| 48 | Woodball | 6 | 5 | | | | | | | | | | | Δ/O | 2 | | 2 | | 2 | | | | | | | Royal Thai Fleet Golf Course, Sattahip, Chonburi |
| 49 | Wrestling | | | | | | | | | | | | | | | | | | | | | | | | | |
| | - Freestyle | 8 | 2 | | | | | | | | | | | | | | | | | Δ/O | | 4 | 4 | | | Convention Hall, Central Festival Hatyai, Songkhla |
| | - Greco-Roman | 4 | 1 | | | | | | | | | | | | | | | | | Δ/O | 4 | | | | | Convention Hall, Central Festival Hatyai, Songkhla |
| 50 | Wushu | 14 | 3 | | | | | | | | | | | | | | Δ/O | 4 | 2 | 8 | | | | | | Prince of Songkhla University Convention Hall, Songkhla |
| | Closing Ceremony | | | | | | | | | | | | | | | | | | | | | | | | | Rajamangala National Stadium, SAT, Bangkok |
| | TOTAL | 574 | 540 | 0 | 0 | 0 | 0 | 0 | 0 | 0 | 0 | 0 | 0 | 0 | 32 | 54 | 57 | 64 | 56 | 54 | 45 | 54 | 52 | 105 | 1 | 574 |

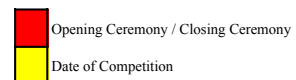
Δ : Technical Meeting

O : Managers/Meeting

F : Final

R : Rest Day

Number : Number of Medal



Demonstration Sports

| | | | | | | | | | | | | | | | | | | | | | | | | | | |
|----|----------------------|---|---|--|--|--|--|--|--|--|--|--|--|-----|--|--|-----|-----|-----|---|---|---|--|--|--|---|
| 51 | Air Sports | | | | | | | | | | | | | | | | | | | | | | | | | |
| | -Paragliding | 3 | 3 | | | | | | | | | | | Δ/O | | | 3 | | | | | | | | | Nongkho Reservoir (Air Sport Venue), Chonburi |
| | -Powered Paragliding | 1 | 4 | | | | | | | | | | | | | | Δ/O | | | | | 1 | | | | Nongkho Reservoir (Air Sport Venue), Chonburi |
| 52 | Flying Disc | | | | | | | | | | | | | | | | | | | | | | | | | |
| | -Ultimate Division | 1 | 2 | | | | | | | | | | | | | | | Δ/O | | | 1 | | | | | King Mongkut's Institute of Technology Ladkrabang |
| | -Disc Golf | 2 | 3 | | | | | | | | | | | | | | | Δ/O | | | | 2 | | | | Lakewood Country Club |
| 53 | Tug of War | 5 | 1 | | | | | | | | | | | | | | | | Δ/O | 5 | | | | | | Multipurpose Venue, Sports Authority of Thailand, Bangkok |

Special Value - Added Events / Activities

| | | | | | | | | | | | | | | | | | | | | | | | | | | |
|----|--------------------|---|---|--|--|--|--|--|--|--|--|--|--|-----|--|---|--|--|--|--|--|--|--|--|--|------------------------|
| 54 | Mixed Martial Arts | 6 | 2 | | | | | | | | | | | Δ/O | | 6 | | | | | | | | | | The Mall Ngam Wong Wan |
|----|--------------------|---|---|--|--|--|--|--|--|--|--|--|--|-----|--|---|--|--|--|--|--|--|--|--|--|------------------------|

Data as of : 1 August 2025